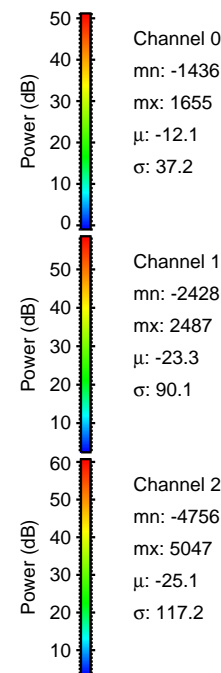
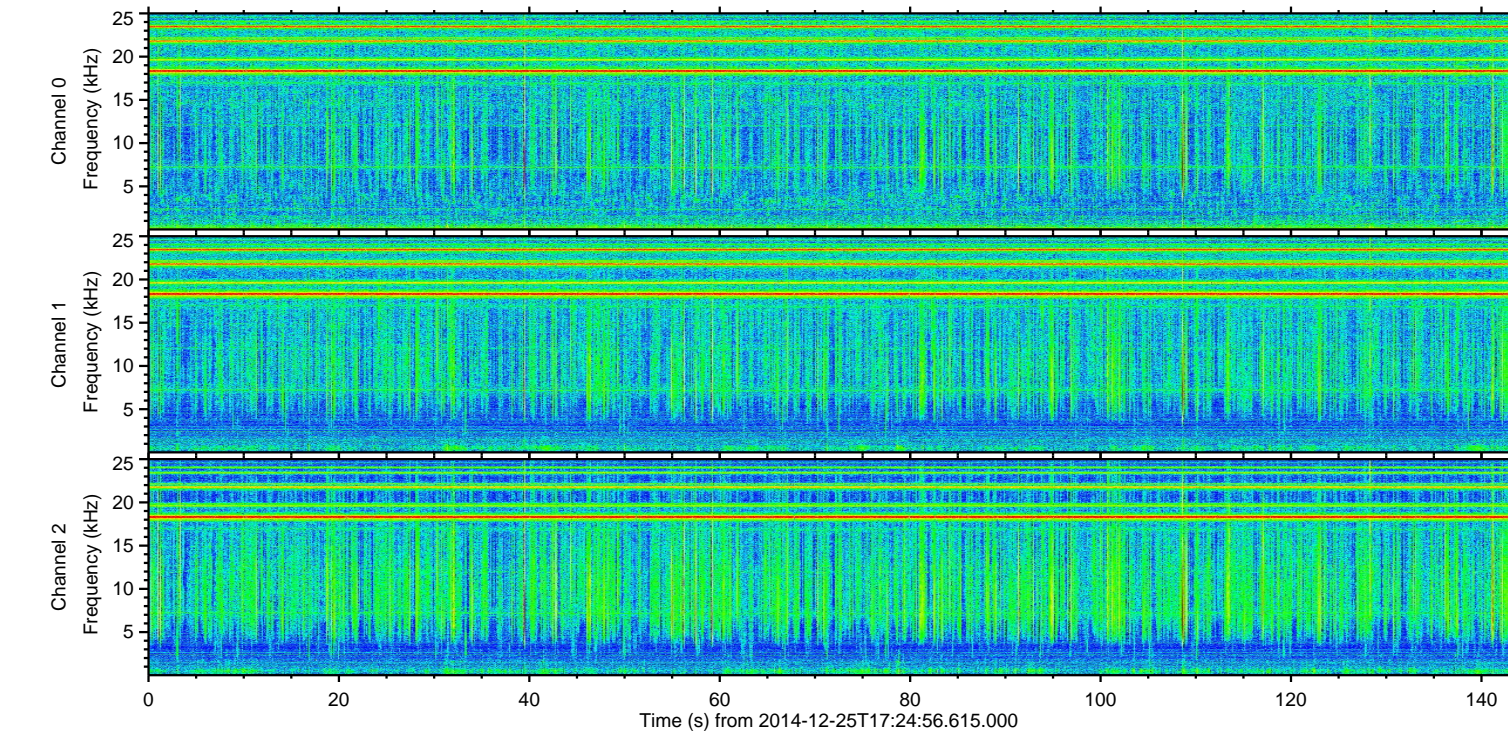
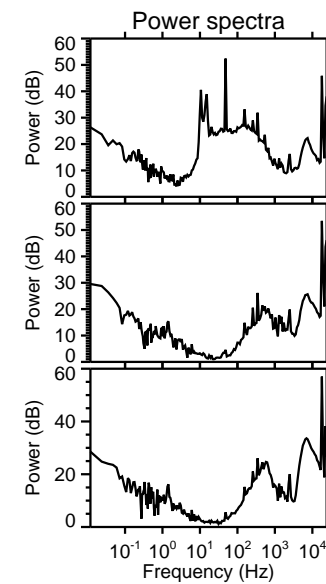
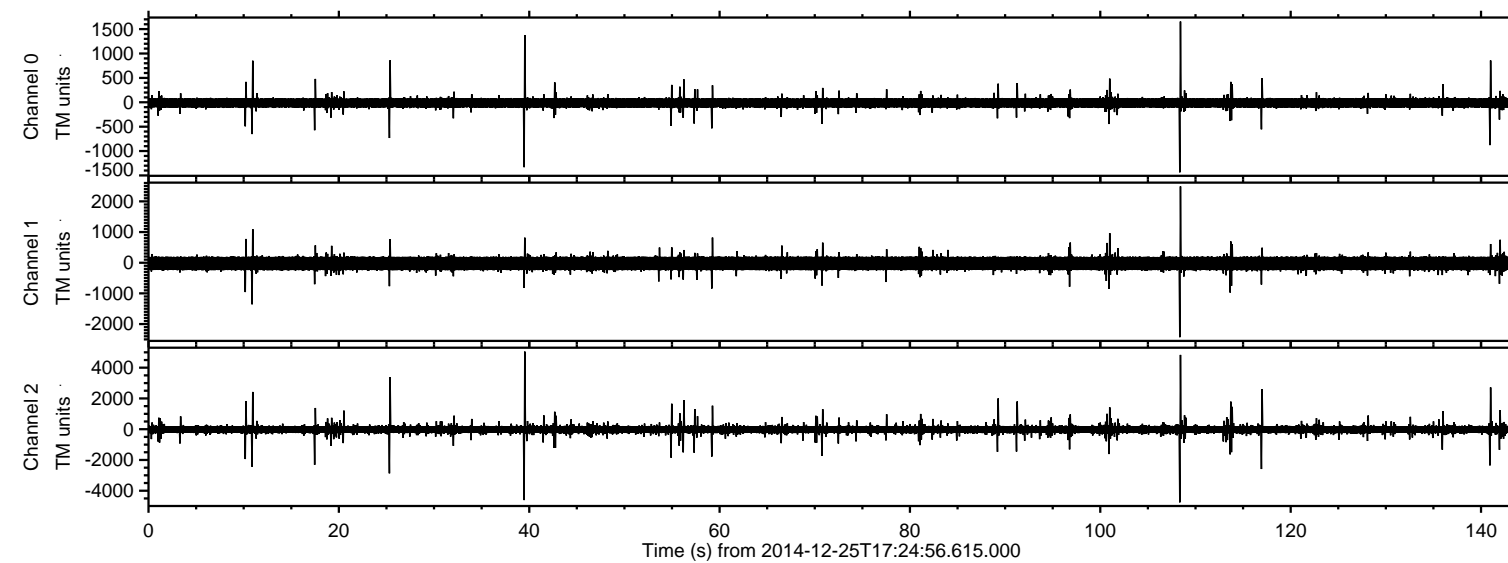


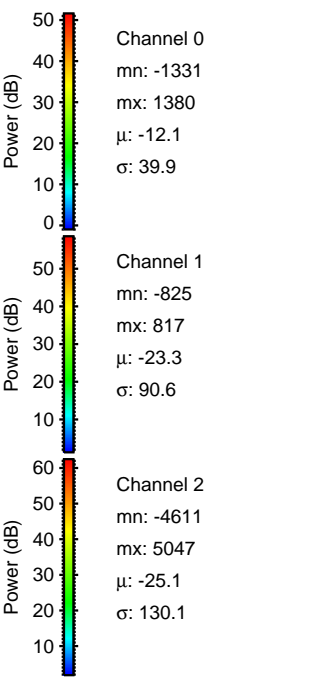
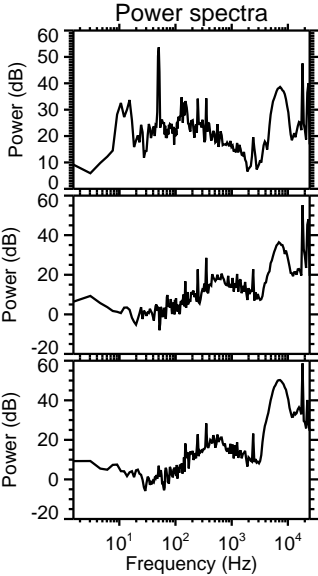
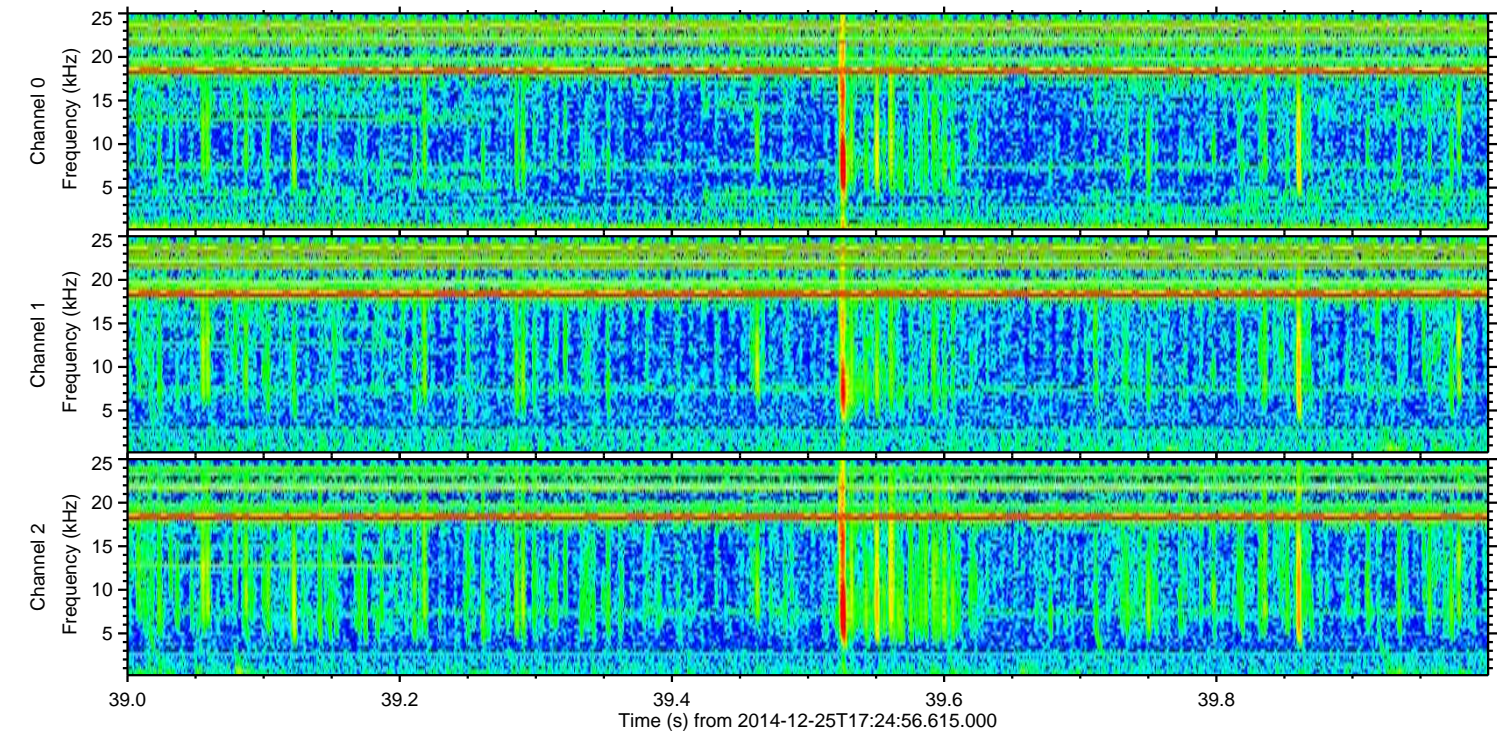
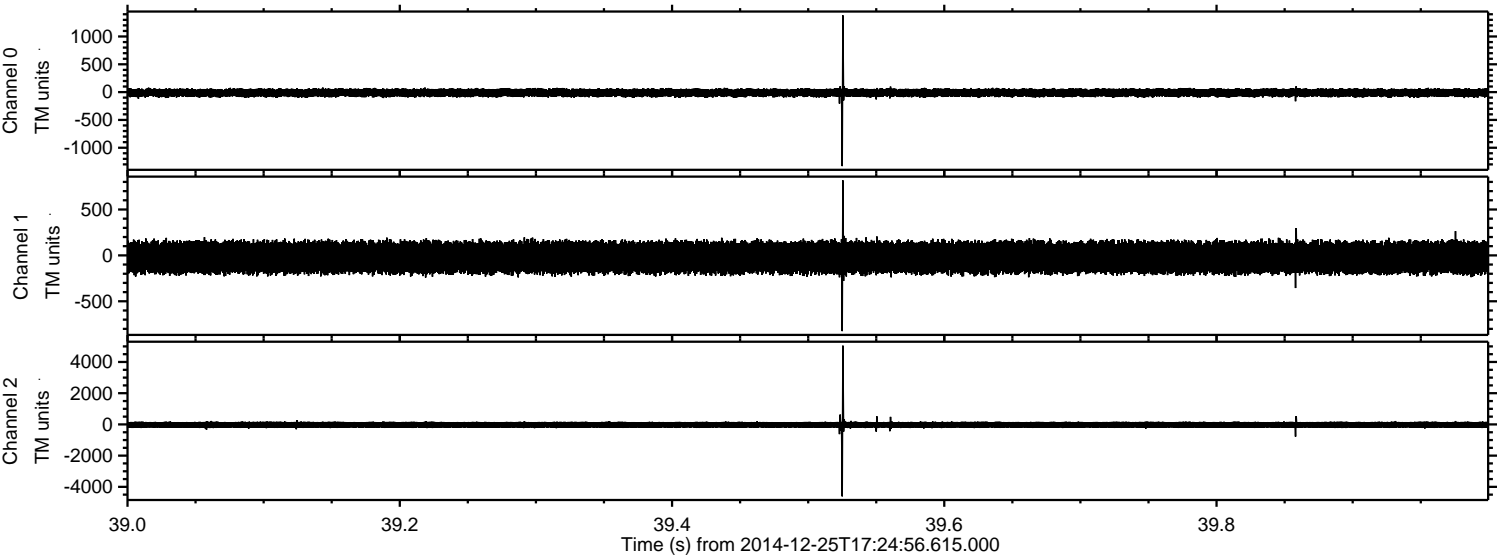
# ELMAVAN 3D WAVEFORMS (Measured data sampled at 50 kHz) 49637 packets of 144 samples from 2014-12-25T17:24:56.615.000.

Processed Thu Dec 25 18:33:18 2014 by ELM ver.2012-10-06 from 001\_\_elm20141225\_172455\_\_dat00.bin





Processed Thu Dec 25 18:33:33 2014 by ELM ver.2012-10-06 from 001\_\_elm20141225\_172455\_\_dat00.bin



Channel 0  
mn: -1331  
mx: 1380  
 $\mu$ : -12.1  
 $\sigma$ : 39.9

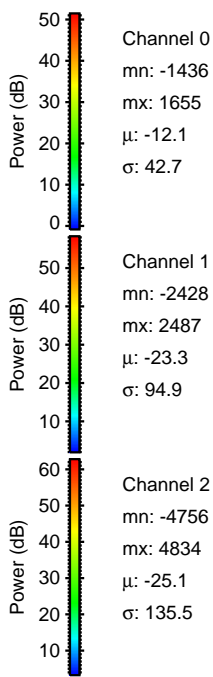
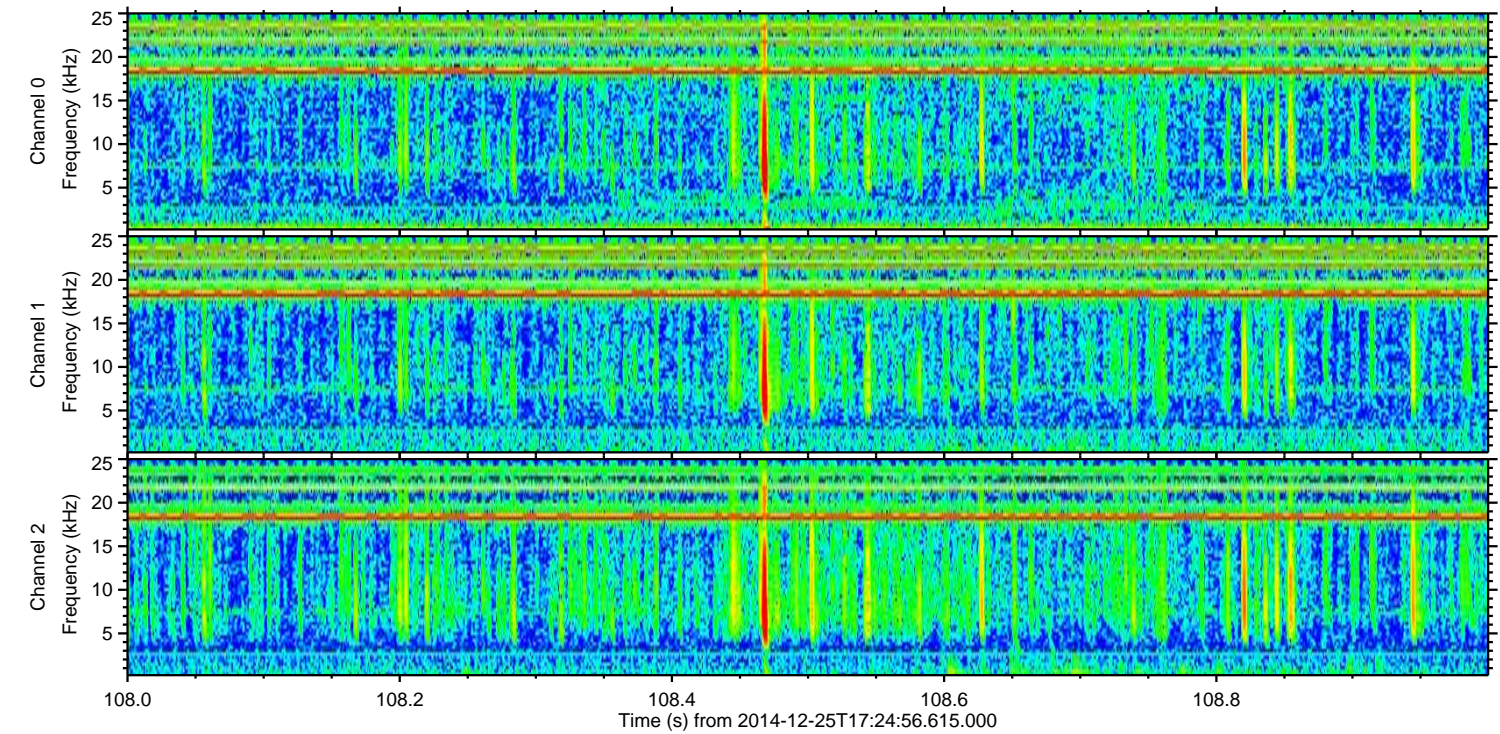
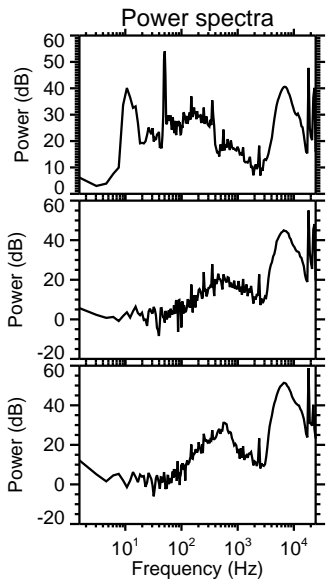
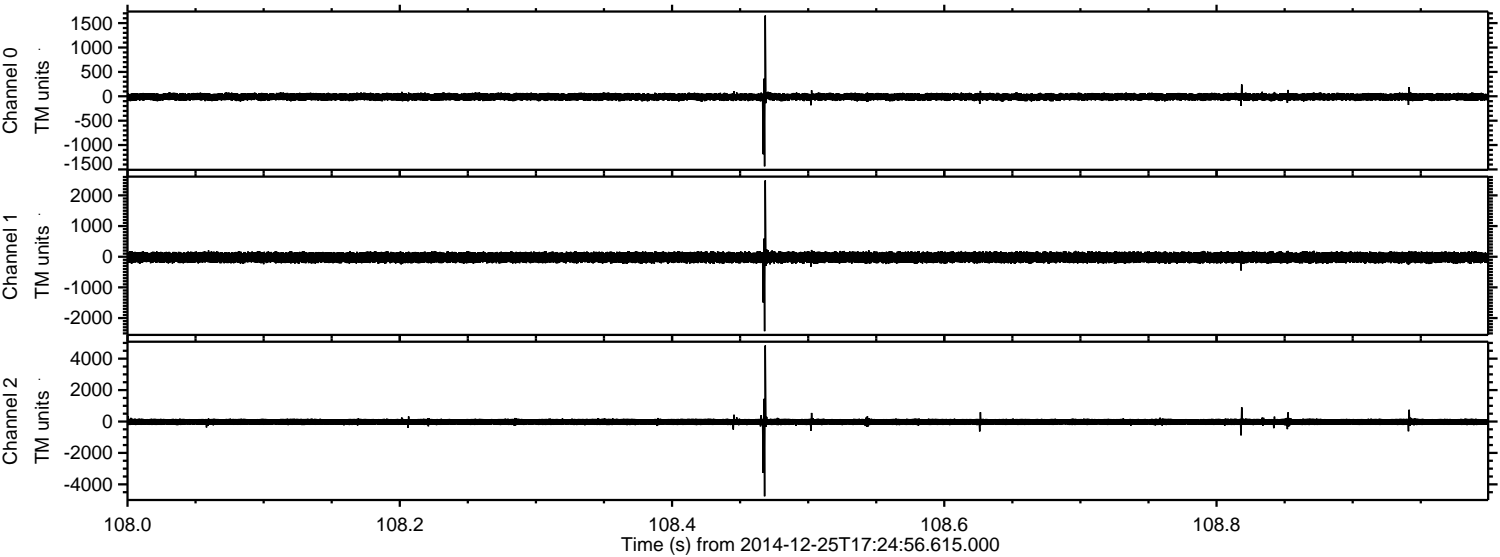
Channel 1  
mn: -825  
mx: 817  
 $\mu$ : -23.3  
 $\sigma$ : 90.6

Channel 2  
mn: -4611  
mx: 5047  
 $\mu$ : -25.1  
 $\sigma$ : 130.1



ELMAVAN 3D WAVEFORMS (Measured data sampled at 50 kHz) 49637 packets of 144 samples from 2014-12-25T17:24:56.615.000. Part 109/143

Processed Thu Dec 25 18:33:34 2014 by ELM ver.2012-10-06 from 001\_\_elm20141225\_172455\_\_dat00.bin



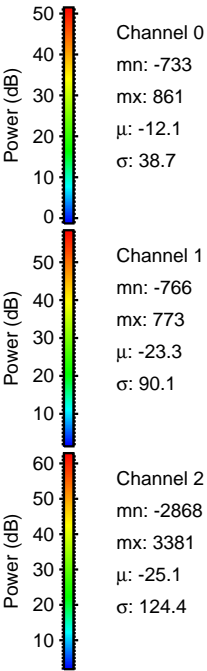
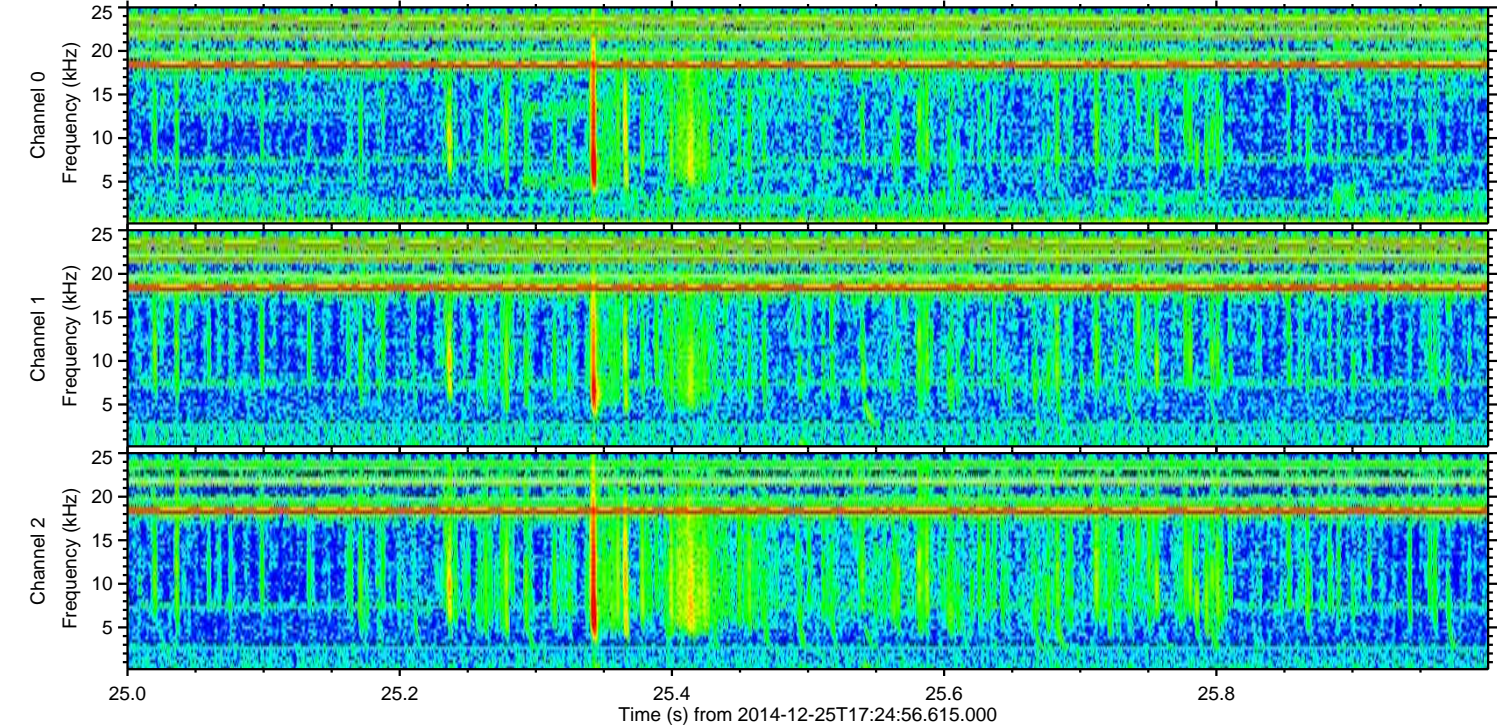
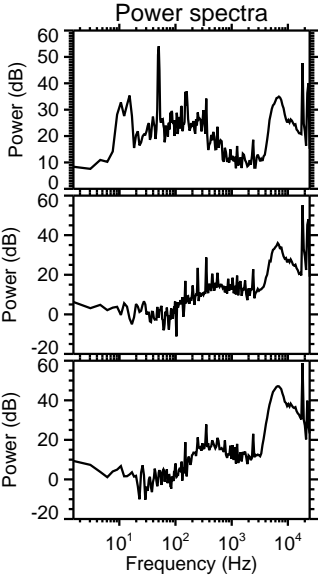
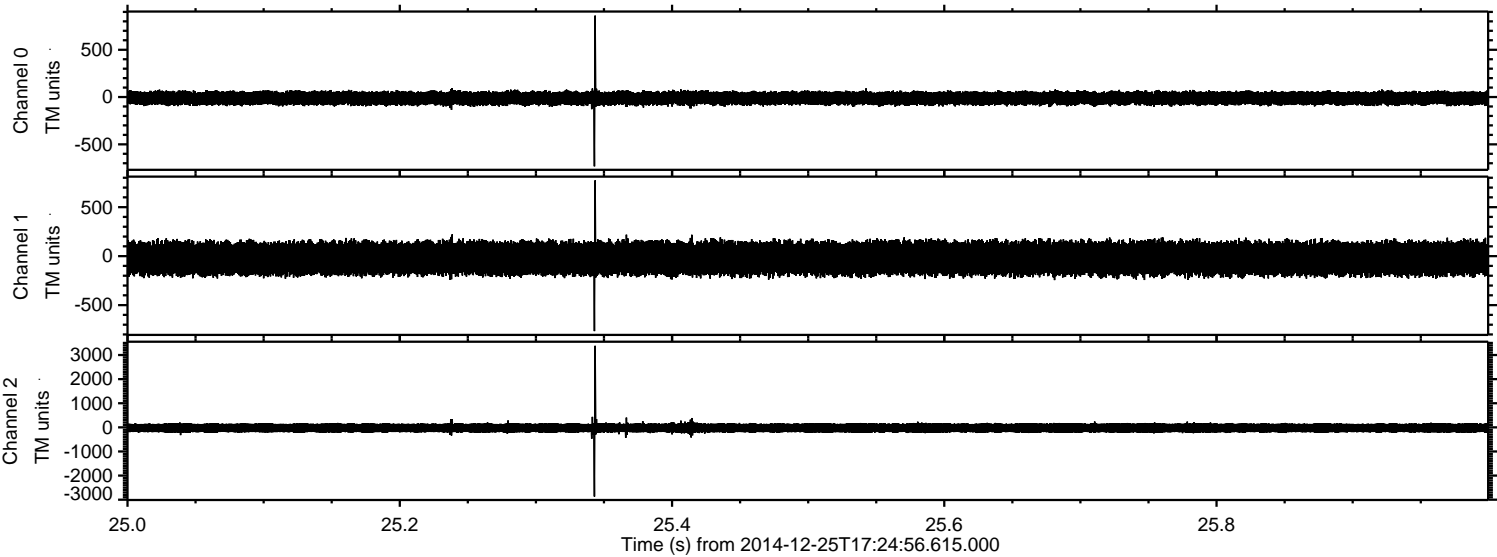
Channel 0  
mn: -1436  
mx: 1655  
 $\mu$ : -12.1  
 $\sigma$ : 42.7

Channel 1  
mn: -2428  
mx: 2487  
 $\mu$ : -23.3  
 $\sigma$ : 94.9

Channel 2  
mn: -4756  
mx: 4834  
 $\mu$ : -25.1  
 $\sigma$ : 135.5



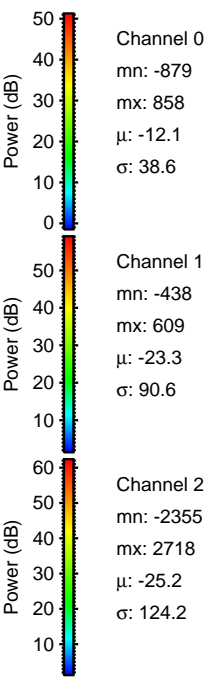
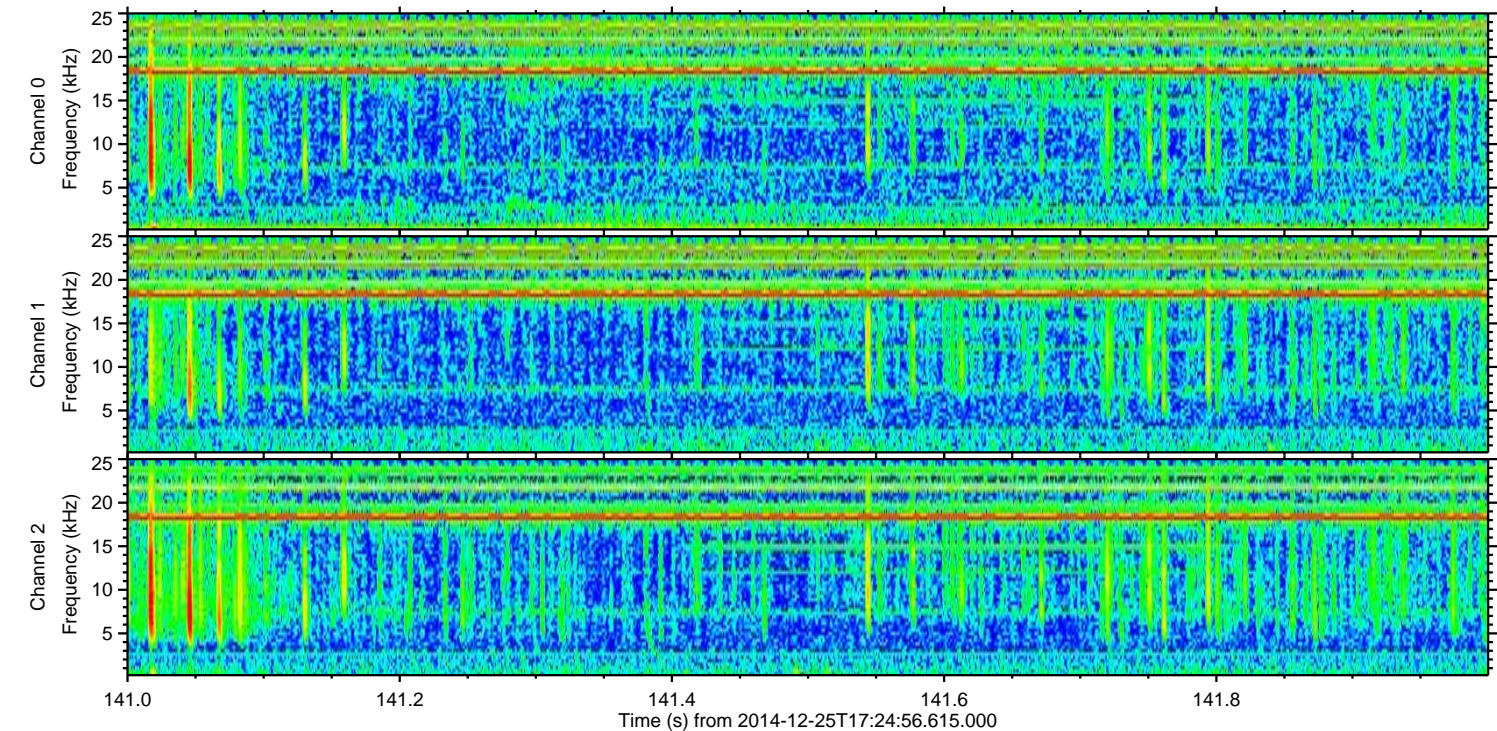
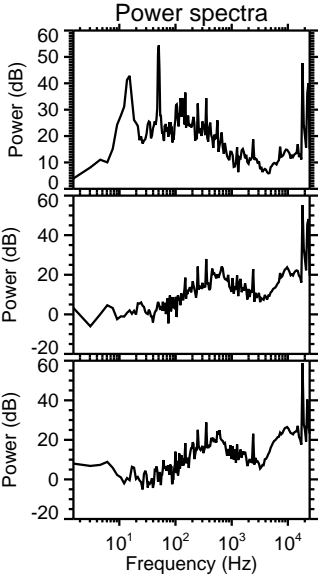
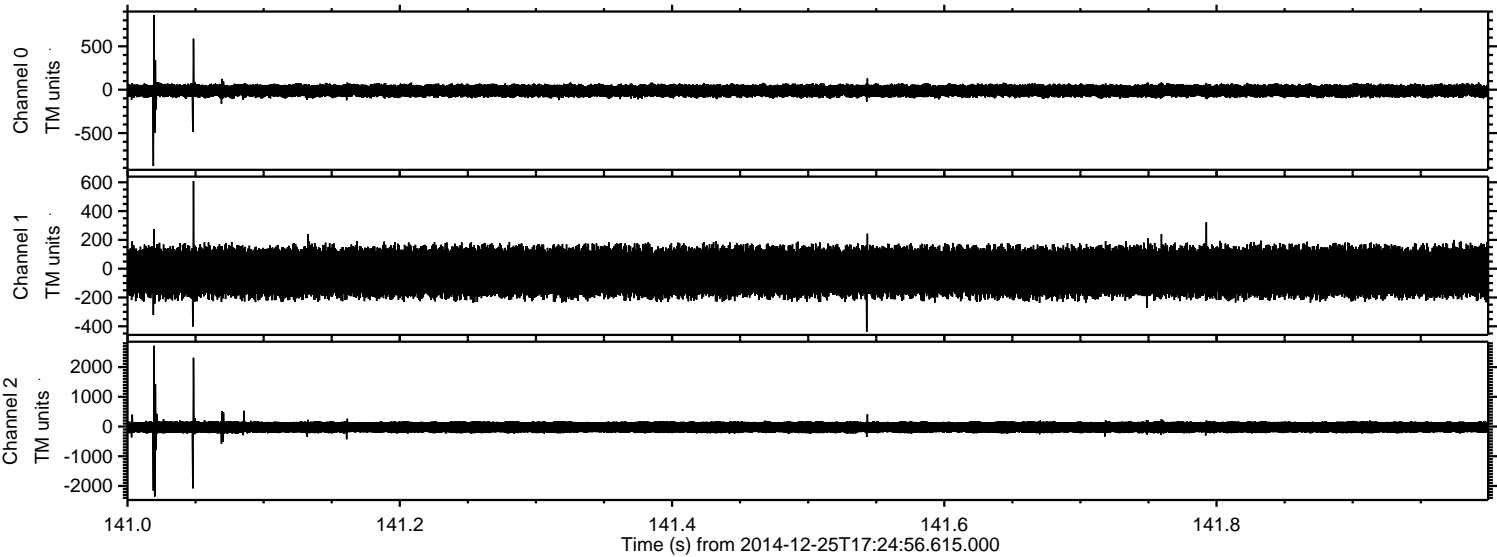
Processed Thu Dec 25 18:33:36 2014 by ELM ver.2012-10-06 from 001\_\_elm20141225\_172455\_\_dat00.bin





ELMAVAN 3D WAVEFORMS (Measured data sampled at 50 kHz) 49637 packets of 144 samples from 2014-12-25T17:24:56.615.000. Part 142/143

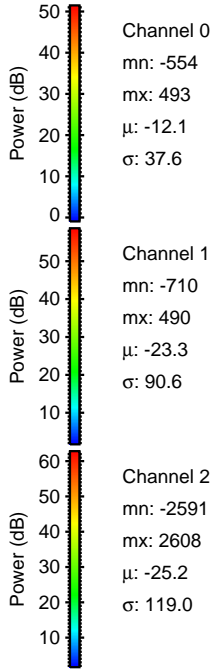
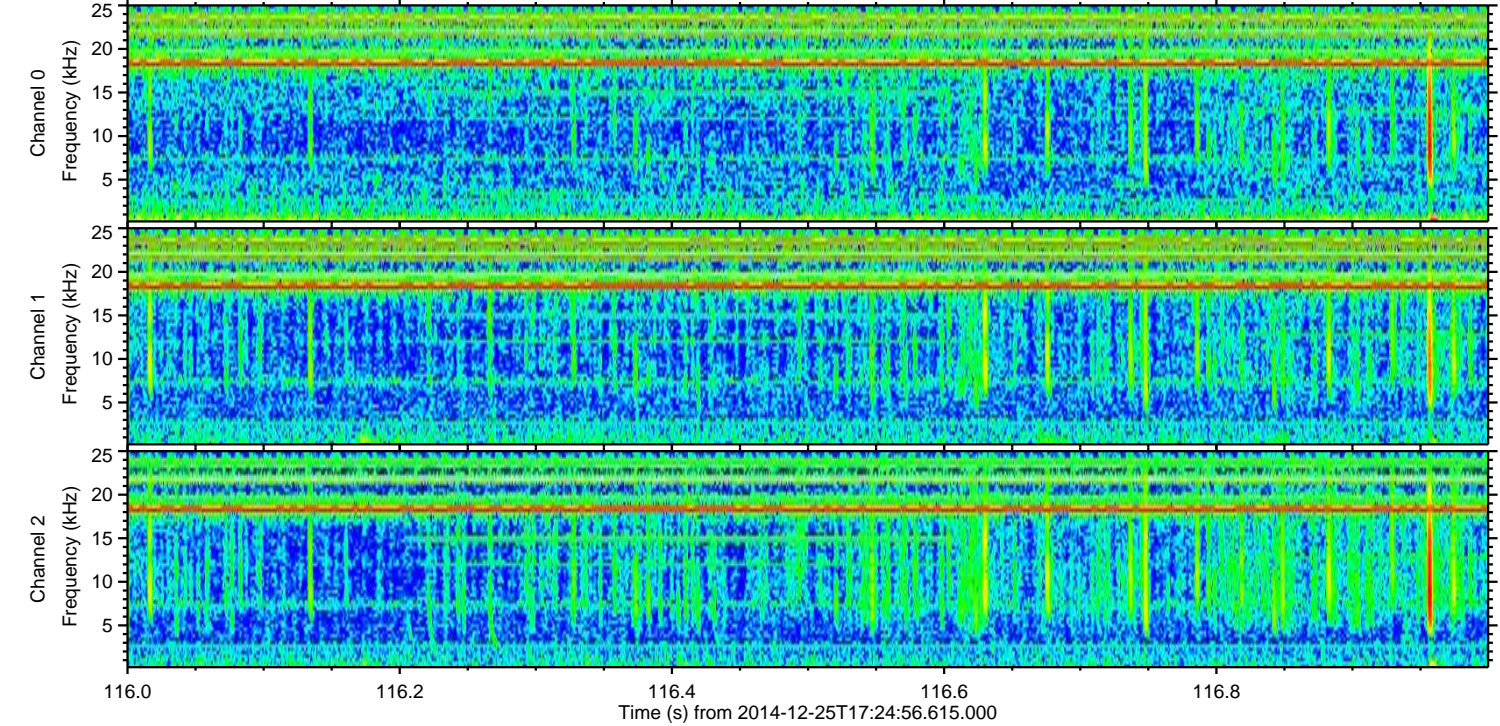
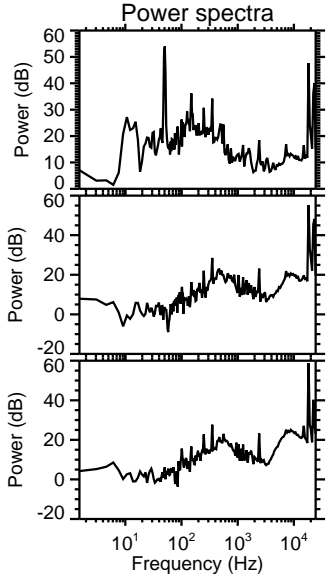
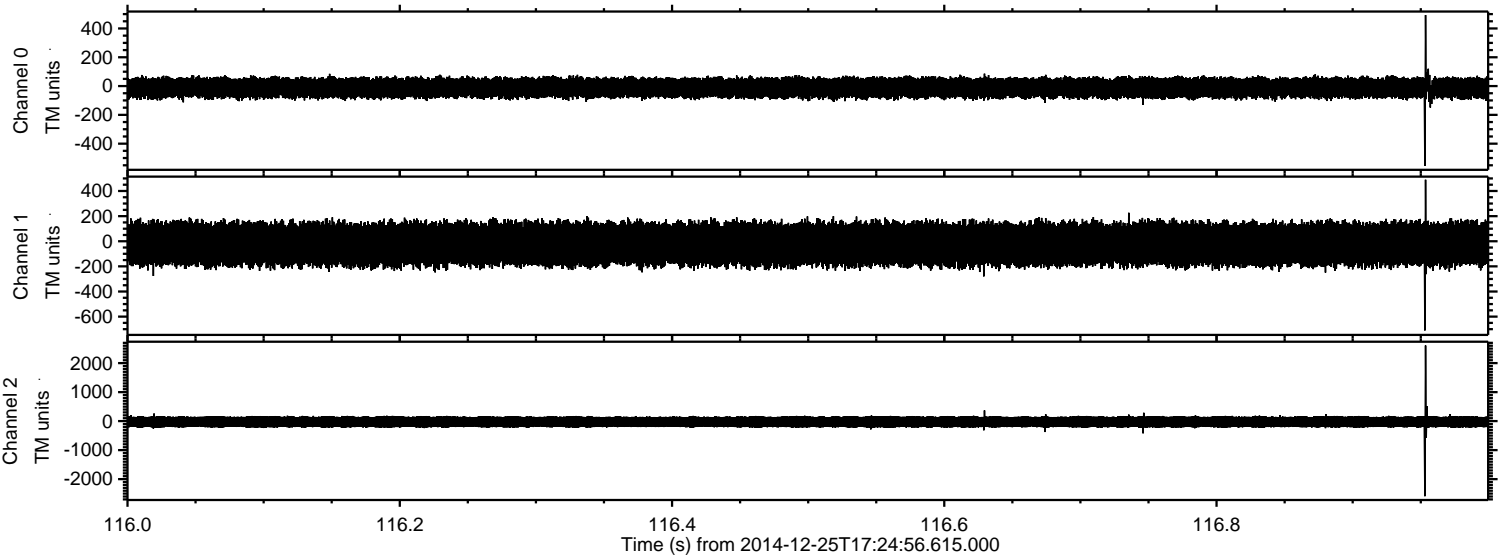
Processed Thu Dec 25 18:33:37 2014 by ELM ver.2012-10-06 from 001\_\_elm20141225\_172455\_\_dat00.bin





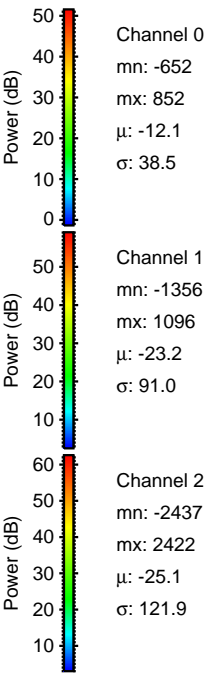
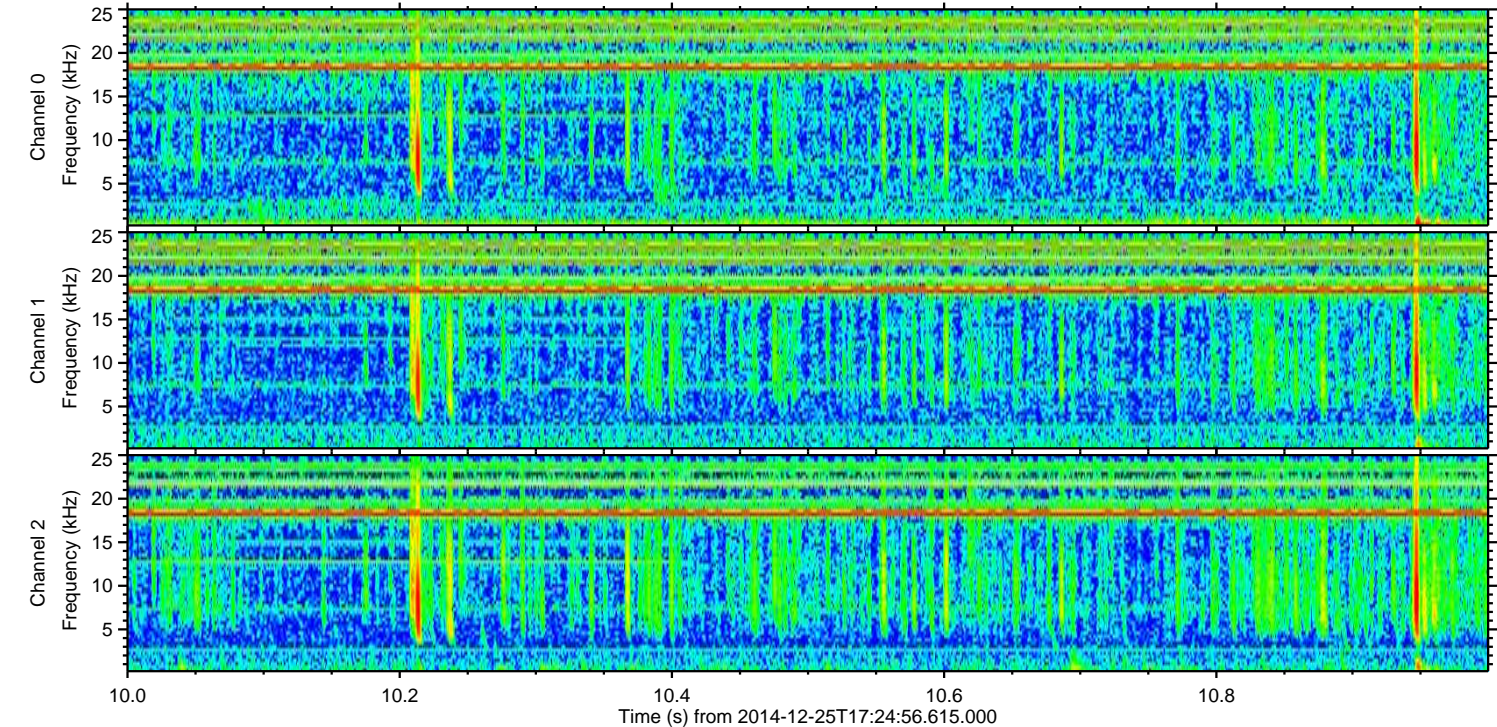
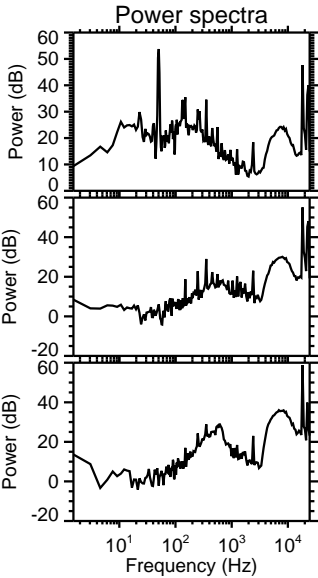
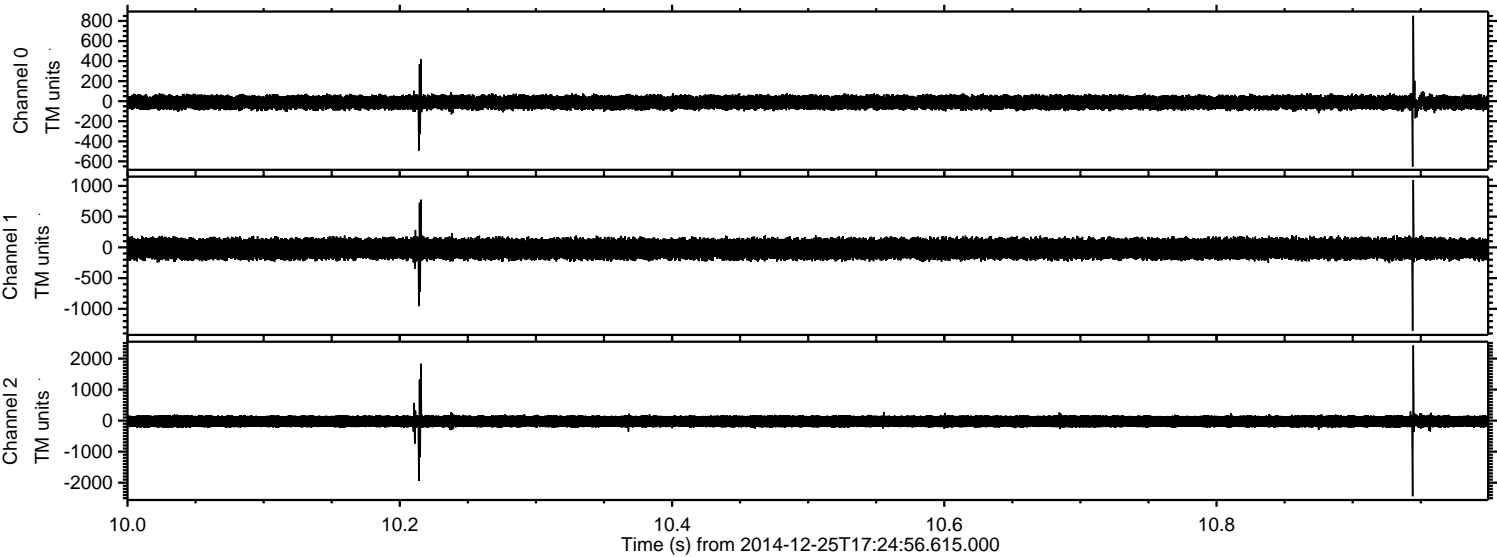
ELMAVAN 3D WAVEFORMS (Measured data sampled at 50 kHz) 49637 packets of 144 samples from 2014-12-25T17:24:56.615.000. Part 117/143

Processed Thu Dec 25 18:33:38 2014 by ELM ver.2012-10-06 from 001\_\_elm20141225\_172455\_\_dat00.bin



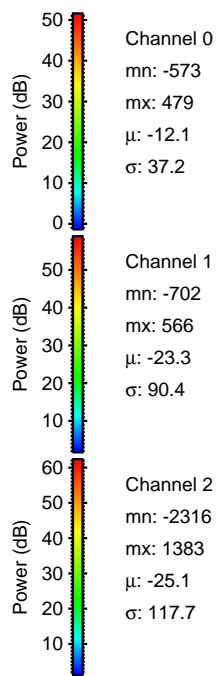
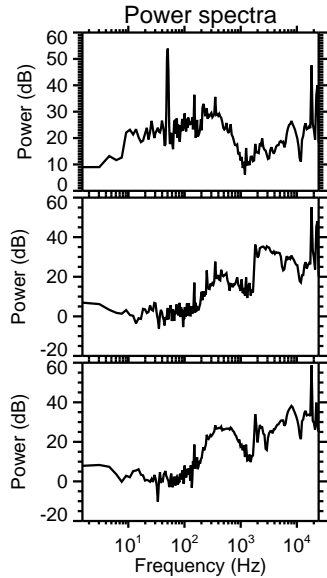
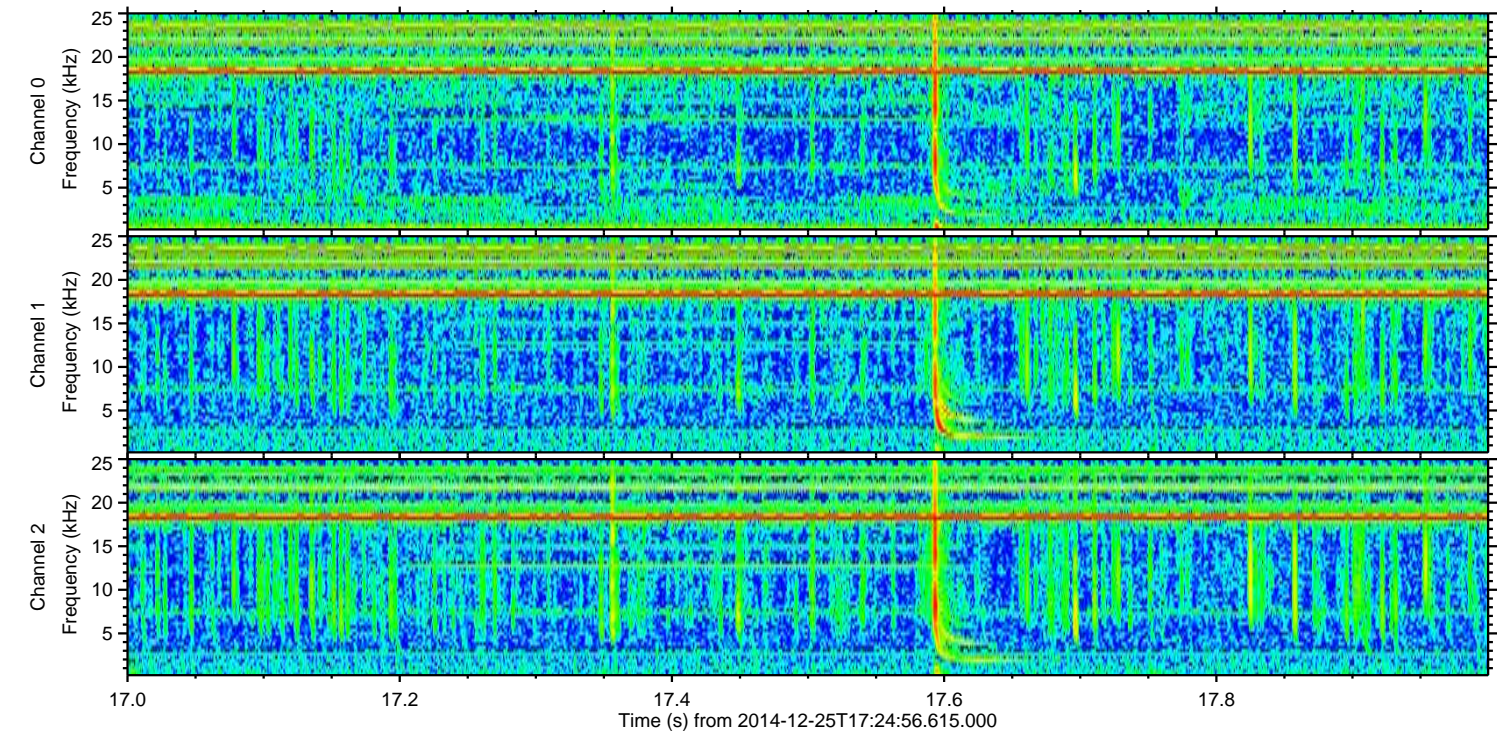
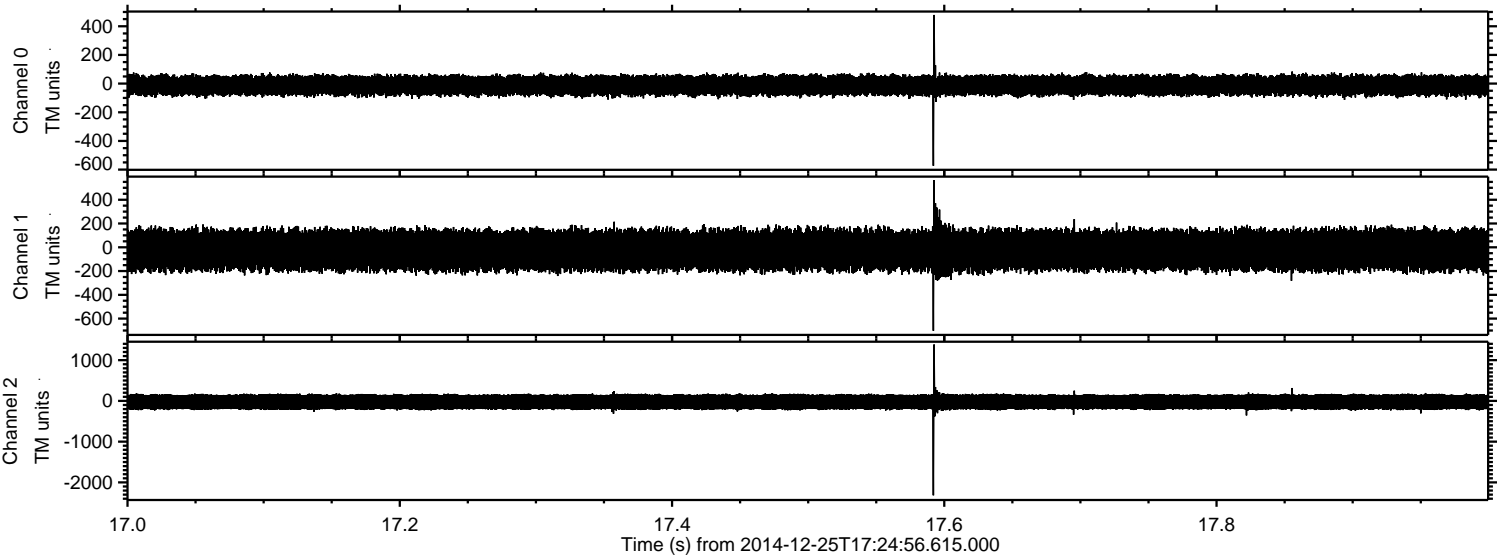


Processed Thu Dec 25 18:33:39 2014 by ELM ver.2012-10-06 from 001\_\_elm20141225\_172455\_\_dat00.bin



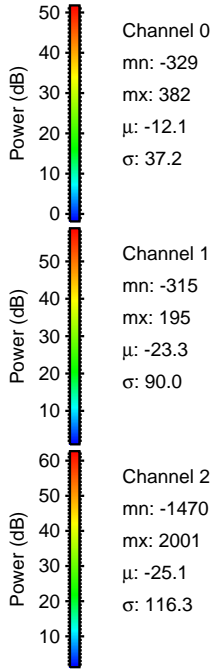
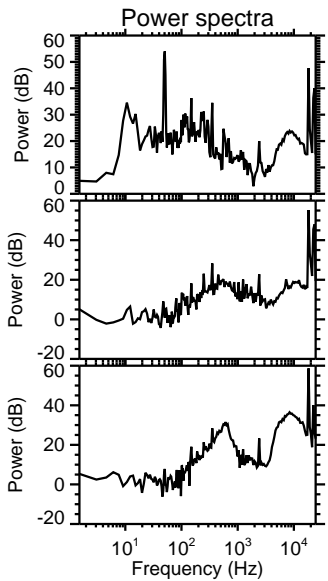
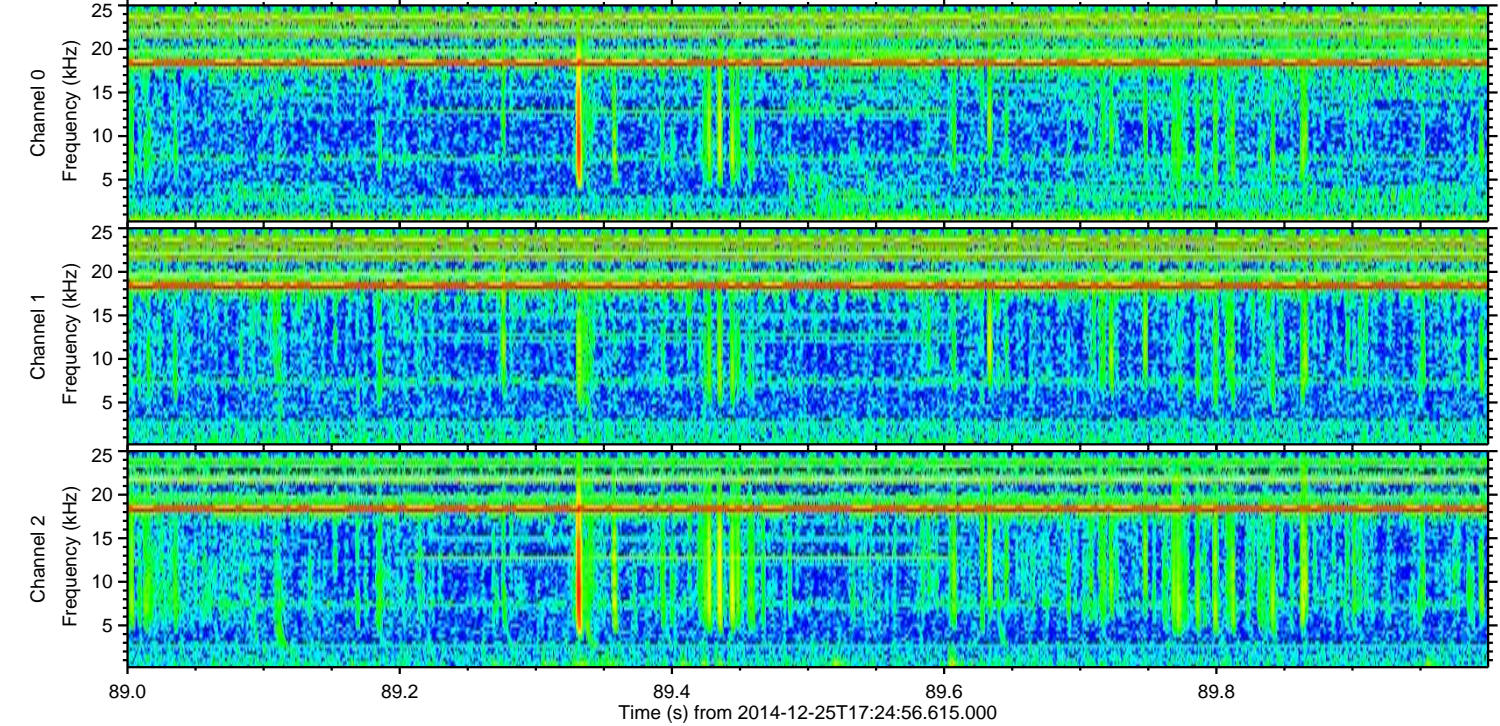
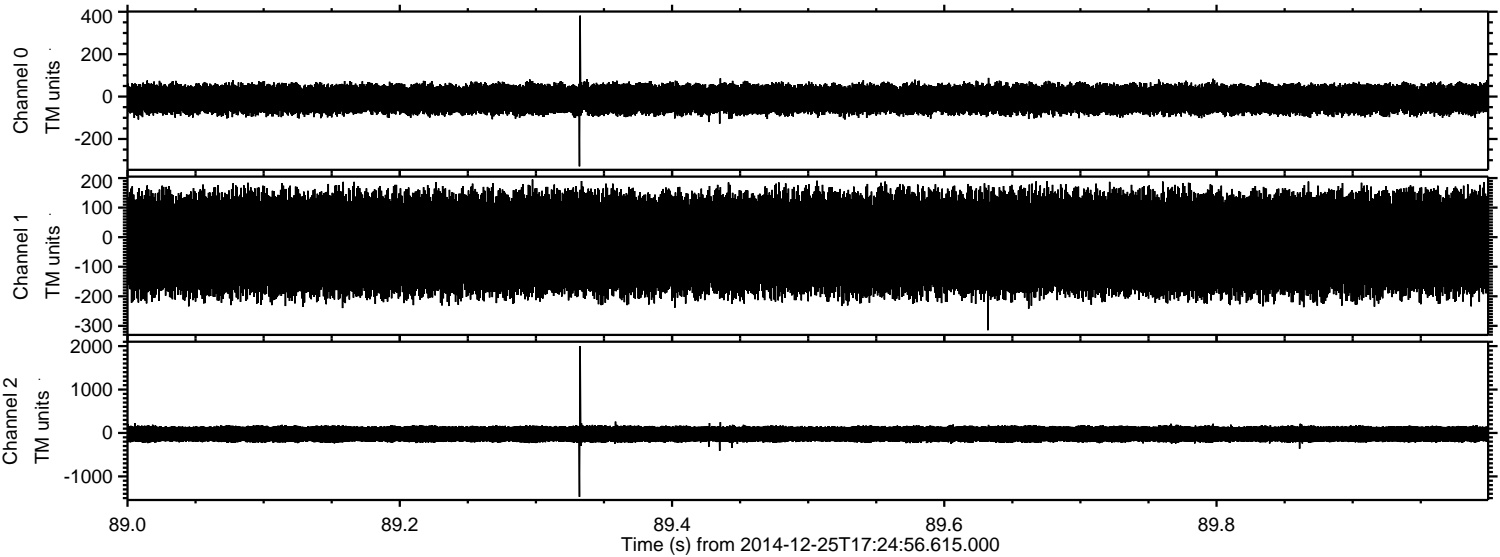


Processed Thu Dec 25 18:33:40 2014 by ELM ver.2012-10-06 from 001\_\_elm20141225\_172455\_\_dat00.bin





Processed Thu Dec 25 18:33:41 2014 by ELM ver.2012-10-06 from 001\_\_elm20141225\_172455\_\_dat00.bin



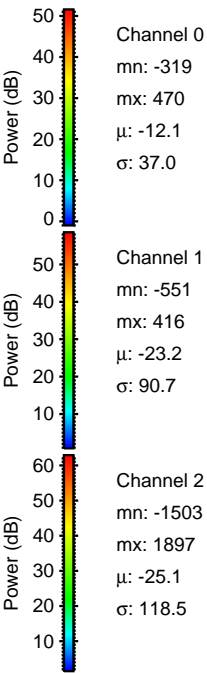
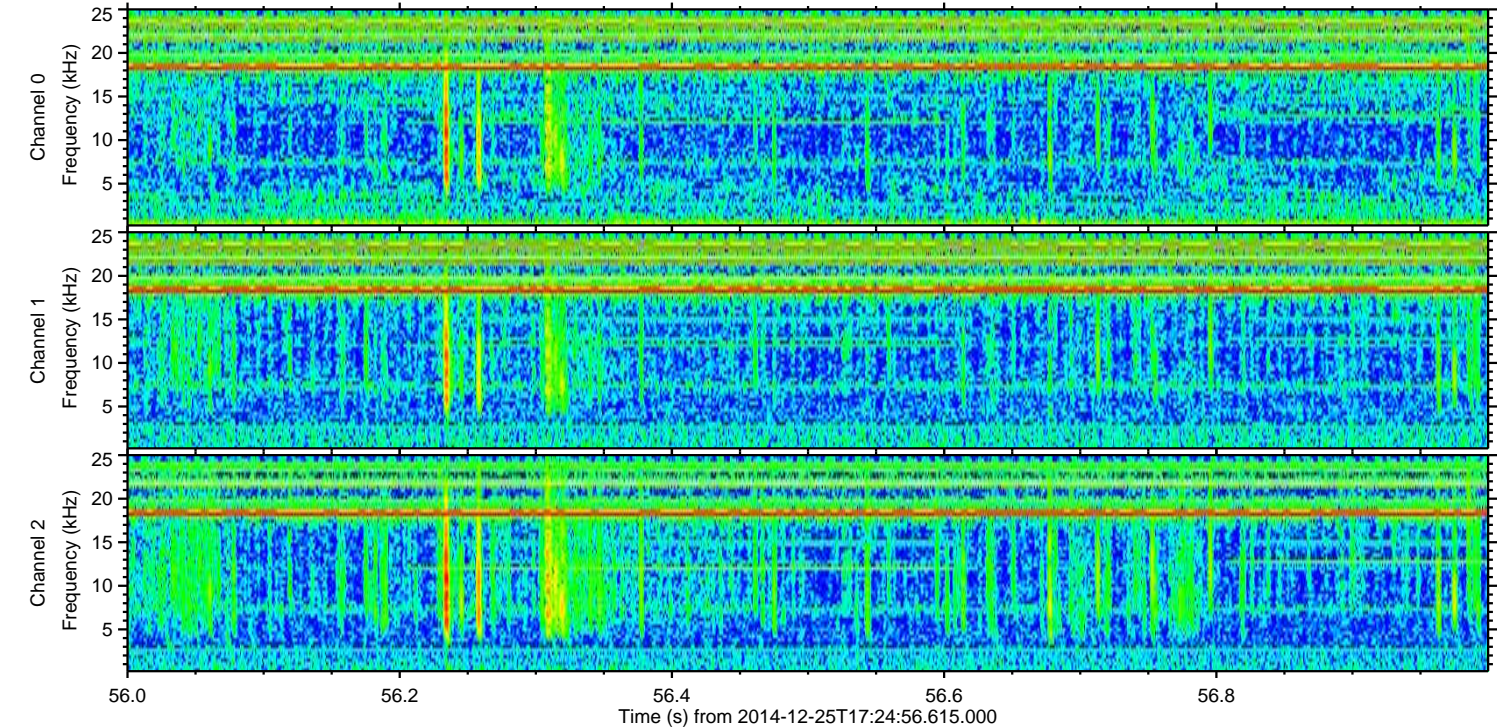
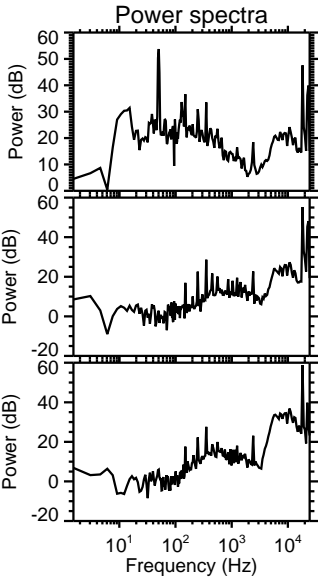
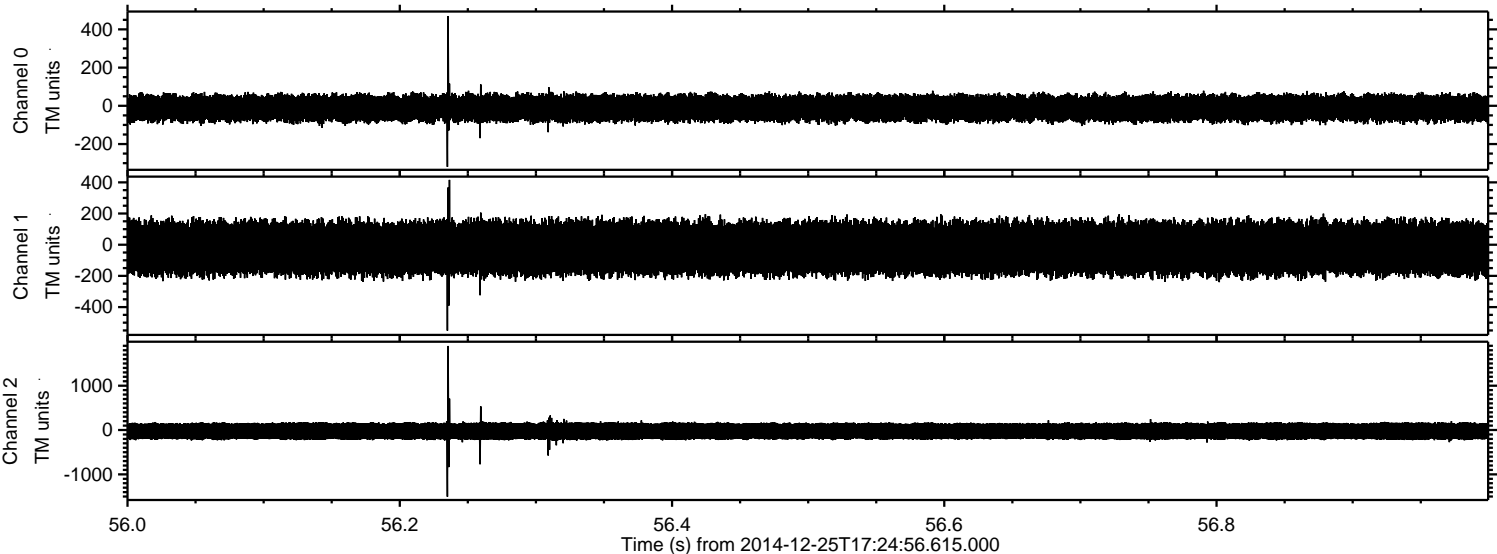
Channel 0  
mn: -329  
mx: 382  
 $\mu$ : -12.1  
 $\sigma$ : 37.2

Channel 1  
mn: -315  
mx: 195  
 $\mu$ : -23.3  
 $\sigma$ : 90.0

Channel 2  
mn: -1470  
mx: 2001  
 $\mu$ : -25.1  
 $\sigma$ : 116.3



Processed Thu Dec 25 18:33:43 2014 by ELM ver.2012-10-06 from 001\_\_elm20141225\_172455\_\_dat00.bin





ELMAVAN 3D WAVEFORMS (Measured data sampled at 50 kHz) 49637 packets of 144 samples from 2014-12-25T17:24:56.615.000. Part 3/143

Processed Thu Dec 25 18:33:44 2014 by ELM ver.2012-10-06 from 001\_\_elm20141225\_172455\_\_dat00.bin

