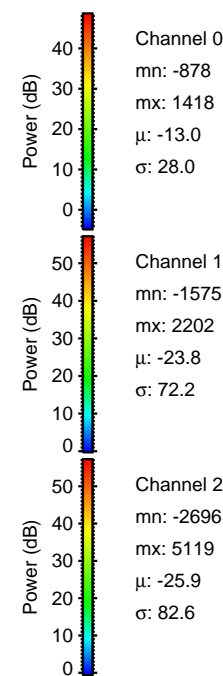
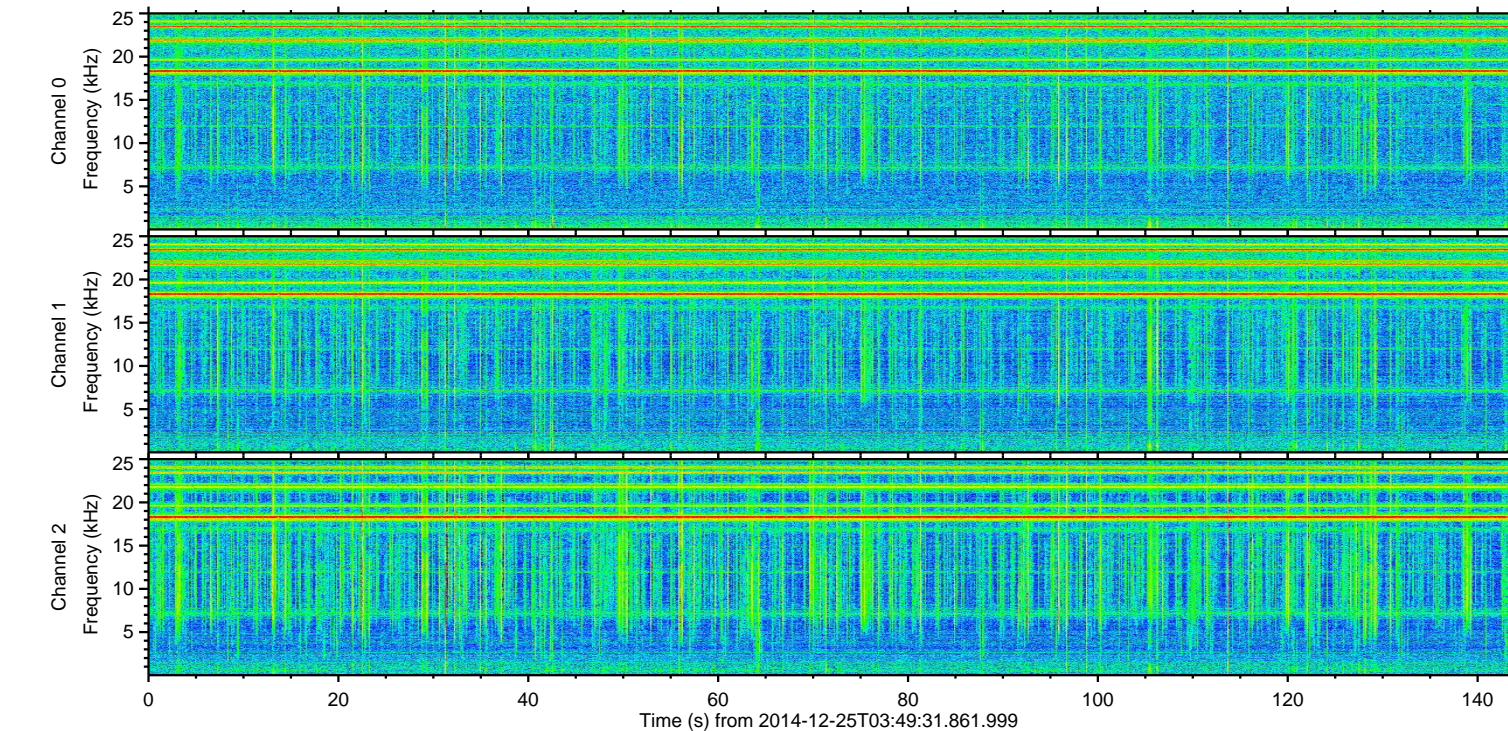
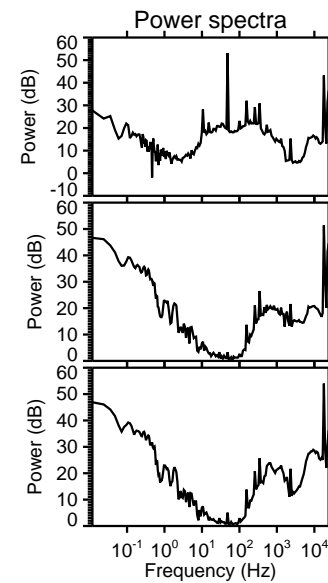
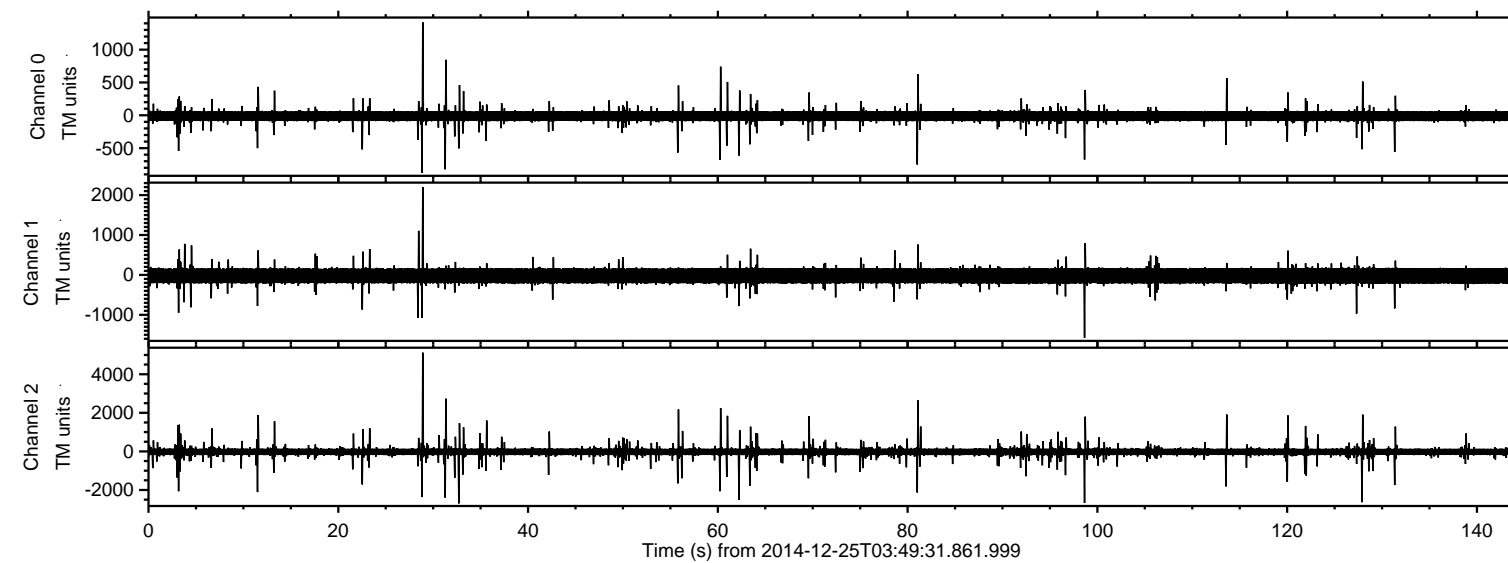


# ELMAVAN 3D WAVEFORMS (Measured data sampled at 50 kHz) 49790 packets of 144 samples from 2014-12-25T03:49:31.861.999.

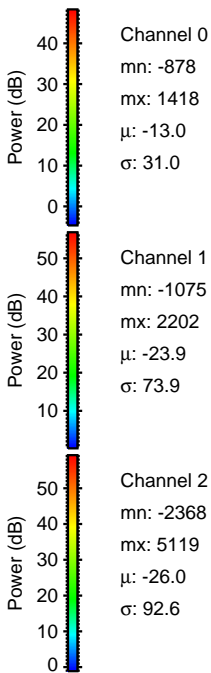
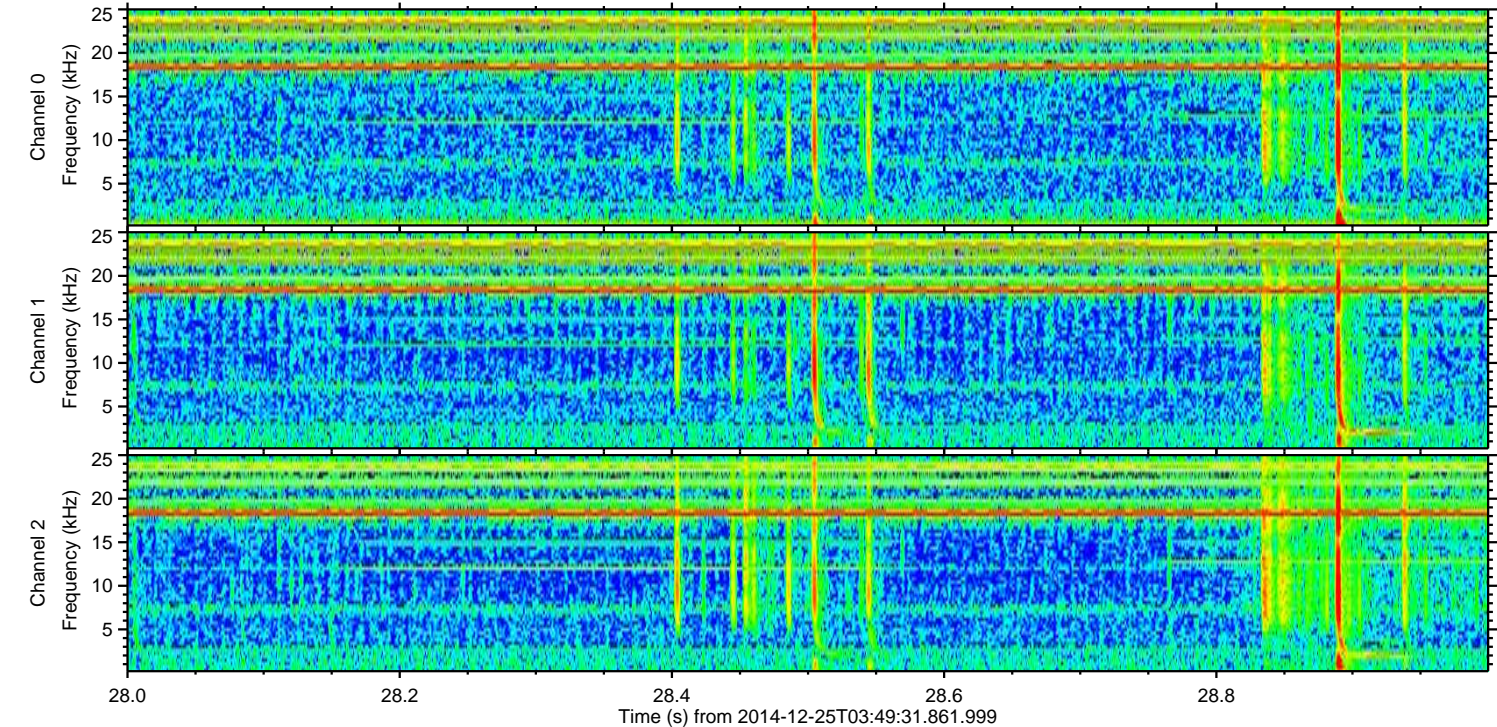
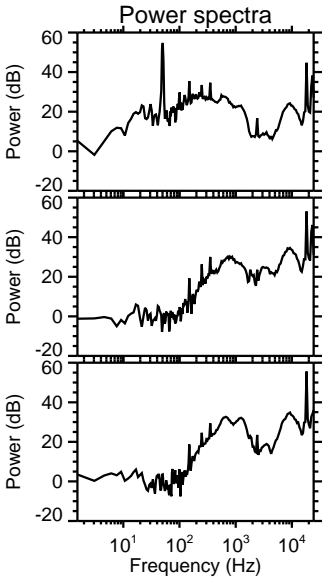
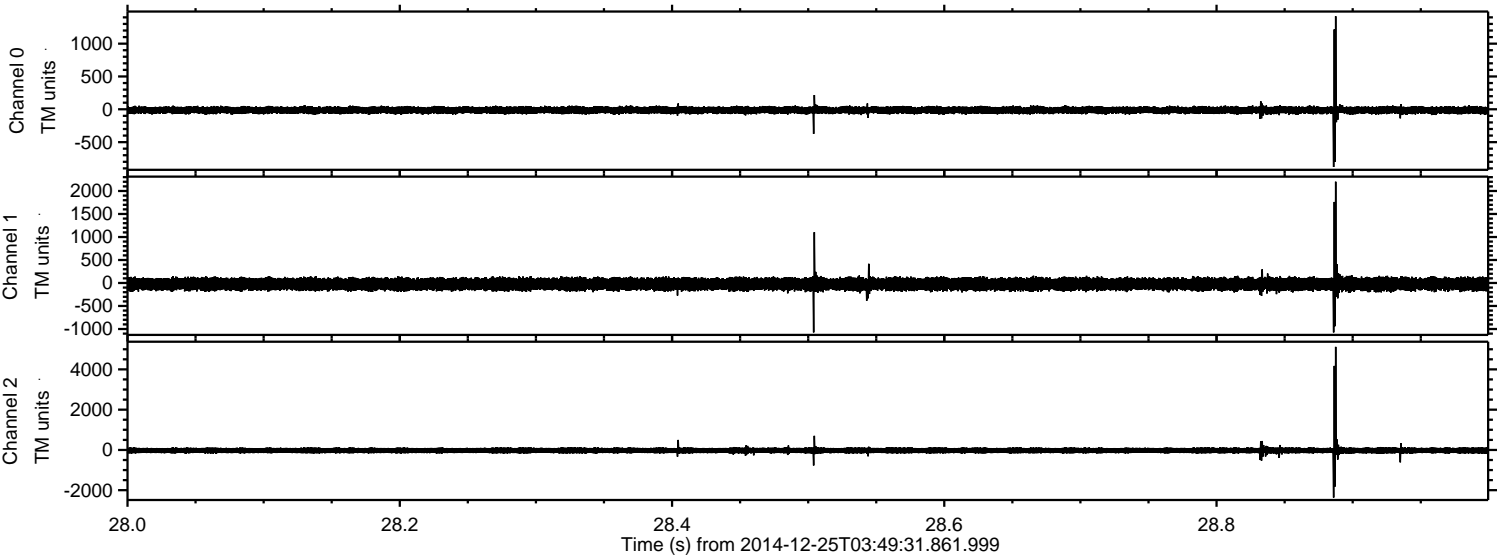
Processed Thu Dec 25 04:57:57 2014 by ELM ver.2012-10-06 from 001\_\_elm20141225\_034930\_\_dat00.bin





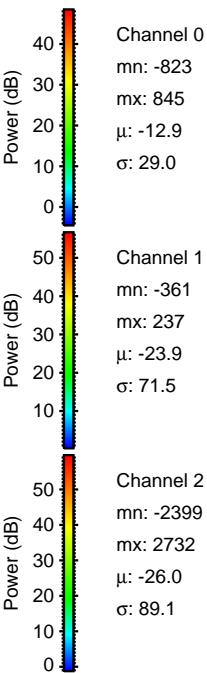
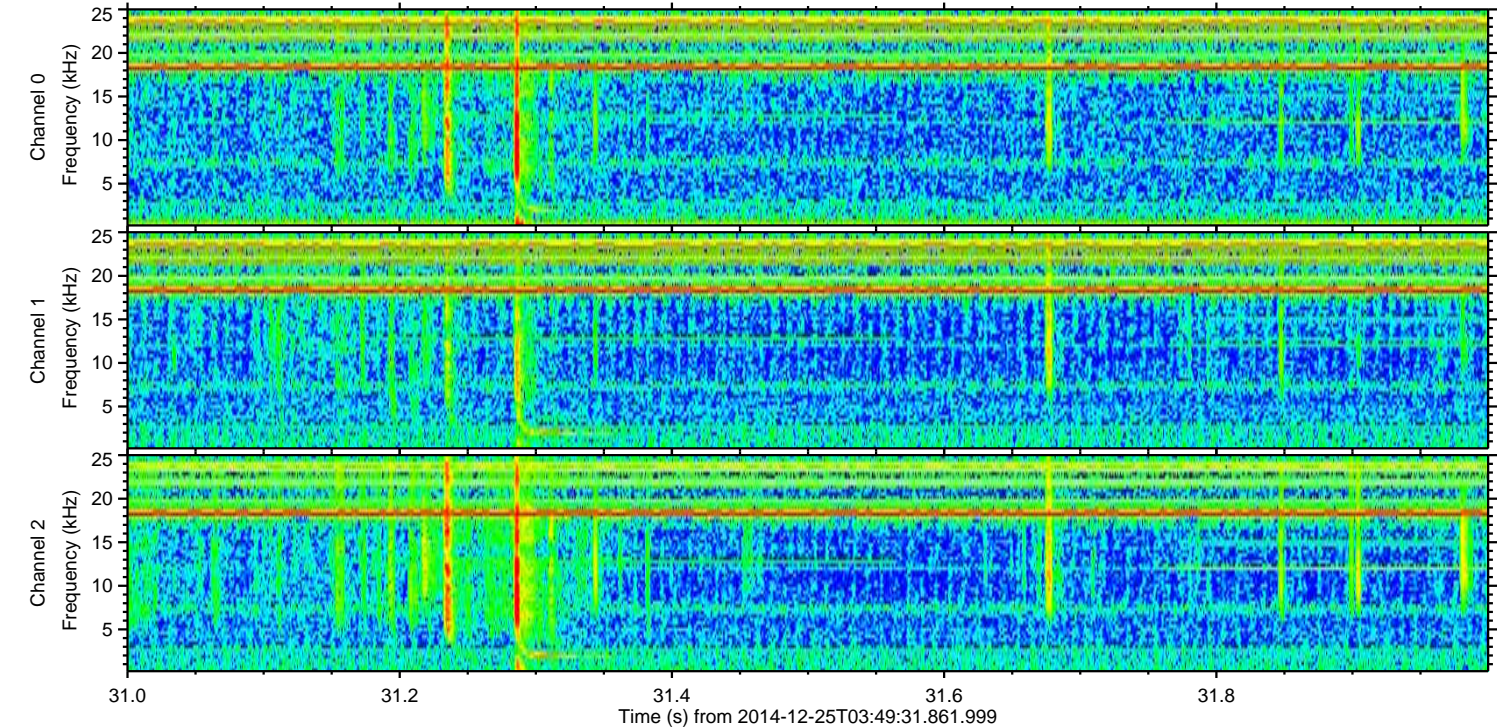
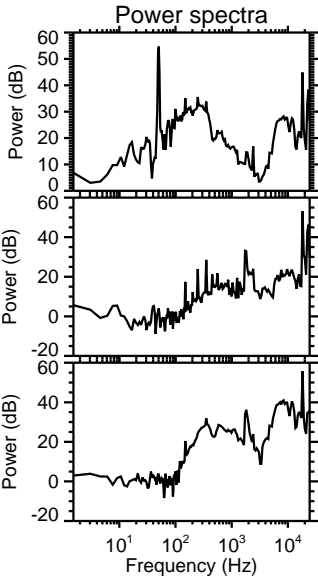
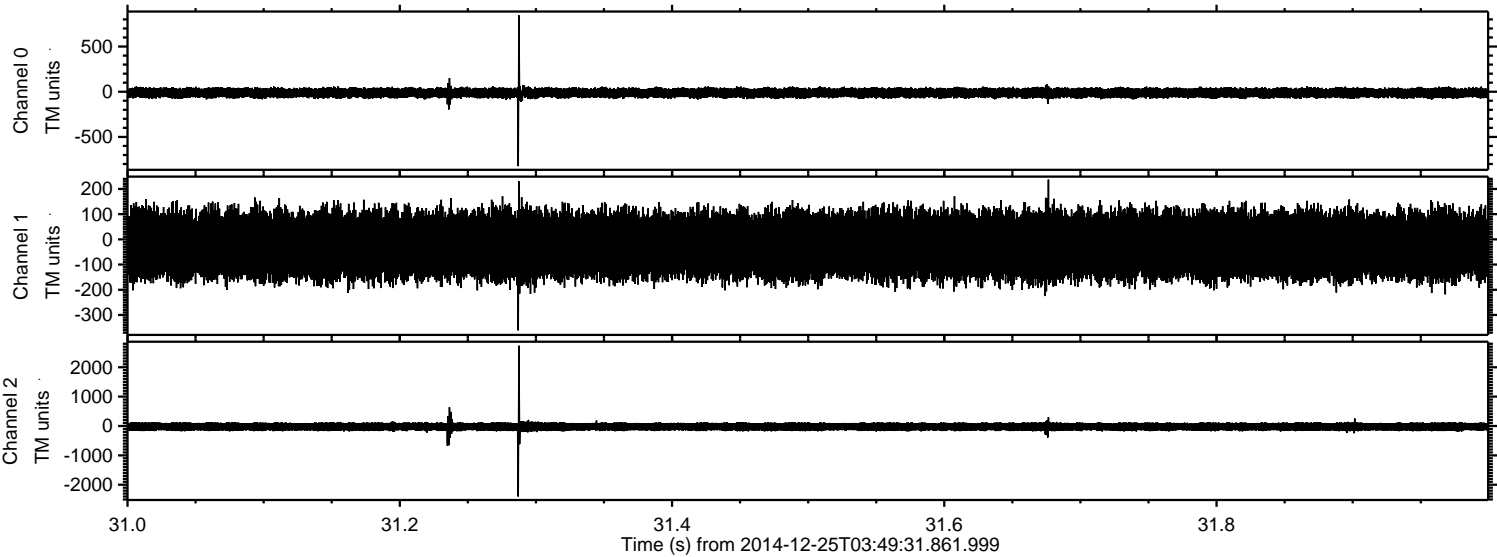
ELMAVAN 3D WAVEFORMS (Measured data sampled at 50 kHz) 49790 packets of 144 samples from 2014-12-25T03:49:31.861.999. Part 29/144

Processed Thu Dec 25 04:58:09 2014 by ELM ver.2012-10-06 from 001\_\_elm20141225\_034930\_\_dat00.bin





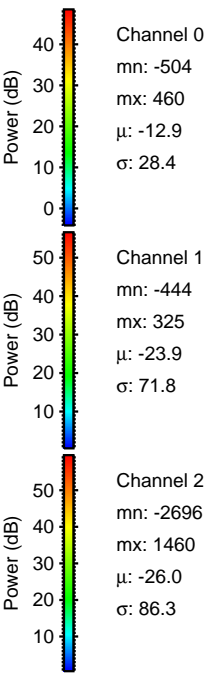
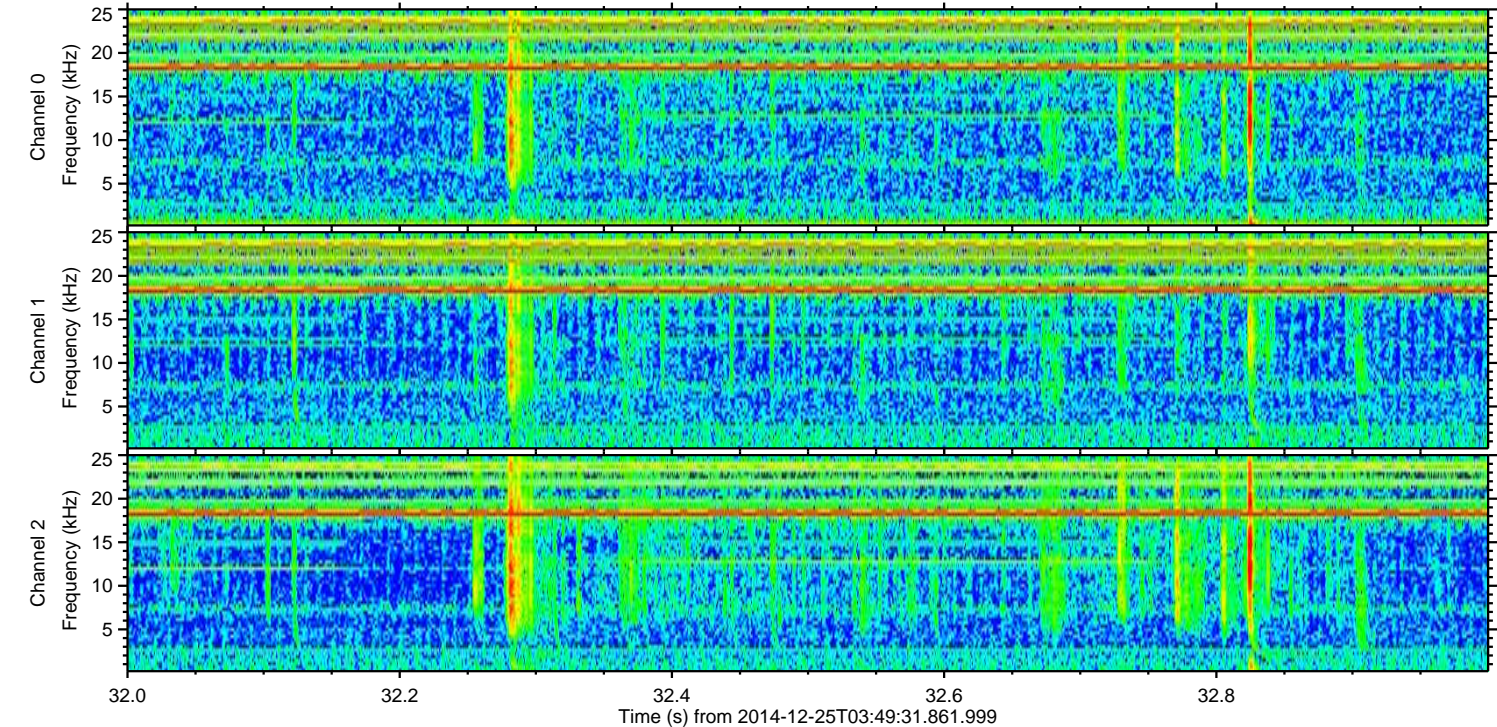
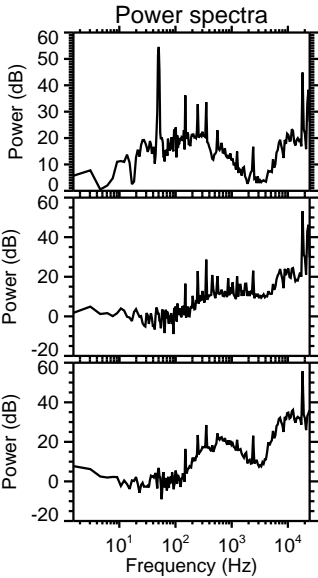
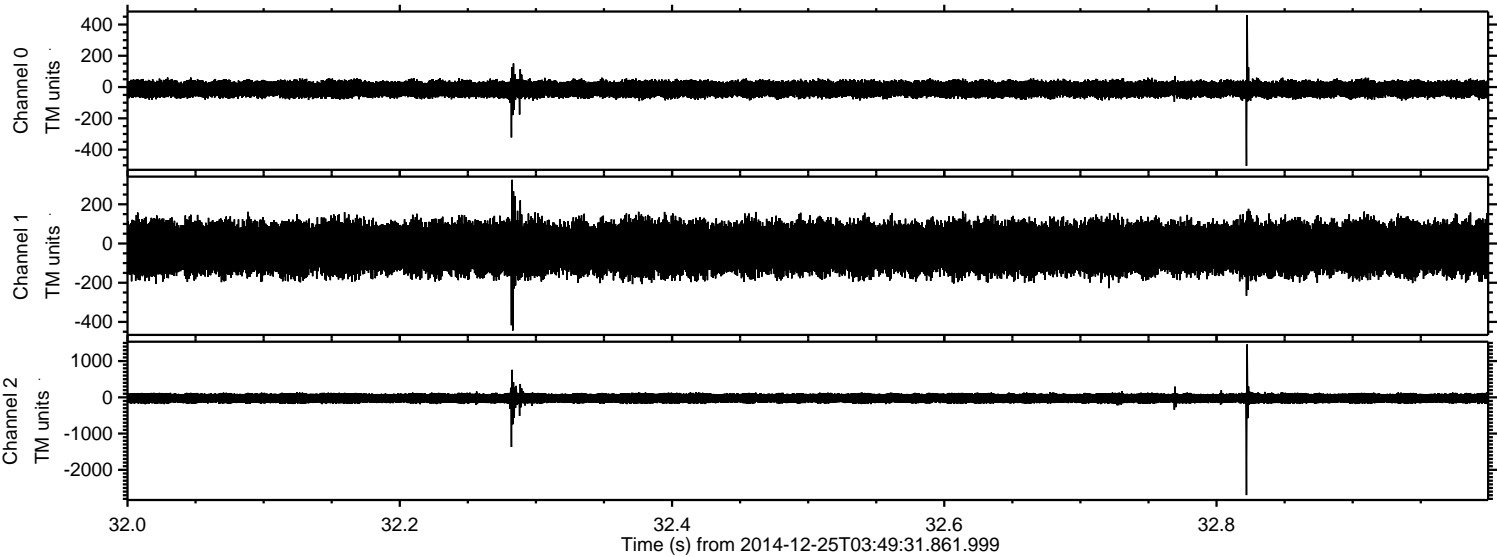
Processed Thu Dec 25 04:58:10 2014 by ELM ver.2012-10-06 from 001\_\_elm20141225\_034930\_\_dat00.bin





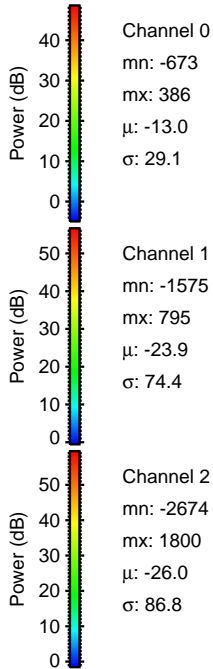
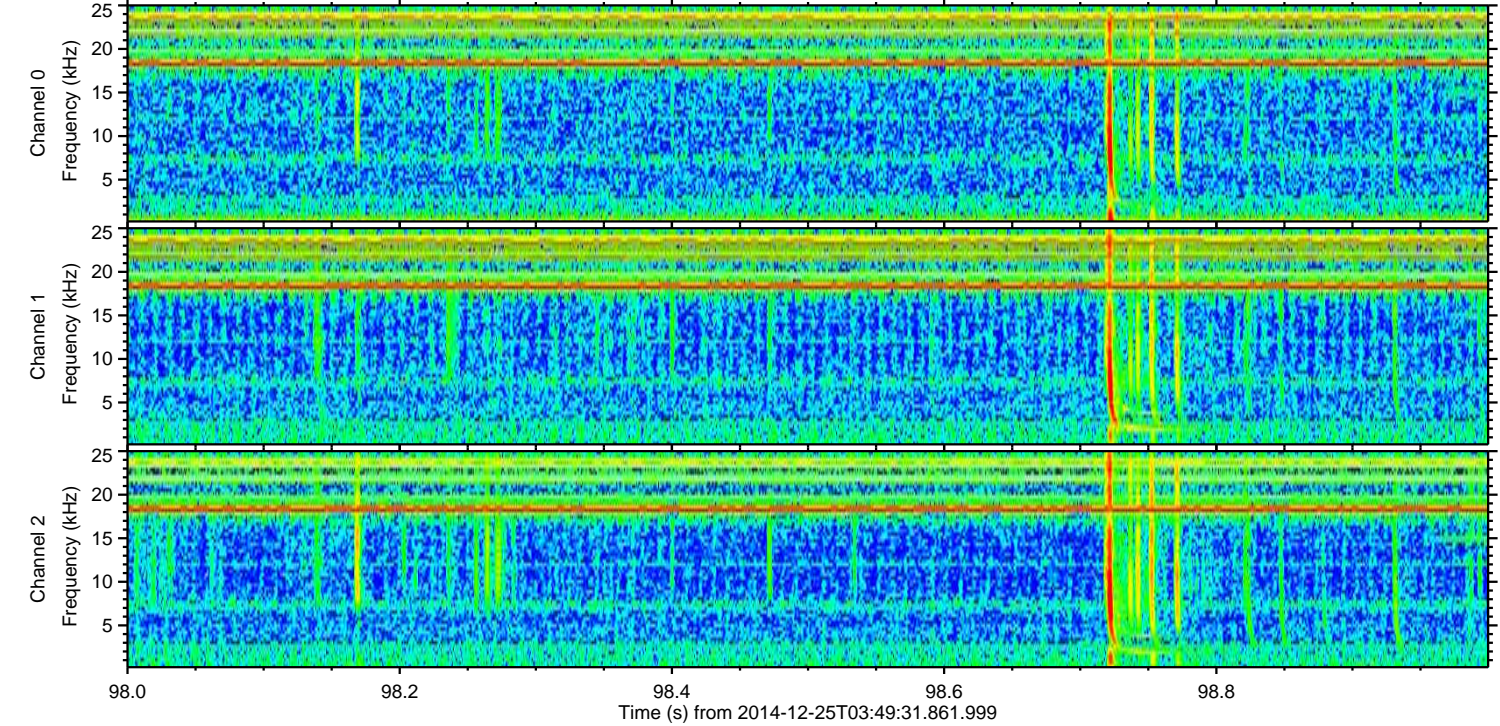
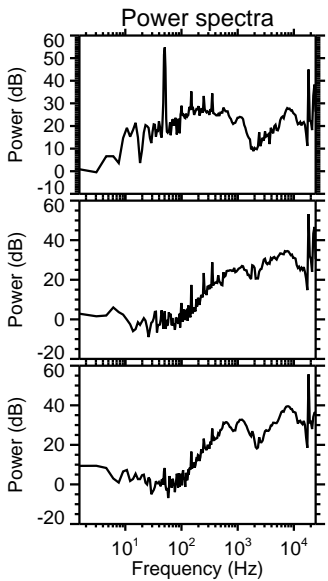
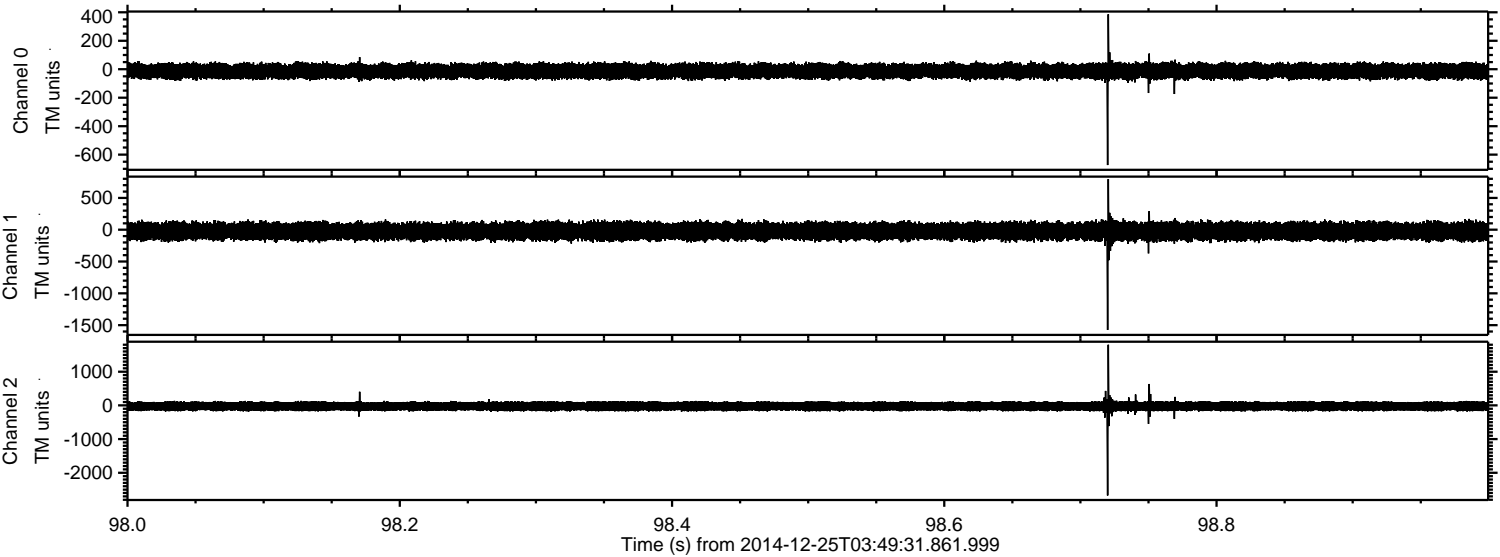
ELMAVAN 3D WAVEFORMS (Measured data sampled at 50 kHz) 49790 packets of 144 samples from 2014-12-25T03:49:31.861.999. Part 33/144

Processed Thu Dec 25 04:58:11 2014 by ELM ver.2012-10-06 from 001\_\_elm20141225\_034930\_\_dat00.bin





Processed Thu Dec 25 04:58:12 2014 by ELM ver.2012-10-06 from 001\_\_elm20141225\_034930\_\_dat00.bin



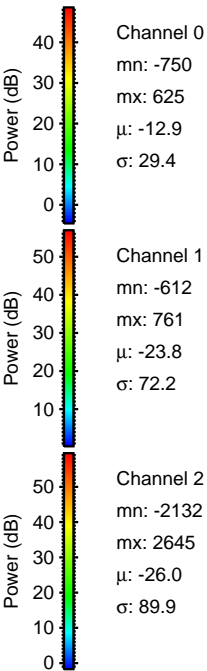
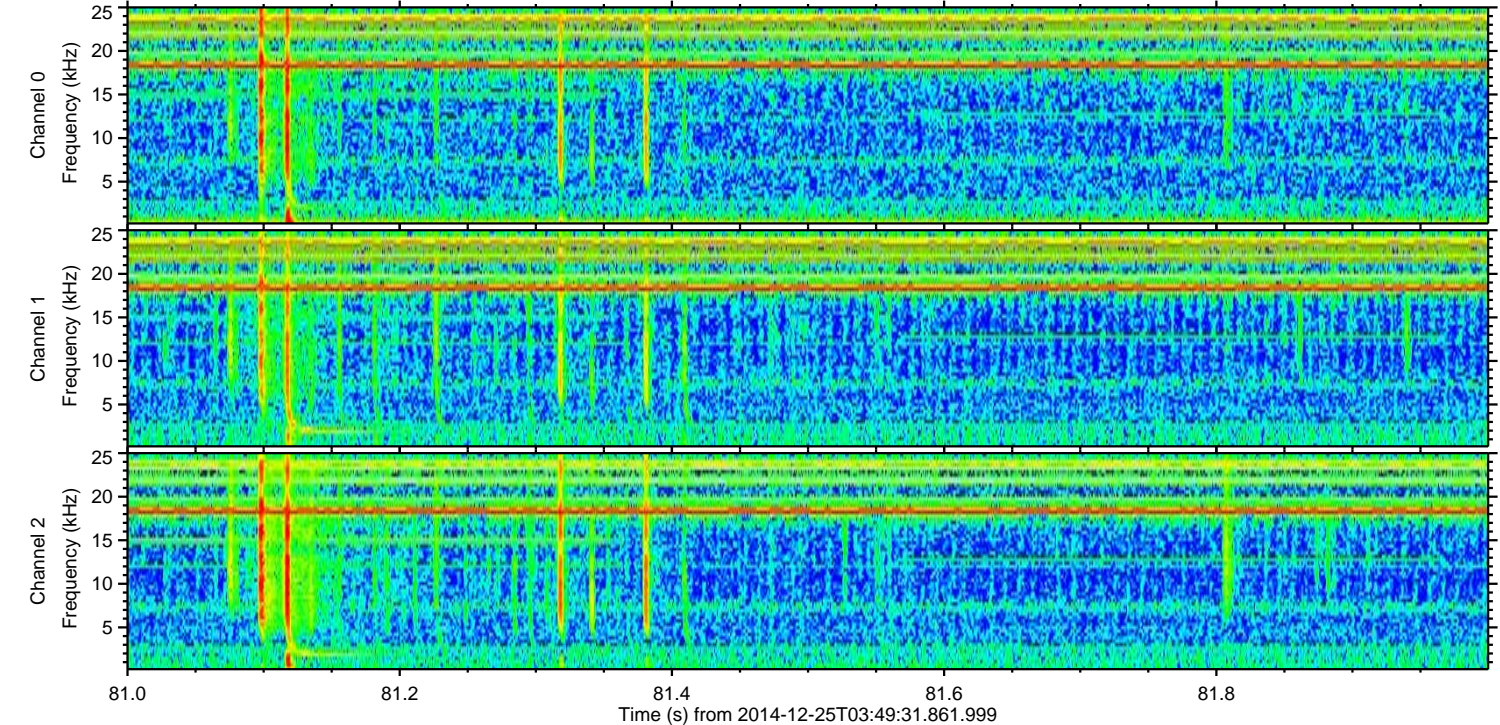
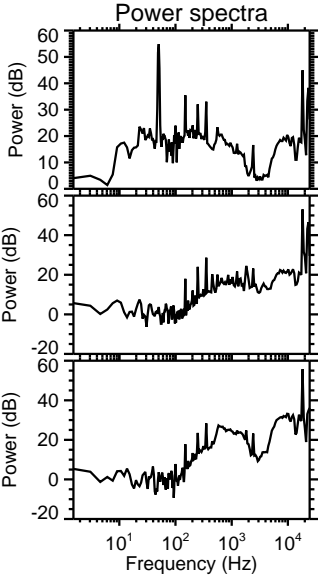
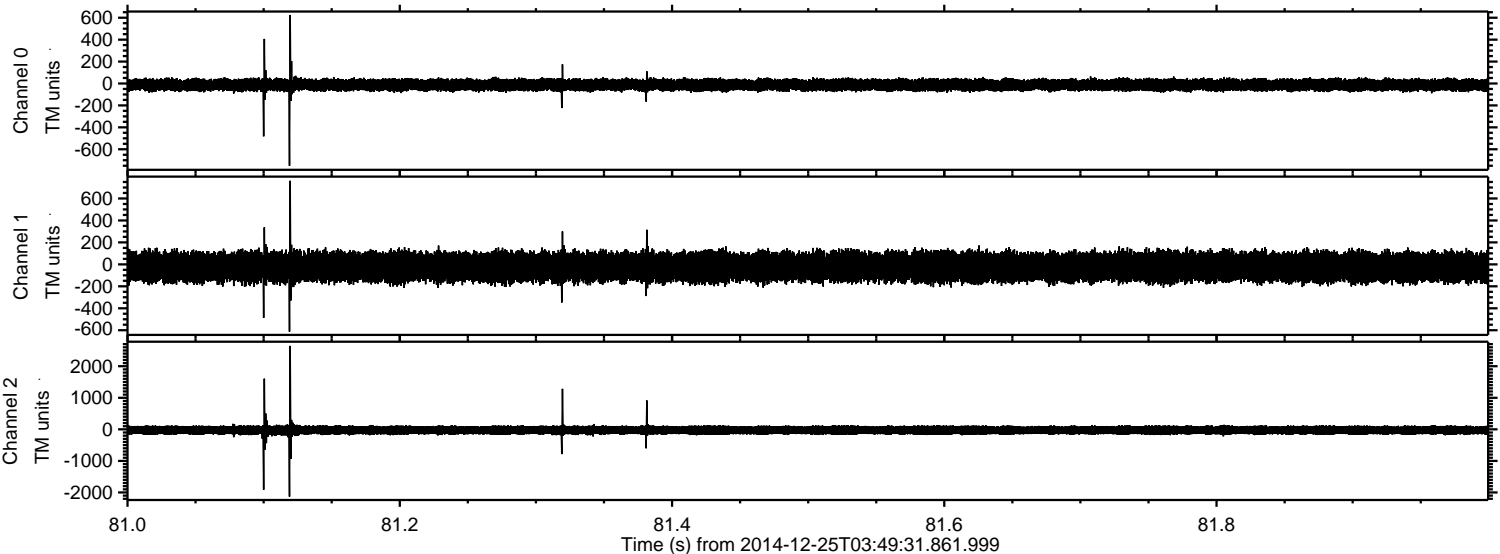
Channel 0  
mn: -673  
mx: 386  
 $\mu$ : -13.0  
 $\sigma$ : 29.1

Channel 1  
mn: -1575  
mx: 795  
 $\mu$ : -23.9  
 $\sigma$ : 74.4

Channel 2  
mn: -2674  
mx: 1800  
 $\mu$ : -26.0  
 $\sigma$ : 86.8



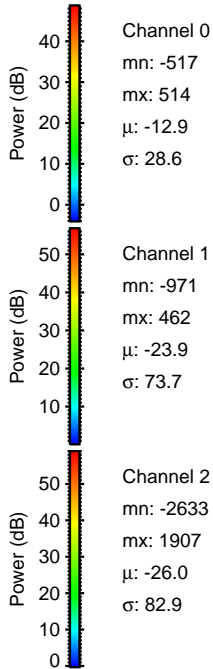
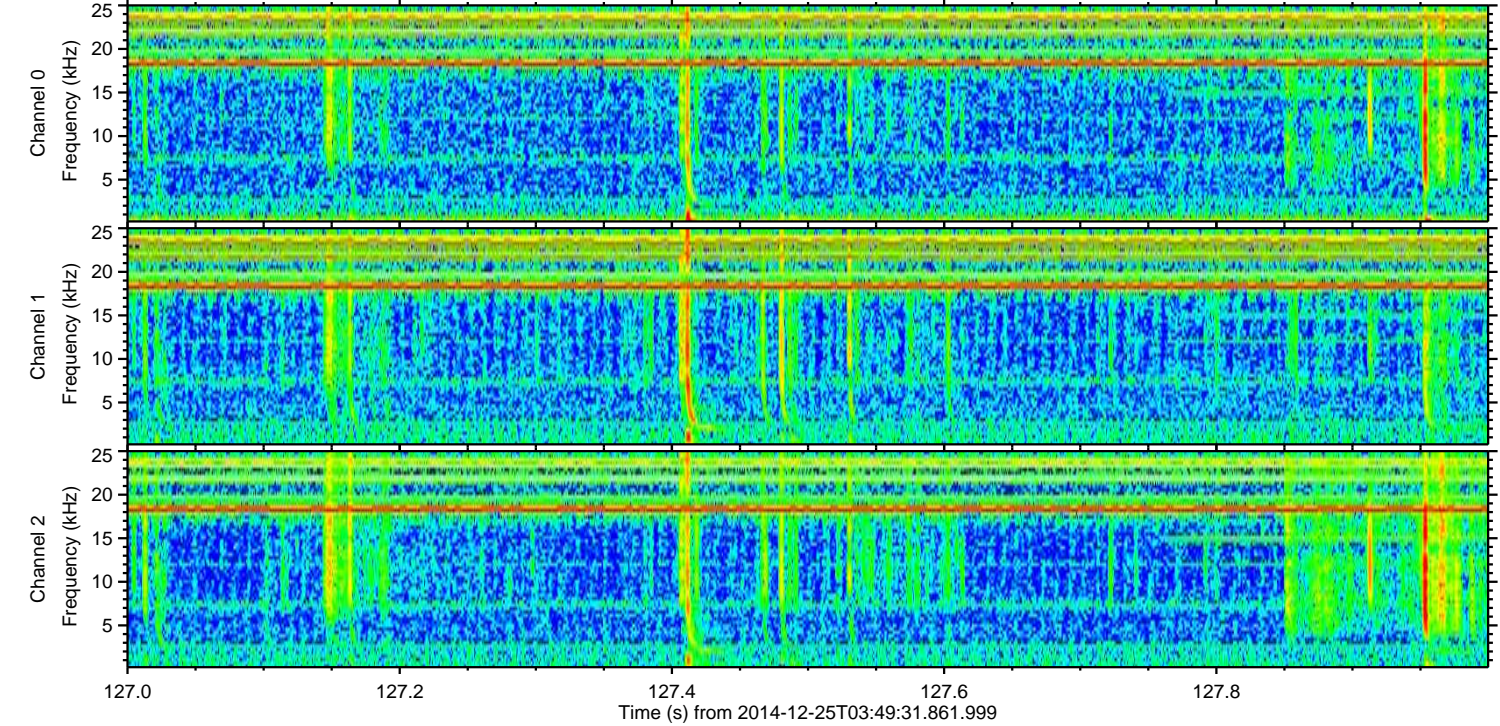
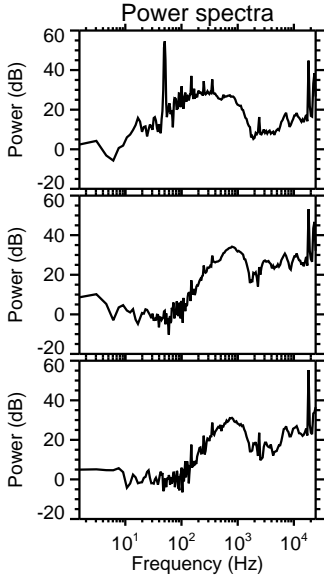
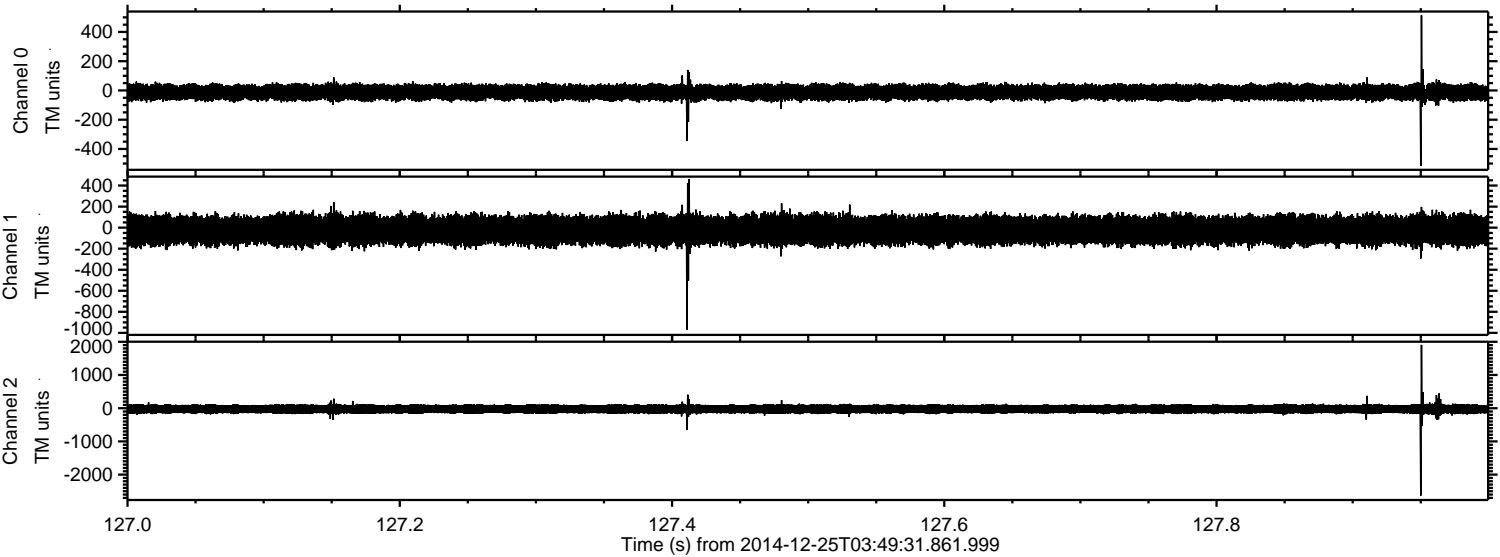
Processed Thu Dec 25 04:58:13 2014 by ELM ver.2012-10-06 from 001\_\_elm20141225\_034930\_\_dat00.bin





ELMAVAN 3D WAVEFORMS (Measured data sampled at 50 kHz) 49790 packets of 144 samples from 2014-12-25T03:49:31.861.999. Part 128/144

Processed Thu Dec 25 04:58:14 2014 by ELM ver.2012-10-06 from 001\_\_elm20141225\_034930\_\_dat00.bin



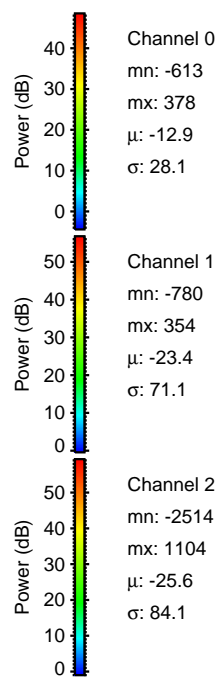
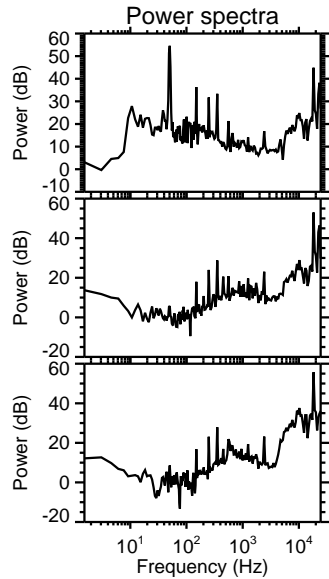
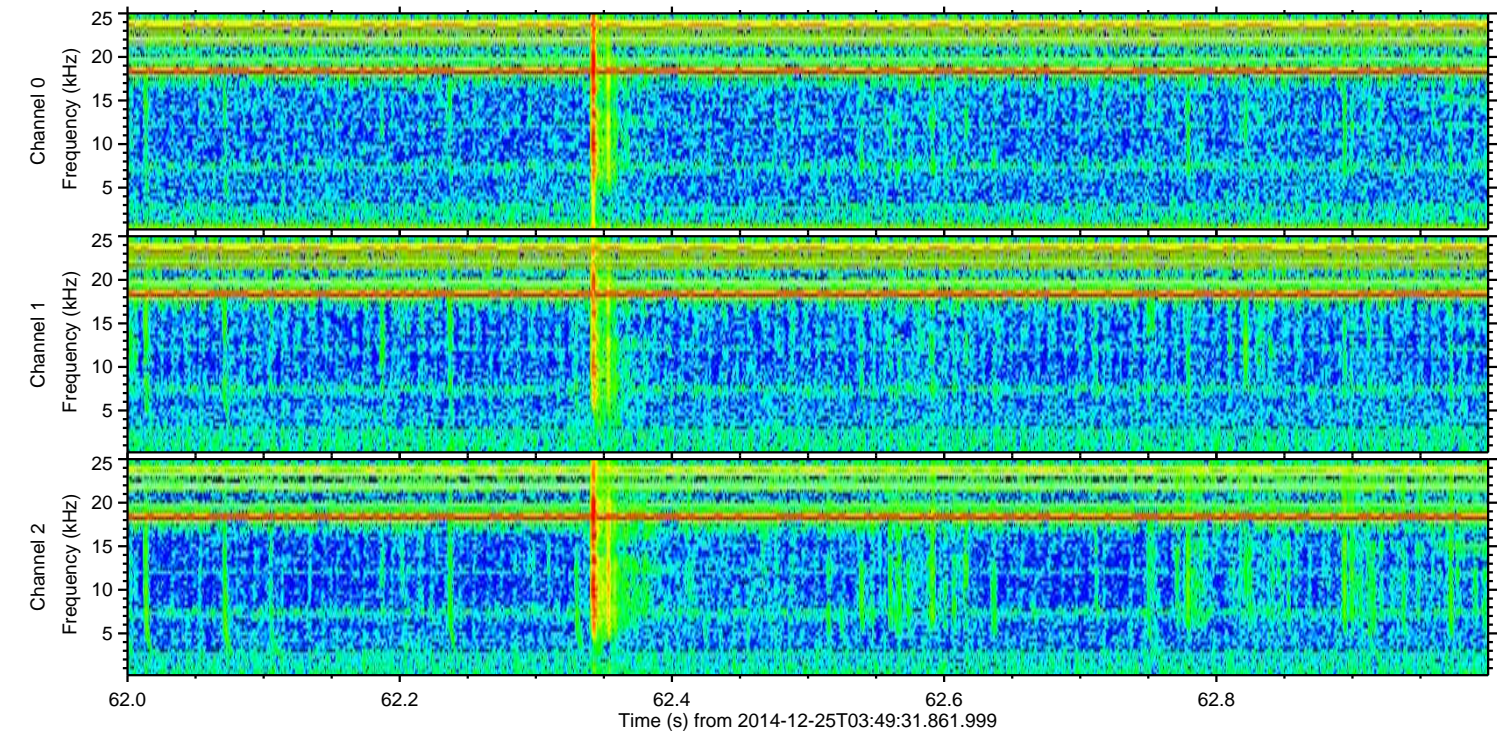
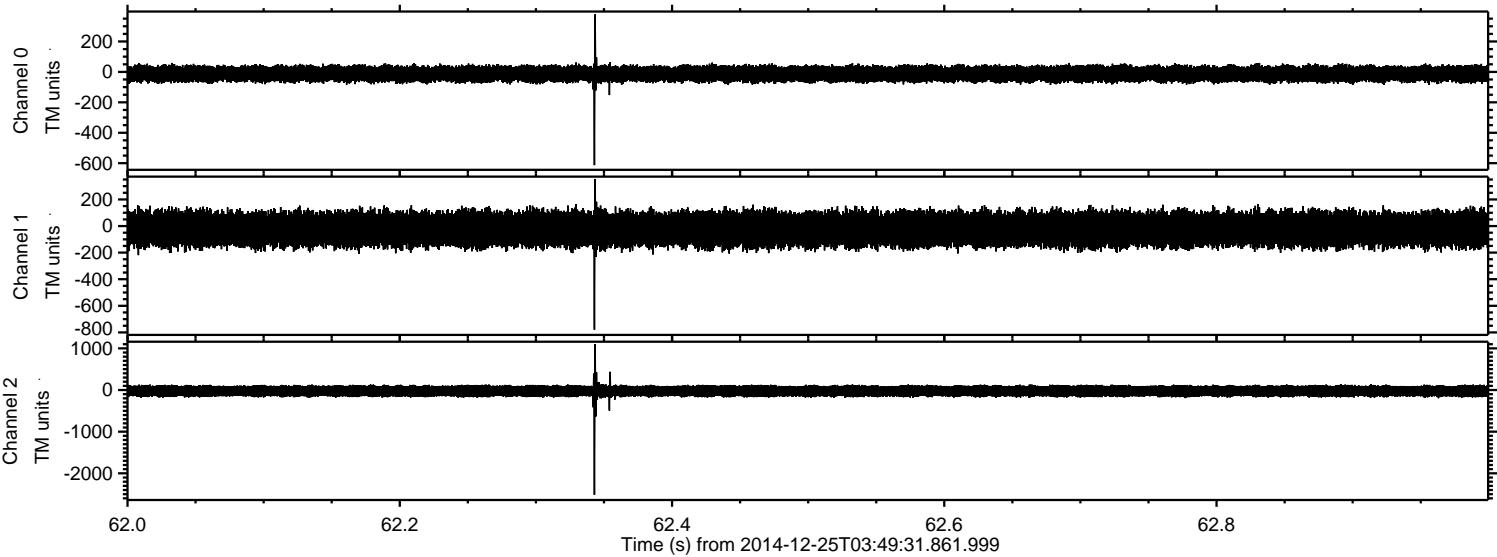
Channel 0  
mn: -517  
mx: 514  
 $\mu$ : -12.9  
 $\sigma$ : 28.6

Channel 1  
mn: -971  
mx: 462  
 $\mu$ : -23.9  
 $\sigma$ : 73.7

Channel 2  
mn: -2633  
mx: 1907  
 $\mu$ : -26.0  
 $\sigma$ : 82.9



Processed Thu Dec 25 04:58:15 2014 by ELM ver.2012-10-06 from 001\_\_elm20141225\_034930\_\_dat00.bin



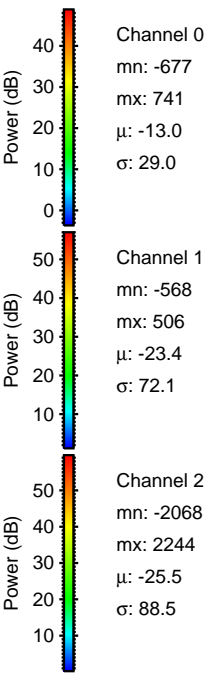
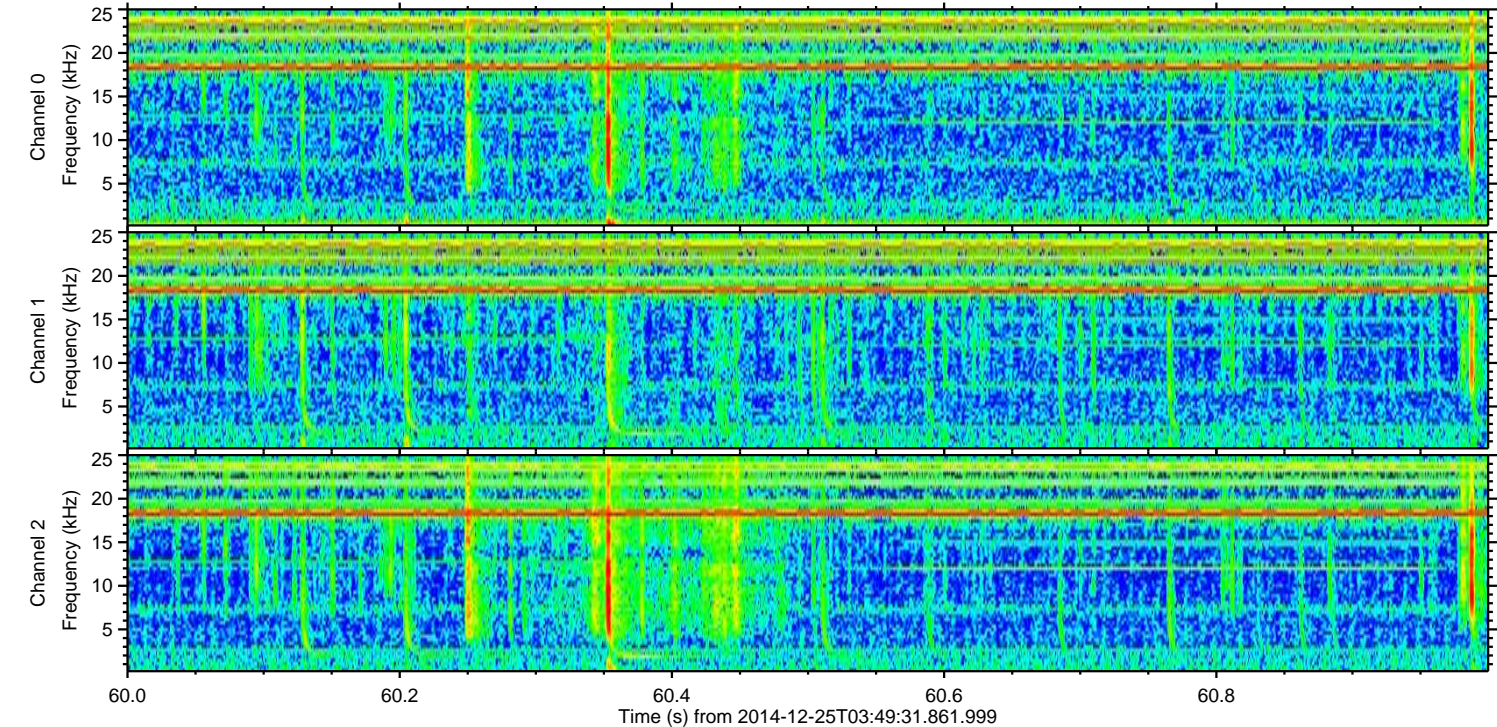
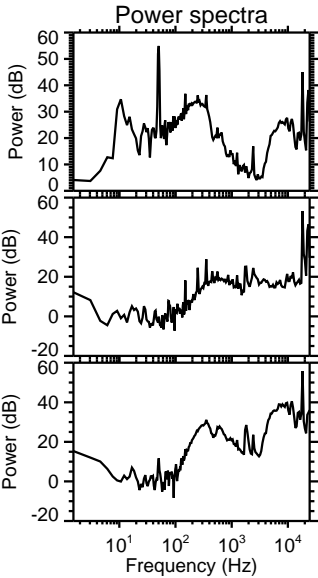
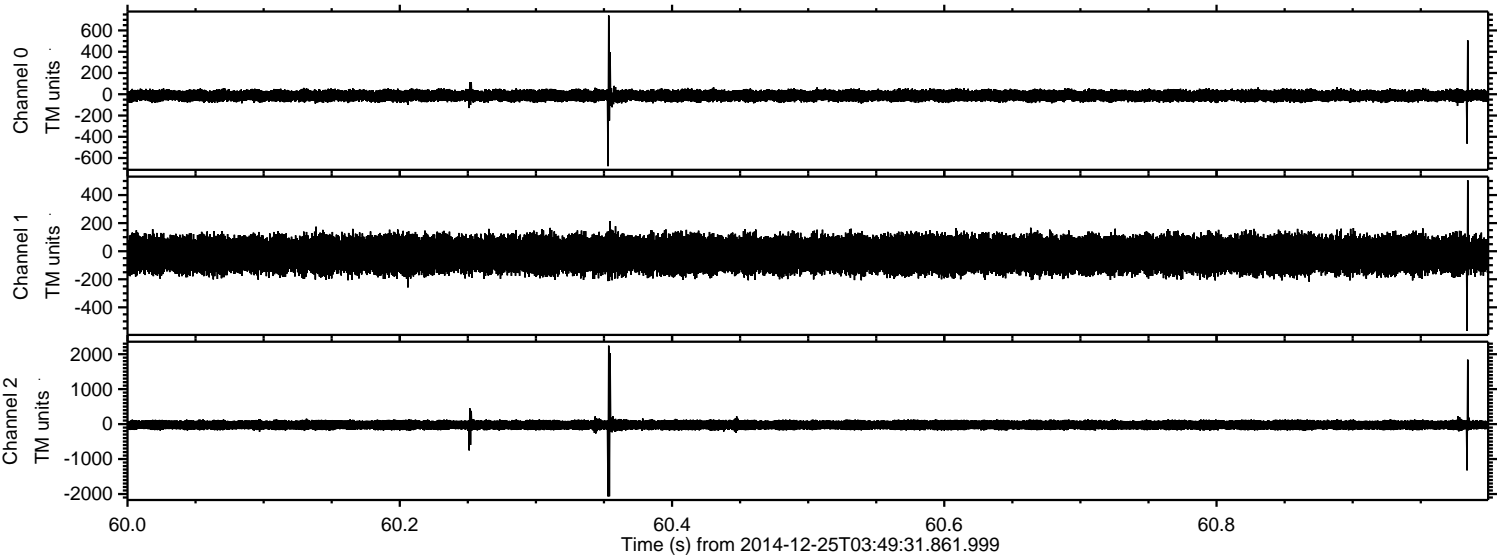
Channel 0  
mn: -613  
mx: 378  
 $\mu$ : -12.9  
 $\sigma$ : 28.1

Channel 1  
mn: -780  
mx: 354  
 $\mu$ : -23.4  
 $\sigma$ : 71.1

Channel 2  
mn: -2514  
mx: 1104  
 $\mu$ : -25.6  
 $\sigma$ : 84.1



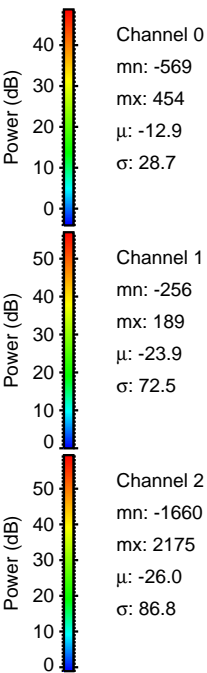
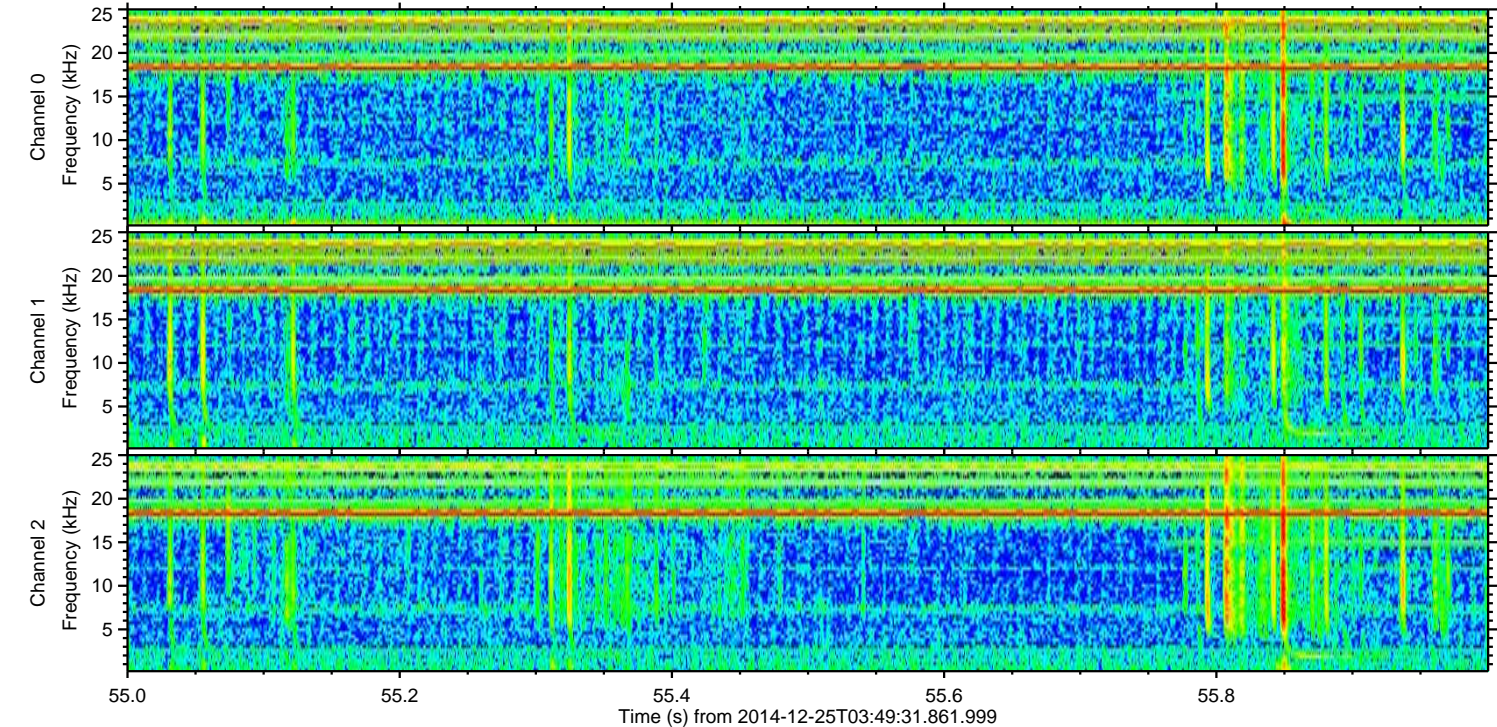
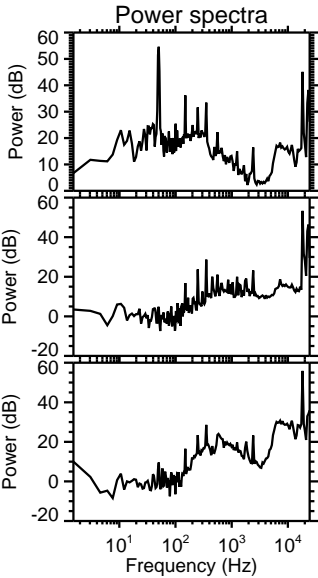
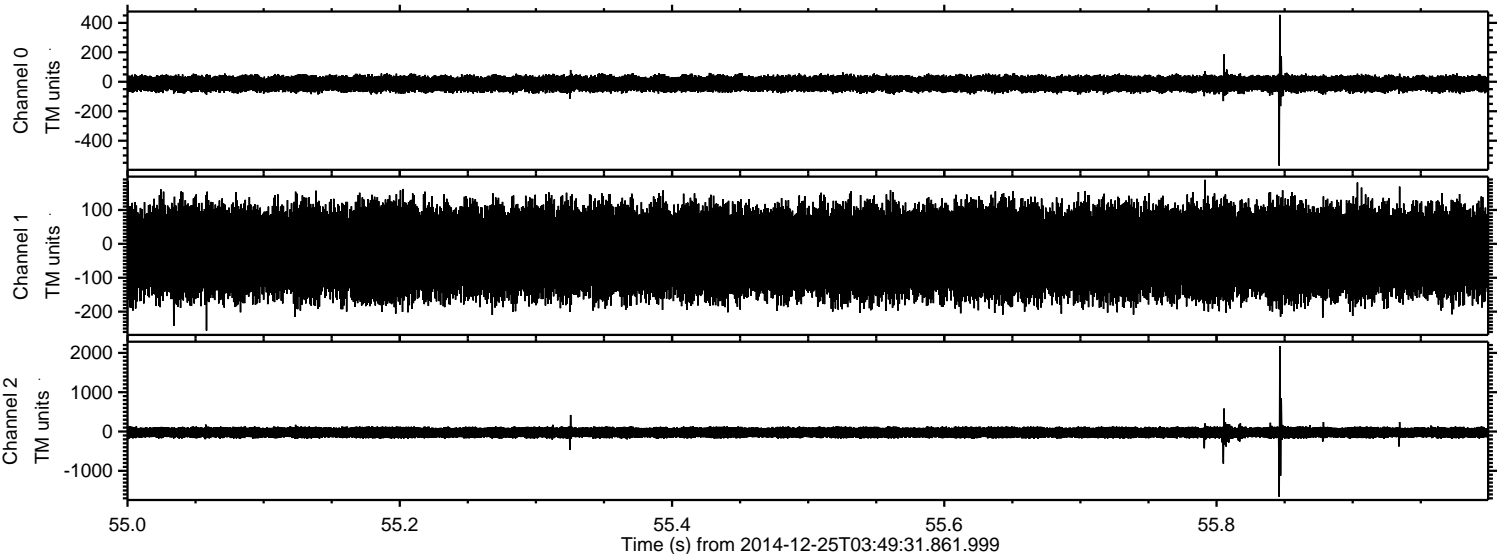
Processed Thu Dec 25 04:58:15 2014 by ELM ver.2012-10-06 from 001\_\_elm20141225\_034930\_\_dat00.bin





ELMAVAN 3D WAVEFORMS (Measured data sampled at 50 kHz) 49790 packets of 144 samples from 2014-12-25T03:49:31.861.999. Part 56/144

Processed Thu Dec 25 04:58:16 2014 by ELM ver.2012-10-06 from 001\_\_elm20141225\_034930\_\_dat00.bin



Channel 0  
mn: -569  
mx: 454  
 $\mu$ : -12.9  
 $\sigma$ : 28.7

Channel 1  
mn: -256  
mx: 189  
 $\mu$ : -23.9  
 $\sigma$ : 72.5

Channel 2  
mn: -1660  
mx: 2175  
 $\mu$ : -26.0  
 $\sigma$ : 86.8



Processed Thu Dec 25 04:58:17 2014 by ELM ver.2012-10-06 from 001\_\_elm20141225\_034930\_\_dat00.bin

