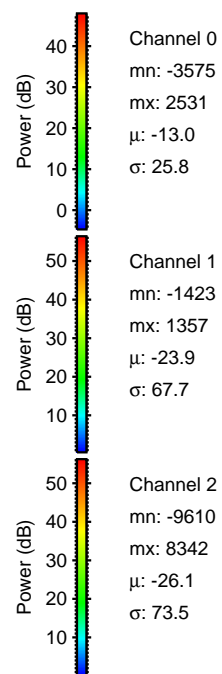
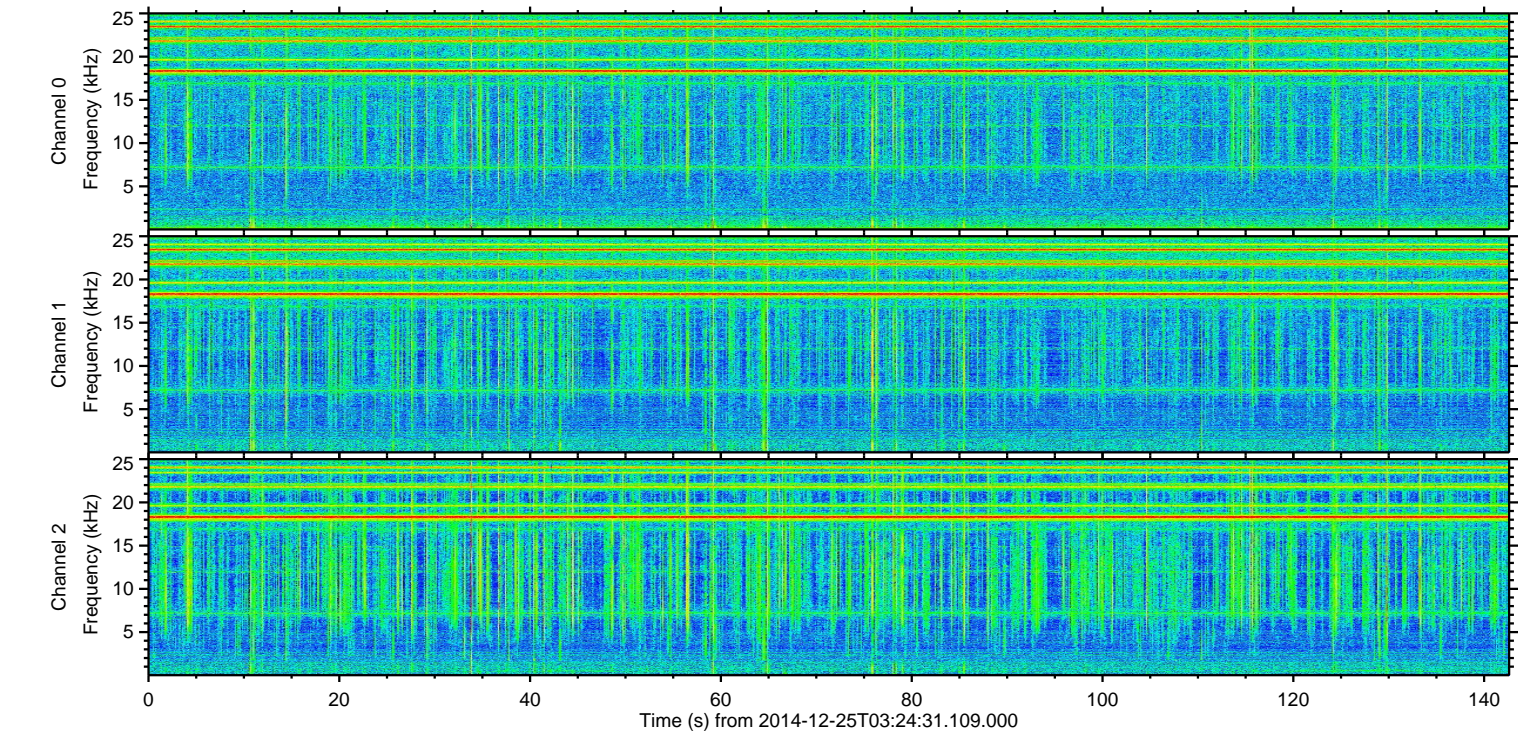
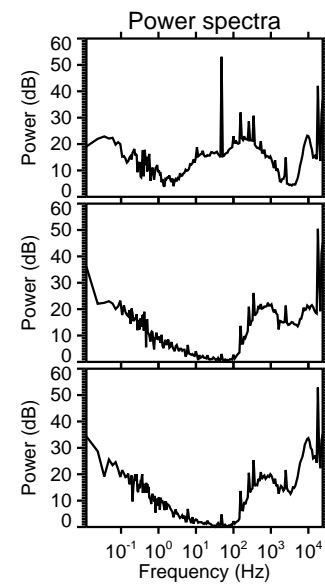
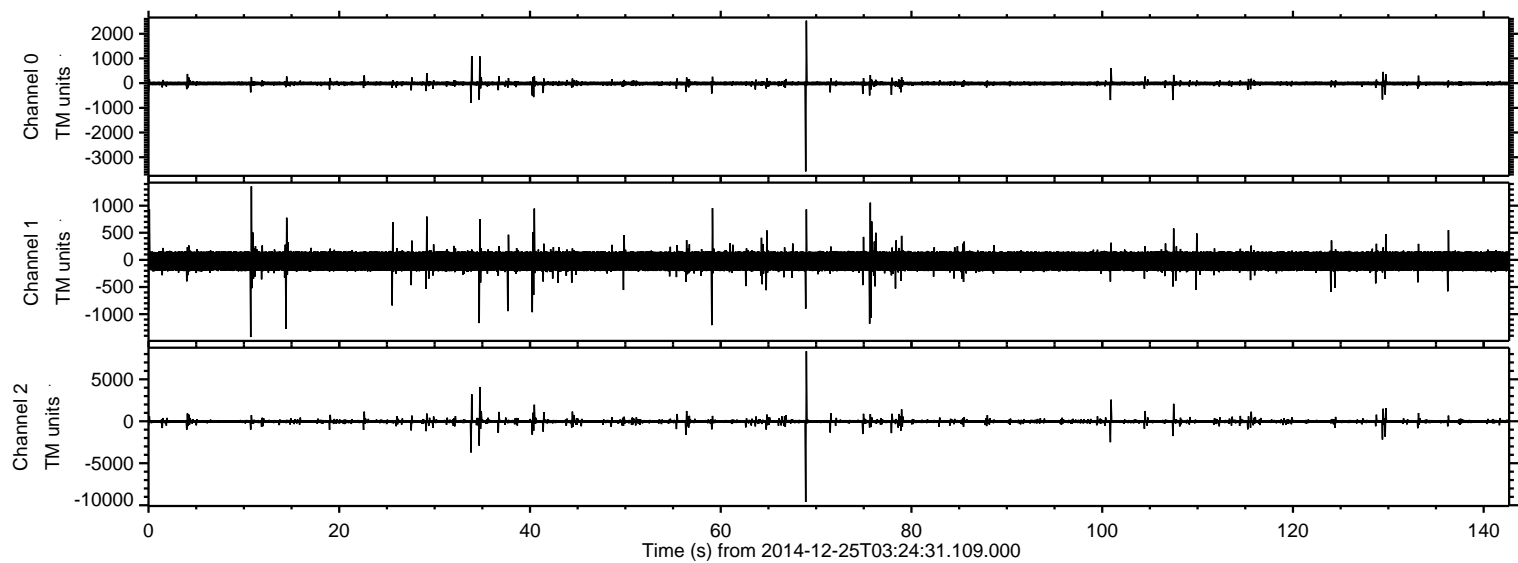


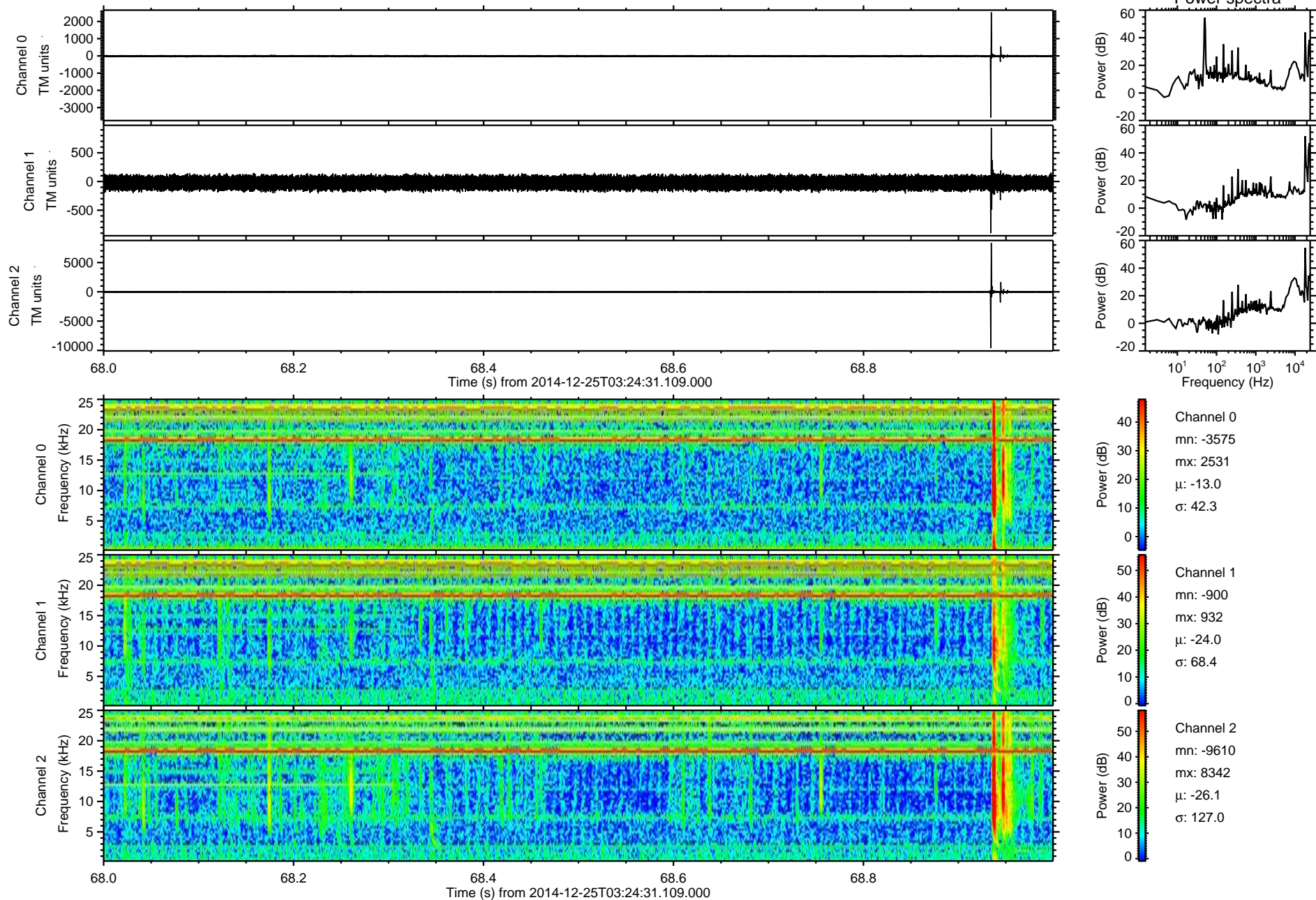
ELMAVAN 3D WAVEFORMS (Measured data sampled at 50 kHz) 49538 packets of 144 samples from 2014-12-25T03:24:31.109.000.

Processed Thu Dec 25 04:35:25 2014 by ELM ver.2012-10-06 from 001__elm20141225_032430__dat00.bin

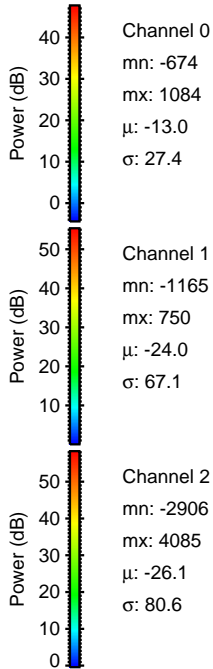
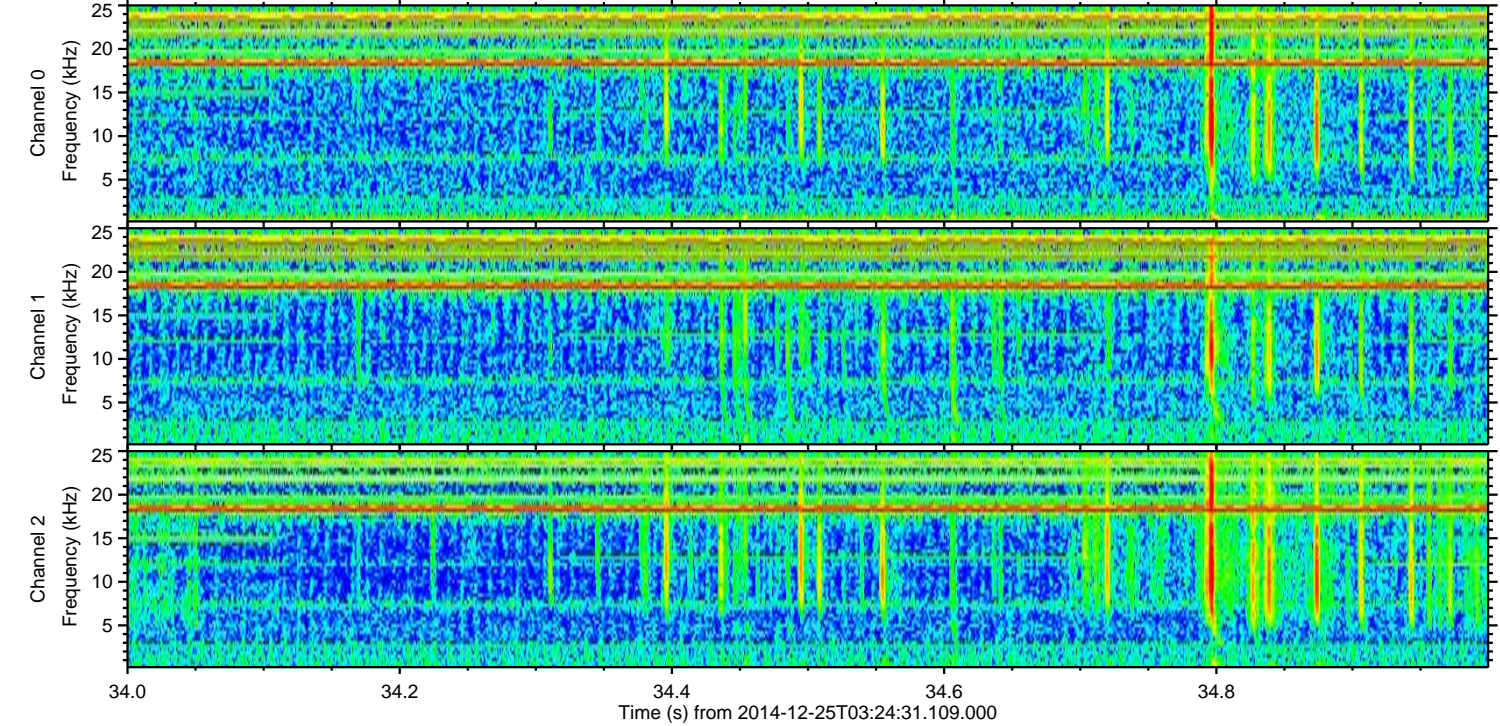
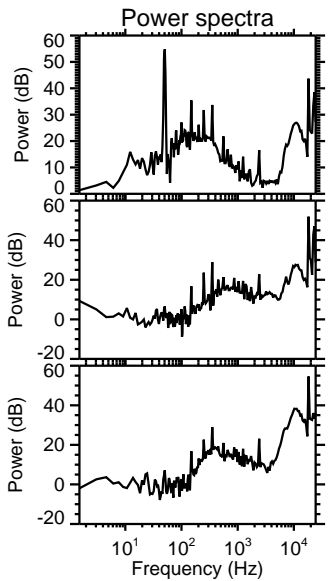
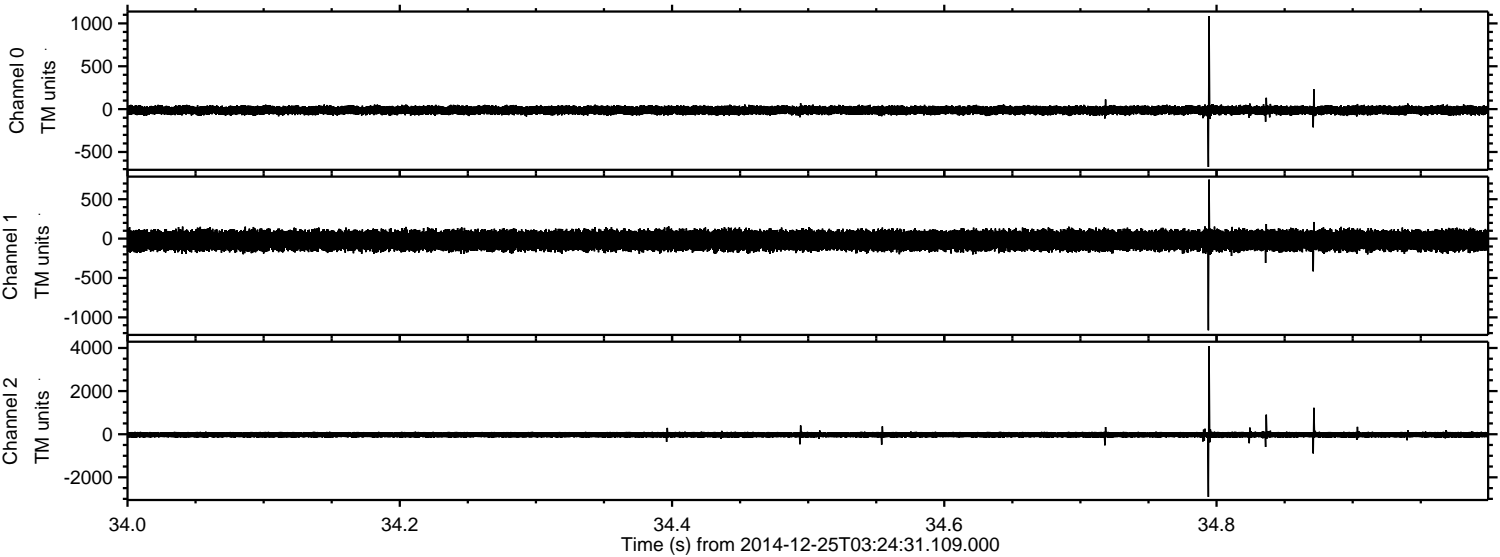


ELMAVAN 3D WAVEFORMS (Measured data sampled at 50 kHz) 49538 packets of 144 samples from 2014-12-25T03:24:31.109.000. Part 69/143

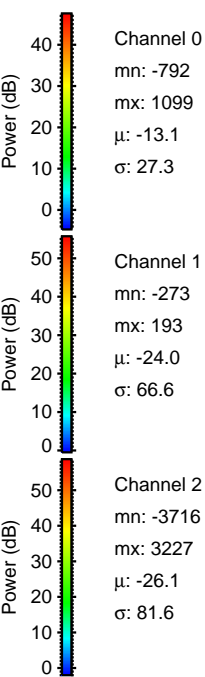
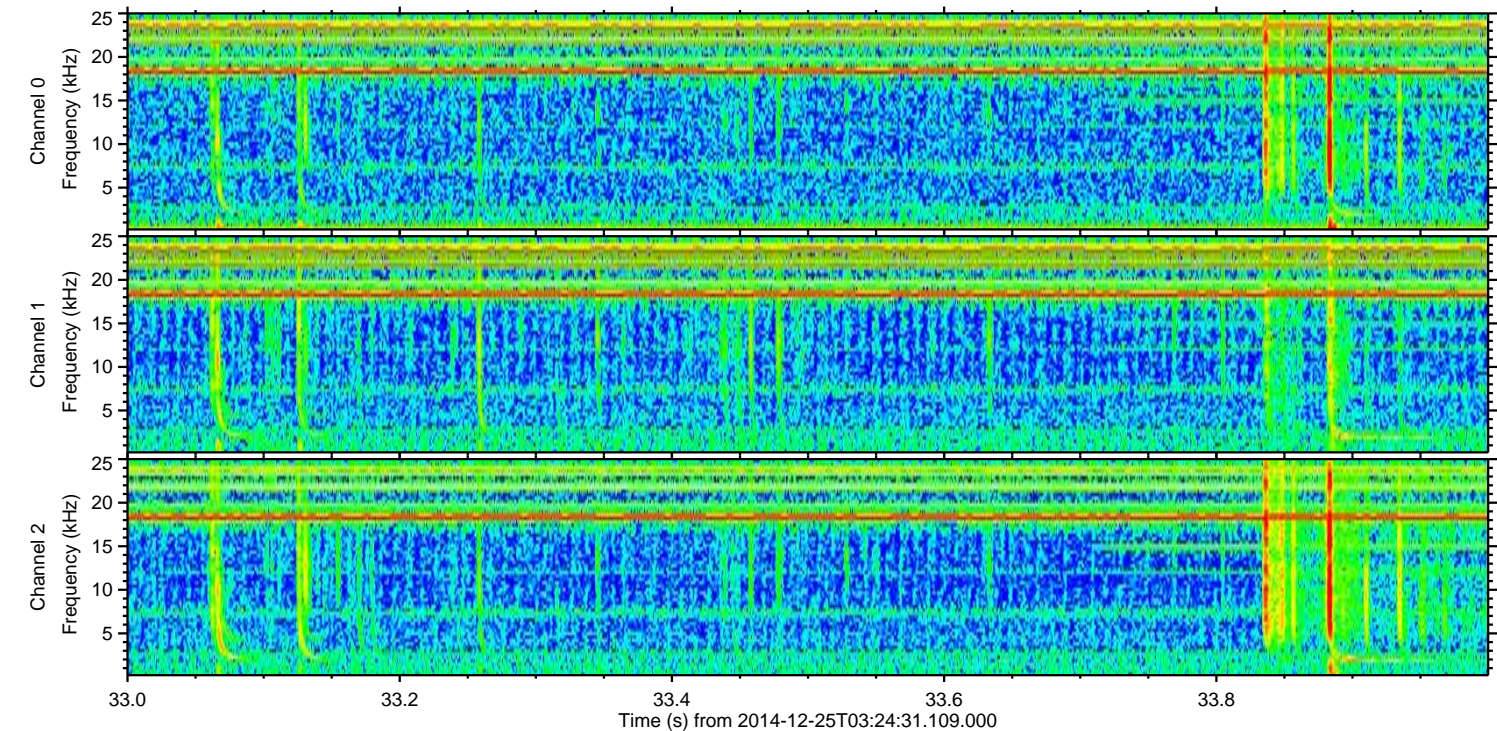
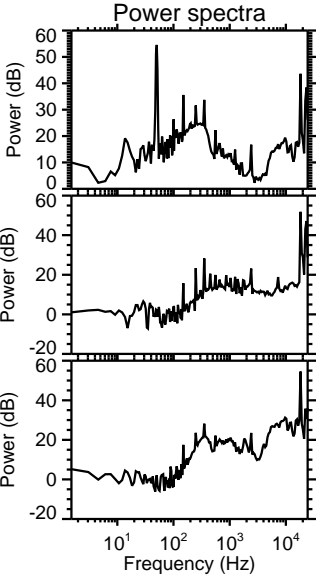
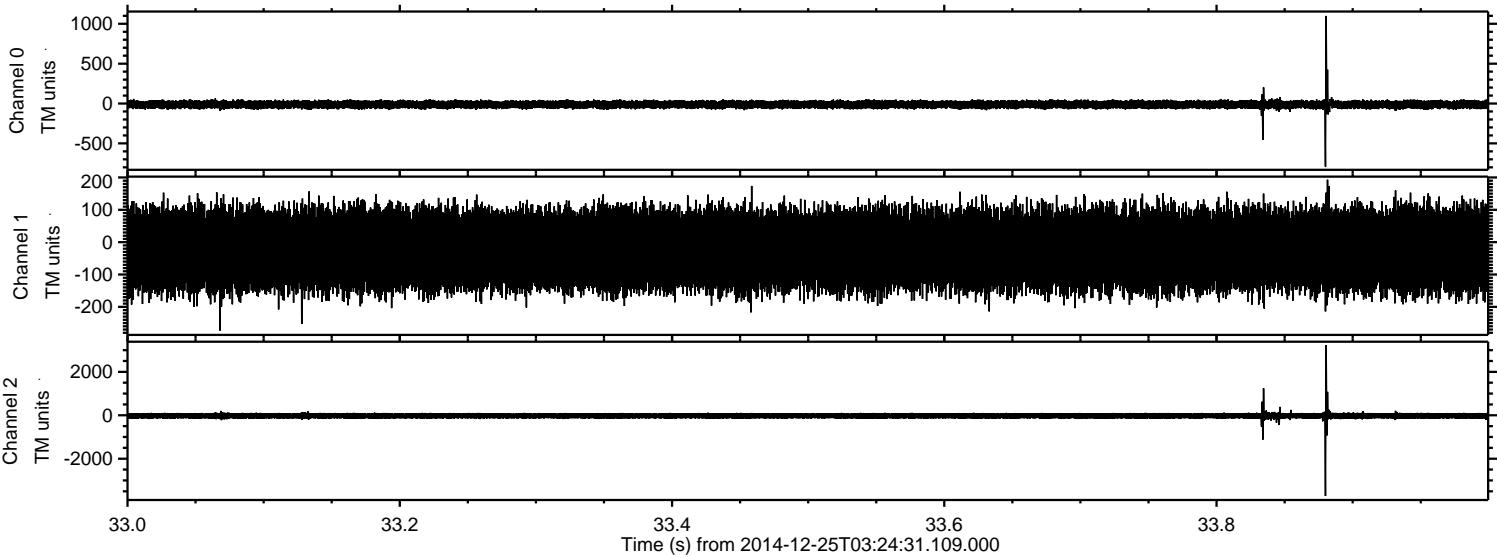
Processed Thu Dec 25 04:35:40 2014 by ELM ver.2012-10-06 from 001__elm20141225_032430__dat00.bin



Processed Thu Dec 25 04:35:41 2014 by ELM ver.2012-10-06 from 001__elm20141225_032430__dat00.bin

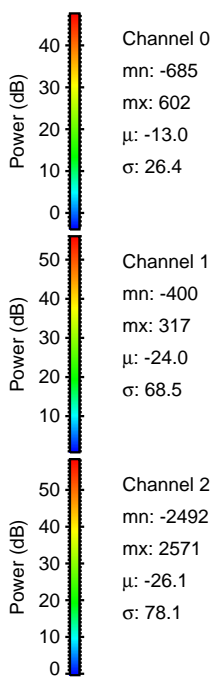
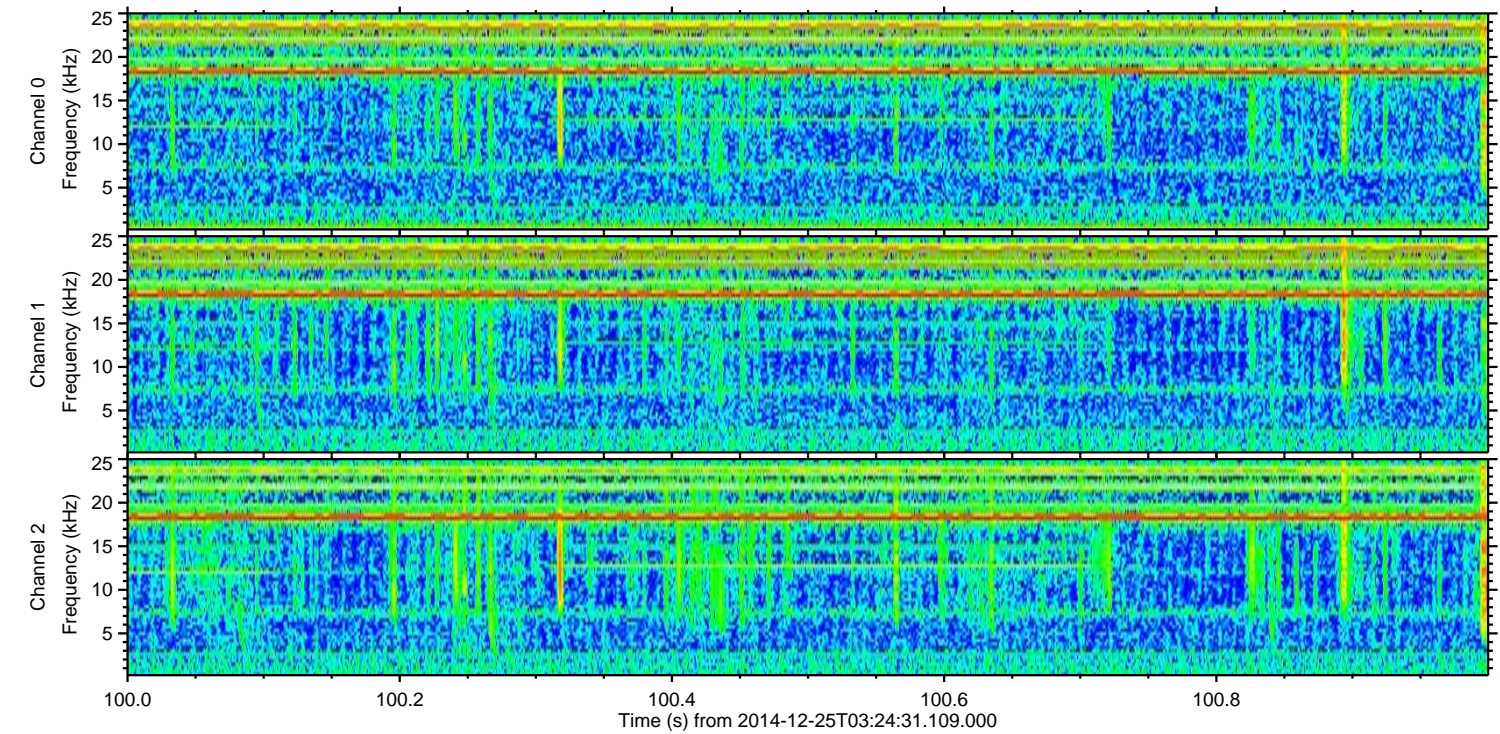
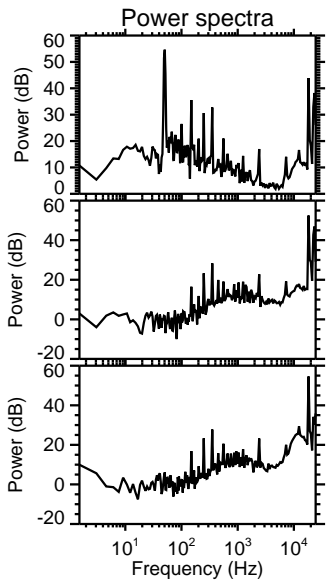
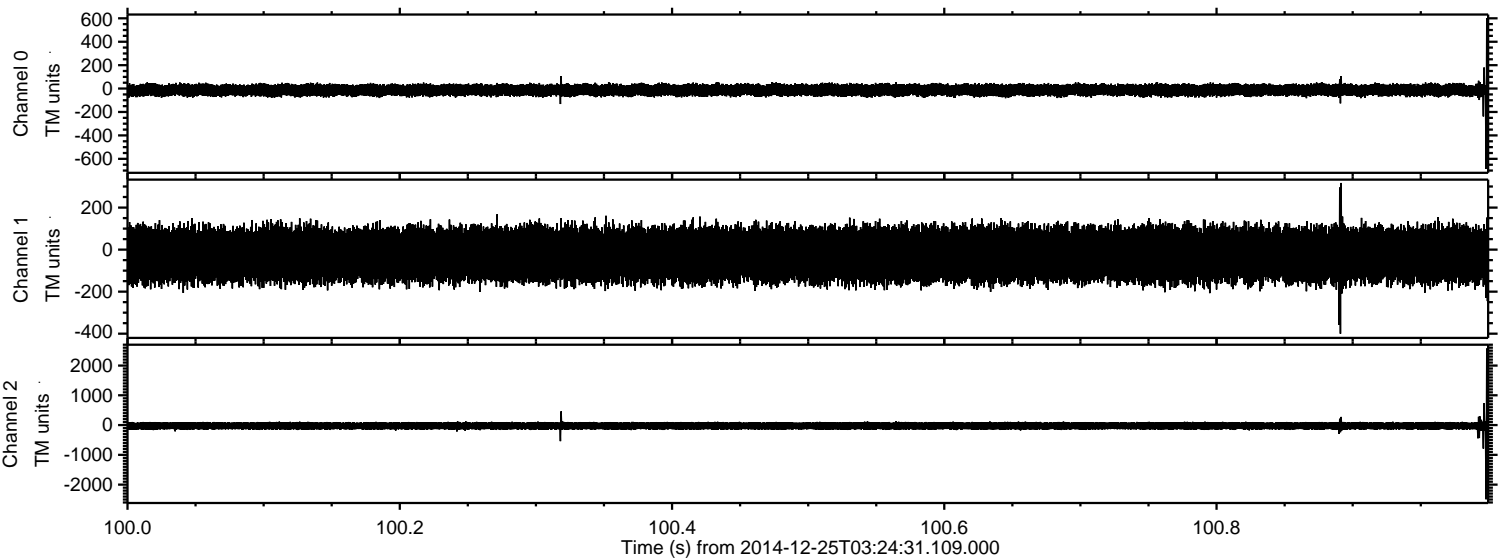


Processed Thu Dec 25 04:35:43 2014 by ELM ver.2012-10-06 from 001__elm20141225_032430__dat00.bin



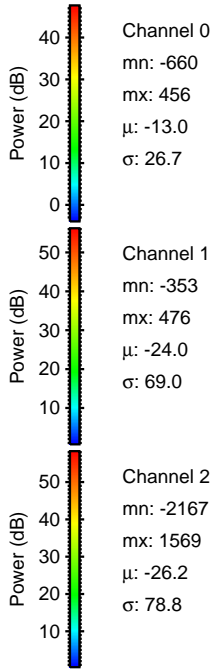
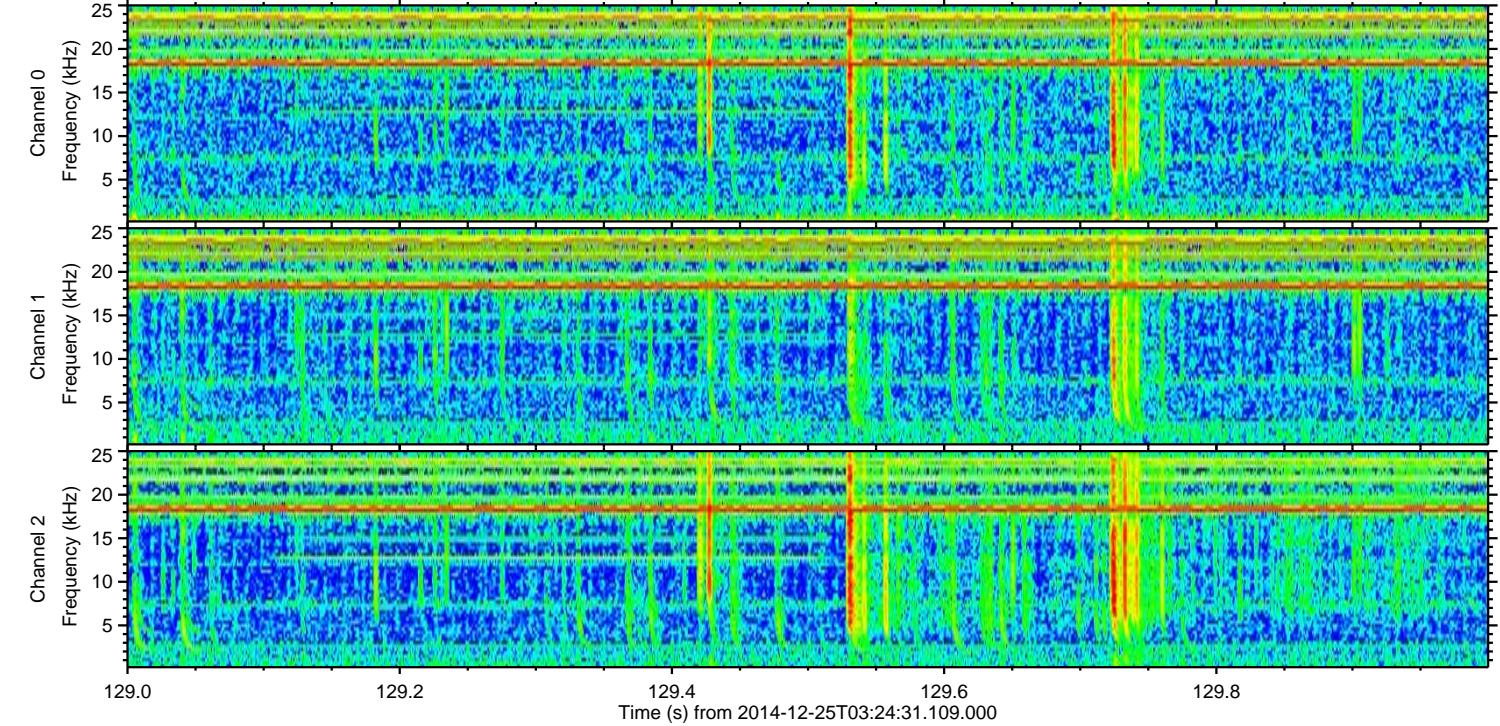
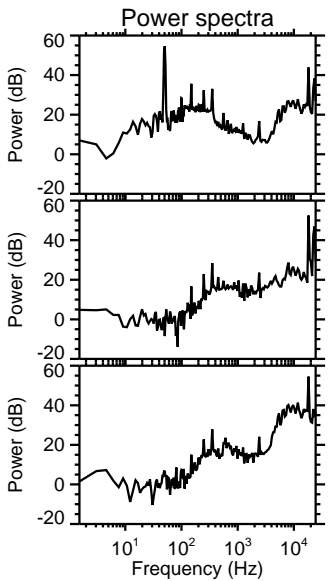
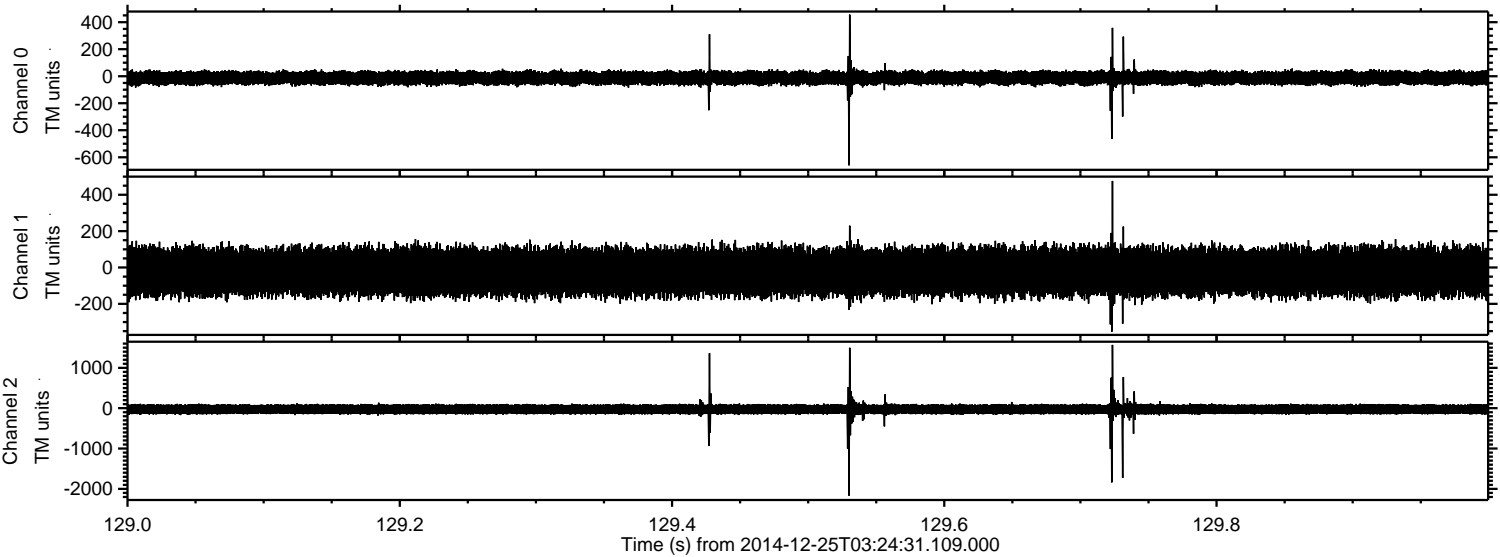
ELMAVAN 3D WAVEFORMS (Measured data sampled at 50 kHz) 49538 packets of 144 samples from 2014-12-25T03:24:31.109.000. Part 101/143

Processed Thu Dec 25 04:35:44 2014 by ELM ver.2012-10-06 from 001__elm20141225_032430__dat00.bin



ELMAVAN 3D WAVEFORMS (Measured data sampled at 50 kHz) 49538 packets of 144 samples from 2014-12-25T03:24:31.109.000. Part 130/143

Processed Thu Dec 25 04:35:45 2014 by ELM ver.2012-10-06 from 001__elm20141225_032430__dat00.bin



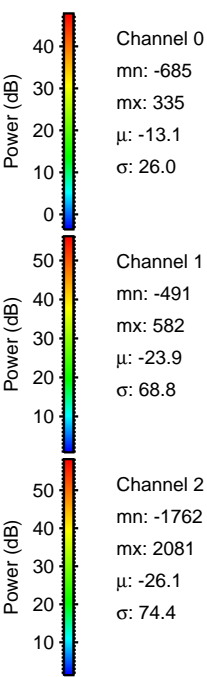
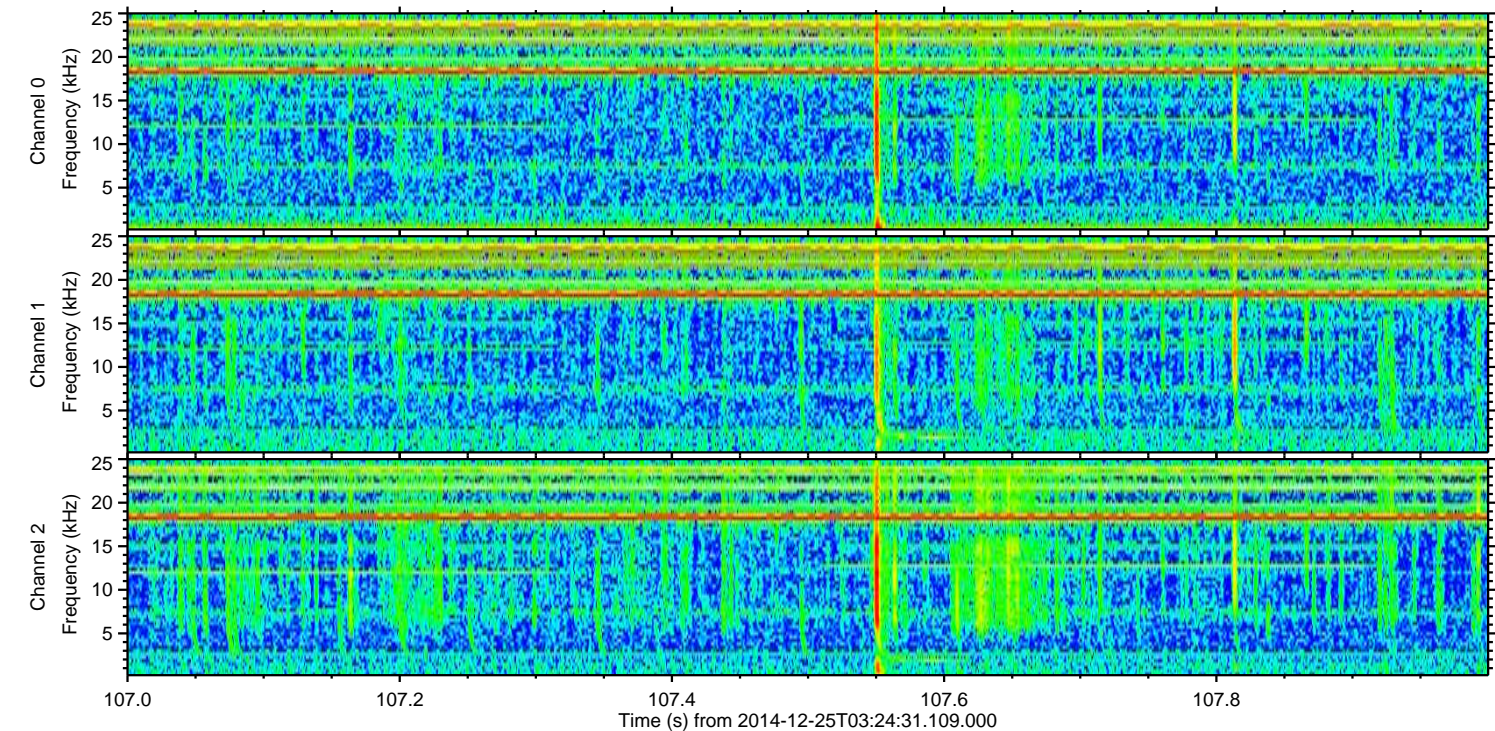
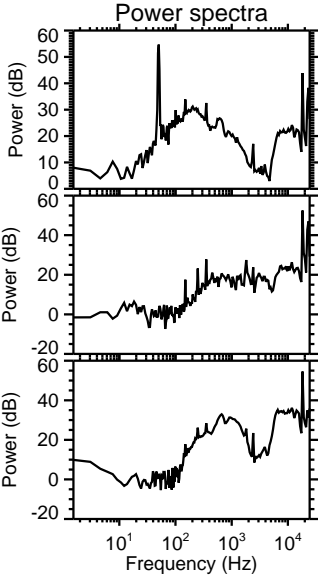
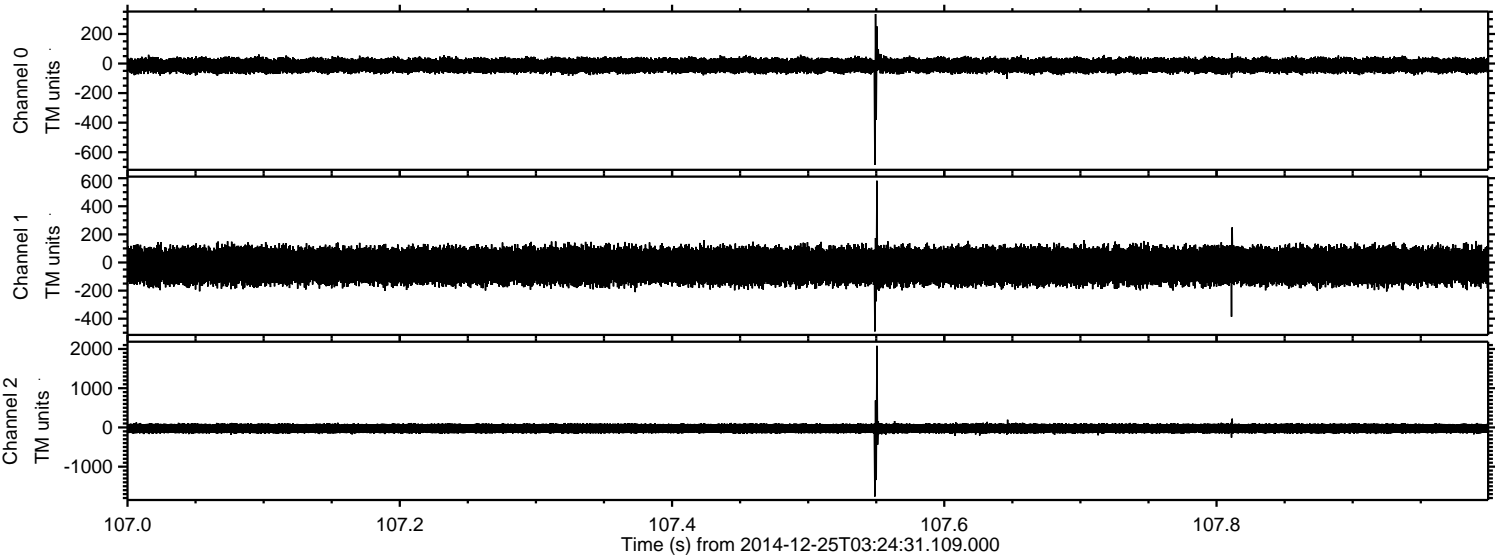
Channel 0
mn: -660
mx: 456
 μ : -13.0
 σ : 26.7

Channel 1
mn: -353
mx: 476
 μ : -24.0
 σ : 69.0

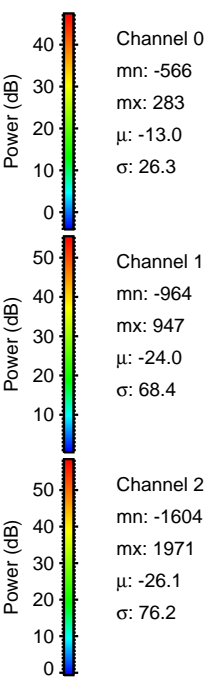
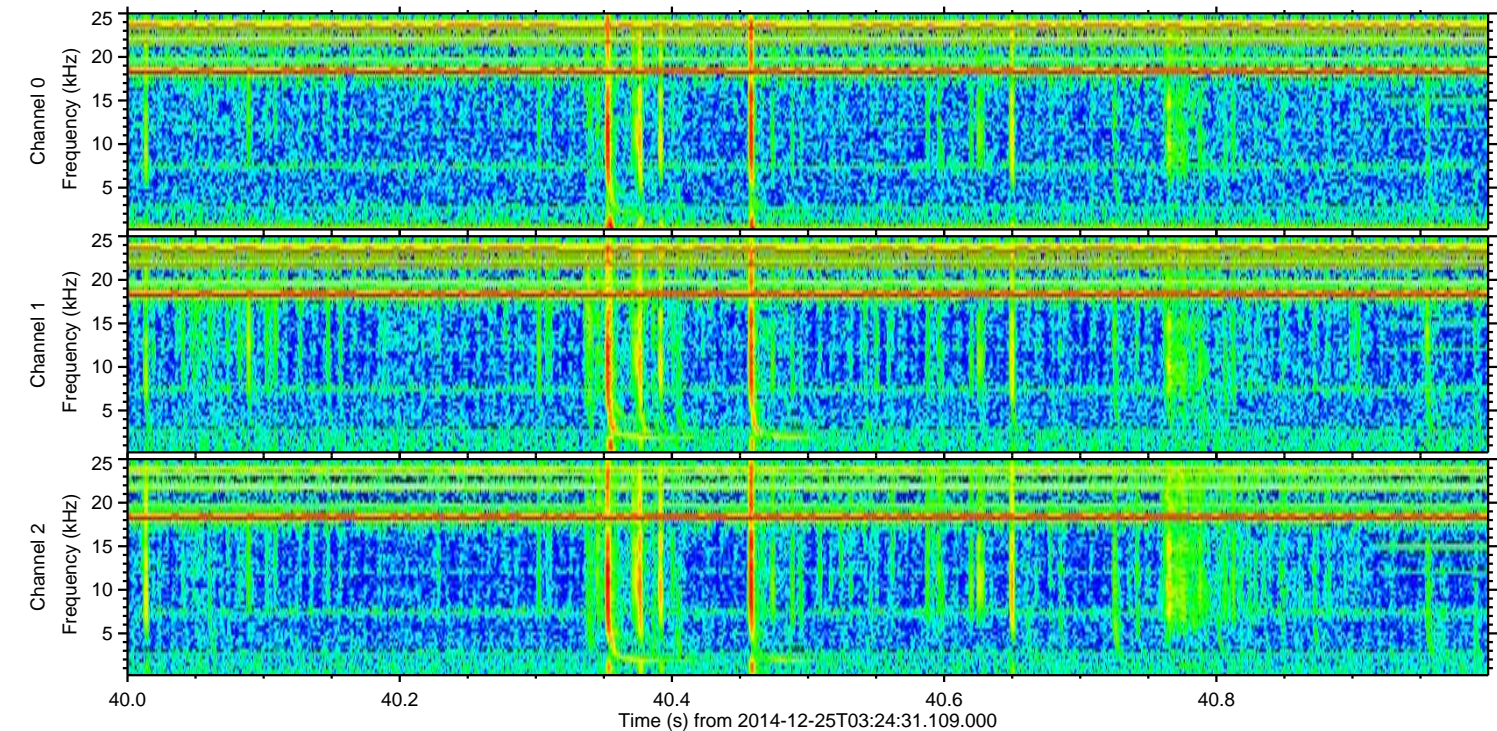
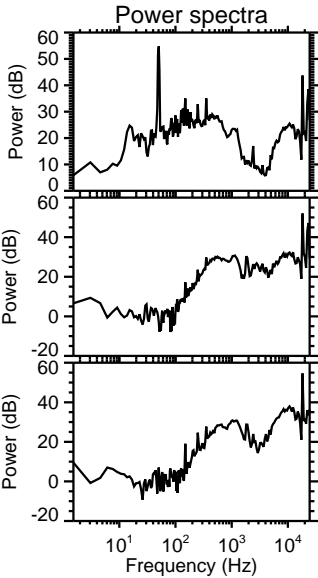
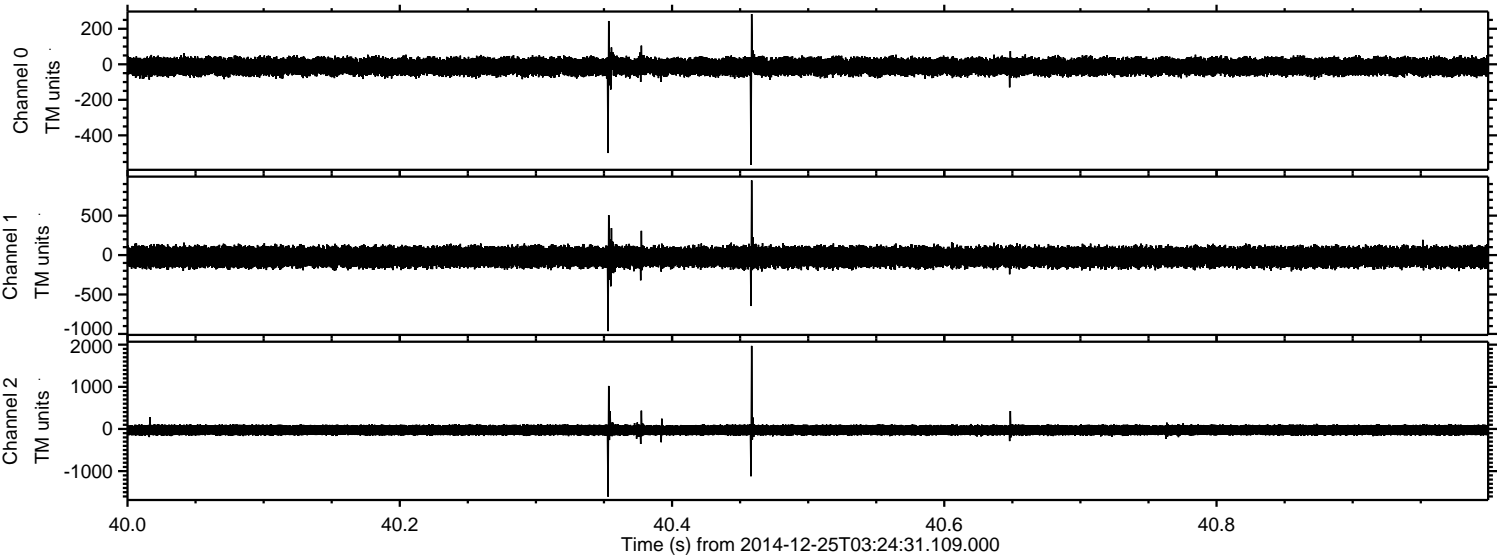
Channel 2
mn: -2167
mx: 1569
 μ : -26.2
 σ : 78.8

ELMAVAN 3D WAVEFORMS (Measured data sampled at 50 kHz) 49538 packets of 144 samples from 2014-12-25T03:24:31.109.000. Part 108/143

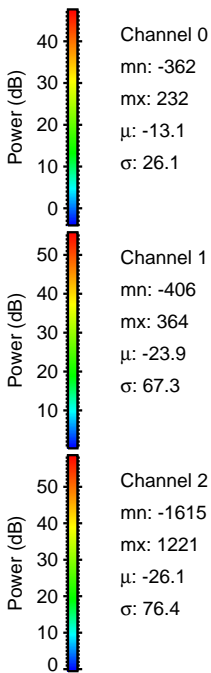
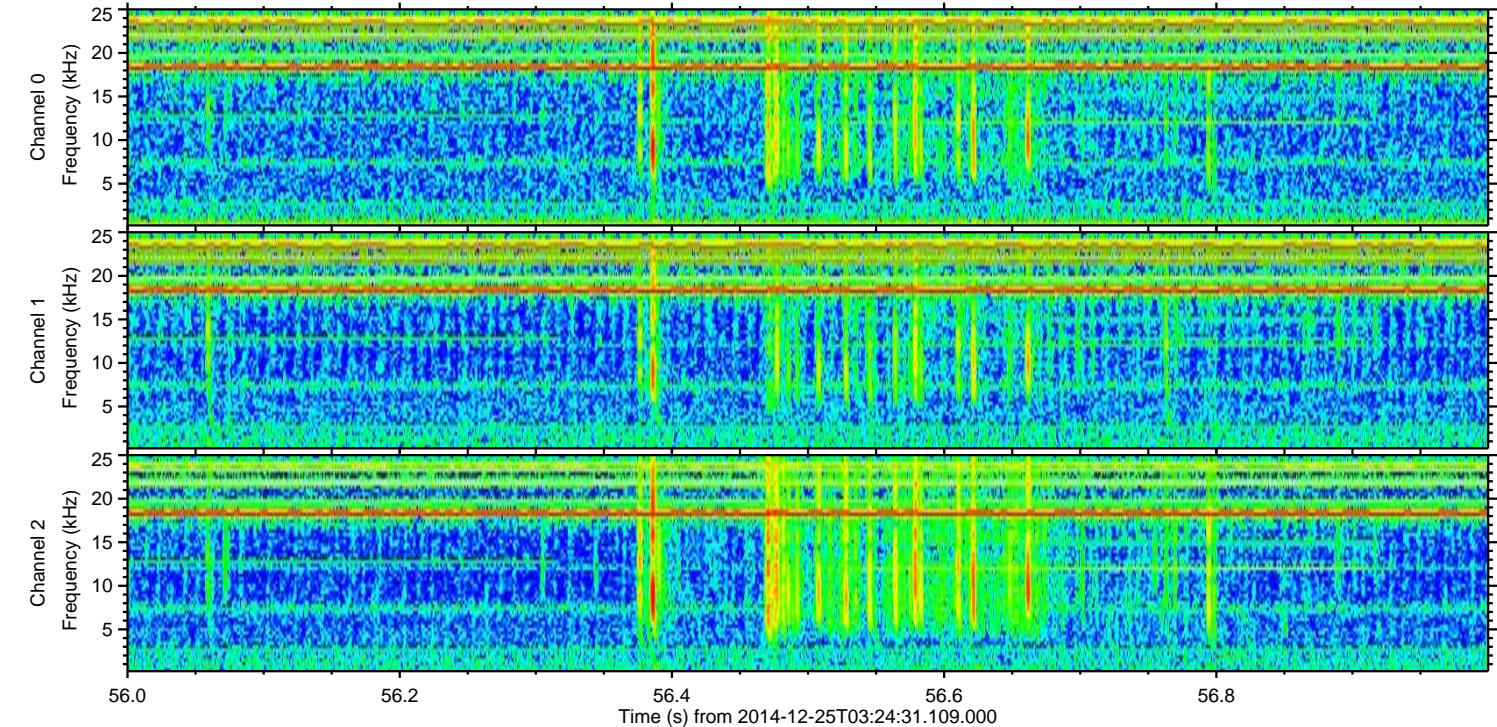
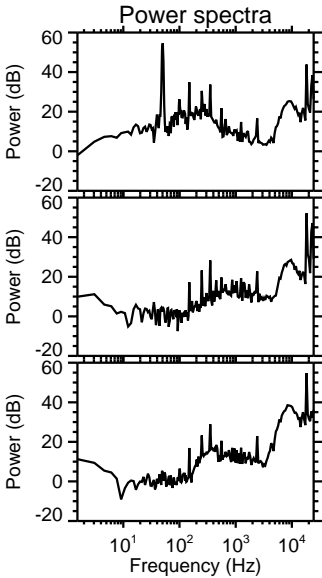
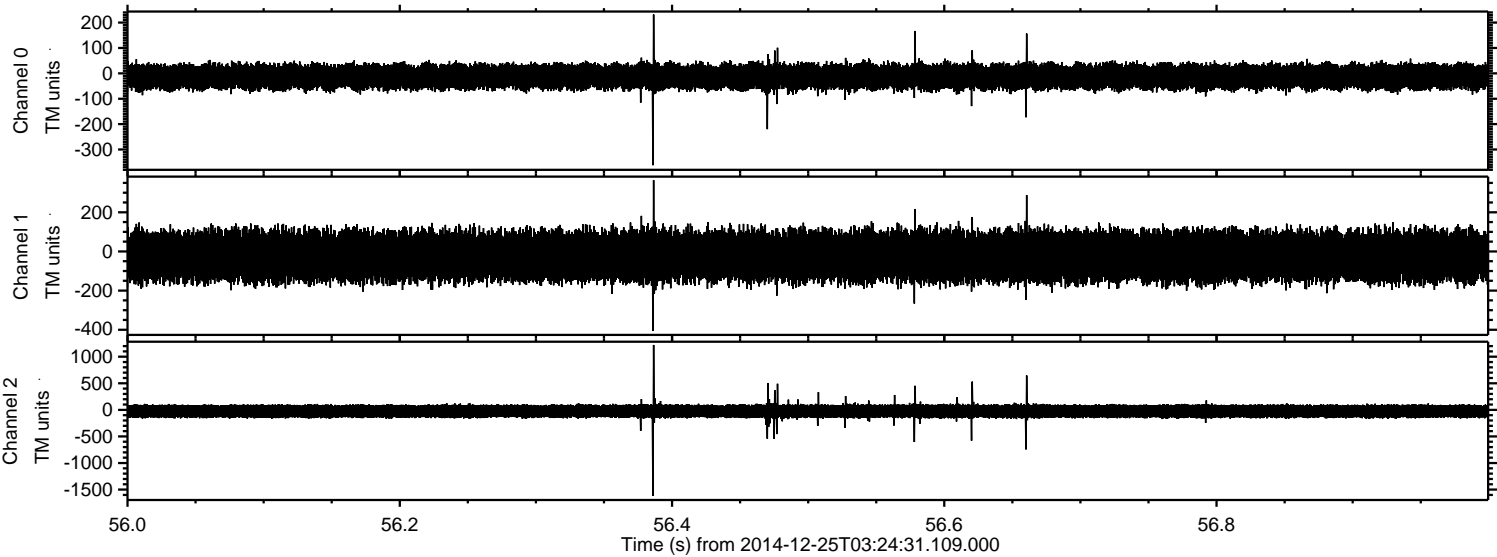
Processed Thu Dec 25 04:35:46 2014 by ELM ver.2012-10-06 from 001__elm20141225_032430__dat00.bin



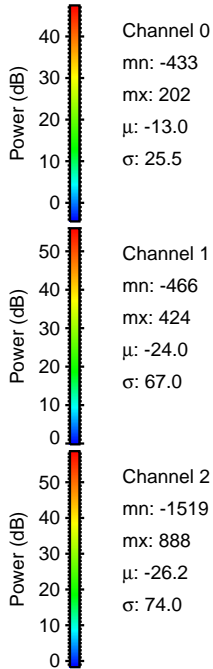
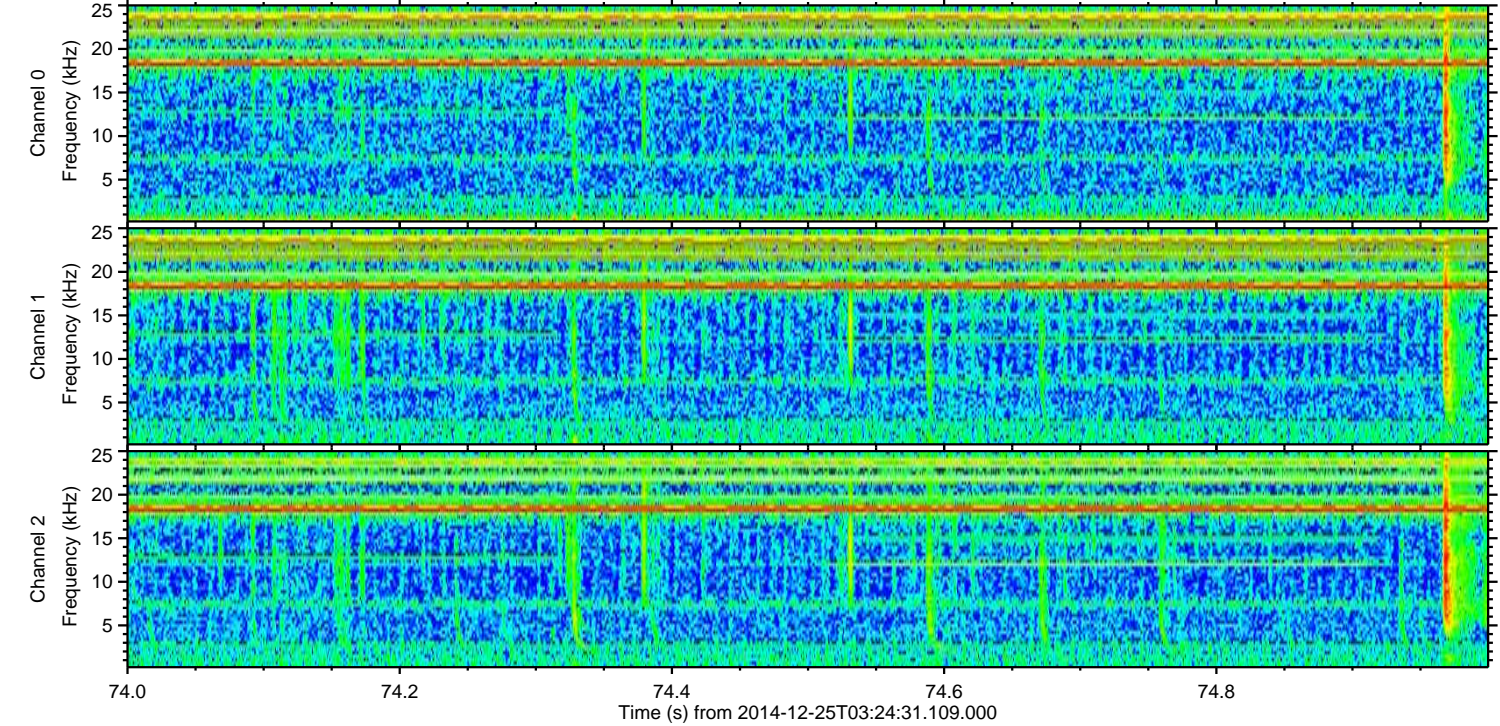
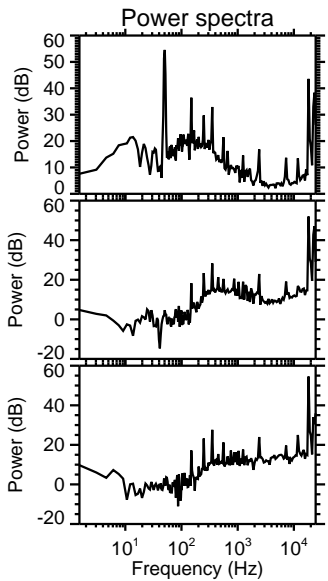
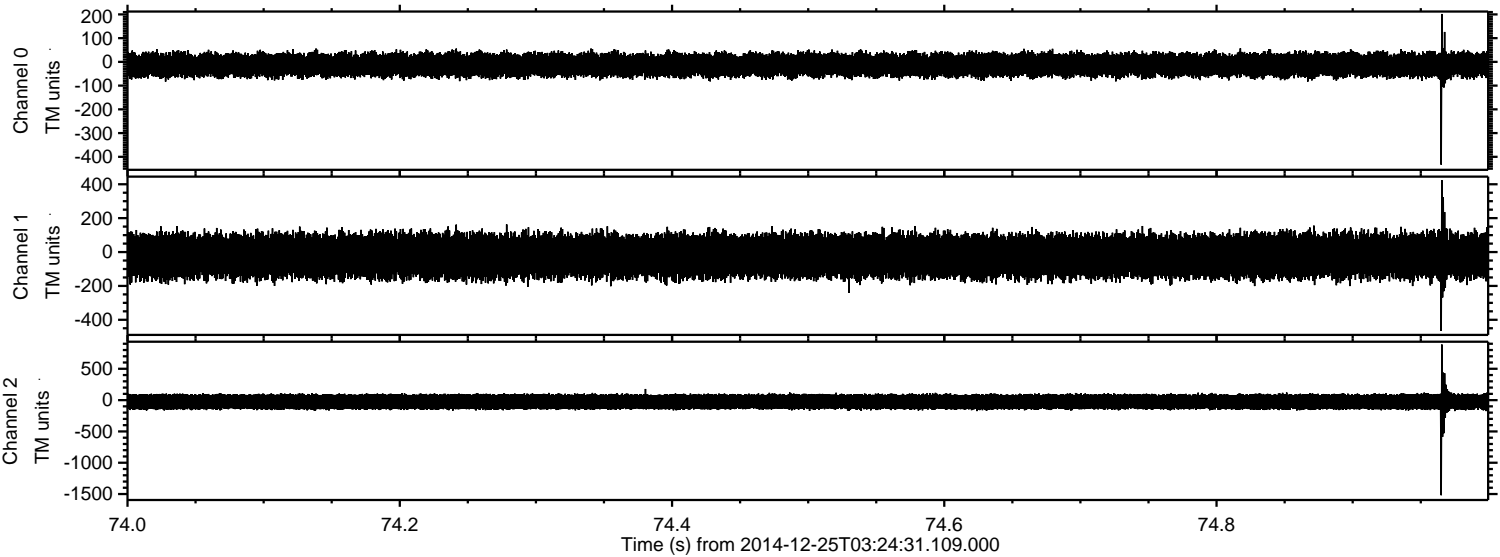
Processed Thu Dec 25 04:35:47 2014 by ELM ver.2012-10-06 from 001__elm20141225_032430__dat00.bin



Processed Thu Dec 25 04:35:49 2014 by ELM ver.2012-10-06 from 001__elm20141225_032430__dat00.bin



Processed Thu Dec 25 04:35:50 2014 by ELM ver.2012-10-06 from 001__elm20141225_032430__dat00.bin



Processed Thu Dec 25 04:35:51 2014 by ELM ver.2012-10-06 from 001__elm20141225_032430__dat00.bin

