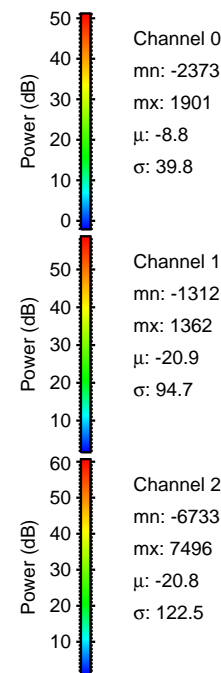
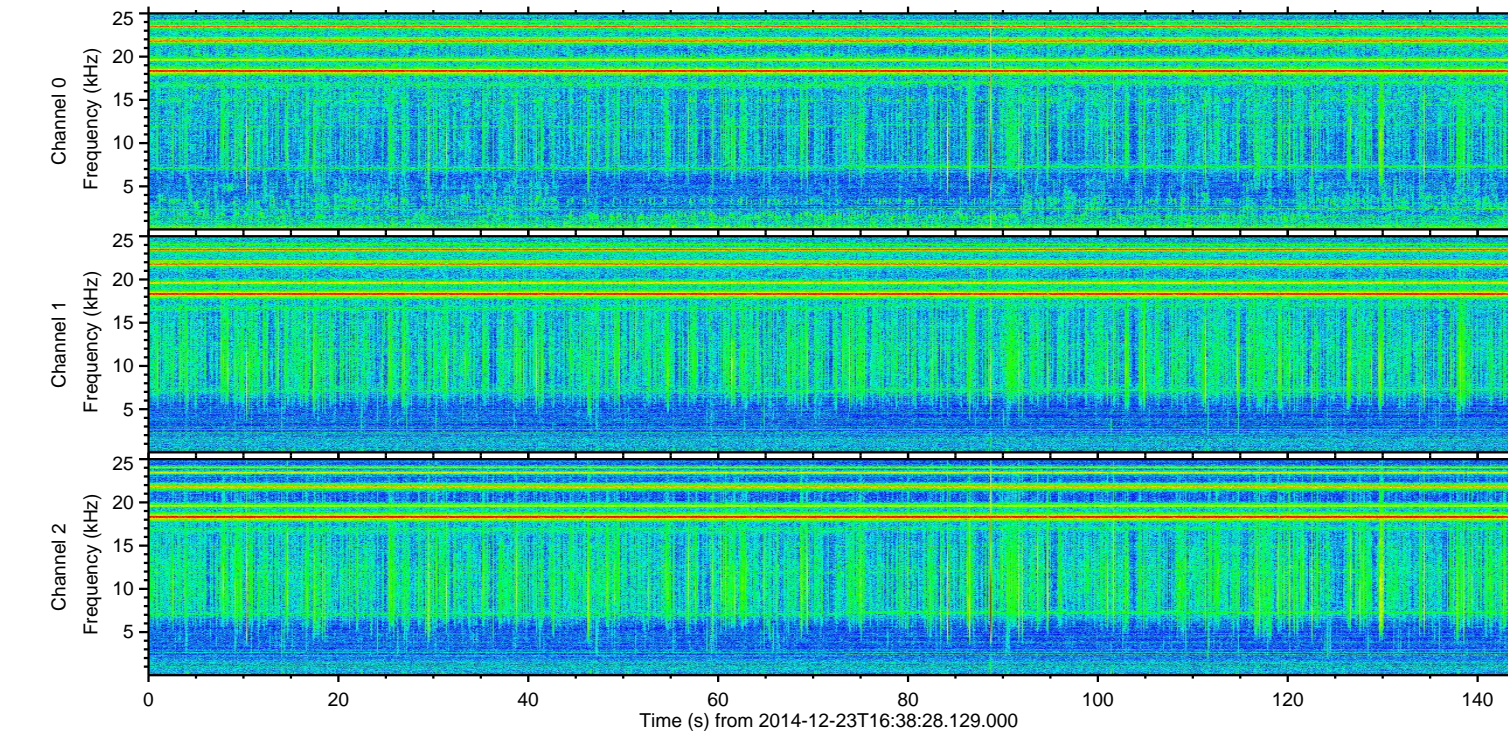
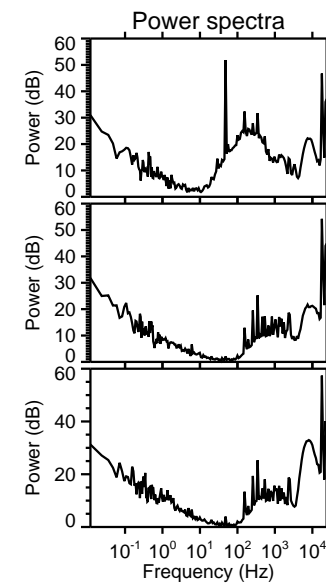
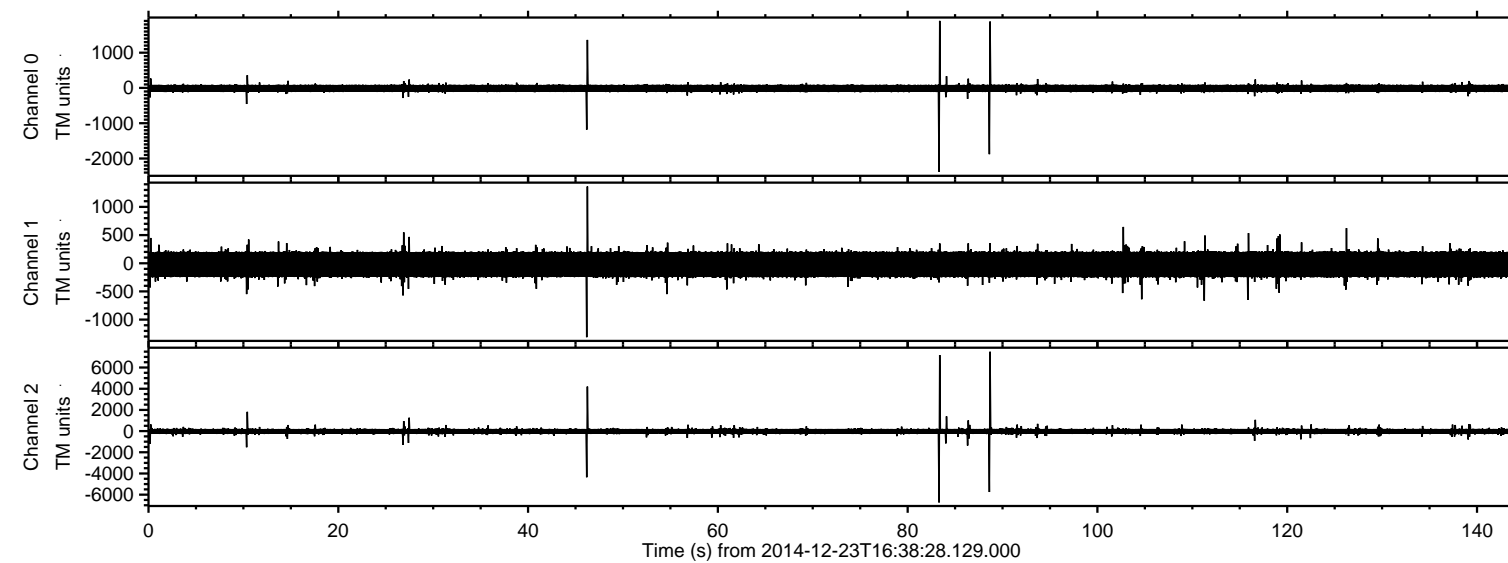
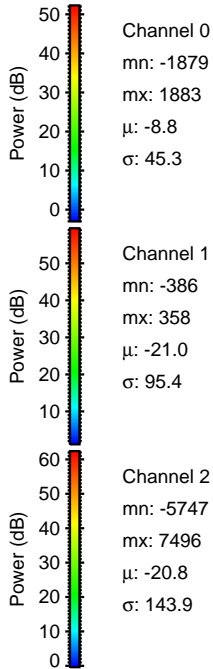
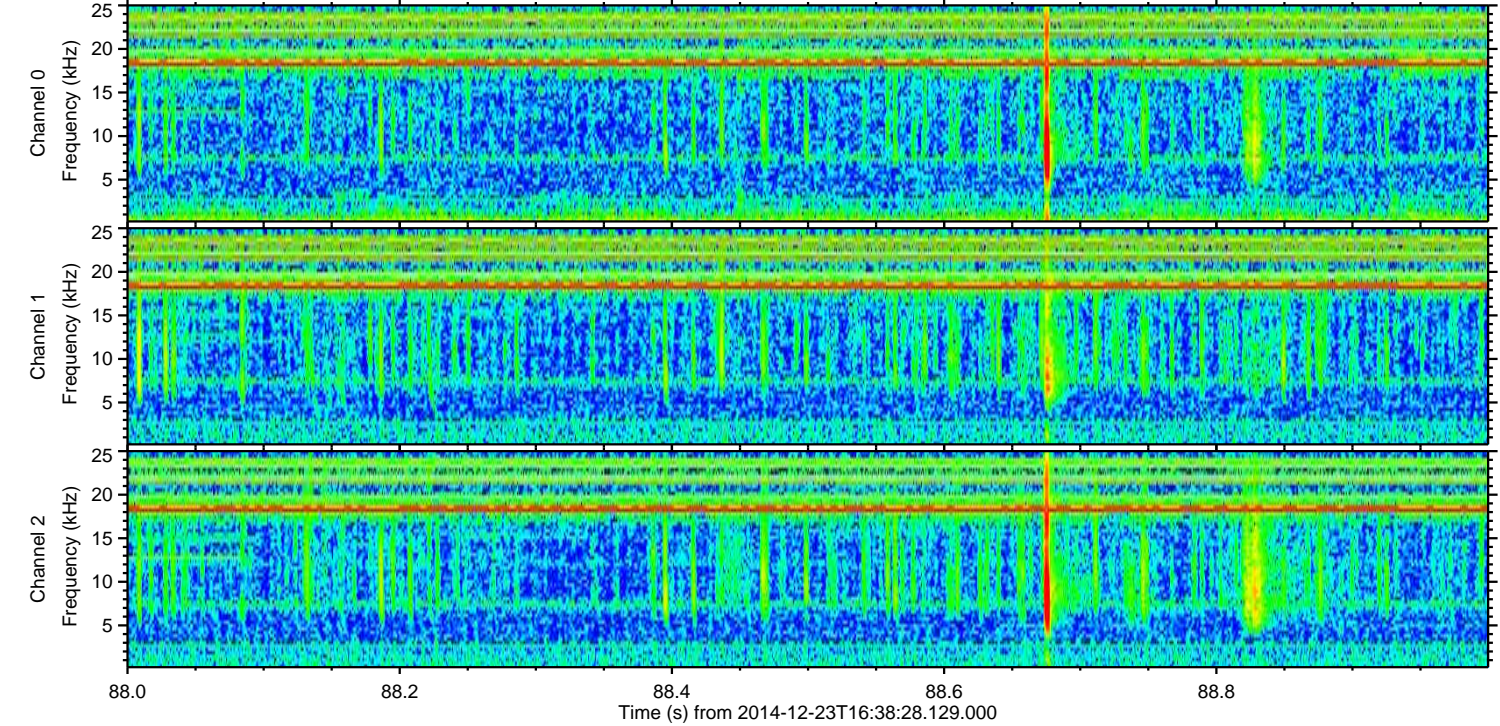
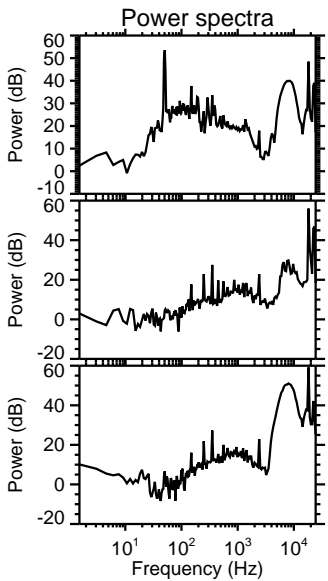
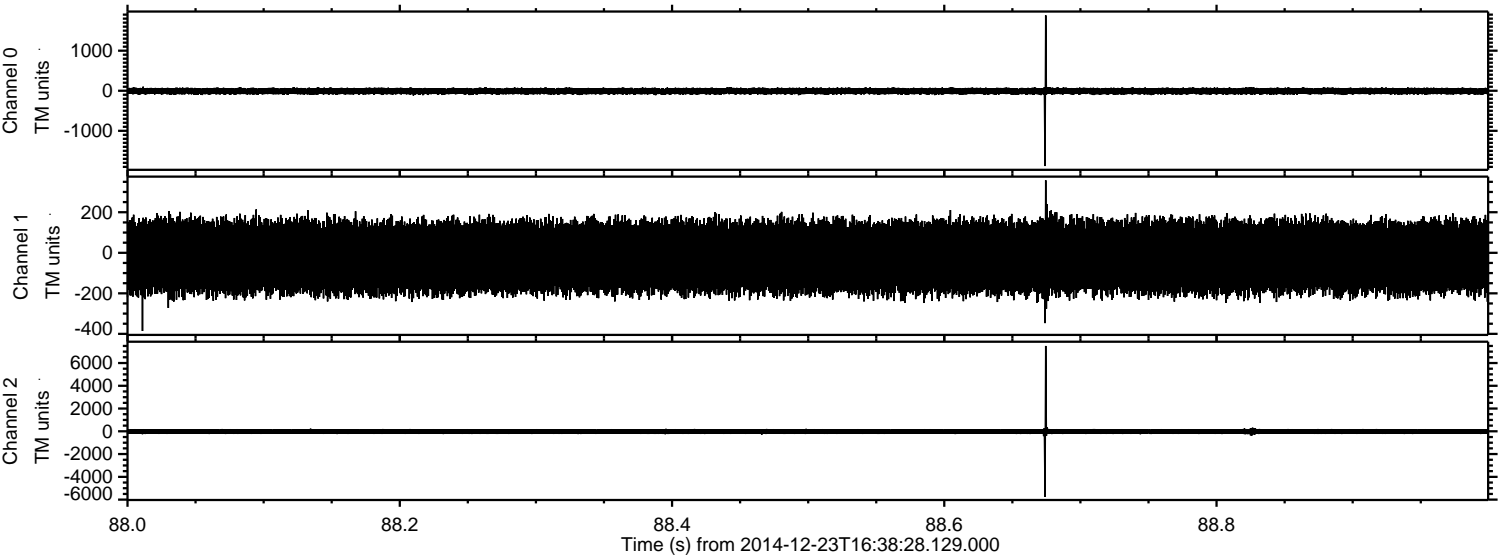


ELMAVAN 3D WAVEFORMS (Measured data sampled at 50 kHz) 49788 packets of 144 samples from 2014-12-23T16:38:28.129.000.

Processed Tue Dec 23 17:45:41 2014 by ELM ver.2012-10-06 from 001__elm20141223_163827__dat00.bin



Processed Tue Dec 23 17:45:53 2014 by ELM ver.2012-10-06 from 001__elm20141223_163827__dat00.bin

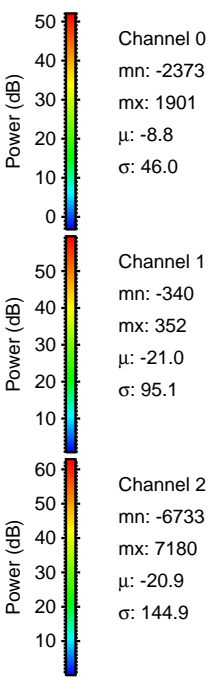
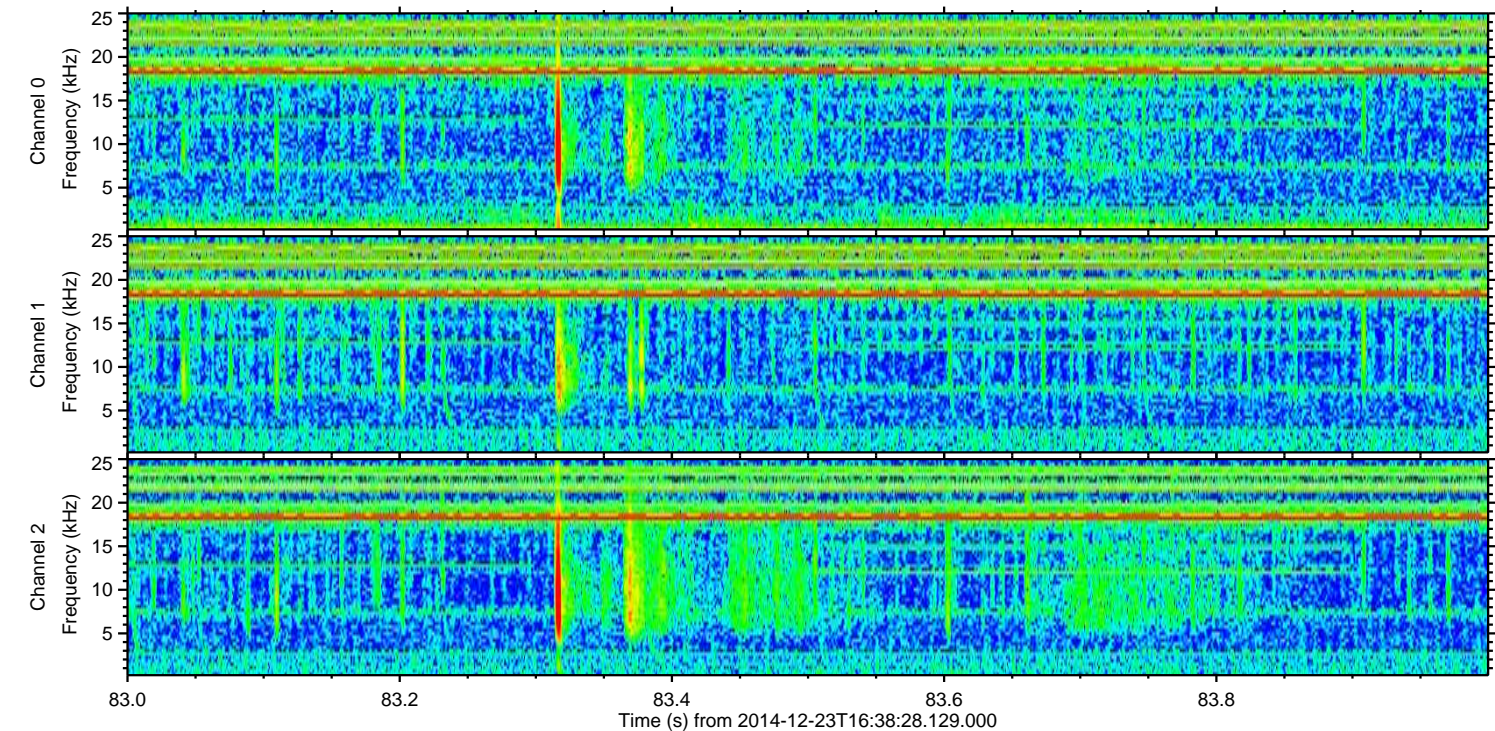
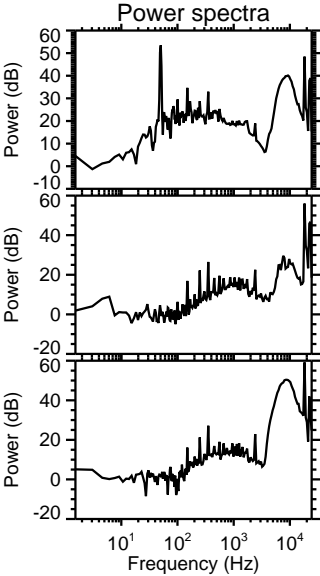
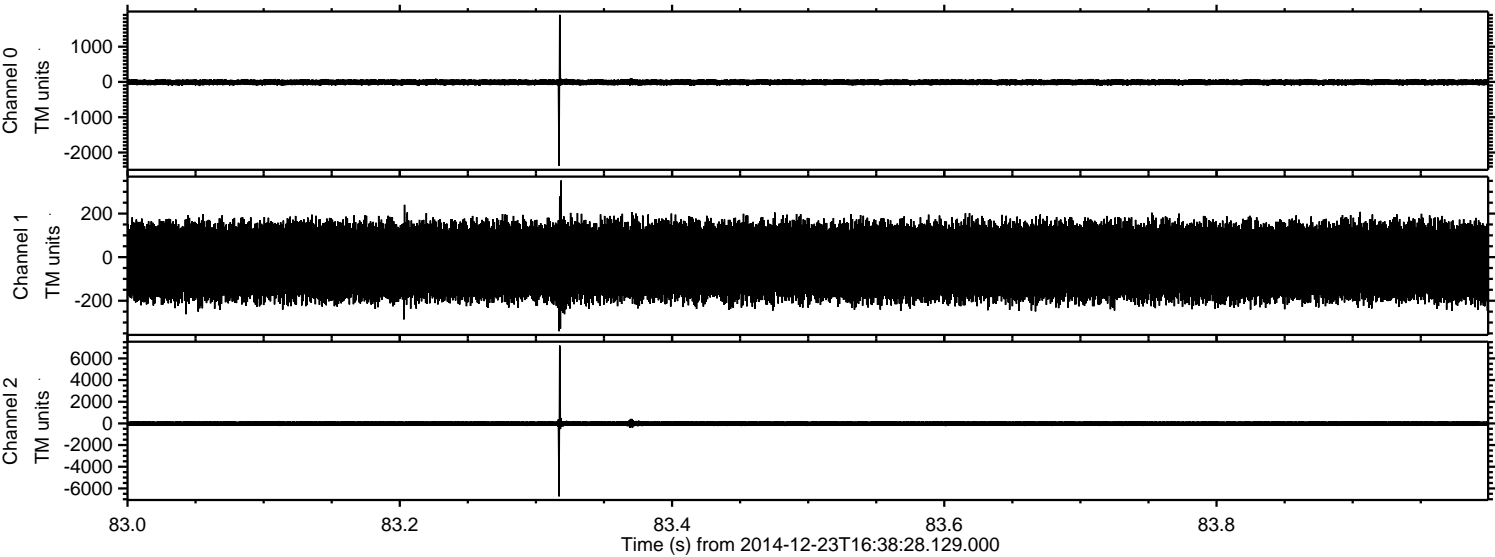


Channel 0
mn: -1879
mx: 1883
 μ : -8.8
 σ : 45.3

Channel 1
mn: -386
mx: 358
 μ : -21.0
 σ : 95.4

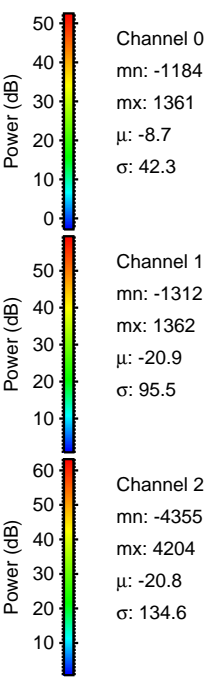
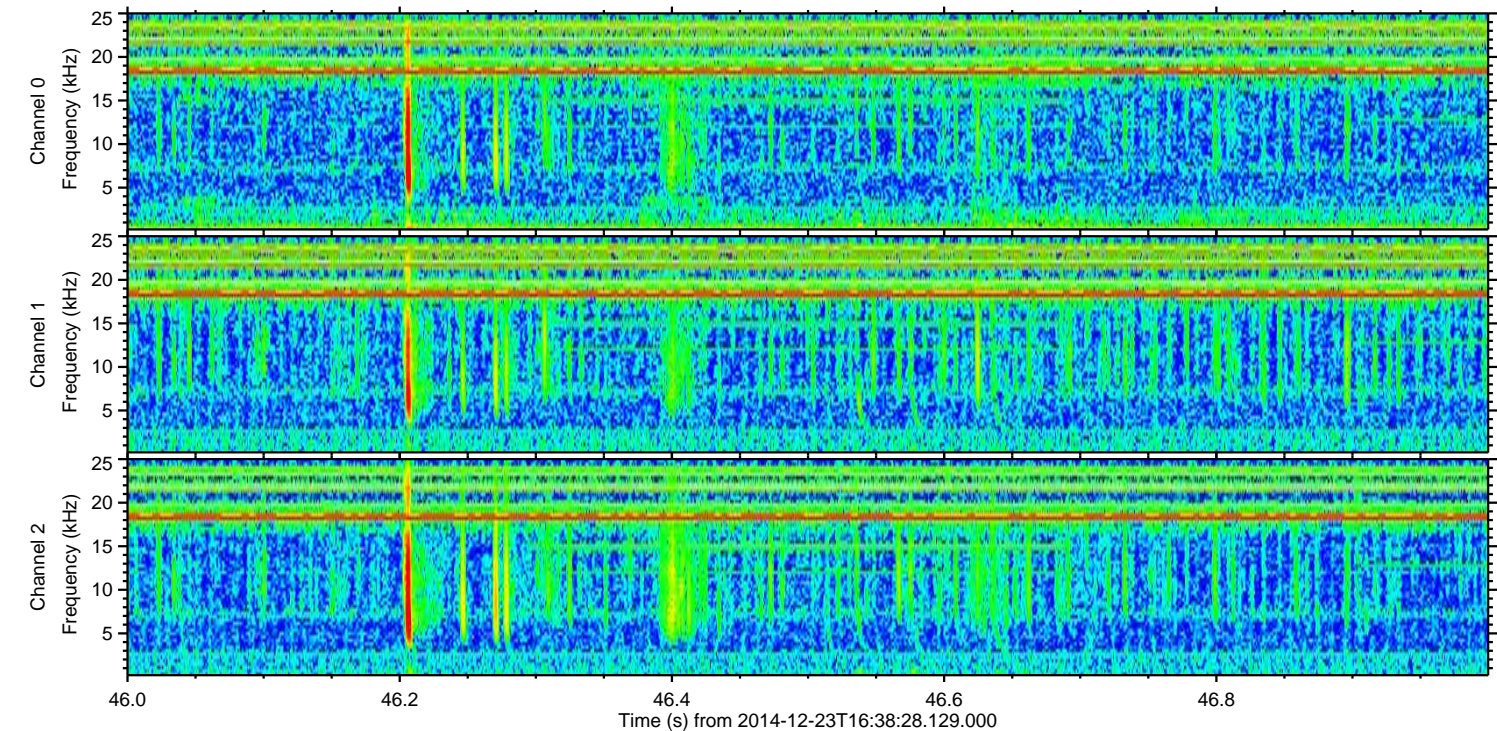
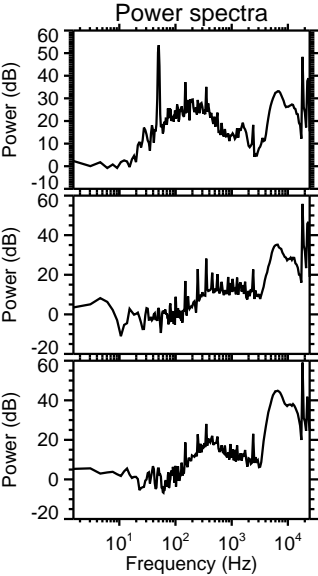
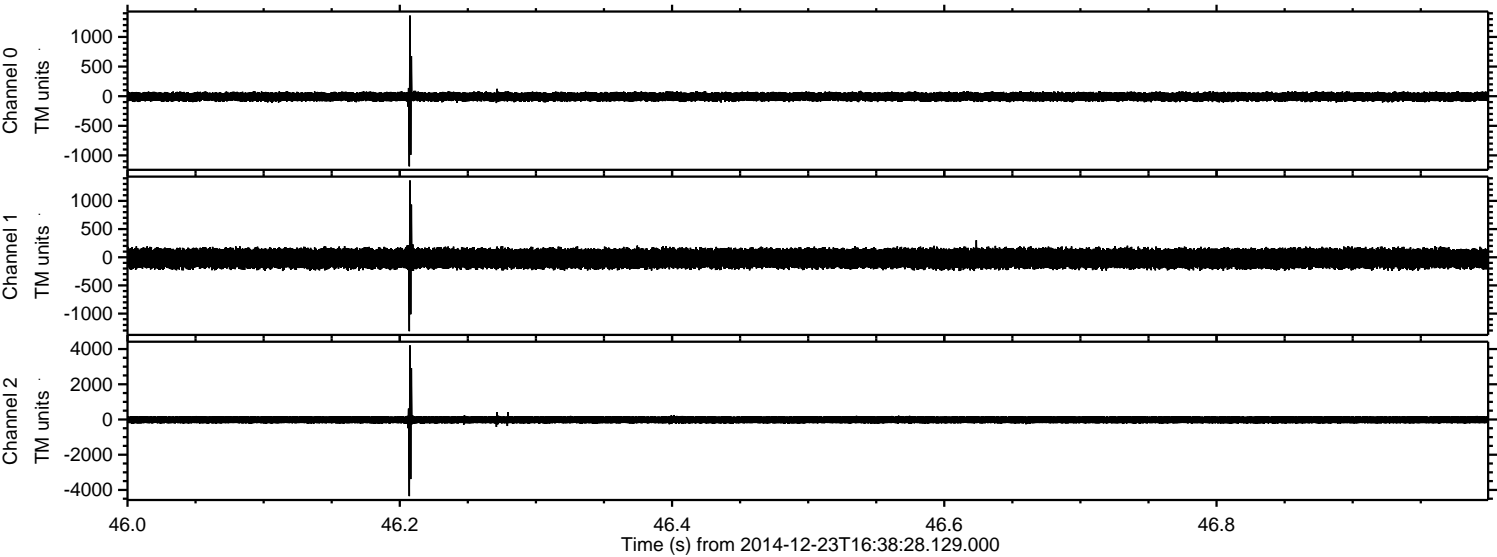
Channel 2
mn: -5747
mx: 7496
 μ : -20.8
 σ : 143.9

Processed Tue Dec 23 17:45:54 2014 by ELM ver.2012-10-06 from 001__elm20141223_163827__dat00.bin

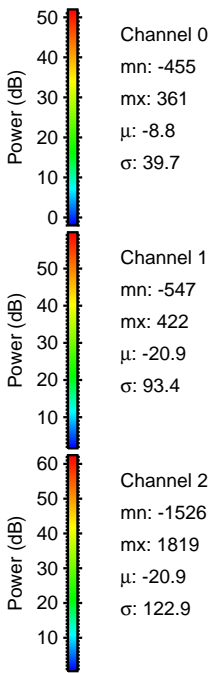
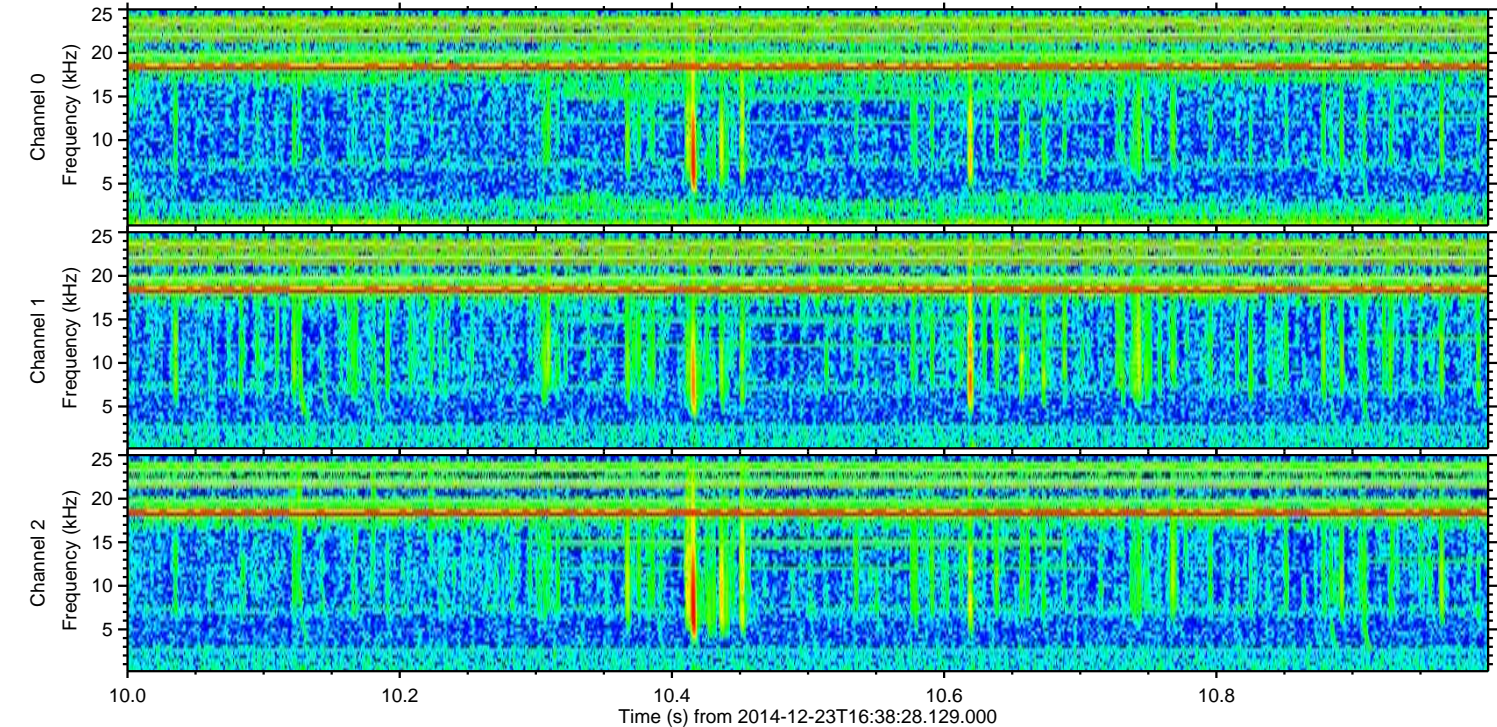
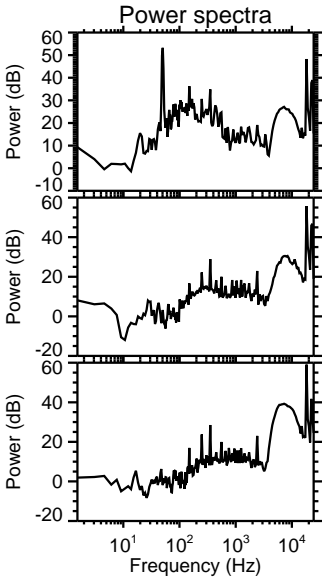
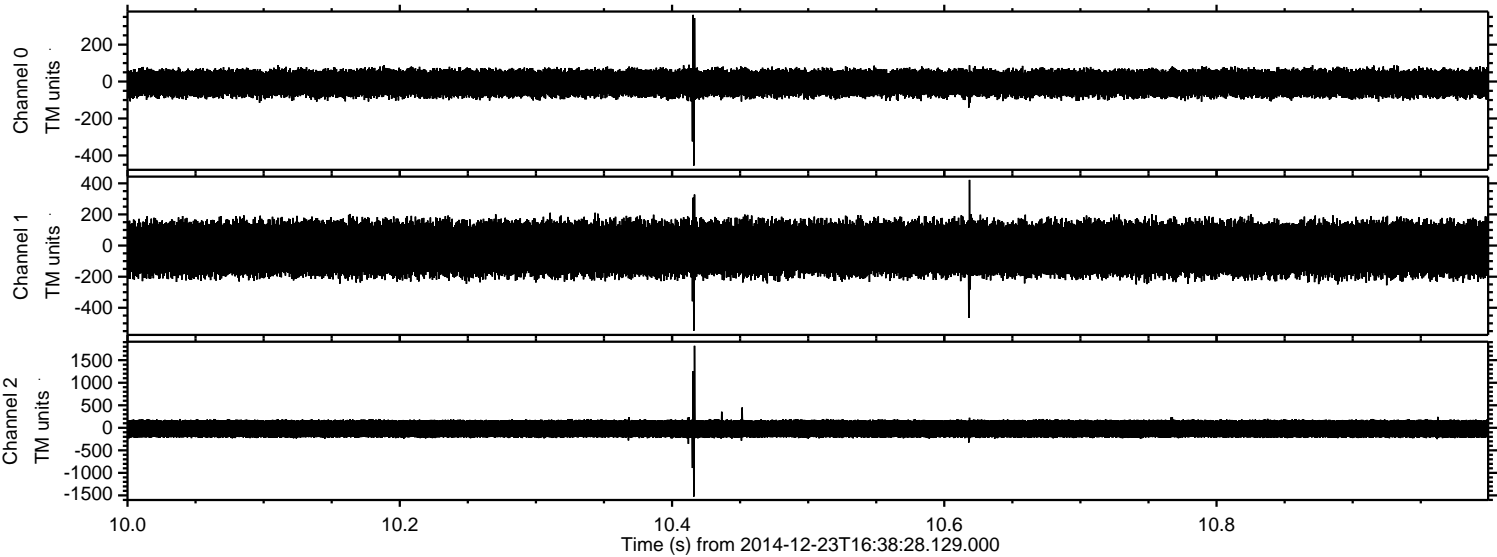


ELMAVAN 3D WAVEFORMS (Measured data sampled at 50 kHz) 49788 packets of 144 samples from 2014-12-23T16:38:28.129.000. Part 47/144

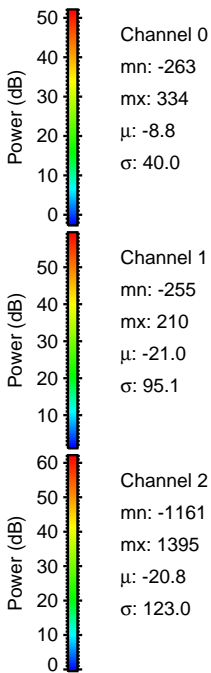
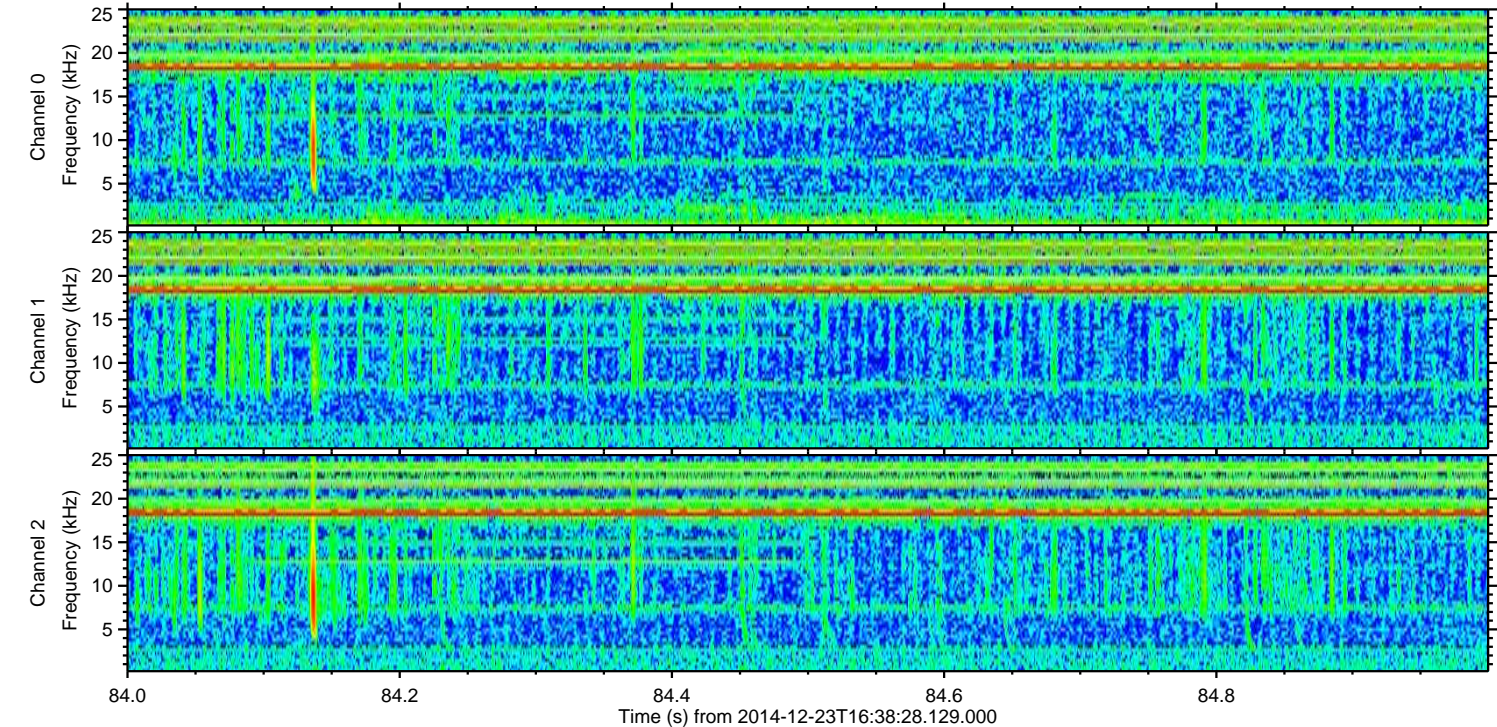
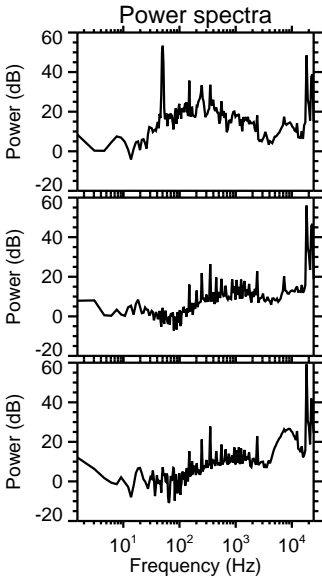
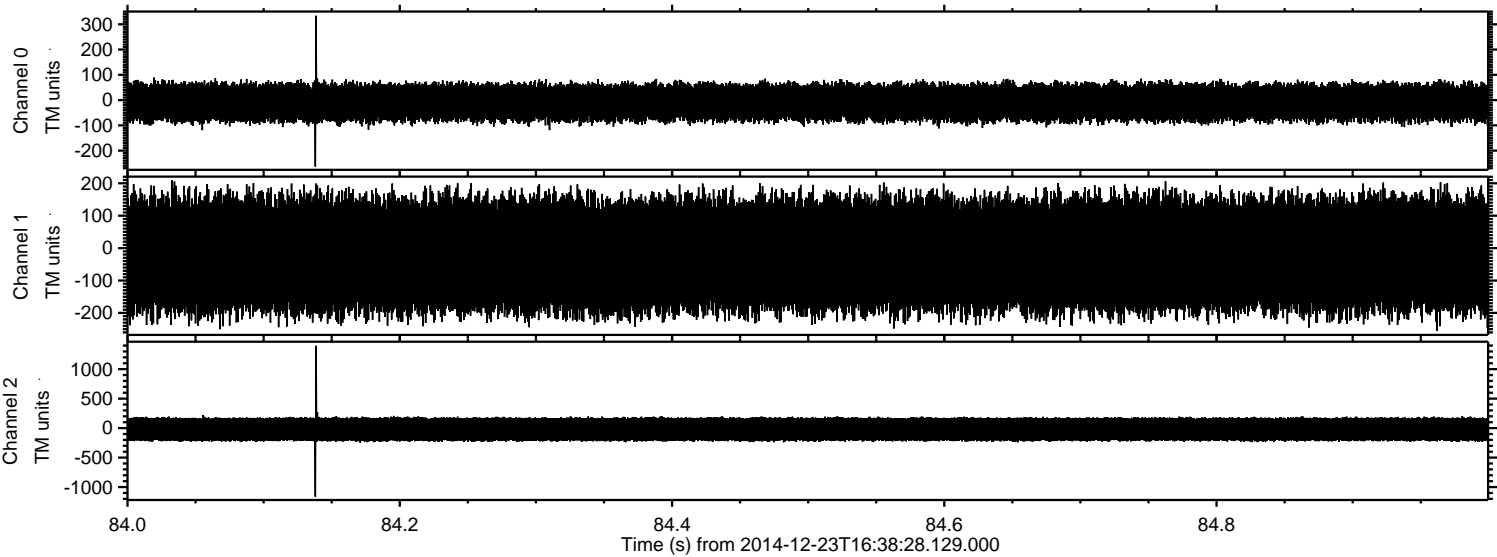
Processed Tue Dec 23 17:45:55 2014 by ELM ver.2012-10-06 from 001__elm20141223_163827__dat00.bin



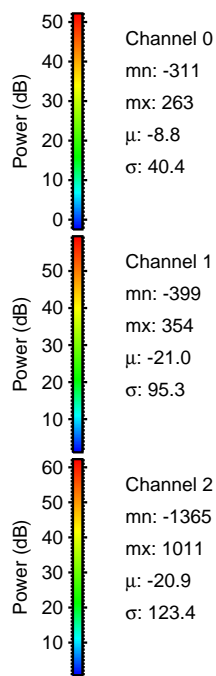
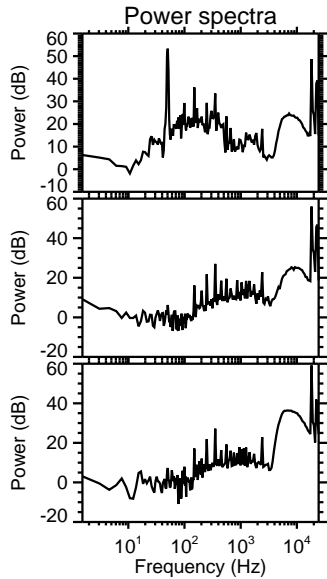
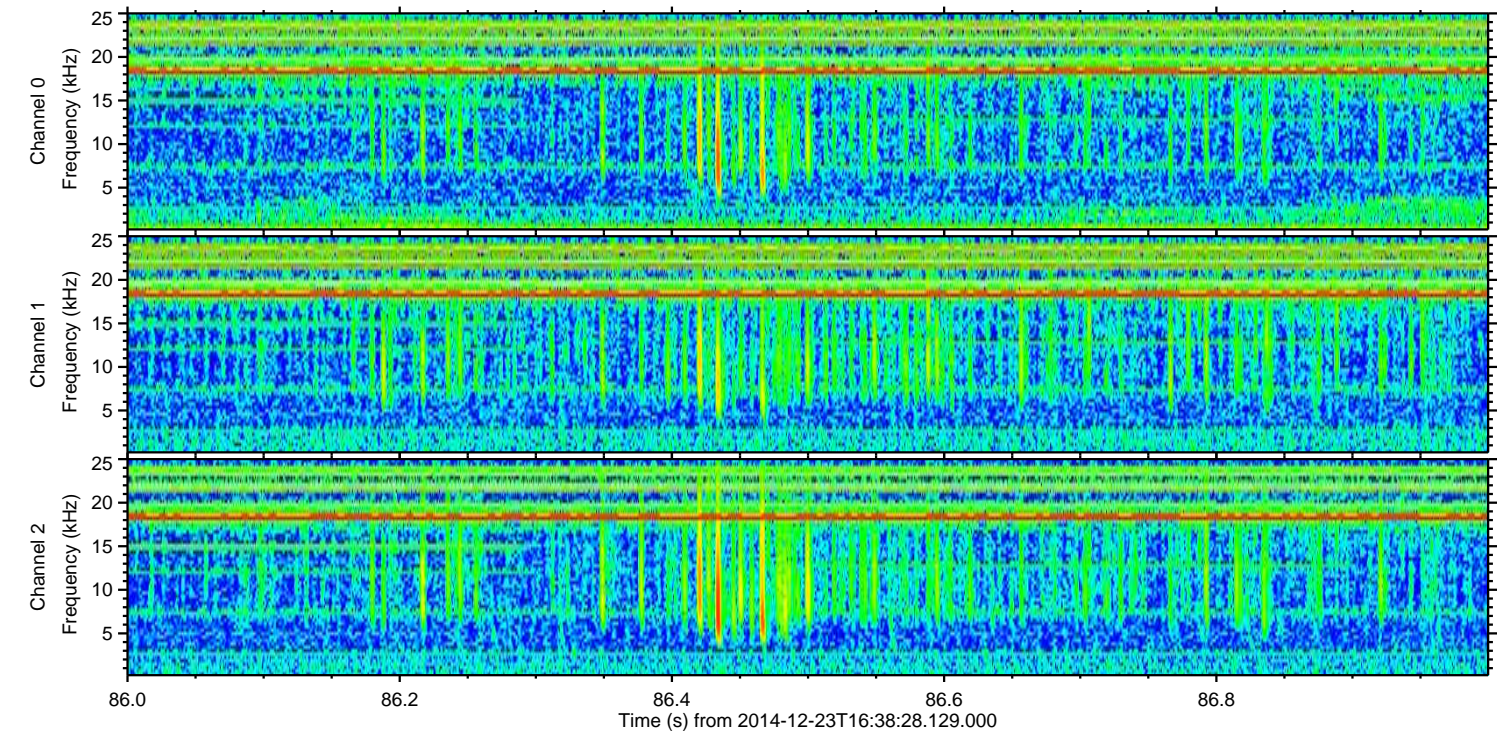
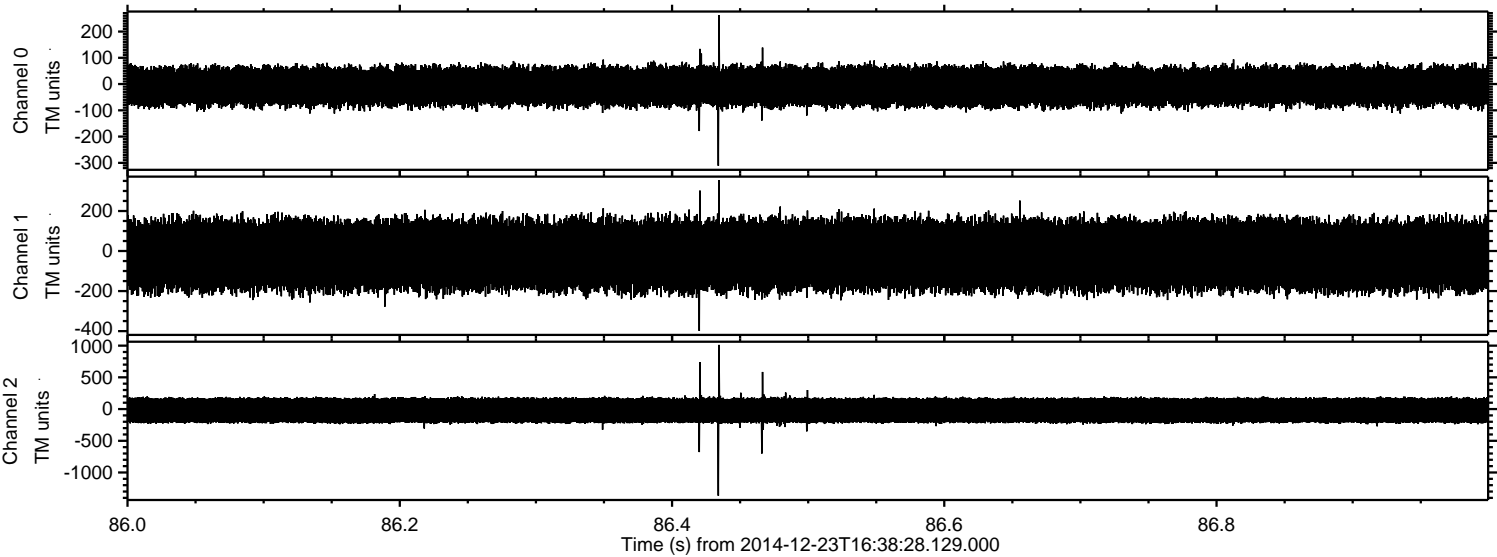
Processed Tue Dec 23 17:45:56 2014 by ELM ver.2012-10-06 from 001__elm20141223_163827__dat00.bin



Processed Tue Dec 23 17:45:57 2014 by ELM ver.2012-10-06 from 001__elm20141223_163827__dat00.bin



Processed Tue Dec 23 17:45:58 2014 by ELM ver.2012-10-06 from 001__elm20141223_163827__dat00.bin



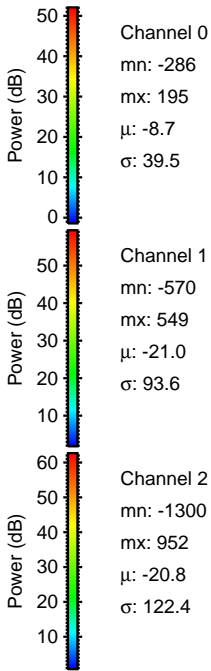
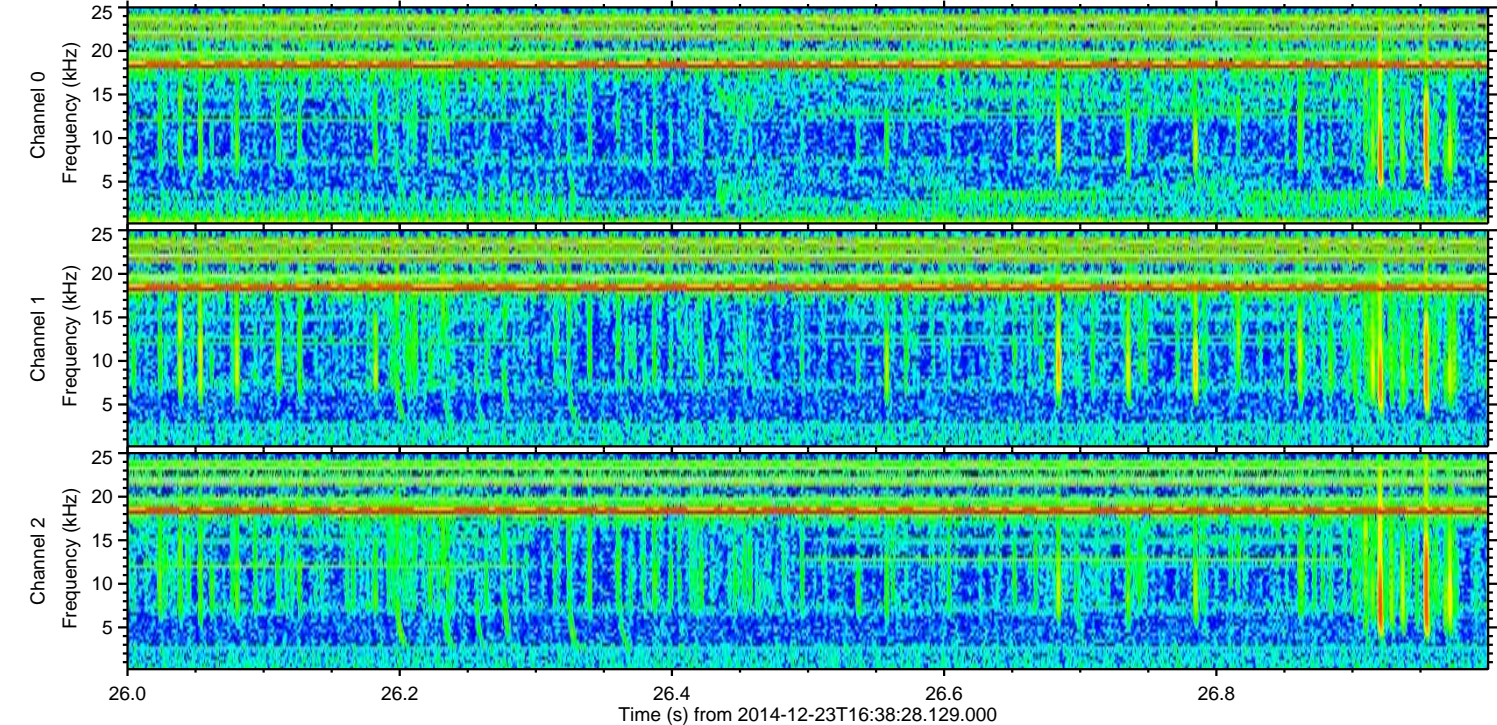
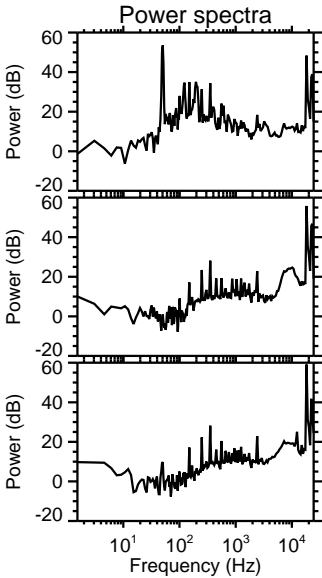
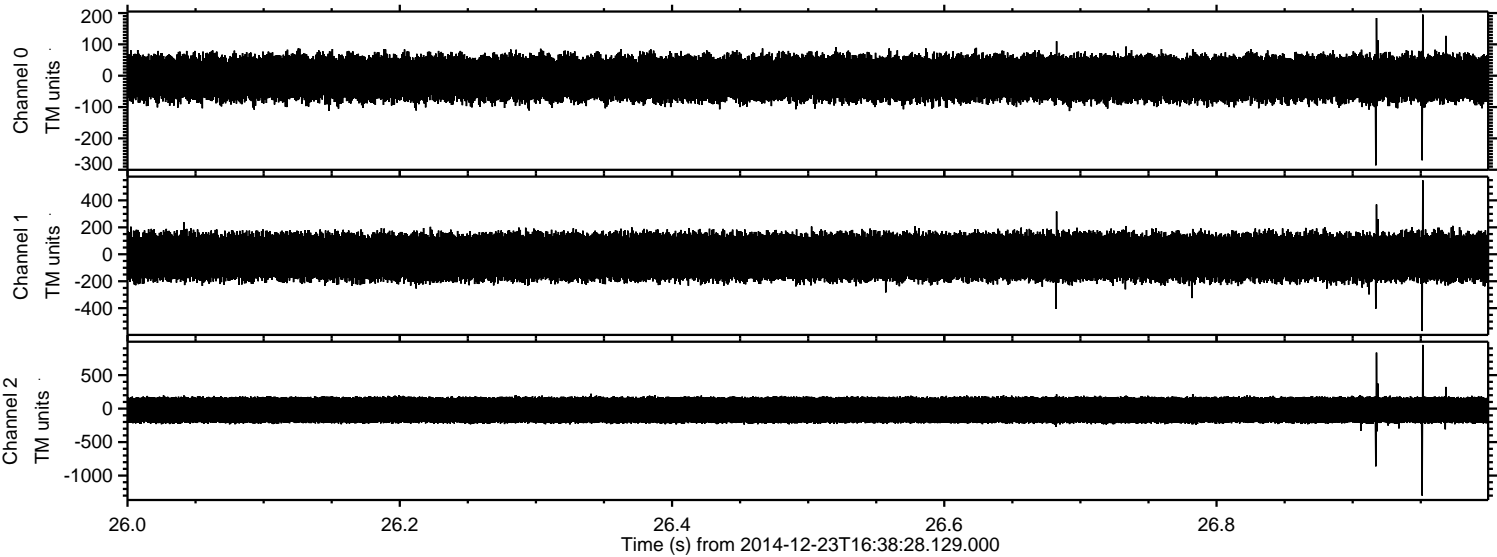
Channel 0
mn: -311
mx: 263
 μ : -8.8
 σ : 40.4

Channel 1
mn: -399
mx: 354
 μ : -21.0
 σ : 95.3

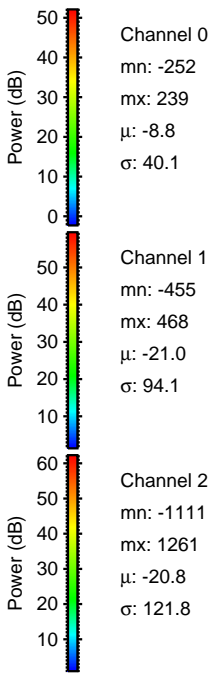
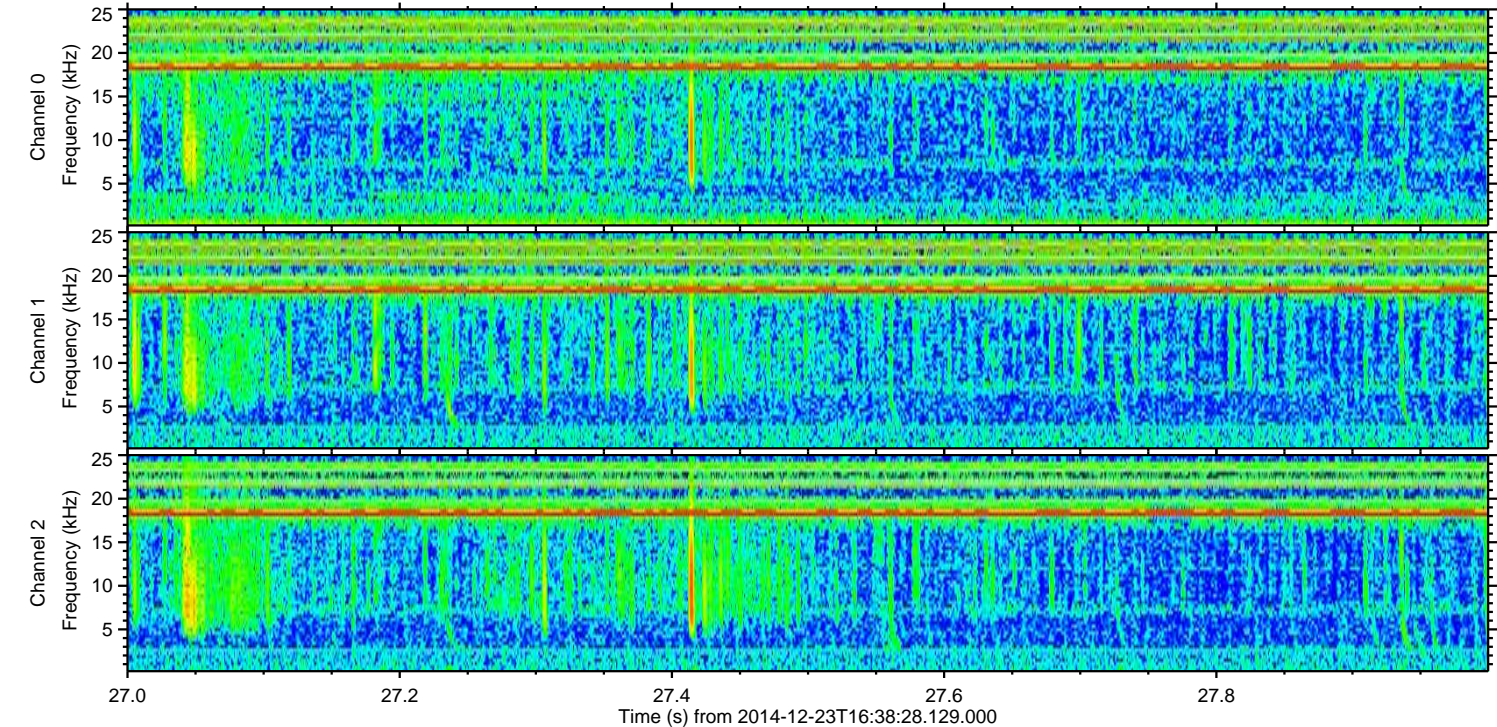
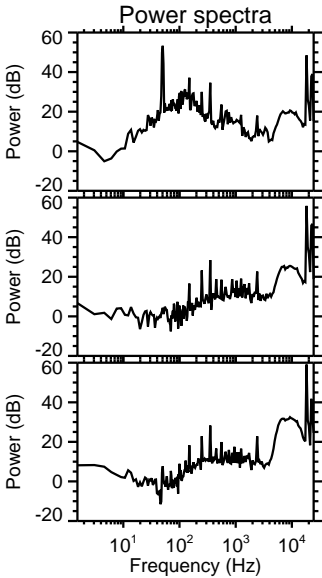
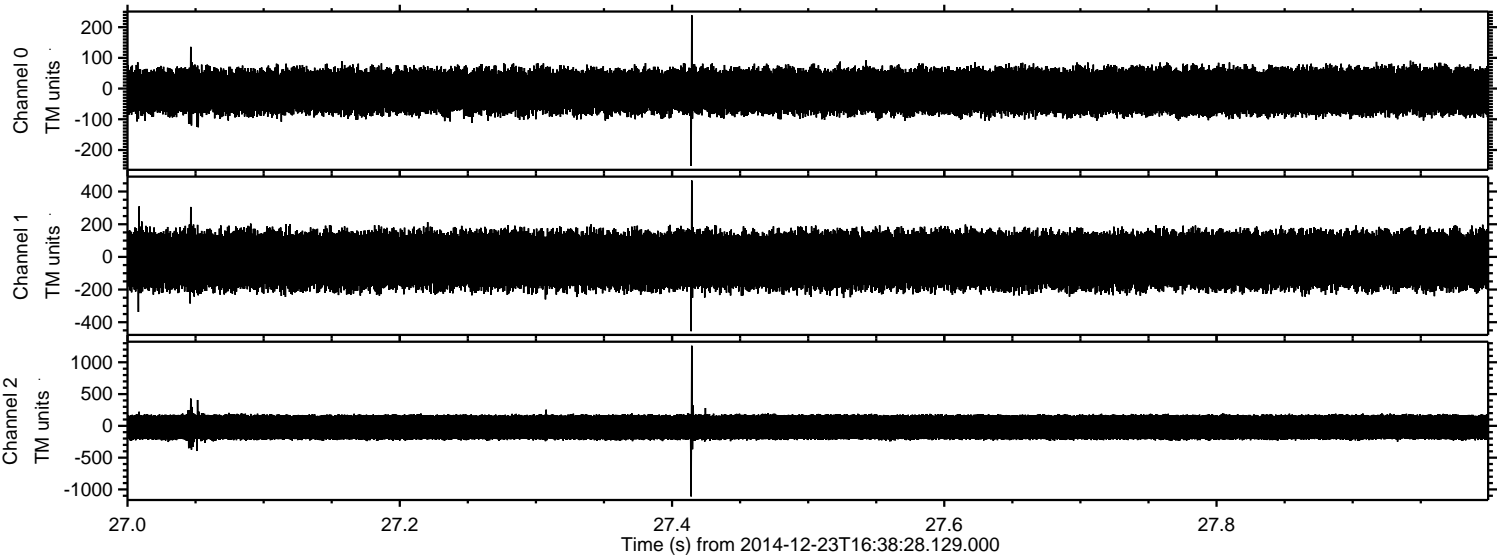
Channel 2
mn: -1365
mx: 1011
 μ : -20.9
 σ : 123.4

ELMAVAN 3D WAVEFORMS (Measured data sampled at 50 kHz) 49788 packets of 144 samples from 2014-12-23T16:38:28.129.000. Part 27/144

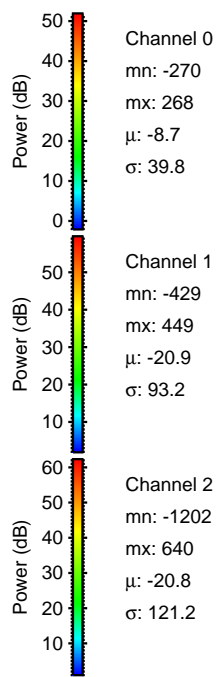
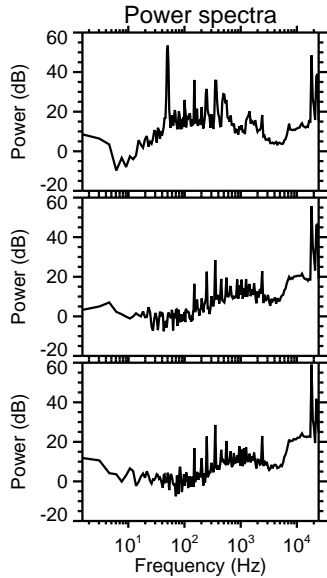
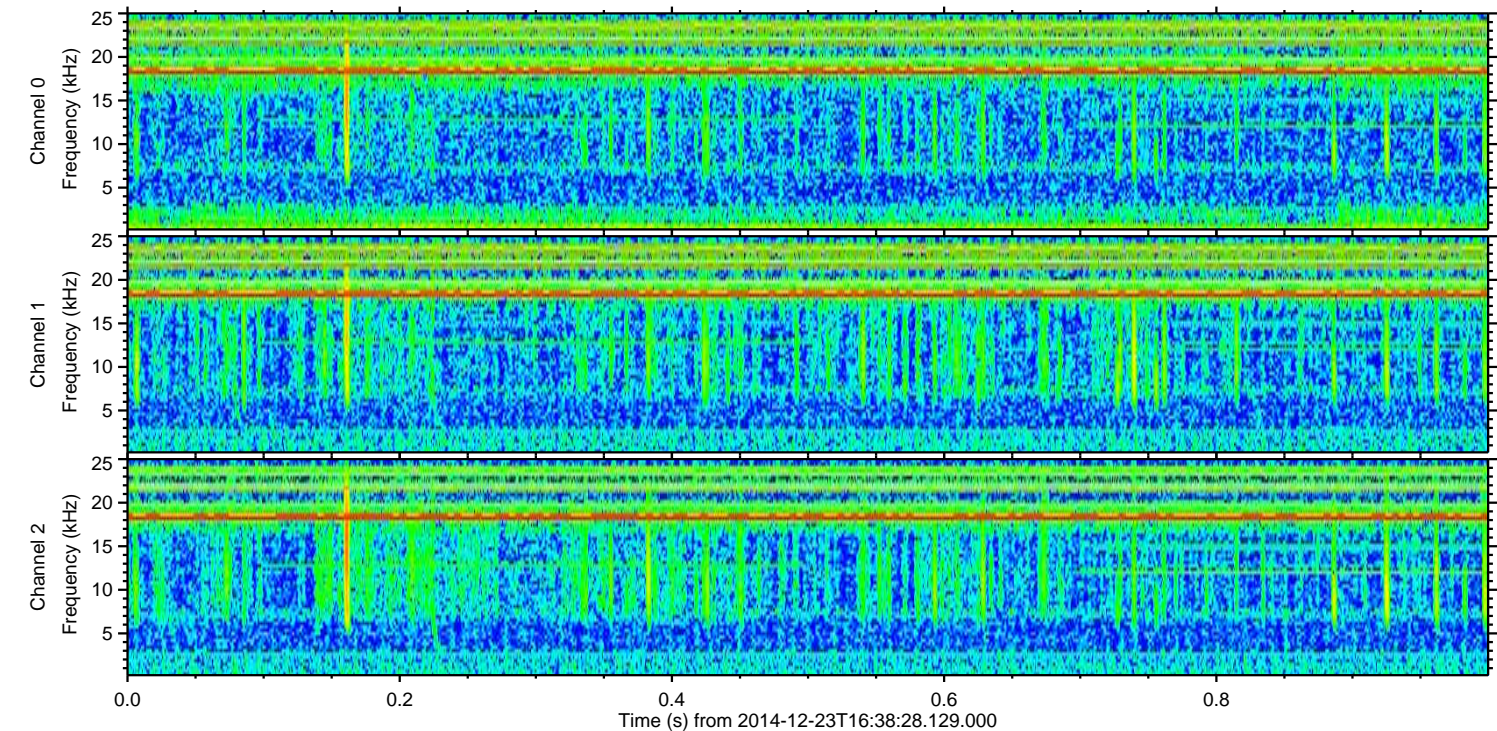
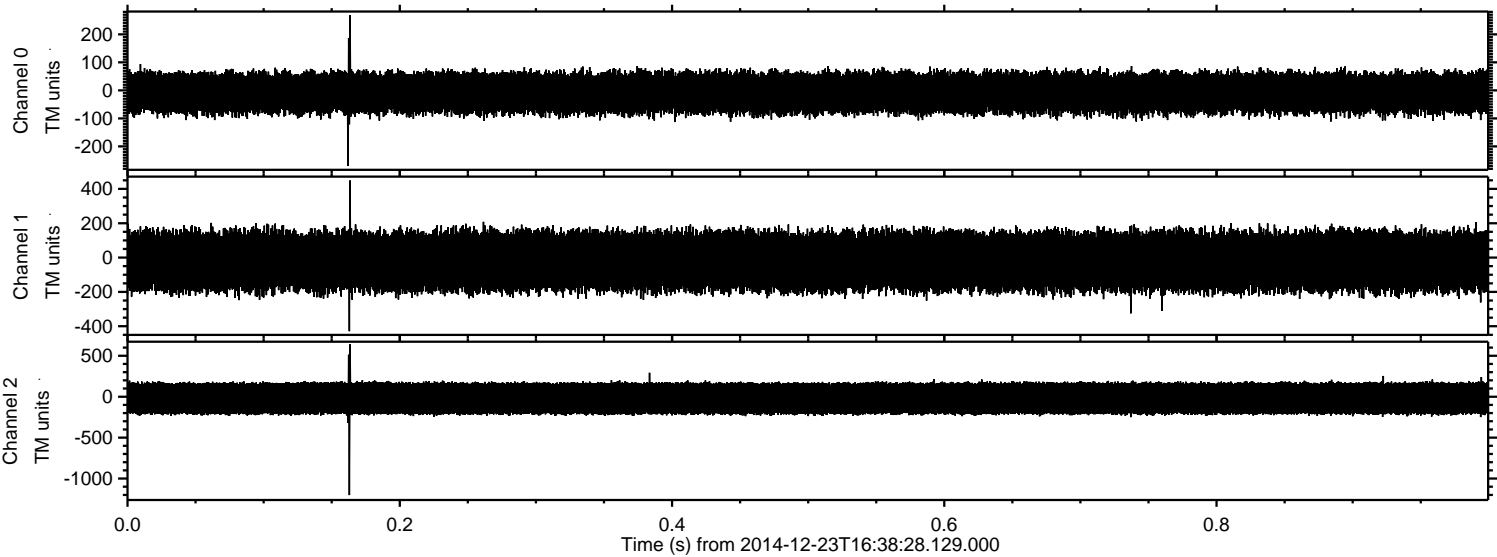
Processed Tue Dec 23 17:45:59 2014 by ELM ver.2012-10-06 from 001__elm20141223_163827__dat00.bin



Processed Tue Dec 23 17:46:00 2014 by ELM ver.2012-10-06 from 001__elm20141223_163827__dat00.bin



Processed Tue Dec 23 17:46:01 2014 by ELM ver.2012-10-06 from 001__elm20141223_163827__dat00.bin



Channel 0
mn: -270
mx: 268
 μ : -8.7
 σ : 39.8

Channel 1
mn: -429
mx: 449
 μ : -20.9
 σ : 93.2

Channel 2
mn: -1202
mx: 640
 μ : -20.8
 σ : 121.2

Processed Tue Dec 23 17:46:02 2014 by ELM ver.2012-10-06 from 001__elm20141223_163827__dat00.bin

