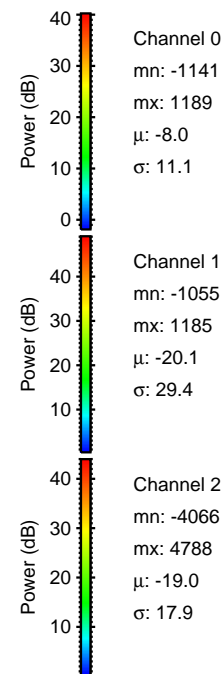
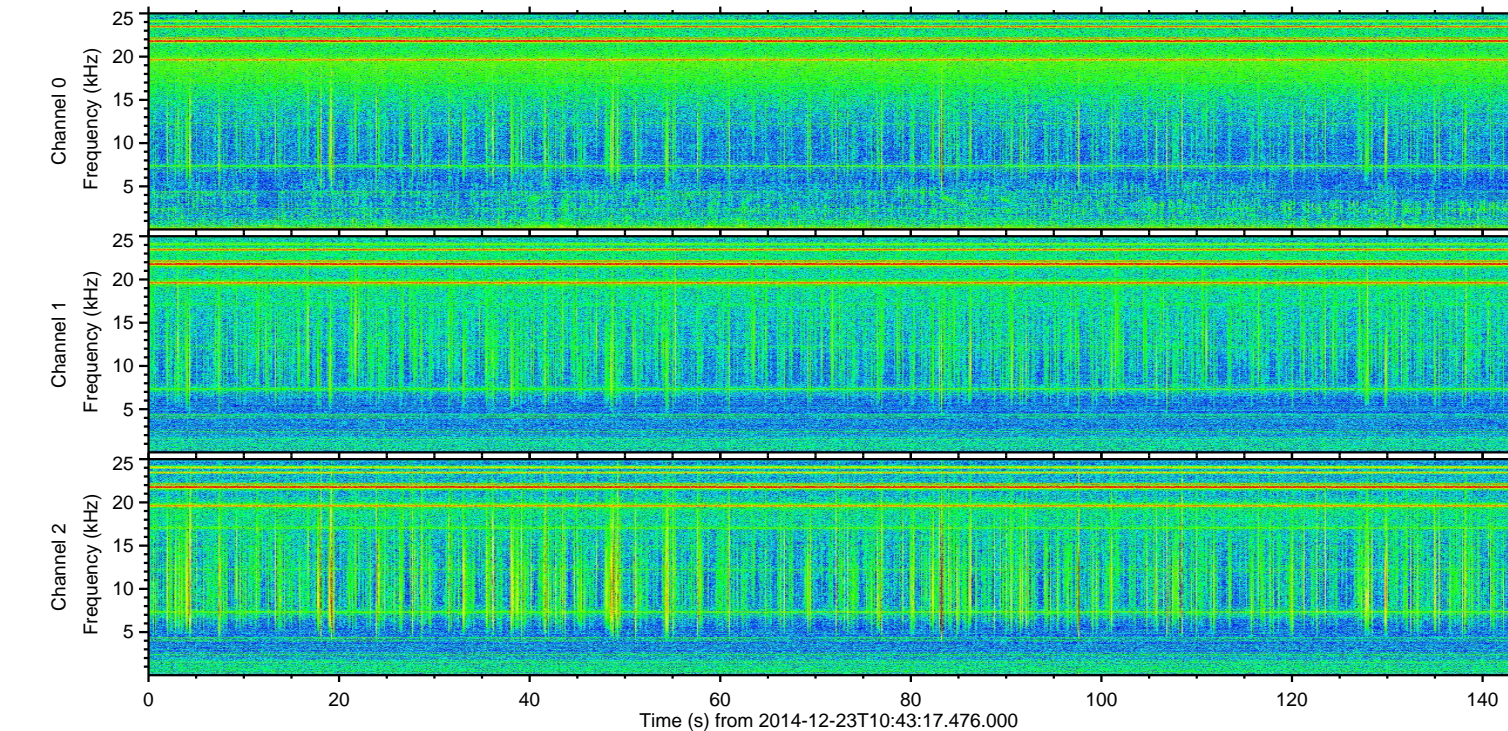
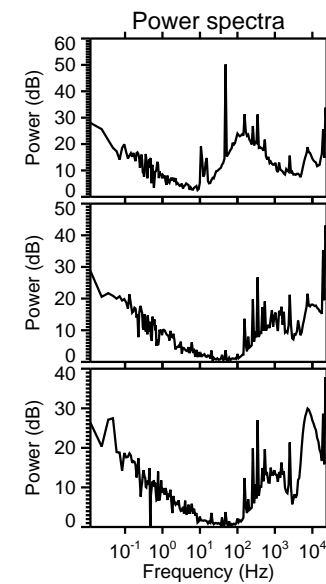
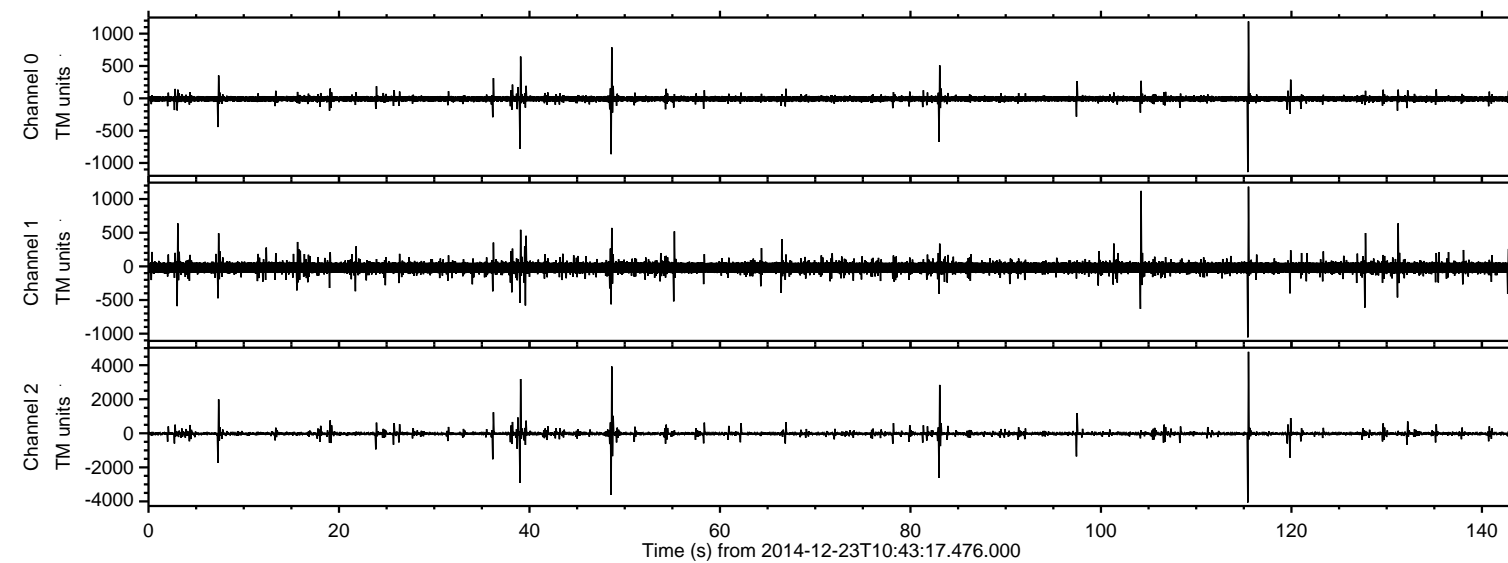


# ELMAVAN 3D WAVEFORMS (Measured data sampled at 50 kHz) 49602 packets of 144 samples from 2014-12-23T10:43:17.476.000.

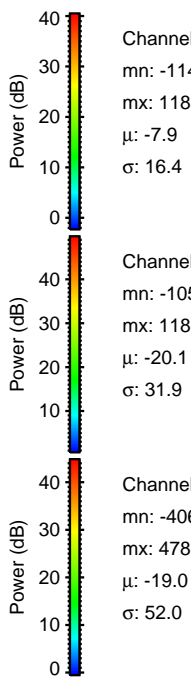
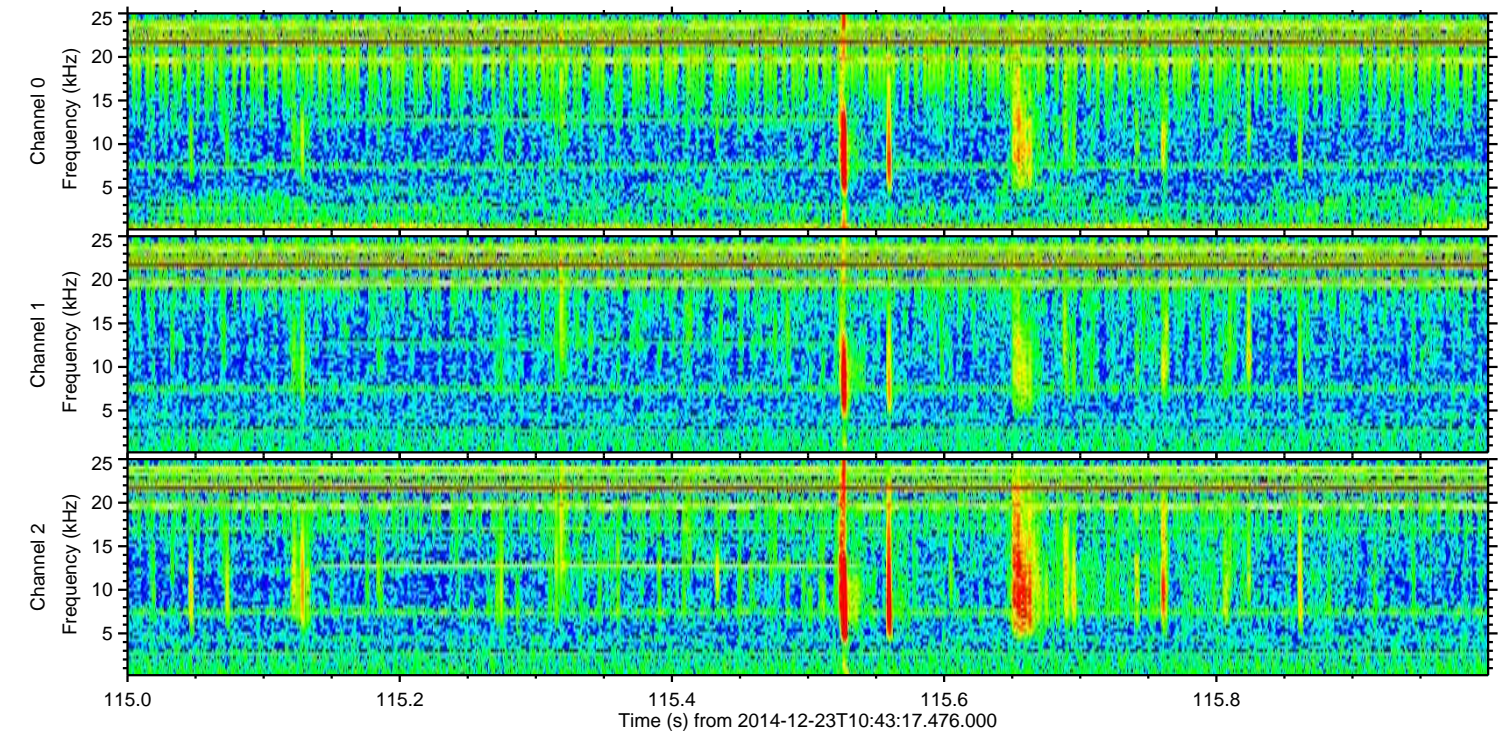
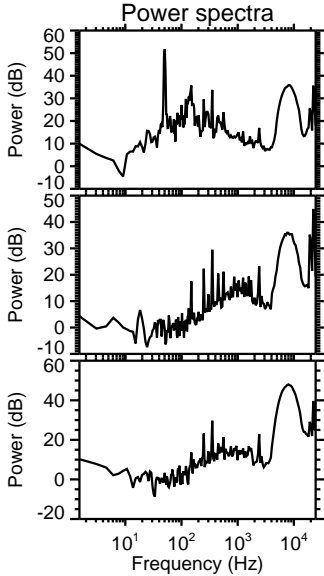
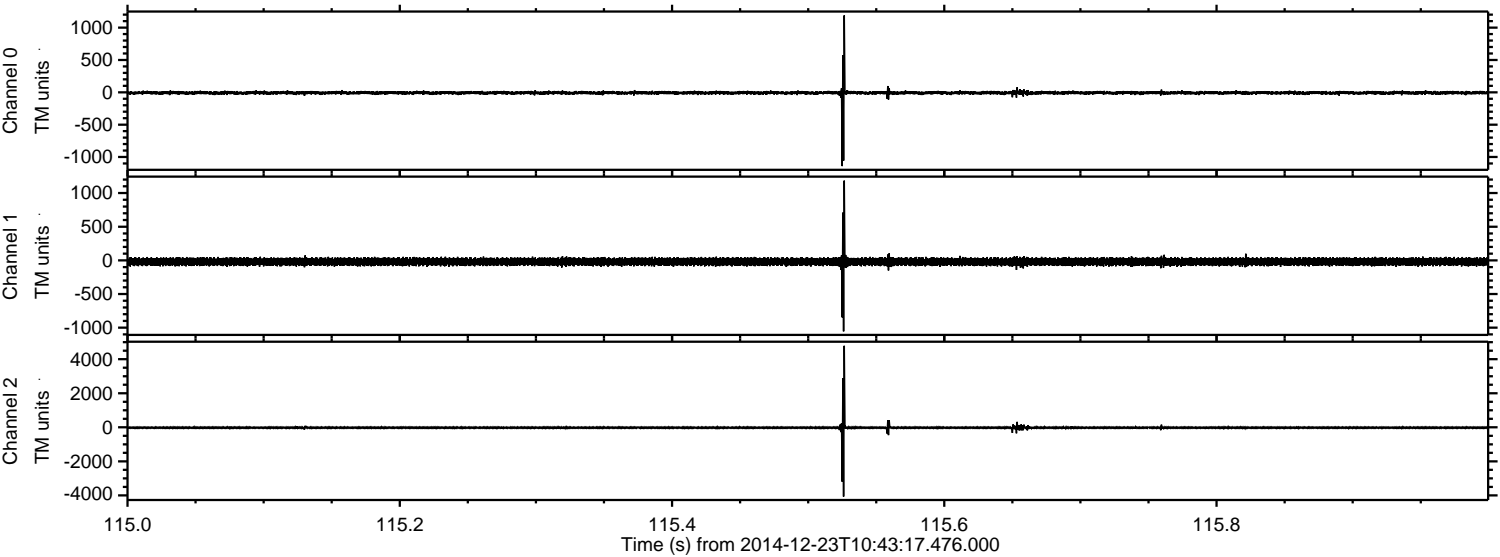
Processed Tue Dec 23 11:50:43 2014 by ELM ver.2012-10-06 from 001\_\_elm20141223\_104316\_\_dat00.bin





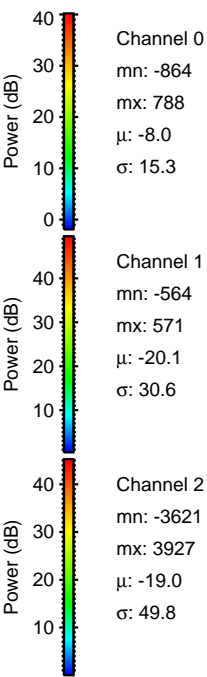
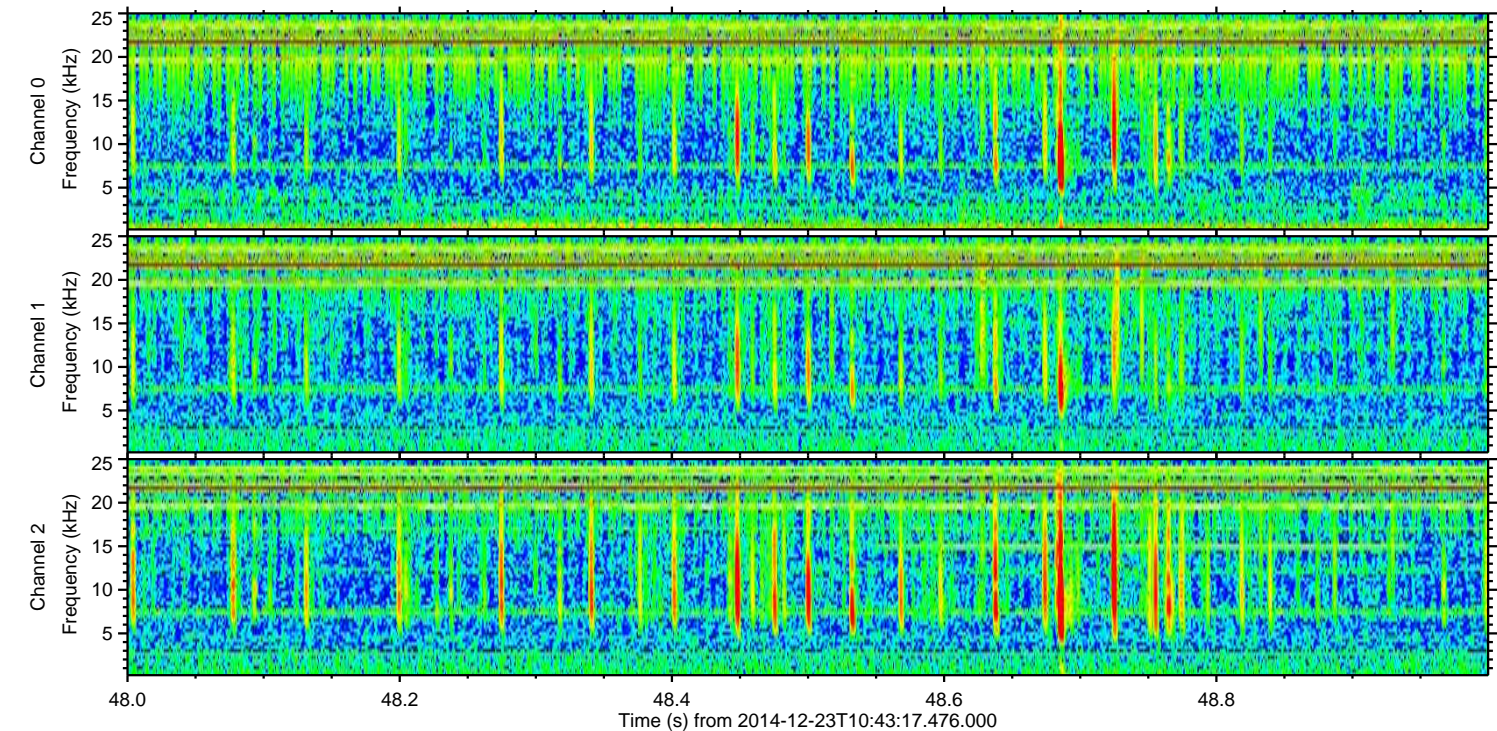
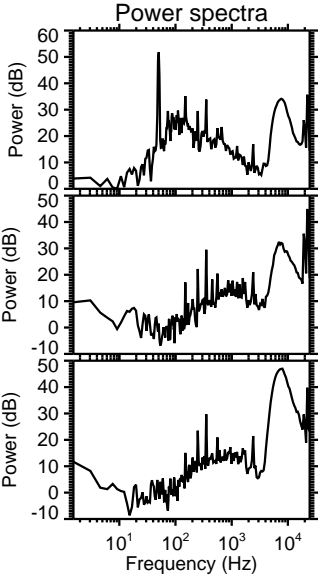
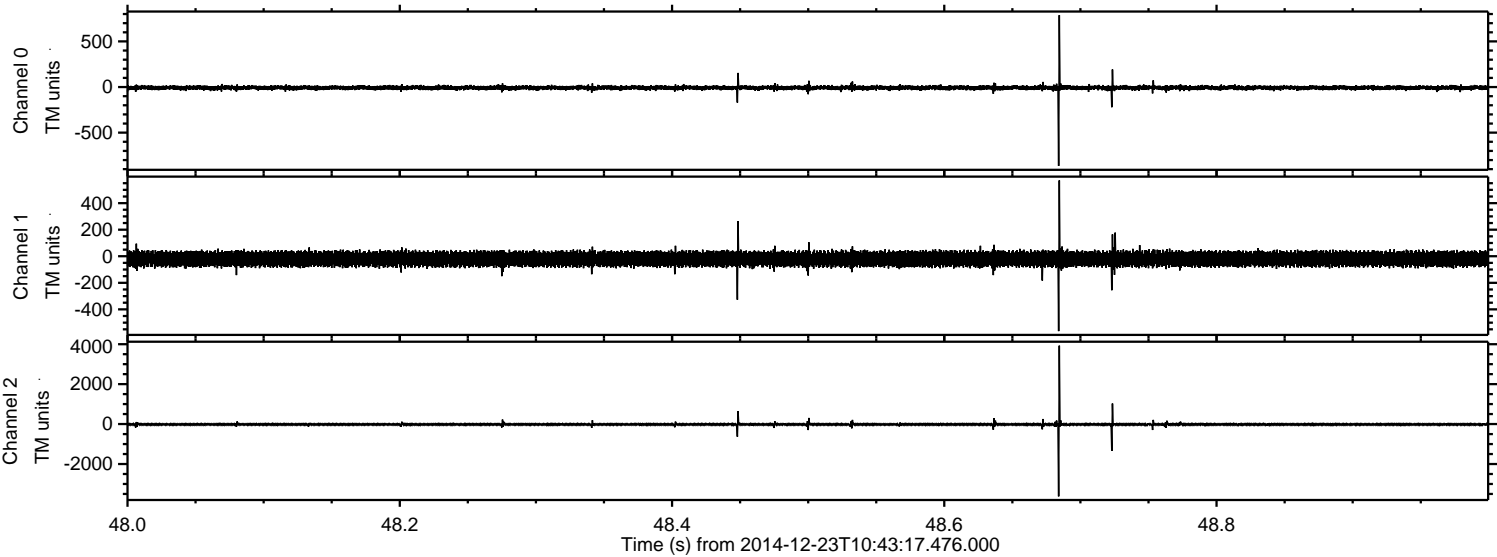
ELMAVAN 3D WAVEFORMS (Measured data sampled at 50 kHz) 49602 packets of 144 samples from 2014-12-23T10:43:17.476.000. Part 116/143

Processed Tue Dec 23 11:50:58 2014 by ELM ver.2012-10-06 from 001\_\_elm20141223\_104316\_\_dat00.bin



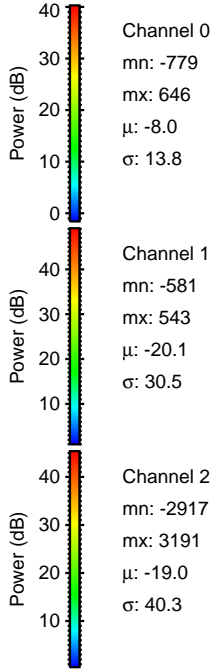
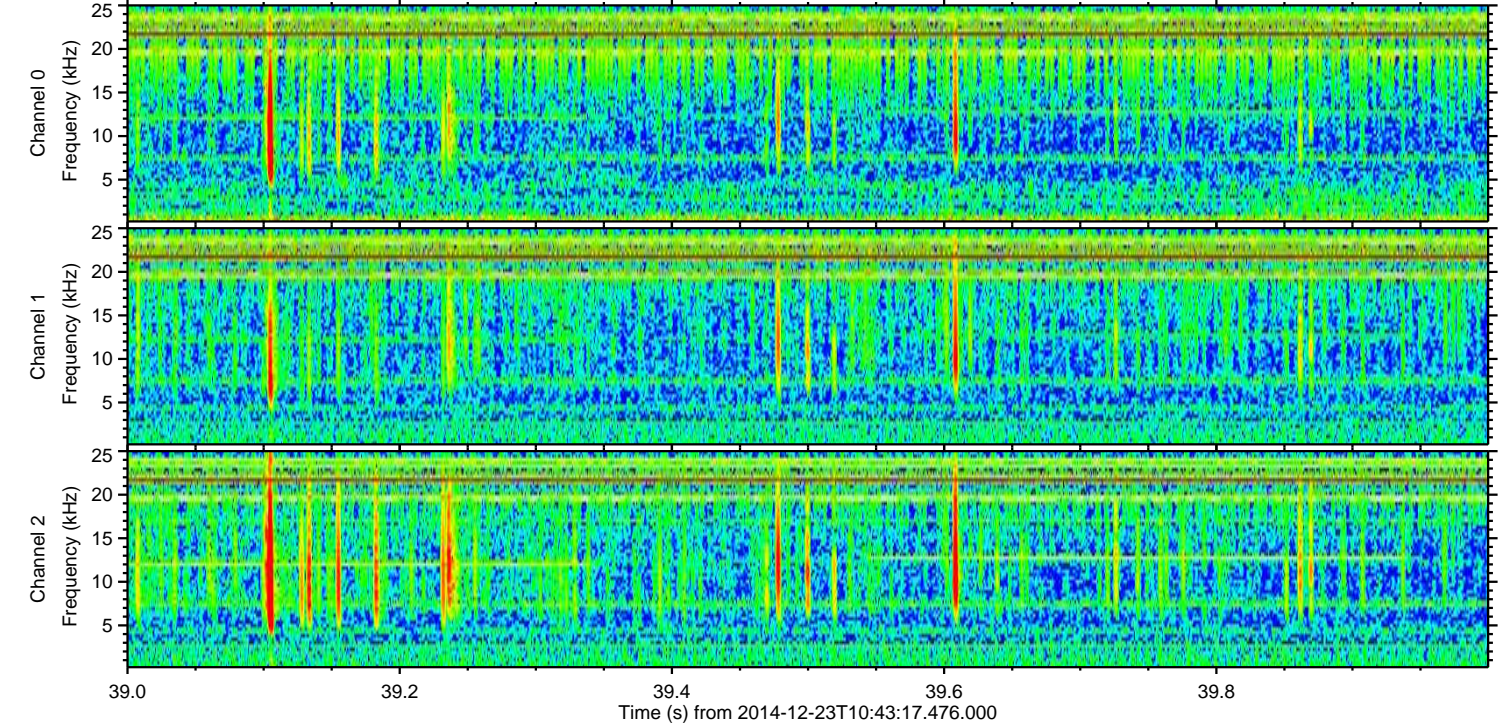
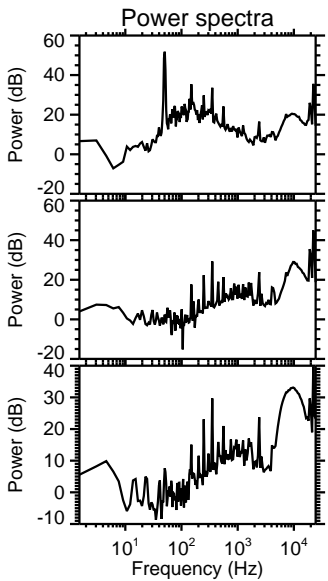
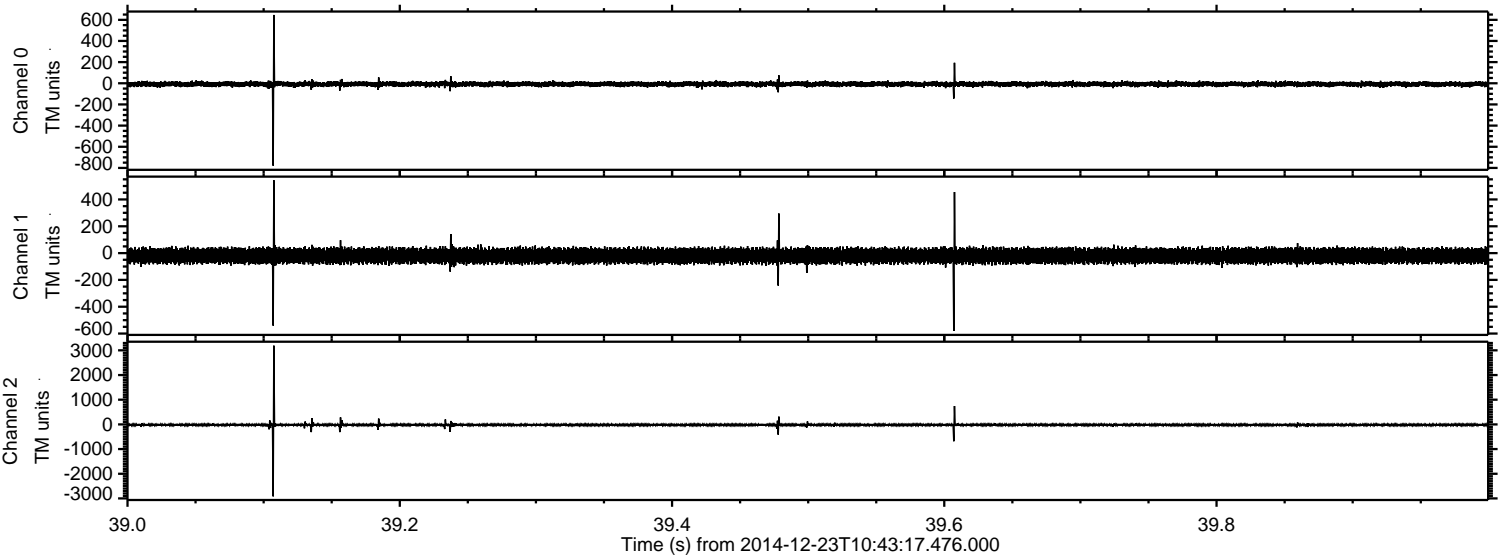


Processed Tue Dec 23 11:50:59 2014 by ELM ver.2012-10-06 from 001\_\_elm20141223\_104316\_\_dat00.bin





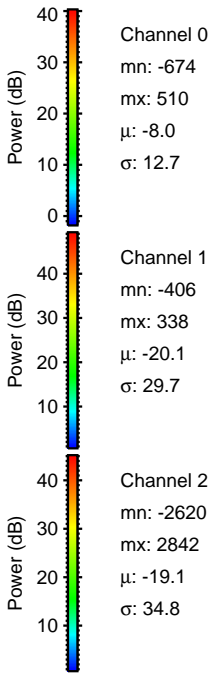
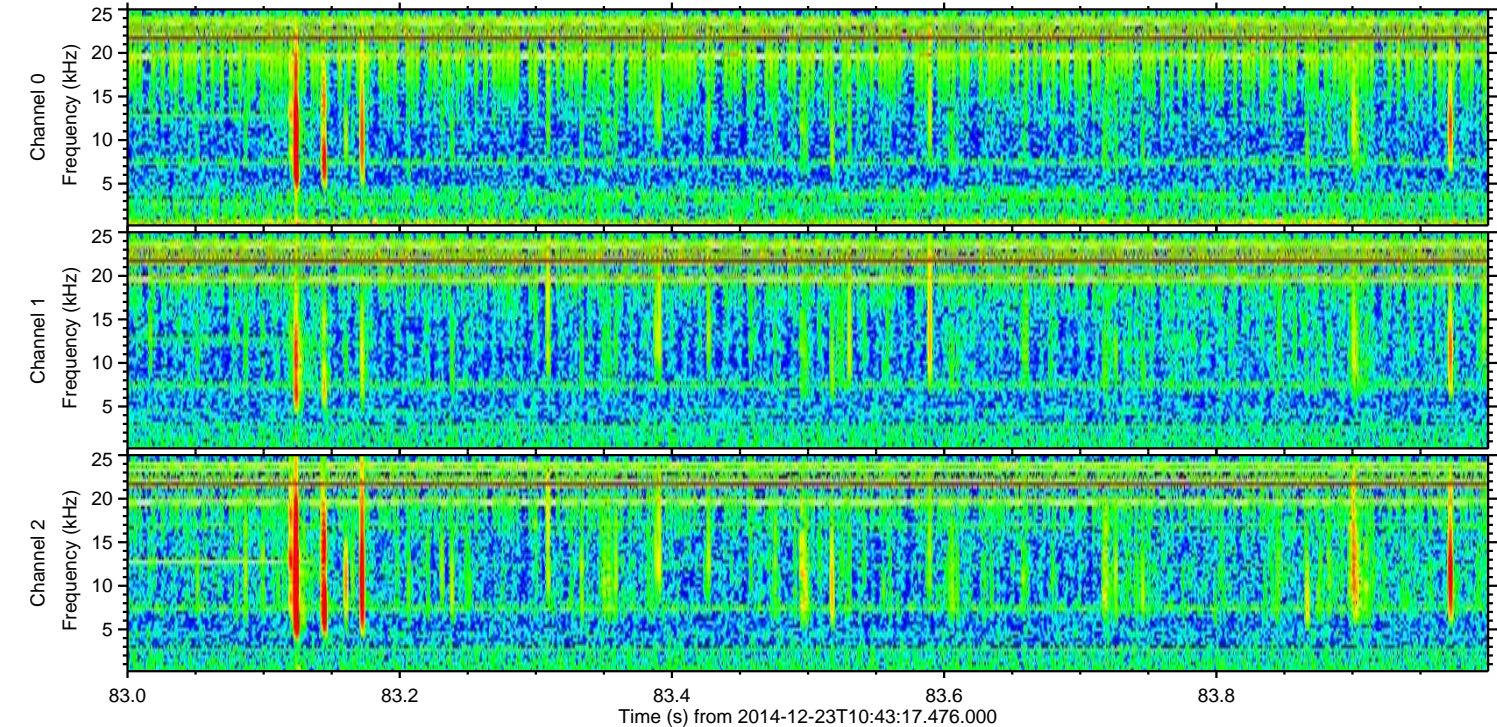
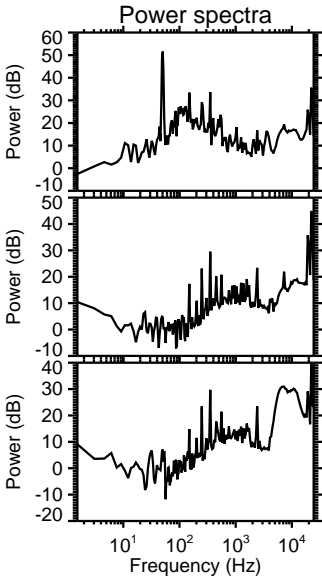
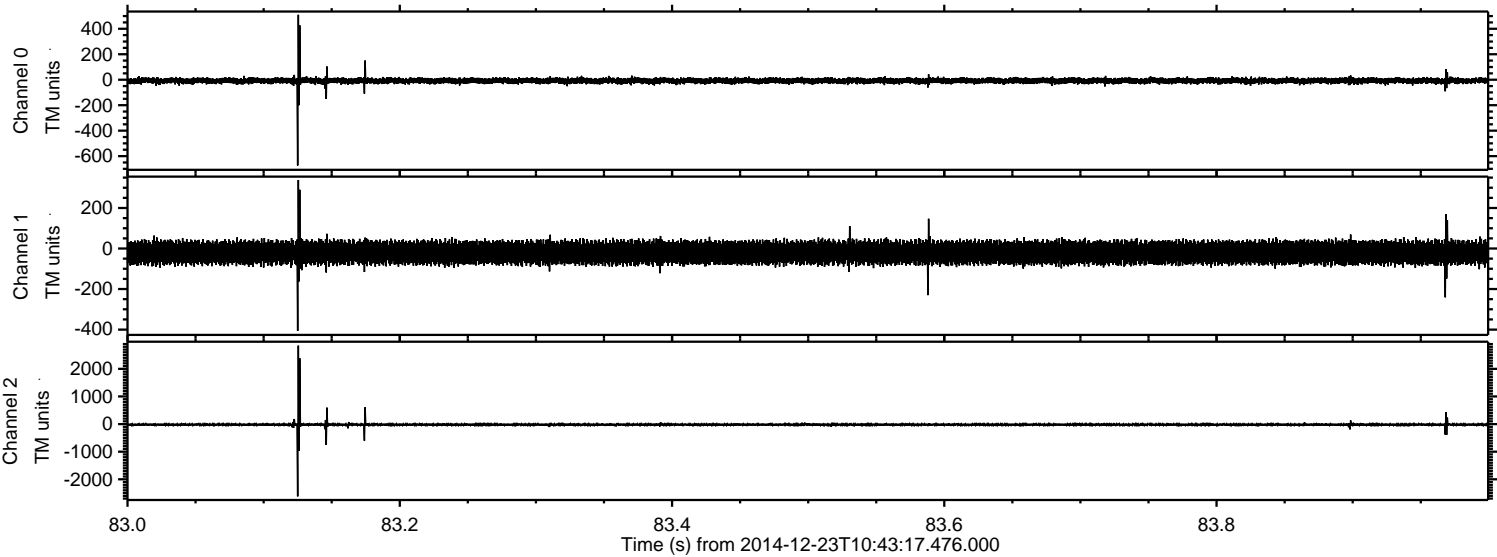
Processed Tue Dec 23 11:51:00 2014 by ELM ver.2012-10-06 from 001\_\_elm20141223\_104316\_\_dat00.bin





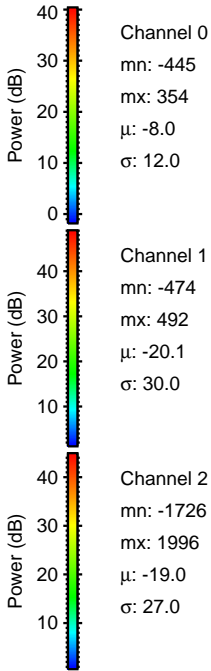
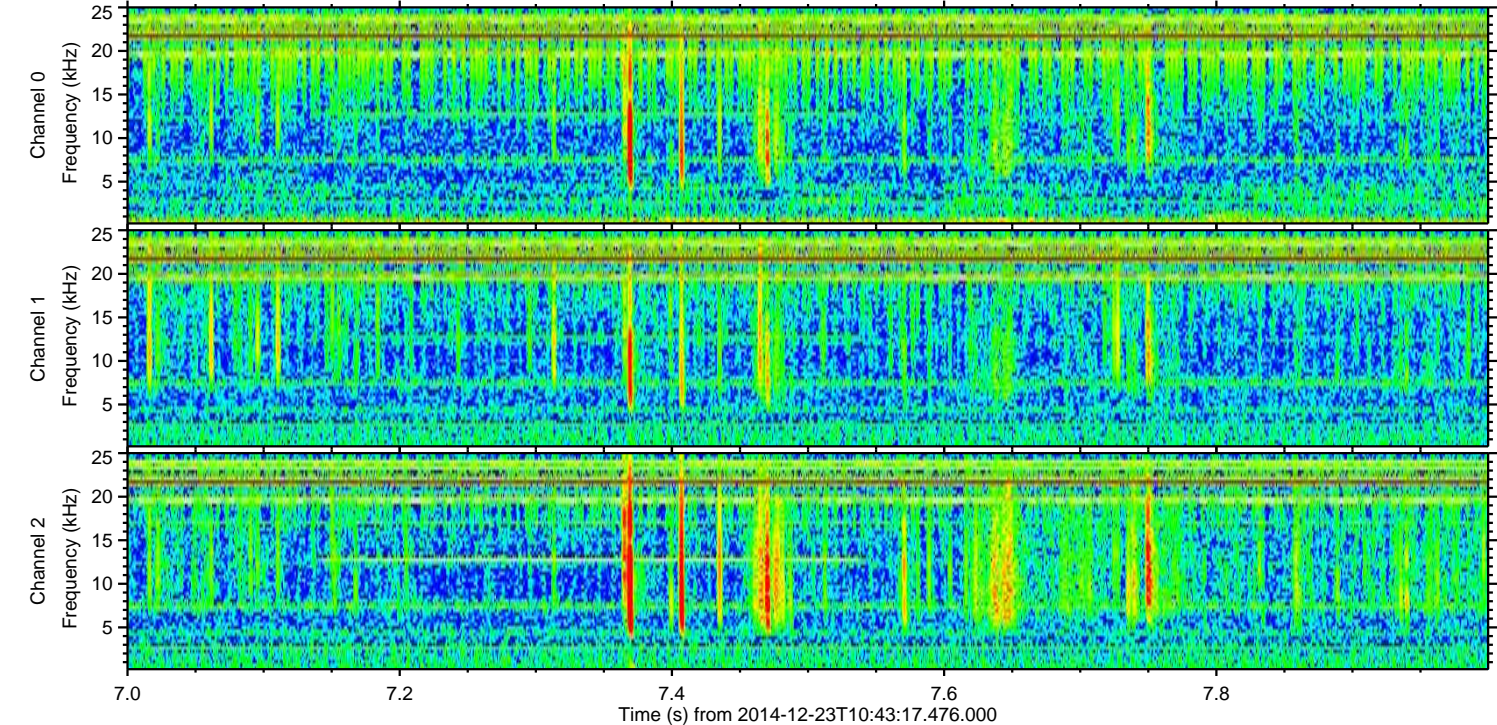
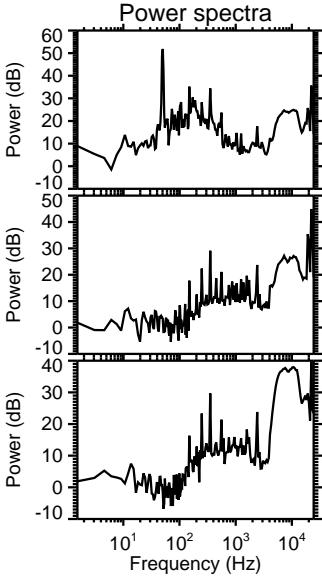
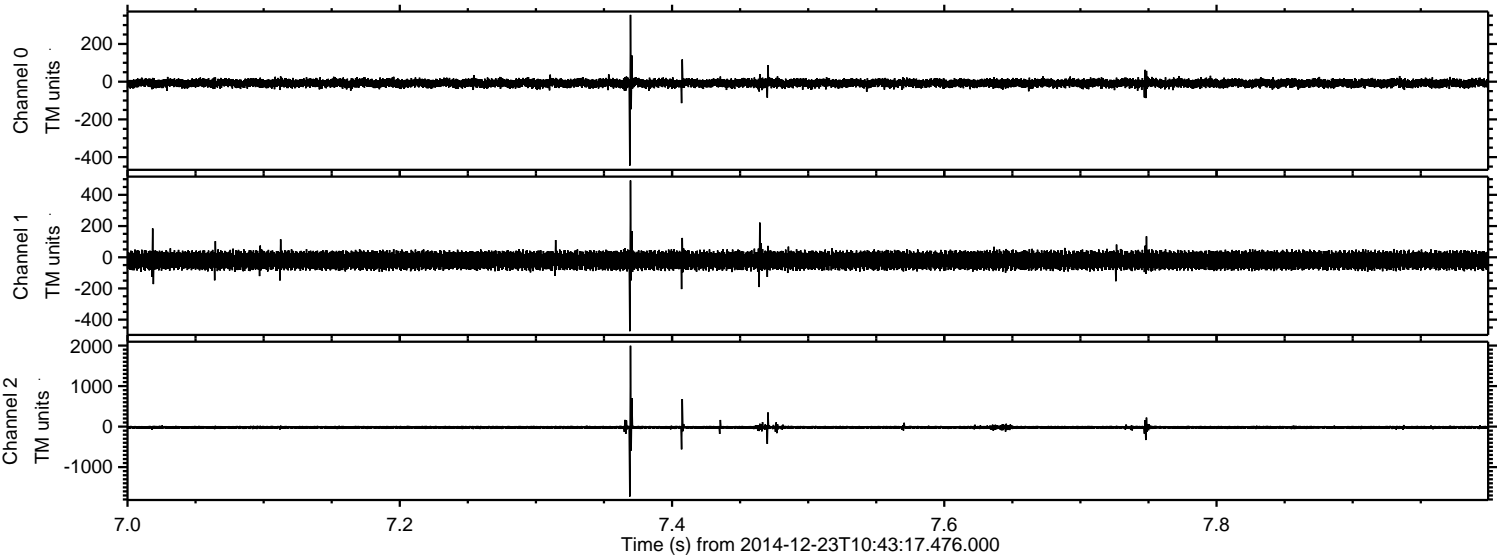
ELMAVAN 3D WAVEFORMS (Measured data sampled at 50 kHz) 49602 packets of 144 samples from 2014-12-23T10:43:17.476.000. Part 84/143

Processed Tue Dec 23 11:51:01 2014 by ELM ver.2012-10-06 from 001\_\_elm20141223\_104316\_\_dat00.bin



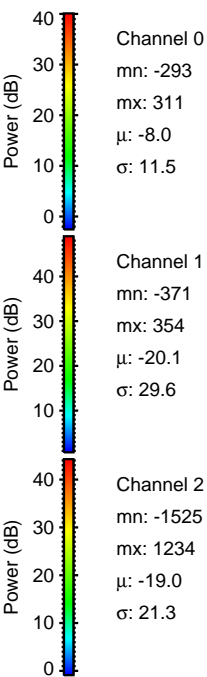
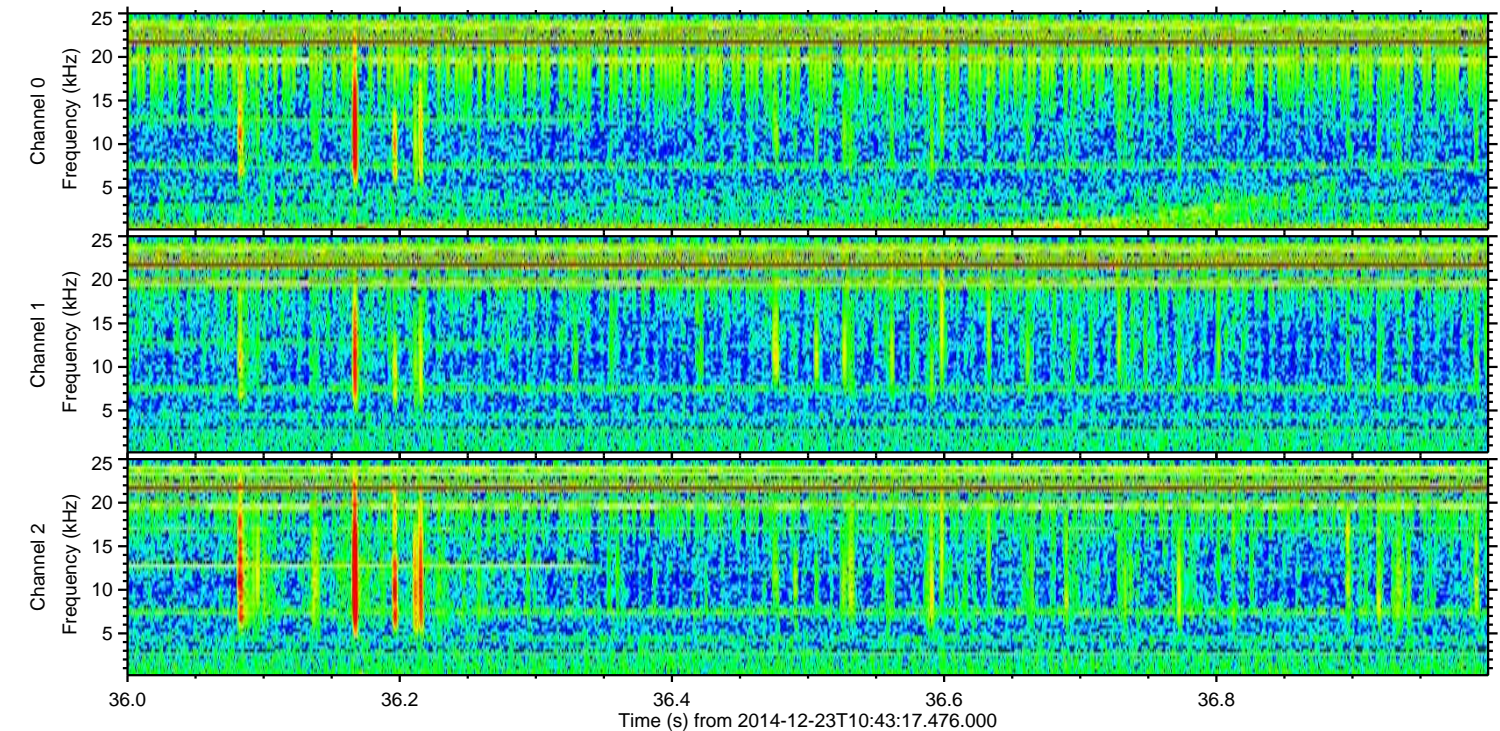
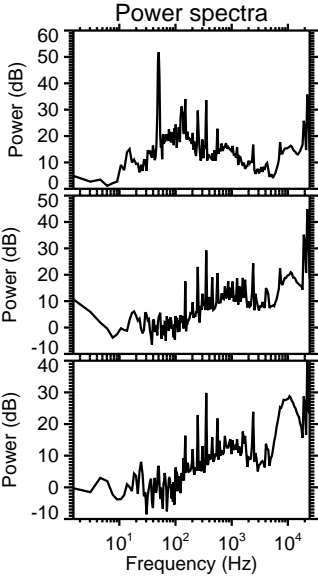
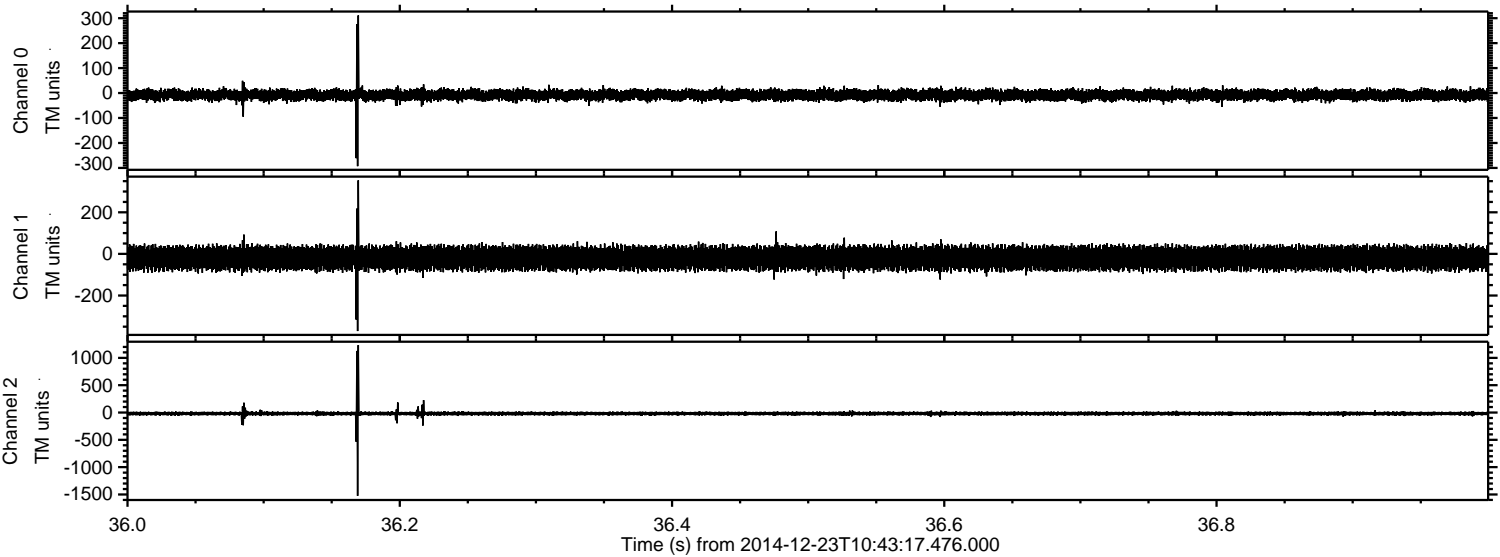


Processed Tue Dec 23 11:51:02 2014 by ELM ver.2012-10-06 from 001\_\_elm20141223\_104316\_\_dat00.bin





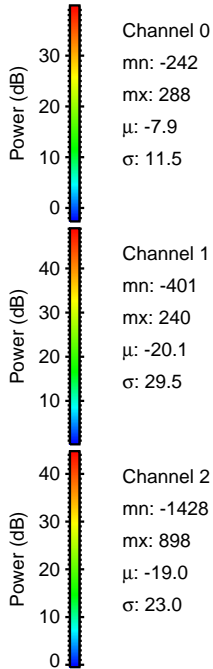
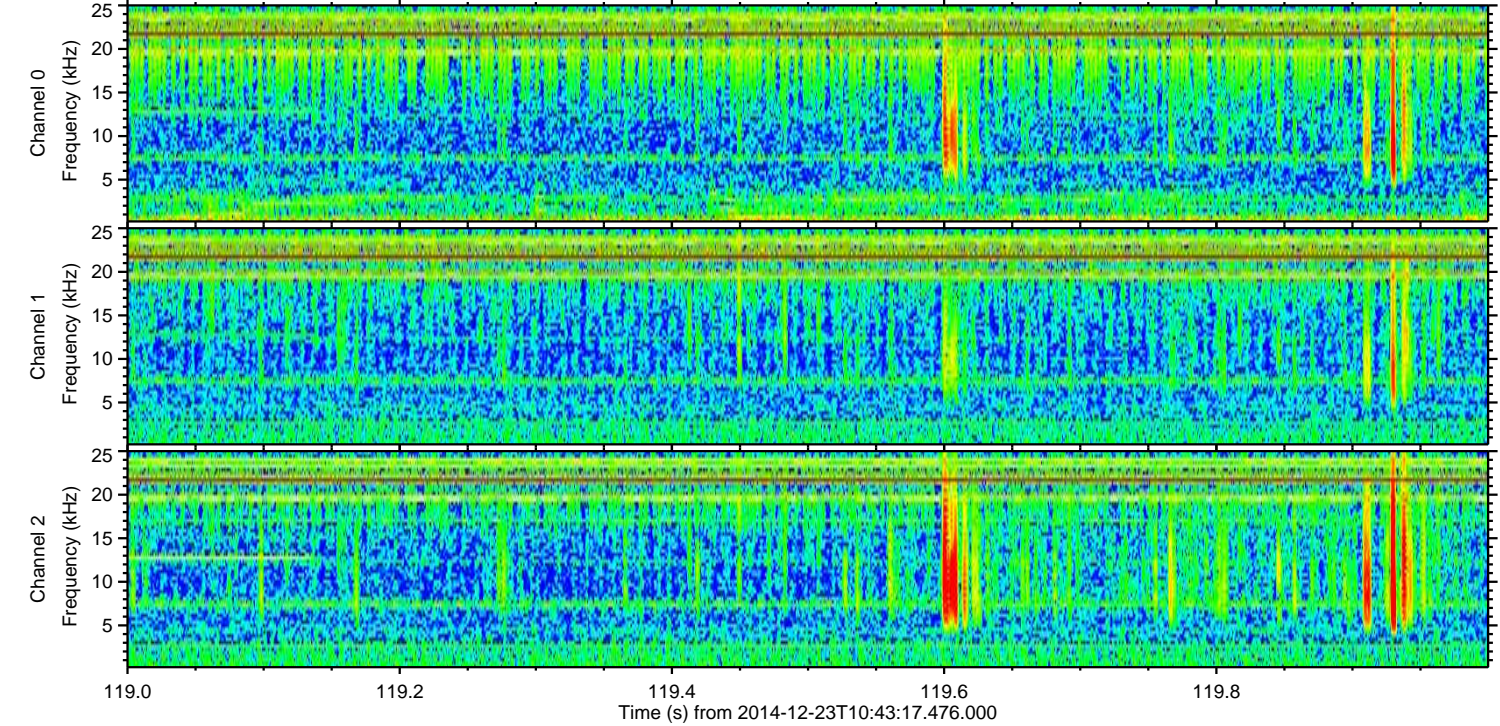
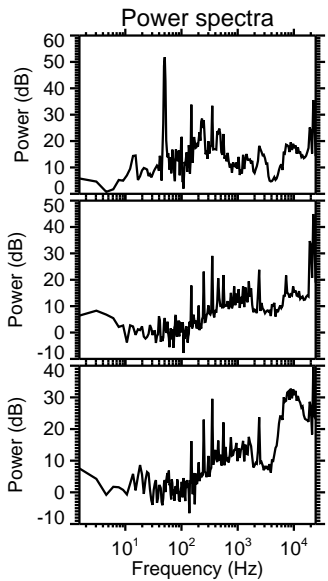
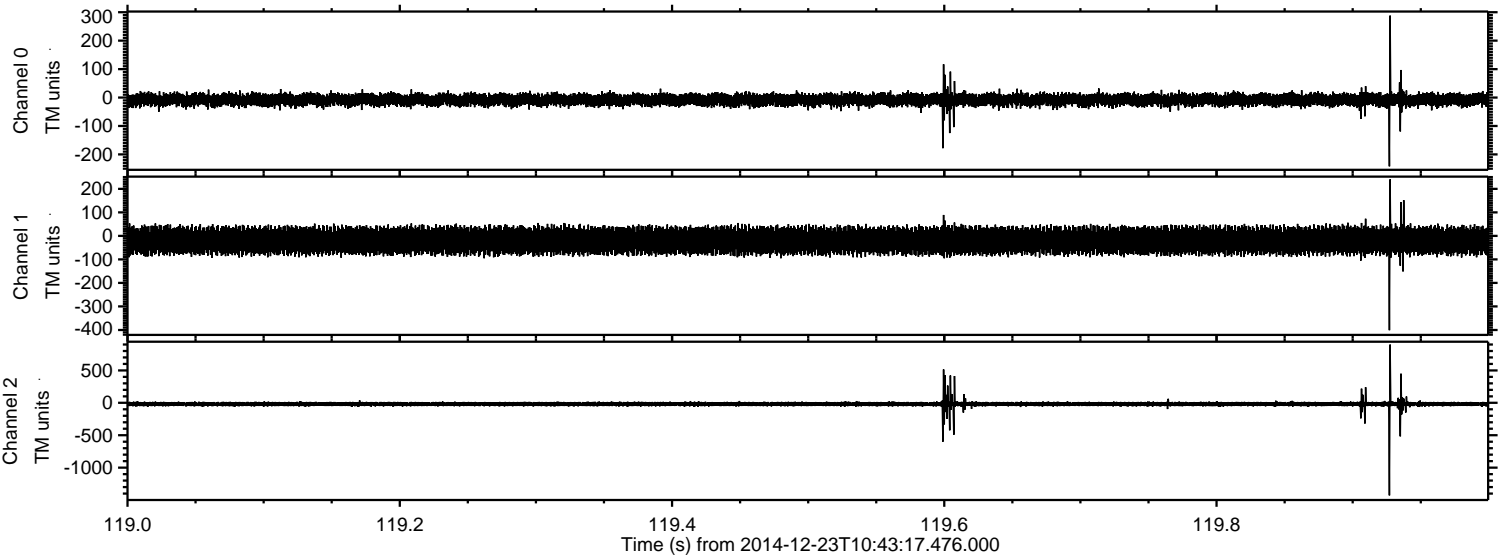
Processed Tue Dec 23 11:51:03 2014 by ELM ver.2012-10-06 from 001\_\_elm20141223\_104316\_\_dat00.bin





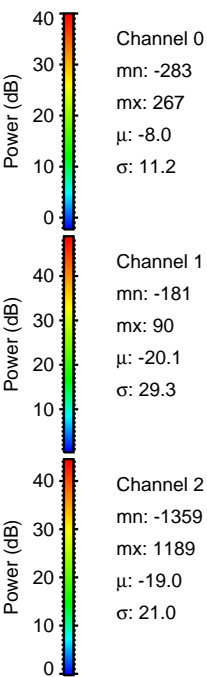
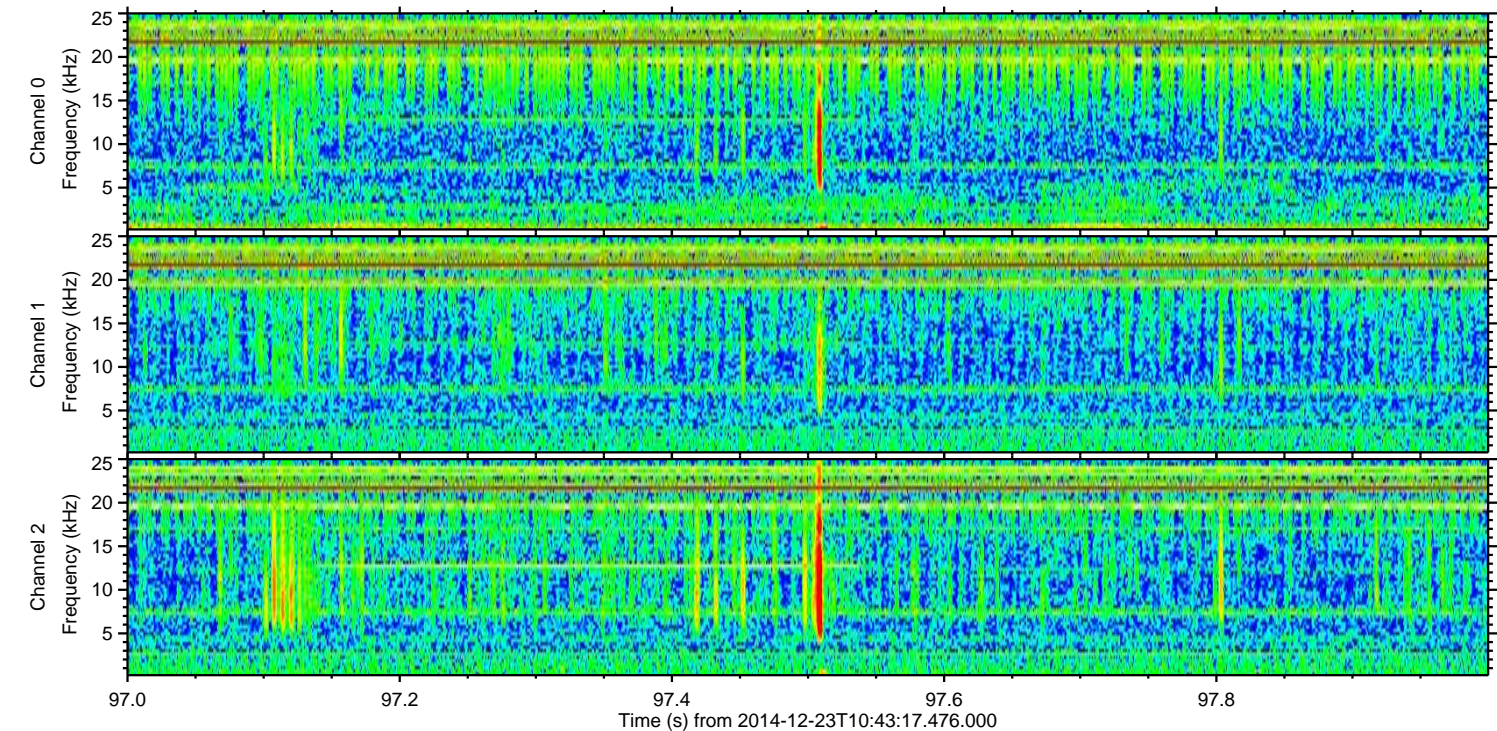
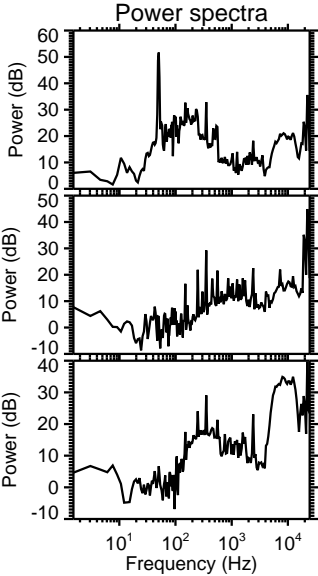
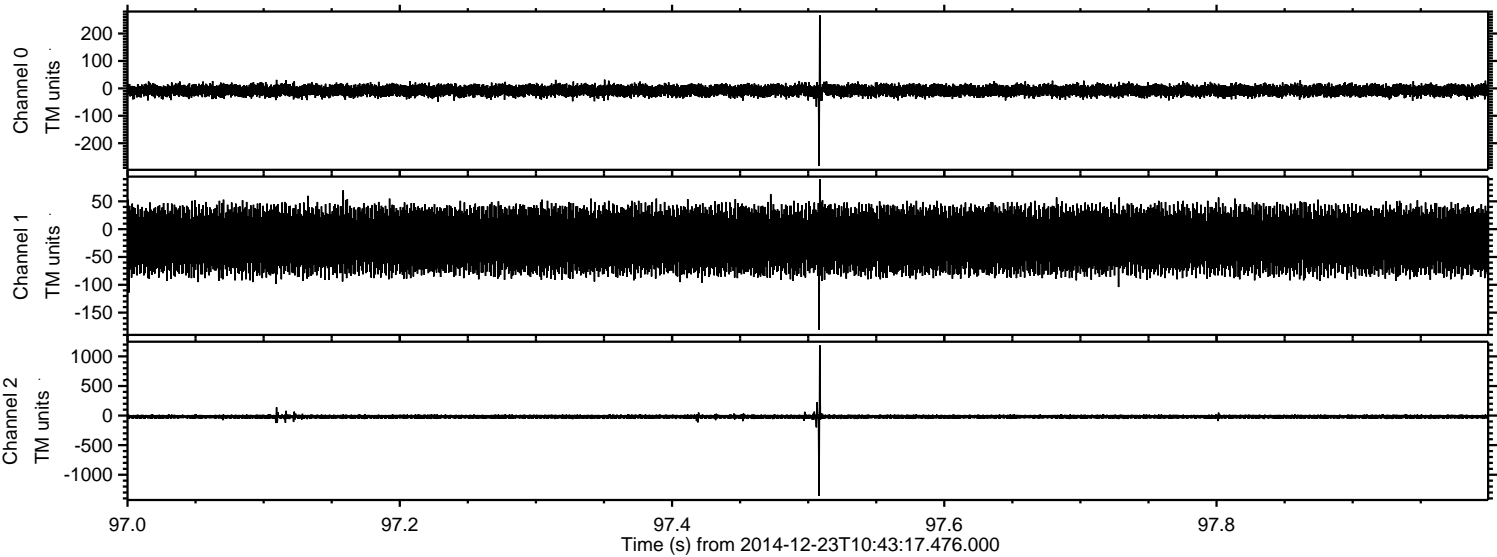
ELMAVAN 3D WAVEFORMS (Measured data sampled at 50 kHz) 49602 packets of 144 samples from 2014-12-23T10:43:17.476.000. Part 120/143

Processed Tue Dec 23 11:51:04 2014 by ELM ver.2012-10-06 from 001\_\_elm20141223\_104316\_\_dat00.bin



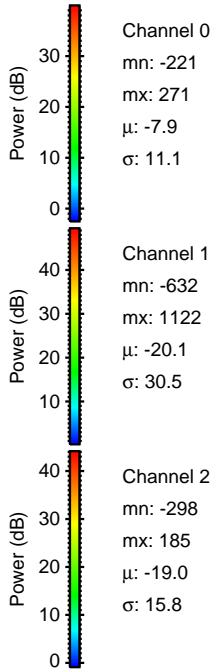
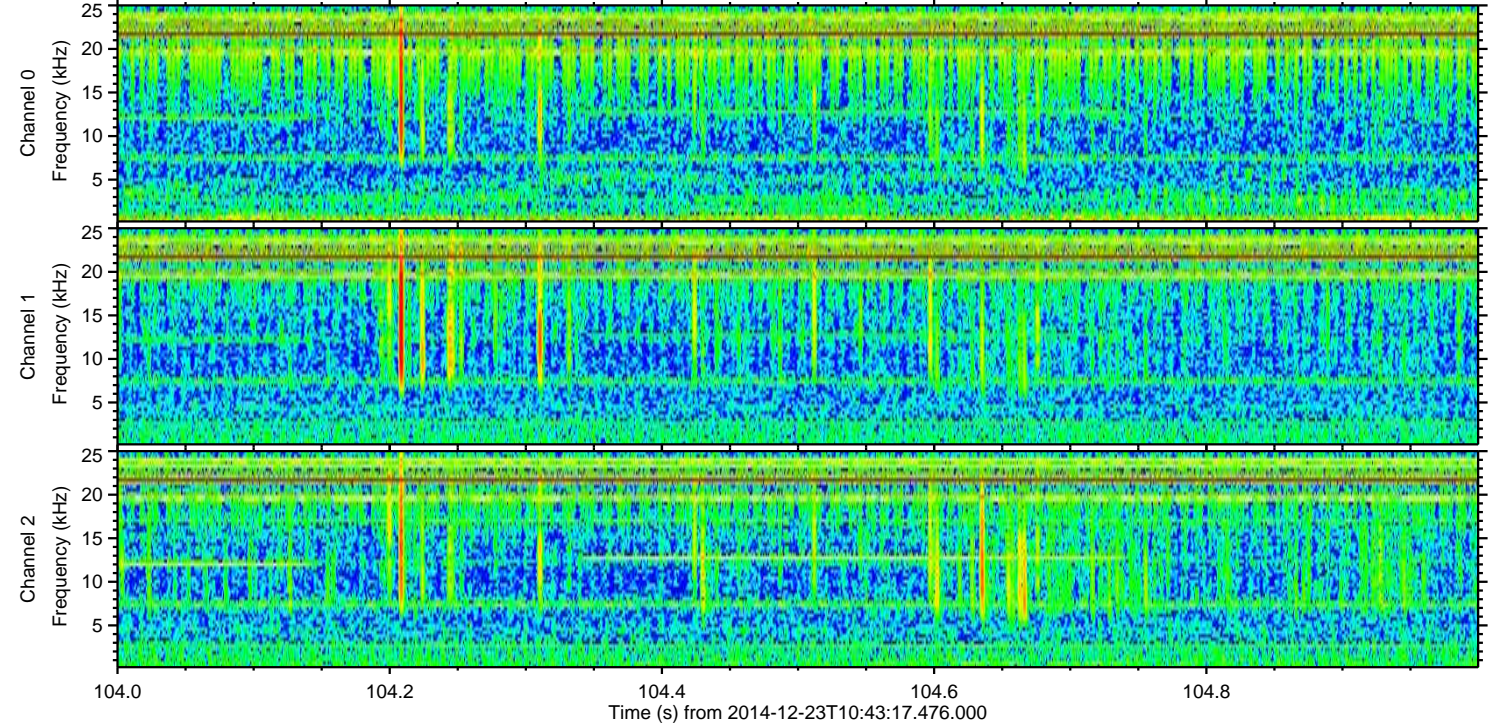
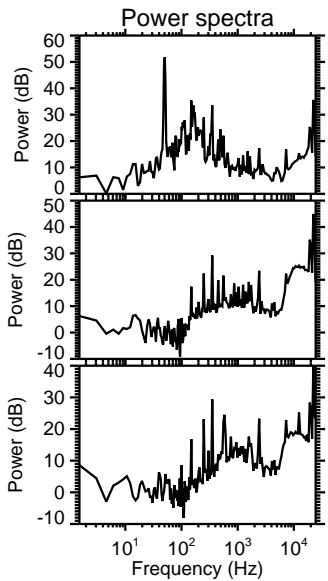
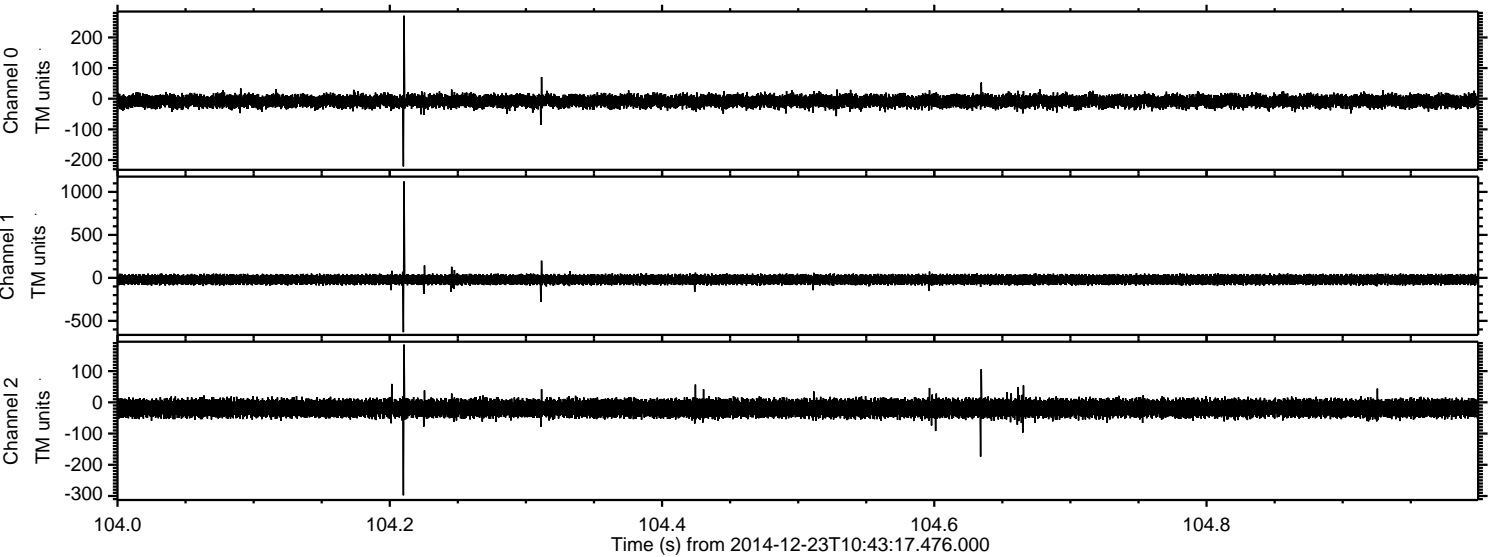


Processed Tue Dec 23 11:51:05 2014 by ELM ver.2012-10-06 from 001\_\_elm20141223\_104316\_\_dat00.bin





Processed Tue Dec 23 11:51:06 2014 by ELM ver.2012-10-06 from 001\_\_elm20141223\_104316\_\_dat00.bin





Processed Tue Dec 23 11:51:07 2014 by ELM ver.2012-10-06 from 001\_\_elm20141223\_104316\_\_dat00.bin

