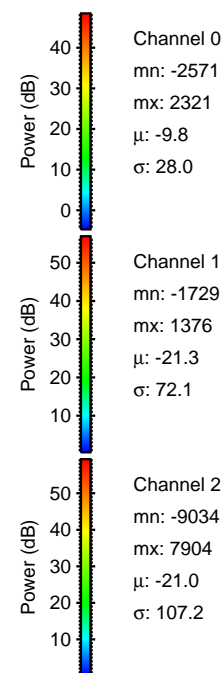
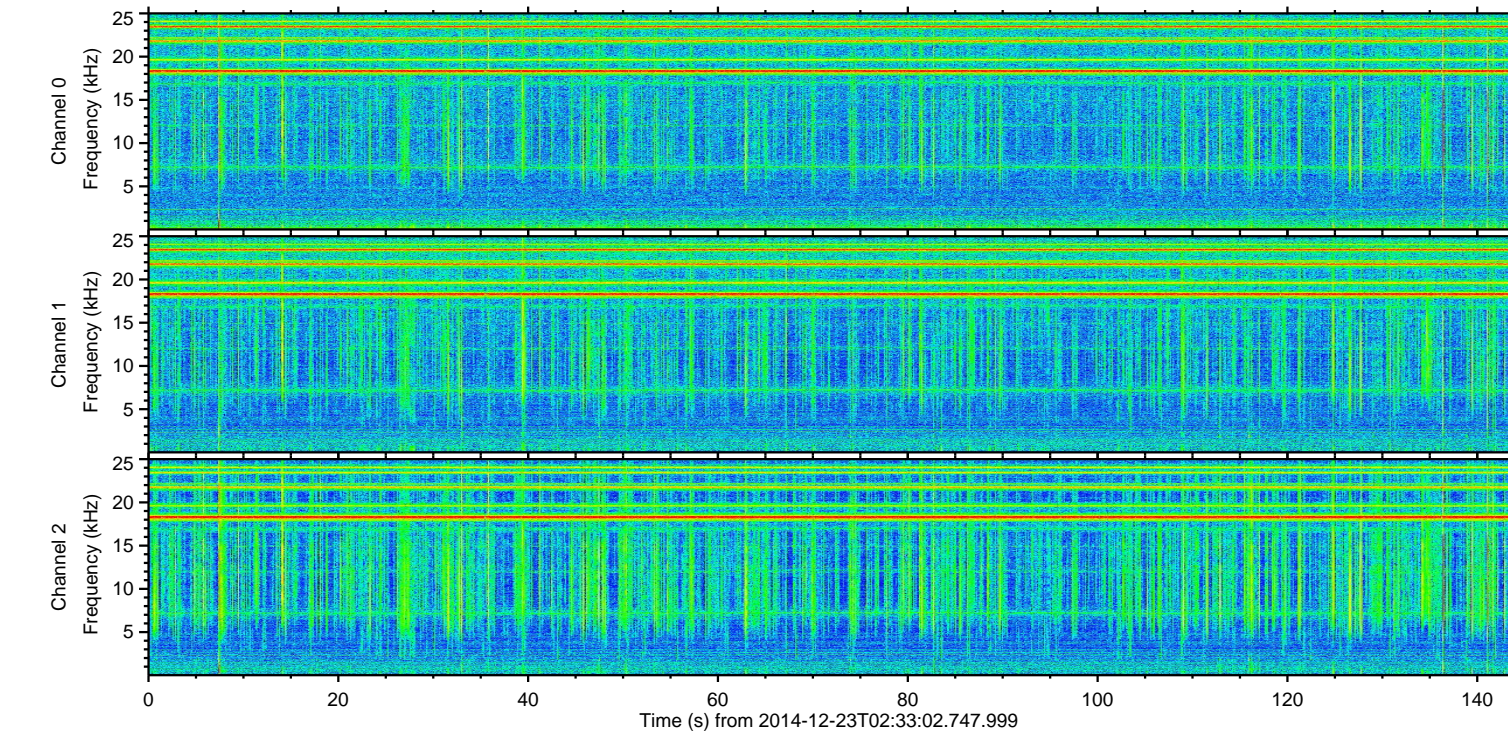
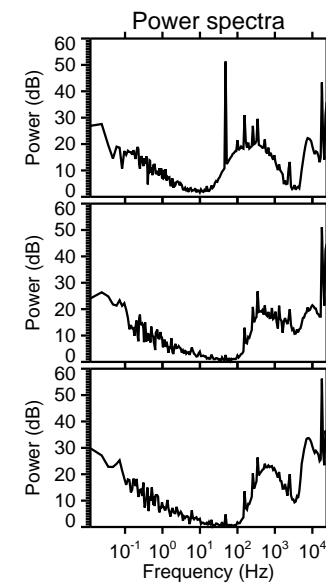
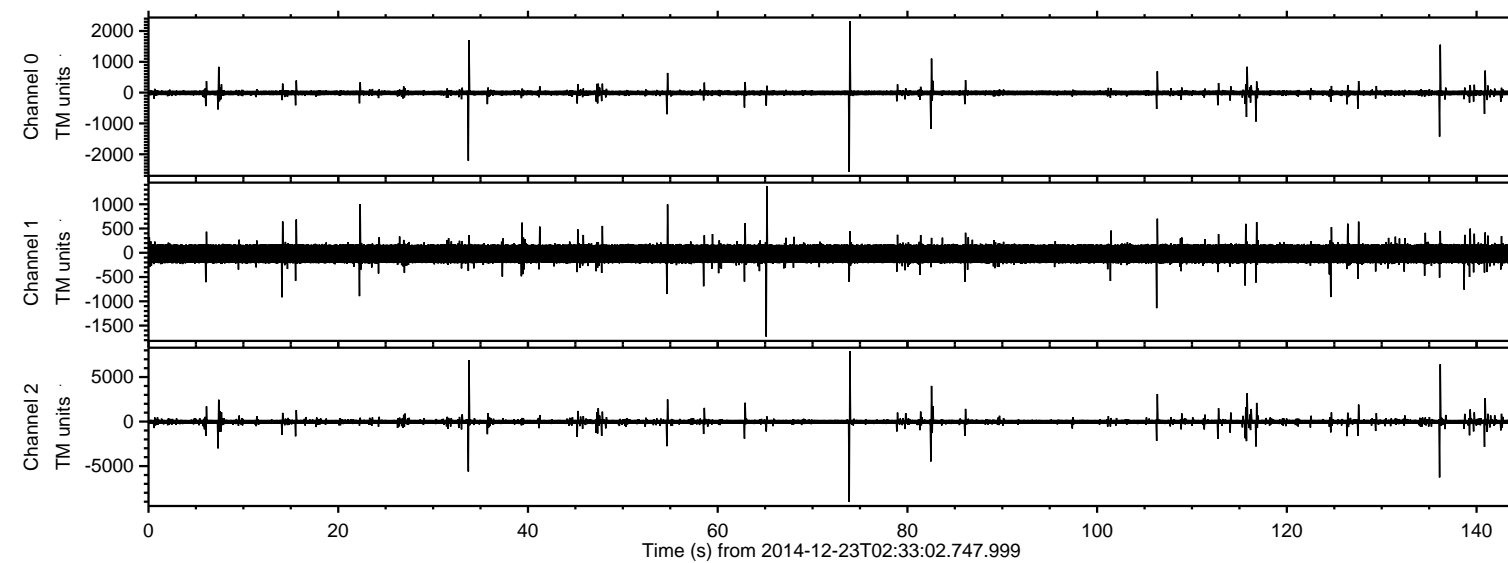


ELMAVAN 3D WAVEFORMS (Measured data sampled at 50 kHz) 49803 packets of 144 samples from 2014-12-23T02:33:02.747.999.

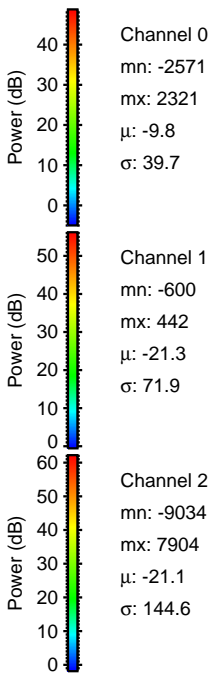
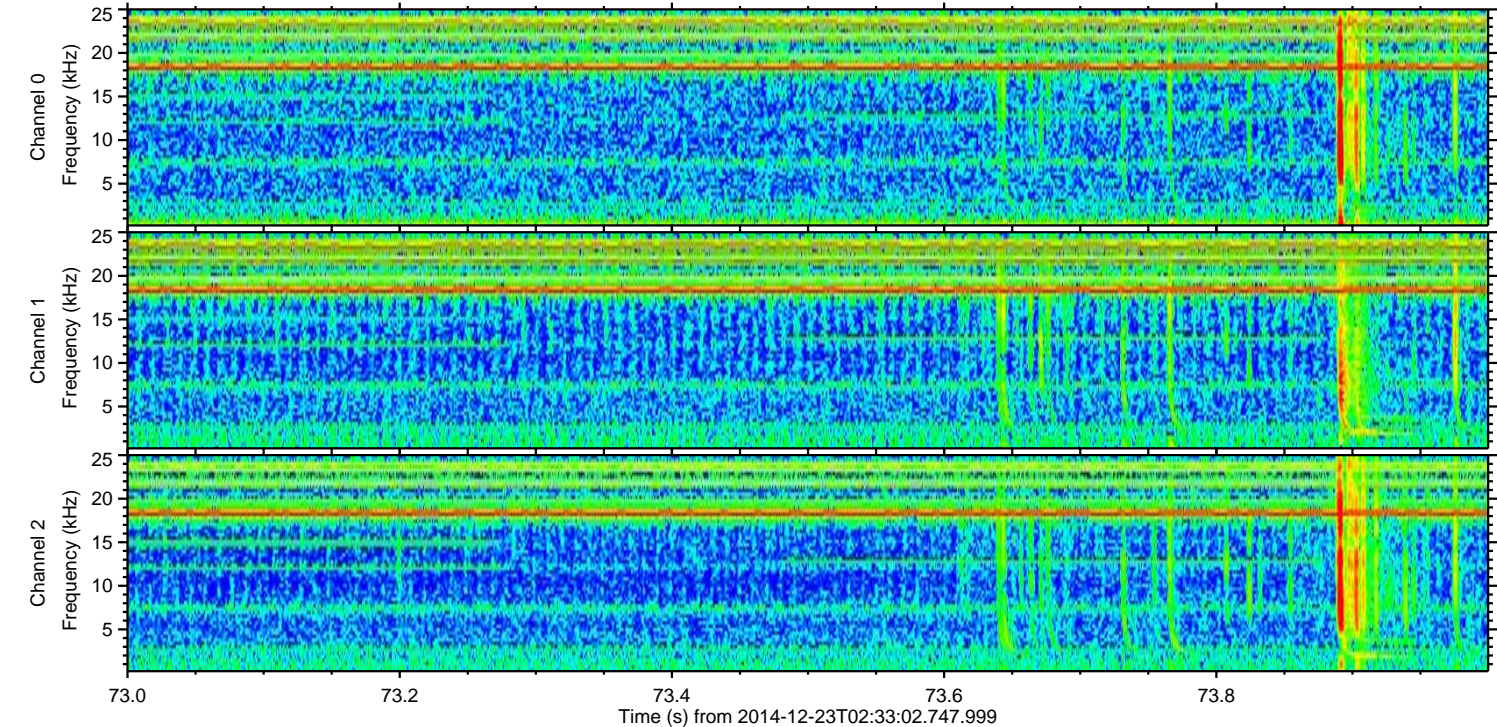
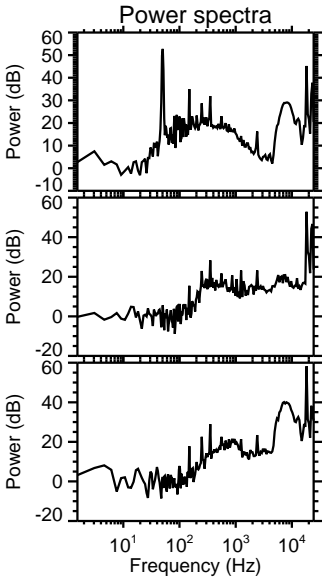
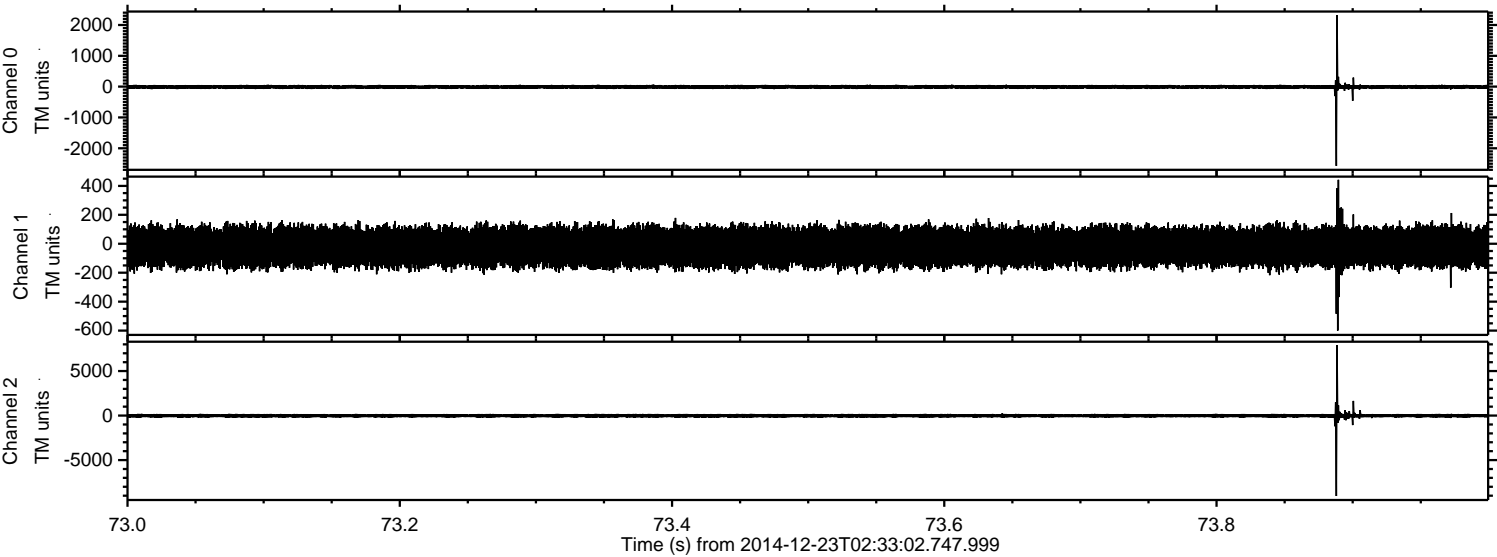
Processed Tue Dec 23 03:40:47 2014 by ELM ver.2012-10-06 from 001\_\_elm20141223\_023301\_\_dat00.bin





ELMAVAN 3D WAVEFORMS (Measured data sampled at 50 kHz) 49803 packets of 144 samples from 2014-12-23T02:33:02.747.999. Part 74/144

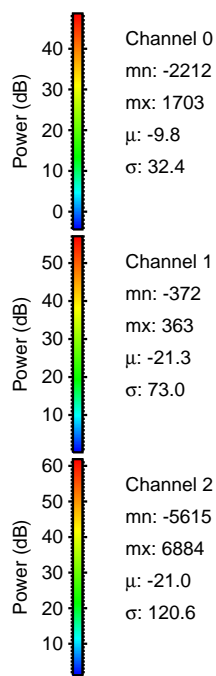
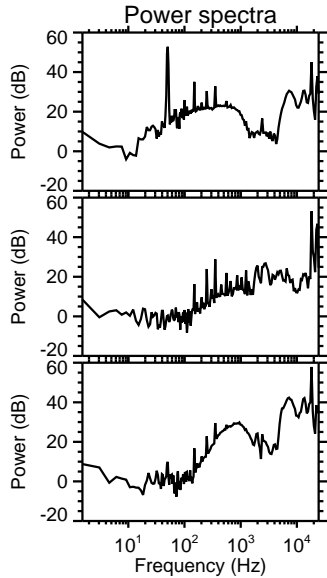
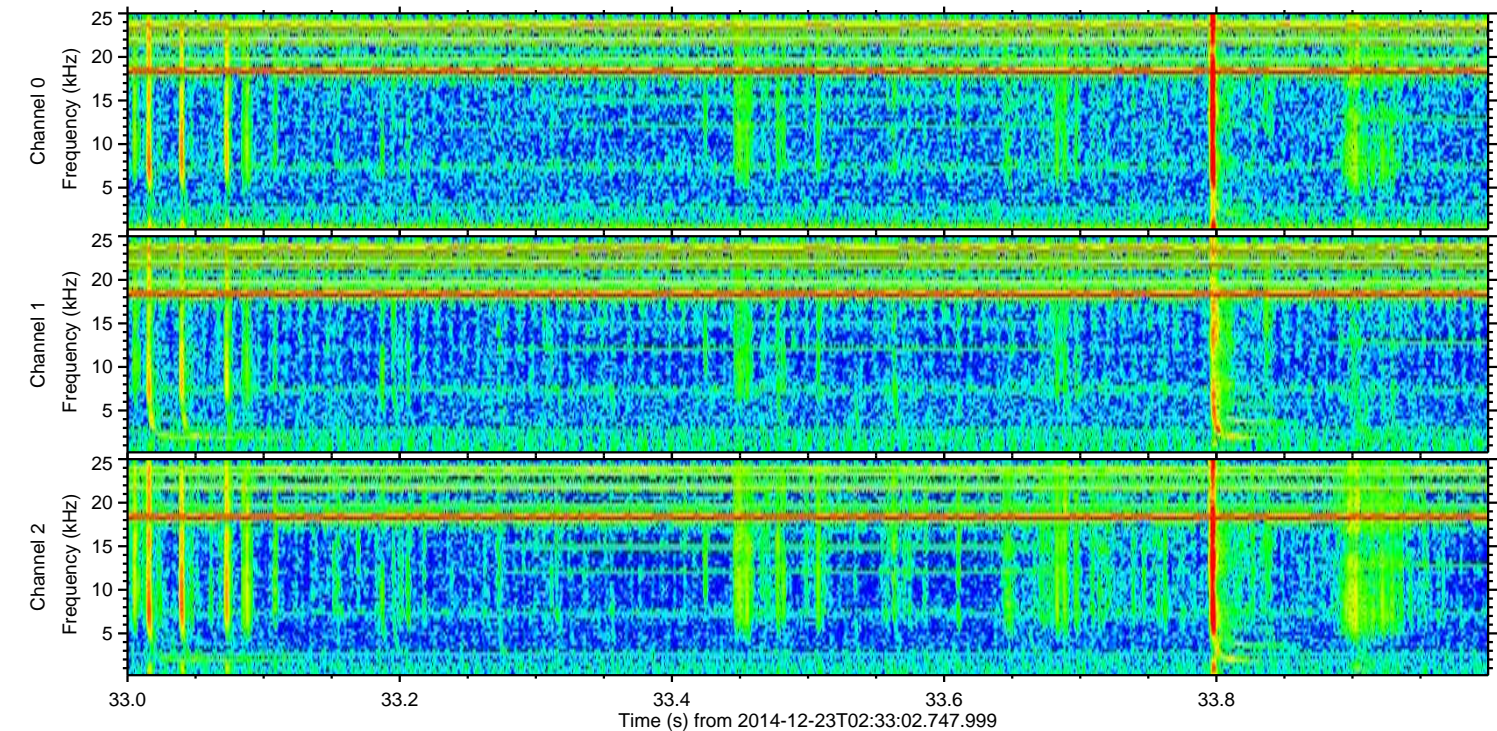
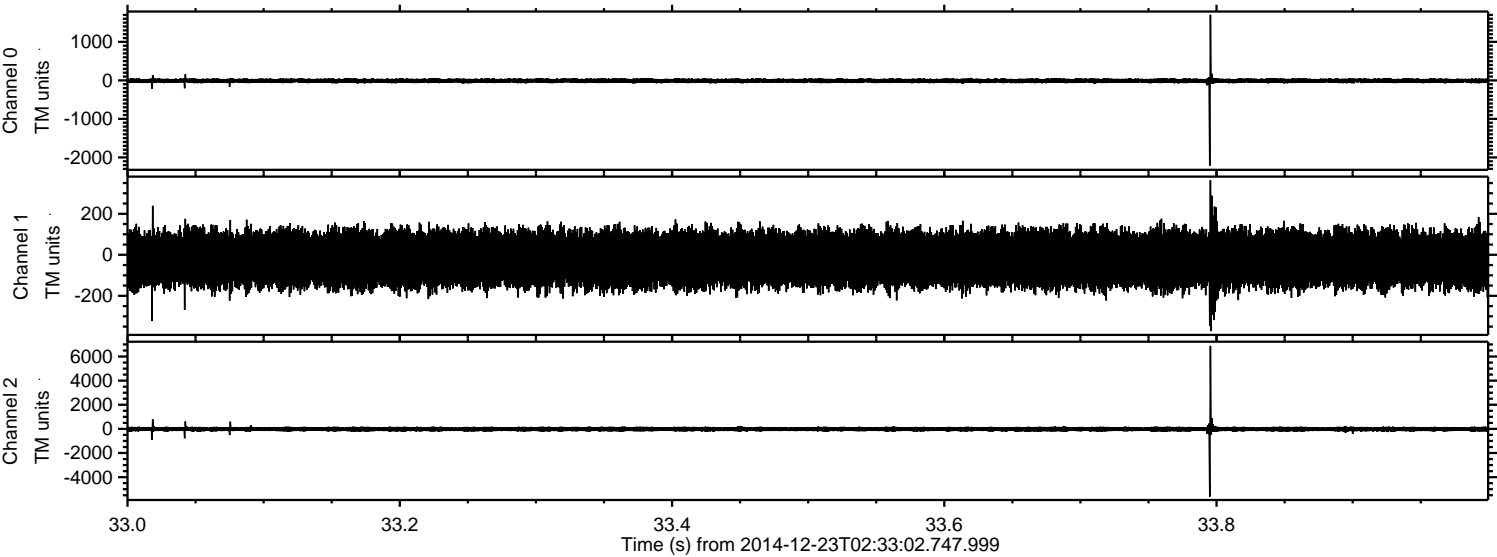
Processed Tue Dec 23 03:40:59 2014 by ELM ver.2012-10-06 from 001\_\_elm20141223\_023301\_\_dat00.bin





ELMAVAN 3D WAVEFORMS (Measured data sampled at 50 kHz) 49803 packets of 144 samples from 2014-12-23T02:33:02.747.999. Part 34/144

Processed Tue Dec 23 03:41:00 2014 by ELM ver.2012-10-06 from 001\_\_elm20141223\_023301\_\_dat00.bin



Channel 0  
mn: -2212  
mx: 1703  
 $\mu$ : -9.8  
 $\sigma$ : 32.4

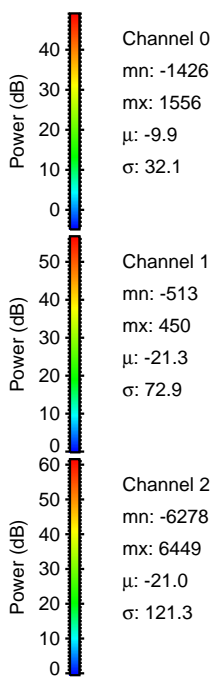
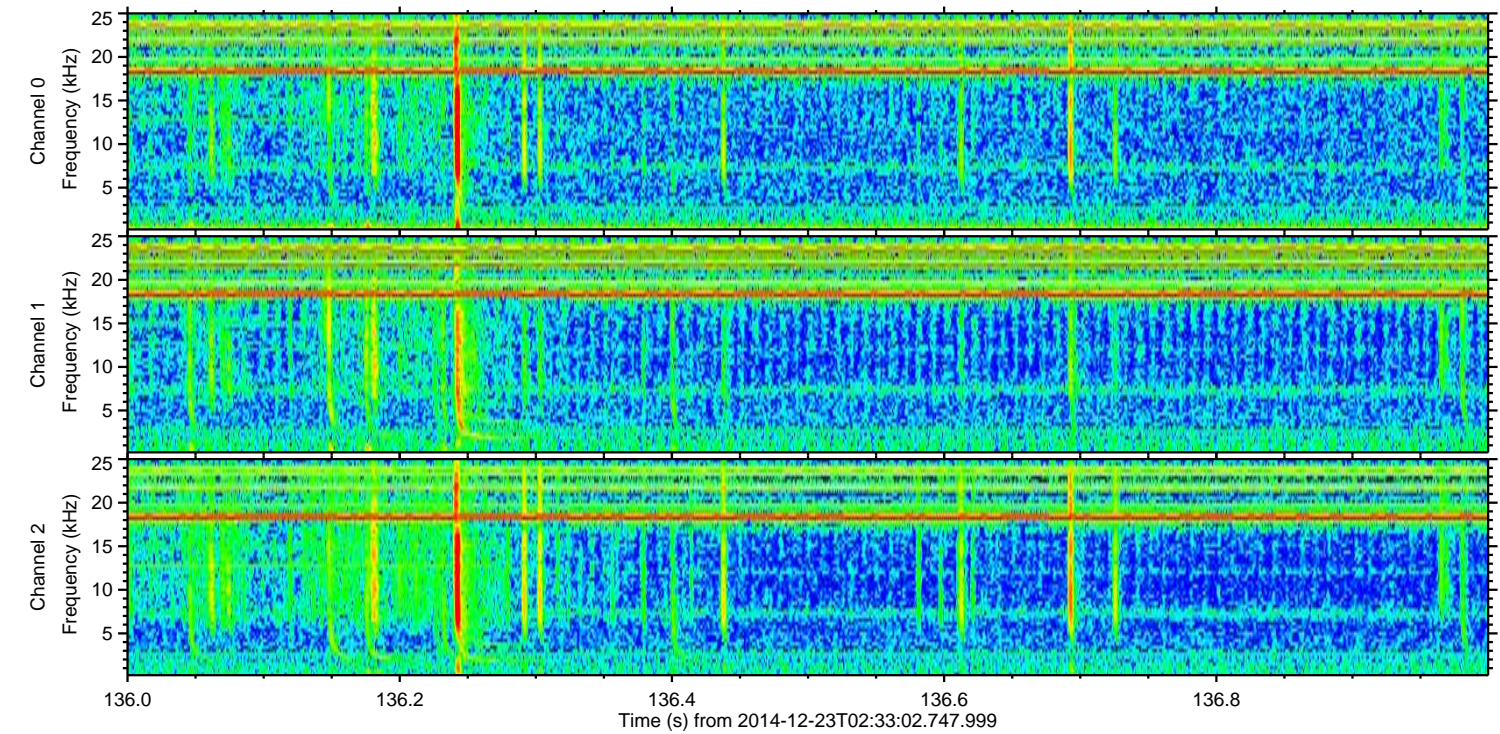
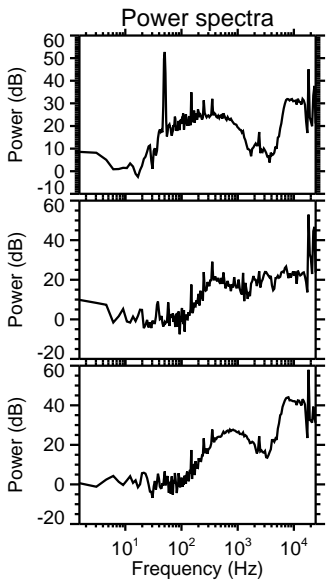
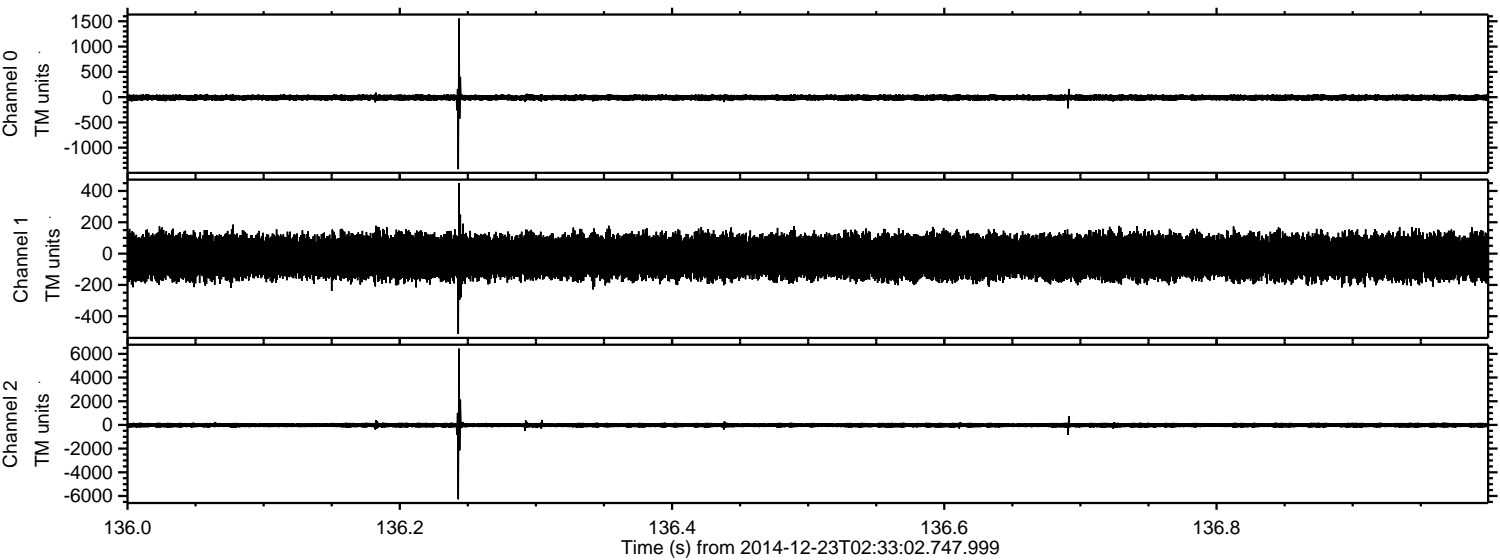
Channel 1  
mn: -372  
mx: 363  
 $\mu$ : -21.3  
 $\sigma$ : 73.0

Channel 2  
mn: -5615  
mx: 6884  
 $\mu$ : -21.0  
 $\sigma$ : 120.6



ELMAVAN 3D WAVEFORMS (Measured data sampled at 50 kHz) 49803 packets of 144 samples from 2014-12-23T02:33:02.747.999. Part 137/144

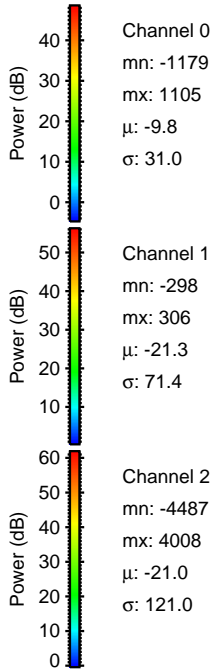
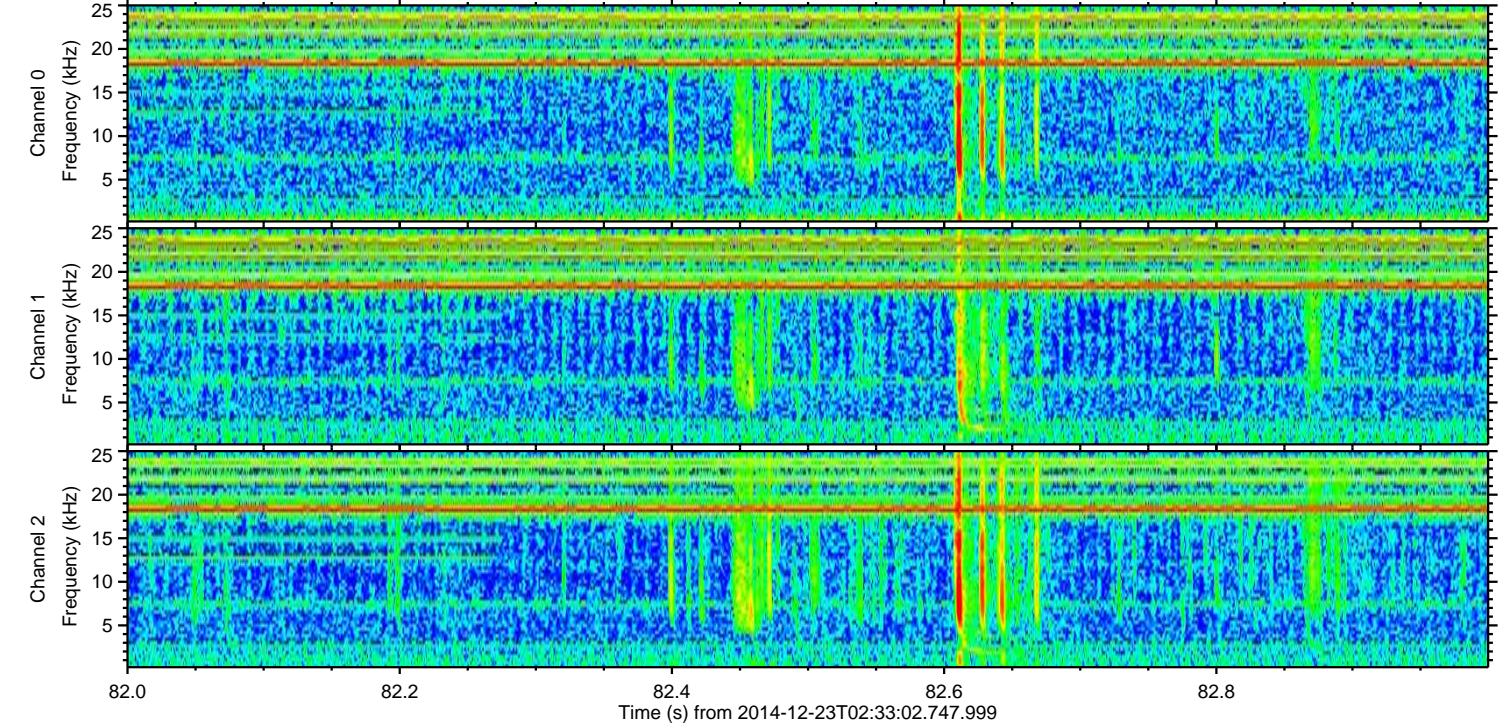
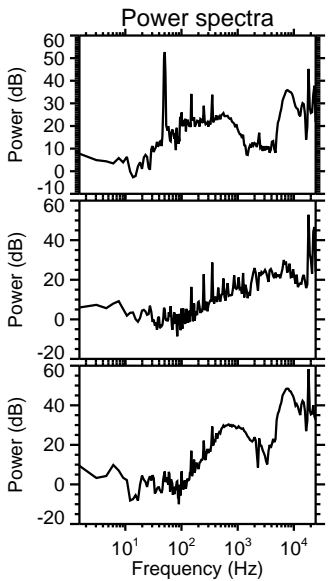
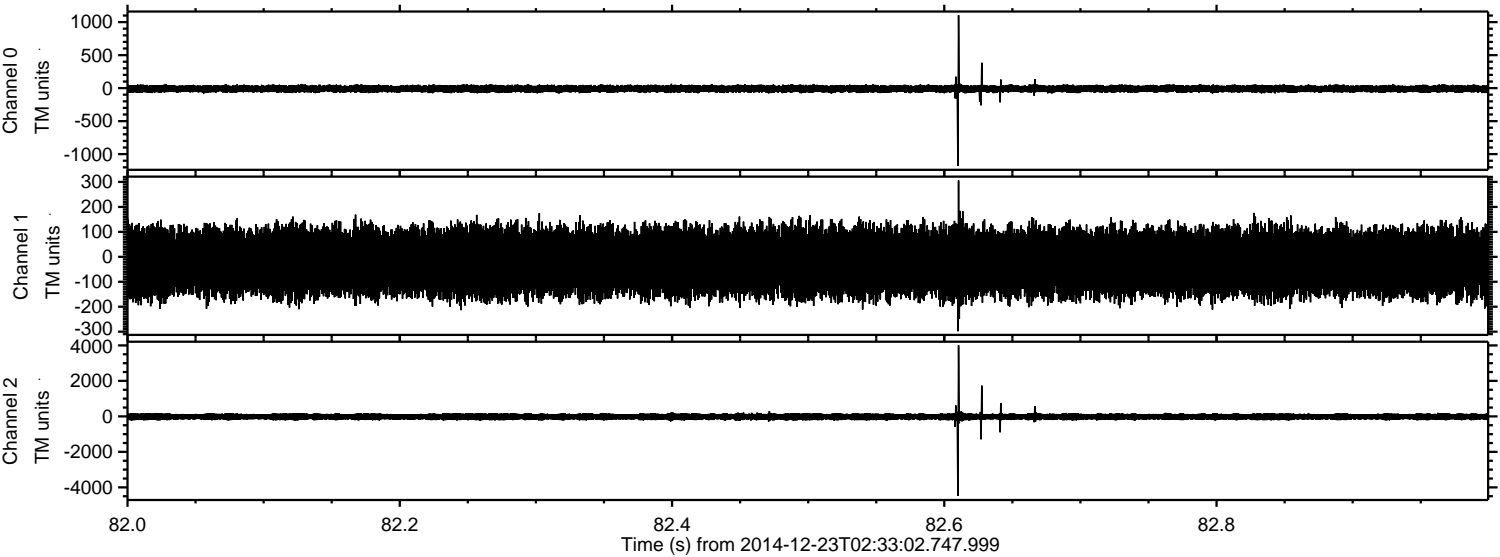
Processed Tue Dec 23 03:41:01 2014 by ELM ver.2012-10-06 from 001\_\_elm20141223\_023301\_\_dat00.bin





ELMAVAN 3D WAVEFORMS (Measured data sampled at 50 kHz) 49803 packets of 144 samples from 2014-12-23T02:33:02.747.999. Part 83/144

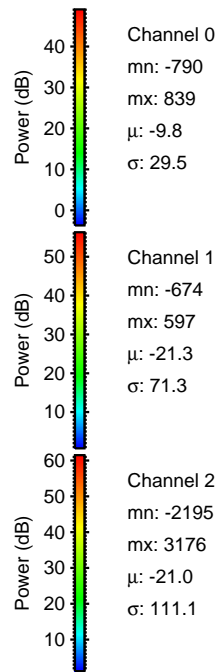
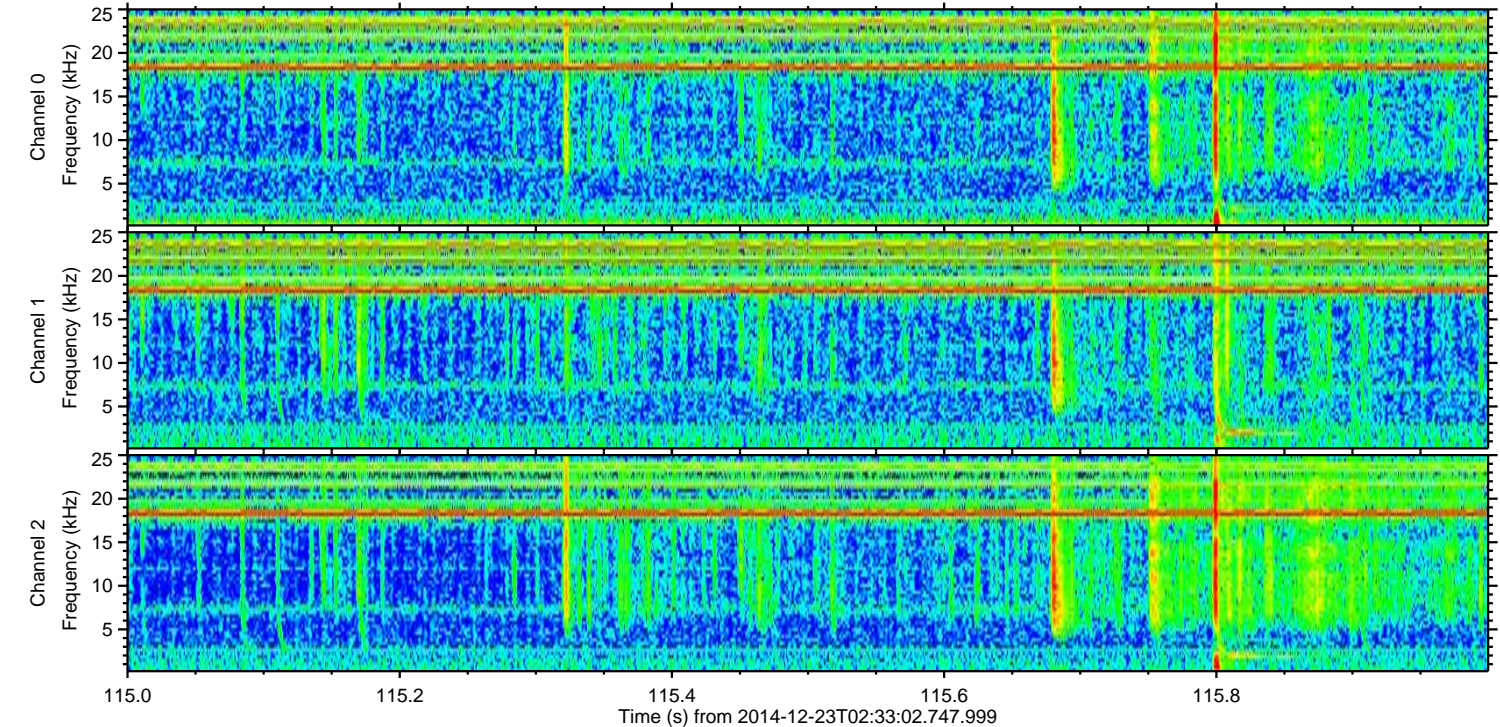
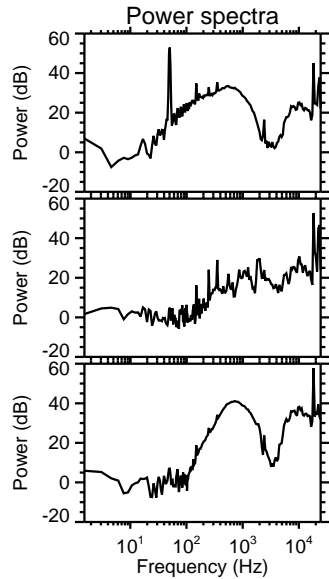
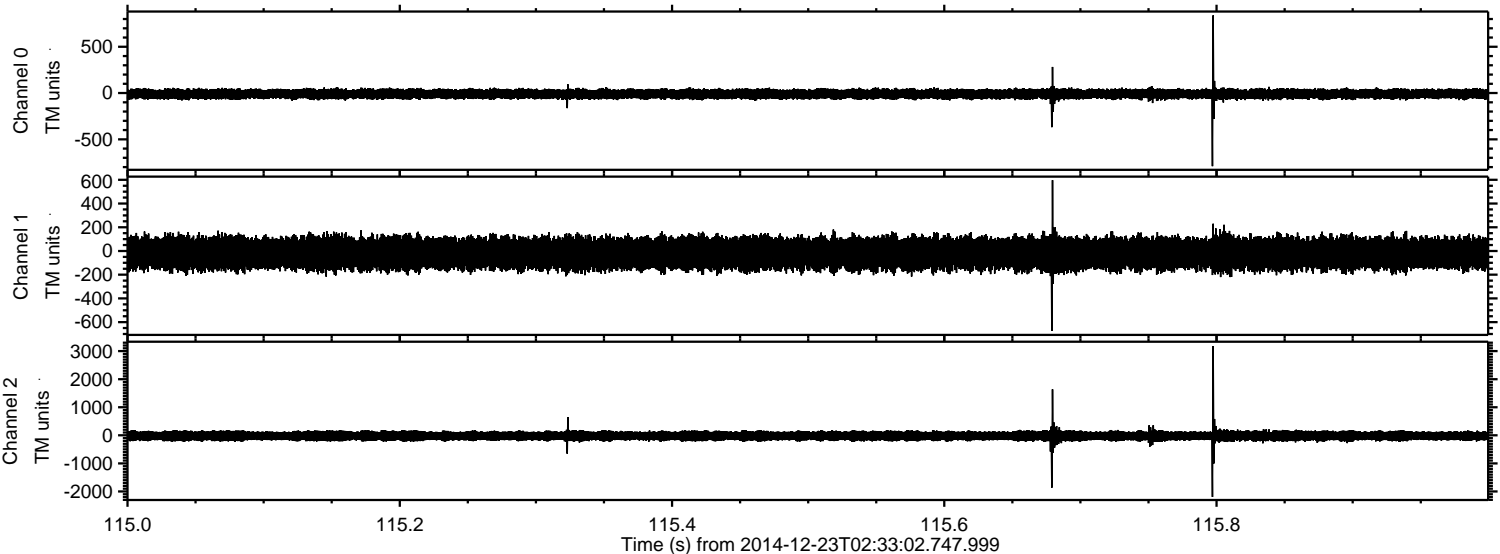
Processed Tue Dec 23 03:41:02 2014 by ELM ver.2012-10-06 from 001\_\_elm20141223\_023301\_\_dat00.bin





ELMAVAN 3D WAVEFORMS (Measured data sampled at 50 kHz) 49803 packets of 144 samples from 2014-12-23T02:33:02.747.999. Part 116/144

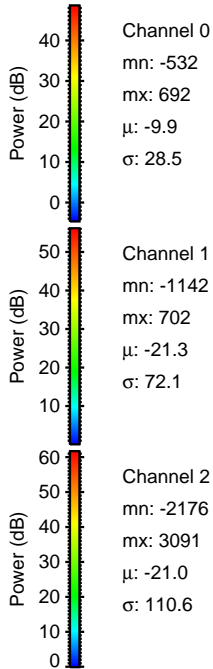
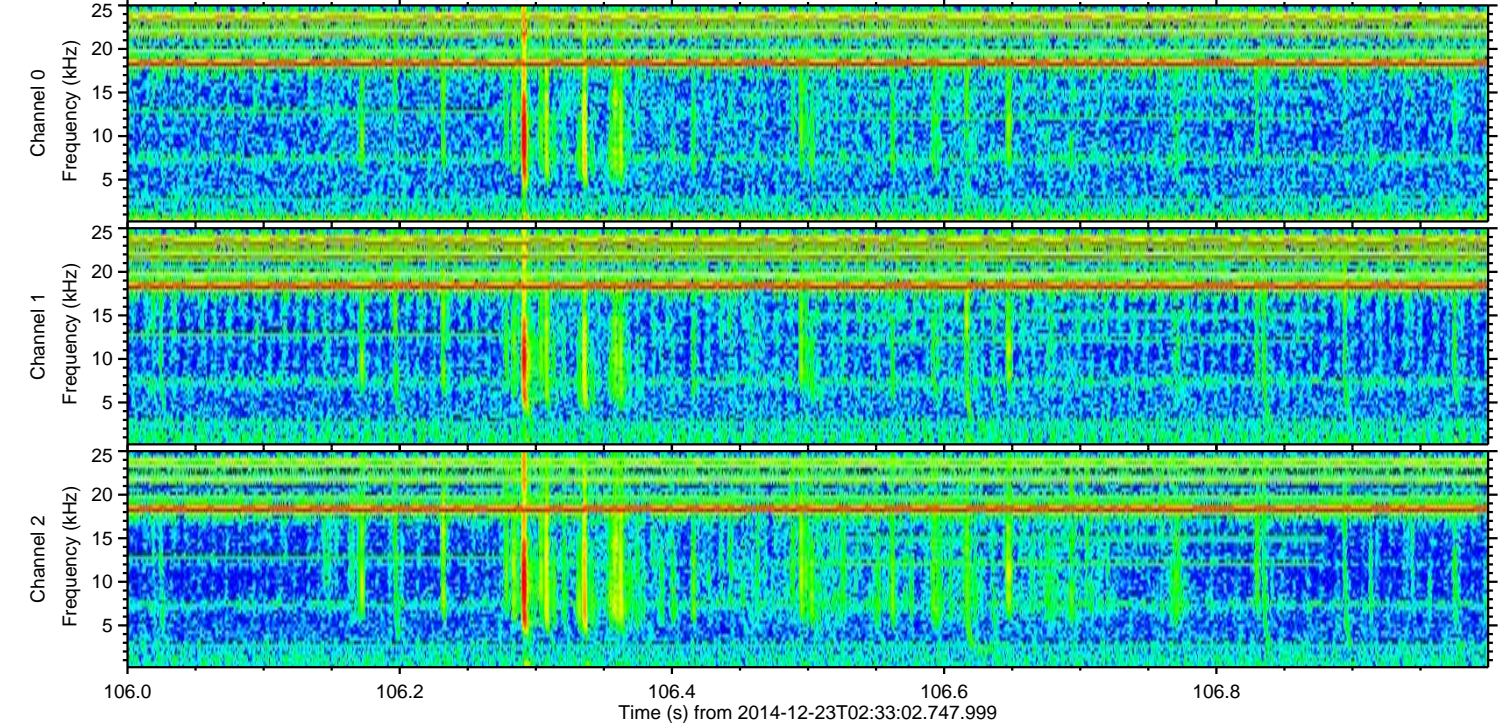
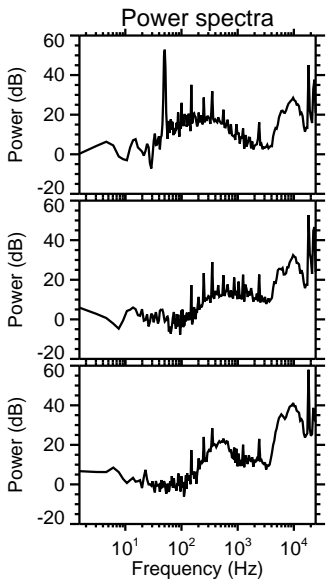
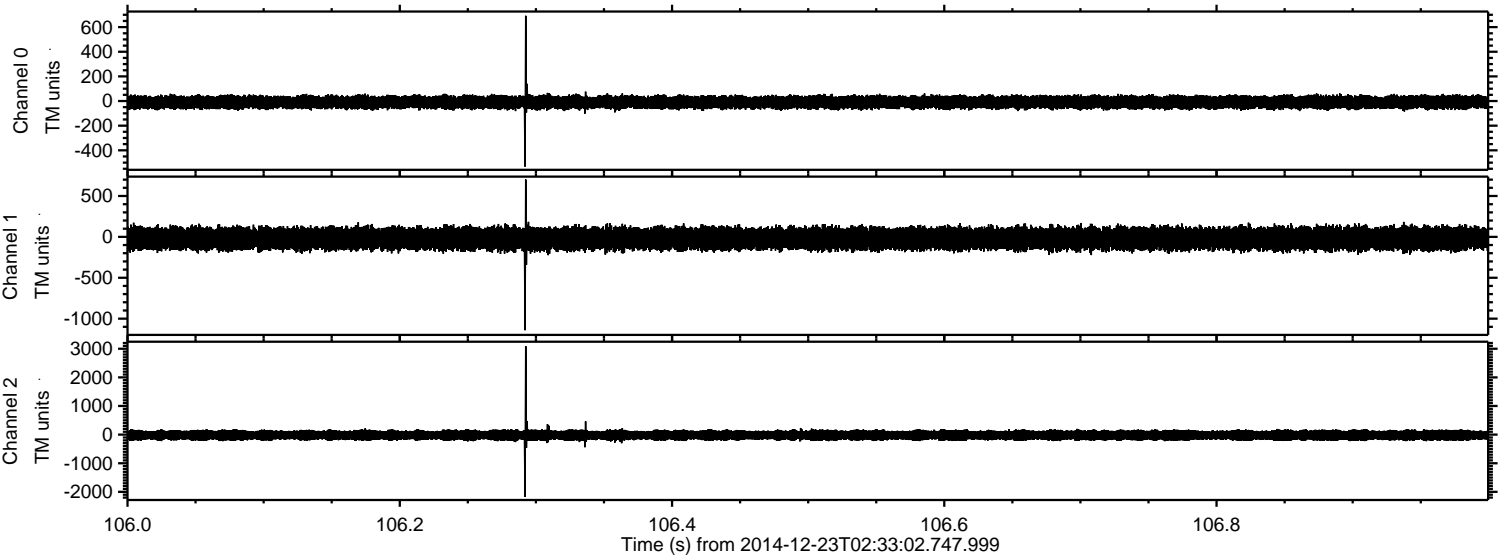
Processed Tue Dec 23 03:41:02 2014 by ELM ver.2012-10-06 from 001\_\_elm20141223\_023301\_\_dat00.bin





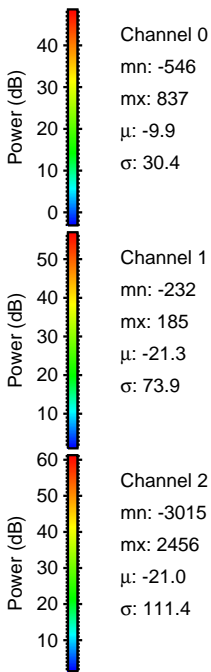
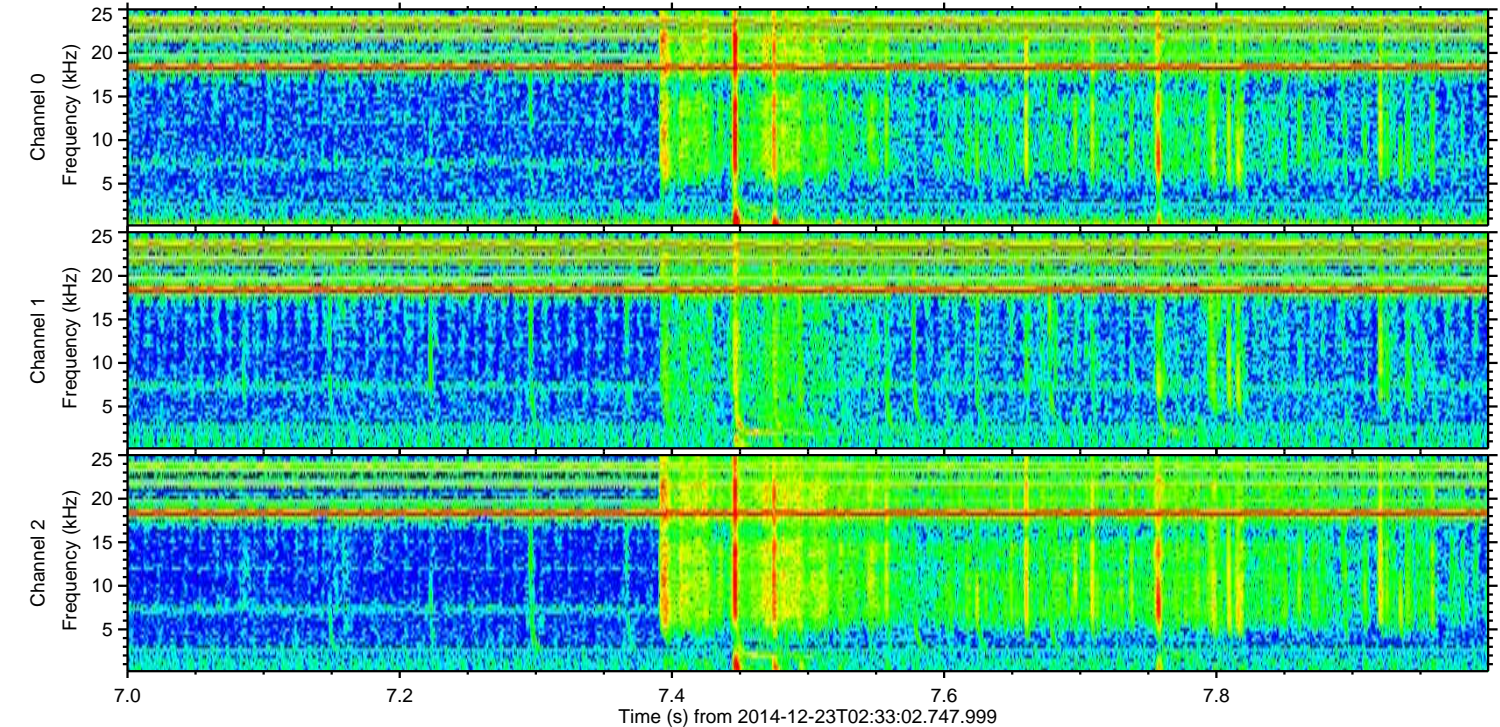
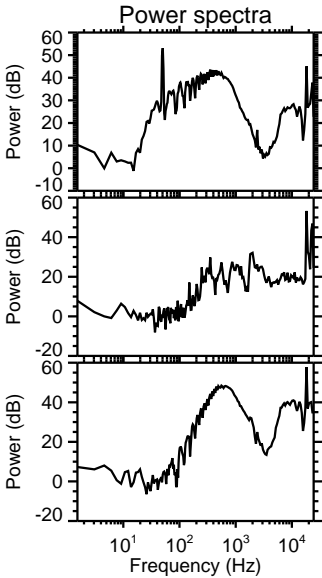
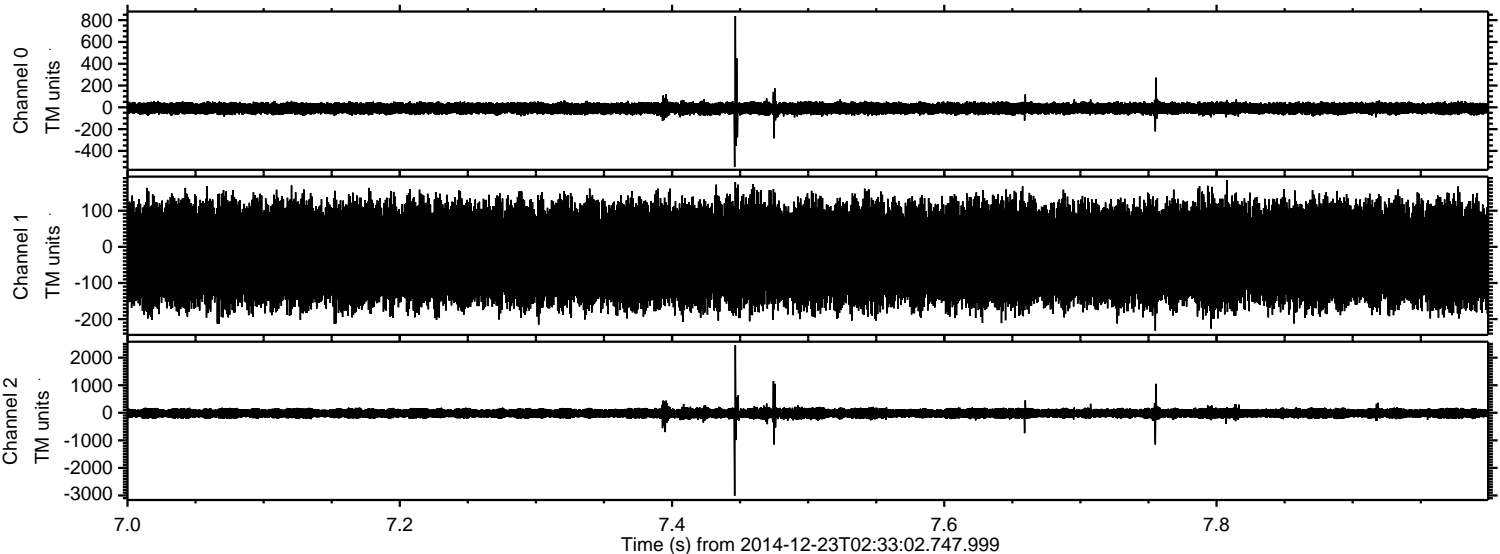
ELMAVAN 3D WAVEFORMS (Measured data sampled at 50 kHz) 49803 packets of 144 samples from 2014-12-23T02:33:02.747.999. Part 107/144

Processed Tue Dec 23 03:41:03 2014 by ELM ver.2012-10-06 from 001\_\_elm20141223\_023301\_\_dat00.bin





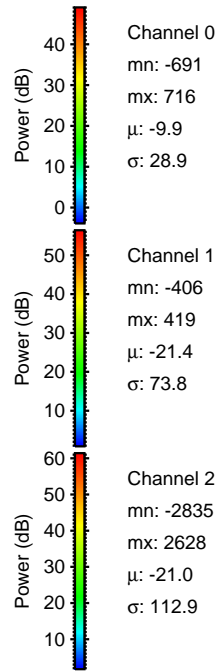
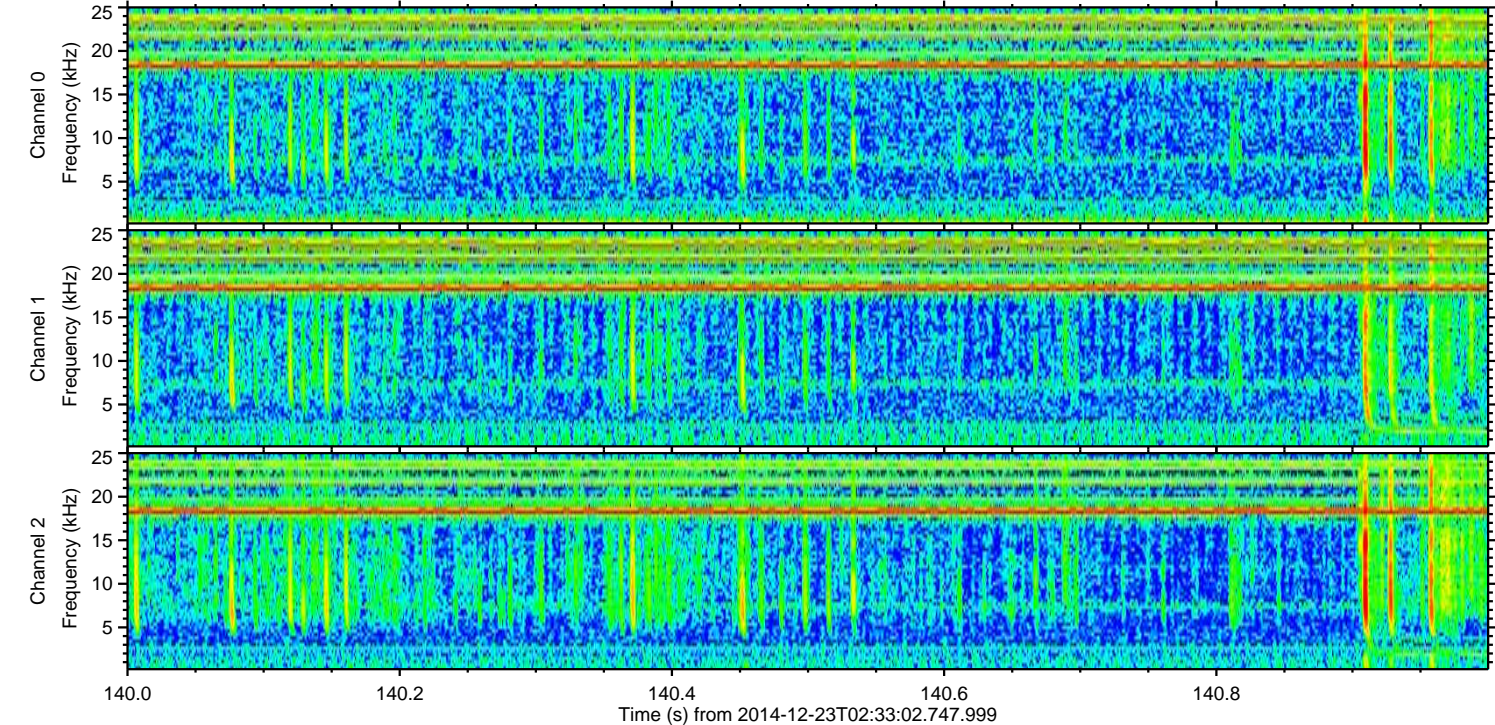
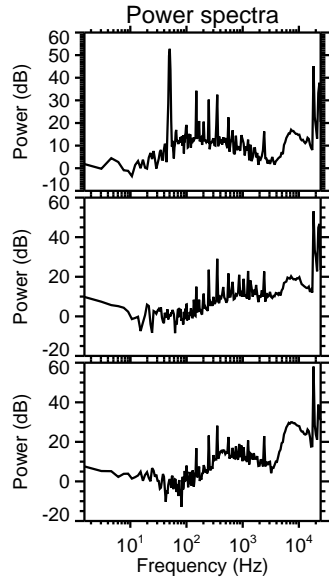
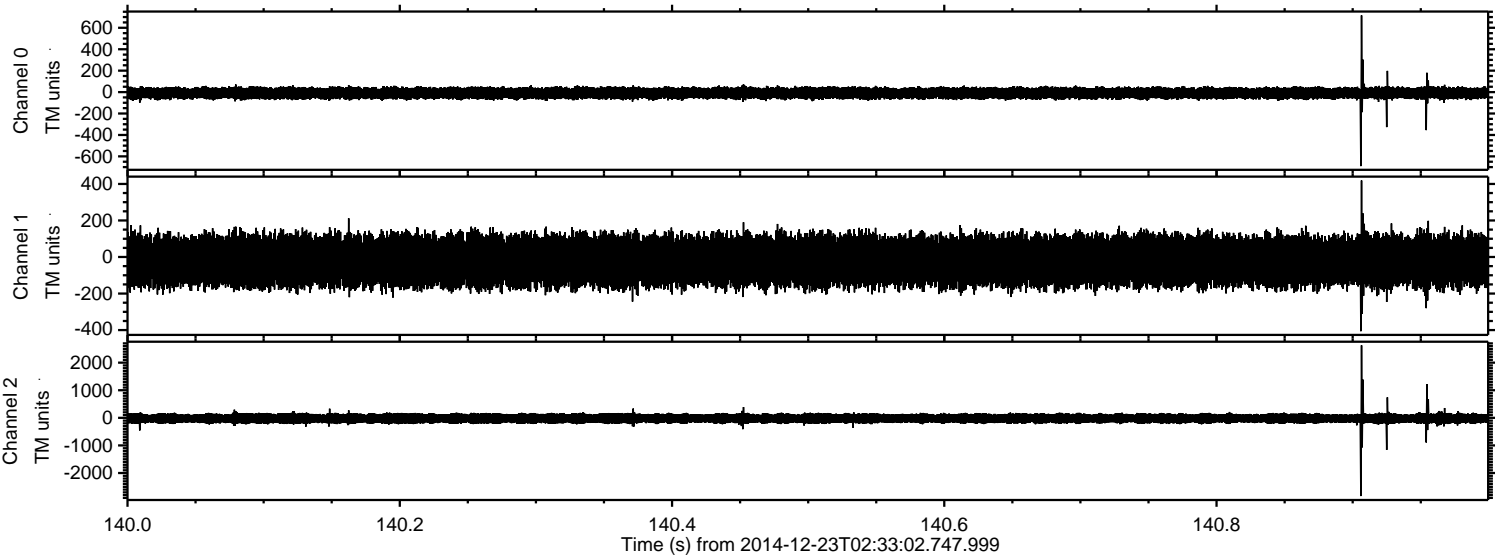
Processed Tue Dec 23 03:41:04 2014 by ELM ver.2012-10-06 from 001\_\_elm20141223\_023301\_\_dat00.bin





ELMAVAN 3D WAVEFORMS (Measured data sampled at 50 kHz) 49803 packets of 144 samples from 2014-12-23T02:33:02.747.999. Part 141/144

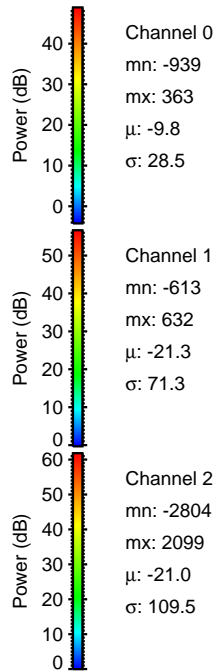
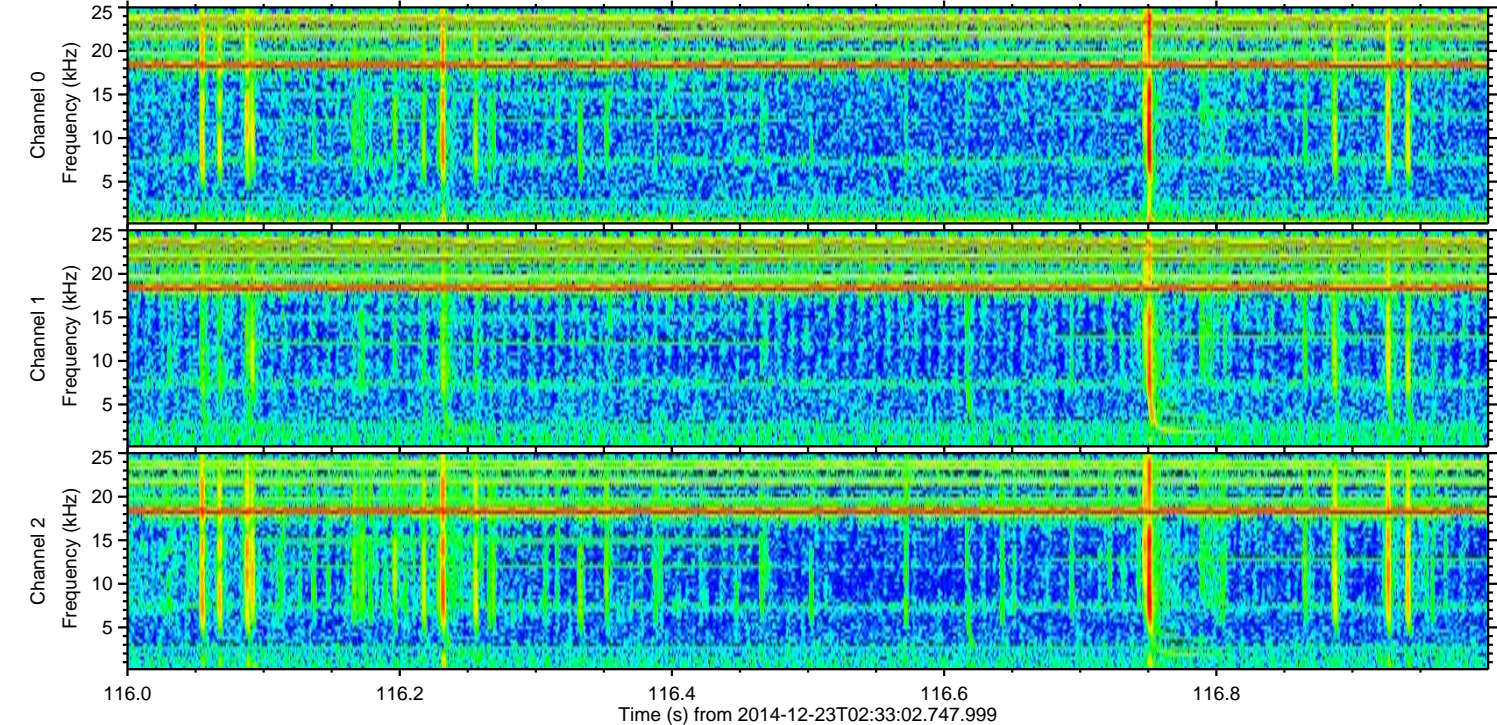
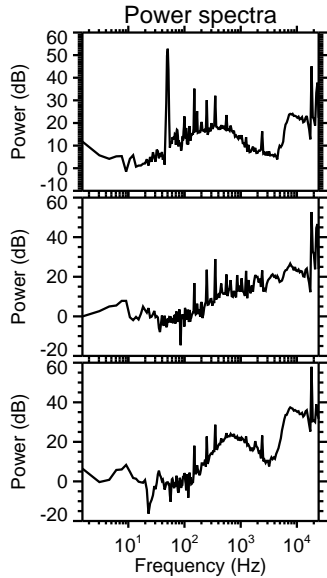
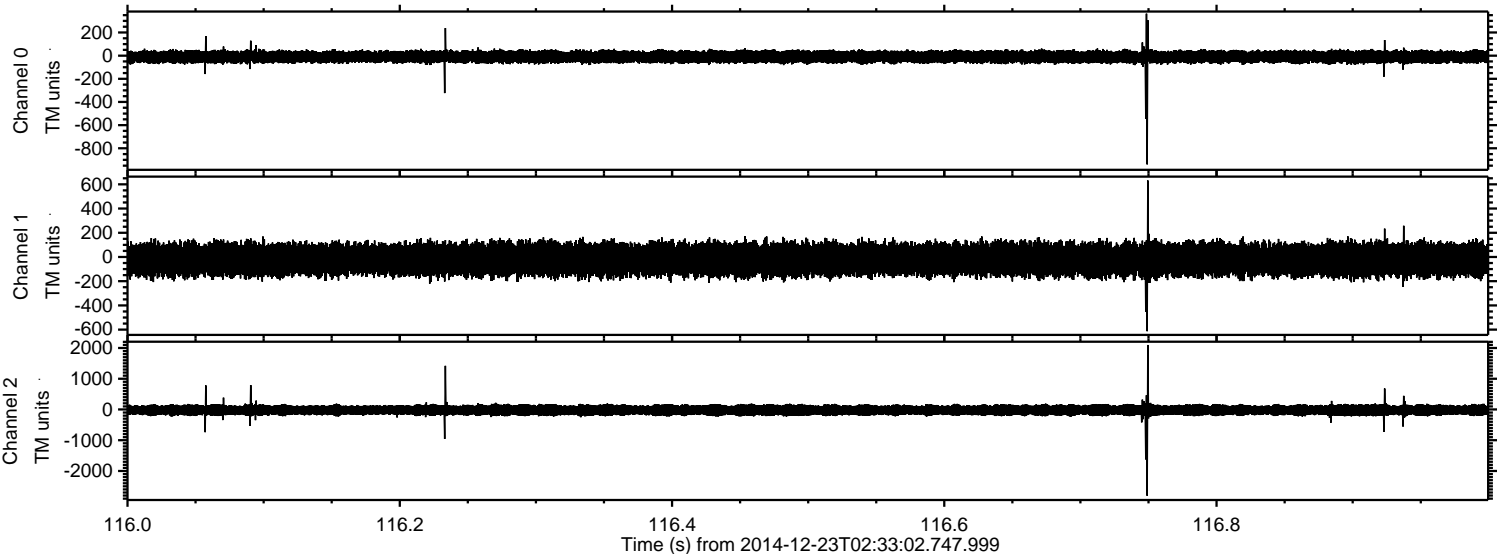
Processed Tue Dec 23 03:41:05 2014 by ELM ver.2012-10-06 from 001\_\_elm20141223\_023301\_\_dat00.bin





ELMAVAN 3D WAVEFORMS (Measured data sampled at 50 kHz) 49803 packets of 144 samples from 2014-12-23T02:33:02.747.999. Part 117/144

Processed Tue Dec 23 03:41:06 2014 by ELM ver.2012-10-06 from 001\_\_elm20141223\_023301\_\_dat00.bin





ELMAVAN 3D WAVEFORMS (Measured data sampled at 50 kHz) 49803 packets of 144 samples from 2014-12-23T02:33:02.747.999. Part 121/144

Processed Tue Dec 23 03:41:07 2014 by ELM ver.2012-10-06 from 001\_\_elm20141223\_023301\_\_dat00.bin

