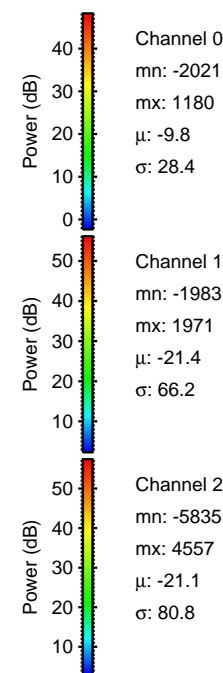
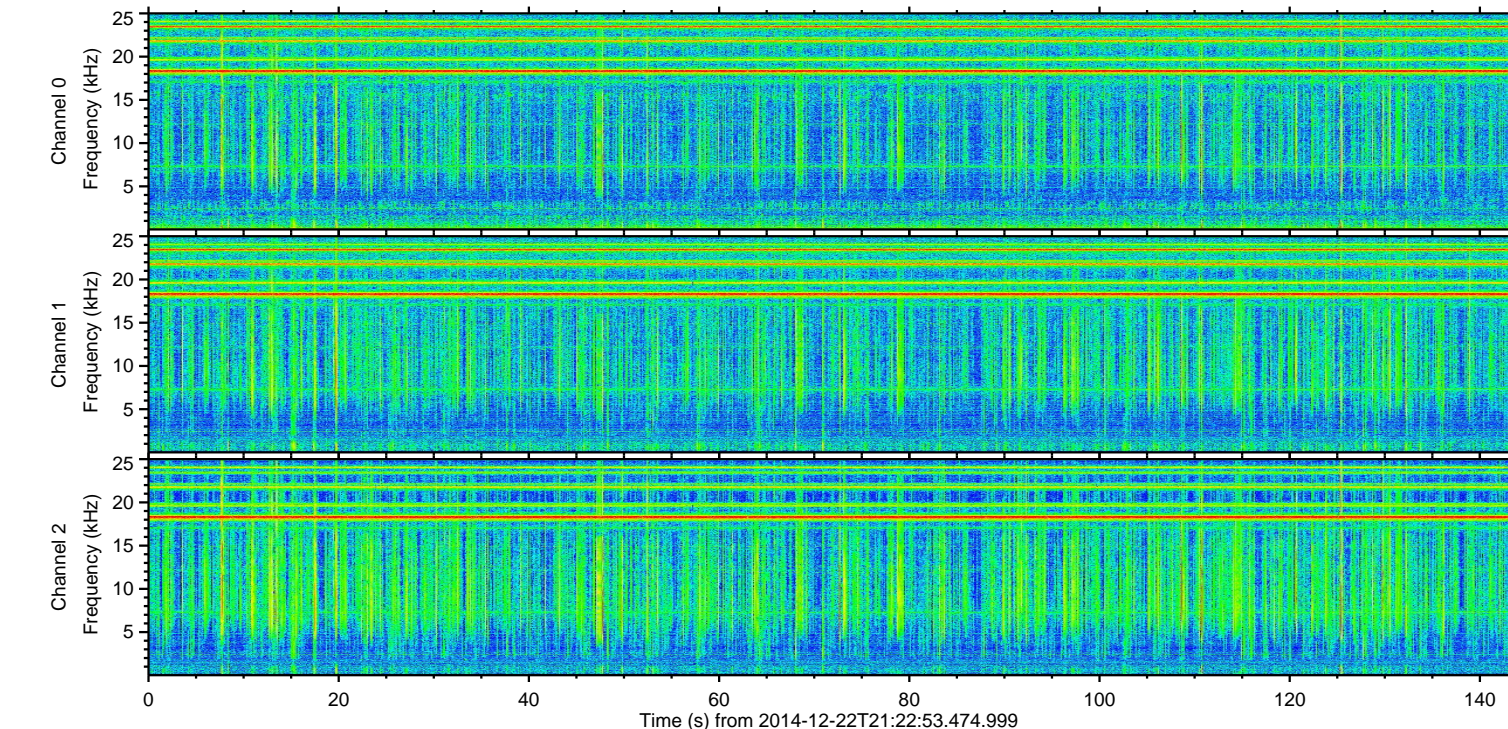
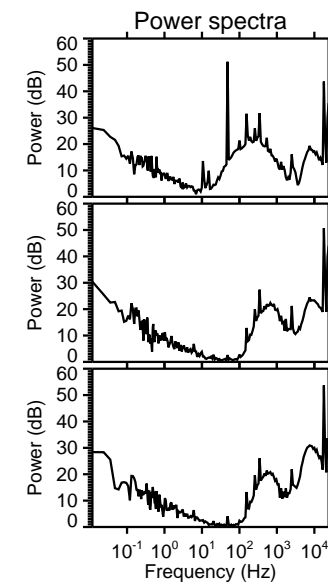
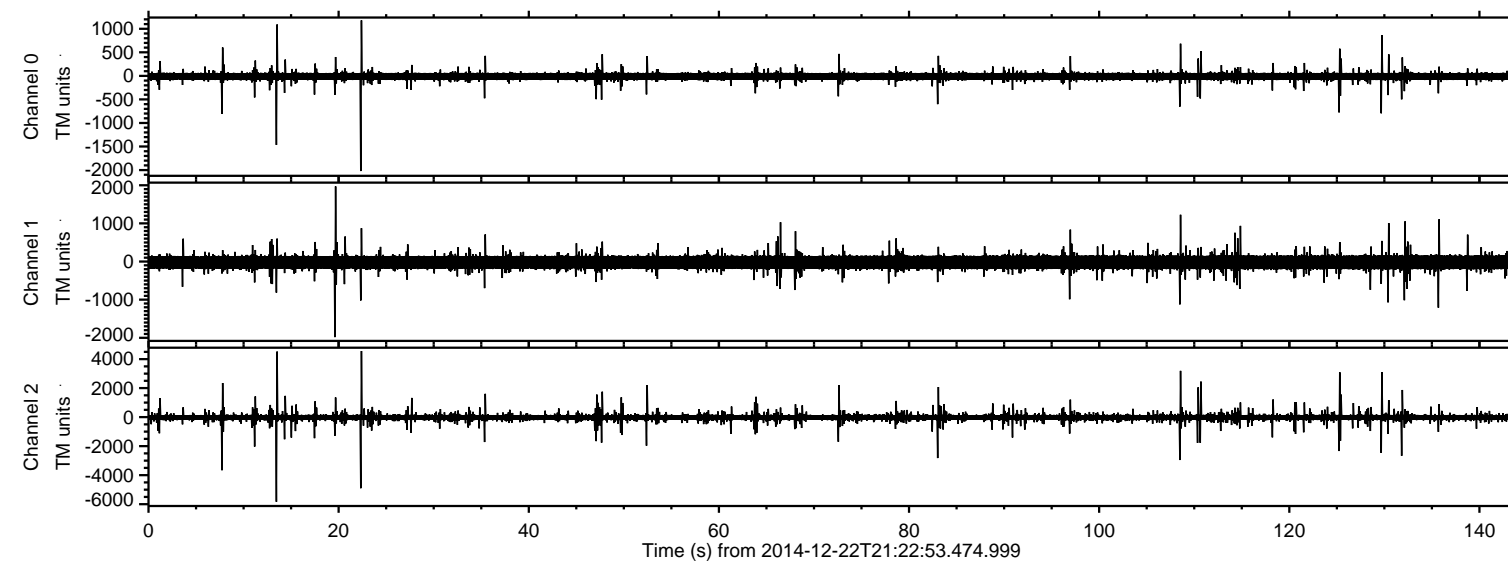


ELMAVAN 3D WAVEFORMS (Measured data sampled at 50 kHz) 49696 packets of 144 samples from 2014-12-22T21:22:53.474.999.

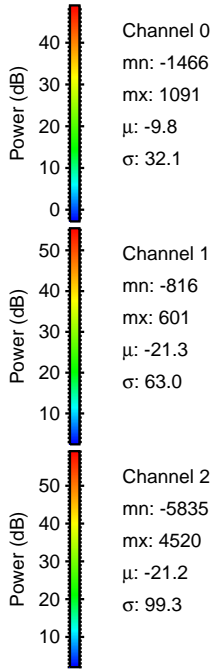
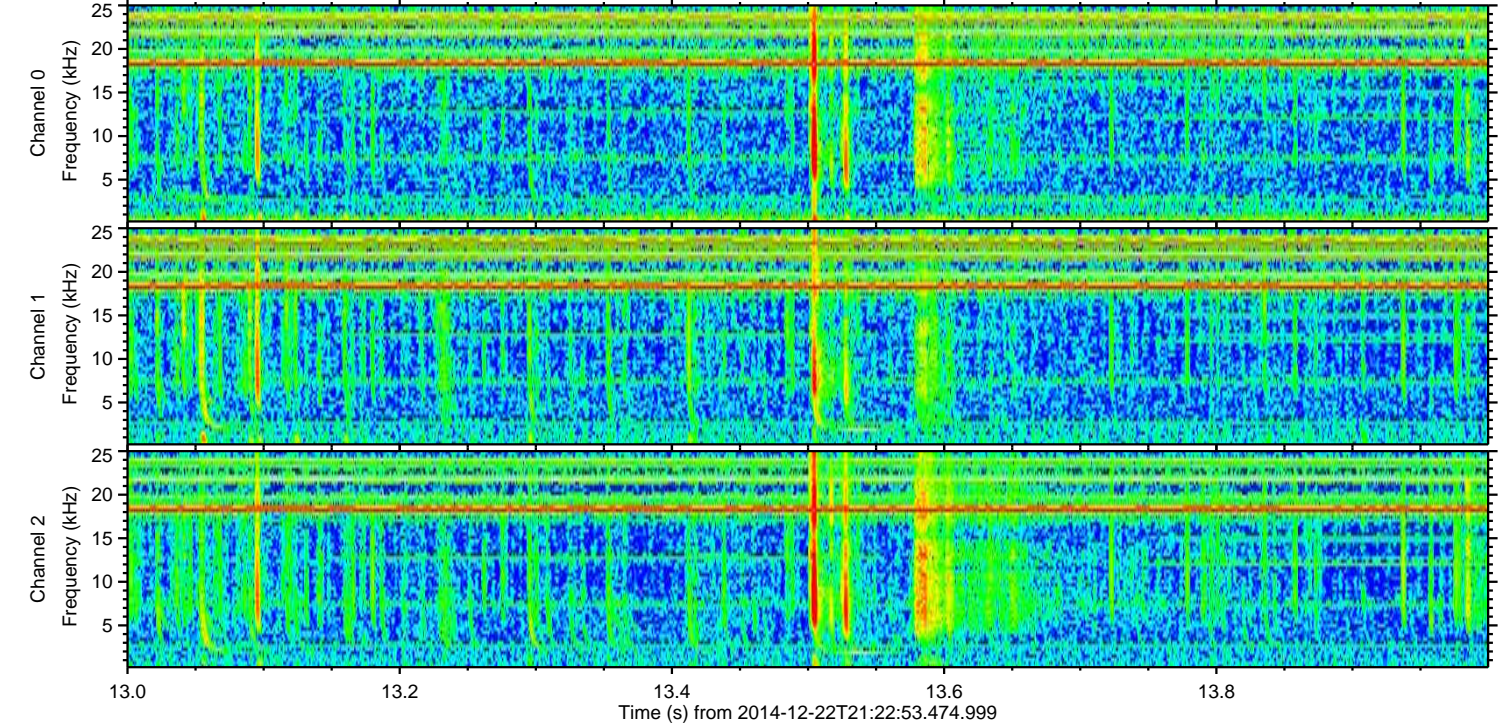
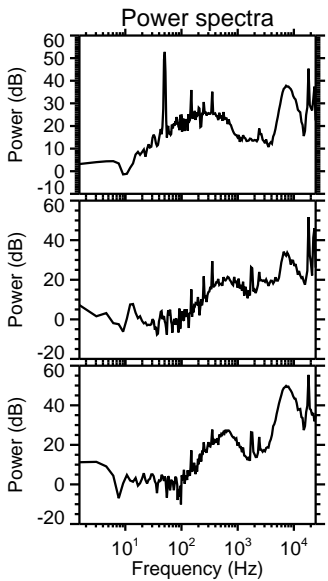
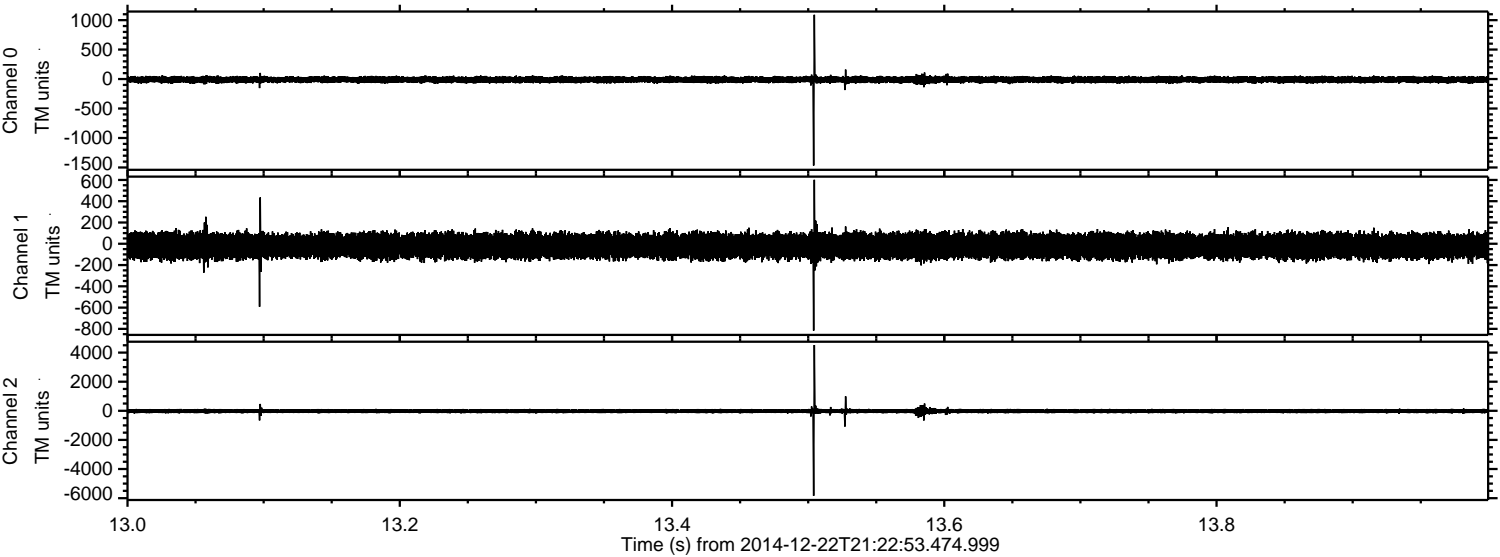
Processed Mon Dec 22 22:30:50 2014 by ELM ver.2012-10-06 from 001\_\_elm20141222\_212252\_\_dat00.bin





ELMAVAN 3D WAVEFORMS (Measured data sampled at 50 kHz) 49696 packets of 144 samples from 2014-12-22T21:22:53.474.999. Part 14/144

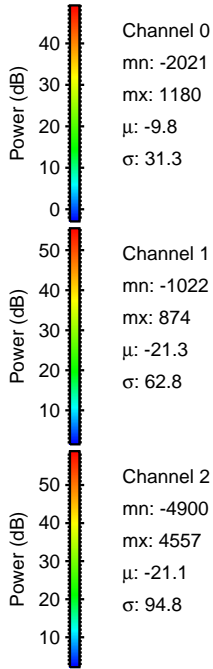
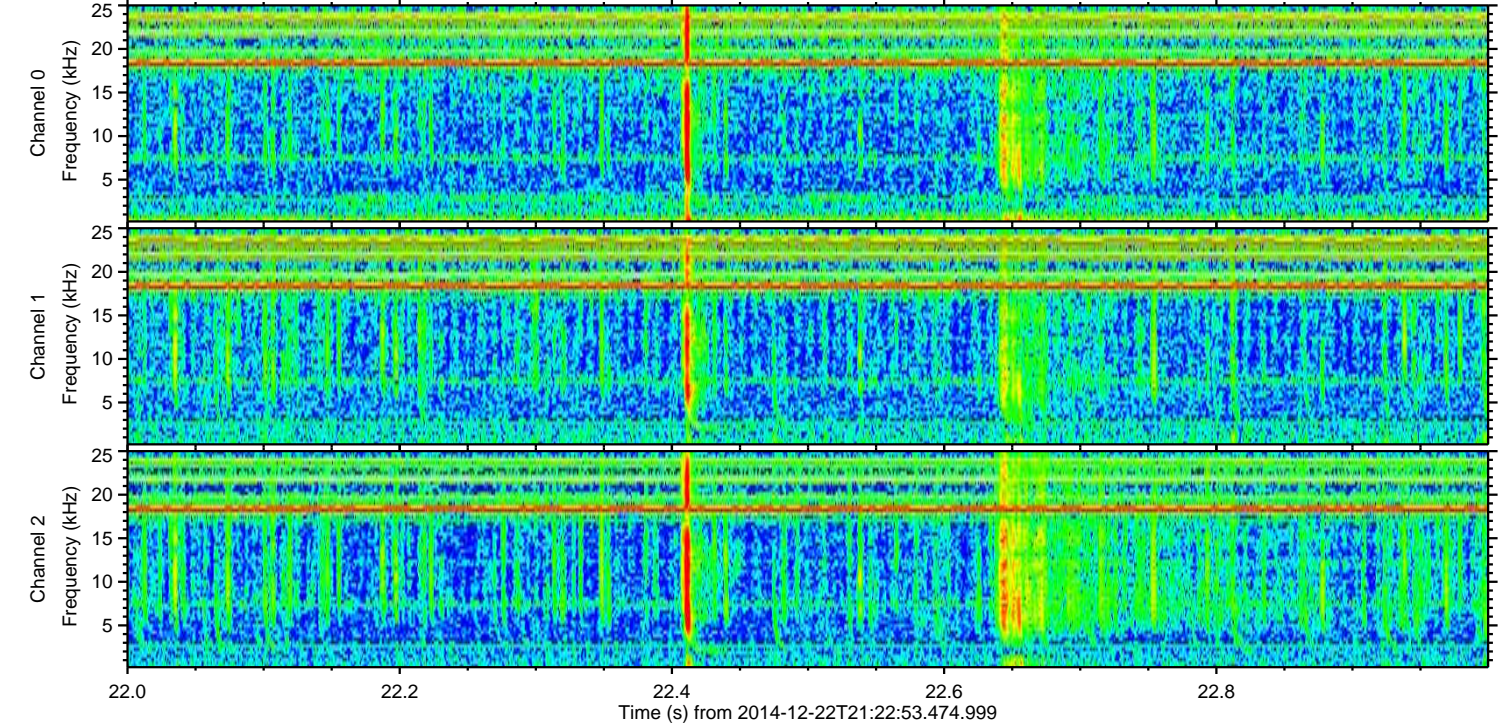
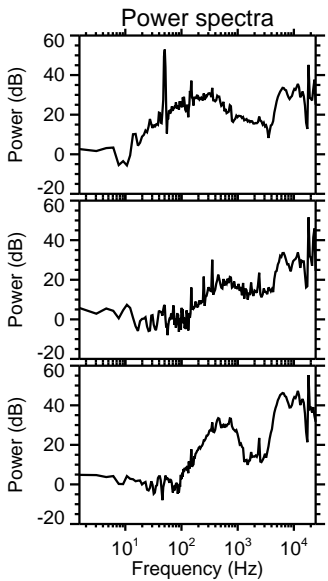
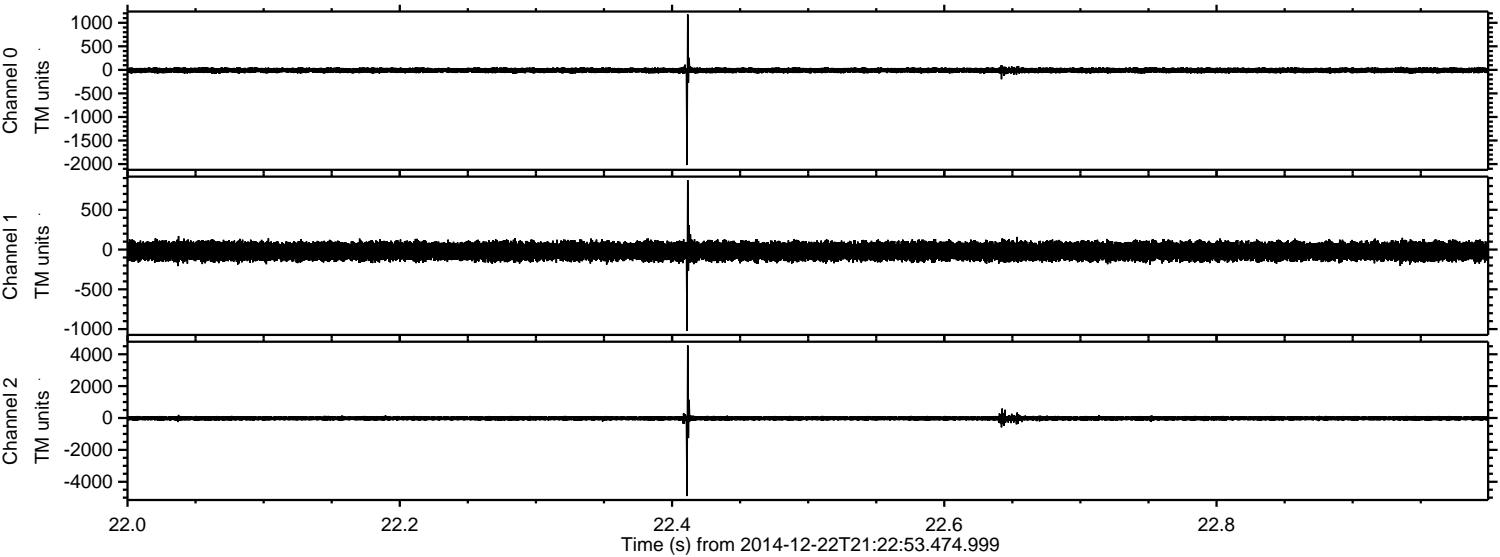
Processed Mon Dec 22 22:31:03 2014 by ELM ver.2012-10-06 from 001\_\_elm20141222\_212252\_\_dat00.bin





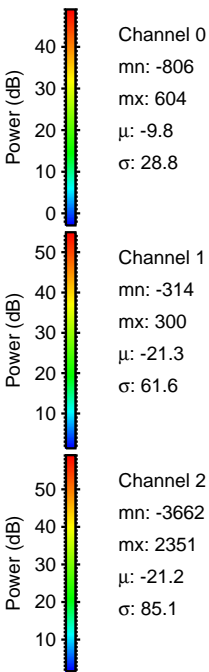
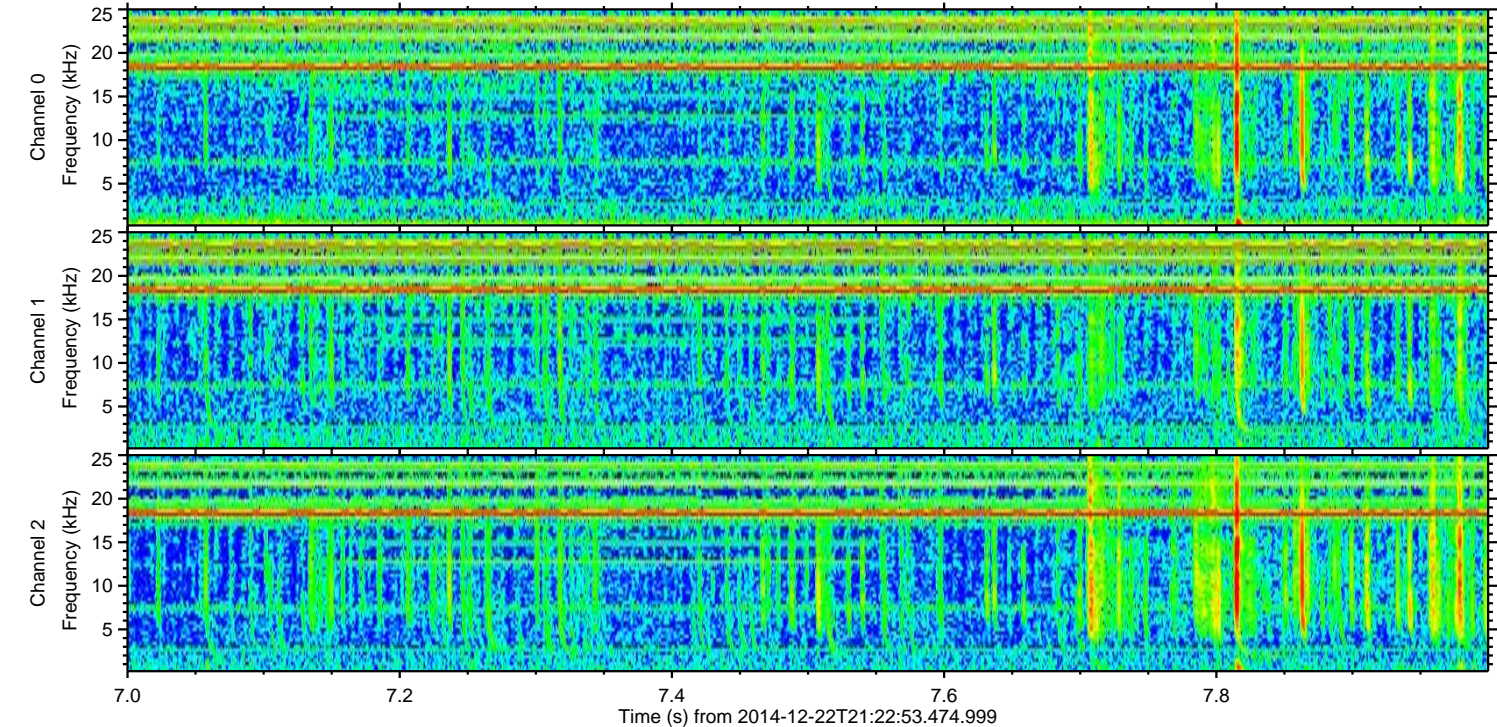
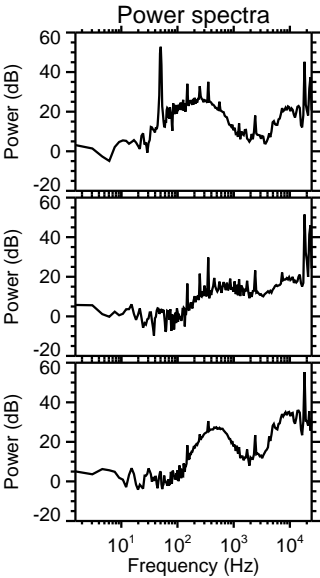
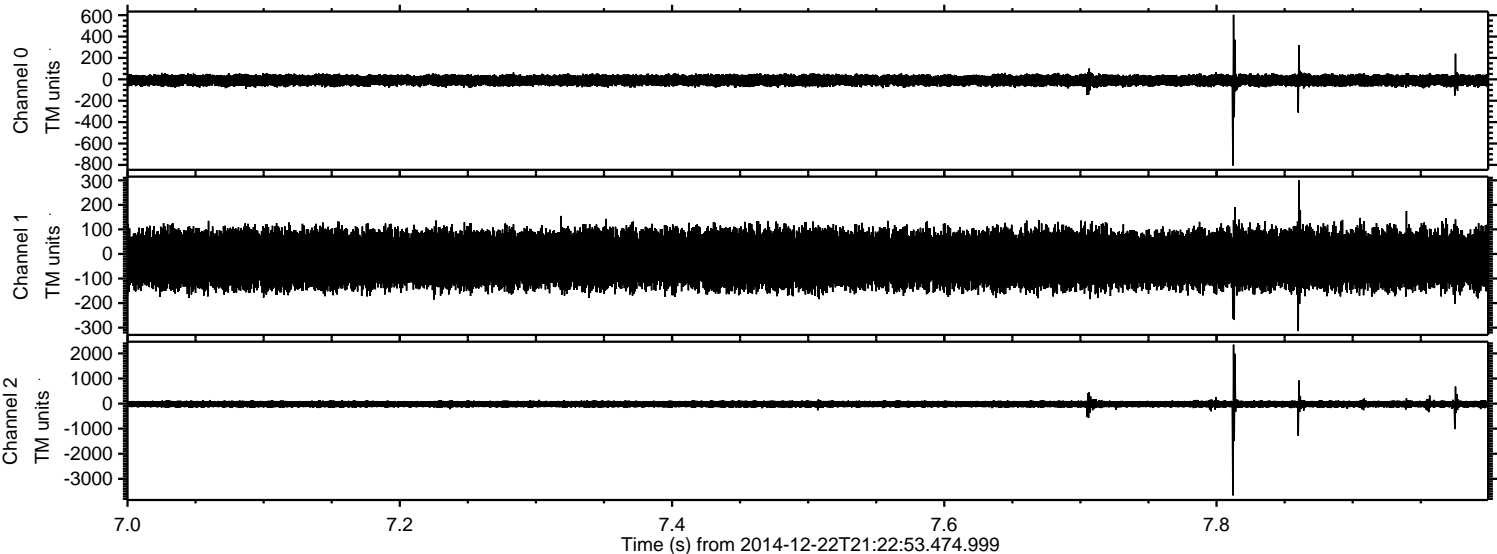
ELMAVAN 3D WAVEFORMS (Measured data sampled at 50 kHz) 49696 packets of 144 samples from 2014-12-22T21:22:53.474.999. Part 23/144

Processed Mon Dec 22 22:31:04 2014 by ELM ver.2012-10-06 from 001\_\_elm20141222\_212252\_\_dat00.bin





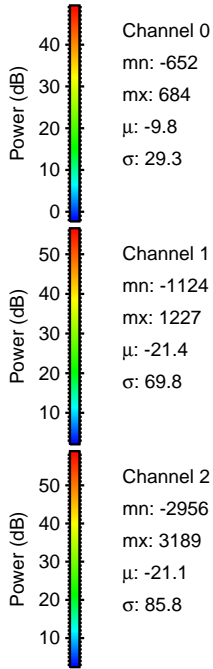
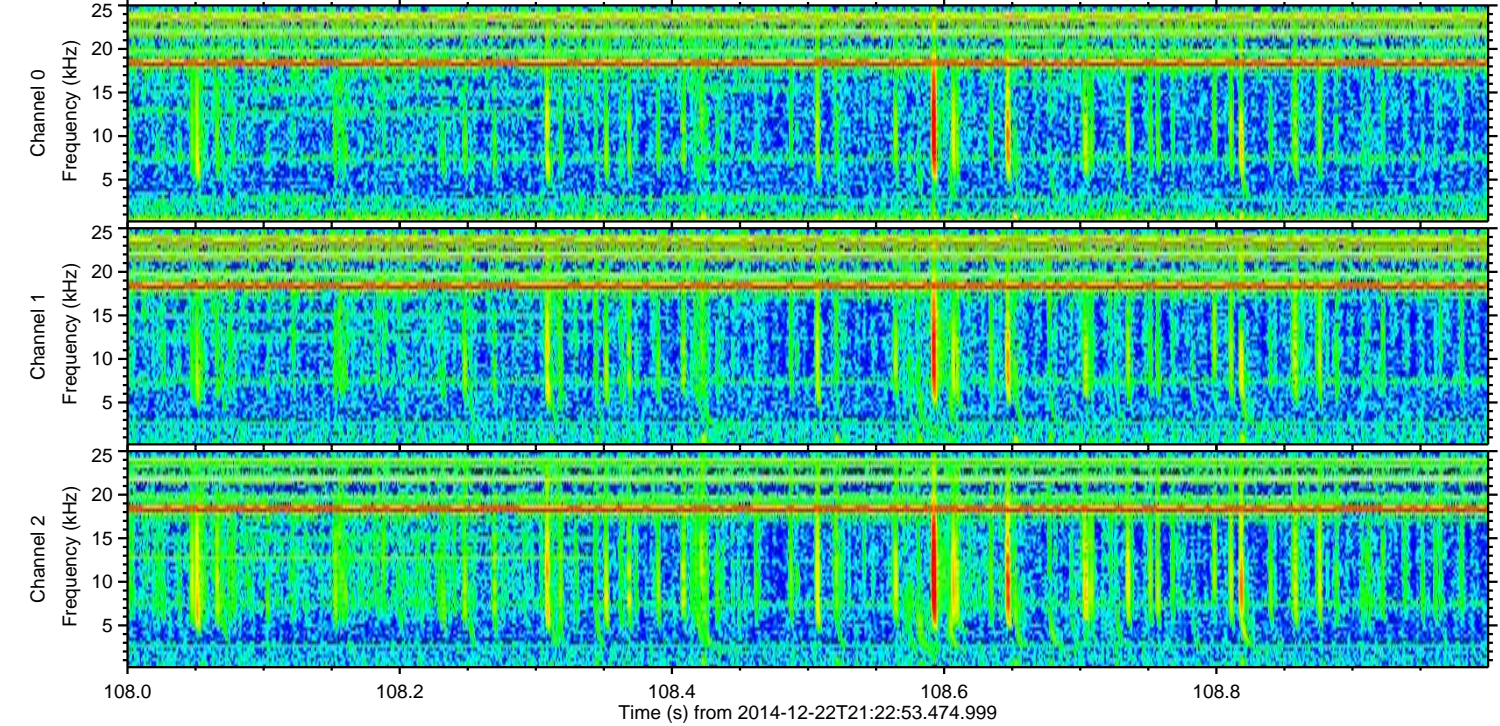
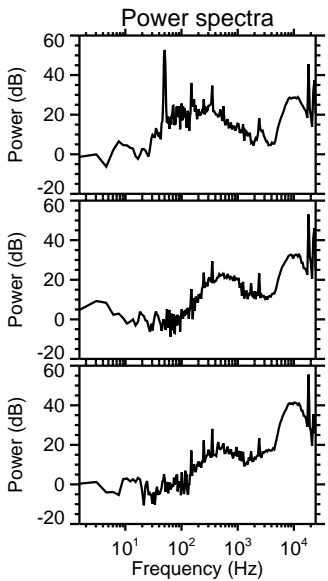
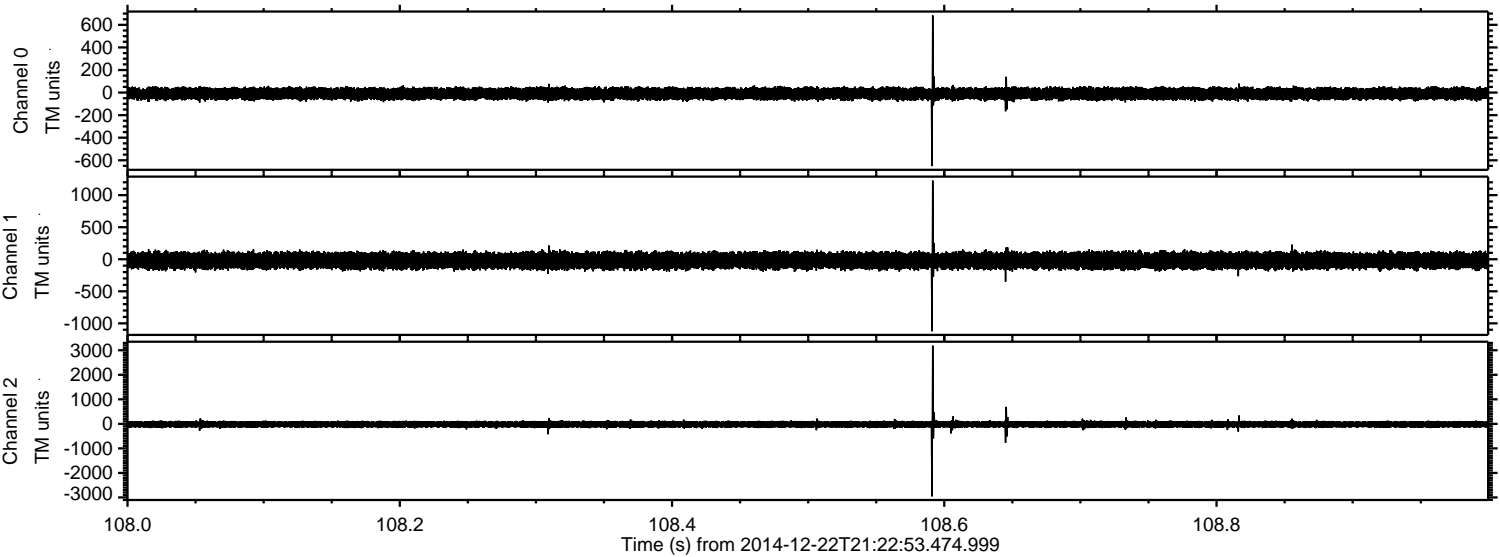
Processed Mon Dec 22 22:31:05 2014 by ELM ver.2012-10-06 from 001\_\_elm20141222\_212252\_\_dat00.bin





ELMAVAN 3D WAVEFORMS (Measured data sampled at 50 kHz) 49696 packets of 144 samples from 2014-12-22T21:22:53.474.999. Part 109/144

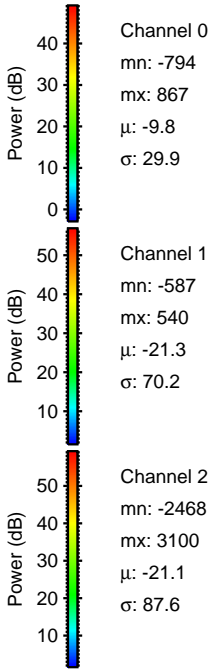
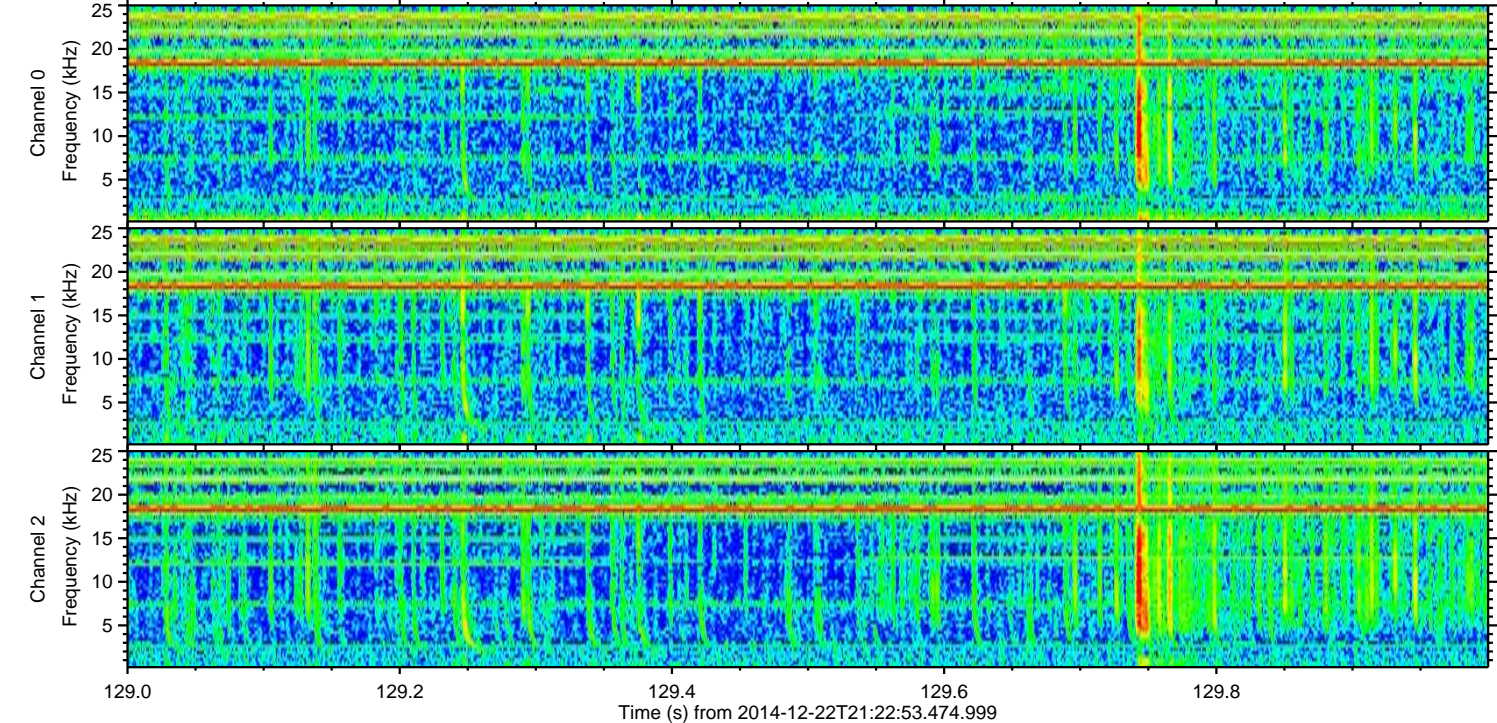
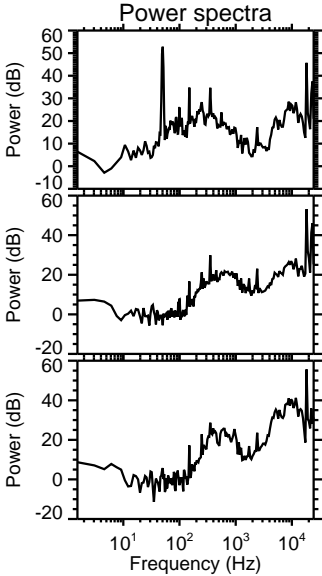
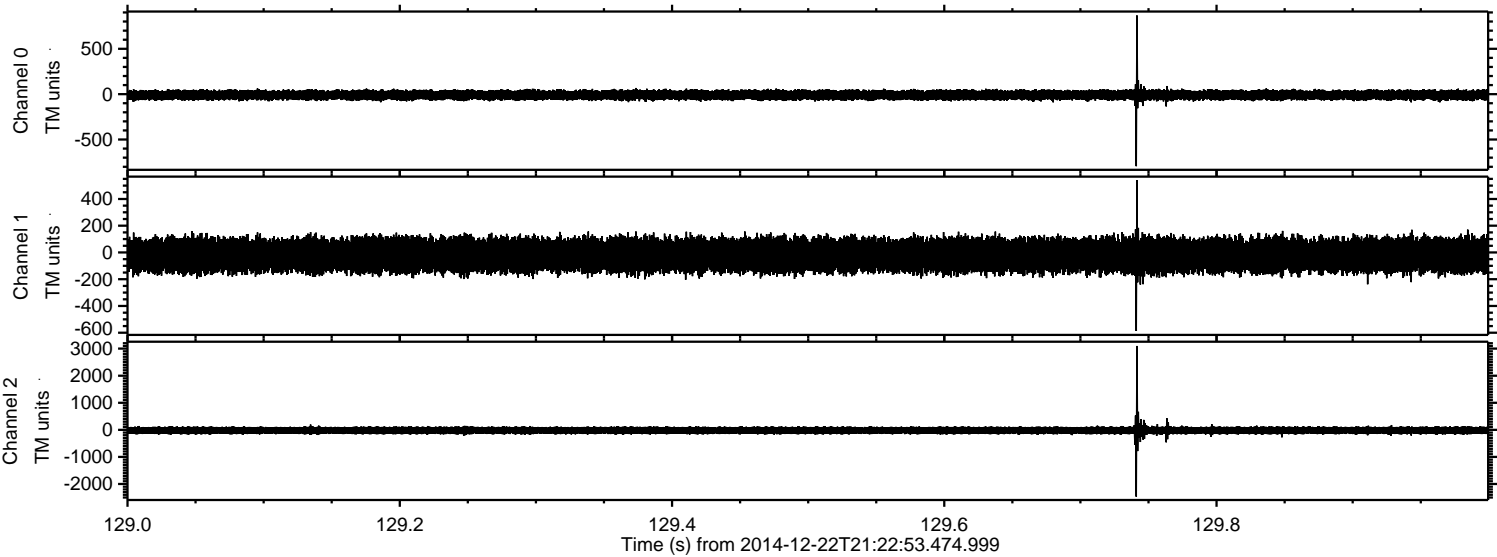
Processed Mon Dec 22 22:31:06 2014 by ELM ver.2012-10-06 from 001\_\_elm20141222\_212252\_\_dat00.bin





ELMAVAN 3D WAVEFORMS (Measured data sampled at 50 kHz) 49696 packets of 144 samples from 2014-12-22T21:22:53.474.999. Part 130/144

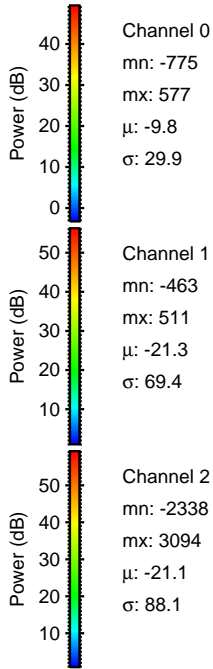
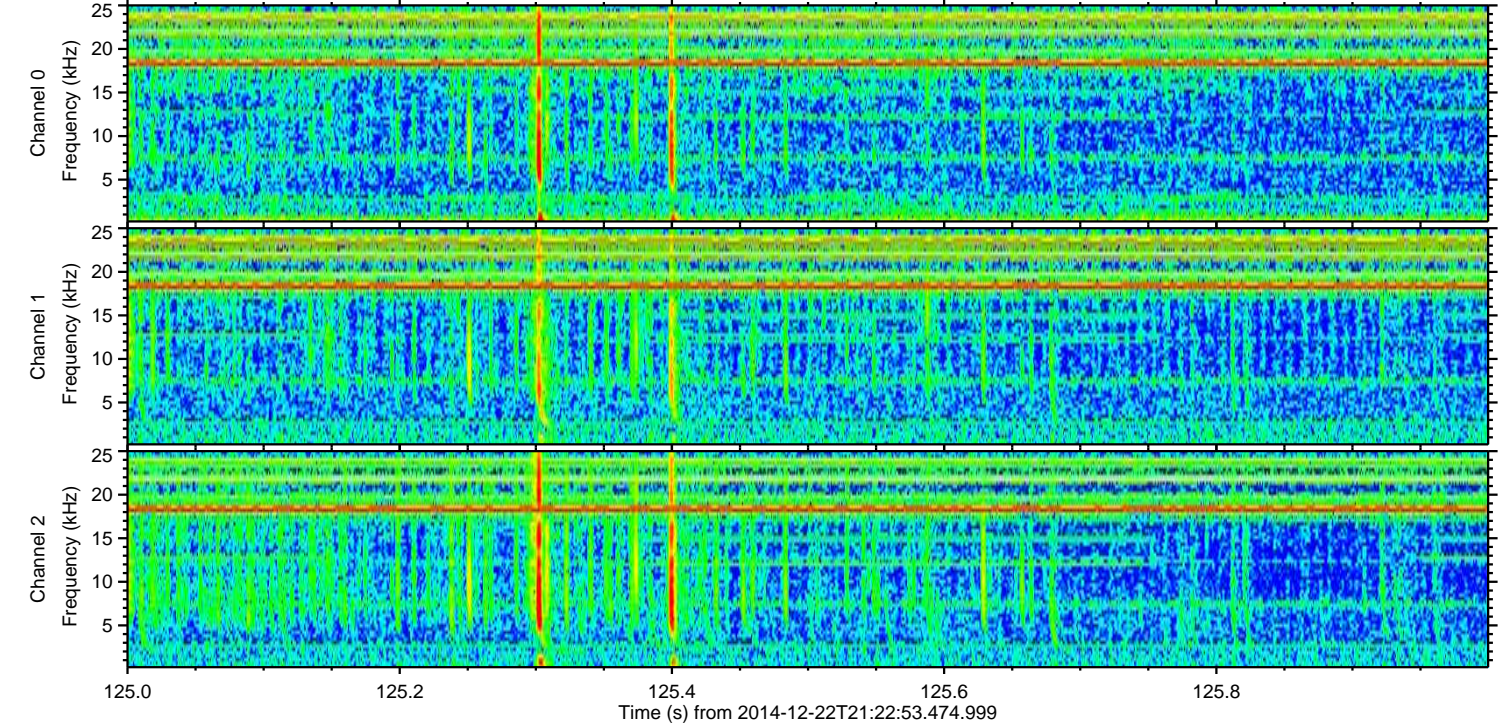
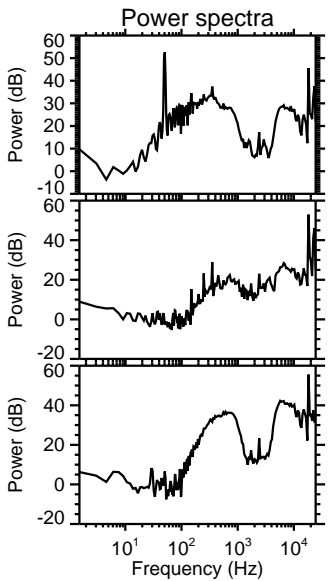
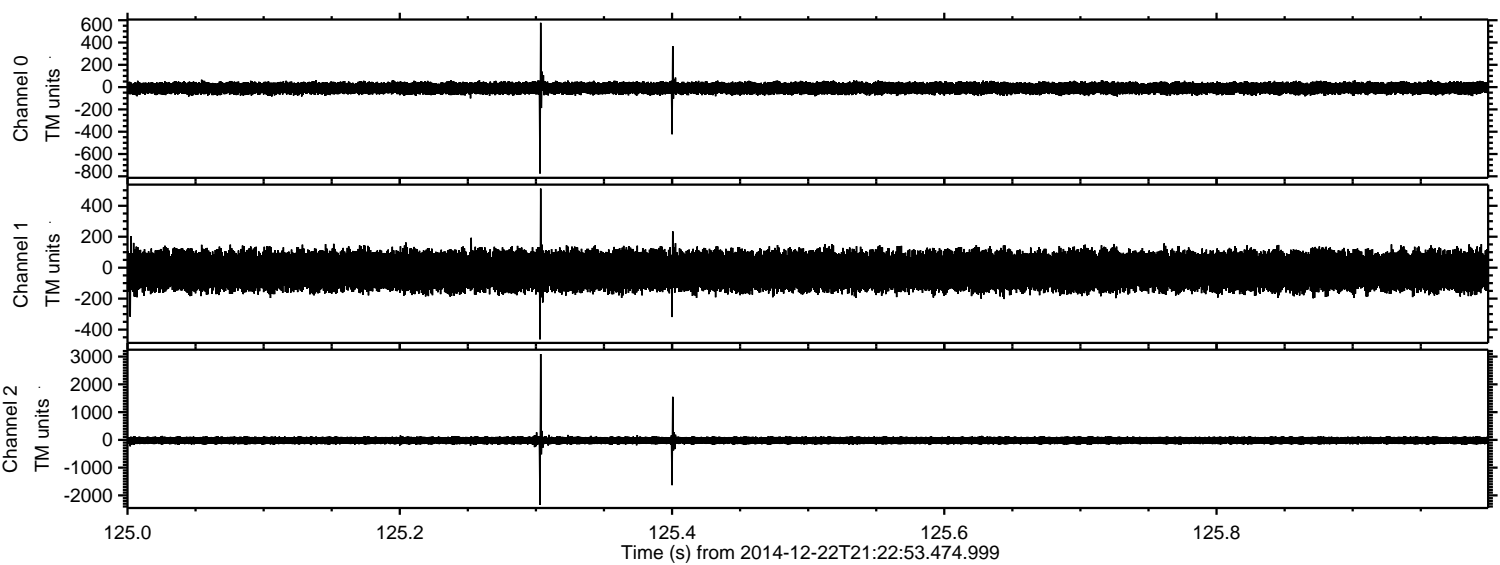
Processed Mon Dec 22 22:31:06 2014 by ELM ver.2012-10-06 from 001\_\_elm20141222\_212252\_\_dat00.bin





ELMAVAN 3D WAVEFORMS (Measured data sampled at 50 kHz) 49696 packets of 144 samples from 2014-12-22T21:22:53.474.999. Part 126/144

Processed Mon Dec 22 22:31:07 2014 by ELM ver.2012-10-06 from 001\_\_elm20141222\_212252\_\_dat00.bin



Channel 0  
mn: -775  
mx: 577  
 $\mu$ : -9.8  
 $\sigma$ : 29.9

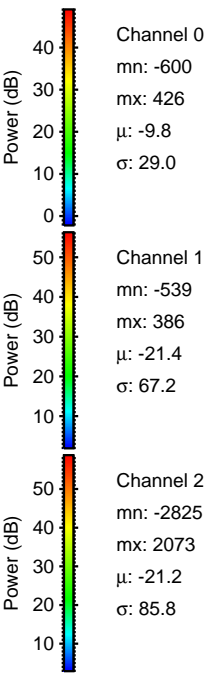
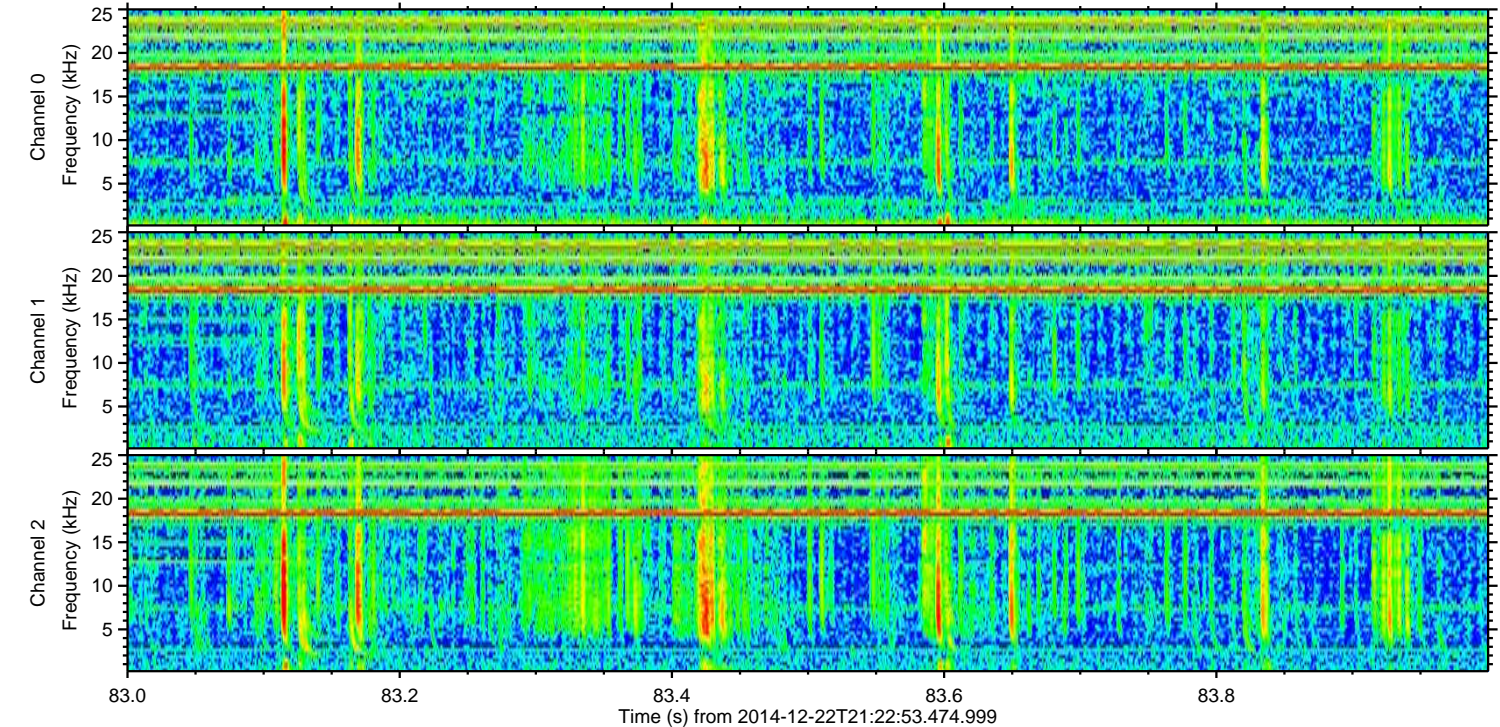
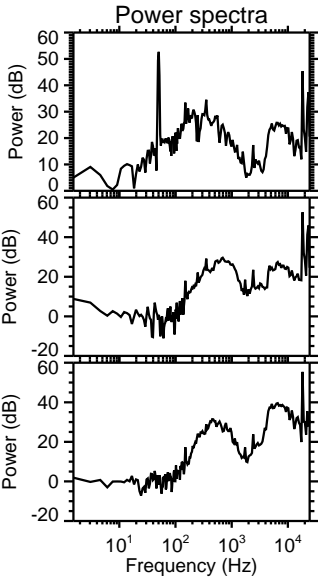
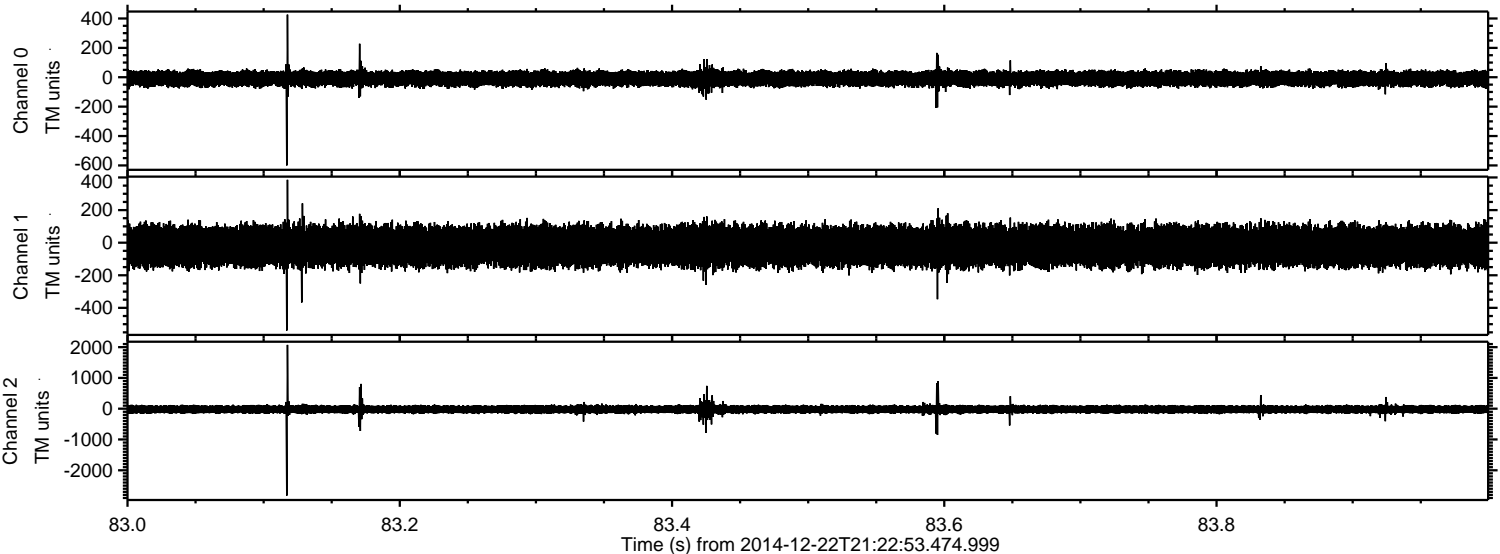
Channel 1  
mn: -463  
mx: 511  
 $\mu$ : -21.3  
 $\sigma$ : 69.4

Channel 2  
mn: -2338  
mx: 3094  
 $\mu$ : -21.1  
 $\sigma$ : 88.1



ELMAVAN 3D WAVEFORMS (Measured data sampled at 50 kHz) 49696 packets of 144 samples from 2014-12-22T21:22:53.474.999. Part 84/144

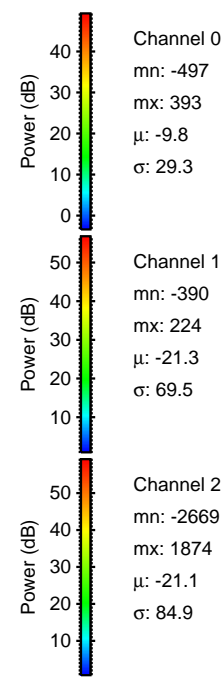
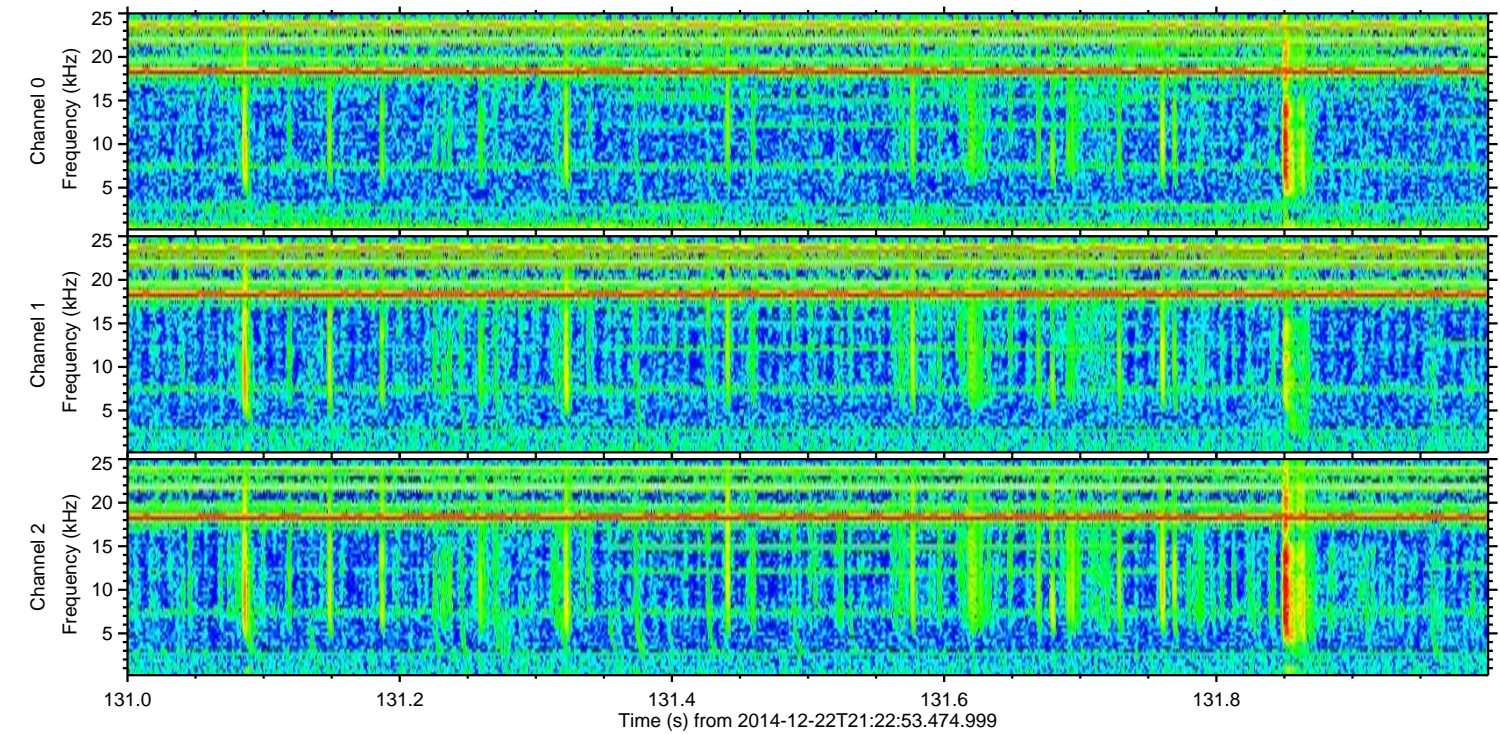
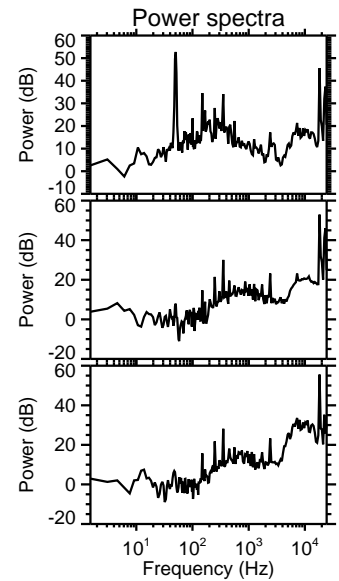
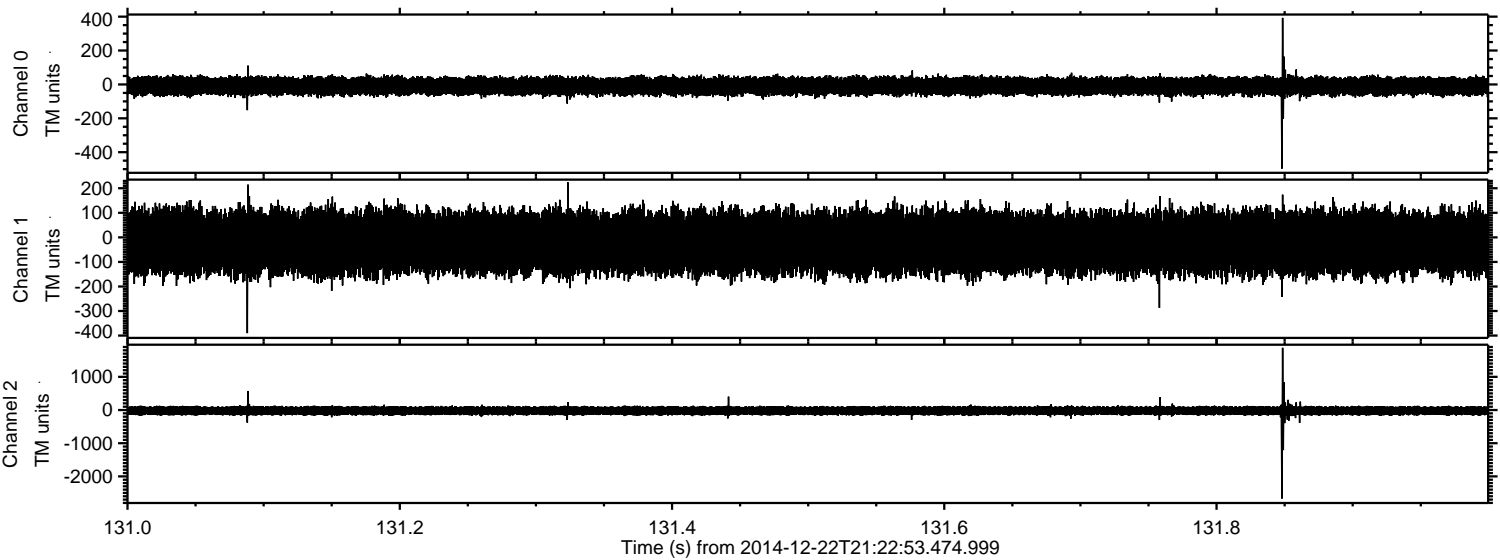
Processed Mon Dec 22 22:31:08 2014 by ELM ver.2012-10-06 from 001\_\_elm20141222\_212252\_\_dat00.bin





ELMAVAN 3D WAVEFORMS (Measured data sampled at 50 kHz) 49696 packets of 144 samples from 2014-12-22T21:22:53.474.999. Part 132/144

Processed Mon Dec 22 22:31:09 2014 by ELM ver.2012-10-06 from 001\_\_elm20141222\_212252\_\_dat00.bin



Channel 0  
mn: -497  
mx: 393  
 $\mu$ : -9.8  
 $\sigma$ : 29.3

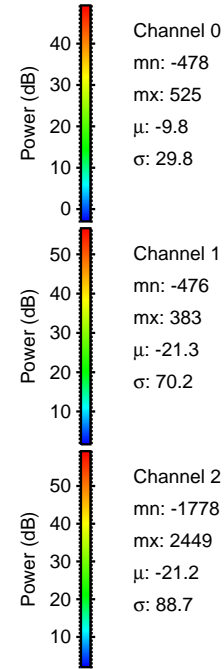
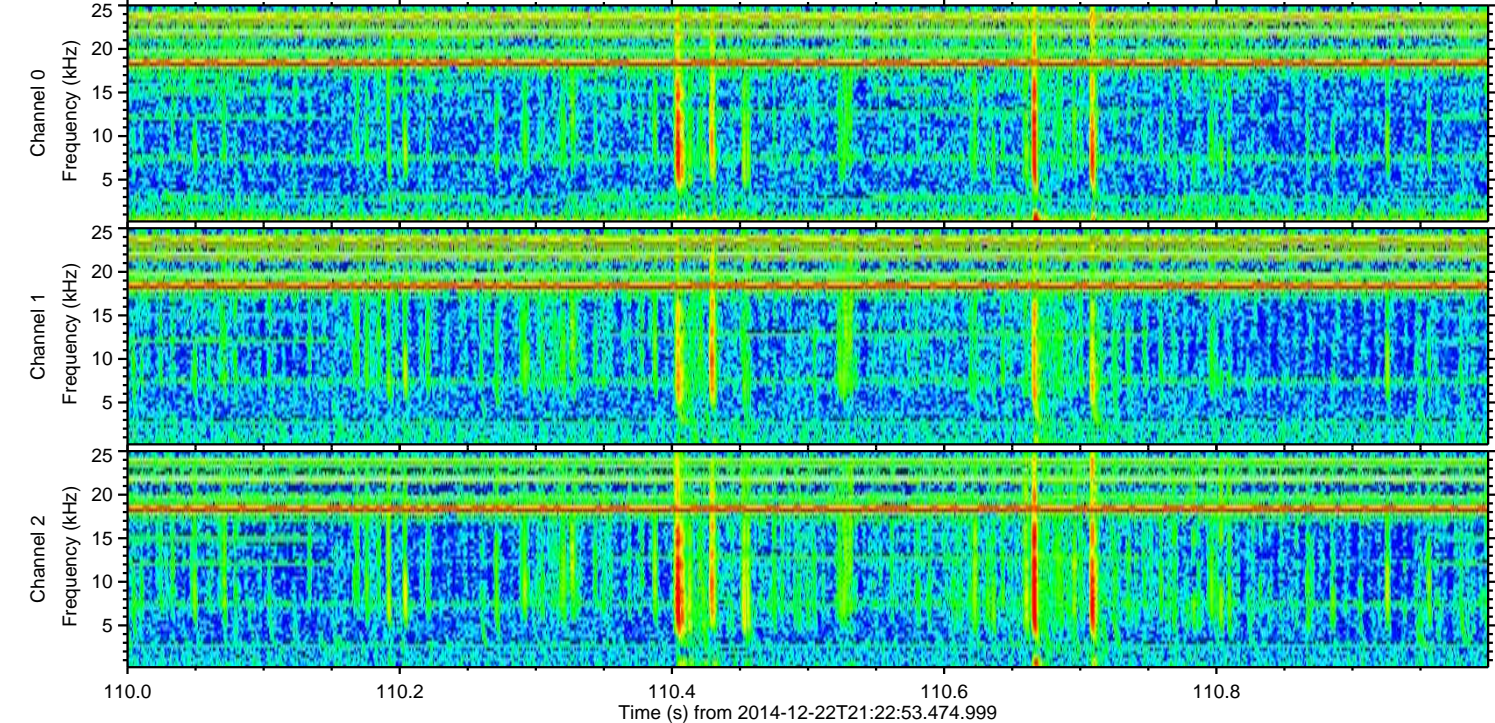
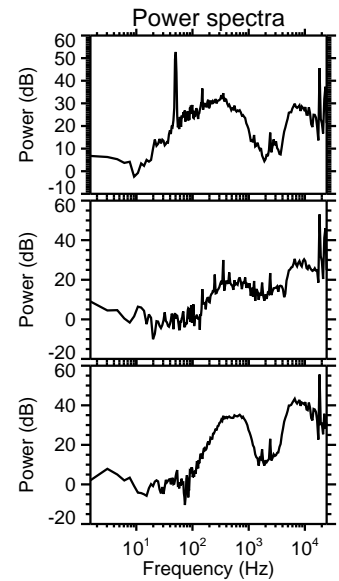
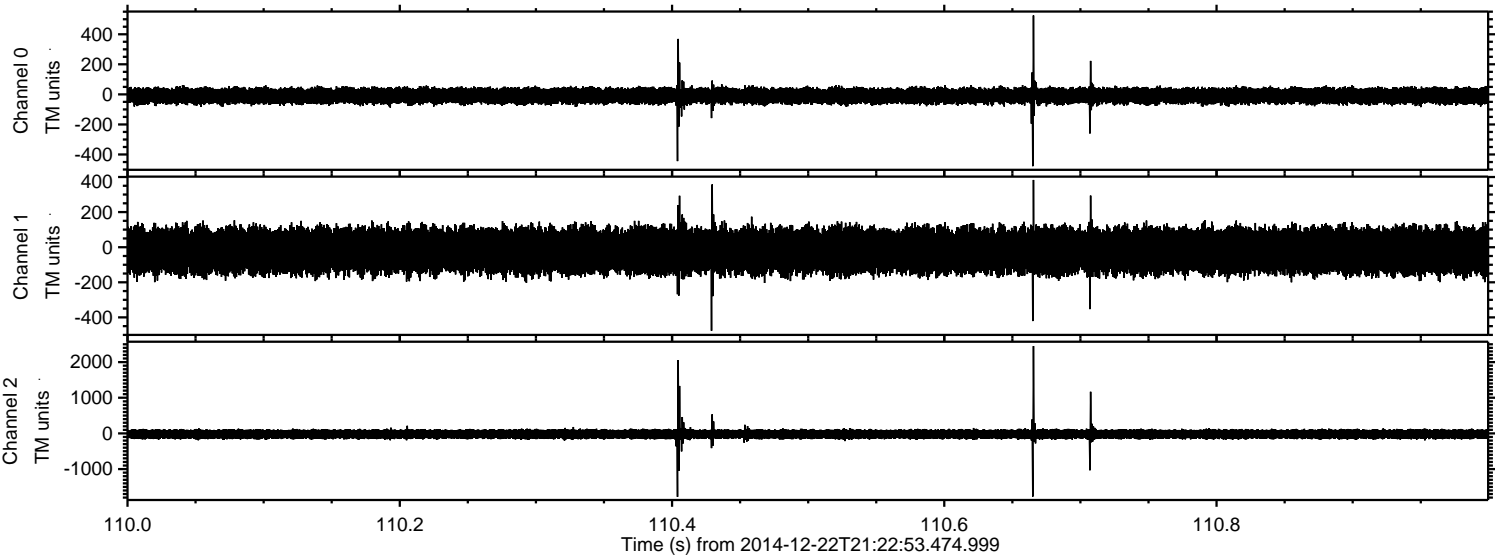
Channel 1  
mn: -390  
mx: 224  
 $\mu$ : -21.3  
 $\sigma$ : 69.5

Channel 2  
mn: -2669  
mx: 1874  
 $\mu$ : -21.1  
 $\sigma$ : 84.9



ELMAVAN 3D WAVEFORMS (Measured data sampled at 50 kHz) 49696 packets of 144 samples from 2014-12-22T21:22:53.474.999. Part 111/144

Processed Mon Dec 22 22:31:10 2014 by ELM ver.2012-10-06 from 001\_\_elm20141222\_212252\_\_dat00.bin





Processed Mon Dec 22 22:31:11 2014 by ELM ver.2012-10-06 from 001\_\_elm20141222\_212252\_\_dat00.bin

