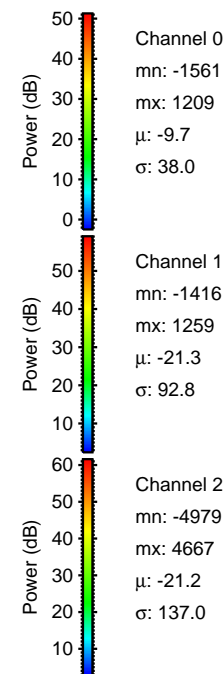
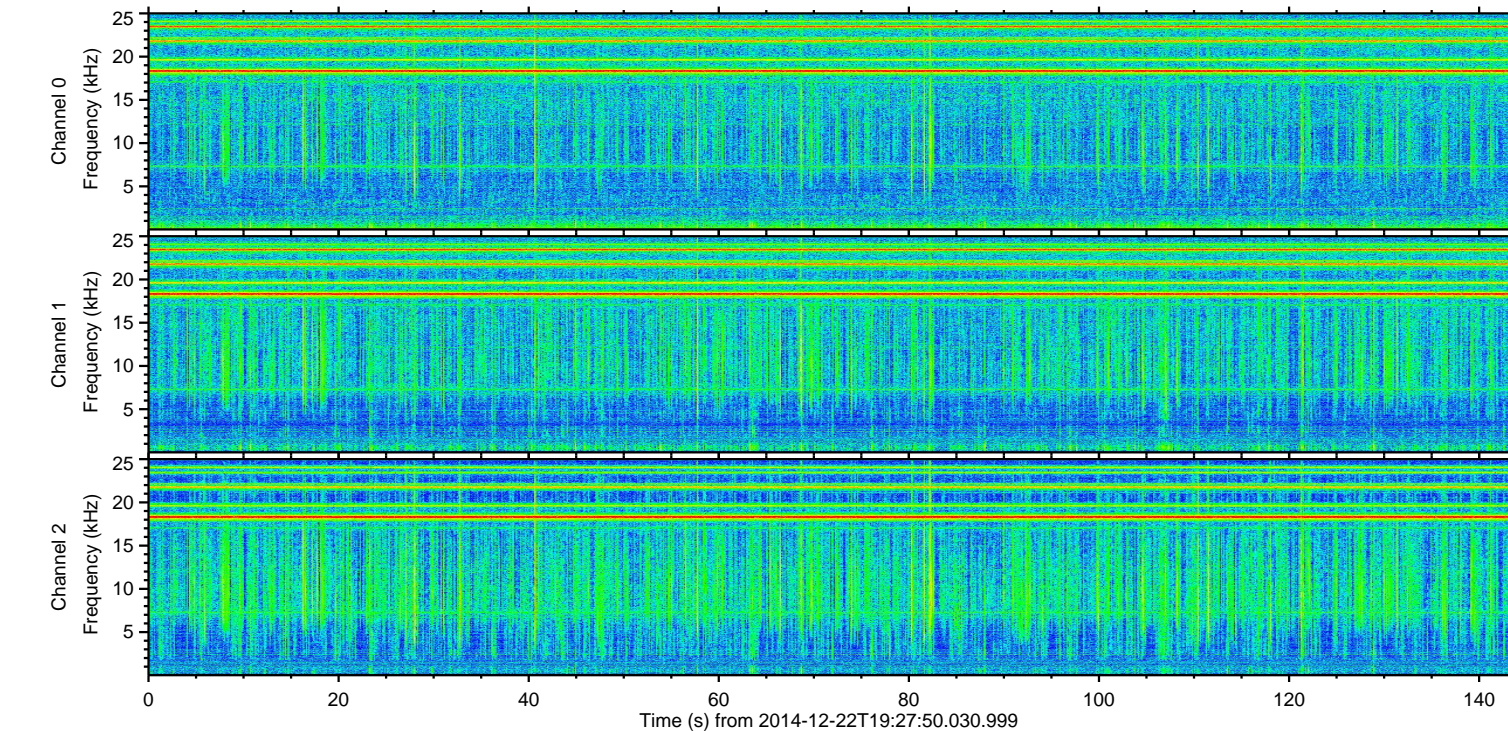
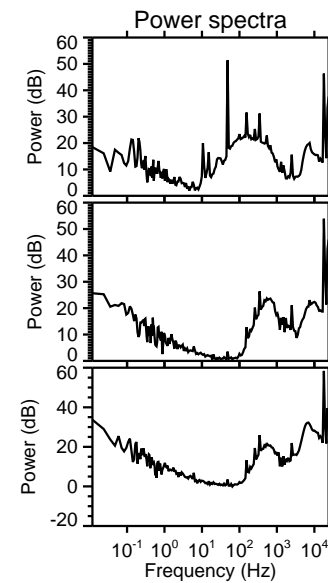
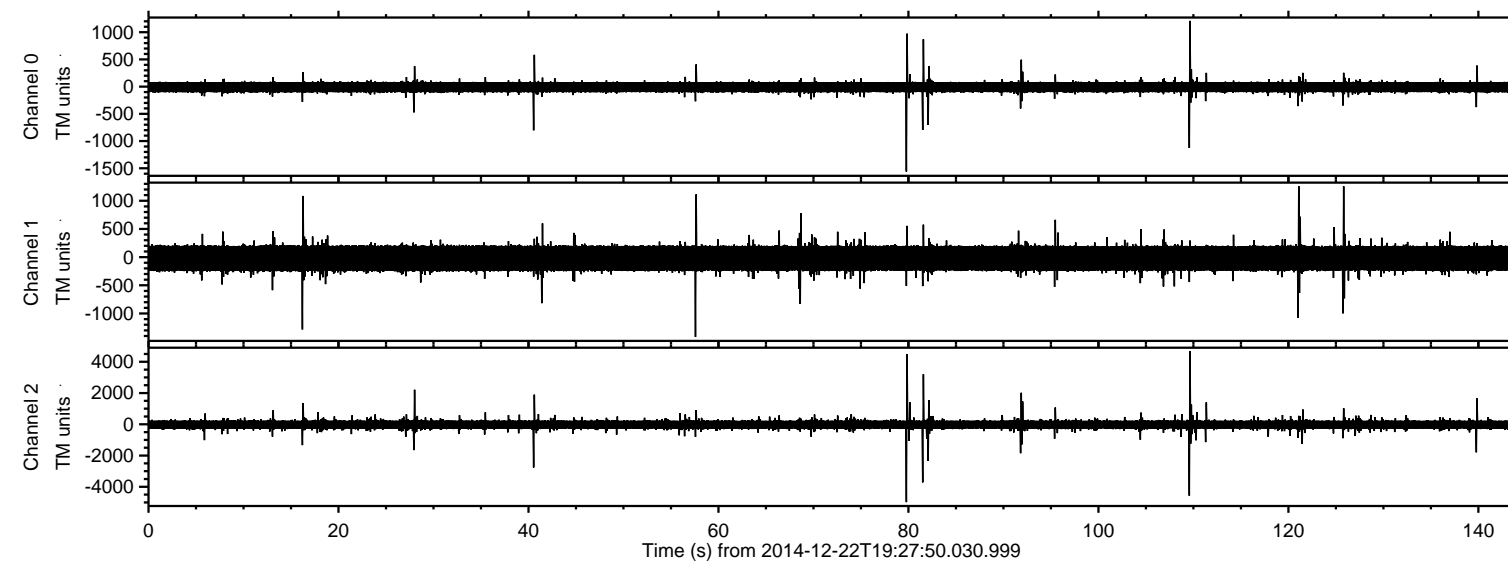
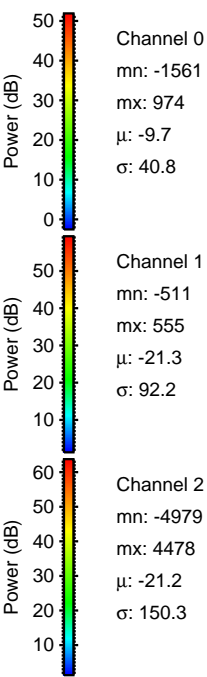
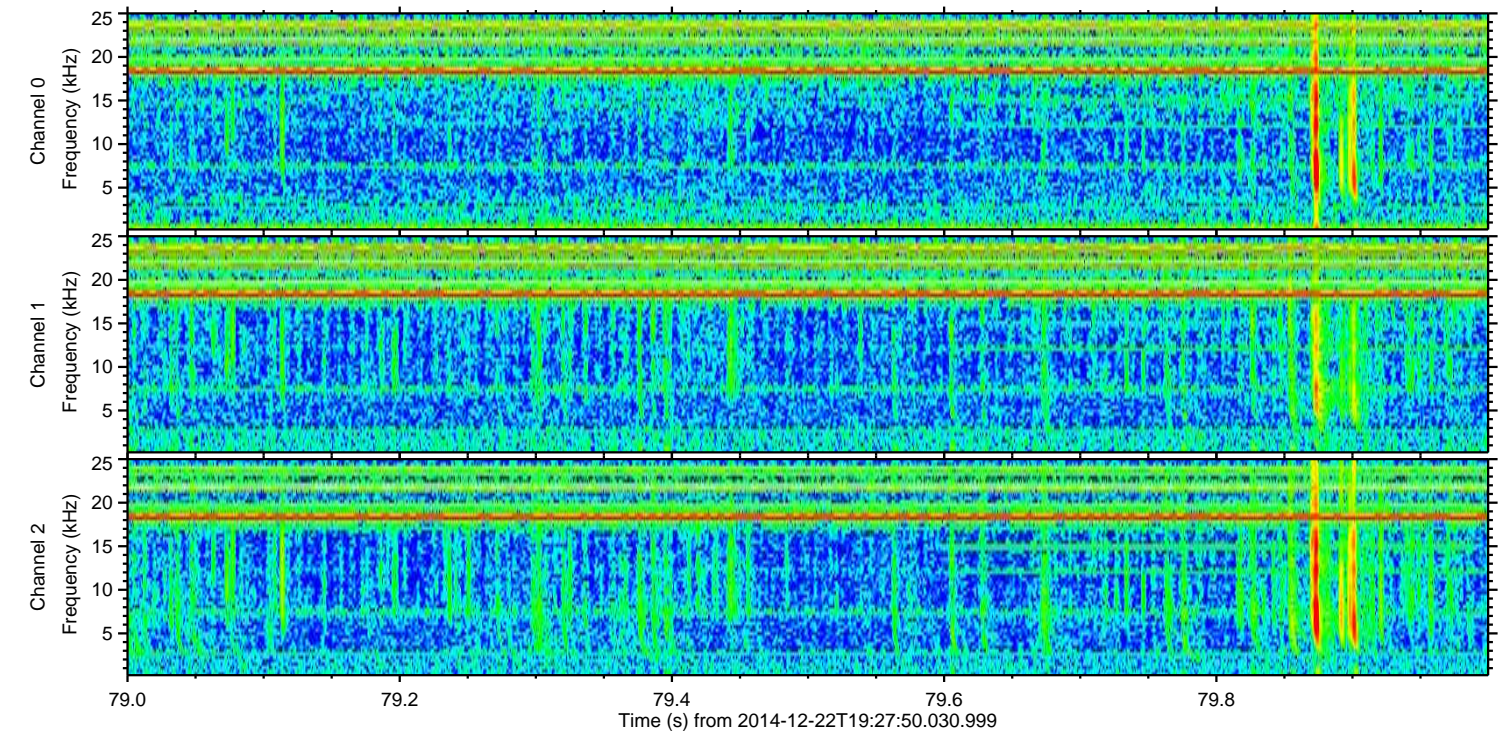
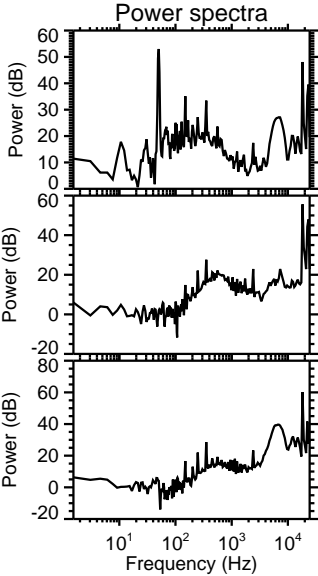
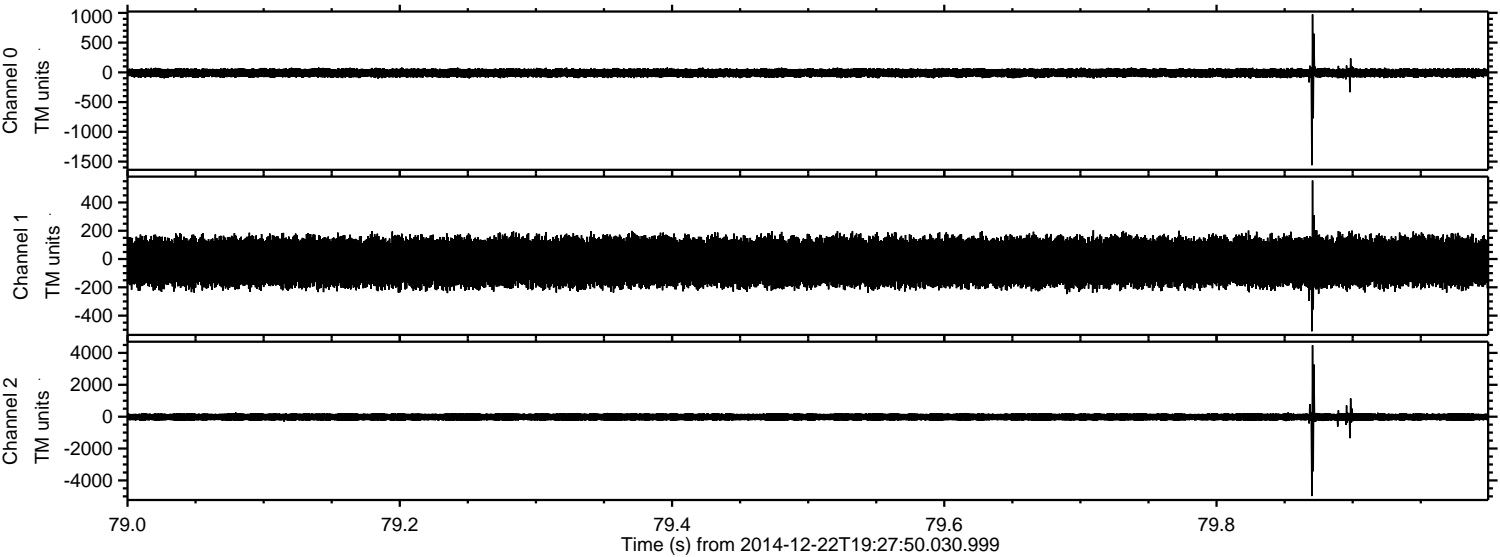


ELMAVAN 3D WAVEFORMS (Measured data sampled at 50 kHz) 49735 packets of 144 samples from 2014-12-22T19:27:50.030.999.

Processed Mon Dec 22 20:35:12 2014 by ELM ver.2012-10-06 from 001__elm20141222_192749__dat00.bin

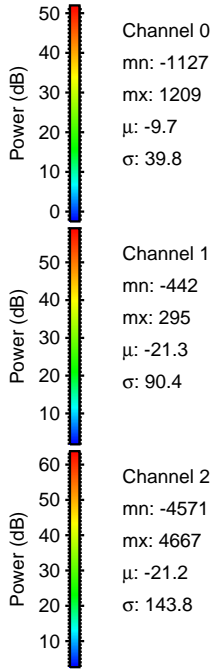
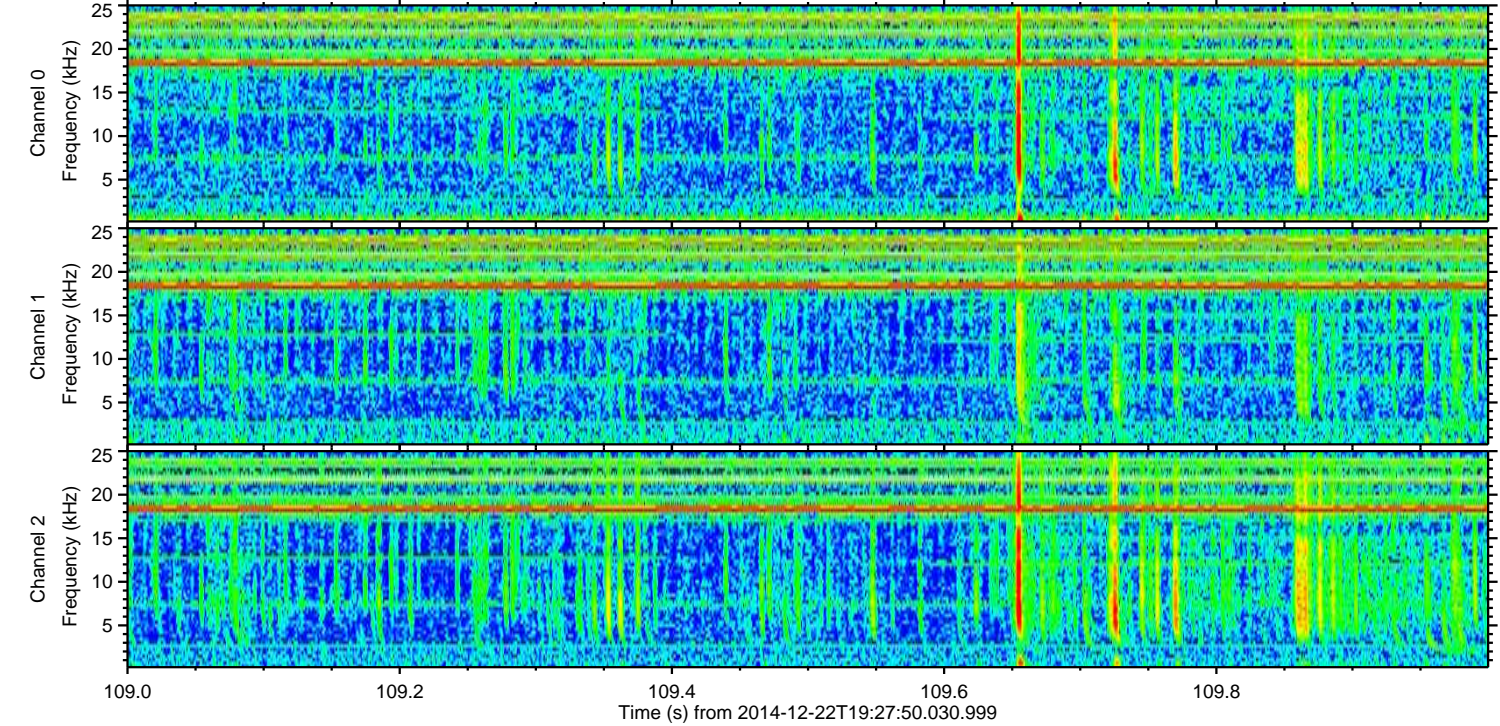
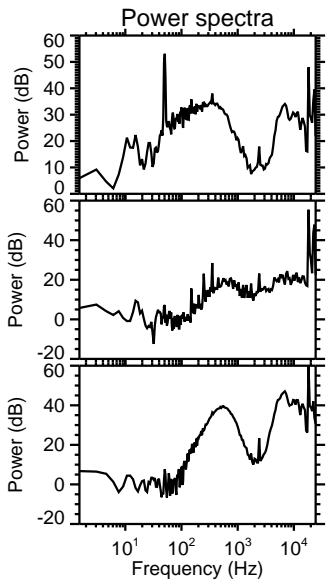
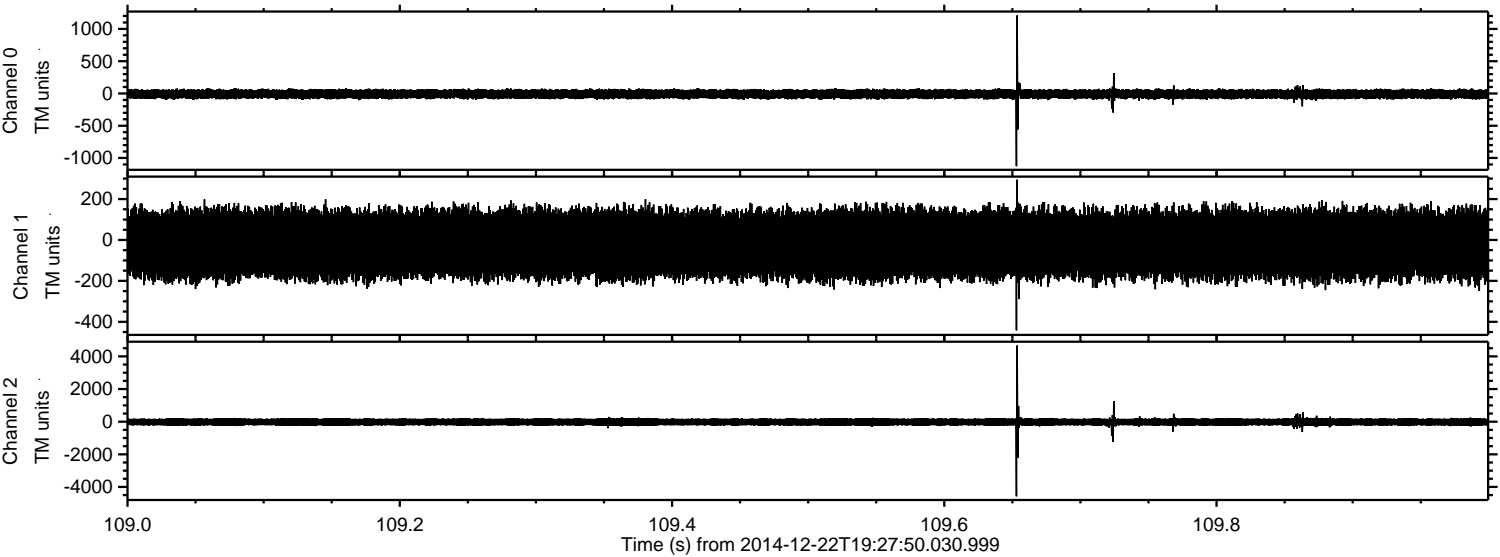


Processed Mon Dec 22 20:35:24 2014 by ELM ver.2012-10-06 from 001__elm20141222_192749__dat00.bin

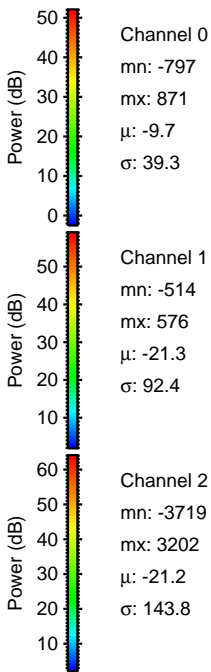
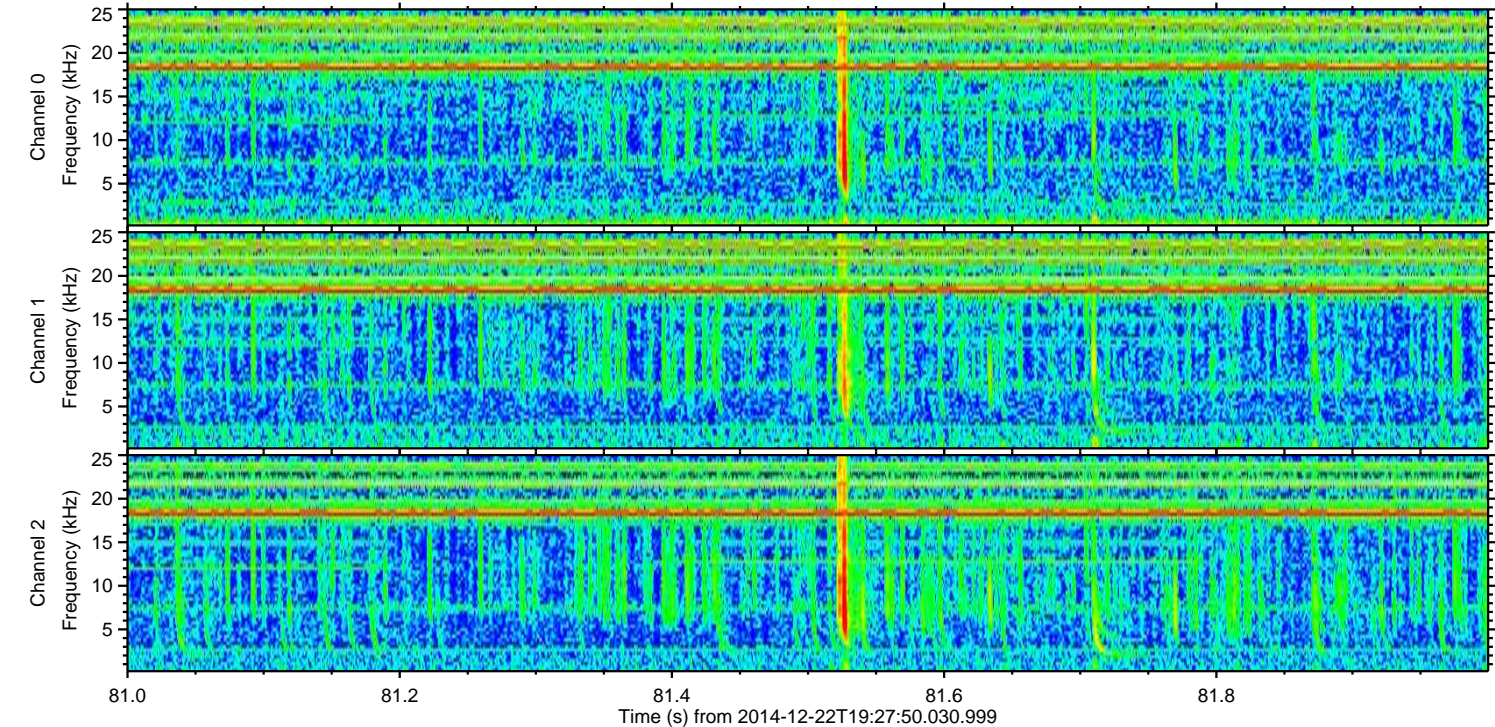
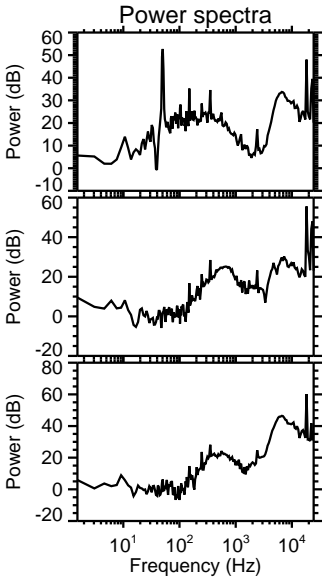
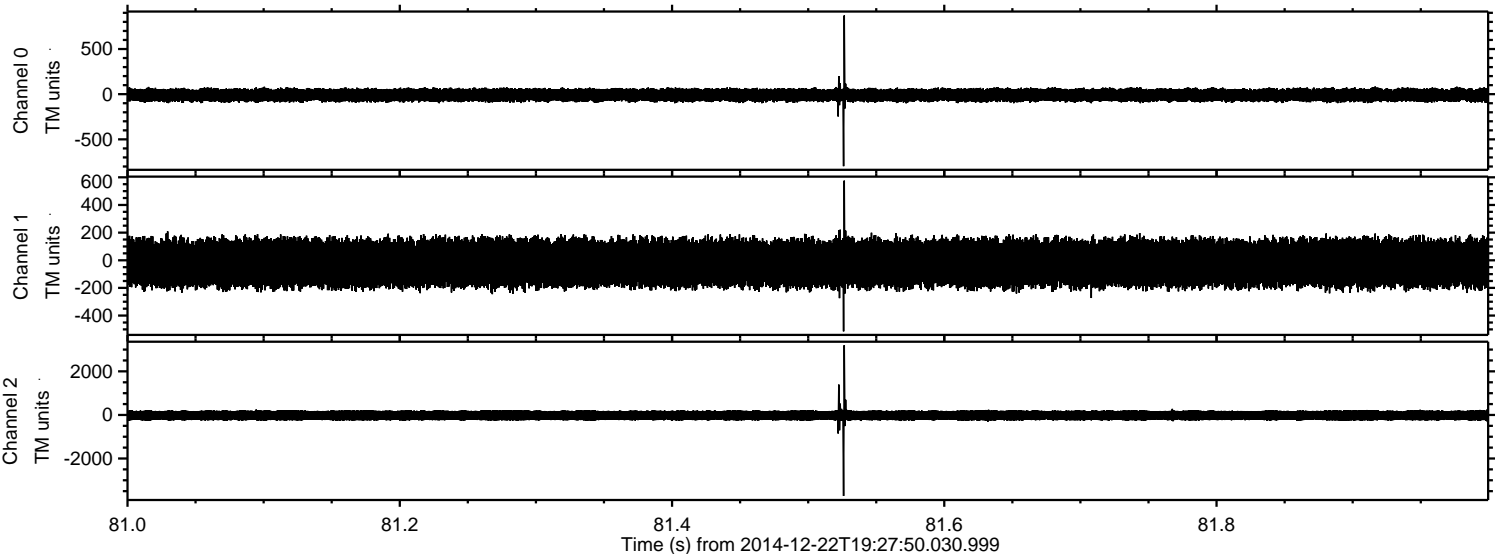


ELMAVAN 3D WAVEFORMS (Measured data sampled at 50 kHz) 49735 packets of 144 samples from 2014-12-22T19:27:50.030.999. Part 110/144

Processed Mon Dec 22 20:35:25 2014 by ELM ver.2012-10-06 from 001__elm20141222_192749__dat00.bin

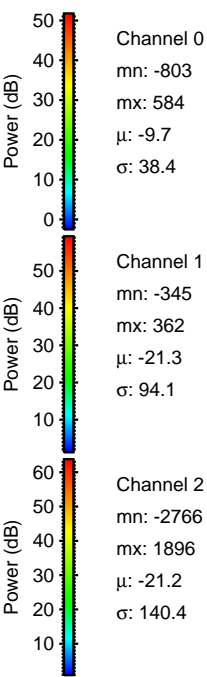
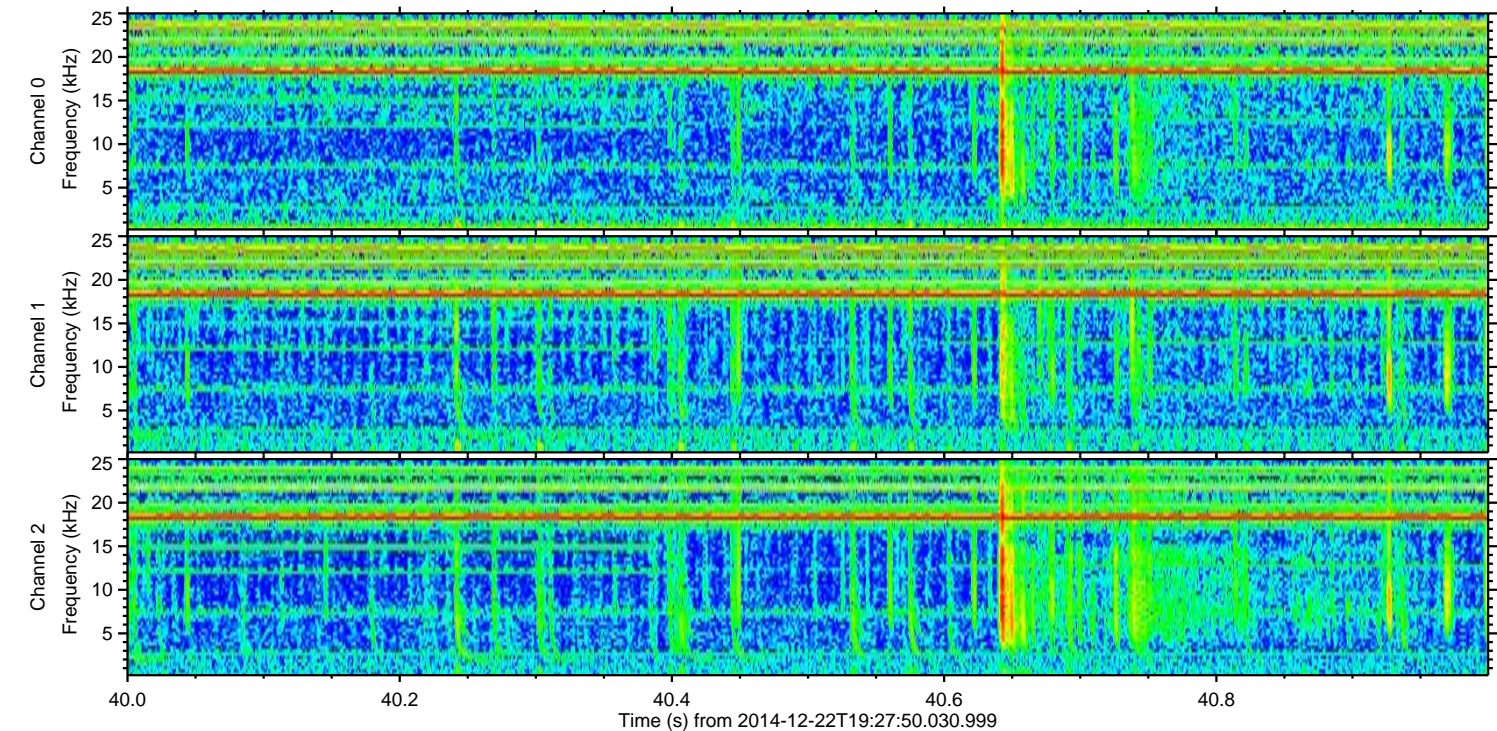
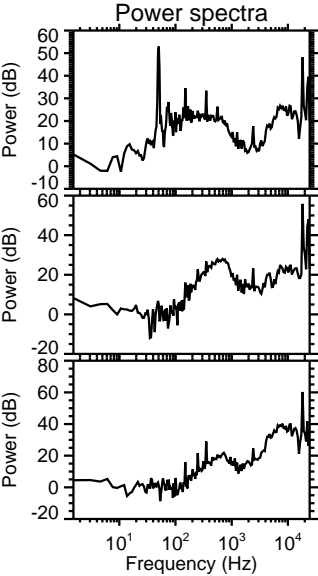
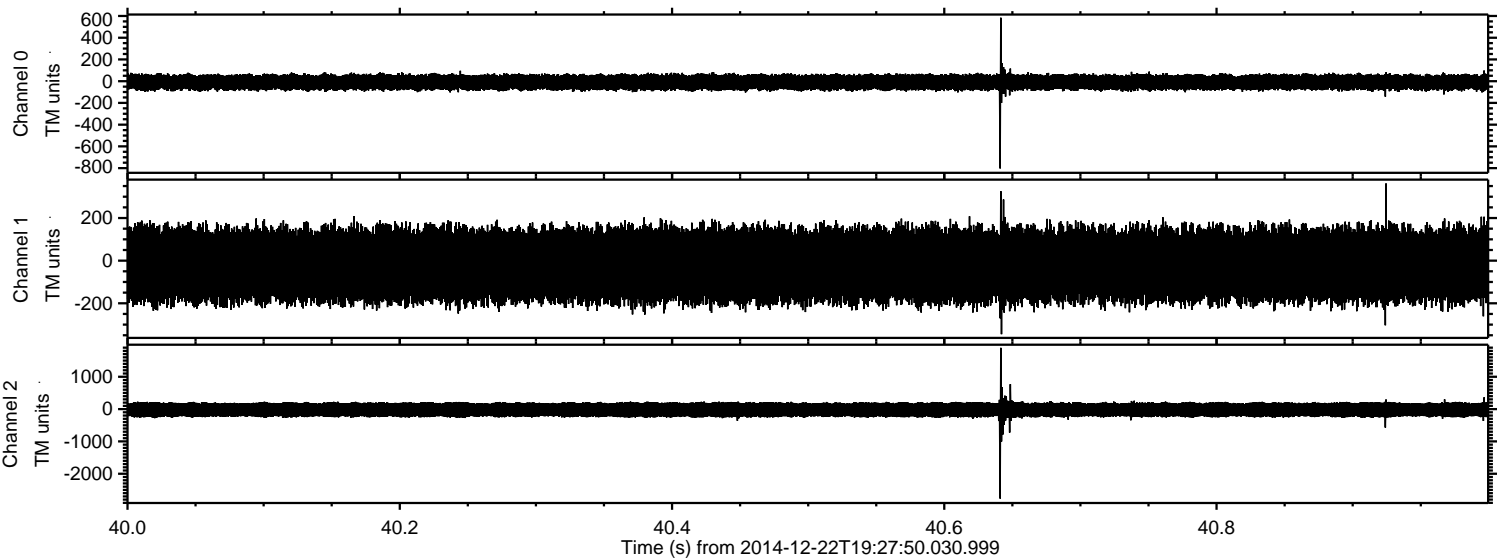


Processed Mon Dec 22 20:35:26 2014 by ELM ver.2012-10-06 from 001__elm20141222_192749__dat00.bin



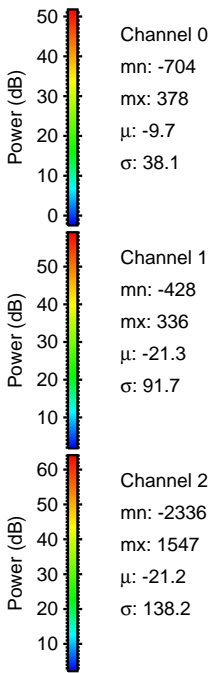
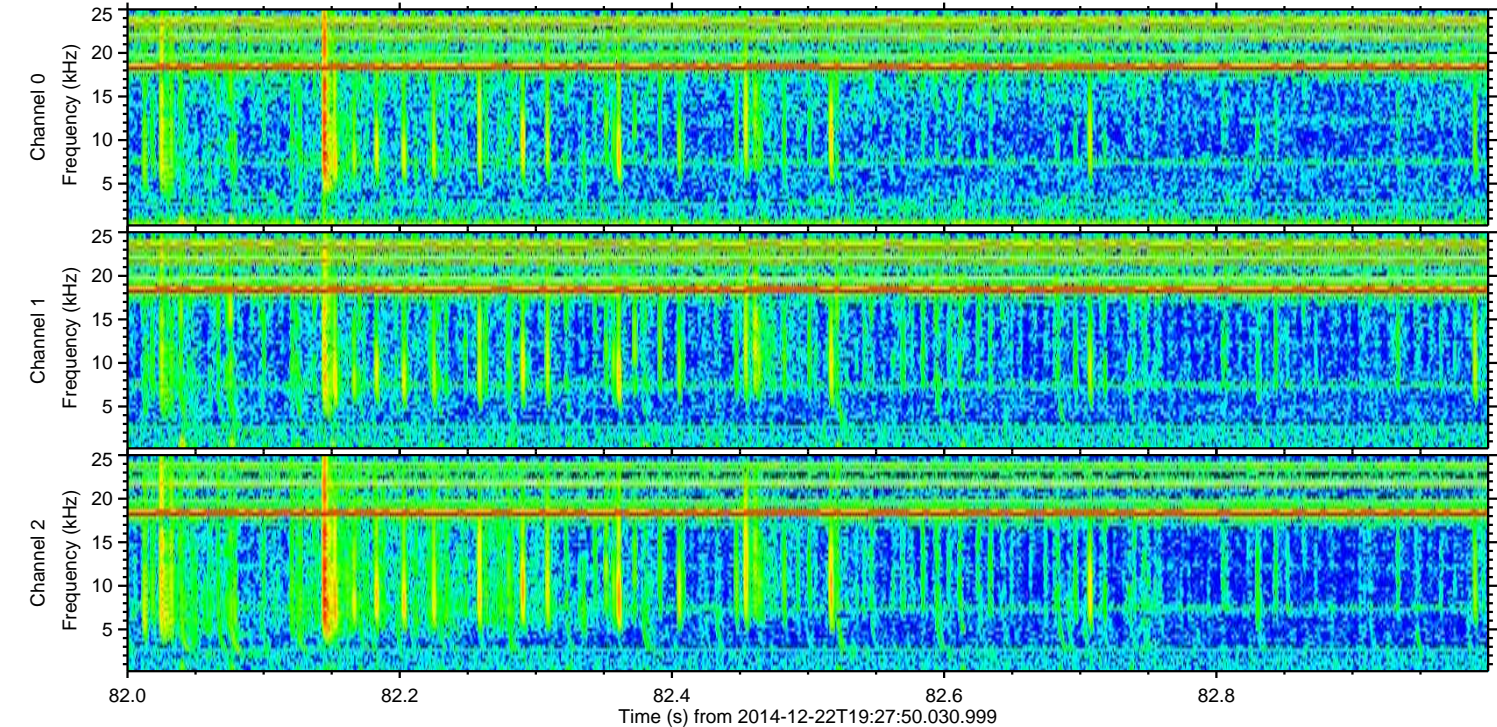
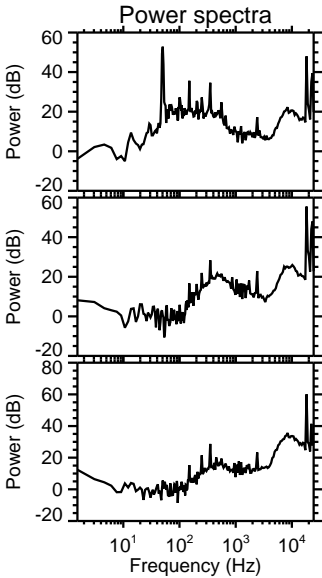
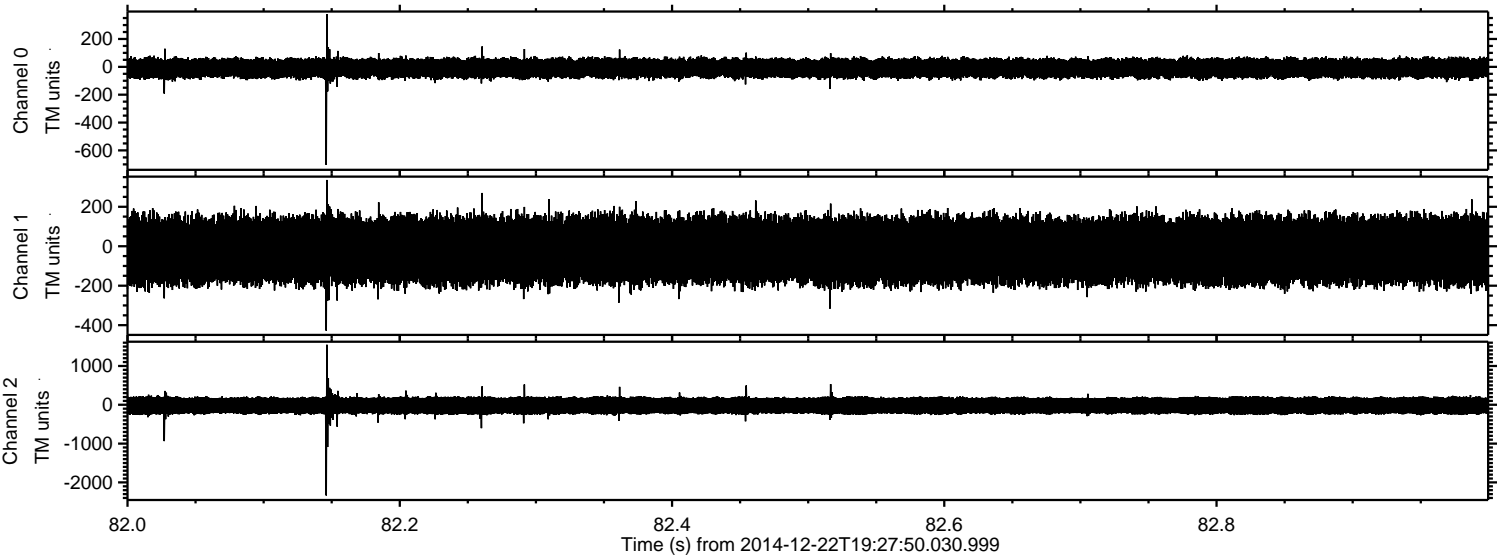
ELMAVAN 3D WAVEFORMS (Measured data sampled at 50 kHz) 49735 packets of 144 samples from 2014-12-22T19:27:50.030.999. Part 41/144

Processed Mon Dec 22 20:35:27 2014 by ELM ver.2012-10-06 from 001__elm20141222_192749__dat00.bin

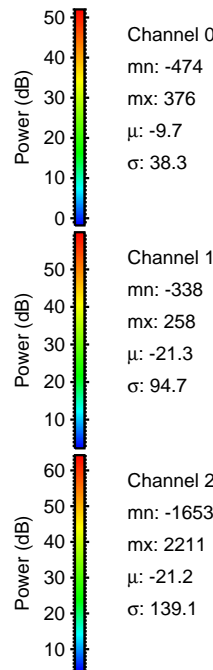
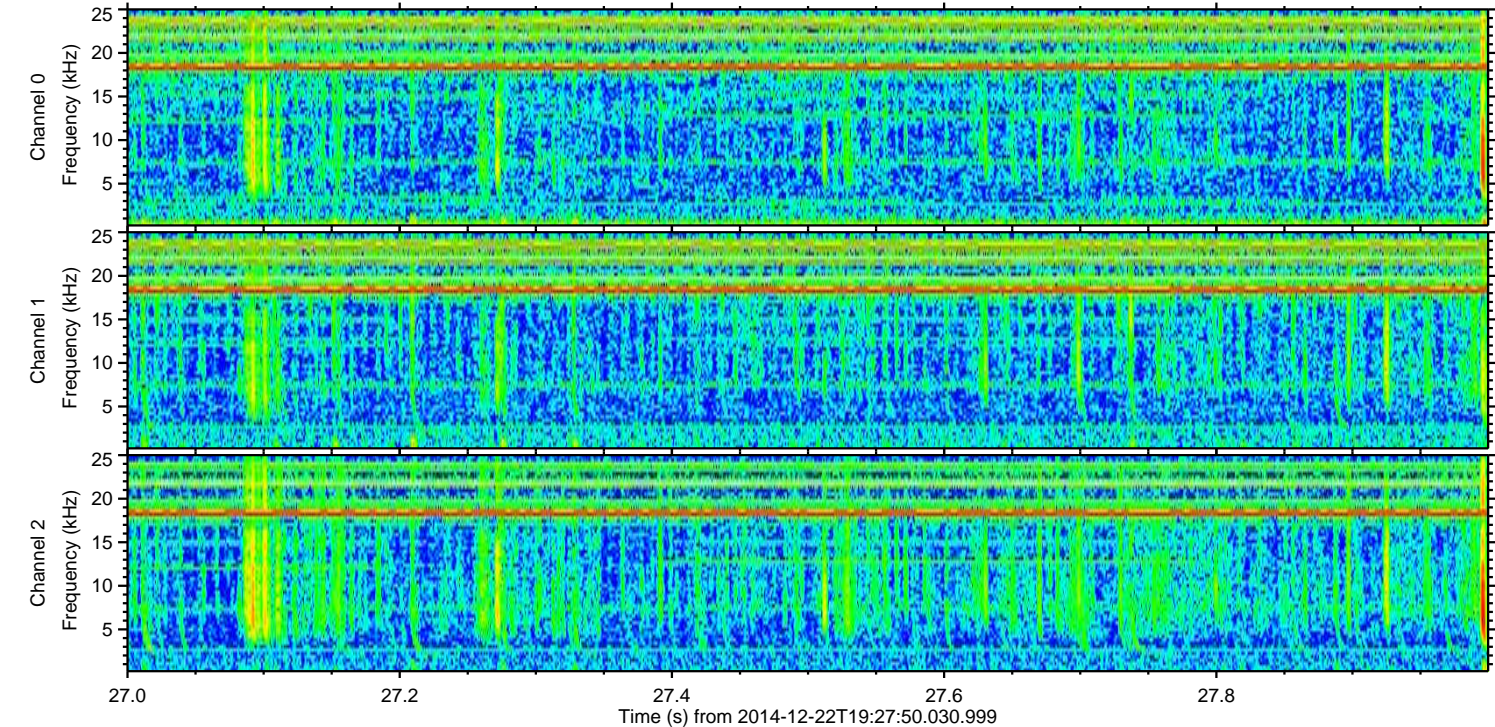
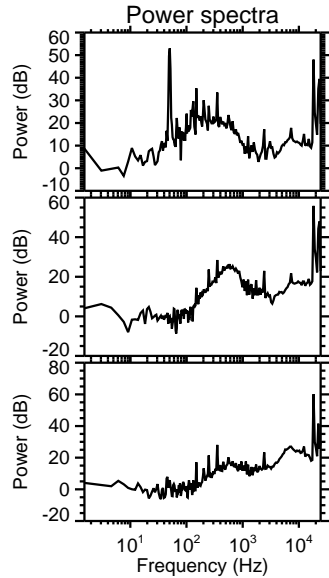
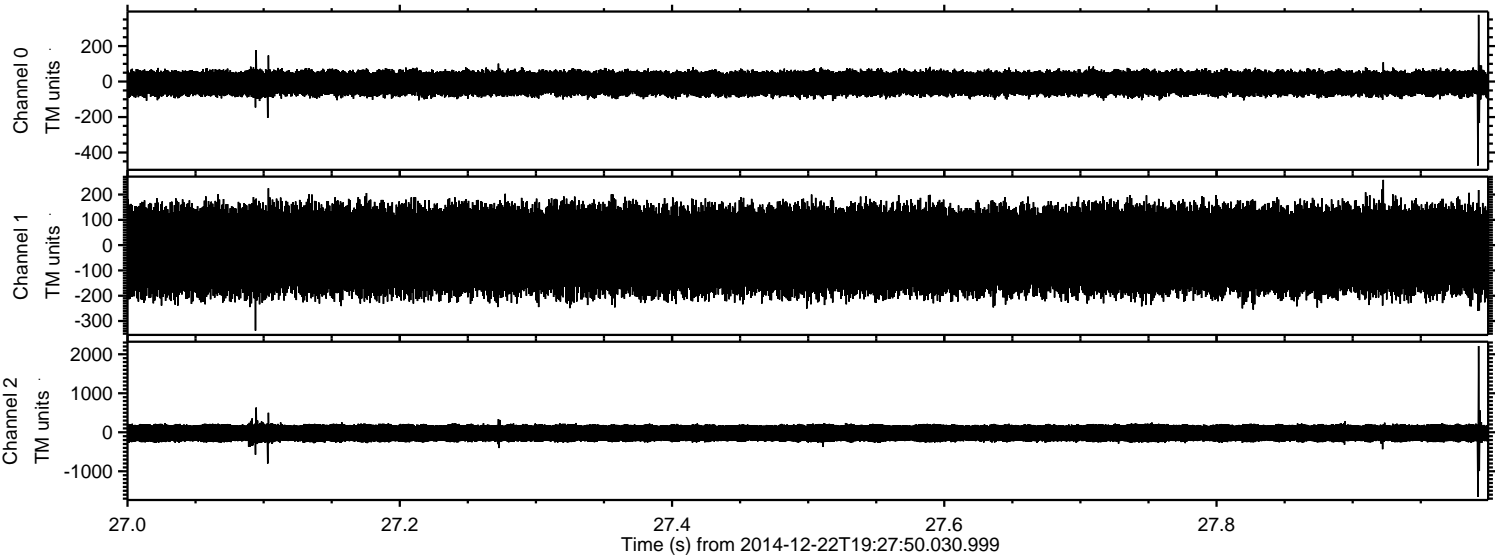


ELMAVAN 3D WAVEFORMS (Measured data sampled at 50 kHz) 49735 packets of 144 samples from 2014-12-22T19:27:50.030.999. Part 83/144

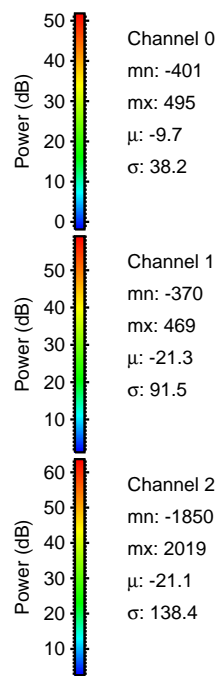
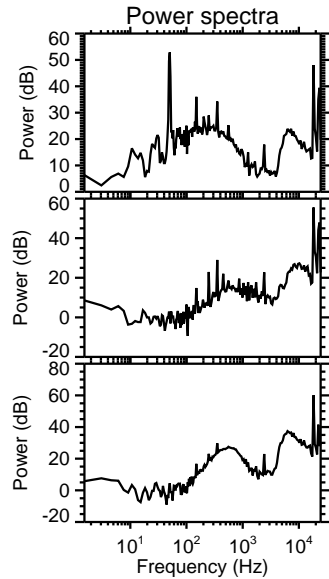
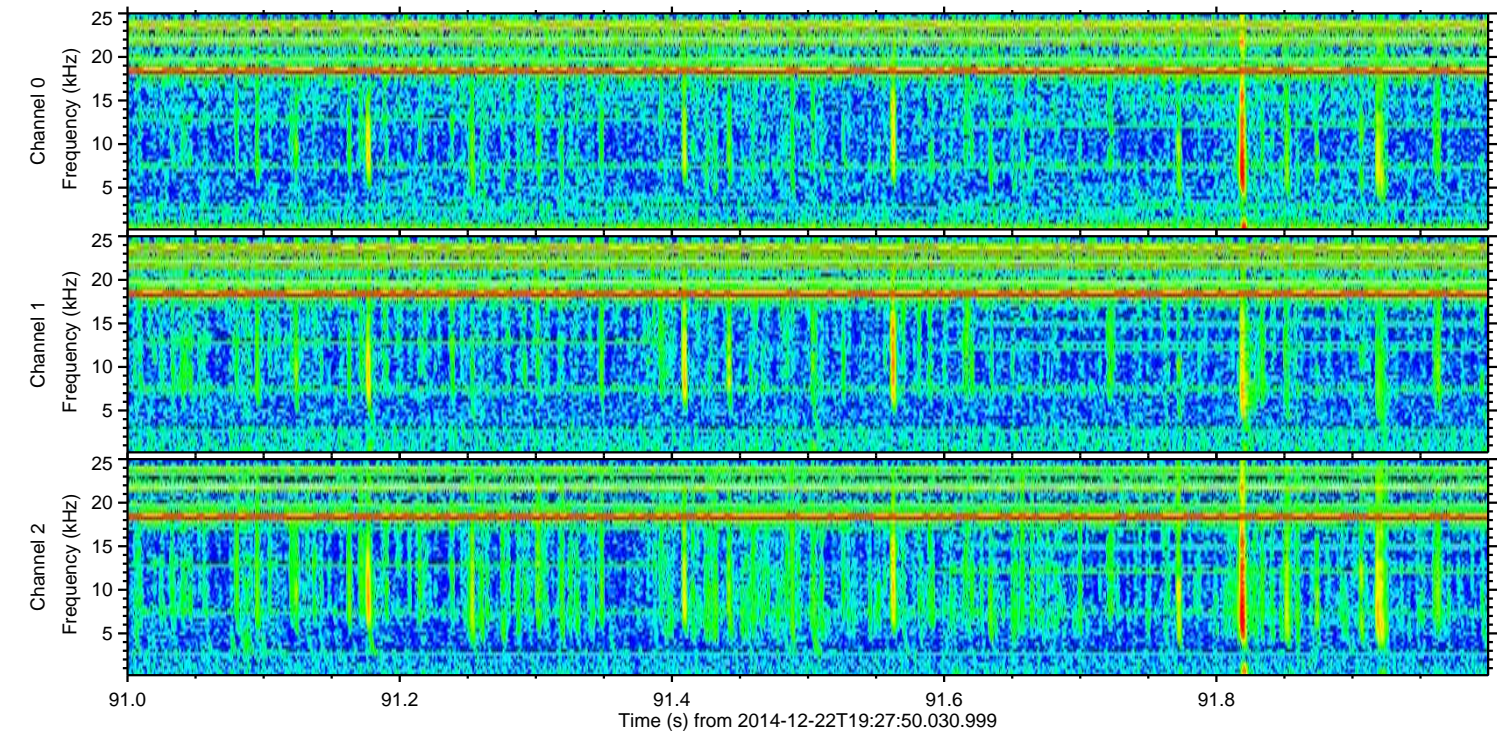
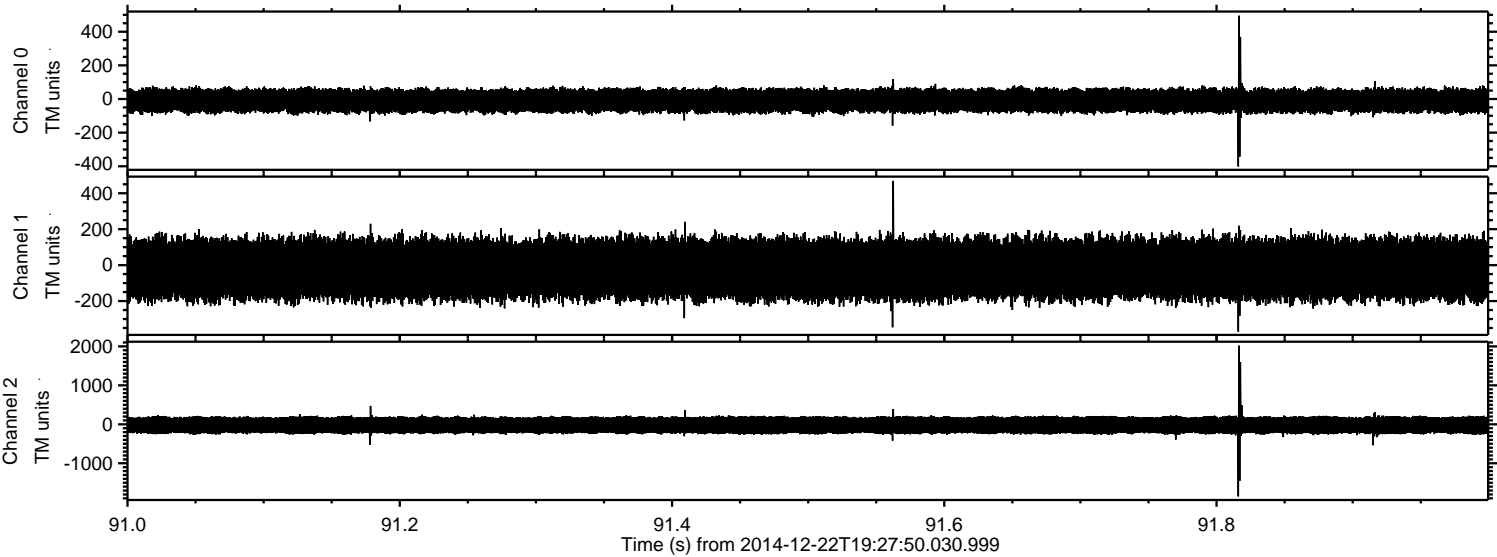
Processed Mon Dec 22 20:35:28 2014 by ELM ver.2012-10-06 from 001__elm20141222_192749__dat00.bin



Processed Mon Dec 22 20:35:29 2014 by ELM ver.2012-10-06 from 001__elm20141222_192749__dat00.bin

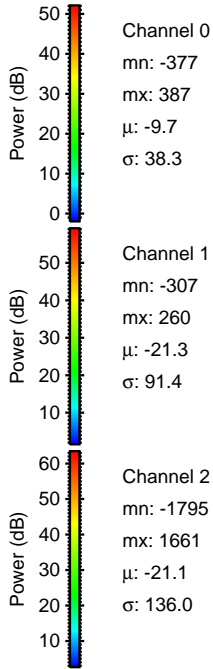
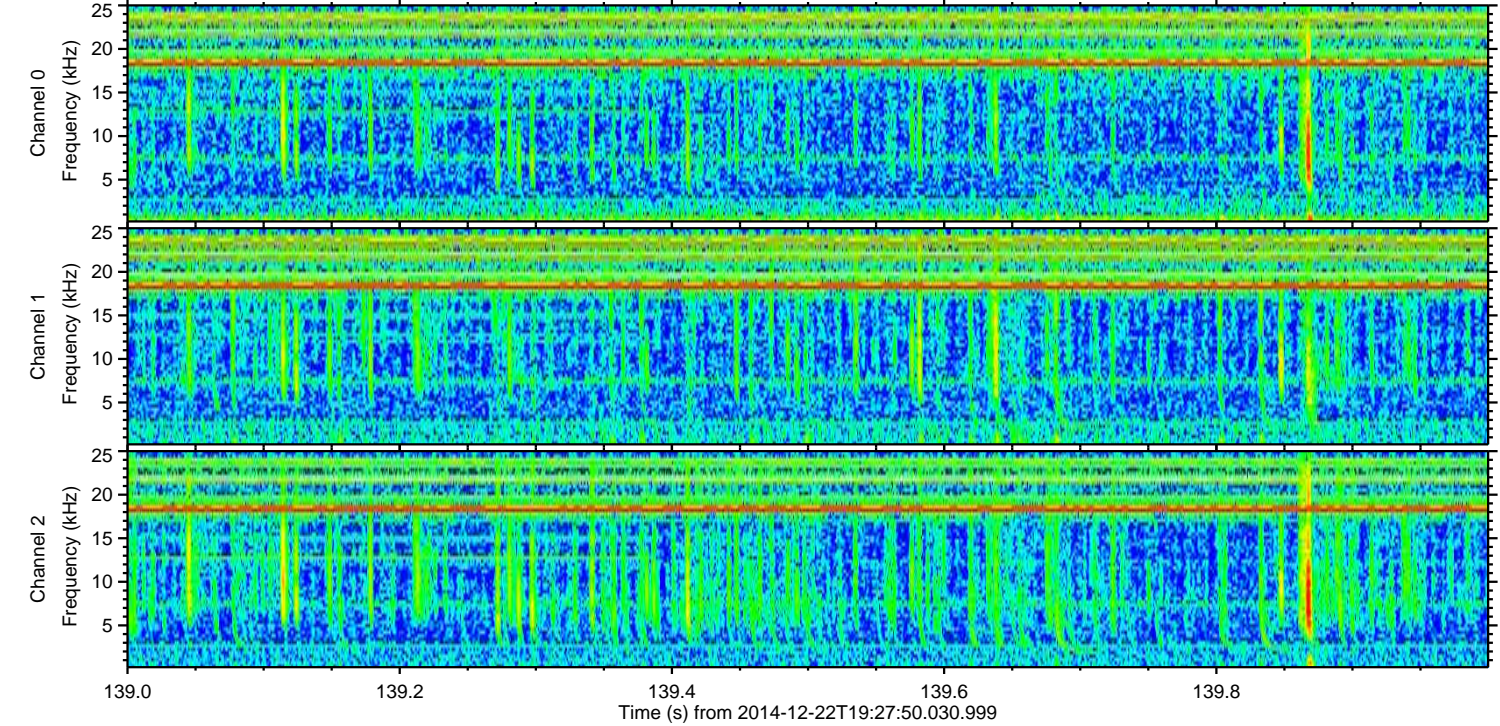
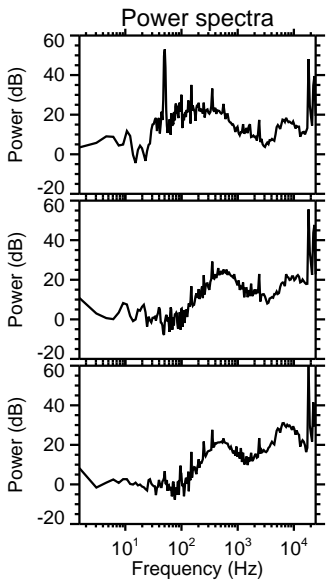
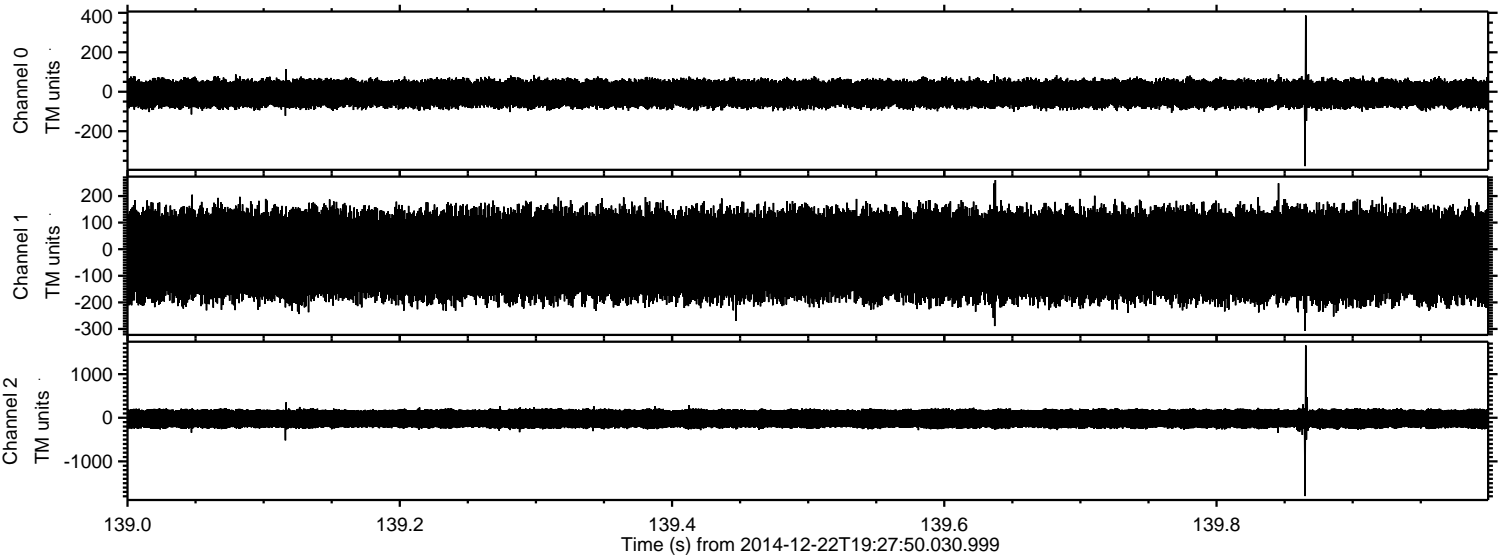


Processed Mon Dec 22 20:35:30 2014 by ELM ver.2012-10-06 from 001__elm20141222_192749__dat00.bin



ELMAVAN 3D WAVEFORMS (Measured data sampled at 50 kHz) 49735 packets of 144 samples from 2014-12-22T19:27:50.030.999. Part 140/144

Processed Mon Dec 22 20:35:31 2014 by ELM ver.2012-10-06 from 001__elm20141222_192749__dat00.bin

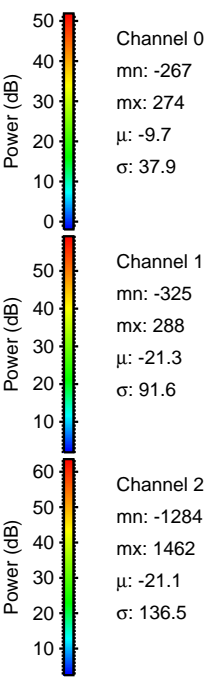
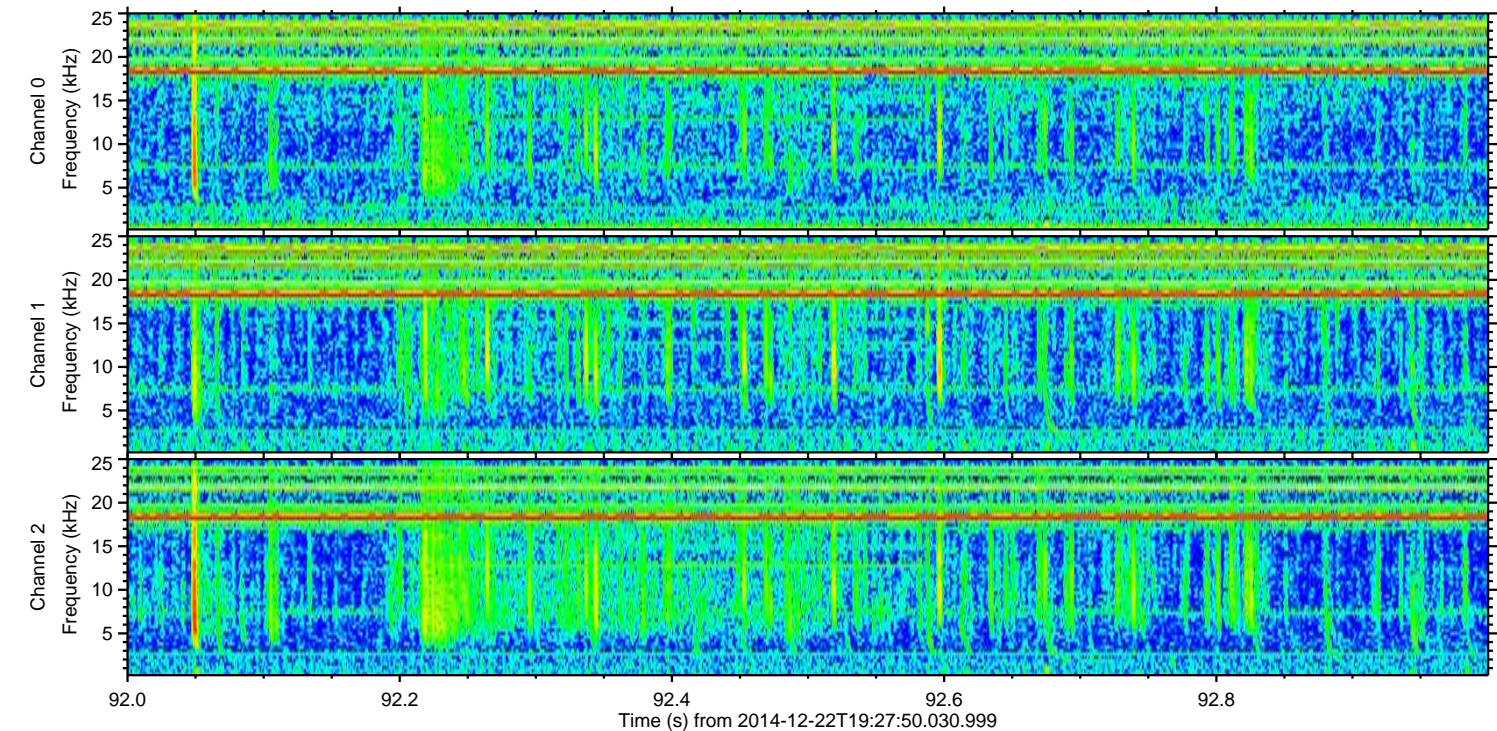
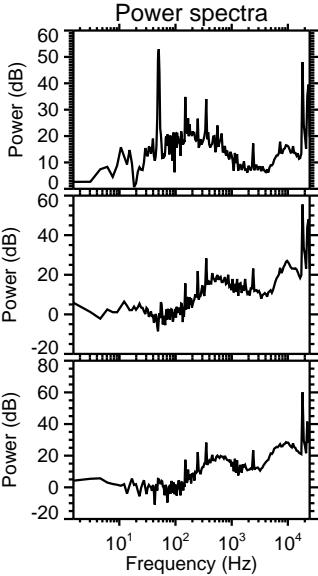
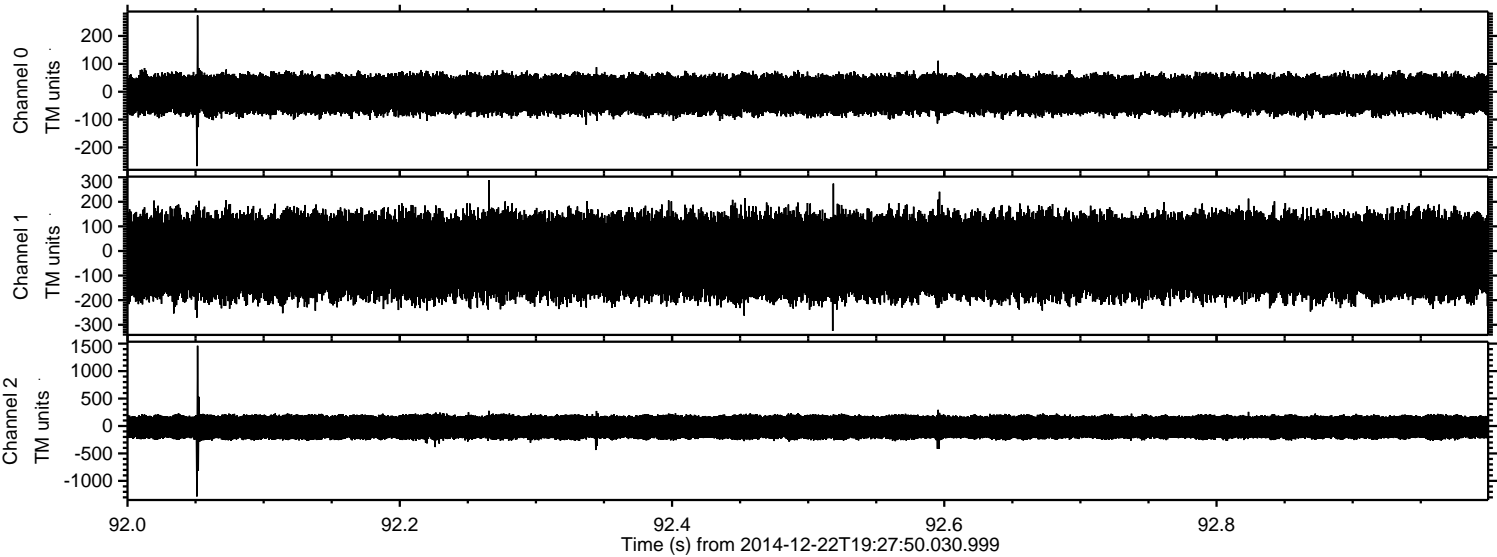


Channel 0
mn: -377
mx: 387
 μ : -9.7
 σ : 38.3

Channel 1
mn: -307
mx: 260
 μ : -21.3
 σ : 91.4

Channel 2
mn: -1795
mx: 1661
 μ : -21.1
 σ : 136.0

Processed Mon Dec 22 20:35:32 2014 by ELM ver.2012-10-06 from 001__elm20141222_192749__dat00.bin



Processed Mon Dec 22 20:35:33 2014 by ELM ver.2012-10-06 from 001__elm20141222_192749__dat00.bin

