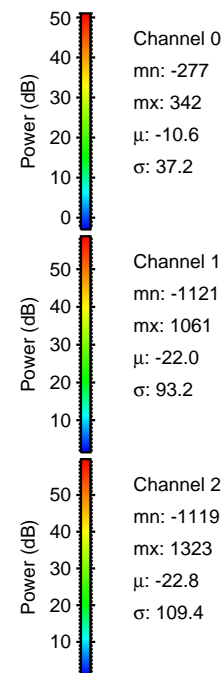
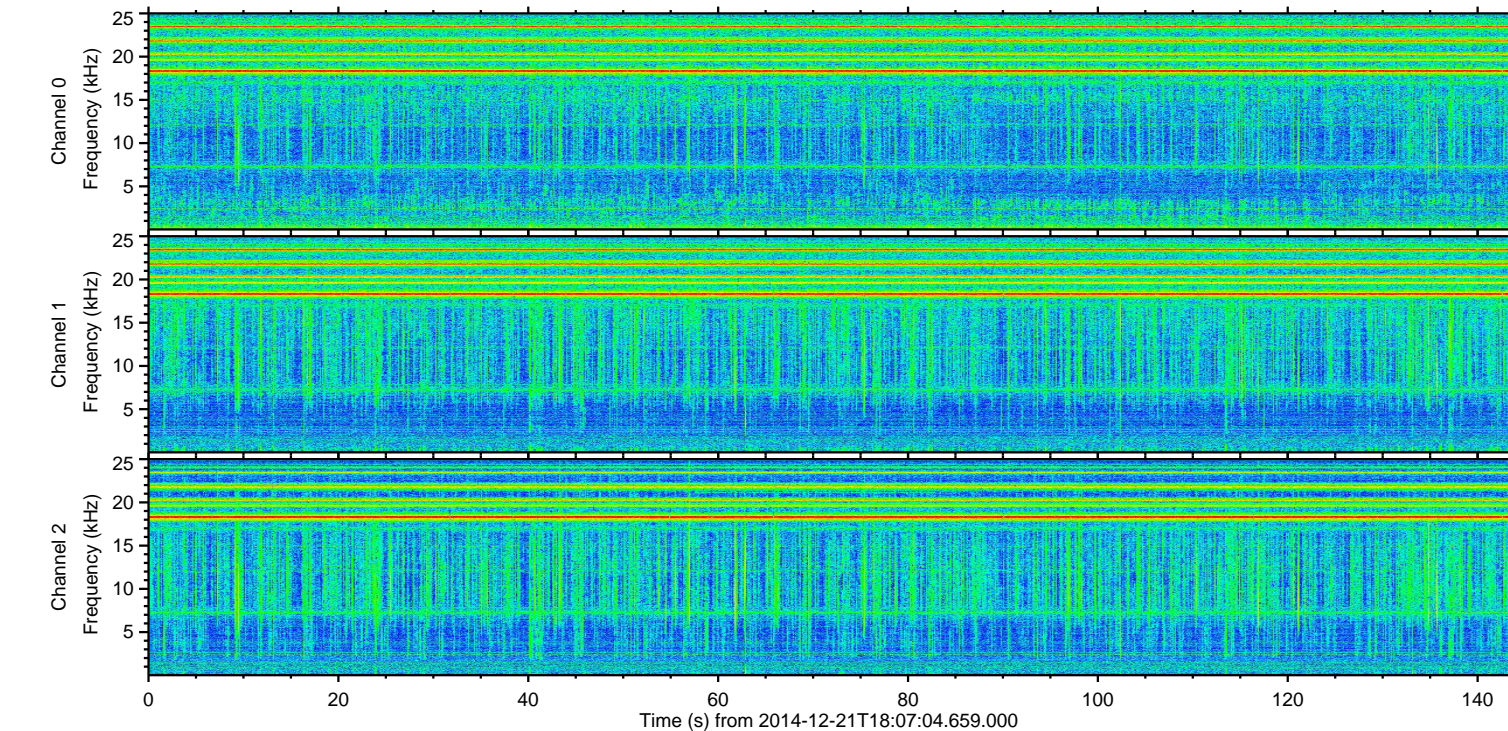
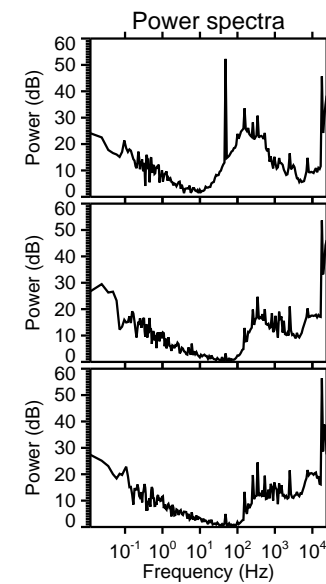
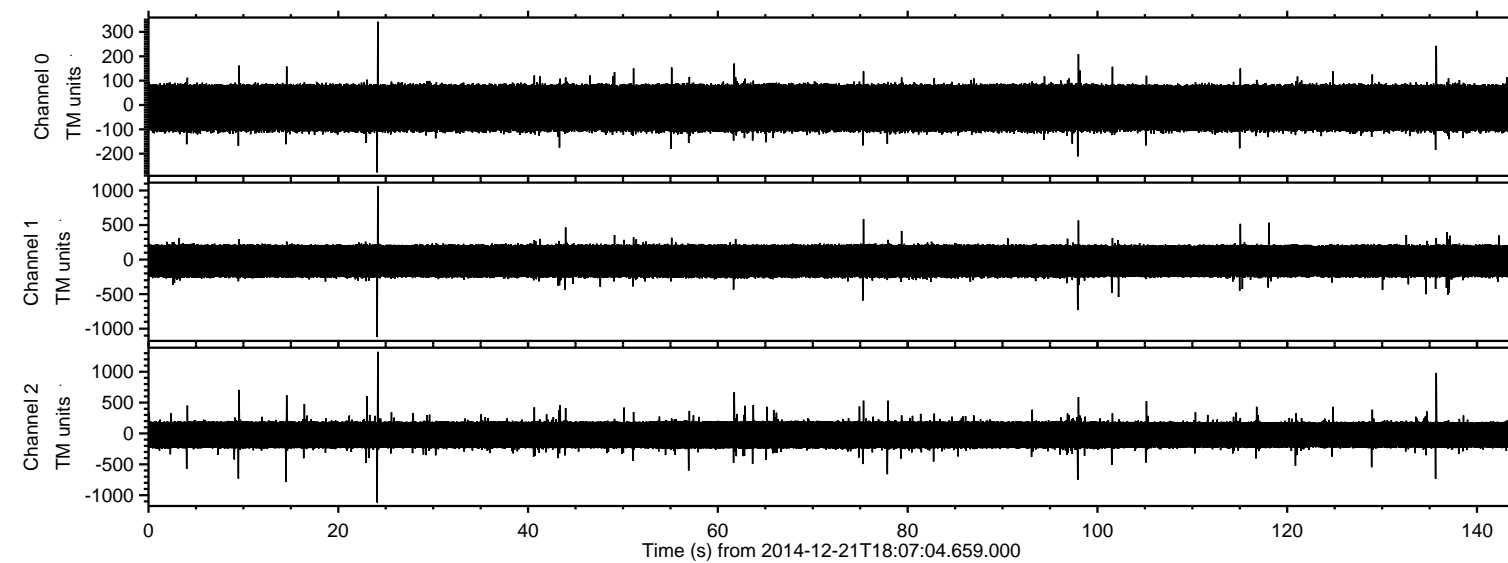


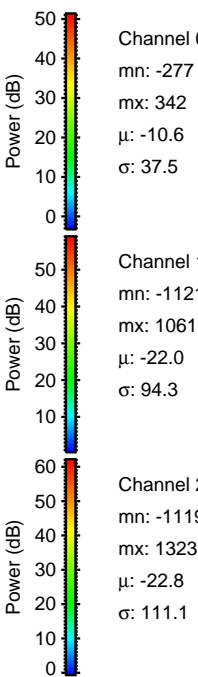
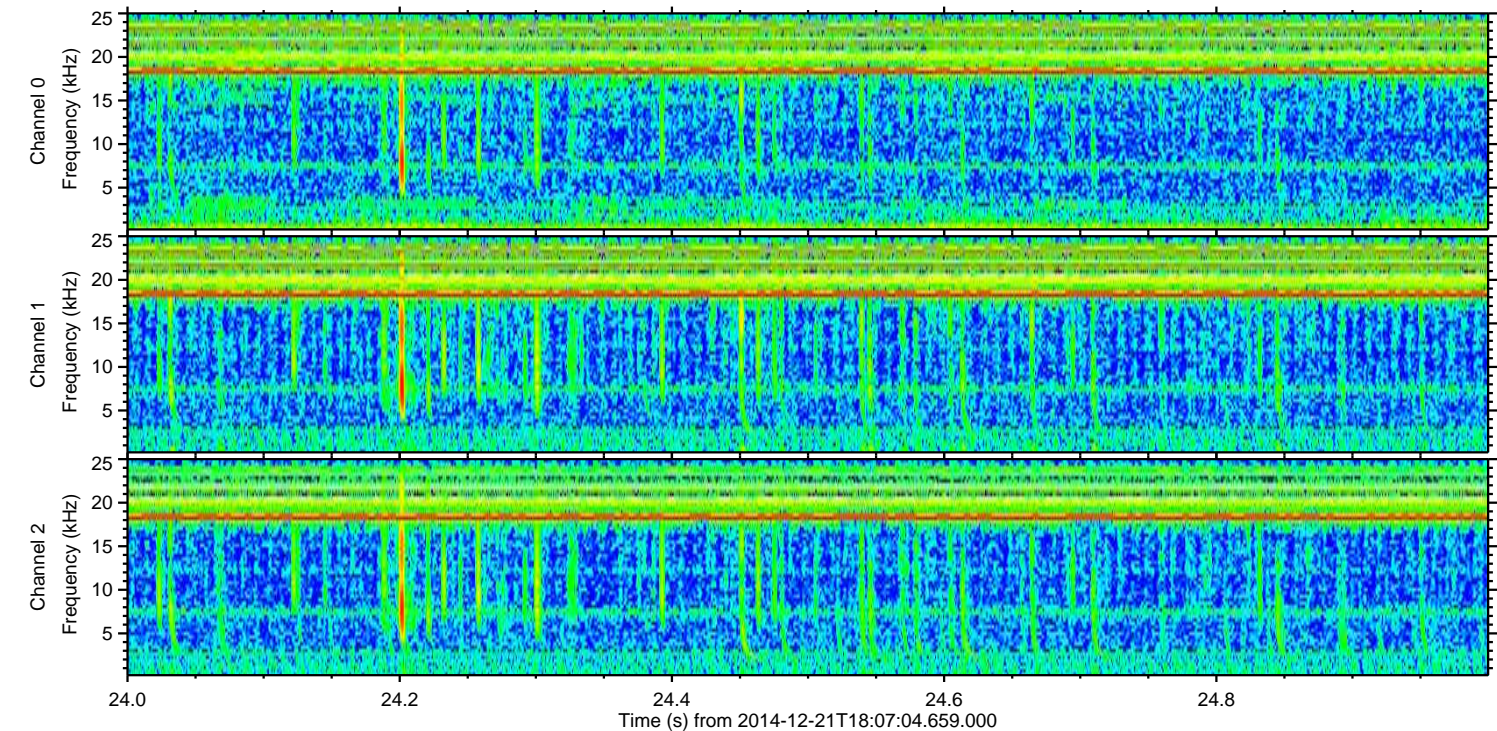
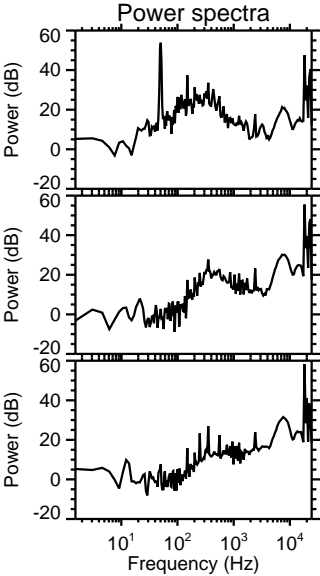
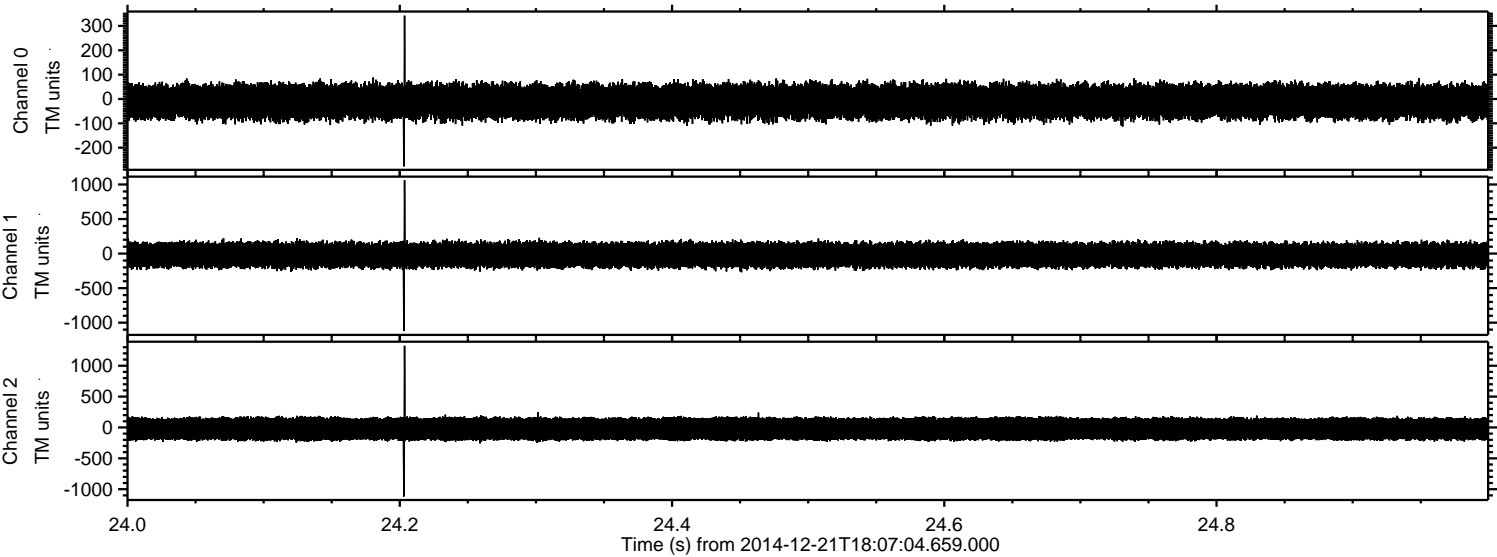
ELMAVAN 3D WAVEFORMS (Measured data sampled at 50 kHz) 49786 packets of 144 samples from 2014-12-21T18:07:04.659.000.

Processed Sun Dec 21 19:14:32 2014 by ELM ver.2012-10-06 from 001__elm20141221_180703__dat00.bin



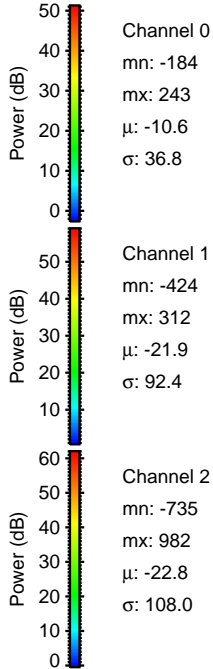
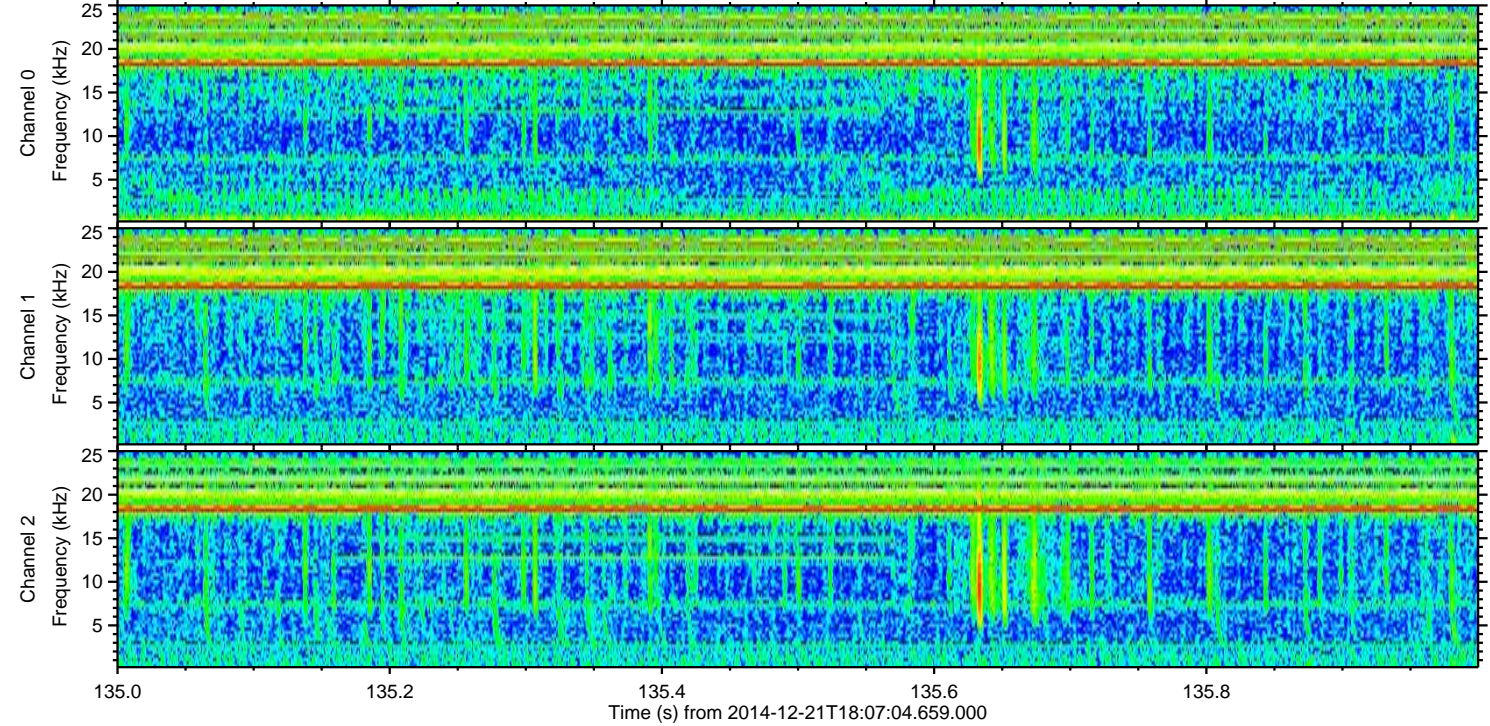
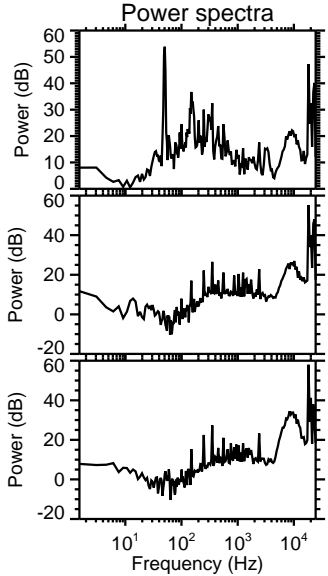
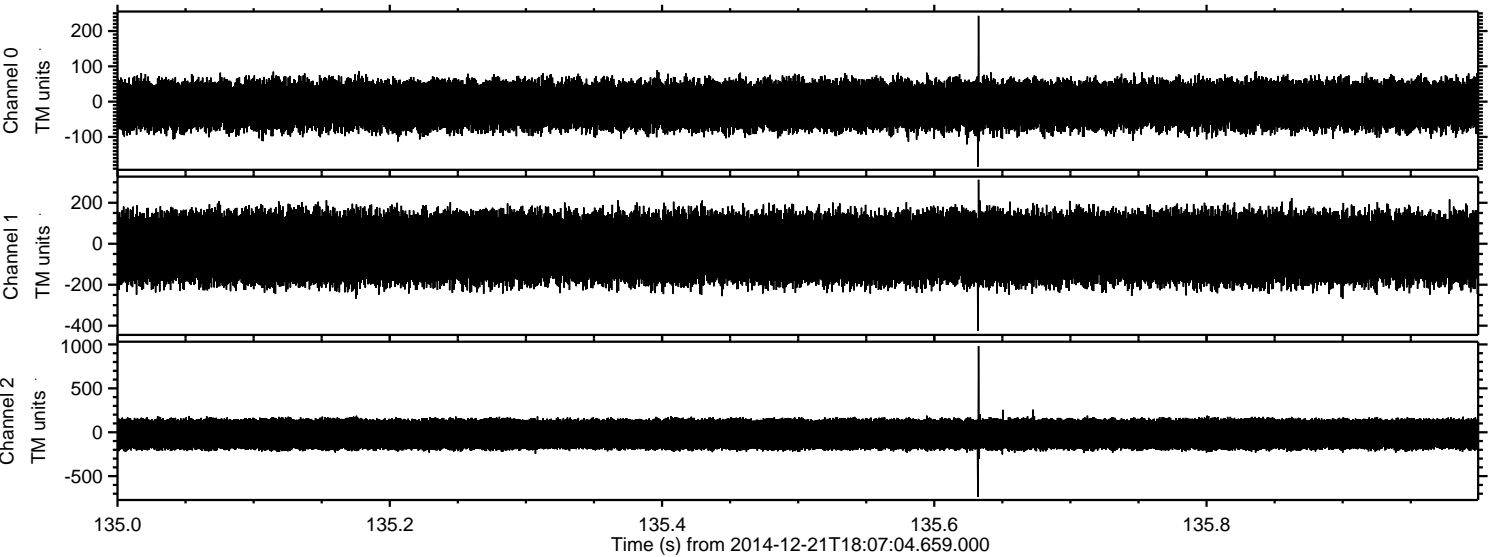
ELMAVAN 3D WAVEFORMS (Measured data sampled at 50 kHz) 49786 packets of 144 samples from 2014-12-21T18:07:04.659.000. Part 25/144

Processed Sun Dec 21 19:14:44 2014 by ELM ver.2012-10-06 from 001__elm20141221_180703__dat00.bin



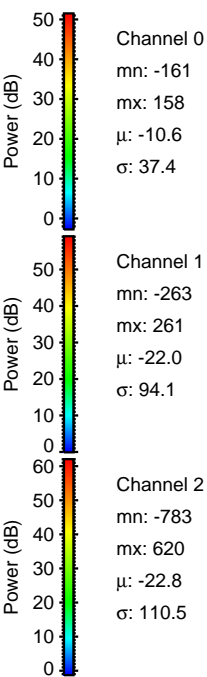
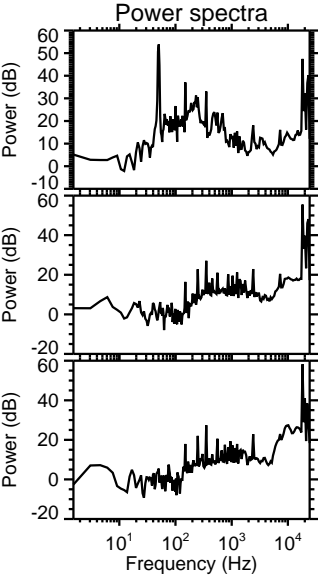
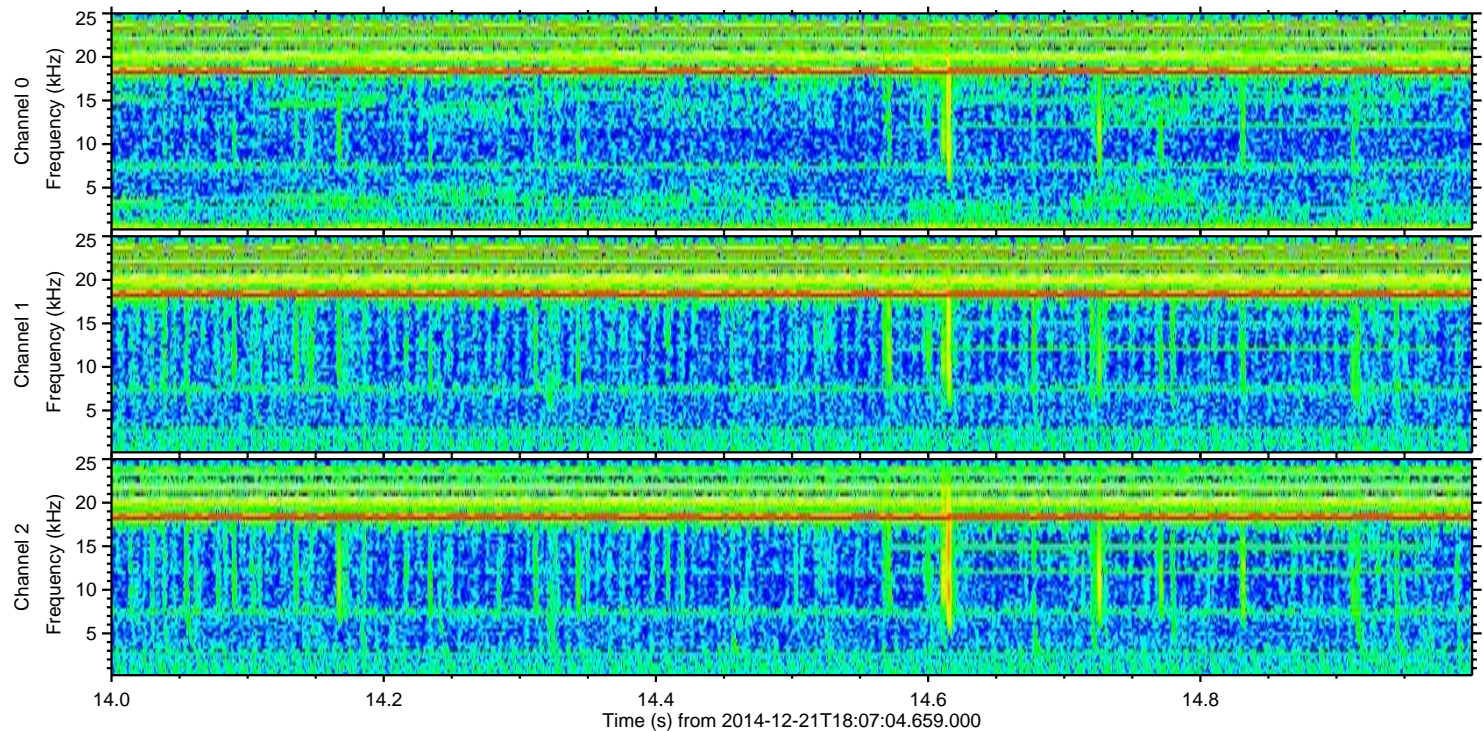
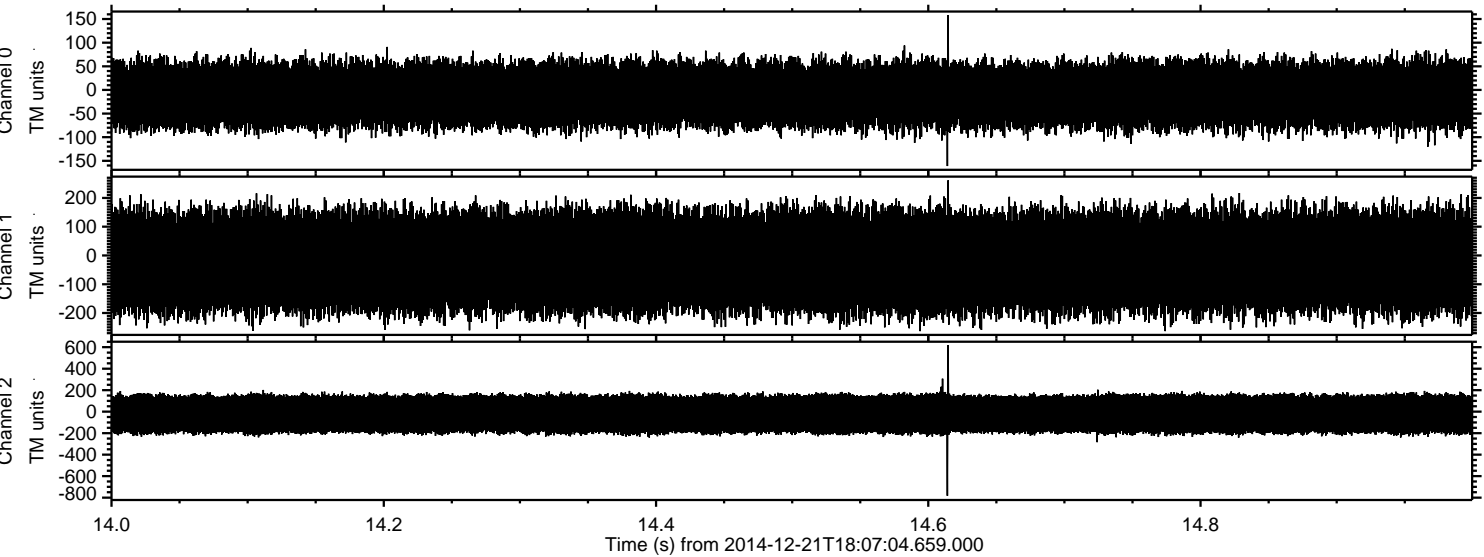
ELMAVAN 3D WAVEFORMS (Measured data sampled at 50 kHz) 49786 packets of 144 samples from 2014-12-21T18:07:04.659.000. Part 136/144

Processed Sun Dec 21 19:14:45 2014 by ELM ver.2012-10-06 from 001__elm20141221_180703__dat00.bin



ELMAVAN 3D WAVEFORMS (Measured data sampled at 50 kHz) 49786 packets of 144 samples from 2014-12-21T18:07:04.659.000. Part 15/144

Processed Sun Dec 21 19:14:46 2014 by ELM ver.2012-10-06 from 001__elm20141221_180703__dat00.bin

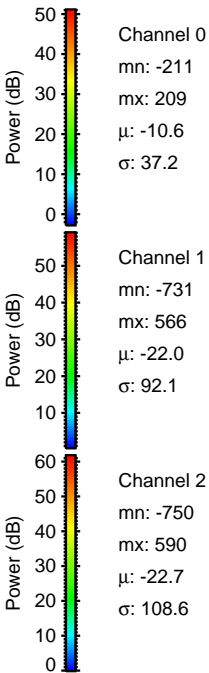
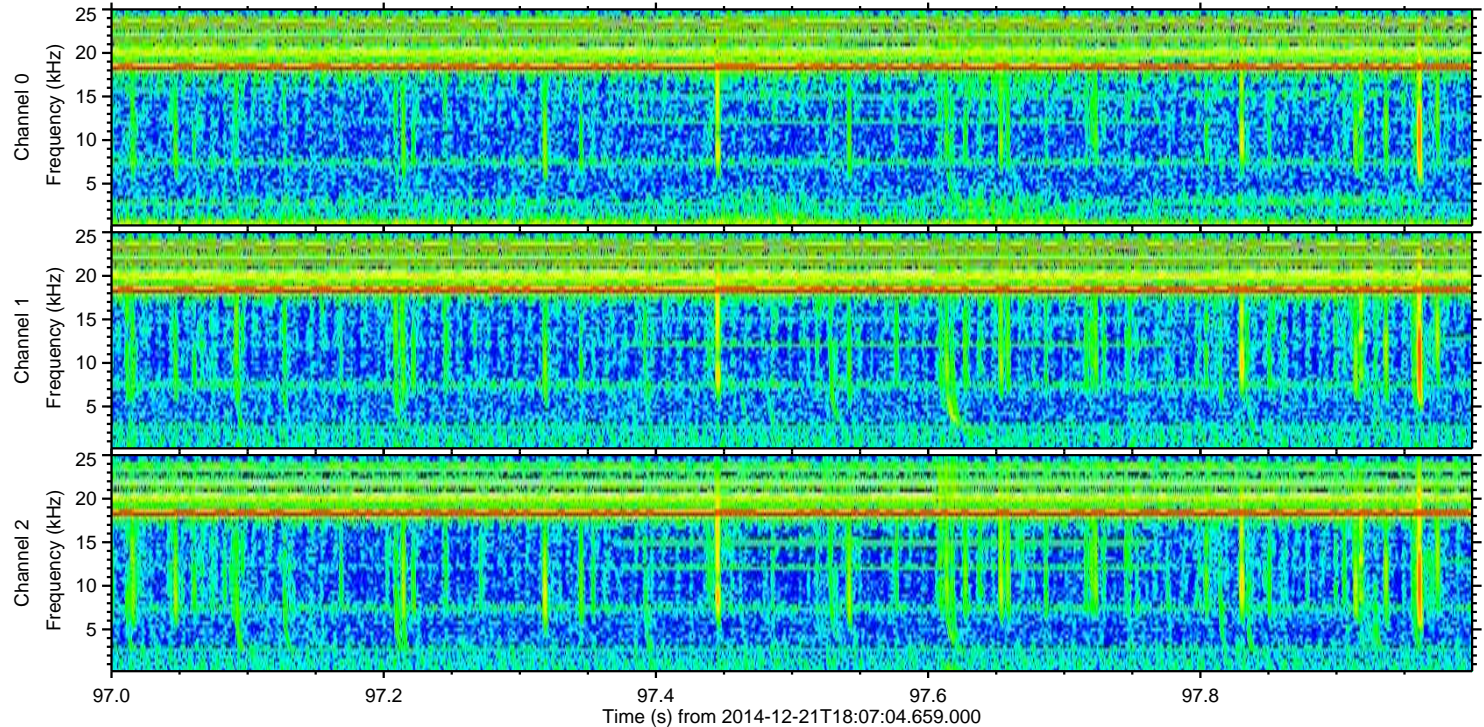
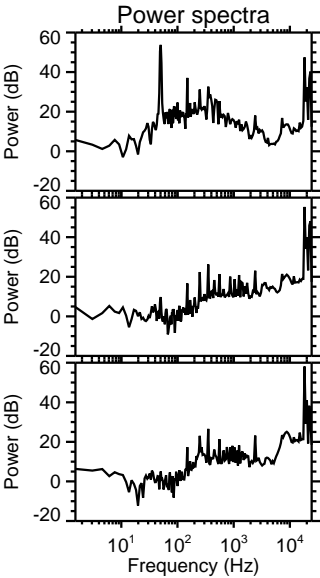
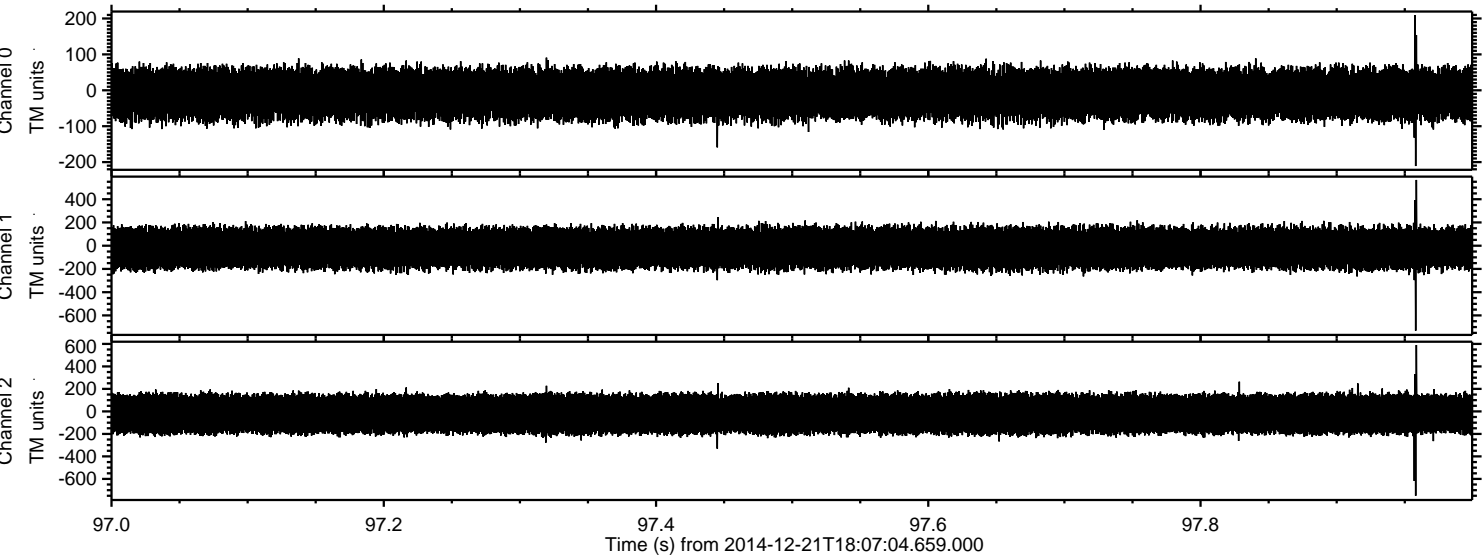


Channel 0
mn: -161
mx: 158
 μ : -10.6
 σ : 37.4

Channel 1
mn: -263
mx: 261
 μ : -22.0
 σ : 94.1

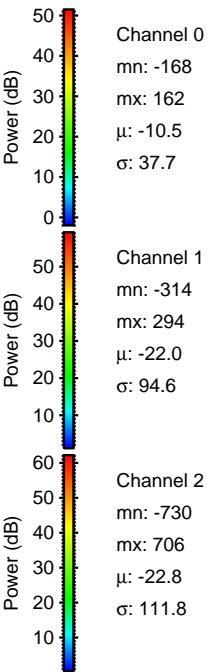
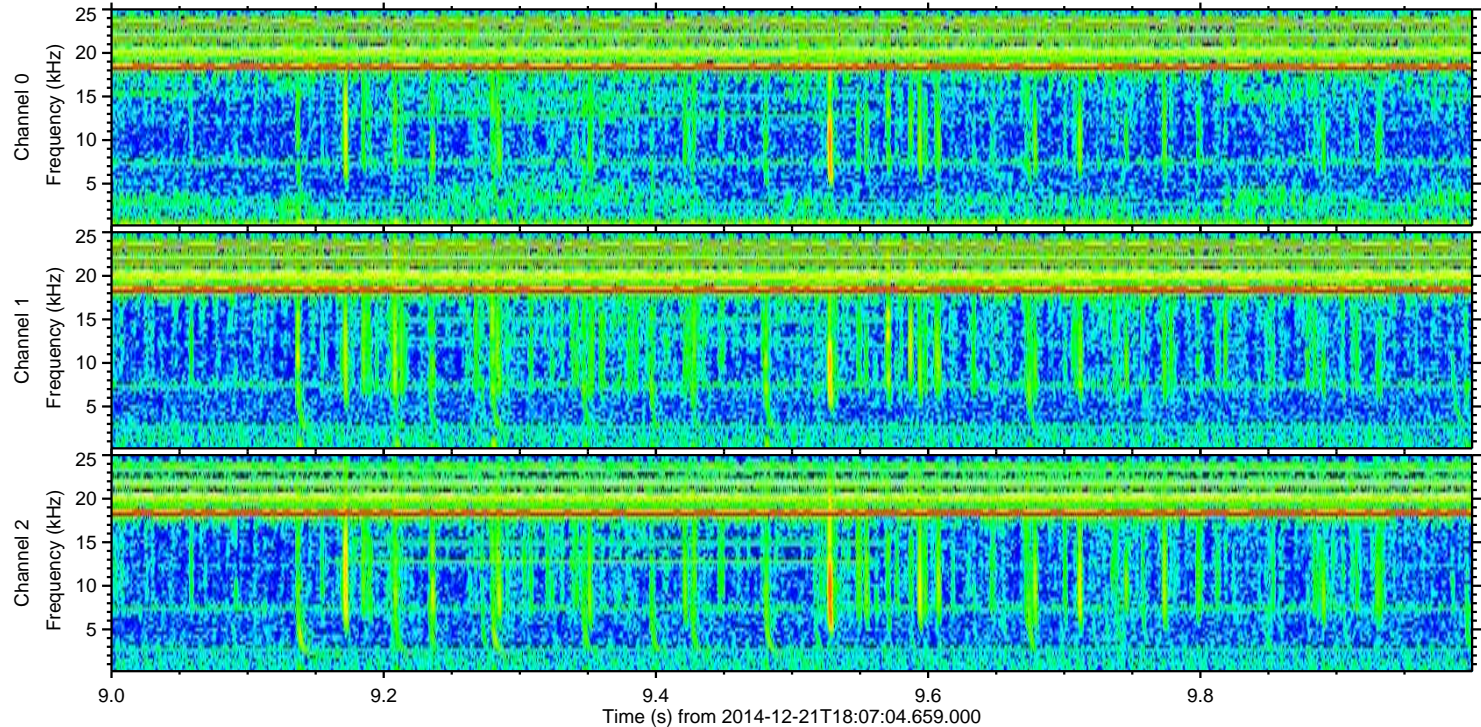
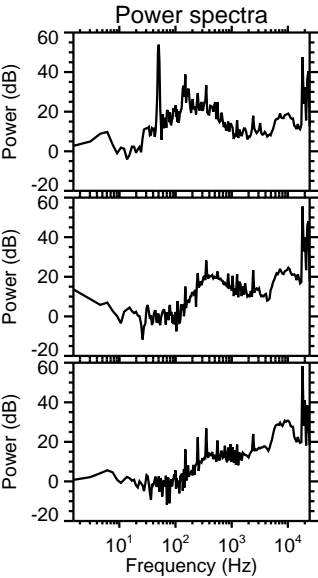
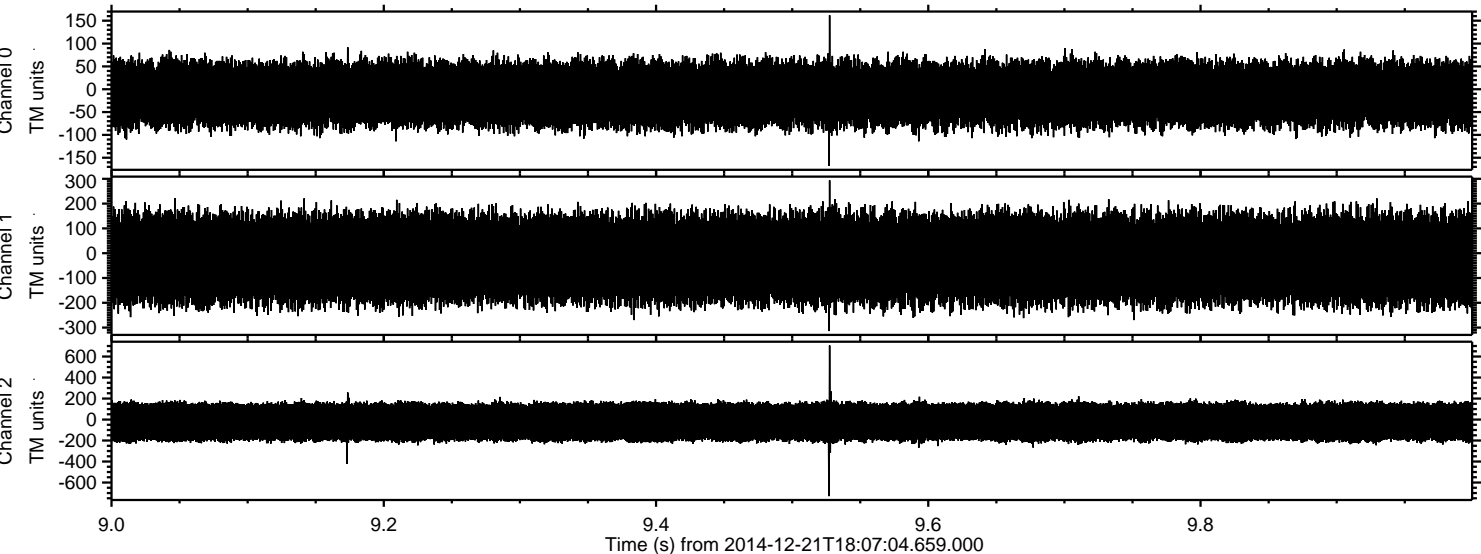
Channel 2
mn: -783
mx: 620
 μ : -22.8
 σ : 110.5

Processed Sun Dec 21 19:14:47 2014 by ELM ver.2012-10-06 from 001__elm20141221_180703__dat00.bin



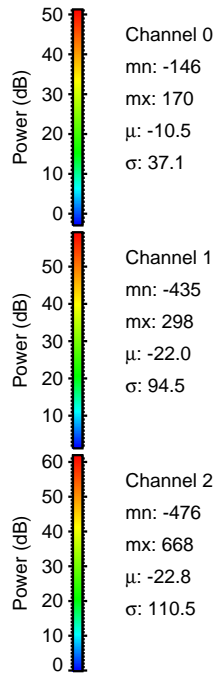
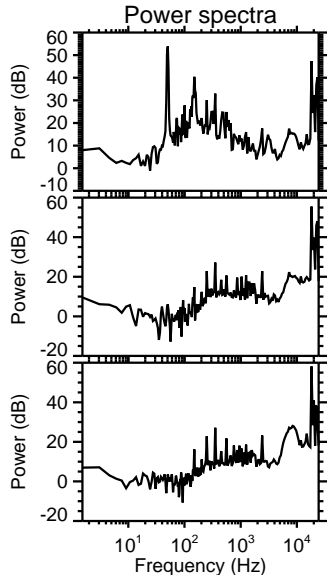
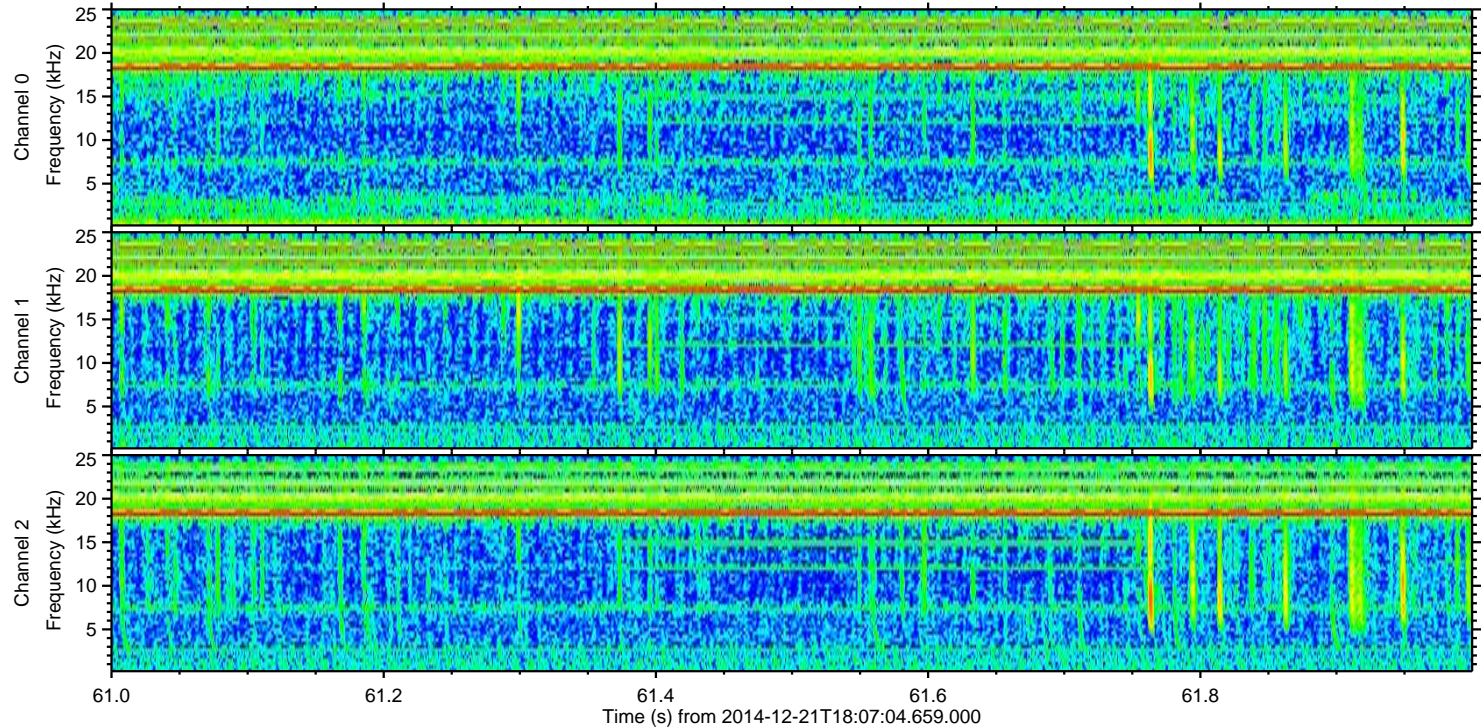
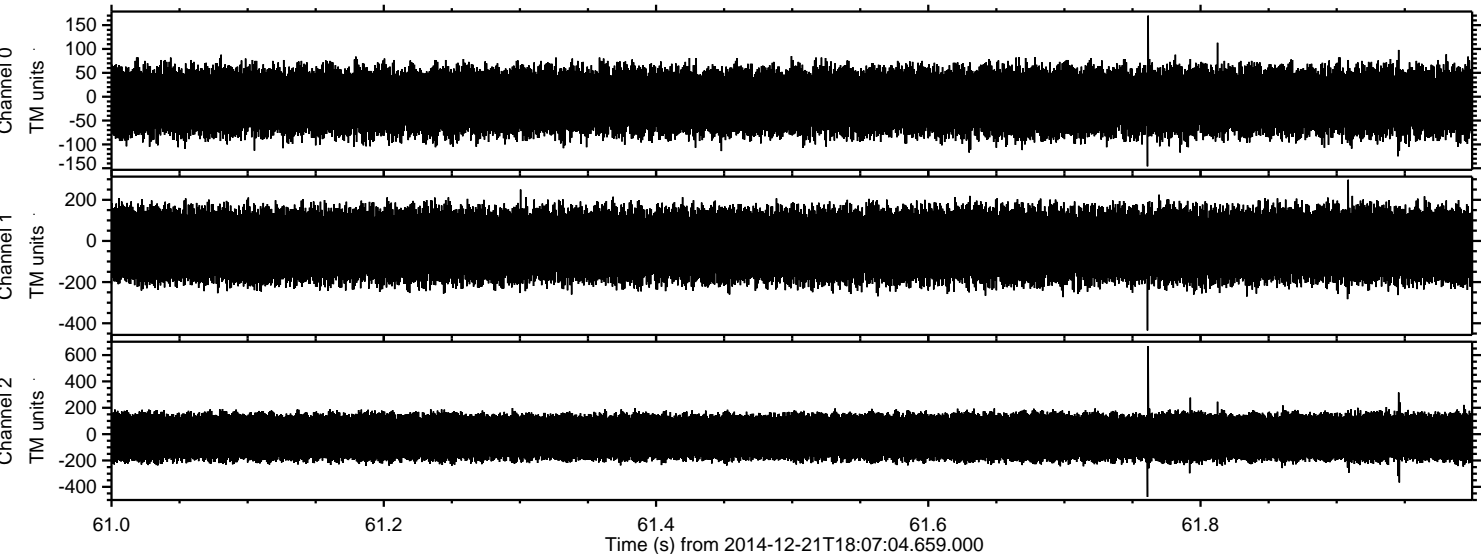
ELMAVAN 3D WAVEFORMS (Measured data sampled at 50 kHz) 49786 packets of 144 samples from 2014-12-21T18:07:04.659.000. Part 10/144

Processed Sun Dec 21 19:14:48 2014 by ELM ver.2012-10-06 from 001_elm20141221_180703__dat00.bin

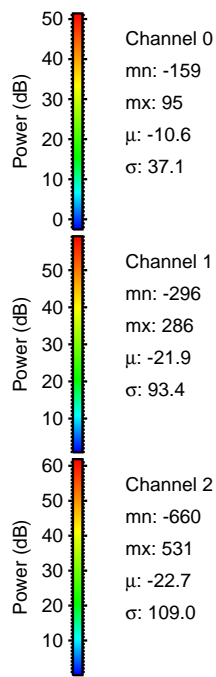
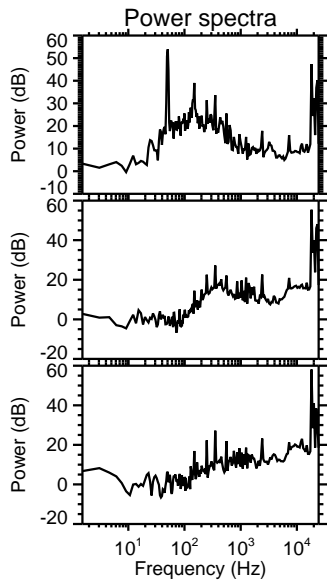
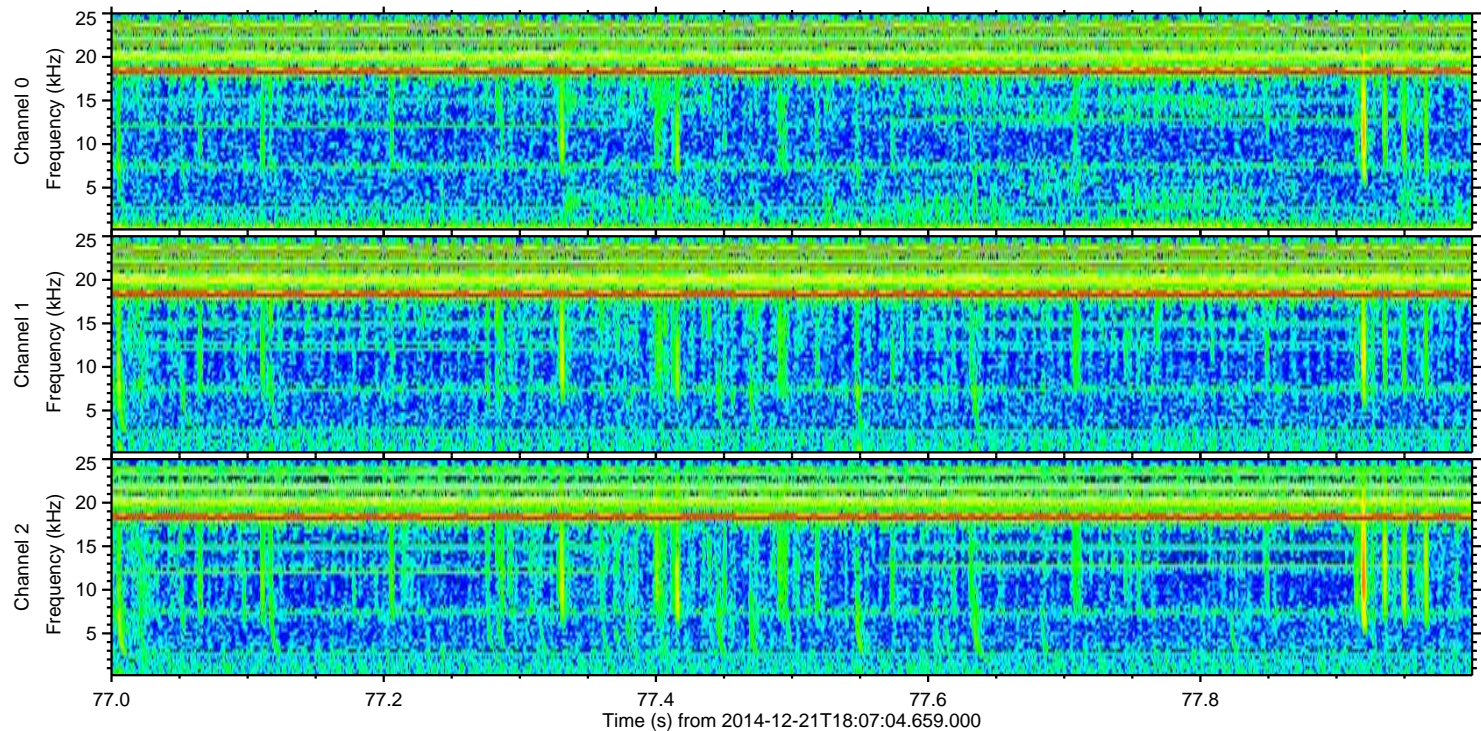
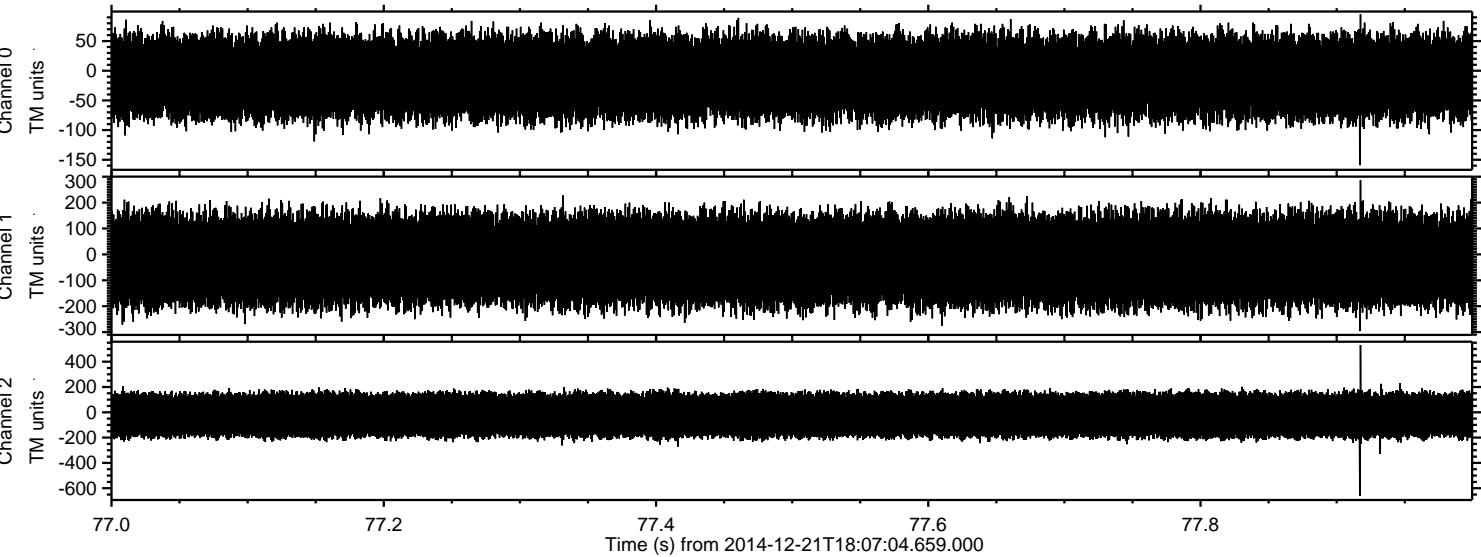


ELMAVAN 3D WAVEFORMS (Measured data sampled at 50 kHz) 49786 packets of 144 samples from 2014-12-21T18:07:04.659.000. Part 62/144

Processed Sun Dec 21 19:14:49 2014 by ELM ver.2012-10-06 from 001__elm20141221_180703__dat00.bin



Processed Sun Dec 21 19:14:50 2014 by ELM ver.2012-10-06 from 001__elm20141221_180703__dat00.bin

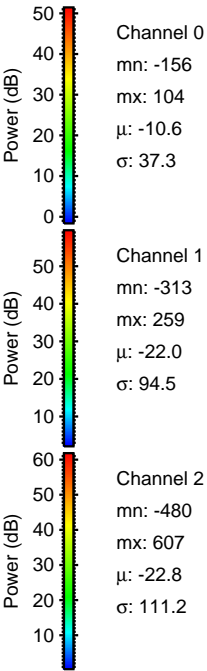
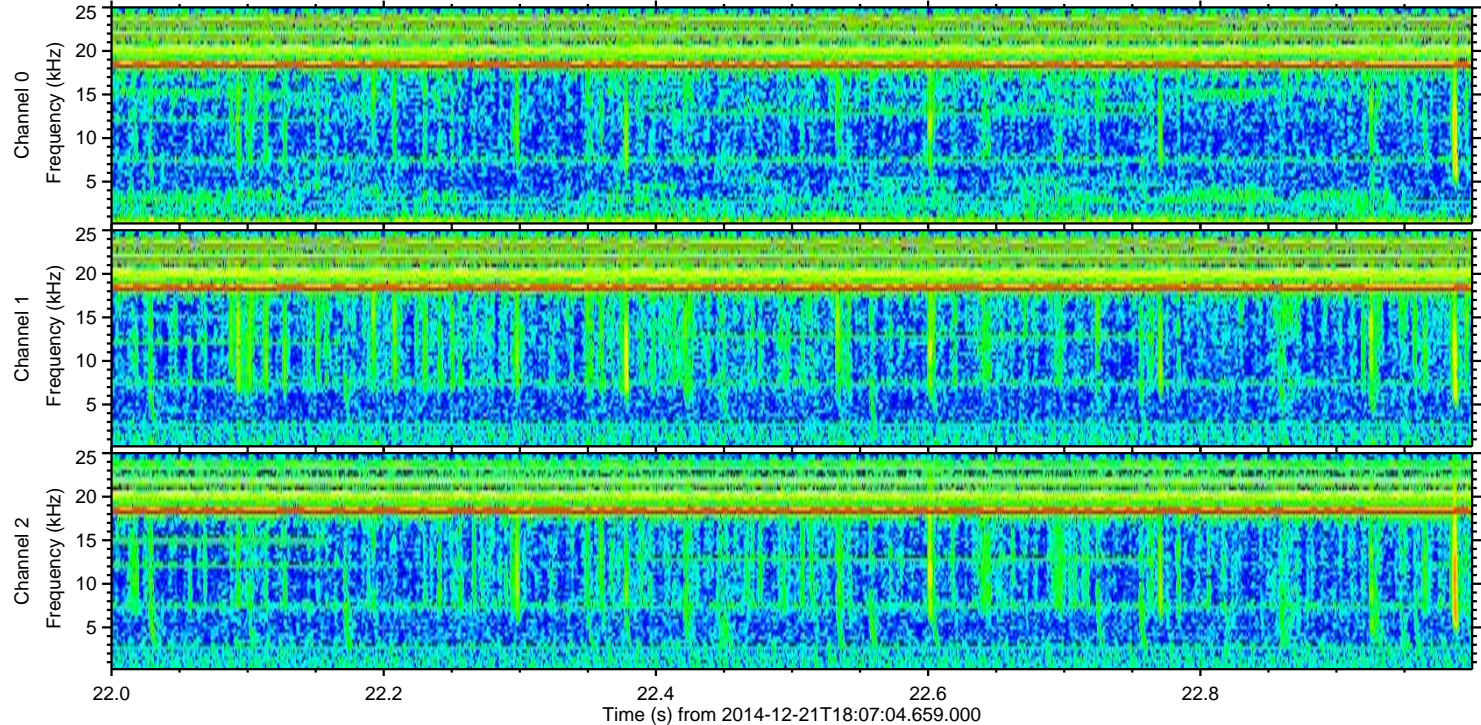
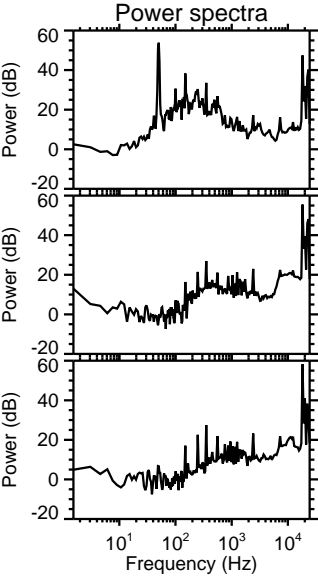
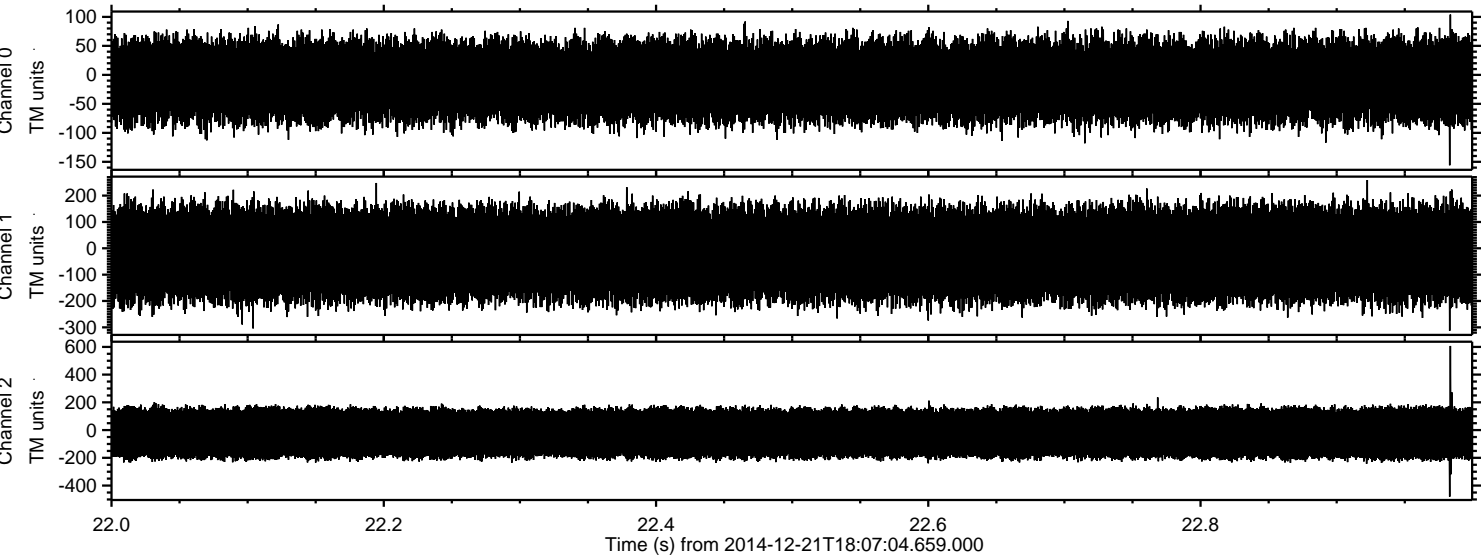


Channel 0
mn: -159
mx: 95
 μ : -10.6
 σ : 37.1

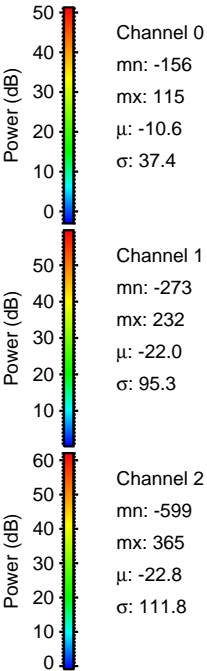
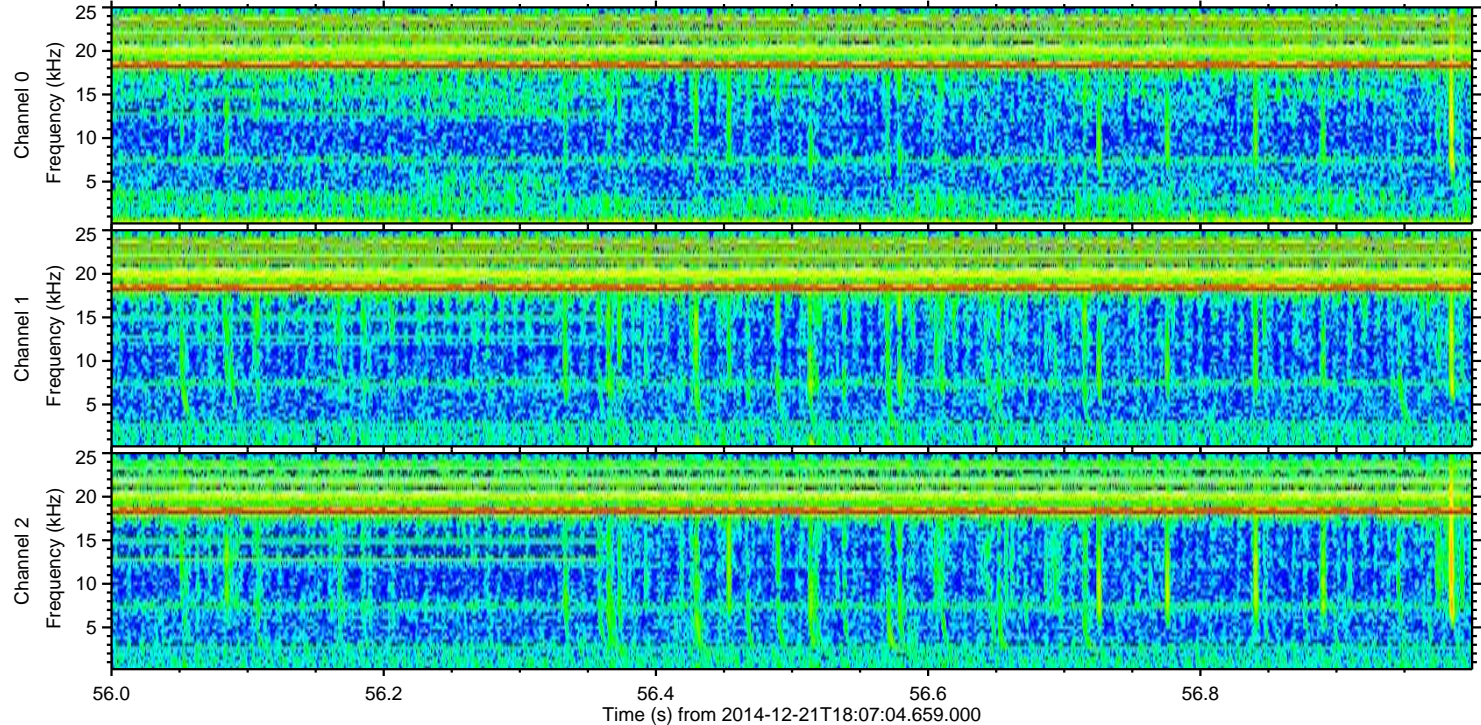
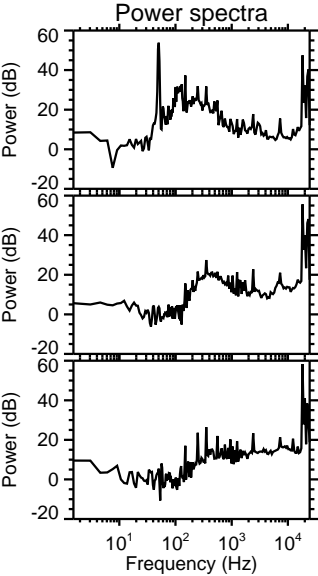
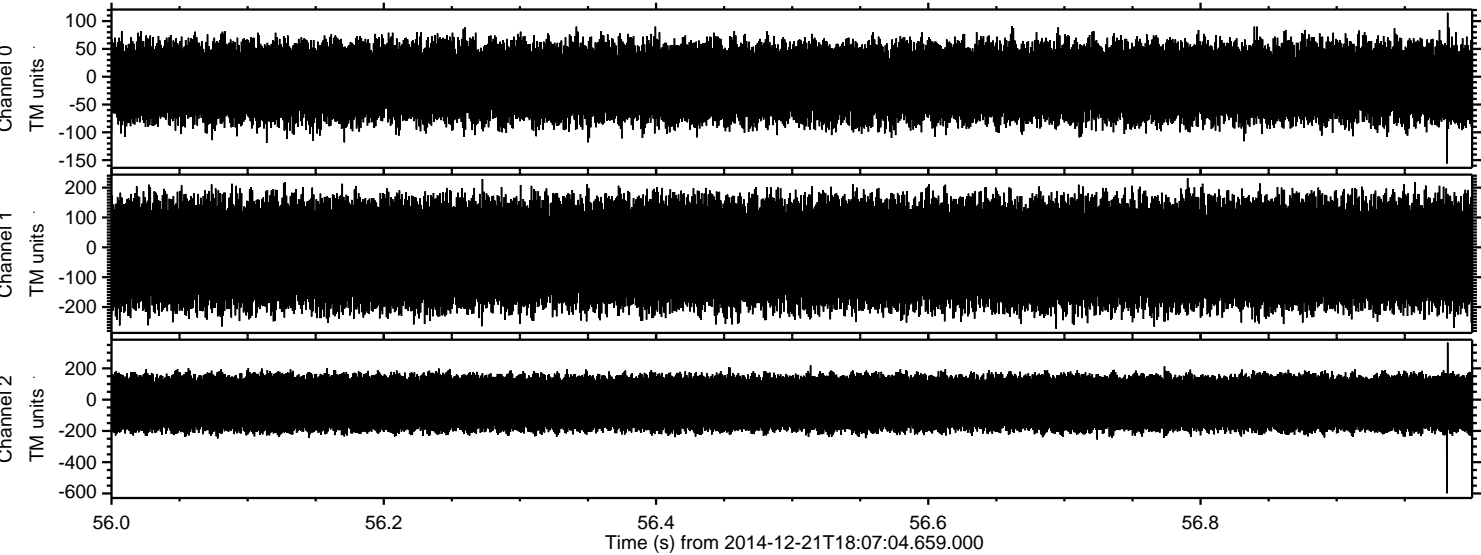
Channel 1
mn: -296
mx: 286
 μ : -21.9
 σ : 93.4

Channel 2
mn: -660
mx: 531
 μ : -22.7
 σ : 109.0

Processed Sun Dec 21 19:14:51 2014 by ELM ver.2012-10-06 from 001__elm20141221_180703__dat00.bin



Processed Sun Dec 21 19:14:52 2014 by ELM ver.2012-10-06 from 001__elm20141221_180703__dat00.bin



Processed Sun Dec 21 19:14:53 2014 by ELM ver.2012-10-06 from 001__elm20141221_180703__dat00.bin

