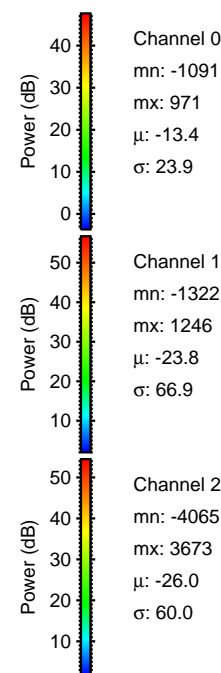
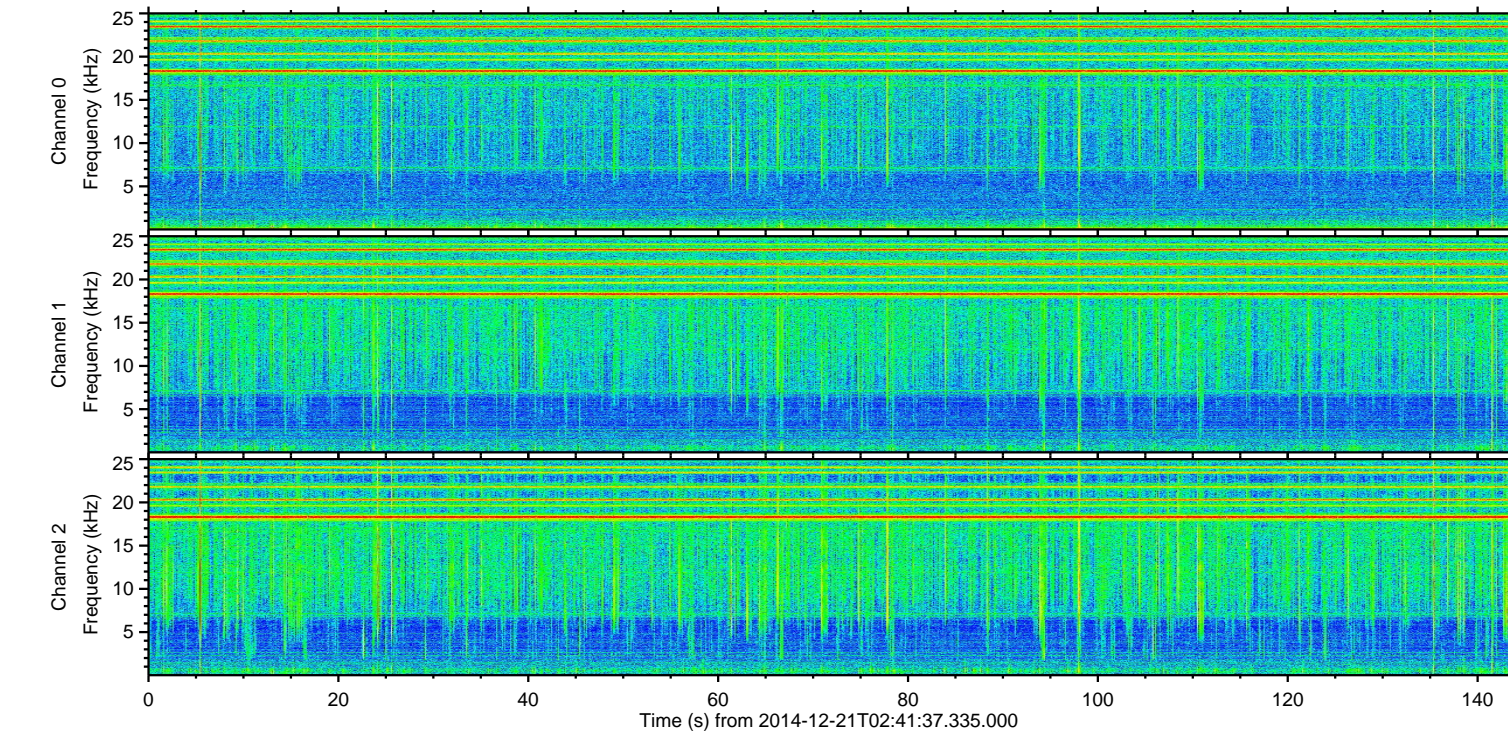
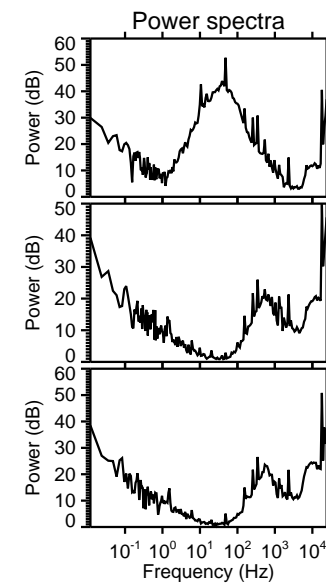
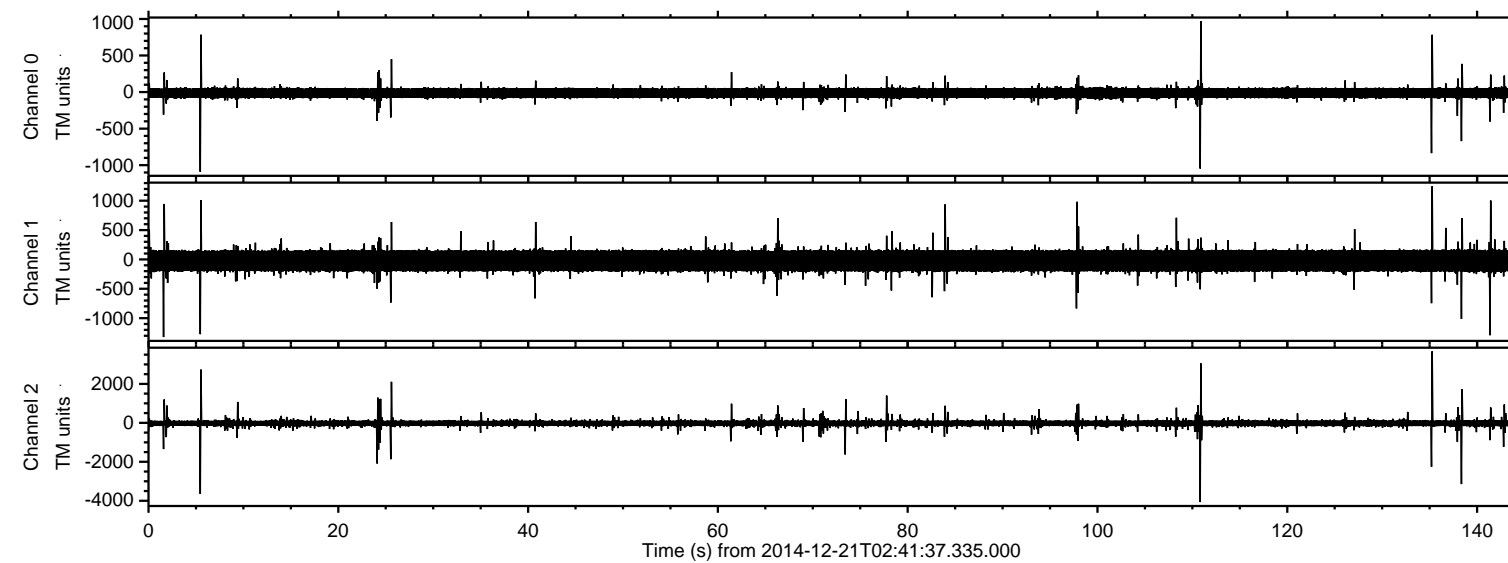


# ELMAVAN 3D WAVEFORMS (Measured data sampled at 50 kHz) 49785 packets of 144 samples from 2014-12-21T02:41:37.335.000.

Processed Sun Dec 21 03:49:04 2014 by ELM ver.2012-10-06 from 001\_\_elm20141221\_024136\_\_dat00.bin



Channel 0  
mn: -1091  
mx: 971  
 $\mu$ : -13.4  
 $\sigma$ : 23.9

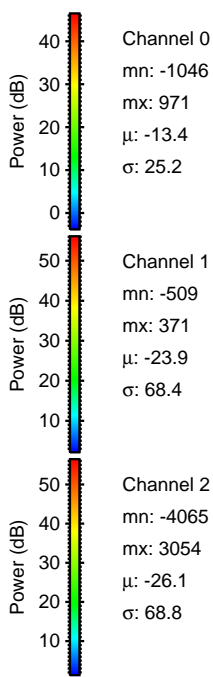
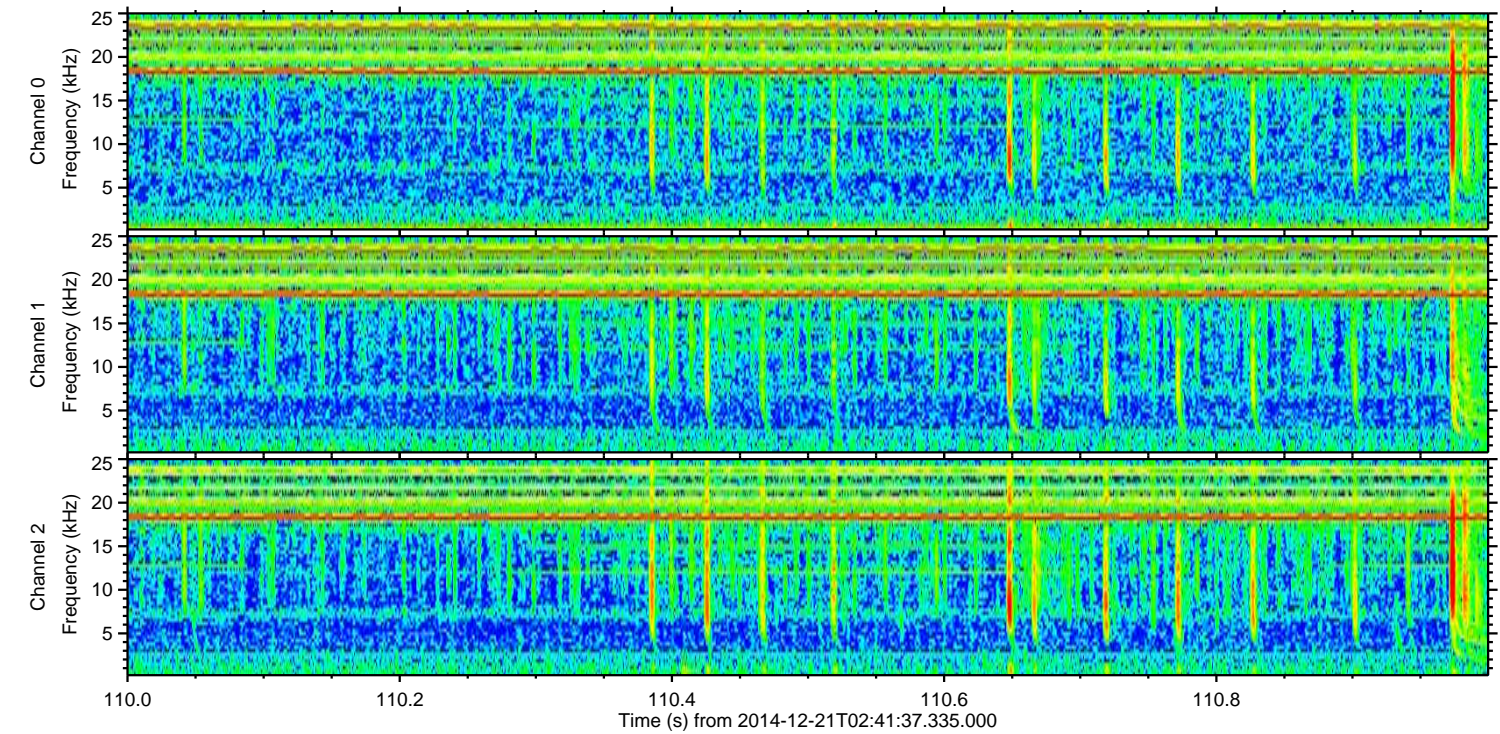
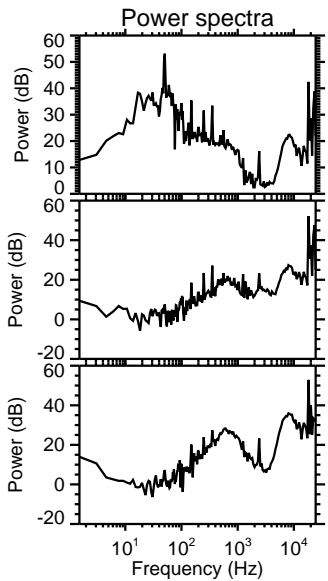
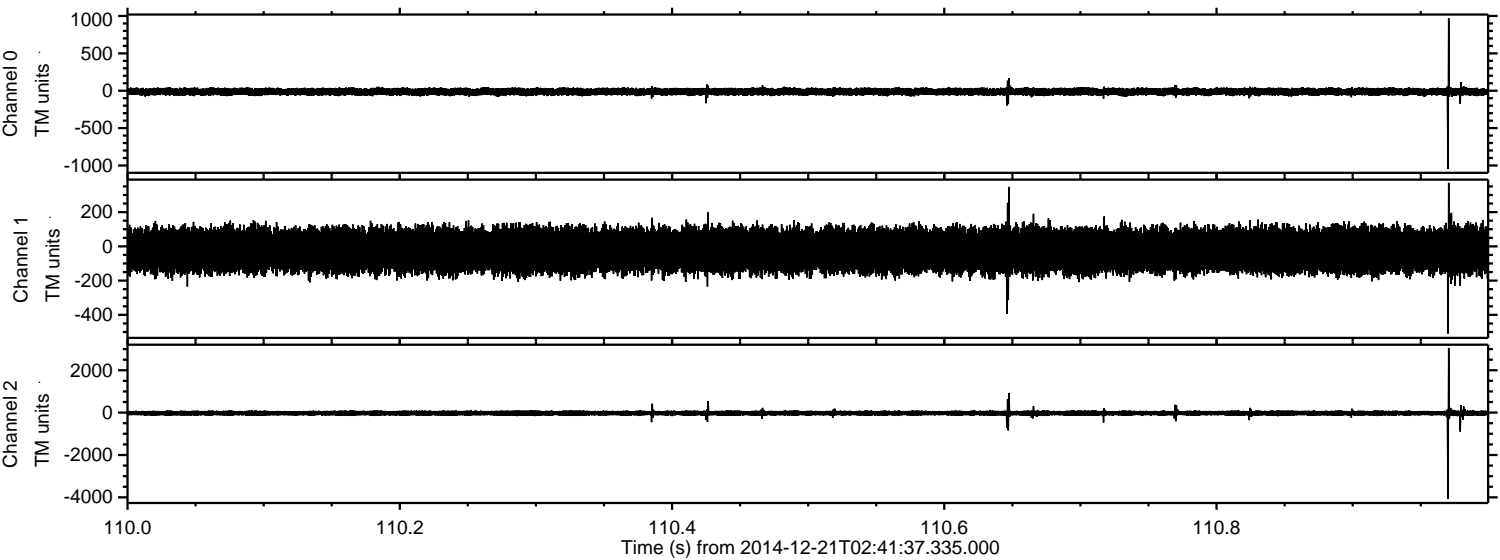
Channel 1  
mn: -1322  
mx: 1246  
 $\mu$ : -23.8  
 $\sigma$ : 66.9

Channel 2  
mn: -4065  
mx: 3673  
 $\mu$ : -26.0  
 $\sigma$ : 60.0



ELMAVAN 3D WAVEFORMS (Measured data sampled at 50 kHz) 49785 packets of 144 samples from 2014-12-21T02:41:37.335.000. Part 111/144

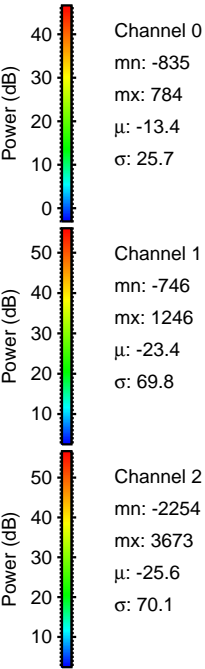
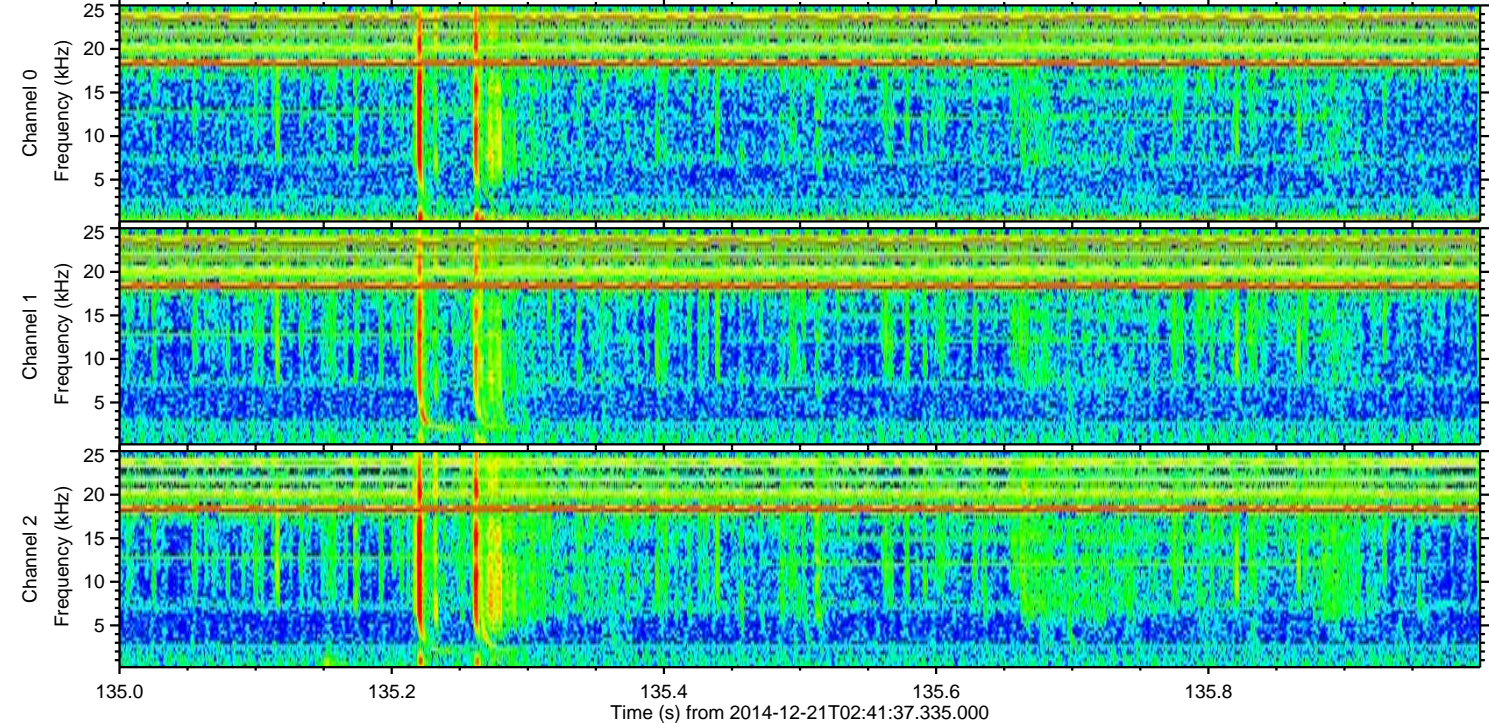
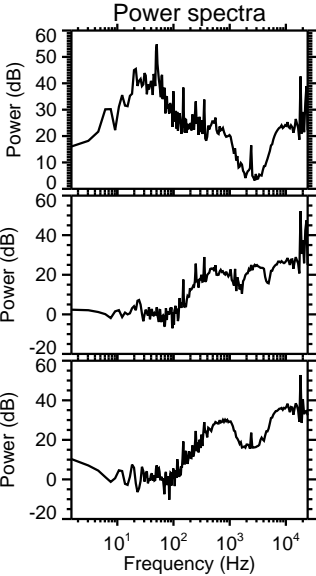
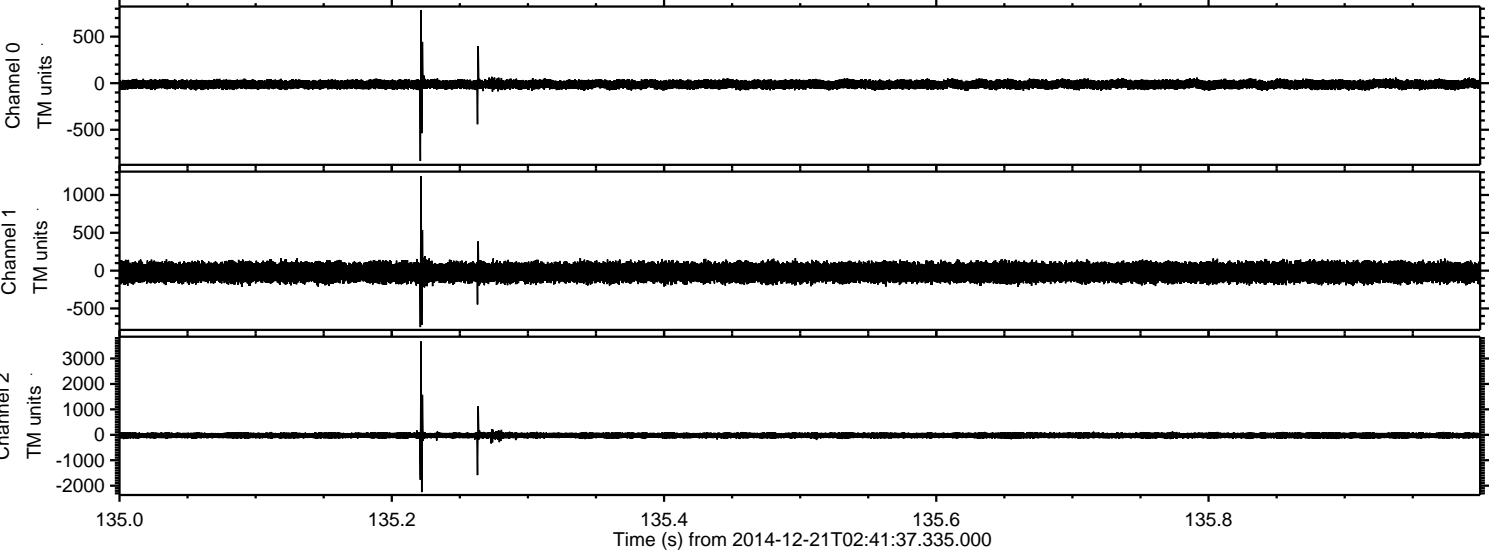
Processed Sun Dec 21 03:49:16 2014 by ELM ver.2012-10-06 from 001\_\_elm20141221\_024136\_\_dat00.bin





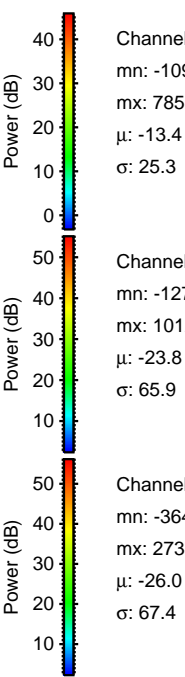
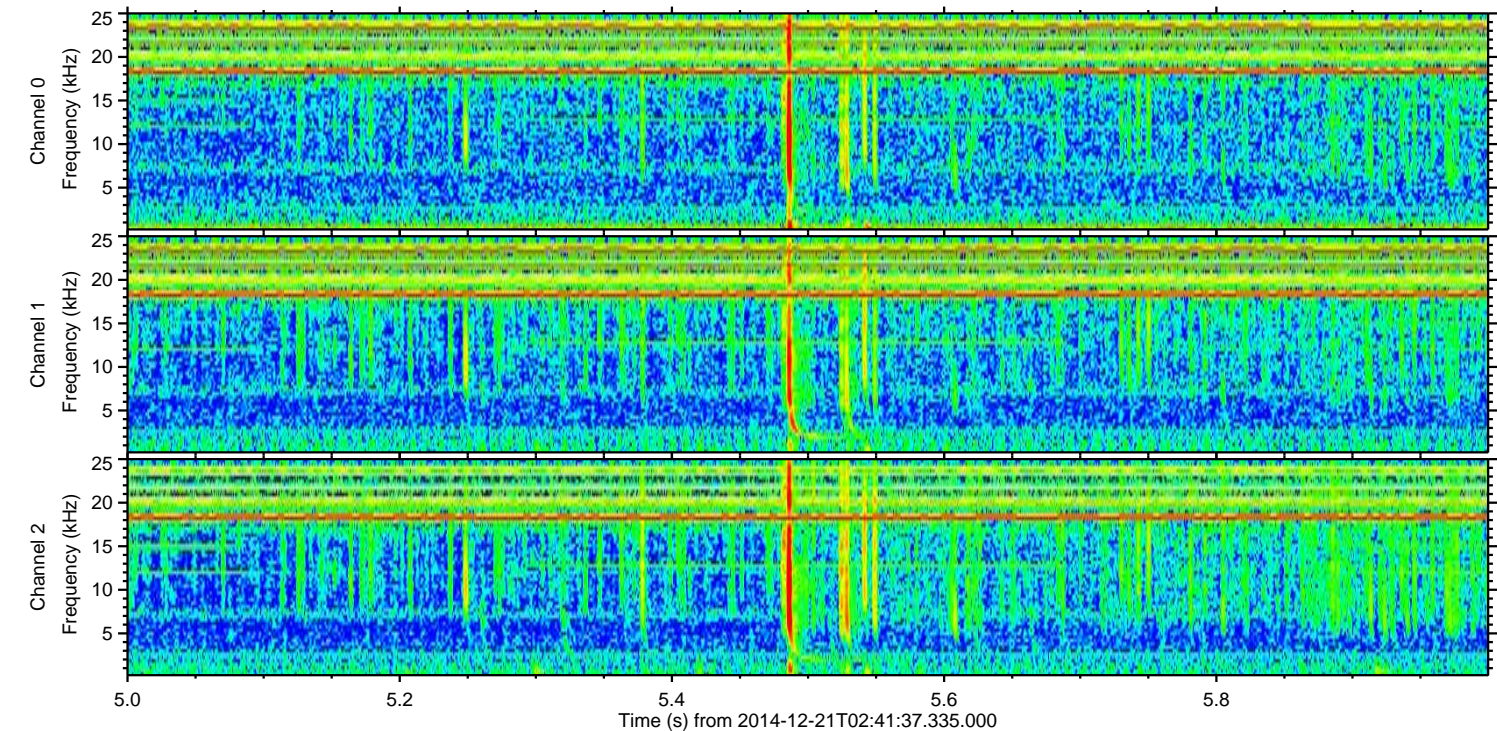
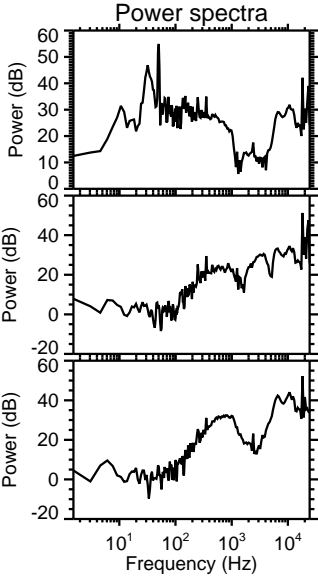
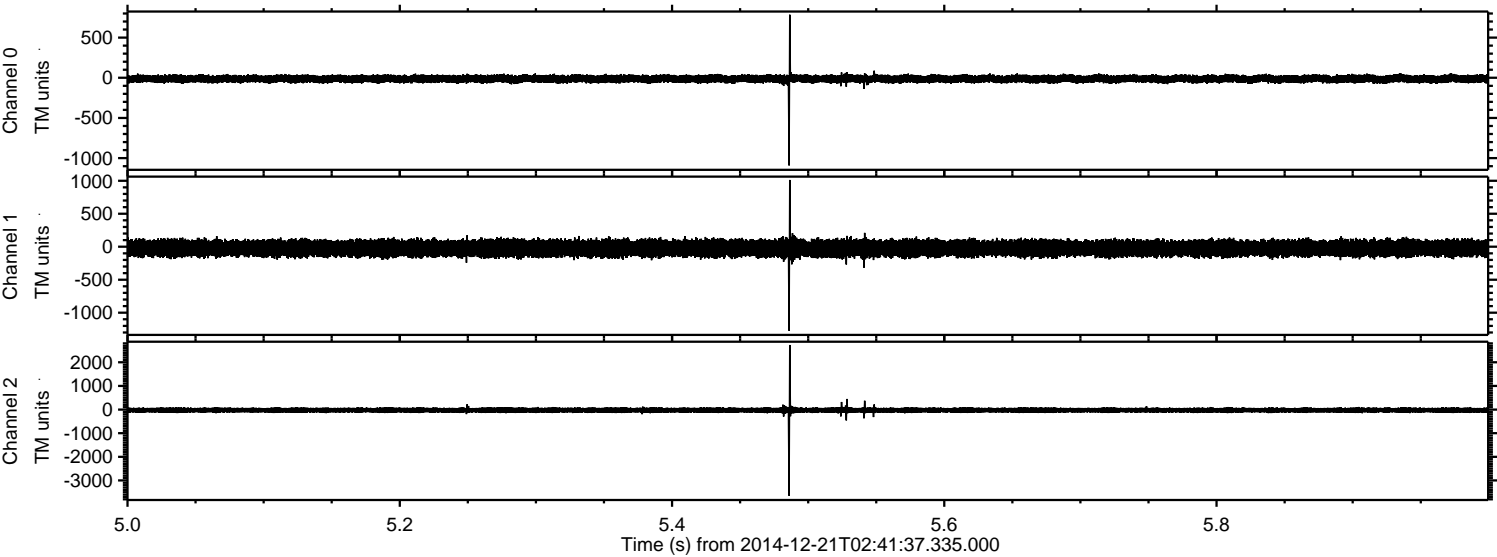
ELMAVAN 3D WAVEFORMS (Measured data sampled at 50 kHz) 49785 packets of 144 samples from 2014-12-21T02:41:37.335.000. Part 136/144

Processed Sun Dec 21 03:49:17 2014 by ELM ver.2012-10-06 from 001\_\_elm20141221\_024136\_\_dat00.bin





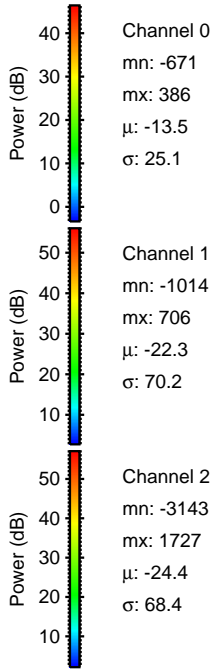
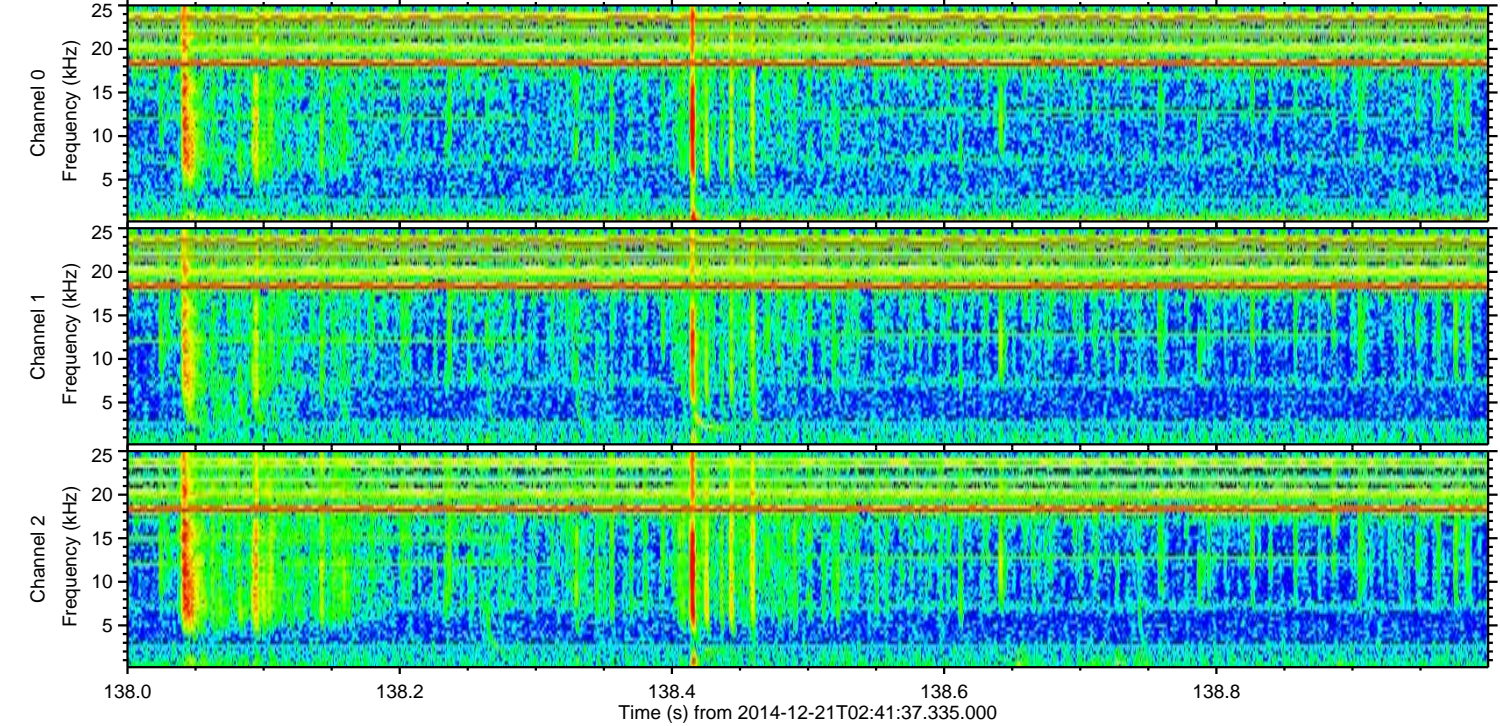
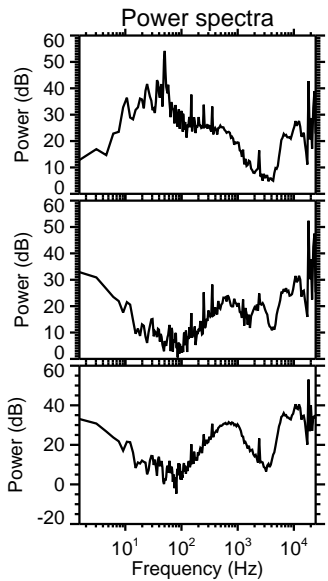
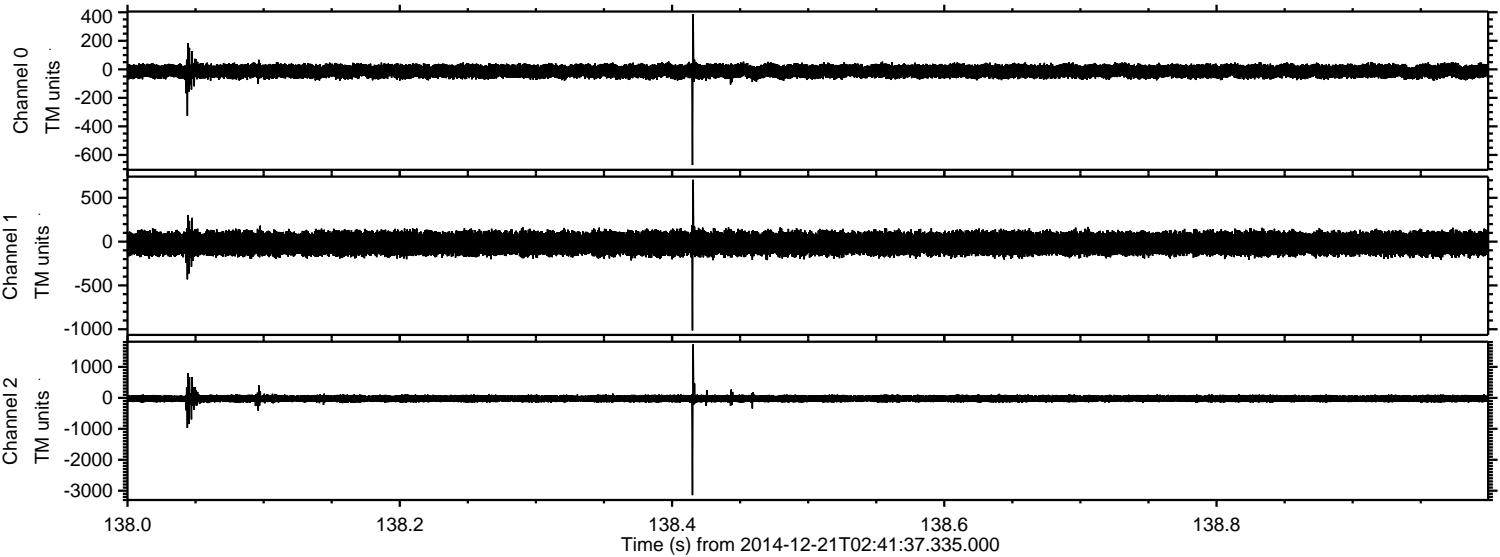
Processed Sun Dec 21 03:49:18 2014 by ELM ver.2012-10-06 from 001\_\_elm20141221\_024136\_\_dat00.bin





ELMAVAN 3D WAVEFORMS (Measured data sampled at 50 kHz) 49785 packets of 144 samples from 2014-12-21T02:41:37.335.000. Part 139/144

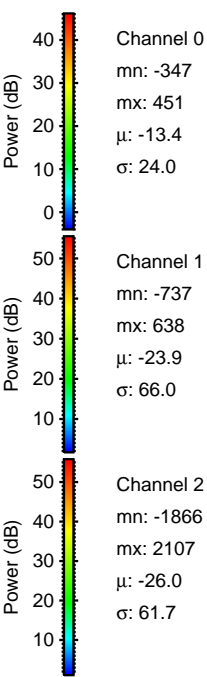
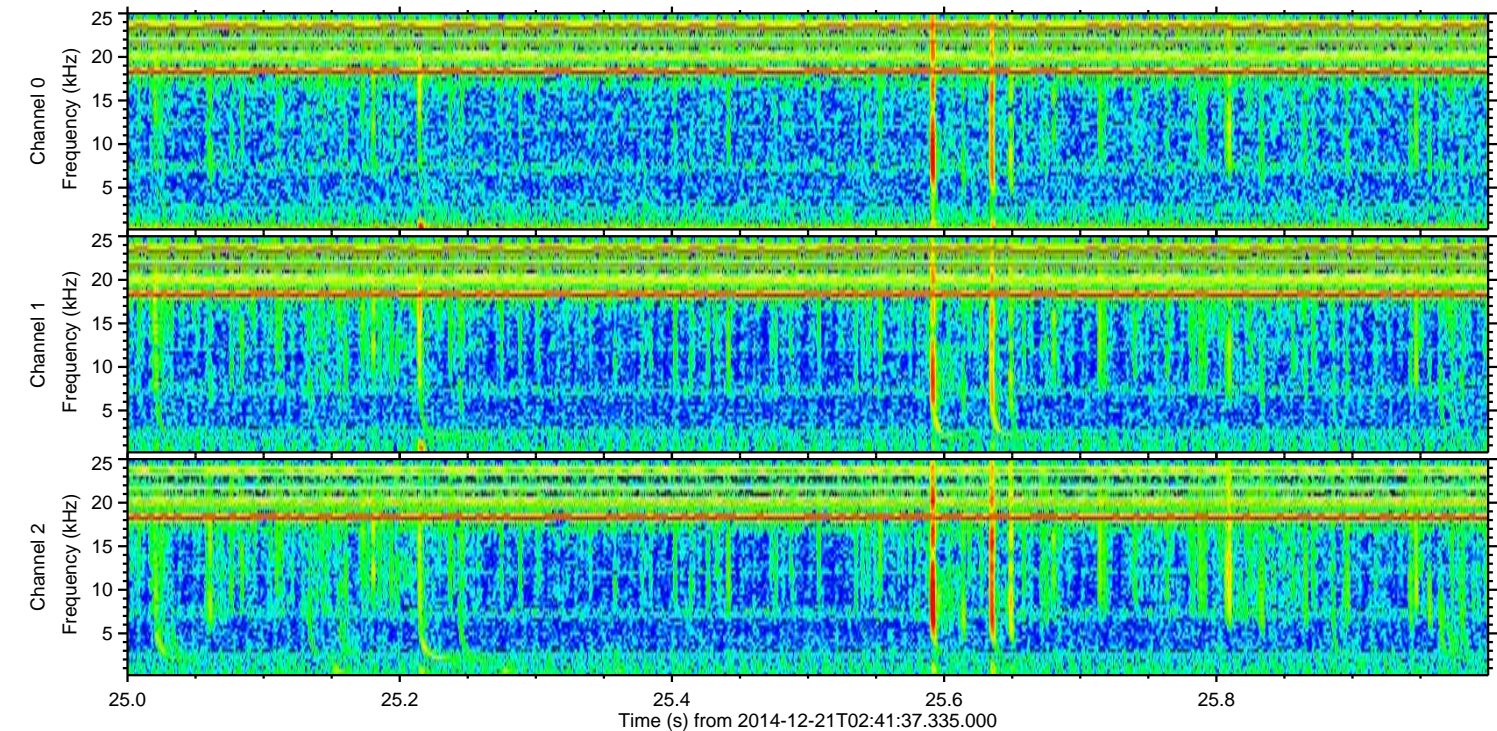
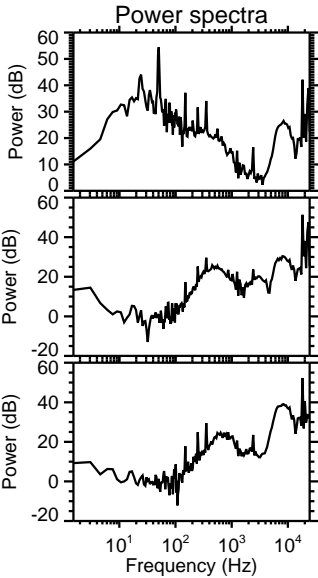
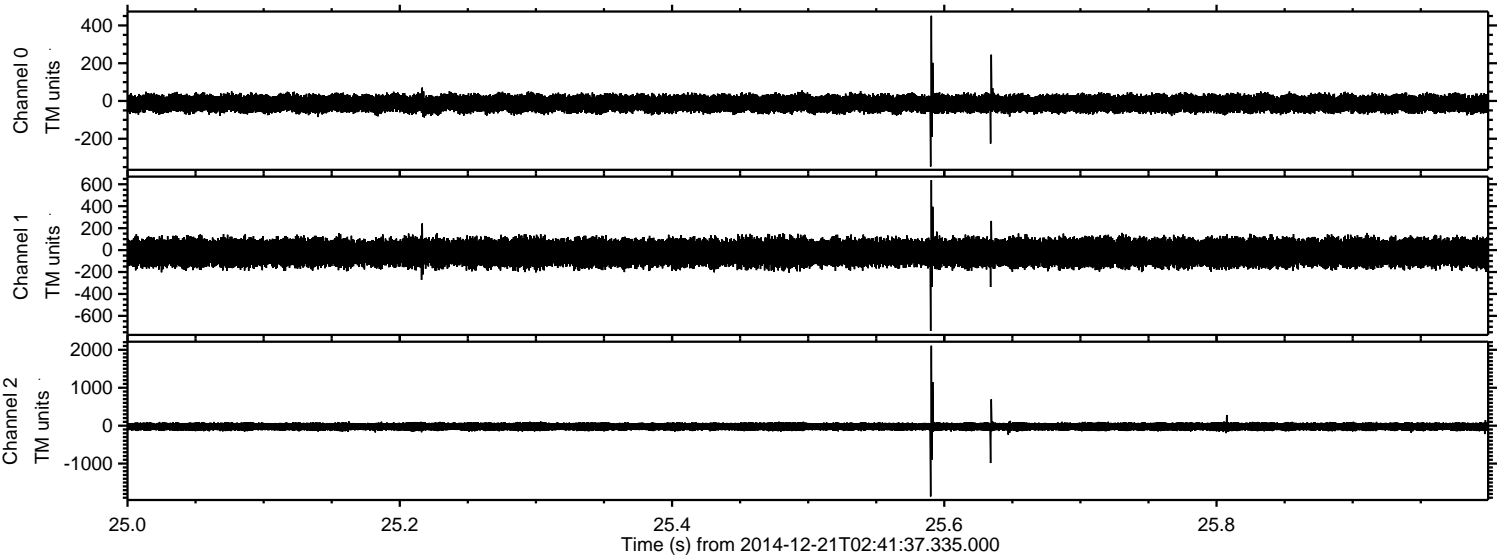
Processed Sun Dec 21 03:49:19 2014 by ELM ver.2012-10-06 from 001\_\_elm20141221\_024136\_\_dat00.bin





ELMAVAN 3D WAVEFORMS (Measured data sampled at 50 kHz) 49785 packets of 144 samples from 2014-12-21T02:41:37.335.000. Part 26/144

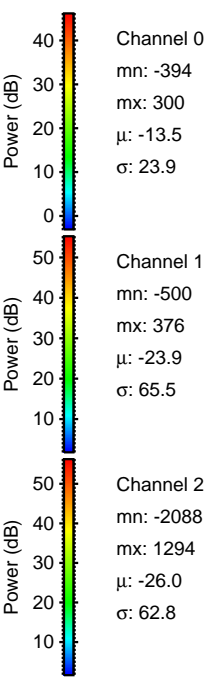
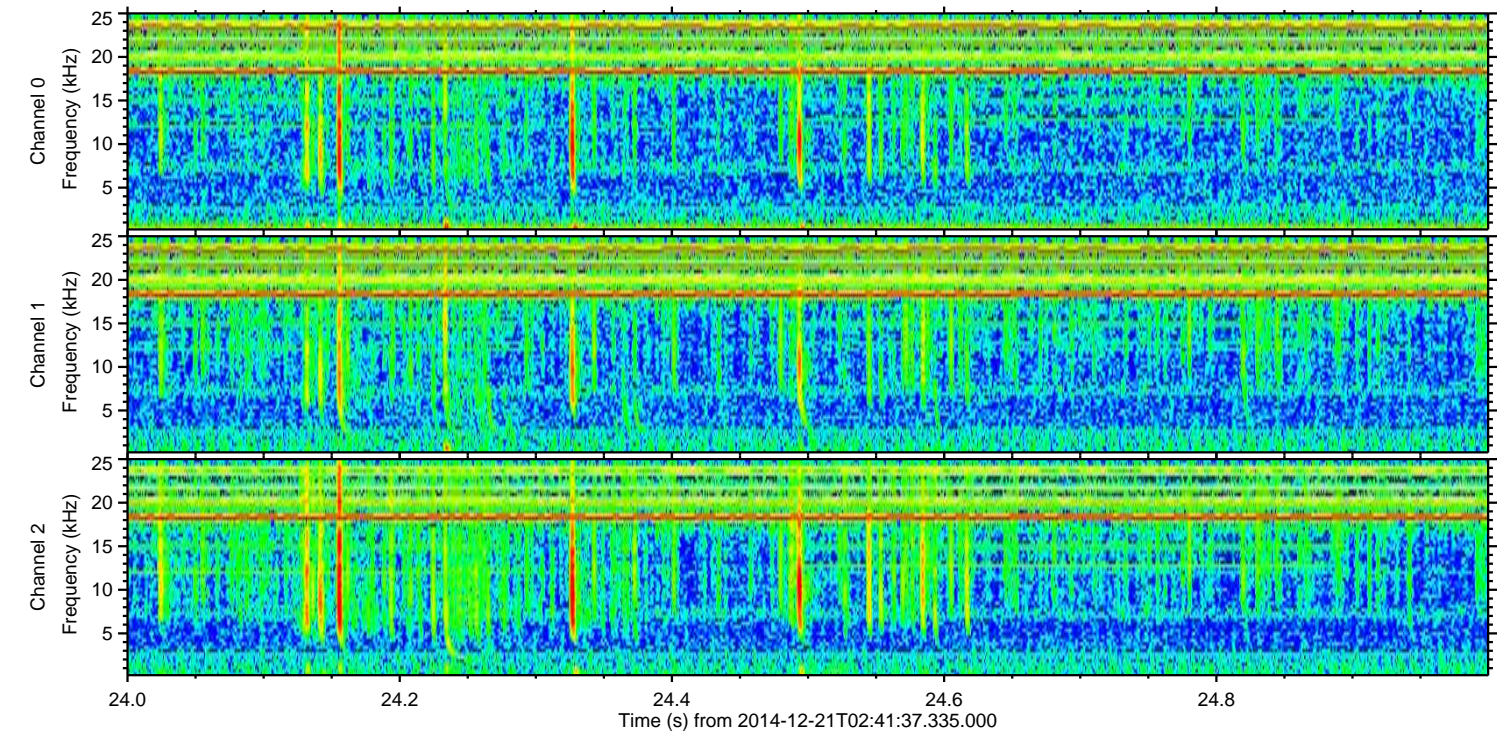
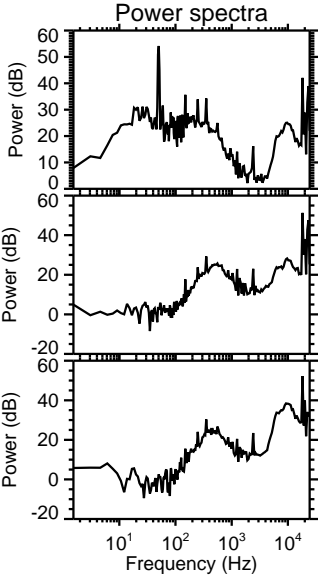
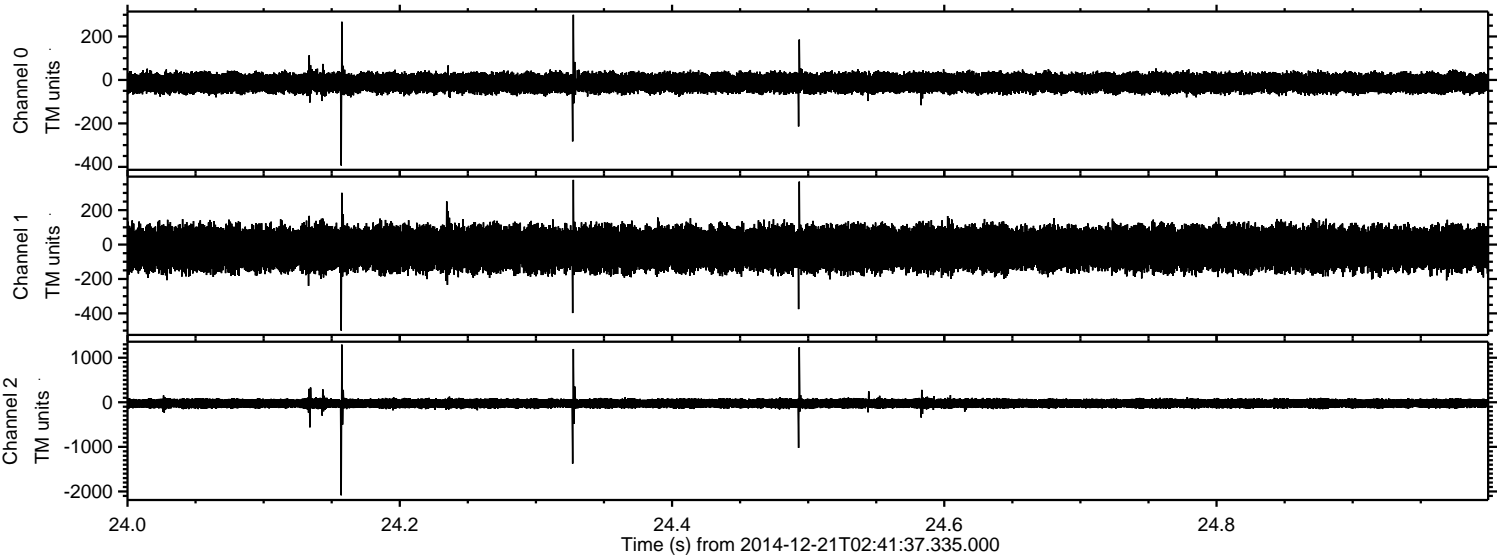
Processed Sun Dec 21 03:49:19 2014 by ELM ver.2012-10-06 from 001\_\_elm20141221\_024136\_\_dat00.bin





ELMAVAN 3D WAVEFORMS (Measured data sampled at 50 kHz) 49785 packets of 144 samples from 2014-12-21T02:41:37.335.000. Part 25/144

Processed Sun Dec 21 03:49:20 2014 by ELM ver.2012-10-06 from 001\_\_elm20141221\_024136\_\_dat00.bin



Channel 0  
mn: -394  
mx: 300  
 $\mu$ : -13.5  
 $\sigma$ : 23.9

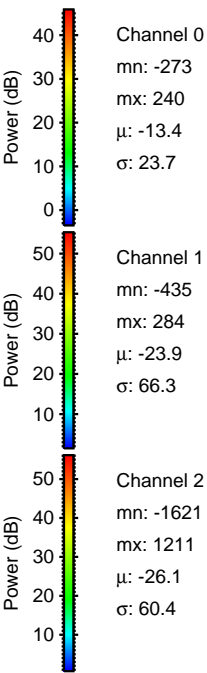
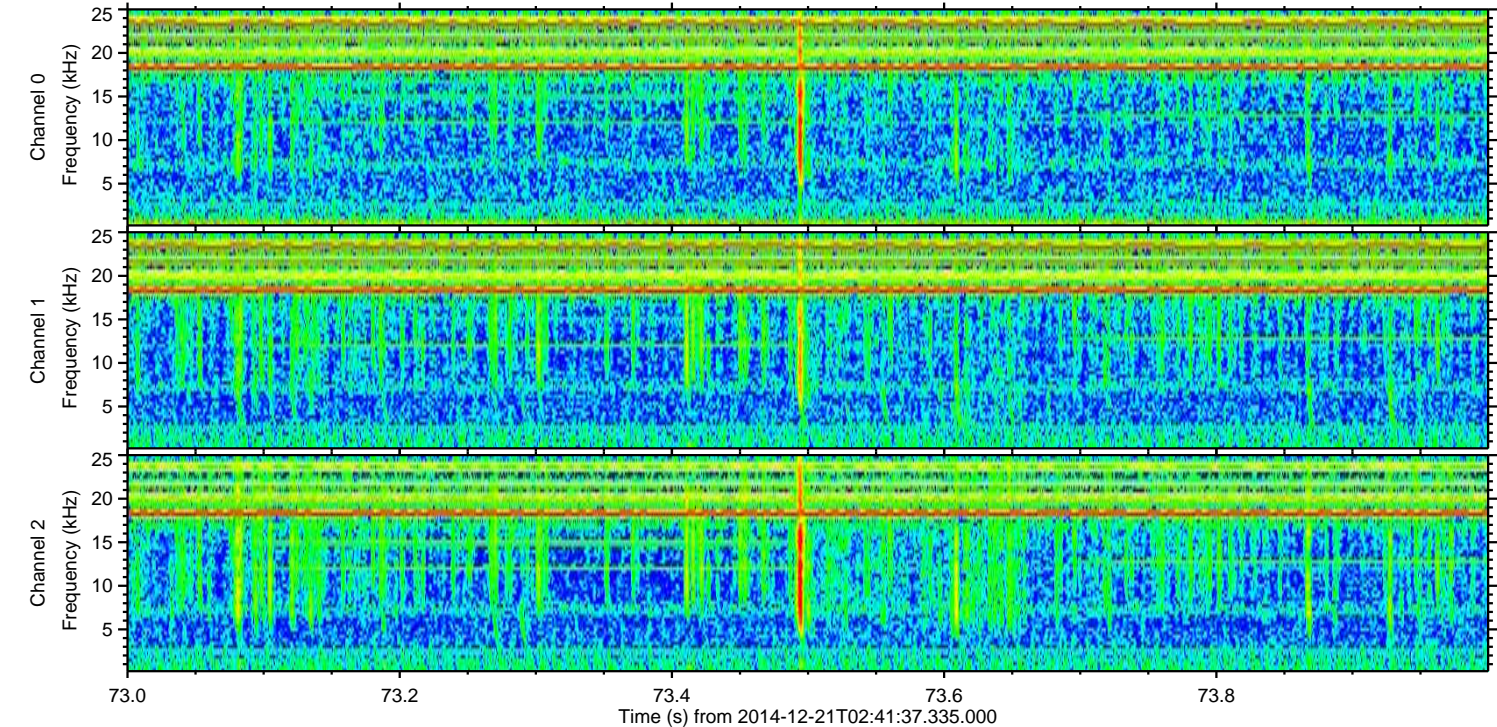
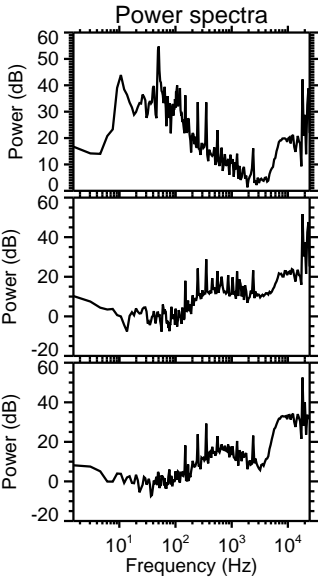
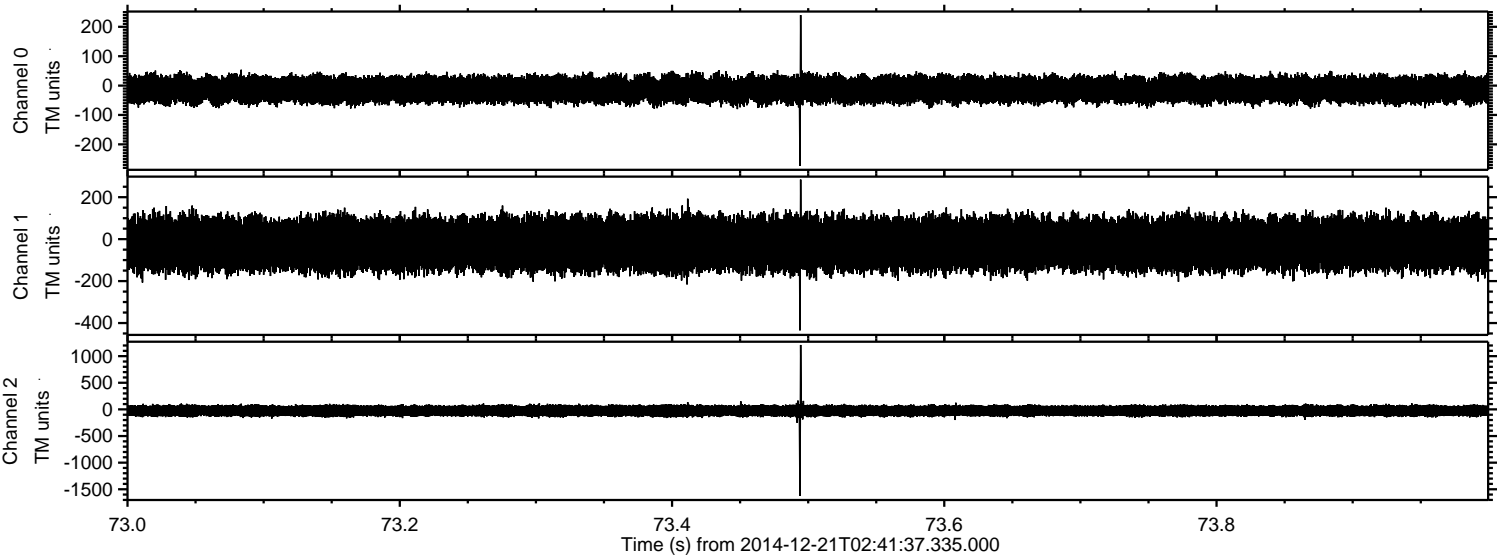
Channel 1  
mn: -500  
mx: 376  
 $\mu$ : -23.9  
 $\sigma$ : 65.5

Channel 2  
mn: -2088  
mx: 1294  
 $\mu$ : -26.0  
 $\sigma$ : 62.8



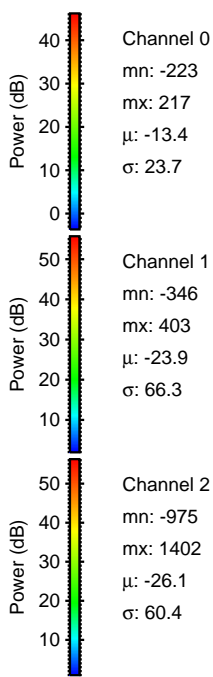
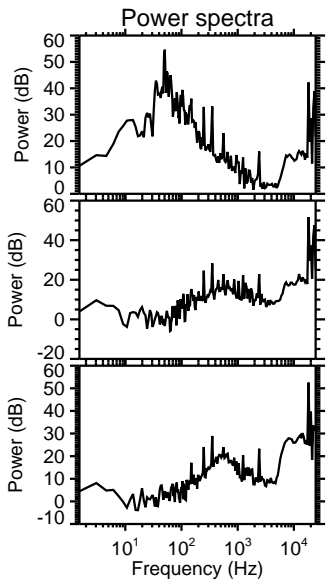
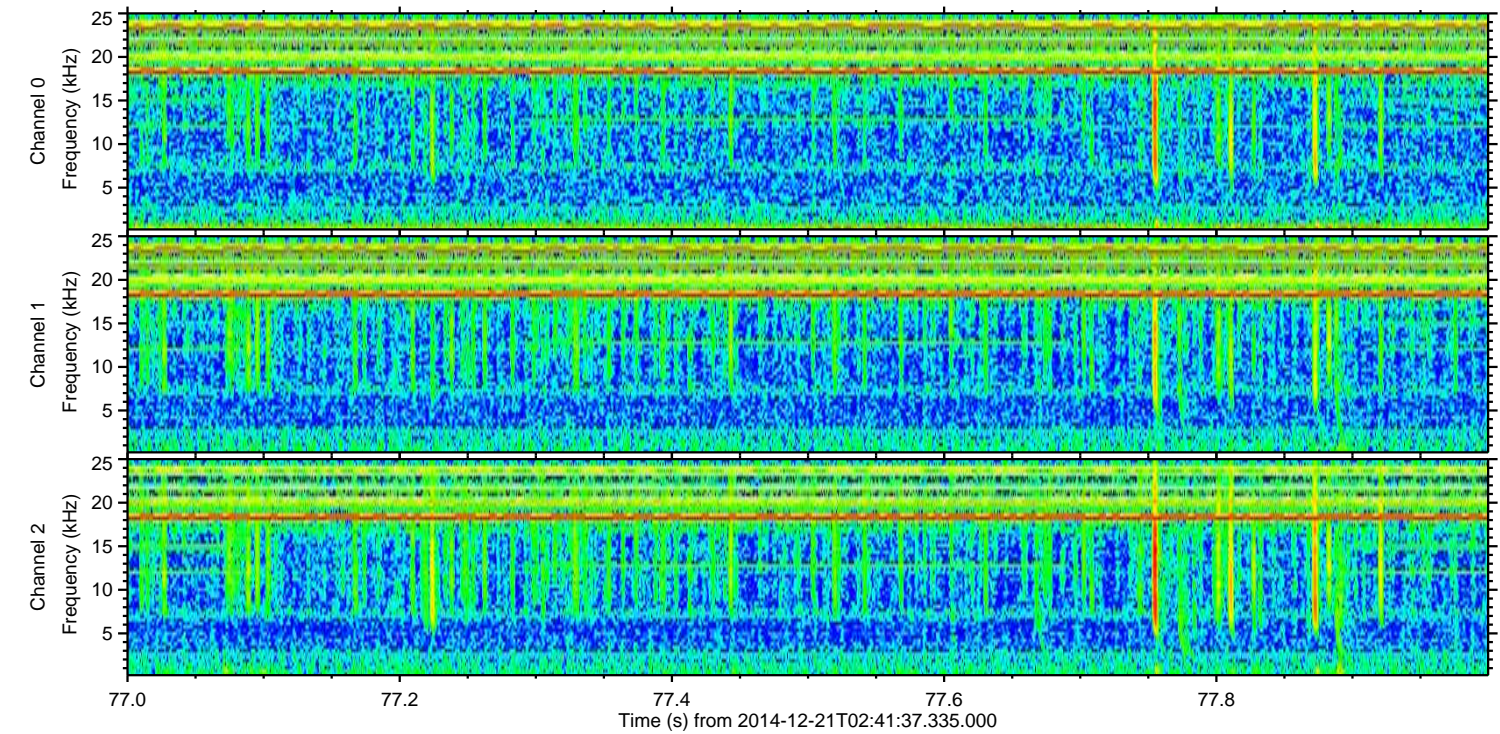
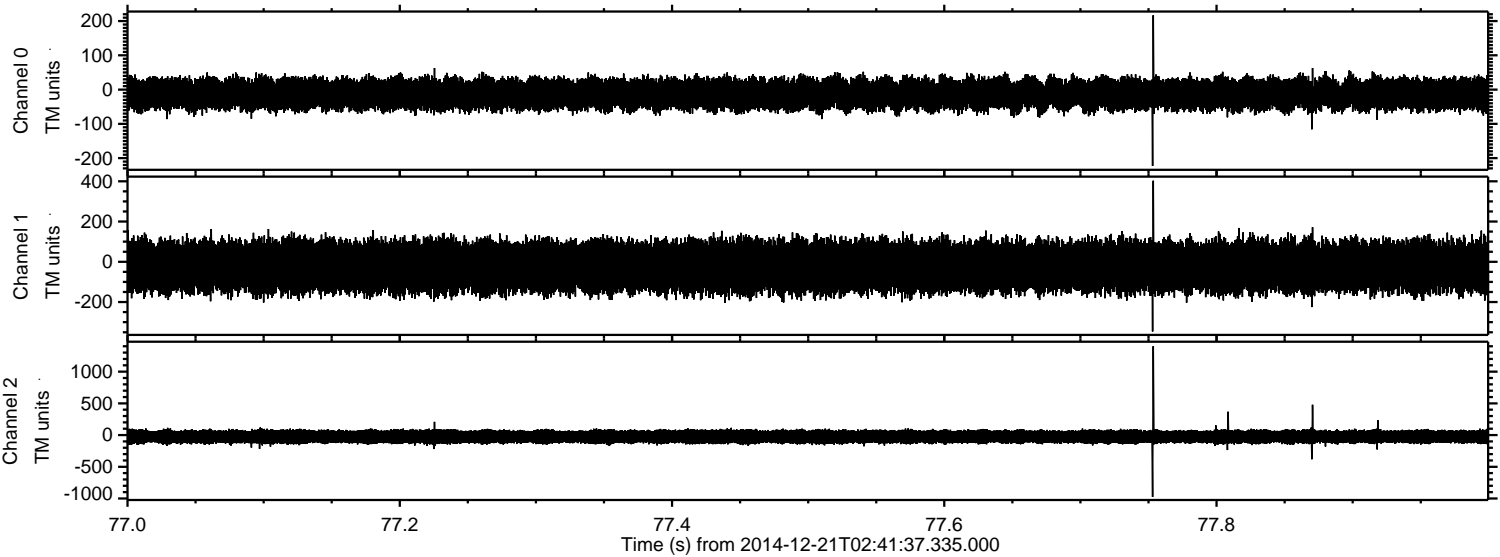
ELMAVAN 3D WAVEFORMS (Measured data sampled at 50 kHz) 49785 packets of 144 samples from 2014-12-21T02:41:37.335.000. Part 74/144

Processed Sun Dec 21 03:49:21 2014 by ELM ver.2012-10-06 from 001\_\_elm20141221\_024136\_\_dat00.bin





Processed Sun Dec 21 03:49:22 2014 by ELM ver.2012-10-06 from 001\_\_elm20141221\_024136\_\_dat00.bin



Power spectra

Channel 0

mn: -223  
mx: 217  
 $\mu$ : -13.4  
 $\sigma$ : 23.7

Channel 1

mn: -346  
mx: 403  
 $\mu$ : -23.9  
 $\sigma$ : 66.3

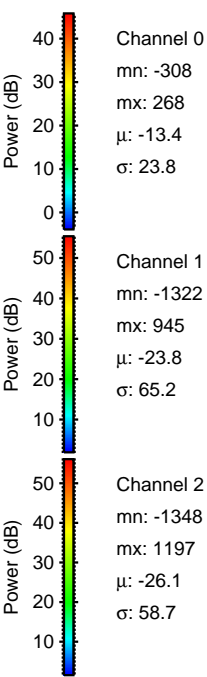
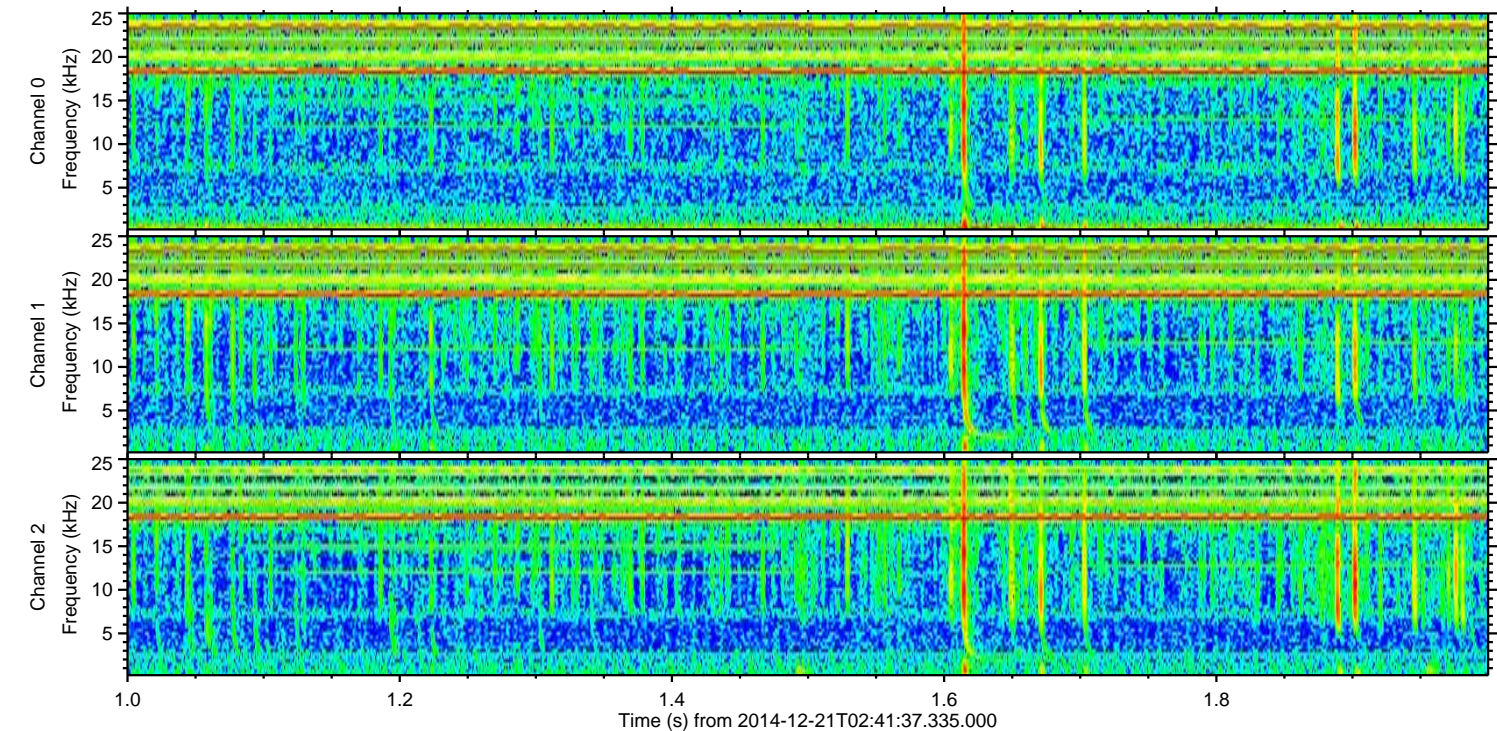
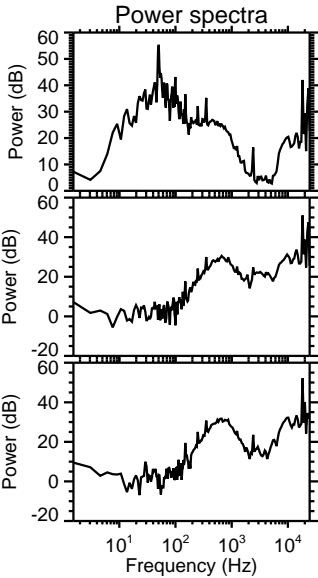
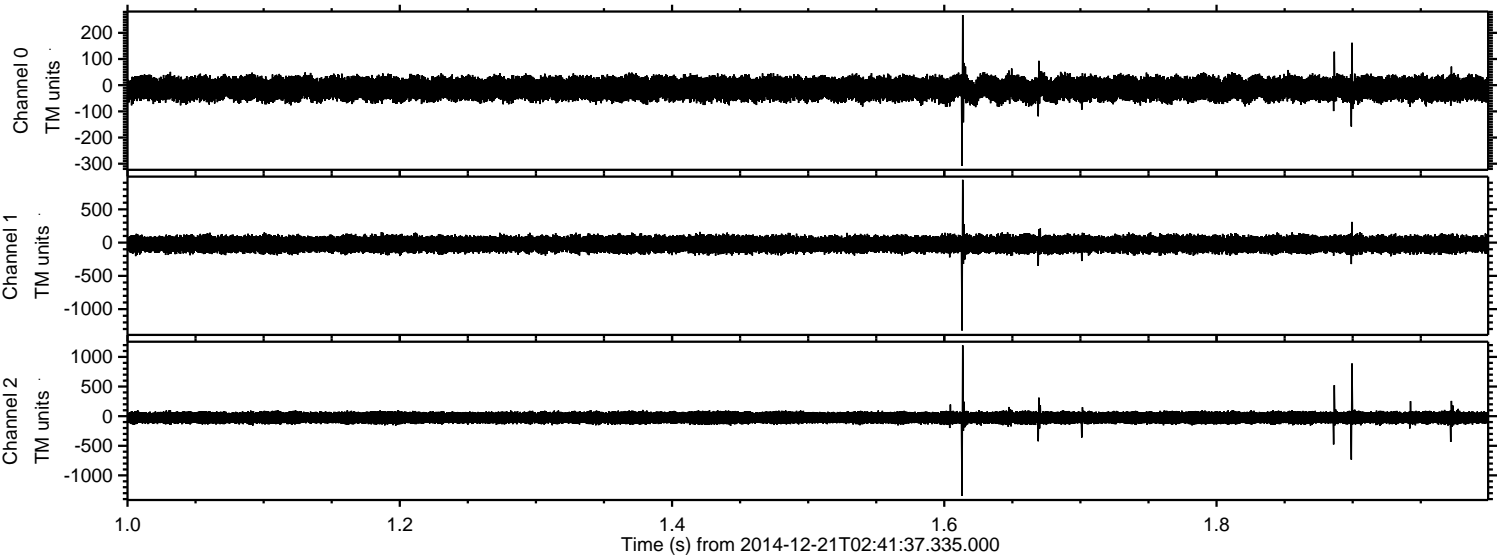
Channel 2

mn: -975  
mx: 1402  
 $\mu$ : -26.1  
 $\sigma$ : 60.4



ELMAVAN 3D WAVEFORMS (Measured data sampled at 50 kHz) 49785 packets of 144 samples from 2014-12-21T02:41:37.335.000. Part 2/144

Processed Sun Dec 21 03:49:23 2014 by ELM ver.2012-10-06 from 001\_\_elm20141221\_024136\_\_dat00.bin





Processed Sun Dec 21 03:49:24 2014 by ELM ver.2012-10-06 from 001\_\_elm20141221\_024136\_\_dat00.bin

