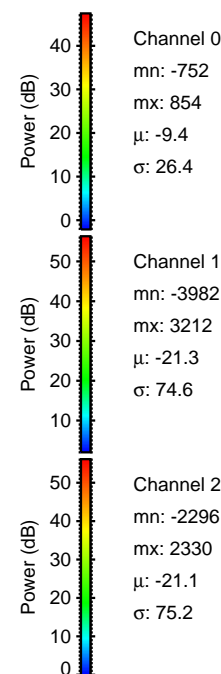
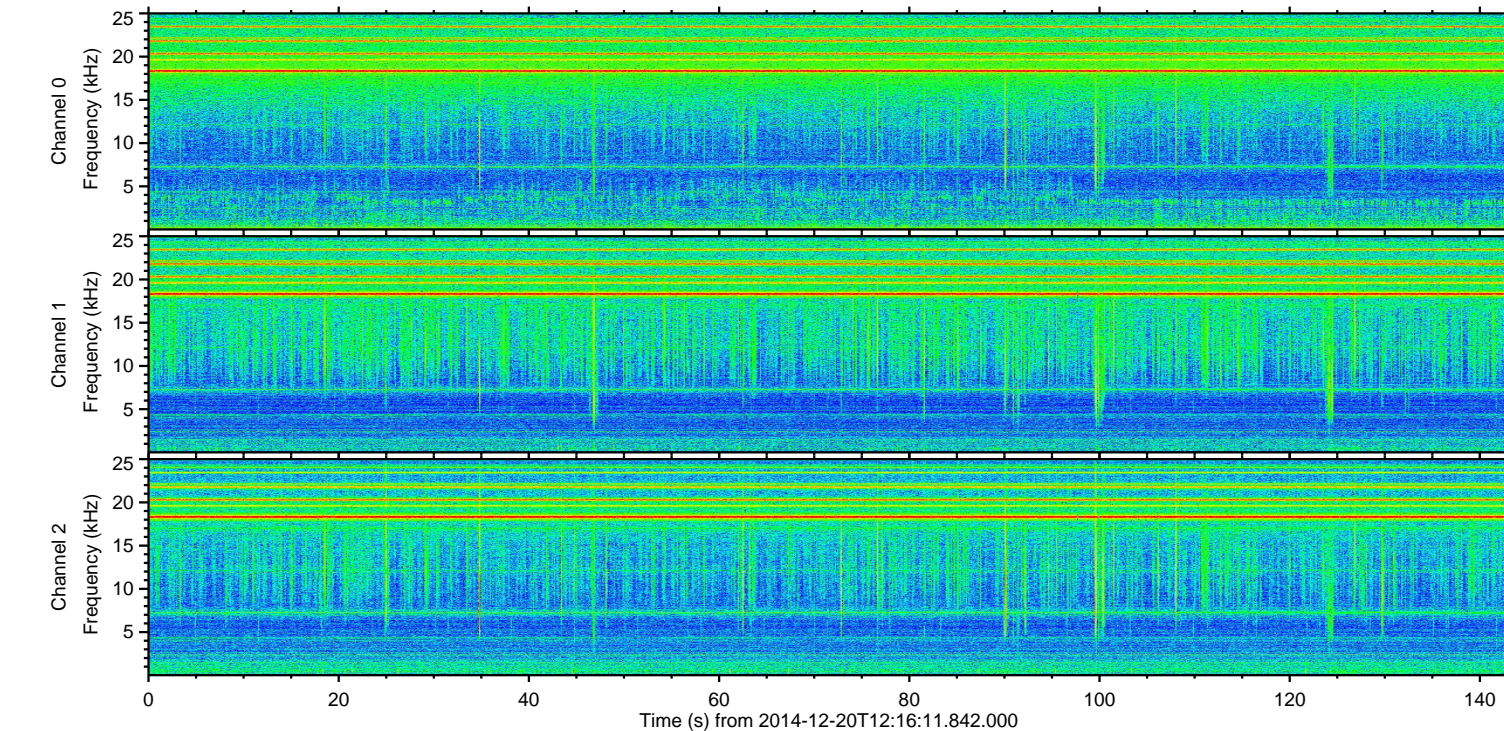
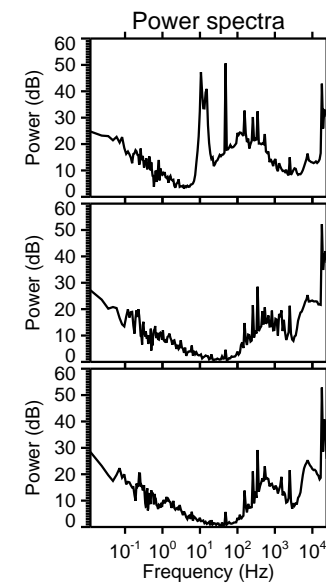
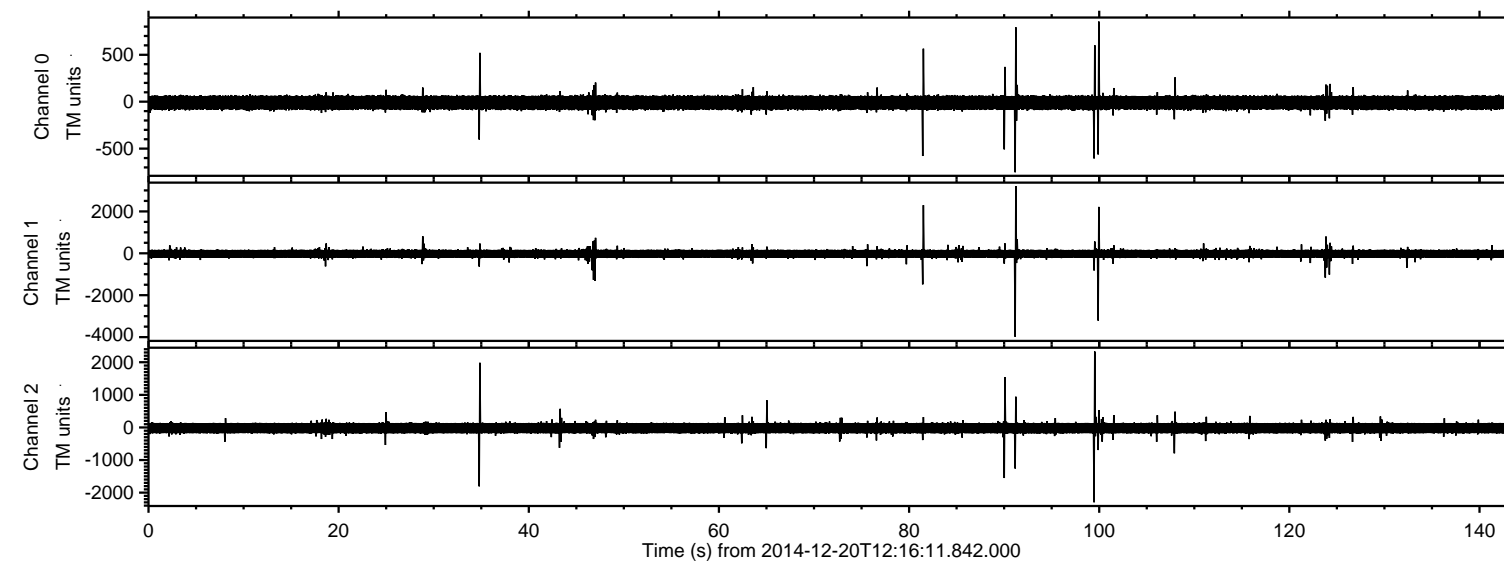
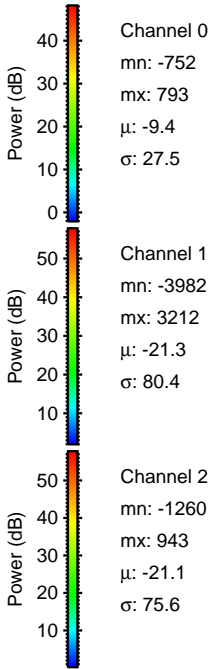
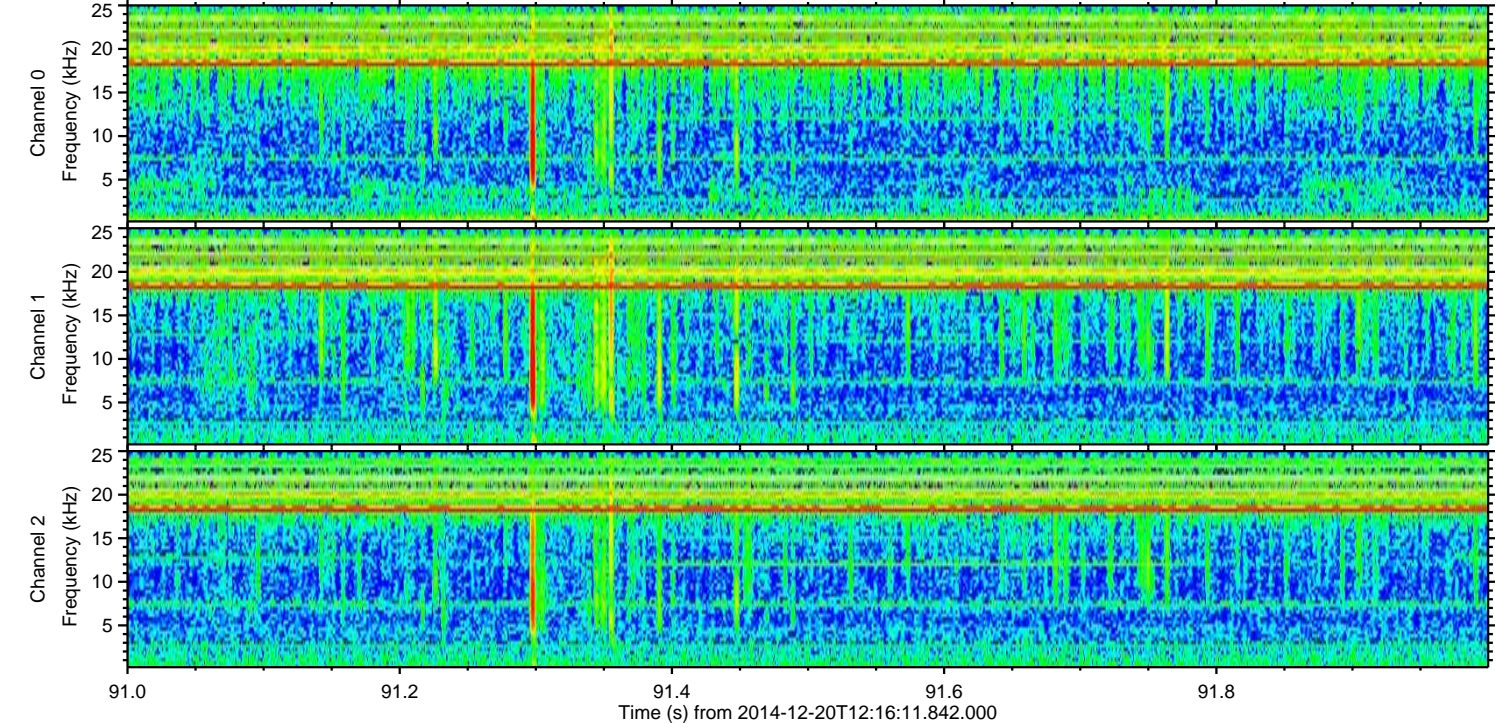
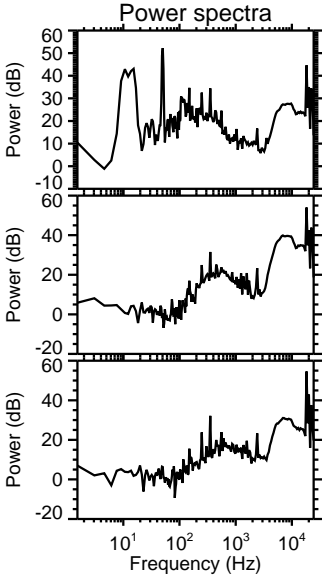
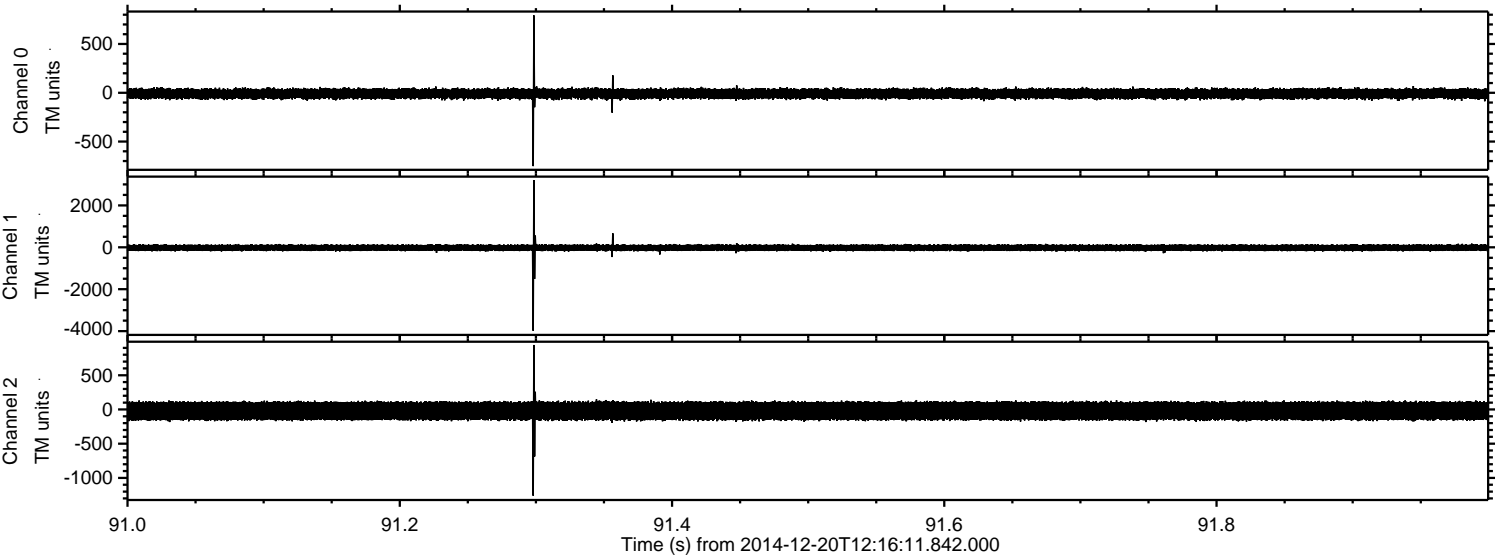


ELMAVAN 3D WAVEFORMS (Measured data sampled at 50 kHz) 49694 packets of 144 samples from 2014-12-20T12:16:11.842.000.

Processed Sat Dec 20 13:23:44 2014 by ELM ver.2012-10-06 from 001__elm20141220_121610__dat00.bin

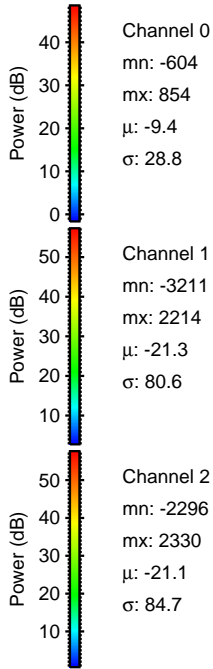
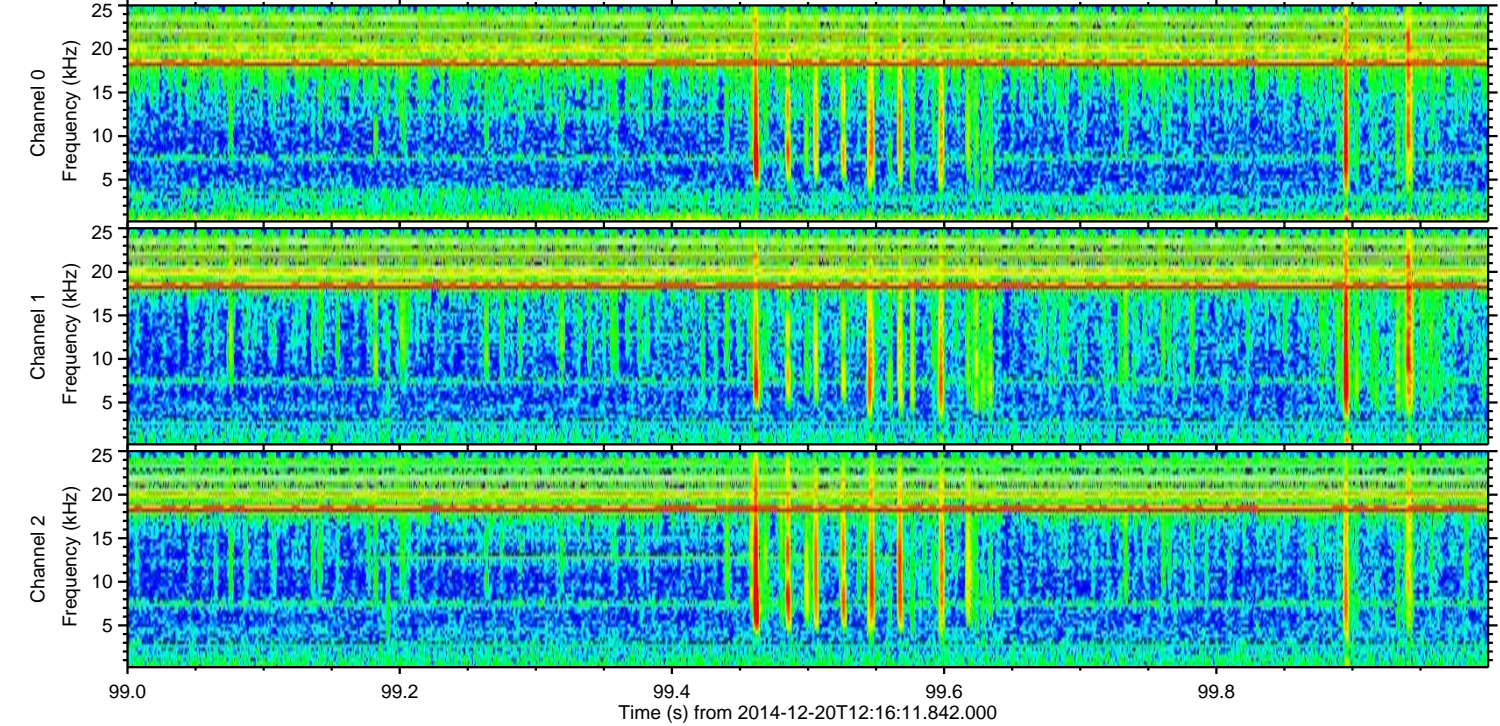
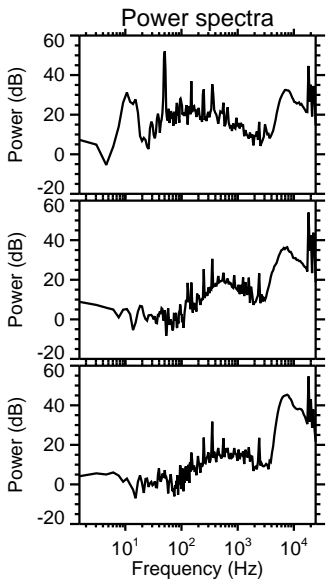
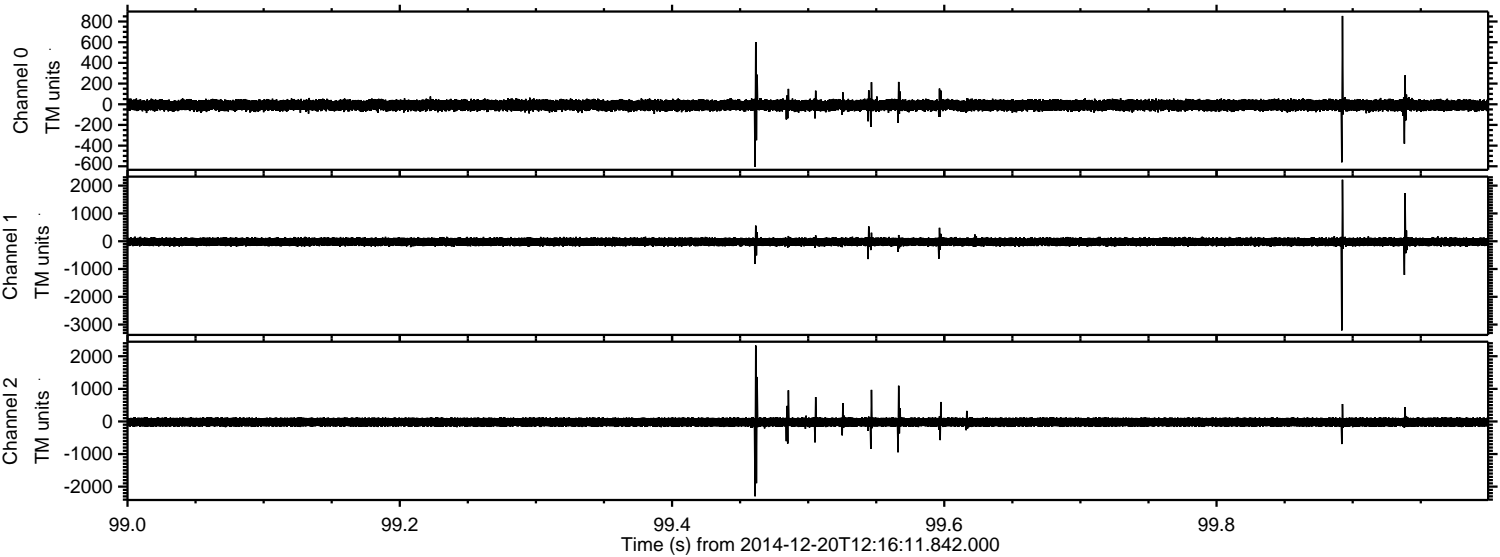


Processed Sat Dec 20 13:24:00 2014 by ELM ver.2012-10-06 from 001__elm20141220_121610__dat00.bin

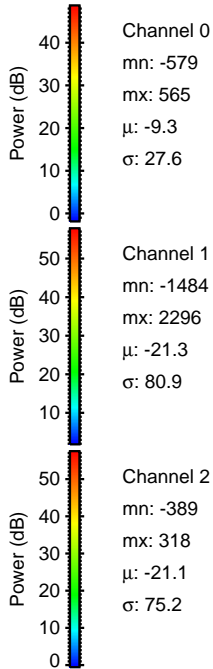
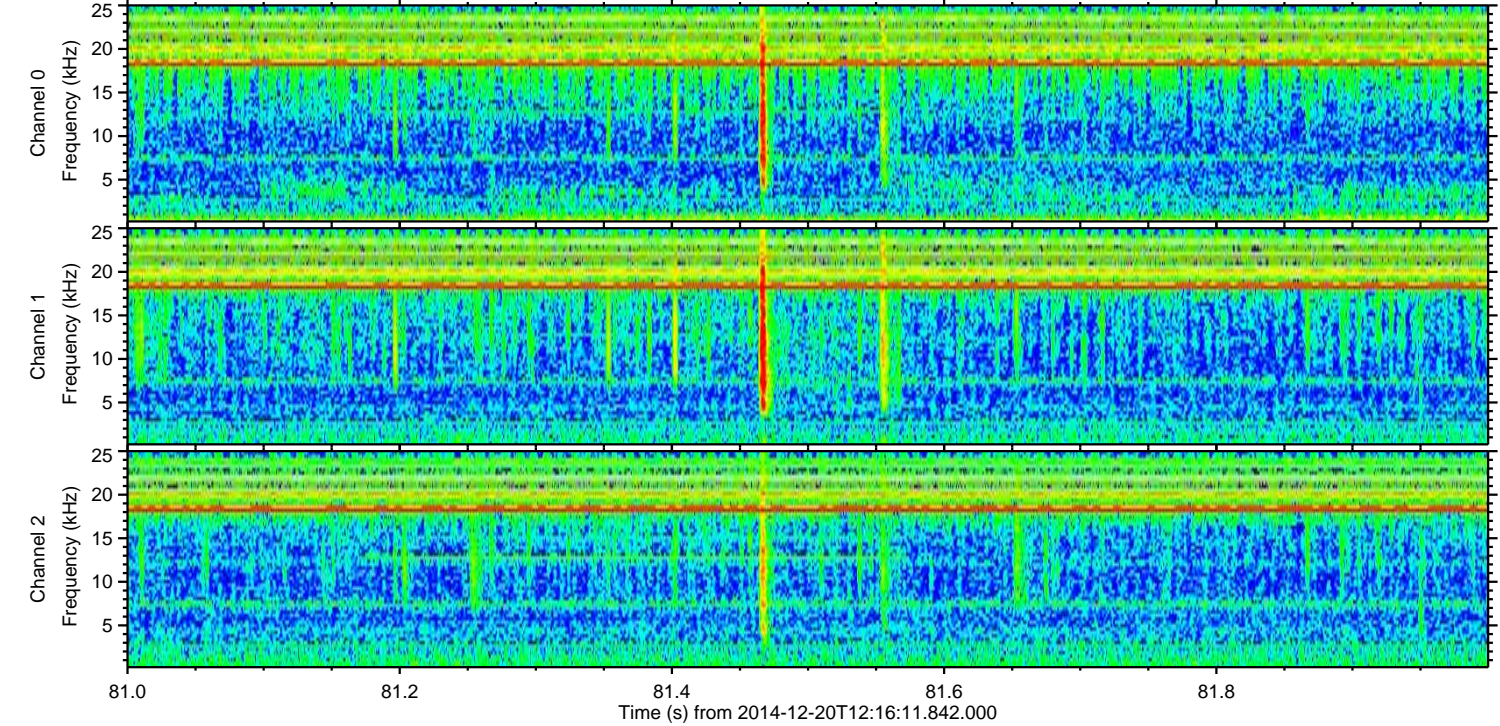
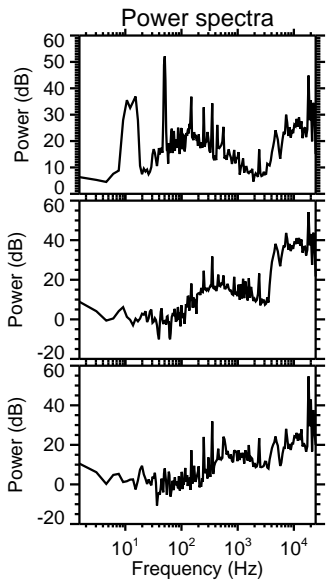
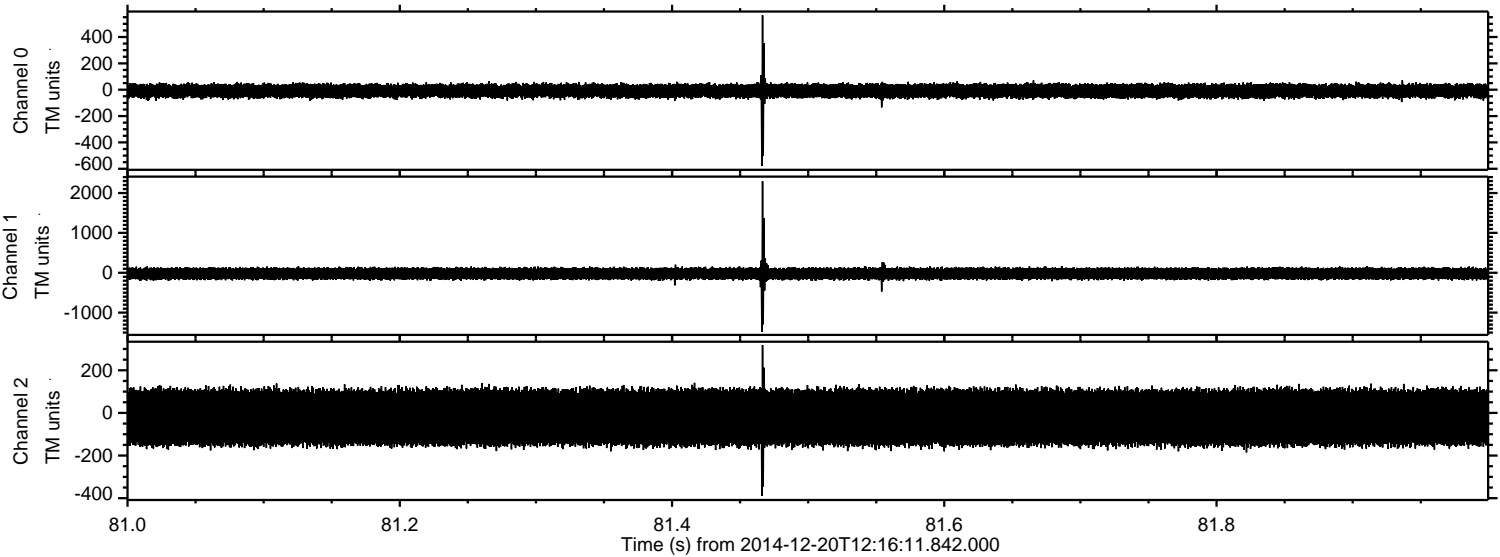


ELMAVAN 3D WAVEFORMS (Measured data sampled at 50 kHz) 49694 packets of 144 samples from 2014-12-20T12:16:11.842.000. Part 100/144

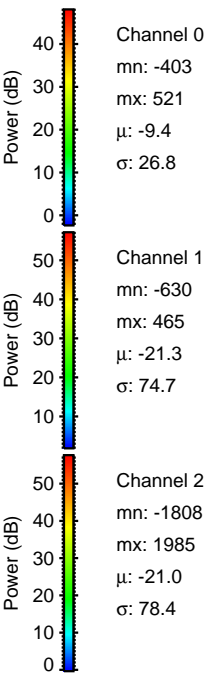
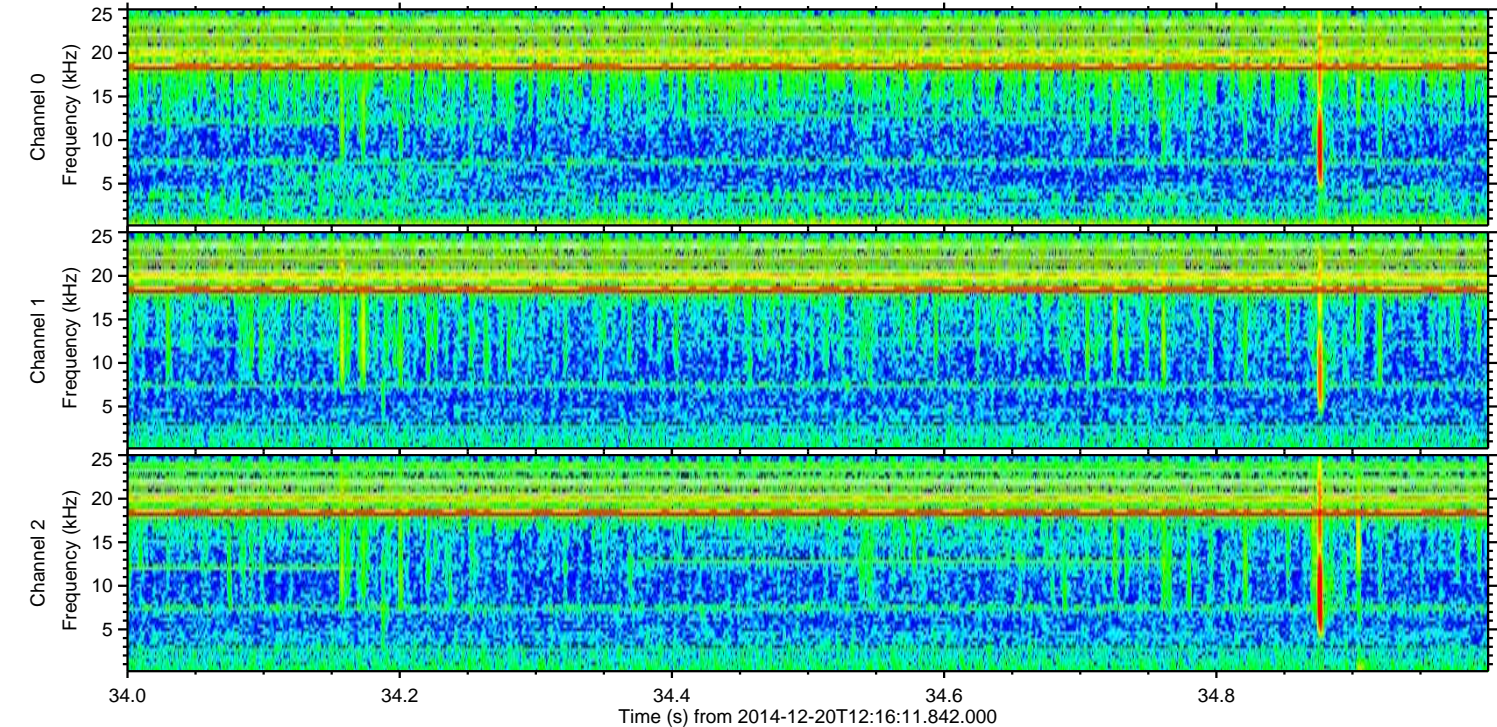
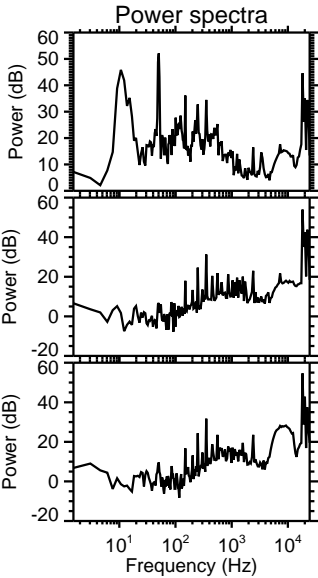
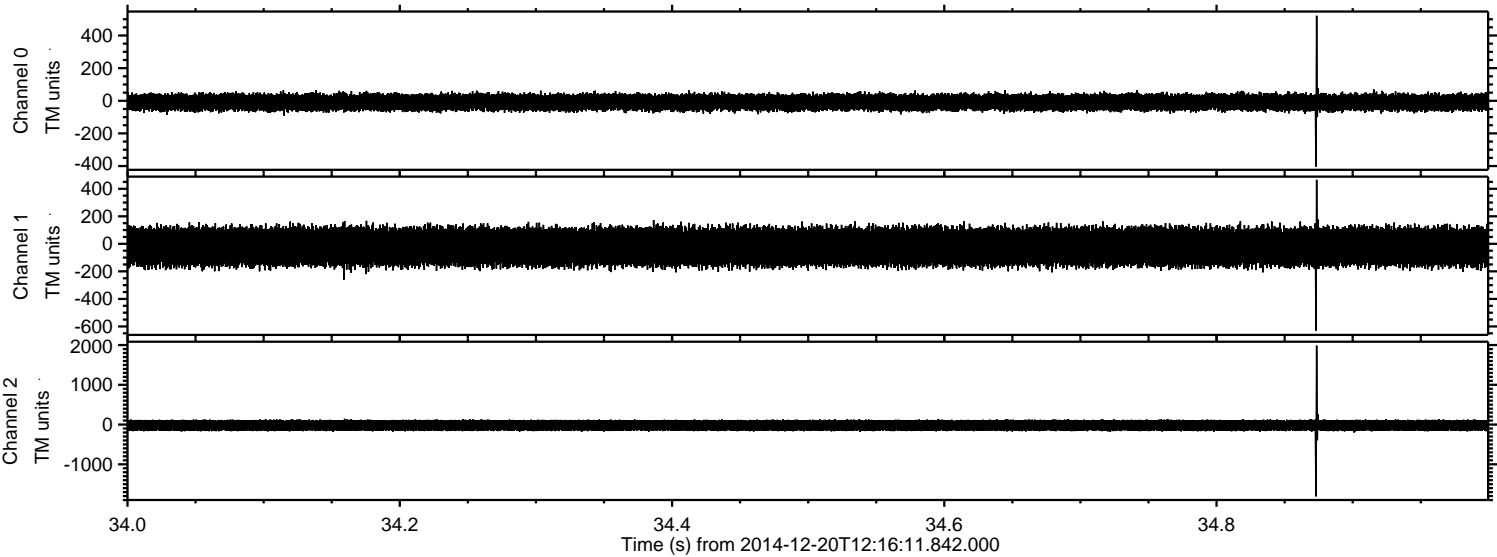
Processed Sat Dec 20 13:24:02 2014 by ELM ver.2012-10-06 from 001__elm20141220_121610__dat00.bin



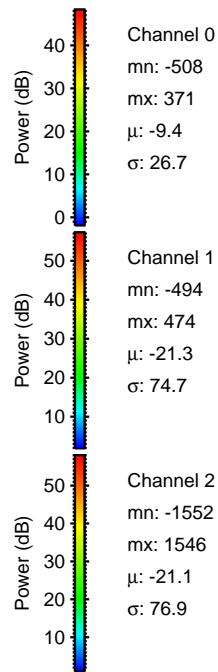
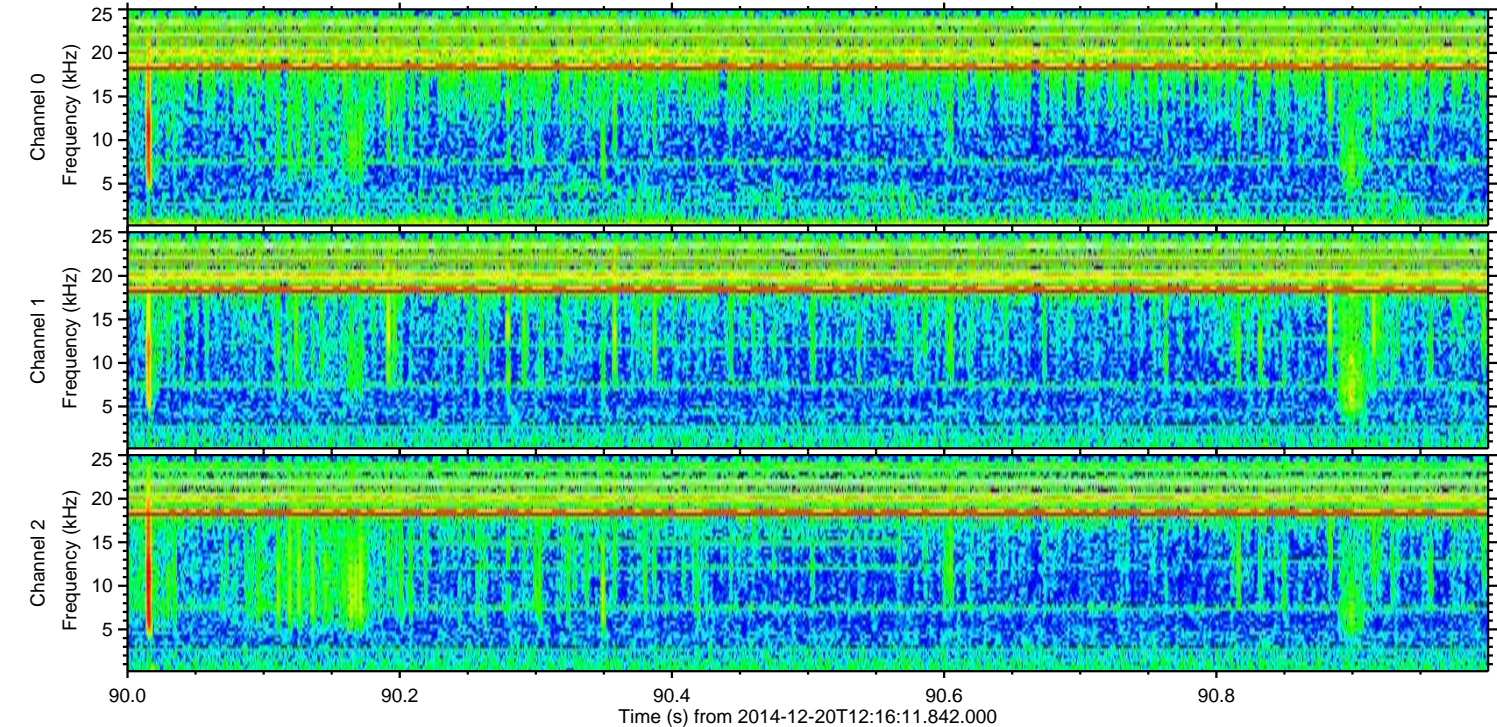
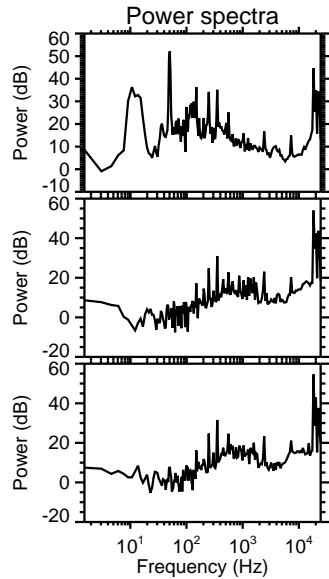
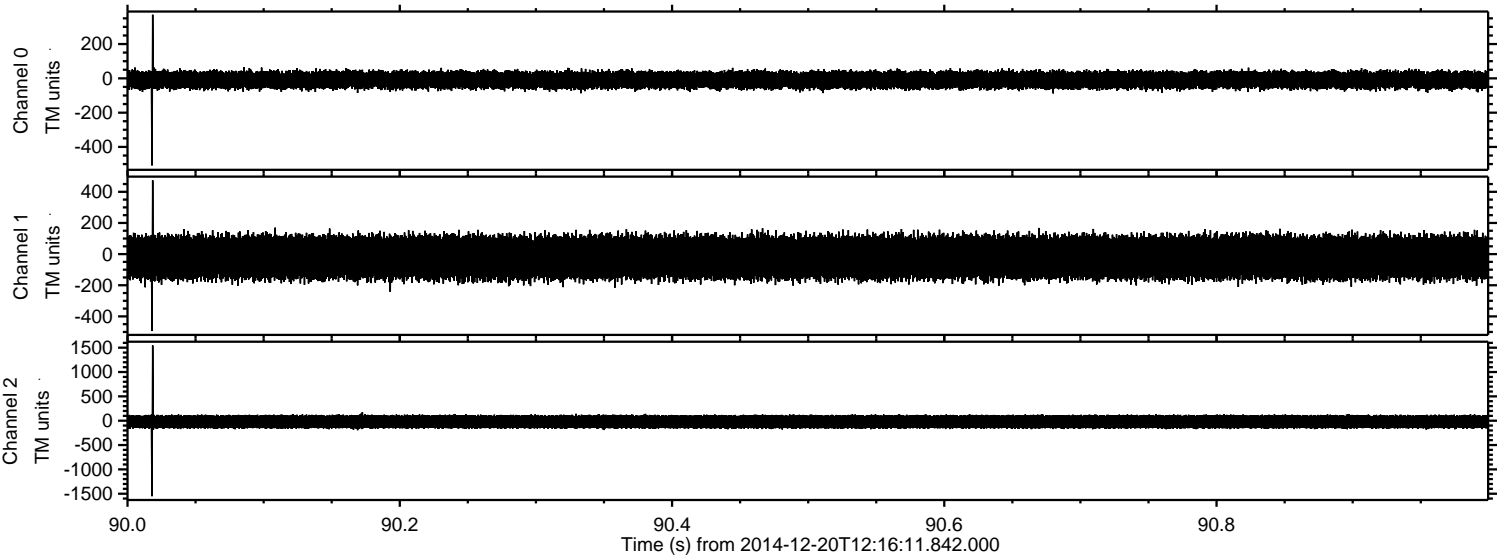
Processed Sat Dec 20 13:24:03 2014 by ELM ver.2012-10-06 from 001__elm20141220_121610__dat00.bin



Processed Sat Dec 20 13:24:04 2014 by ELM ver.2012-10-06 from 001__elm20141220_121610__dat00.bin

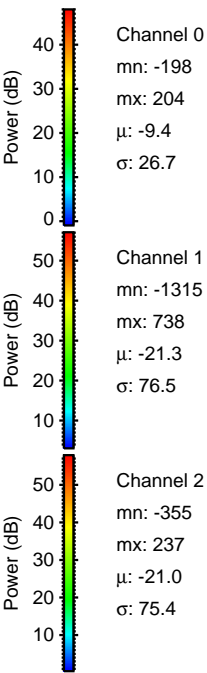
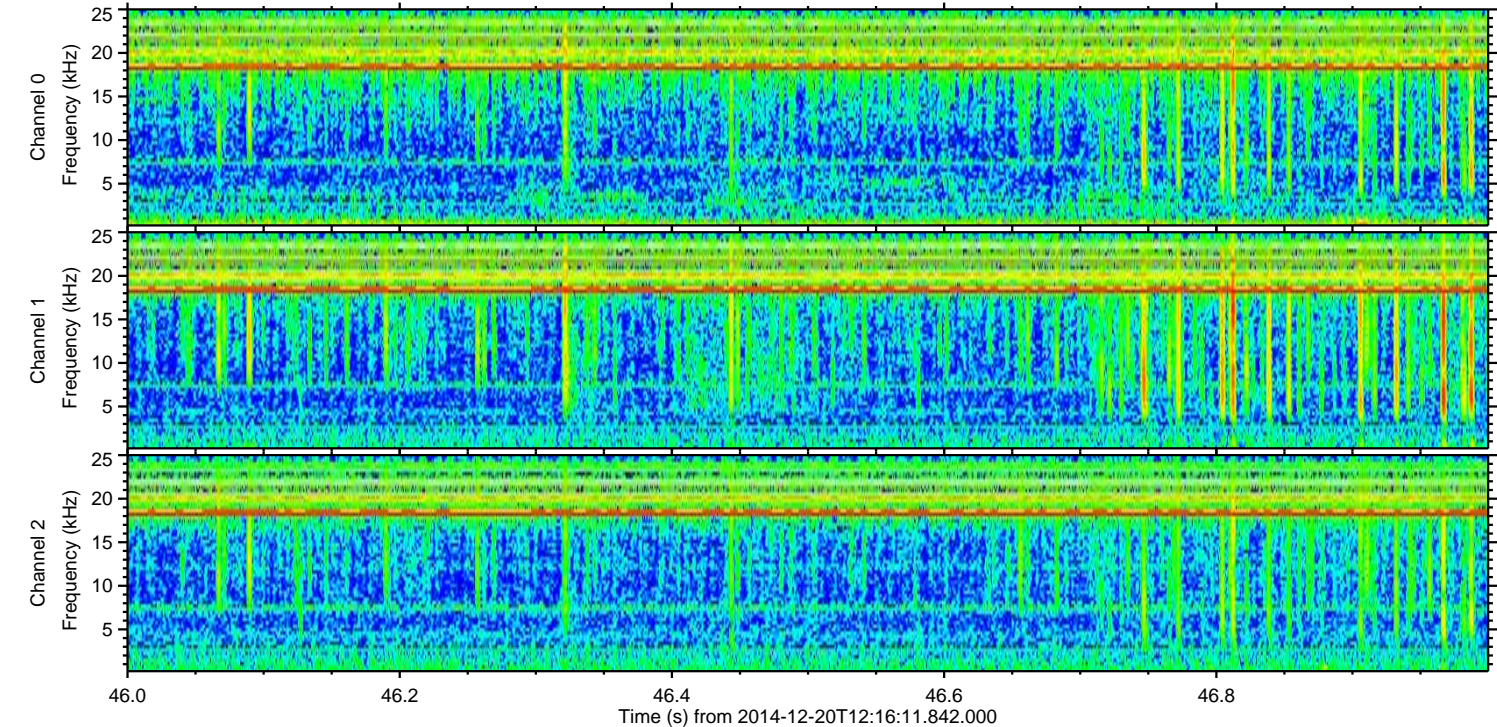
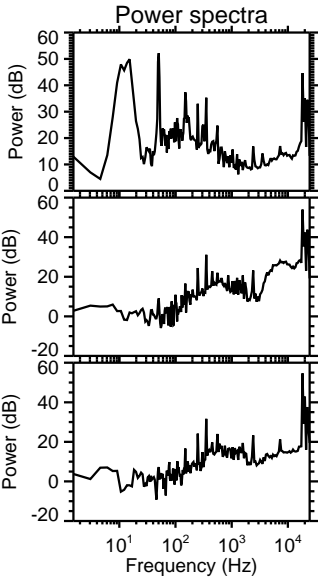
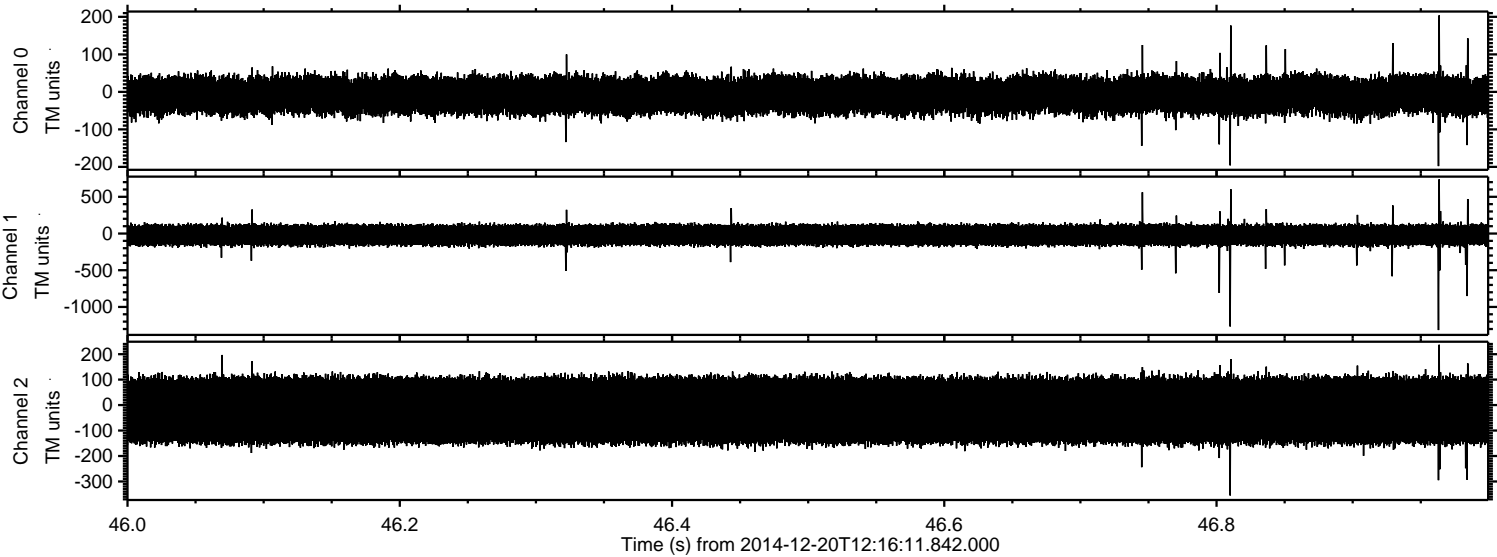


Processed Sat Dec 20 13:24:05 2014 by ELM ver.2012-10-06 from 001__elm20141220_121610__dat00.bin



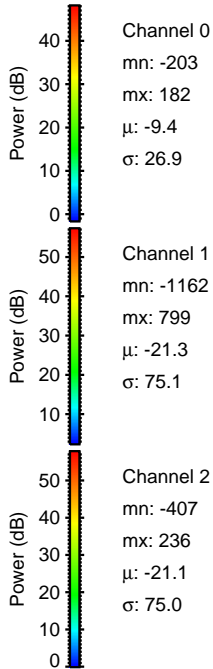
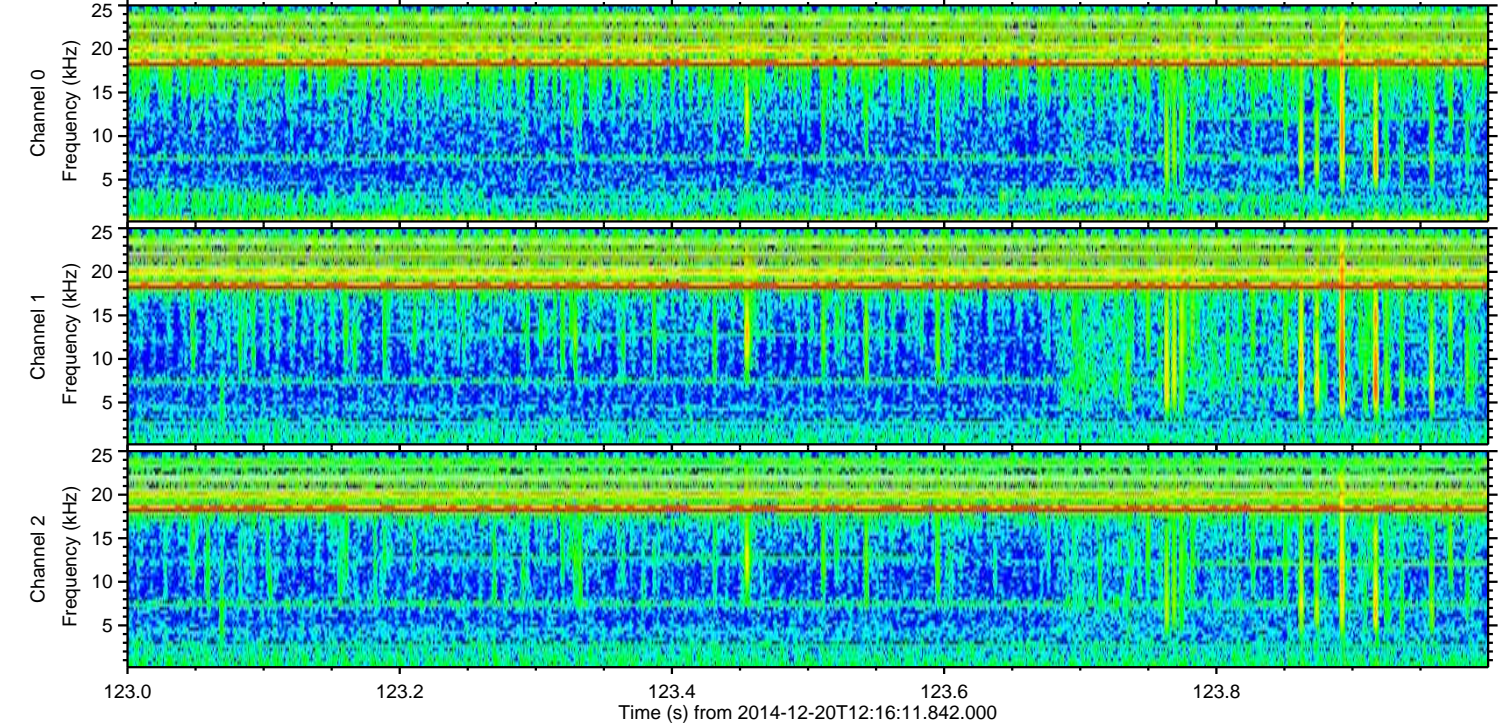
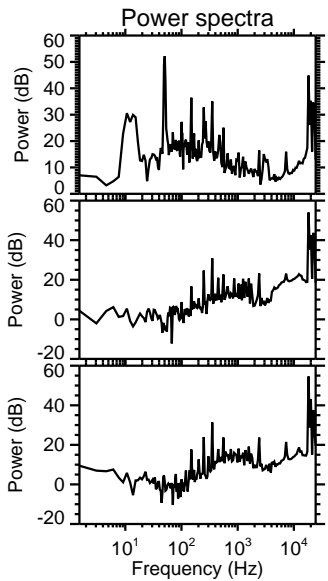
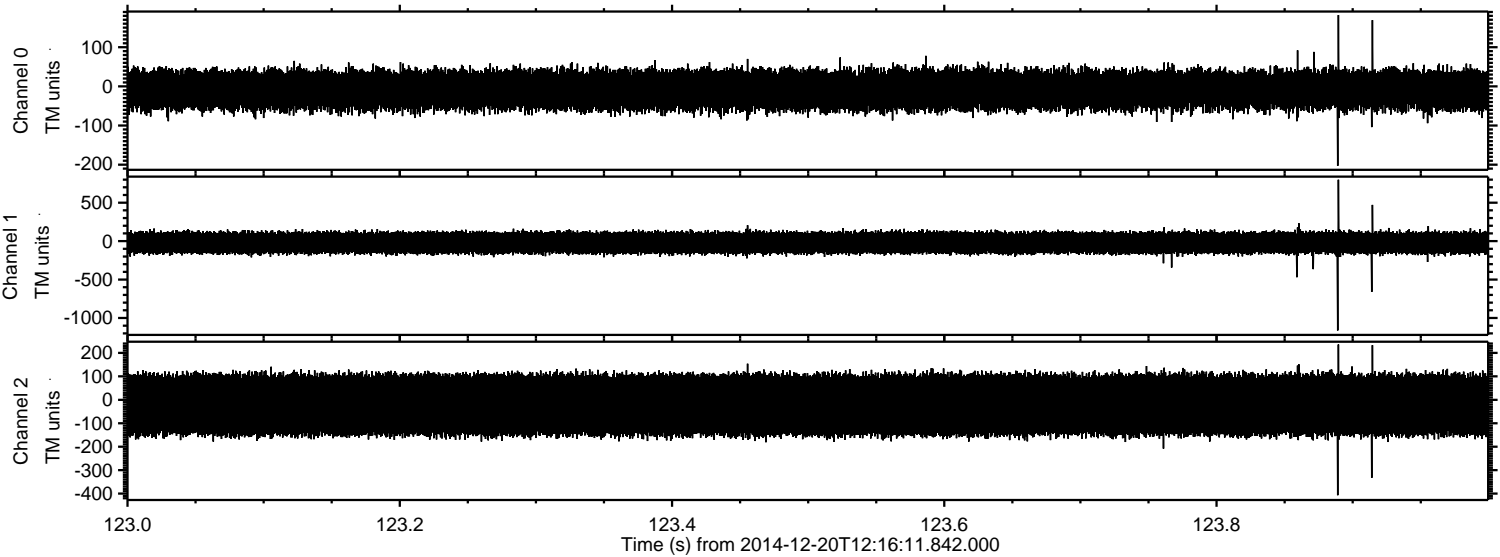
ELMAVAN 3D WAVEFORMS (Measured data sampled at 50 kHz) 49694 packets of 144 samples from 2014-12-20T12:16:11.842.000. Part 47/144

Processed Sat Dec 20 13:24:06 2014 by ELM ver.2012-10-06 from 001__elm20141220_121610__dat00.bin



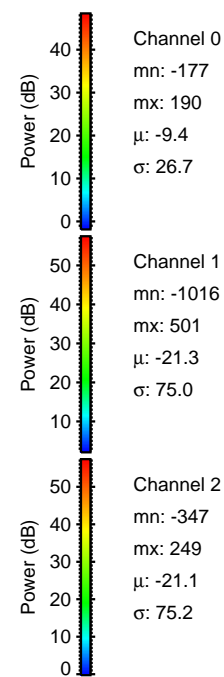
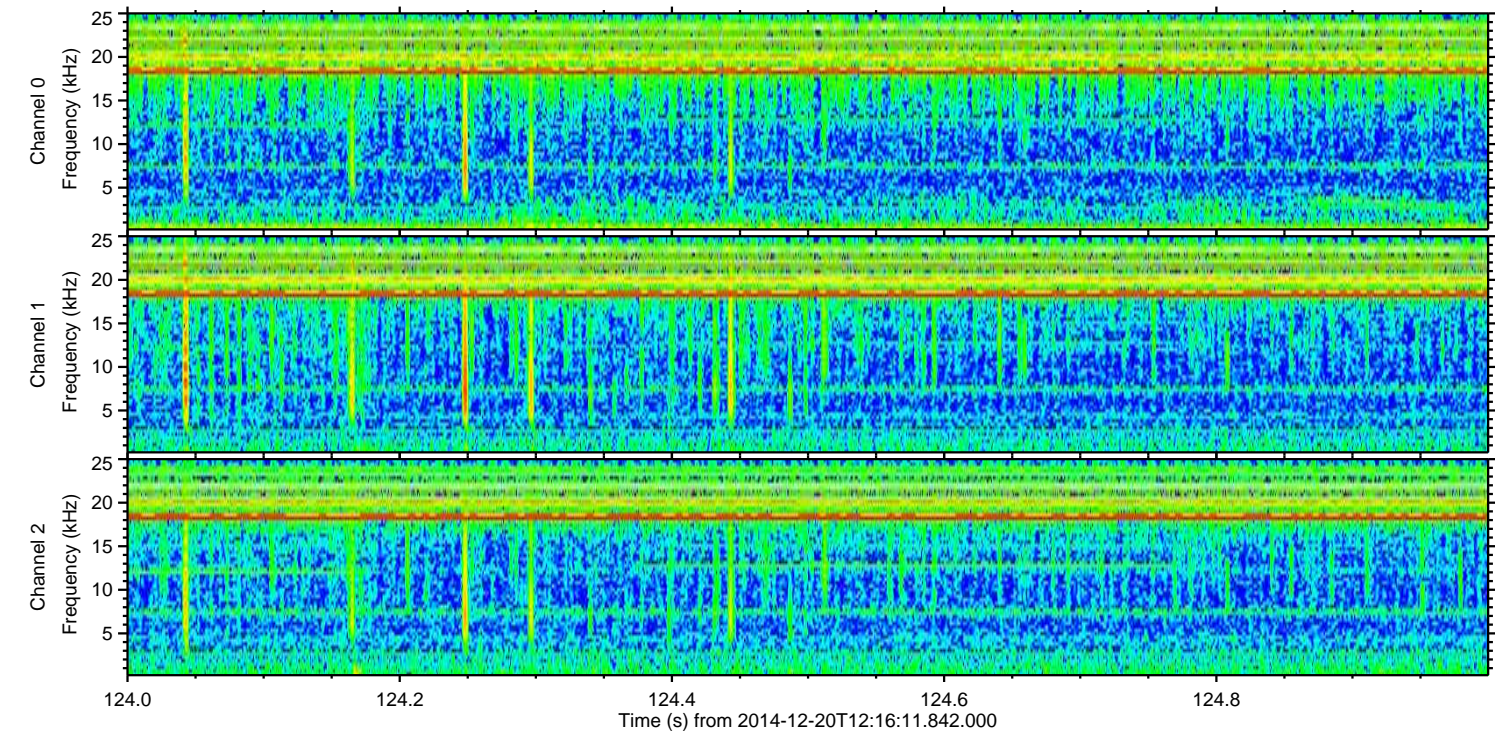
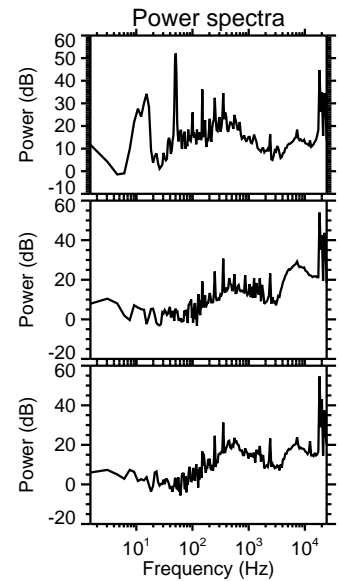
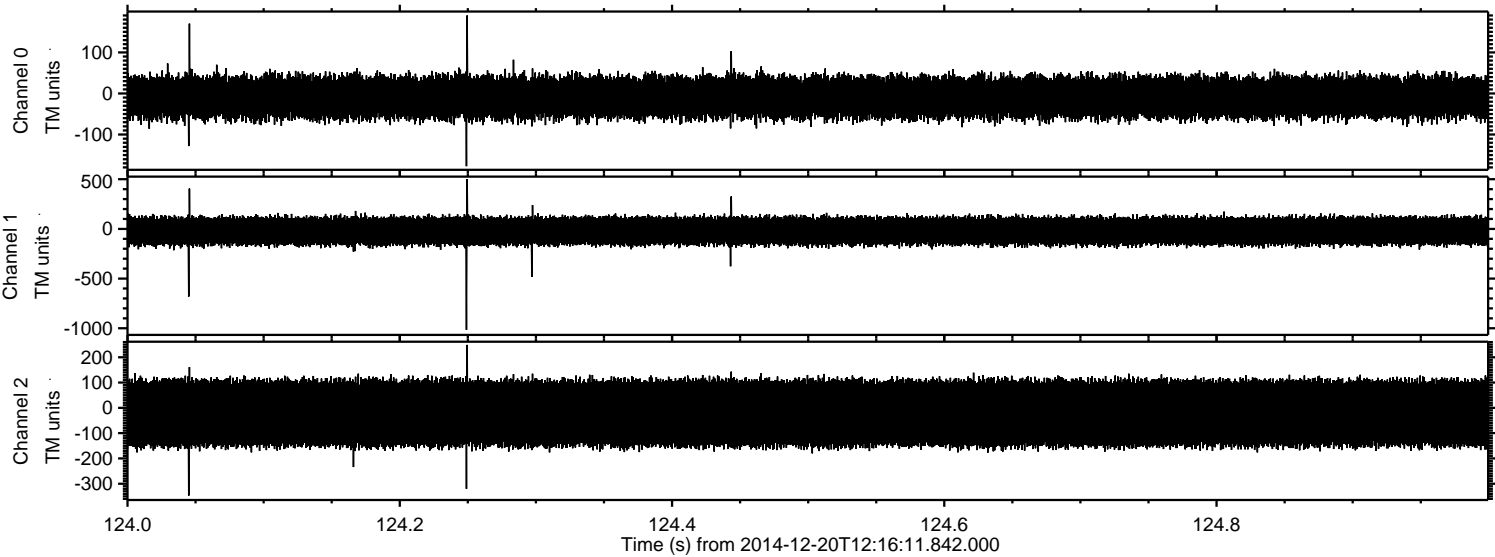
ELMAVAN 3D WAVEFORMS (Measured data sampled at 50 kHz) 49694 packets of 144 samples from 2014-12-20T12:16:11.842.000. Part 124/144

Processed Sat Dec 20 13:24:07 2014 by ELM ver.2012-10-06 from 001__elm20141220_121610__dat00.bin



ELMAVAN 3D WAVEFORMS (Measured data sampled at 50 kHz) 49694 packets of 144 samples from 2014-12-20T12:16:11.842.000. Part 125/144

Processed Sat Dec 20 13:24:08 2014 by ELM ver.2012-10-06 from 001__elm20141220_121610__dat00.bin

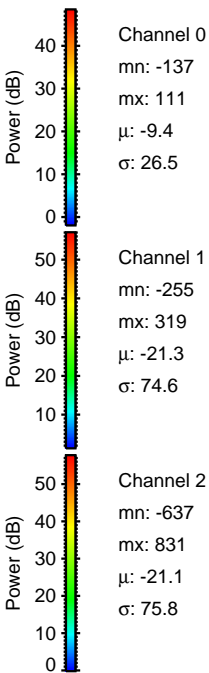
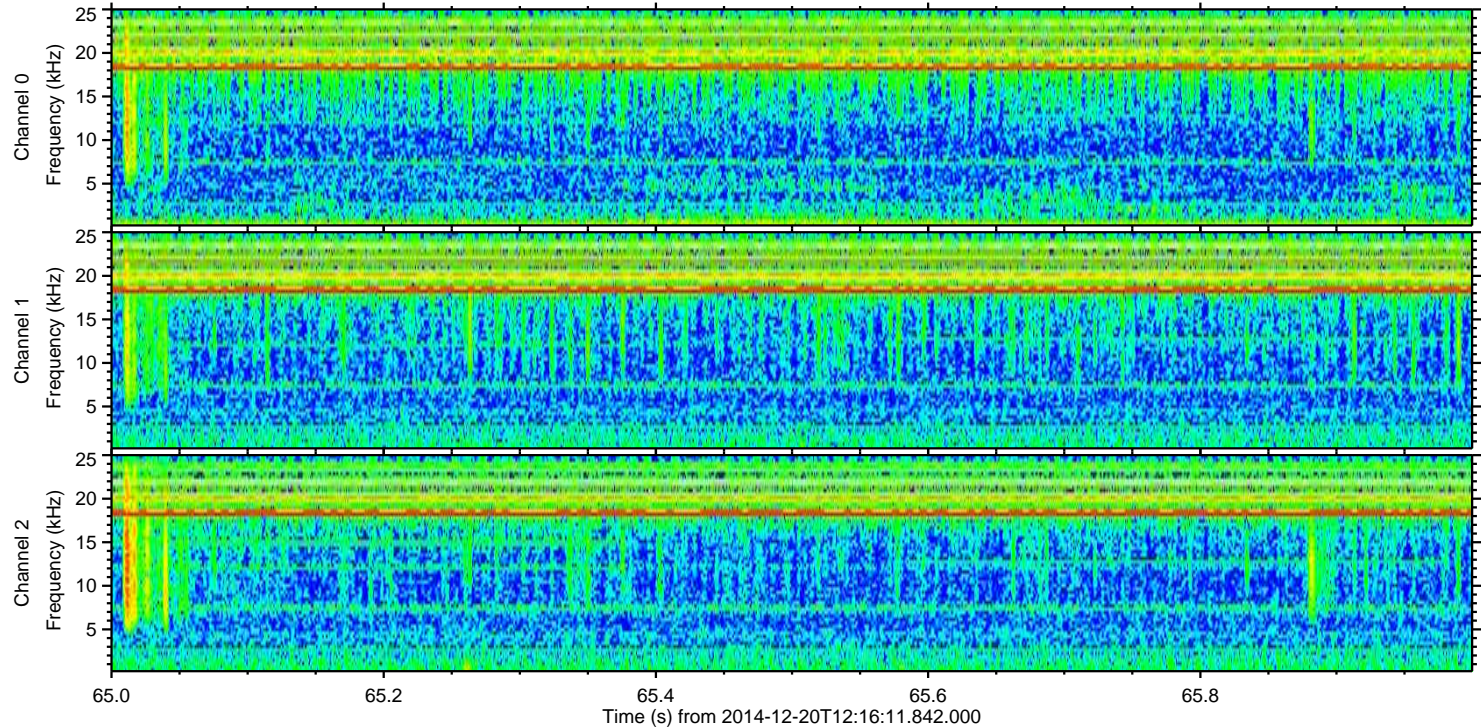
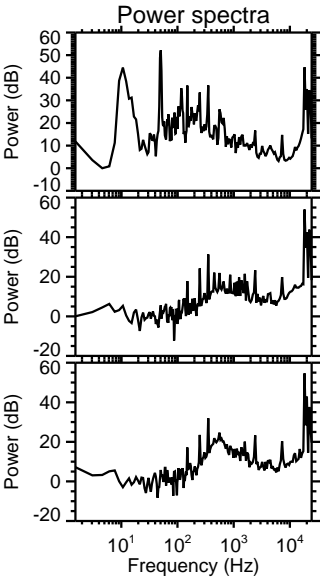
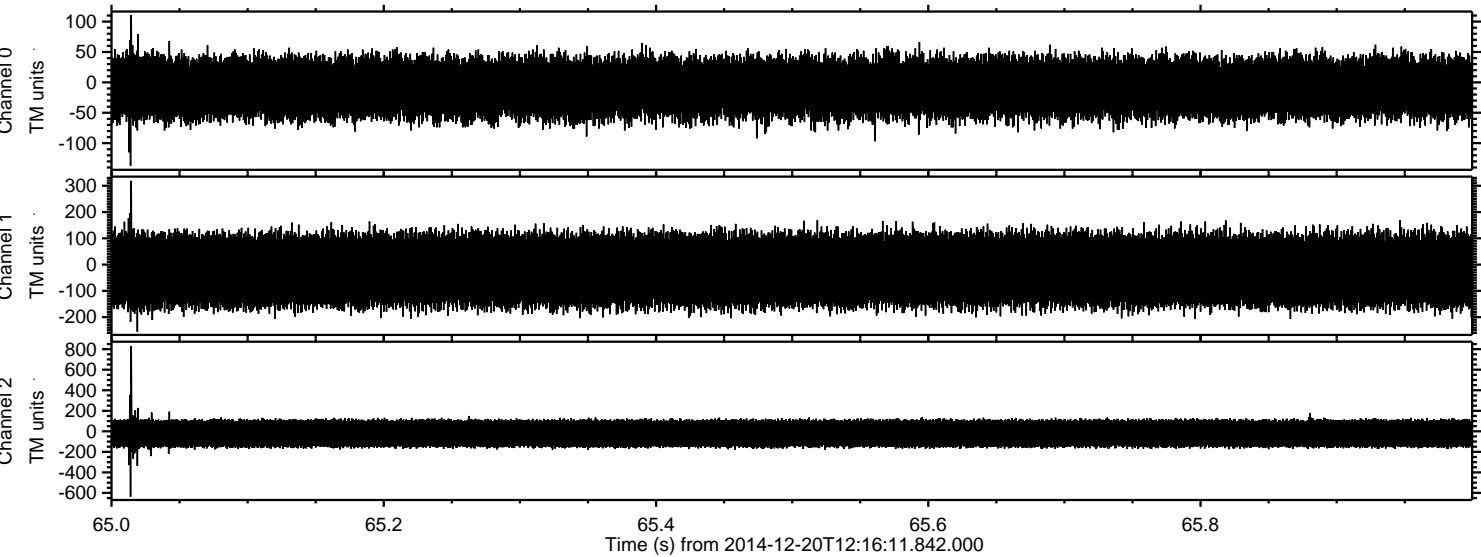


Channel 0
mn: -177
mx: 190
 μ : -9.4
 σ : 26.7

Channel 1
mn: -1016
mx: 501
 μ : -21.3
 σ : 75.0

Channel 2
mn: -347
mx: 249
 μ : -21.1
 σ : 75.2

Processed Sat Dec 20 13:24:10 2014 by ELM ver.2012-10-06 from 001__elm20141220_121610__dat00.bin



Processed Sat Dec 20 13:24:11 2014 by ELM ver.2012-10-06 from 001__elm20141220_121610__dat00.bin

