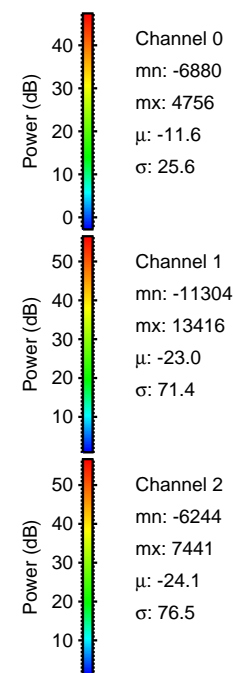
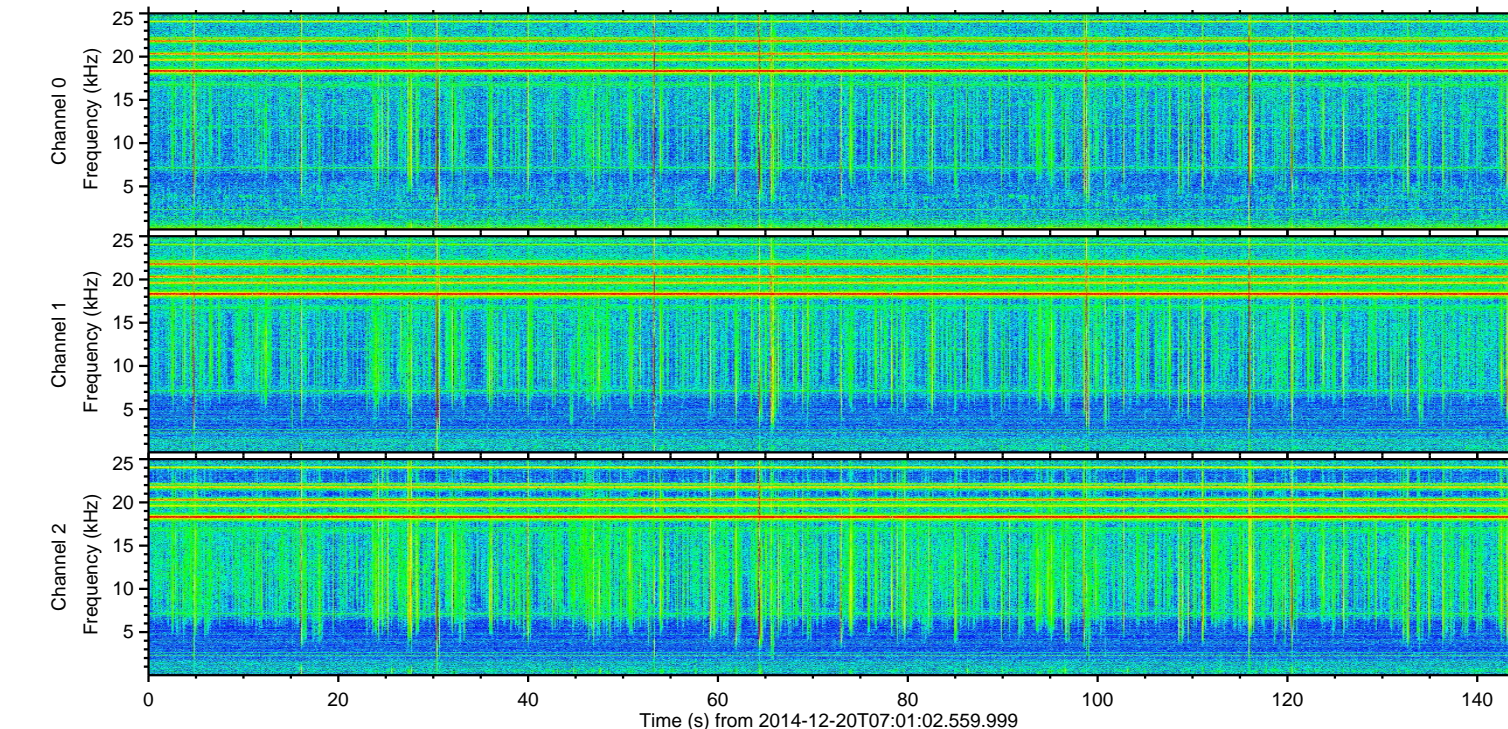
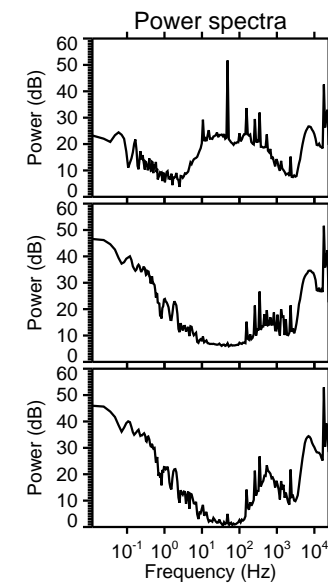
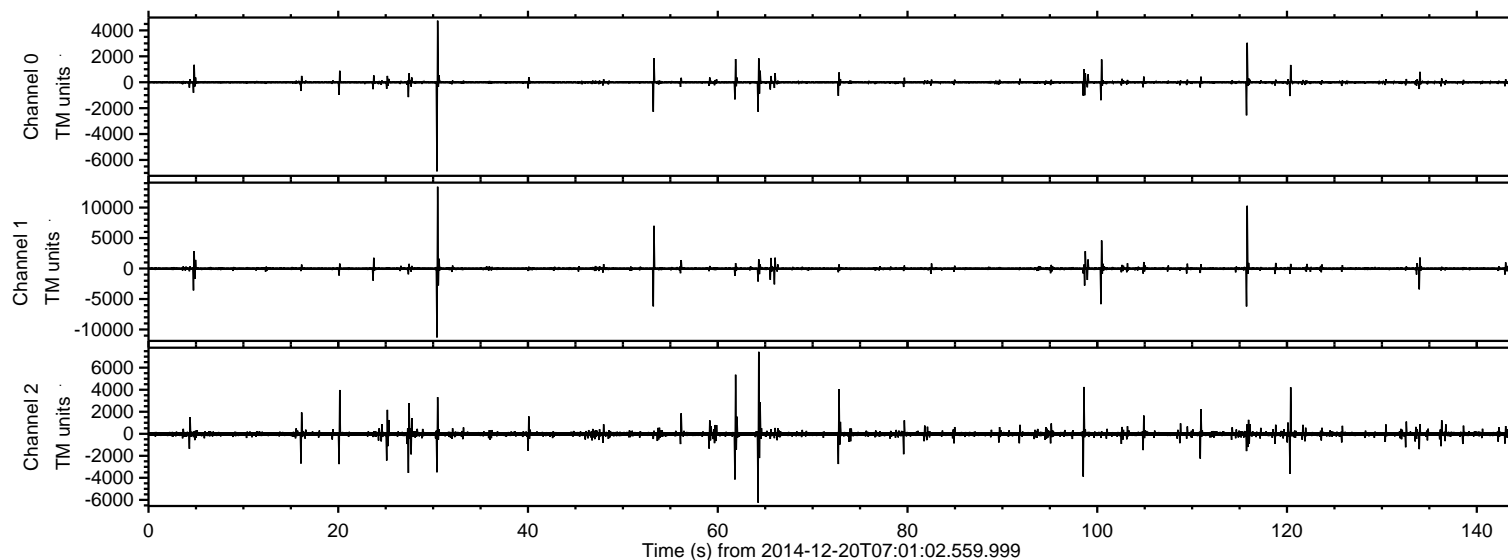


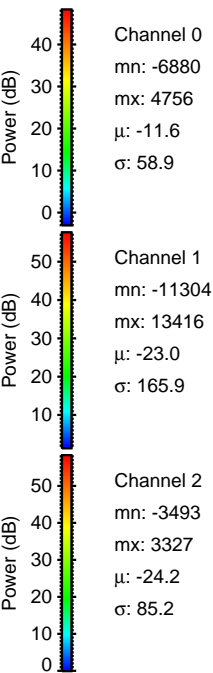
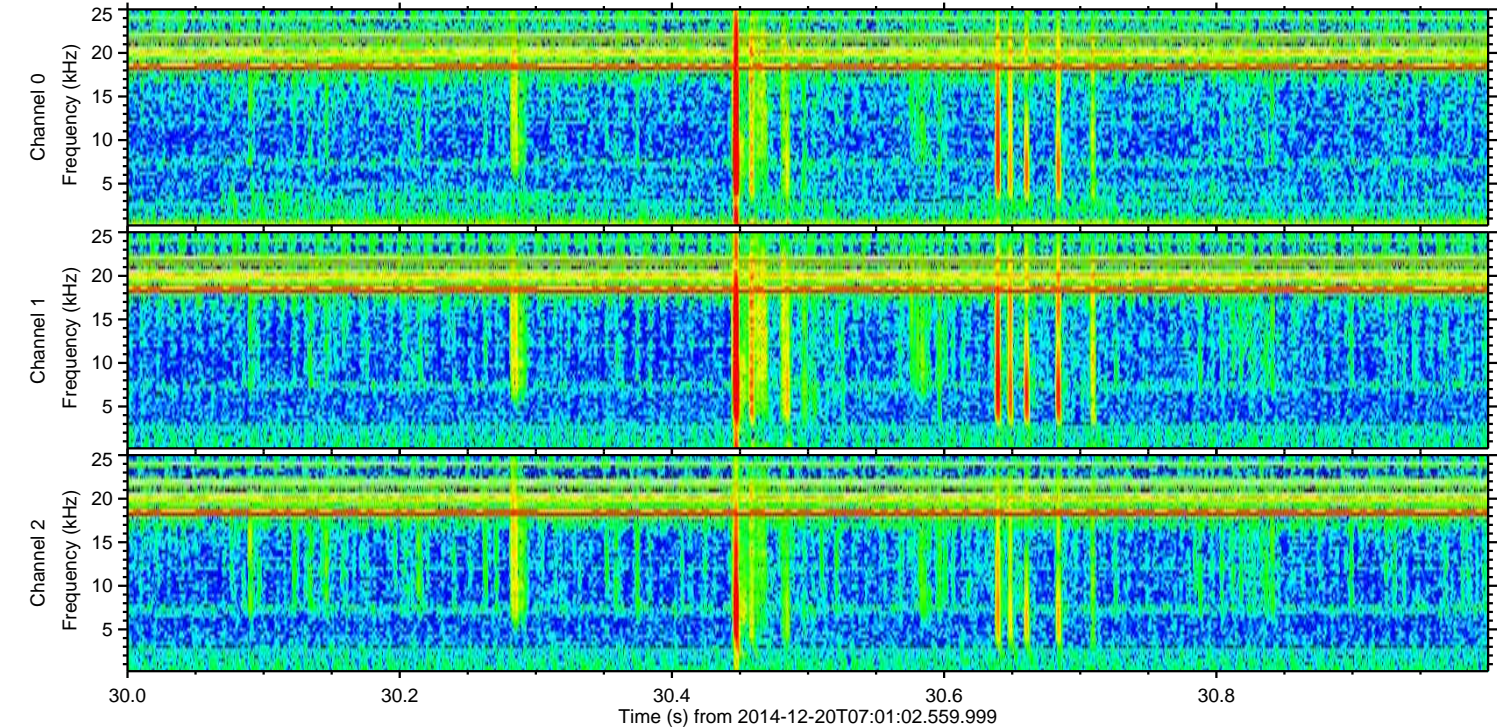
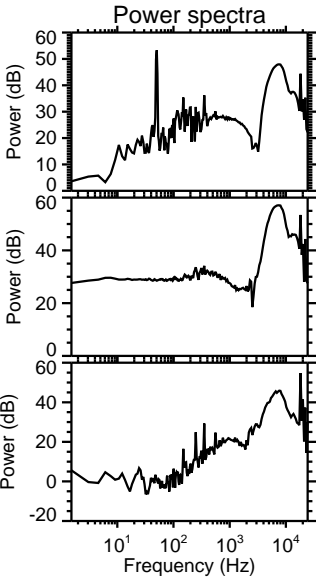
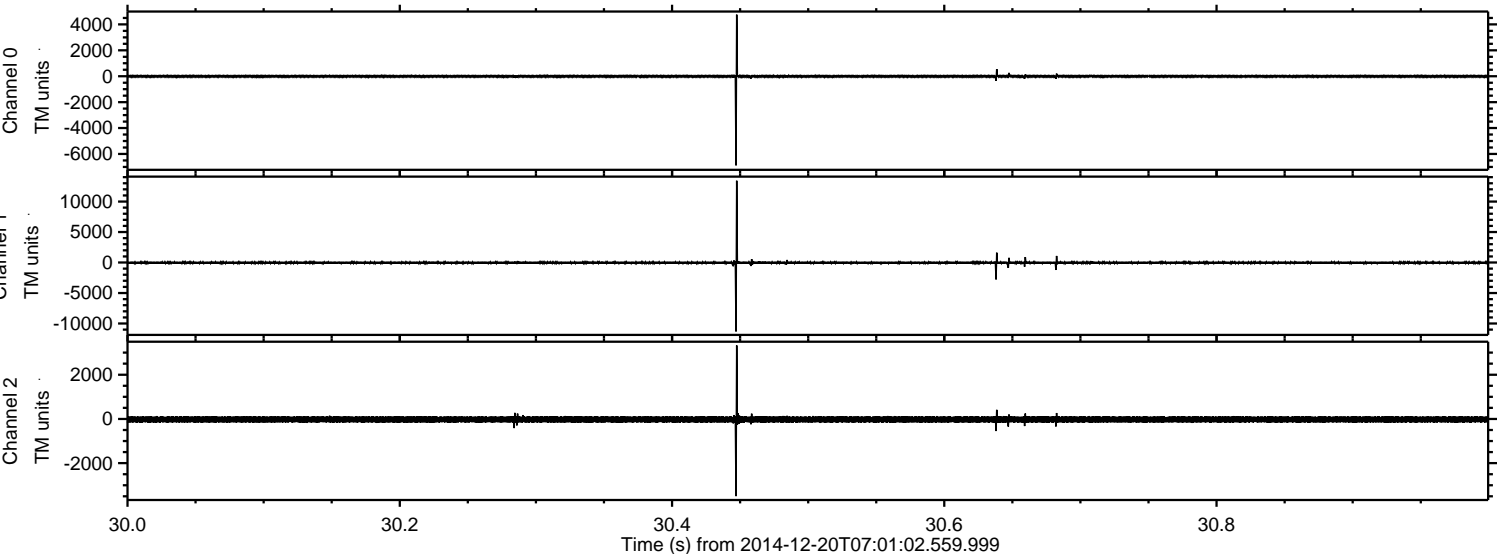
ELMAVAN 3D WAVEFORMS (Measured data sampled at 50 kHz) 49796 packets of 144 samples from 2014-12-20T07:01:02.559.999.

Processed Sat Dec 20 08:08:43 2014 by ELM ver.2012-10-06 from 001__elm20141220_070101__dat00.bin



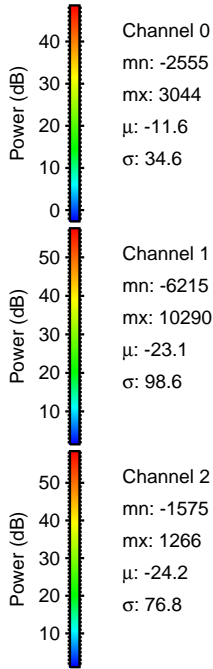
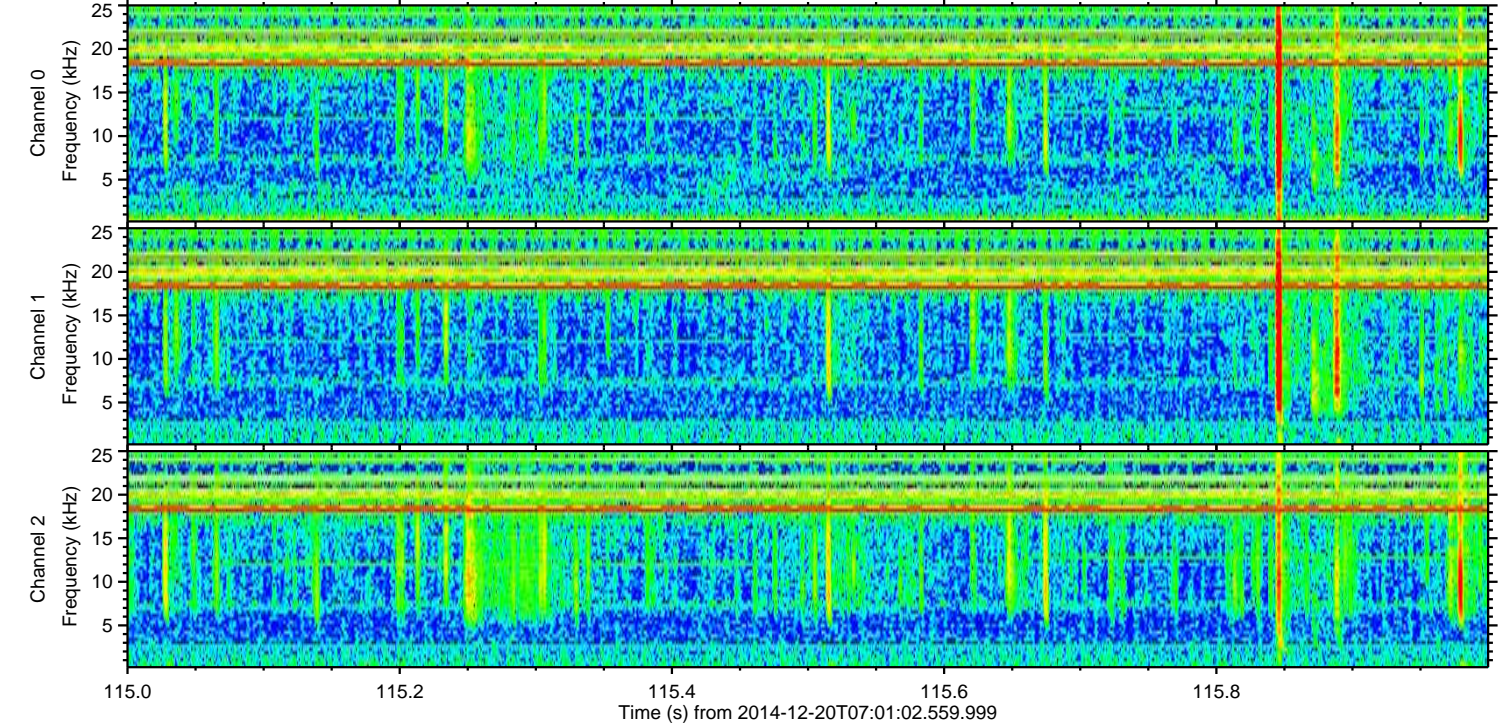
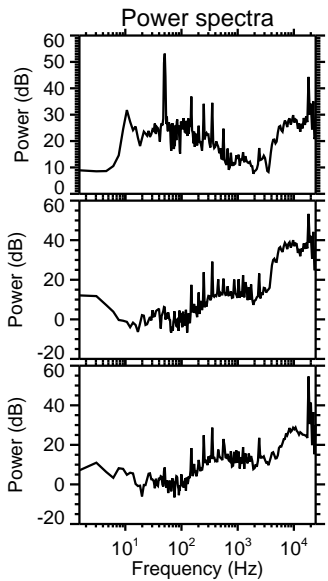
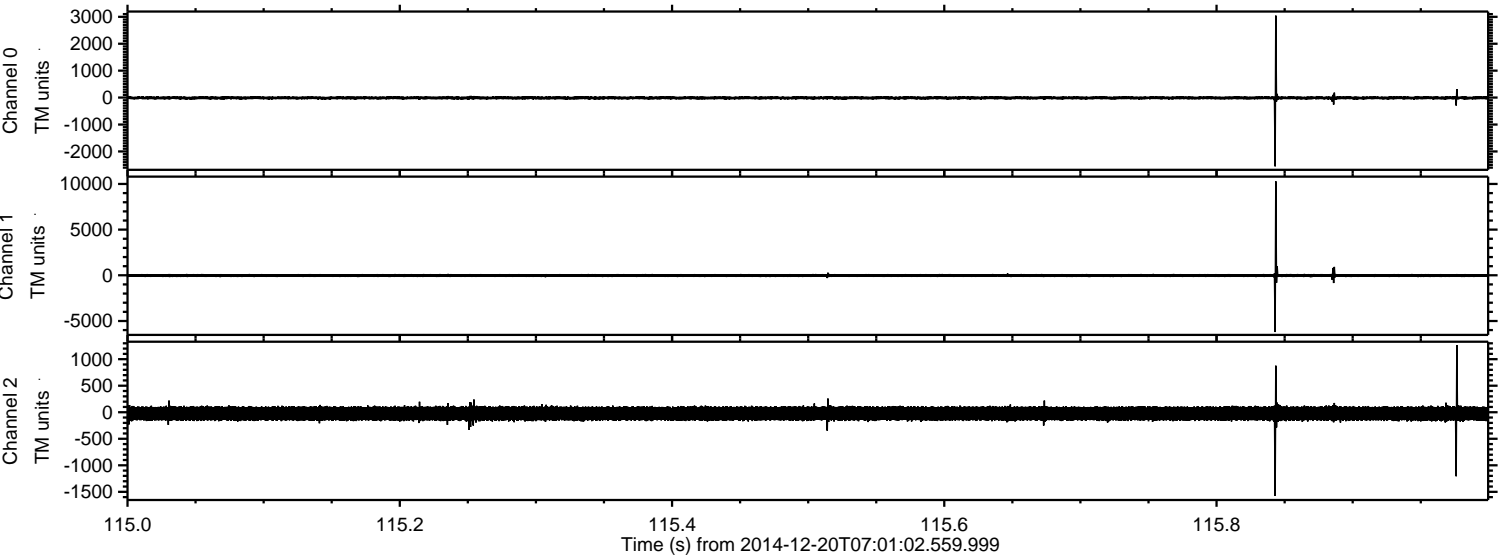
ELMAVAN 3D WAVEFORMS (Measured data sampled at 50 kHz) 49796 packets of 144 samples from 2014-12-20T07:01:02.559.999. Part 31/144

Processed Sat Dec 20 08:08:55 2014 by ELM ver.2012-10-06 from 001__elm20141220_070101__dat00.bin



ELMAVAN 3D WAVEFORMS (Measured data sampled at 50 kHz) 49796 packets of 144 samples from 2014-12-20T07:01:02.559.999. Part 116/144

Processed Sat Dec 20 08:08:56 2014 by ELM ver.2012-10-06 from 001__elm20141220_070101__dat00.bin

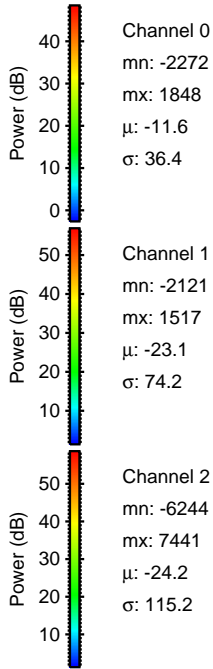
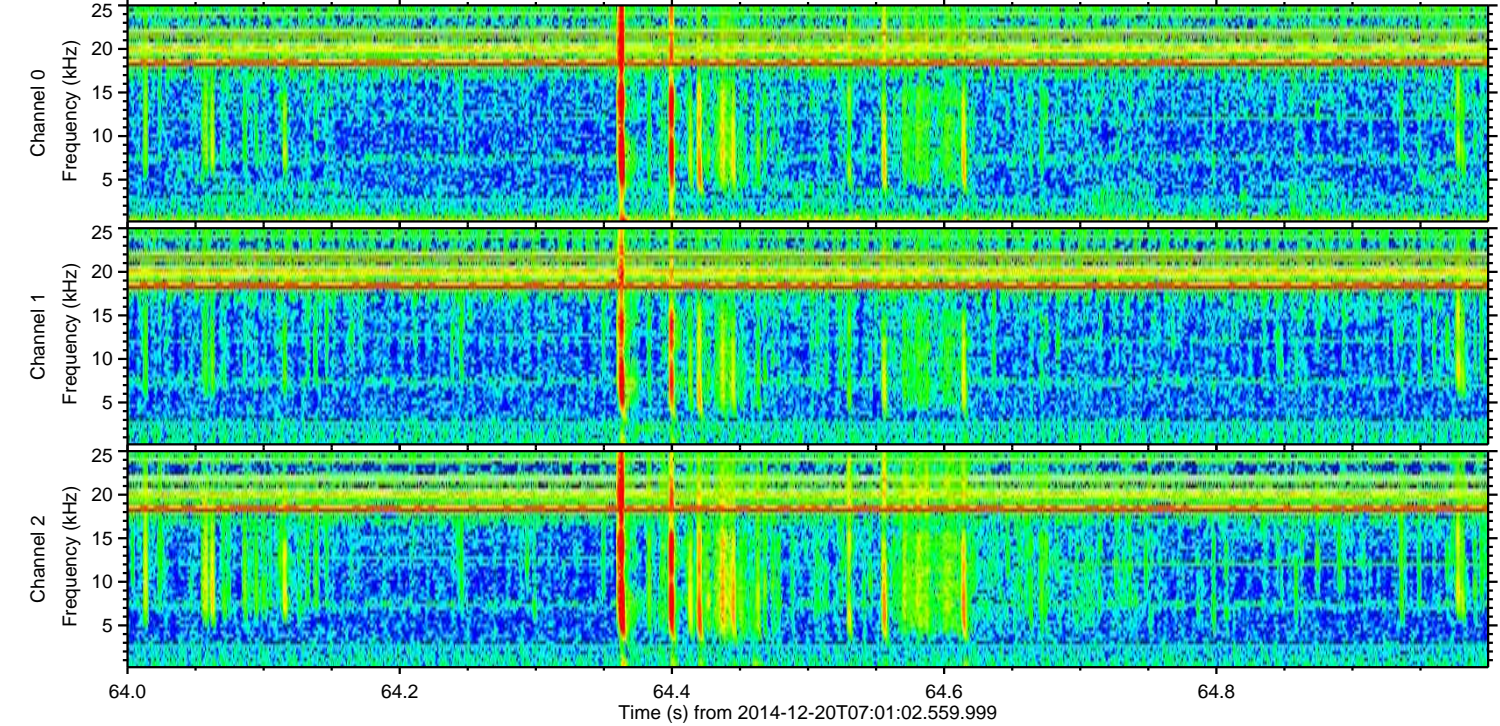
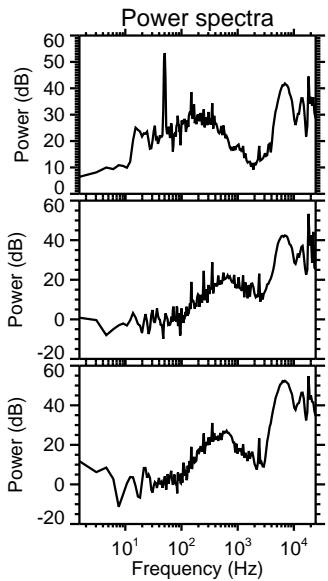
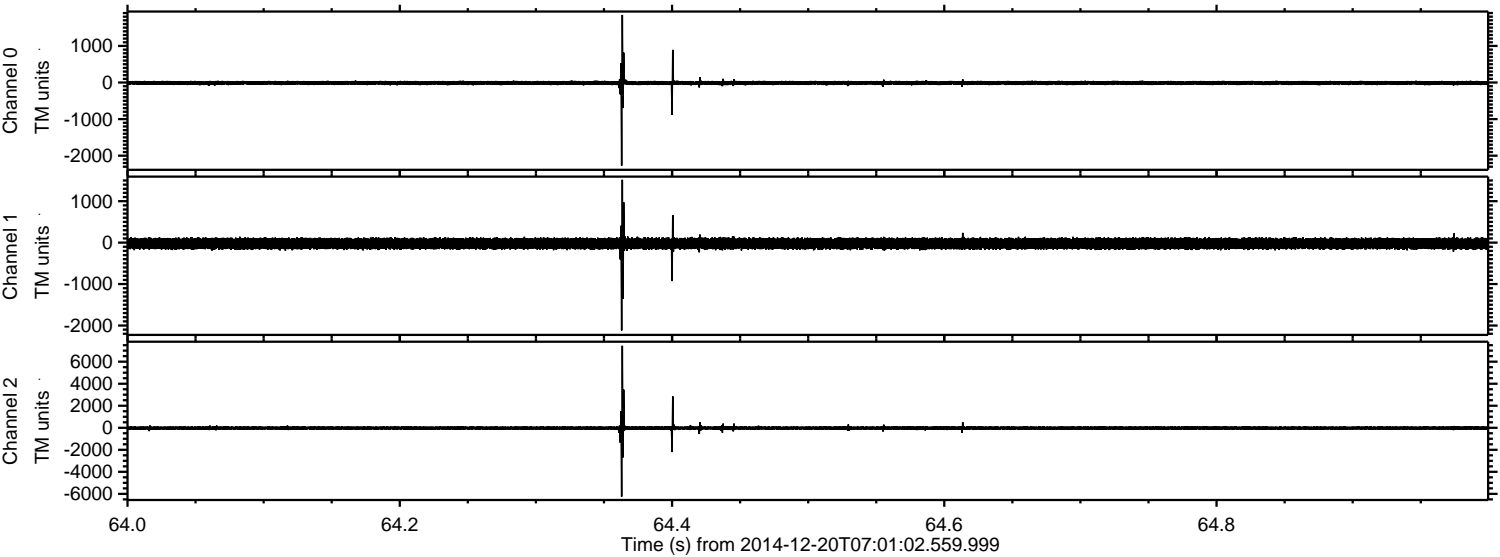


Channel 0
mn: -2555
mx: 3044
 μ : -11.6
 σ : 34.6

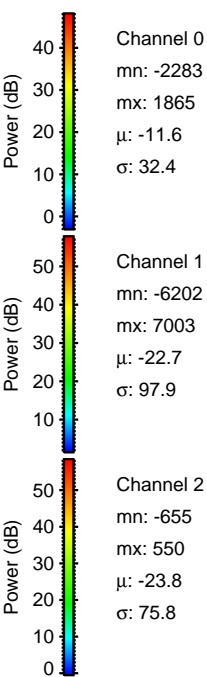
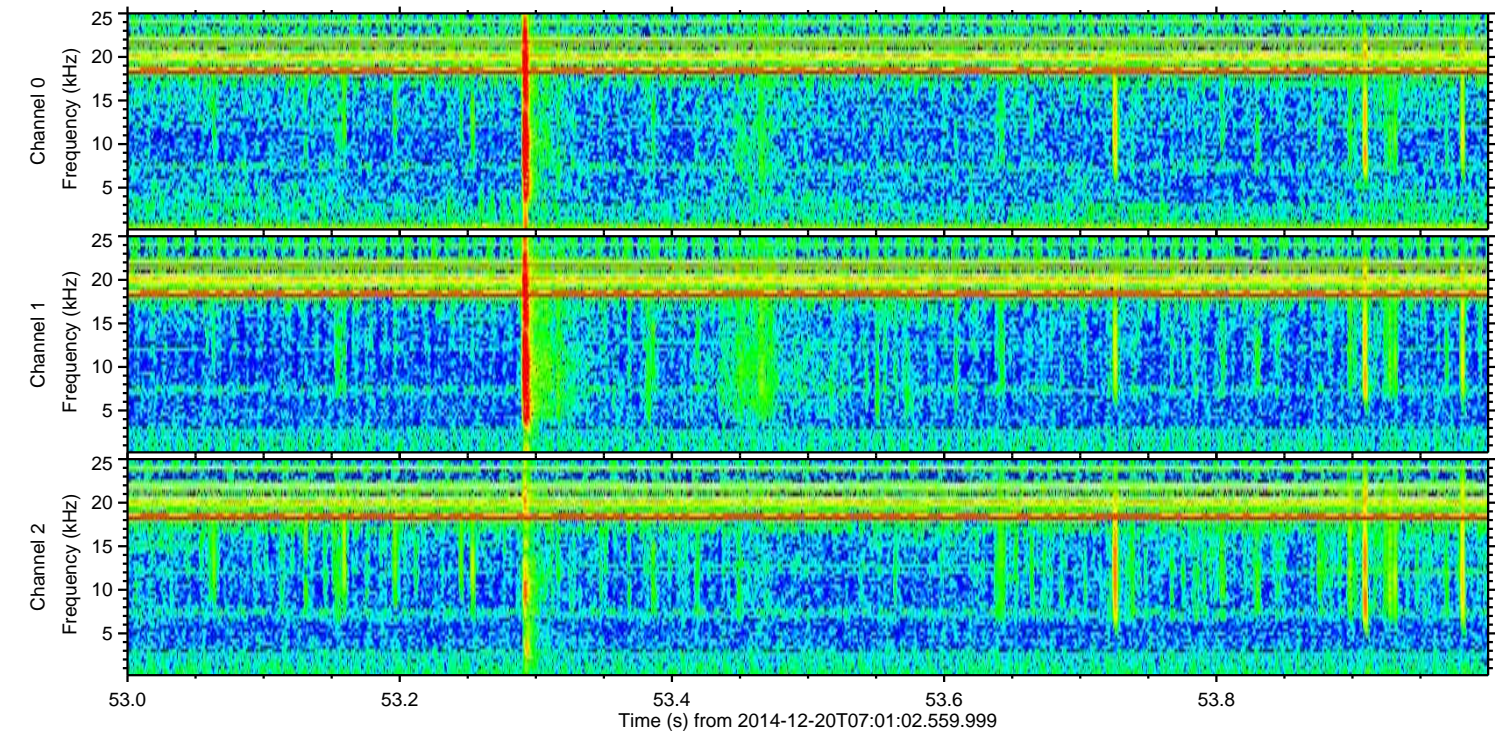
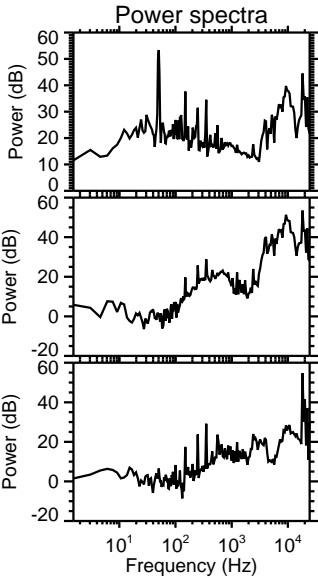
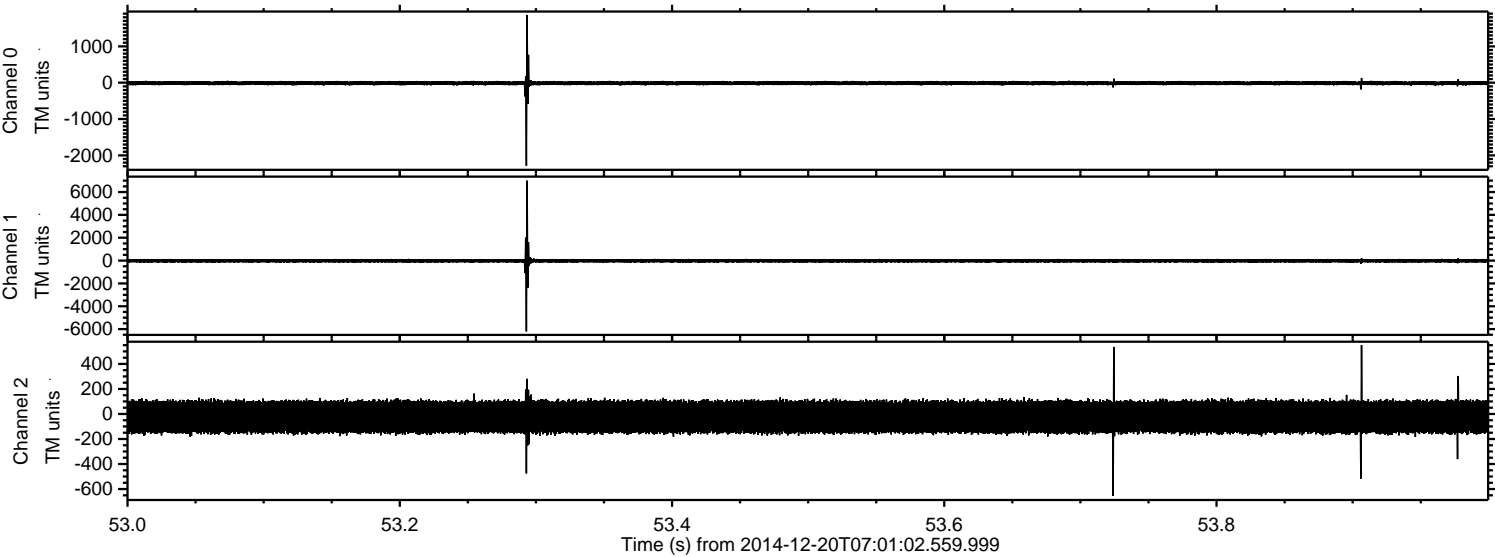
Channel 1
mn: -6215
mx: 10290
 μ : -23.1
 σ : 98.6

Channel 2
mn: -1575
mx: 1266
 μ : -24.2
 σ : 76.8

Processed Sat Dec 20 08:08:57 2014 by ELM ver.2012-10-06 from 001__elm20141220_070101__dat00.bin

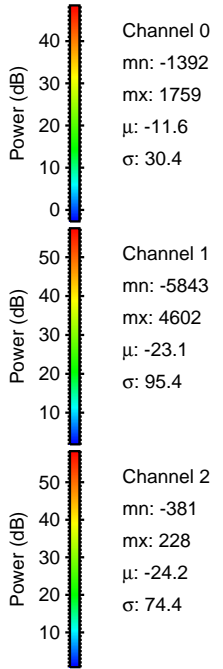
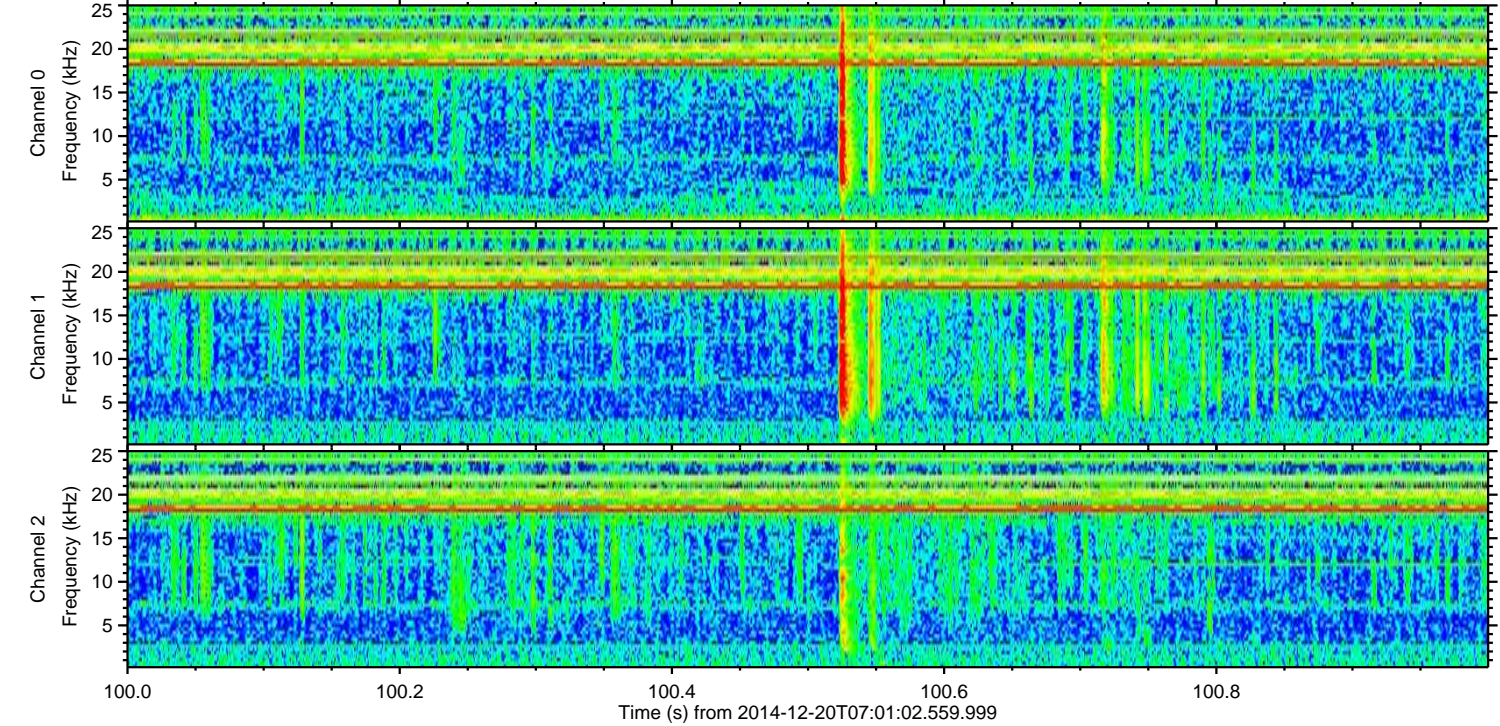
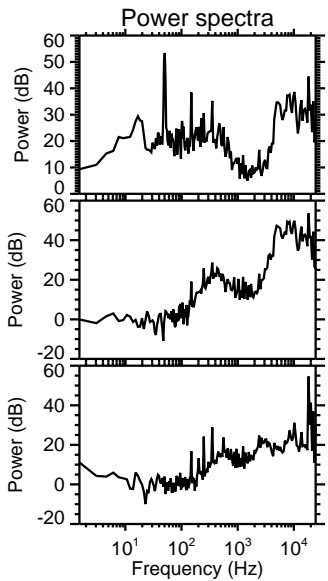
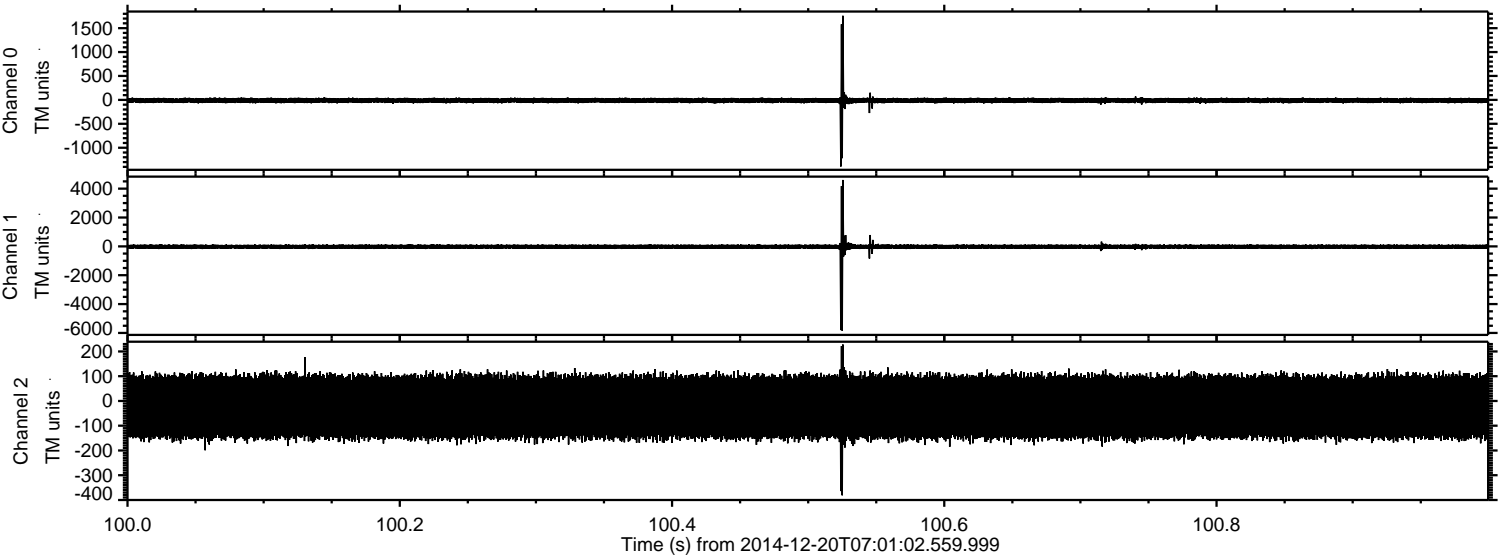


Processed Sat Dec 20 08:08:58 2014 by ELM ver.2012-10-06 from 001__elm20141220_070101__dat00.bin



ELMAVAN 3D WAVEFORMS (Measured data sampled at 50 kHz) 49796 packets of 144 samples from 2014-12-20T07:01:02.559.999. Part 101/144

Processed Sat Dec 20 08:08:59 2014 by ELM ver.2012-10-06 from 001__elm20141220_070101__dat00.bin



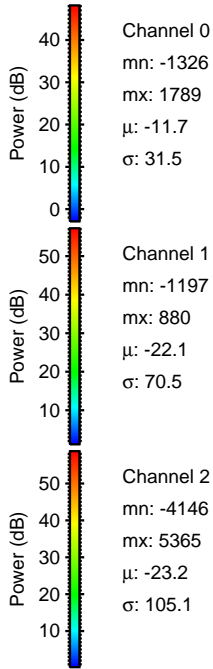
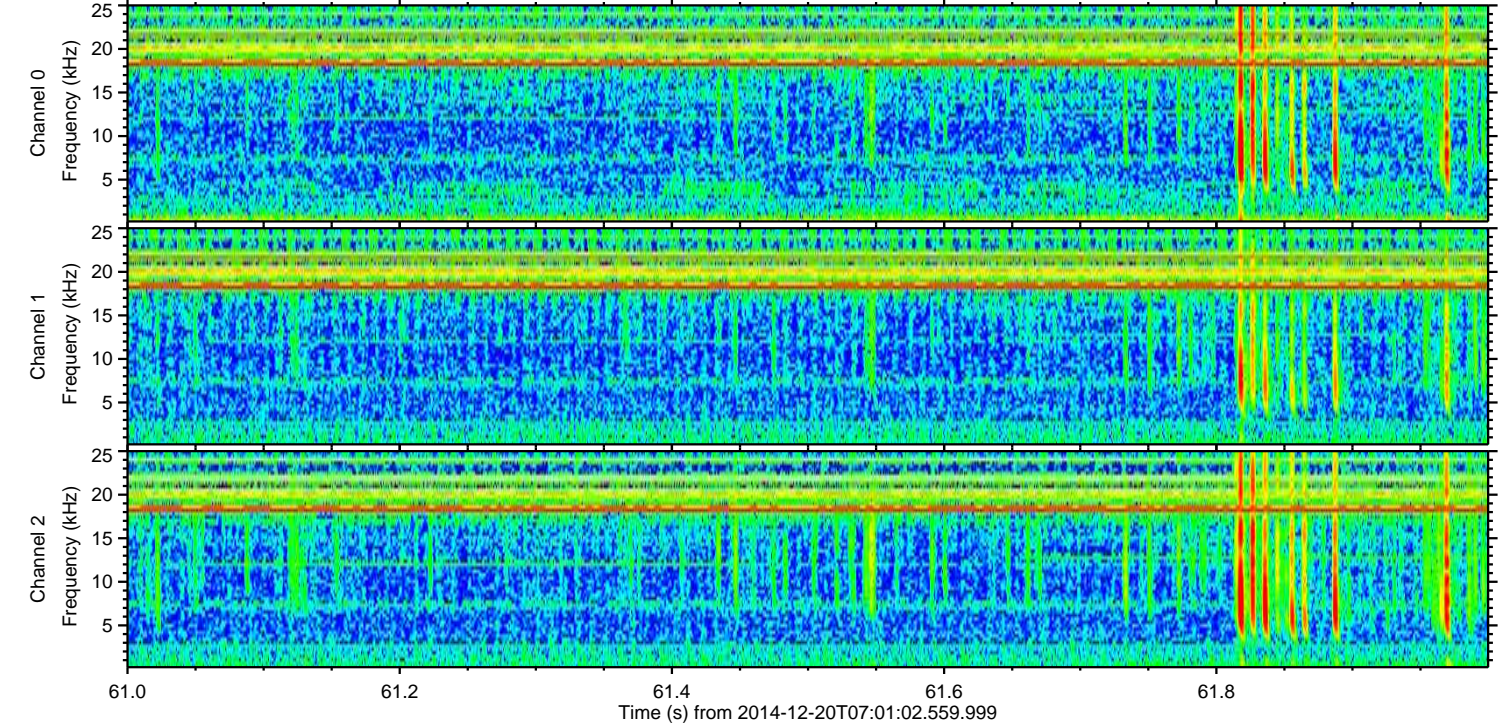
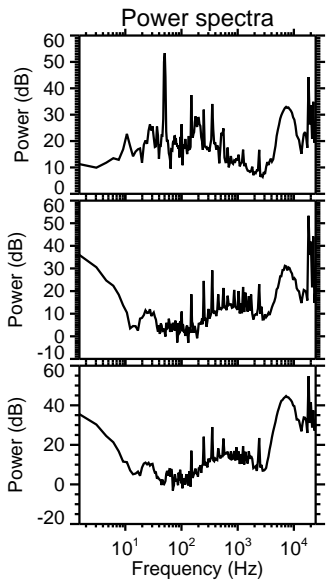
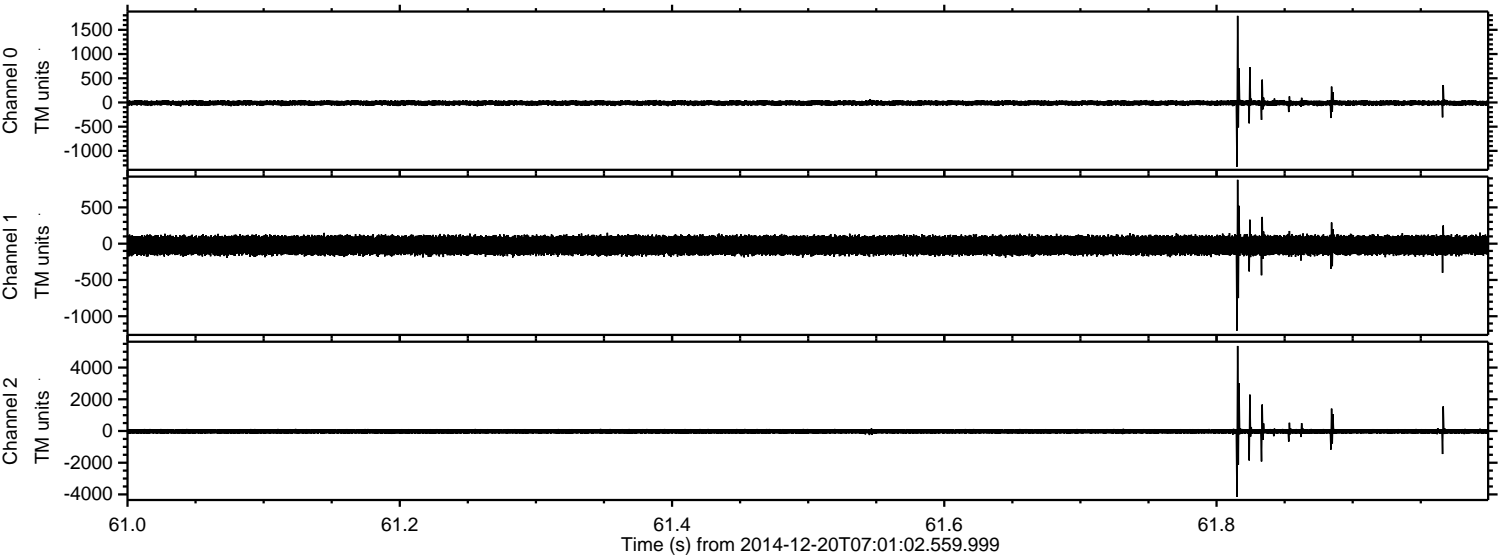
Channel 0
mn: -1392
mx: 1759
μ: -11.6
σ: 30.4

Channel 1
mn: -5843
mx: 4602
μ: -23.1
σ: 95.4

Channel 2
mn: -381
mx: 228
μ: -24.2
σ: 74.4

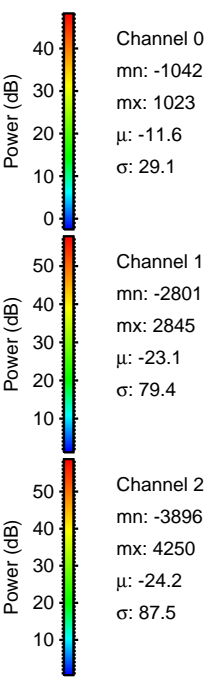
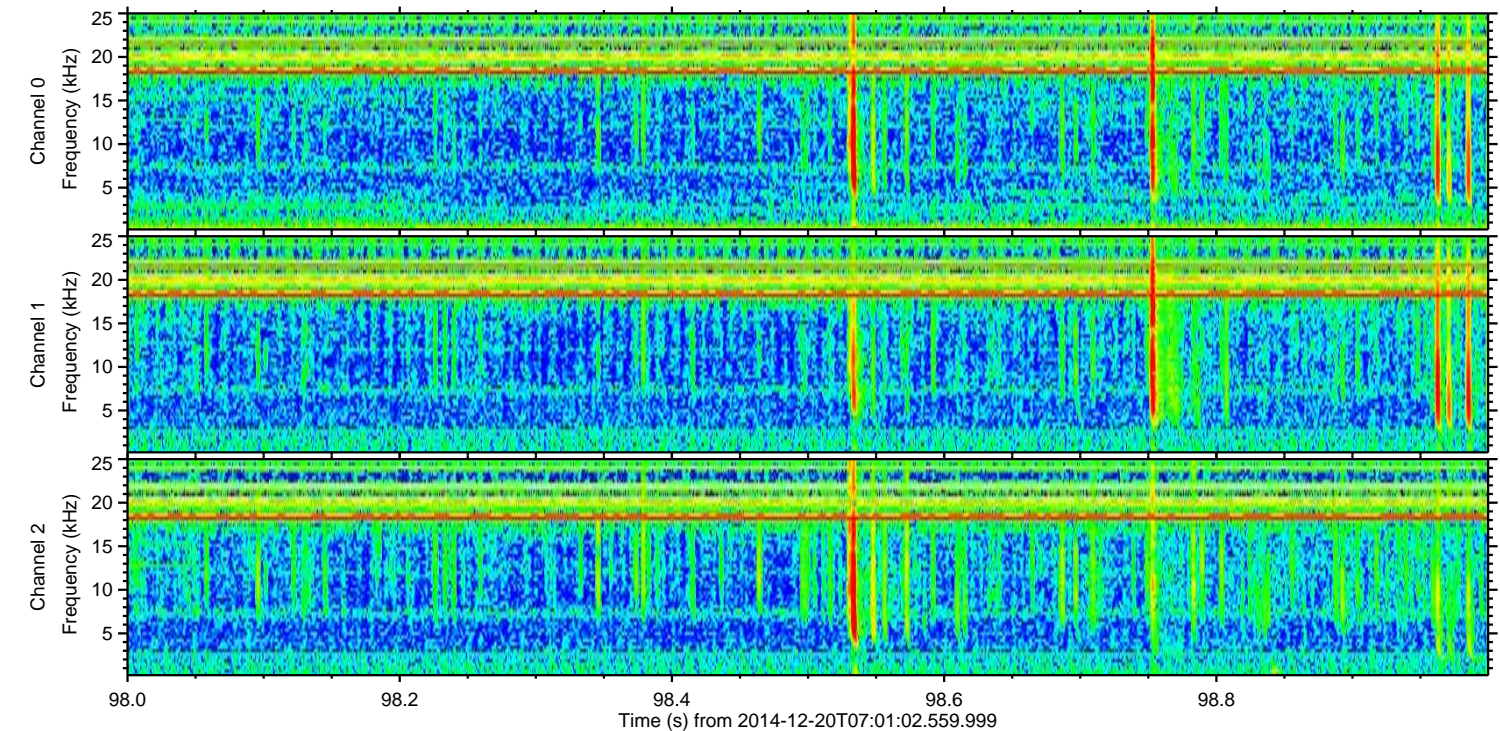
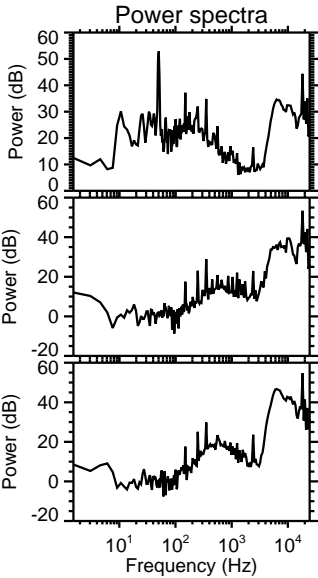
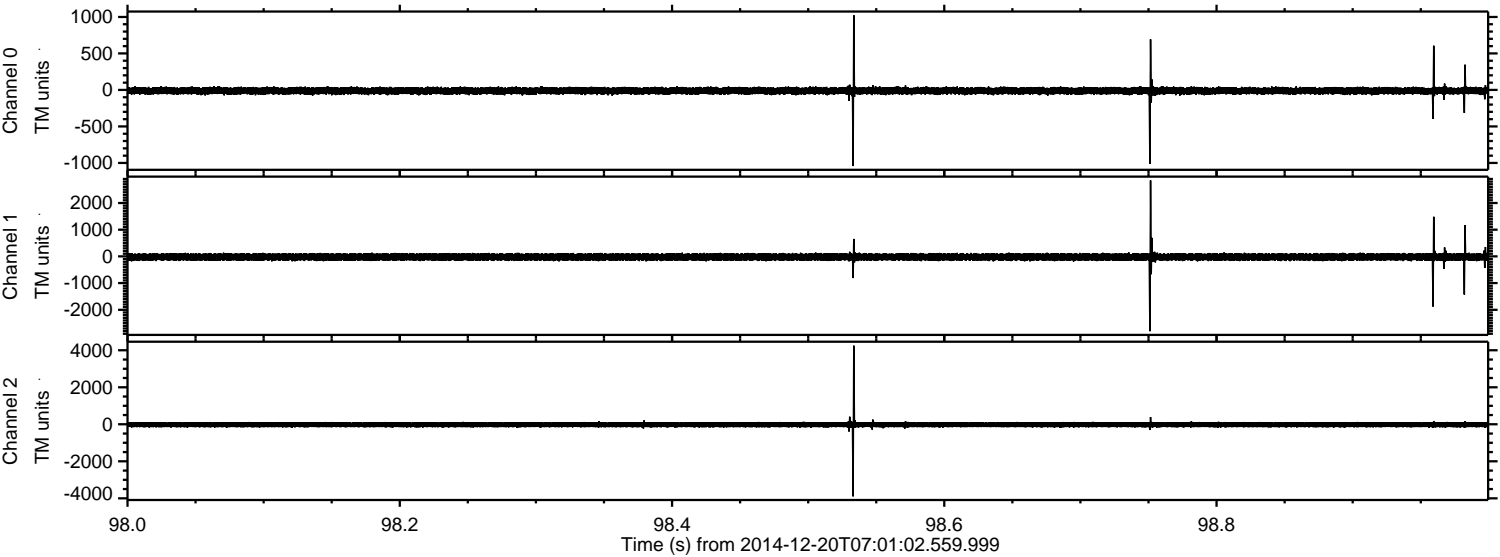
ELMAVAN 3D WAVEFORMS (Measured data sampled at 50 kHz) 49796 packets of 144 samples from 2014-12-20T07:01:02.559.999. Part 62/144

Processed Sat Dec 20 08:09:00 2014 by ELM ver.2012-10-06 from 001__elm20141220_070101__dat00.bin



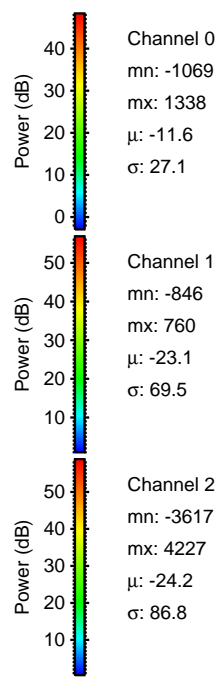
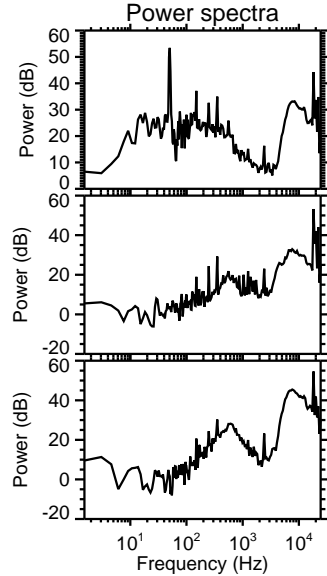
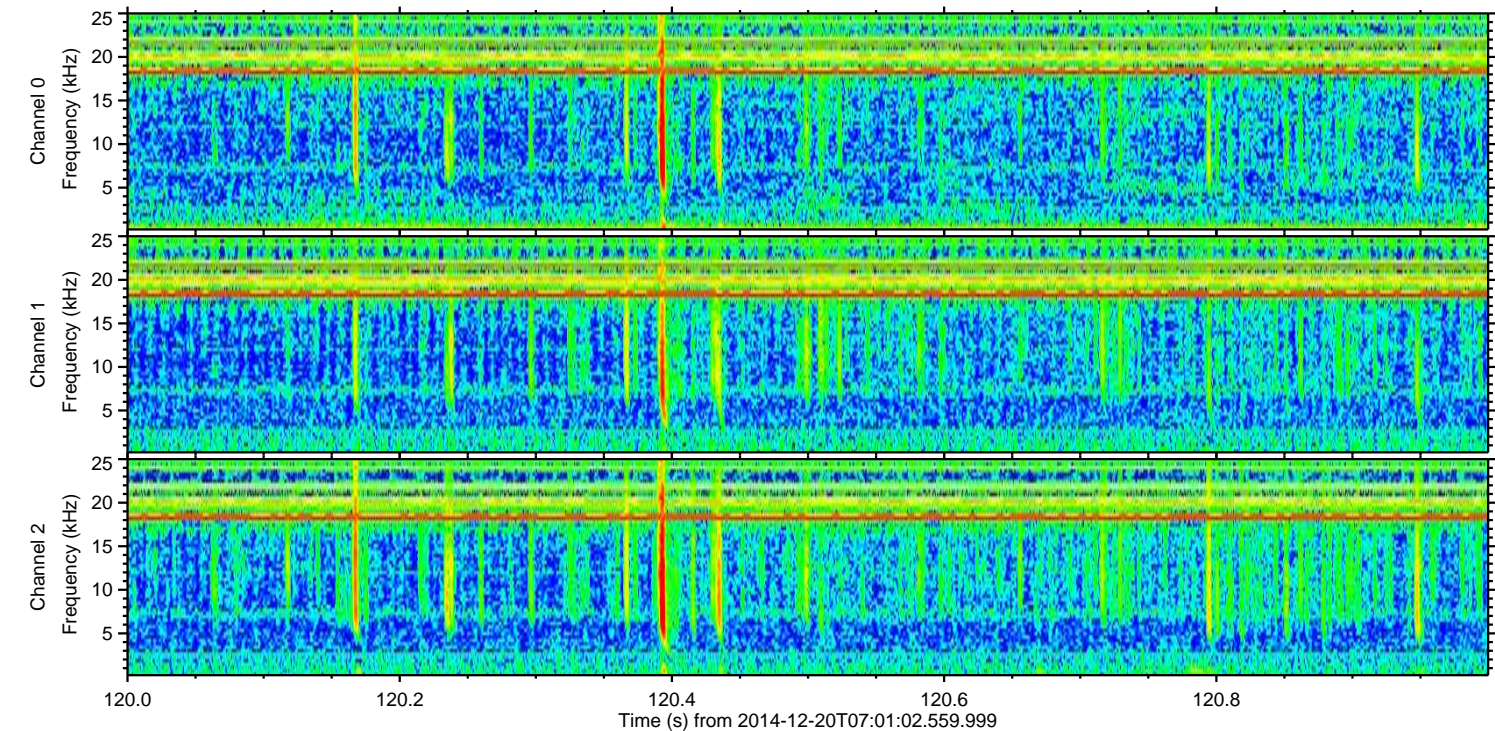
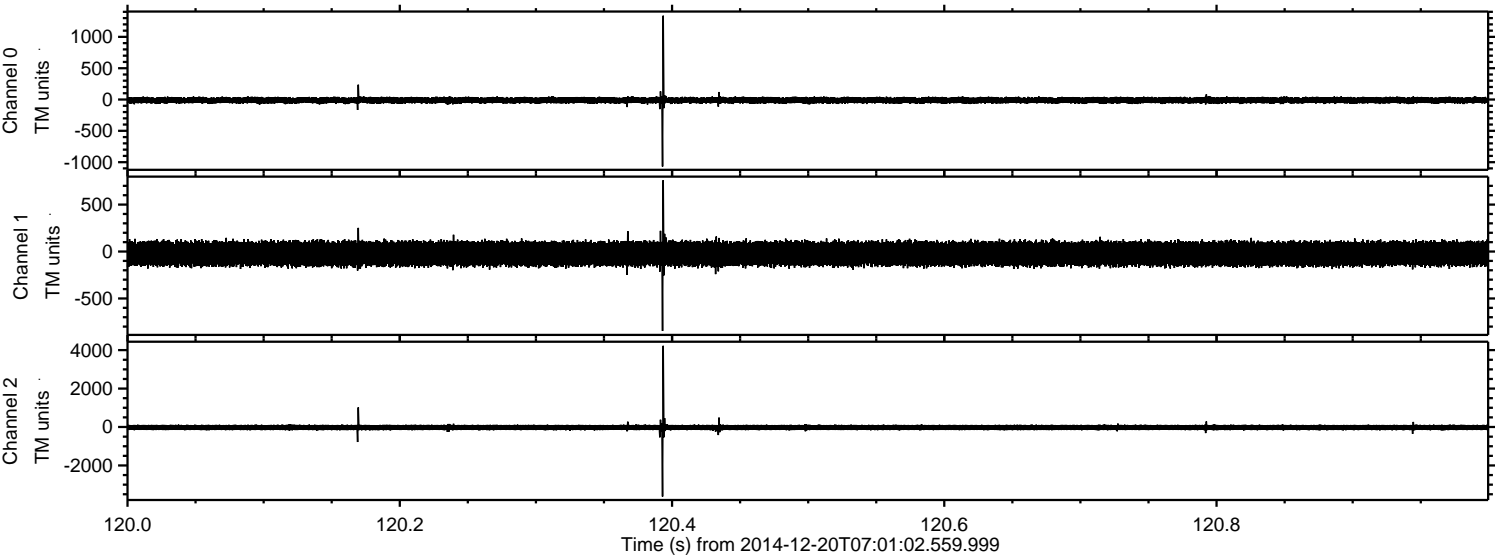
ELMAVAN 3D WAVEFORMS (Measured data sampled at 50 kHz) 49796 packets of 144 samples from 2014-12-20T07:01:02.559.999. Part 99/144

Processed Sat Dec 20 08:09:01 2014 by ELM ver.2012-10-06 from 001__elm20141220_070101__dat00.bin



ELMAVAN 3D WAVEFORMS (Measured data sampled at 50 kHz) 49796 packets of 144 samples from 2014-12-20T07:01:02.559.999. Part 121/144

Processed Sat Dec 20 08:09:01 2014 by ELM ver.2012-10-06 from 001__elm20141220_070101__dat00.bin



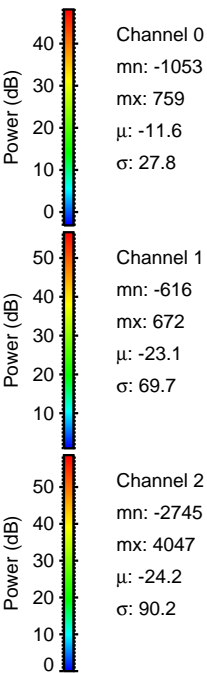
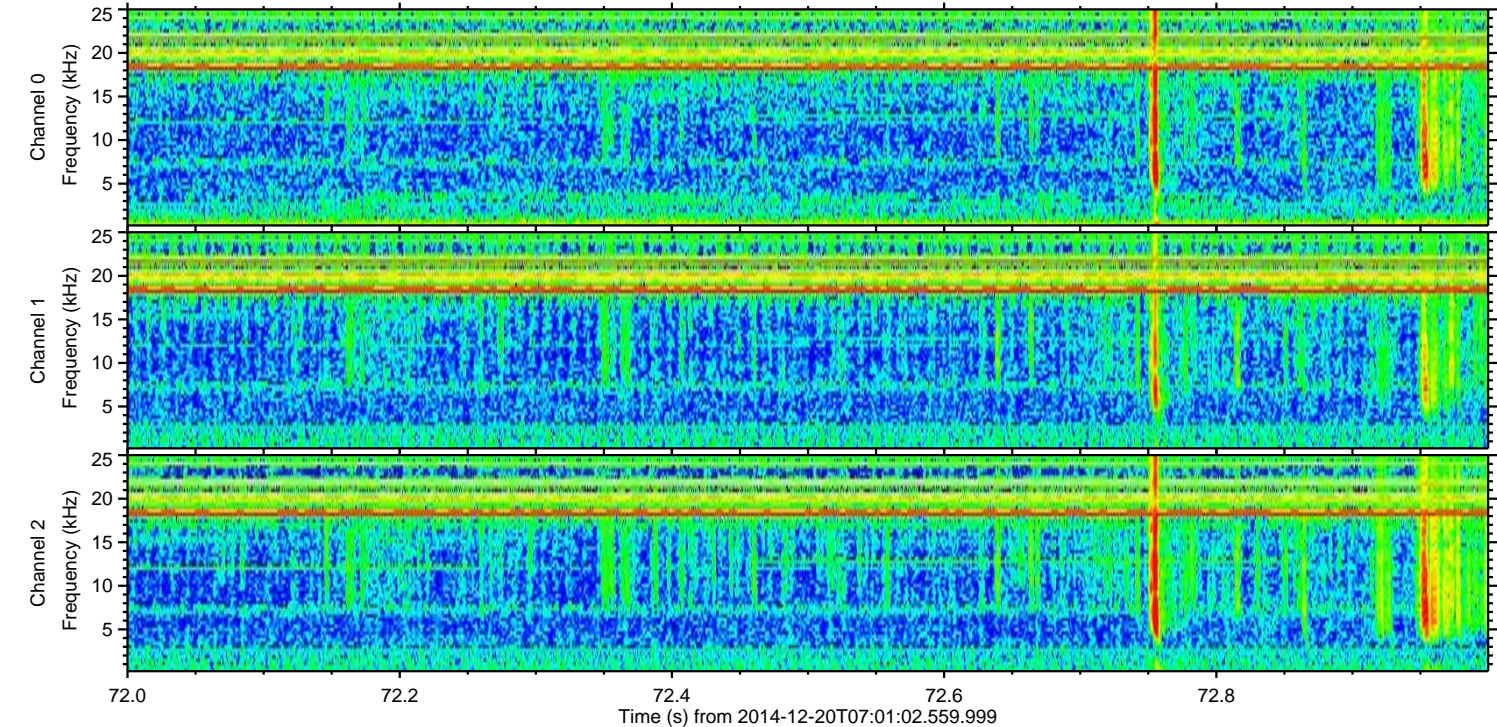
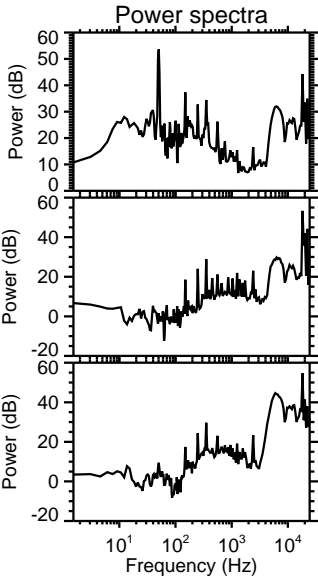
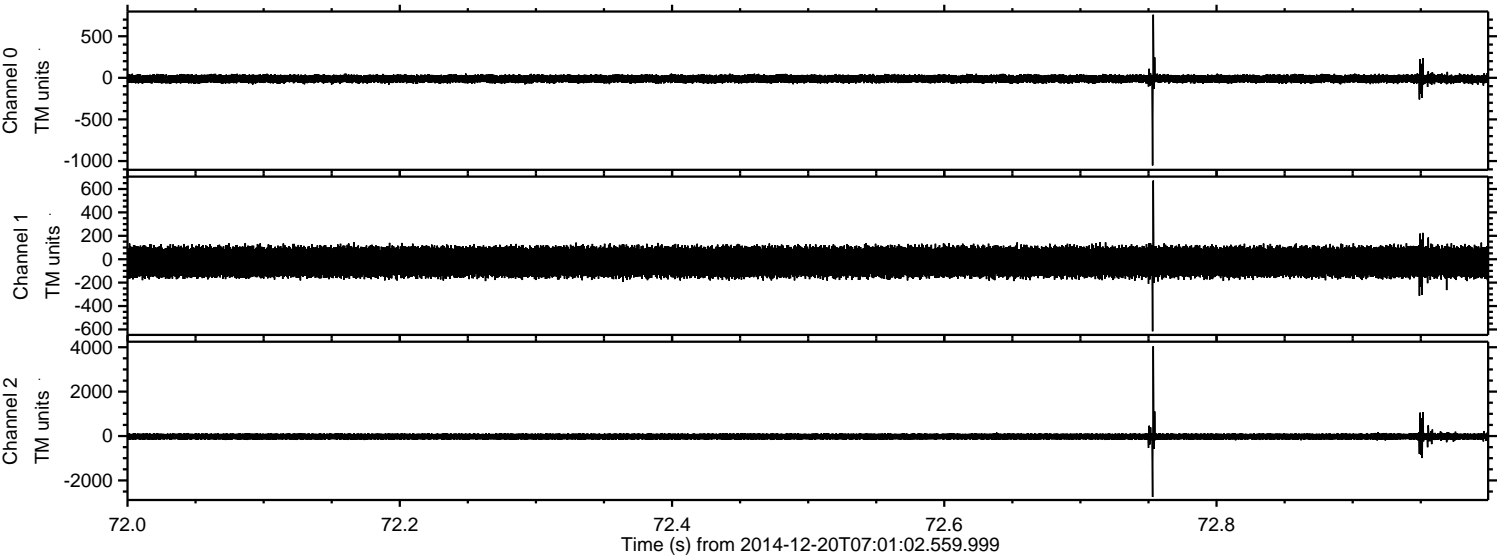
Channel 0
mn: -1069
mx: 1338
 μ : -11.6
 σ : 27.1

Channel 1
mn: -846
mx: 760
 μ : -23.1
 σ : 69.5

Channel 2
mn: -3617
mx: 4227
 μ : -24.2
 σ : 86.8

ELMAVAN 3D WAVEFORMS (Measured data sampled at 50 kHz) 49796 packets of 144 samples from 2014-12-20T07:01:02.559.999. Part 73/144

Processed Sat Dec 20 08:09:02 2014 by ELM ver.2012-10-06 from 001__elm20141220_070101__dat00.bin



ELMAVAN 3D WAVEFORMS (Measured data sampled at 50 kHz) 49796 packets of 144 samples from 2014-12-20T07:01:02.559.999. Part 23/144

Processed Sat Dec 20 08:09:03 2014 by ELM ver.2012-10-06 from 001__elm20141220_070101__dat00.bin

