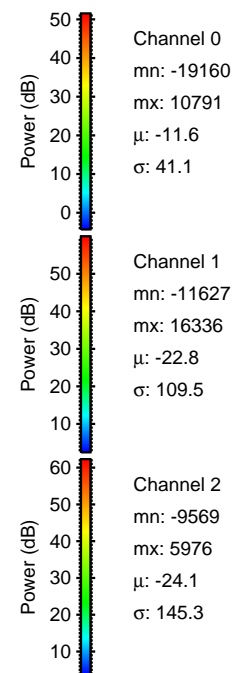
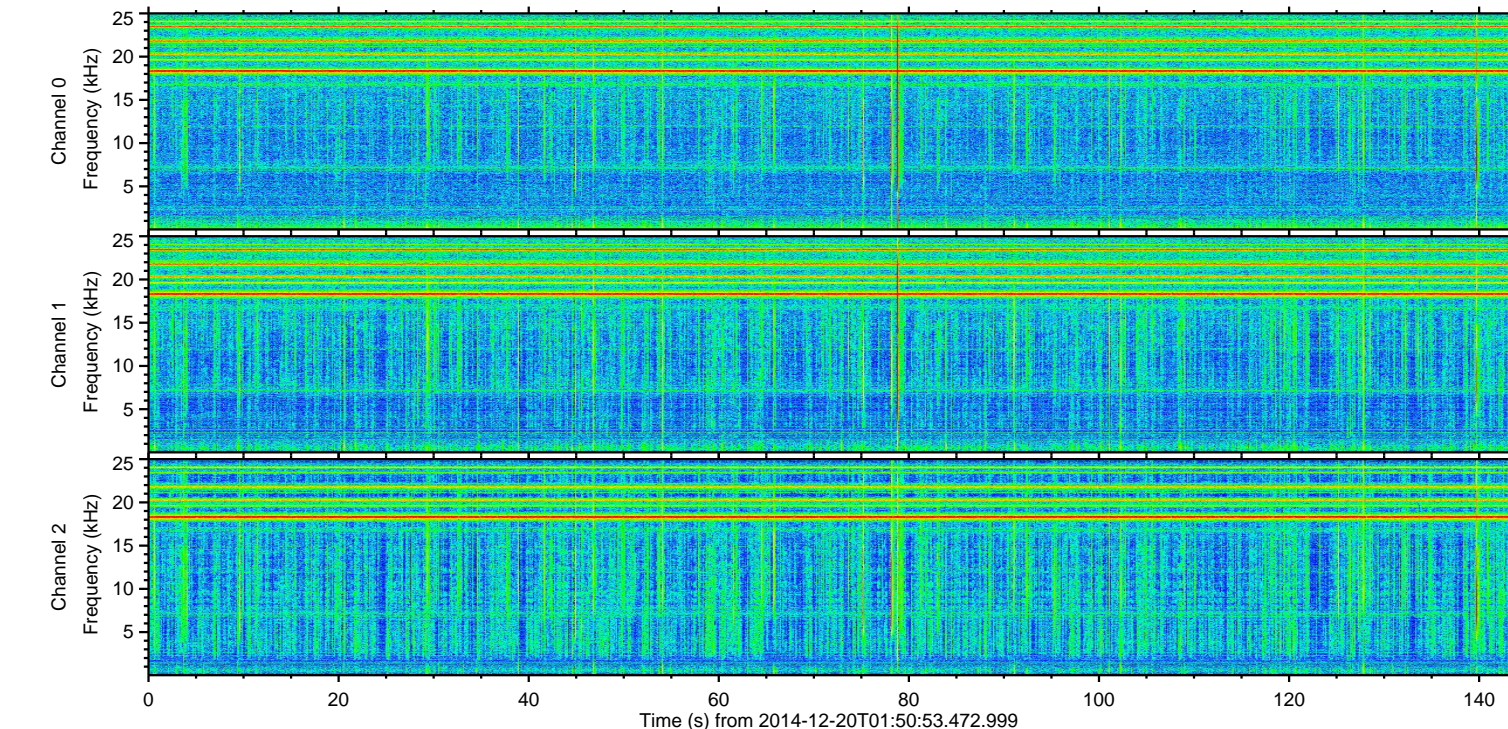
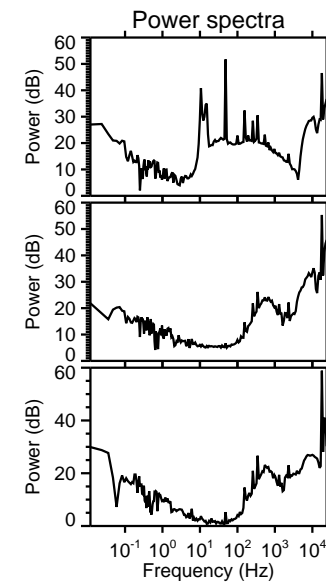
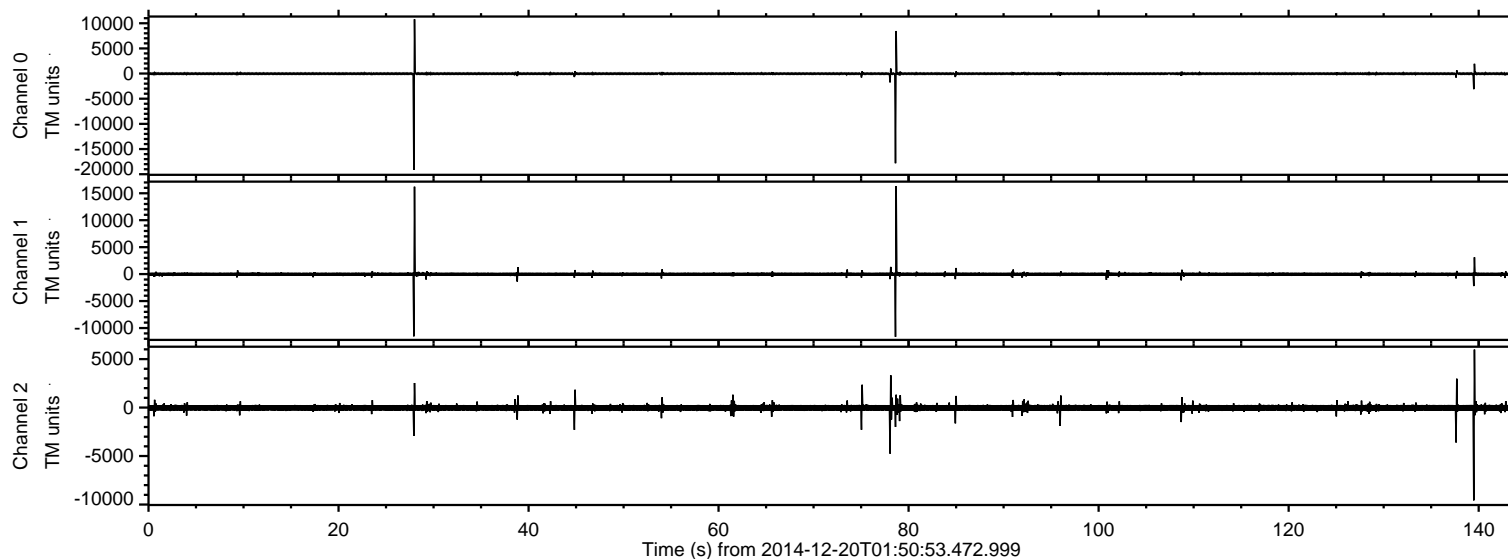


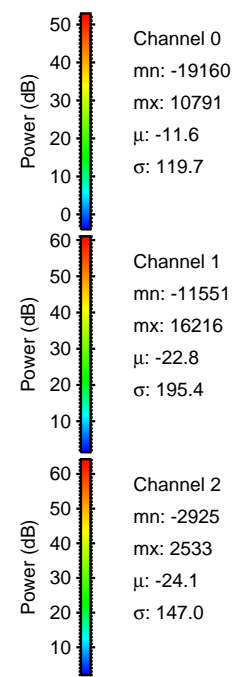
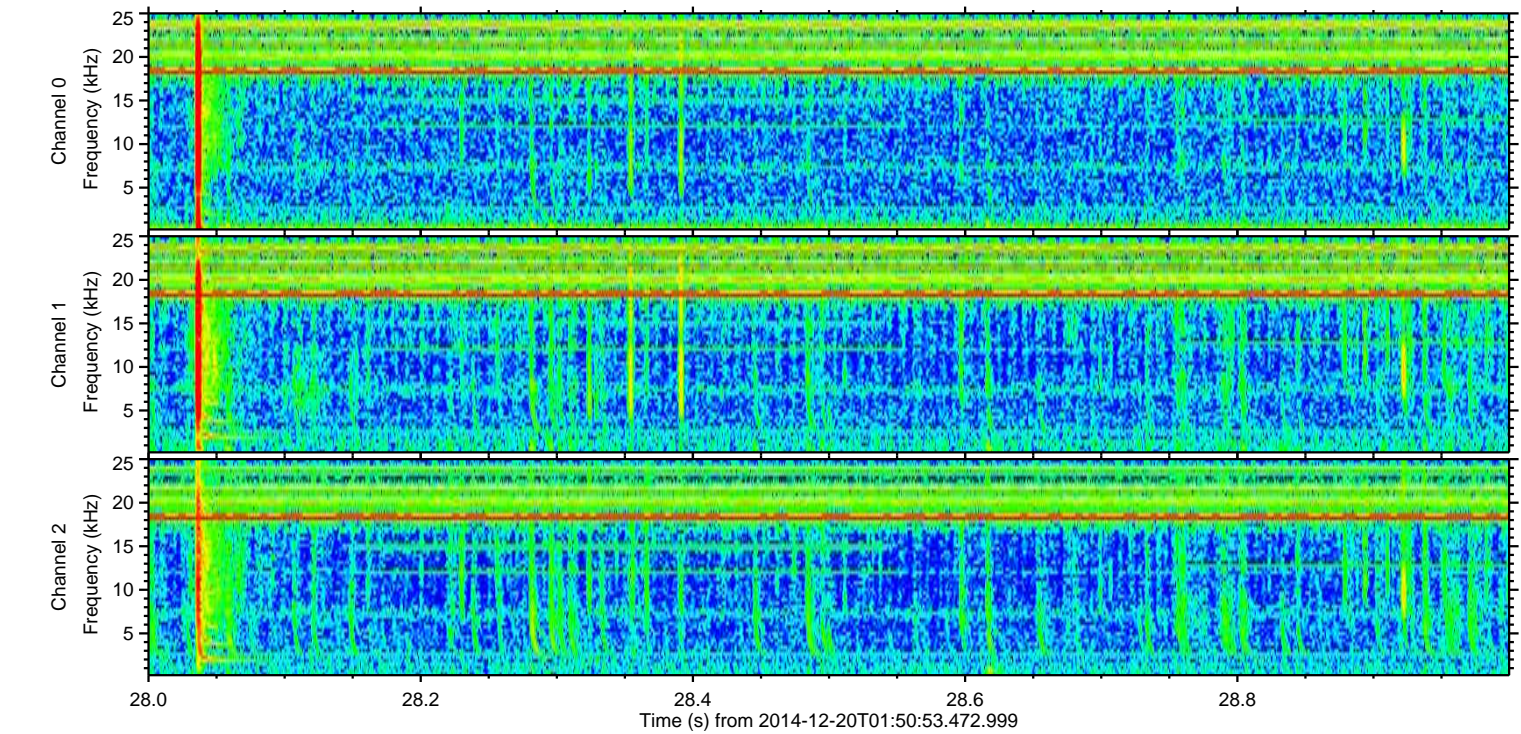
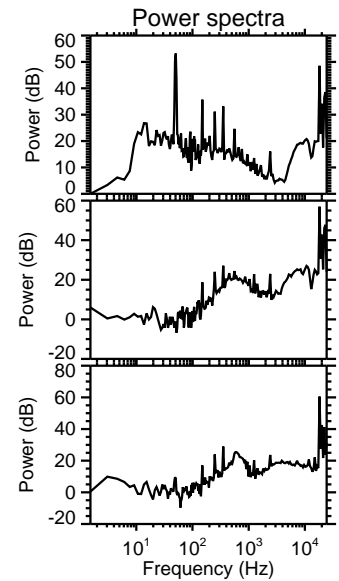
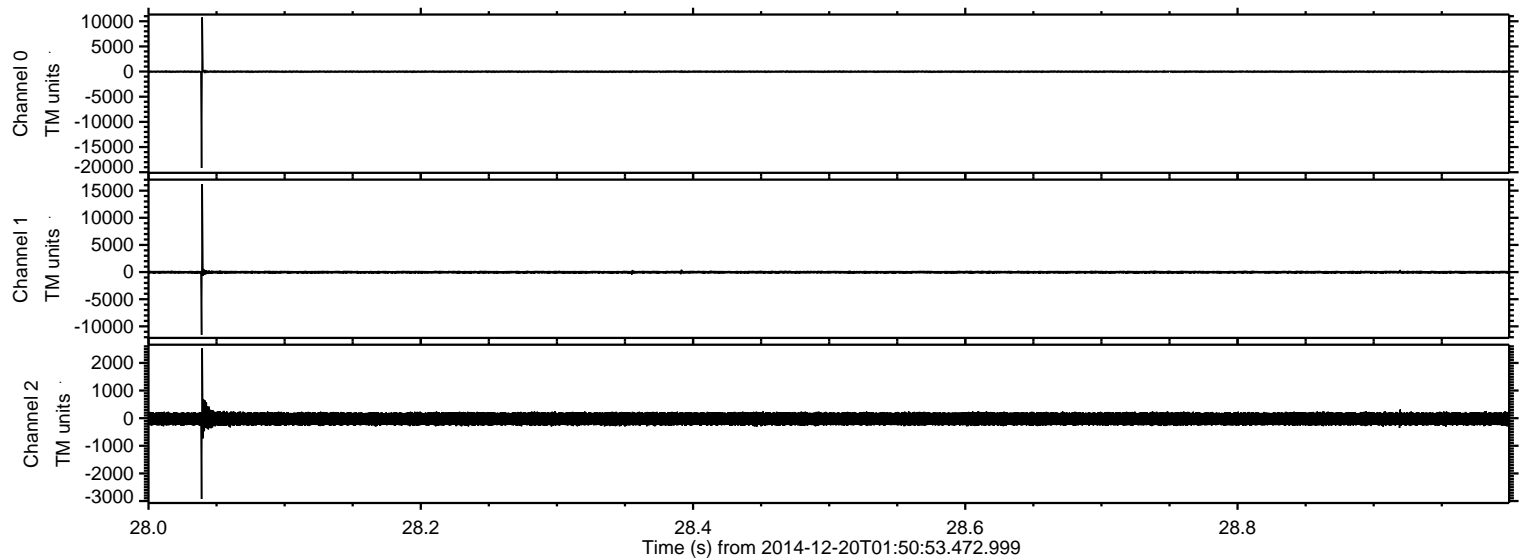
ELMAVAN 3D WAVEFORMS (Measured data sampled at 50 kHz) 49725 packets of 144 samples from 2014-12-20T01:50:53.472.999.

Processed Sat Dec 20 02:58:39 2014 by ELM ver.2012-10-06 from 001__elm20141220_015052__dat00.bin



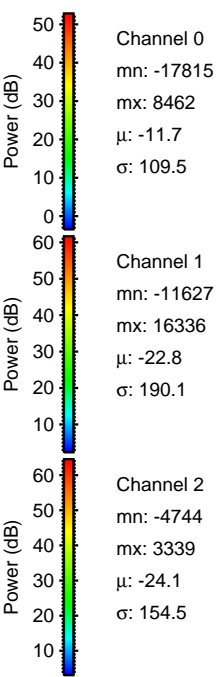
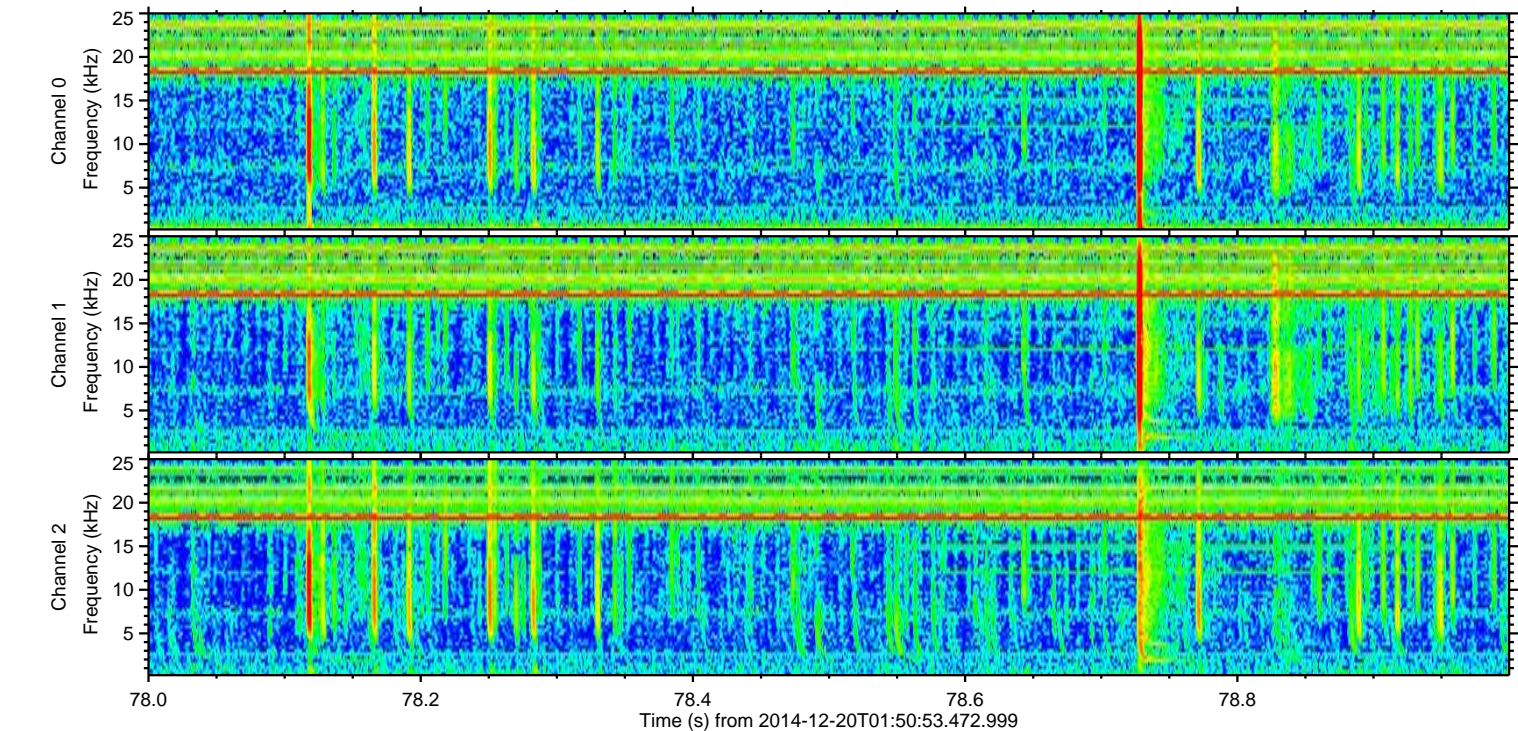
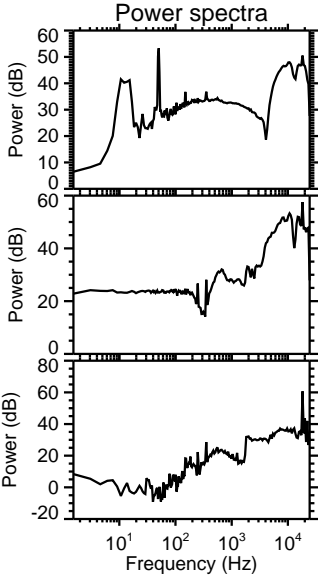
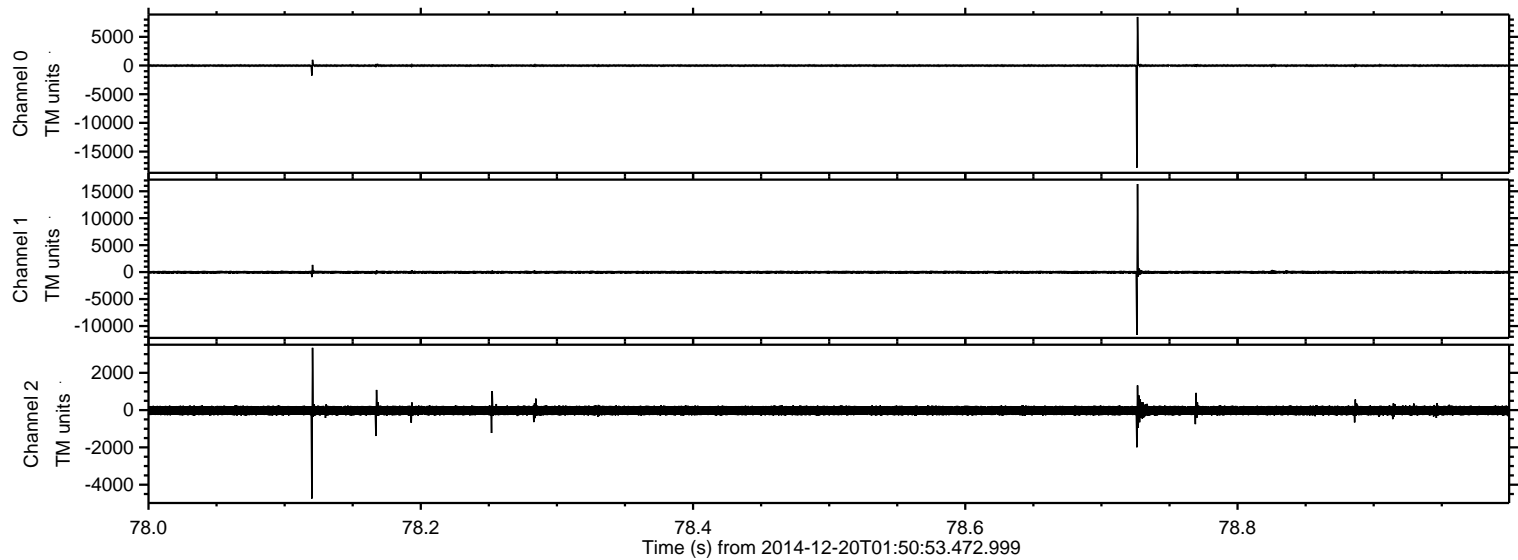
ELMAVAN 3D WAVEFORMS (Measured data sampled at 50 kHz) 49725 packets of 144 samples from 2014-12-20T01:50:53.472.999. Part 29/144

Processed Sat Dec 20 02:58:51 2014 by ELM ver.2012-10-06 from 001__elm20141220_015052__dat00.bin



ELMAVAN 3D WAVEFORMS (Measured data sampled at 50 kHz) 49725 packets of 144 samples from 2014-12-20T01:50:53.472.999. Part 79/144

Processed Sat Dec 20 02:58:52 2014 by ELM ver.2012-10-06 from 001__elm20141220_015052__dat00.bin



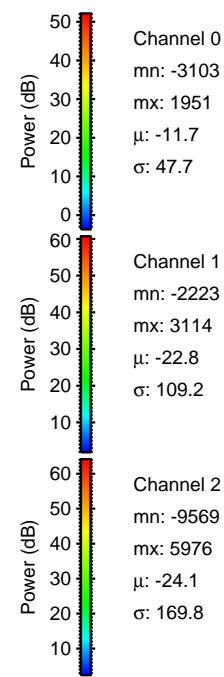
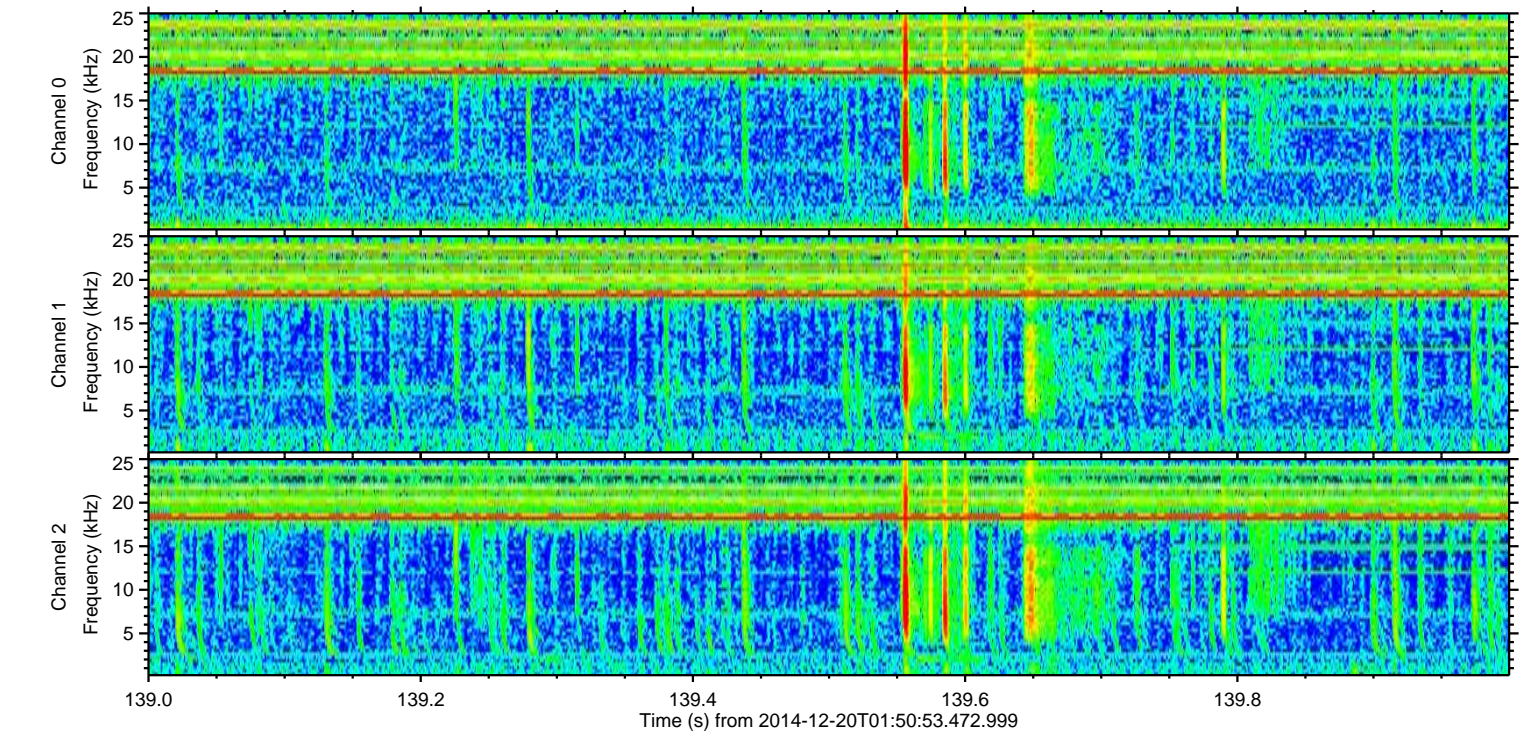
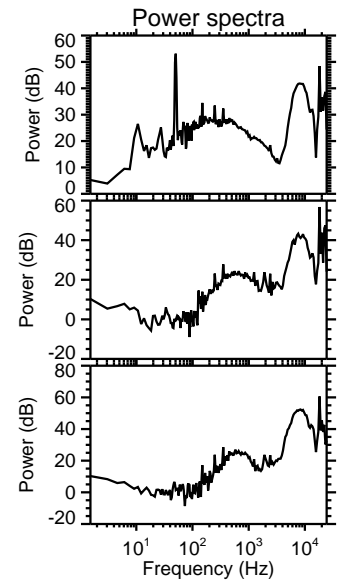
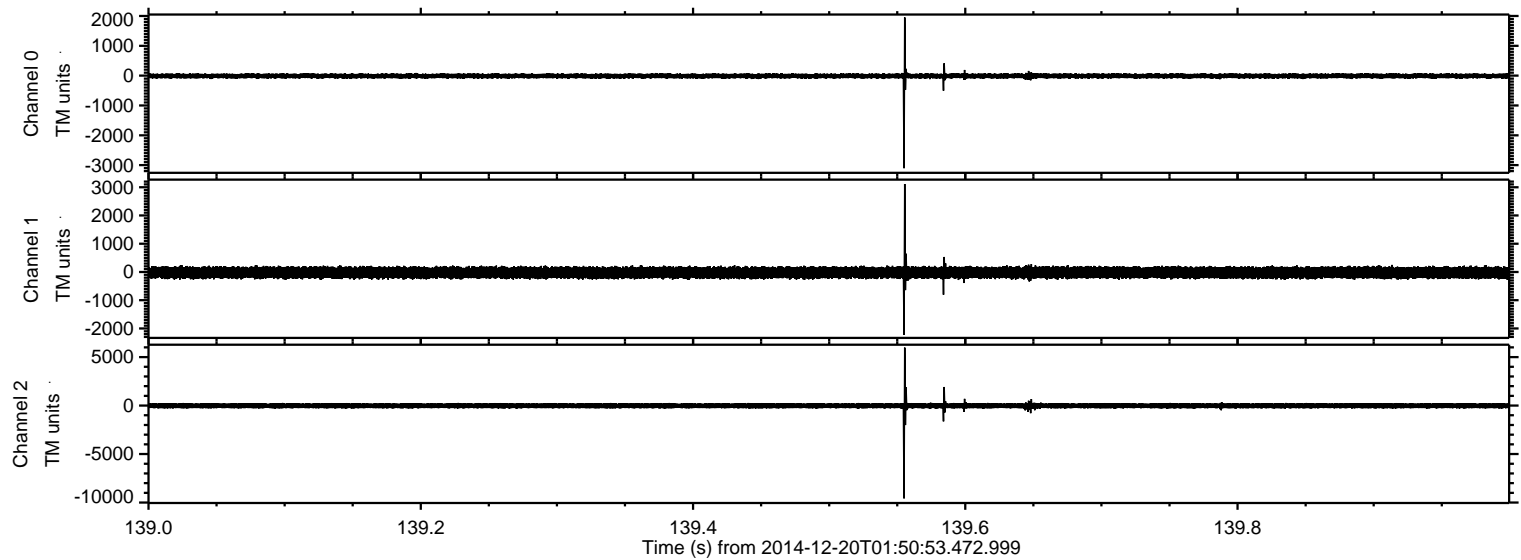
Channel 0
mn: -17815
mx: 8462
 μ : -11.7
 σ : 109.5

Channel 1
mn: -11627
mx: 16336
 μ : -22.8
 σ : 190.1

Channel 2
mn: -4744
mx: 3339
 μ : -24.1
 σ : 154.5

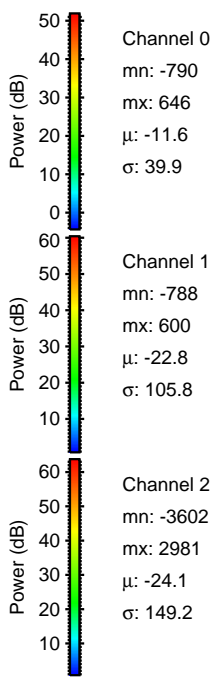
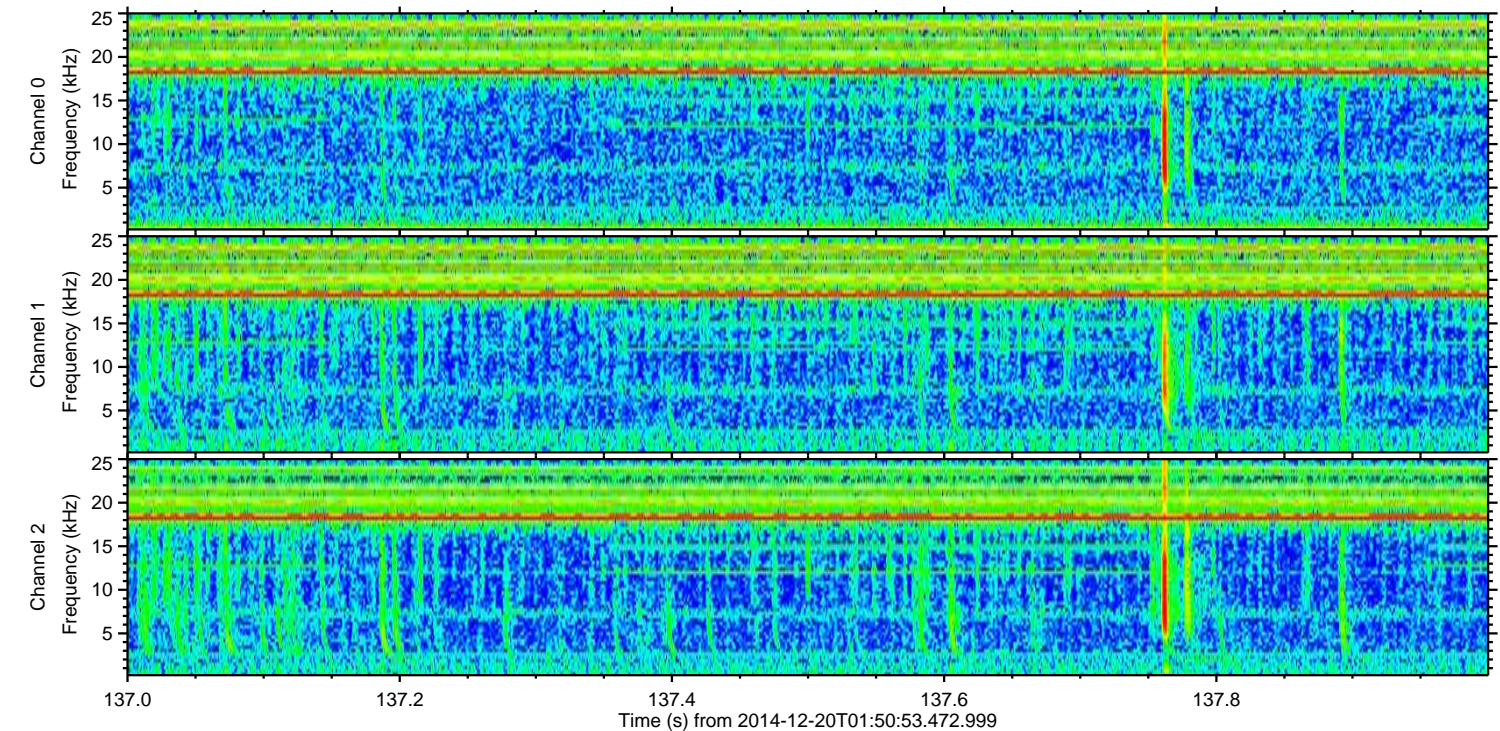
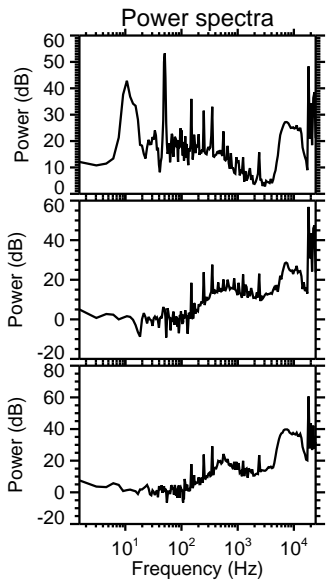
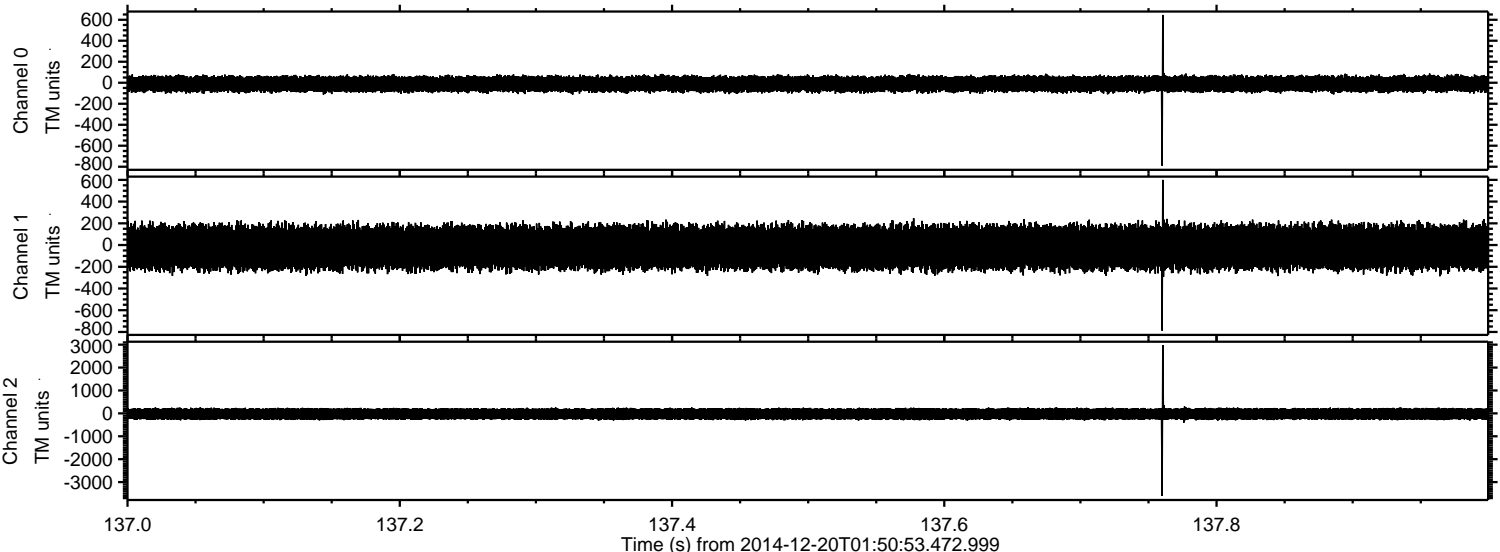
ELMAVAN 3D WAVEFORMS (Measured data sampled at 50 kHz) 49725 packets of 144 samples from 2014-12-20T01:50:53.472.999. Part 140/144

Processed Sat Dec 20 02:58:53 2014 by ELM ver.2012-10-06 from 001__elm20141220_015052__dat00.bin



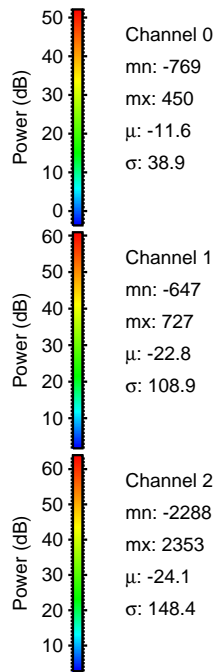
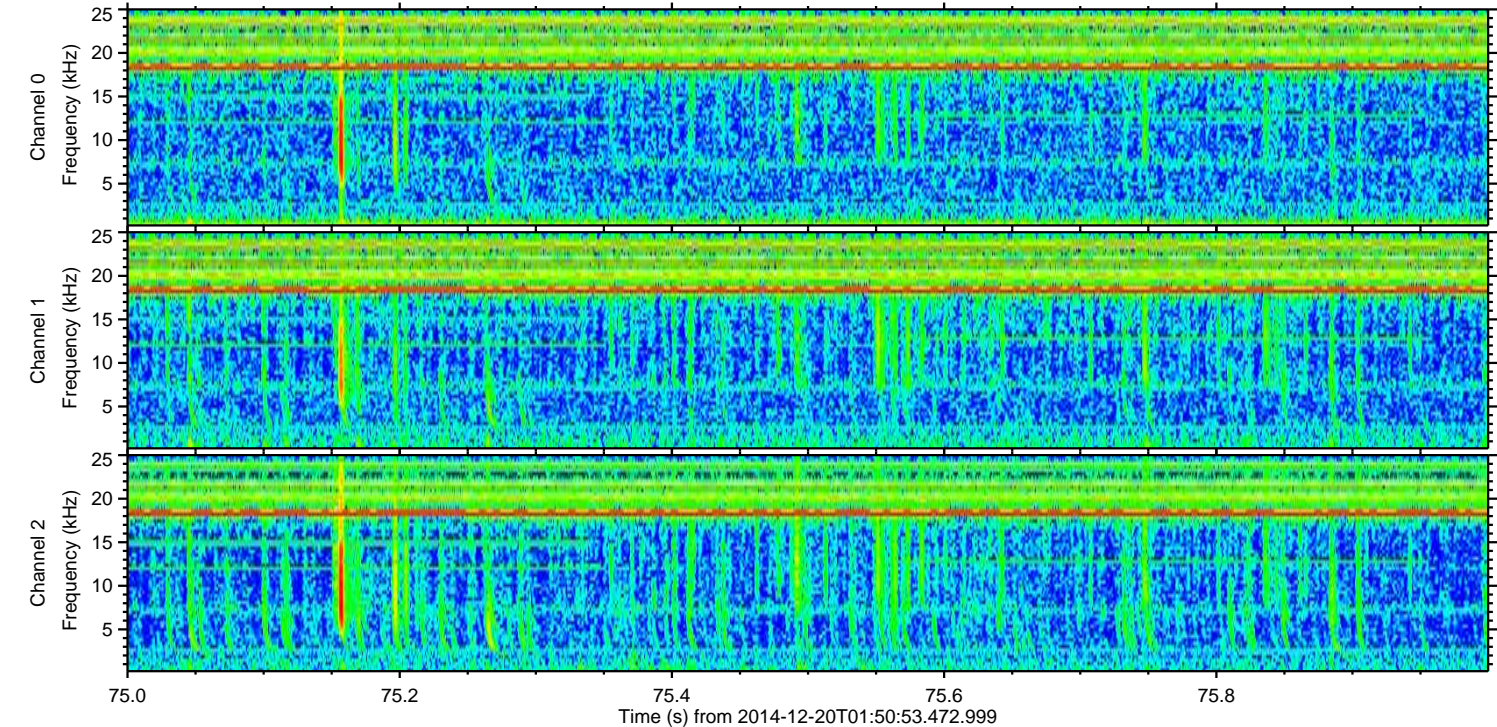
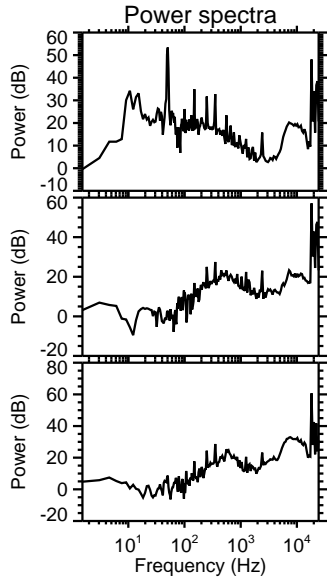
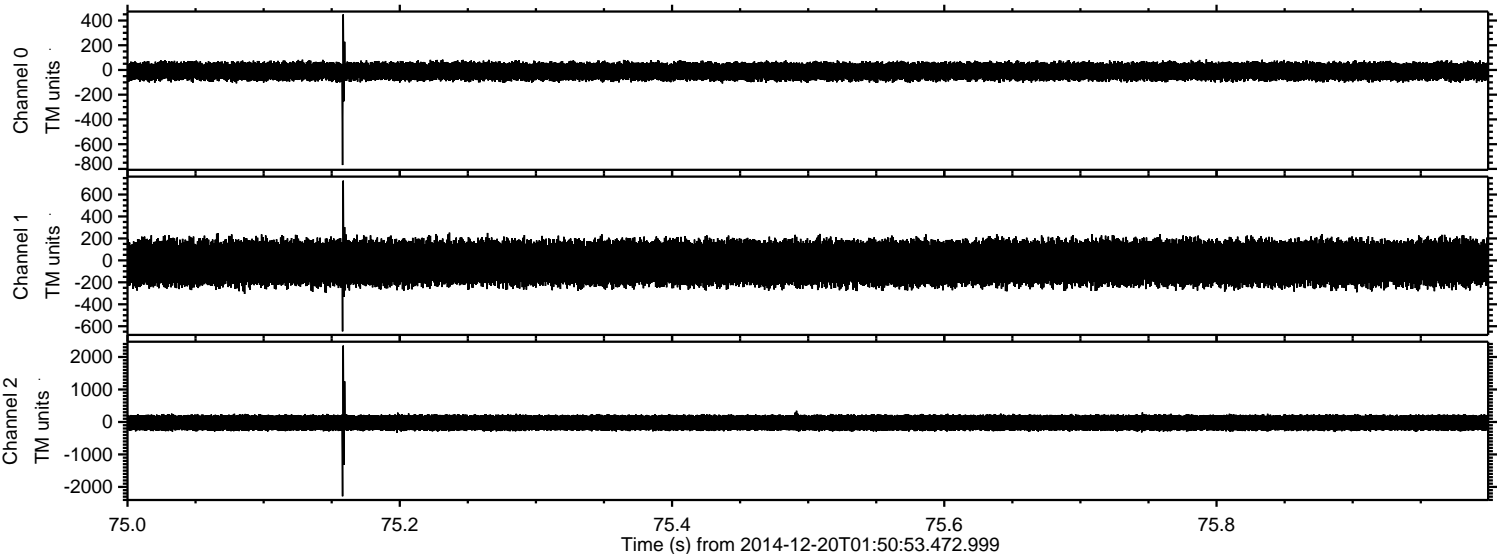
ELMAVAN 3D WAVEFORMS (Measured data sampled at 50 kHz) 49725 packets of 144 samples from 2014-12-20T01:50:53.472.999. Part 138/144

Processed Sat Dec 20 02:58:54 2014 by ELM ver.2012-10-06 from 001__elm20141220_015052__dat00.bin



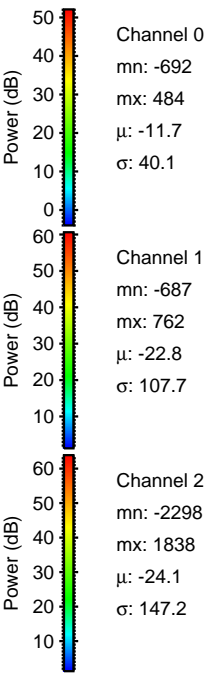
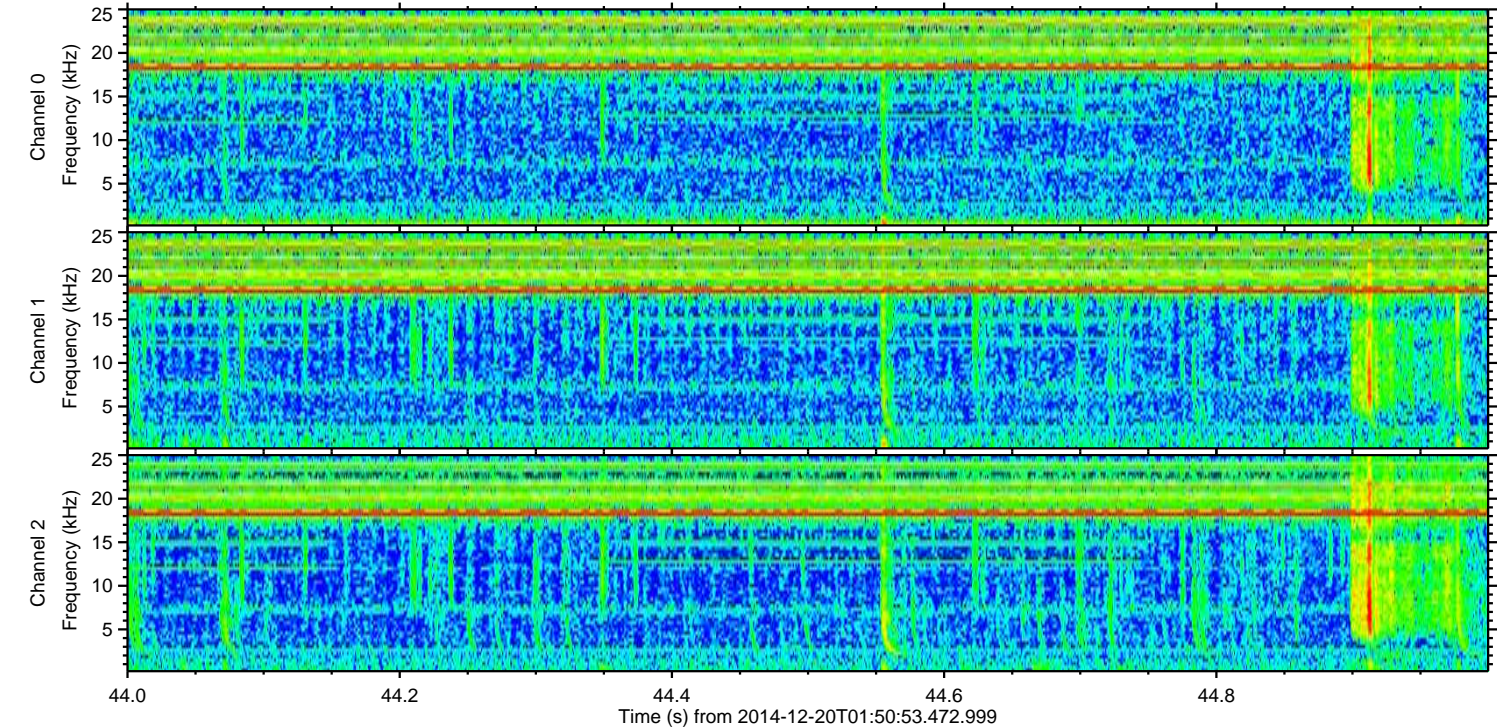
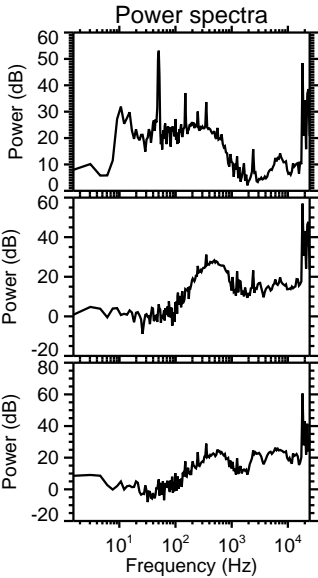
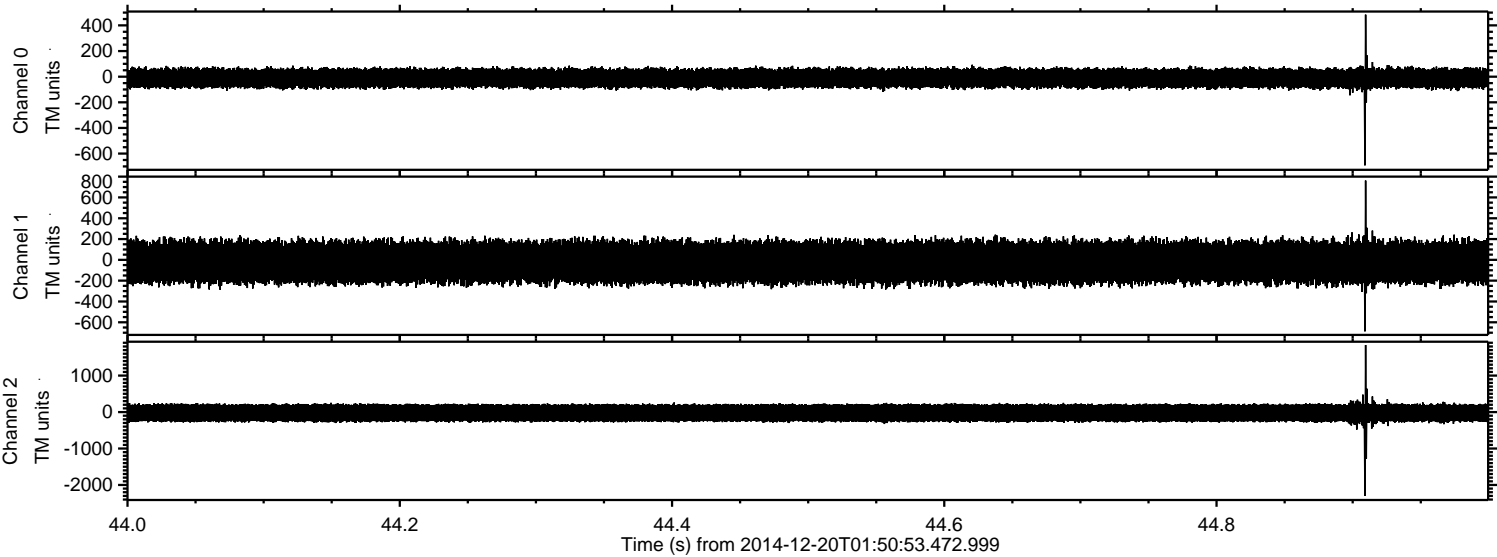
ELMAVAN 3D WAVEFORMS (Measured data sampled at 50 kHz) 49725 packets of 144 samples from 2014-12-20T01:50:53.472.999. Part 76/144

Processed Sat Dec 20 02:58:55 2014 by ELM ver.2012-10-06 from 001__elm20141220_015052__dat00.bin



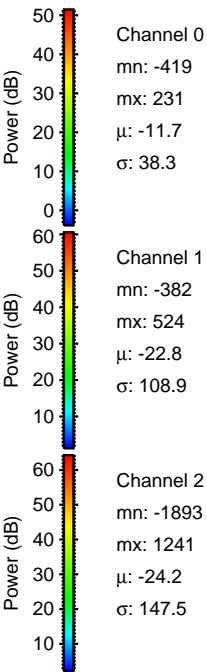
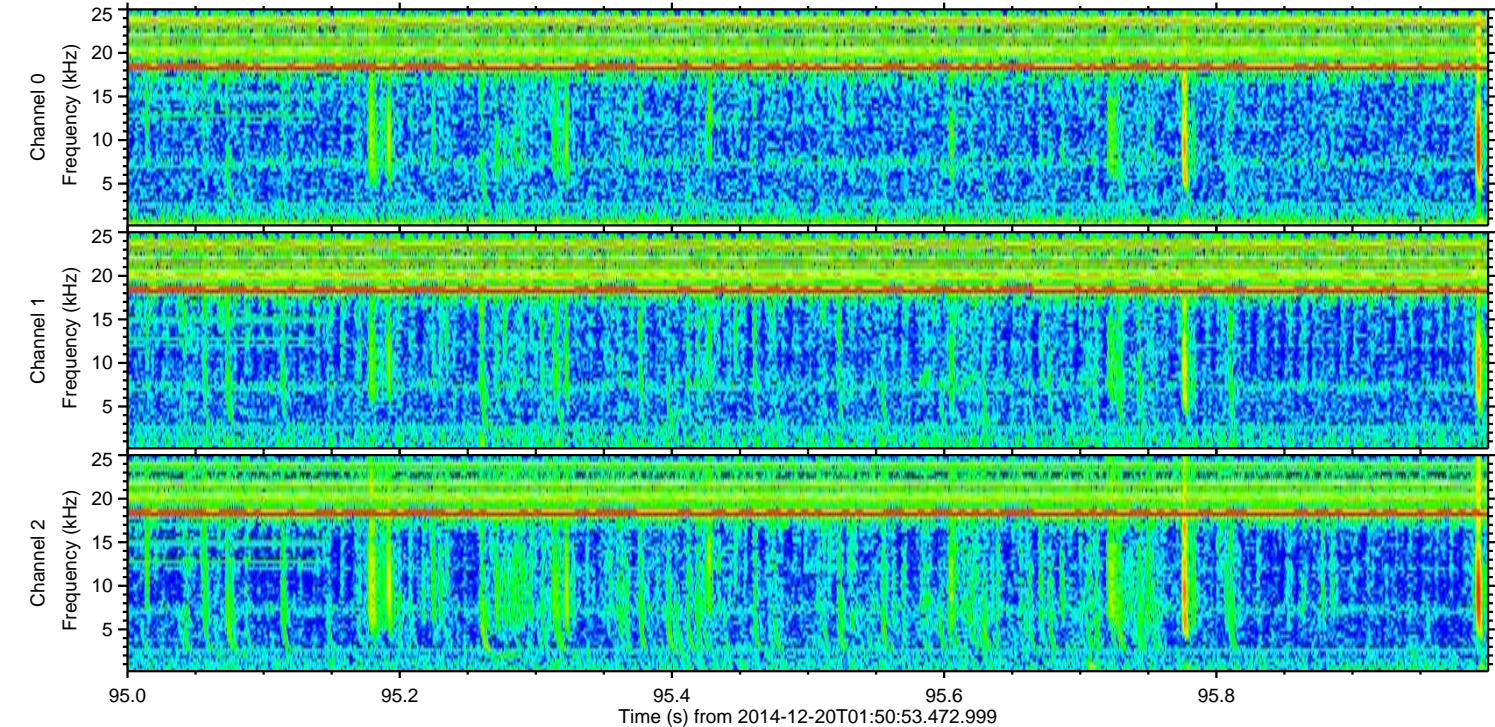
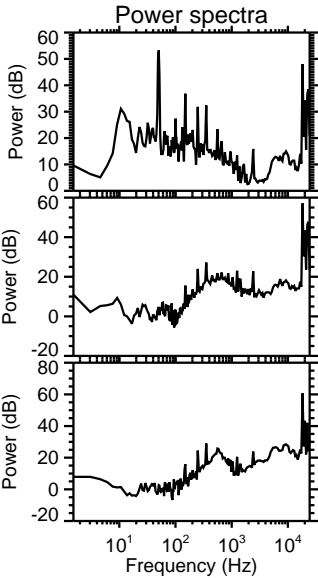
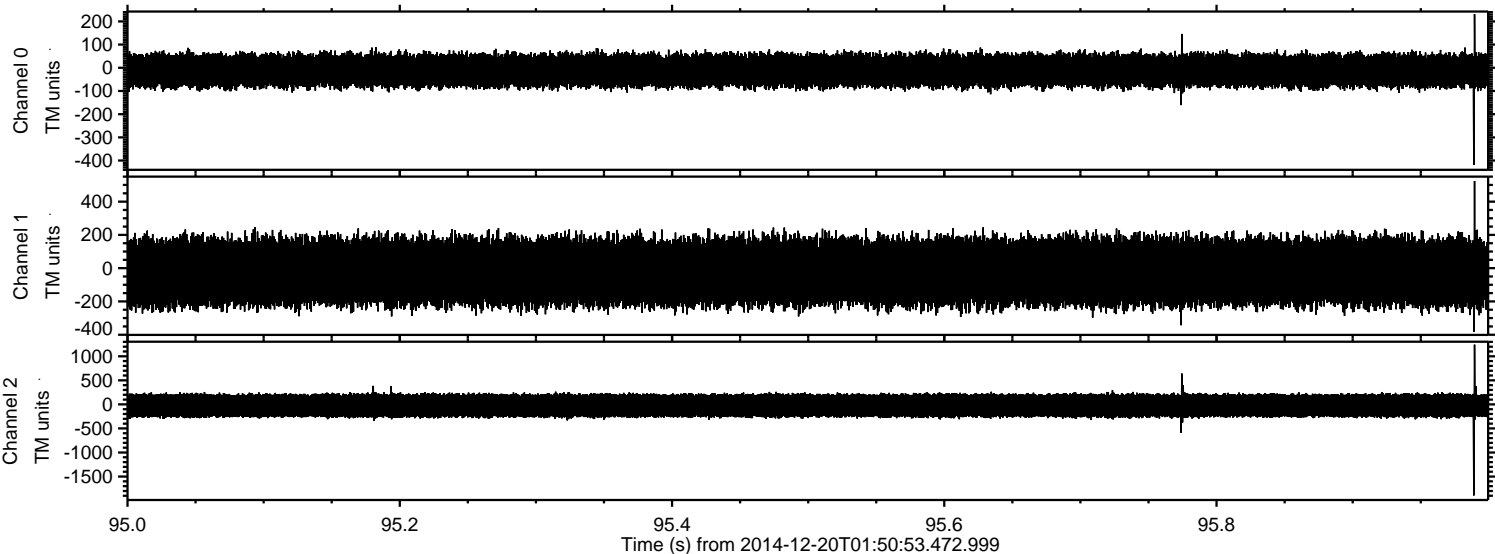
ELMAVAN 3D WAVEFORMS (Measured data sampled at 50 kHz) 49725 packets of 144 samples from 2014-12-20T01:50:53.472.999. Part 45/144

Processed Sat Dec 20 02:58:56 2014 by ELM ver.2012-10-06 from 001__elm20141220_015052__dat00.bin



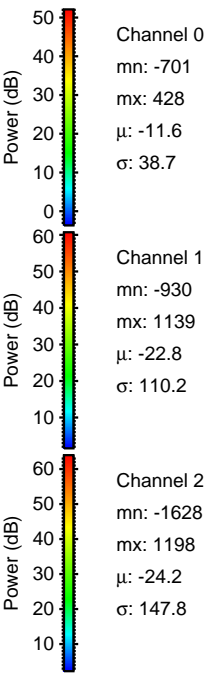
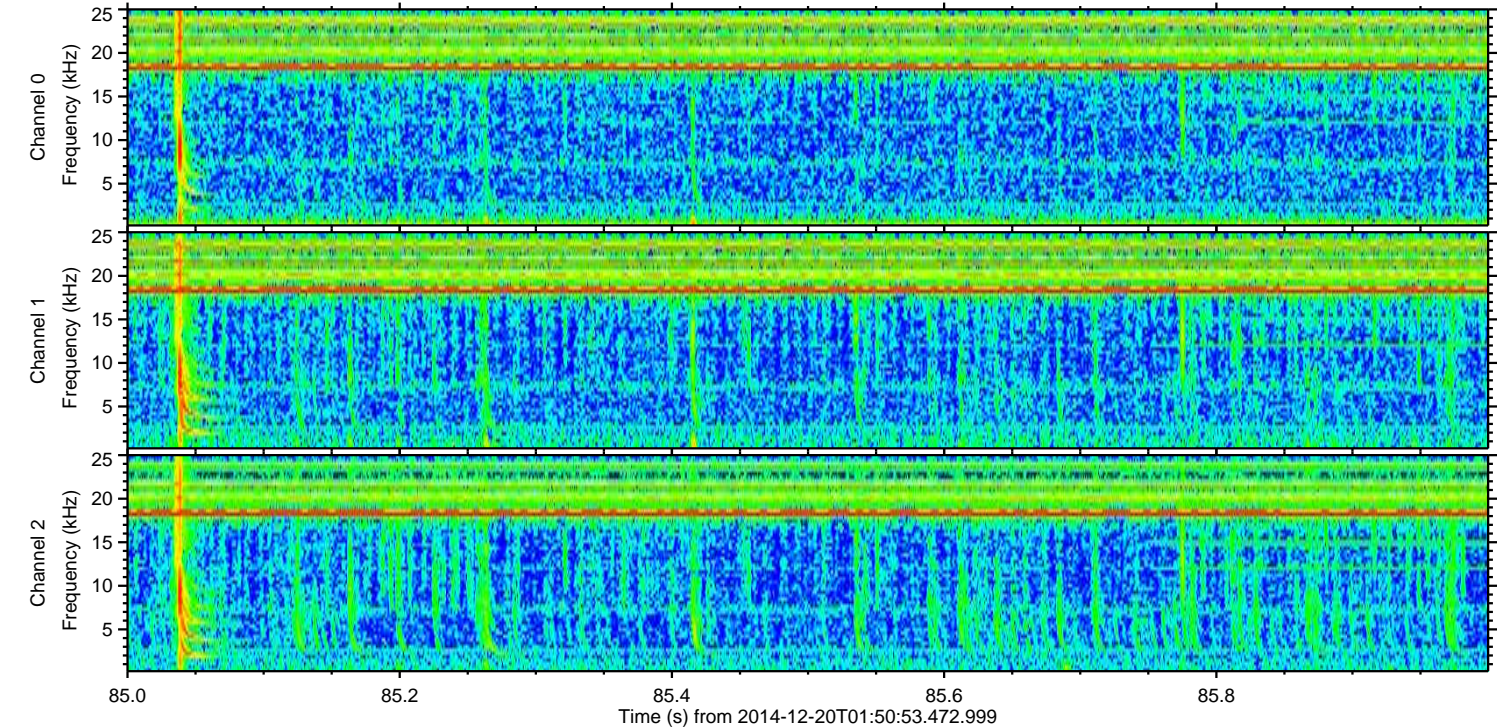
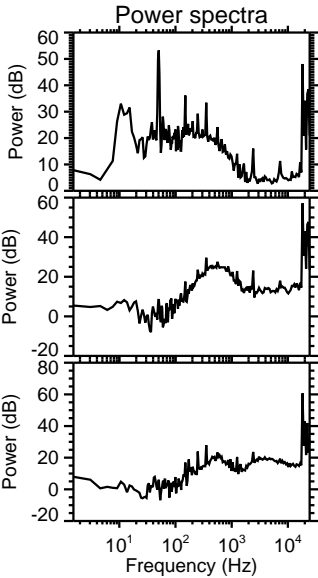
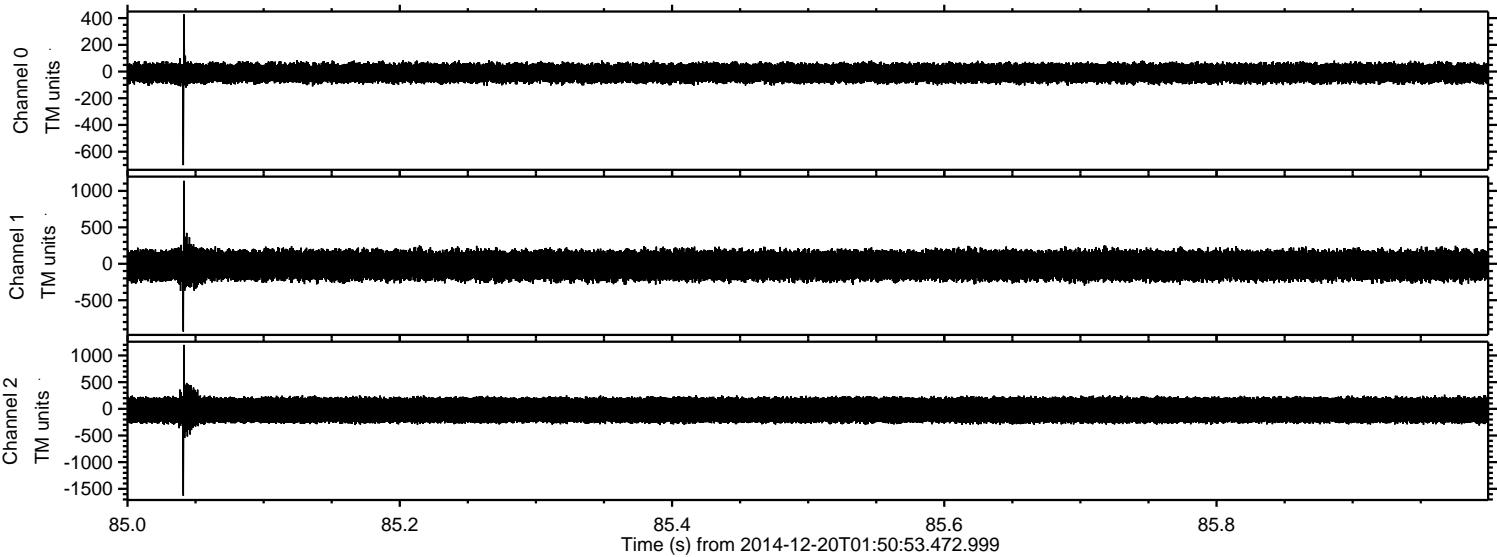
ELMAVAN 3D WAVEFORMS (Measured data sampled at 50 kHz) 49725 packets of 144 samples from 2014-12-20T01:50:53.472.999. Part 96/144

Processed Sat Dec 20 02:58:56 2014 by ELM ver.2012-10-06 from 001__elm20141220_015052__dat00.bin



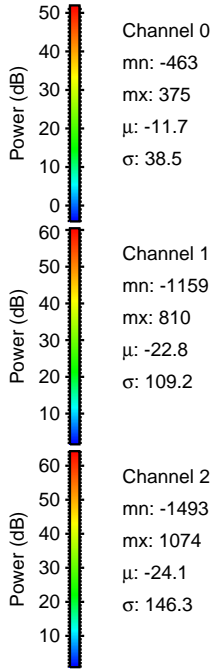
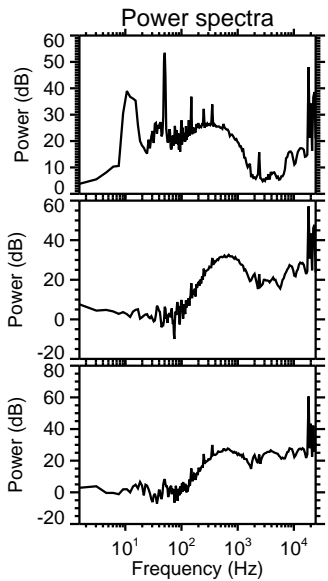
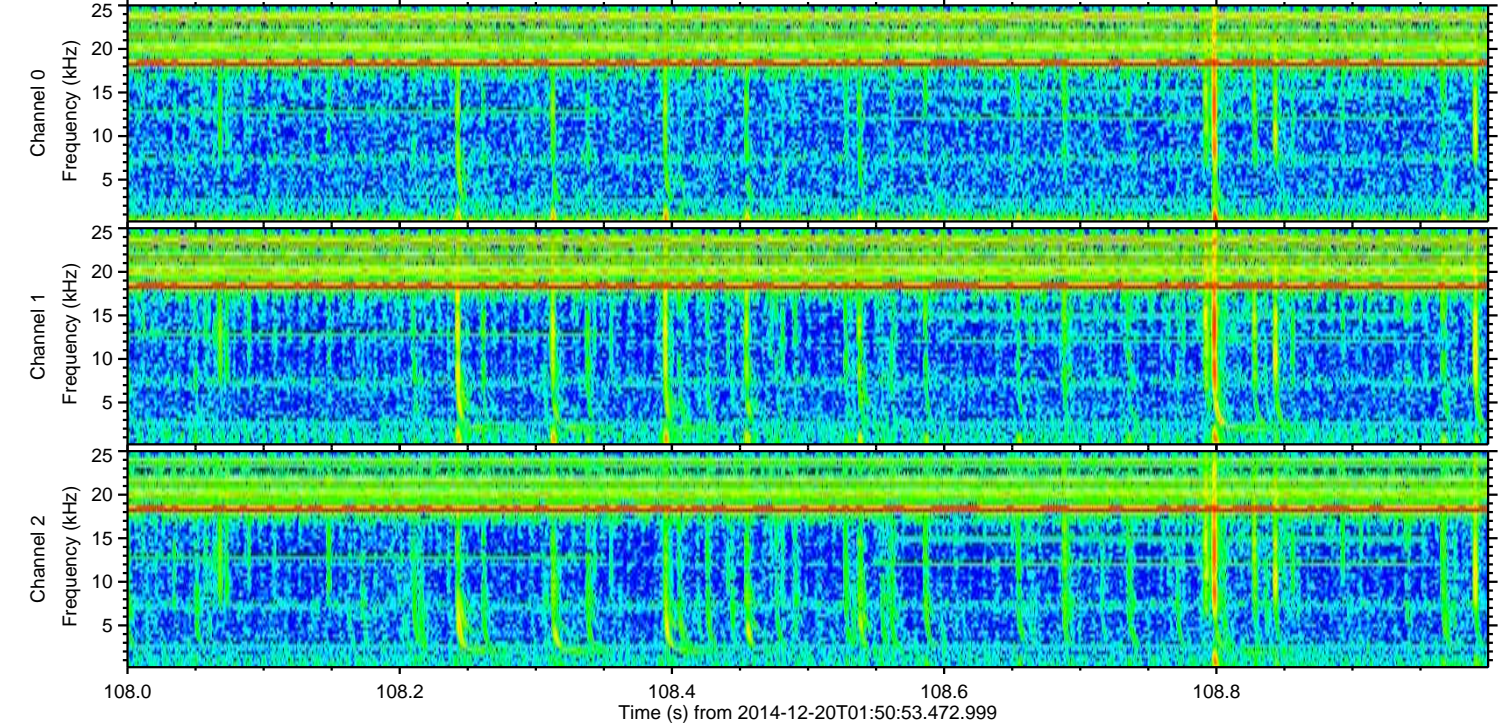
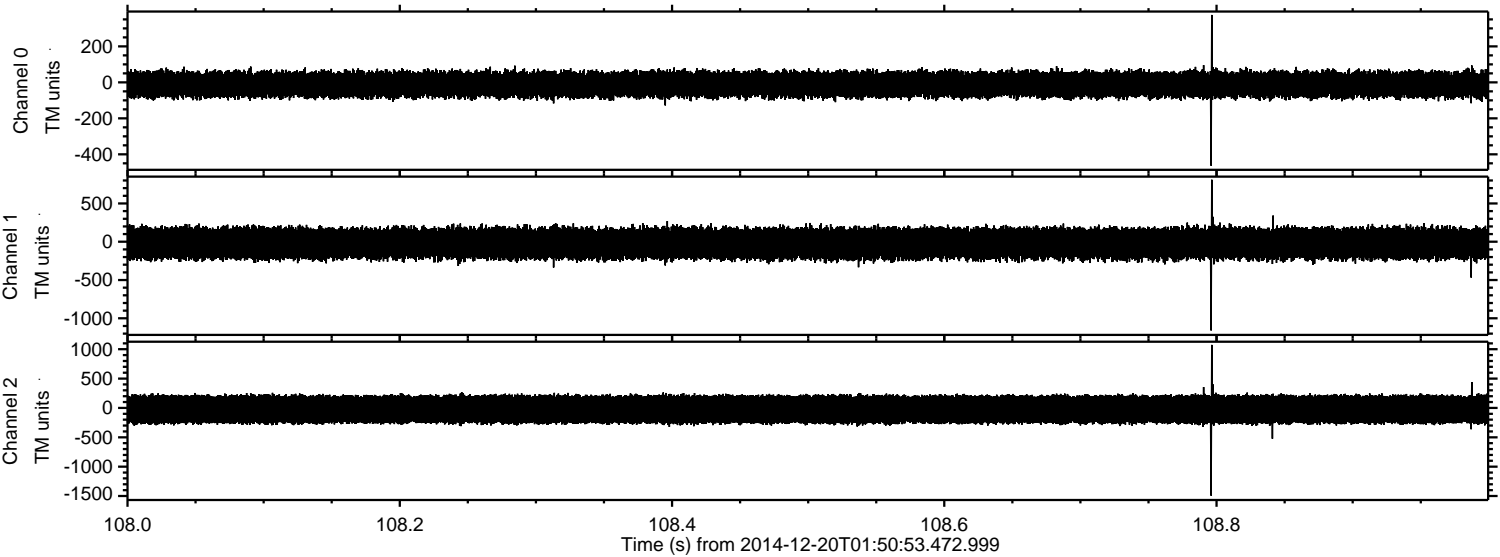
ELMAVAN 3D WAVEFORMS (Measured data sampled at 50 kHz) 49725 packets of 144 samples from 2014-12-20T01:50:53.472.999. Part 86/144

Processed Sat Dec 20 02:58:57 2014 by ELM ver.2012-10-06 from 001__elm20141220_015052__dat00.bin



ELMAVAN 3D WAVEFORMS (Measured data sampled at 50 kHz) 49725 packets of 144 samples from 2014-12-20T01:50:53.472.999. Part 109/144

Processed Sat Dec 20 02:58:58 2014 by ELM ver.2012-10-06 from 001__elm20141220_015052__dat00.bin



Channel 0
mn: -463
mx: 375
 μ : -11.7
 σ : 38.5

Channel 1
mn: -1159
mx: 810
 μ : -22.8
 σ : 109.2

Channel 2
mn: -1493
mx: 1074
 μ : -24.1
 σ : 146.3

ELMAVAN 3D WAVEFORMS (Measured data sampled at 50 kHz) 49725 packets of 144 samples from 2014-12-20T01:50:53.472.999. Part 16/144

Processed Sat Dec 20 02:58:59 2014 by ELM ver.2012-10-06 from 001__elm20141220_015052__dat00.bin

