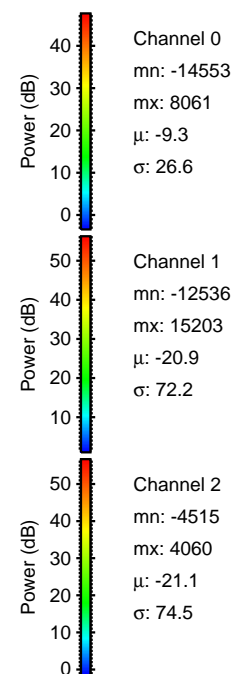
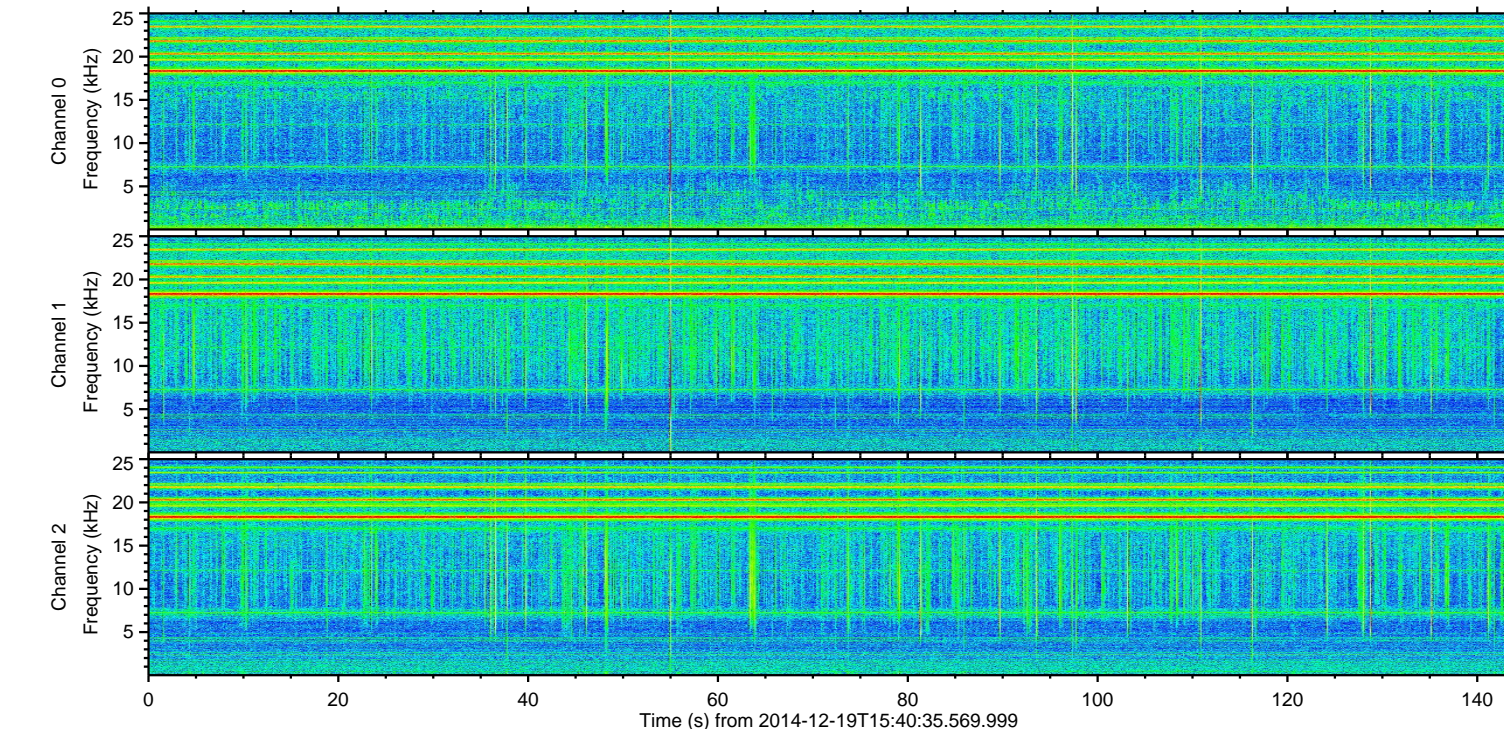
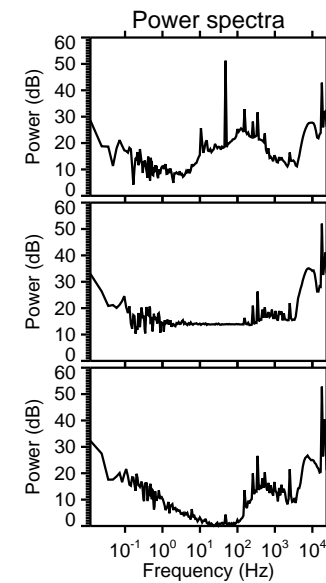
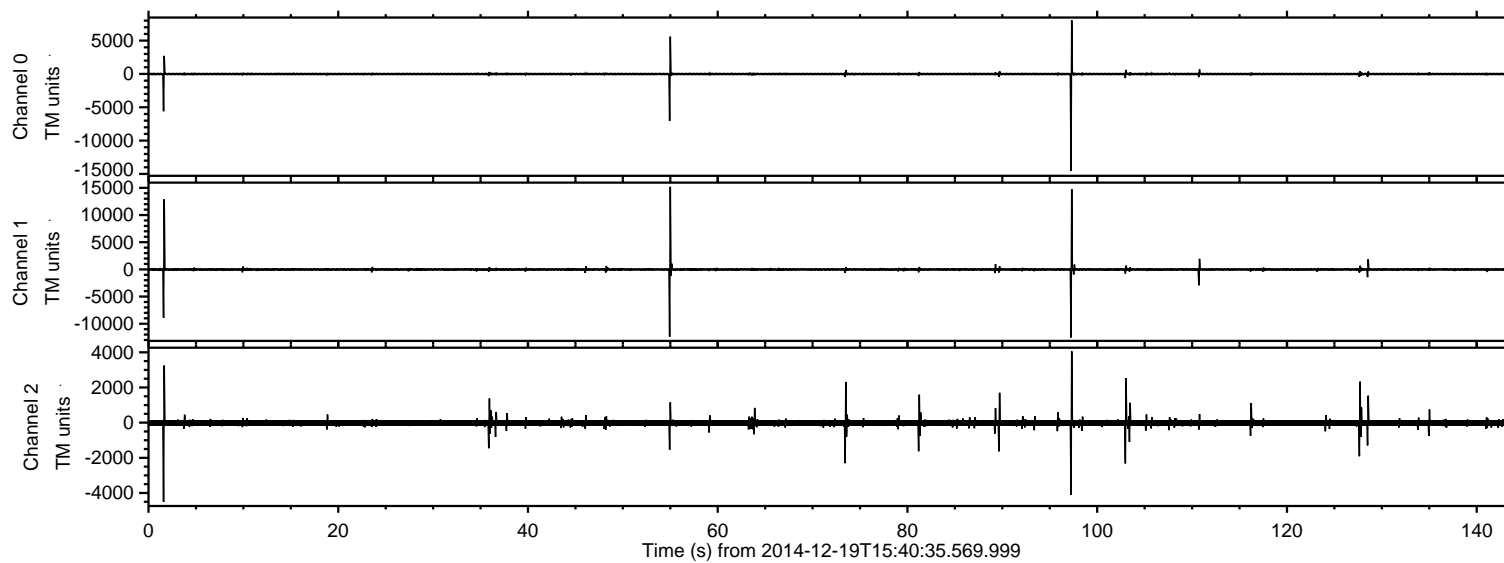


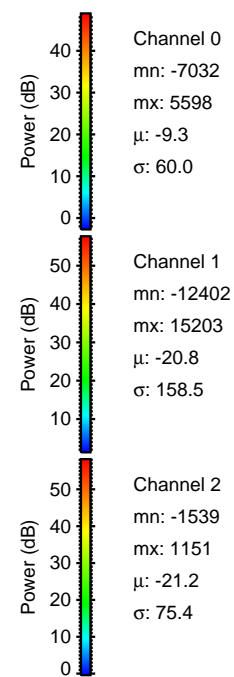
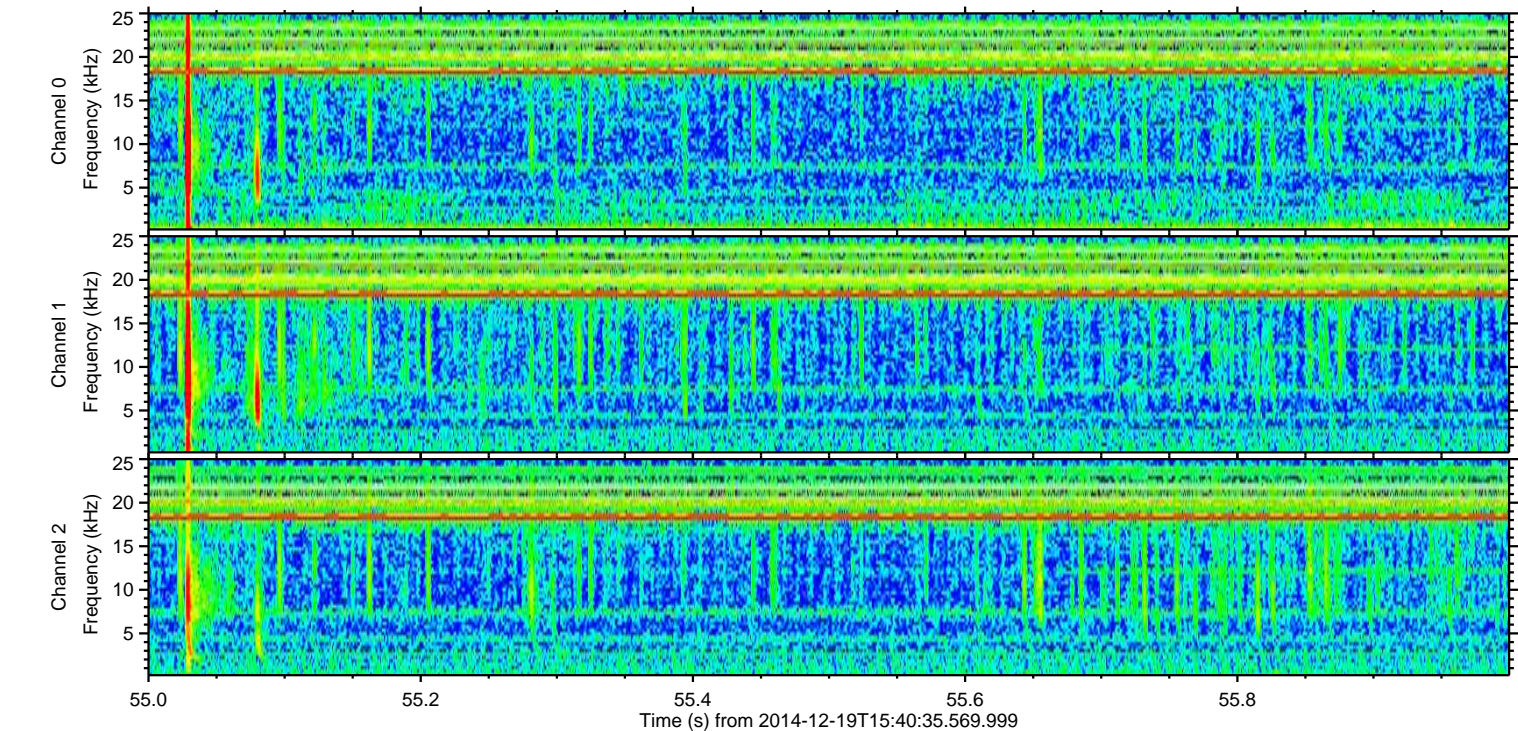
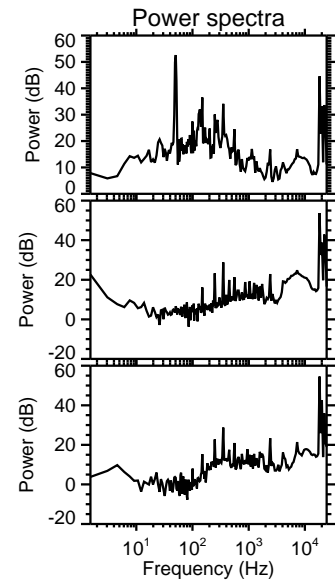
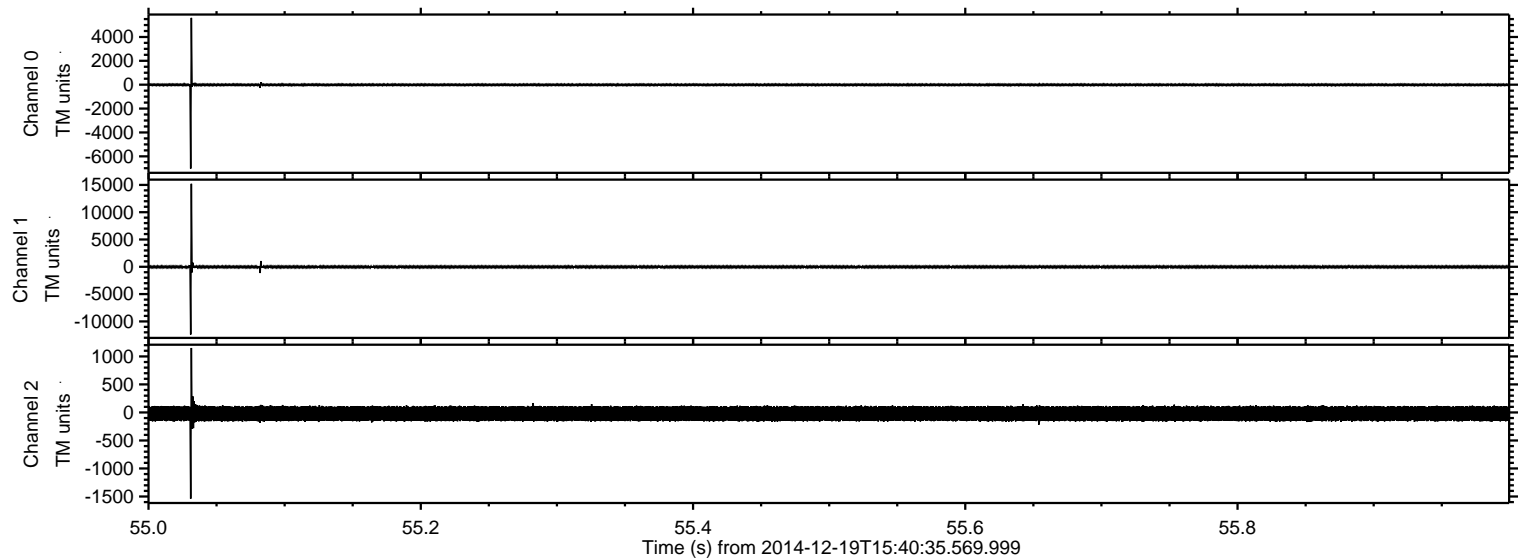
ELMAVAN 3D WAVEFORMS (Measured data sampled at 50 kHz) 49799 packets of 144 samples from 2014-12-19T15:40:35.569.999.

Processed Fri Dec 19 16:48:05 2014 by ELM ver.2012-10-06 from 001__elm20141219_154034__dat00.bin

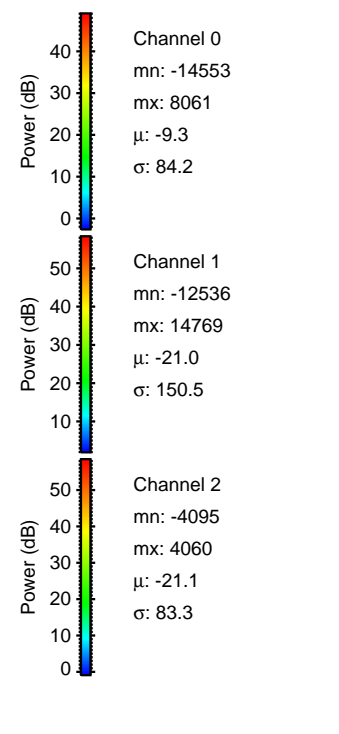
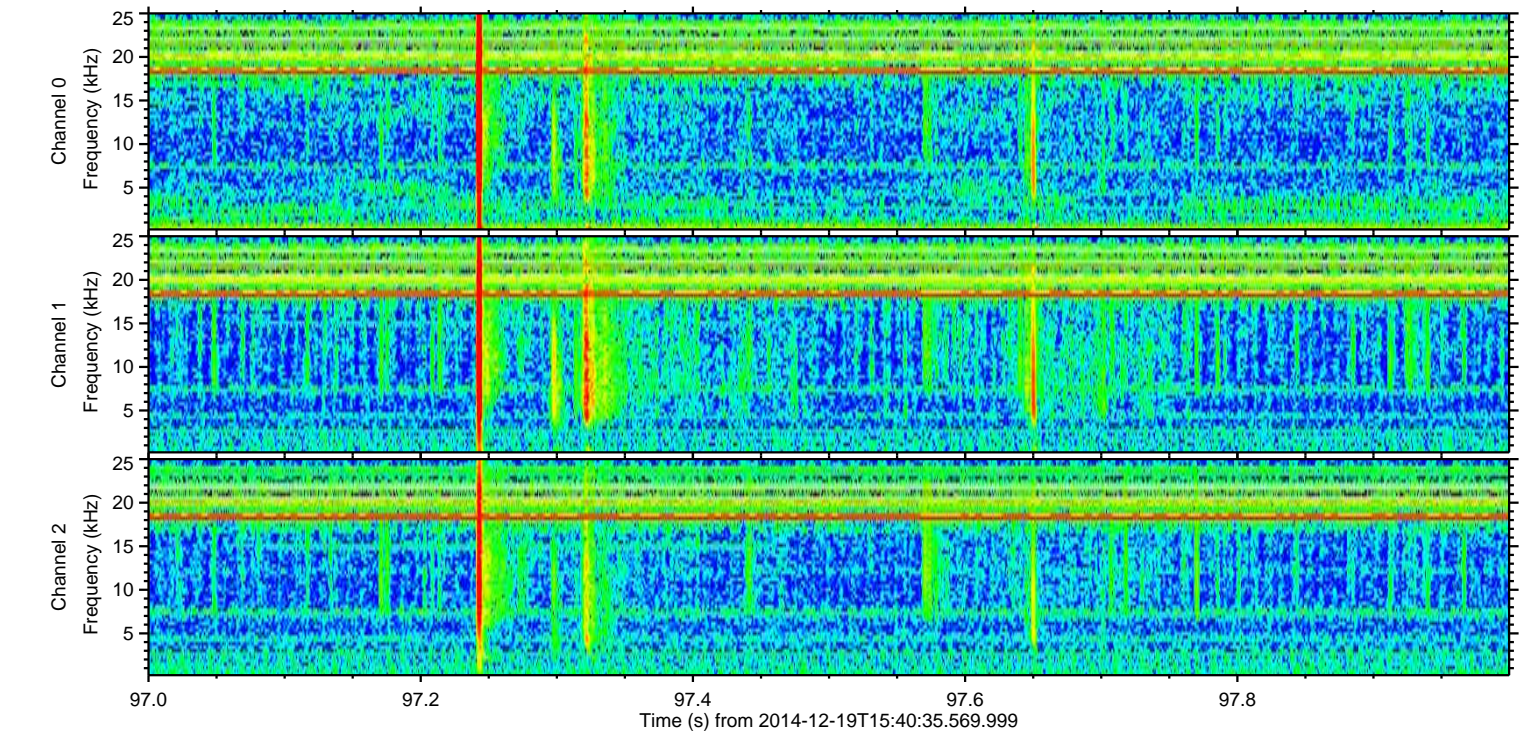
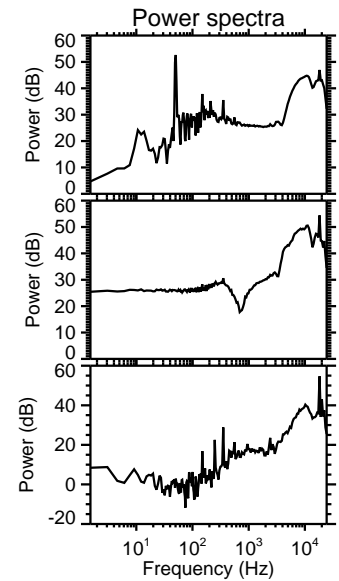
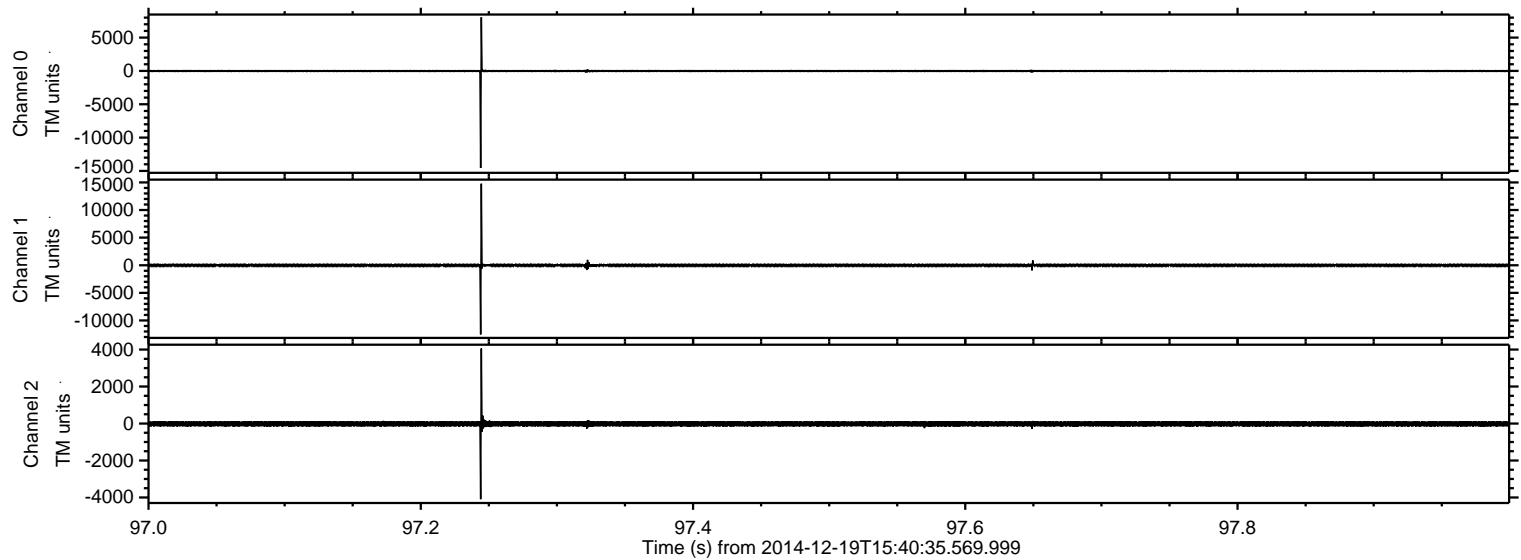


ELMAVAN 3D WAVEFORMS (Measured data sampled at 50 kHz) 49799 packets of 144 samples from 2014-12-19T15:40:35.569.999. Part 56/144

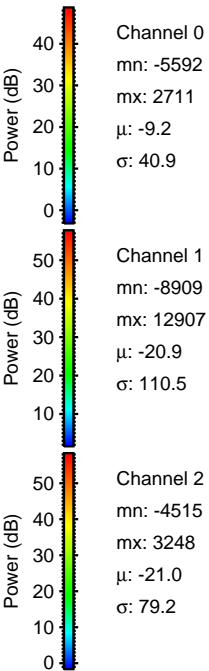
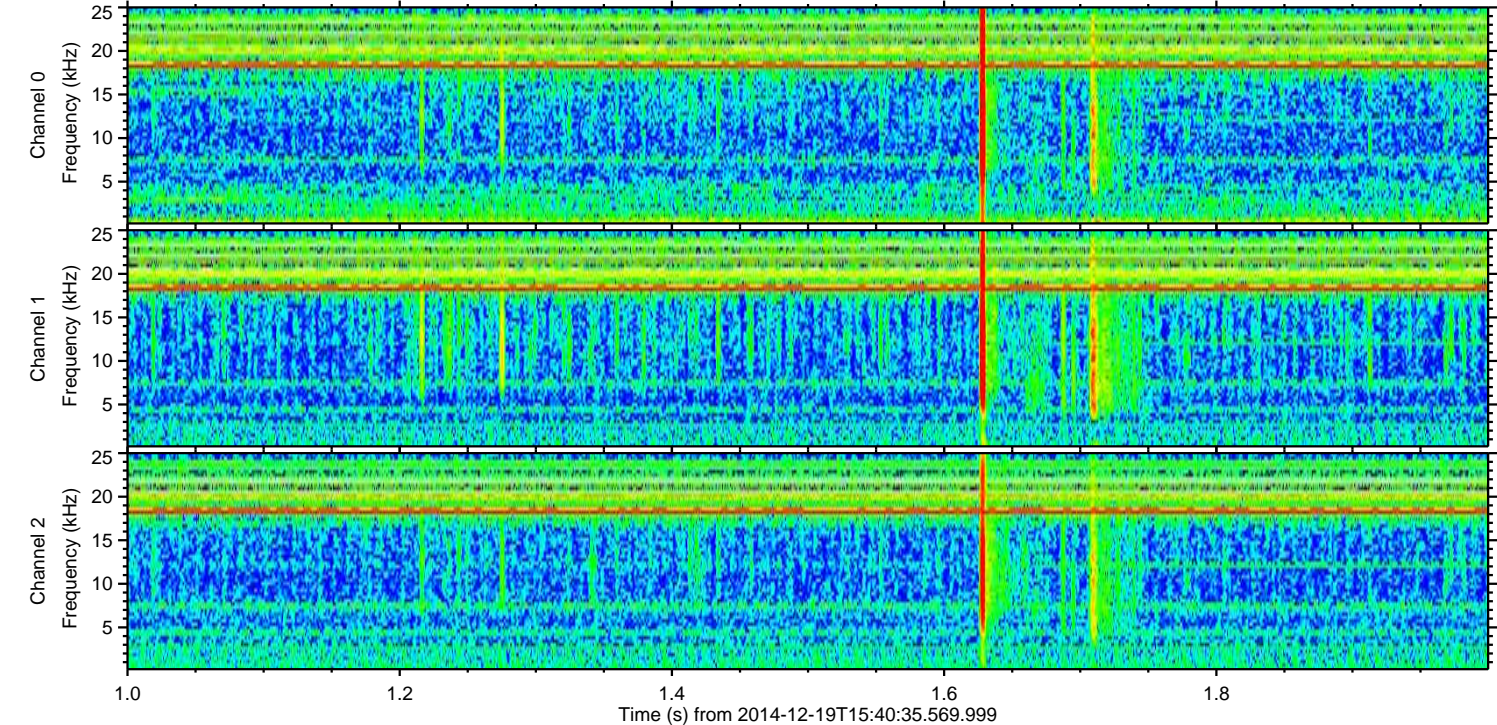
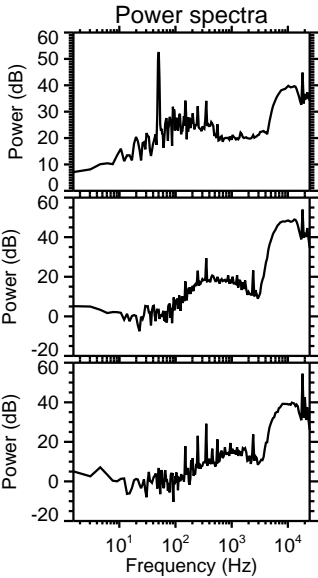
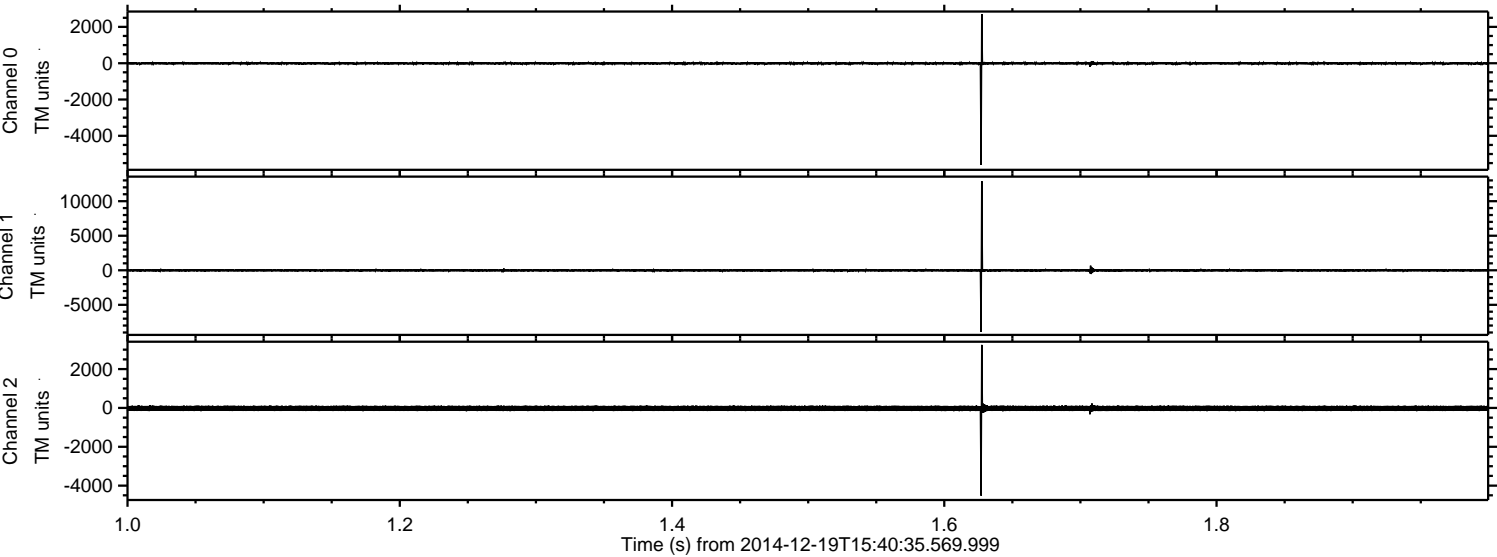
Processed Fri Dec 19 16:48:17 2014 by ELM ver.2012-10-06 from 001__elm20141219_154034__dat00.bin



Processed Fri Dec 19 16:48:18 2014 by ELM ver.2012-10-06 from 001__elm20141219_154034__dat00.bin

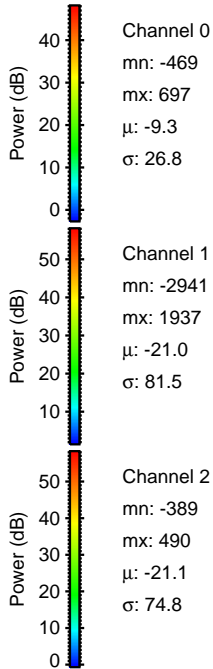
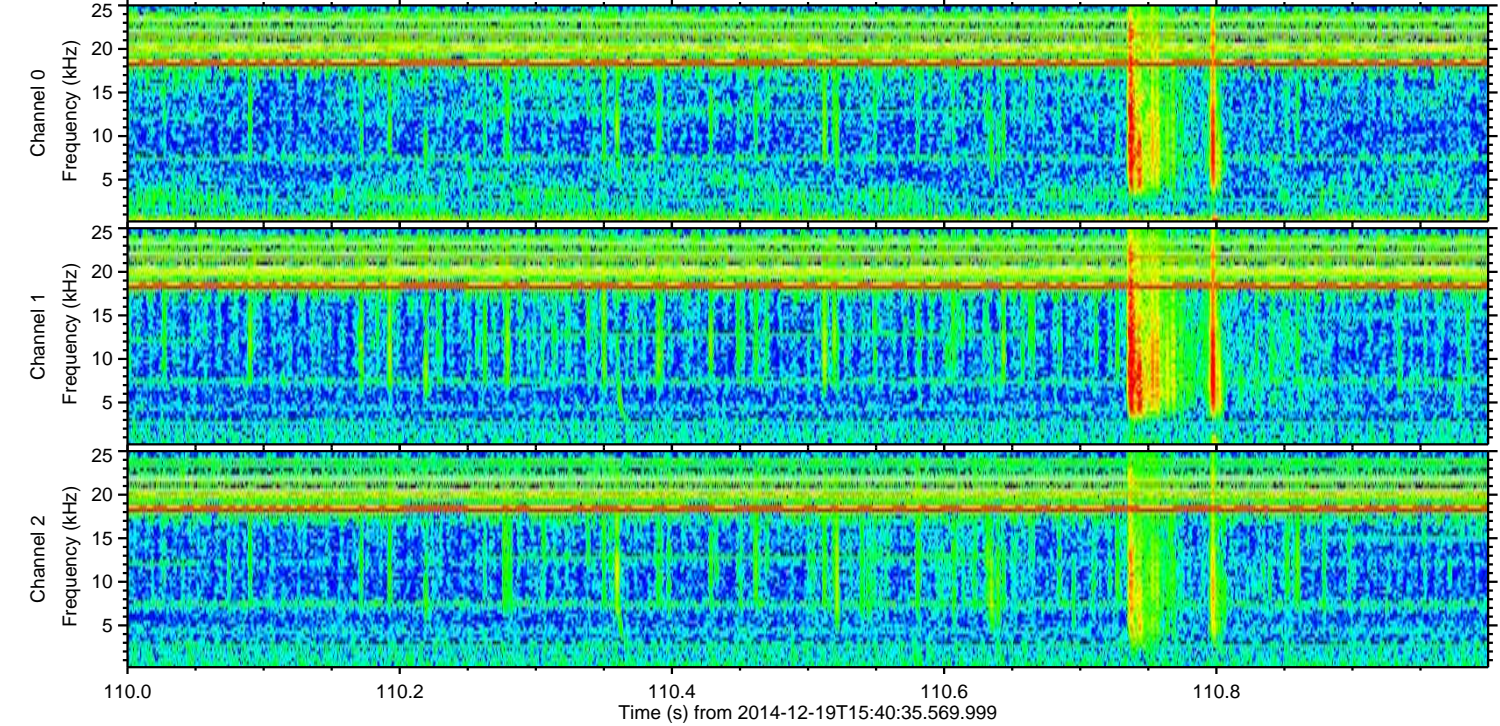
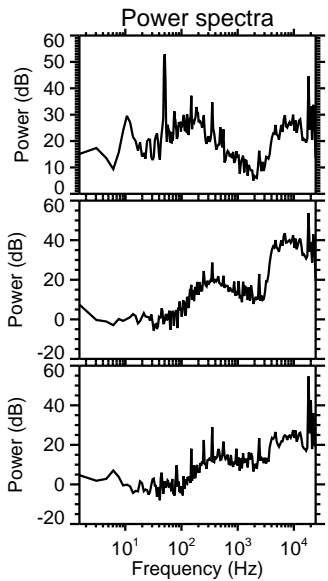
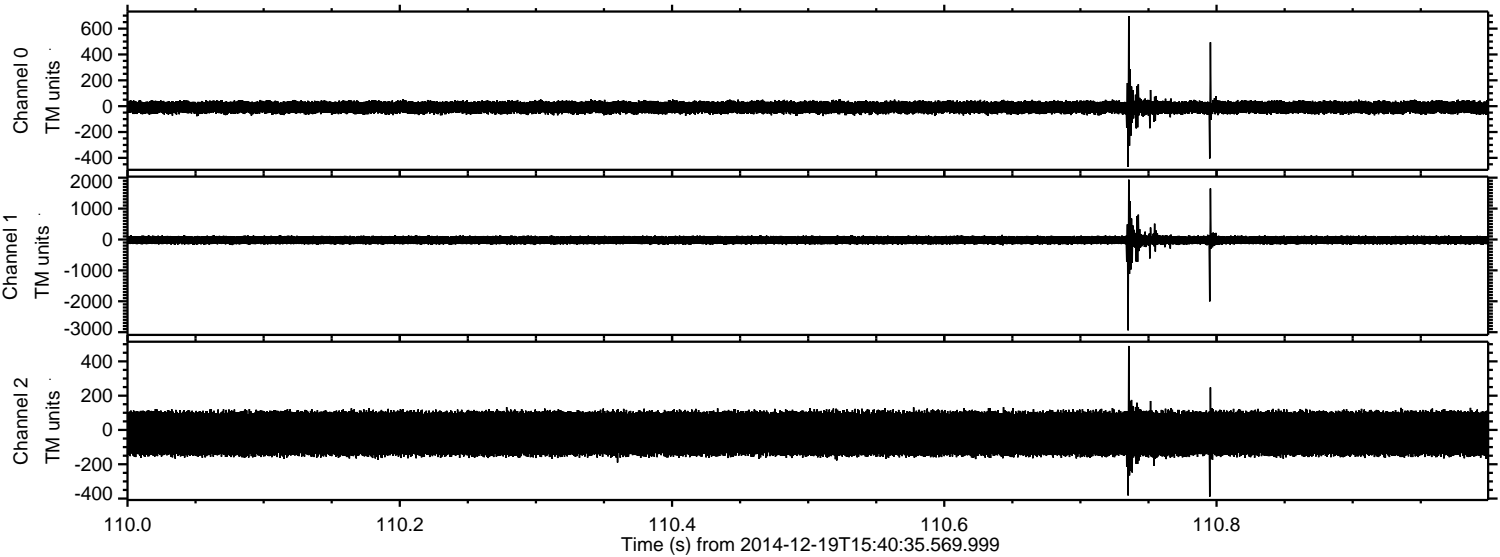


Processed Fri Dec 19 16:48:19 2014 by ELM ver.2012-10-06 from 001__elm20141219_154034__dat00.bin



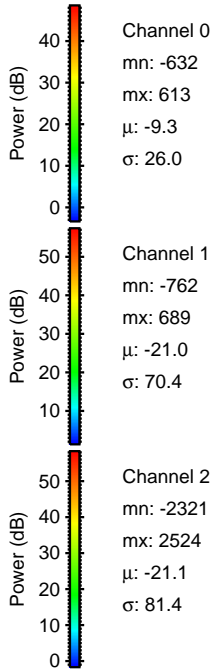
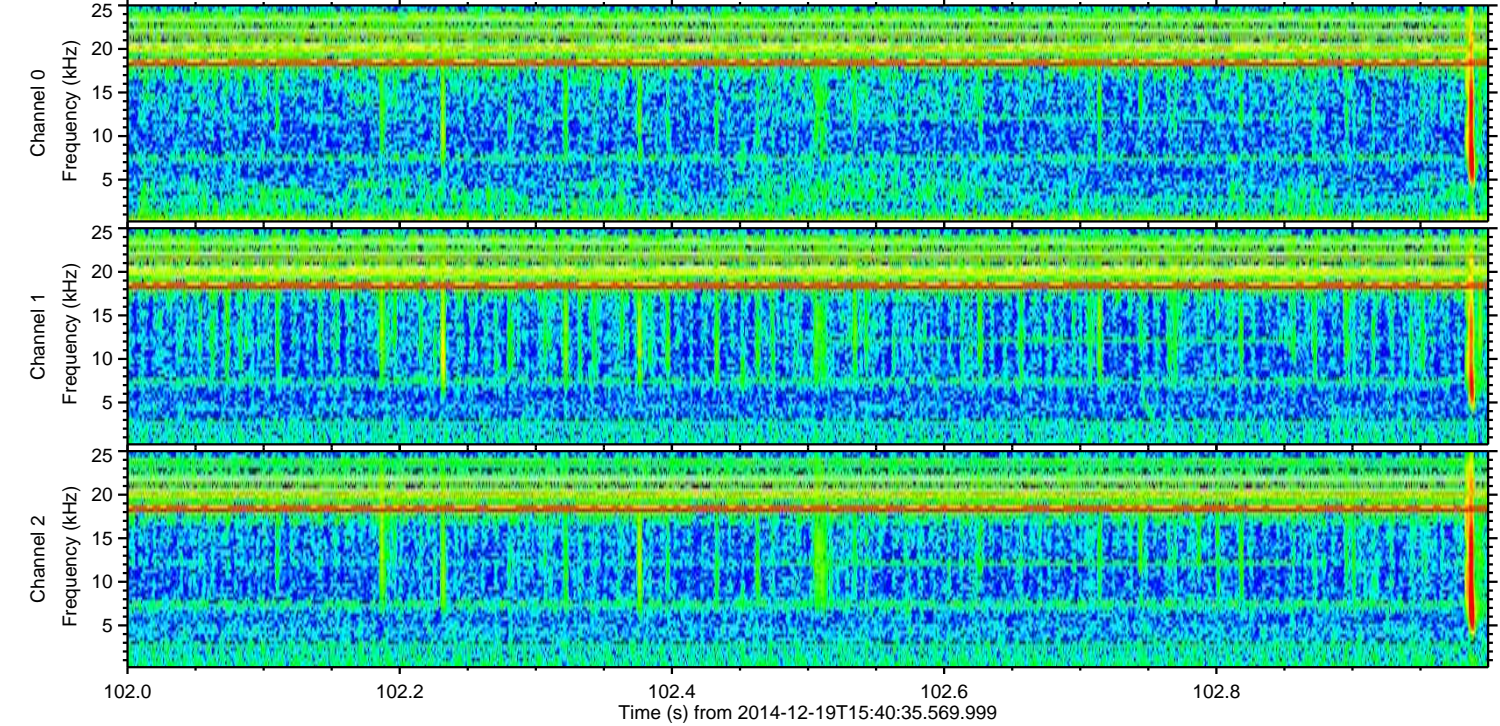
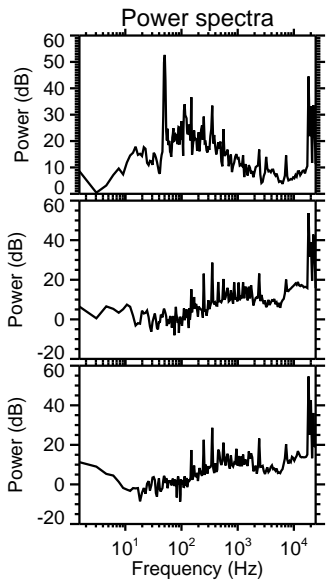
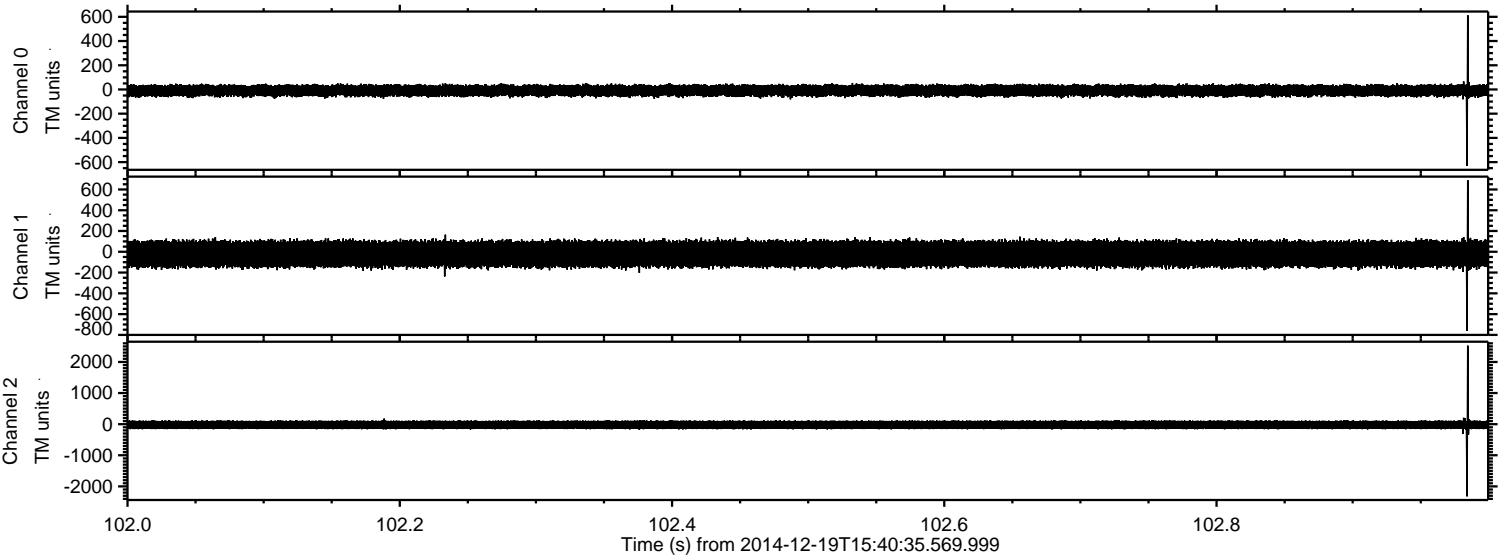
ELMAVAN 3D WAVEFORMS (Measured data sampled at 50 kHz) 49799 packets of 144 samples from 2014-12-19T15:40:35.569.999. Part 111/144

Processed Fri Dec 19 16:48:20 2014 by ELM ver.2012-10-06 from 001__elm20141219_154034__dat00.bin



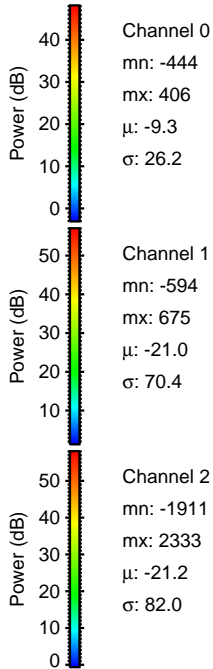
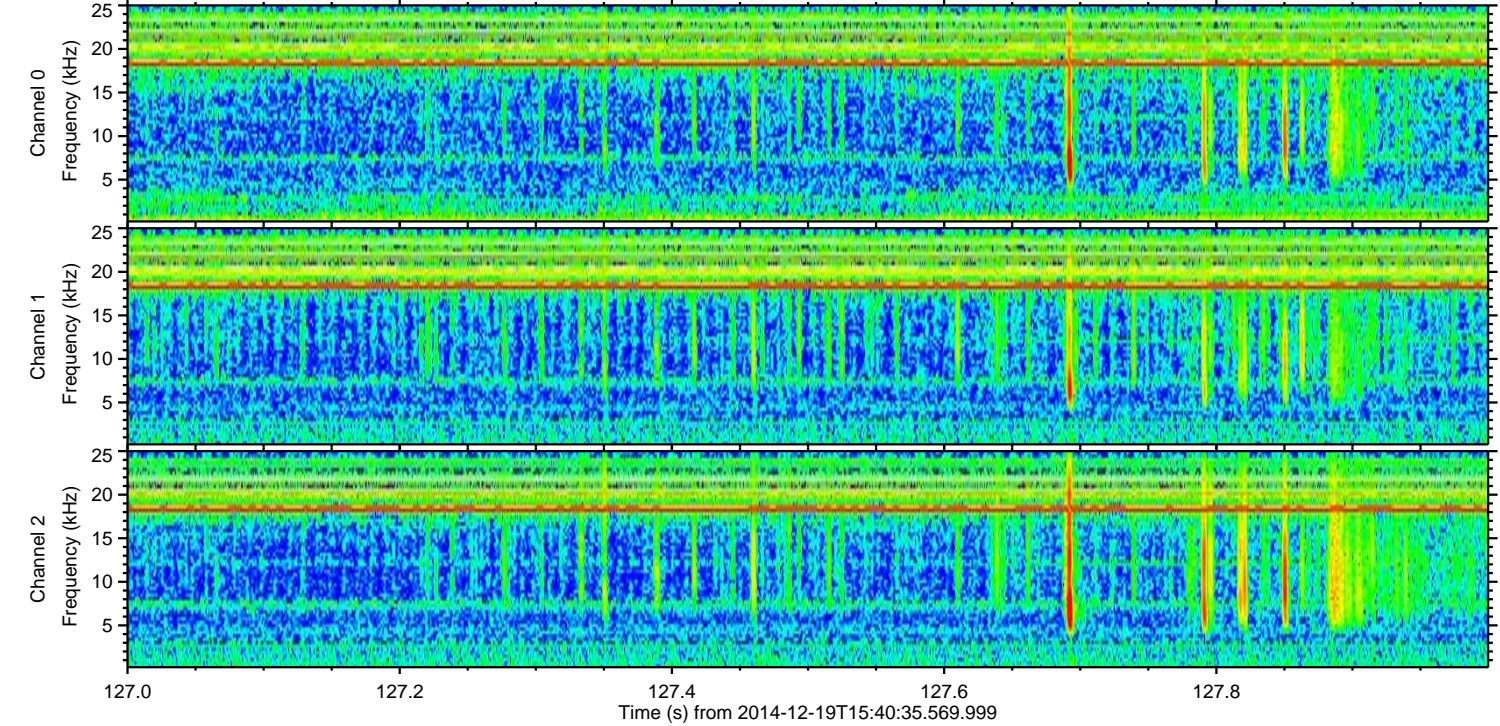
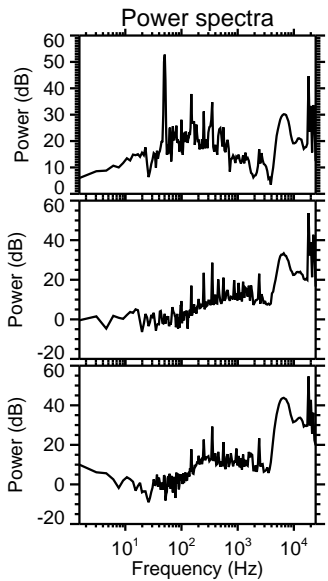
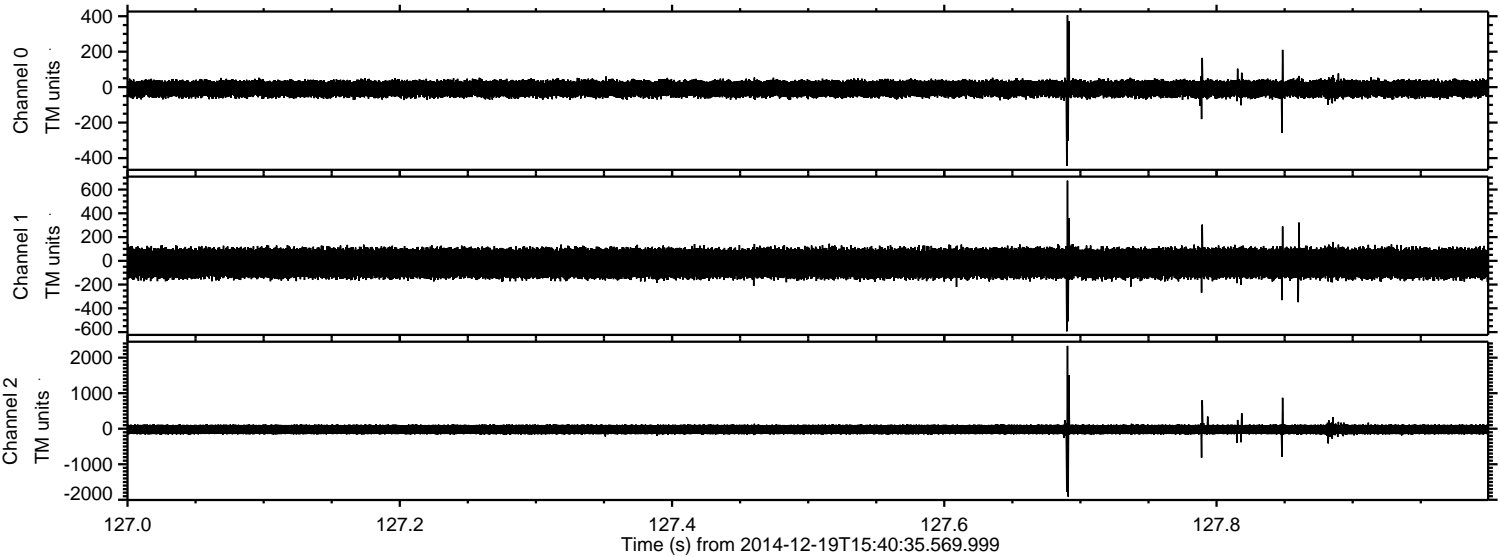
ELMAVAN 3D WAVEFORMS (Measured data sampled at 50 kHz) 49799 packets of 144 samples from 2014-12-19T15:40:35.569.999. Part 103/144

Processed Fri Dec 19 16:48:20 2014 by ELM ver.2012-10-06 from 001__elm20141219_154034__dat00.bin

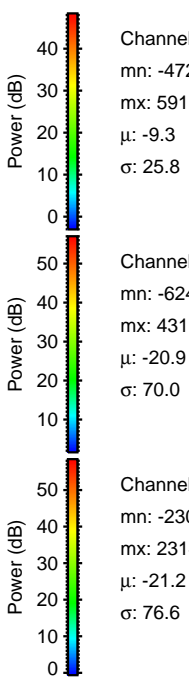
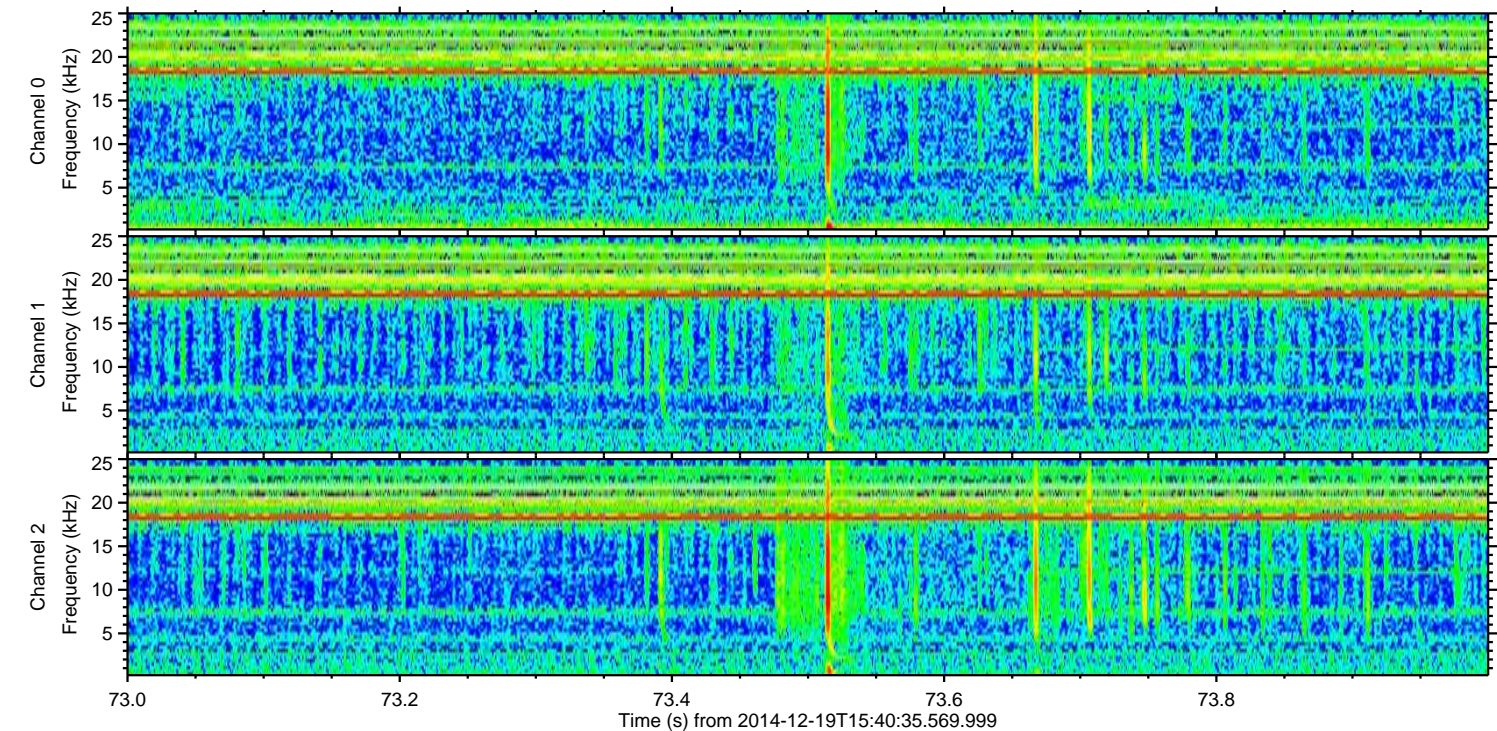
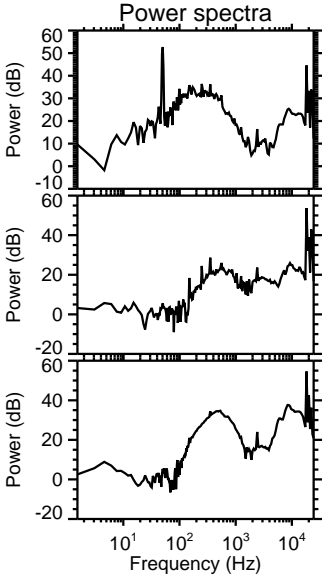
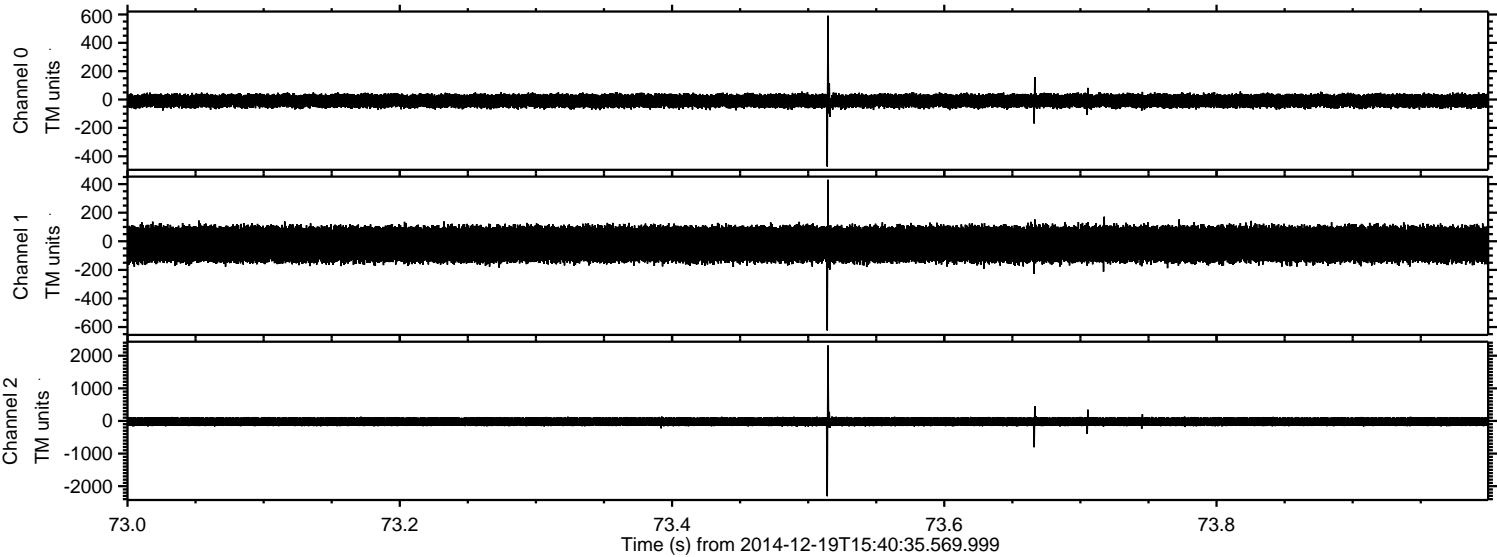


ELMAVAN 3D WAVEFORMS (Measured data sampled at 50 kHz) 49799 packets of 144 samples from 2014-12-19T15:40:35.569.999. Part 128/144

Processed Fri Dec 19 16:48:21 2014 by ELM ver.2012-10-06 from 001__elm20141219_154034__dat00.bin



Processed Fri Dec 19 16:48:22 2014 by ELM ver.2012-10-06 from 001__elm20141219_154034__dat00.bin

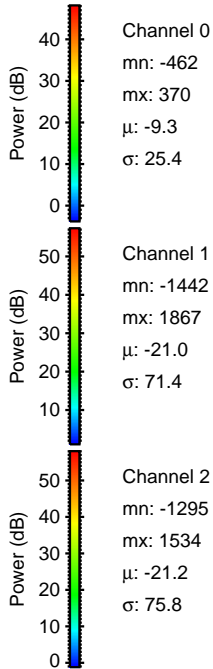
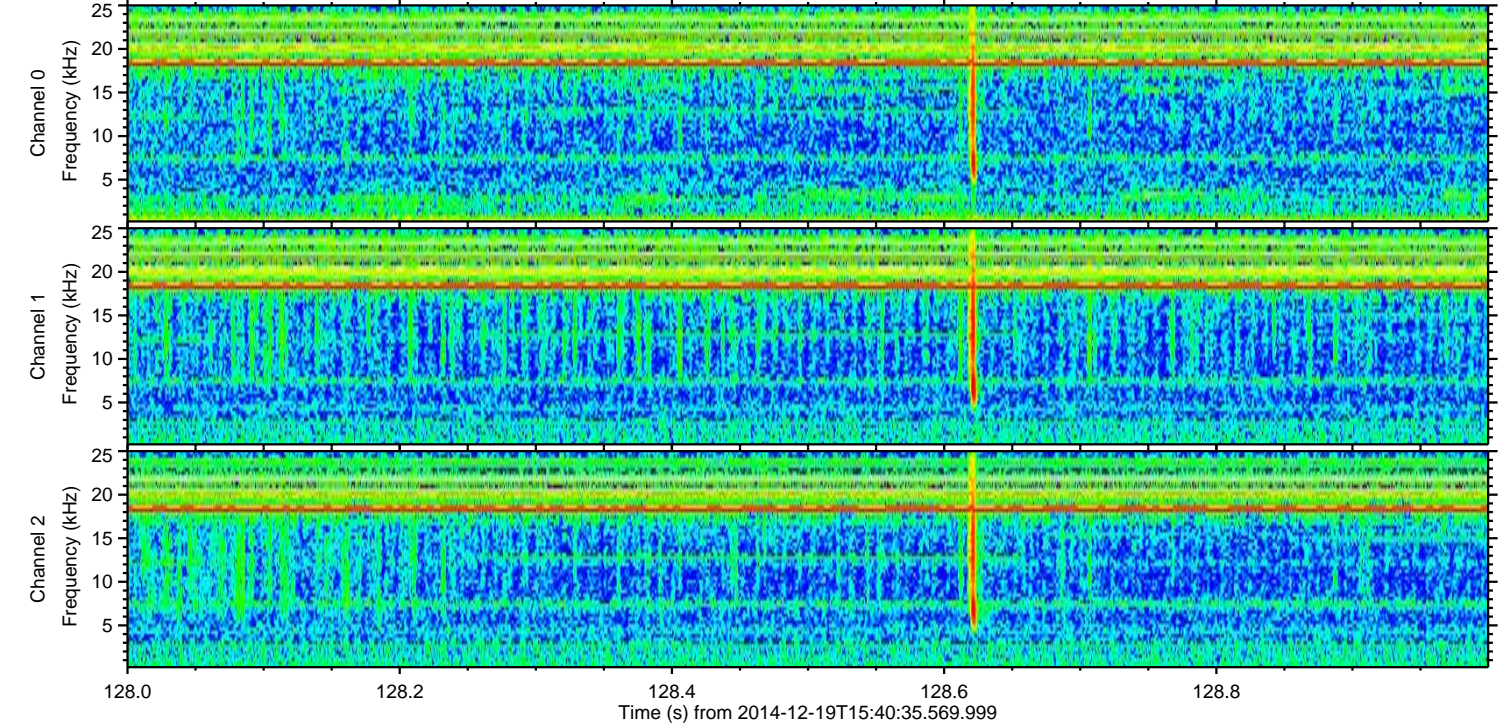
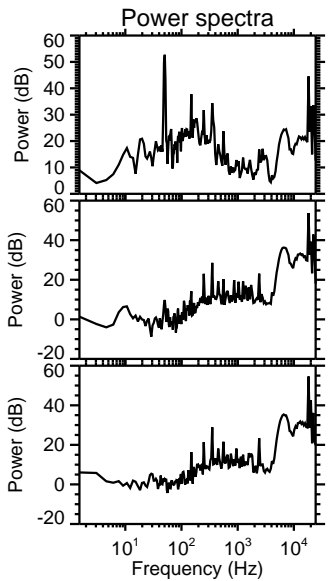
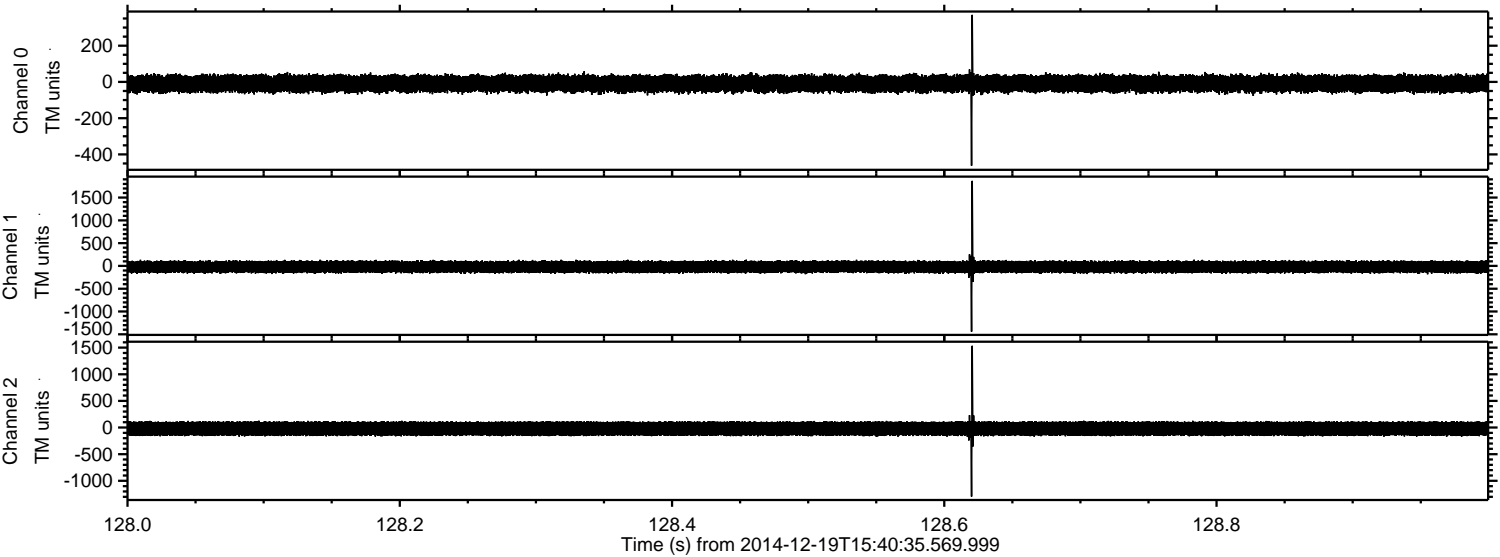


Channel 0
mn: -472
mx: 591
 μ : -9.3
 σ : 25.8

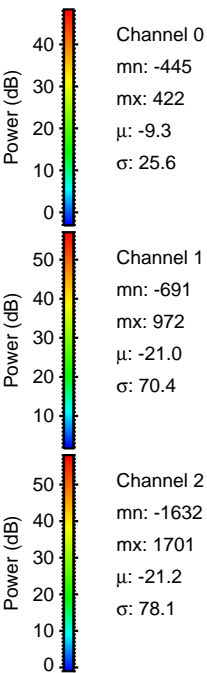
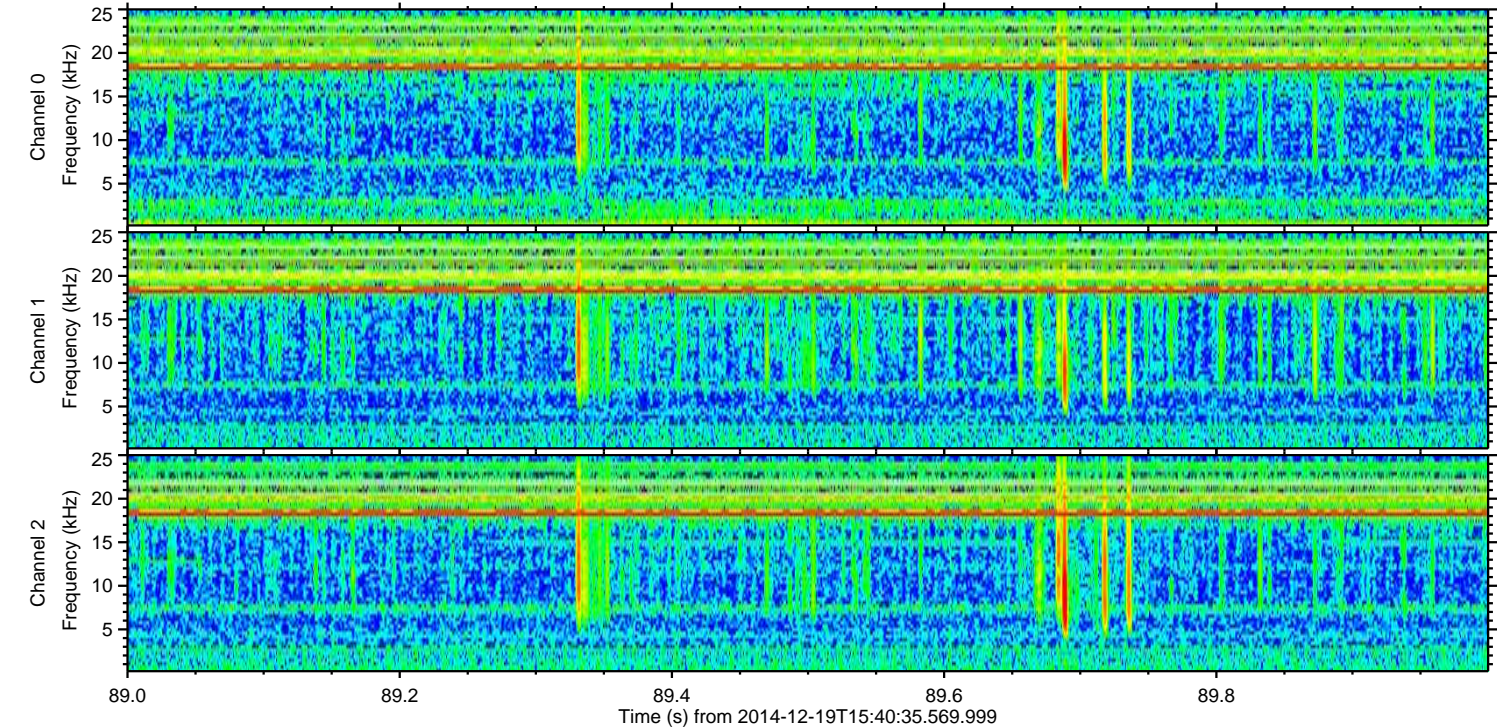
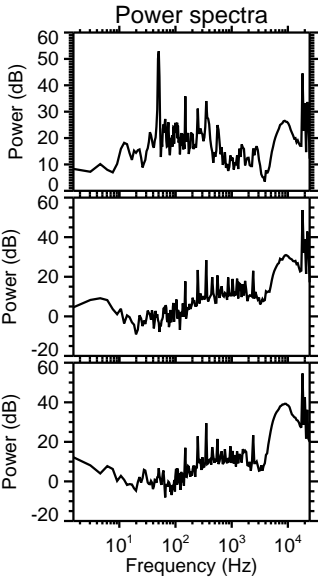
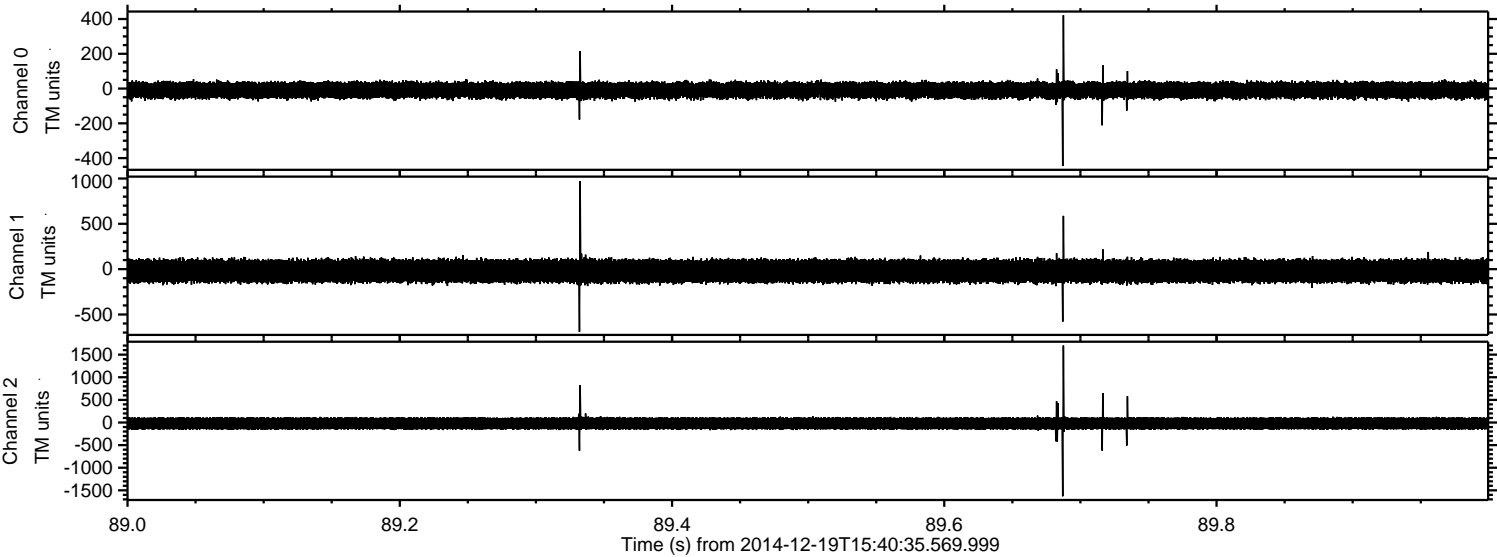
Channel 1
mn: -624
mx: 431
 μ : -20.9
 σ : 70.0

Channel 2
mn: -2309
mx: 2314
 μ : -21.2
 σ : 76.6

Processed Fri Dec 19 16:48:23 2014 by ELM ver.2012-10-06 from 001__elm20141219_154034__dat00.bin



Processed Fri Dec 19 16:48:24 2014 by ELM ver.2012-10-06 from 001__elm20141219_154034__dat00.bin



Processed Fri Dec 19 16:48:25 2014 by ELM ver.2012-10-06 from 001__elm20141219_154034__dat00.bin

