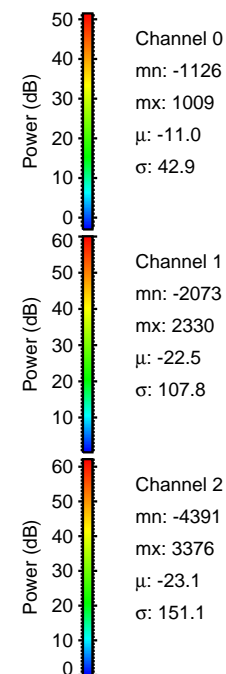
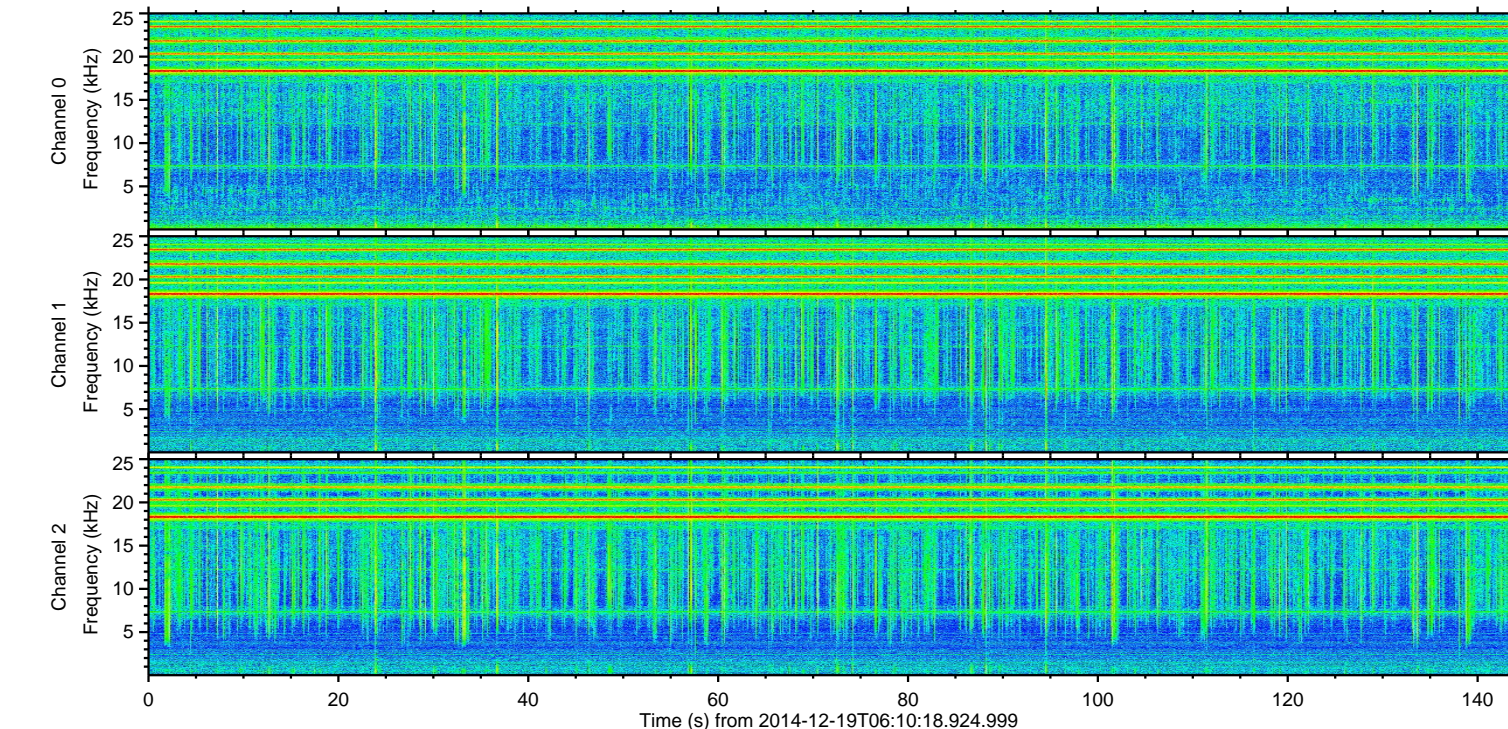
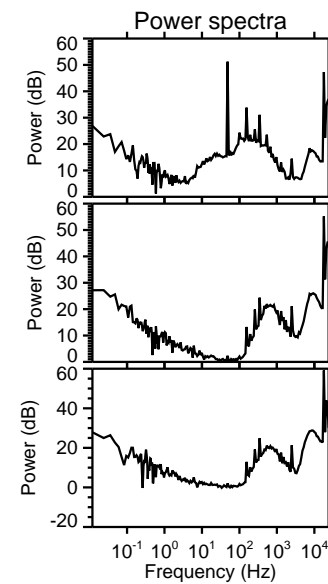
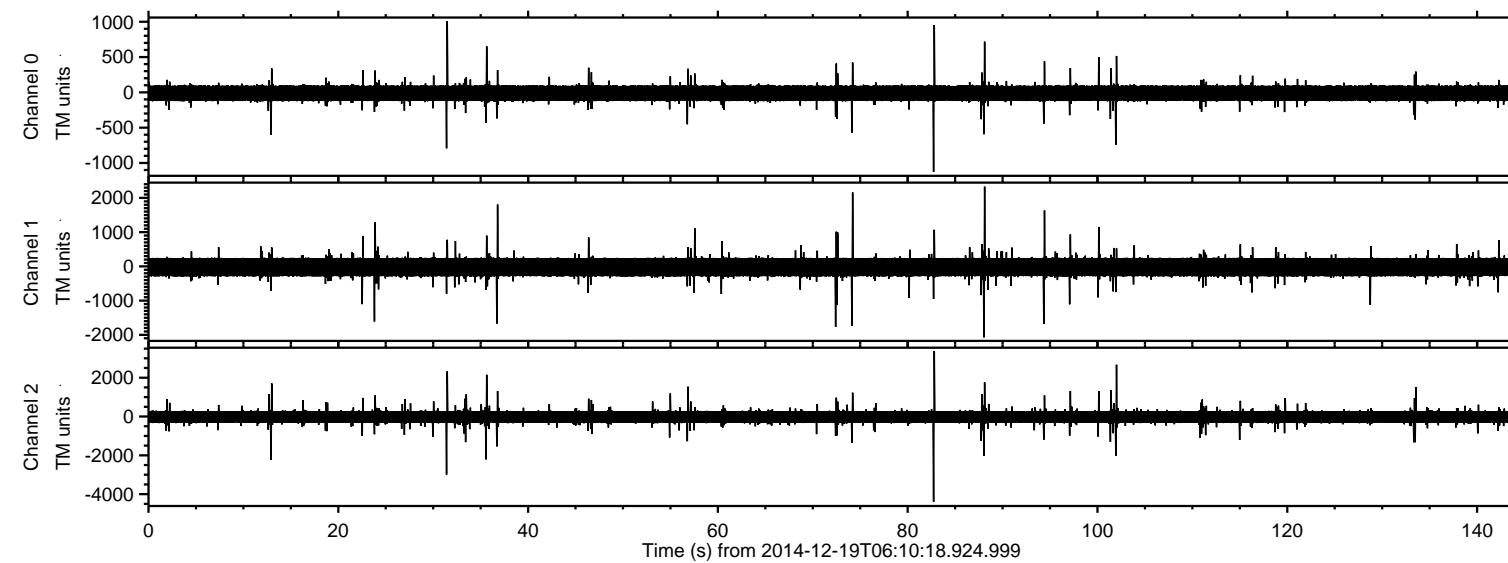
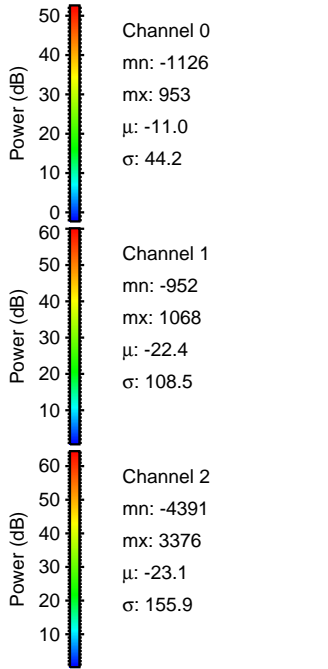
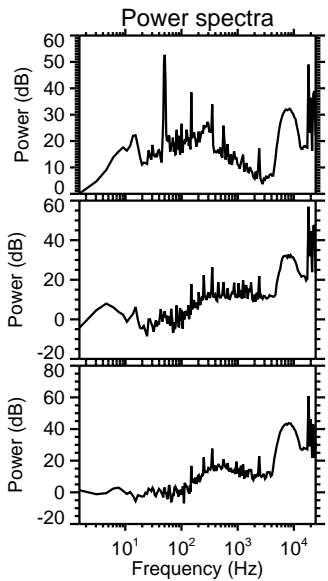
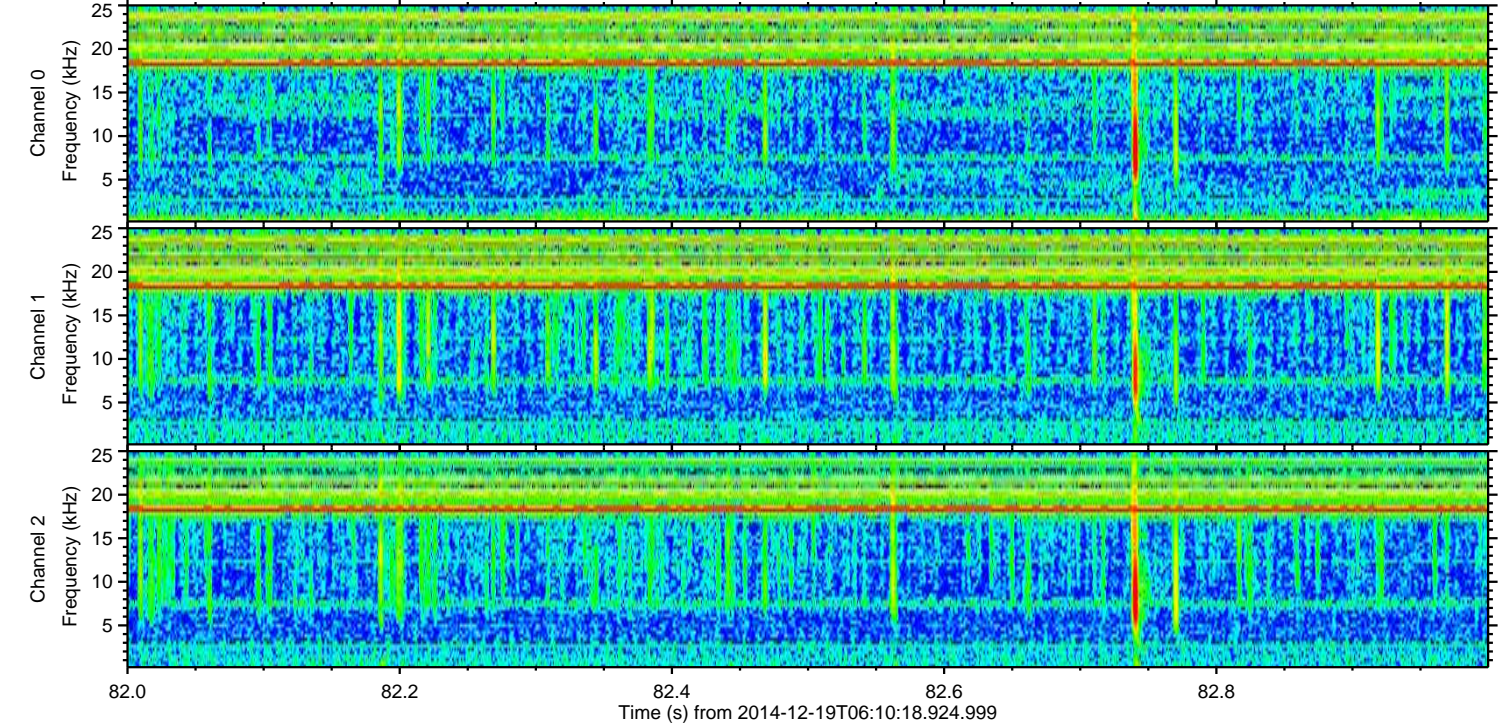
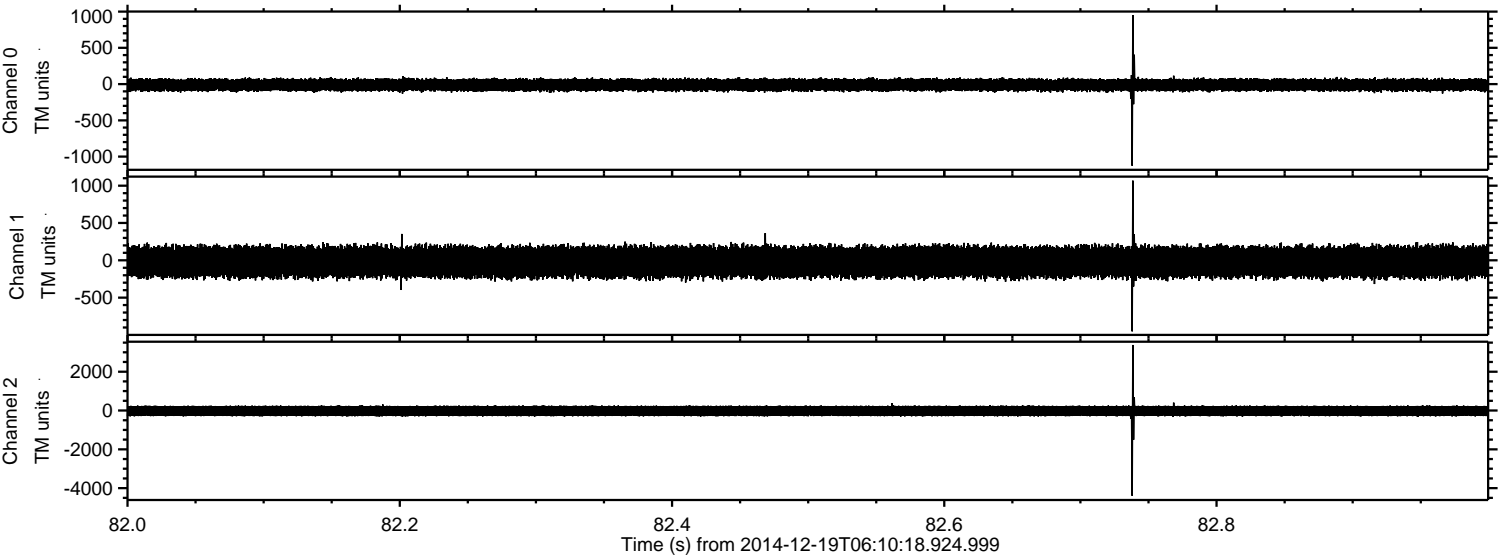


# ELMAVAN 3D WAVEFORMS (Measured data sampled at 50 kHz) 49785 packets of 144 samples from 2014-12-19T06:10:18.924.999.

Processed Fri Dec 19 07:17:48 2014 by ELM ver.2012-10-06 from 001\_\_elm20141219\_061017\_\_dat00.bin



Processed Fri Dec 19 07:18:00 2014 by ELM ver.2012-10-06 from 001\_\_elm20141219\_061017\_\_dat00.bin



Power spectra

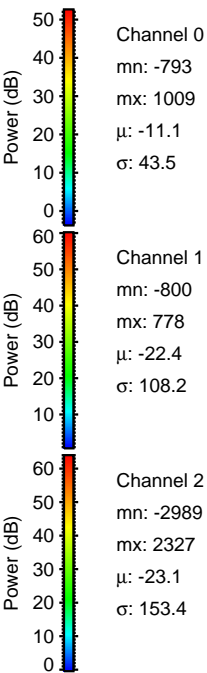
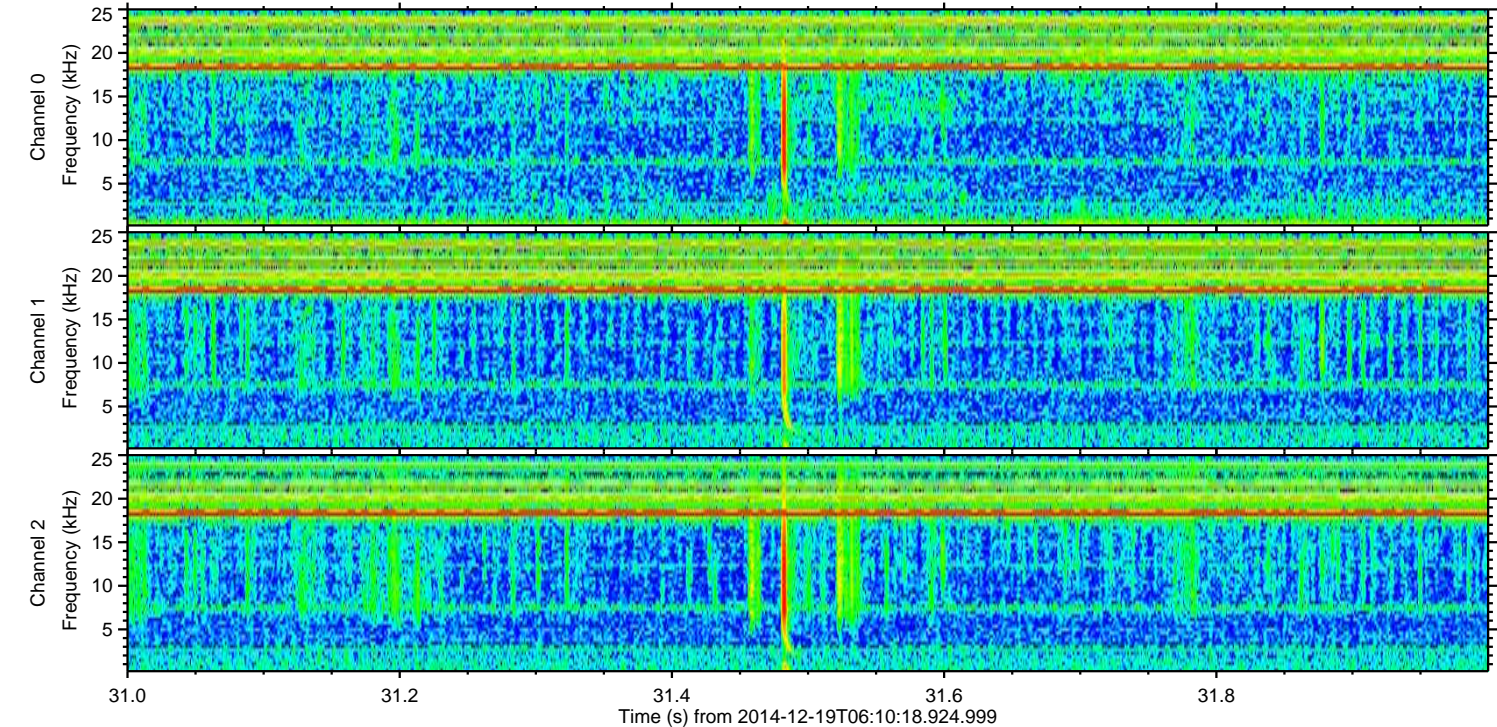
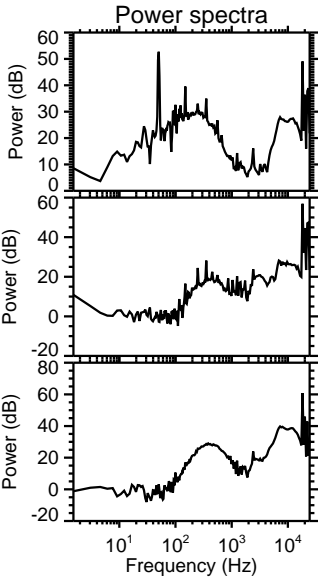
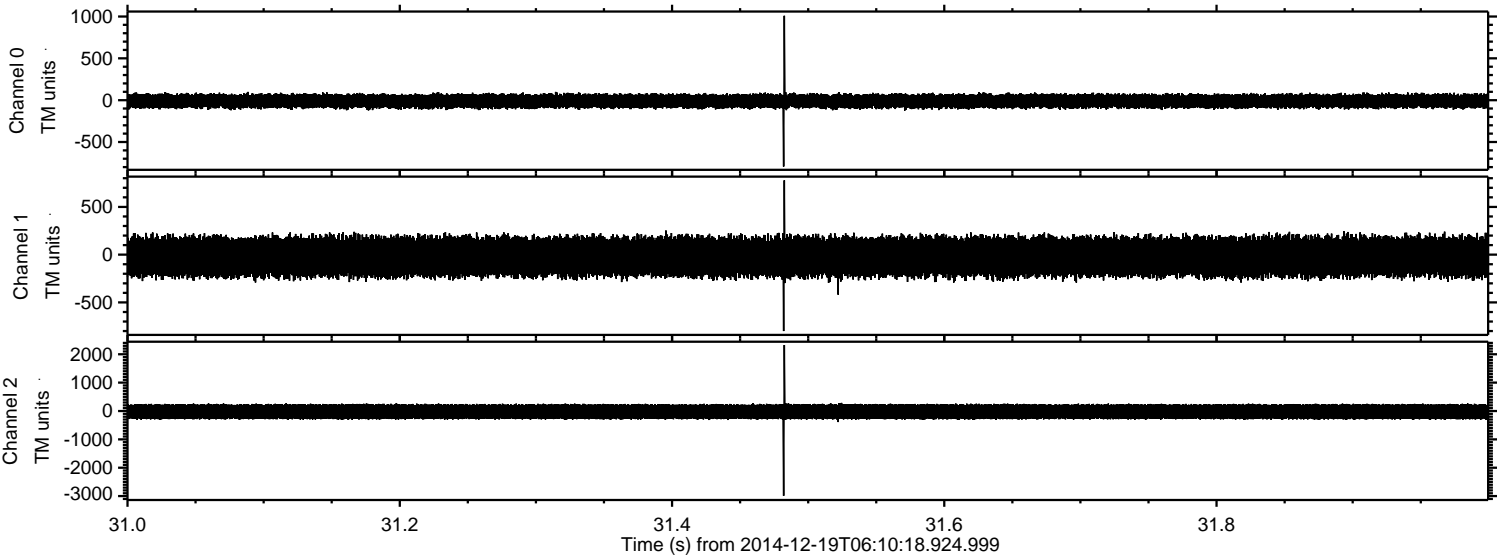
Channel 0  
mn: -1126  
mx: 953  
 $\mu$ : -11.0  
 $\sigma$ : 44.2

Channel 1  
mn: -952  
mx: 1068  
 $\mu$ : -22.4  
 $\sigma$ : 108.5

Channel 2  
mn: -4391  
mx: 3376  
 $\mu$ : -23.1  
 $\sigma$ : 155.9

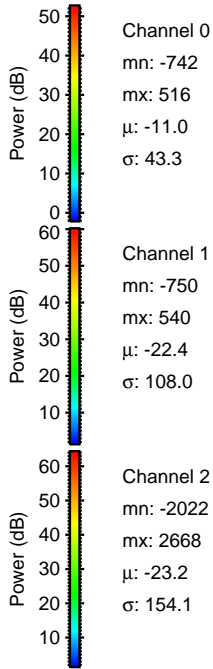
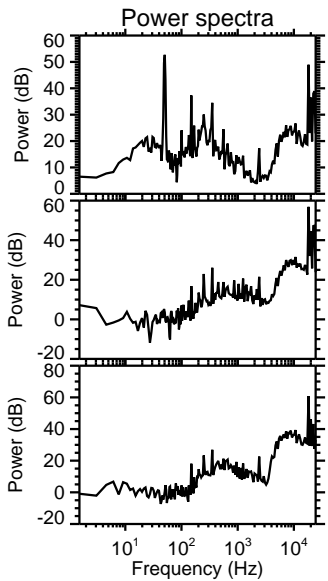
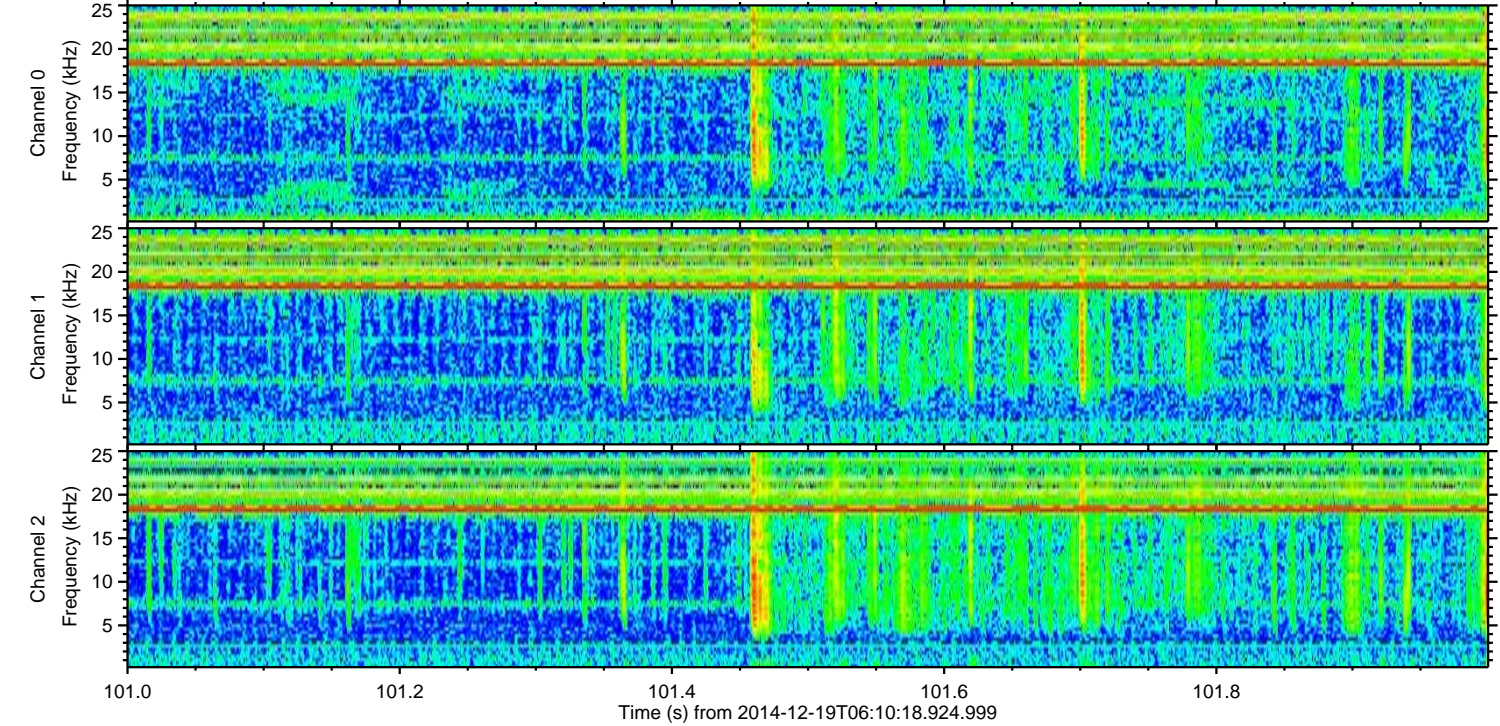
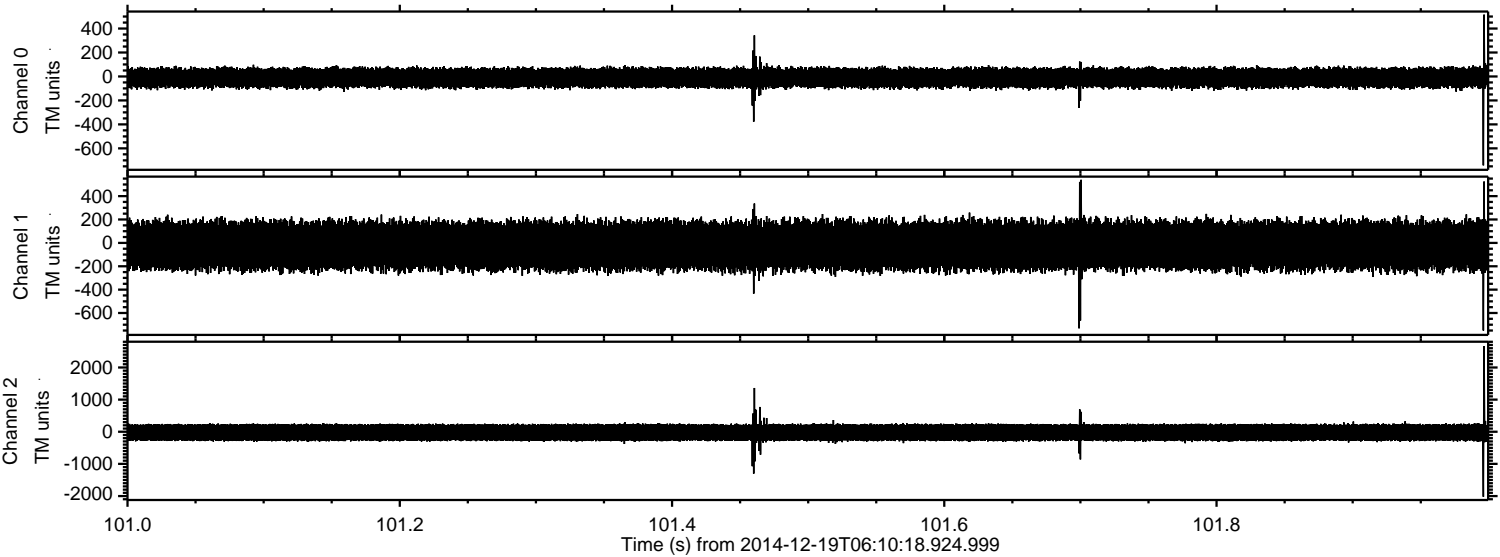
ELMAVAN 3D WAVEFORMS (Measured data sampled at 50 kHz) 49785 packets of 144 samples from 2014-12-19T06:10:18.924.999. Part 32/144

Processed Fri Dec 19 07:18:01 2014 by ELM ver.2012-10-06 from 001\_\_elm20141219\_061017\_\_dat00.bin

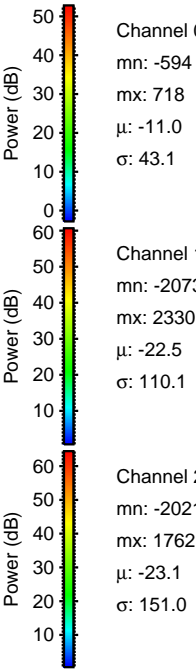
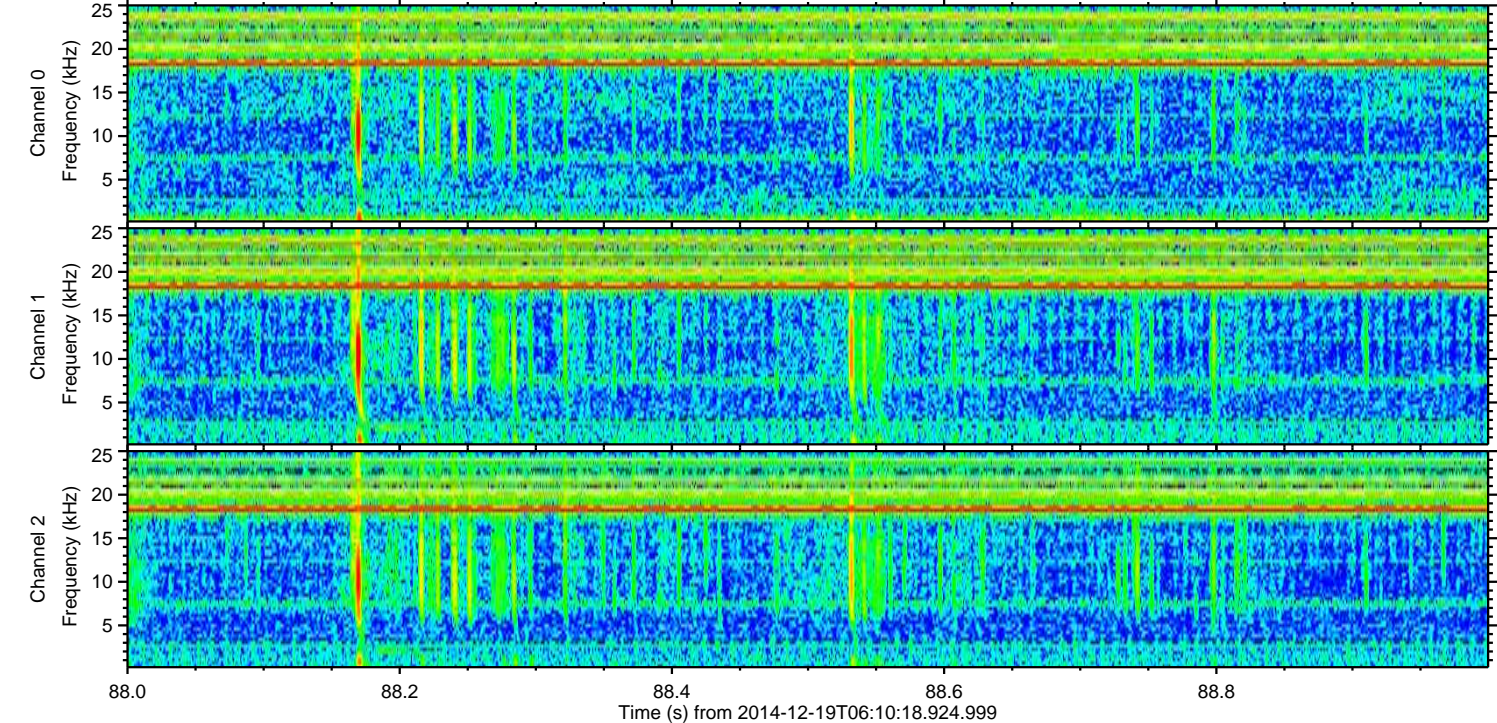
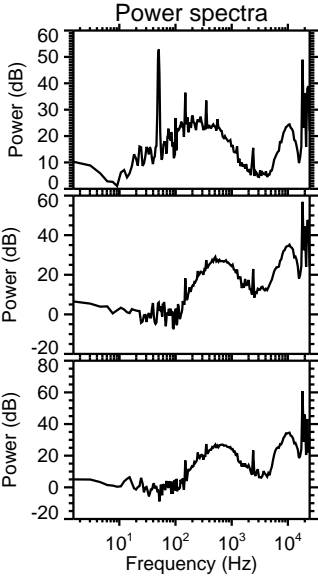
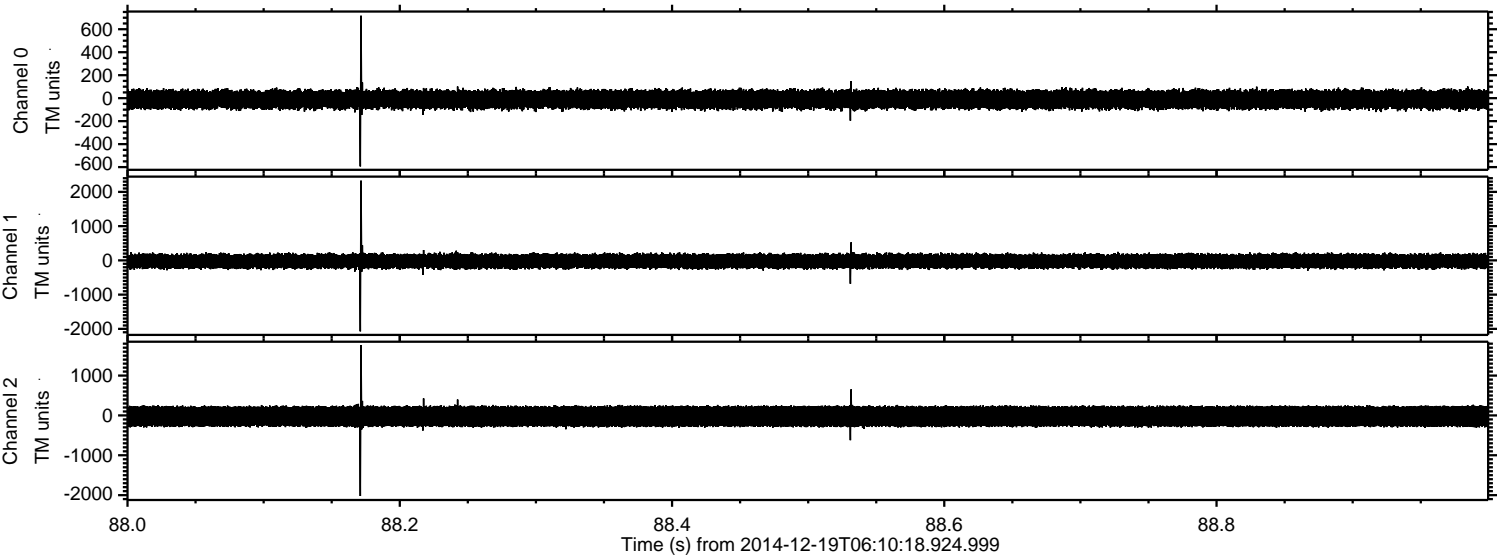


ELMAVAN 3D WAVEFORMS (Measured data sampled at 50 kHz) 49785 packets of 144 samples from 2014-12-19T06:10:18.924.999. Part 102/144

Processed Fri Dec 19 07:18:02 2014 by ELM ver.2012-10-06 from 001\_\_elm20141219\_061017\_\_dat00.bin



Processed Fri Dec 19 07:18:03 2014 by ELM ver.2012-10-06 from 001\_\_elm20141219\_061017\_\_dat00.bin

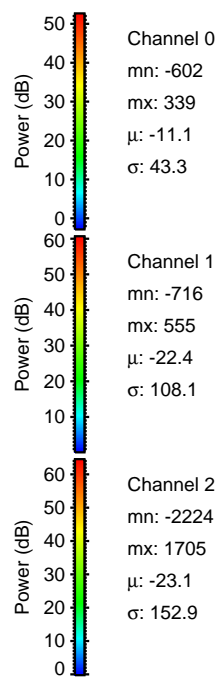
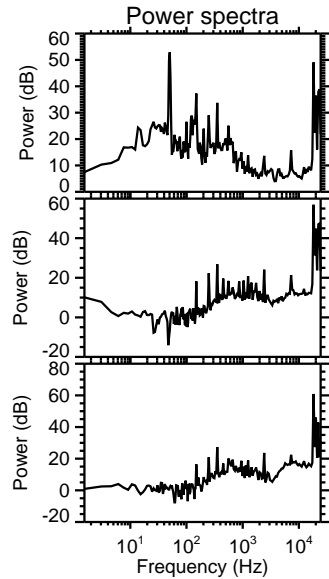
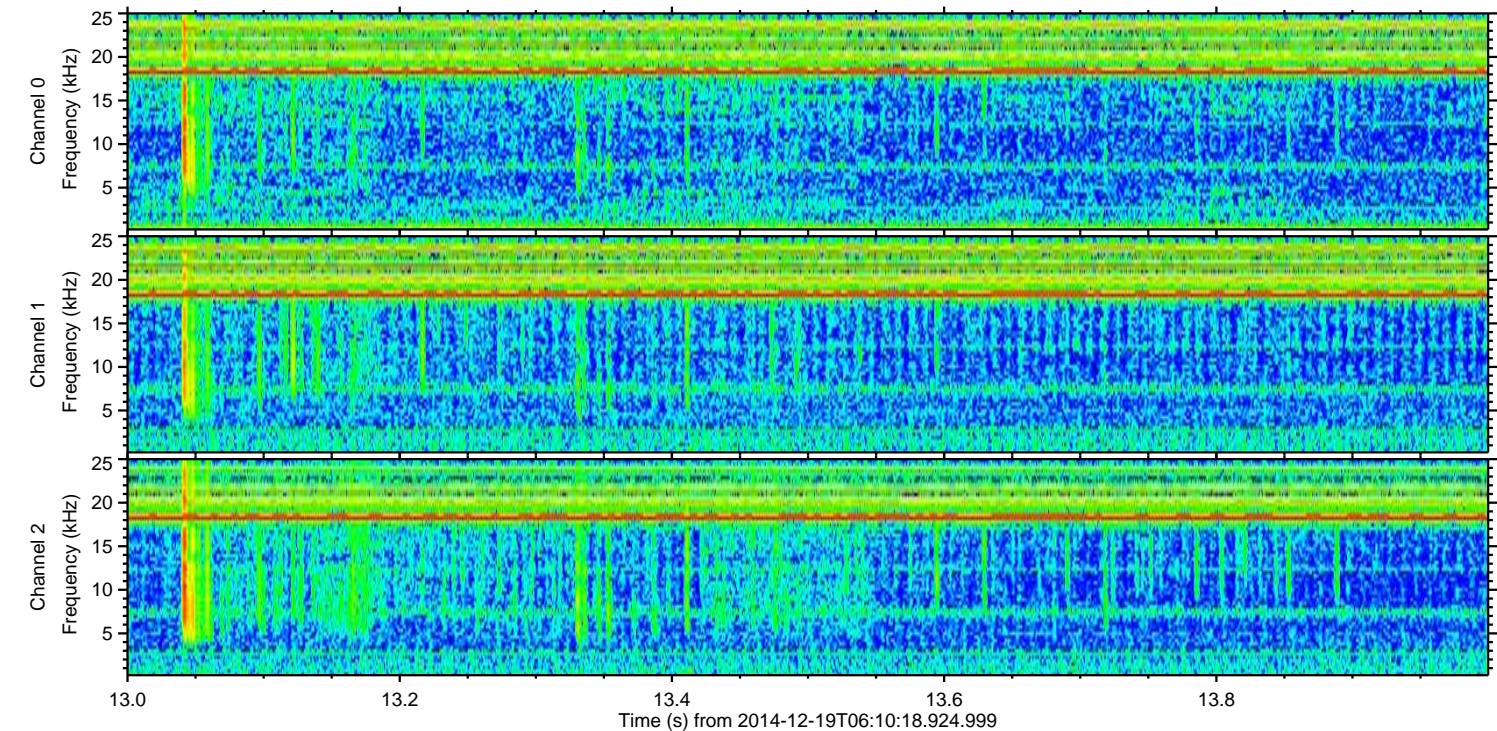
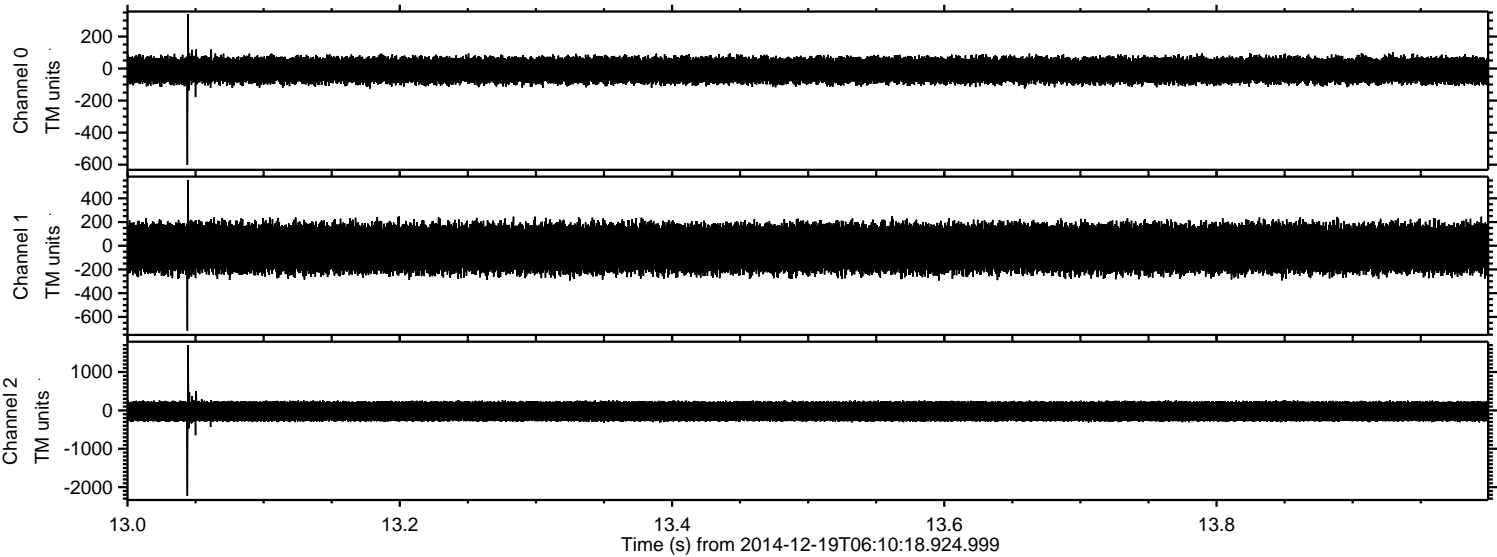


Channel 0  
mn: -594  
mx: 718  
 $\mu$ : -11.0  
 $\sigma$ : 43.1

Channel 1  
mn: -2073  
mx: 2330  
 $\mu$ : -22.5  
 $\sigma$ : 110.1

Channel 2  
mn: -2021  
mx: 1762  
 $\mu$ : -23.1  
 $\sigma$ : 151.0

Processed Fri Dec 19 07:18:04 2014 by ELM ver.2012-10-06 from 001\_\_elm20141219\_061017\_\_dat00.bin

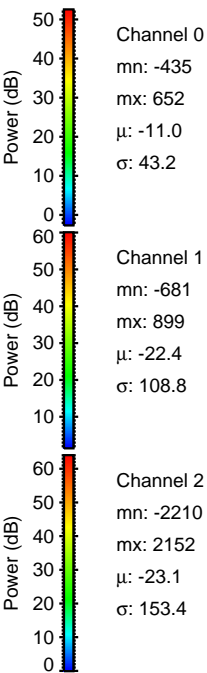
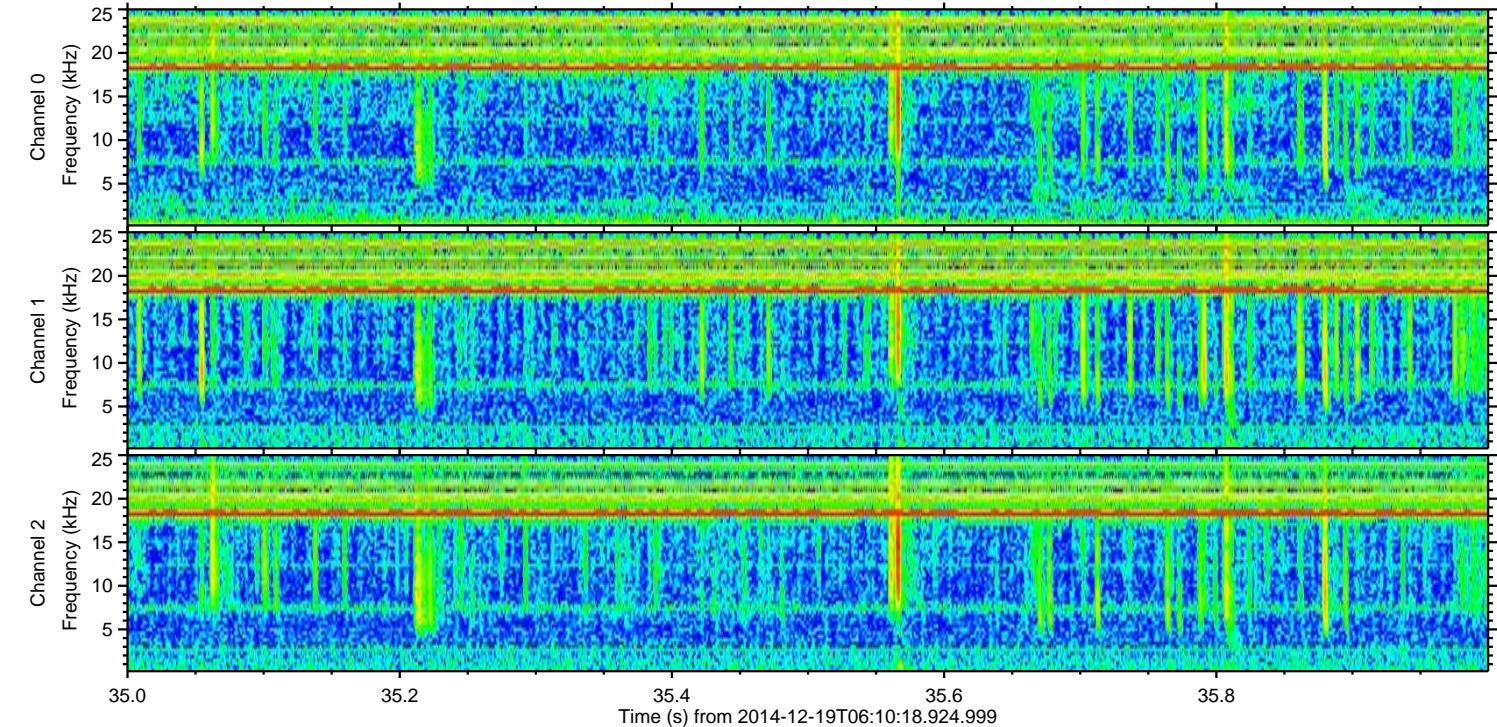
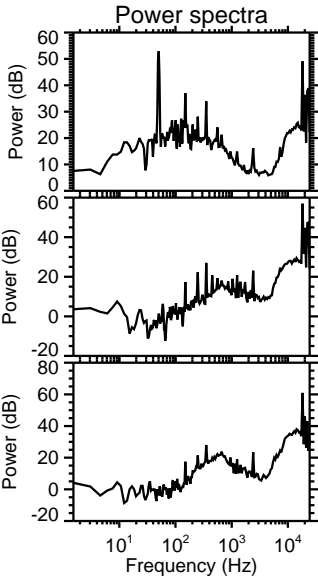
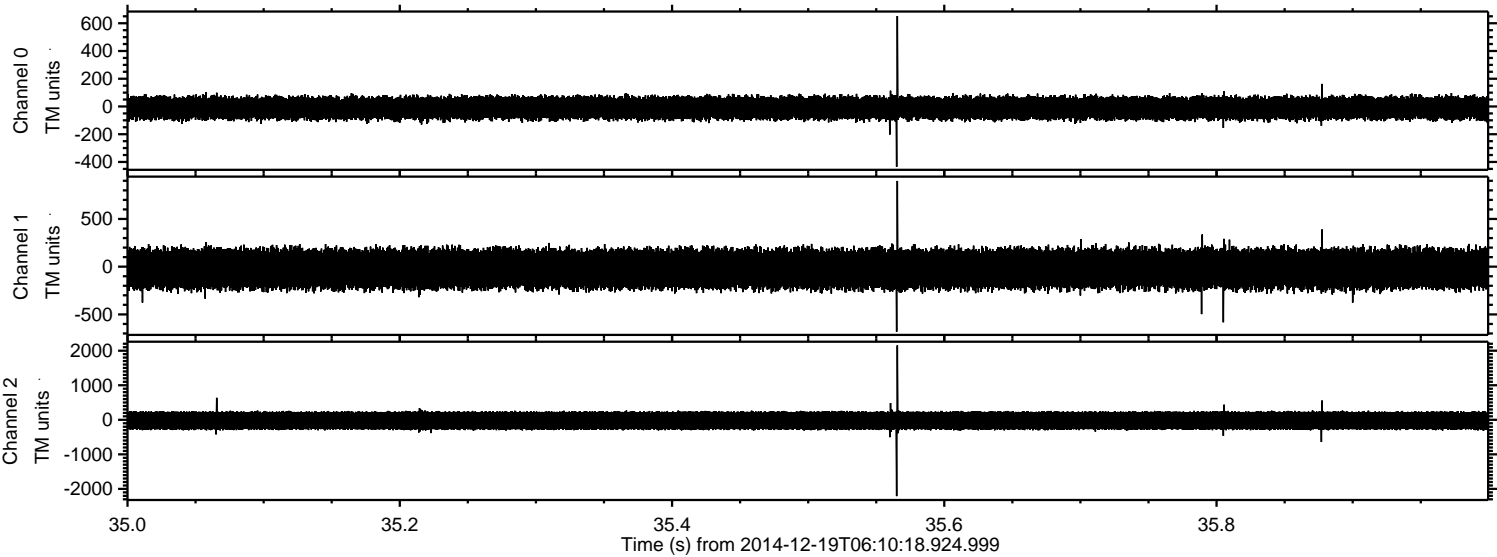


Channel 0  
mn: -602  
mx: 339  
 $\mu$ : -11.1  
 $\sigma$ : 43.3

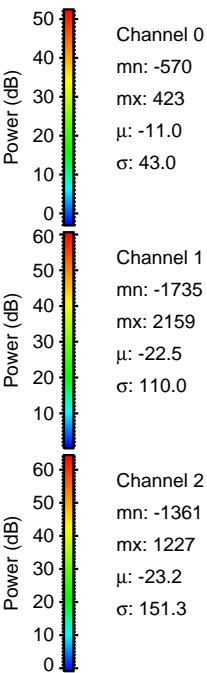
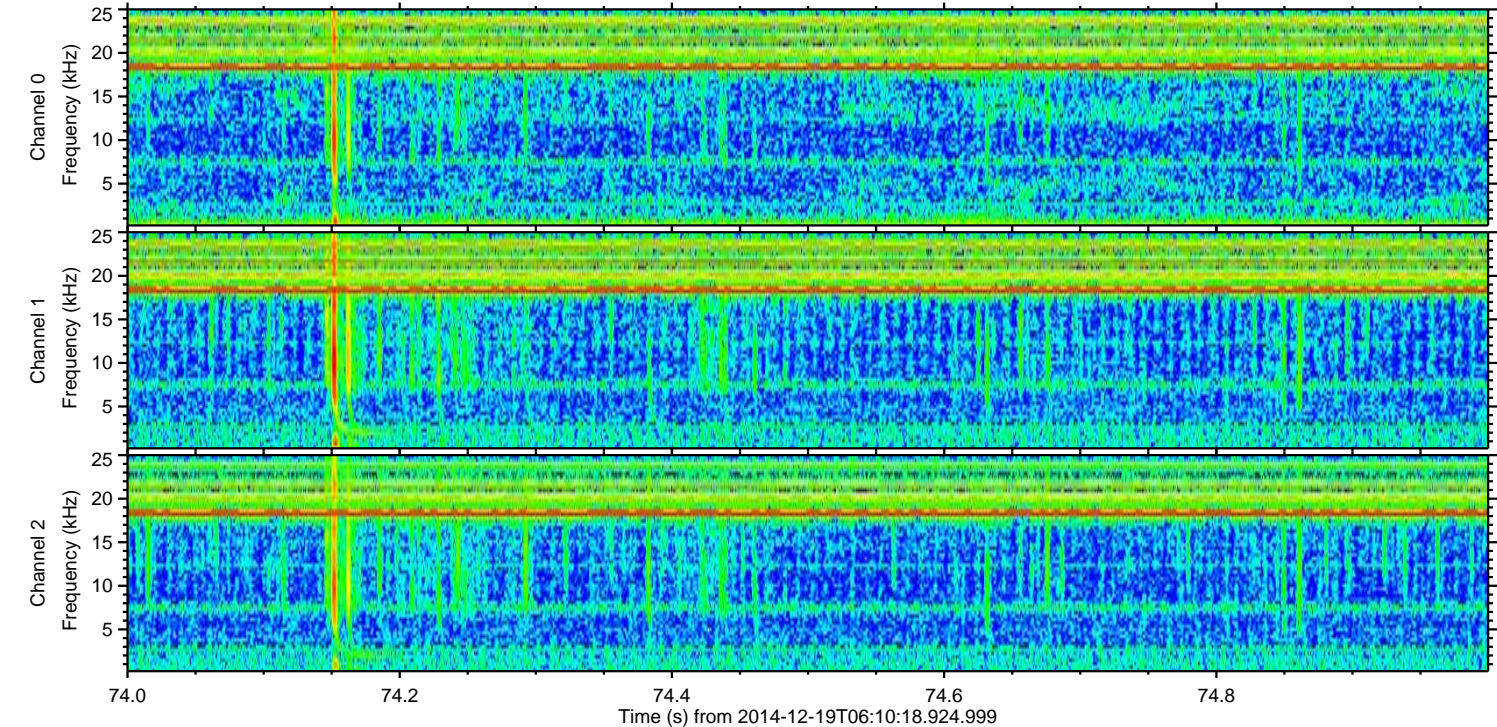
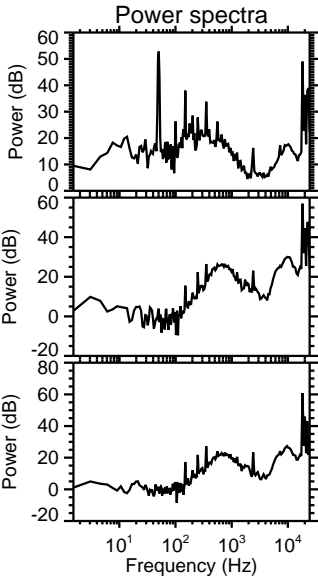
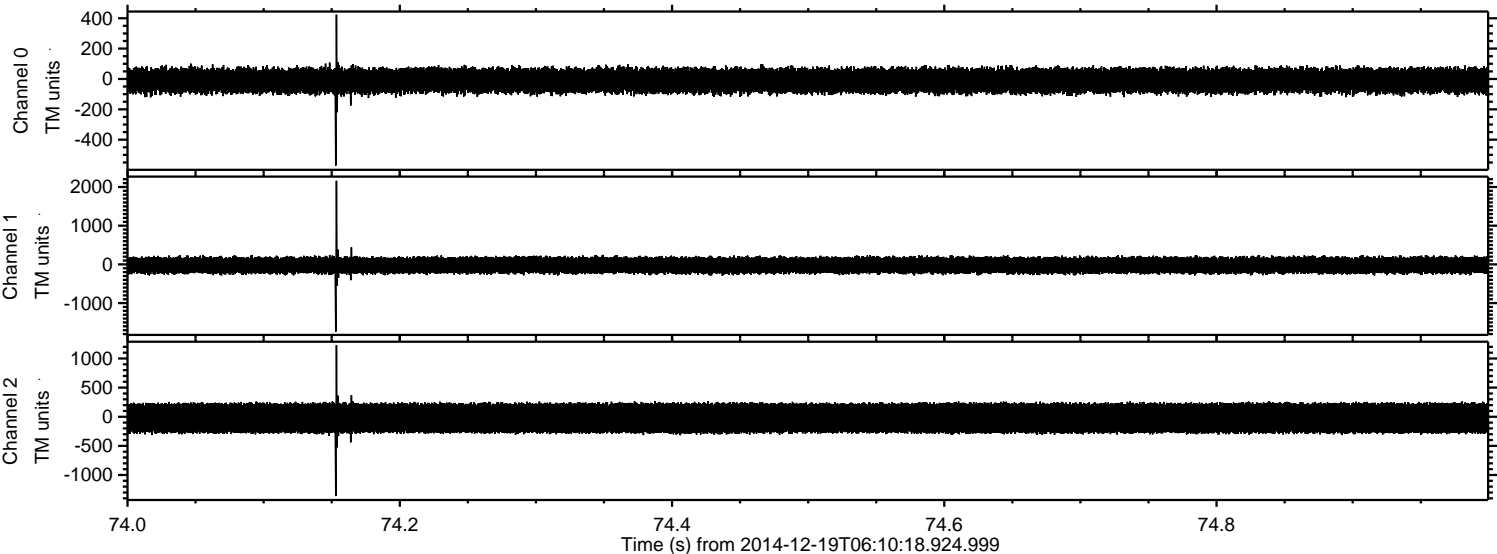
Channel 1  
mn: -716  
mx: 555  
 $\mu$ : -22.4  
 $\sigma$ : 108.1

Channel 2  
mn: -2224  
mx: 1705  
 $\mu$ : -23.1  
 $\sigma$ : 152.9

Processed Fri Dec 19 07:18:05 2014 by ELM ver.2012-10-06 from 001\_\_elm20141219\_061017\_\_dat00.bin

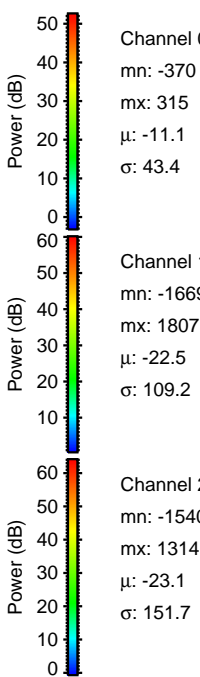
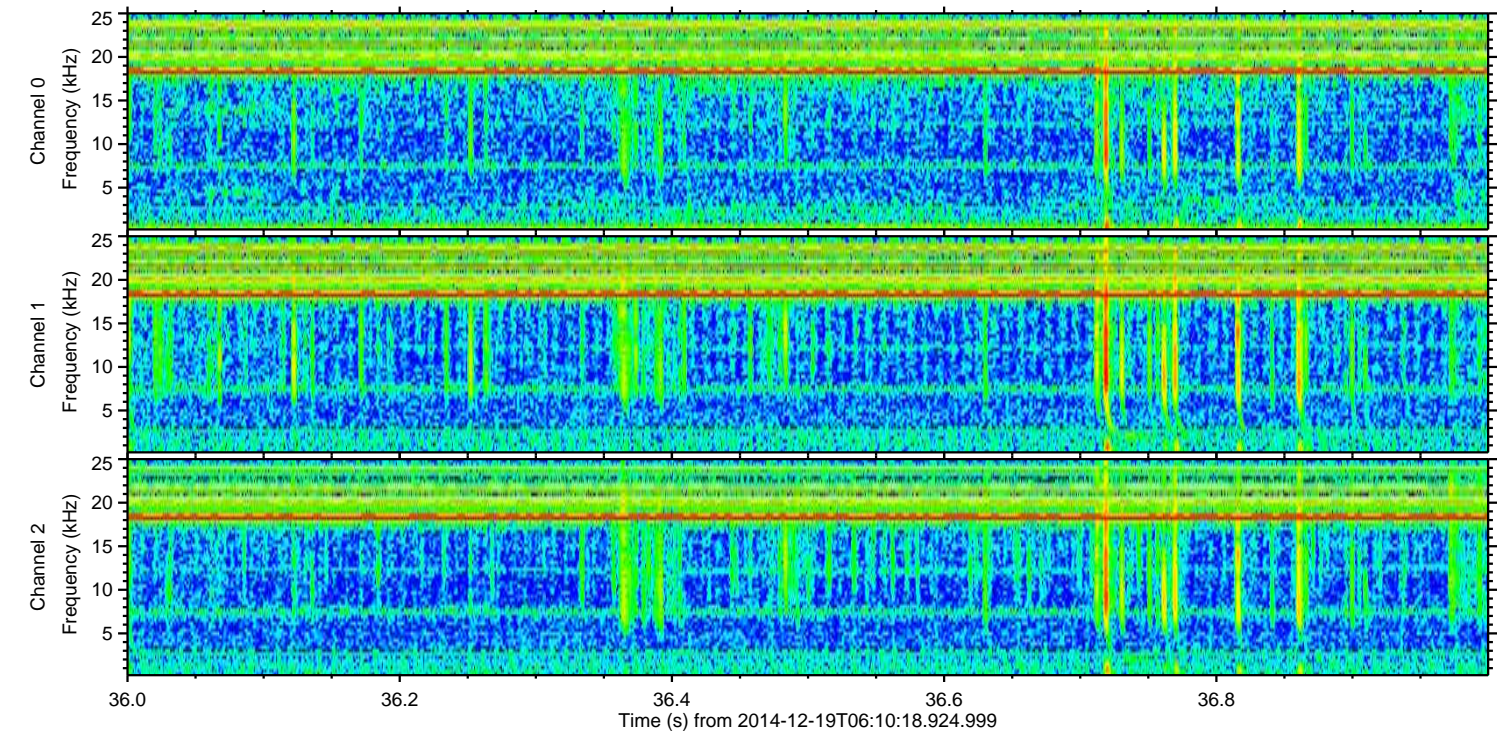
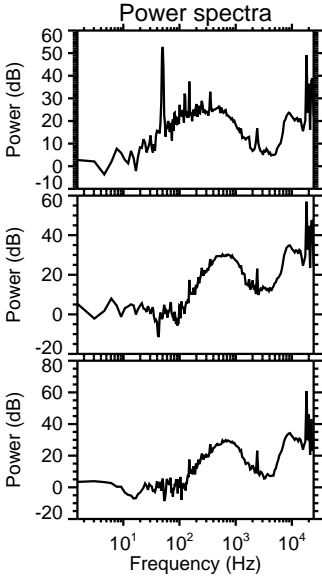
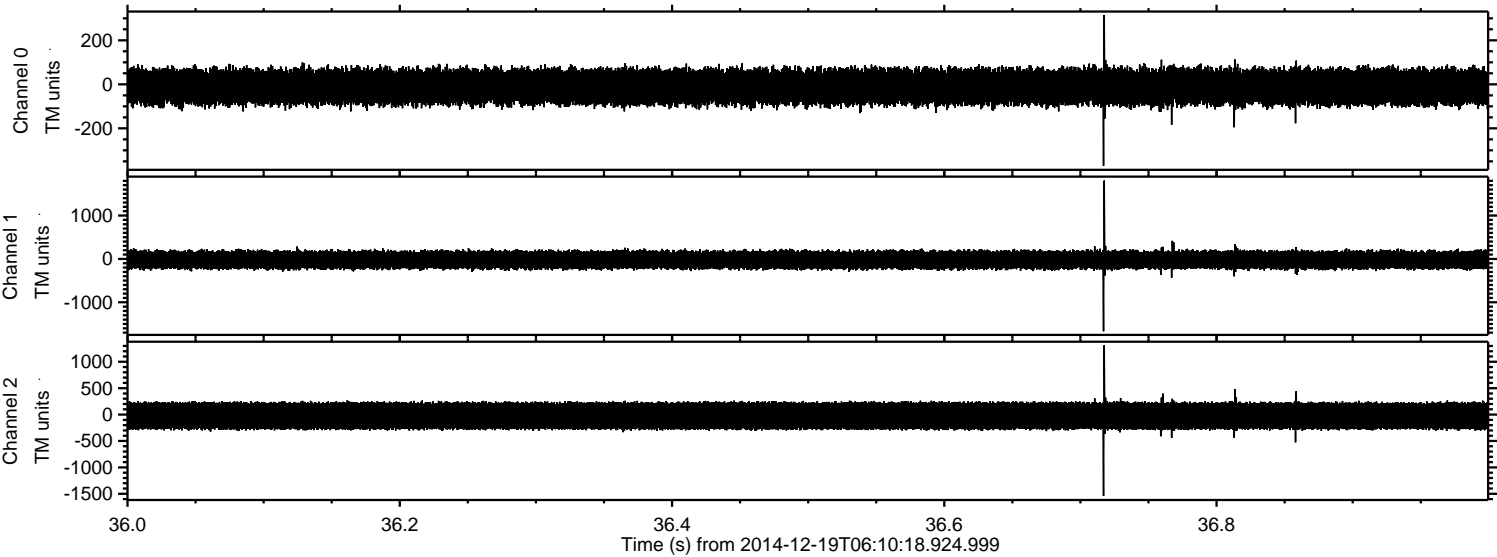


Processed Fri Dec 19 07:18:06 2014 by ELM ver.2012-10-06 from 001\_\_elm20141219\_061017\_\_dat00.bin



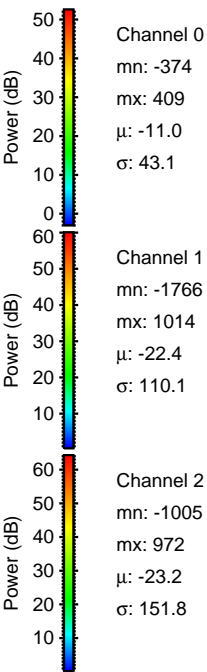
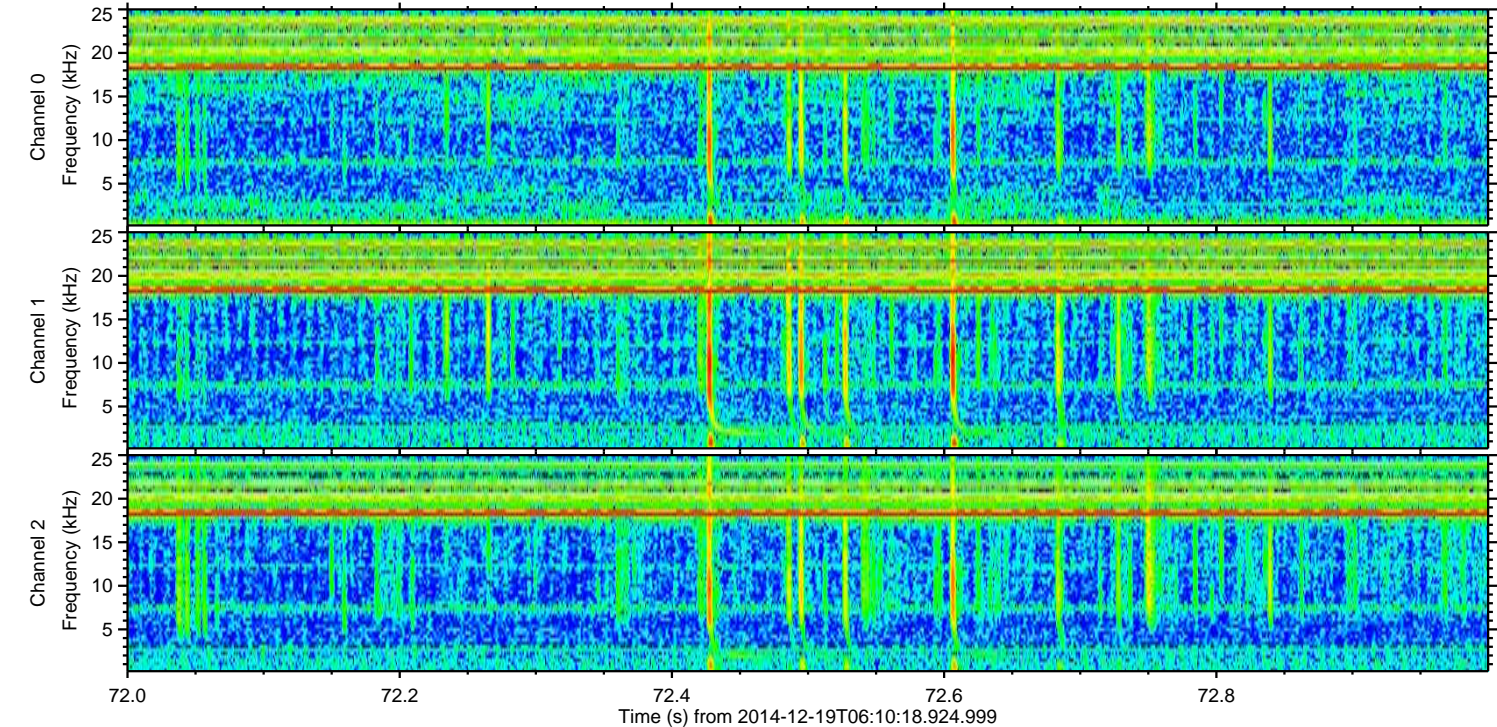
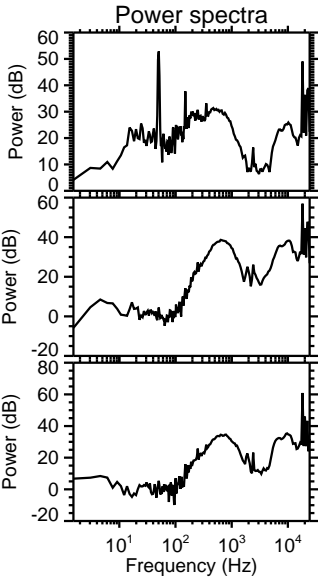
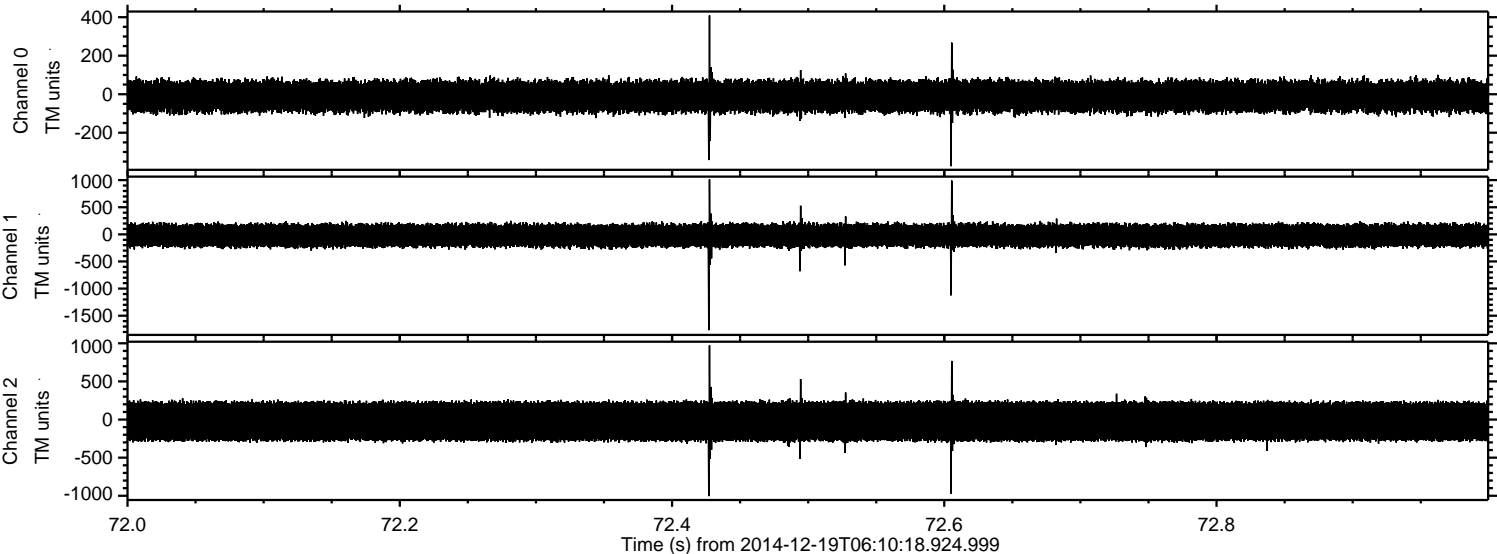
ELMAVAN 3D WAVEFORMS (Measured data sampled at 50 kHz) 49785 packets of 144 samples from 2014-12-19T06:10:18.924.999. Part 37/144

Processed Fri Dec 19 07:18:07 2014 by ELM ver.2012-10-06 from 001\_\_elm20141219\_061017\_\_dat00.bin



ELMAVAN 3D WAVEFORMS (Measured data sampled at 50 kHz) 49785 packets of 144 samples from 2014-12-19T06:10:18.924.999. Part 73/144

Processed Fri Dec 19 07:18:08 2014 by ELM ver.2012-10-06 from 001\_\_elm20141219\_061017\_\_dat00.bin



Processed Fri Dec 19 07:18:09 2014 by ELM ver.2012-10-06 from 001\_\_elm20141219\_061017\_\_dat00.bin

