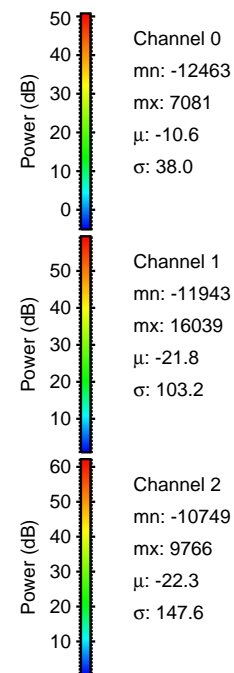
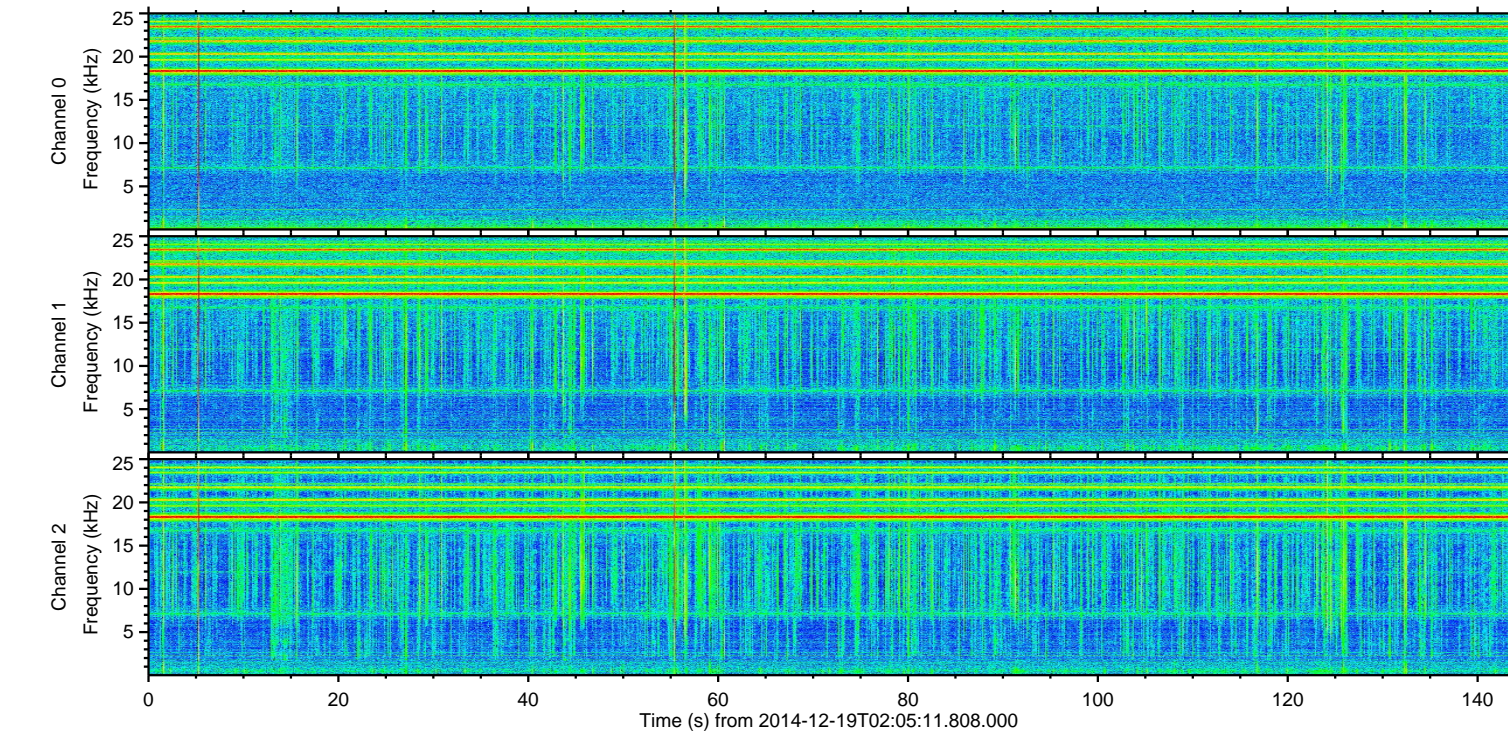
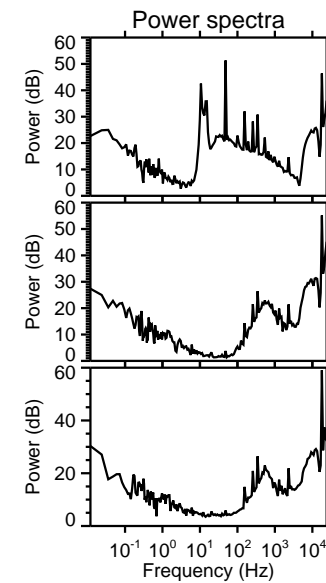
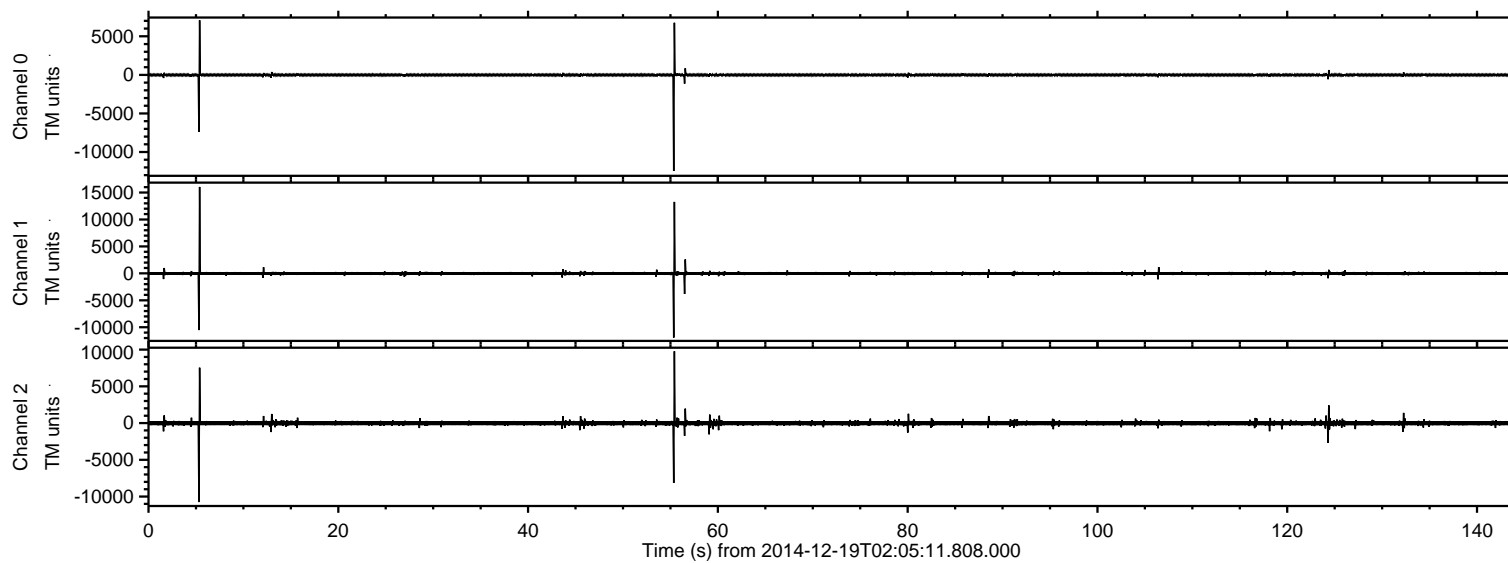


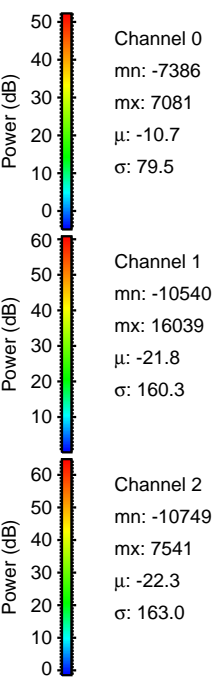
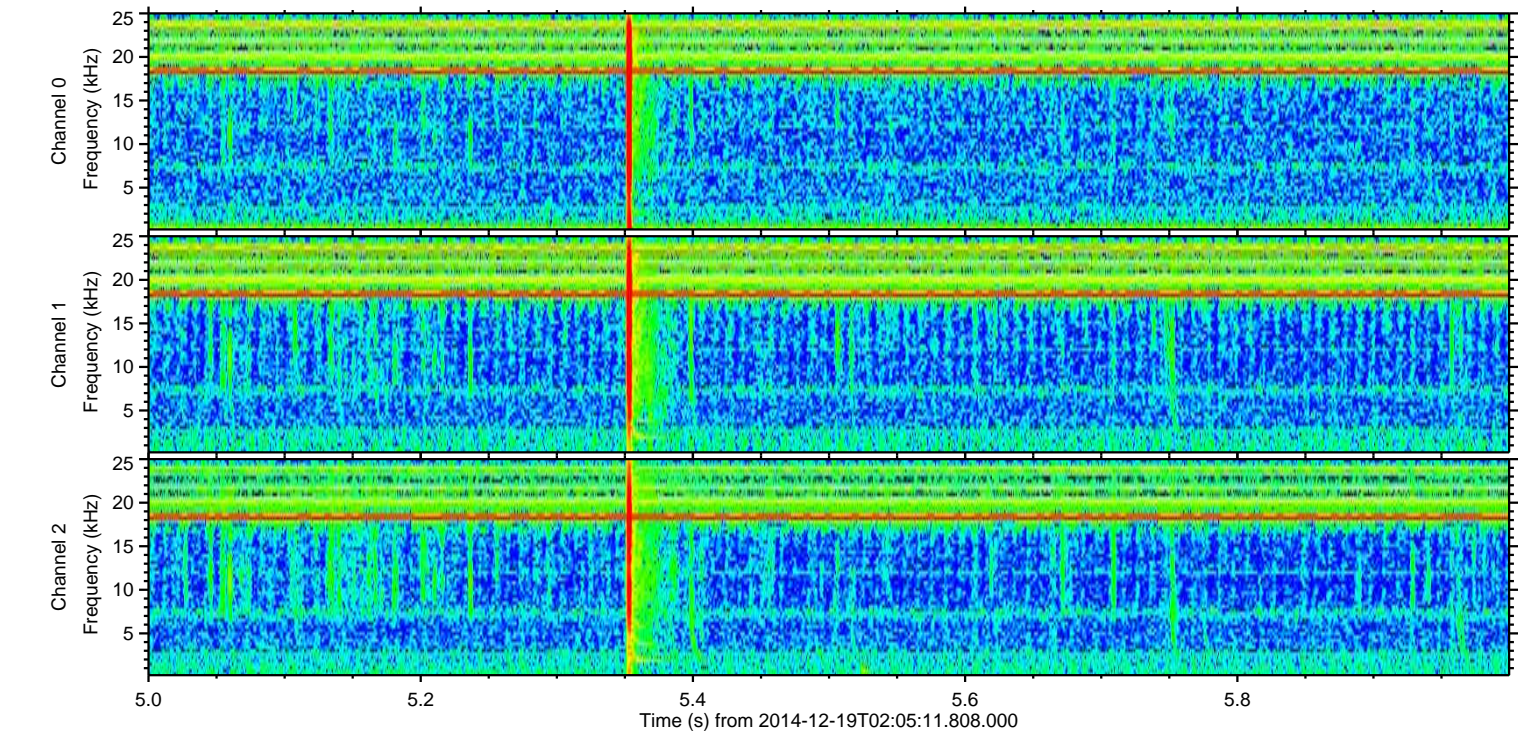
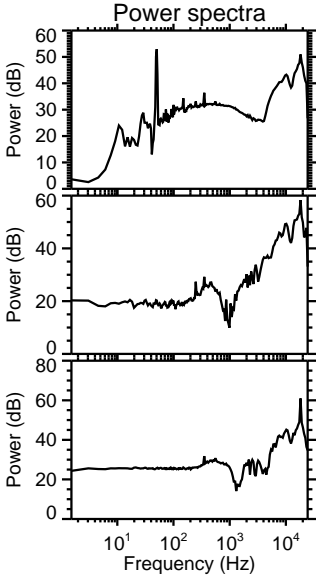
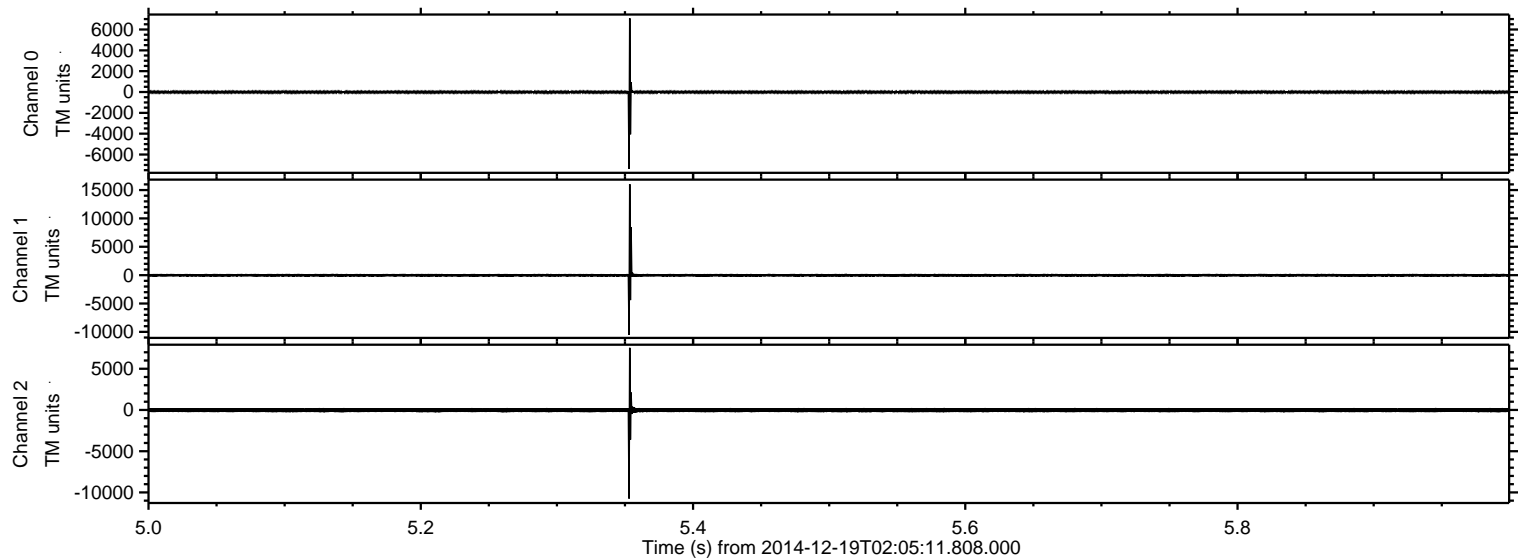
ELMAVAN 3D WAVEFORMS (Measured data sampled at 50 kHz) 49786 packets of 144 samples from 2014-12-19T02:05:11.808.000.

Processed Fri Dec 19 03:13:00 2014 by ELM ver.2012-10-06 from 001__elm20141219_020510__dat00.bin

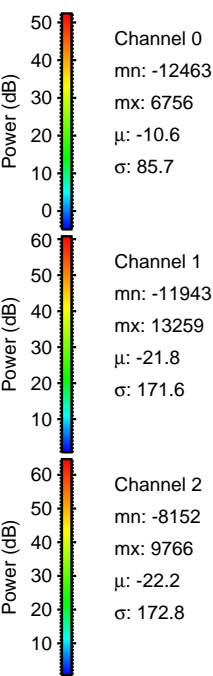
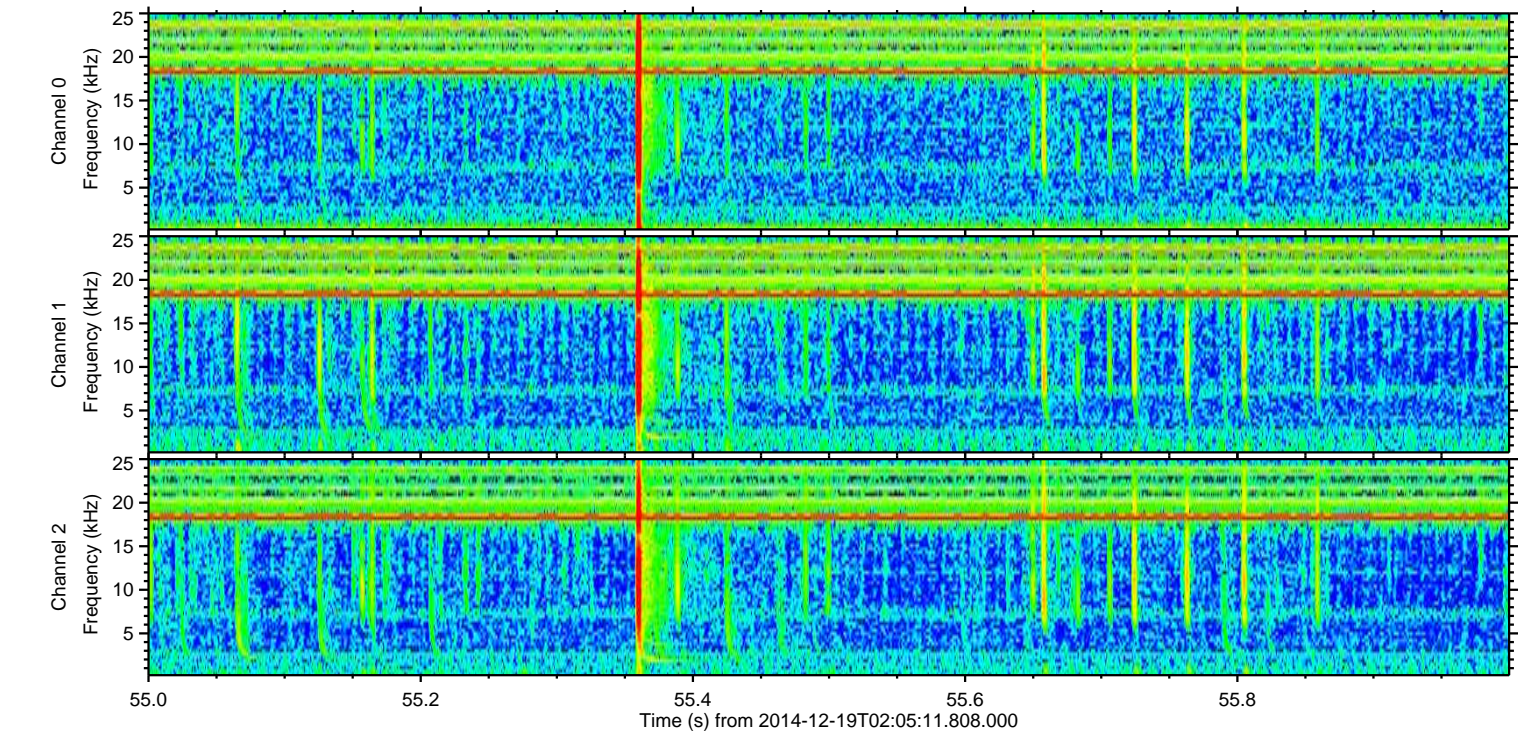
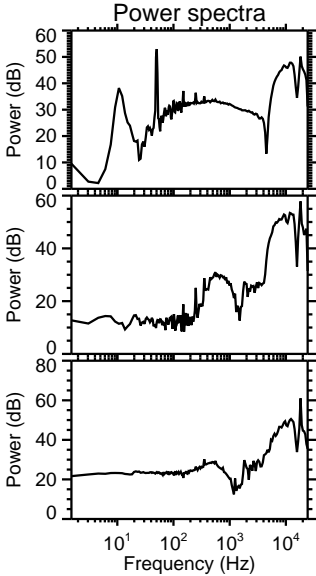
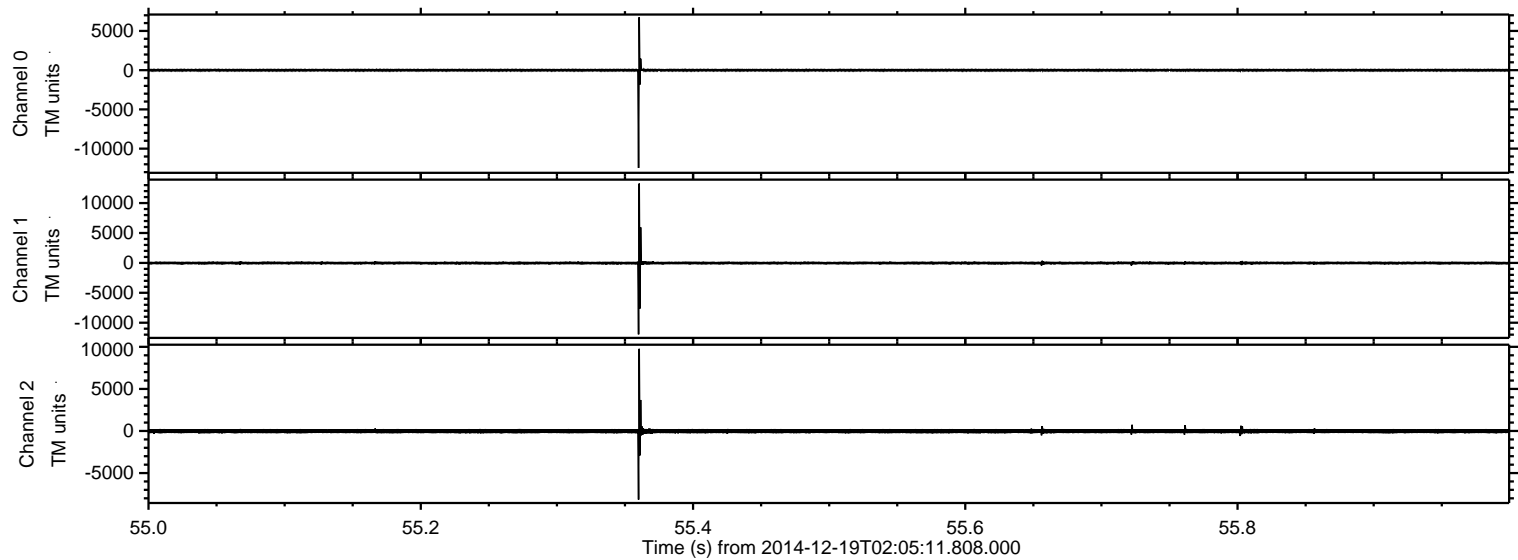


ELMAVAN 3D WAVEFORMS (Measured data sampled at 50 kHz) 49786 packets of 144 samples from 2014-12-19T02:05:11.808.000. Part 6/144

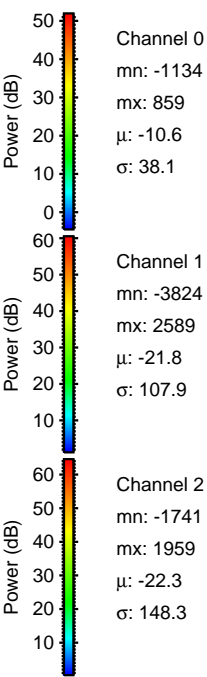
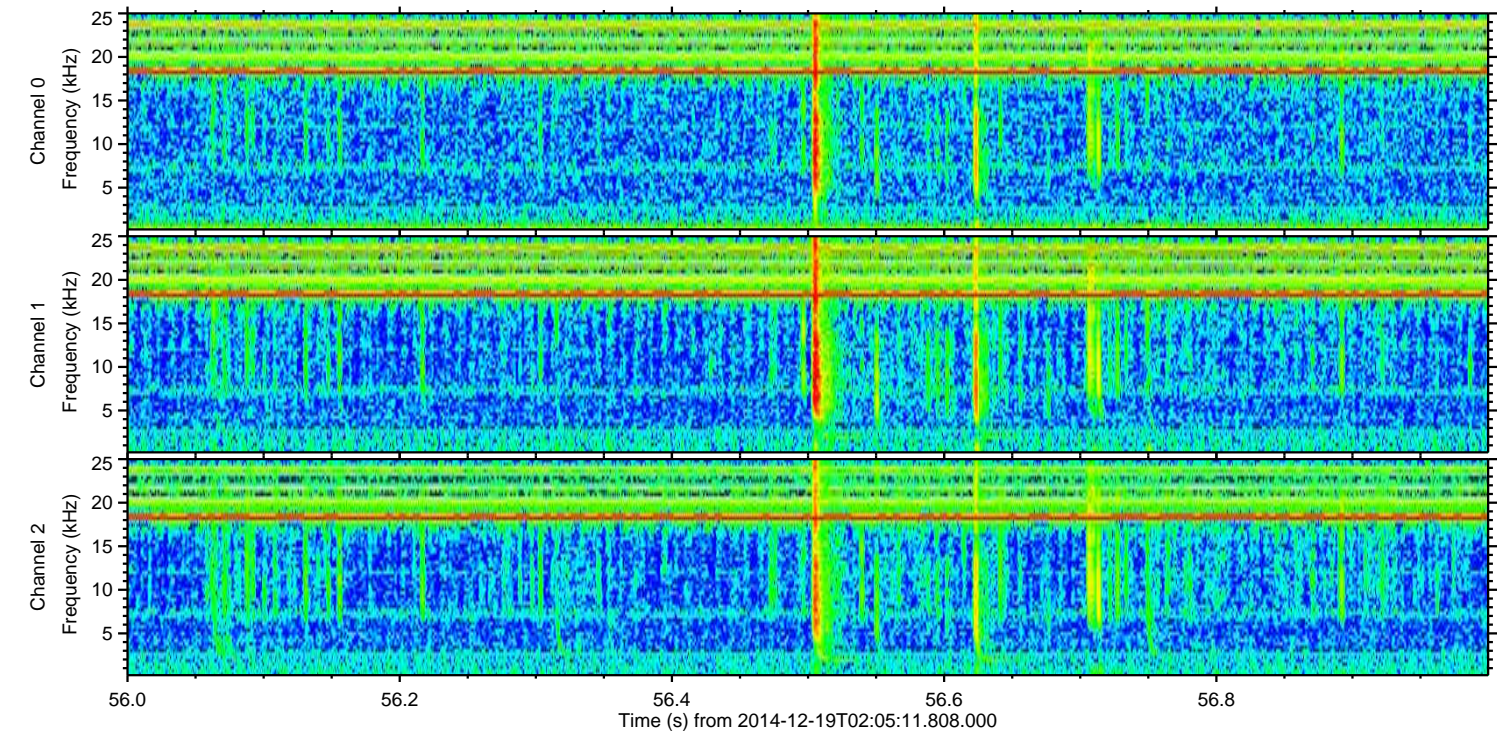
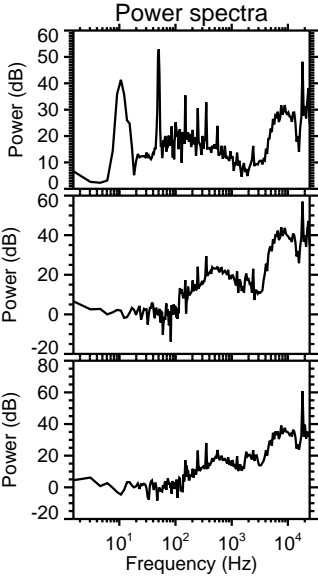
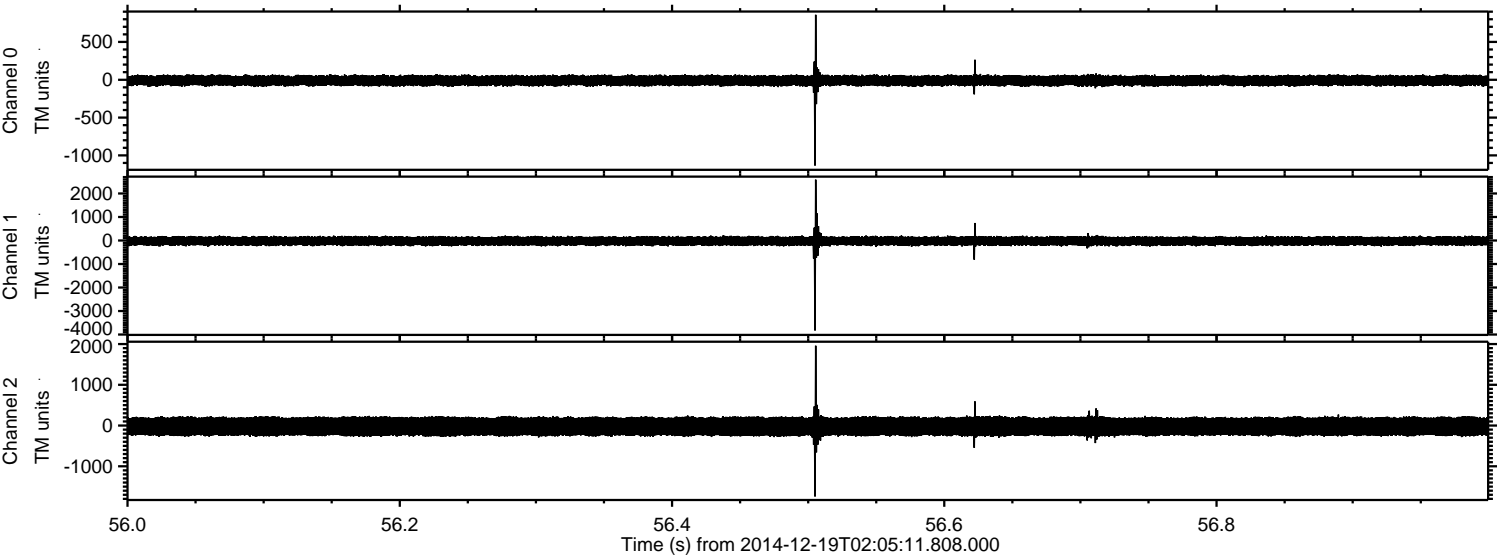
Processed Fri Dec 19 03:13:12 2014 by ELM ver.2012-10-06 from 001__elm20141219_020510__dat00.bin



Processed Fri Dec 19 03:13:13 2014 by ELM ver.2012-10-06 from 001__elm20141219_020510__dat00.bin

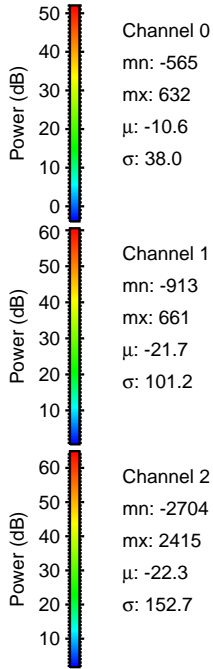
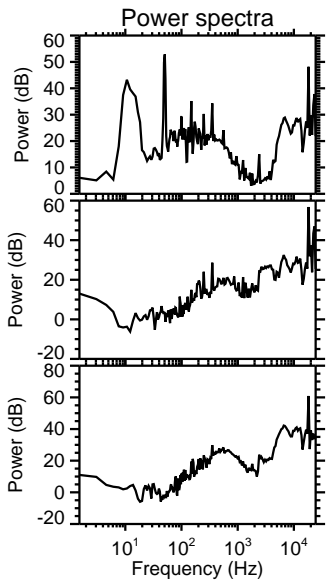
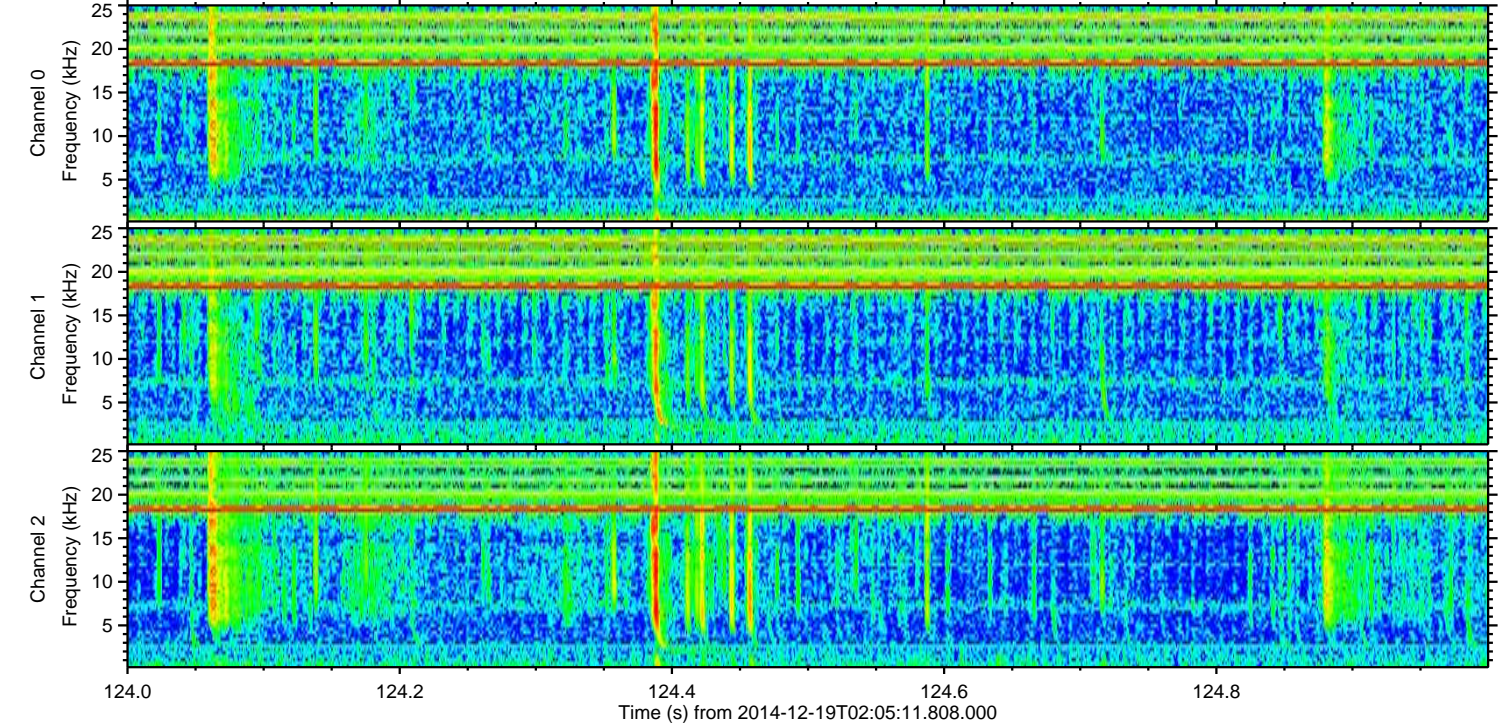
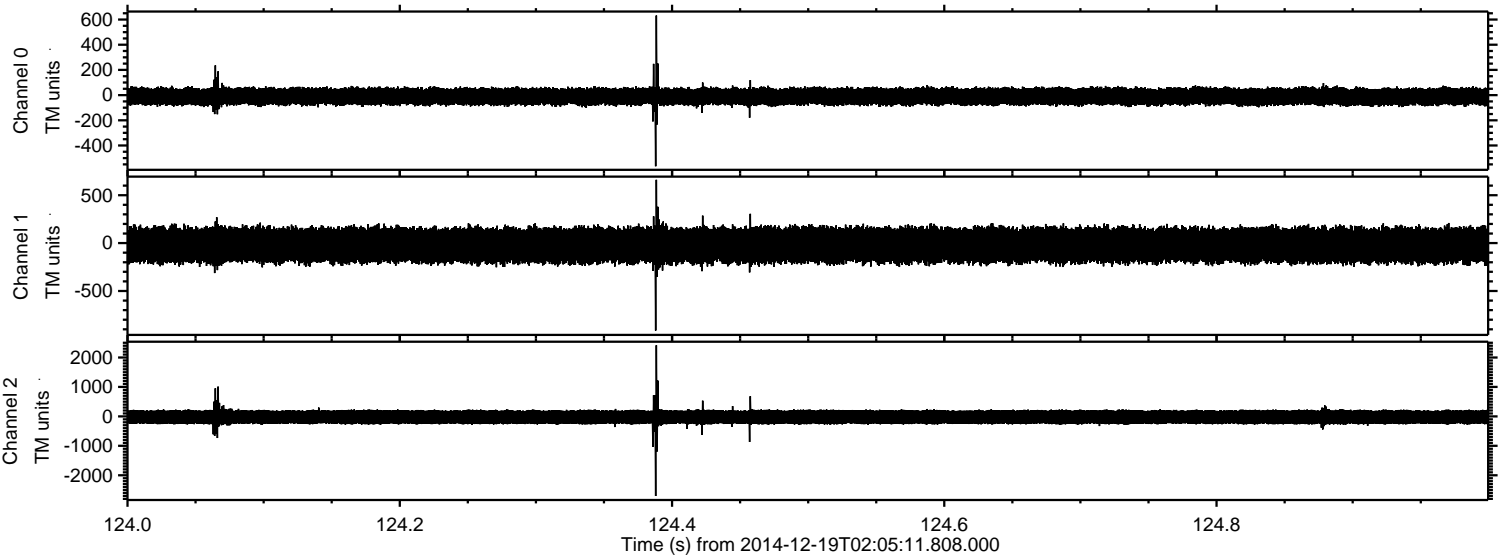


Processed Fri Dec 19 03:13:14 2014 by ELM ver.2012-10-06 from 001__elm20141219_020510__dat00.bin

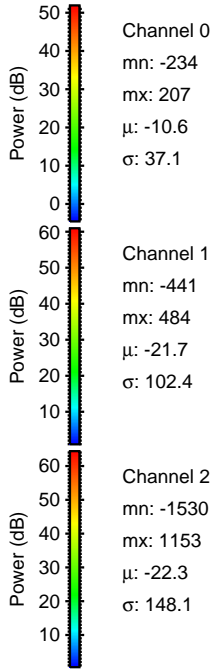
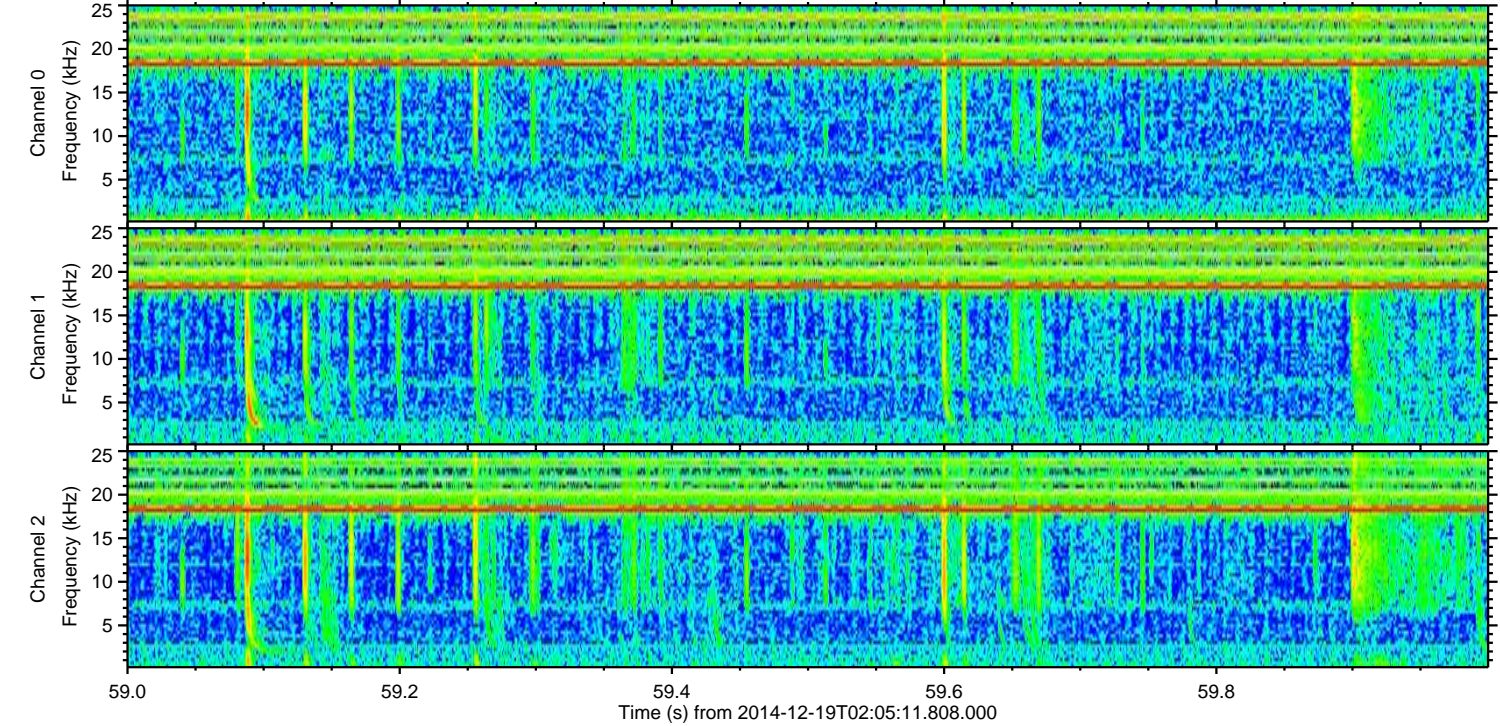
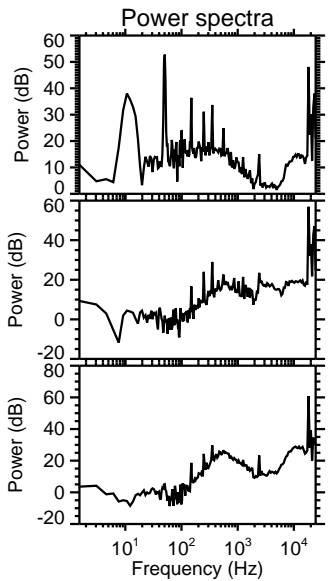
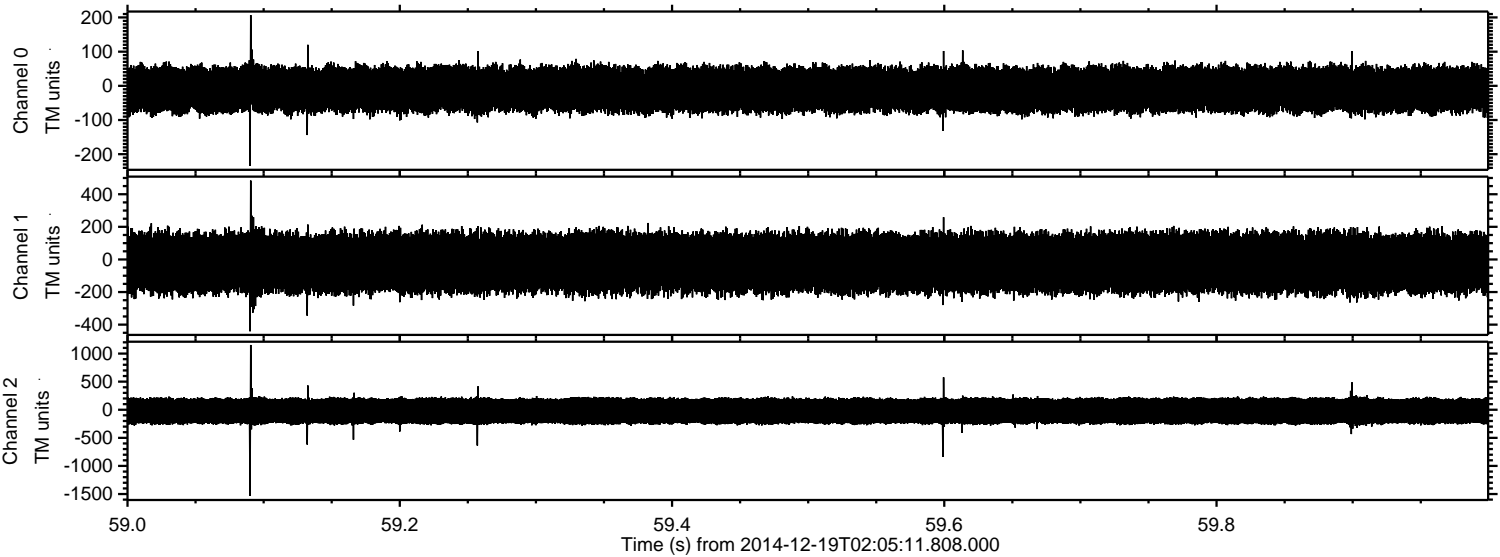


ELMAVAN 3D WAVEFORMS (Measured data sampled at 50 kHz) 49786 packets of 144 samples from 2014-12-19T02:05:11.808.000. Part 125/144

Processed Fri Dec 19 03:13:15 2014 by ELM ver.2012-10-06 from 001__elm20141219_020510__dat00.bin

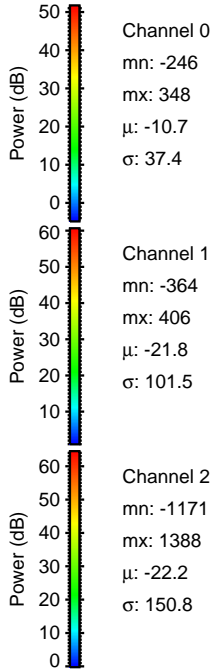
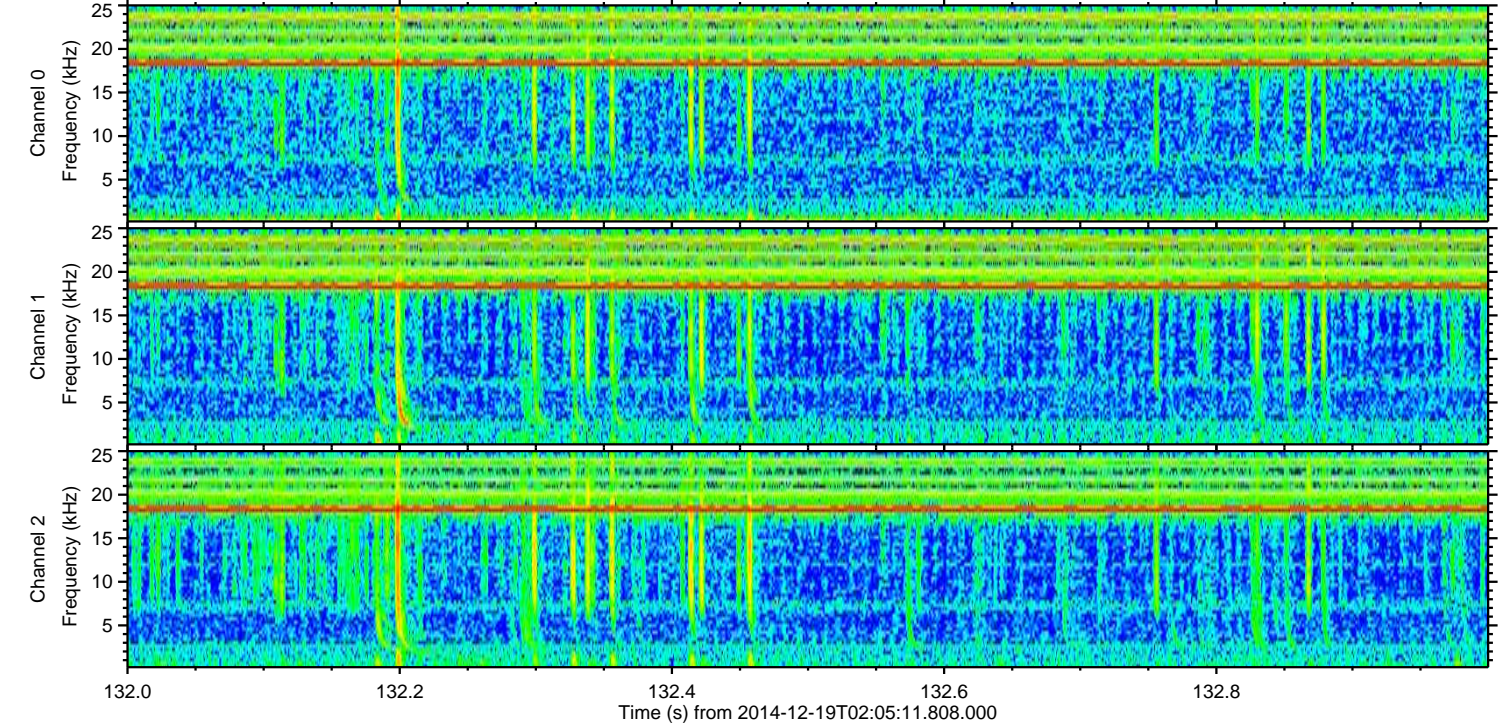
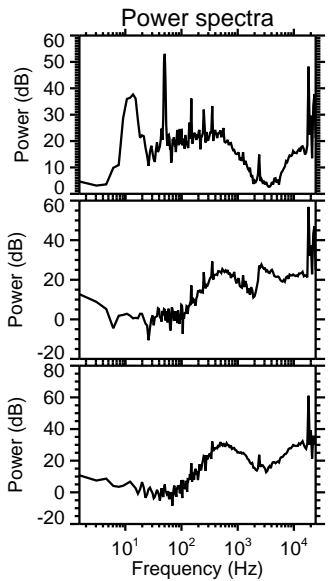
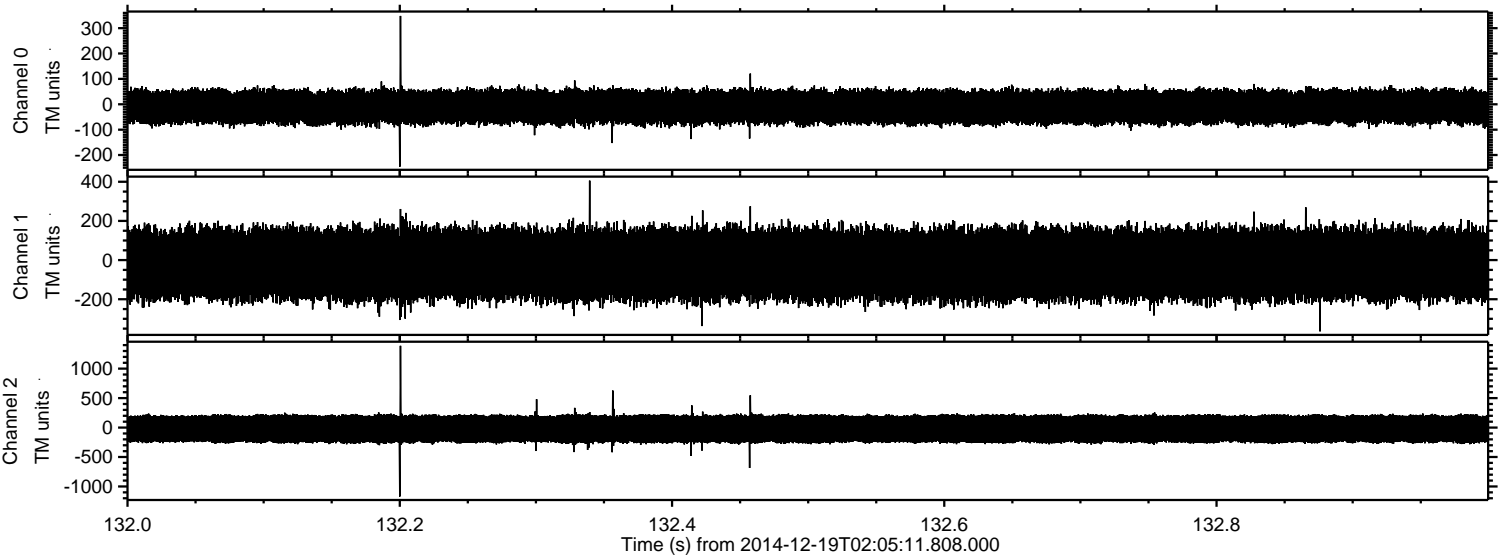


Processed Fri Dec 19 03:13:16 2014 by ELM ver.2012-10-06 from 001__elm20141219_020510__dat00.bin

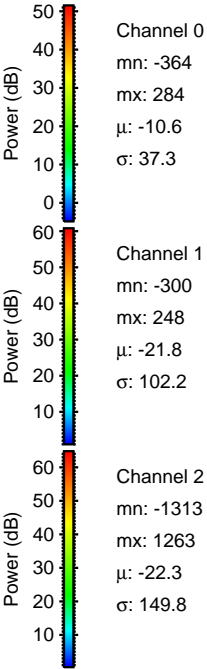
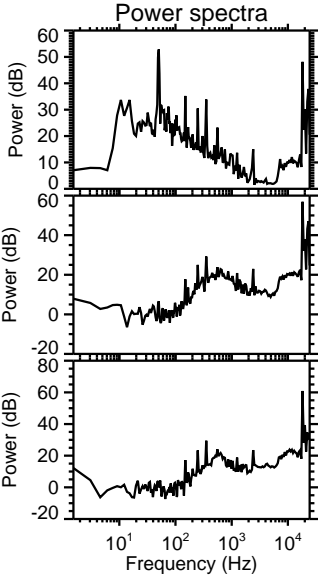
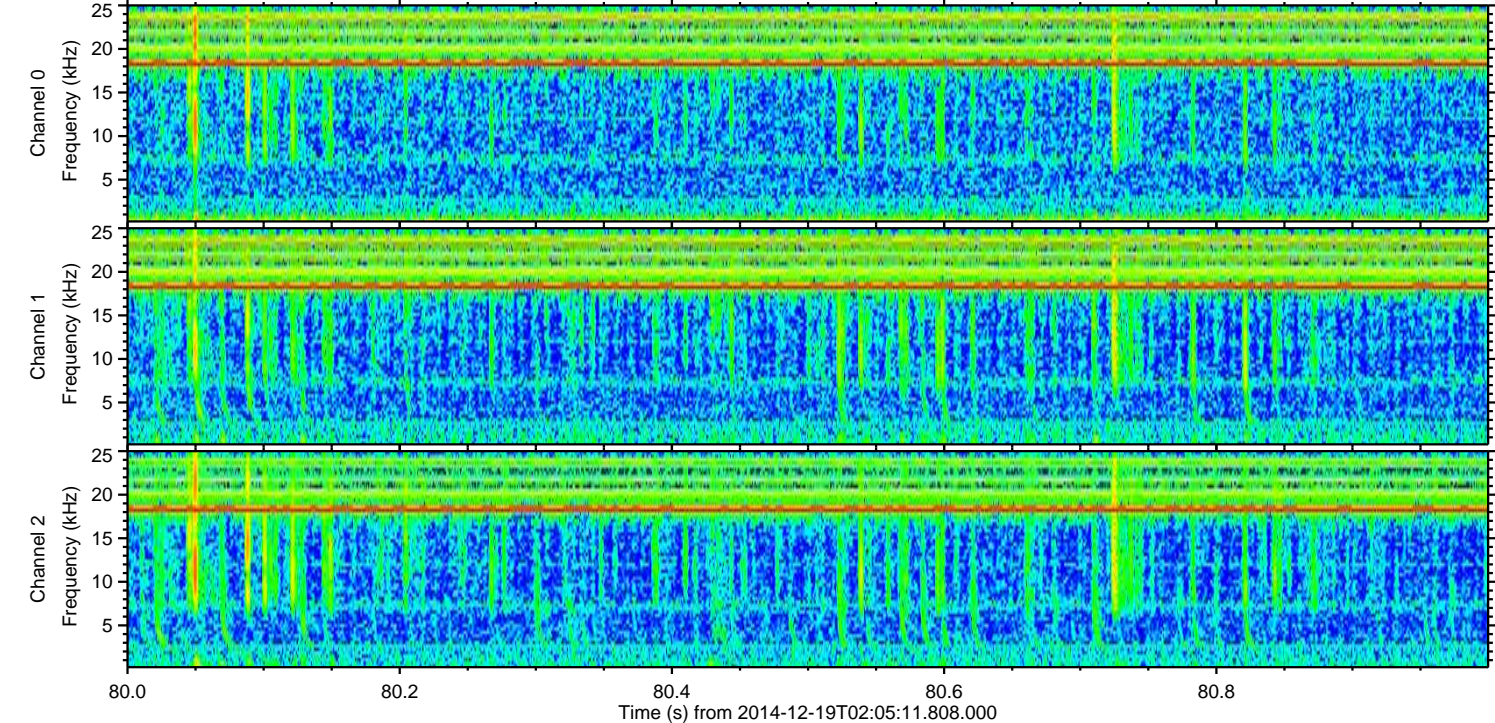
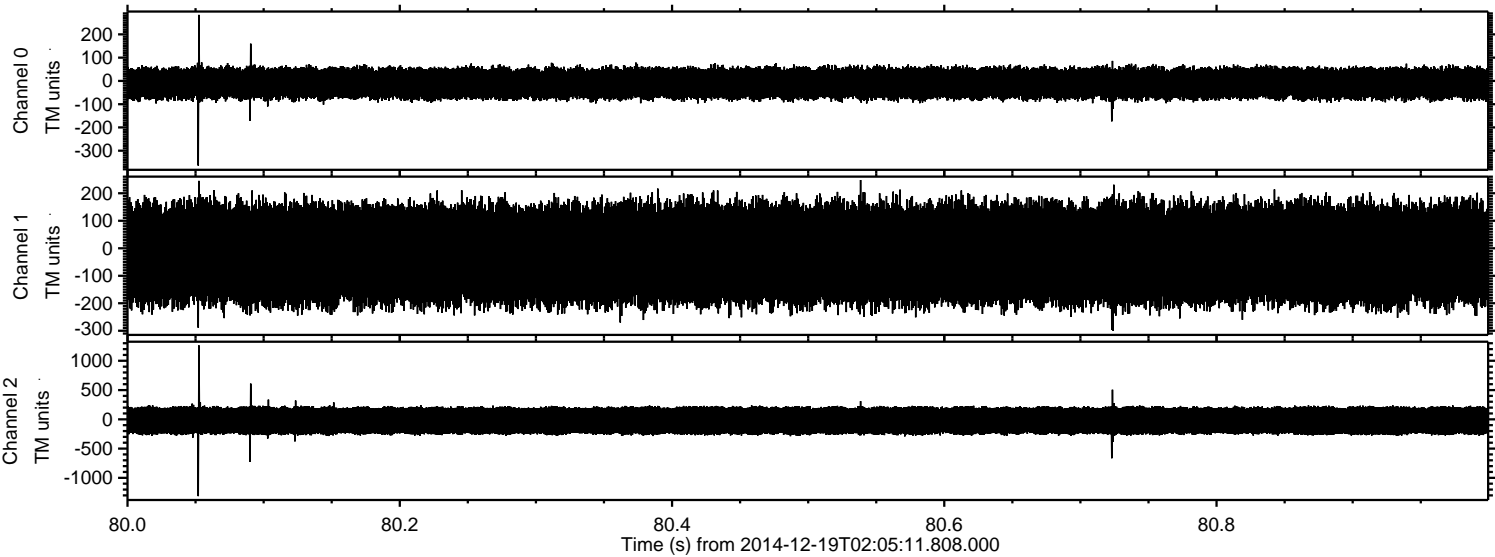


ELMAVAN 3D WAVEFORMS (Measured data sampled at 50 kHz) 49786 packets of 144 samples from 2014-12-19T02:05:11.808.000. Part 133/144

Processed Fri Dec 19 03:13:17 2014 by ELM ver.2012-10-06 from 001__elm20141219_020510__dat00.bin

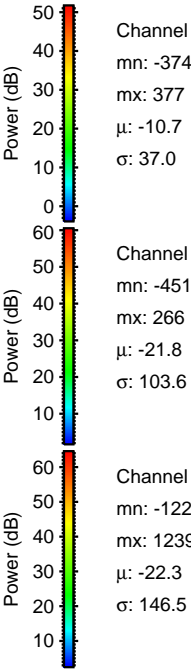
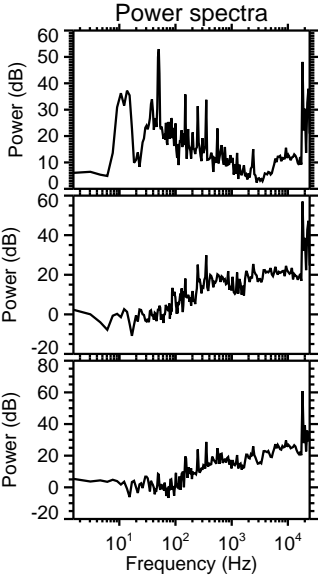
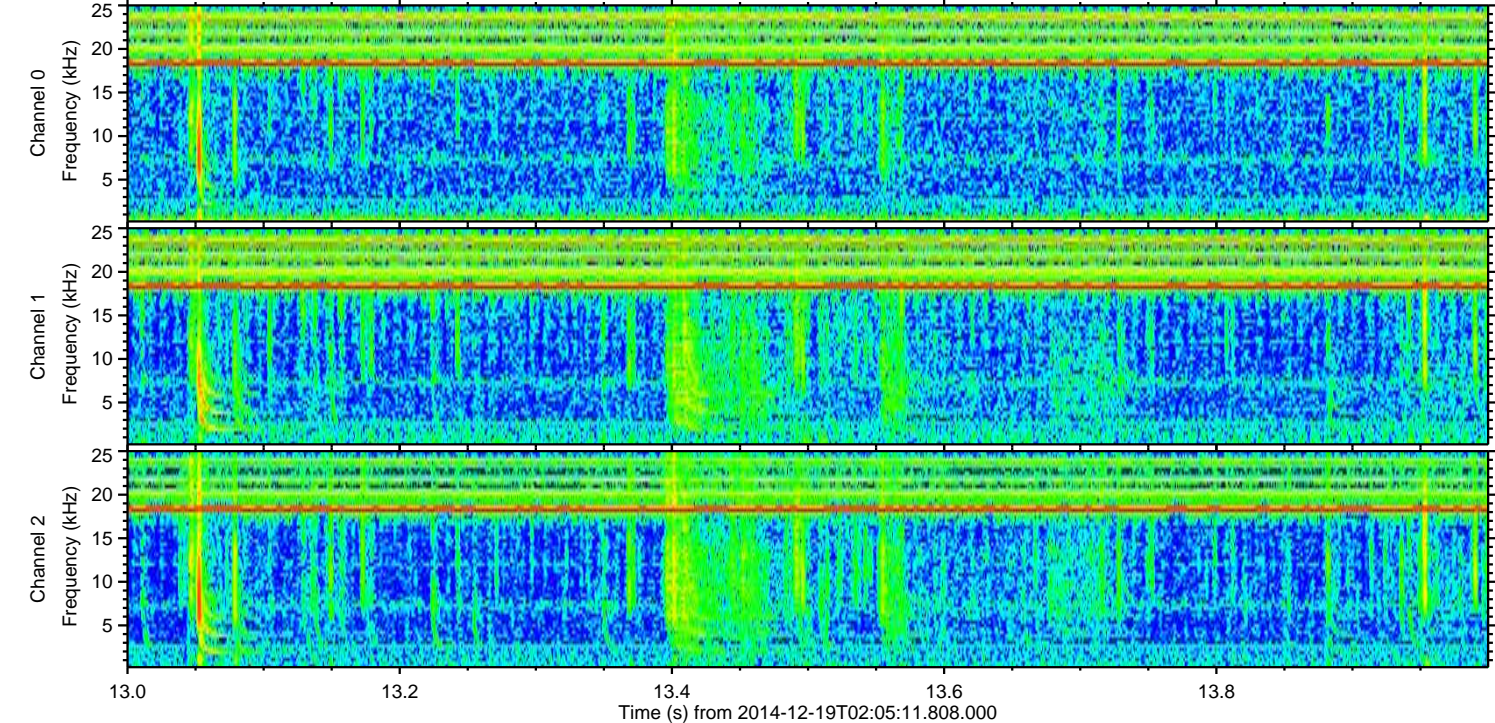
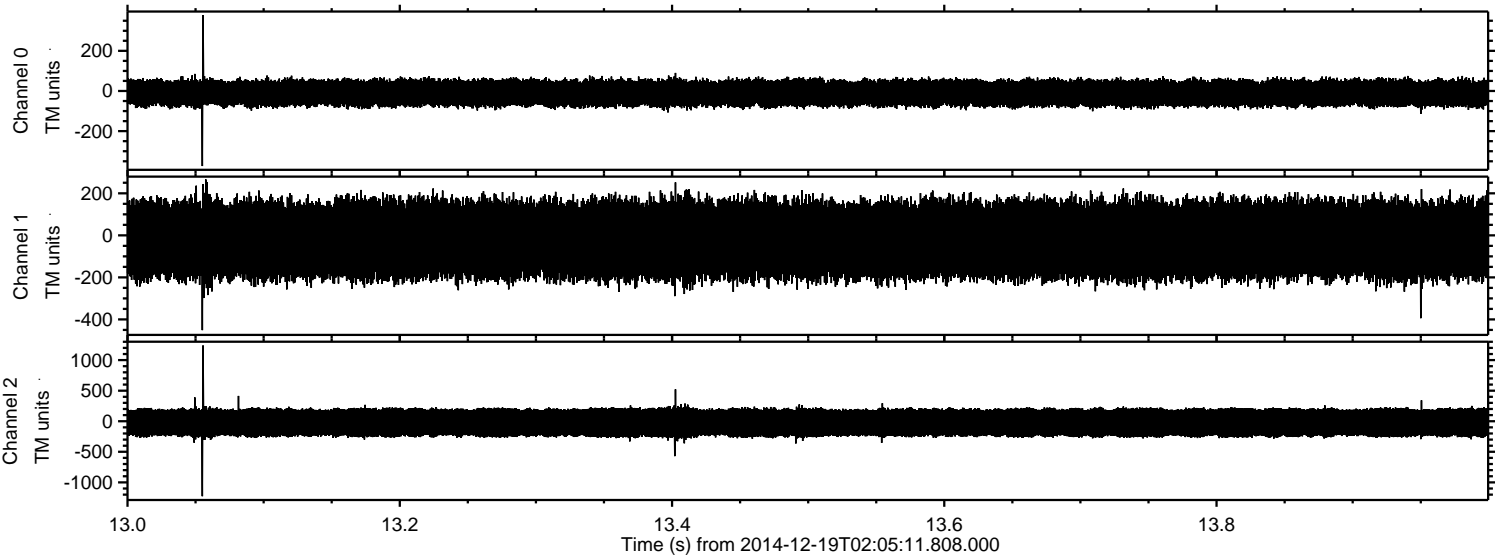


Processed Fri Dec 19 03:13:18 2014 by ELM ver.2012-10-06 from 001__elm20141219_020510__dat00.bin



ELMAVAN 3D WAVEFORMS (Measured data sampled at 50 kHz) 49786 packets of 144 samples from 2014-12-19T02:05:11.808.000. Part 14/144

Processed Fri Dec 19 03:13:19 2014 by ELM ver.2012-10-06 from 001__elm20141219_020510__dat00.bin

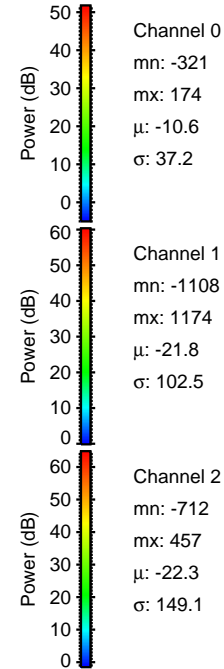
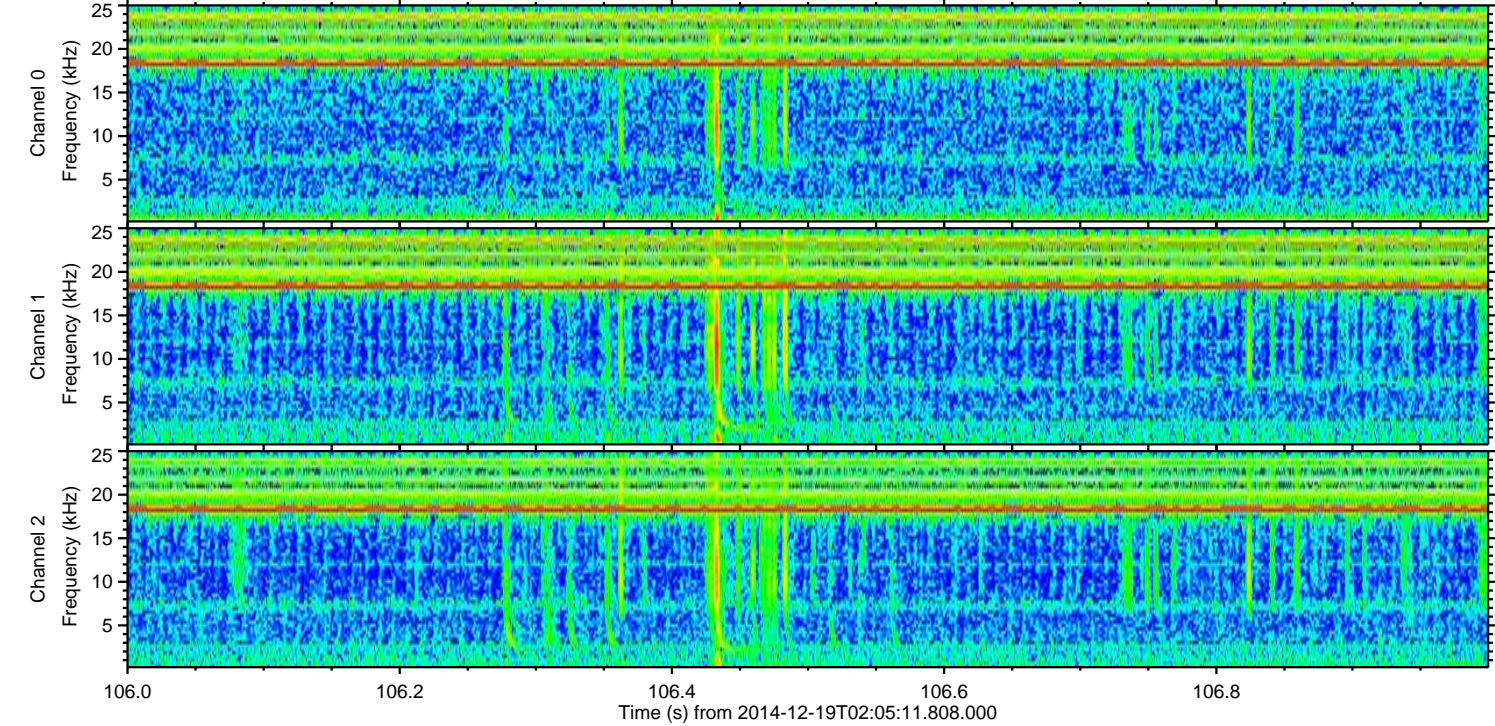
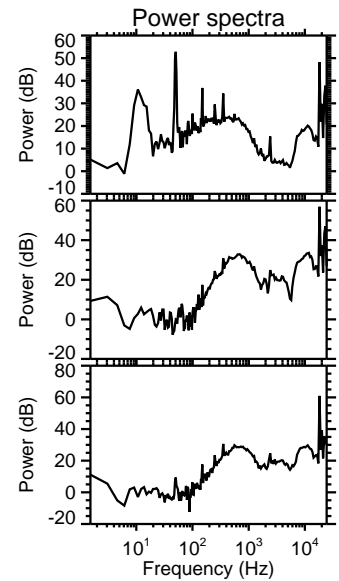
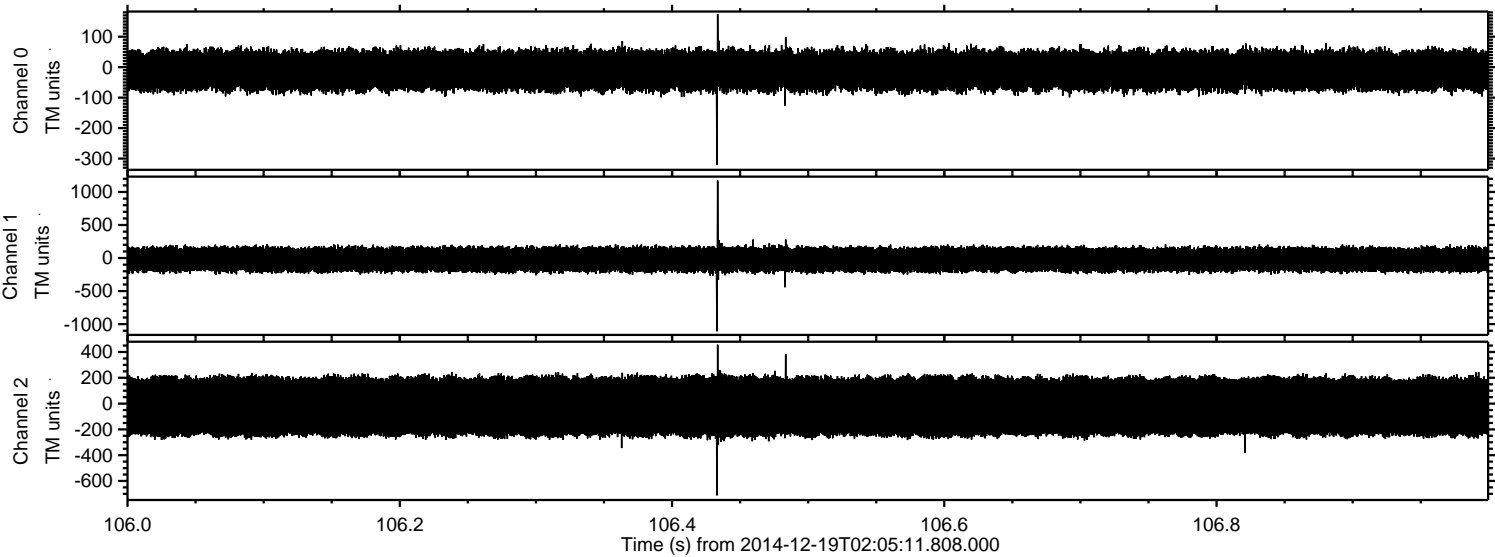


Channel 0
mn: -374
mx: 377
 μ : -10.7
 σ : 37.0

Channel 1
mn: -451
mx: 266
 μ : -21.8
 σ : 103.6

Channel 2
mn: -1227
mx: 1239
 μ : -22.3
 σ : 146.5

Processed Fri Dec 19 03:13:20 2014 by ELM ver.2012-10-06 from 001__elm20141219_020510__dat00.bin



Processed Fri Dec 19 03:13:21 2014 by ELM ver.2012-10-06 from 001__elm20141219_020510__dat00.bin

