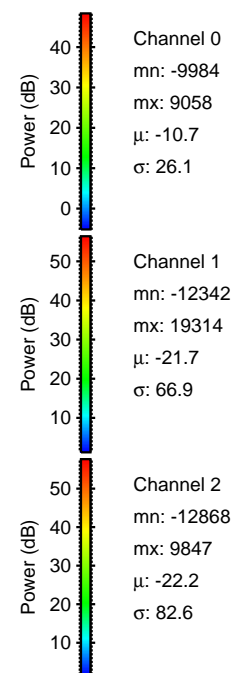
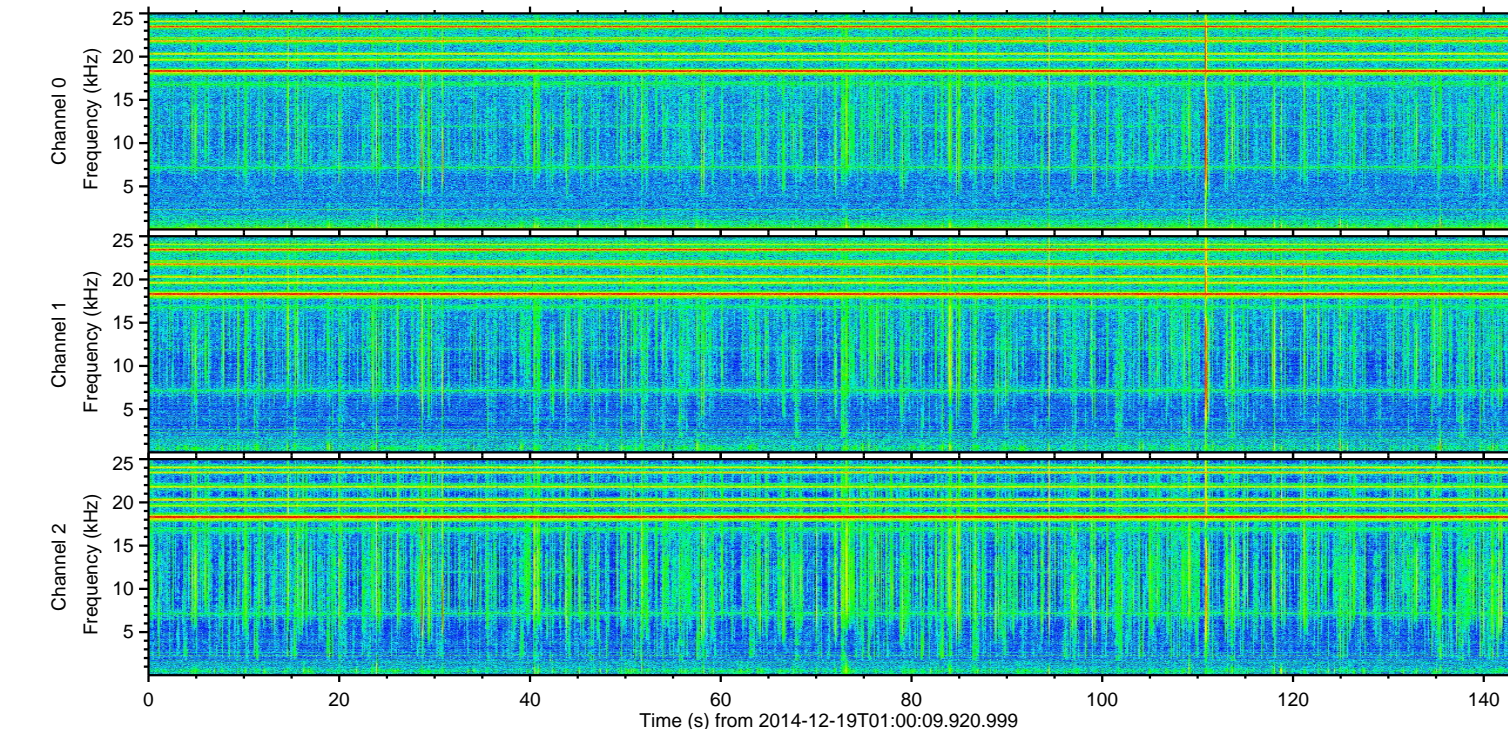
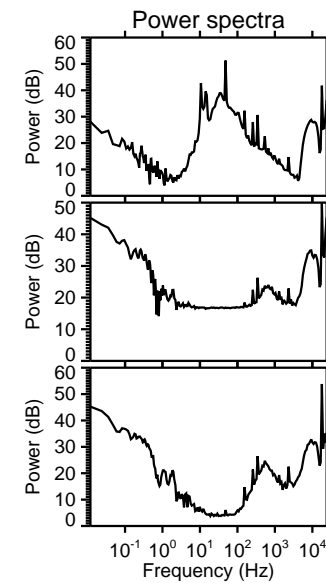
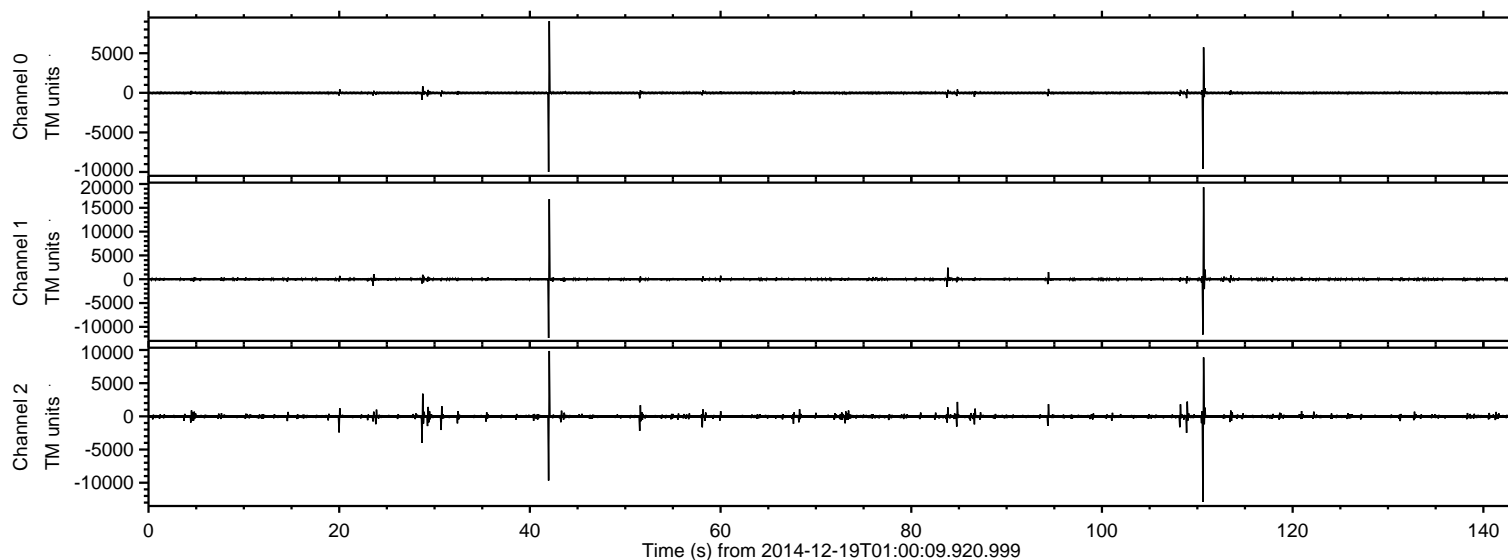


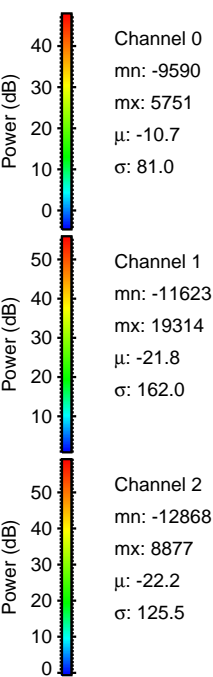
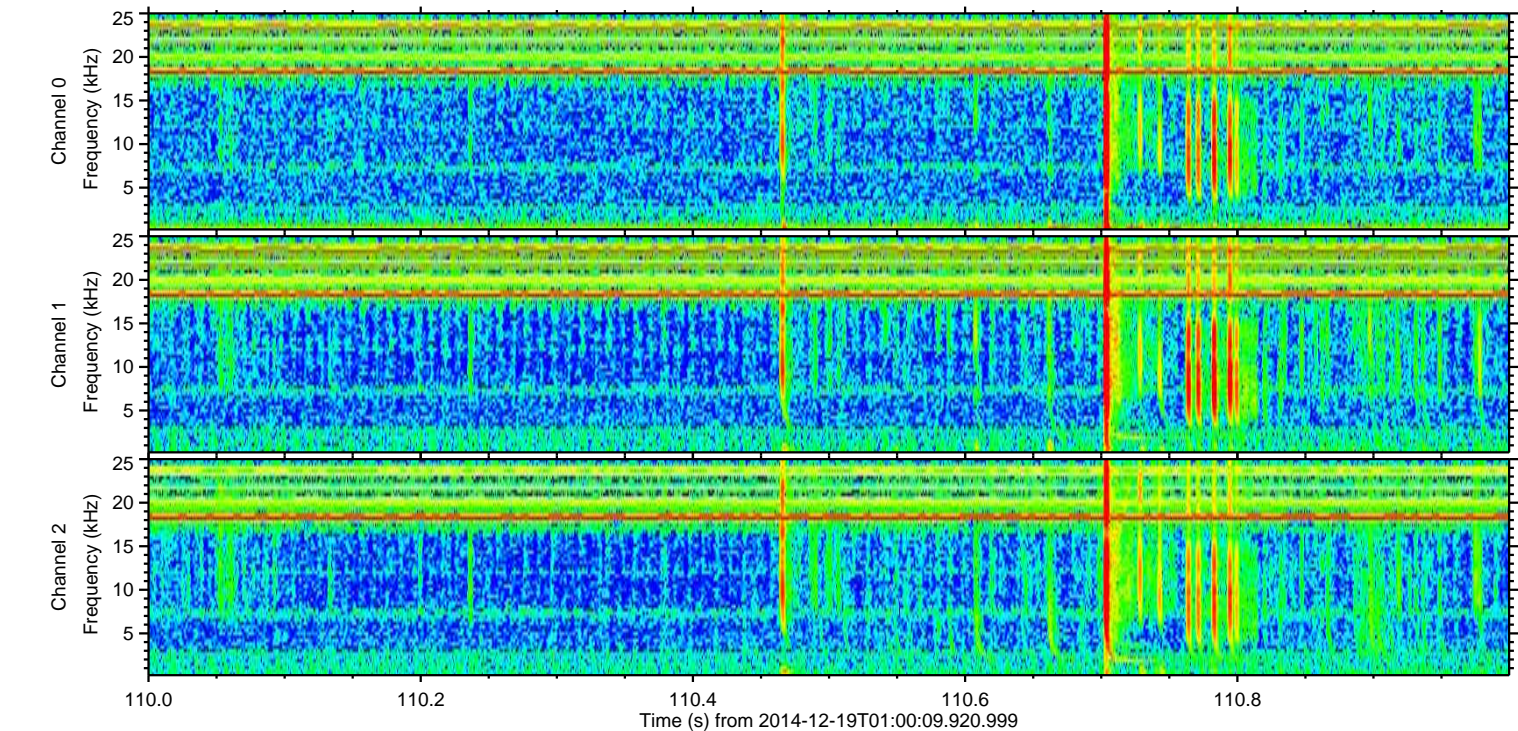
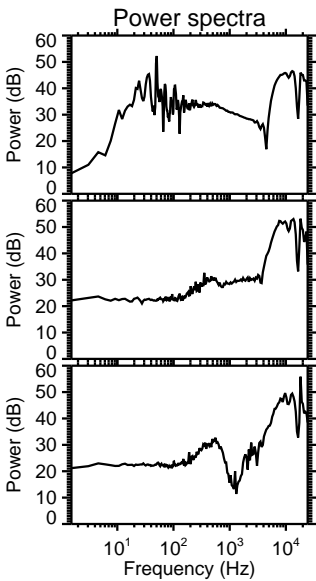
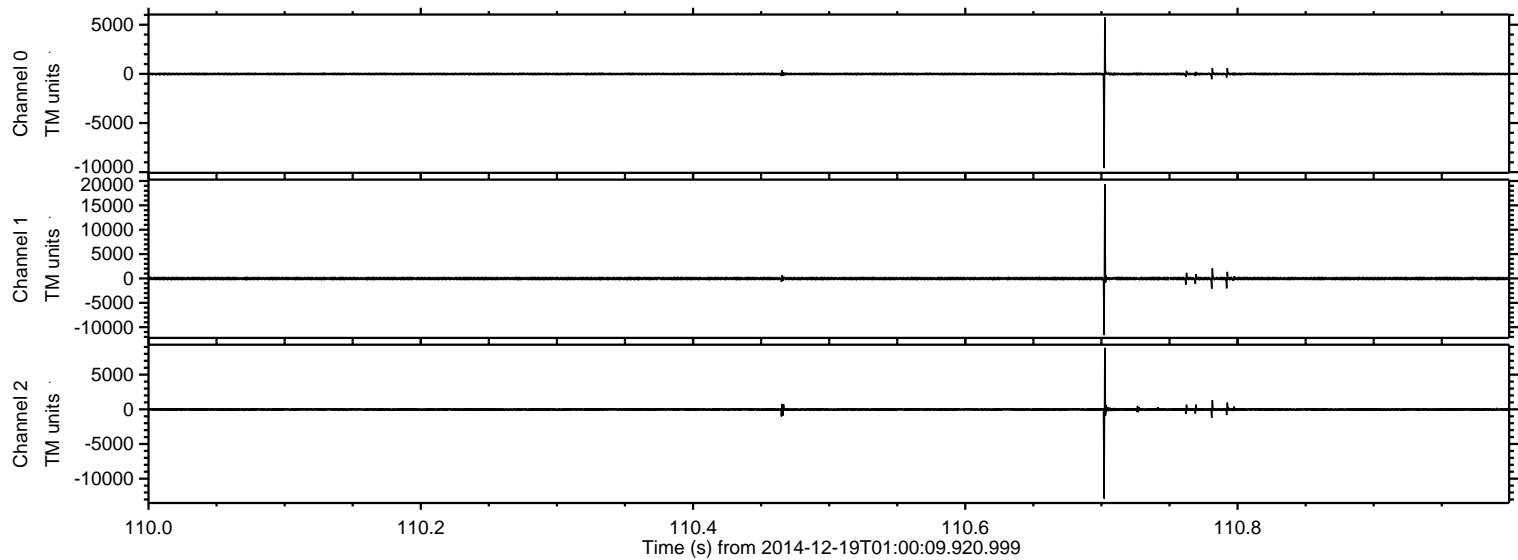
ELMAVAN 3D WAVEFORMS (Measured data sampled at 50 kHz) 49551 packets of 144 samples from 2014-12-19T01:00:09.920.999.

Processed Fri Dec 19 02:10:21 2014 by ELM ver.2012-10-06 from 001__elm20141219_010008__dat00.bin



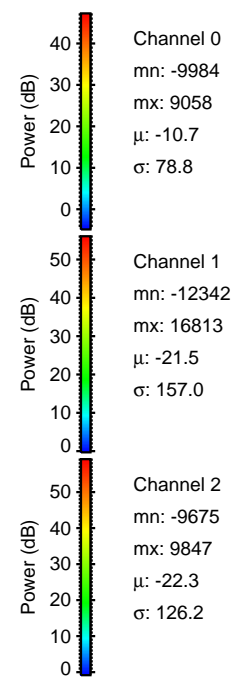
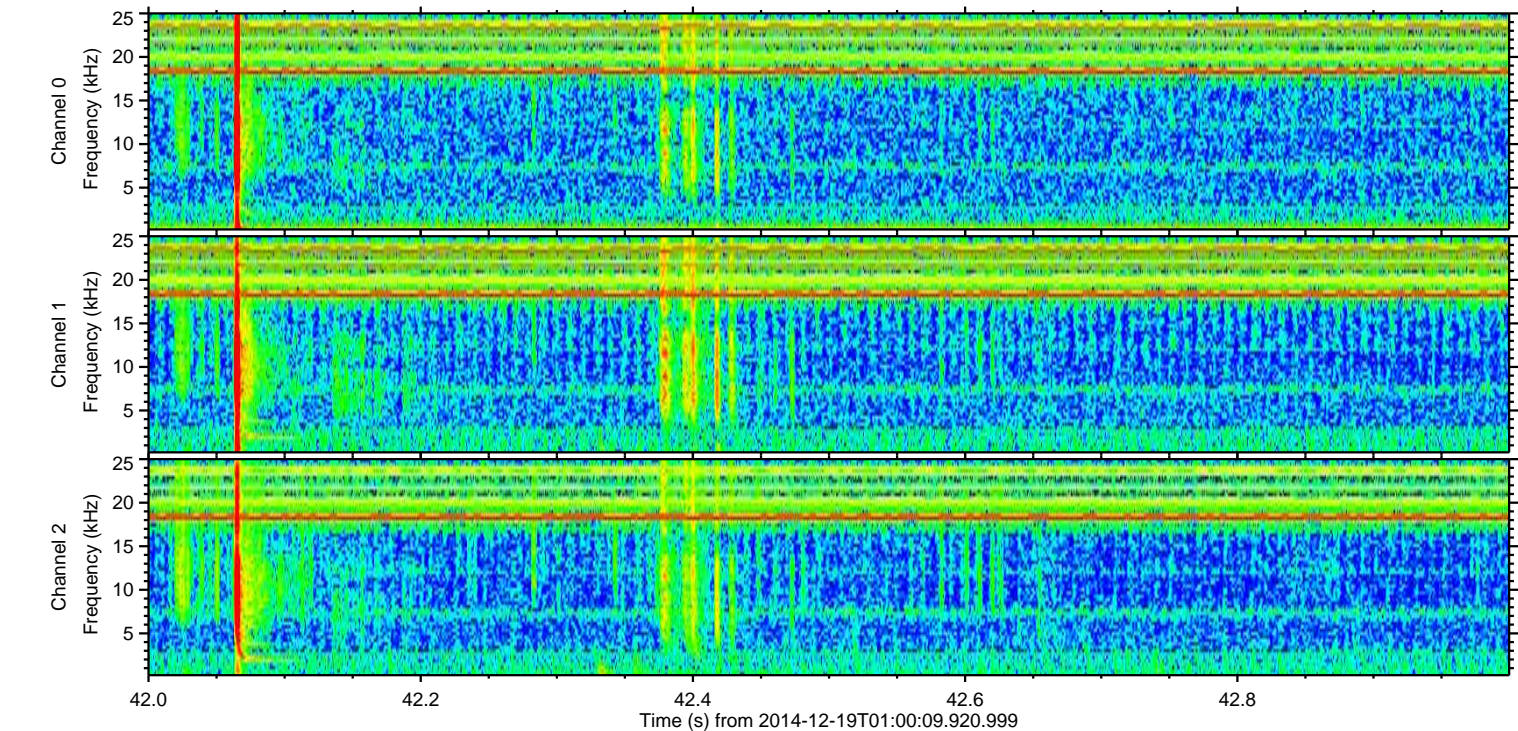
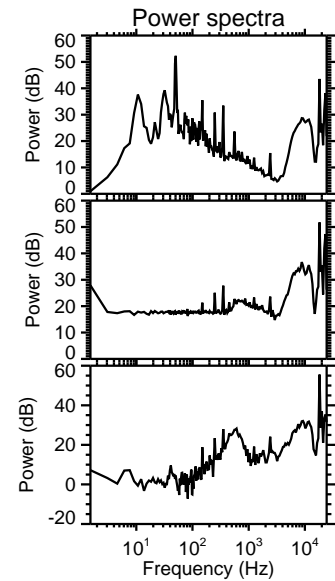
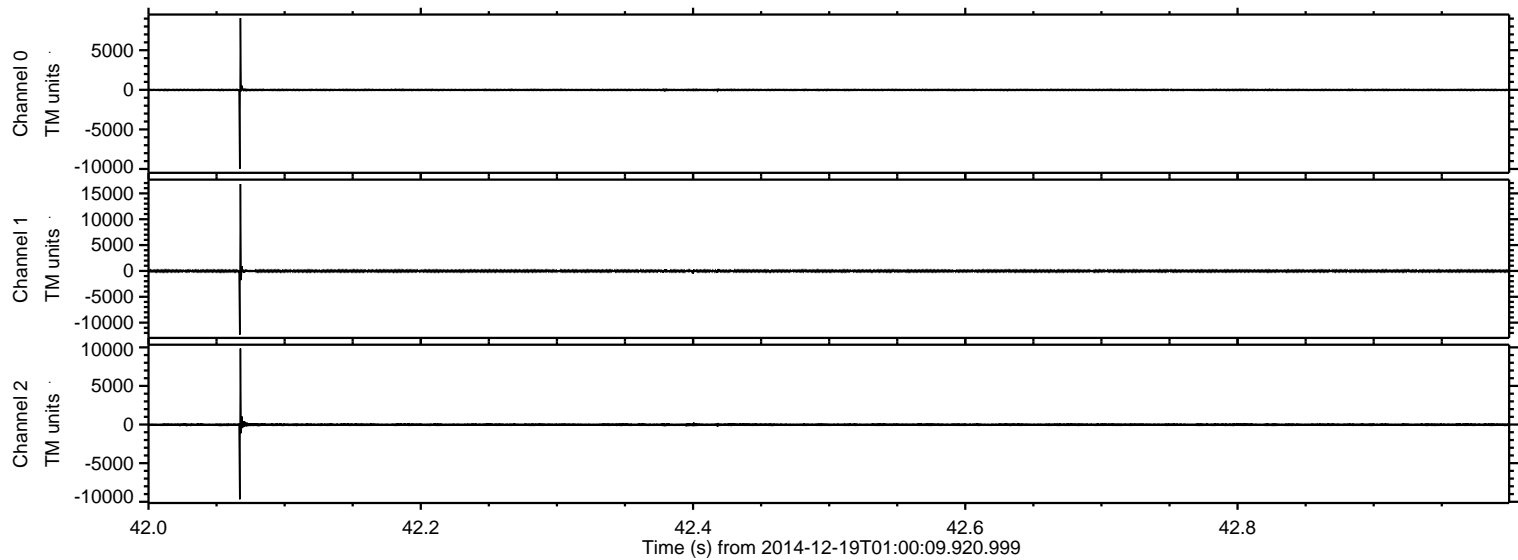
ELMAVAN 3D WAVEFORMS (Measured data sampled at 50 kHz) 49551 packets of 144 samples from 2014-12-19T01:00:09.920.999. Part 111/143

Processed Fri Dec 19 02:10:37 2014 by ELM ver.2012-10-06 from 001__elm20141219_010008__dat00.bin



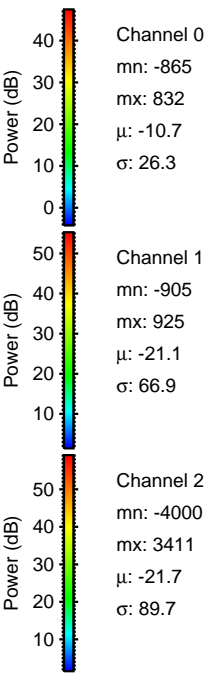
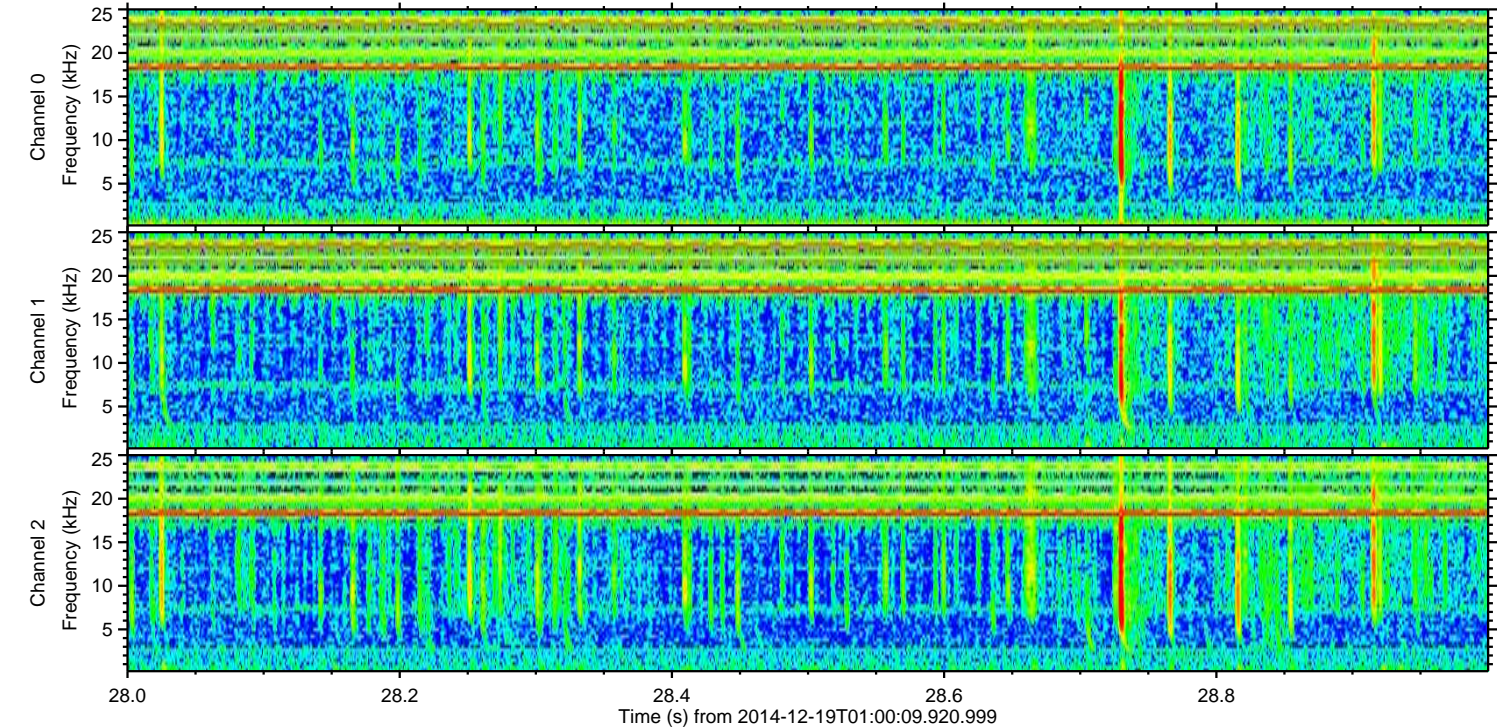
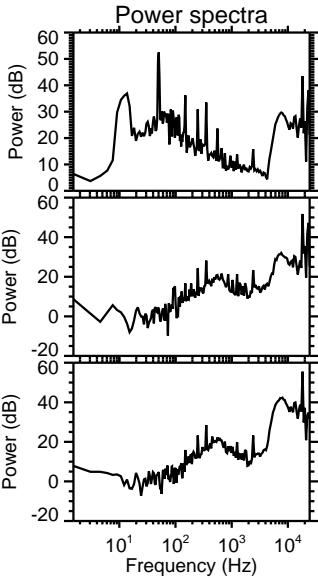
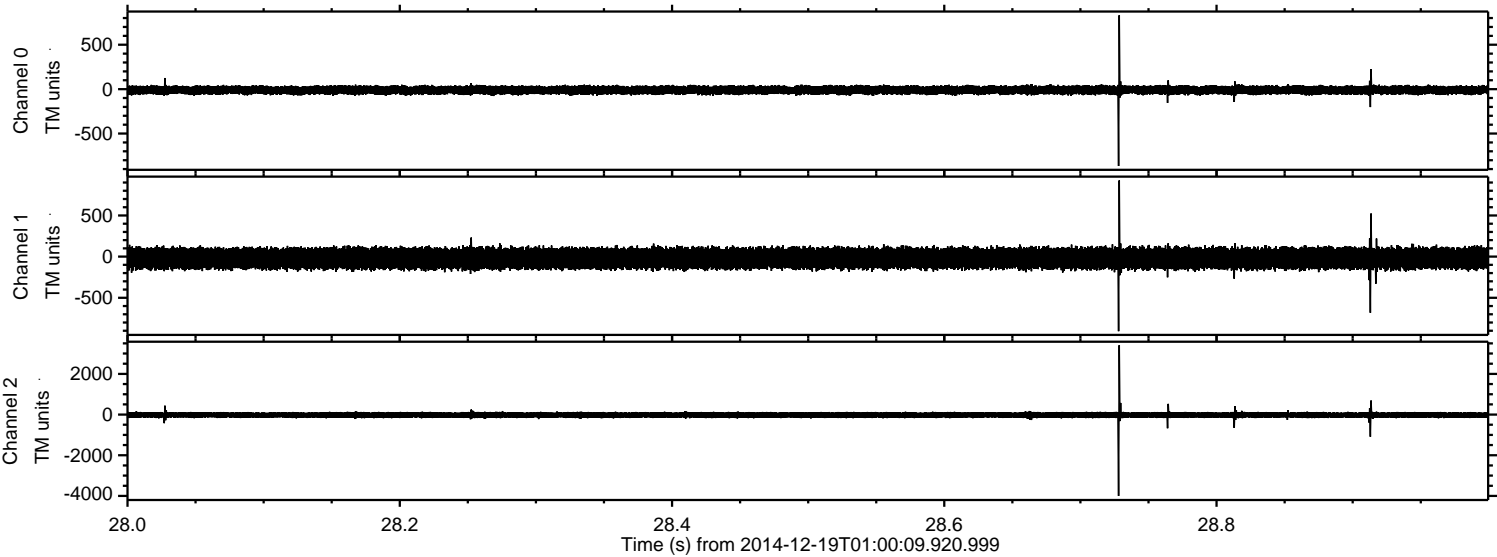
ELMAVAN 3D WAVEFORMS (Measured data sampled at 50 kHz) 49551 packets of 144 samples from 2014-12-19T01:00:09.920.999. Part 43/143

Processed Fri Dec 19 02:10:38 2014 by ELM ver.2012-10-06 from 001__elm20141219_010008__dat00.bin



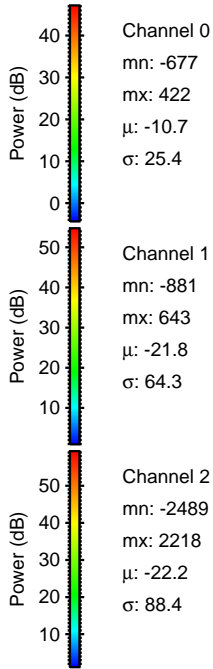
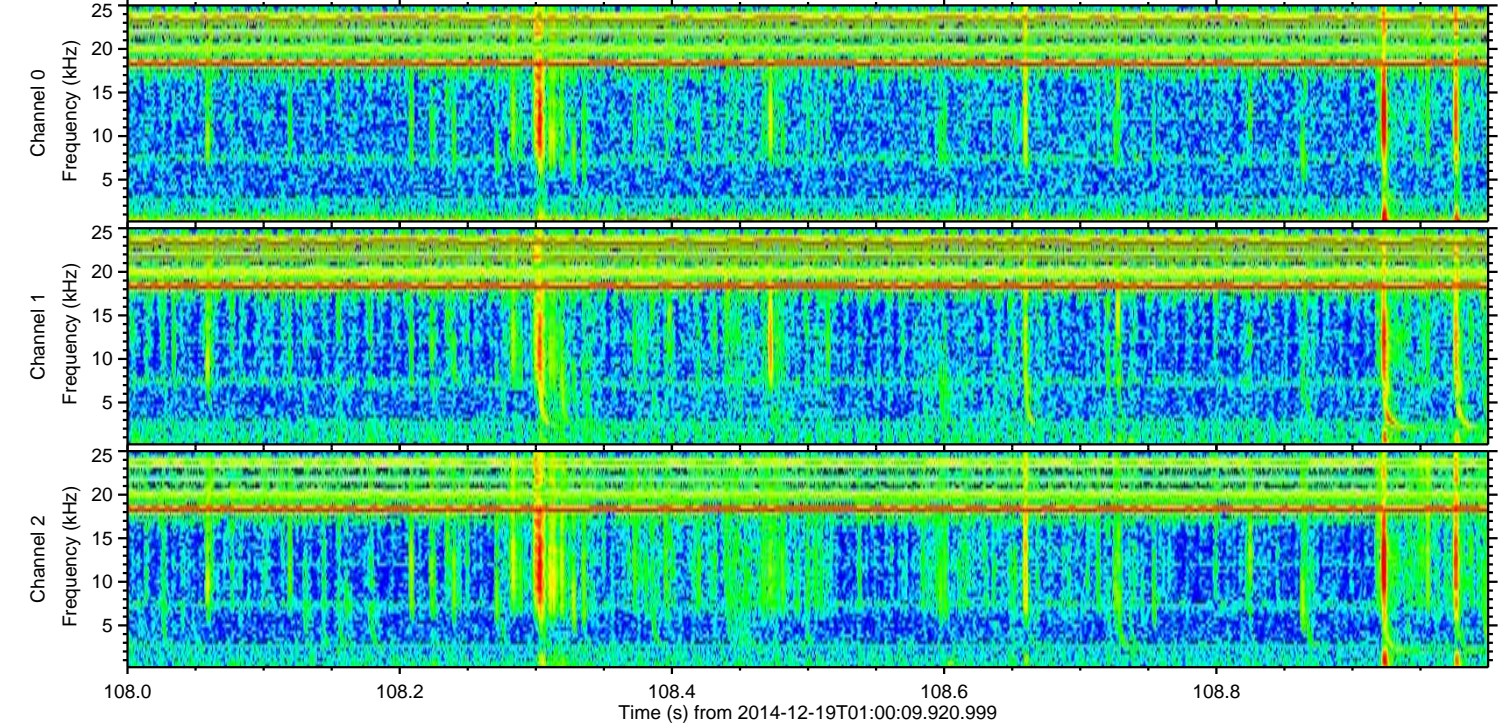
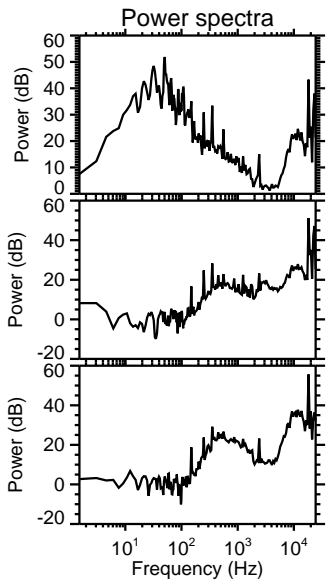
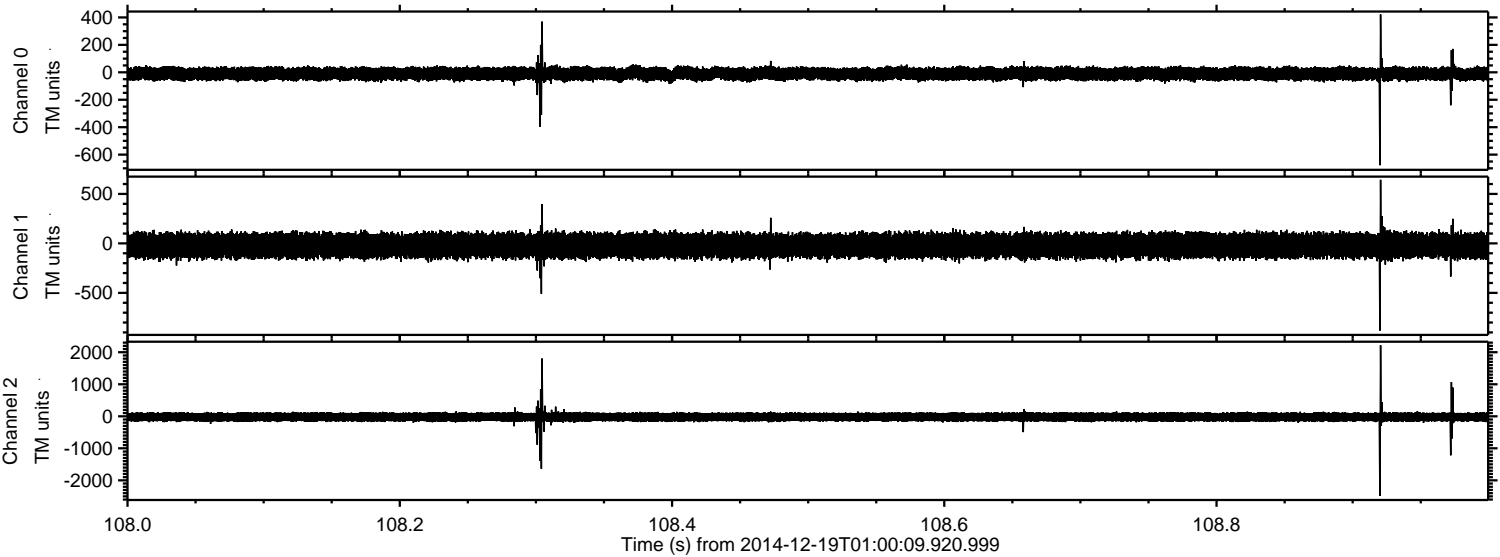
ELMAVAN 3D WAVEFORMS (Measured data sampled at 50 kHz) 49551 packets of 144 samples from 2014-12-19T01:00:09.920.999. Part 29/143

Processed Fri Dec 19 02:10:39 2014 by ELM ver.2012-10-06 from 001__elm20141219_010008__dat00.bin

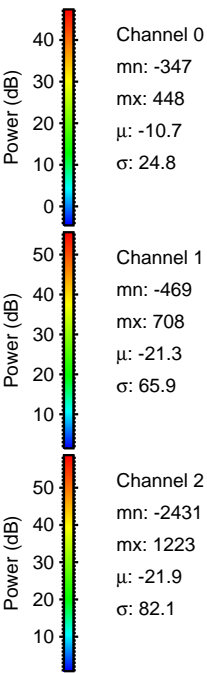
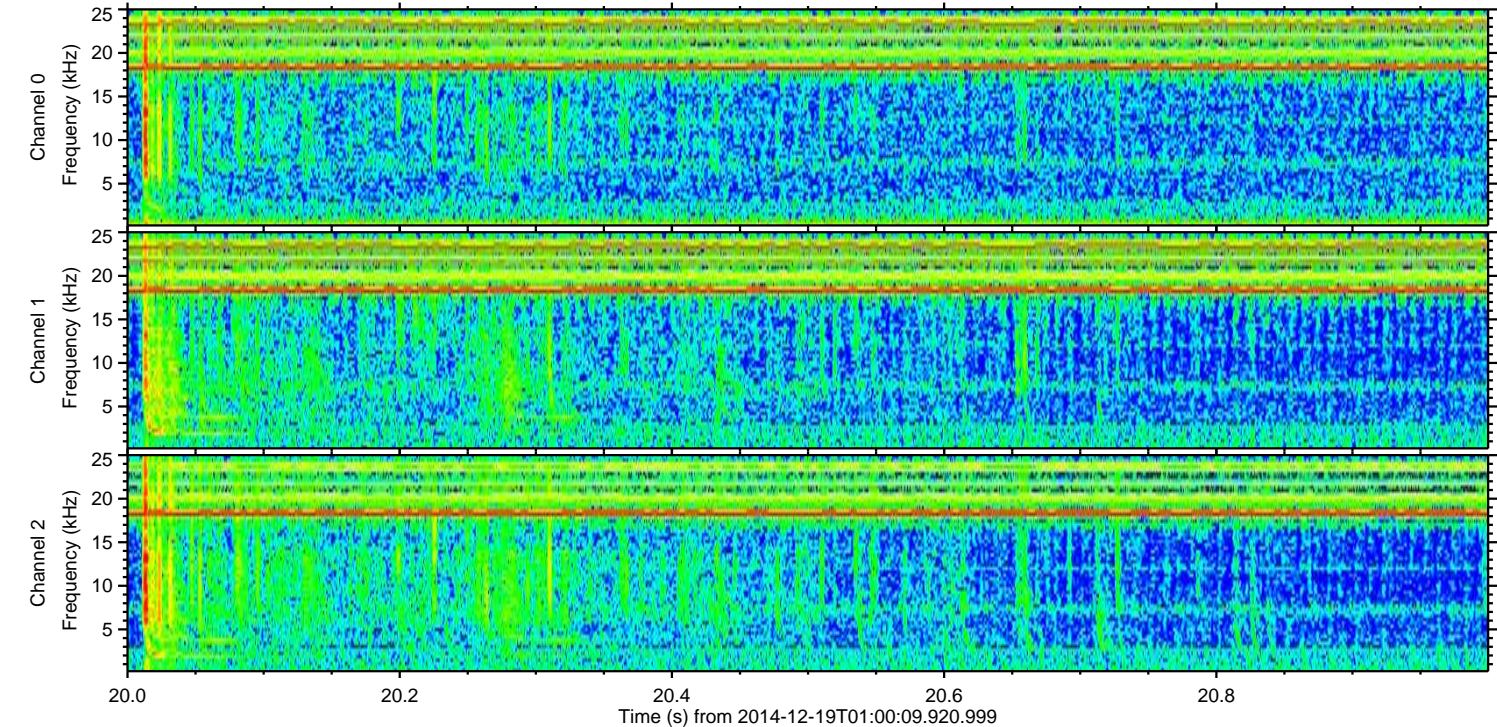
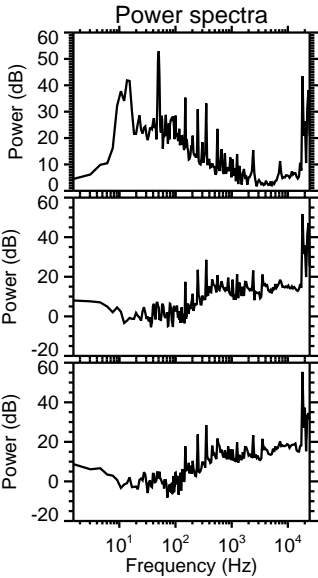
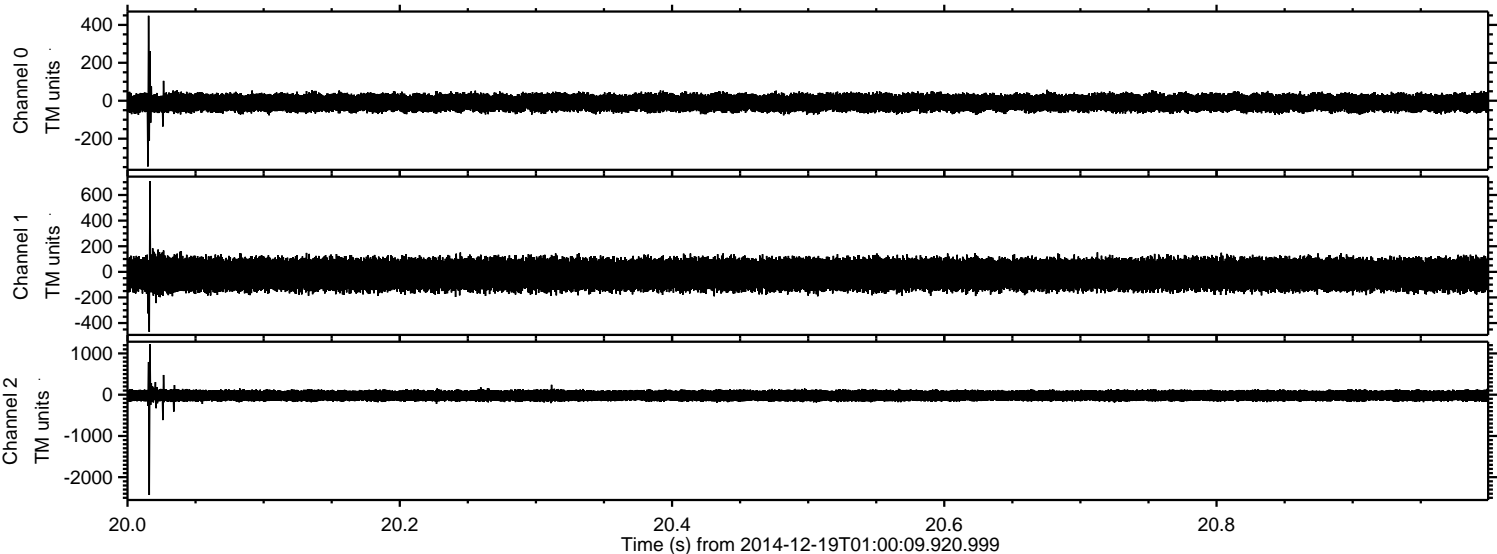


ELMAVAN 3D WAVEFORMS (Measured data sampled at 50 kHz) 49551 packets of 144 samples from 2014-12-19T01:00:09.920.999. Part 109/143

Processed Fri Dec 19 02:10:40 2014 by ELM ver.2012-10-06 from 001__elm20141219_010008__dat00.bin

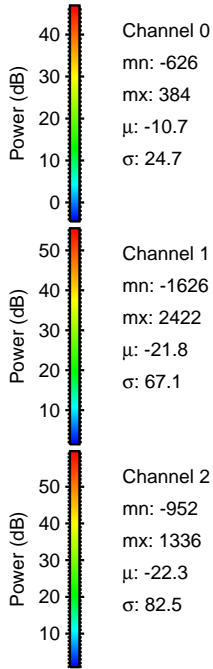
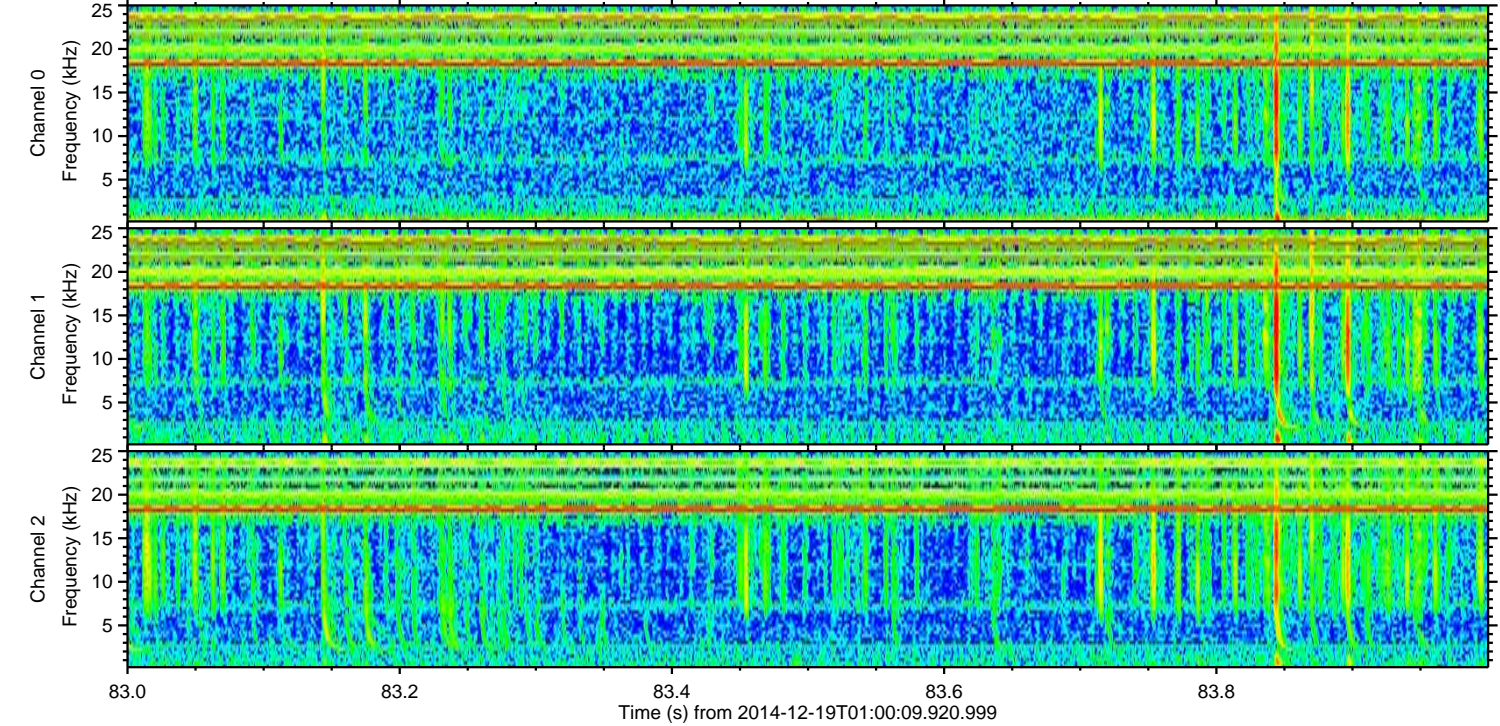
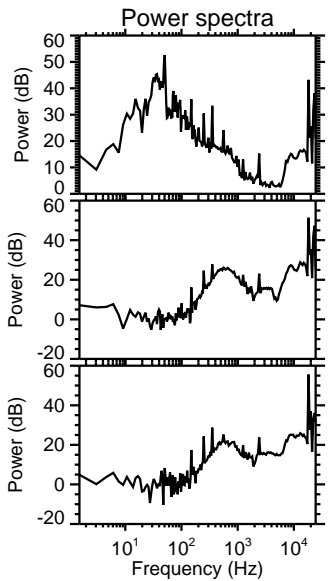
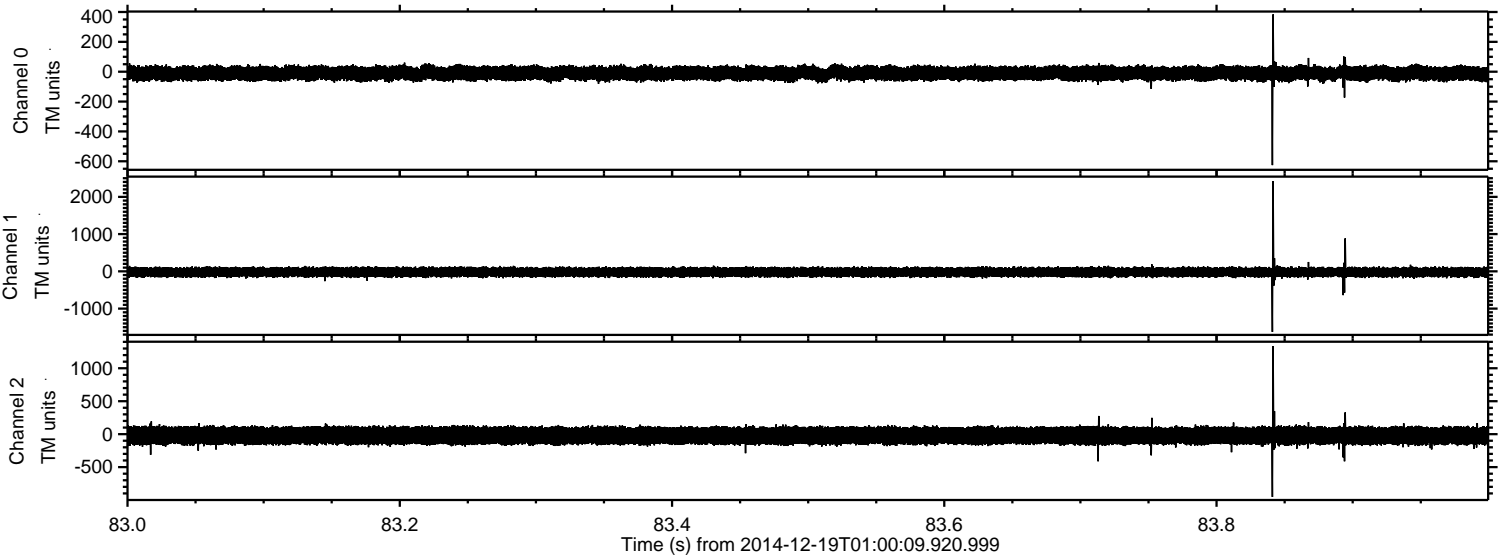


Processed Fri Dec 19 02:10:41 2014 by ELM ver.2012-10-06 from 001__elm20141219_010008__dat00.bin

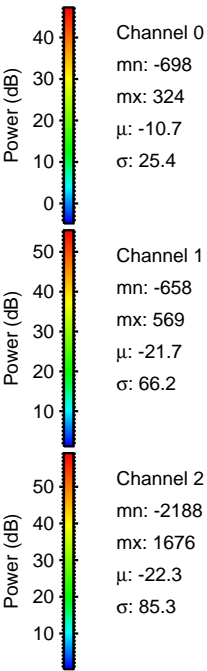
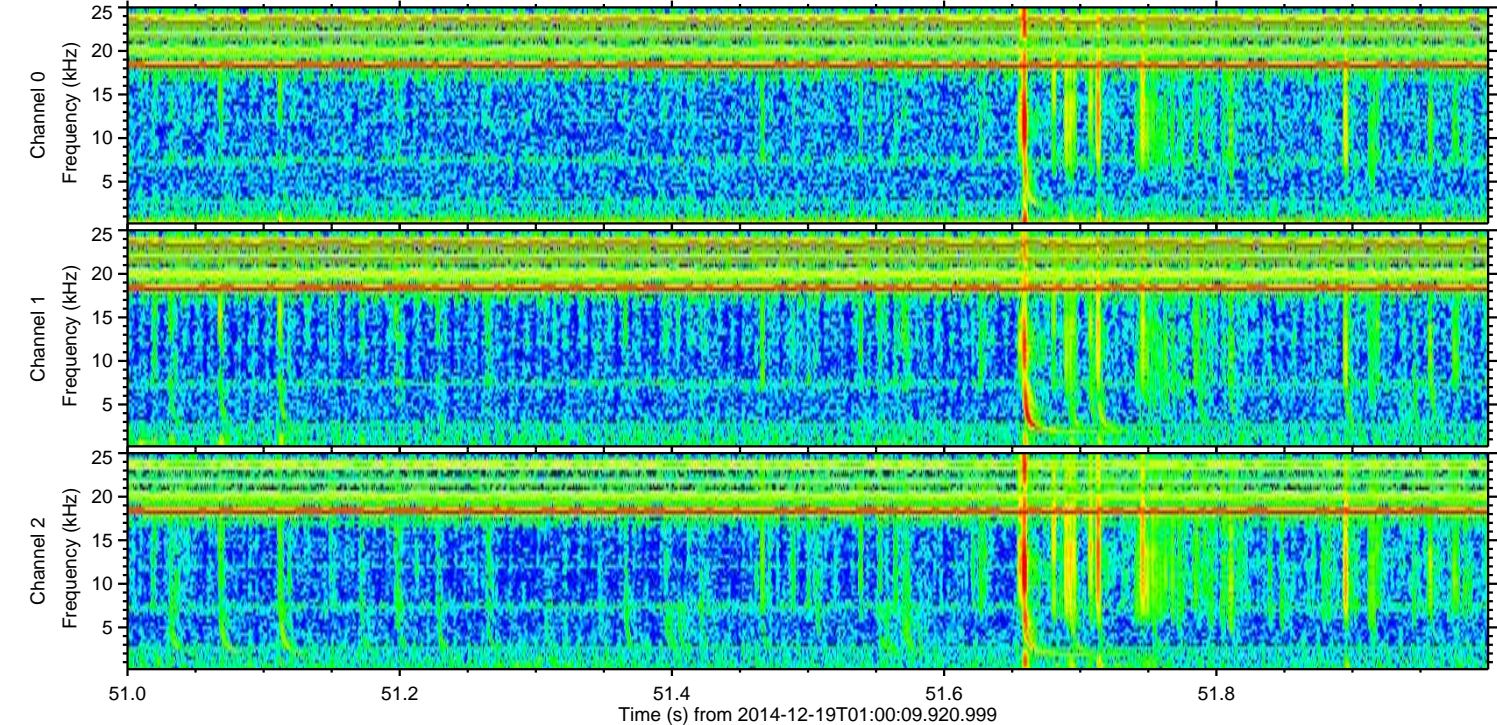
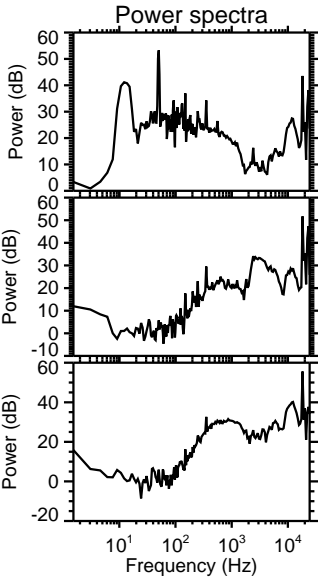
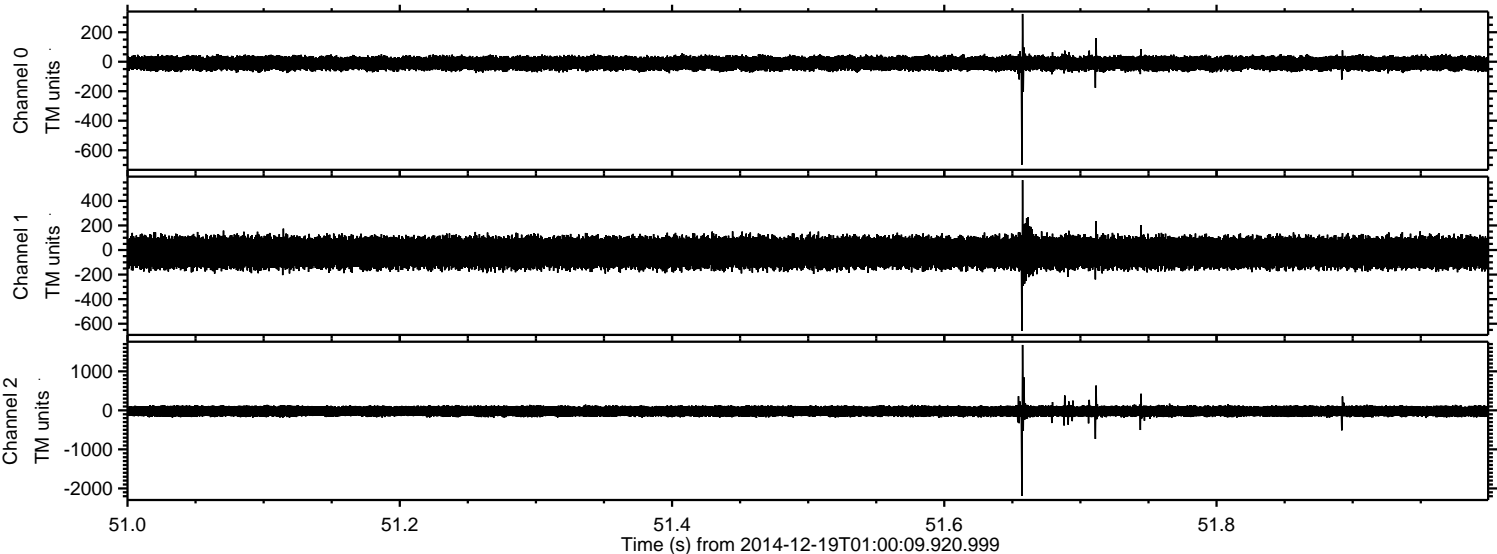


ELMAVAN 3D WAVEFORMS (Measured data sampled at 50 kHz) 49551 packets of 144 samples from 2014-12-19T01:00:09.920.999. Part 84/143

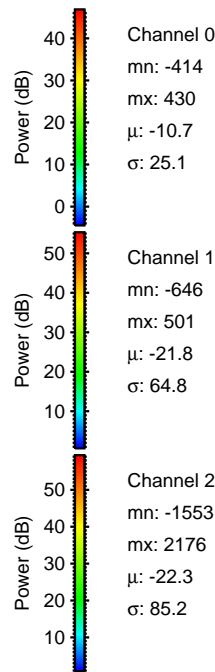
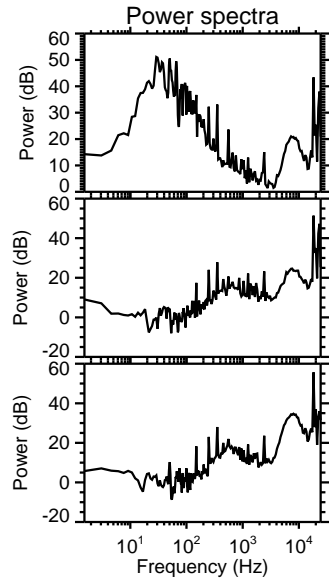
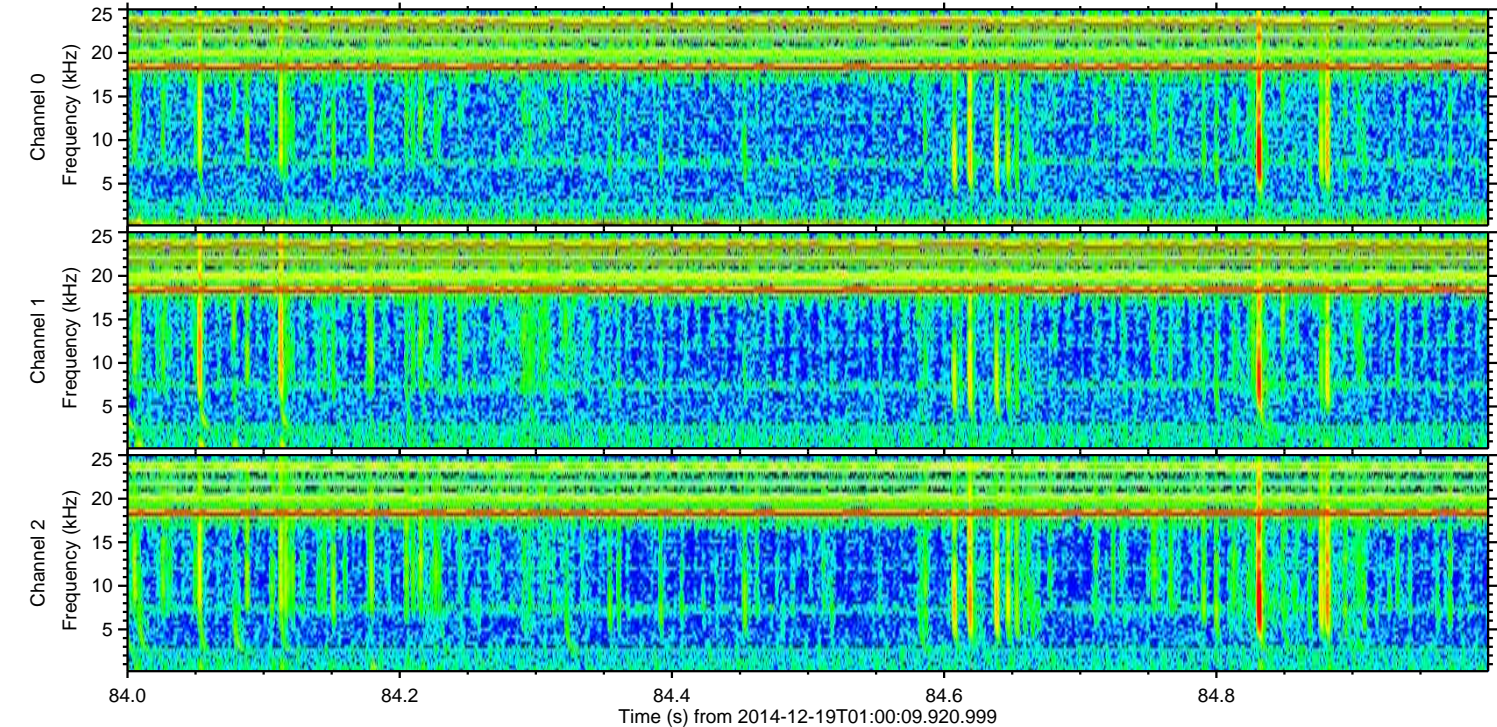
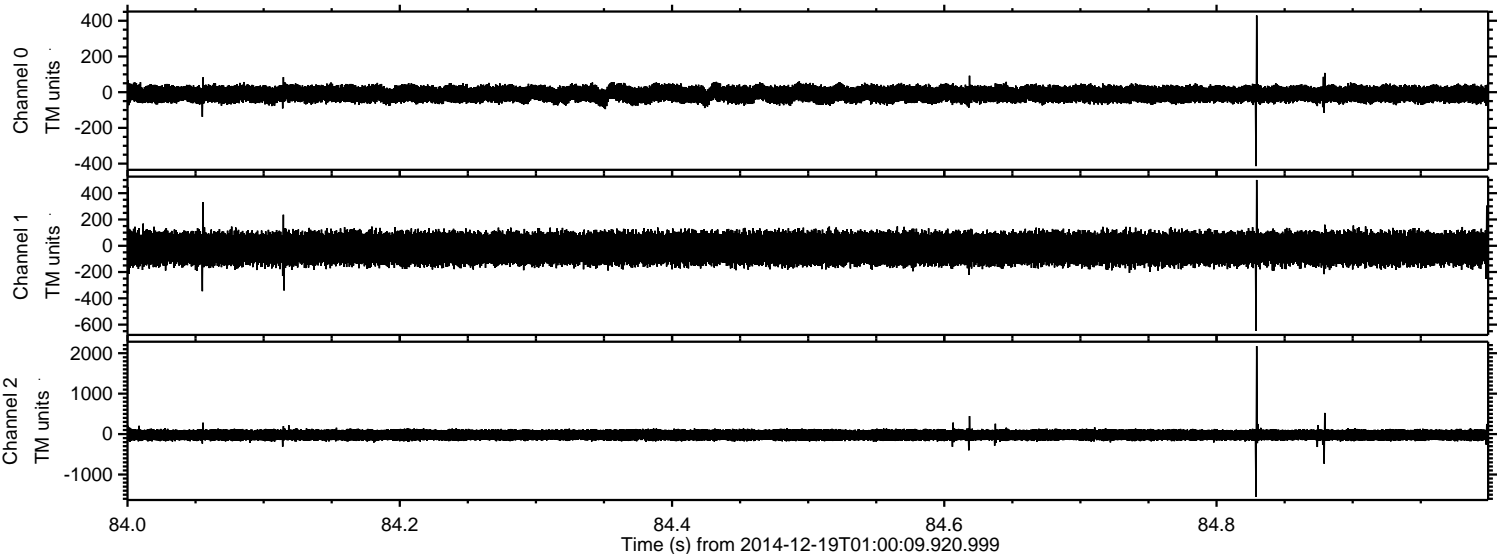
Processed Fri Dec 19 02:10:42 2014 by ELM ver.2012-10-06 from 001__elm20141219_010008__dat00.bin



Processed Fri Dec 19 02:10:43 2014 by ELM ver.2012-10-06 from 001__elm20141219_010008__dat00.bin



Processed Fri Dec 19 02:10:44 2014 by ELM ver.2012-10-06 from 001__elm20141219_010008__dat00.bin



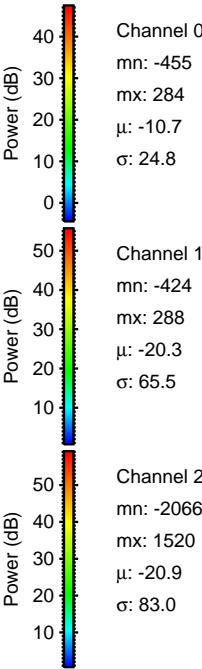
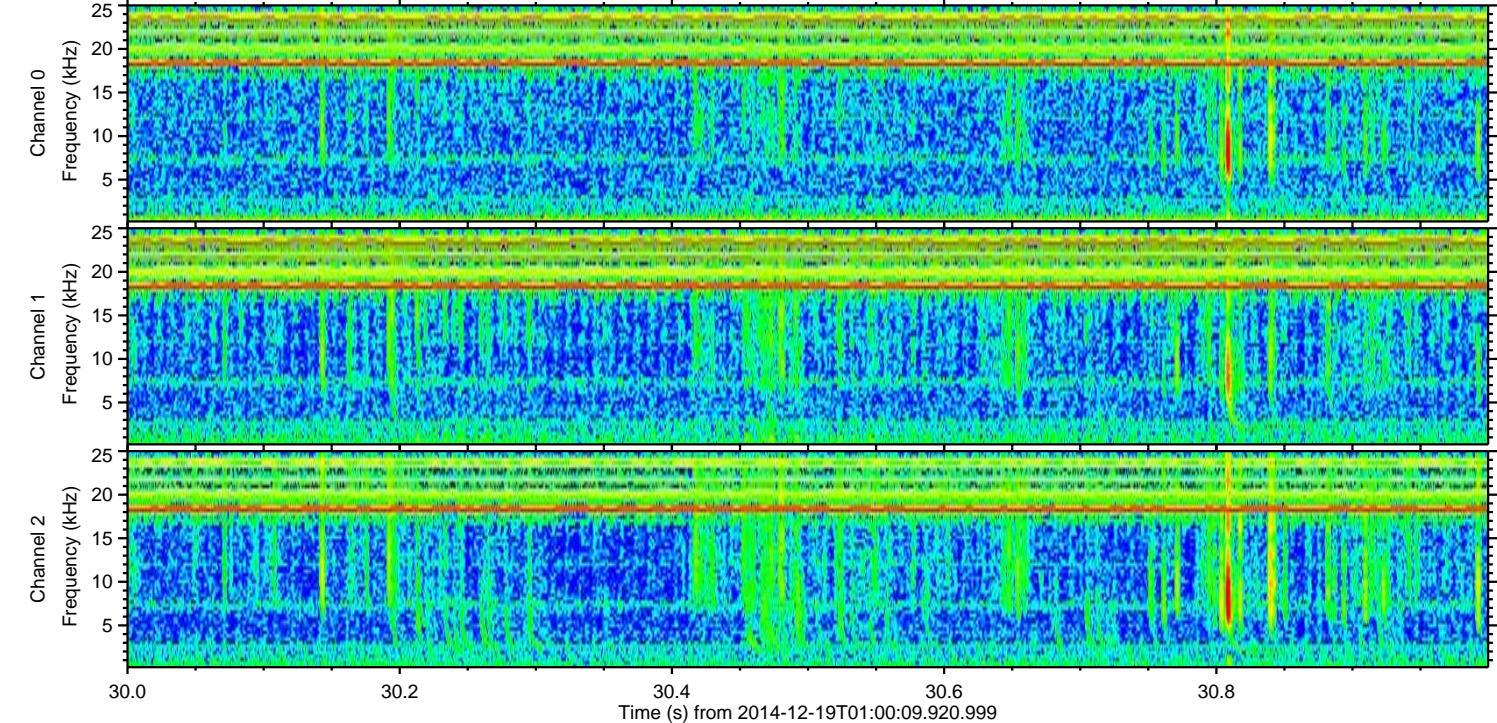
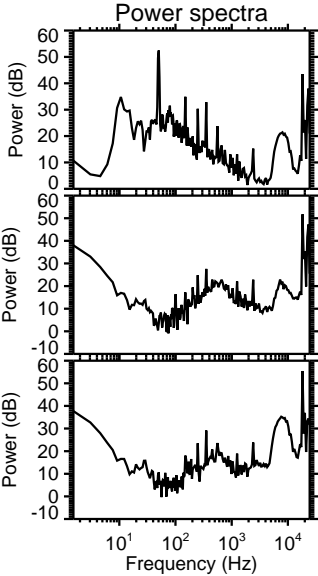
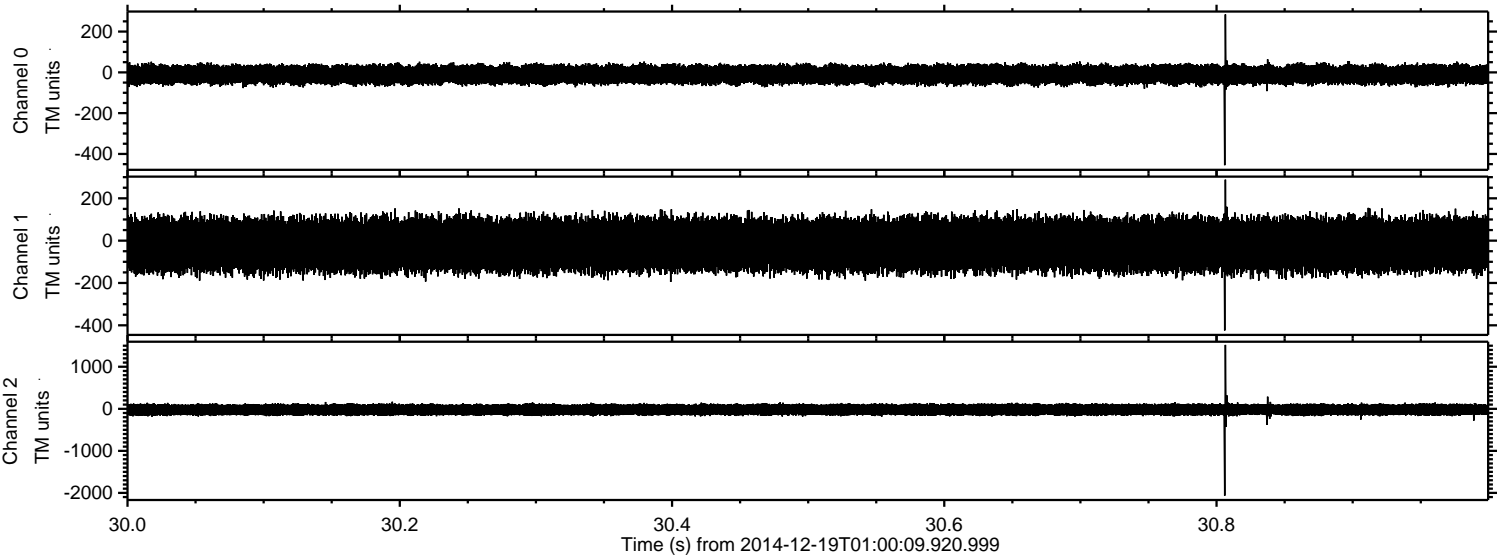
Power spectra

Channel 0
mn: -414
mx: 430
 μ : -10.7
 σ : 25.1

Channel 1
mn: -646
mx: 501
 μ : -21.8
 σ : 64.8

Channel 2
mn: -1553
mx: 2176
 μ : -22.3
 σ : 85.2

Processed Fri Dec 19 02:10:46 2014 by ELM ver.2012-10-06 from 001__elm20141219_010008__dat00.bin



Processed Fri Dec 19 02:10:47 2014 by ELM ver.2012-10-06 from 001__elm20141219_010008__dat00.bin

