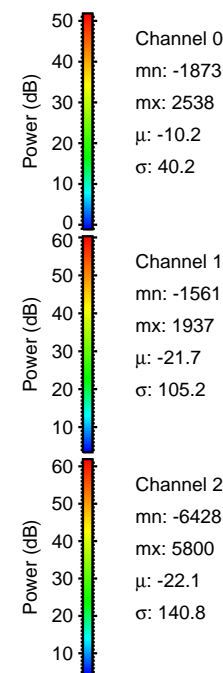
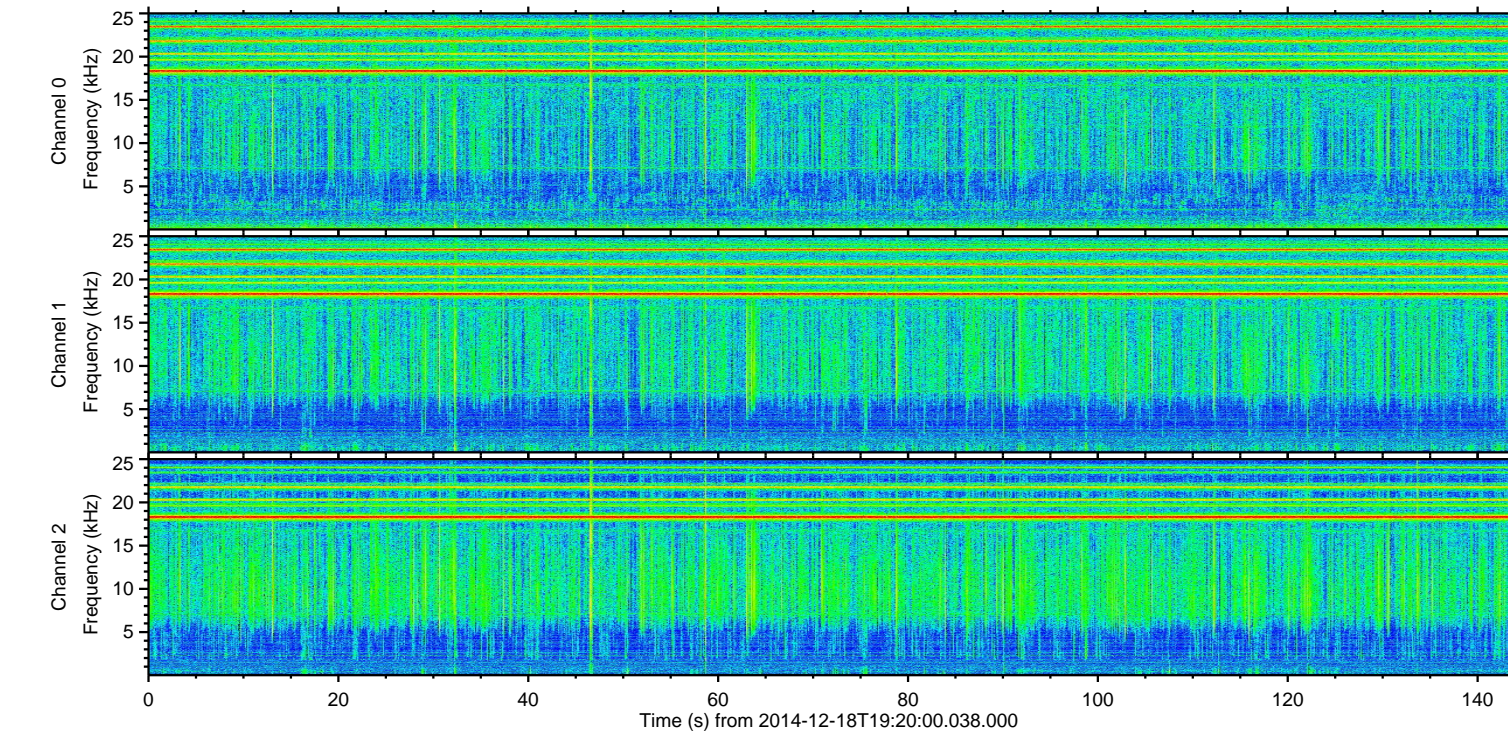
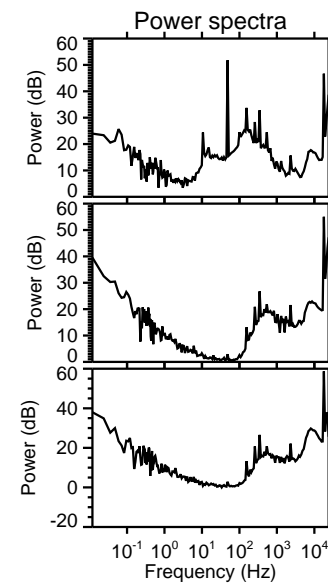
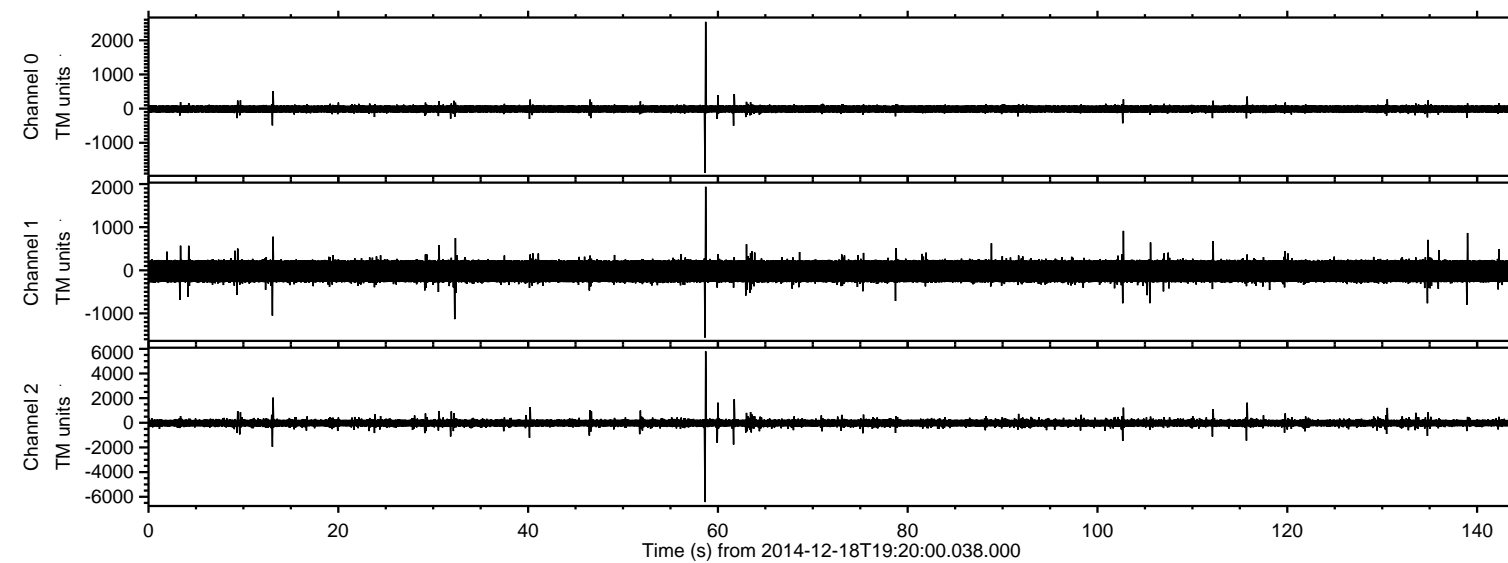
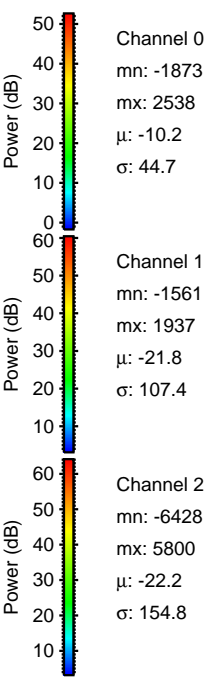
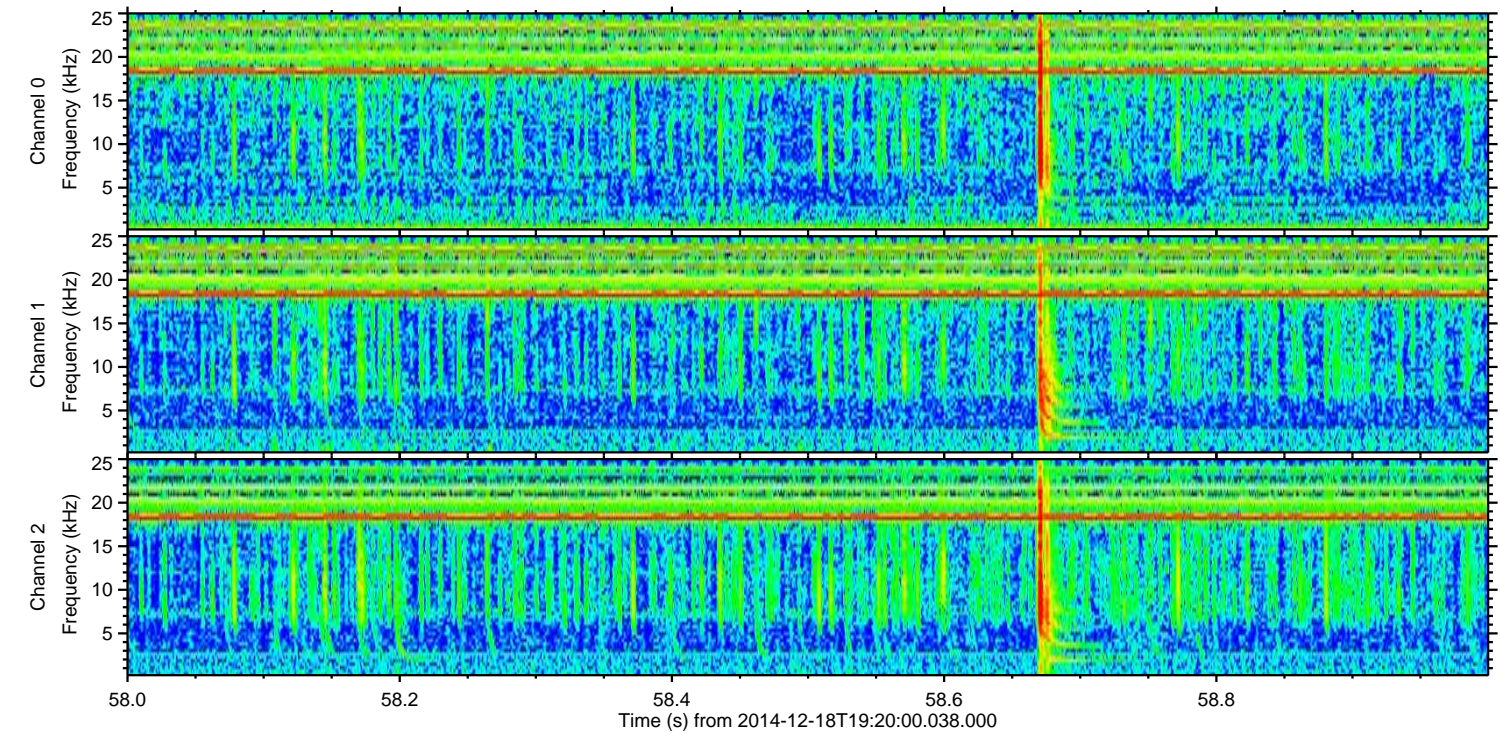
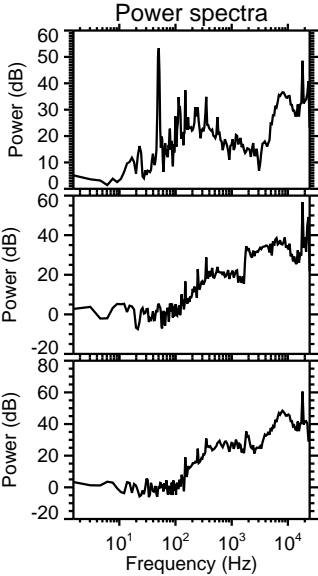
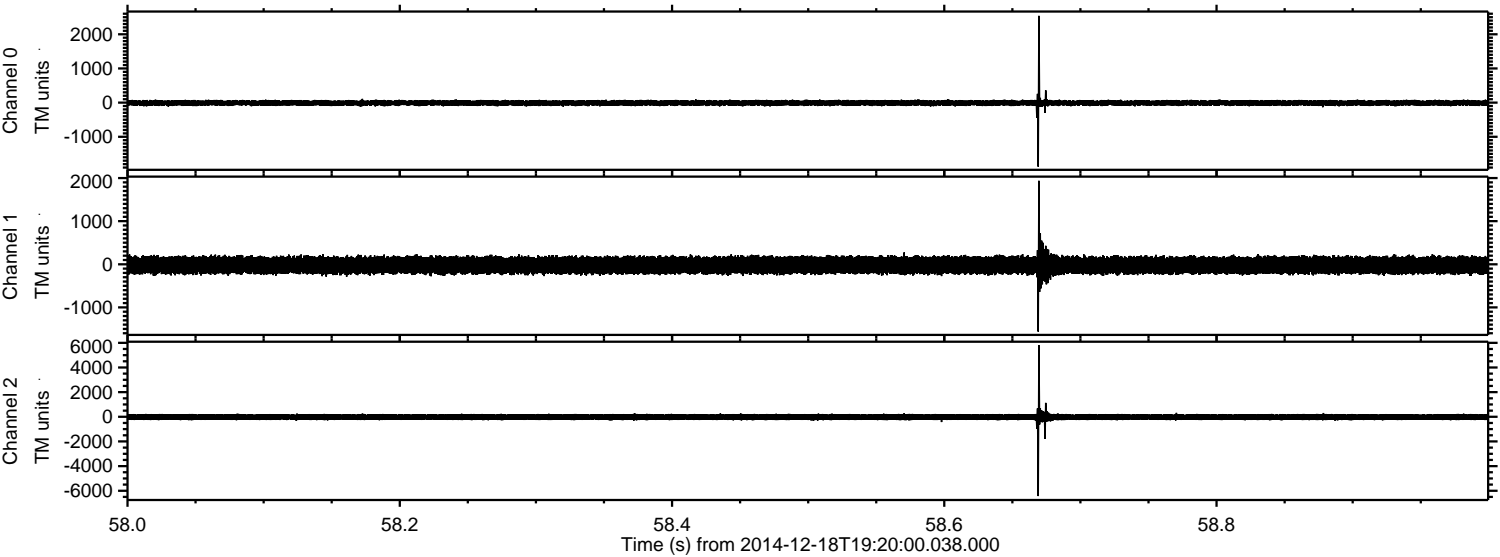


ELMAVAN 3D WAVEFORMS (Measured data sampled at 50 kHz) 49784 packets of 144 samples from 2014-12-18T19:20:00.038.000.

Processed Thu Dec 18 20:27:51 2014 by ELM ver.2012-10-06 from 001__elm20141218_191959__dat00.bin



Processed Thu Dec 18 20:28:04 2014 by ELM ver.2012-10-06 from 001__elm20141218_191959__dat00.bin



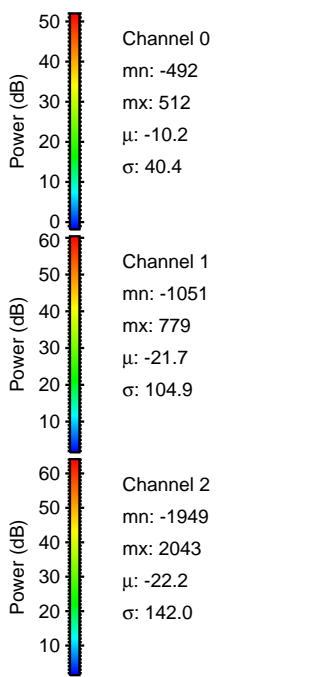
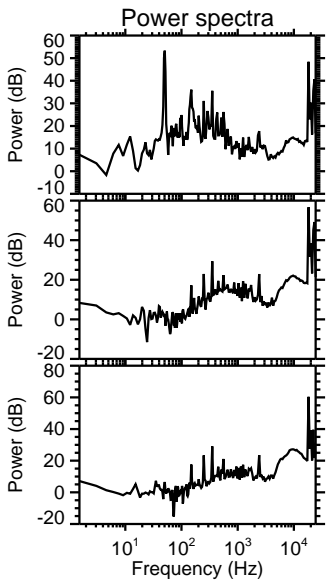
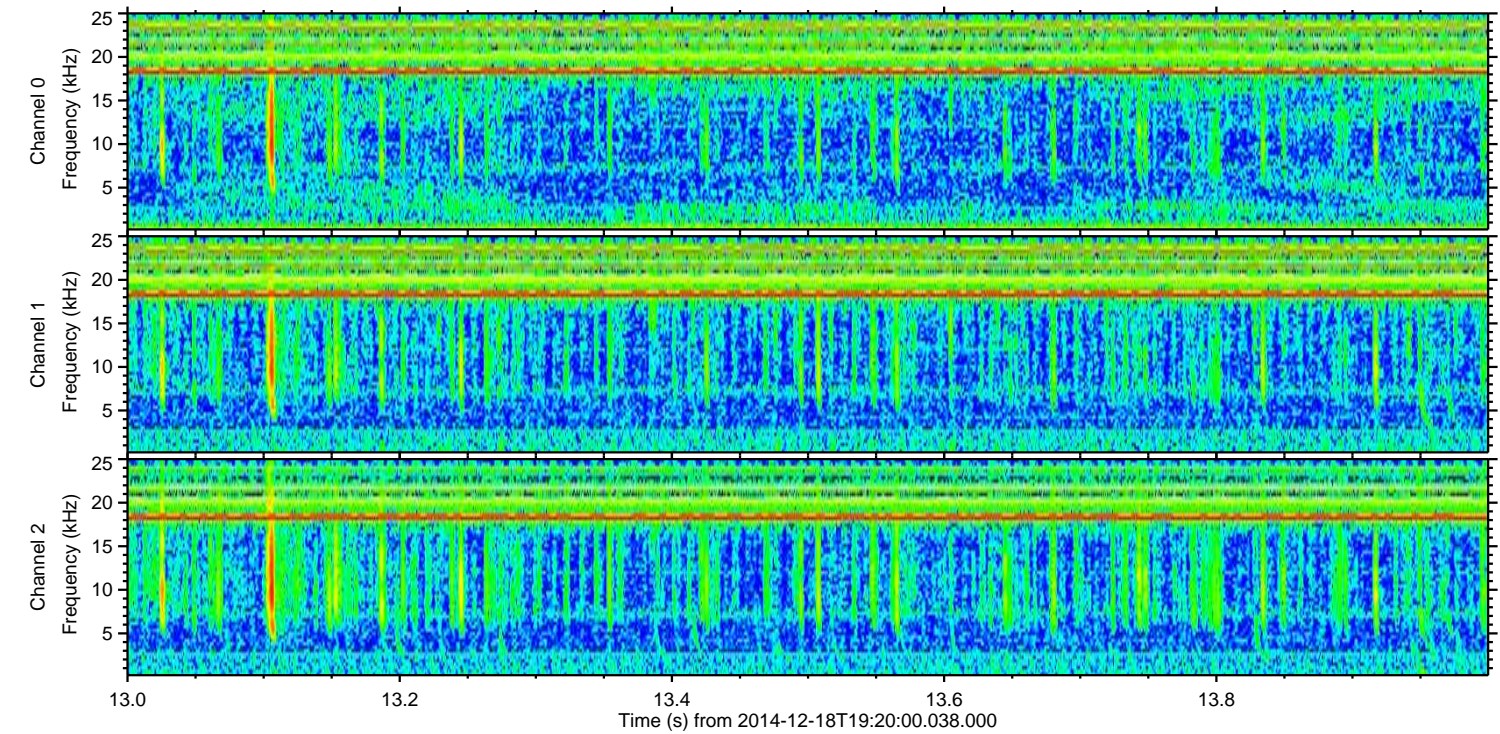
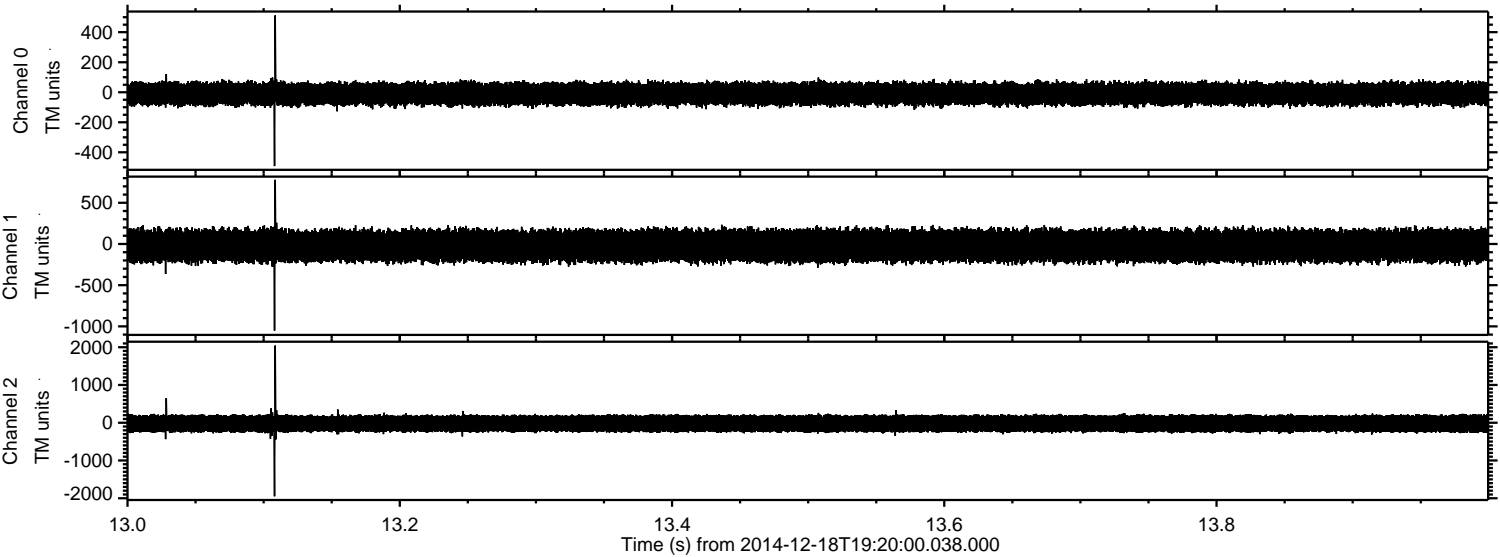
Channel 0
mn: -1873
mx: 2538
 μ : -10.2
 σ : 44.7

Channel 1
mn: -1561
mx: 1937
 μ : -21.8
 σ : 107.4

Channel 2
mn: -6428
mx: 5800
 μ : -22.2
 σ : 154.8

ELMAVAN 3D WAVEFORMS (Measured data sampled at 50 kHz) 49784 packets of 144 samples from 2014-12-18T19:20:00.038.000. Part 14/144

Processed Thu Dec 18 20:28:05 2014 by ELM ver.2012-10-06 from 001__elm20141218_191959__dat00.bin



Power spectra

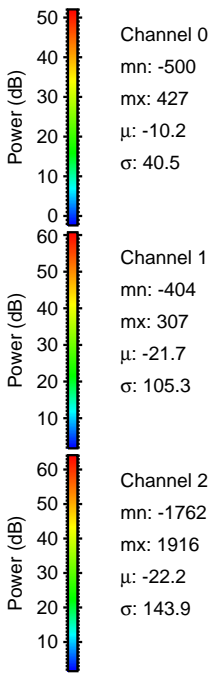
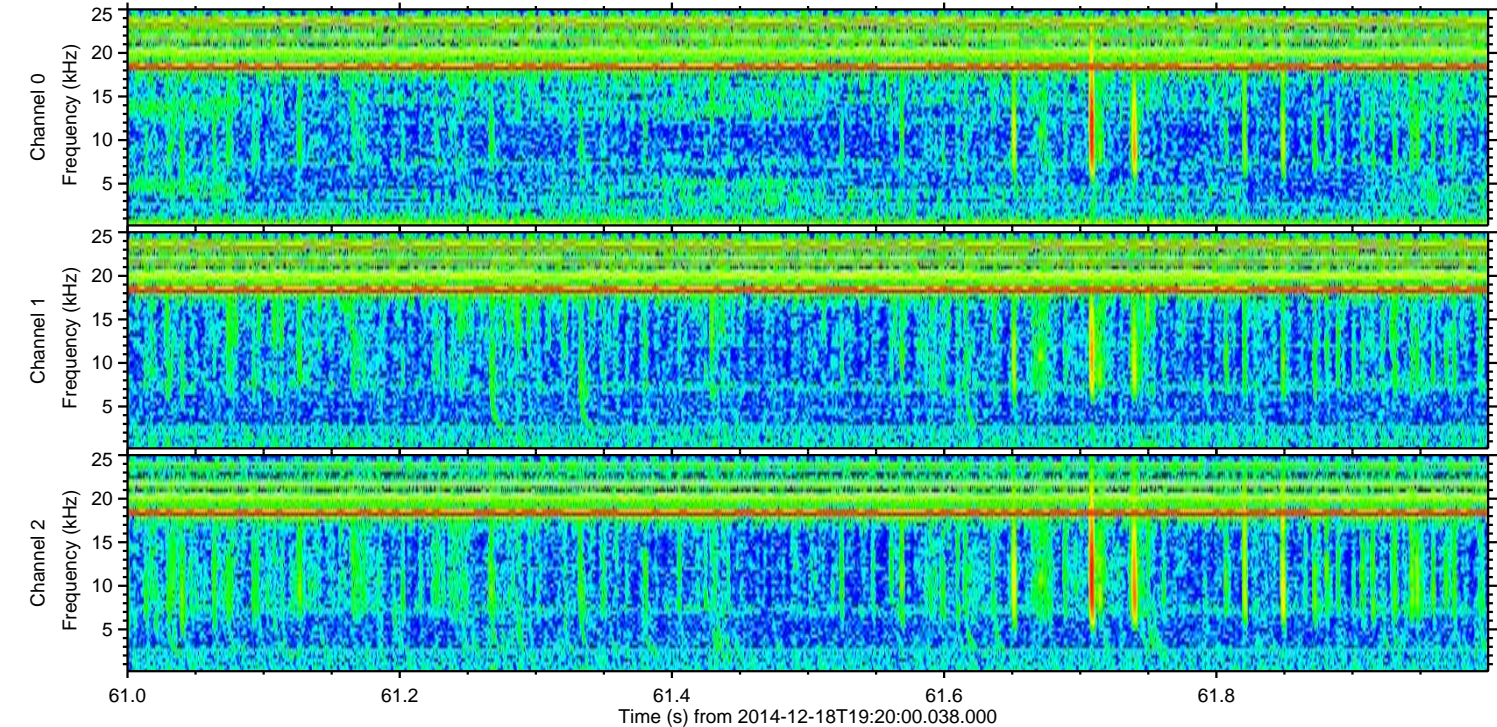
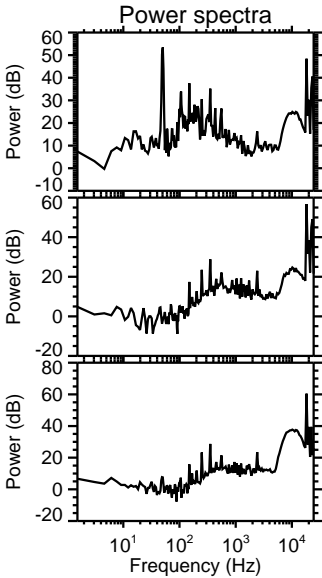
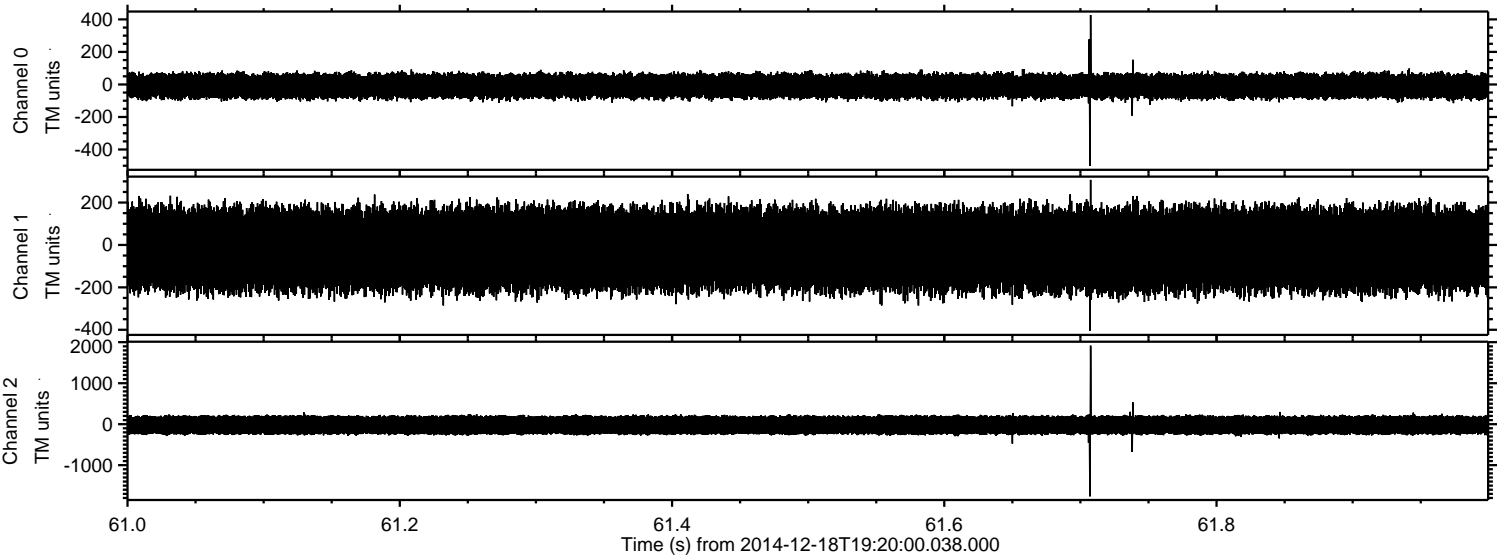
Channel 0
mn: -492
mx: 512
 μ : -10.2
 σ : 40.4

Channel 1
mn: -1051
mx: 779
 μ : -21.7
 σ : 104.9

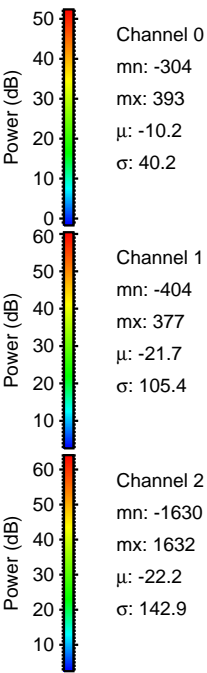
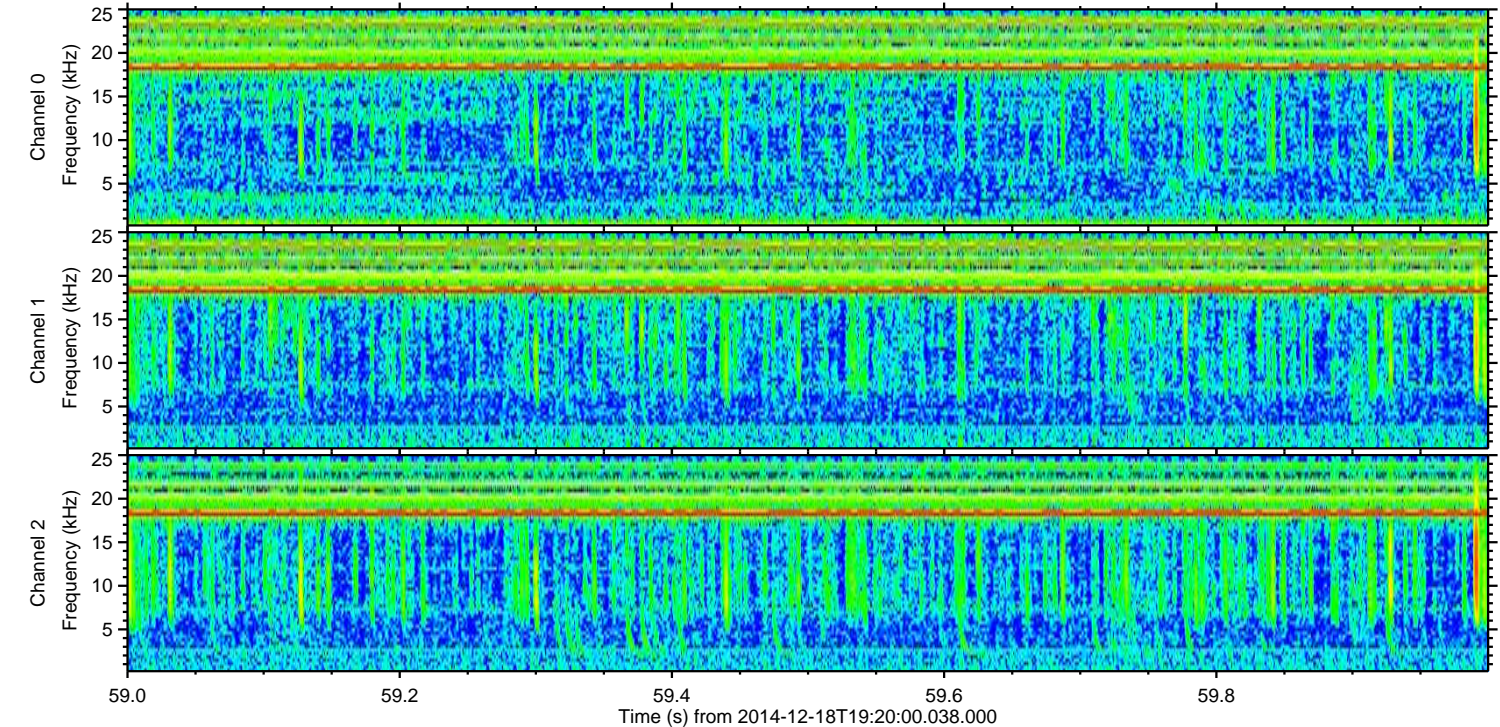
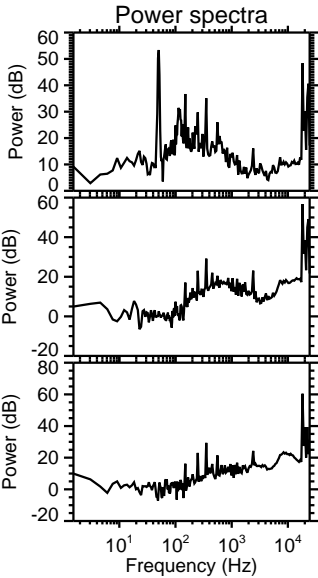
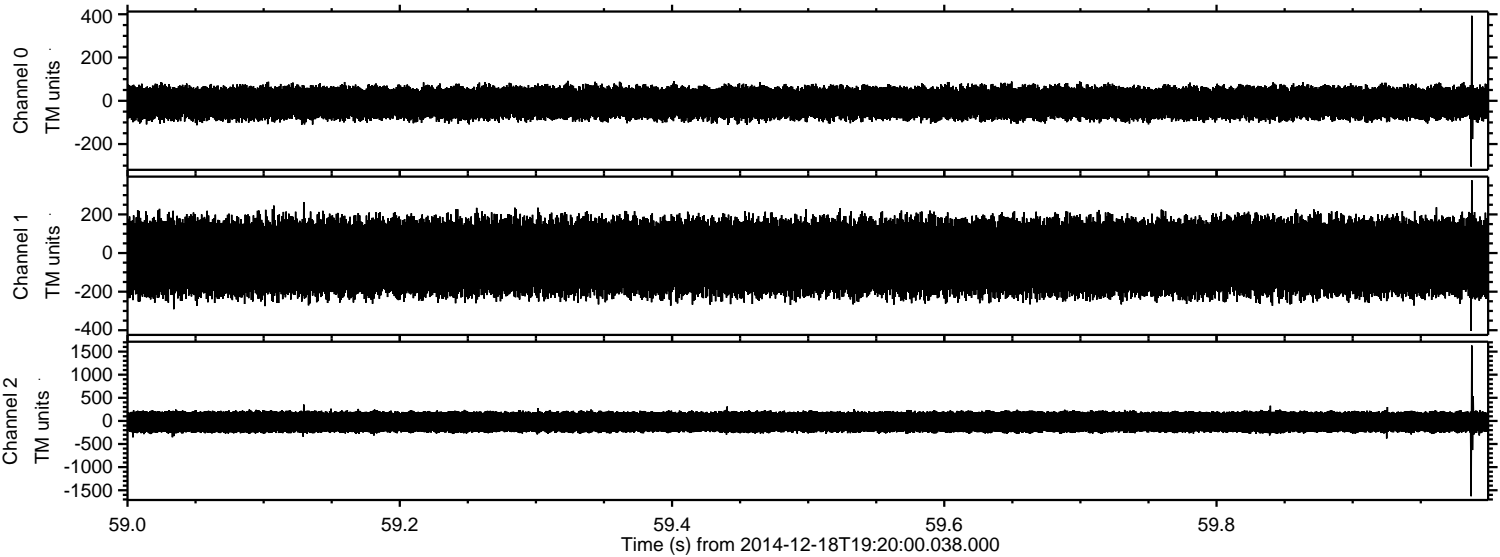
Channel 2
mn: -1949
mx: 2043
 μ : -22.2
 σ : 142.0

ELMAVAN 3D WAVEFORMS (Measured data sampled at 50 kHz) 49784 packets of 144 samples from 2014-12-18T19:20:00.038.000. Part 62/144

Processed Thu Dec 18 20:28:06 2014 by ELM ver.2012-10-06 from 001__elm20141218_191959__dat00.bin

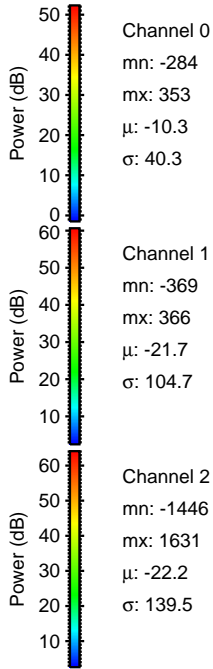
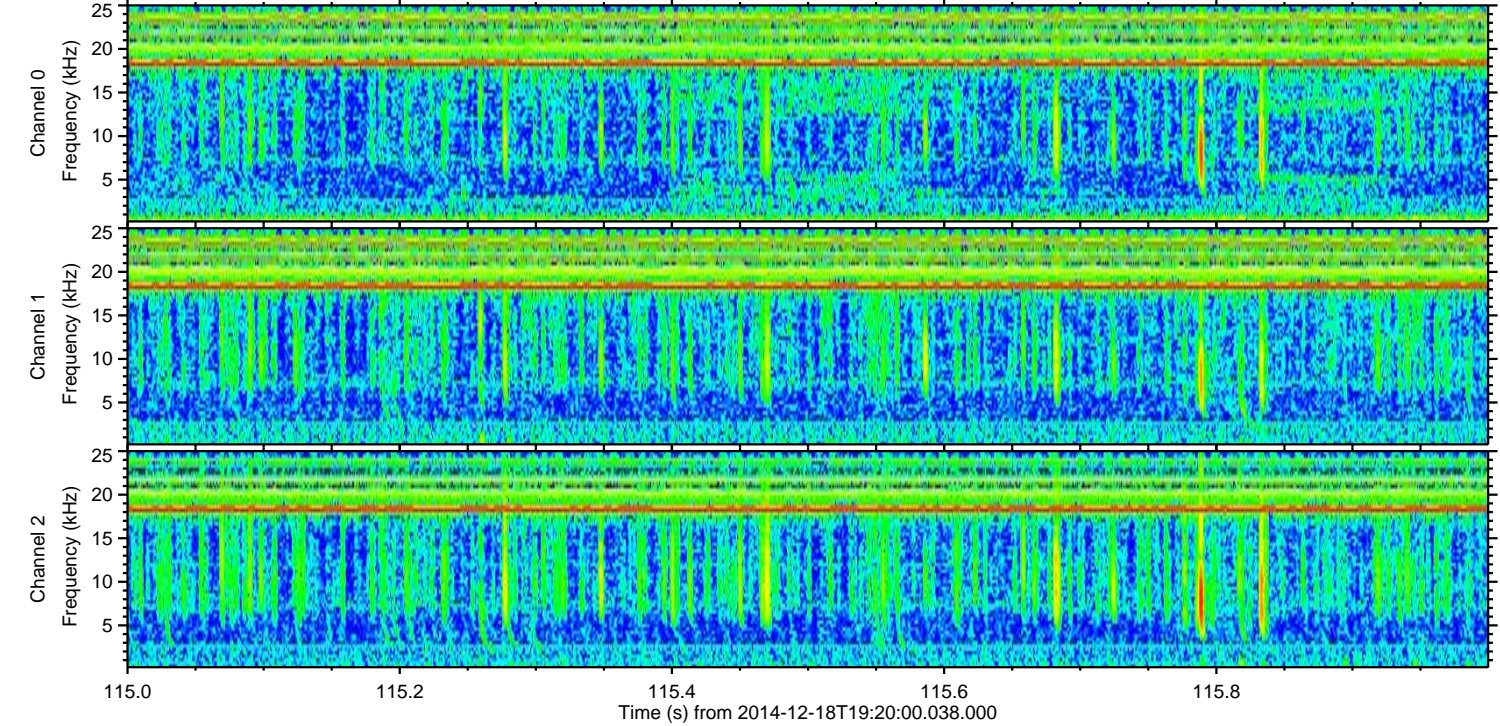
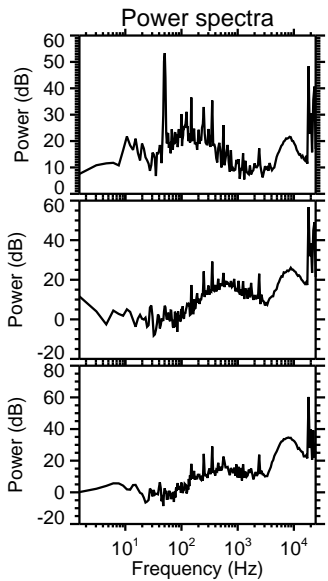
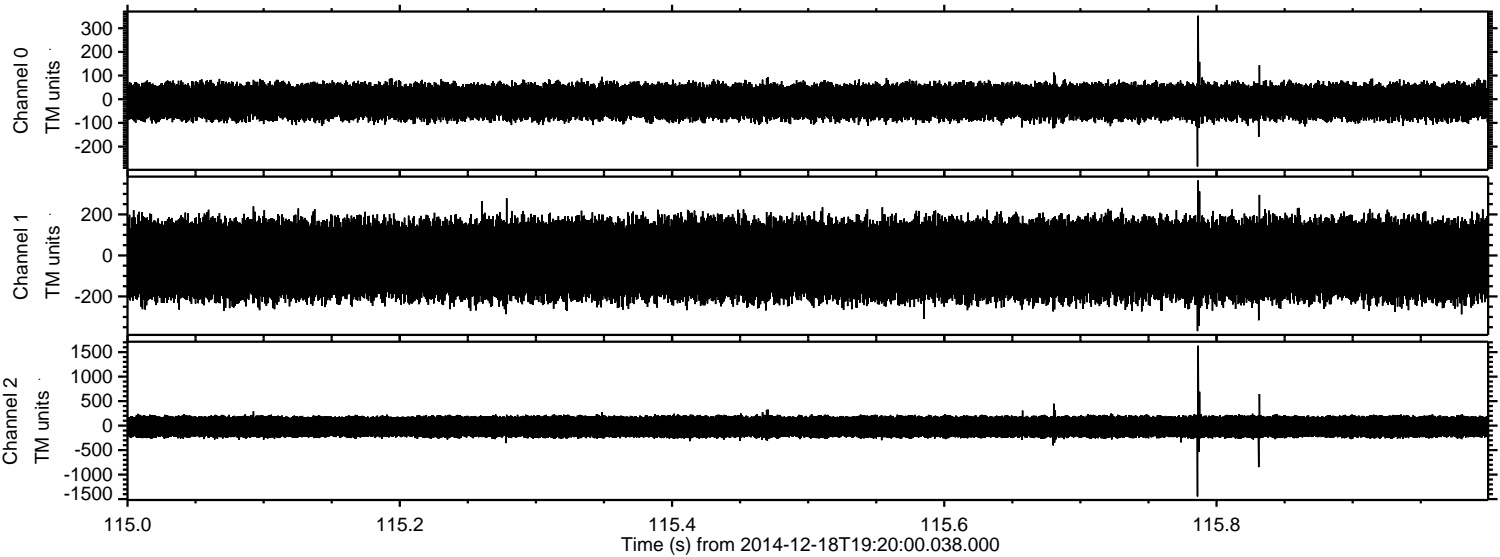


Processed Thu Dec 18 20:28:07 2014 by ELM ver.2012-10-06 from 001__elm20141218_191959__dat00.bin

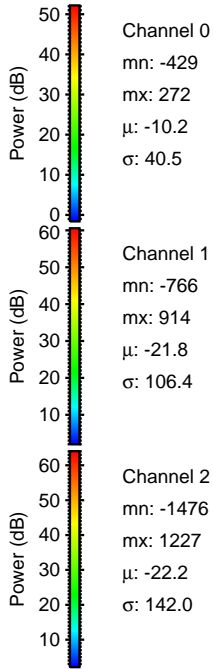
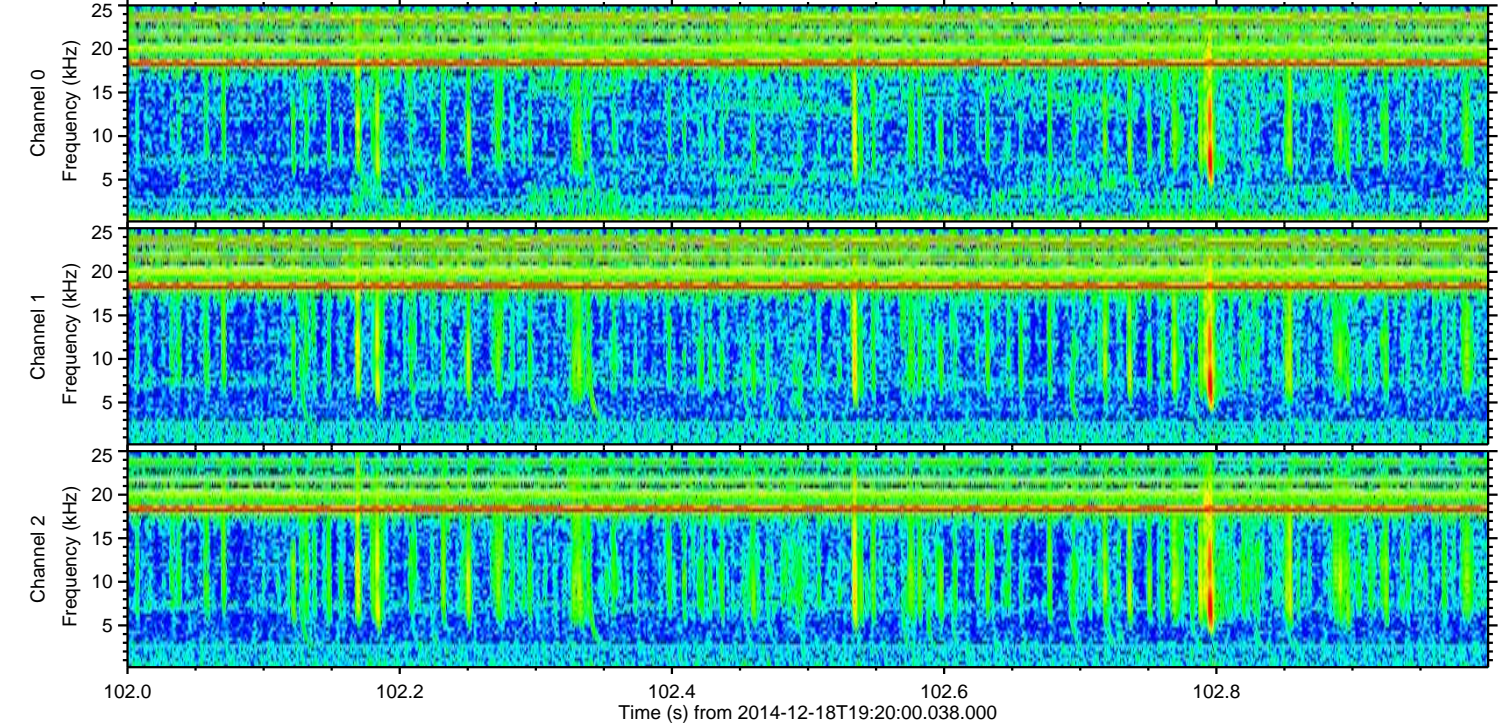
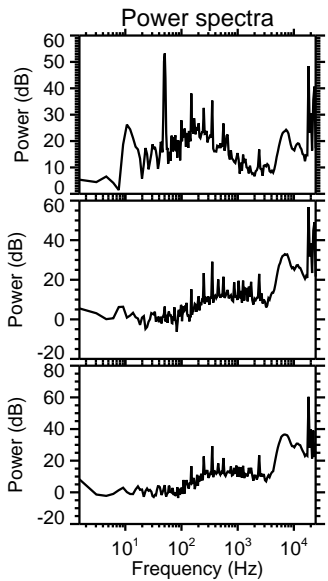
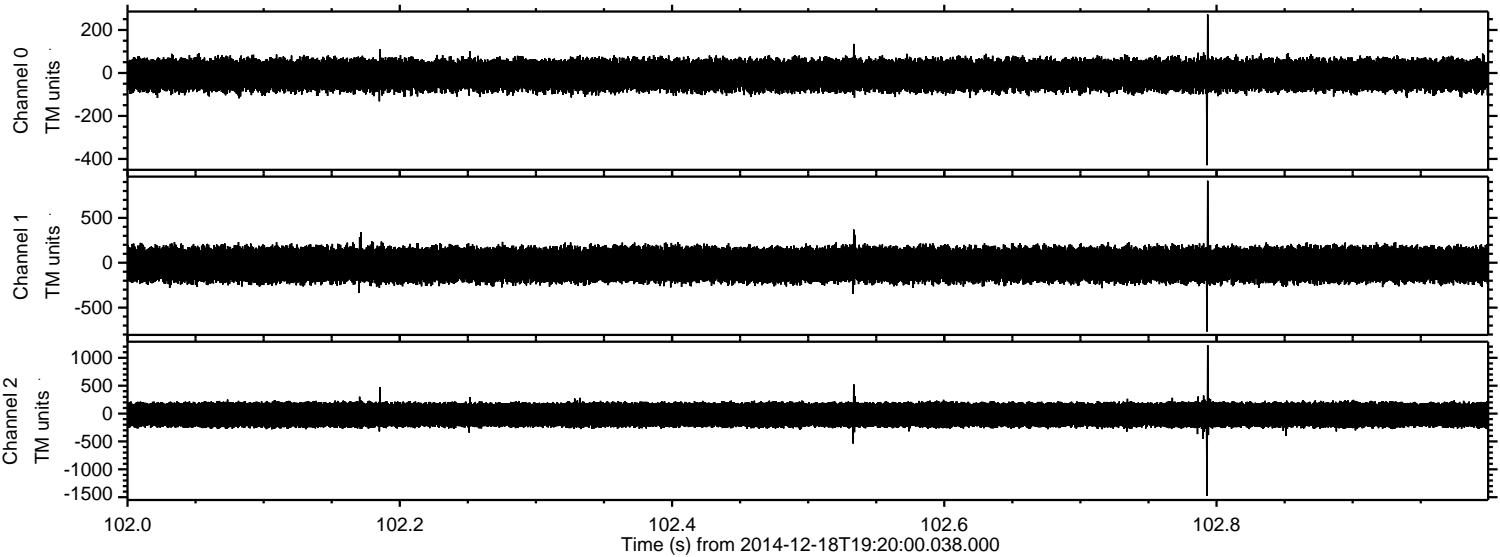


ELMAVAN 3D WAVEFORMS (Measured data sampled at 50 kHz) 49784 packets of 144 samples from 2014-12-18T19:20:00.038.000. Part 116/144

Processed Thu Dec 18 20:28:08 2014 by ELM ver.2012-10-06 from 001__elm20141218_191959__dat00.bin

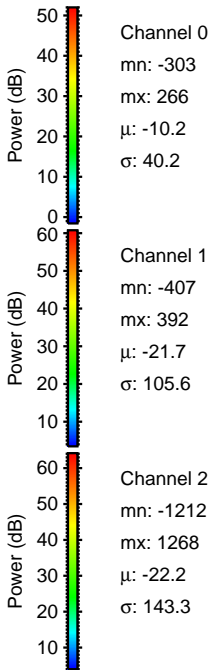
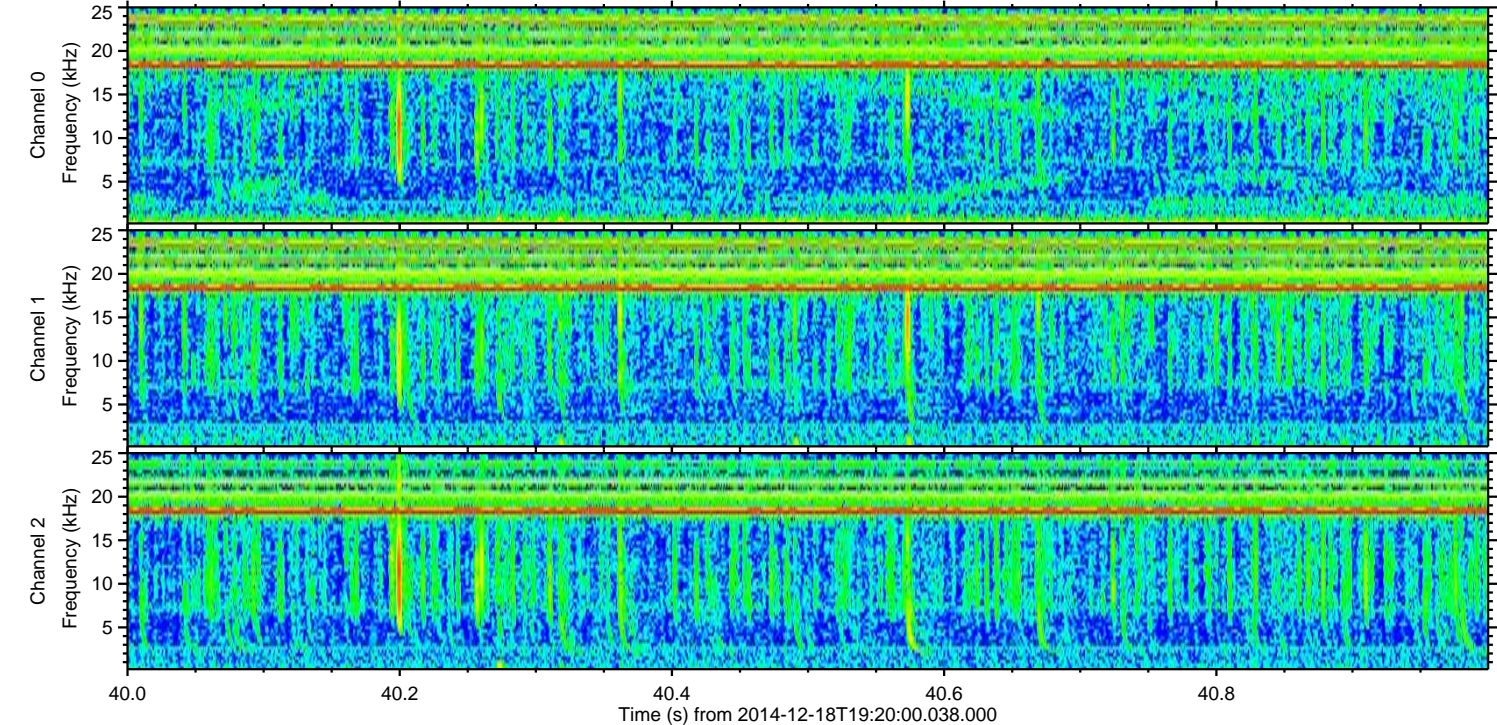
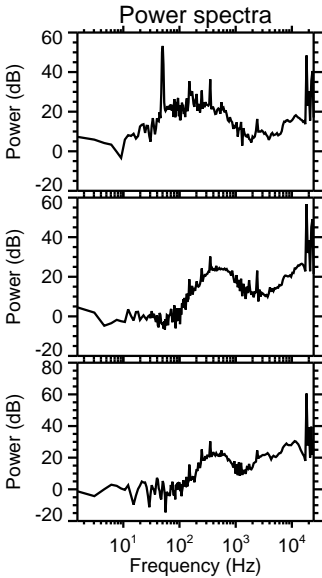
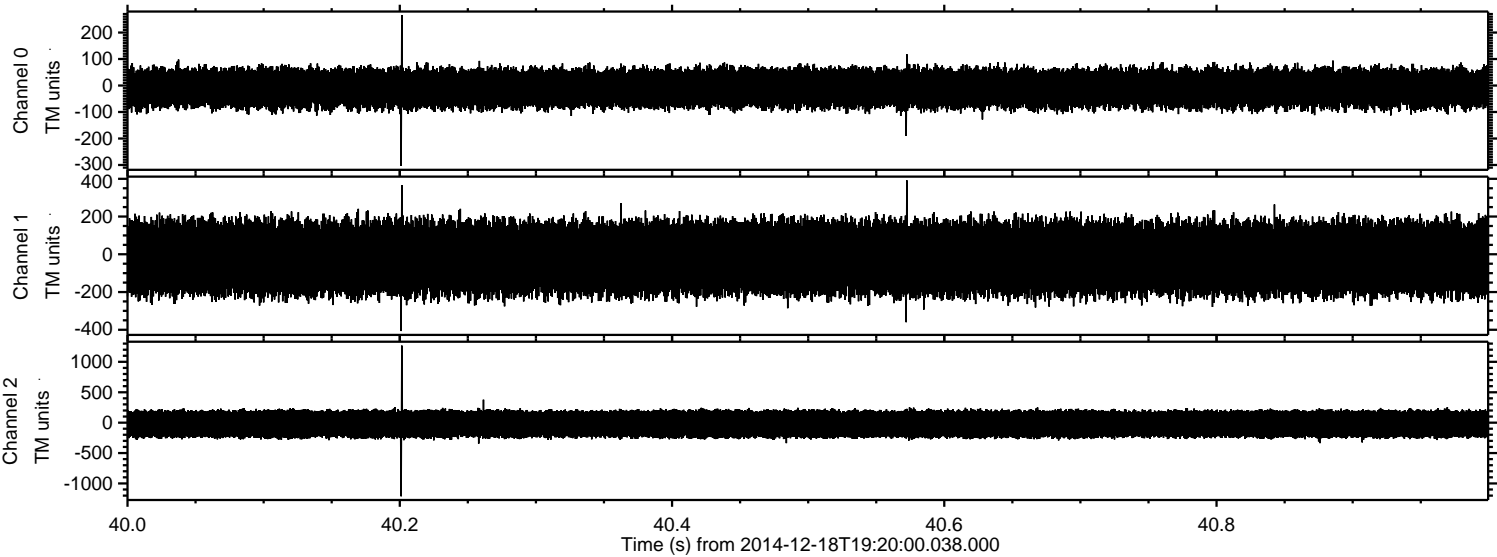


Processed Thu Dec 18 20:28:09 2014 by ELM ver.2012-10-06 from 001__elm20141218_191959__dat00.bin



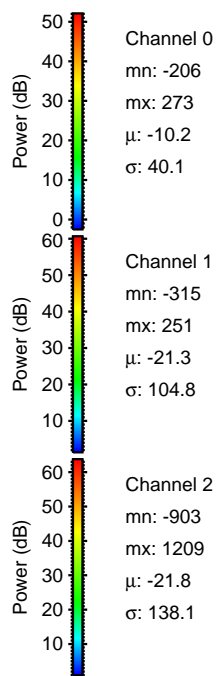
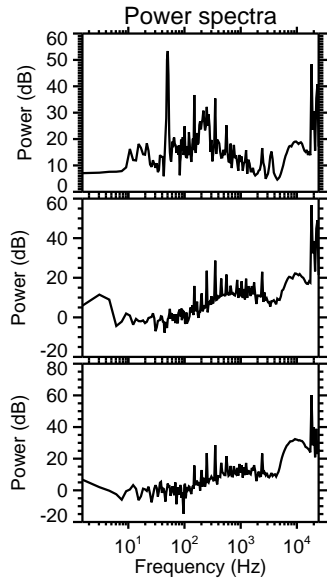
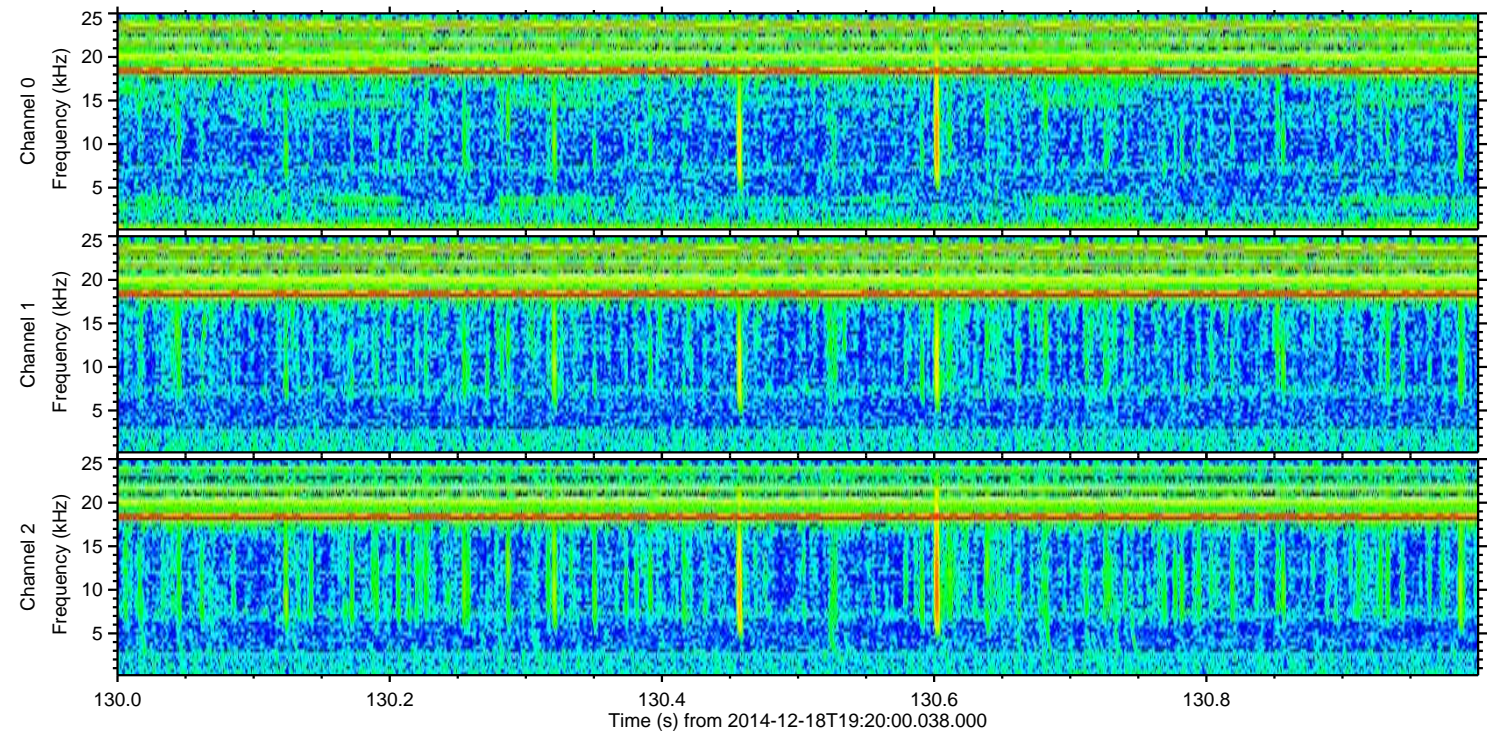
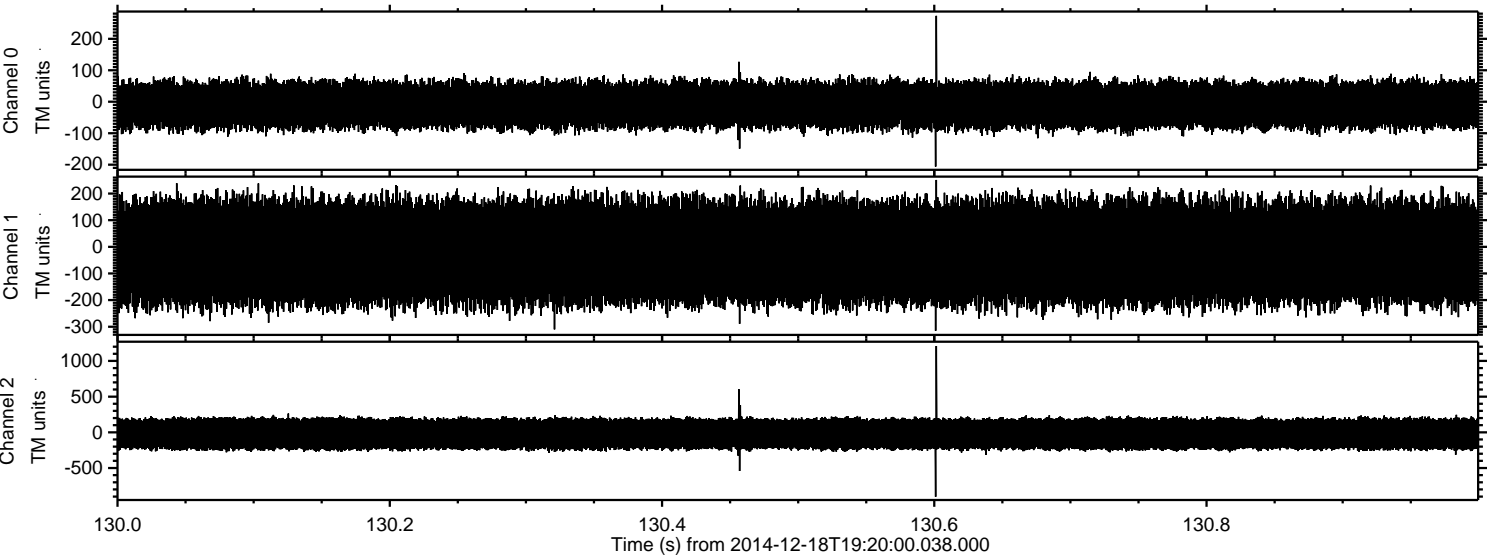
ELMAVAN 3D WAVEFORMS (Measured data sampled at 50 kHz) 49784 packets of 144 samples from 2014-12-18T19:20:00.038.000. Part 41/144

Processed Thu Dec 18 20:28:10 2014 by ELM ver.2012-10-06 from 001__elm20141218_191959__dat00.bin



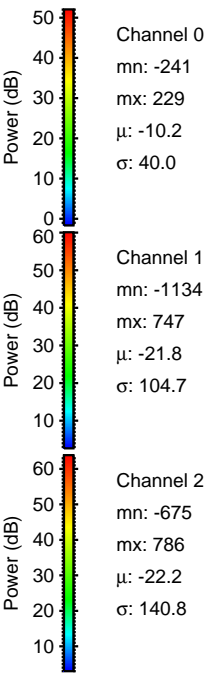
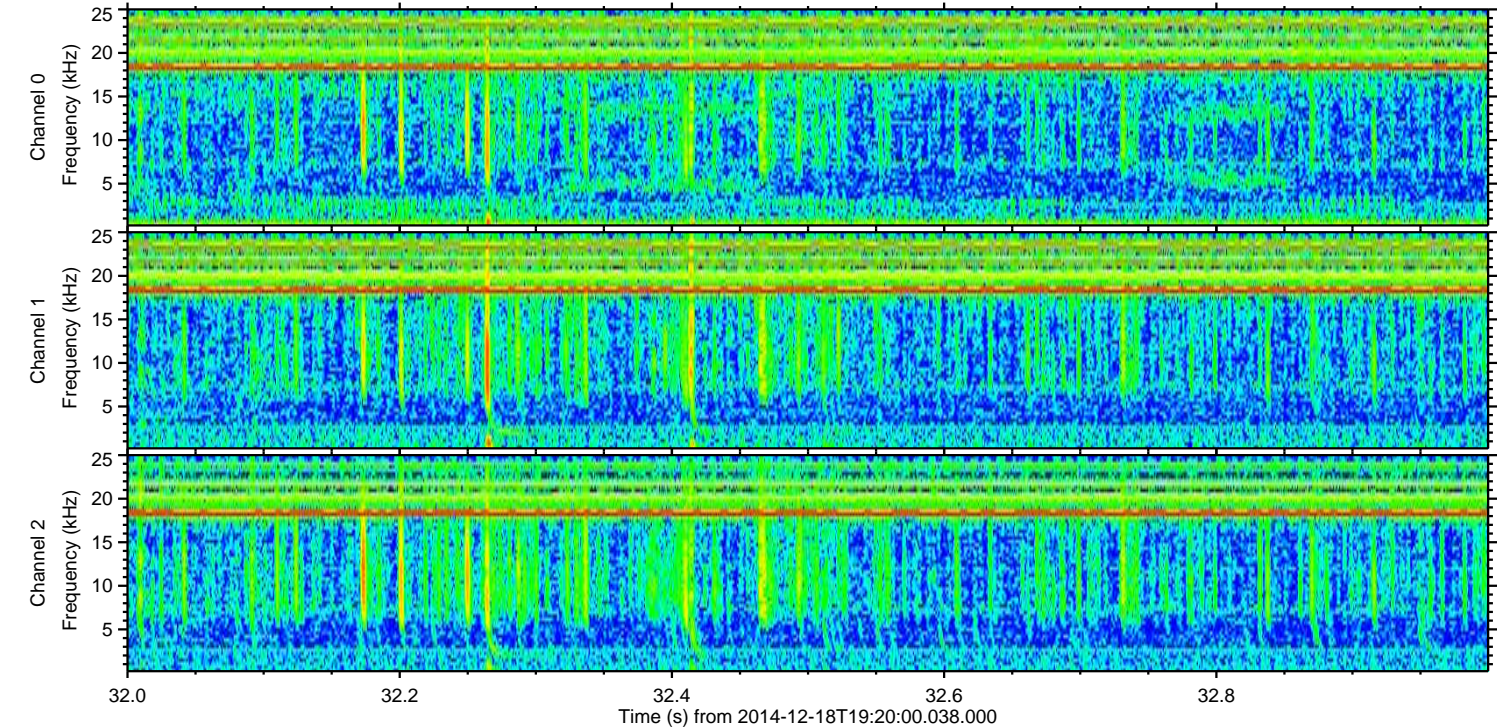
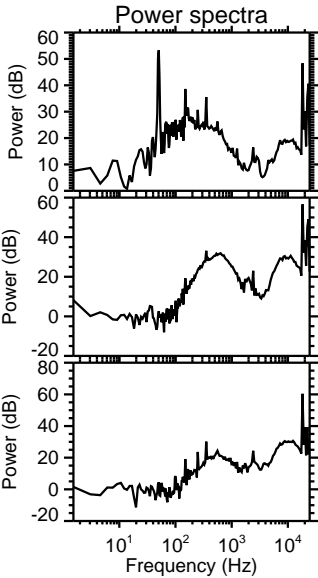
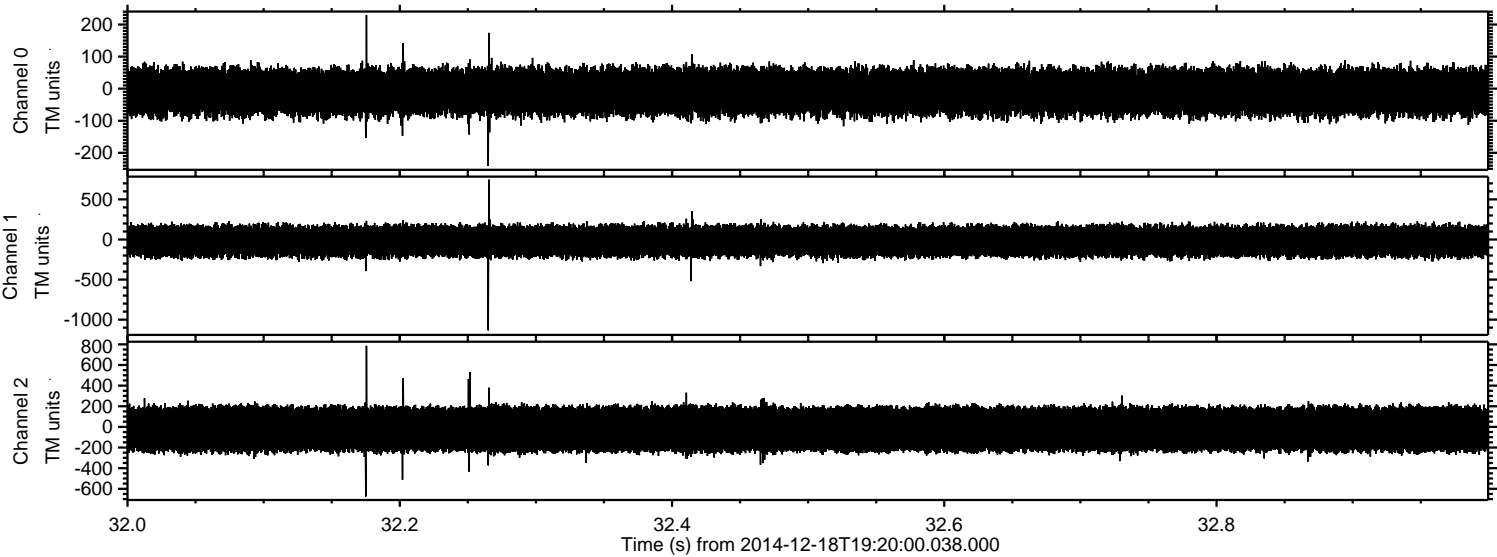
ELMAVAN 3D WAVEFORMS (Measured data sampled at 50 kHz) 49784 packets of 144 samples from 2014-12-18T19:20:00.038.000. Part 131/144

Processed Thu Dec 18 20:28:11 2014 by ELM ver.2012-10-06 from 001__elm20141218_191959__dat00.bin



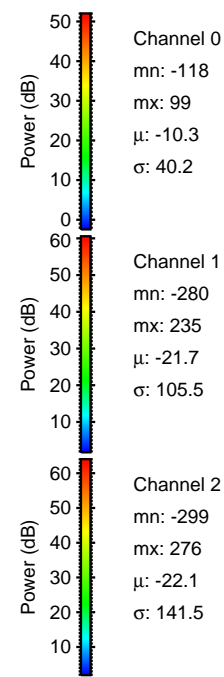
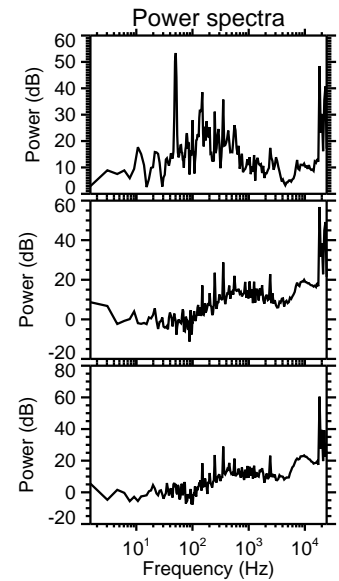
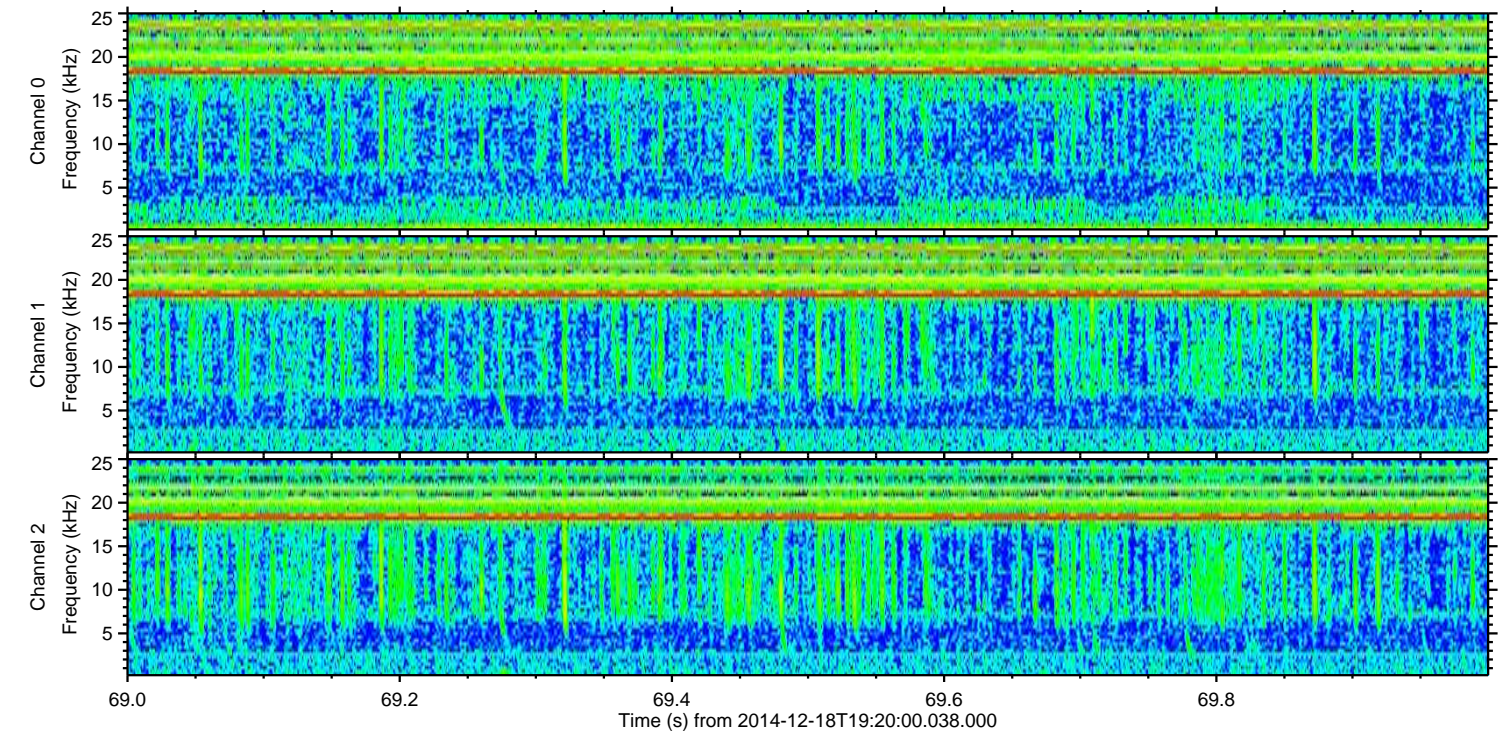
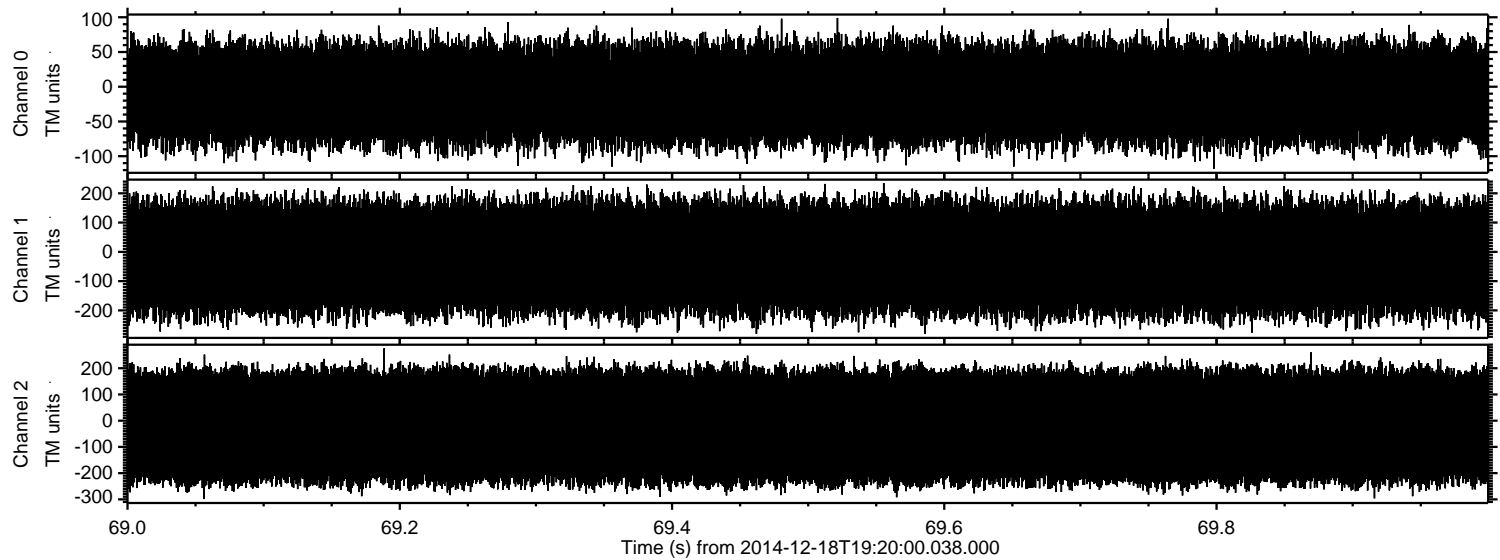
ELMAVAN 3D WAVEFORMS (Measured data sampled at 50 kHz) 49784 packets of 144 samples from 2014-12-18T19:20:00.038.000. Part 33/144

Processed Thu Dec 18 20:28:12 2014 by ELM ver.2012-10-06 from 001__elm20141218_191959__dat00.bin



ELMAVAN 3D WAVEFORMS (Measured data sampled at 50 kHz) 49784 packets of 144 samples from 2014-12-18T19:20:00.038.000. Part 70/144

Processed Thu Dec 18 20:28:12 2014 by ELM ver.2012-10-06 from 001__elm20141218_191959__dat00.bin



Channel 0
mn: -118
mx: 99
 μ : -10.3
 σ : 40.2

Channel 1
mn: -280
mx: 235
 μ : -21.7
 σ : 105.5

Channel 2
mn: -299
mx: 276
 μ : -22.1
 σ : 141.5