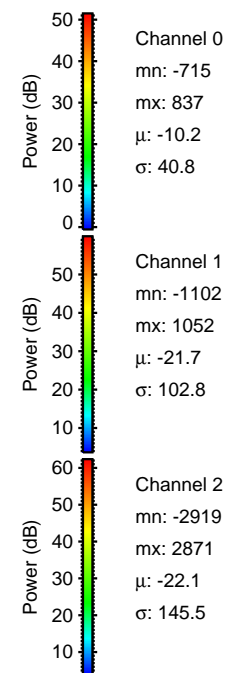
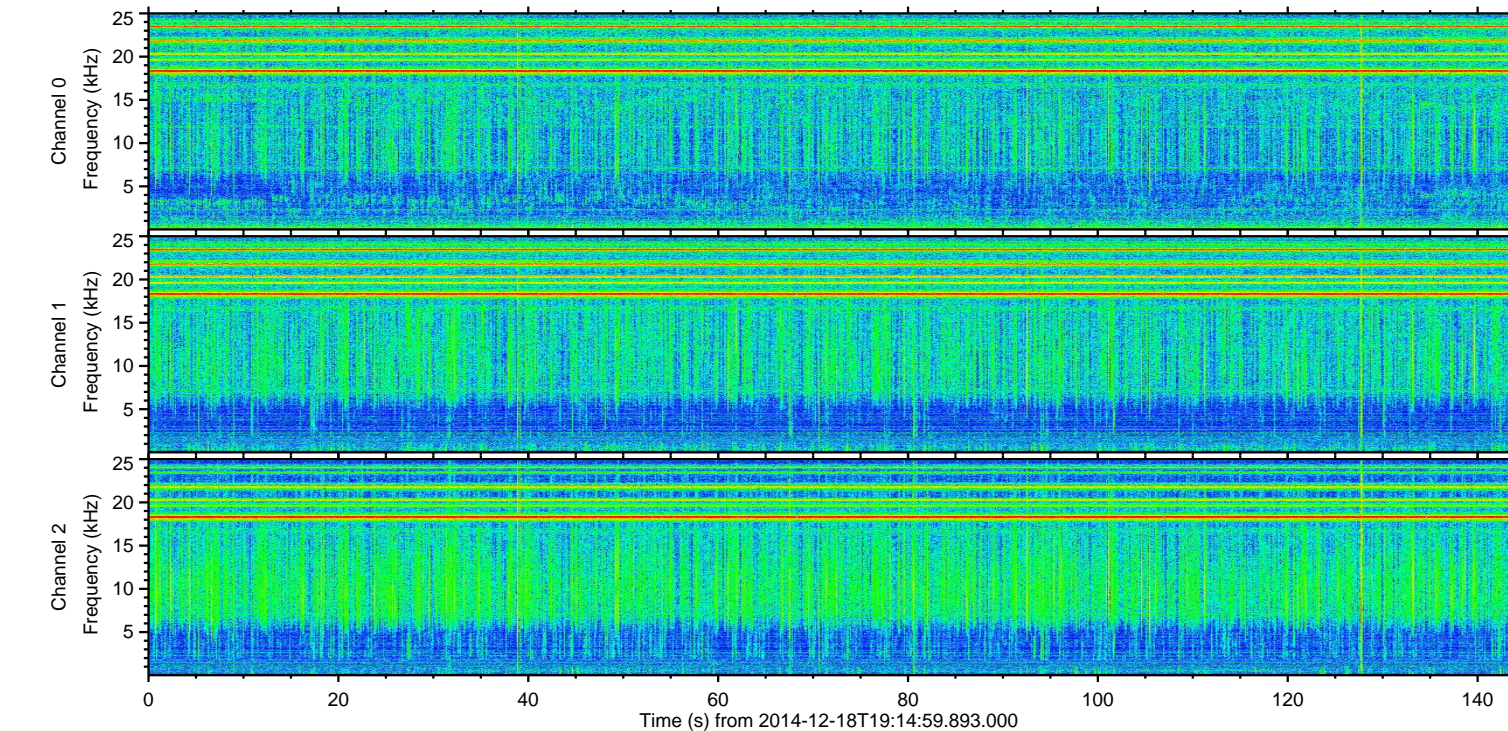
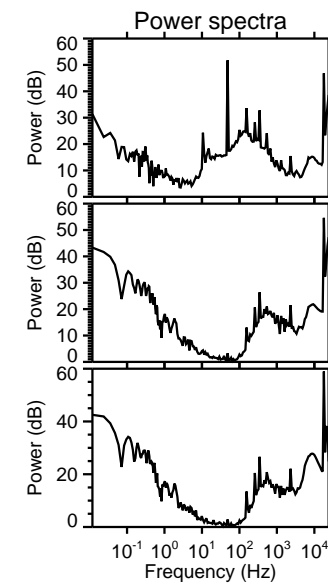
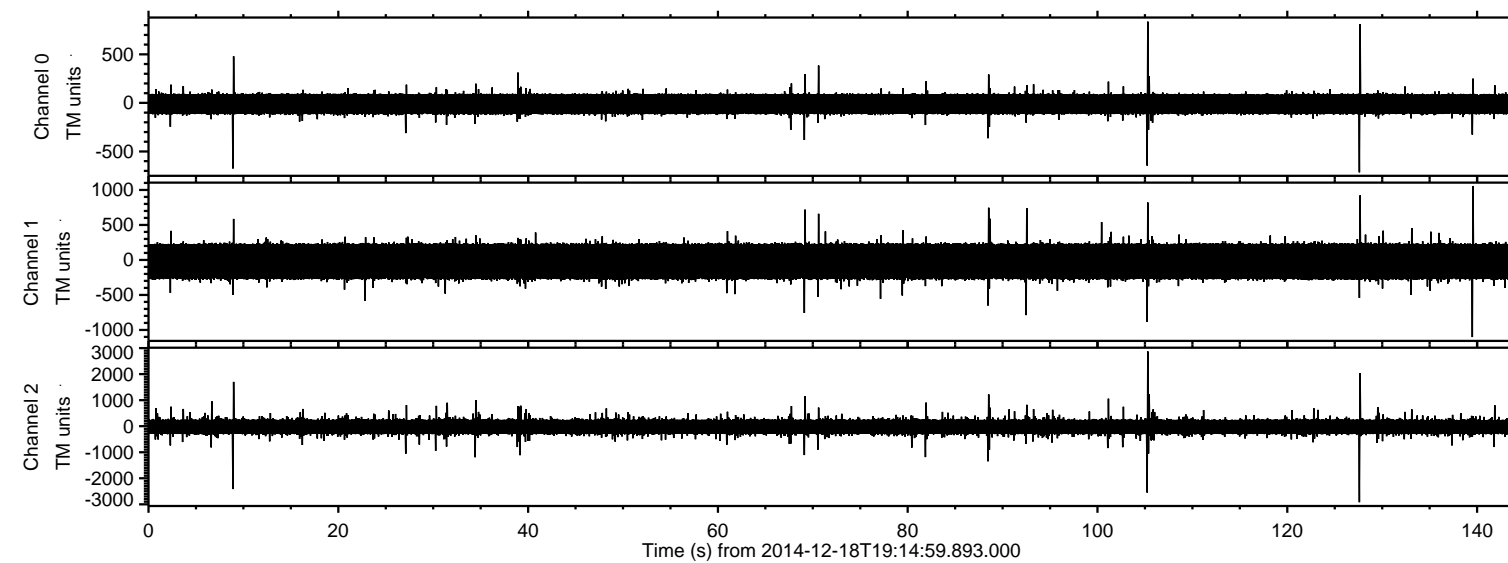


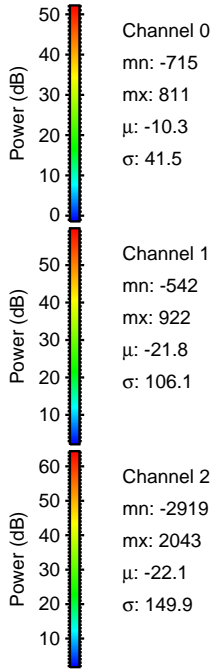
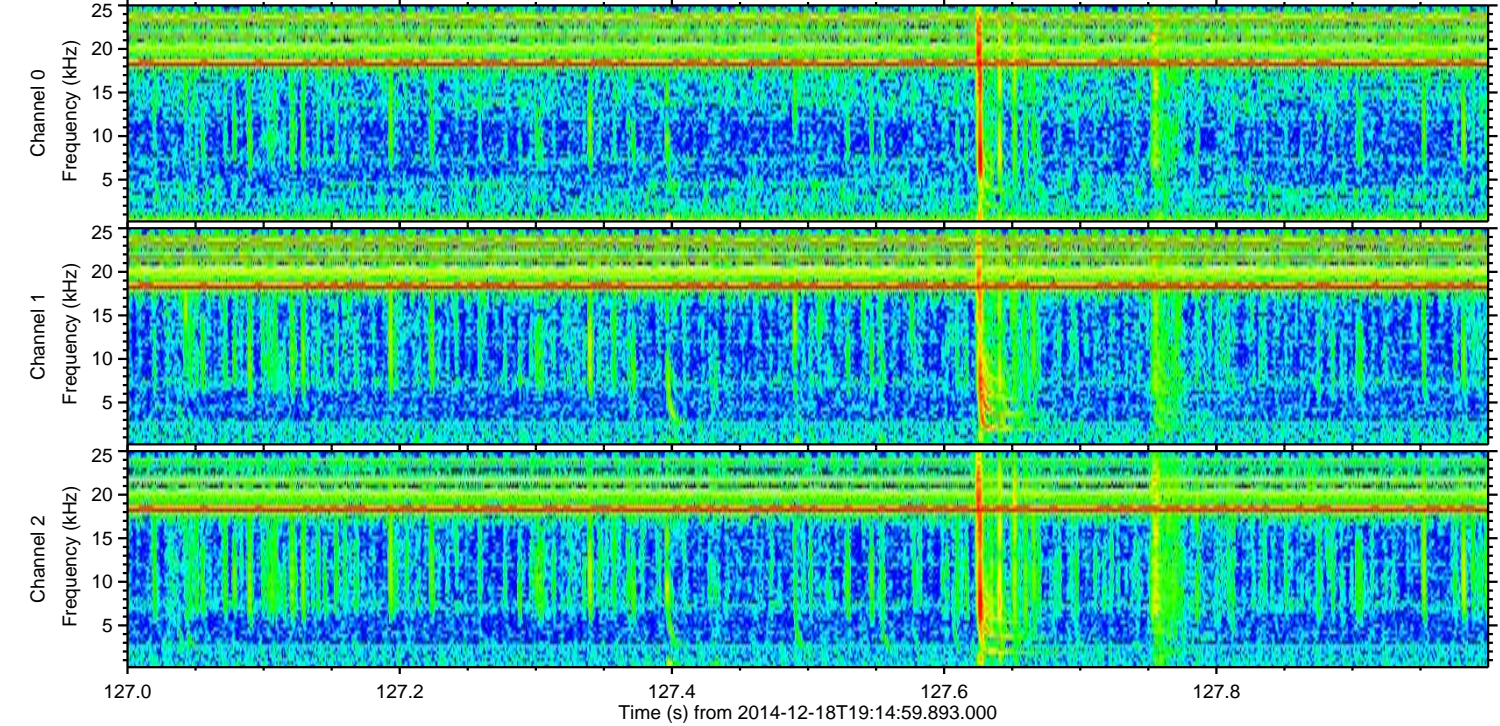
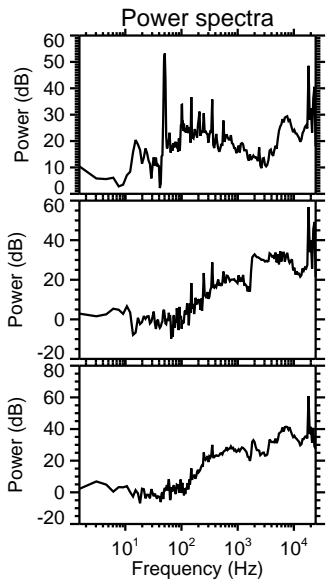
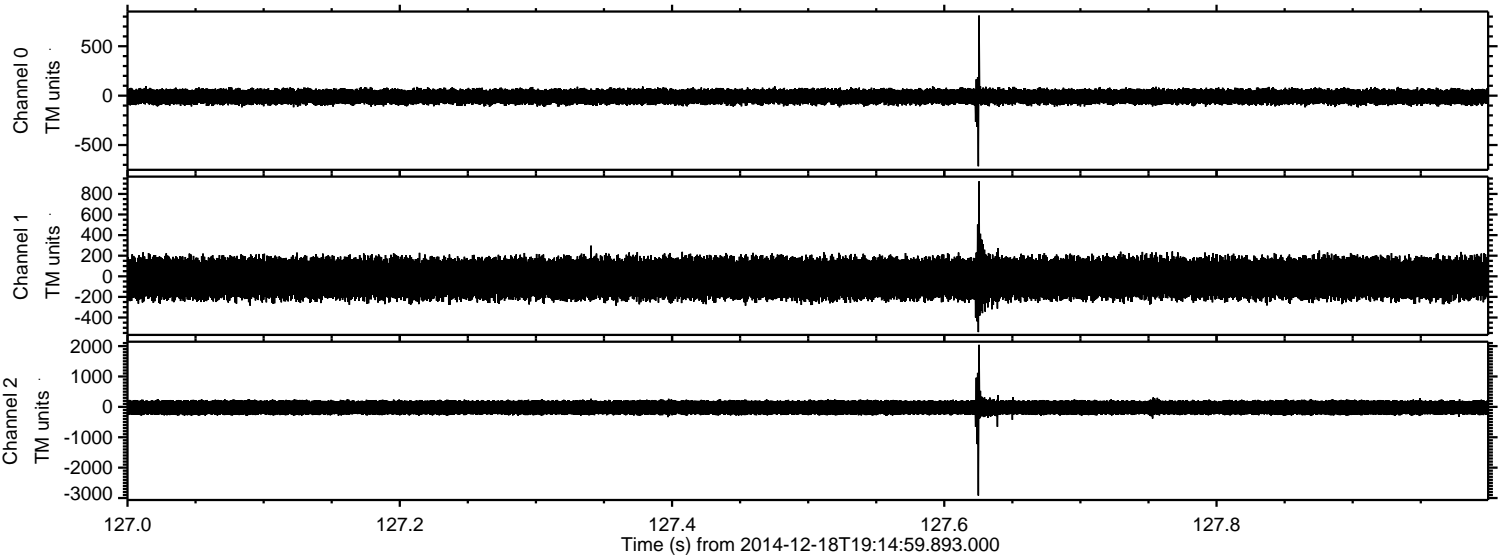
ELMAVAN 3D WAVEFORMS (Measured data sampled at 50 kHz) 49784 packets of 144 samples from 2014-12-18T19:14:59.893.000.

Processed Thu Dec 18 20:22:37 2014 by ELM ver.2012-10-06 from 001__elm20141218_191458__dat00.bin



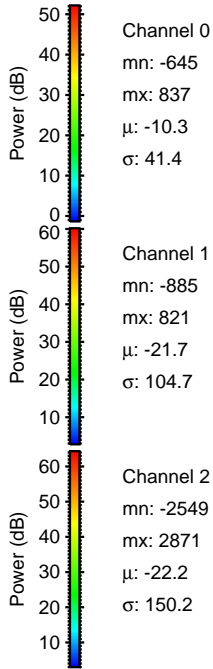
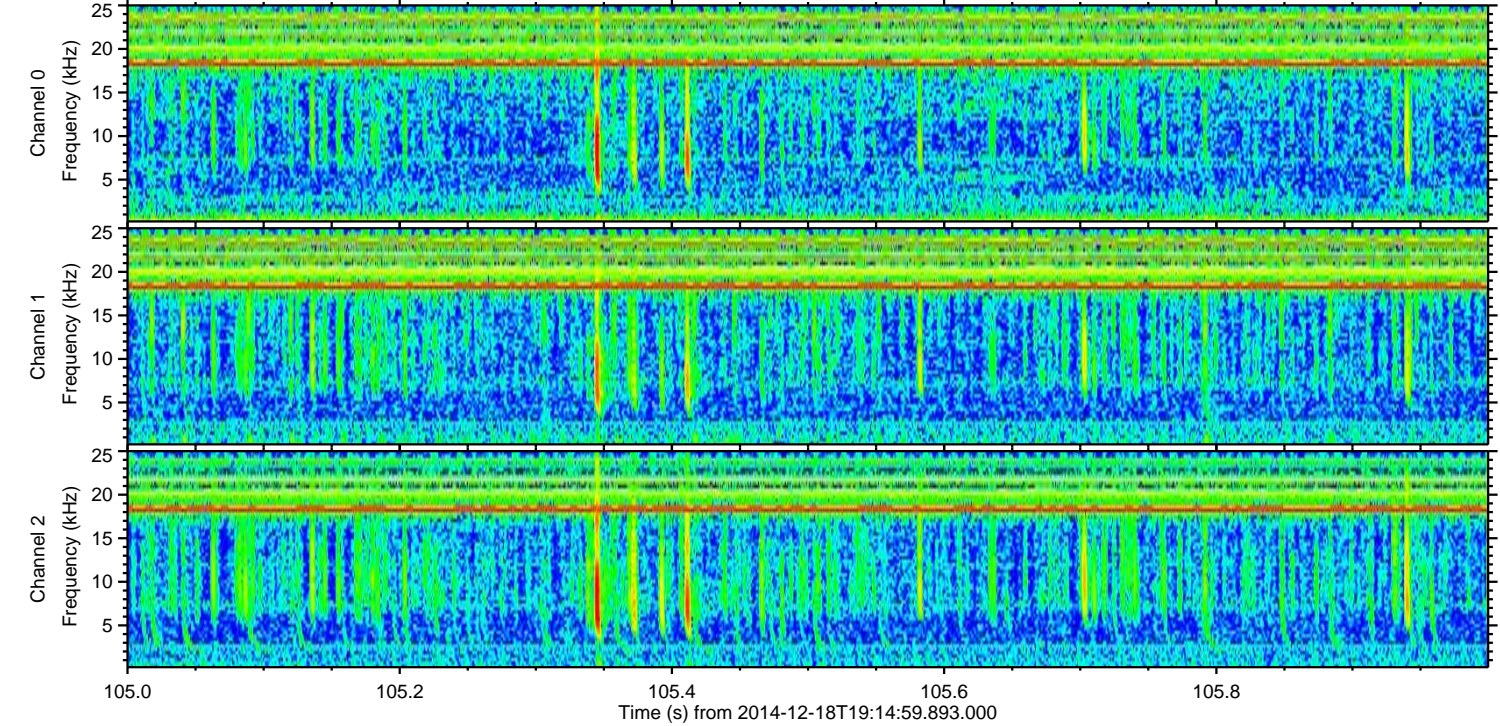
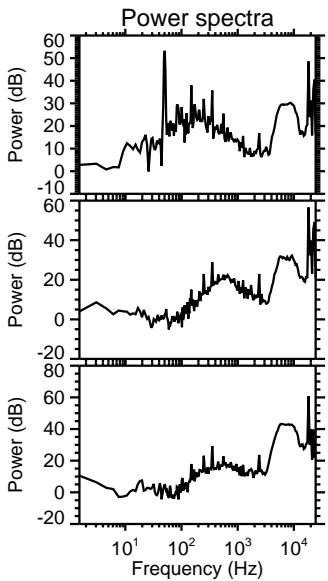
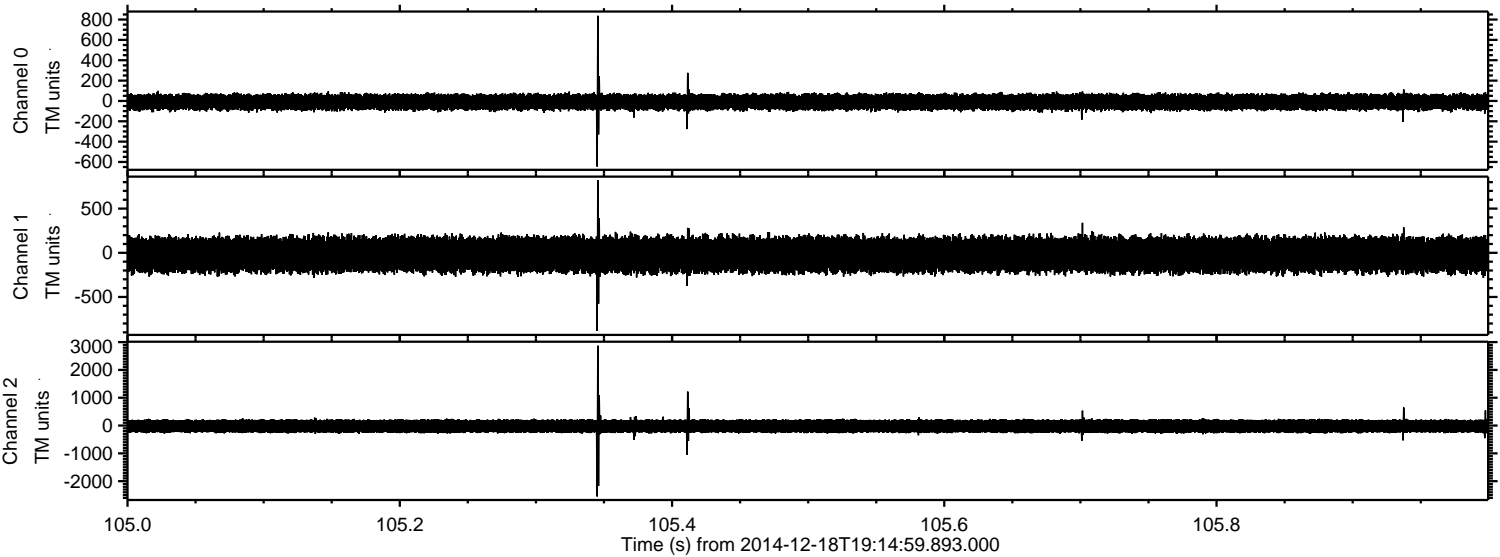
ELMAVAN 3D WAVEFORMS (Measured data sampled at 50 kHz) 49784 packets of 144 samples from 2014-12-18T19:14:59.893.000. Part 128/144

Processed Thu Dec 18 20:22:50 2014 by ELM ver.2012-10-06 from 001__elm20141218_191458__dat00.bin

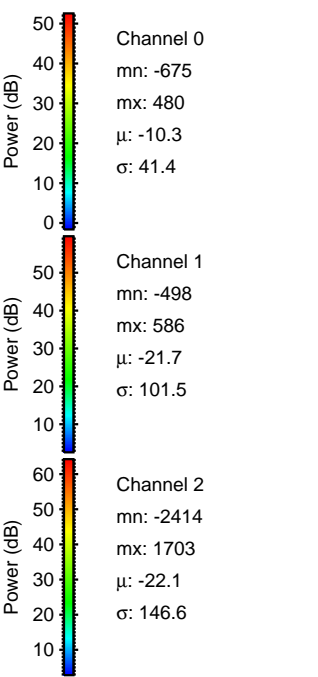
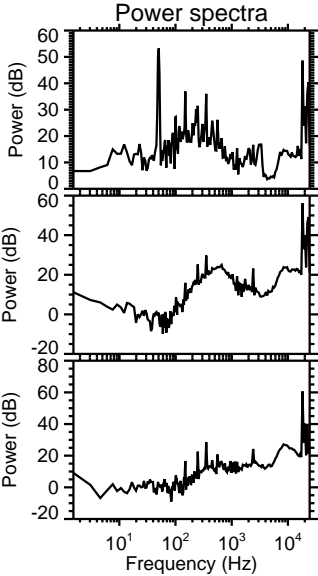
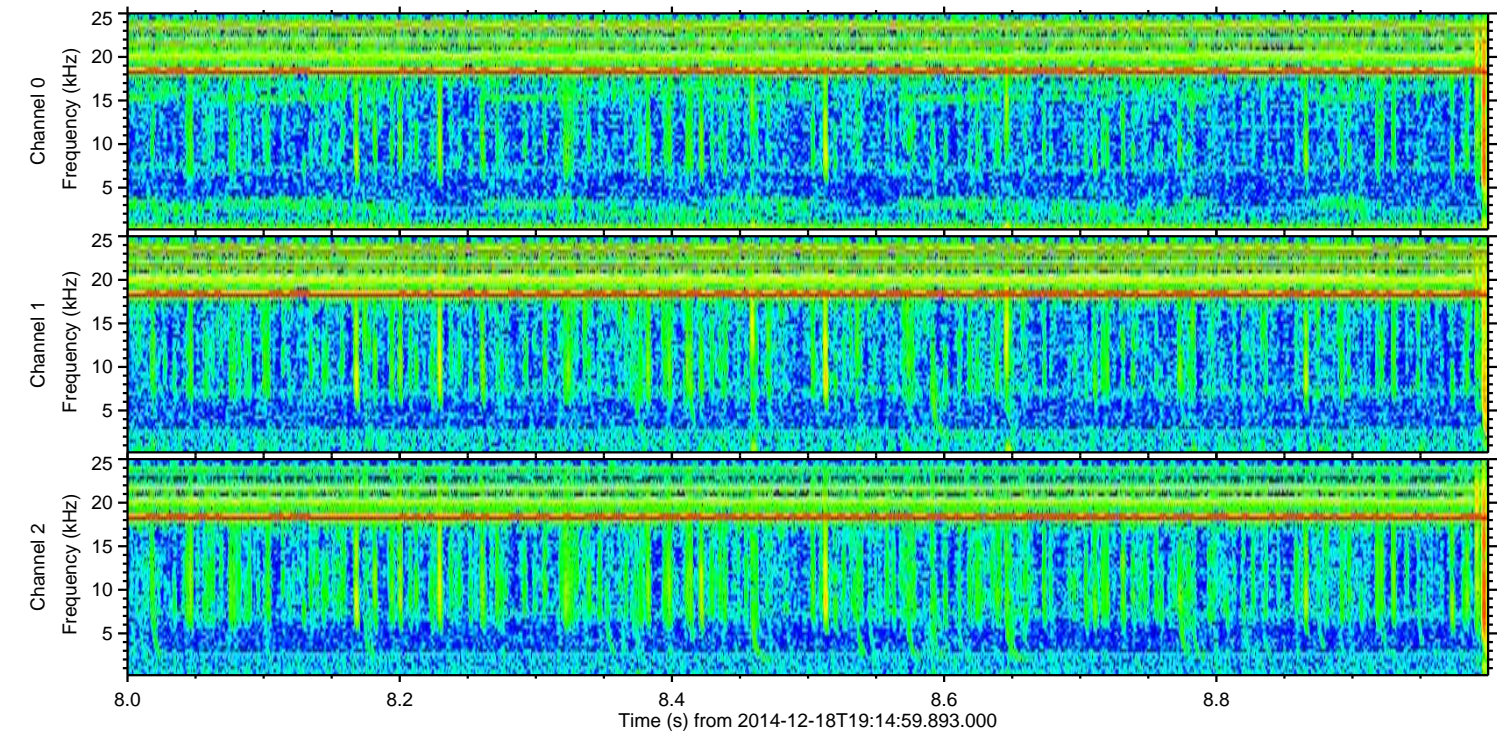
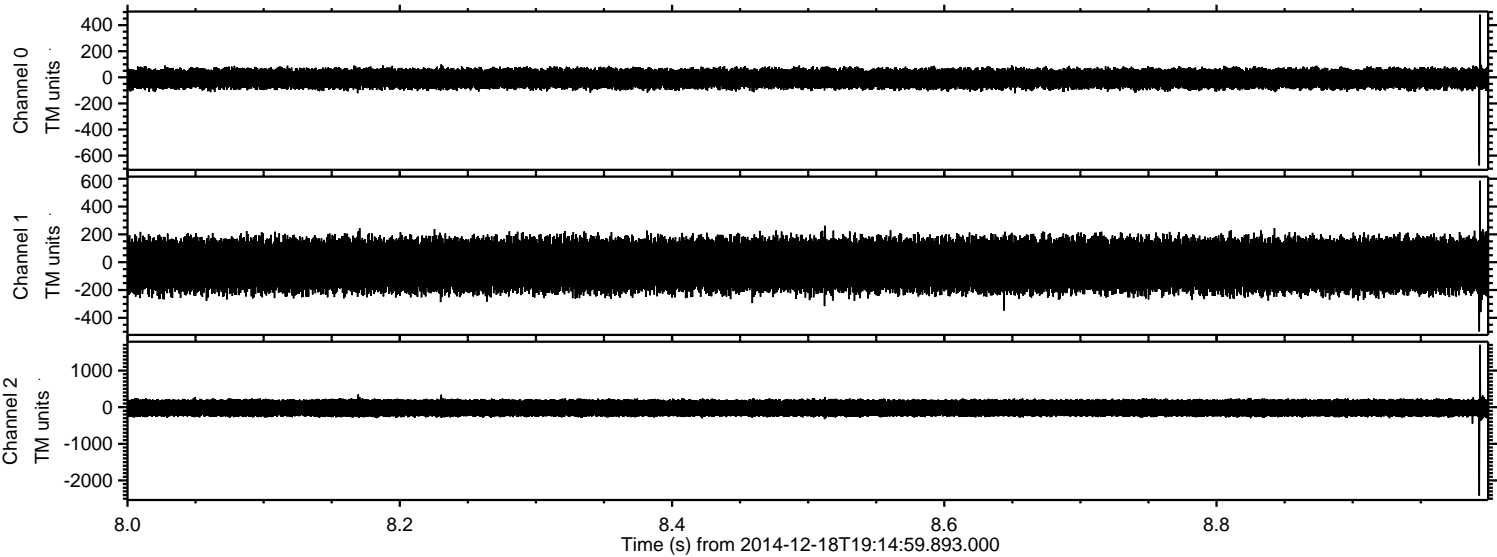


ELMAVAN 3D WAVEFORMS (Measured data sampled at 50 kHz) 49784 packets of 144 samples from 2014-12-18T19:14:59.893.000. Part 106/144

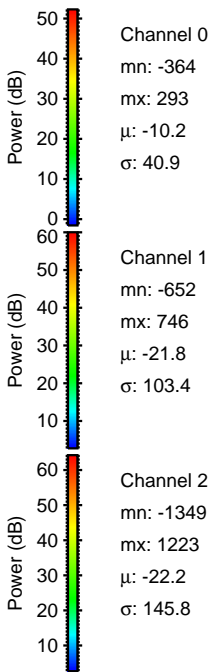
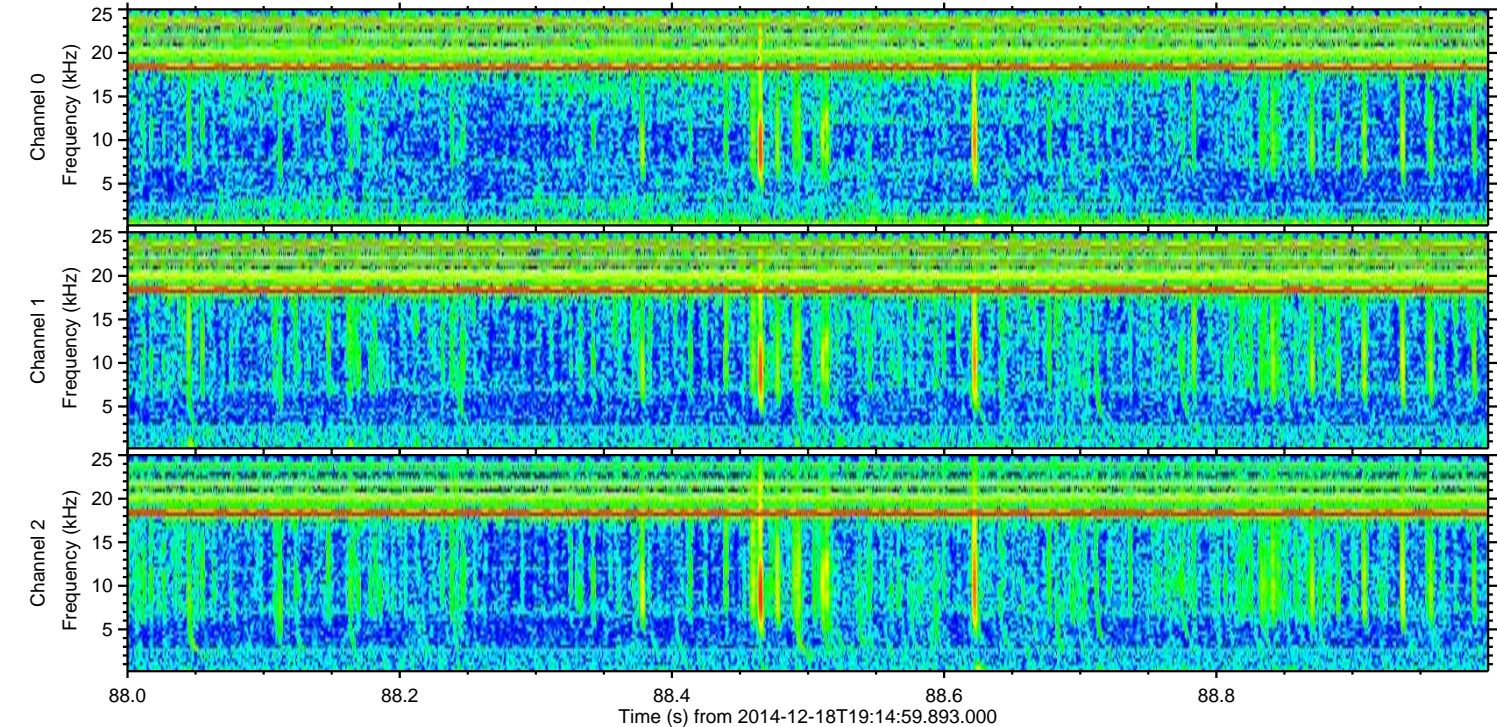
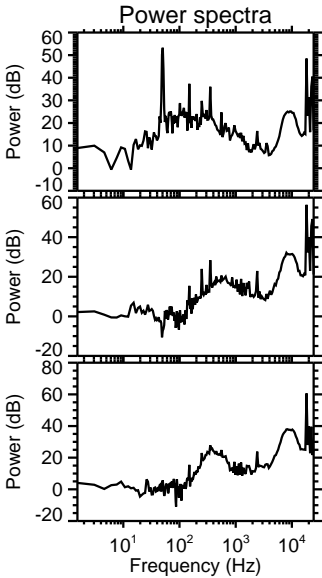
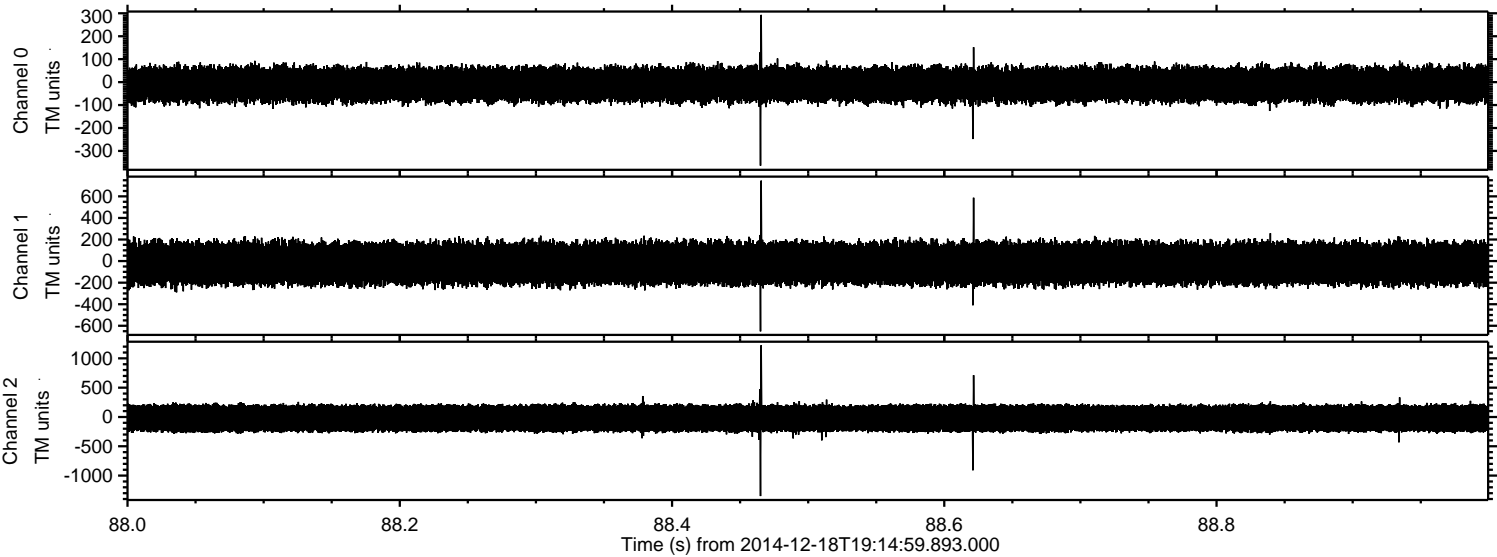
Processed Thu Dec 18 20:22:51 2014 by ELM ver.2012-10-06 from 001__elm20141218_191458__dat00.bin



Processed Thu Dec 18 20:22:52 2014 by ELM ver.2012-10-06 from 001__elm20141218_191458__dat00.bin

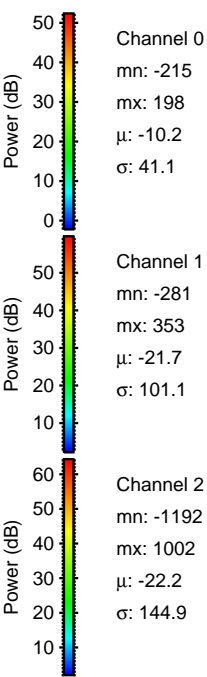
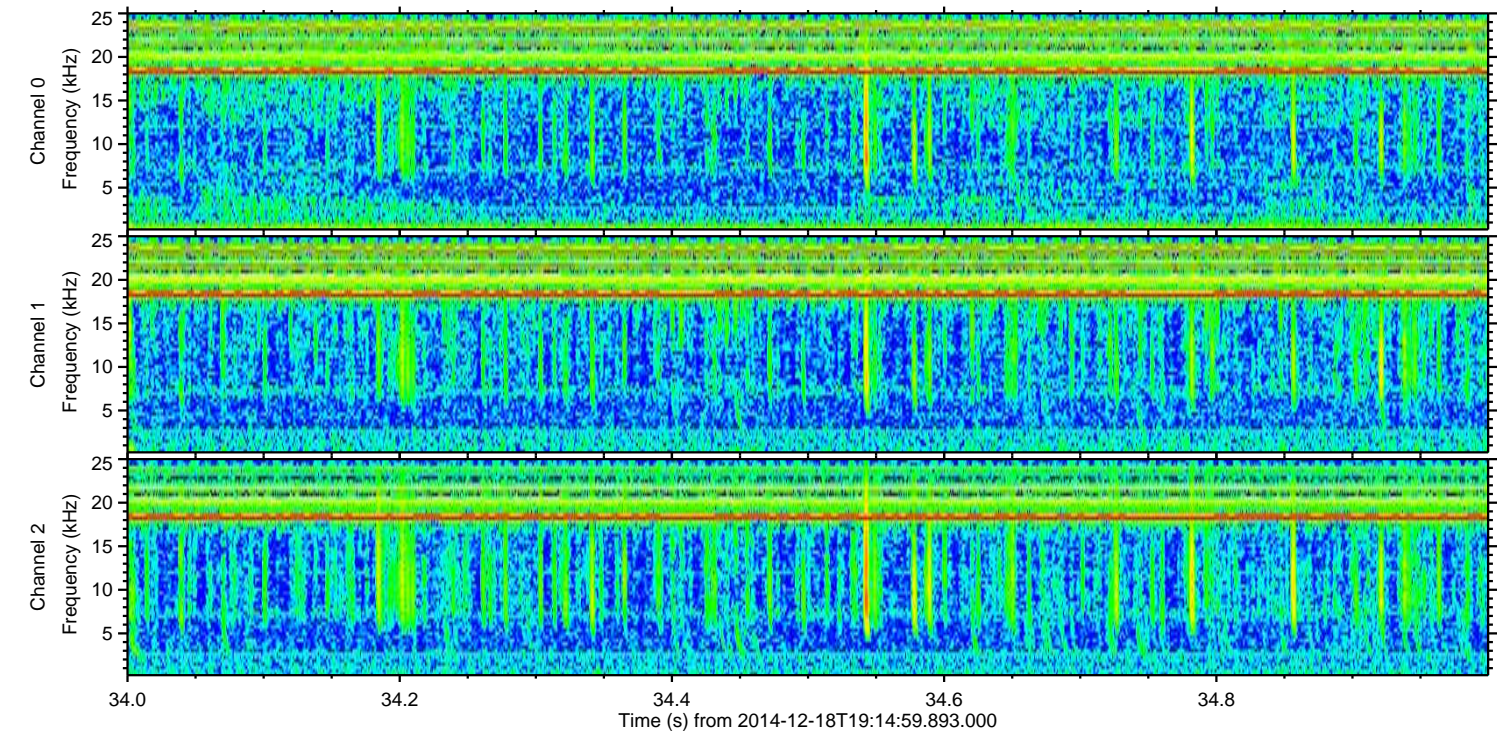
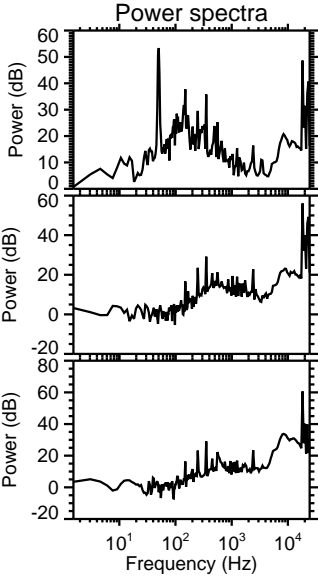
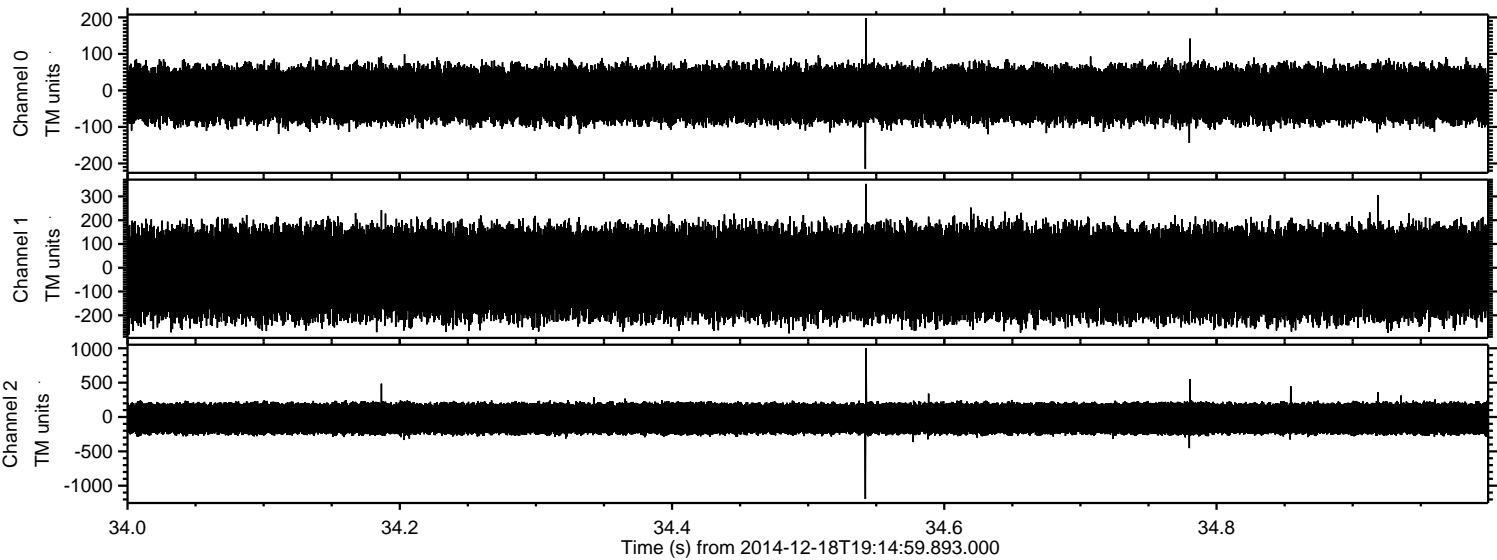


Processed Thu Dec 18 20:22:53 2014 by ELM ver.2012-10-06 from 001__elm20141218_191458__dat00.bin

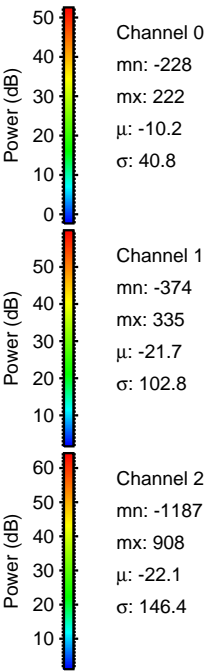
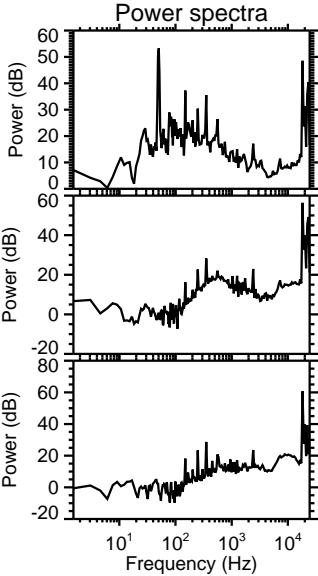
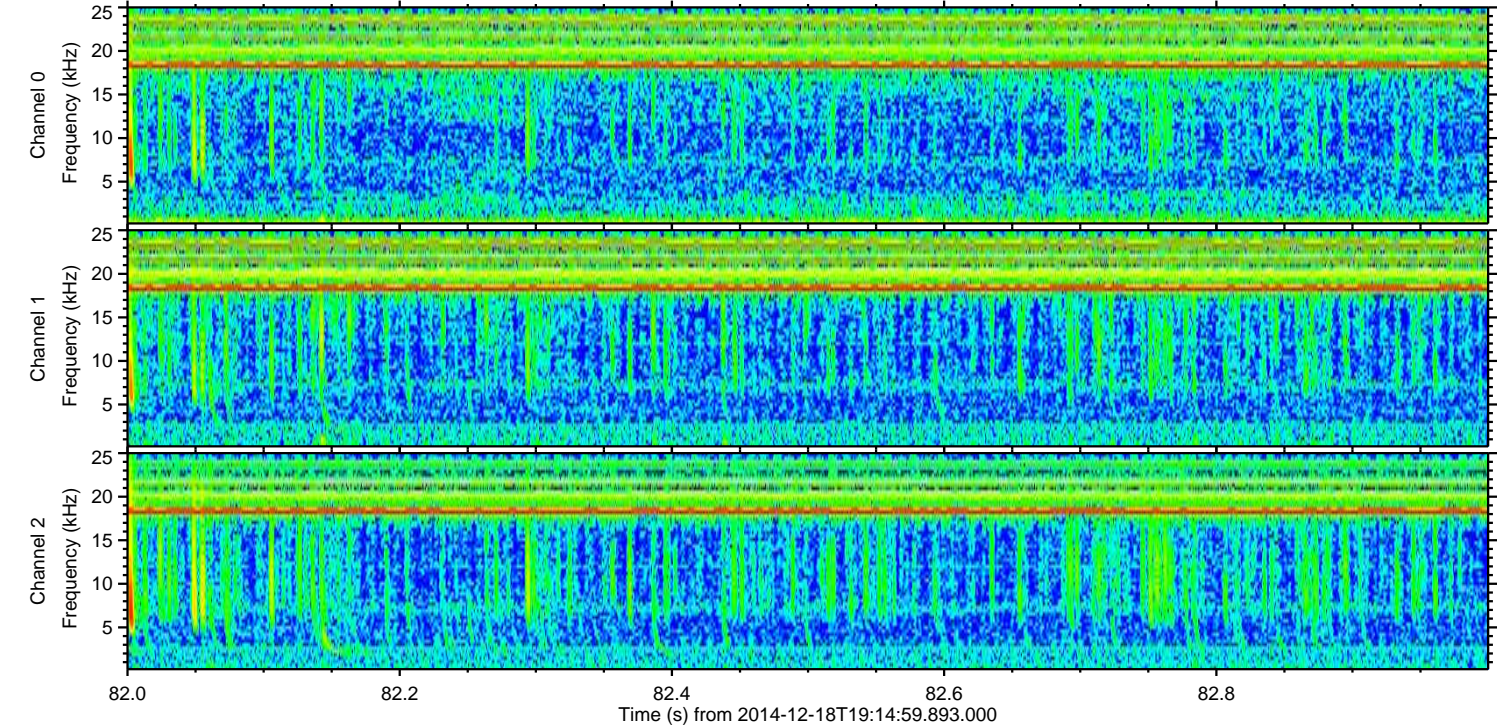
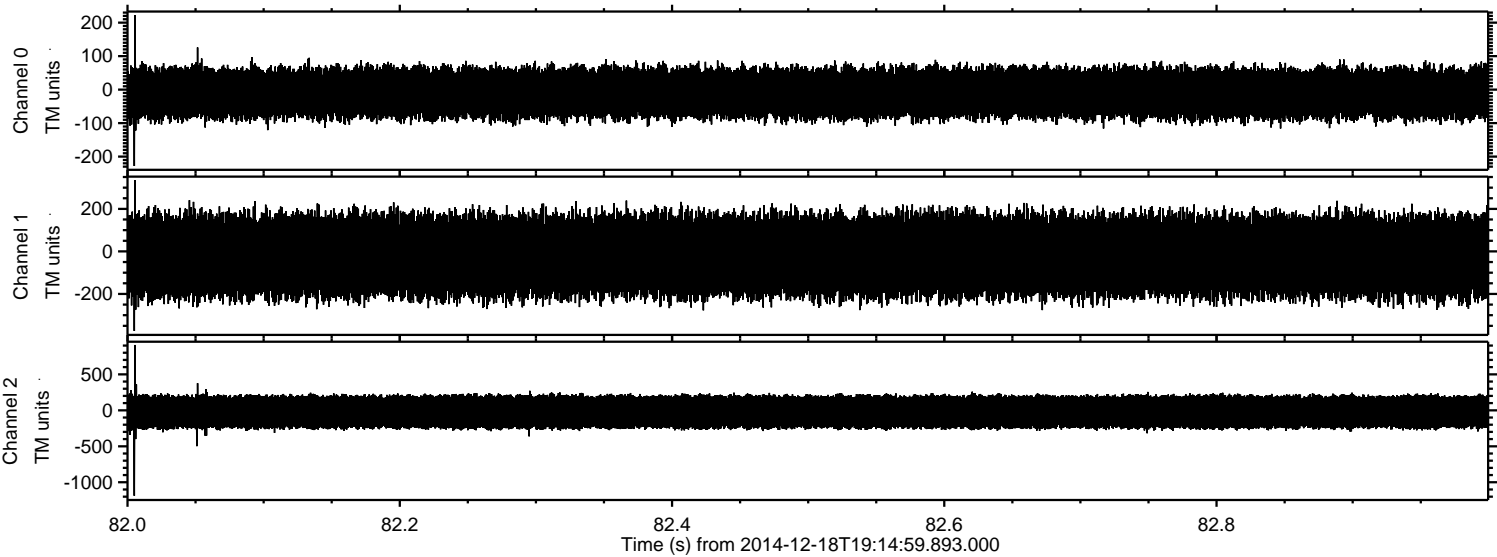


ELMAVAN 3D WAVEFORMS (Measured data sampled at 50 kHz) 49784 packets of 144 samples from 2014-12-18T19:14:59.893.000. Part 35/144

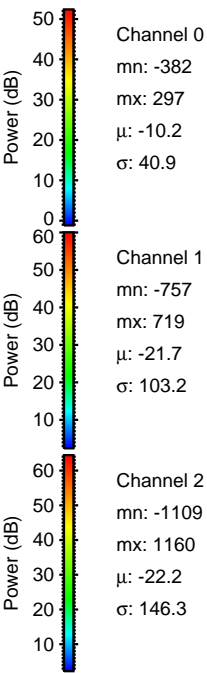
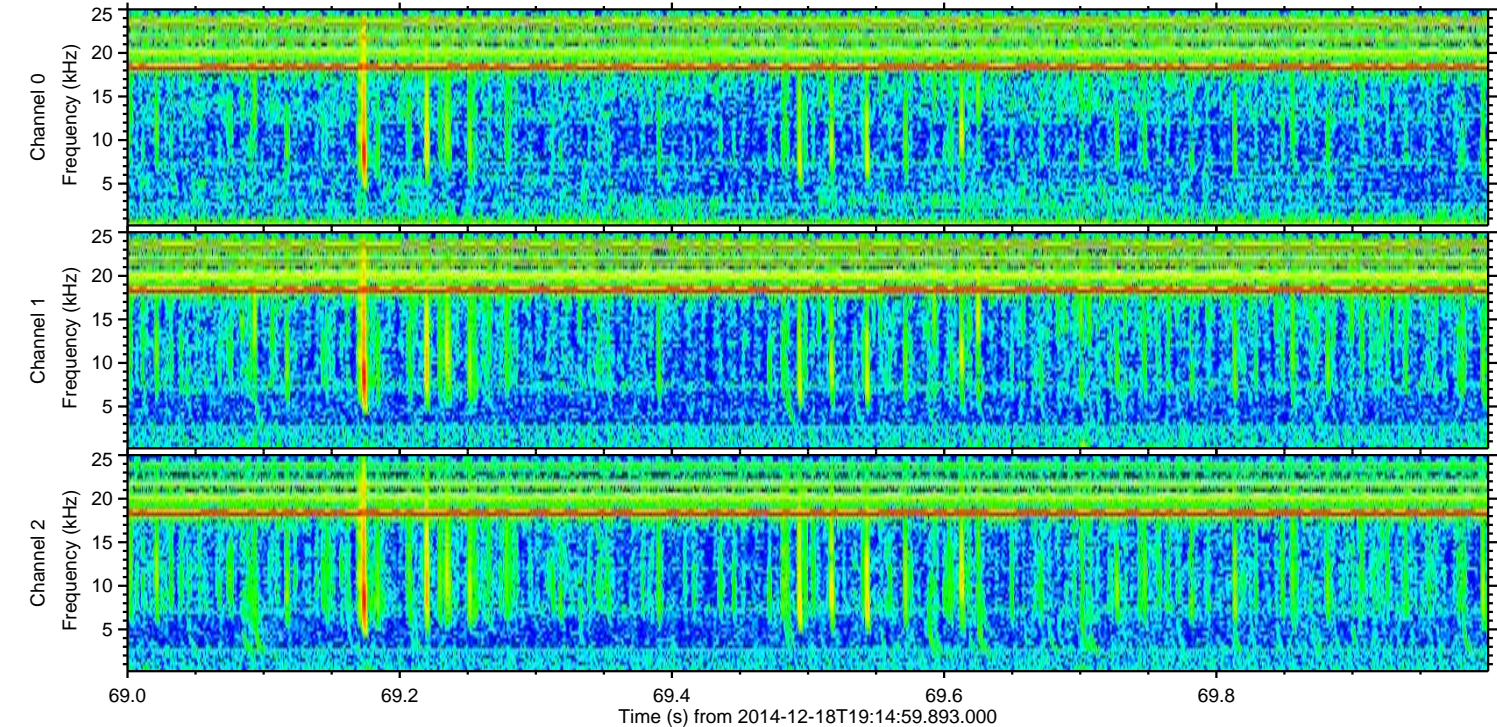
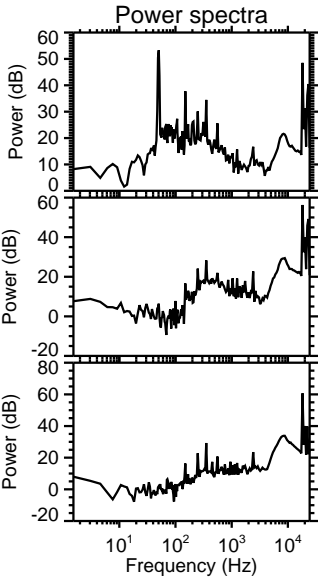
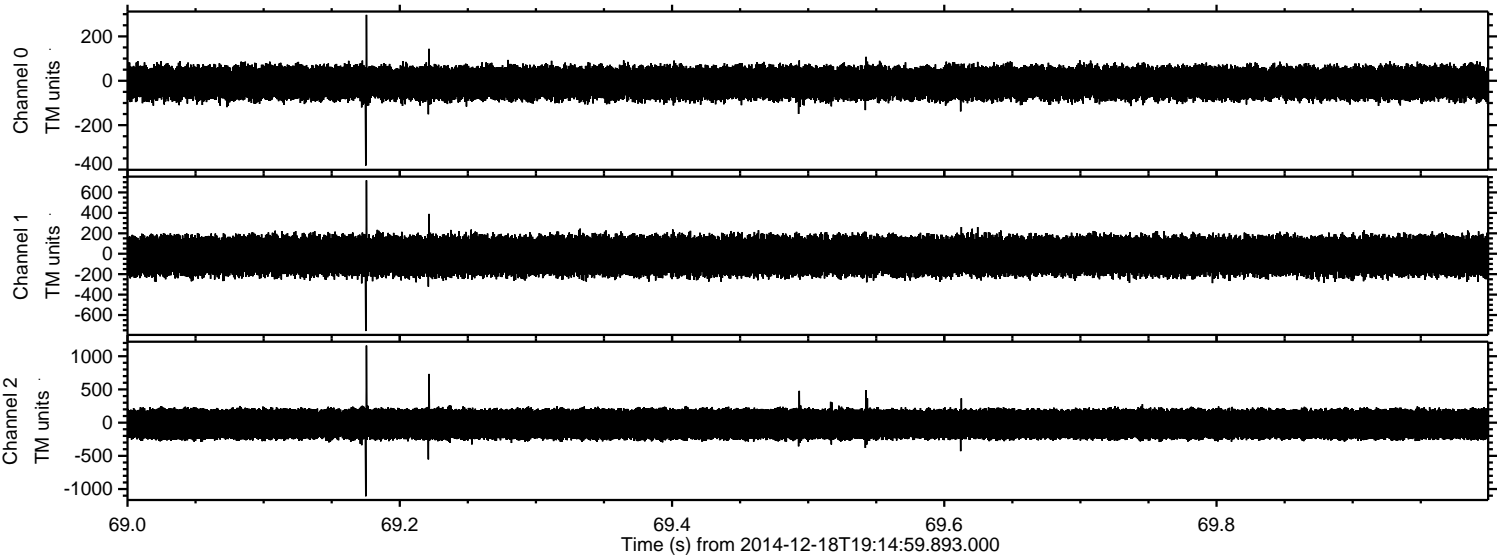
Processed Thu Dec 18 20:22:53 2014 by ELM ver.2012-10-06 from 001__elm20141218_191458__dat00.bin



Processed Thu Dec 18 20:22:54 2014 by ELM ver.2012-10-06 from 001__elm20141218_191458__dat00.bin

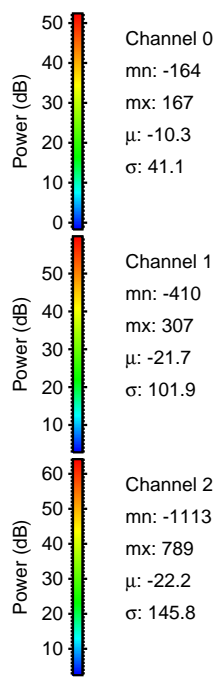
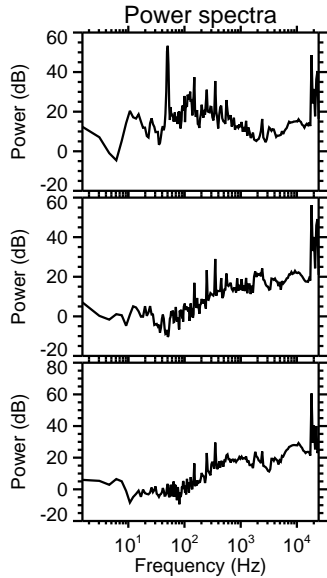
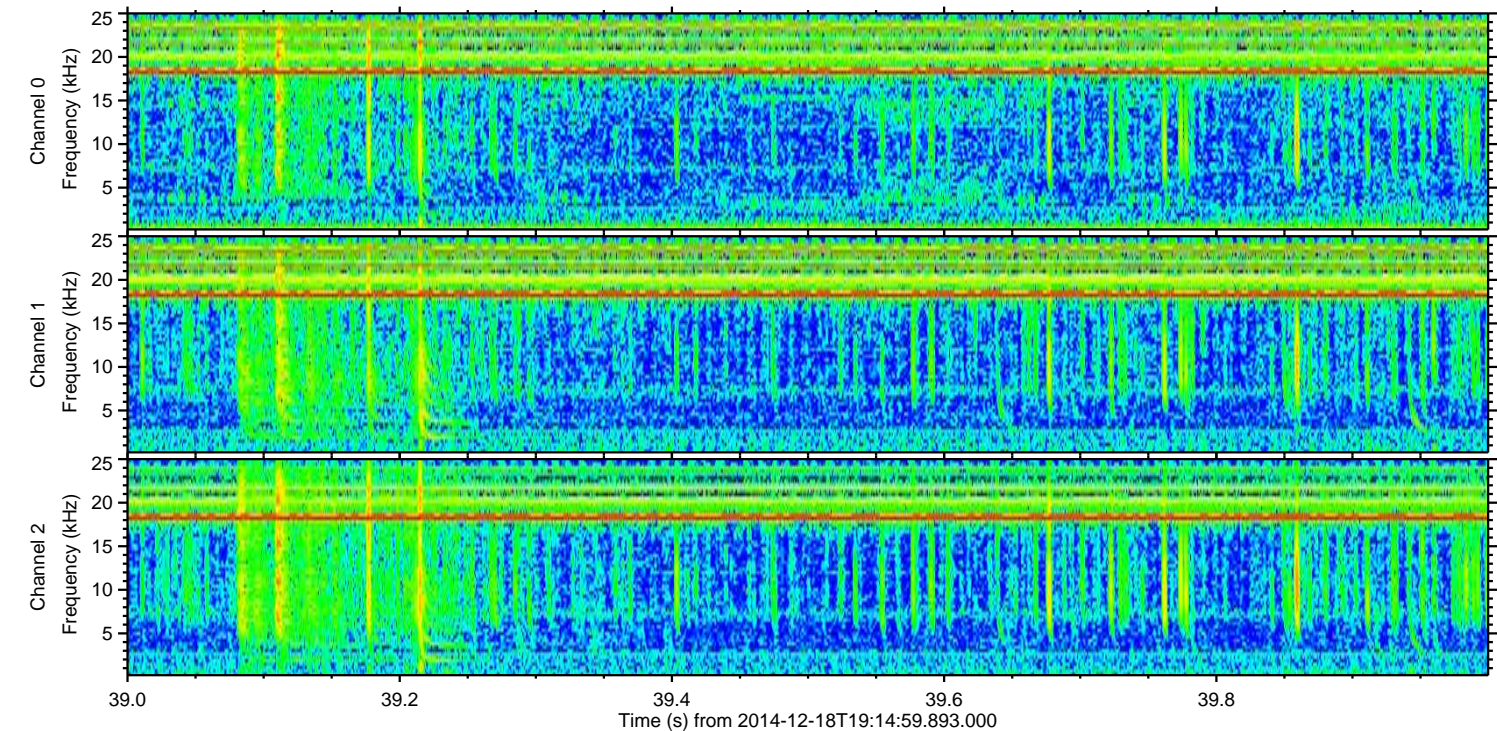
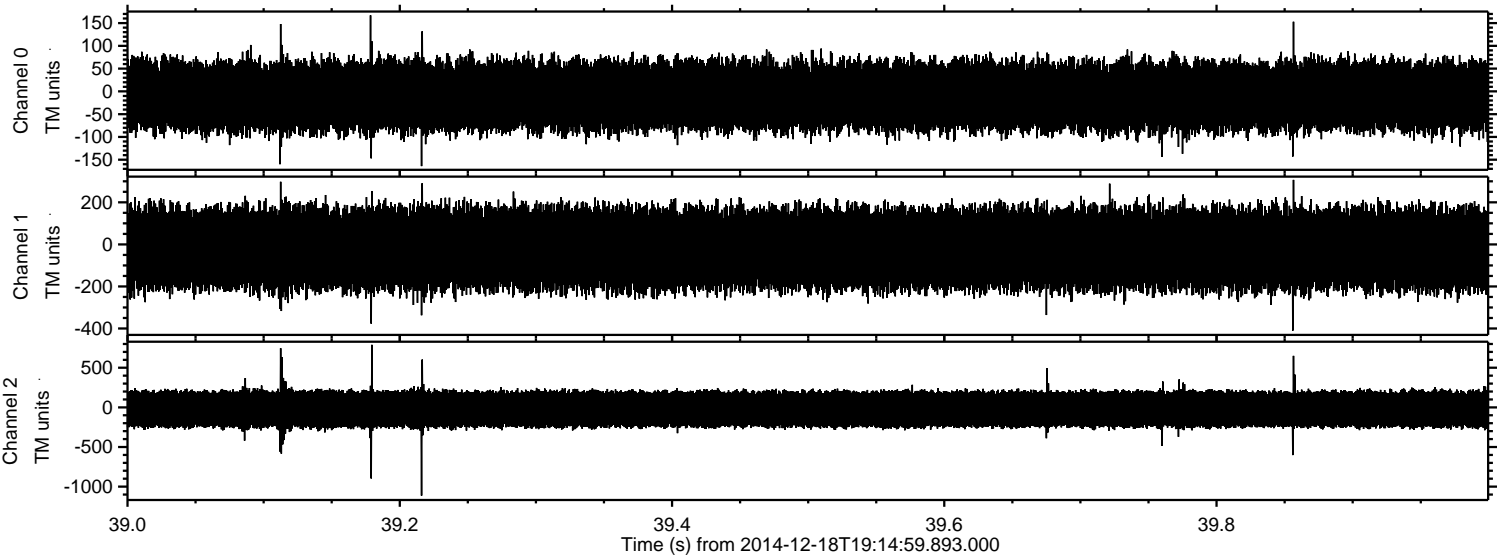


Processed Thu Dec 18 20:22:55 2014 by ELM ver.2012-10-06 from 001__elm20141218_191458__dat00.bin



ELMAVAN 3D WAVEFORMS (Measured data sampled at 50 kHz) 49784 packets of 144 samples from 2014-12-18T19:14:59.893.000. Part 40/144

Processed Thu Dec 18 20:22:56 2014 by ELM ver.2012-10-06 from 001__elm20141218_191458__dat00.bin



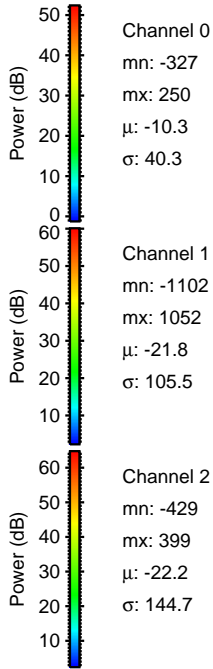
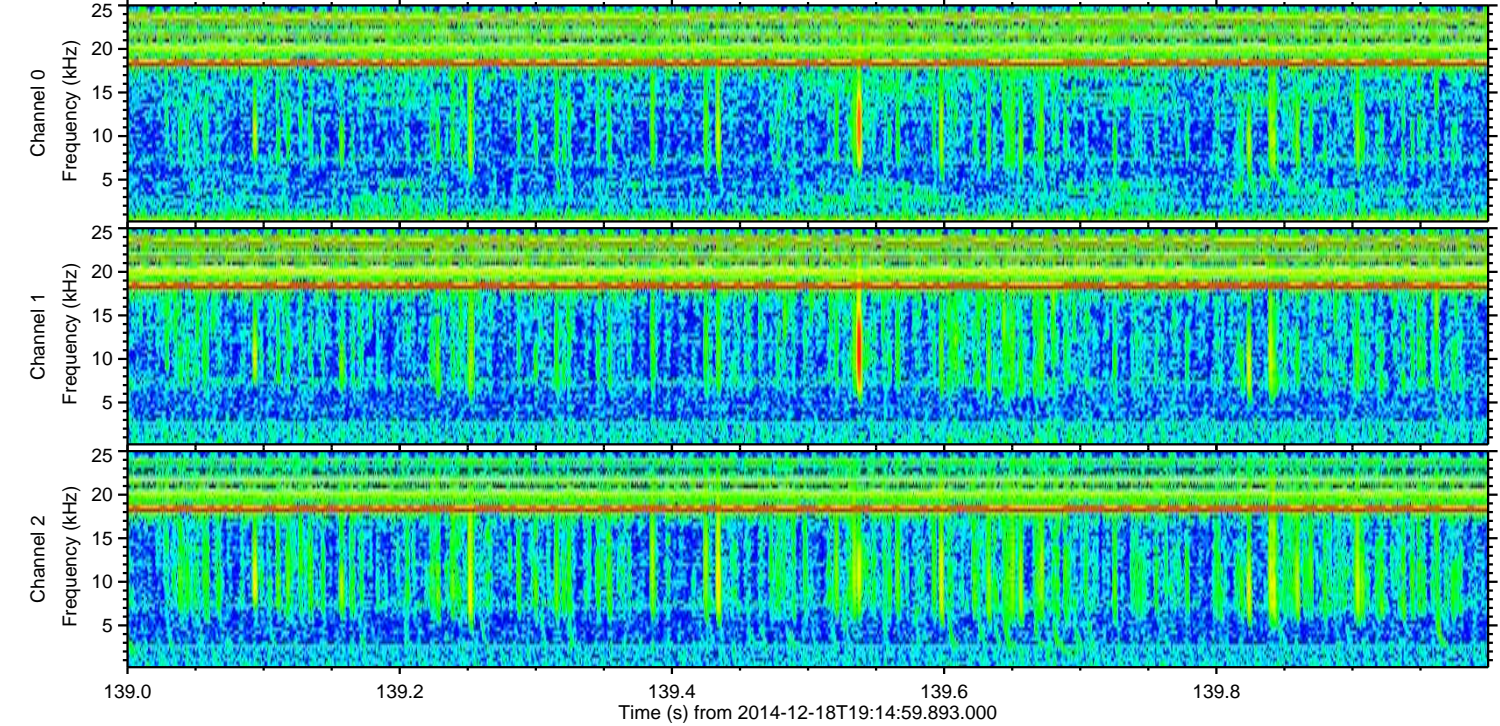
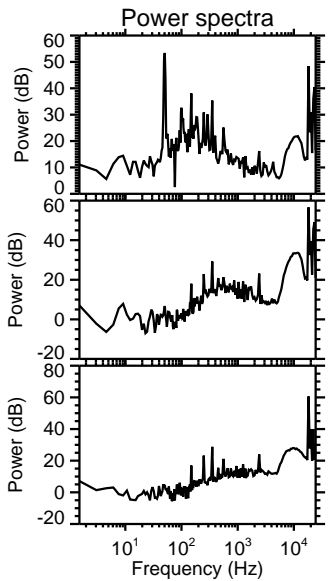
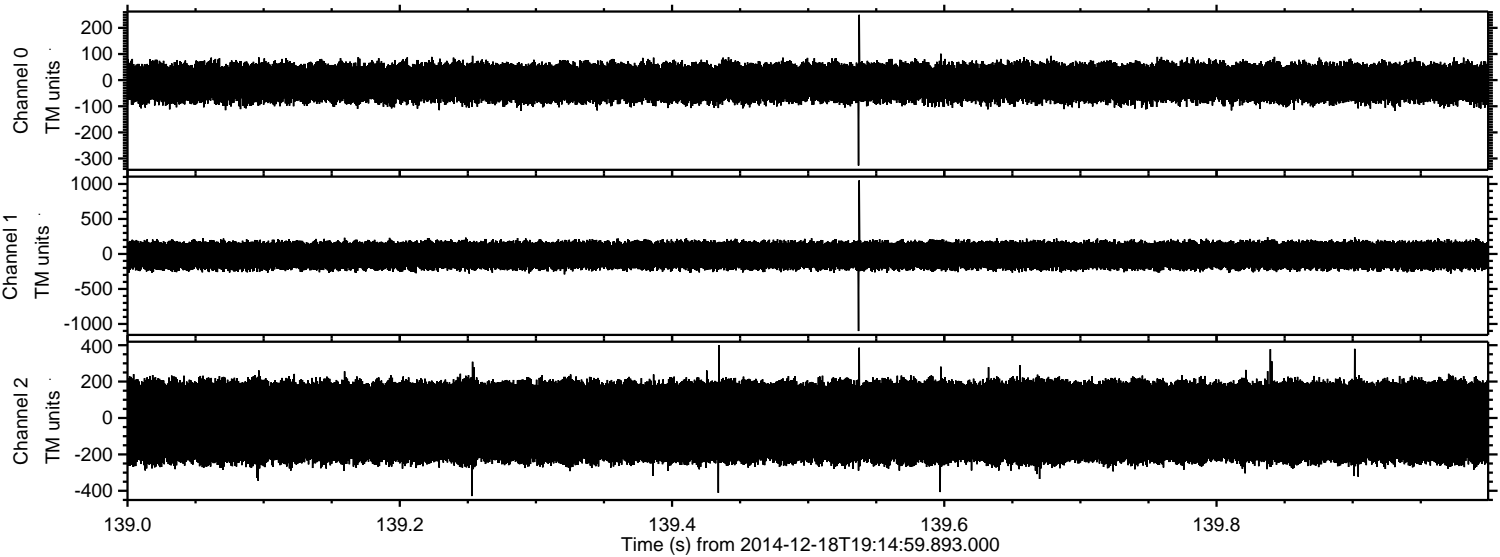
Channel 0
mn: -164
mx: 167
 μ : -10.3
 σ : 41.1

Channel 1
mn: -410
mx: 307
 μ : -21.7
 σ : 101.9

Channel 2
mn: -1113
mx: 789
 μ : -22.2
 σ : 145.8

ELMAVAN 3D WAVEFORMS (Measured data sampled at 50 kHz) 49784 packets of 144 samples from 2014-12-18T19:14:59.893.000. Part 140/144

Processed Thu Dec 18 20:22:58 2014 by ELM ver.2012-10-06 from 001__elm20141218_191458__dat00.bin



Channel 0
mn: -327
mx: 250
 μ : -10.3
 σ : 40.3

Channel 1
mn: -1102
mx: 1052
 μ : -21.8
 σ : 105.5

Channel 2
mn: -429
mx: 399
 μ : -22.2
 σ : 144.7

ELMAVAN 3D WAVEFORMS (Measured data sampled at 50 kHz) 49784 packets of 144 samples from 2014-12-18T19:14:59.893.000. Part 76/144

Processed Thu Dec 18 20:22:59 2014 by ELM ver.2012-10-06 from 001__elm20141218_191458__dat00.bin

