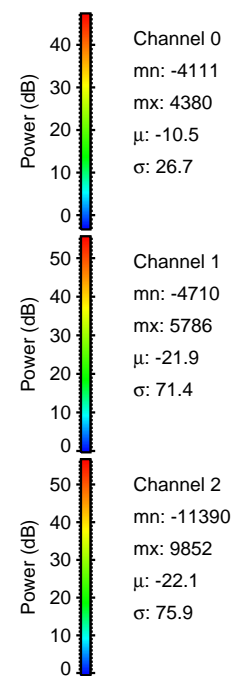
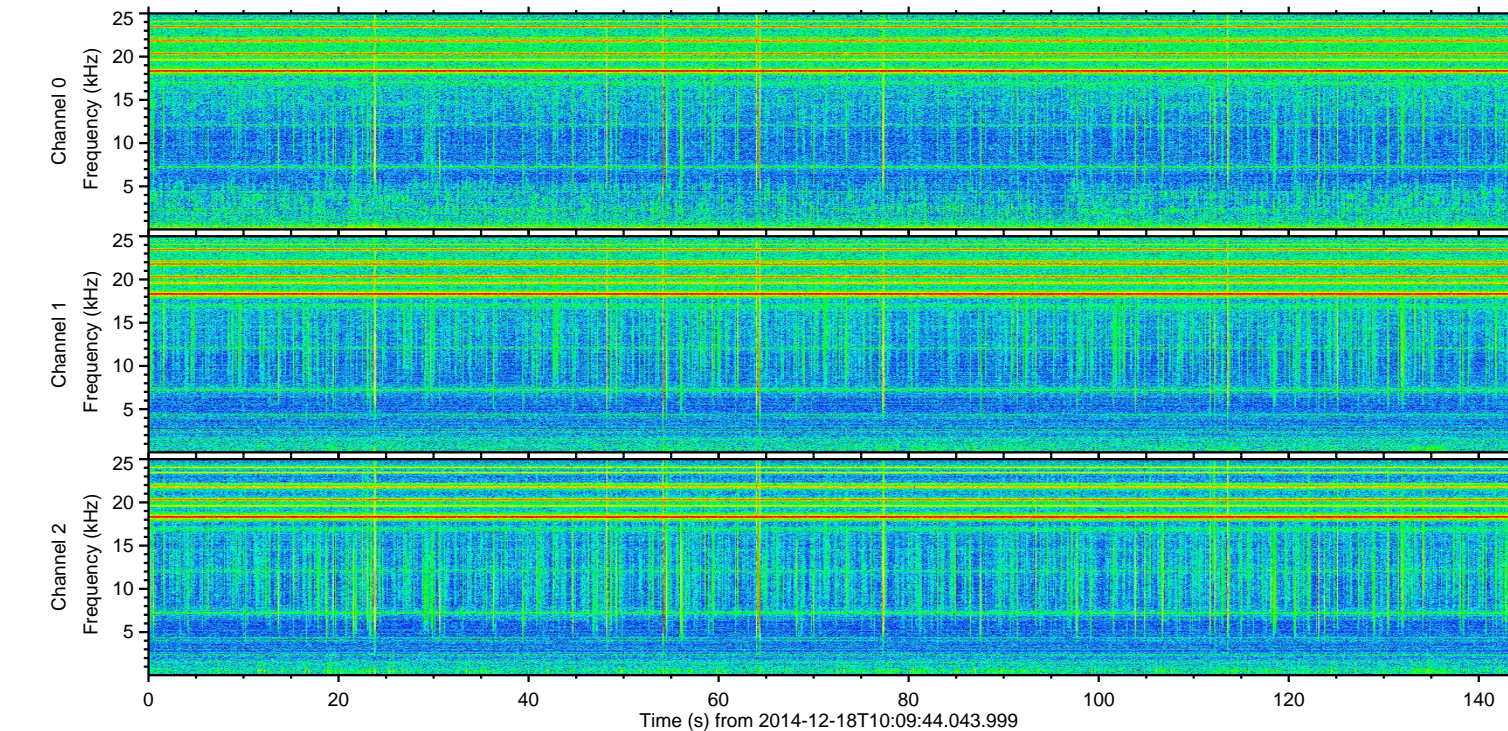
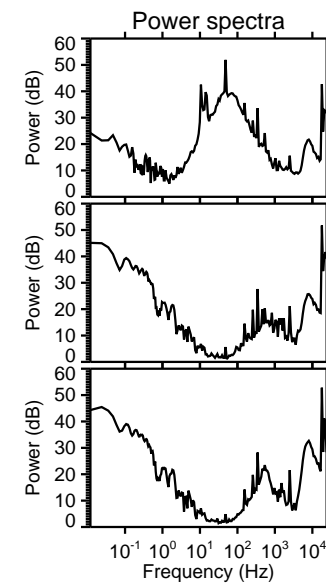
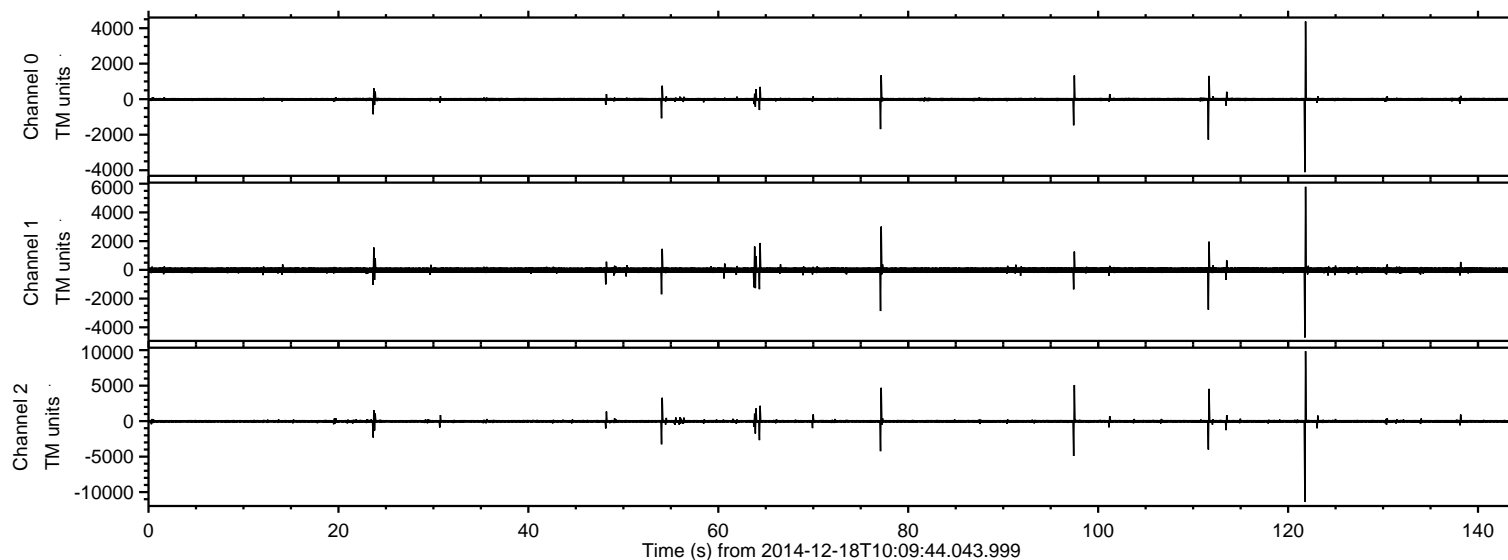


# ELMAVAN 3D WAVEFORMS (Measured data sampled at 50 kHz) 49749 packets of 144 samples from 2014-12-18T10:09:44.043.999.

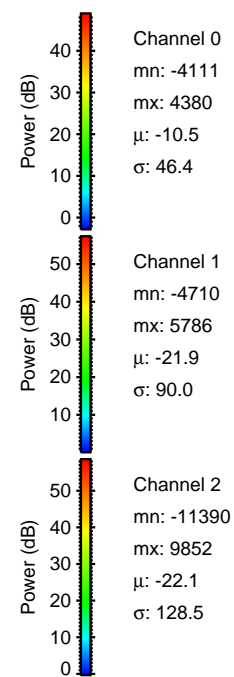
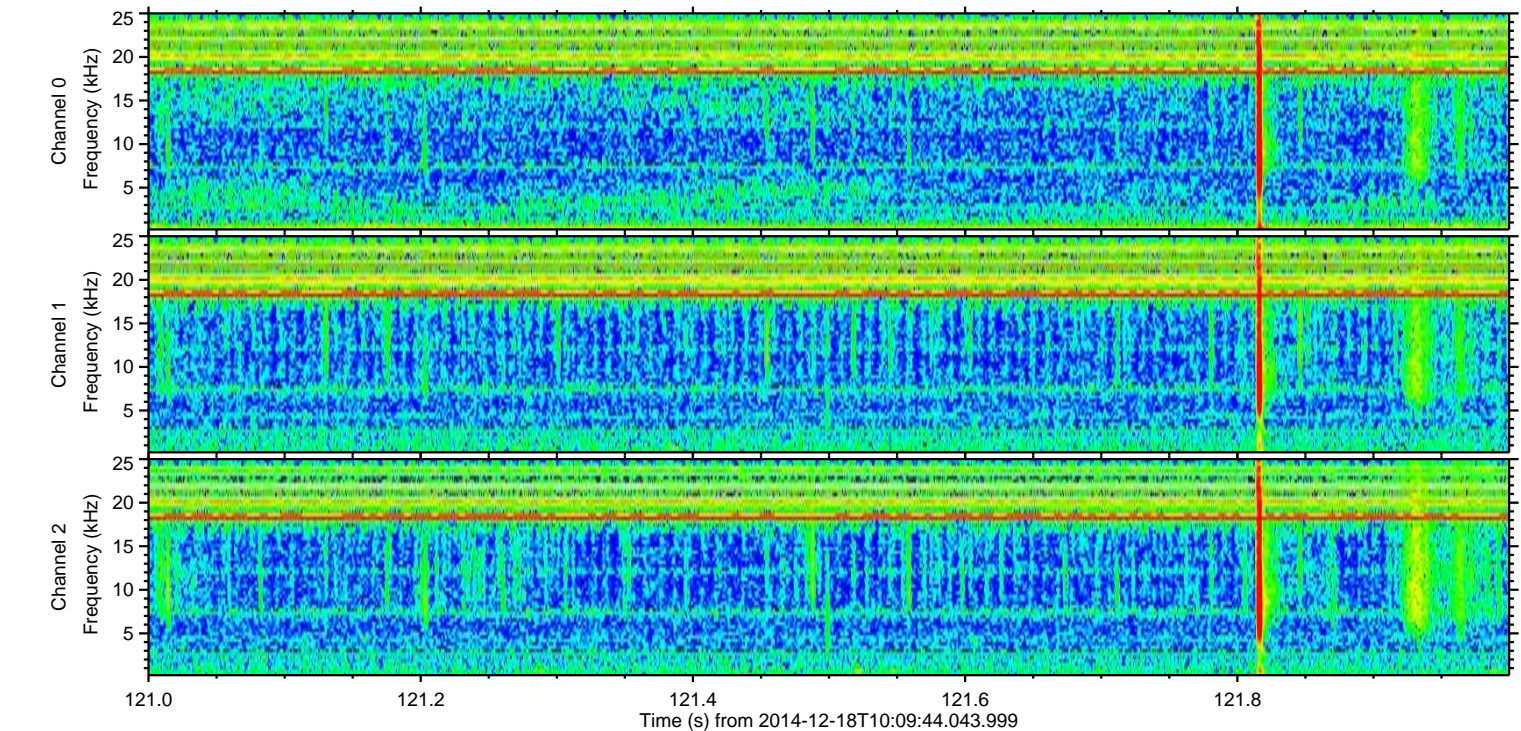
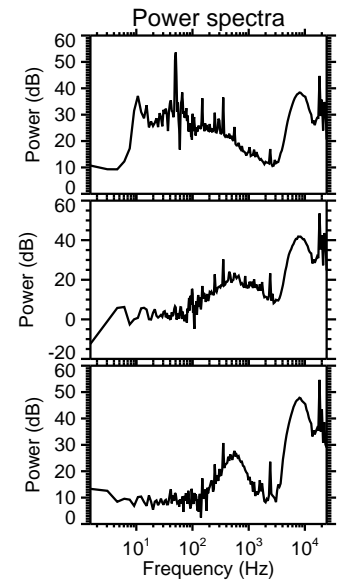
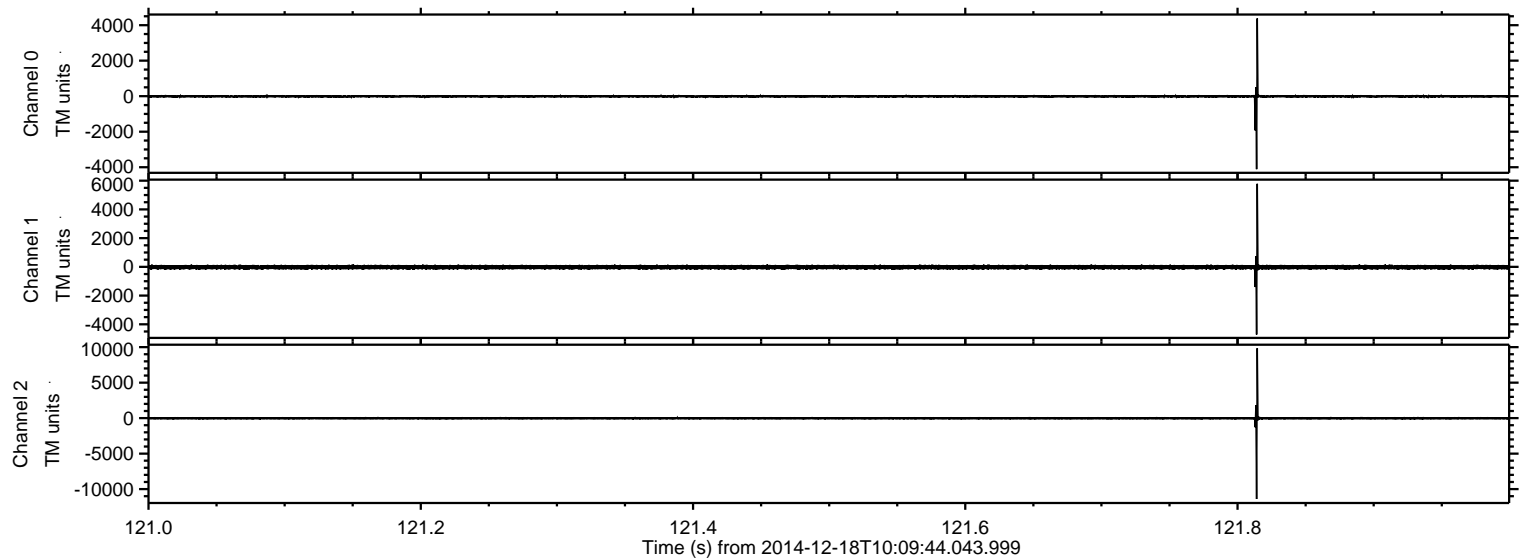
Processed Thu Dec 18 11:18:29 2014 by ELM ver.2012-10-06 from 001\_\_elm20141218\_100943\_\_dat00.bin





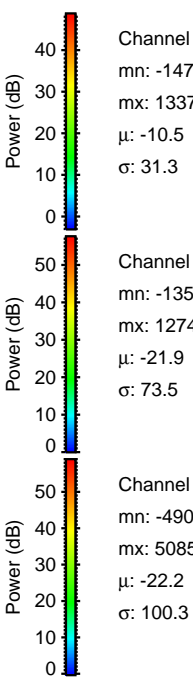
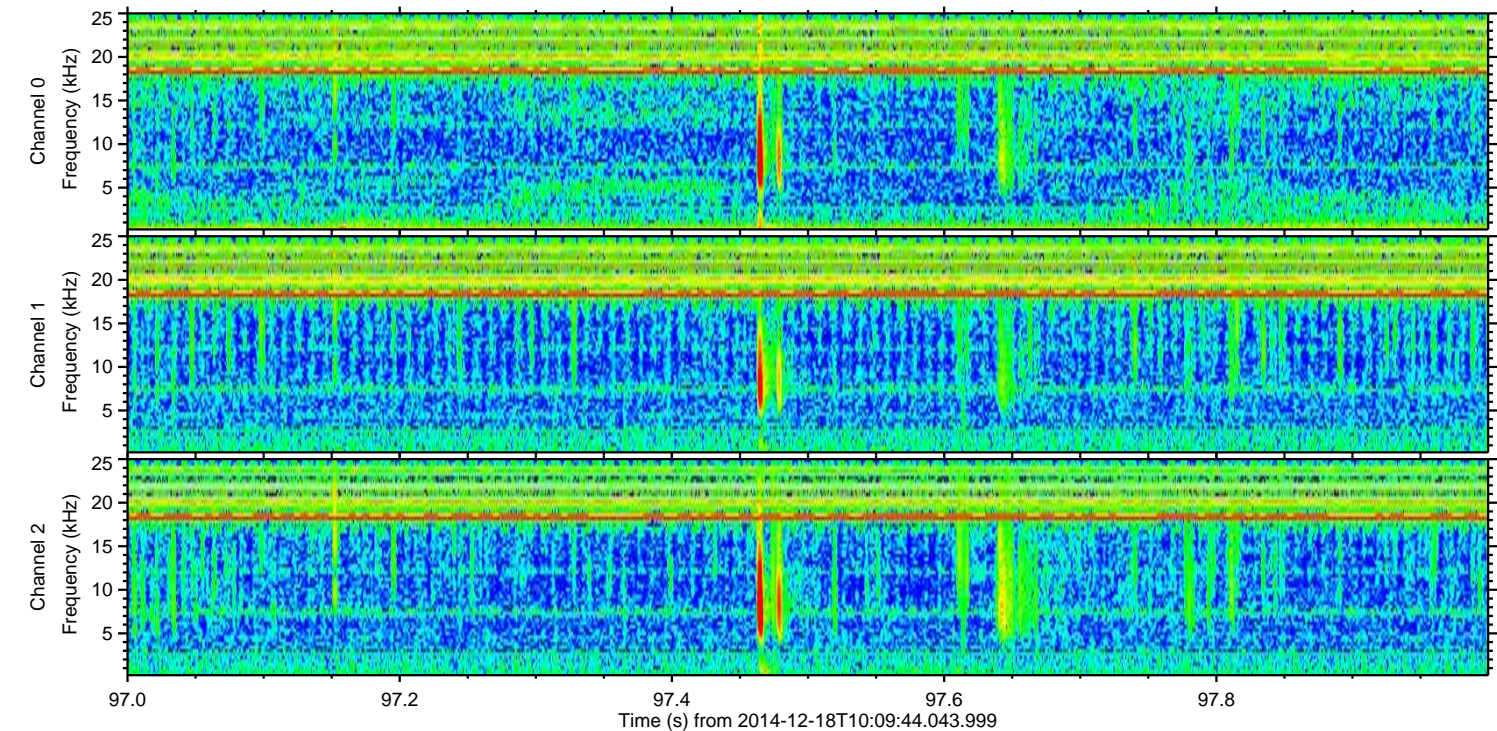
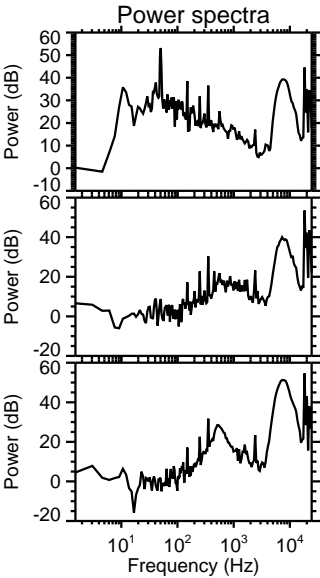
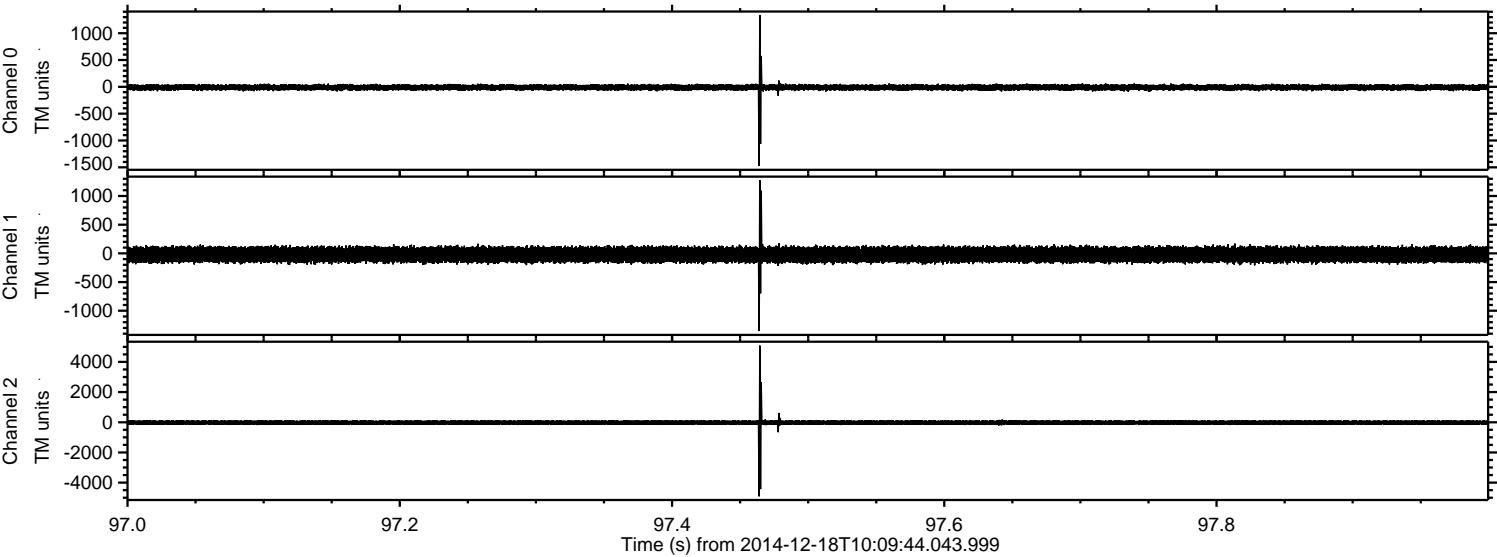
ELMAVAN 3D WAVEFORMS (Measured data sampled at 50 kHz) 49749 packets of 144 samples from 2014-12-18T10:09:44.043.999. Part 122/144

Processed Thu Dec 18 11:18:41 2014 by ELM ver.2012-10-06 from 001\_\_elm20141218\_100943\_\_dat00.bin



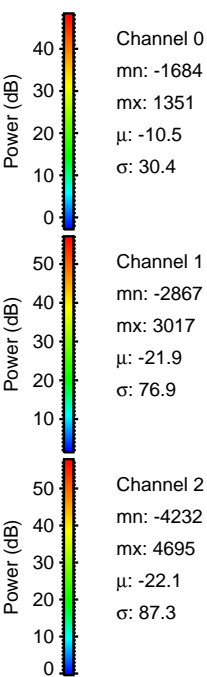
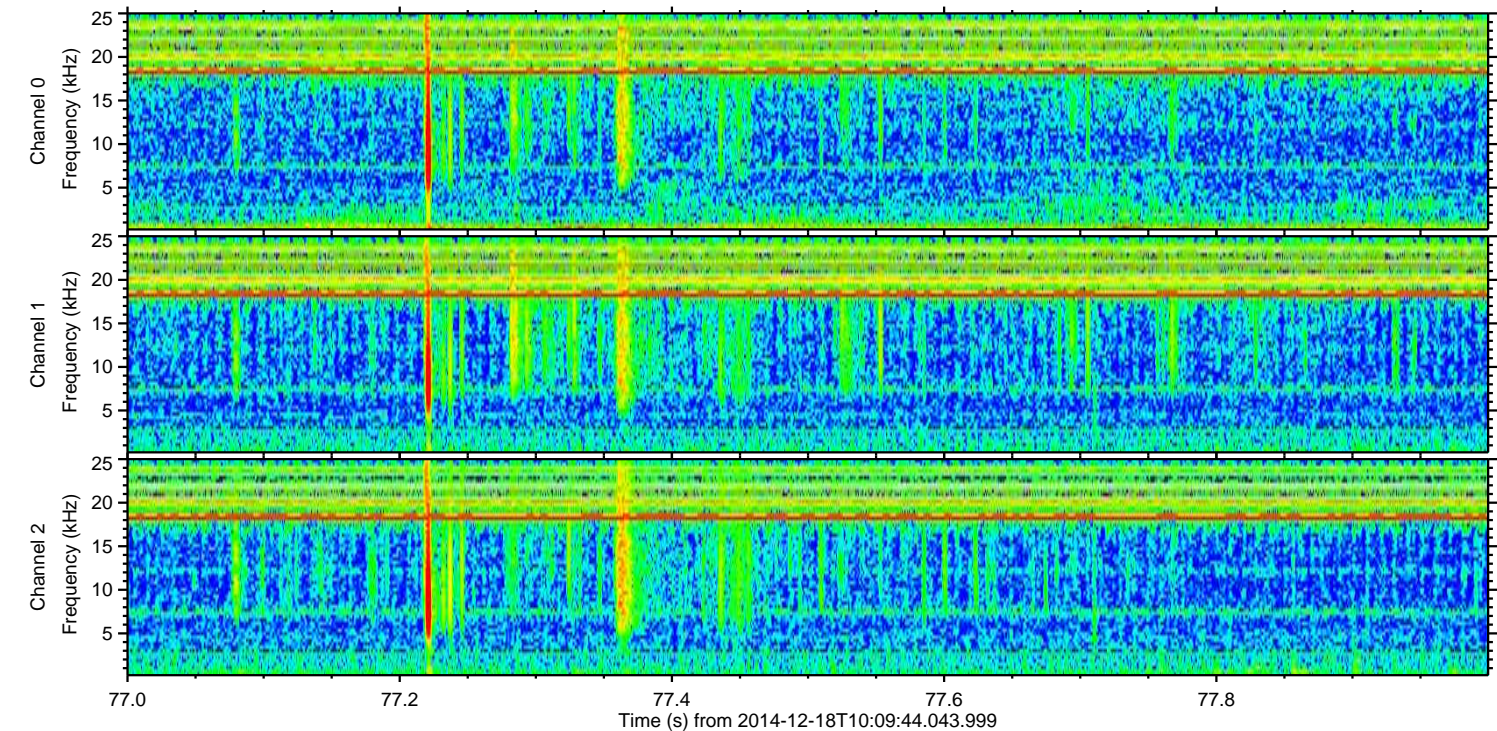
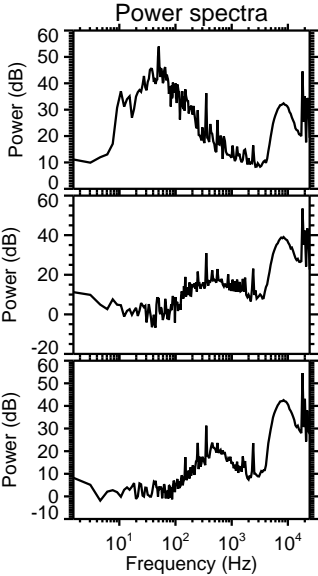
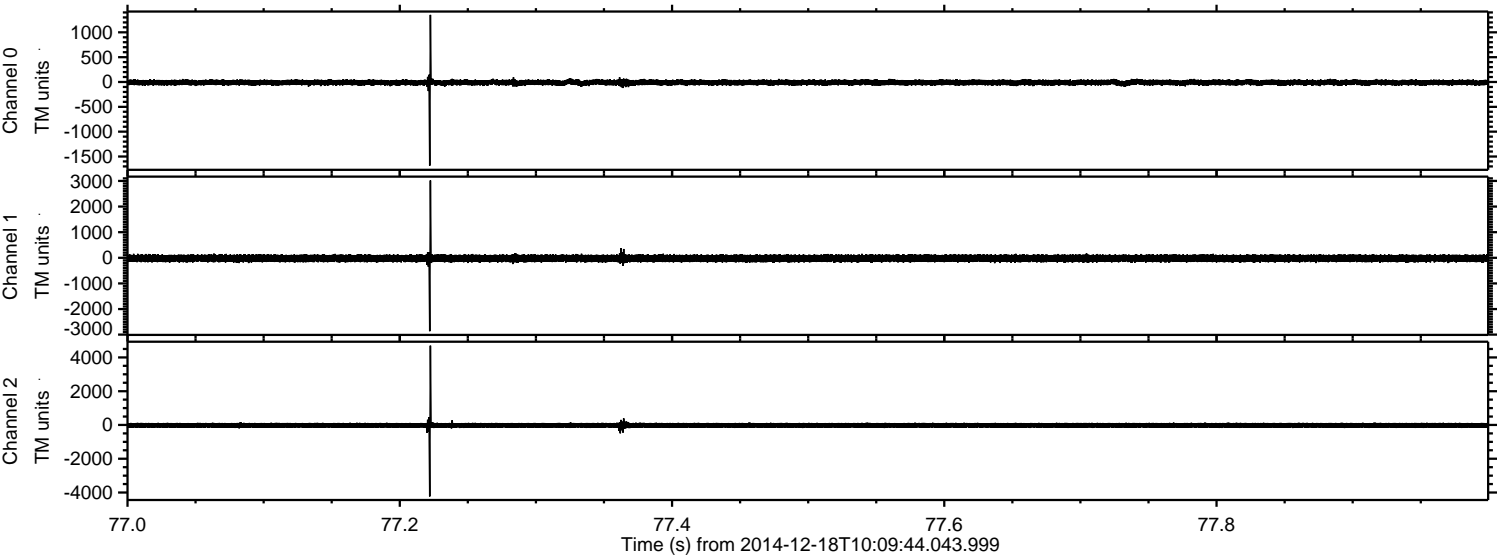


Processed Thu Dec 18 11:18:42 2014 by ELM ver.2012-10-06 from 001\_\_elm20141218\_100943\_\_dat00.bin





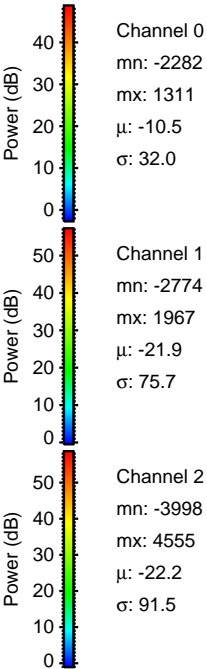
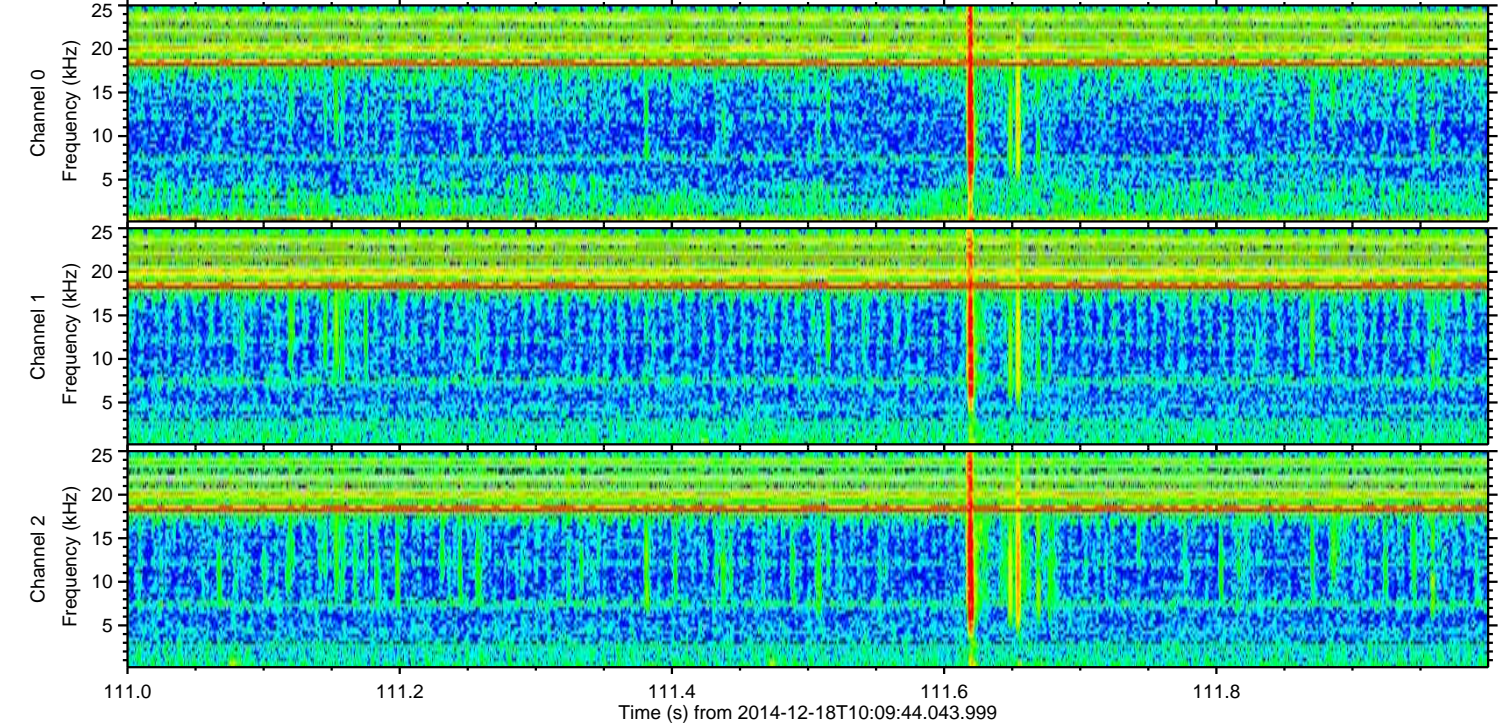
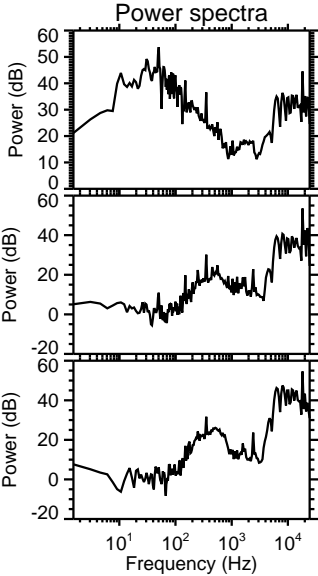
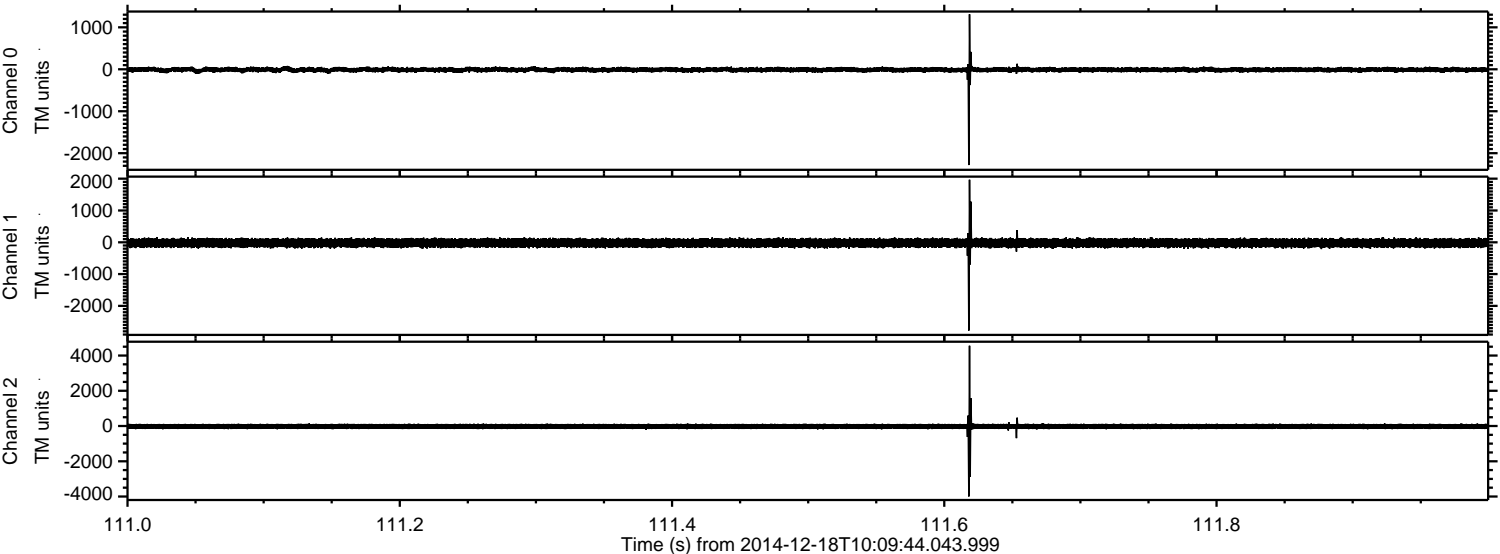
Processed Thu Dec 18 11:18:43 2014 by ELM ver.2012-10-06 from 001\_\_elm20141218\_100943\_\_dat00.bin





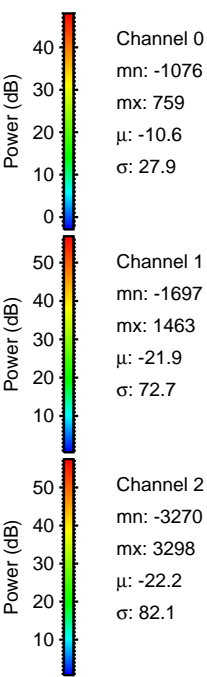
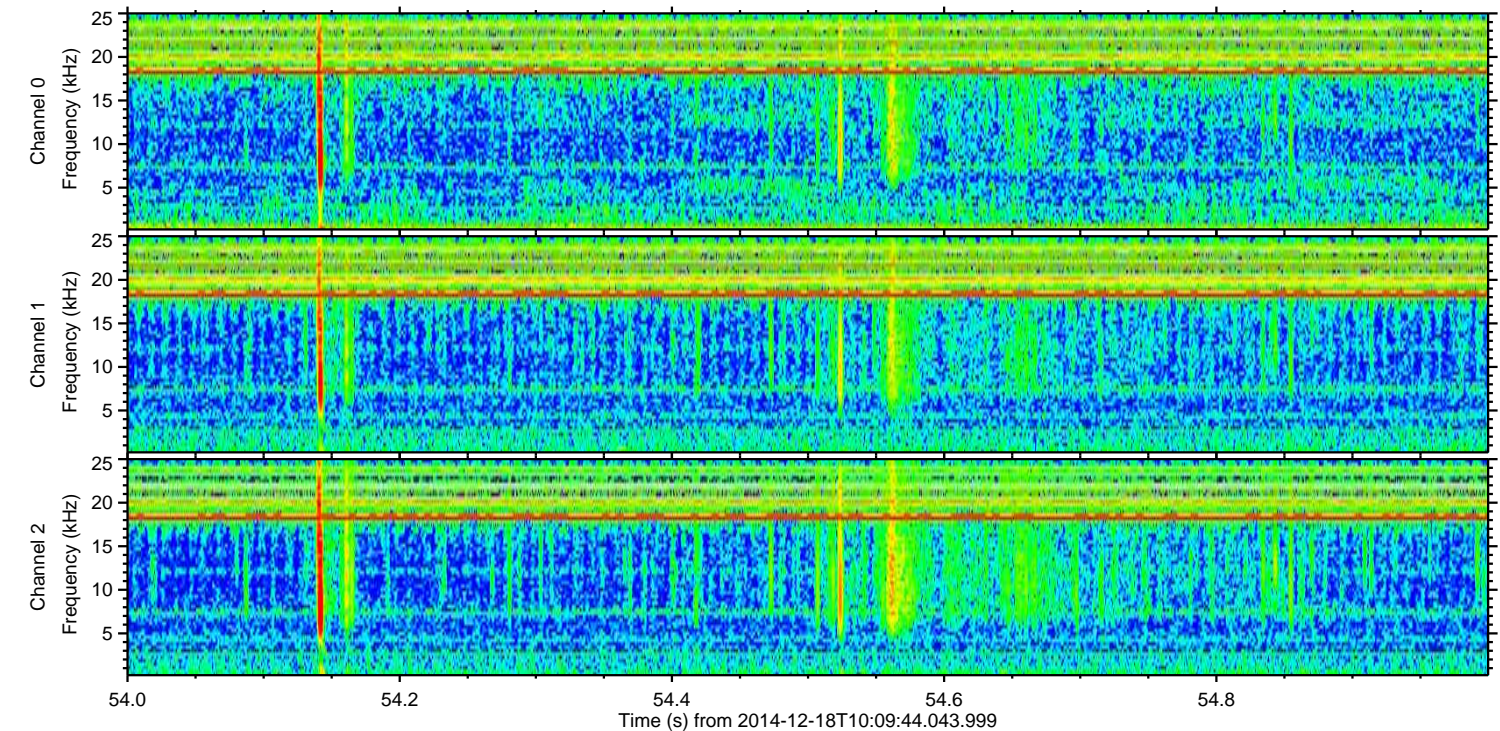
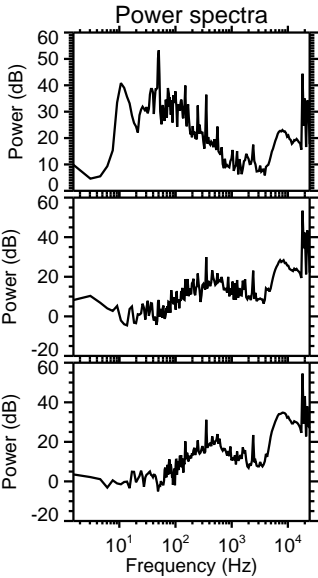
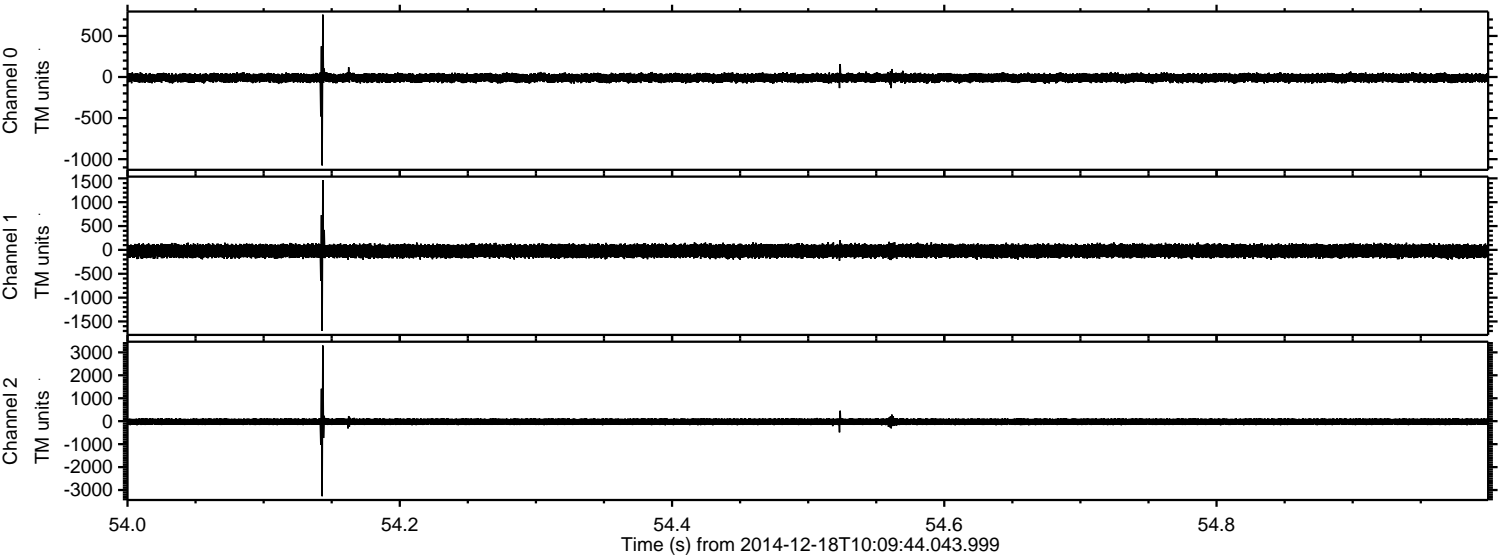
ELMAVAN 3D WAVEFORMS (Measured data sampled at 50 kHz) 49749 packets of 144 samples from 2014-12-18T10:09:44.043.999. Part 112/144

Processed Thu Dec 18 11:18:44 2014 by ELM ver.2012-10-06 from 001\_\_elm20141218\_100943\_\_dat00.bin





Processed Thu Dec 18 11:18:45 2014 by ELM ver.2012-10-06 from 001\_\_elm20141218\_100943\_\_dat00.bin



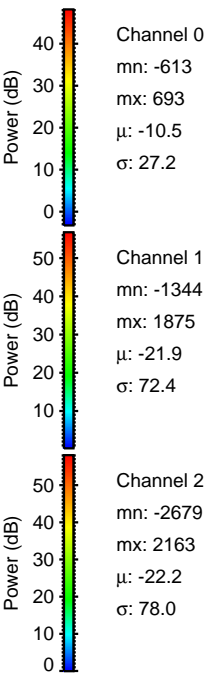
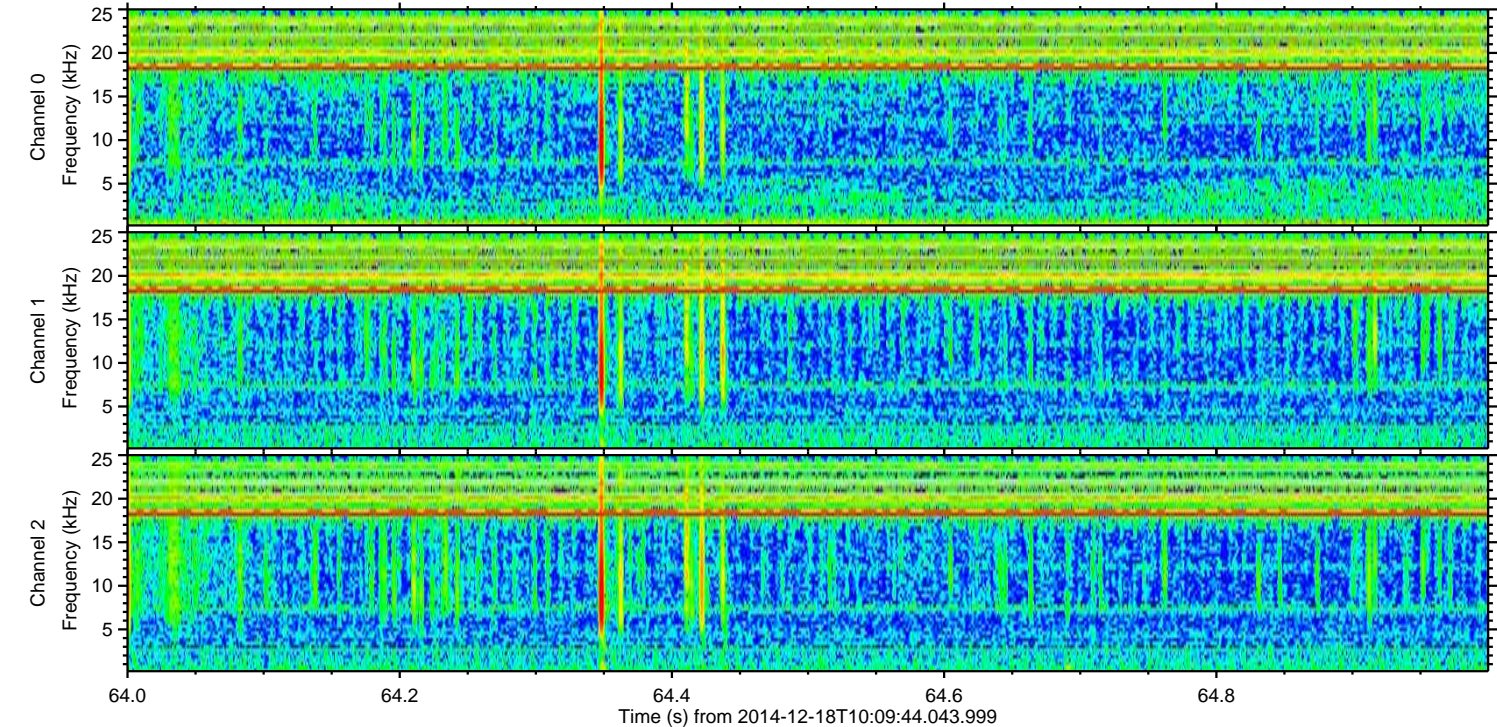
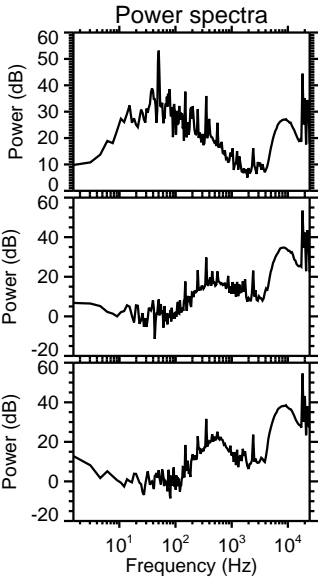
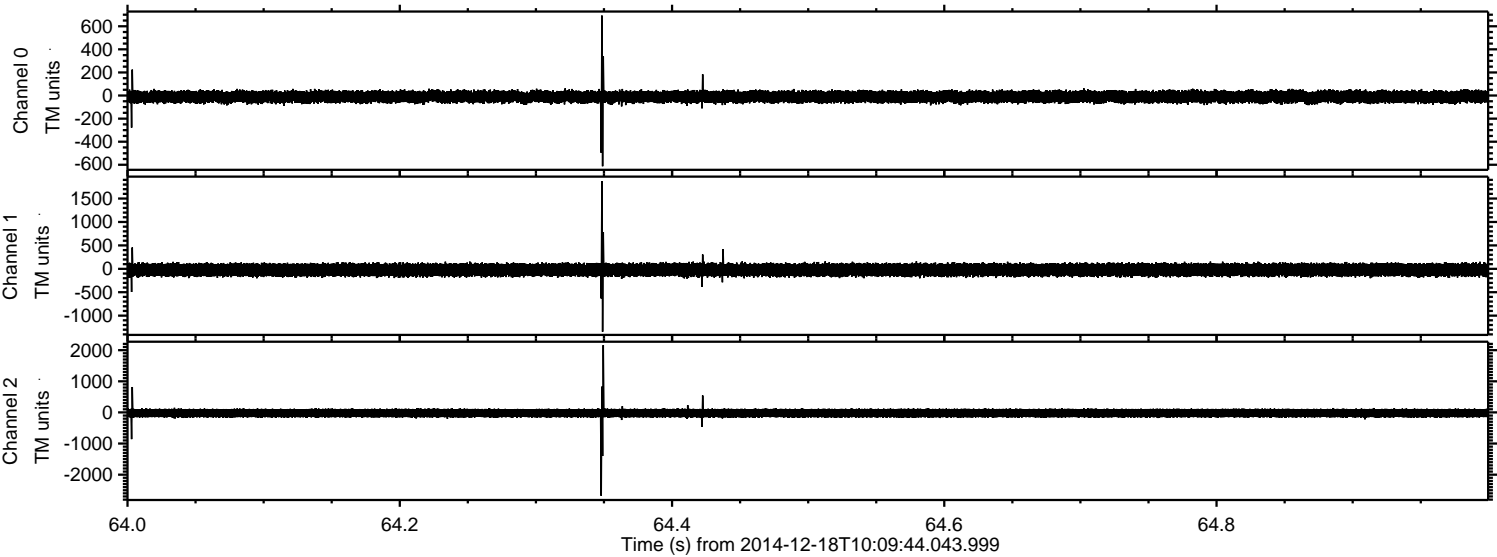
Channel 0  
mn: -1076  
mx: 759  
 $\mu$ : -10.6  
 $\sigma$ : 27.9

Channel 1  
mn: -1697  
mx: 1463  
 $\mu$ : -21.9  
 $\sigma$ : 72.7

Channel 2  
mn: -3270  
mx: 3298  
 $\mu$ : -22.2  
 $\sigma$ : 82.1



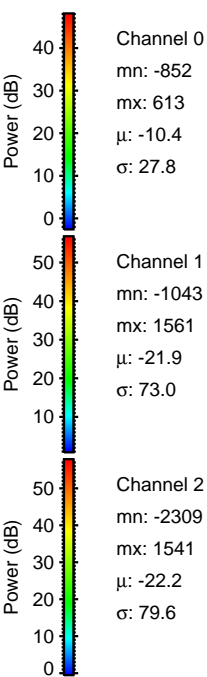
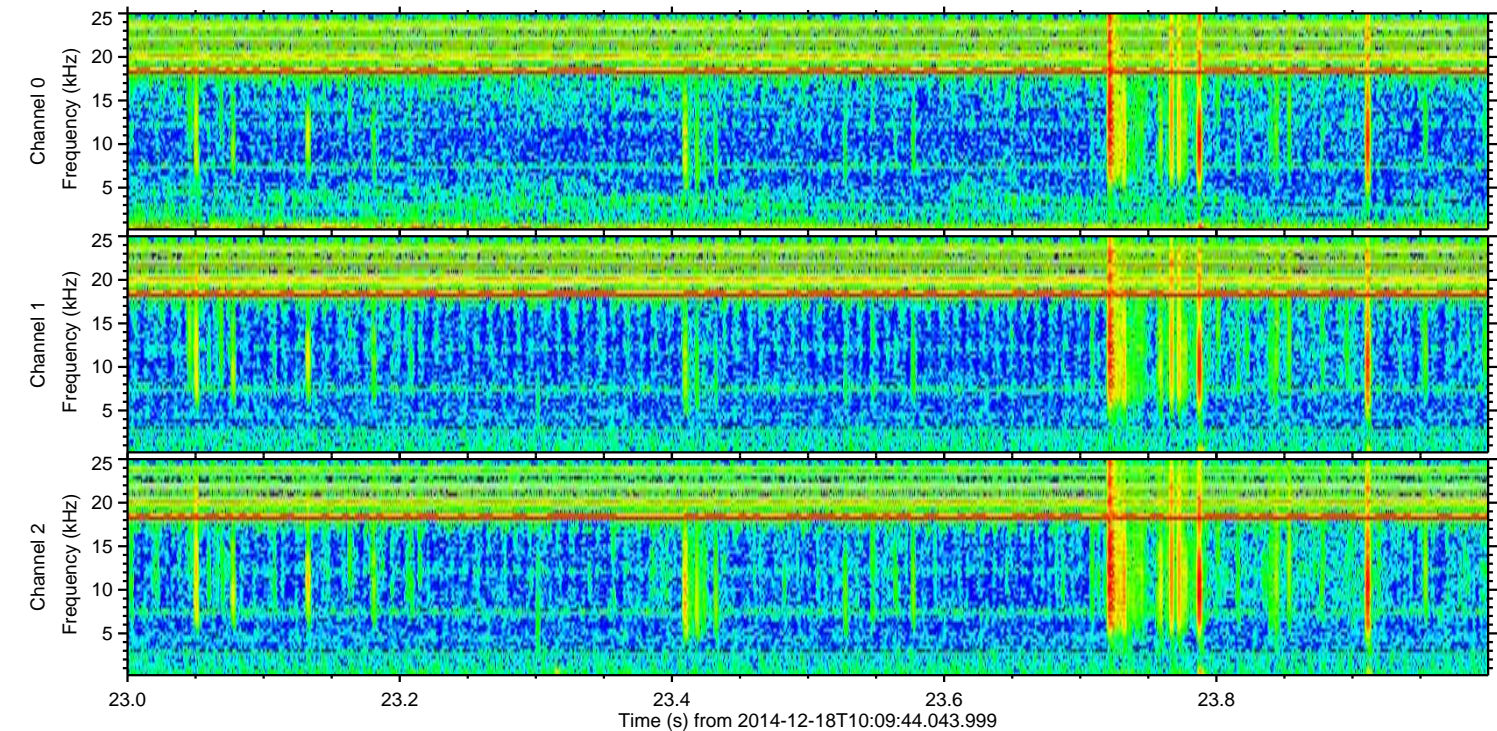
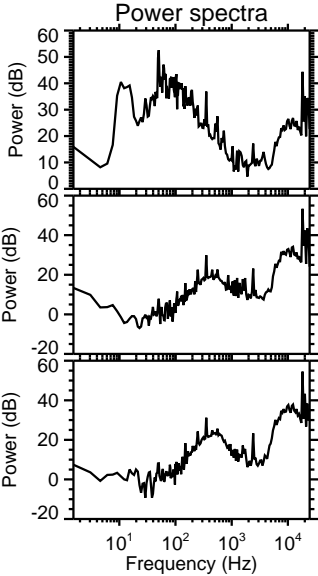
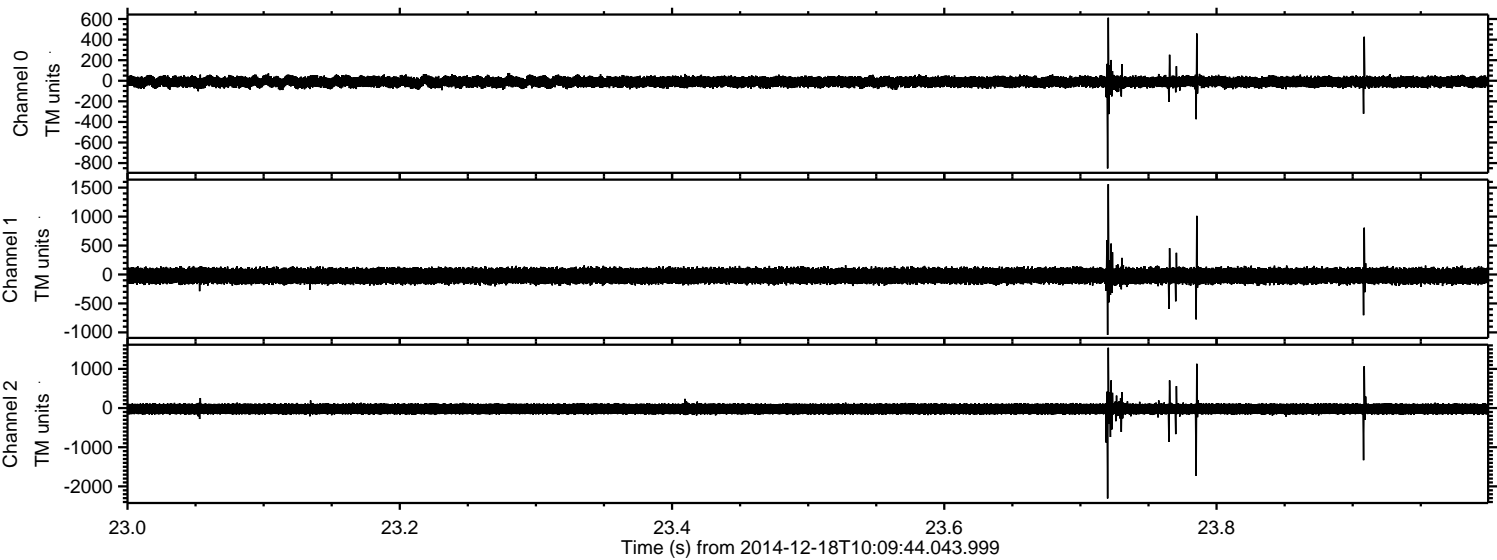
Processed Thu Dec 18 11:18:46 2014 by ELM ver.2012-10-06 from 001\_\_elm20141218\_100943\_\_dat00.bin





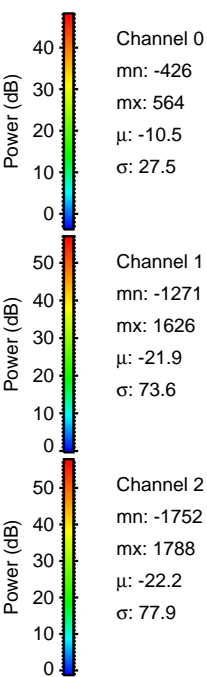
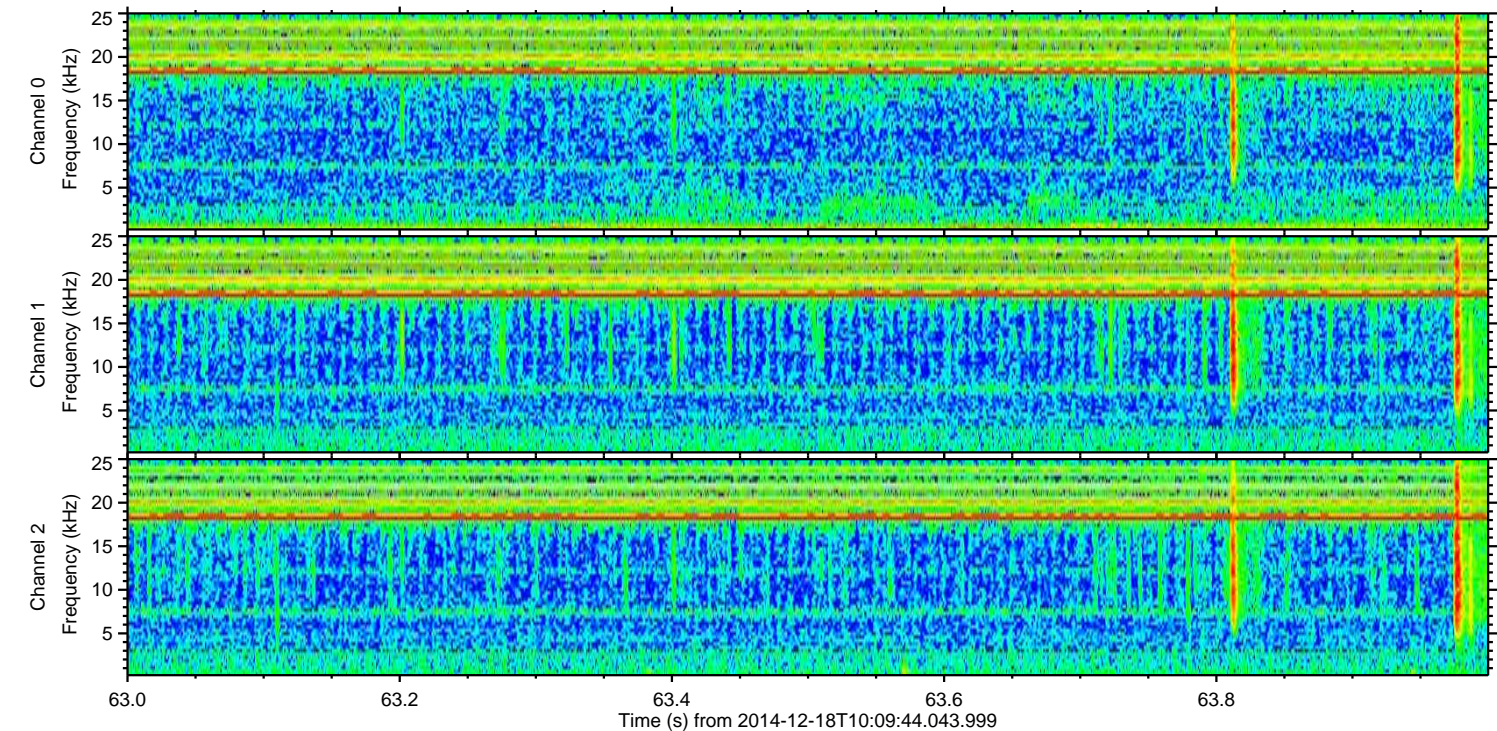
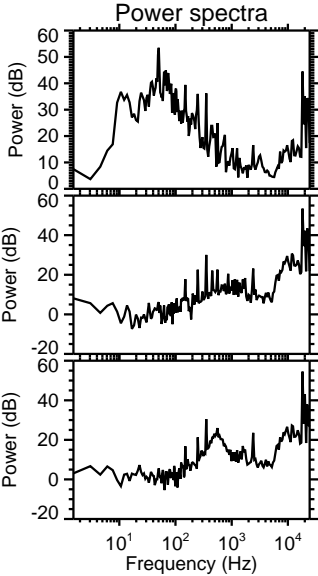
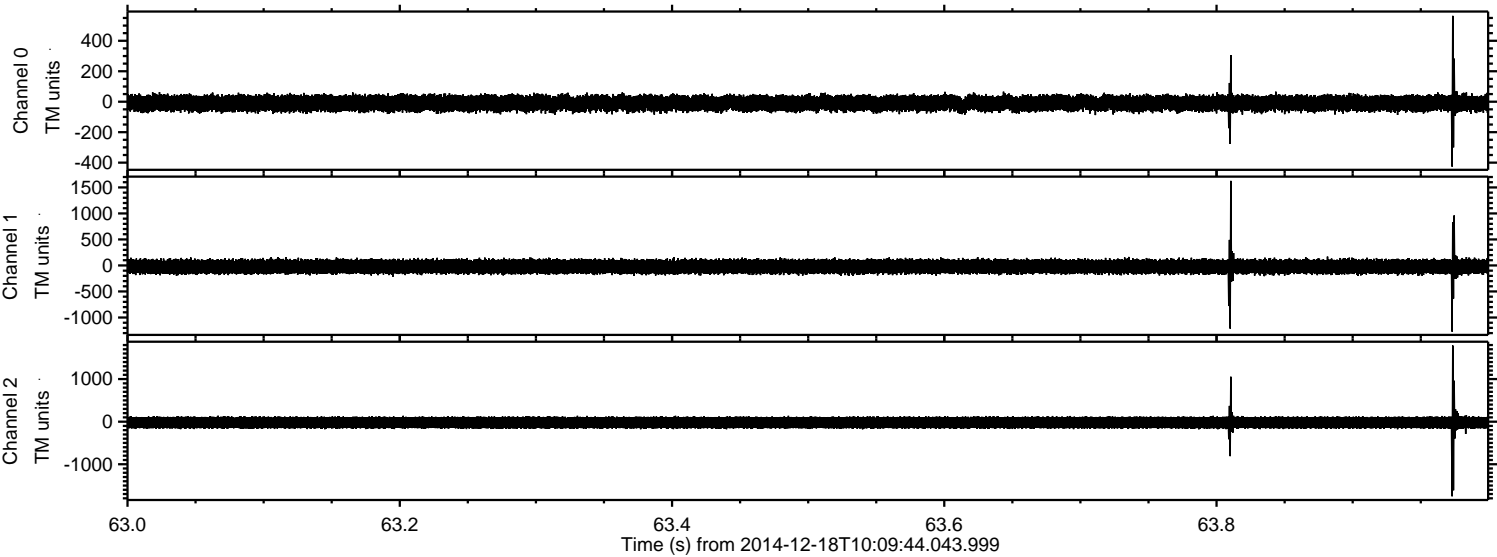
ELMAVAN 3D WAVEFORMS (Measured data sampled at 50 kHz) 49749 packets of 144 samples from 2014-12-18T10:09:44.043.999. Part 24/144

Processed Thu Dec 18 11:18:47 2014 by ELM ver.2012-10-06 from 001\_\_elm20141218\_100943\_\_dat00.bin



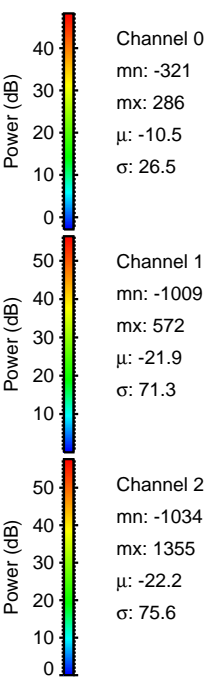
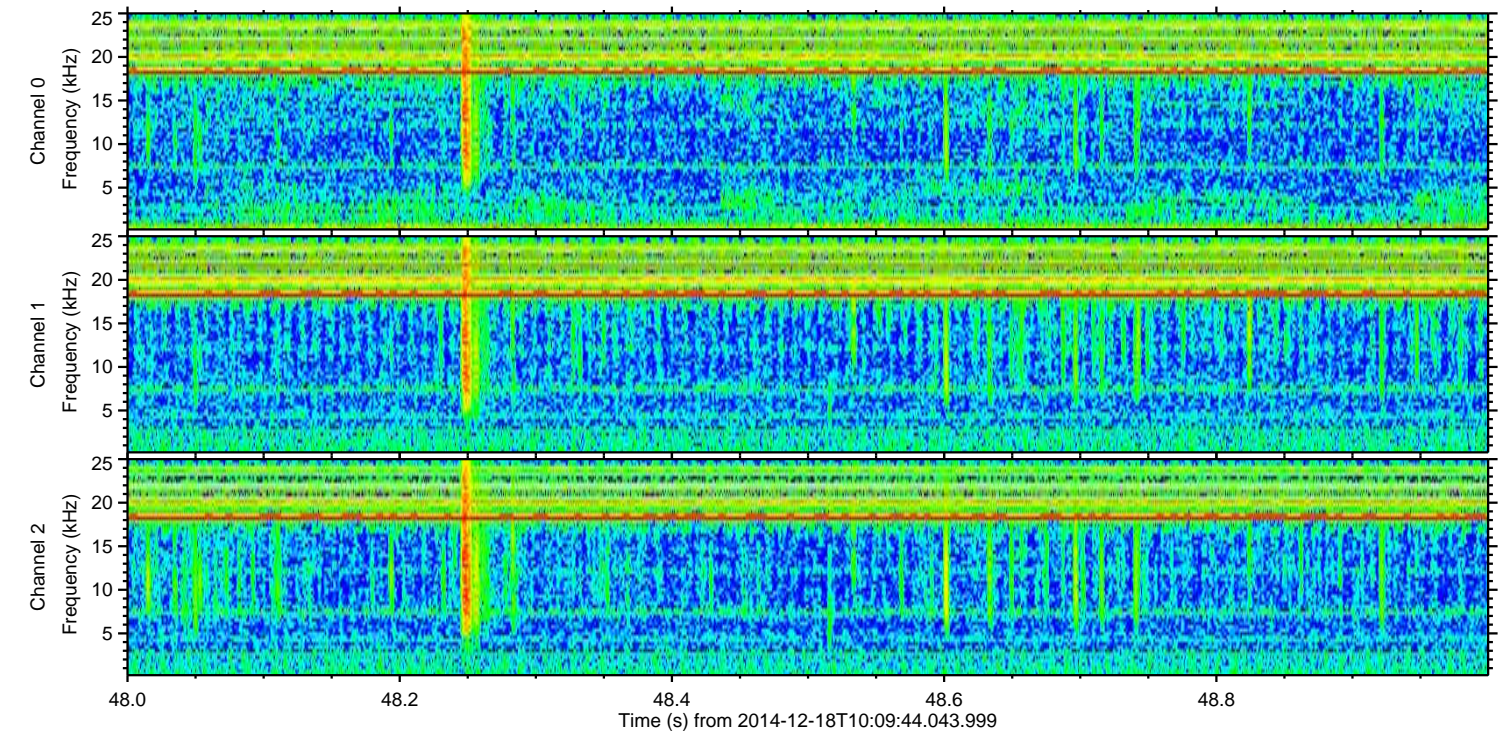
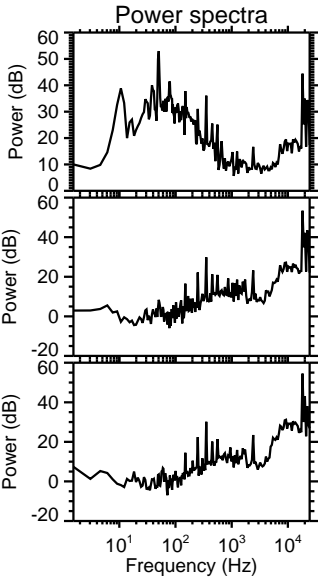
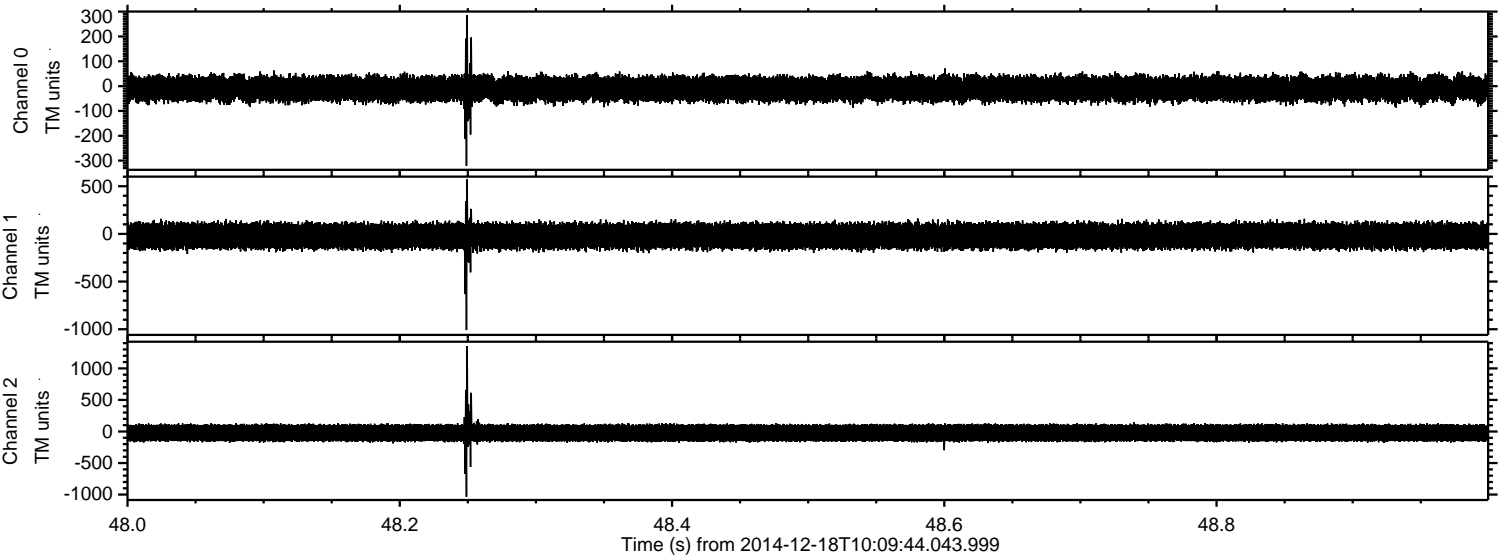


Processed Thu Dec 18 11:18:48 2014 by ELM ver.2012-10-06 from 001\_\_elm20141218\_100943\_\_dat00.bin





Processed Thu Dec 18 11:18:49 2014 by ELM ver.2012-10-06 from 001\_\_elm20141218\_100943\_\_dat00.bin



Channel 0  
mn: -321  
mx: 286  
 $\mu$ : -10.5  
 $\sigma$ : 26.5

Channel 1  
mn: -1009  
mx: 572  
 $\mu$ : -21.9  
 $\sigma$ : 71.3

Channel 2  
mn: -1034  
mx: 1355  
 $\mu$ : -22.2  
 $\sigma$ : 75.6



Processed Thu Dec 18 11:18:50 2014 by ELM ver.2012-10-06 from 001\_\_elm20141218\_100943\_\_dat00.bin

