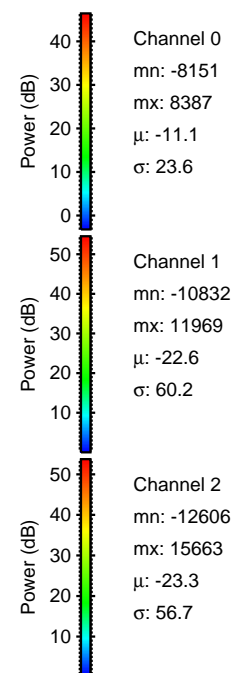
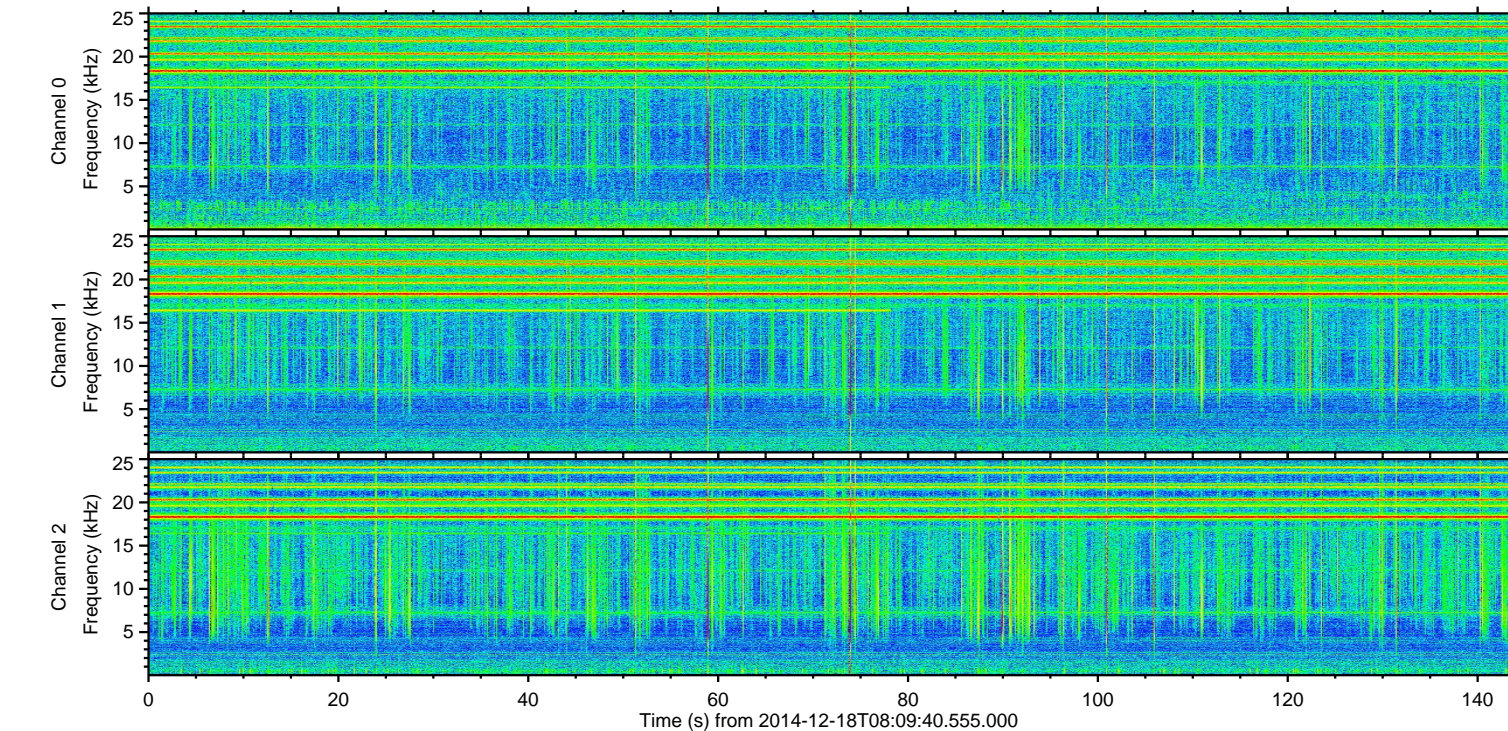
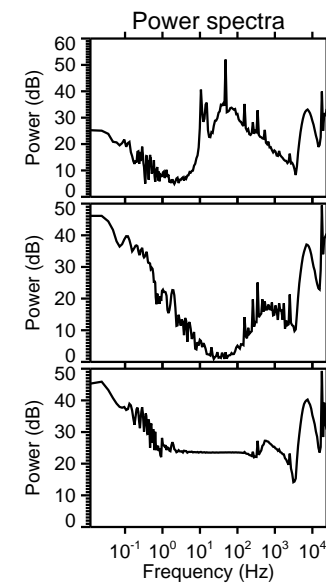
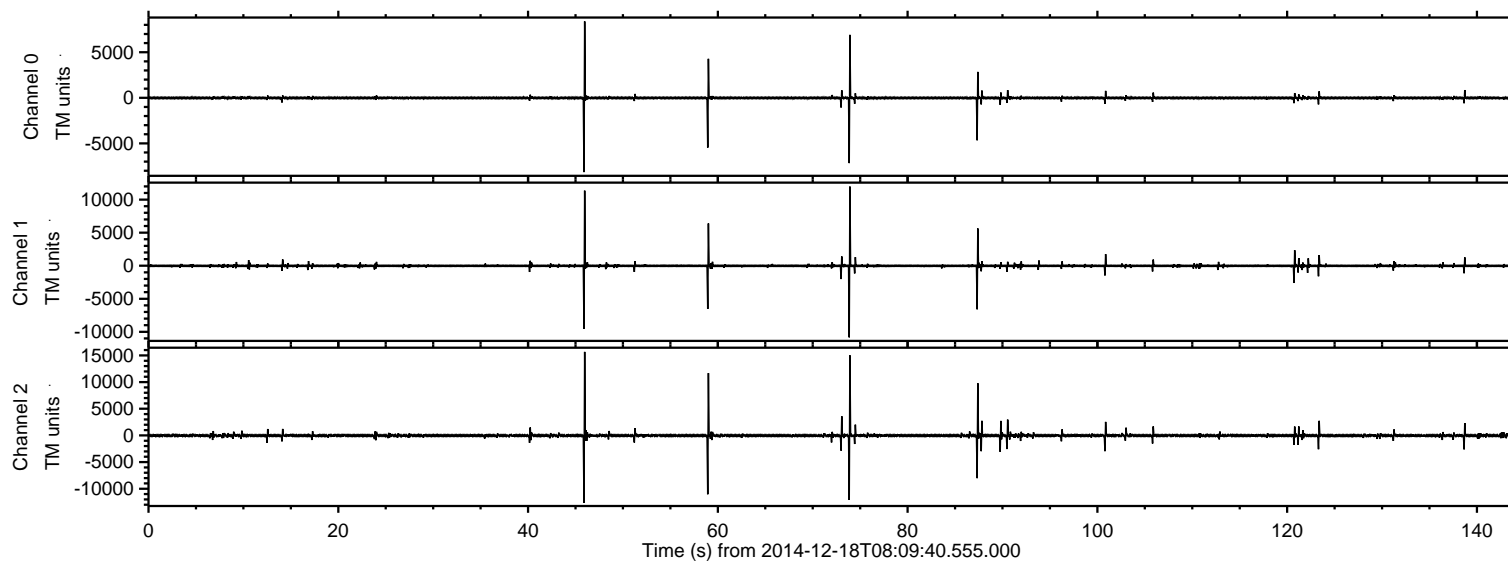
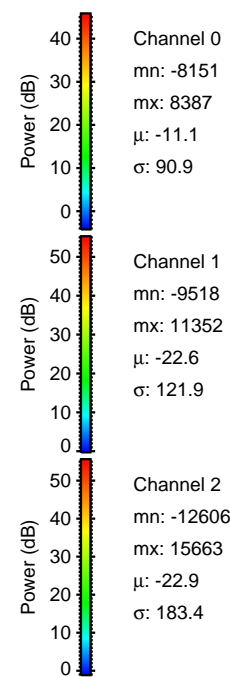
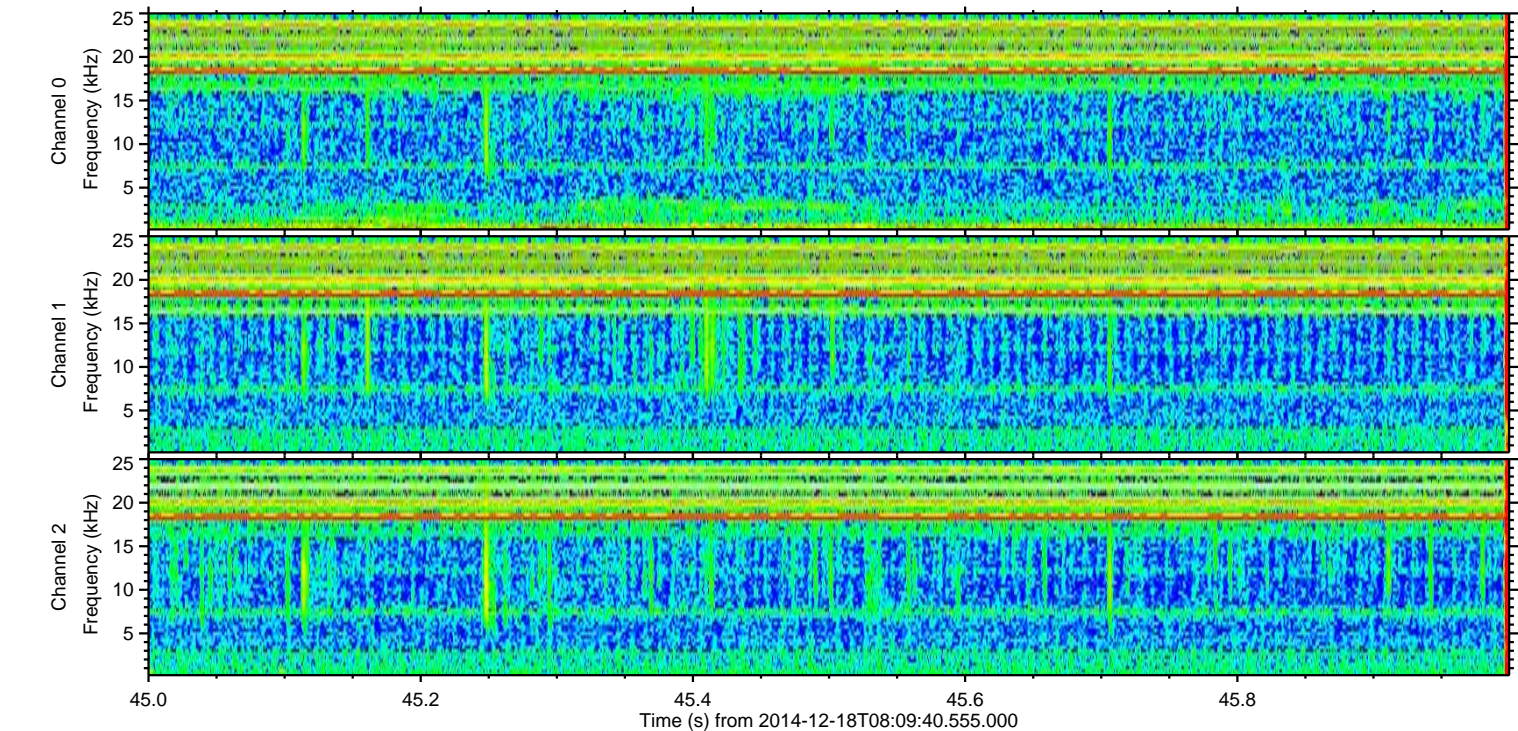
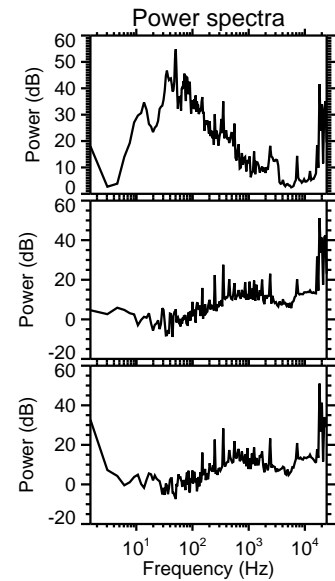
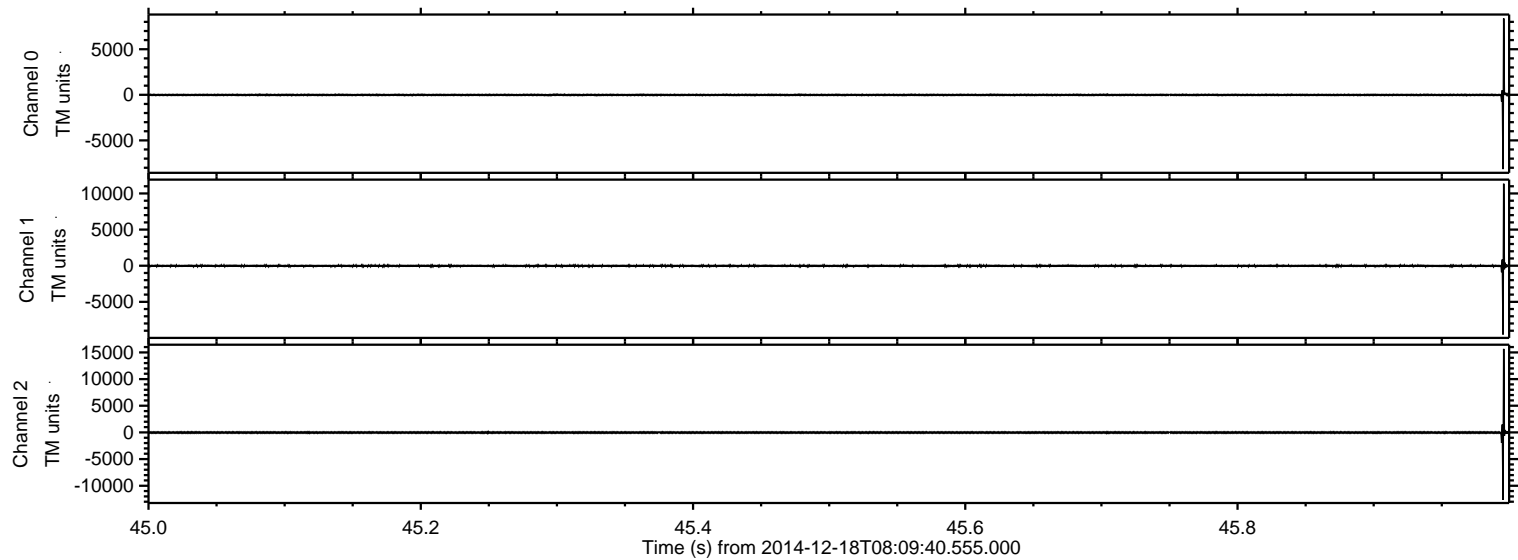


ELMAVAN 3D WAVEFORMS (Measured data sampled at 50 kHz) 49790 packets of 144 samples from 2014-12-18T08:09:40.555.000.

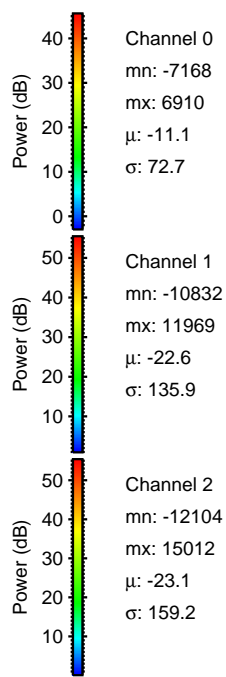
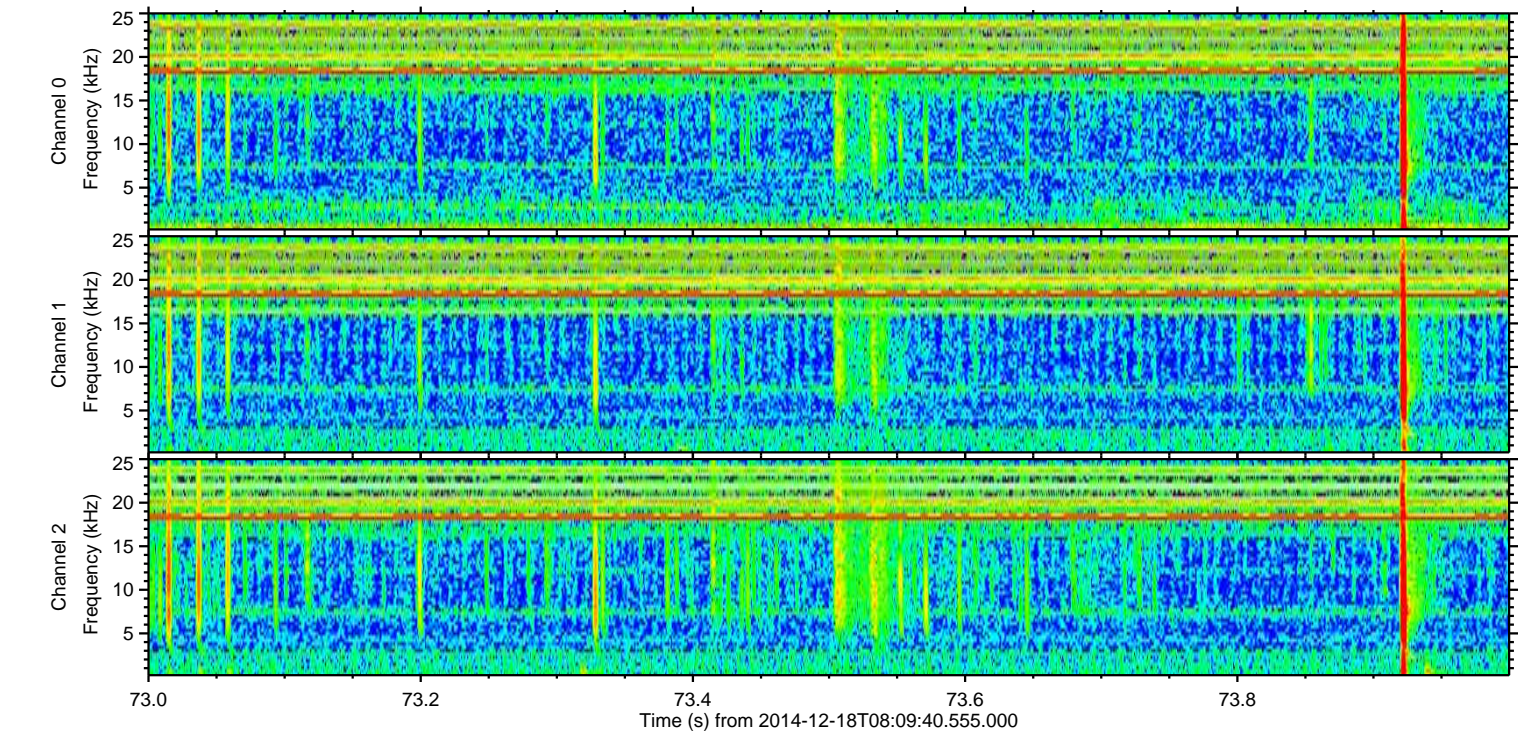
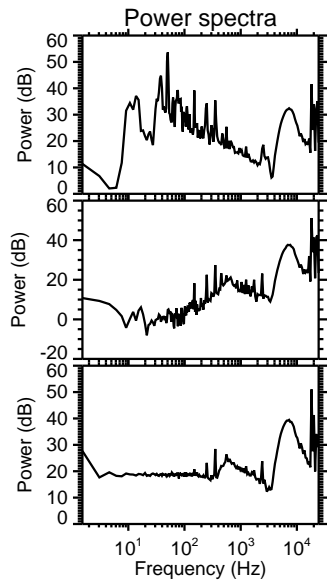
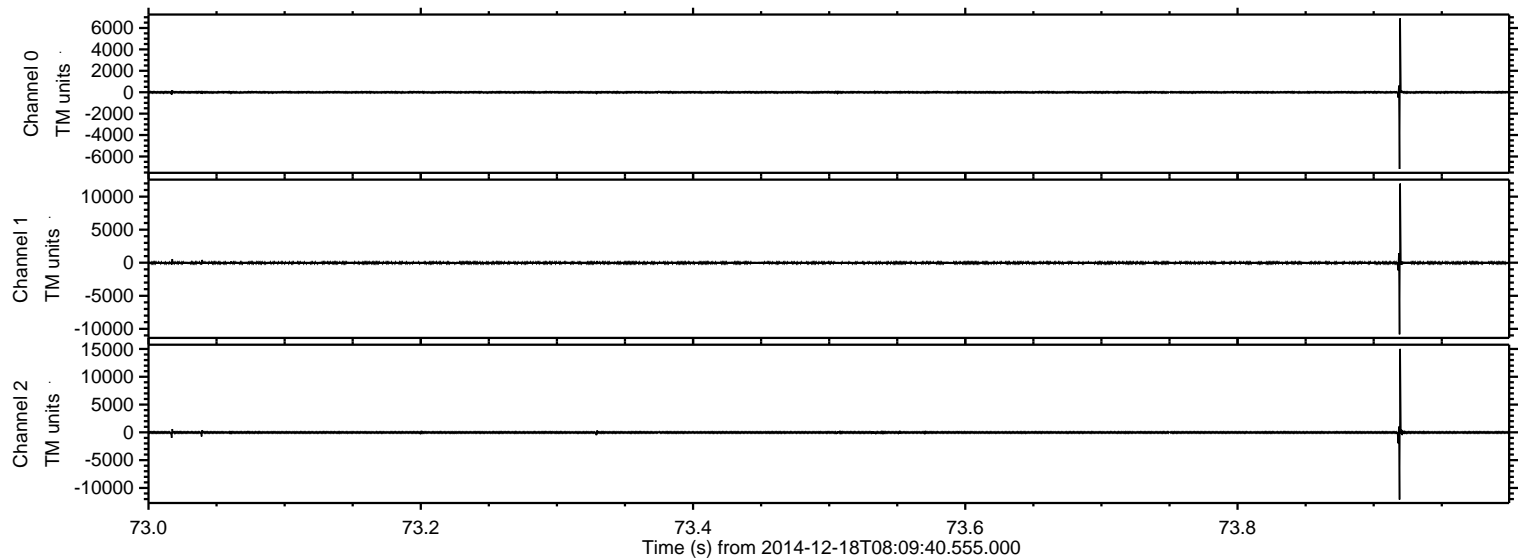
Processed Thu Dec 18 09:33:29 2014 by ELM ver.2012-10-06 from 001__elm20141218_080939__dat00.bin



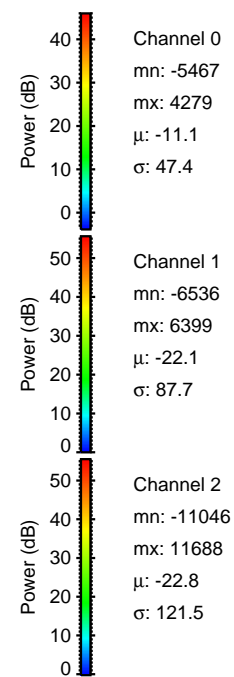
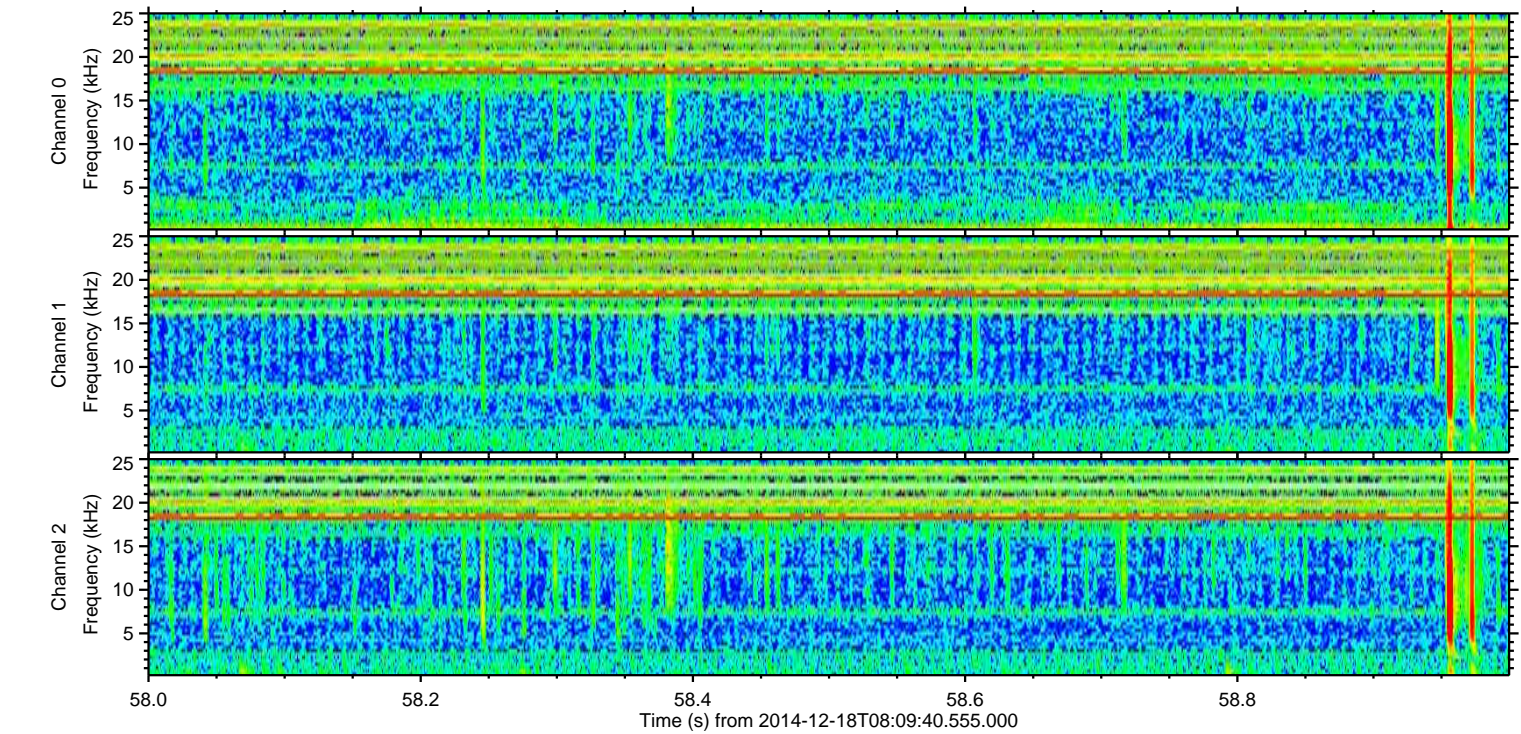
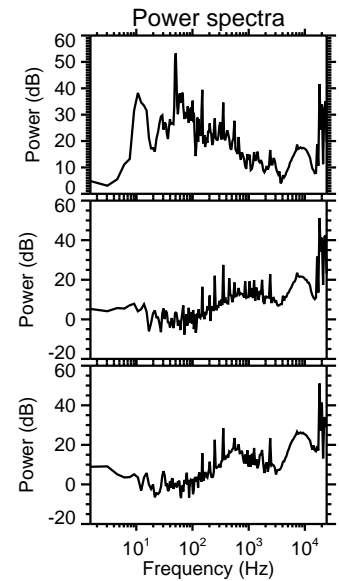
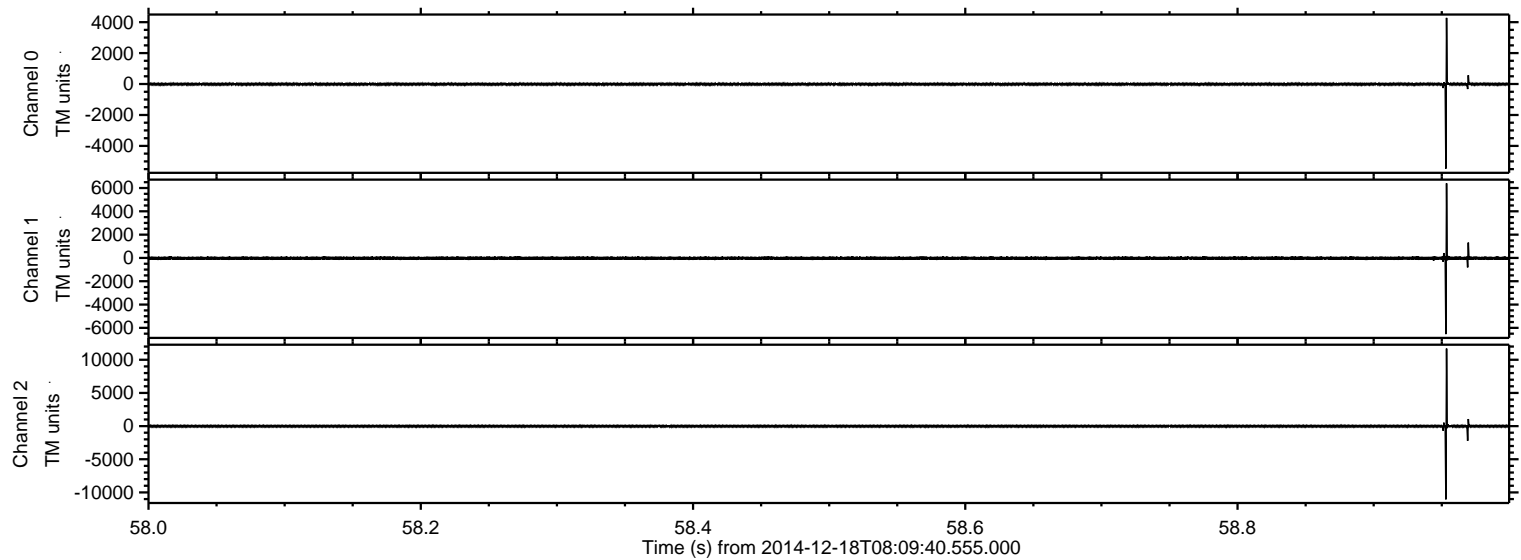
Processed Thu Dec 18 09:33:41 2014 by ELM ver.2012-10-06 from 001__elm20141218_080939__dat00.bin



Processed Thu Dec 18 09:33:42 2014 by ELM ver.2012-10-06 from 001__elm20141218_080939__dat00.bin

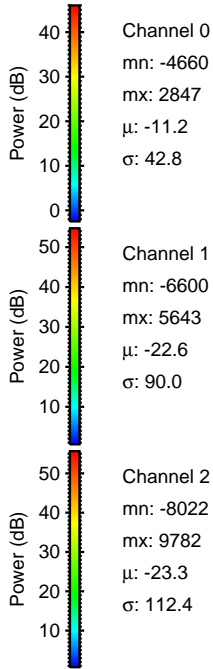
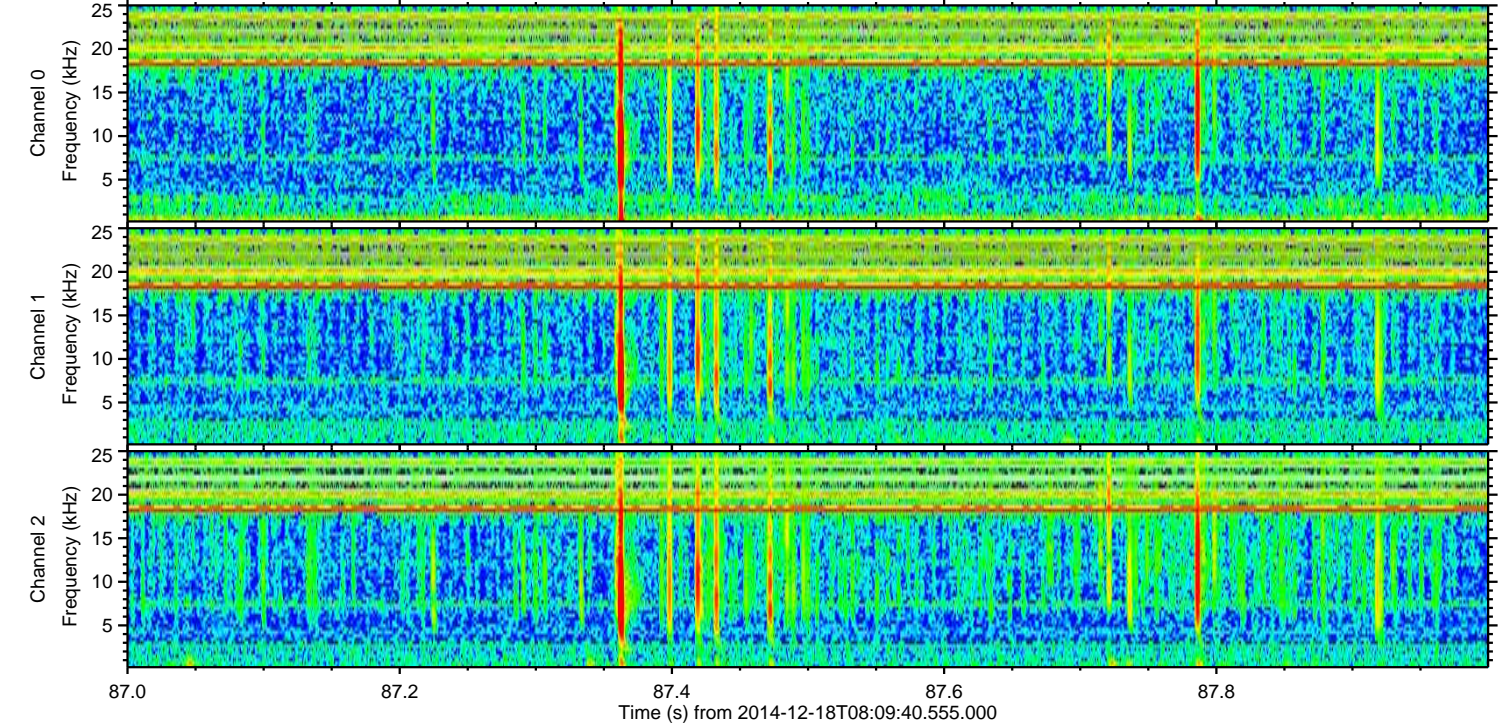
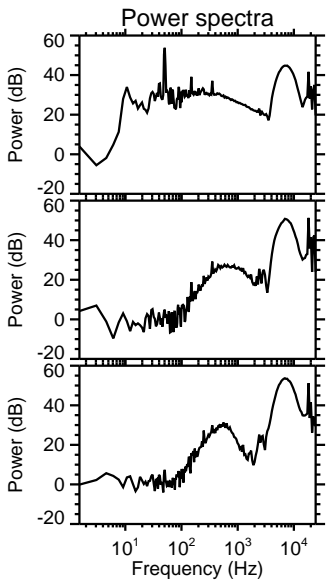
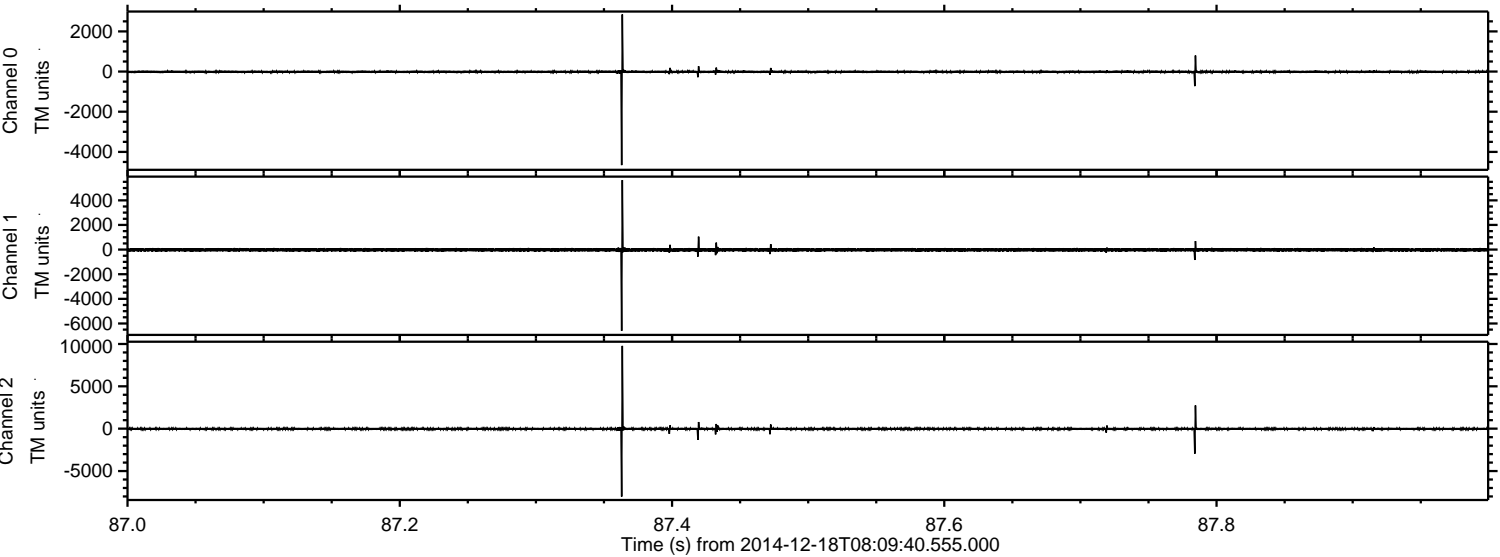


Processed Thu Dec 18 09:33:43 2014 by ELM ver.2012-10-06 from 001__elm20141218_080939__dat00.bin

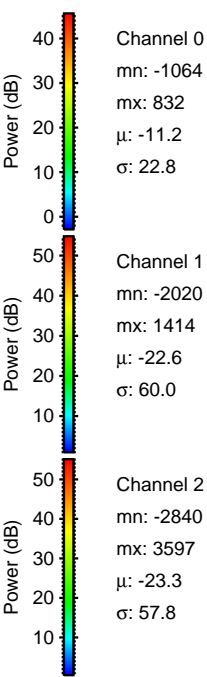
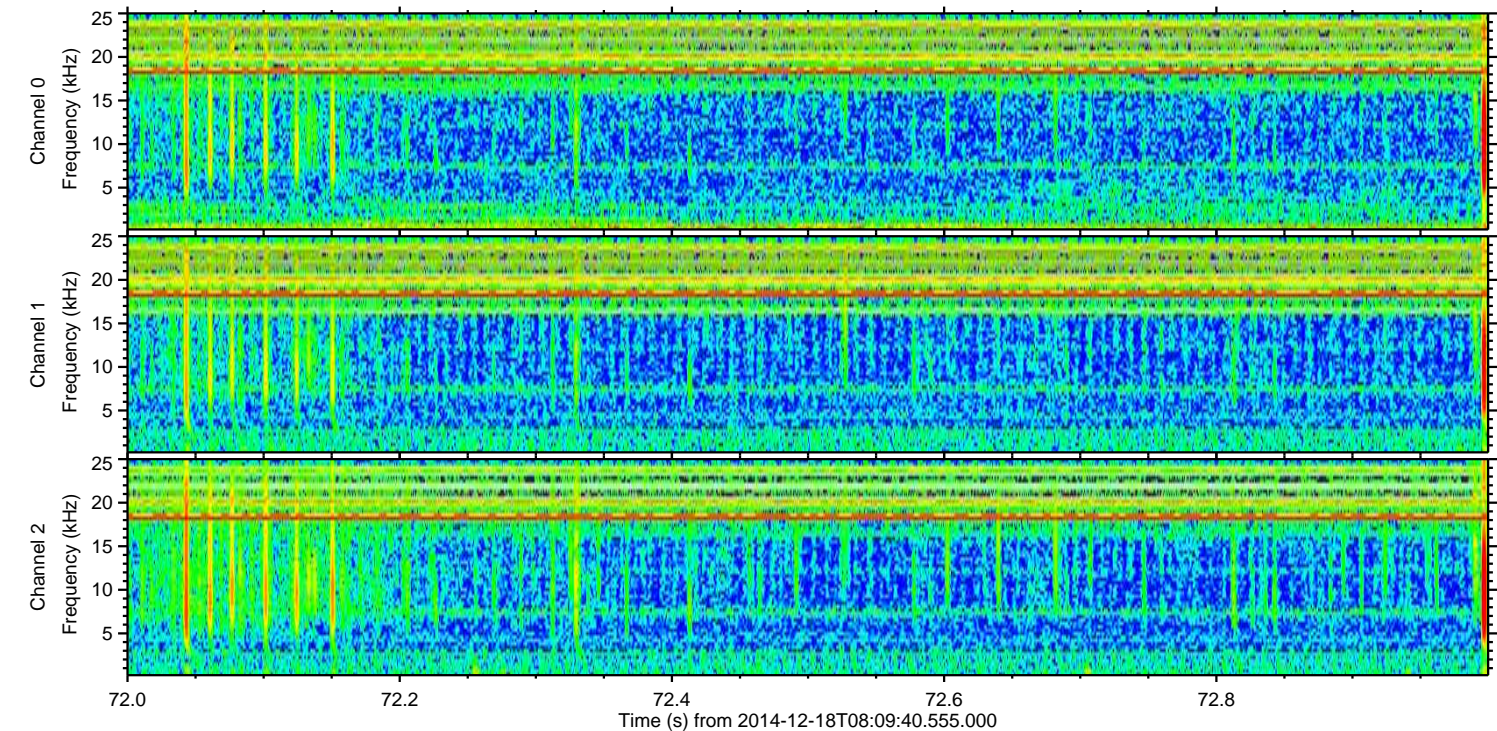
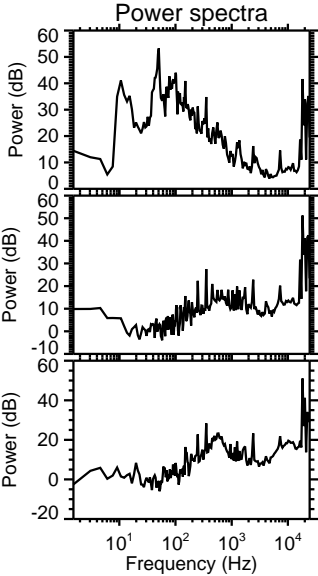
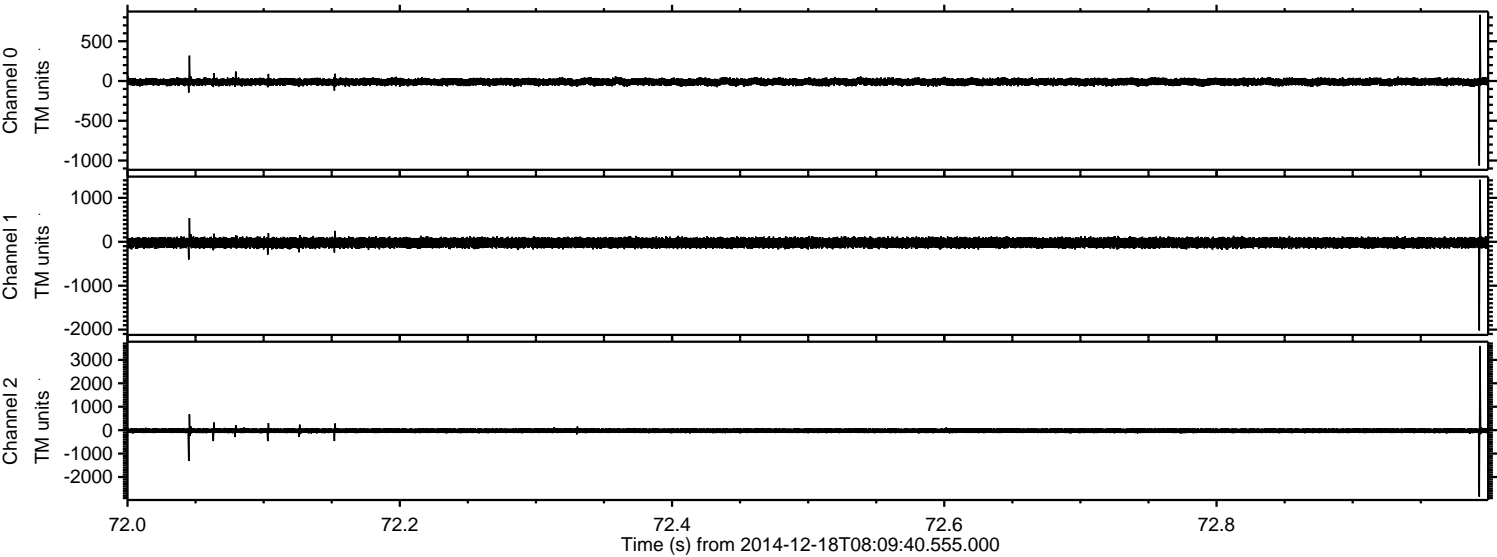


ELMAVAN 3D WAVEFORMS (Measured data sampled at 50 kHz) 49790 packets of 144 samples from 2014-12-18T08:09:40.555.000. Part 88/144

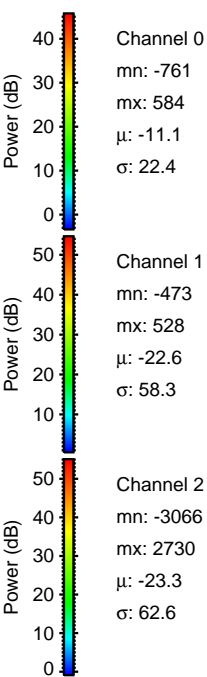
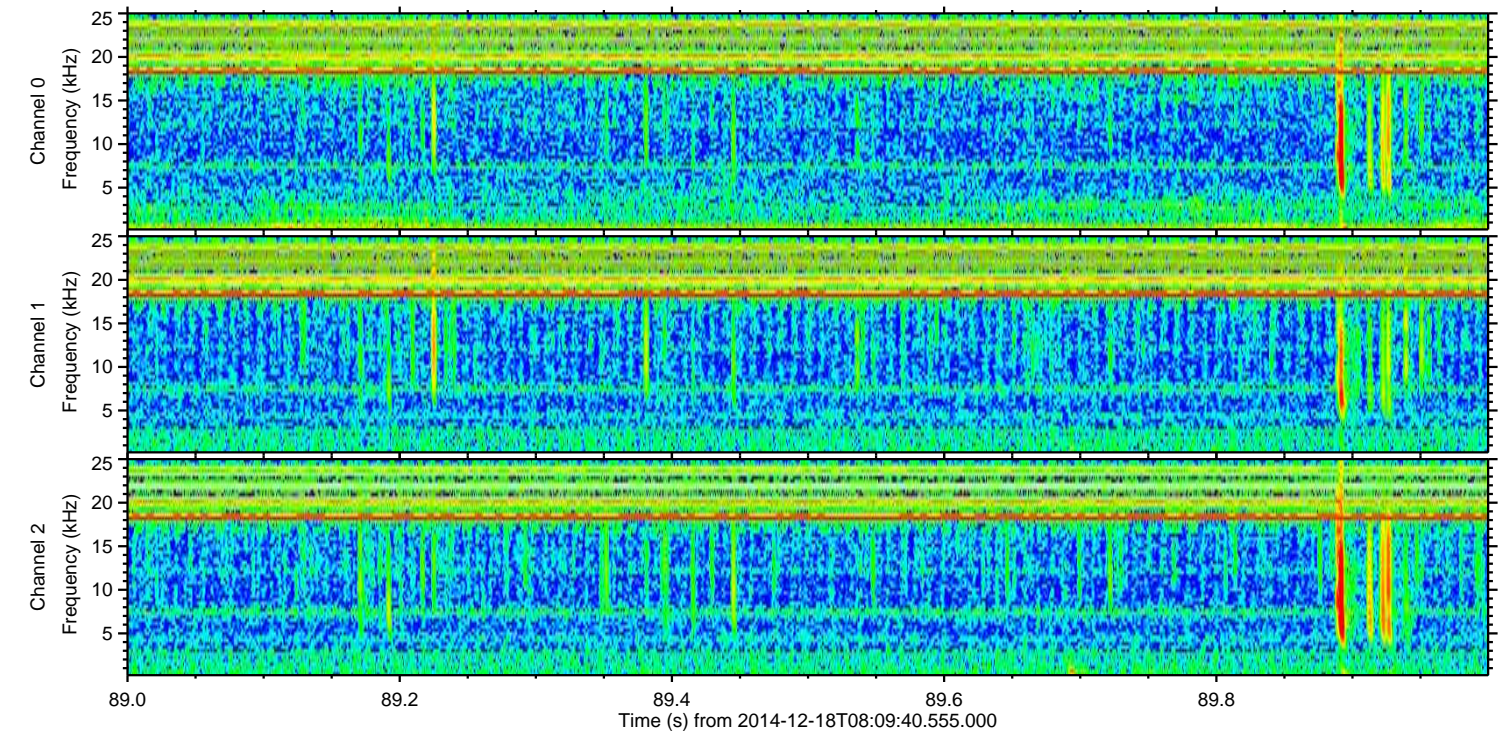
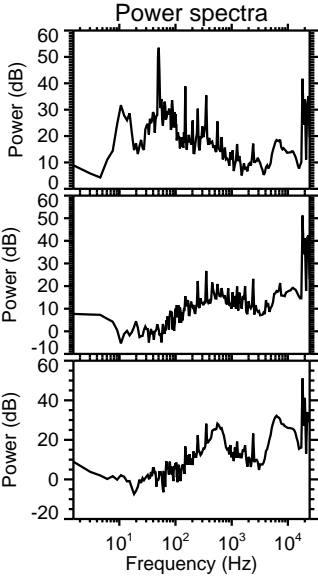
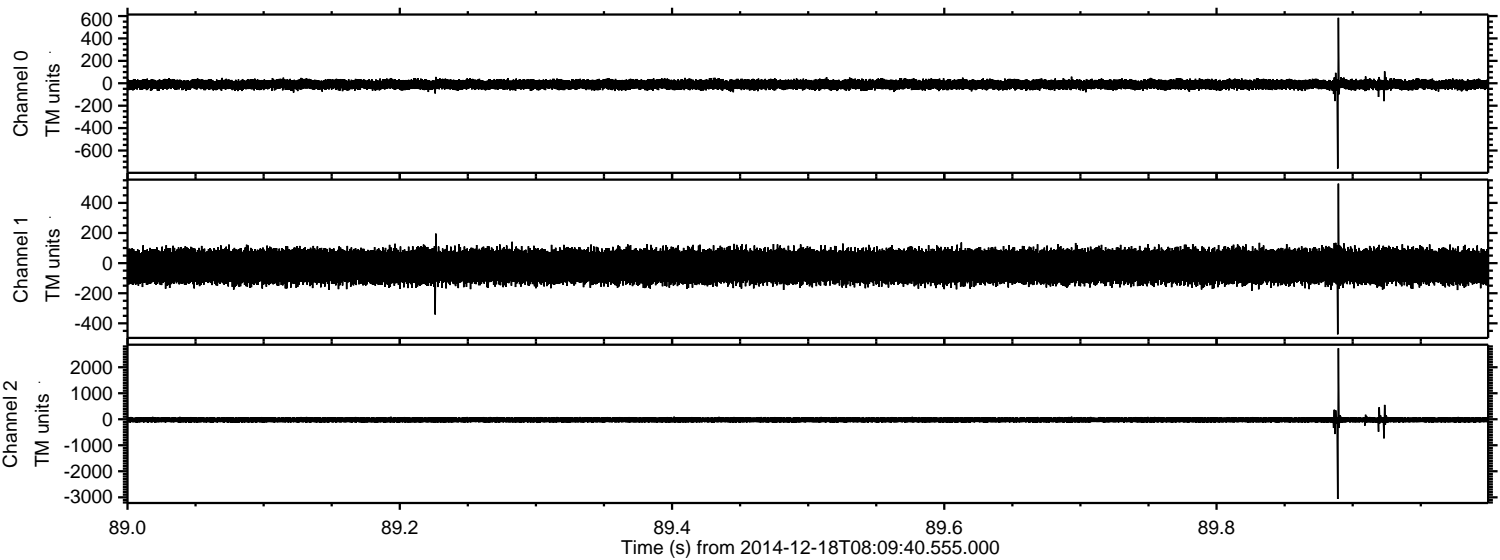
Processed Thu Dec 18 09:33:44 2014 by ELM ver.2012-10-06 from 001__elm20141218_080939__dat00.bin



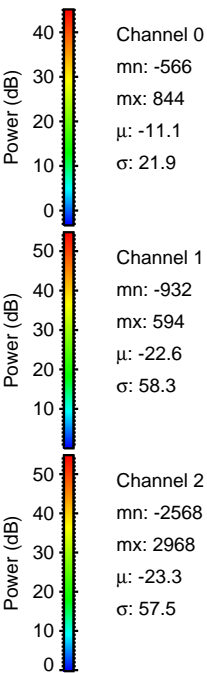
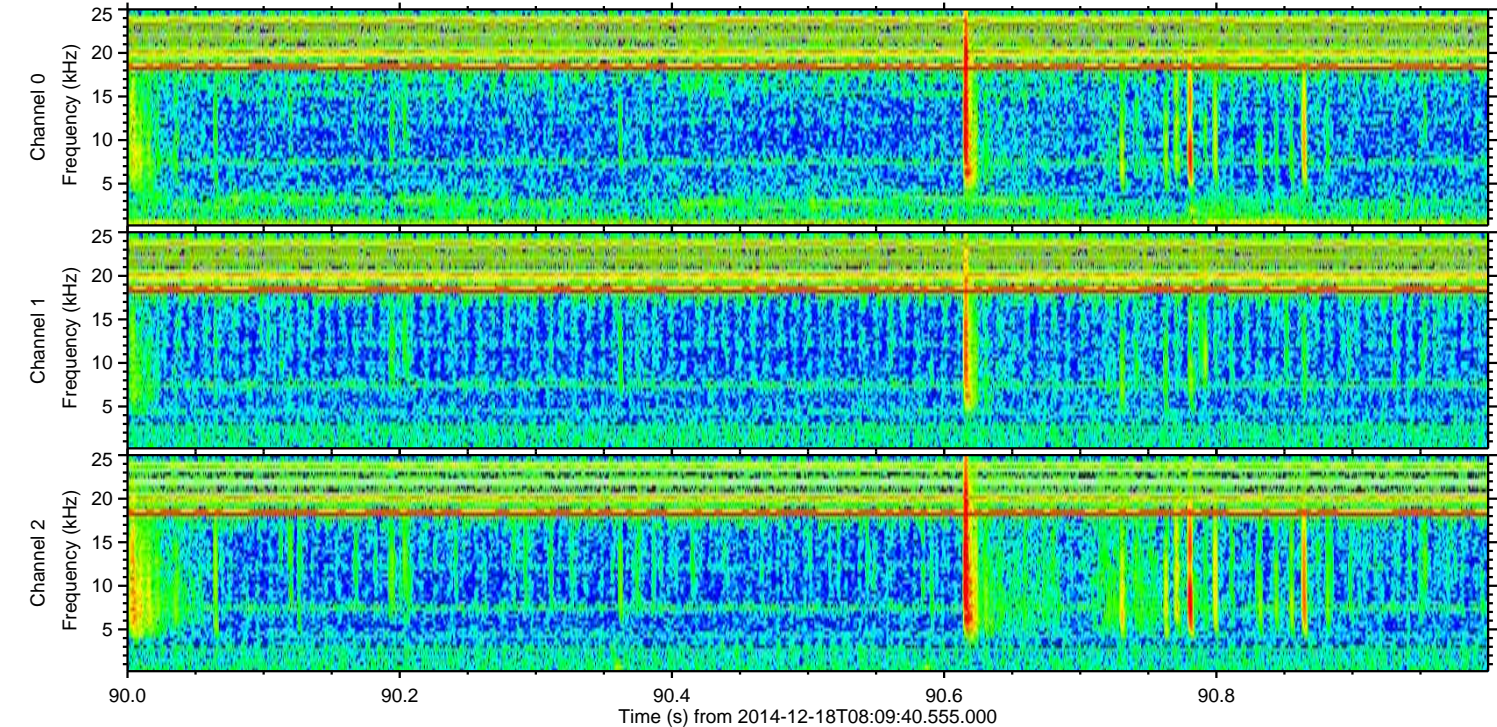
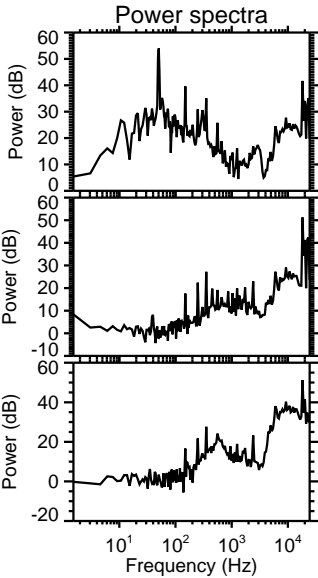
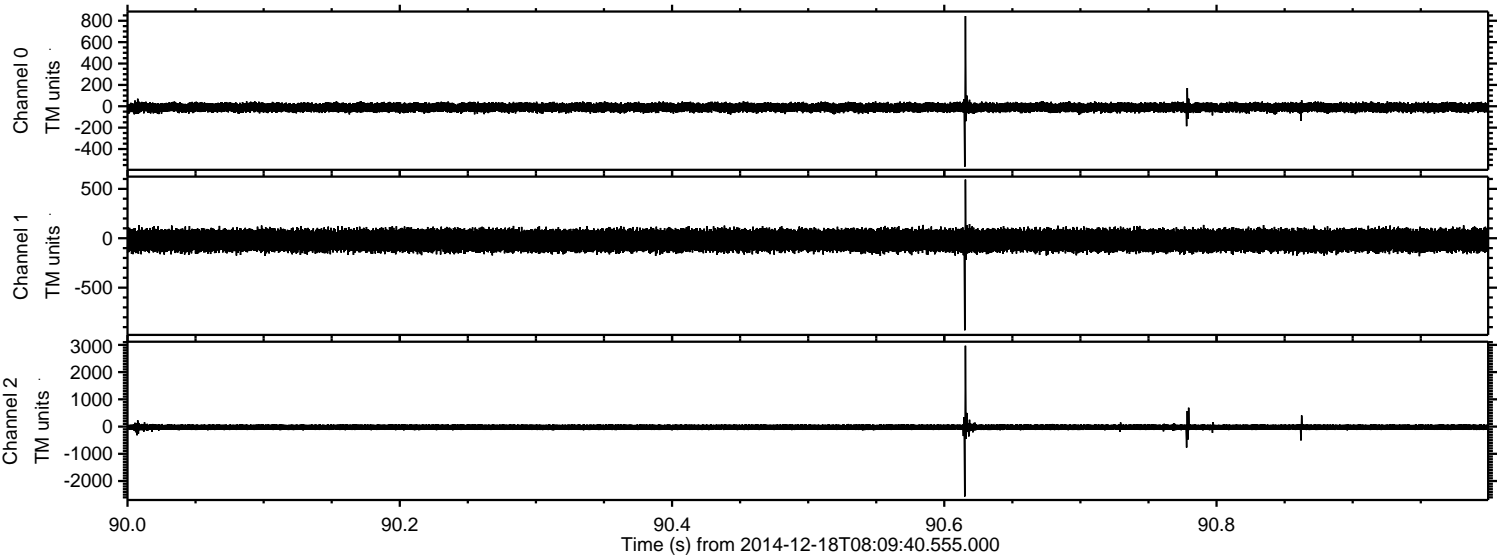
Processed Thu Dec 18 09:33:45 2014 by ELM ver.2012-10-06 from 001__elm20141218_080939__dat00.bin



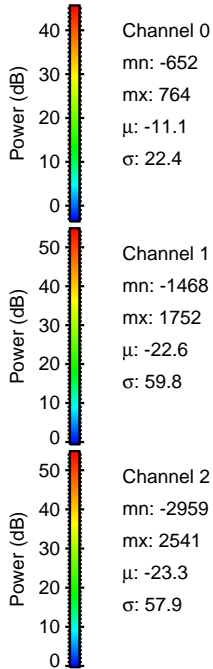
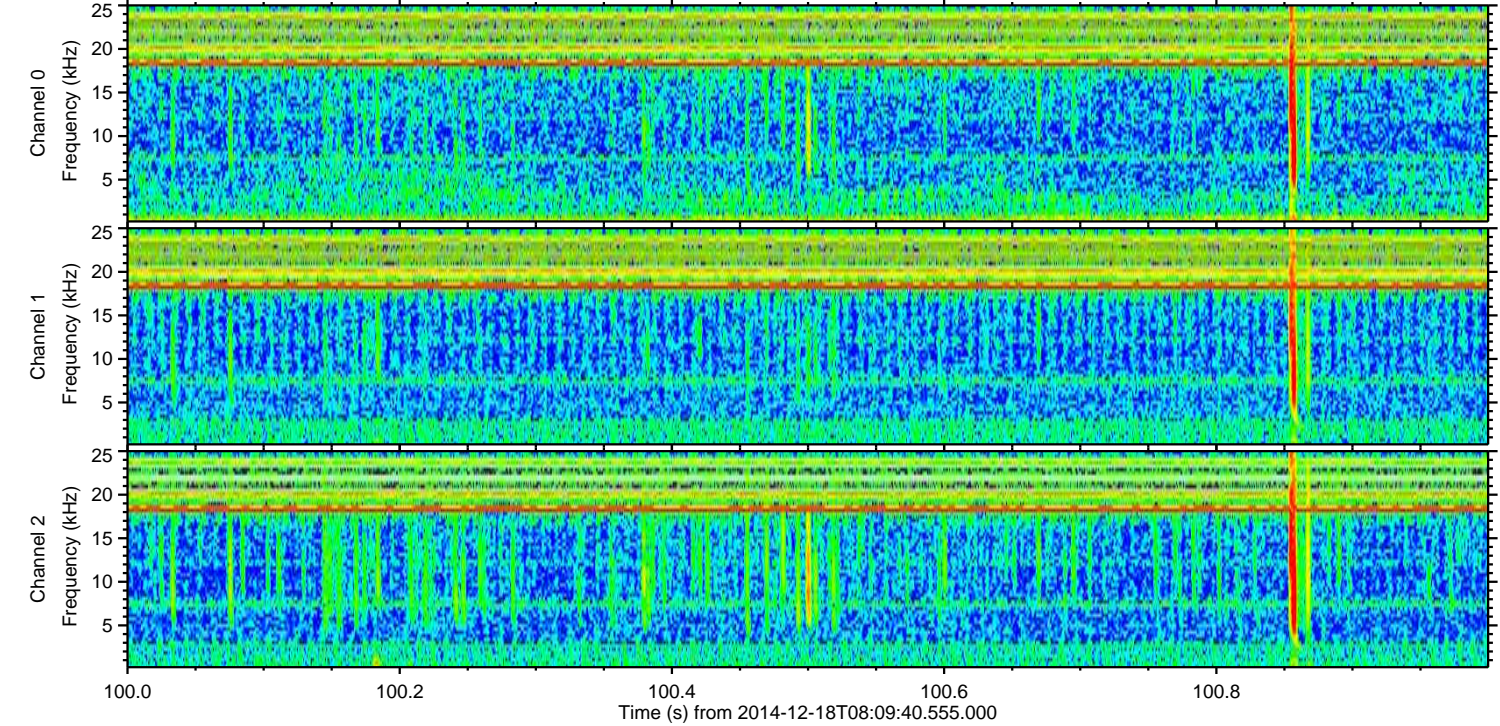
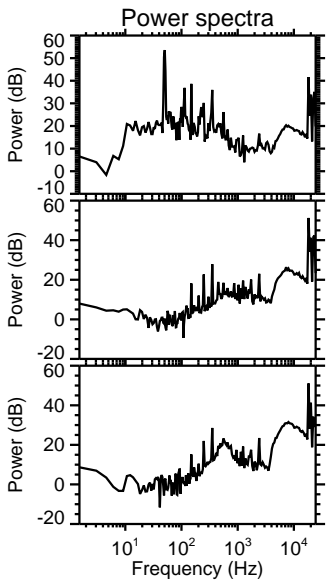
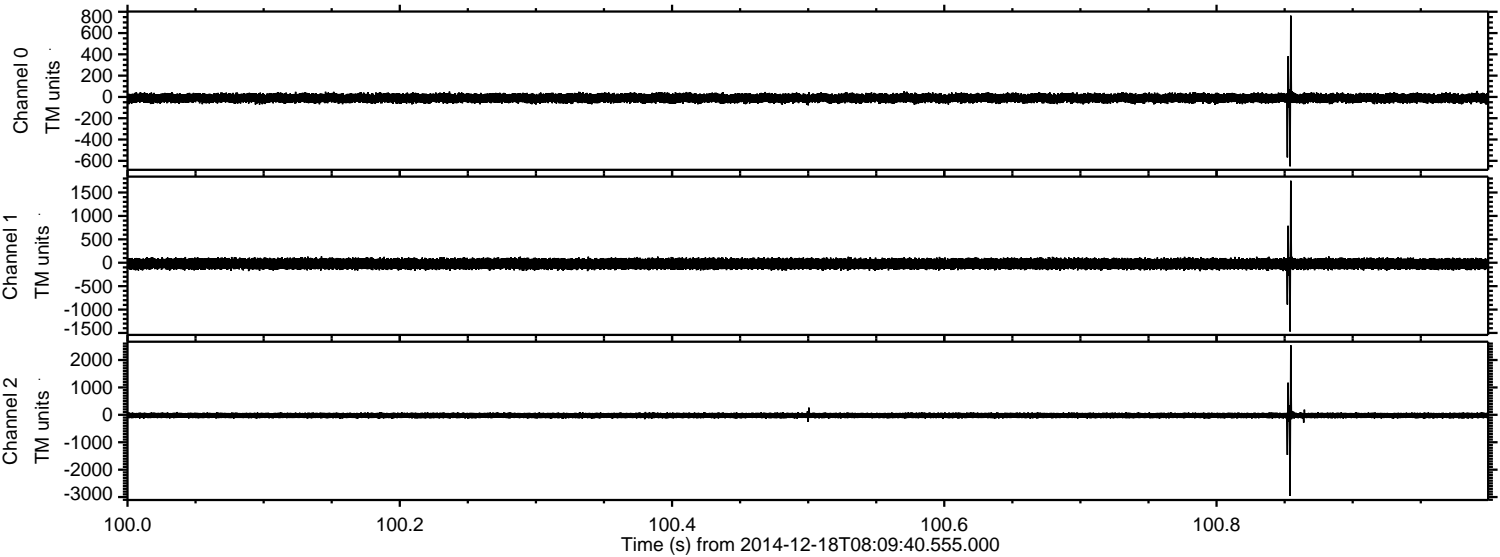
Processed Thu Dec 18 09:33:46 2014 by ELM ver.2012-10-06 from 001__elm20141218_080939__dat00.bin



Processed Thu Dec 18 09:33:47 2014 by ELM ver.2012-10-06 from 001__elm20141218_080939__dat00.bin



Processed Thu Dec 18 09:33:48 2014 by ELM ver.2012-10-06 from 001__elm20141218_080939__dat00.bin



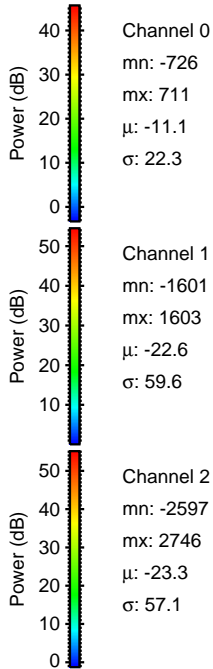
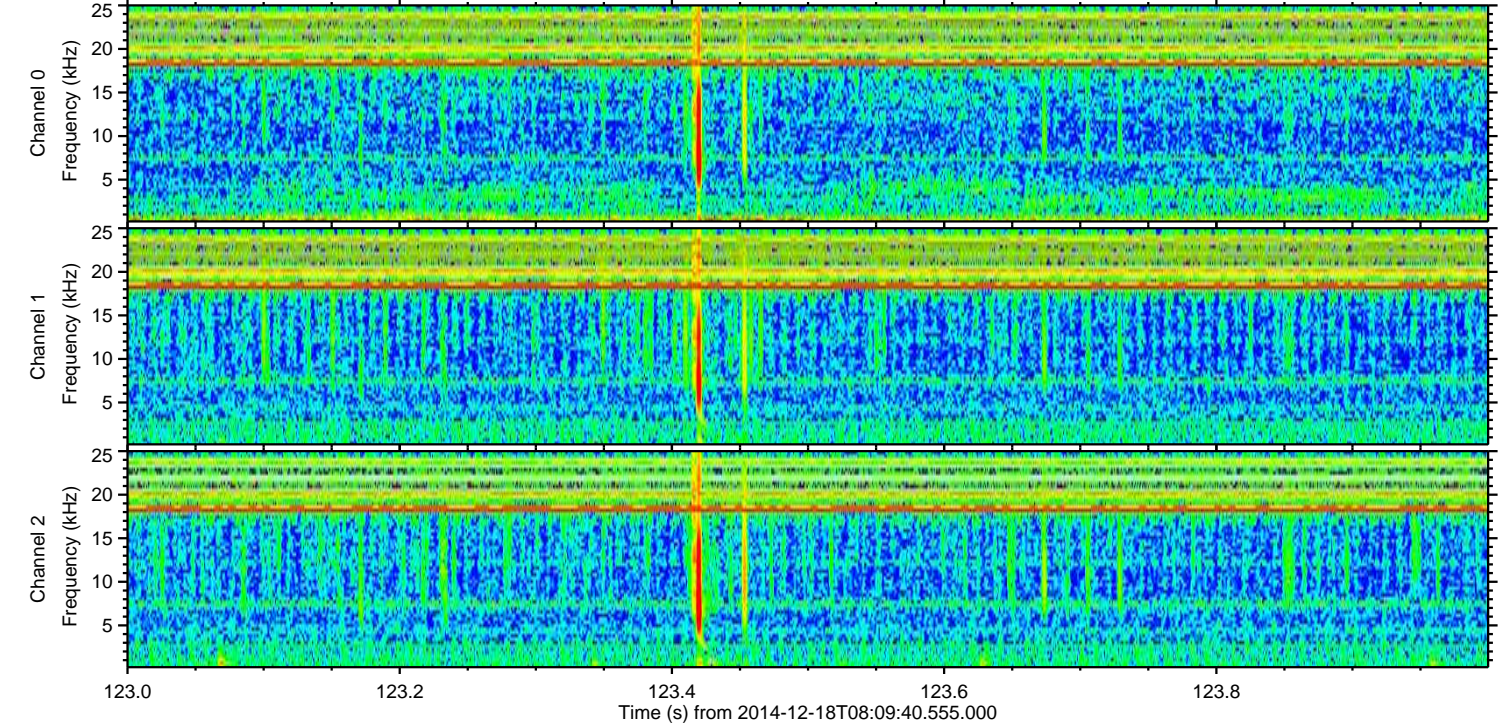
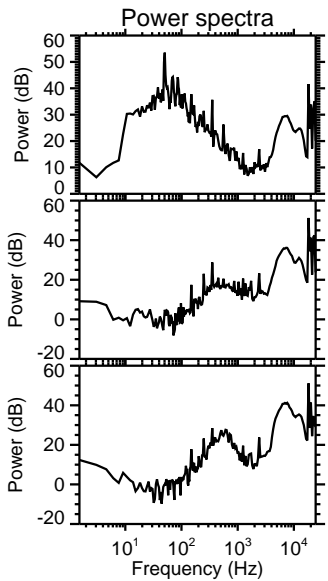
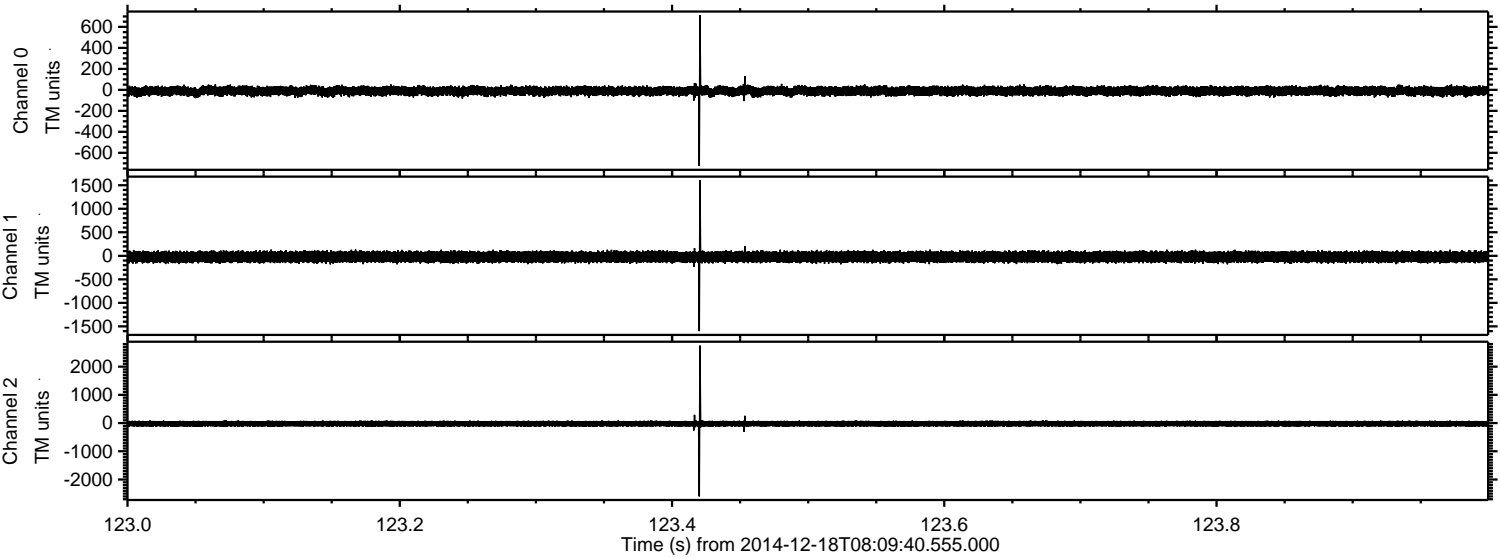
Channel 0
mn: -652
mx: 764
 μ : -11.1
 σ : 22.4

Channel 1
mn: -1468
mx: 1752
 μ : -22.6
 σ : 59.8

Channel 2
mn: -2959
mx: 2541
 μ : -23.3
 σ : 57.9

ELMAVAN 3D WAVEFORMS (Measured data sampled at 50 kHz) 49790 packets of 144 samples from 2014-12-18T08:09:40.555.000. Part 124/144

Processed Thu Dec 18 09:33:49 2014 by ELM ver.2012-10-06 from 001__elm20141218_080939__dat00.bin



Channel 0
mn: -726
mx: 711
 μ : -11.1
 σ : 22.3

Channel 1
mn: -1601
mx: 1603
 μ : -22.6
 σ : 59.6

Channel 2
mn: -2597
mx: 2746
 μ : -23.3
 σ : 57.1

Processed Thu Dec 18 09:33:50 2014 by ELM ver.2012-10-06 from 001__elm20141218_080939__dat00.bin

