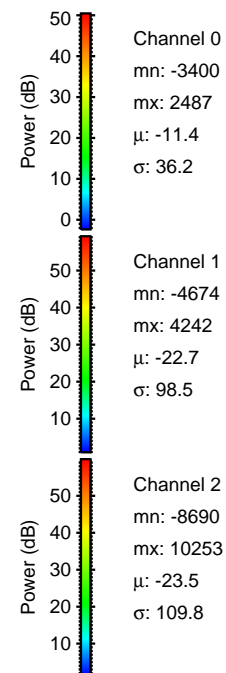
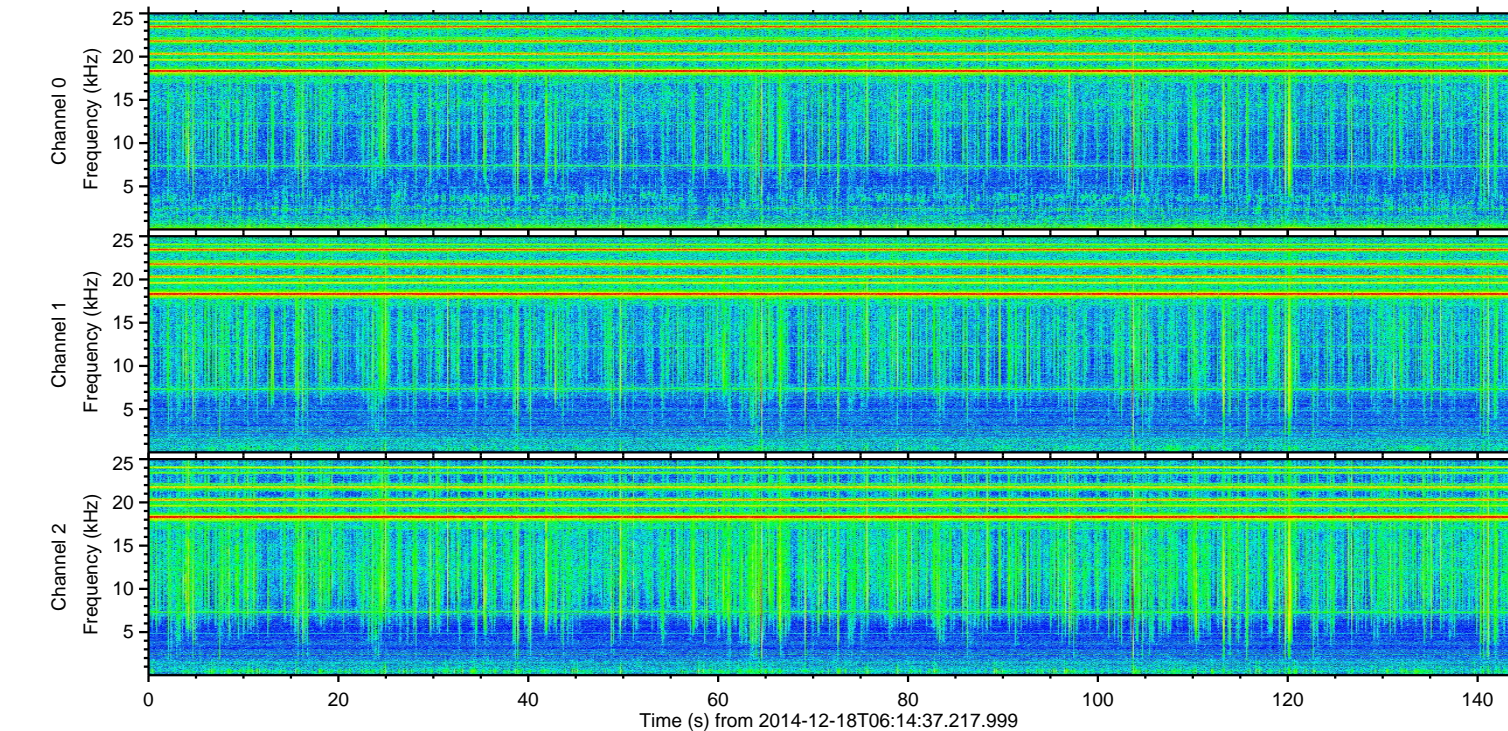
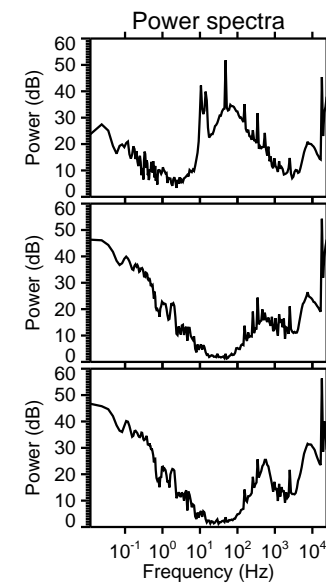
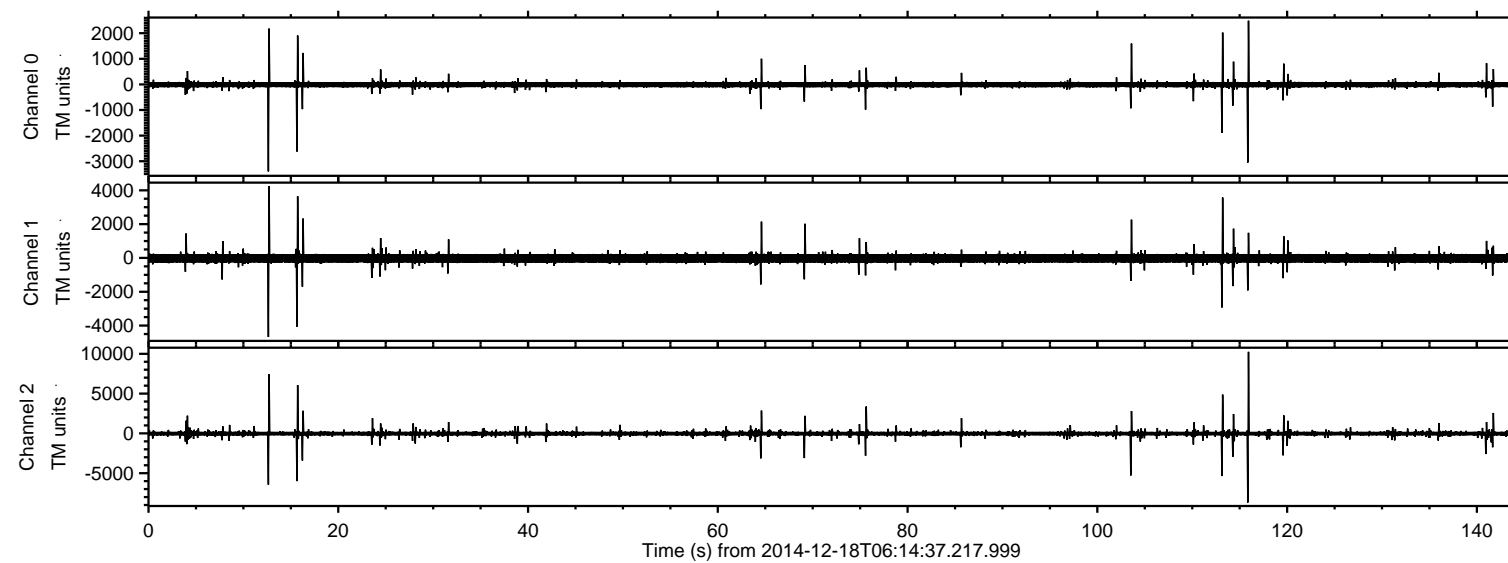


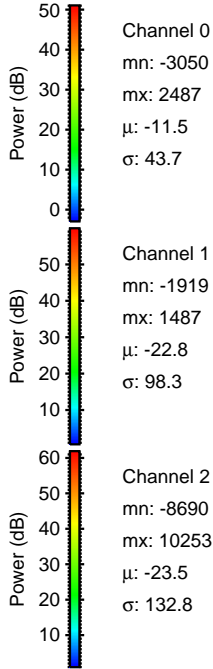
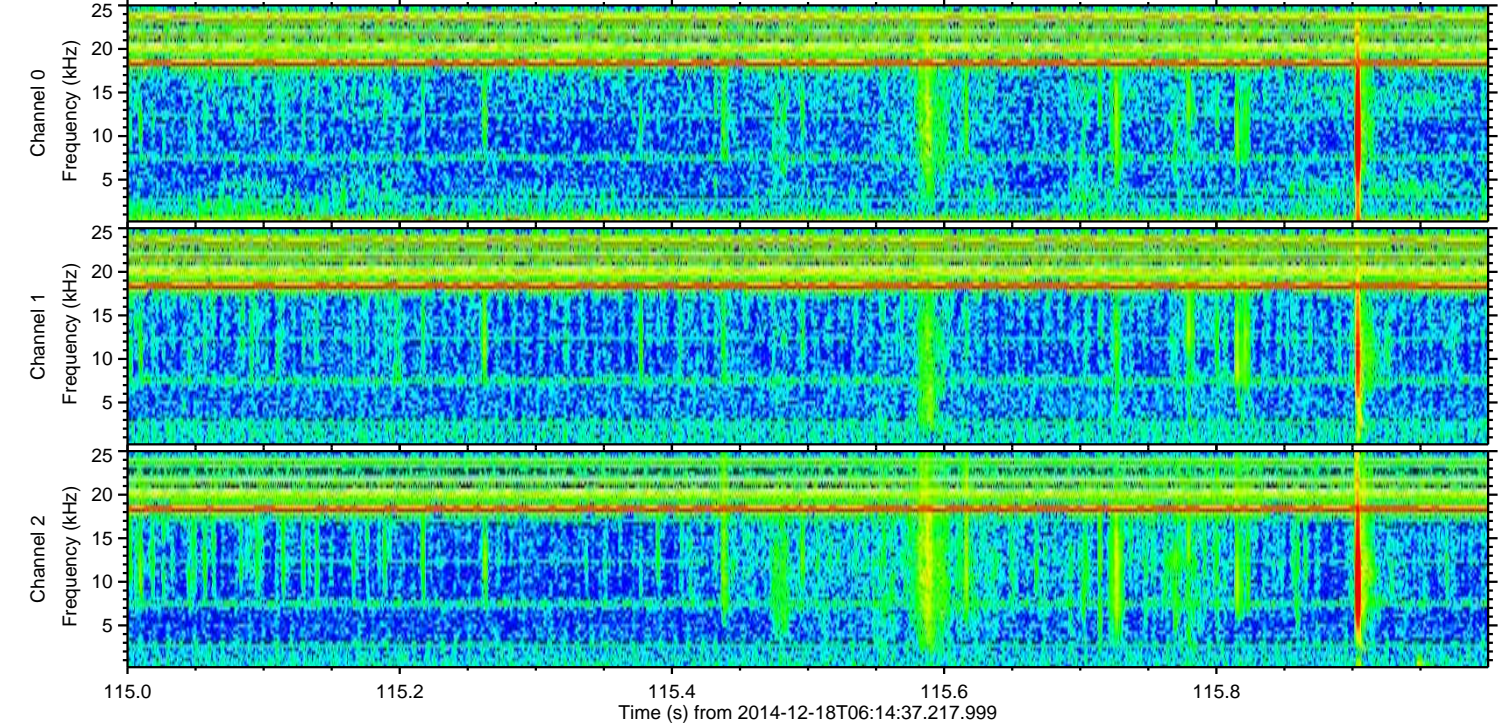
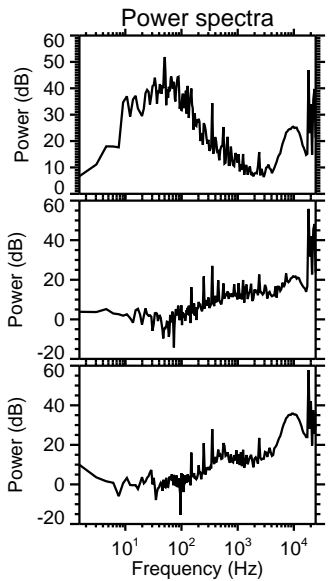
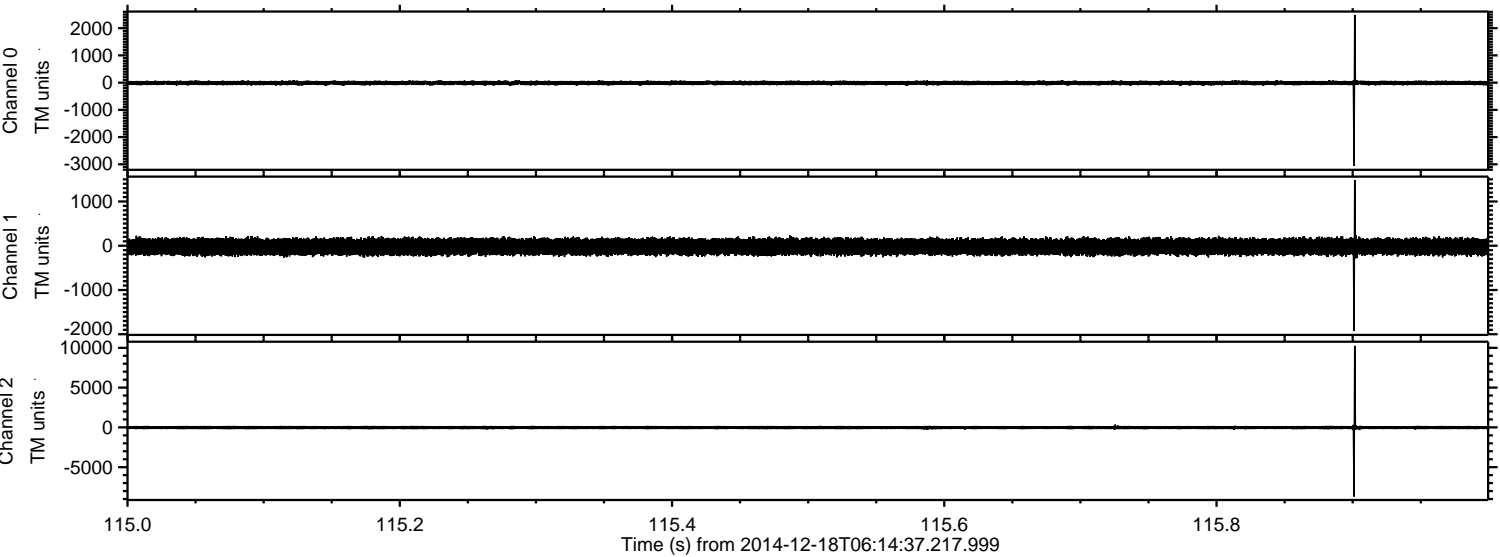
ELMAVAN 3D WAVEFORMS (Measured data sampled at 50 kHz) 49791 packets of 144 samples from 2014-12-18T06:14:37.217.999.

Processed Thu Dec 18 07:57:32 2014 by ELM ver.2012-10-06 from 001__elm20141218_061436__dat00.bin



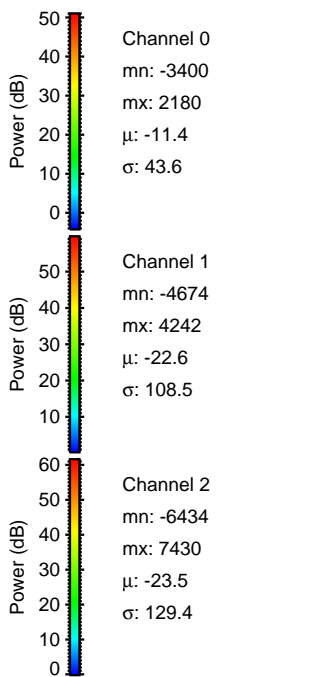
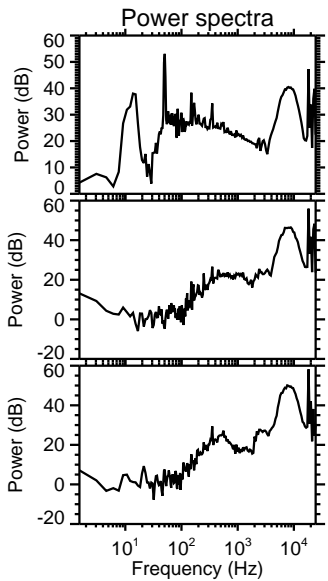
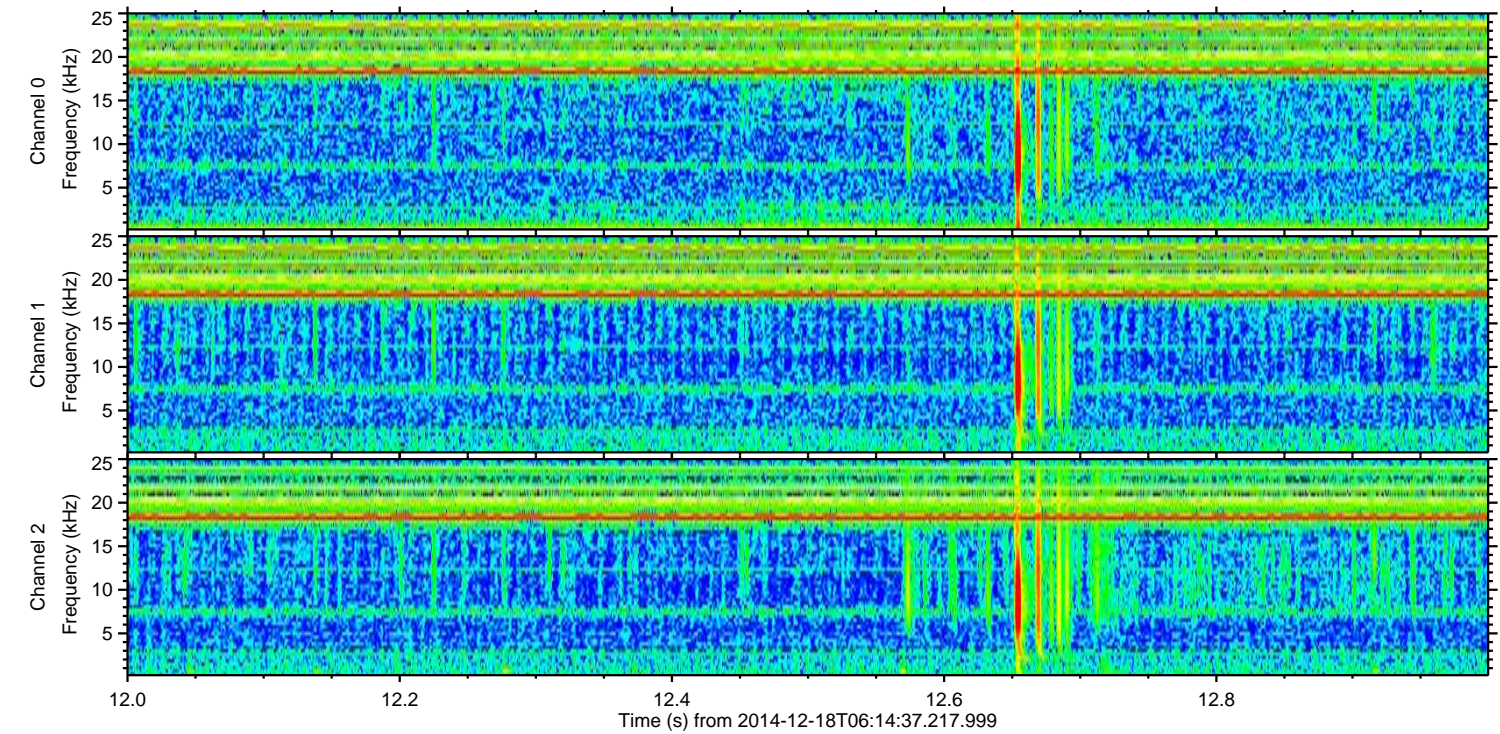
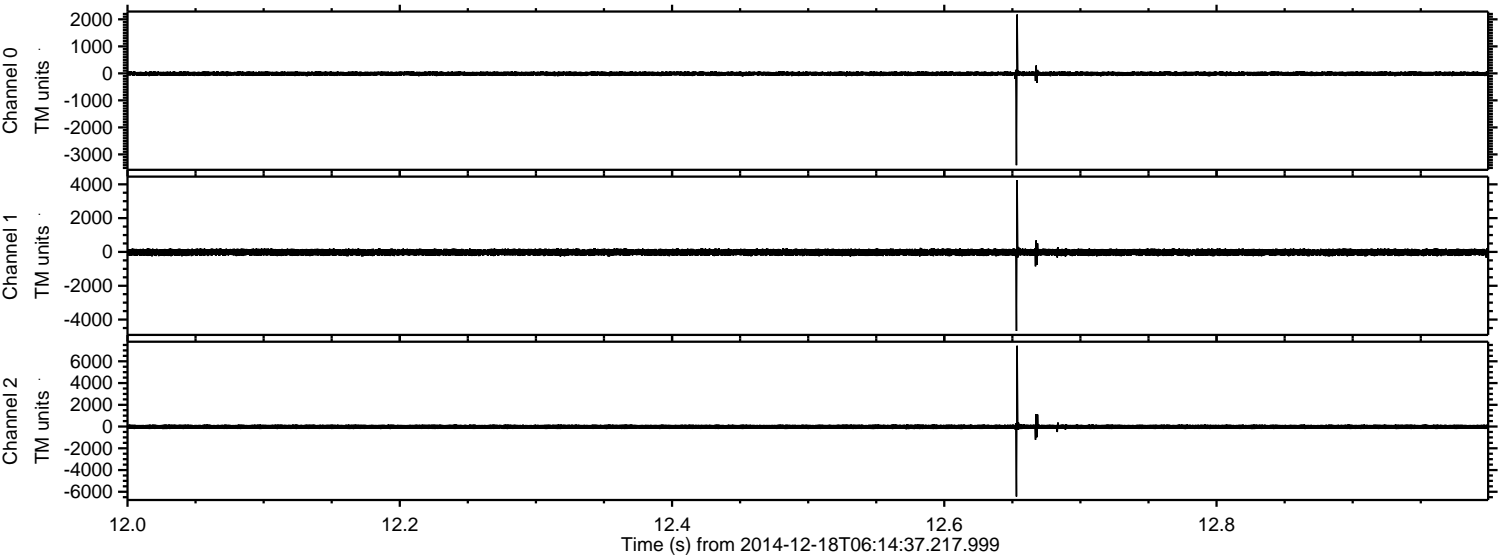
ELMAVAN 3D WAVEFORMS (Measured data sampled at 50 kHz) 49791 packets of 144 samples from 2014-12-18T06:14:37.217.999. Part 116/144

Processed Thu Dec 18 07:57:44 2014 by ELM ver.2012-10-06 from 001__elm20141218_061436__dat00.bin



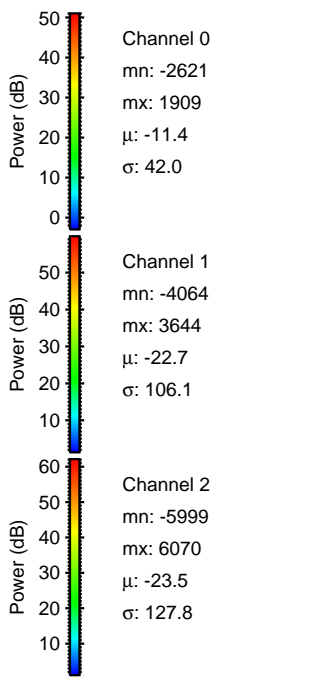
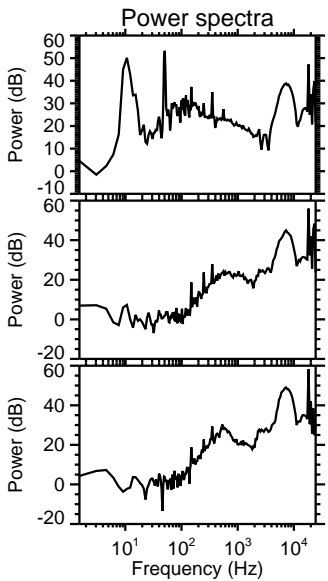
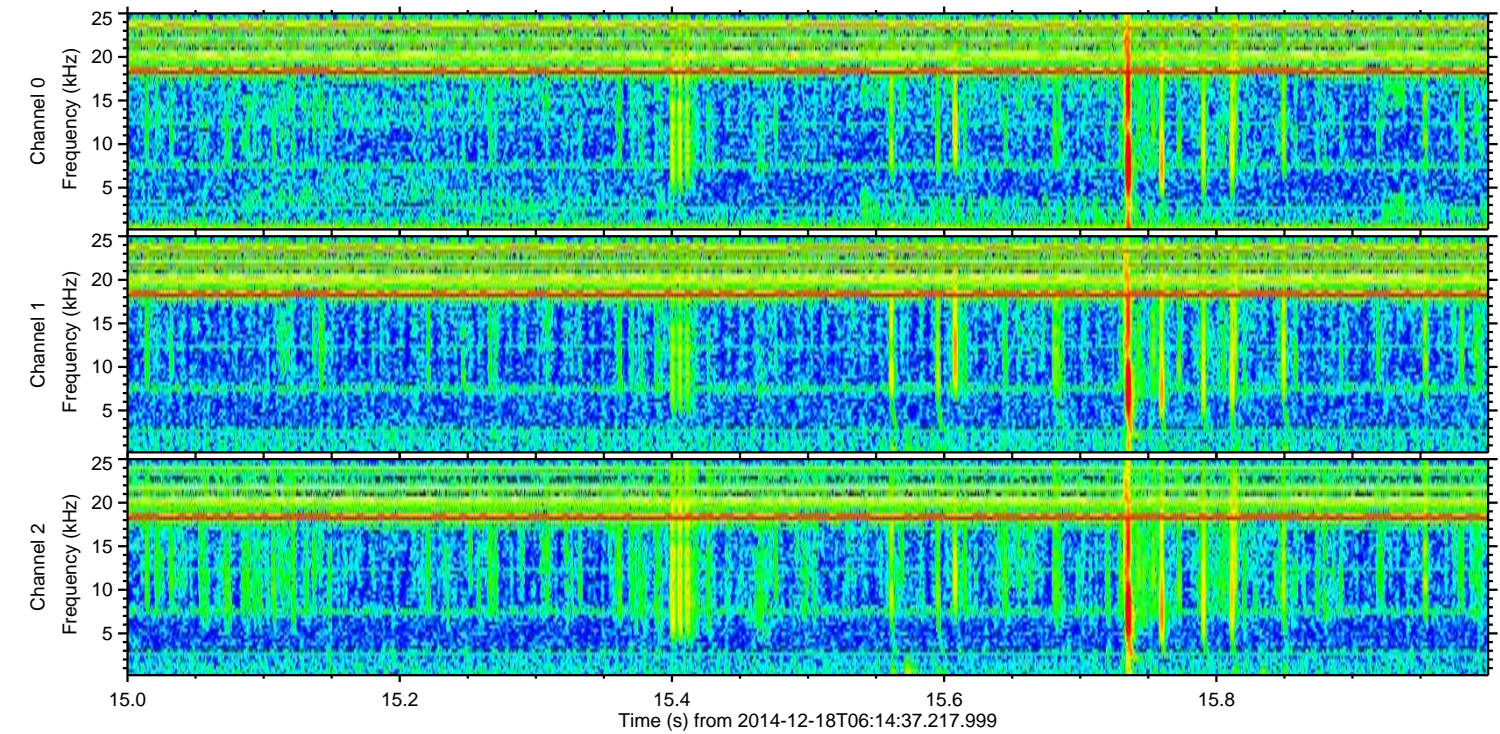
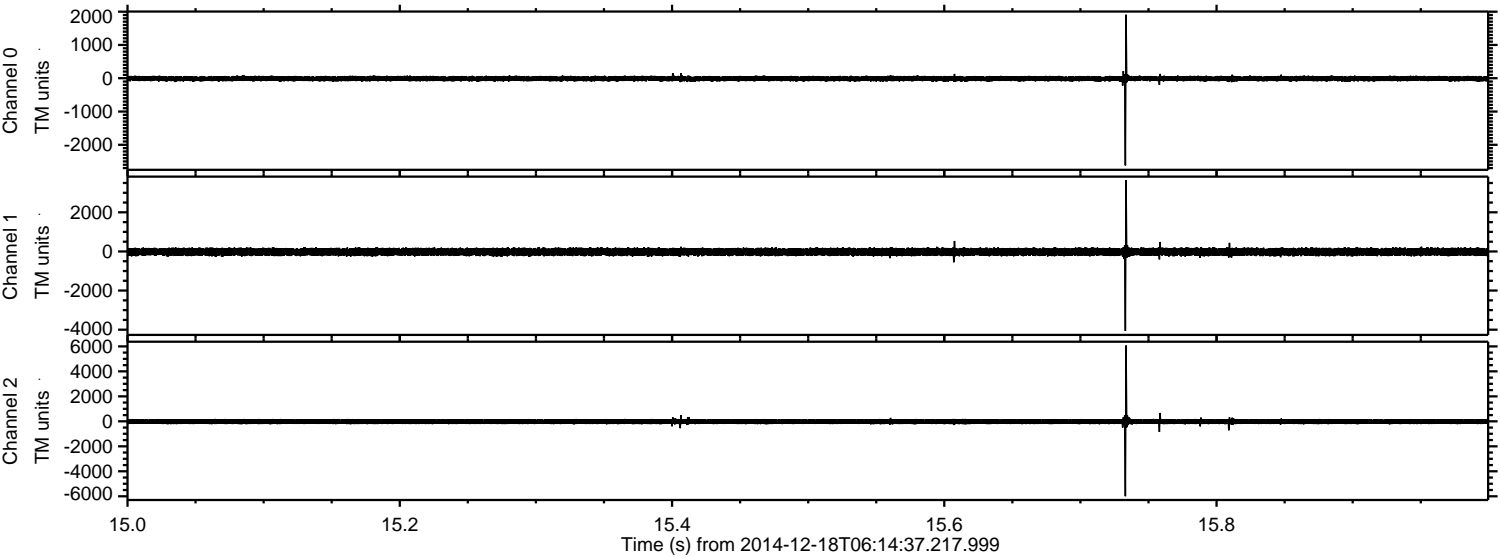
ELMAVAN 3D WAVEFORMS (Measured data sampled at 50 kHz) 49791 packets of 144 samples from 2014-12-18T06:14:37.217.999. Part 13/144

Processed Thu Dec 18 07:57:45 2014 by ELM ver.2012-10-06 from 001__elm20141218_061436__dat00.bin



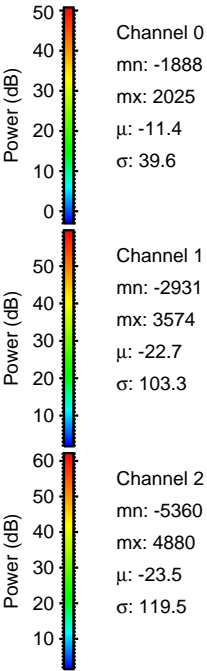
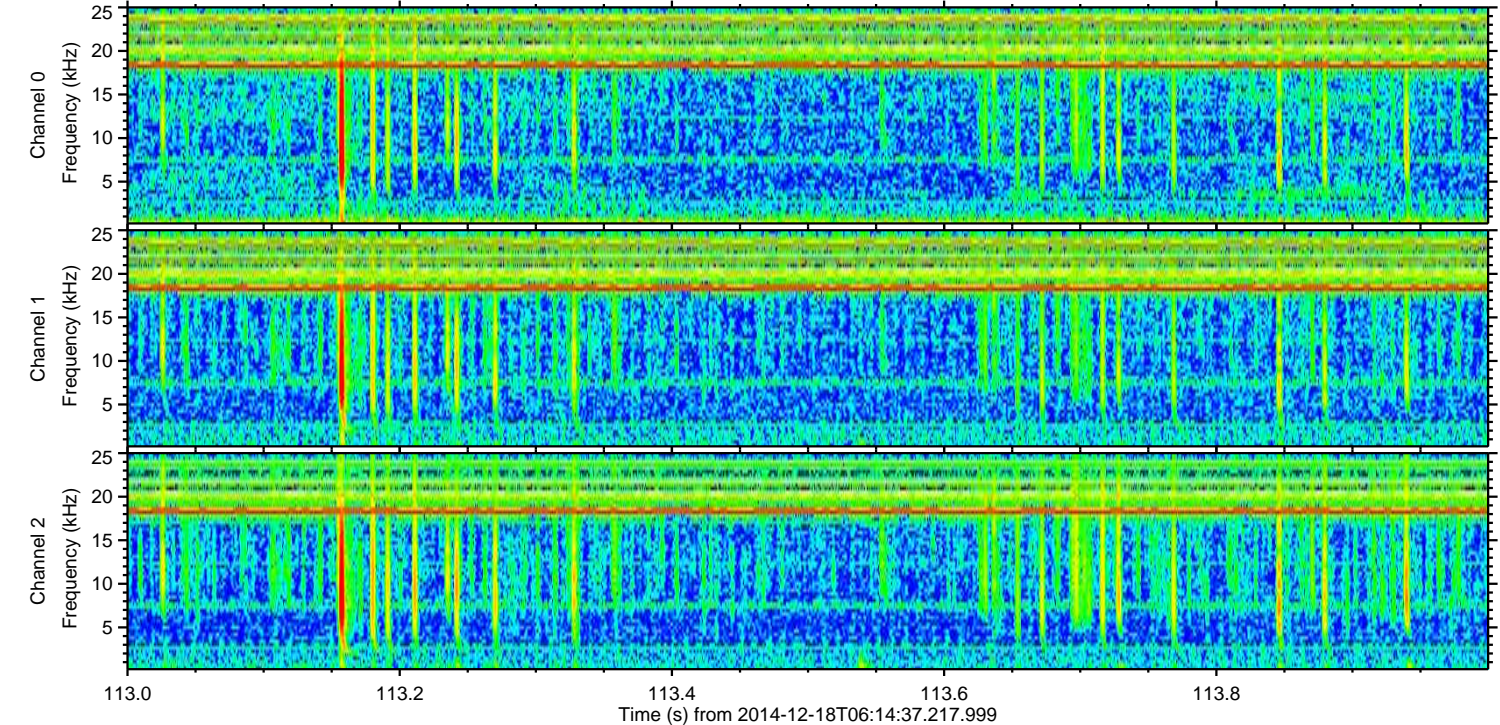
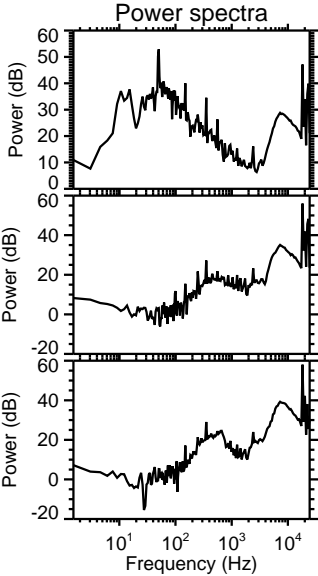
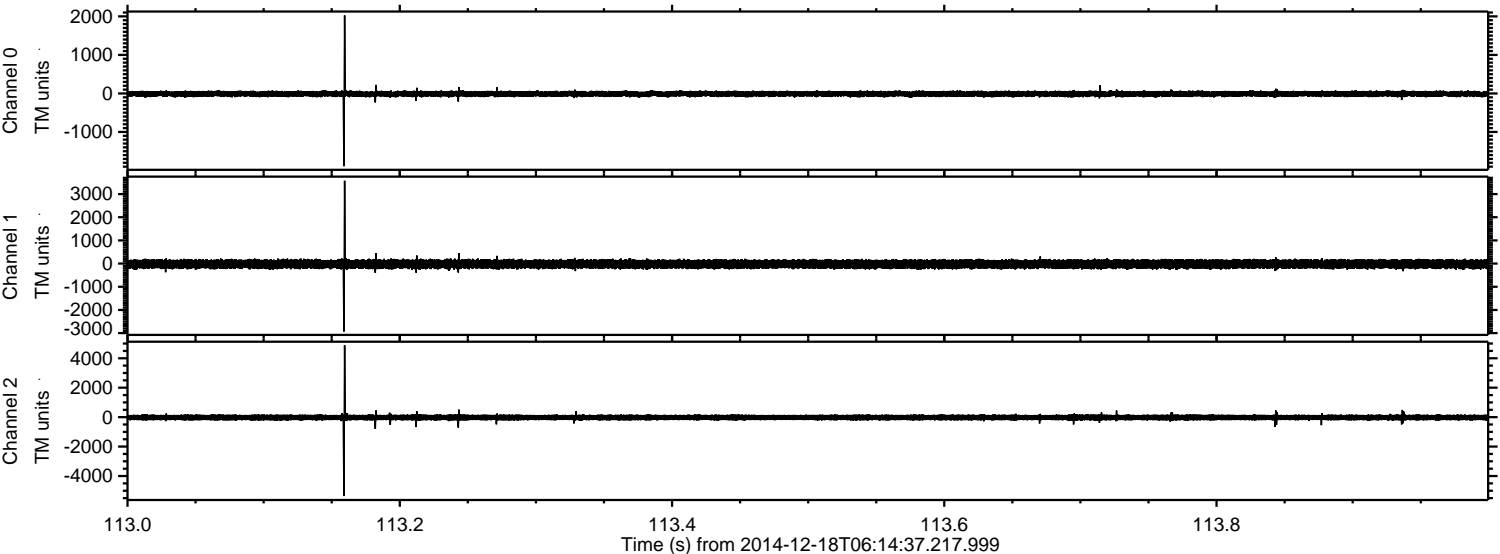
ELMAVAN 3D WAVEFORMS (Measured data sampled at 50 kHz) 49791 packets of 144 samples from 2014-12-18T06:14:37.217.999. Part 16/144

Processed Thu Dec 18 07:57:46 2014 by ELM ver.2012-10-06 from 001__elm20141218_061436__dat00.bin



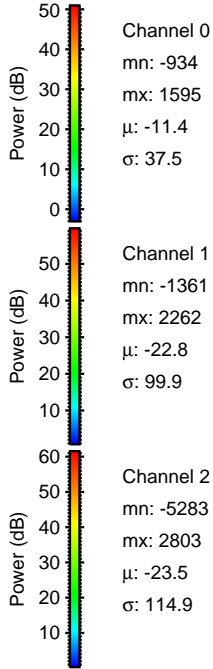
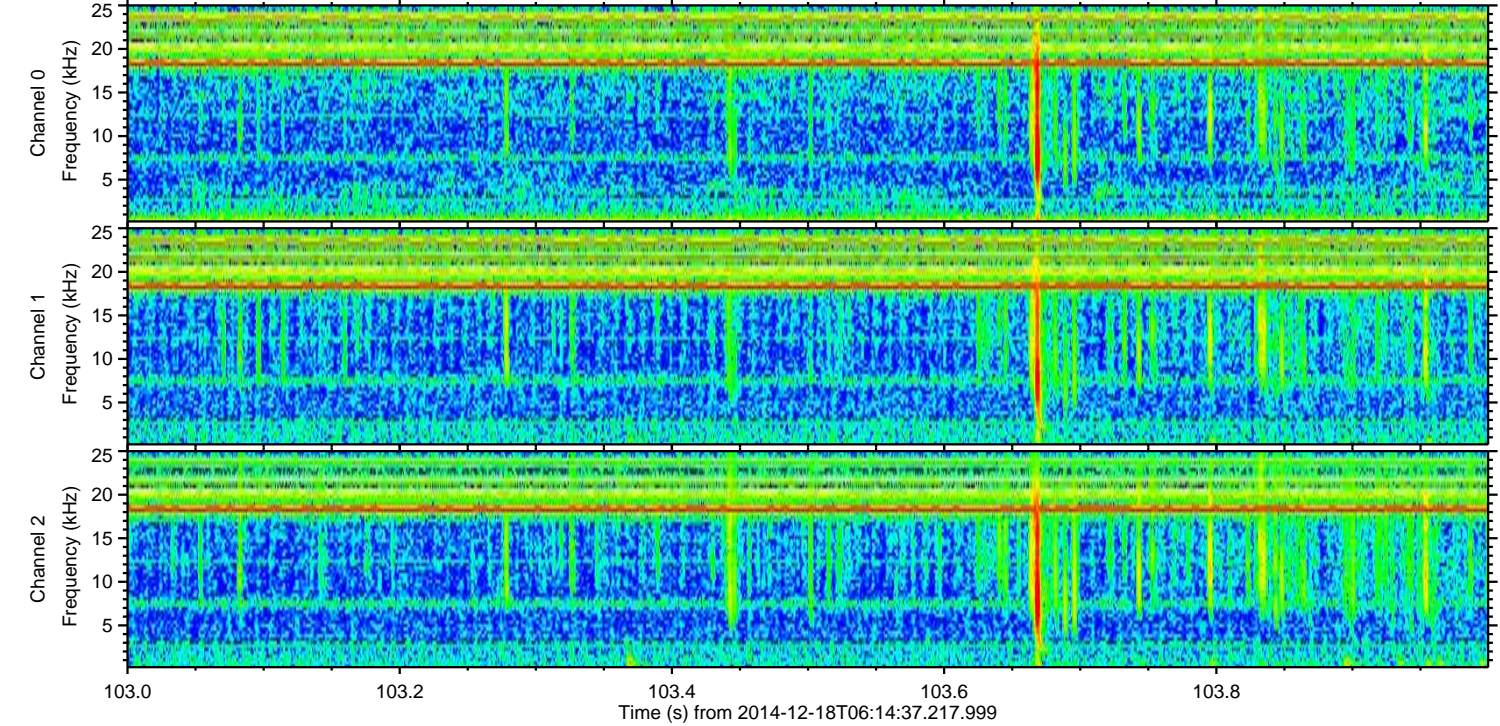
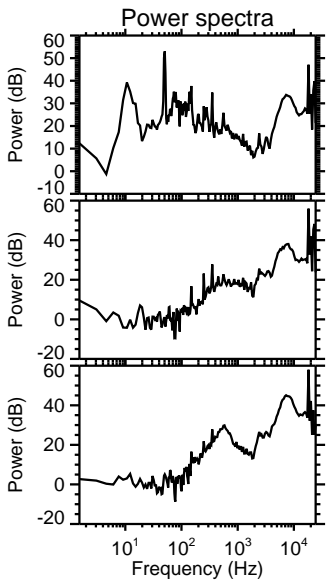
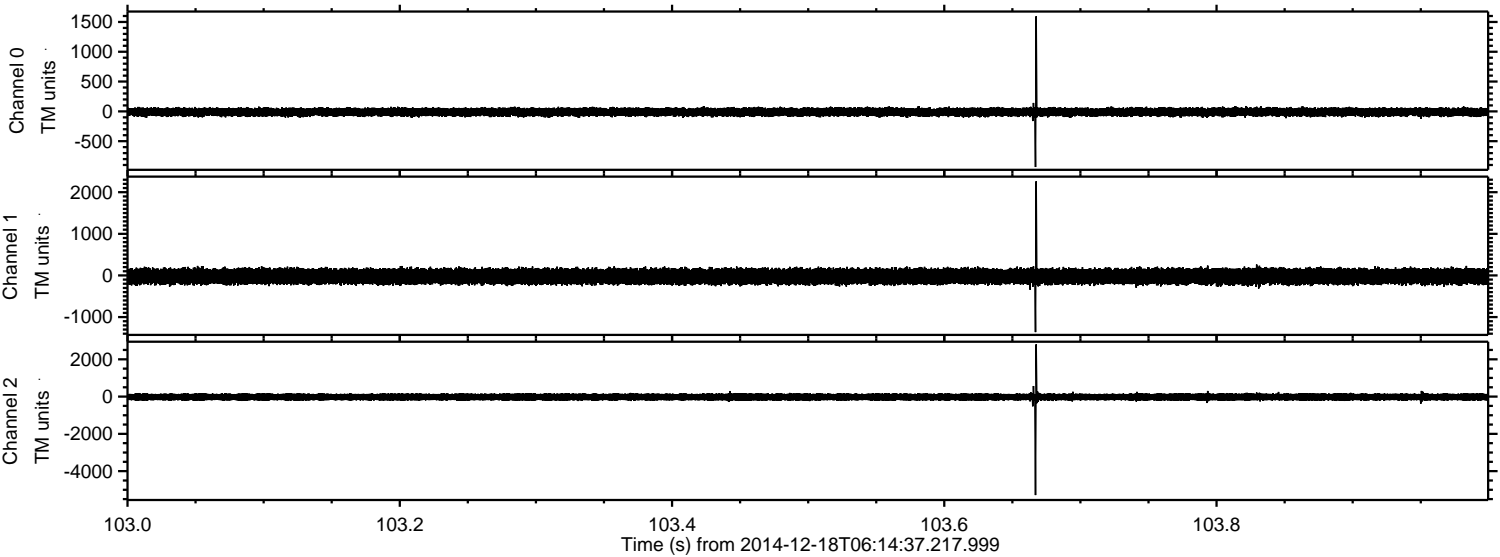
ELMAVAN 3D WAVEFORMS (Measured data sampled at 50 kHz) 49791 packets of 144 samples from 2014-12-18T06:14:37.217.999. Part 114/144

Processed Thu Dec 18 07:57:47 2014 by ELM ver.2012-10-06 from 001__elm20141218_061436__dat00.bin



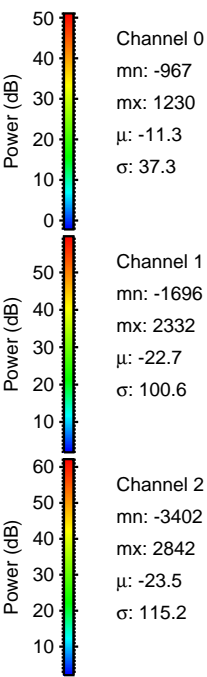
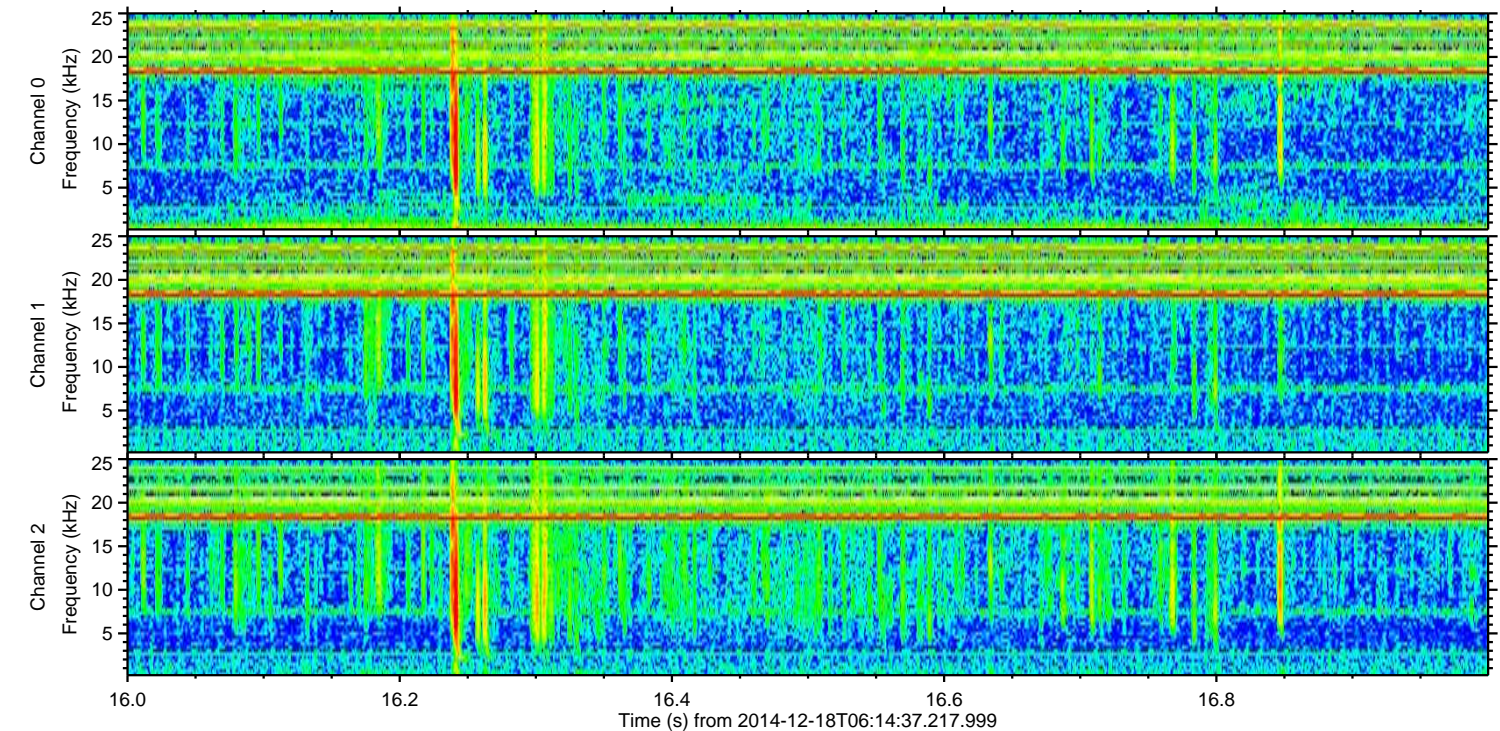
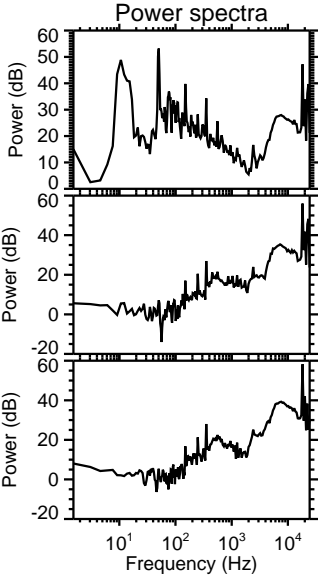
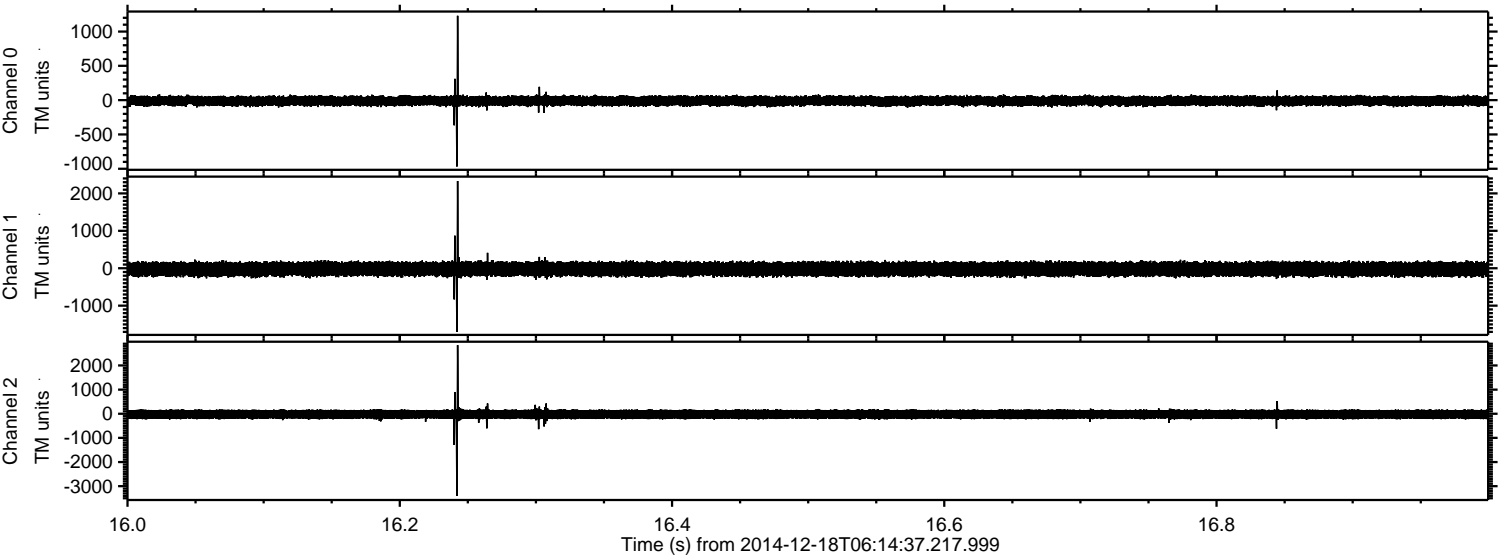
ELMAVAN 3D WAVEFORMS (Measured data sampled at 50 kHz) 49791 packets of 144 samples from 2014-12-18T06:14:37.217.999. Part 104/144

Processed Thu Dec 18 07:57:48 2014 by ELM ver.2012-10-06 from 001__elm20141218_061436__dat00.bin

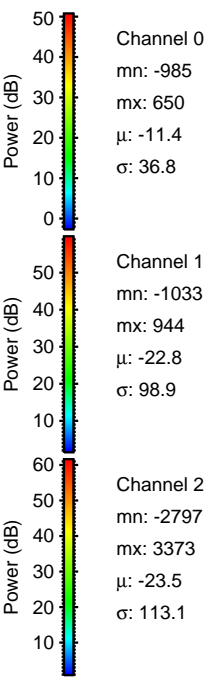
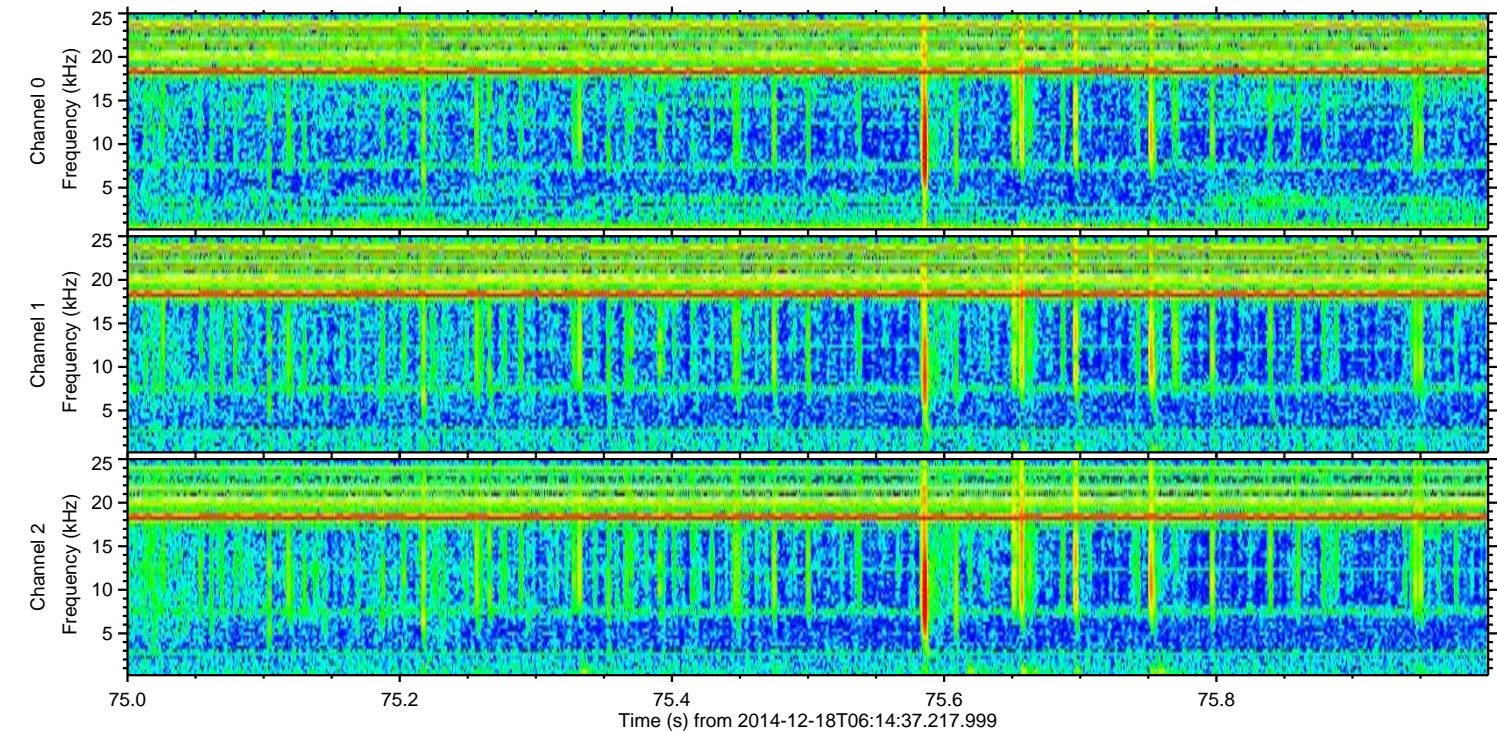
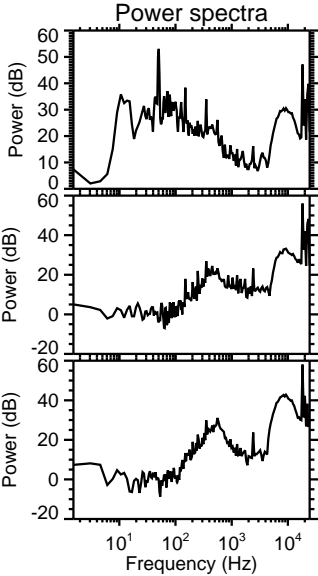
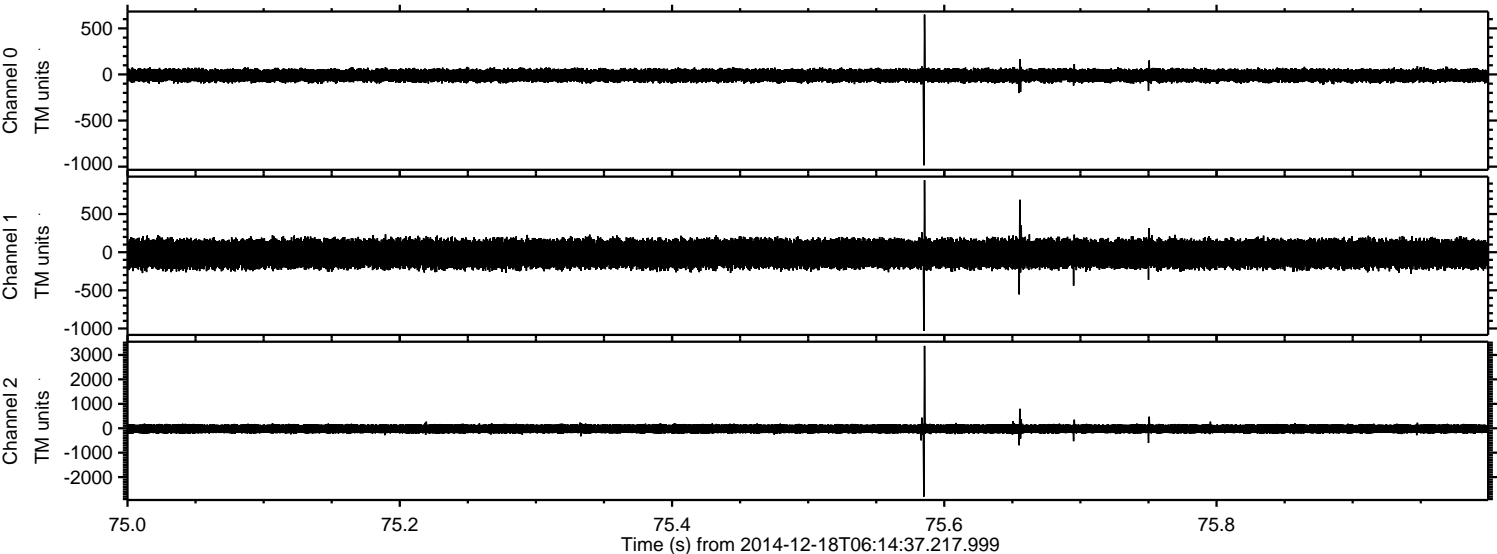


ELMAVAN 3D WAVEFORMS (Measured data sampled at 50 kHz) 49791 packets of 144 samples from 2014-12-18T06:14:37.217.999. Part 17/144

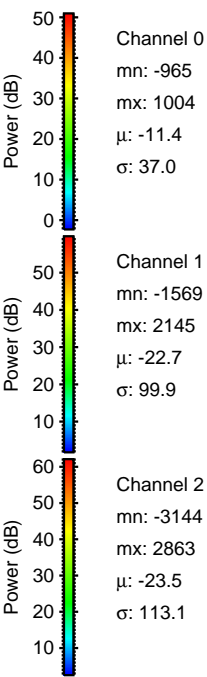
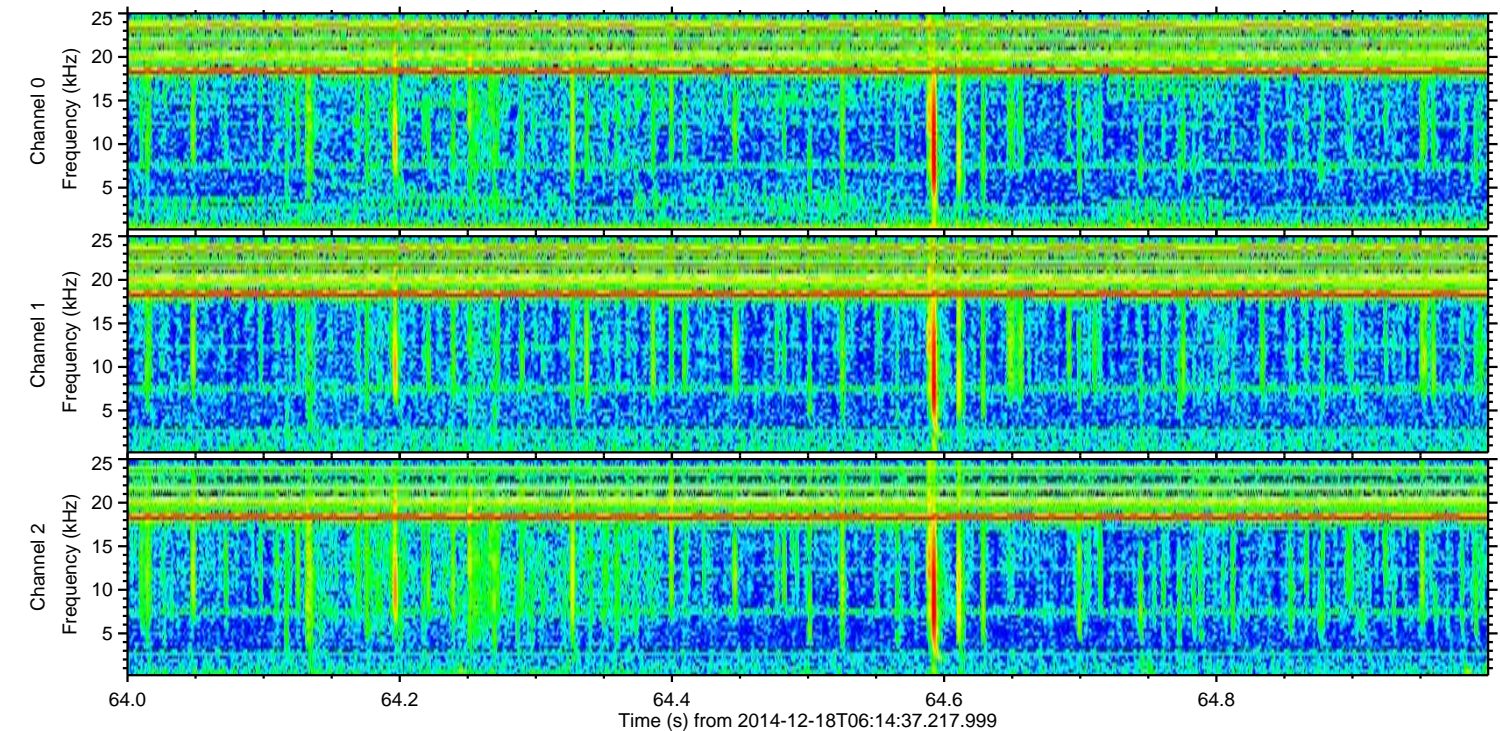
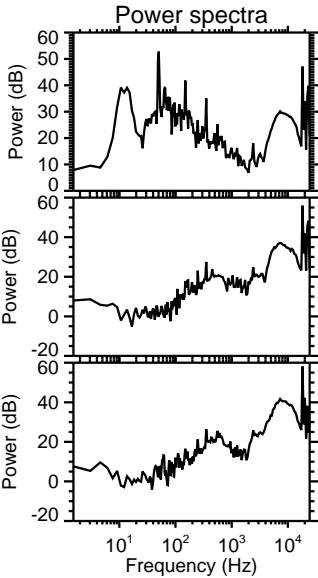
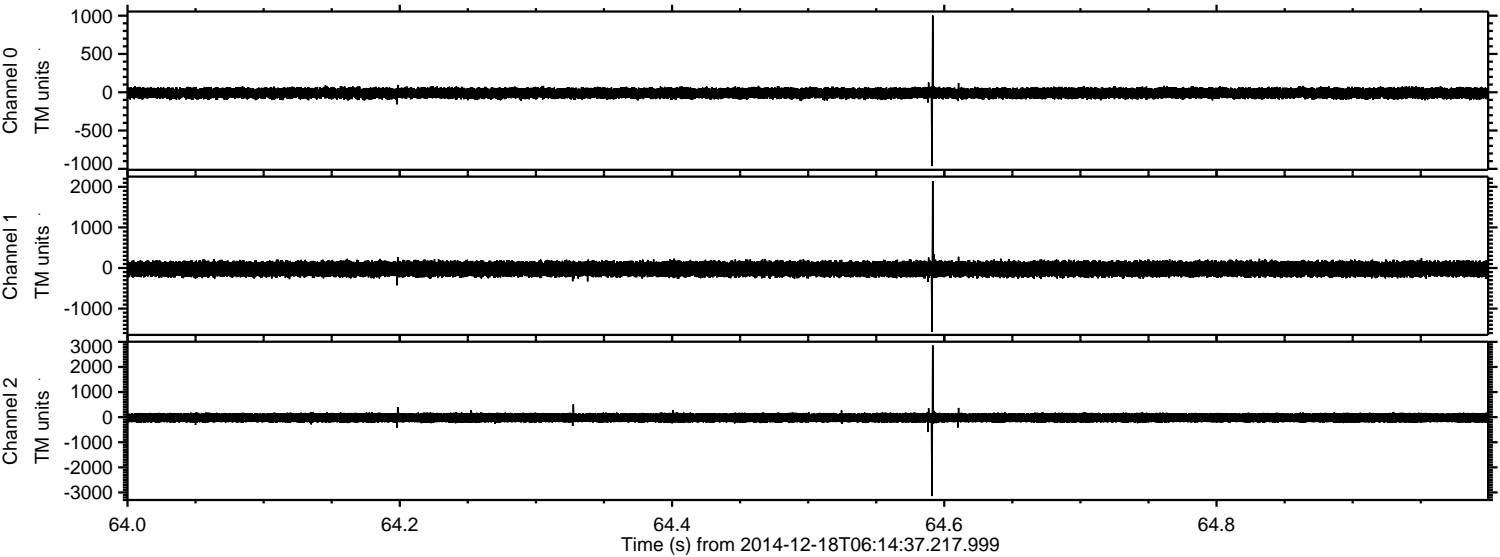
Processed Thu Dec 18 07:57:49 2014 by ELM ver.2012-10-06 from 001__elm20141218_061436__dat00.bin



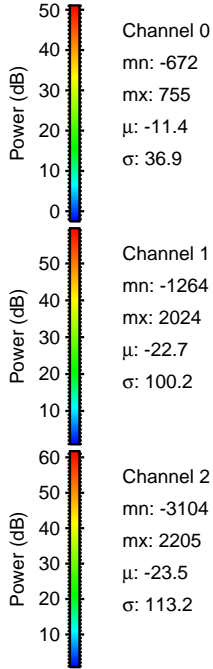
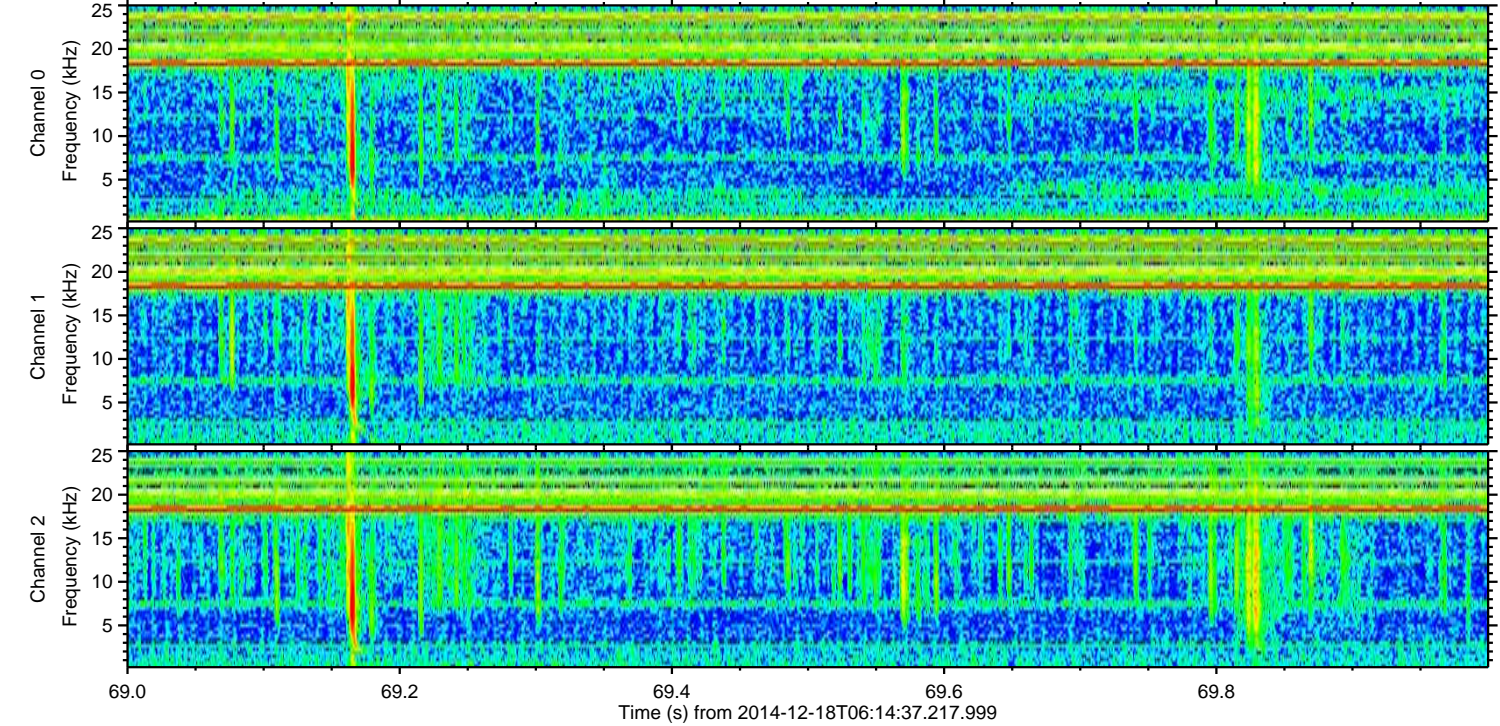
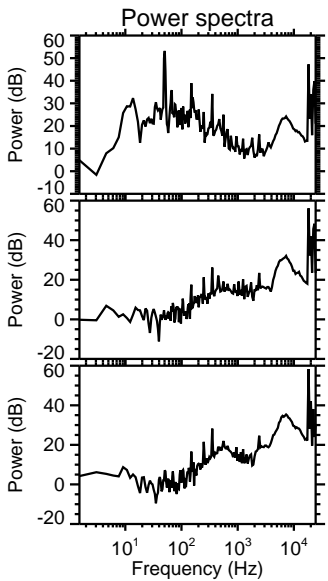
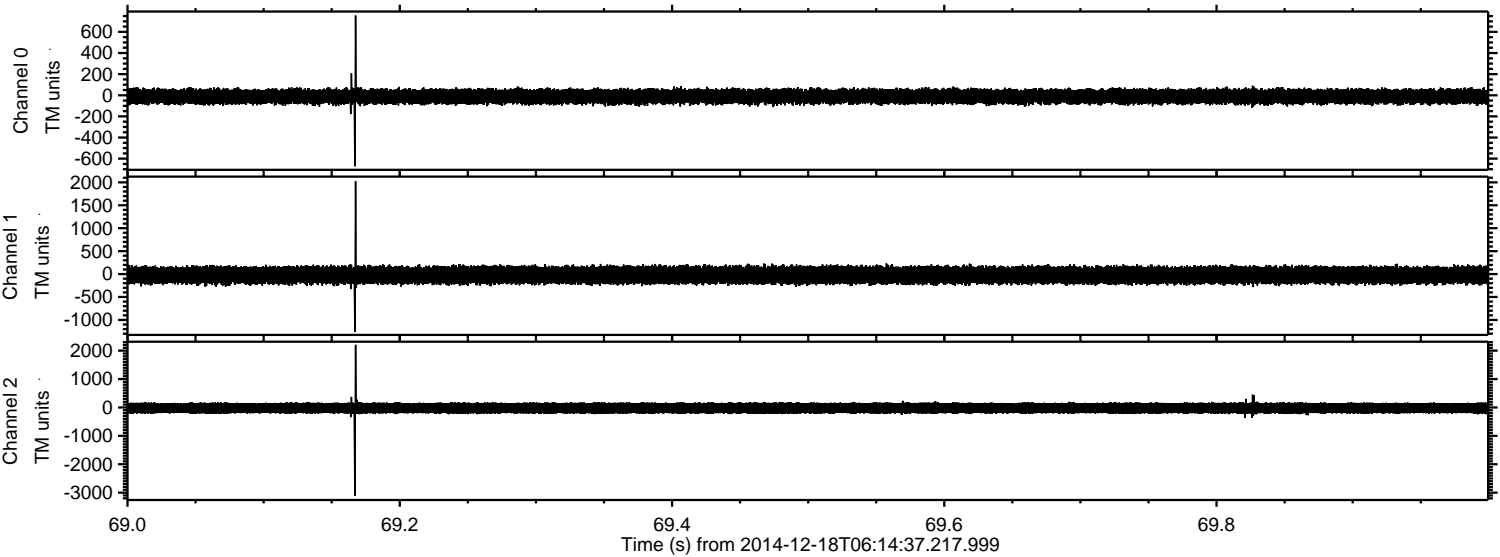
Processed Thu Dec 18 07:57:50 2014 by ELM ver.2012-10-06 from 001__elm20141218_061436__dat00.bin



Processed Thu Dec 18 07:57:51 2014 by ELM ver.2012-10-06 from 001__elm20141218_061436__dat00.bin



Processed Thu Dec 18 07:57:52 2014 by ELM ver.2012-10-06 from 001__elm20141218_061436__dat00.bin



Processed Thu Dec 18 07:57:53 2014 by ELM ver.2012-10-06 from 001__elm20141218_061436__dat00.bin

