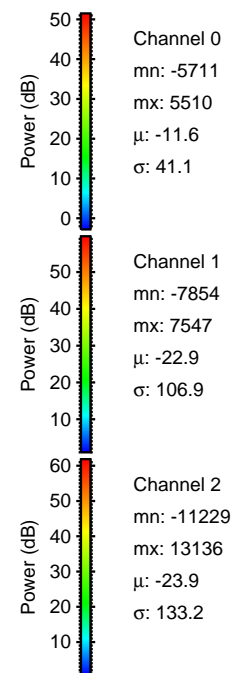
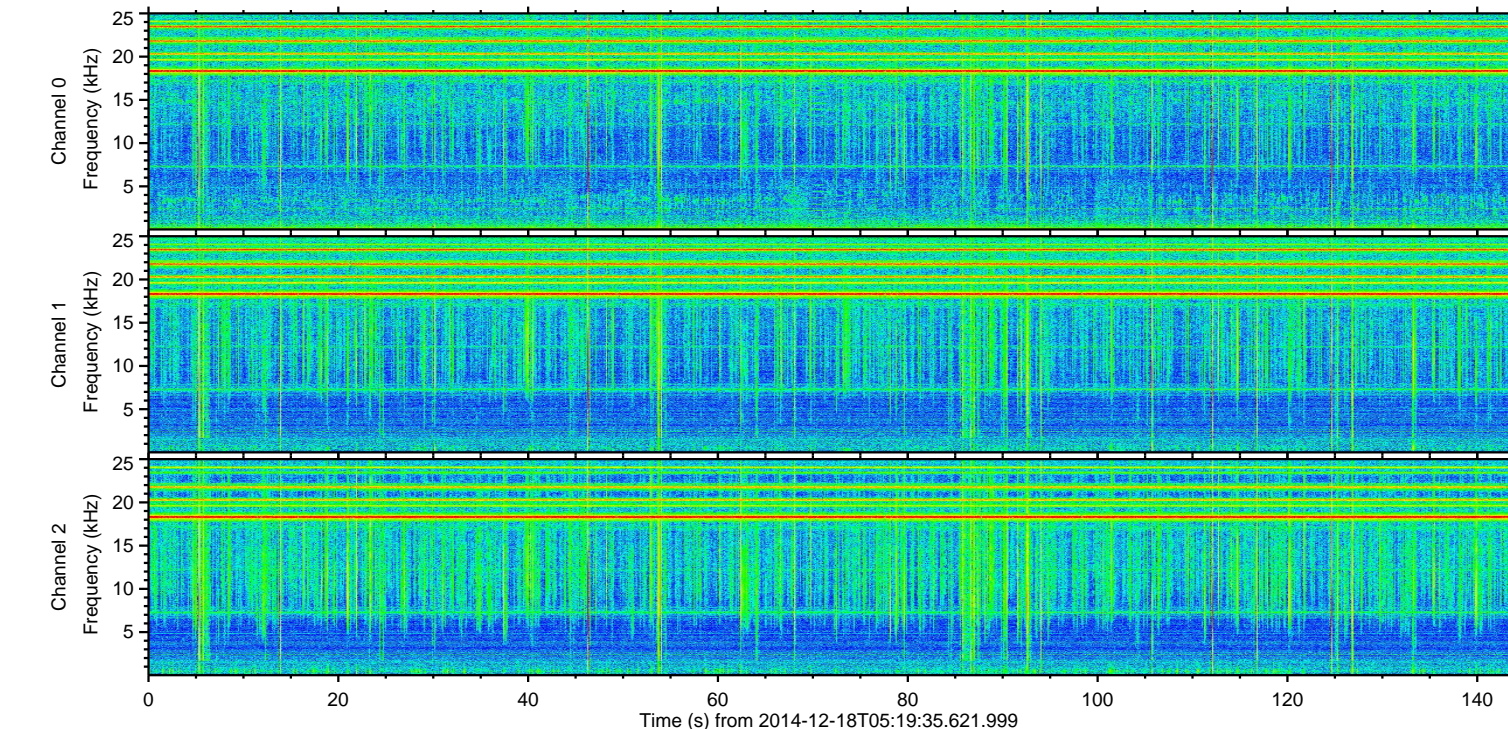
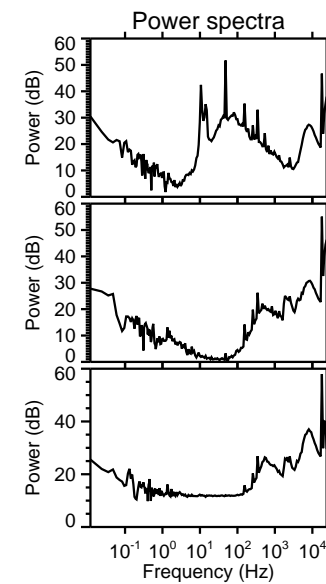
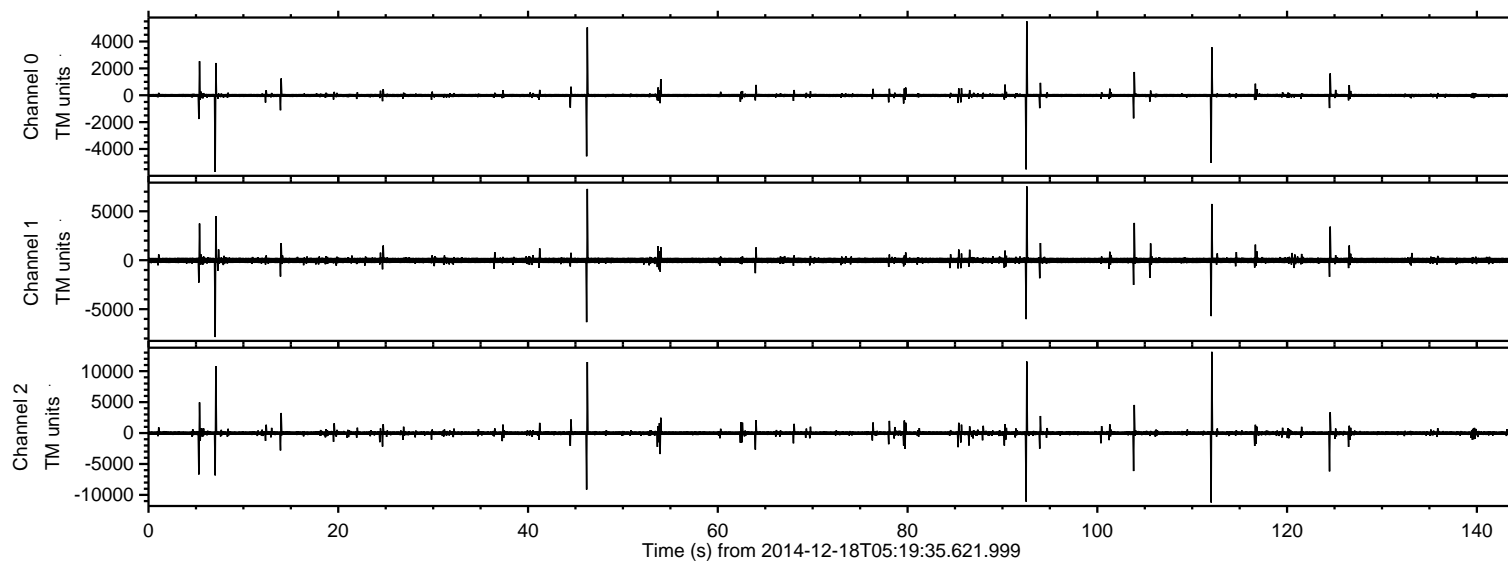


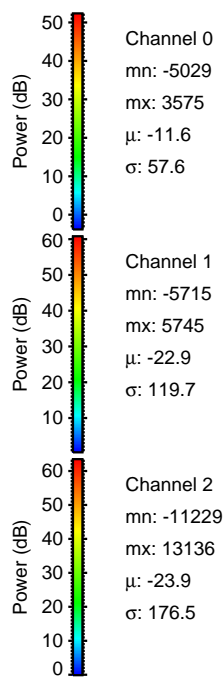
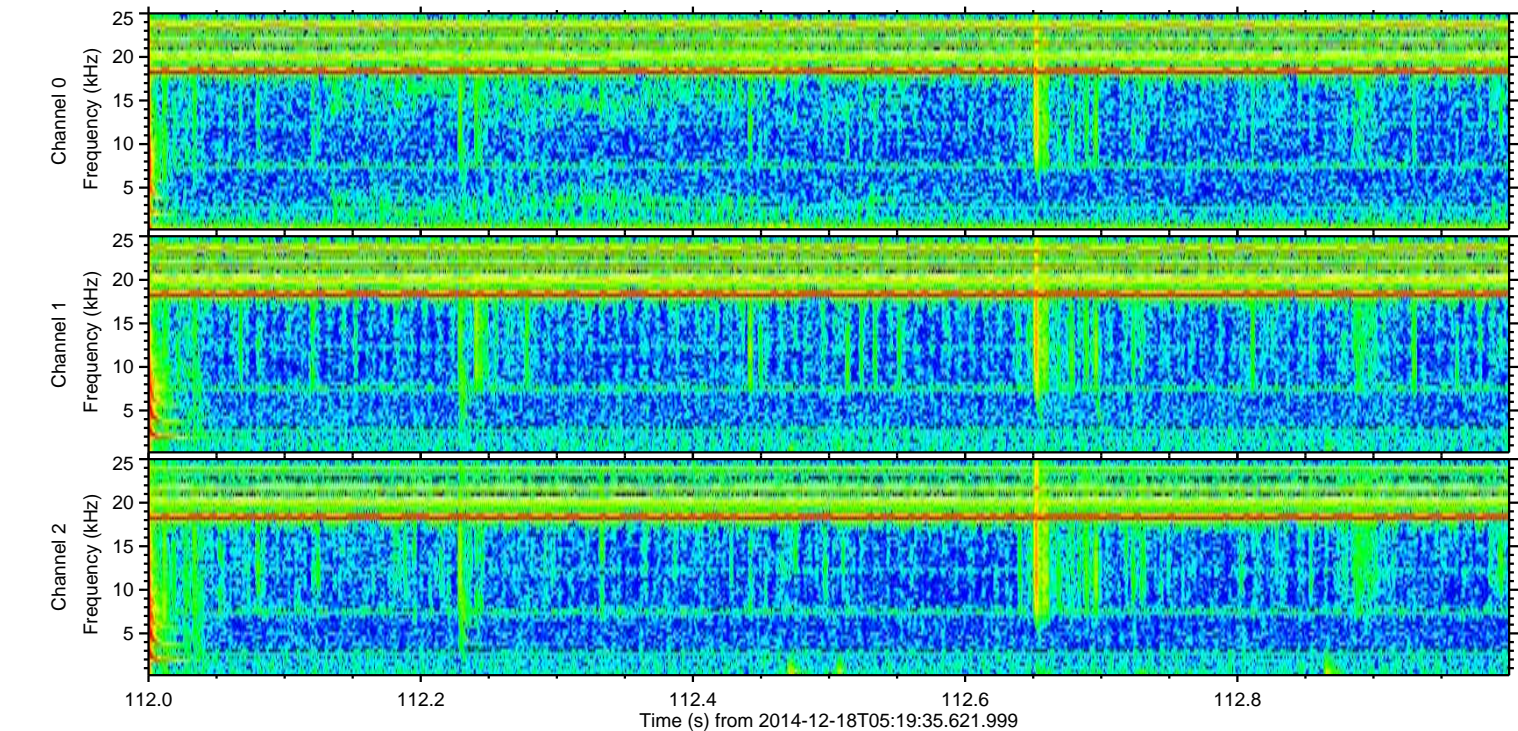
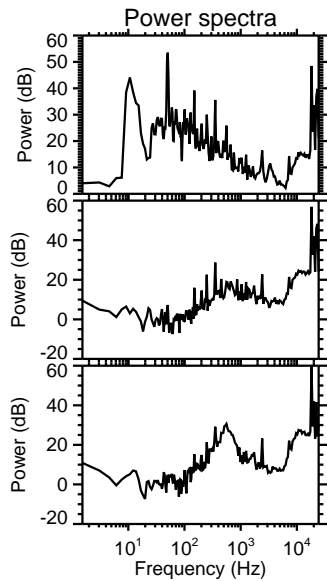
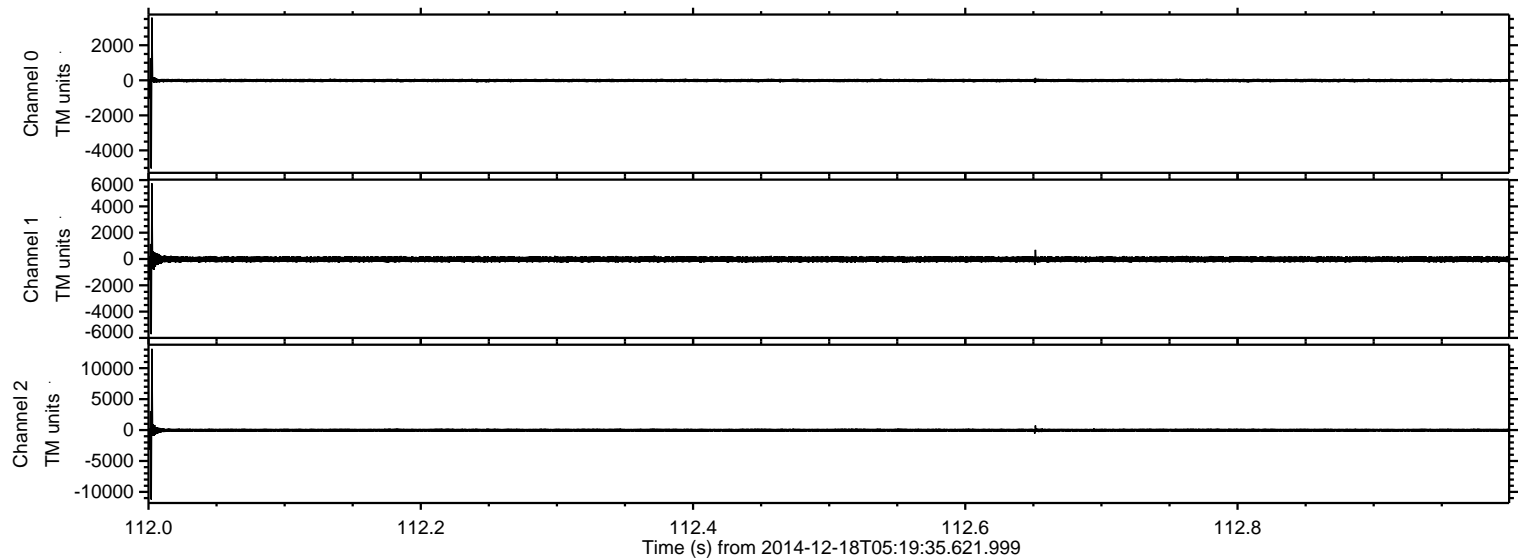
ELMAVAN 3D WAVEFORMS (Measured data sampled at 50 kHz) 49793 packets of 144 samples from 2014-12-18T05:19:35.621.999.

Processed Thu Dec 18 06:57:12 2014 by ELM ver.2012-10-06 from 001__elm20141218_051934__dat00.bin



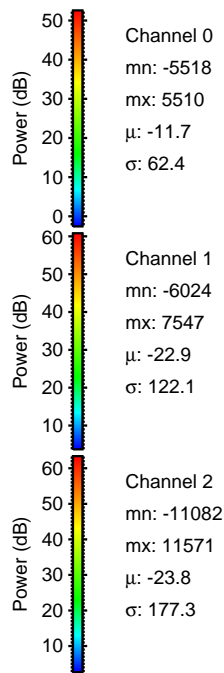
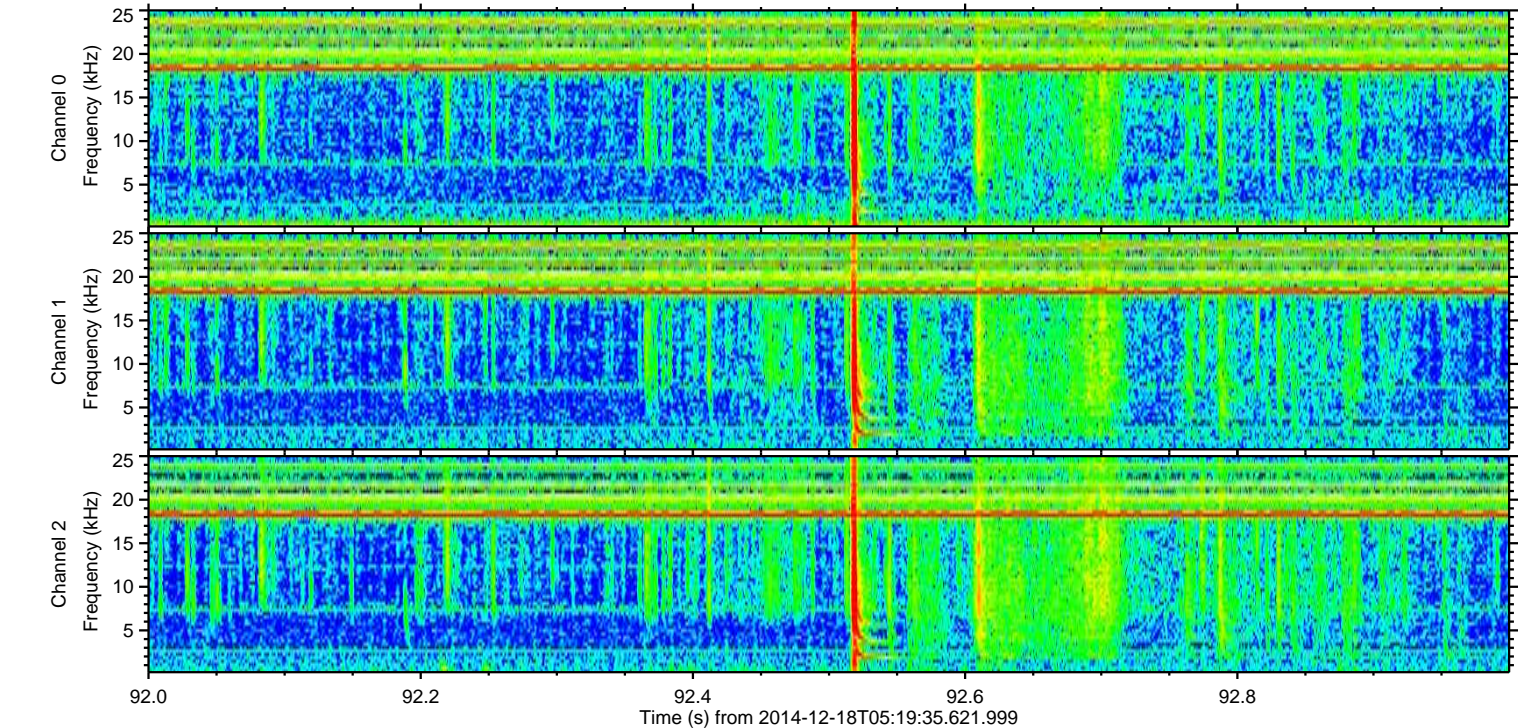
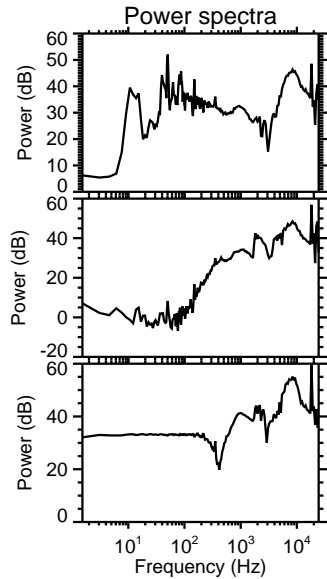
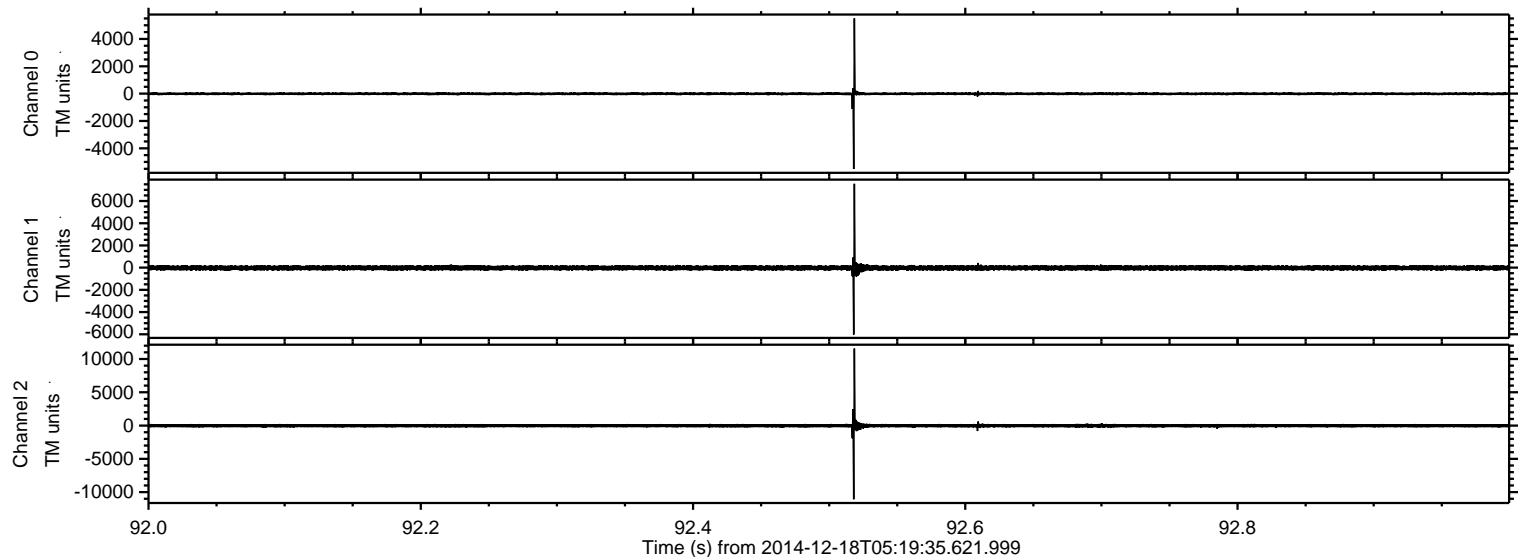
ELMAVAN 3D WAVEFORMS (Measured data sampled at 50 kHz) 49793 packets of 144 samples from 2014-12-18T05:19:35.621.999. Part 113/144

Processed Thu Dec 18 06:57:24 2014 by ELM ver.2012-10-06 from 001__elm20141218_051934__dat00.bin



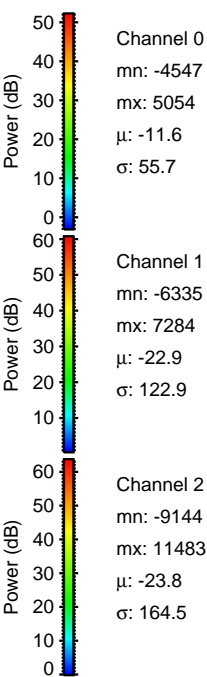
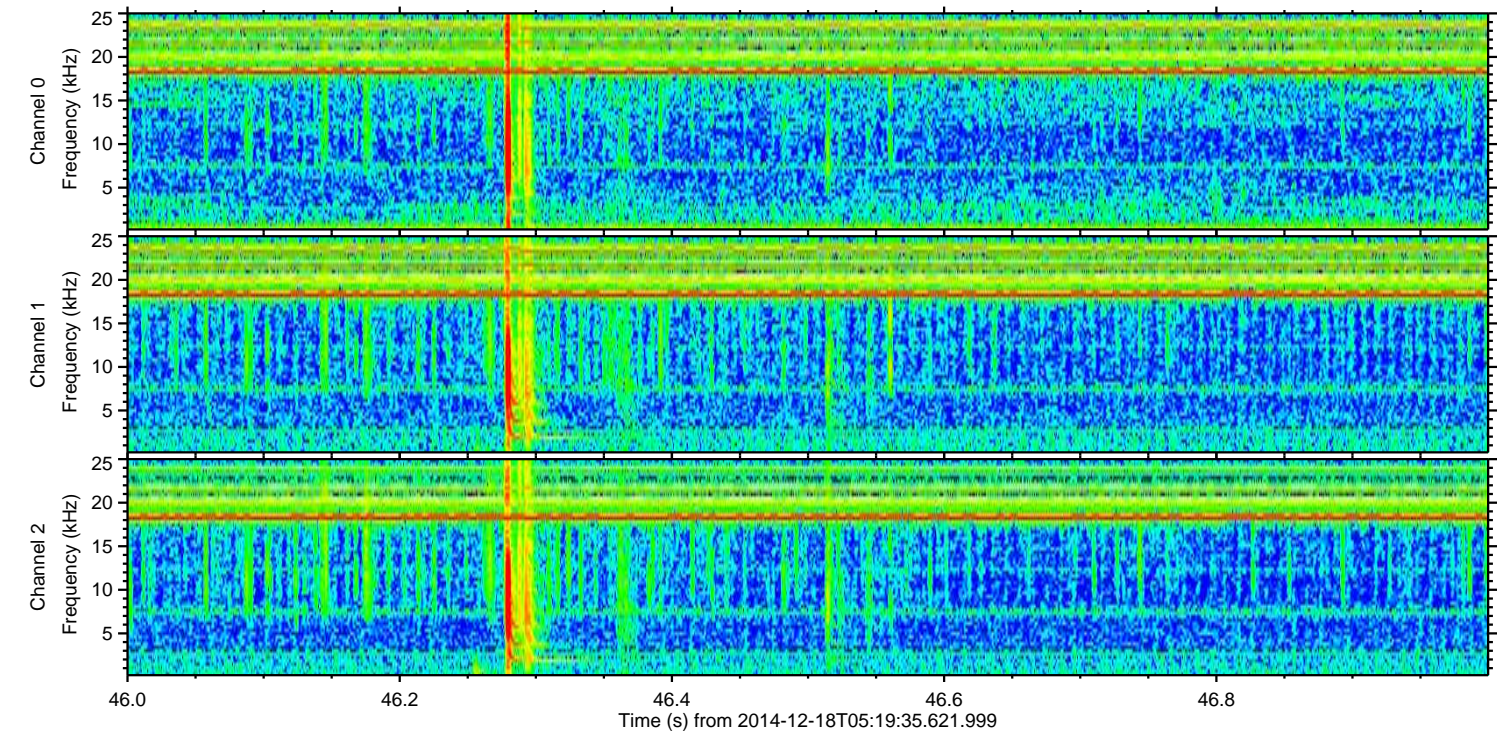
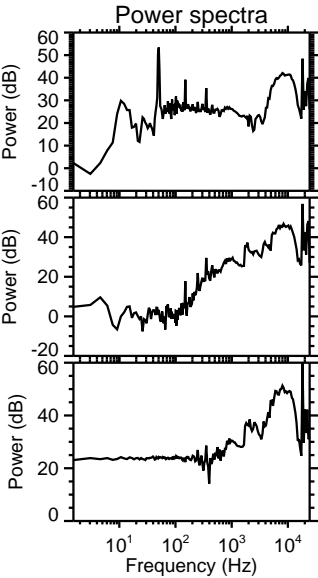
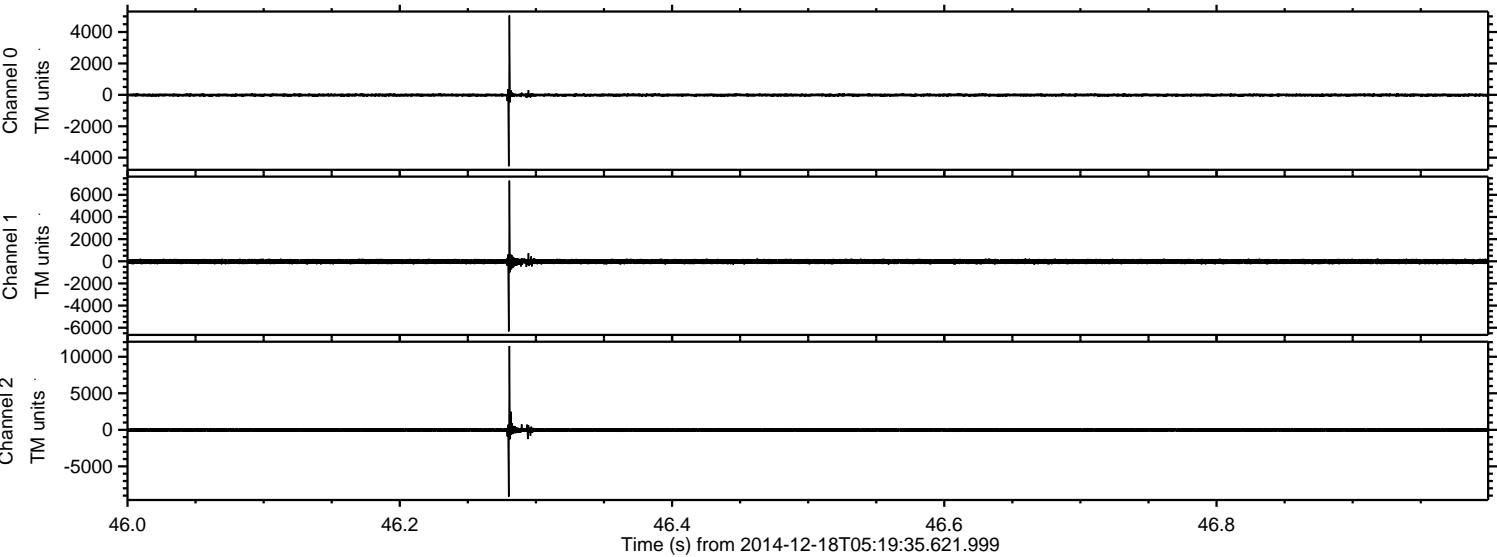
ELMAVAN 3D WAVEFORMS (Measured data sampled at 50 kHz) 49793 packets of 144 samples from 2014-12-18T05:19:35.621.999. Part 93/144

Processed Thu Dec 18 06:57:25 2014 by ELM ver.2012-10-06 from 001__elm20141218_051934__dat00.bin

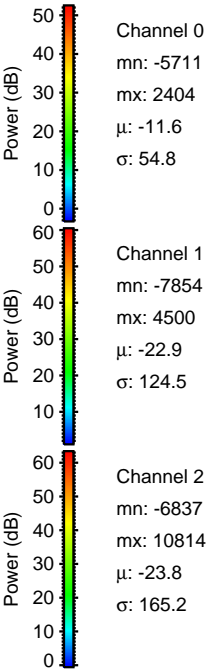
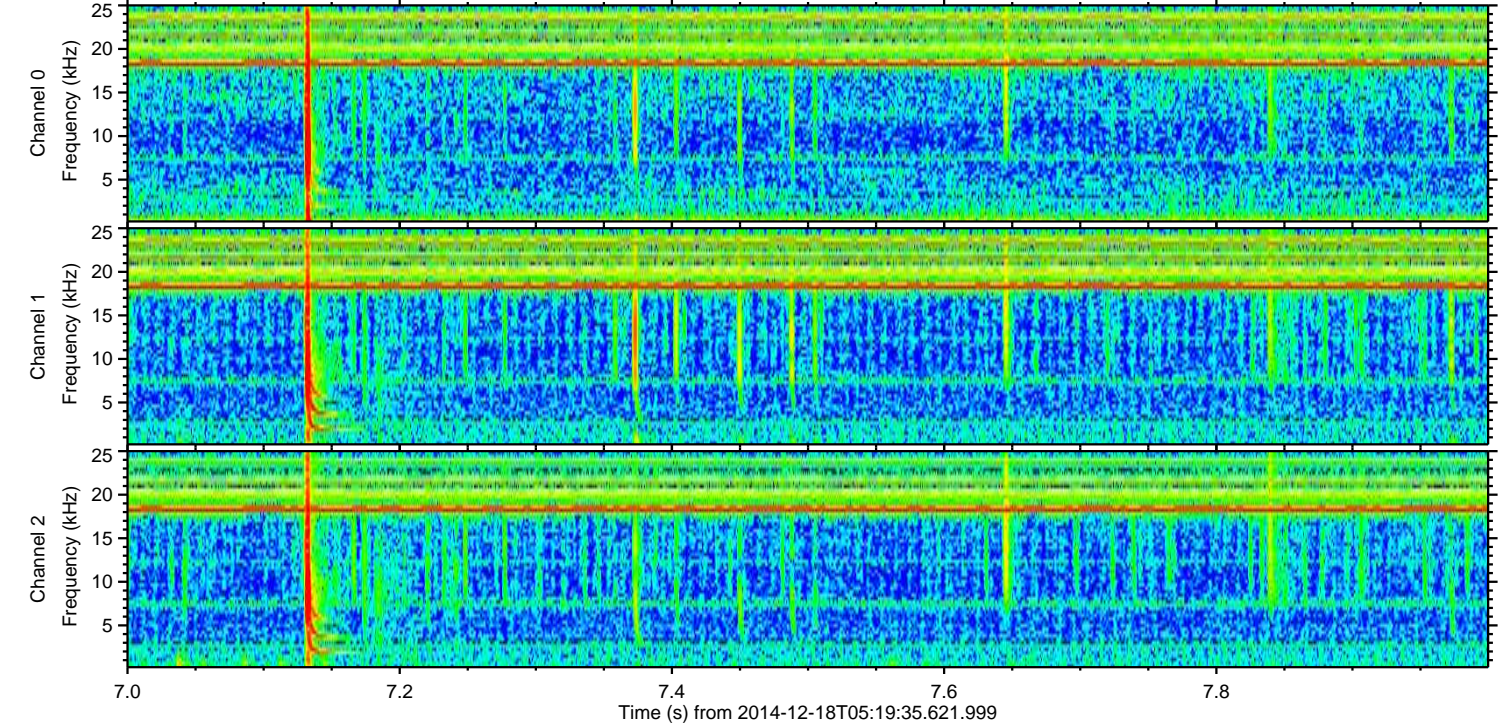
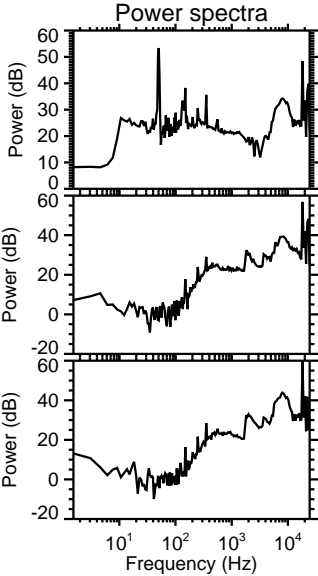
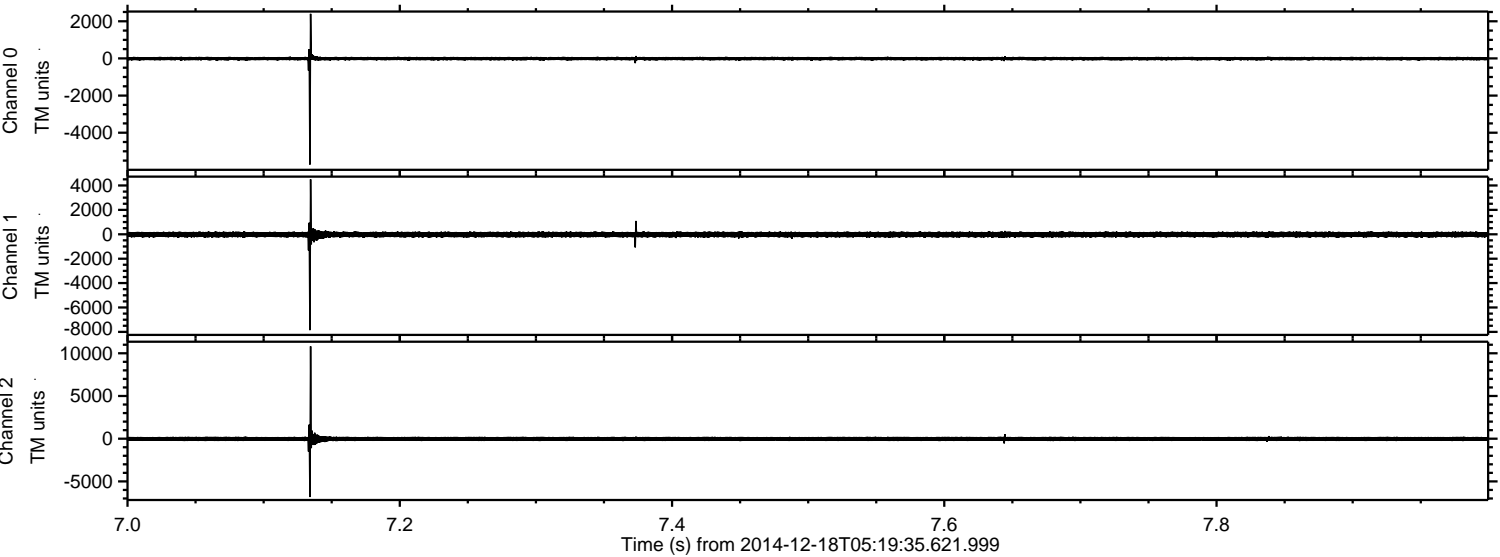


ELMAVAN 3D WAVEFORMS (Measured data sampled at 50 kHz) 49793 packets of 144 samples from 2014-12-18T05:19:35.621.999. Part 47/144

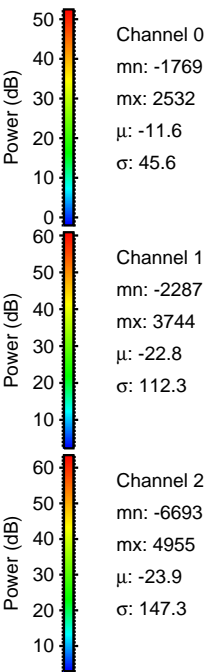
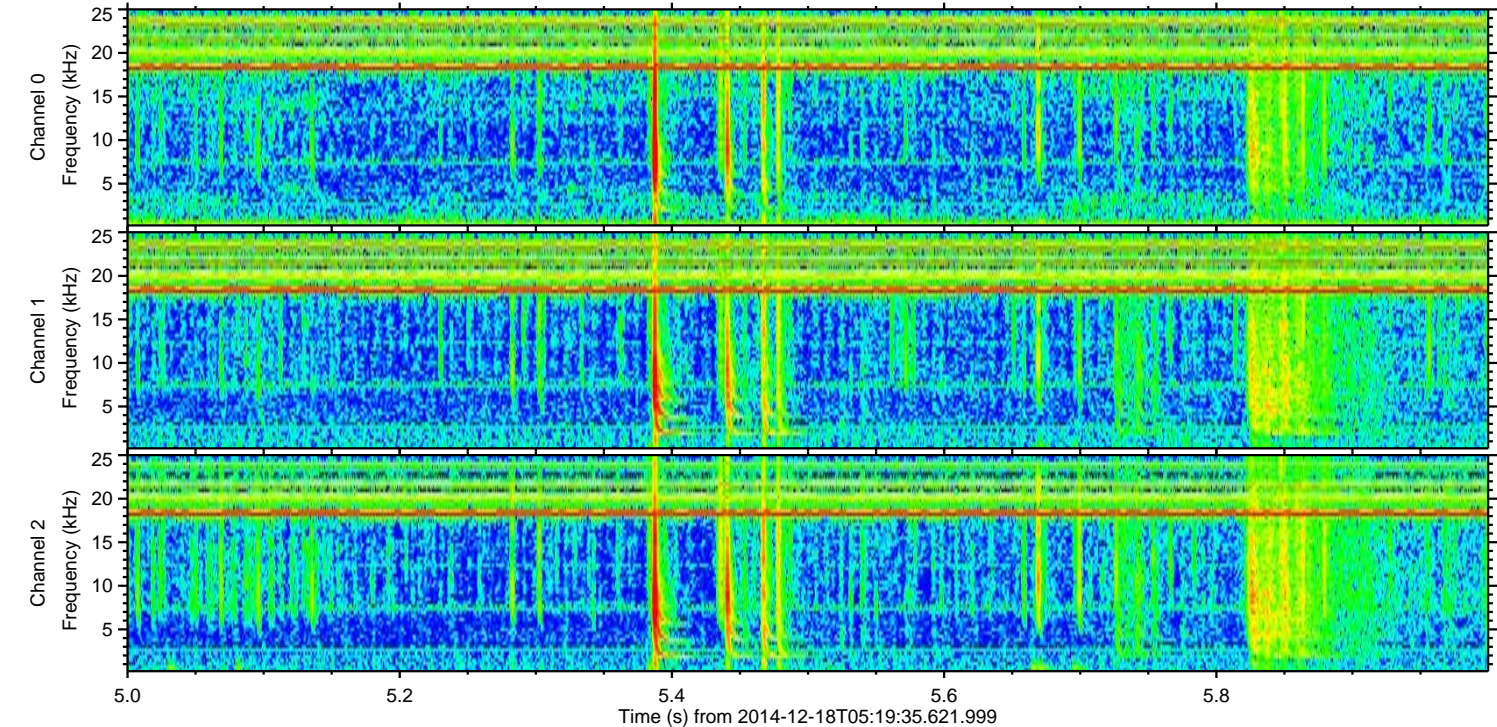
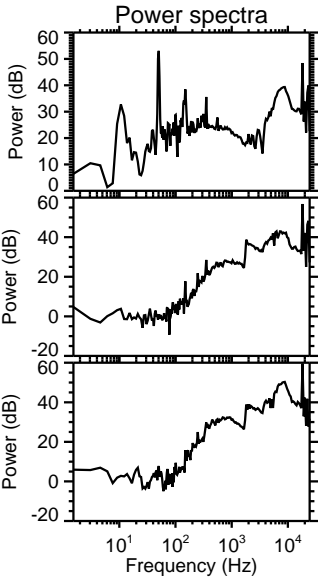
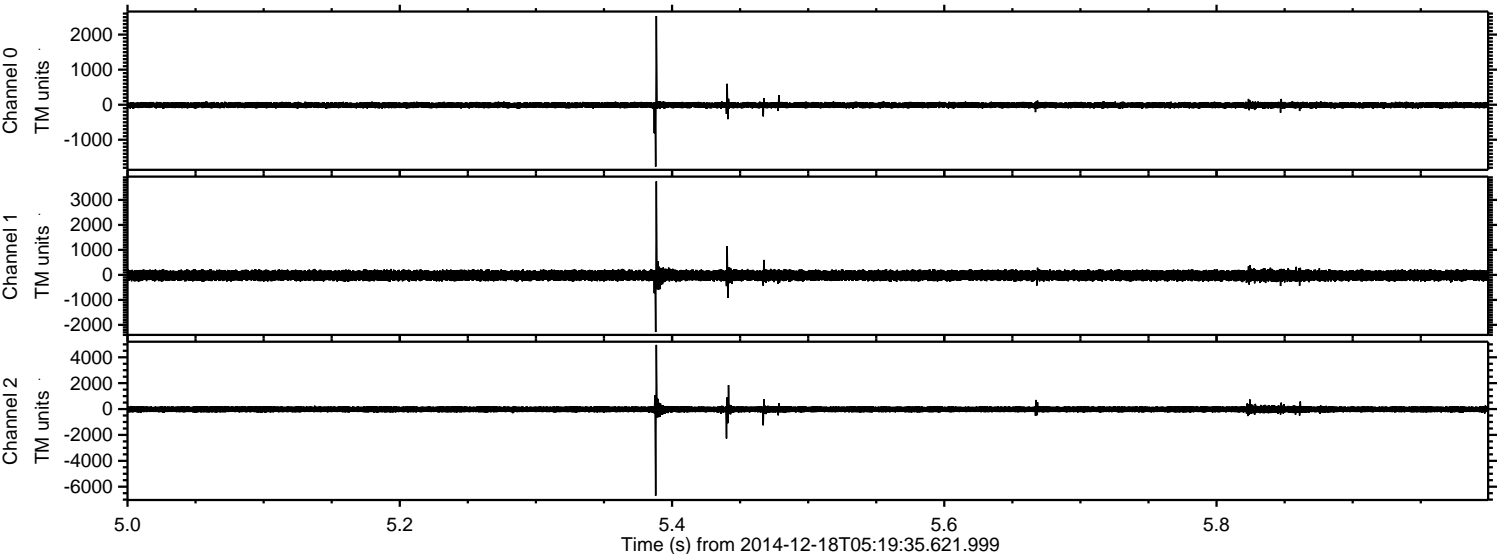
Processed Thu Dec 18 06:57:26 2014 by ELM ver.2012-10-06 from 001__elm20141218_051934__dat00.bin



Processed Thu Dec 18 06:57:27 2014 by ELM ver.2012-10-06 from 001__elm20141218_051934__dat00.bin

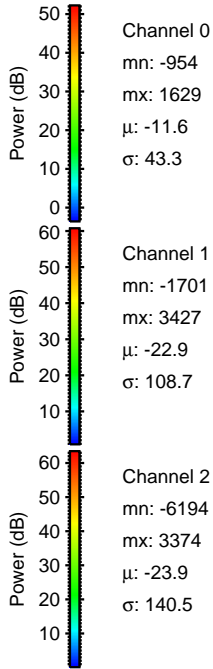
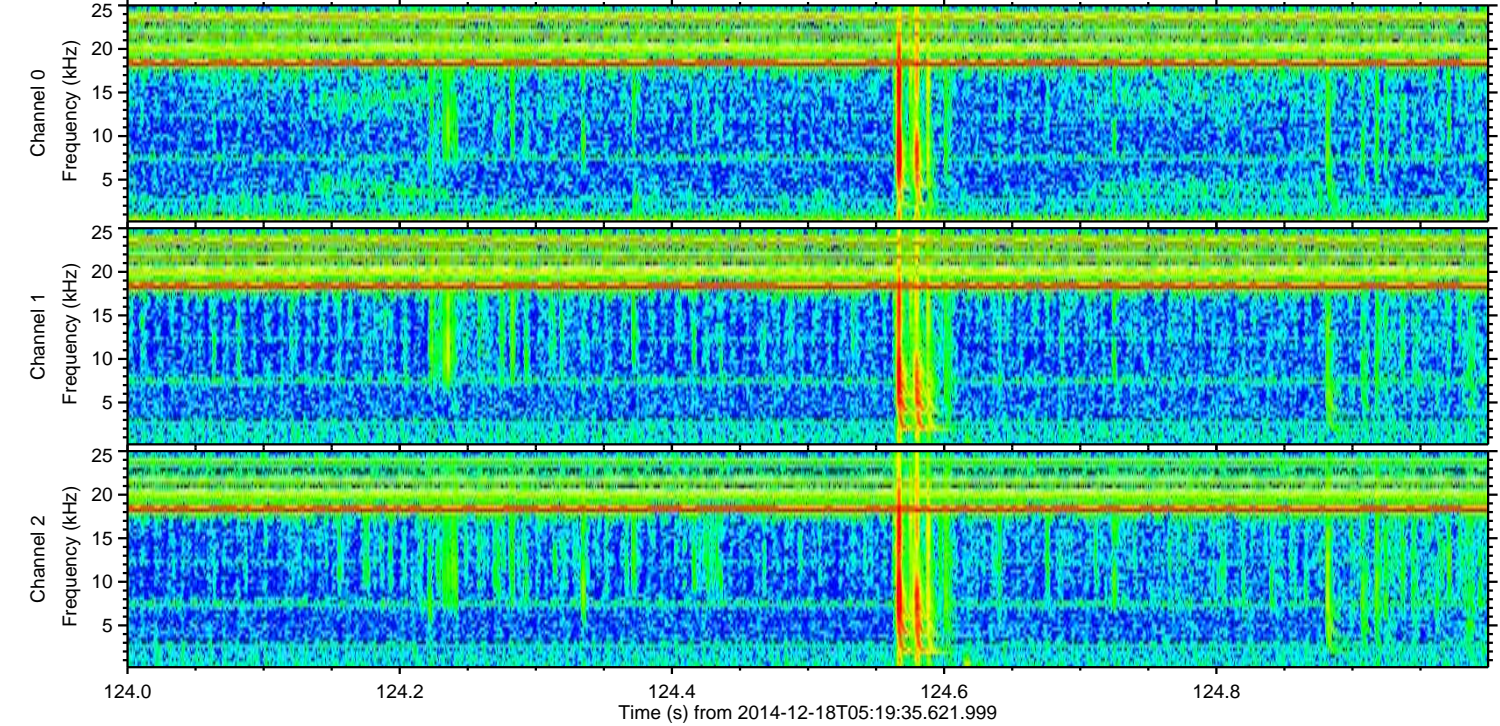
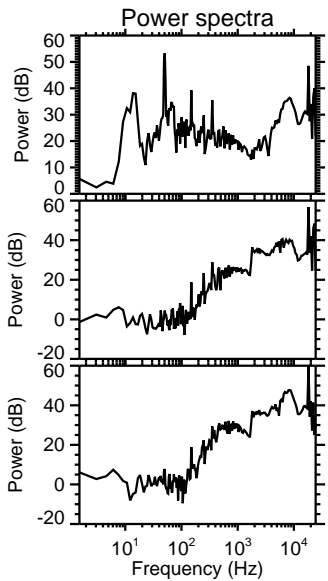
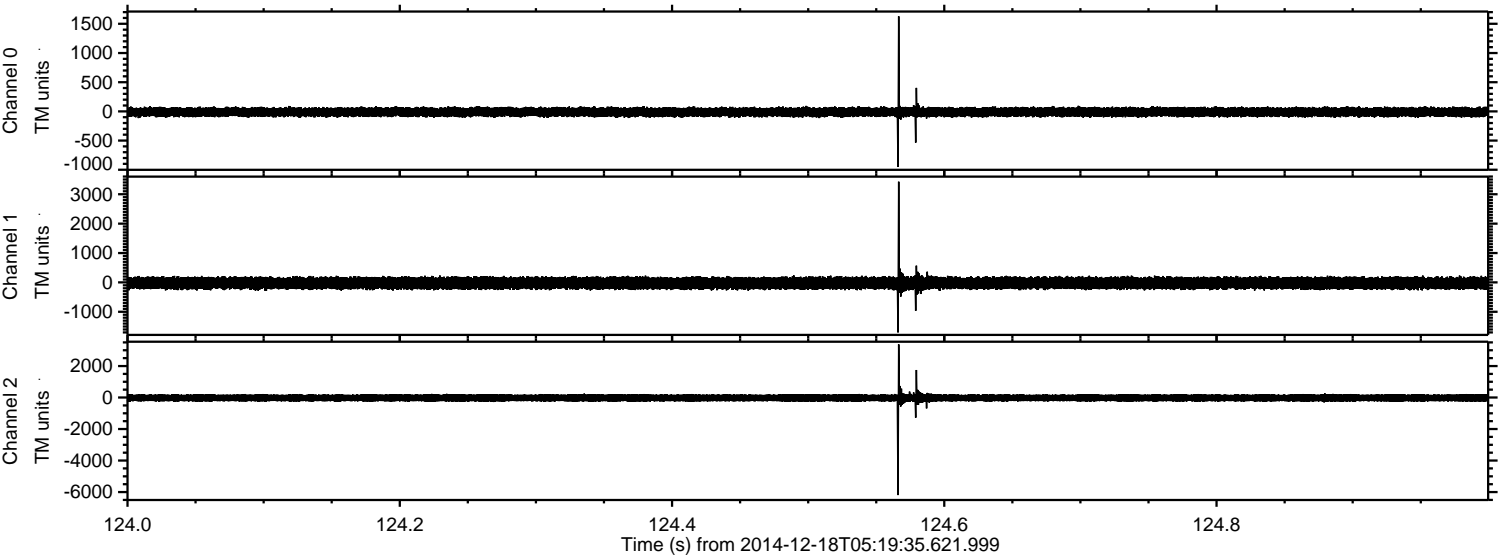


Processed Thu Dec 18 06:57:28 2014 by ELM ver.2012-10-06 from 001__elm20141218_051934__dat00.bin



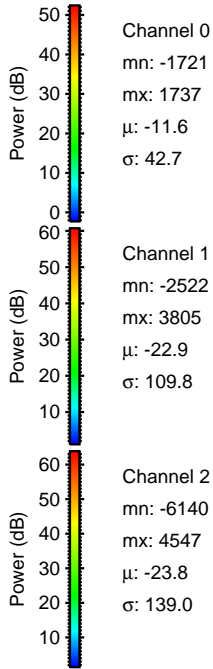
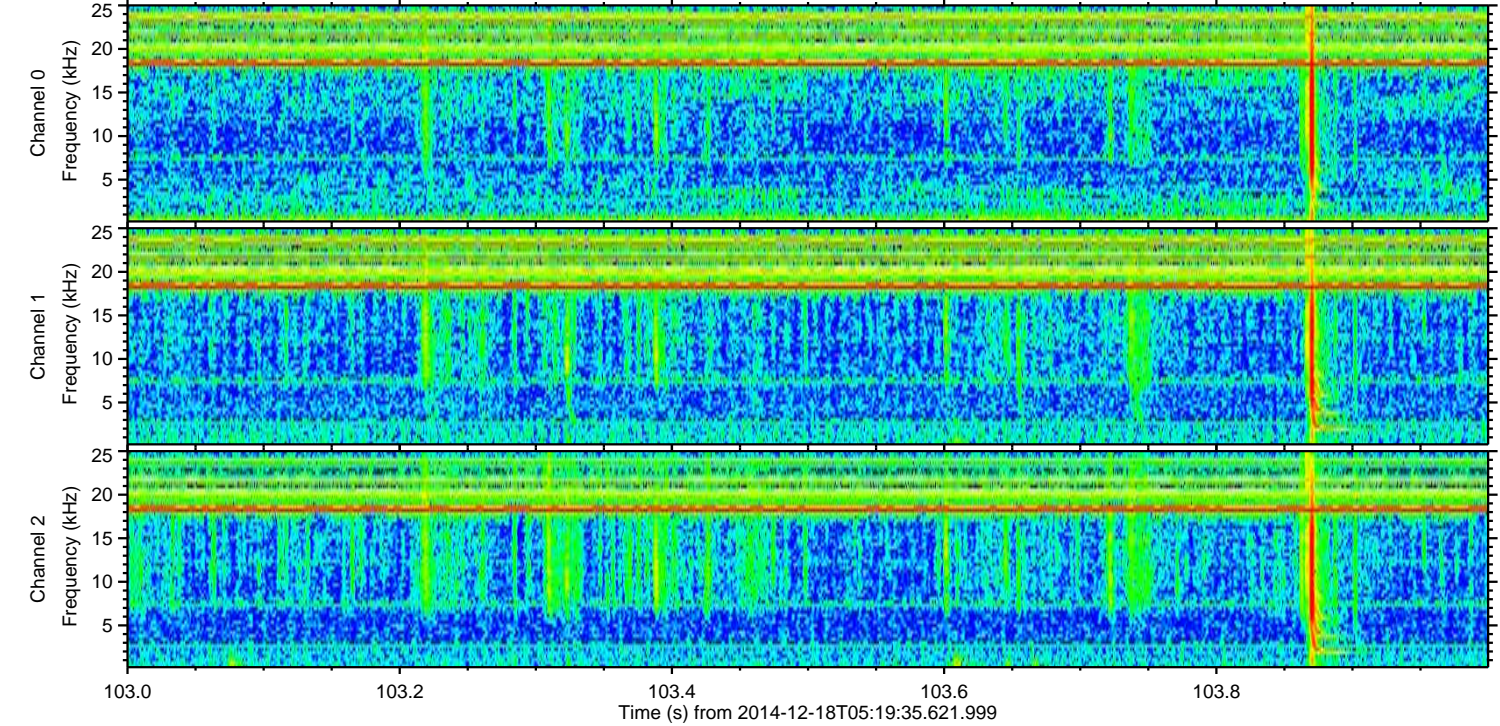
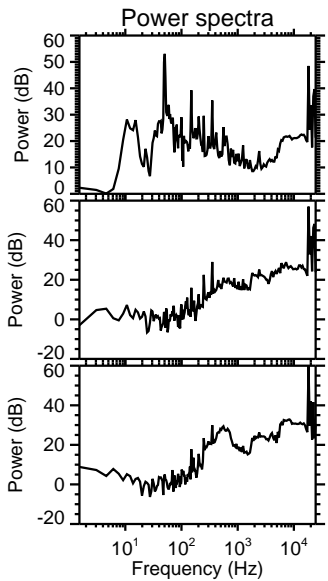
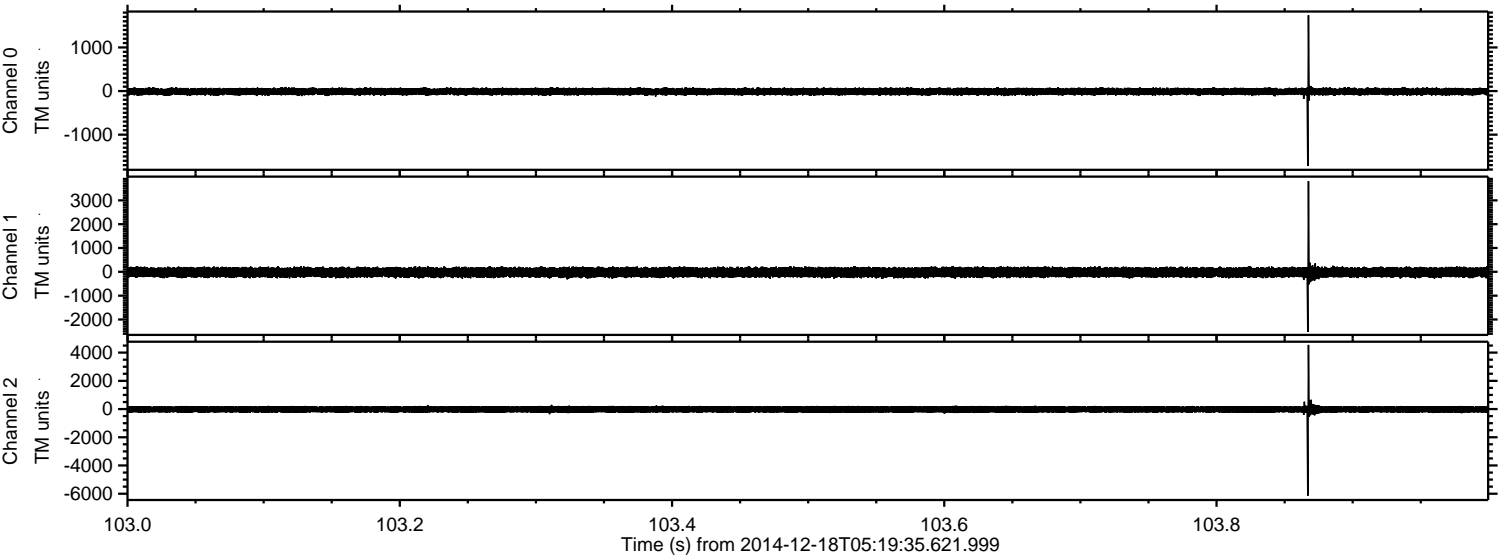
ELMAVAN 3D WAVEFORMS (Measured data sampled at 50 kHz) 49793 packets of 144 samples from 2014-12-18T05:19:35.621.999. Part 125/144

Processed Thu Dec 18 06:57:29 2014 by ELM ver.2012-10-06 from 001__elm20141218_051934__dat00.bin



ELMAVAN 3D WAVEFORMS (Measured data sampled at 50 kHz) 49793 packets of 144 samples from 2014-12-18T05:19:35.621.999. Part 104/144

Processed Thu Dec 18 06:57:30 2014 by ELM ver.2012-10-06 from 001__elm20141218_051934__dat00.bin

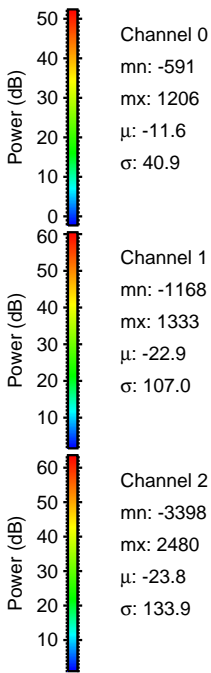
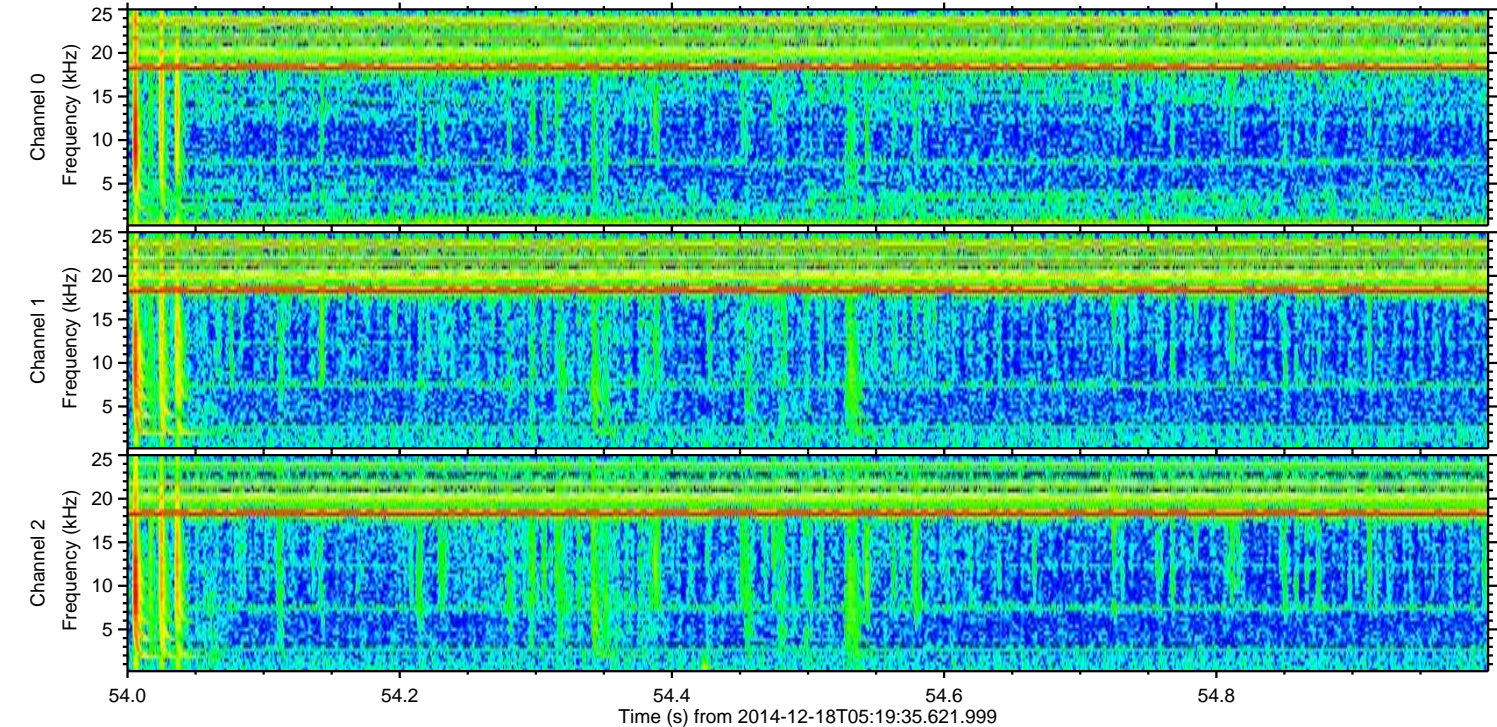
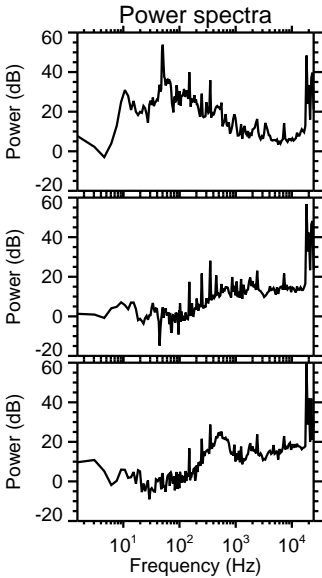
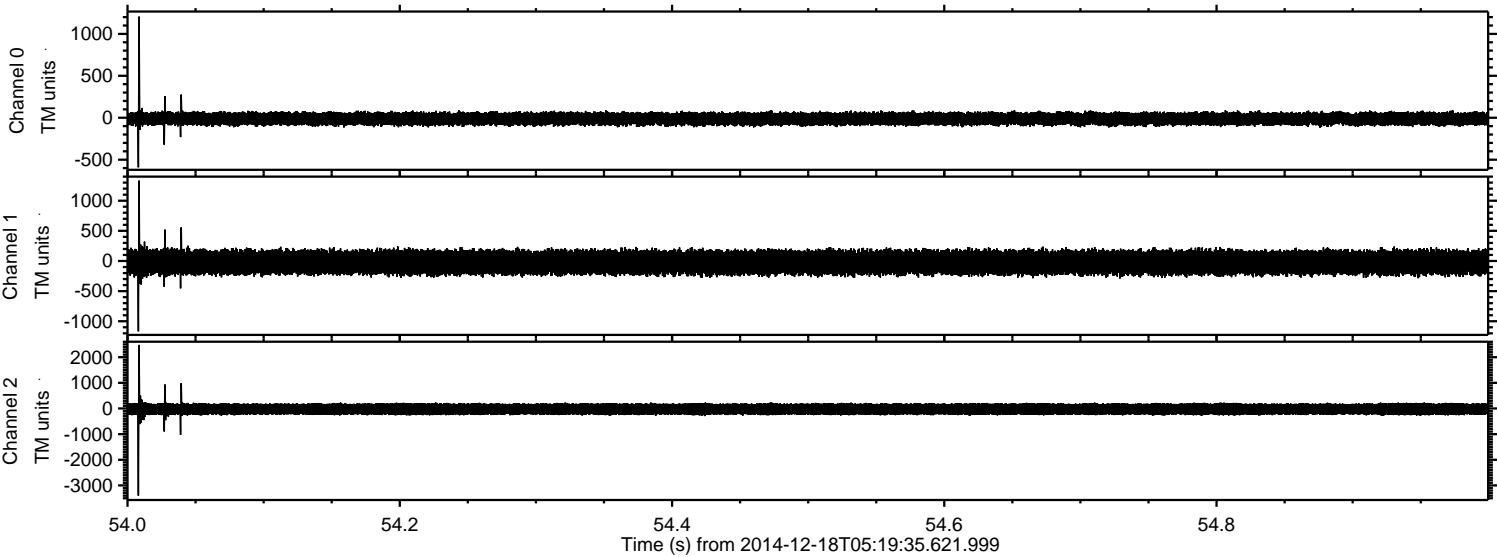


Channel 0
mn: -1721
mx: 1737
 μ : -11.6
 σ : 42.7

Channel 1
mn: -2522
mx: 3805
 μ : -22.9
 σ : 109.8

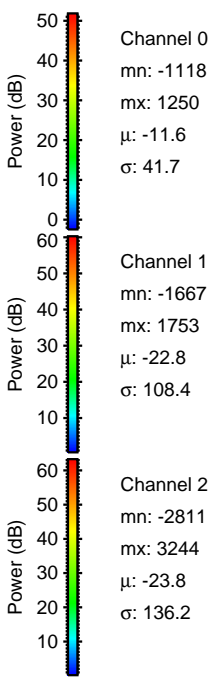
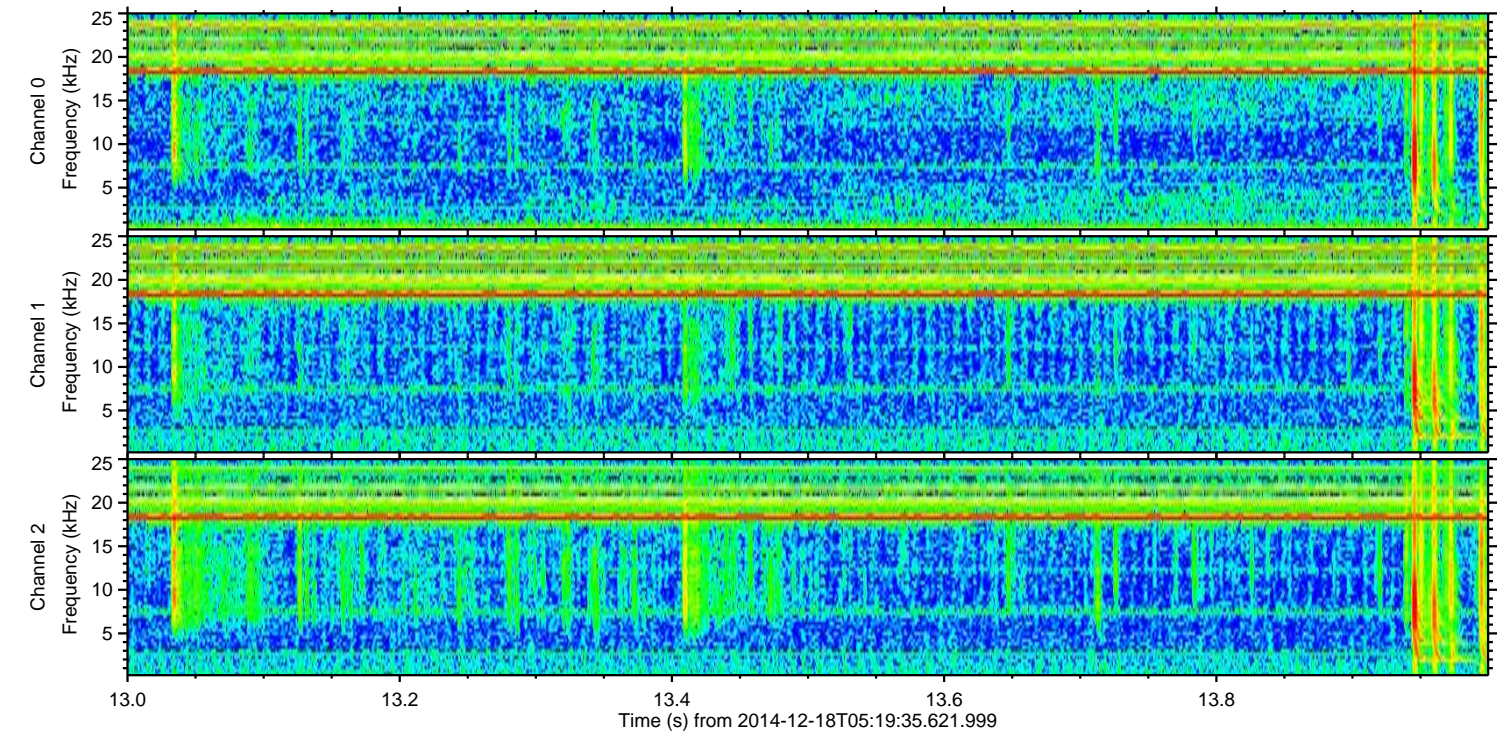
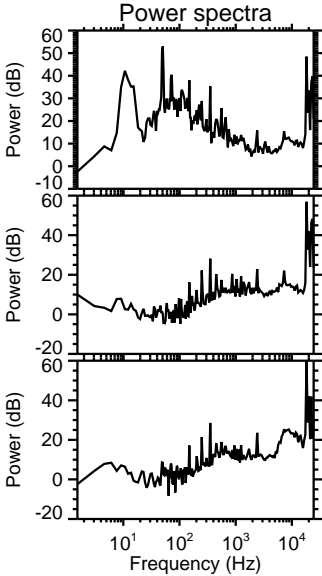
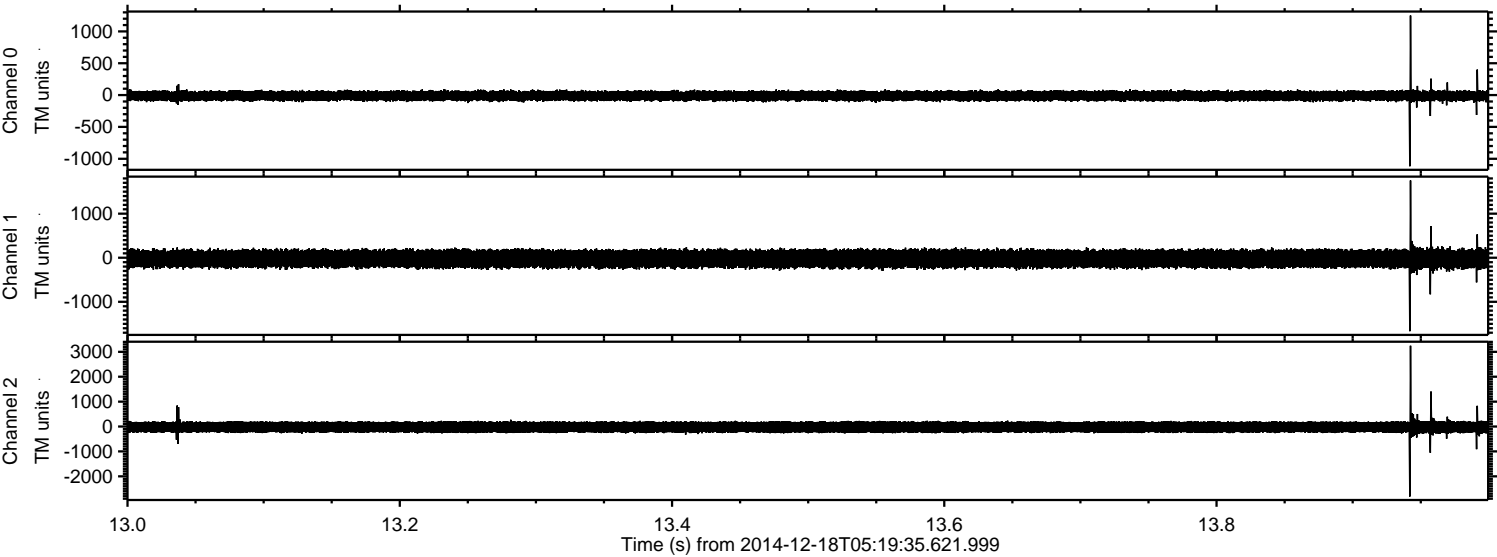
Channel 2
mn: -6140
mx: 4547
 μ : -23.8
 σ : 139.0

Processed Thu Dec 18 06:57:31 2014 by ELM ver.2012-10-06 from 001__elm20141218_051934__dat00.bin



ELMAVAN 3D WAVEFORMS (Measured data sampled at 50 kHz) 49793 packets of 144 samples from 2014-12-18T05:19:35.621.999. Part 14/144

Processed Thu Dec 18 06:57:32 2014 by ELM ver.2012-10-06 from 001__elm20141218_051934__dat00.bin



ELMAVAN 3D WAVEFORMS (Measured data sampled at 50 kHz) 49793 packets of 144 samples from 2014-12-18T05:19:35.621.999. Part 50/144

Processed Thu Dec 18 06:57:33 2014 by ELM ver.2012-10-06 from 001__elm20141218_051934__dat00.bin

