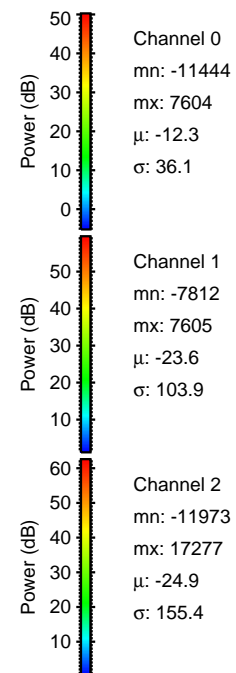
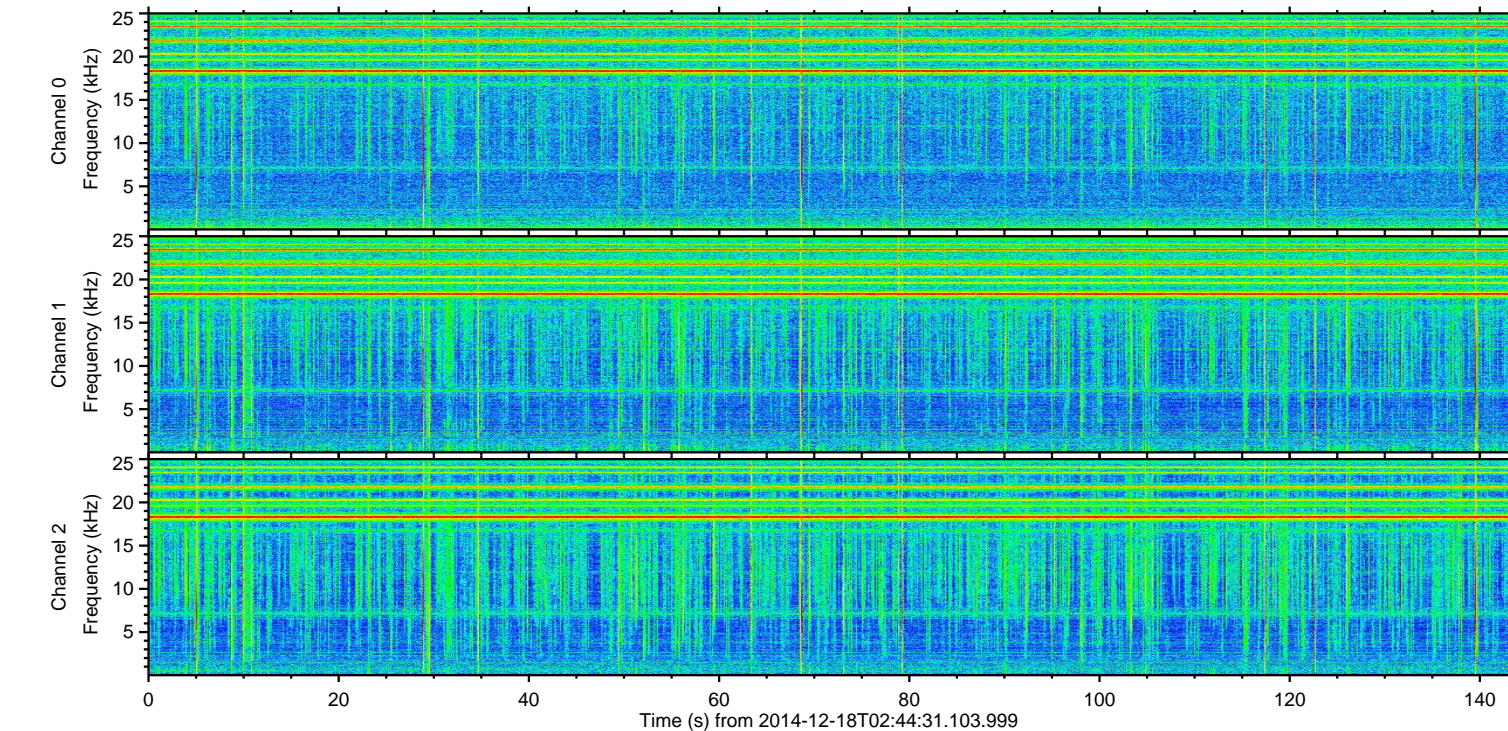
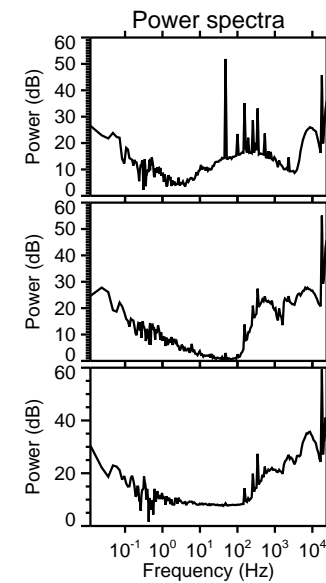
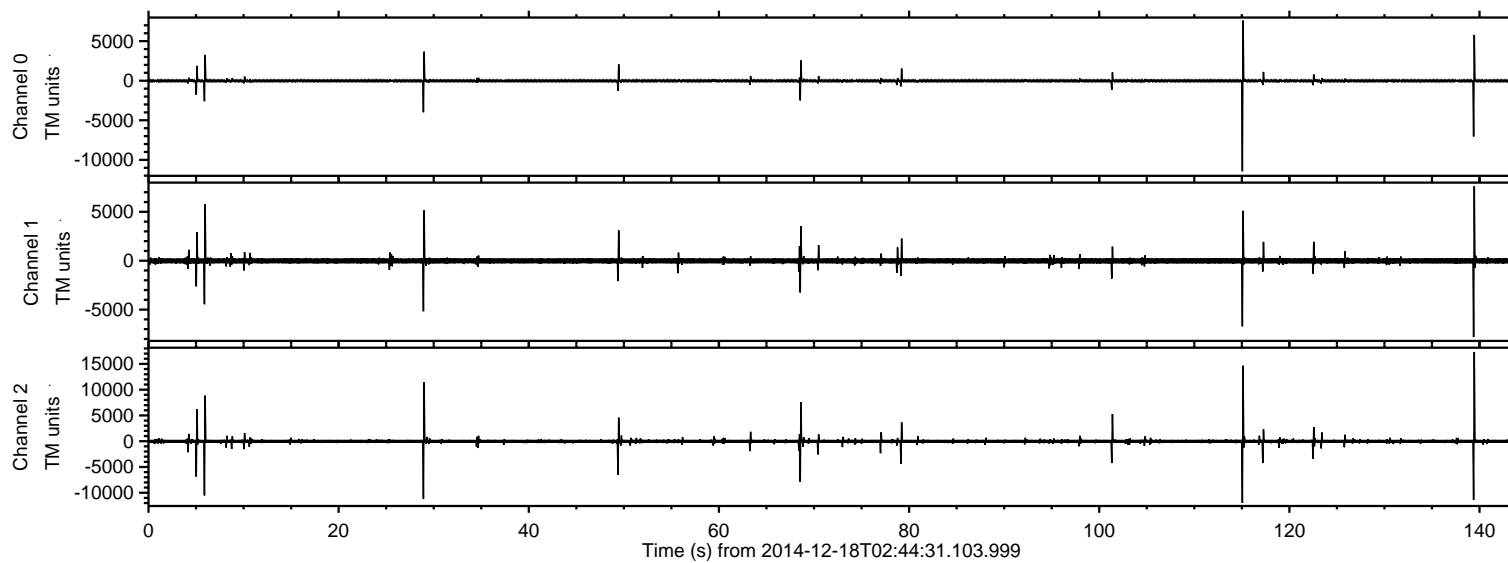


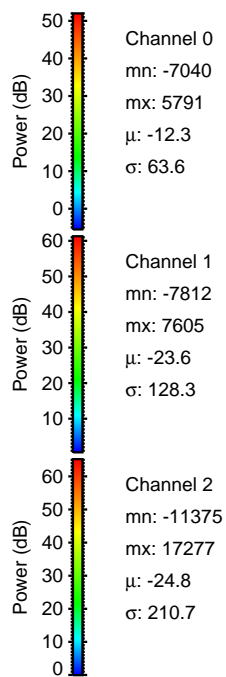
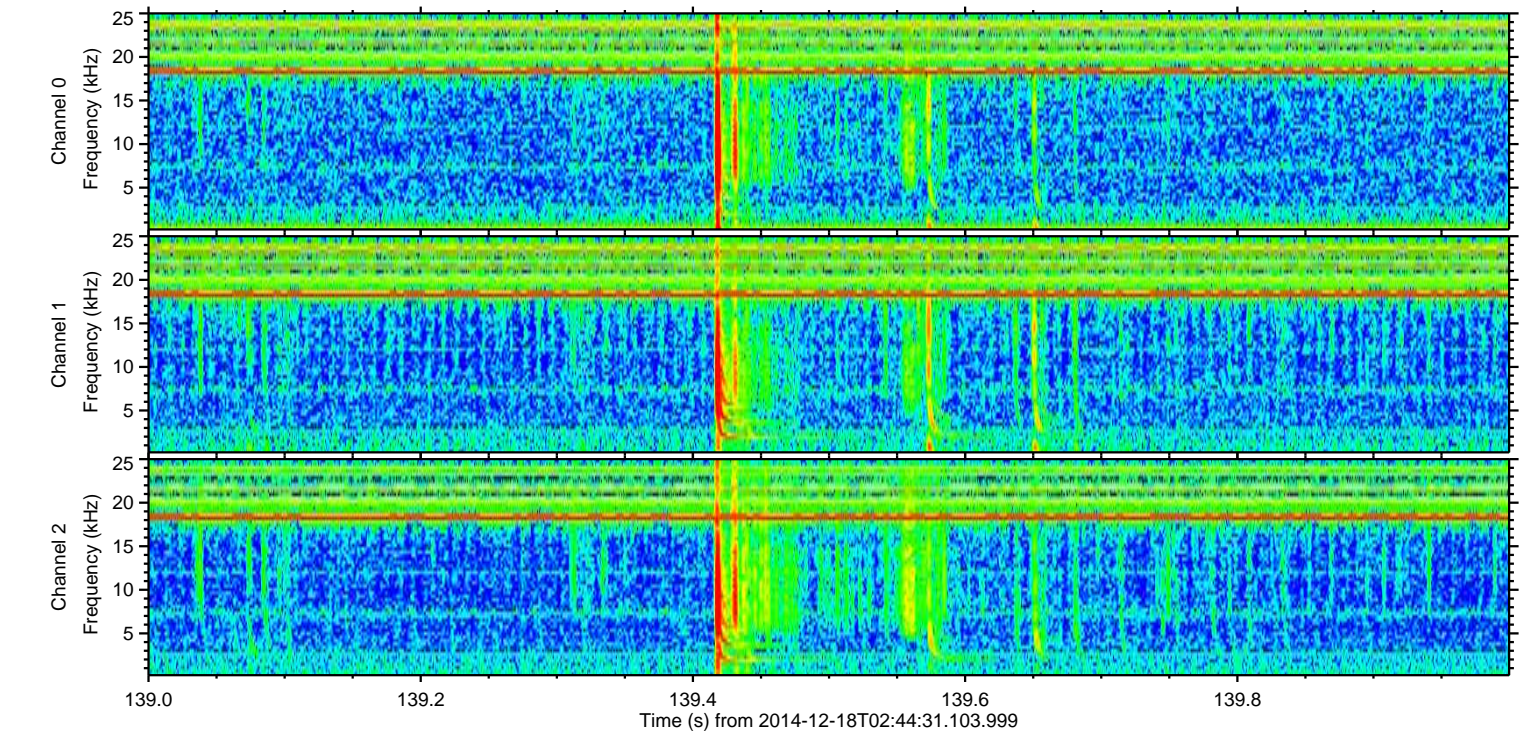
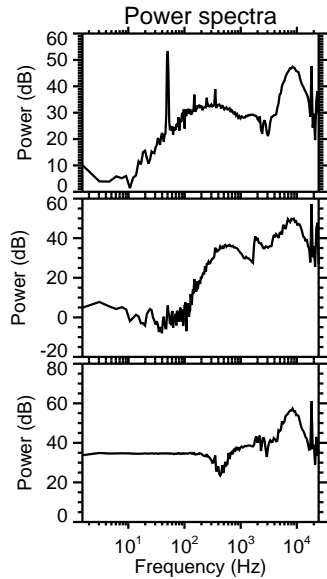
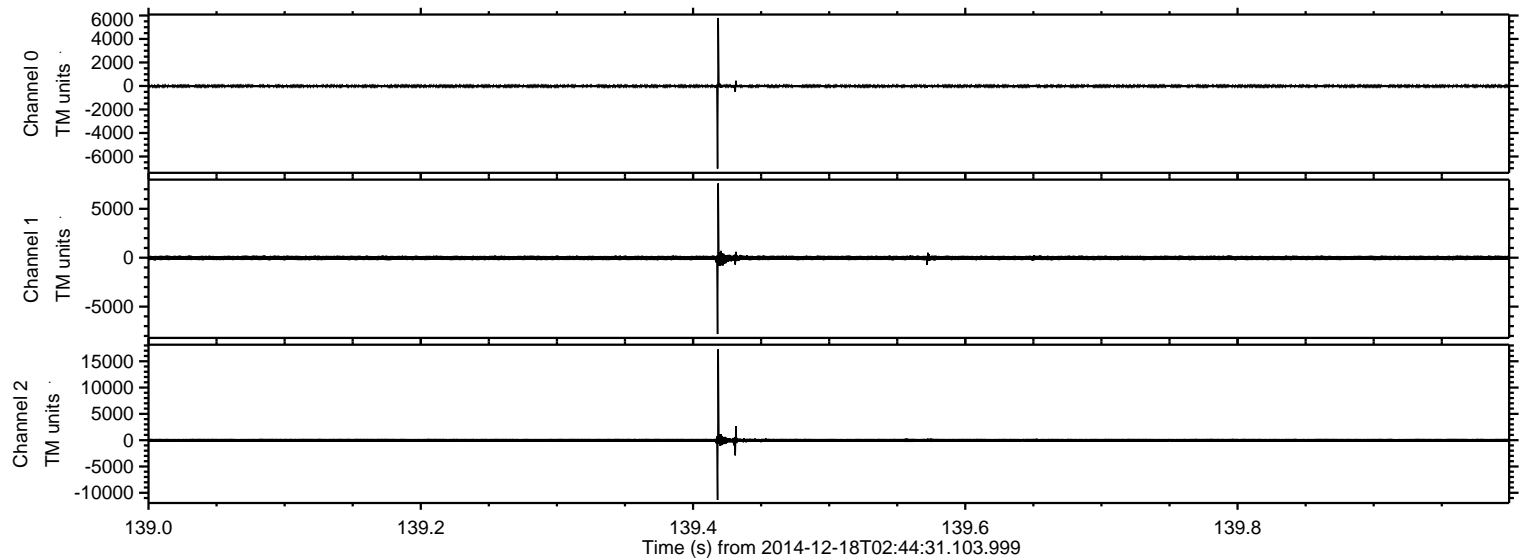
ELMAVAN 3D WAVEFORMS (Measured data sampled at 50 kHz) 49693 packets of 144 samples from 2014-12-18T02:44:31.103.999.

Processed Thu Dec 18 04:19:32 2014 by ELM ver.2012-10-06 from 001__elm20141218_024430__dat00.bin



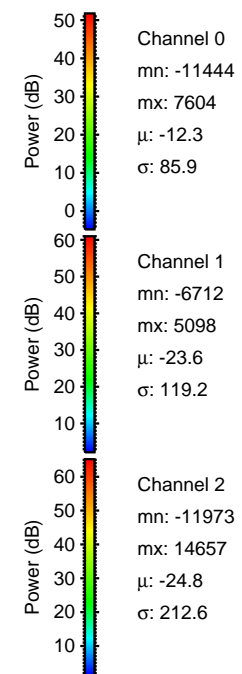
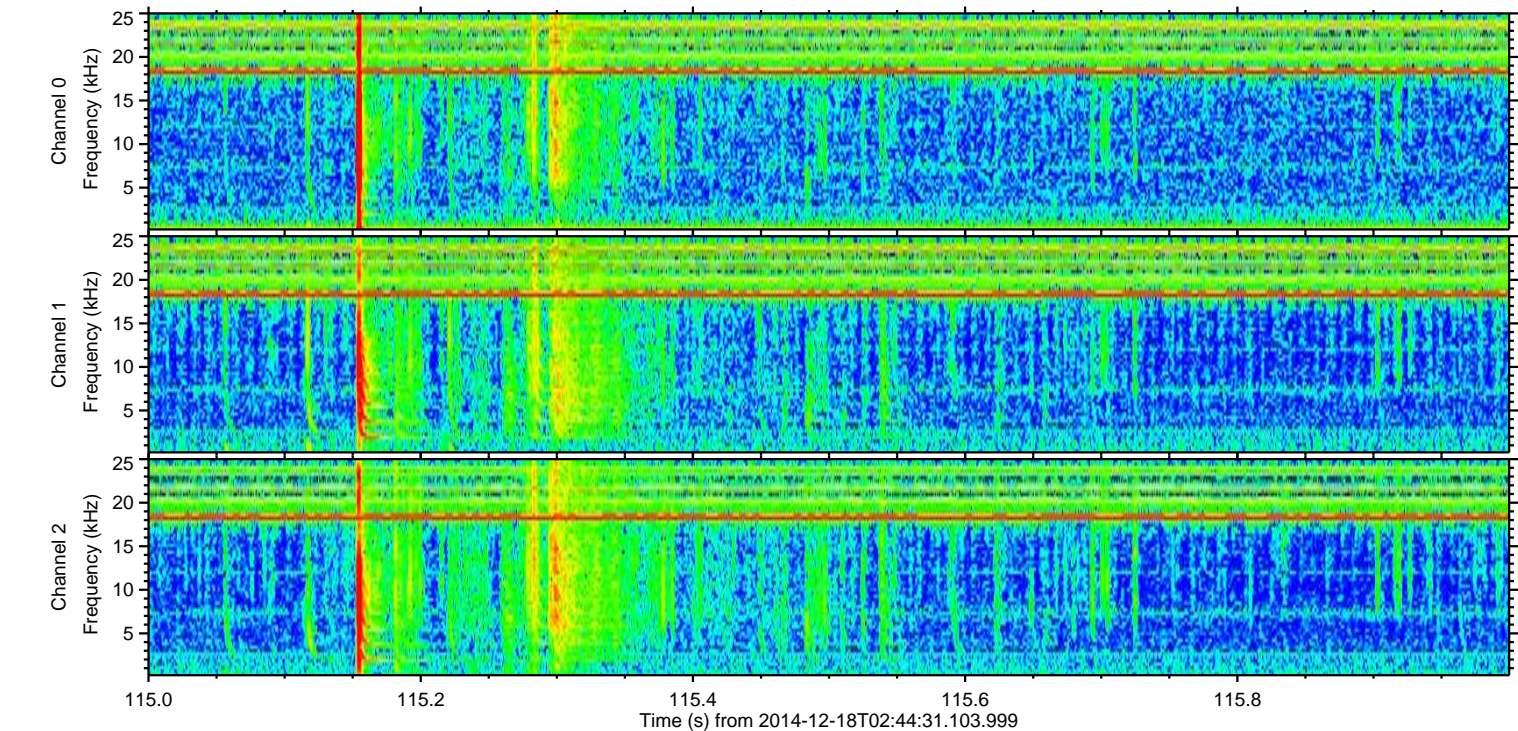
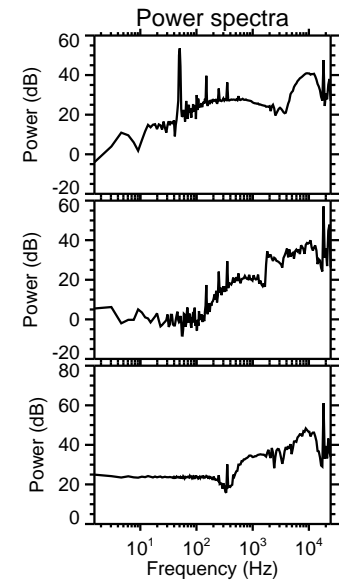
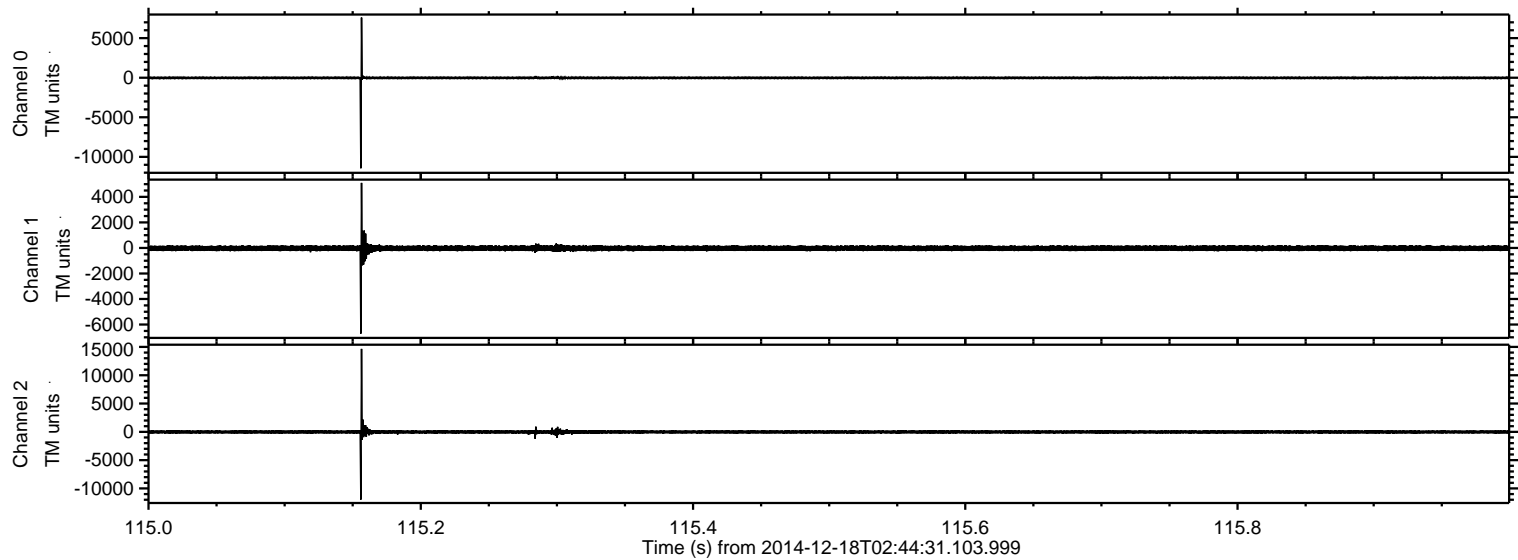
ELMAVAN 3D WAVEFORMS (Measured data sampled at 50 kHz) 49693 packets of 144 samples from 2014-12-18T02:44:31.103.999. Part 140/144

Processed Thu Dec 18 04:19:45 2014 by ELM ver.2012-10-06 from 001__elm20141218_024430__dat00.bin



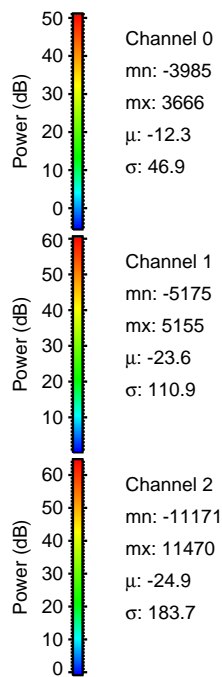
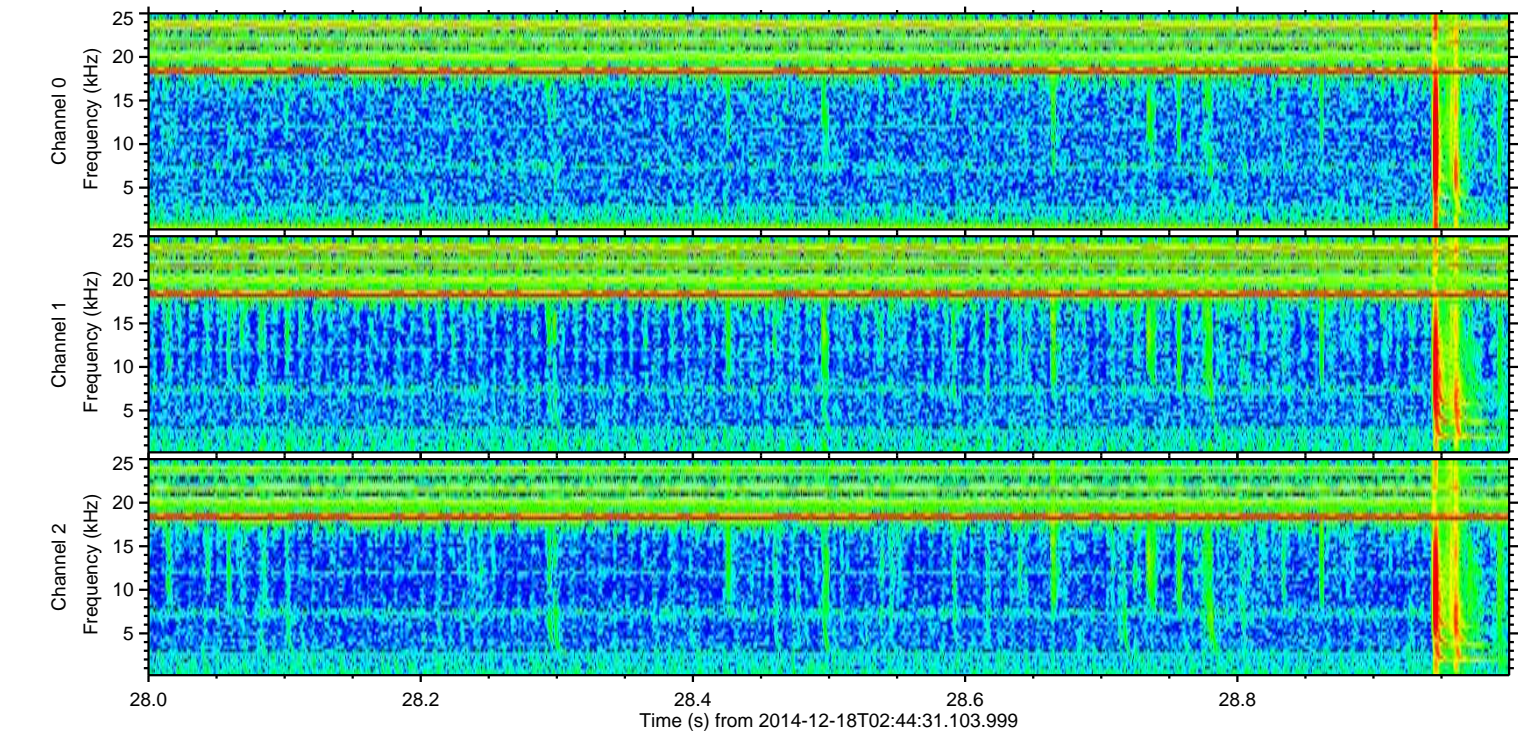
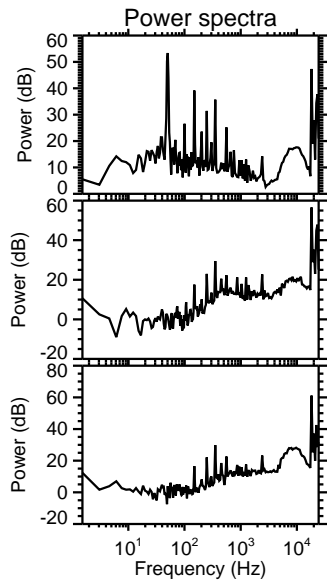
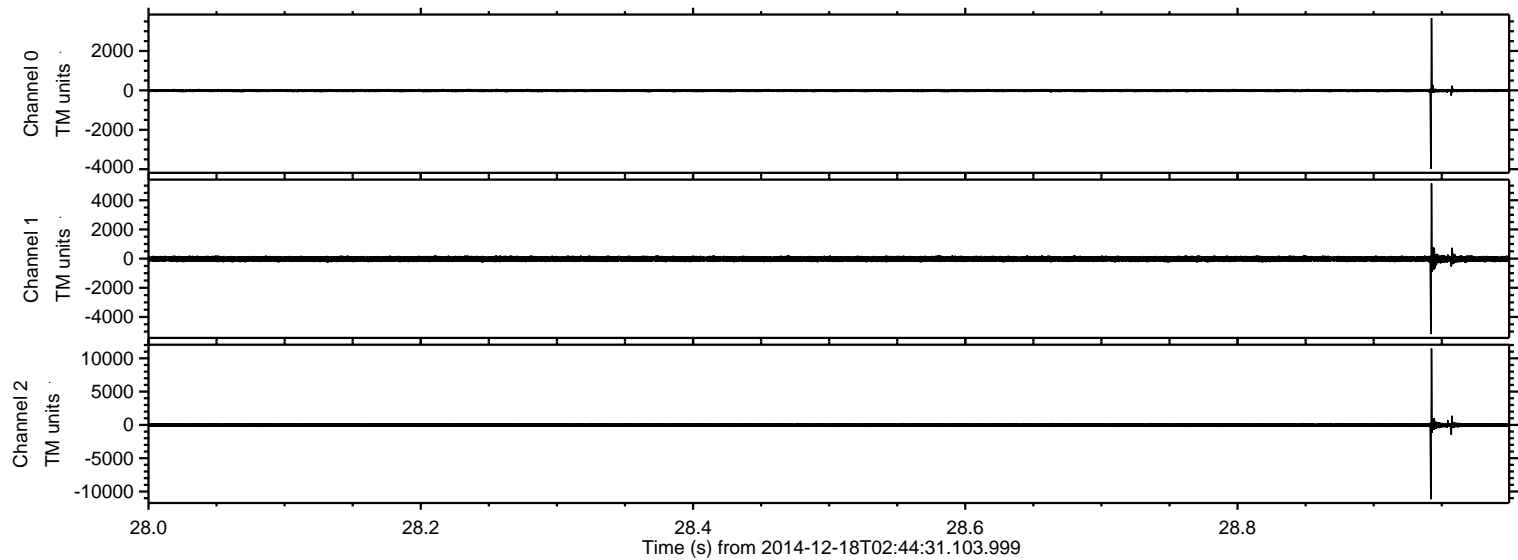
ELMAVAN 3D WAVEFORMS (Measured data sampled at 50 kHz) 49693 packets of 144 samples from 2014-12-18T02:44:31.103.999. Part 116/144

Processed Thu Dec 18 04:19:46 2014 by ELM ver.2012-10-06 from 001__elm20141218_024430__dat00.bin

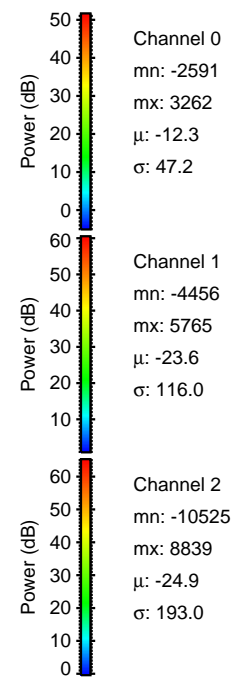
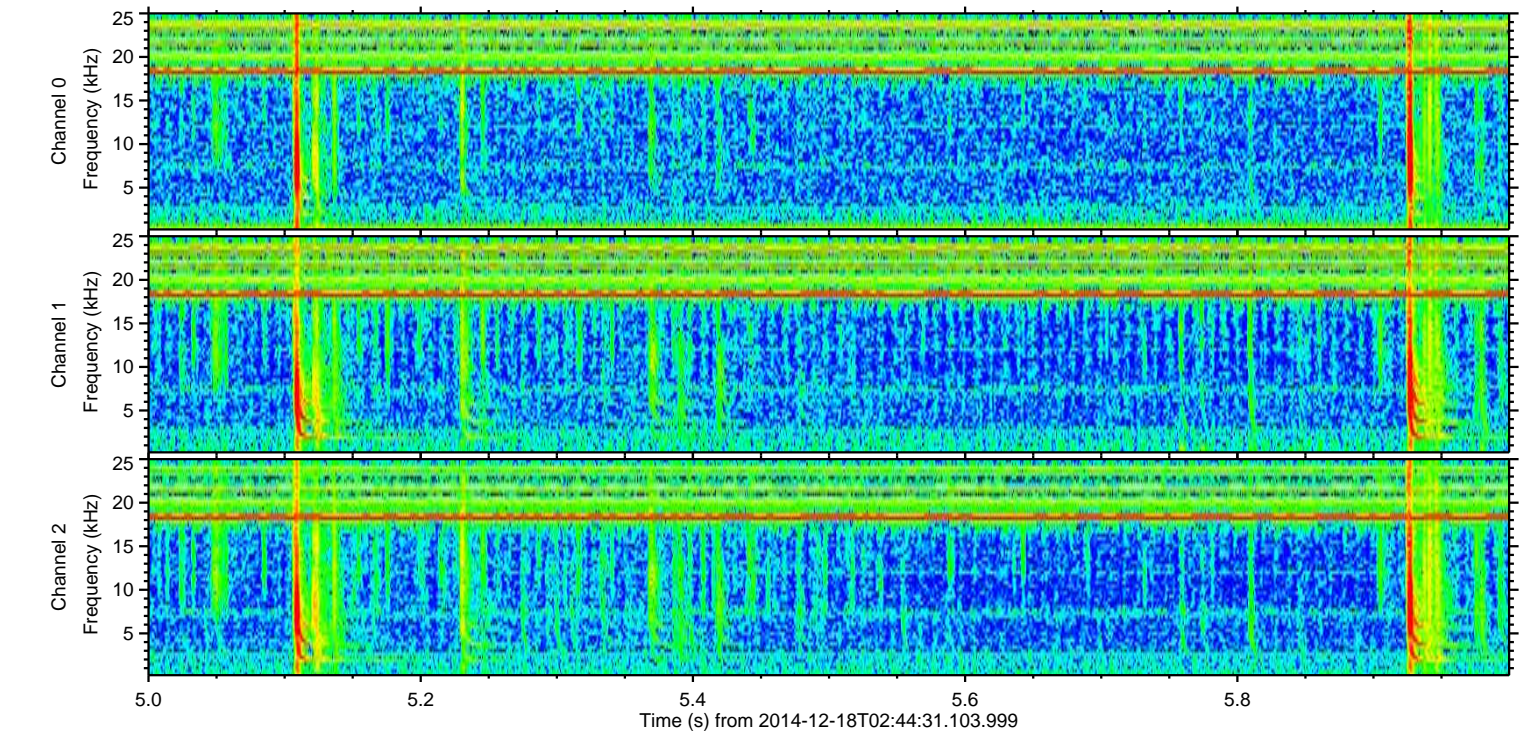
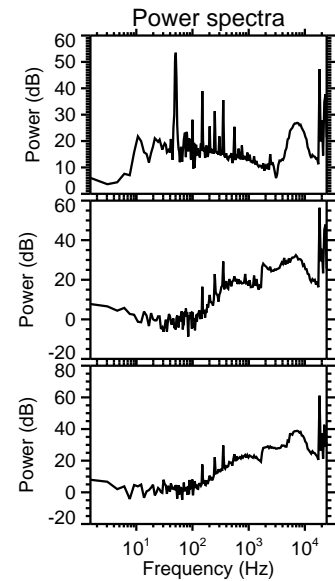
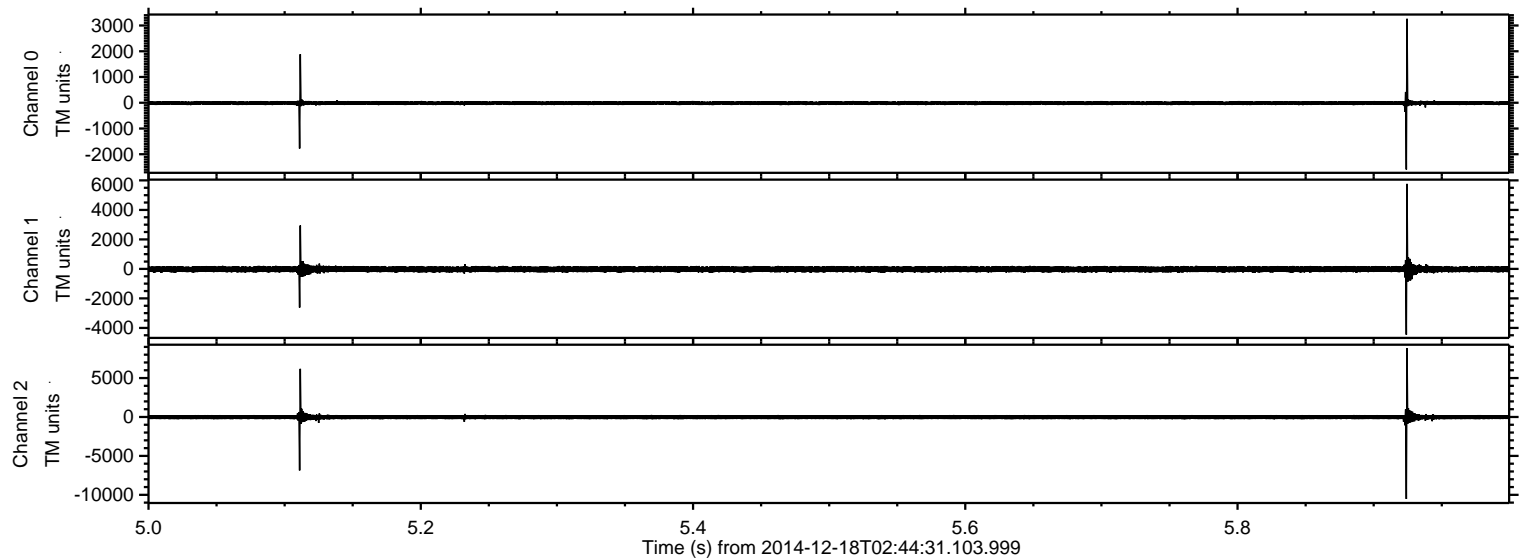


ELMAVAN 3D WAVEFORMS (Measured data sampled at 50 kHz) 49693 packets of 144 samples from 2014-12-18T02:44:31.103.999. Part 29/144

Processed Thu Dec 18 04:19:47 2014 by ELM ver.2012-10-06 from 001__elm20141218_024430__dat00.bin

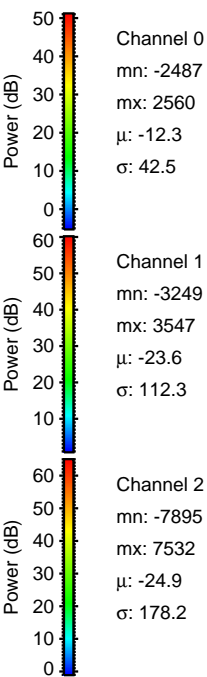
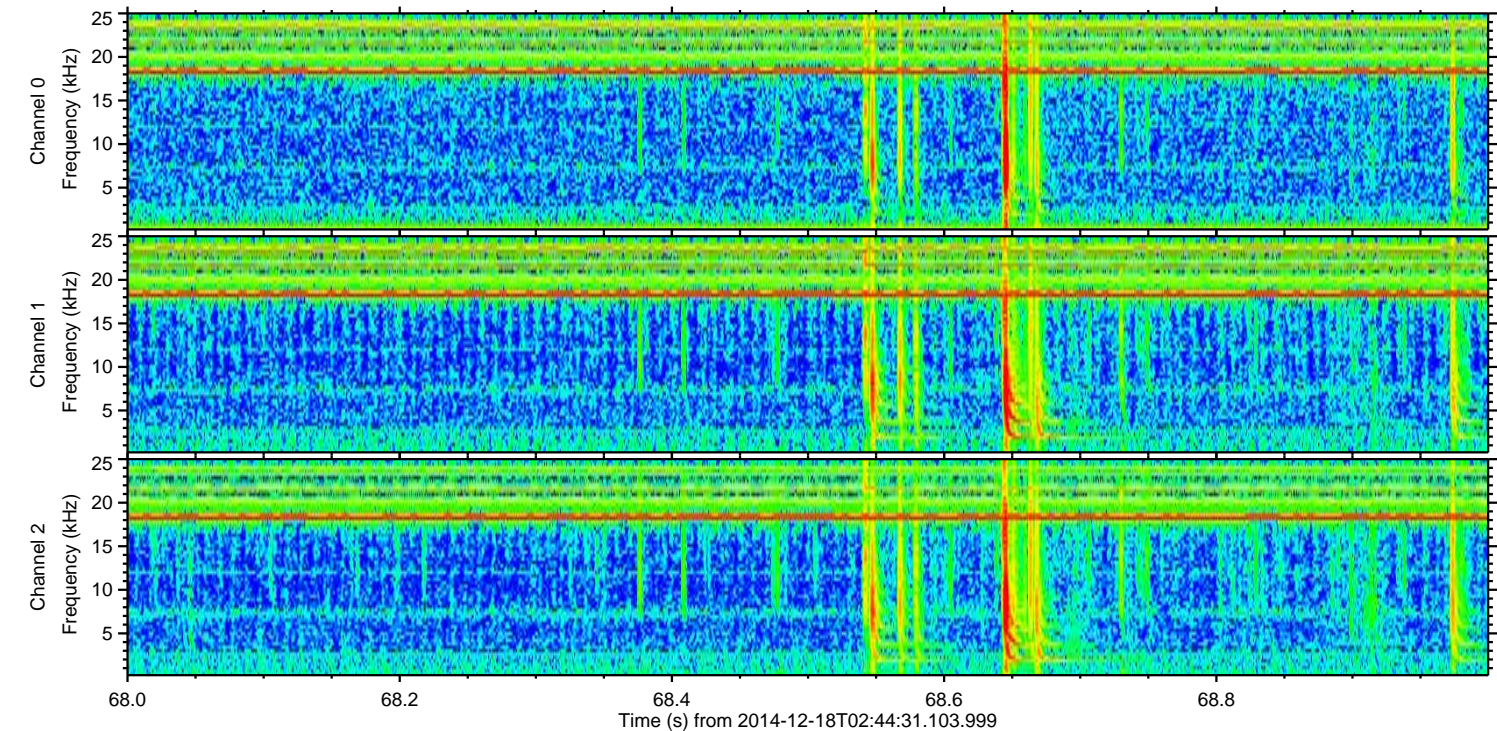
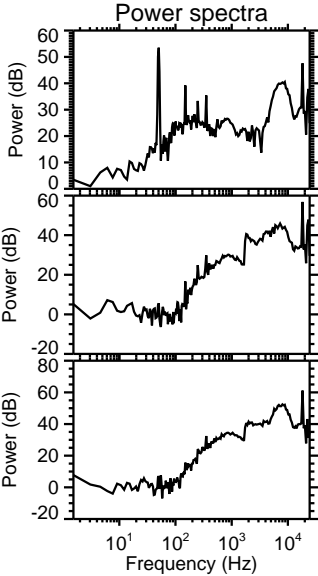
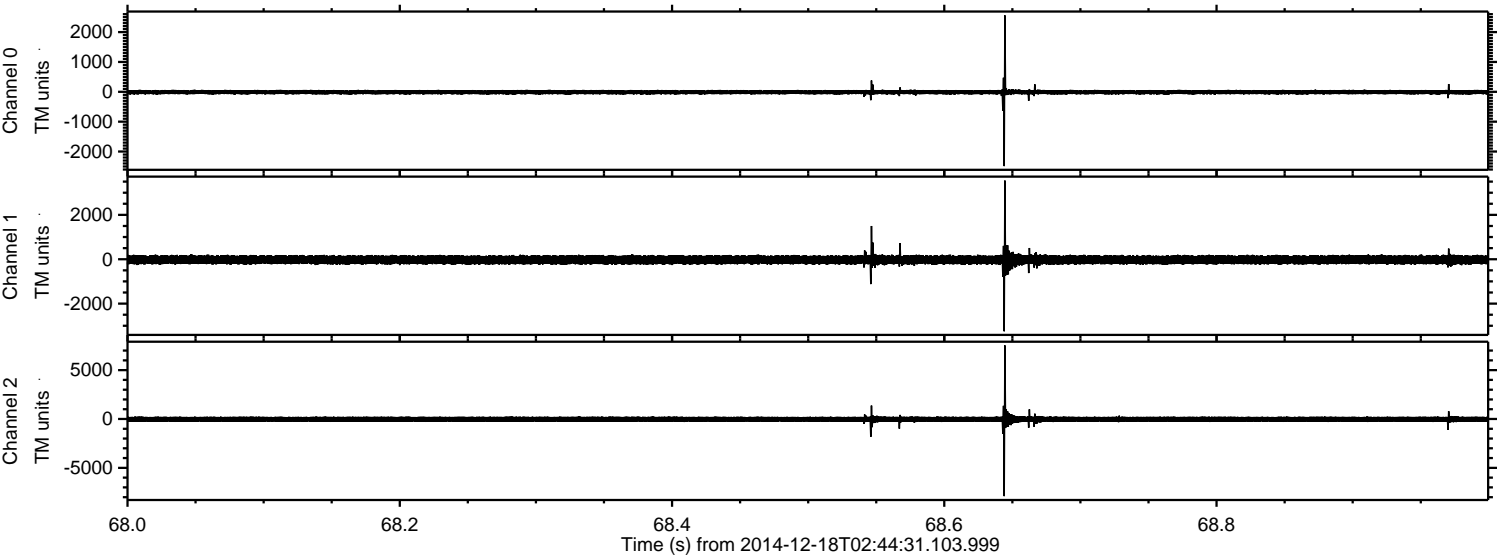


Processed Thu Dec 18 04:19:48 2014 by ELM ver.2012-10-06 from 001__elm20141218_024430__dat00.bin



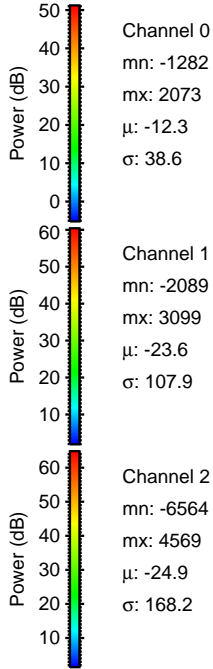
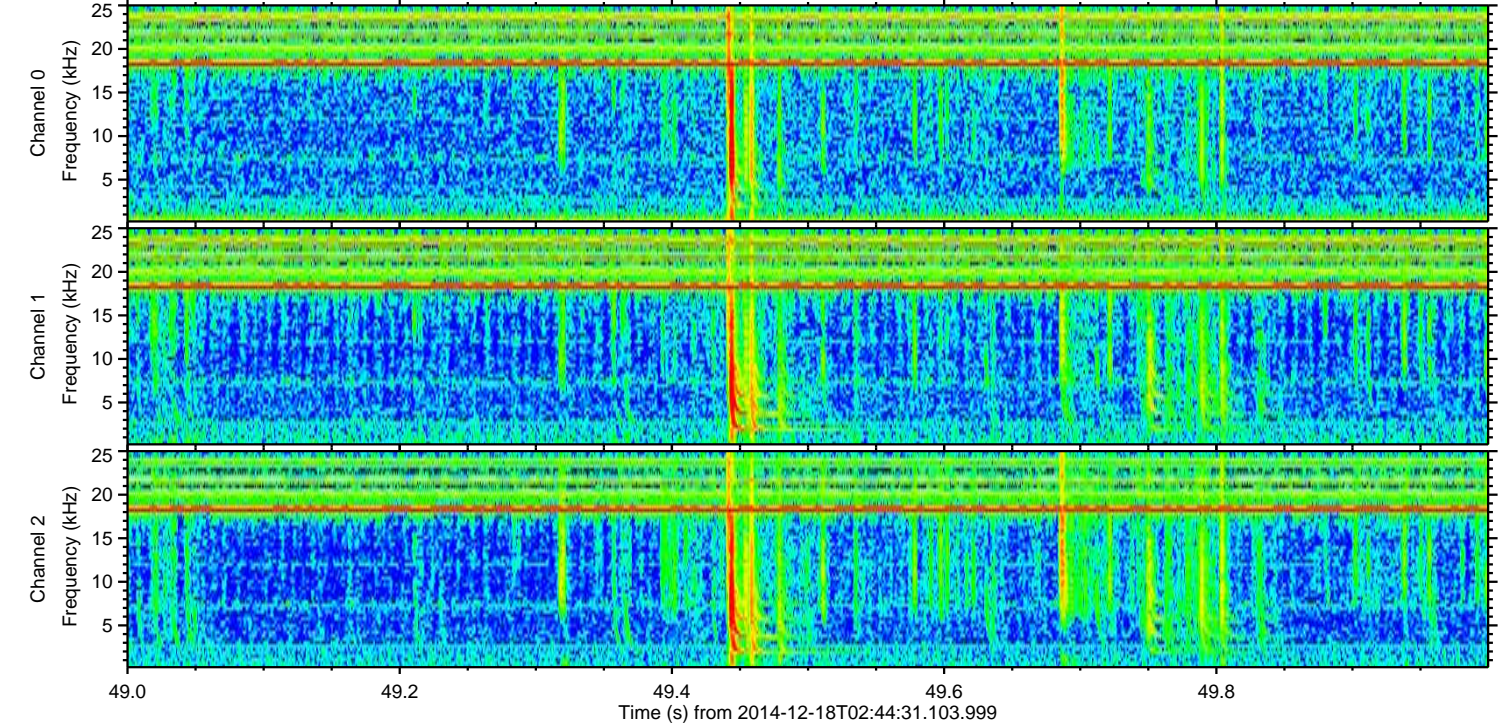
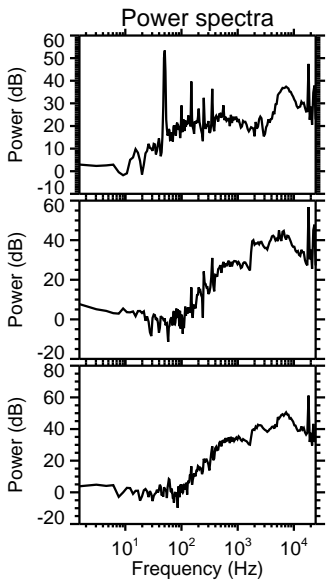
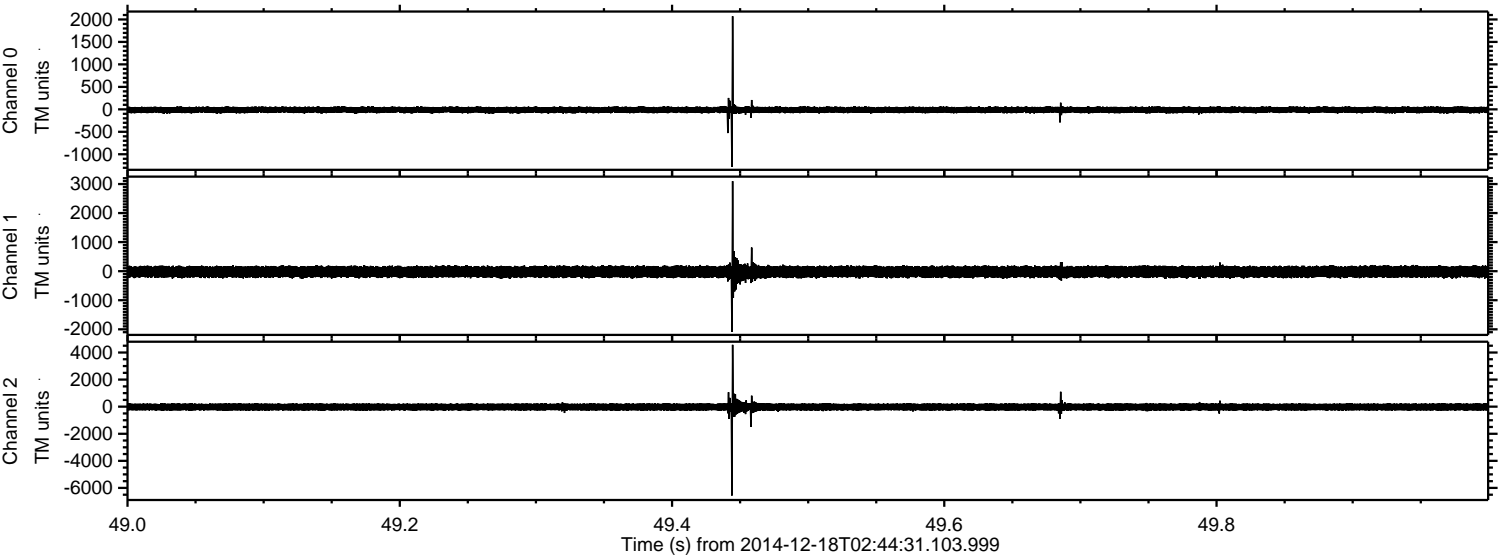
ELMAVAN 3D WAVEFORMS (Measured data sampled at 50 kHz) 49693 packets of 144 samples from 2014-12-18T02:44:31.103.999. Part 69/144

Processed Thu Dec 18 04:19:49 2014 by ELM ver.2012-10-06 from 001__elm20141218_024430__dat00.bin



ELMAVAN 3D WAVEFORMS (Measured data sampled at 50 kHz) 49693 packets of 144 samples from 2014-12-18T02:44:31.103.999. Part 50/144

Processed Thu Dec 18 04:19:50 2014 by ELM ver.2012-10-06 from 001__elm20141218_024430__dat00.bin



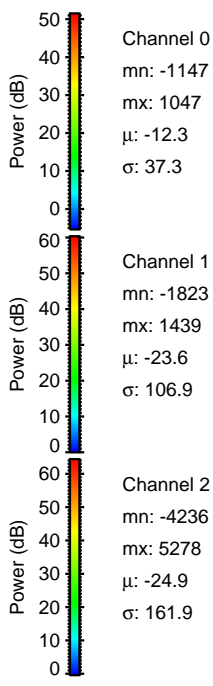
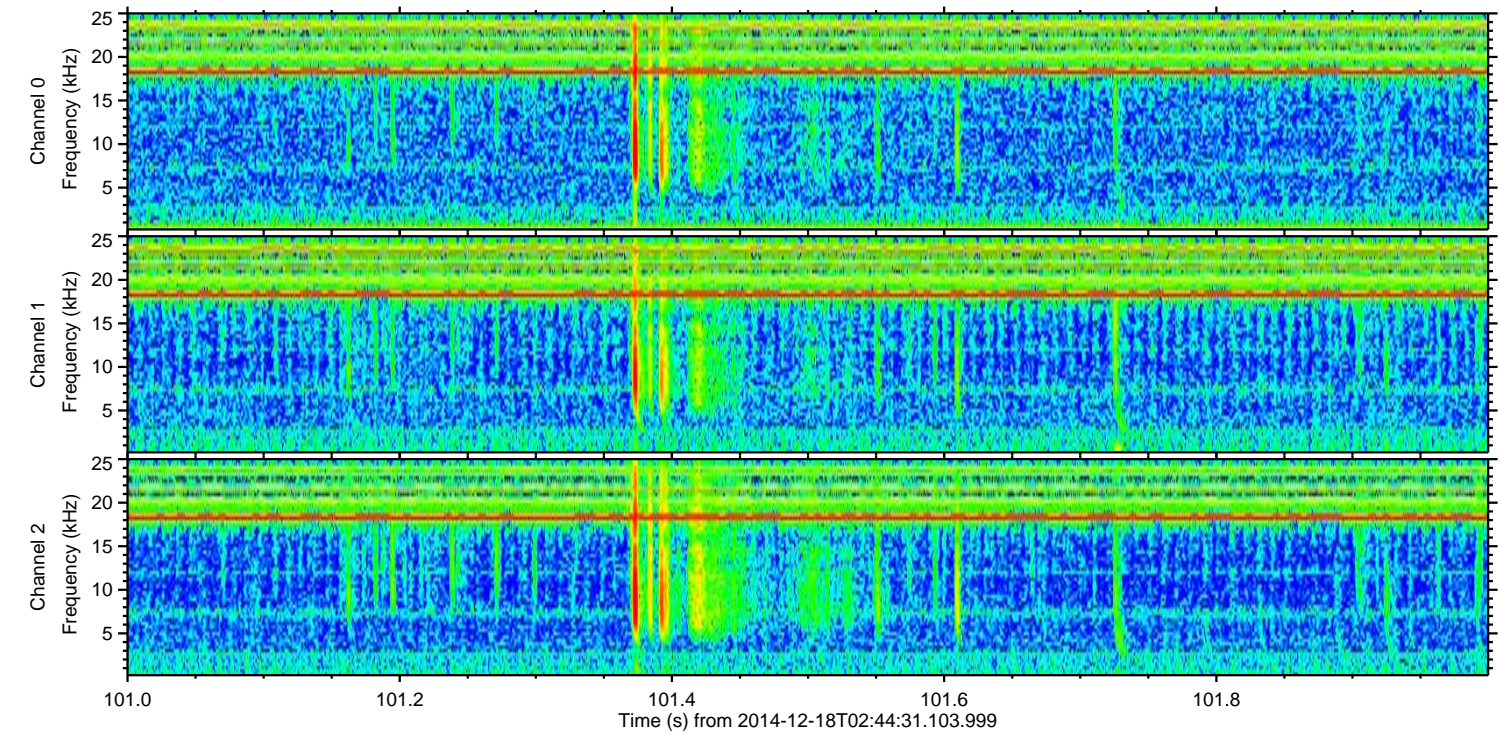
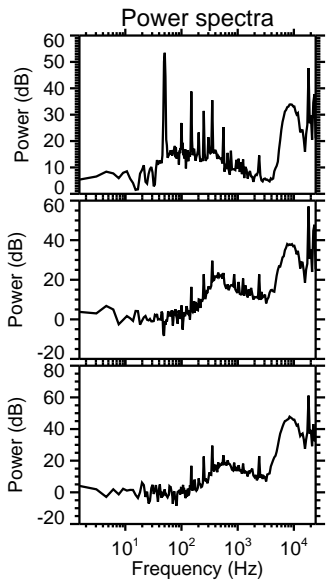
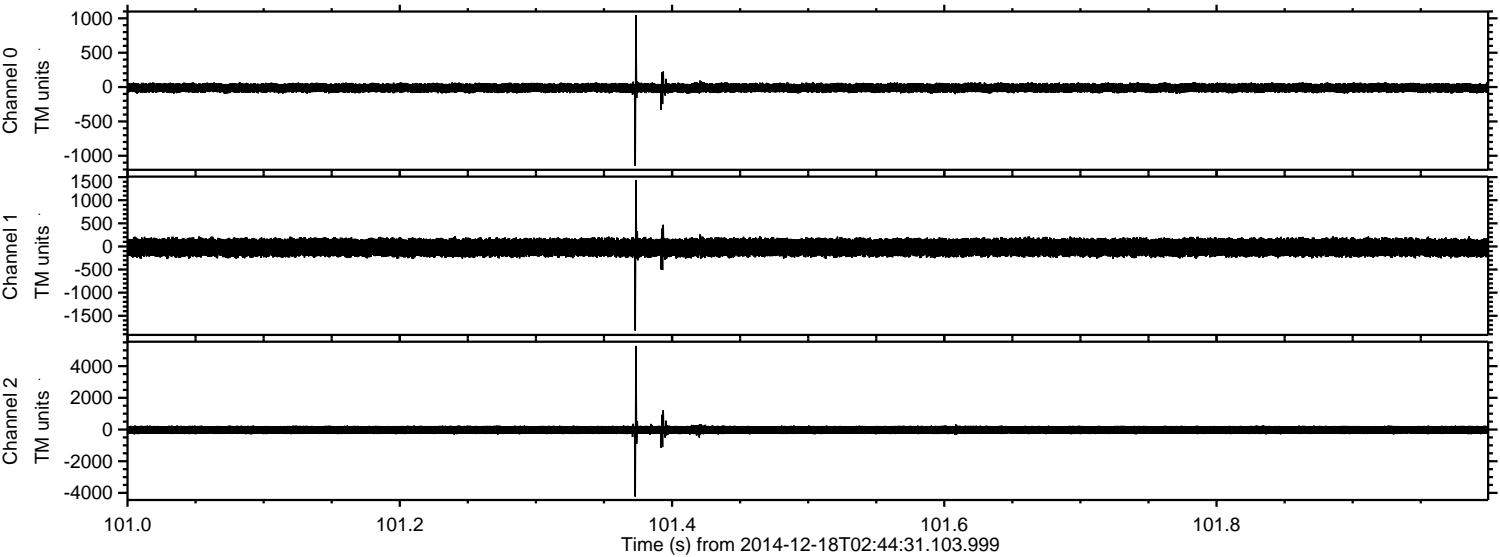
Channel 0
mn: -1282
mx: 2073
 μ : -12.3
 σ : 38.6

Channel 1
mn: -2089
mx: 3099
 μ : -23.6
 σ : 107.9

Channel 2
mn: -6564
mx: 4569
 μ : -24.9
 σ : 168.2

ELMAVAN 3D WAVEFORMS (Measured data sampled at 50 kHz) 49693 packets of 144 samples from 2014-12-18T02:44:31.103.999. Part 102/144

Processed Thu Dec 18 04:19:51 2014 by ELM ver.2012-10-06 from 001__elm20141218_024430__dat00.bin

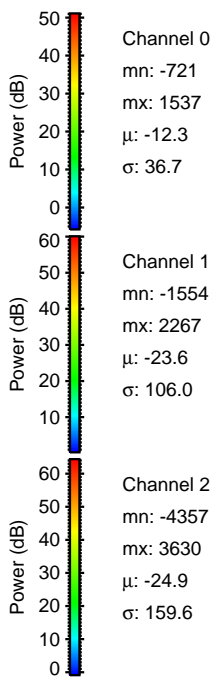
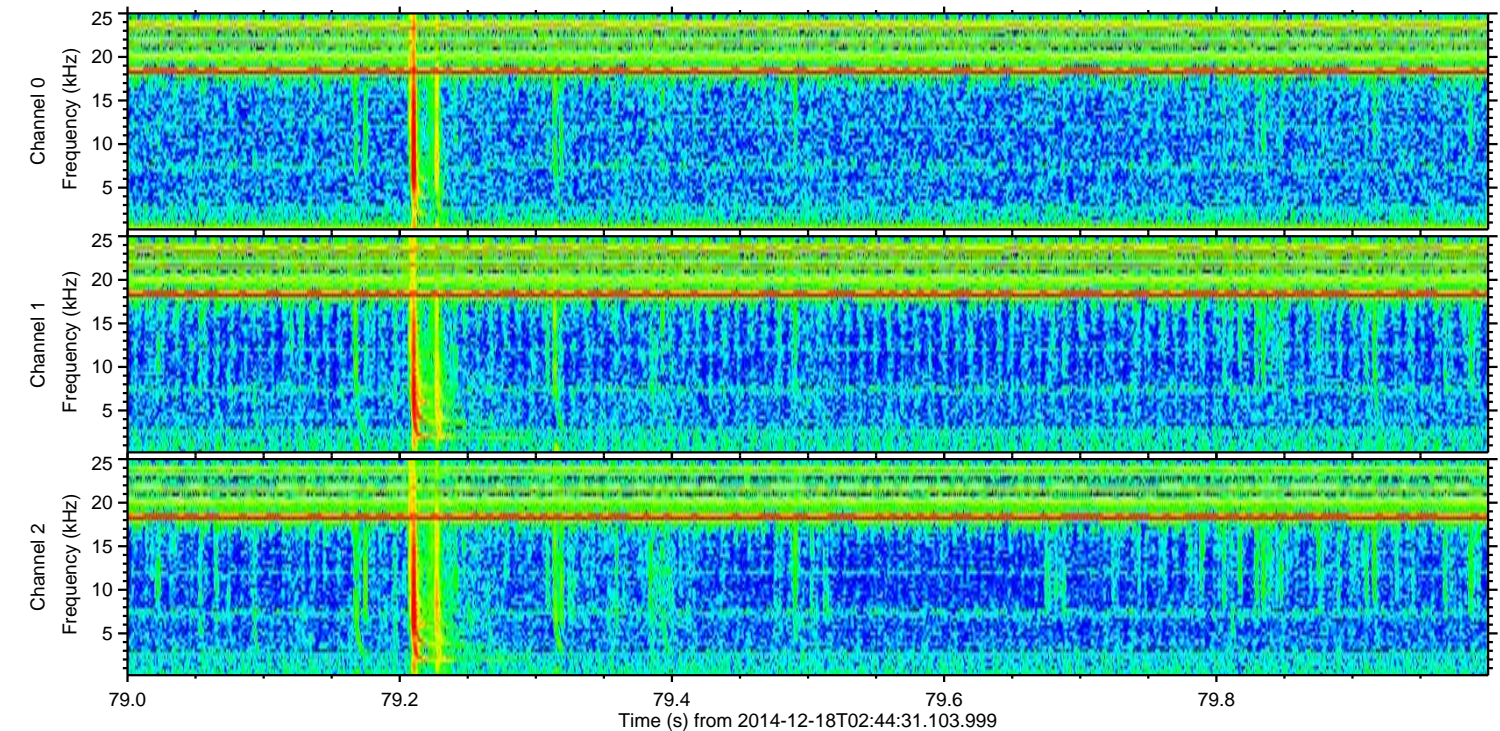
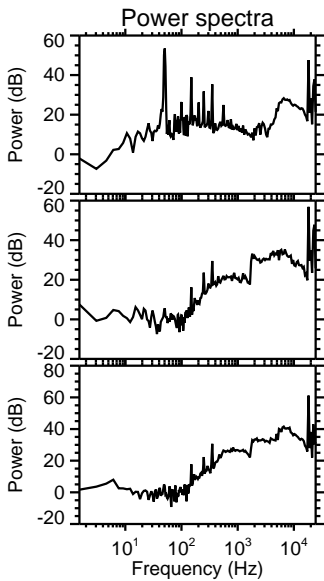
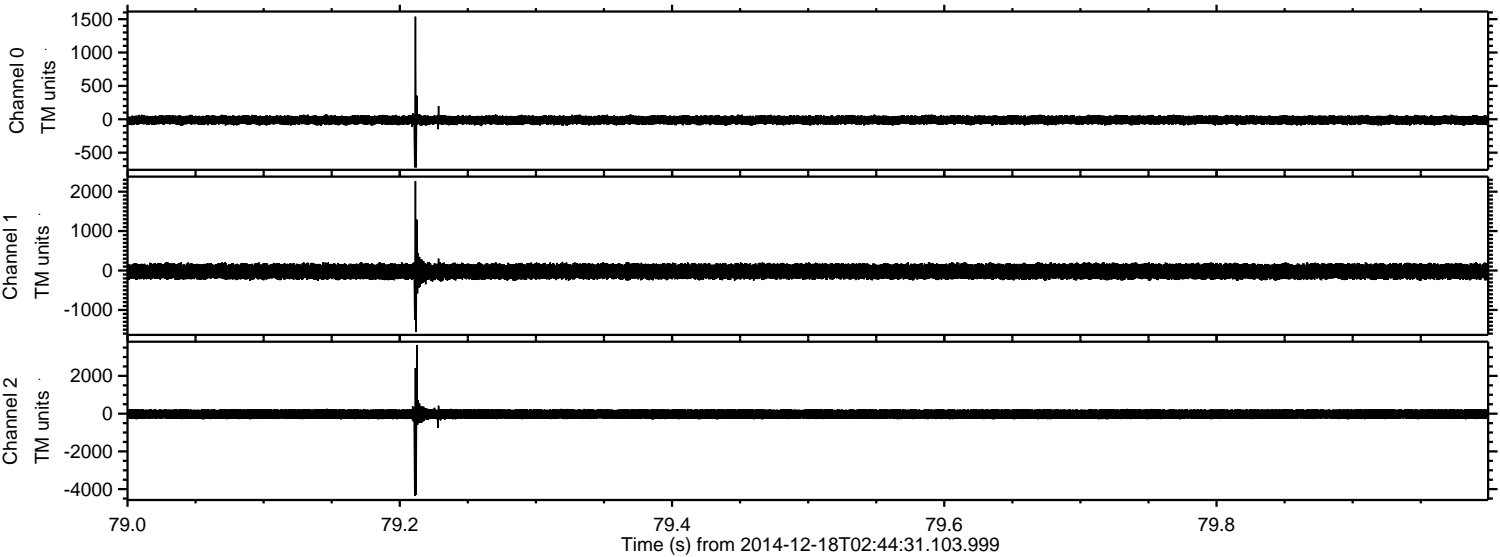


Channel 0
mn: -1147
mx: 1047
 μ : -12.3
 σ : 37.3

Channel 1
mn: -1823
mx: 1439
 μ : -23.6
 σ : 106.9

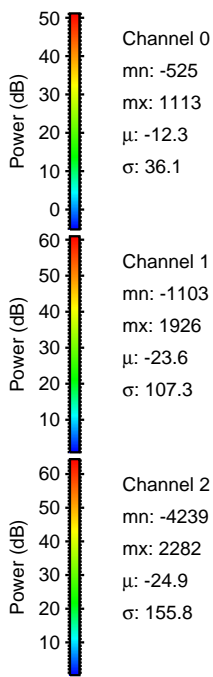
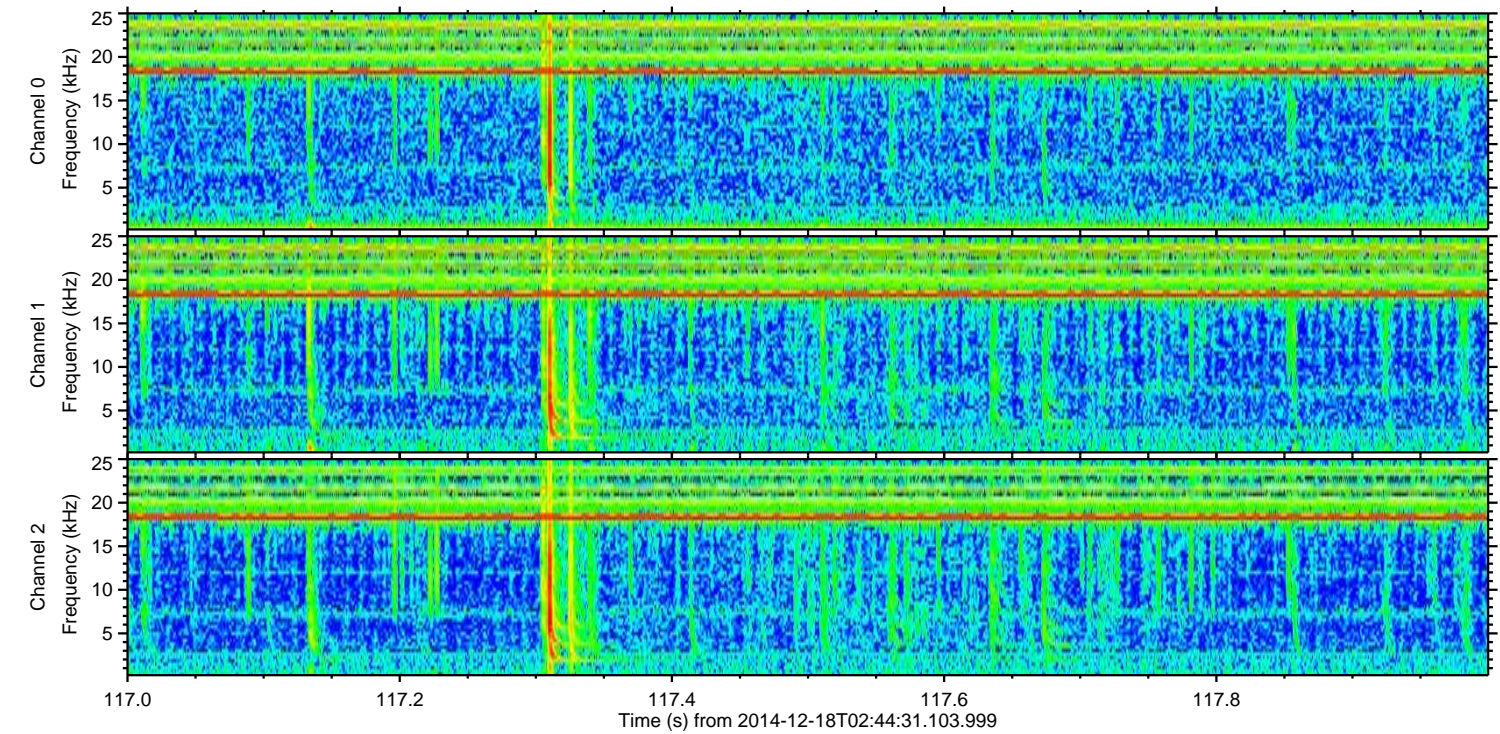
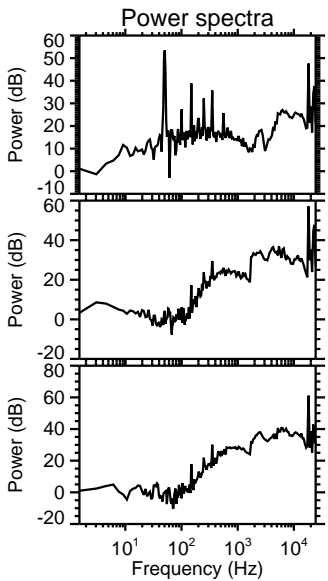
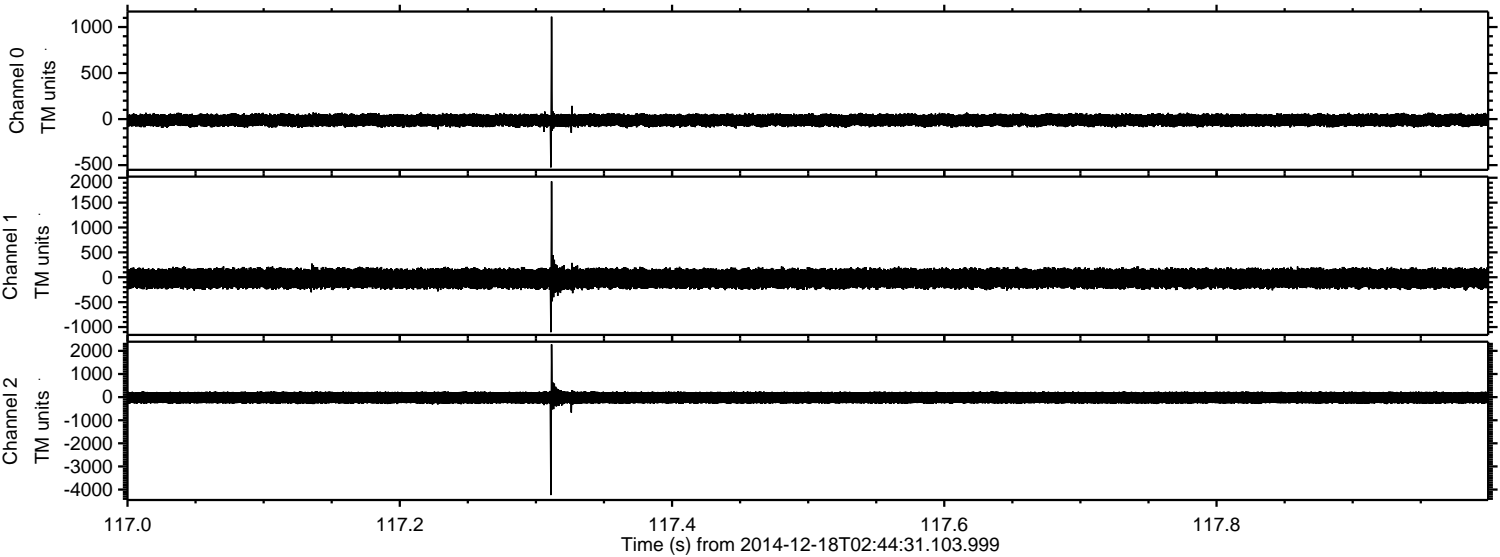
Channel 2
mn: -4236
mx: 5278
 μ : -24.9
 σ : 161.9

Processed Thu Dec 18 04:19:52 2014 by ELM ver.2012-10-06 from 001__elm20141218_024430__dat00.bin



ELMAVAN 3D WAVEFORMS (Measured data sampled at 50 kHz) 49693 packets of 144 samples from 2014-12-18T02:44:31.103.999. Part 118/144

Processed Thu Dec 18 04:19:52 2014 by ELM ver.2012-10-06 from 001__elm20141218_024430__dat00.bin



Channel 0
mn: -525
mx: 1113
 μ : -12.3
 σ : 36.1

Channel 1
mn: -1103
mx: 1926
 μ : -23.6
 σ : 107.3

Channel 2
mn: -4239
mx: 2282
 μ : -24.9
 σ : 155.8

ELMAVAN 3D WAVEFORMS (Measured data sampled at 50 kHz) 49693 packets of 144 samples from 2014-12-18T02:44:31.103.999. Part 14/144

Processed Thu Dec 18 04:19:53 2014 by ELM ver.2012-10-06 from 001__elm20141218_024430__dat00.bin

