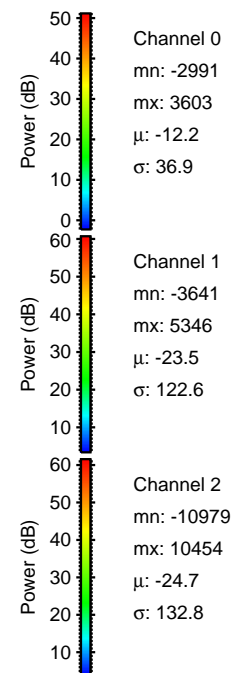
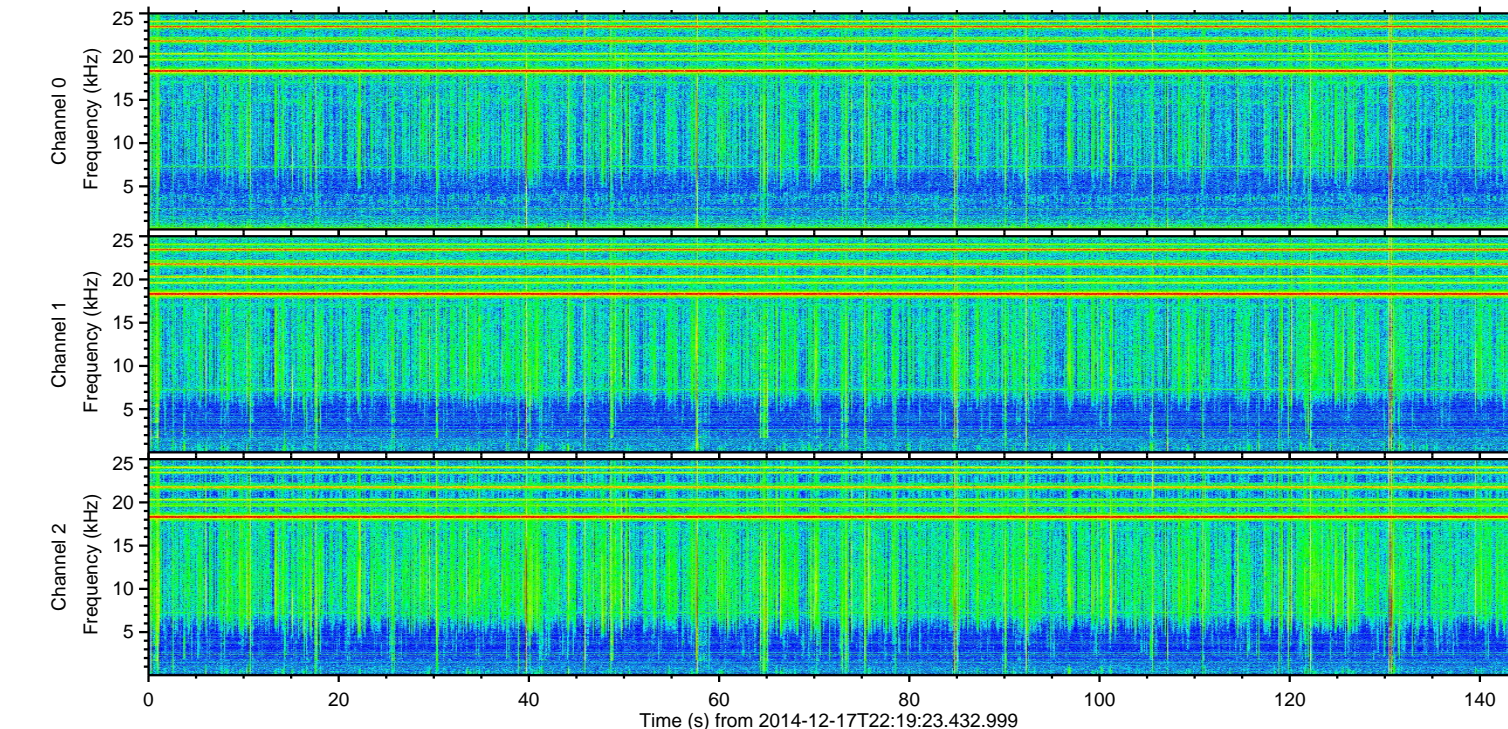
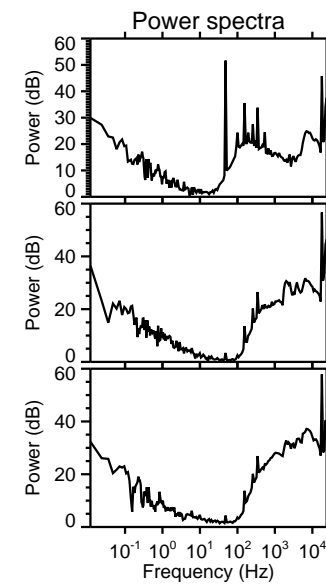
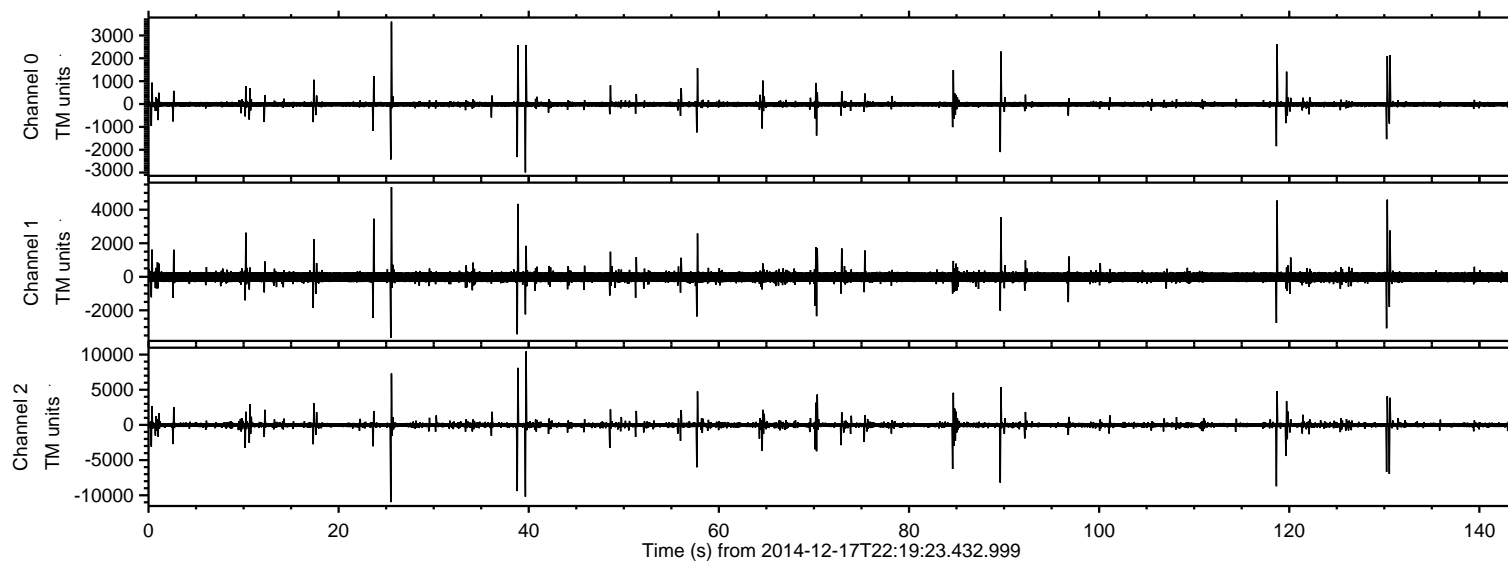


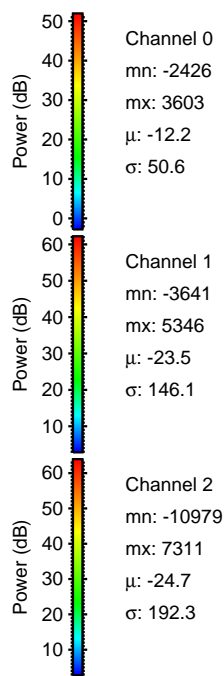
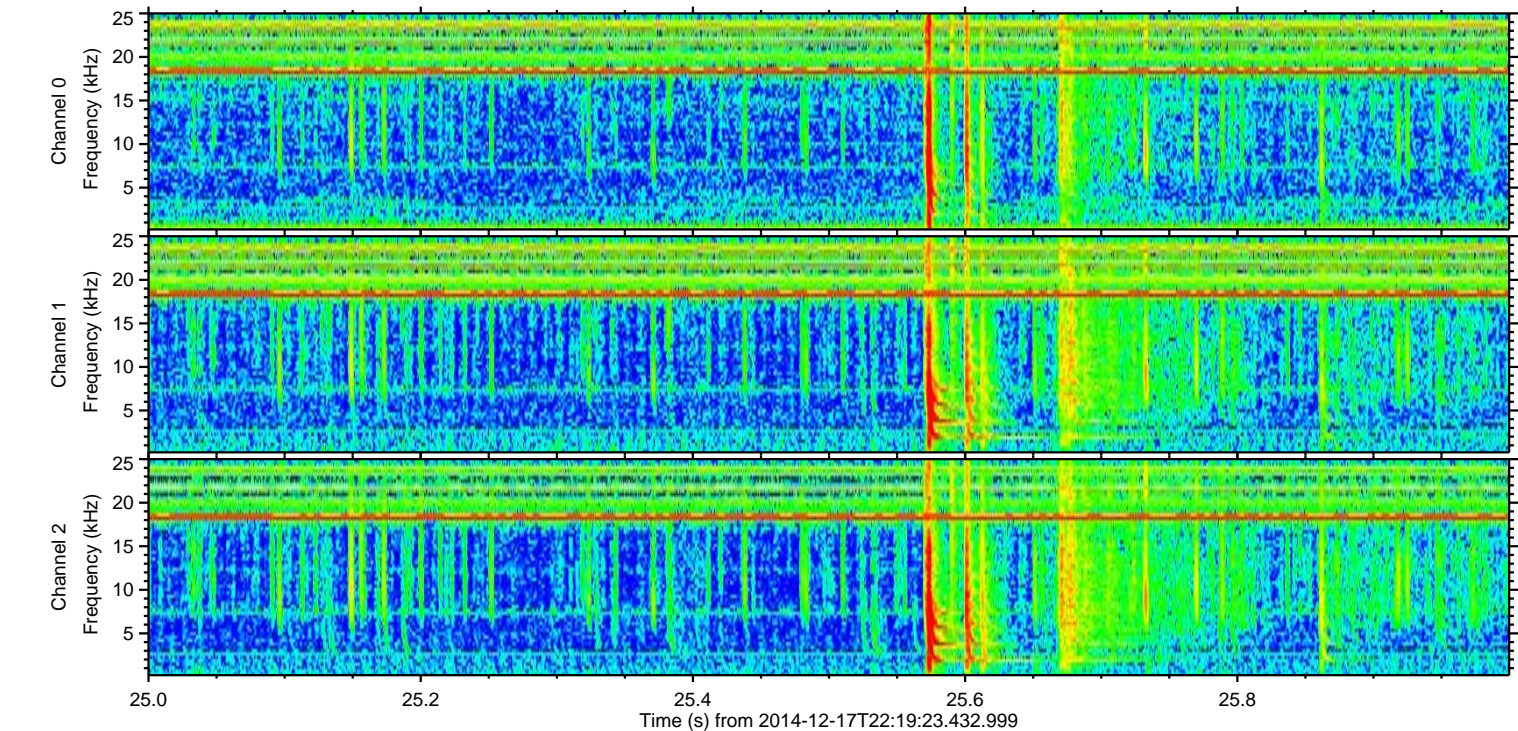
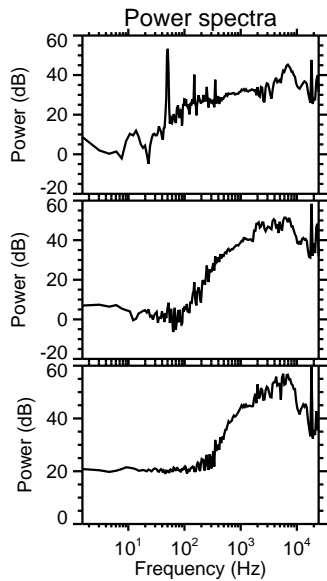
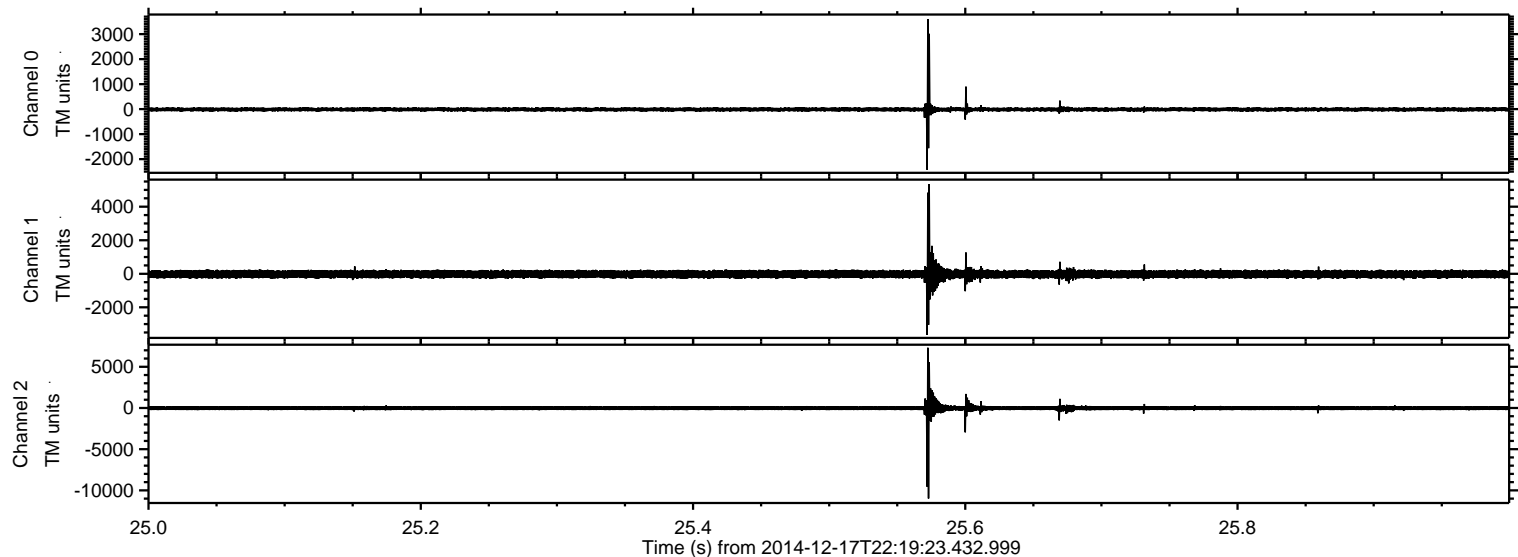
ELMAVAN 3D WAVEFORMS (Measured data sampled at 50 kHz) 49699 packets of 144 samples from 2014-12-17T22:19:23.432.999.

Processed Thu Dec 18 00:12:32 2014 by ELM ver.2012-10-06 from 001__elm20141217_221922__dat00.bin



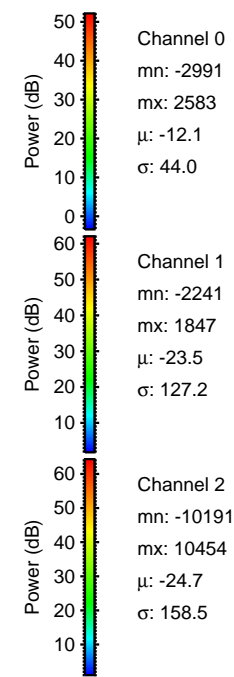
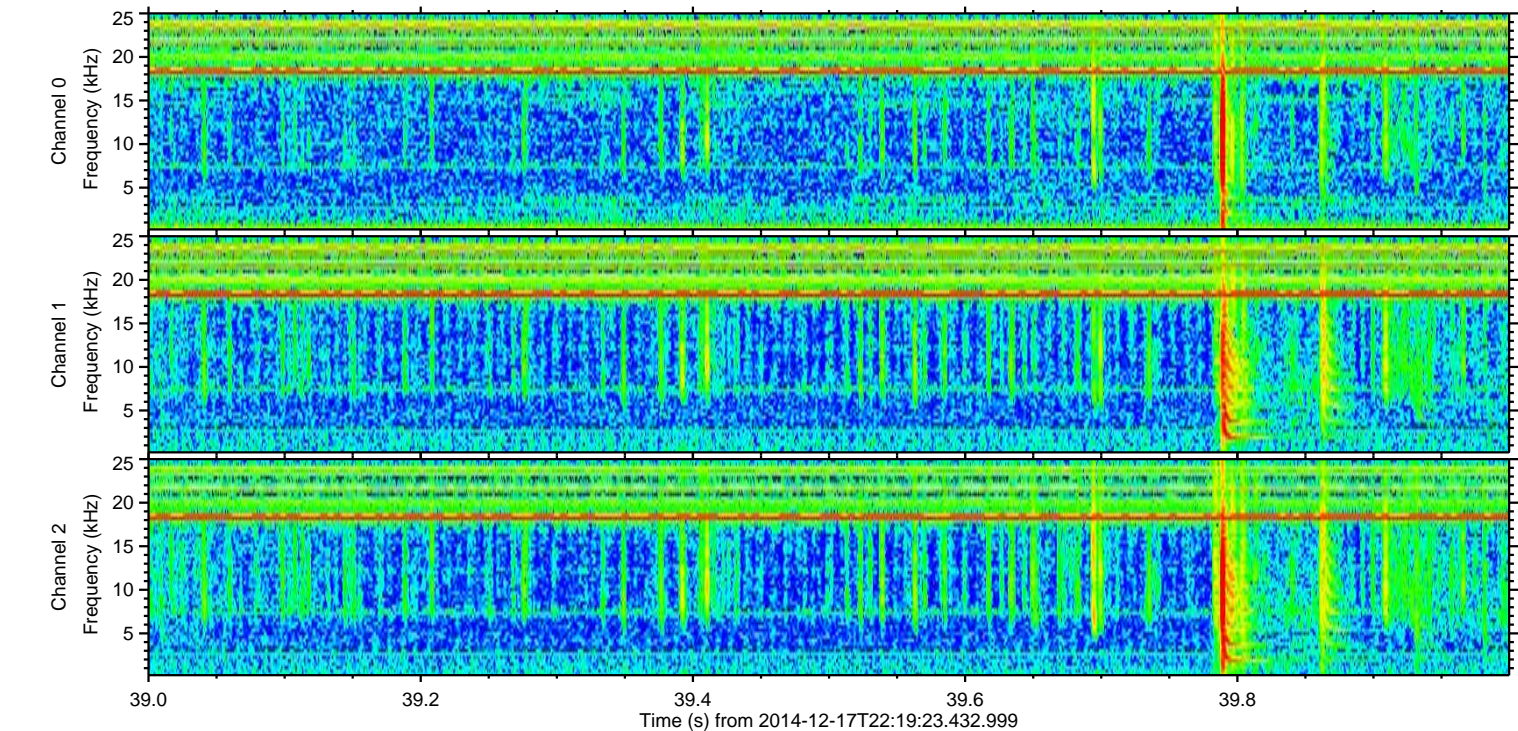
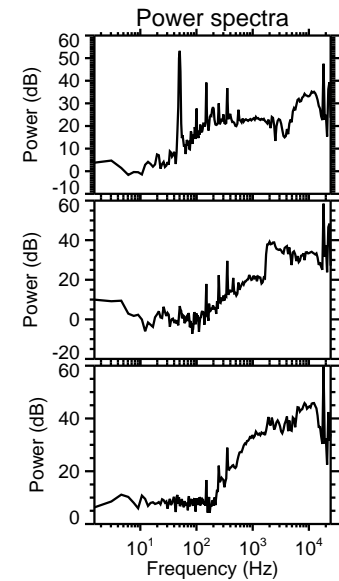
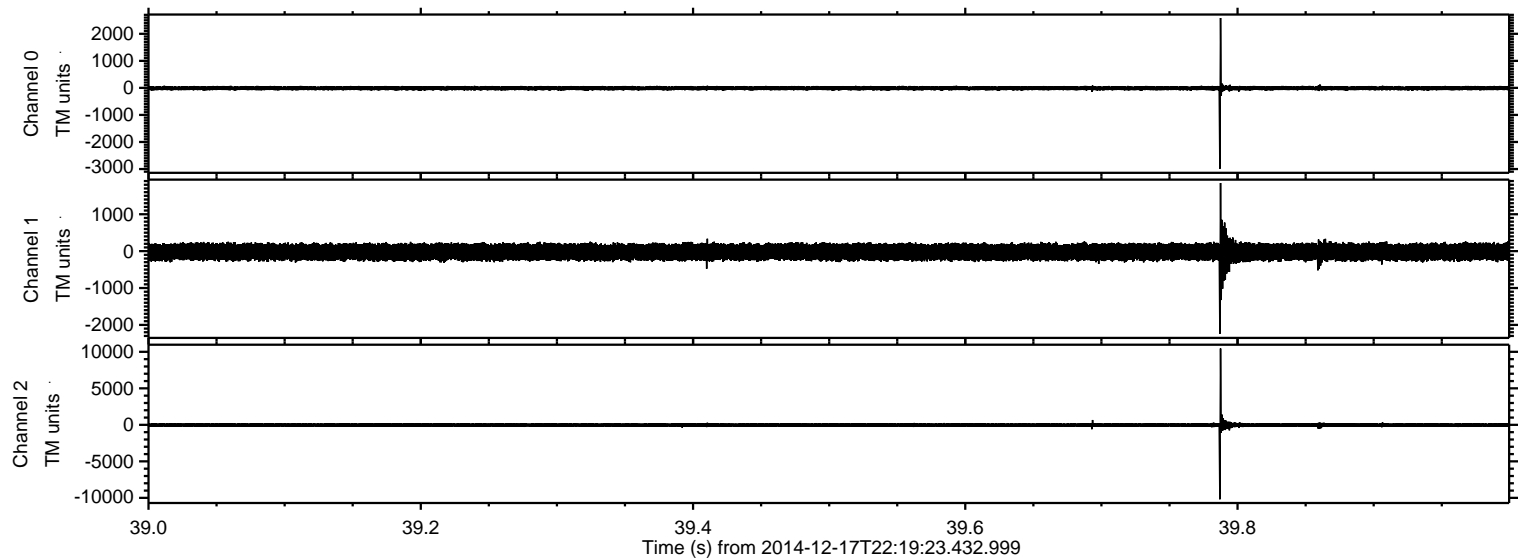
ELMAVAN 3D WAVEFORMS (Measured data sampled at 50 kHz) 49699 packets of 144 samples from 2014-12-17T22:19:23.432.999. Part 26/144

Processed Thu Dec 18 00:12:45 2014 by ELM ver.2012-10-06 from 001__elm20141217_221922__dat00.bin



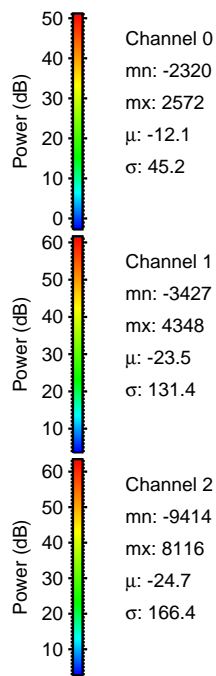
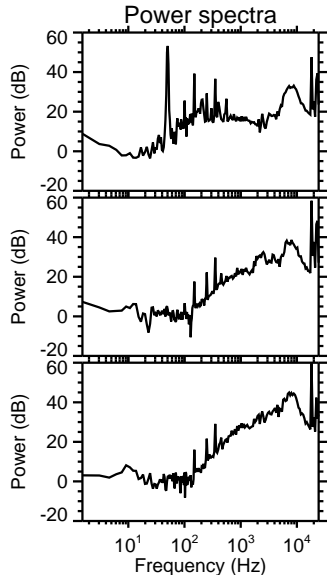
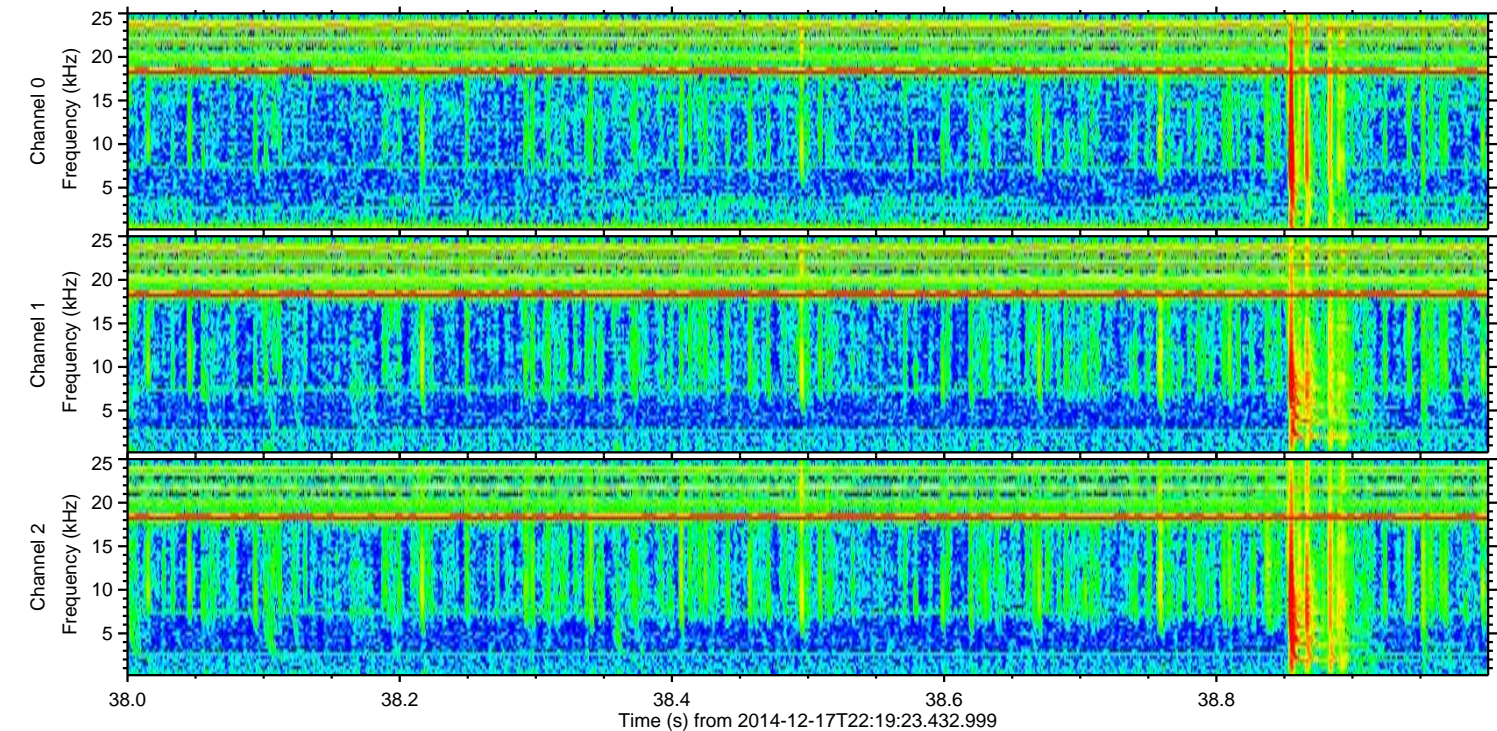
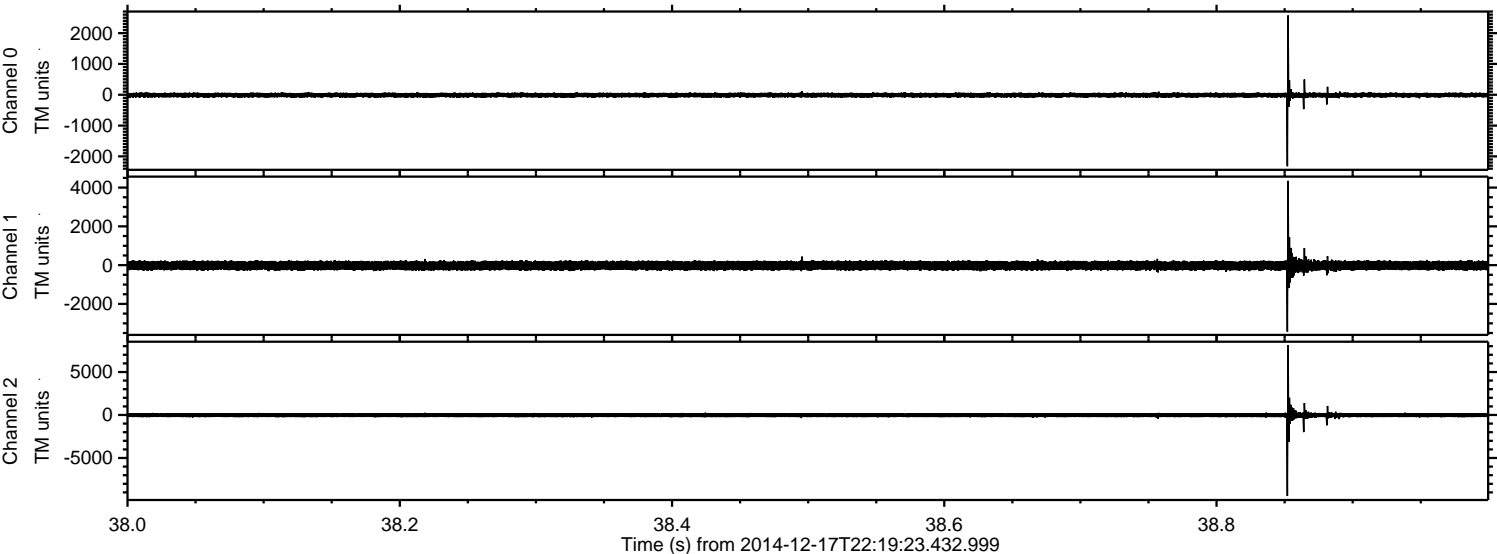
ELMAVAN 3D WAVEFORMS (Measured data sampled at 50 kHz) 49699 packets of 144 samples from 2014-12-17T22:19:23.432.999. Part 40/144

Processed Thu Dec 18 00:12:46 2014 by ELM ver.2012-10-06 from 001__elm20141217_221922__dat00.bin



ELMAVAN 3D WAVEFORMS (Measured data sampled at 50 kHz) 49699 packets of 144 samples from 2014-12-17T22:19:23.432.999. Part 39/144

Processed Thu Dec 18 00:12:47 2014 by ELM ver.2012-10-06 from 001__elm20141217_221922__dat00.bin



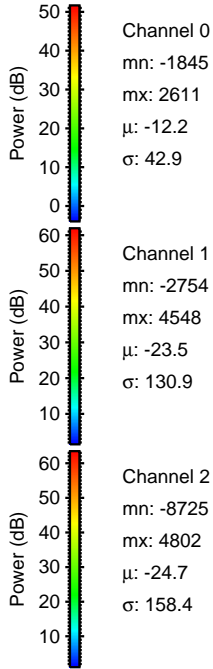
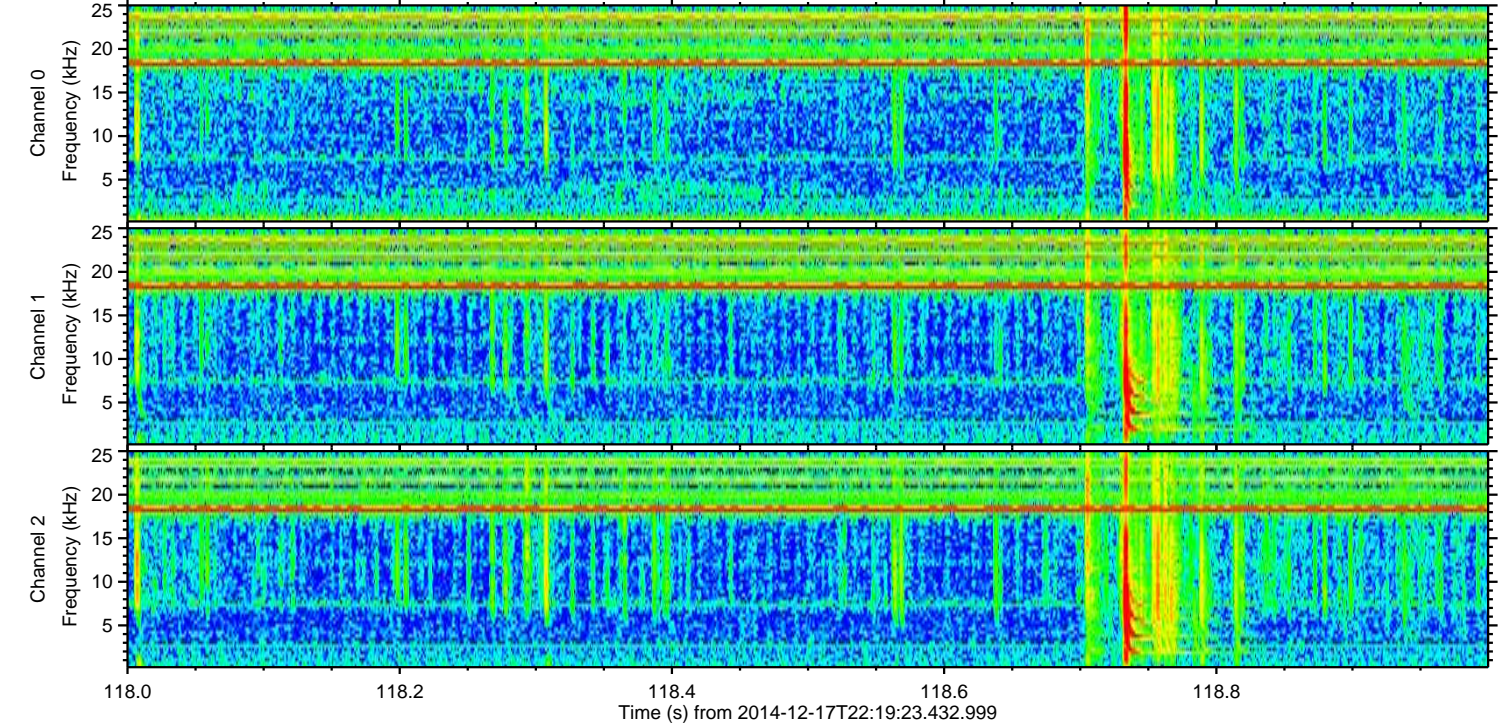
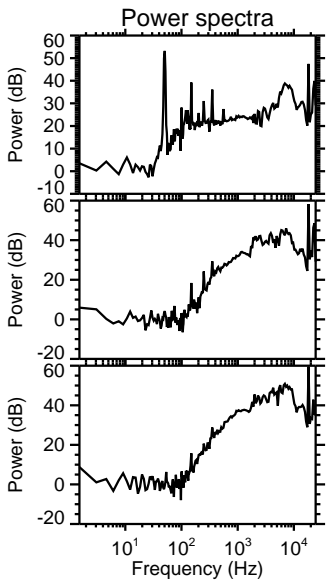
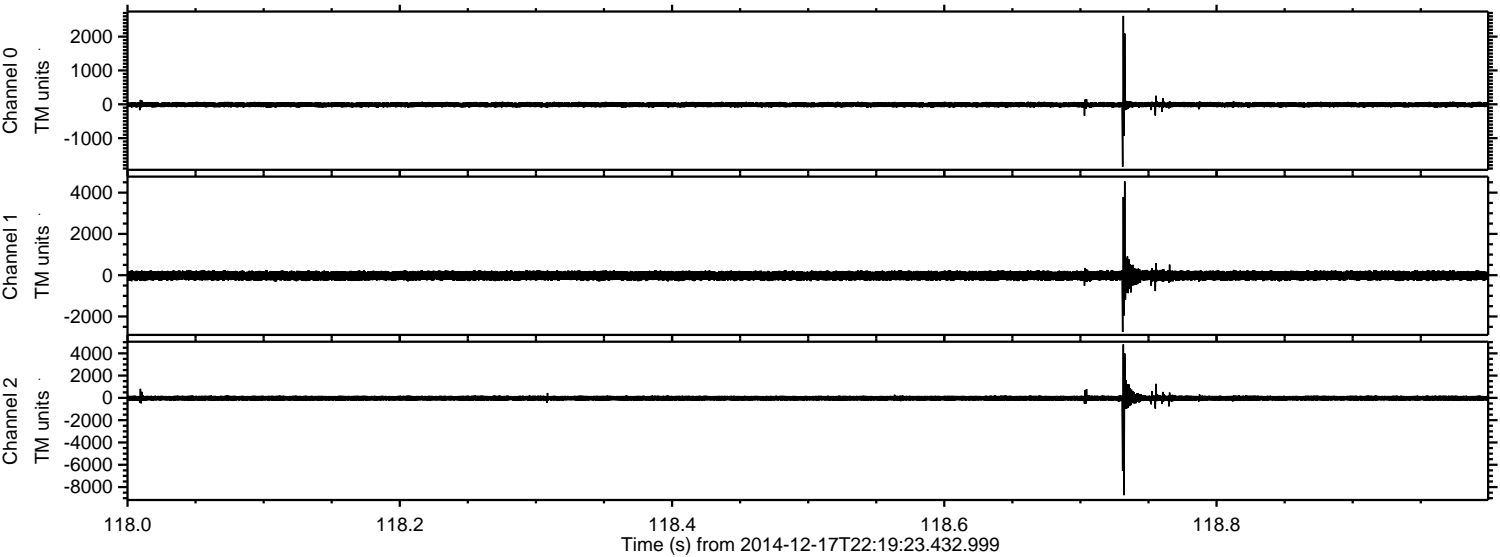
Channel 0
mn: -2320
mx: 2572
 μ : -12.1
 σ : 45.2

Channel 1
mn: -3427
mx: 4348
 μ : -23.5
 σ : 131.4

Channel 2
mn: -9414
mx: 8116
 μ : -24.7
 σ : 166.4

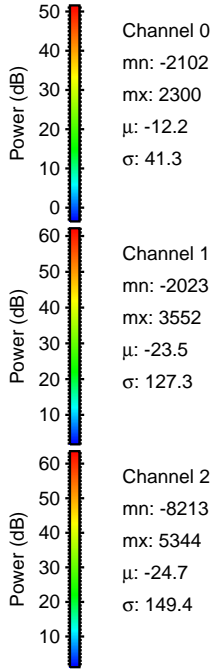
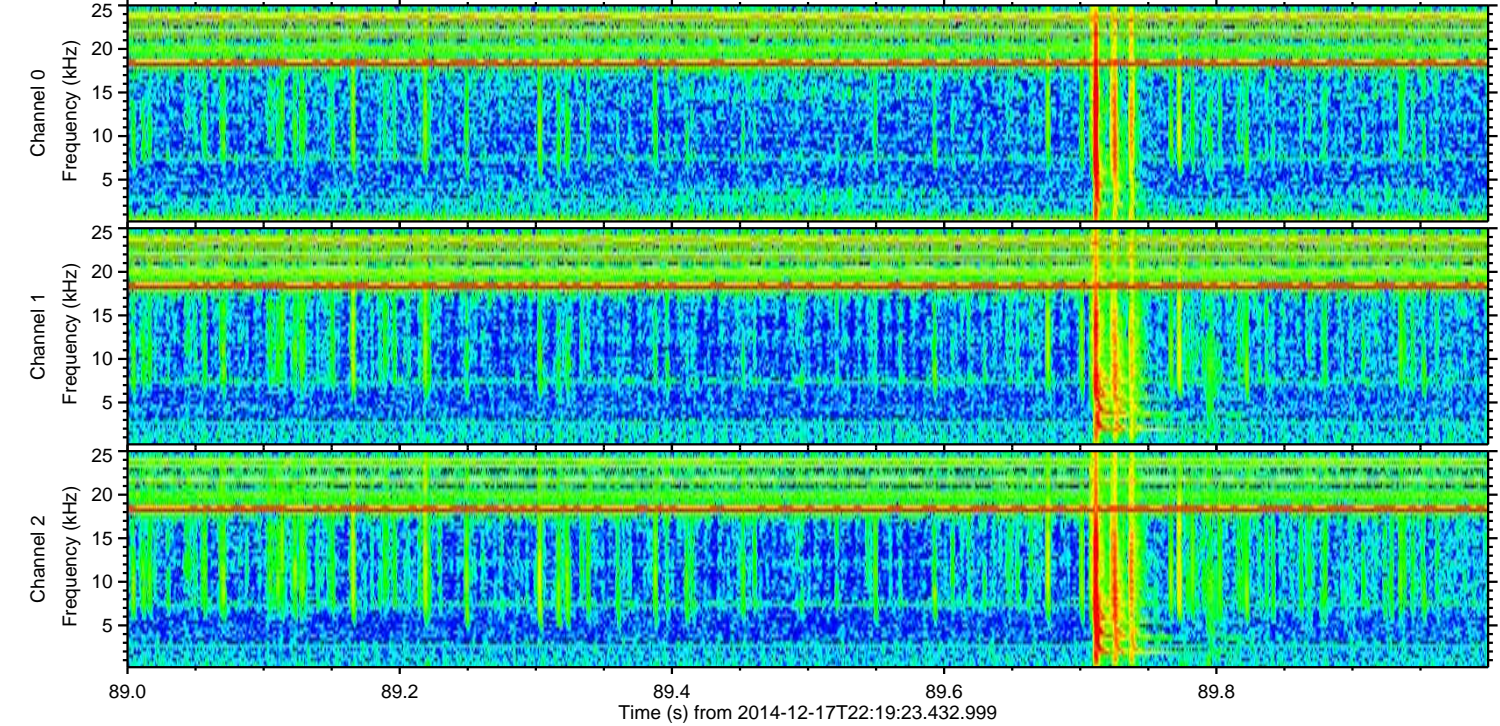
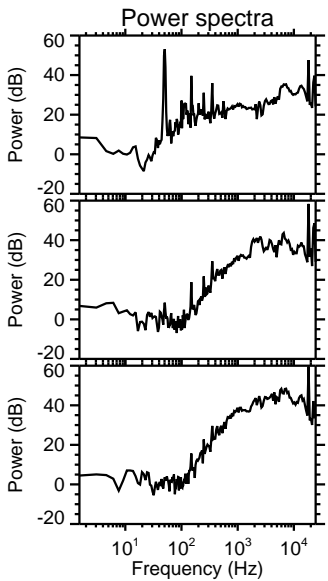
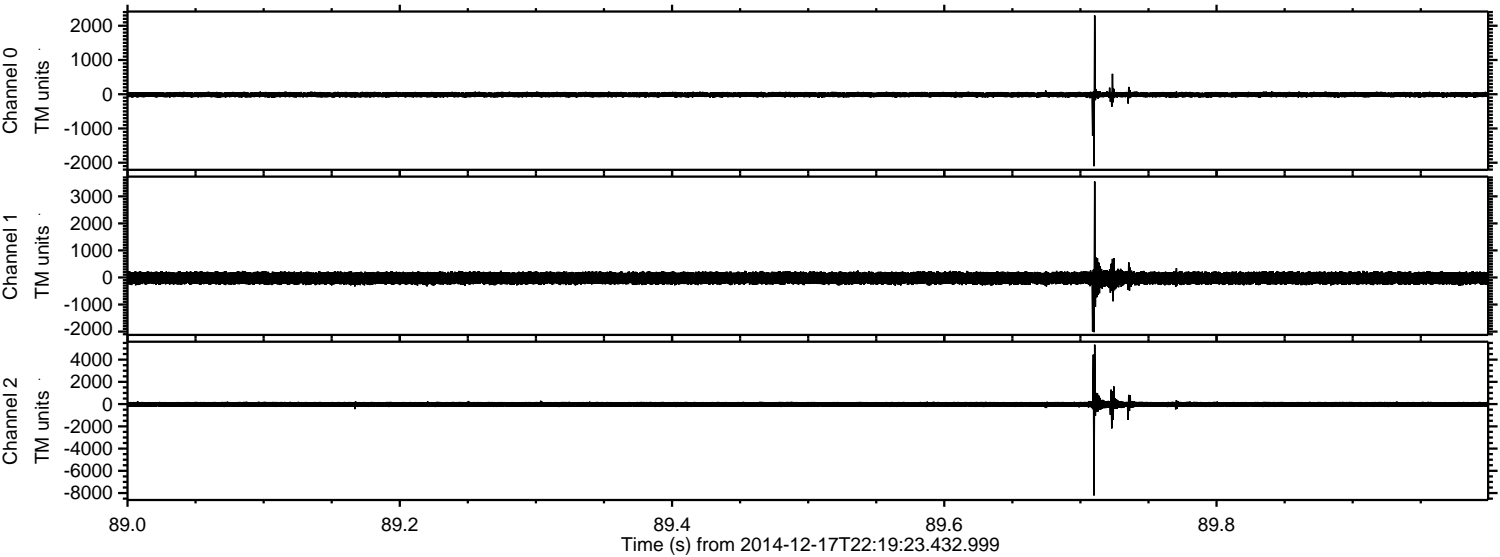
ELMAVAN 3D WAVEFORMS (Measured data sampled at 50 kHz) 49699 packets of 144 samples from 2014-12-17T22:19:23.432.999. Part 119/144

Processed Thu Dec 18 00:12:48 2014 by ELM ver.2012-10-06 from 001__elm20141217_221922__dat00.bin



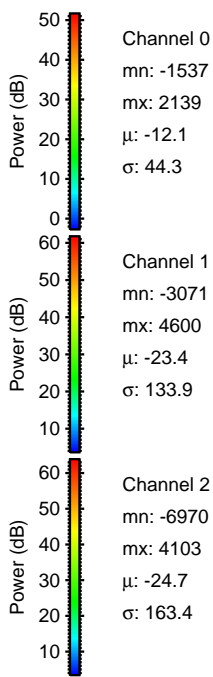
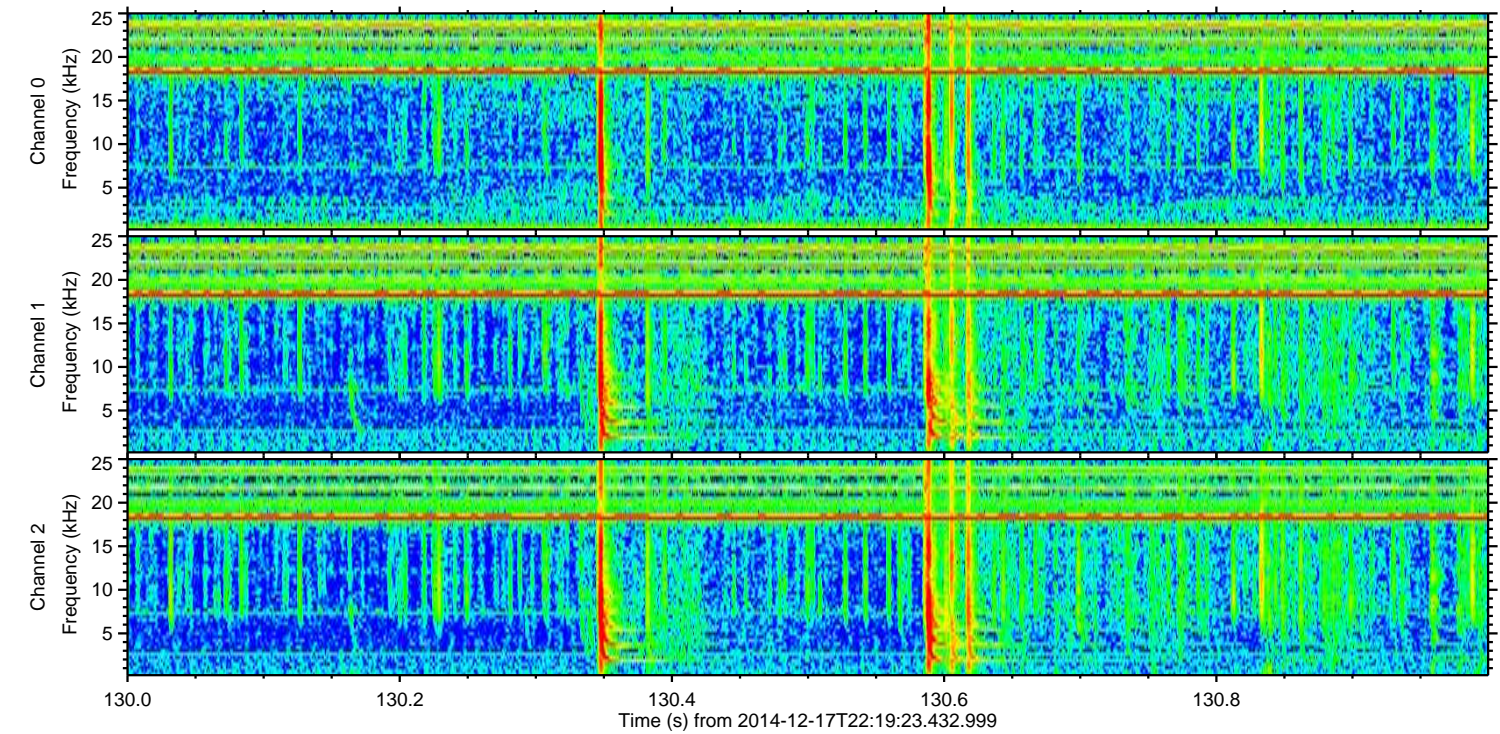
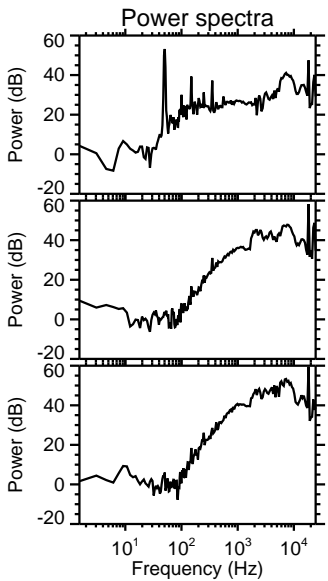
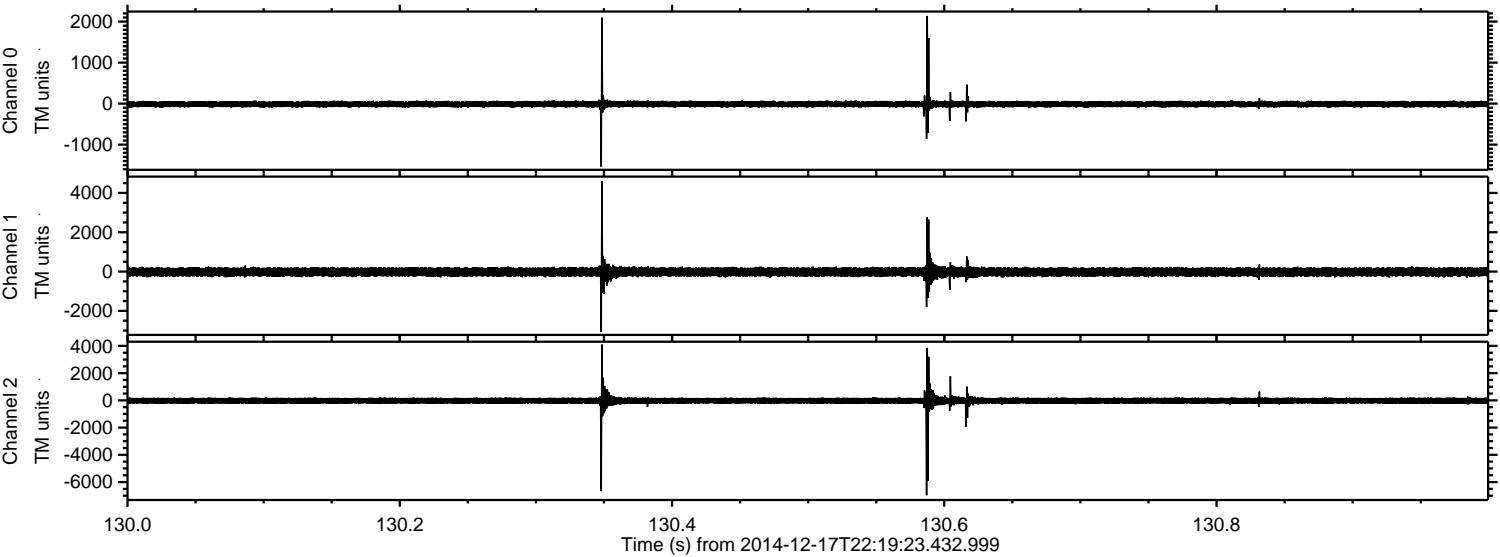
ELMAVAN 3D WAVEFORMS (Measured data sampled at 50 kHz) 49699 packets of 144 samples from 2014-12-17T22:19:23.432.999. Part 90/144

Processed Thu Dec 18 00:12:49 2014 by ELM ver.2012-10-06 from 001__elm20141217_221922__dat00.bin



ELMAVAN 3D WAVEFORMS (Measured data sampled at 50 kHz) 49699 packets of 144 samples from 2014-12-17T22:19:23.432.999. Part 131/144

Processed Thu Dec 18 00:12:50 2014 by ELM ver.2012-10-06 from 001__elm20141217_221922__dat00.bin

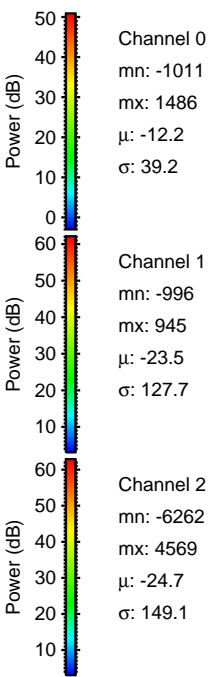
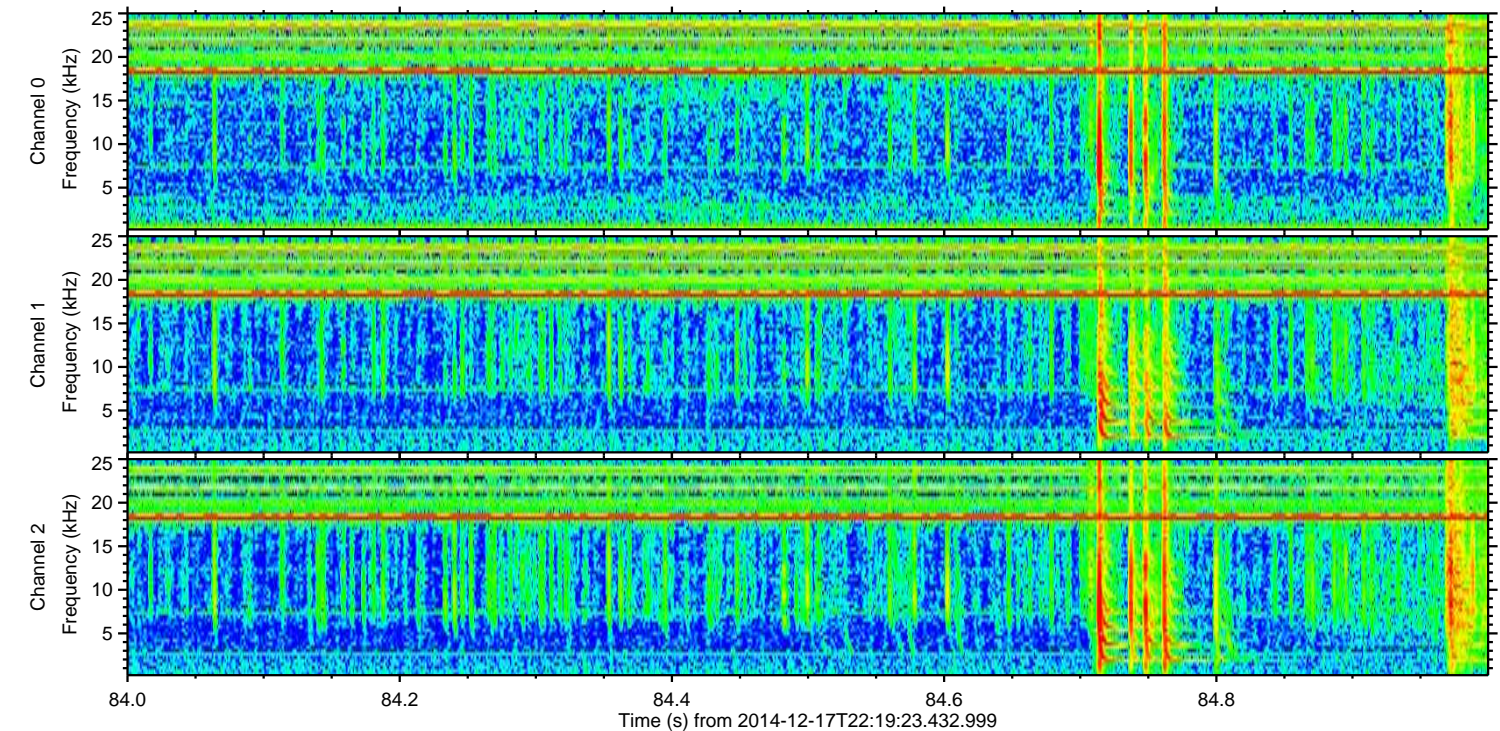
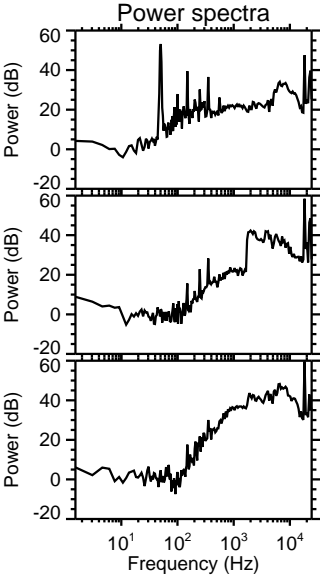
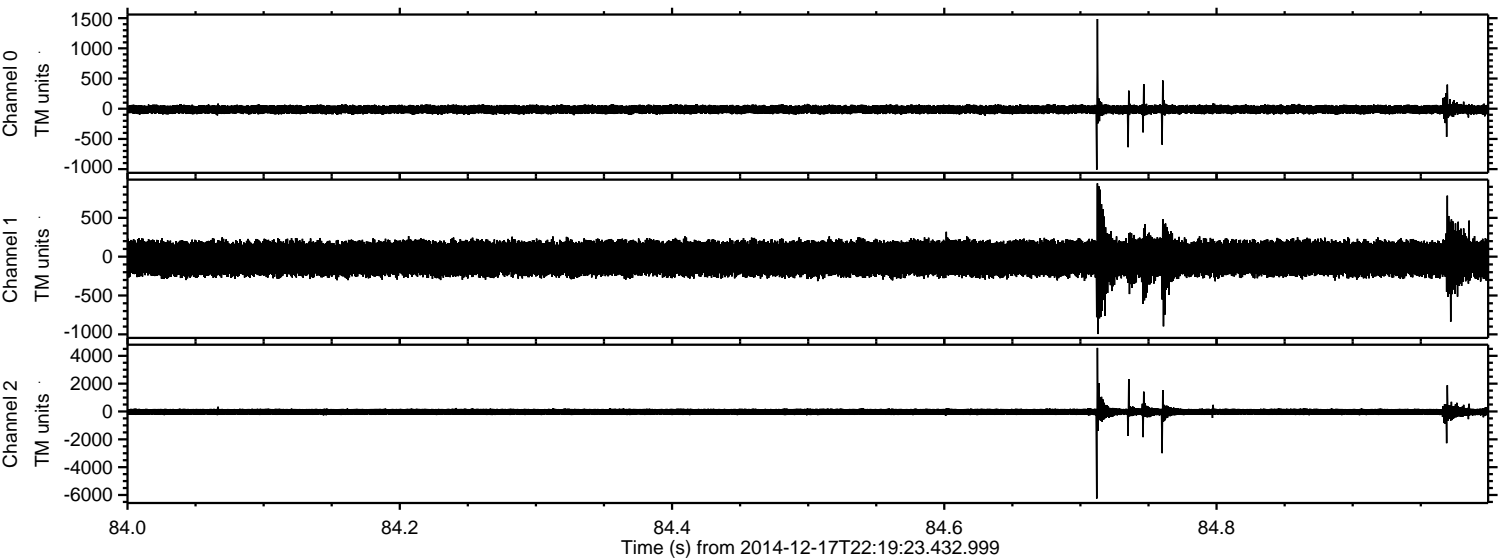


Channel 0
mn: -1537
mx: 2139
 μ : -12.1
 σ : 44.3

Channel 1
mn: -3071
mx: 4600
 μ : -23.4
 σ : 133.9

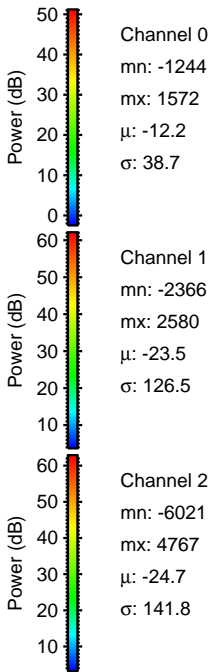
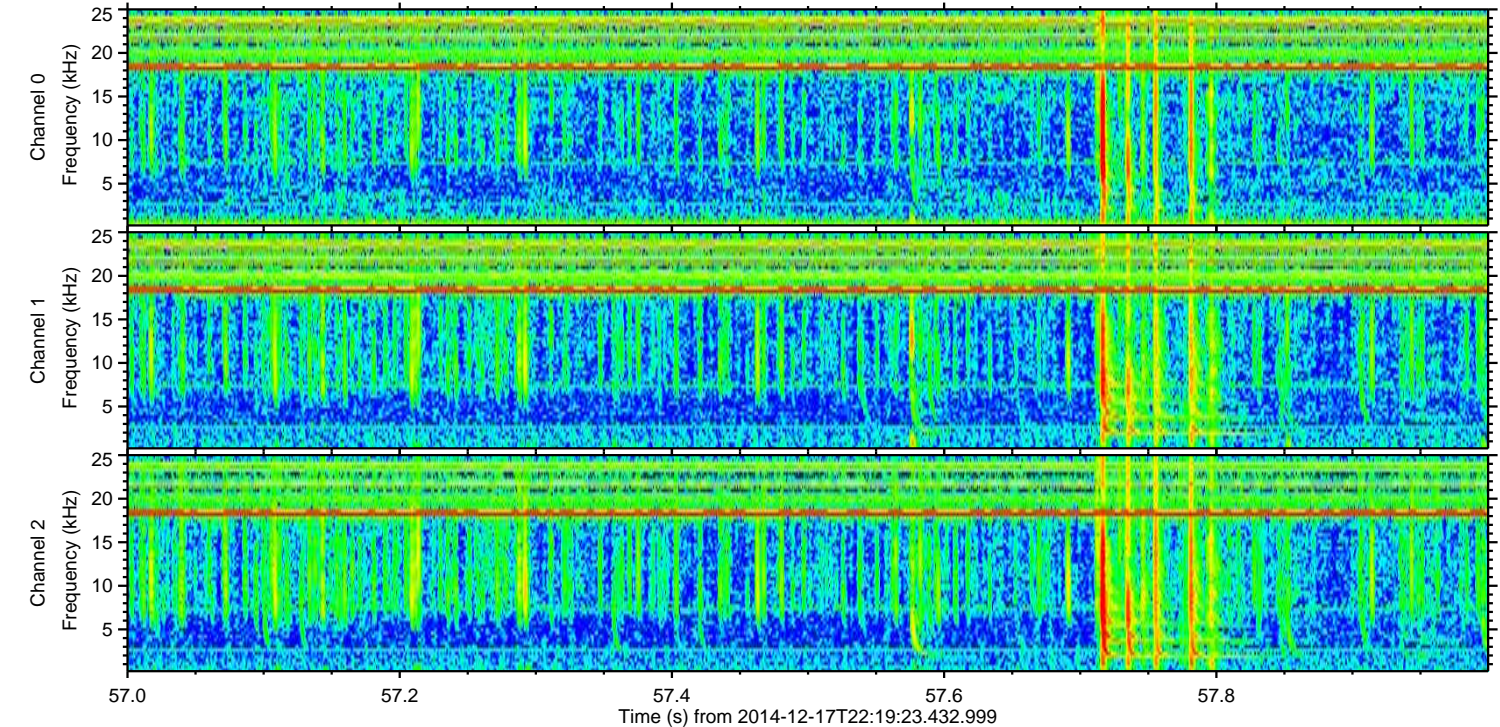
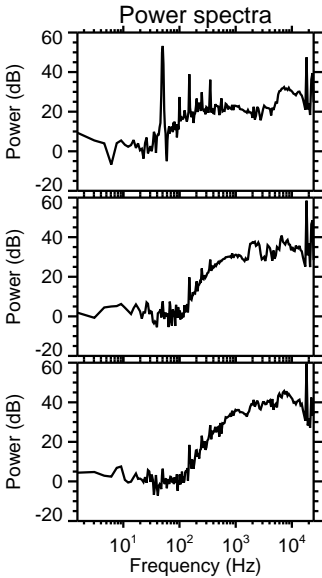
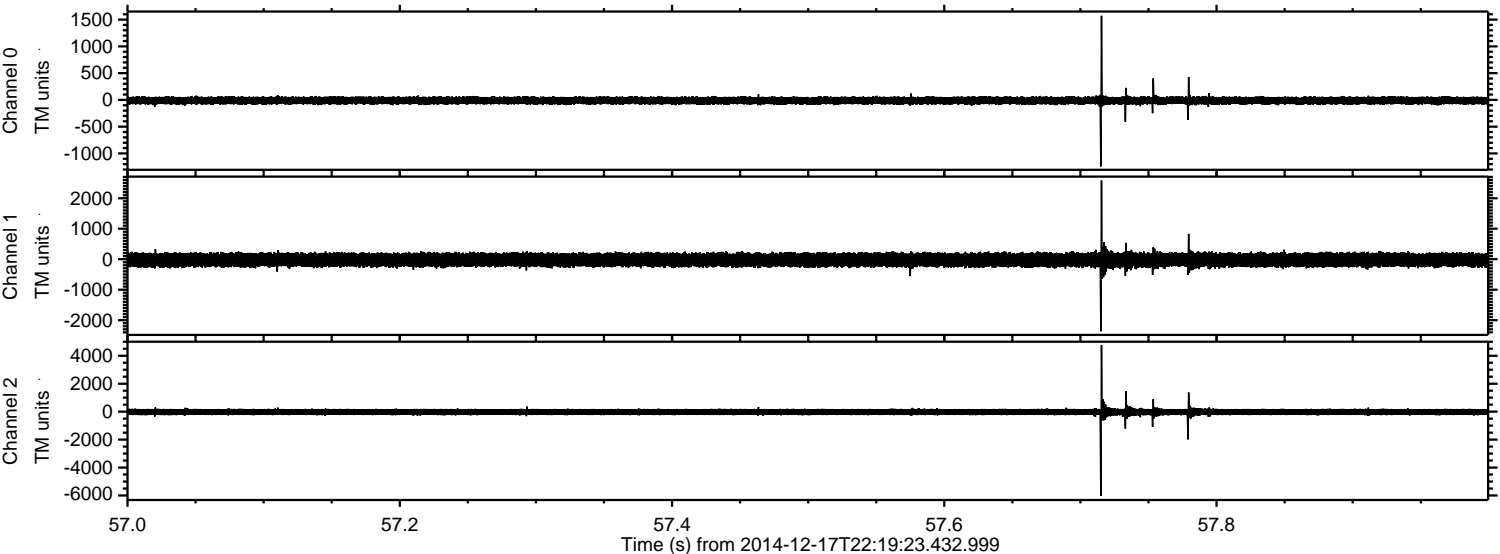
Channel 2
mn: -6970
mx: 4103
 μ : -24.7
 σ : 163.4

Processed Thu Dec 18 00:12:51 2014 by ELM ver.2012-10-06 from 001__elm20141217_221922__dat00.bin



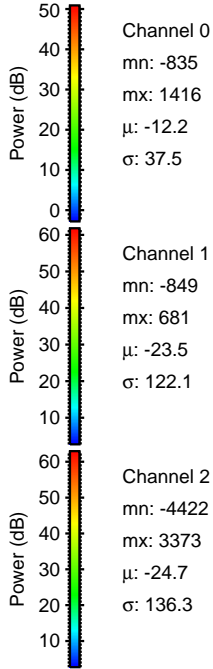
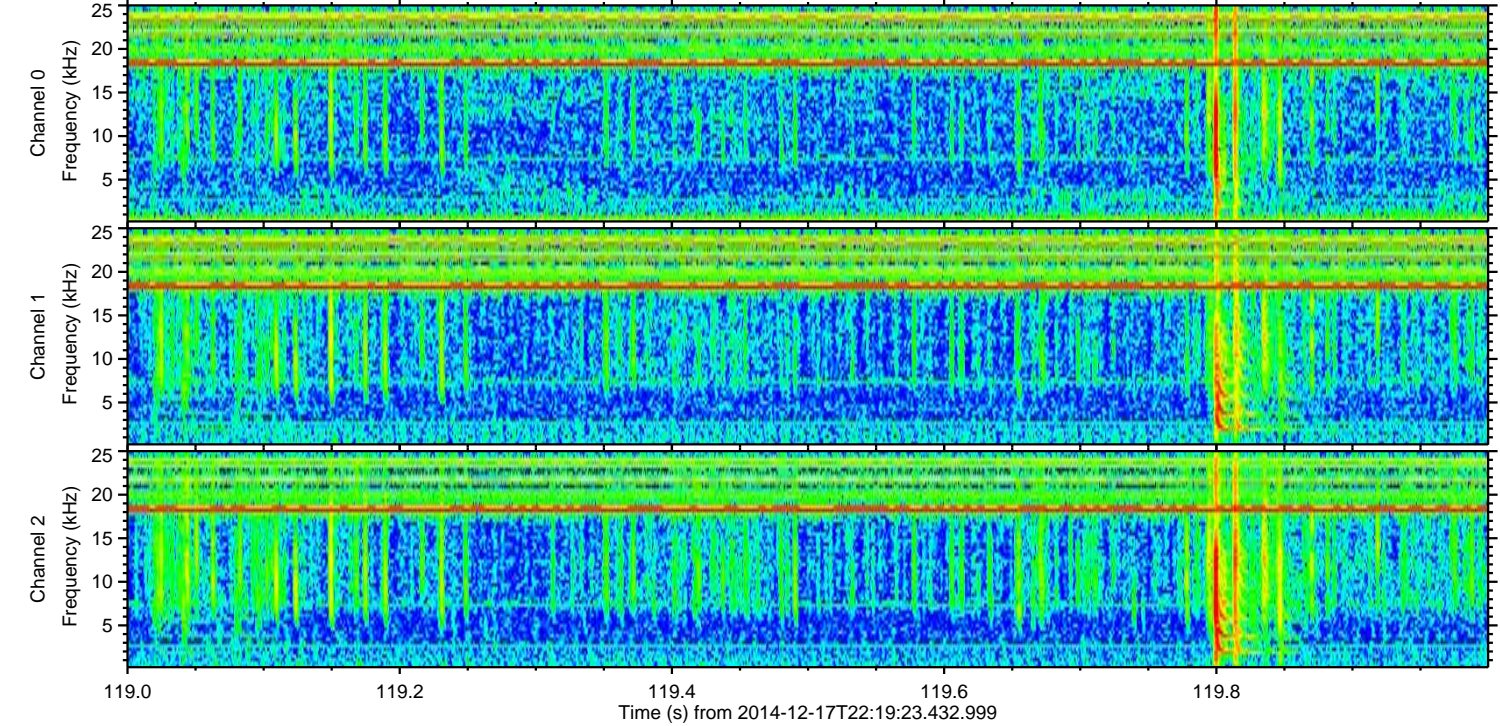
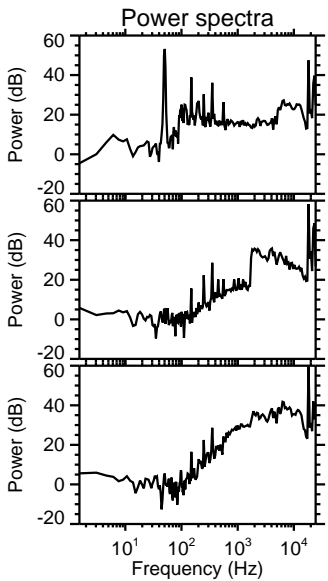
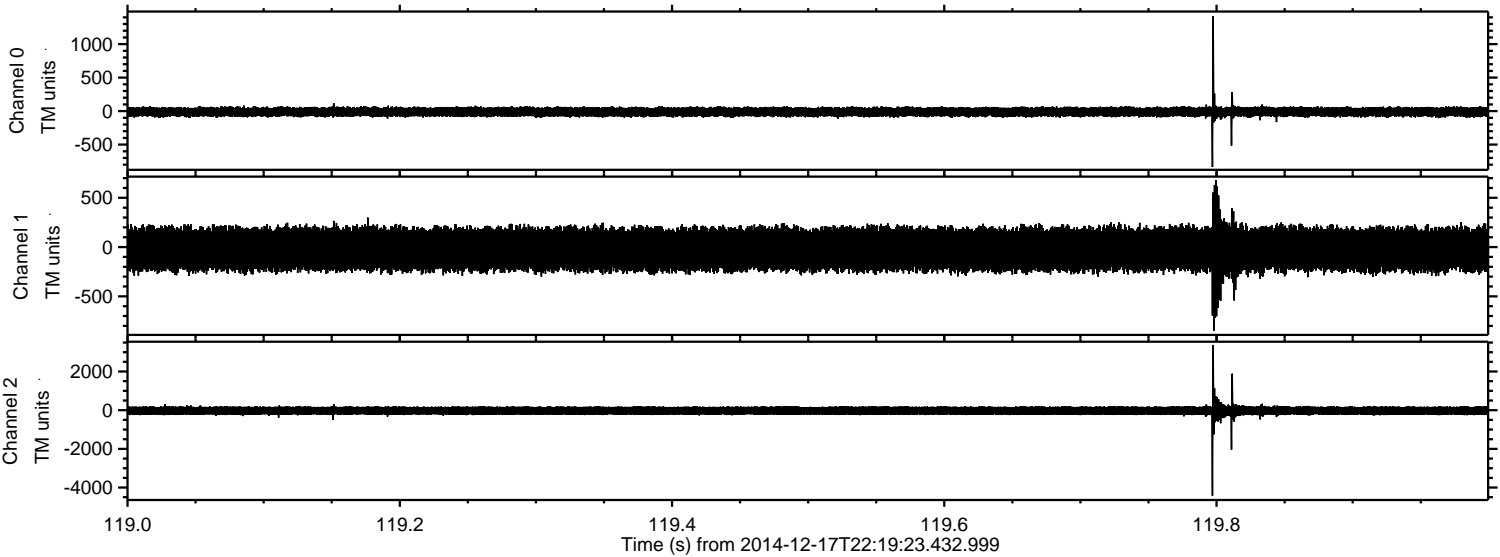
ELMAVAN 3D WAVEFORMS (Measured data sampled at 50 kHz) 49699 packets of 144 samples from 2014-12-17T22:19:23.432.999. Part 58/144

Processed Thu Dec 18 00:12:51 2014 by ELM ver.2012-10-06 from 001__elm20141217_221922__dat00.bin



ELMAVAN 3D WAVEFORMS (Measured data sampled at 50 kHz) 49699 packets of 144 samples from 2014-12-17T22:19:23.432.999. Part 120/144

Processed Thu Dec 18 00:12:52 2014 by ELM ver.2012-10-06 from 001__elm20141217_221922__dat00.bin



ELMAVAN 3D WAVEFORMS (Measured data sampled at 50 kHz) 49699 packets of 144 samples from 2014-12-17T22:19:23.432.999. Part 117/144

Processed Thu Dec 18 00:12:53 2014 by ELM ver.2012-10-06 from 001__elm20141217_221922__dat00.bin

