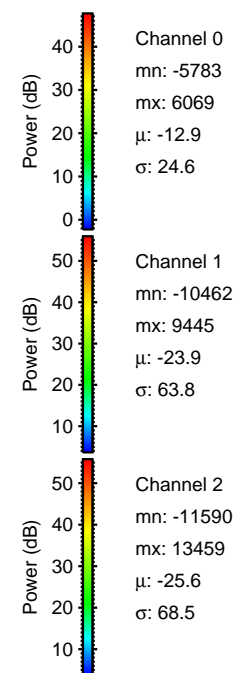
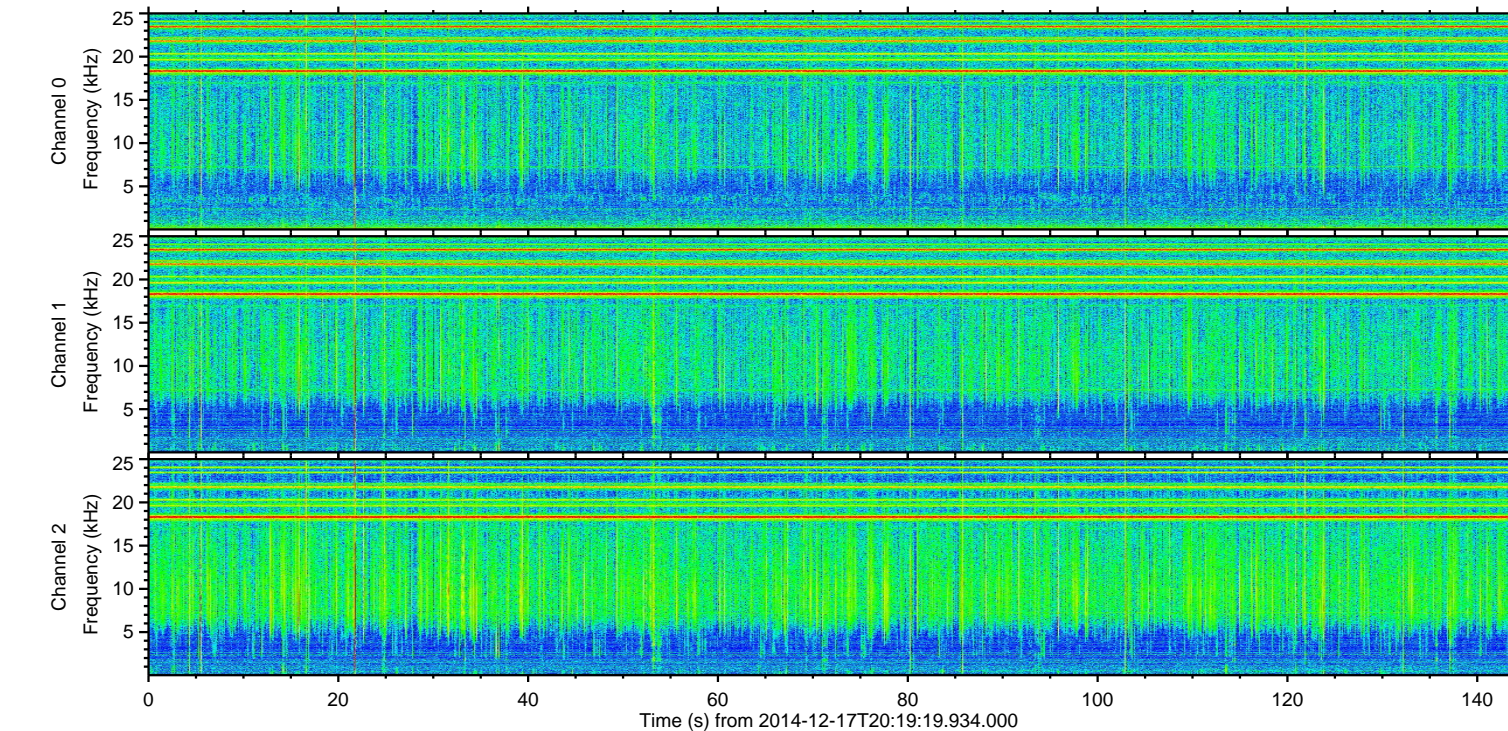
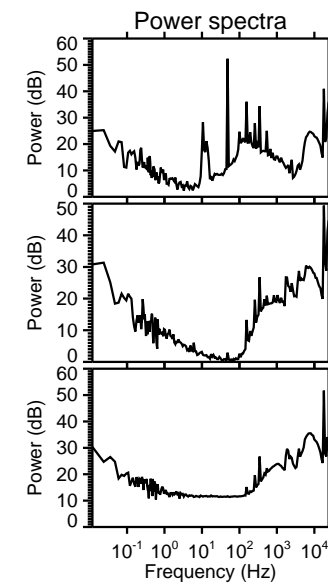
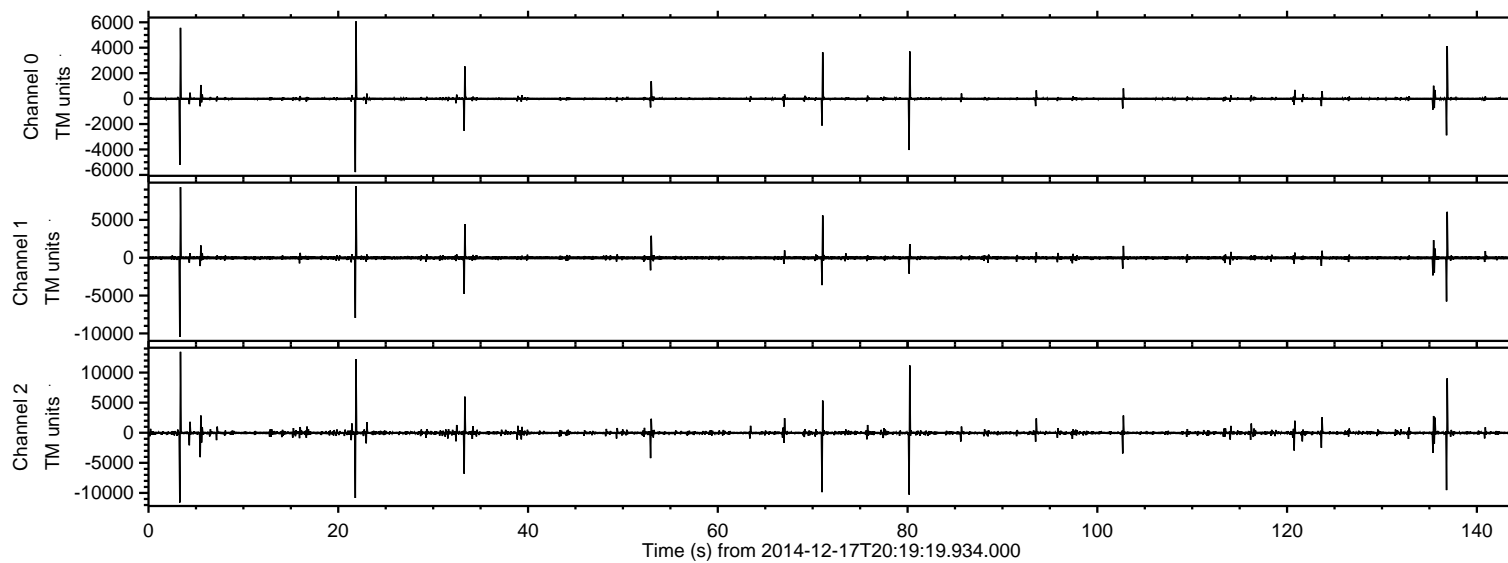
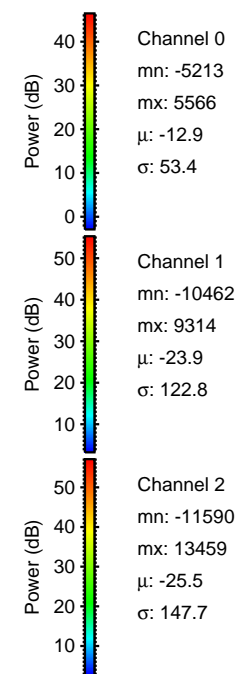
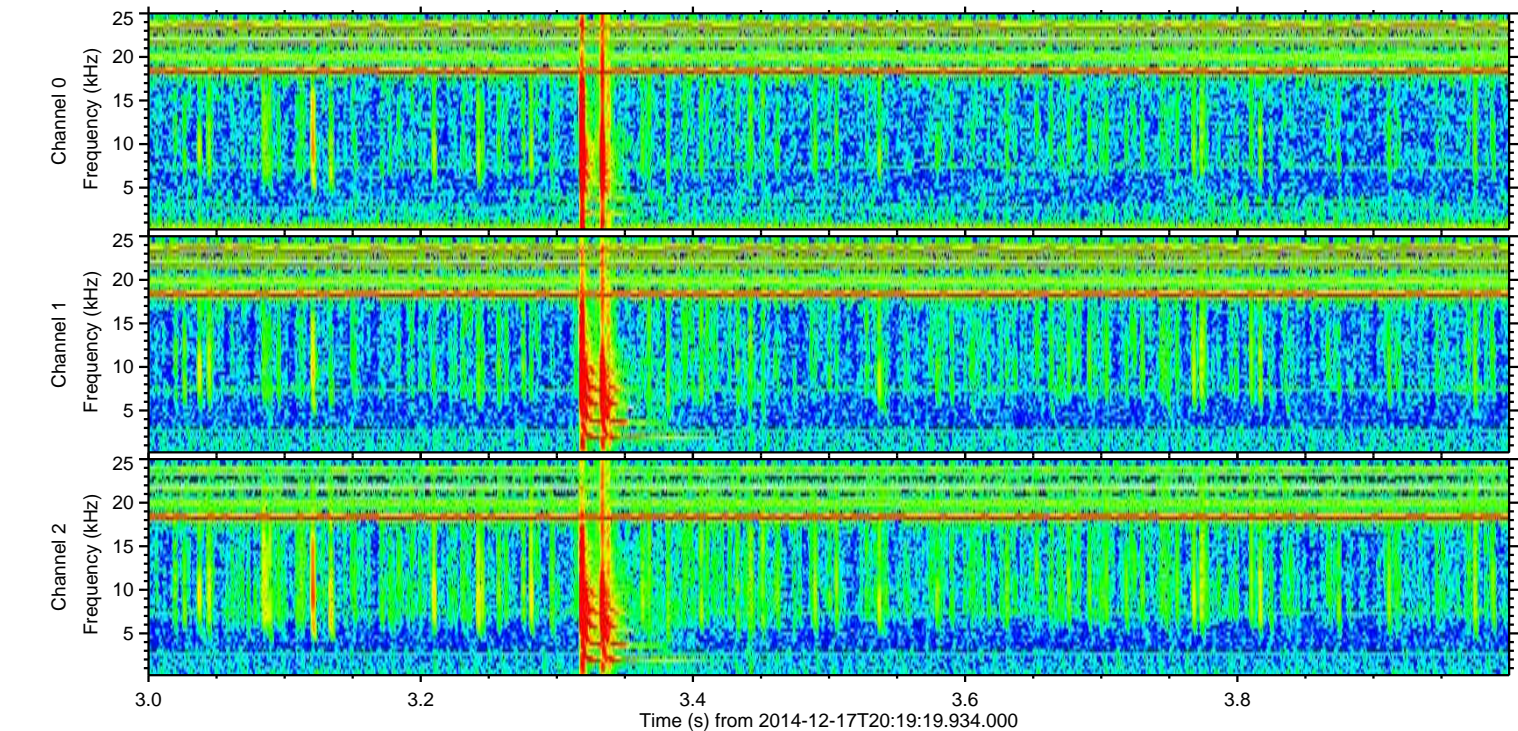
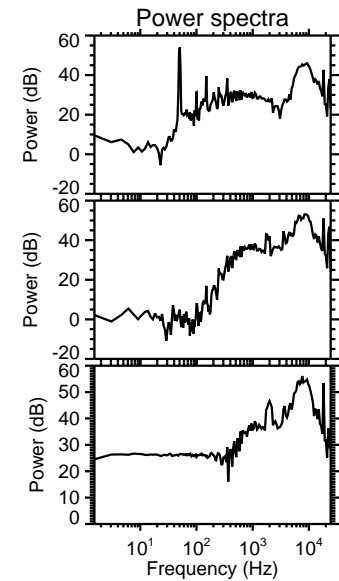
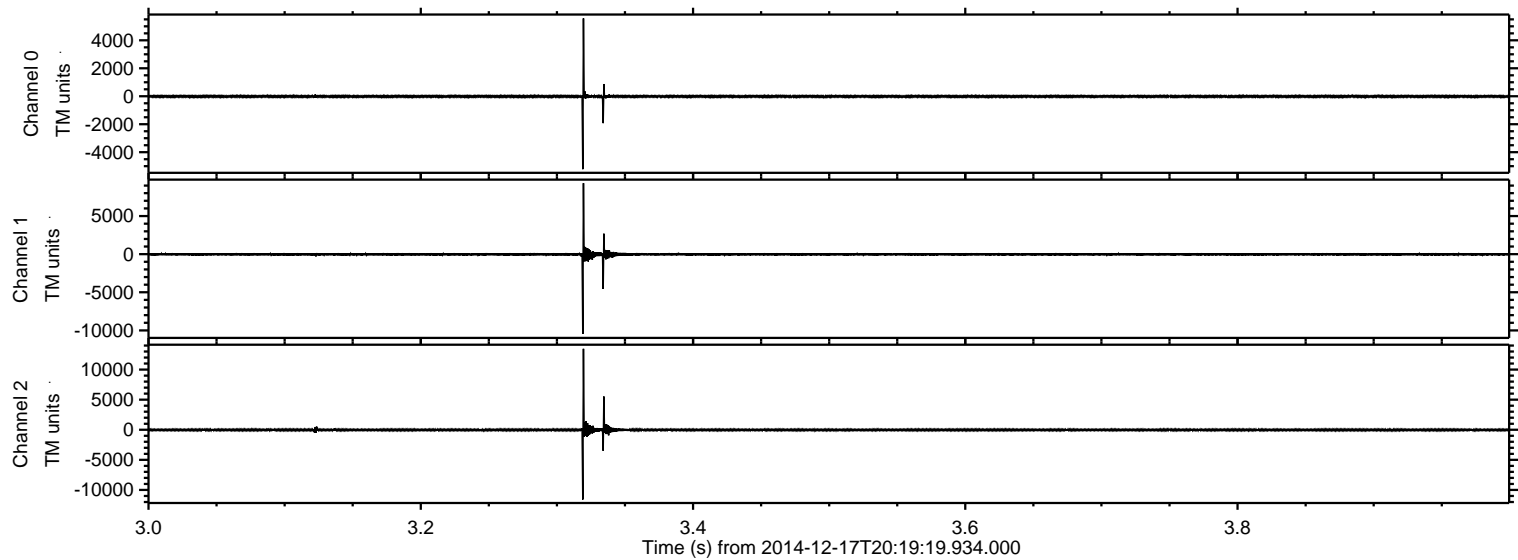


ELMAVAN 3D WAVEFORMS (Measured data sampled at 50 kHz) 49793 packets of 144 samples from 2014-12-17T20:19:19.934.000.

Processed Wed Dec 17 22:23:21 2014 by ELM ver.2012-10-06 from 001__elm20141217_201918__dat00.bin

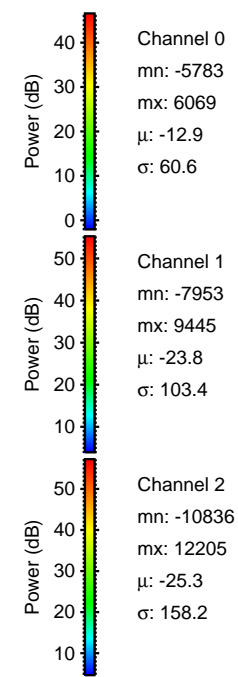
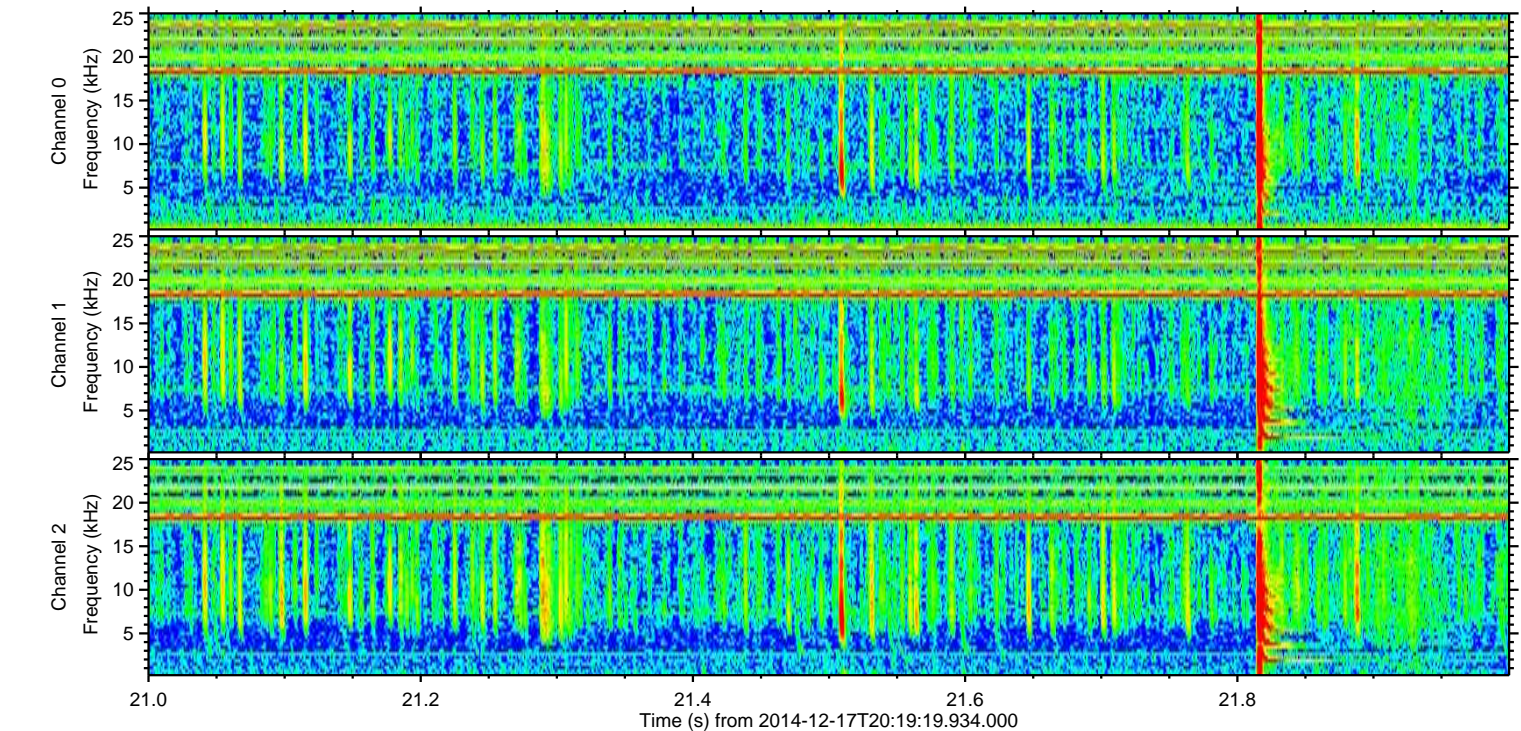
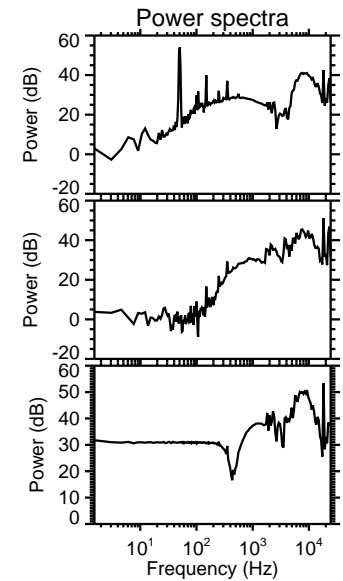
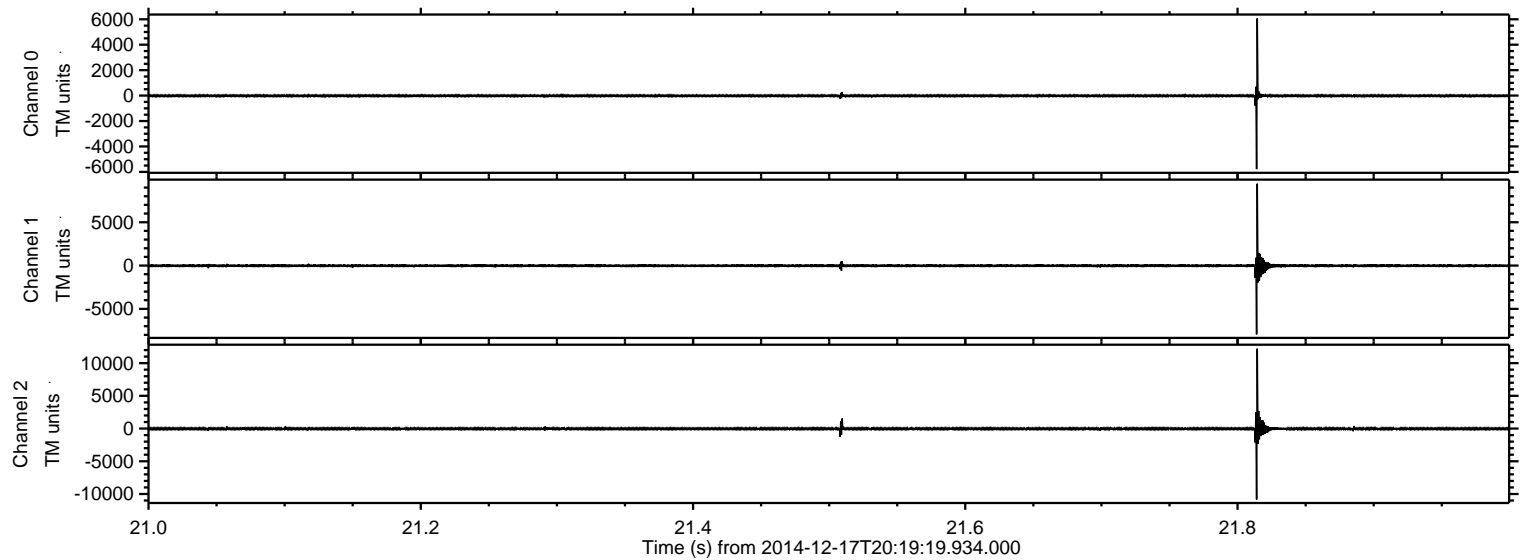


Processed Wed Dec 17 22:23:33 2014 by ELM ver.2012-10-06 from 001__elm20141217_201918__dat00.bin

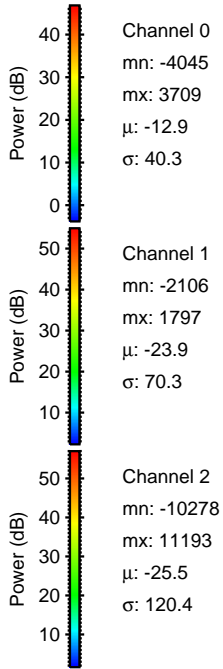
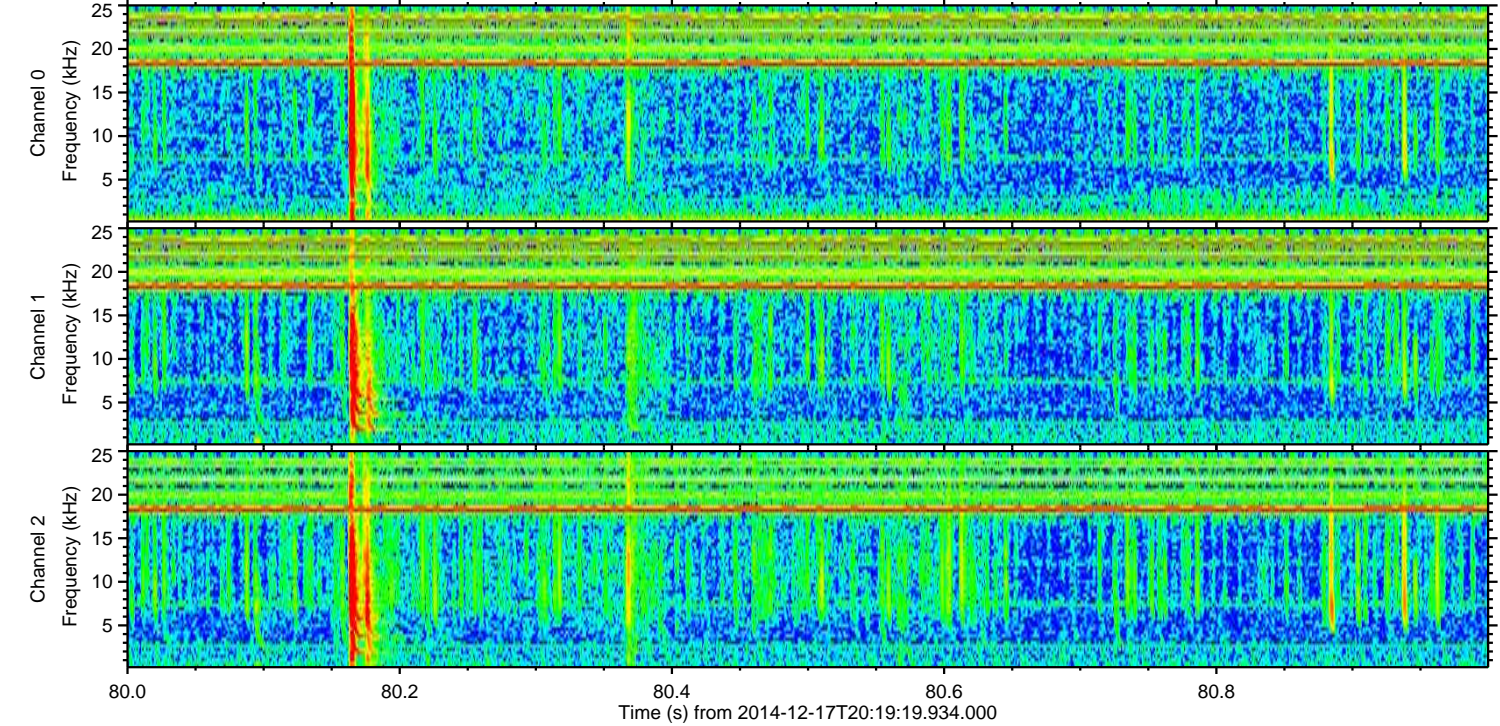
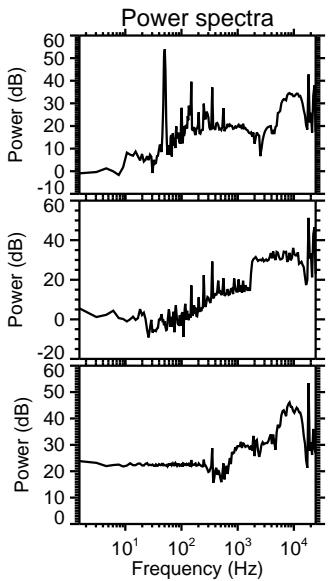
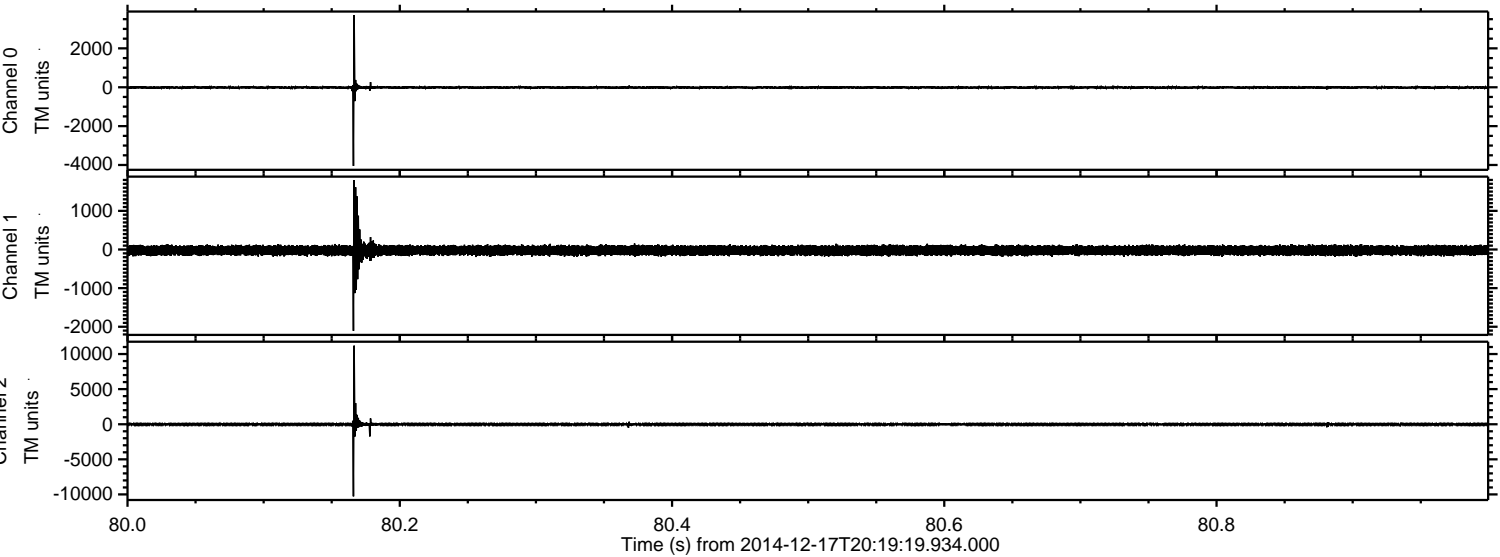


ELMAVAN 3D WAVEFORMS (Measured data sampled at 50 kHz) 49793 packets of 144 samples from 2014-12-17T20:19:19.934.000. Part 22/144

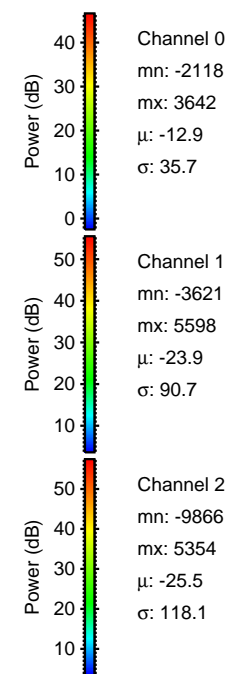
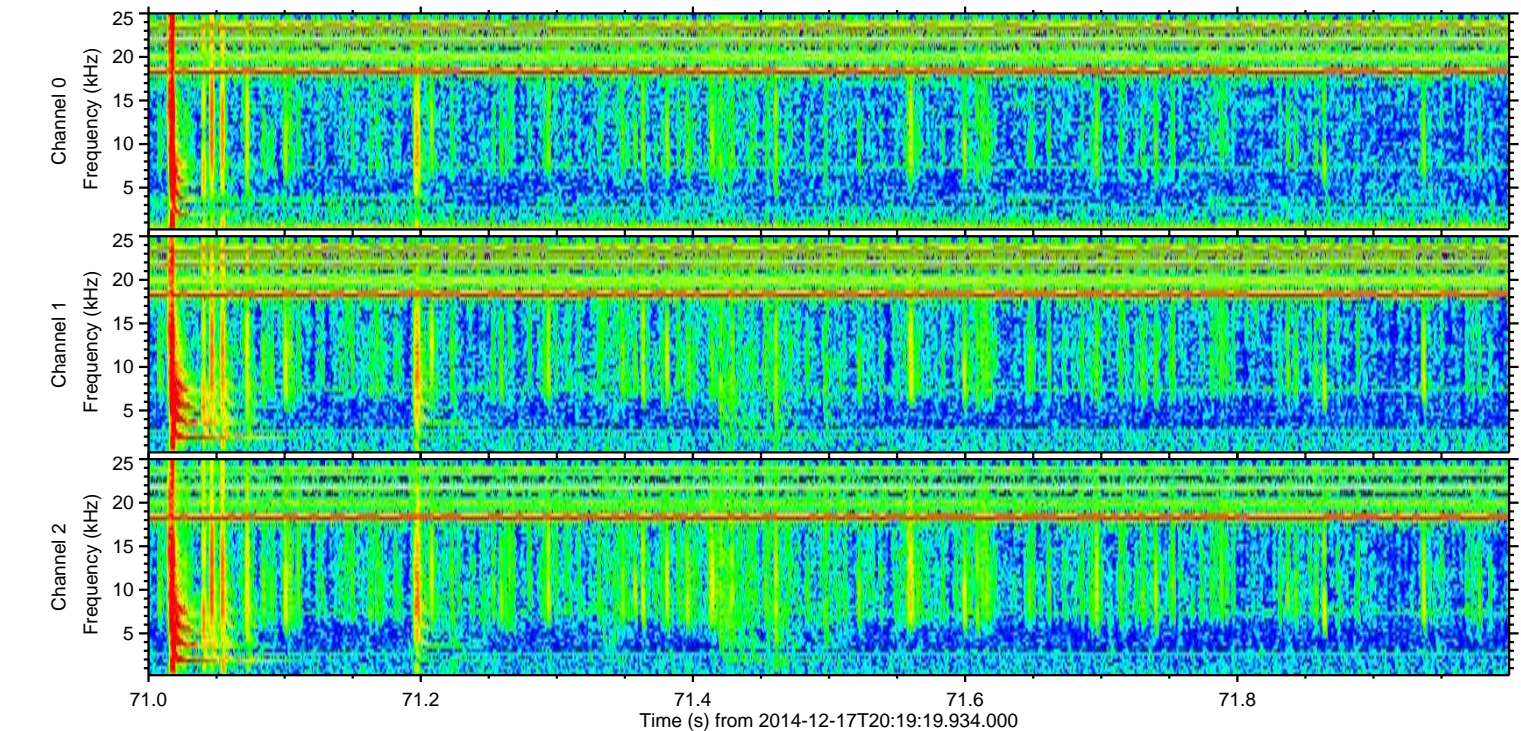
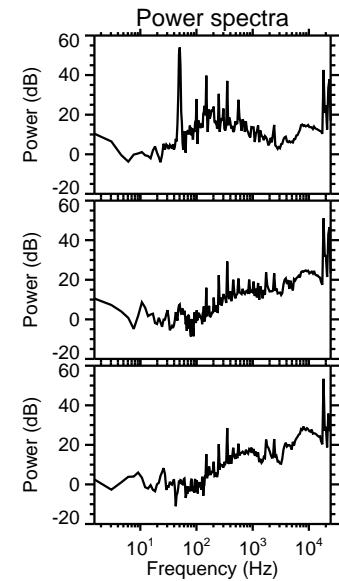
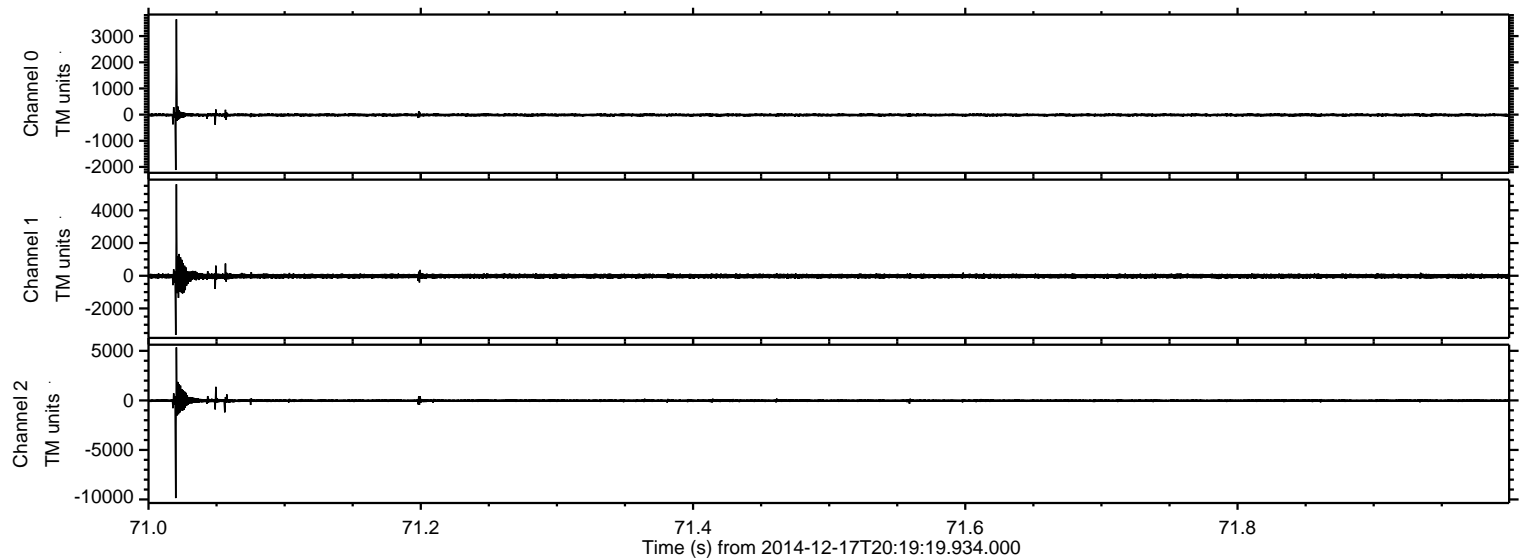
Processed Wed Dec 17 22:23:34 2014 by ELM ver.2012-10-06 from 001__elm20141217_201918__dat00.bin



Processed Wed Dec 17 22:23:35 2014 by ELM ver.2012-10-06 from 001__elm20141217_201918__dat00.bin

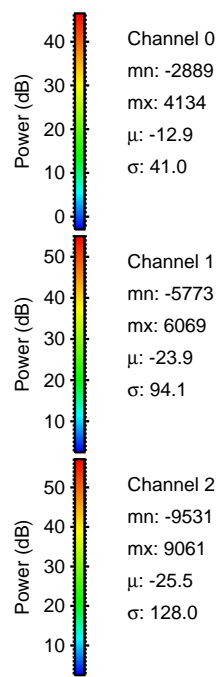
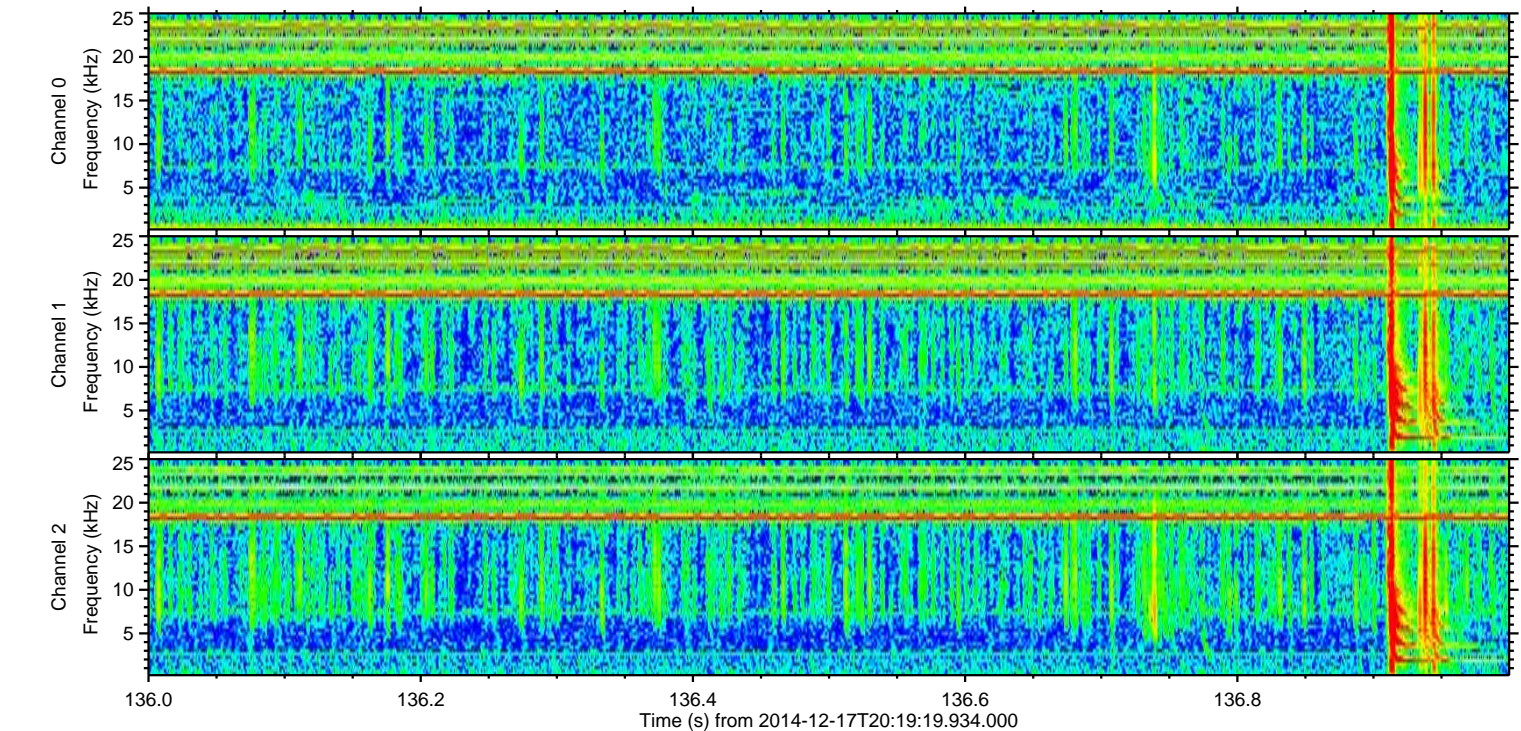
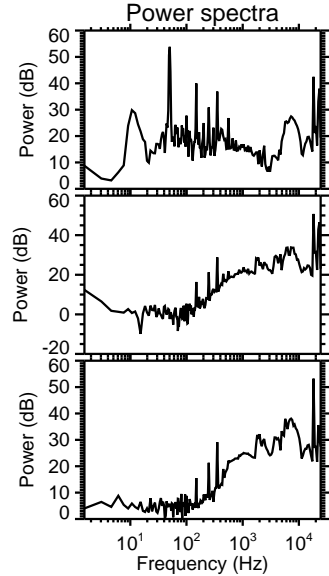
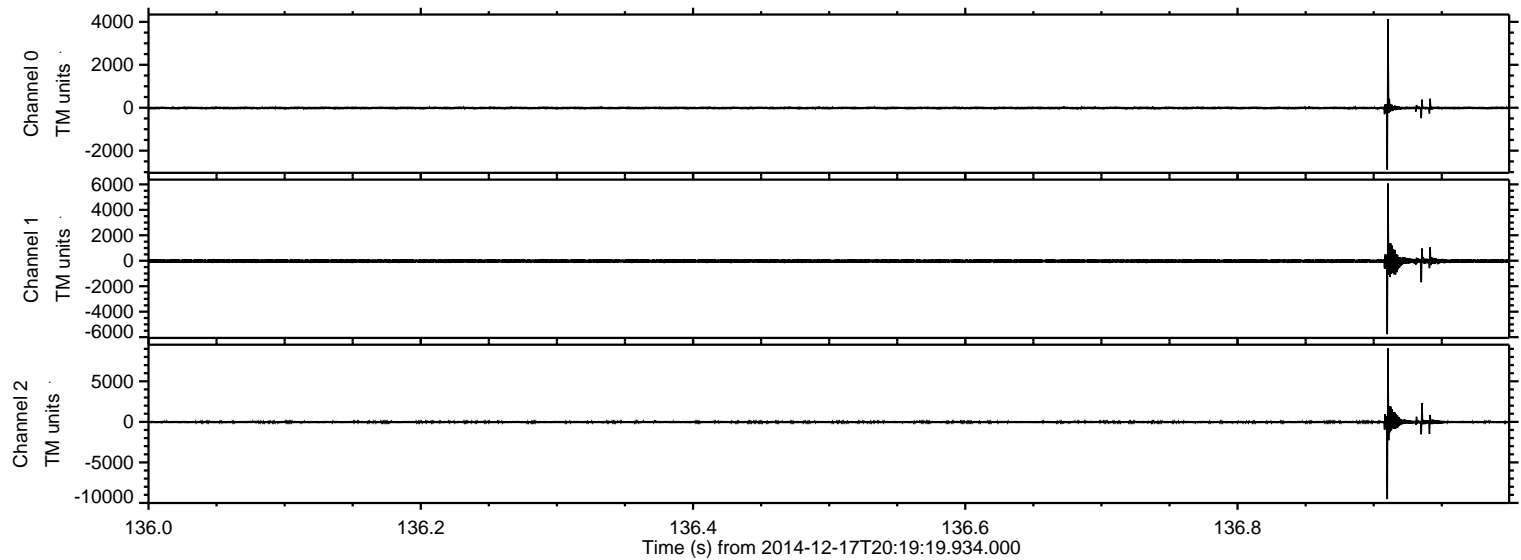


Processed Wed Dec 17 22:23:36 2014 by ELM ver.2012-10-06 from 001__elm20141217_201918__dat00.bin



ELMAVAN 3D WAVEFORMS (Measured data sampled at 50 kHz) 49793 packets of 144 samples from 2014-12-17T20:19:19.934.000. Part 137/144

Processed Wed Dec 17 22:23:37 2014 by ELM ver.2012-10-06 from 001__elm20141217_201918__dat00.bin



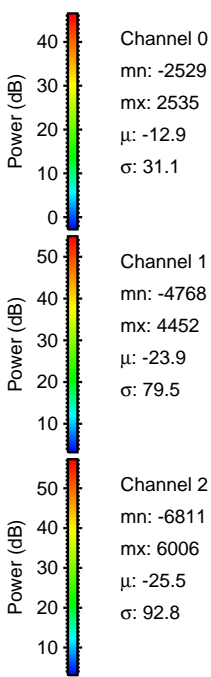
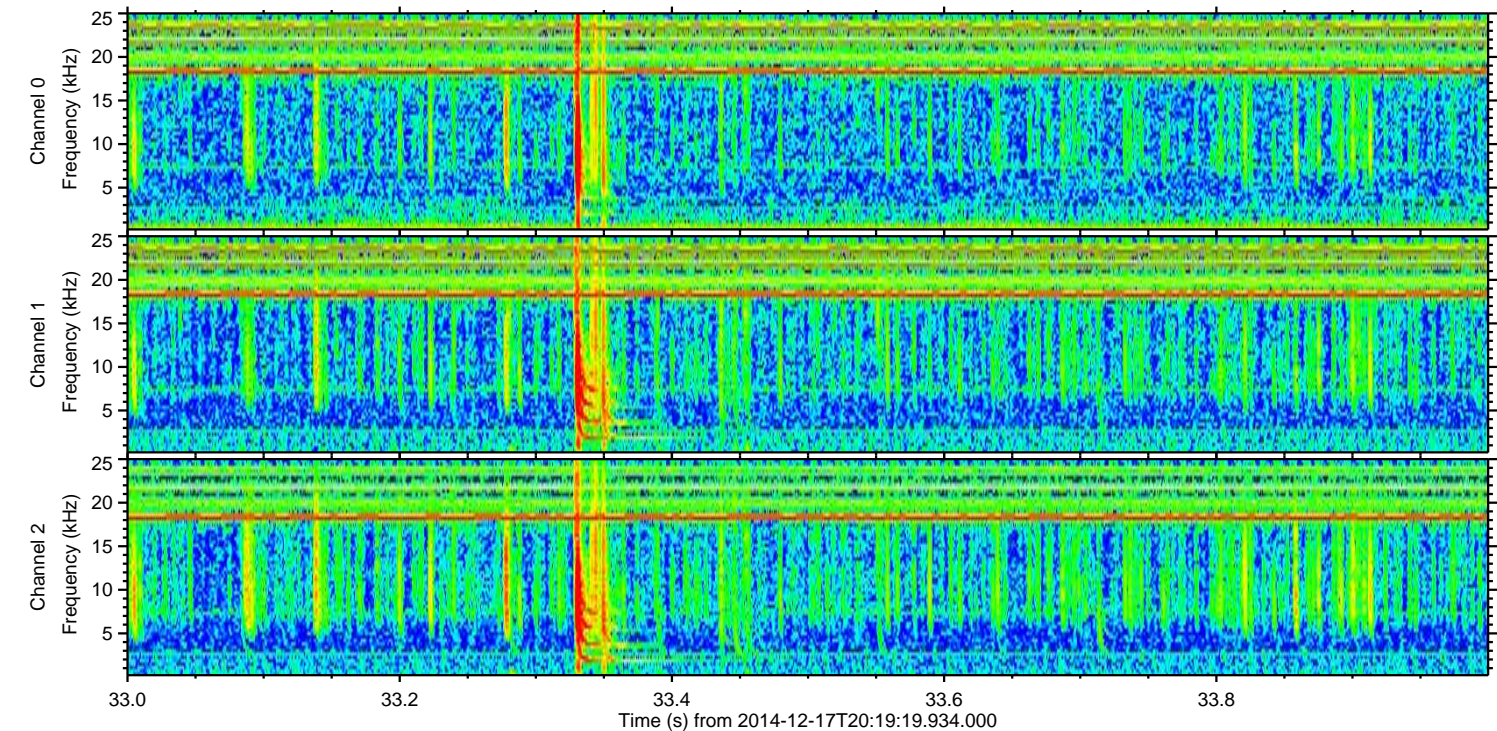
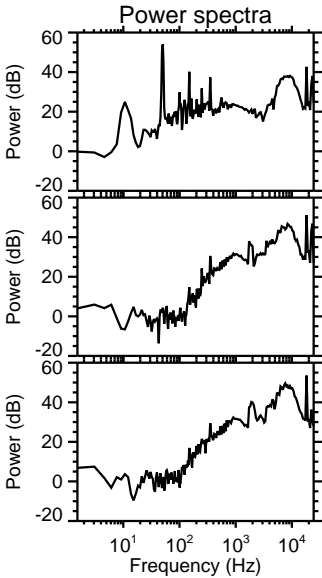
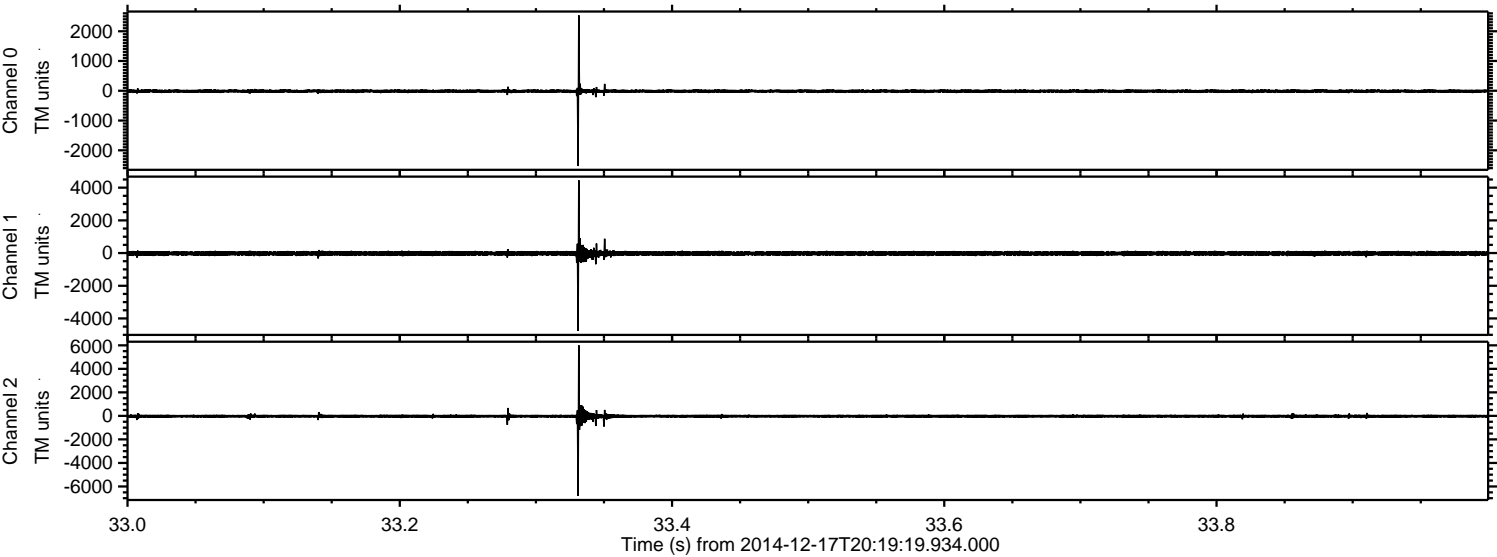
Channel 0
mn: -2889
mx: 4134
 μ : -12.9
 σ : 41.0

Channel 1
mn: -5773
mx: 6069
 μ : -23.9
 σ : 94.1

Channel 2
mn: -9531
mx: 9061
 μ : -25.5
 σ : 128.0

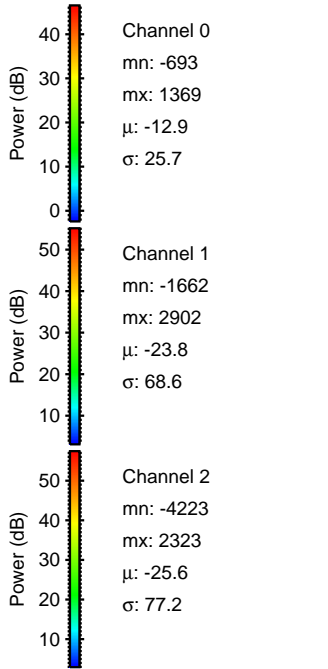
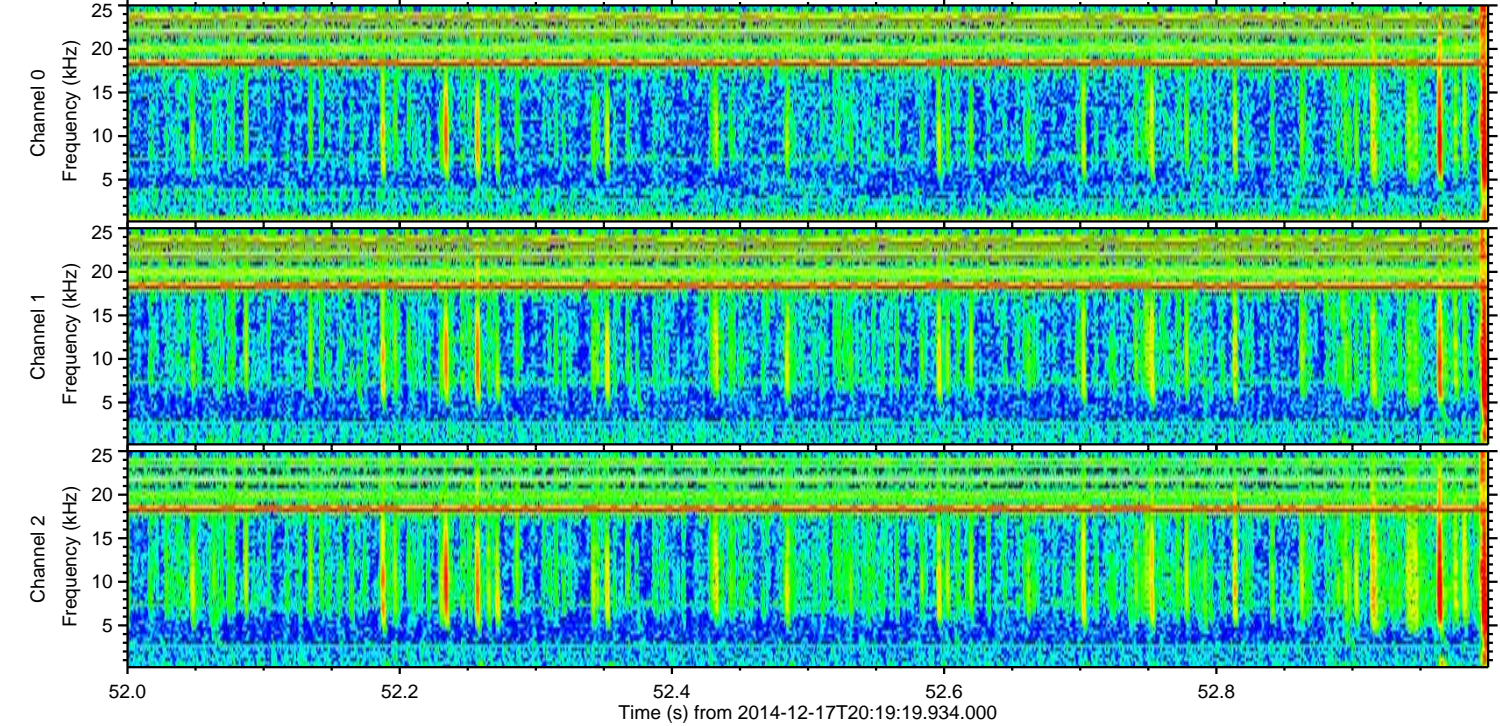
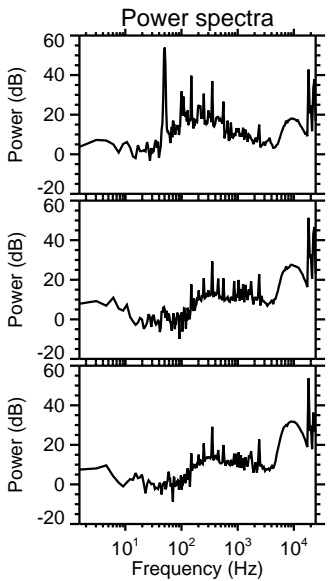
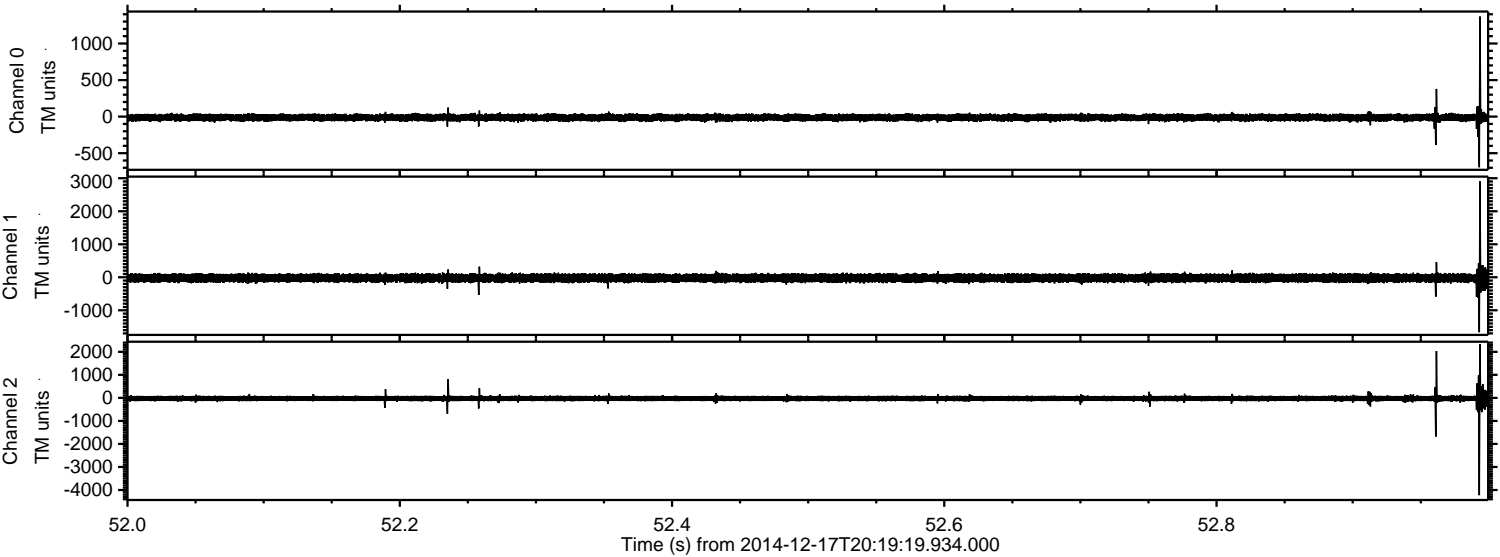
ELMAVAN 3D WAVEFORMS (Measured data sampled at 50 kHz) 49793 packets of 144 samples from 2014-12-17T20:19:19.934.000. Part 34/144

Processed Wed Dec 17 22:23:38 2014 by ELM ver.2012-10-06 from 001__elm20141217_201918__dat00.bin

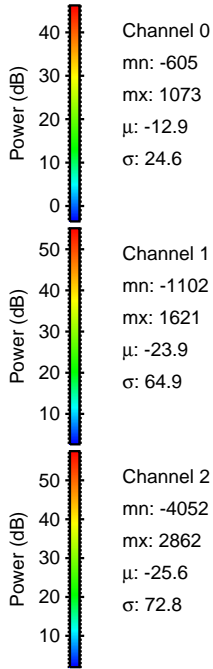
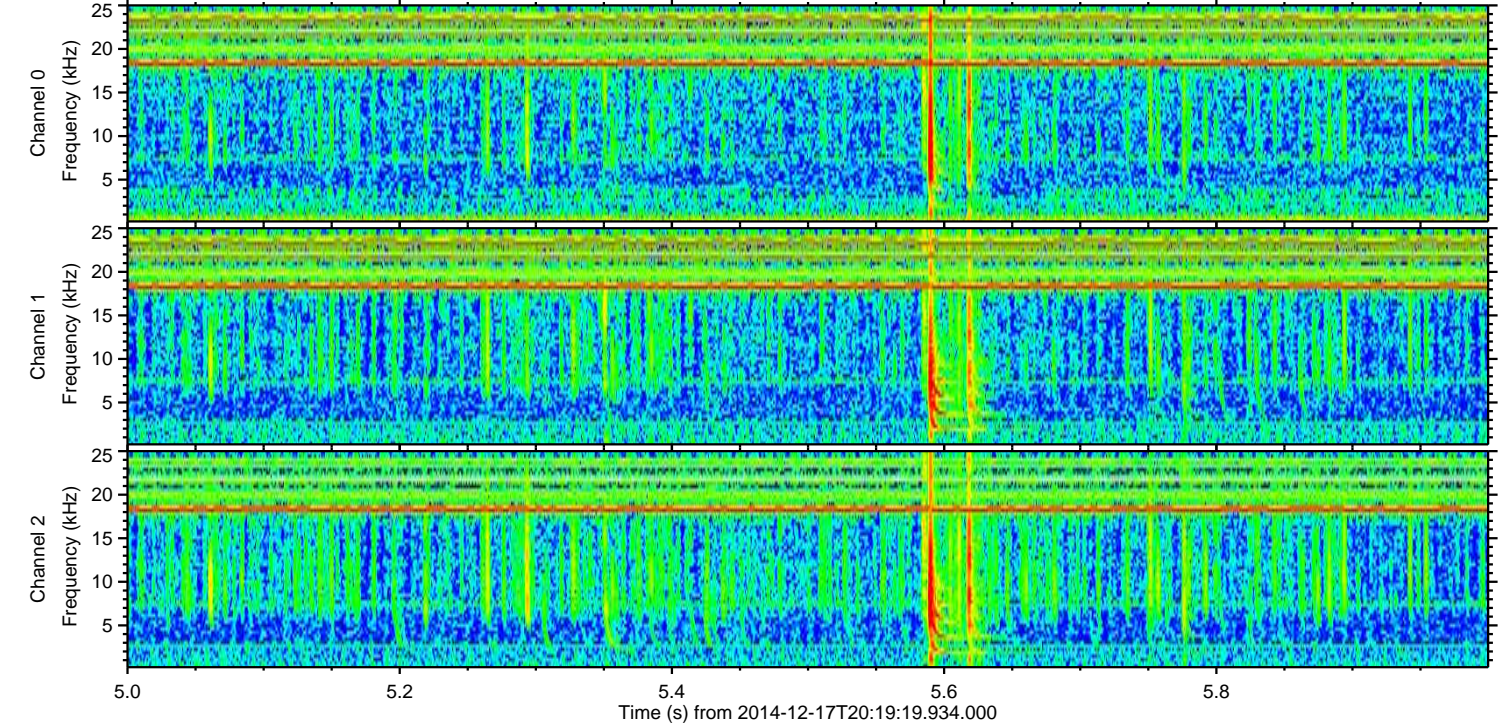
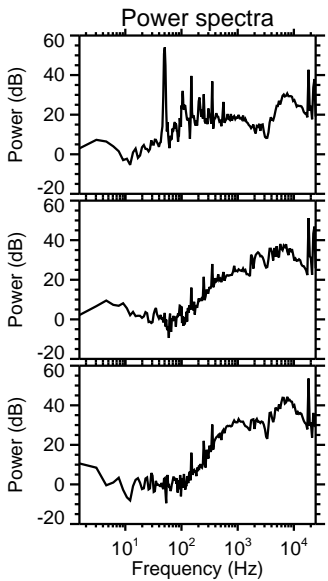
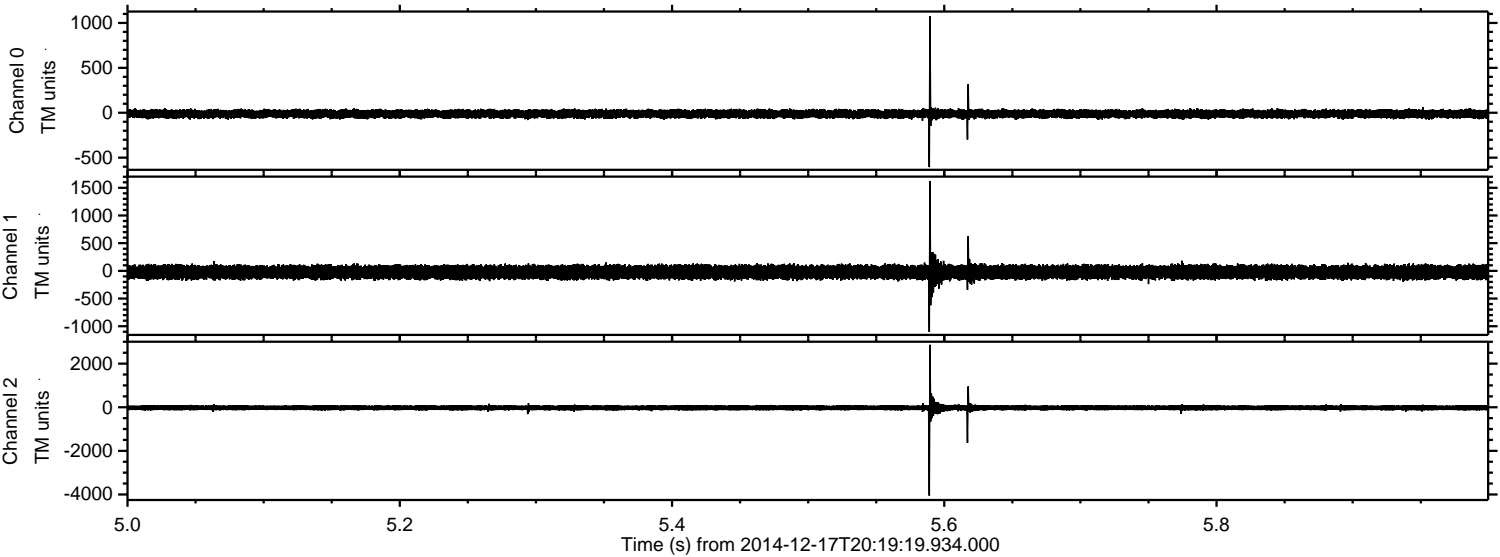


ELMAVAN 3D WAVEFORMS (Measured data sampled at 50 kHz) 49793 packets of 144 samples from 2014-12-17T20:19:19.934.000. Part 53/144

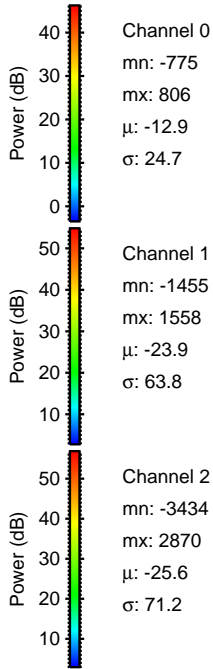
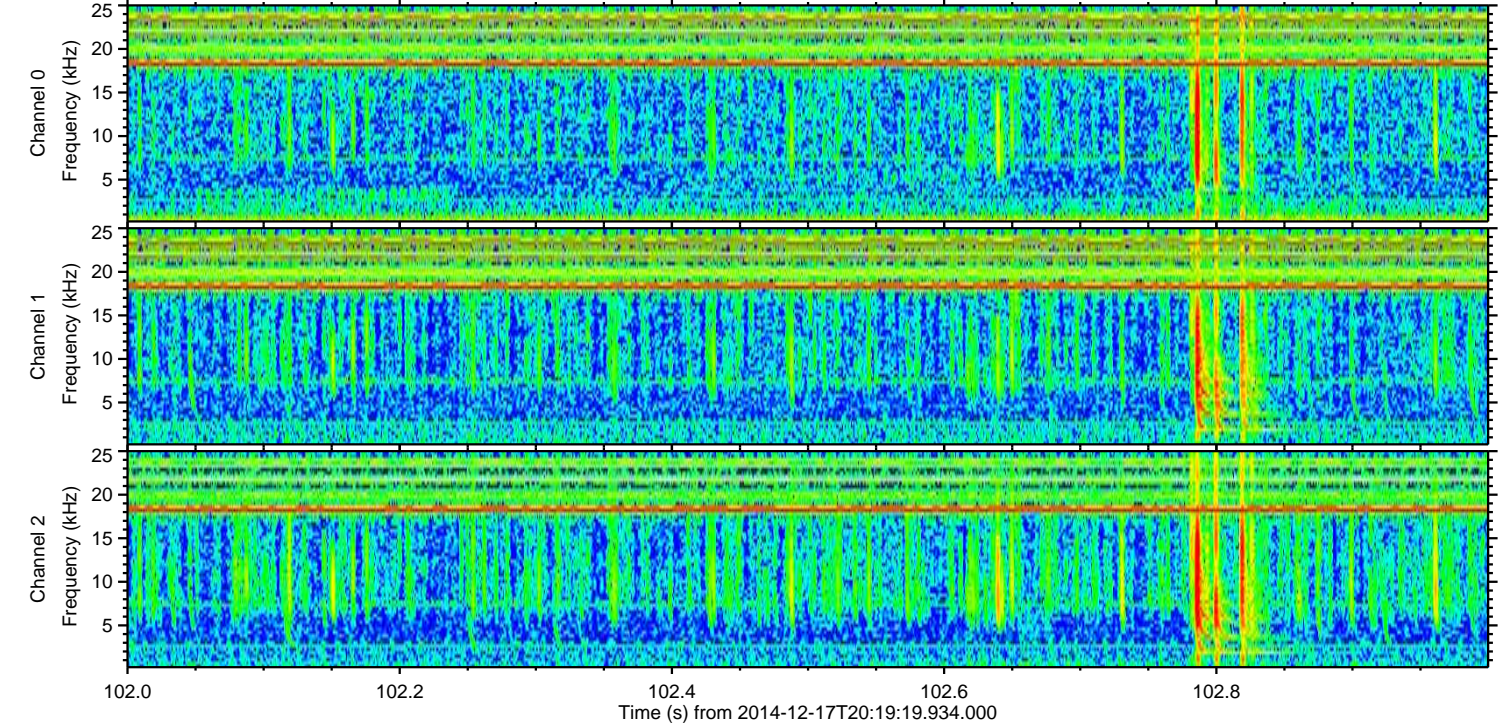
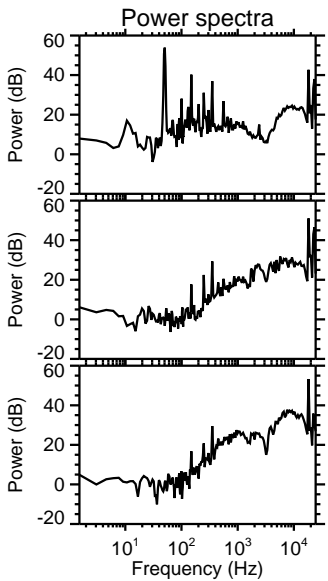
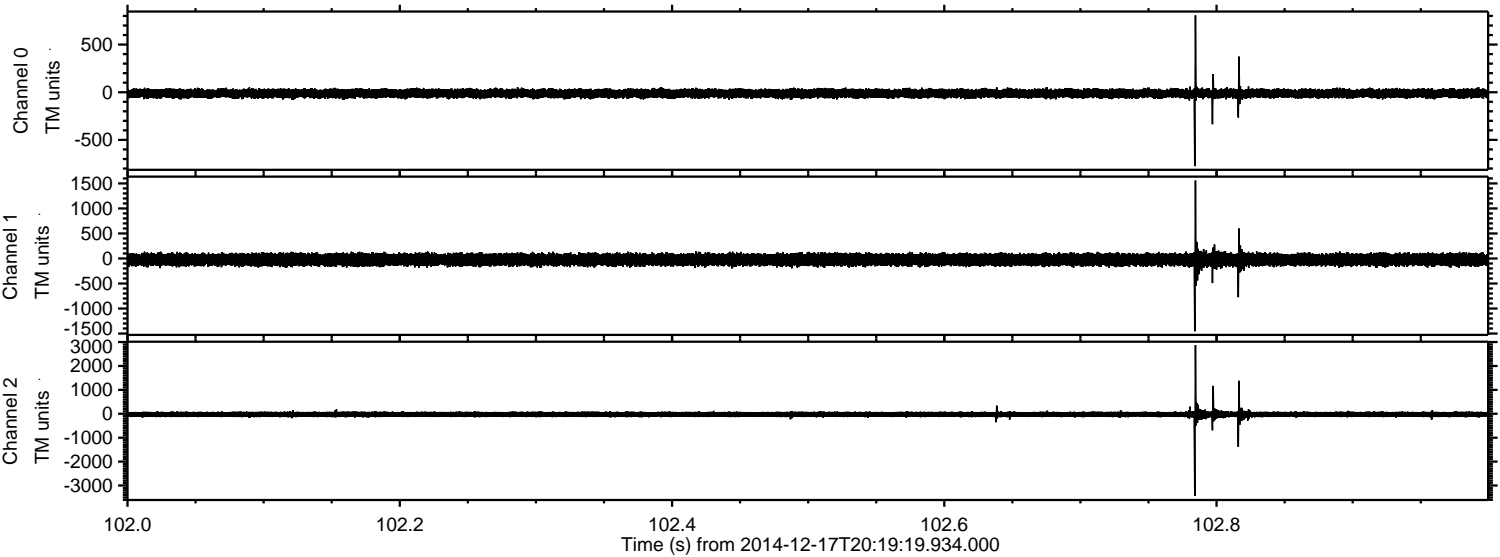
Processed Wed Dec 17 22:23:39 2014 by ELM ver.2012-10-06 from 001__elm20141217_201918__dat00.bin



Processed Wed Dec 17 22:23:40 2014 by ELM ver.2012-10-06 from 001__elm20141217_201918__dat00.bin



Processed Wed Dec 17 22:23:41 2014 by ELM ver.2012-10-06 from 001__elm20141217_201918__dat00.bin



Channel 0
mn: -775
mx: 806
 μ : -12.9
 σ : 24.7

Channel 1
mn: -1455
mx: 1558
 μ : -23.9
 σ : 63.8

Channel 2
mn: -3434
mx: 2870
 μ : -25.6
 σ : 71.2

