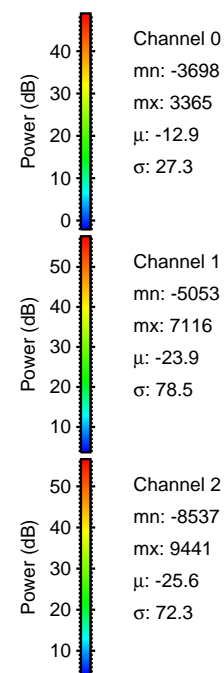
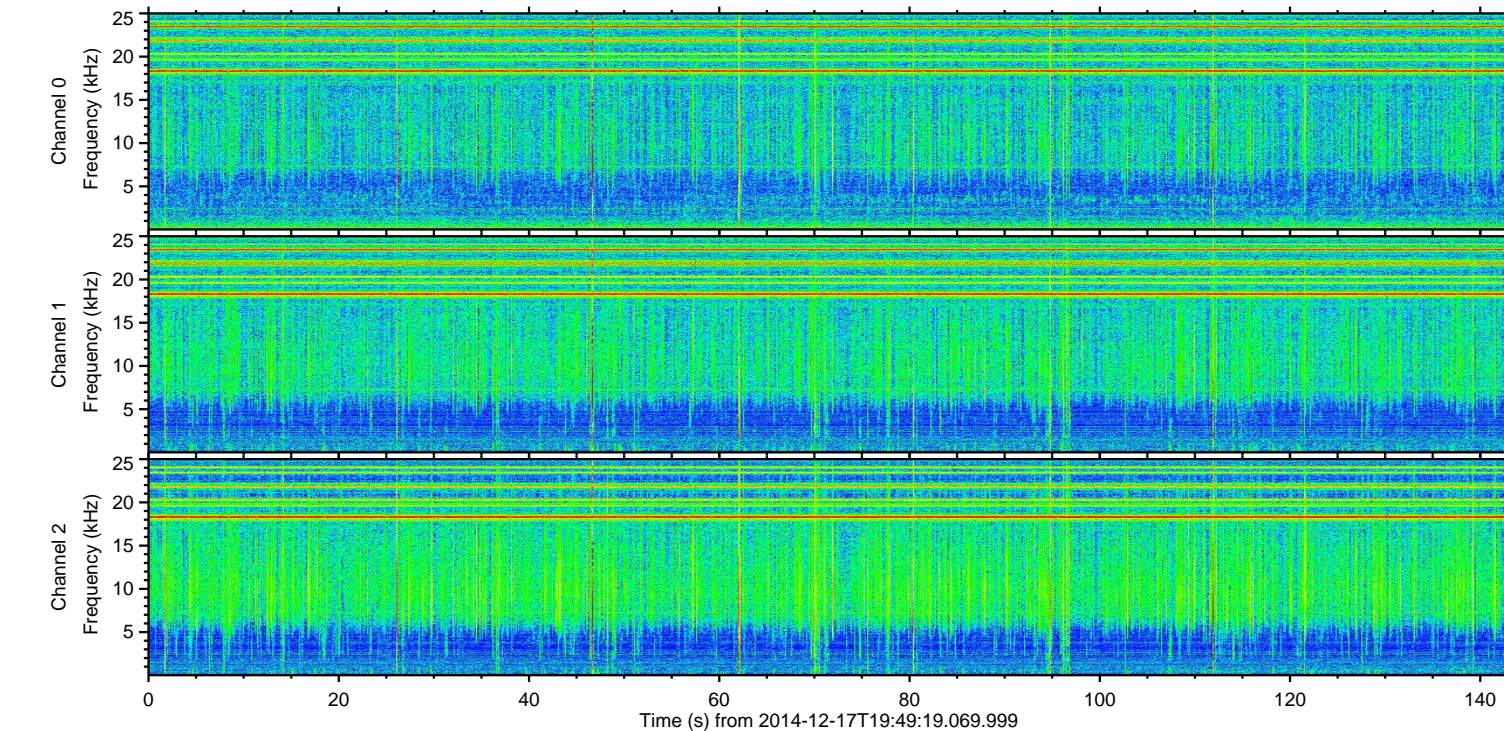
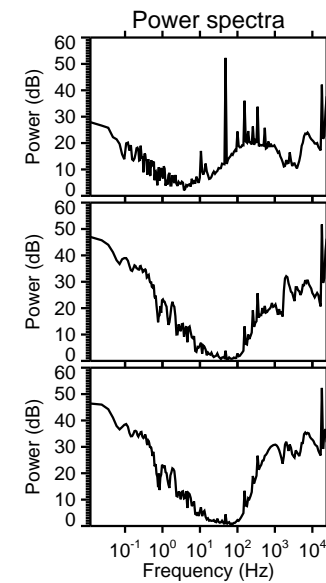
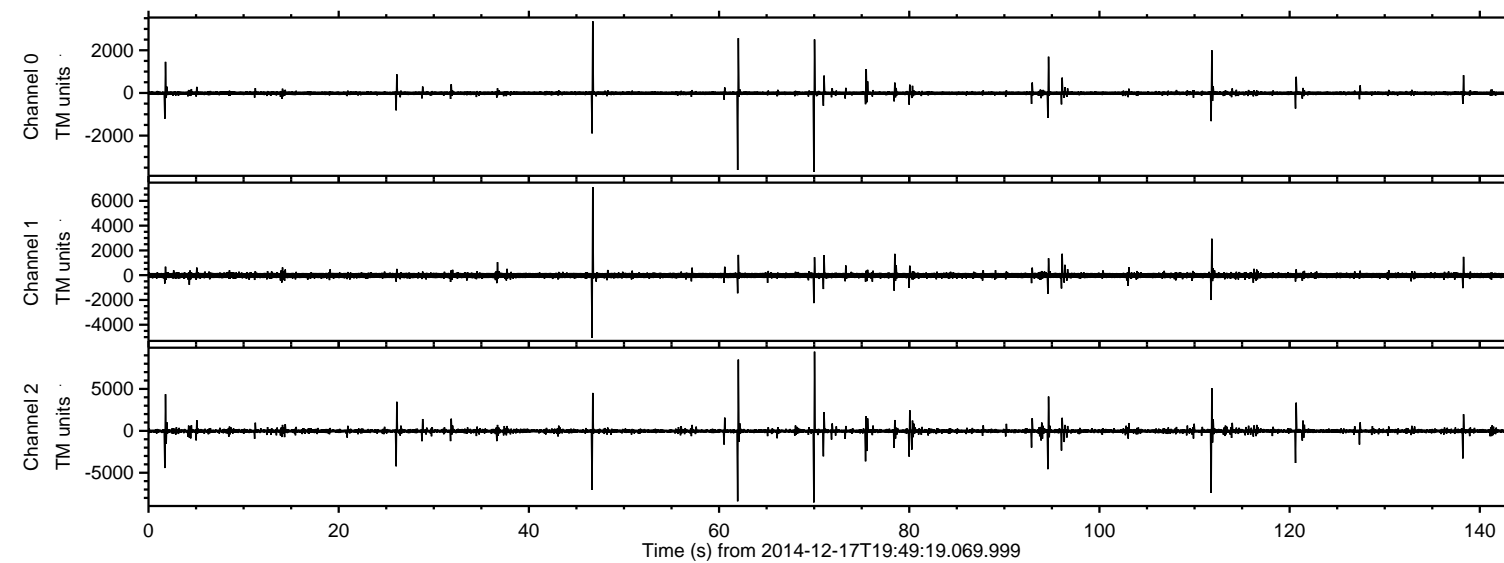


# ELMAVAN 3D WAVEFORMS (Measured data sampled at 50 kHz) 49682 packets of 144 samples from 2014-12-17T19:49:19.069.999.

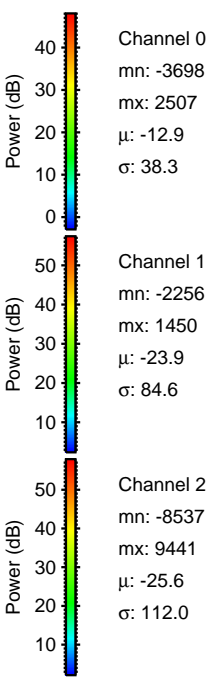
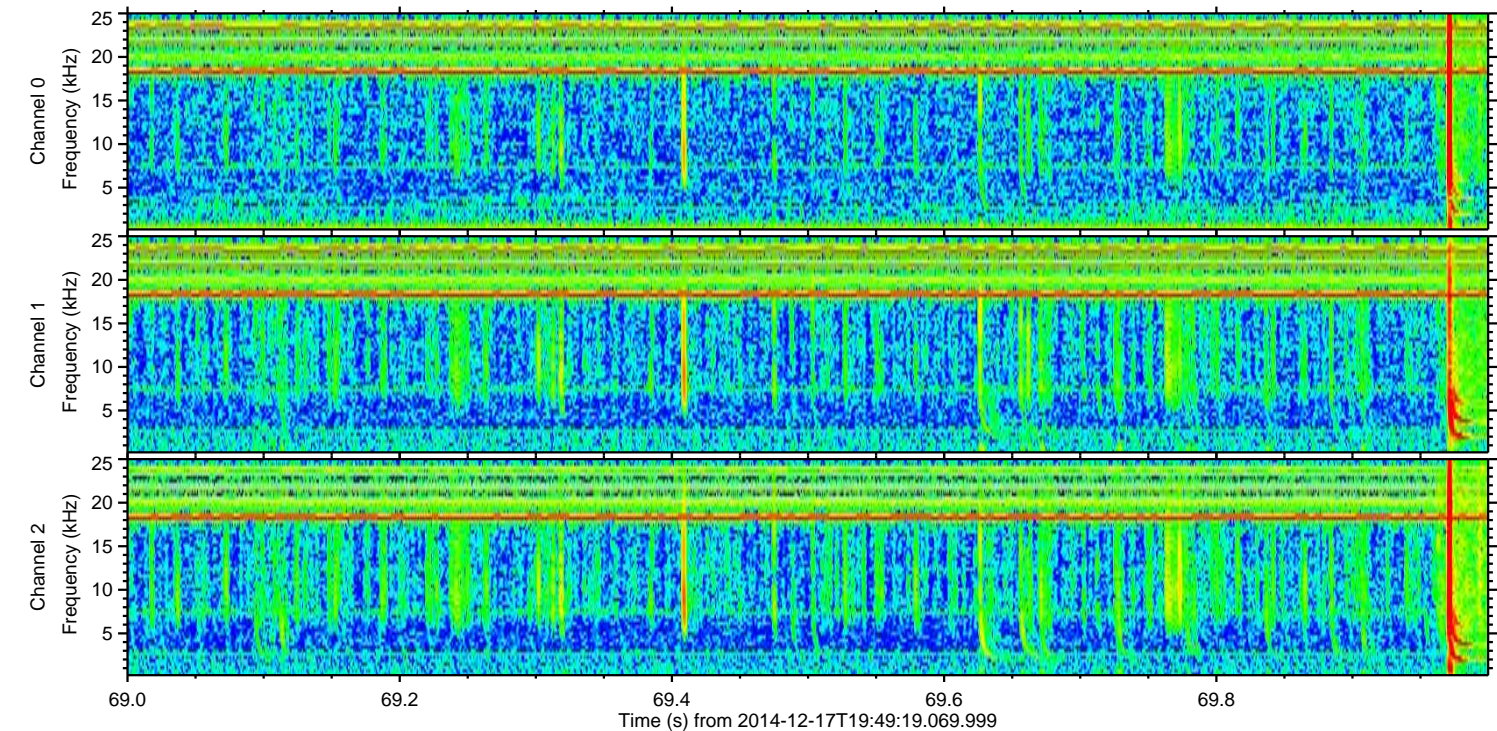
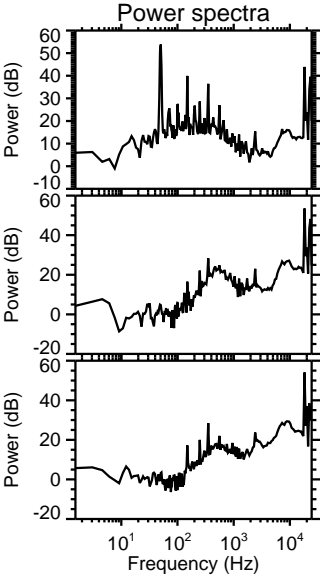
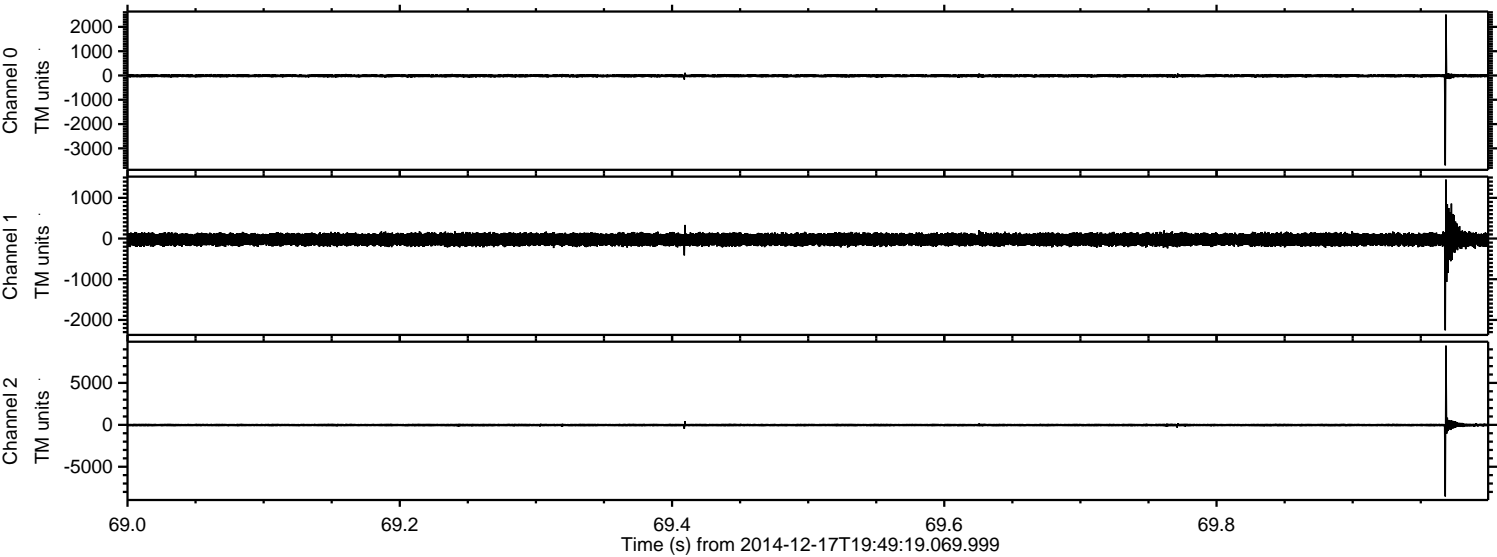
Processed Wed Dec 17 22:05:48 2014 by ELM ver.2012-10-06 from 001\_\_elm20141217\_194918\_\_dat00.bin





ELMAVAN 3D WAVEFORMS (Measured data sampled at 50 kHz) 49682 packets of 144 samples from 2014-12-17T19:49:19.069.999. Part 70/144

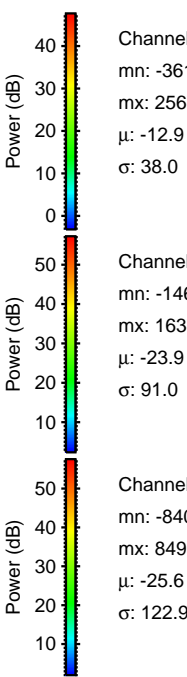
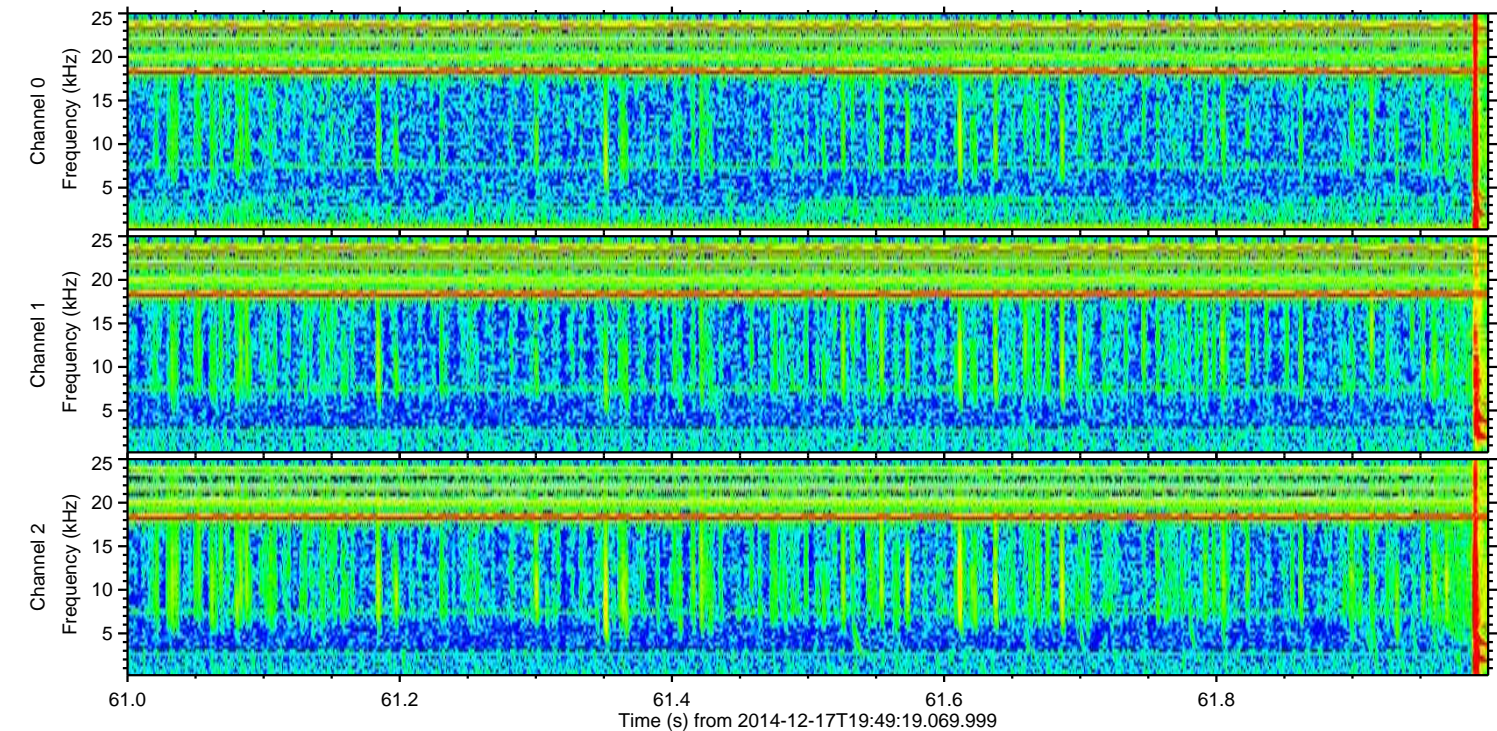
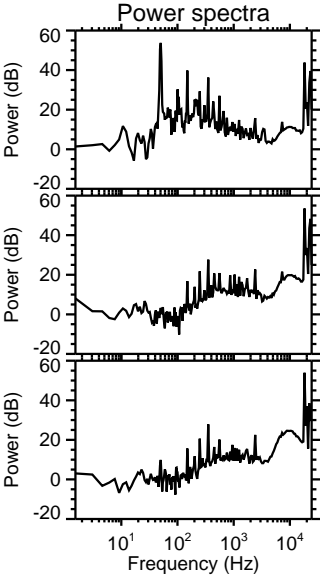
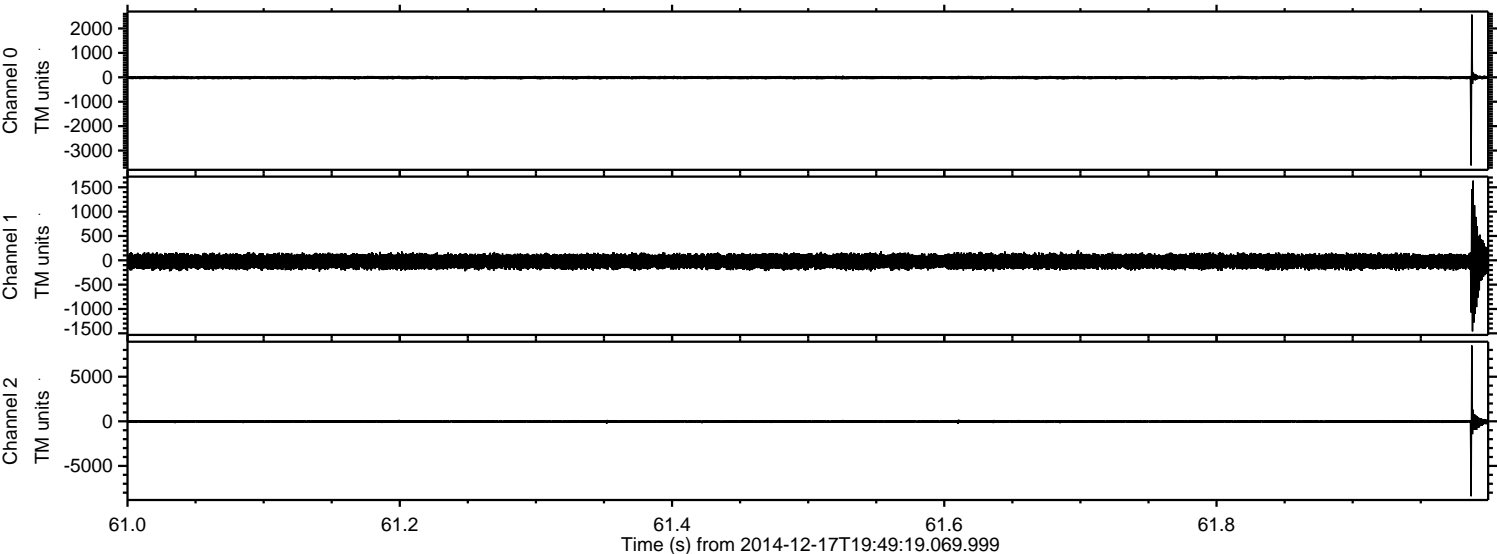
Processed Wed Dec 17 22:06:01 2014 by ELM ver.2012-10-06 from 001\_\_elm20141217\_194918\_\_dat00.bin





ELMAVAN 3D WAVEFORMS (Measured data sampled at 50 kHz) 49682 packets of 144 samples from 2014-12-17T19:49:19.069.999. Part 62/144

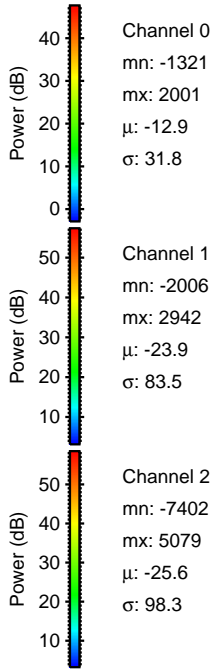
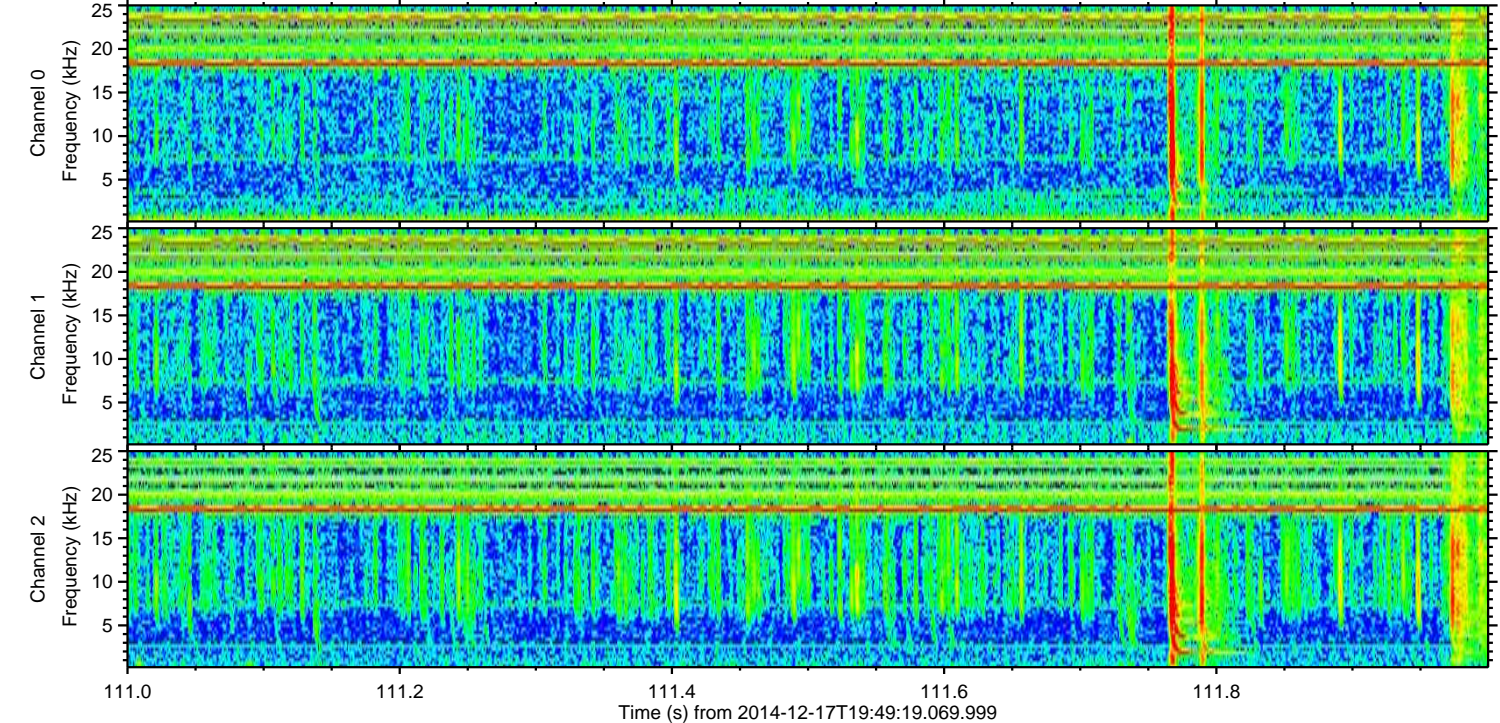
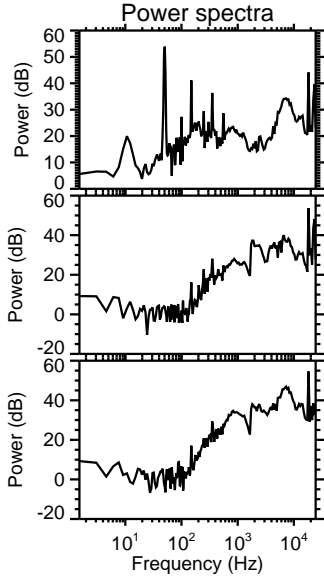
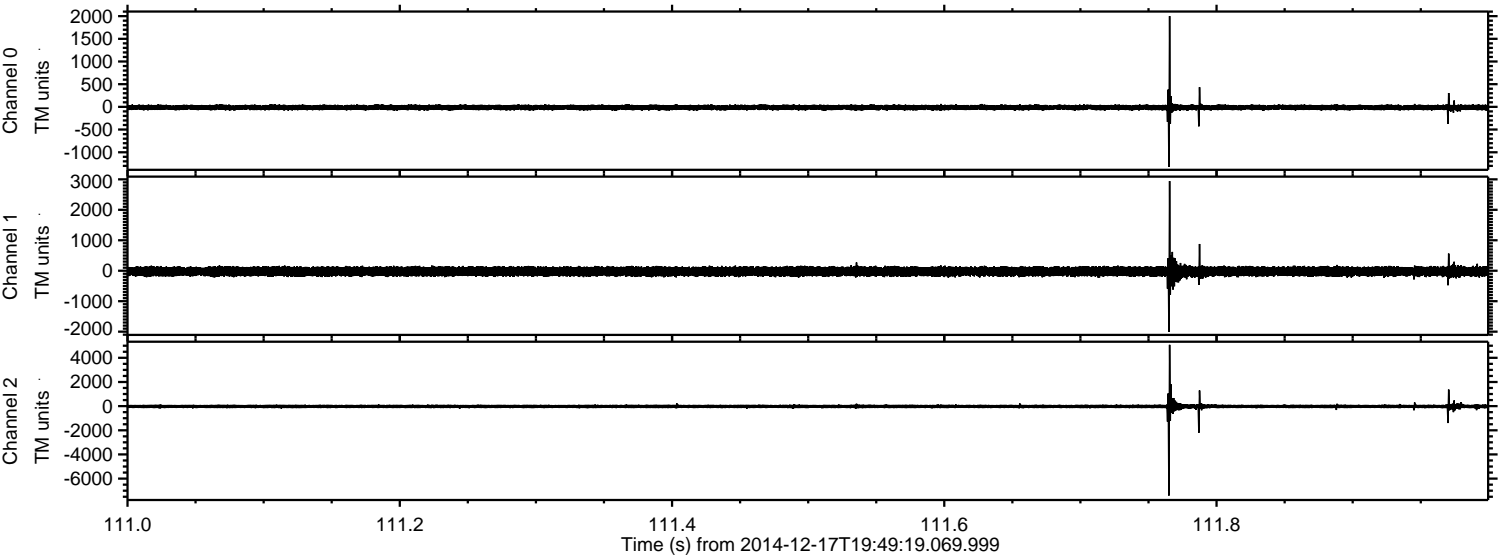
Processed Wed Dec 17 22:06:02 2014 by ELM ver.2012-10-06 from 001\_\_elm20141217\_194918\_\_dat00.bin





ELMAVAN 3D WAVEFORMS (Measured data sampled at 50 kHz) 49682 packets of 144 samples from 2014-12-17T19:49:19.069.999. Part 112/144

Processed Wed Dec 17 22:06:03 2014 by ELM ver.2012-10-06 from 001\_\_elm20141217\_194918\_\_dat00.bin



Channel 0  
mn: -1321  
mx: 2001  
 $\mu$ : -12.9  
 $\sigma$ : 31.8

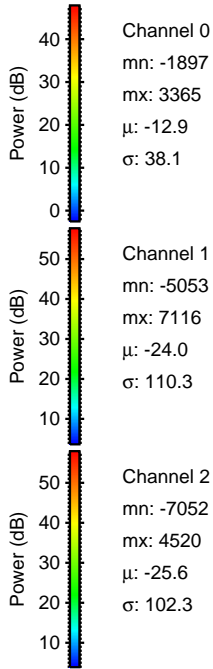
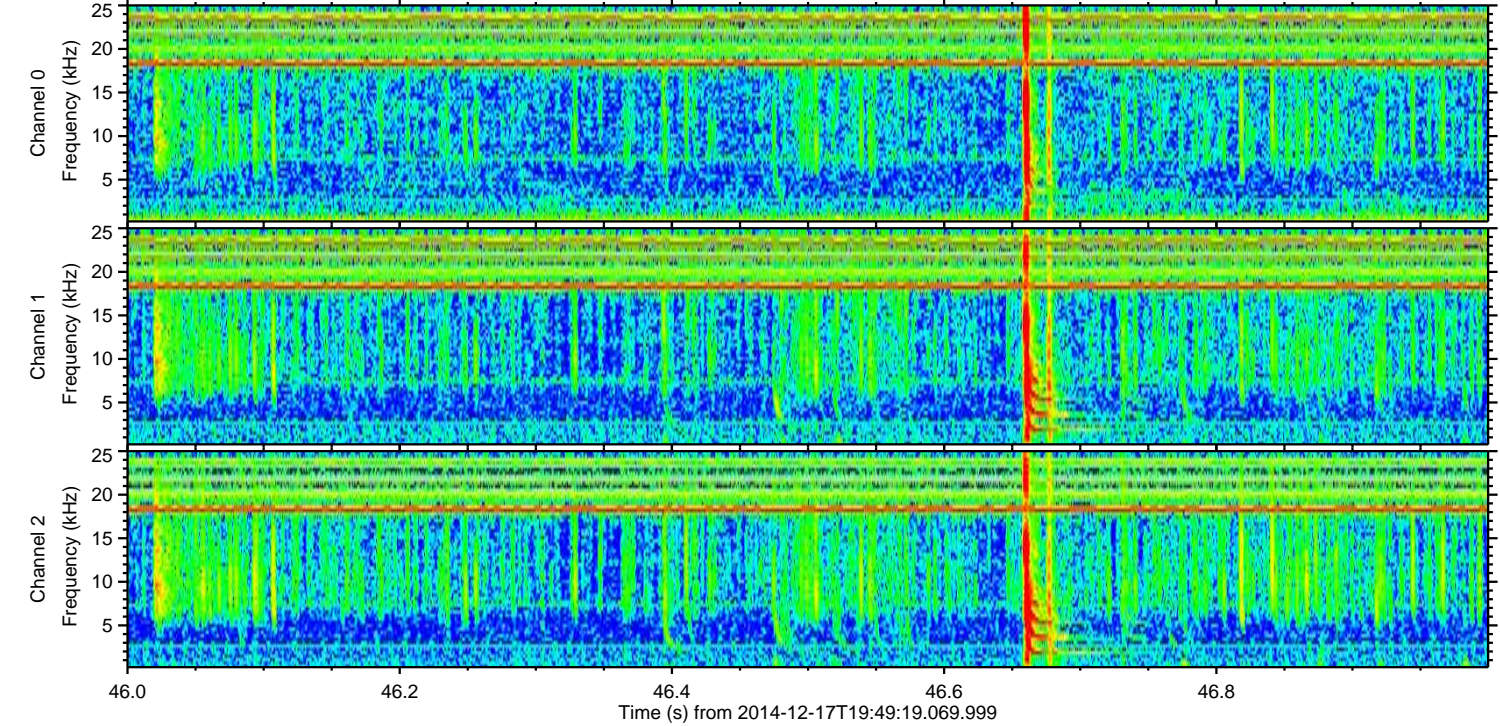
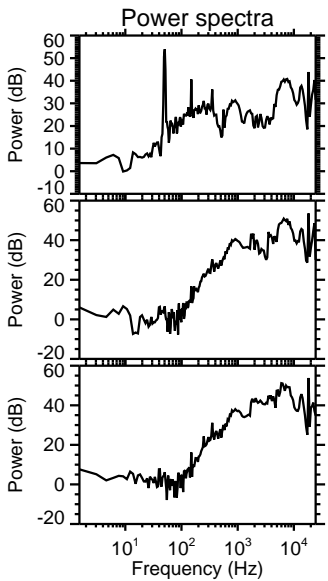
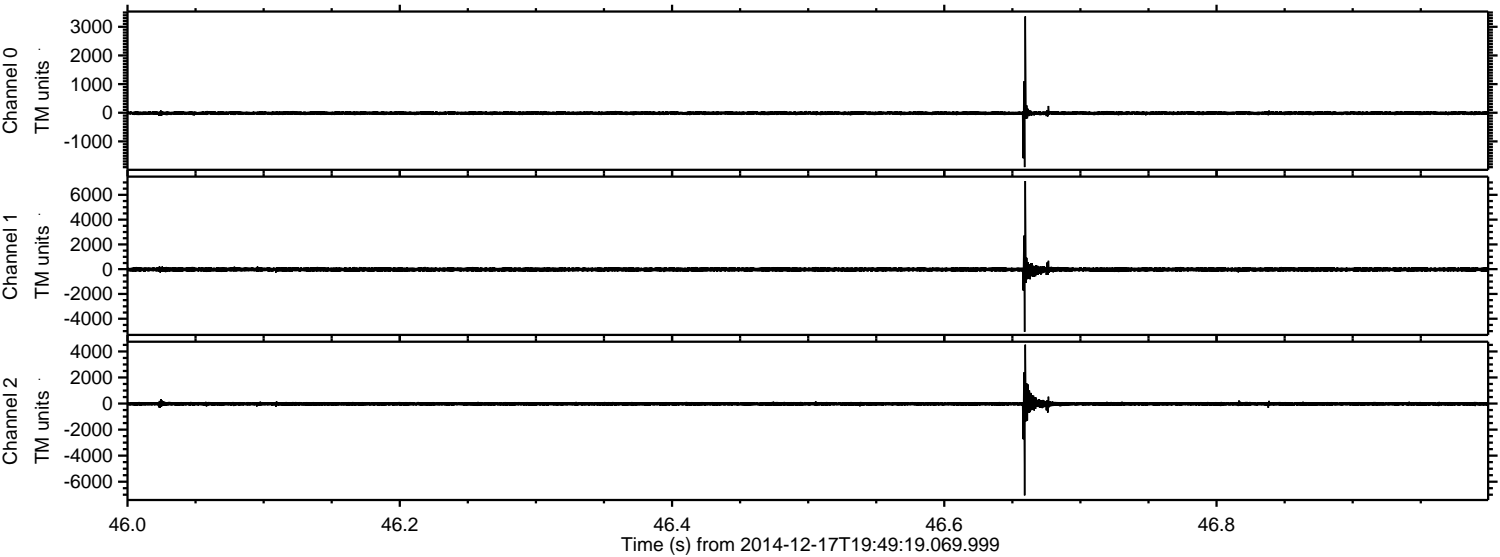
Channel 1  
mn: -2006  
mx: 2942  
 $\mu$ : -23.9  
 $\sigma$ : 83.5

Channel 2  
mn: -7402  
mx: 5079  
 $\mu$ : -25.6  
 $\sigma$ : 98.3



ELMAVAN 3D WAVEFORMS (Measured data sampled at 50 kHz) 49682 packets of 144 samples from 2014-12-17T19:49:19.069.999. Part 47/144

Processed Wed Dec 17 22:06:04 2014 by ELM ver.2012-10-06 from 001\_\_elm20141217\_194918\_\_dat00.bin



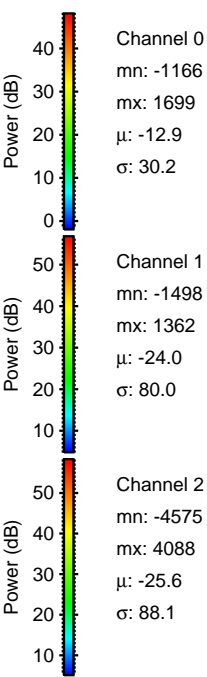
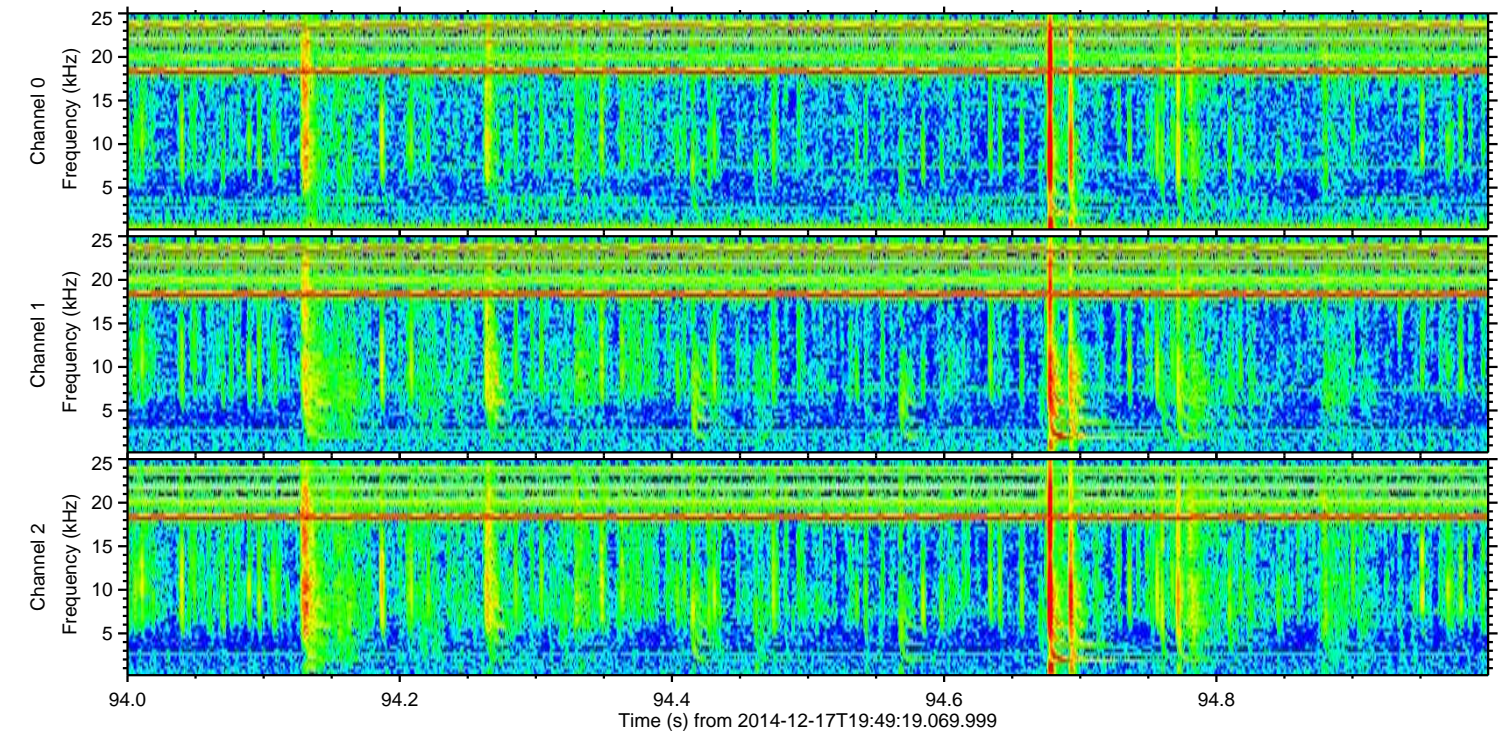
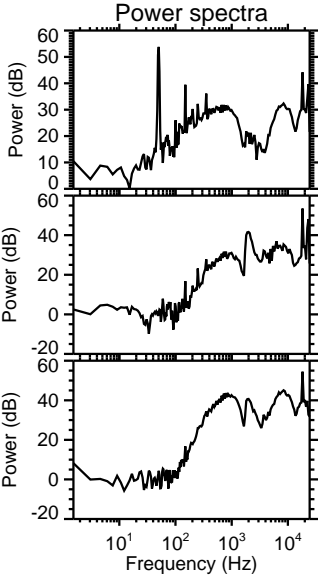
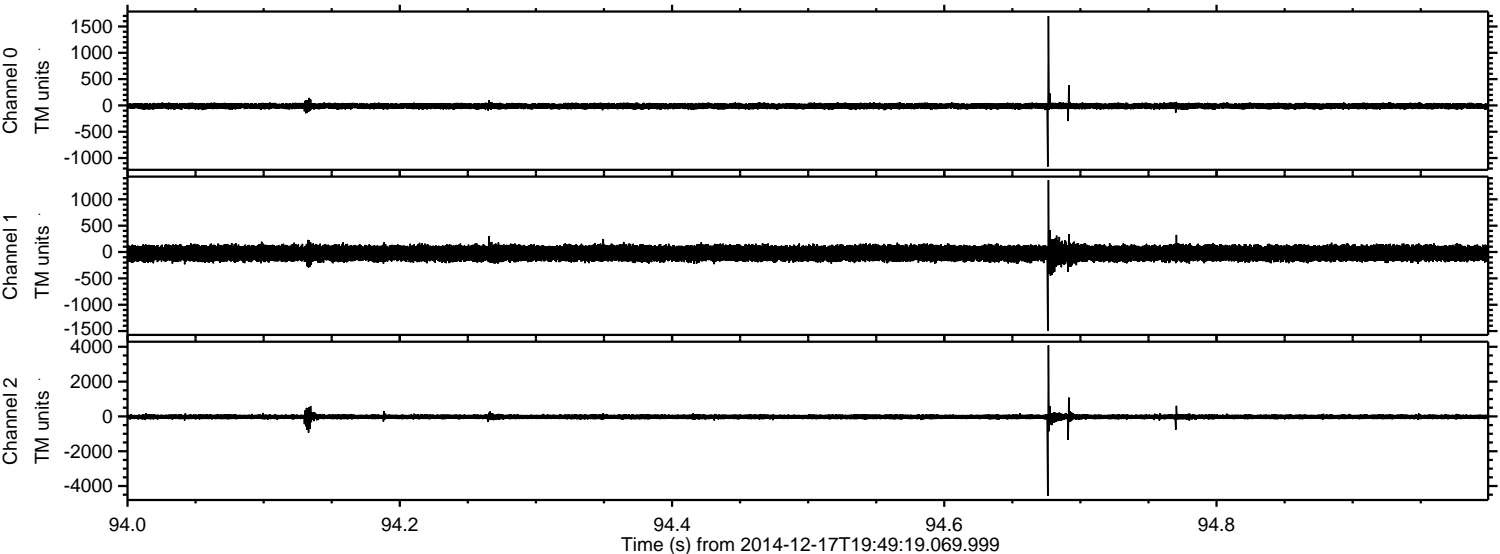
Channel 0  
mn: -1897  
mx: 3365  
 $\mu$ : -12.9  
 $\sigma$ : 38.1

Channel 1  
mn: -5053  
mx: 7116  
 $\mu$ : -24.0  
 $\sigma$ : 110.3

Channel 2  
mn: -7052  
mx: 4520  
 $\mu$ : -25.6  
 $\sigma$ : 102.3



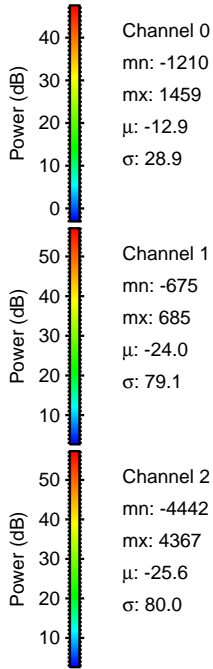
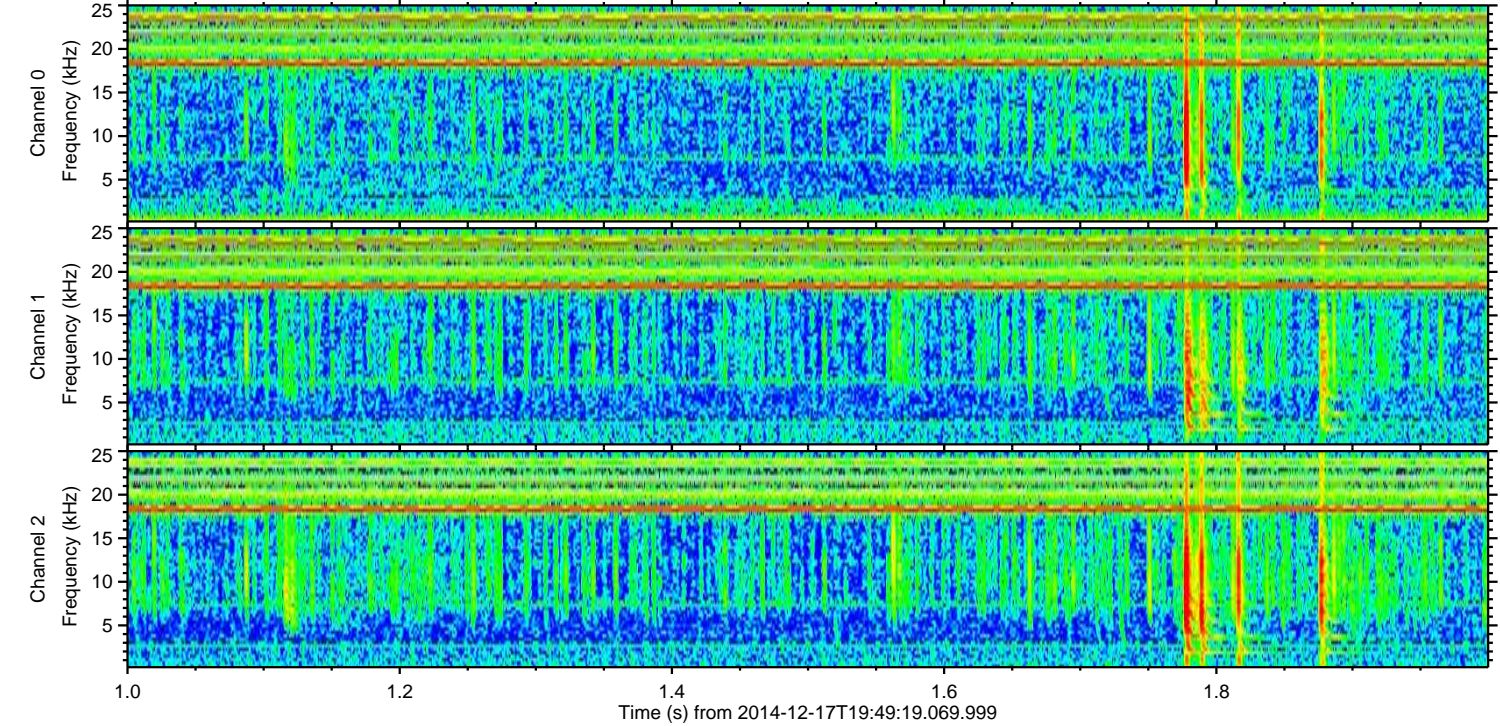
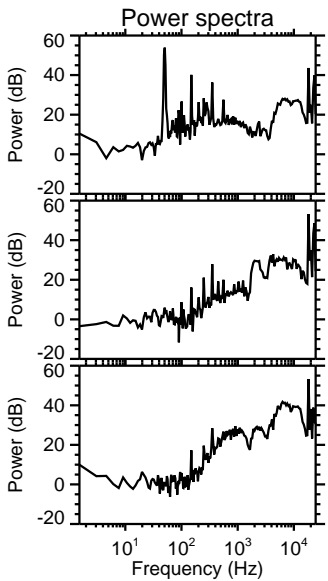
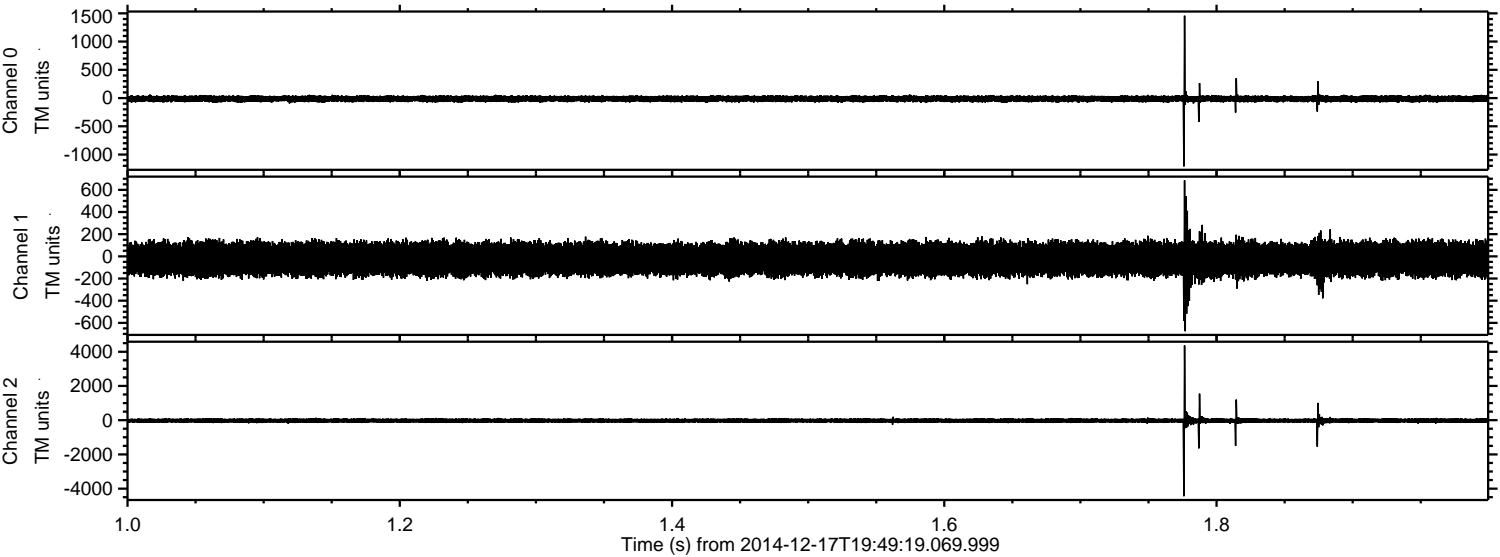
Processed Wed Dec 17 22:06:05 2014 by ELM ver.2012-10-06 from 001\_\_elm20141217\_194918\_\_dat00.bin





ELMAVAN 3D WAVEFORMS (Measured data sampled at 50 kHz) 49682 packets of 144 samples from 2014-12-17T19:49:19.069.999. Part 2/144

Processed Wed Dec 17 22:06:06 2014 by ELM ver.2012-10-06 from 001\_\_elm20141217\_194918\_\_dat00.bin



Channel 0  
mn: -1210  
mx: 1459  
 $\mu$ : -12.9  
 $\sigma$ : 28.9

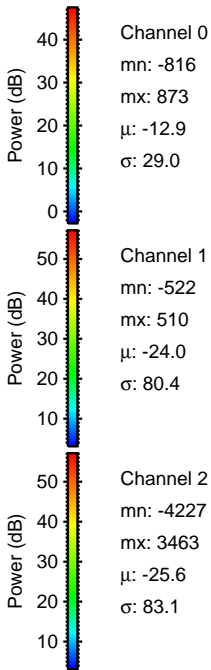
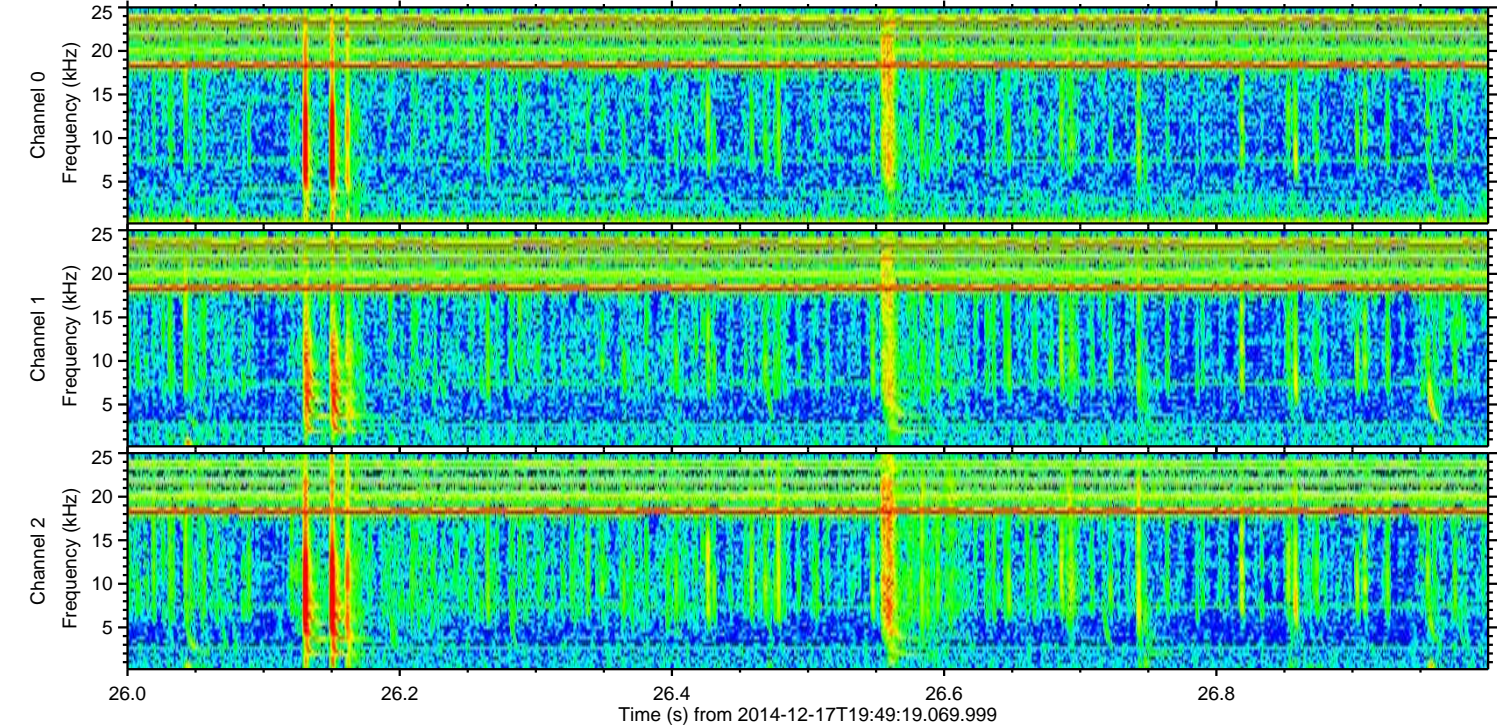
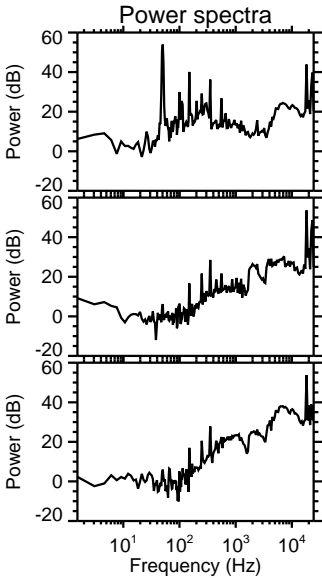
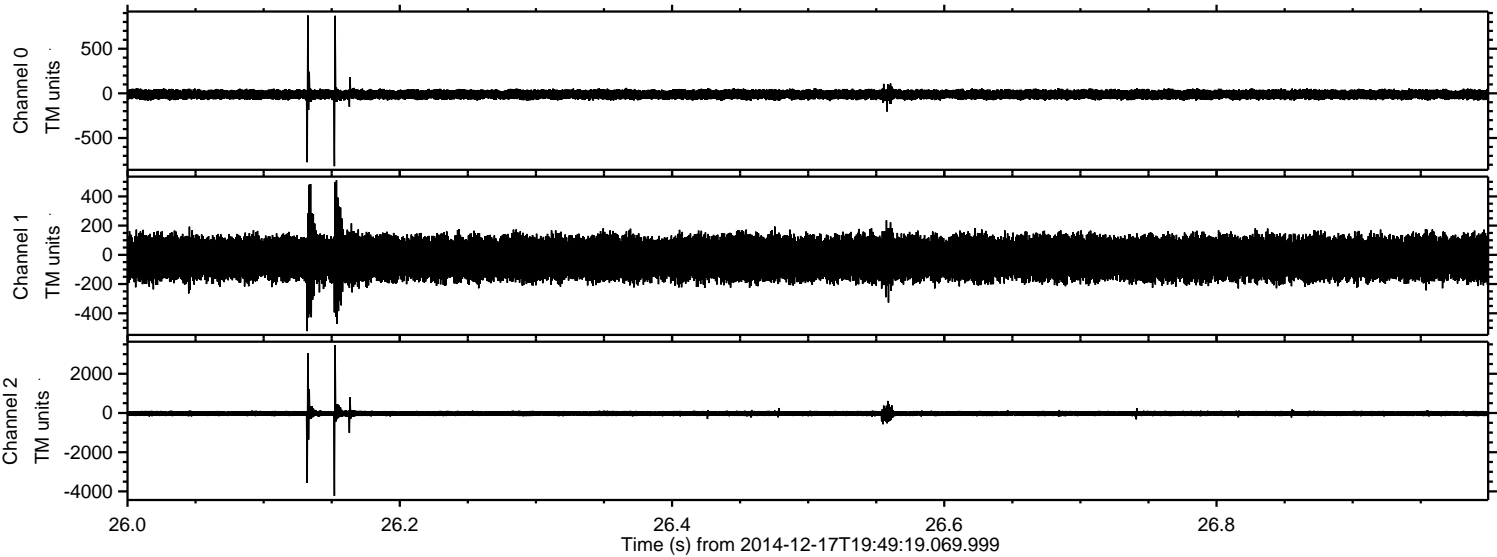
Channel 1  
mn: -675  
mx: 685  
 $\mu$ : -24.0  
 $\sigma$ : 79.1

Channel 2  
mn: -4442  
mx: 4367  
 $\mu$ : -25.6  
 $\sigma$ : 80.0



ELMAVAN 3D WAVEFORMS (Measured data sampled at 50 kHz) 49682 packets of 144 samples from 2014-12-17T19:49:19.069.999. Part 27/144

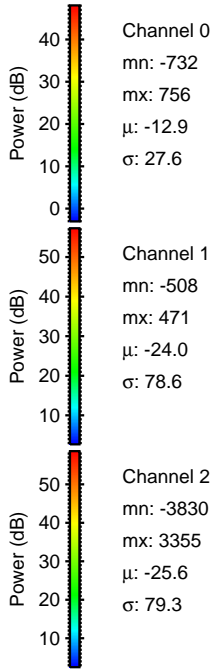
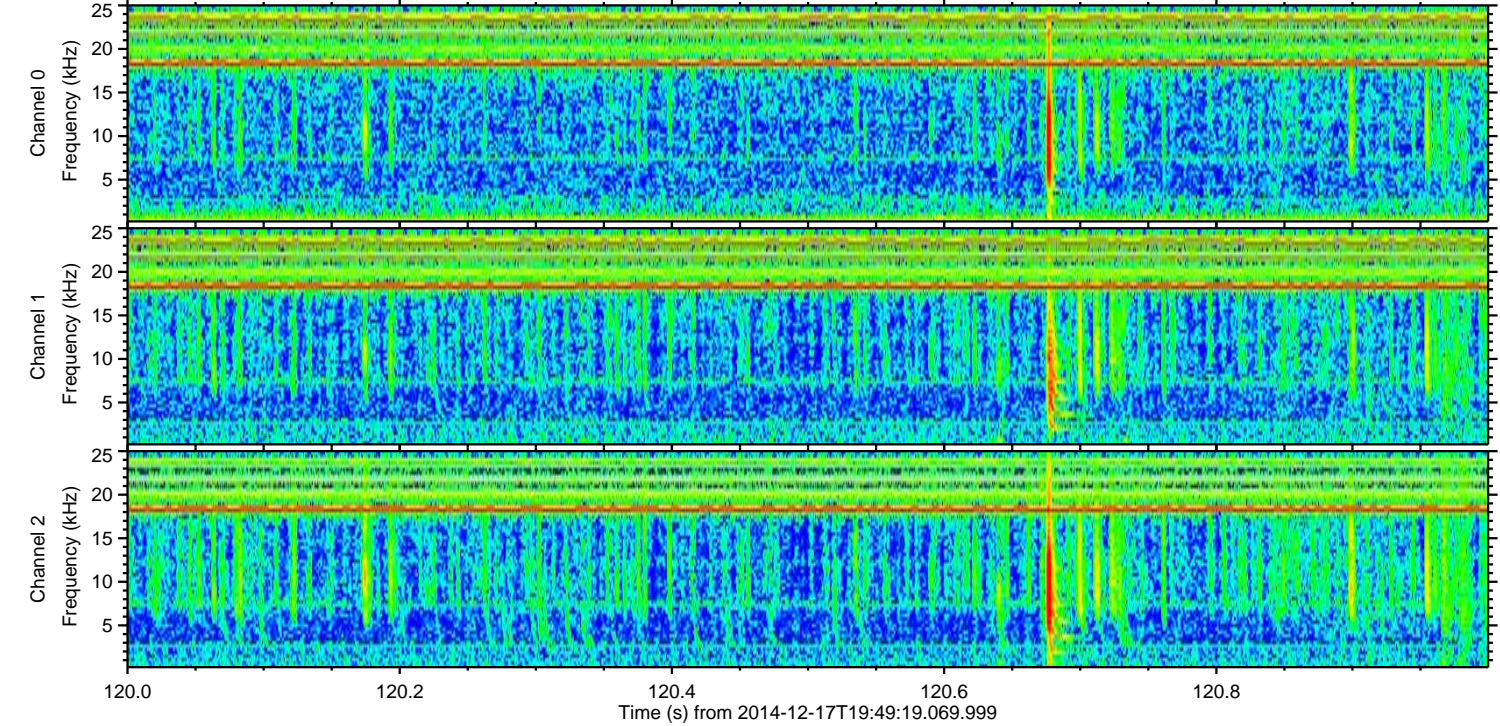
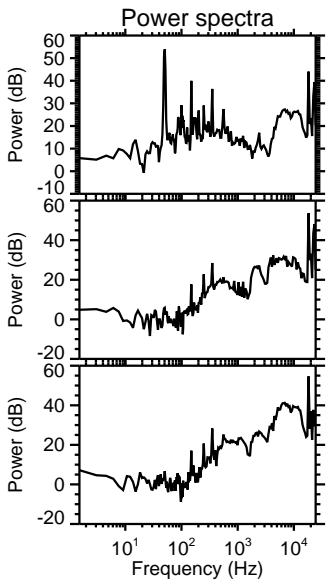
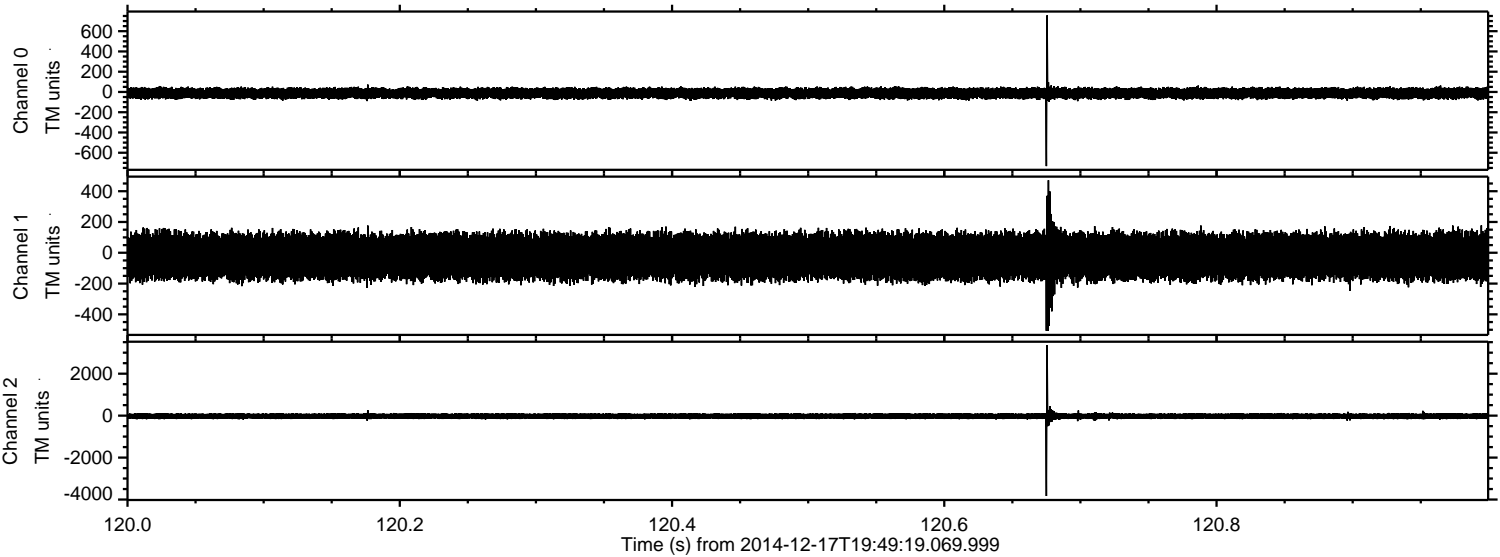
Processed Wed Dec 17 22:06:07 2014 by ELM ver.2012-10-06 from 001\_\_elm20141217\_194918\_\_dat00.bin





ELMAVAN 3D WAVEFORMS (Measured data sampled at 50 kHz) 49682 packets of 144 samples from 2014-12-17T19:49:19.069.999. Part 121/144

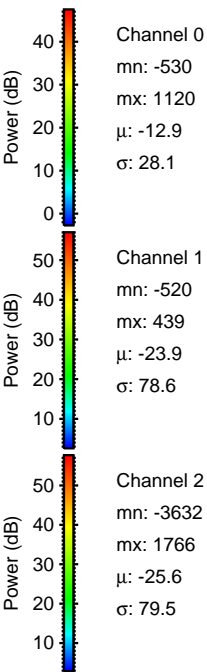
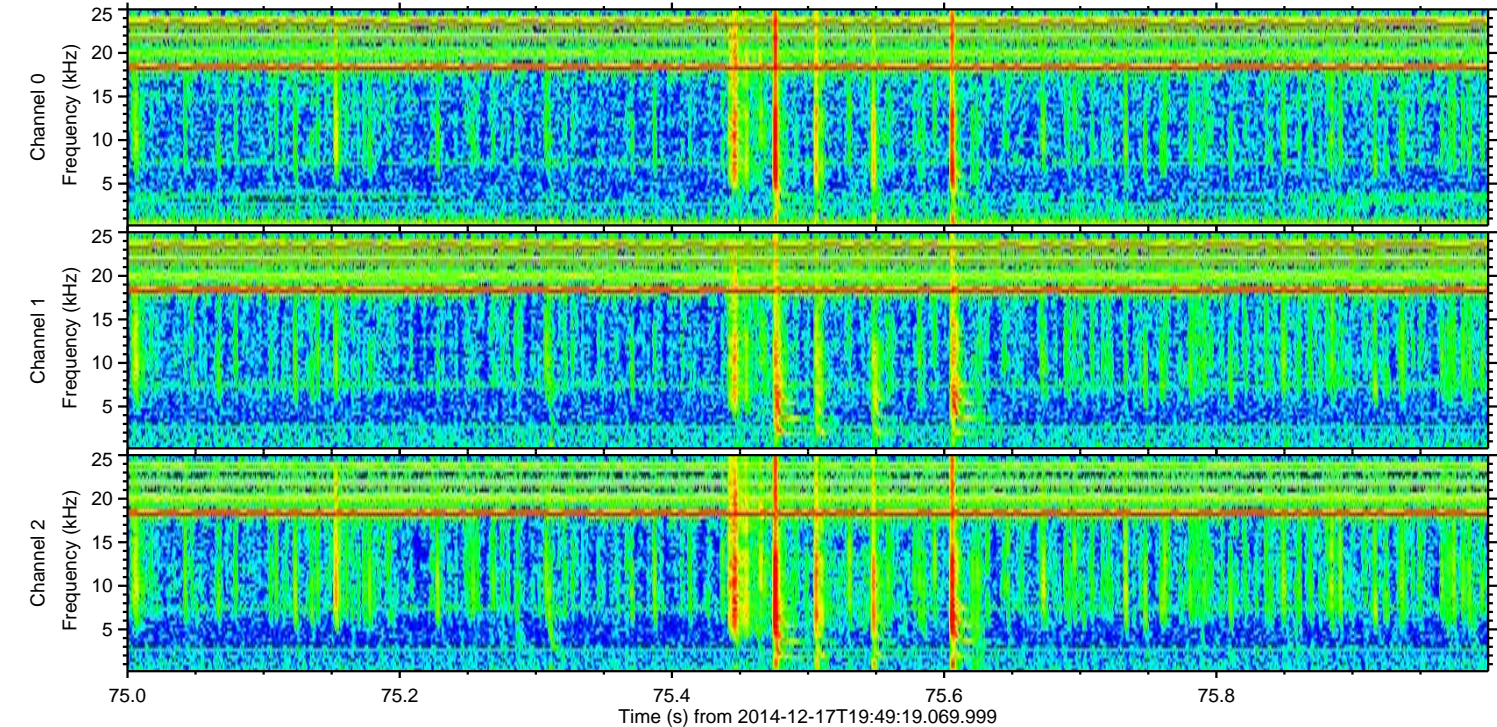
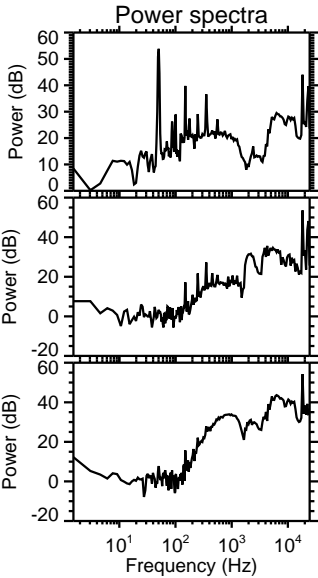
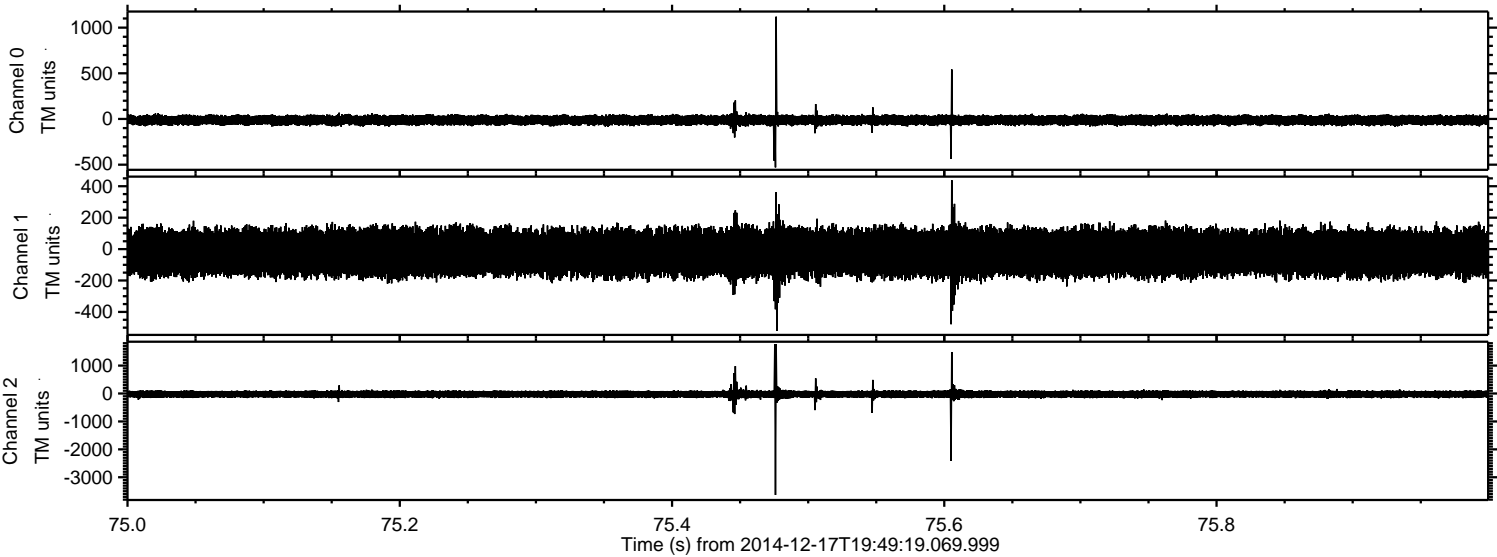
Processed Wed Dec 17 22:06:08 2014 by ELM ver.2012-10-06 from 001\_\_elm20141217\_194918\_\_dat00.bin





ELMAVAN 3D WAVEFORMS (Measured data sampled at 50 kHz) 49682 packets of 144 samples from 2014-12-17T19:49:19.069.999. Part 76/144

Processed Wed Dec 17 22:06:08 2014 by ELM ver.2012-10-06 from 001\_\_elm20141217\_194918\_\_dat00.bin





Processed Wed Dec 17 22:06:09 2014 by ELM ver.2012-10-06 from 001\_\_elm20141217\_194918\_\_dat00.bin

