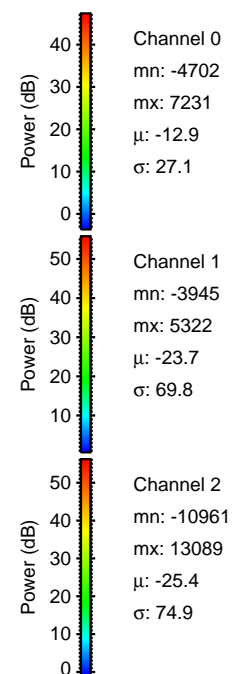
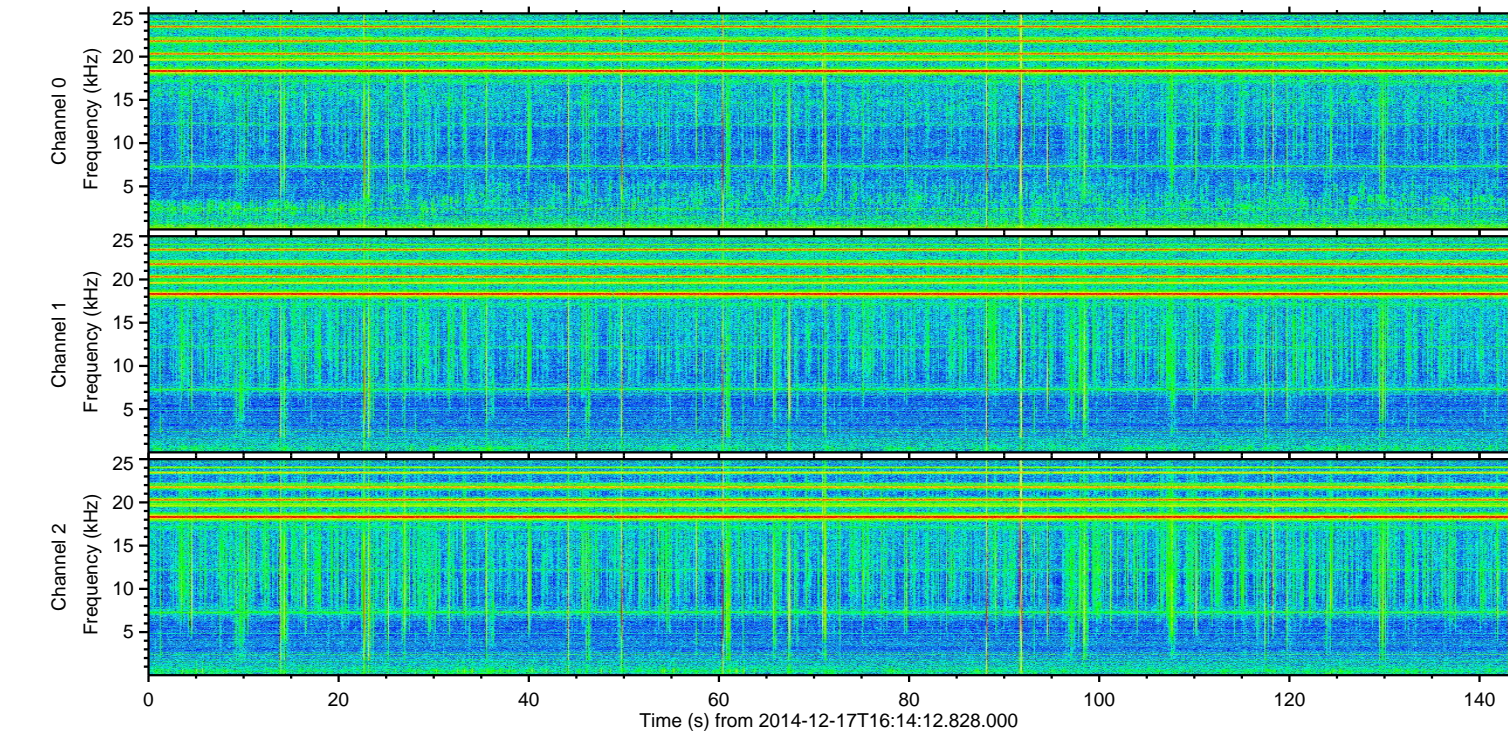
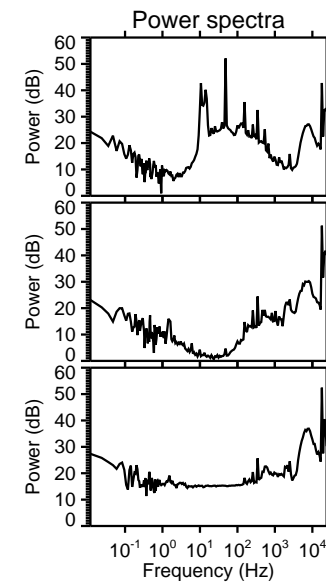
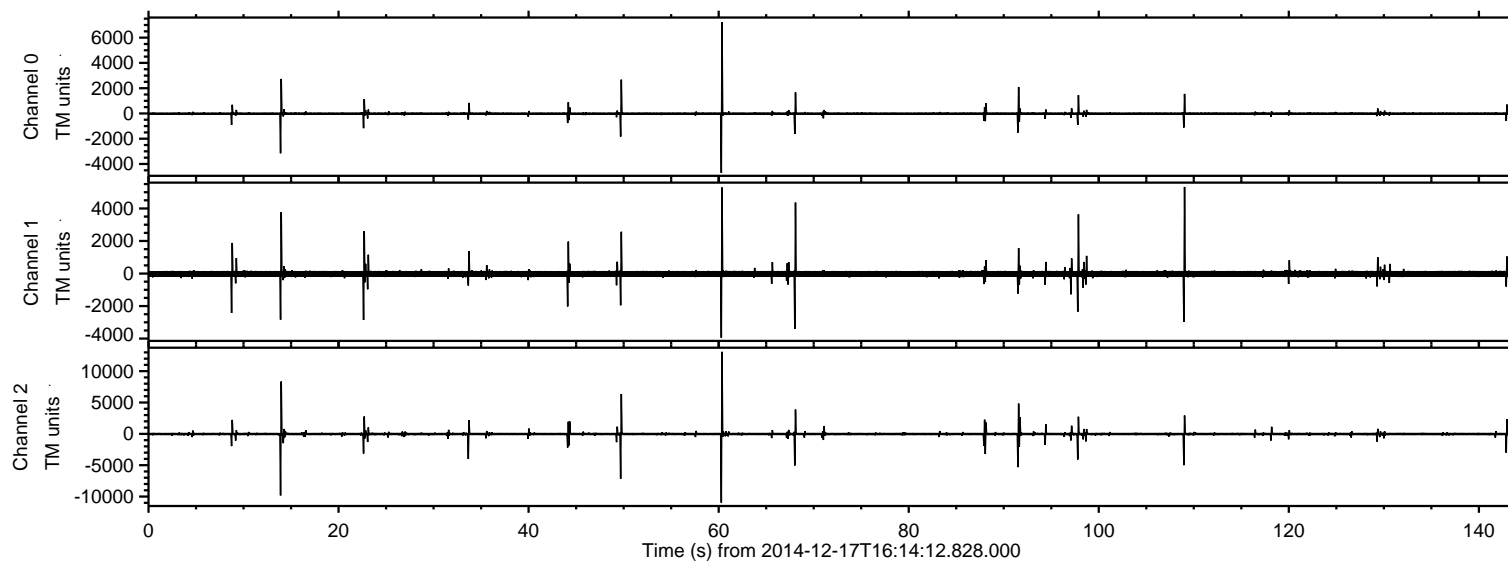
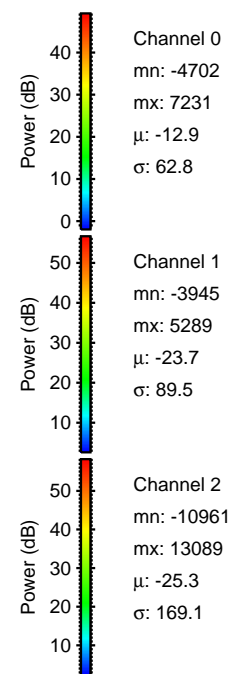
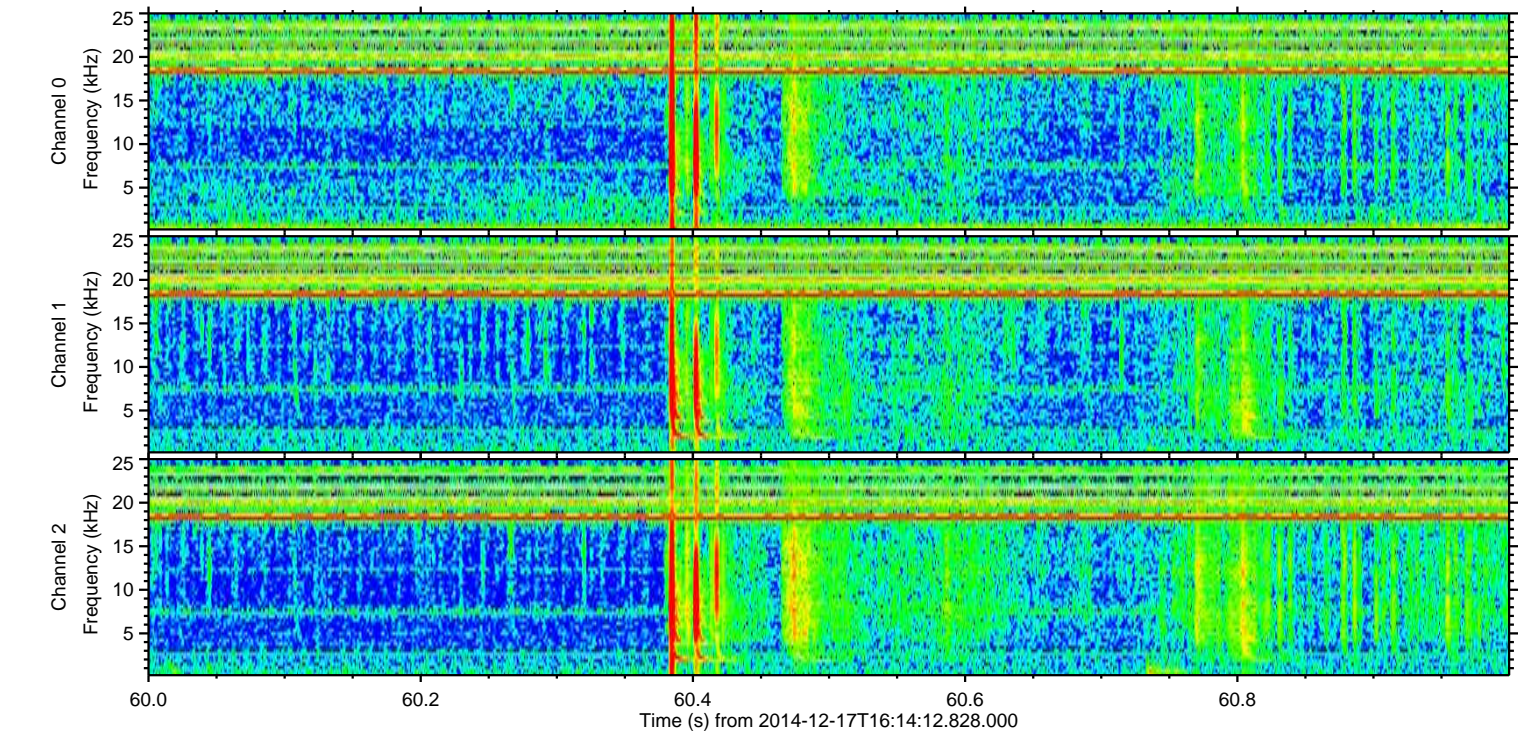
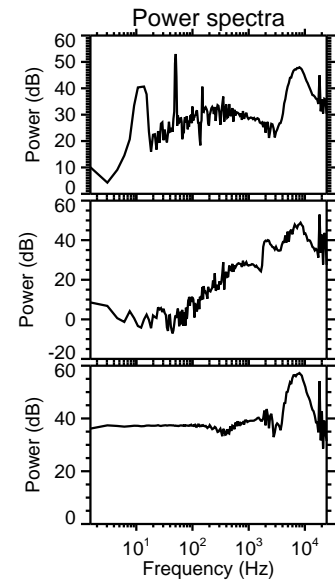
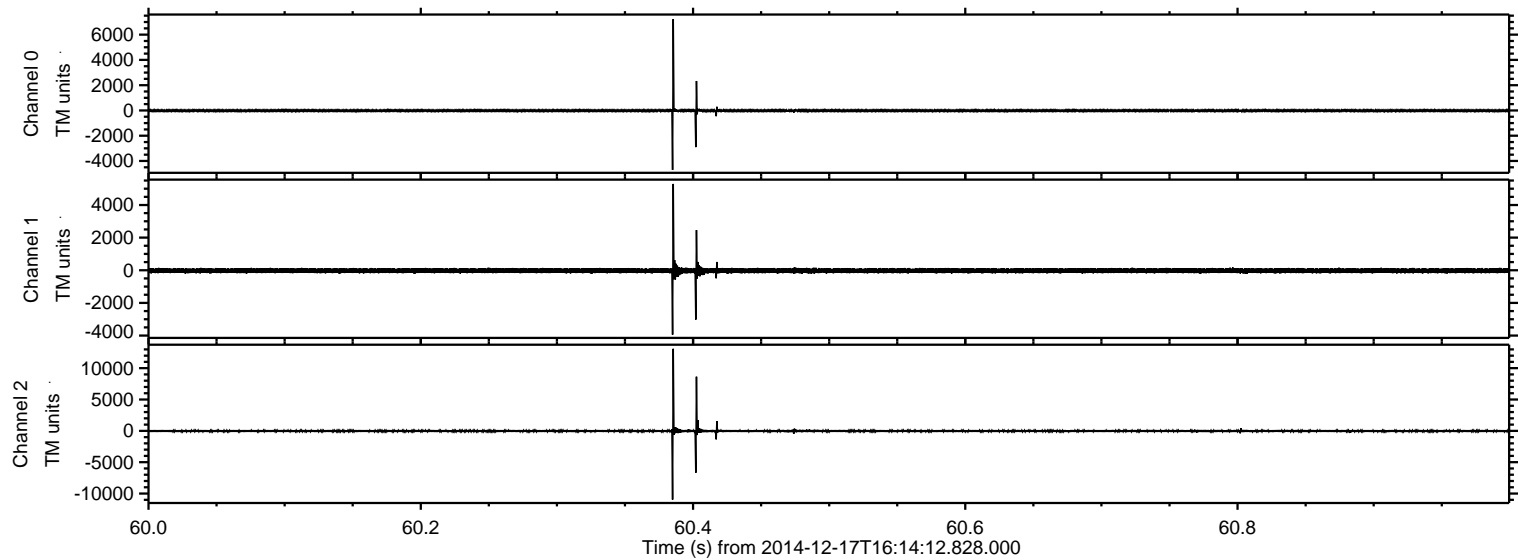


ELMAVAN 3D WAVEFORMS (Measured data sampled at 50 kHz) 49717 packets of 144 samples from 2014-12-17T16:14:12.828.000.

Processed Wed Dec 17 19:01:58 2014 by ELM ver.2012-10-06 from 001__elm20141217_161411__dat00.bin

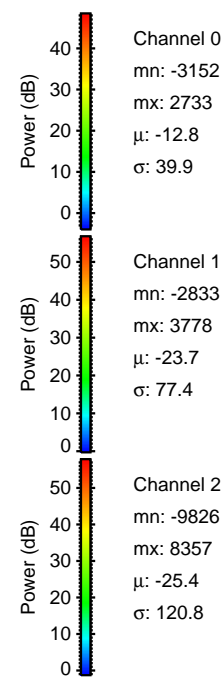
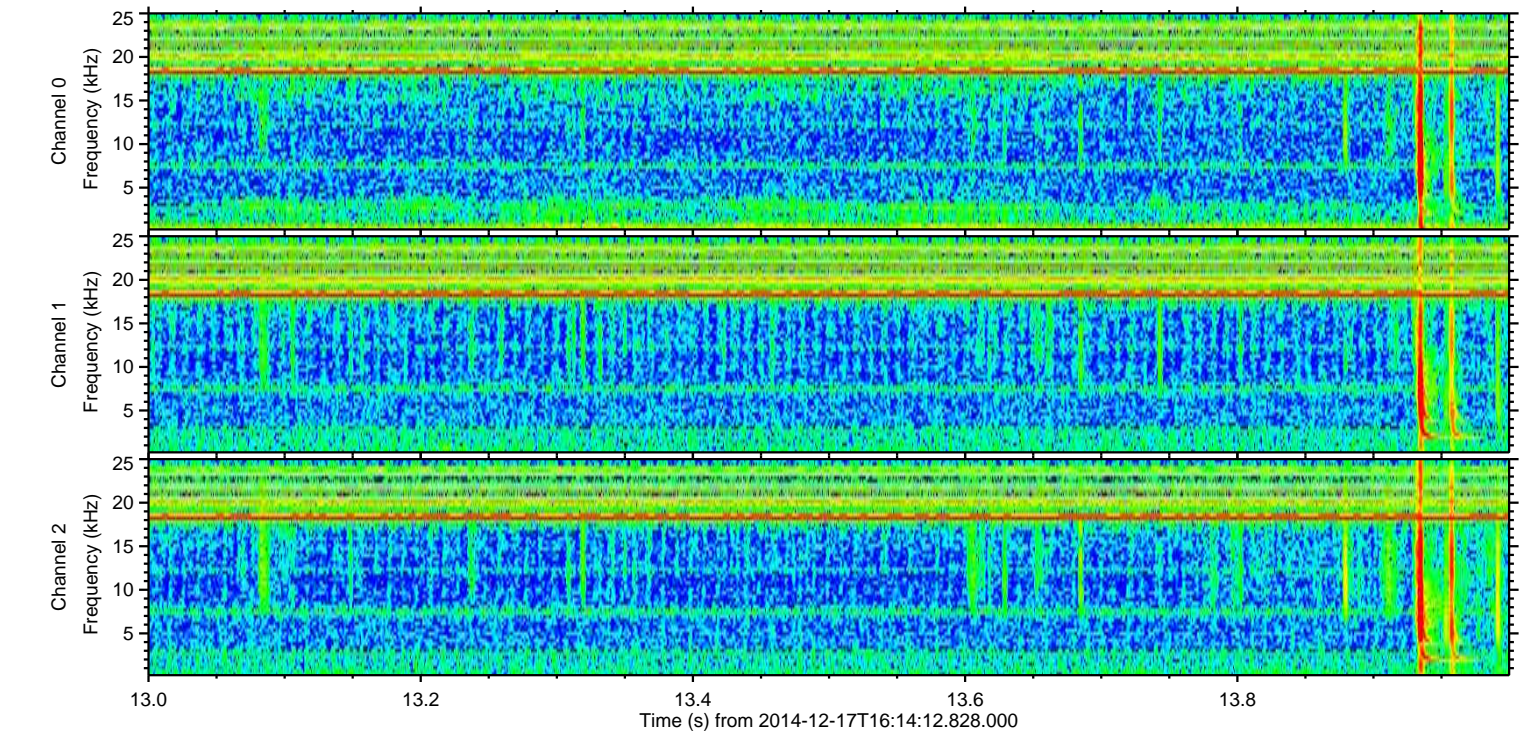
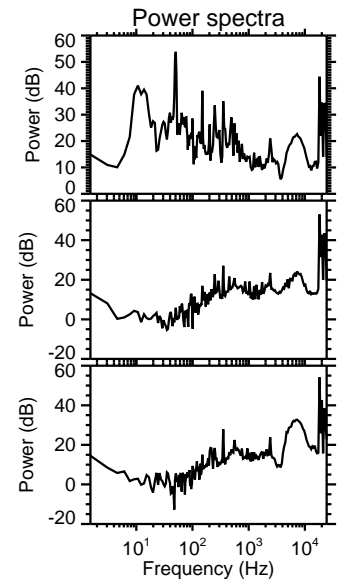
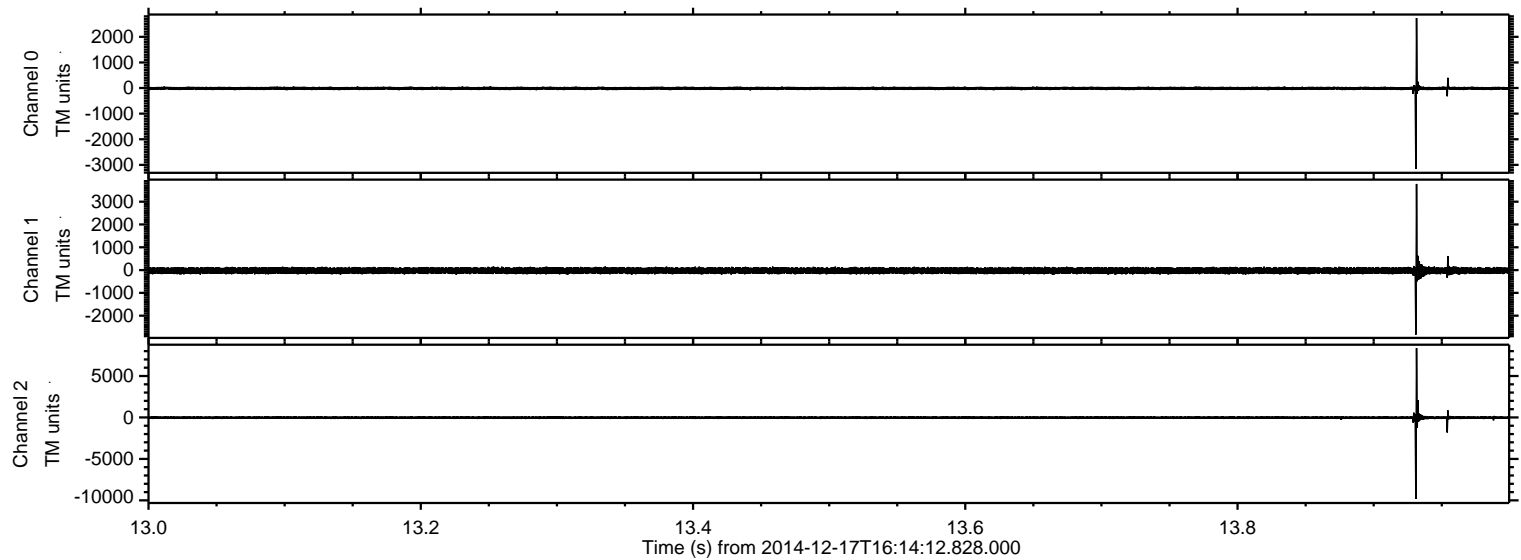


Processed Wed Dec 17 19:02:11 2014 by ELM ver.2012-10-06 from 001__elm20141217_161411__dat00.bin

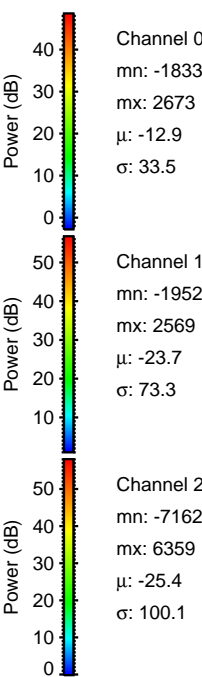
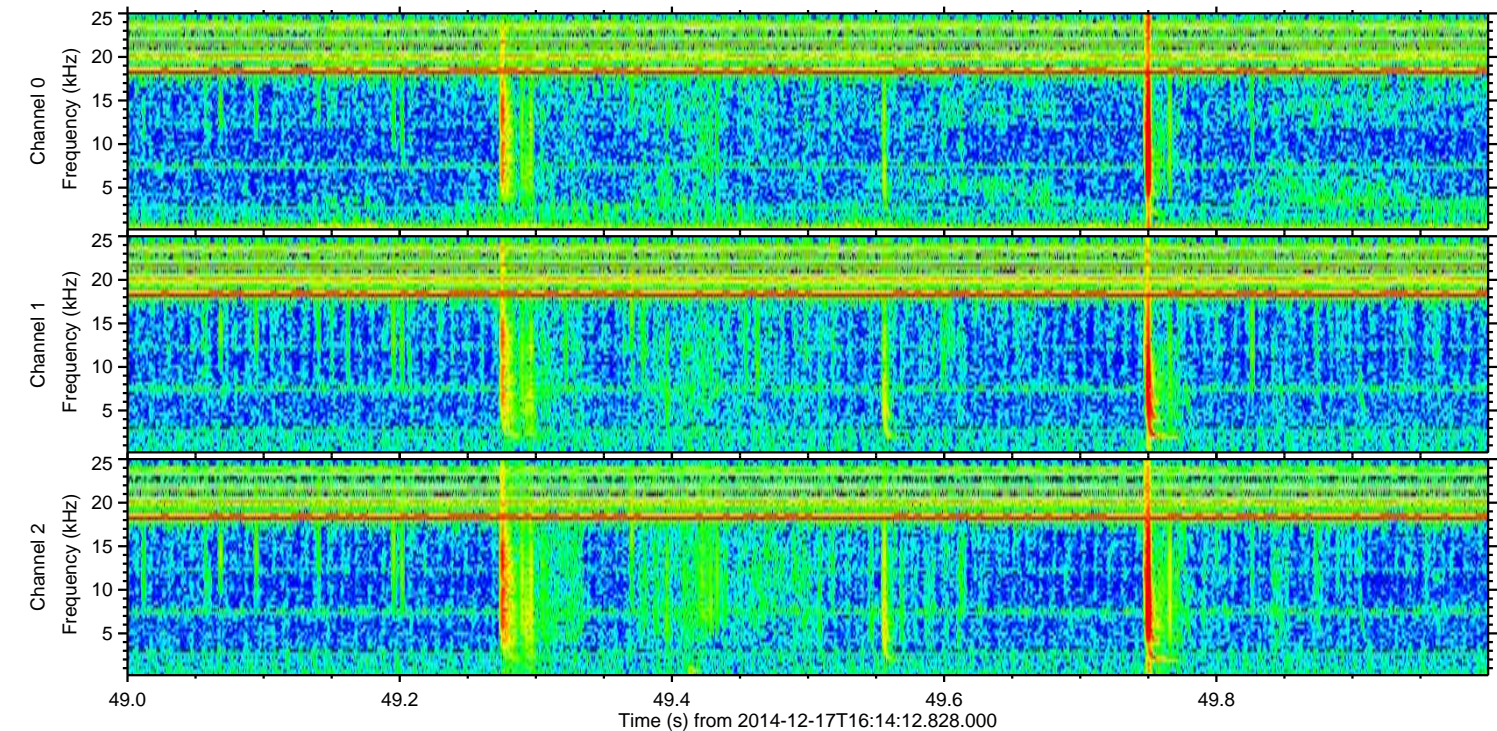
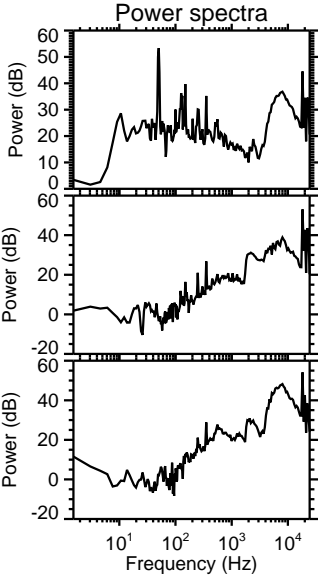
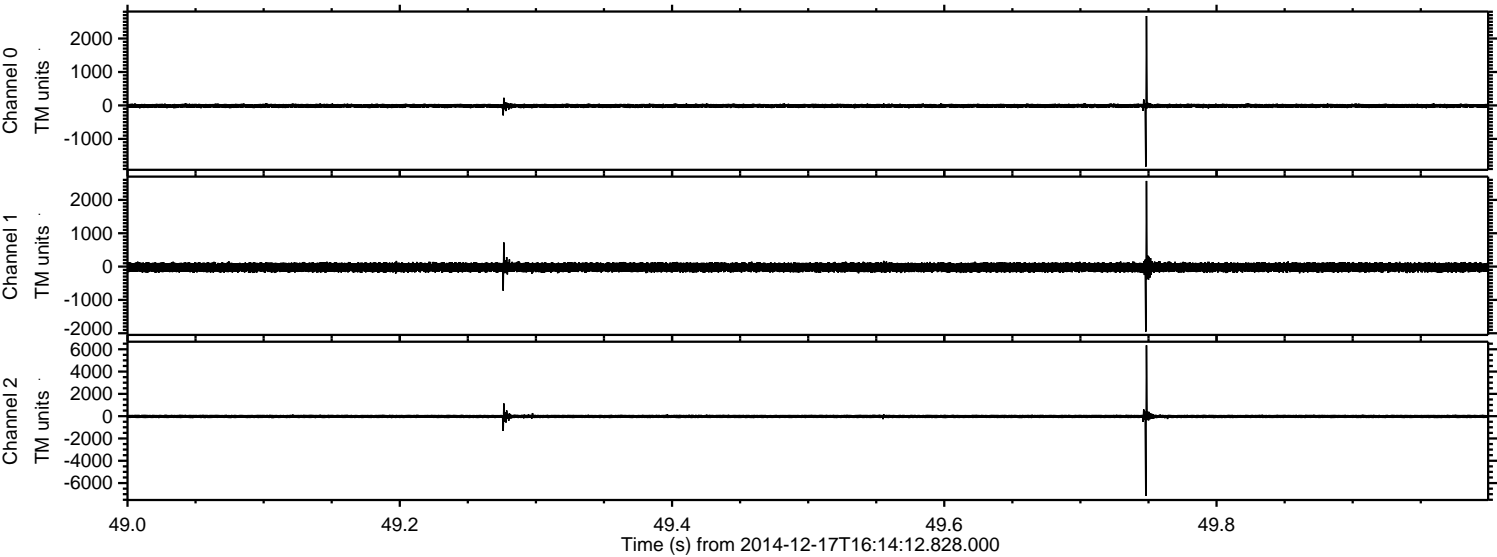


ELMAVAN 3D WAVEFORMS (Measured data sampled at 50 kHz) 49717 packets of 144 samples from 2014-12-17T16:14:12.828.000. Part 14/144

Processed Wed Dec 17 19:02:12 2014 by ELM ver.2012-10-06 from 001__elm20141217_161411__dat00.bin



Processed Wed Dec 17 19:02:13 2014 by ELM ver.2012-10-06 from 001__elm20141217_161411__dat00.bin

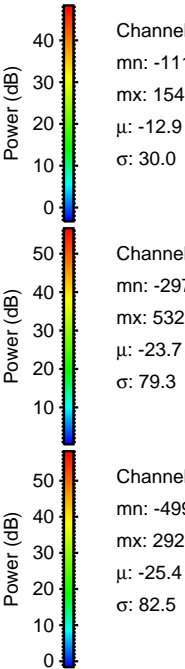
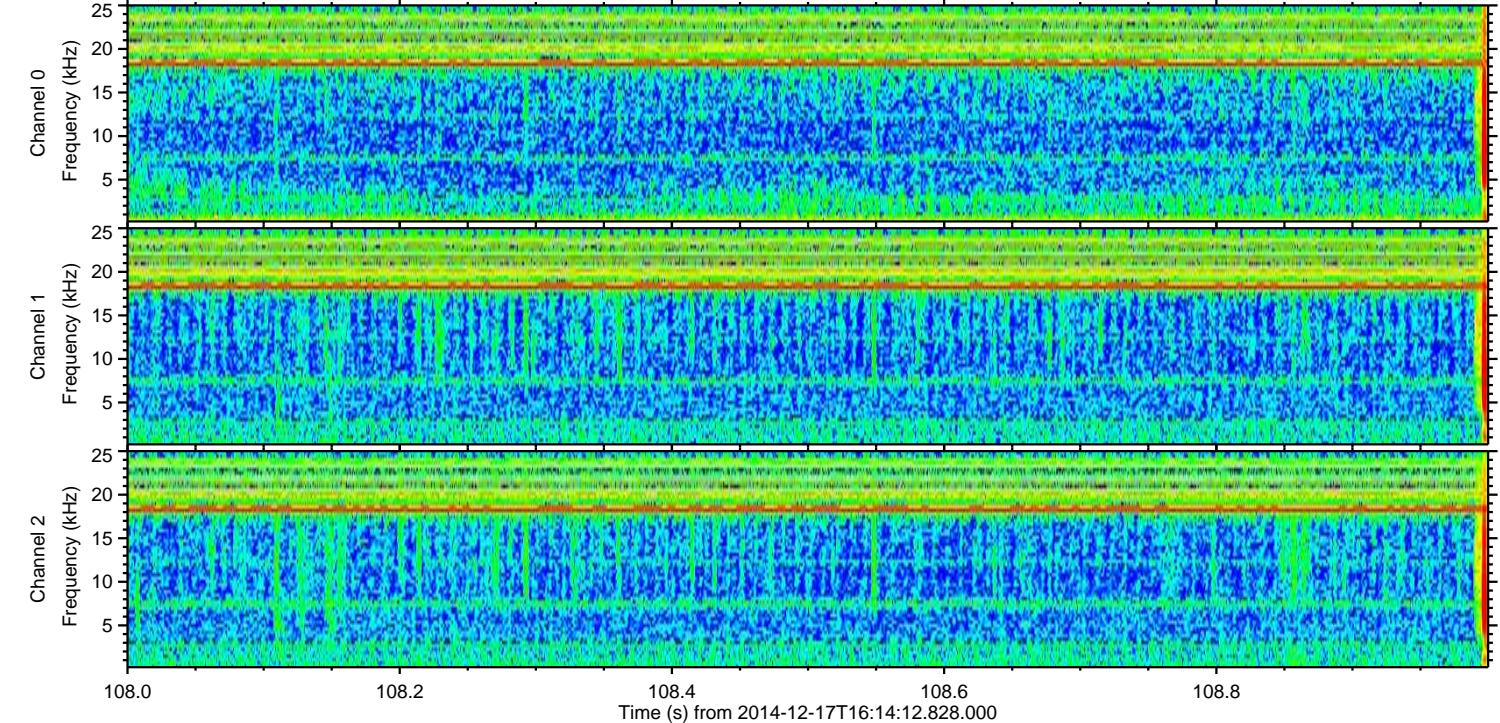
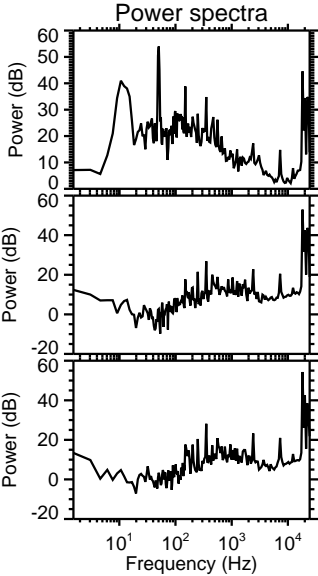
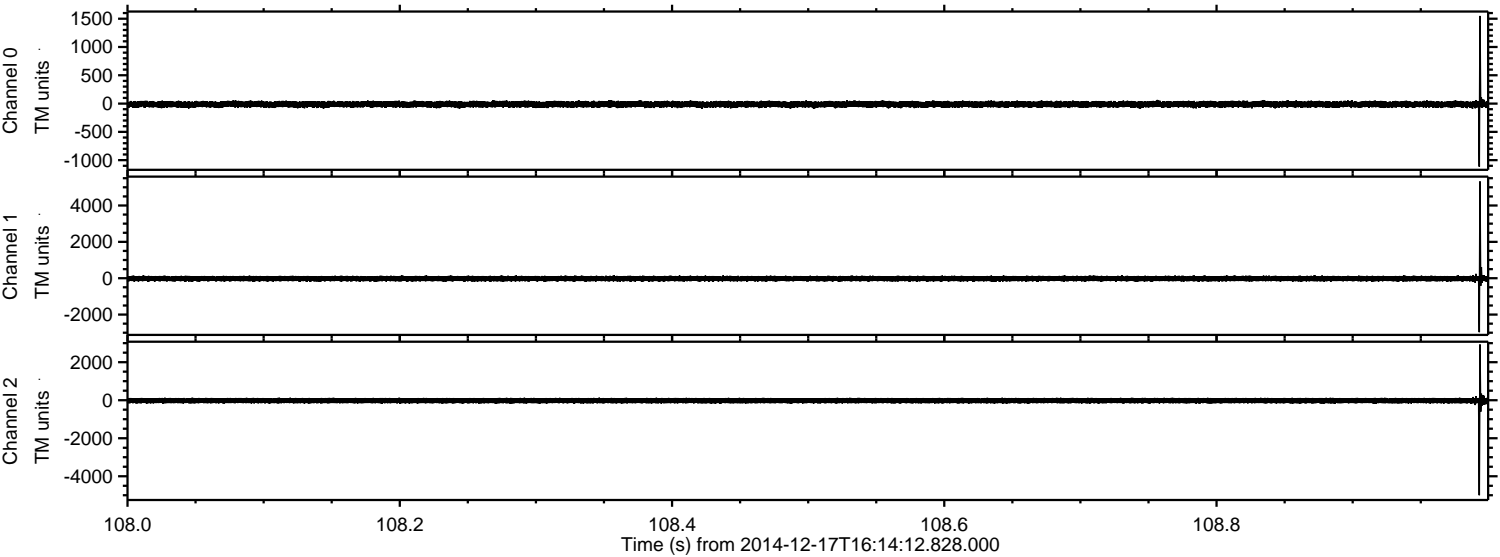


Channel 0
mn: -1833
mx: 2673
 μ : -12.9
 σ : 33.5

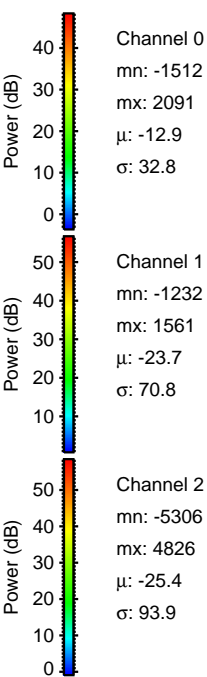
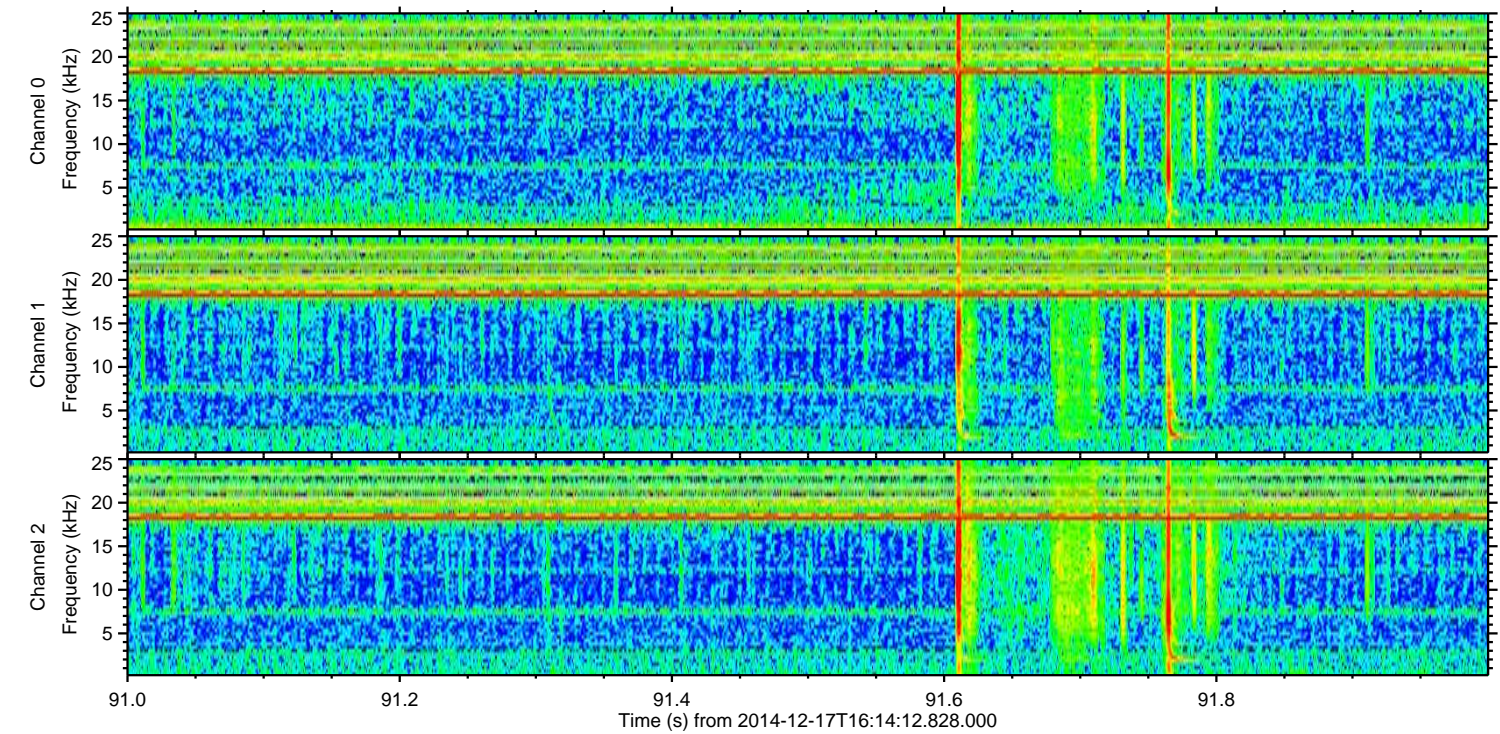
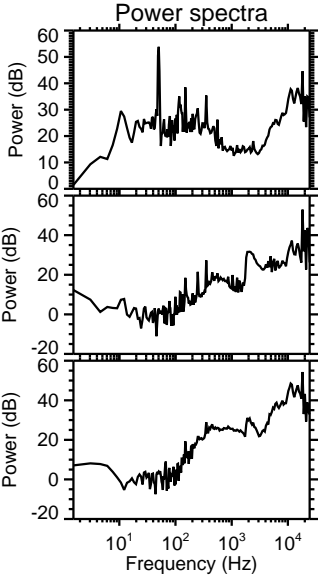
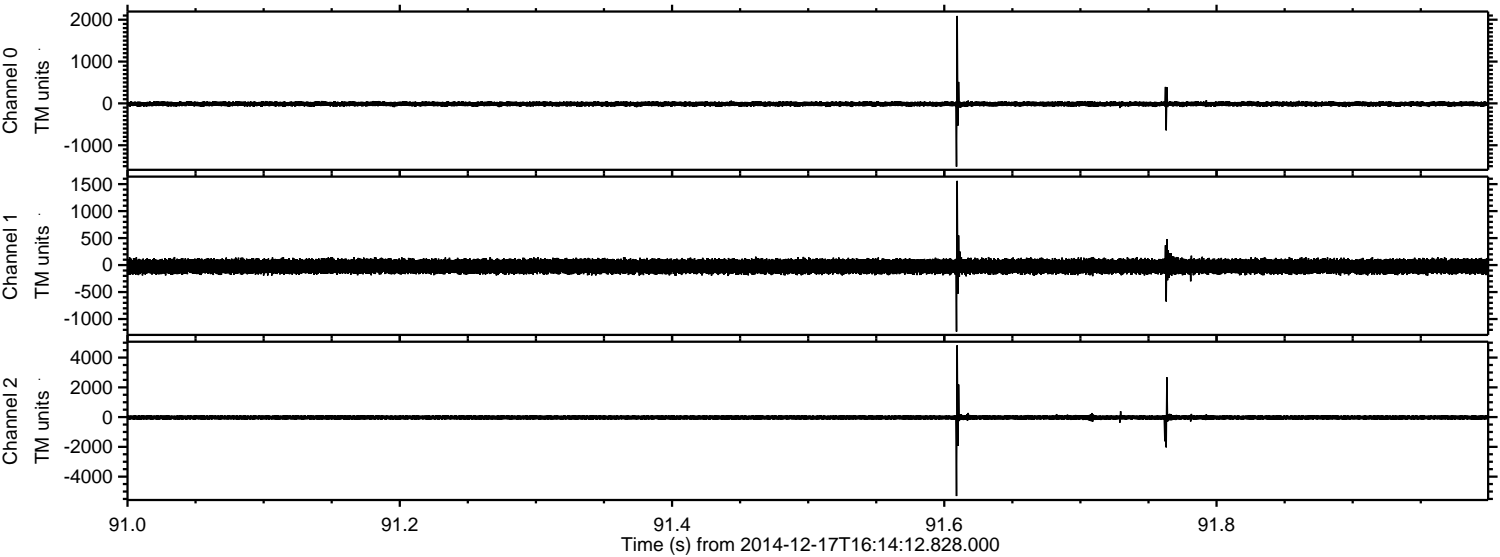
Channel 1
mn: -1952
mx: 2569
 μ : -23.7
 σ : 73.3

Channel 2
mn: -7162
mx: 6359
 μ : -25.4
 σ : 100.1

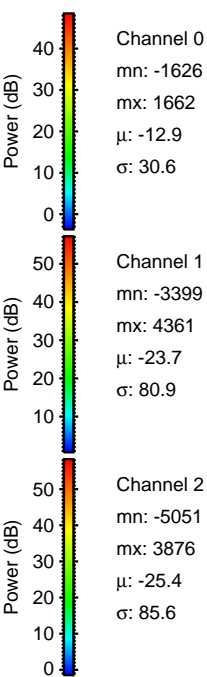
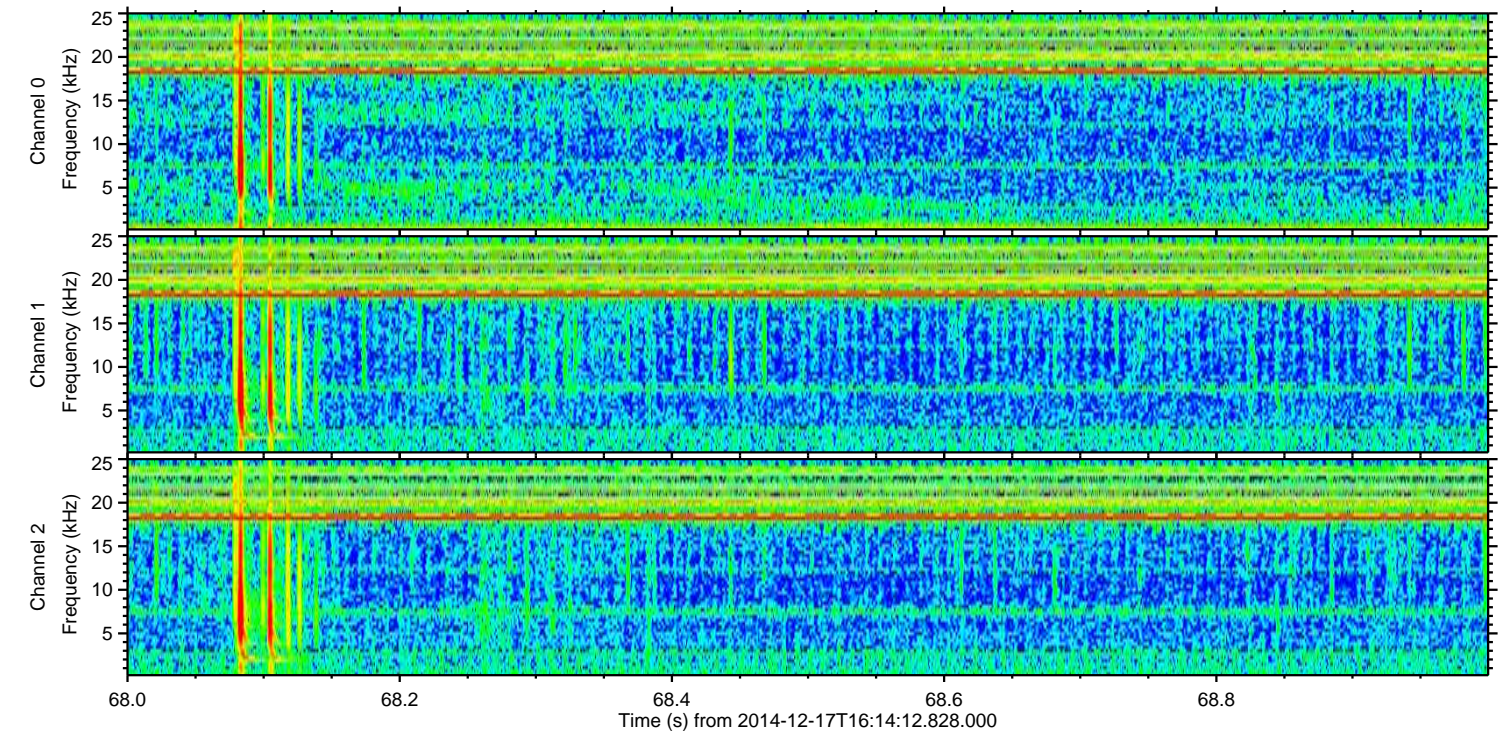
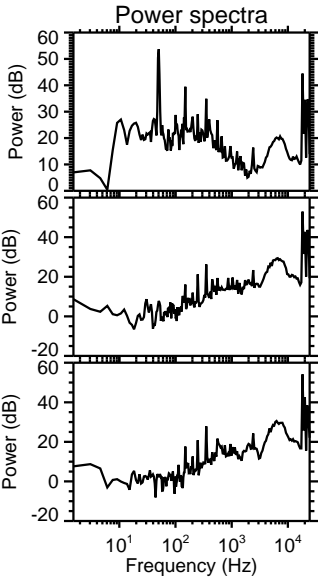
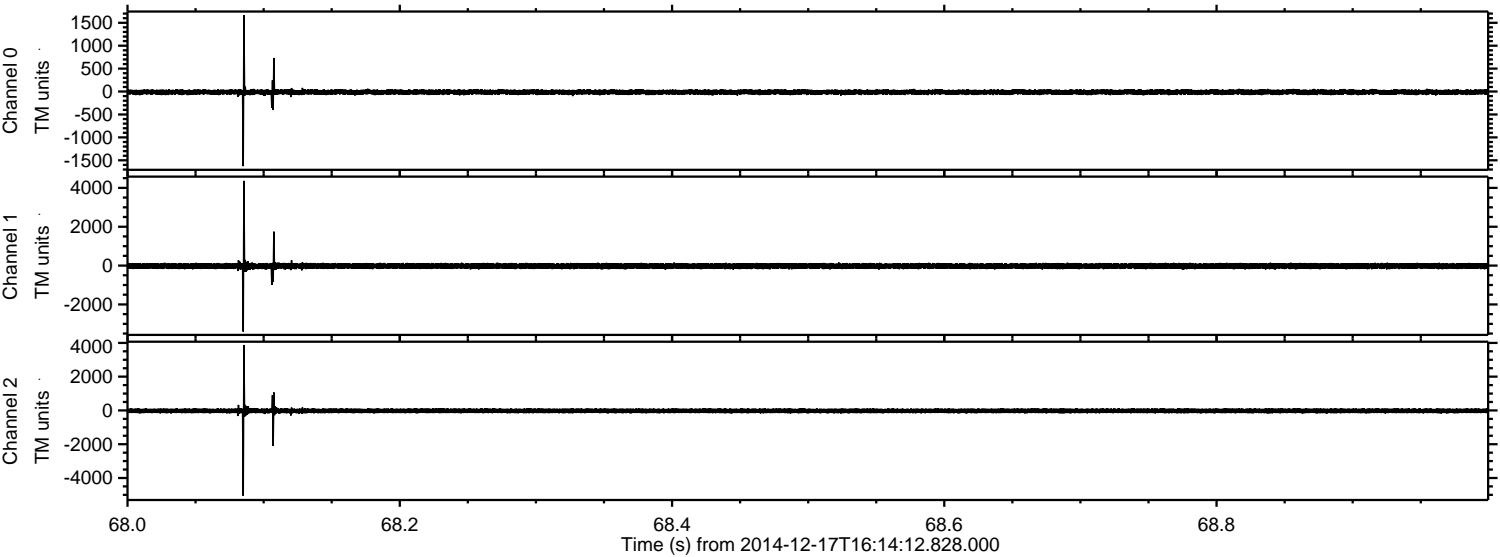
Processed Wed Dec 17 19:02:14 2014 by ELM ver.2012-10-06 from 001__elm20141217_161411__dat00.bin



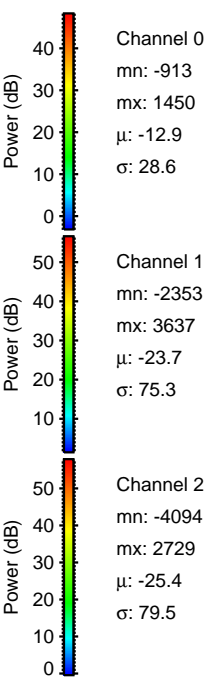
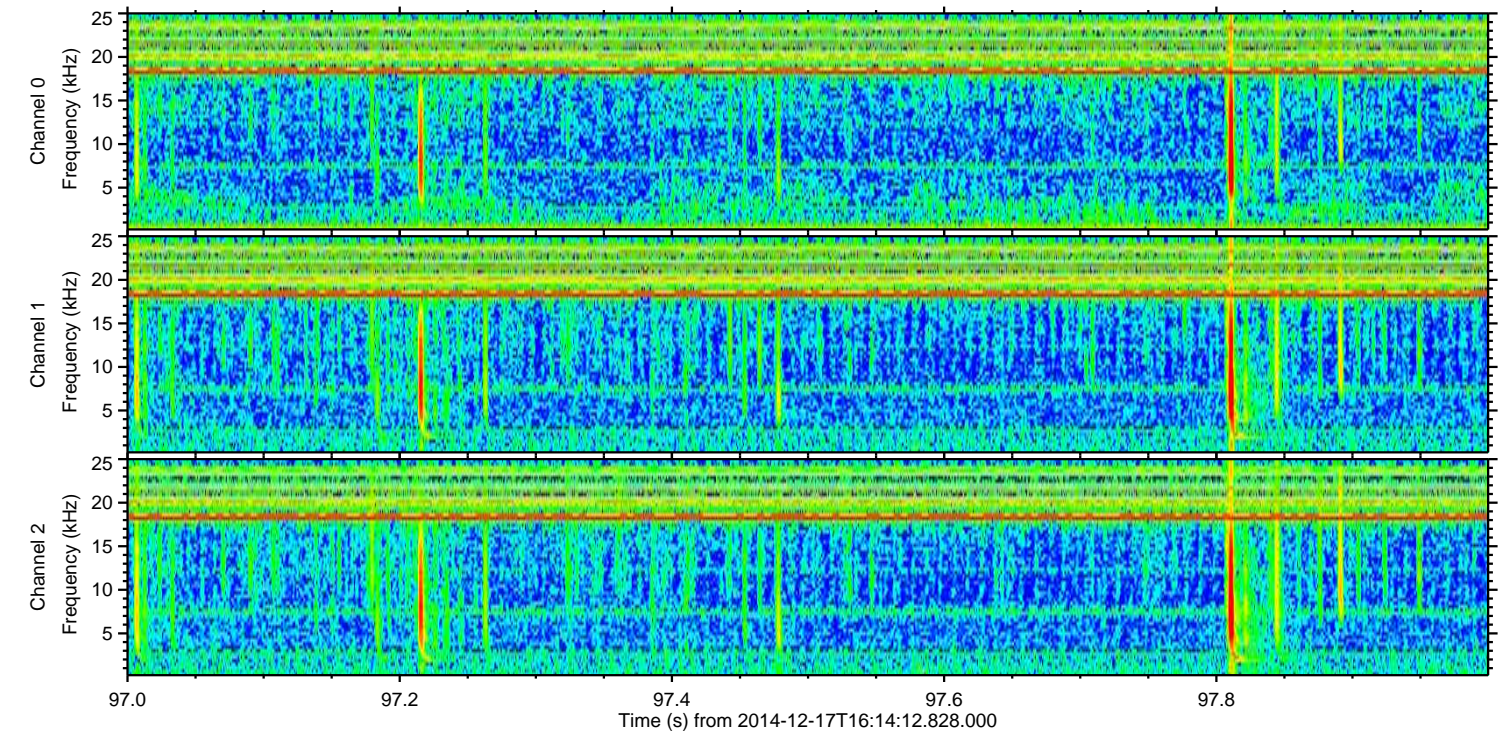
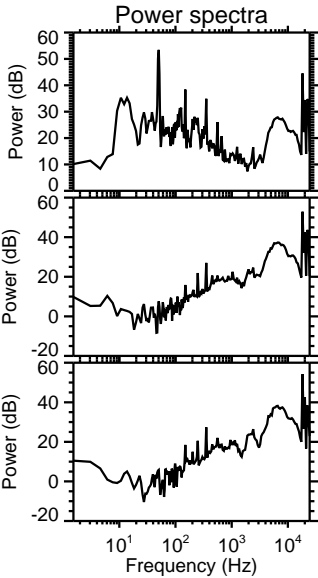
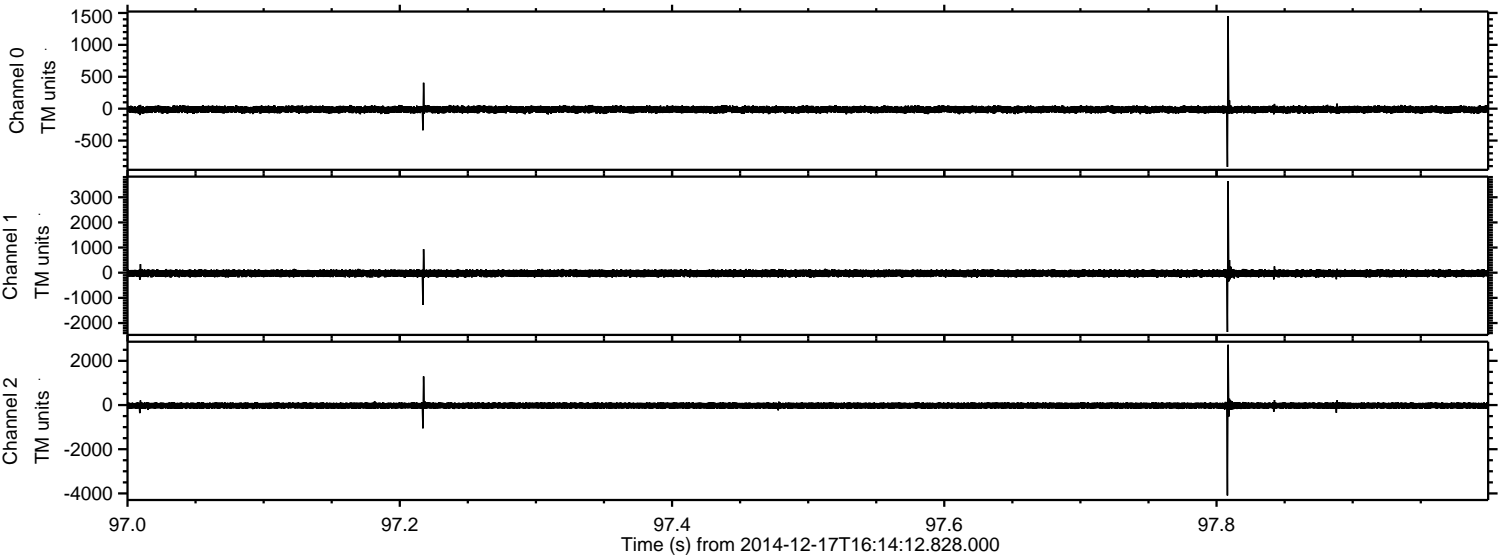
Processed Wed Dec 17 19:02:15 2014 by ELM ver.2012-10-06 from 001__elm20141217_161411__dat00.bin



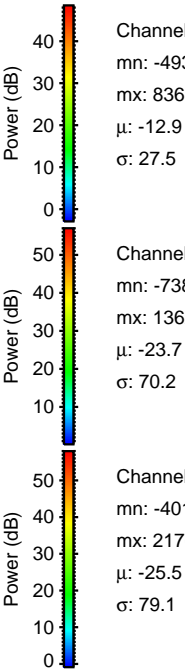
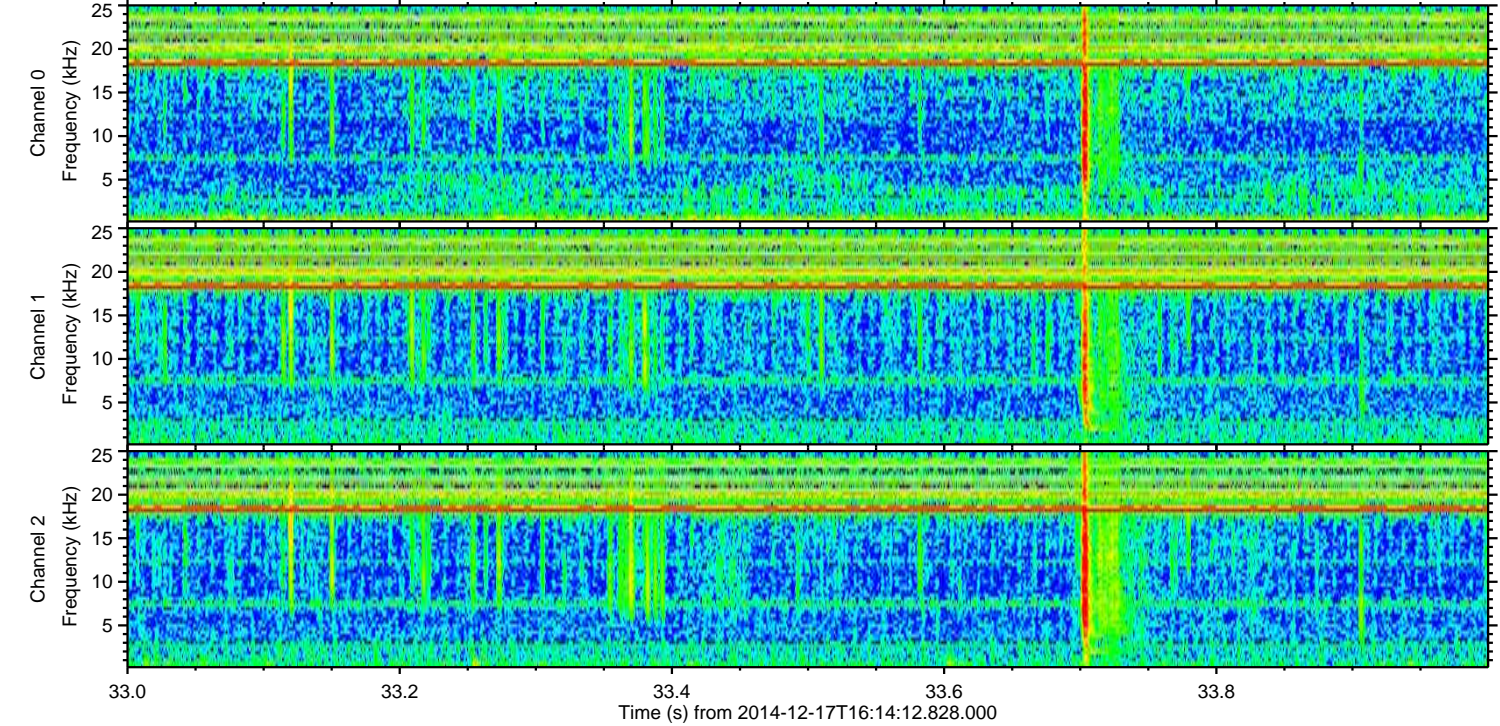
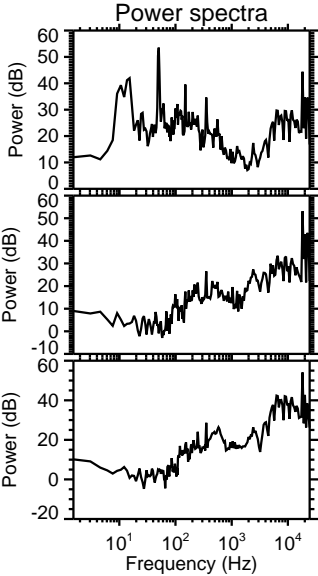
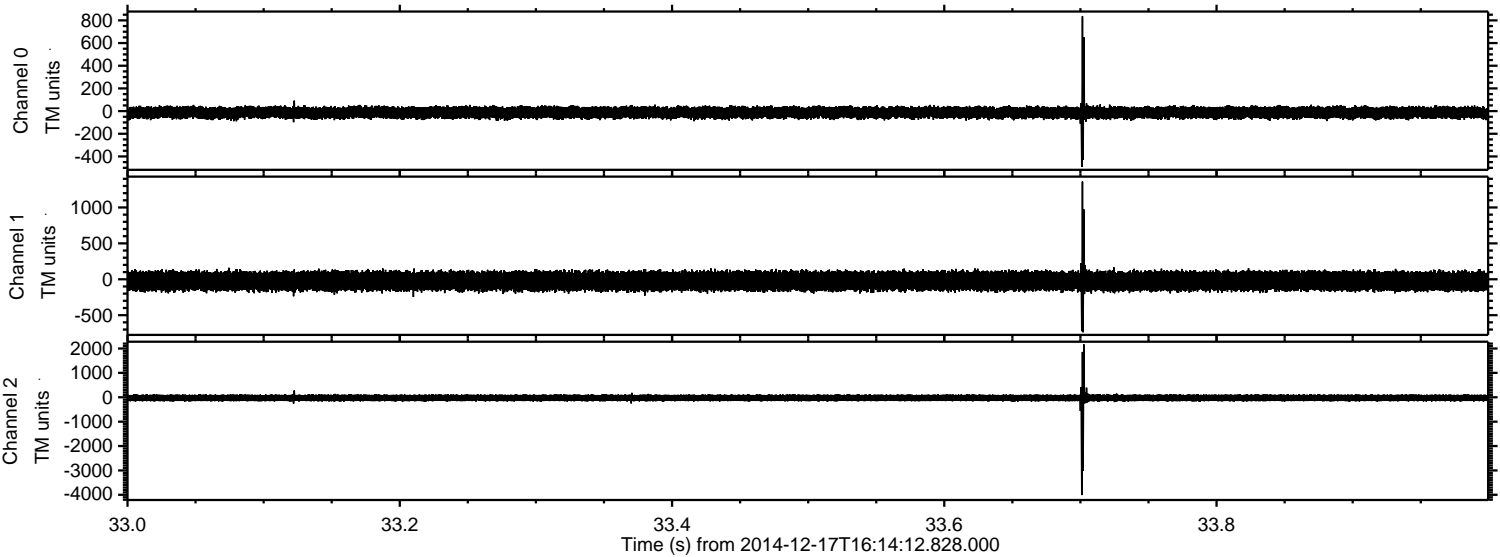
Processed Wed Dec 17 19:02:16 2014 by ELM ver.2012-10-06 from 001__elm20141217_161411__dat00.bin



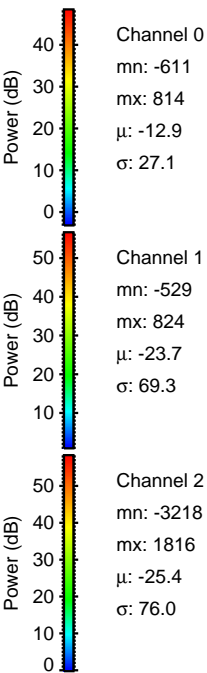
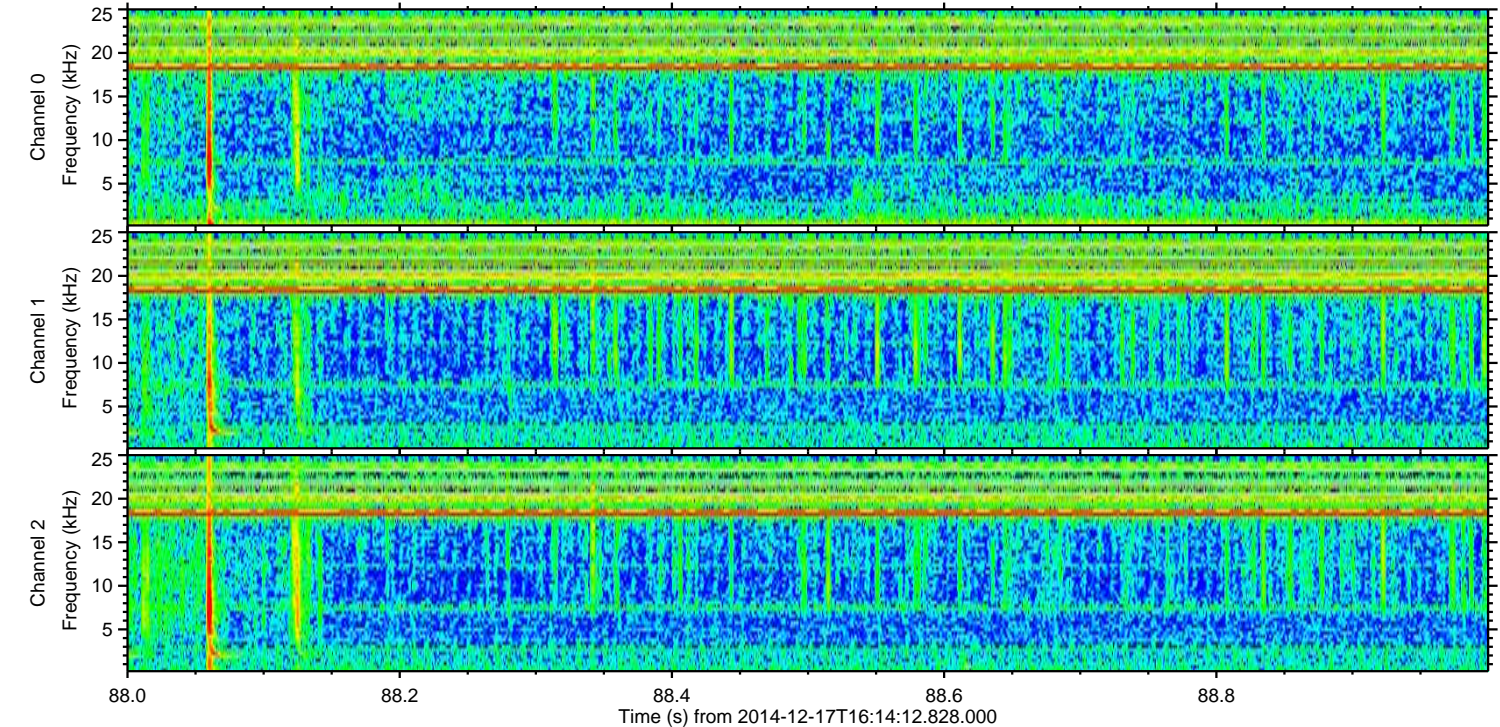
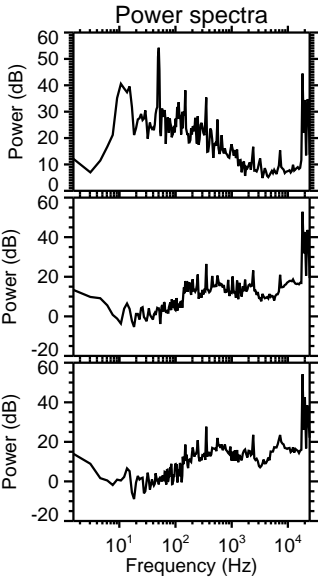
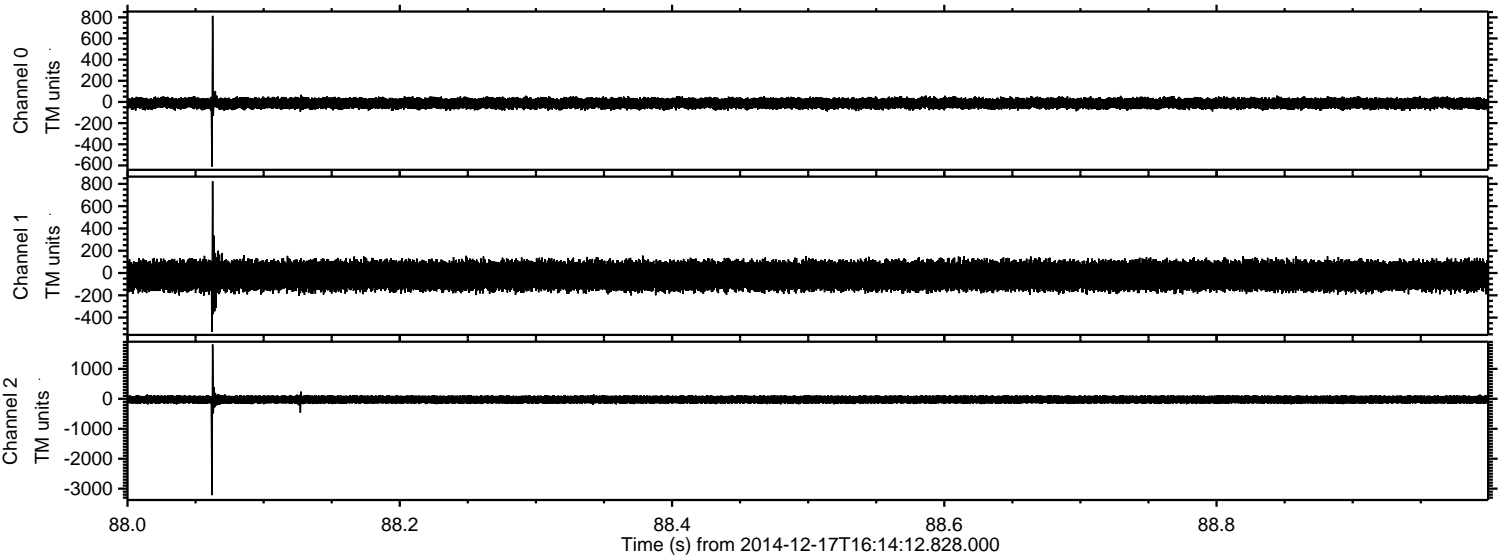
Processed Wed Dec 17 19:02:17 2014 by ELM ver.2012-10-06 from 001__elm20141217_161411__dat00.bin



Processed Wed Dec 17 19:02:17 2014 by ELM ver.2012-10-06 from 001__elm20141217_161411__dat00.bin



Processed Wed Dec 17 19:02:18 2014 by ELM ver.2012-10-06 from 001__elm20141217_161411__dat00.bin



Channel 0
mn: -611
mx: 814
 μ : -12.9
 σ : 27.1

Channel 1
mn: -529
mx: 824
 μ : -23.7
 σ : 69.3

Channel 2
mn: -3218
mx: 1816
 μ : -25.4
 σ : 76.0

Processed Wed Dec 17 19:02:19 2014 by ELM ver.2012-10-06 from 001__elm20141217_161411__dat00.bin

