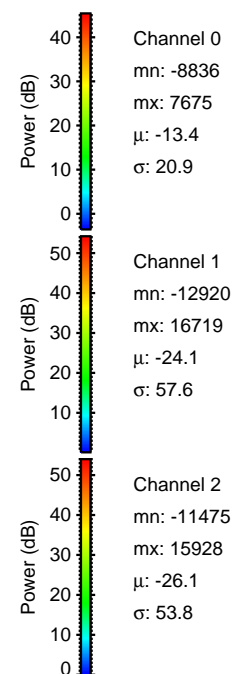
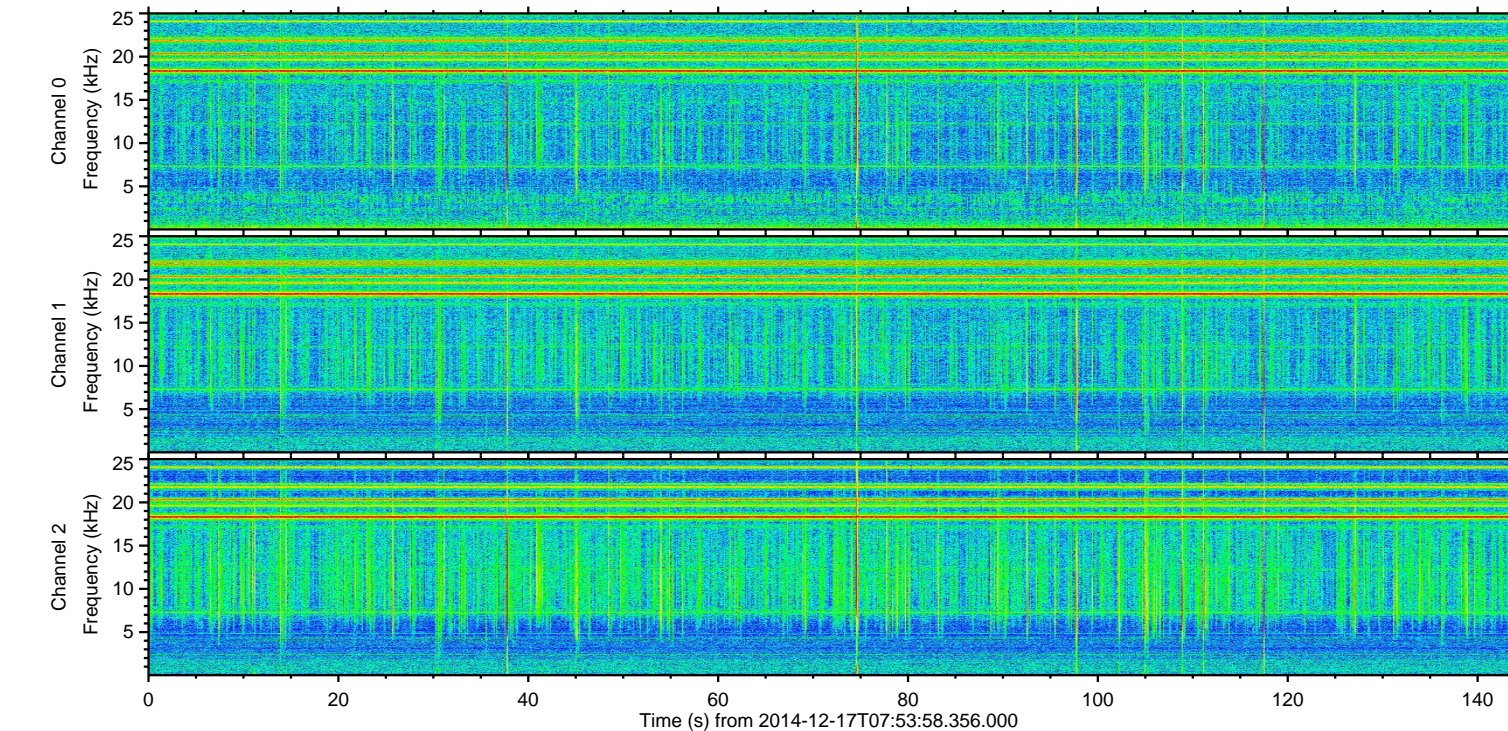
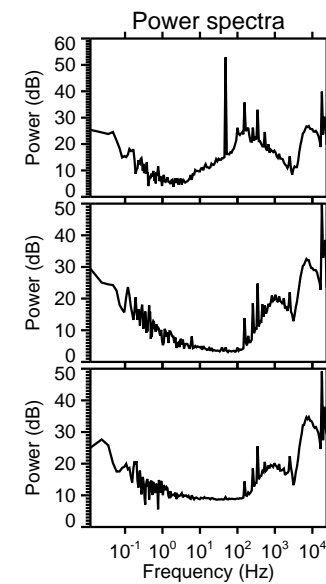
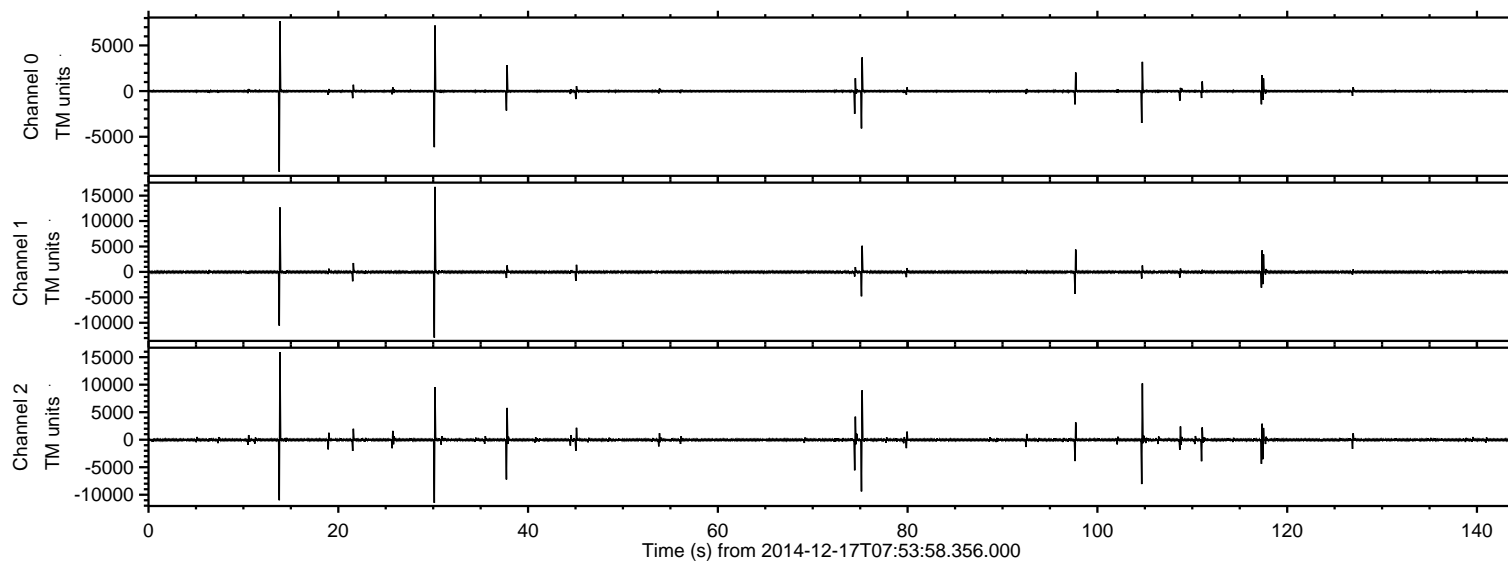
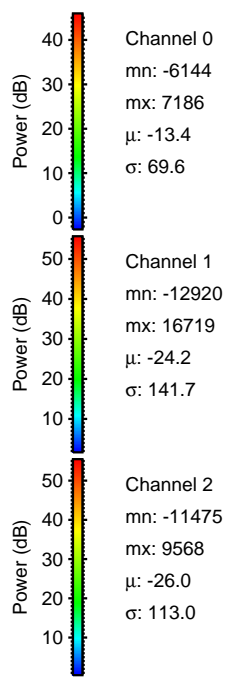
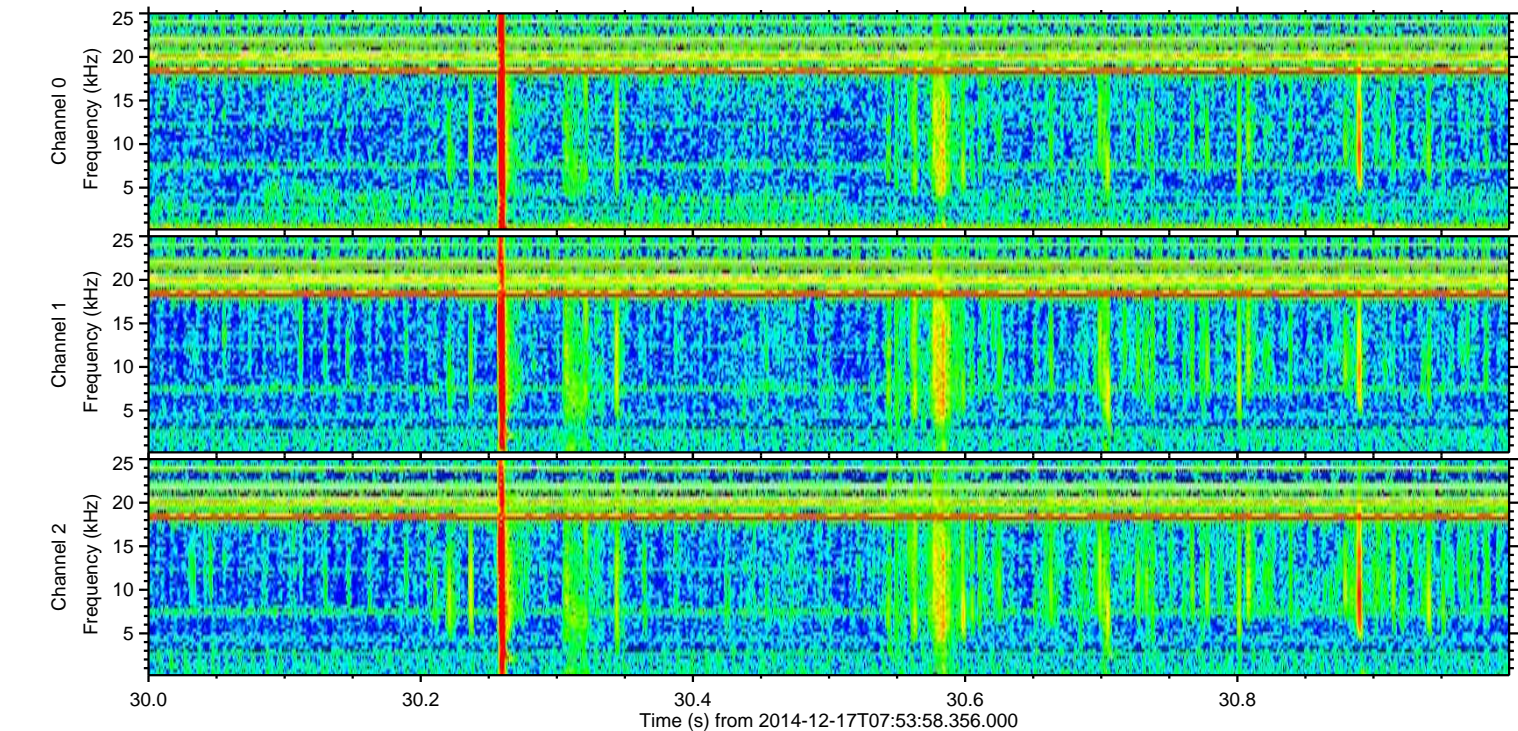
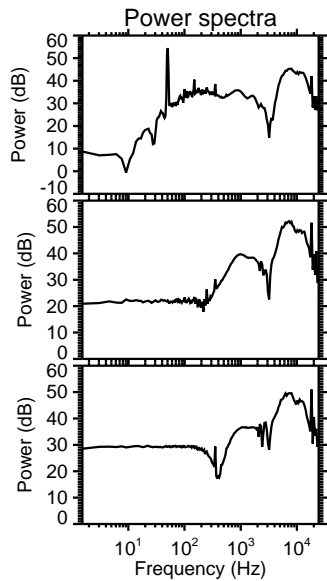
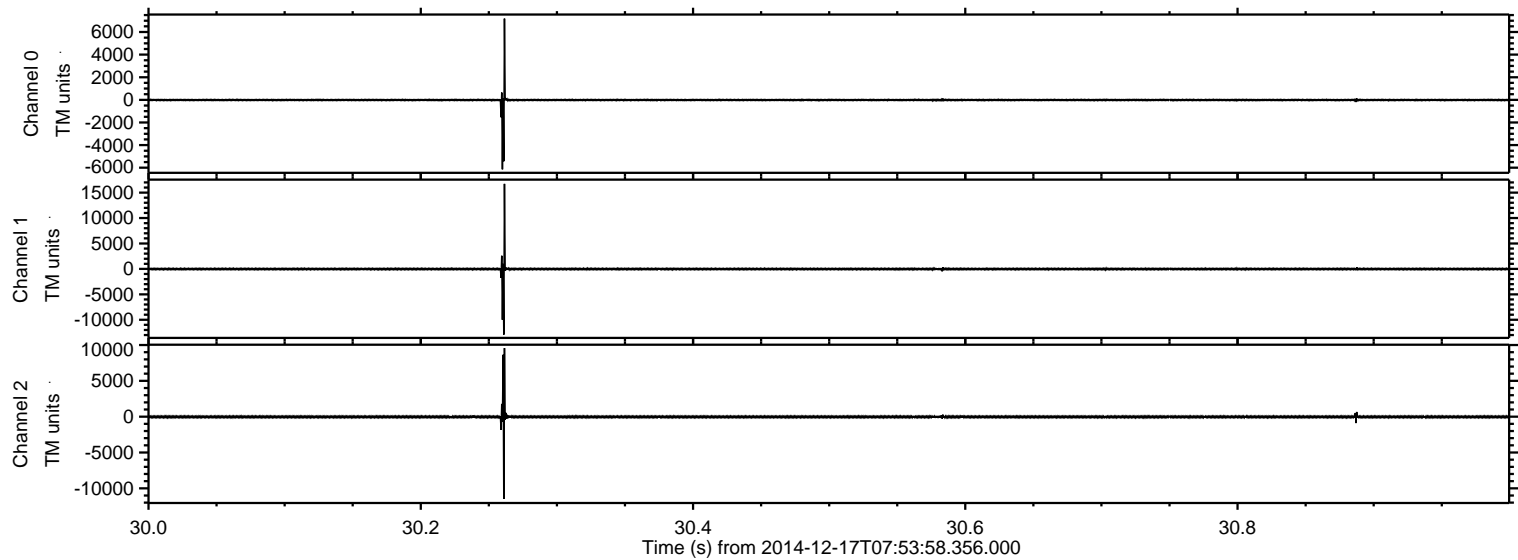


ELMAVAN 3D WAVEFORMS (Measured data sampled at 50 kHz) 49789 packets of 144 samples from 2014-12-17T07:53:58.356.000.

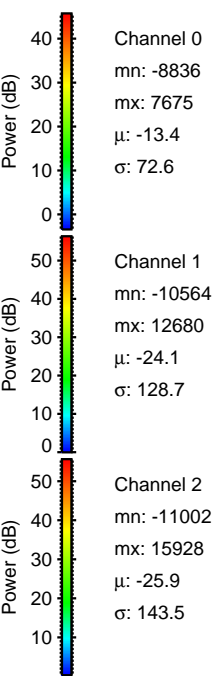
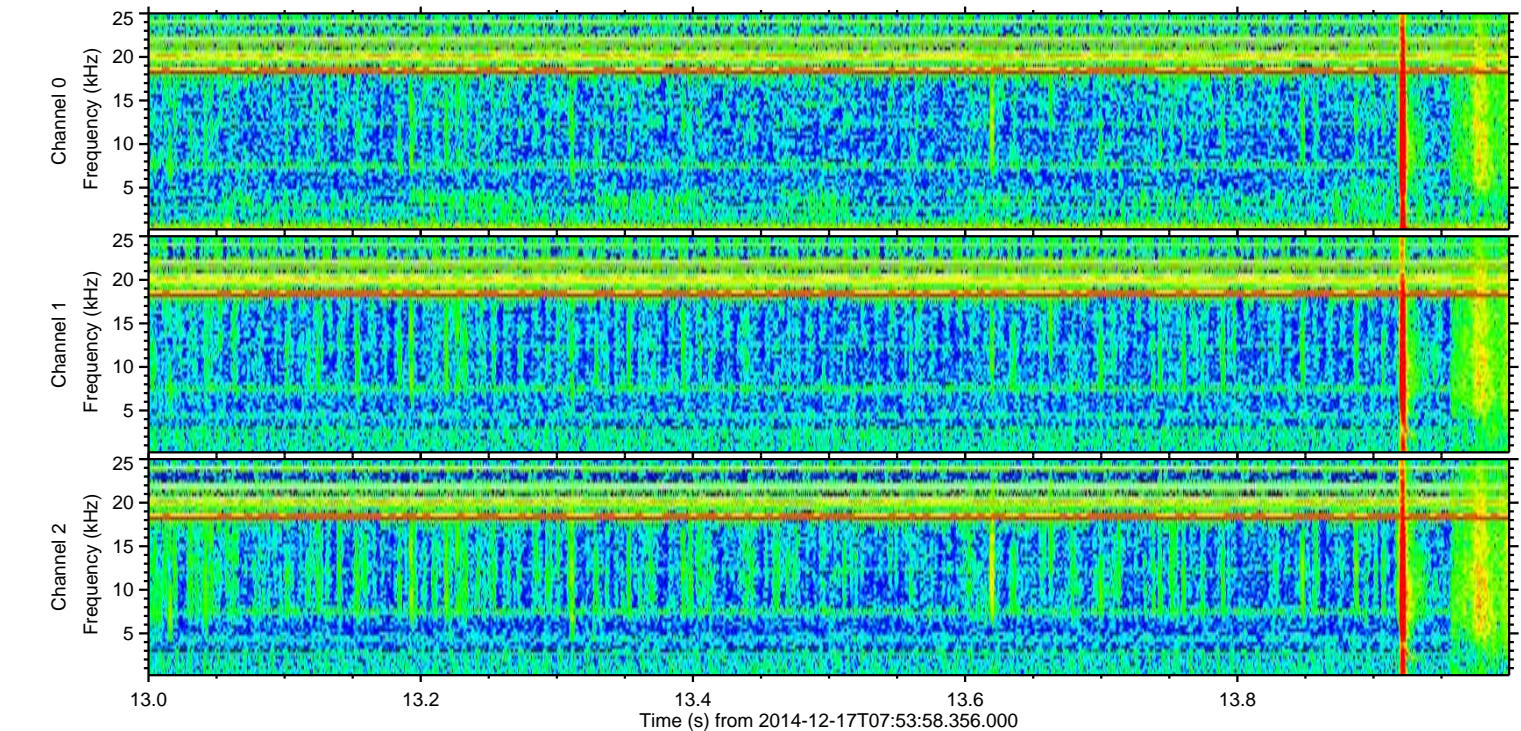
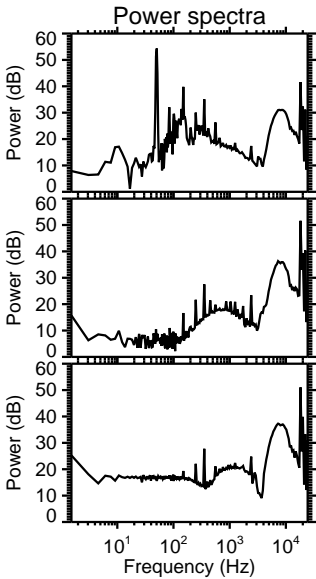
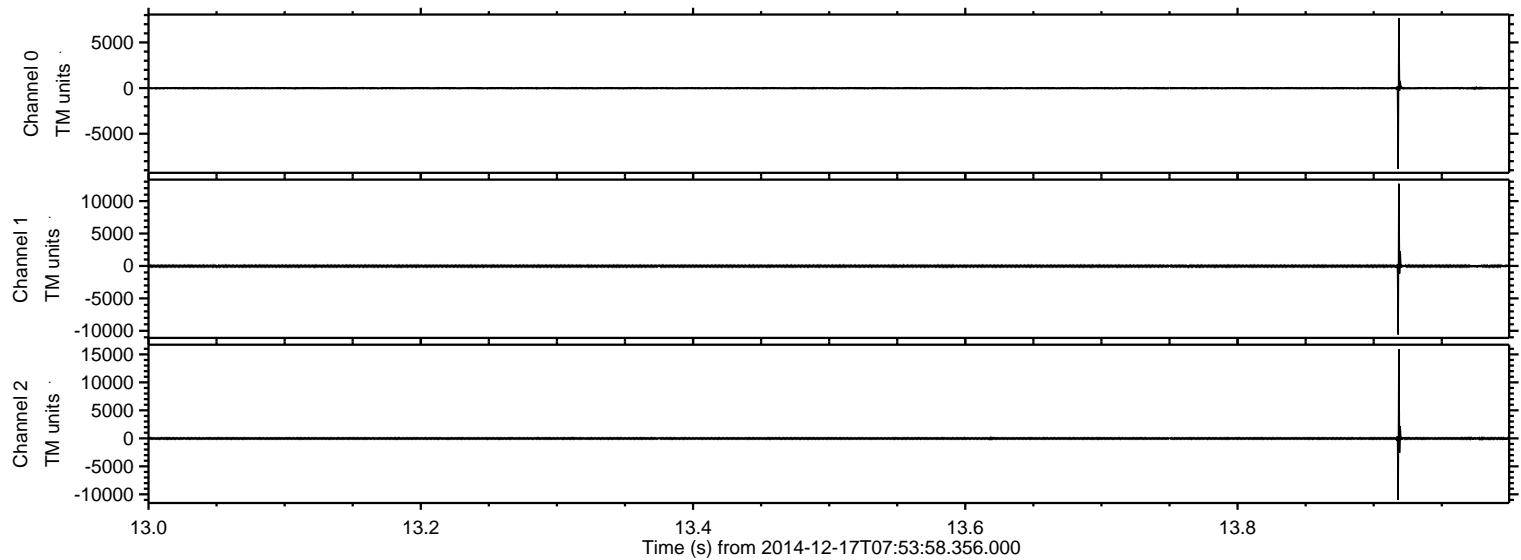
Processed Wed Dec 17 09:24:29 2014 by ELM ver.2012-10-06 from 001__elm20141217_075357__dat00.bin



Processed Wed Dec 17 09:24:41 2014 by ELM ver.2012-10-06 from 001__elm20141217_075357__dat00.bin

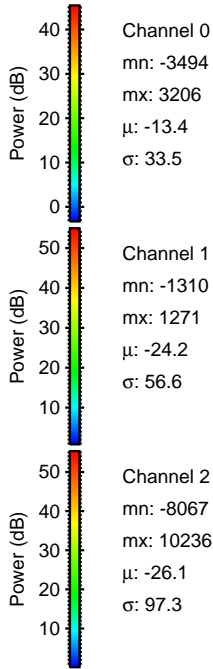
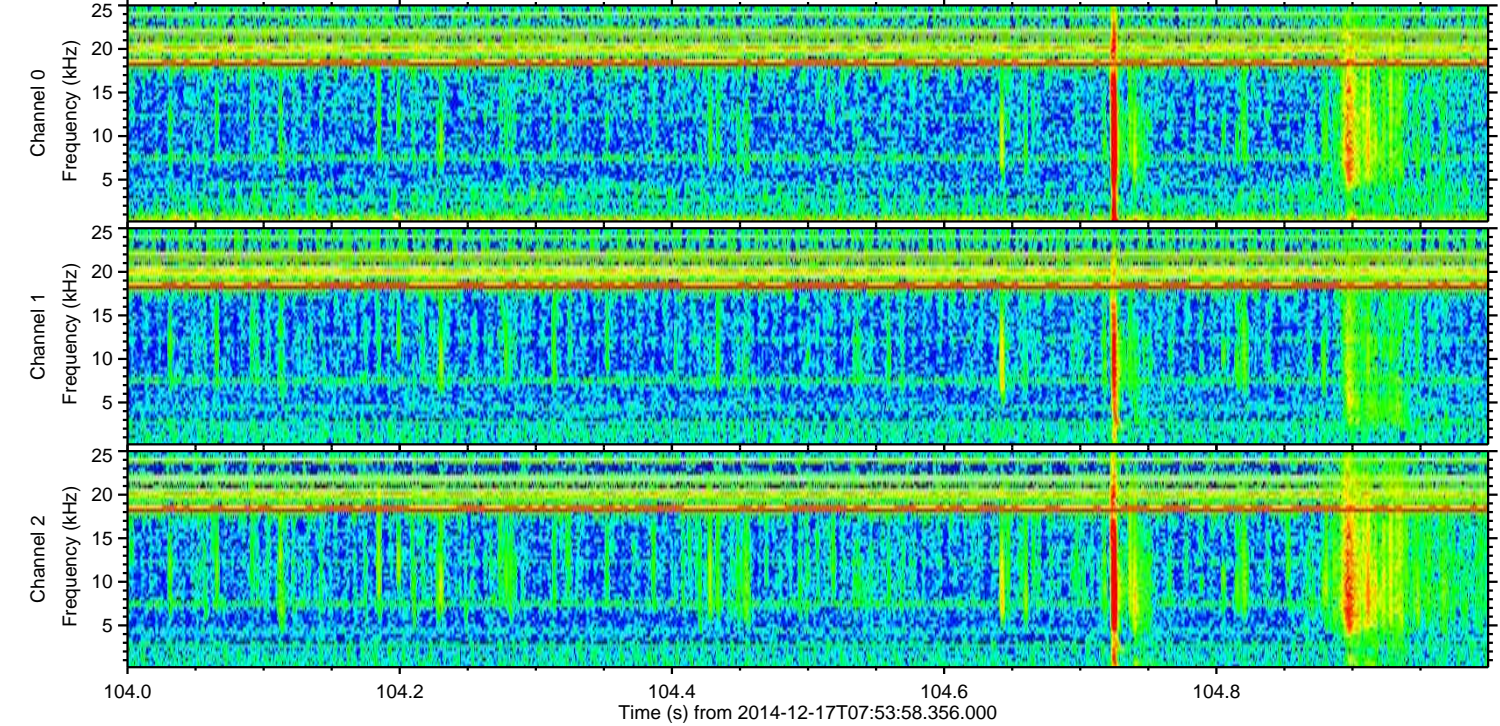
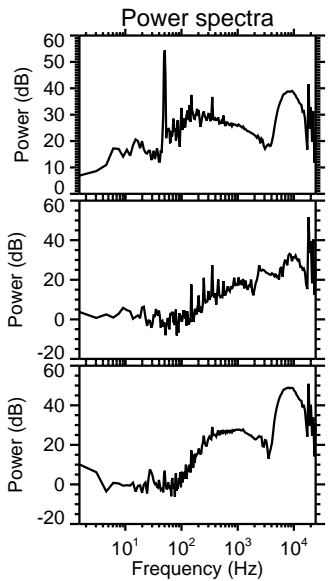
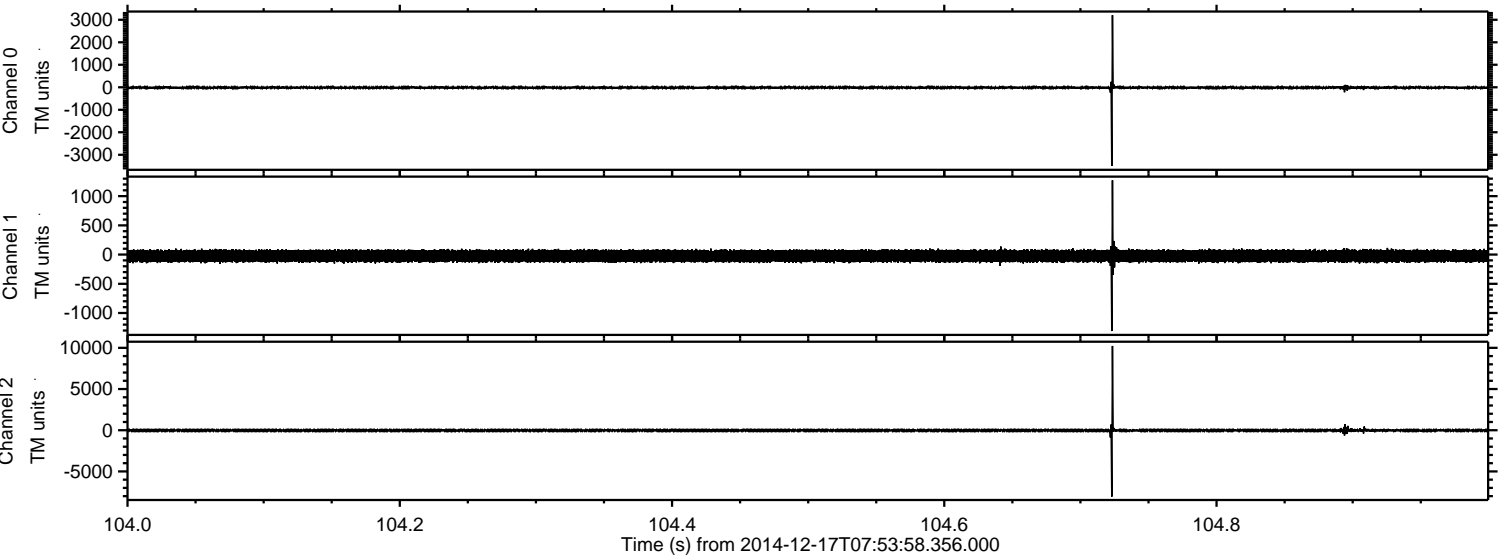


Processed Wed Dec 17 09:24:42 2014 by ELM ver.2012-10-06 from 001__elm20141217_075357__dat00.bin

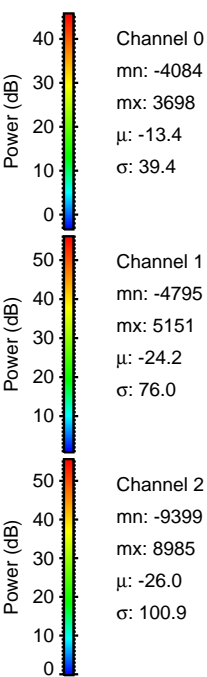
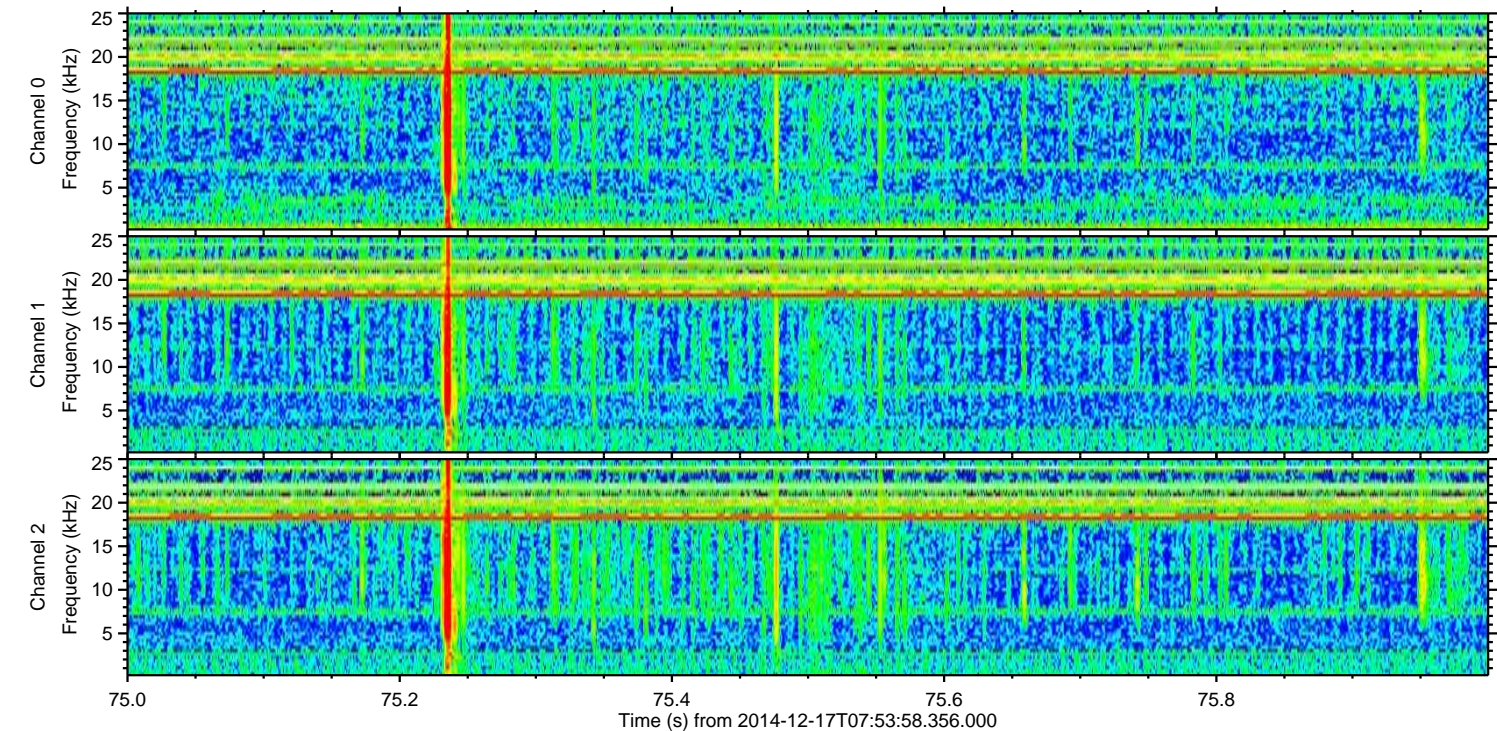
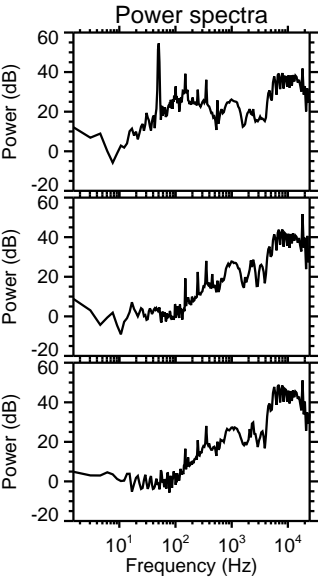
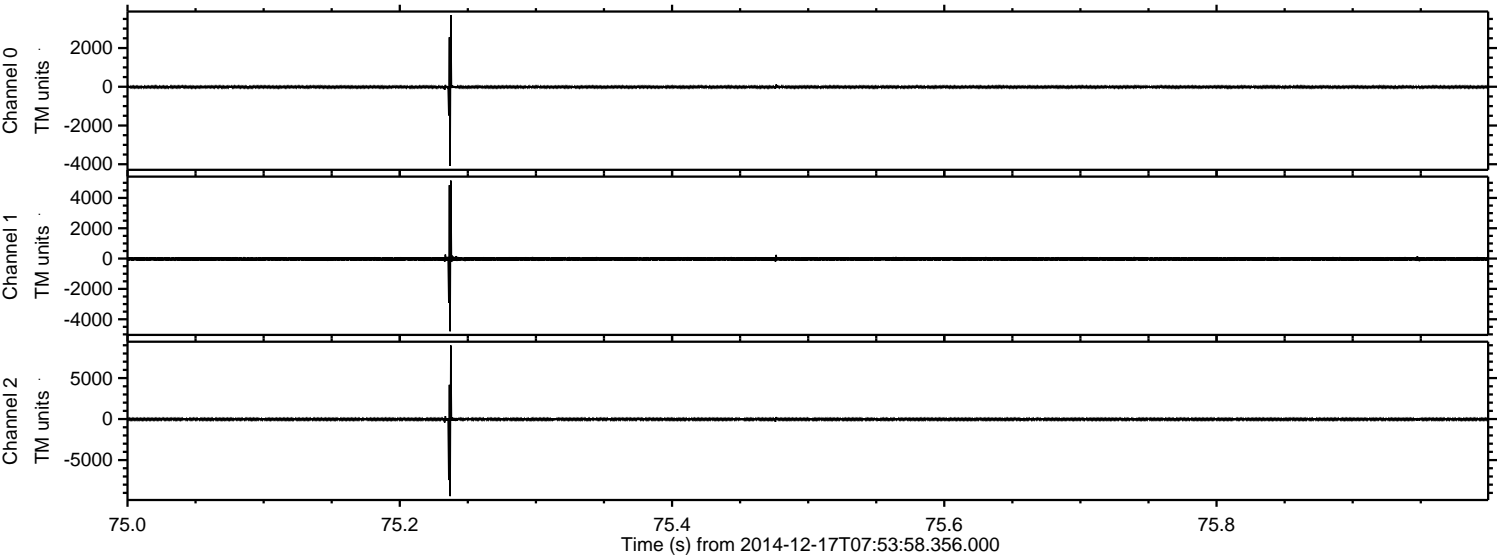


ELMAVAN 3D WAVEFORMS (Measured data sampled at 50 kHz) 49789 packets of 144 samples from 2014-12-17T07:53:58.356.000. Part 105/144

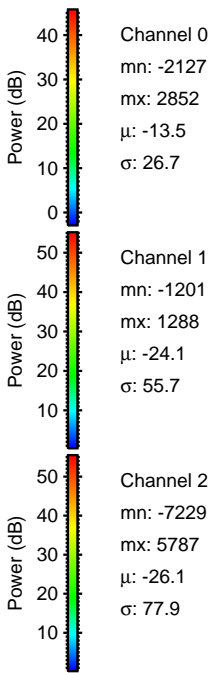
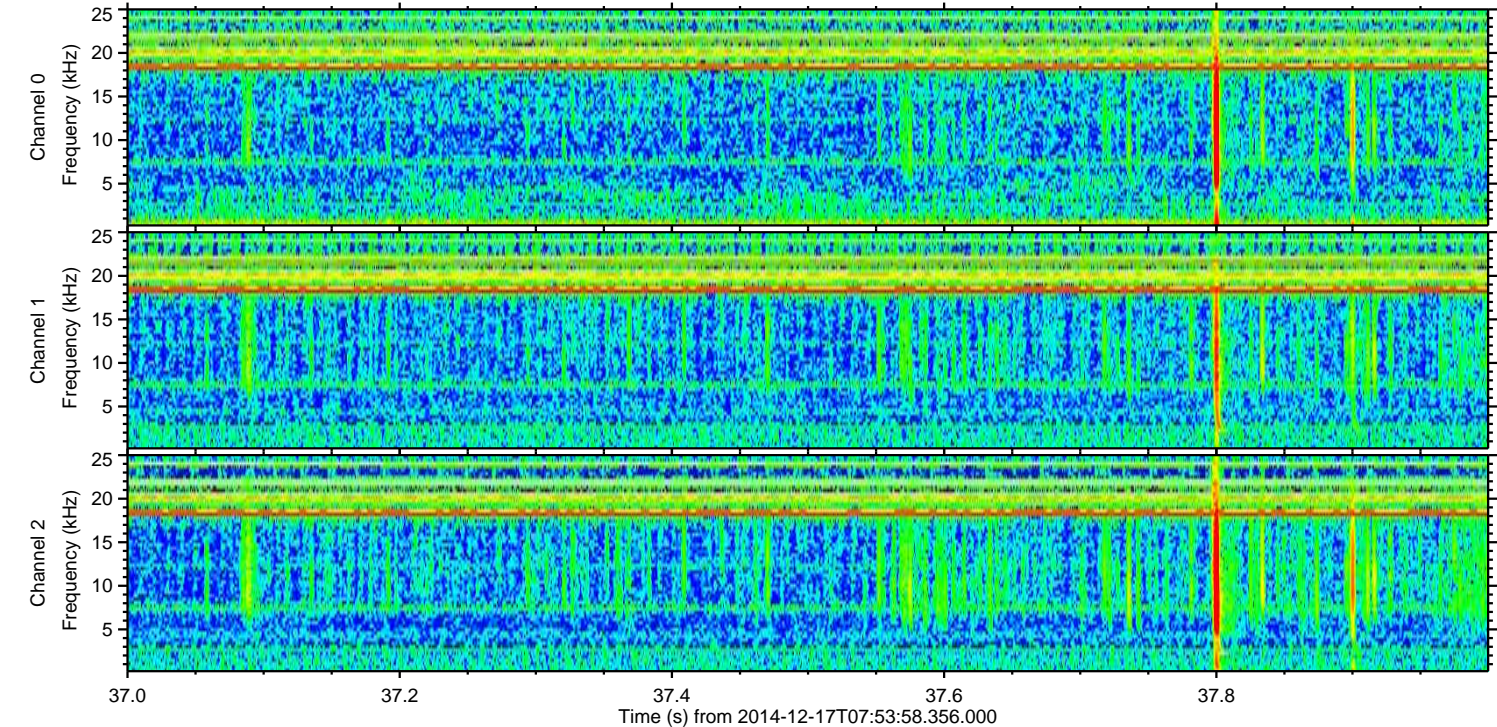
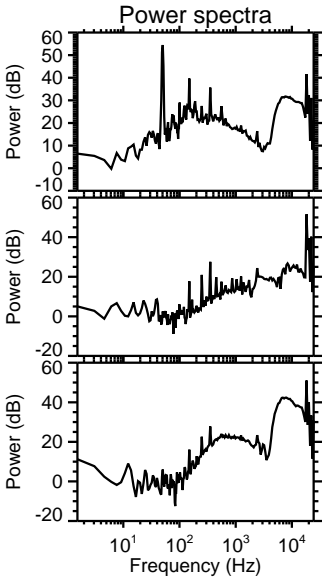
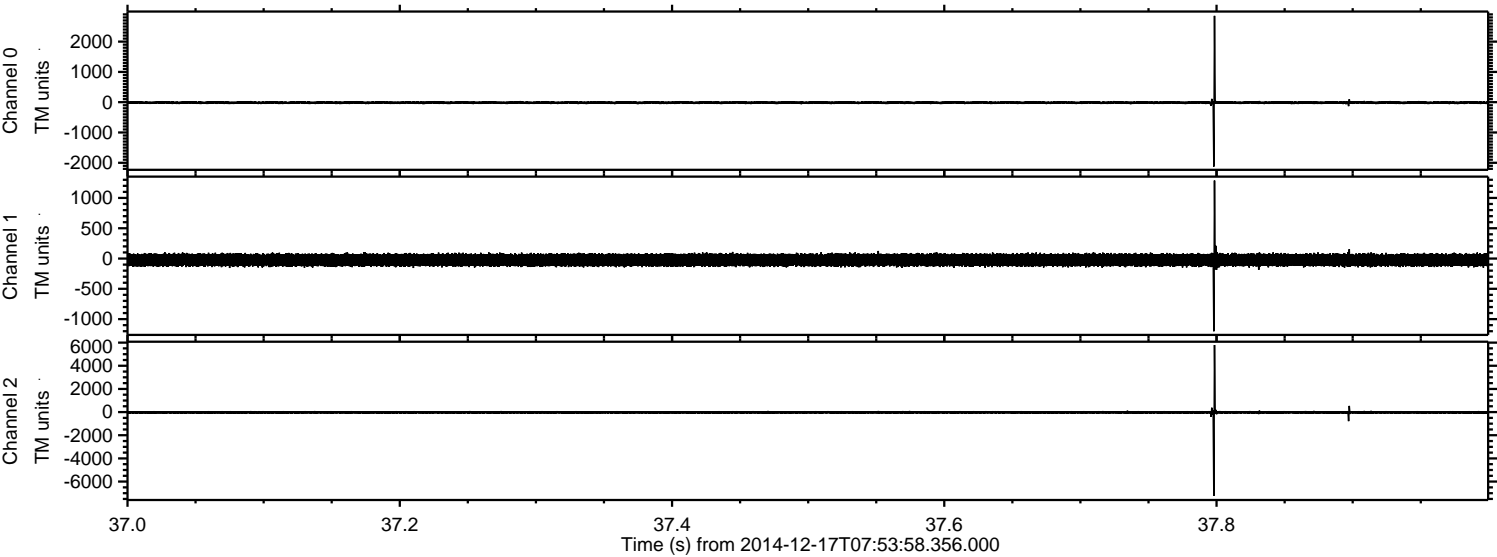
Processed Wed Dec 17 09:24:43 2014 by ELM ver.2012-10-06 from 001__elm20141217_075357__dat00.bin



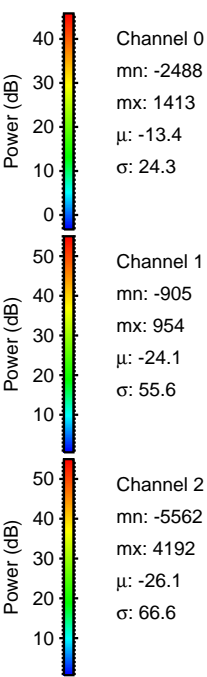
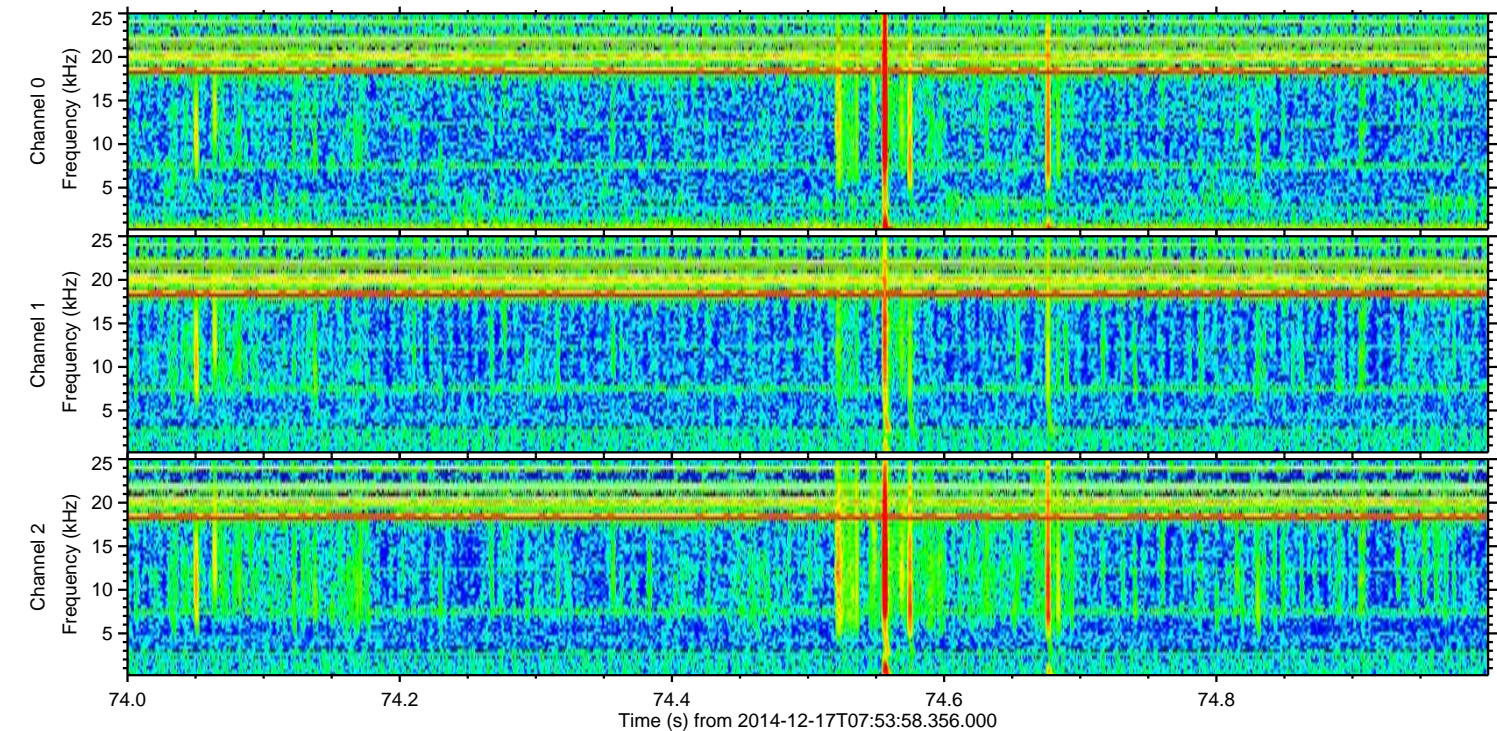
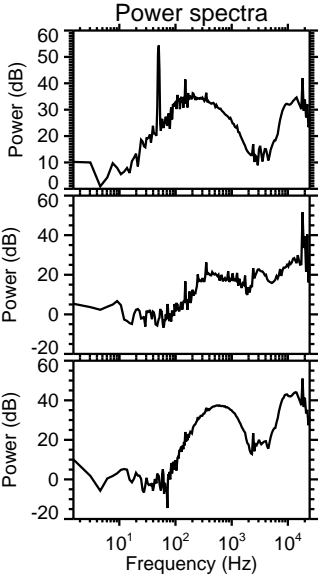
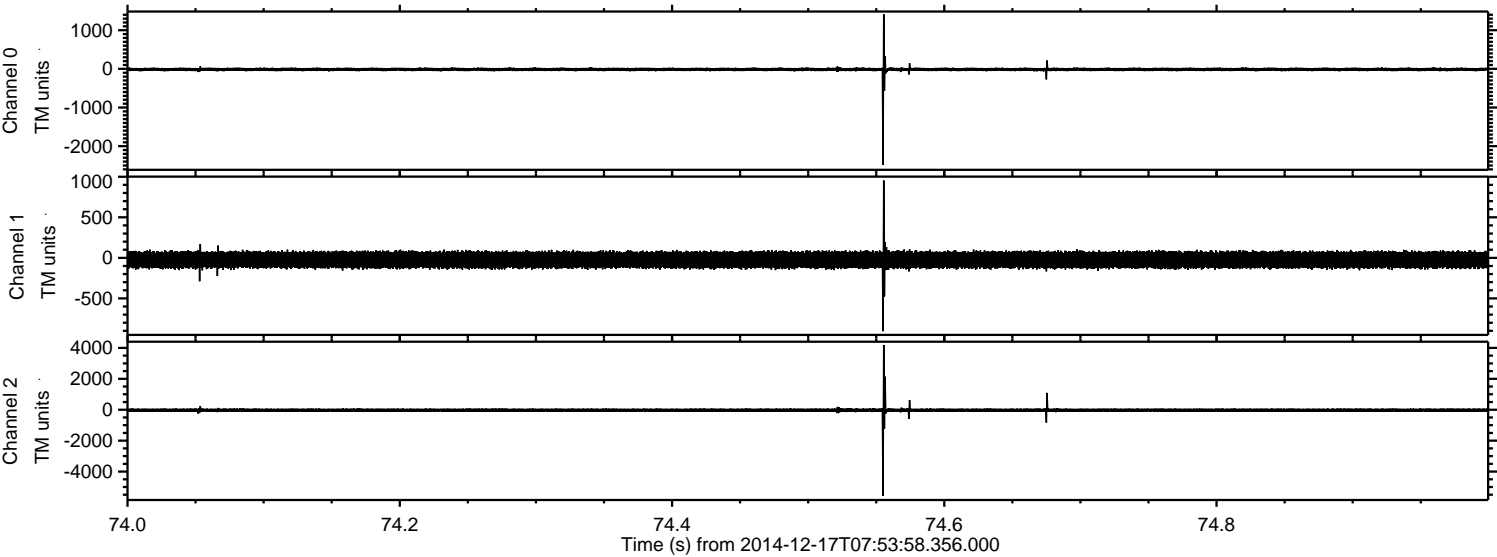
Processed Wed Dec 17 09:24:44 2014 by ELM ver.2012-10-06 from 001__elm20141217_075357__dat00.bin



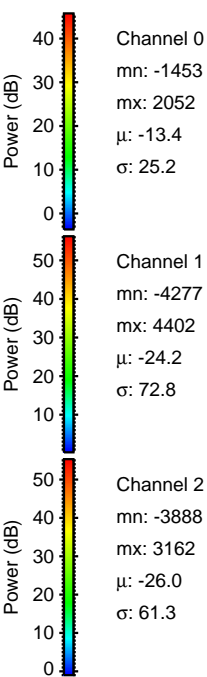
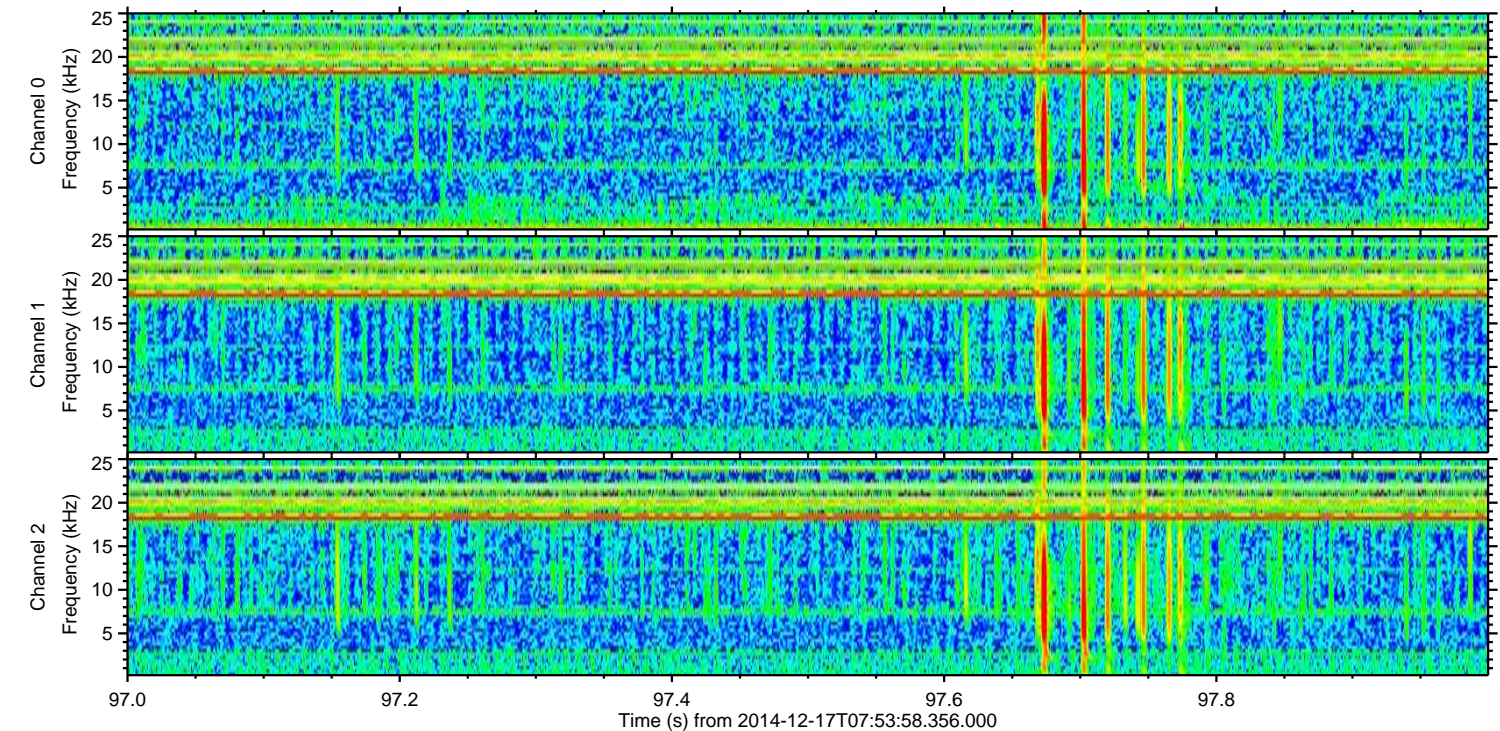
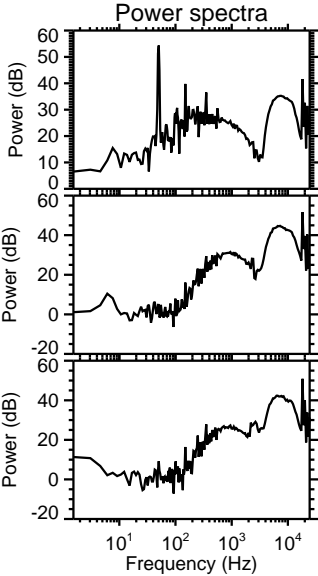
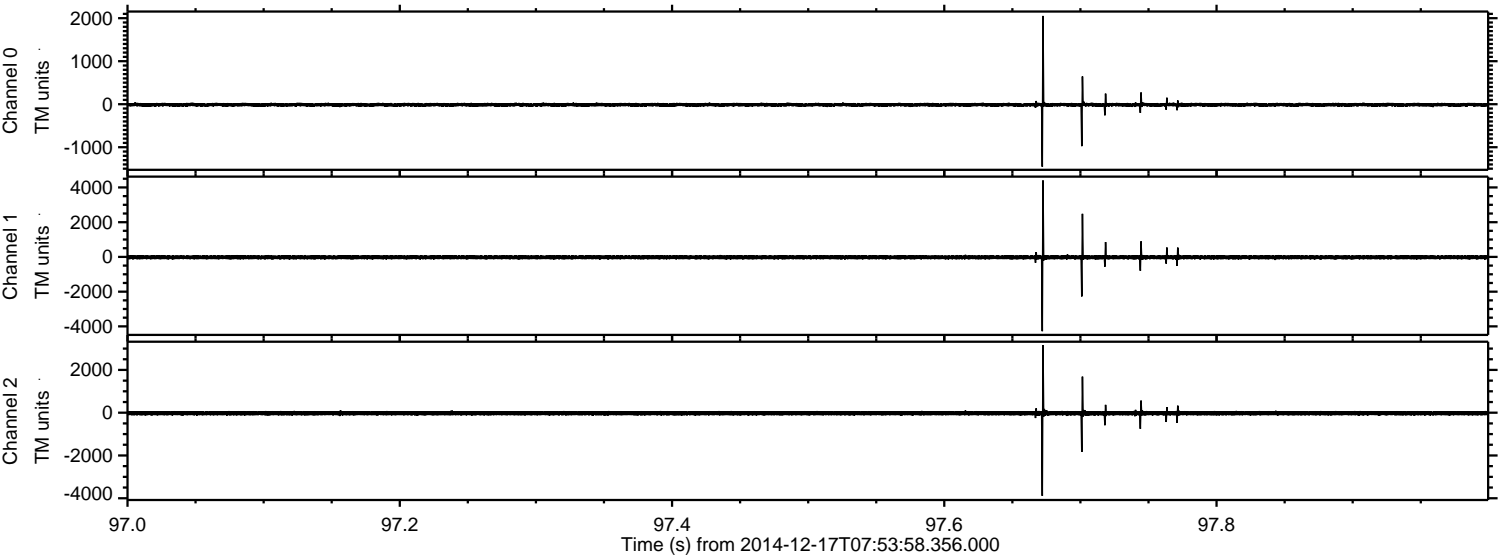
Processed Wed Dec 17 09:24:45 2014 by ELM ver.2012-10-06 from 001__elm20141217_075357__dat00.bin



Processed Wed Dec 17 09:24:46 2014 by ELM ver.2012-10-06 from 001__elm20141217_075357__dat00.bin

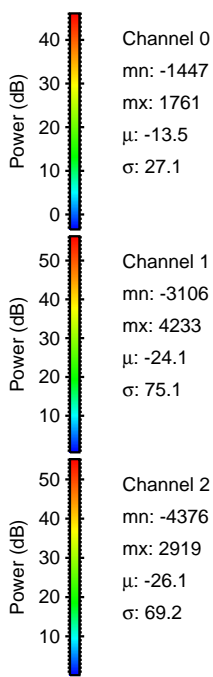
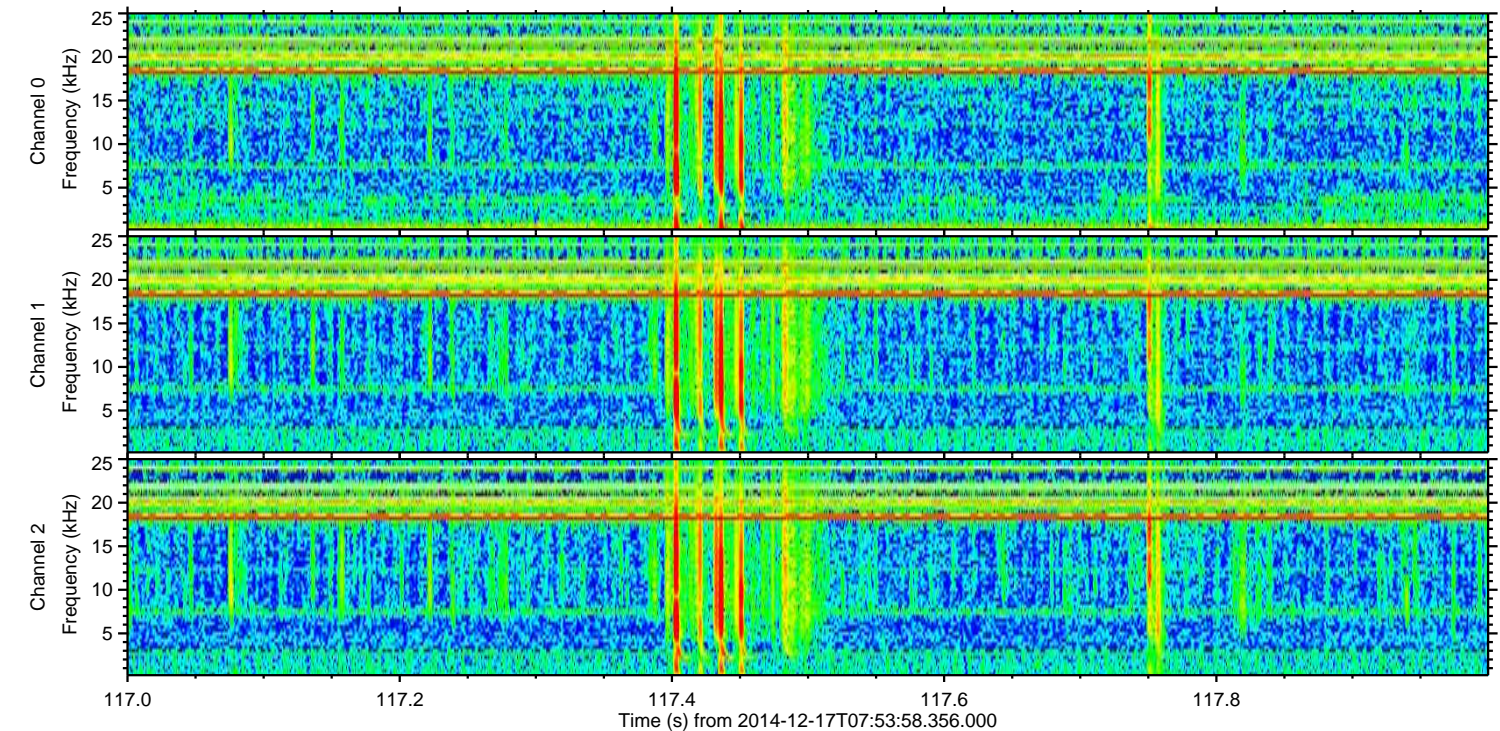
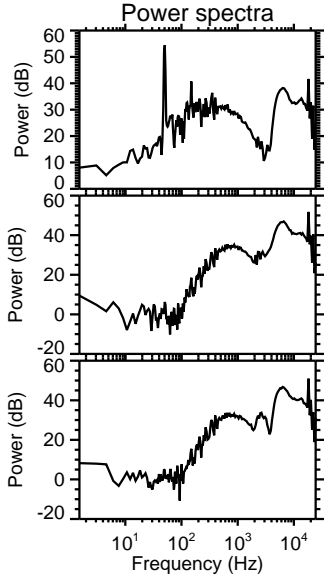
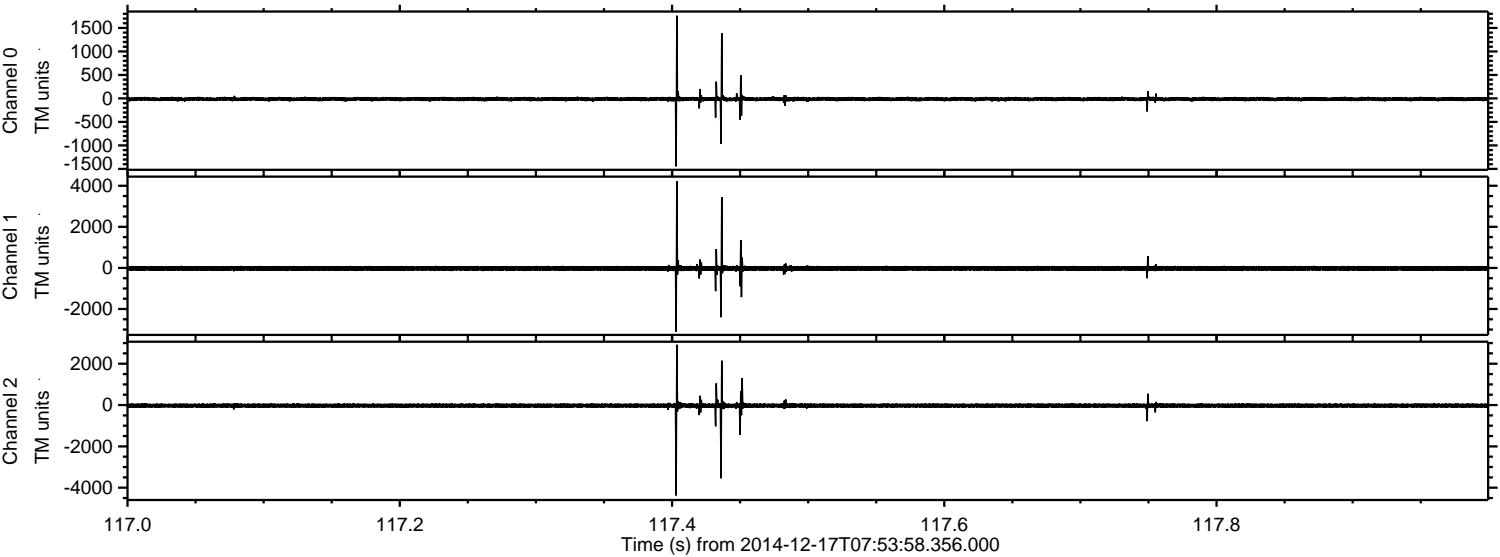


Processed Wed Dec 17 09:24:47 2014 by ELM ver.2012-10-06 from 001__elm20141217_075357__dat00.bin

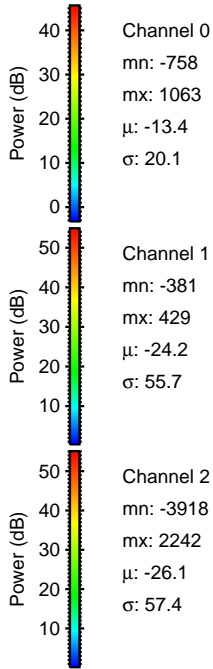
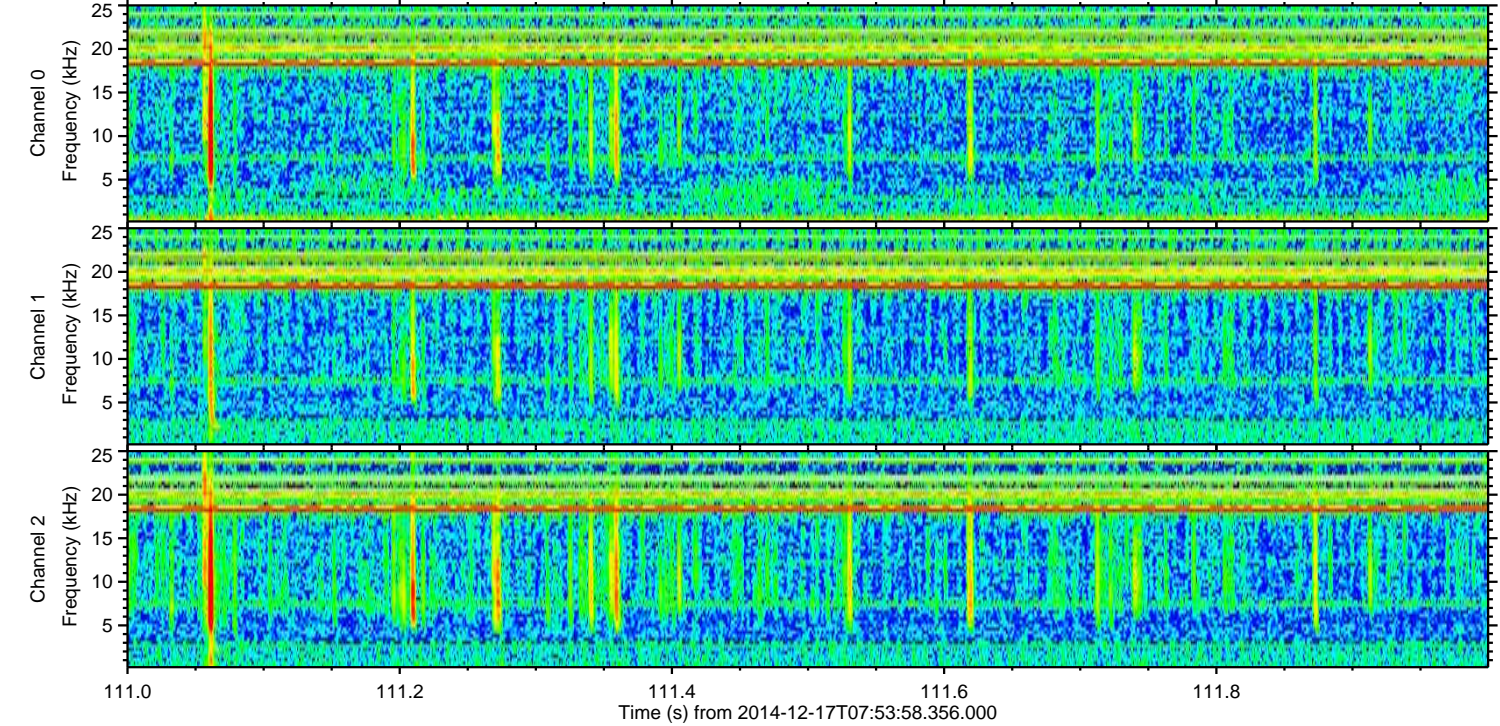
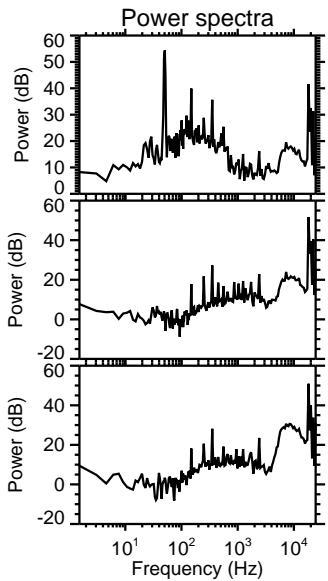
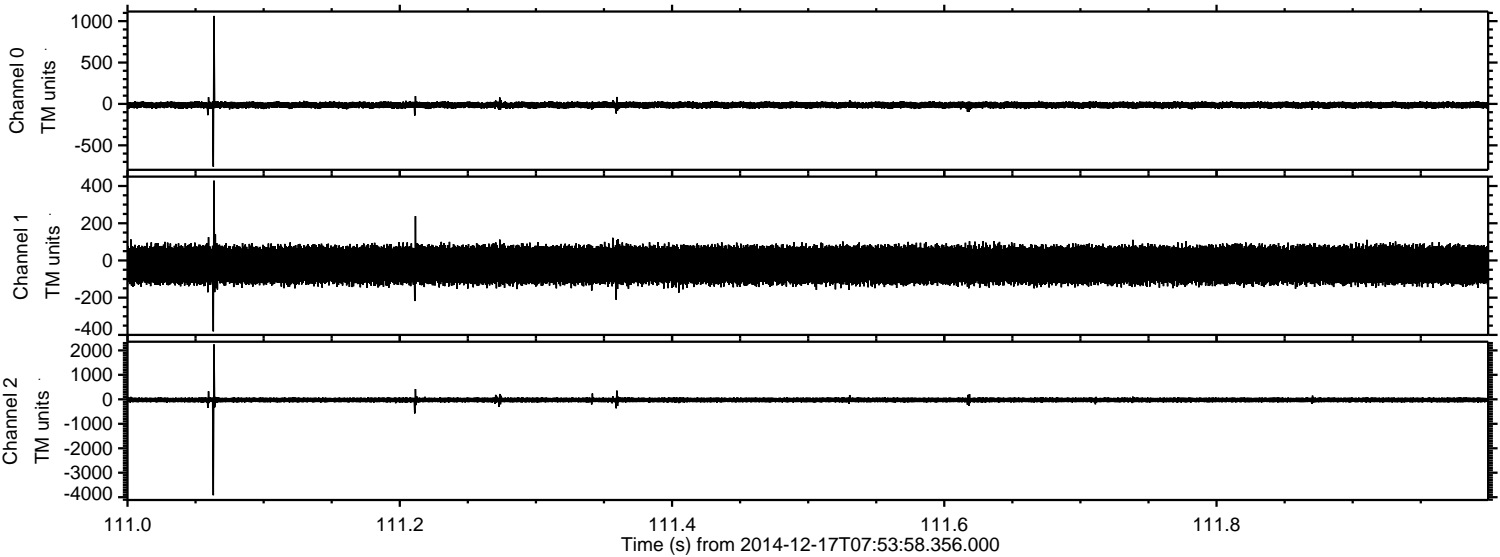


ELMAVAN 3D WAVEFORMS (Measured data sampled at 50 kHz) 49789 packets of 144 samples from 2014-12-17T07:53:58.356.000. Part 118/144

Processed Wed Dec 17 09:24:48 2014 by ELM ver.2012-10-06 from 001__elm20141217_075357__dat00.bin



Processed Wed Dec 17 09:24:49 2014 by ELM ver.2012-10-06 from 001__elm20141217_075357__dat00.bin



Channel 0
mn: -758
mx: 1063
 μ : -13.4
 σ : 20.1

Channel 1
mn: -381
mx: 429
 μ : -24.2
 σ : 55.7

Channel 2
mn: -3918
mx: 2242
 μ : -26.1
 σ : 57.4

Processed Wed Dec 17 09:24:49 2014 by ELM ver.2012-10-06 from 001__elm20141217_075357__dat00.bin

