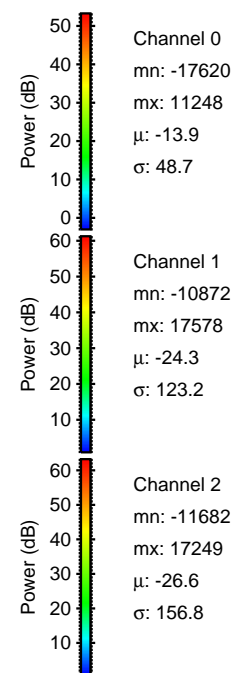
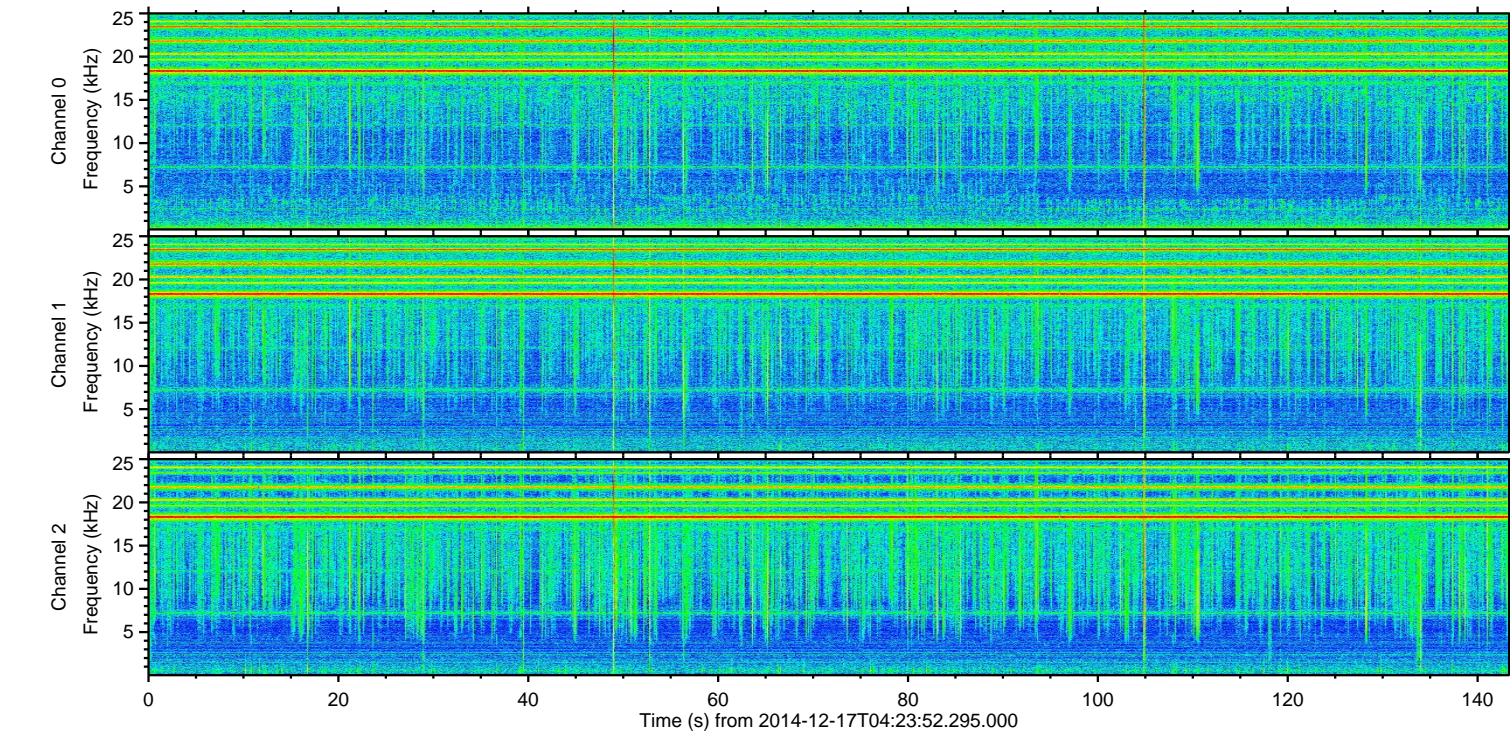
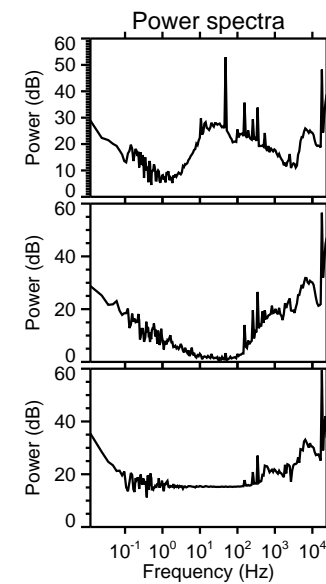
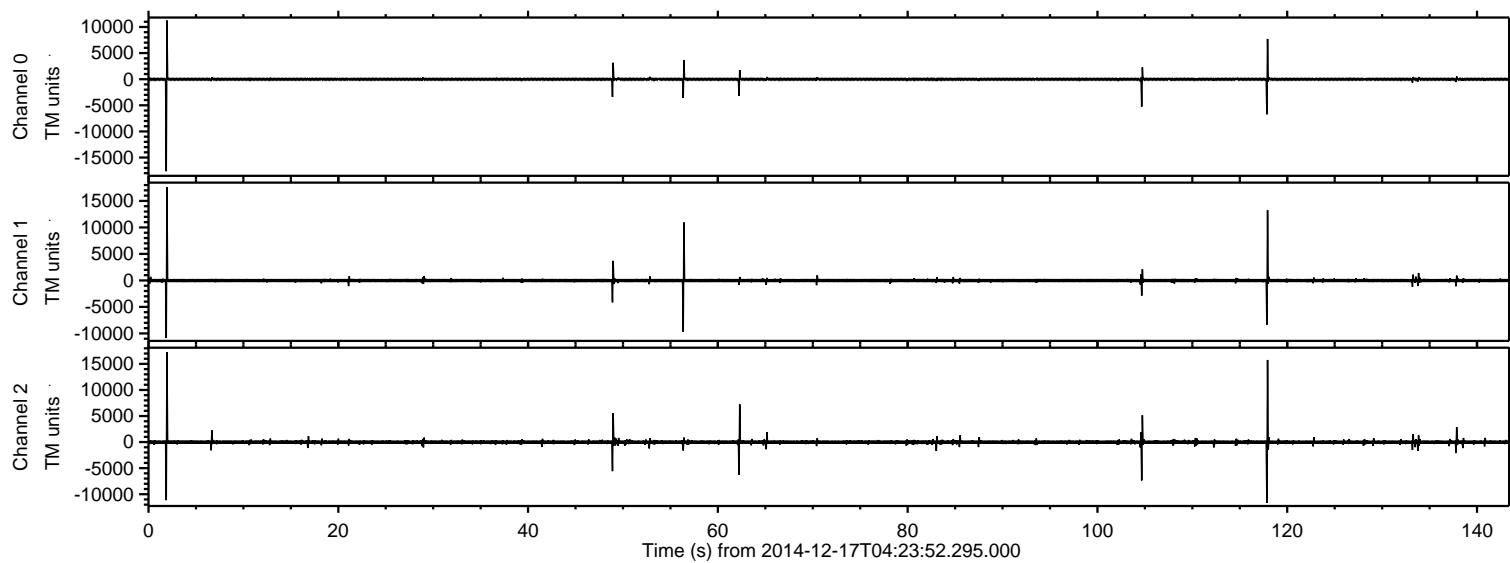


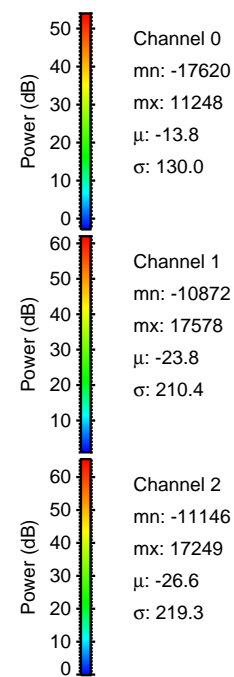
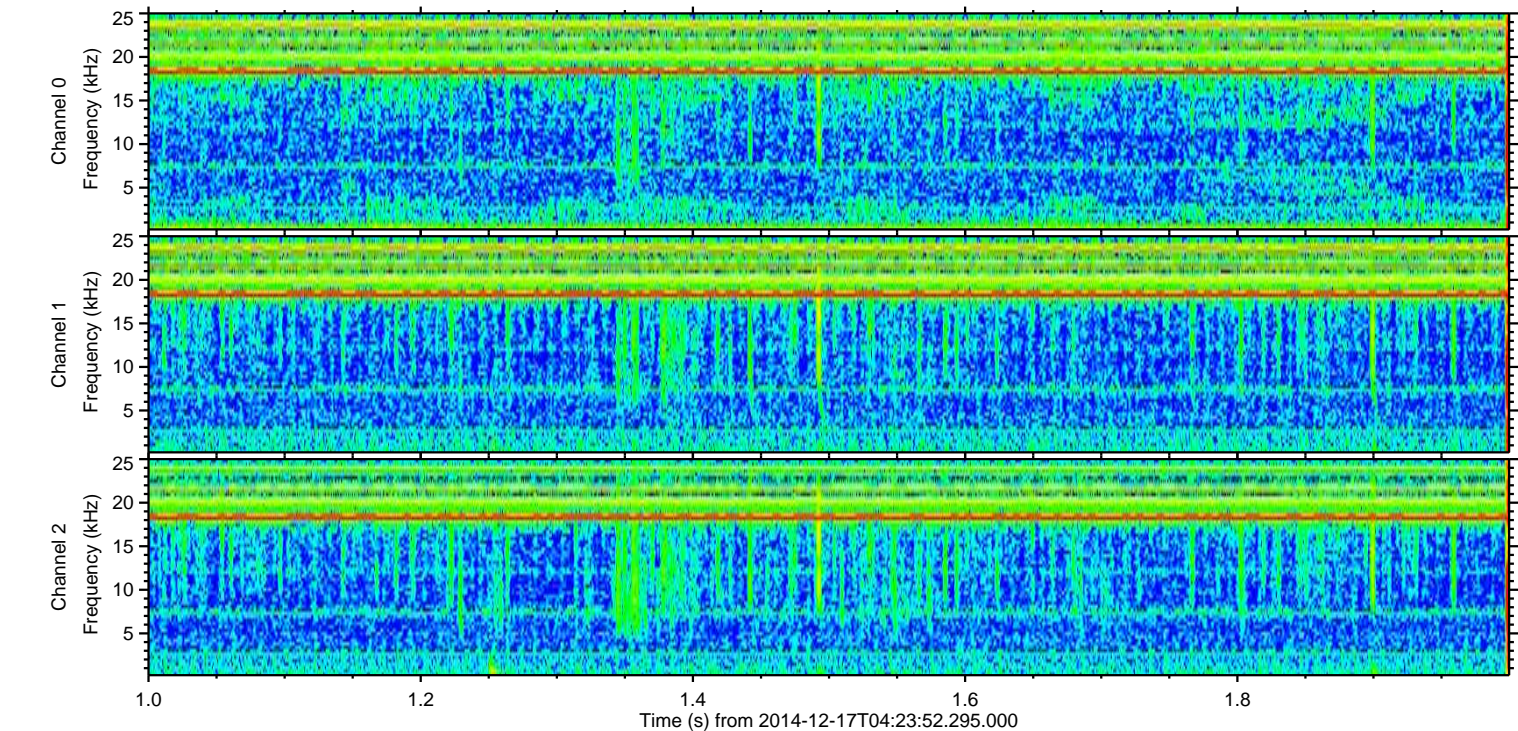
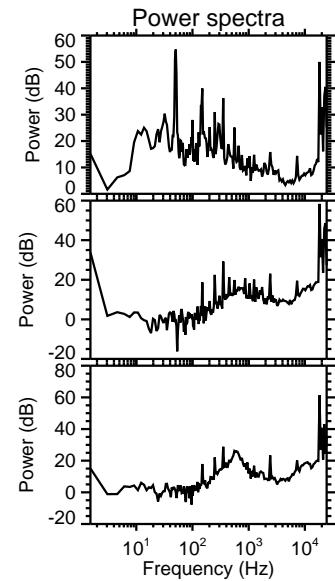
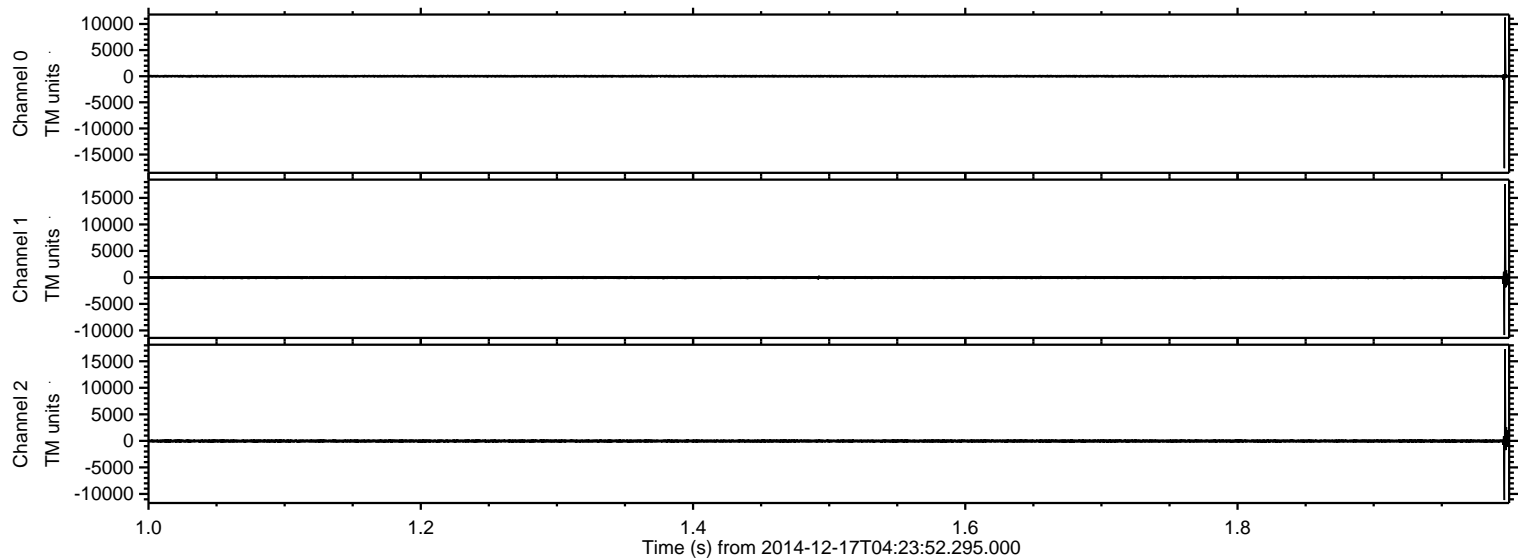
ELMAVAN 3D WAVEFORMS (Measured data sampled at 50 kHz) 49786 packets of 144 samples from 2014-12-17T04:23:52.295.000.

Processed Wed Dec 17 05:33:48 2014 by ELM ver.2012-10-06 from 001__elm20141217_042351__dat00.bin



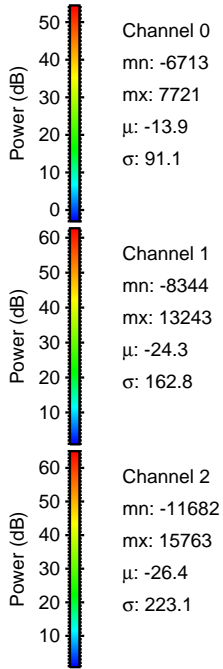
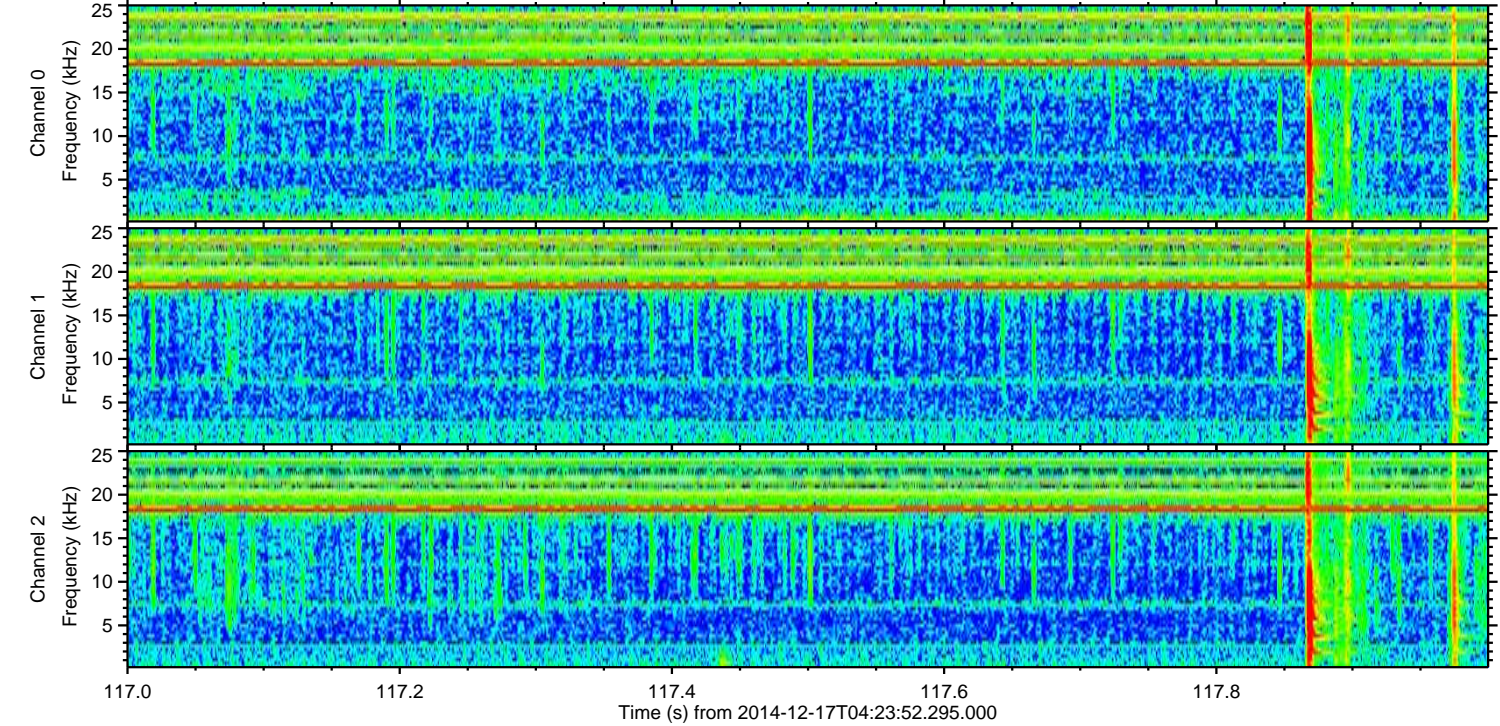
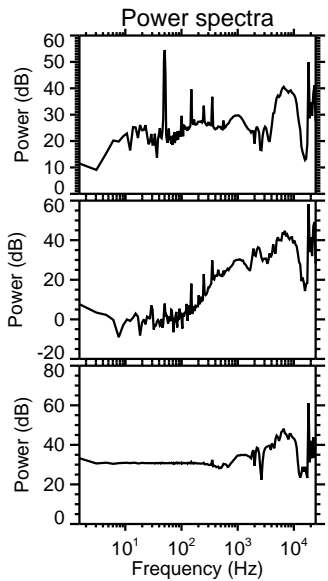
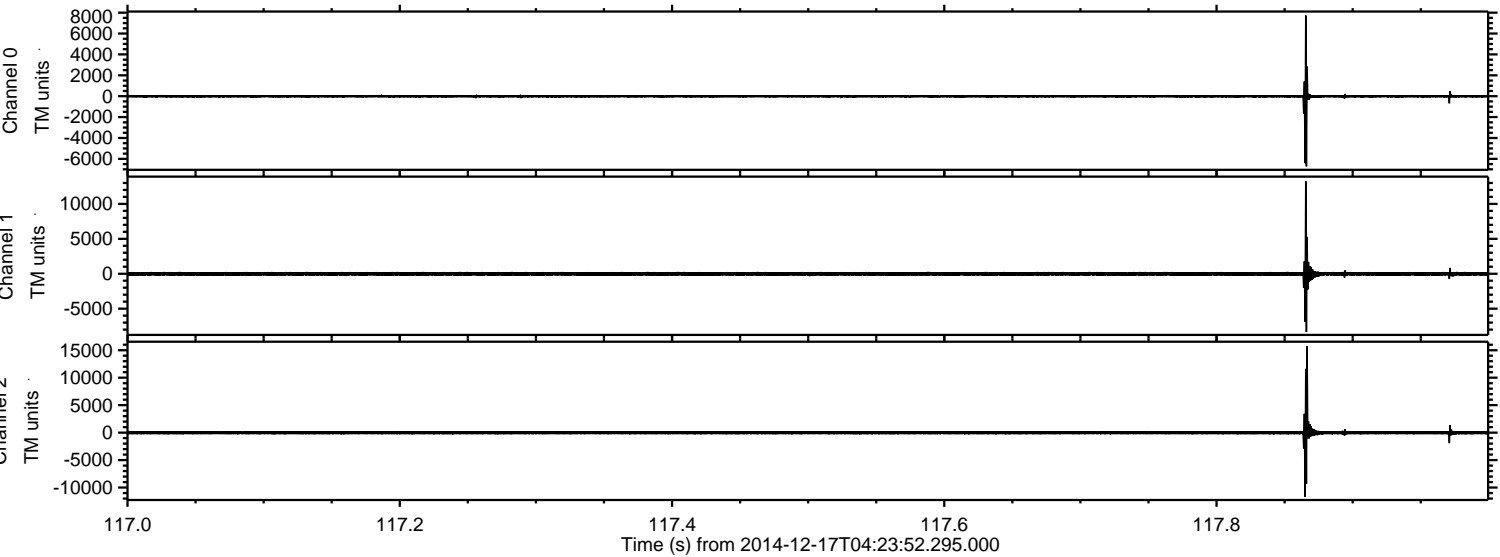
ELMAVAN 3D WAVEFORMS (Measured data sampled at 50 kHz) 49786 packets of 144 samples from 2014-12-17T04:23:52.295.000. Part 2/144

Processed Wed Dec 17 05:34:00 2014 by ELM ver.2012-10-06 from 001__elm20141217_042351__dat00.bin

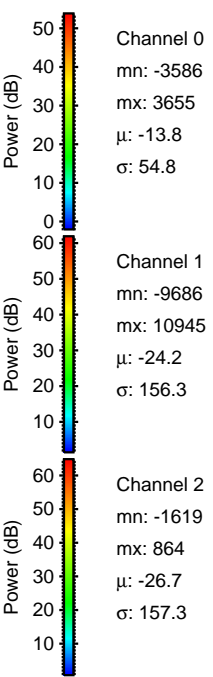
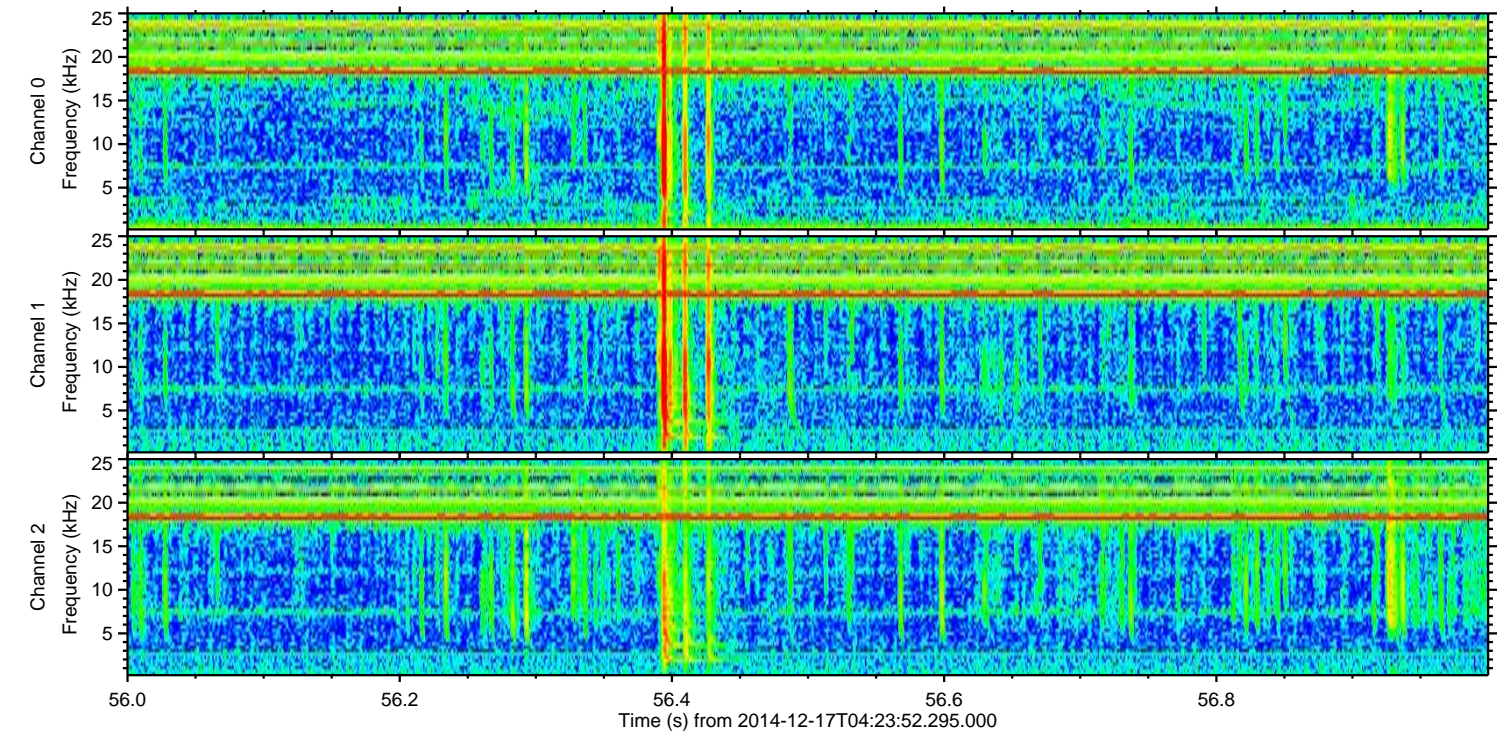
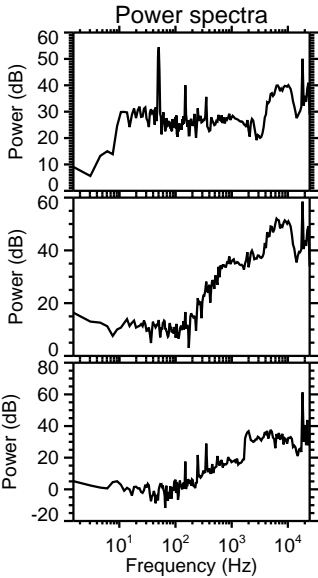
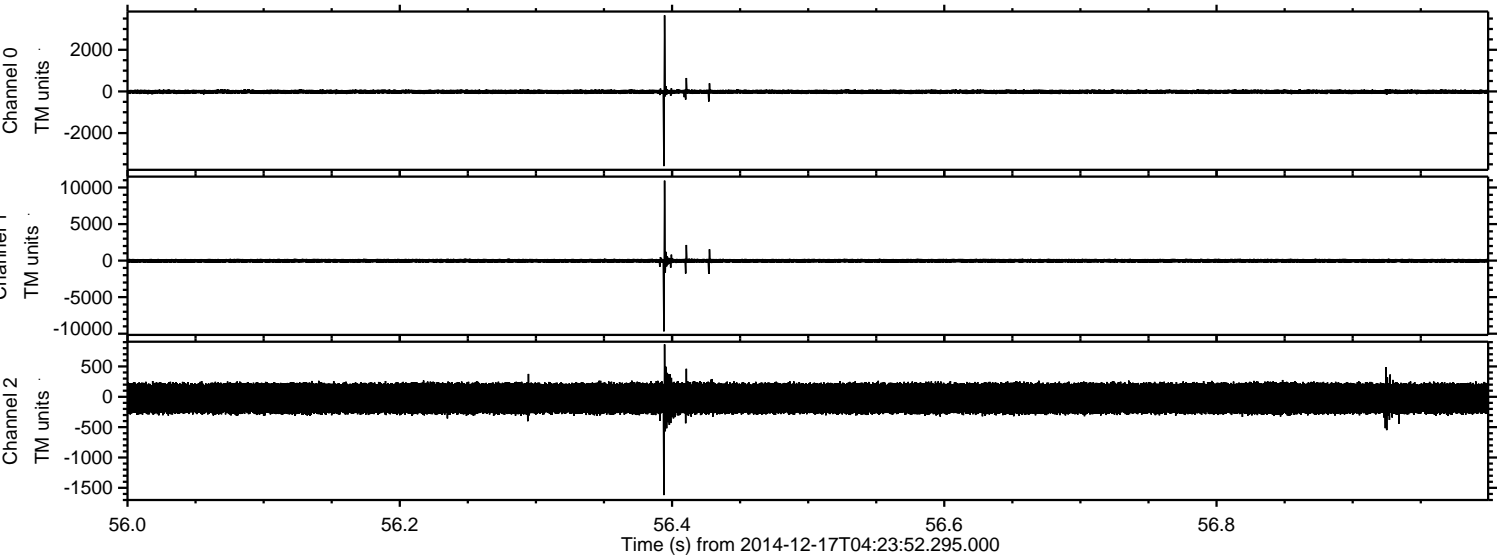


ELMAVAN 3D WAVEFORMS (Measured data sampled at 50 kHz) 49786 packets of 144 samples from 2014-12-17T04:23:52.295.000. Part 118/144

Processed Wed Dec 17 05:34:01 2014 by ELM ver.2012-10-06 from 001__elm20141217_042351__dat00.bin

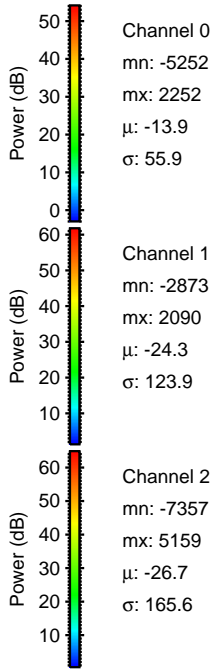
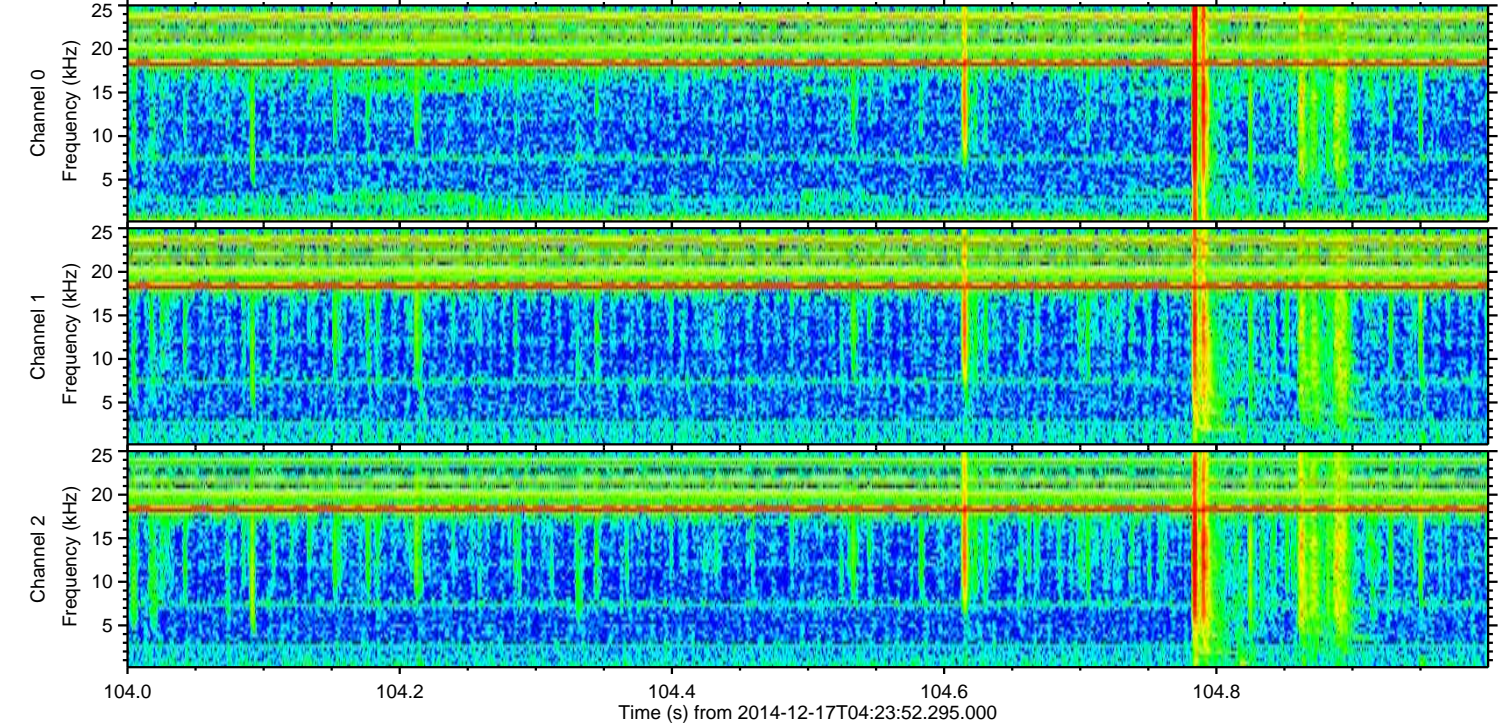
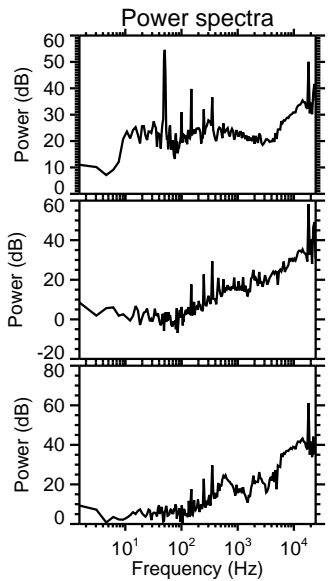
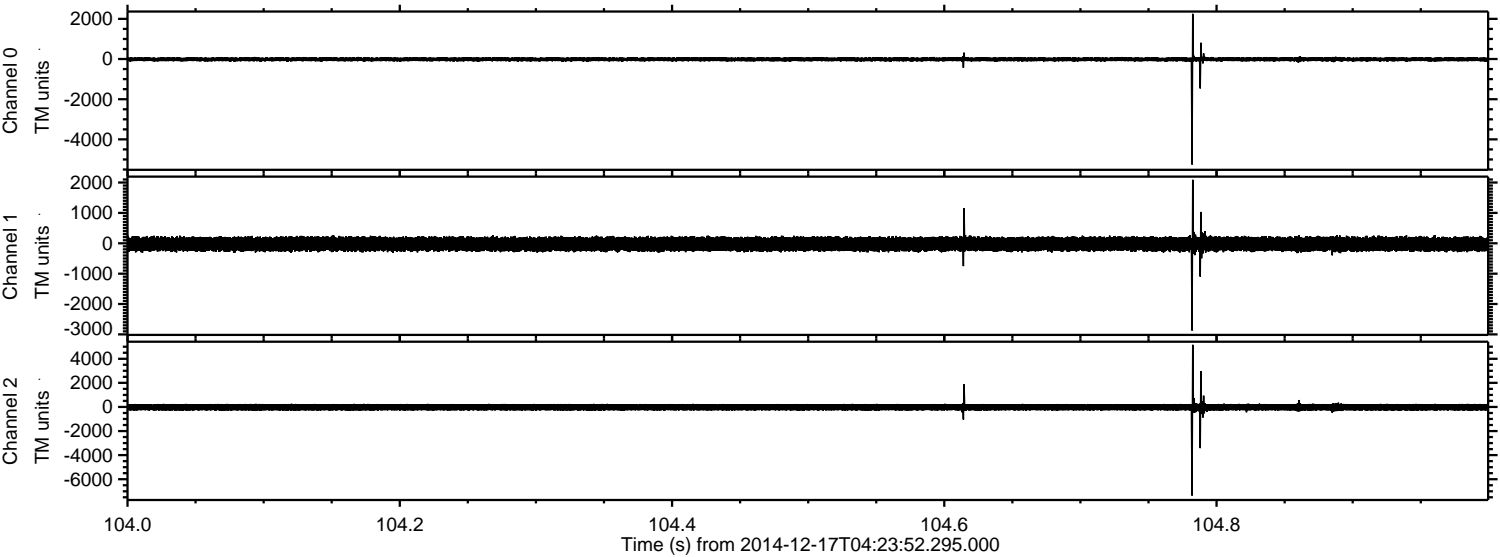


Processed Wed Dec 17 05:34:02 2014 by ELM ver.2012-10-06 from 001__elm20141217_042351__dat00.bin

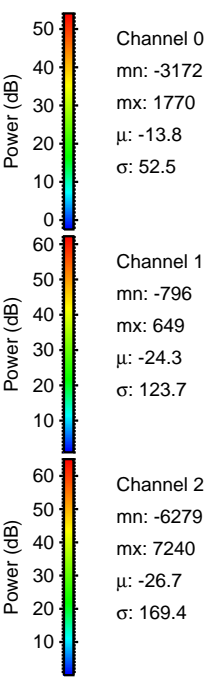
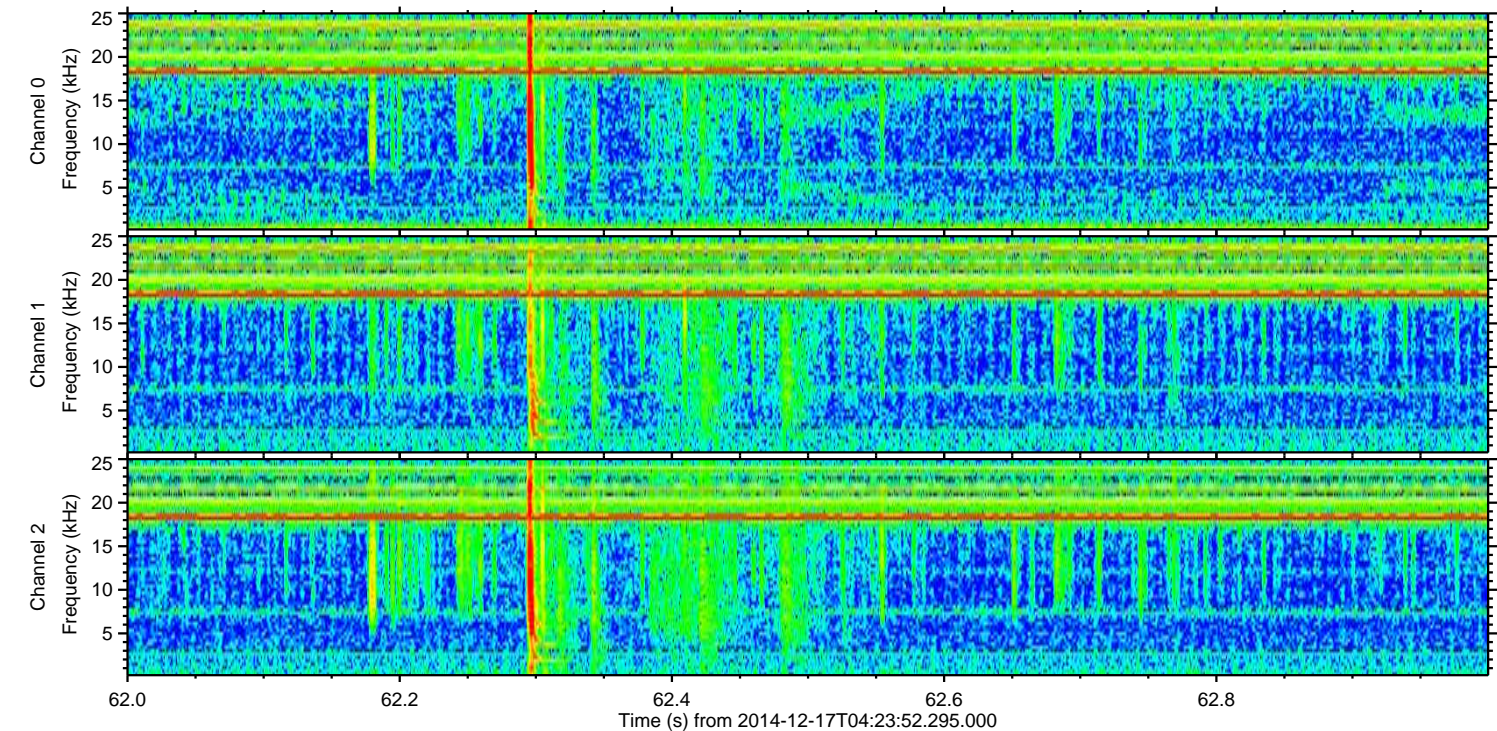
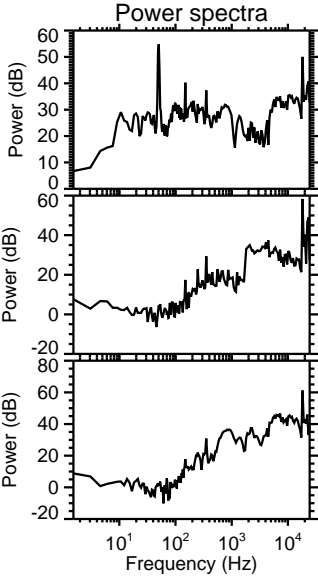
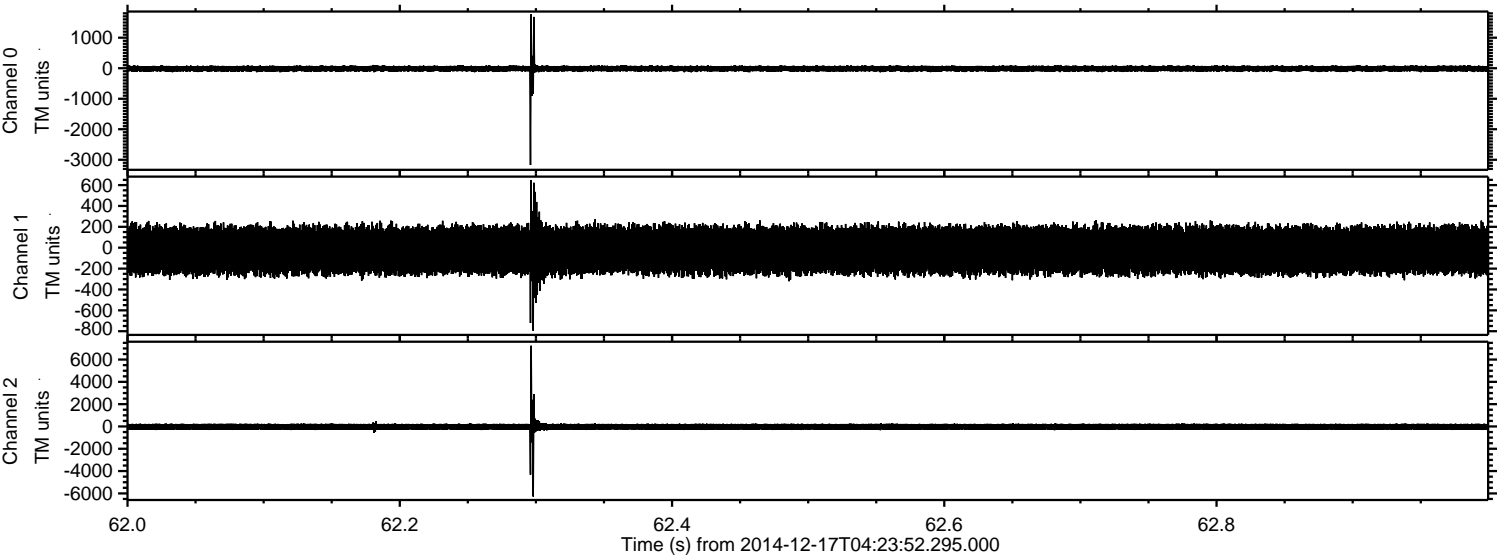


ELMAVAN 3D WAVEFORMS (Measured data sampled at 50 kHz) 49786 packets of 144 samples from 2014-12-17T04:23:52.295.000. Part 105/144

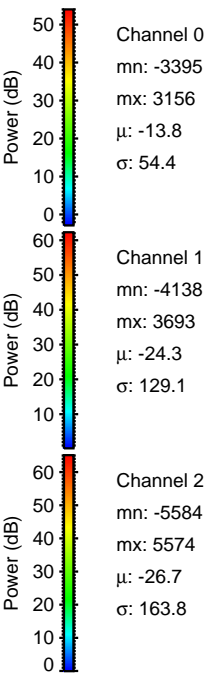
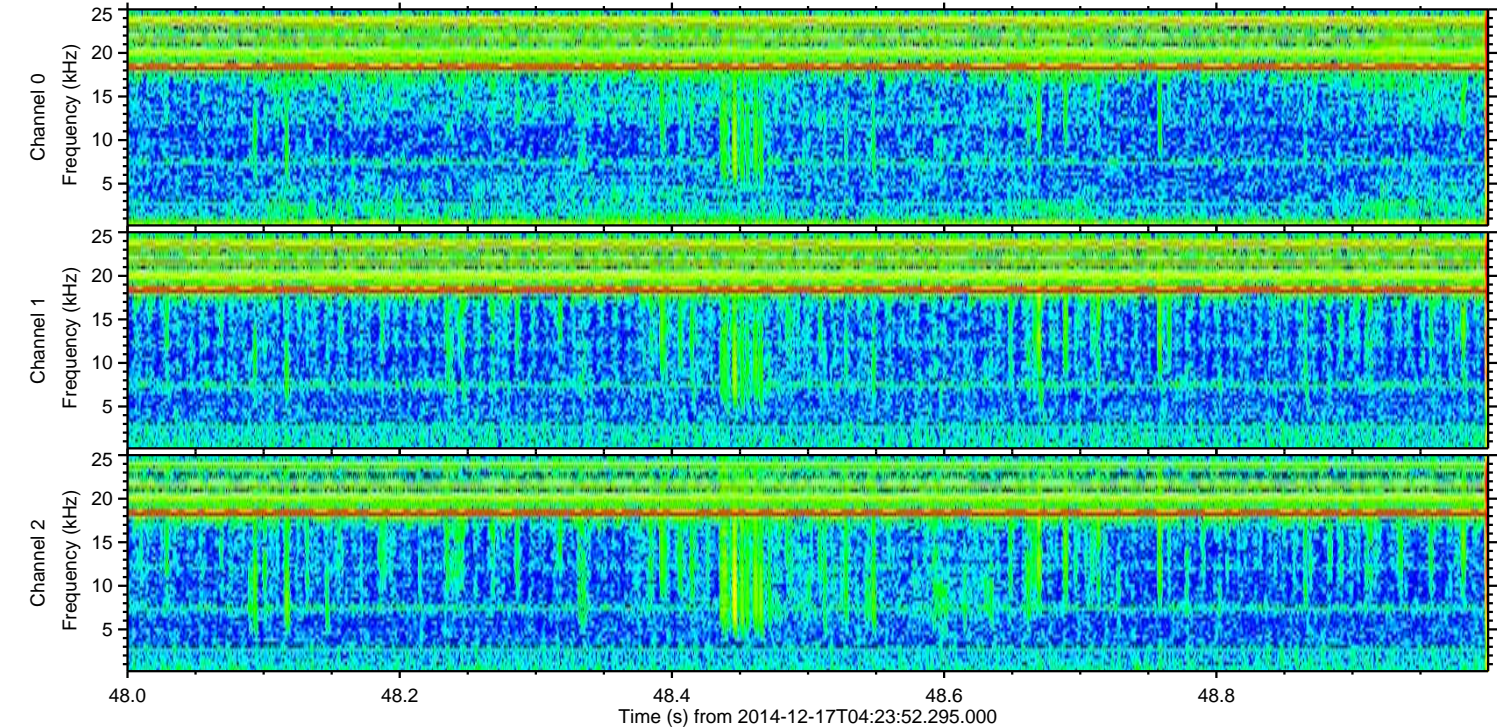
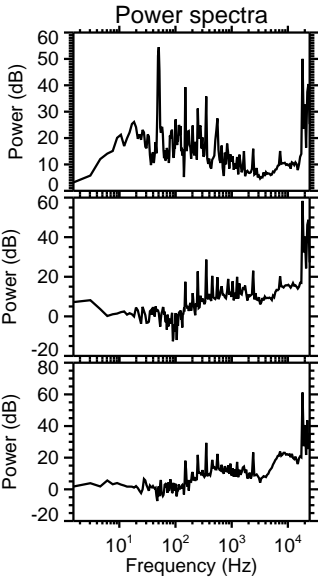
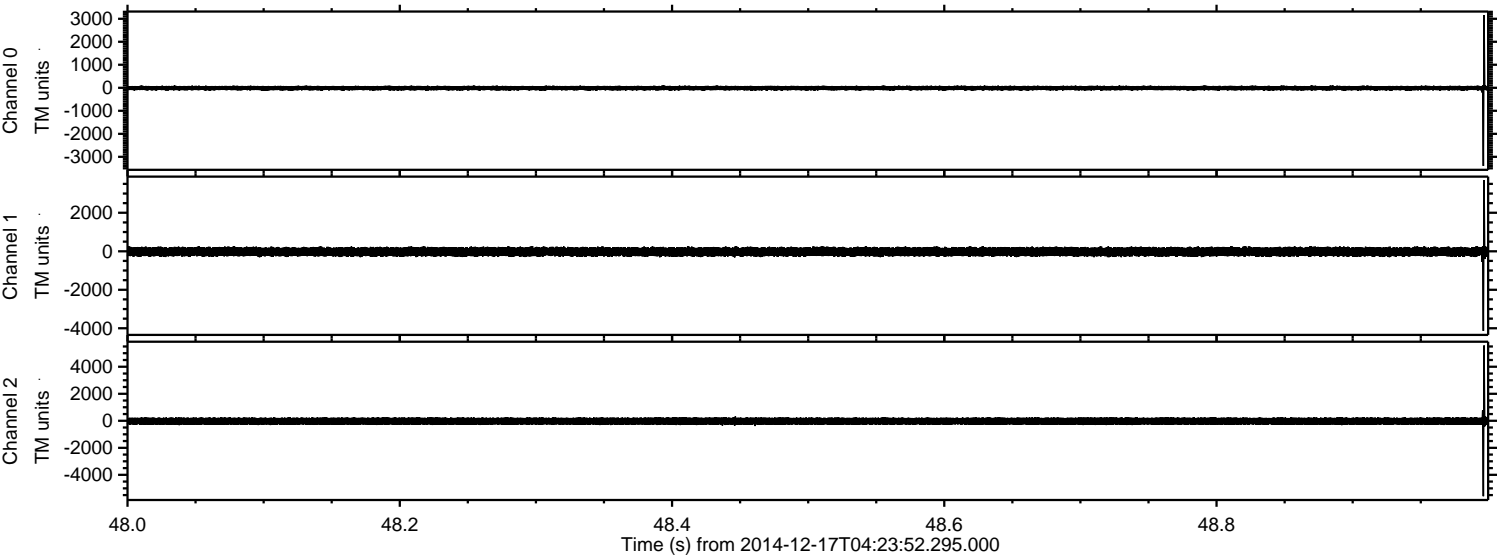
Processed Wed Dec 17 05:34:03 2014 by ELM ver.2012-10-06 from 001__elm20141217_042351__dat00.bin



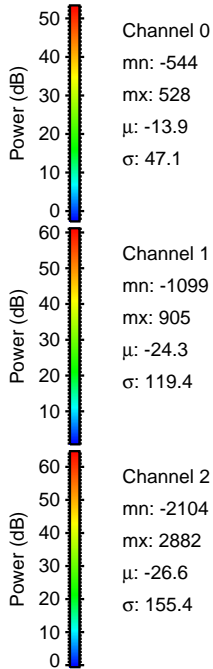
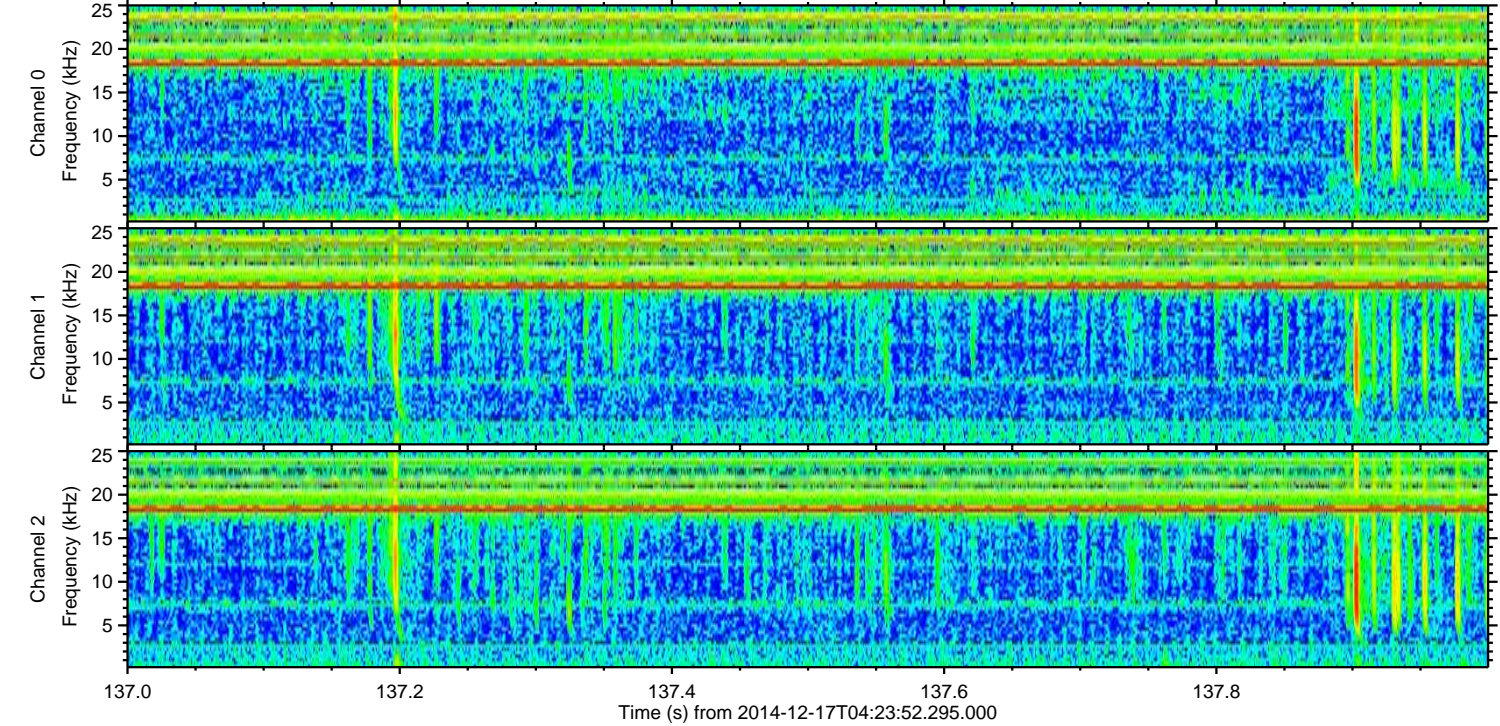
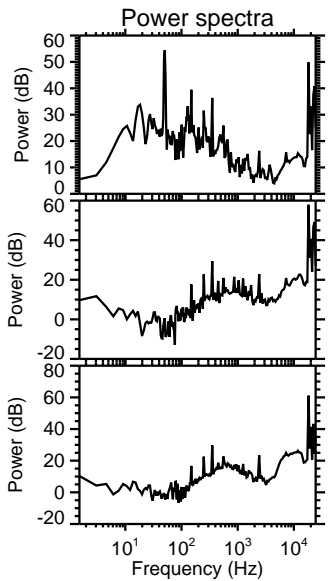
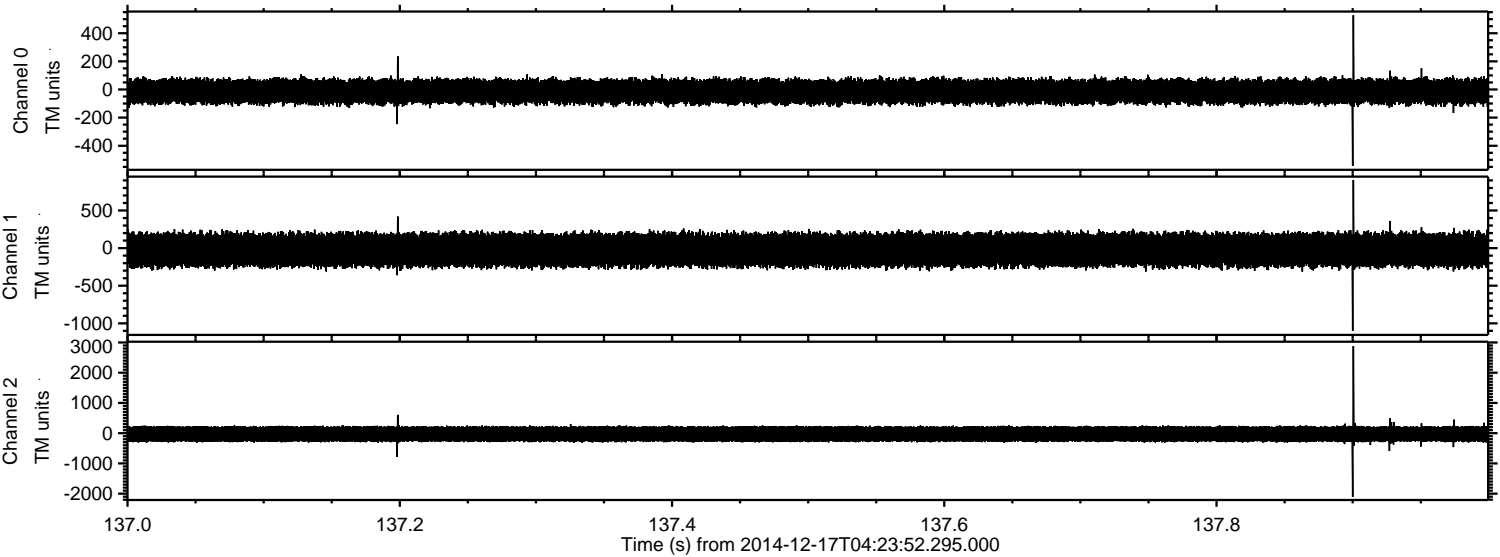
Processed Wed Dec 17 05:34:04 2014 by ELM ver.2012-10-06 from 001__elm20141217_042351__dat00.bin



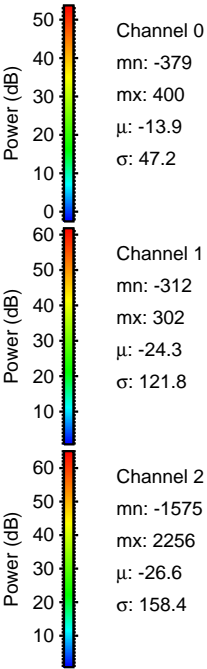
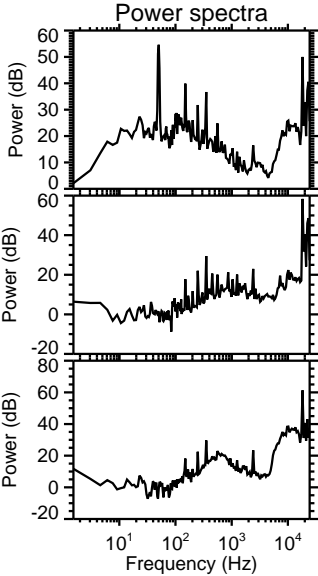
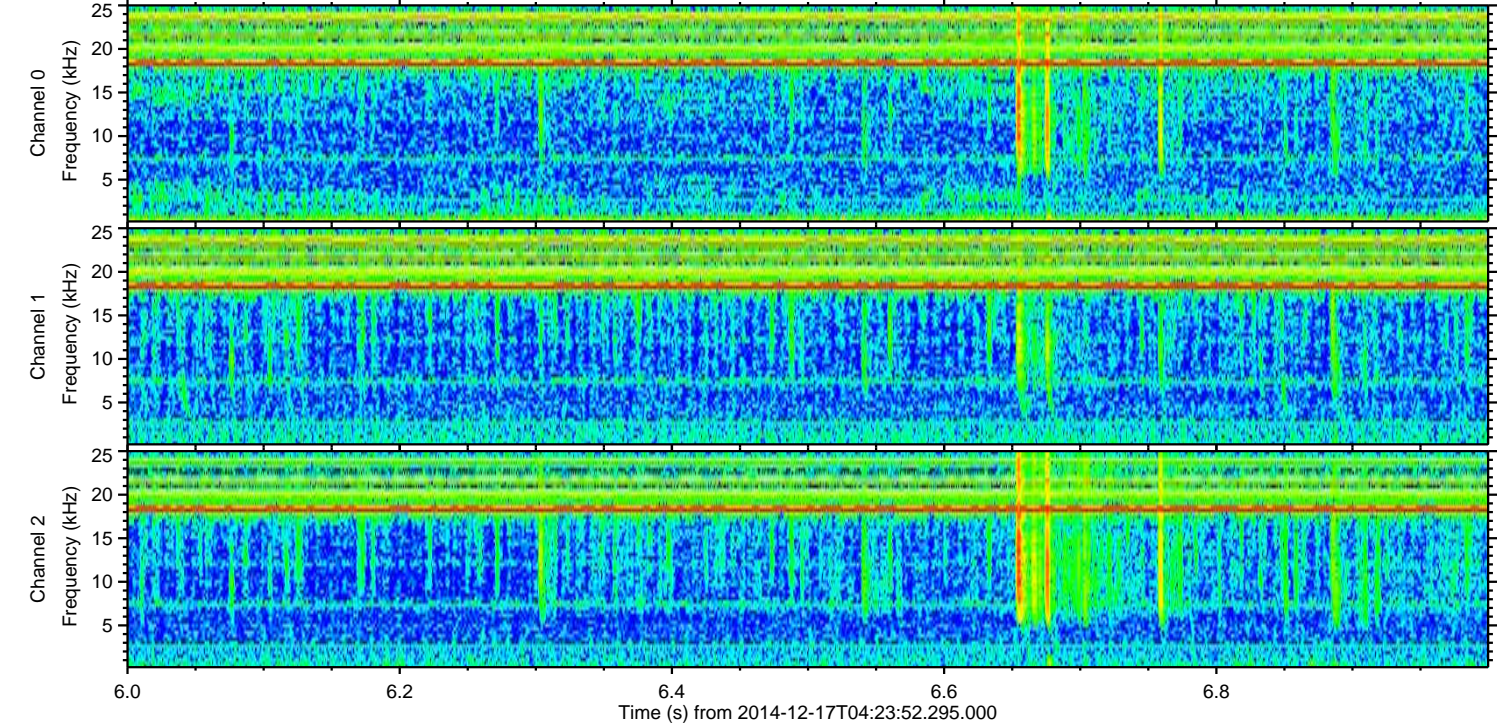
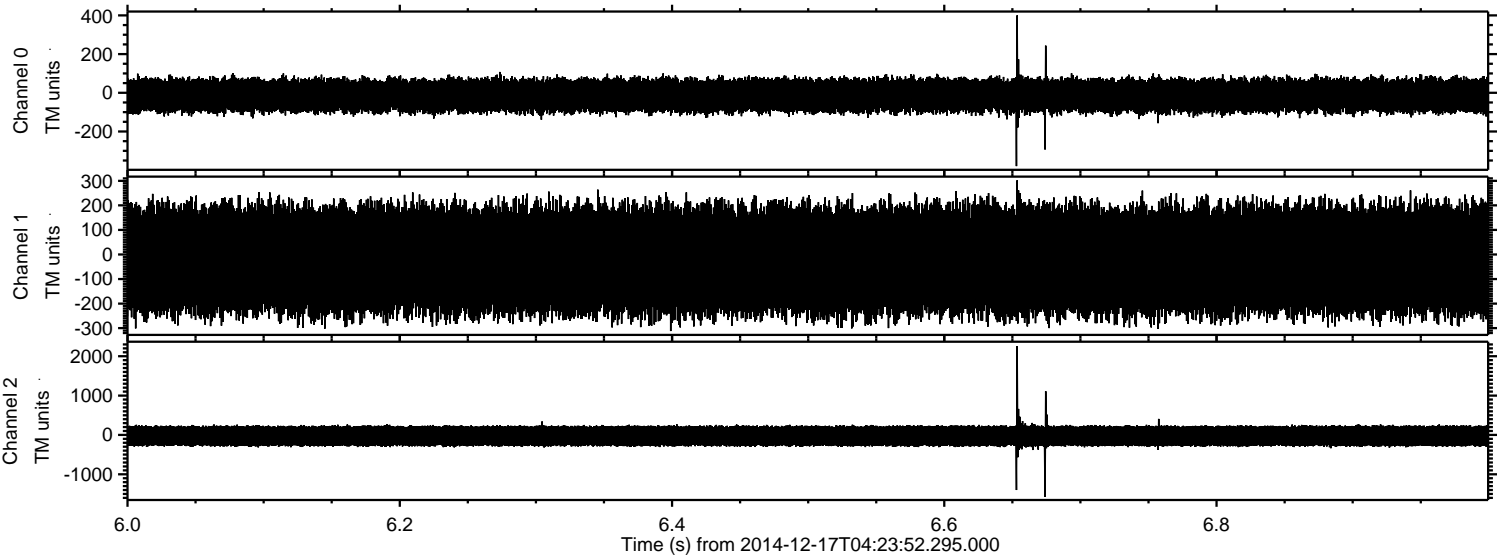
Processed Wed Dec 17 05:34:05 2014 by ELM ver.2012-10-06 from 001__elm20141217_042351__dat00.bin



Processed Wed Dec 17 05:34:06 2014 by ELM ver.2012-10-06 from 001__elm20141217_042351__dat00.bin



Processed Wed Dec 17 05:34:07 2014 by ELM ver.2012-10-06 from 001__elm20141217_042351__dat00.bin



Channel 0
mn: -379
mx: 400
 μ : -13.9
 σ : 47.2

Channel 1
mn: -312
mx: 302
 μ : -24.3
 σ : 121.8

Channel 2
mn: -1575
mx: 2256
 μ : -26.6
 σ : 158.4

Processed Wed Dec 17 05:34:08 2014 by ELM ver.2012-10-06 from 001__elm20141217_042351__dat00.bin

