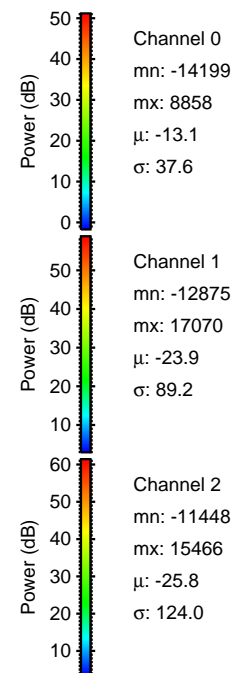
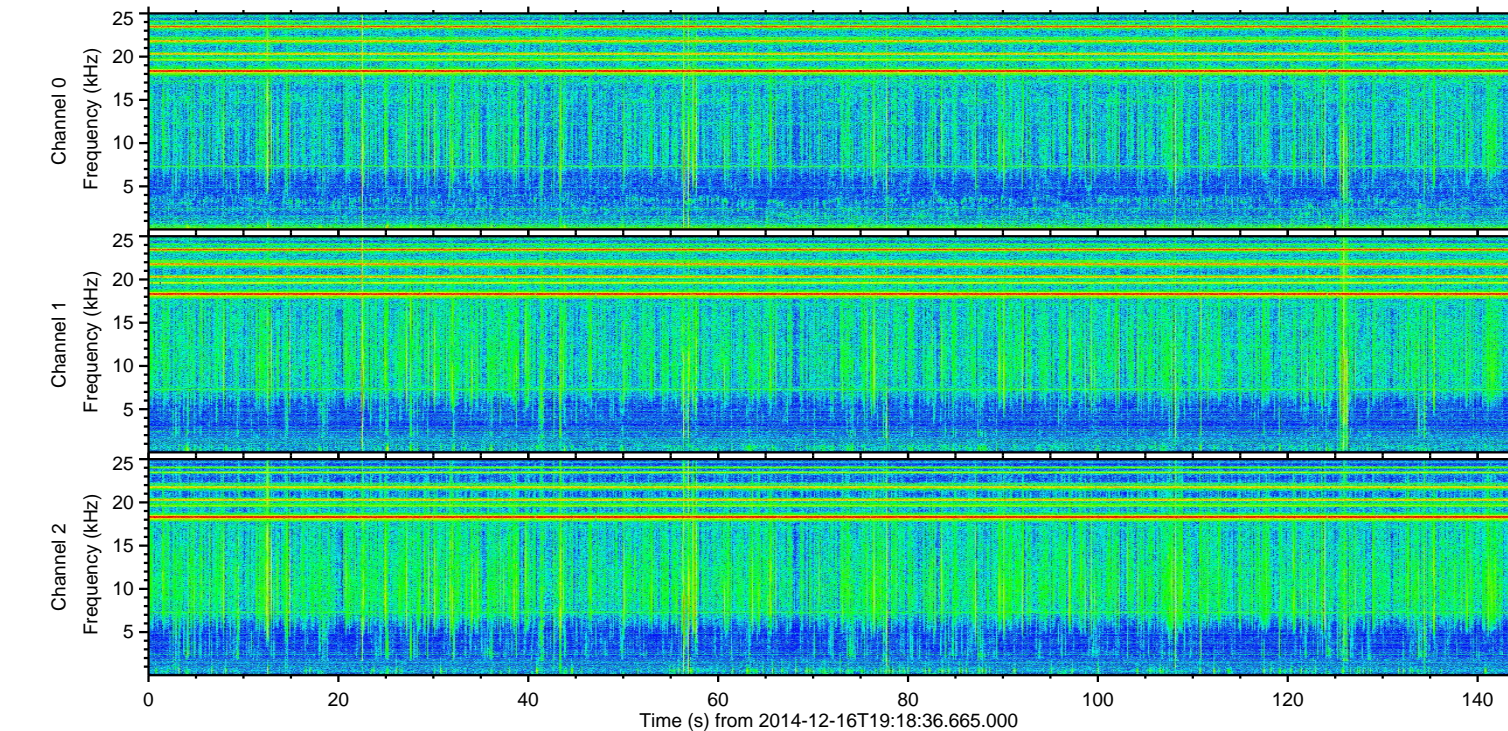
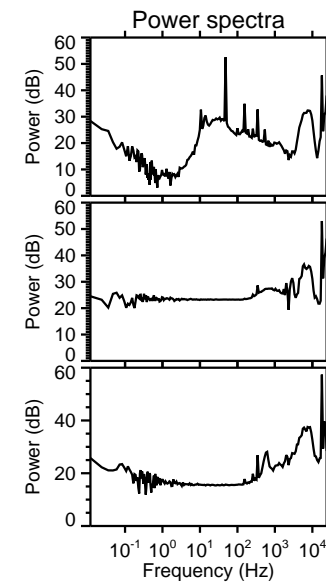
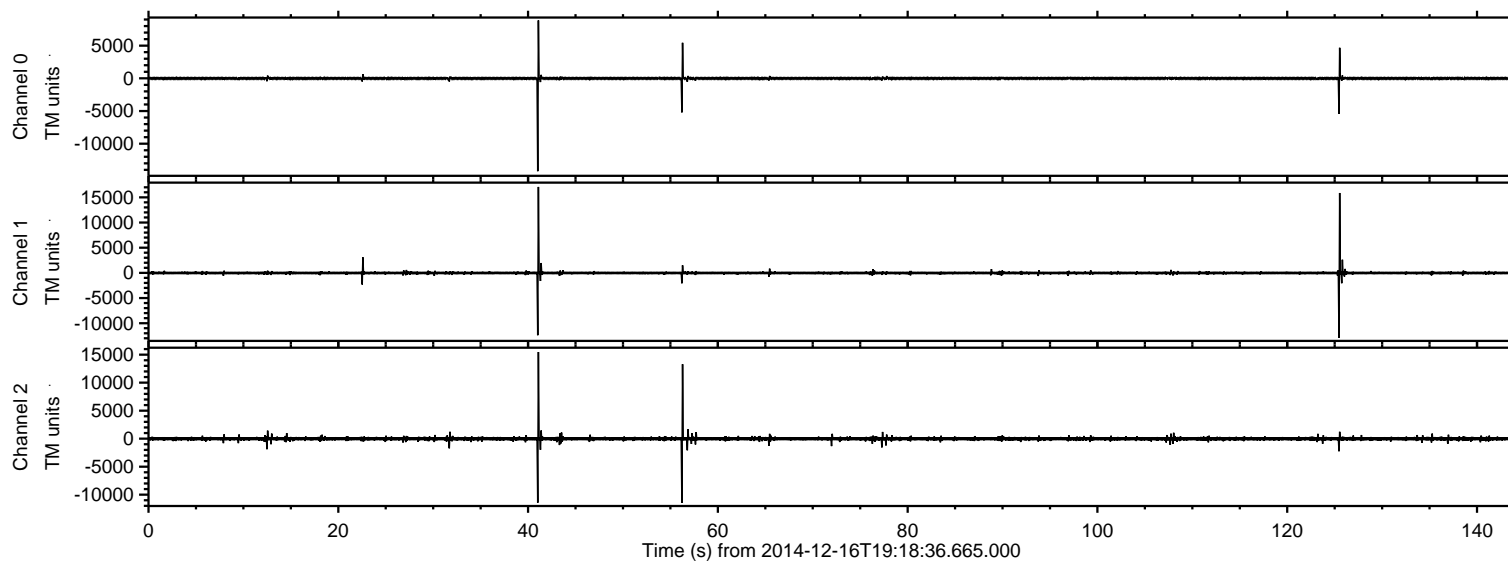


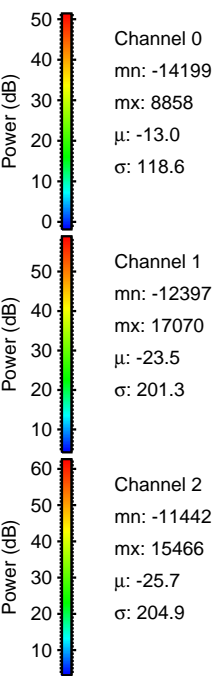
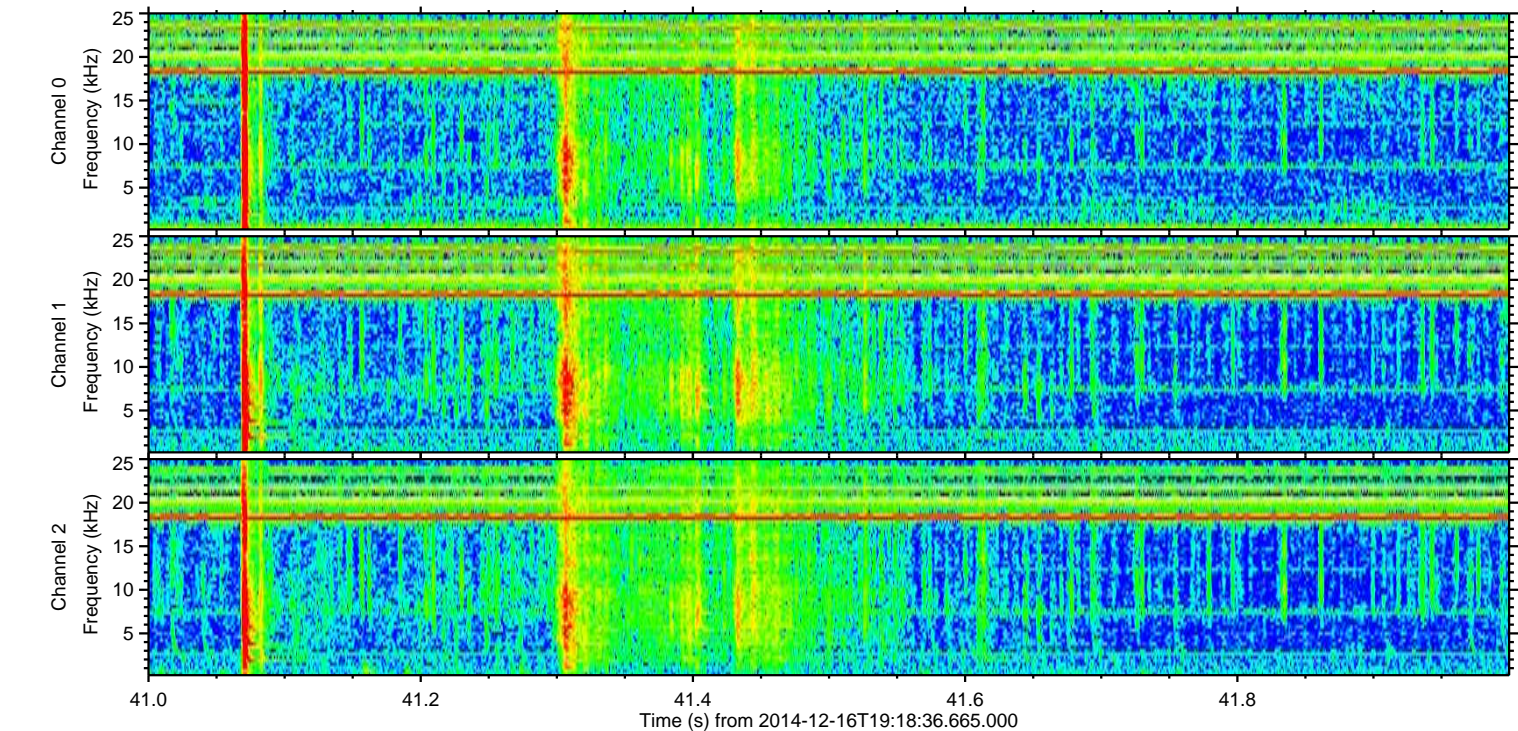
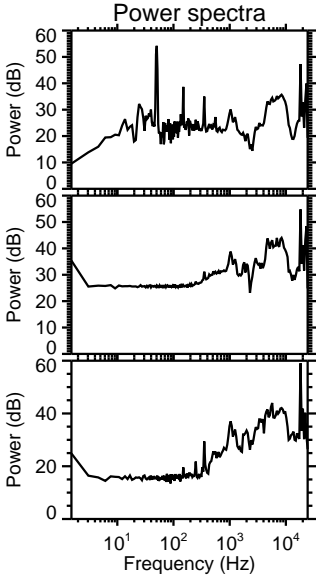
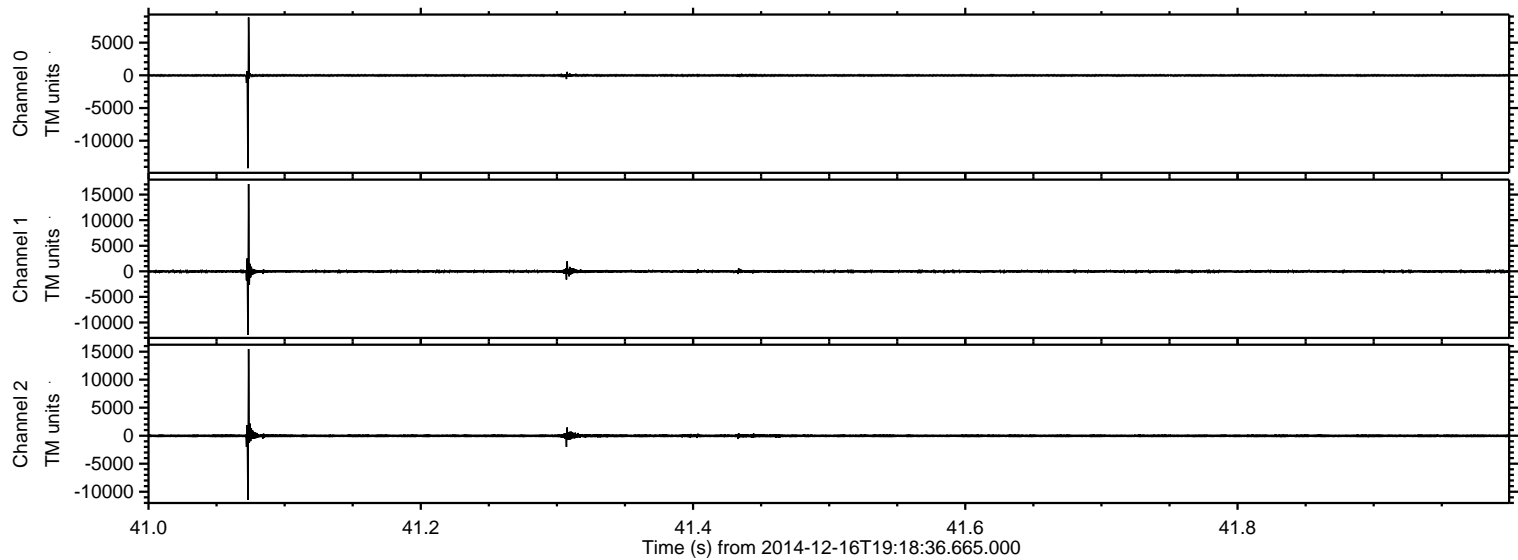
ELMAVAN 3D WAVEFORMS (Measured data sampled at 50 kHz) 49787 packets of 144 samples from 2014-12-16T19:18:36.665.000.

Processed Tue Dec 16 20:26:29 2014 by ELM ver.2012-10-06 from 001__elm20141216_191835__dat00.bin



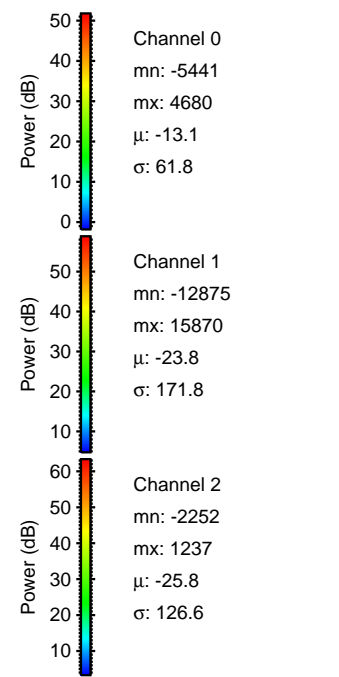
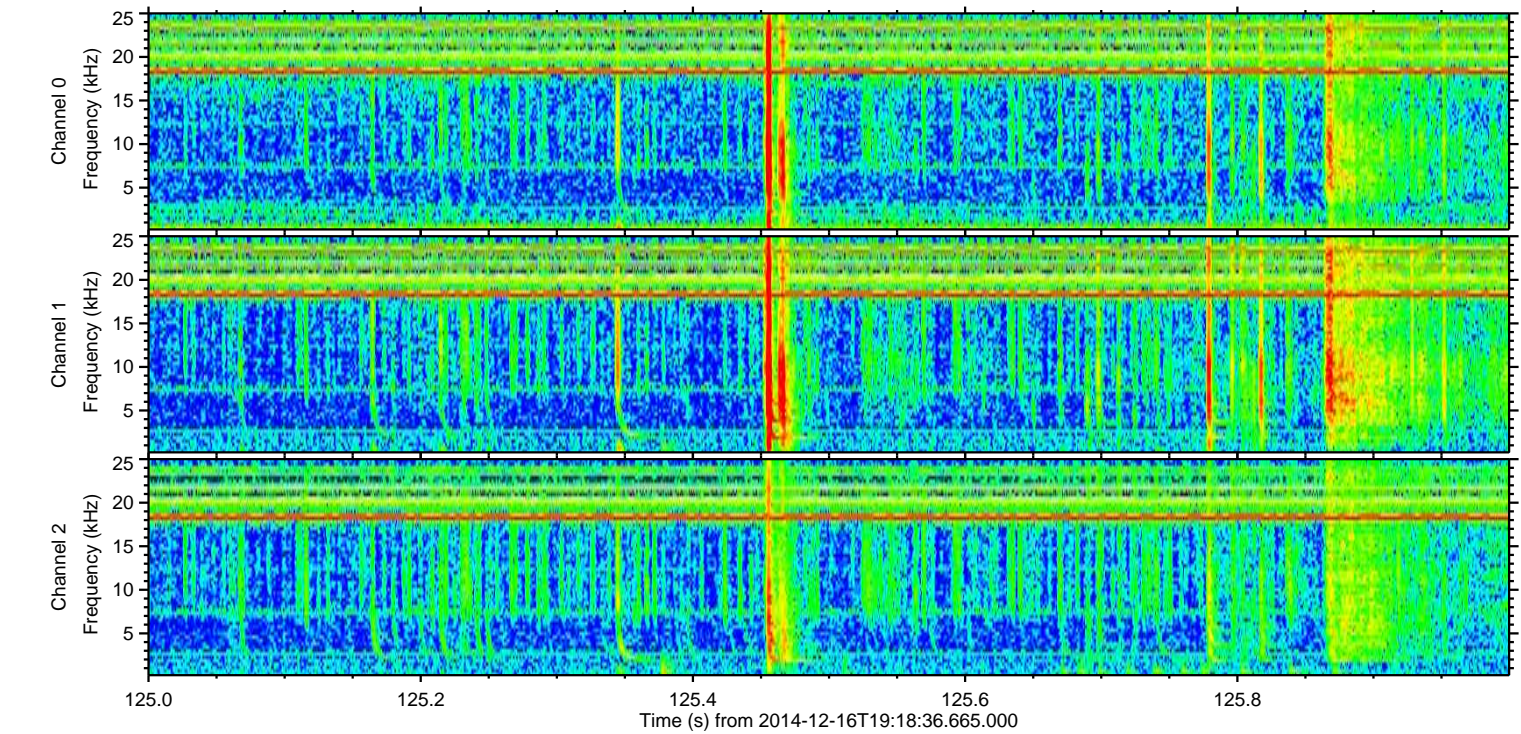
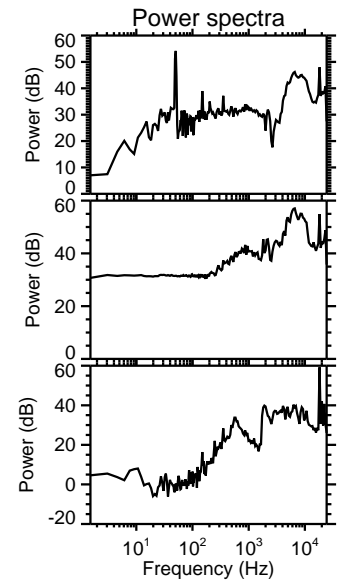
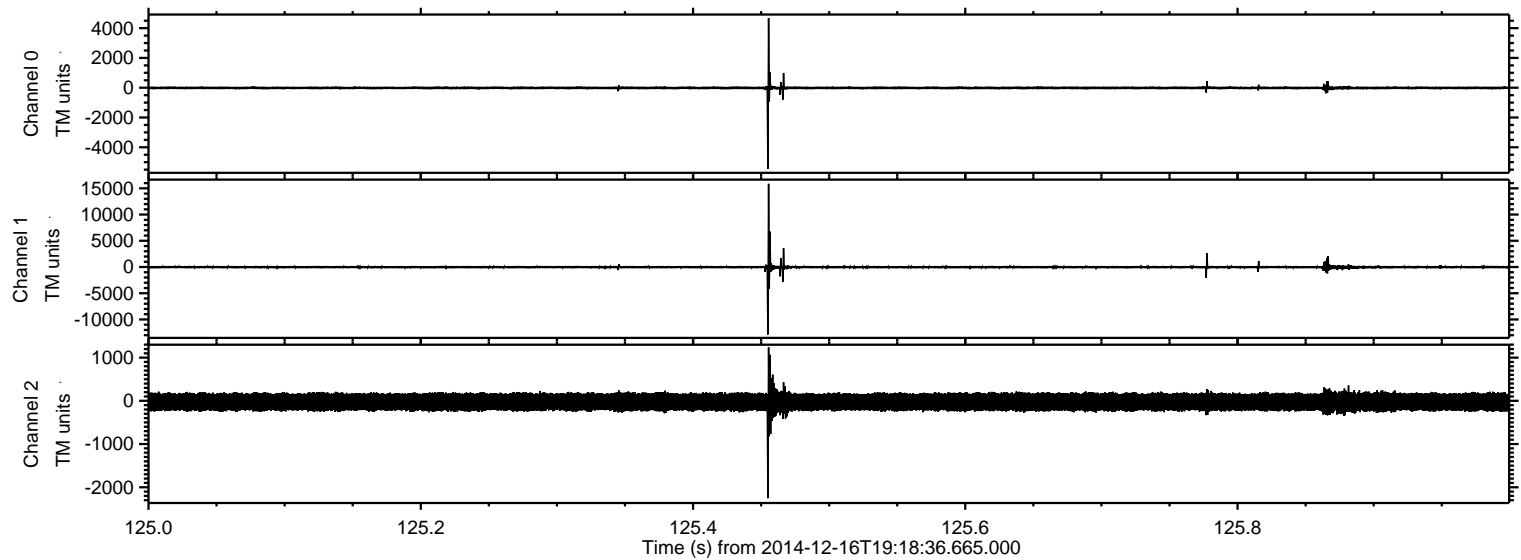
ELMAVAN 3D WAVEFORMS (Measured data sampled at 50 kHz) 49787 packets of 144 samples from 2014-12-16T19:18:36.665.000. Part 42/144

Processed Tue Dec 16 20:26:41 2014 by ELM ver.2012-10-06 from 001__elm20141216_191835__dat00.bin



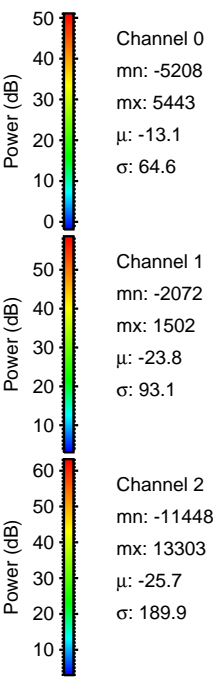
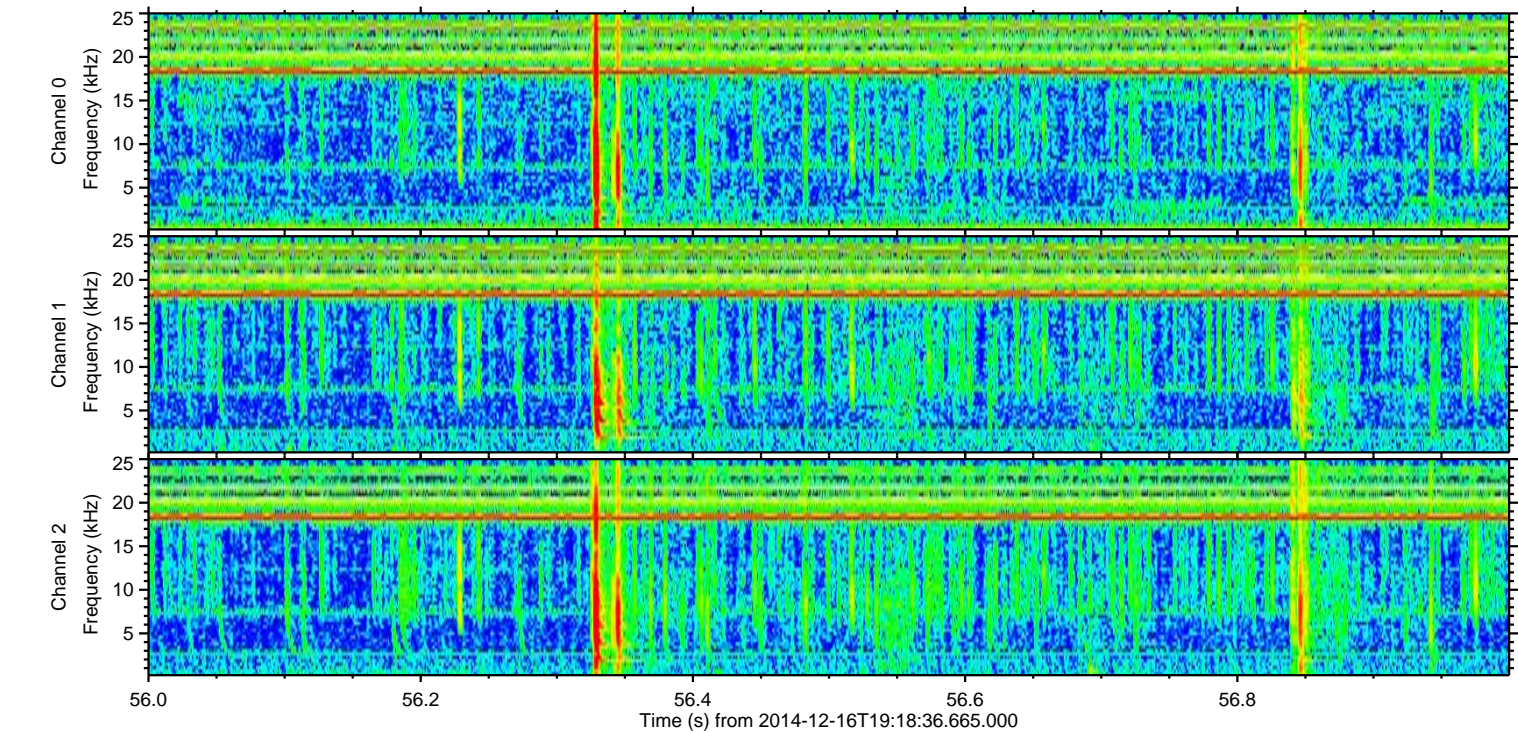
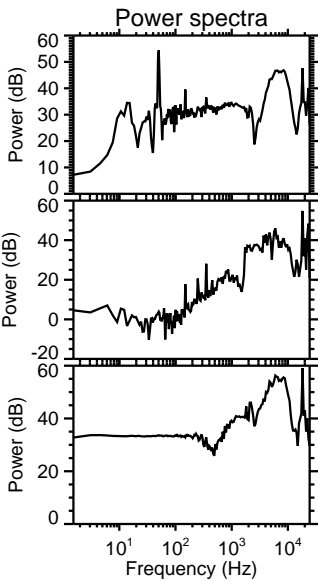
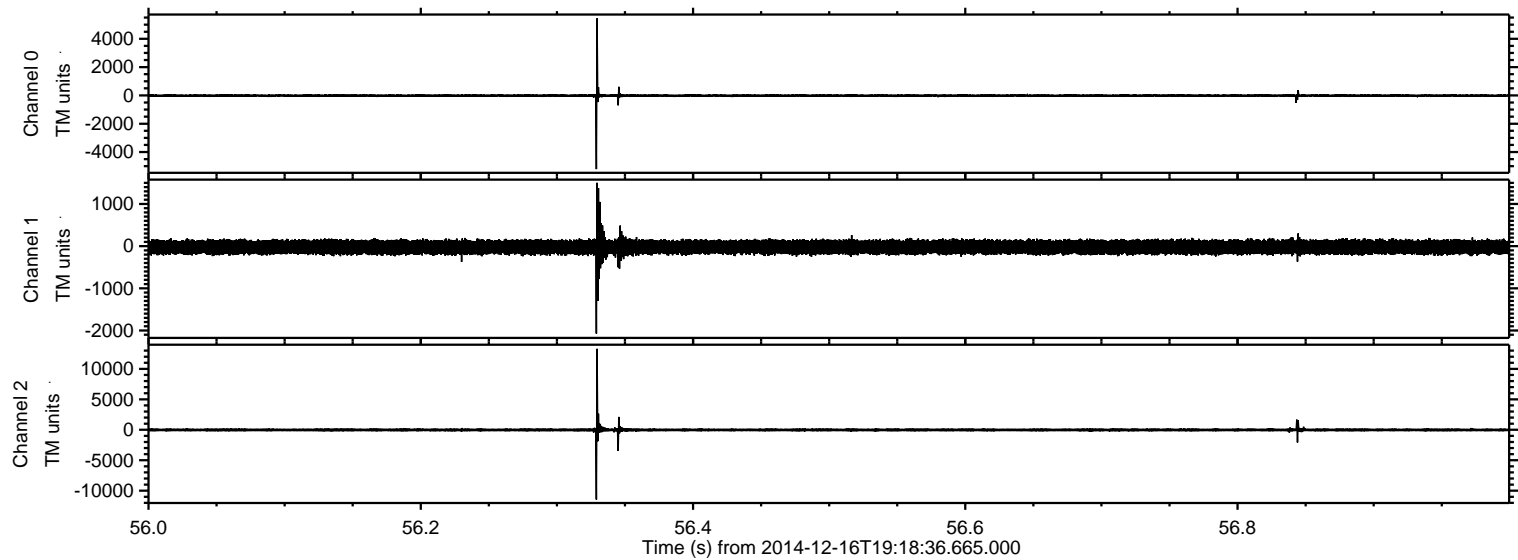
ELMAVAN 3D WAVEFORMS (Measured data sampled at 50 kHz) 49787 packets of 144 samples from 2014-12-16T19:18:36.665.000. Part 126/144

Processed Tue Dec 16 20:26:42 2014 by ELM ver.2012-10-06 from 001__elm20141216_191835__dat00.bin



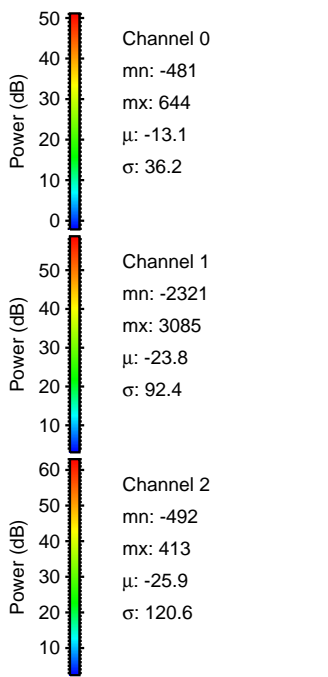
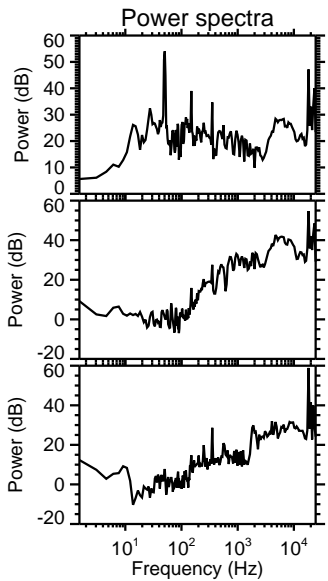
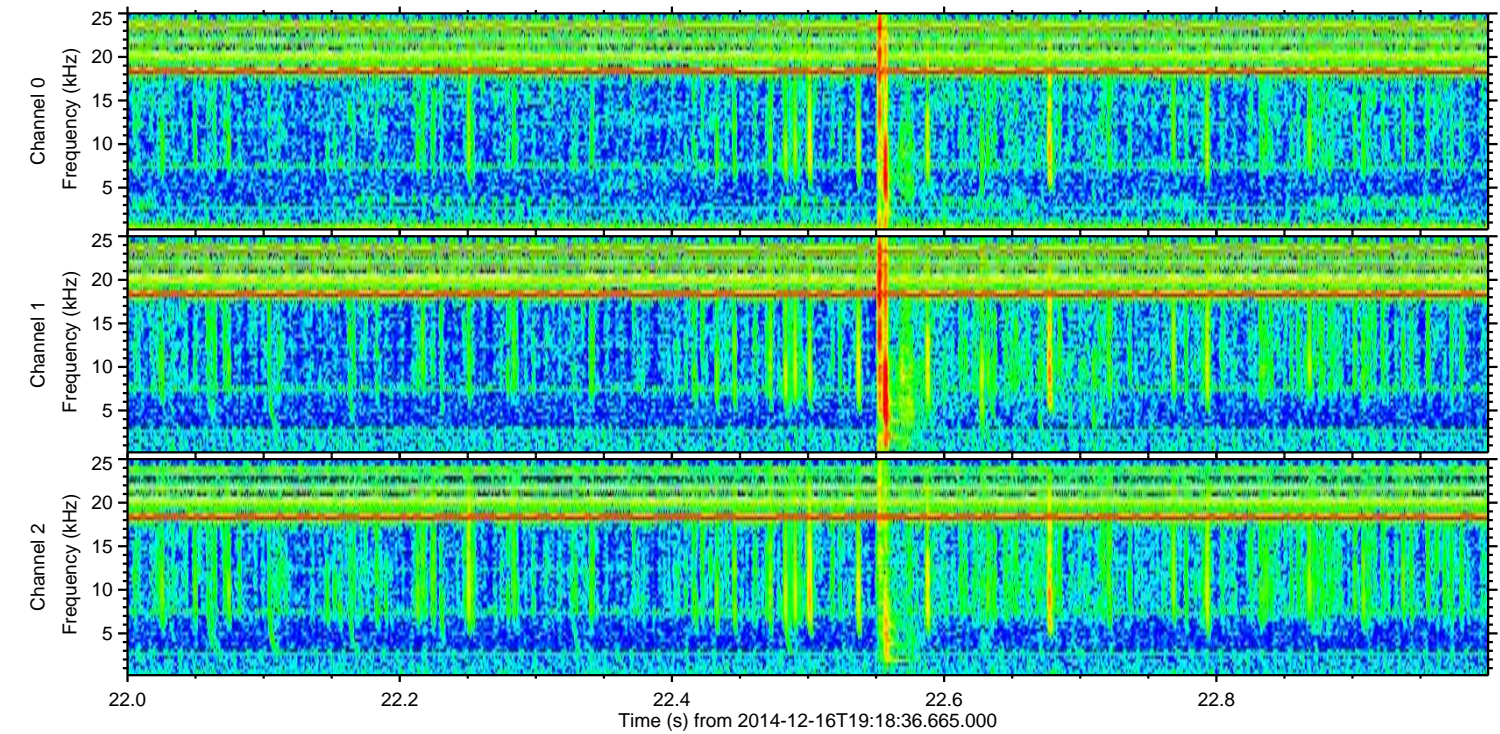
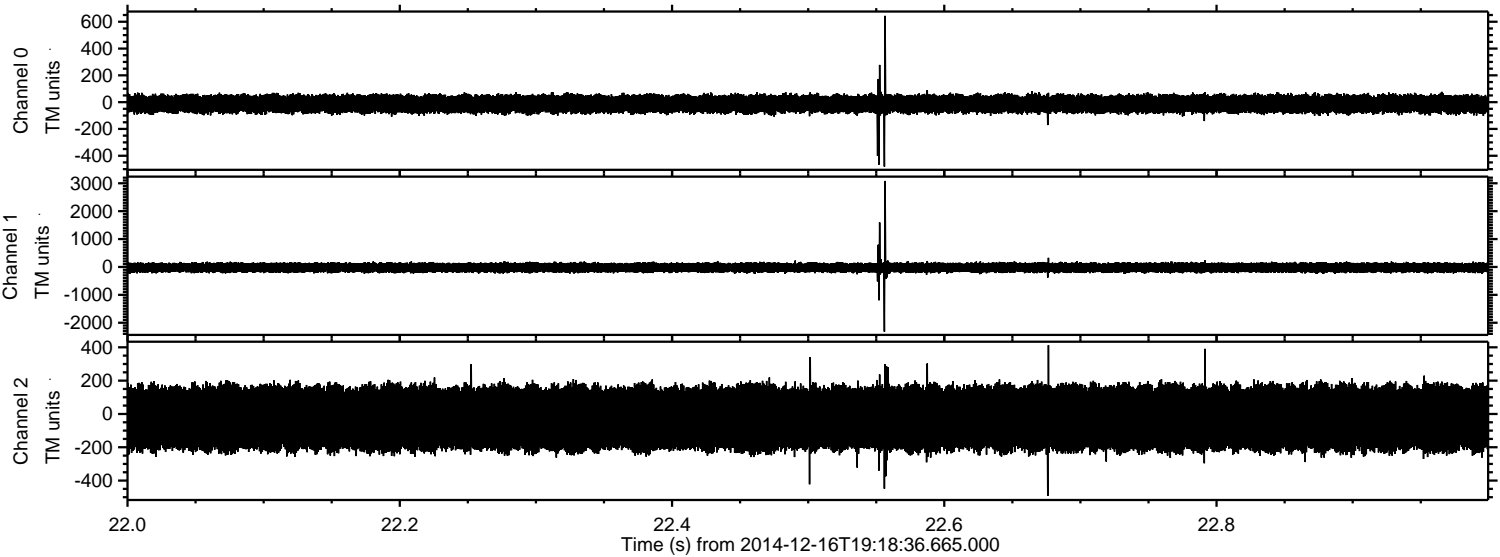
ELMAVAN 3D WAVEFORMS (Measured data sampled at 50 kHz) 49787 packets of 144 samples from 2014-12-16T19:18:36.665.000. Part 57/144

Processed Tue Dec 16 20:26:43 2014 by ELM ver.2012-10-06 from 001__elm20141216_191835__dat00.bin



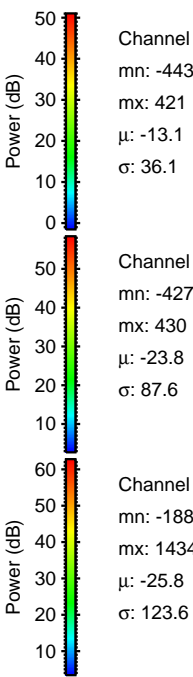
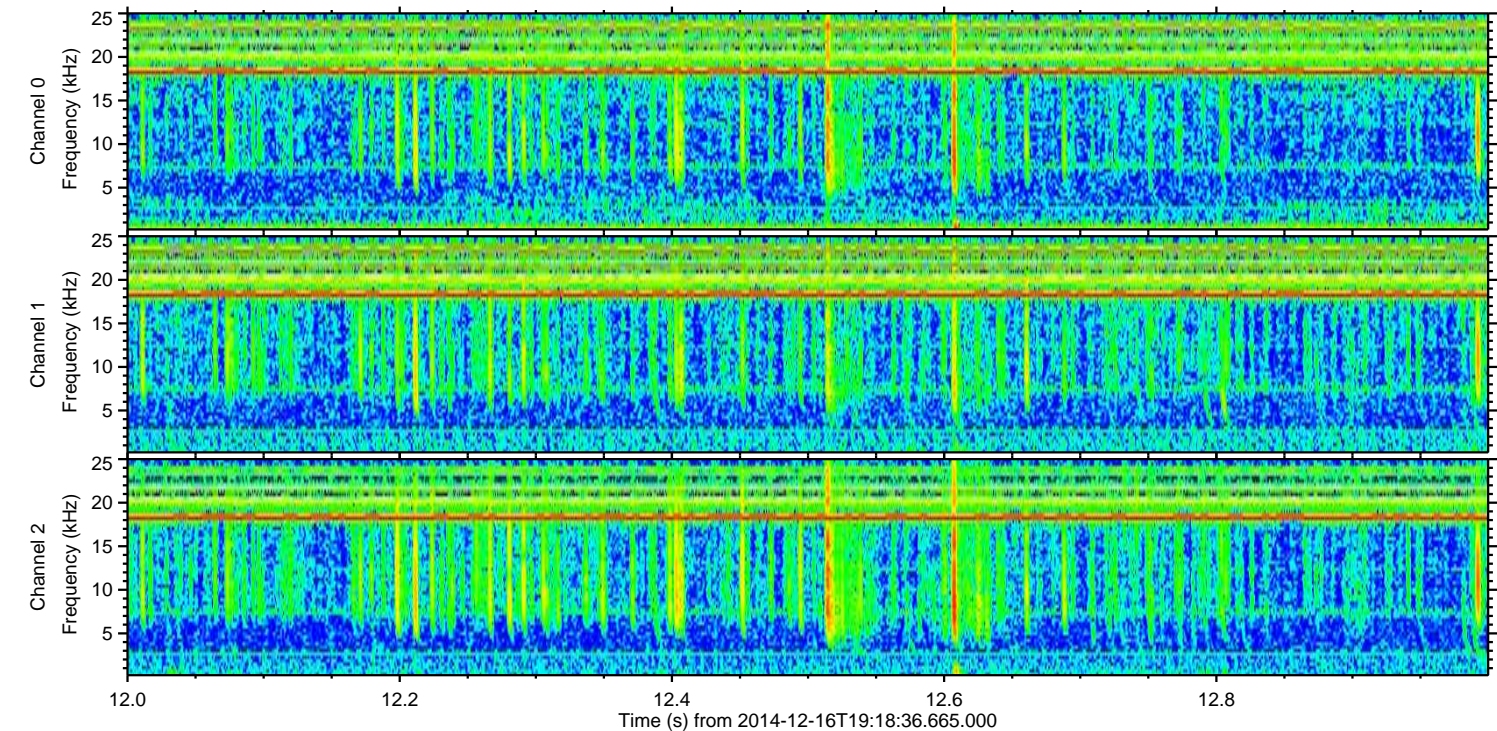
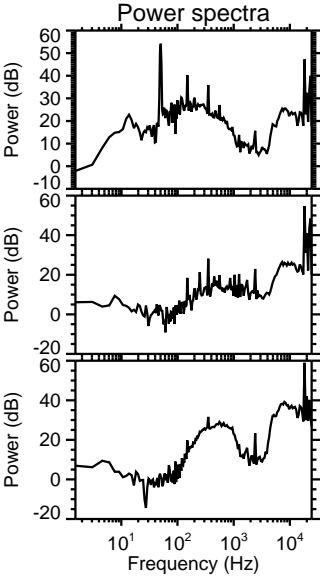
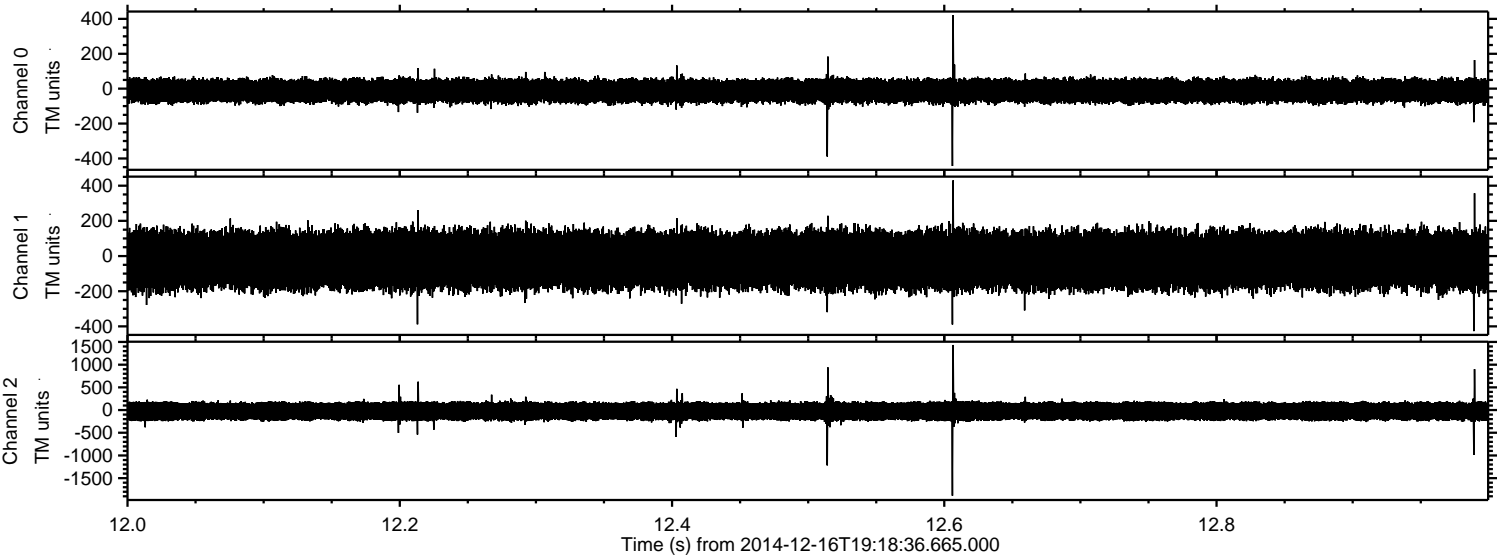
ELMAVAN 3D WAVEFORMS (Measured data sampled at 50 kHz) 49787 packets of 144 samples from 2014-12-16T19:18:36.665.000. Part 23/144

Processed Tue Dec 16 20:26:44 2014 by ELM ver.2012-10-06 from 001__elm20141216_191835__dat00.bin

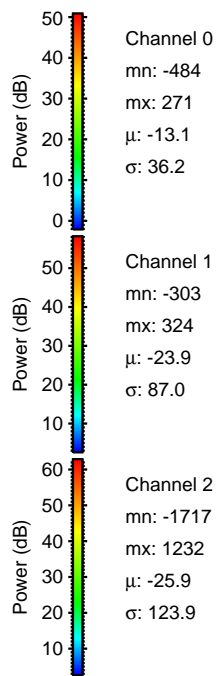
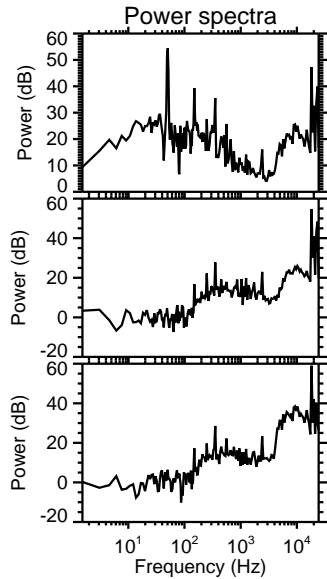
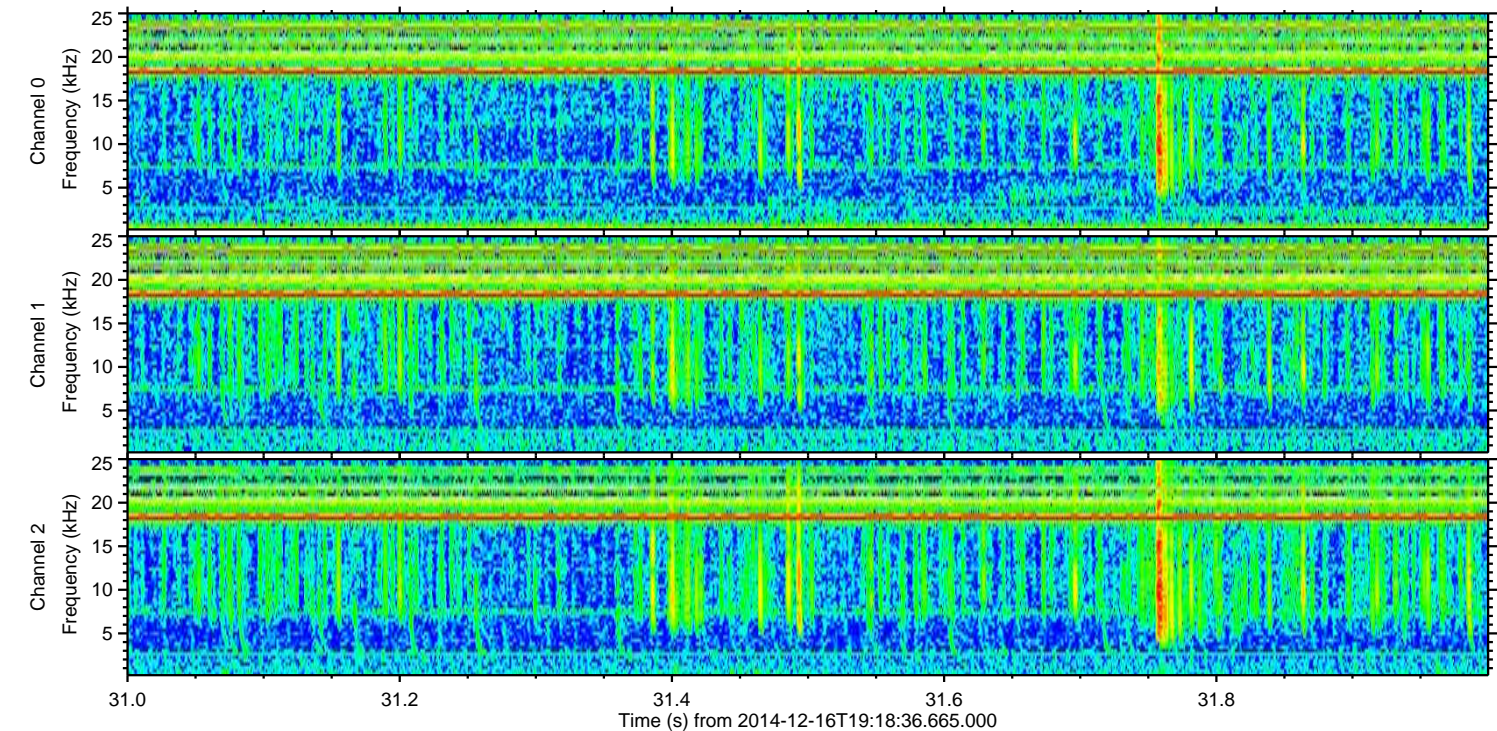
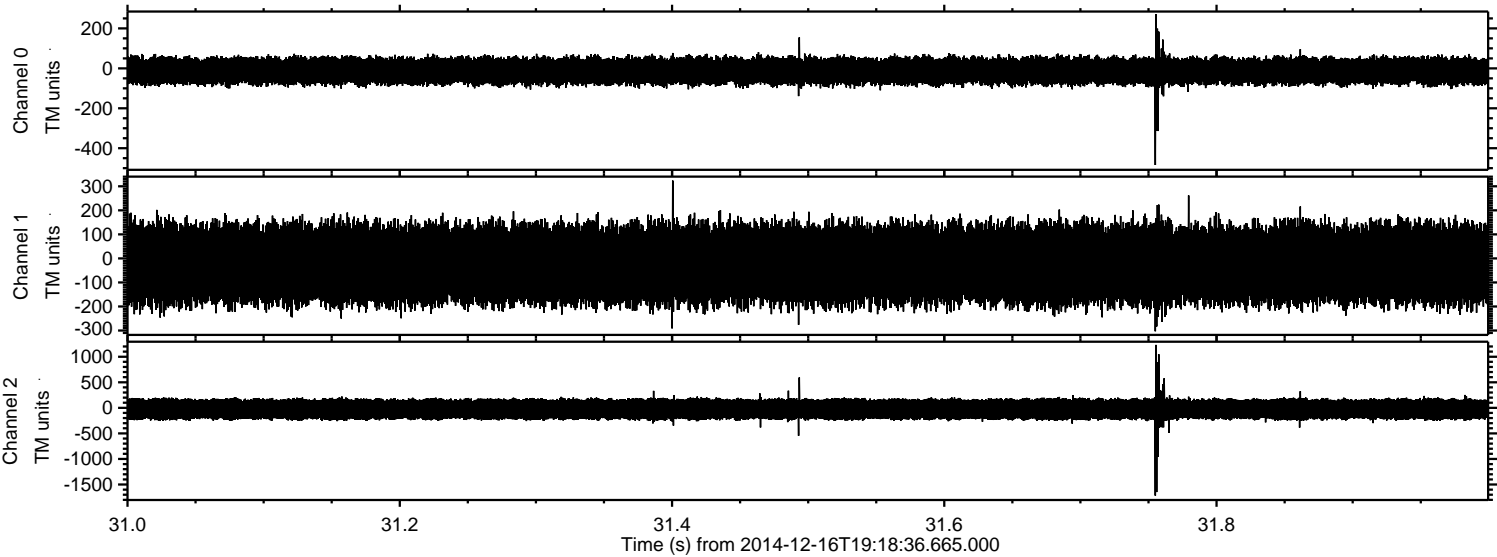


ELMAVAN 3D WAVEFORMS (Measured data sampled at 50 kHz) 49787 packets of 144 samples from 2014-12-16T19:18:36.665.000. Part 13/144

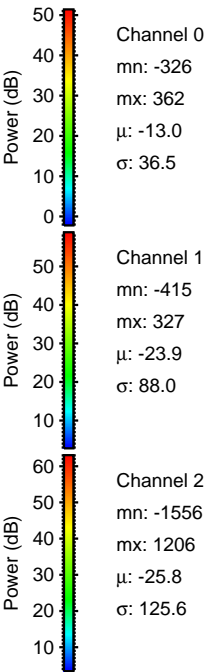
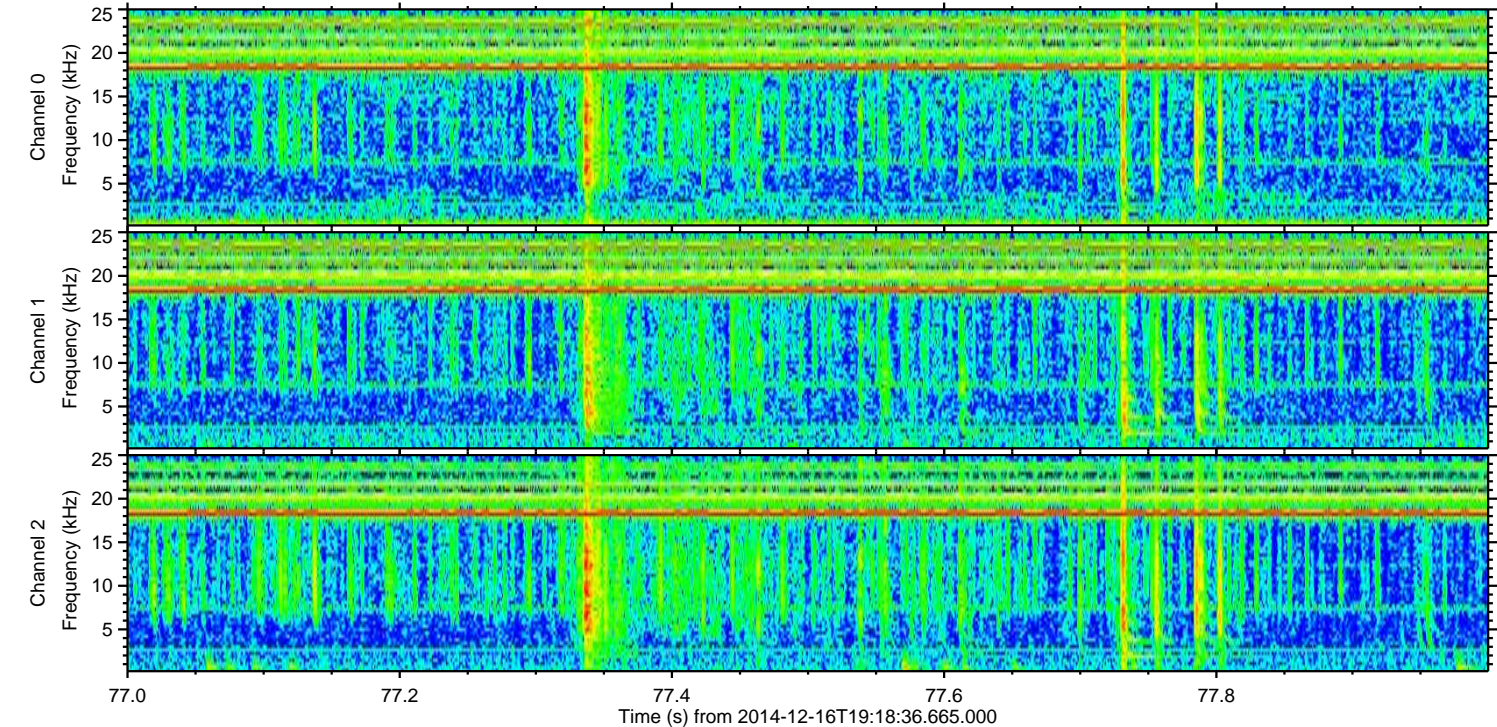
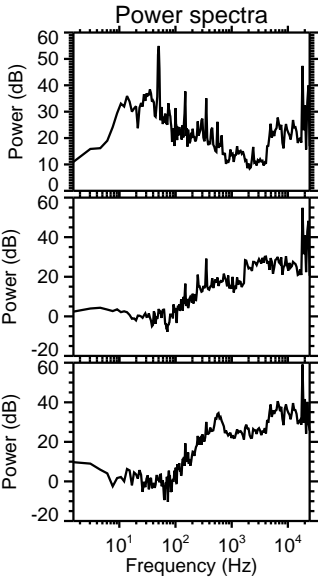
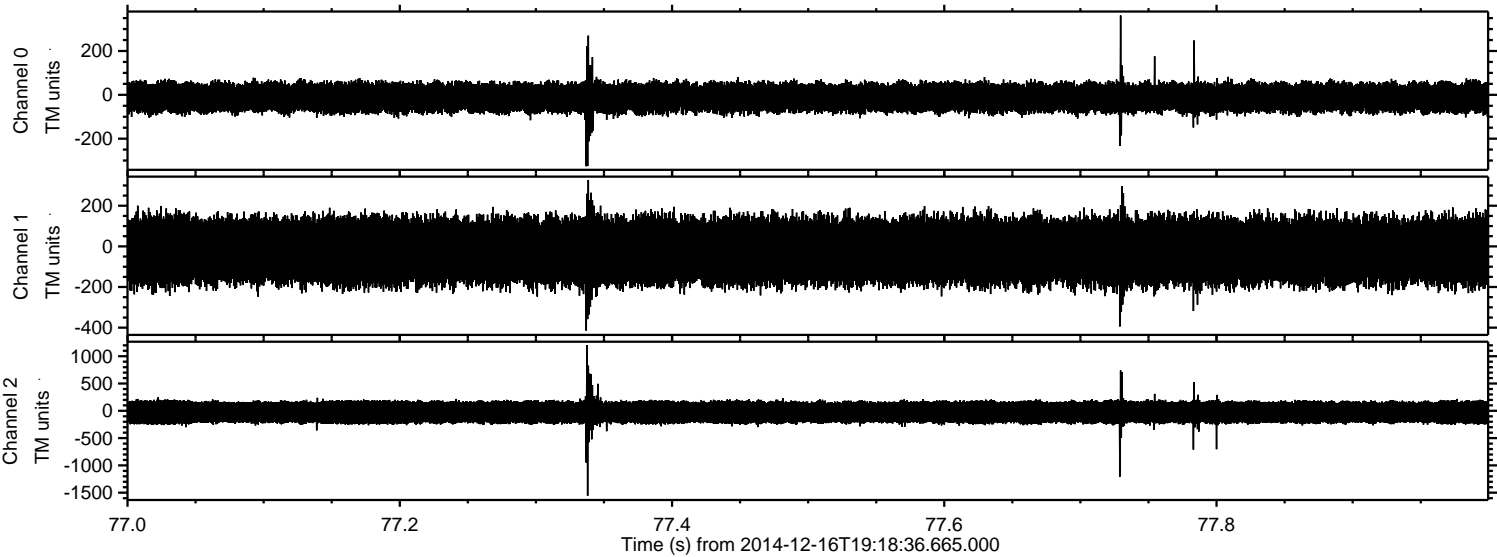
Processed Tue Dec 16 20:26:45 2014 by ELM ver.2012-10-06 from 001__elm20141216_191835__dat00.bin



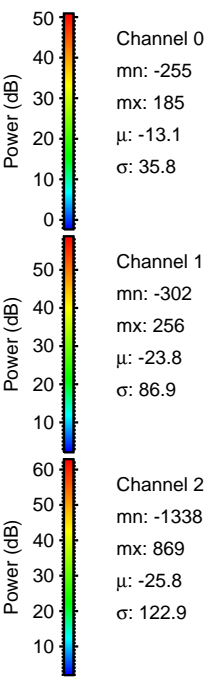
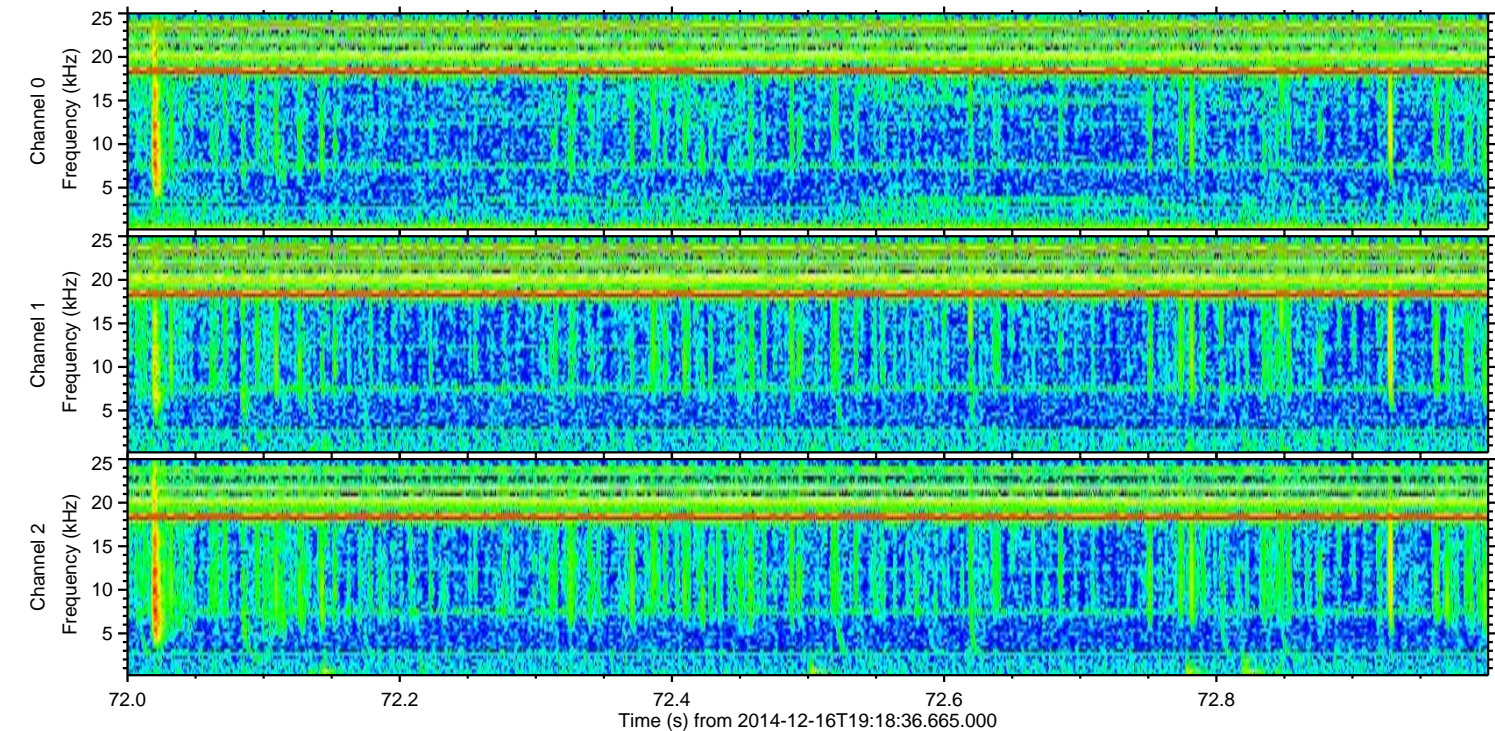
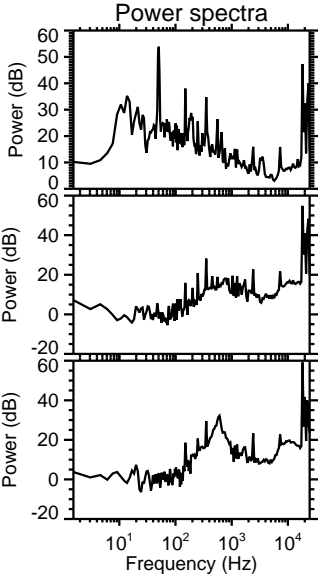
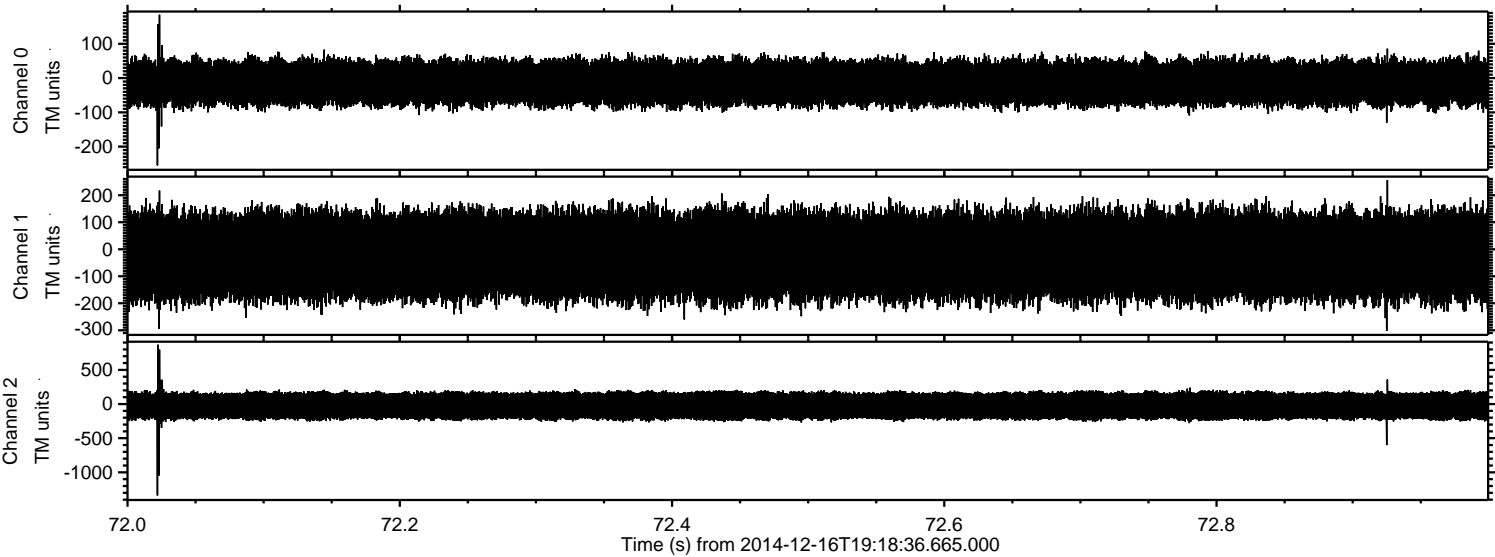
Processed Tue Dec 16 20:26:46 2014 by ELM ver.2012-10-06 from 001__elm20141216_191835__dat00.bin



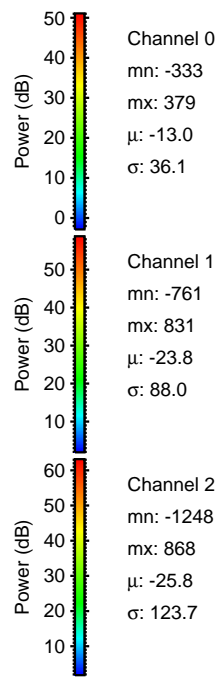
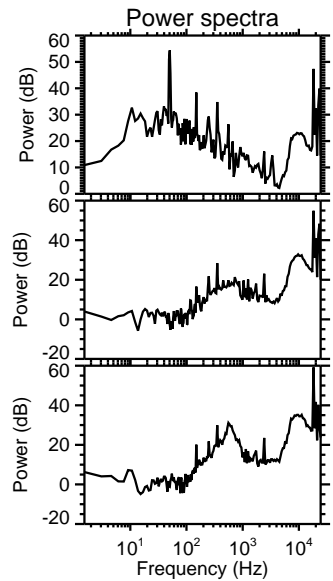
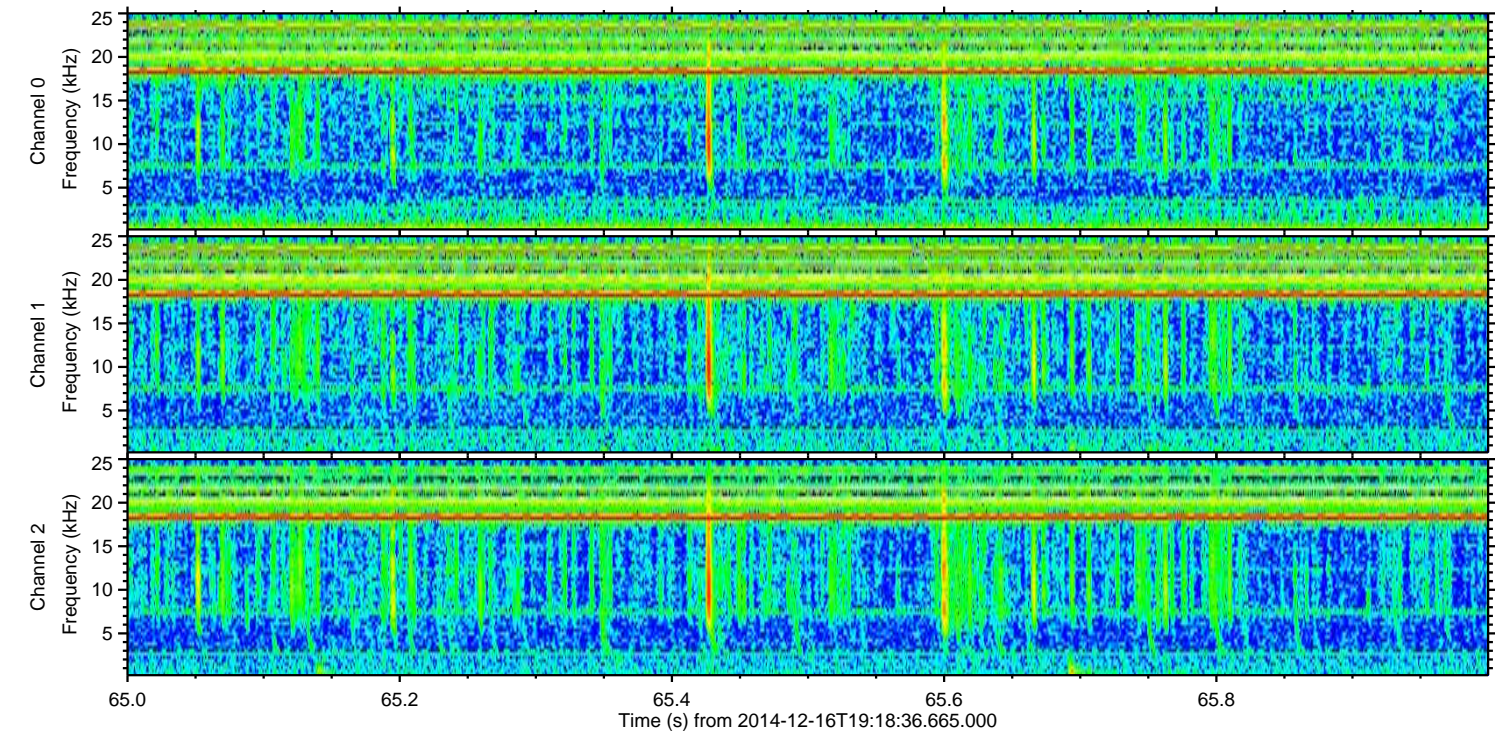
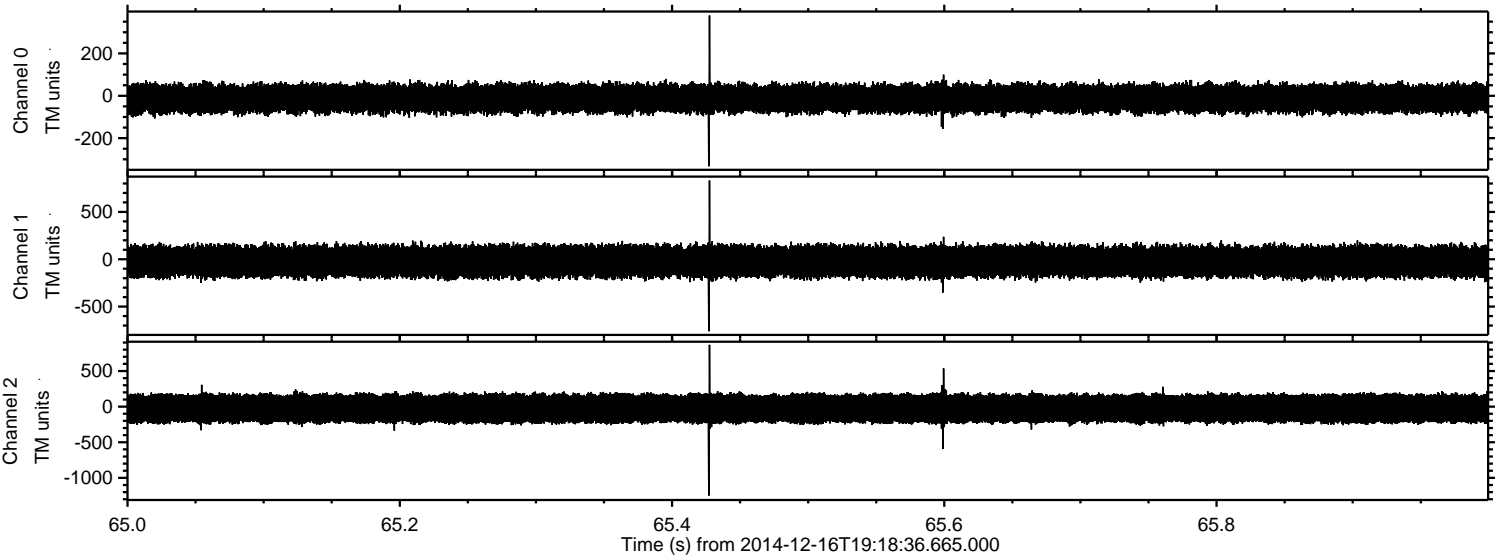
Processed Tue Dec 16 20:26:47 2014 by ELM ver.2012-10-06 from 001__elm20141216_191835__dat00.bin



Processed Tue Dec 16 20:26:48 2014 by ELM ver.2012-10-06 from 001__elm20141216_191835__dat00.bin



Processed Tue Dec 16 20:26:49 2014 by ELM ver.2012-10-06 from 001__elm20141216_191835__dat00.bin



Channel 0
mn: -333
mx: 379
 μ : -13.0
 σ : 36.1

Channel 1
mn: -761
mx: 831
 μ : -23.8
 σ : 88.0

Channel 2
mn: -1248
mx: 868
 μ : -25.8
 σ : 123.7

Processed Tue Dec 16 20:26:49 2014 by ELM ver.2012-10-06 from 001__elm20141216_191835__dat00.bin

