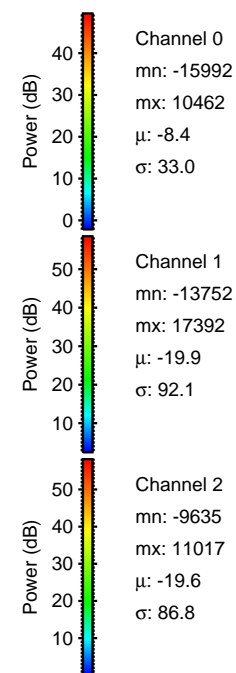
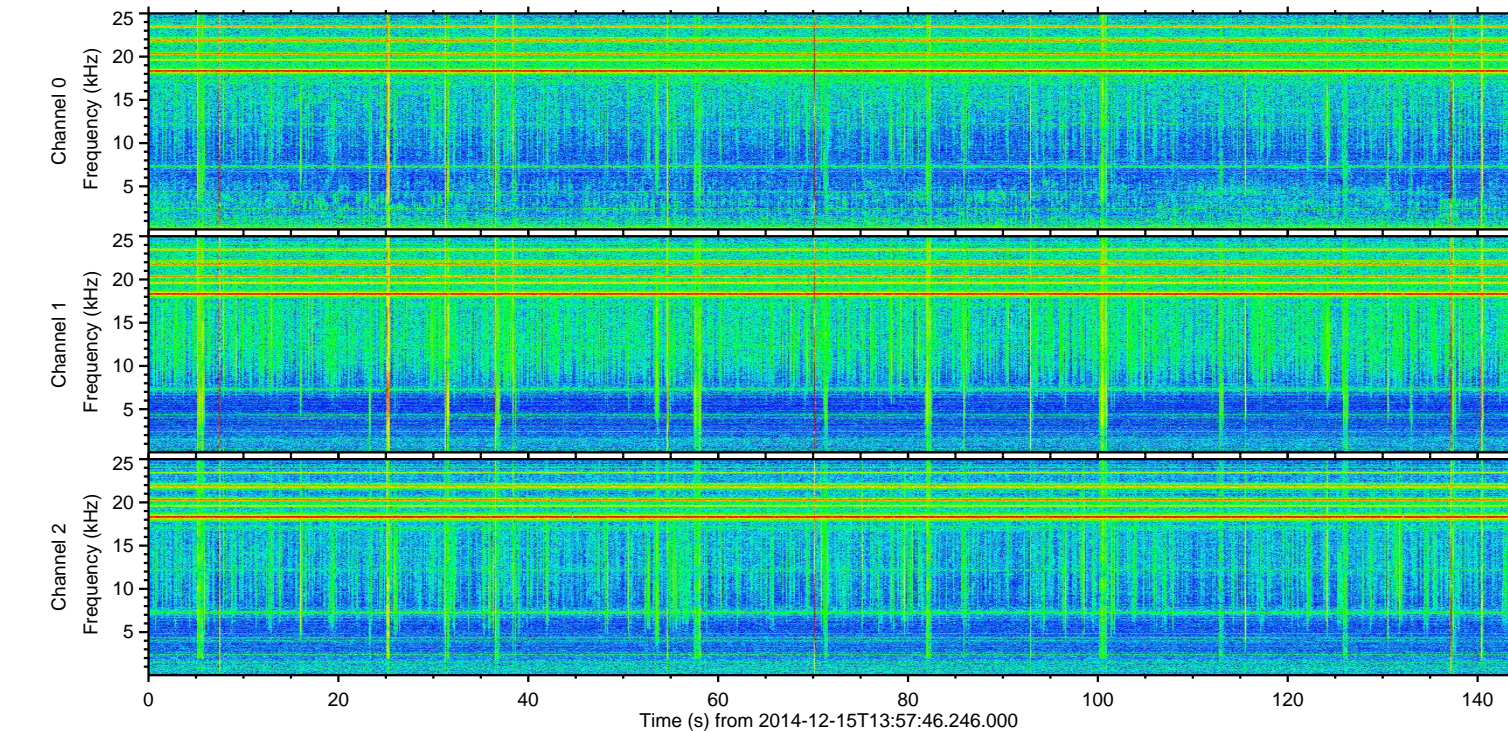
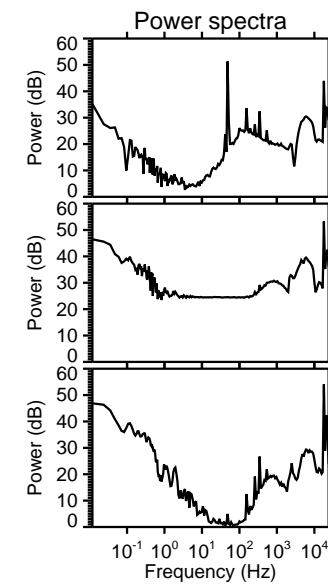
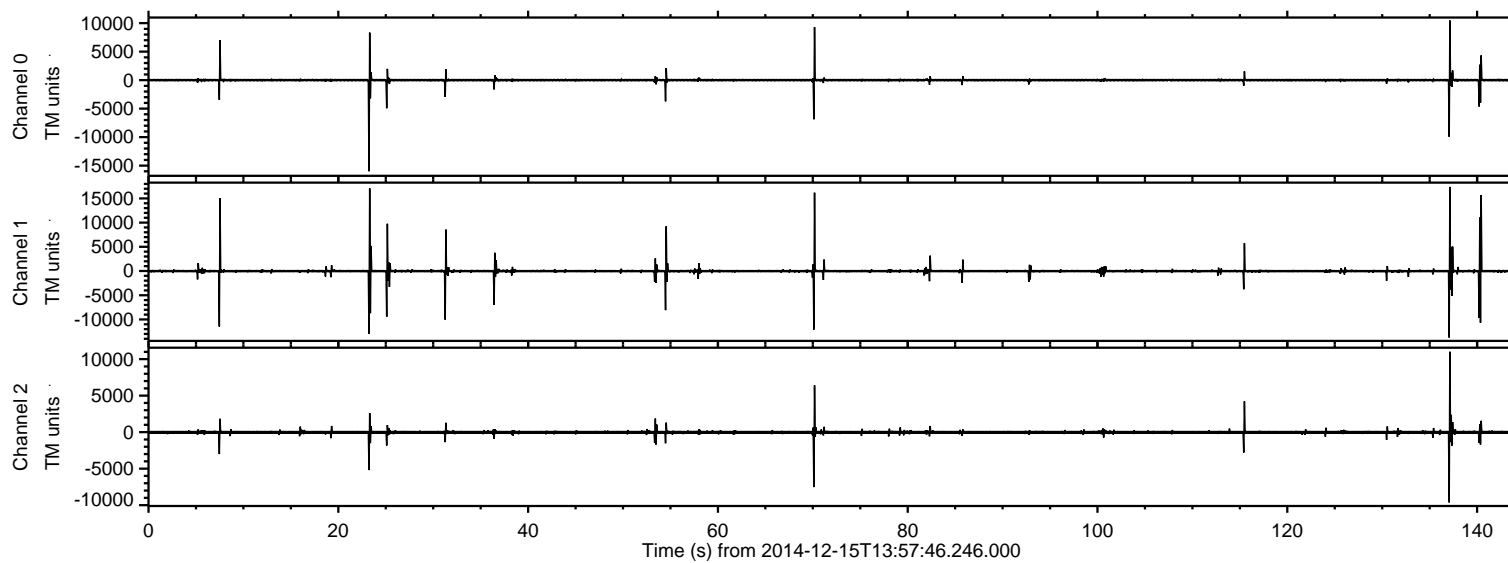


# ELMAVAN 3D WAVEFORMS (Measured data sampled at 50 kHz) 49783 packets of 144 samples from 2014-12-15T13:57:46.246.000.

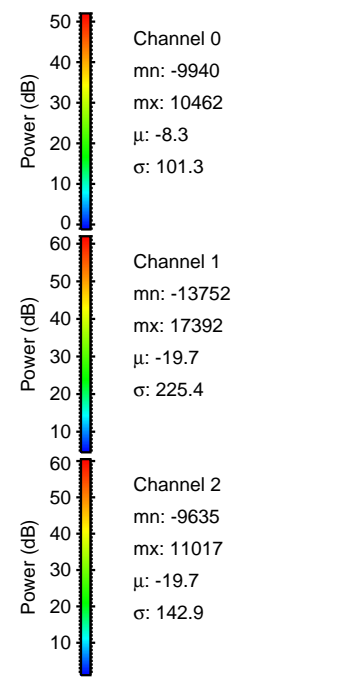
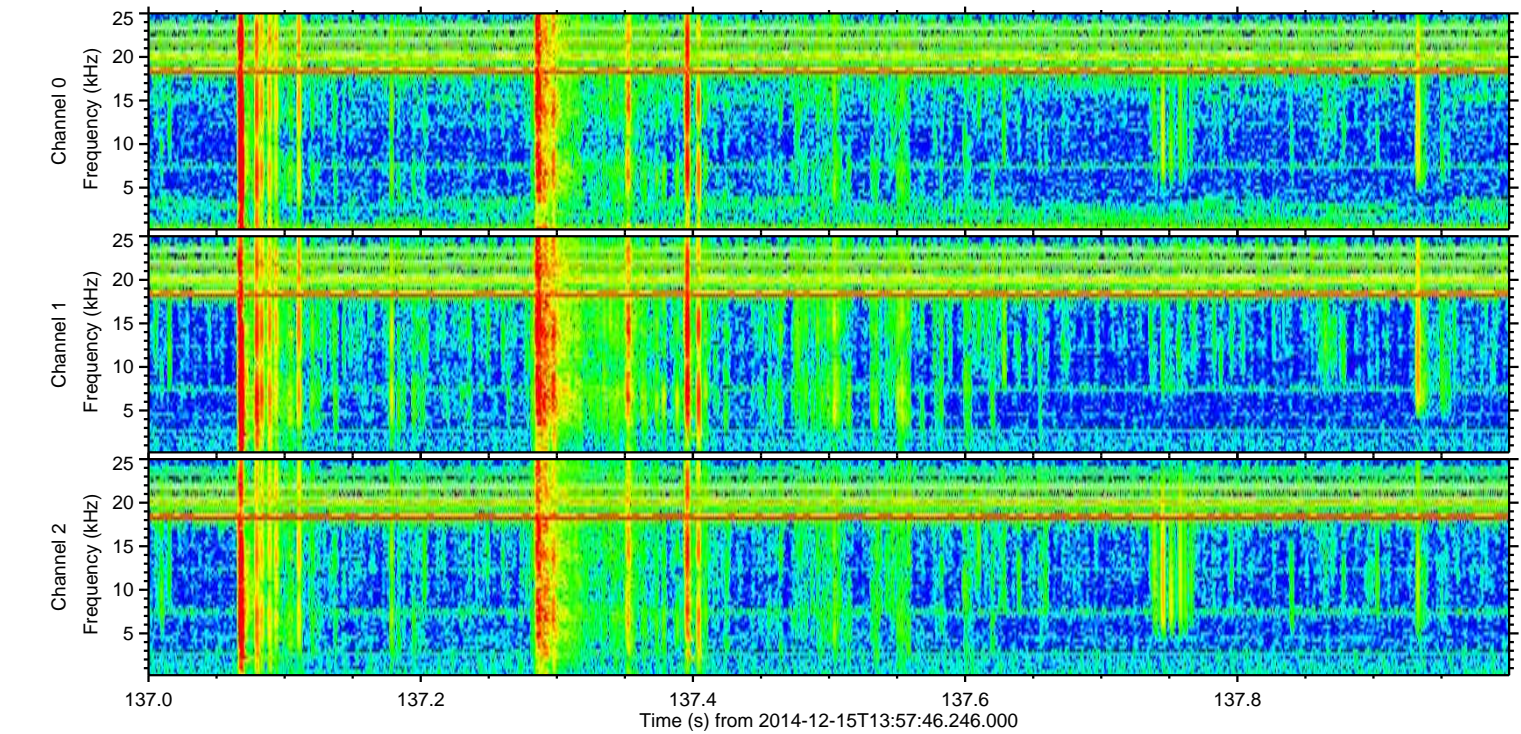
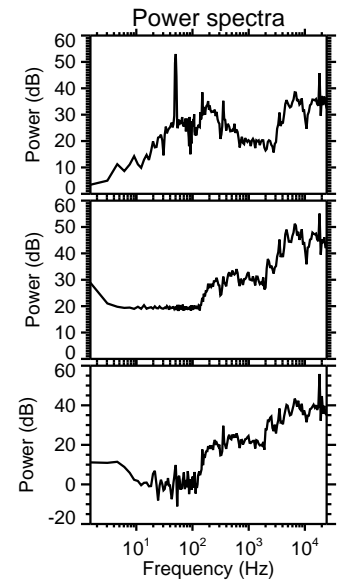
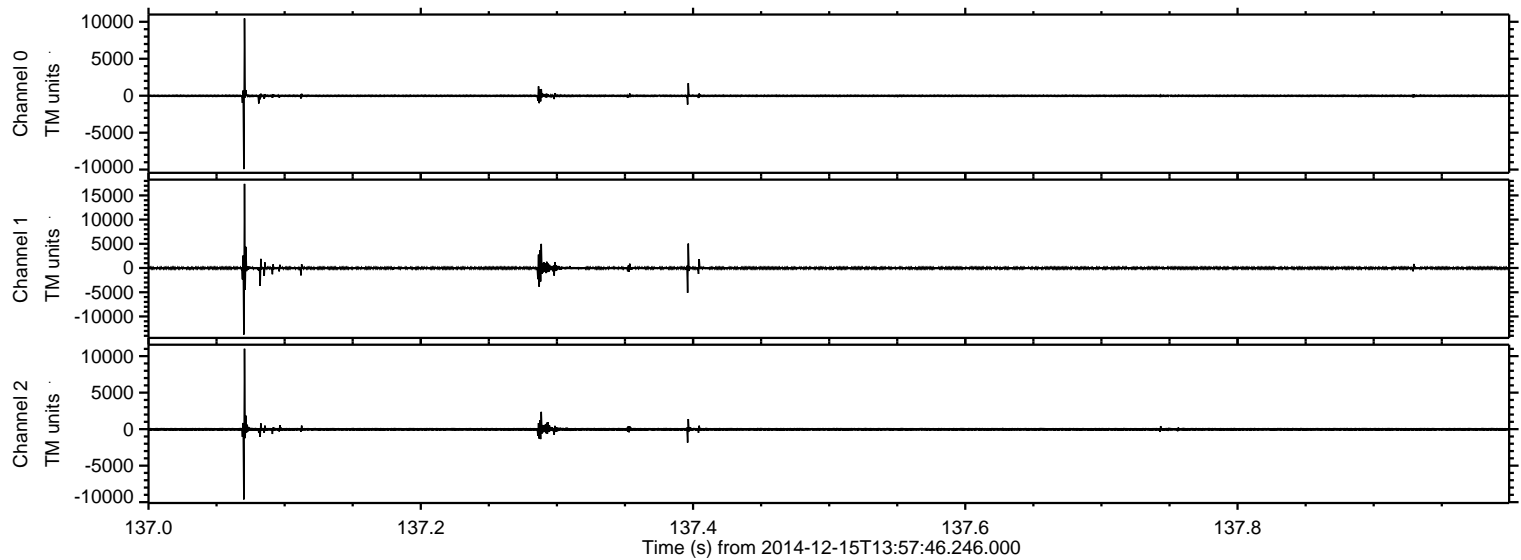
Processed Mon Dec 15 15:05:31 2014 by ELM ver.2012-10-06 from 001\_\_elm20141215\_135745\_\_dat00.bin





ELMAVAN 3D WAVEFORMS (Measured data sampled at 50 kHz) 49783 packets of 144 samples from 2014-12-15T13:57:46.246.000. Part 138/144

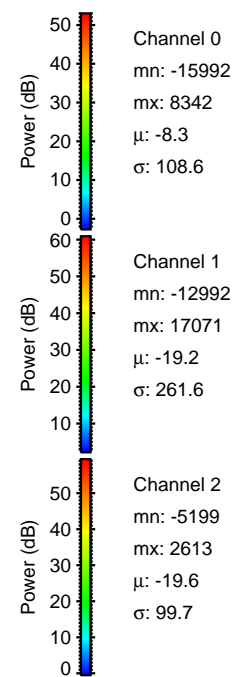
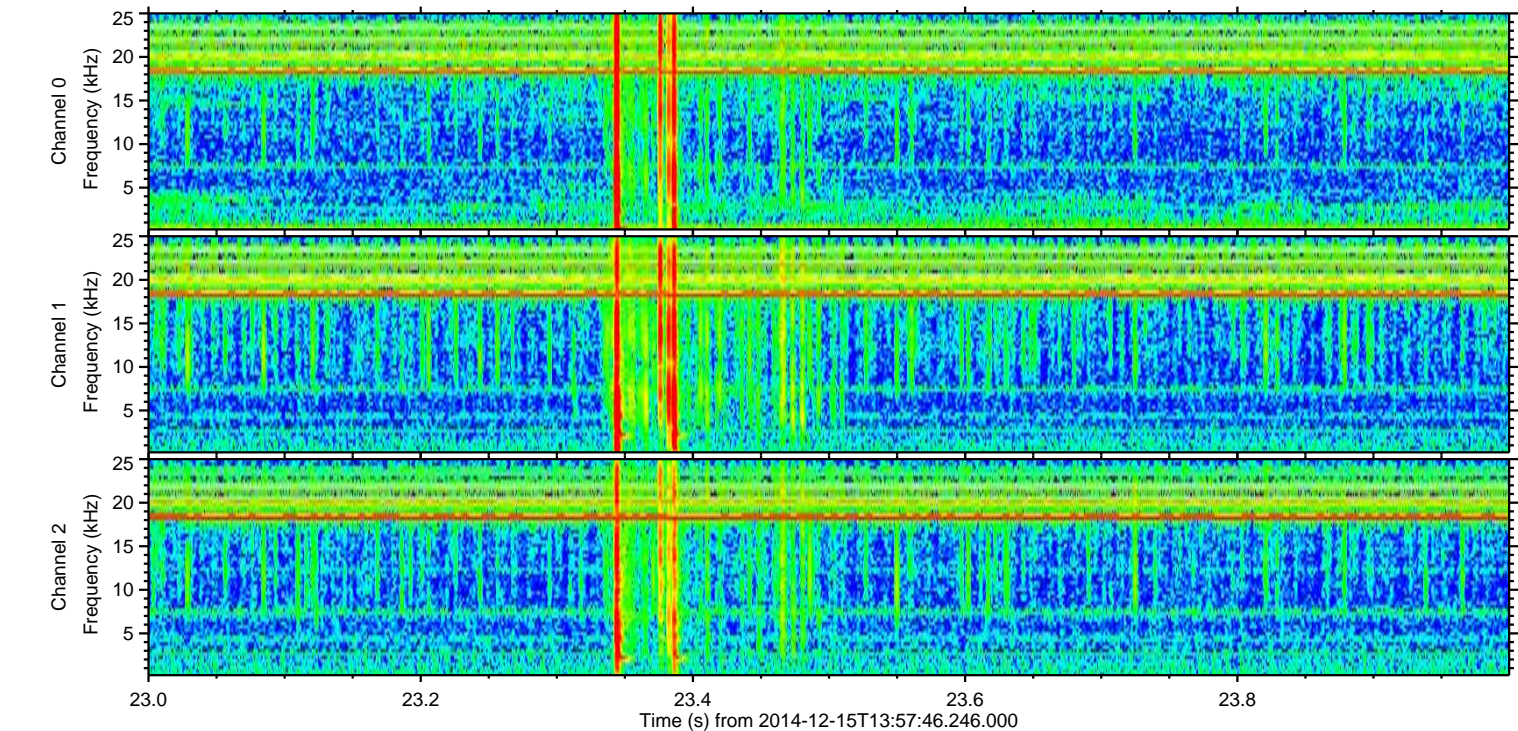
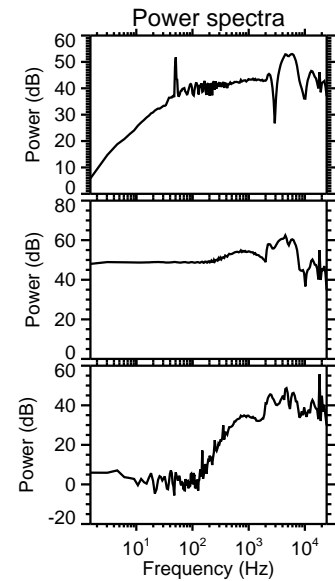
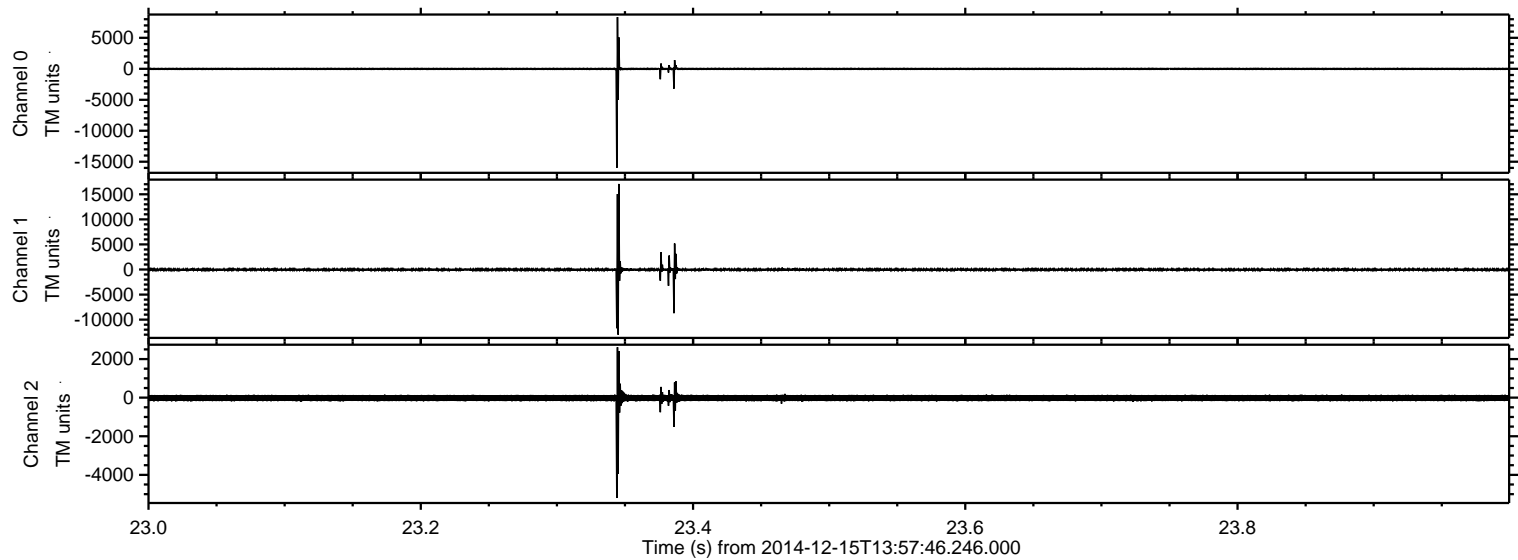
Processed Mon Dec 15 15:05:43 2014 by ELM ver.2012-10-06 from 001\_\_elm20141215\_135745\_\_dat00.bin





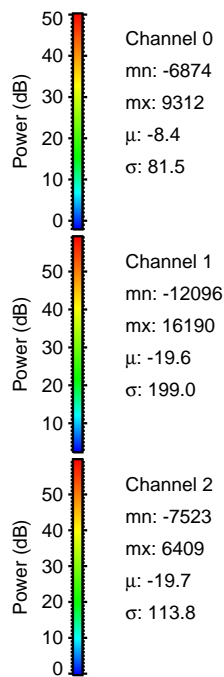
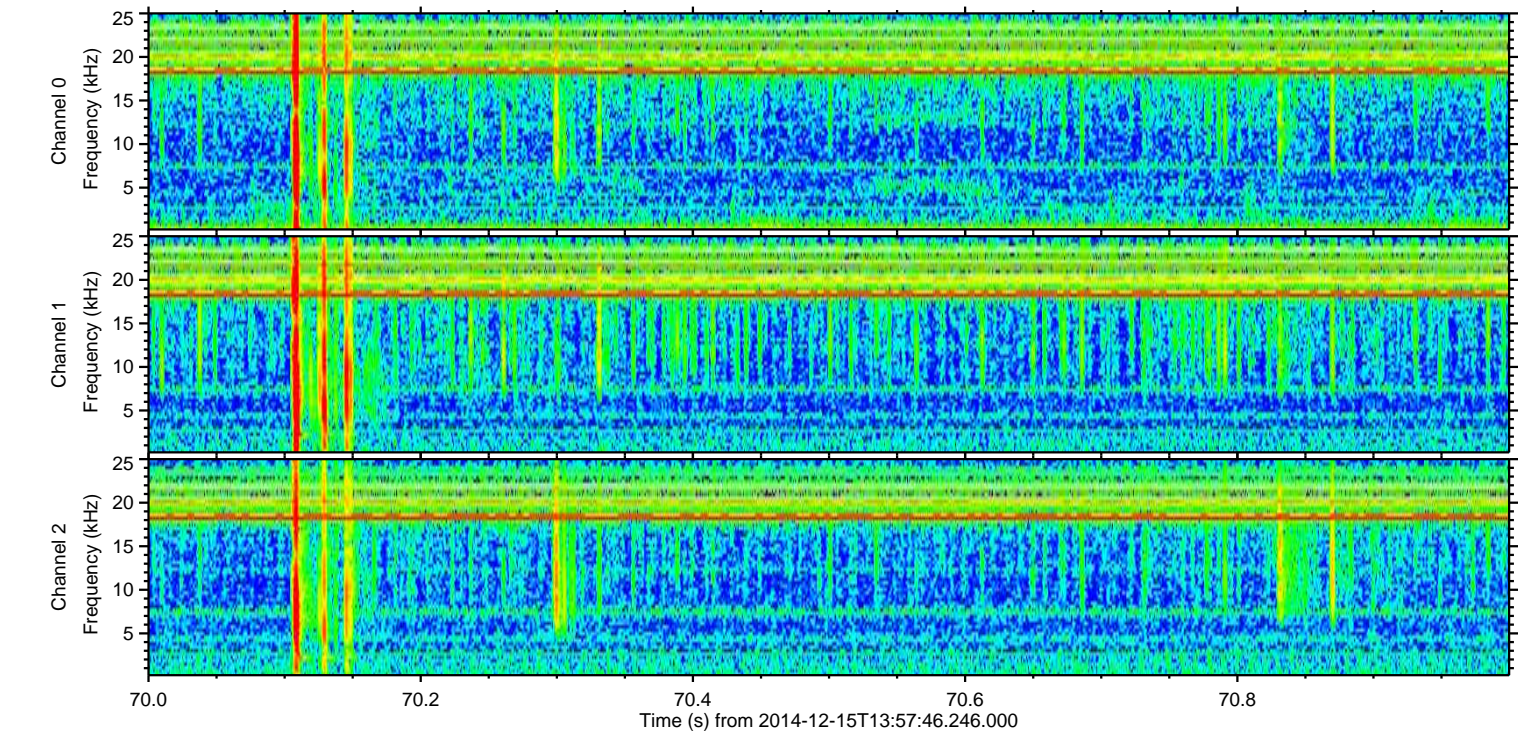
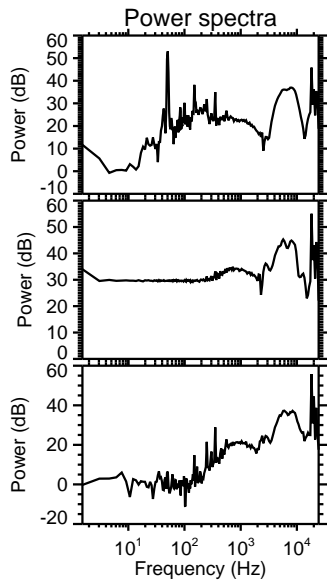
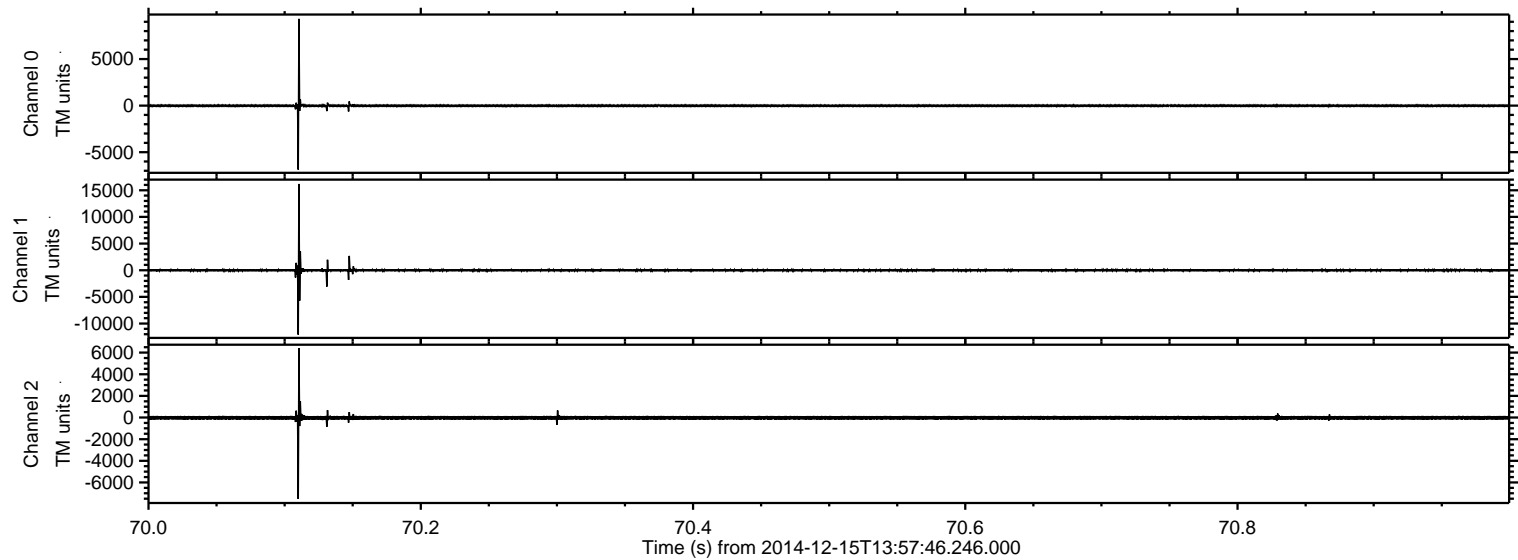
ELMAVAN 3D WAVEFORMS (Measured data sampled at 50 kHz) 49783 packets of 144 samples from 2014-12-15T13:57:46.246.000. Part 24/144

Processed Mon Dec 15 15:05:44 2014 by ELM ver.2012-10-06 from 001\_\_elm20141215\_135745\_\_dat00.bin





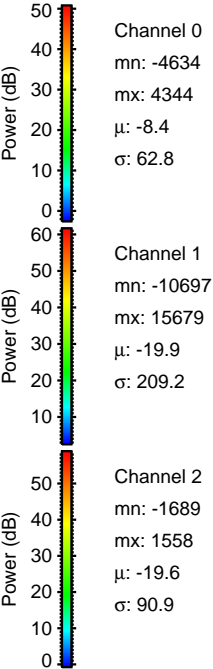
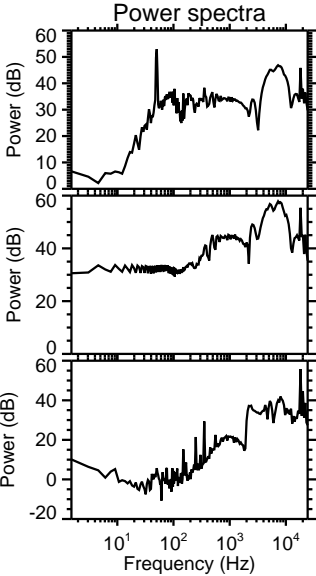
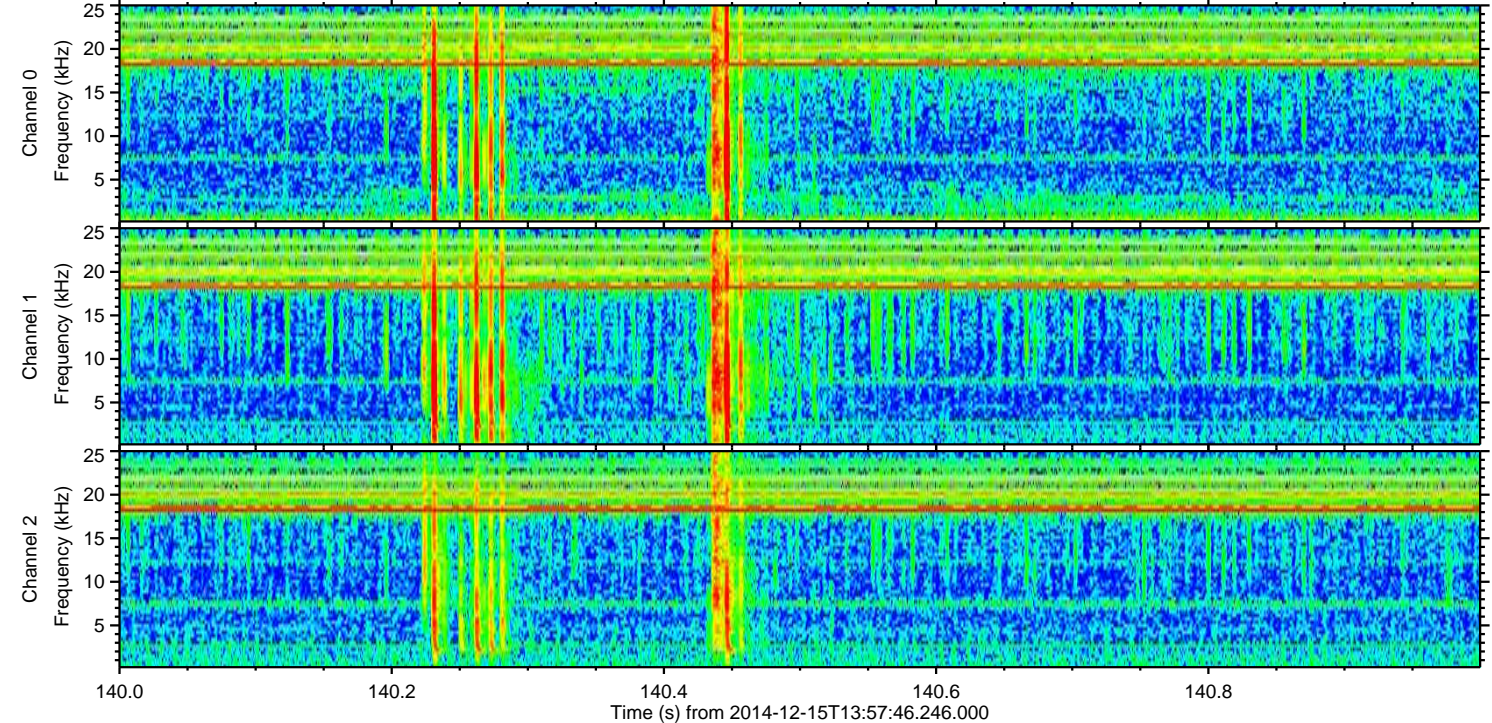
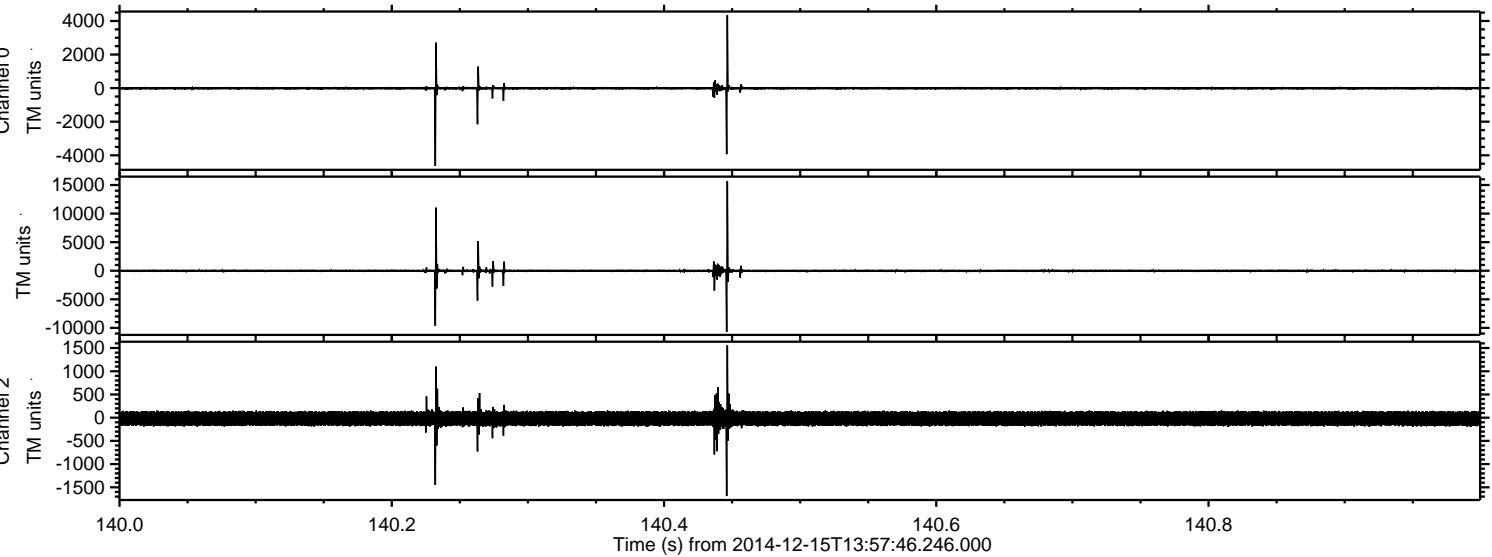
Processed Mon Dec 15 15:05:45 2014 by ELM ver.2012-10-06 from 001\_\_elm20141215\_135745\_\_dat00.bin





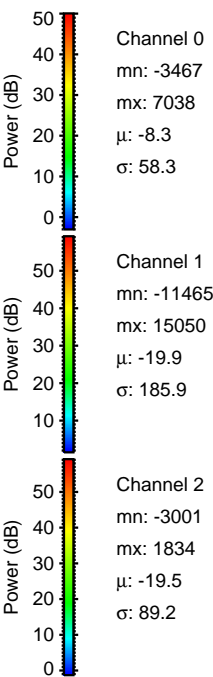
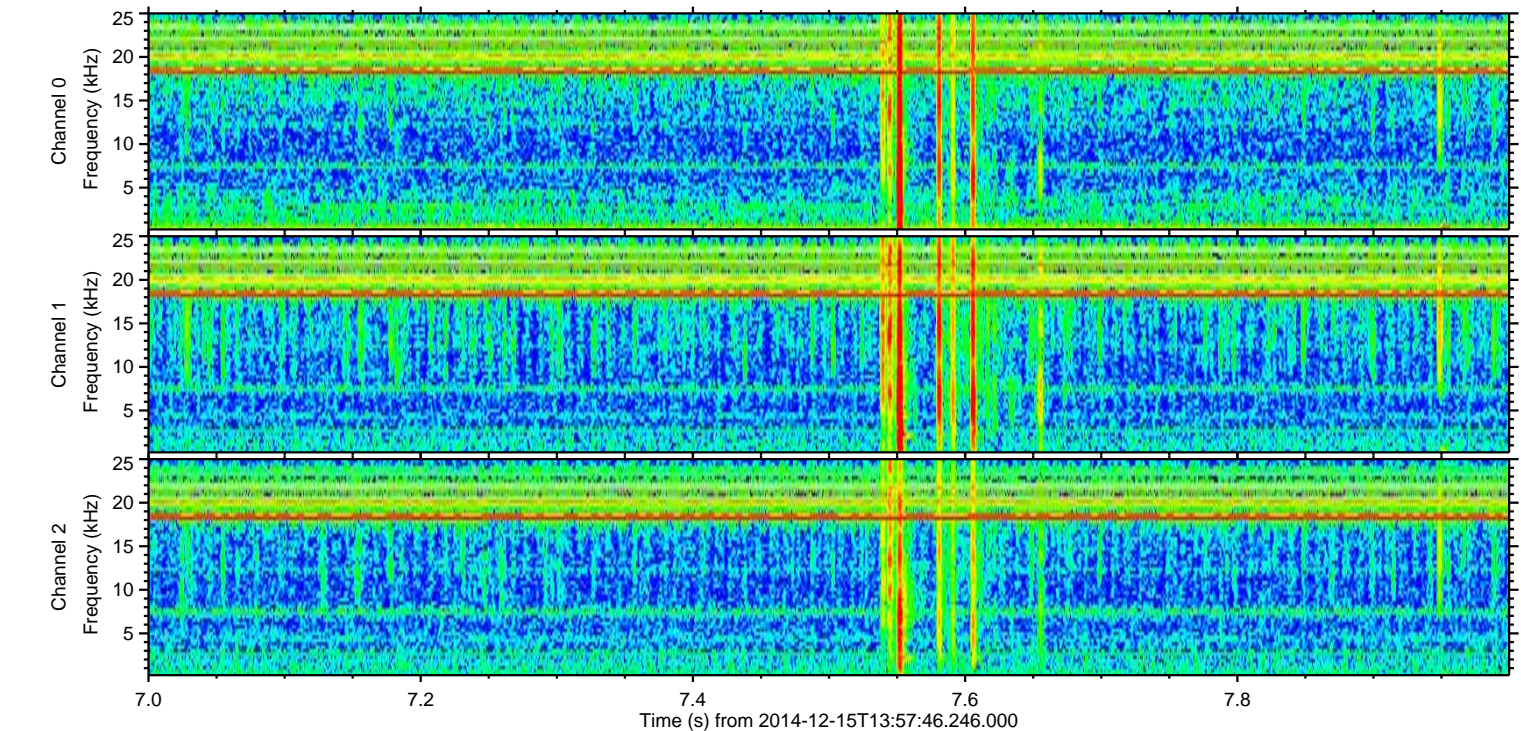
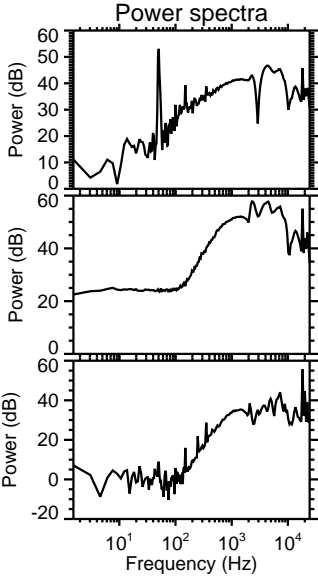
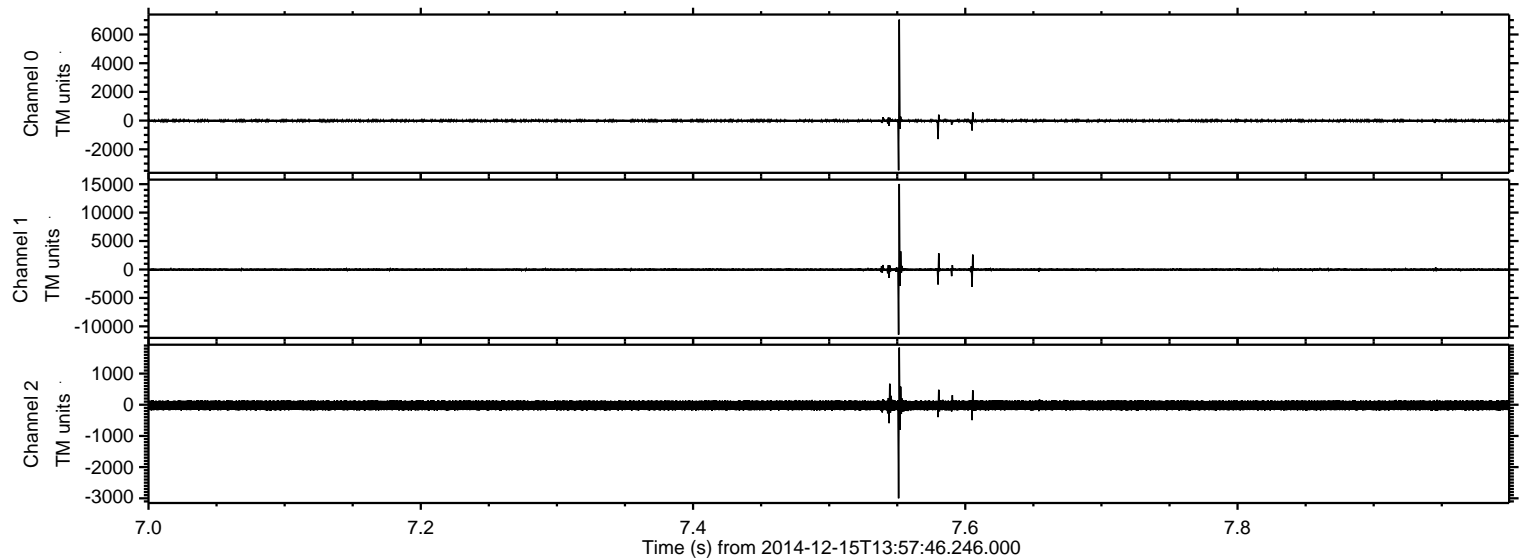
ELMAVAN 3D WAVEFORMS (Measured data sampled at 50 kHz) 49783 packets of 144 samples from 2014-12-15T13:57:46.246.000. Part 141/144

Processed Mon Dec 15 15:05:46 2014 by ELM ver.2012-10-06 from 001\_\_elm20141215\_135745\_\_dat00.bin



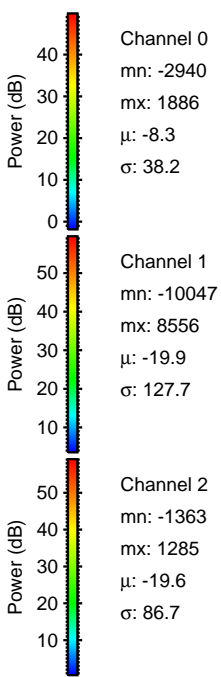
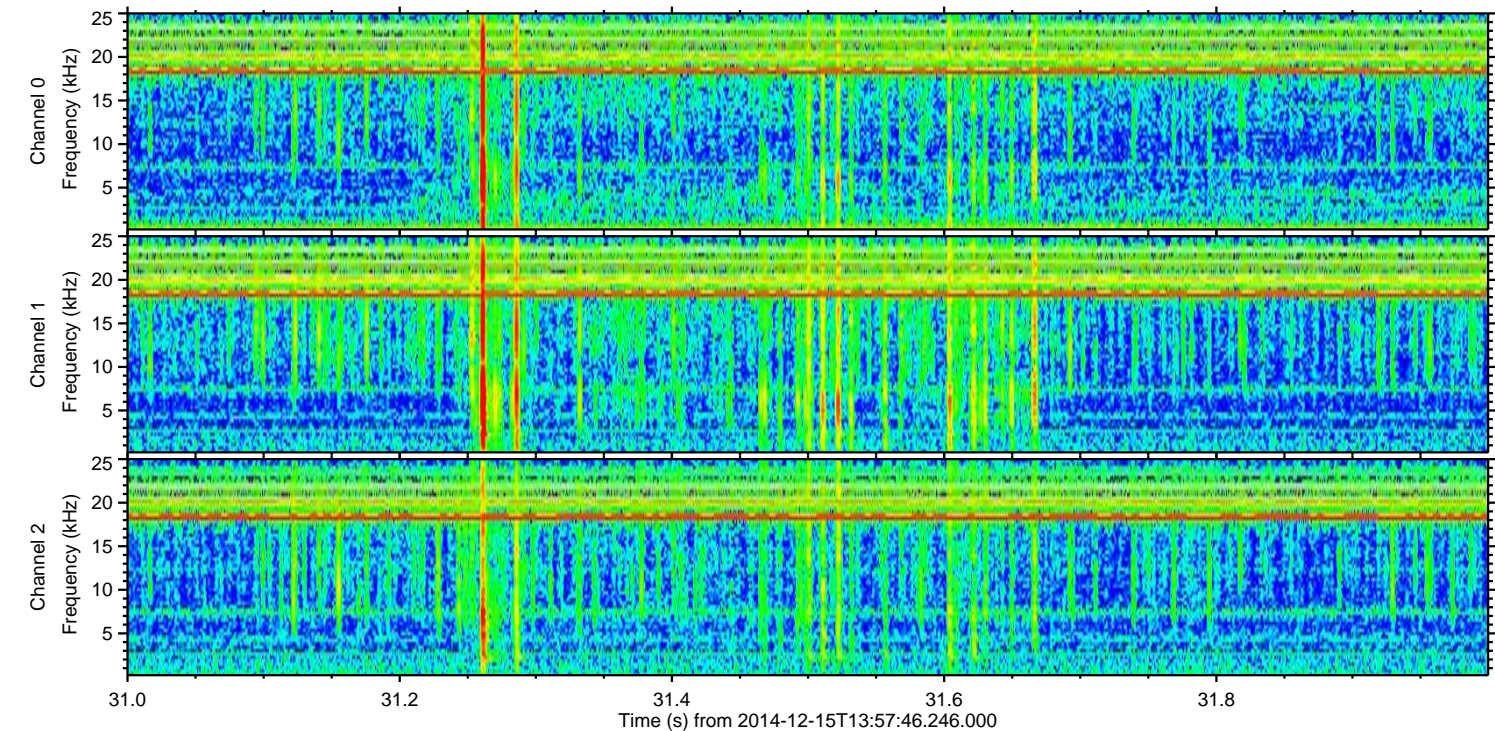
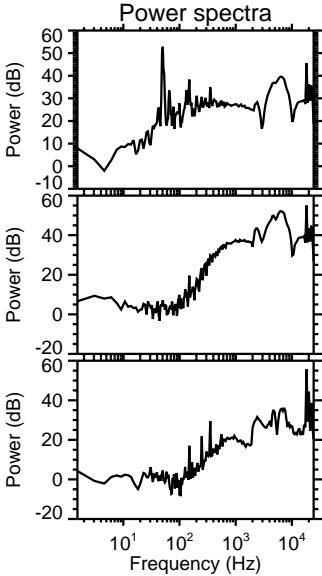
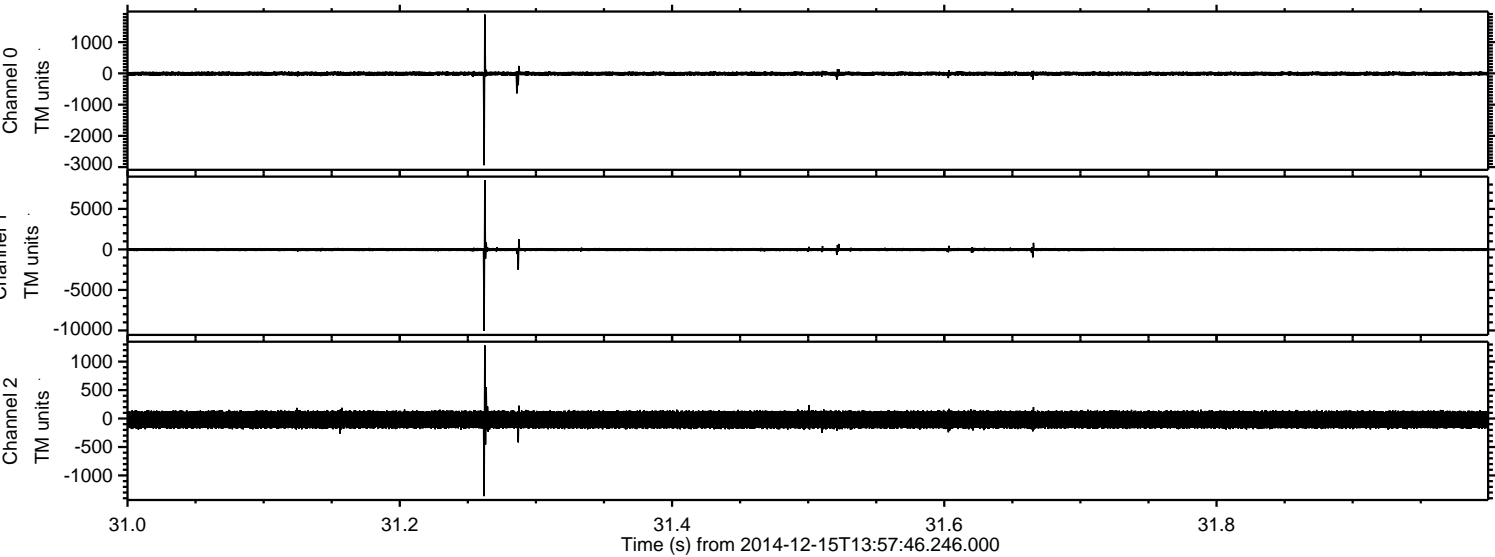


Processed Mon Dec 15 15:05:47 2014 by ELM ver.2012-10-06 from 001\_\_elm20141215\_135745\_\_dat00.bin



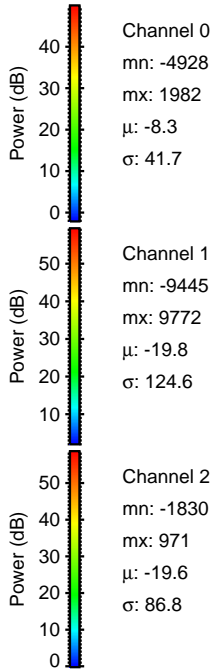
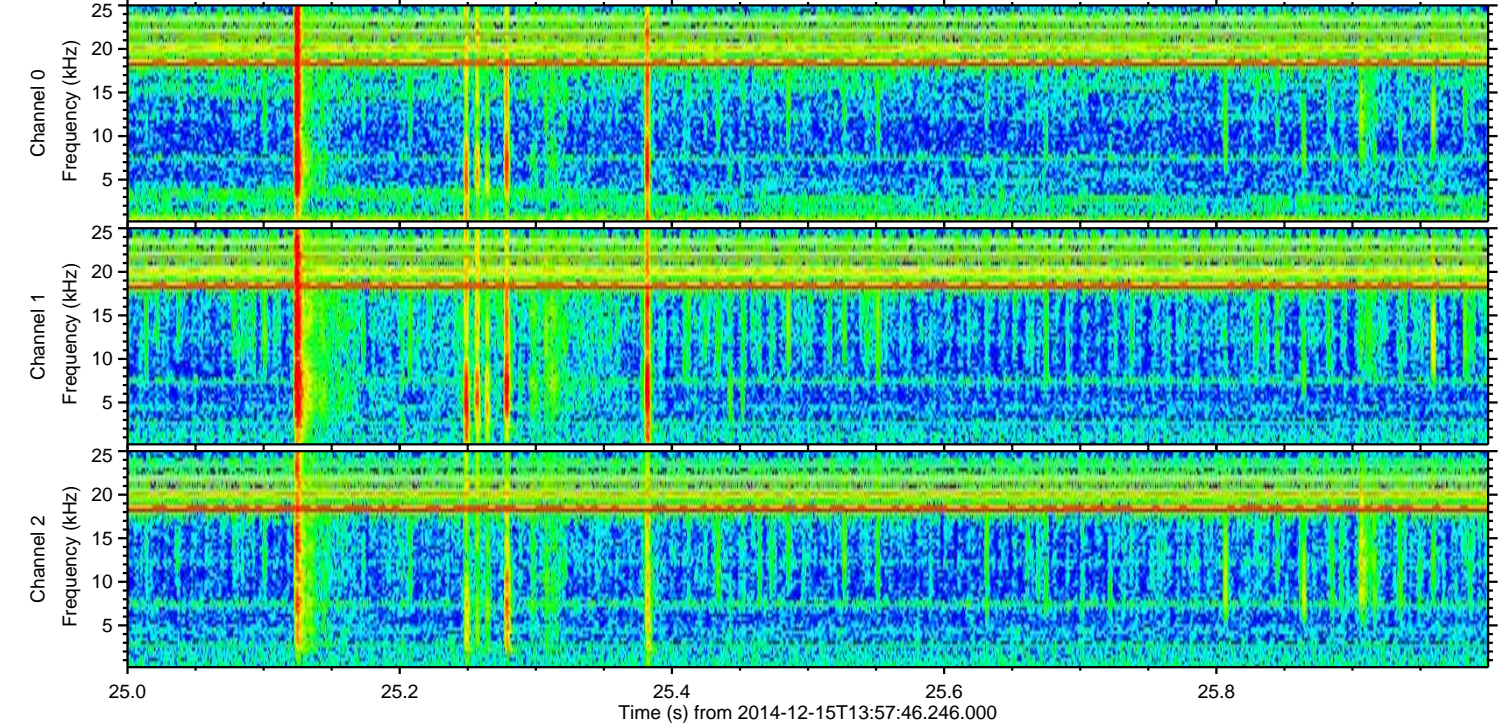
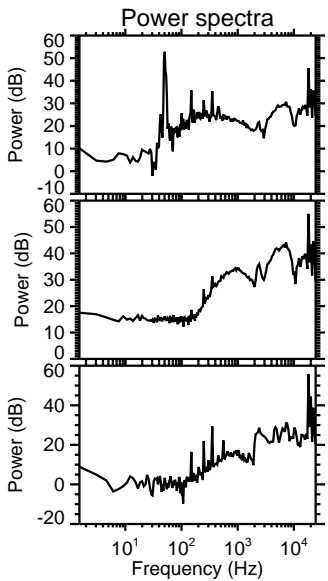
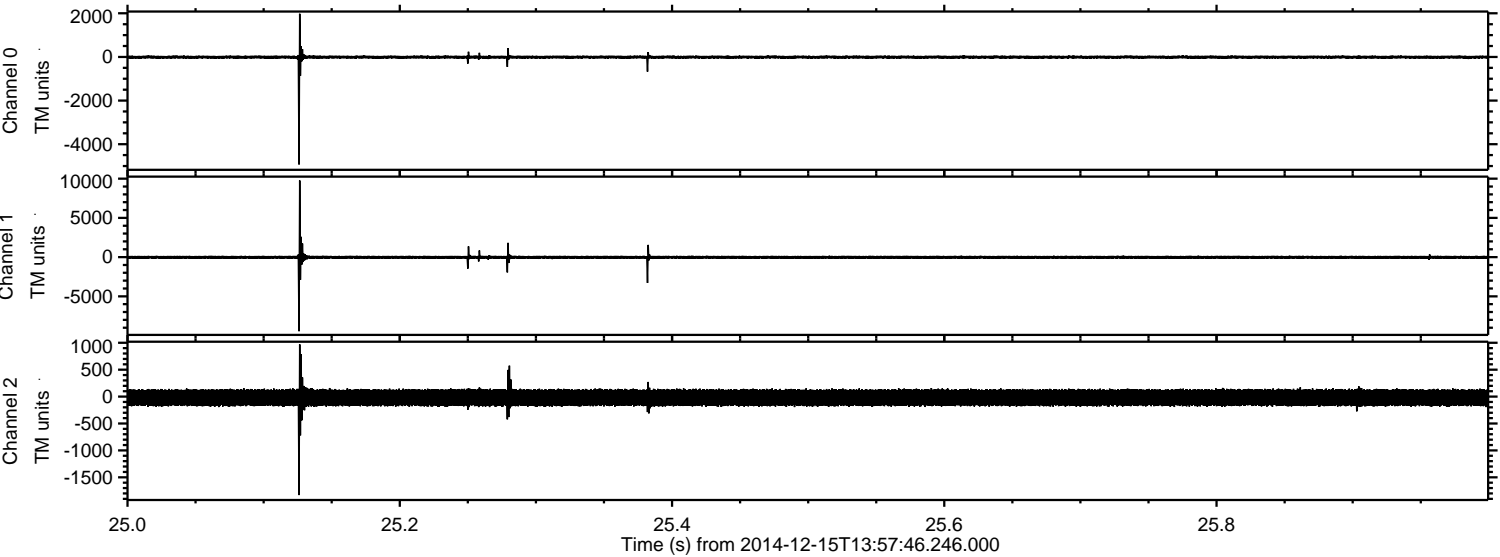


Processed Mon Dec 15 15:05:48 2014 by ELM ver.2012-10-06 from 001\_\_elm20141215\_135745\_\_dat00.bin



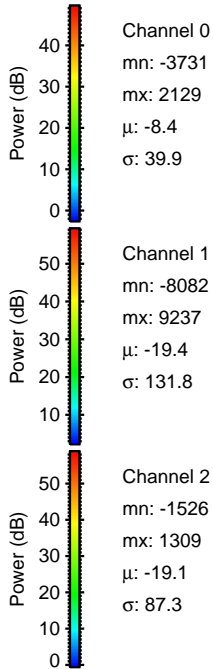
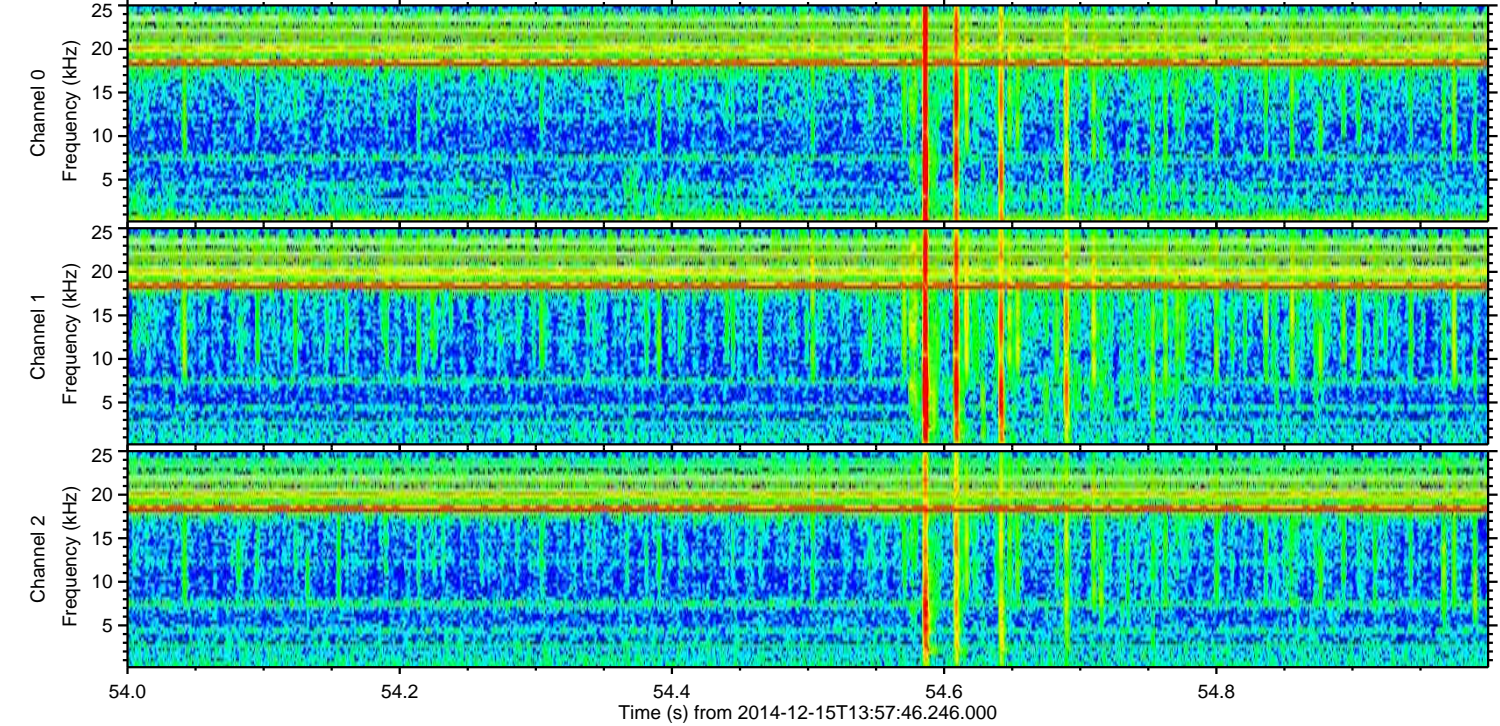
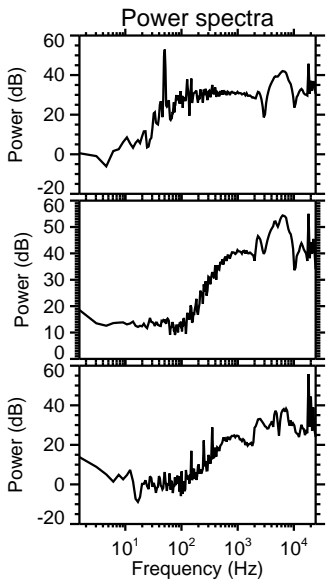
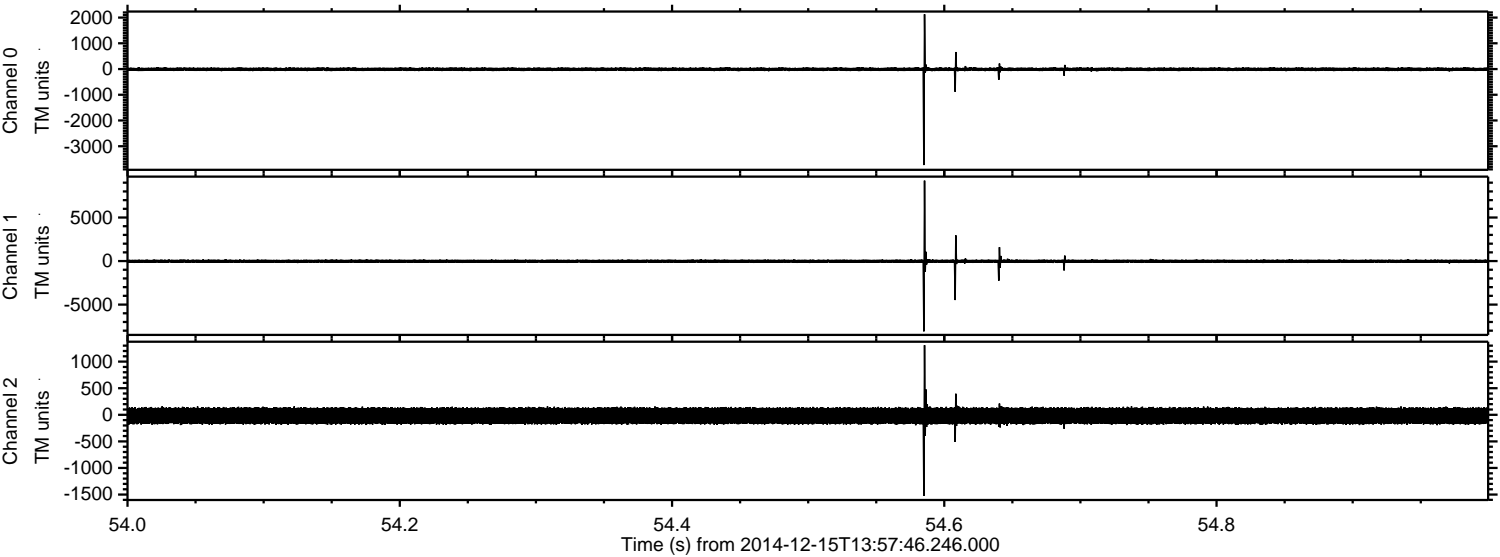


Processed Mon Dec 15 15:05:49 2014 by ELM ver.2012-10-06 from 001\_\_elm20141215\_135745\_\_dat00.bin



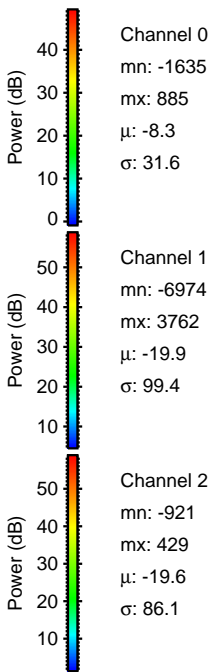
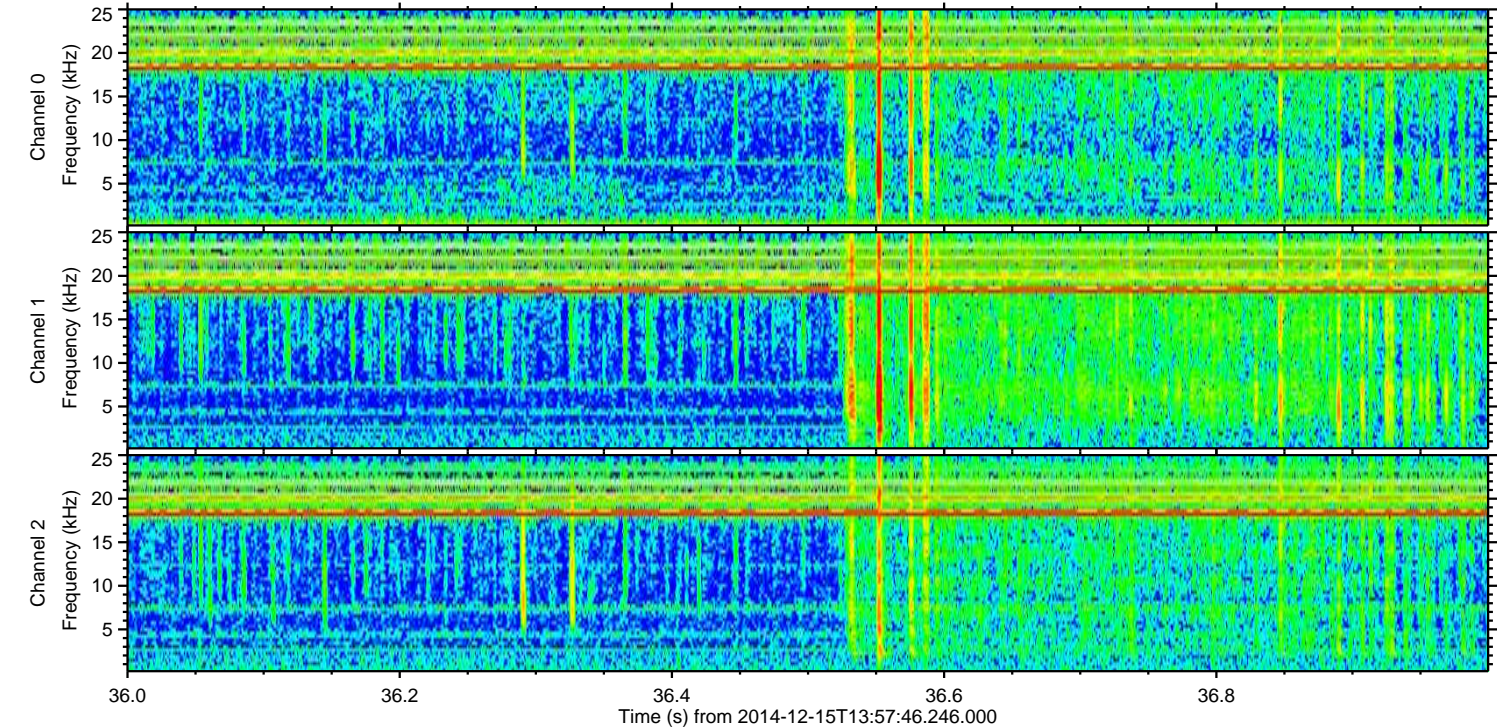
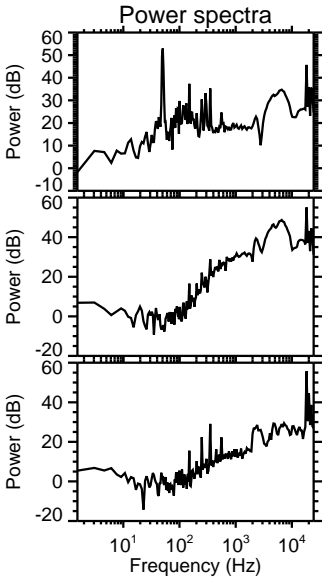
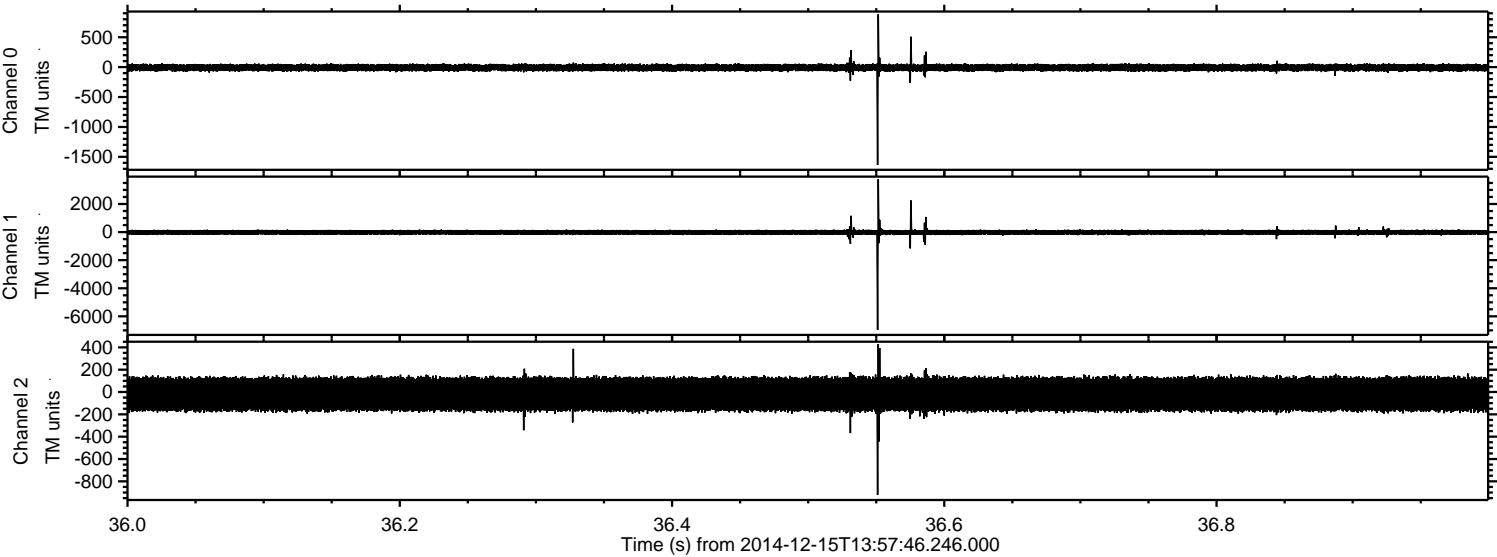


Processed Mon Dec 15 15:05:50 2014 by ELM ver.2012-10-06 from 001\_\_elm20141215\_135745\_\_dat00.bin





Processed Mon Dec 15 15:05:51 2014 by ELM ver.2012-10-06 from 001\_\_elm20141215\_135745\_\_dat00.bin



Channel 0  
mn: -1635  
mx: 885  
 $\mu$ : -8.3  
 $\sigma$ : 31.6

Channel 1  
mn: -6974  
mx: 3762  
 $\mu$ : -19.9  
 $\sigma$ : 99.4

Channel 2  
mn: -921  
mx: 429  
 $\mu$ : -19.6  
 $\sigma$ : 86.1



Processed Mon Dec 15 15:05:52 2014 by ELM ver.2012-10-06 from 001\_\_elm20141215\_135745\_\_dat00.bin

