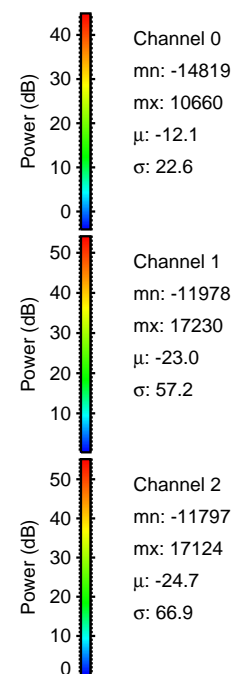
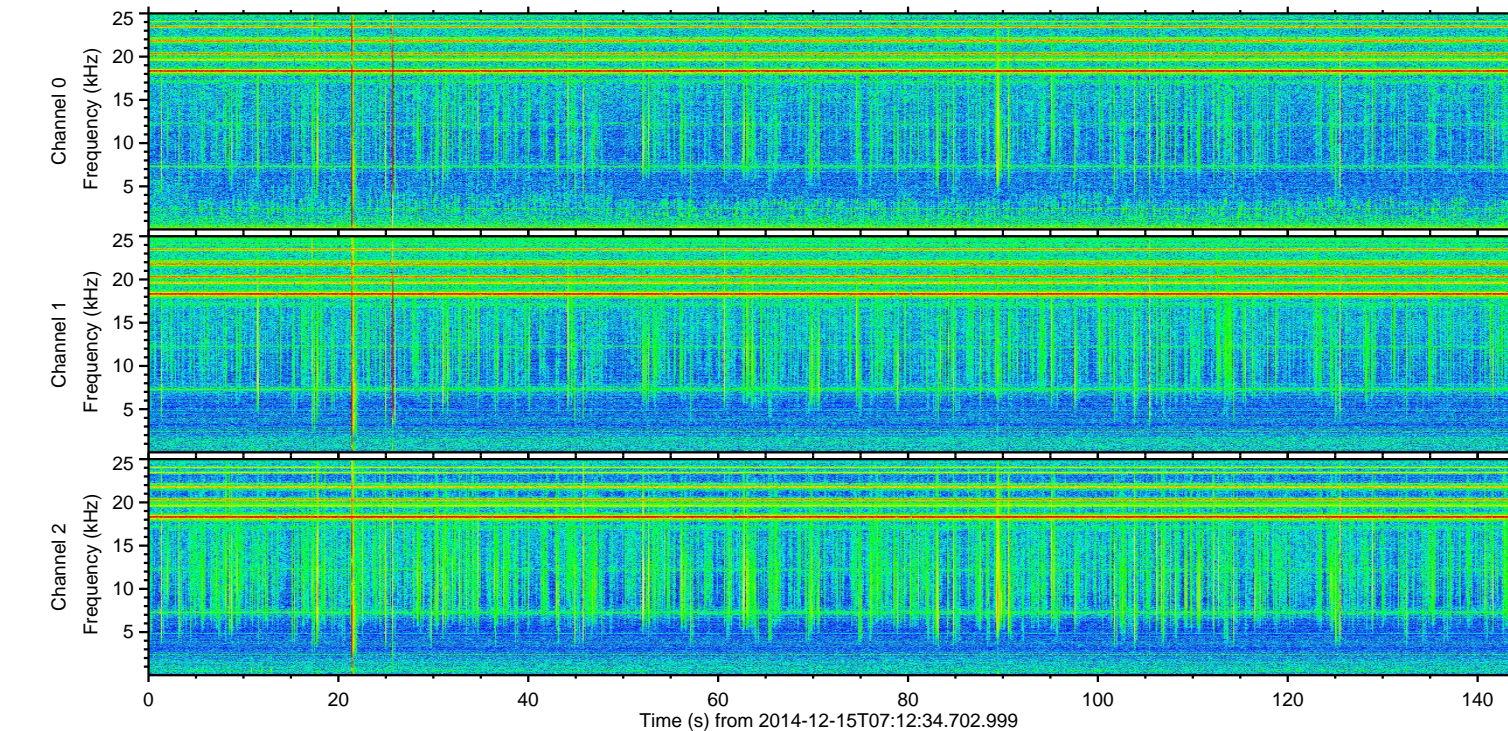
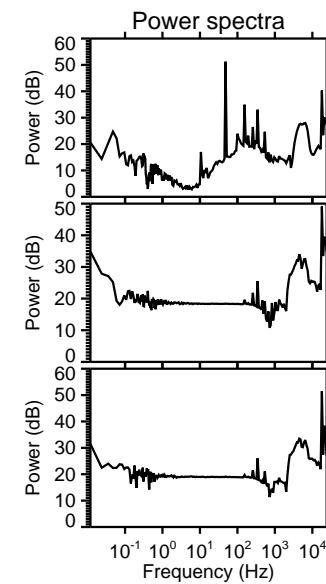
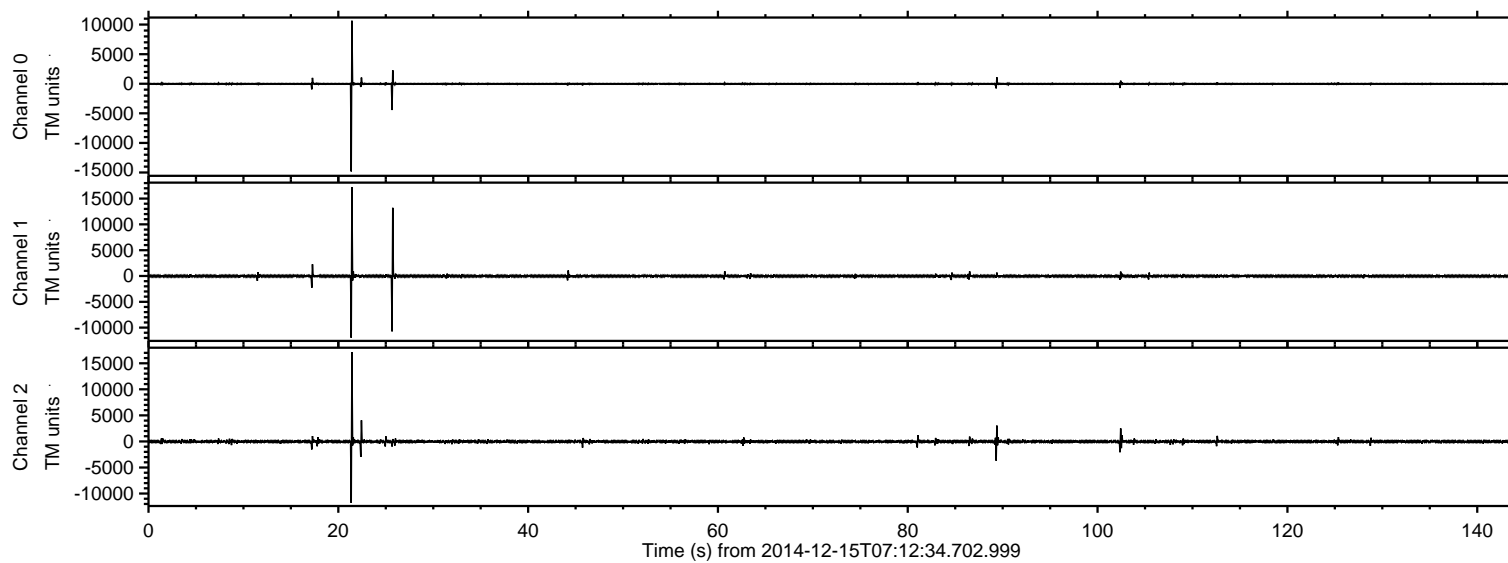


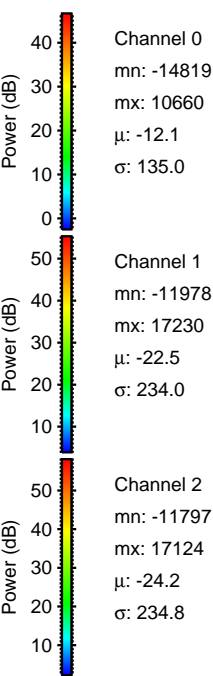
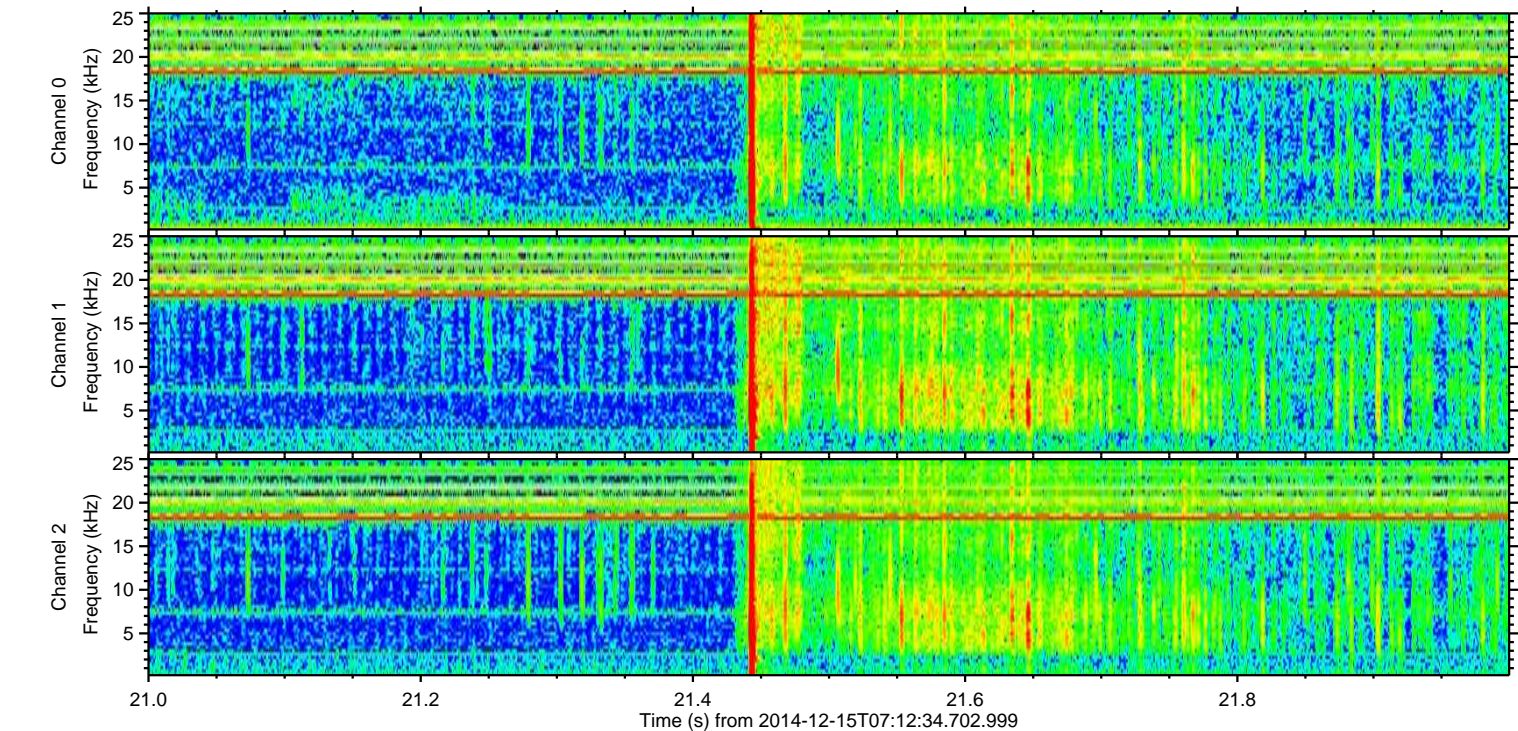
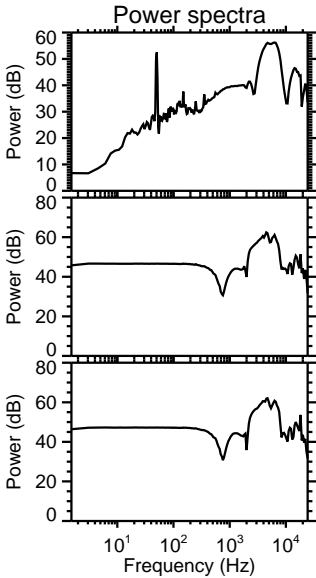
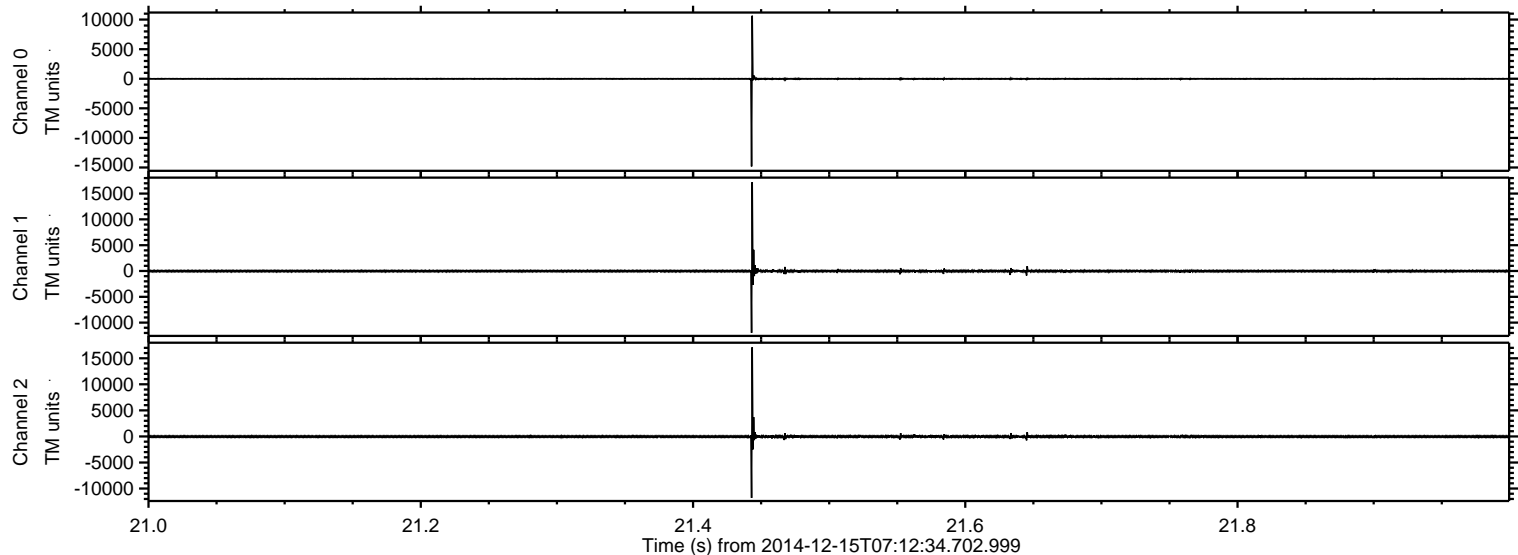
# ELMAVAN 3D WAVEFORMS (Measured data sampled at 50 kHz) 49779 packets of 144 samples from 2014-12-15T07:12:34.702.999.

Processed Mon Dec 15 08:21:27 2014 by ELM ver.2012-10-06 from 001\_\_elm20141215\_071233\_\_dat00.bin





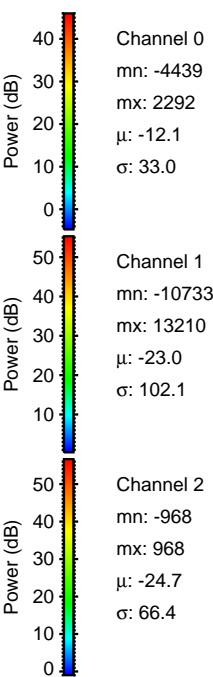
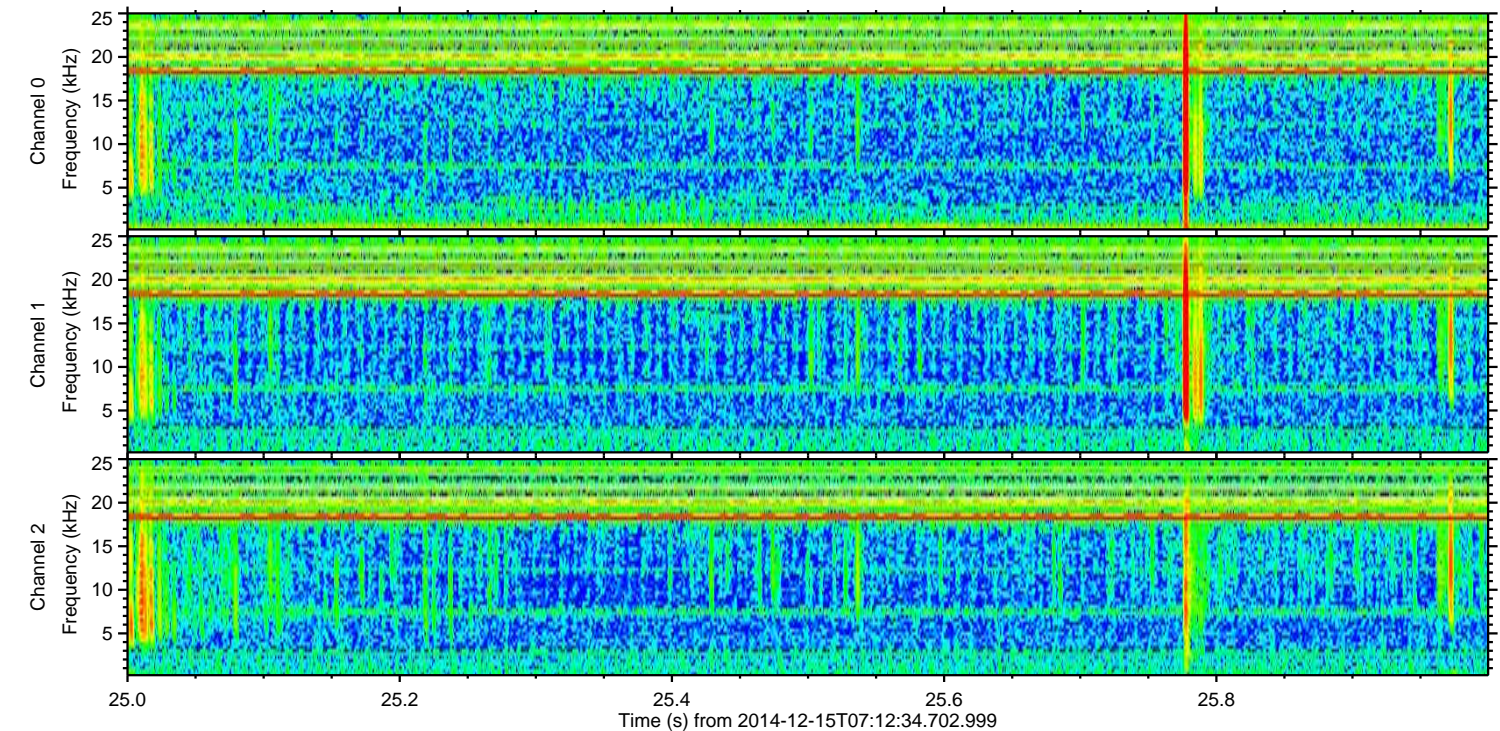
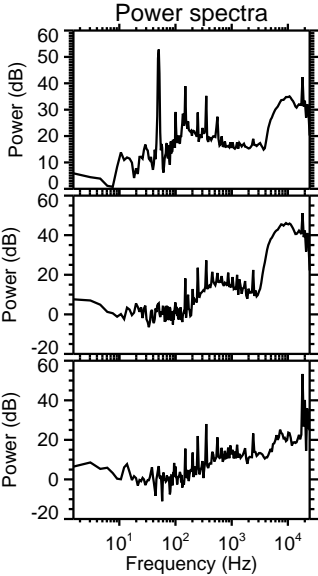
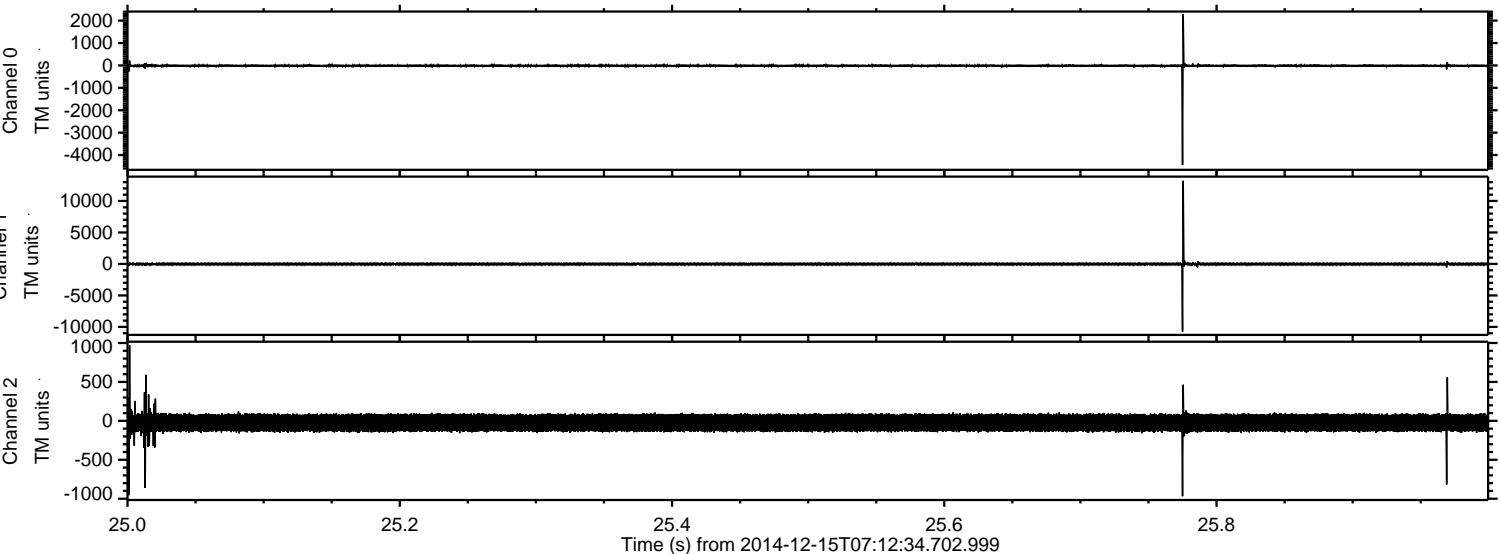
Processed Mon Dec 15 08:21:40 2014 by ELM ver.2012-10-06 from 001\_\_elm20141215\_071233\_\_dat00.bin





ELMAVAN 3D WAVEFORMS (Measured data sampled at 50 kHz) 49779 packets of 144 samples from 2014-12-15T07:12:34.702.999. Part 26/144

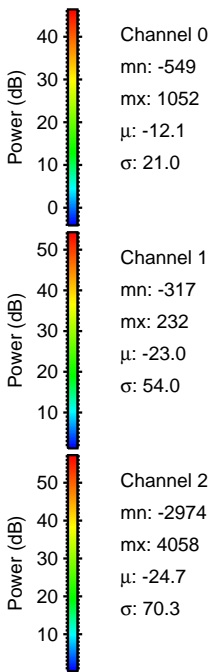
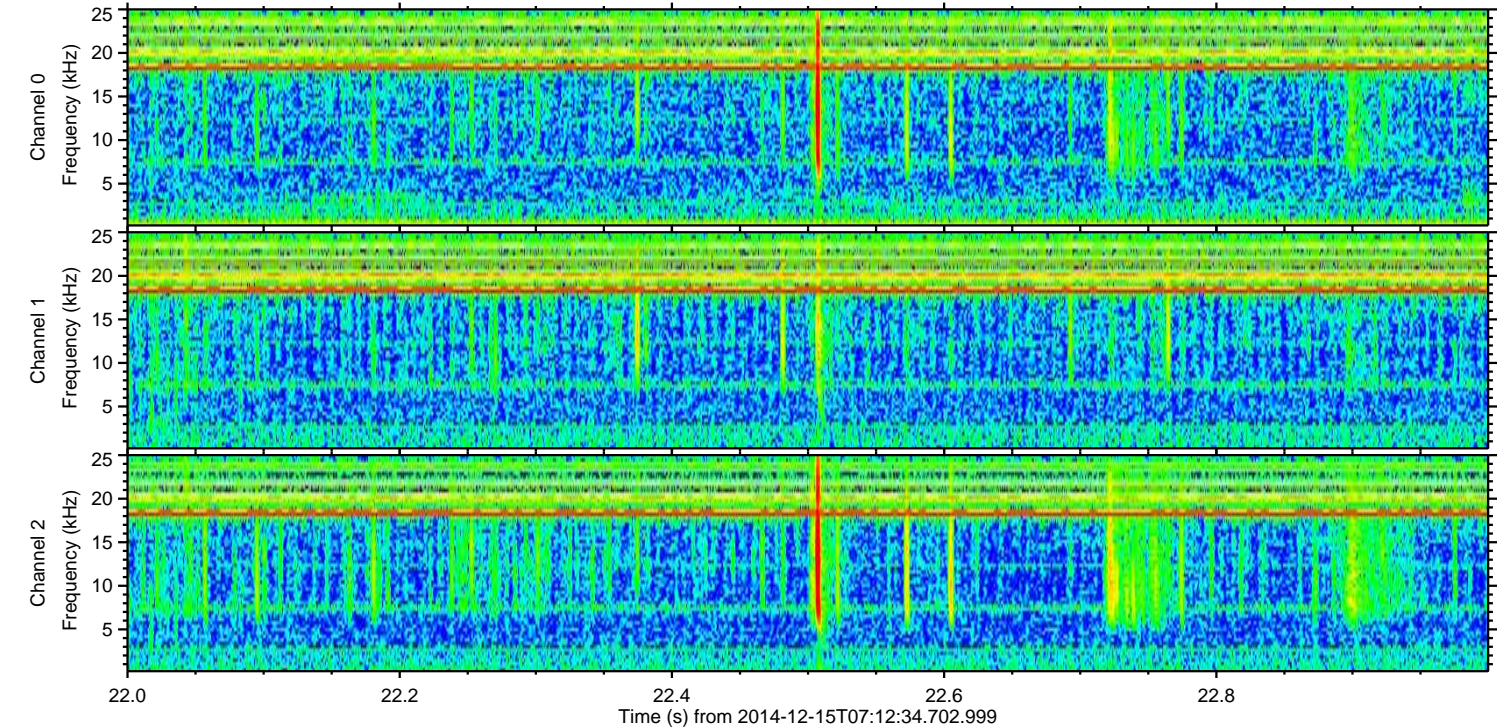
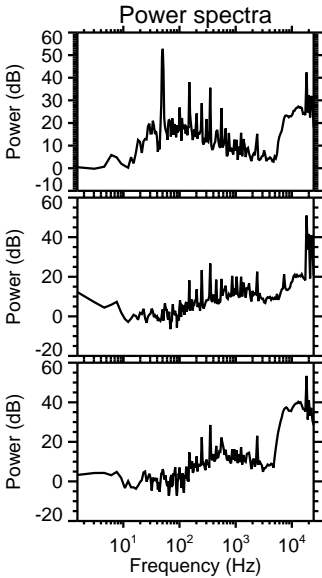
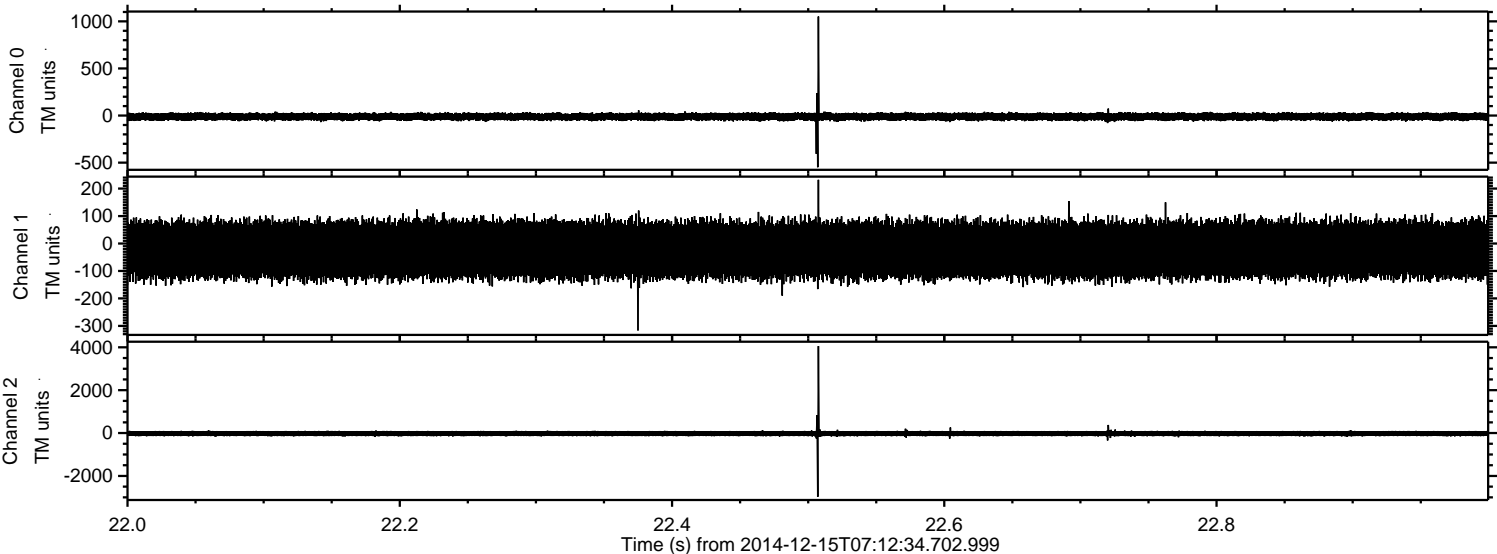
Processed Mon Dec 15 08:21:41 2014 by ELM ver.2012-10-06 from 001\_\_elm20141215\_071233\_\_dat00.bin





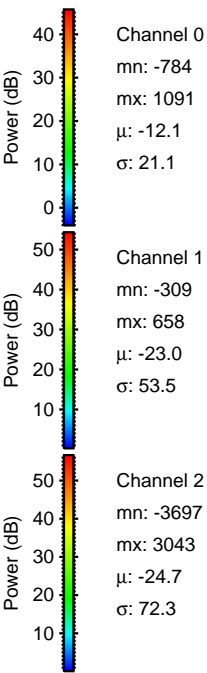
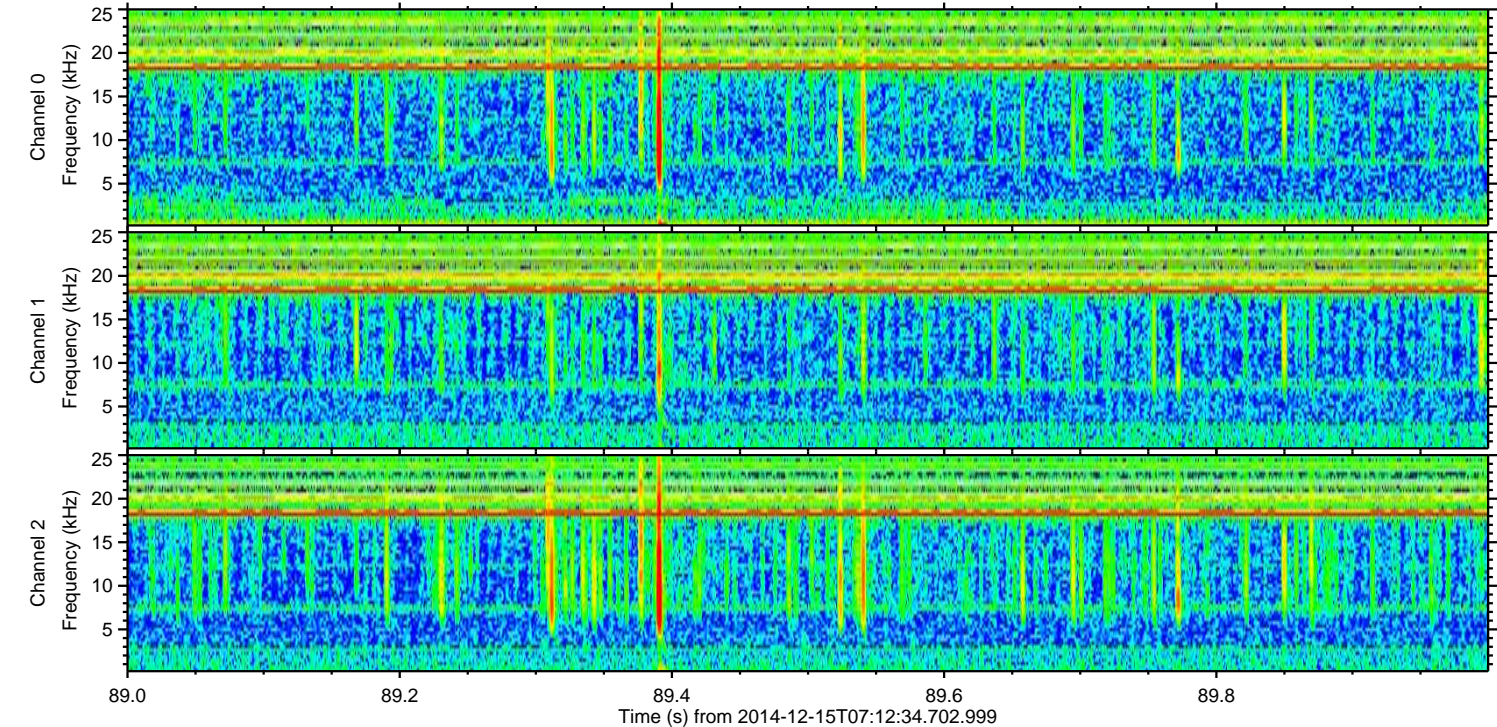
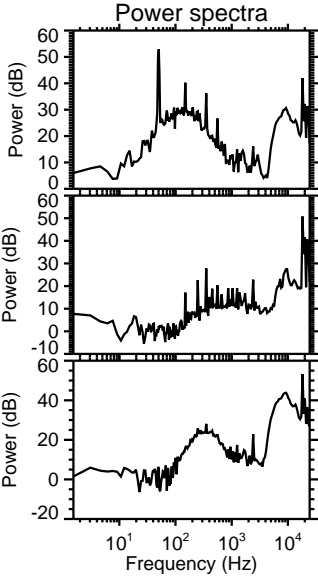
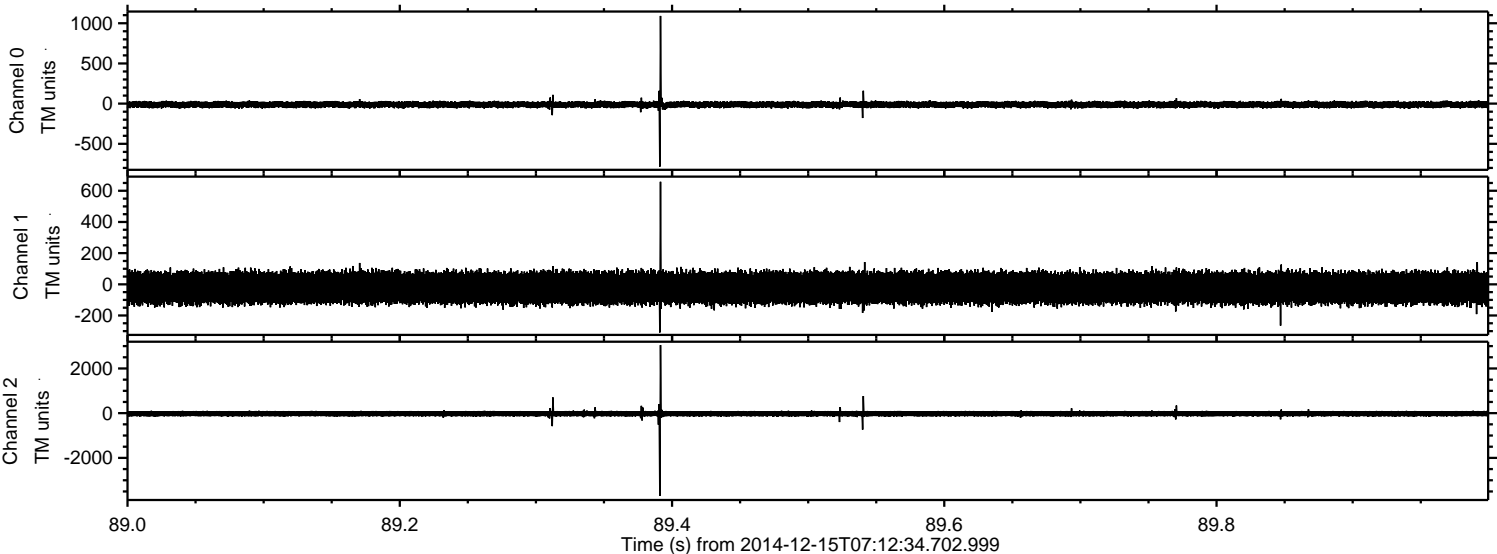
ELMAVAN 3D WAVEFORMS (Measured data sampled at 50 kHz) 49779 packets of 144 samples from 2014-12-15T07:12:34.702.999. Part 23/144

Processed Mon Dec 15 08:21:42 2014 by ELM ver.2012-10-06 from 001\_\_elm20141215\_071233\_\_dat00.bin



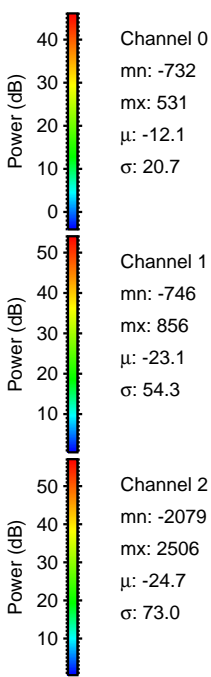
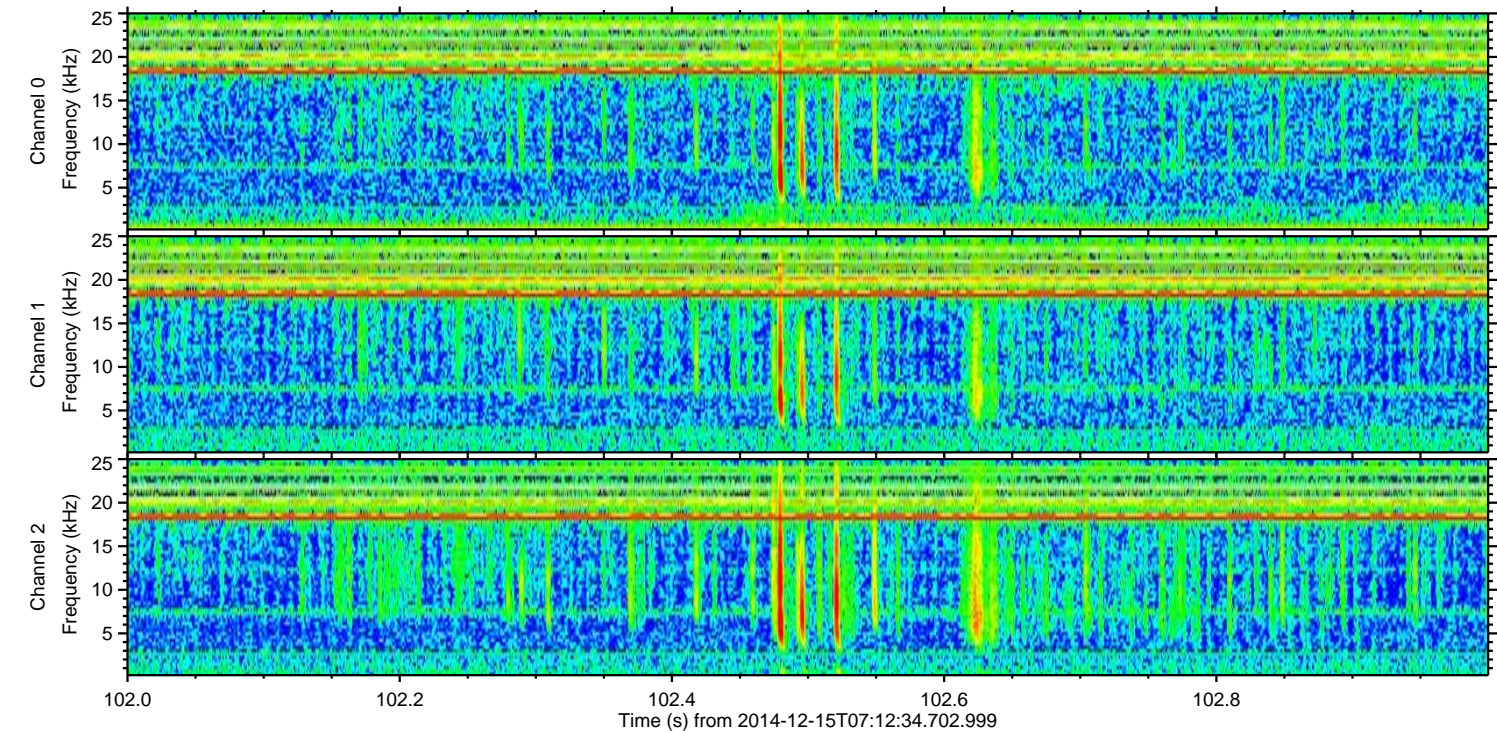
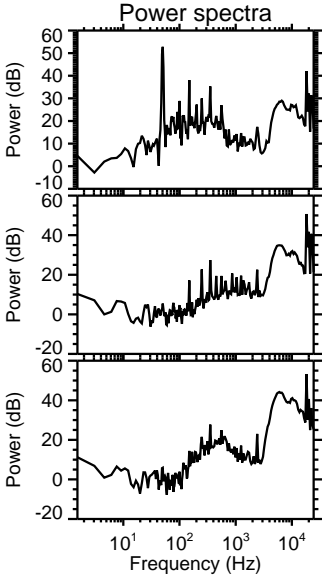
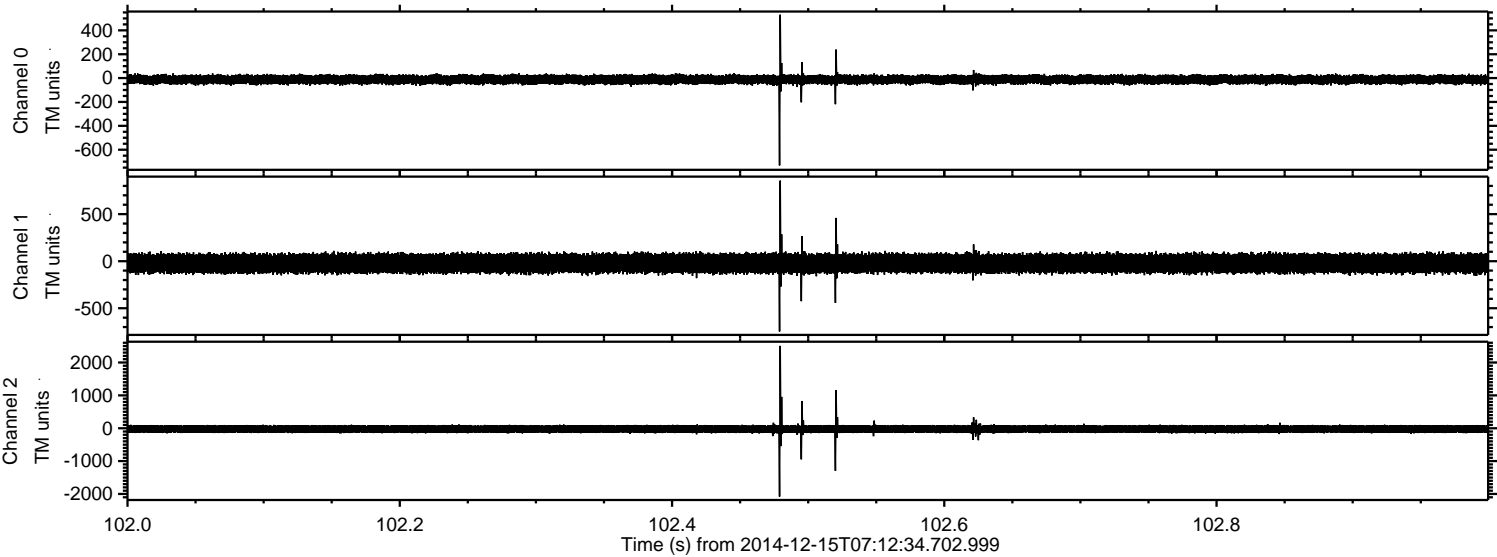


Processed Mon Dec 15 08:21:43 2014 by ELM ver.2012-10-06 from 001\_\_elm20141215\_071233\_\_dat00.bin





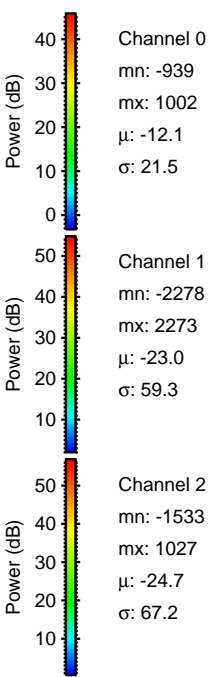
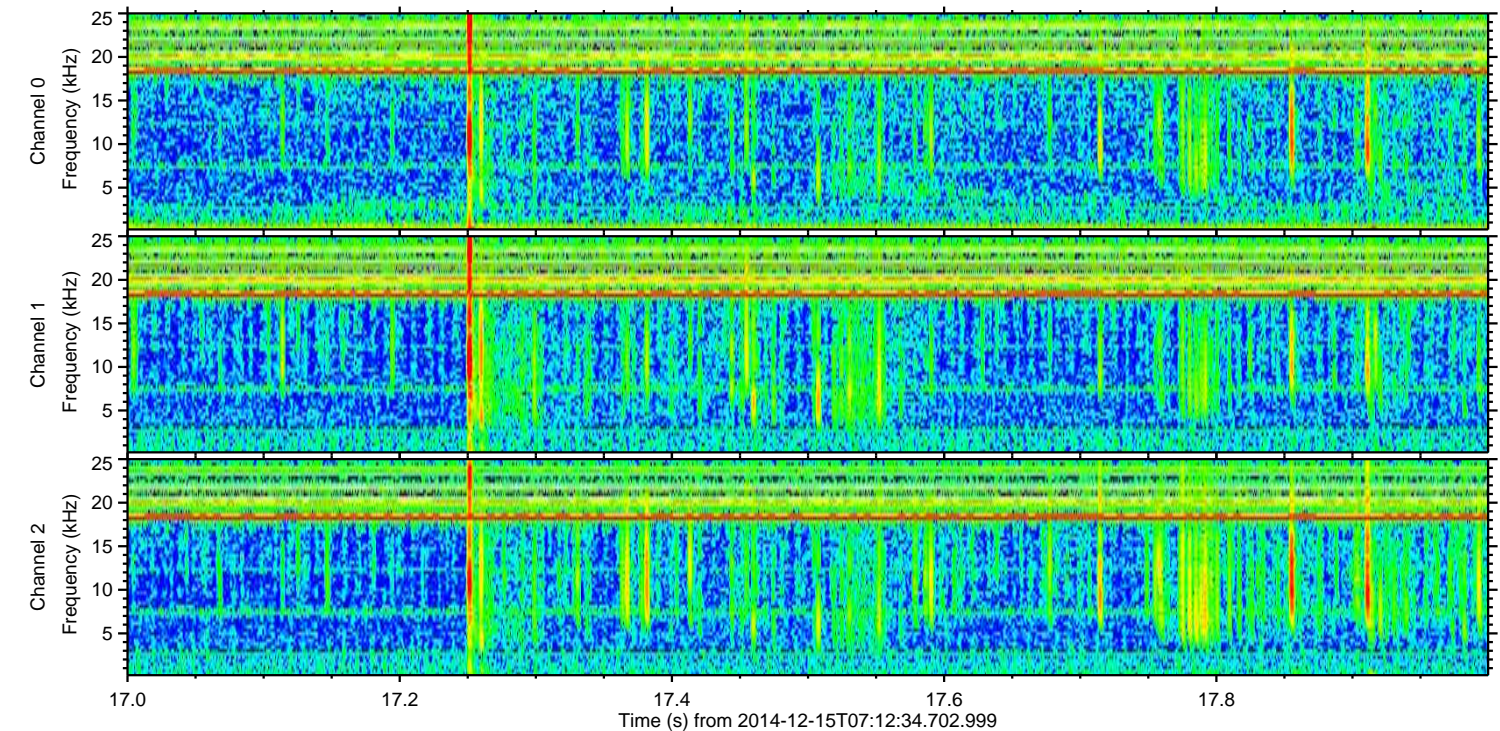
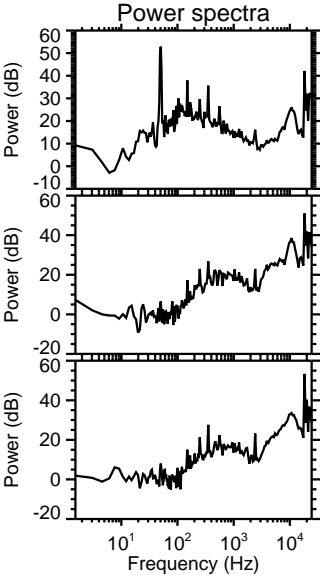
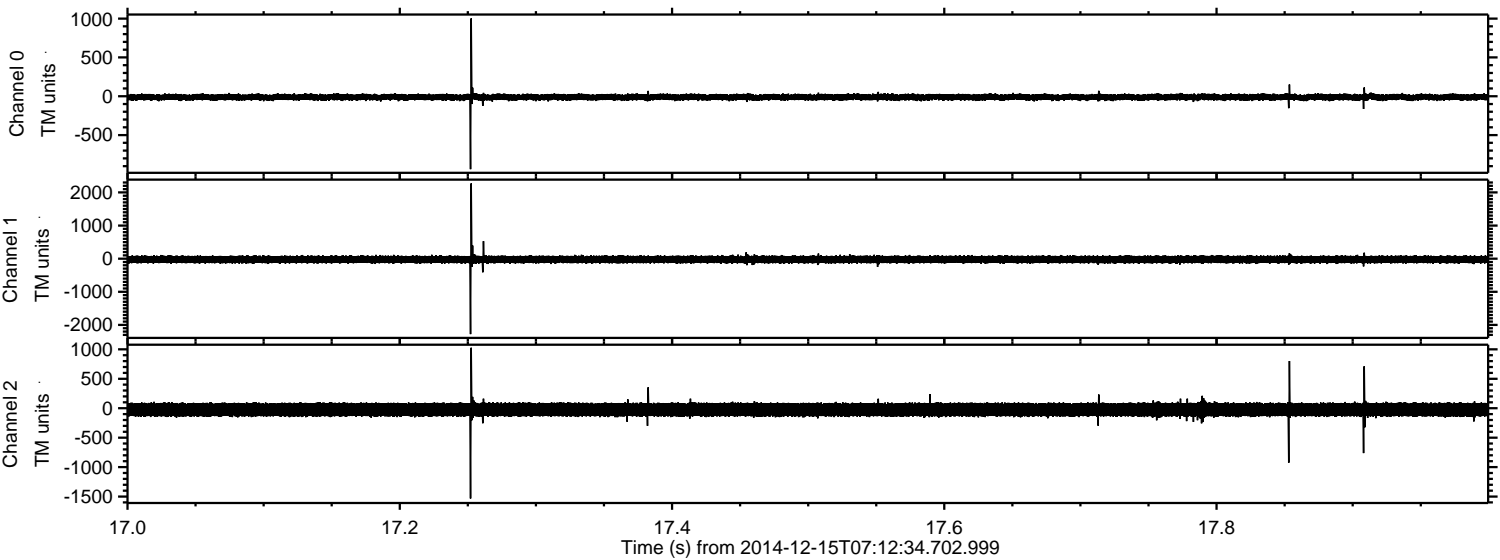
Processed Mon Dec 15 08:21:43 2014 by ELM ver.2012-10-06 from 001\_\_elm20141215\_071233\_\_dat00.bin





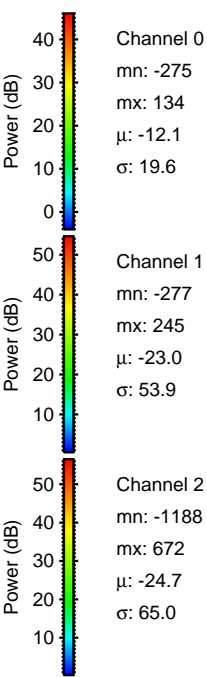
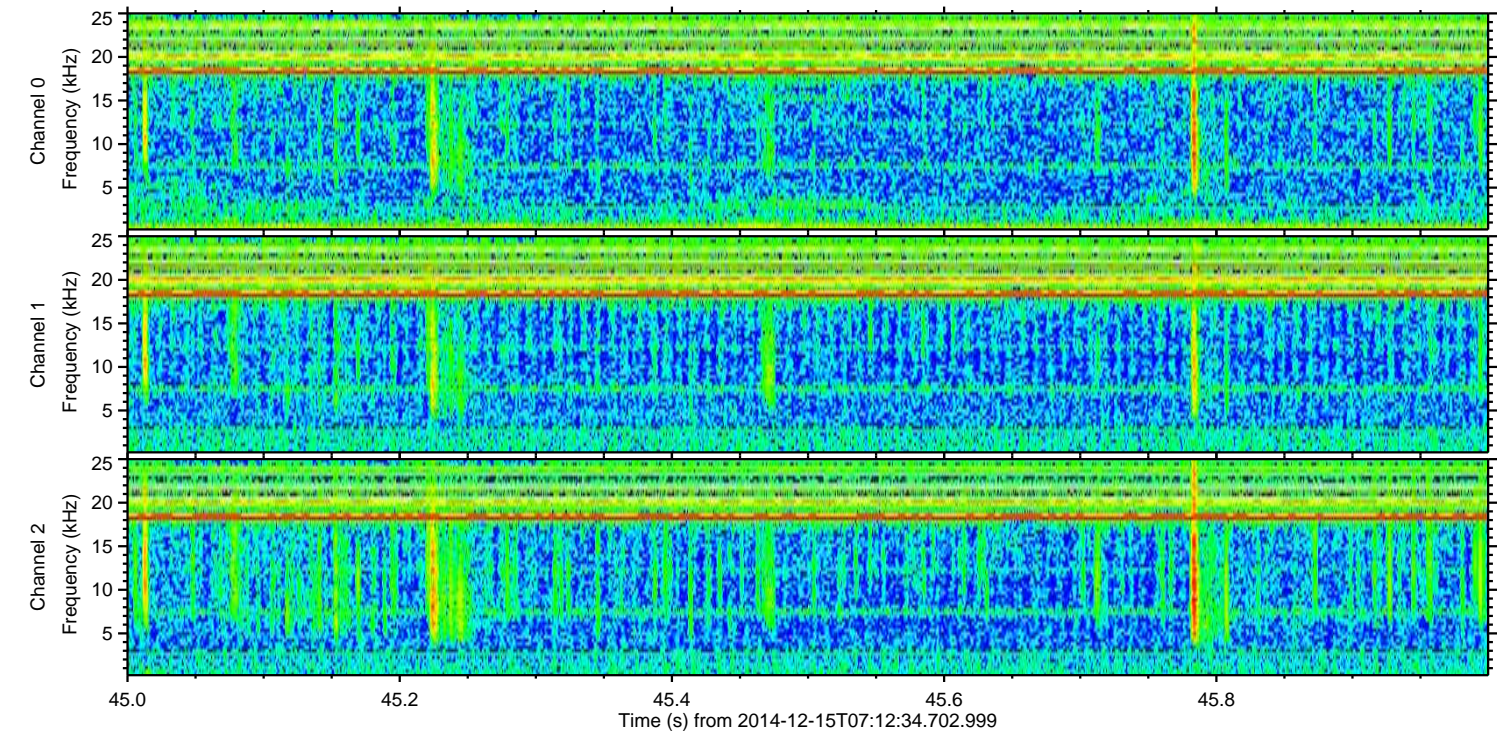
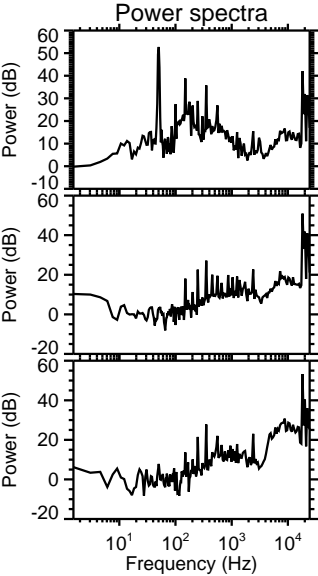
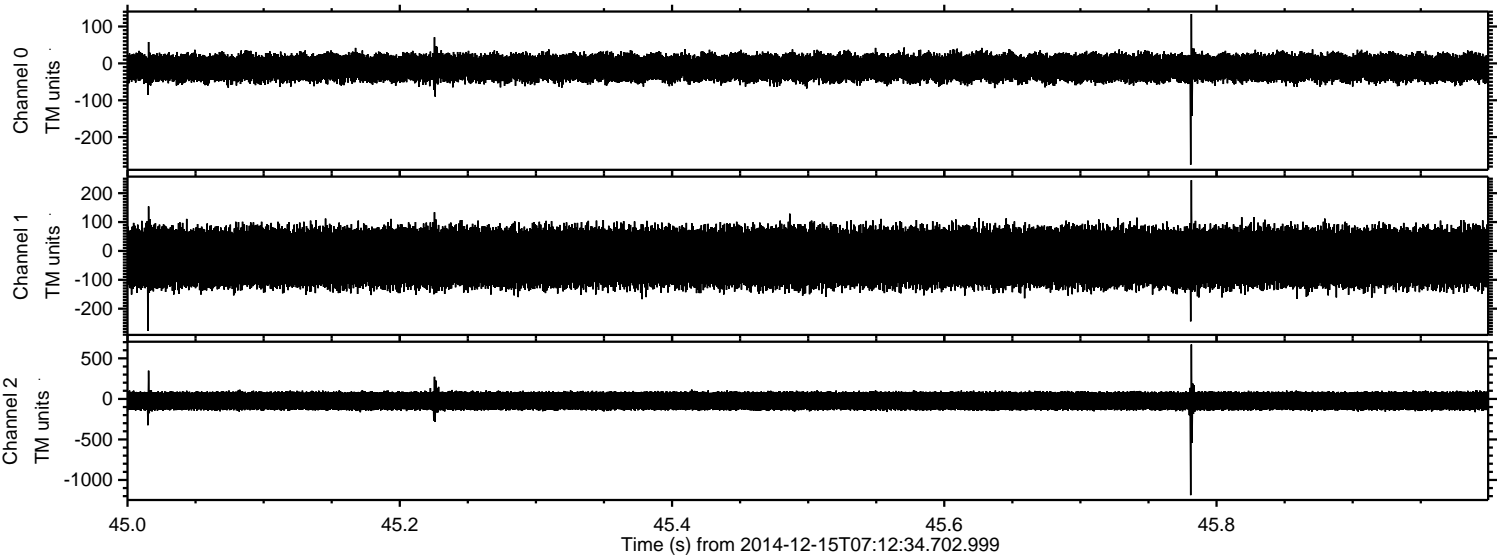
ELMAVAN 3D WAVEFORMS (Measured data sampled at 50 kHz) 49779 packets of 144 samples from 2014-12-15T07:12:34.702.999. Part 18/144

Processed Mon Dec 15 08:21:44 2014 by ELM ver.2012-10-06 from 001\_\_elm20141215\_071233\_\_dat00.bin





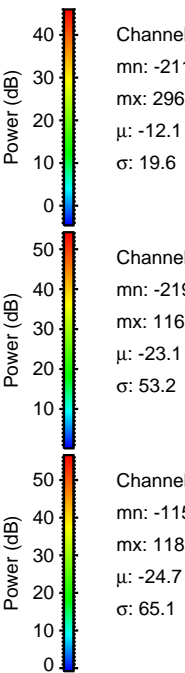
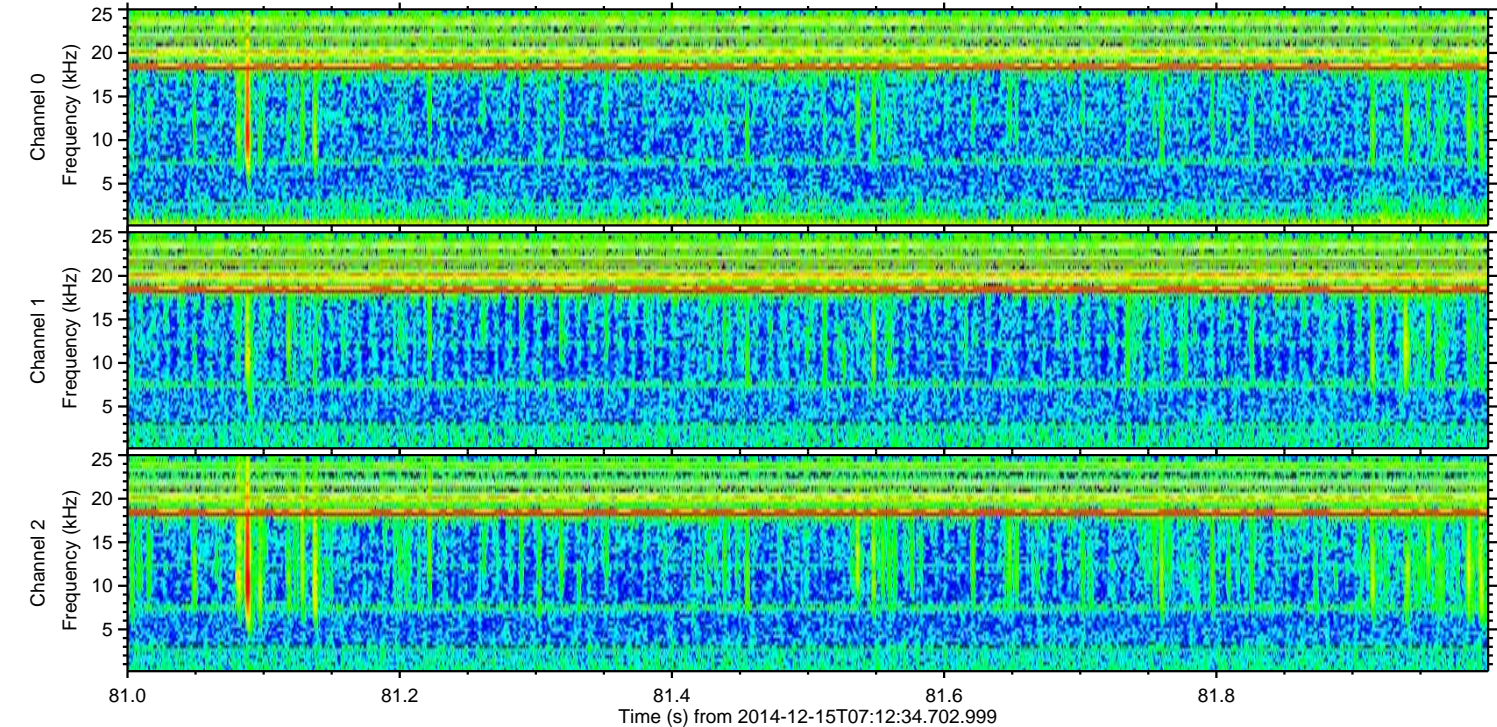
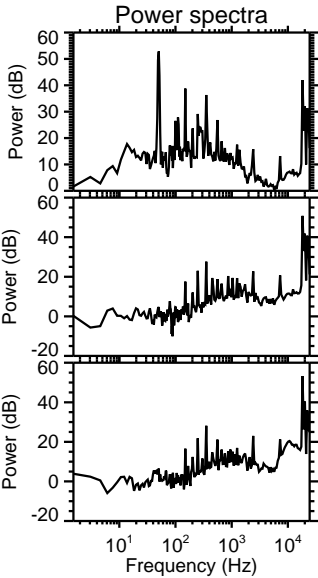
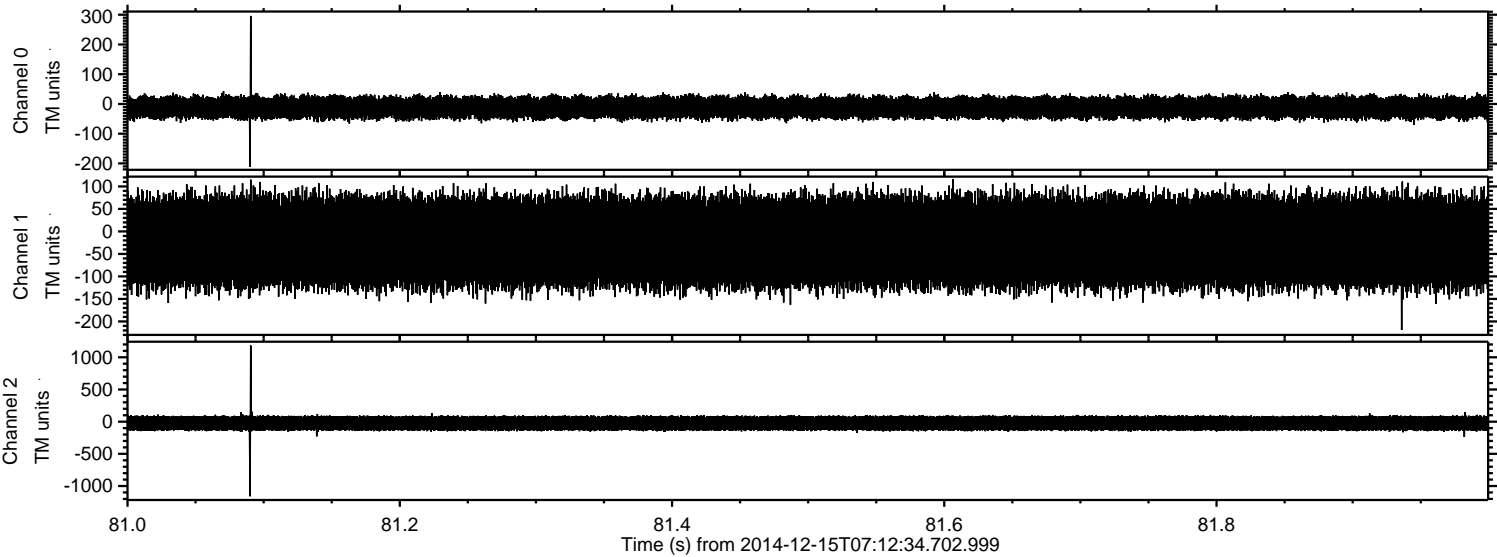
Processed Mon Dec 15 08:21:45 2014 by ELM ver.2012-10-06 from 001\_\_elm20141215\_071233\_\_dat00.bin





ELMAVAN 3D WAVEFORMS (Measured data sampled at 50 kHz) 49779 packets of 144 samples from 2014-12-15T07:12:34.702.999. Part 82/144

Processed Mon Dec 15 08:21:46 2014 by ELM ver.2012-10-06 from 001\_\_elm20141215\_071233\_\_dat00.bin



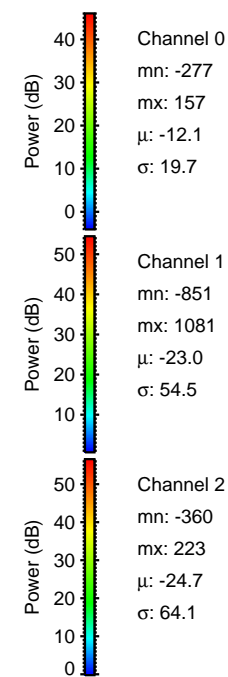
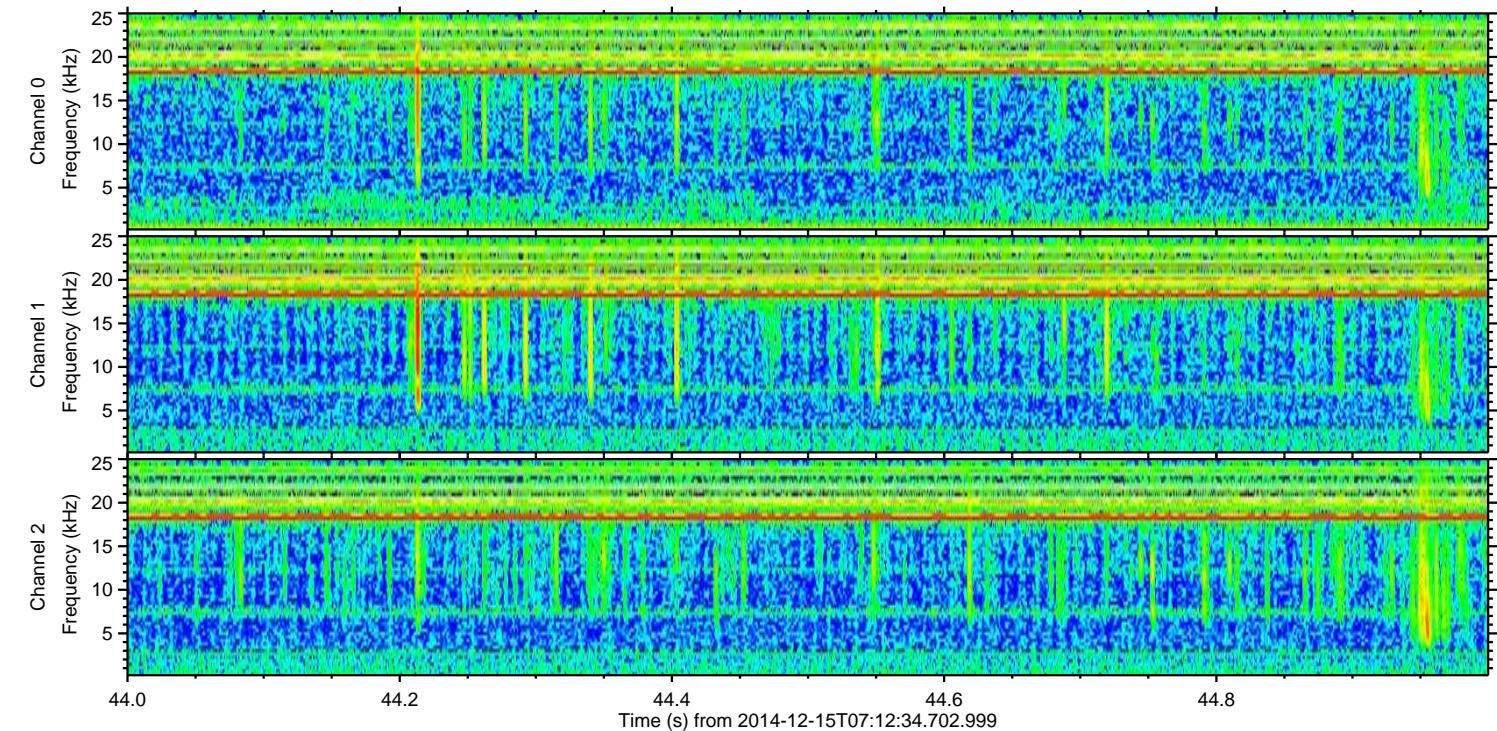
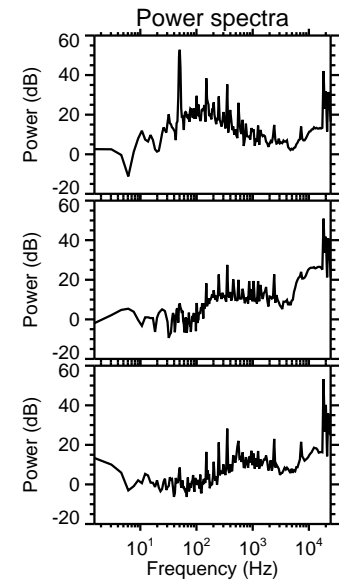
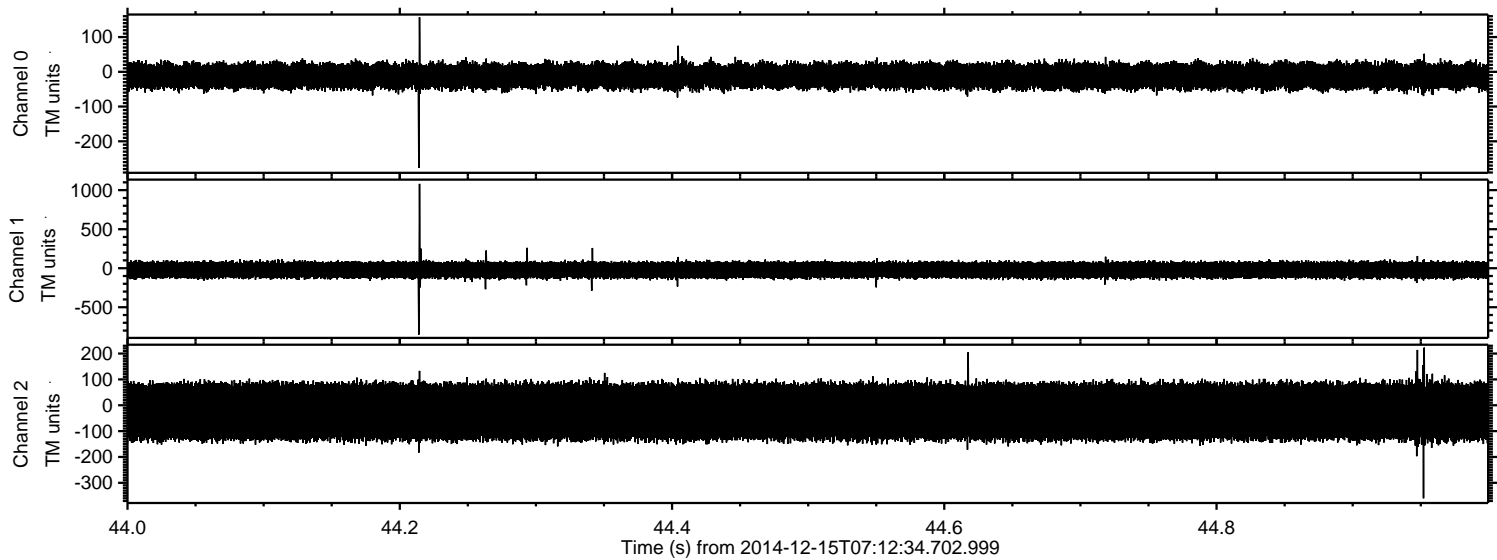
Channel 0  
mn: -211  
mx: 296  
 $\mu$ : -12.1  
 $\sigma$ : 19.6

Channel 1  
mn: -219  
mx: 116  
 $\mu$ : -23.1  
 $\sigma$ : 53.2

Channel 2  
mn: -1159  
mx: 1183  
 $\mu$ : -24.7  
 $\sigma$ : 65.1



Processed Mon Dec 15 08:21:47 2014 by ELM ver.2012-10-06 from 001\_\_elm20141215\_071233\_\_dat00.bin





Processed Mon Dec 15 08:21:48 2014 by ELM ver.2012-10-06 from 001\_\_elm20141215\_071233\_\_dat00.bin

