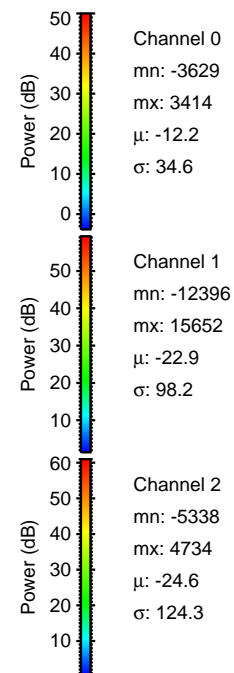
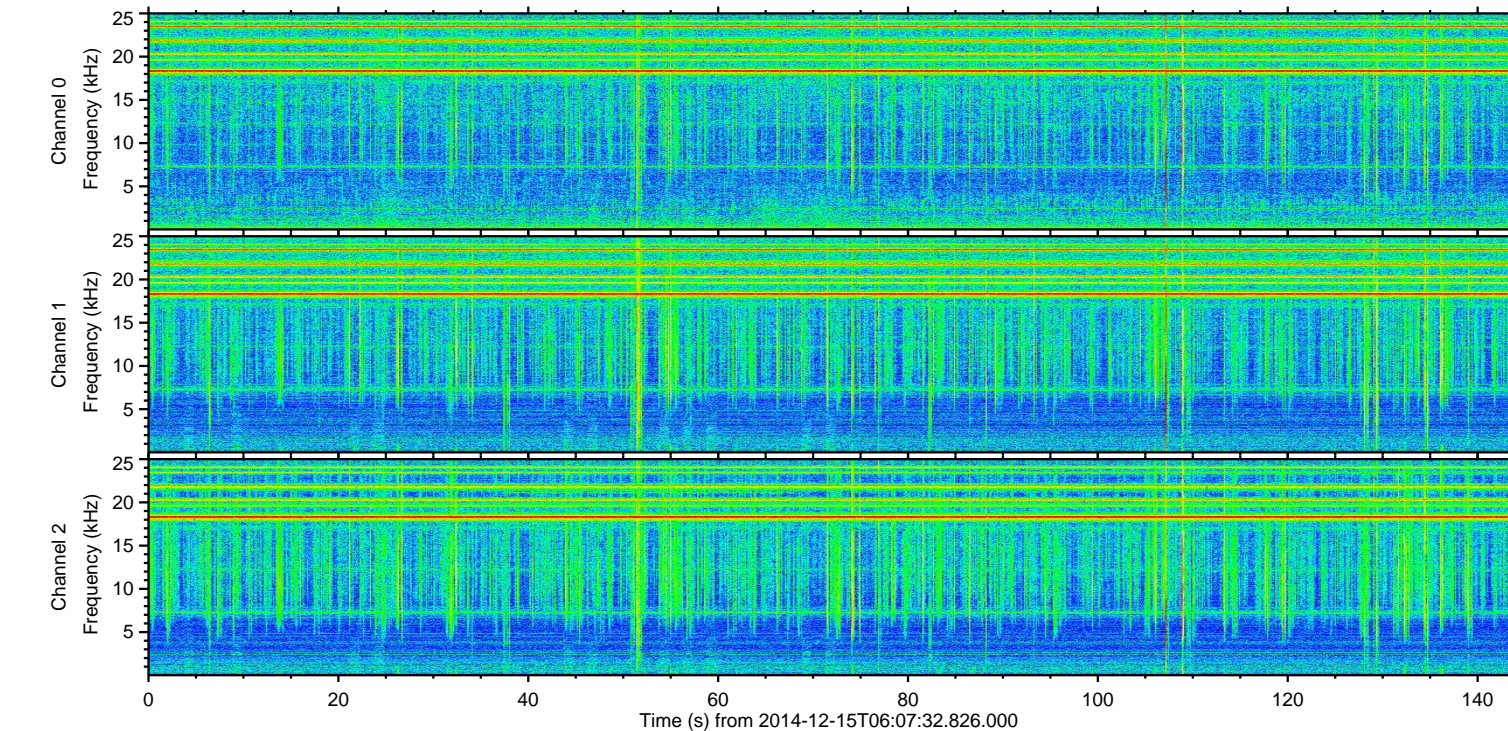
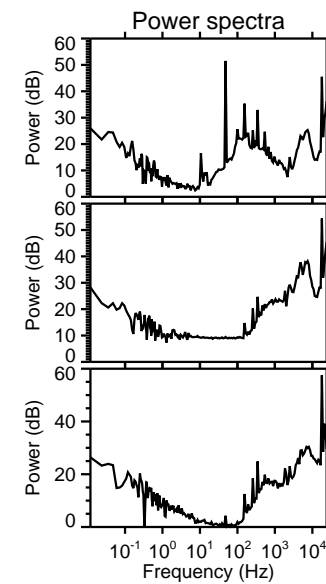
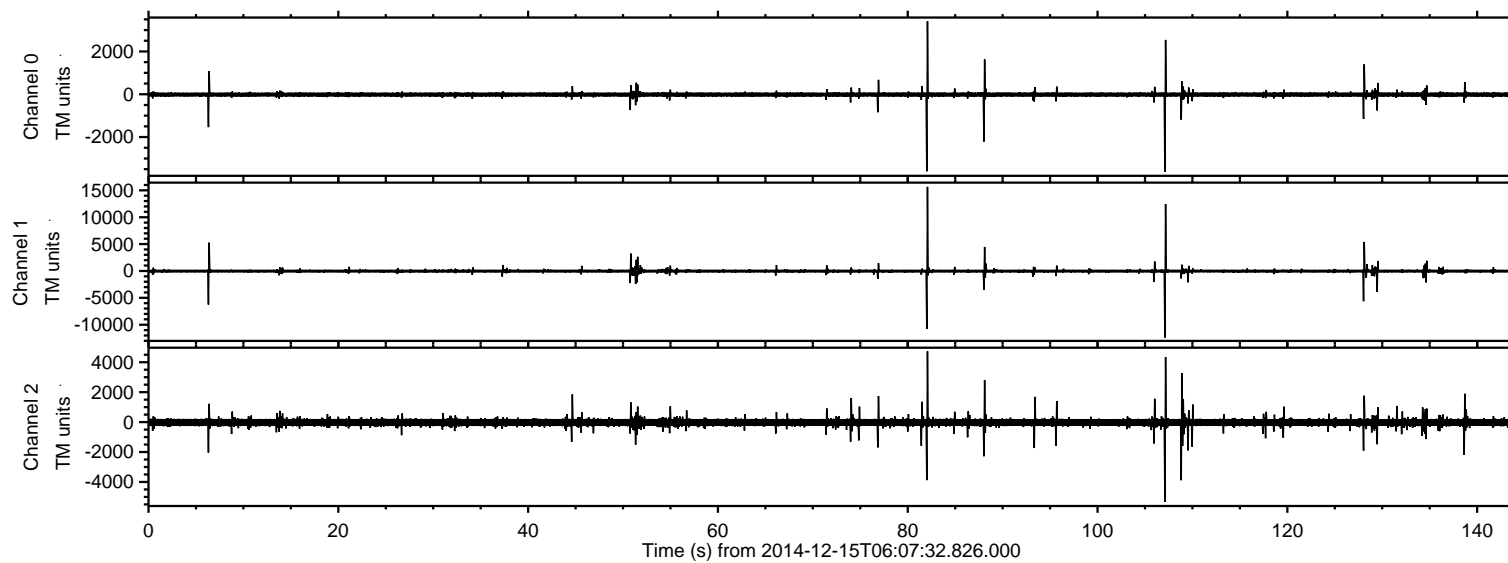


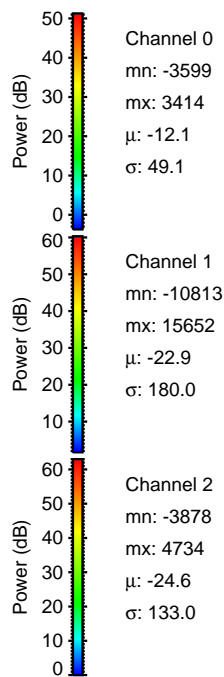
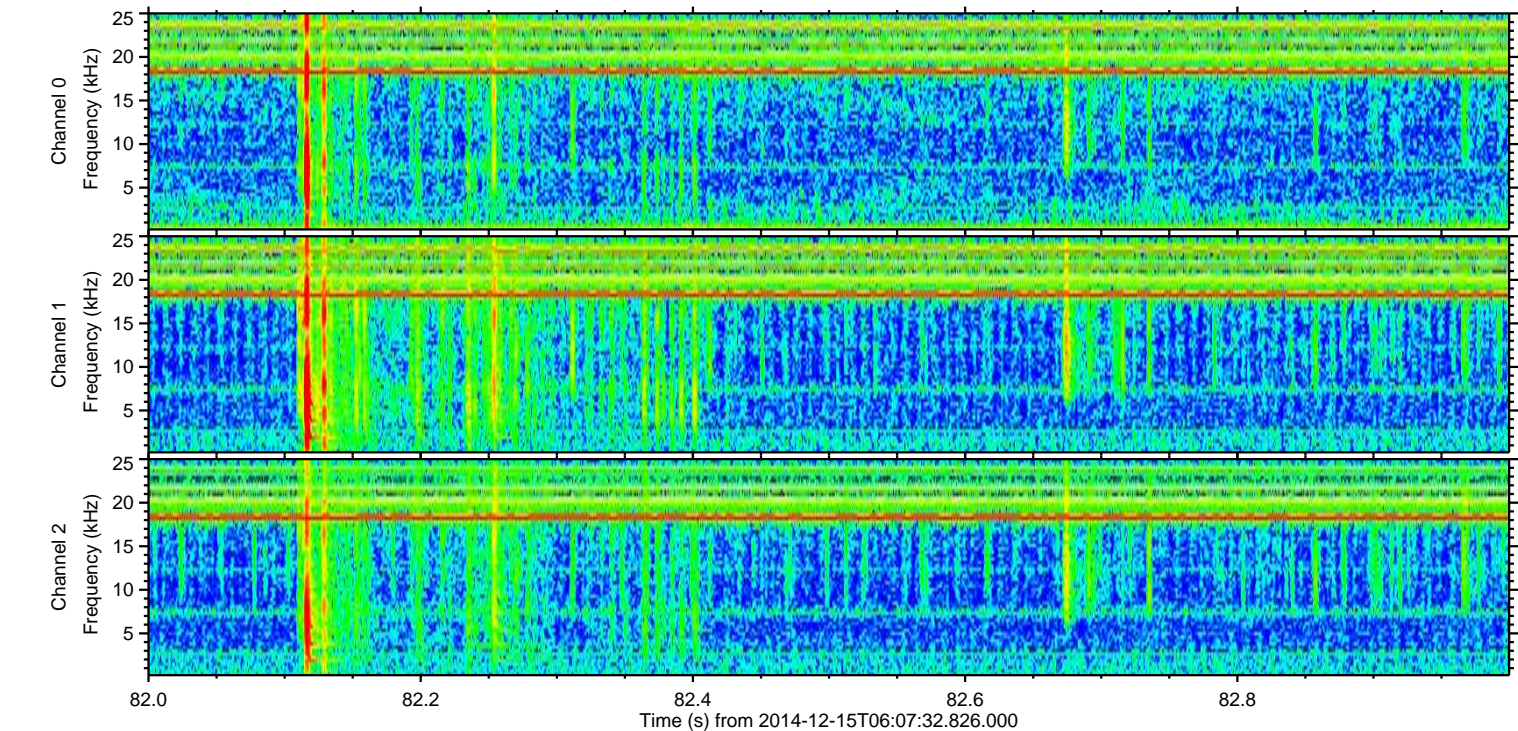
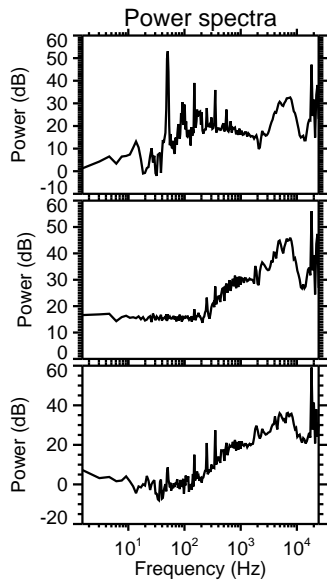
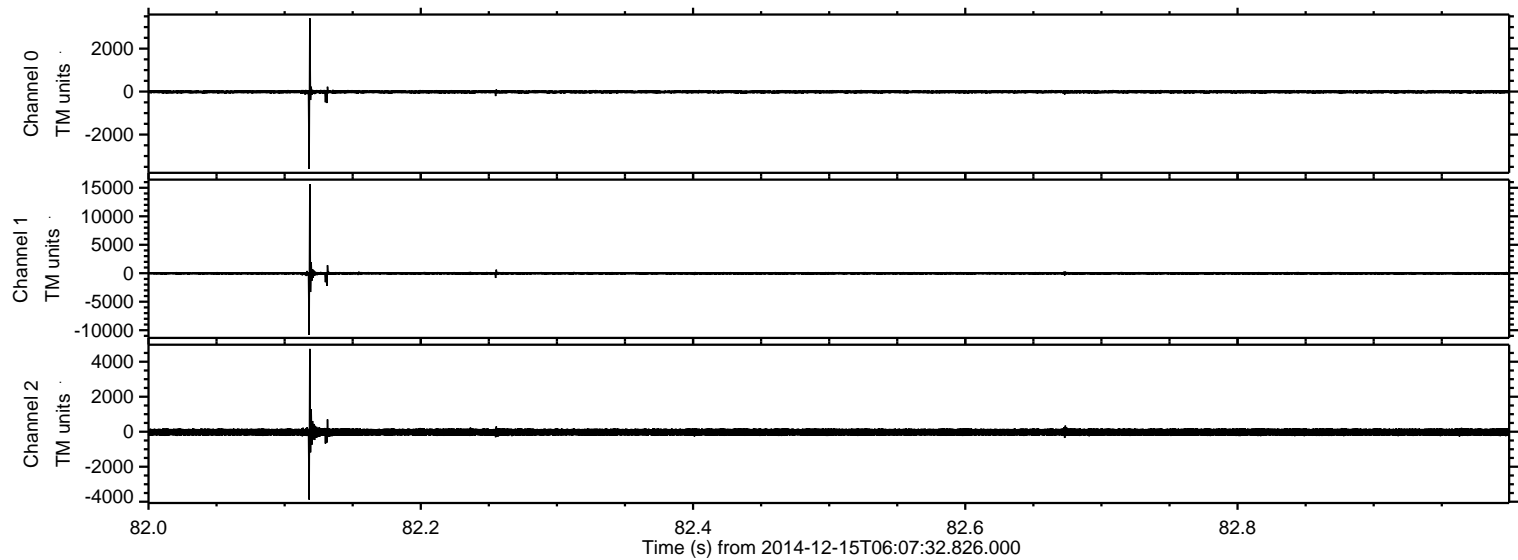
ELMAVAN 3D WAVEFORMS (Measured data sampled at 50 kHz) 49781 packets of 144 samples from 2014-12-15T06:07:32.826.000.

Processed Mon Dec 15 07:15:51 2014 by ELM ver.2012-10-06 from 001__elm20141215_060731__dat00.bin



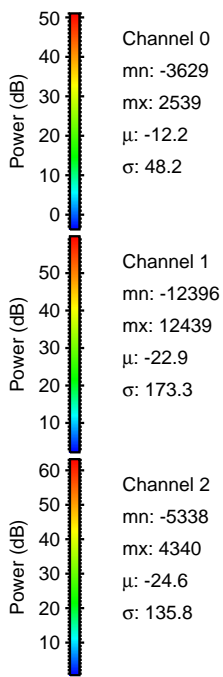
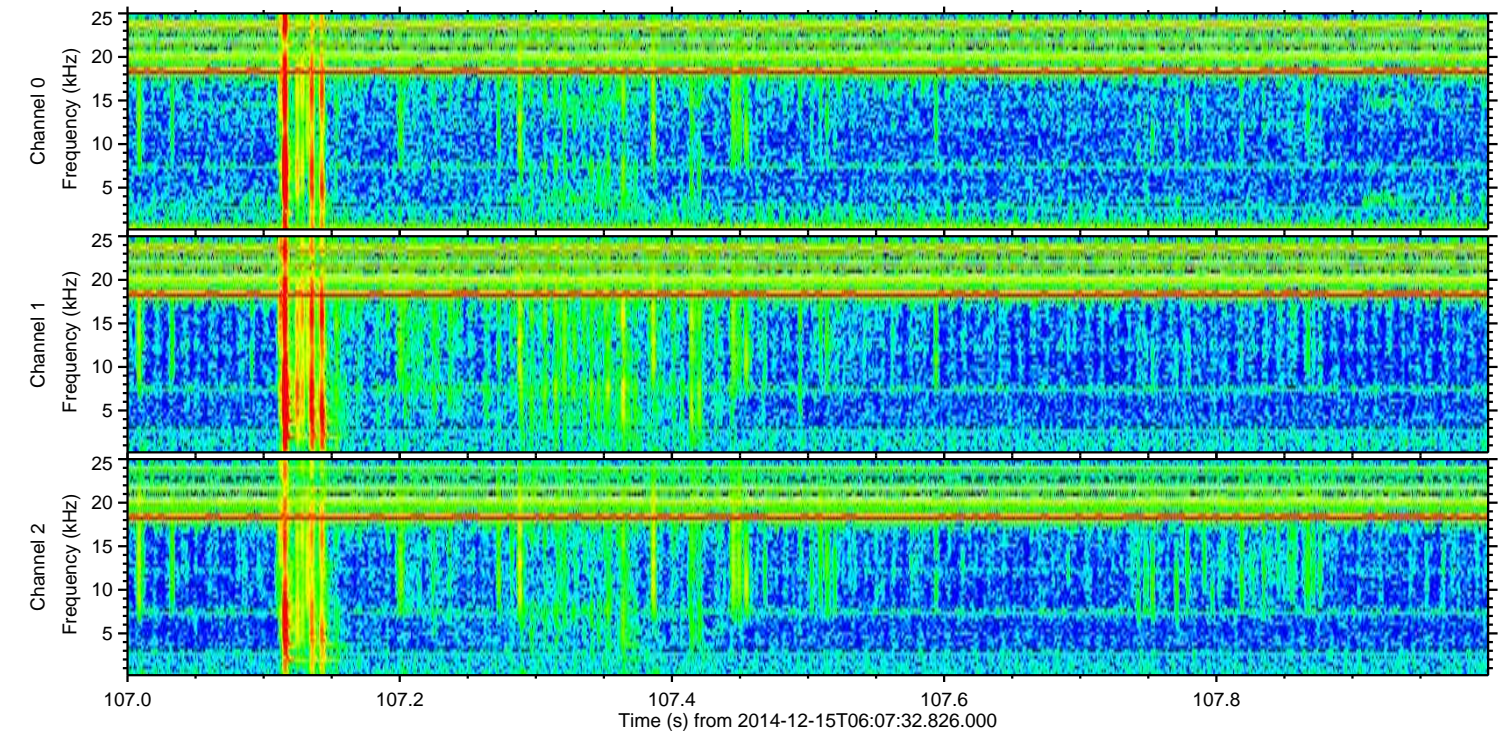
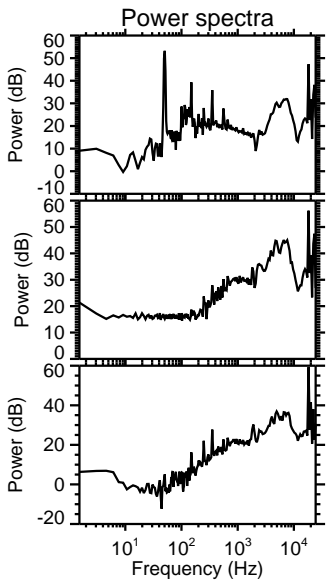
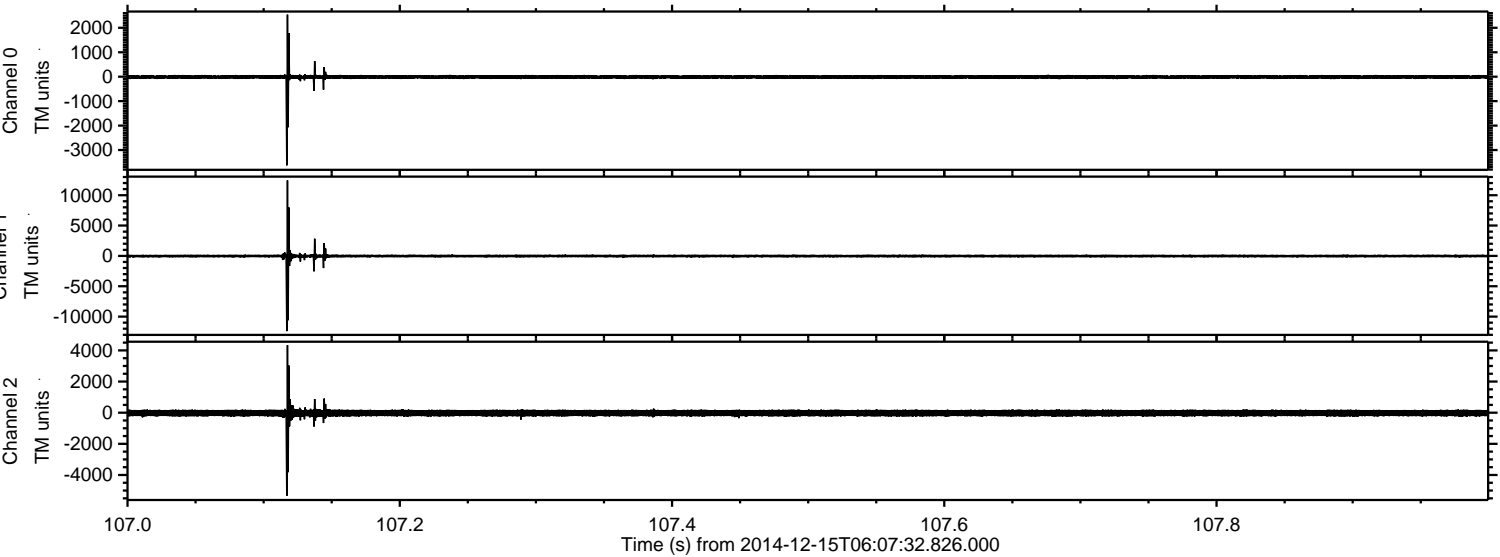
ELMAVAN 3D WAVEFORMS (Measured data sampled at 50 kHz) 49781 packets of 144 samples from 2014-12-15T06:07:32.826.000. Part 83/144

Processed Mon Dec 15 07:16:03 2014 by ELM ver.2012-10-06 from 001__elm20141215_060731__dat00.bin

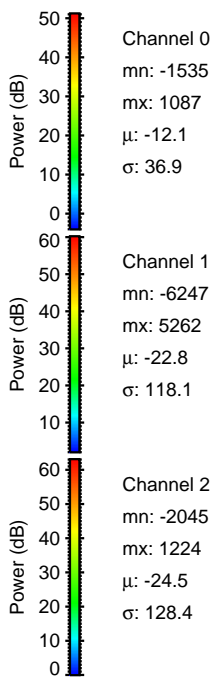
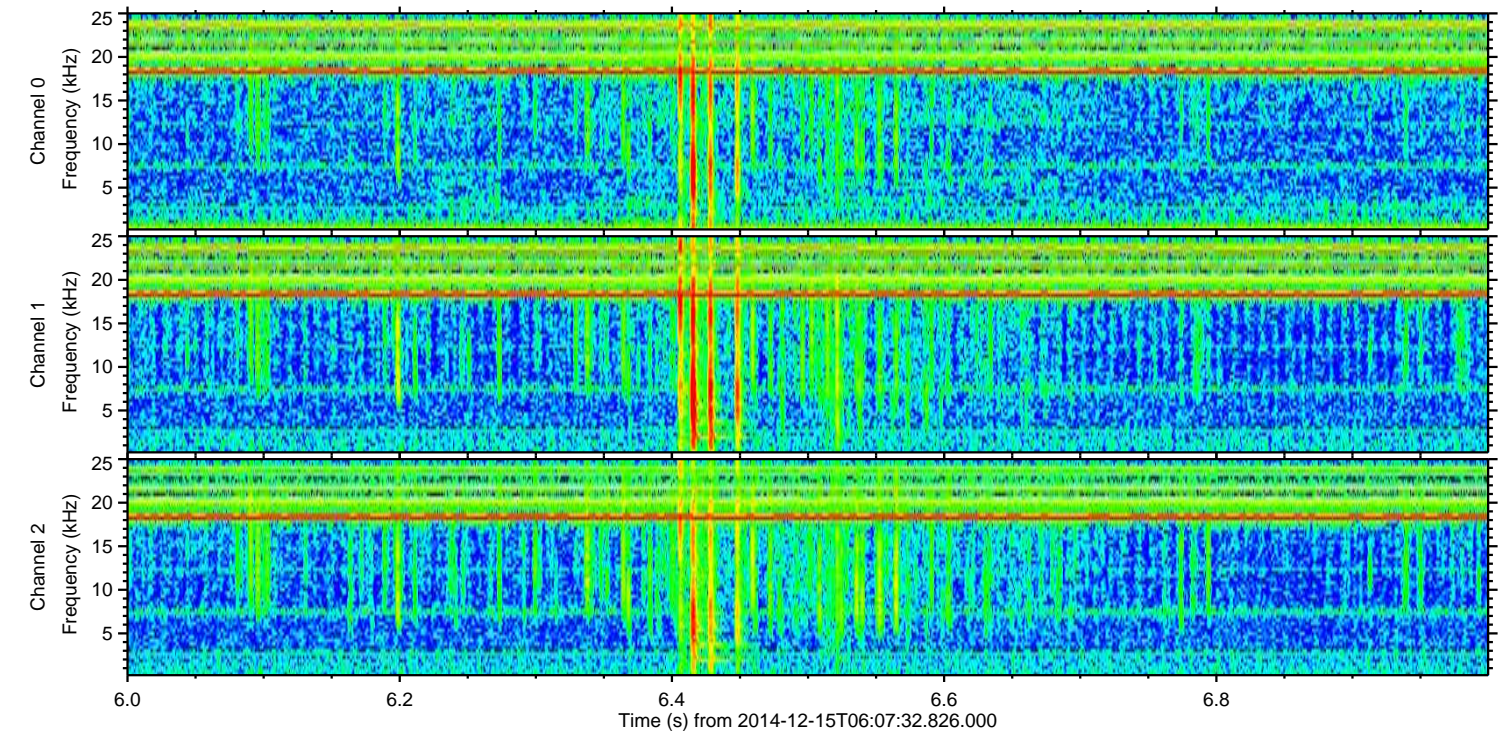
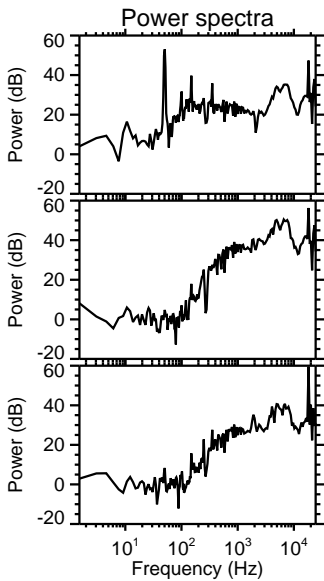
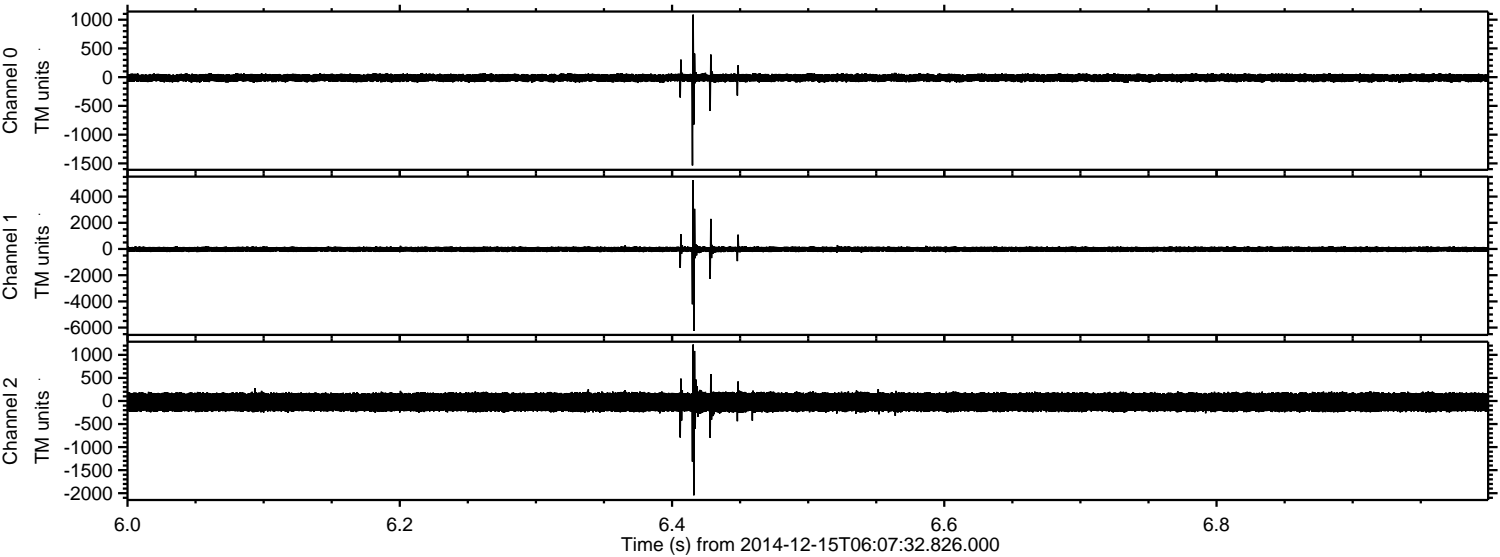


ELMAVAN 3D WAVEFORMS (Measured data sampled at 50 kHz) 49781 packets of 144 samples from 2014-12-15T06:07:32.826.000. Part 108/144

Processed Mon Dec 15 07:16:04 2014 by ELM ver.2012-10-06 from 001__elm20141215_060731__dat00.bin

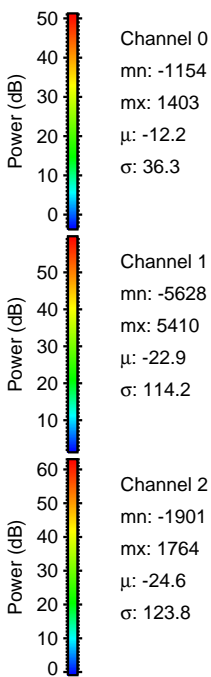
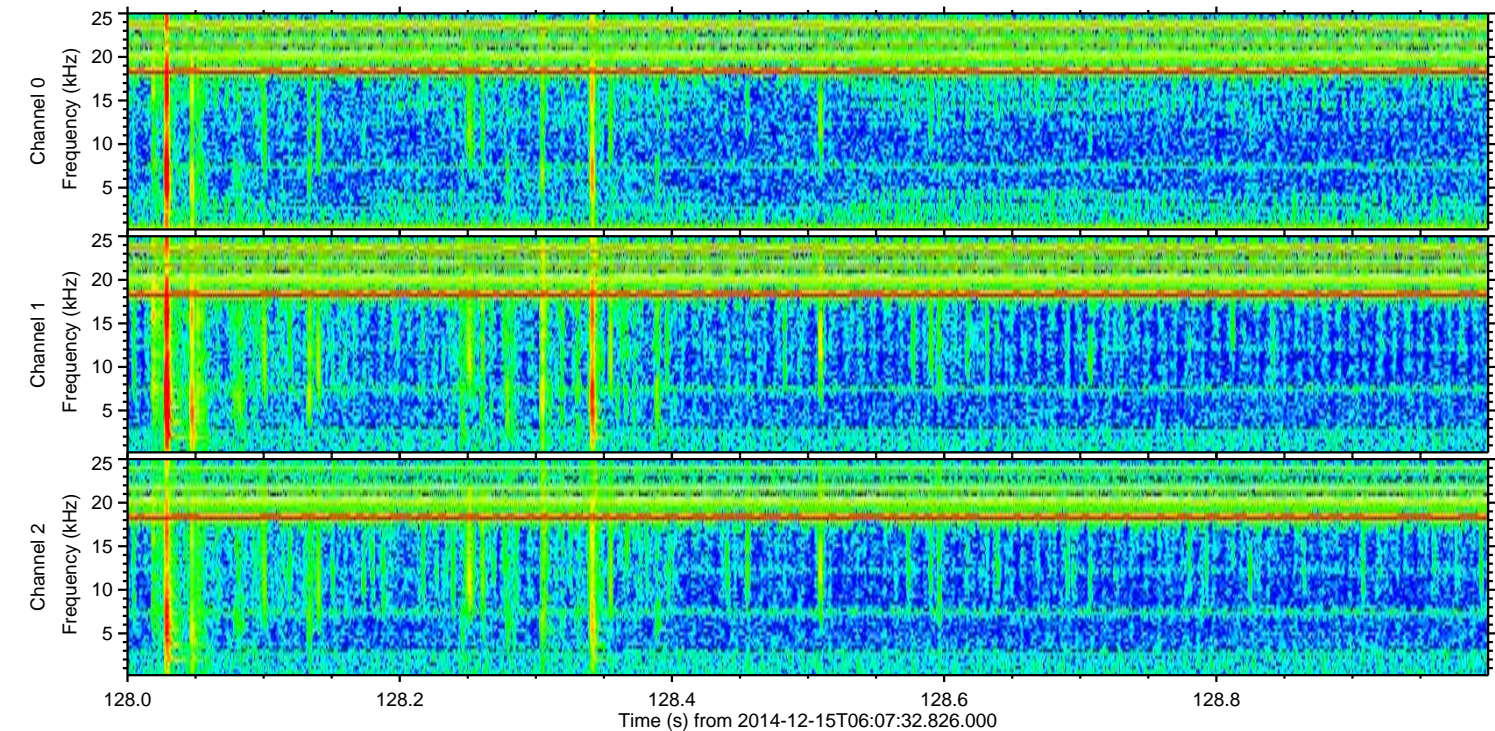
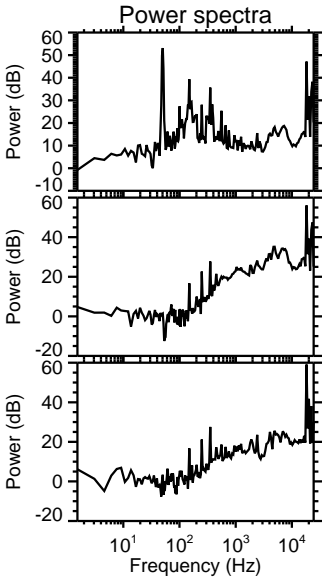
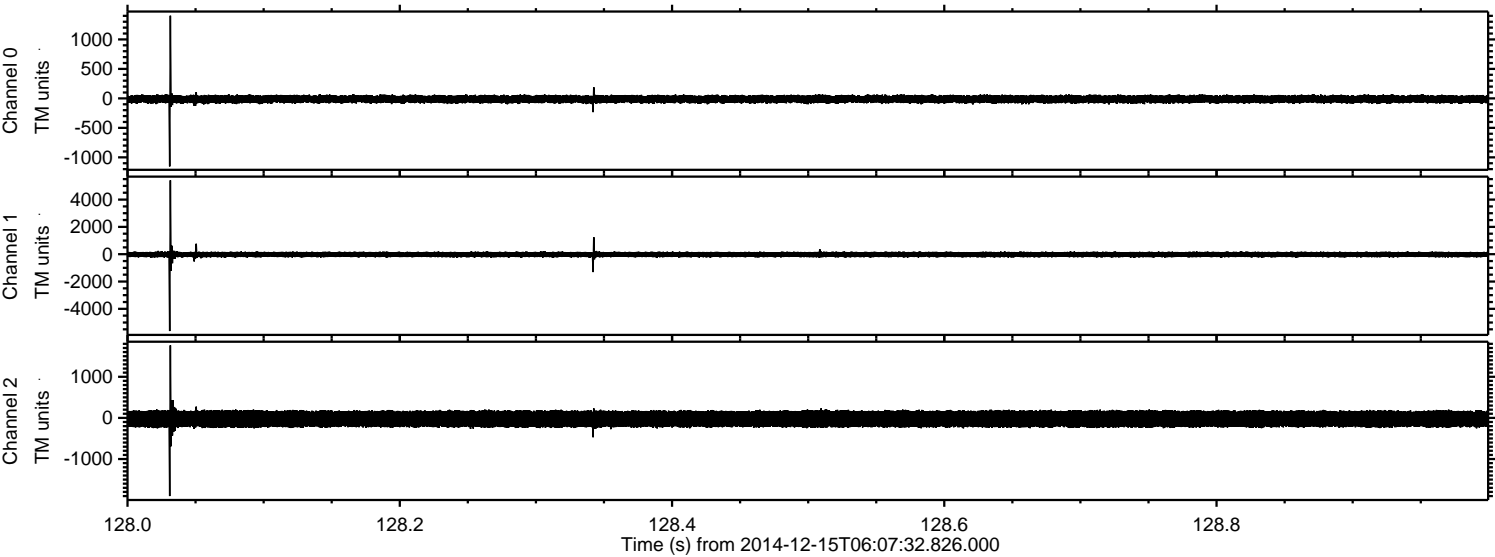


Processed Mon Dec 15 07:16:05 2014 by ELM ver.2012-10-06 from 001__elm20141215_060731__dat00.bin

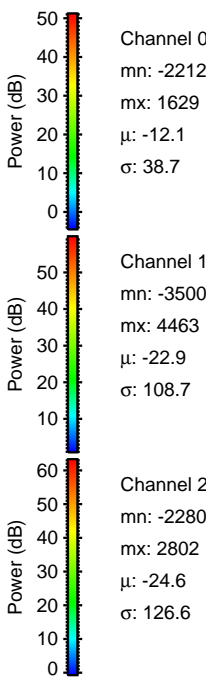
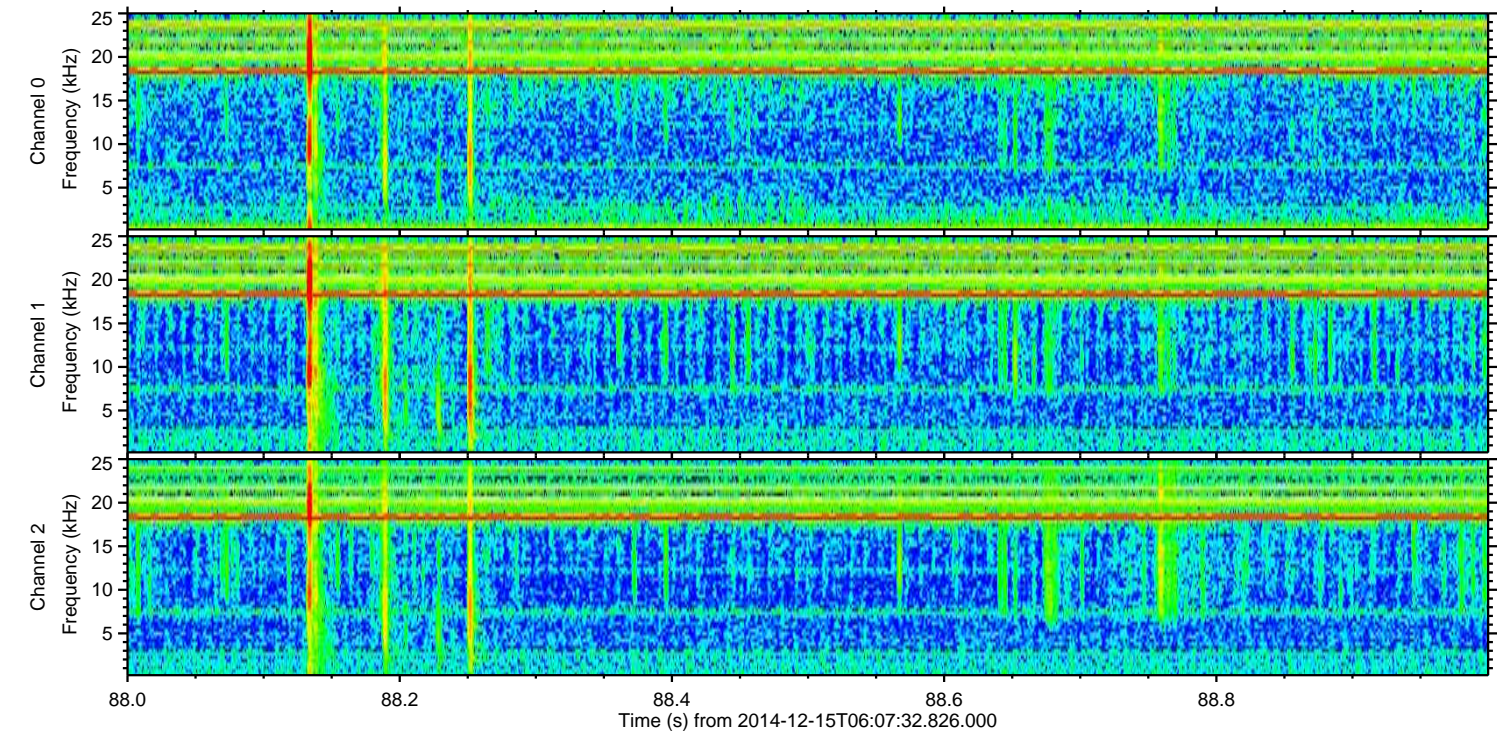
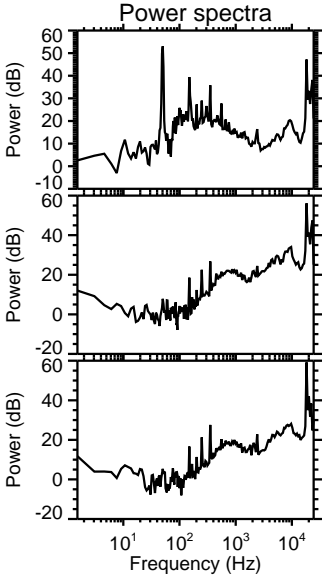
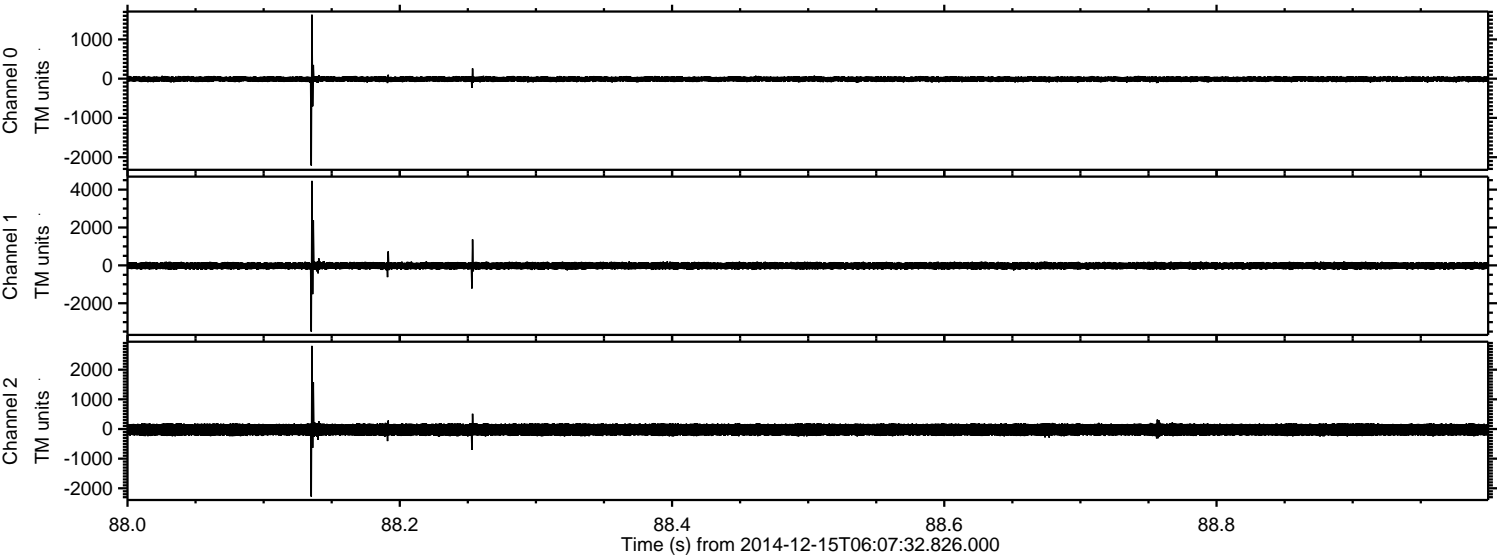


ELMAVAN 3D WAVEFORMS (Measured data sampled at 50 kHz) 49781 packets of 144 samples from 2014-12-15T06:07:32.826.000. Part 129/144

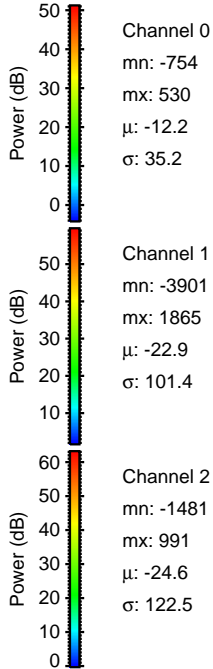
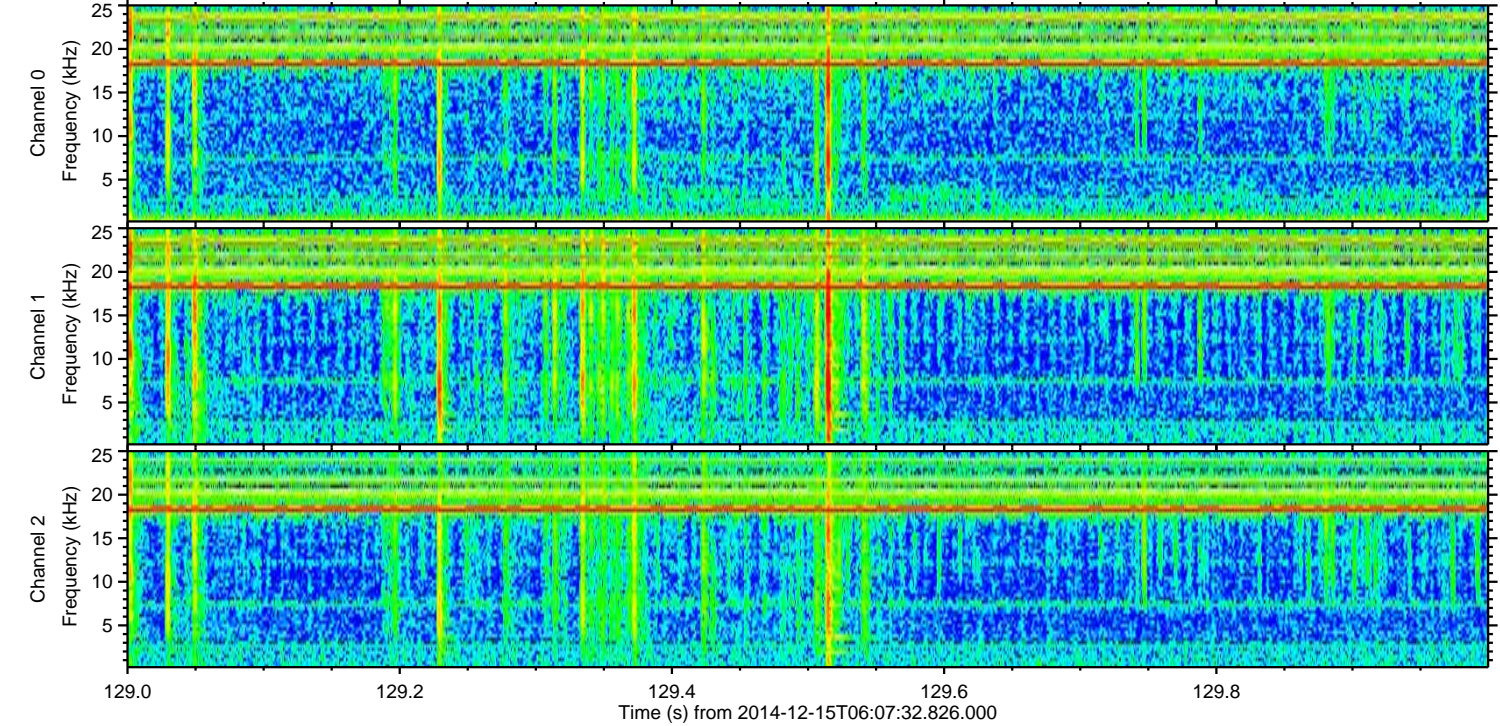
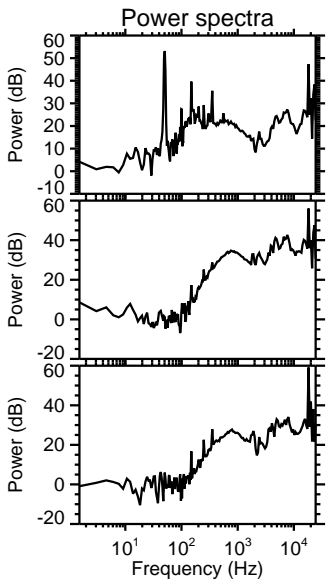
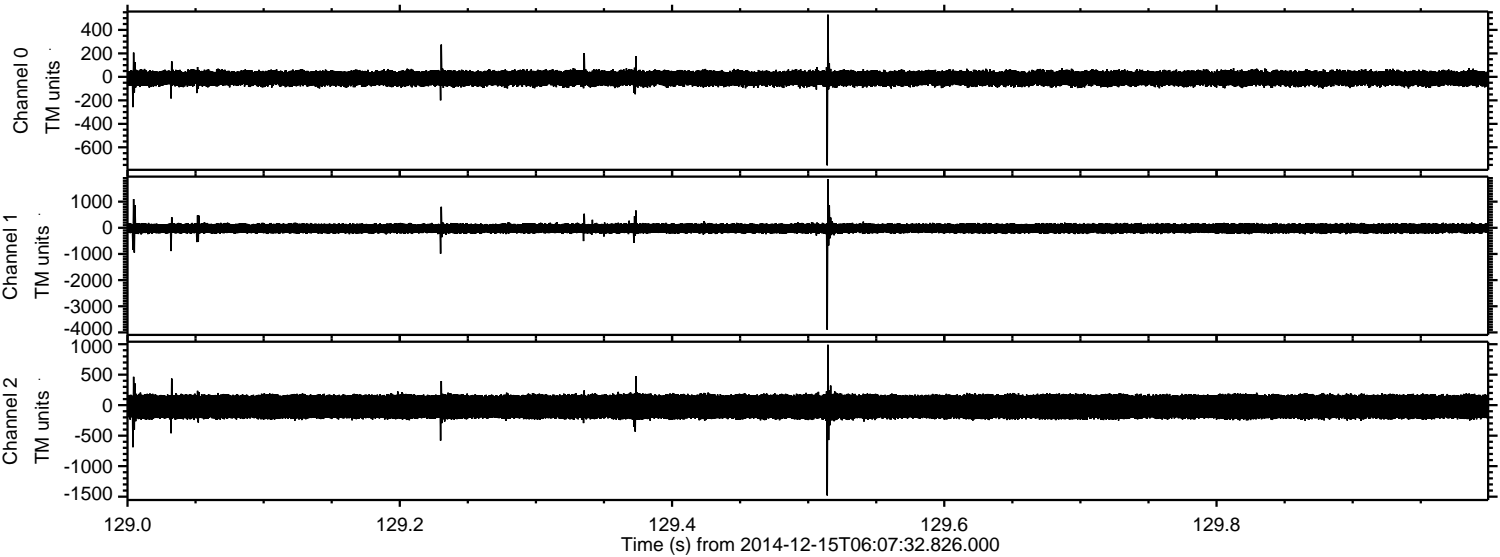
Processed Mon Dec 15 07:16:06 2014 by ELM ver.2012-10-06 from 001__elm20141215_060731__dat00.bin



Processed Mon Dec 15 07:16:07 2014 by ELM ver.2012-10-06 from 001__elm20141215_060731__dat00.bin

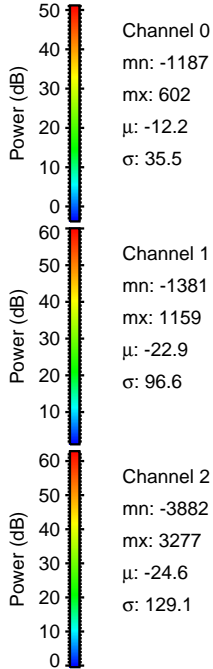
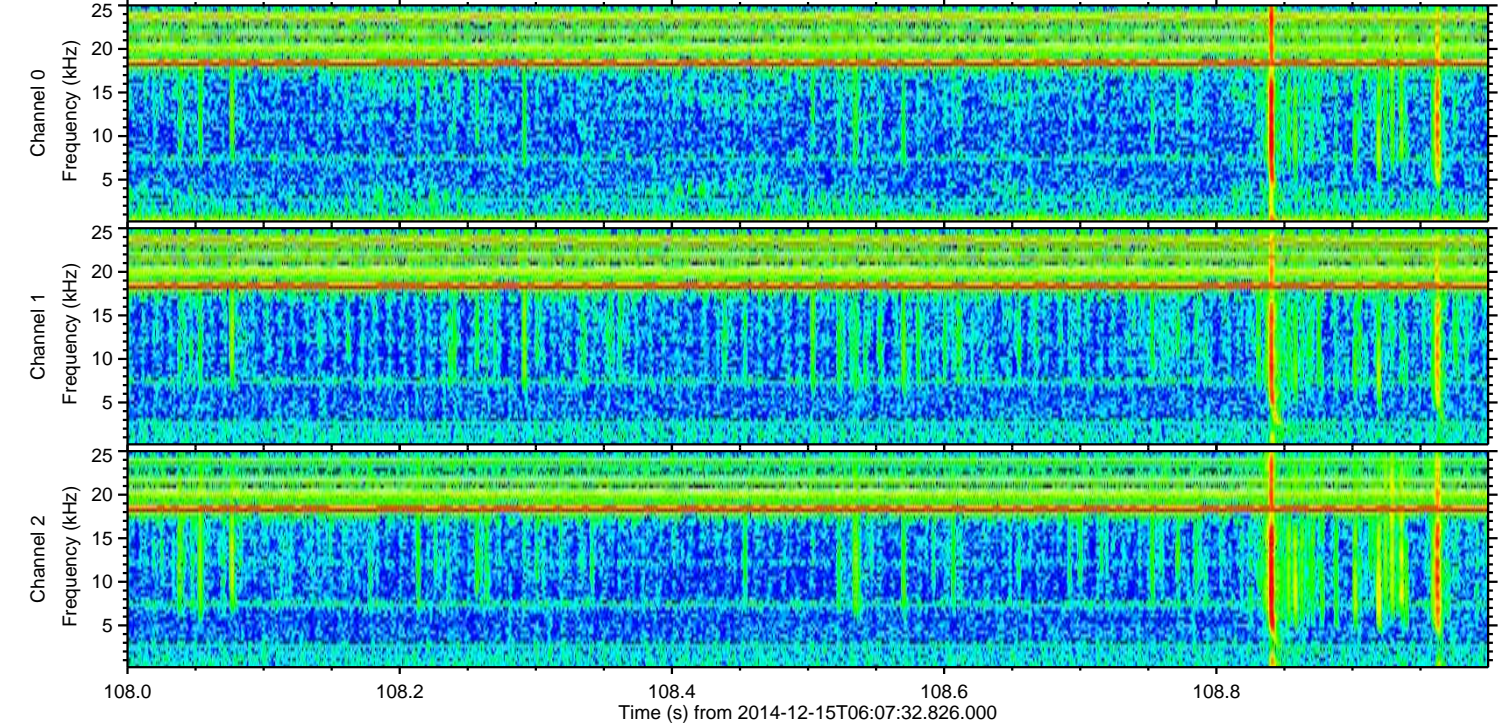
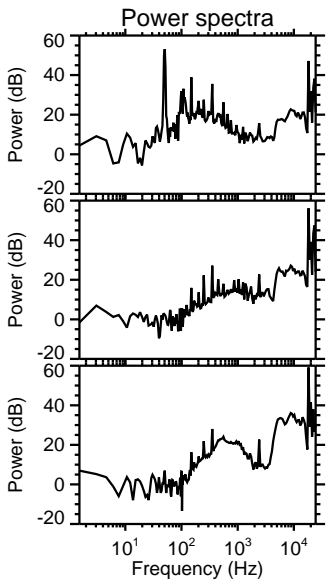
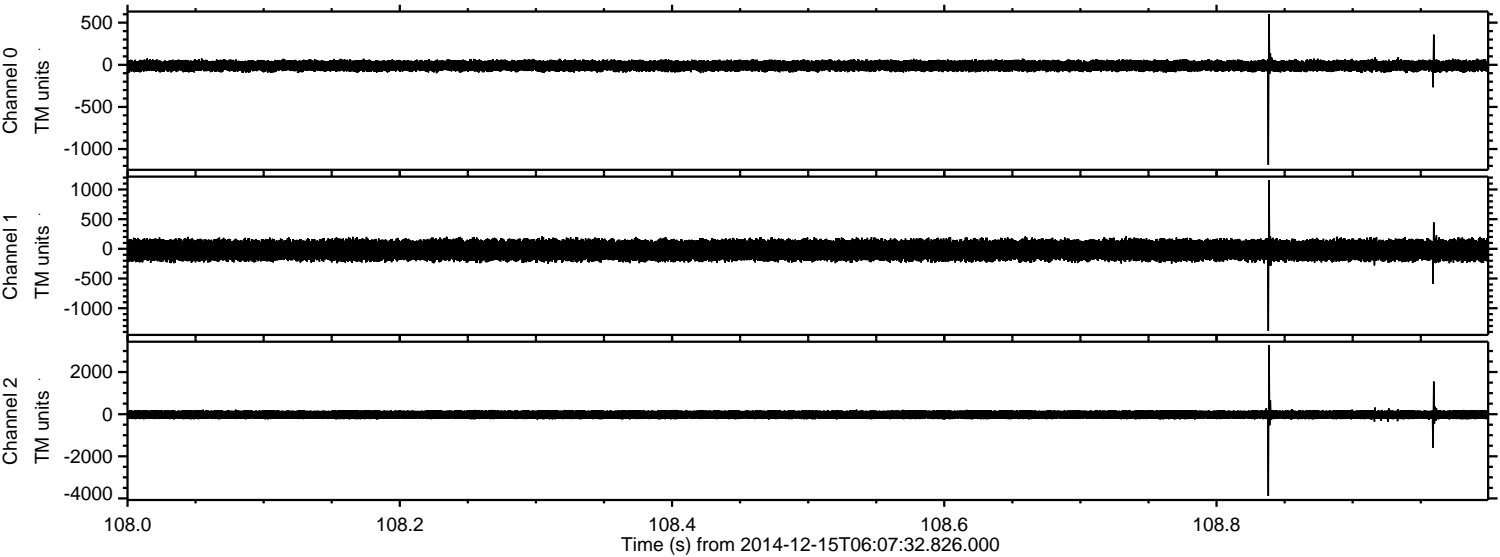


Processed Mon Dec 15 07:16:08 2014 by ELM ver.2012-10-06 from 001__elm20141215_060731__dat00.bin

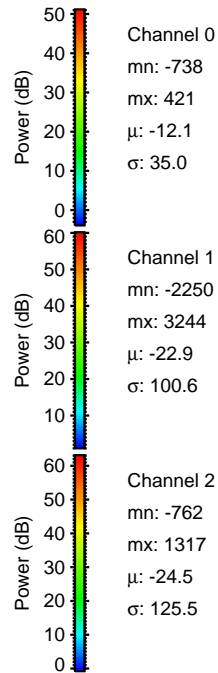
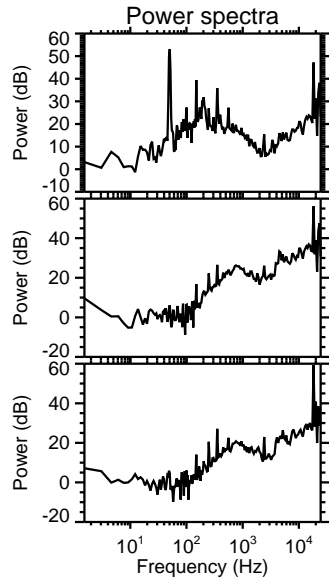
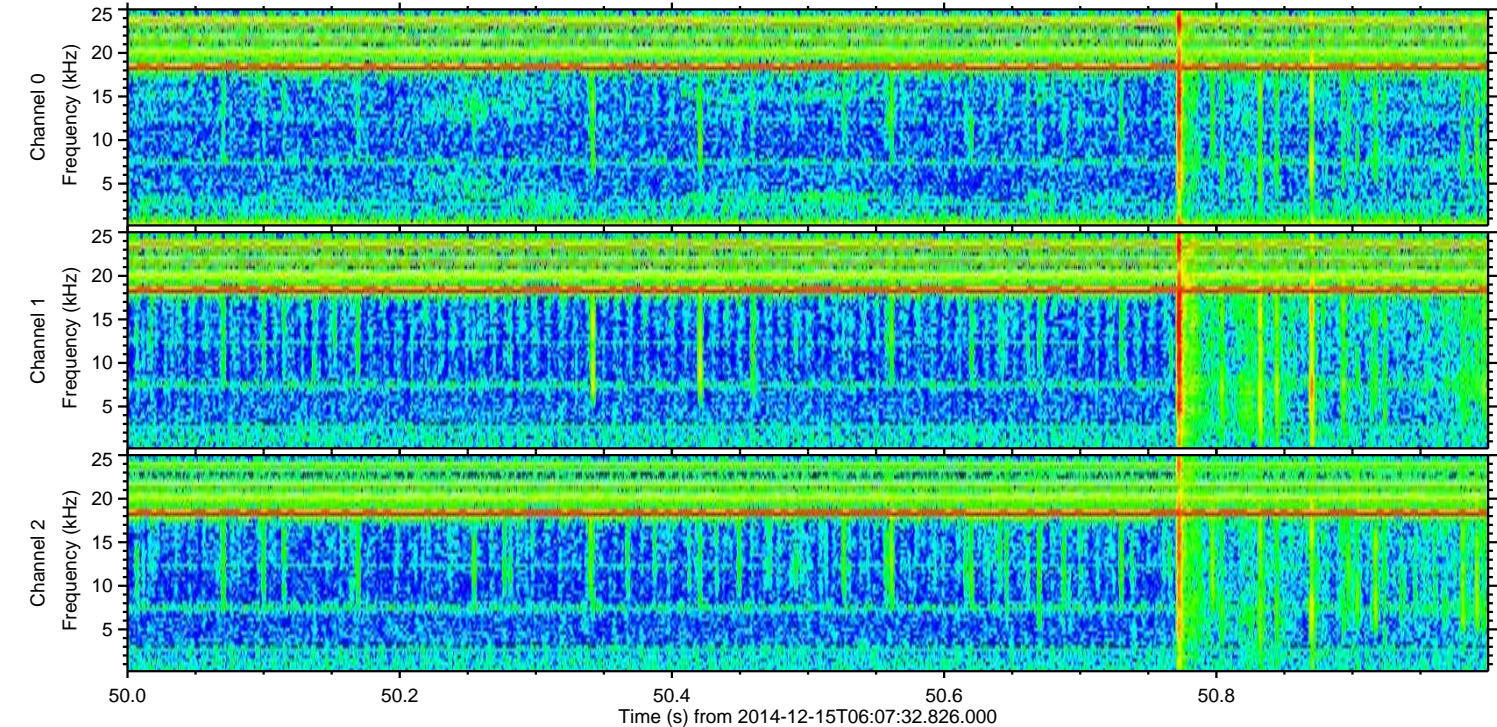
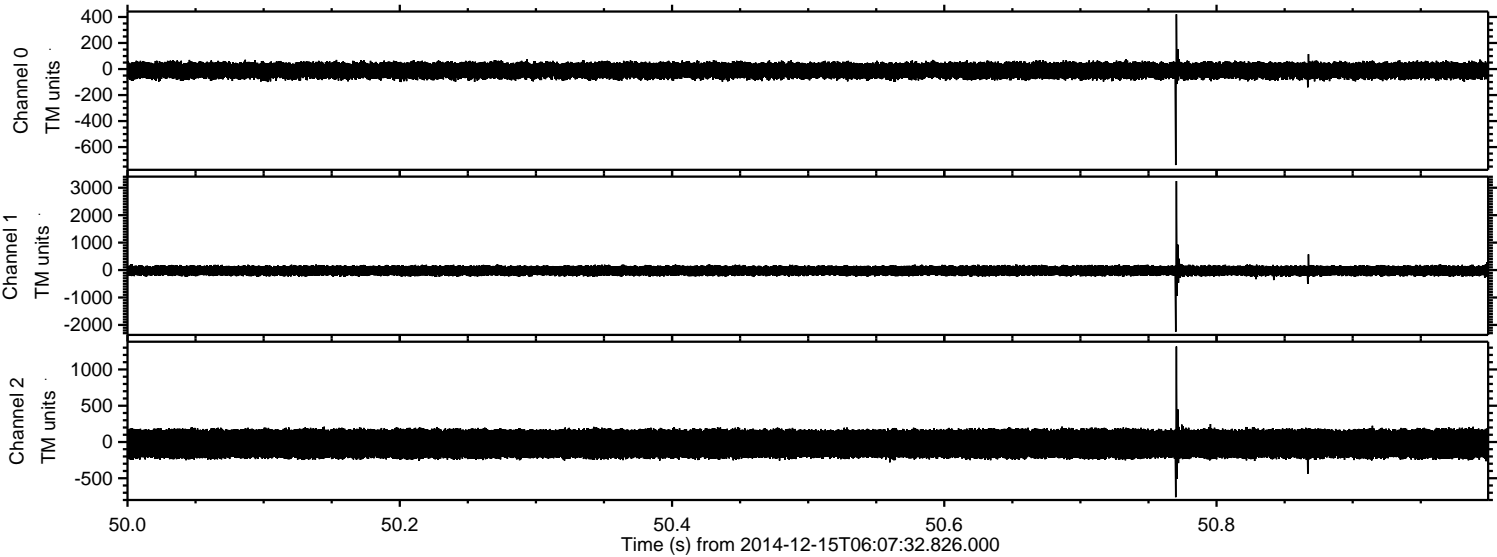


ELMAVAN 3D WAVEFORMS (Measured data sampled at 50 kHz) 49781 packets of 144 samples from 2014-12-15T06:07:32.826.000. Part 109/144

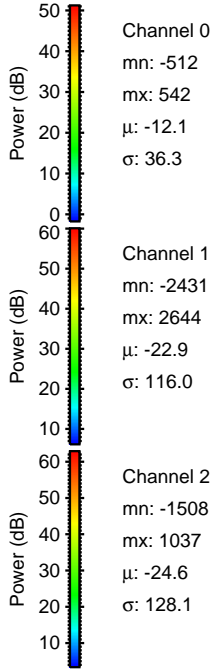
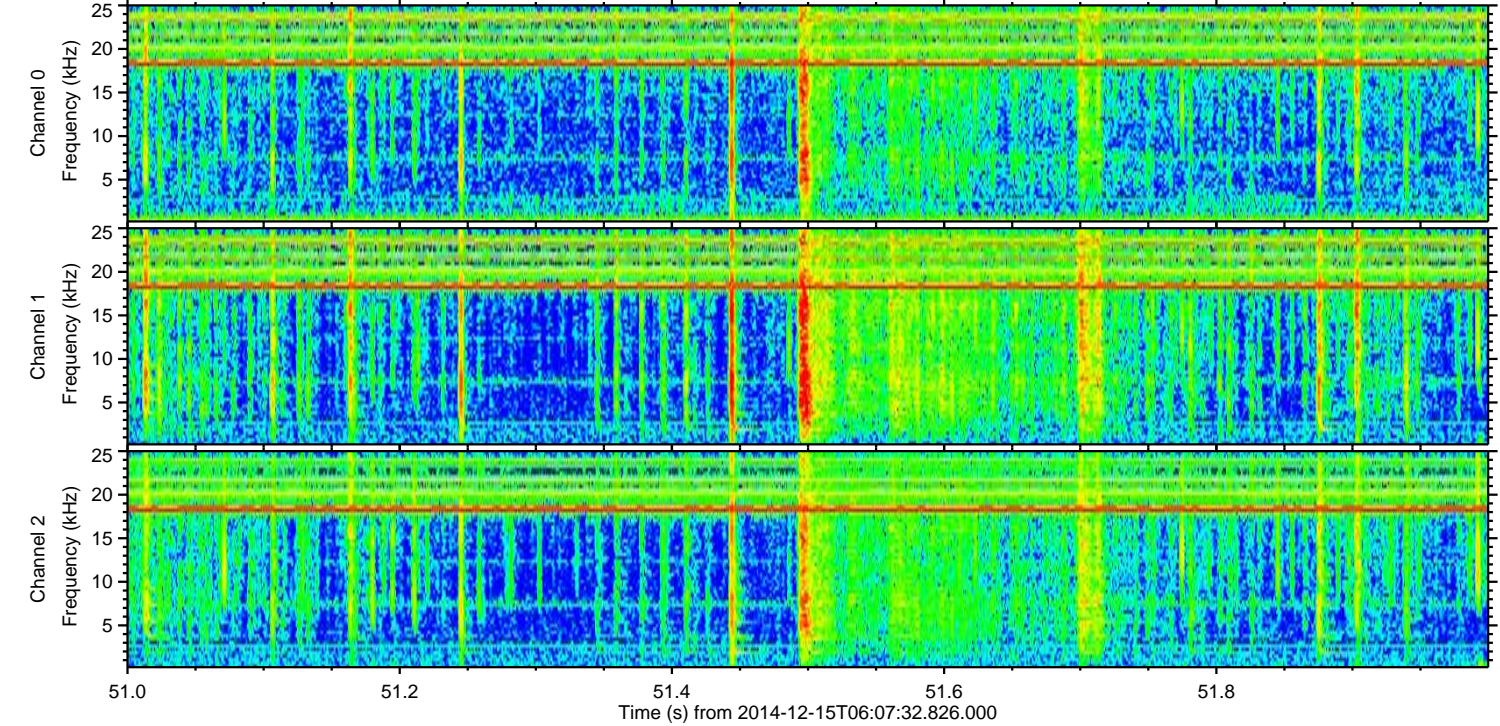
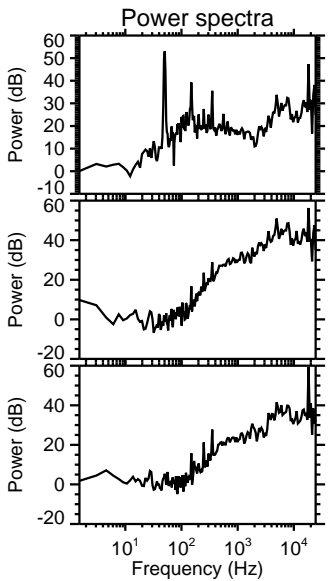
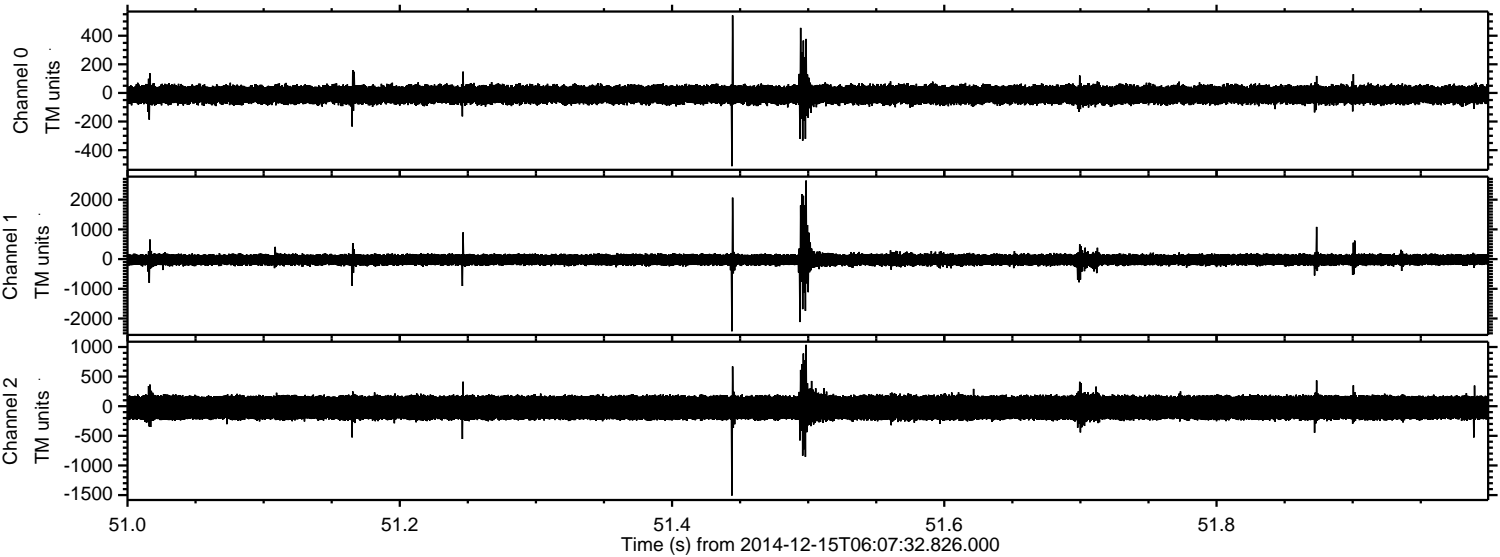
Processed Mon Dec 15 07:16:09 2014 by ELM ver.2012-10-06 from 001__elm20141215_060731__dat00.bin



Processed Mon Dec 15 07:16:10 2014 by ELM ver.2012-10-06 from 001__elm20141215_060731__dat00.bin



Processed Mon Dec 15 07:16:11 2014 by ELM ver.2012-10-06 from 001__elm20141215_060731__dat00.bin



Processed Mon Dec 15 07:16:12 2014 by ELM ver.2012-10-06 from 001__elm20141215_060731__dat00.bin

