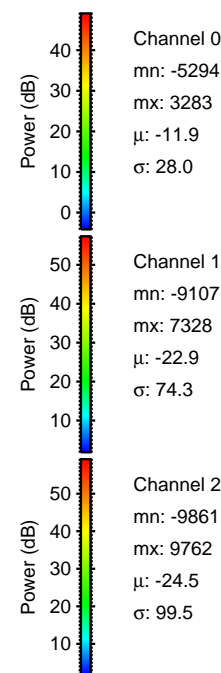
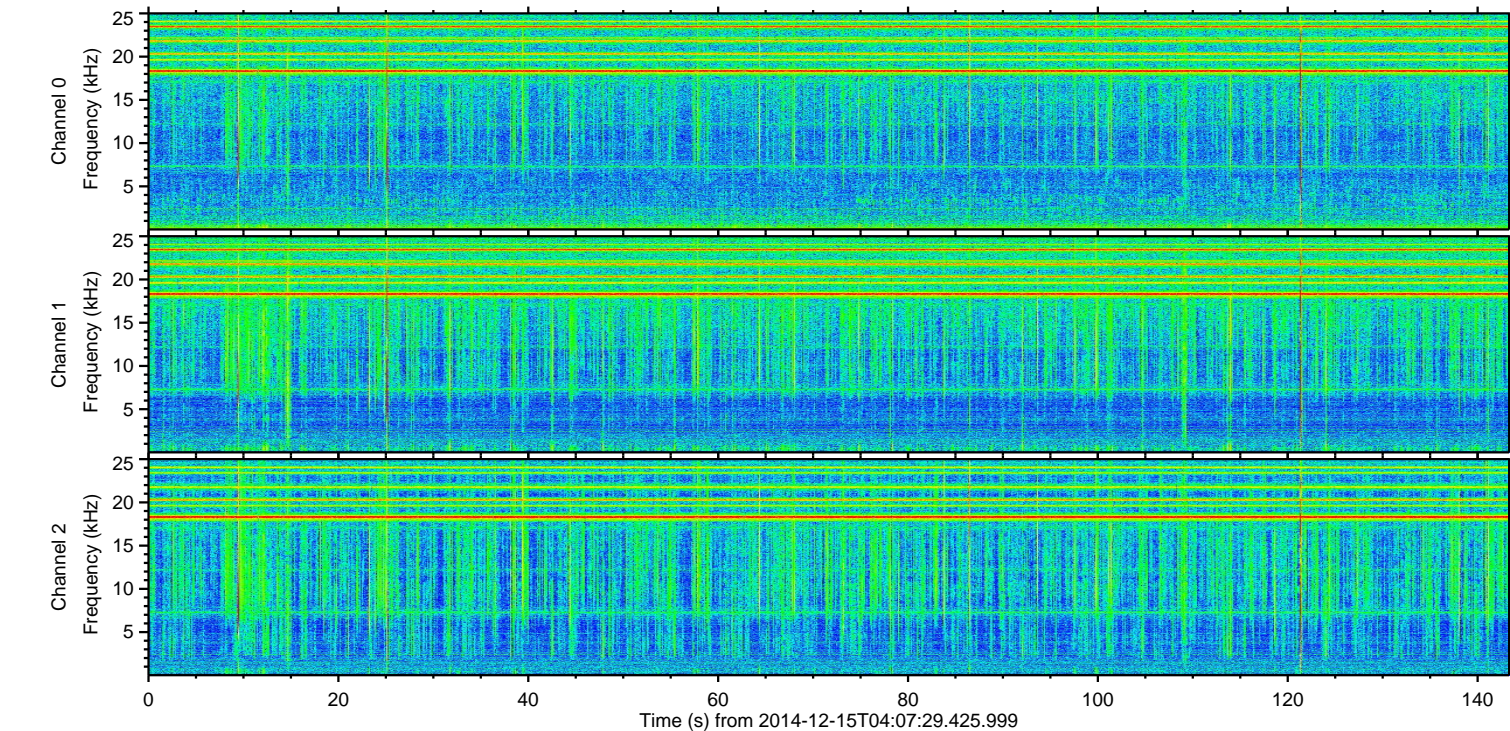
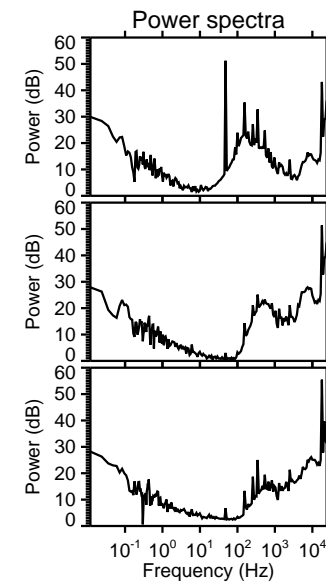
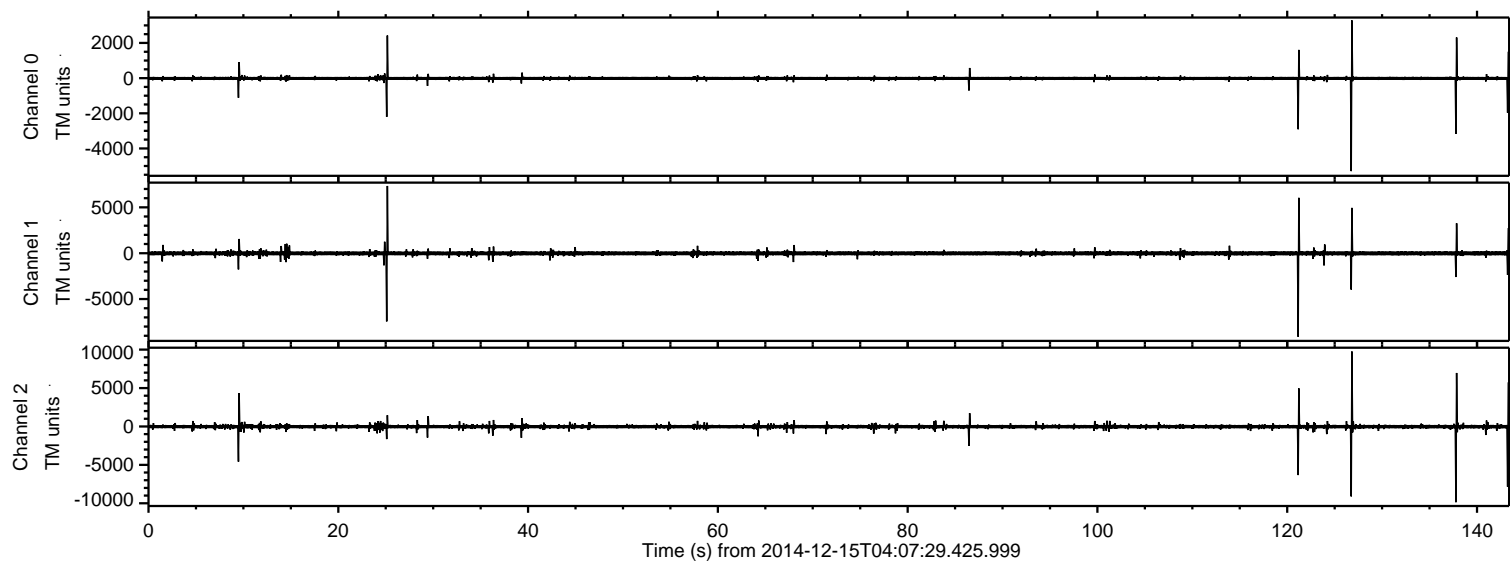


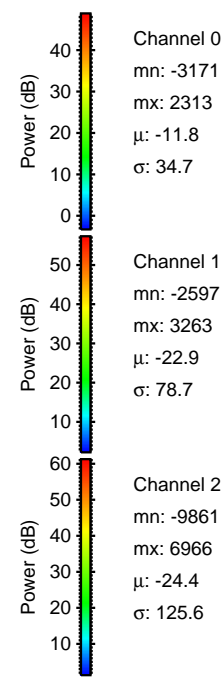
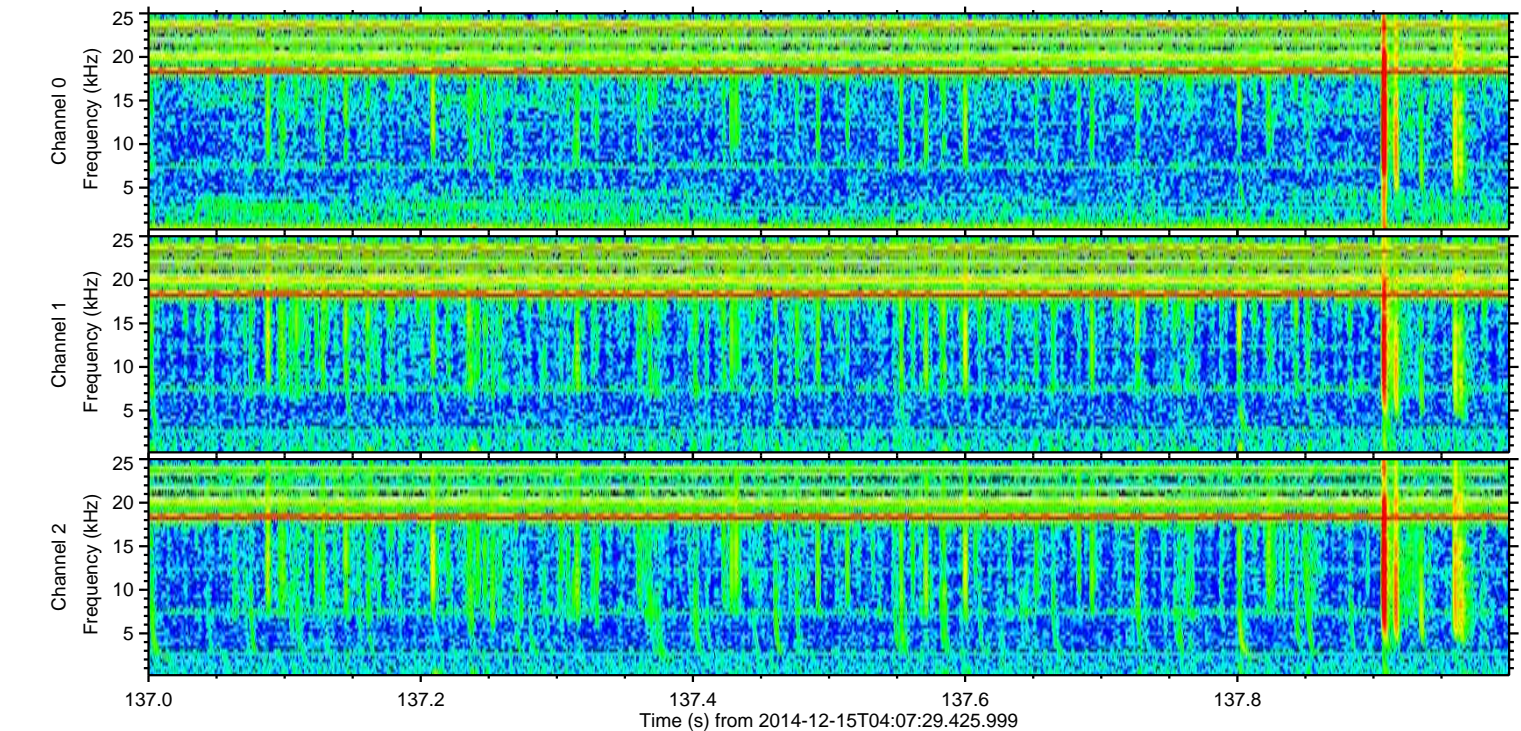
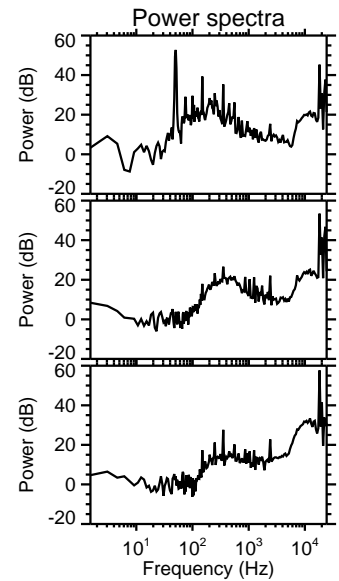
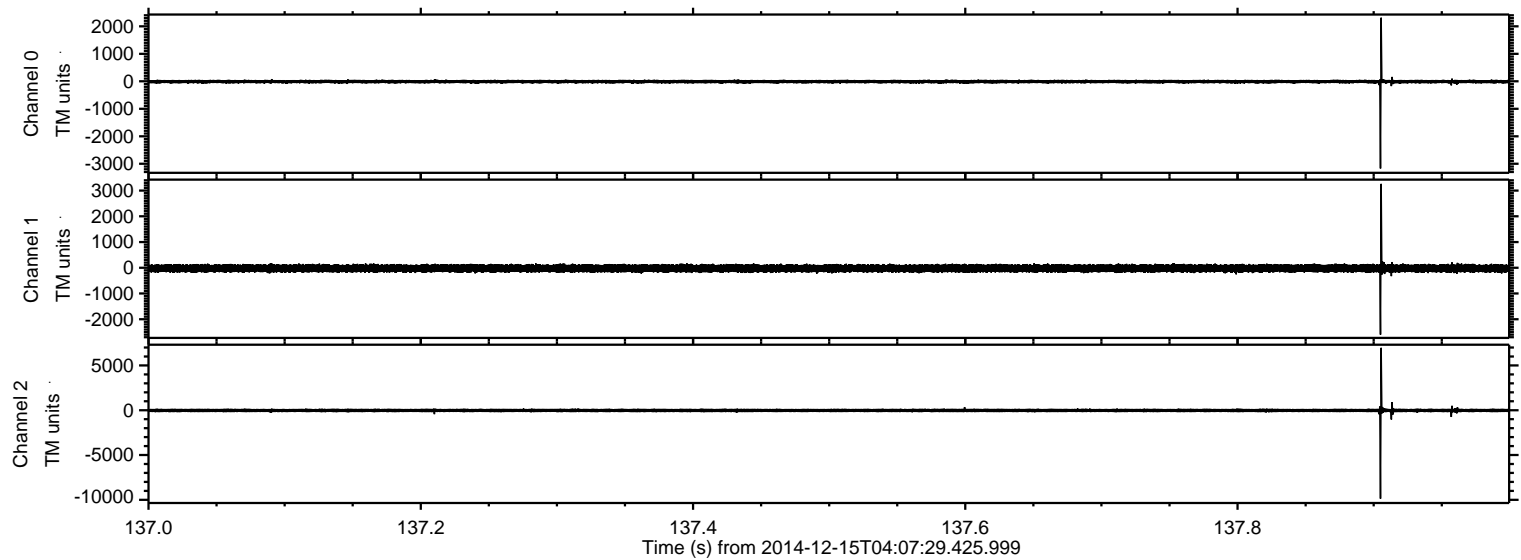
ELMAVAN 3D WAVEFORMS (Measured data sampled at 50 kHz) 49788 packets of 144 samples from 2014-12-15T04:07:29.425.999.

Processed Mon Dec 15 05:16:26 2014 by ELM ver.2012-10-06 from 001__elm20141215_040728__dat00.bin



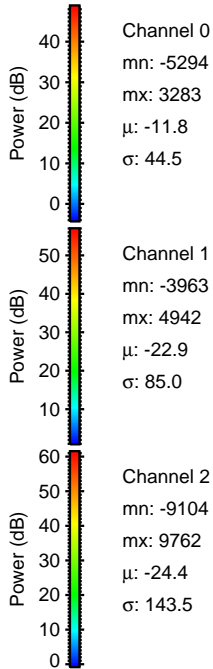
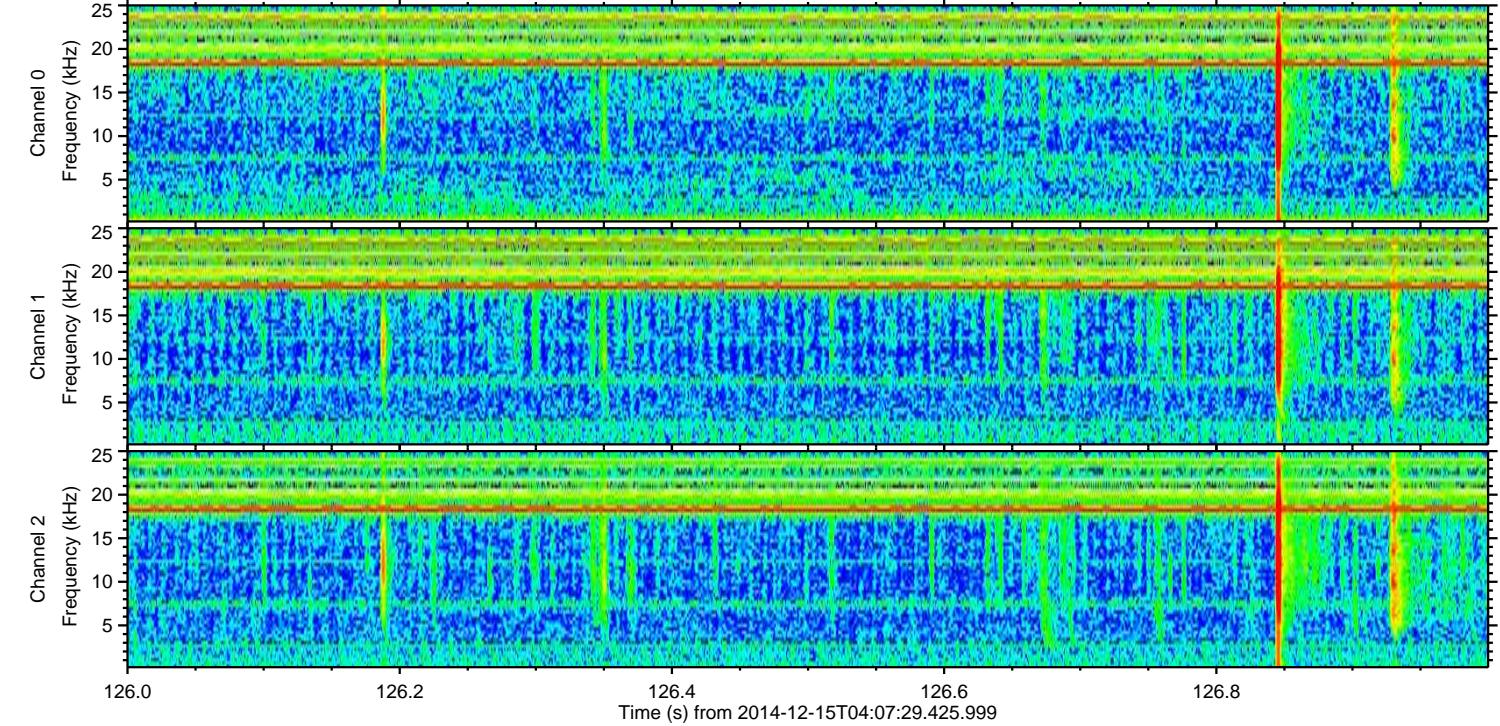
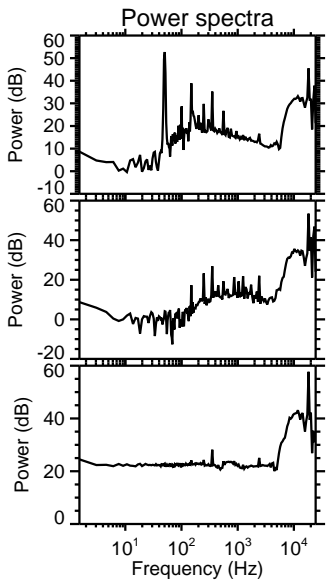
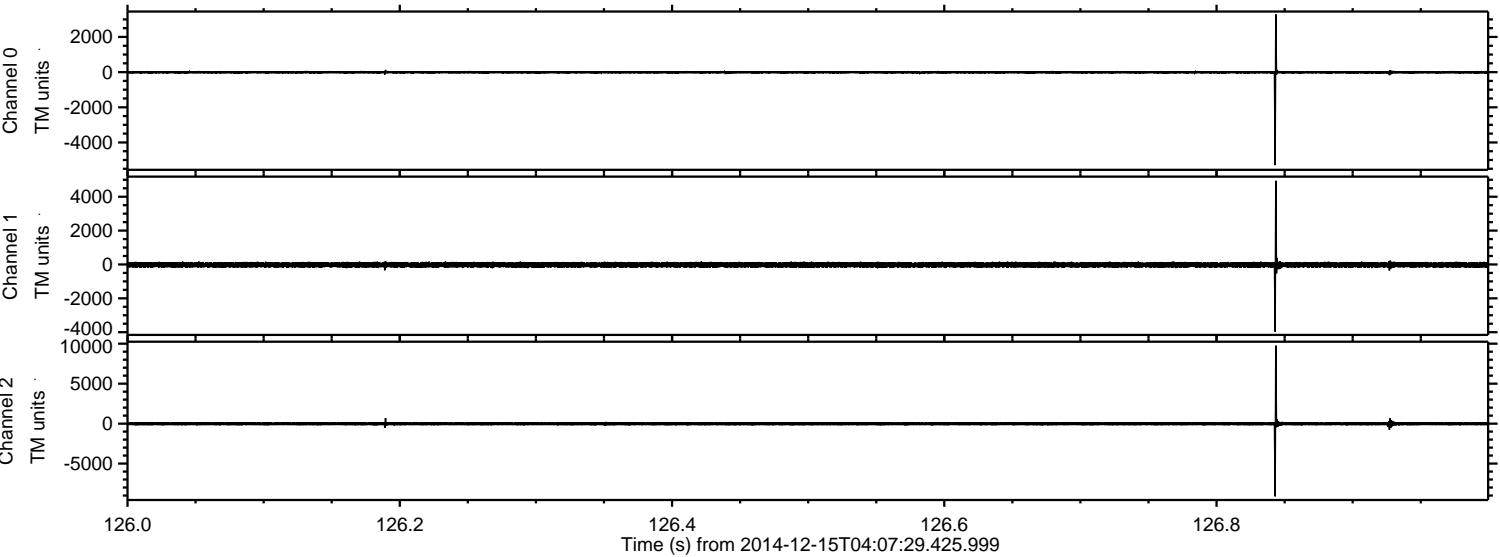
ELMAVAN 3D WAVEFORMS (Measured data sampled at 50 kHz) 49788 packets of 144 samples from 2014-12-15T04:07:29.425.999. Part 138/144

Processed Mon Dec 15 05:16:38 2014 by ELM ver.2012-10-06 from 001__elm20141215_040728__dat00.bin



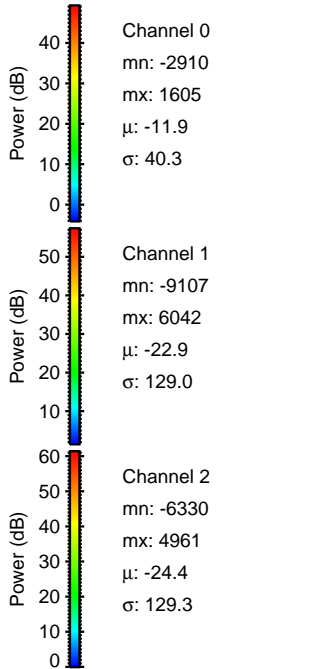
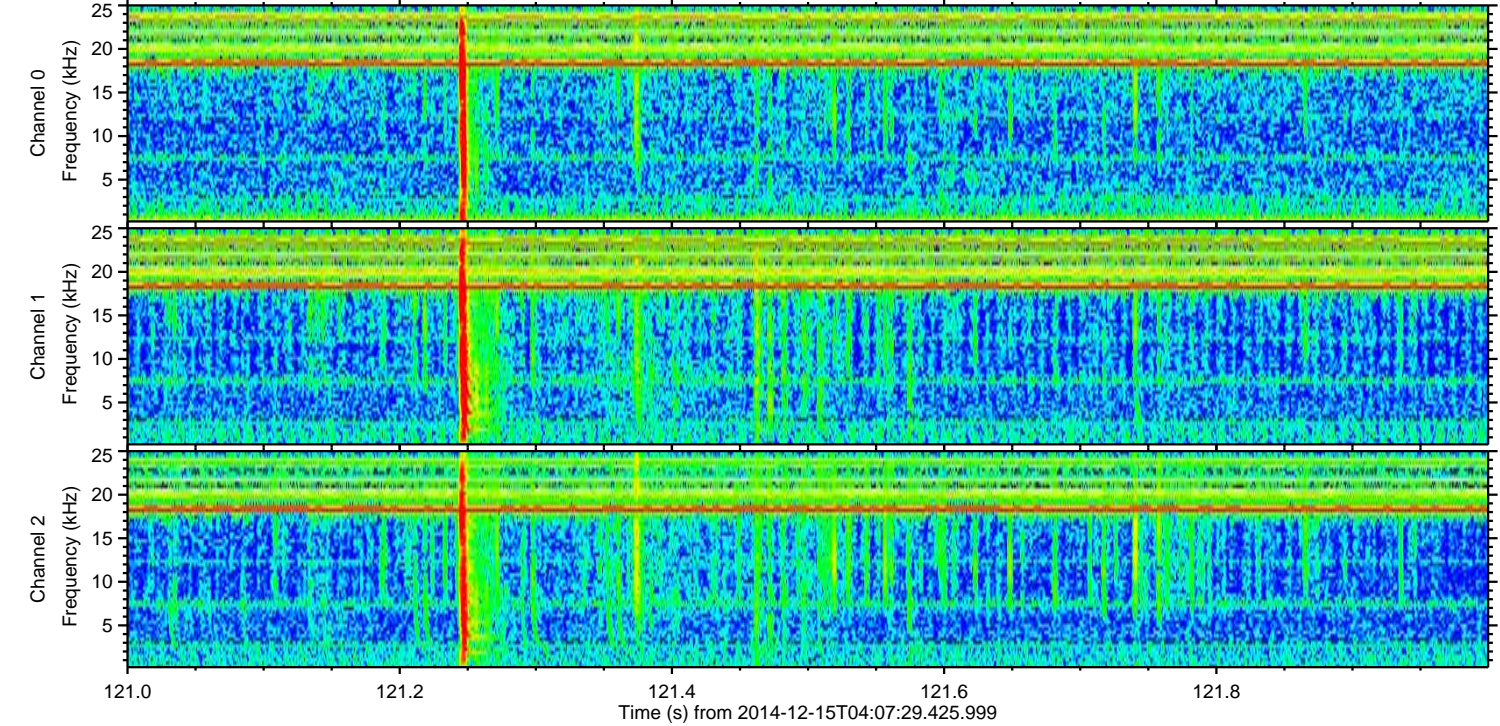
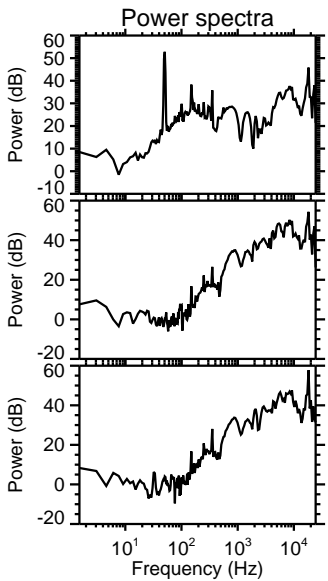
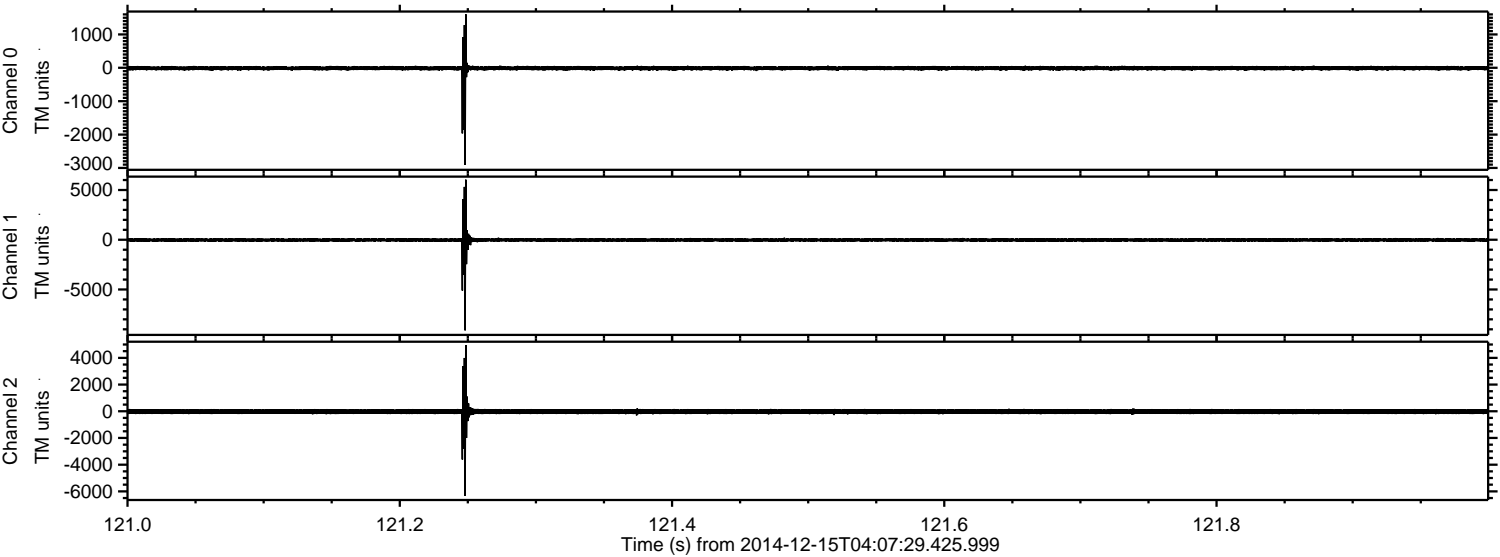
ELMAVAN 3D WAVEFORMS (Measured data sampled at 50 kHz) 49788 packets of 144 samples from 2014-12-15T04:07:29.425.999. Part 127/144

Processed Mon Dec 15 05:16:39 2014 by ELM ver.2012-10-06 from 001__elm20141215_040728__dat00.bin



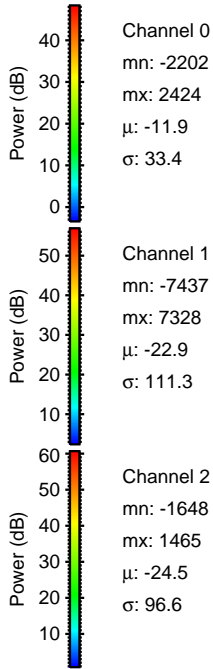
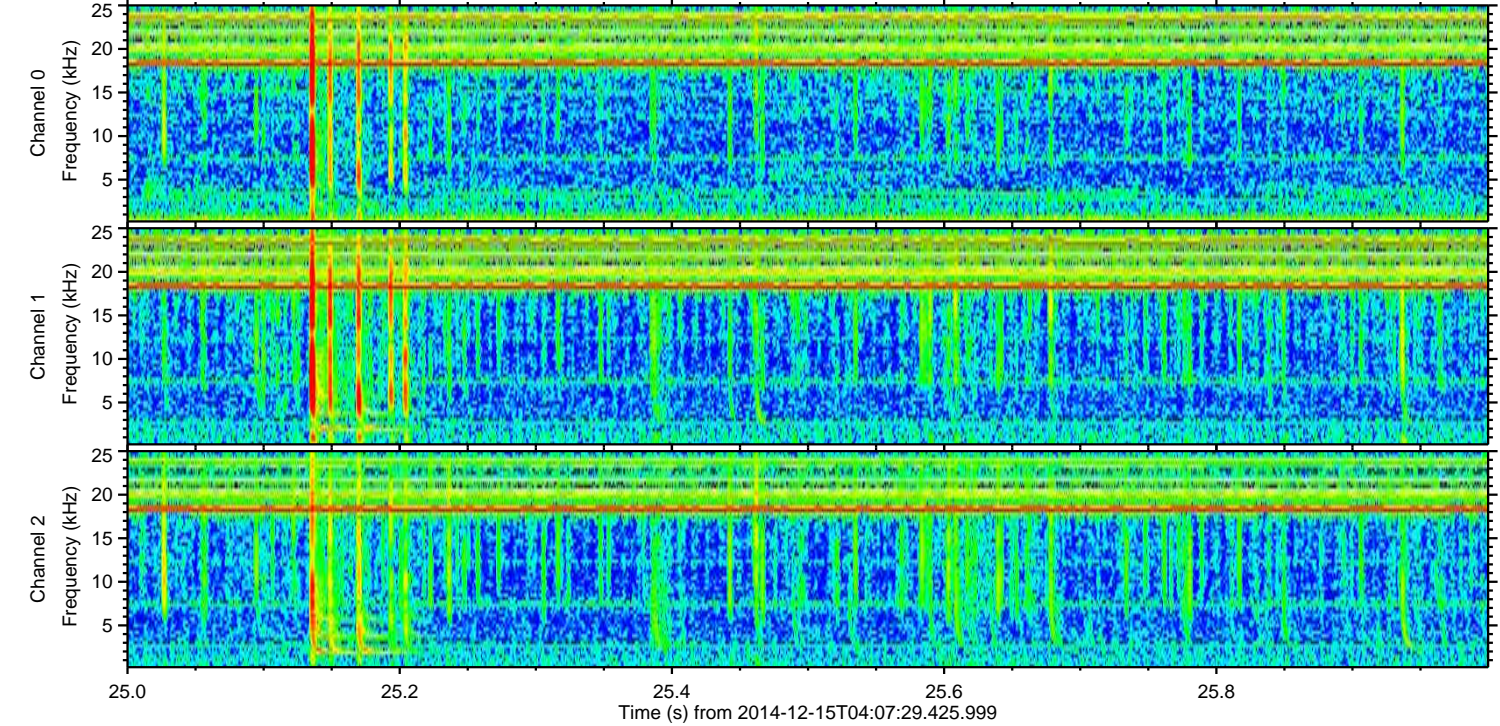
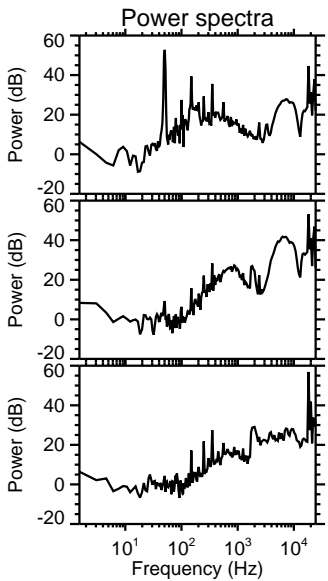
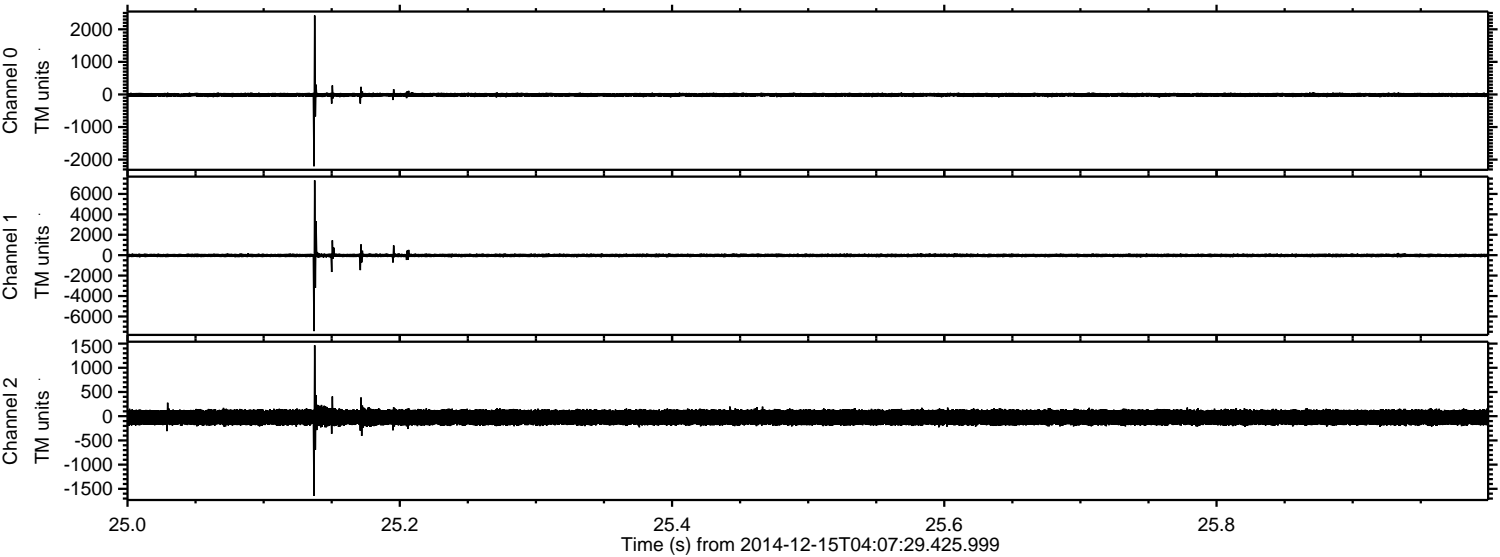
ELMAVAN 3D WAVEFORMS (Measured data sampled at 50 kHz) 49788 packets of 144 samples from 2014-12-15T04:07:29.425.999. Part 122/144

Processed Mon Dec 15 05:16:40 2014 by ELM ver.2012-10-06 from 001__elm20141215_040728__dat00.bin



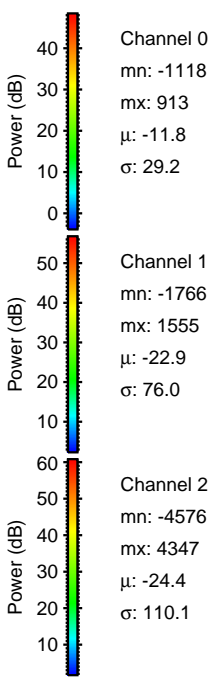
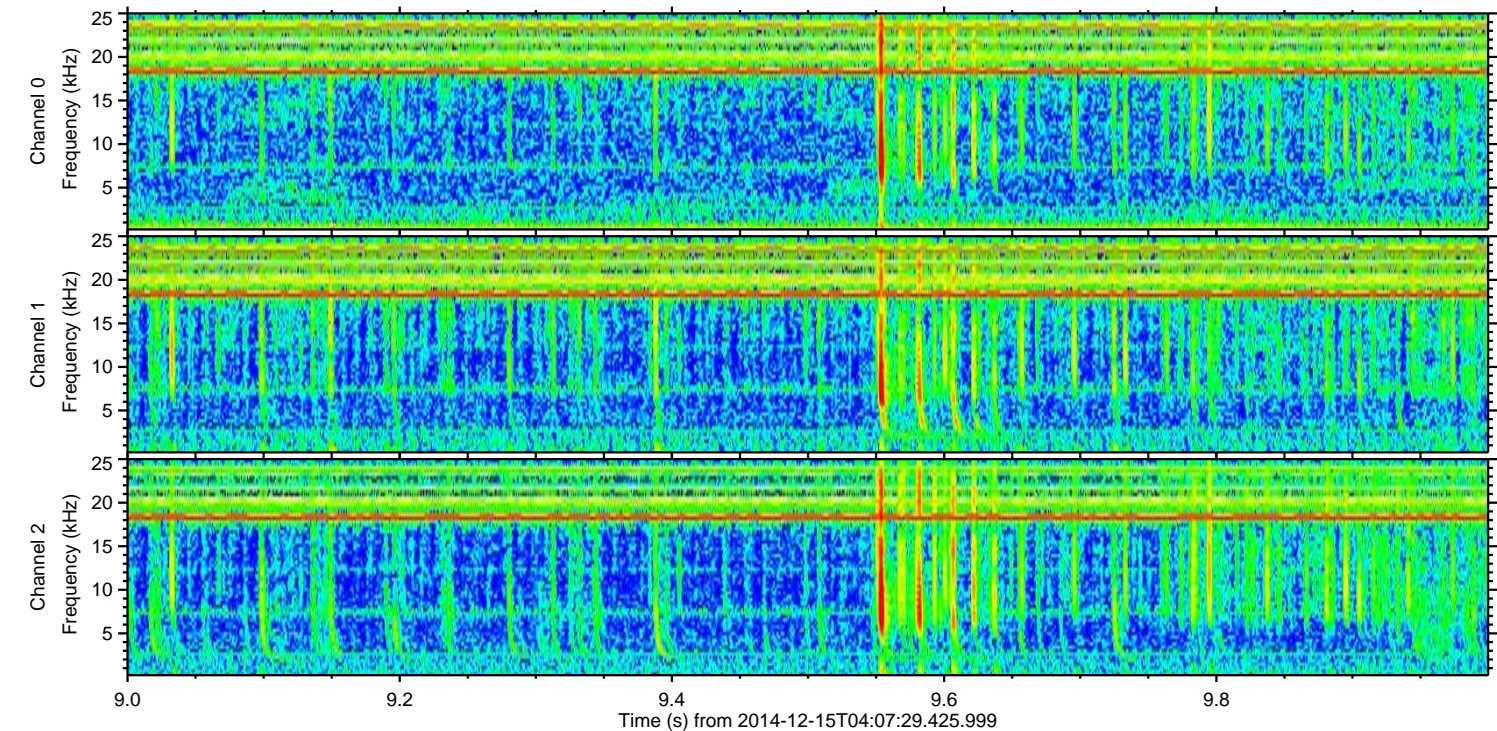
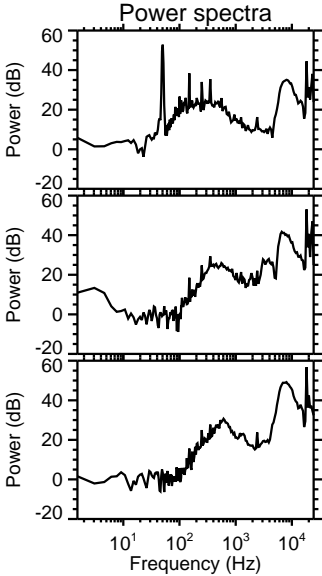
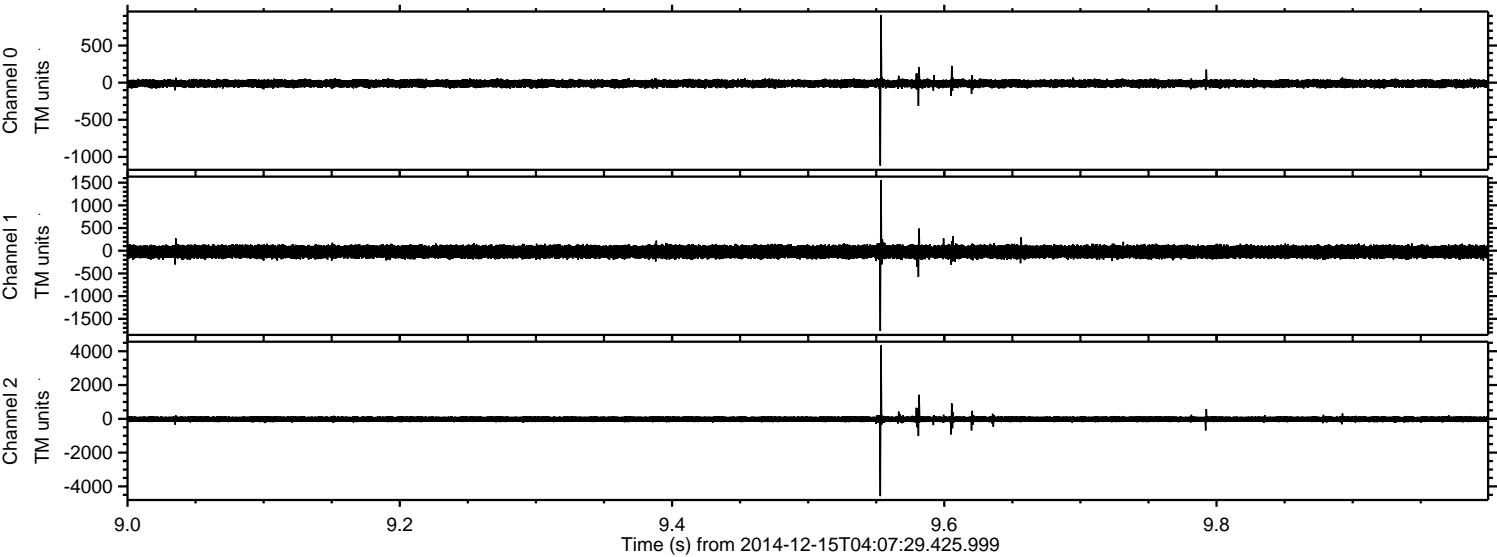
ELMAVAN 3D WAVEFORMS (Measured data sampled at 50 kHz) 49788 packets of 144 samples from 2014-12-15T04:07:29.425.999. Part 26/144

Processed Mon Dec 15 05:16:41 2014 by ELM ver.2012-10-06 from 001__elm20141215_040728__dat00.bin



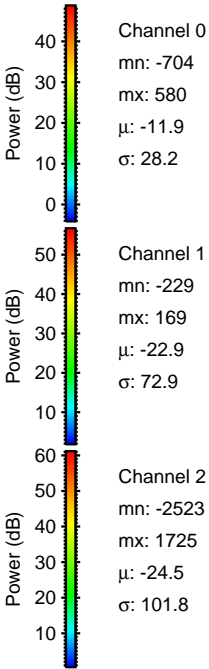
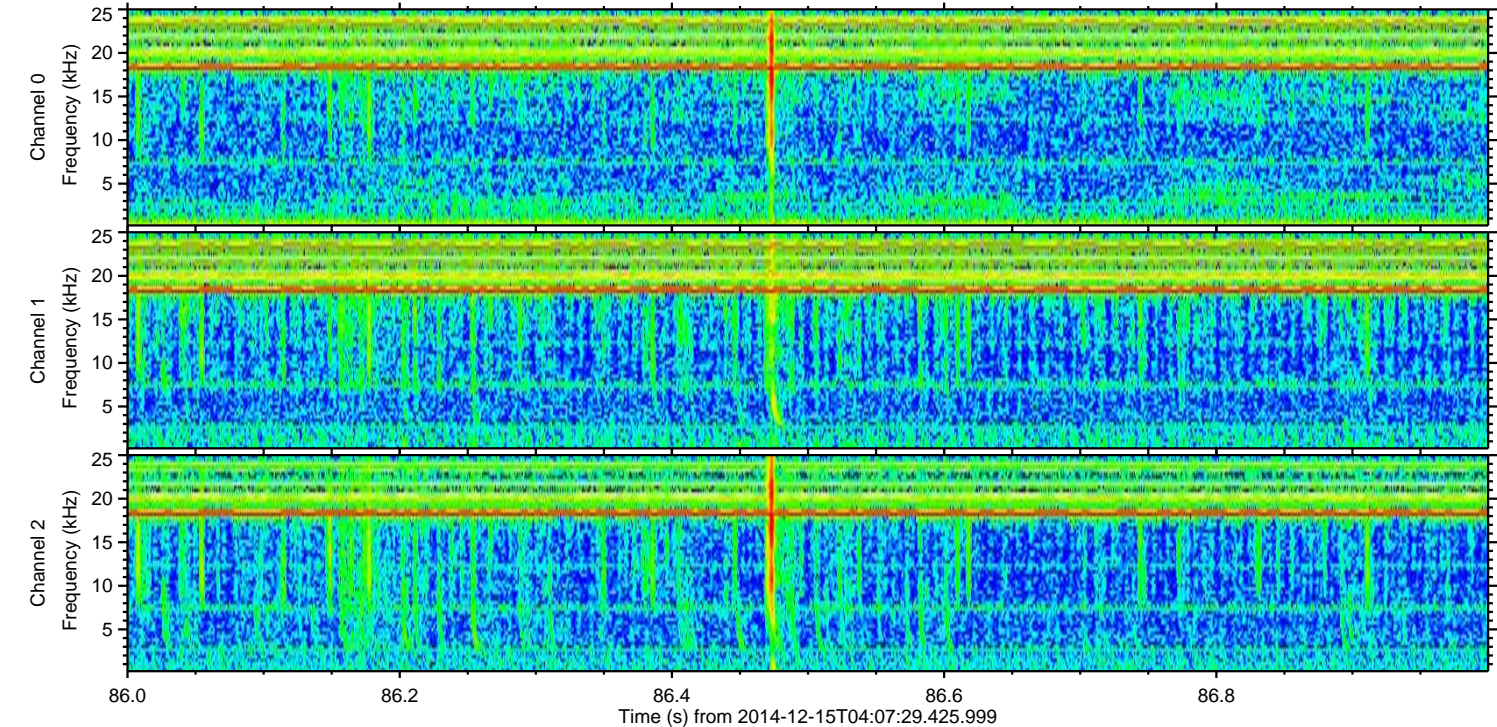
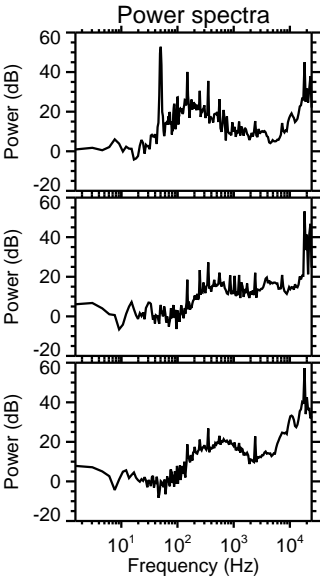
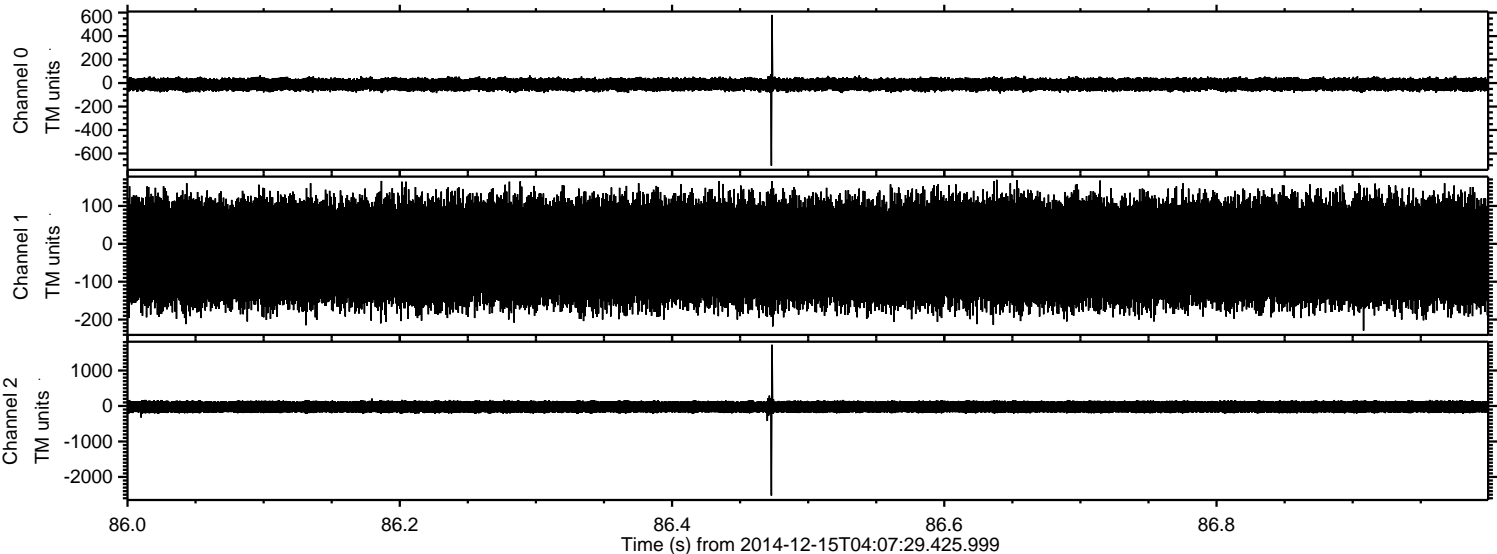
ELMAVAN 3D WAVEFORMS (Measured data sampled at 50 kHz) 49788 packets of 144 samples from 2014-12-15T04:07:29.425.999. Part 10/144

Processed Mon Dec 15 05:16:42 2014 by ELM ver.2012-10-06 from 001__elm20141215_040728__dat00.bin



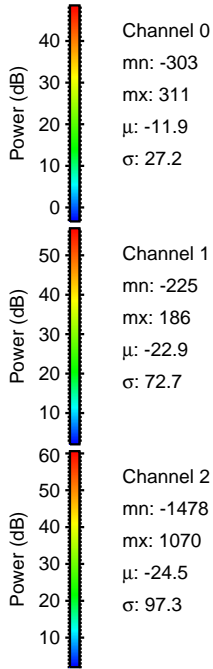
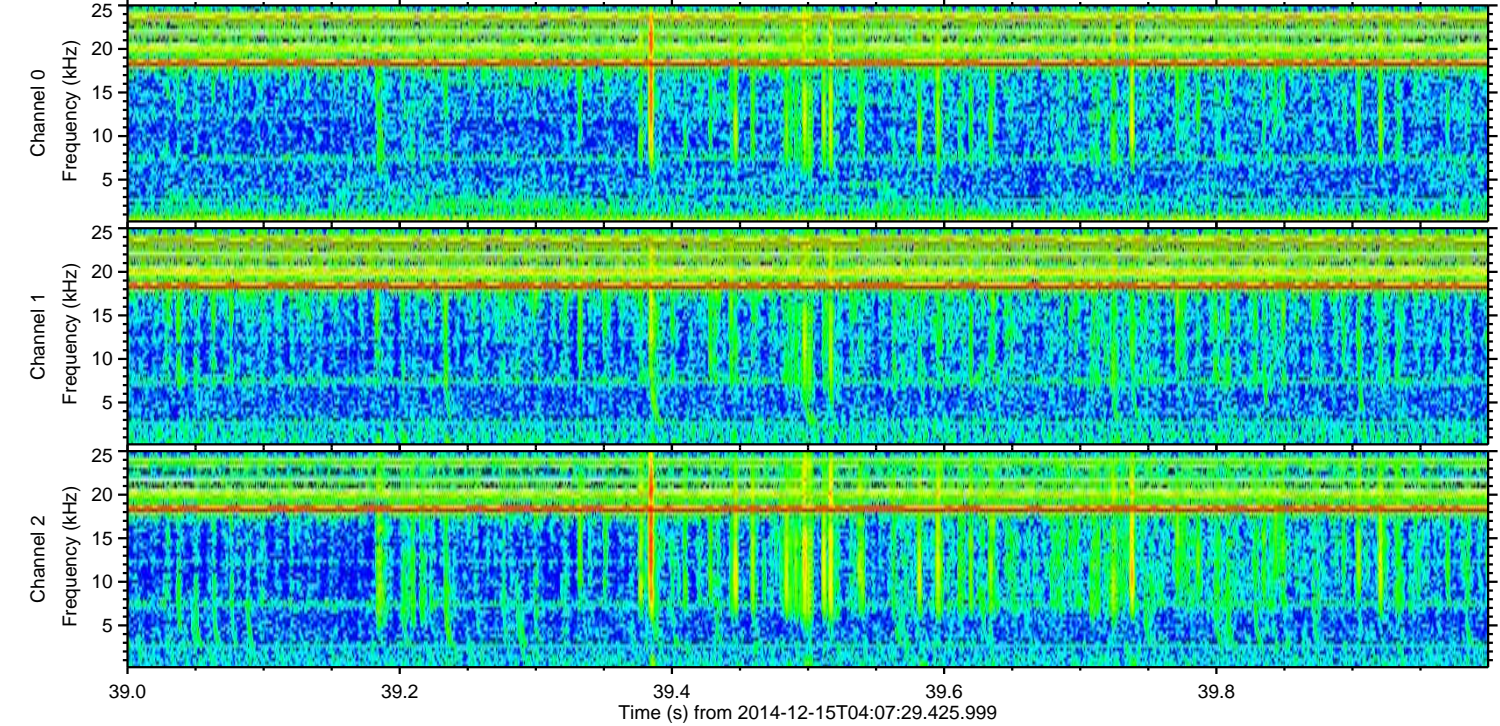
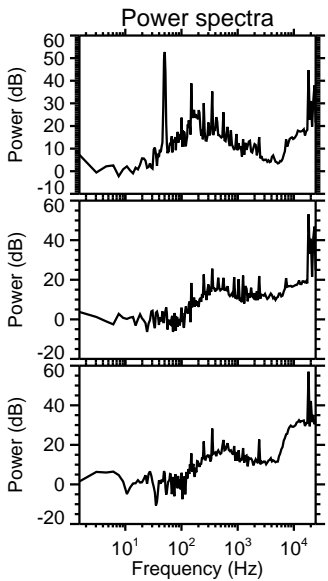
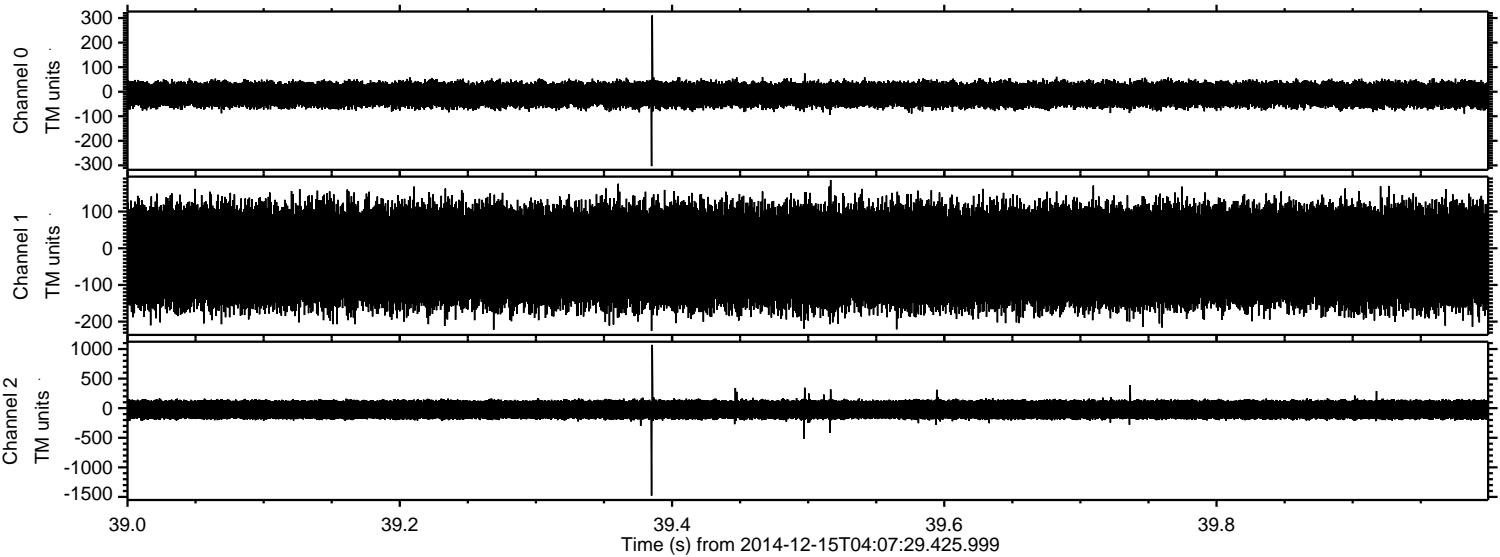
ELMAVAN 3D WAVEFORMS (Measured data sampled at 50 kHz) 49788 packets of 144 samples from 2014-12-15T04:07:29.425.999. Part 87/144

Processed Mon Dec 15 05:16:43 2014 by ELM ver.2012-10-06 from 001__elm20141215_040728__dat00.bin

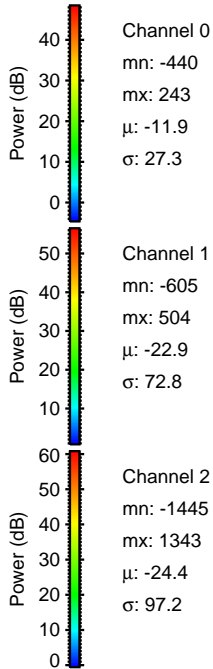
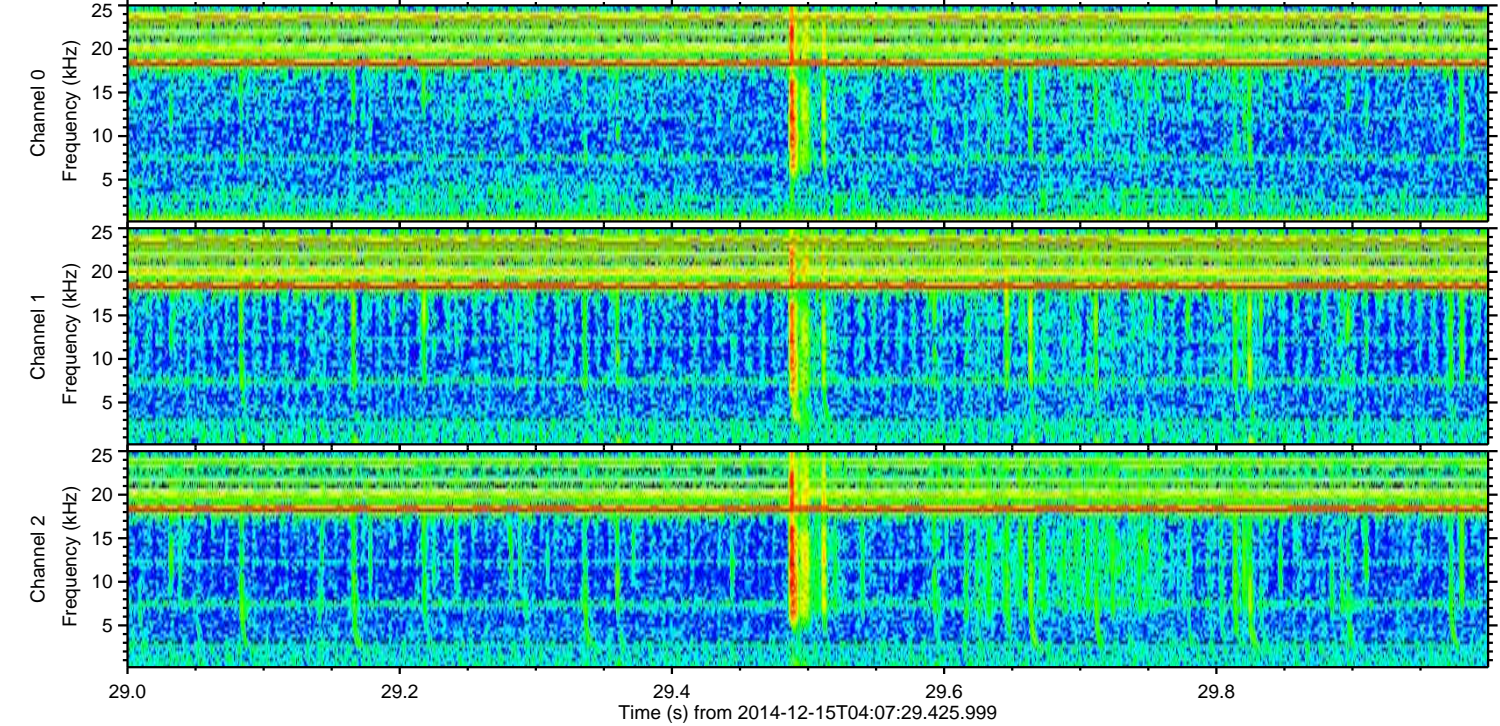
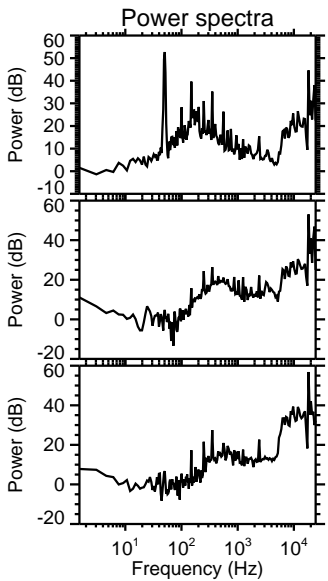
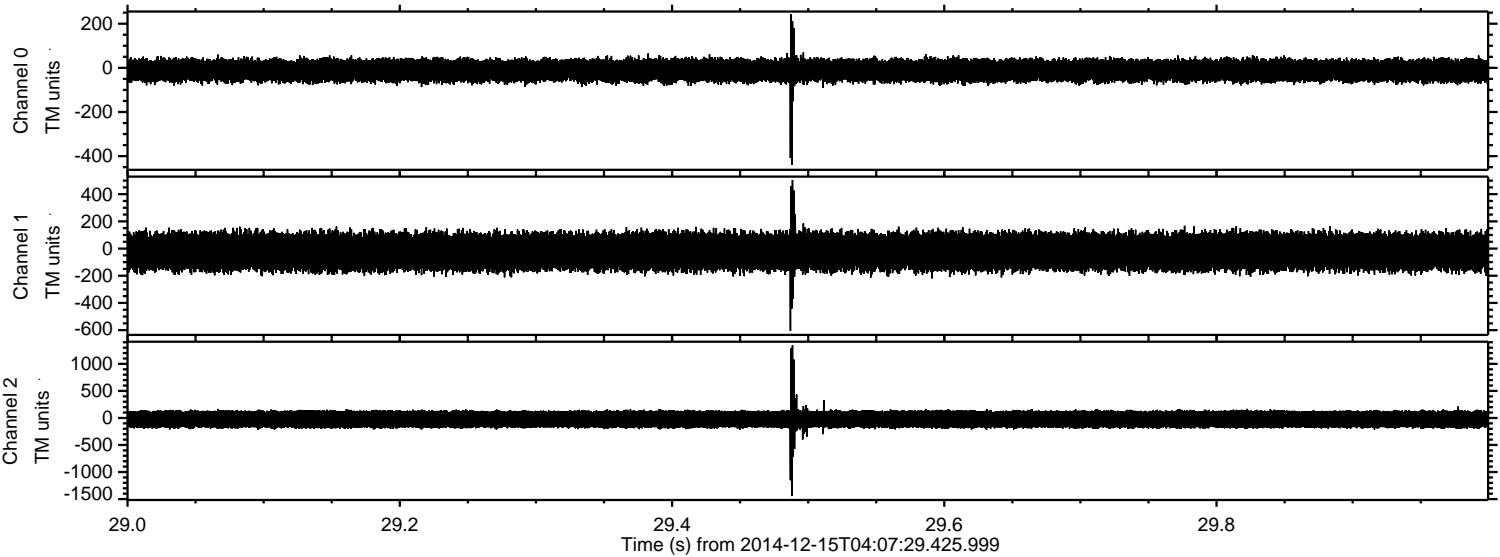


ELMAVAN 3D WAVEFORMS (Measured data sampled at 50 kHz) 49788 packets of 144 samples from 2014-12-15T04:07:29.425.999. Part 40/144

Processed Mon Dec 15 05:16:44 2014 by ELM ver.2012-10-06 from 001__elm20141215_040728__dat00.bin

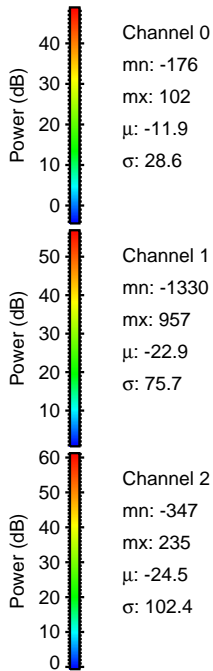
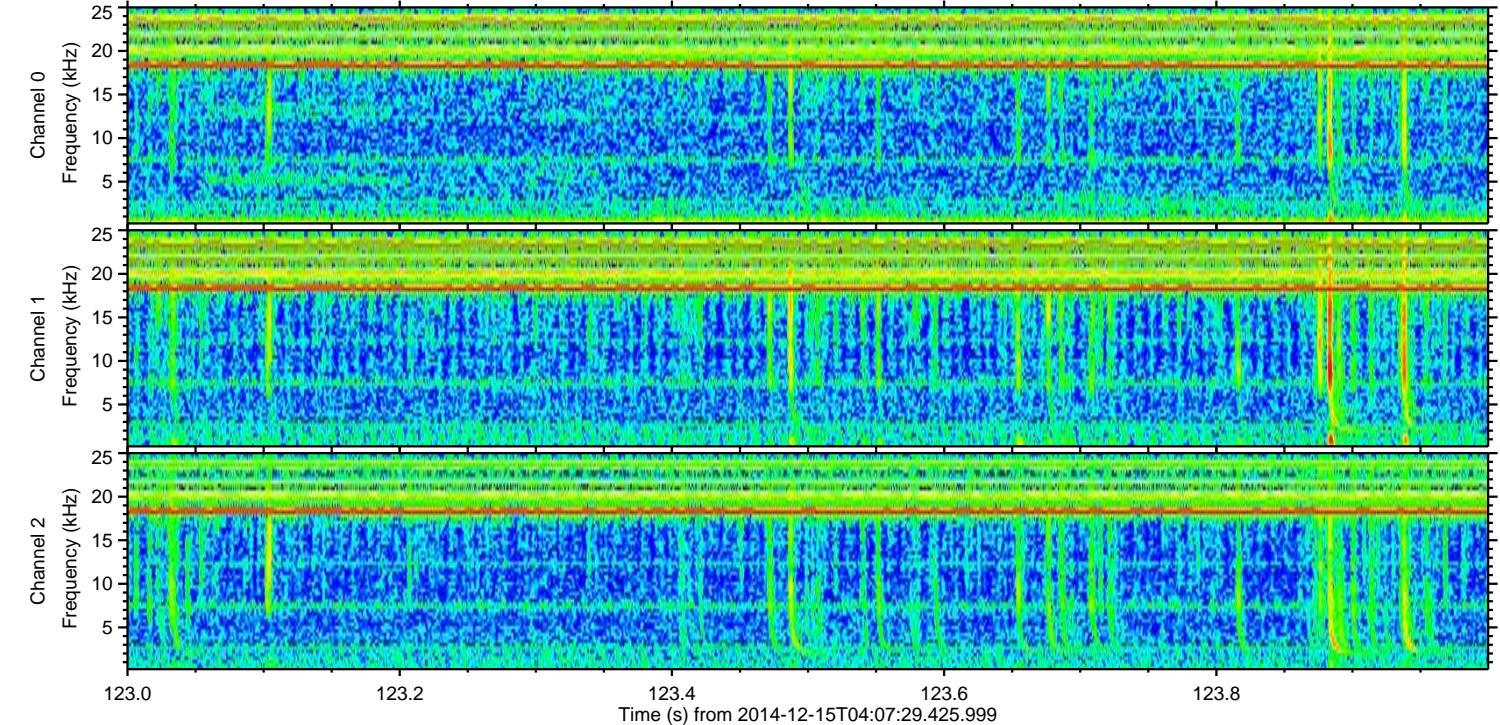
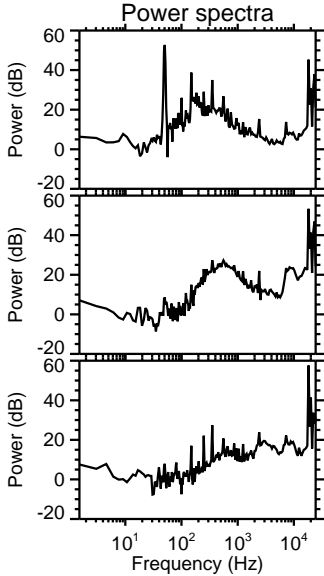
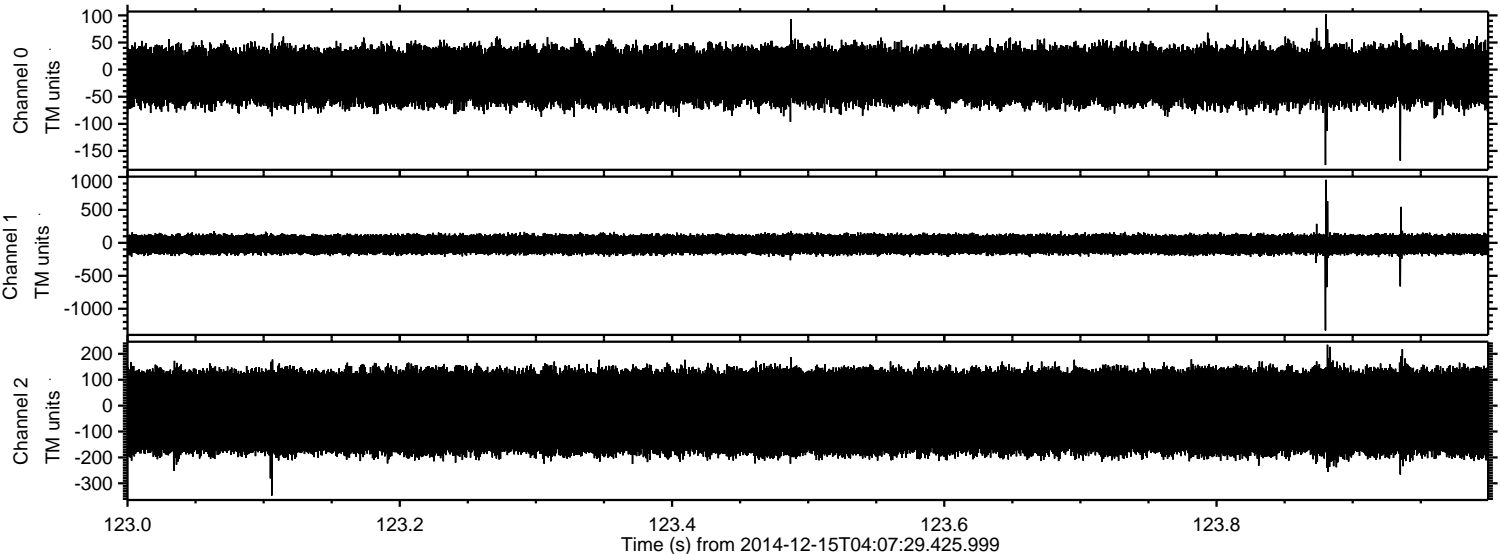


Processed Mon Dec 15 05:16:45 2014 by ELM ver.2012-10-06 from 001__elm20141215_040728__dat00.bin



ELMAVAN 3D WAVEFORMS (Measured data sampled at 50 kHz) 49788 packets of 144 samples from 2014-12-15T04:07:29.425.999. Part 124/144

Processed Mon Dec 15 05:16:47 2014 by ELM ver.2012-10-06 from 001__elm20141215_040728__dat00.bin

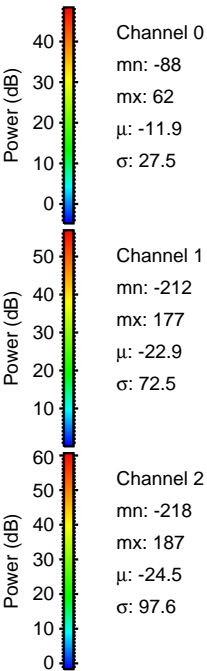
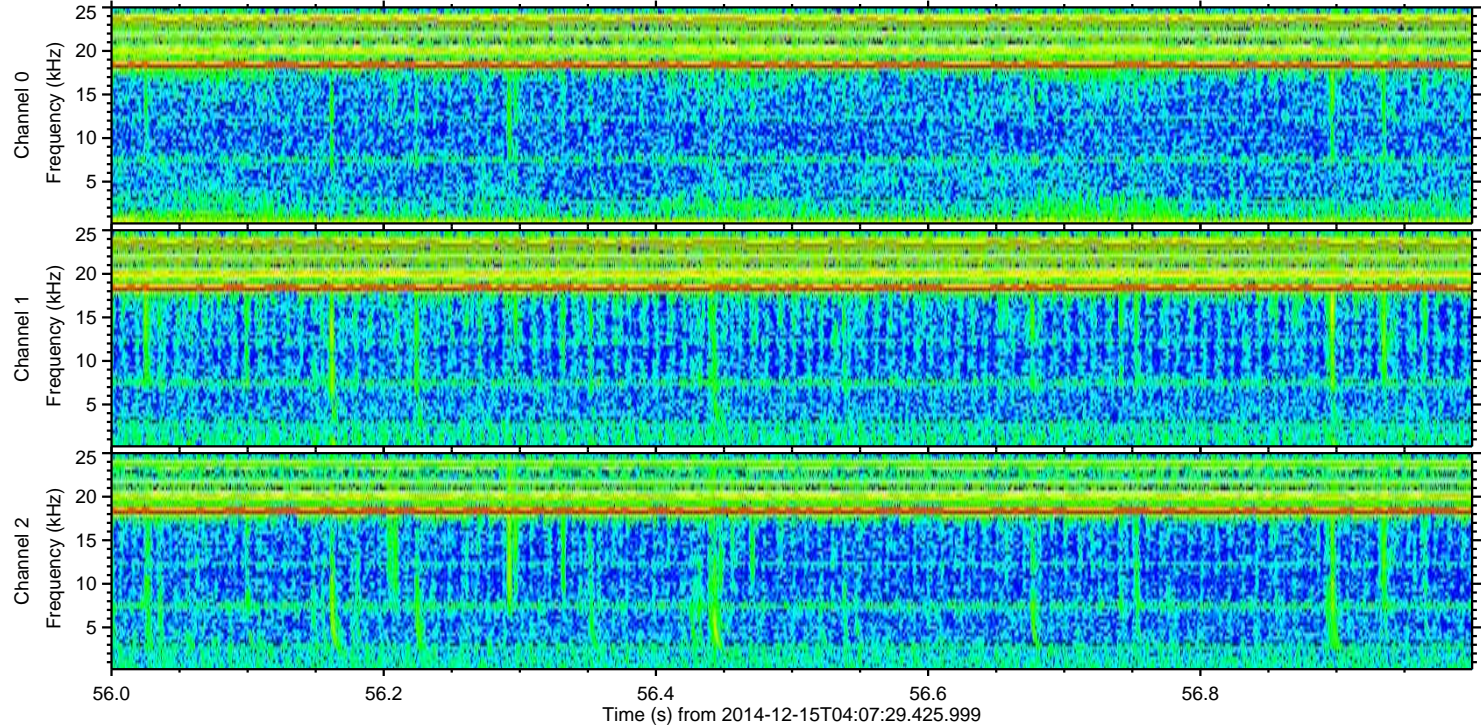
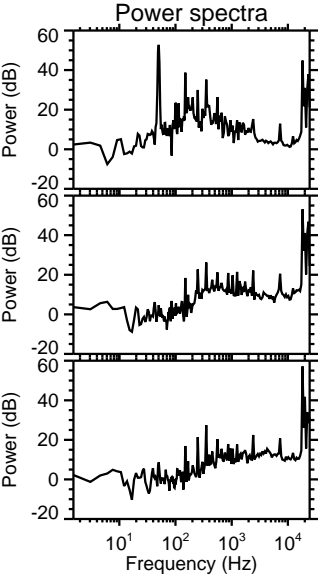
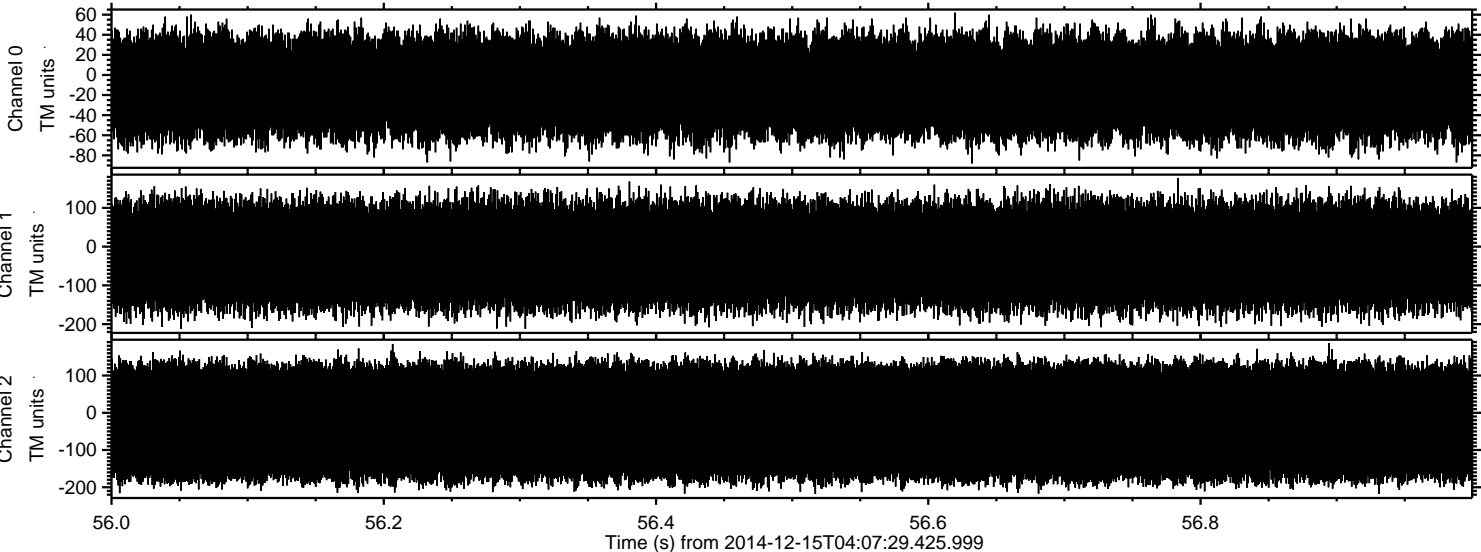


Channel 0
mn: -176
mx: 102
 μ : -11.9
 σ : 28.6

Channel 1
mn: -1330
mx: 957
 μ : -22.9
 σ : 75.7

Channel 2
mn: -347
mx: 235
 μ : -24.5
 σ : 102.4

Processed Mon Dec 15 05:16:48 2014 by ELM ver.2012-10-06 from 001__elm20141215_040728__dat00.bin



Channel 0
mn: -88
mx: 62
 μ : -11.9
 σ : 27.5

Channel 1
mn: -212
mx: 177
 μ : -22.9
 σ : 72.5

Channel 2
mn: -218
mx: 187
 μ : -24.5
 σ : 97.6