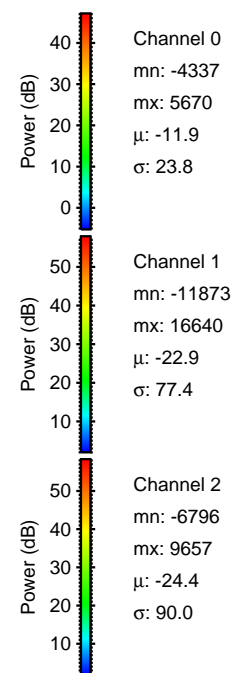
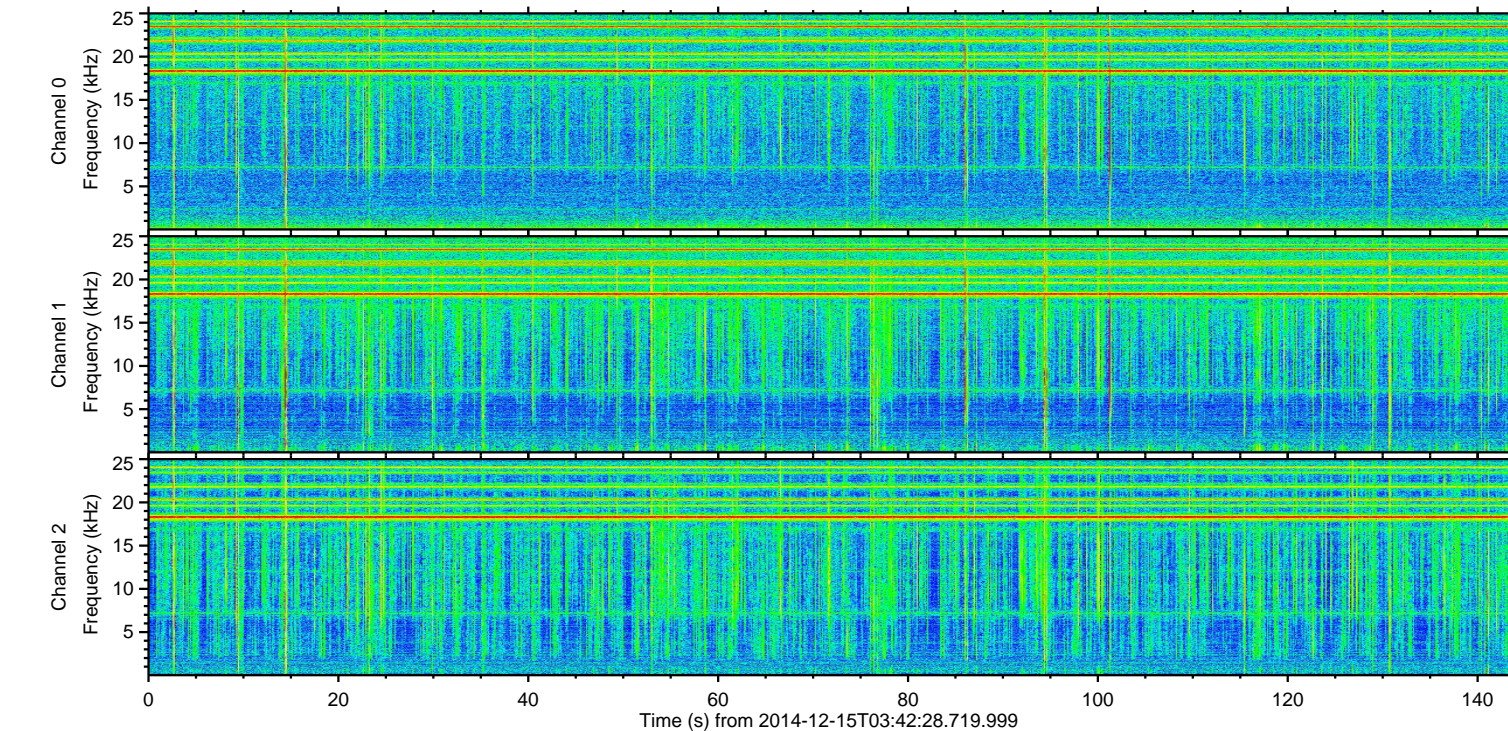
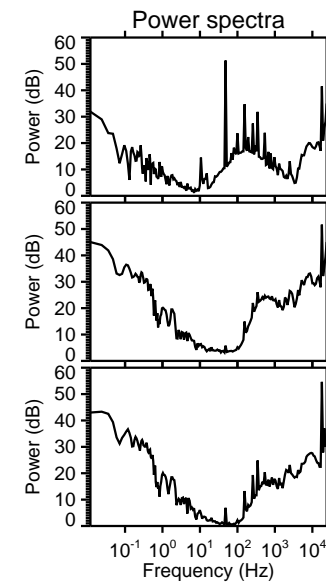
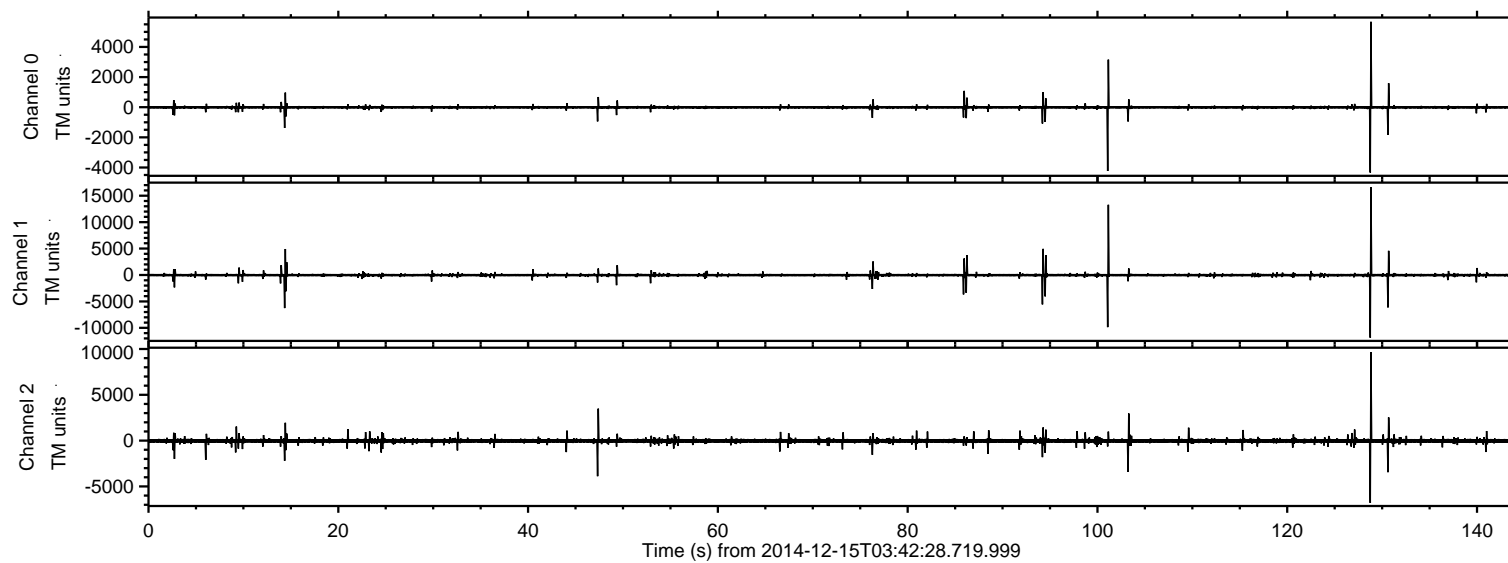


# ELMAVAN 3D WAVEFORMS (Measured data sampled at 50 kHz) 49786 packets of 144 samples from 2014-12-15T03:42:28.719.999.

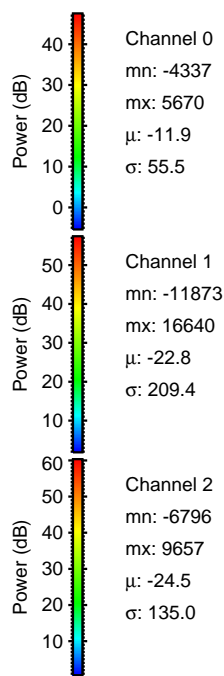
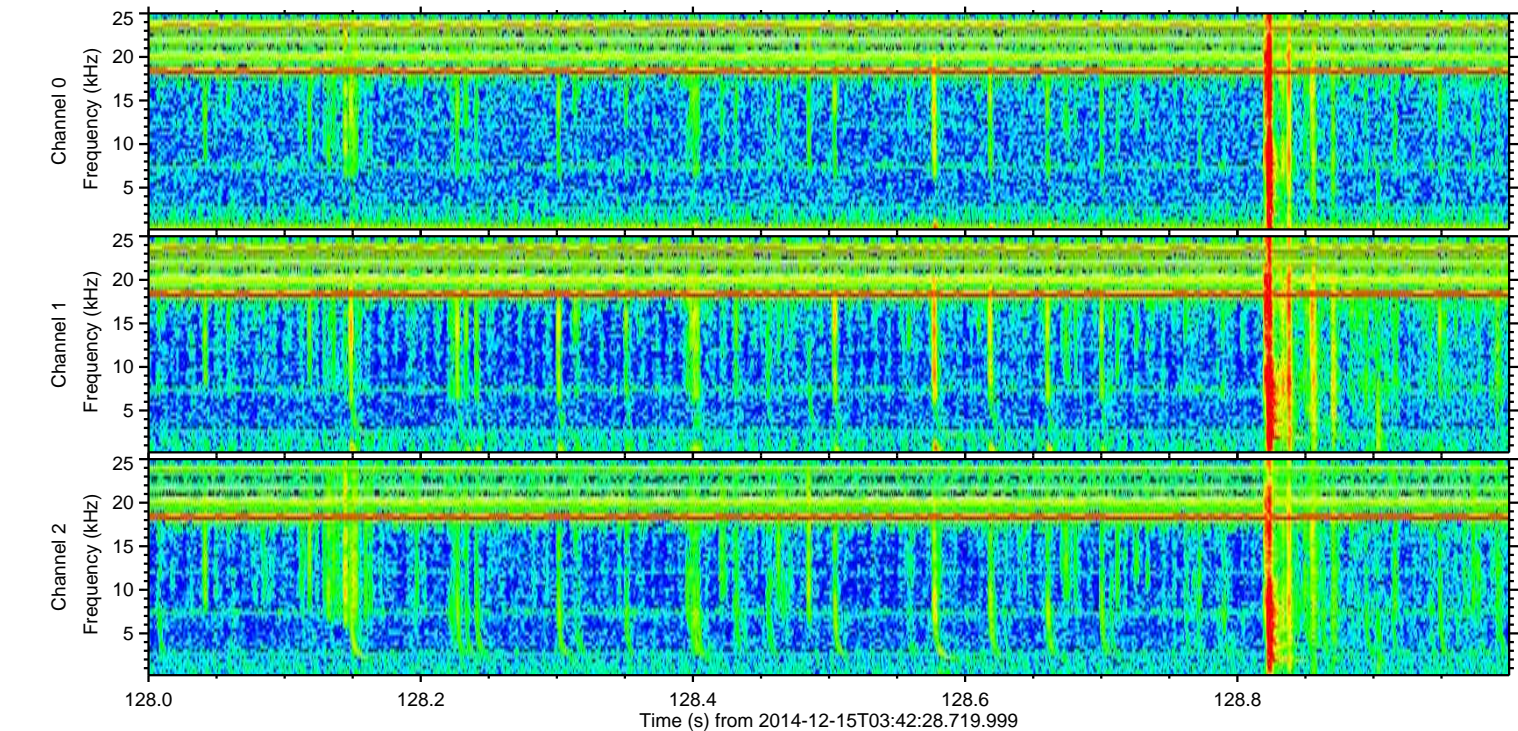
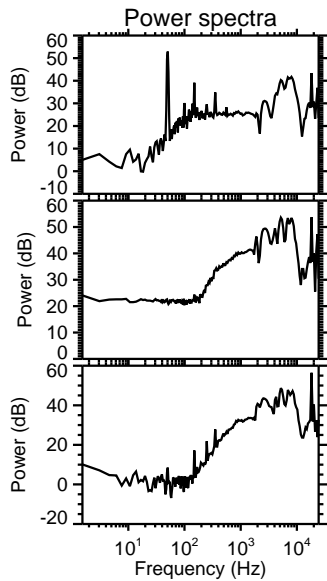
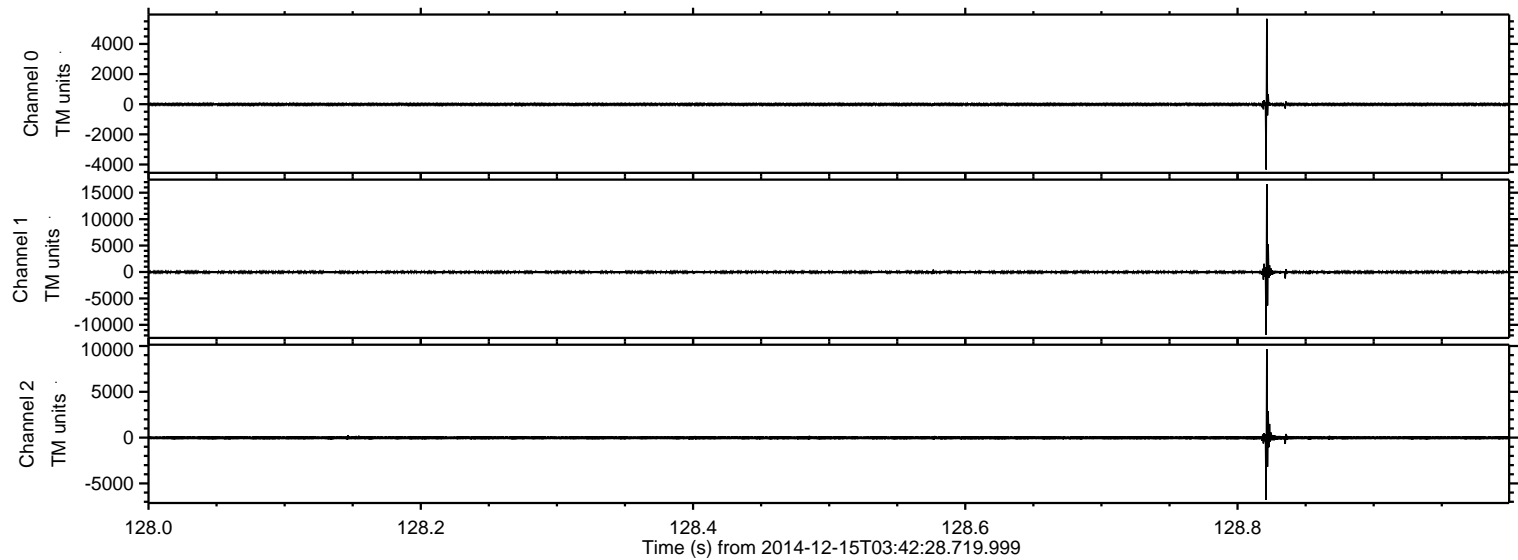
Processed Mon Dec 15 04:51:27 2014 by ELM ver.2012-10-06 from 001\_\_elm20141215\_034227\_\_dat00.bin





ELMAVAN 3D WAVEFORMS (Measured data sampled at 50 kHz) 49786 packets of 144 samples from 2014-12-15T03:42:28.719.999. Part 129/144

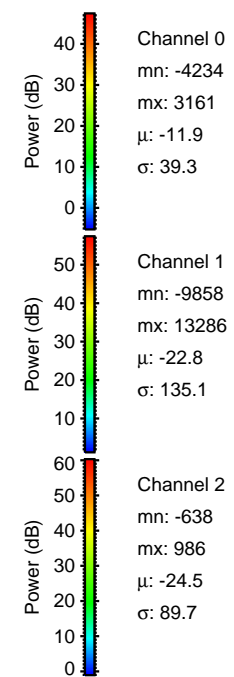
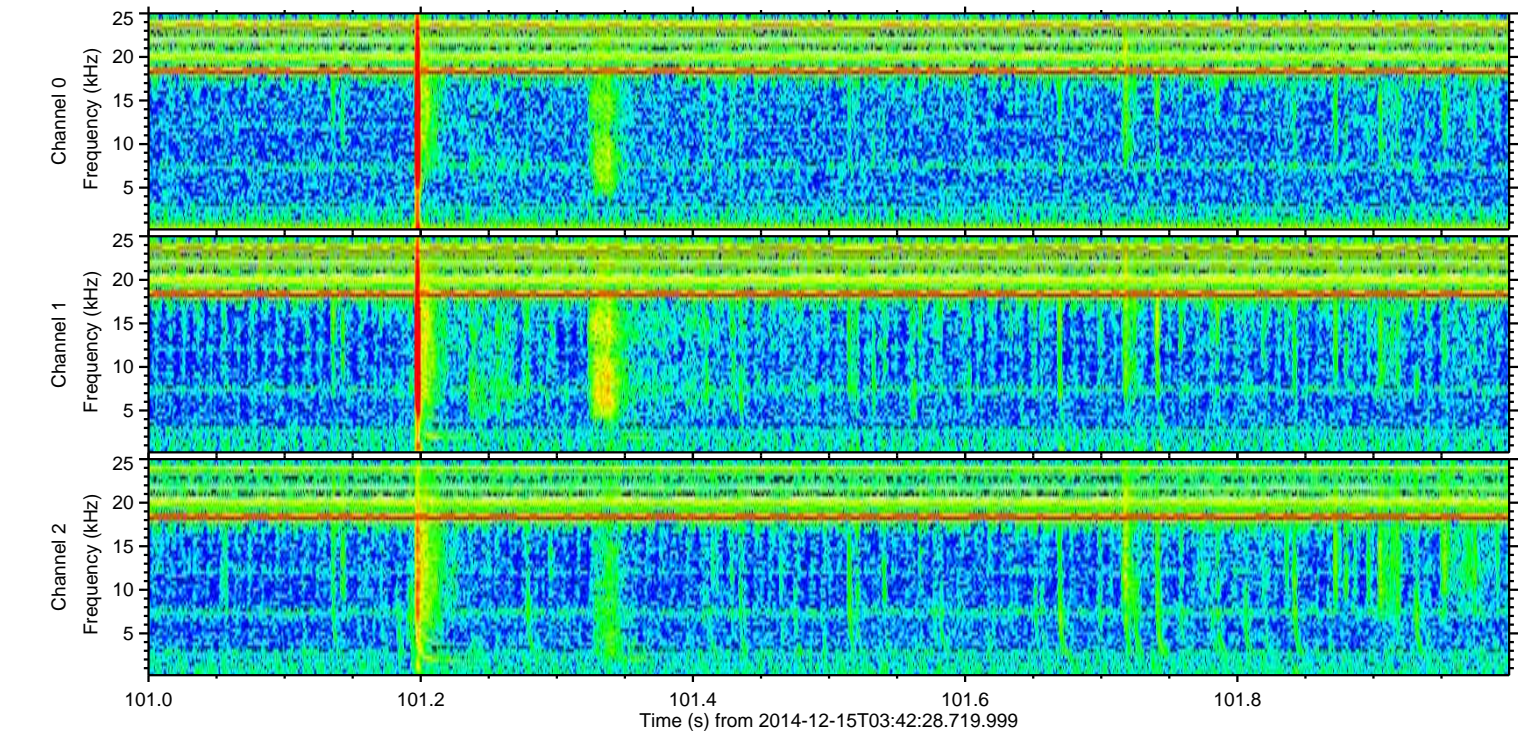
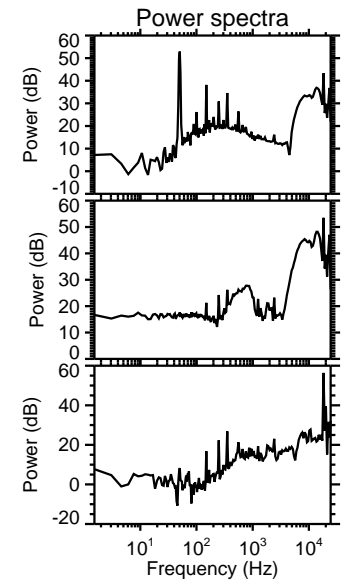
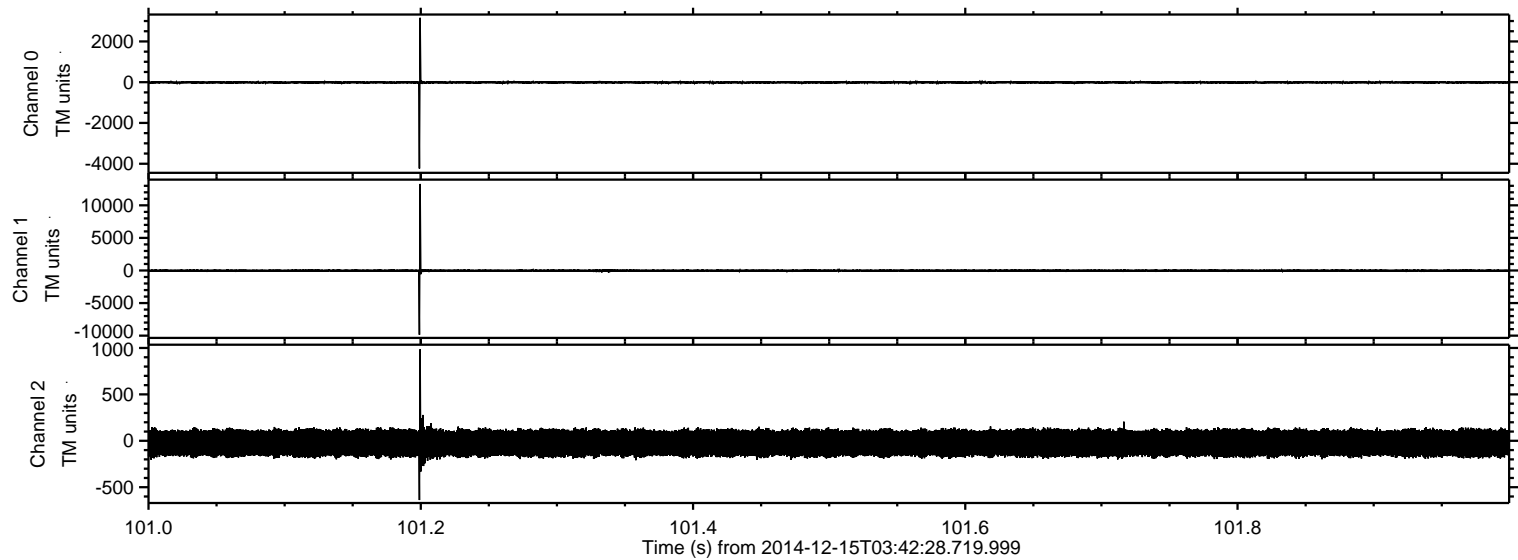
Processed Mon Dec 15 04:51:39 2014 by ELM ver.2012-10-06 from 001\_\_elm20141215\_034227\_\_dat00.bin





ELMAVAN 3D WAVEFORMS (Measured data sampled at 50 kHz) 49786 packets of 144 samples from 2014-12-15T03:42:28.719.999. Part 102/144

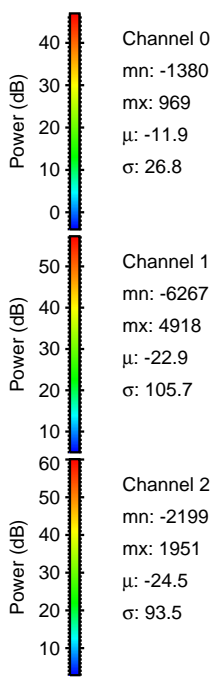
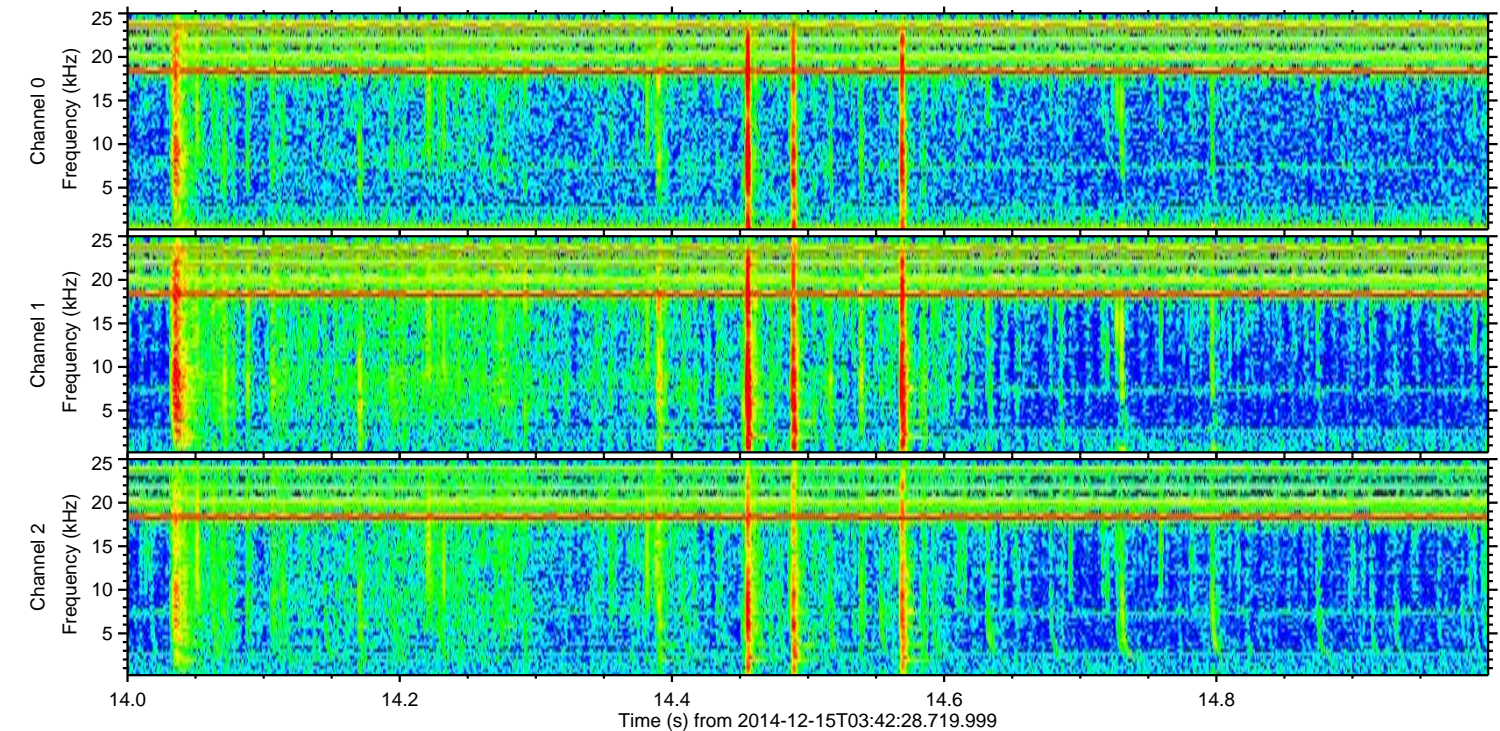
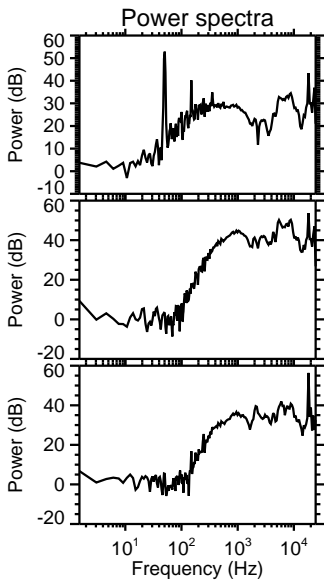
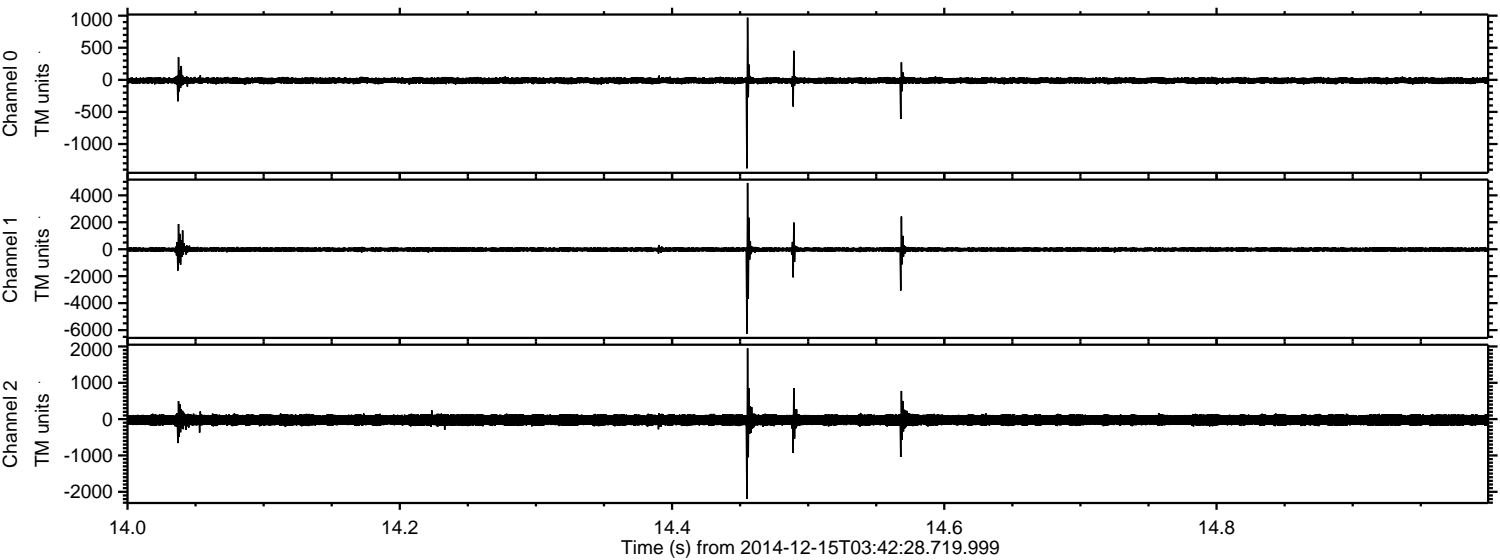
Processed Mon Dec 15 04:51:40 2014 by ELM ver.2012-10-06 from 001\_\_elm20141215\_034227\_\_dat00.bin





ELMAVAN 3D WAVEFORMS (Measured data sampled at 50 kHz) 49786 packets of 144 samples from 2014-12-15T03:42:28.719.999. Part 15/144

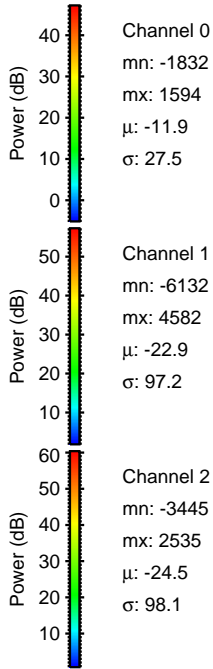
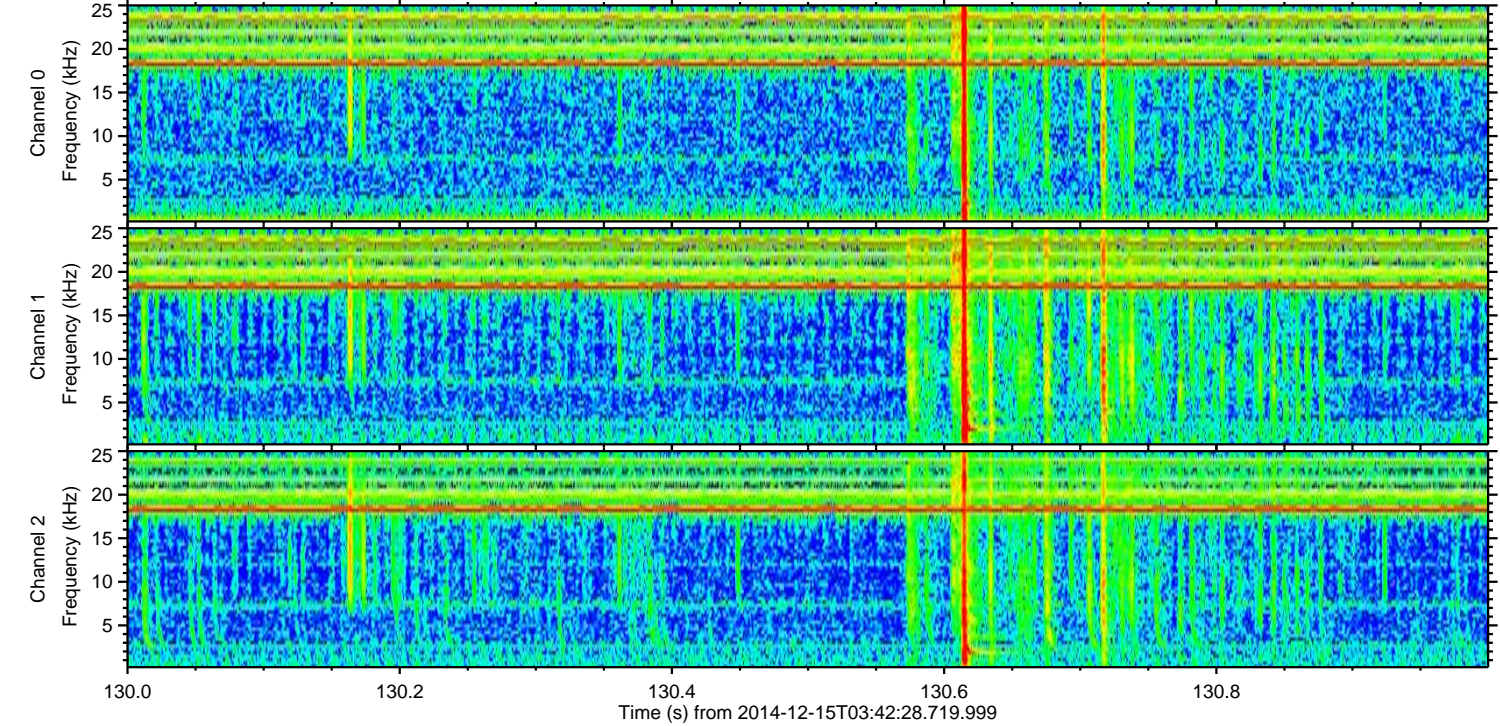
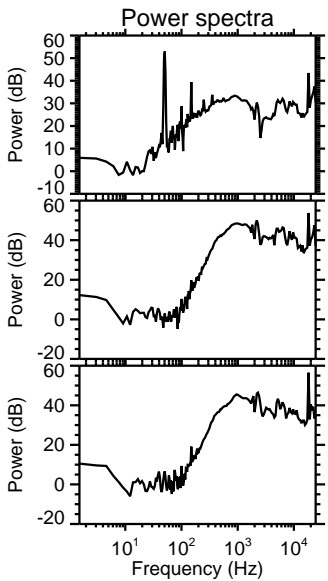
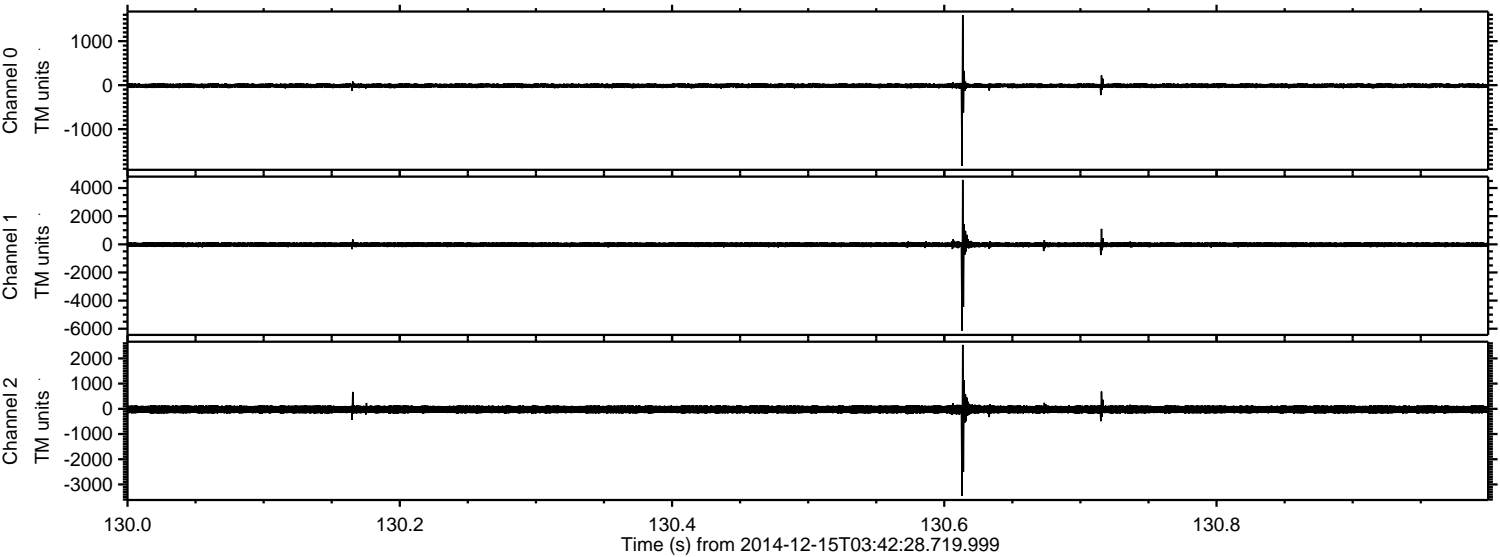
Processed Mon Dec 15 04:51:41 2014 by ELM ver.2012-10-06 from 001\_\_elm20141215\_034227\_\_dat00.bin





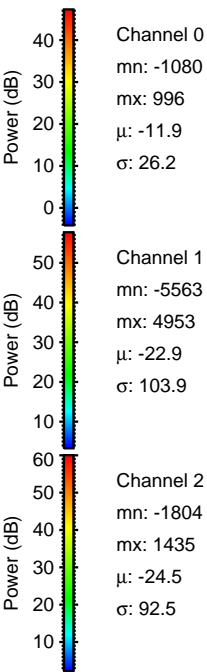
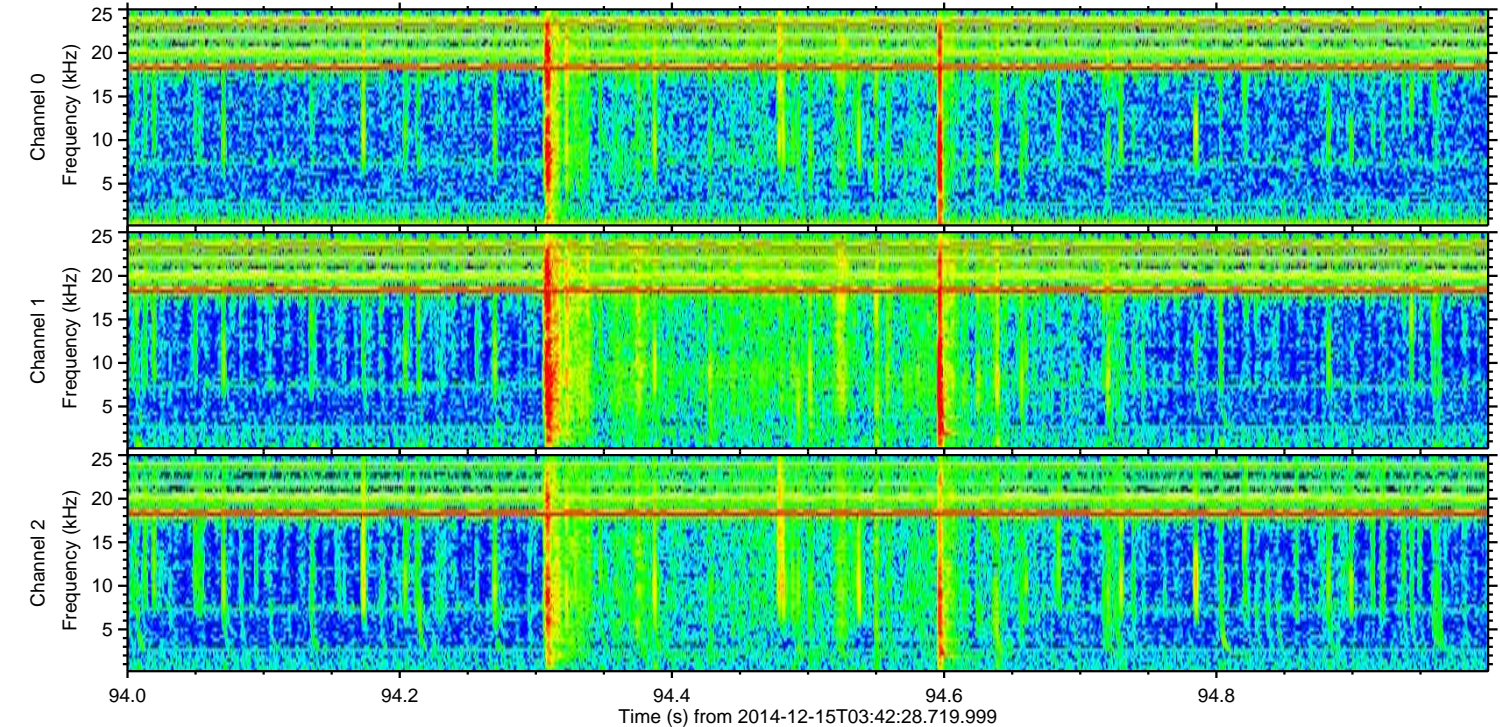
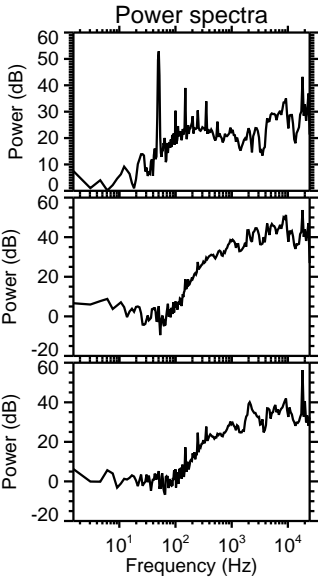
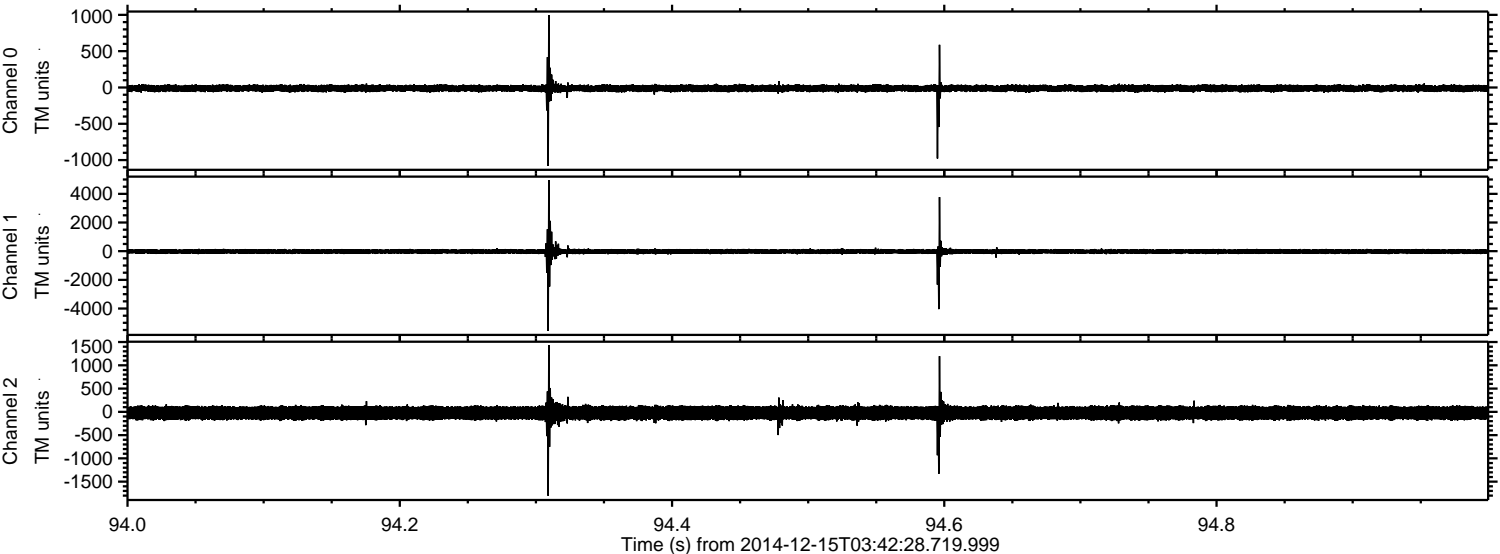
ELMAVAN 3D WAVEFORMS (Measured data sampled at 50 kHz) 49786 packets of 144 samples from 2014-12-15T03:42:28.719.999. Part 131/144

Processed Mon Dec 15 04:51:42 2014 by ELM ver.2012-10-06 from 001\_\_elm20141215\_034227\_\_dat00.bin



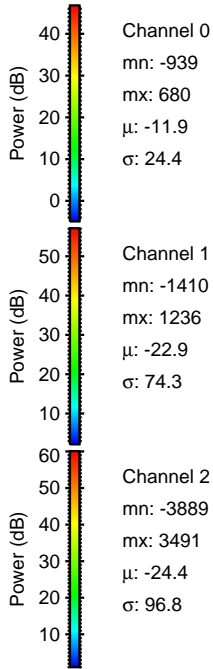
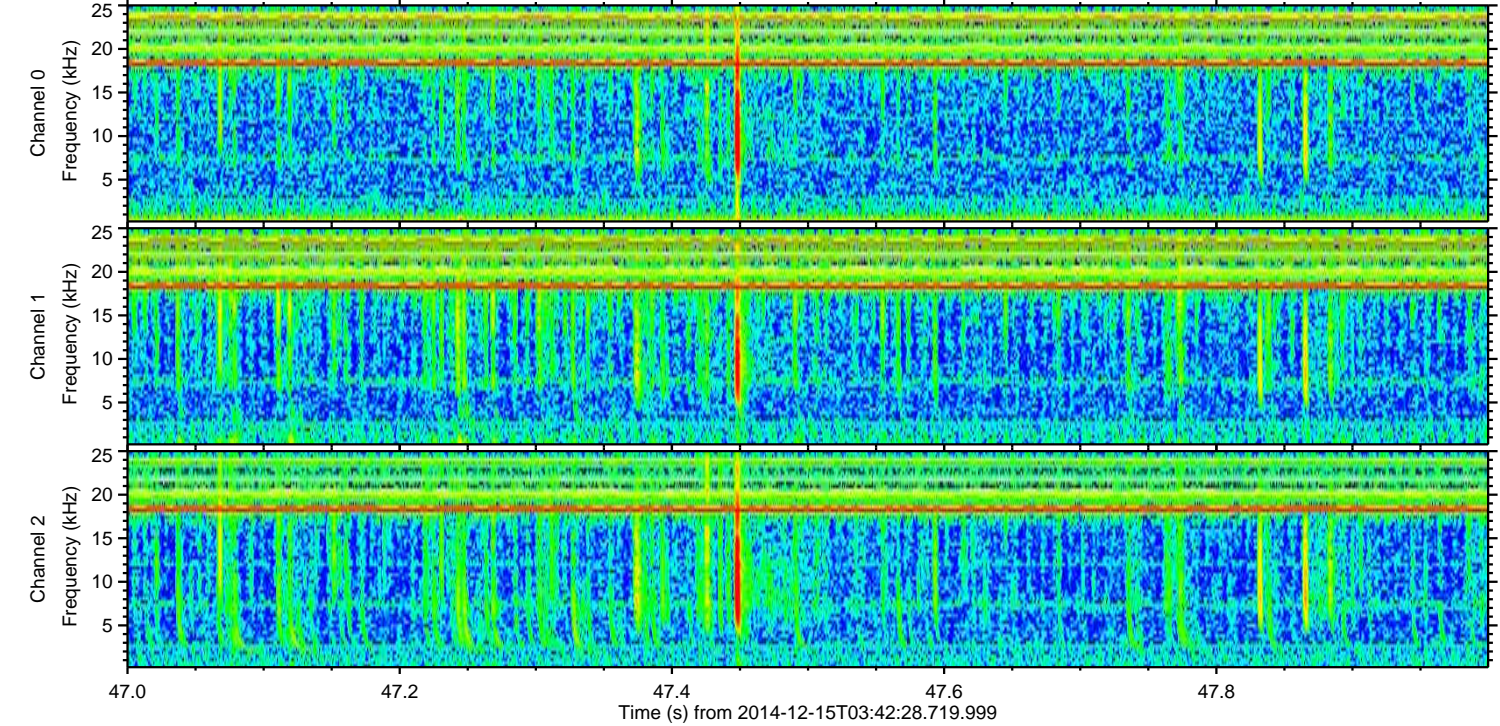
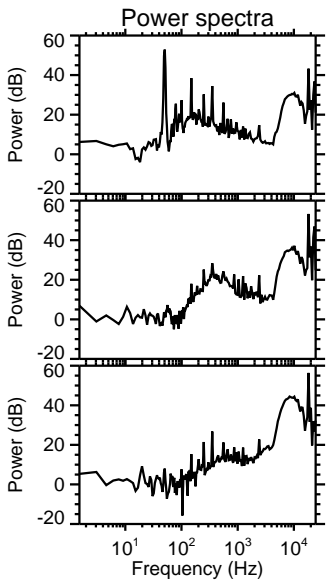
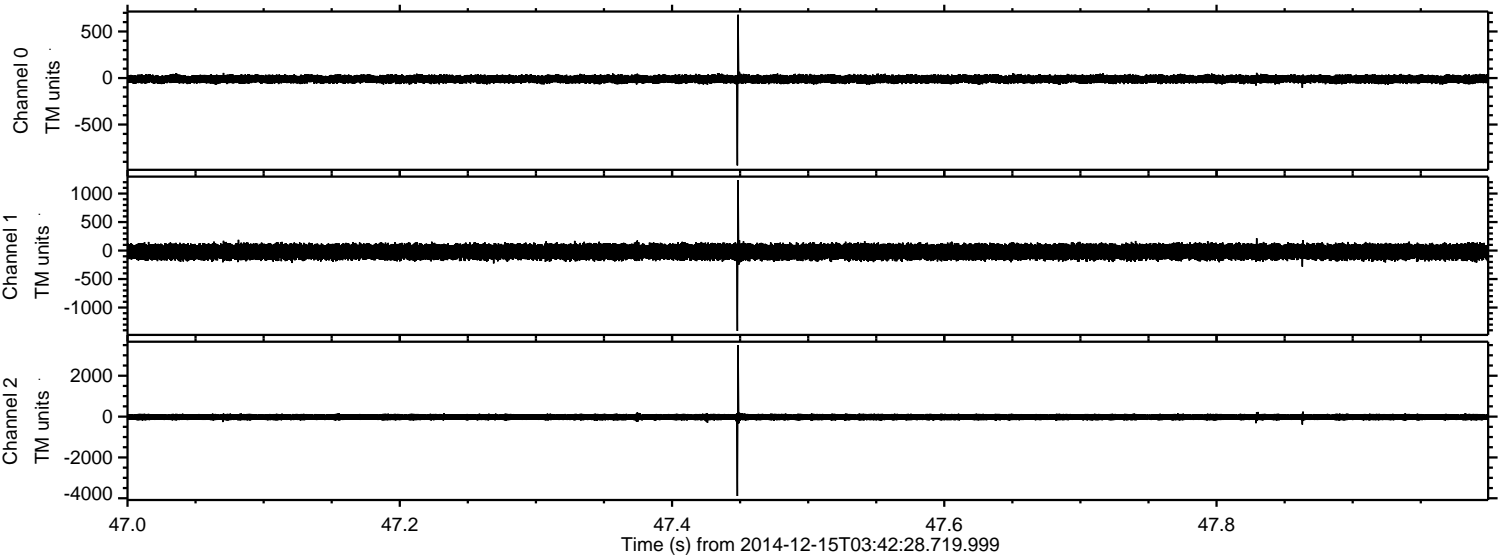


Processed Mon Dec 15 04:51:43 2014 by ELM ver.2012-10-06 from 001\_\_elm20141215\_034227\_\_dat00.bin





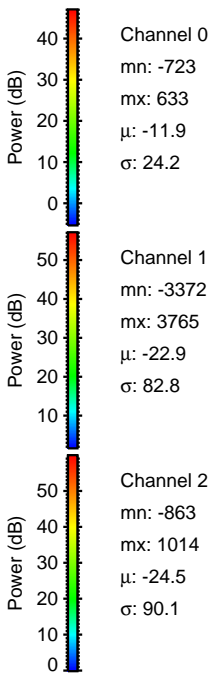
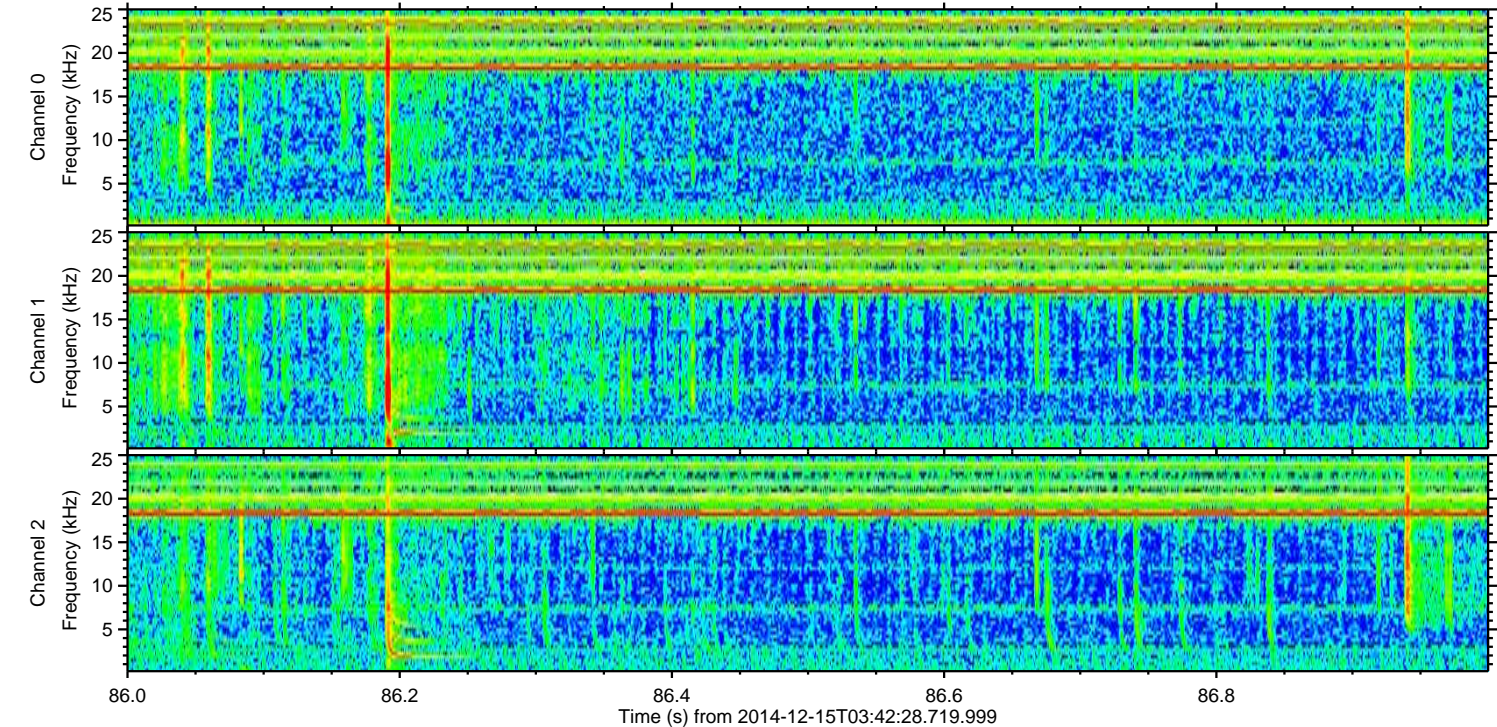
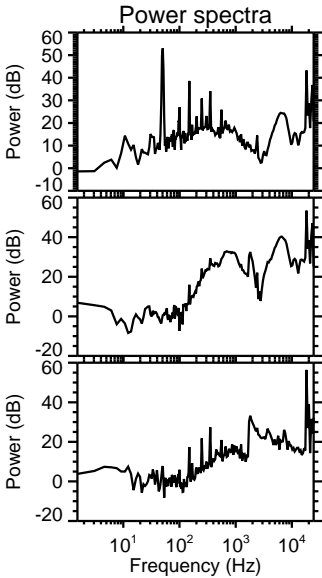
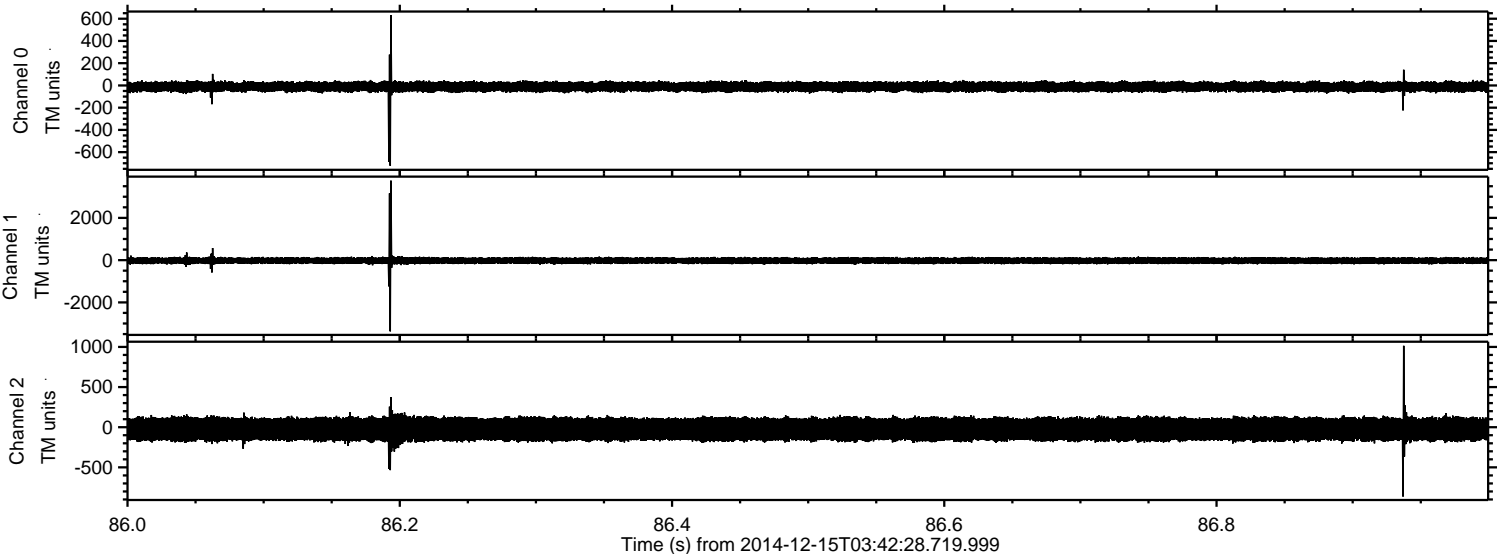
Processed Mon Dec 15 04:51:44 2014 by ELM ver.2012-10-06 from 001\_\_elm20141215\_034227\_\_dat00.bin





ELMAVAN 3D WAVEFORMS (Measured data sampled at 50 kHz) 49786 packets of 144 samples from 2014-12-15T03:42:28.719.999. Part 87/144

Processed Mon Dec 15 04:51:45 2014 by ELM ver.2012-10-06 from 001\_elm20141215\_034227\_\_dat00.bin



Power spectra

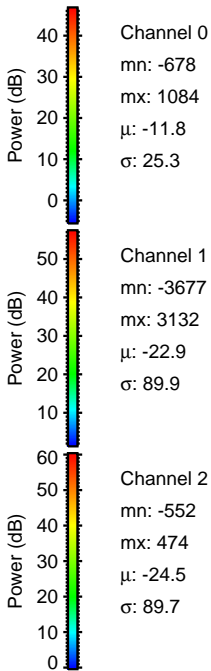
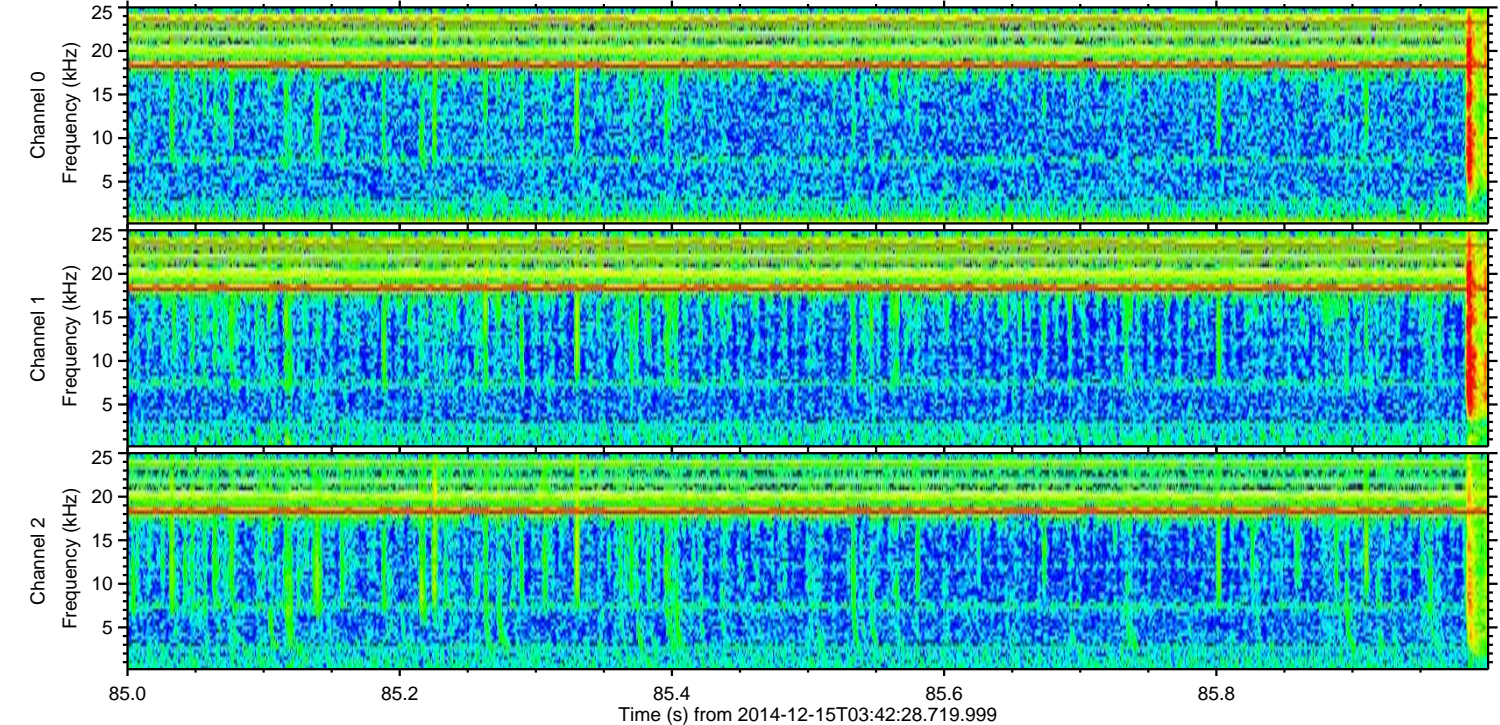
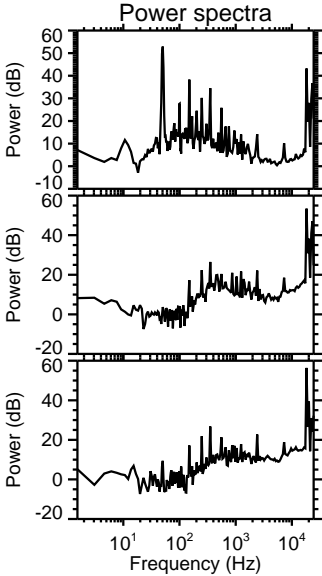
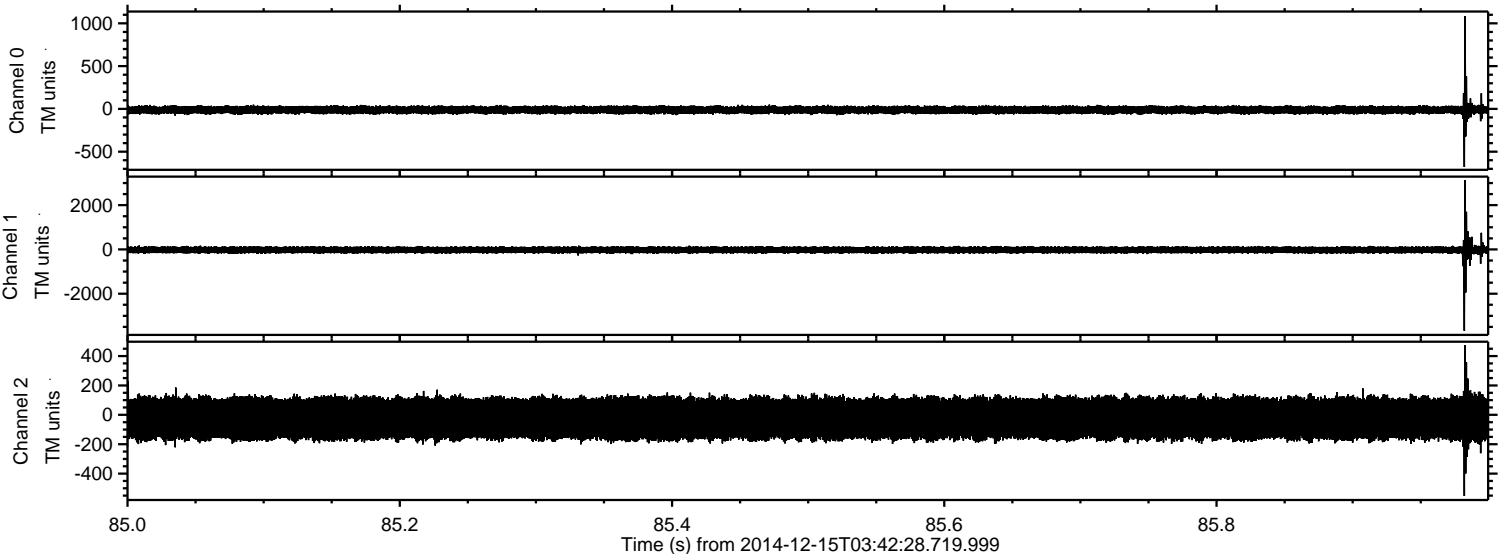
Channel 0  
mn: -723  
mx: 633  
 $\mu$ : -11.9  
 $\sigma$ : 24.2

Channel 1  
mn: -3372  
mx: 3765  
 $\mu$ : -22.9  
 $\sigma$ : 82.8

Channel 2  
mn: -863  
mx: 1014  
 $\mu$ : -24.5  
 $\sigma$ : 90.1



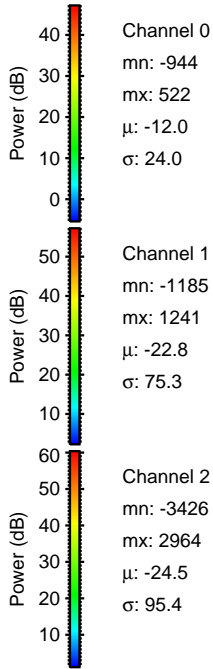
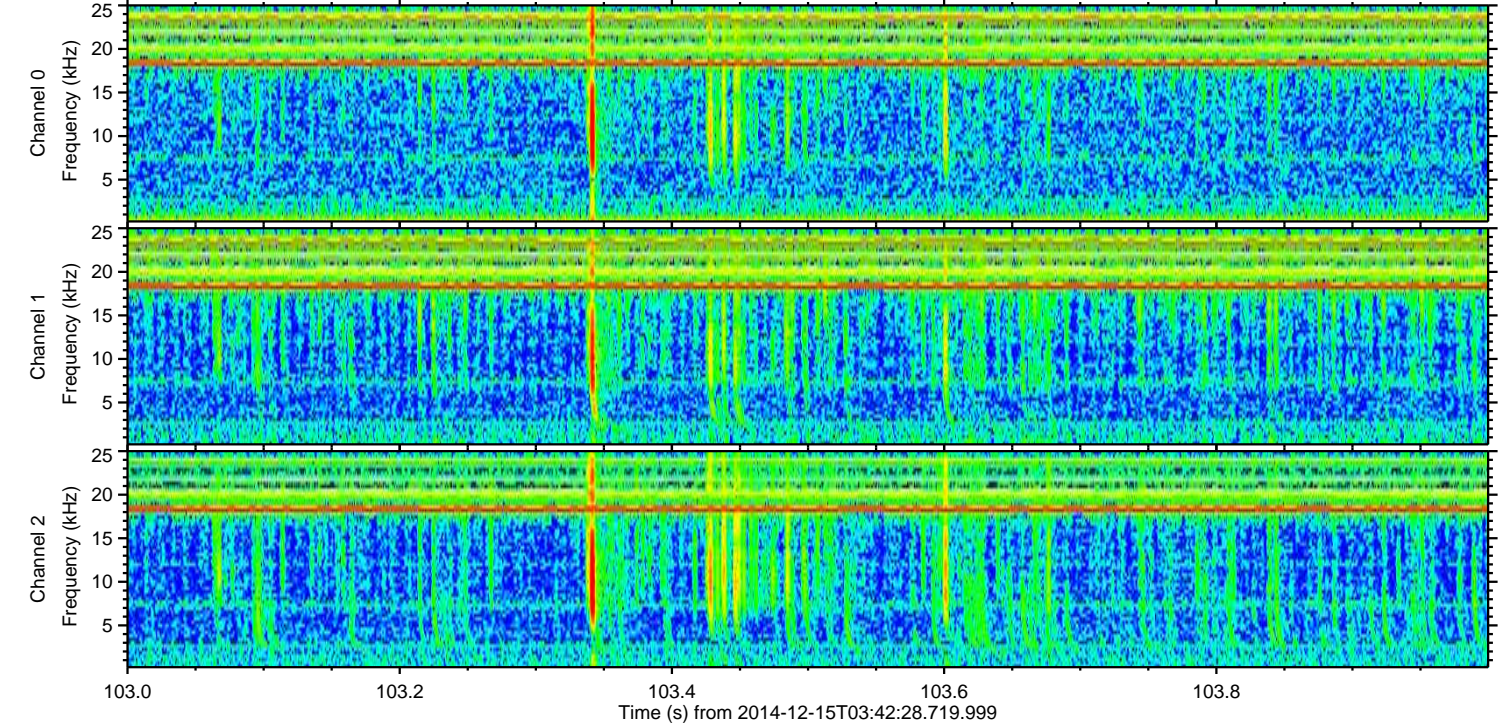
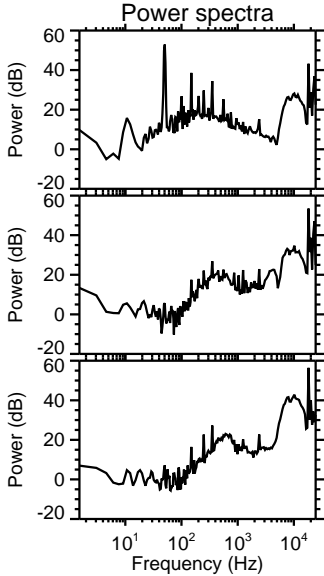
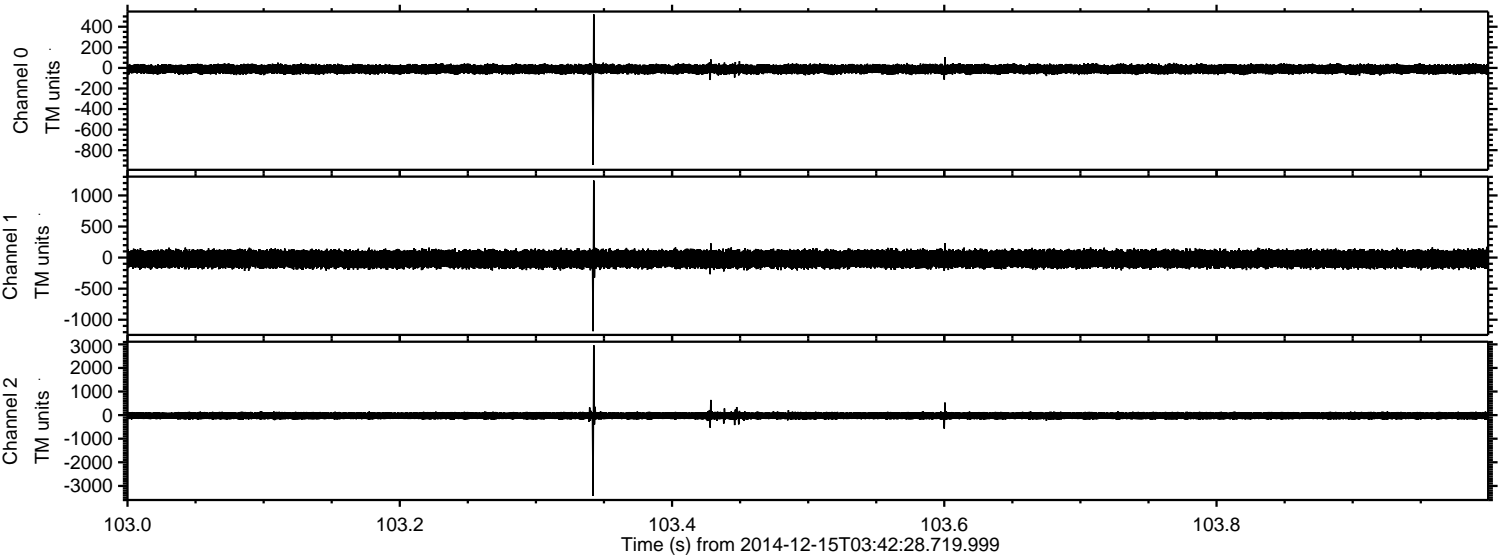
Processed Mon Dec 15 04:51:46 2014 by ELM ver.2012-10-06 from 001\_\_elm20141215\_034227\_\_dat00.bin





ELMAVAN 3D WAVEFORMS (Measured data sampled at 50 kHz) 49786 packets of 144 samples from 2014-12-15T03:42:28.719.999. Part 104/144

Processed Mon Dec 15 04:51:47 2014 by ELM ver.2012-10-06 from 001\_\_elm20141215\_034227\_\_dat00.bin





ELMAVAN 3D WAVEFORMS (Measured data sampled at 50 kHz) 49786 packets of 144 samples from 2014-12-15T03:42:28.719.999. Part 12/144

Processed Mon Dec 15 04:51:48 2014 by ELM ver.2012-10-06 from 001\_\_elm20141215\_034227\_\_dat00.bin

