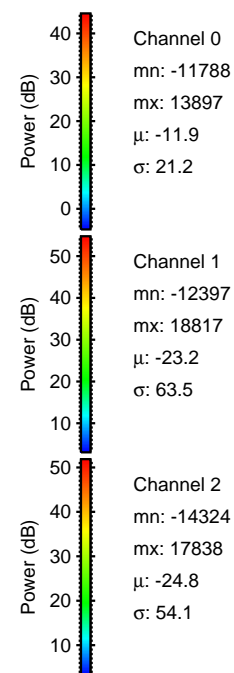
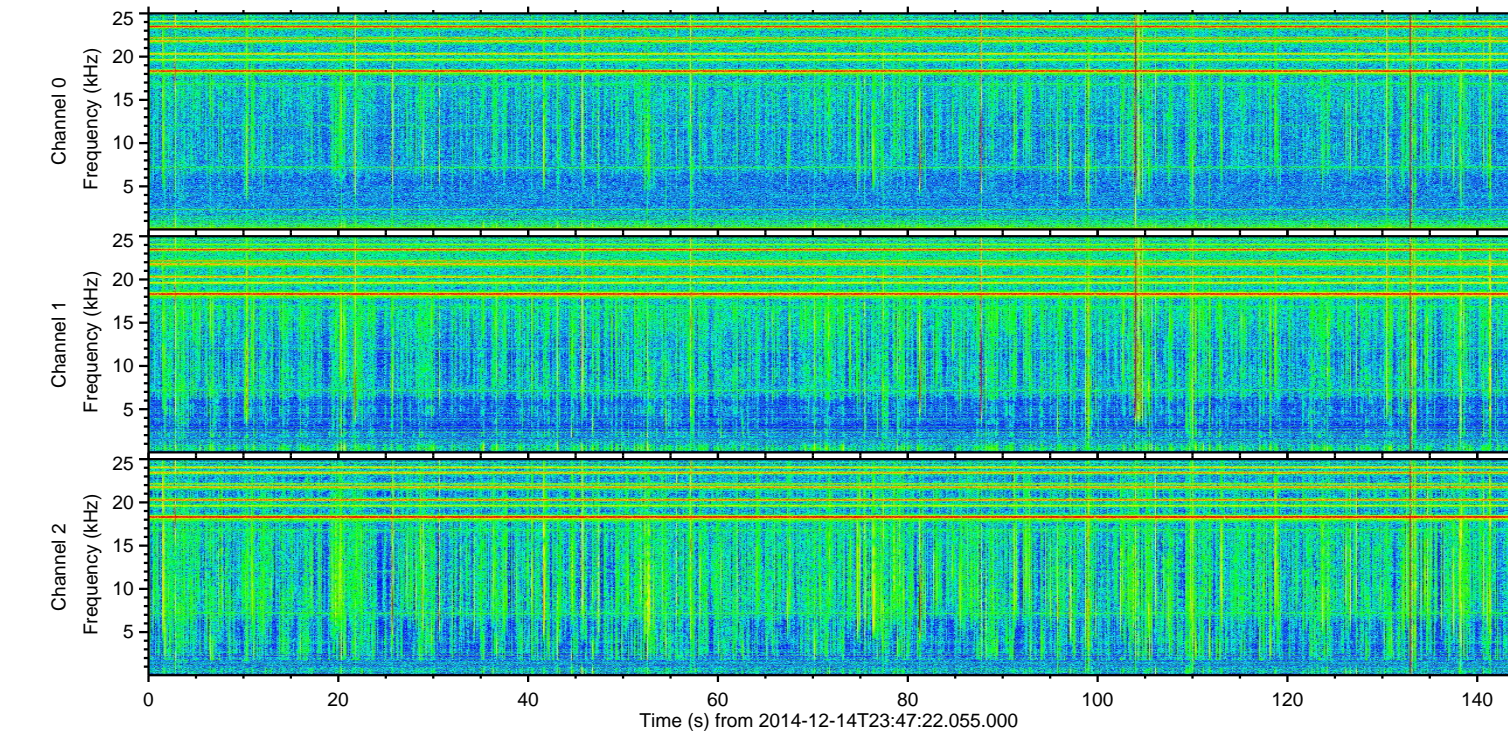
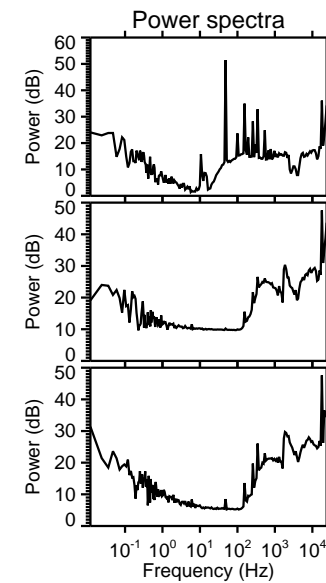
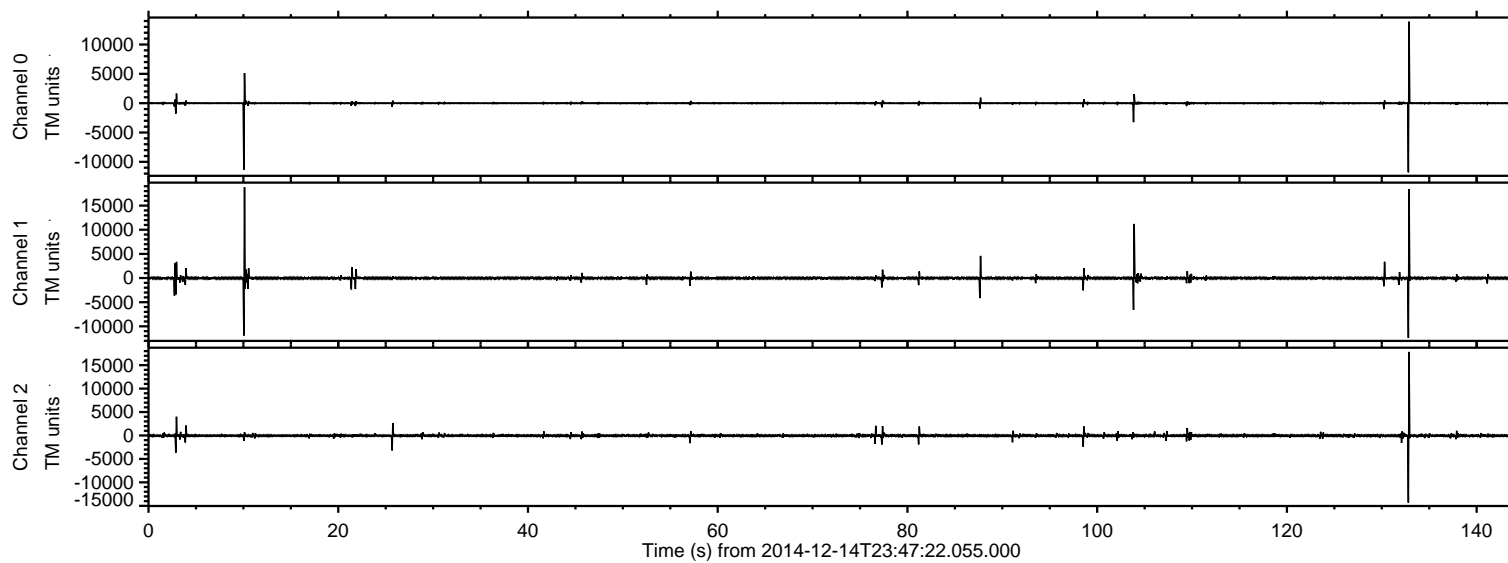


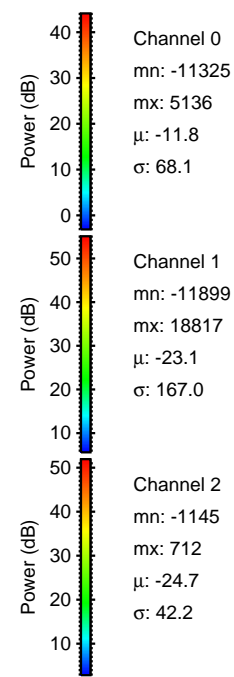
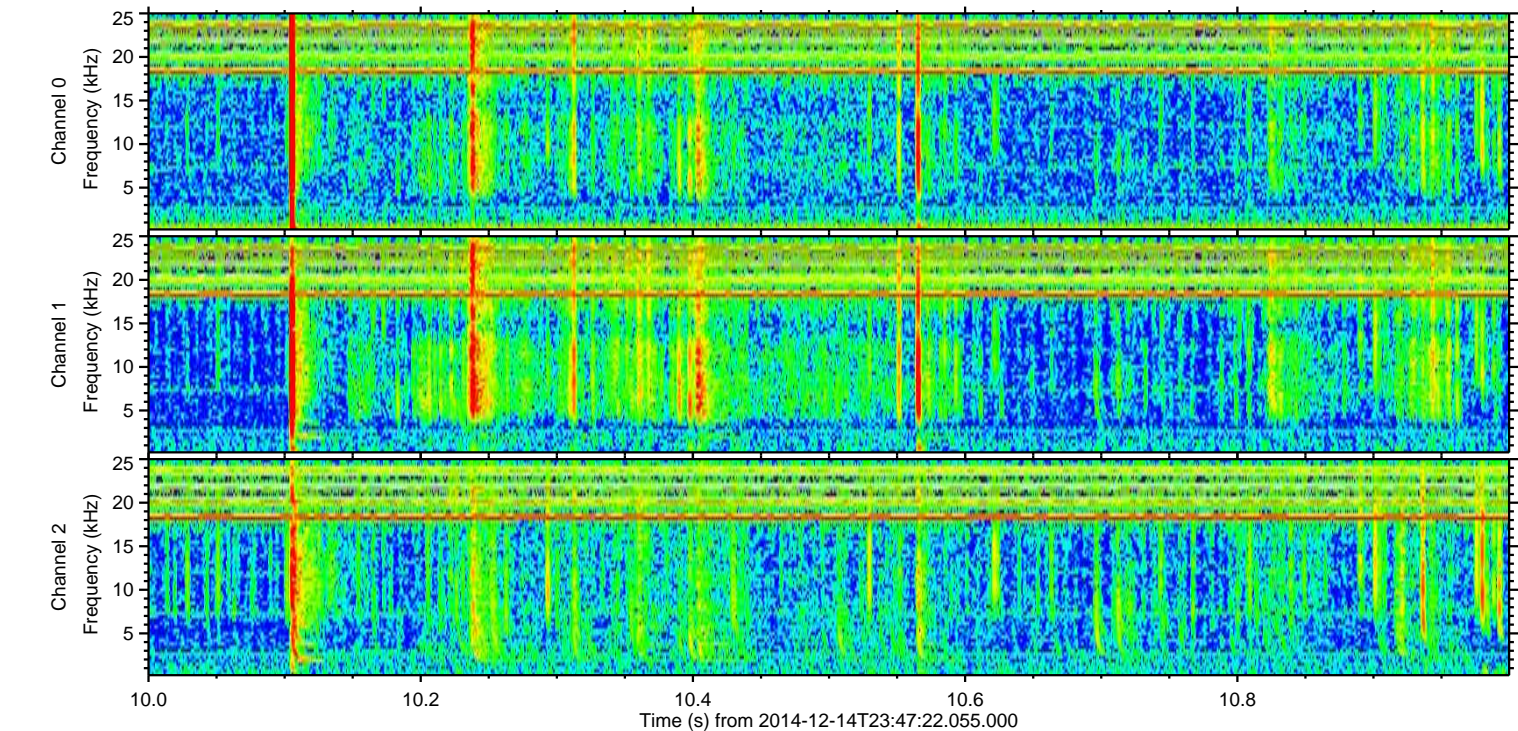
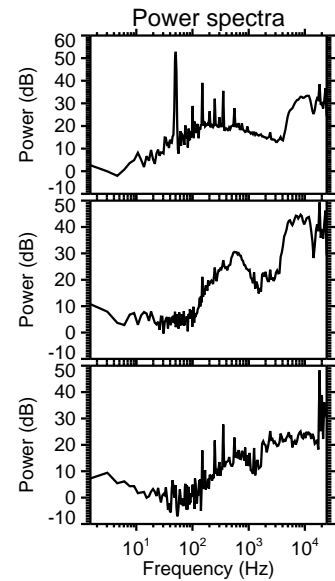
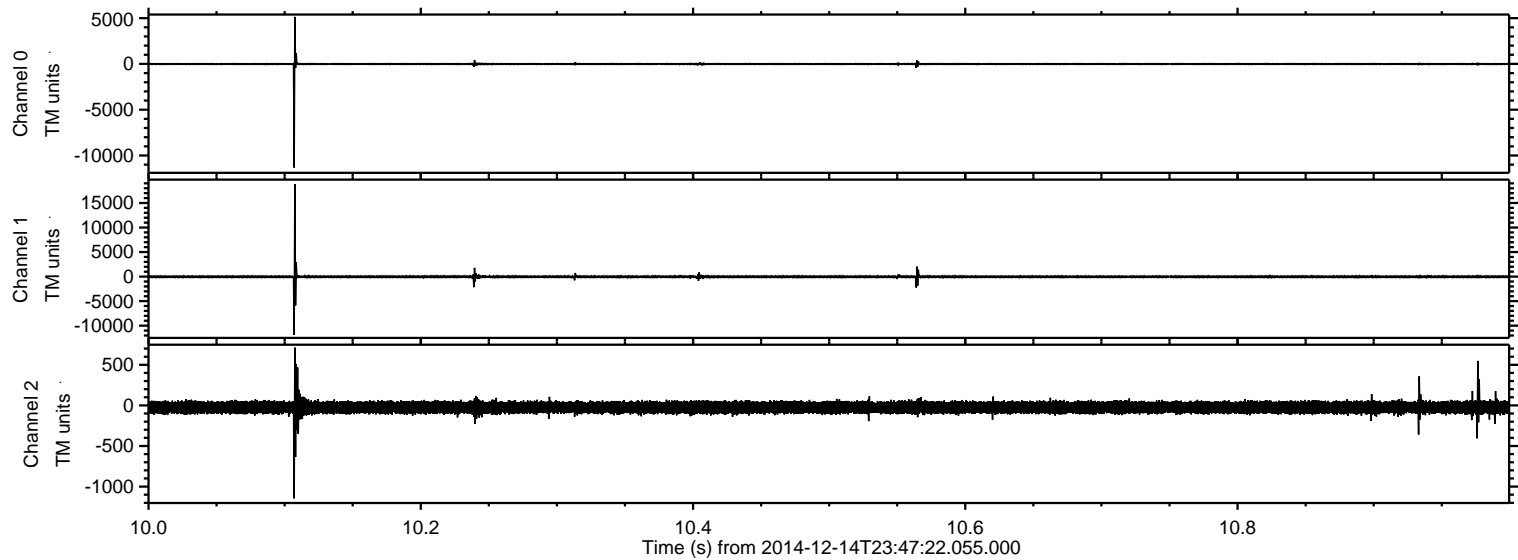
ELMAVAN 3D WAVEFORMS (Measured data sampled at 50 kHz) 49800 packets of 144 samples from 2014-12-14T23:47:22.055.000.

Processed Mon Dec 15 00:58:44 2014 by ELM ver.2012-10-06 from 001__elm20141214_234721__dat00.bin



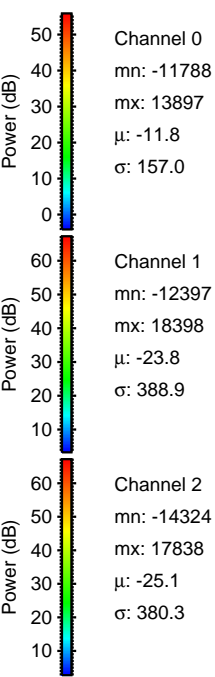
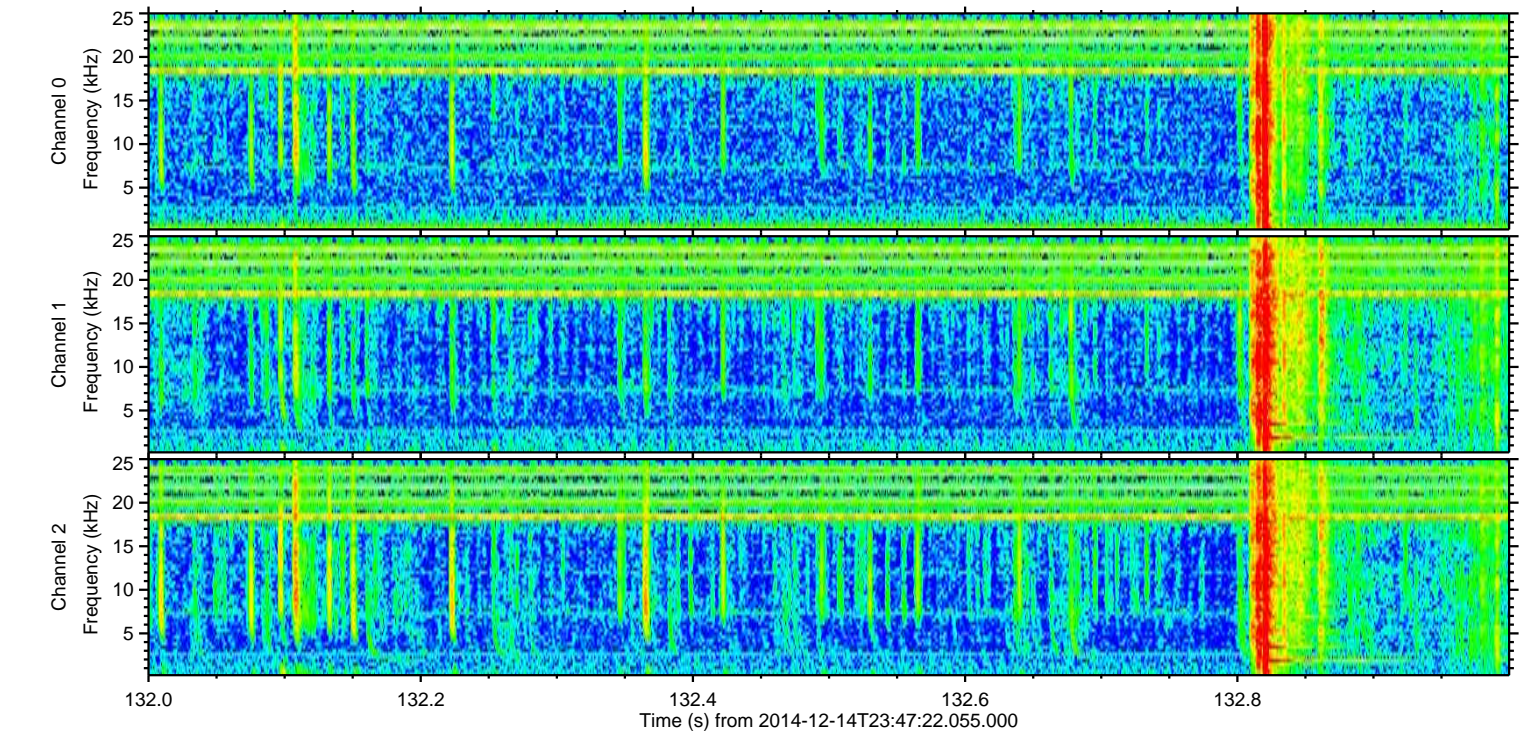
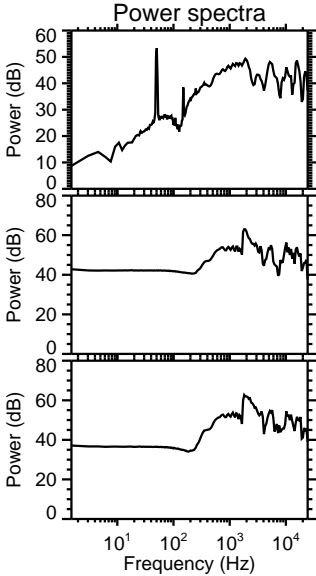
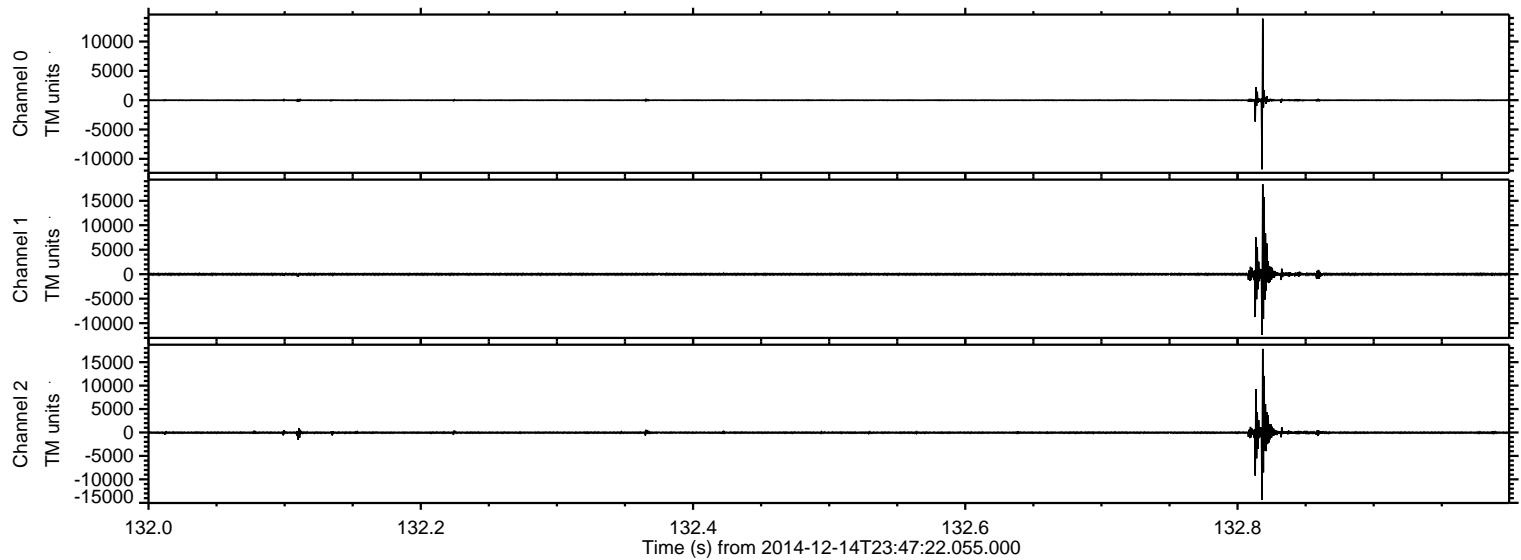
ELMAVAN 3D WAVEFORMS (Measured data sampled at 50 kHz) 49800 packets of 144 samples from 2014-12-14T23:47:22.055.000. Part 11/144

Processed Mon Dec 15 00:58:56 2014 by ELM ver.2012-10-06 from 001__elm20141214_234721__dat00.bin



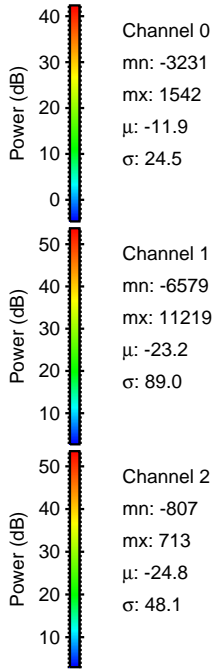
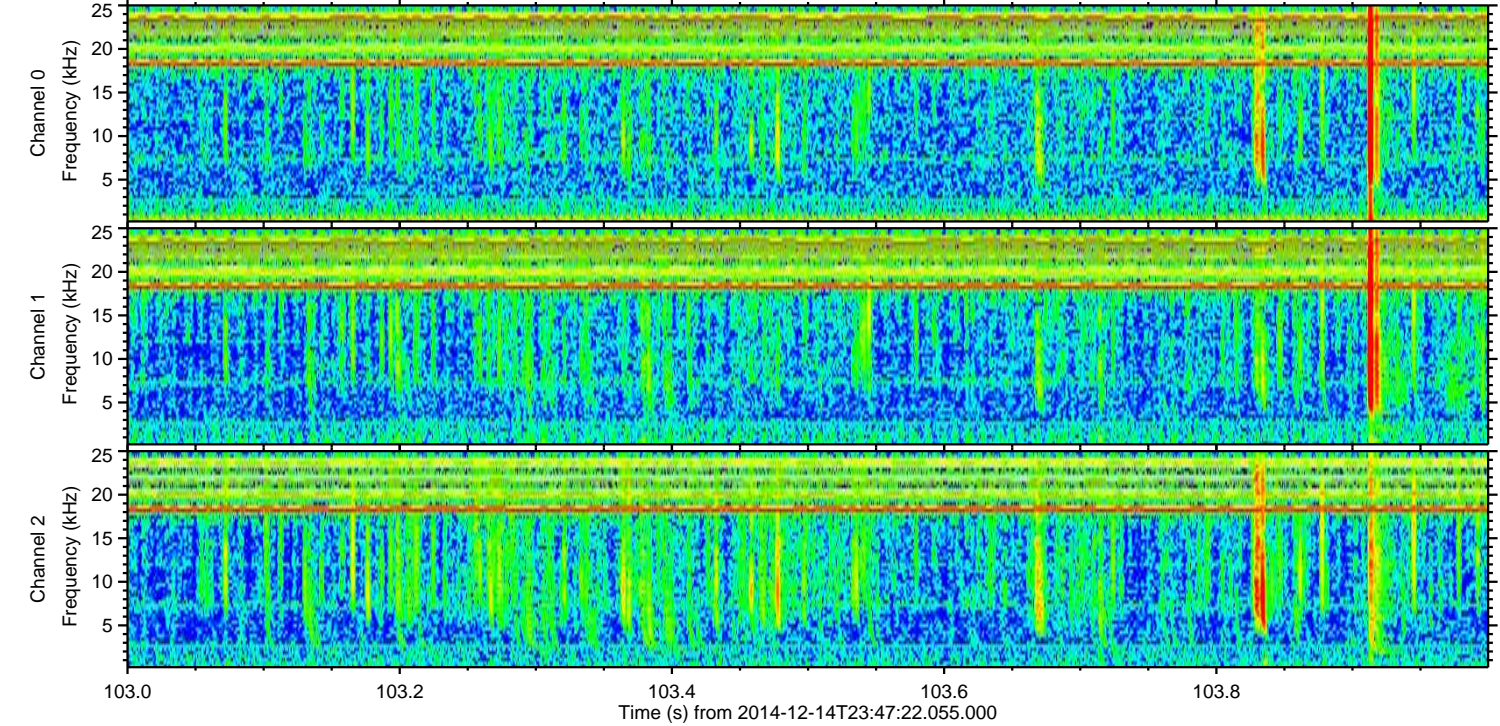
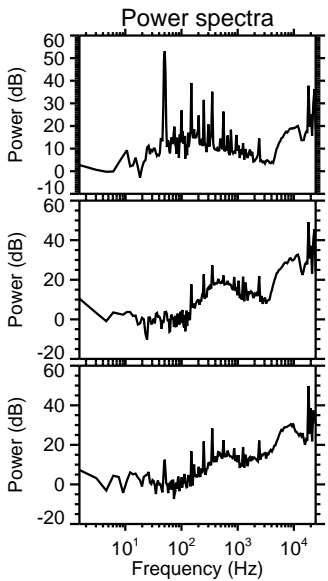
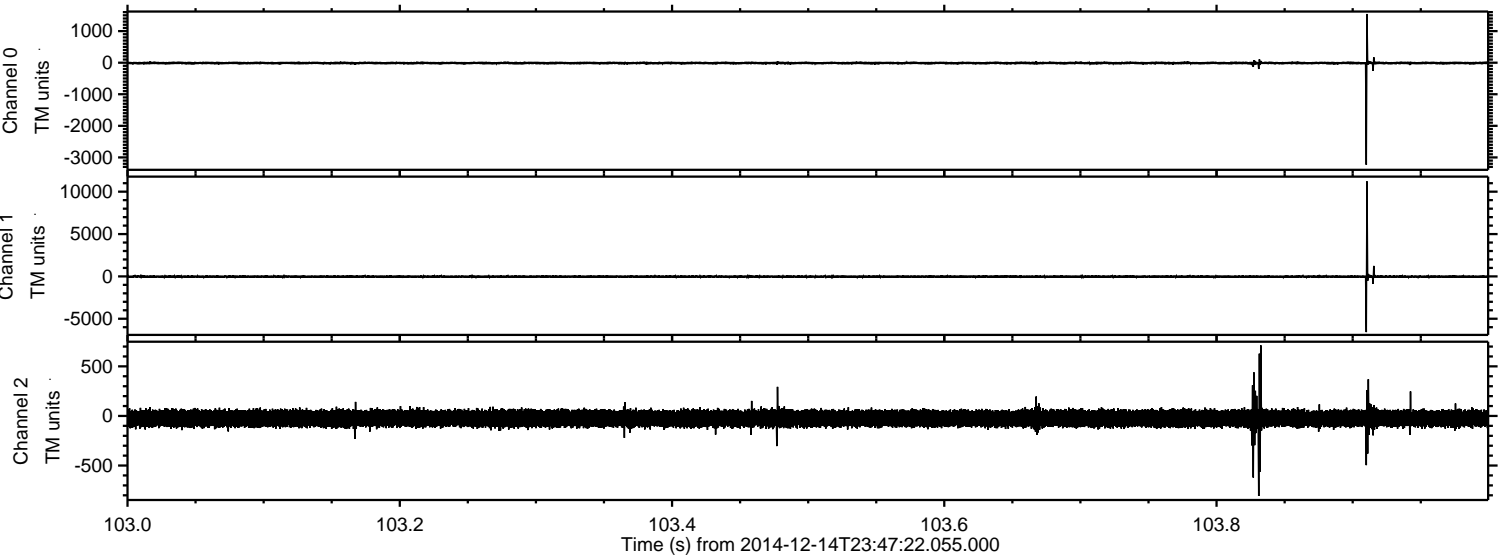
ELMAVAN 3D WAVEFORMS (Measured data sampled at 50 kHz) 49800 packets of 144 samples from 2014-12-14T23:47:22.055.000. Part 133/144

Processed Mon Dec 15 00:58:57 2014 by ELM ver.2012-10-06 from 001__elm20141214_234721__dat00.bin

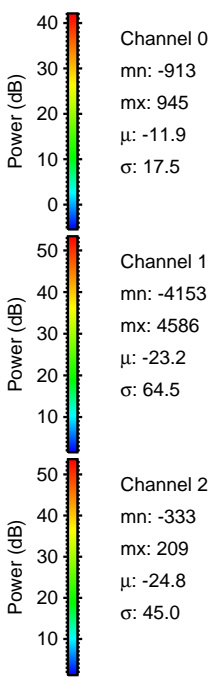
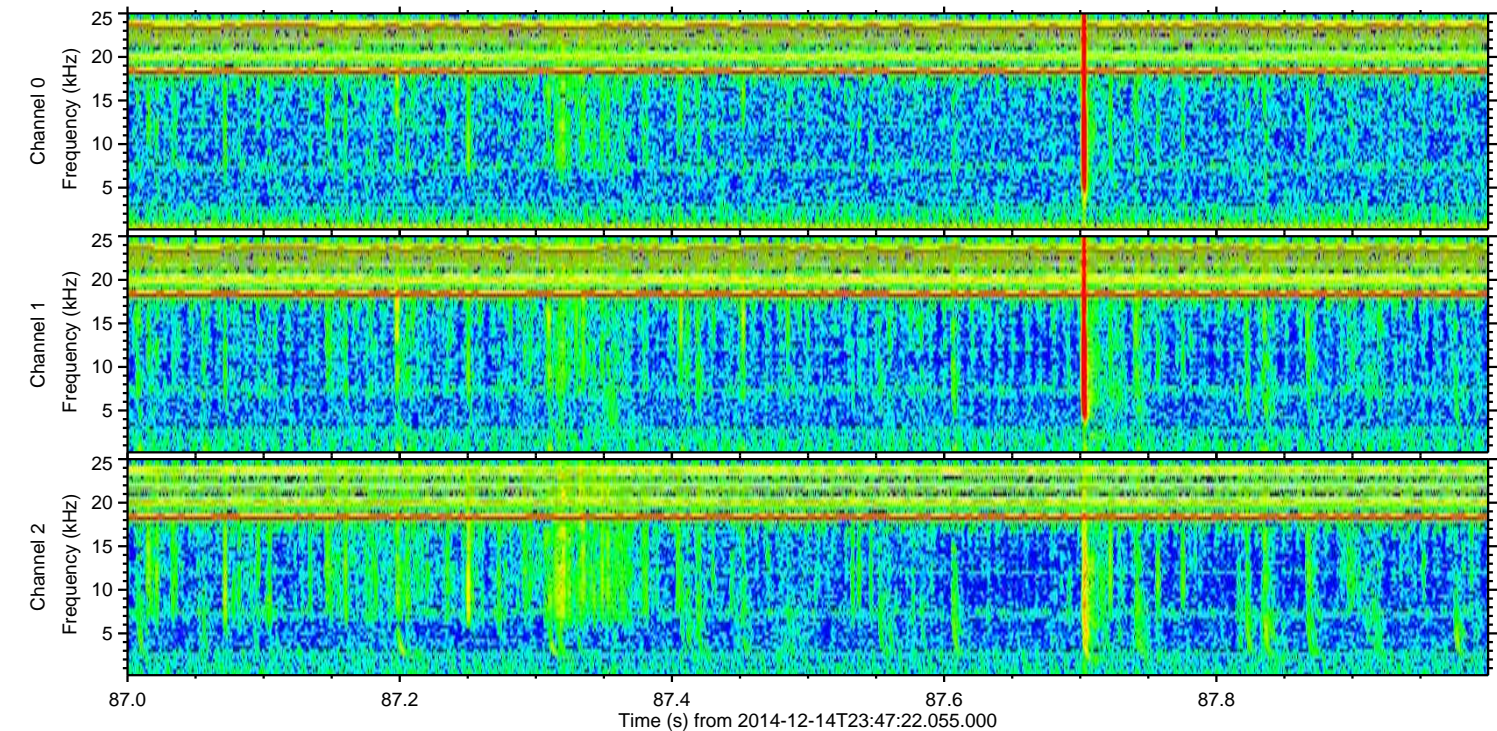
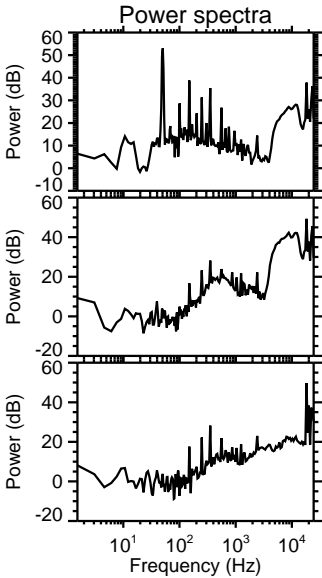
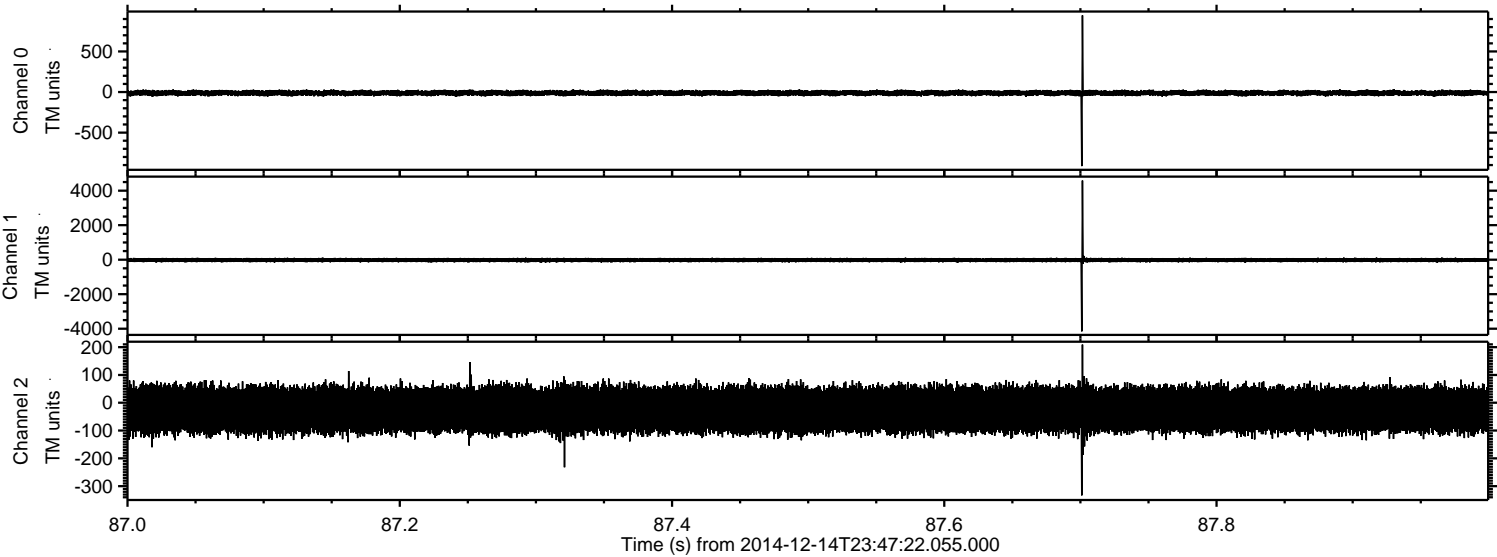


ELMAVAN 3D WAVEFORMS (Measured data sampled at 50 kHz) 49800 packets of 144 samples from 2014-12-14T23:47:22.055.000. Part 104/144

Processed Mon Dec 15 00:58:58 2014 by ELM ver.2012-10-06 from 001__elm20141214_234721__dat00.bin

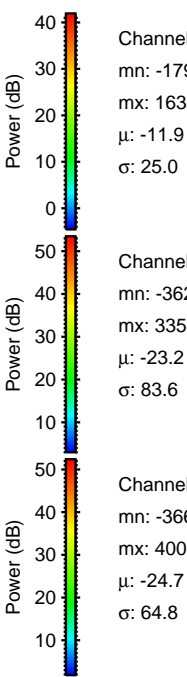
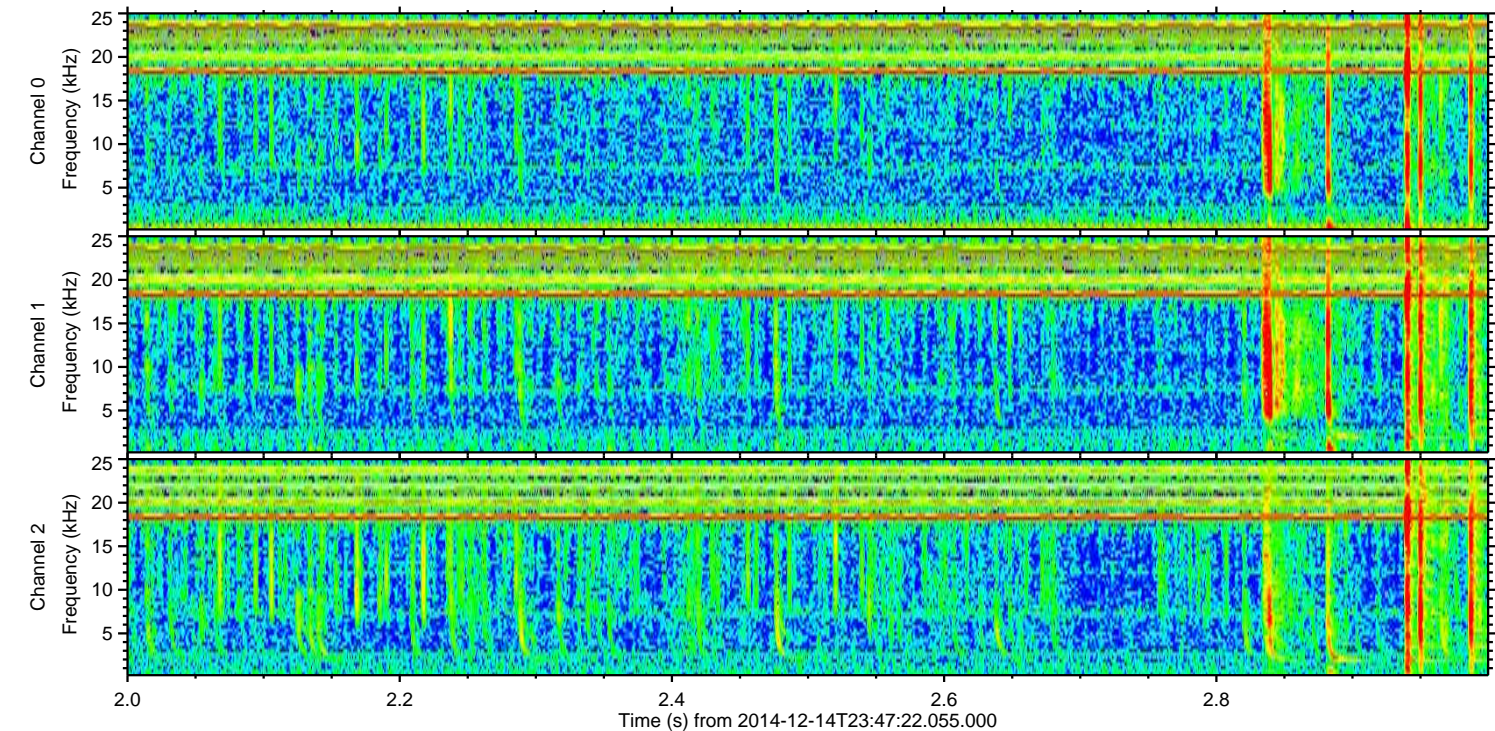
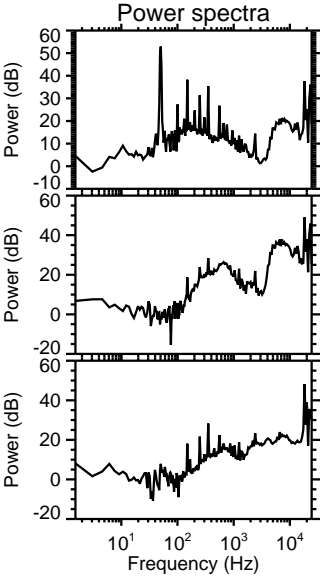
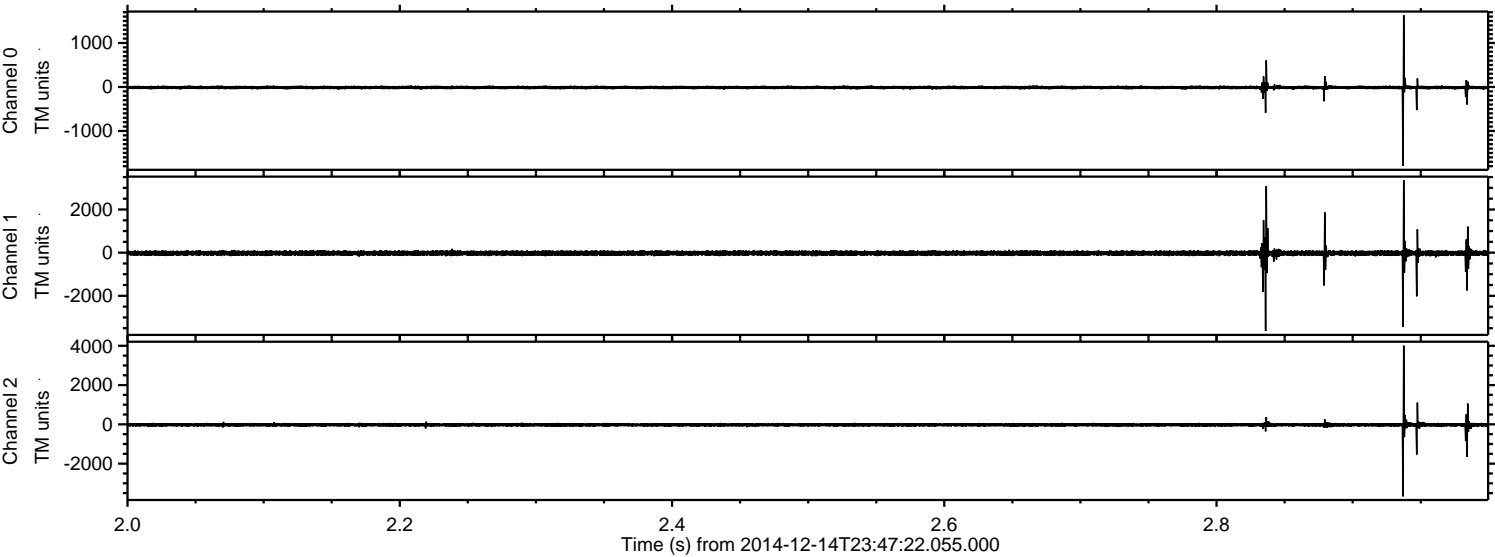


Processed Mon Dec 15 00:58:59 2014 by ELM ver.2012-10-06 from 001__elm20141214_234721__dat00.bin



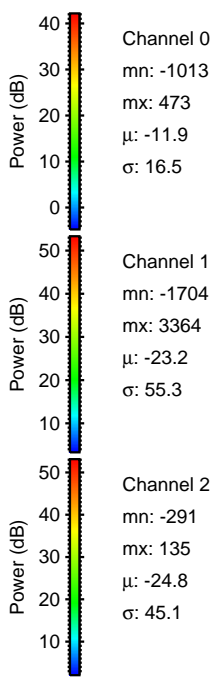
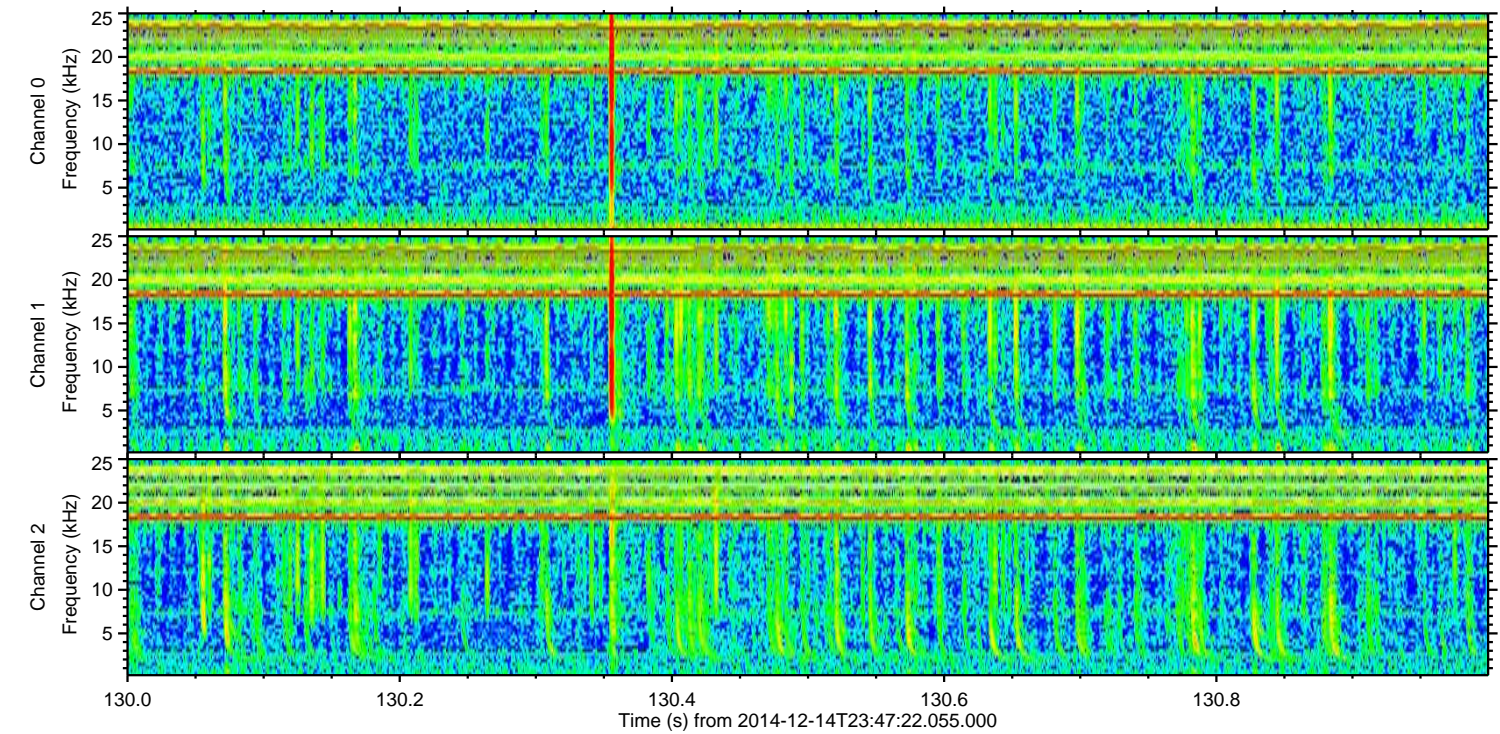
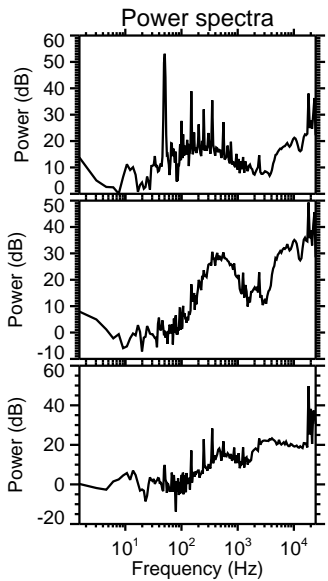
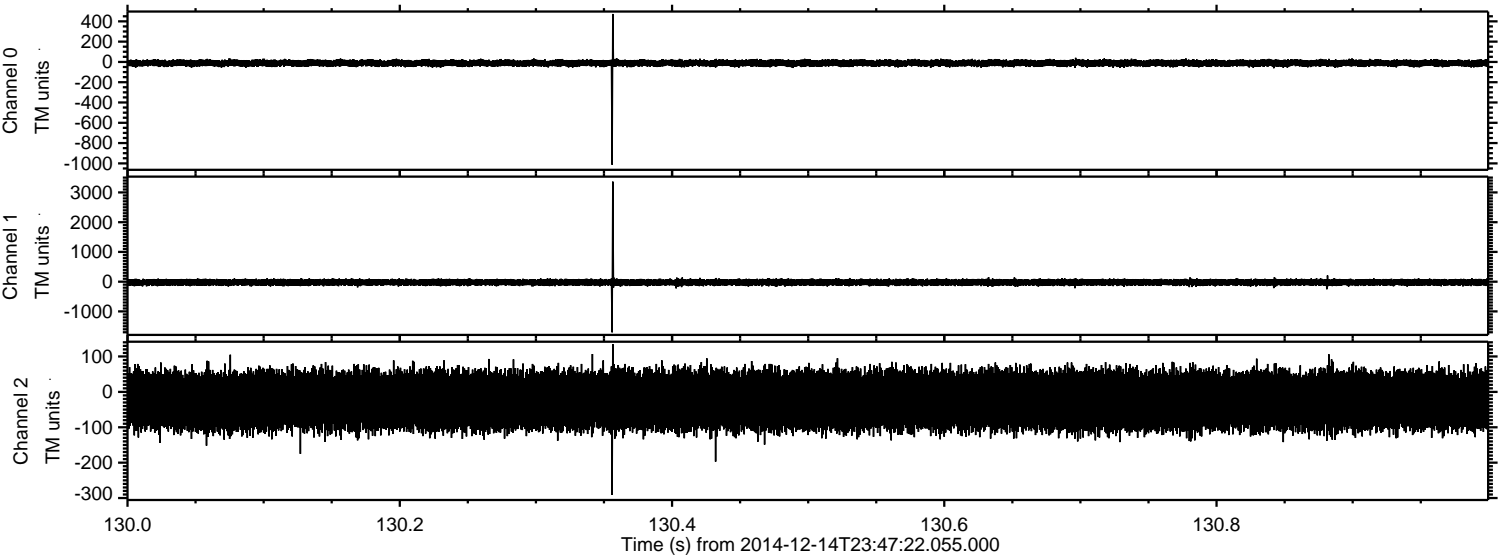
ELMAVAN 3D WAVEFORMS (Measured data sampled at 50 kHz) 49800 packets of 144 samples from 2014-12-14T23:47:22.055.000. Part 3/144

Processed Mon Dec 15 00:58:59 2014 by ELM ver.2012-10-06 from 001__elm20141214_234721__dat00.bin



ELMAVAN 3D WAVEFORMS (Measured data sampled at 50 kHz) 49800 packets of 144 samples from 2014-12-14T23:47:22.055.000. Part 131/144

Processed Mon Dec 15 00:59:00 2014 by ELM ver.2012-10-06 from 001__elm20141214_234721__dat00.bin

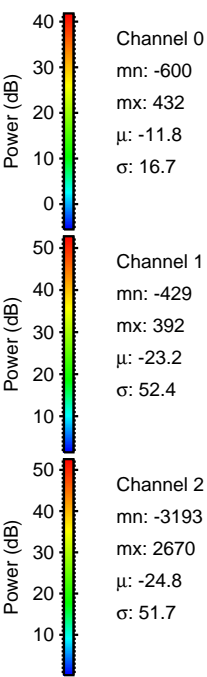
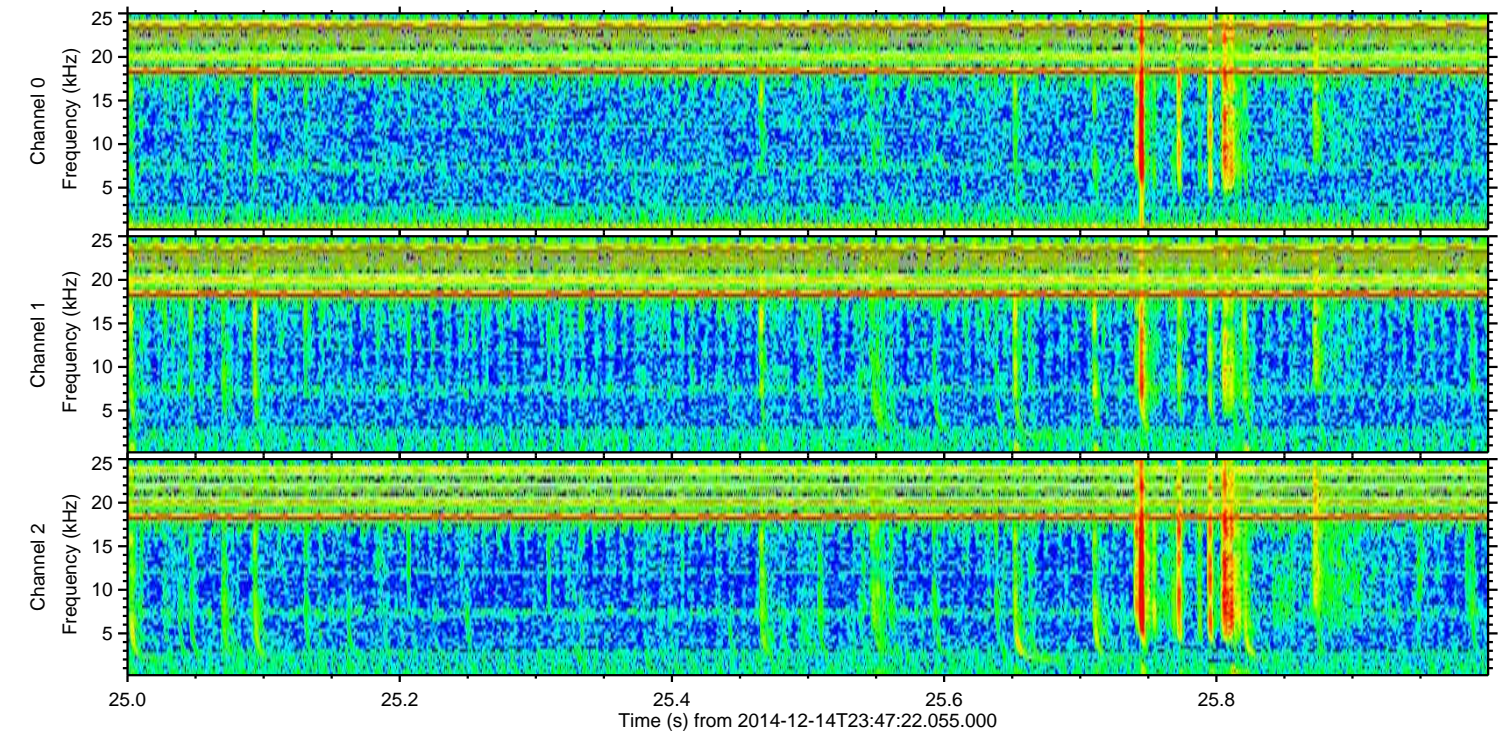
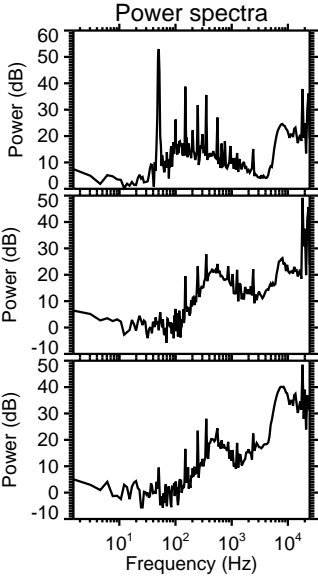
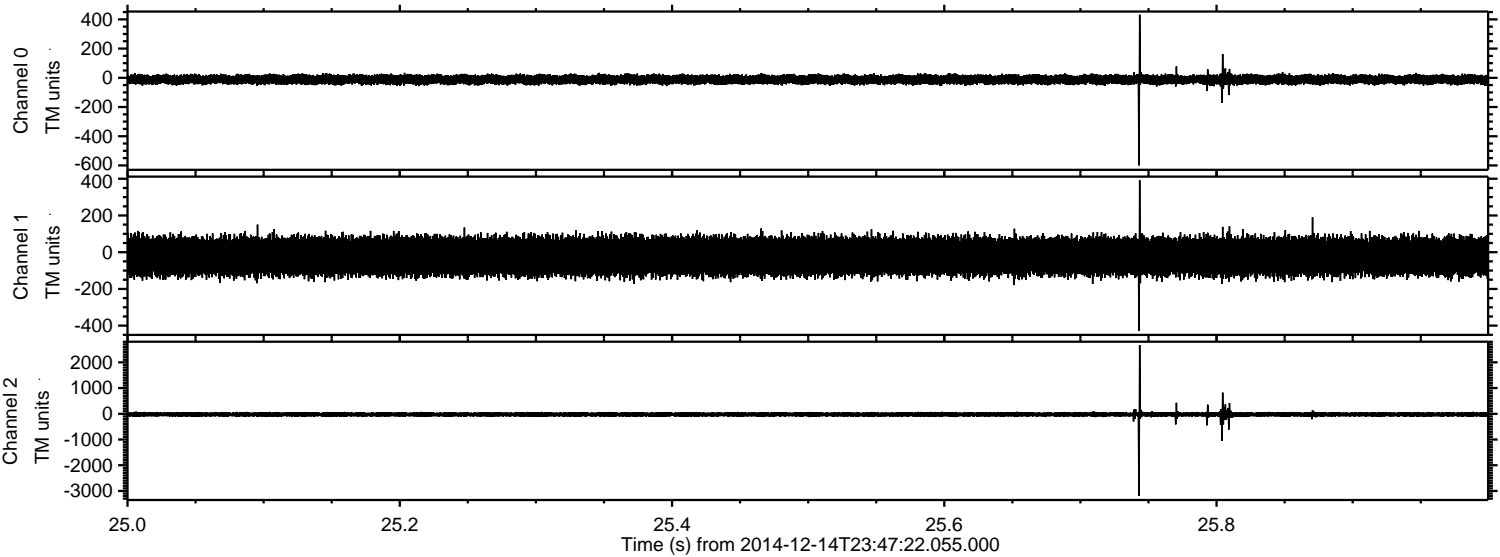


Channel 0
mn: -1013
mx: 473
 μ : -11.9
 σ : 16.5

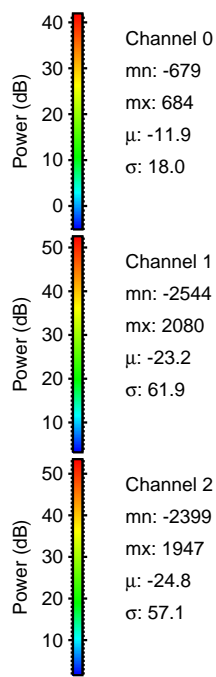
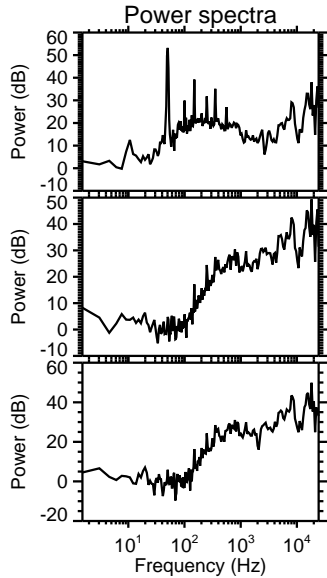
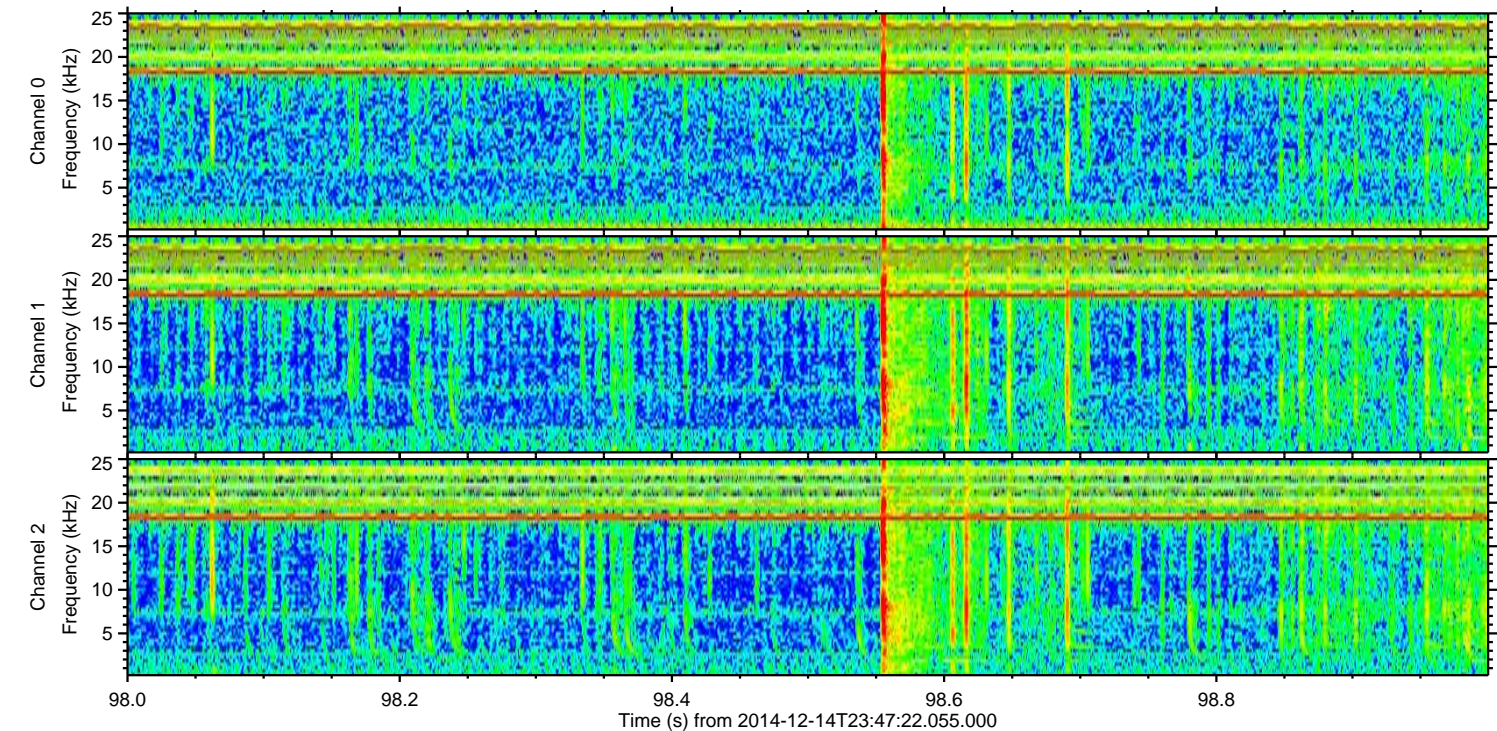
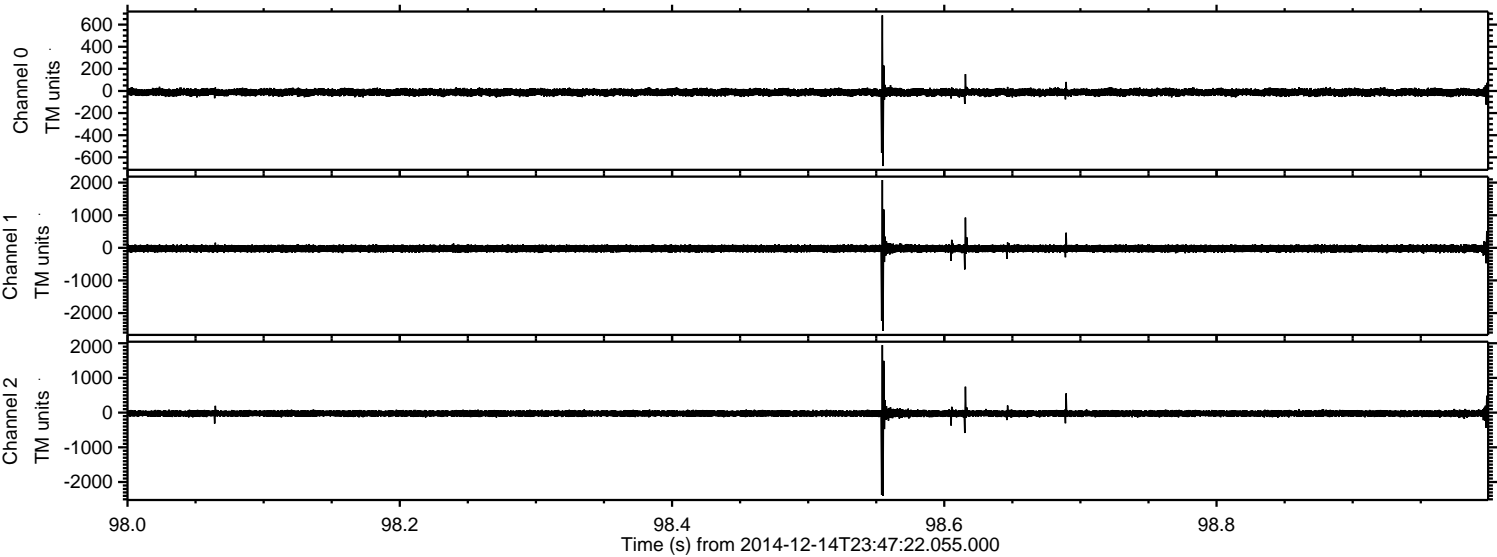
Channel 1
mn: -1704
mx: 3364
 μ : -23.2
 σ : 55.3

Channel 2
mn: -291
mx: 135
 μ : -24.8
 σ : 45.1

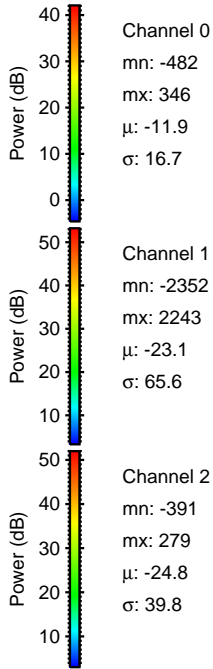
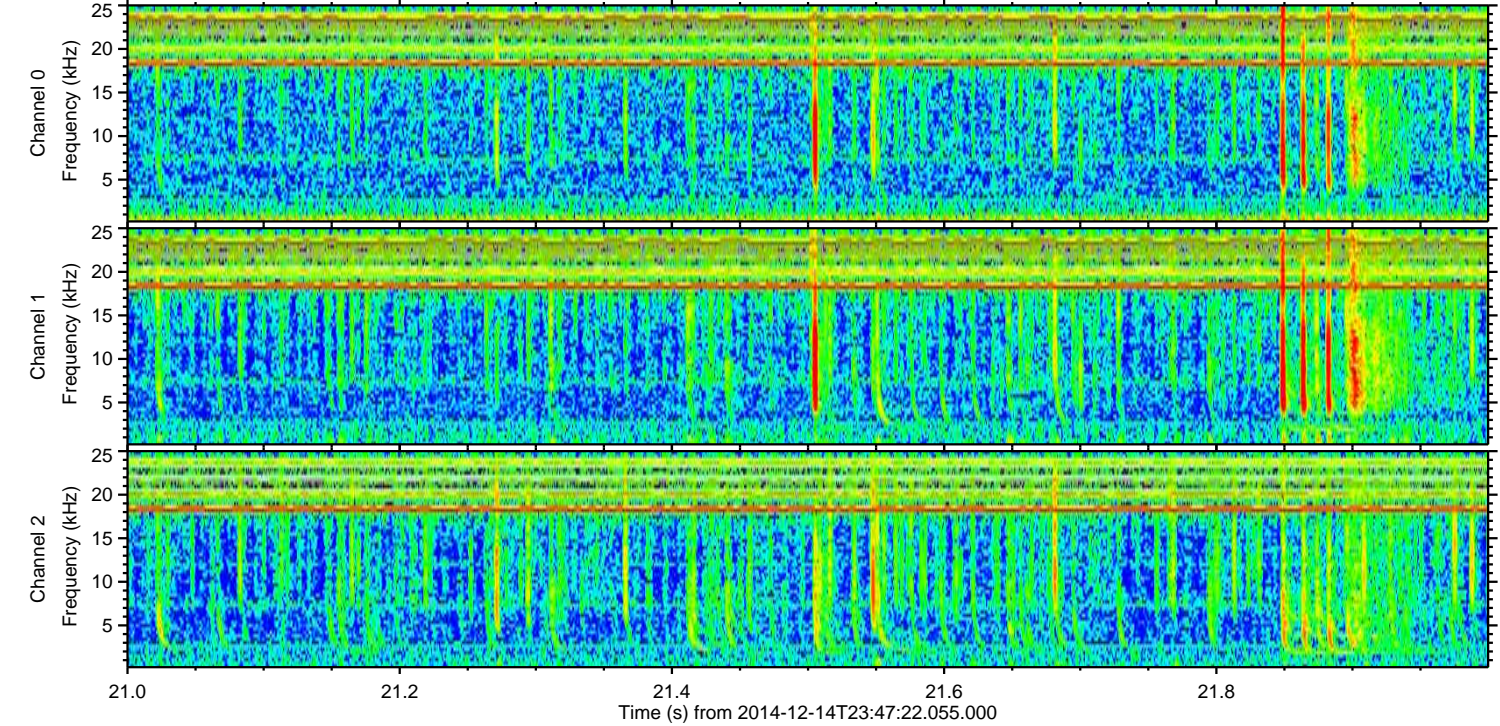
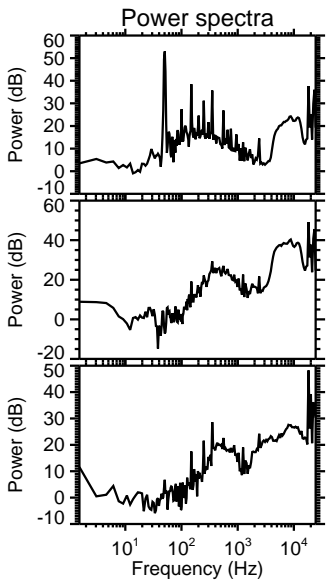
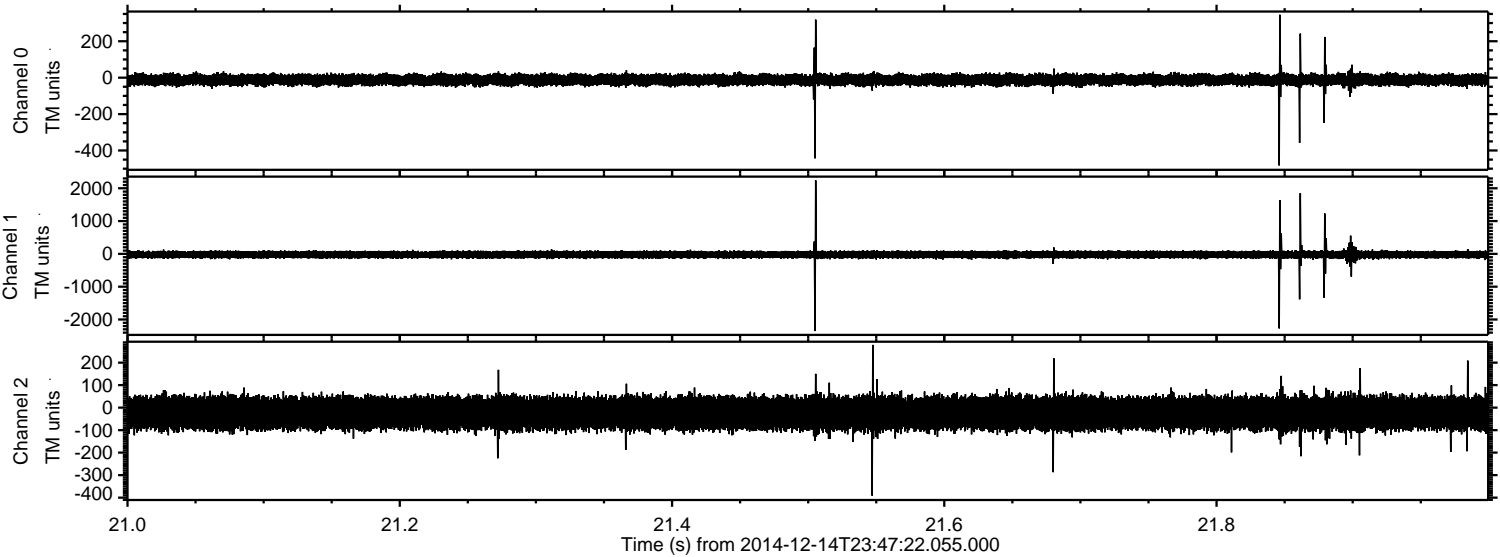
Processed Mon Dec 15 00:59:01 2014 by ELM ver.2012-10-06 from 001__elm20141214_234721__dat00.bin



Processed Mon Dec 15 00:59:02 2014 by ELM ver.2012-10-06 from 001__elm20141214_234721__dat00.bin



Processed Mon Dec 15 00:59:03 2014 by ELM ver.2012-10-06 from 001__elm20141214_234721__dat00.bin



Processed Mon Dec 15 00:59:04 2014 by ELM ver.2012-10-06 from 001__elm20141214_234721__dat00.bin

