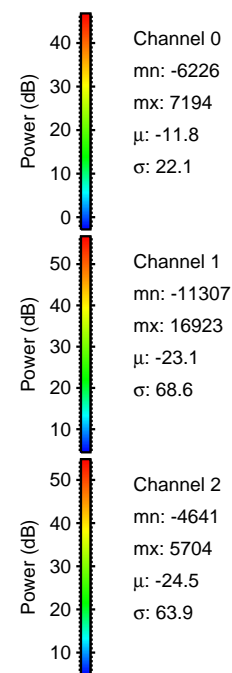
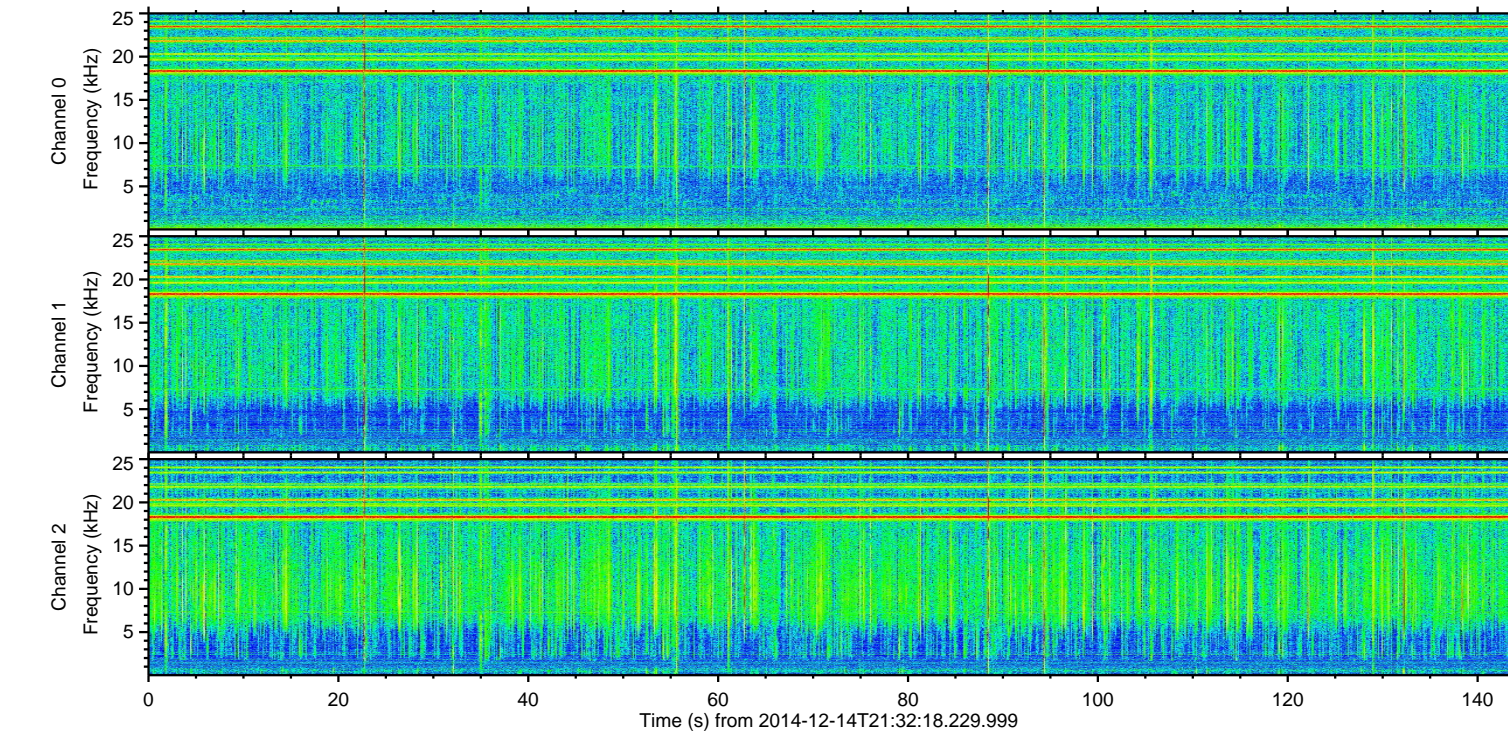
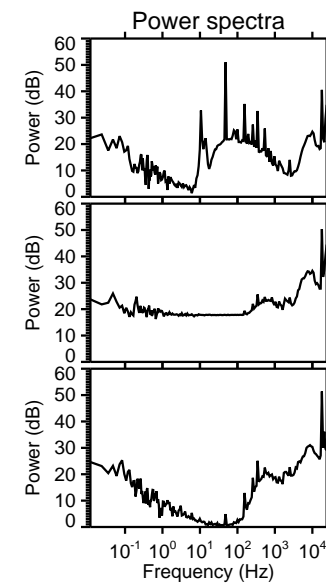
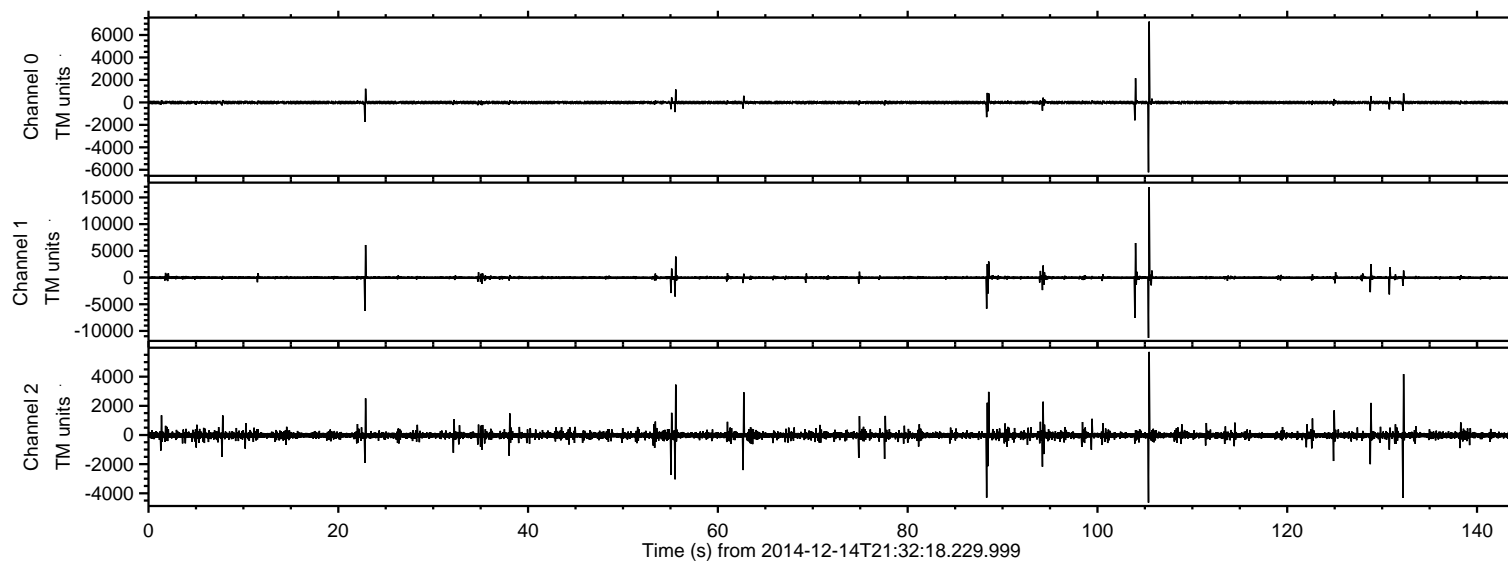


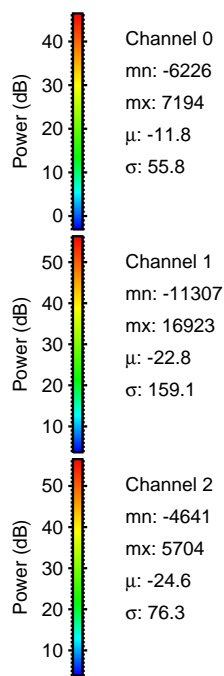
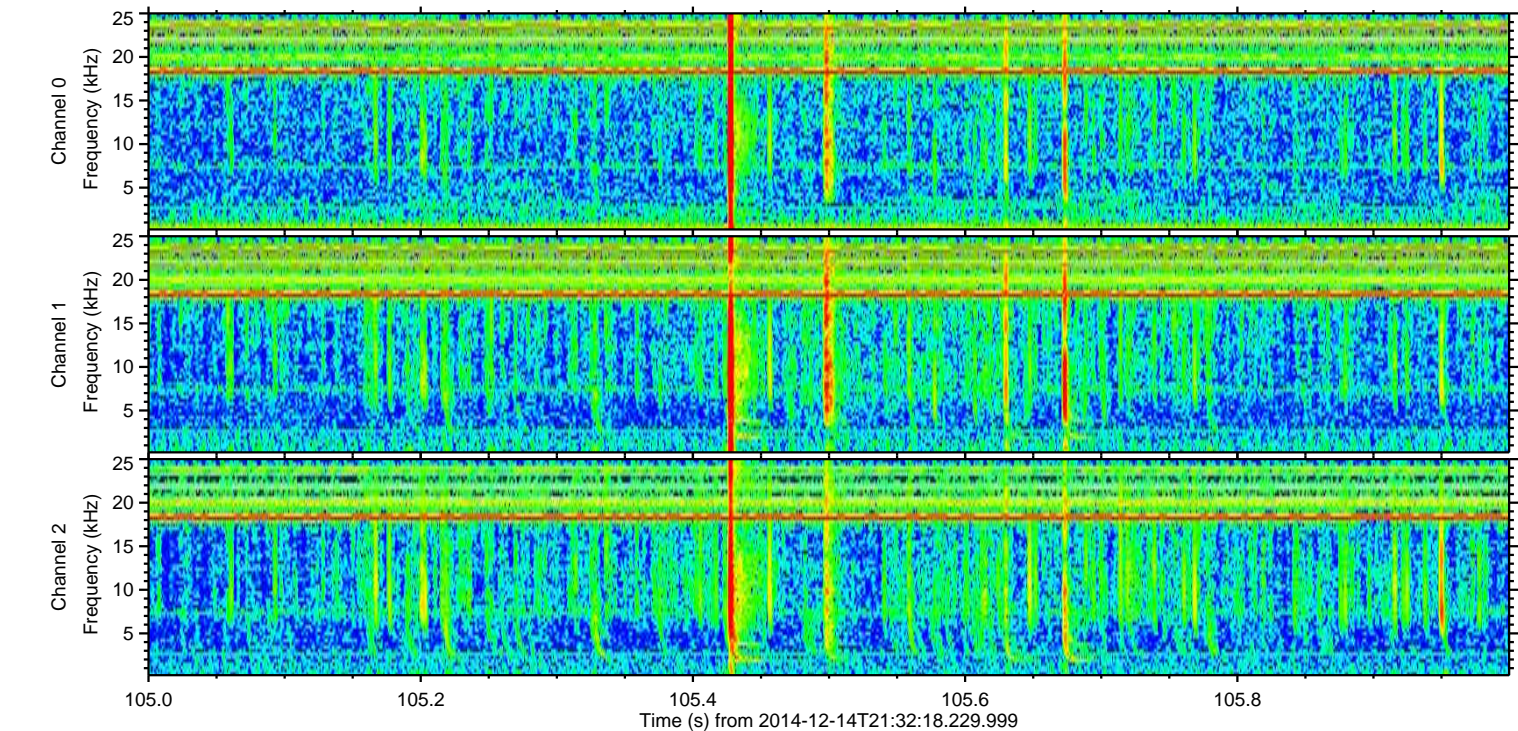
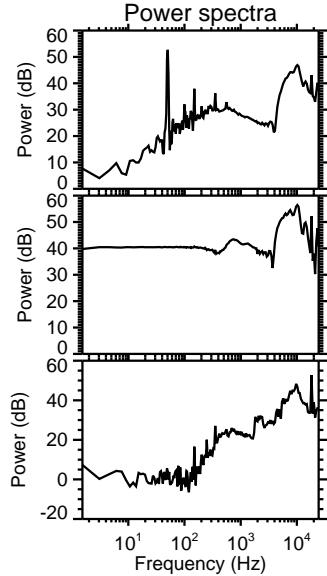
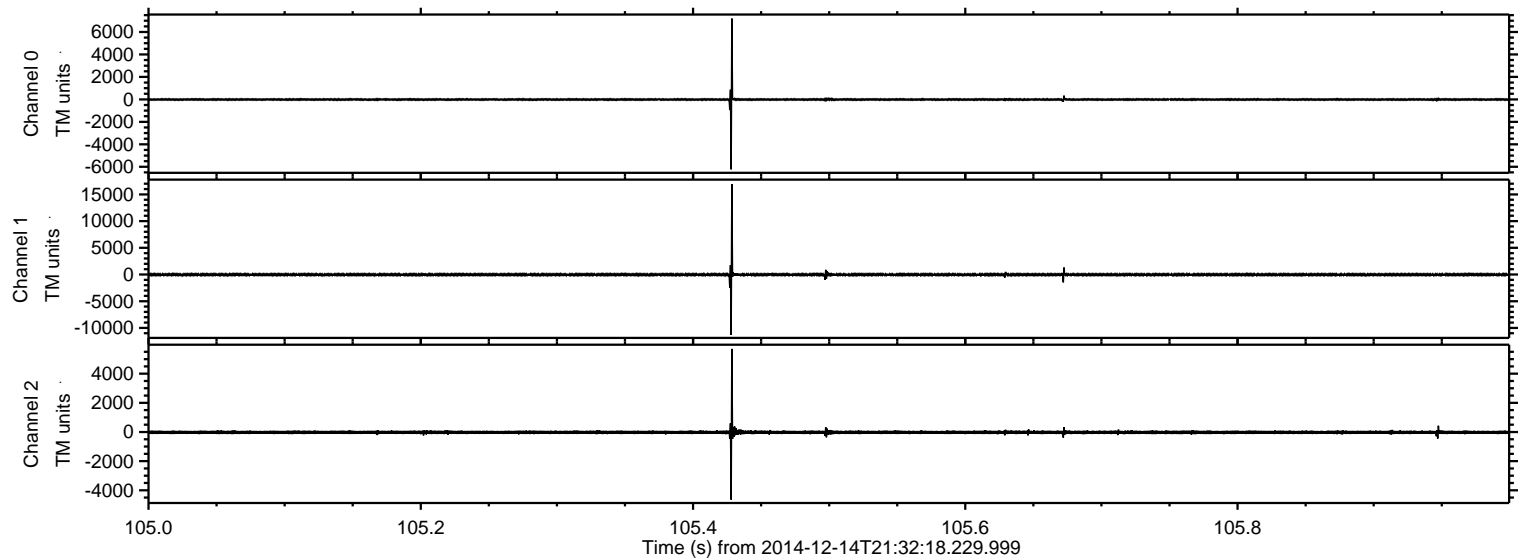
ELMAVAN 3D WAVEFORMS (Measured data sampled at 50 kHz) 49786 packets of 144 samples from 2014-12-14T21:32:18.229.999.

Processed Sun Dec 14 22:41:34 2014 by ELM ver.2012-10-06 from 001__elm20141214_213217__dat00.bin



ELMAVAN 3D WAVEFORMS (Measured data sampled at 50 kHz) 49786 packets of 144 samples from 2014-12-14T21:32:18.229.999. Part 106/144

Processed Sun Dec 14 22:41:46 2014 by ELM ver.2012-10-06 from 001__elm20141214_213217__dat00.bin



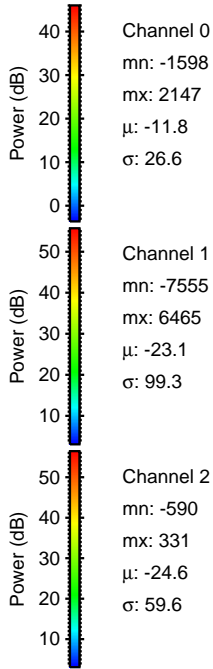
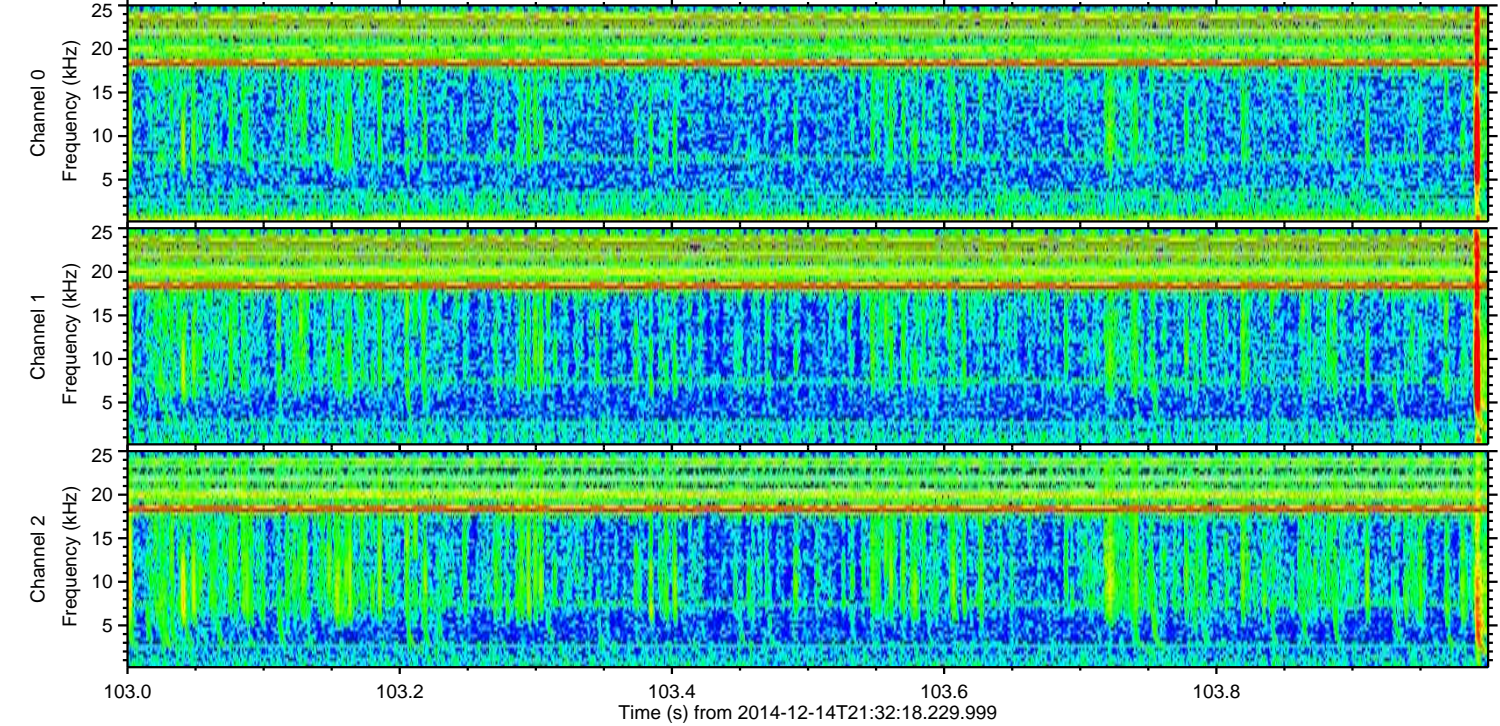
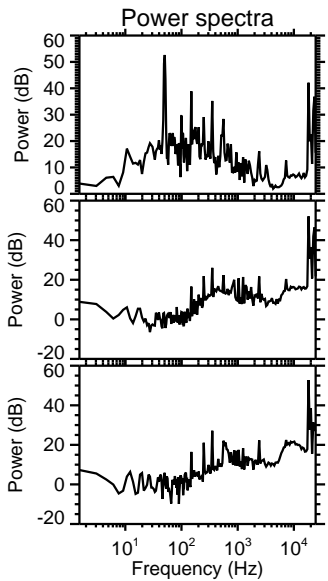
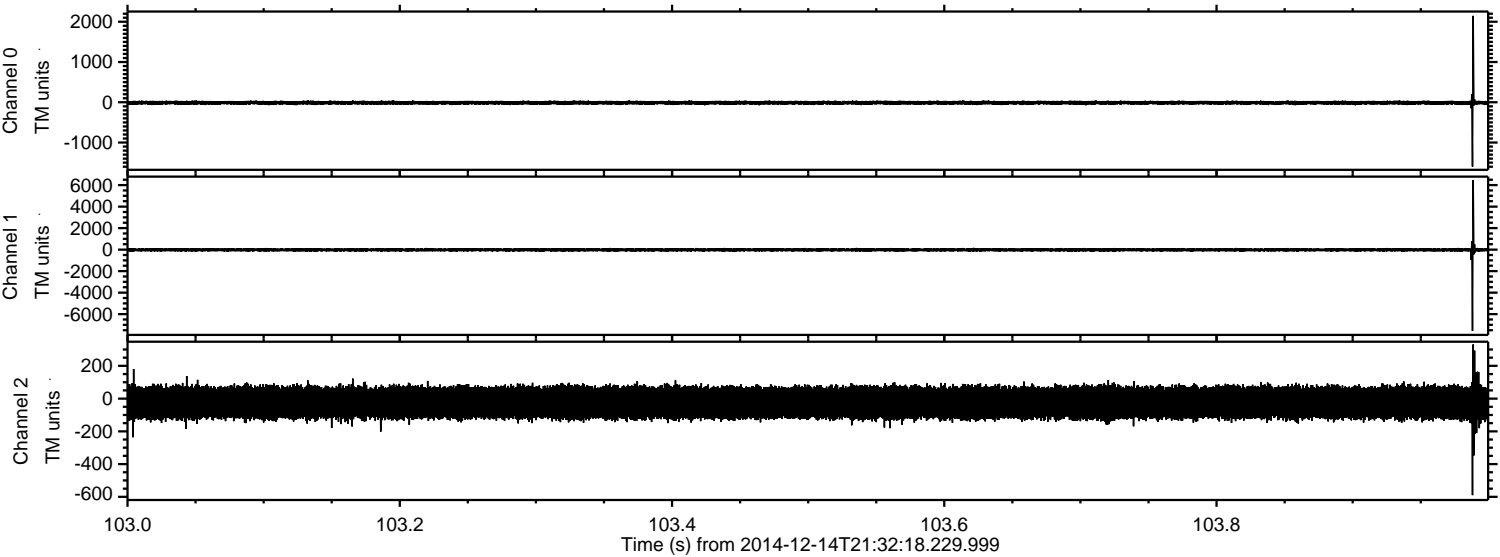
Channel 0
mn: -6226
mx: 7194
 μ : -11.8
 σ : 55.8

Channel 1
mn: -11307
mx: 16923
 μ : -22.8
 σ : 159.1

Channel 2
mn: -4641
mx: 5704
 μ : -24.6
 σ : 76.3

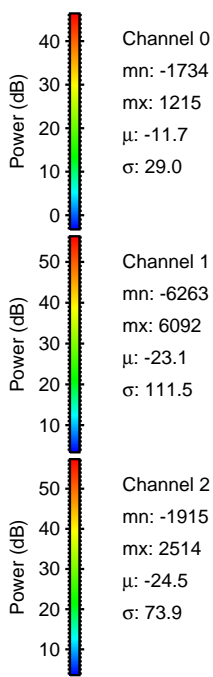
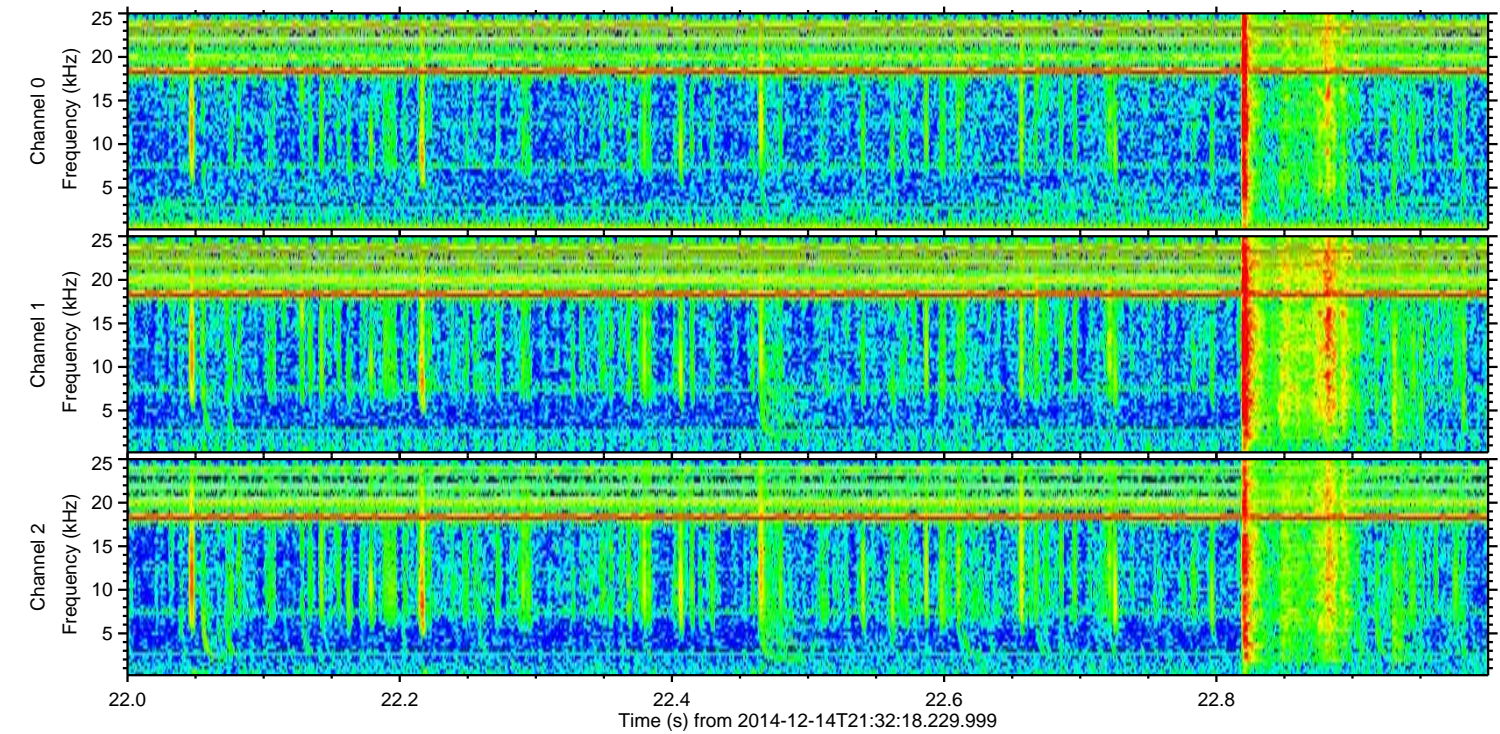
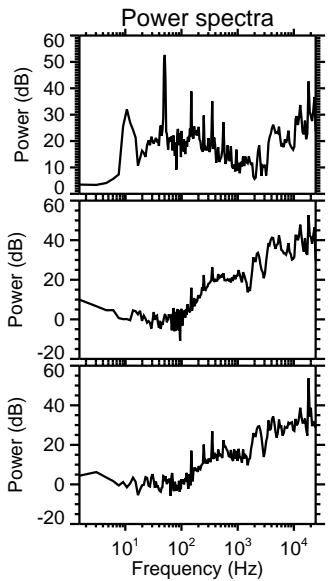
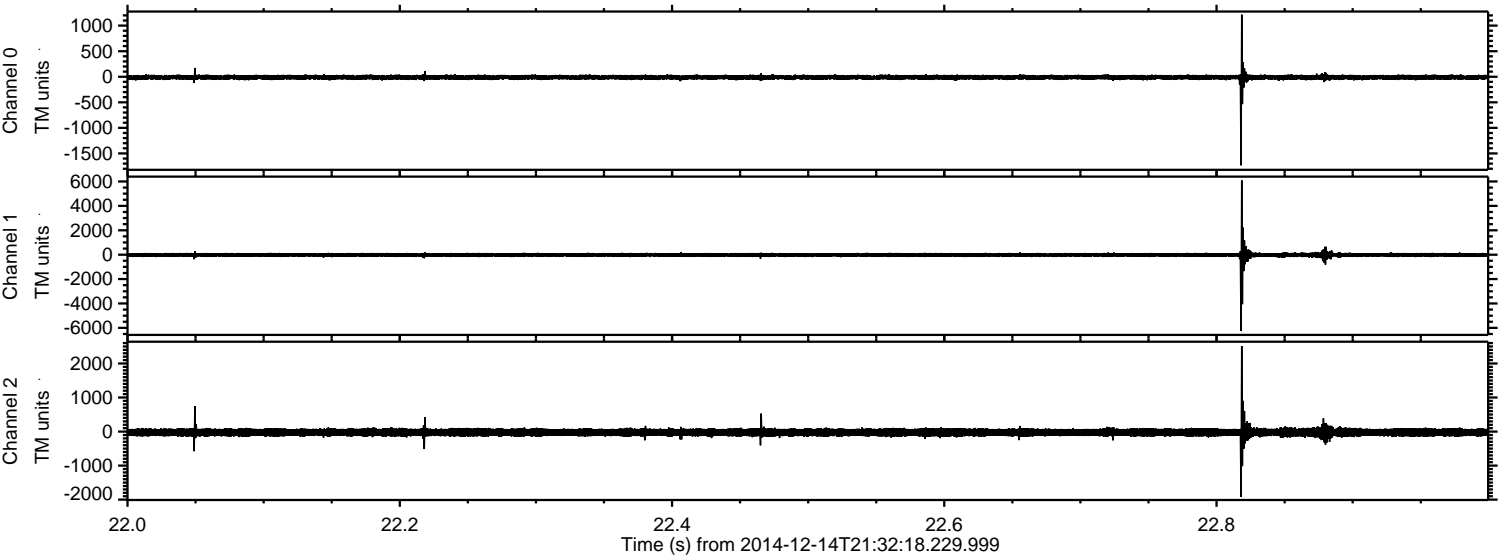
ELMAVAN 3D WAVEFORMS (Measured data sampled at 50 kHz) 49786 packets of 144 samples from 2014-12-14T21:32:18.229.999. Part 104/144

Processed Sun Dec 14 22:41:47 2014 by ELM ver.2012-10-06 from 001__elm20141214_213217__dat00.bin



ELMAVAN 3D WAVEFORMS (Measured data sampled at 50 kHz) 49786 packets of 144 samples from 2014-12-14T21:32:18.229.999. Part 23/144

Processed Sun Dec 14 22:41:48 2014 by ELM ver.2012-10-06 from 001__elm20141214_213217__dat00.bin

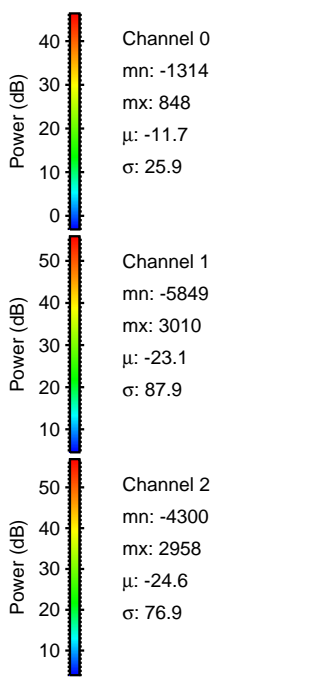
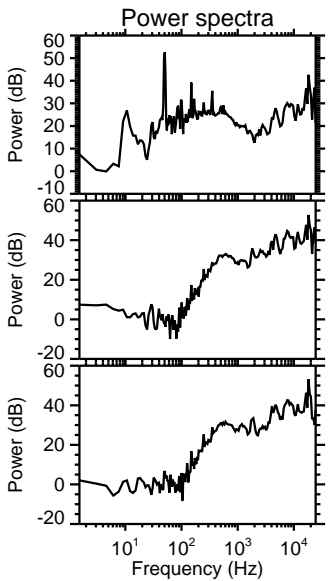
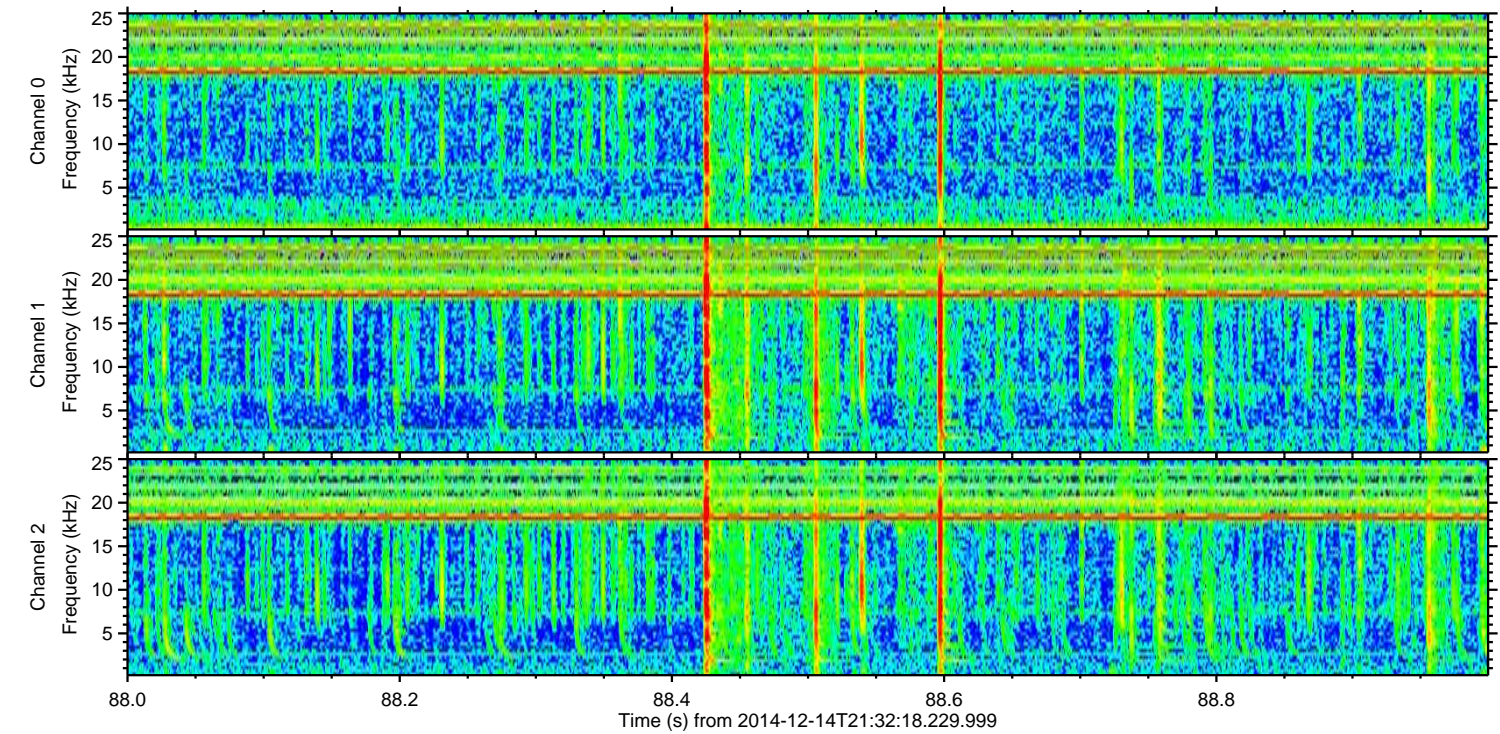
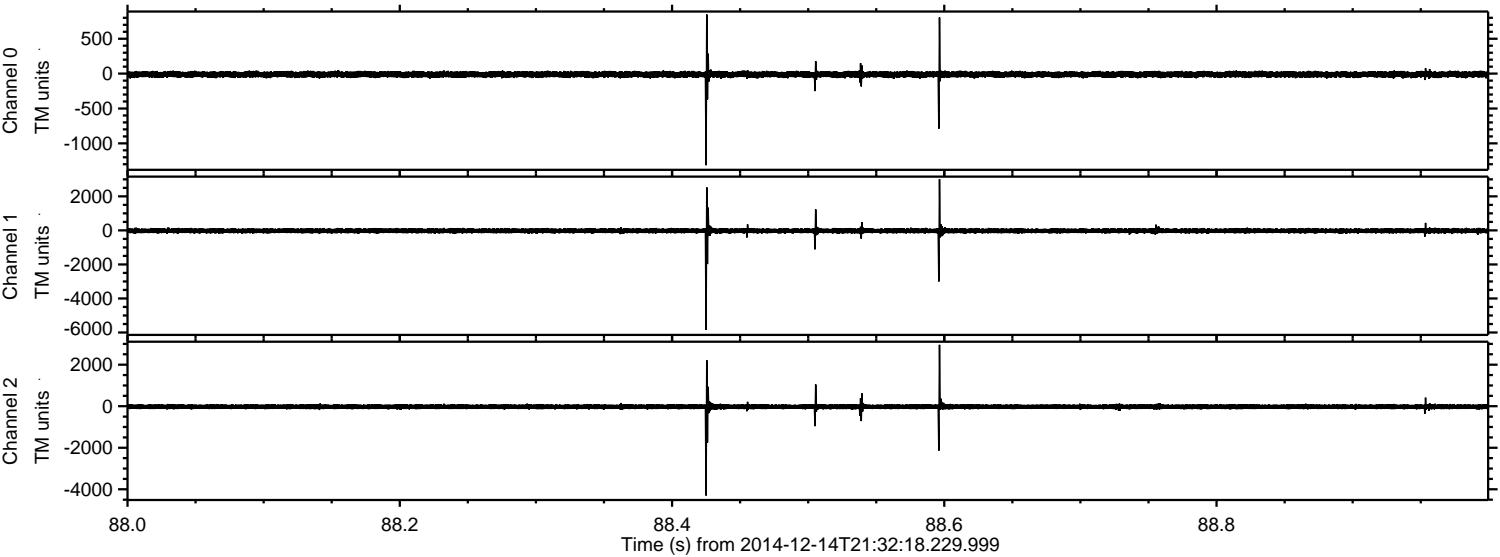


Channel 0
mn: -1734
mx: 1215
 μ : -11.7
 σ : 29.0

Channel 1
mn: -6263
mx: 6092
 μ : -23.1
 σ : 111.5

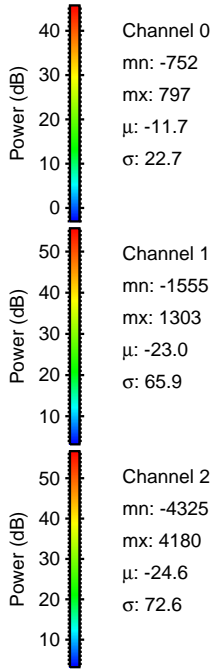
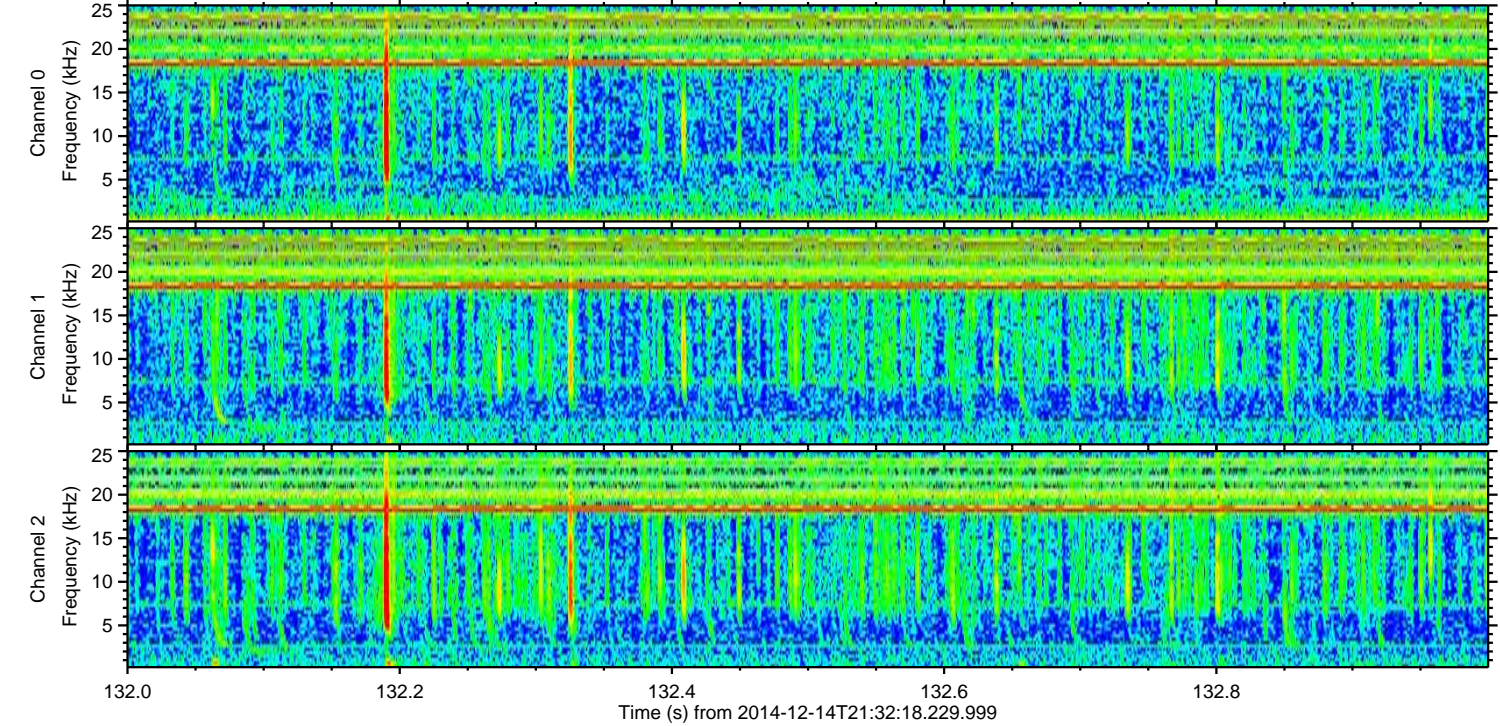
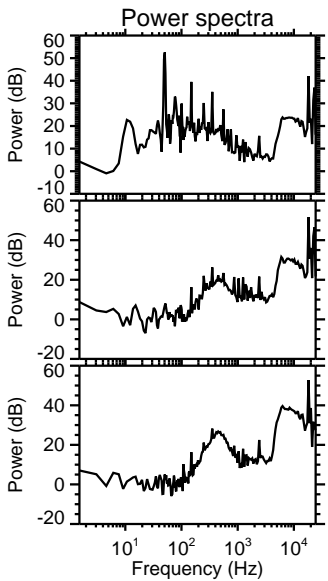
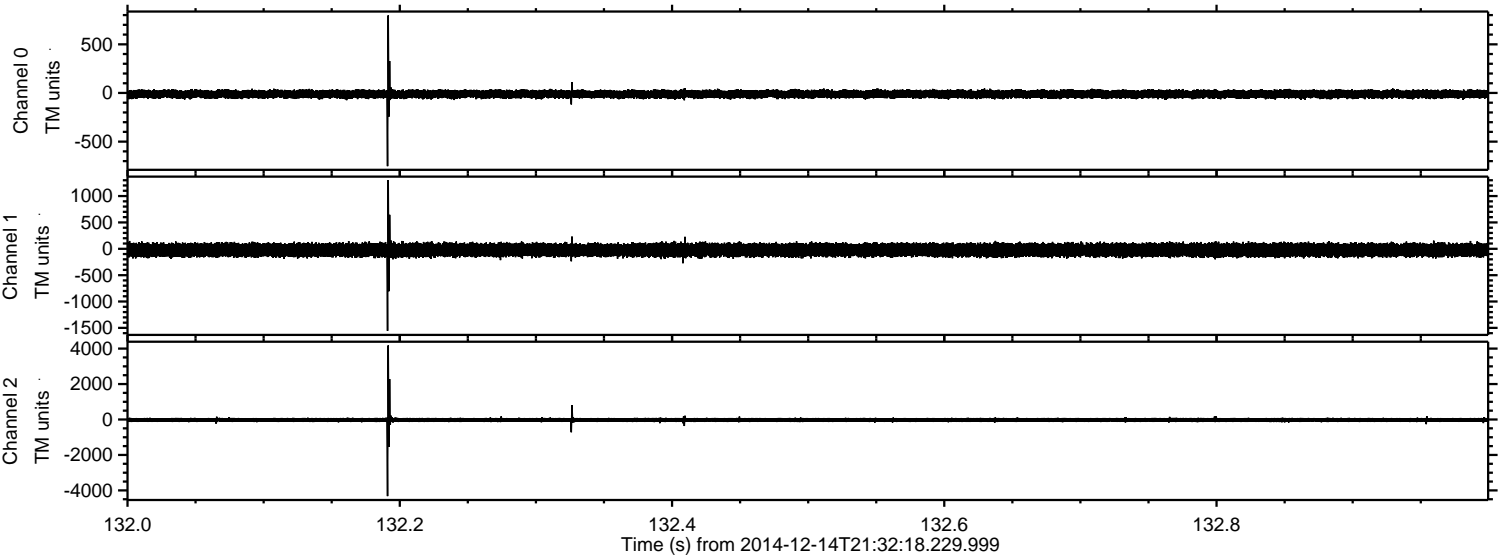
Channel 2
mn: -1915
mx: 2514
 μ : -24.5
 σ : 73.9

Processed Sun Dec 14 22:41:49 2014 by ELM ver.2012-10-06 from 001__elm20141214_213217__dat00.bin

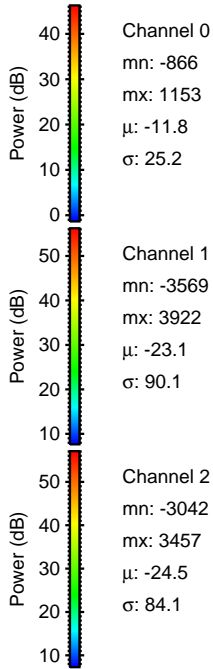
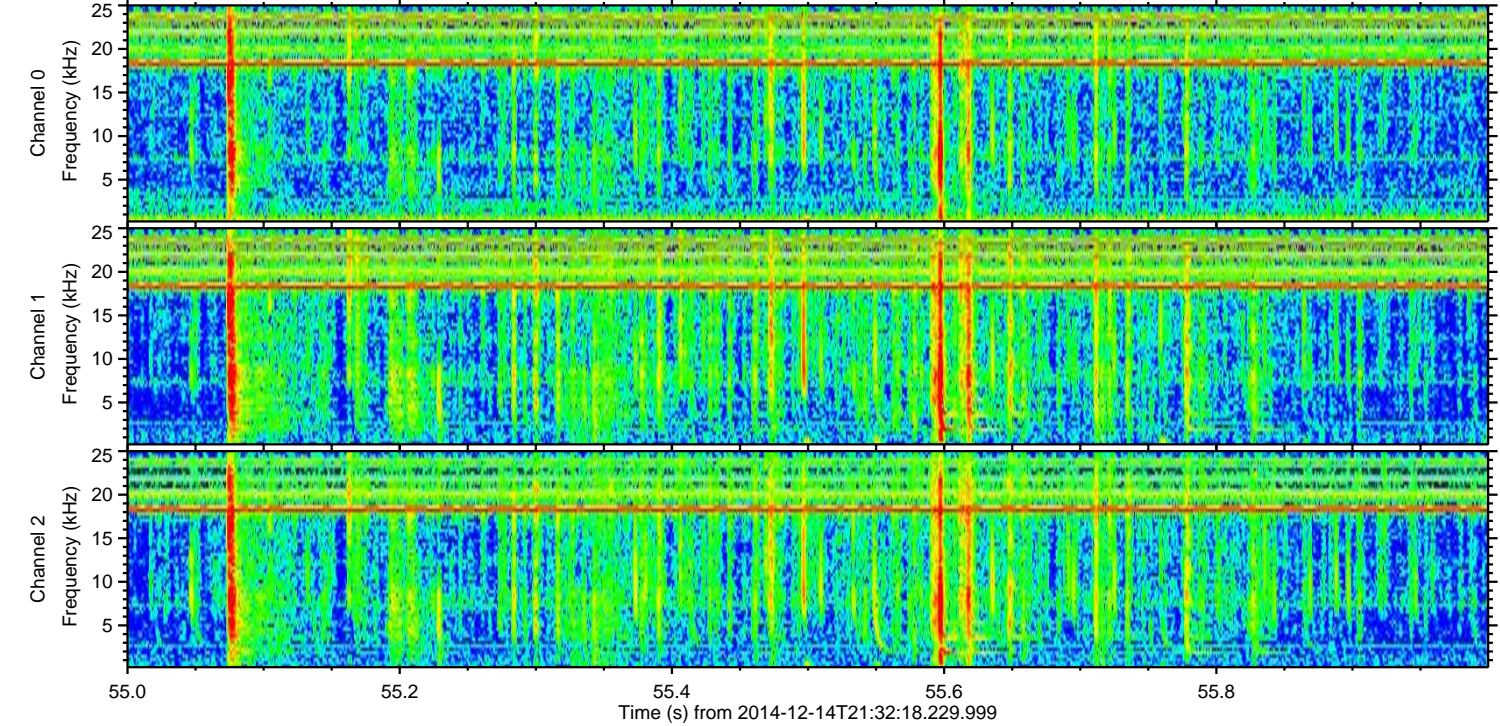
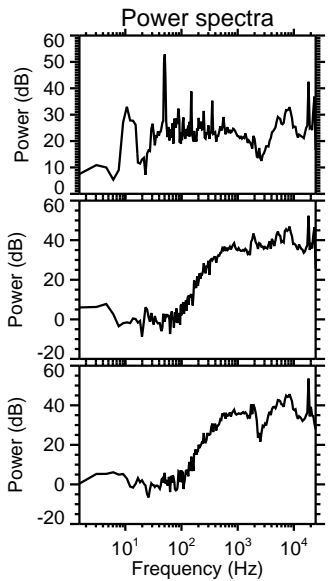
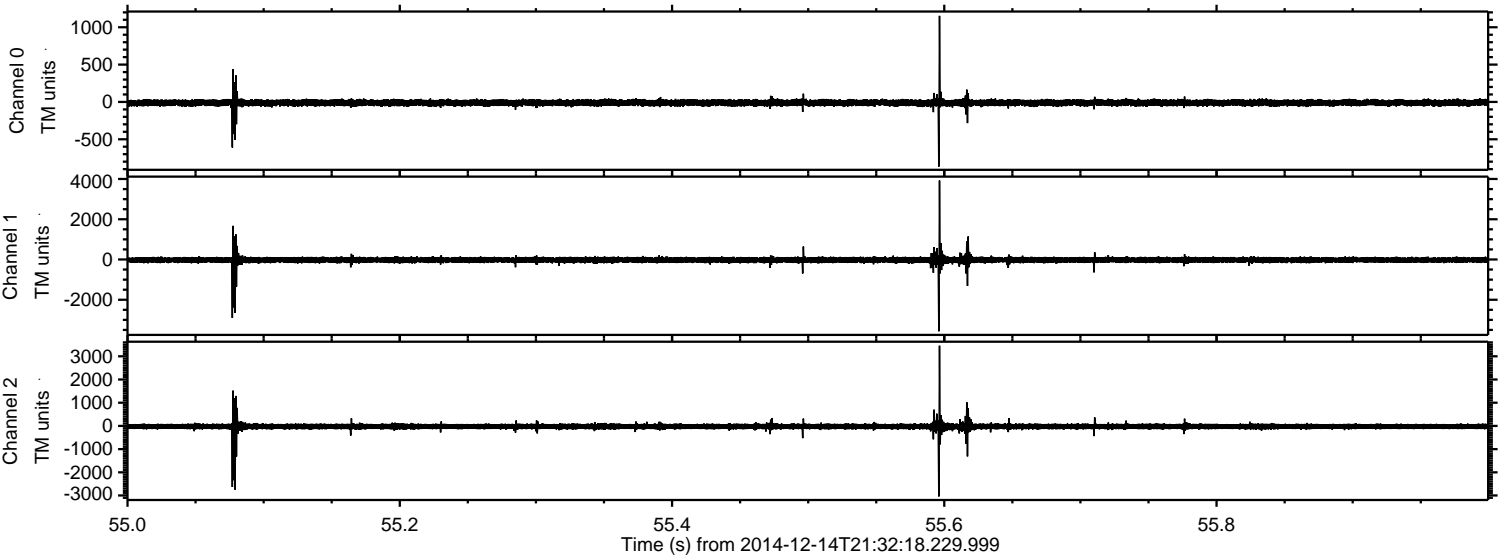


ELMAVAN 3D WAVEFORMS (Measured data sampled at 50 kHz) 49786 packets of 144 samples from 2014-12-14T21:32:18.229.999. Part 133/144

Processed Sun Dec 14 22:41:50 2014 by ELM ver.2012-10-06 from 001__elm20141214_213217__dat00.bin



Processed Sun Dec 14 22:41:51 2014 by ELM ver.2012-10-06 from 001__elm20141214_213217__dat00.bin



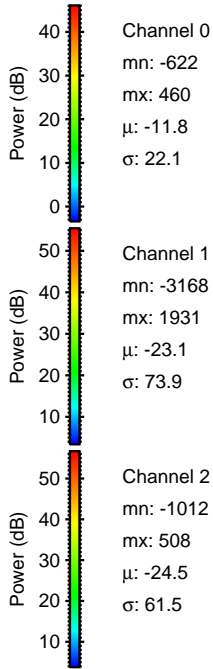
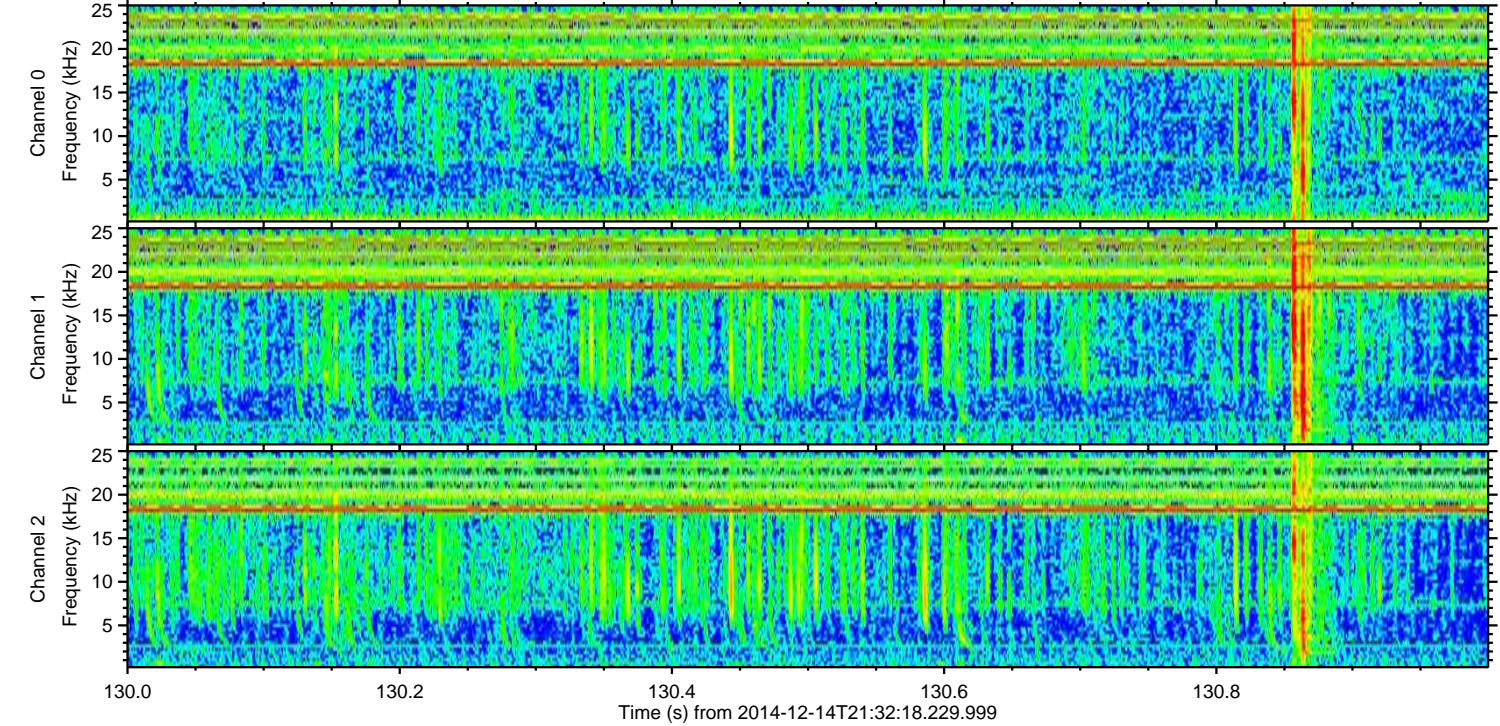
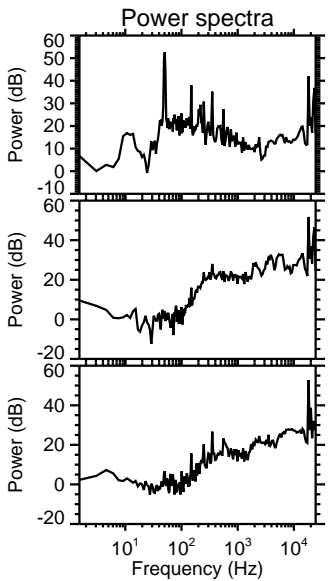
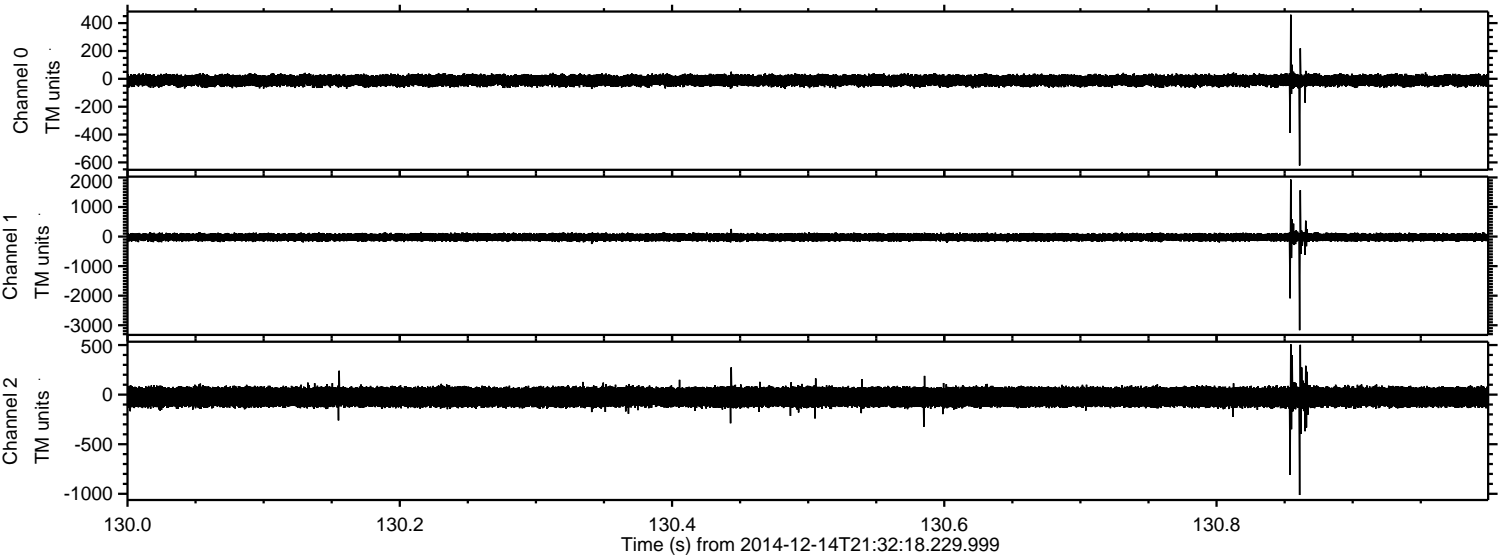
Channel 0
mn: -866
mx: 1153
 μ : -11.8
 σ : 25.2

Channel 1
mn: -3569
mx: 3922
 μ : -23.1
 σ : 90.1

Channel 2
mn: -3042
mx: 3457
 μ : -24.5
 σ : 84.1

ELMAVAN 3D WAVEFORMS (Measured data sampled at 50 kHz) 49786 packets of 144 samples from 2014-12-14T21:32:18.229.999. Part 131/144

Processed Sun Dec 14 22:41:52 2014 by ELM ver.2012-10-06 from 001__elm20141214_213217__dat00.bin

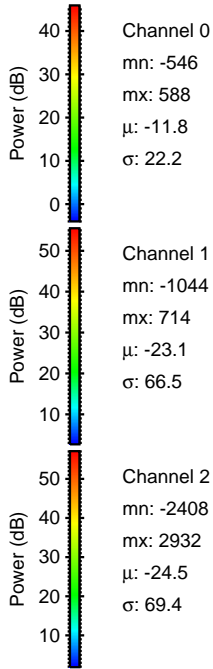
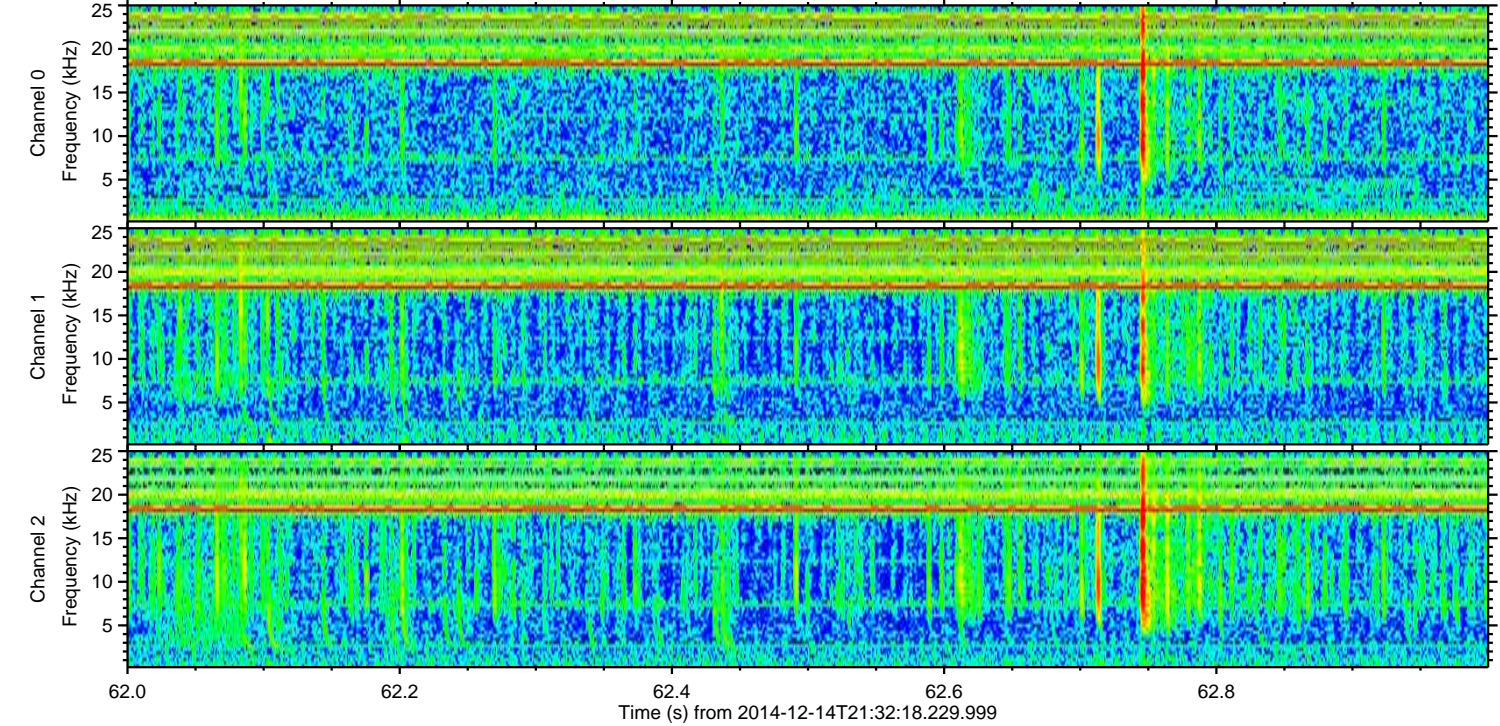
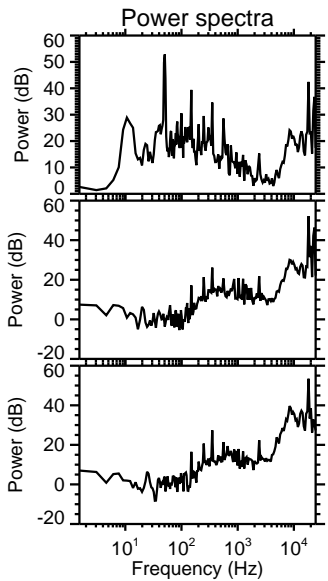
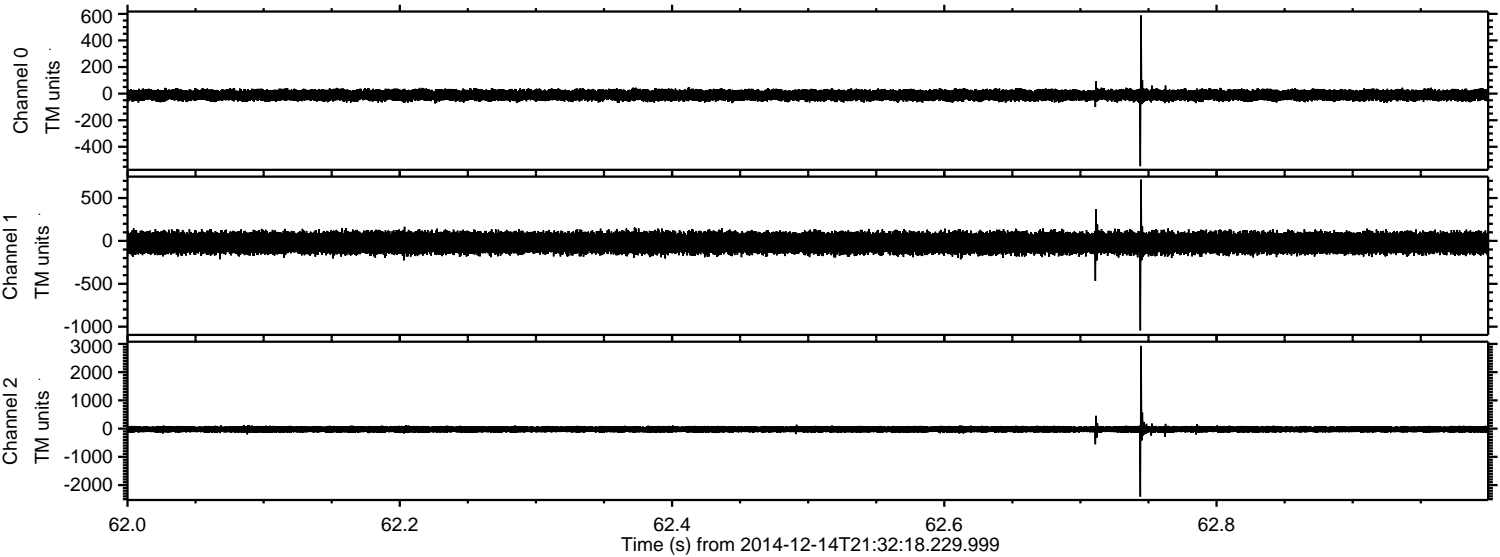


Channel 0
mn: -622
mx: 460
 μ : -11.8
 σ : 22.1

Channel 1
mn: -3168
mx: 1931
 μ : -23.1
 σ : 73.9

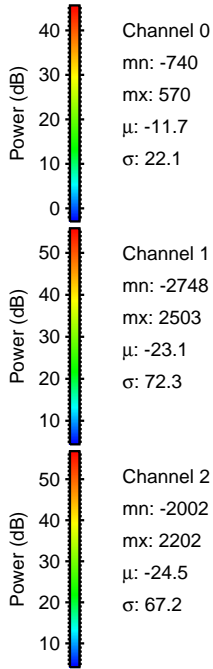
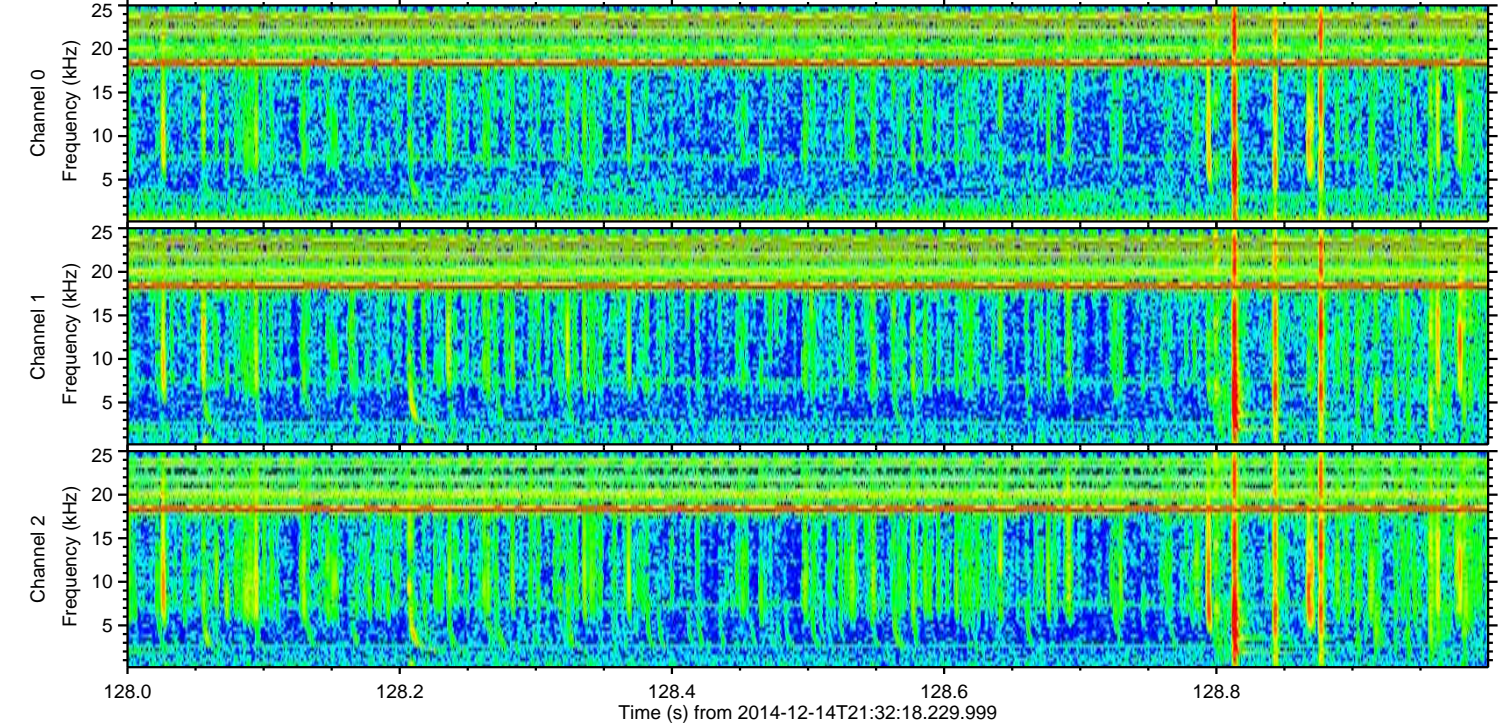
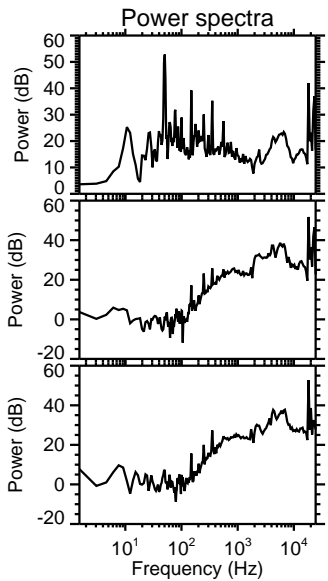
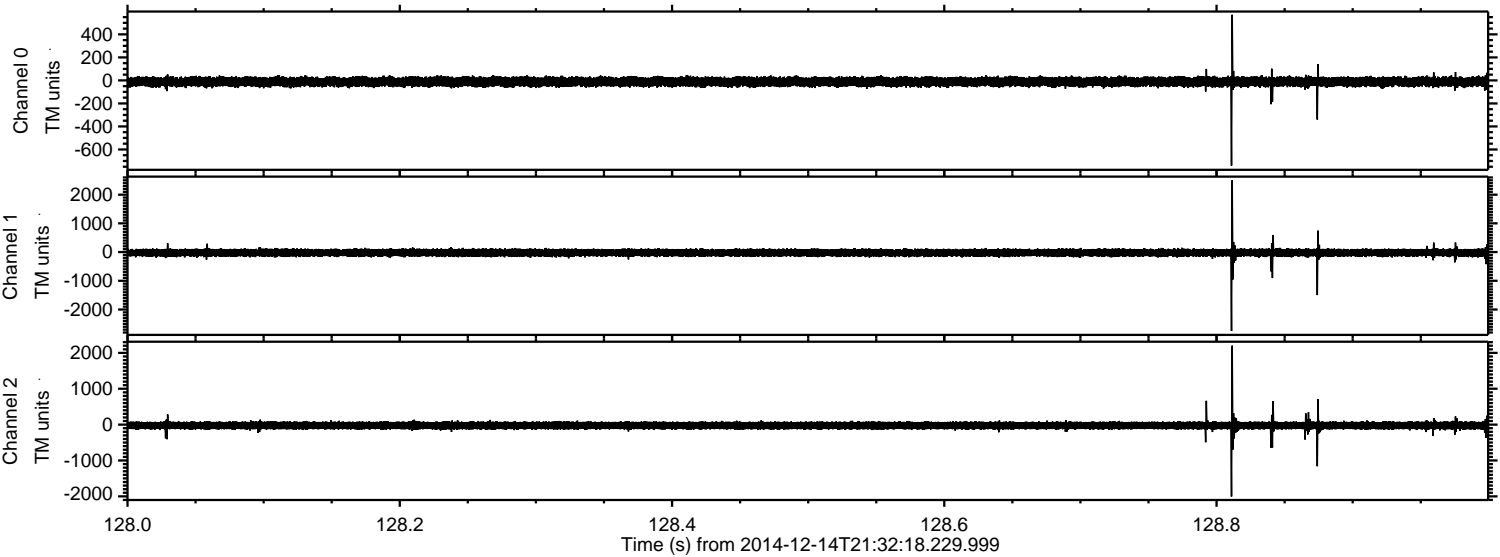
Channel 2
mn: -1012
mx: 508
 μ : -24.5
 σ : 61.5

Processed Sun Dec 14 22:41:53 2014 by ELM ver.2012-10-06 from 001__elm20141214_213217__dat00.bin



ELMAVAN 3D WAVEFORMS (Measured data sampled at 50 kHz) 49786 packets of 144 samples from 2014-12-14T21:32:18.229.999. Part 129/144

Processed Sun Dec 14 22:41:54 2014 by ELM ver.2012-10-06 from 001__elm20141214_213217__dat00.bin



ELMAVAN 3D WAVEFORMS (Measured data sampled at 50 kHz) 49786 packets of 144 samples from 2014-12-14T21:32:18.229.999. Part 135/144

Processed Sun Dec 14 22:41:55 2014 by ELM ver.2012-10-06 from 001__elm20141214_213217__dat00.bin

