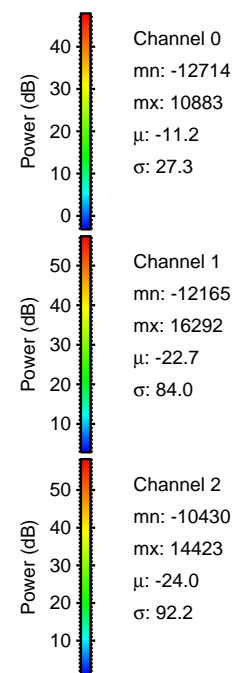
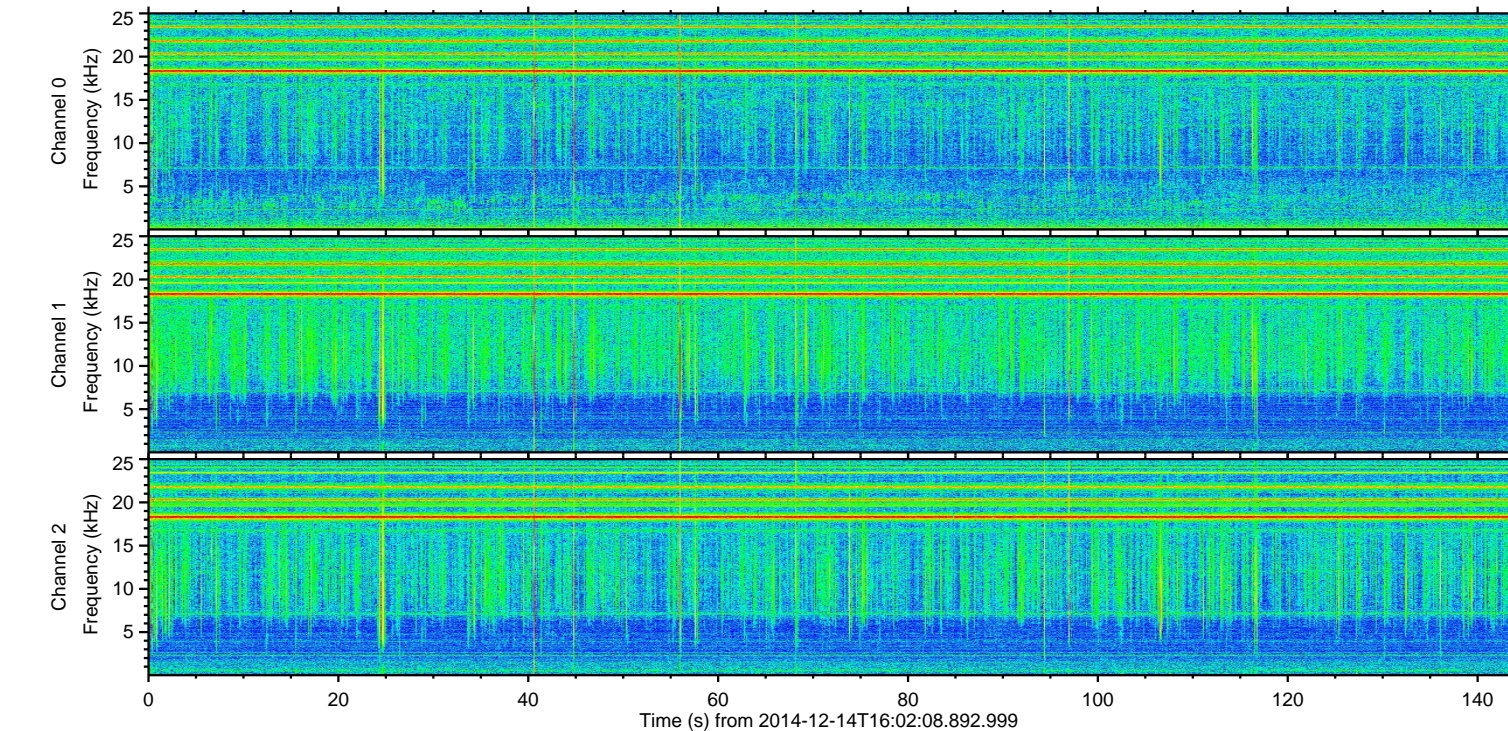
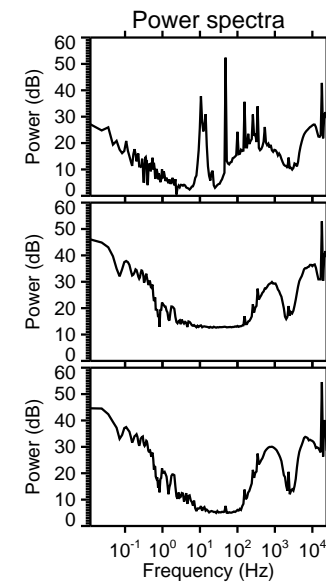
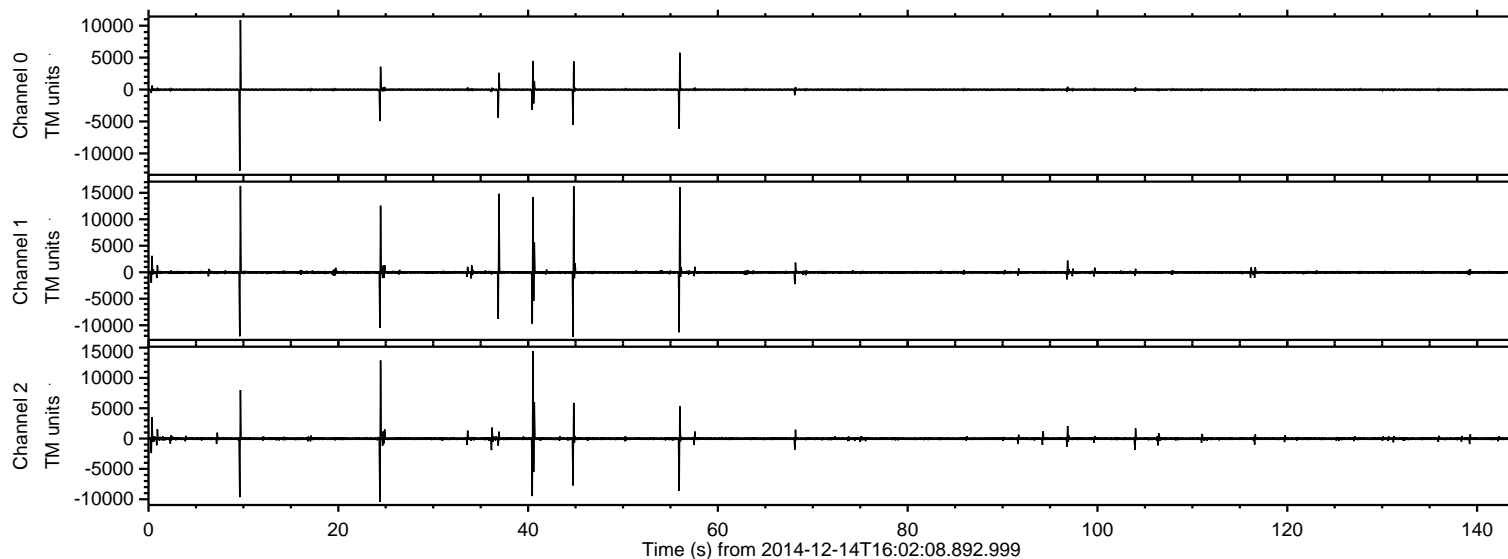


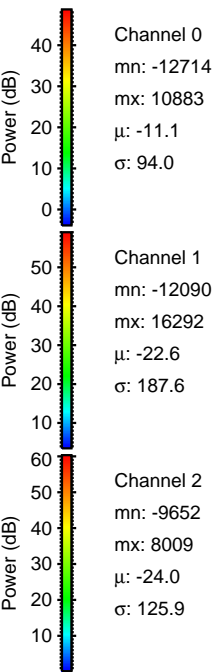
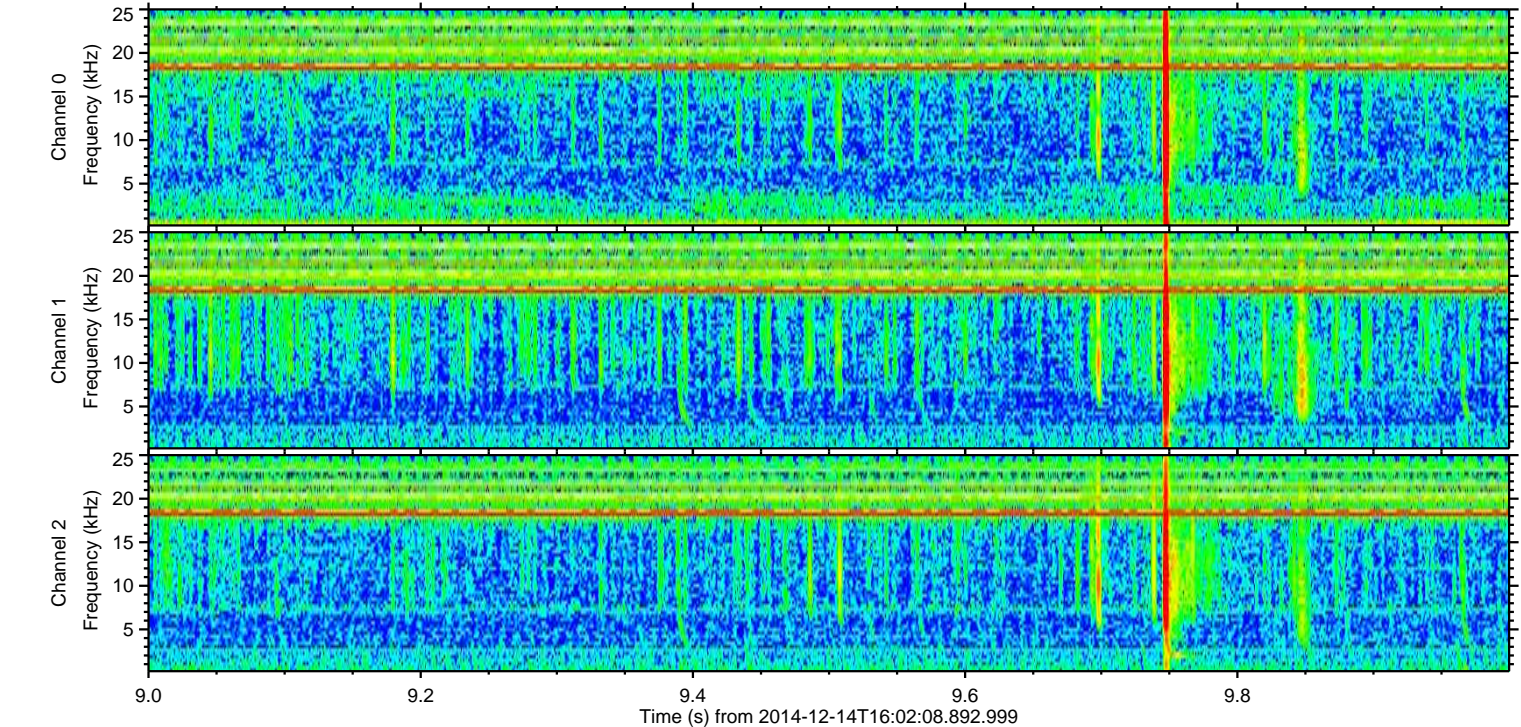
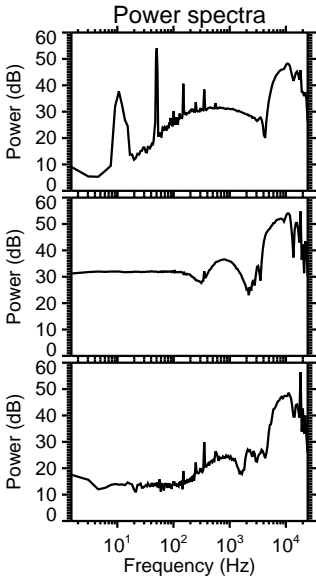
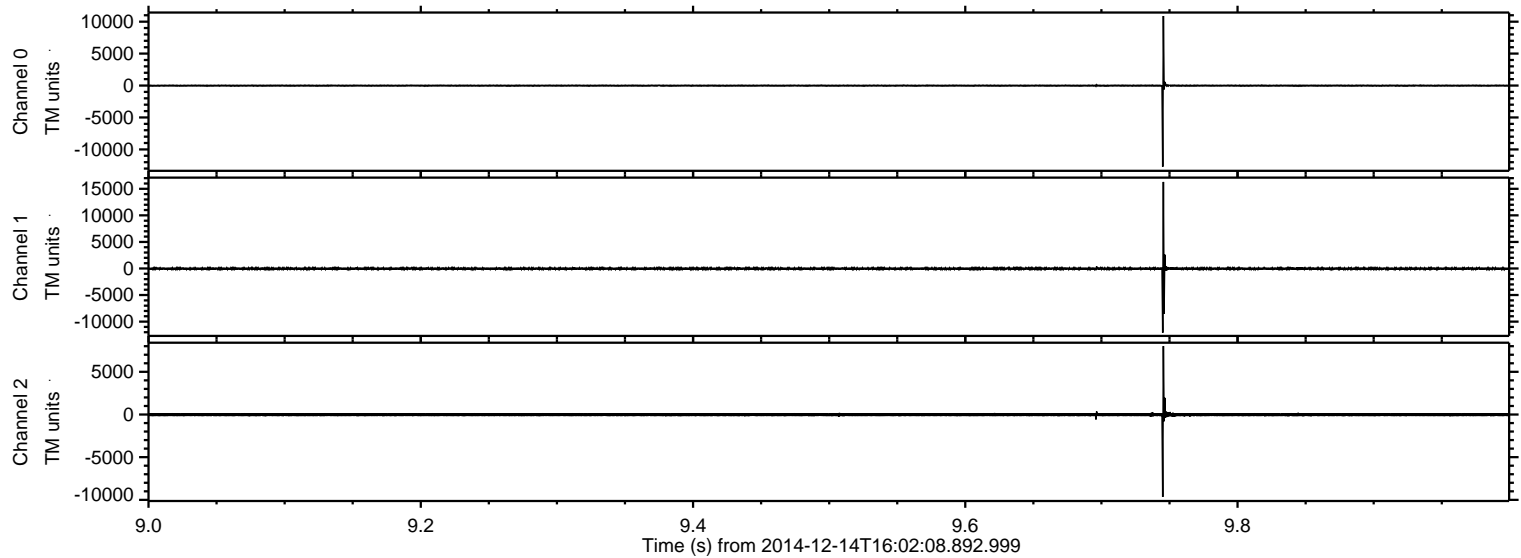
ELMAVAN 3D WAVEFORMS (Measured data sampled at 50 kHz) 49785 packets of 144 samples from 2014-12-14T16:02:08.892.999.

Processed Sun Dec 14 17:11:56 2014 by ELM ver.2012-10-06 from 001__elm20141214_160207__dat00.bin

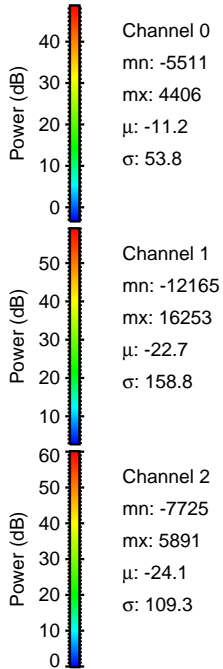
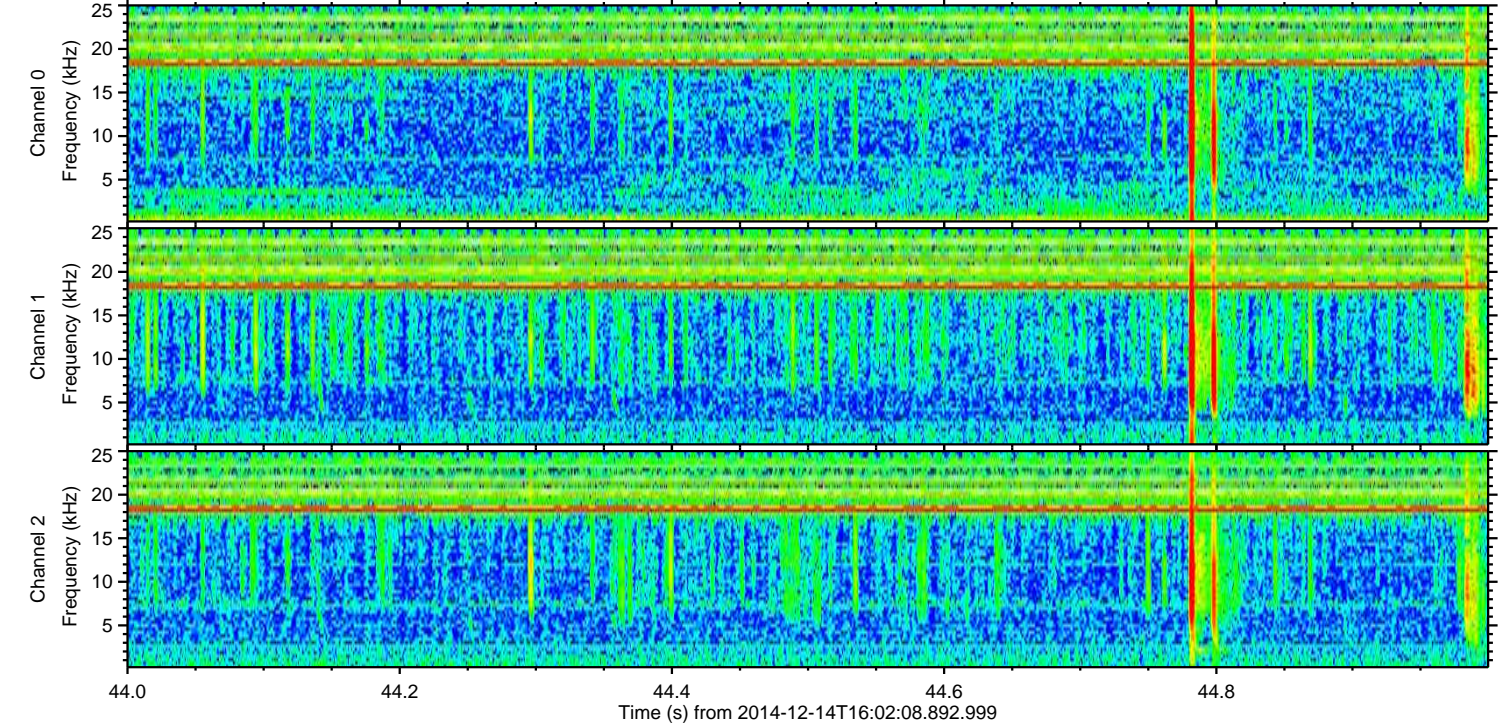
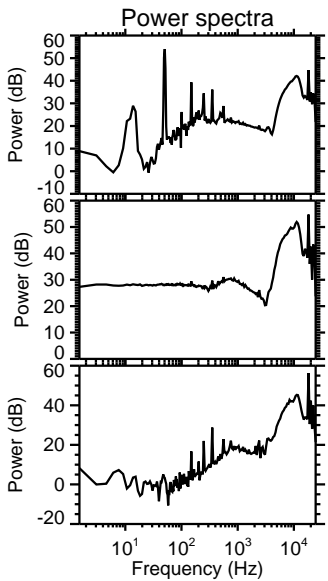
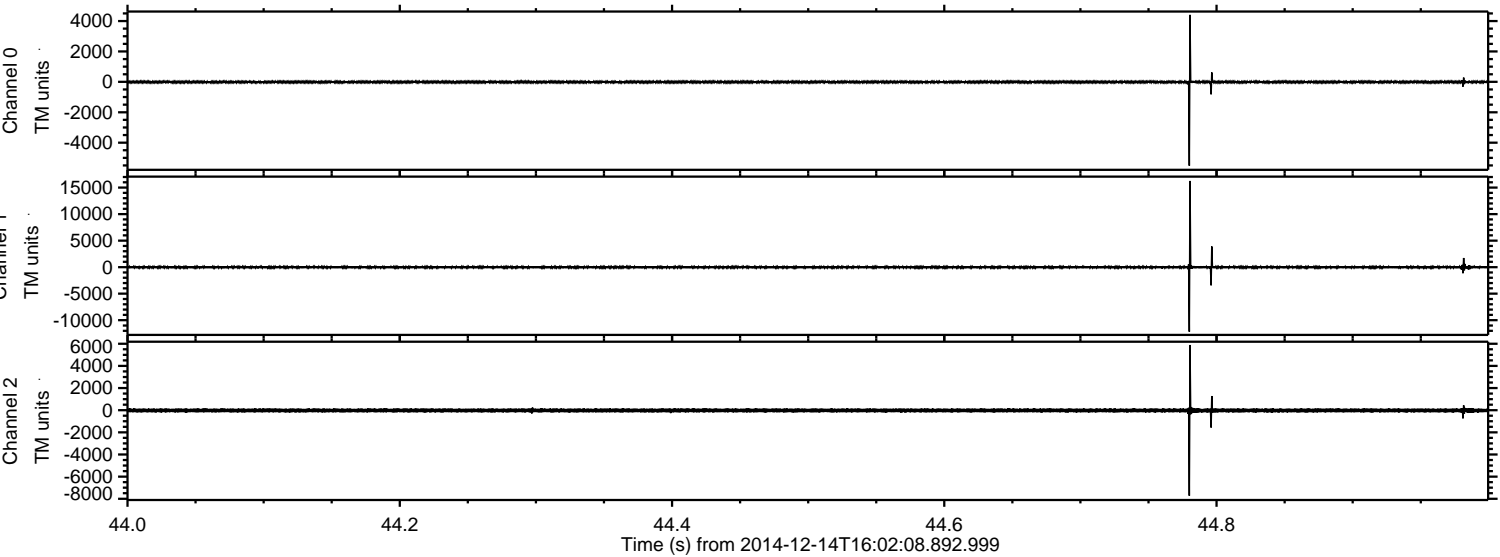


ELMAVAN 3D WAVEFORMS (Measured data sampled at 50 kHz) 49785 packets of 144 samples from 2014-12-14T16:02:08.892.999. Part 10/144

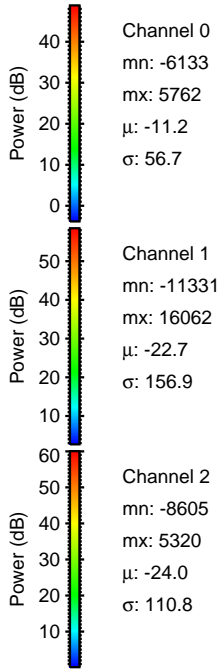
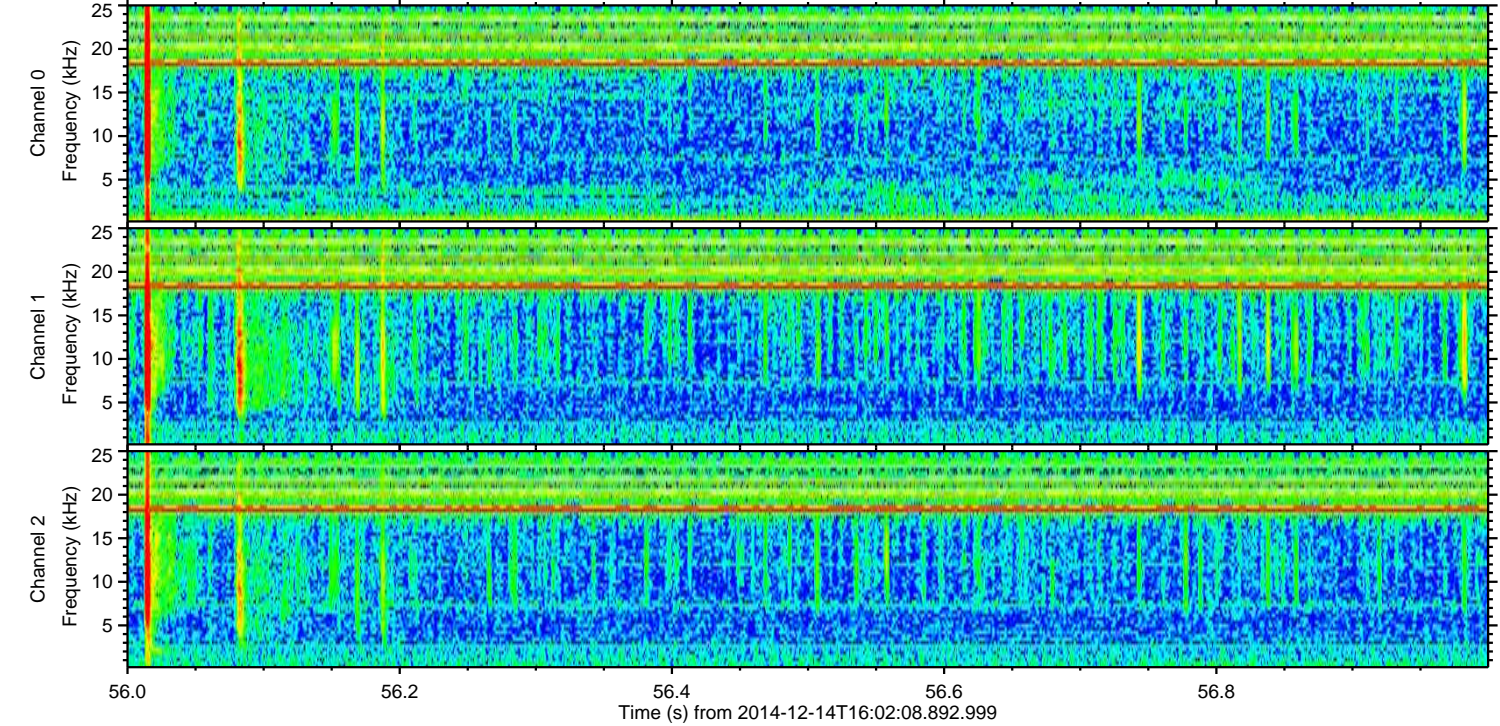
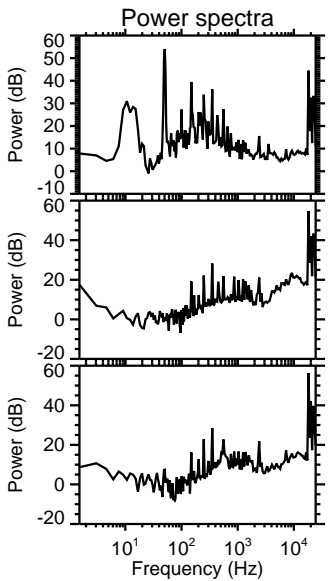
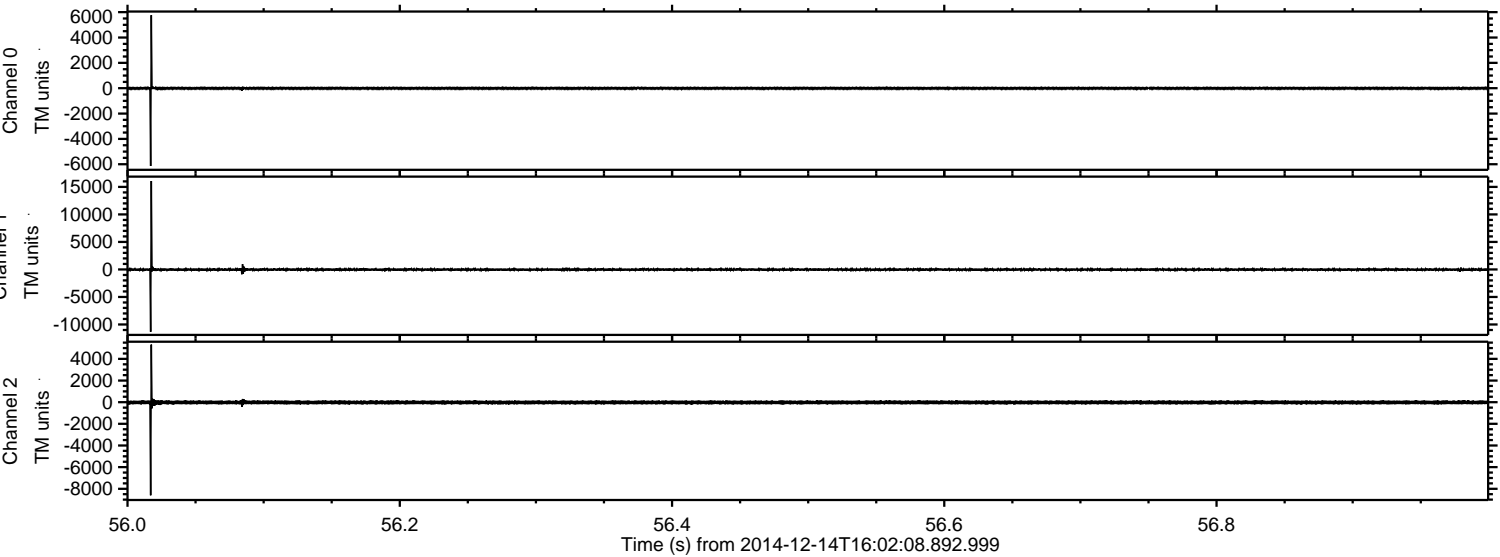
Processed Sun Dec 14 17:12:08 2014 by ELM ver.2012-10-06 from 001__elm20141214_160207__dat00.bin



Processed Sun Dec 14 17:12:09 2014 by ELM ver.2012-10-06 from 001__elm20141214_160207__dat00.bin

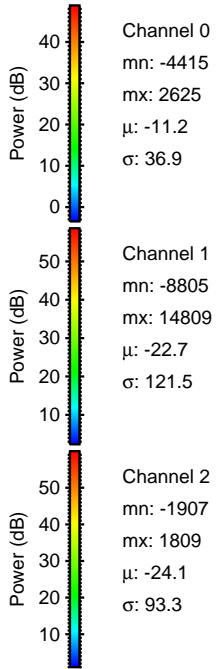
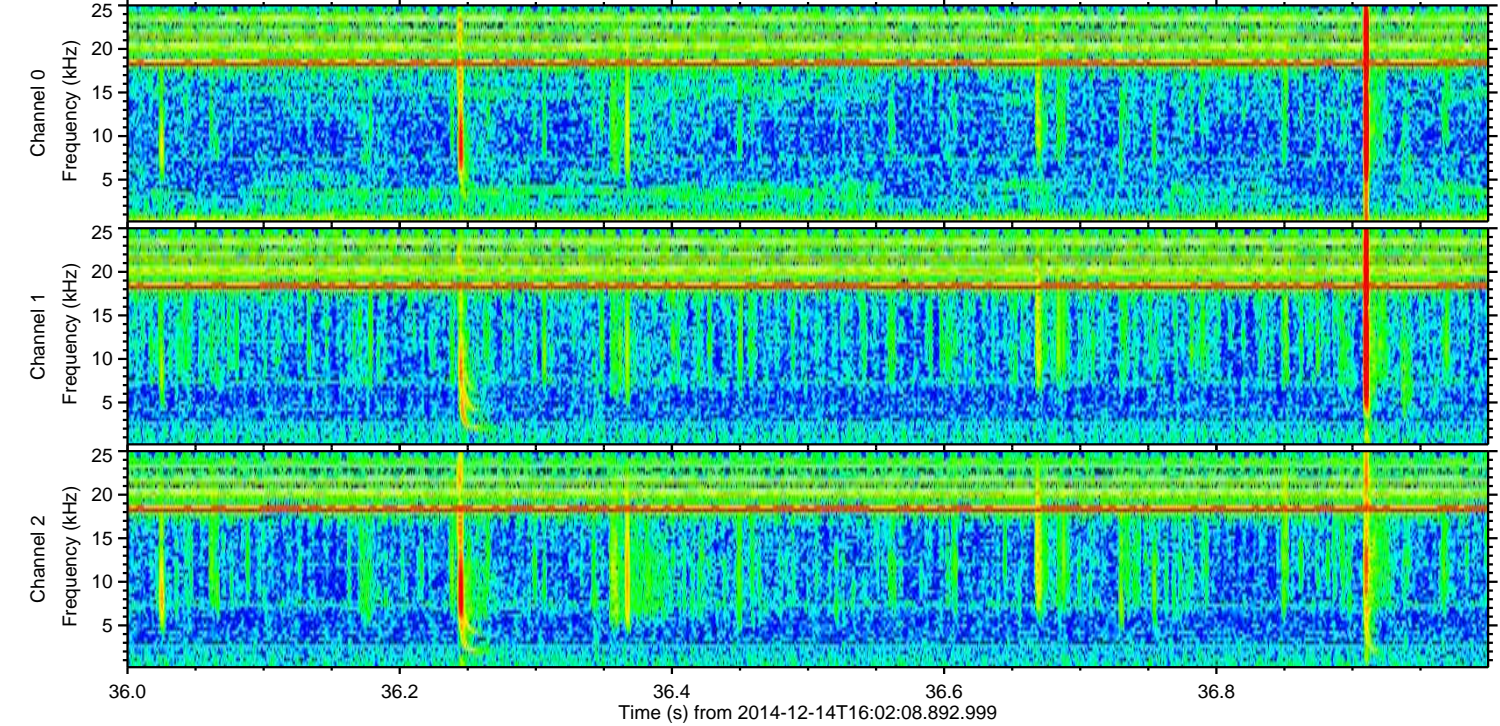
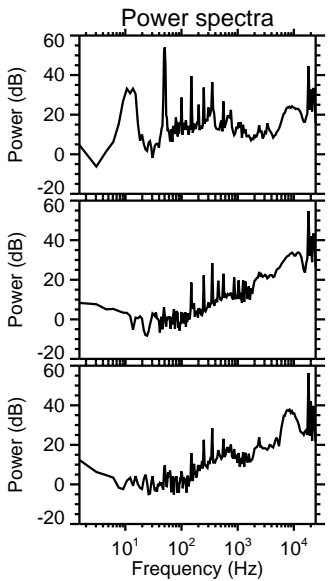
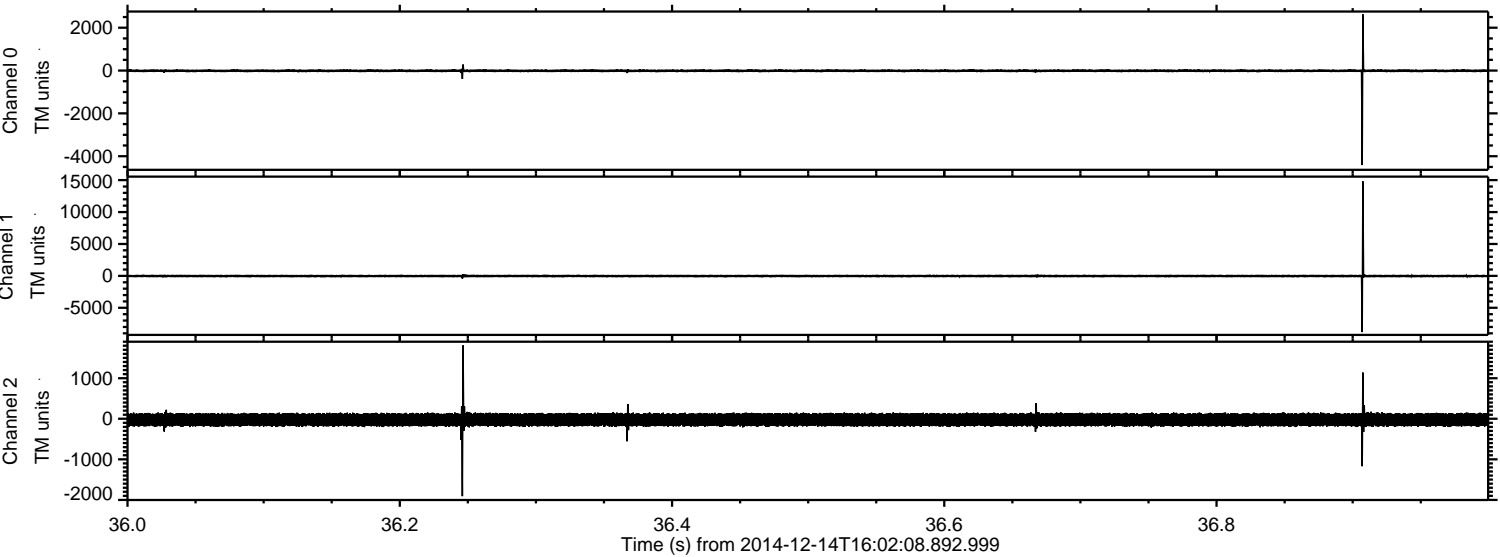


Processed Sun Dec 14 17:12:10 2014 by ELM ver.2012-10-06 from 001__elm20141214_160207__dat00.bin

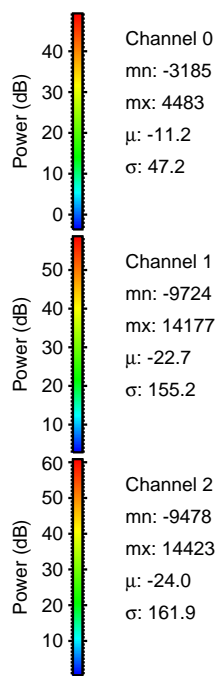
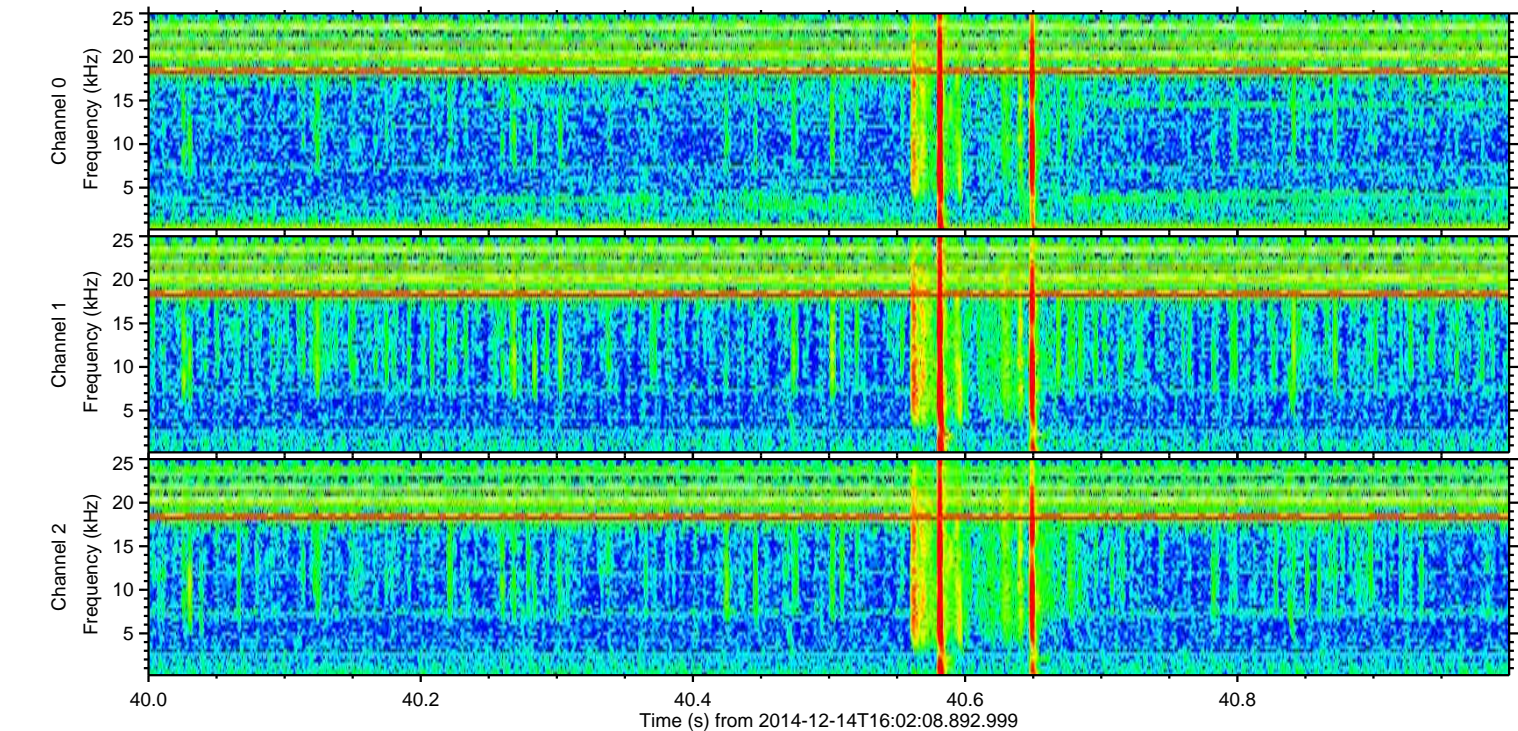
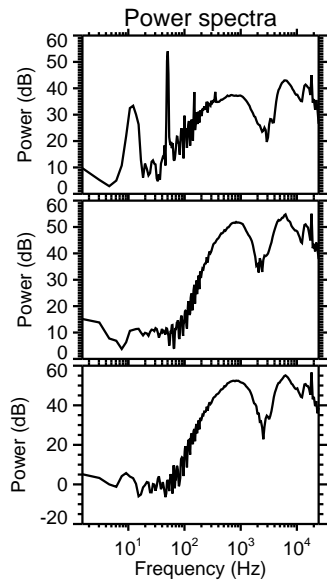
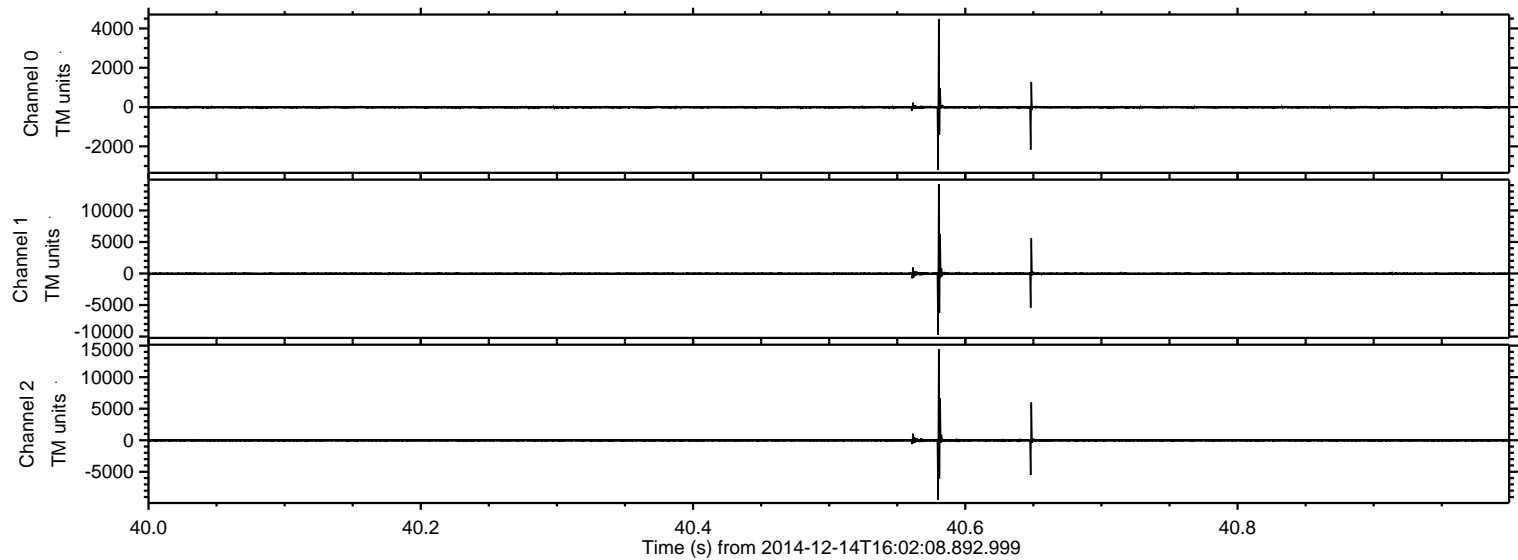


ELMAVAN 3D WAVEFORMS (Measured data sampled at 50 kHz) 49785 packets of 144 samples from 2014-12-14T16:02:08.892.999. Part 37/144

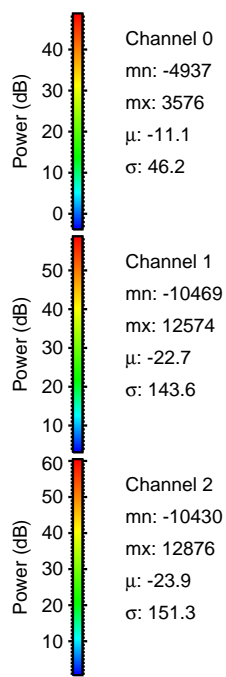
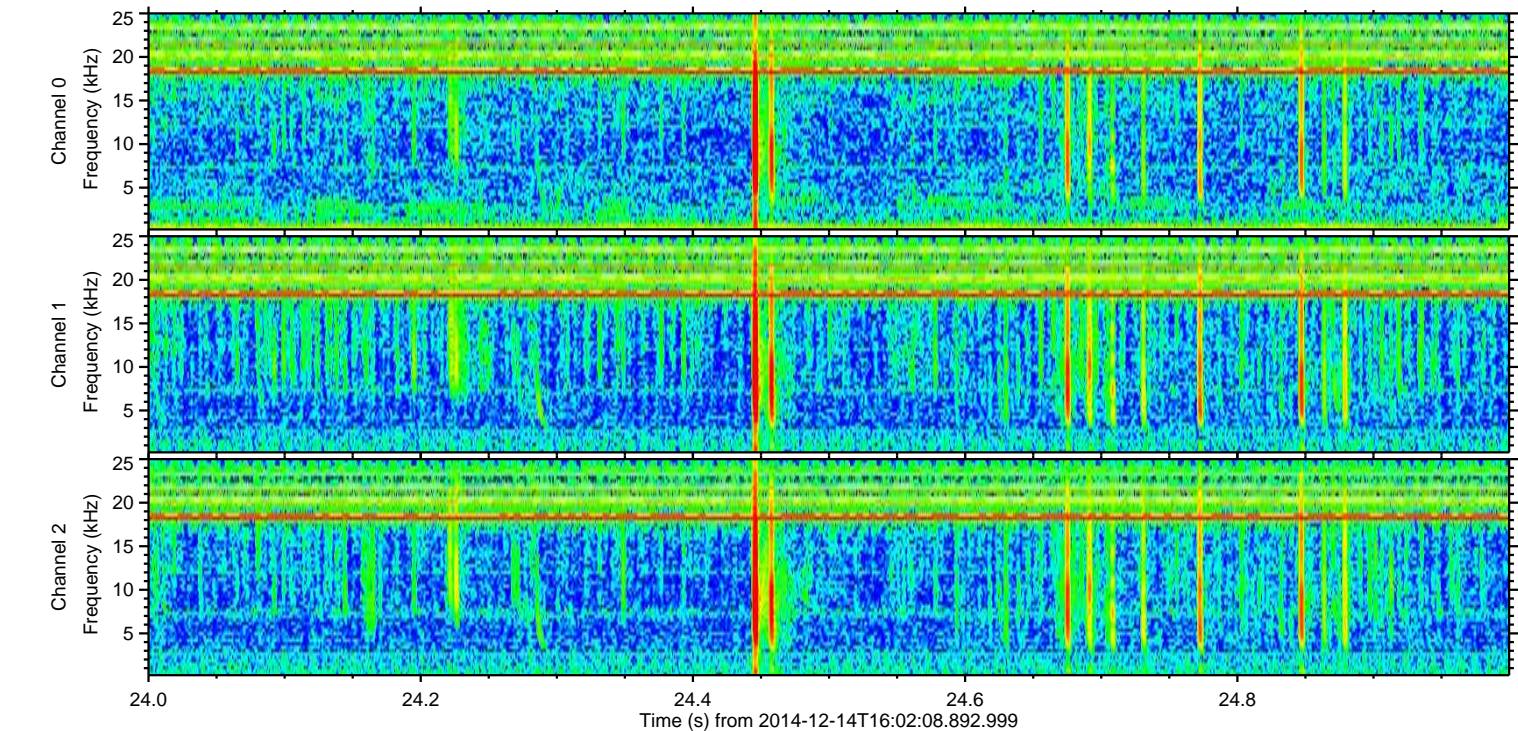
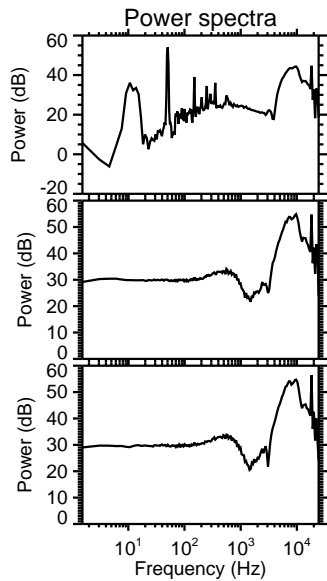
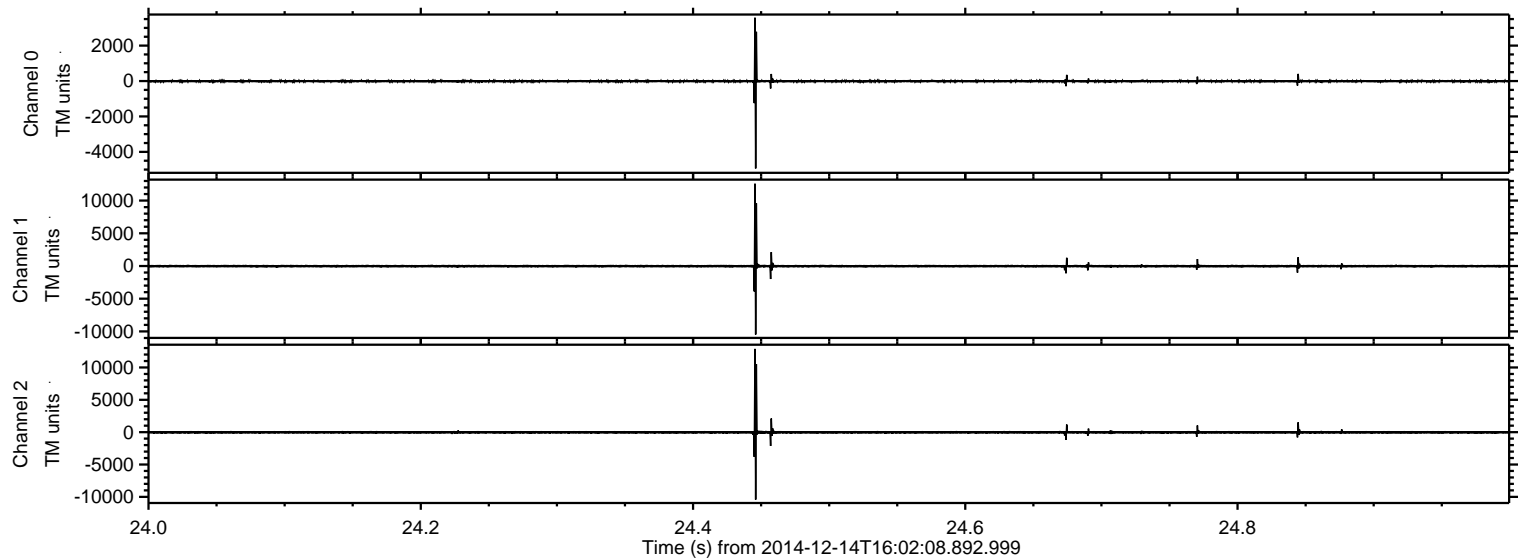
Processed Sun Dec 14 17:12:11 2014 by ELM ver.2012-10-06 from 001__elm20141214_160207__dat00.bin



Processed Sun Dec 14 17:12:12 2014 by ELM ver.2012-10-06 from 001__elm20141214_160207__dat00.bin

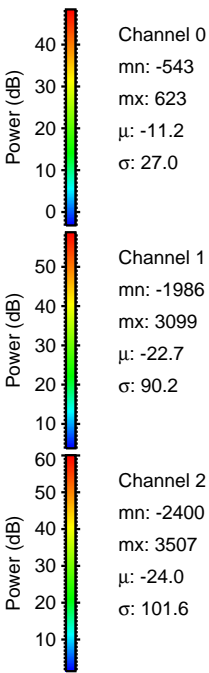
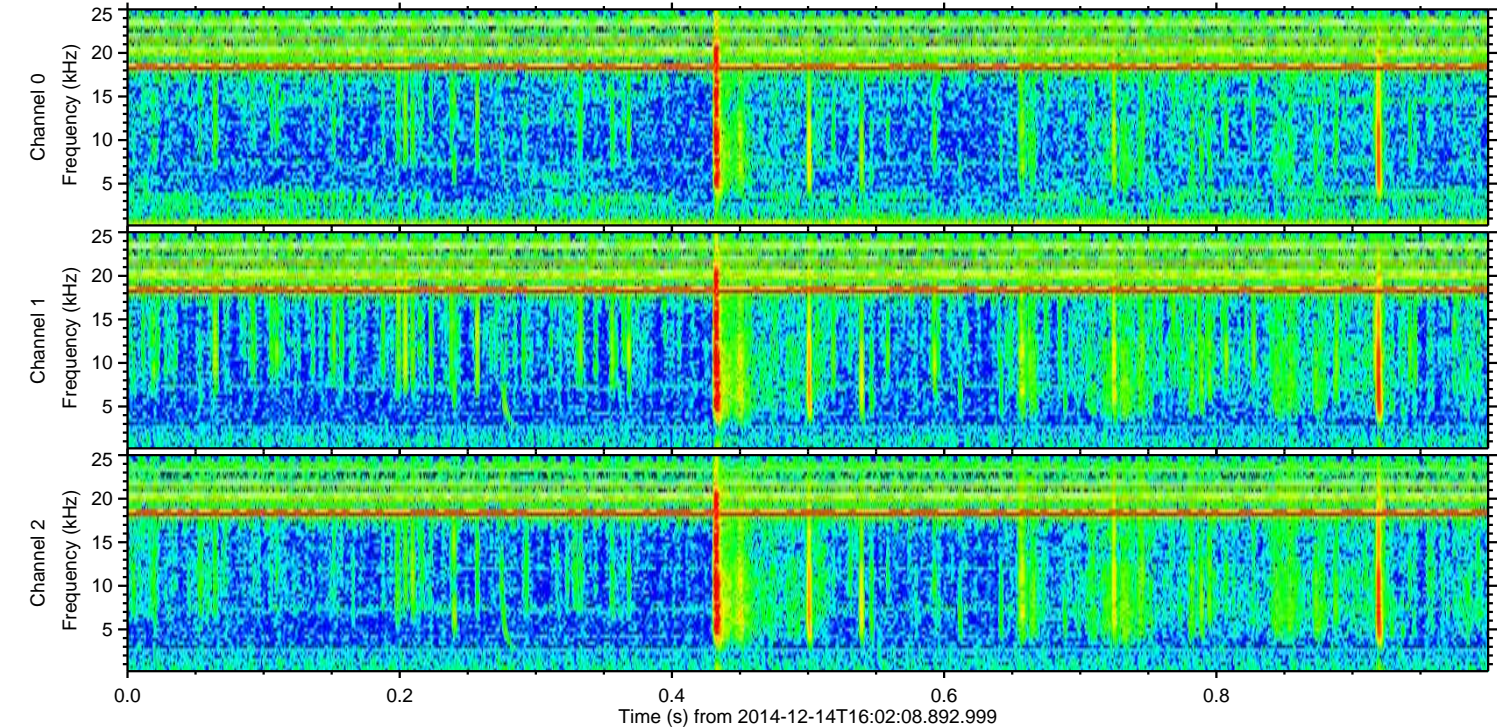
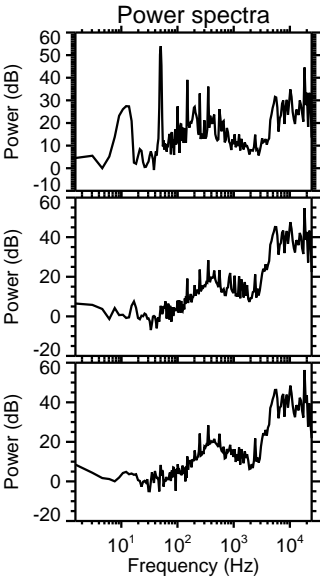
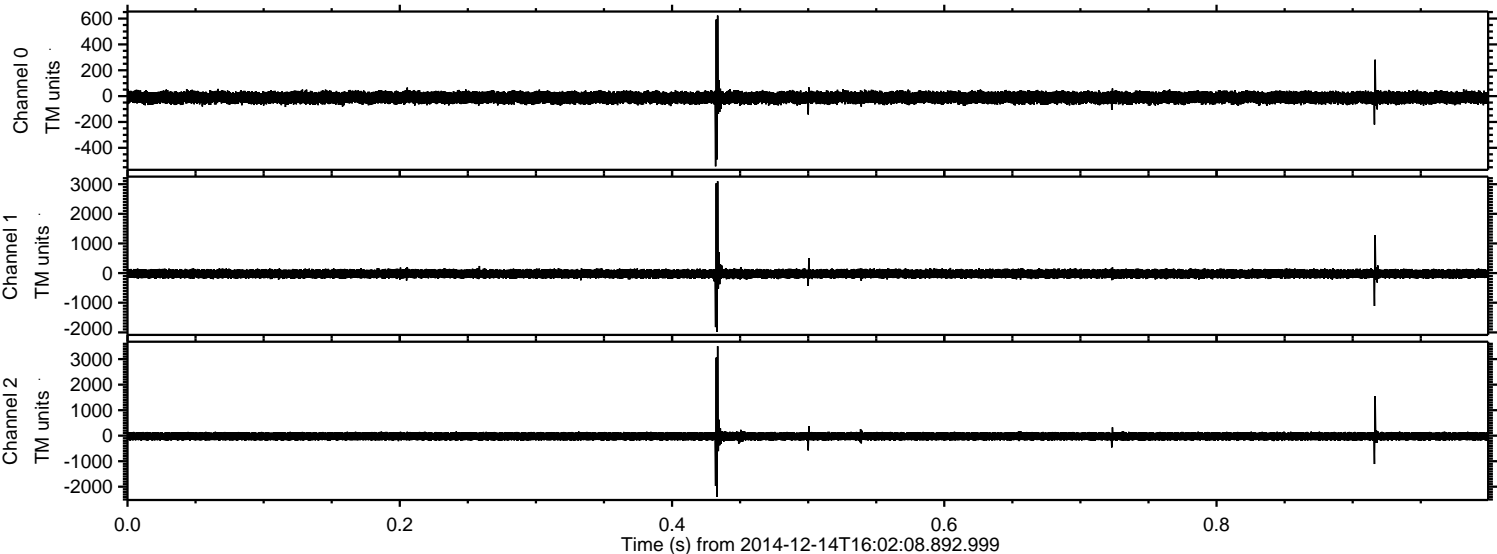


Processed Sun Dec 14 17:12:13 2014 by ELM ver.2012-10-06 from 001__elm20141214_160207__dat00.bin

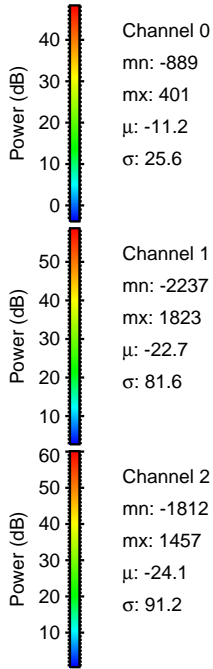
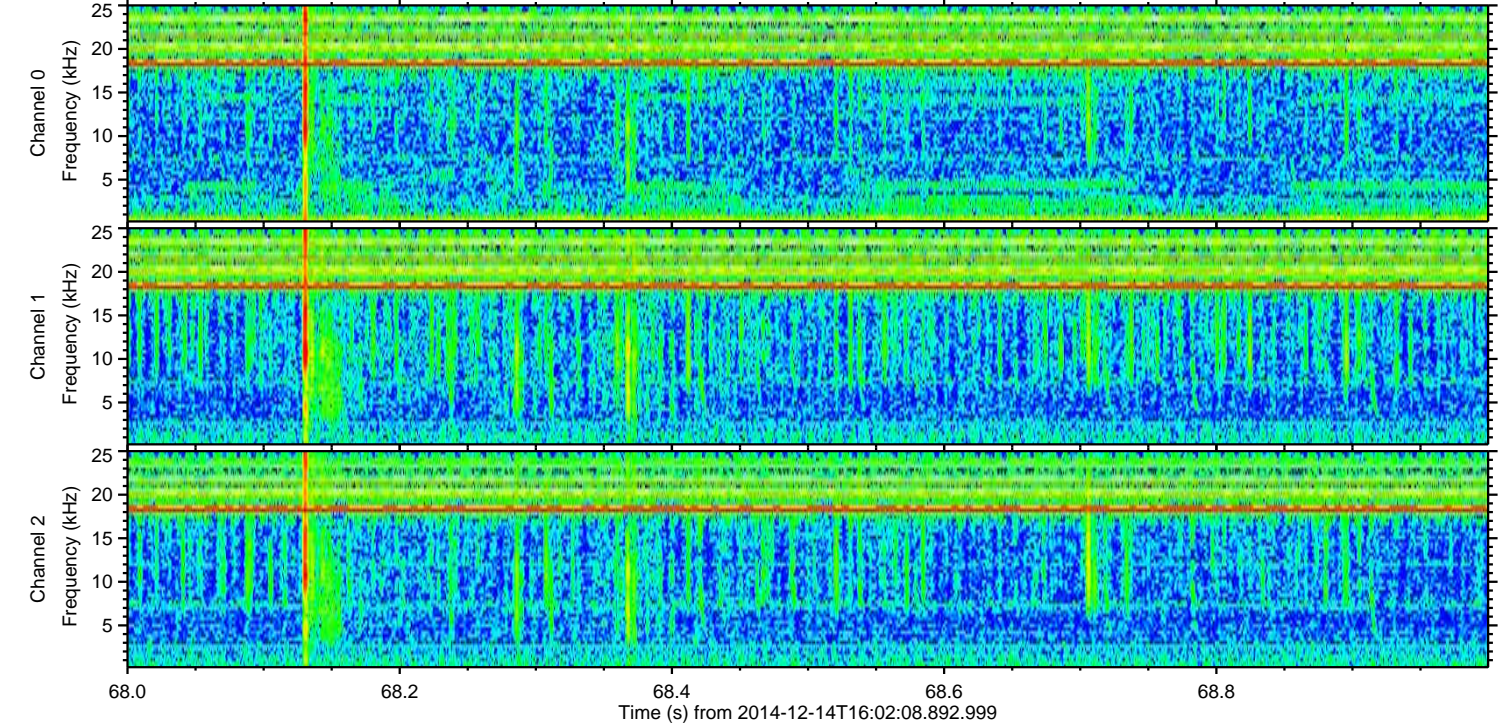
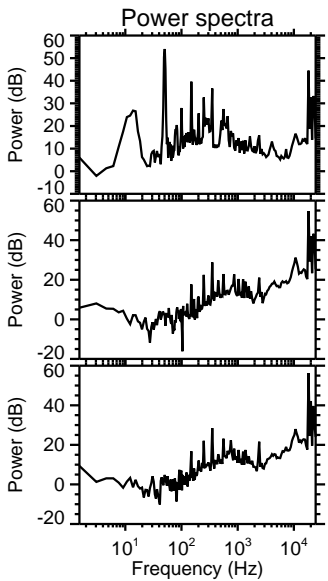
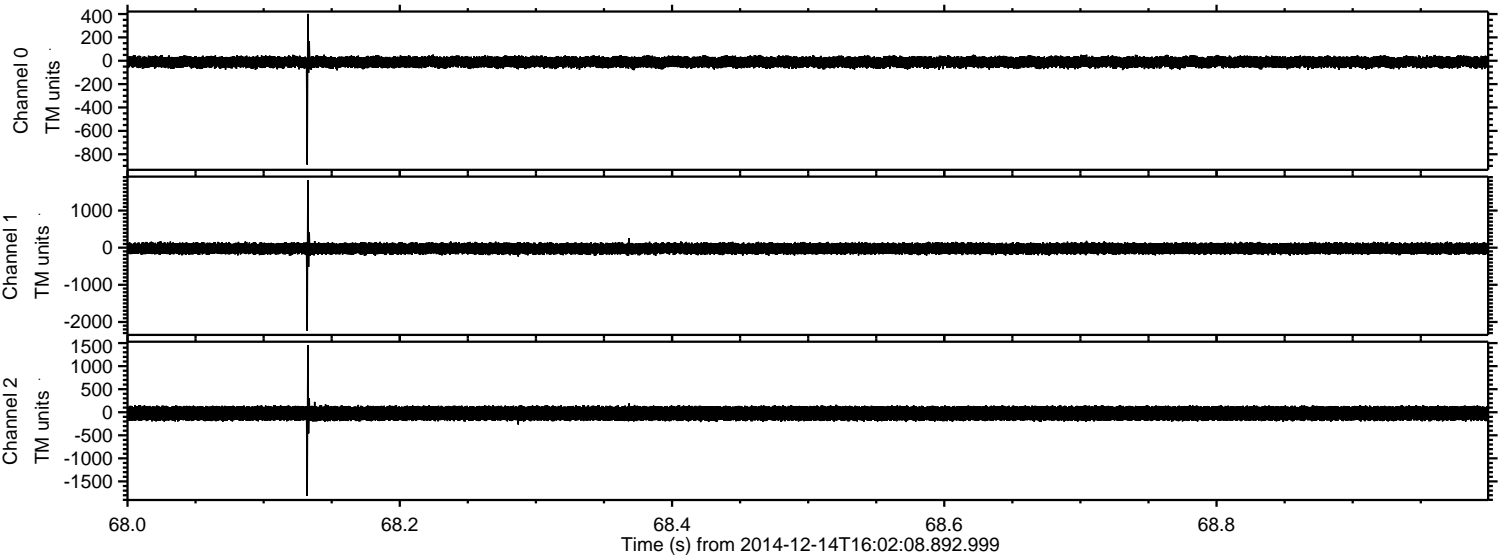


ELMAVAN 3D WAVEFORMS (Measured data sampled at 50 kHz) 49785 packets of 144 samples from 2014-12-14T16:02:08.892.999. Part 1/144

Processed Sun Dec 14 17:12:14 2014 by ELM ver.2012-10-06 from 001__elm20141214_160207__dat00.bin



Processed Sun Dec 14 17:12:14 2014 by ELM ver.2012-10-06 from 001__elm20141214_160207__dat00.bin

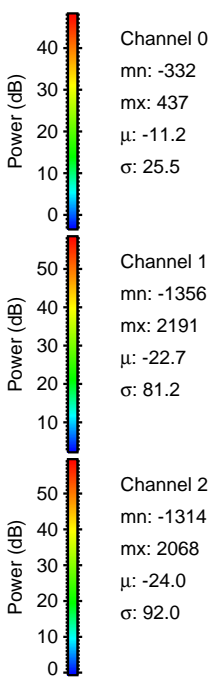
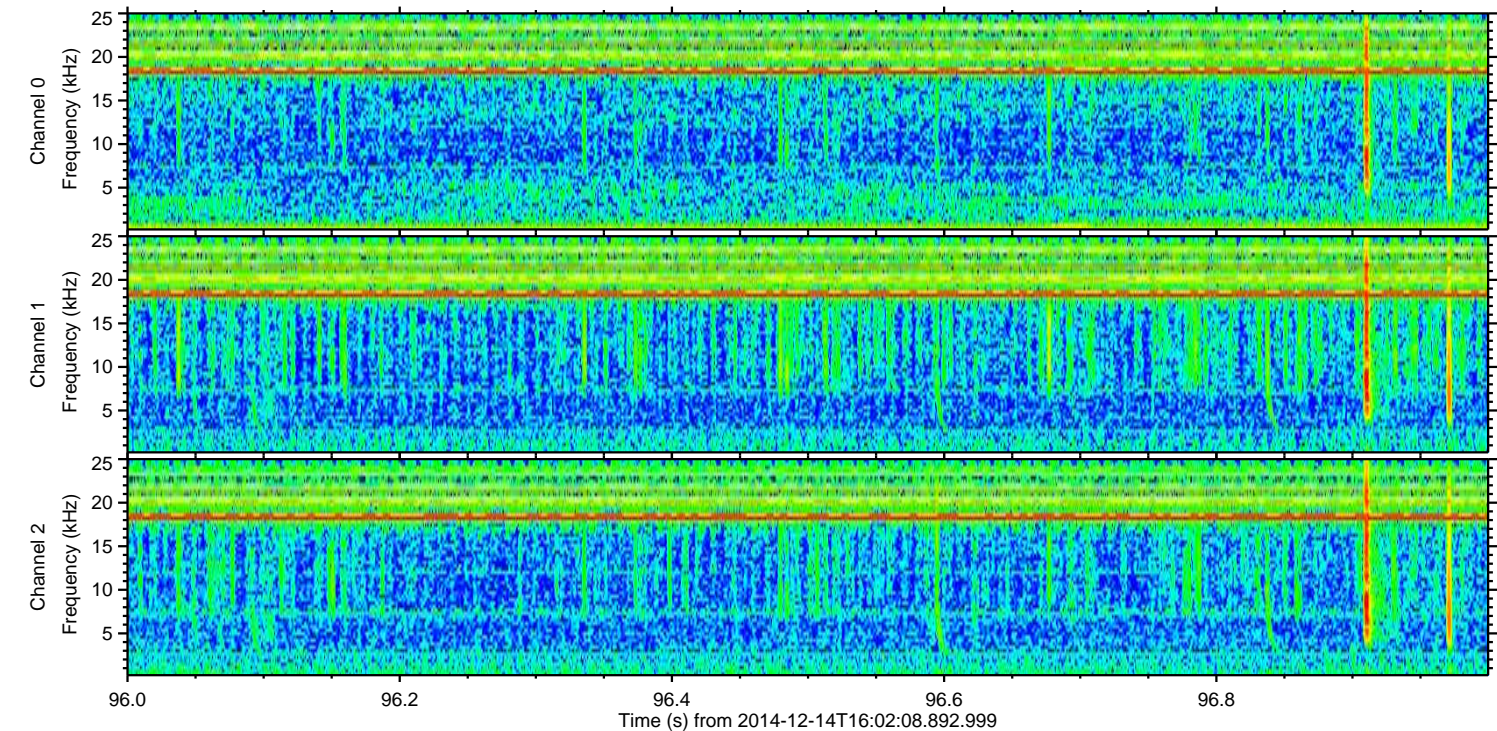
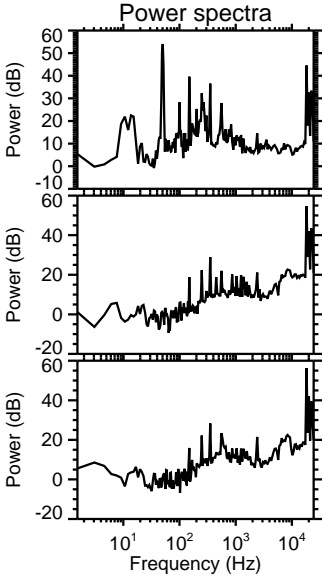
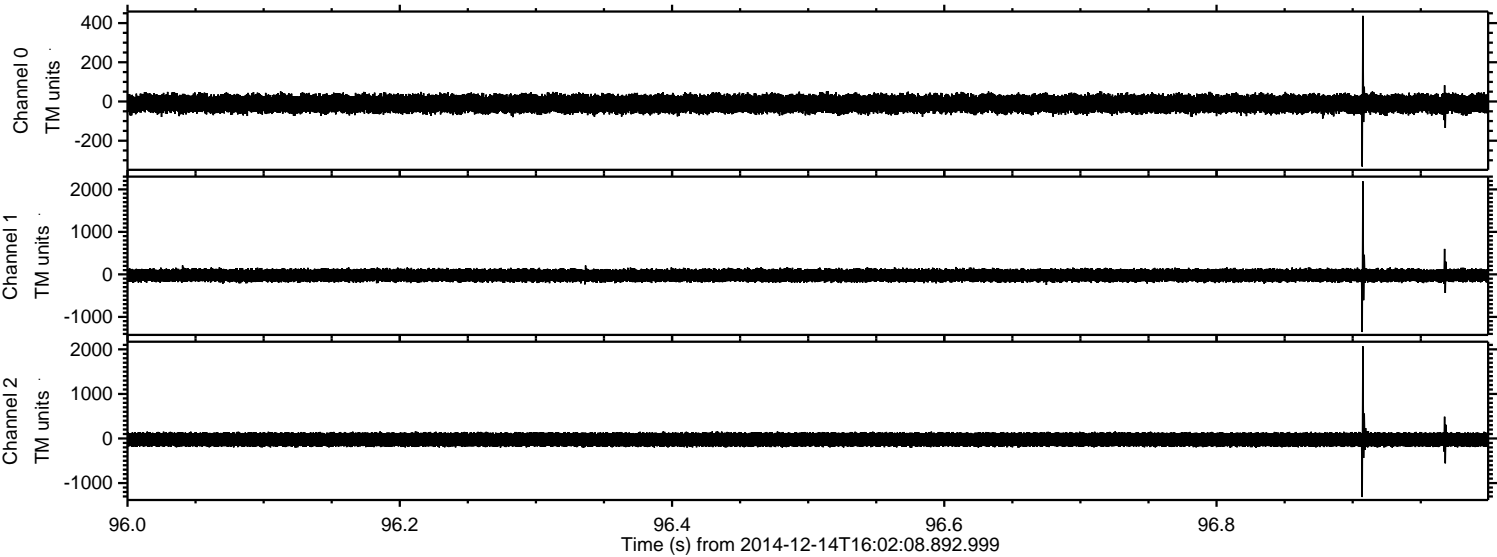


Channel 0
mn: -889
mx: 401
 μ : -11.2
 σ : 25.6

Channel 1
mn: -2237
mx: 1823
 μ : -22.7
 σ : 81.6

Channel 2
mn: -1812
mx: 1457
 μ : -24.1
 σ : 91.2

Processed Sun Dec 14 17:12:15 2014 by ELM ver.2012-10-06 from 001__elm20141214_160207__dat00.bin



Channel 0
mn: -332
mx: 437
 μ : -11.2
 σ : 25.5

Channel 1
mn: -1356
mx: 2191
 μ : -22.7
 σ : 81.2

Channel 2
mn: -1314
mx: 2068
 μ : -24.0
 σ : 92.0

Processed Sun Dec 14 17:12:16 2014 by ELM ver.2012-10-06 from 001__elm20141214_160207__dat00.bin

