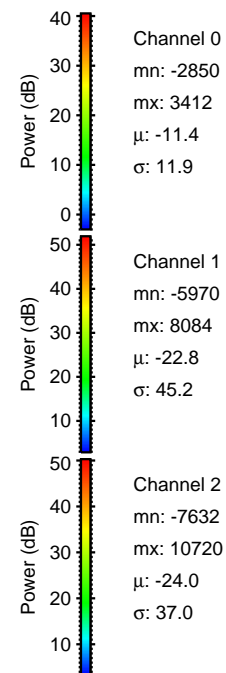
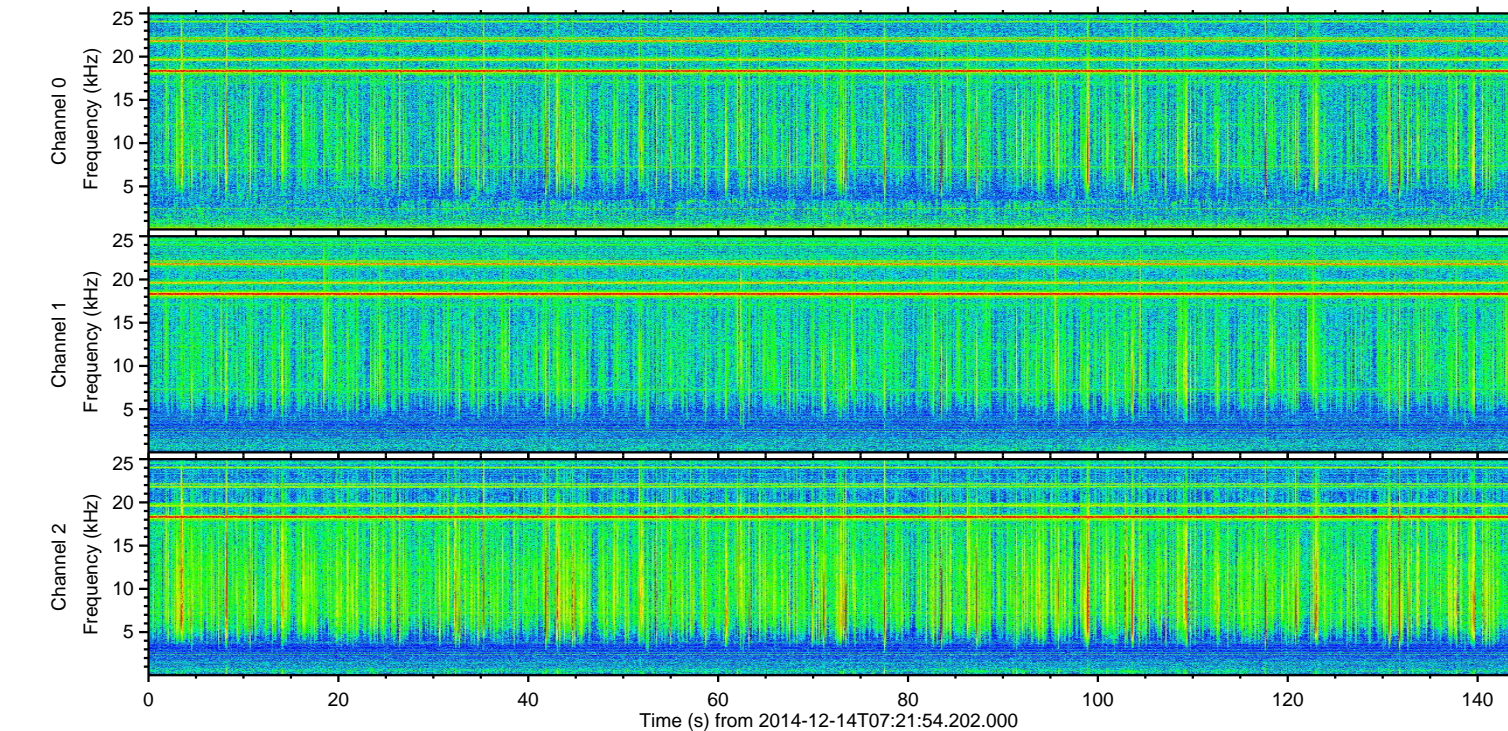
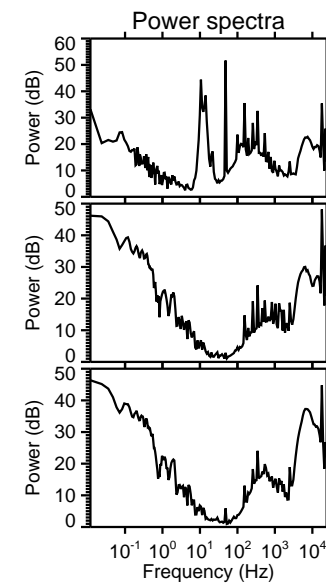
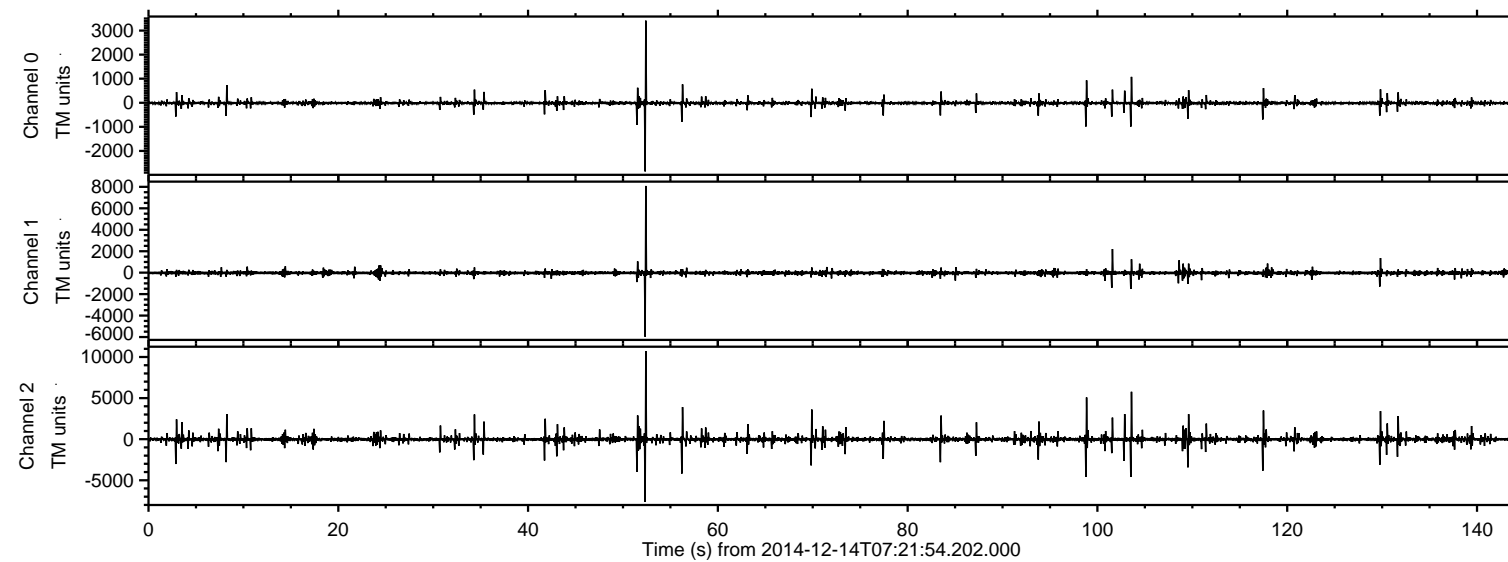
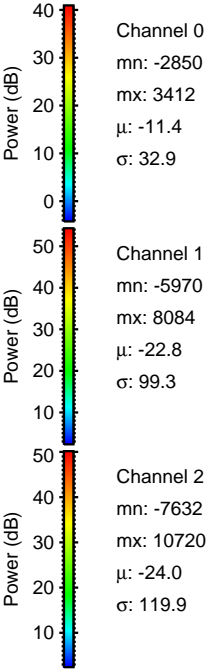
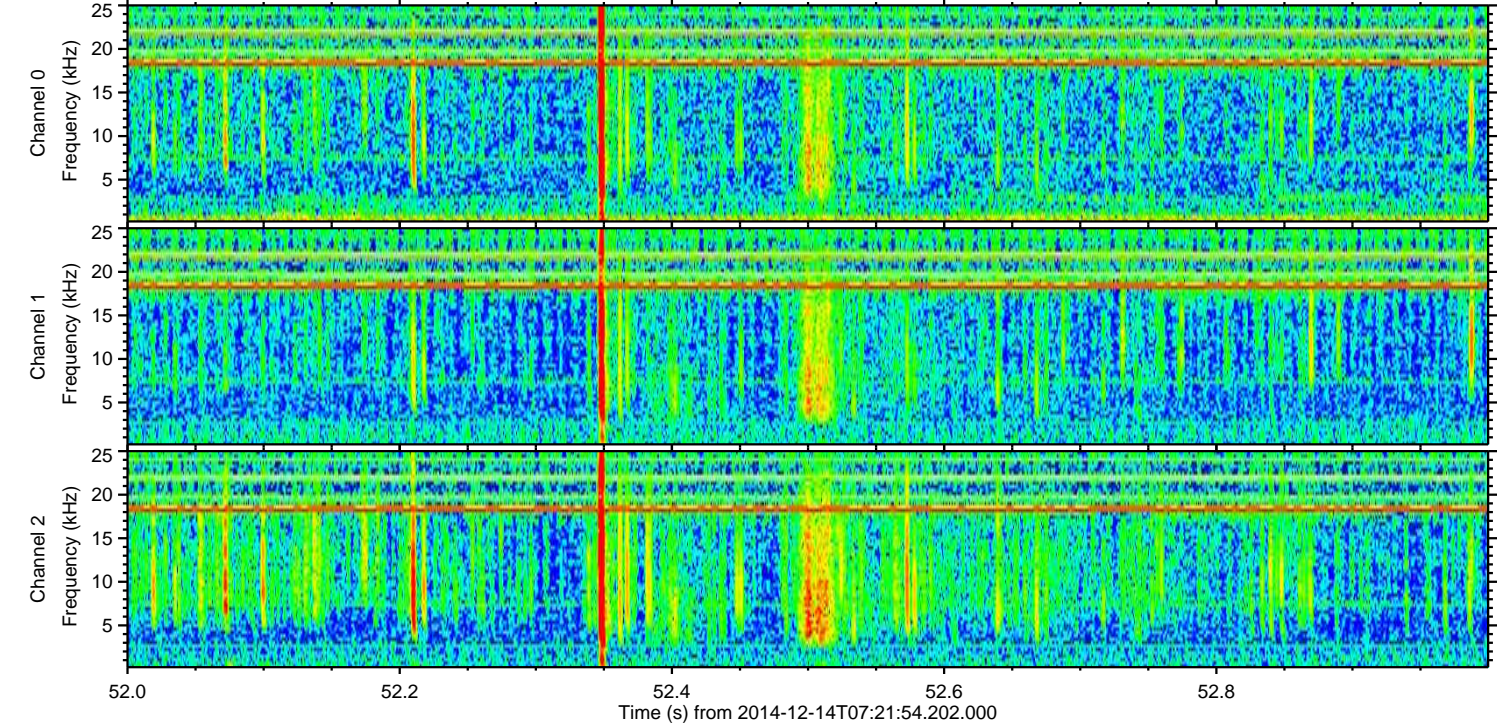
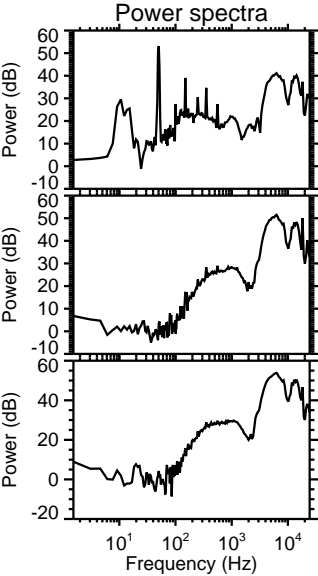
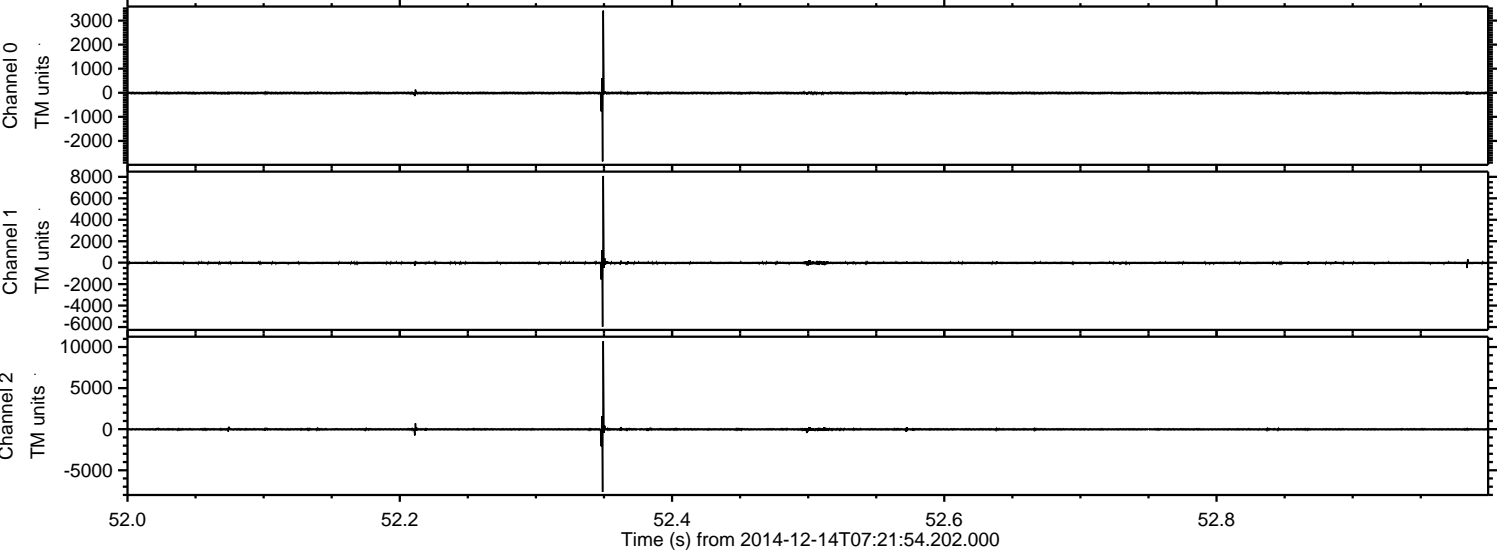


ELMAVAN 3D WAVEFORMS (Measured data sampled at 50 kHz) 49787 packets of 144 samples from 2014-12-14T07:21:54.202.000.

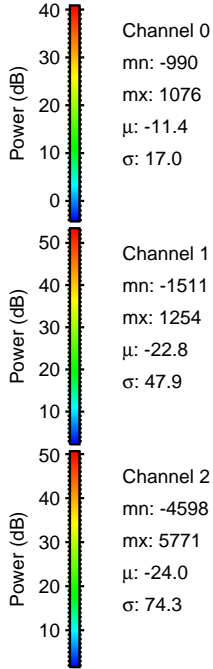
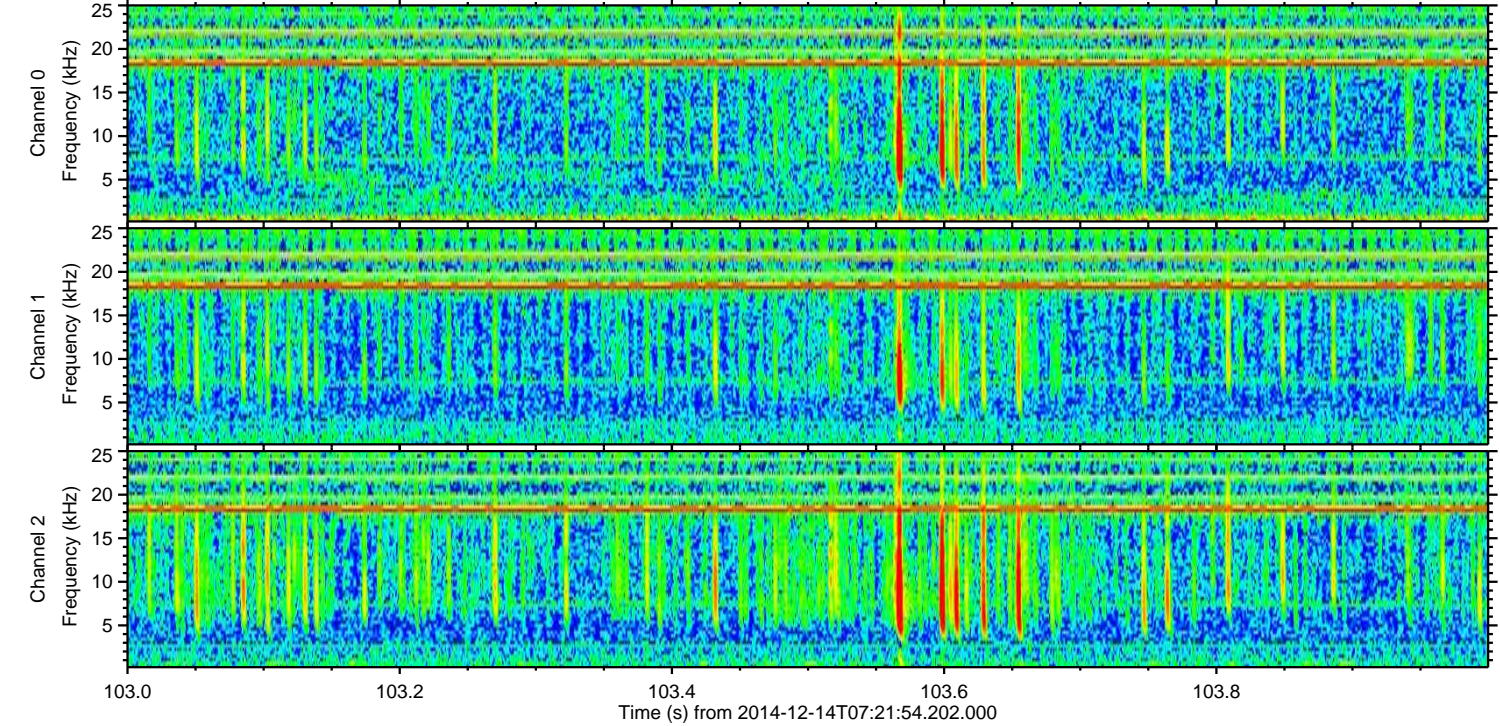
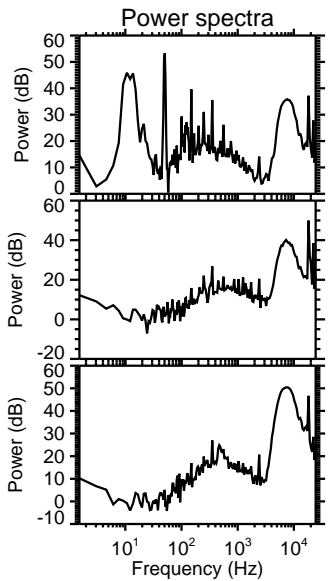
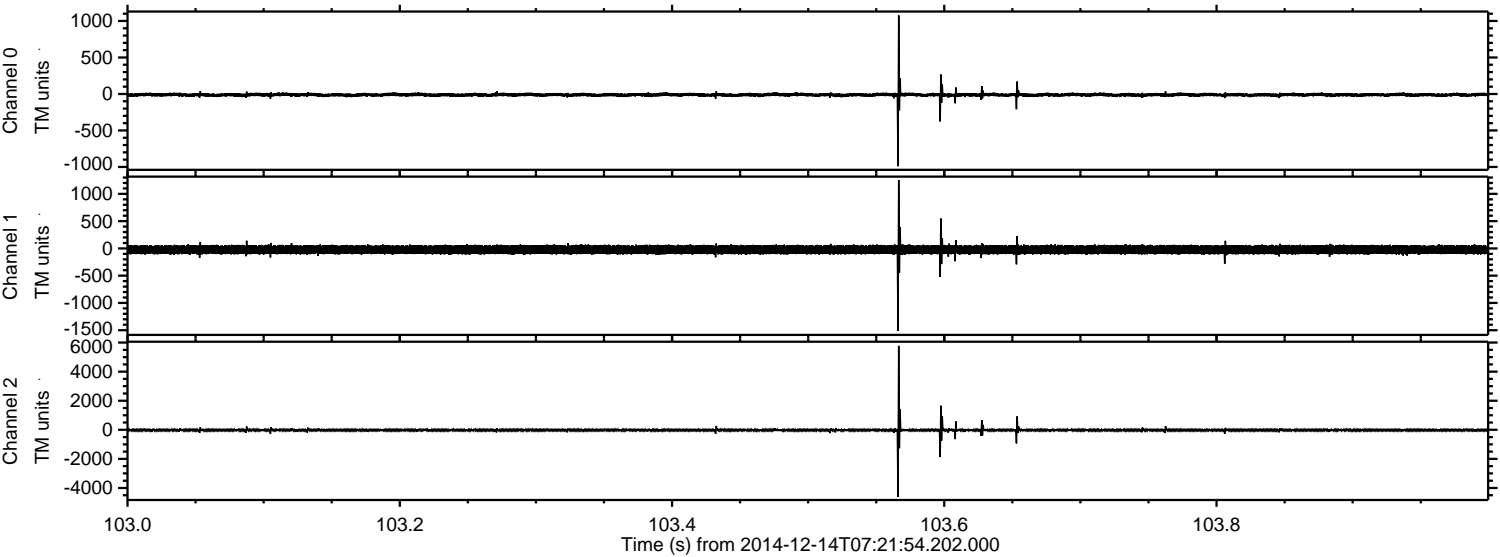
Processed Sun Dec 14 08:29:54 2014 by ELM ver.2012-10-06 from 001__elm20141214_072153__dat00.bin



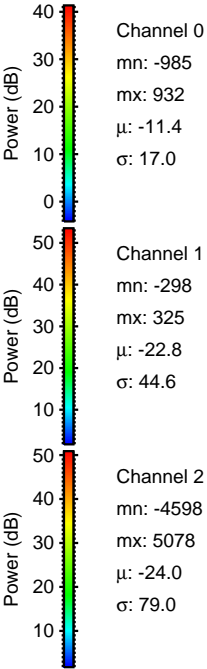
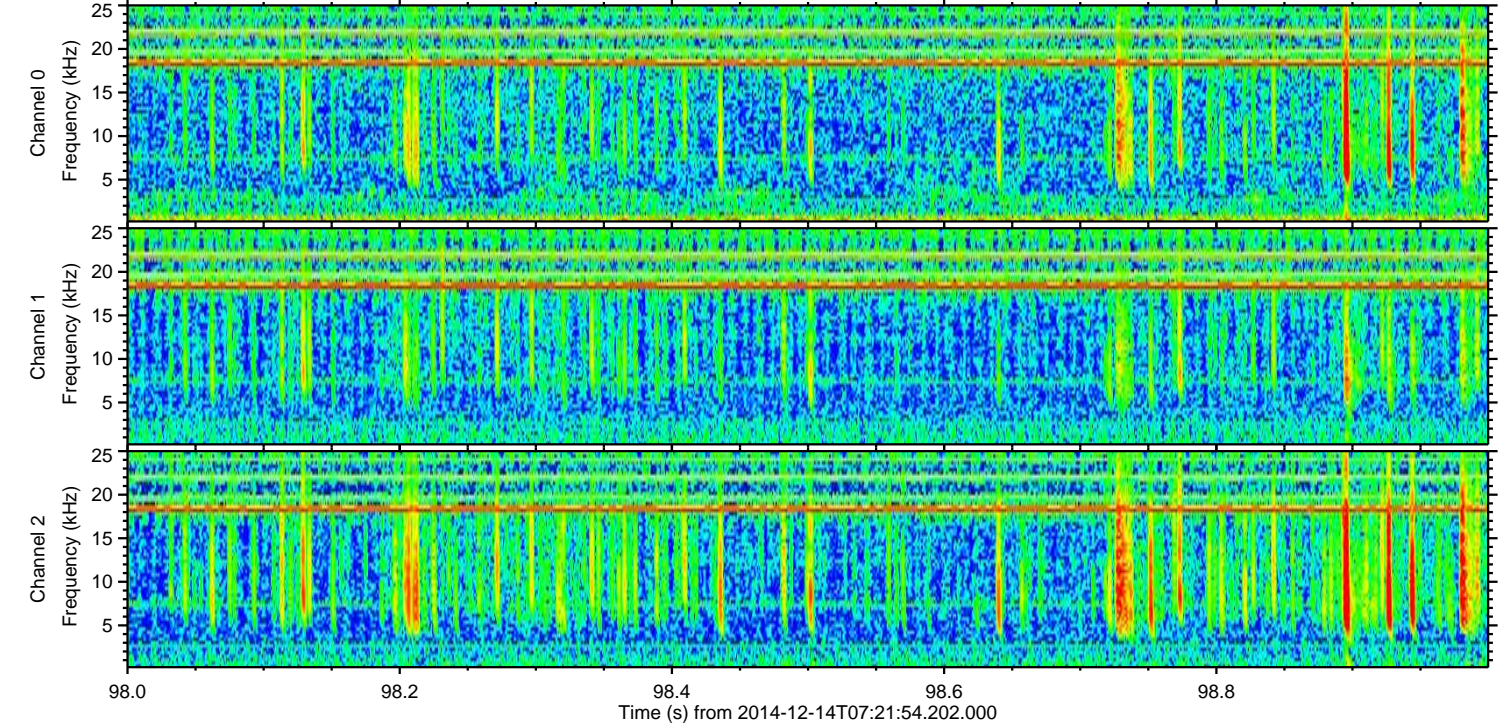
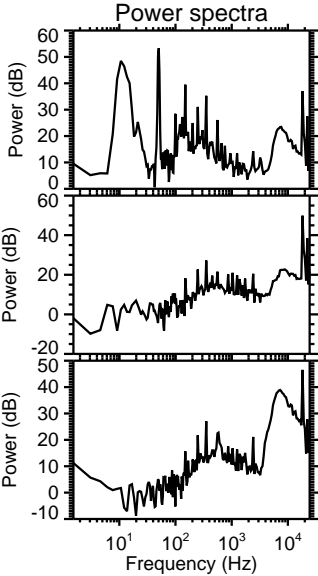
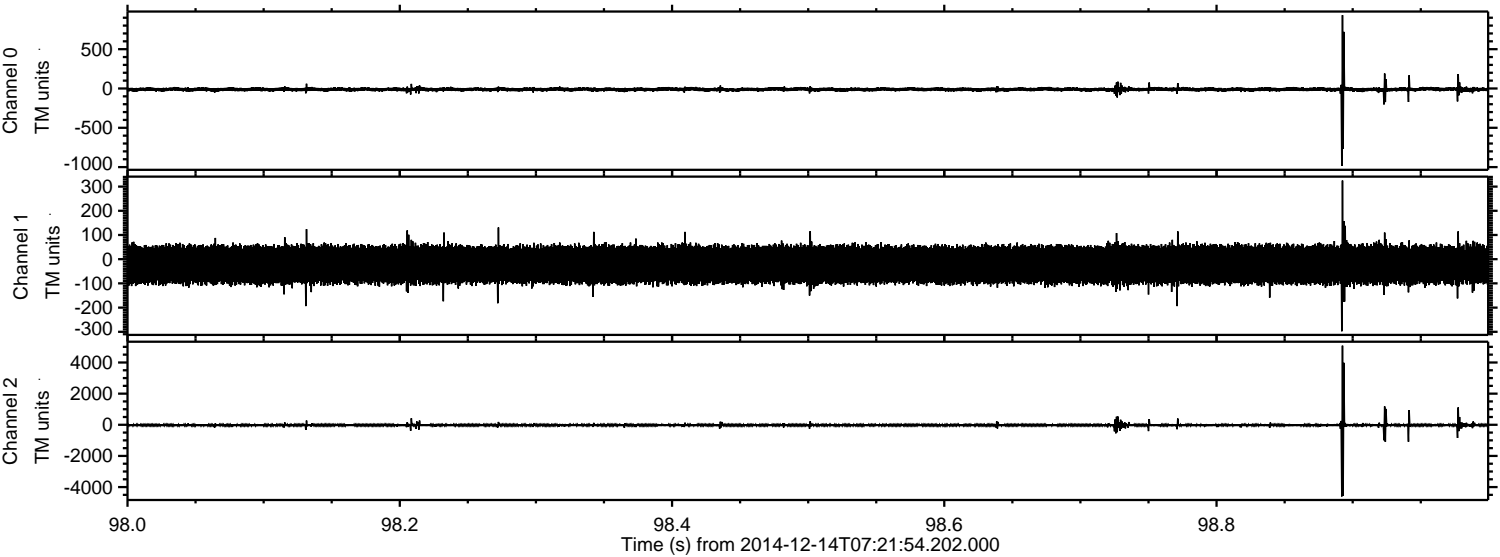
Processed Sun Dec 14 08:30:07 2014 by ELM ver.2012-10-06 from 001__elm20141214_072153__dat00.bin



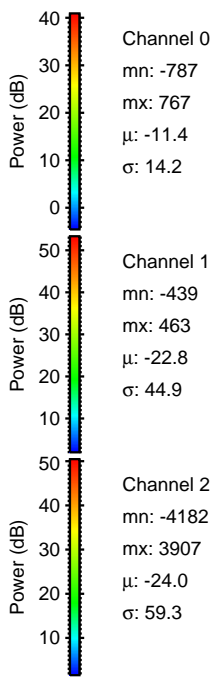
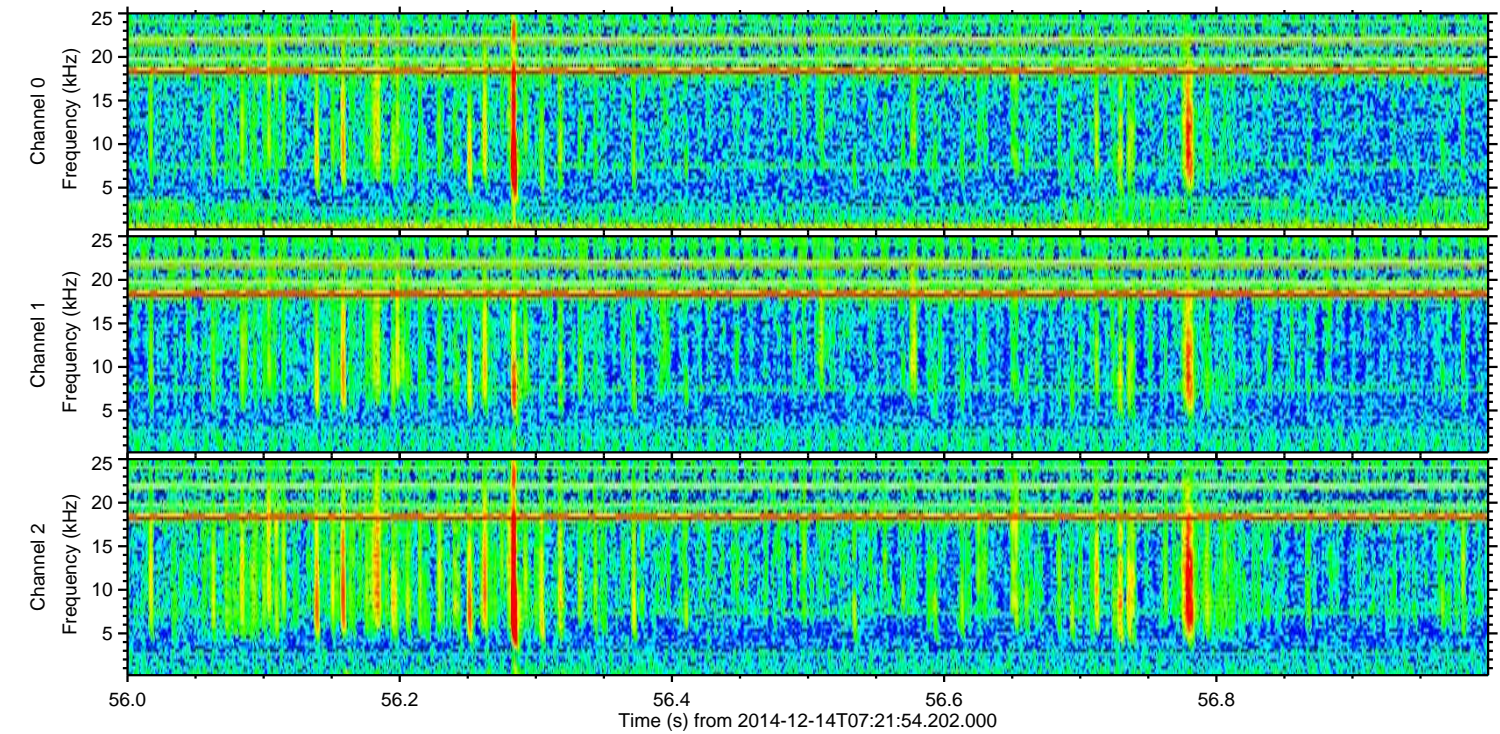
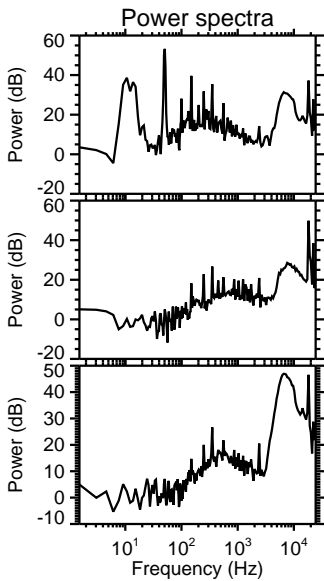
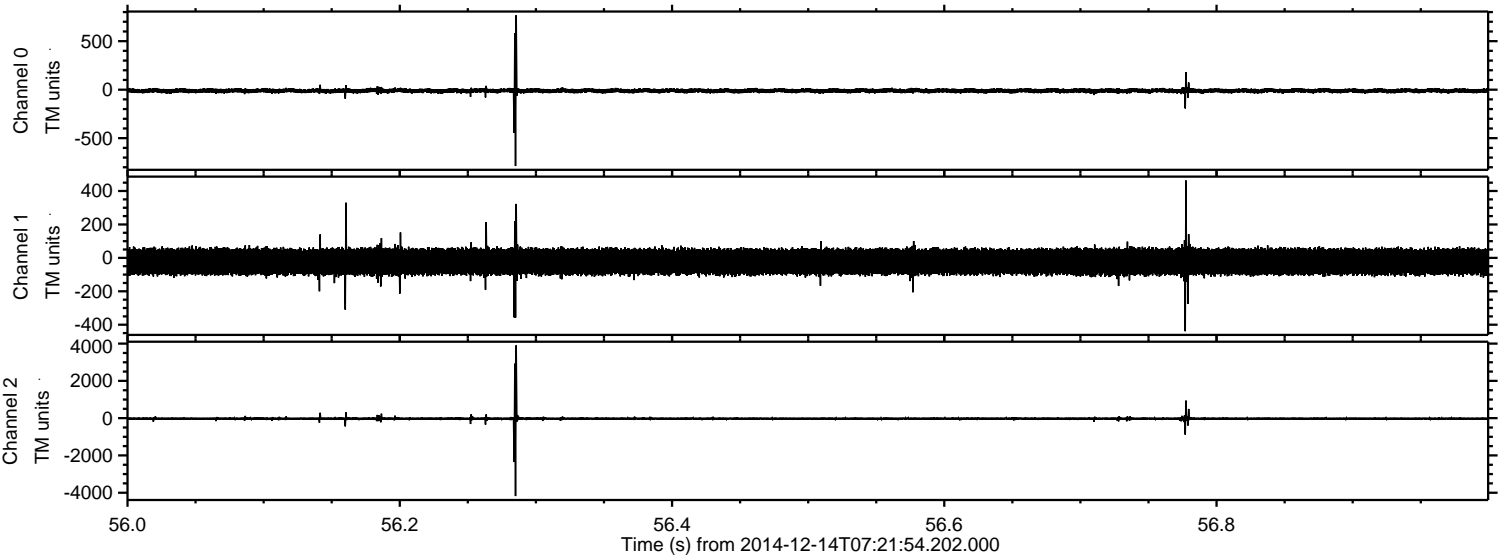
Processed Sun Dec 14 08:30:08 2014 by ELM ver.2012-10-06 from 001__elm20141214_072153__dat00.bin



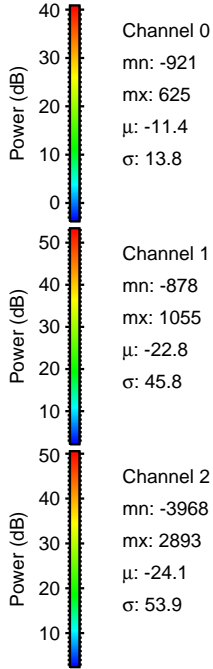
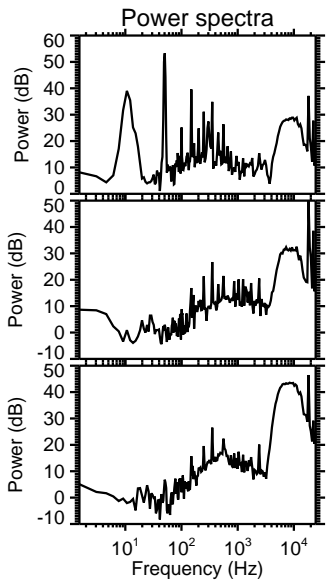
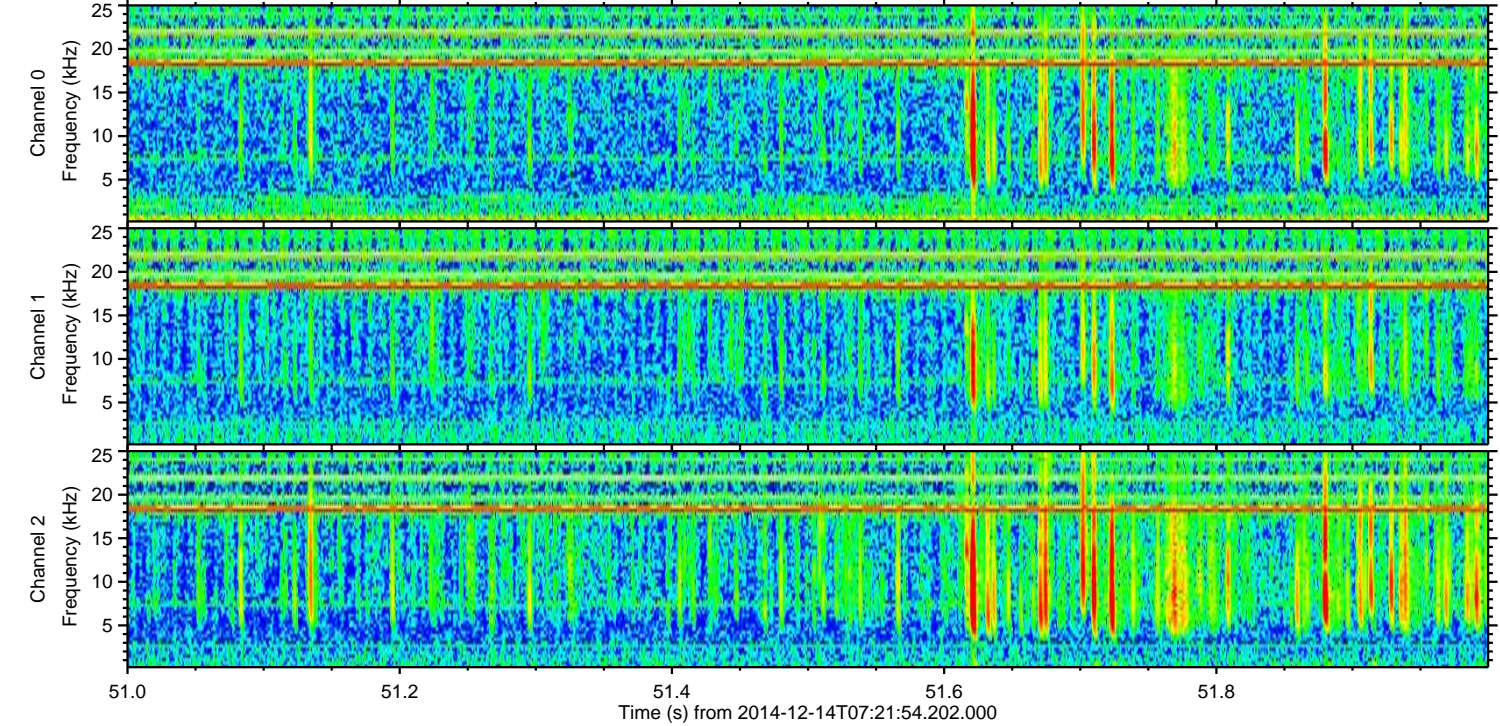
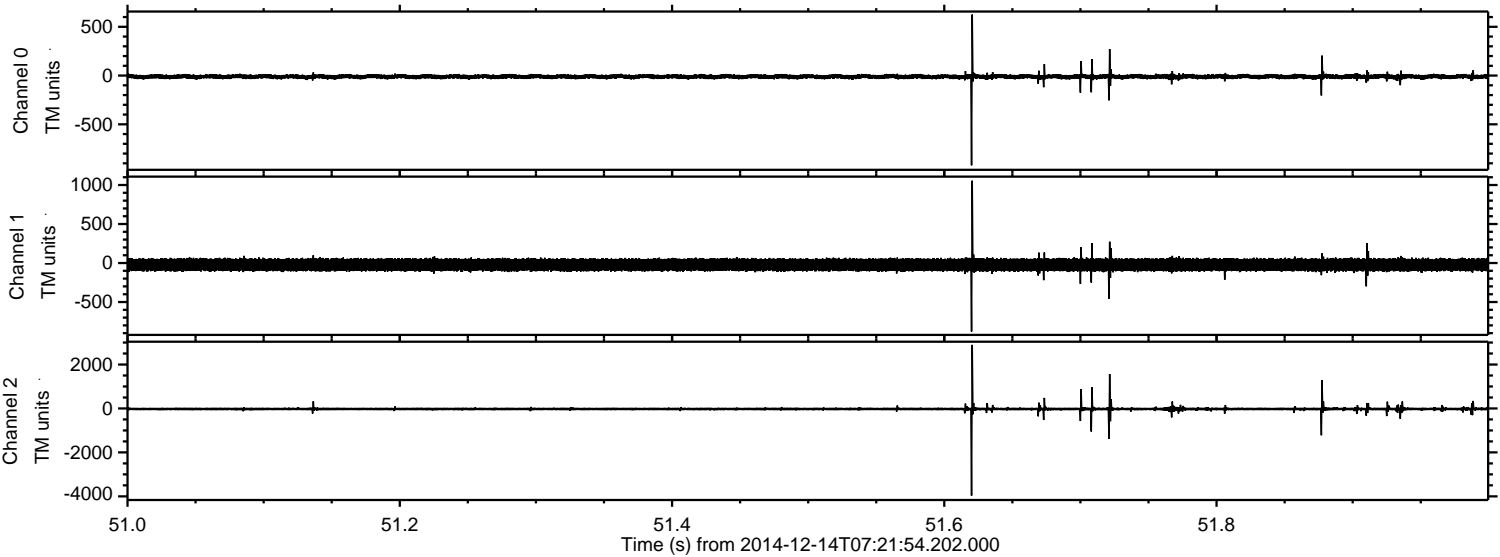
Processed Sun Dec 14 08:30:09 2014 by ELM ver.2012-10-06 from 001__elm20141214_072153__dat00.bin



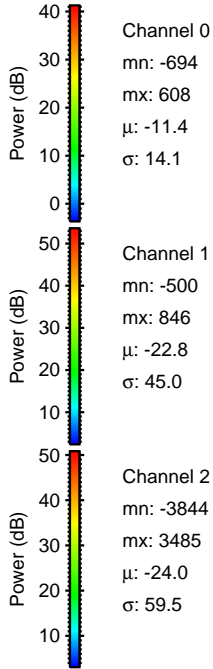
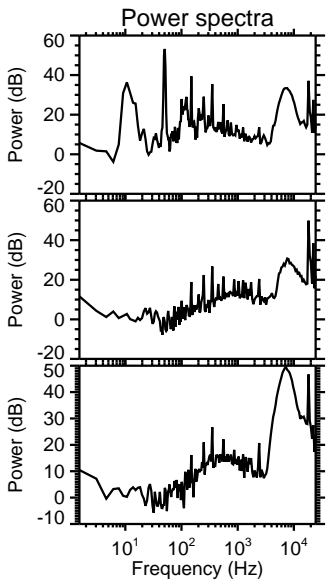
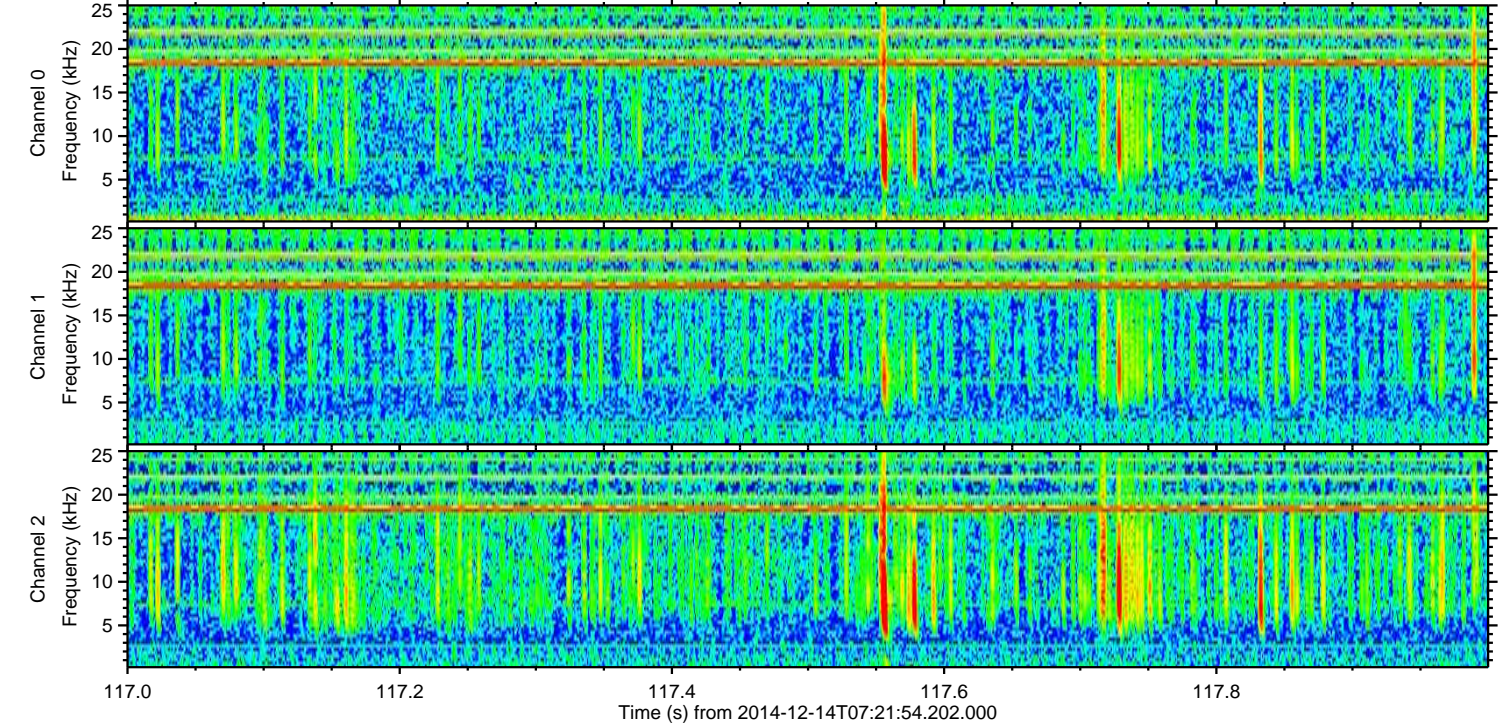
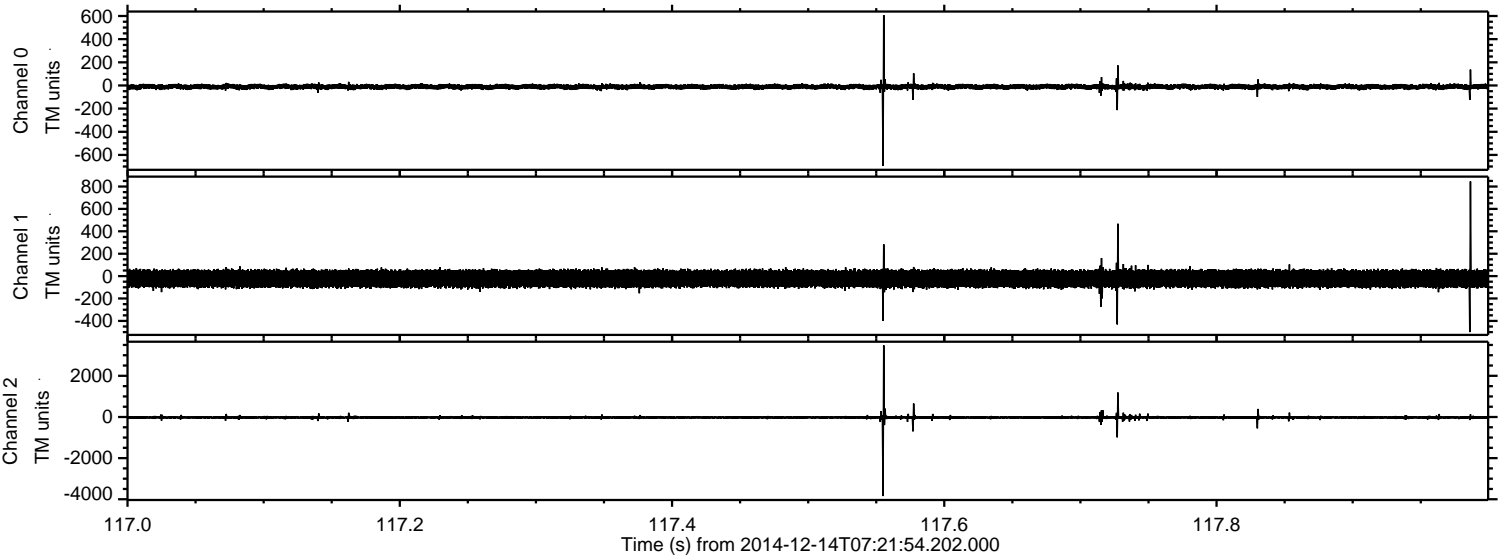
Processed Sun Dec 14 08:30:10 2014 by ELM ver.2012-10-06 from 001__elm20141214_072153__dat00.bin



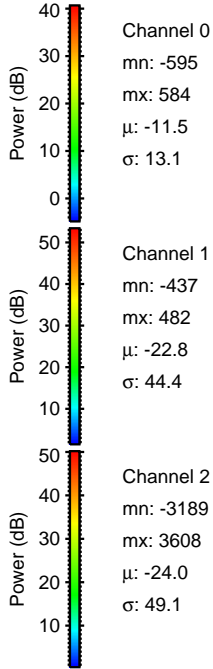
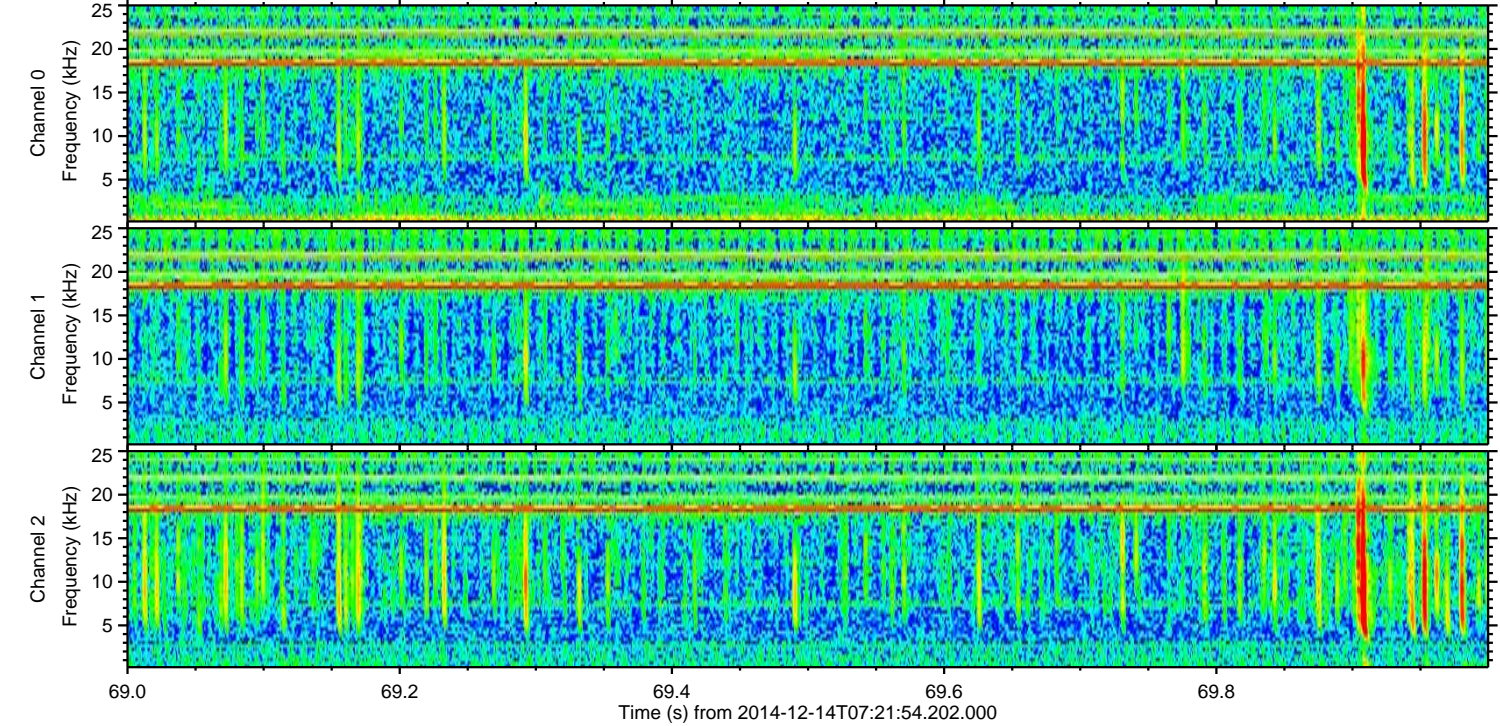
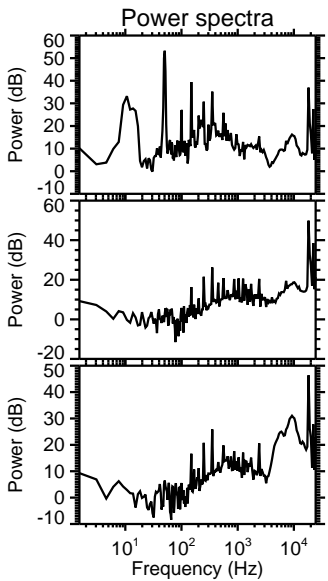
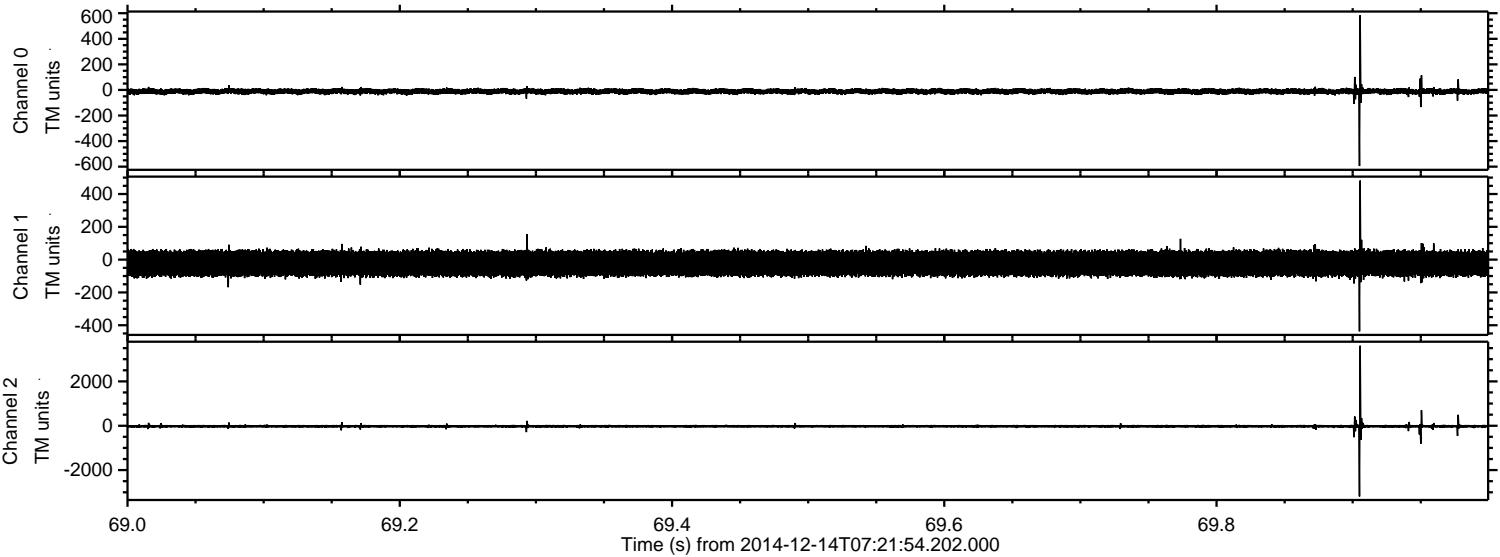
Processed Sun Dec 14 08:30:11 2014 by ELM ver.2012-10-06 from 001__elm20141214_072153__dat00.bin



Processed Sun Dec 14 08:30:12 2014 by ELM ver.2012-10-06 from 001__elm20141214_072153__dat00.bin

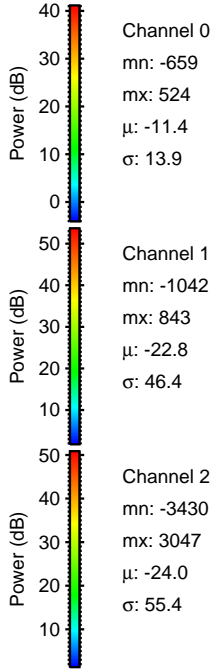
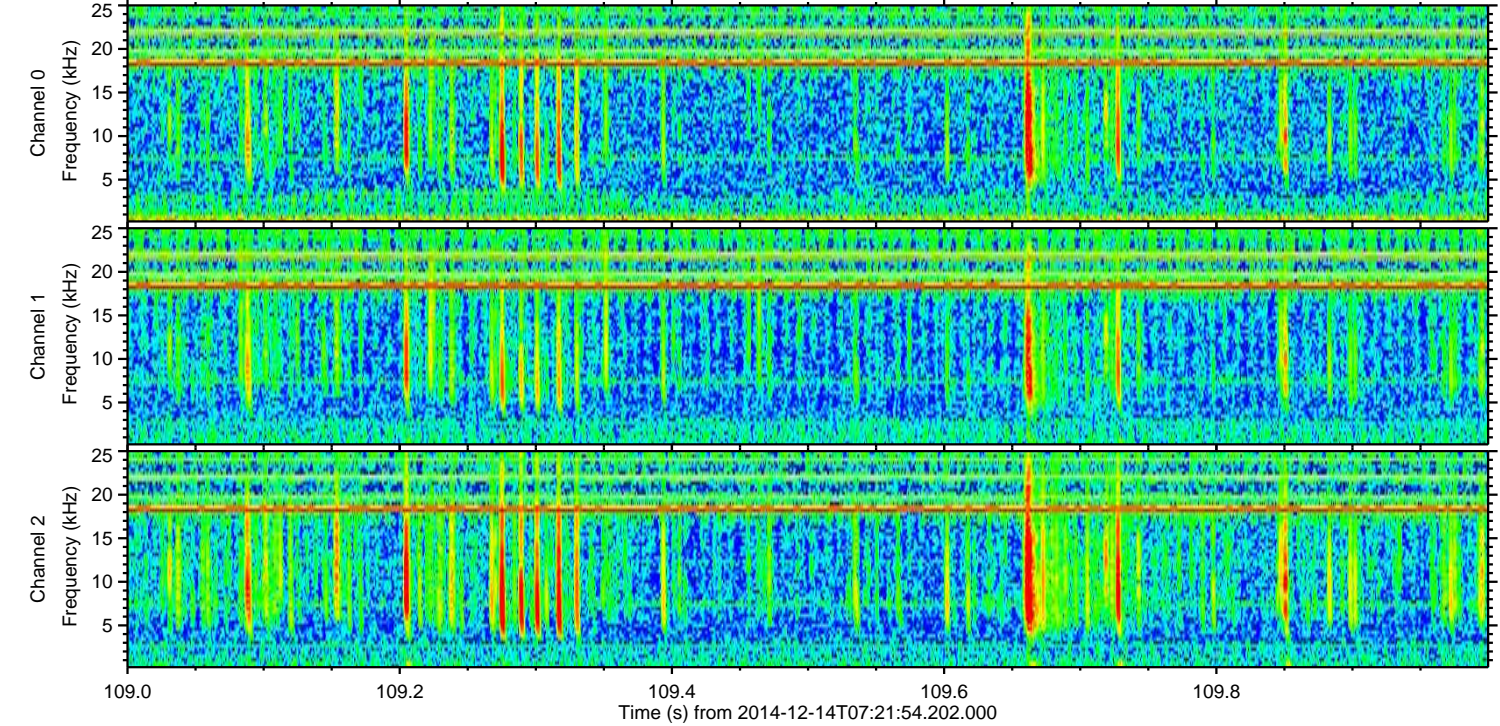
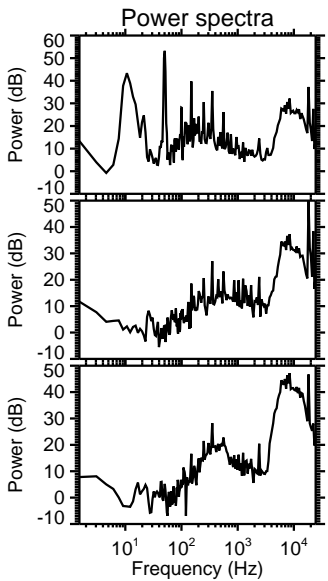
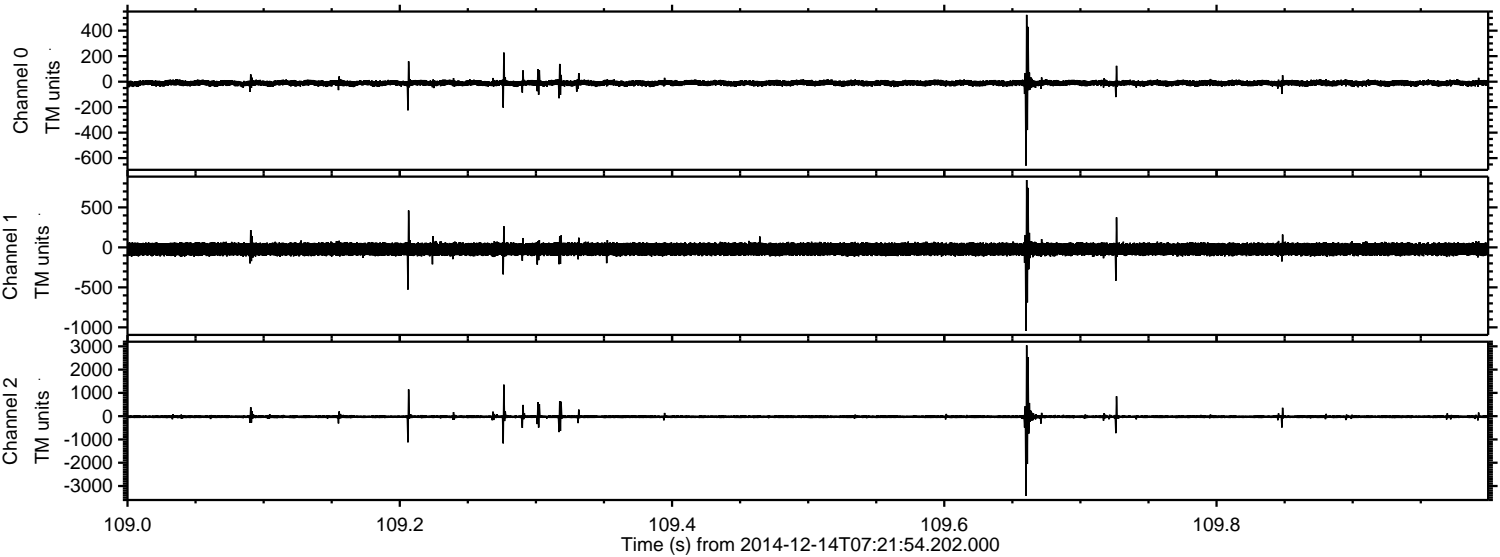


Processed Sun Dec 14 08:30:13 2014 by ELM ver.2012-10-06 from 001__elm20141214_072153__dat00.bin



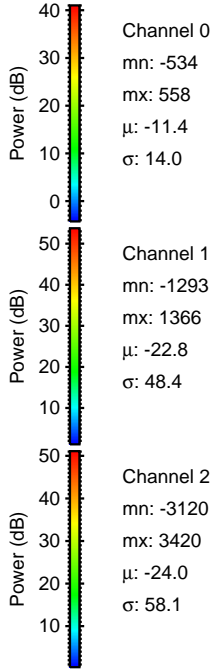
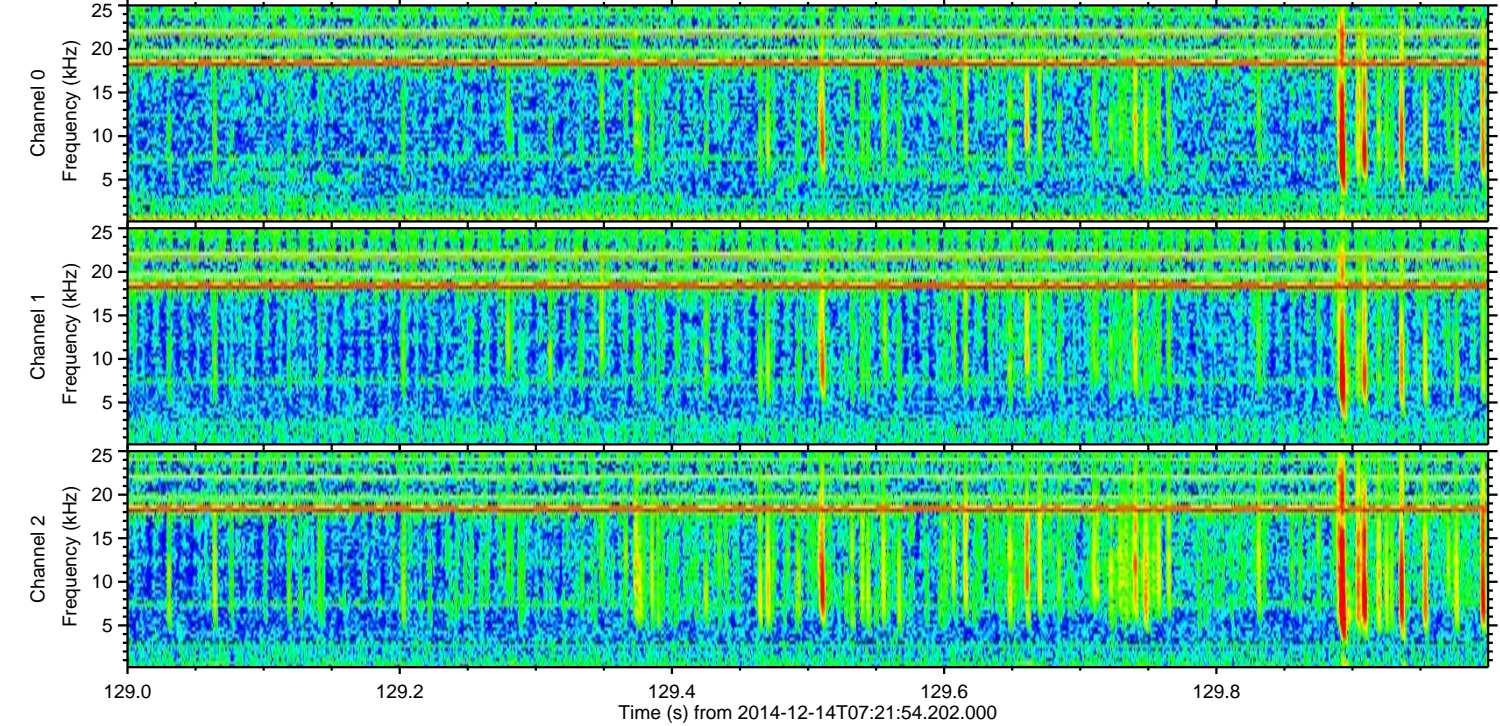
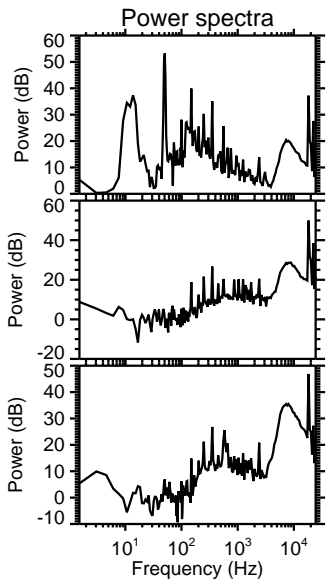
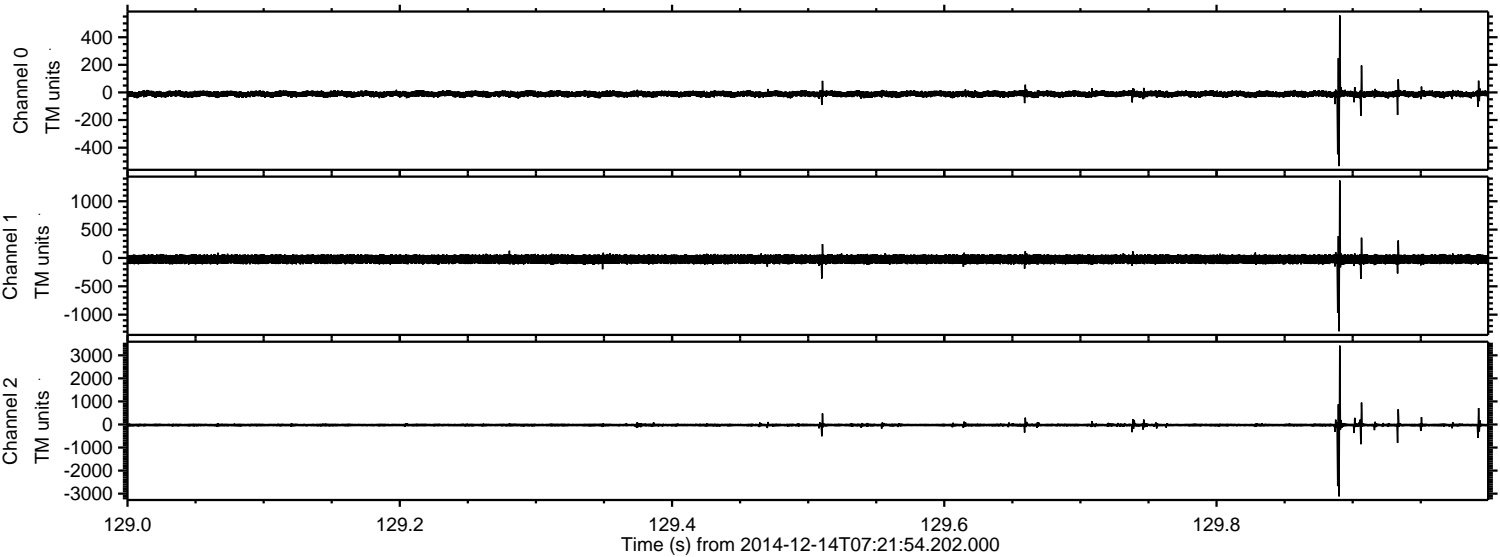
ELMAVAN 3D WAVEFORMS (Measured data sampled at 50 kHz) 49787 packets of 144 samples from 2014-12-14T07:21:54.202.000. Part 110/144

Processed Sun Dec 14 08:30:14 2014 by ELM ver.2012-10-06 from 001__elm20141214_072153__dat00.bin



ELMAVAN 3D WAVEFORMS (Measured data sampled at 50 kHz) 49787 packets of 144 samples from 2014-12-14T07:21:54.202.000. Part 130/144

Processed Sun Dec 14 08:30:15 2014 by ELM ver.2012-10-06 from 001__elm20141214_072153__dat00.bin



Channel 0
mn: -534
mx: 558
 μ : -11.4
 σ : 14.0

Channel 1
mn: -1293
mx: 1366
 μ : -22.8
 σ : 48.4

Channel 2
mn: -3120
mx: 3420
 μ : -24.0
 σ : 58.1

Processed Sun Dec 14 08:30:15 2014 by ELM ver.2012-10-06 from 001__elm20141214_072153__dat00.bin

