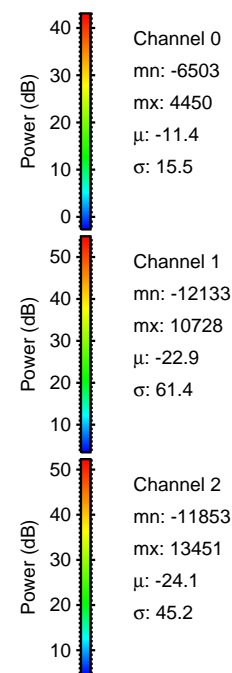
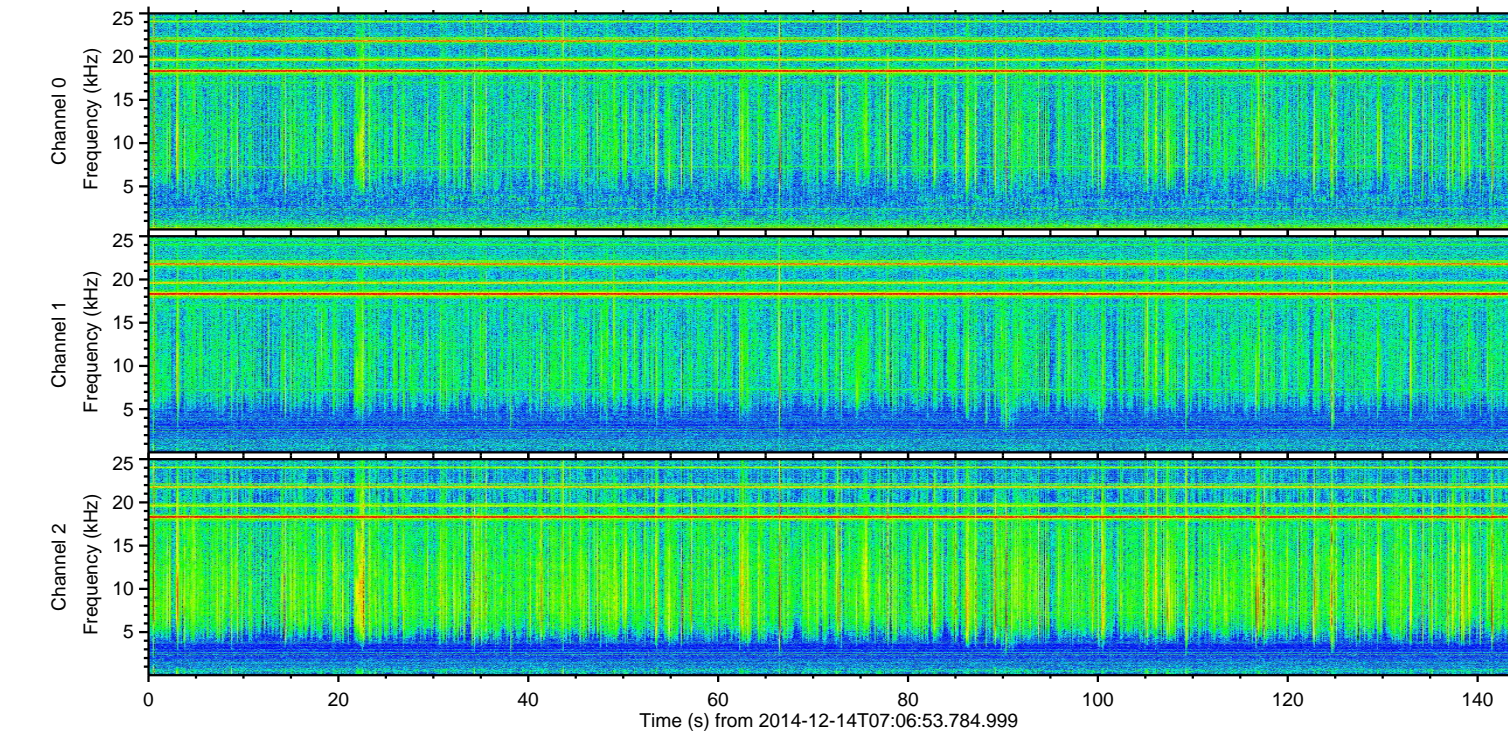
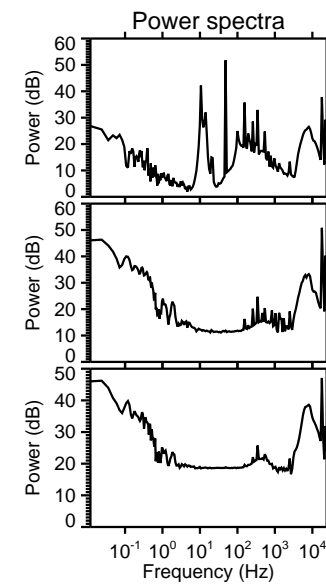
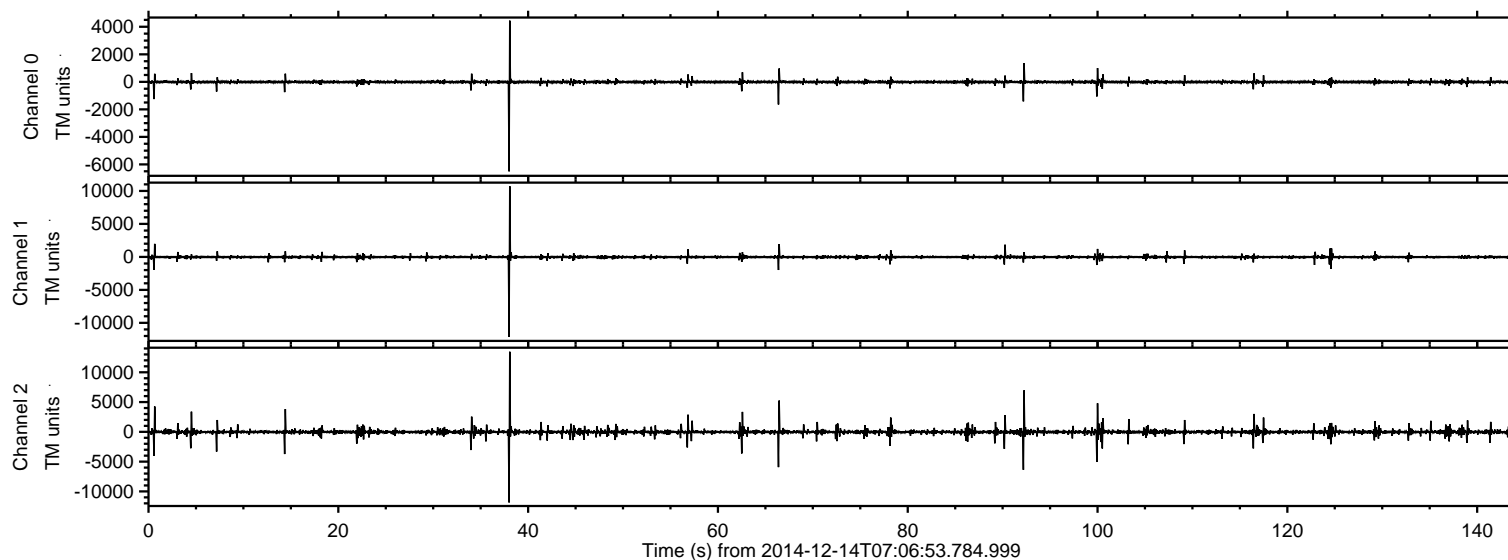
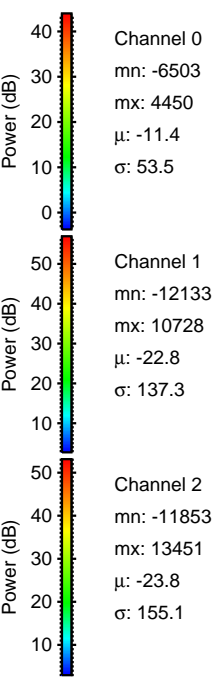
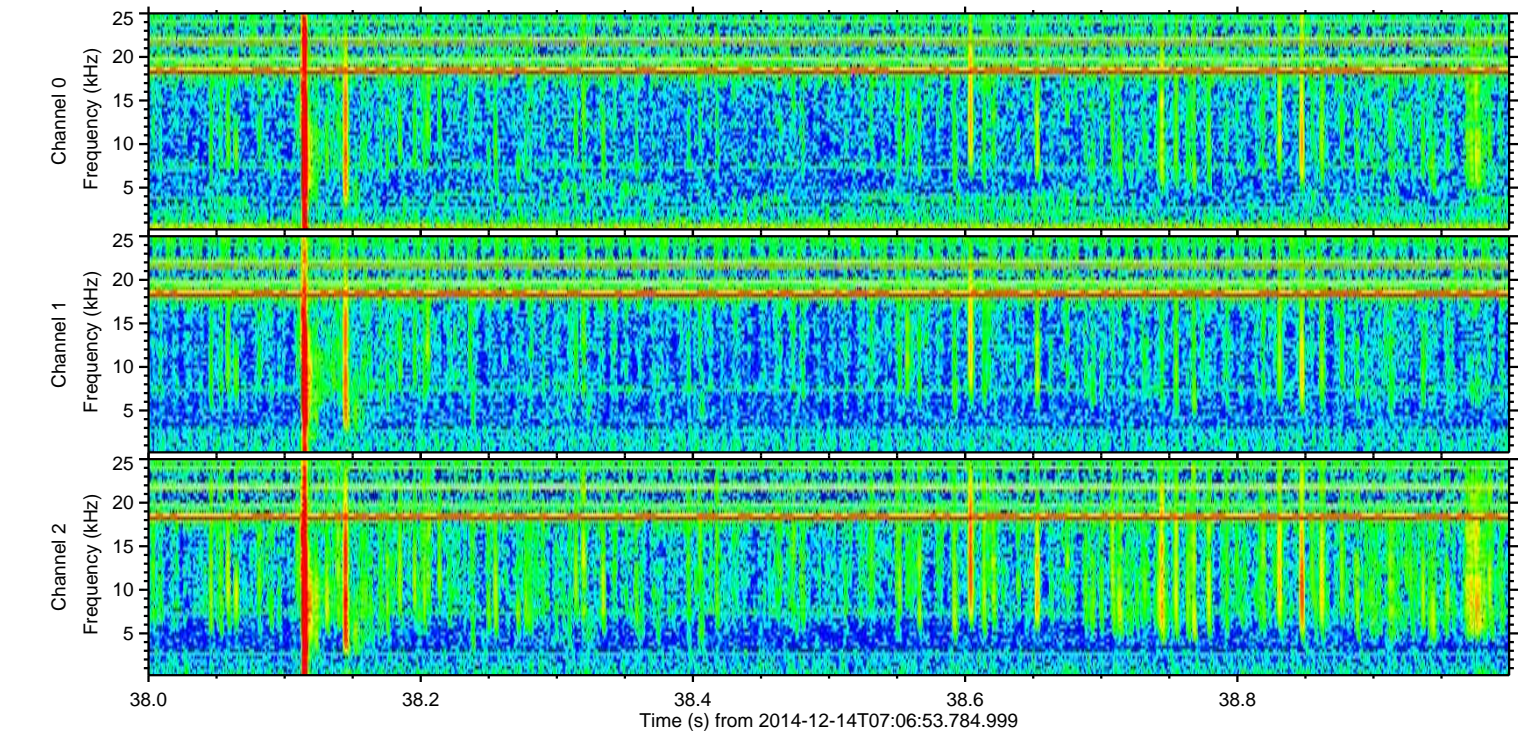
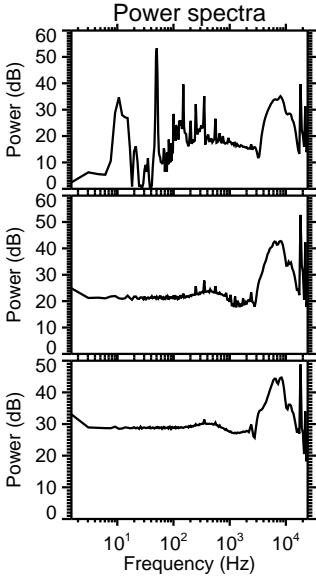
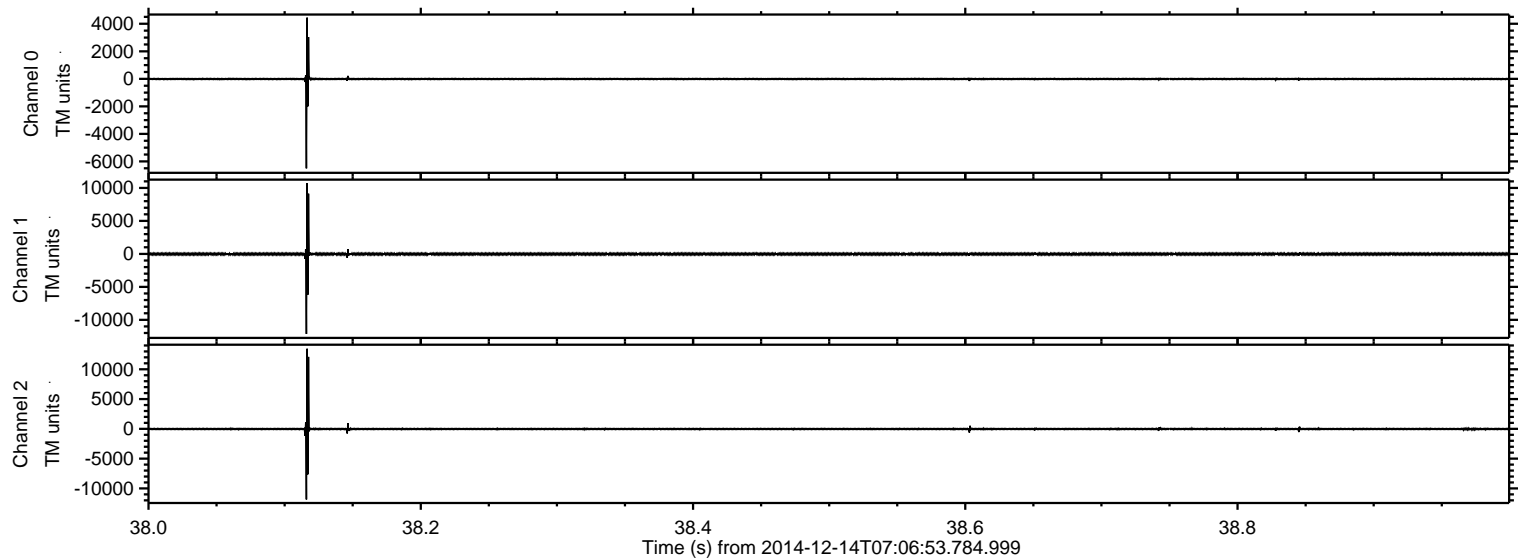


ELMAVAN 3D WAVEFORMS (Measured data sampled at 50 kHz) 49782 packets of 144 samples from 2014-12-14T07:06:53.784.999.

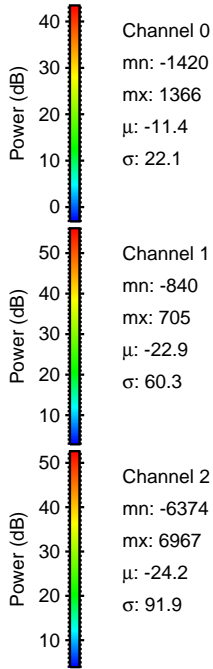
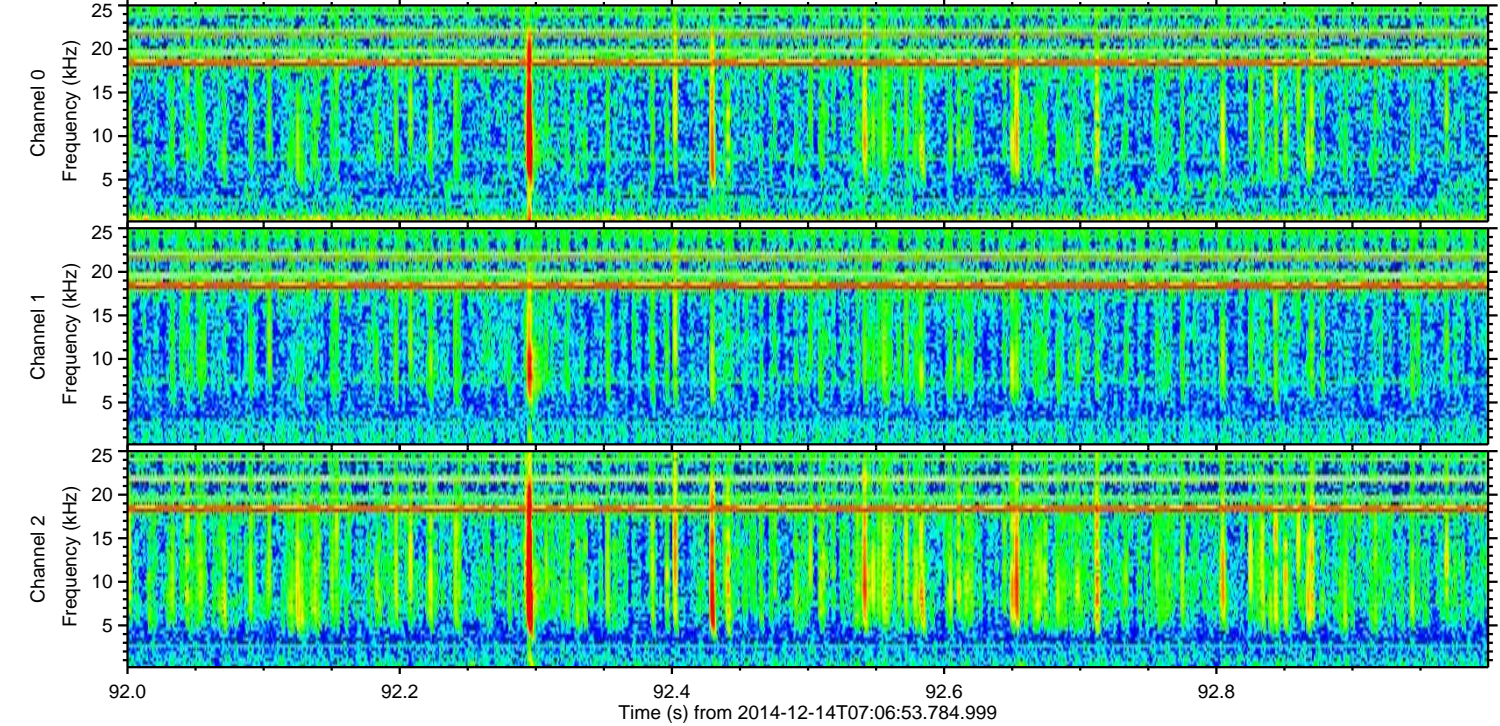
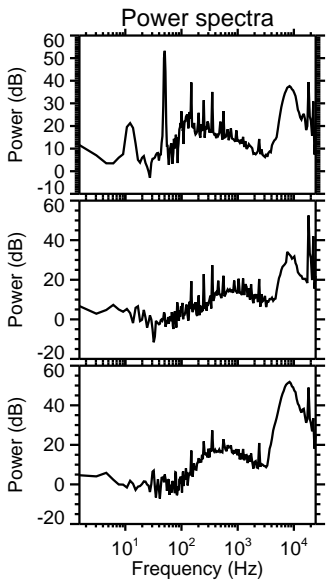
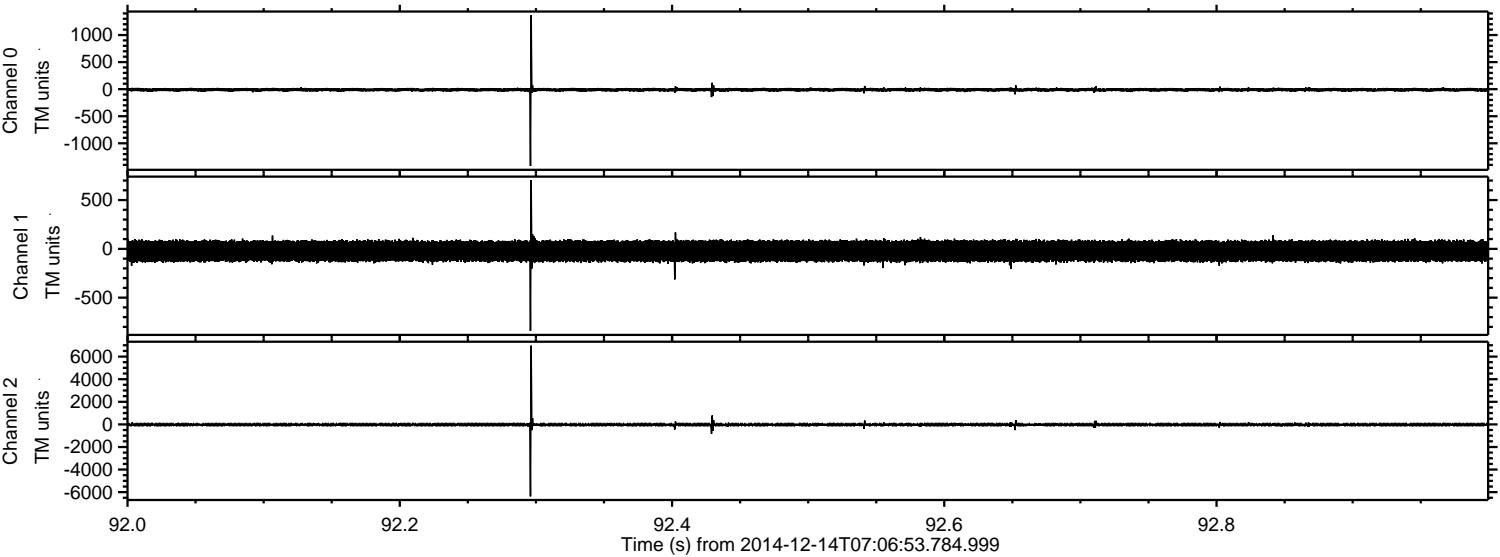
Processed Sun Dec 14 08:15:20 2014 by ELM ver.2012-10-06 from 001__elm20141214_070652__dat00.bin



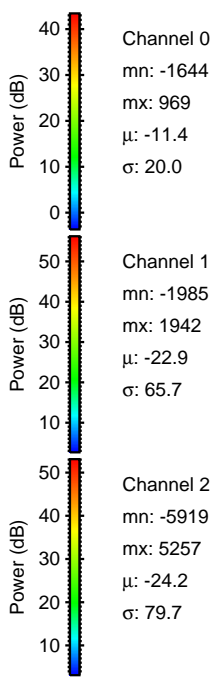
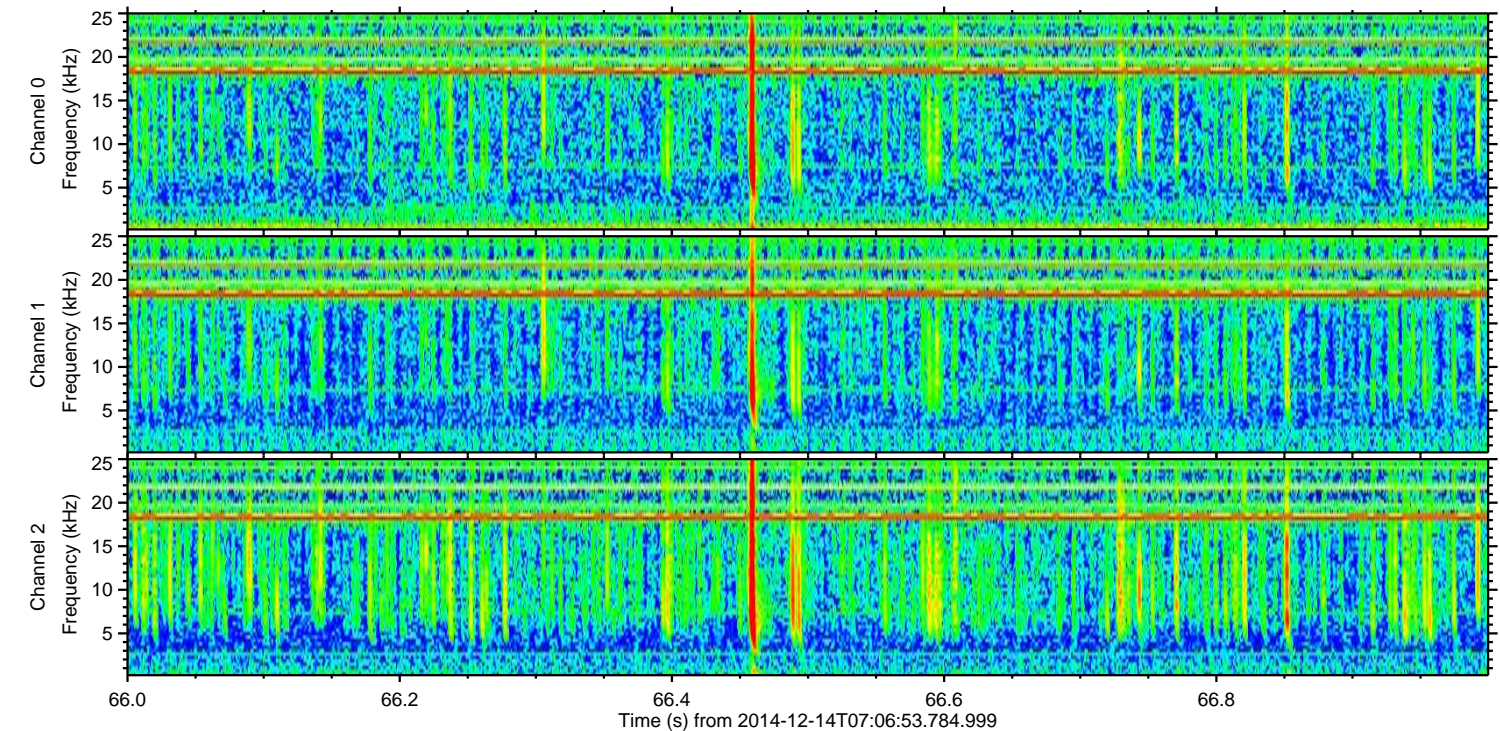
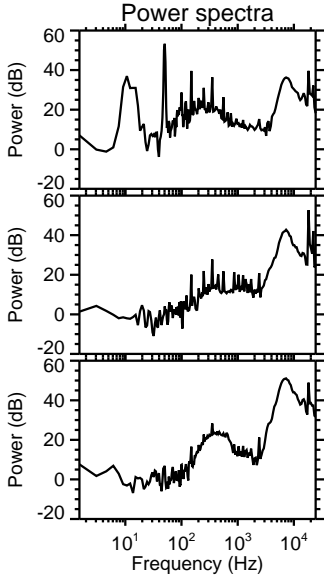
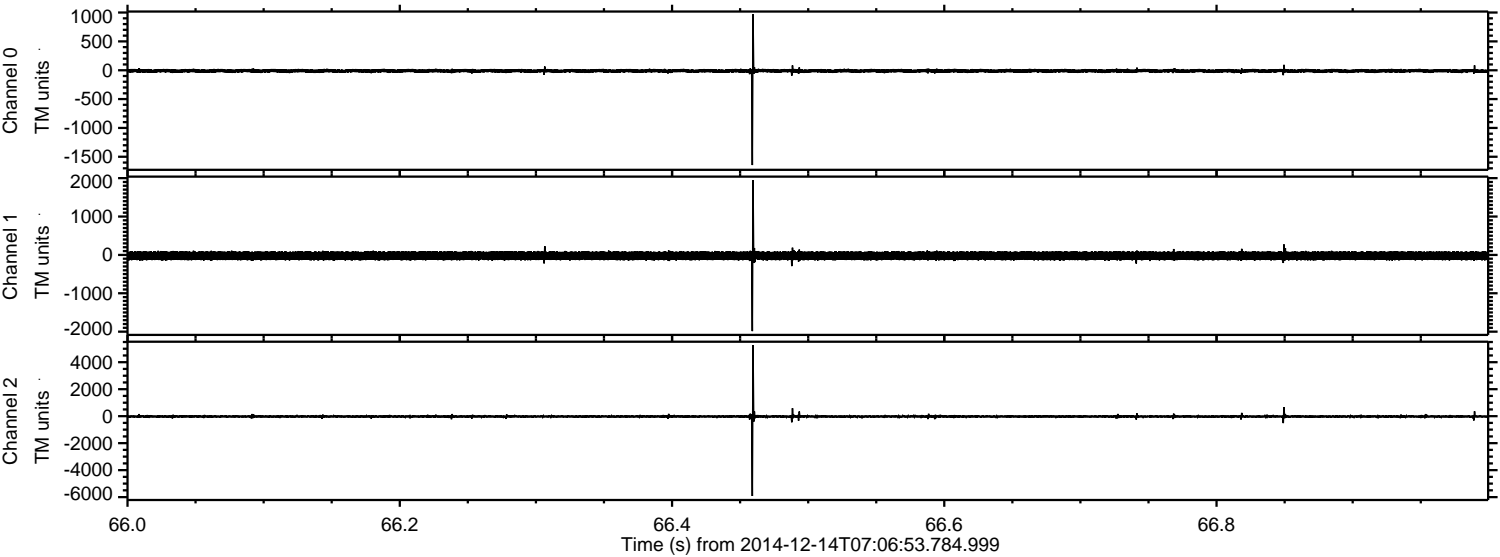
Processed Sun Dec 14 08:15:33 2014 by ELM ver.2012-10-06 from 001__elm20141214_070652__dat00.bin



Processed Sun Dec 14 08:15:34 2014 by ELM ver.2012-10-06 from 001__elm20141214_070652__dat00.bin

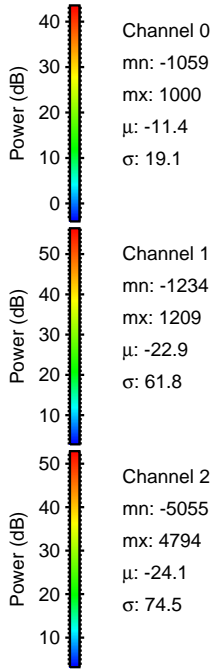
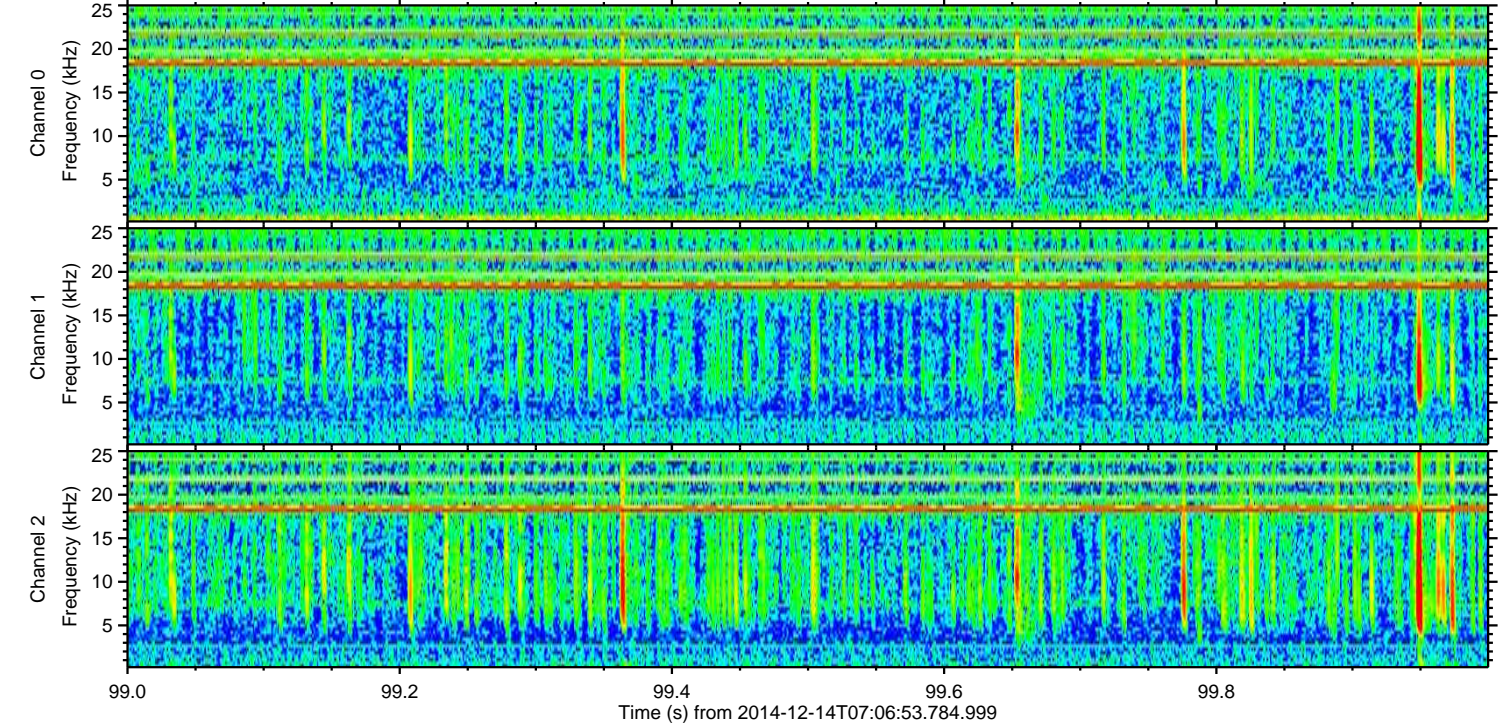
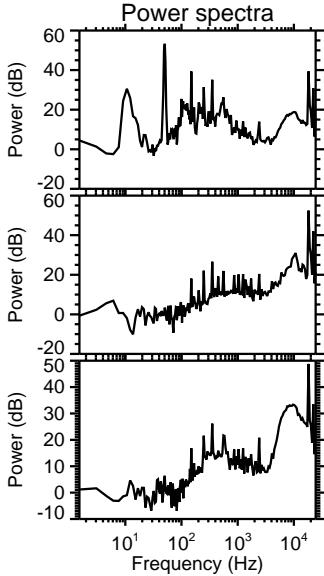
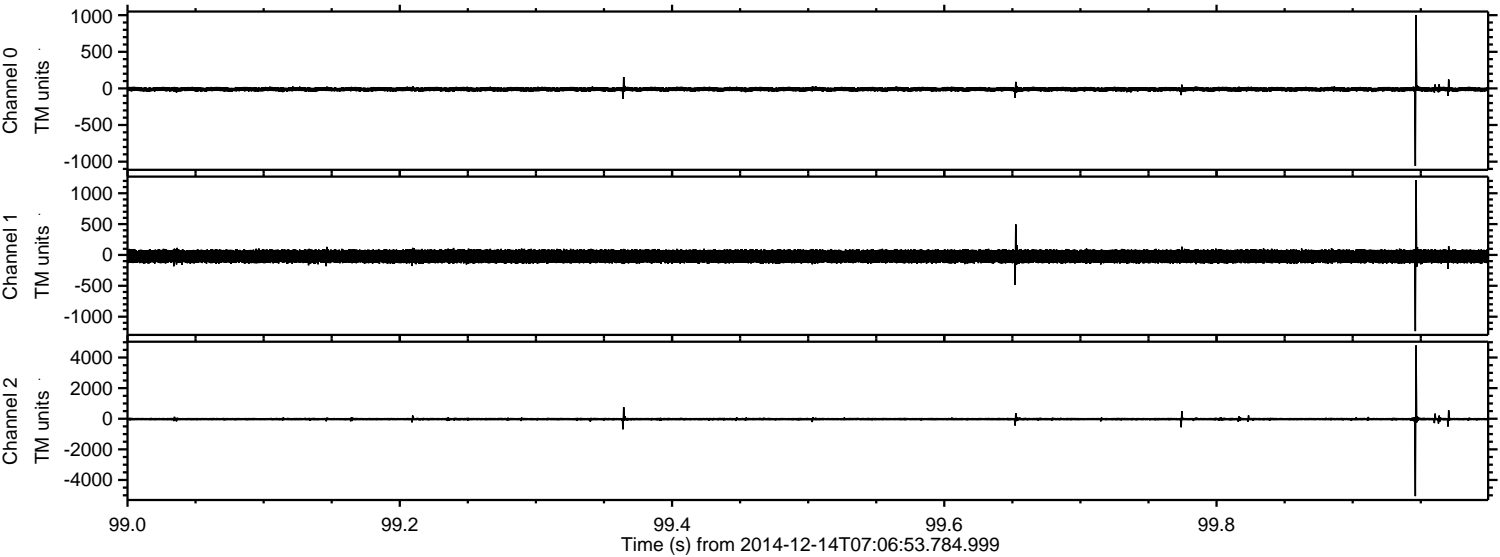


Processed Sun Dec 14 08:15:35 2014 by ELM ver.2012-10-06 from 001__elm20141214_070652__dat00.bin



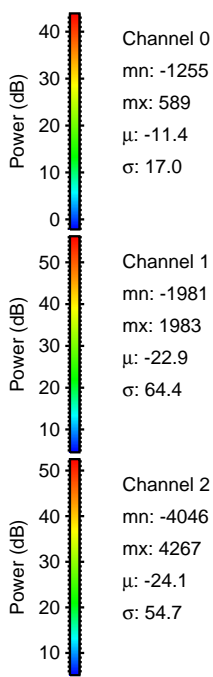
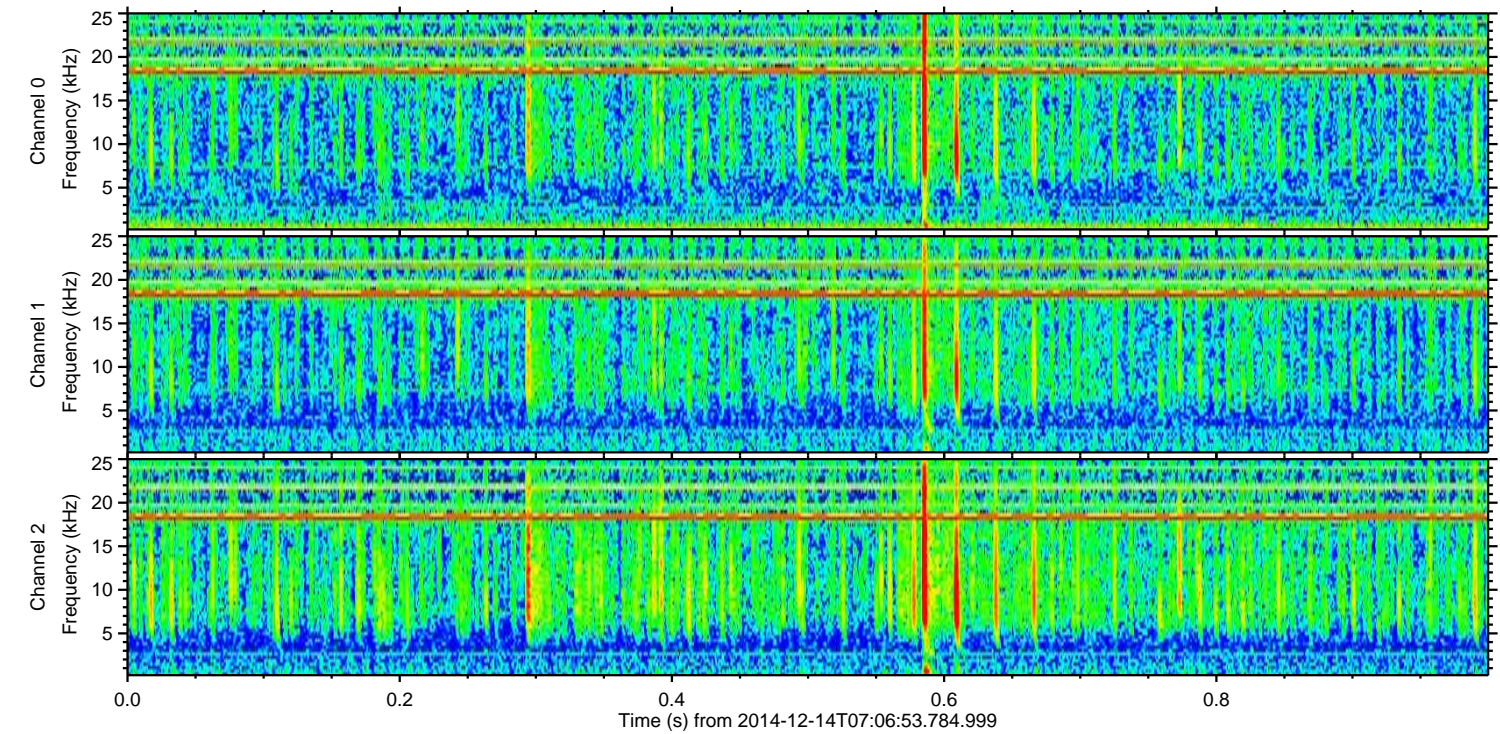
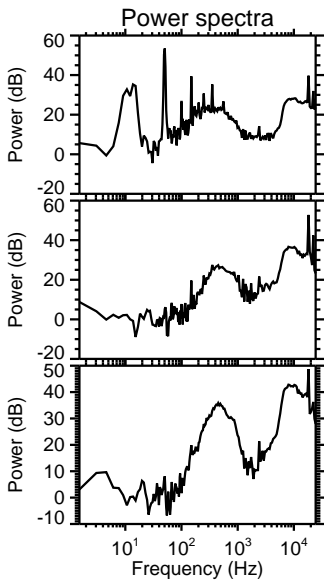
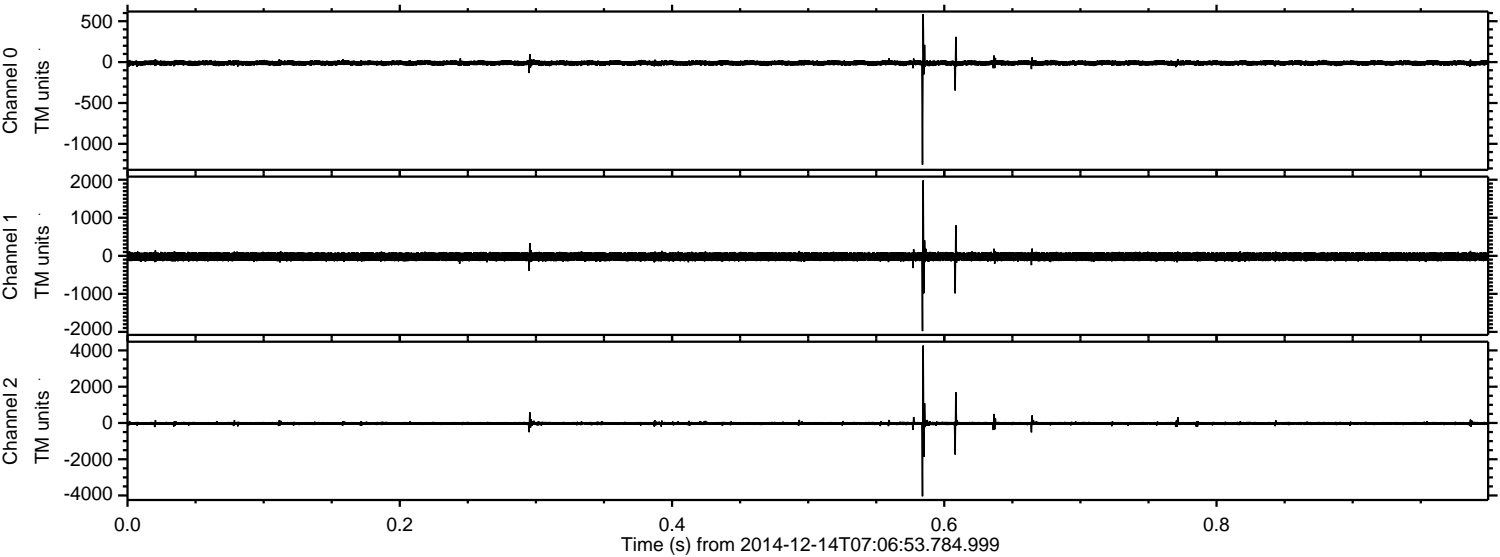
ELMAVAN 3D WAVEFORMS (Measured data sampled at 50 kHz) 49782 packets of 144 samples from 2014-12-14T07:06:53.784.999. Part 100/144

Processed Sun Dec 14 08:15:36 2014 by ELM ver.2012-10-06 from 001__elm20141214_070652__dat00.bin

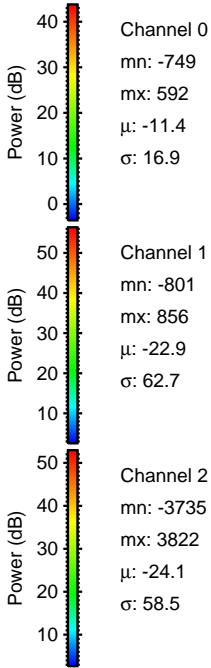
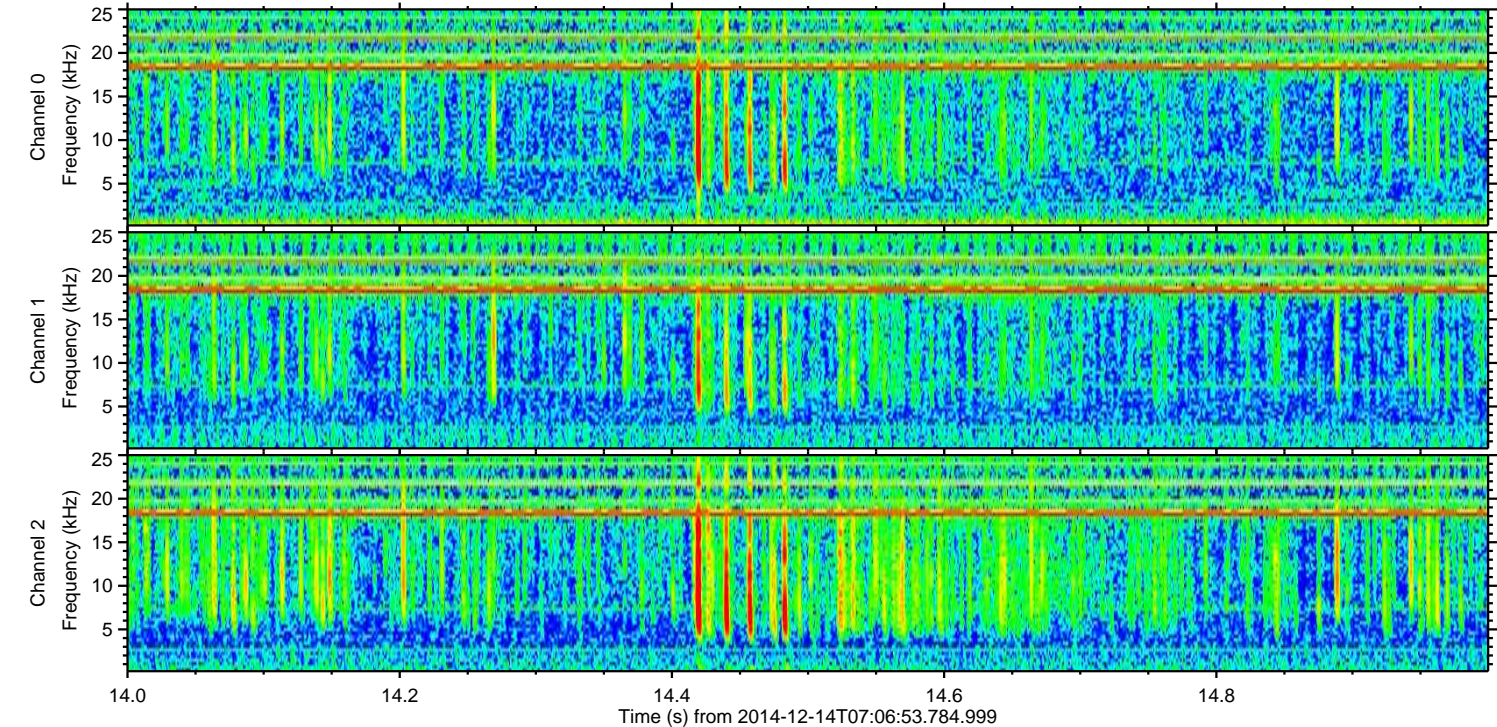
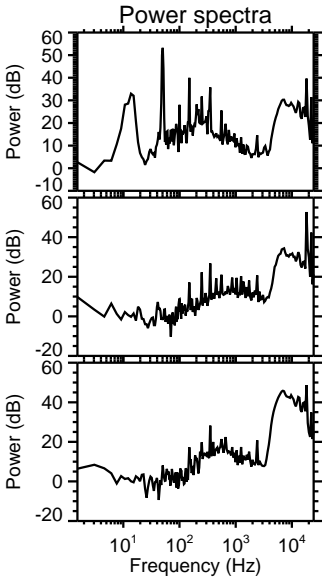
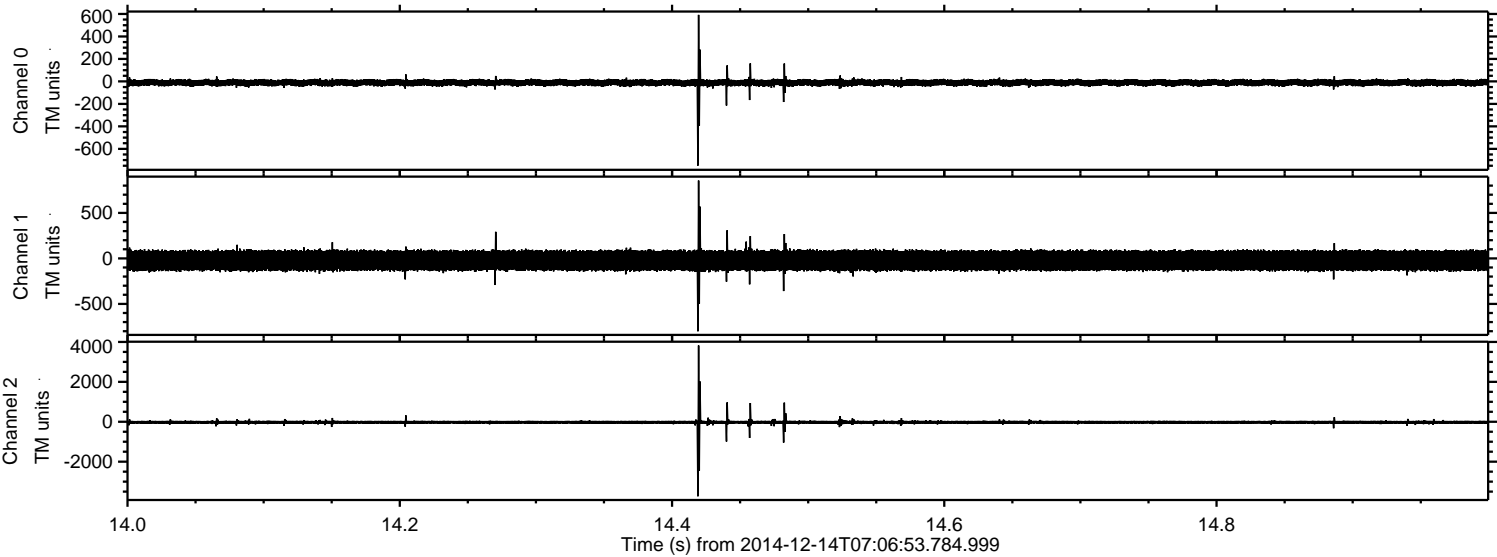


ELMAVAN 3D WAVEFORMS (Measured data sampled at 50 kHz) 49782 packets of 144 samples from 2014-12-14T07:06:53.784.999. Part 1/144

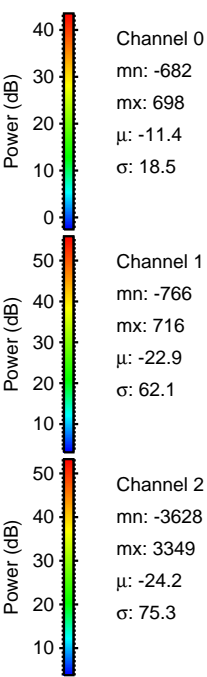
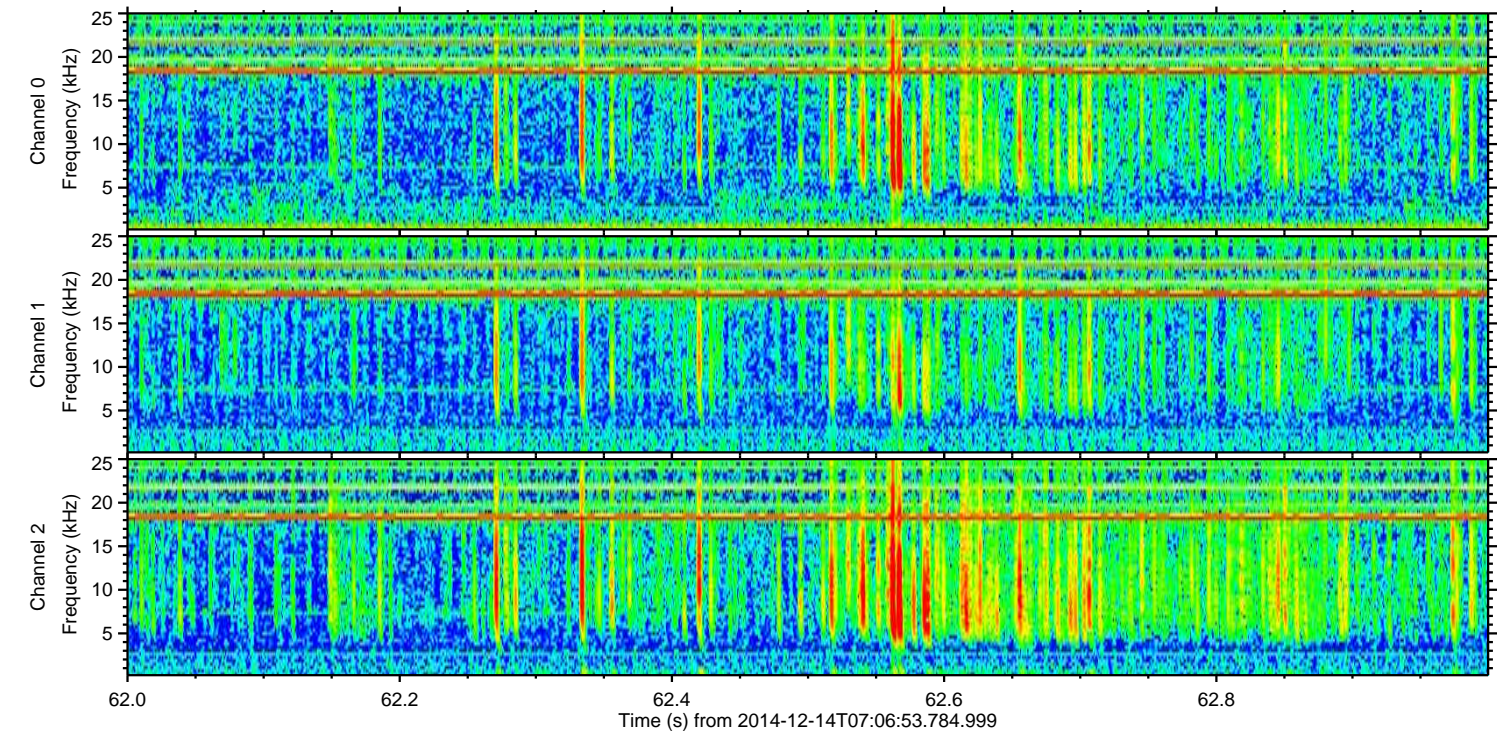
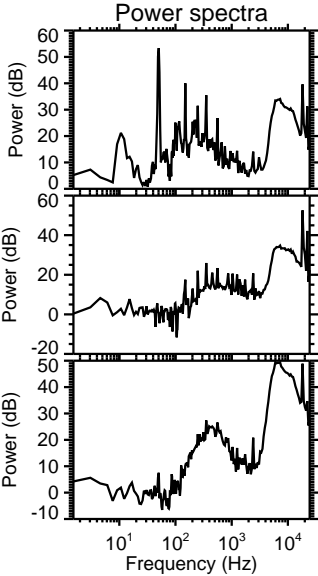
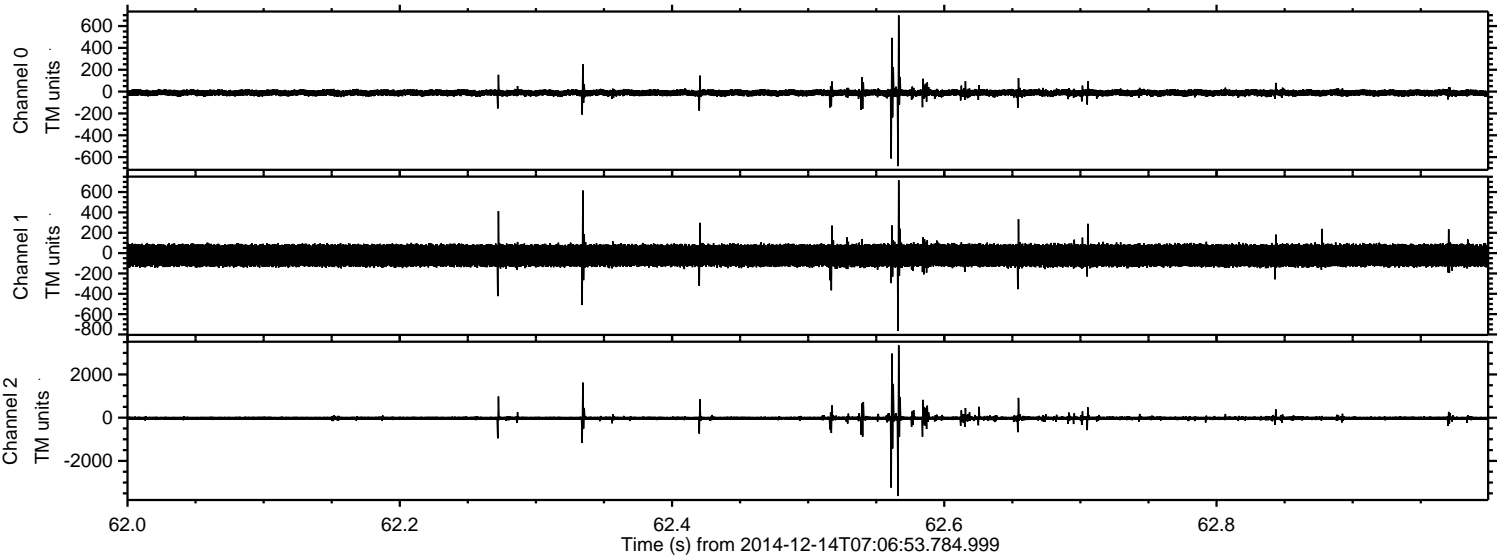
Processed Sun Dec 14 08:15:37 2014 by ELM ver.2012-10-06 from 001__elm20141214_070652__dat00.bin



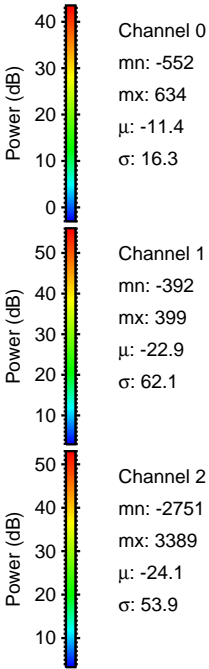
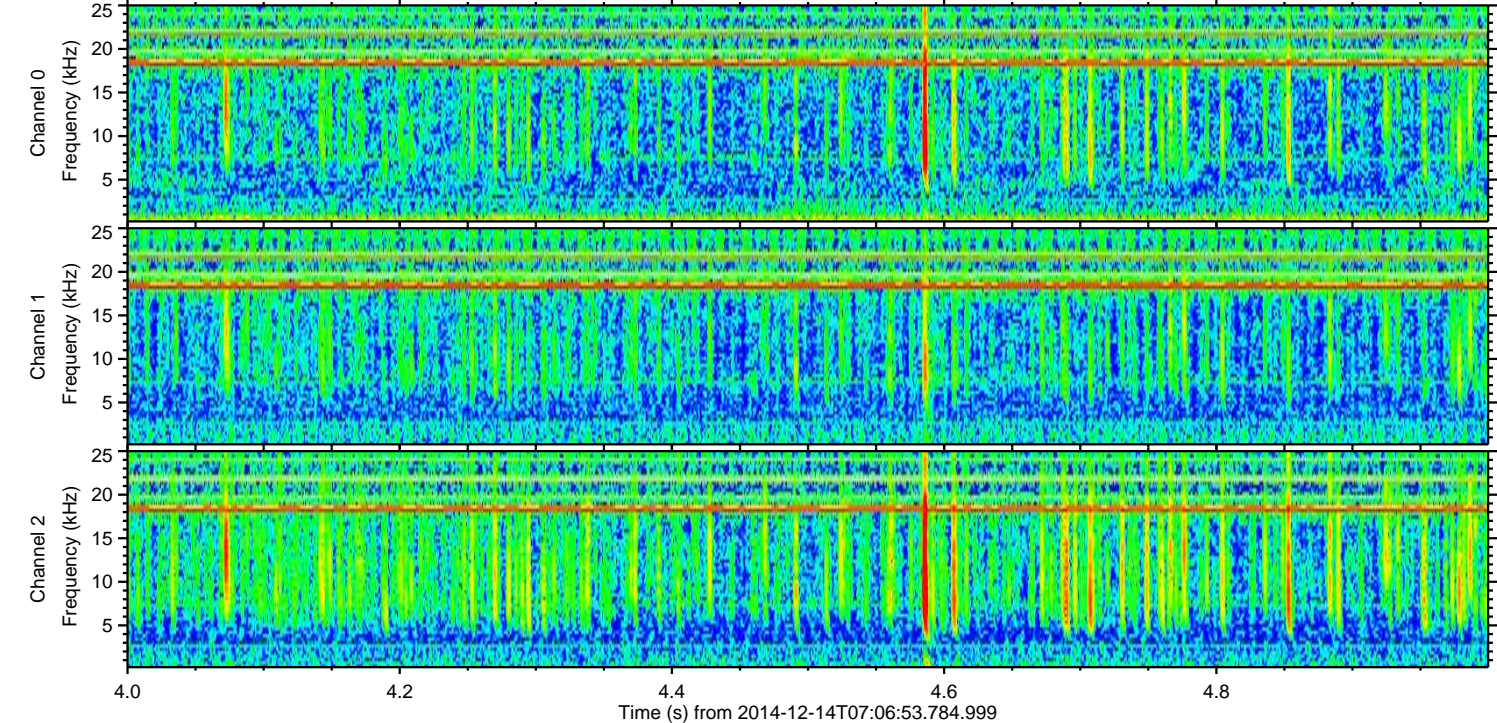
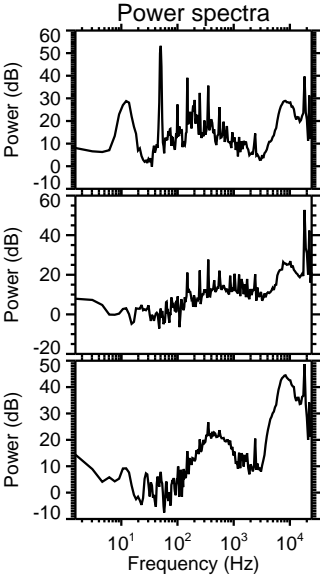
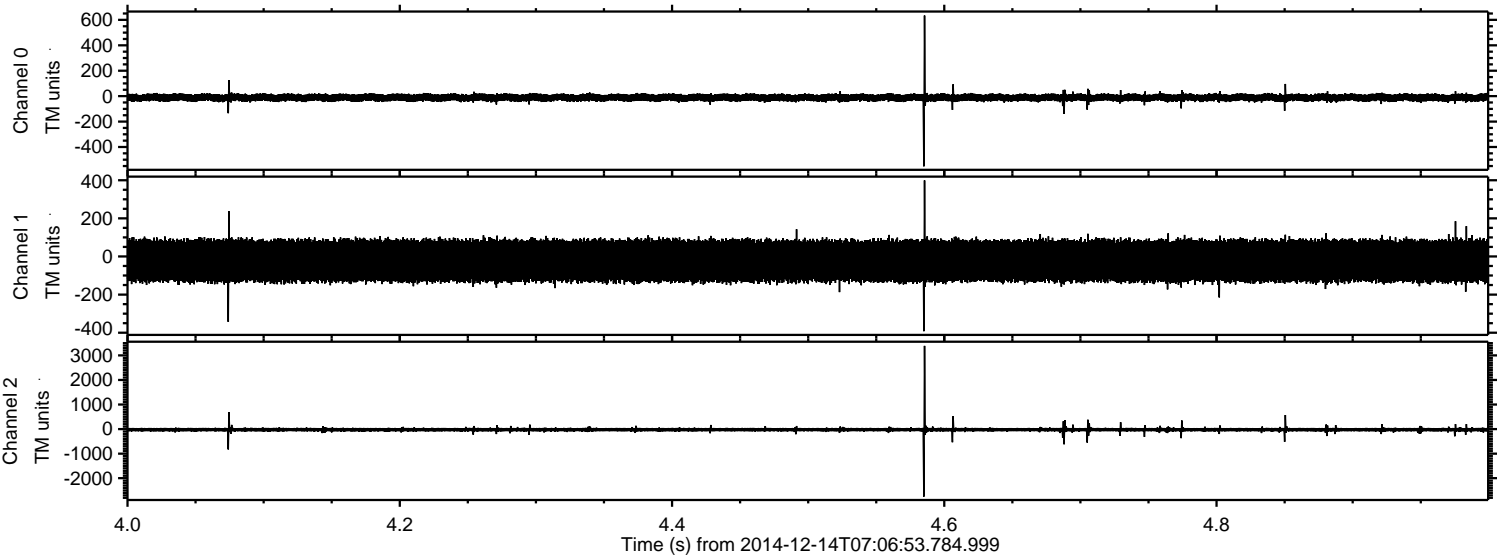
Processed Sun Dec 14 08:15:38 2014 by ELM ver.2012-10-06 from 001__elm20141214_070652__dat00.bin



Processed Sun Dec 14 08:15:39 2014 by ELM ver.2012-10-06 from 001__elm20141214_070652__dat00.bin



Processed Sun Dec 14 08:15:40 2014 by ELM ver.2012-10-06 from 001__elm20141214_070652__dat00.bin

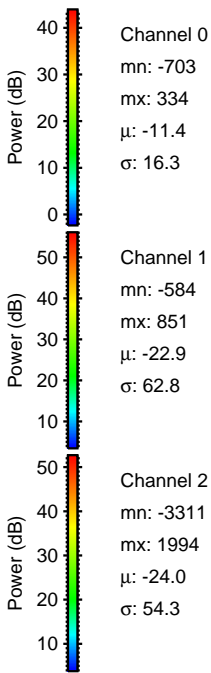
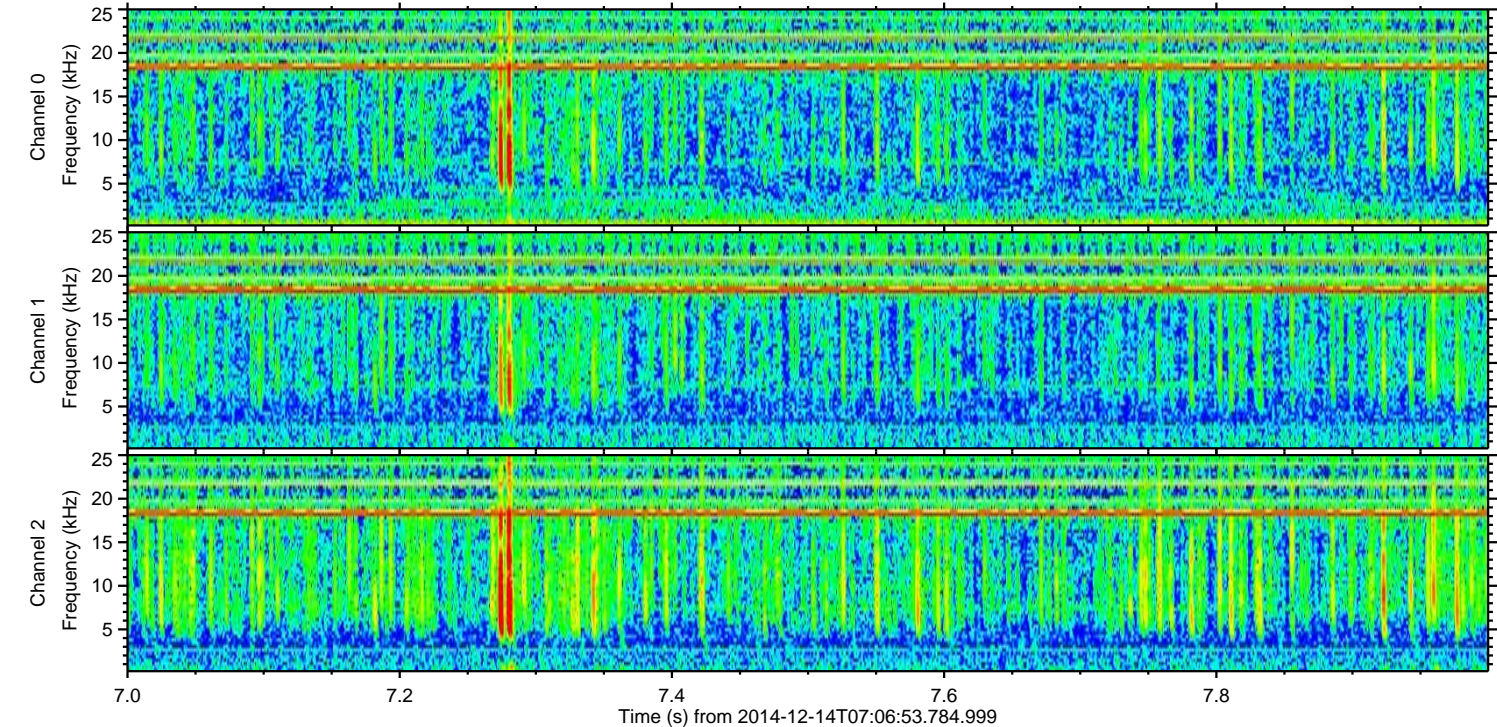
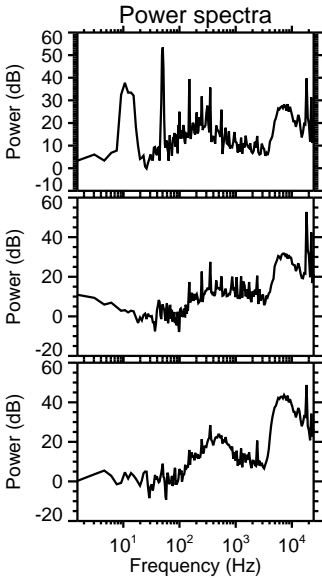
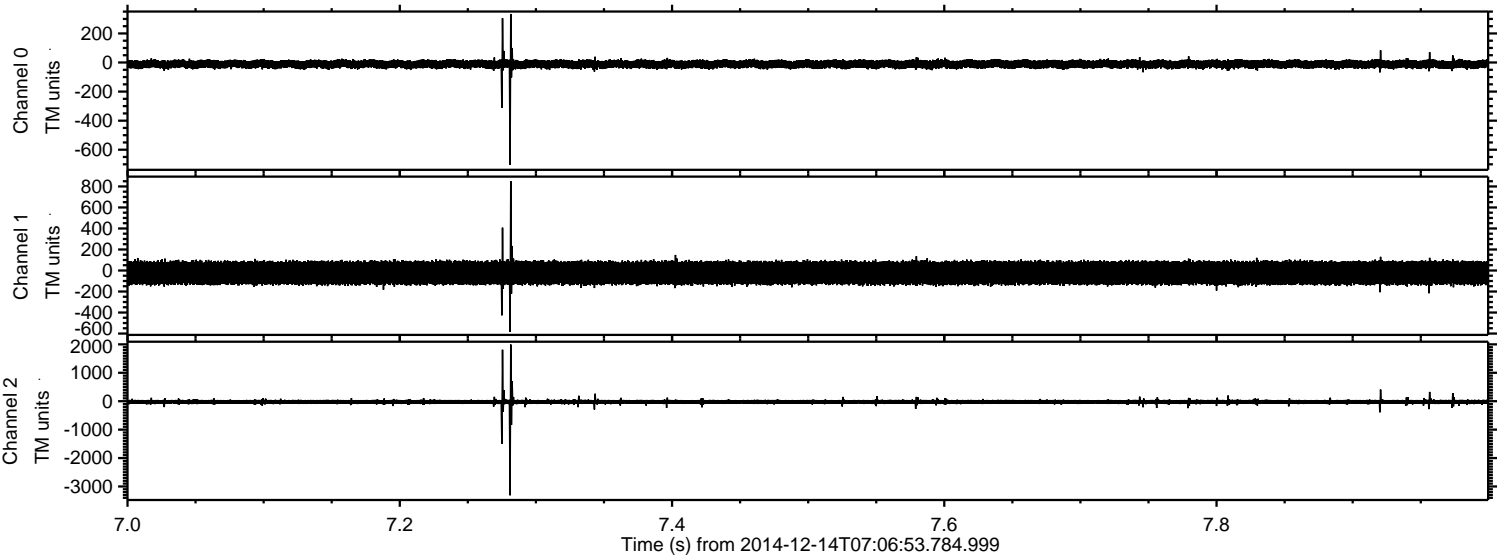


Channel 0
mn: -552
mx: 634
 μ : -11.4
 σ : 16.3

Channel 1
mn: -392
mx: 399
 μ : -22.9
 σ : 62.1

Channel 2
mn: -2751
mx: 3389
 μ : -24.1
 σ : 53.9

Processed Sun Dec 14 08:15:40 2014 by ELM ver.2012-10-06 from 001__elm20141214_070652__dat00.bin



Processed Sun Dec 14 08:15:41 2014 by ELM ver.2012-10-06 from 001__elm20141214_070652__dat00.bin

