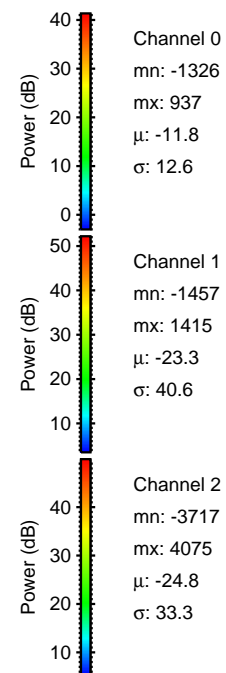
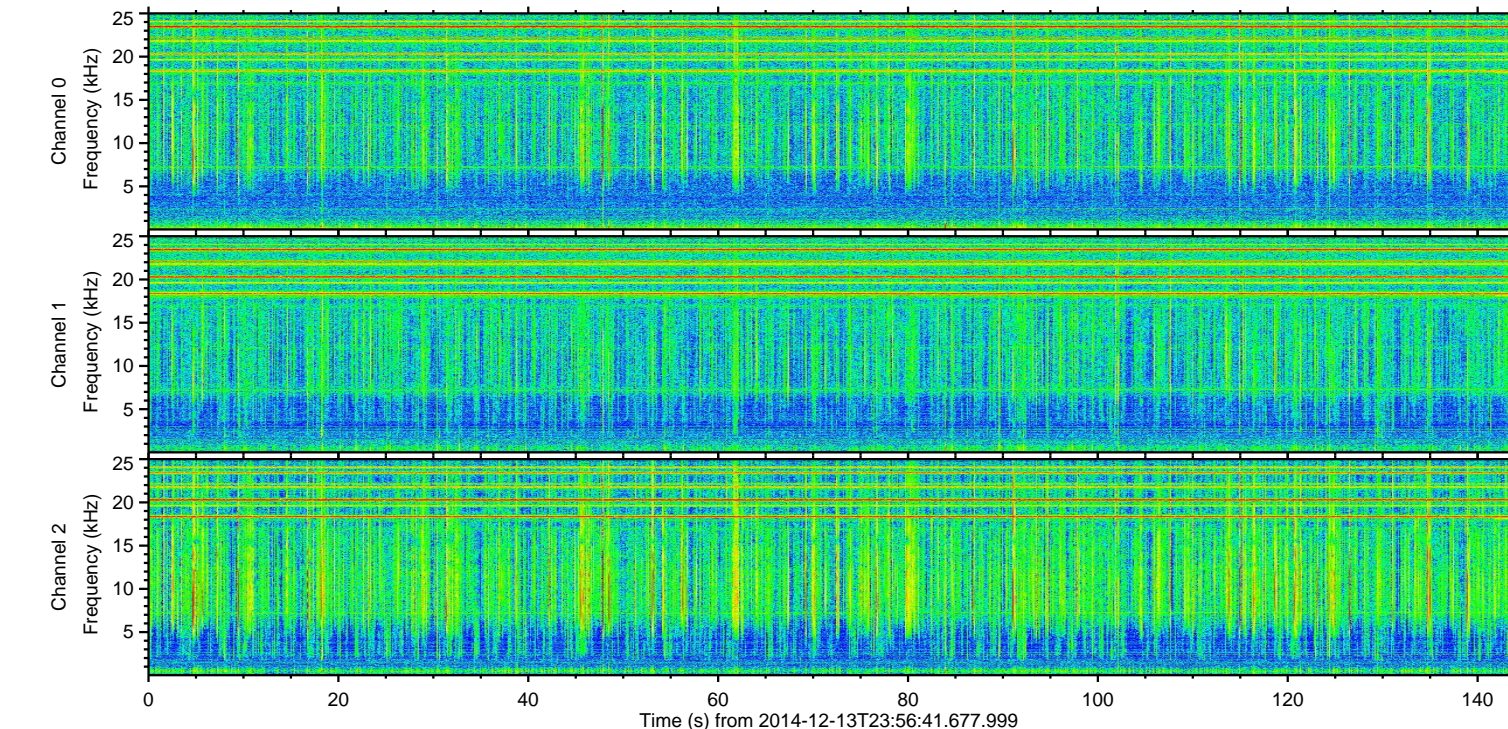
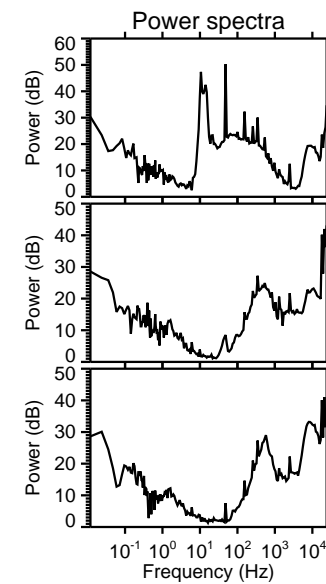
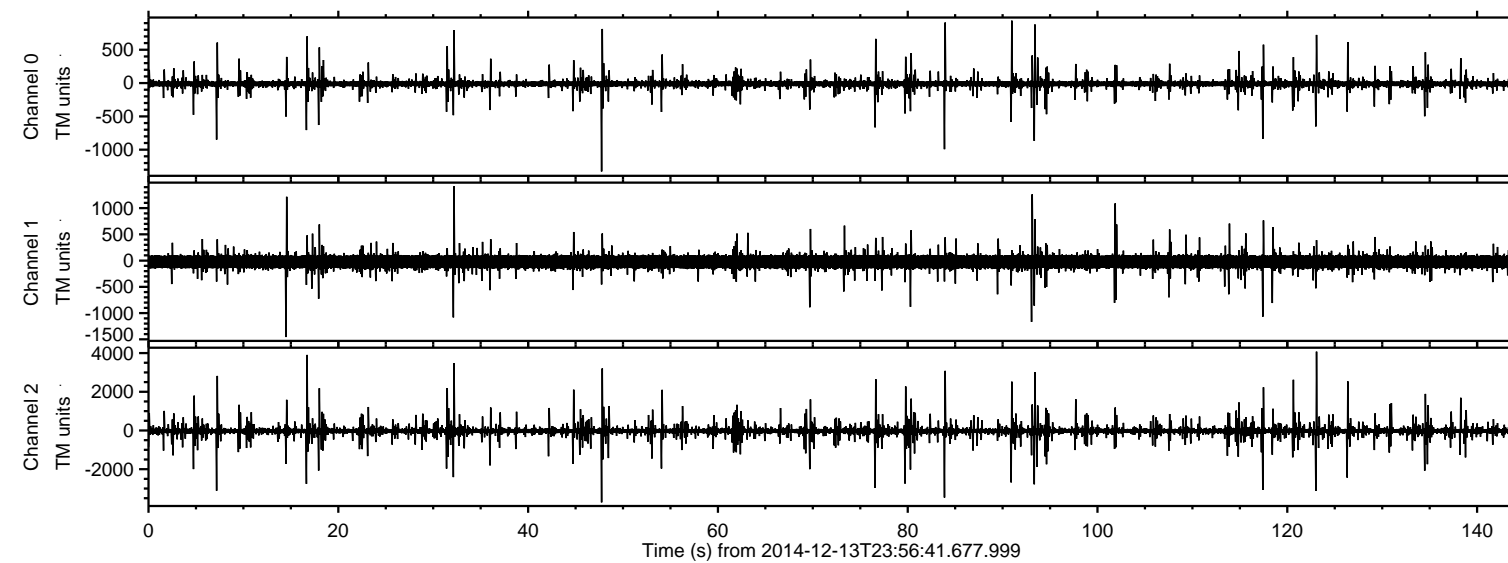


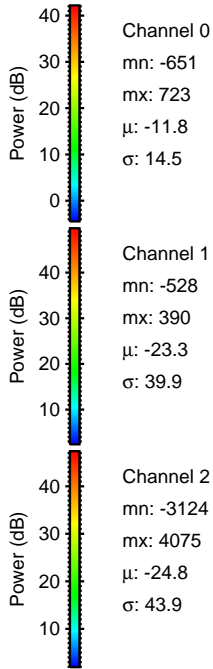
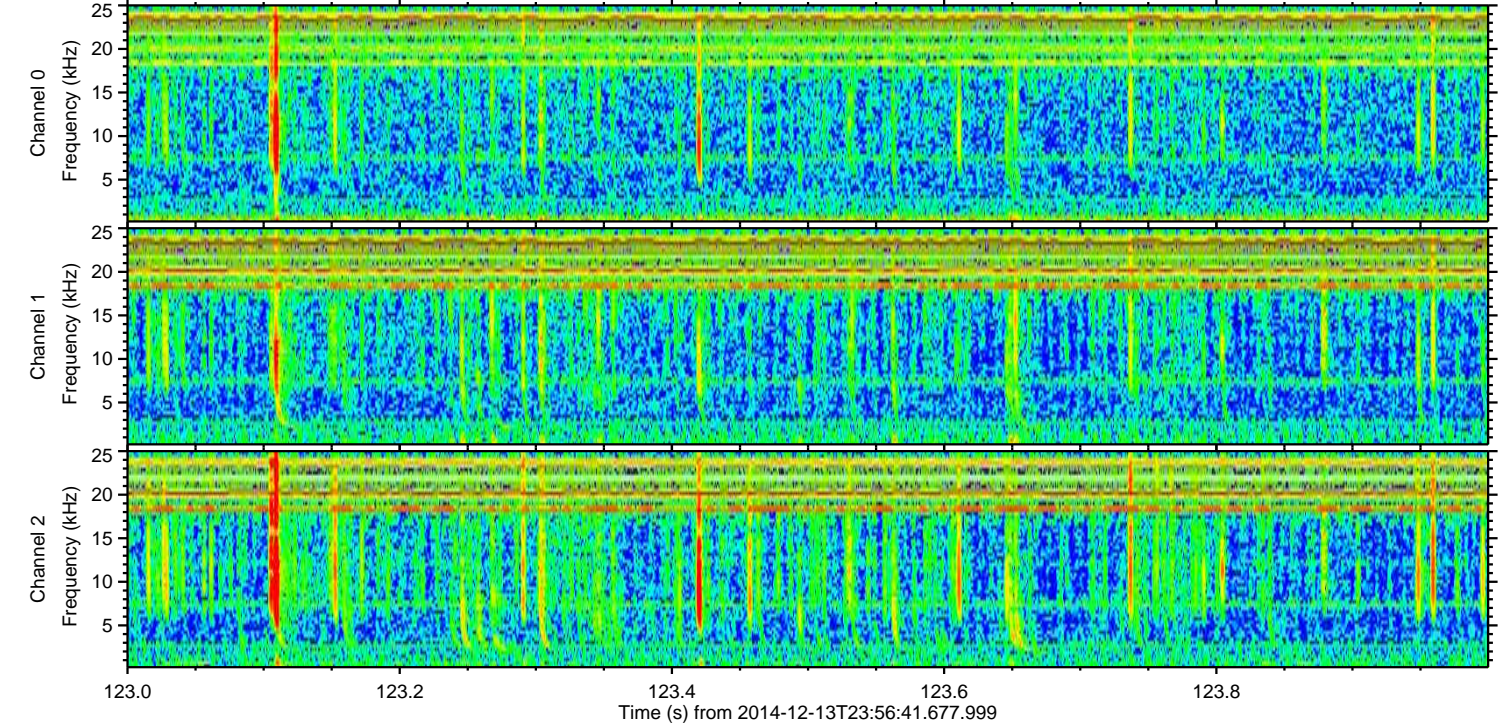
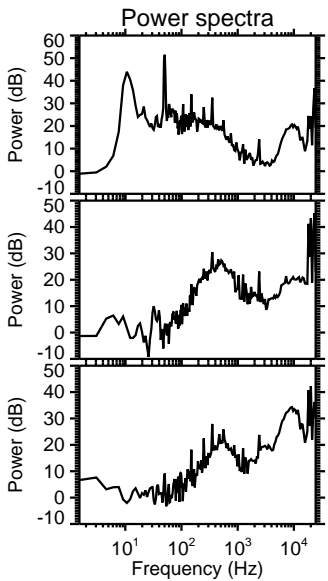
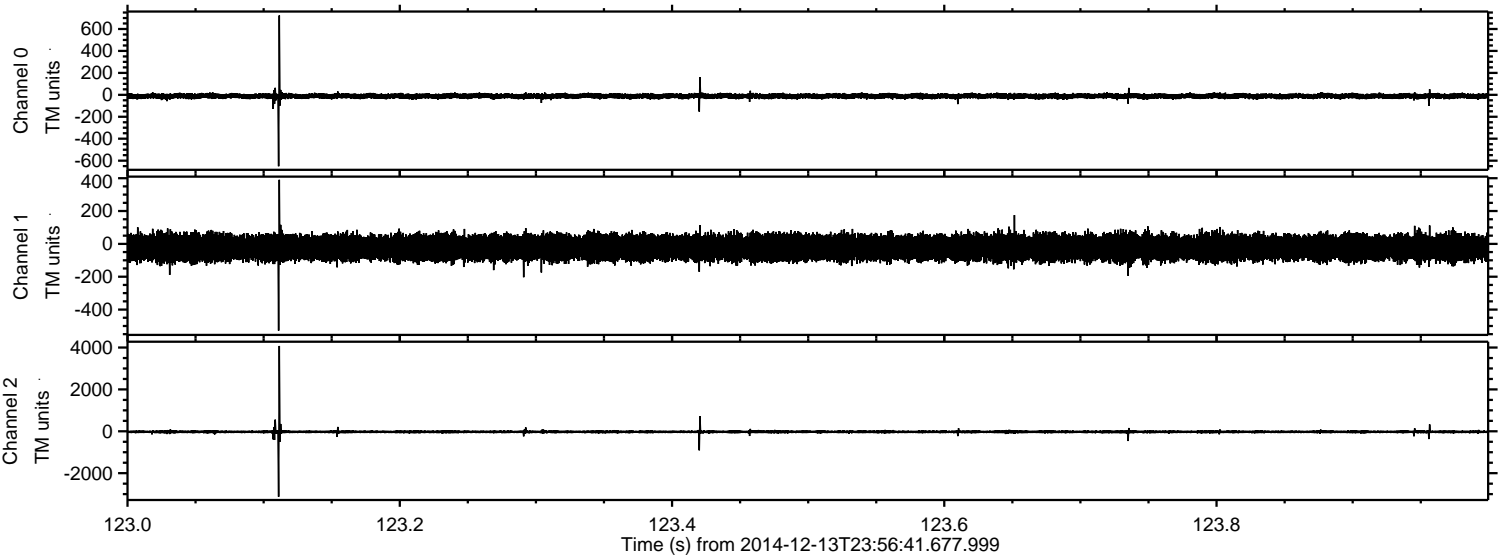
ELMAVAN 3D WAVEFORMS (Measured data sampled at 50 kHz) 49783 packets of 144 samples from 2014-12-13T23:56:41.677.999.

Processed Sun Dec 14 01:05:12 2014 by ELM ver.2012-10-06 from 001__elm20141213_235640__dat00.bin



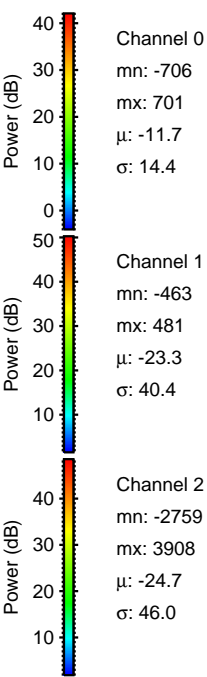
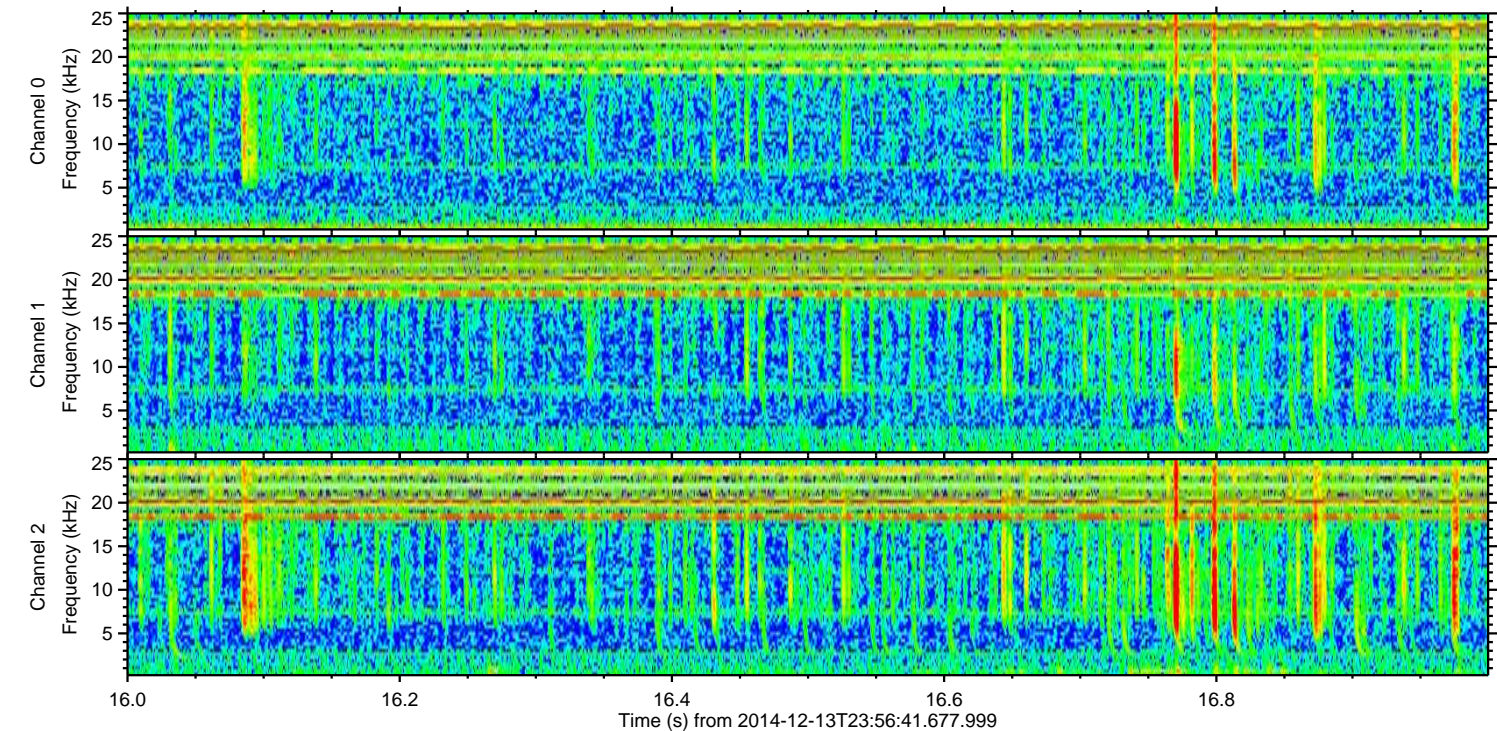
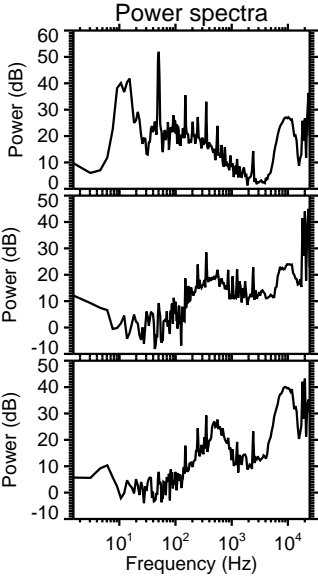
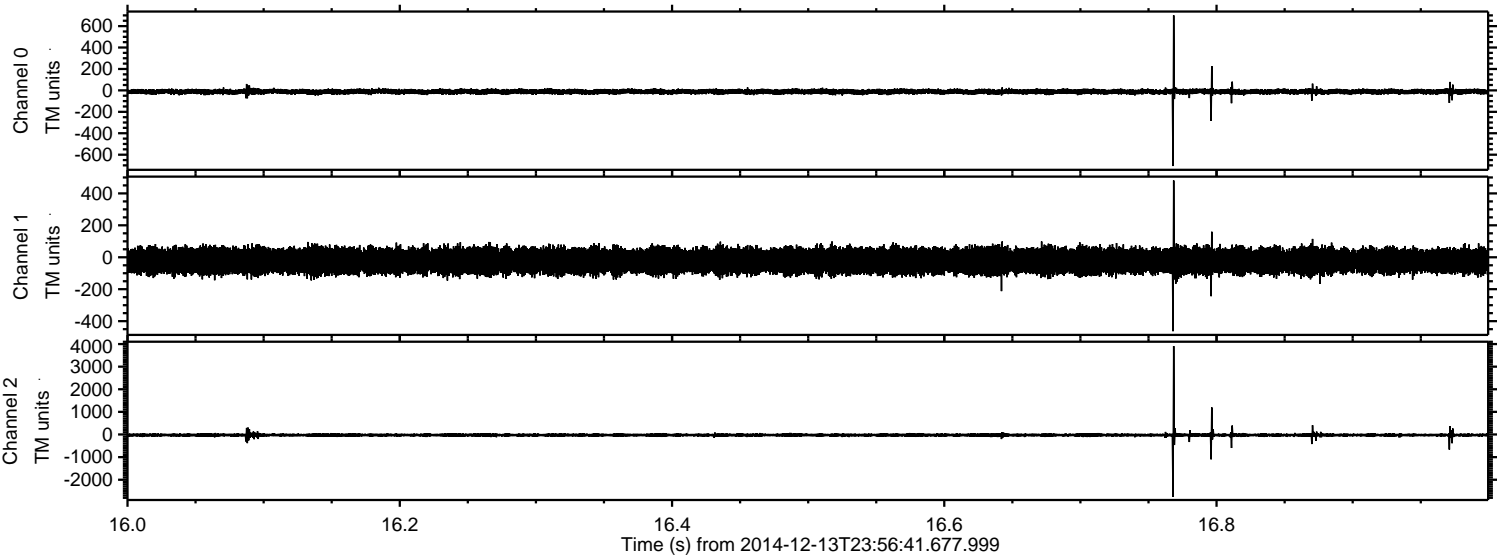
ELMAVAN 3D WAVEFORMS (Measured data sampled at 50 kHz) 49783 packets of 144 samples from 2014-12-13T23:56:41.677.999. Part 124/144

Processed Sun Dec 14 01:05:24 2014 by ELM ver.2012-10-06 from 001__elm20141213_235640__dat00.bin

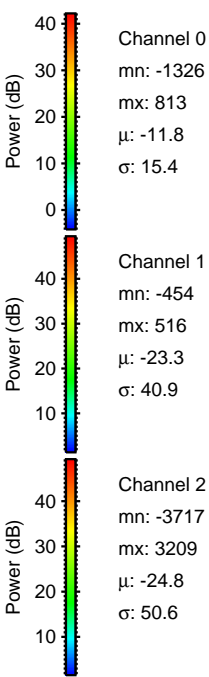
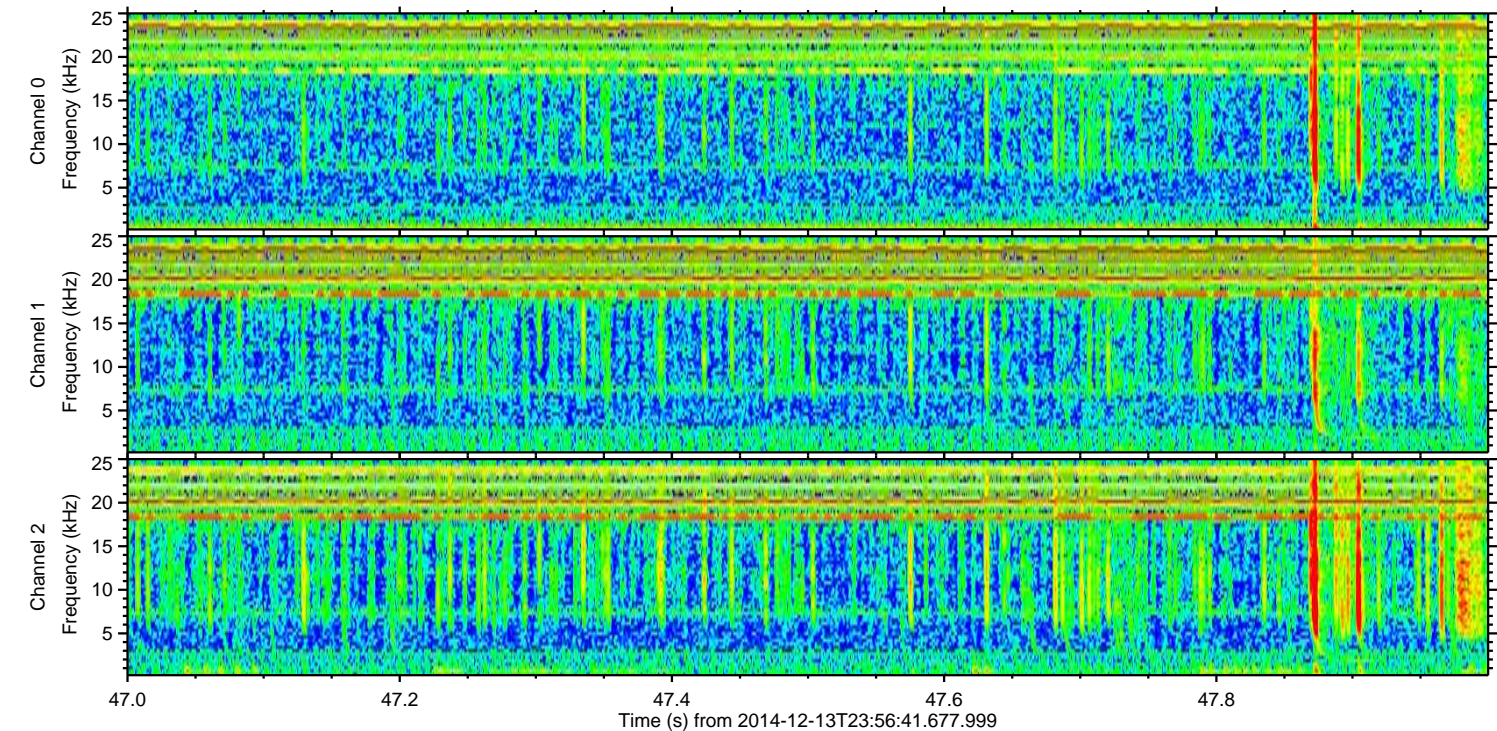
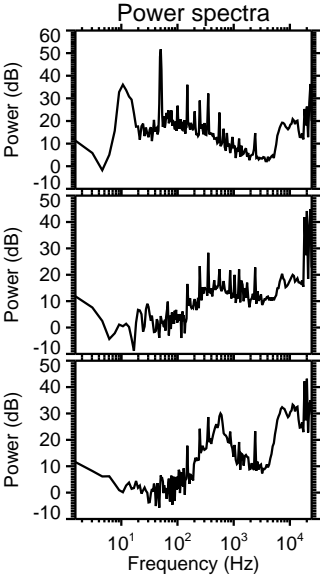
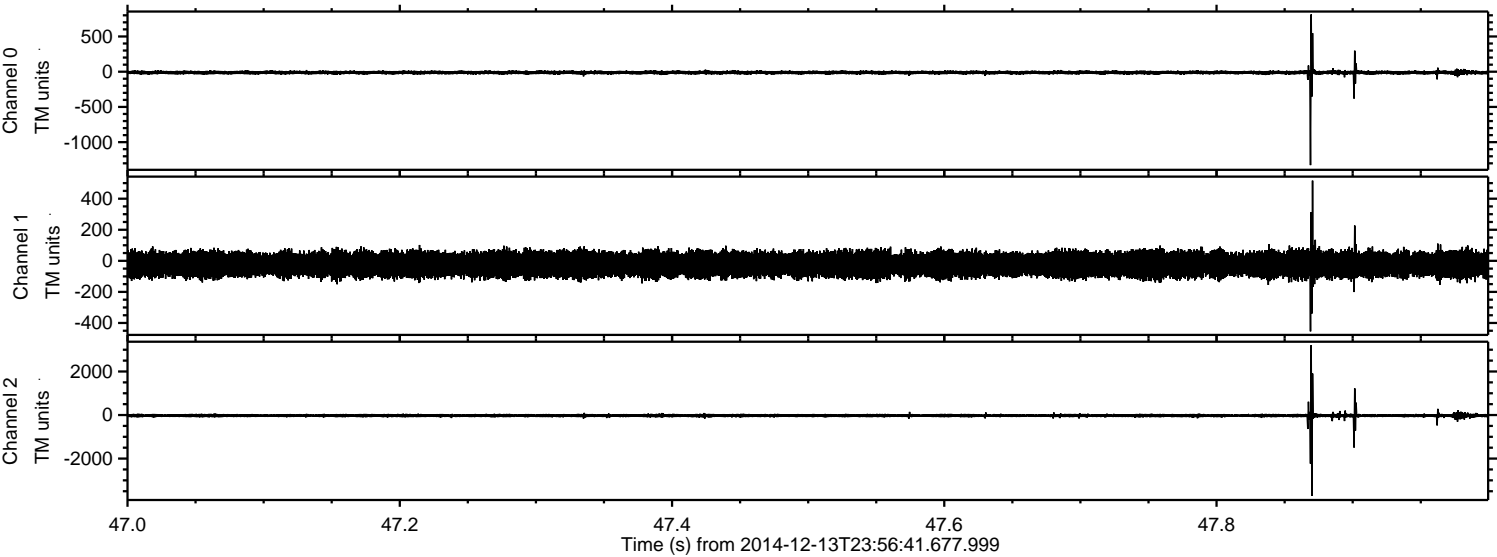


ELMAVAN 3D WAVEFORMS (Measured data sampled at 50 kHz) 49783 packets of 144 samples from 2014-12-13T23:56:41.677.999. Part 17/144

Processed Sun Dec 14 01:05:25 2014 by ELM ver.2012-10-06 from 001__elm20141213_235640__dat00.bin

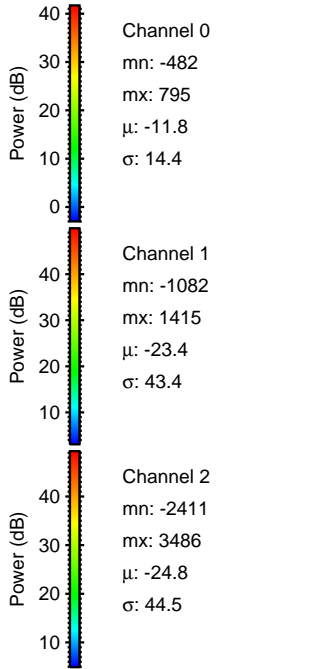
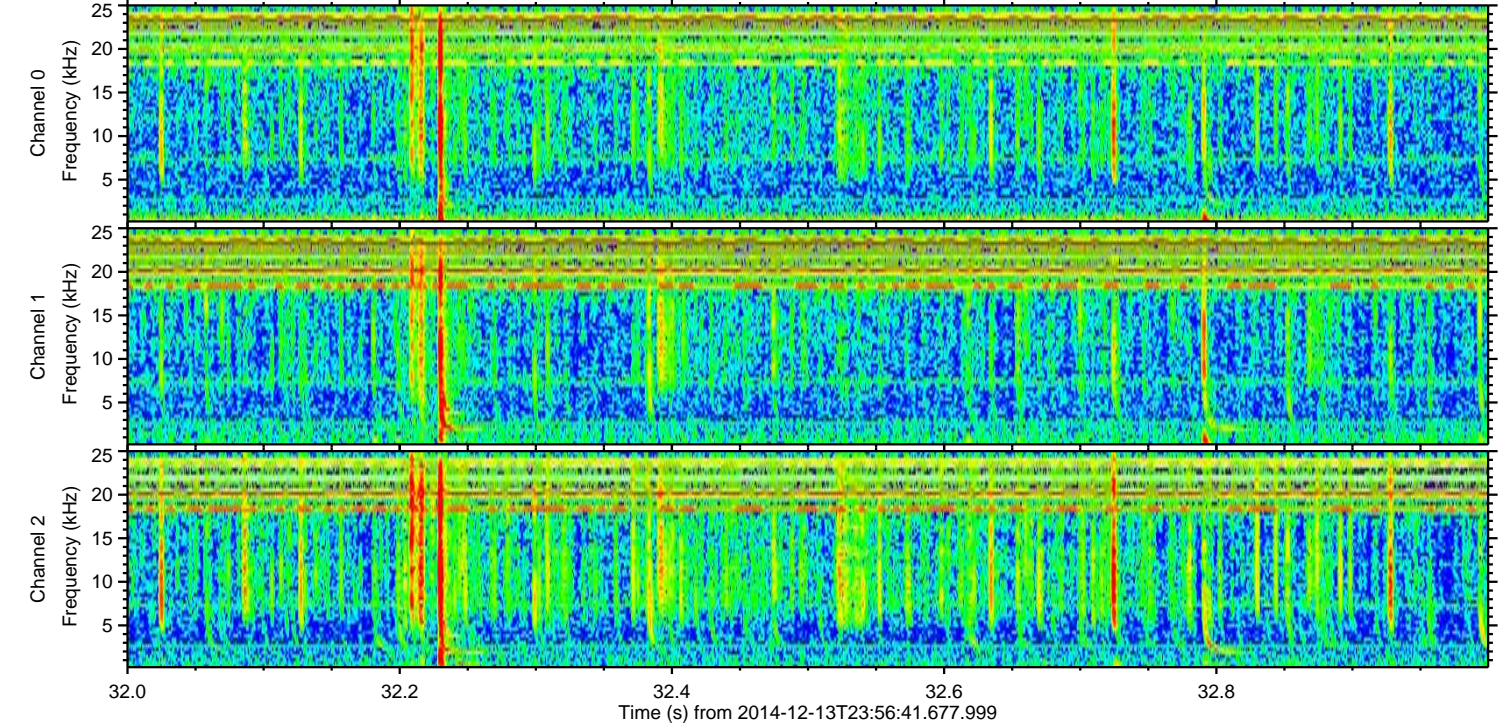
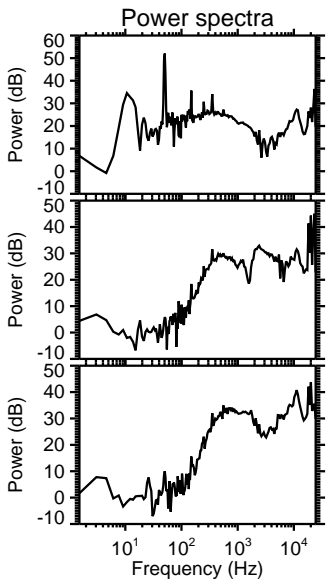
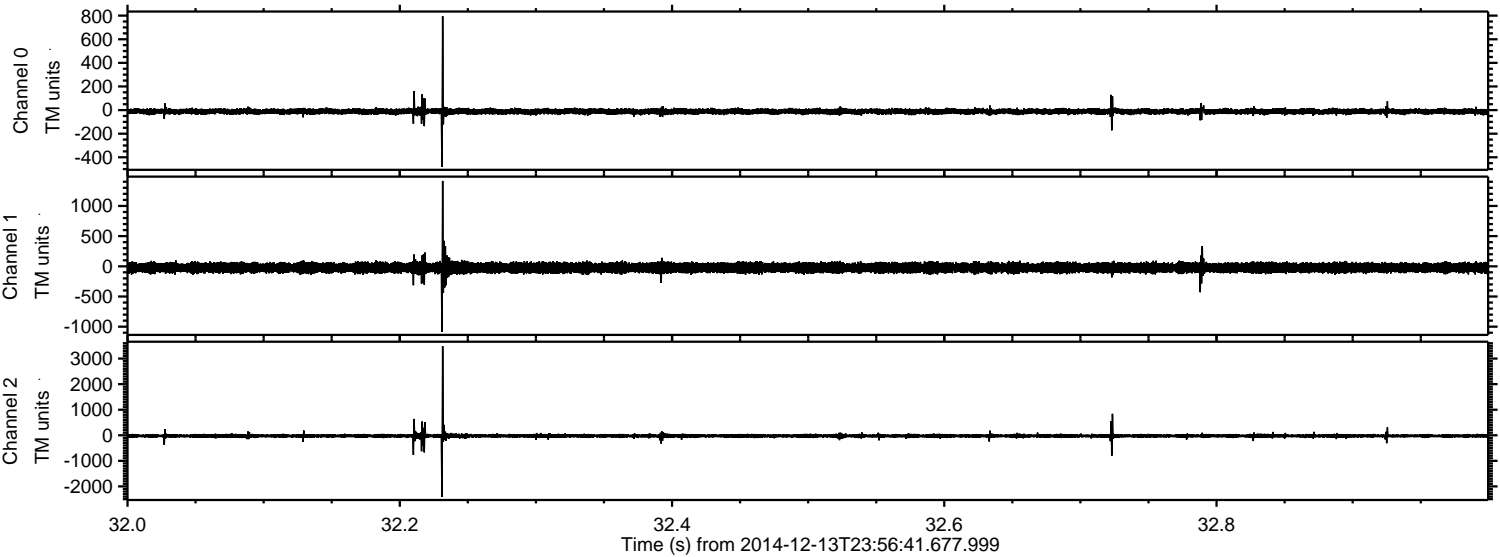


Processed Sun Dec 14 01:05:25 2014 by ELM ver.2012-10-06 from 001__elm20141213_235640__dat00.bin

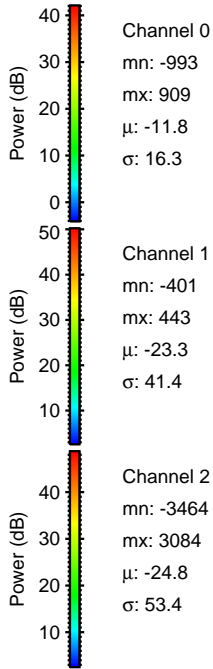
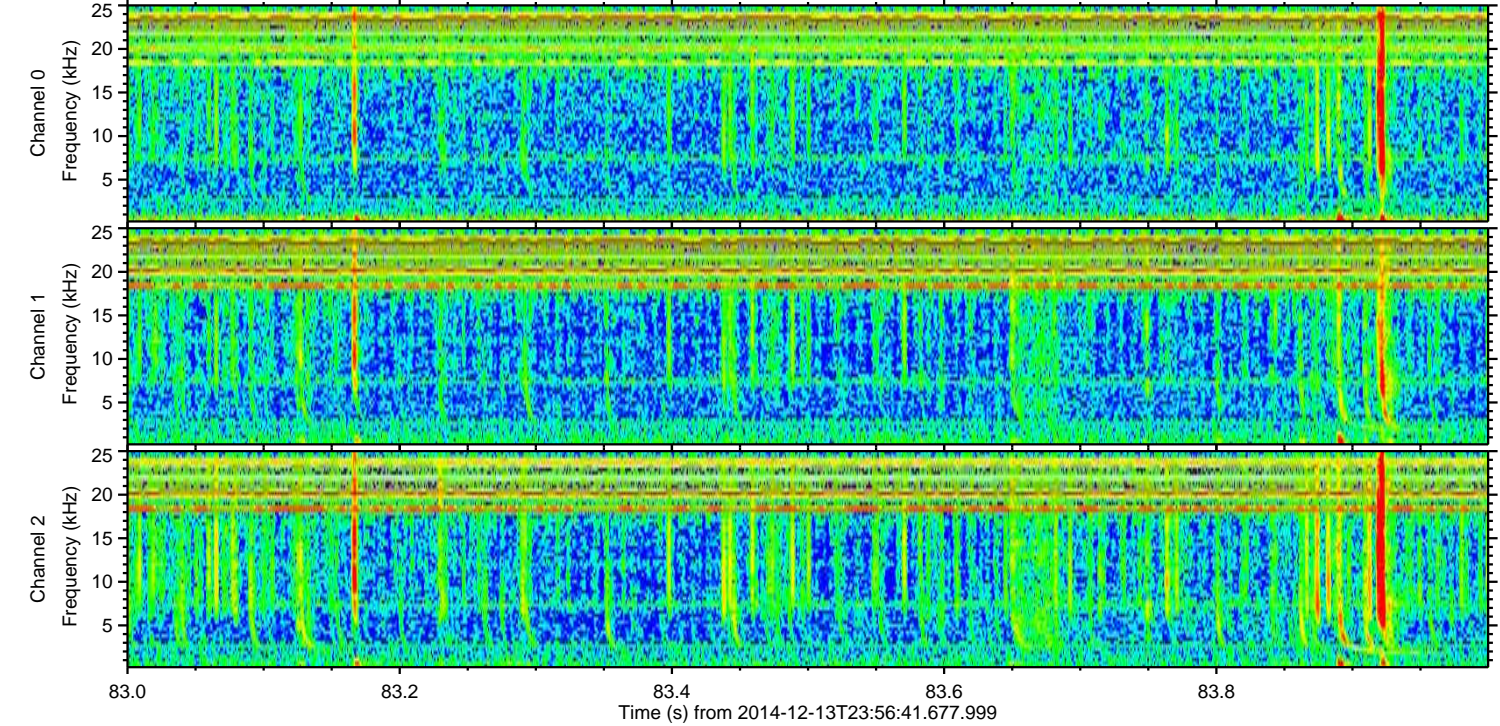
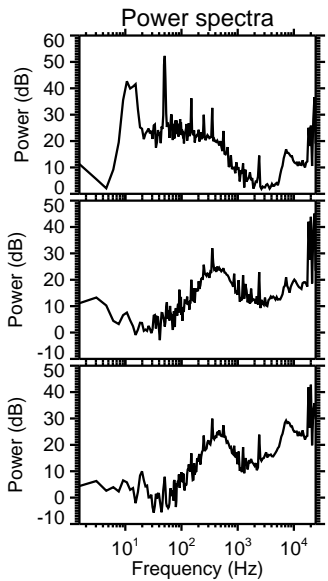
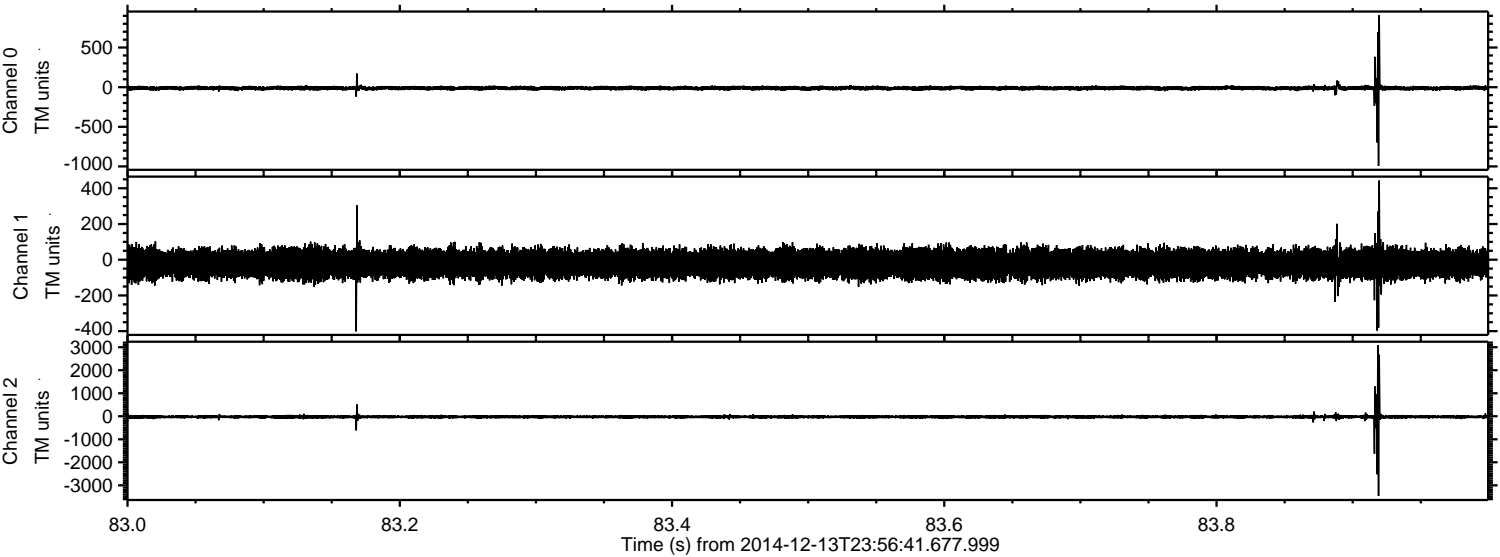


ELMAVAN 3D WAVEFORMS (Measured data sampled at 50 kHz) 49783 packets of 144 samples from 2014-12-13T23:56:41.677.999. Part 33/144

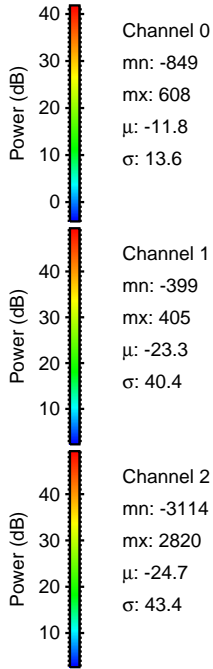
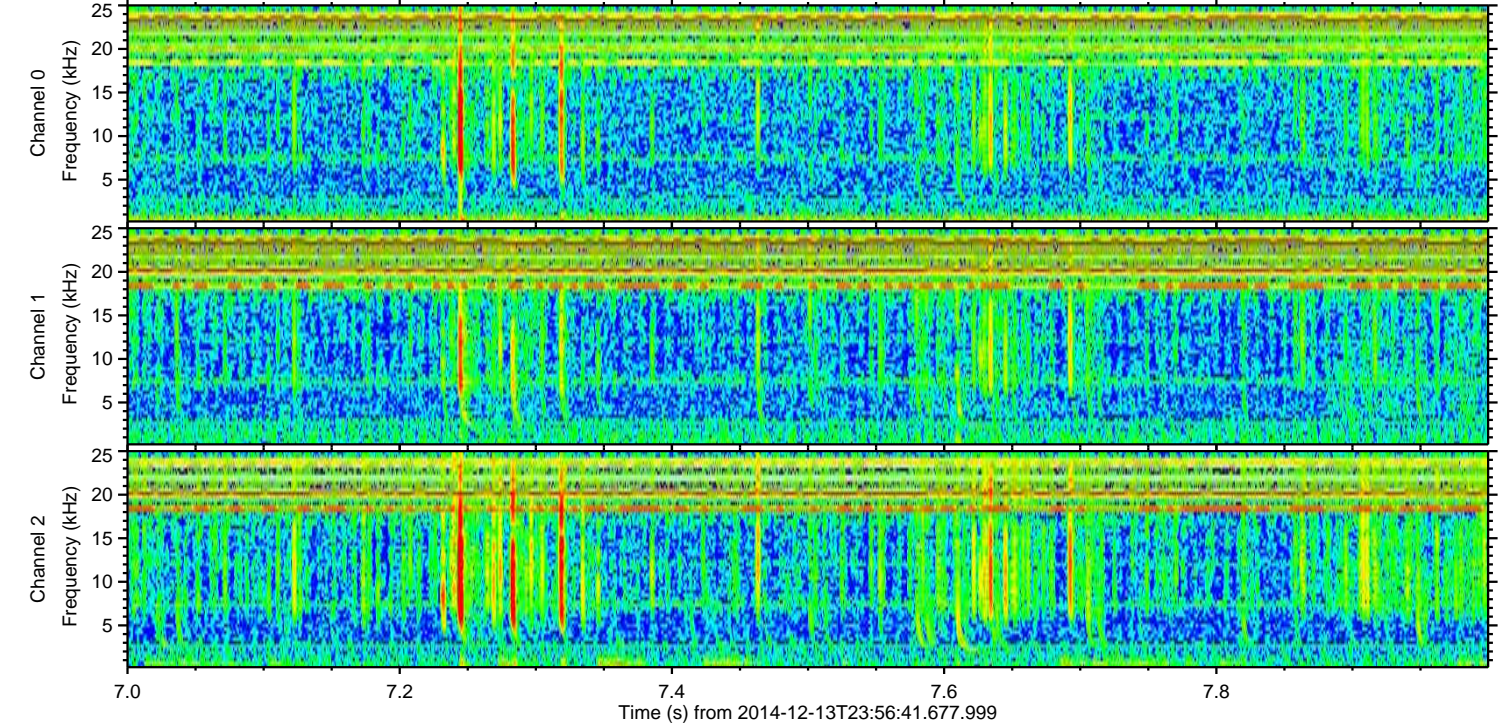
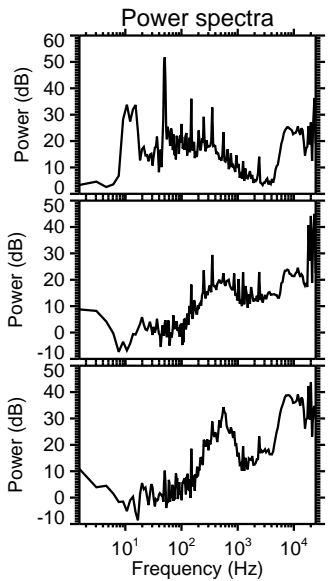
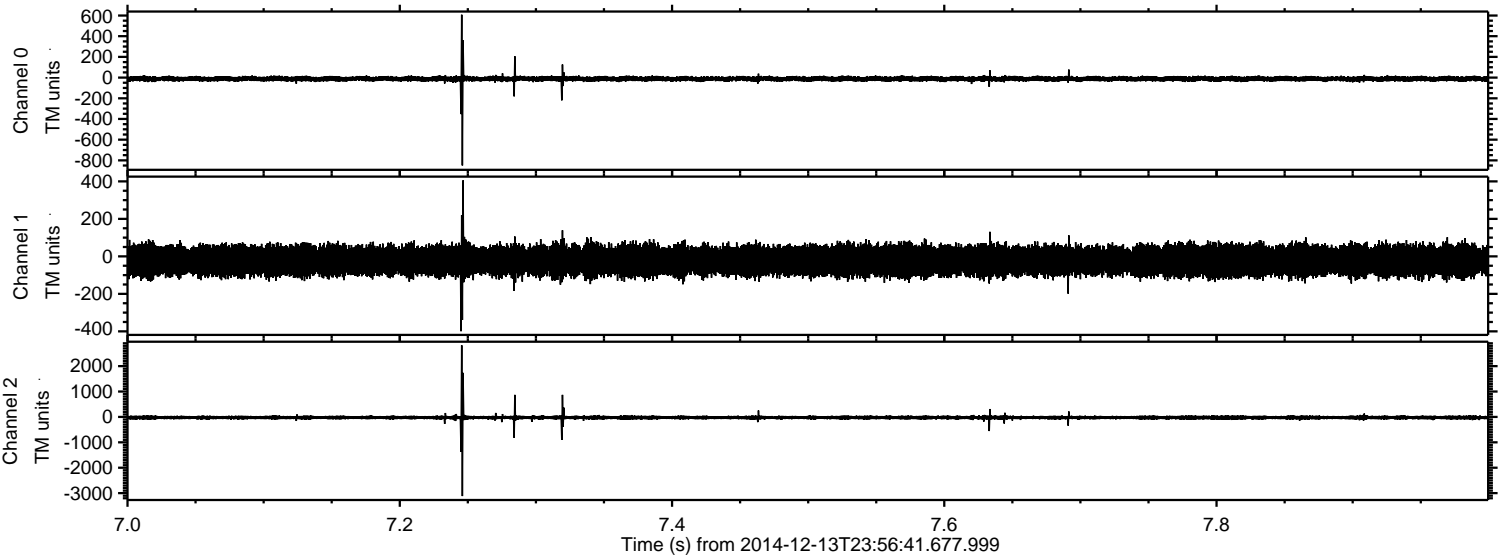
Processed Sun Dec 14 01:05:26 2014 by ELM ver.2012-10-06 from 001__elm20141213_235640__dat00.bin



Processed Sun Dec 14 01:05:27 2014 by ELM ver.2012-10-06 from 001__elm20141213_235640__dat00.bin

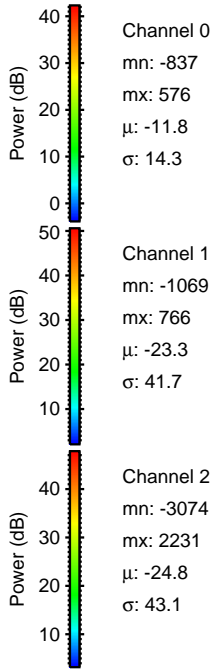
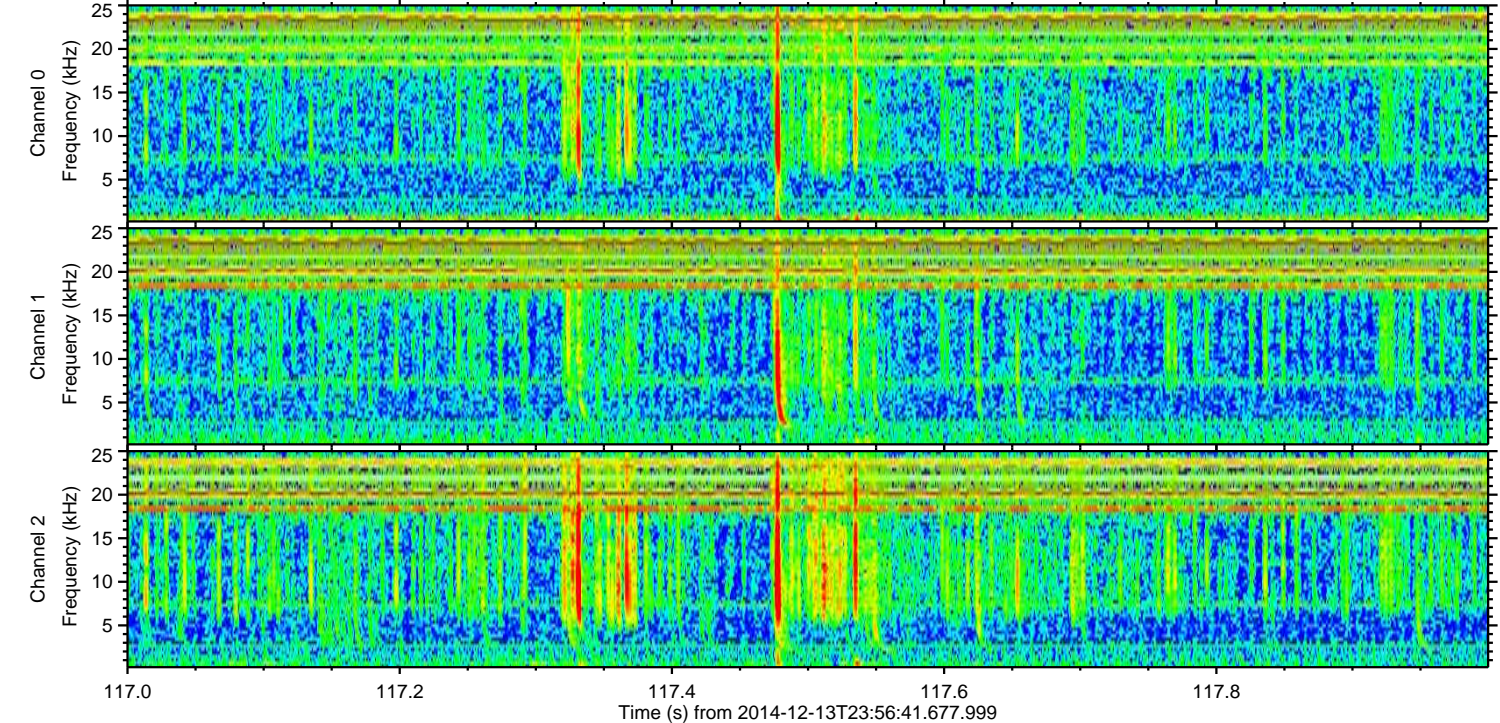
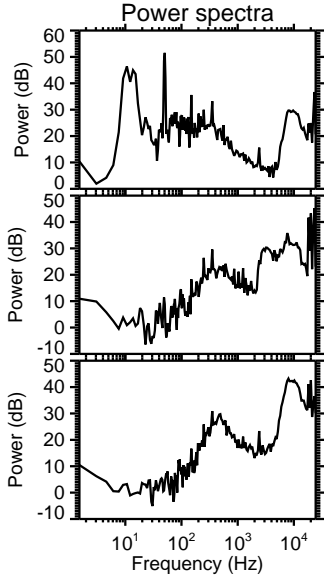
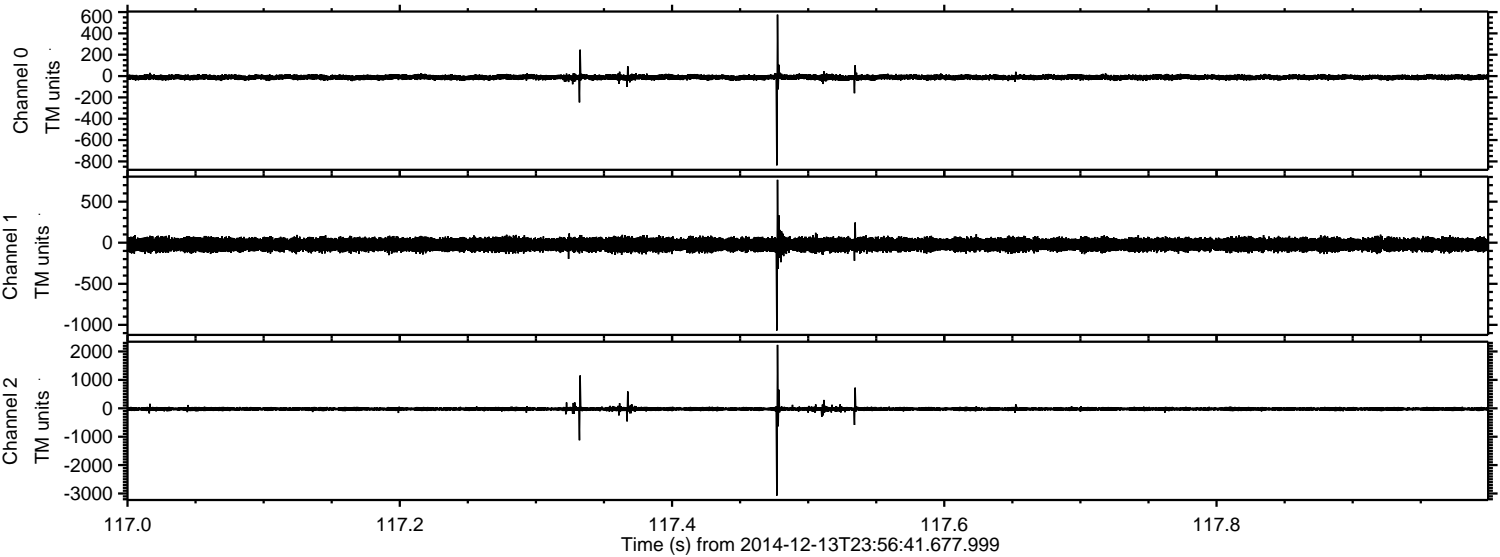


Processed Sun Dec 14 01:05:28 2014 by ELM ver.2012-10-06 from 001__elm20141213_235640__dat00.bin



ELMAVAN 3D WAVEFORMS (Measured data sampled at 50 kHz) 49783 packets of 144 samples from 2014-12-13T23:56:41.677.999. Part 118/144

Processed Sun Dec 14 01:05:29 2014 by ELM ver.2012-10-06 from 001__elm20141213_235640__dat00.bin

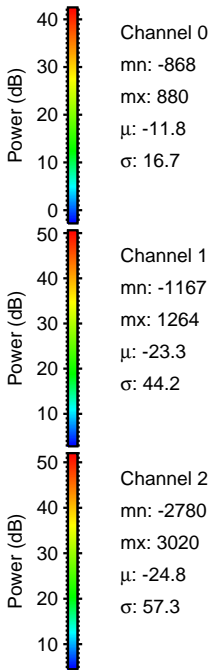
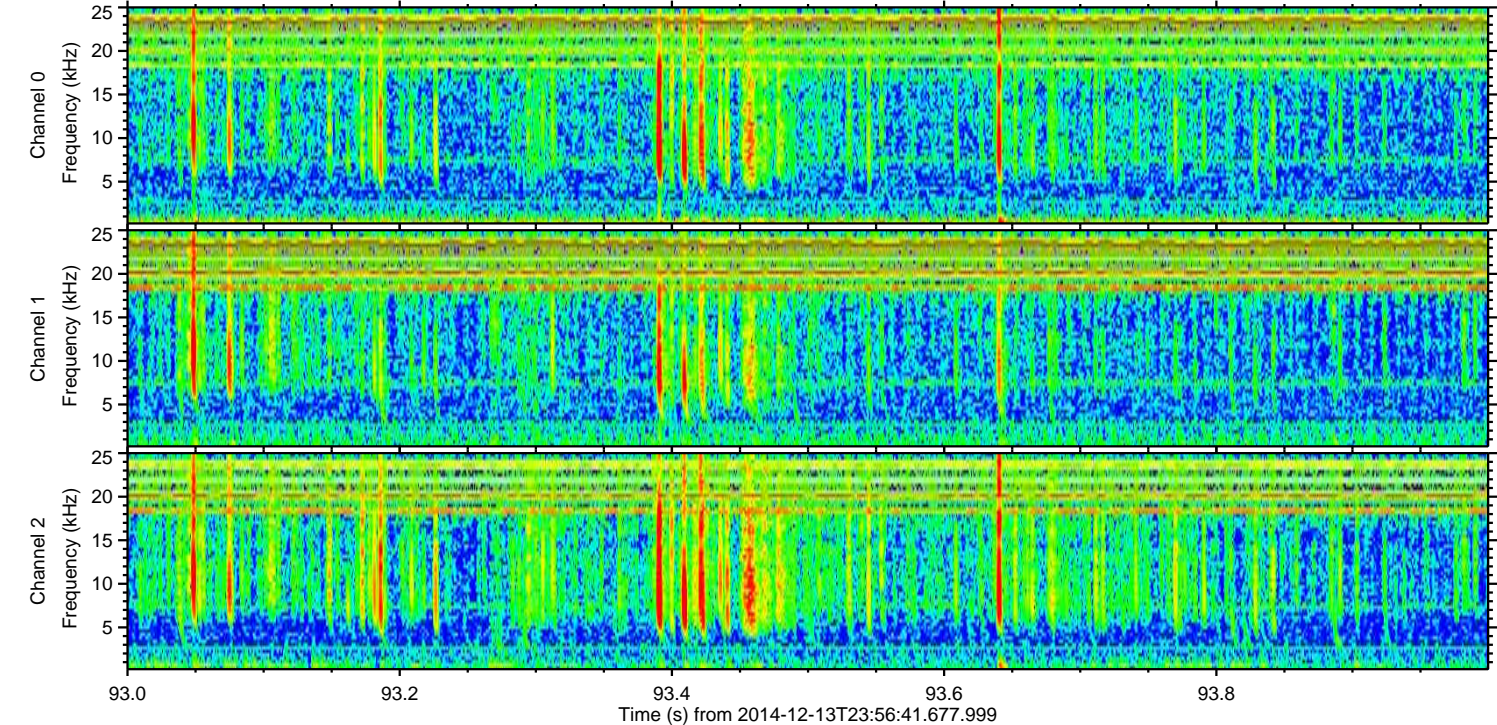
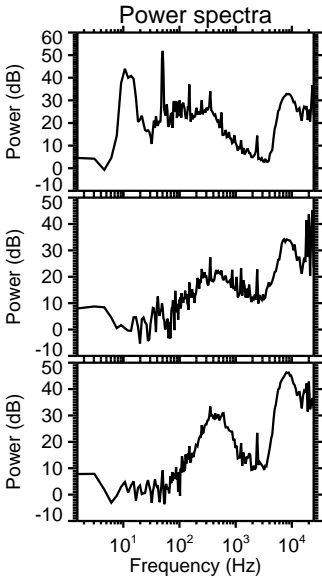
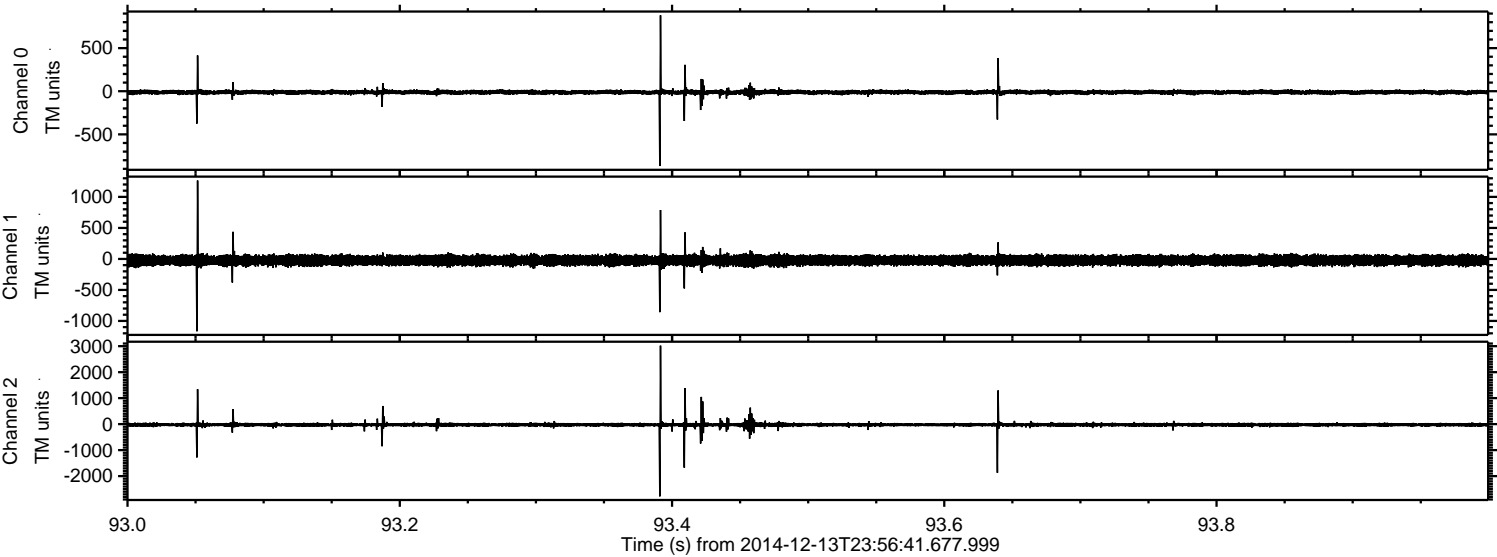


Channel 0
mn: -837
mx: 576
 μ : -11.8
 σ : 14.3

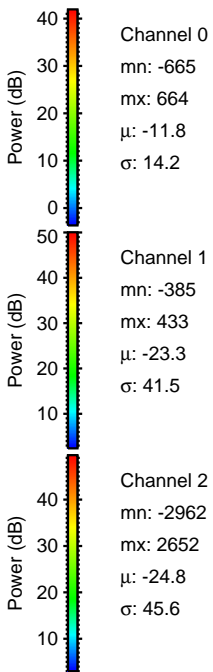
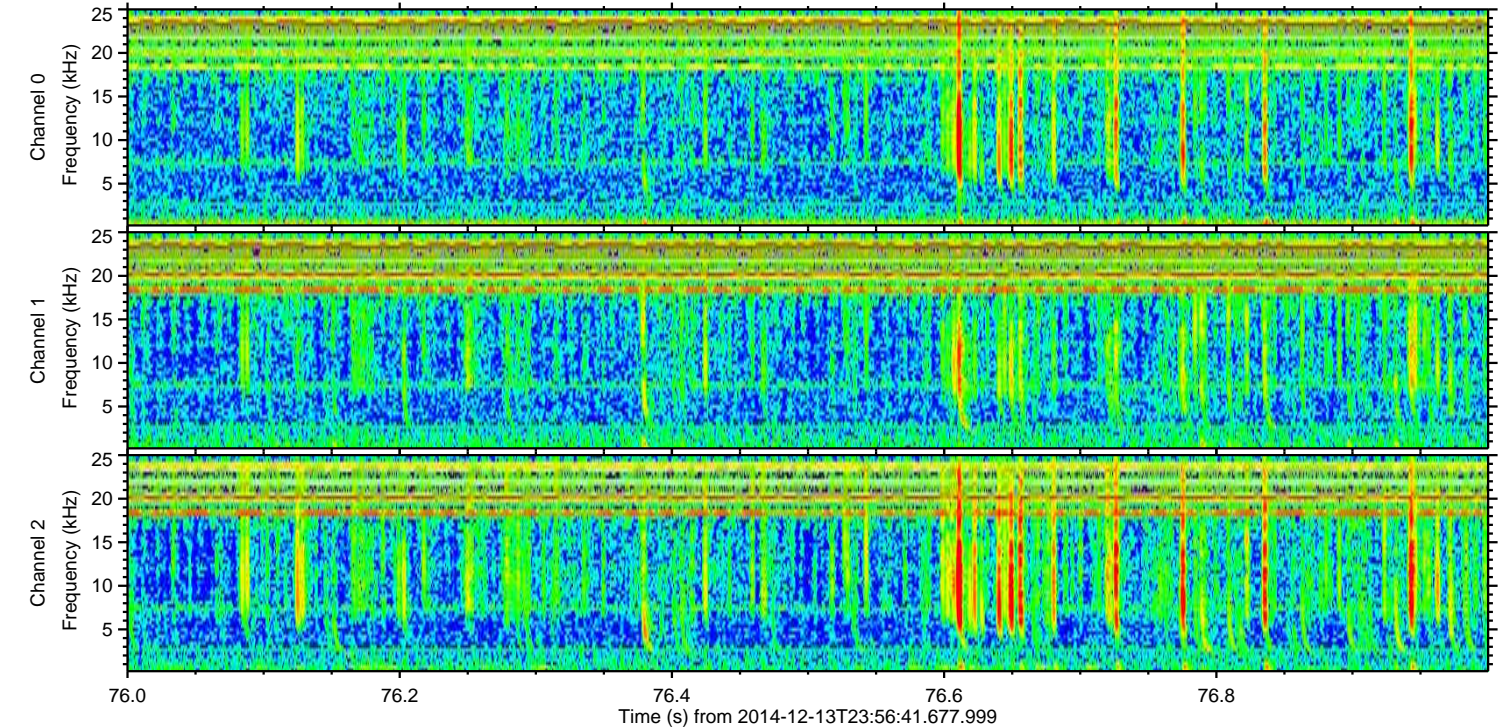
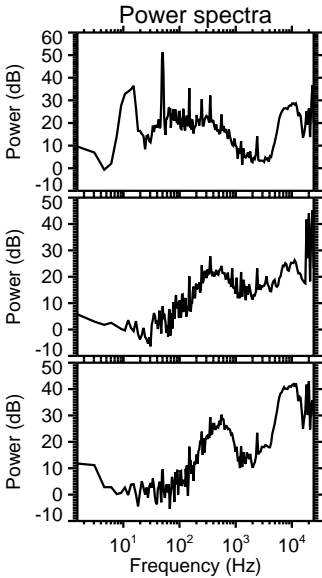
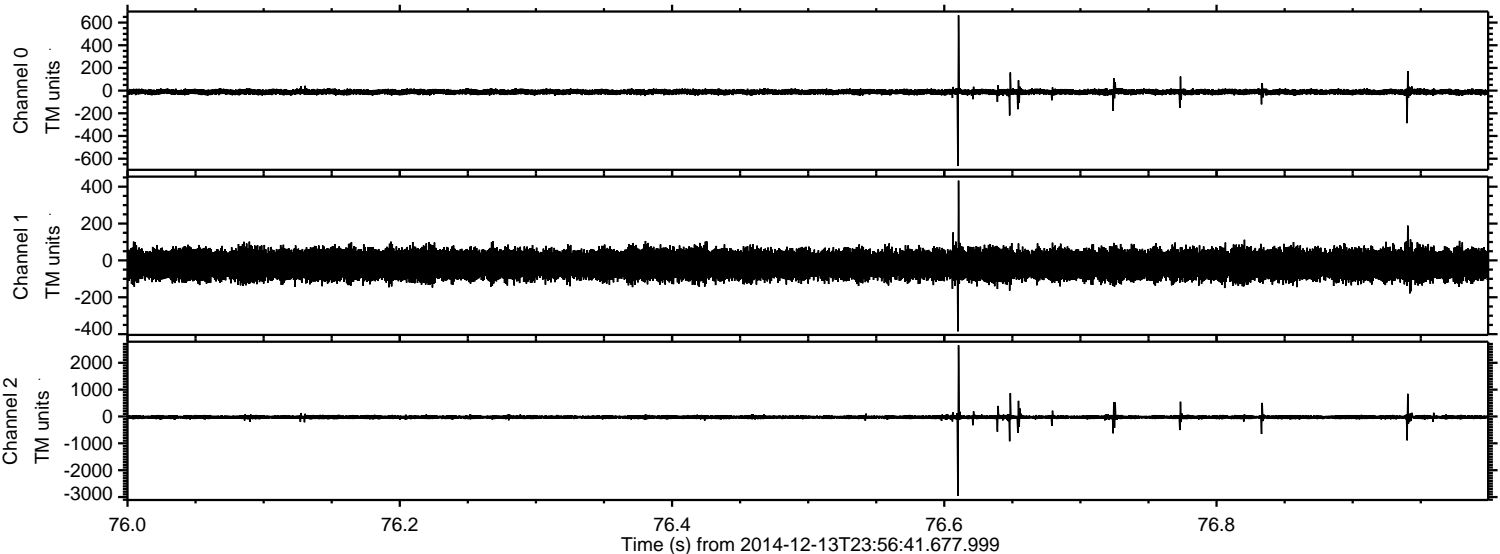
Channel 1
mn: -1069
mx: 766
 μ : -23.3
 σ : 41.7

Channel 2
mn: -3074
mx: 2231
 μ : -24.8
 σ : 43.1

Processed Sun Dec 14 01:05:30 2014 by ELM ver.2012-10-06 from 001__elm20141213_235640__dat00.bin



Processed Sun Dec 14 01:05:31 2014 by ELM ver.2012-10-06 from 001_elm20141213_235640__dat00.bin



Processed Sun Dec 14 01:05:32 2014 by ELM ver.2012-10-06 from 001__elm20141213_235640__dat00.bin

