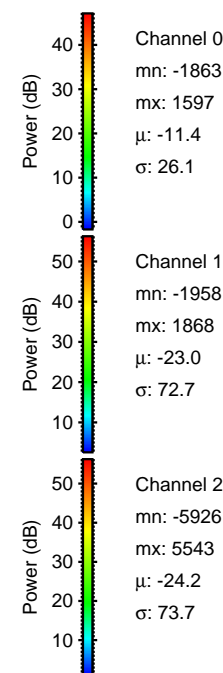
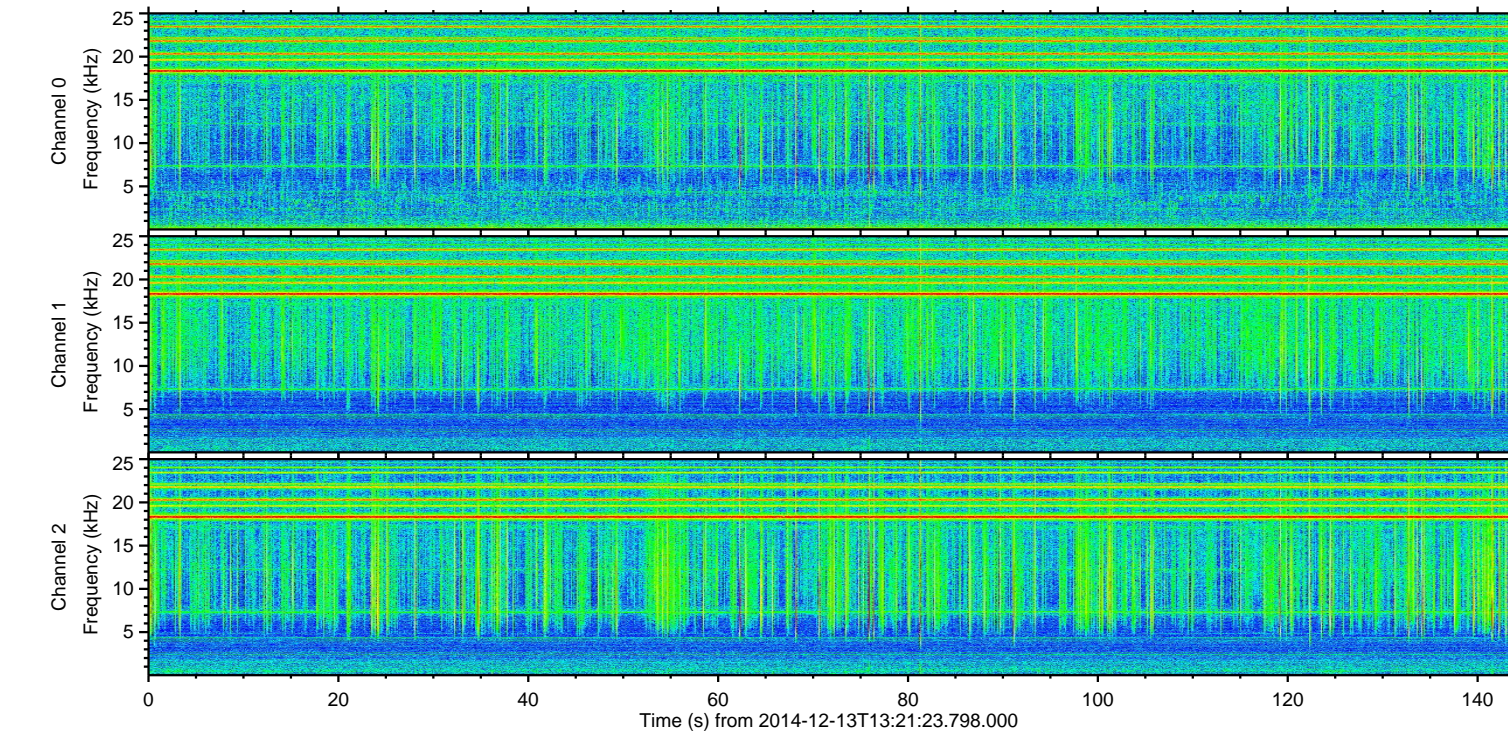
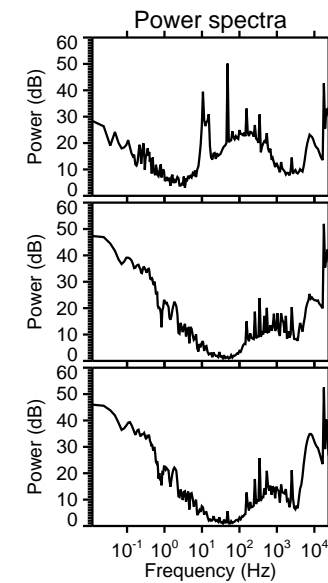
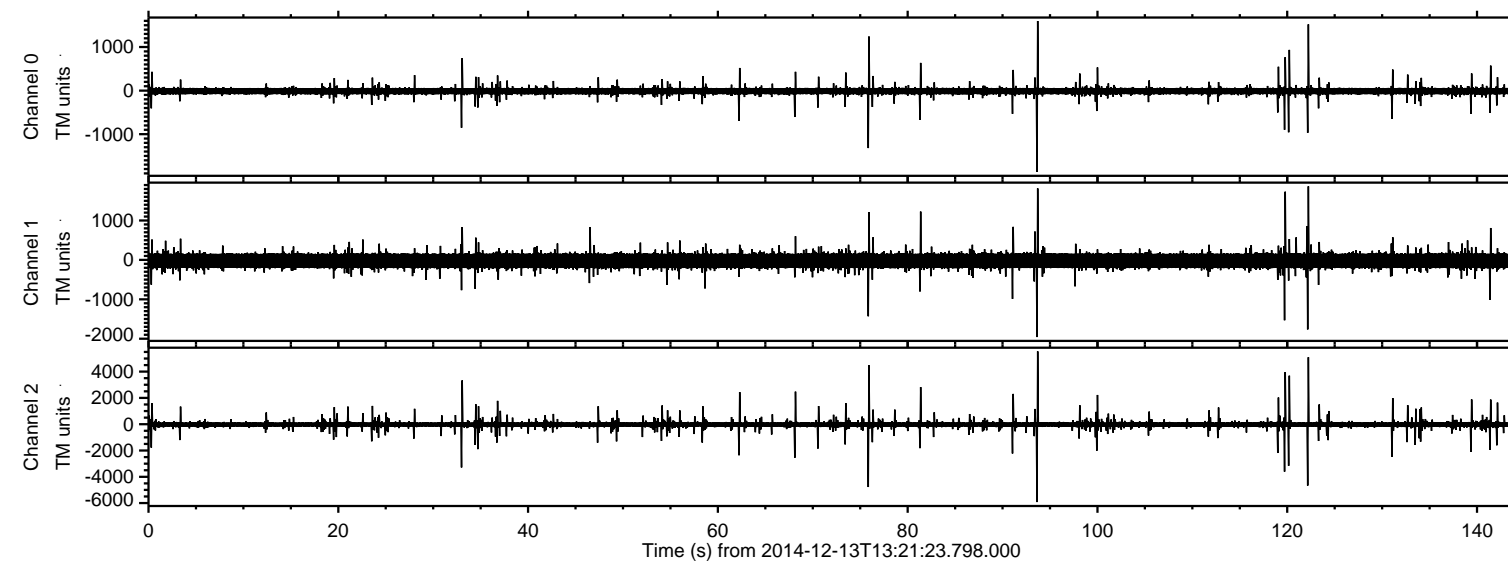
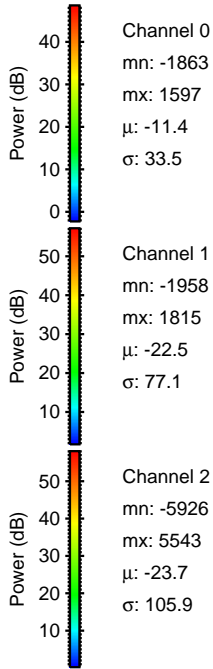
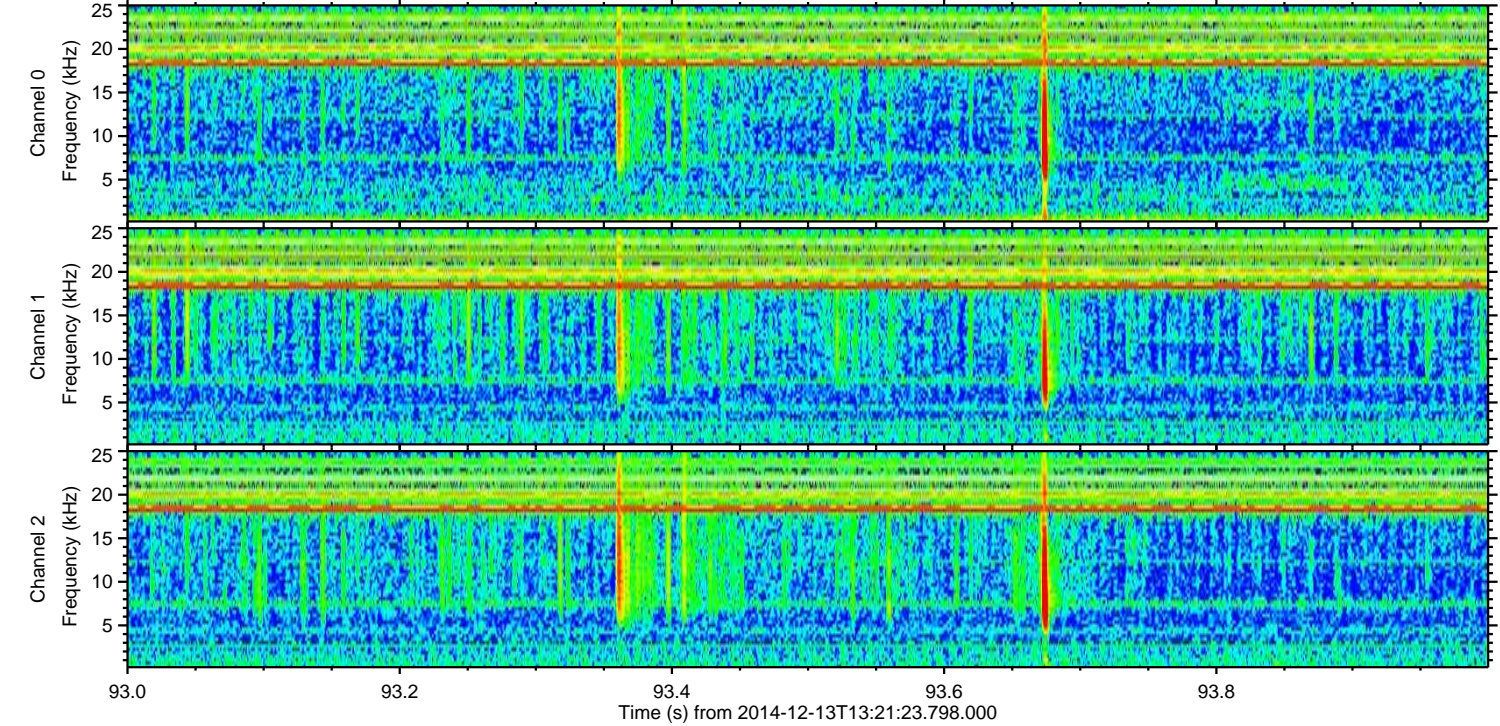
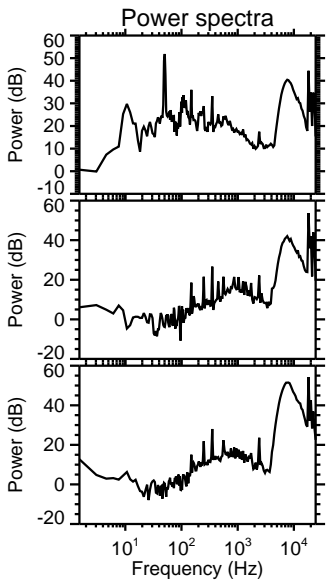
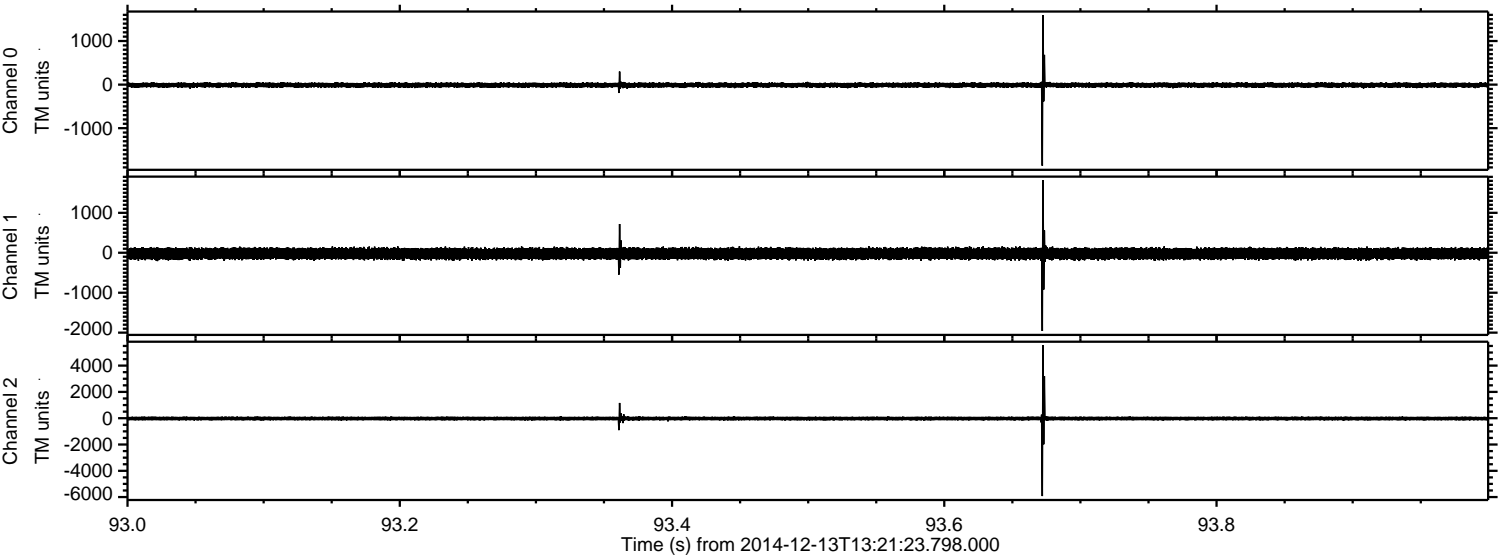


ELMAVAN 3D WAVEFORMS (Measured data sampled at 50 kHz) 49786 packets of 144 samples from 2014-12-13T13:21:23.798.000.

Processed Sat Dec 13 14:30:23 2014 by ELM ver.2012-10-06 from 001__elm20141213_132122__dat00.bin

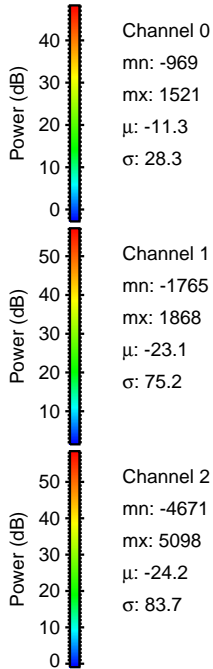
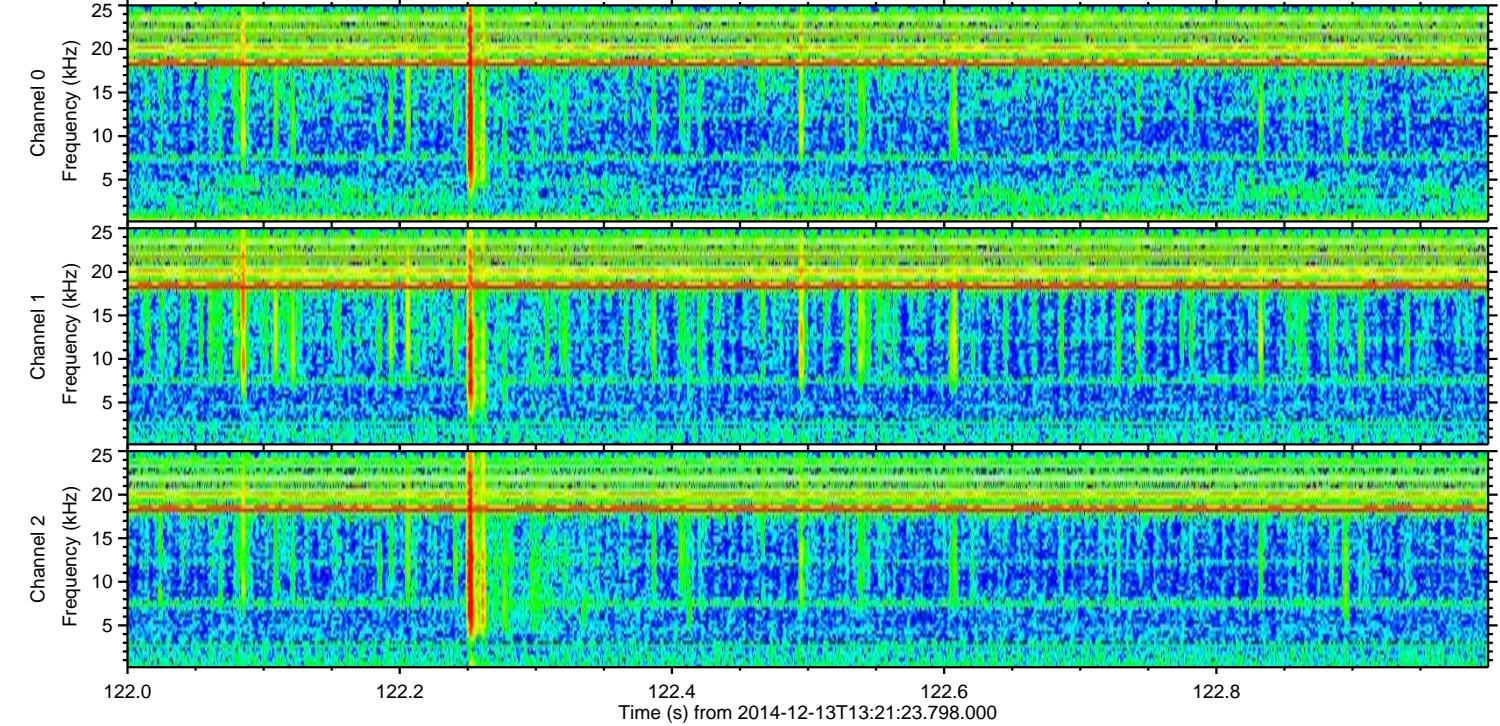
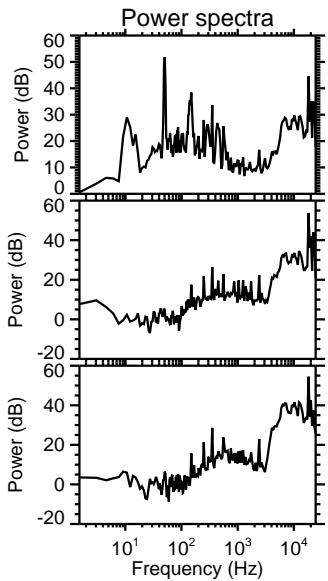
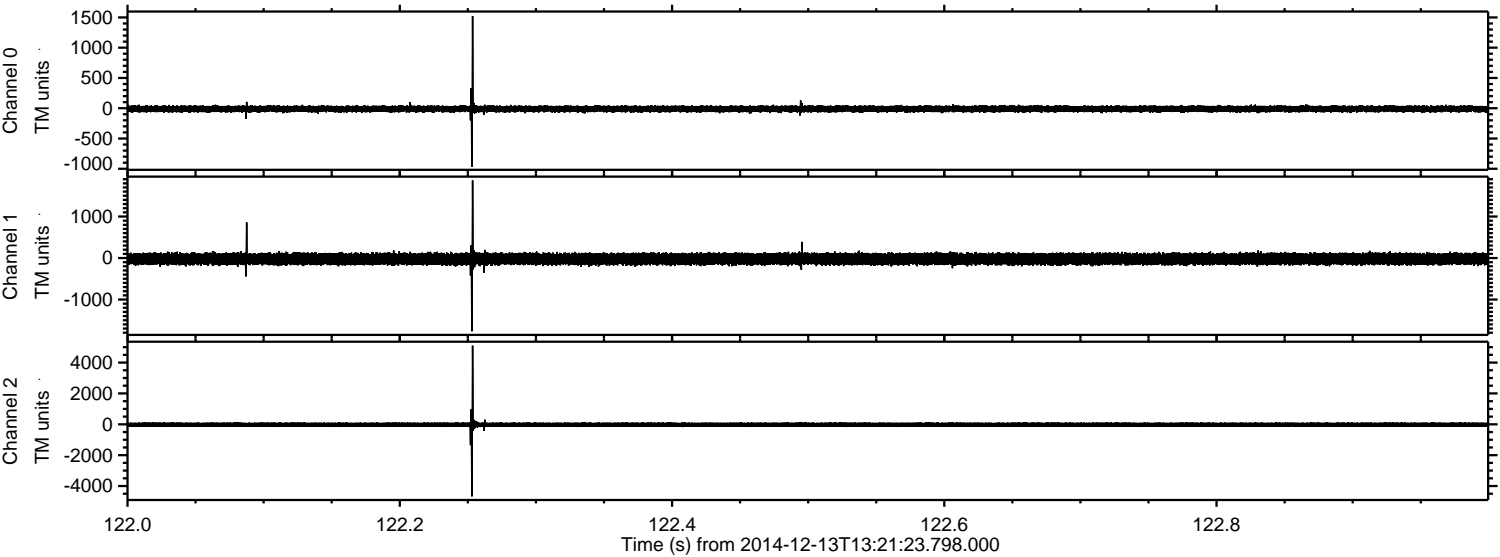


Processed Sat Dec 13 14:30:35 2014 by ELM ver.2012-10-06 from 001__elm20141213_132122__dat00.bin



ELMAVAN 3D WAVEFORMS (Measured data sampled at 50 kHz) 49786 packets of 144 samples from 2014-12-13T13:21:23.798.000. Part 123/144

Processed Sat Dec 13 14:30:36 2014 by ELM ver.2012-10-06 from 001__elm20141213_132122__dat00.bin



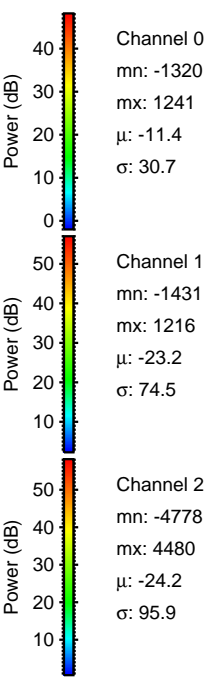
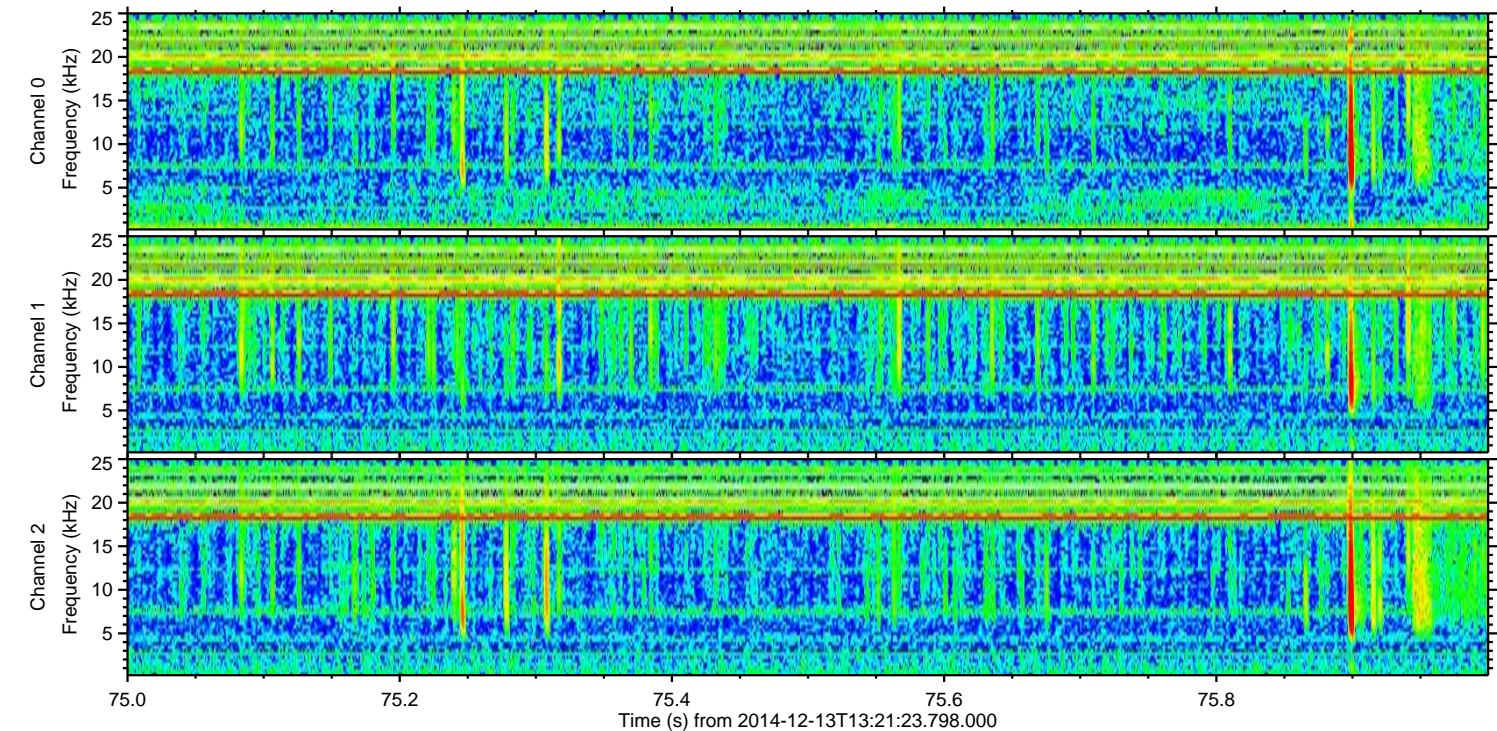
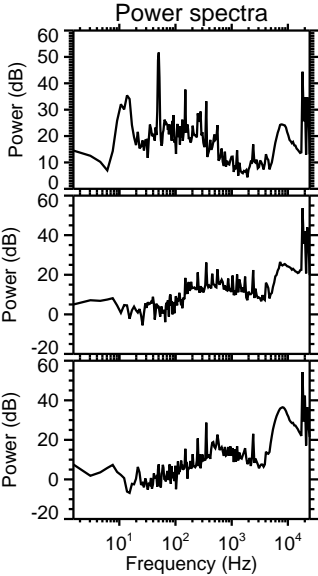
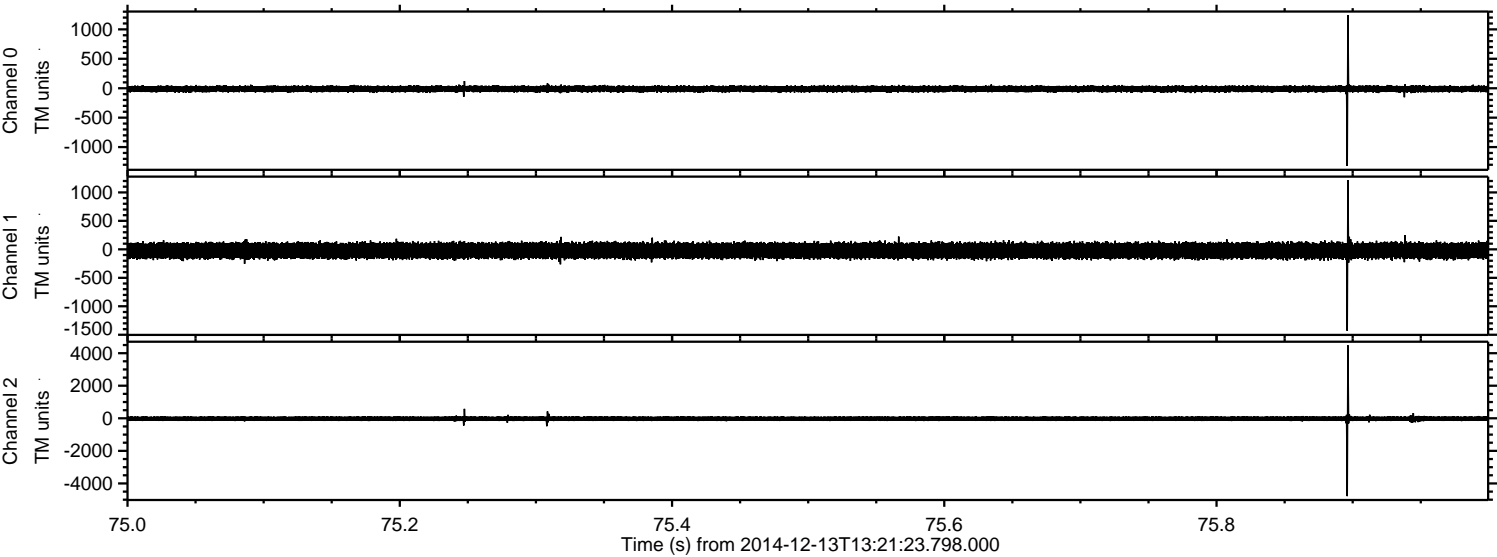
Channel 0
mn: -969
mx: 1521
 μ : -11.3
 σ : 28.3

Channel 1
mn: -1765
mx: 1868
 μ : -23.1
 σ : 75.2

Channel 2
mn: -4671
mx: 5098
 μ : -24.2
 σ : 83.7

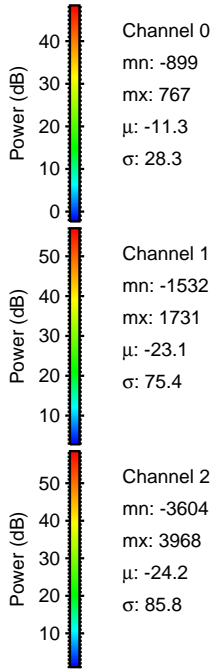
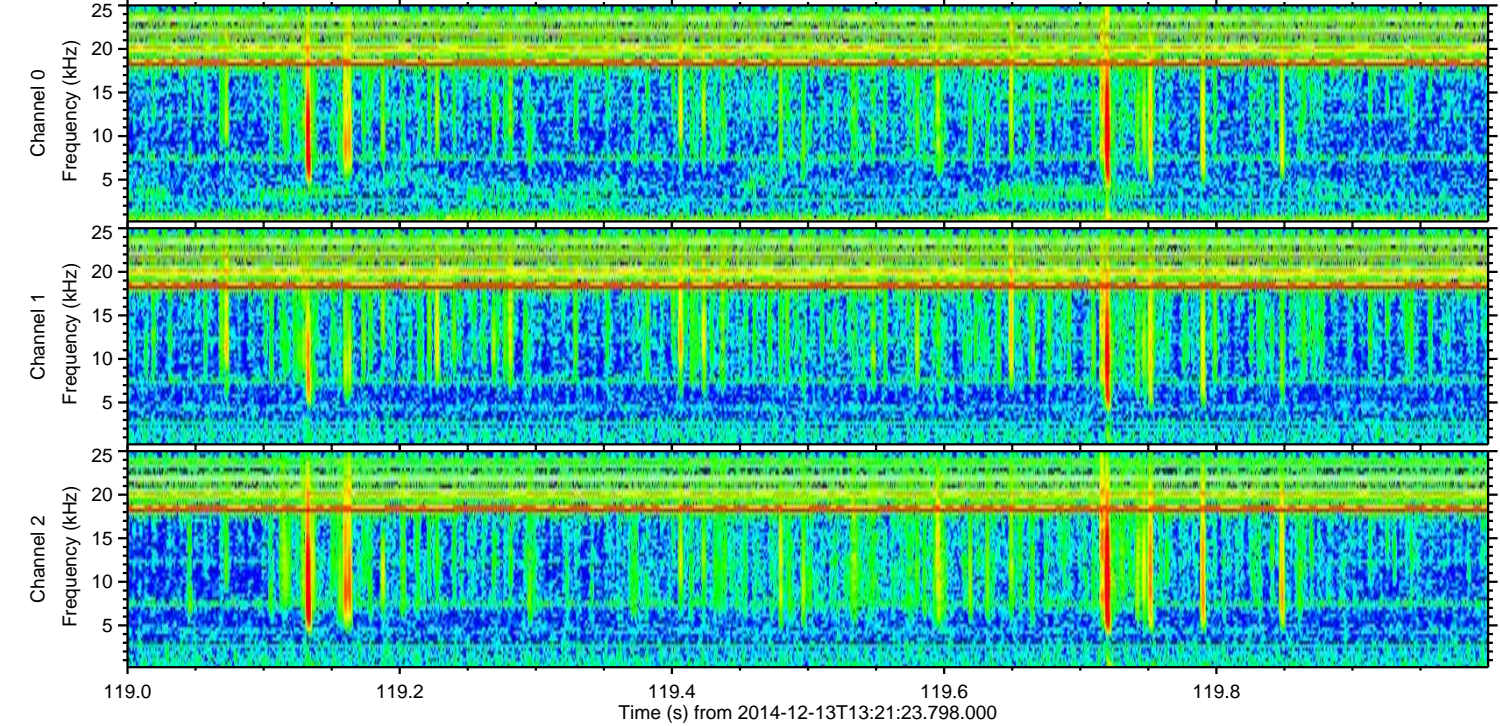
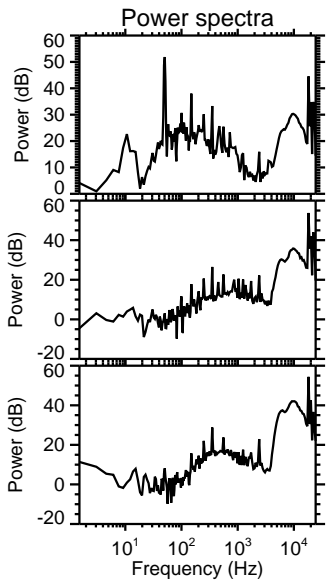
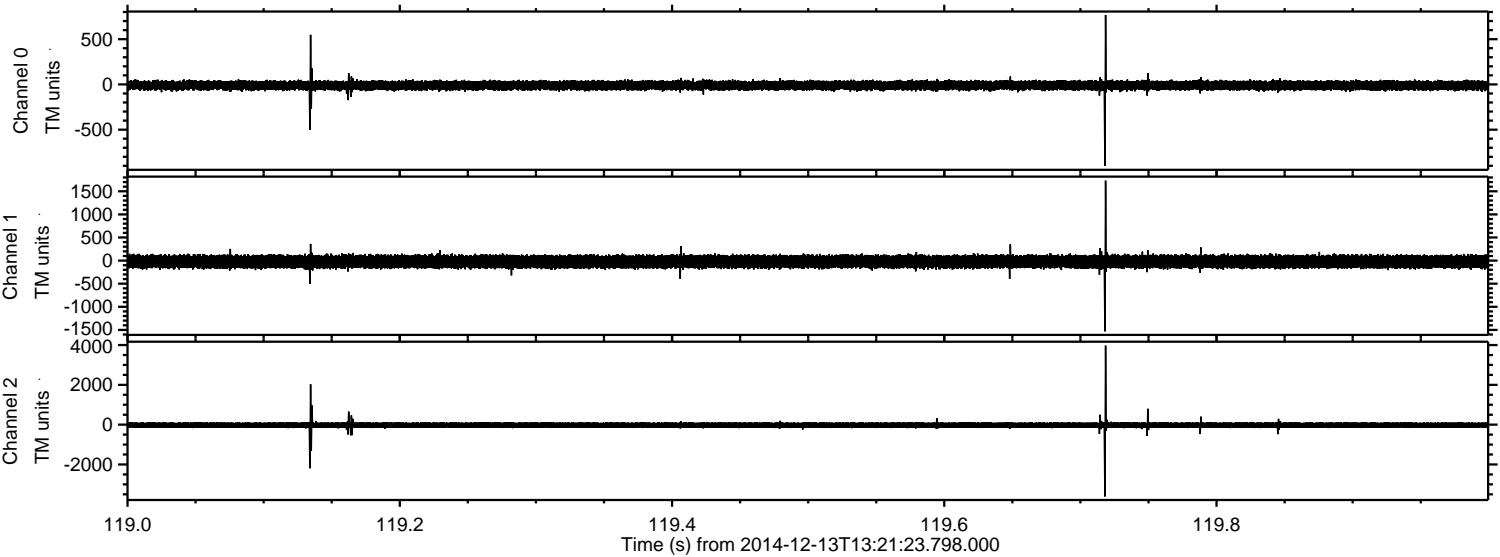
ELMAVAN 3D WAVEFORMS (Measured data sampled at 50 kHz) 49786 packets of 144 samples from 2014-12-13T13:21:23.798.000. Part 76/144

Processed Sat Dec 13 14:30:37 2014 by ELM ver.2012-10-06 from 001__elm20141213_132122__dat00.bin



ELMAVAN 3D WAVEFORMS (Measured data sampled at 50 kHz) 49786 packets of 144 samples from 2014-12-13T13:21:23.798.000. Part 120/144

Processed Sat Dec 13 14:30:38 2014 by ELM ver.2012-10-06 from 001__elm20141213_132122__dat00.bin



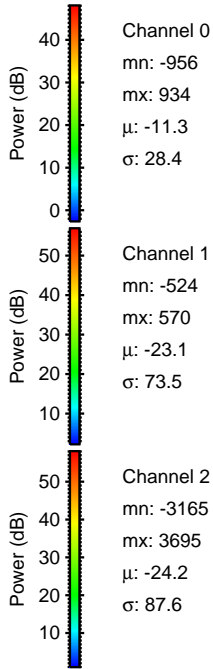
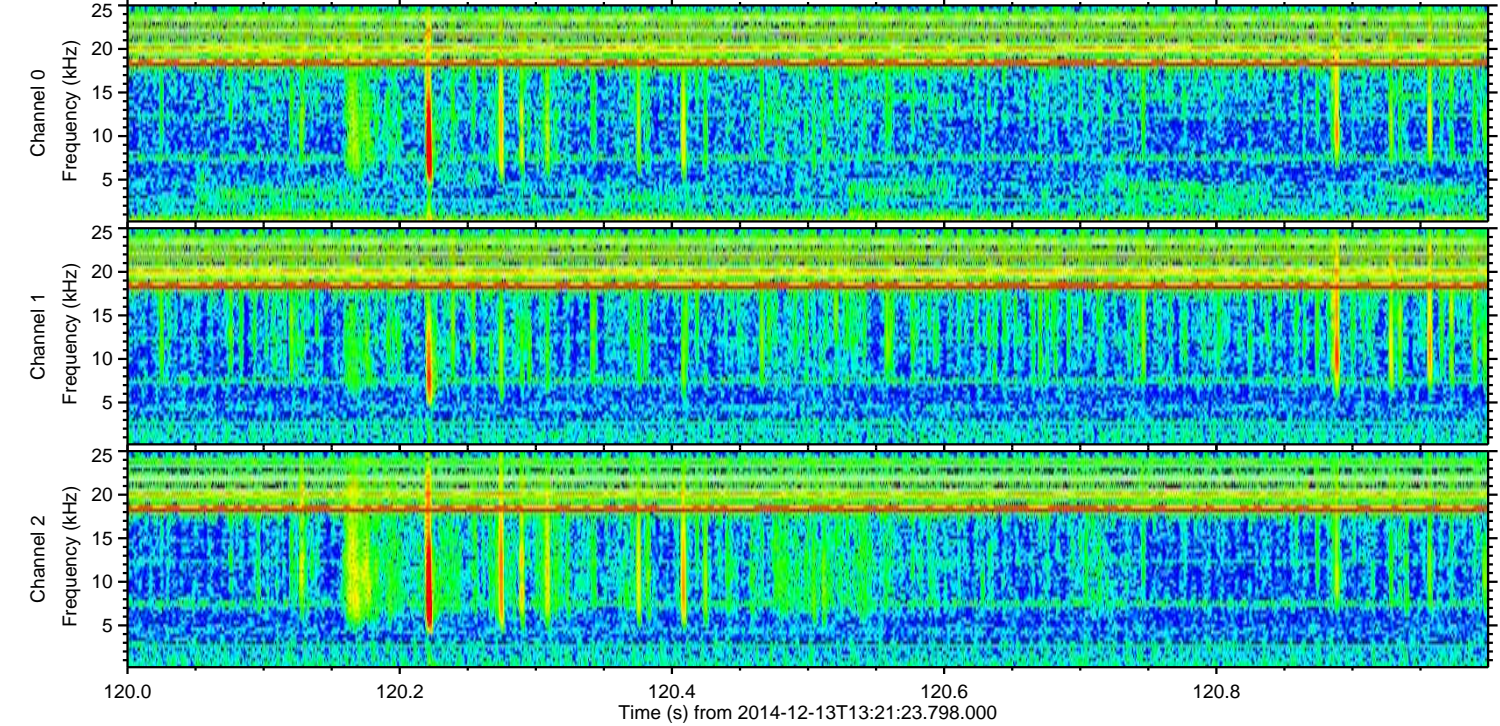
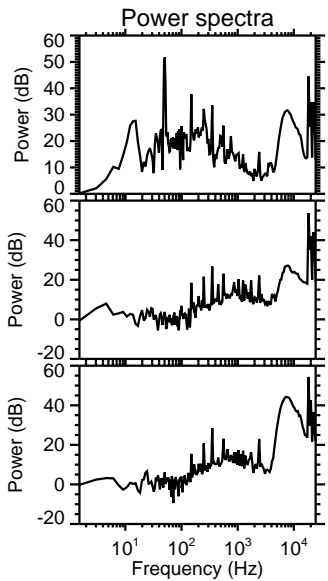
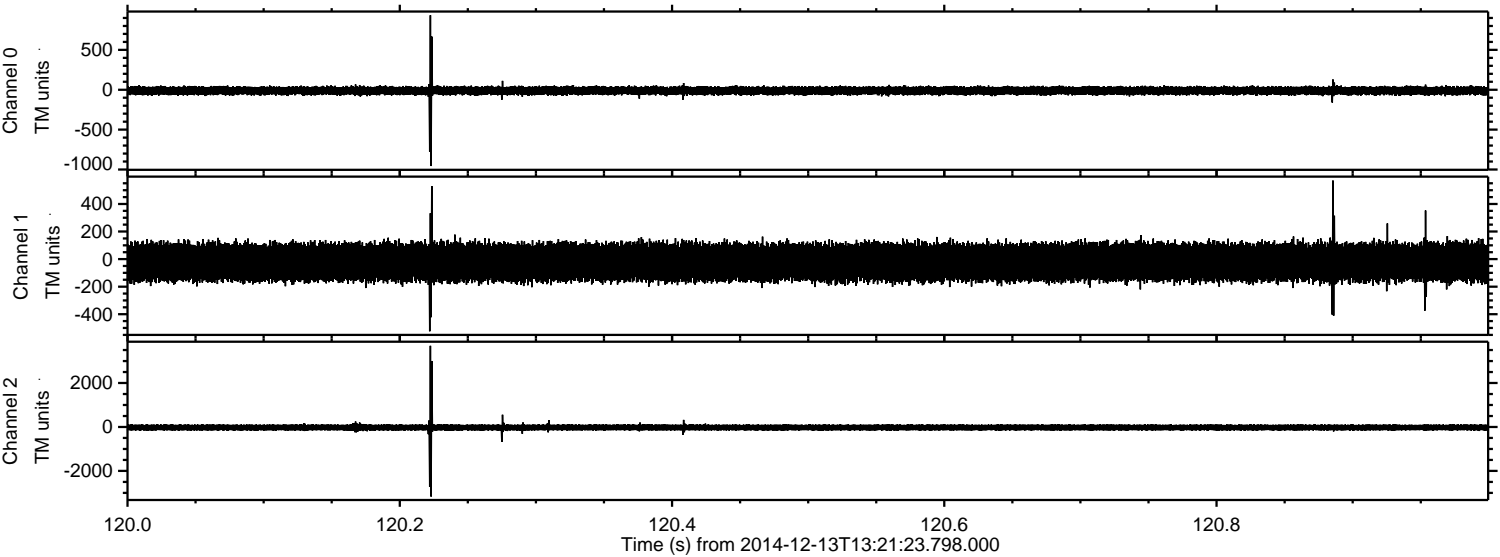
Channel 0
mn: -899
mx: 767
 μ : -11.3
 σ : 28.3

Channel 1
mn: -1532
mx: 1731
 μ : -23.1
 σ : 75.4

Channel 2
mn: -3604
mx: 3968
 μ : -24.2
 σ : 85.8

ELMAVAN 3D WAVEFORMS (Measured data sampled at 50 kHz) 49786 packets of 144 samples from 2014-12-13T13:21:23.798.000. Part 121/144

Processed Sat Dec 13 14:30:39 2014 by ELM ver.2012-10-06 from 001__elm20141213_132122__dat00.bin



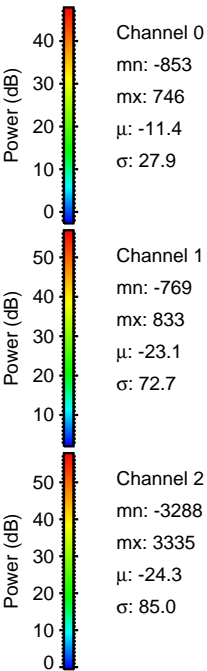
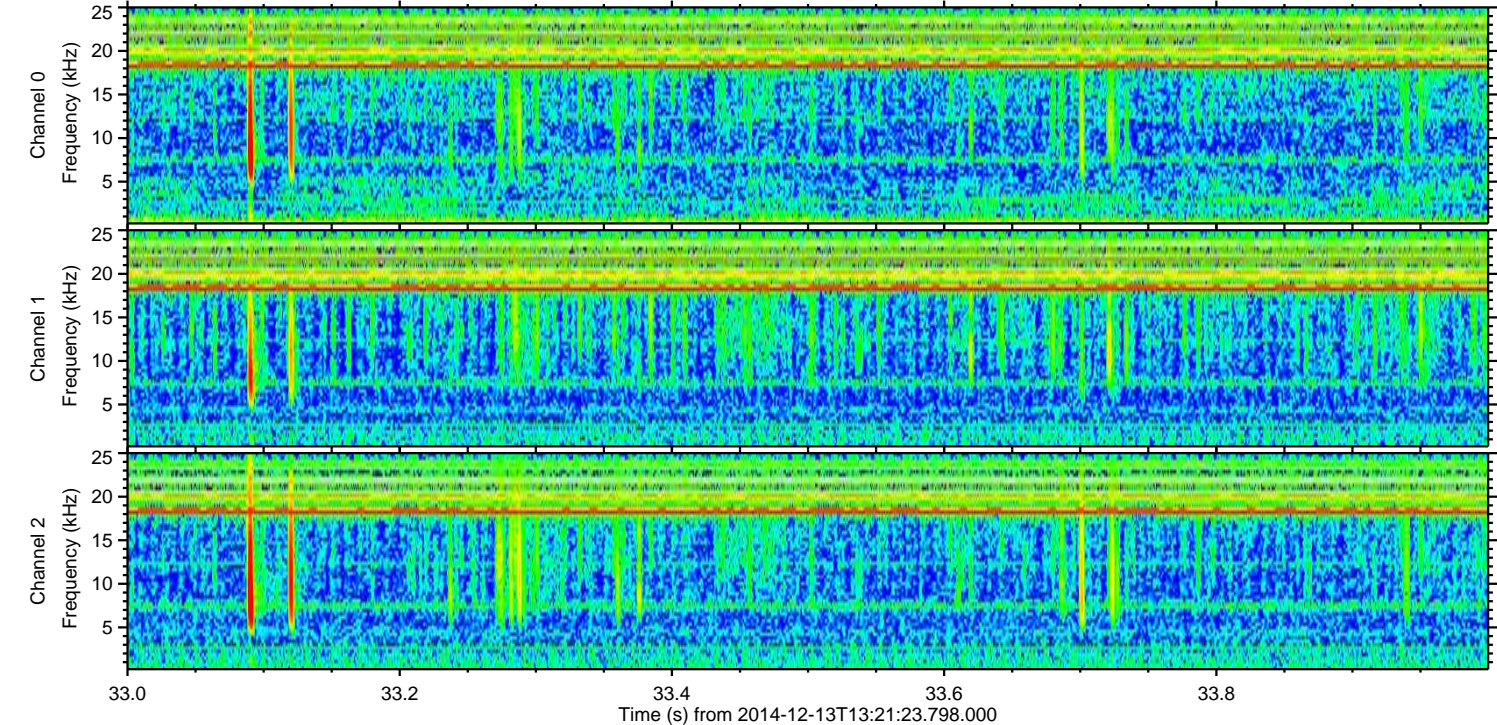
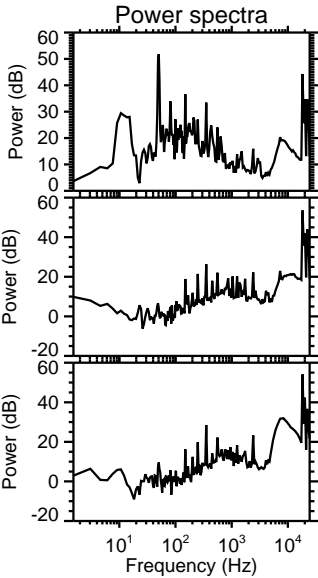
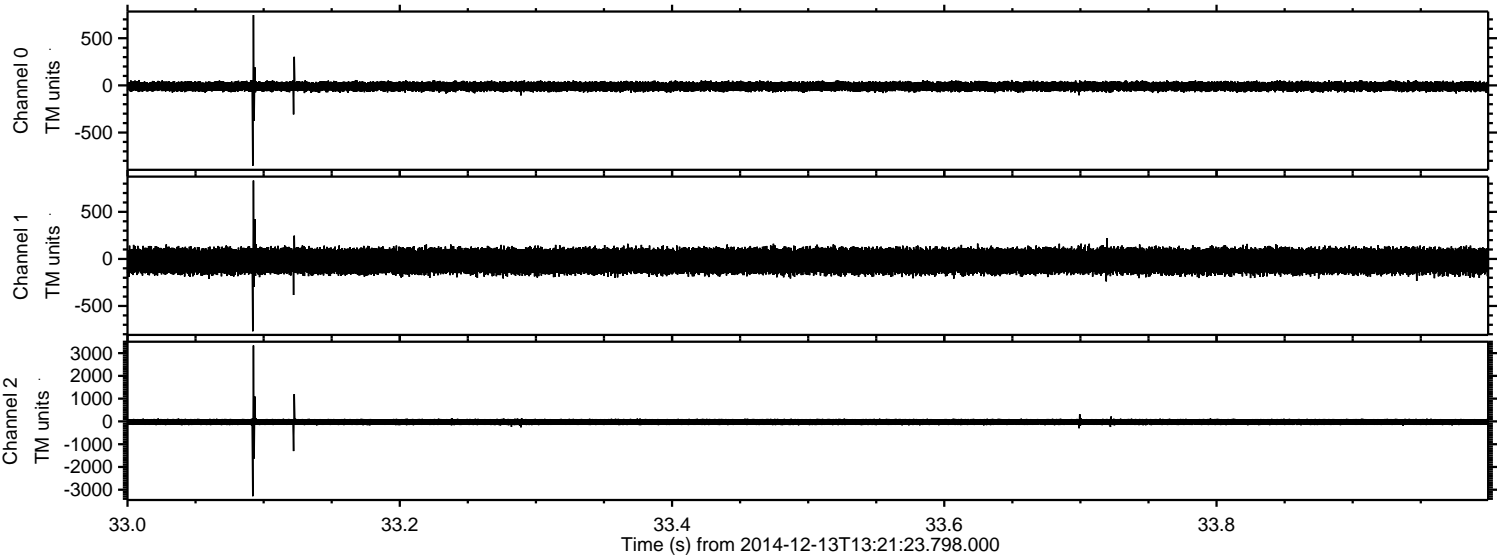
Channel 0
mn: -956
mx: 934
 μ : -11.3
 σ : 28.4

Channel 1
mn: -524
mx: 570
 μ : -23.1
 σ : 73.5

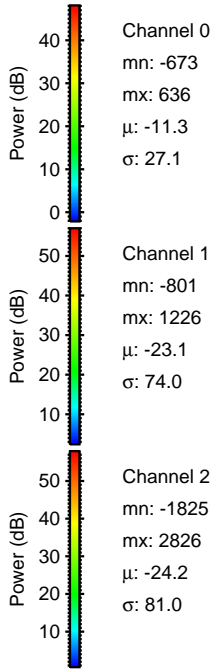
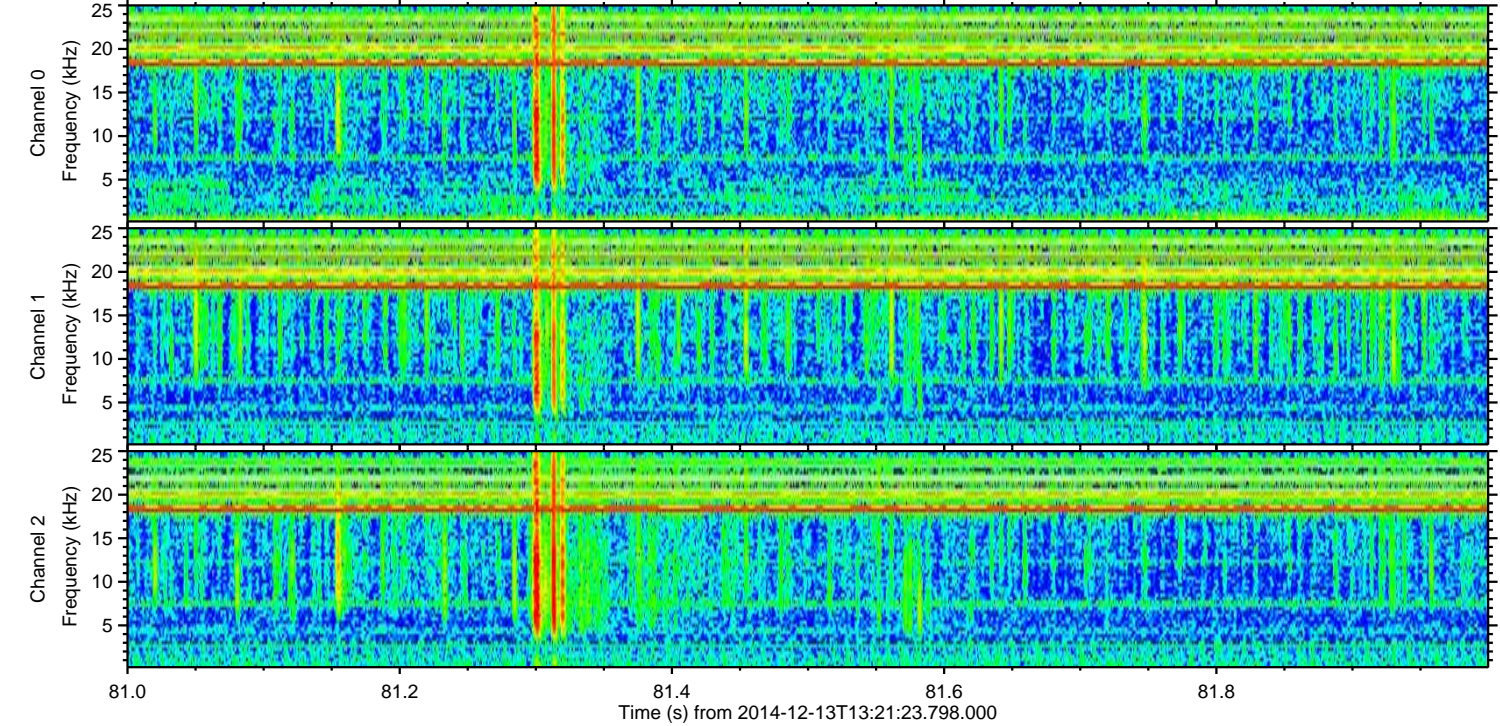
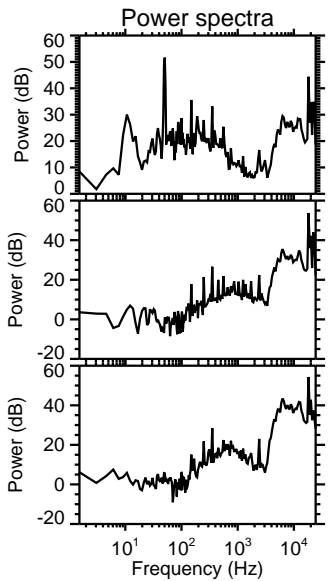
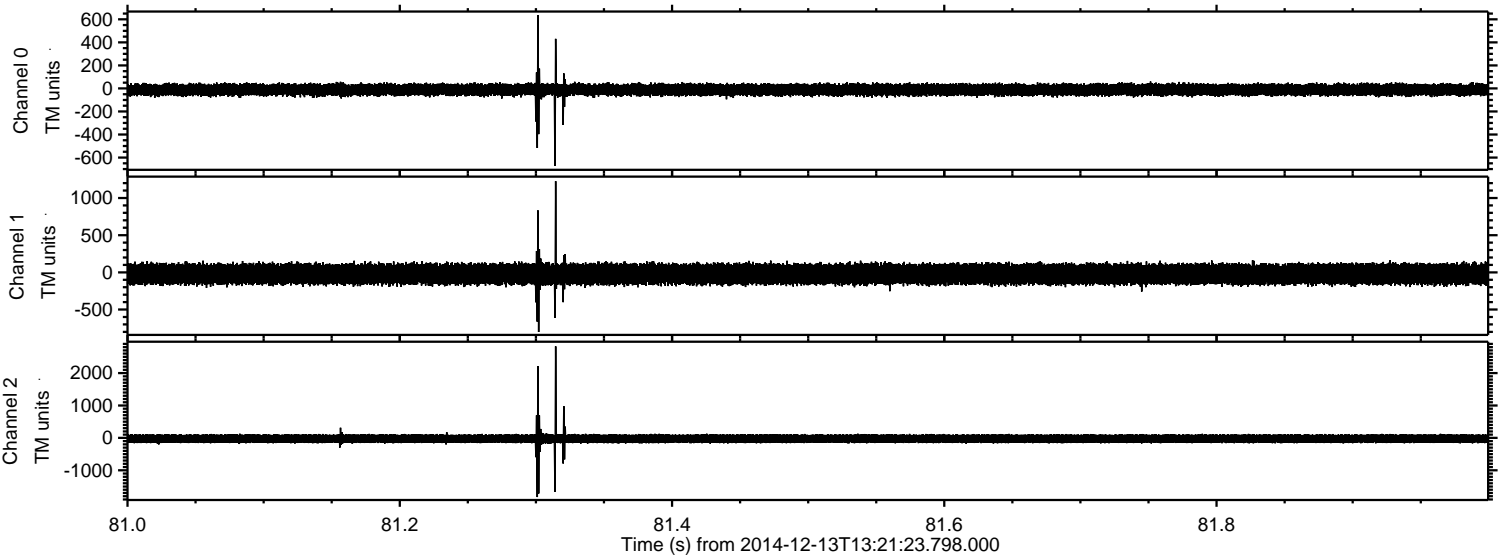
Channel 2
mn: -3165
mx: 3695
 μ : -24.2
 σ : 87.6

ELMAVAN 3D WAVEFORMS (Measured data sampled at 50 kHz) 49786 packets of 144 samples from 2014-12-13T13:21:23.798.000. Part 34/144

Processed Sat Dec 13 14:30:40 2014 by ELM ver.2012-10-06 from 001__elm20141213_132122__dat00.bin

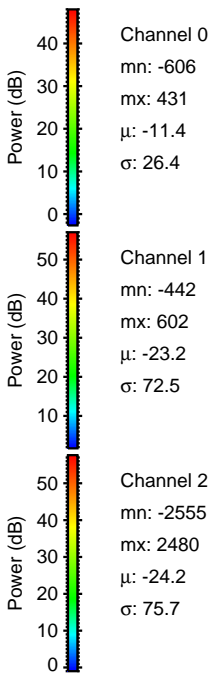
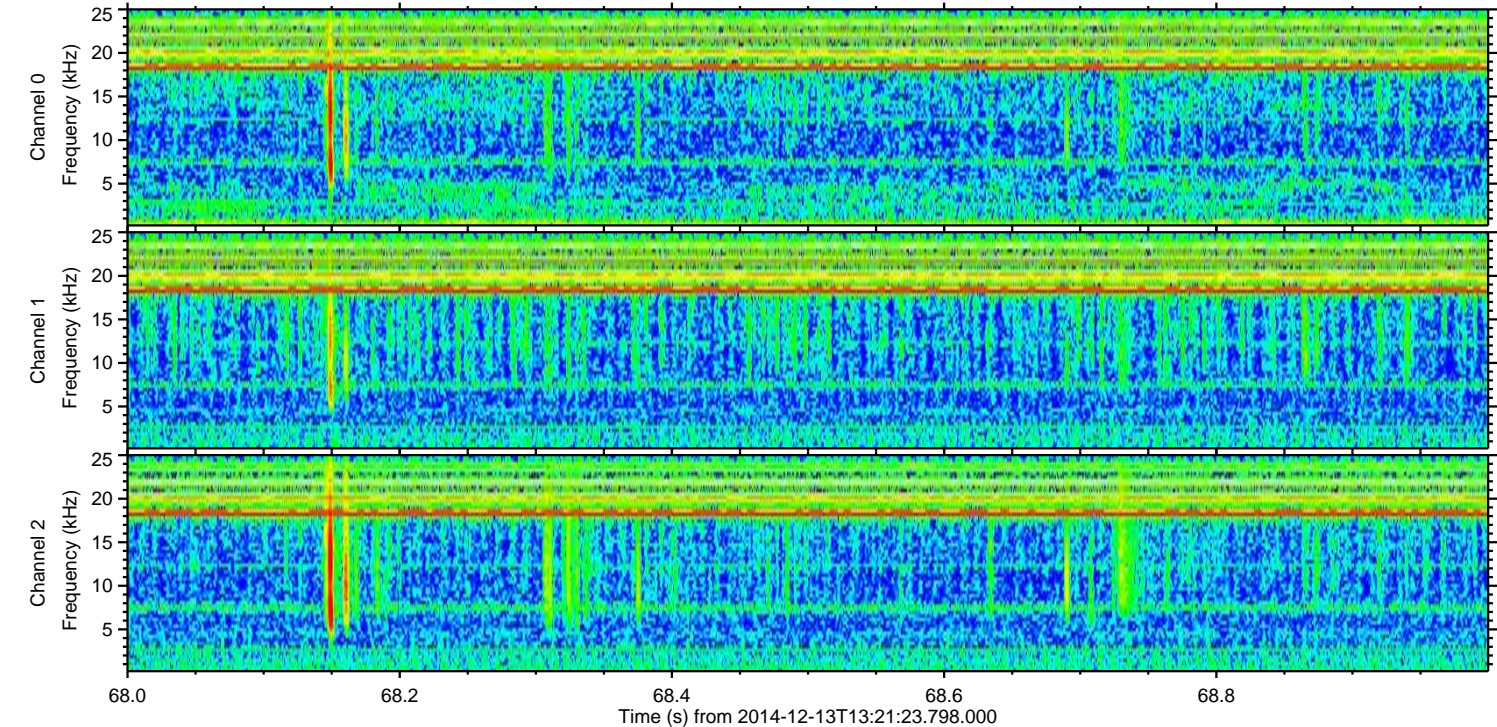
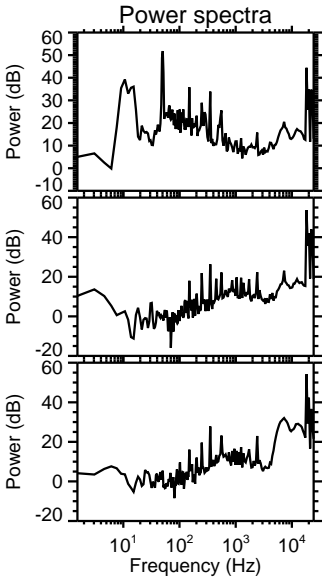
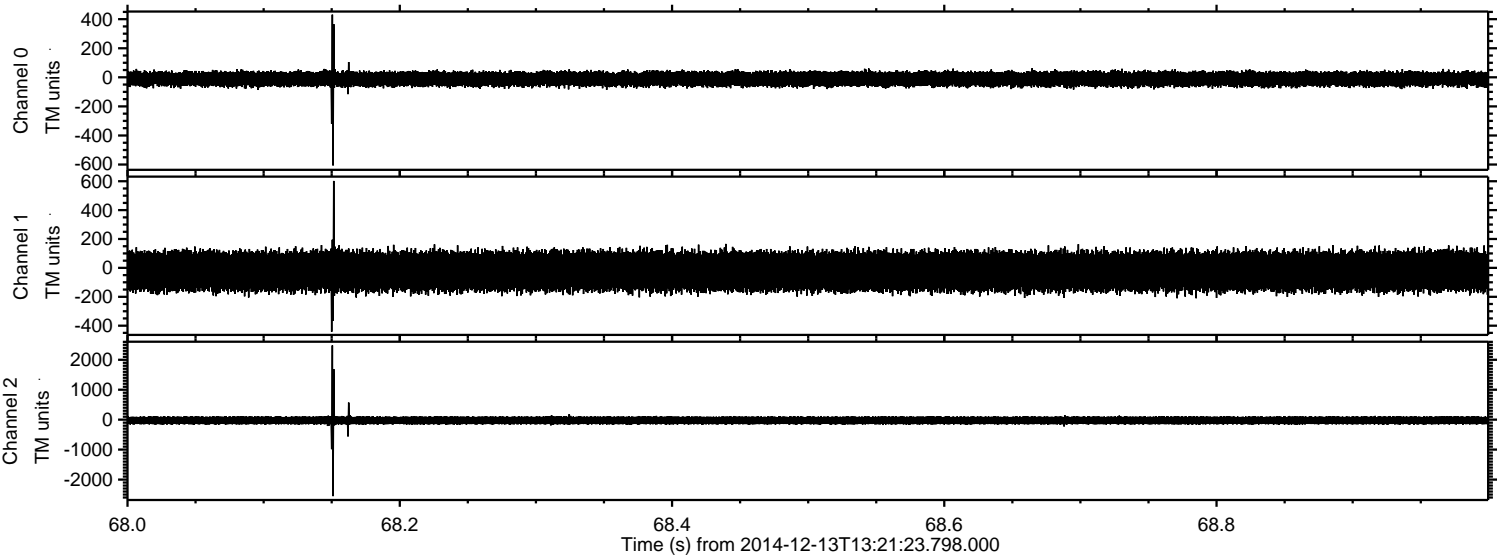


Processed Sat Dec 13 14:30:41 2014 by ELM ver.2012-10-06 from 001__elm20141213_132122__dat00.bin



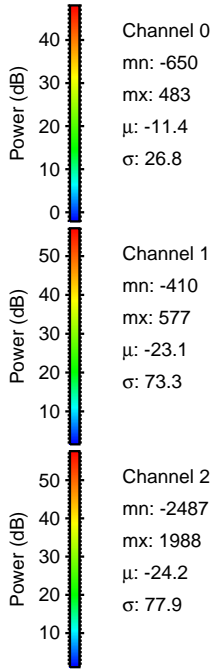
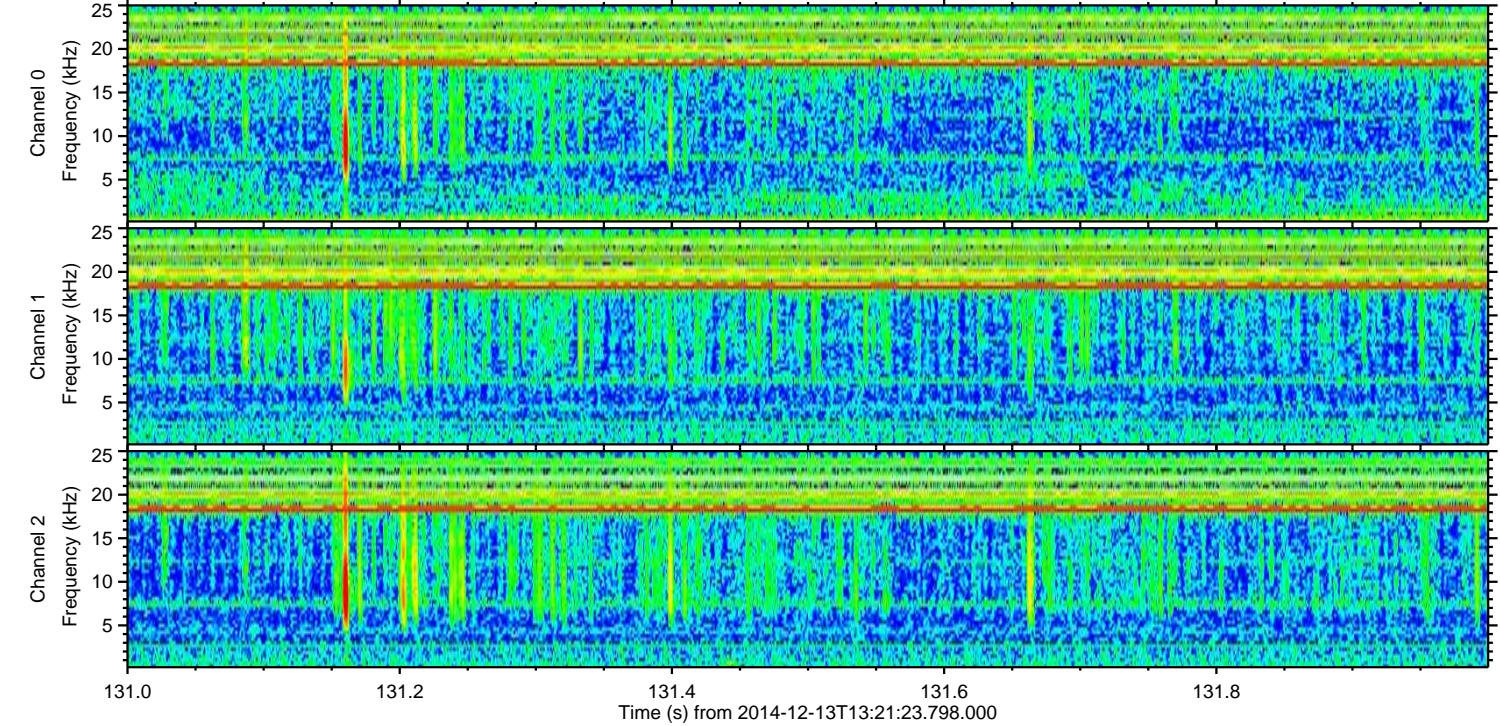
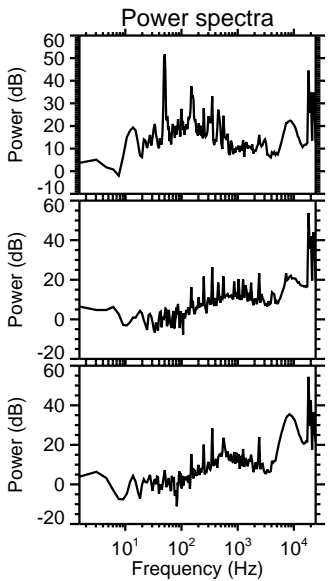
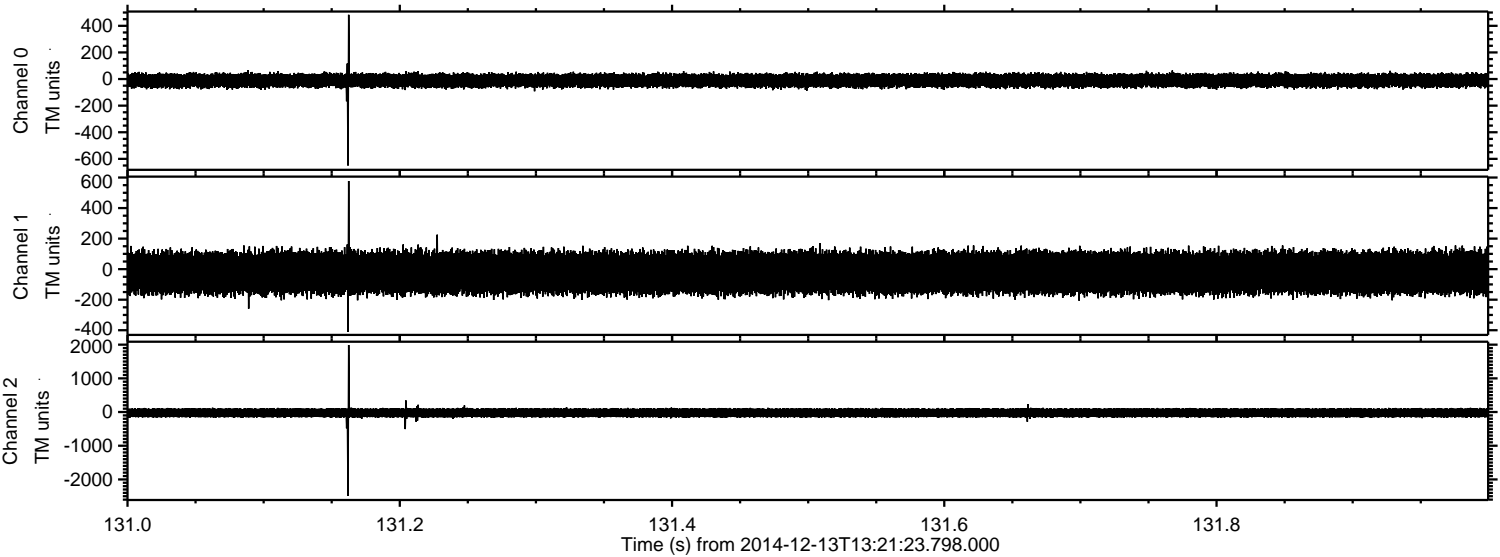
ELMAVAN 3D WAVEFORMS (Measured data sampled at 50 kHz) 49786 packets of 144 samples from 2014-12-13T13:21:23.798.000. Part 69/144

Processed Sat Dec 13 14:30:42 2014 by ELM ver.2012-10-06 from 001__elm20141213_132122__dat00.bin



ELMAVAN 3D WAVEFORMS (Measured data sampled at 50 kHz) 49786 packets of 144 samples from 2014-12-13T13:21:23.798.000. Part 132/144

Processed Sat Dec 13 14:30:43 2014 by ELM ver.2012-10-06 from 001__elm20141213_132122__dat00.bin



ELMAVAN 3D WAVEFORMS (Measured data sampled at 50 kHz) 49786 packets of 144 samples from 2014-12-13T13:21:23.798.000. Part 97/144

Processed Sat Dec 13 14:30:44 2014 by ELM ver.2012-10-06 from 001__elm20141213_132122__dat00.bin

