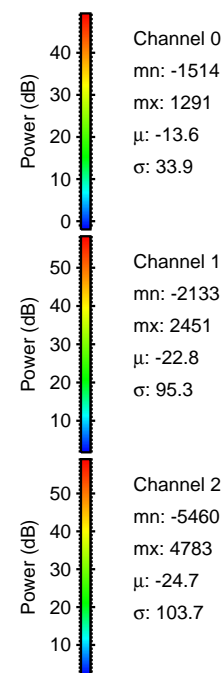
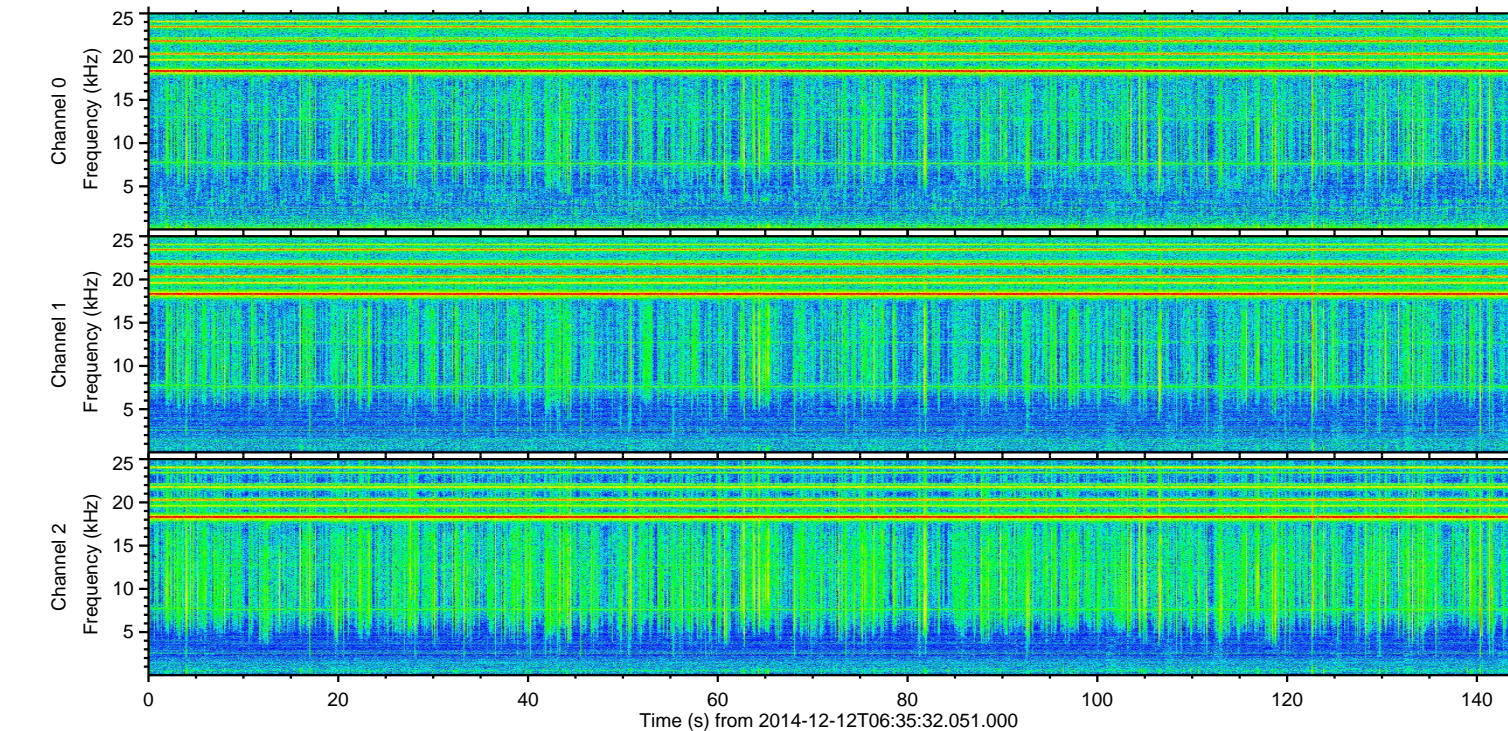
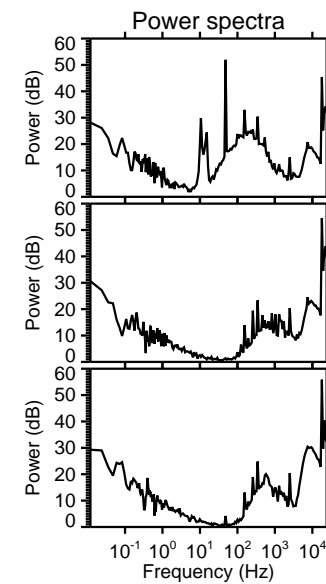
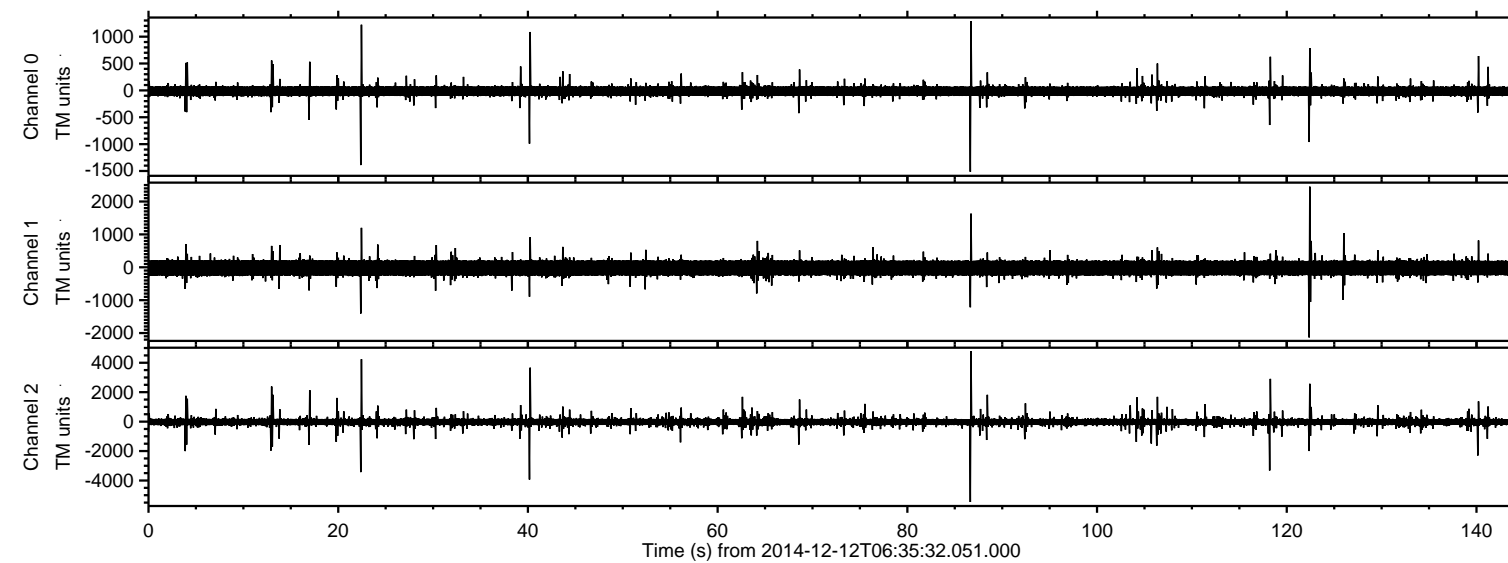


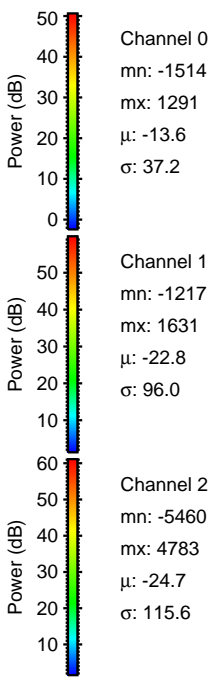
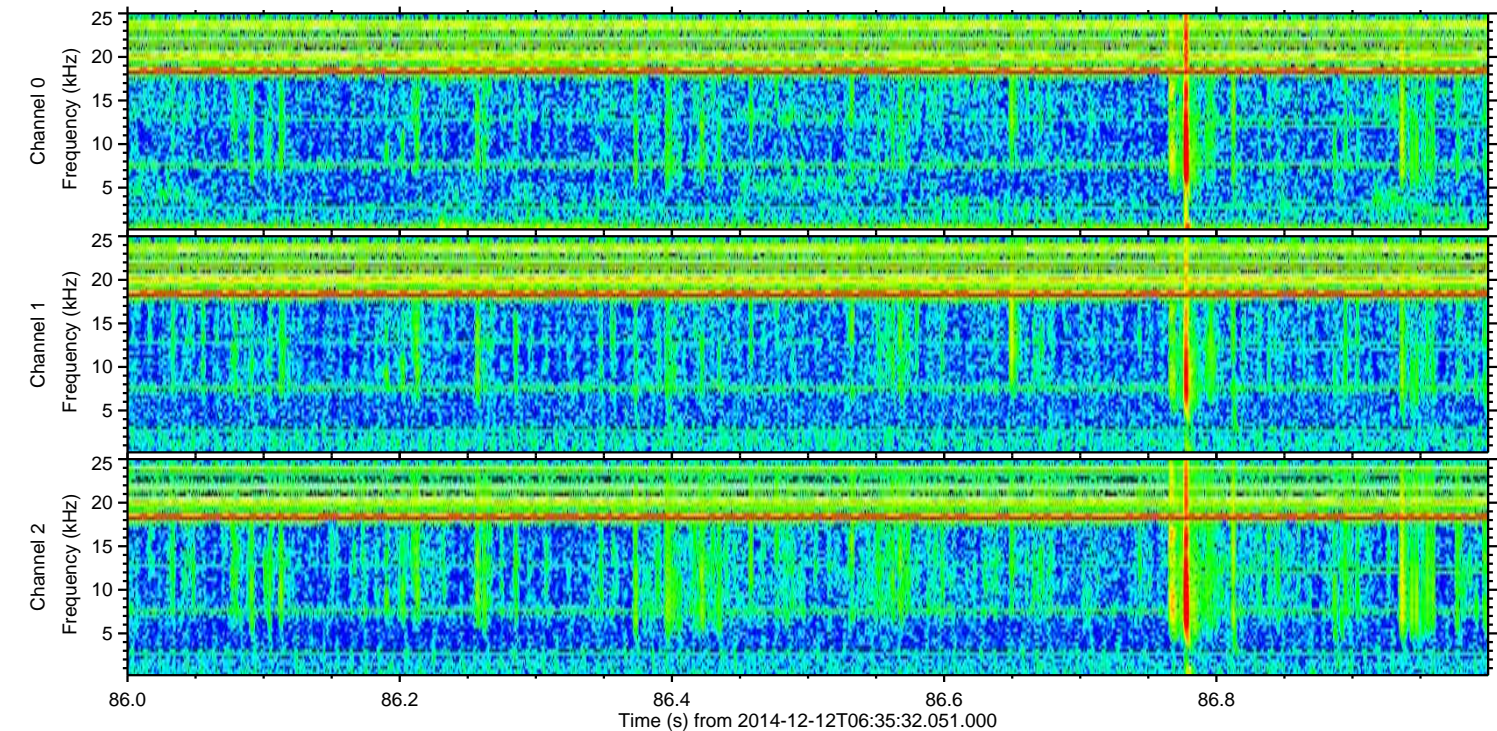
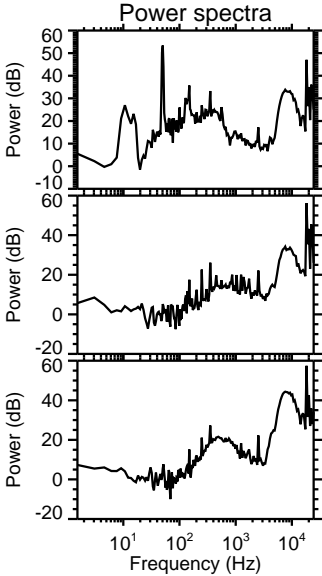
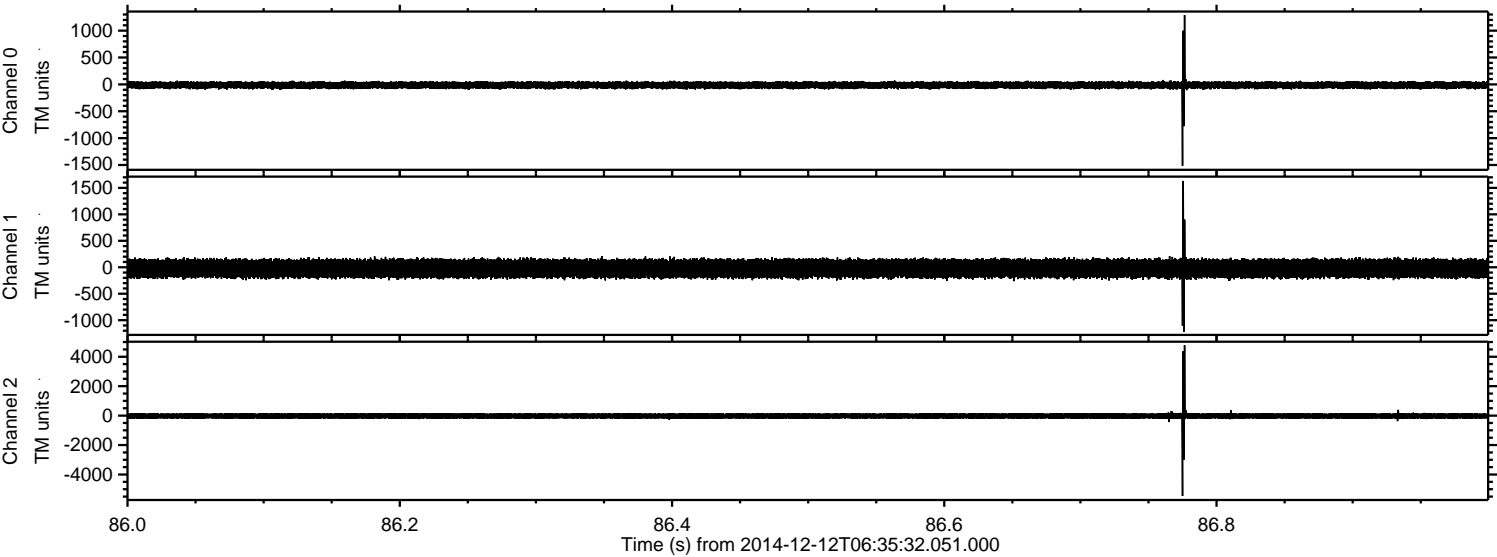
# ELMAVAN 3D WAVEFORMS (Measured data sampled at 50 kHz) 49807 packets of 144 samples from 2014-12-12T06:35:32.051.000.

Processed Fri Dec 12 17:19:03 2014 by ELM ver.2012-10-06 from 001\_\_elm20141212\_063531\_\_dat00.bin



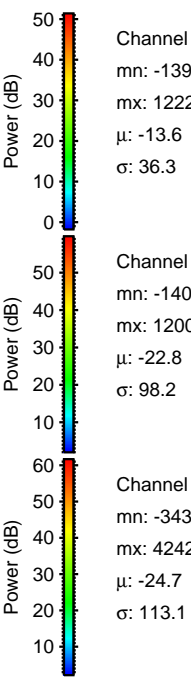
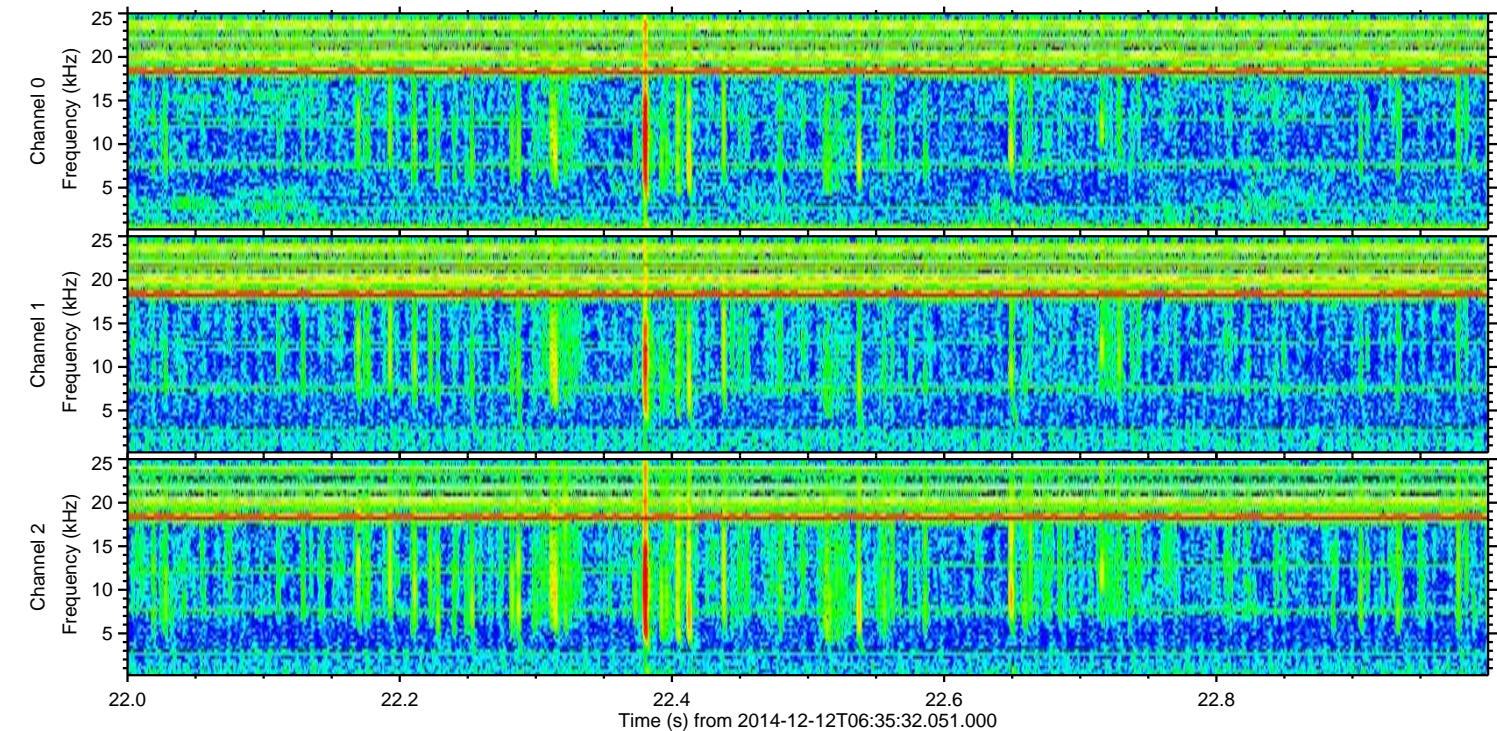
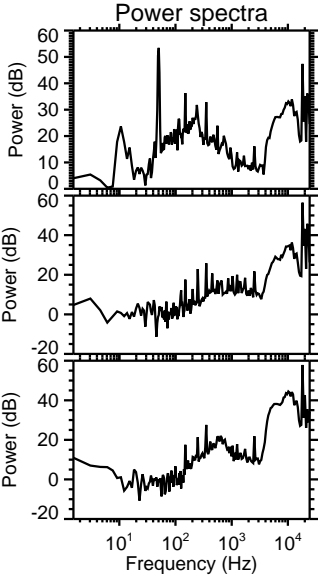
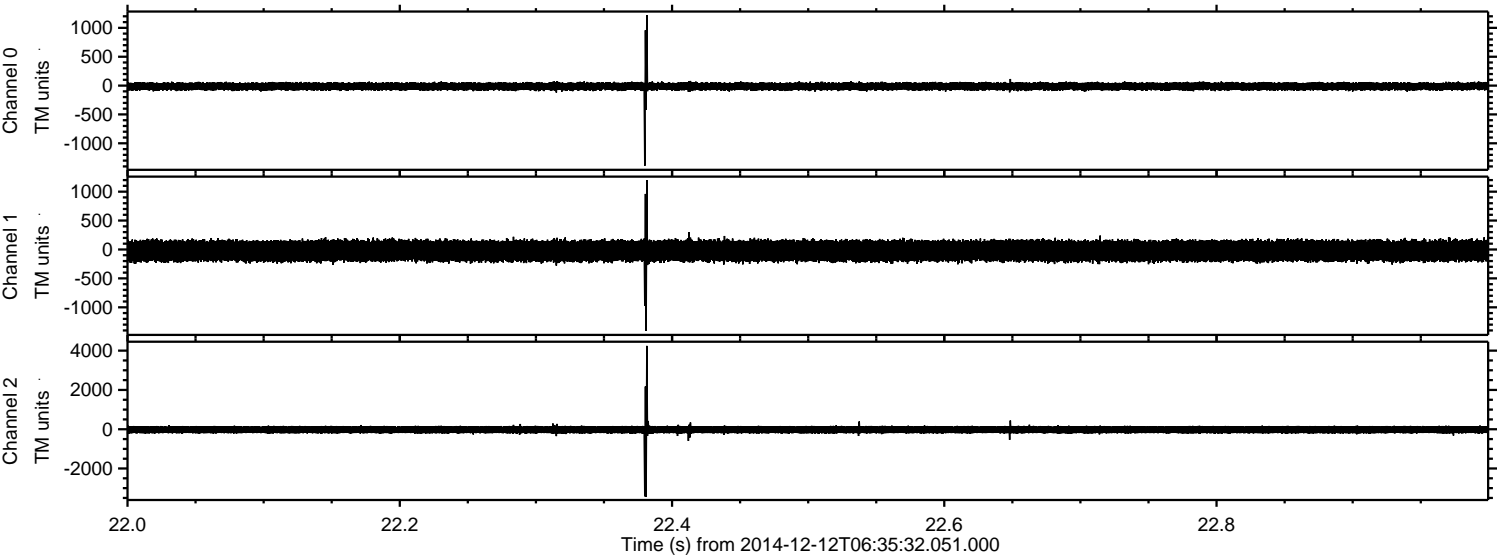


Processed Fri Dec 12 17:19:14 2014 by ELM ver.2012-10-06 from 001\_\_elm20141212\_063531\_\_dat00.bin



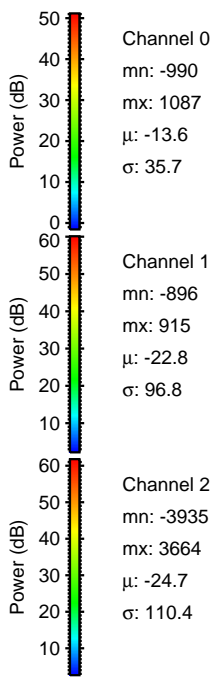
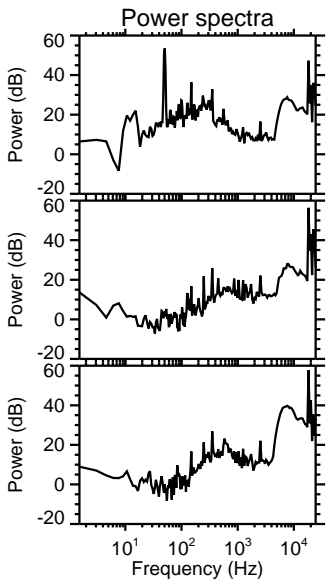
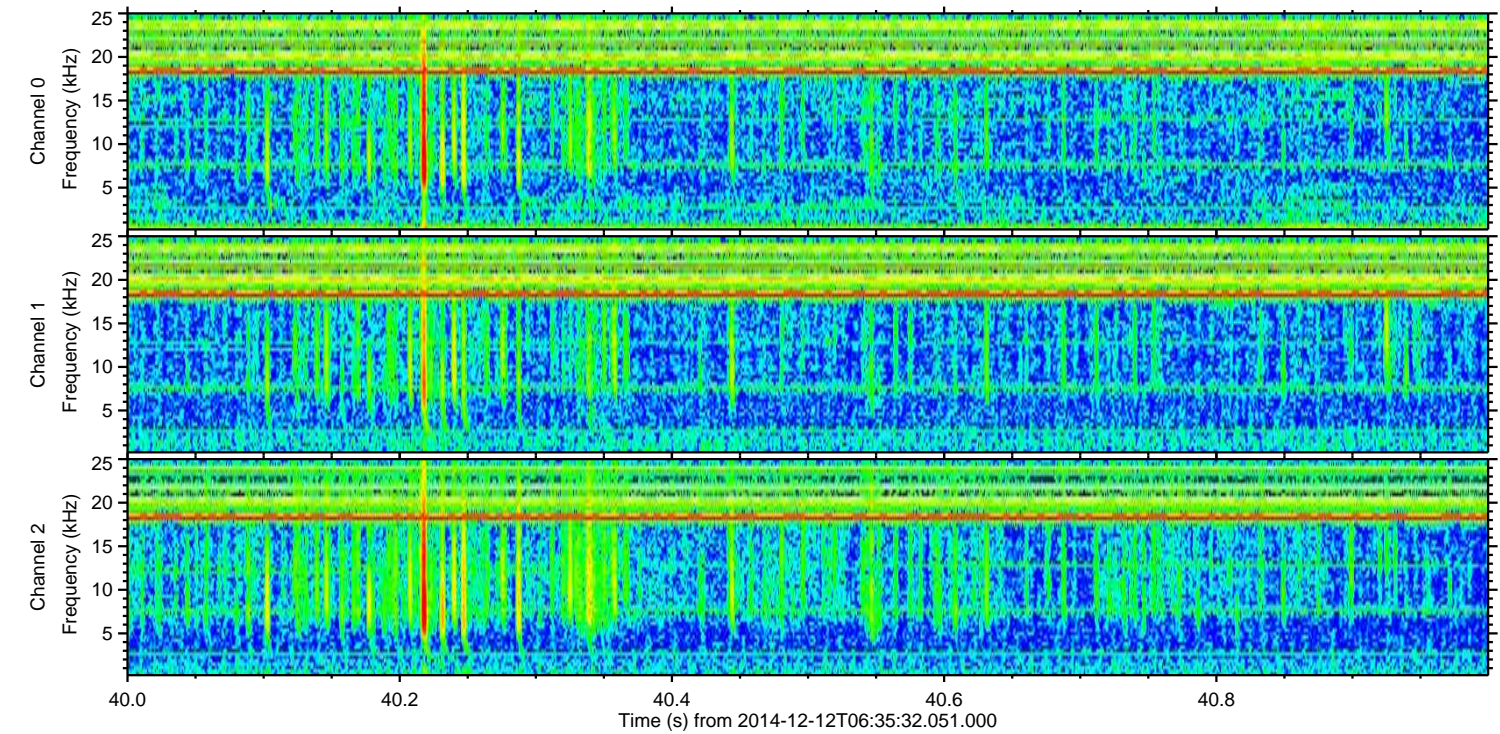
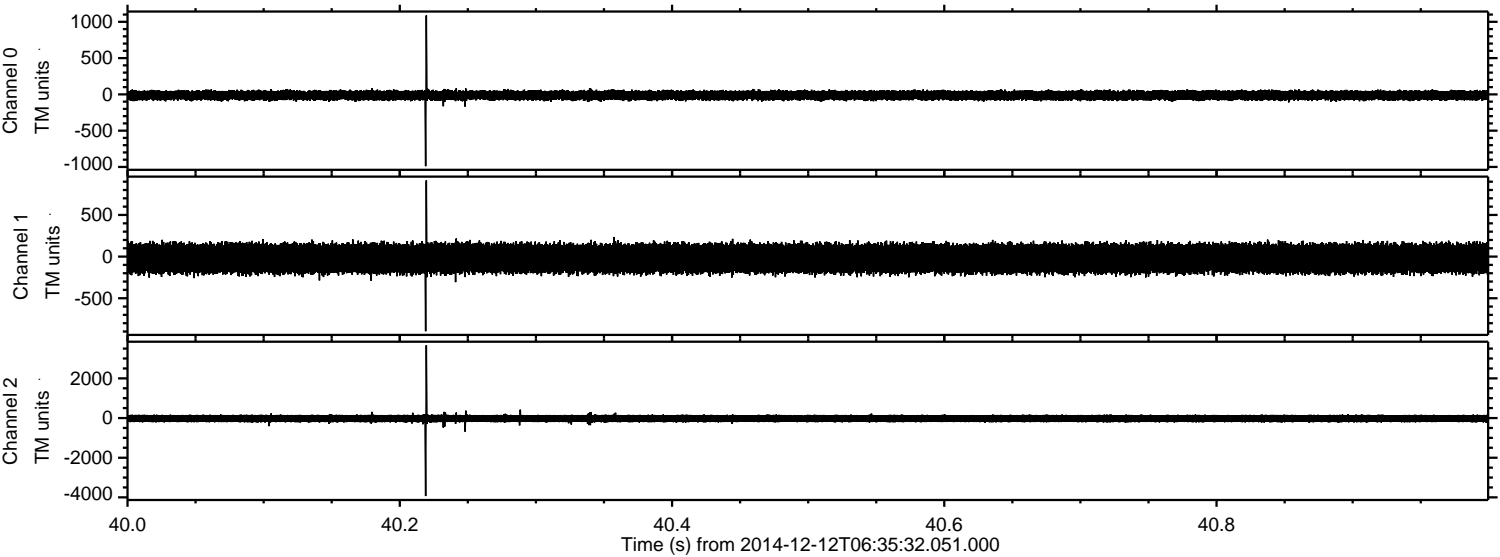


Processed Fri Dec 12 17:19:15 2014 by ELM ver.2012-10-06 from 001\_\_elm20141212\_063531\_\_dat00.bin





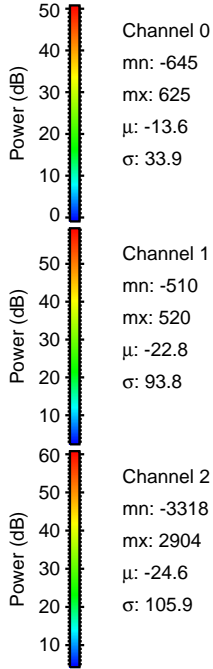
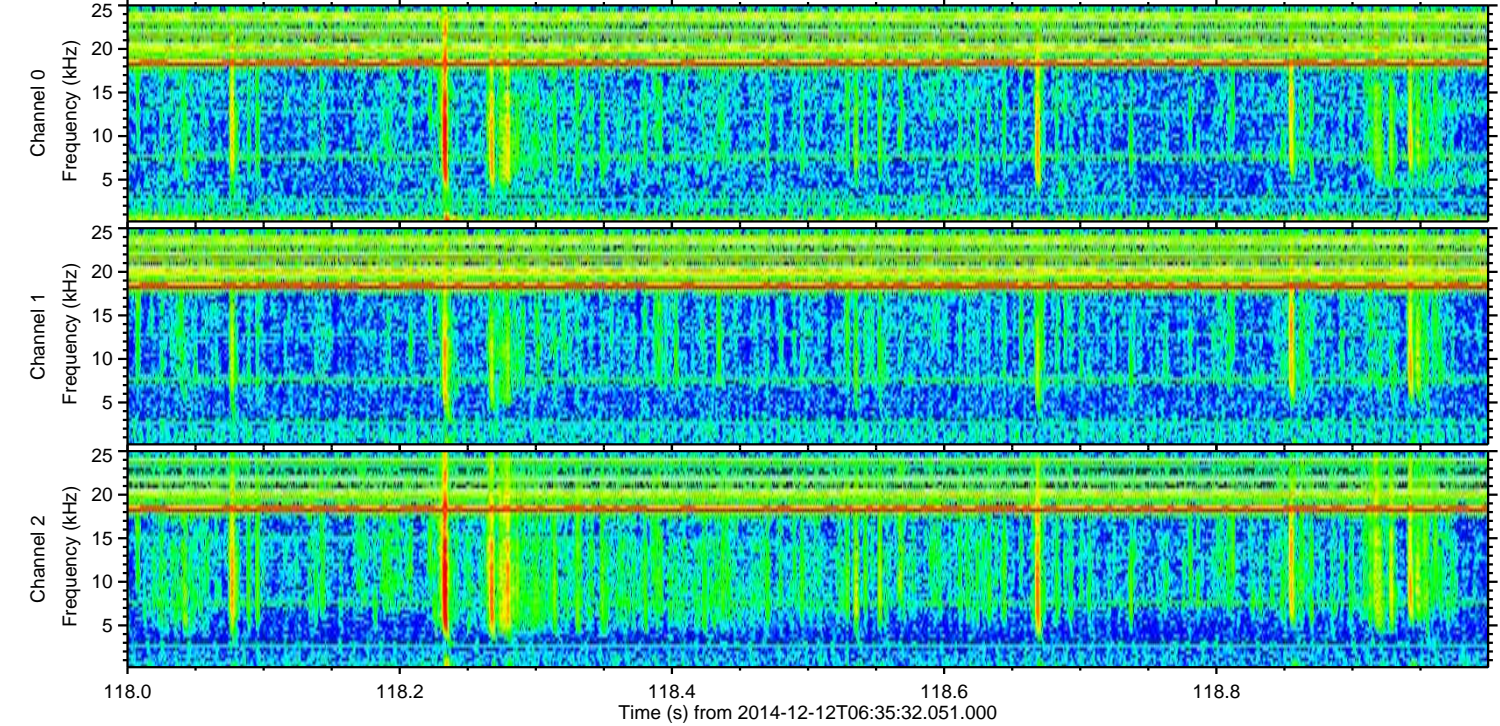
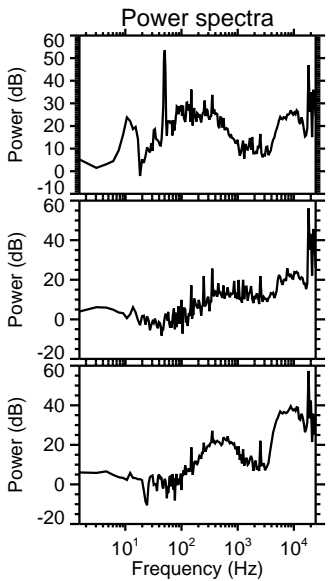
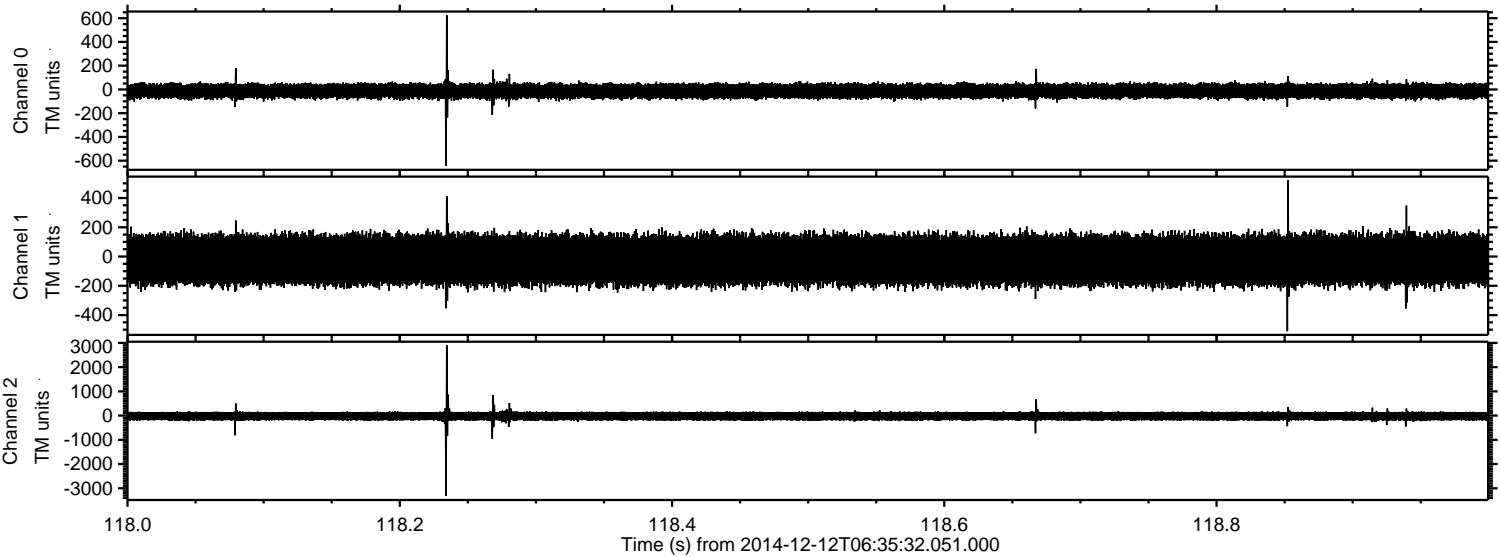
Processed Fri Dec 12 17:19:16 2014 by ELM ver.2012-10-06 from 001\_\_elm20141212\_063531\_\_dat00.bin





ELMAVAN 3D WAVEFORMS (Measured data sampled at 50 kHz) 49807 packets of 144 samples from 2014-12-12T06:35:32.051.000. Part 119/144

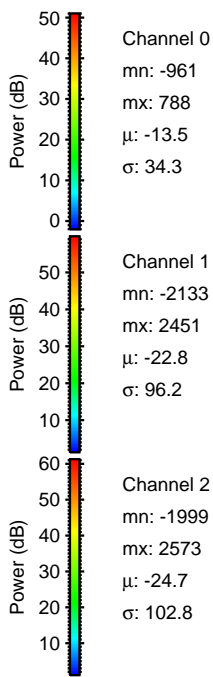
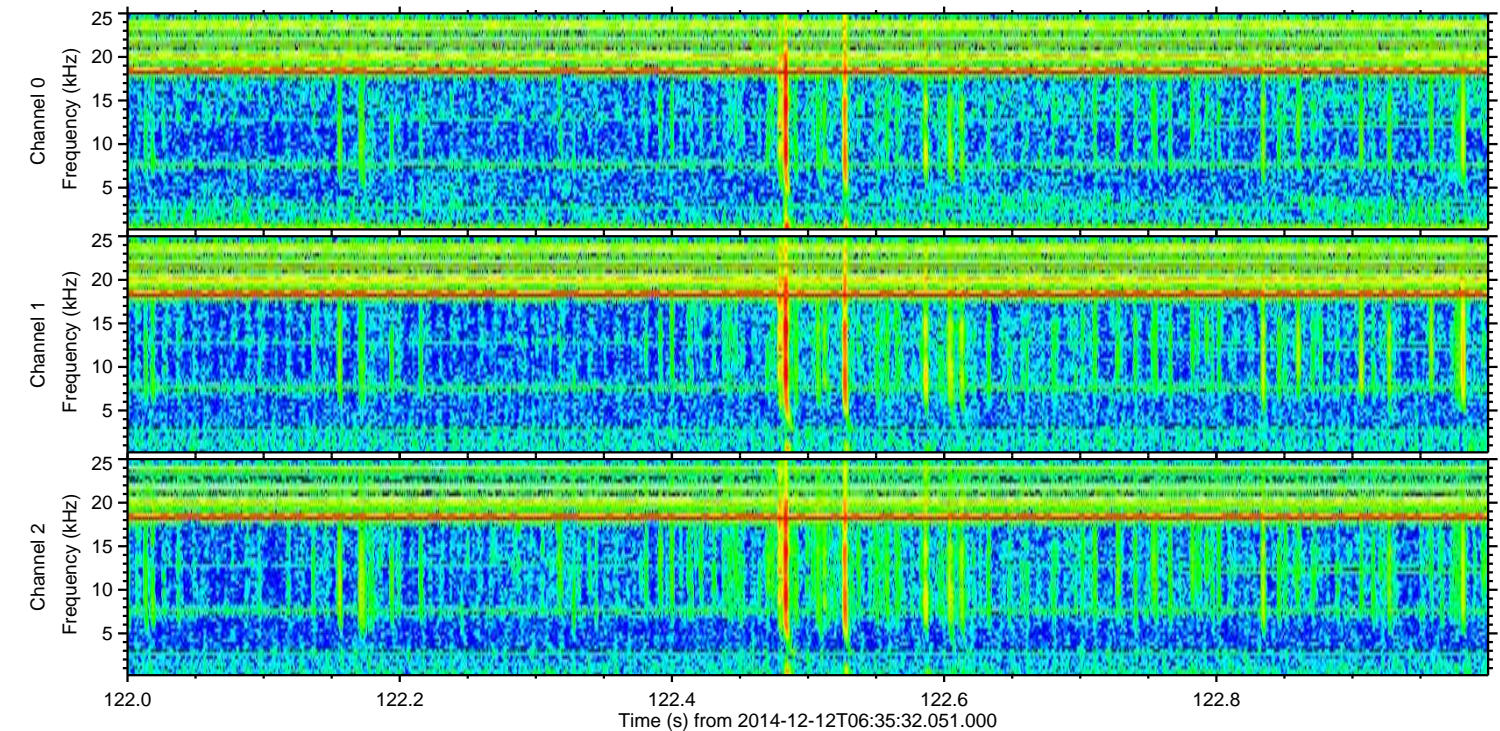
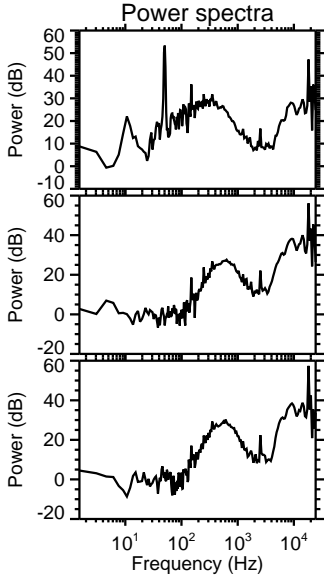
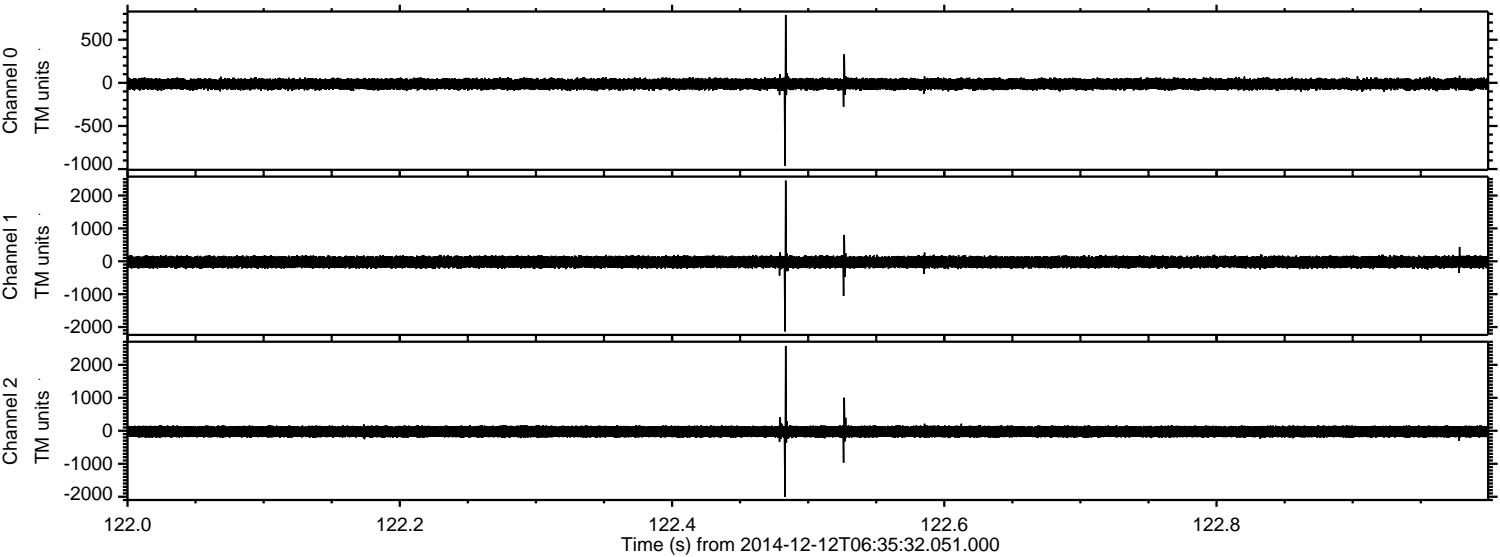
Processed Fri Dec 12 17:19:17 2014 by ELM ver.2012-10-06 from 001\_\_elm20141212\_063531\_\_dat00.bin





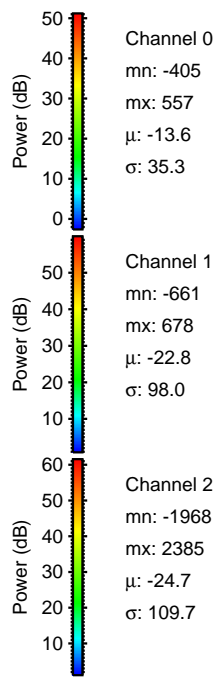
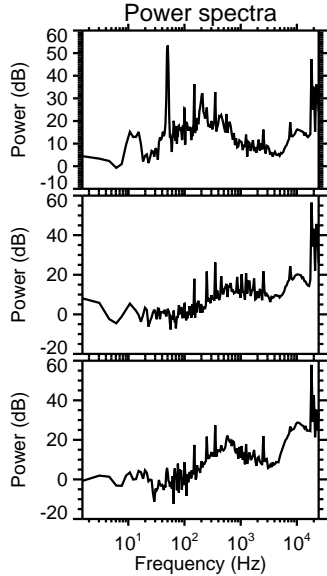
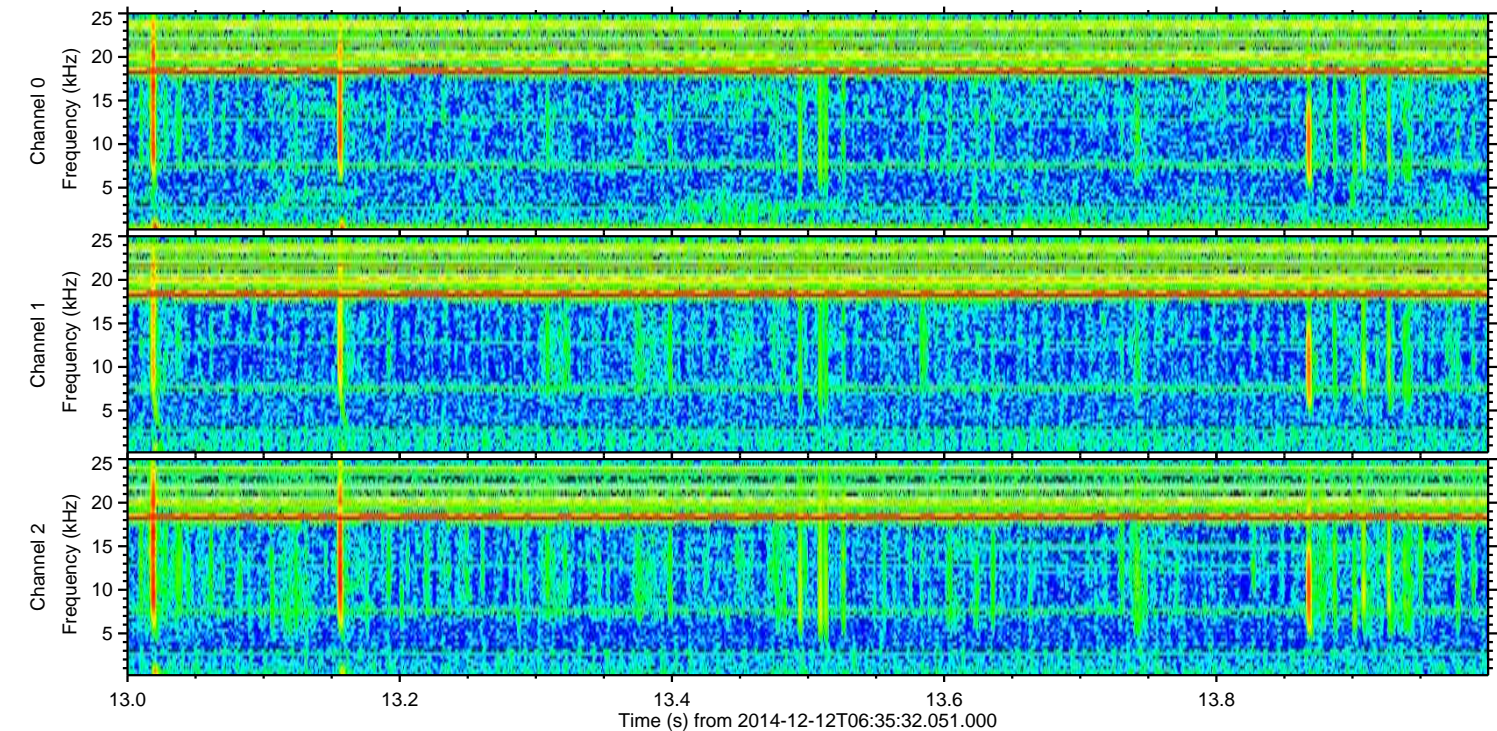
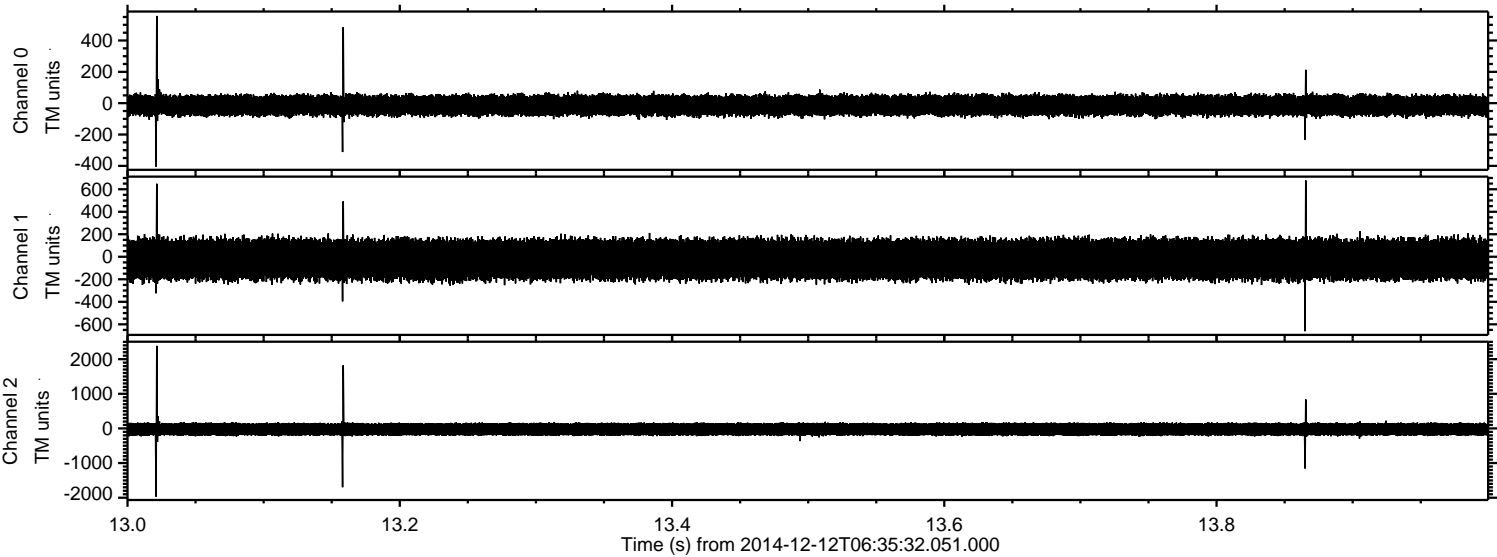
ELMAVAN 3D WAVEFORMS (Measured data sampled at 50 kHz) 49807 packets of 144 samples from 2014-12-12T06:35:32.051.000. Part 123/144

Processed Fri Dec 12 17:19:18 2014 by ELM ver.2012-10-06 from 001\_\_elm20141212\_063531\_\_dat00.bin





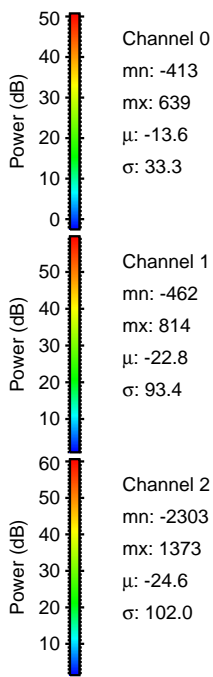
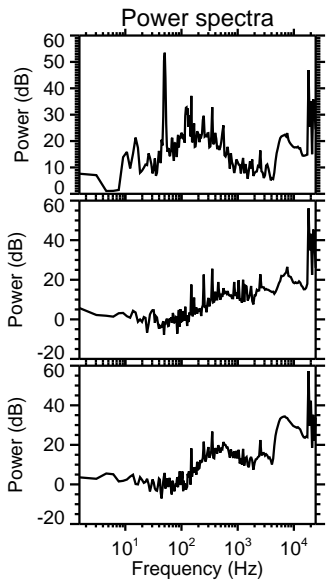
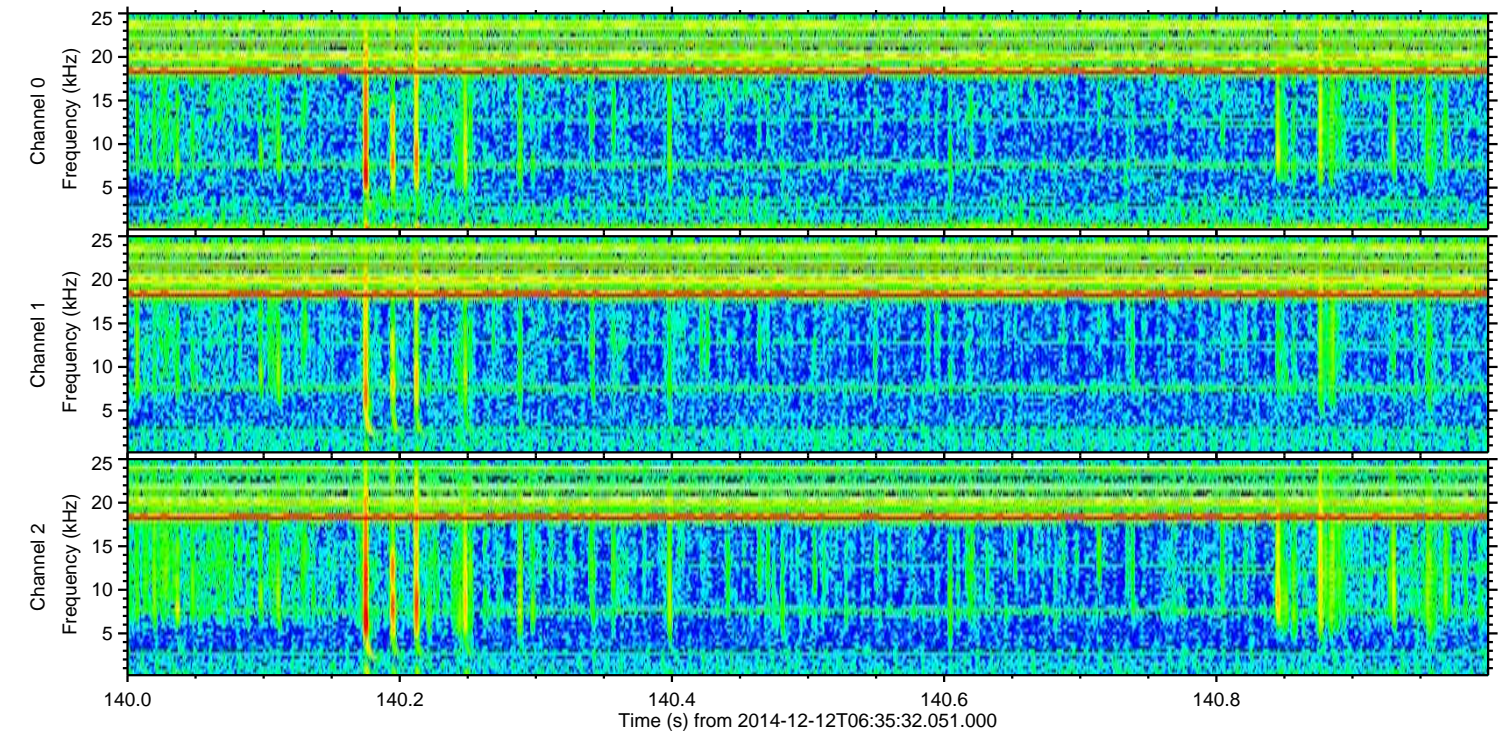
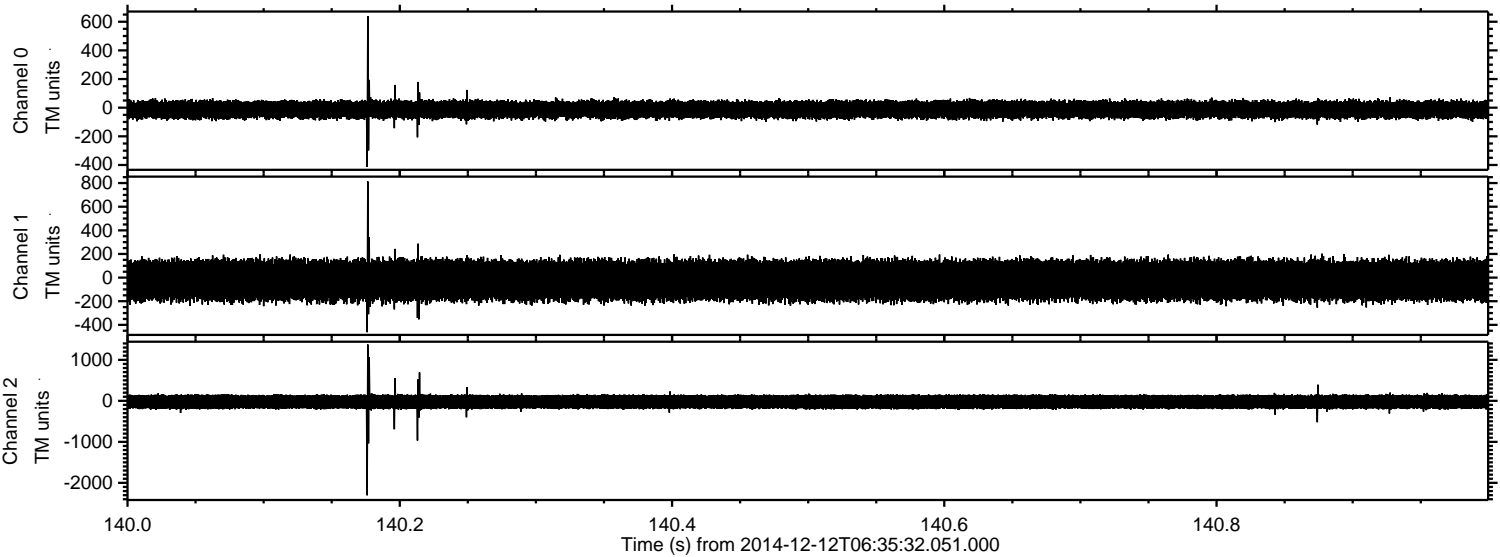
Processed Fri Dec 12 17:19:19 2014 by ELM ver.2012-10-06 from 001\_\_elm20141212\_063531\_\_dat00.bin





ELMAVAN 3D WAVEFORMS (Measured data sampled at 50 kHz) 49807 packets of 144 samples from 2014-12-12T06:35:32.051.000. Part 141/144

Processed Fri Dec 12 17:19:20 2014 by ELM ver.2012-10-06 from 001\_\_elm20141212\_063531\_\_dat00.bin



Power spectra

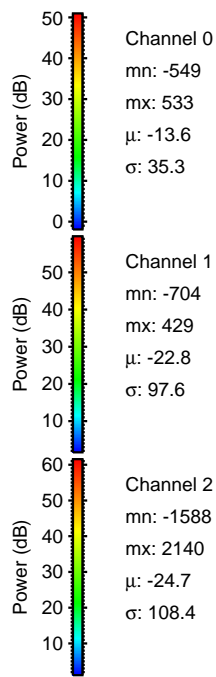
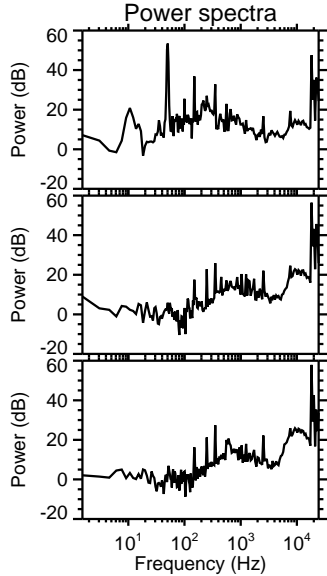
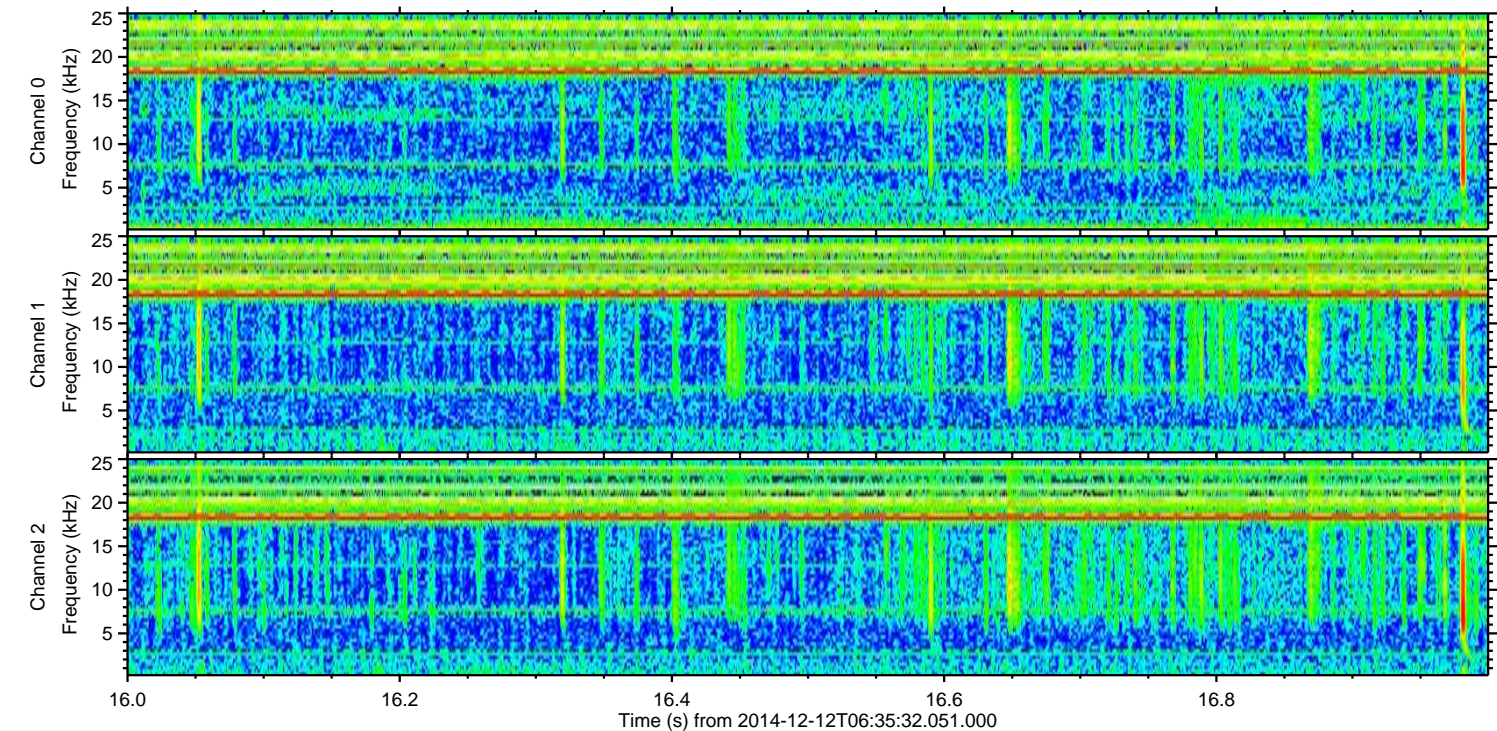
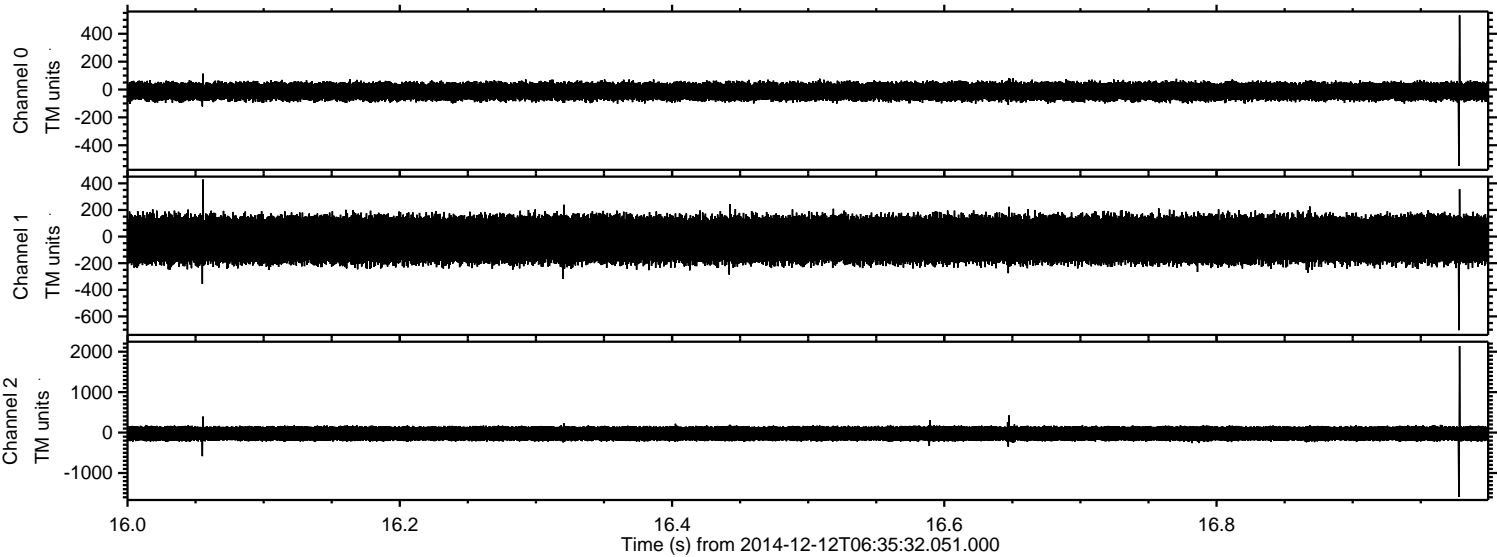
Channel 0  
mn: -413  
mx: 639  
 $\mu$ : -13.6  
 $\sigma$ : 33.3

Channel 1  
mn: -462  
mx: 814  
 $\mu$ : -22.8  
 $\sigma$ : 93.4

Channel 2  
mn: -2303  
mx: 1373  
 $\mu$ : -24.6  
 $\sigma$ : 102.0

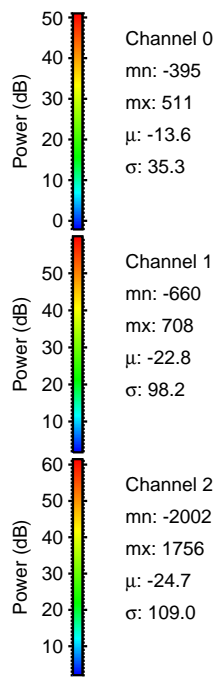
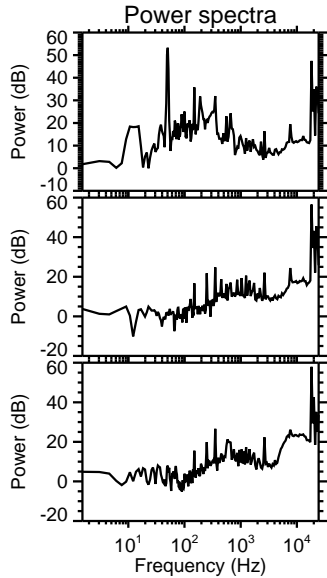
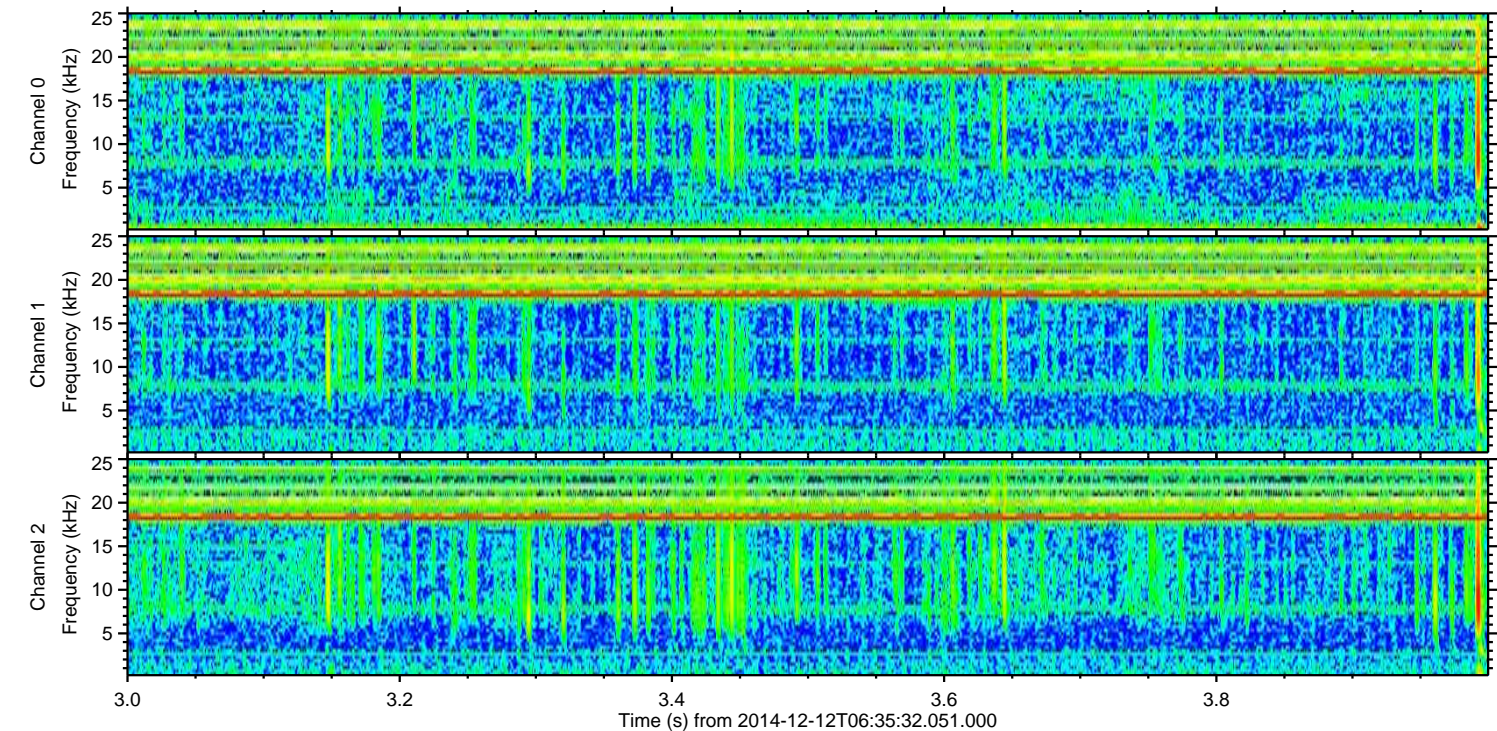
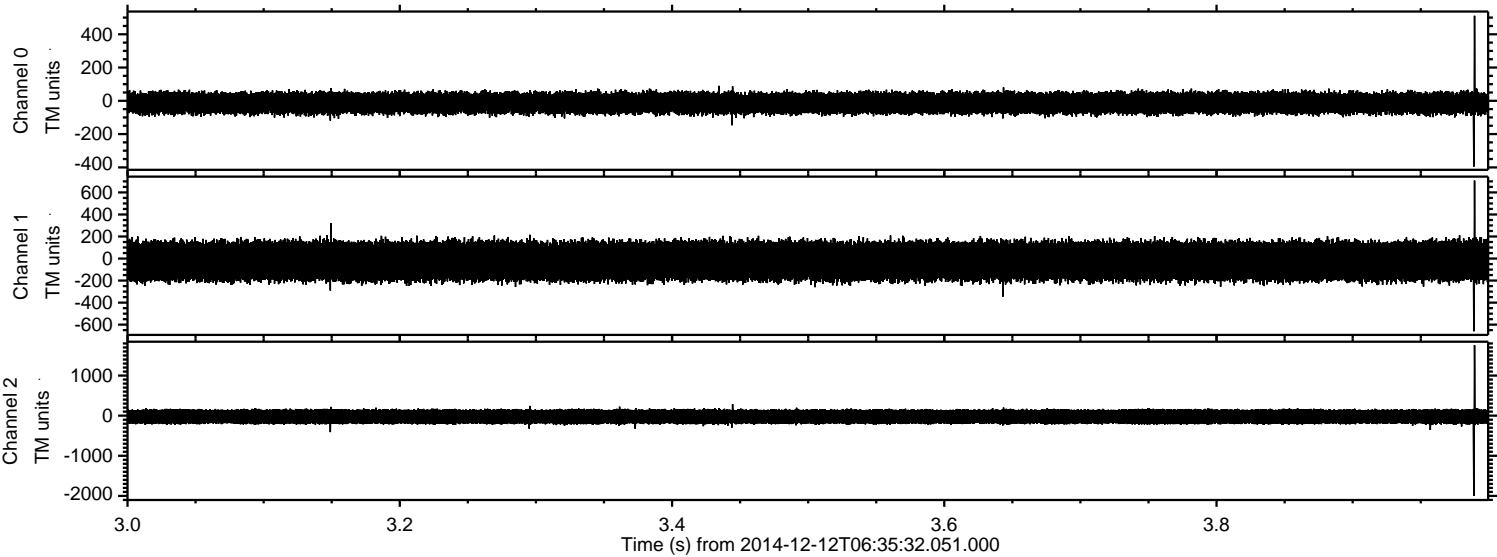


Processed Fri Dec 12 17:19:21 2014 by ELM ver.2012-10-06 from 001\_\_elm20141212\_063531\_\_dat00.bin





Processed Fri Dec 12 17:19:22 2014 by ELM ver.2012-10-06 from 001\_\_elm20141212\_063531\_\_dat00.bin





Processed Fri Dec 12 17:19:23 2014 by ELM ver.2012-10-06 from 001\_\_elm20141212\_063531\_\_dat00.bin

