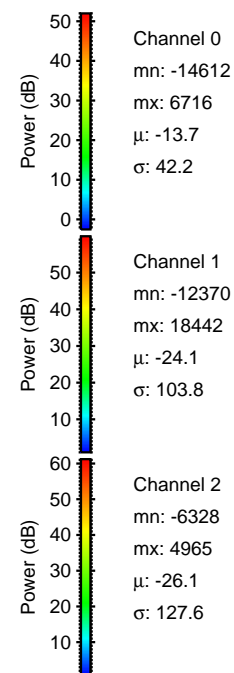
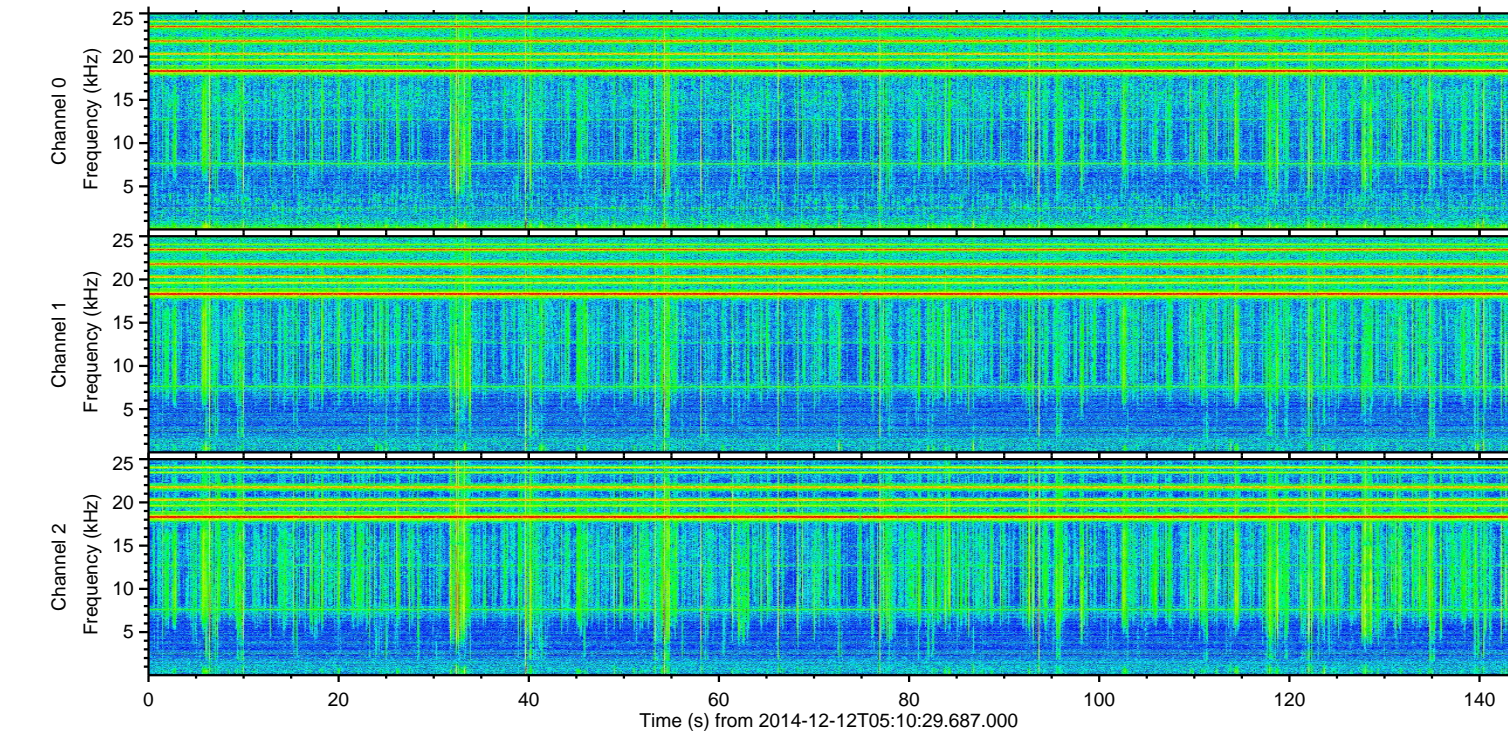
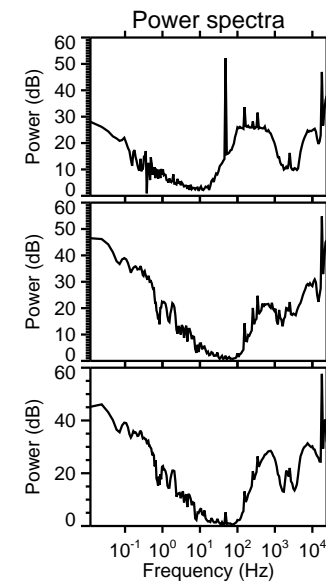
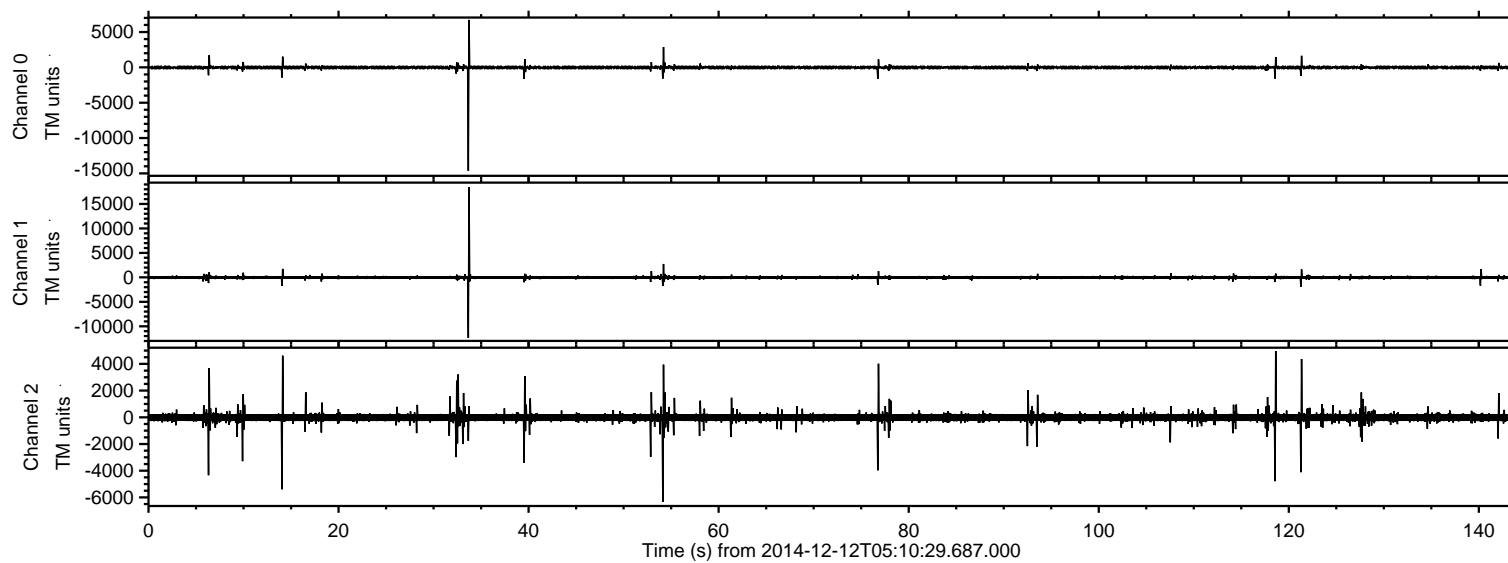


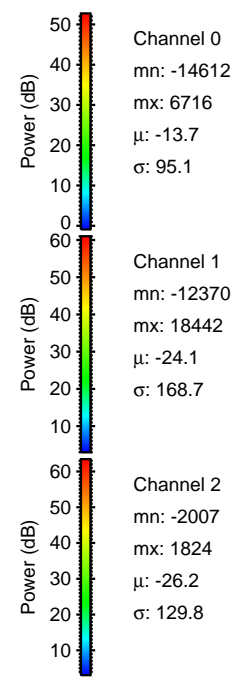
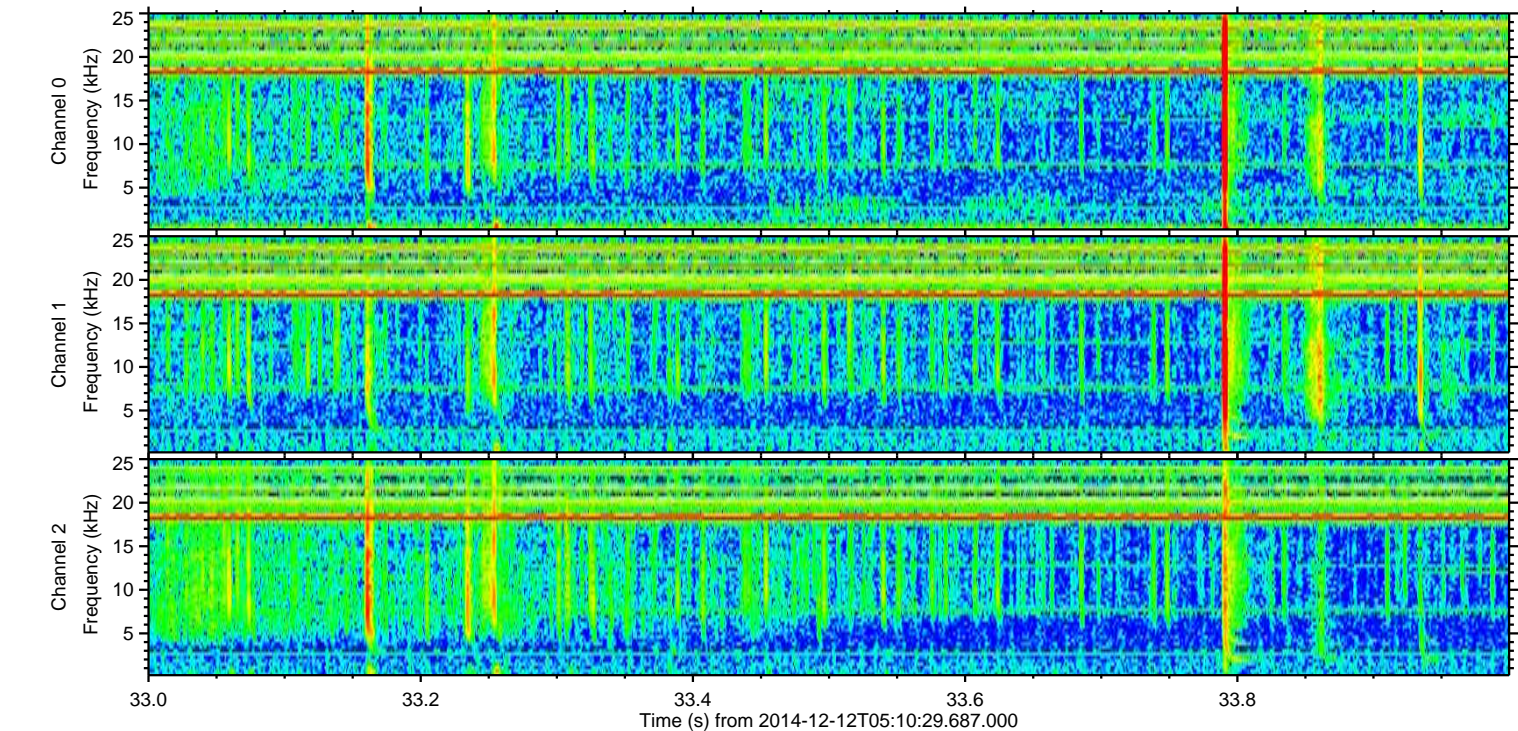
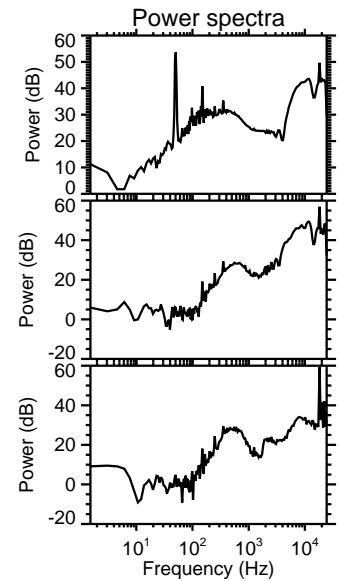
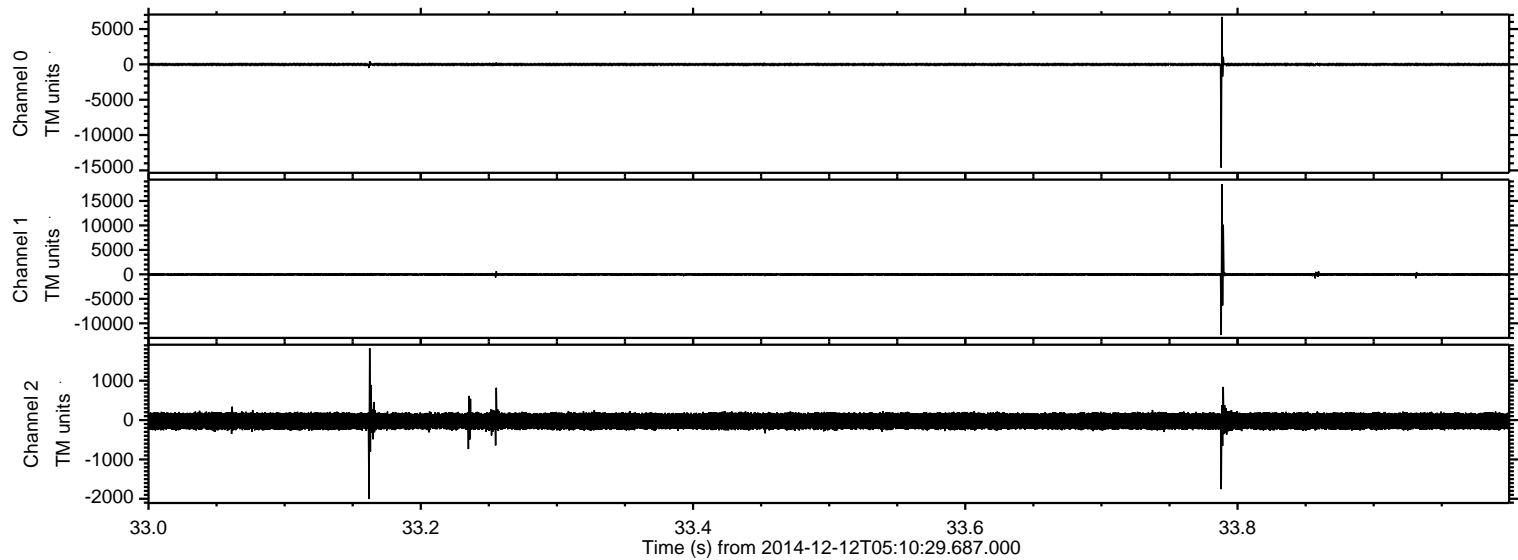
ELMAVAN 3D WAVEFORMS (Measured data sampled at 50 kHz) 49719 packets of 144 samples from 2014-12-12T05:10:29.687.000.

Processed Fri Dec 12 16:43:27 2014 by ELM ver.2012-10-06 from 001__elm20141212_051028__dat00.bin

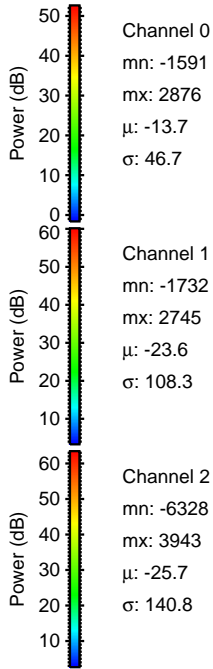
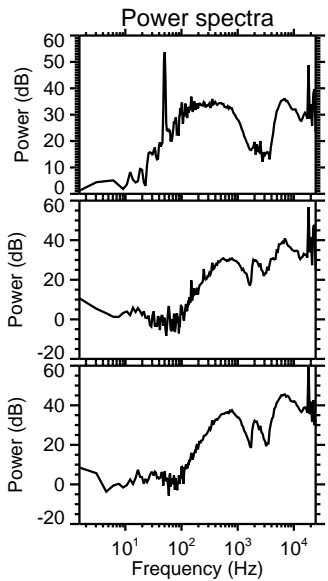
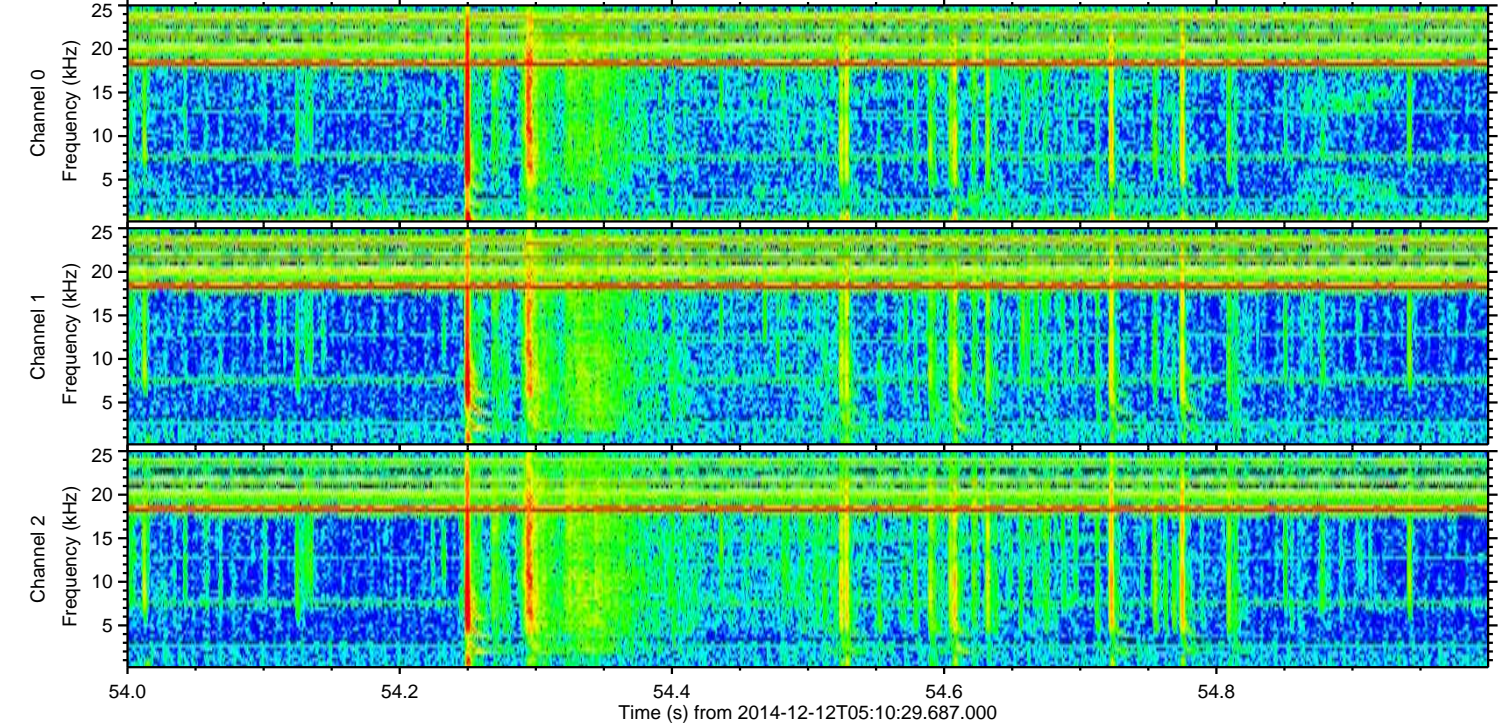
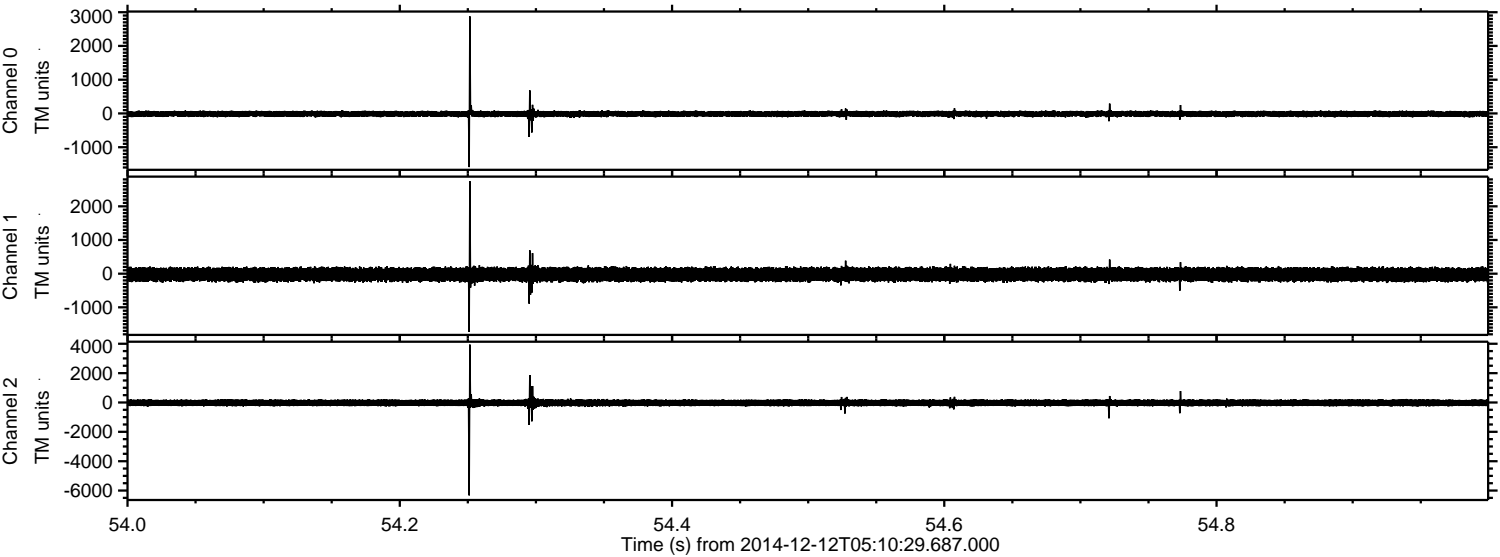


ELMAVAN 3D WAVEFORMS (Measured data sampled at 50 kHz) 49719 packets of 144 samples from 2014-12-12T05:10:29.687.000. Part 34/144

Processed Fri Dec 12 16:43:42 2014 by ELM ver.2012-10-06 from 001__elm20141212_051028__dat00.bin

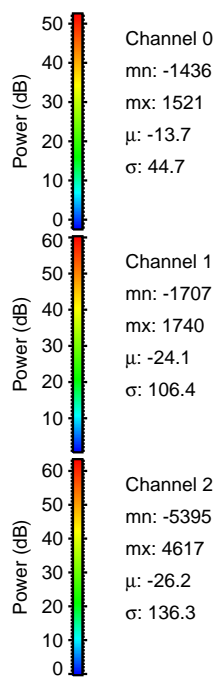
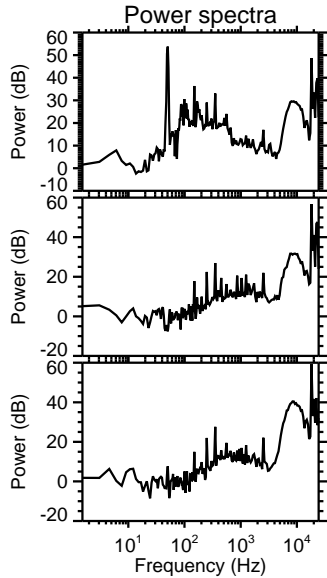
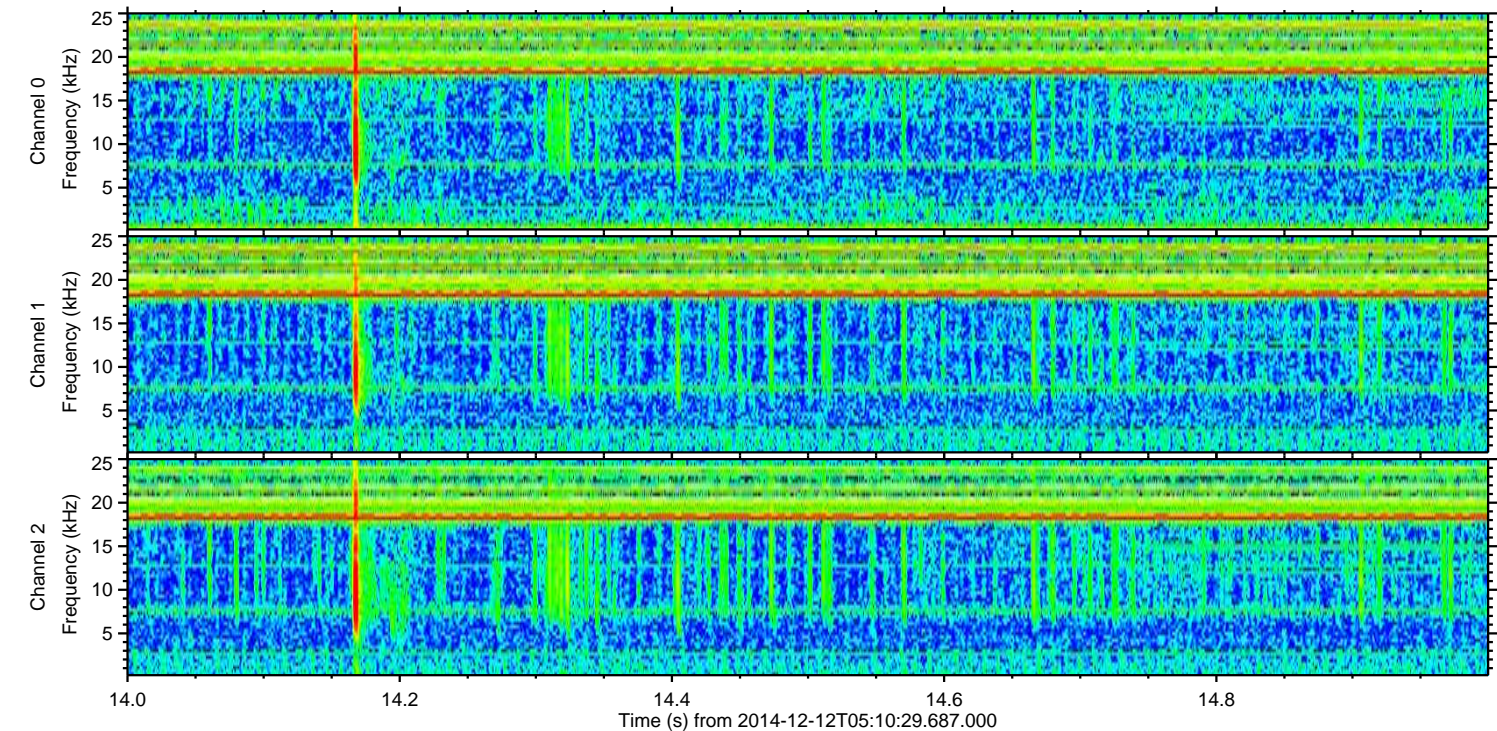
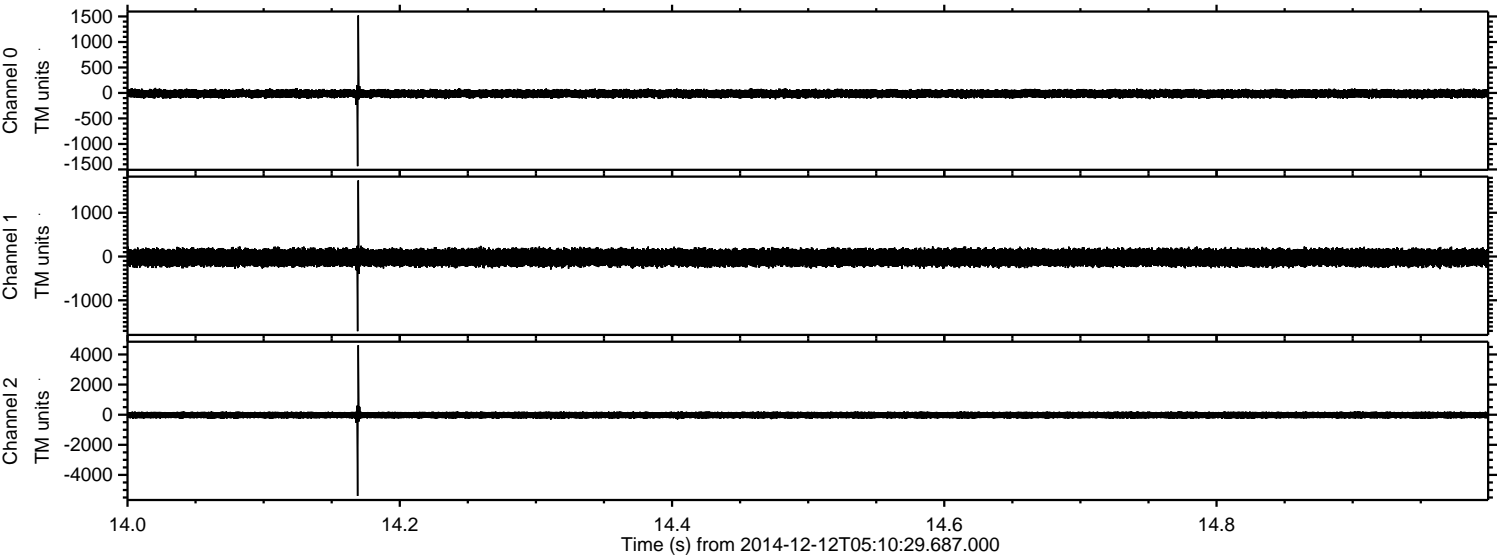


Processed Fri Dec 12 16:43:43 2014 by ELM ver.2012-10-06 from 001__elm20141212_051028__dat00.bin



ELMAVAN 3D WAVEFORMS (Measured data sampled at 50 kHz) 49719 packets of 144 samples from 2014-12-12T05:10:29.687.000. Part 15/144

Processed Fri Dec 12 16:43:44 2014 by ELM ver.2012-10-06 from 001__elm20141212_051028__dat00.bin



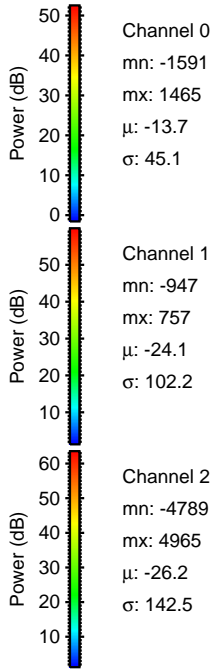
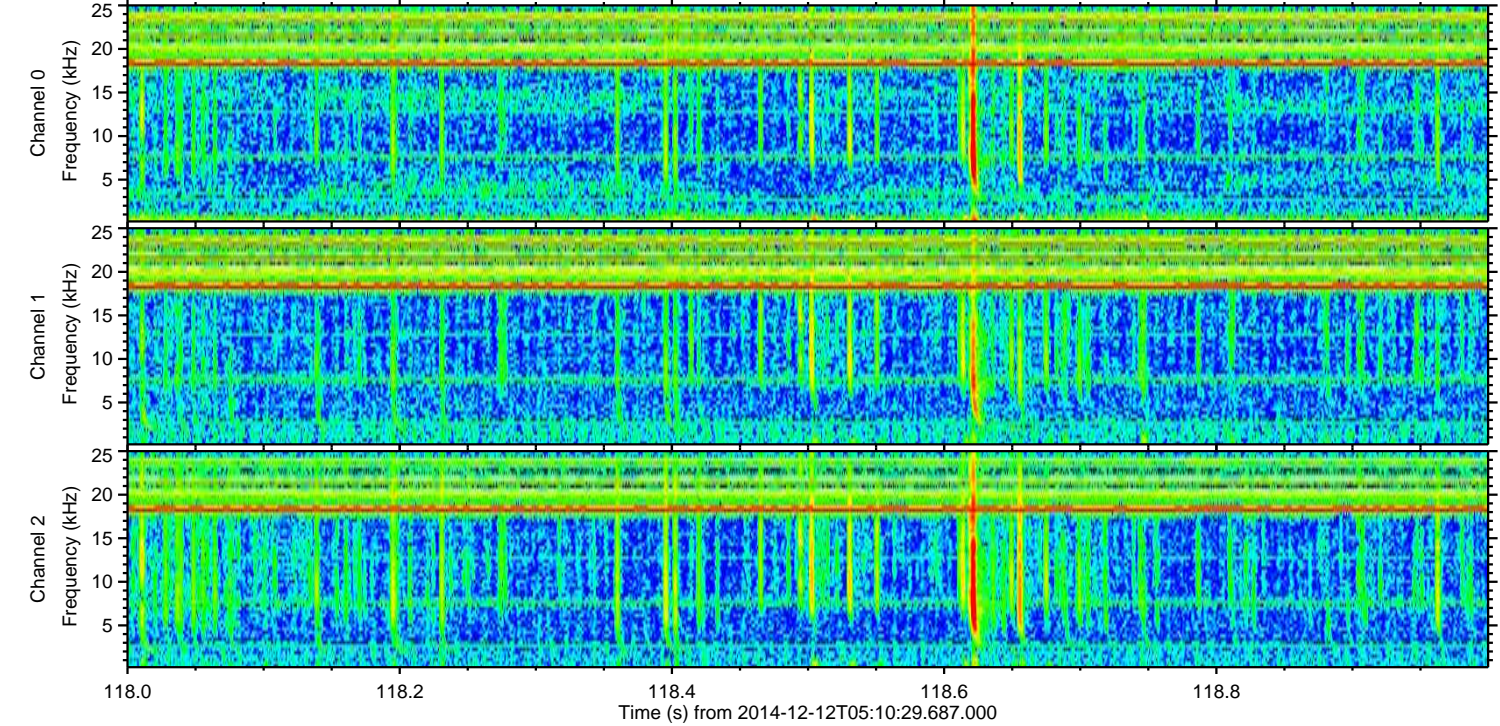
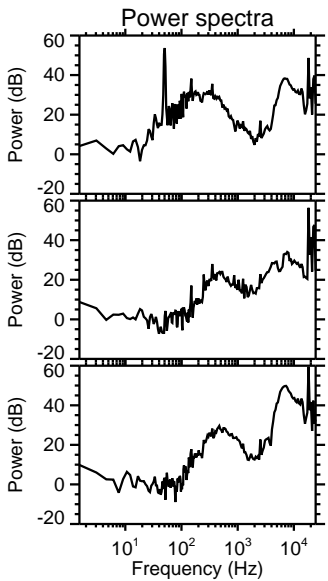
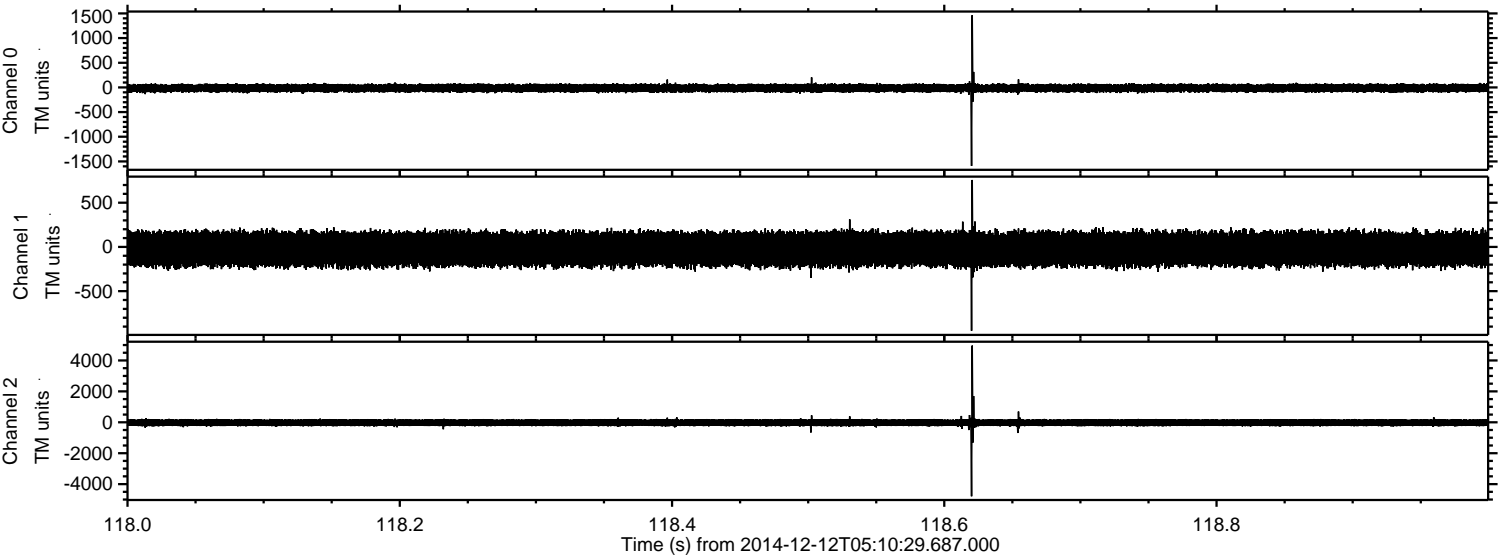
Channel 0
mn: -1436
mx: 1521
 μ : -13.7
 σ : 44.7

Channel 1
mn: -1707
mx: 1740
 μ : -24.1
 σ : 106.4

Channel 2
mn: -5395
mx: 4617
 μ : -26.2
 σ : 136.3

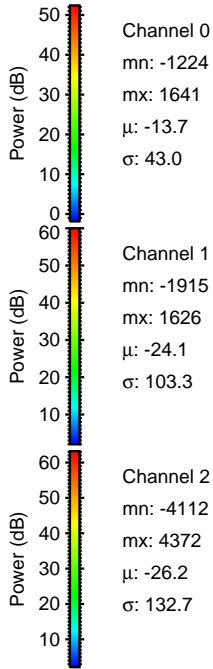
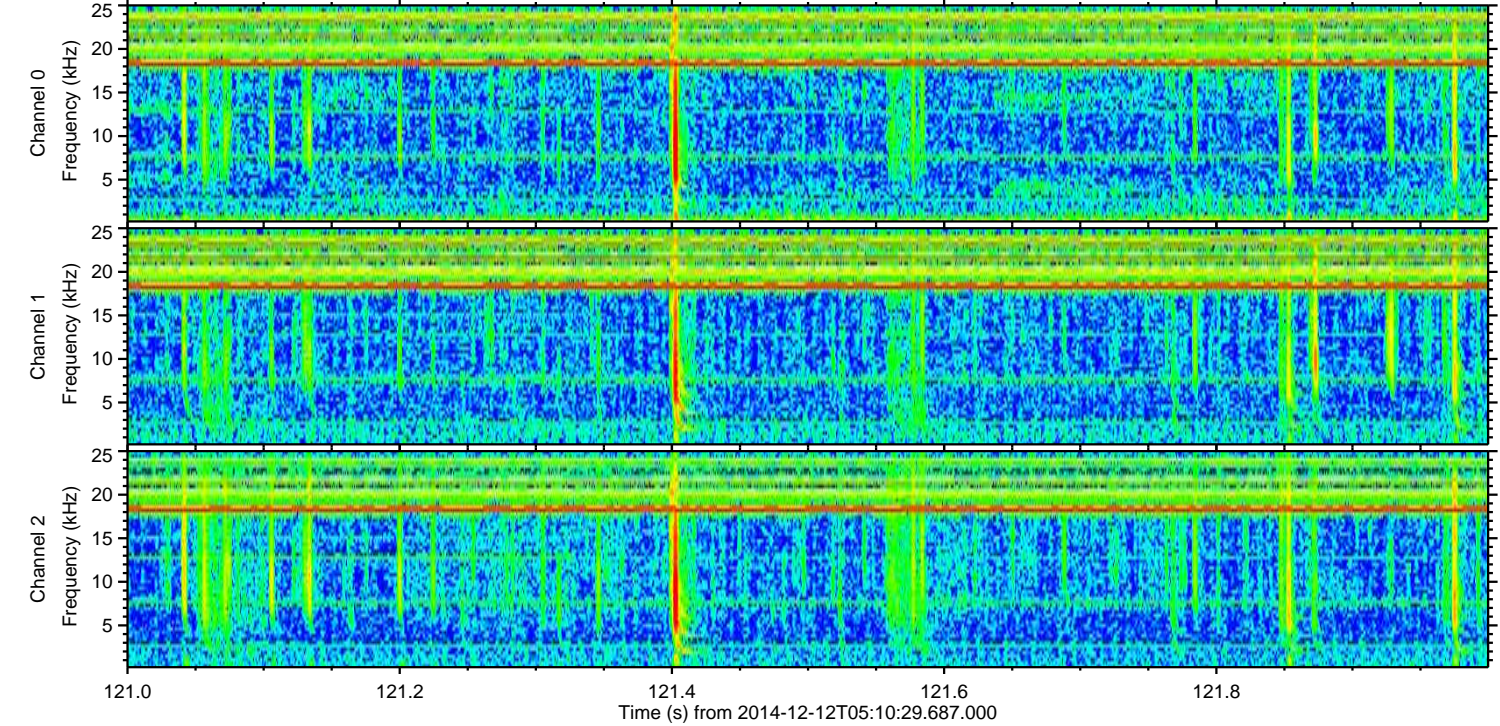
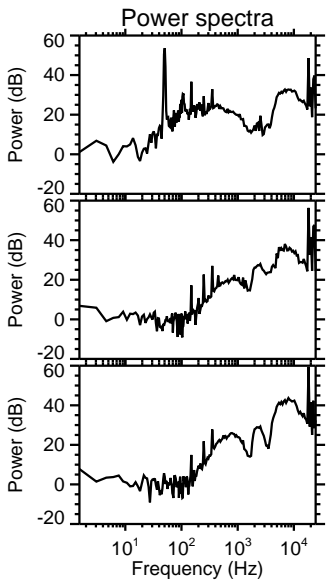
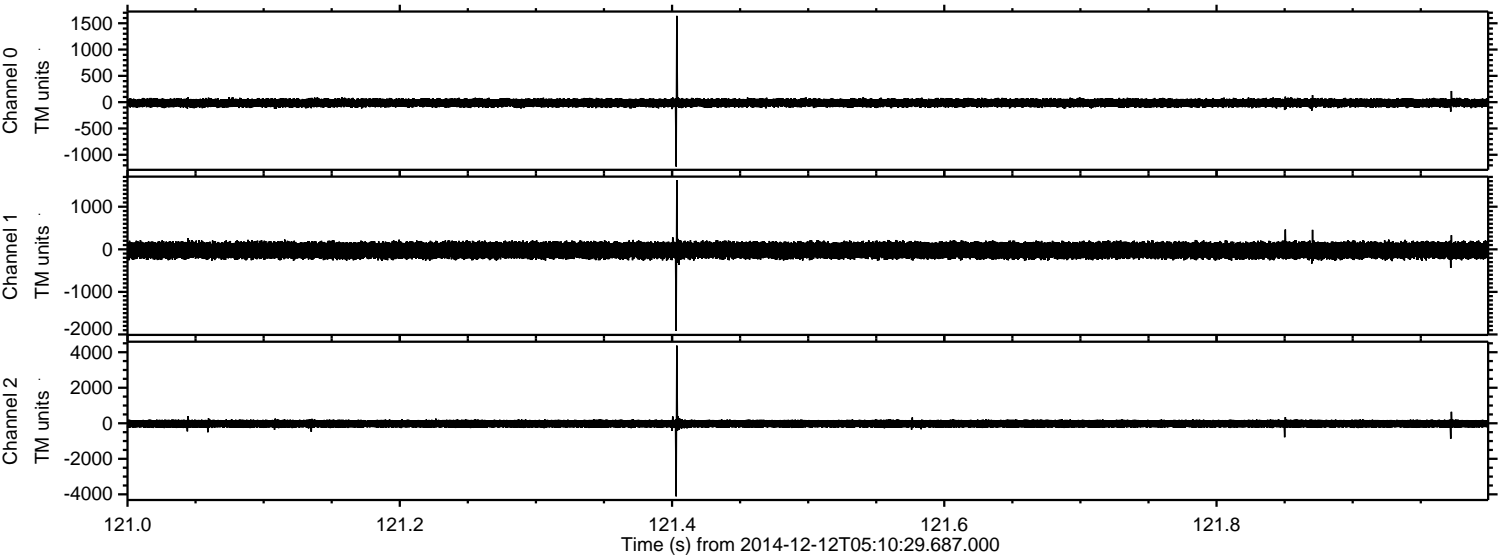
ELMAVAN 3D WAVEFORMS (Measured data sampled at 50 kHz) 49719 packets of 144 samples from 2014-12-12T05:10:29.687.000. Part 119/144

Processed Fri Dec 12 16:43:45 2014 by ELM ver.2012-10-06 from 001__elm20141212_051028__dat00.bin

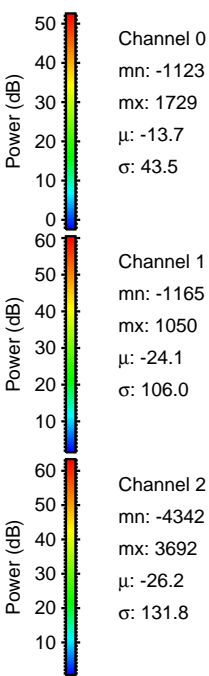
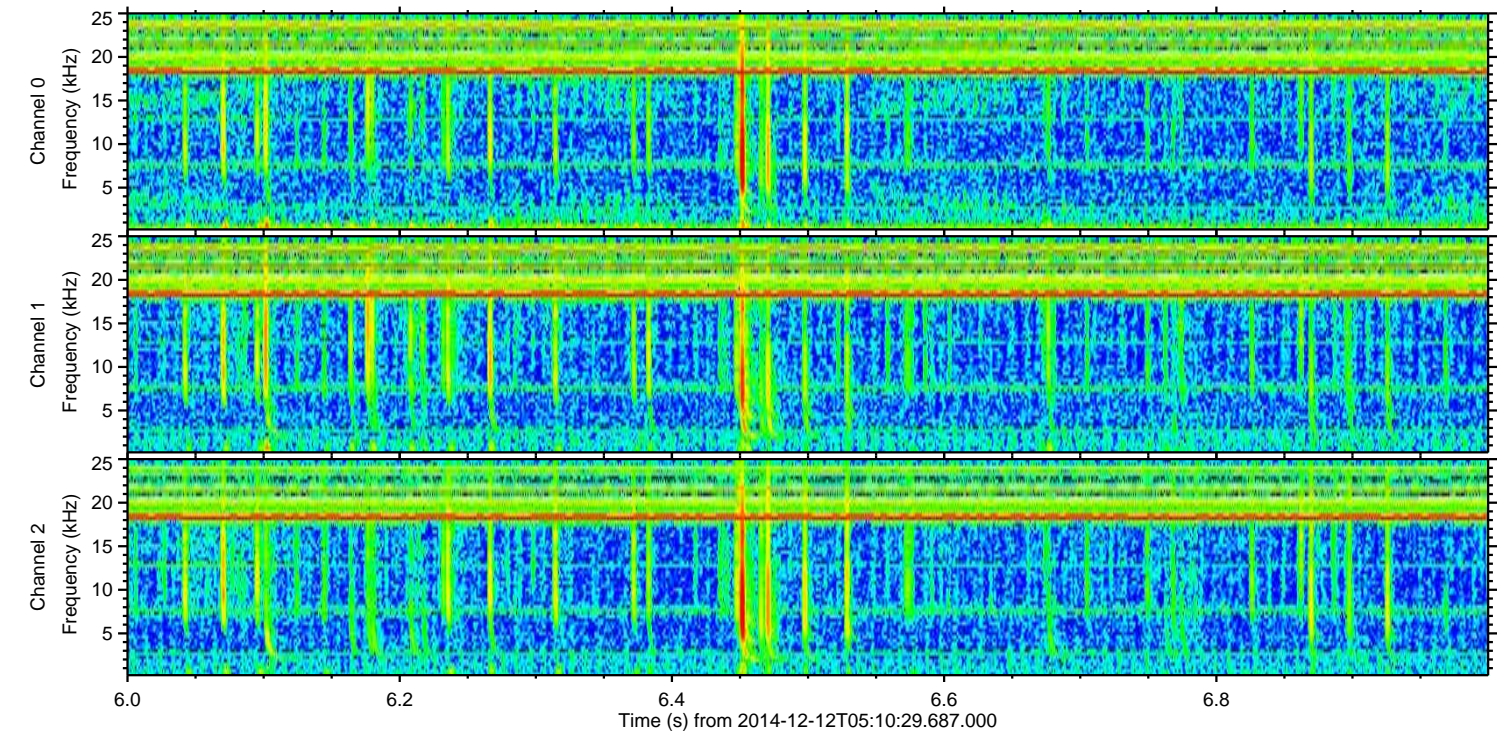
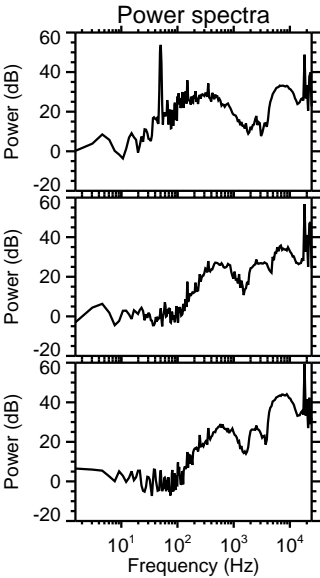
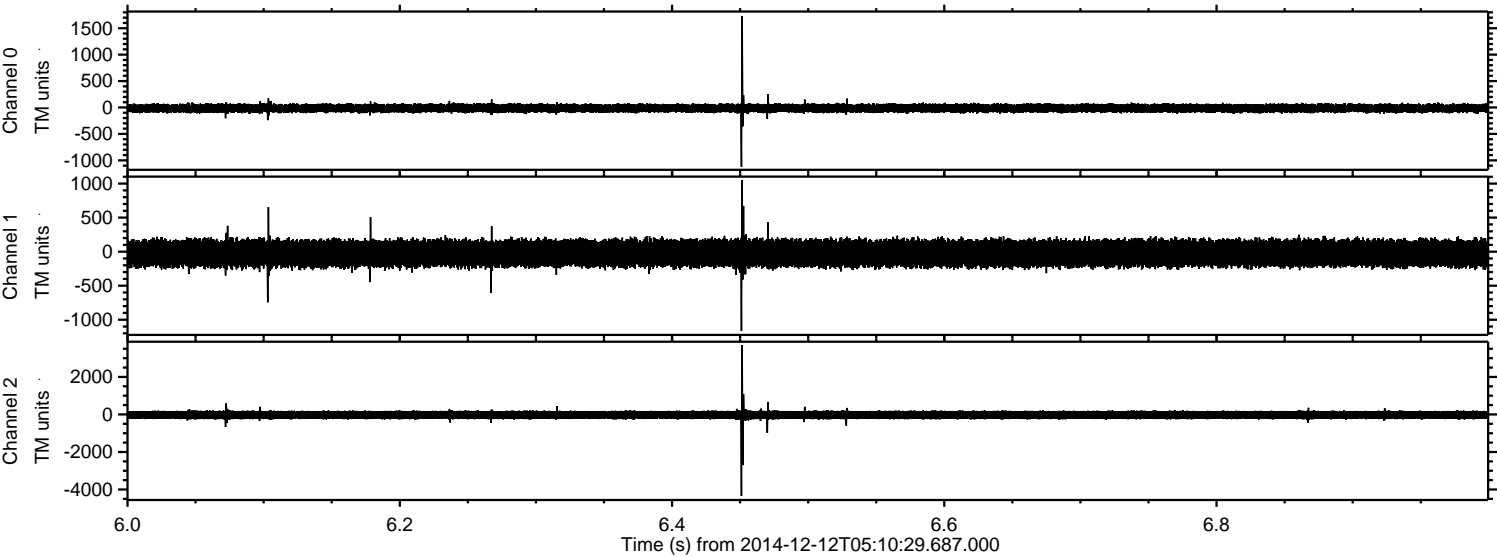


ELMAVAN 3D WAVEFORMS (Measured data sampled at 50 kHz) 49719 packets of 144 samples from 2014-12-12T05:10:29.687.000. Part 122/144

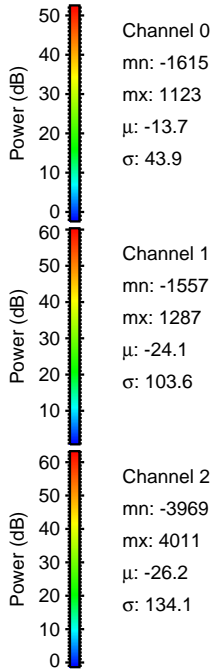
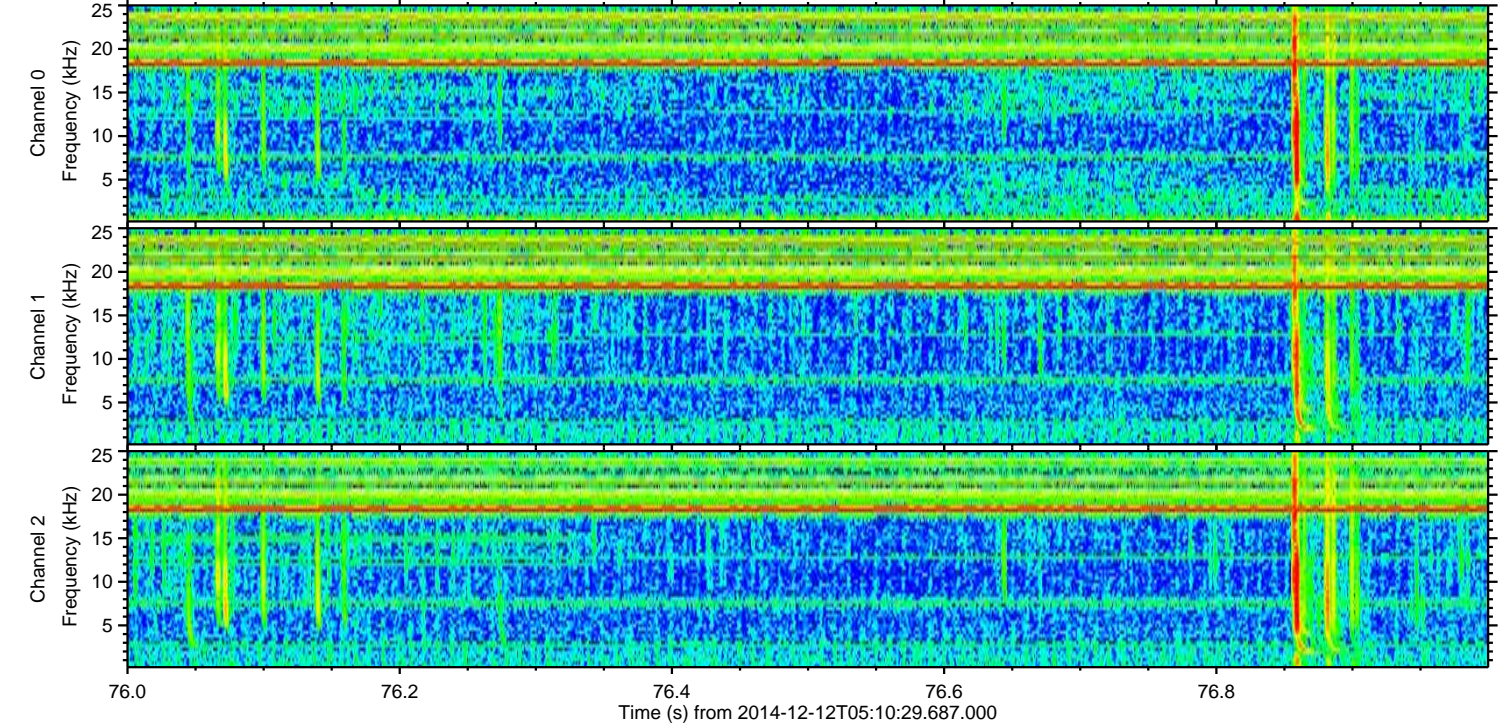
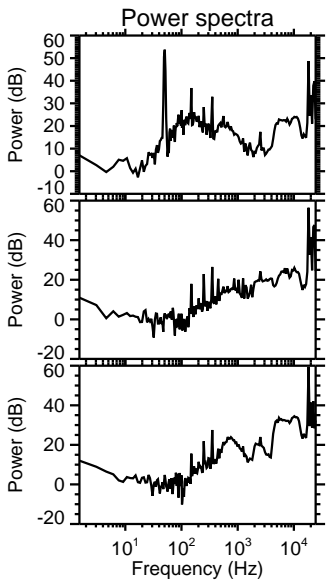
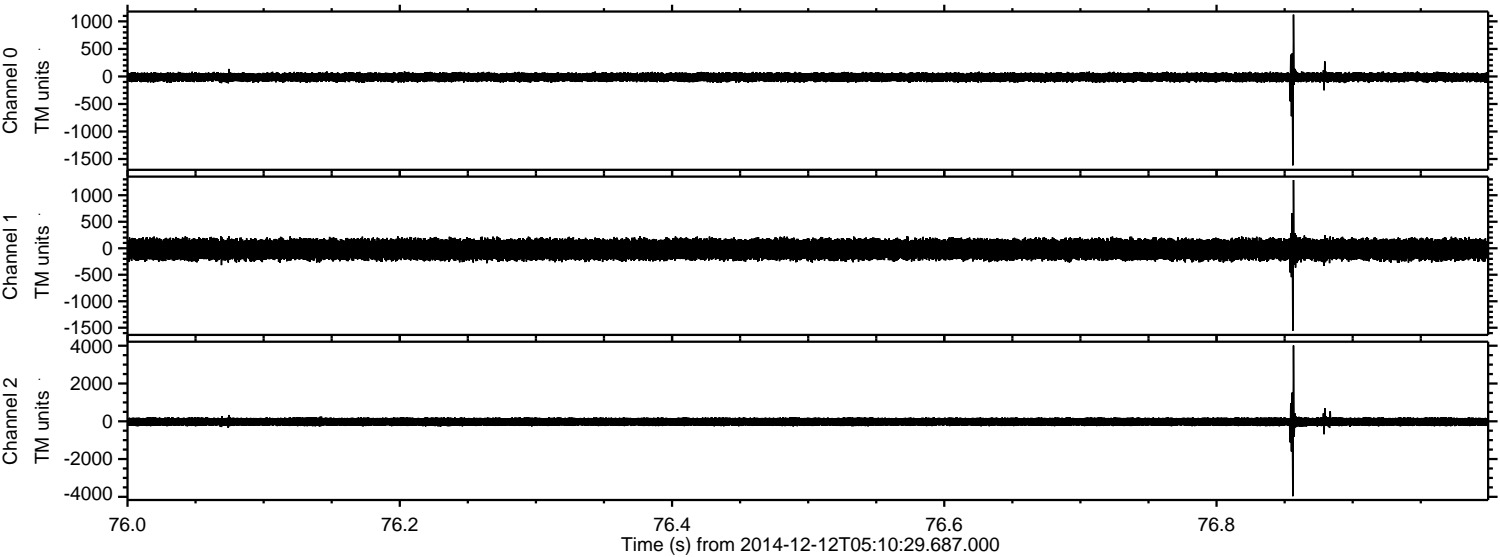
Processed Fri Dec 12 16:43:46 2014 by ELM ver.2012-10-06 from 001__elm20141212_051028__dat00.bin



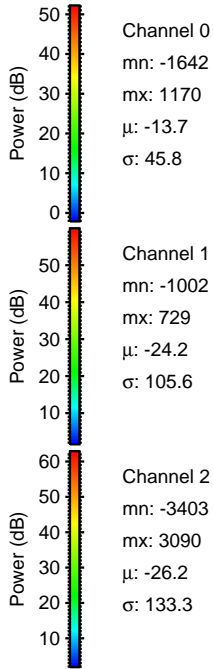
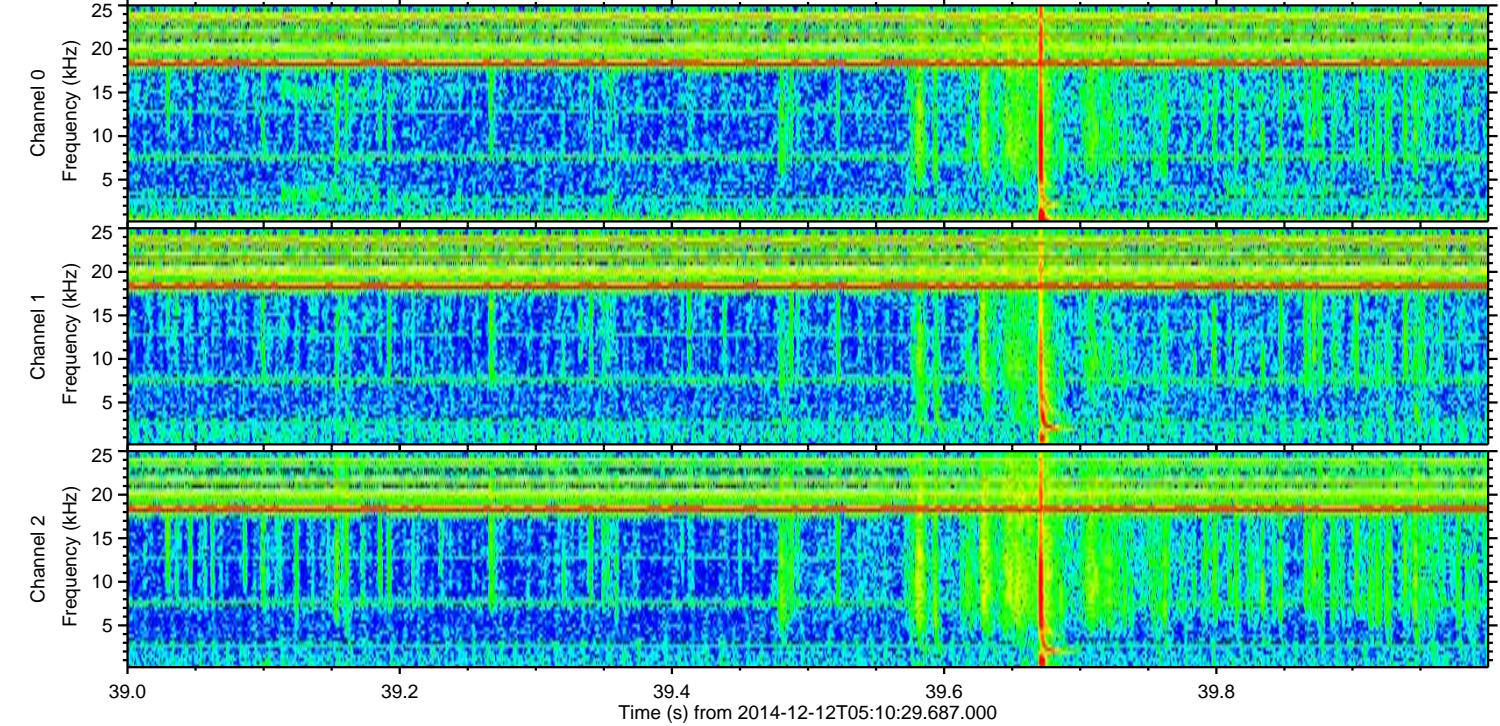
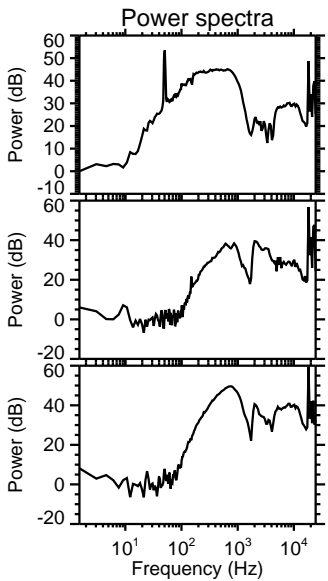
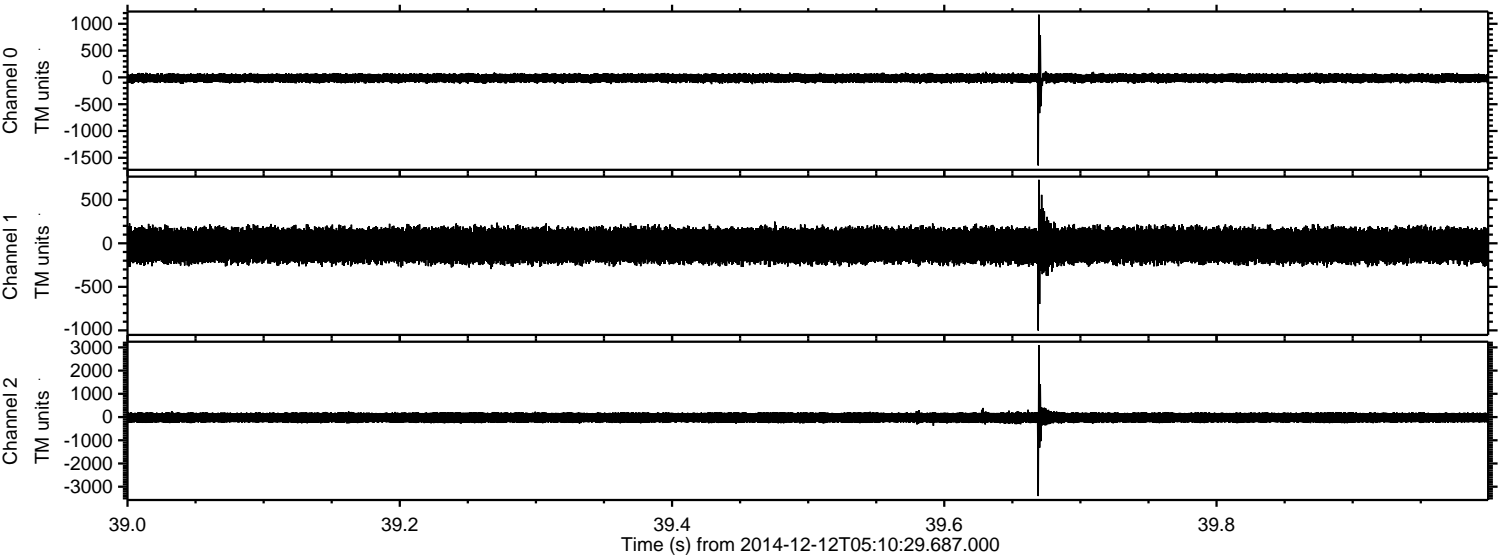
Processed Fri Dec 12 16:43:47 2014 by ELM ver.2012-10-06 from 001__elm20141212_051028__dat00.bin



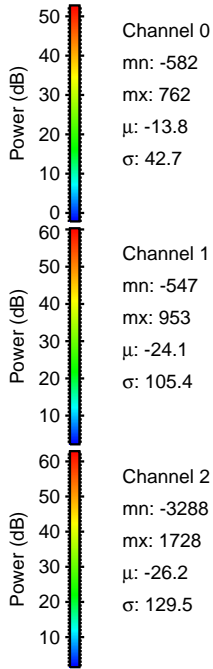
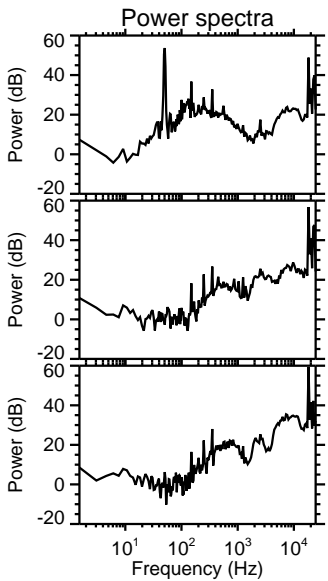
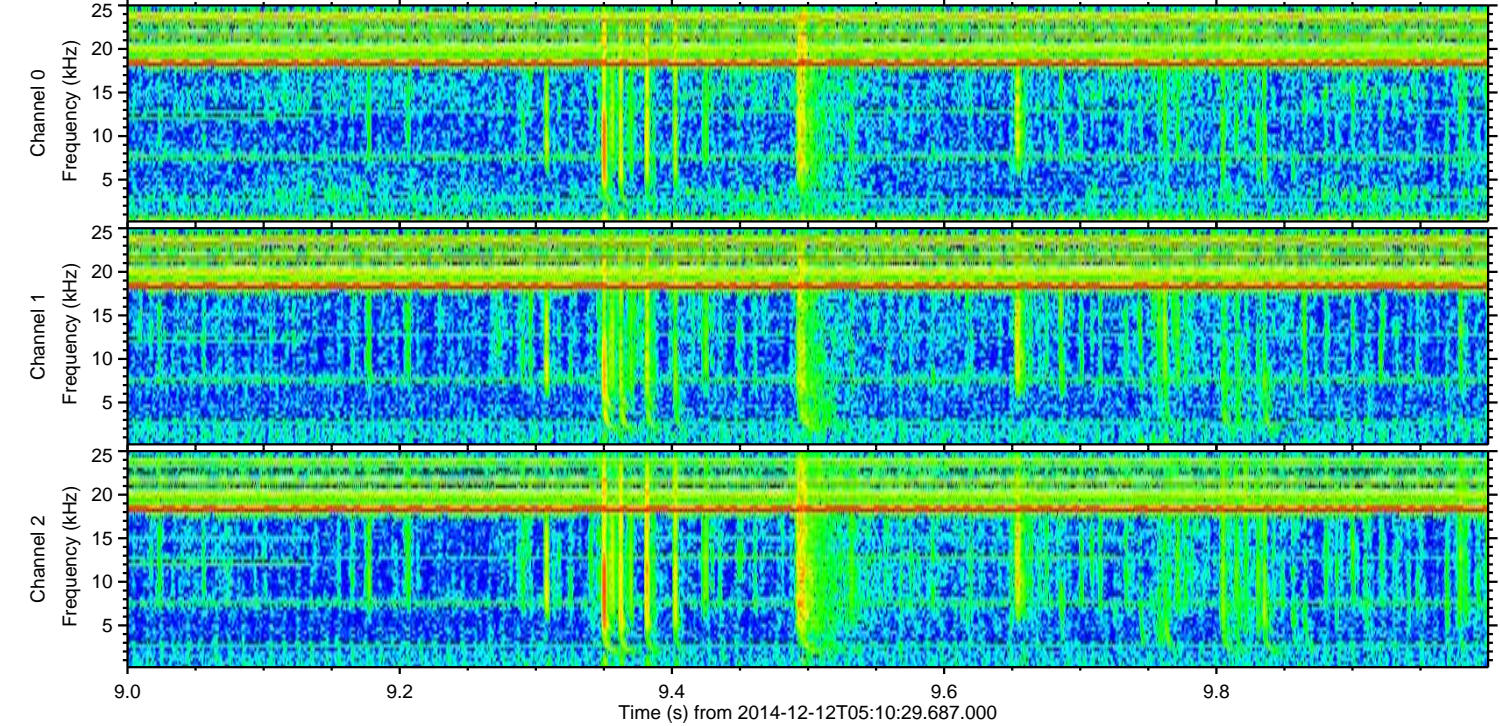
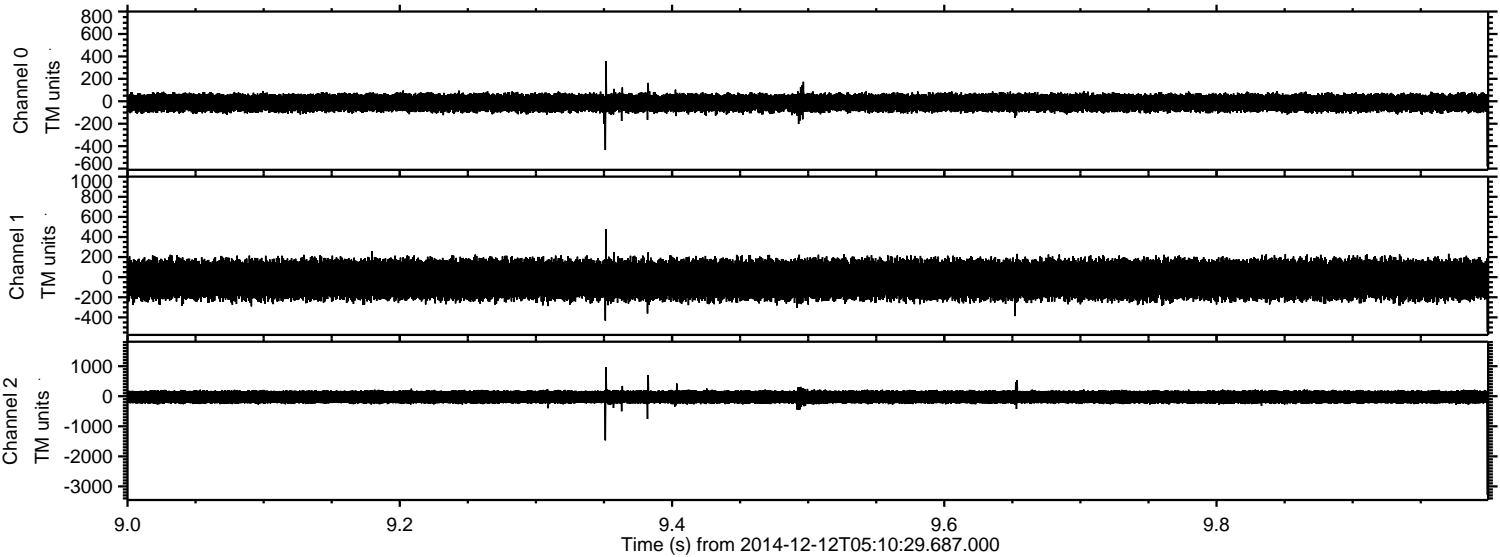
Processed Fri Dec 12 16:43:49 2014 by ELM ver.2012-10-06 from 001__elm20141212_051028__dat00.bin



Processed Fri Dec 12 16:43:50 2014 by ELM ver.2012-10-06 from 001__elm20141212_051028__dat00.bin



Processed Fri Dec 12 16:43:51 2014 by ELM ver.2012-10-06 from 001__elm20141212_051028__dat00.bin



Channel 0
mn: -582
mx: 762
 μ : -13.8
 σ : 42.7

Channel 1
mn: -547
mx: 953
 μ : -24.1
 σ : 105.4

Channel 2
mn: -3288
mx: 1728
 μ : -26.2
 σ : 129.5

Processed Fri Dec 12 16:43:52 2014 by ELM ver.2012-10-06 from 001__elm20141212_051028__dat00.bin

