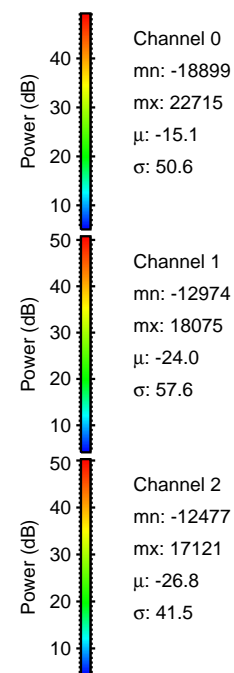
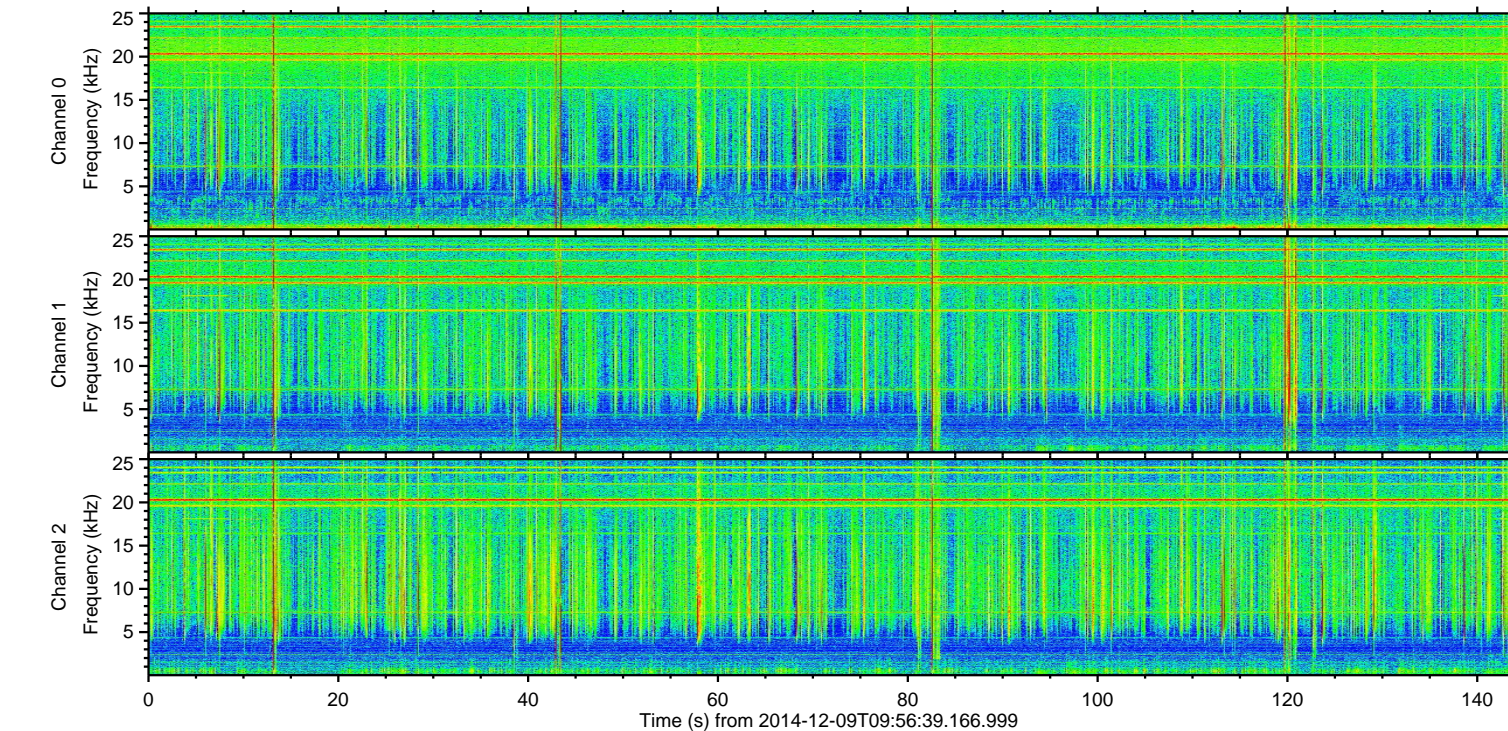
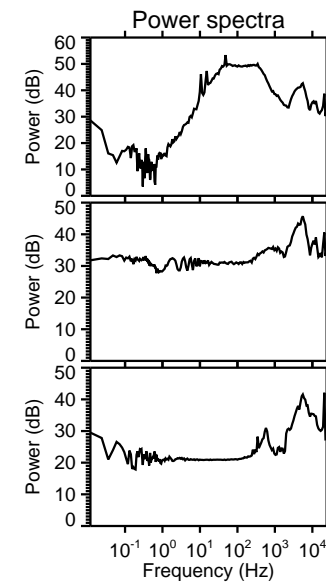
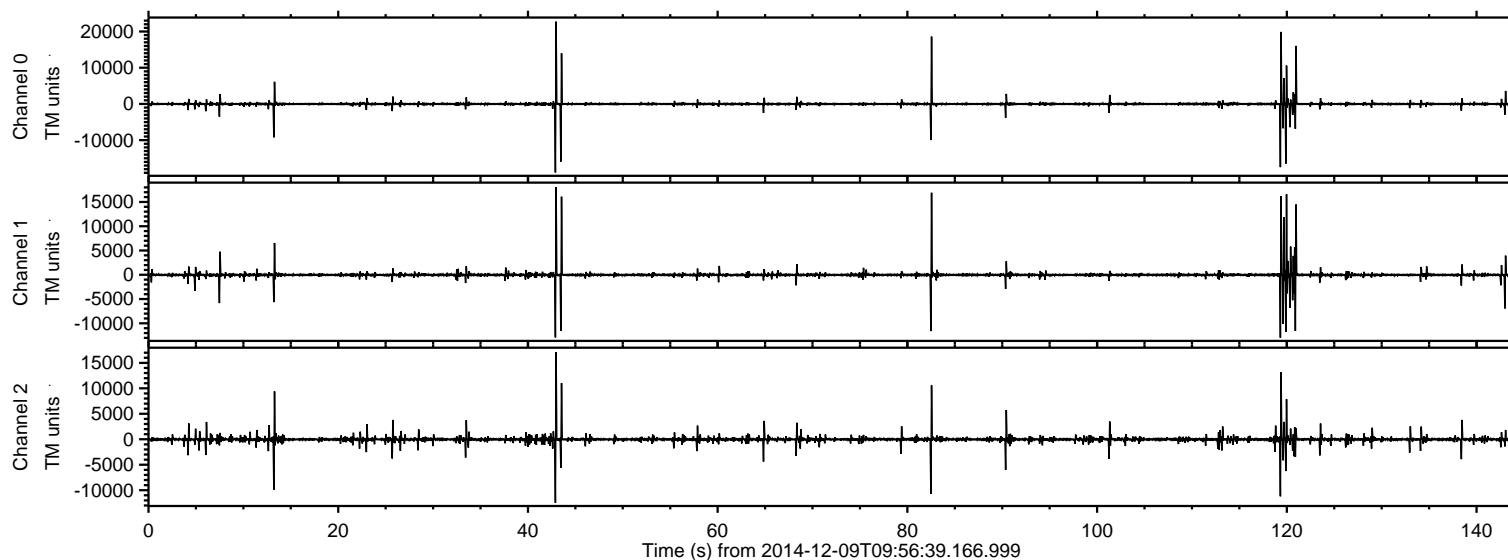


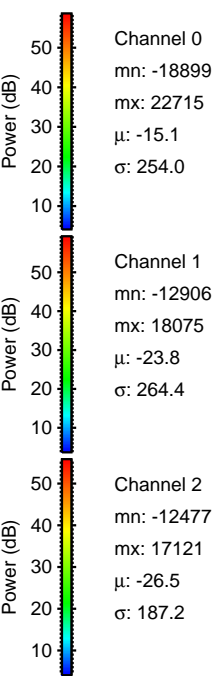
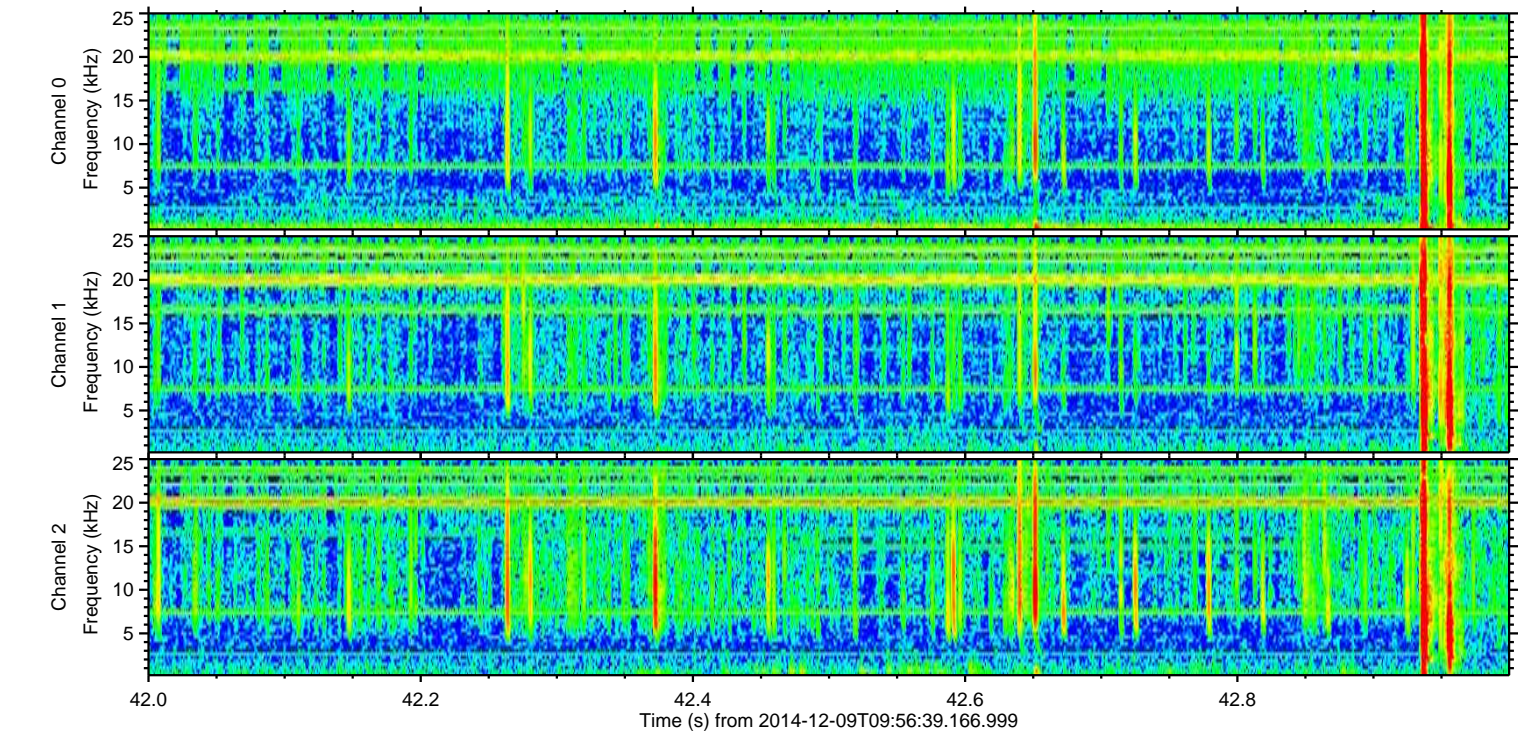
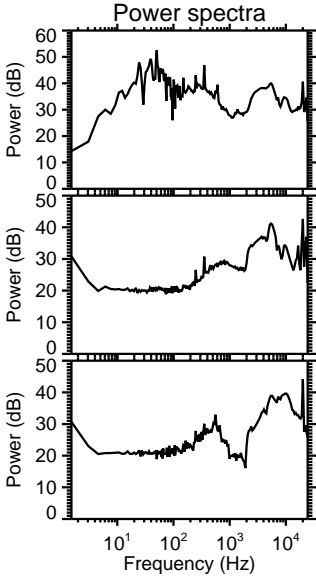
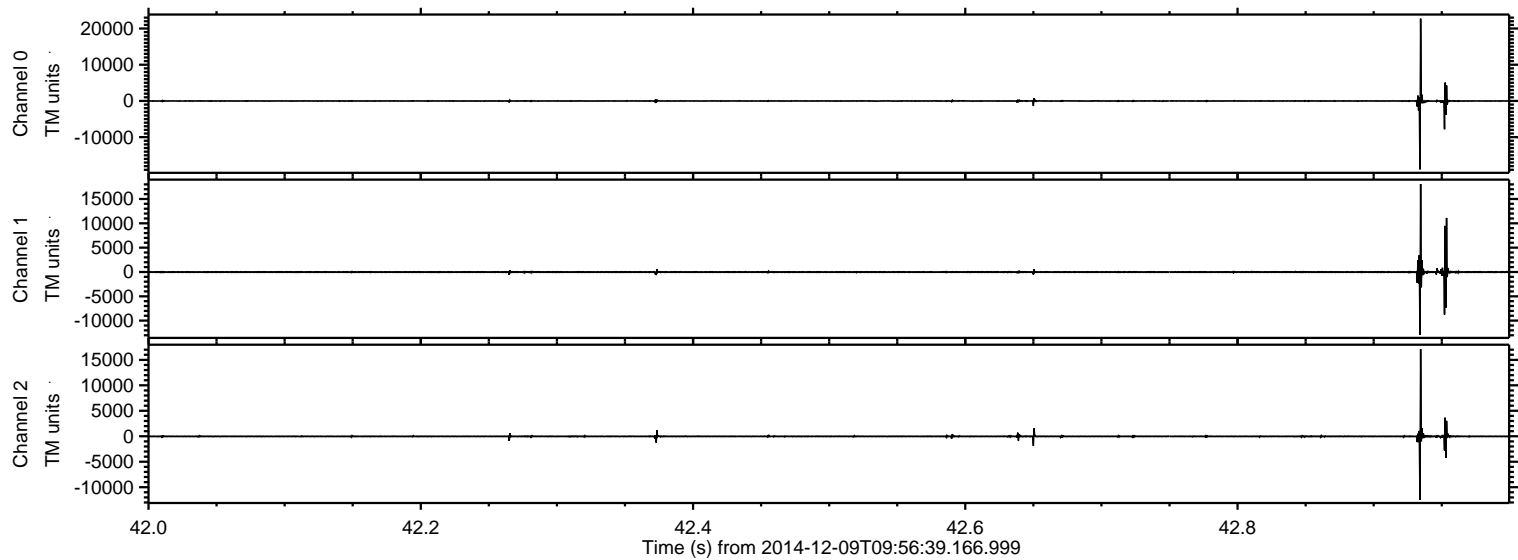
ELMAVAN 3D WAVEFORMS (Measured data sampled at 50 kHz) 49805 packets of 144 samples from 2014-12-09T09:56:39.166.999.

Processed Thu Dec 11 19:31:39 2014 by ELM ver.2012-10-06 from 001__elm20141209_095638__dat00.bin



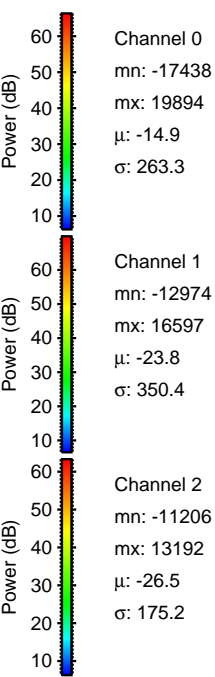
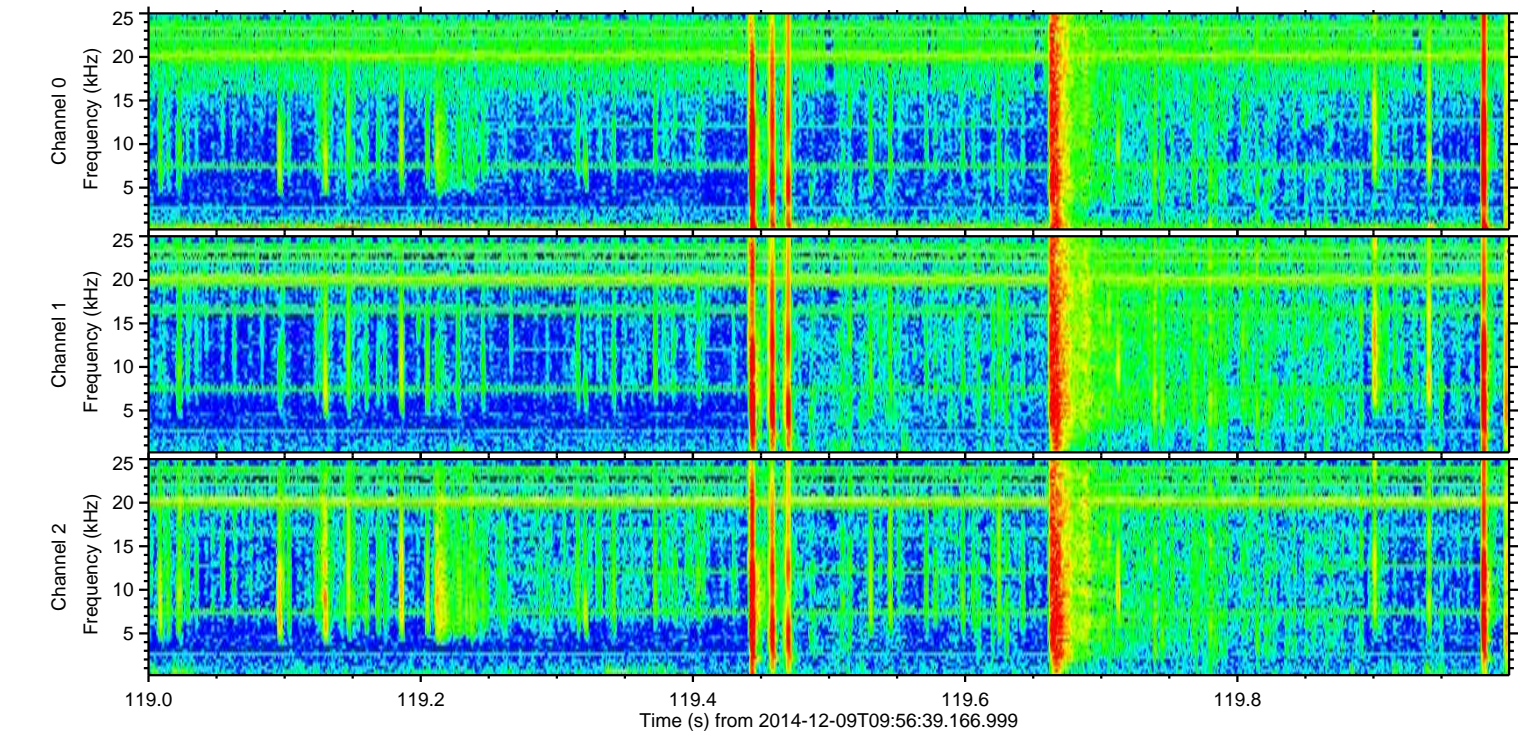
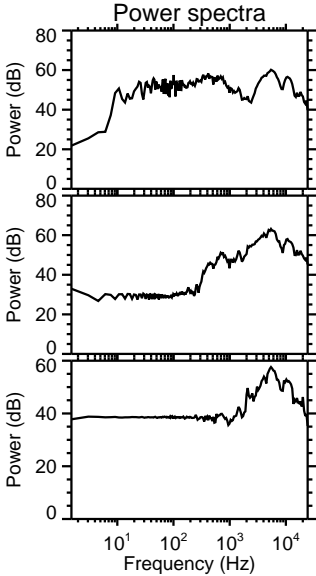
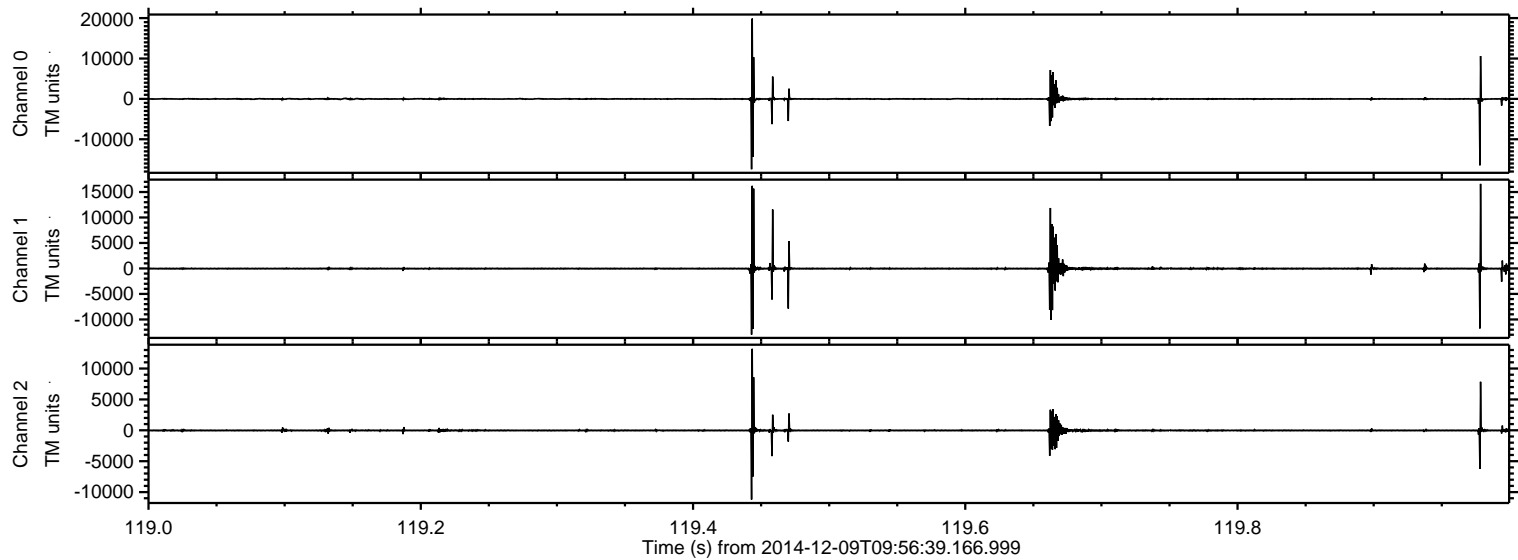
ELMAVAN 3D WAVEFORMS (Measured data sampled at 50 kHz) 49805 packets of 144 samples from 2014-12-09T09:56:39.166.999. Part 43/144

Processed Thu Dec 11 19:31:50 2014 by ELM ver.2012-10-06 from 001__elm20141209_095638__dat00.bin

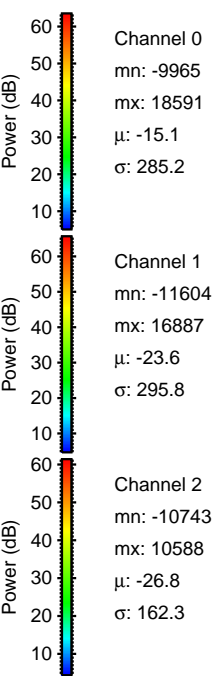
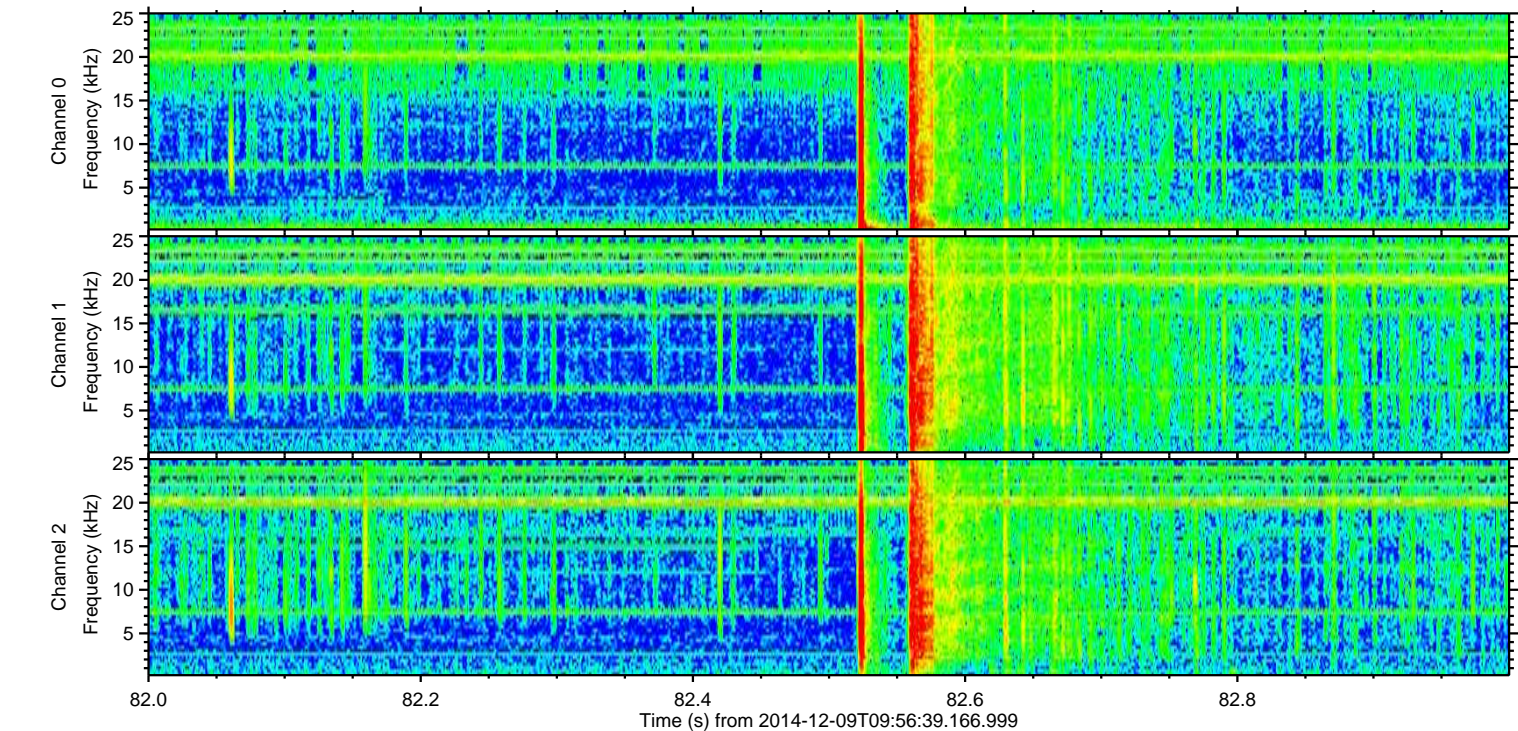
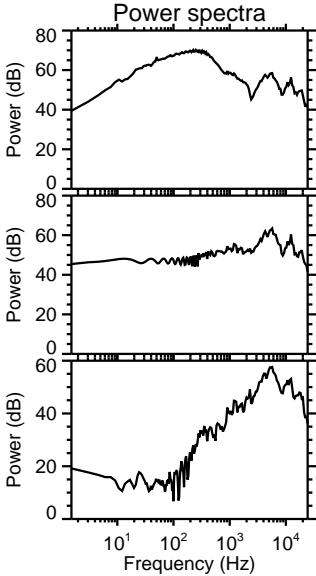
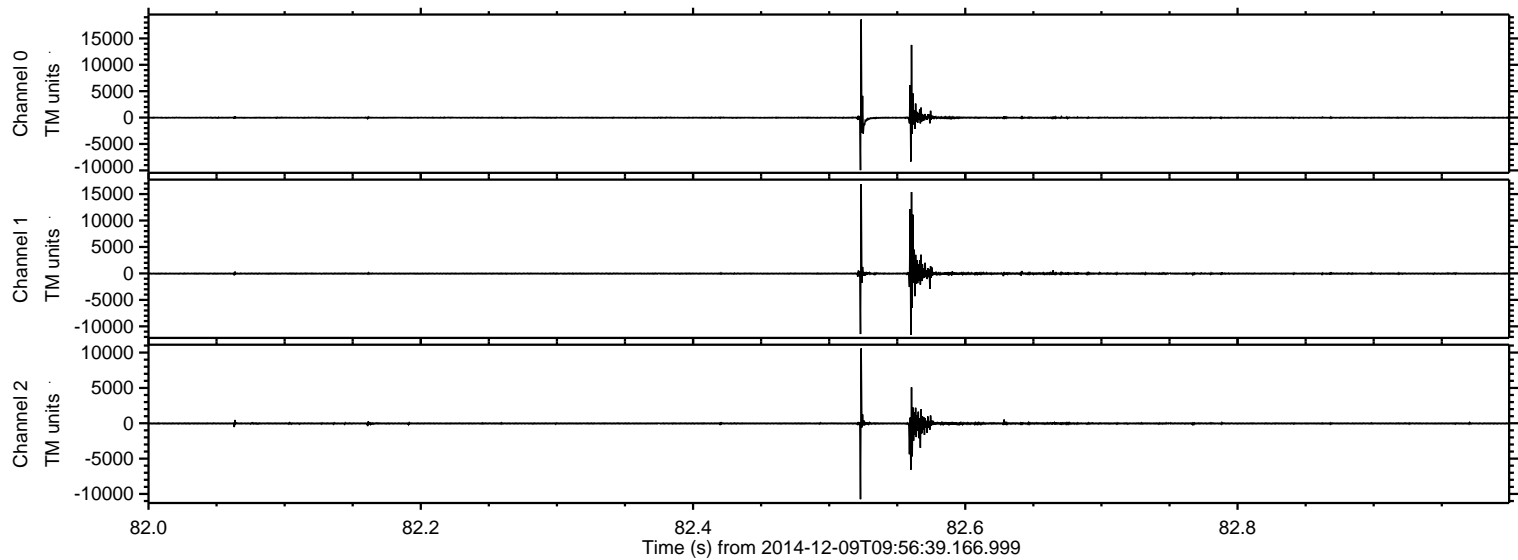


ELMAVAN 3D WAVEFORMS (Measured data sampled at 50 kHz) 49805 packets of 144 samples from 2014-12-09T09:56:39.166.999. Part 120/144

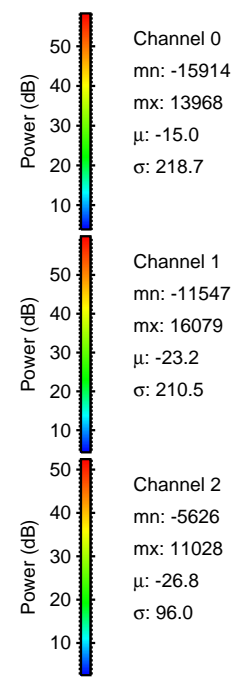
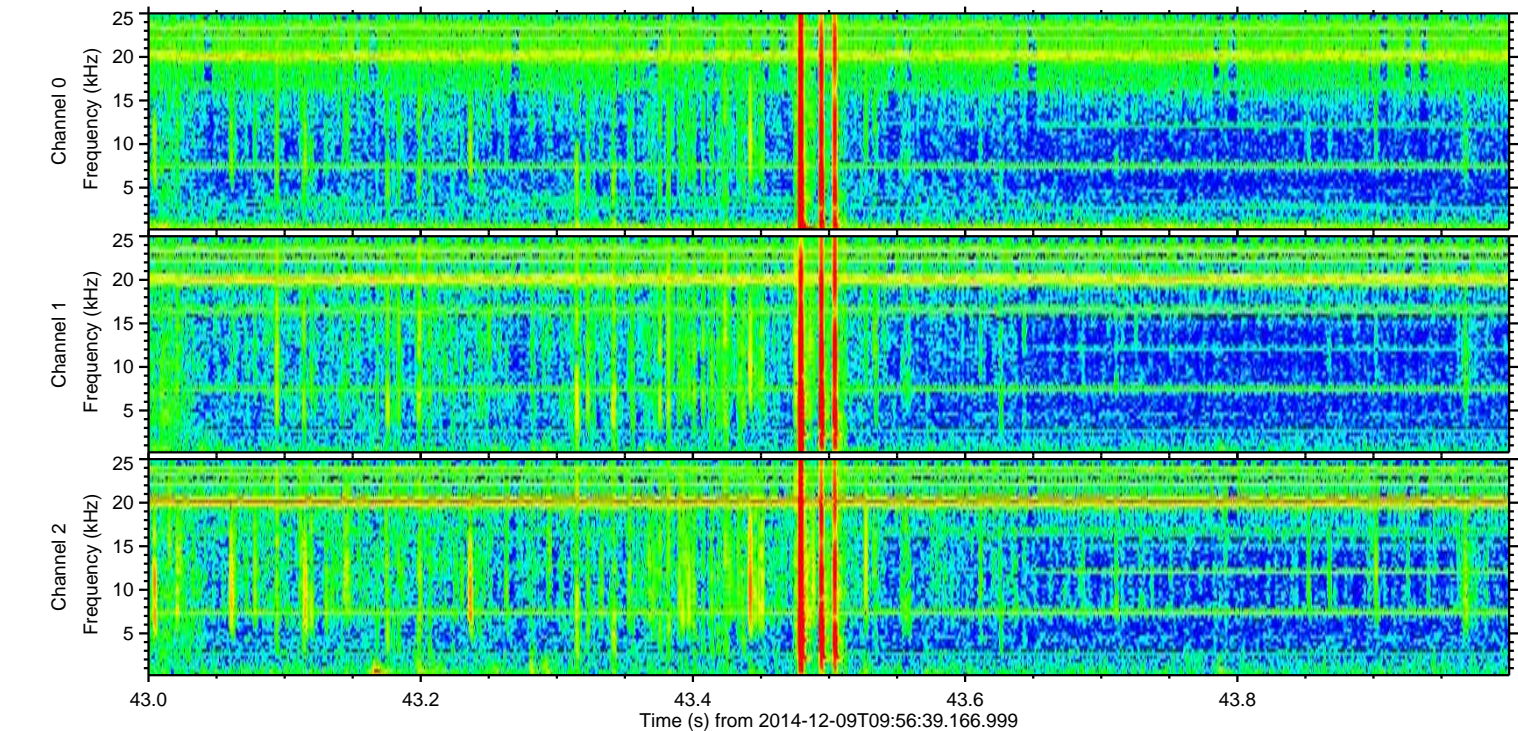
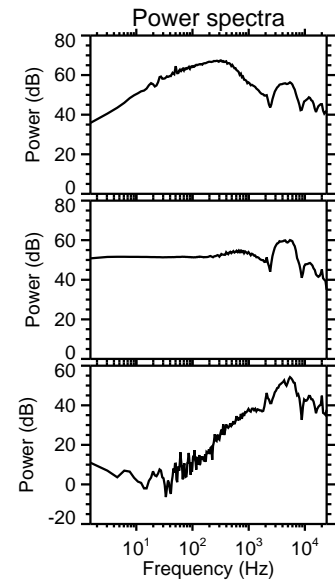
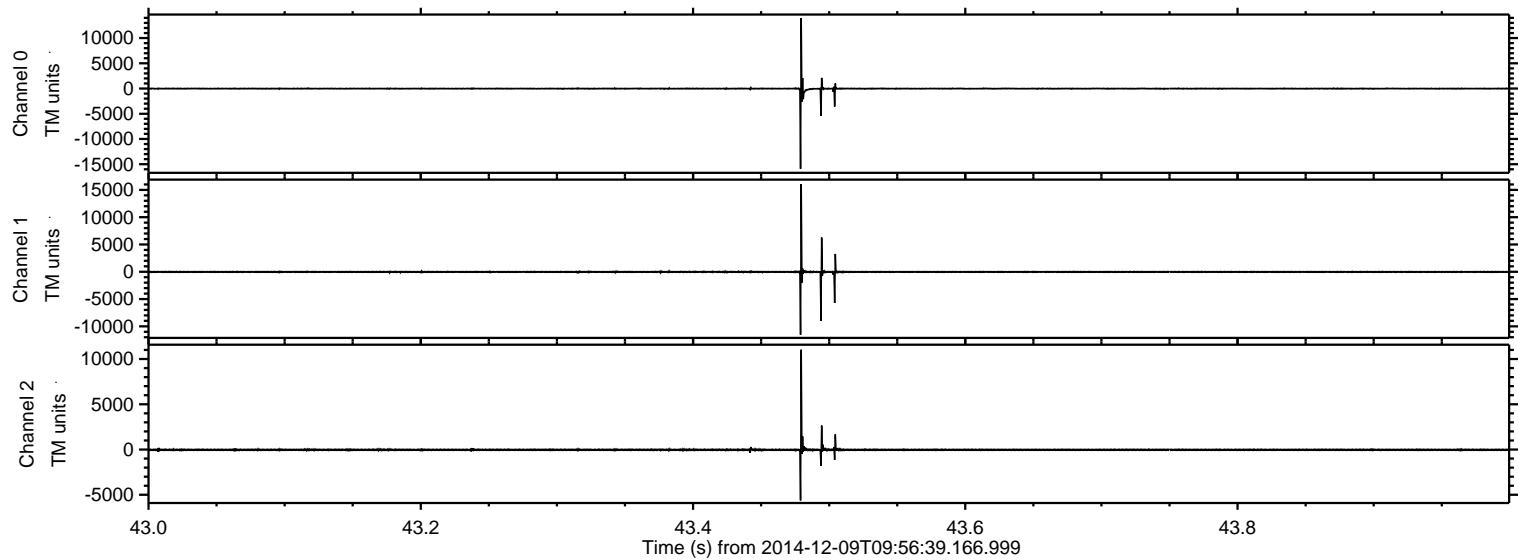
Processed Thu Dec 11 19:31:51 2014 by ELM ver.2012-10-06 from 001__elm20141209_095638__dat00.bin



Processed Thu Dec 11 19:31:52 2014 by ELM ver.2012-10-06 from 001__elm20141209_095638__dat00.bin

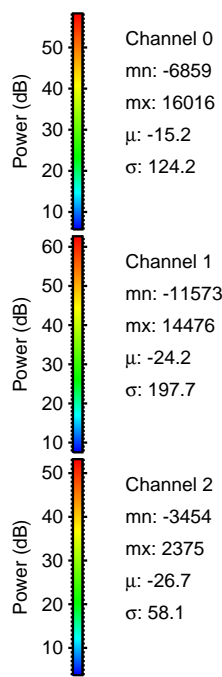
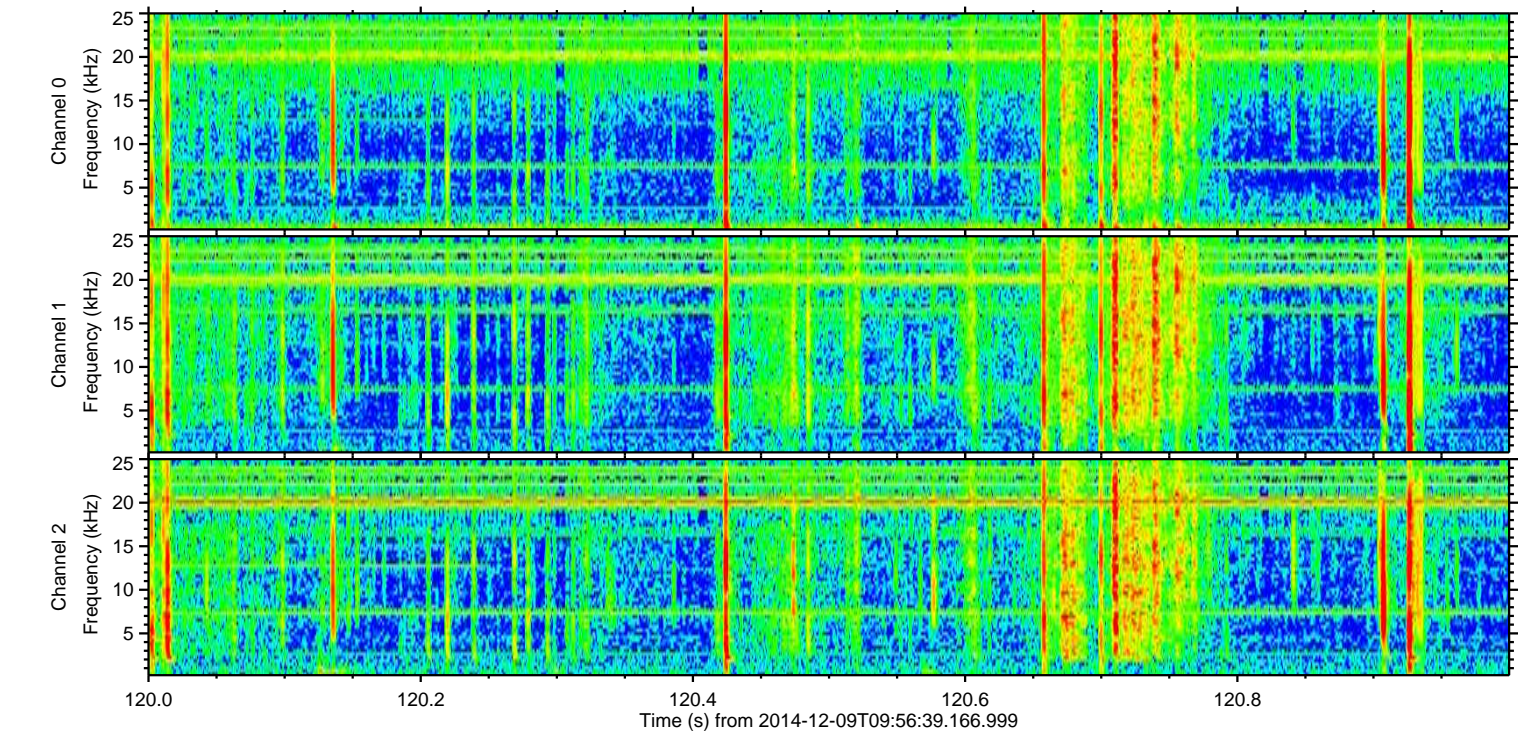
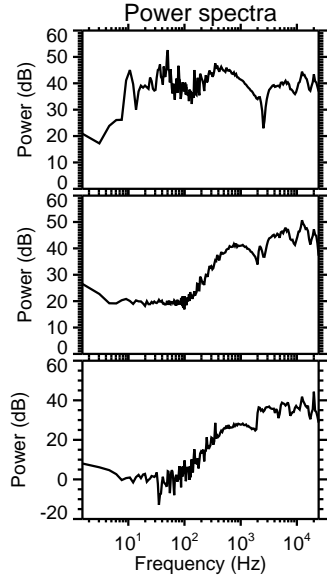
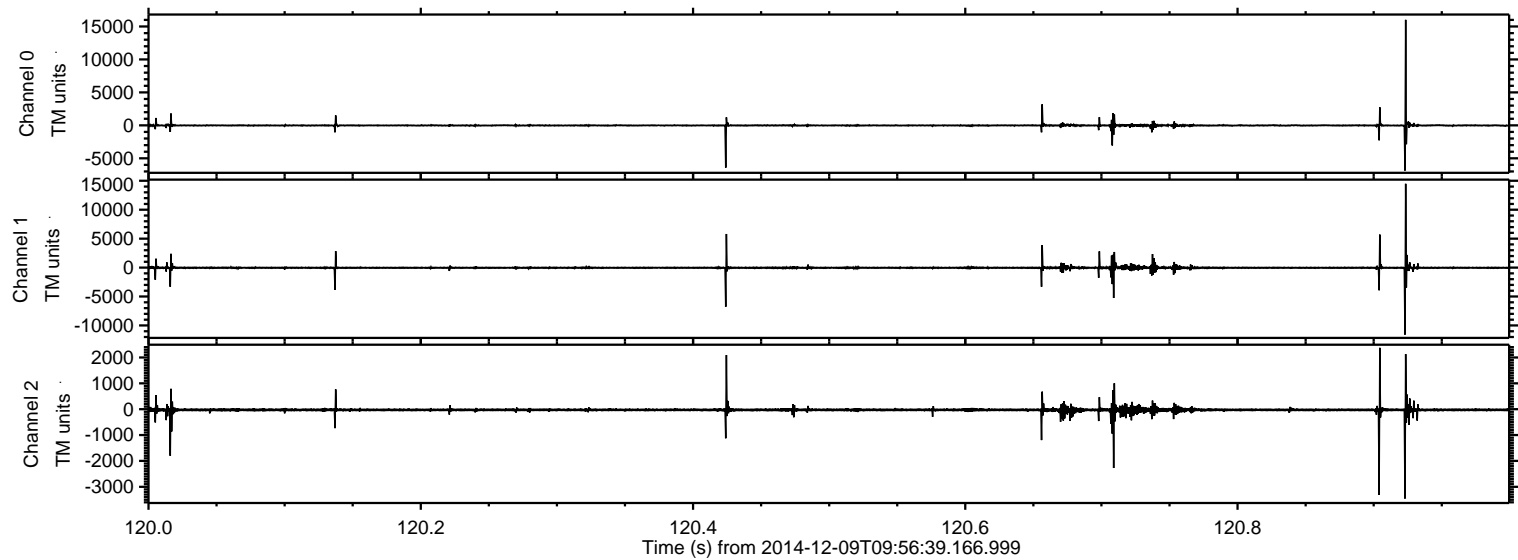


Processed Thu Dec 11 19:31:53 2014 by ELM ver.2012-10-06 from 001__elm20141209_095638__dat00.bin

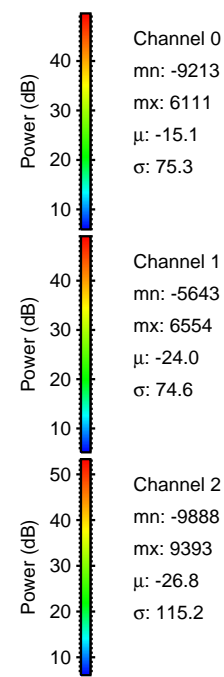
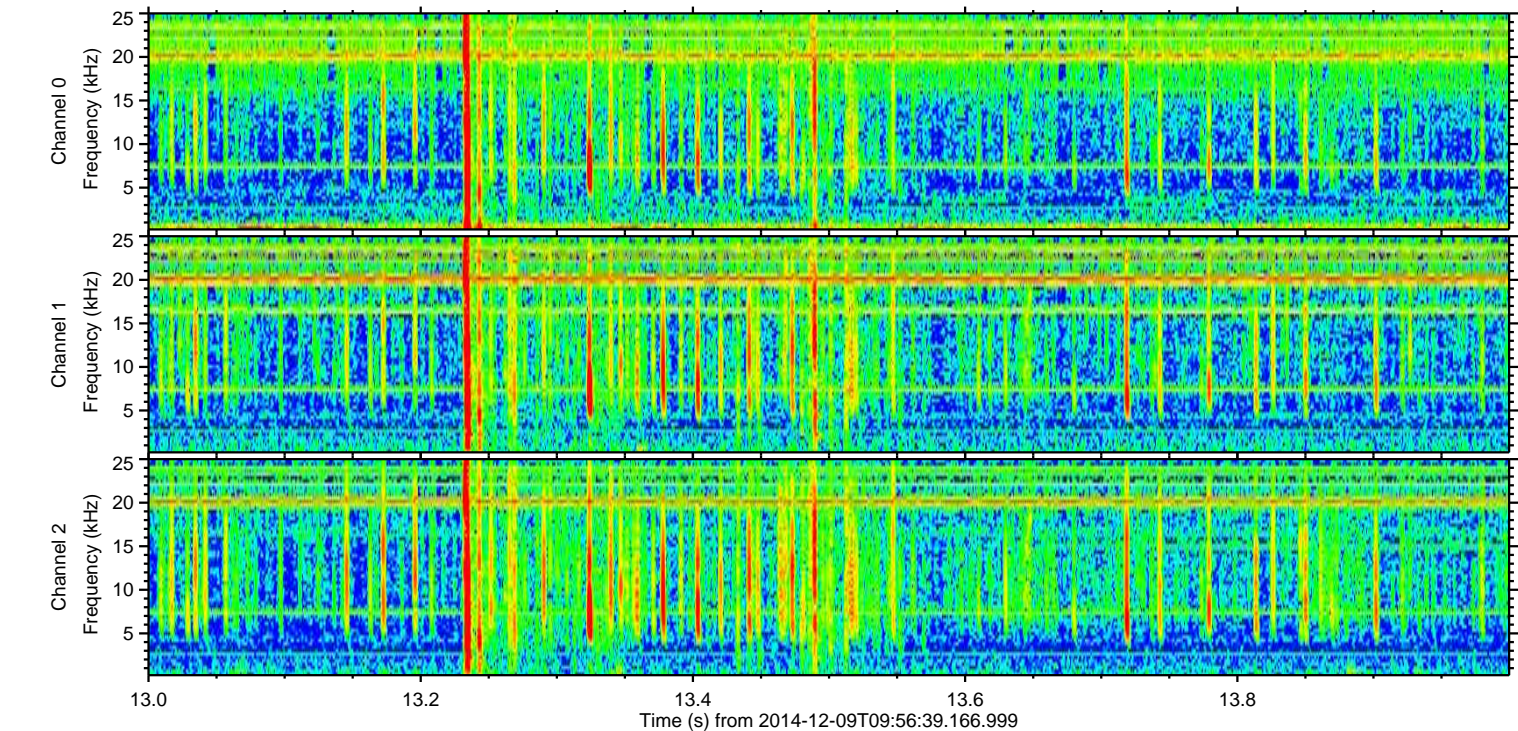
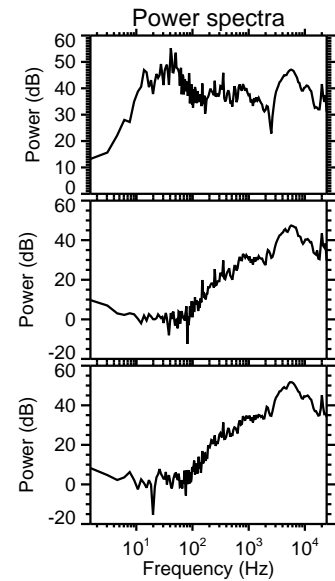
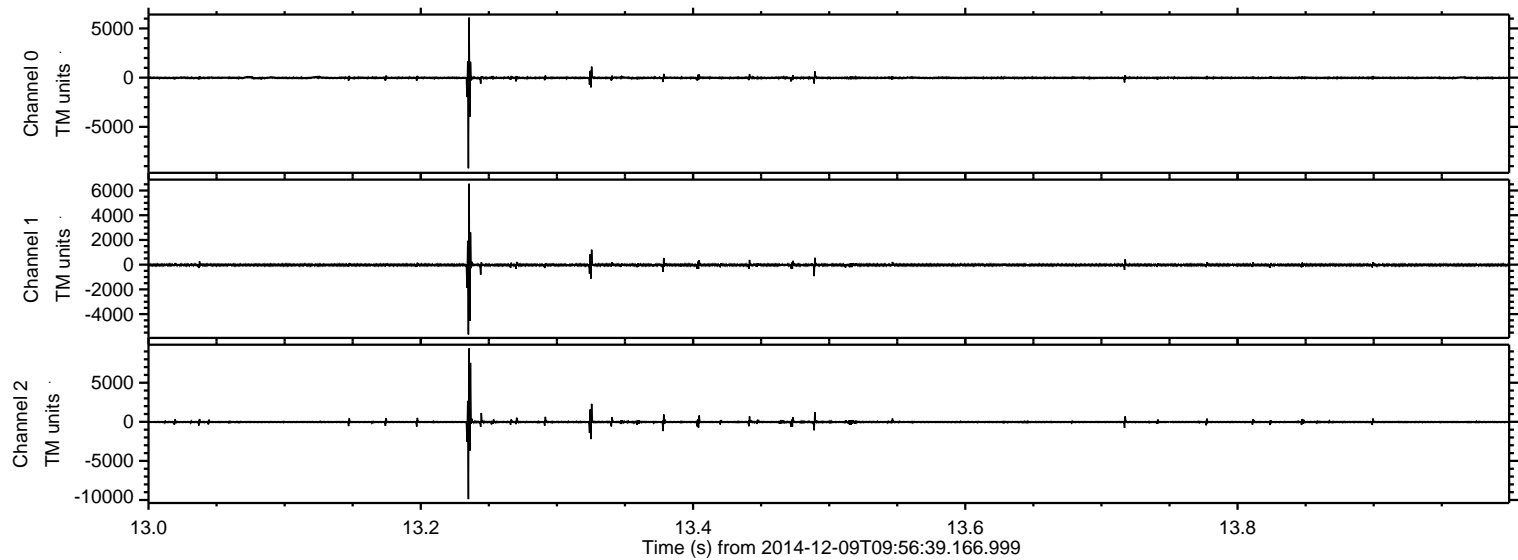


ELMAVAN 3D WAVEFORMS (Measured data sampled at 50 kHz) 49805 packets of 144 samples from 2014-12-09T09:56:39.166.999. Part 121/144

Processed Thu Dec 11 19:31:54 2014 by ELM ver.2012-10-06 from 001__elm20141209_095638__dat00.bin

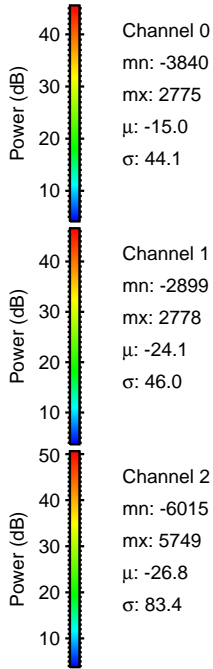
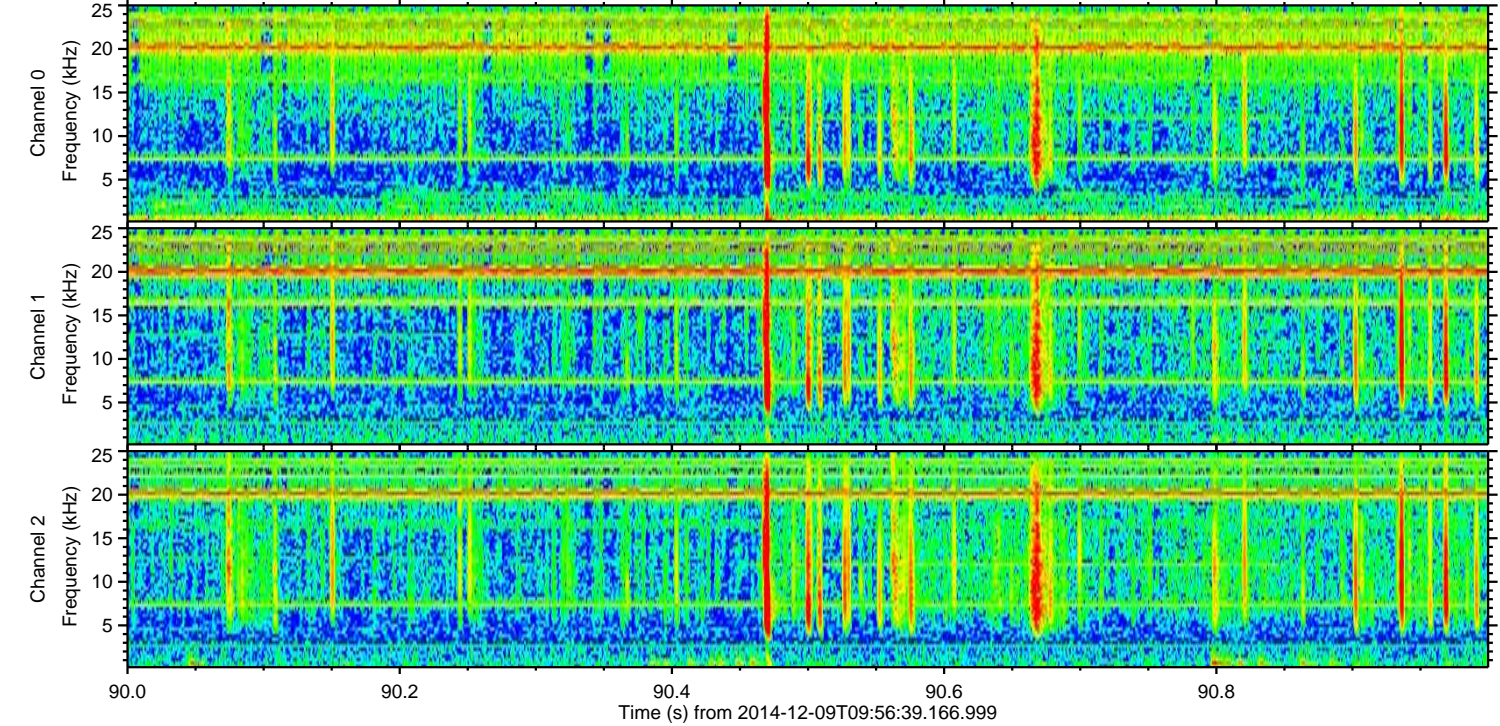
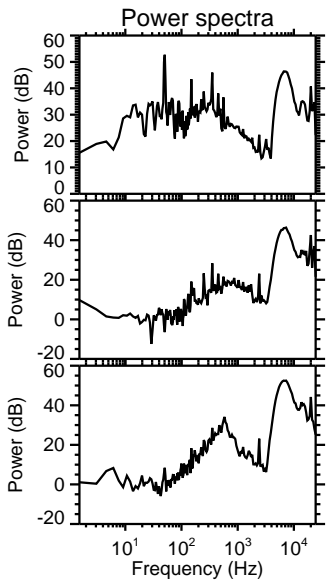
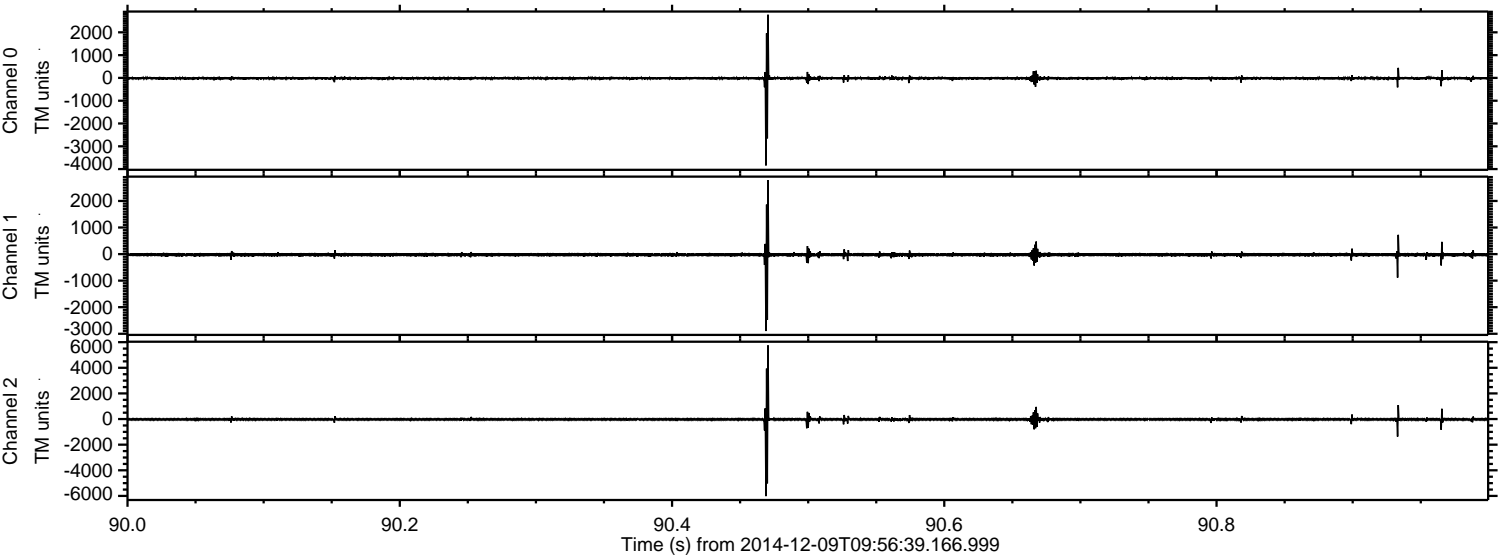


Processed Thu Dec 11 19:31:55 2014 by ELM ver.2012-10-06 from 001__elm20141209_095638__dat00.bin



ELMAVAN 3D WAVEFORMS (Measured data sampled at 50 kHz) 49805 packets of 144 samples from 2014-12-09T09:56:39.166.999. Part 91/144

Processed Thu Dec 11 19:31:56 2014 by ELM ver.2012-10-06 from 001__elm20141209_095638__dat00.bin

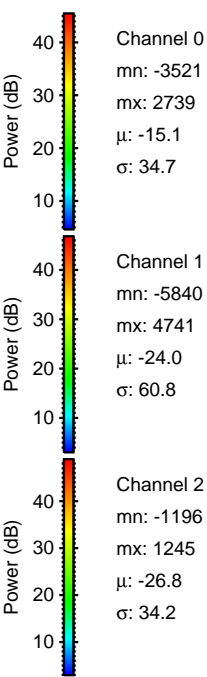
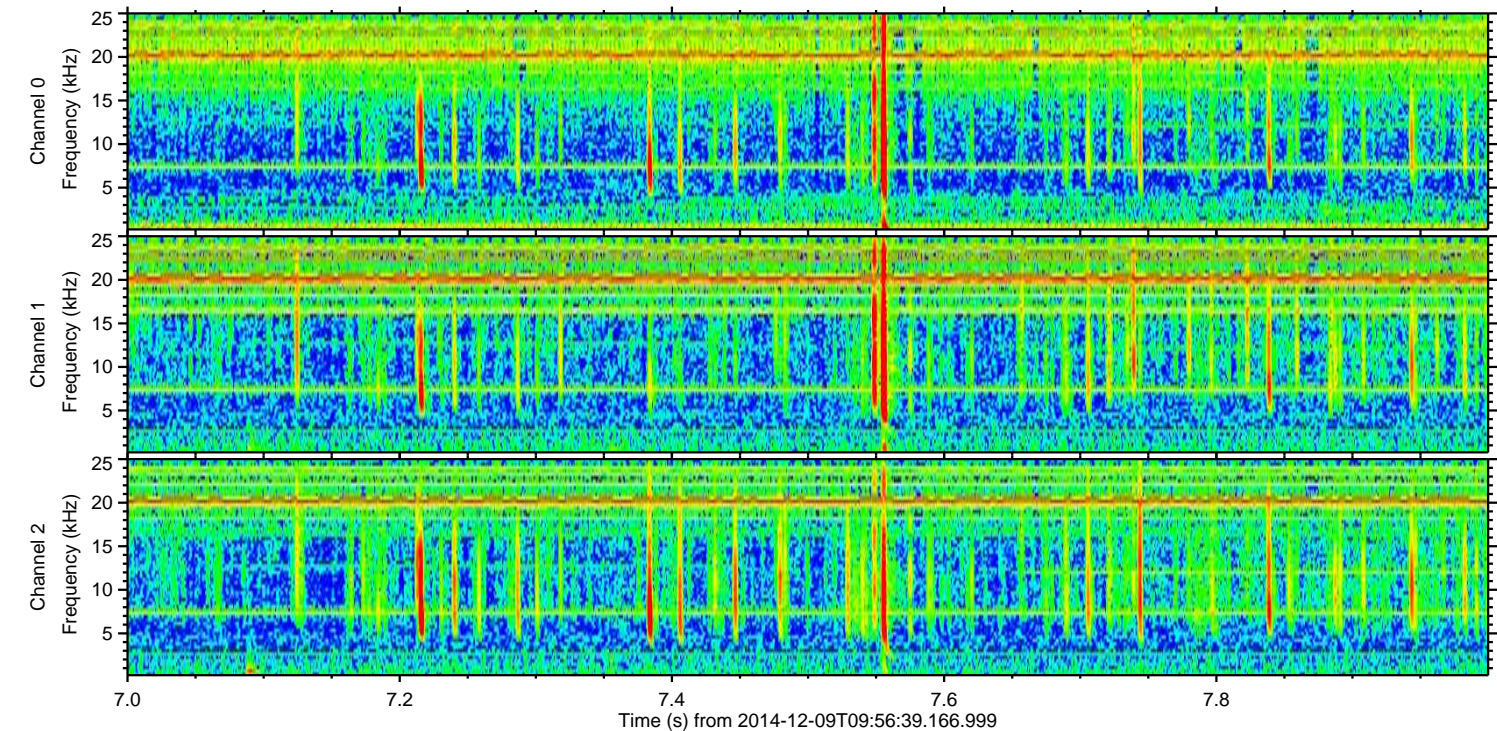
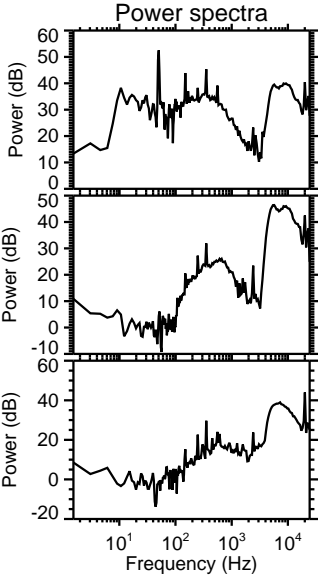
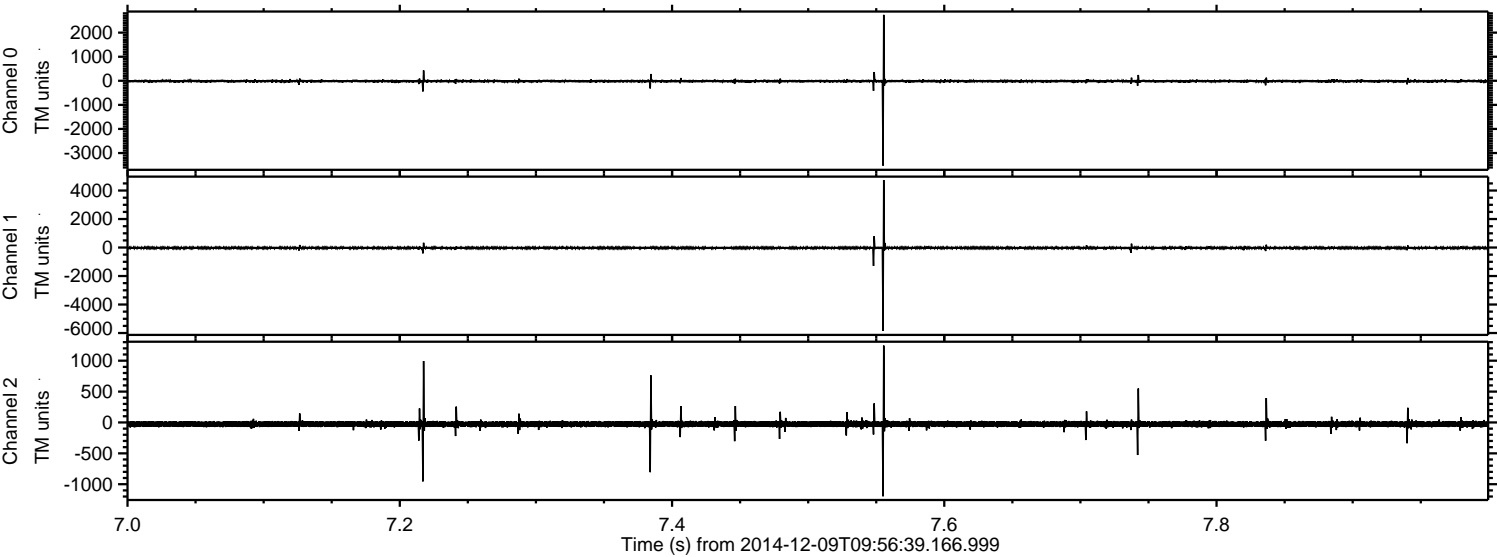


Channel 0
mn: -3840
mx: 2775
 μ : -15.0
 σ : 44.1

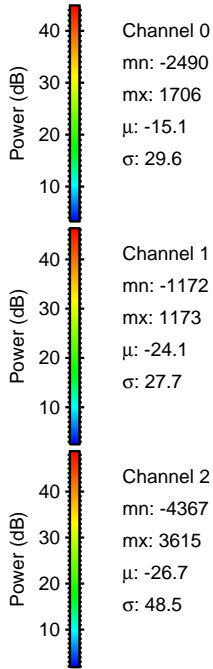
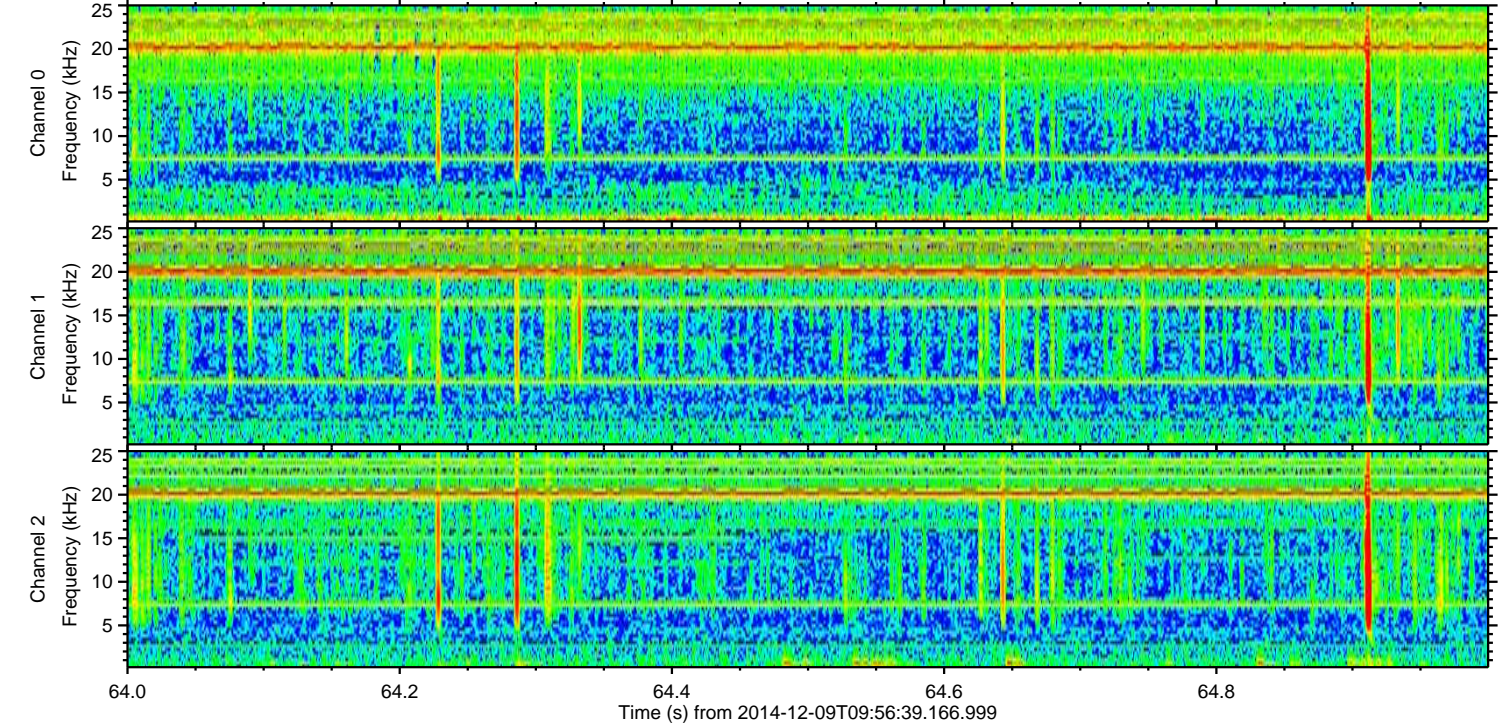
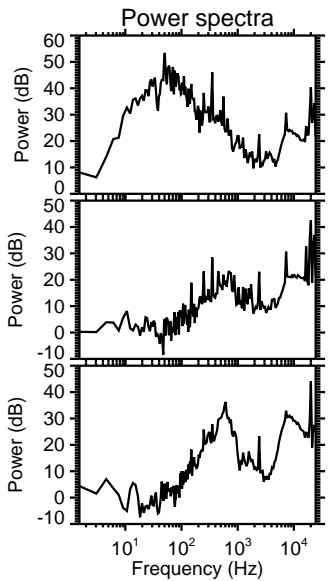
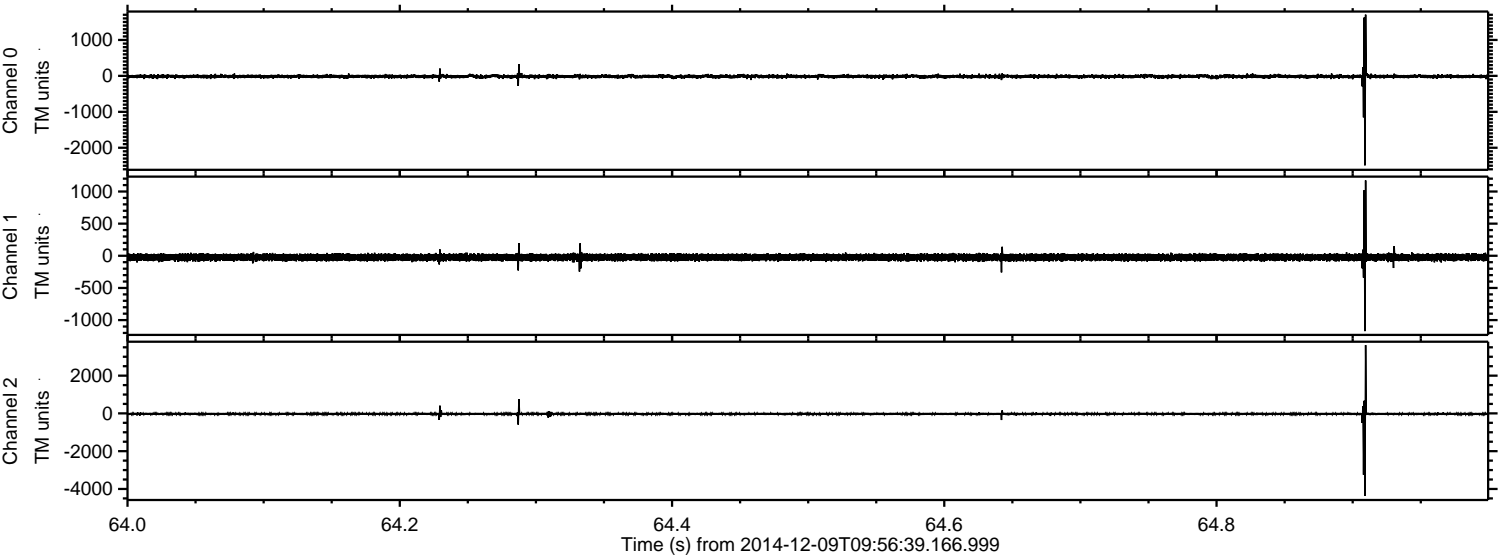
Channel 1
mn: -2899
mx: 2778
 μ : -24.1
 σ : 46.0

Channel 2
mn: -6015
mx: 5749
 μ : -26.8
 σ : 83.4

Processed Thu Dec 11 19:31:57 2014 by ELM ver.2012-10-06 from 001__elm20141209_095638__dat00.bin



Processed Thu Dec 11 19:31:58 2014 by ELM ver.2012-10-06 from 001__elm20141209_095638__dat00.bin



Processed Thu Dec 11 19:31:59 2014 by ELM ver.2012-10-06 from 001__elm20141209_095638__dat00.bin

