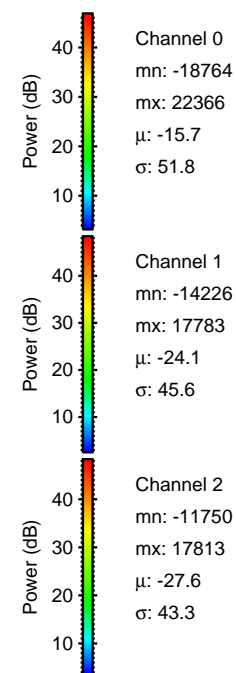
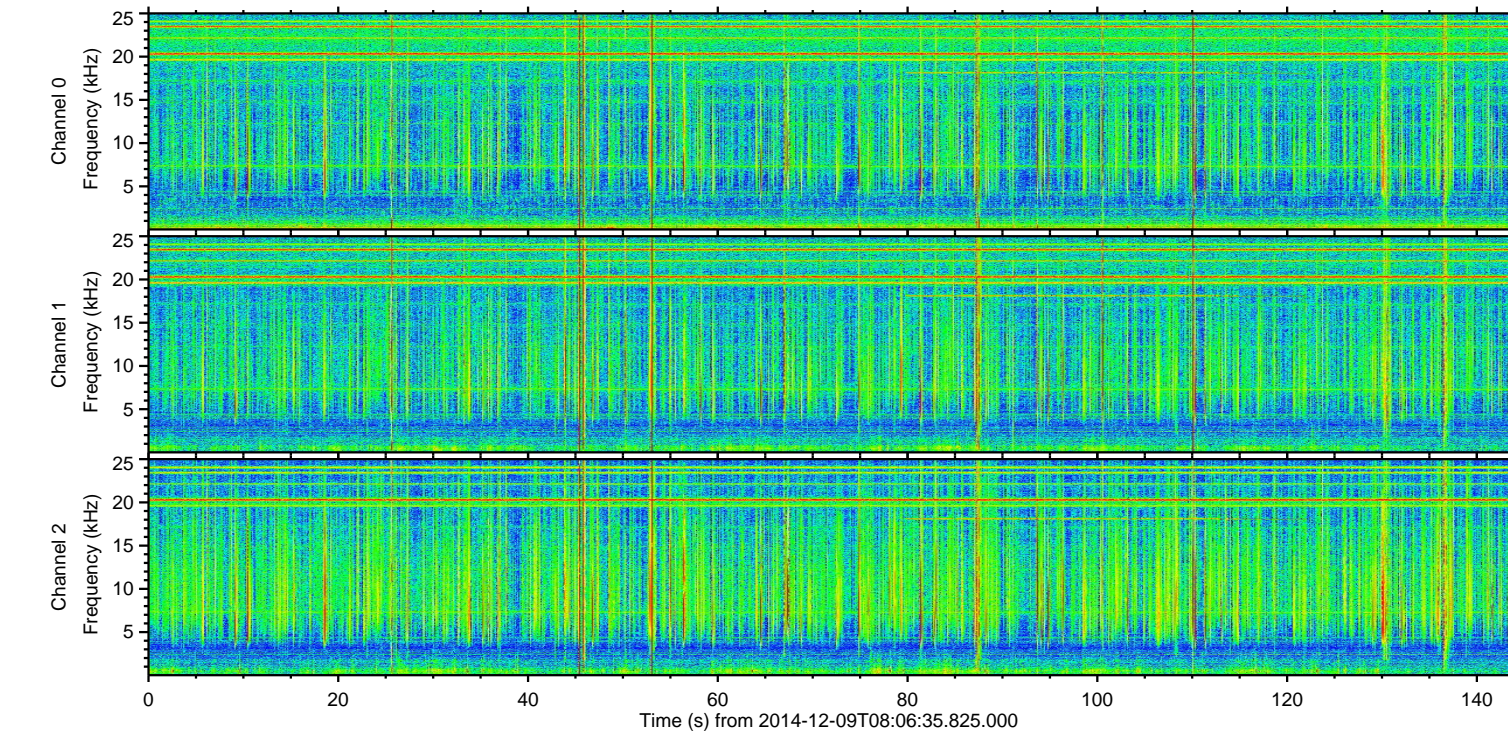
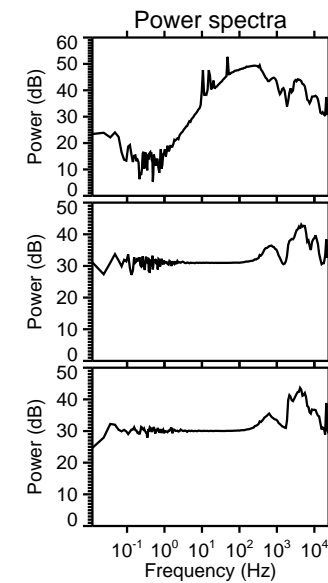
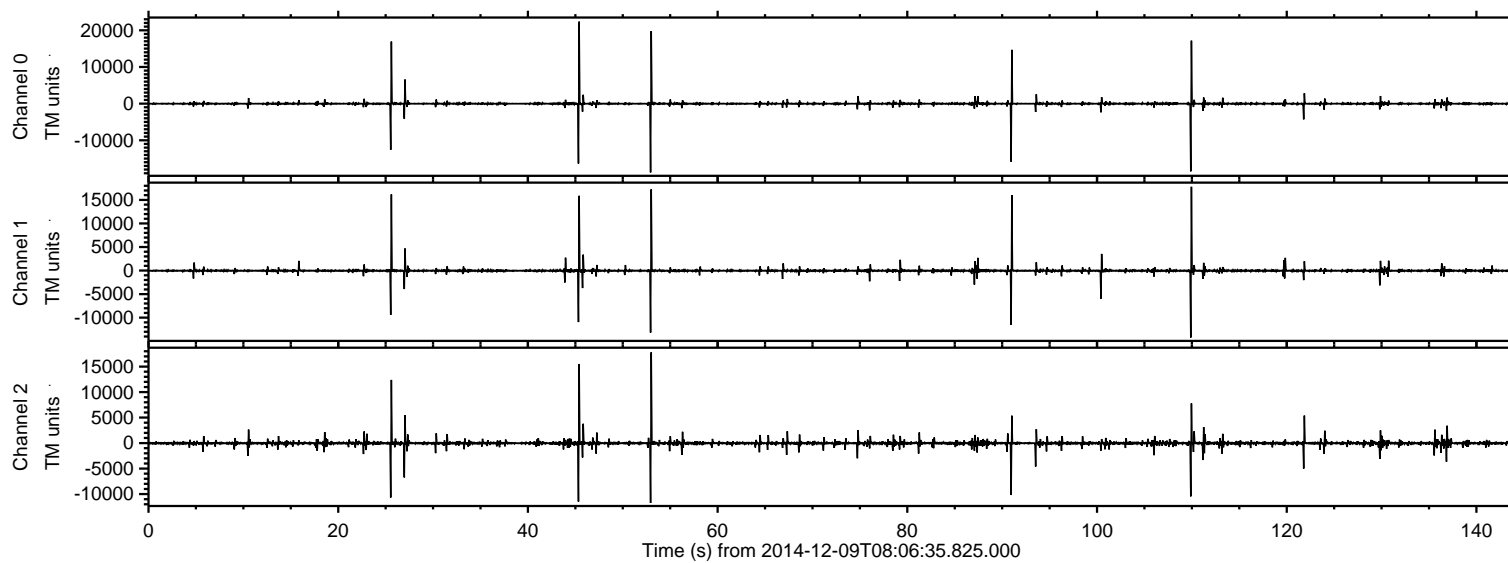


ELMAVAN 3D WAVEFORMS (Measured data sampled at 50 kHz) 49809 packets of 144 samples from 2014-12-09T08:06:35.825.000.

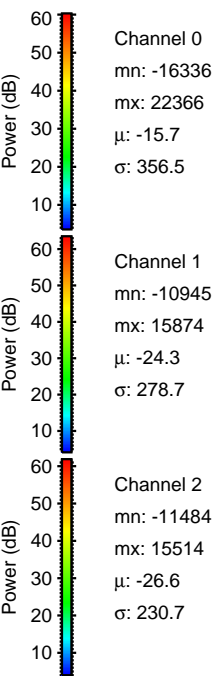
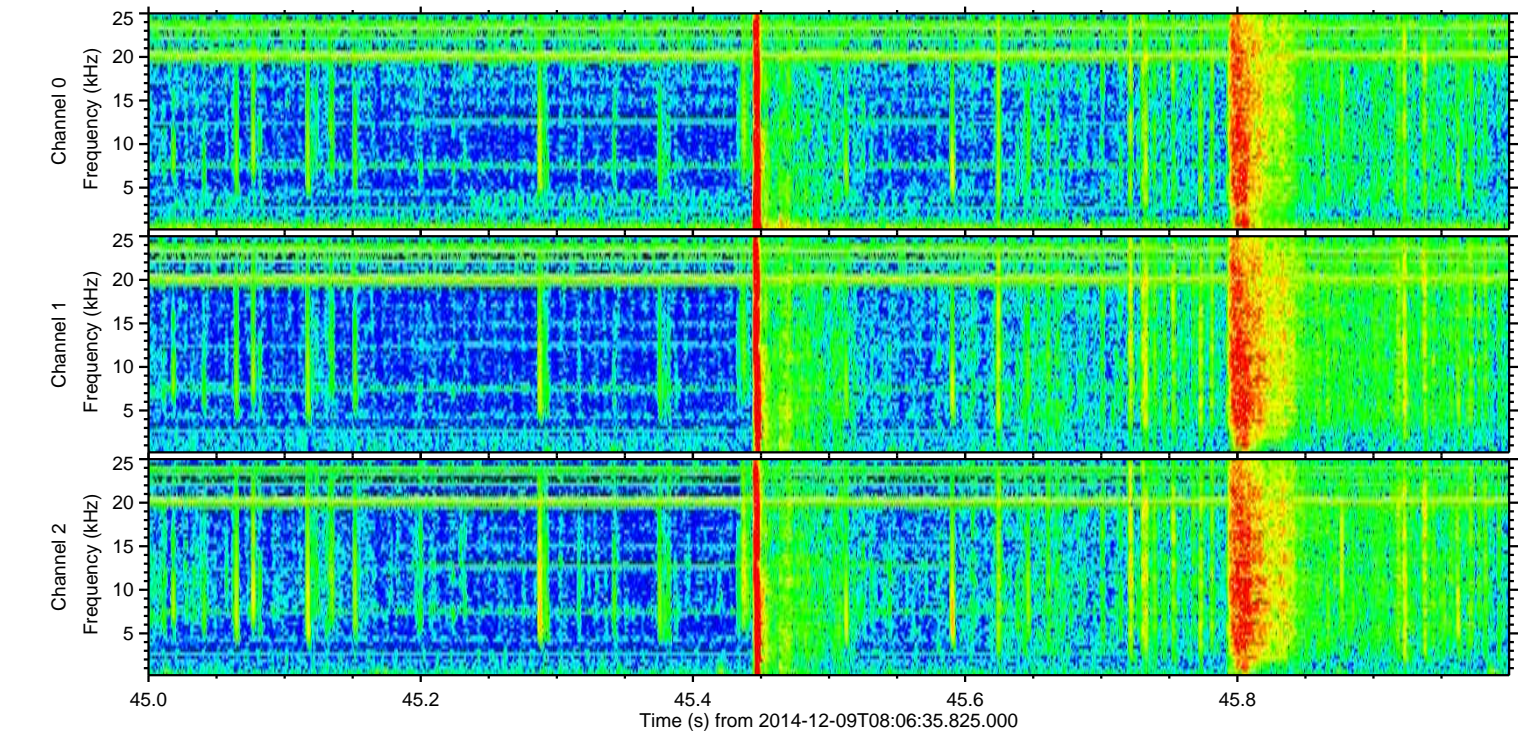
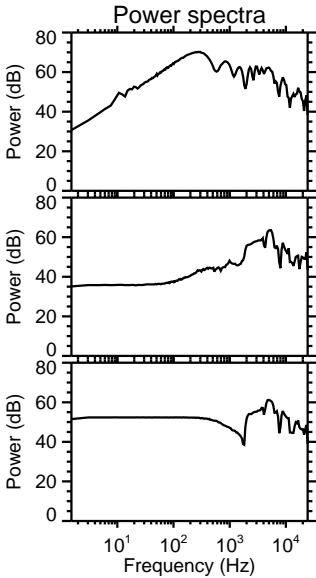
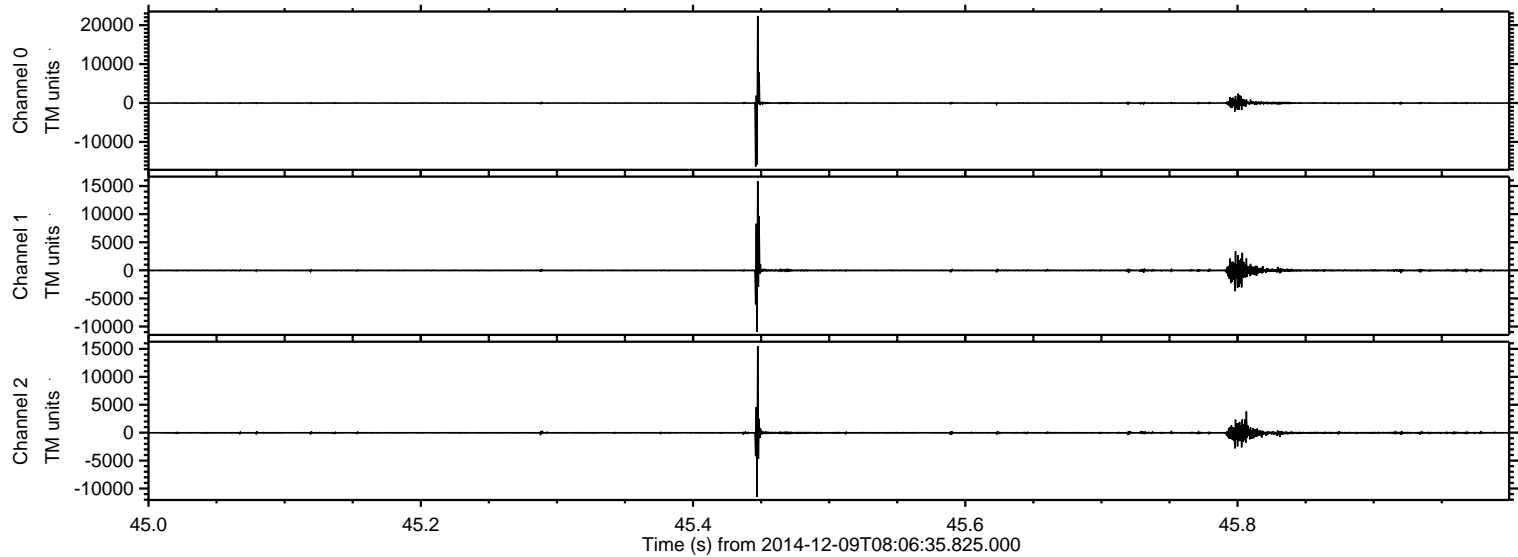
Processed Wed Dec 10 09:30:41 2014 by ELM ver.2012-10-06 from 001\_\_elm20141209\_080634\_\_dat00.bin





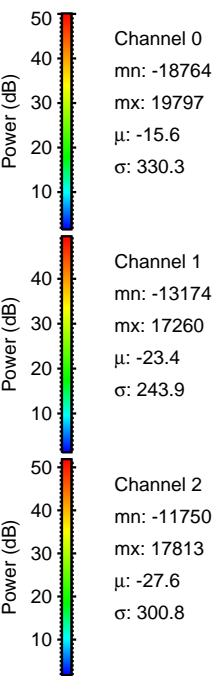
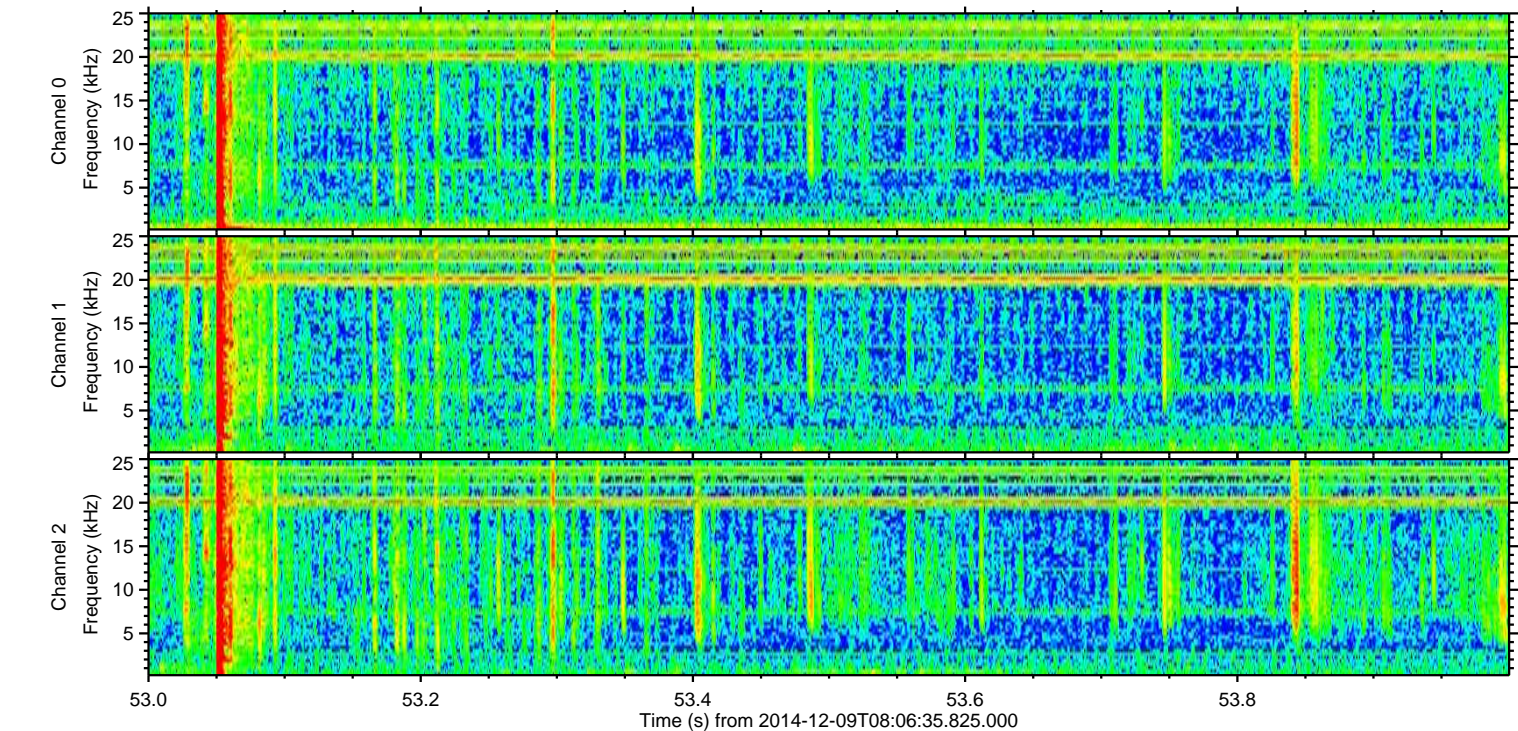
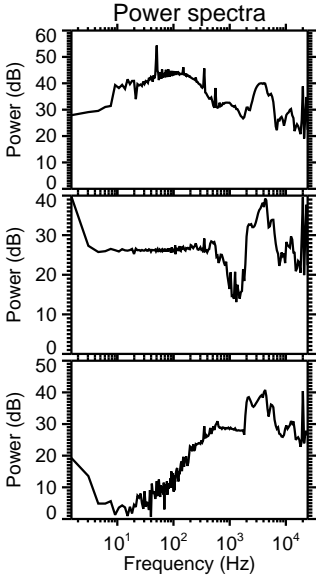
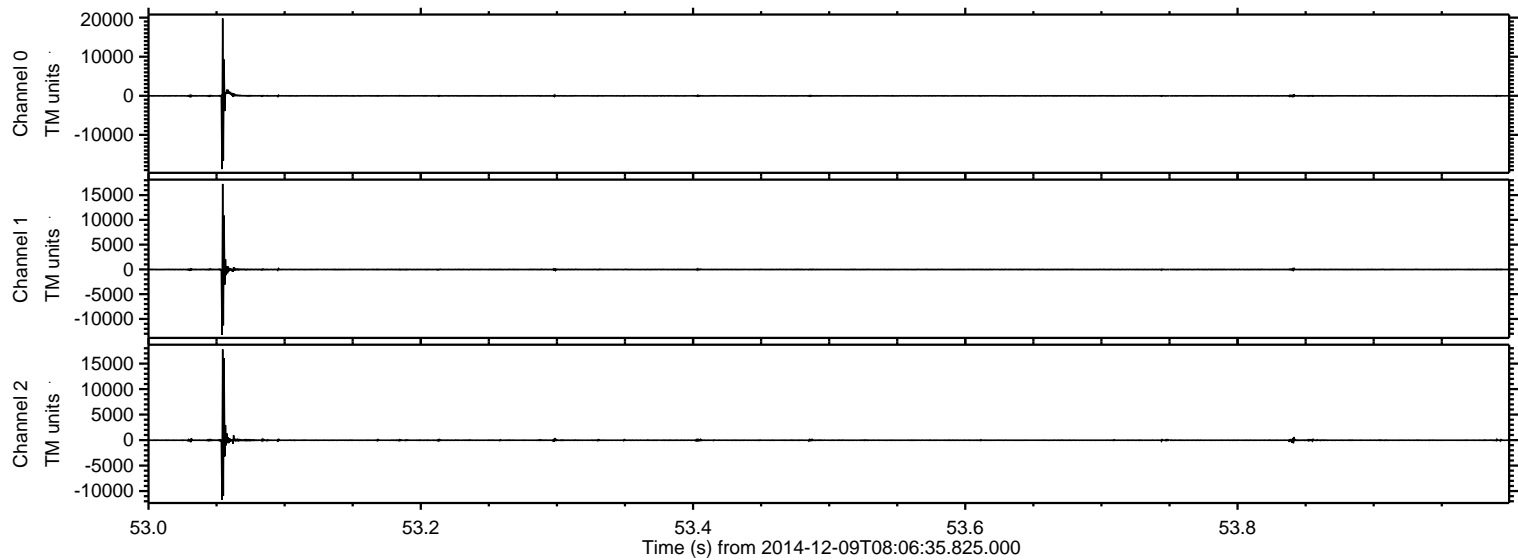
ELMAVAN 3D WAVEFORMS (Measured data sampled at 50 kHz) 49809 packets of 144 samples from 2014-12-09T08:06:35.825.000. Part 46/144

Processed Wed Dec 10 09:30:53 2014 by ELM ver.2012-10-06 from 001\_\_elm20141209\_080634\_\_dat00.bin





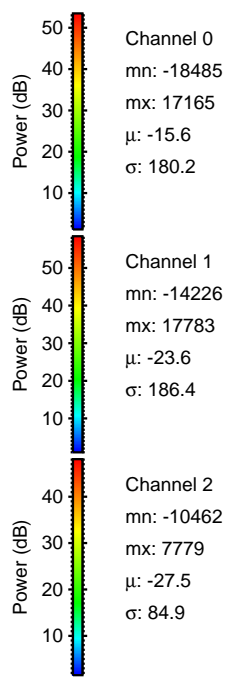
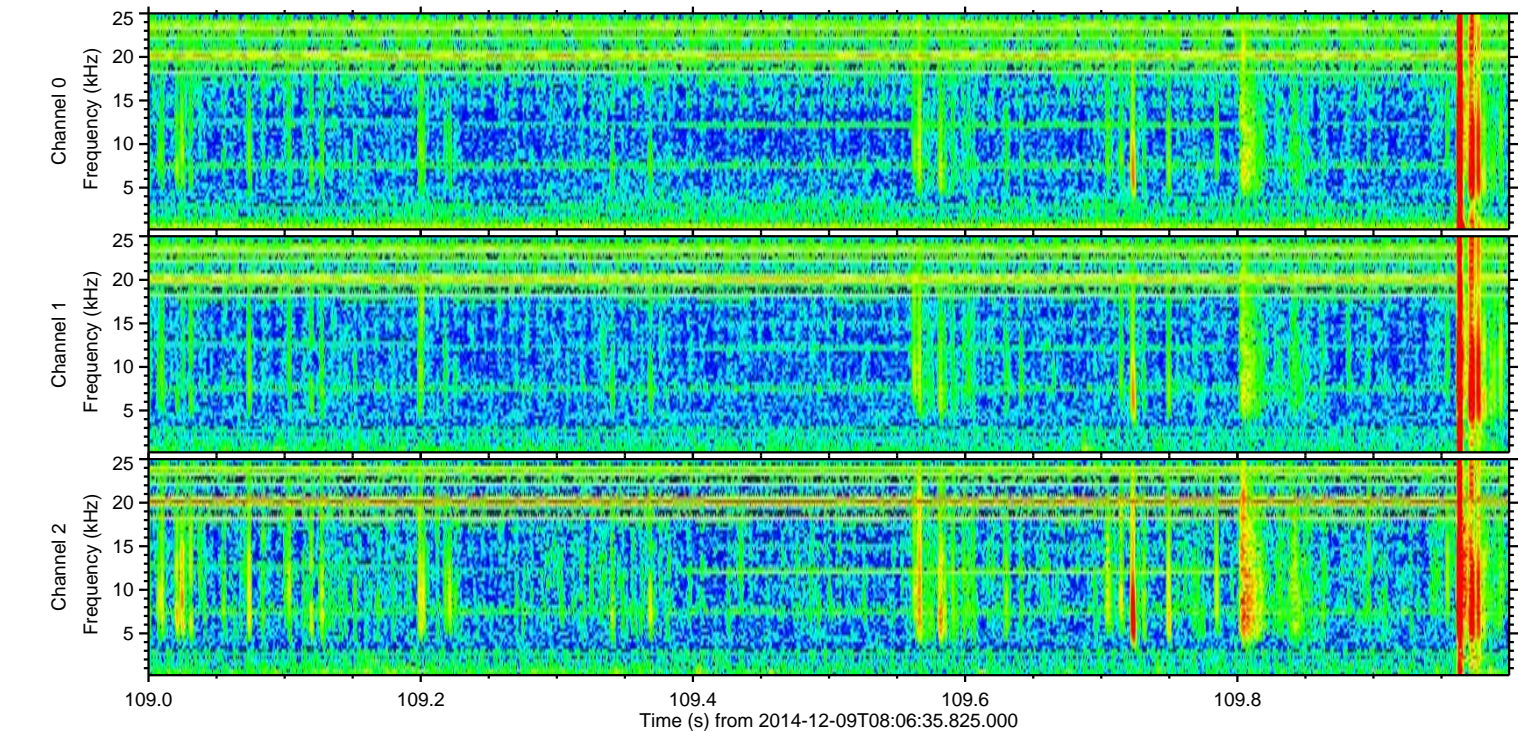
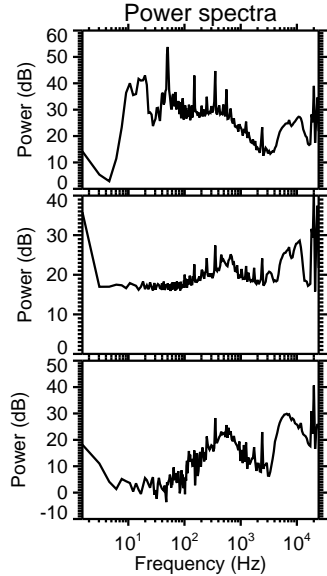
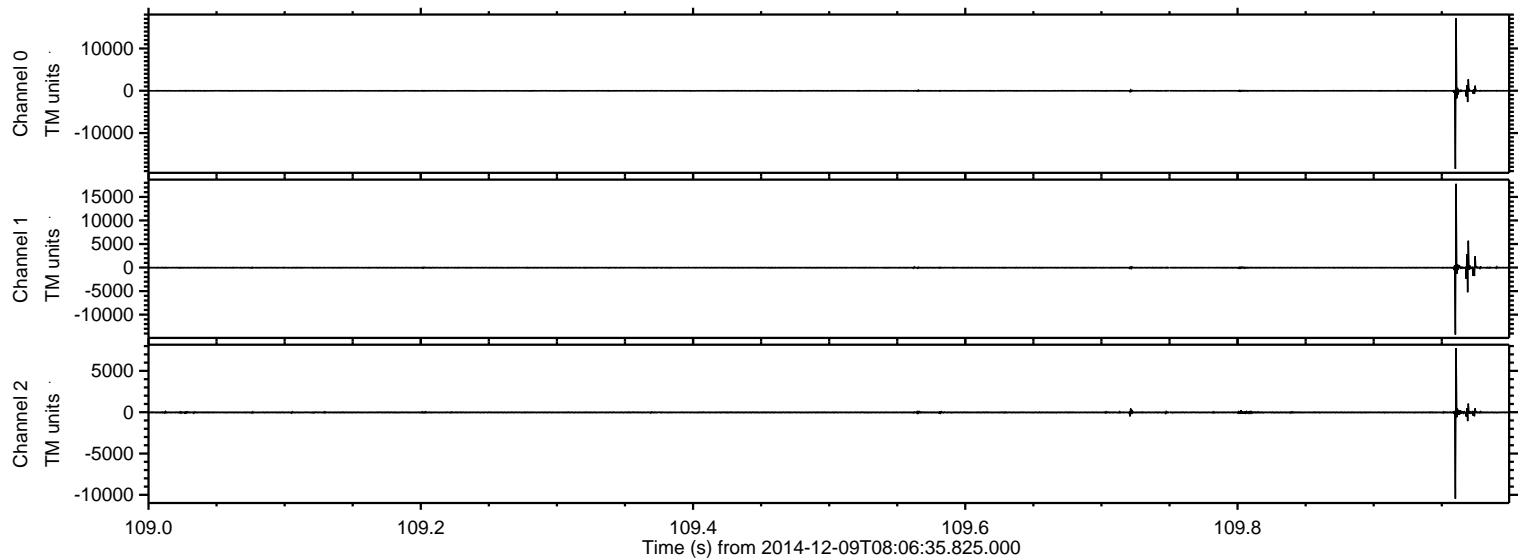
Processed Wed Dec 10 09:30:54 2014 by ELM ver.2012-10-06 from 001\_\_elm20141209\_080634\_\_dat00.bin





ELMAVAN 3D WAVEFORMS (Measured data sampled at 50 kHz) 49809 packets of 144 samples from 2014-12-09T08:06:35.825.000. Part 110/144

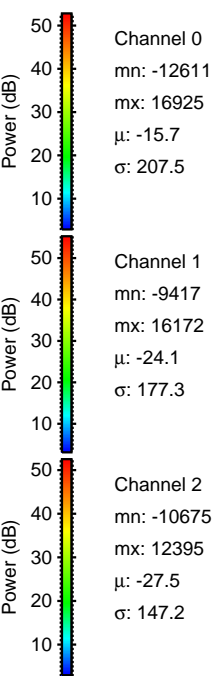
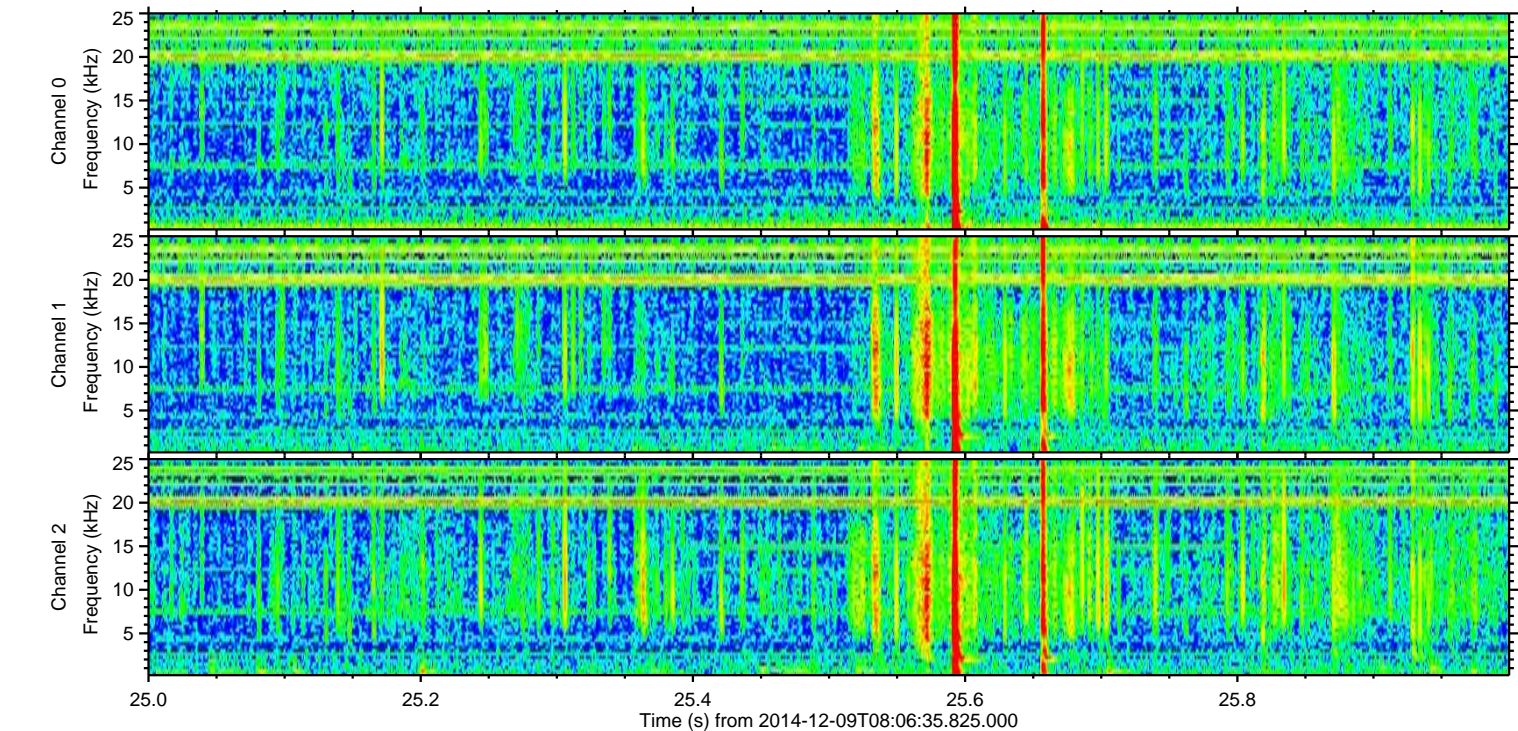
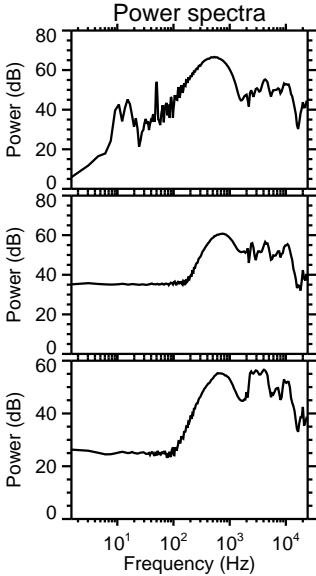
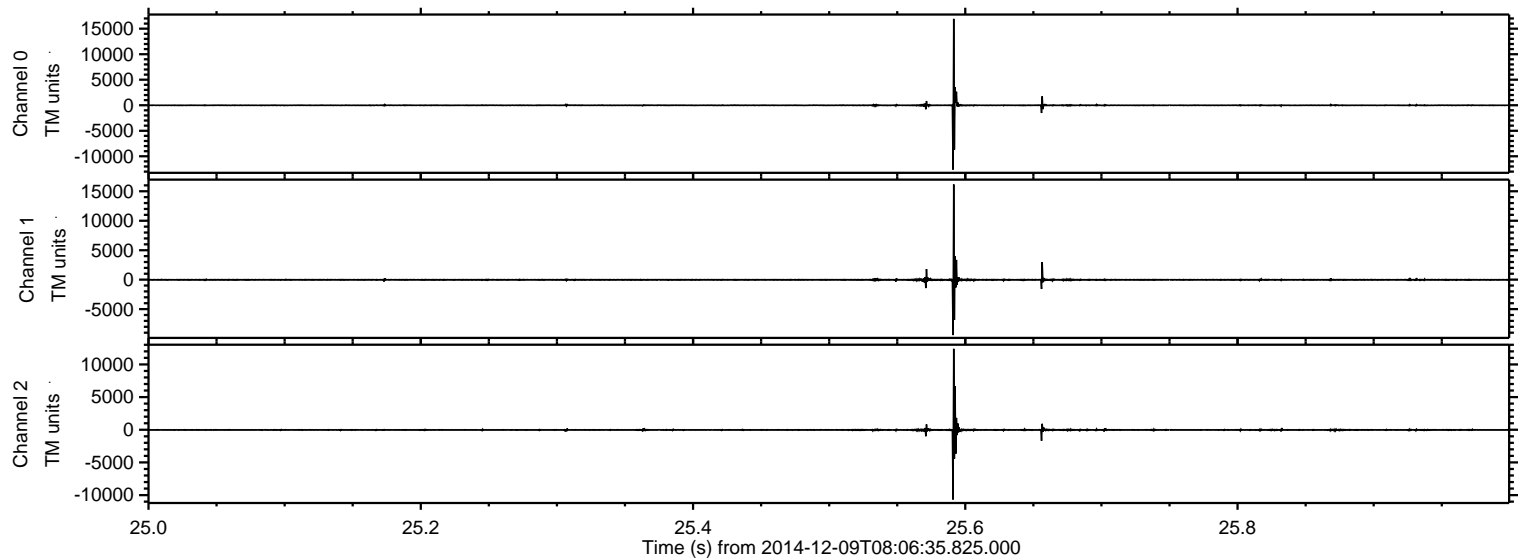
Processed Wed Dec 10 09:30:55 2014 by ELM ver.2012-10-06 from 001\_\_elm20141209\_080634\_\_dat00.bin





ELMAVAN 3D WAVEFORMS (Measured data sampled at 50 kHz) 49809 packets of 144 samples from 2014-12-09T08:06:35.825.000. Part 26/144

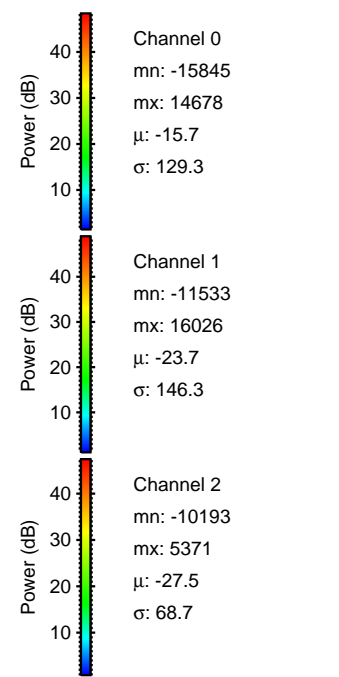
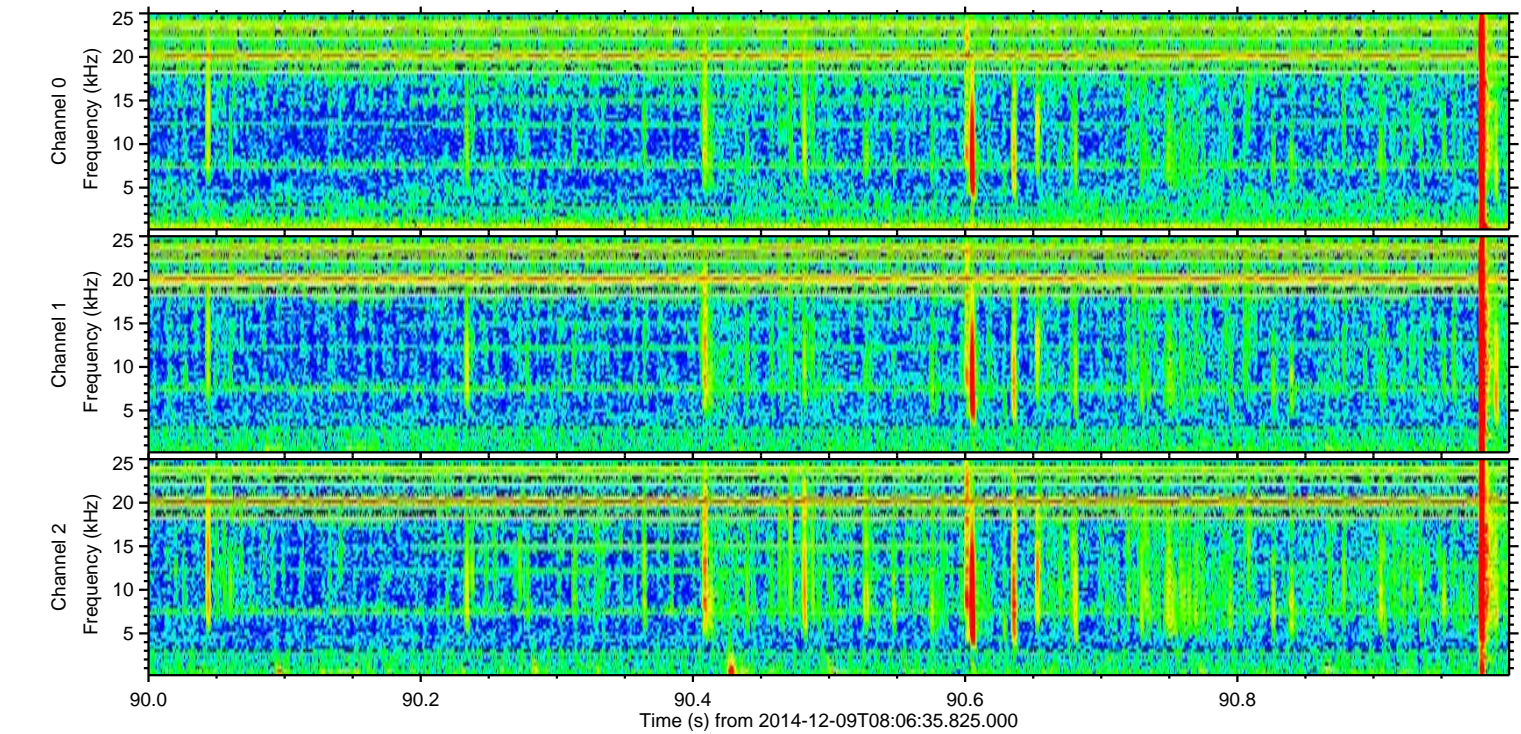
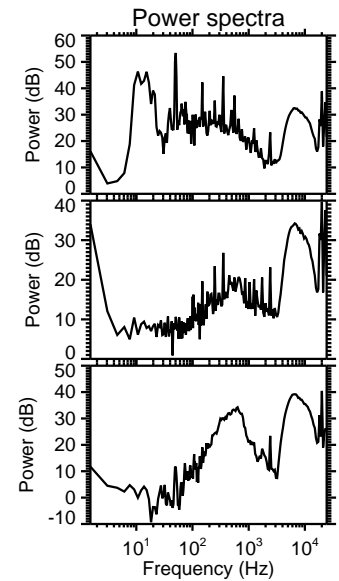
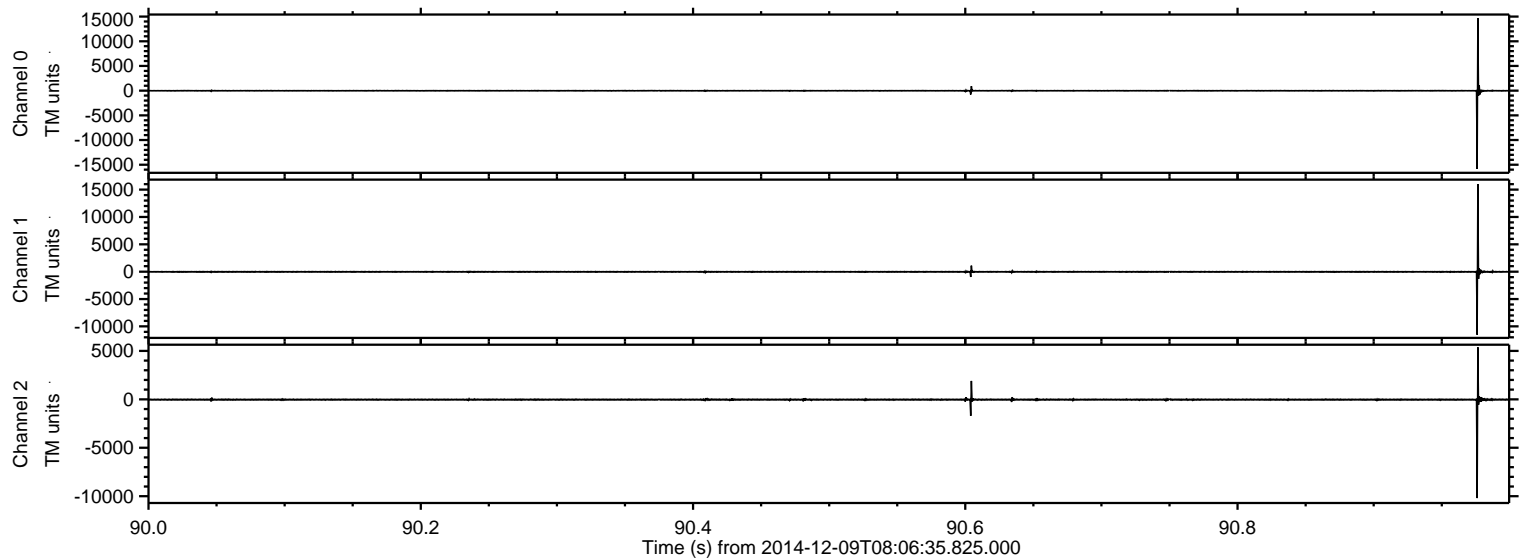
Processed Wed Dec 10 09:30:56 2014 by ELM ver.2012-10-06 from 001\_\_elm20141209\_080634\_\_dat00.bin





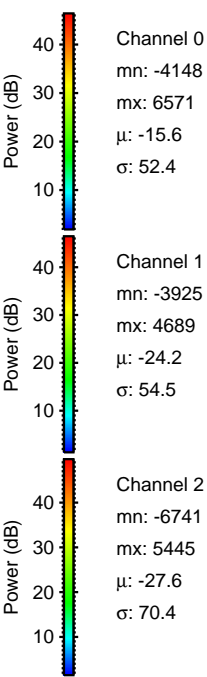
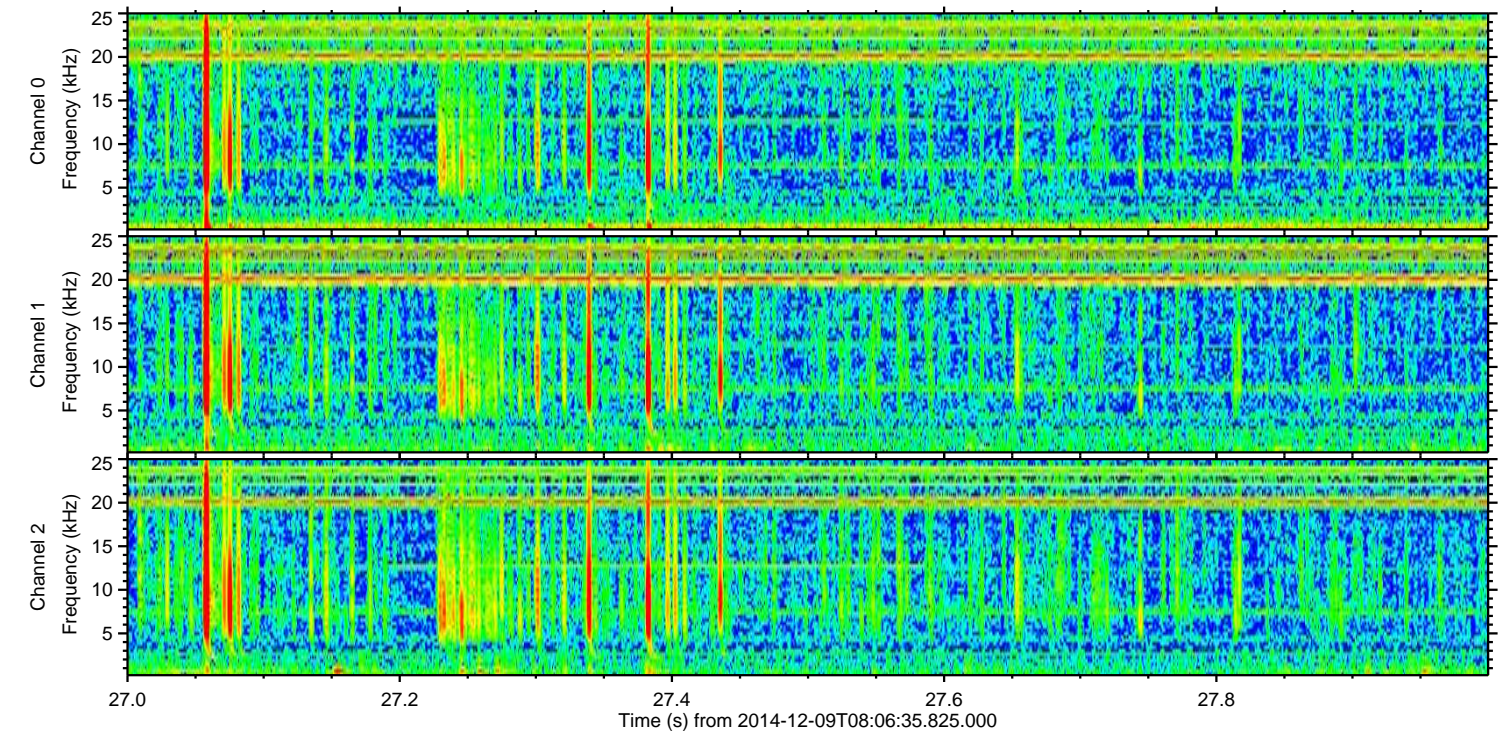
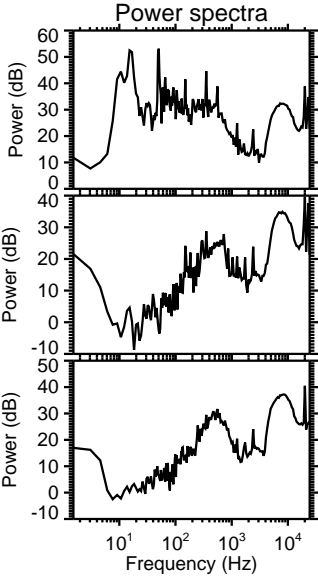
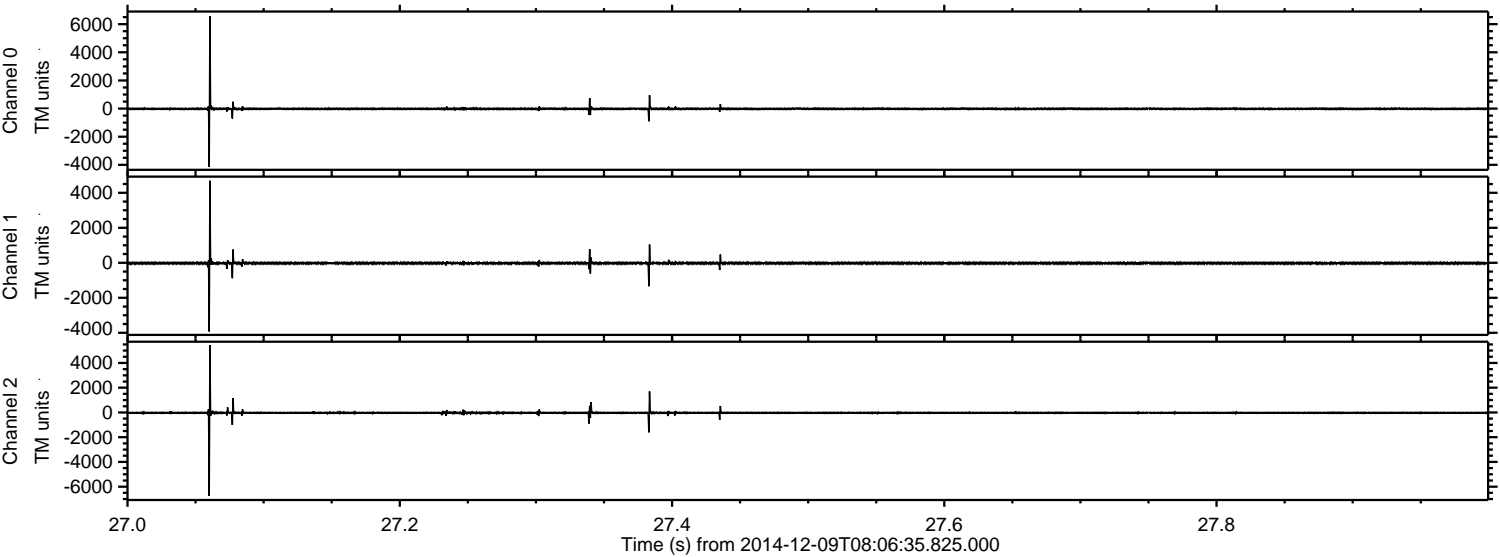
ELMAVAN 3D WAVEFORMS (Measured data sampled at 50 kHz) 49809 packets of 144 samples from 2014-12-09T08:06:35.825.000. Part 91/144

Processed Wed Dec 10 09:30:57 2014 by ELM ver.2012-10-06 from 001\_\_elm20141209\_080634\_\_dat00.bin





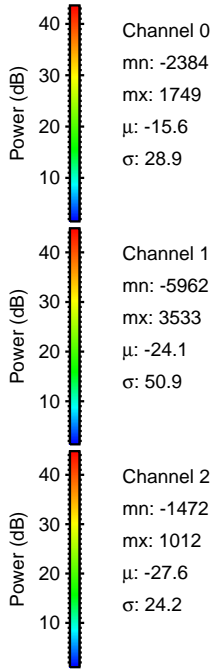
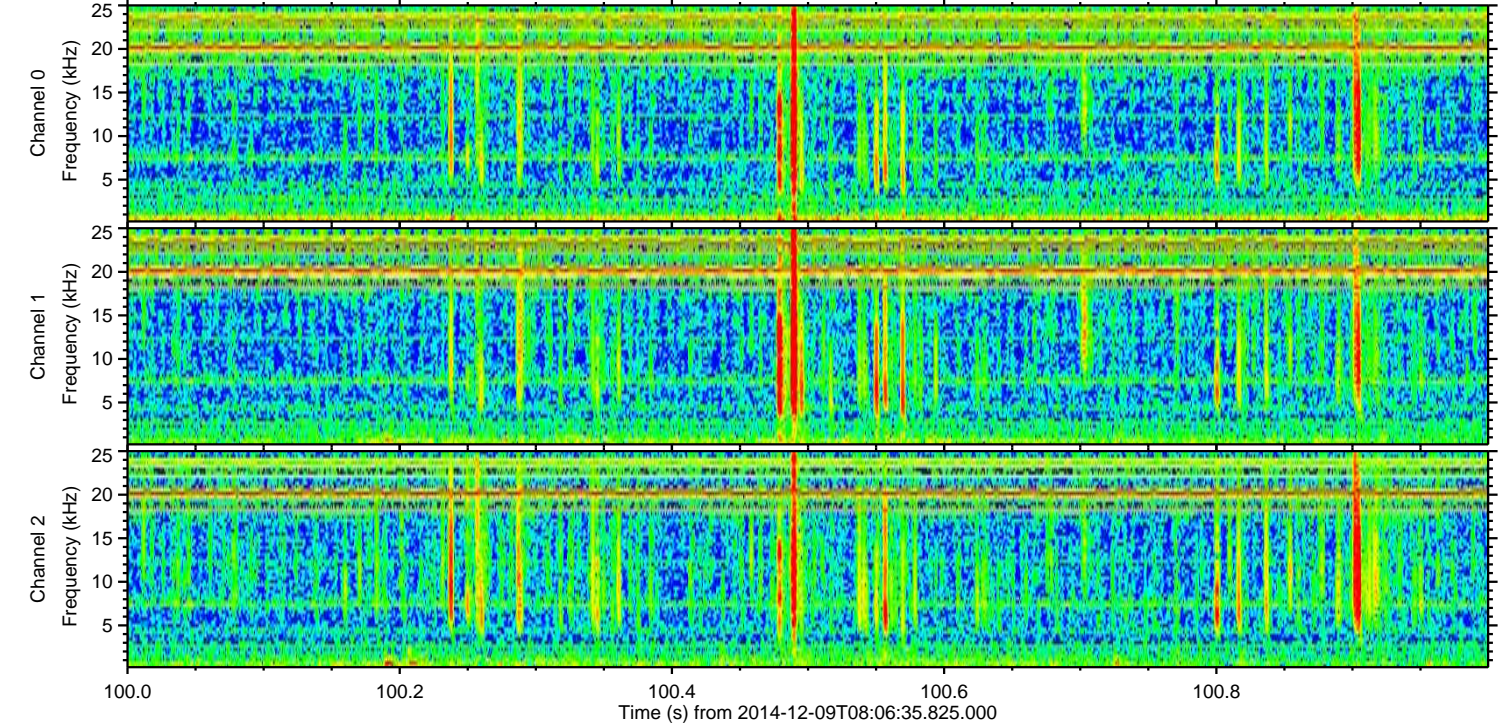
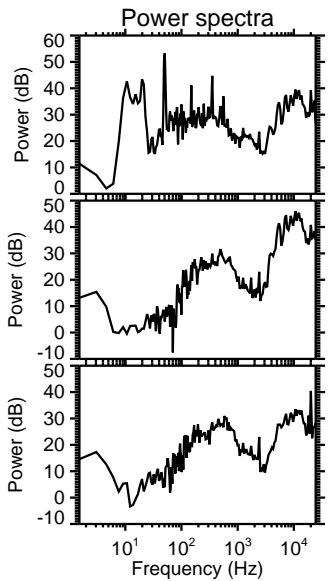
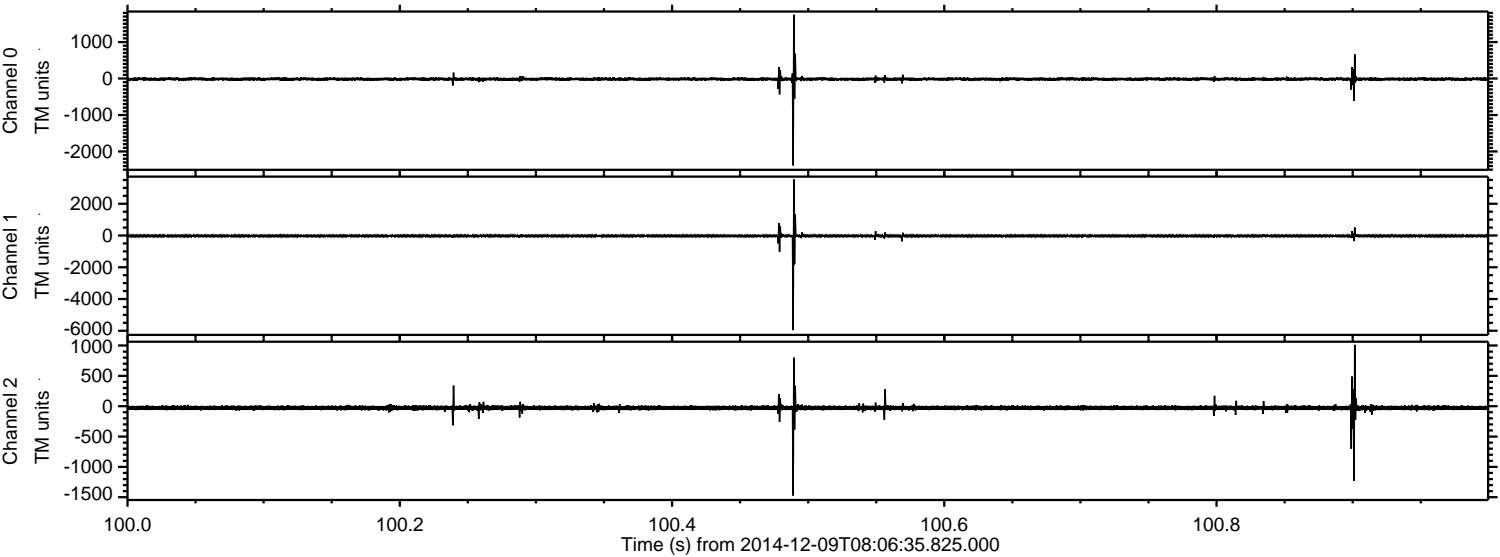
Processed Wed Dec 10 09:30:58 2014 by ELM ver.2012-10-06 from 001\_\_elm20141209\_080634\_\_dat00.bin





ELMAVAN 3D WAVEFORMS (Measured data sampled at 50 kHz) 49809 packets of 144 samples from 2014-12-09T08:06:35.825.000. Part 101/144

Processed Wed Dec 10 09:30:59 2014 by ELM ver.2012-10-06 from 001\_\_elm20141209\_080634\_\_dat00.bin



Channel 0  
mn: -2384  
mx: 1749  
 $\mu$ : -15.6  
 $\sigma$ : 28.9

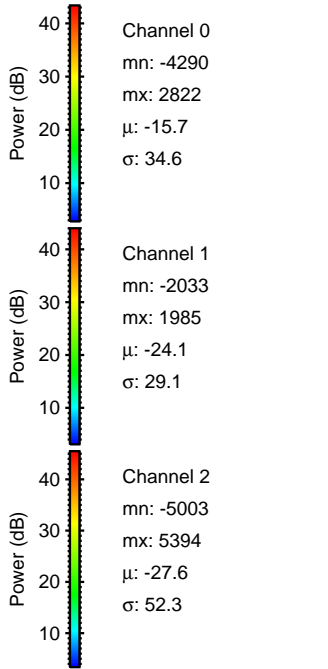
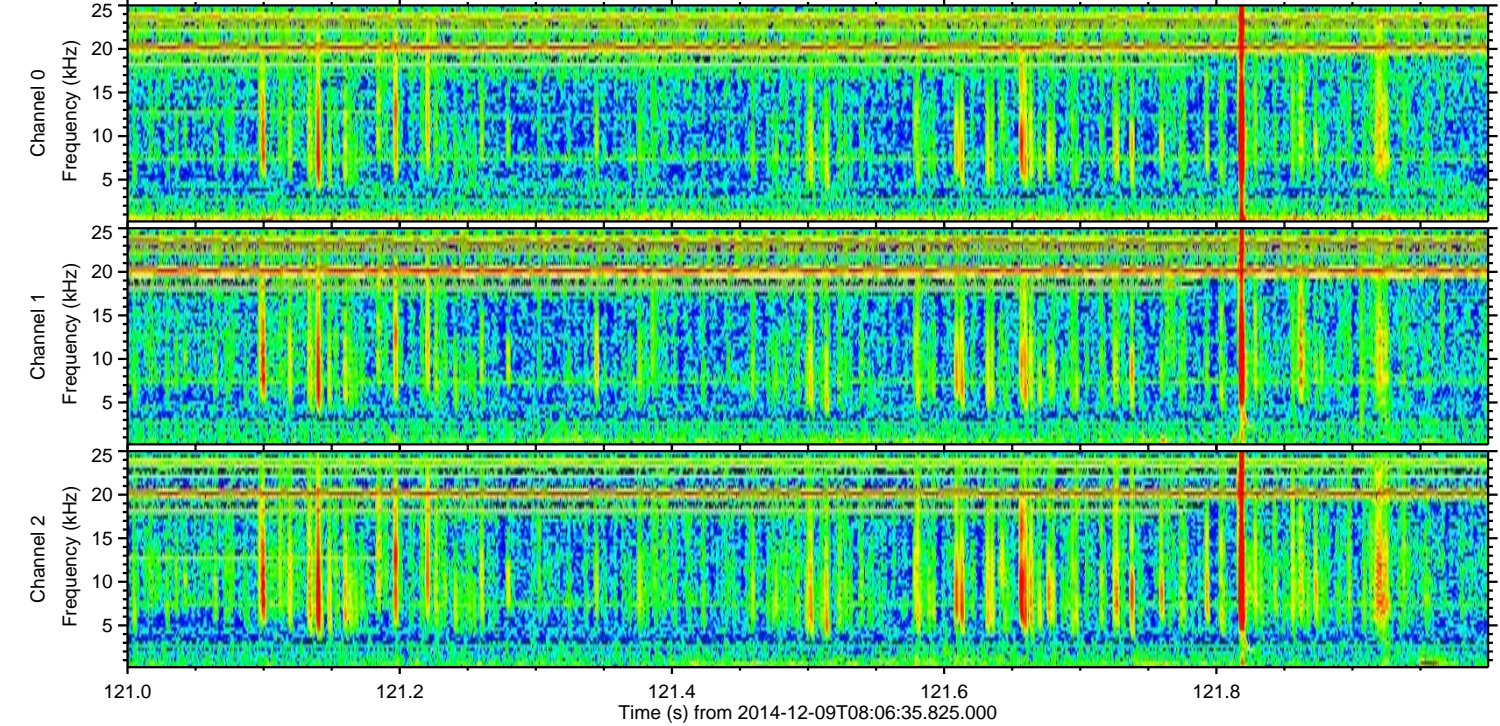
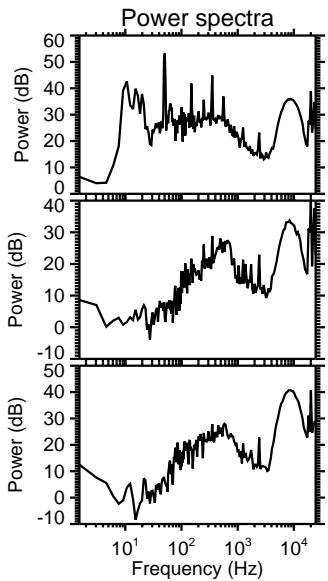
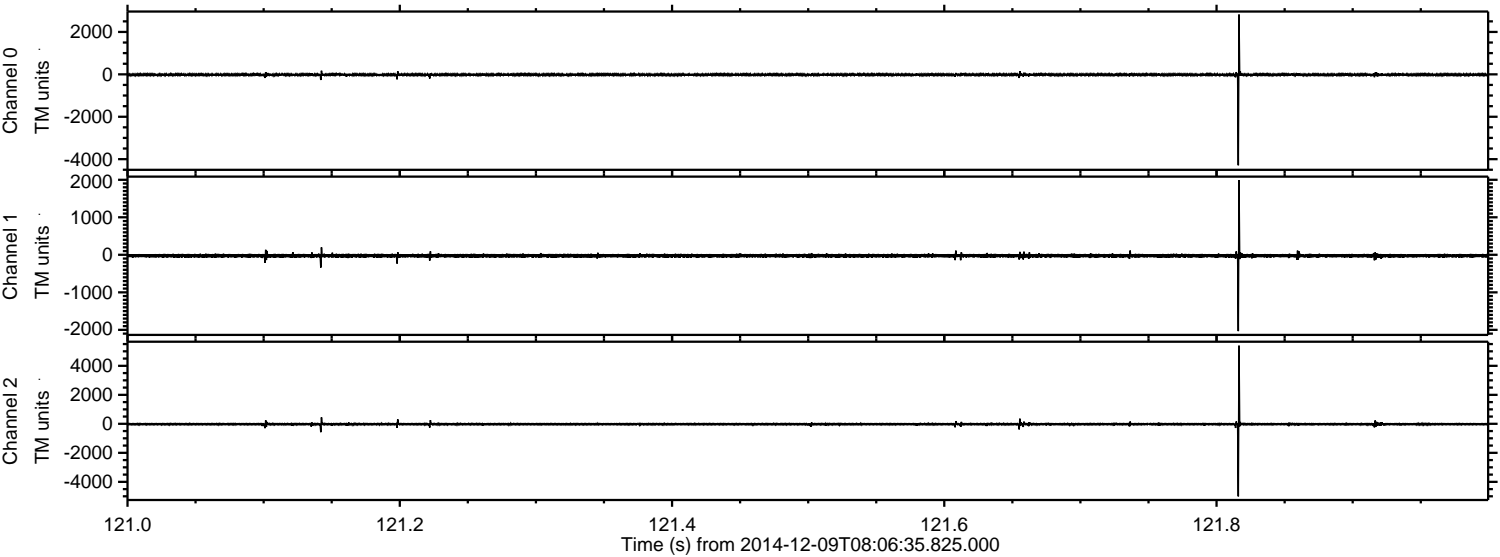
Channel 1  
mn: -5962  
mx: 3533  
 $\mu$ : -24.1  
 $\sigma$ : 50.9

Channel 2  
mn: -1472  
mx: 1012  
 $\mu$ : -27.6  
 $\sigma$ : 24.2



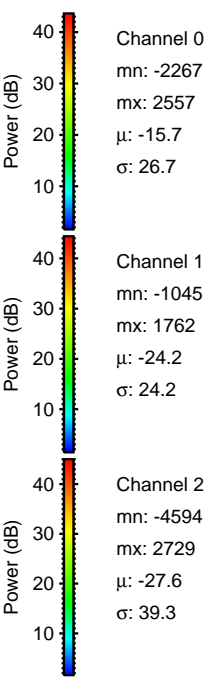
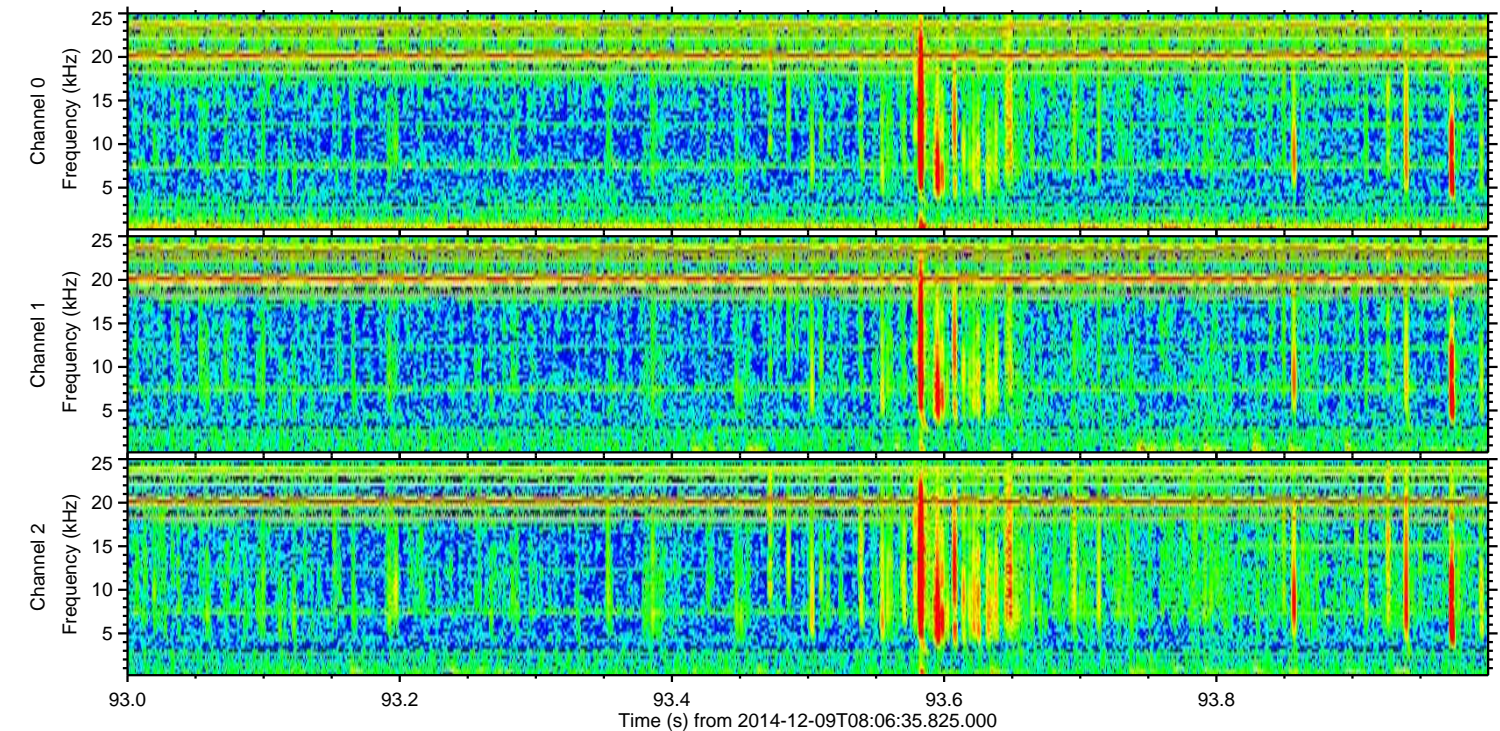
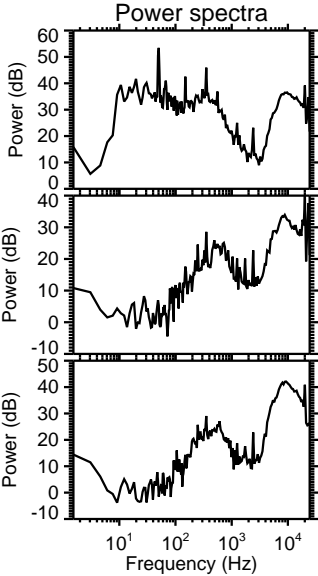
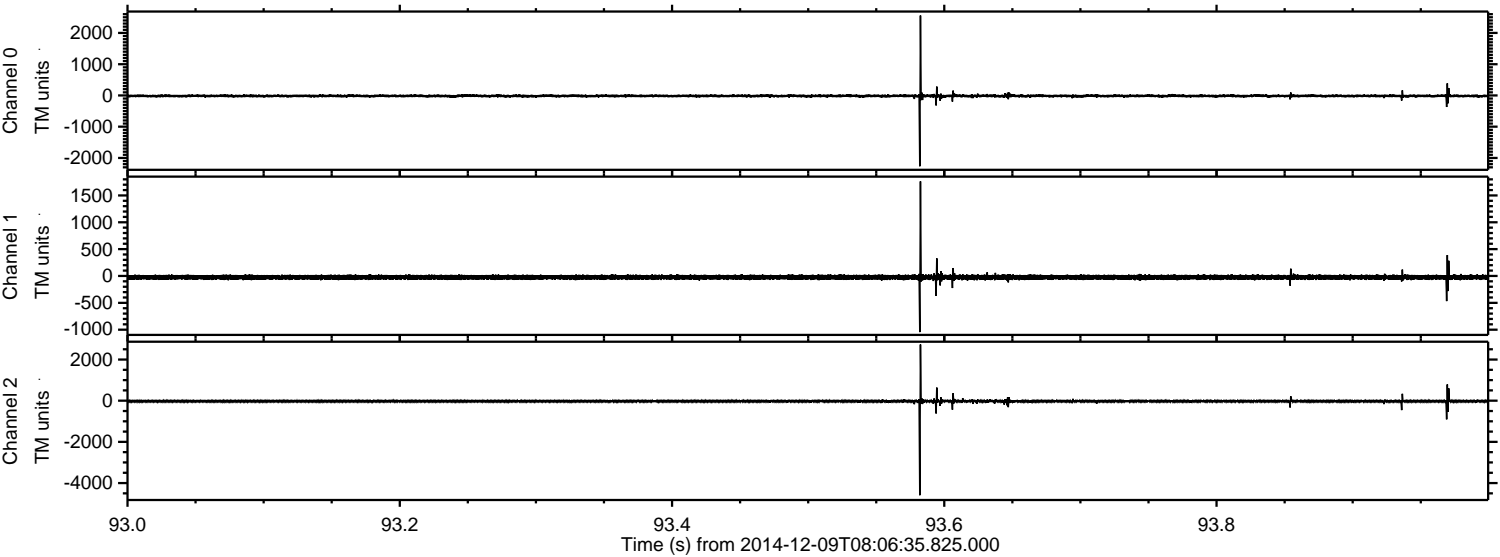
ELMAVAN 3D WAVEFORMS (Measured data sampled at 50 kHz) 49809 packets of 144 samples from 2014-12-09T08:06:35.825.000. Part 122/144

Processed Wed Dec 10 09:31:00 2014 by ELM ver.2012-10-06 from 001\_\_elm20141209\_080634\_\_dat00.bin





Processed Wed Dec 10 09:31:01 2014 by ELM ver.2012-10-06 from 001\_\_elm20141209\_080634\_\_dat00.bin



Channel 0  
mn: -2267  
mx: 2557  
 $\mu$ : -15.7  
 $\sigma$ : 26.7

Channel 1  
mn: -1045  
mx: 1762  
 $\mu$ : -24.2  
 $\sigma$ : 24.2

Channel 2  
mn: -4594  
mx: 2729  
 $\mu$ : -27.6  
 $\sigma$ : 39.3



