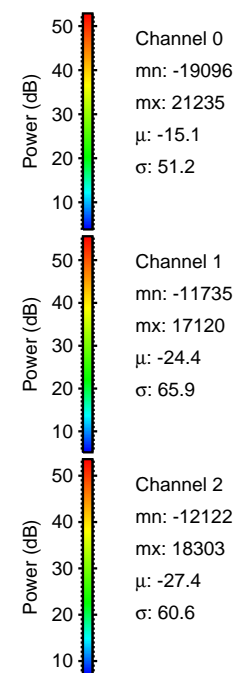
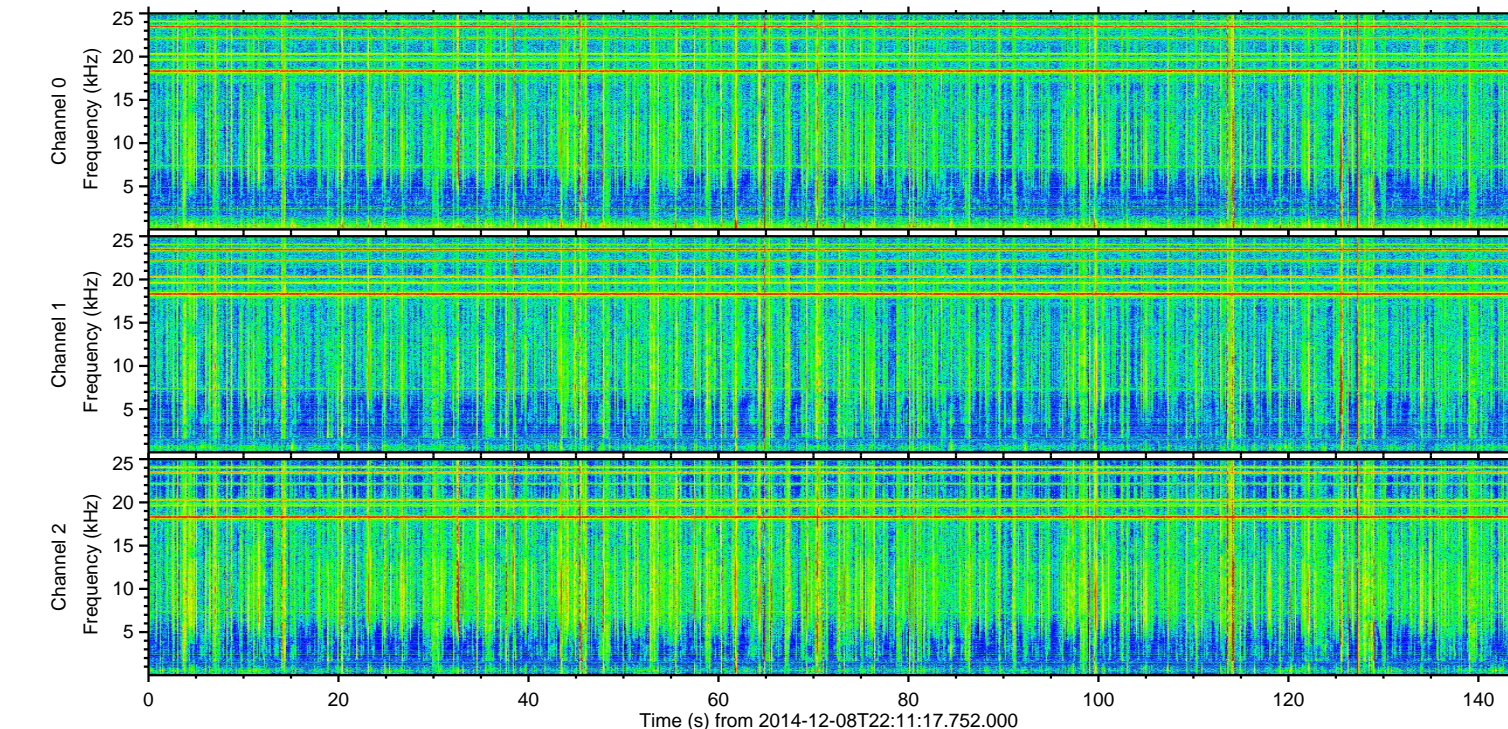
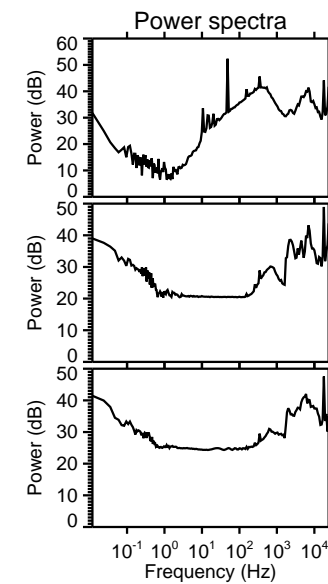
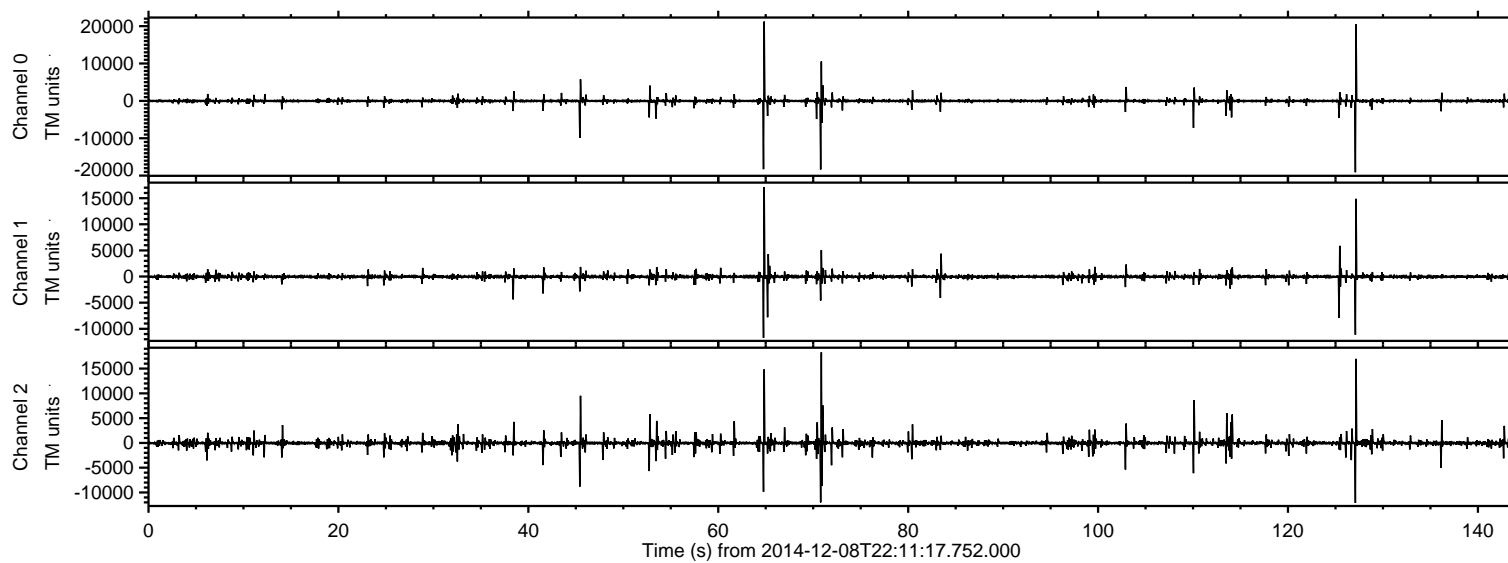
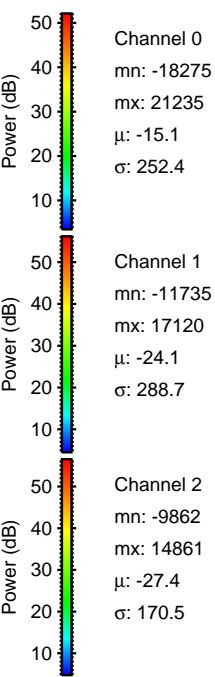
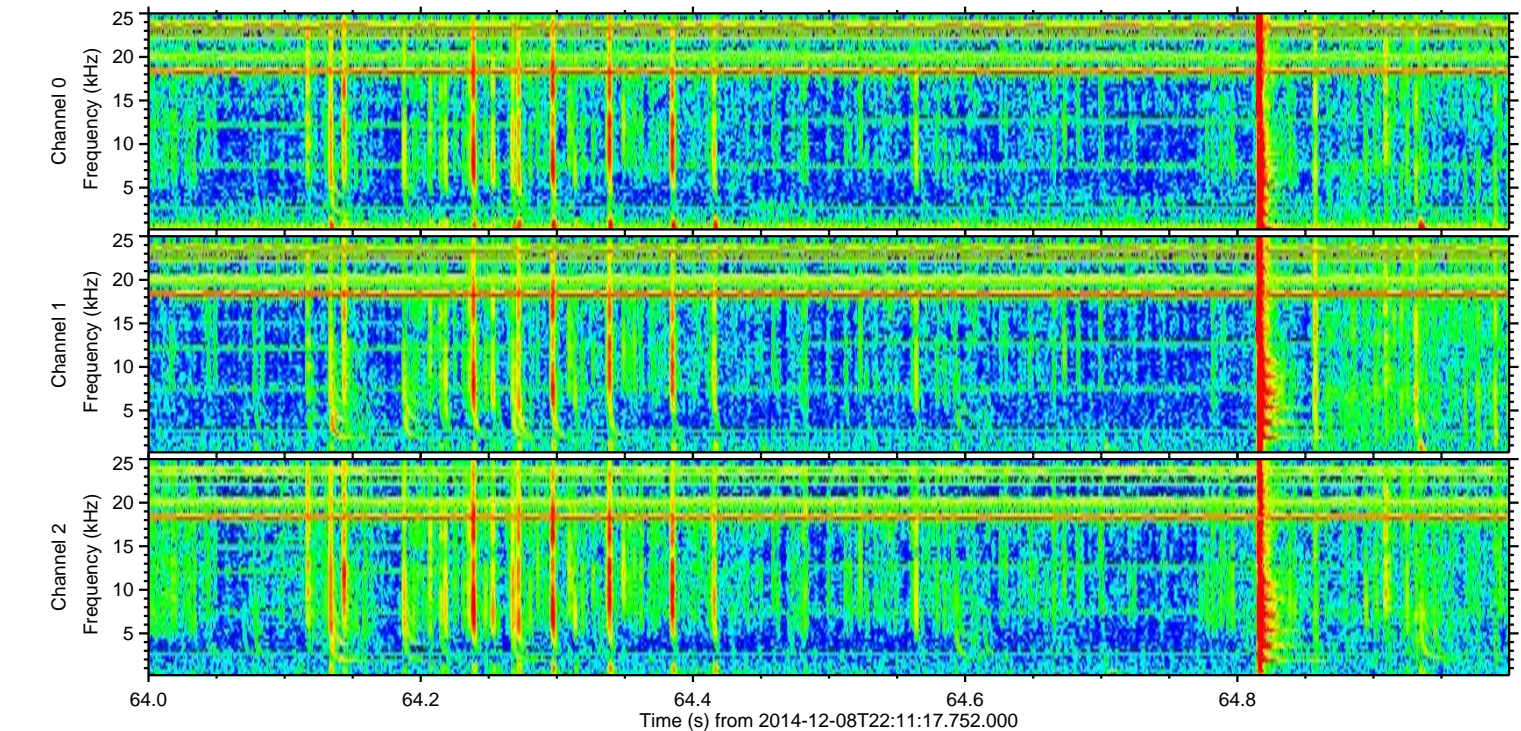
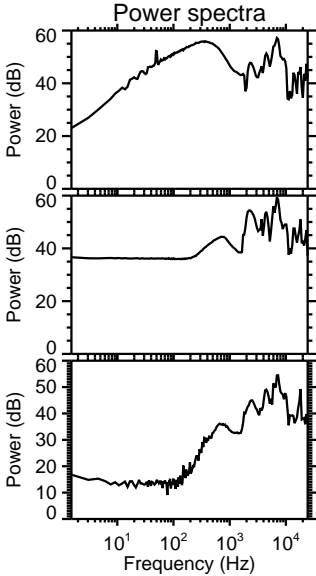
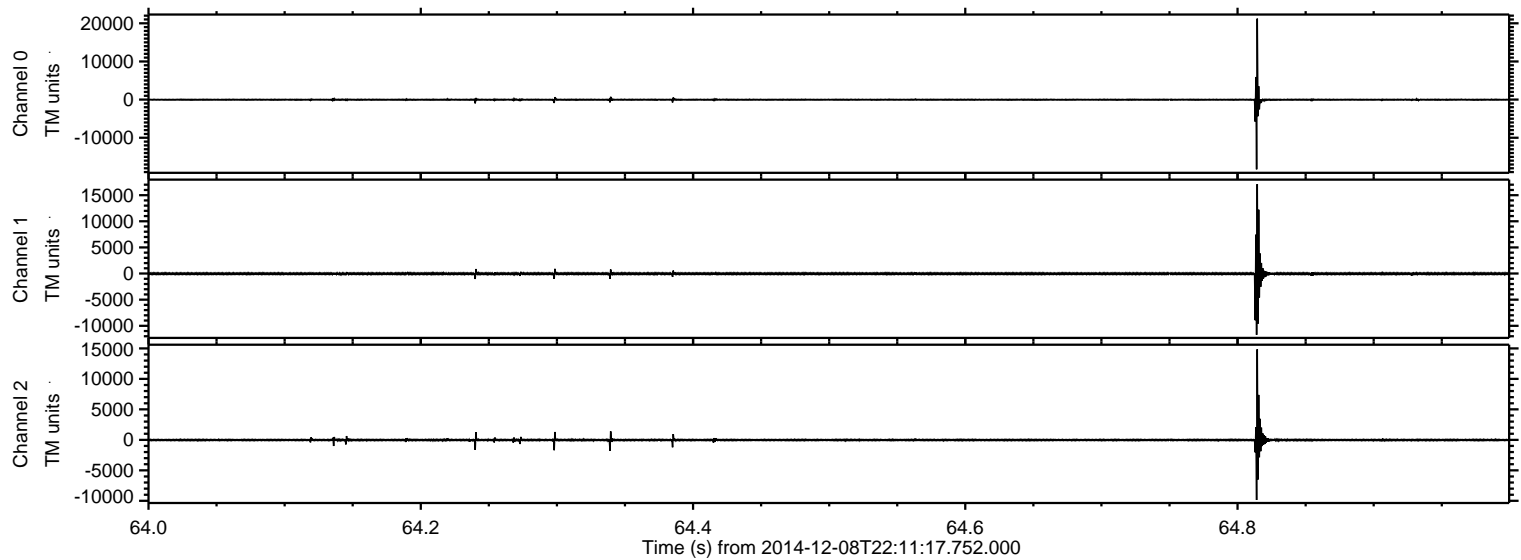


ELMAVAN 3D WAVEFORMS (Measured data sampled at 50 kHz) 49753 packets of 144 samples from 2014-12-08T22:11:17.752.000.

Processed Tue Dec 9 01:35:33 2014 by ELM ver.2012-10-06 from 001__elm20141208_221116__dat00.bin

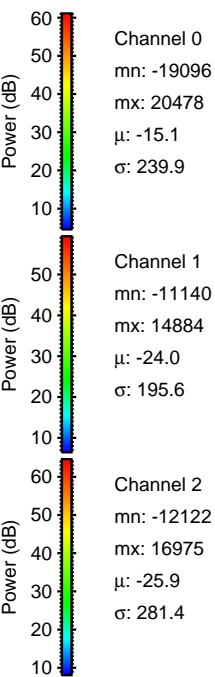
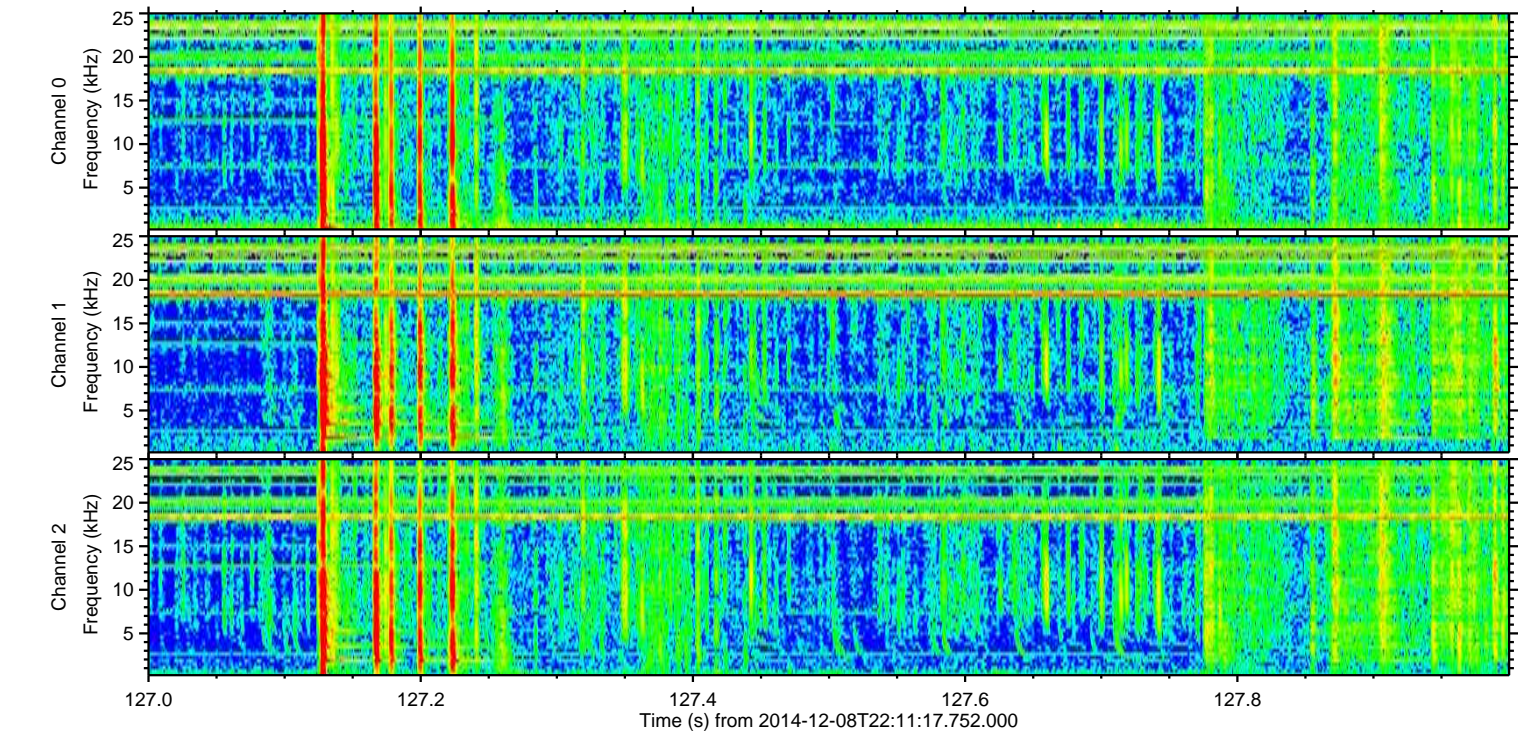
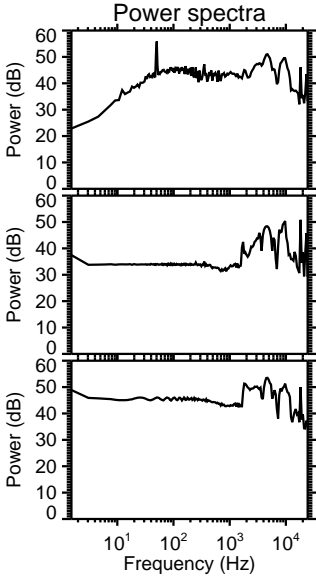
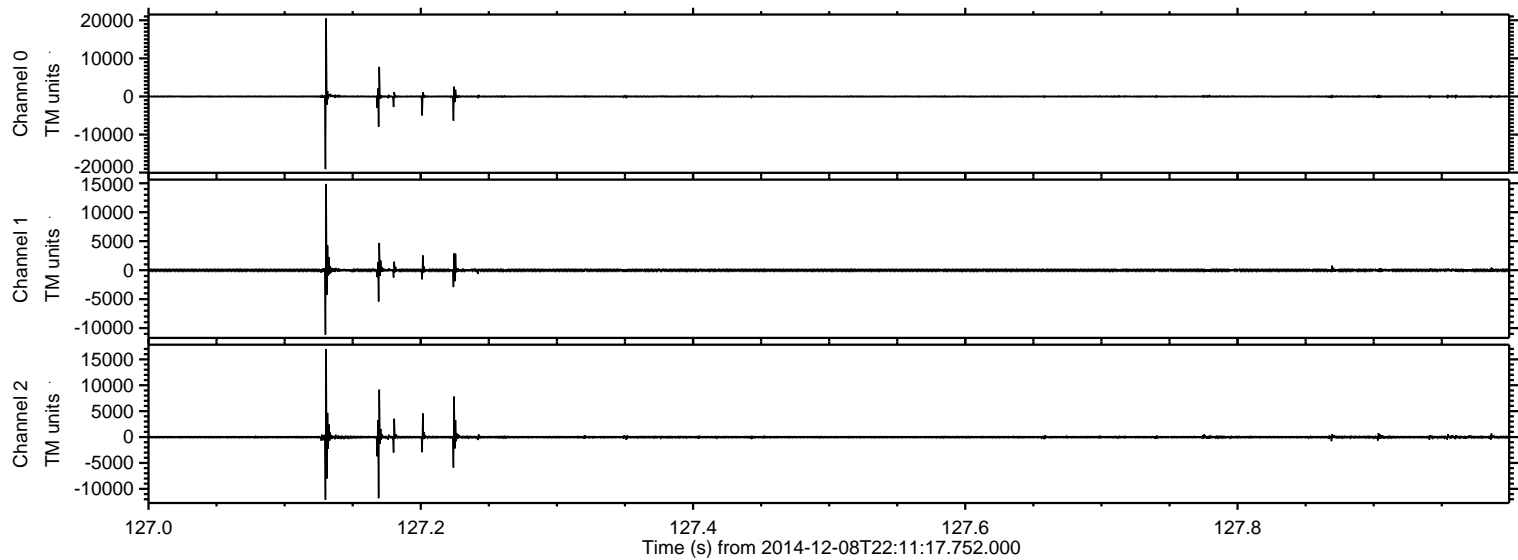


Processed Tue Dec 9 01:35:44 2014 by ELM ver.2012-10-06 from 001__elm20141208_221116__dat00.bin



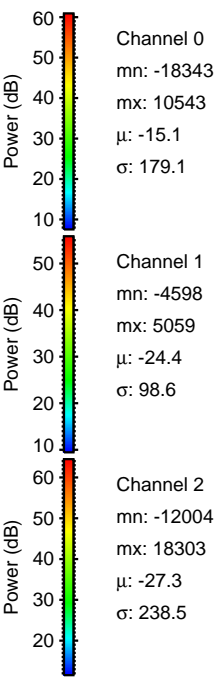
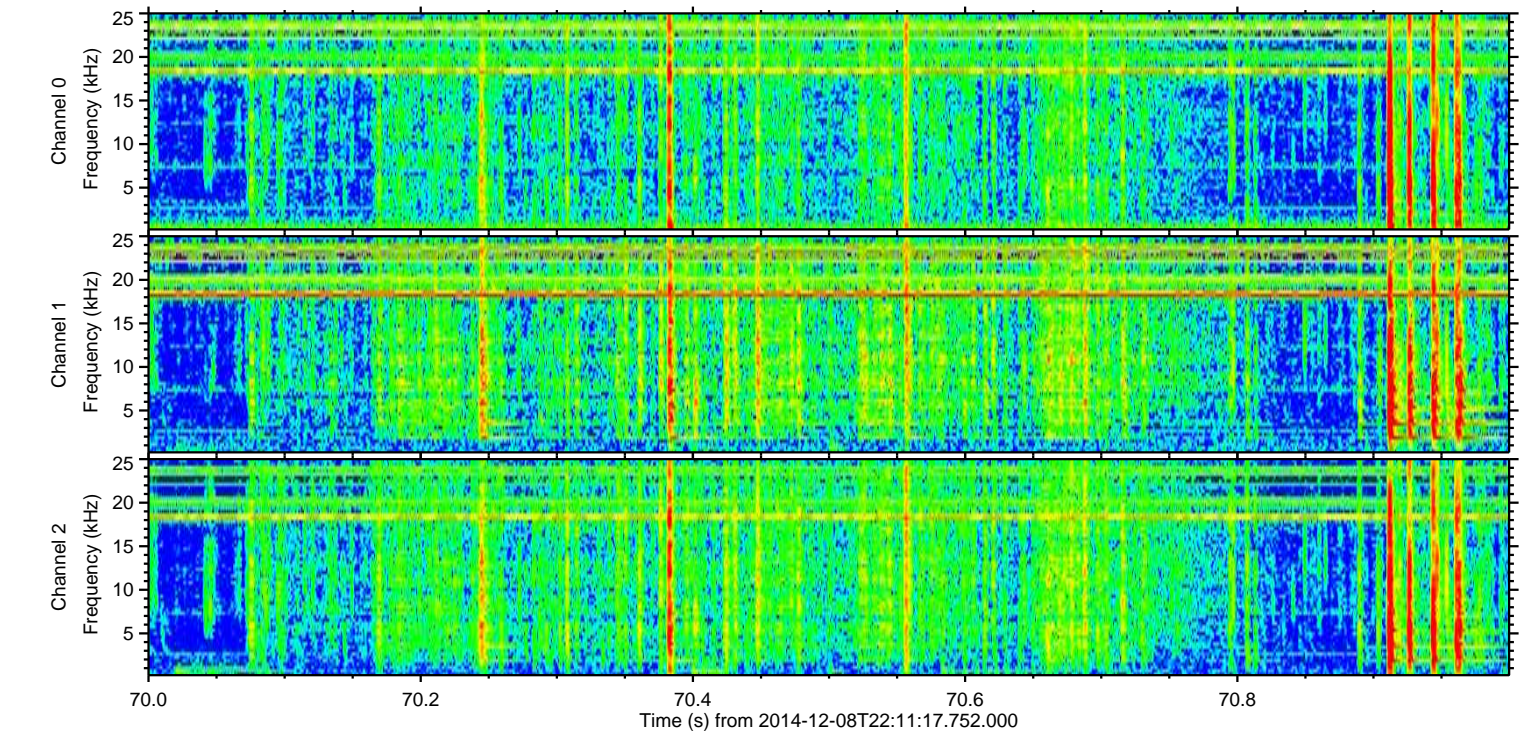
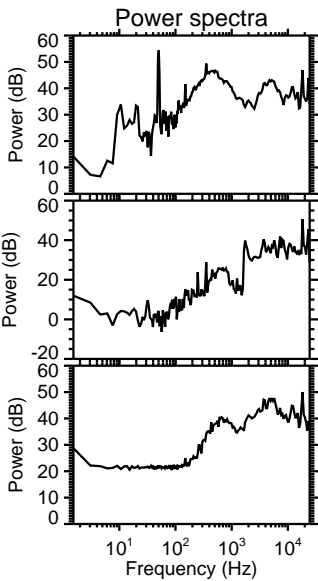
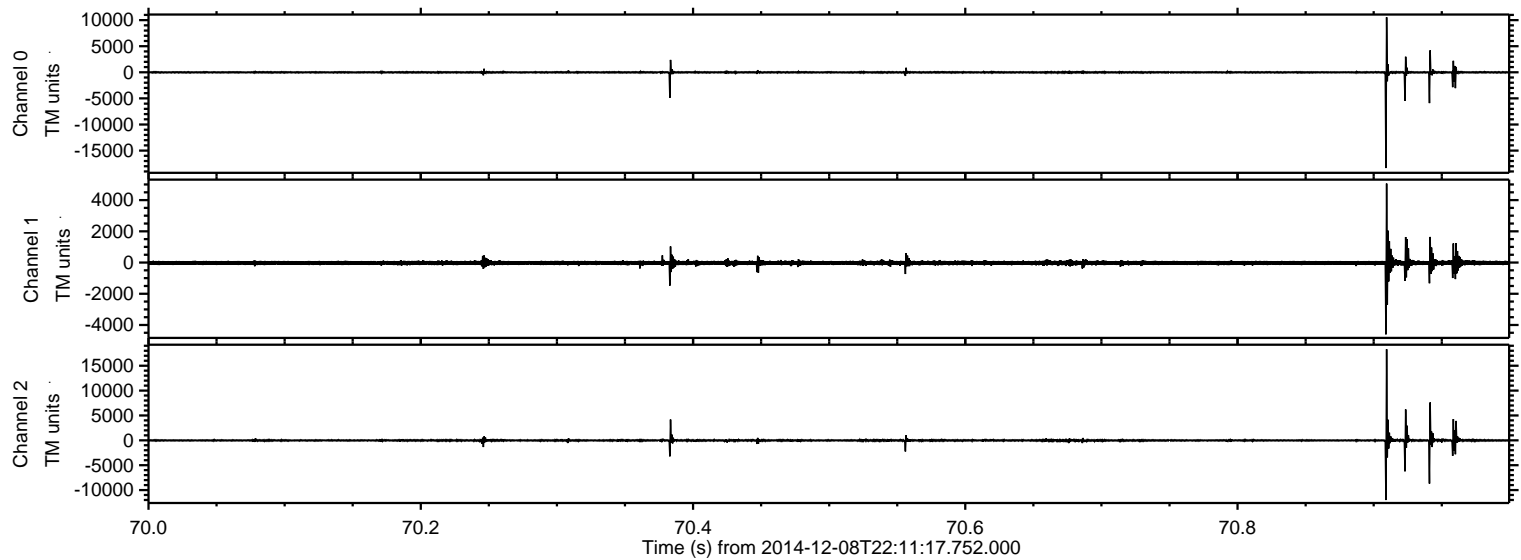
ELMAVAN 3D WAVEFORMS (Measured data sampled at 50 kHz) 49753 packets of 144 samples from 2014-12-08T22:11:17.752.000. Part 128/144

Processed Tue Dec 9 01:35:45 2014 by ELM ver.2012-10-06 from 001__elm20141208_221116__dat00.bin

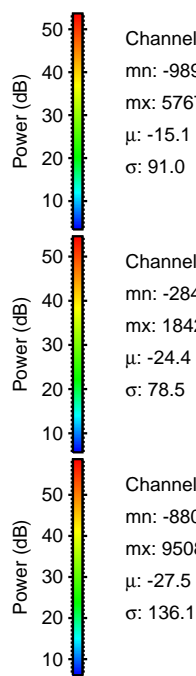
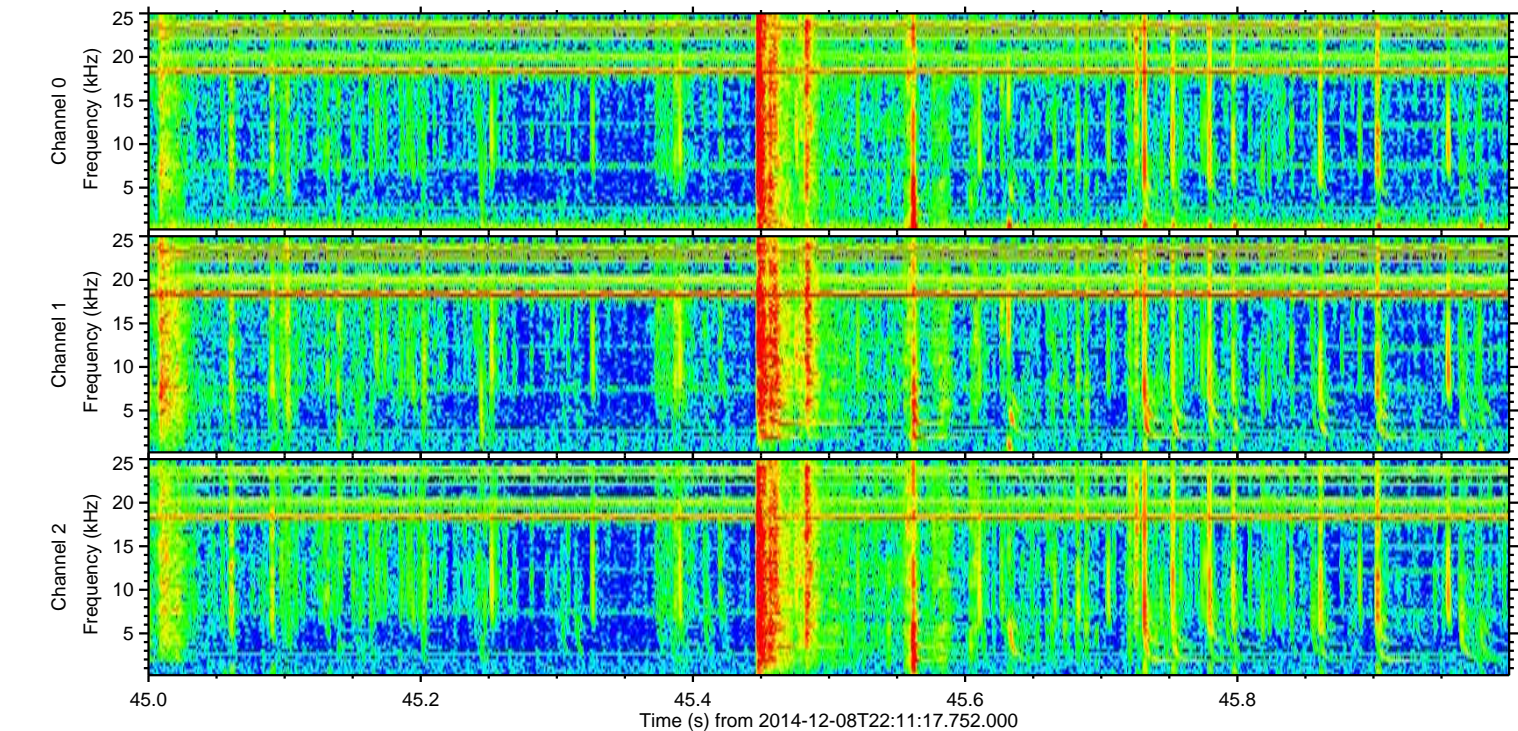
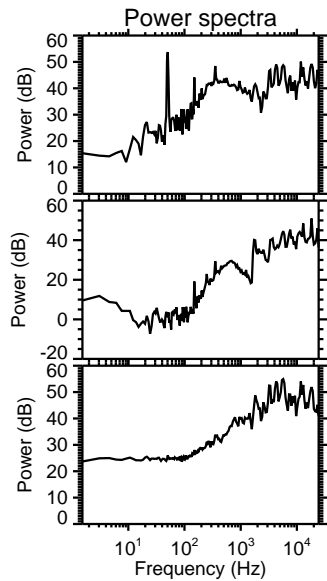
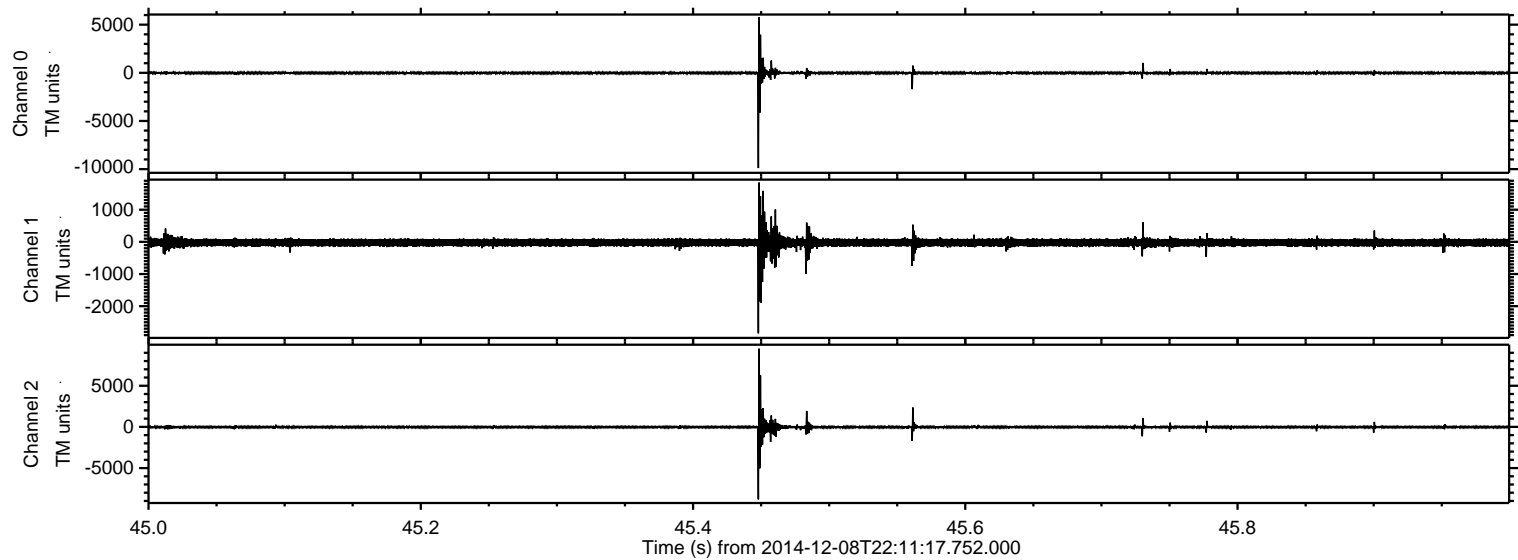


ELMAVAN 3D WAVEFORMS (Measured data sampled at 50 kHz) 49753 packets of 144 samples from 2014-12-08T22:11:17.752.000. Part 71/144

Processed Tue Dec 9 01:35:46 2014 by ELM ver.2012-10-06 from 001__elm20141208_221116__dat00.bin

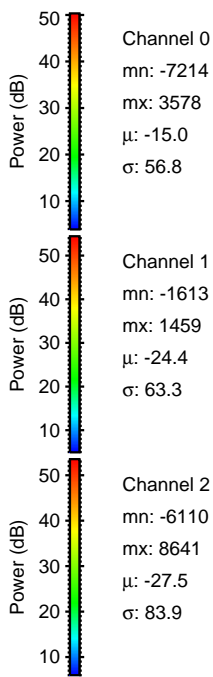
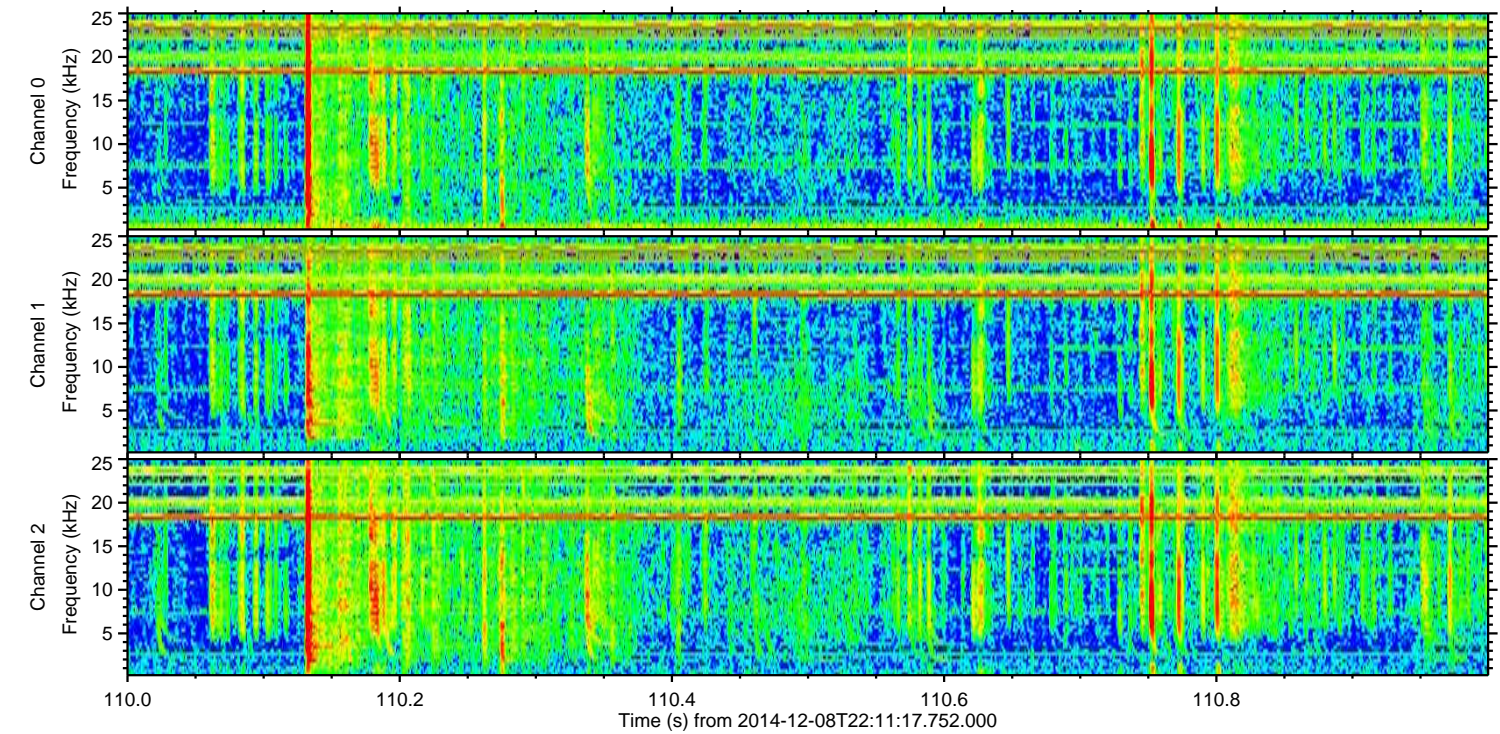
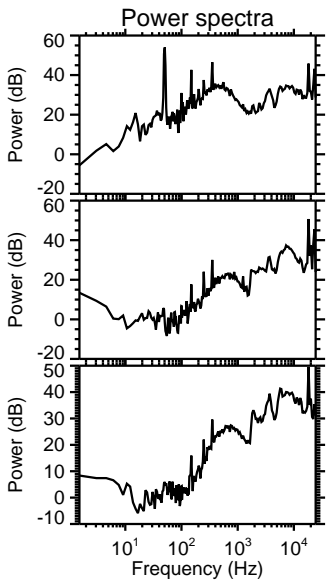
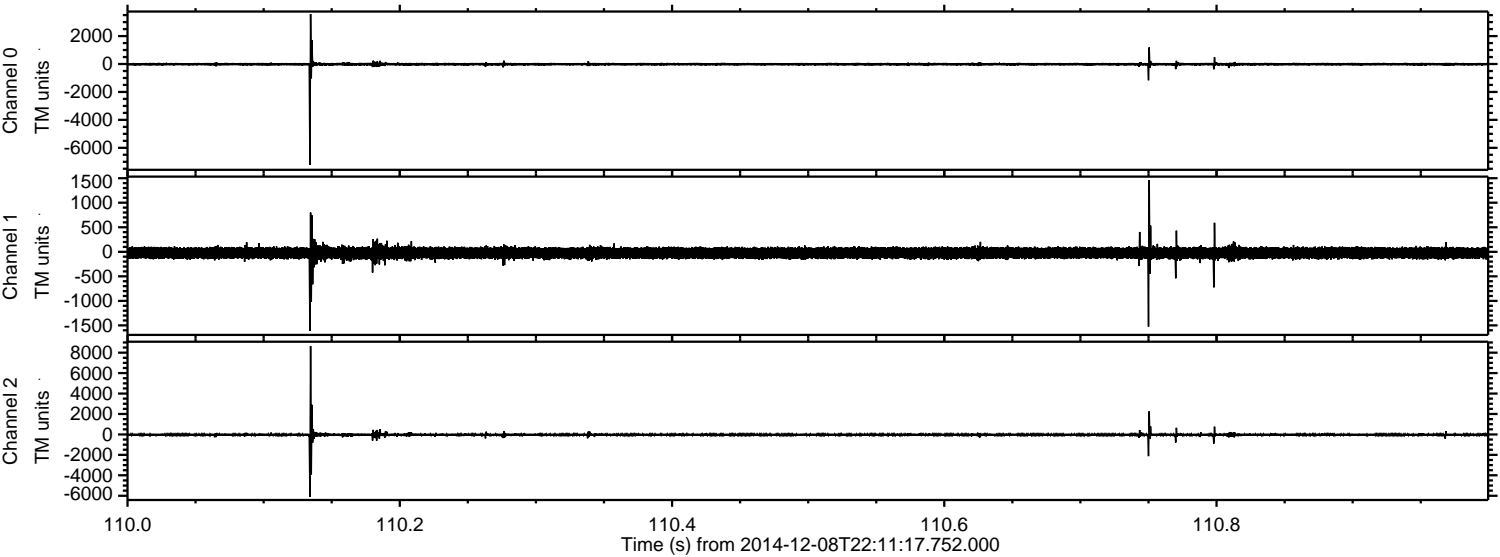


Processed Tue Dec 9 01:35:47 2014 by ELM ver.2012-10-06 from 001__elm20141208_221116__dat00.bin



ELMAVAN 3D WAVEFORMS (Measured data sampled at 50 kHz) 49753 packets of 144 samples from 2014-12-08T22:11:17.752.000. Part 111/144

Processed Tue Dec 9 01:35:48 2014 by ELM ver.2012-10-06 from 001__elm20141208_221116__dat00.bin



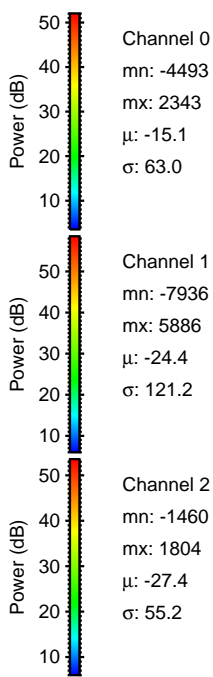
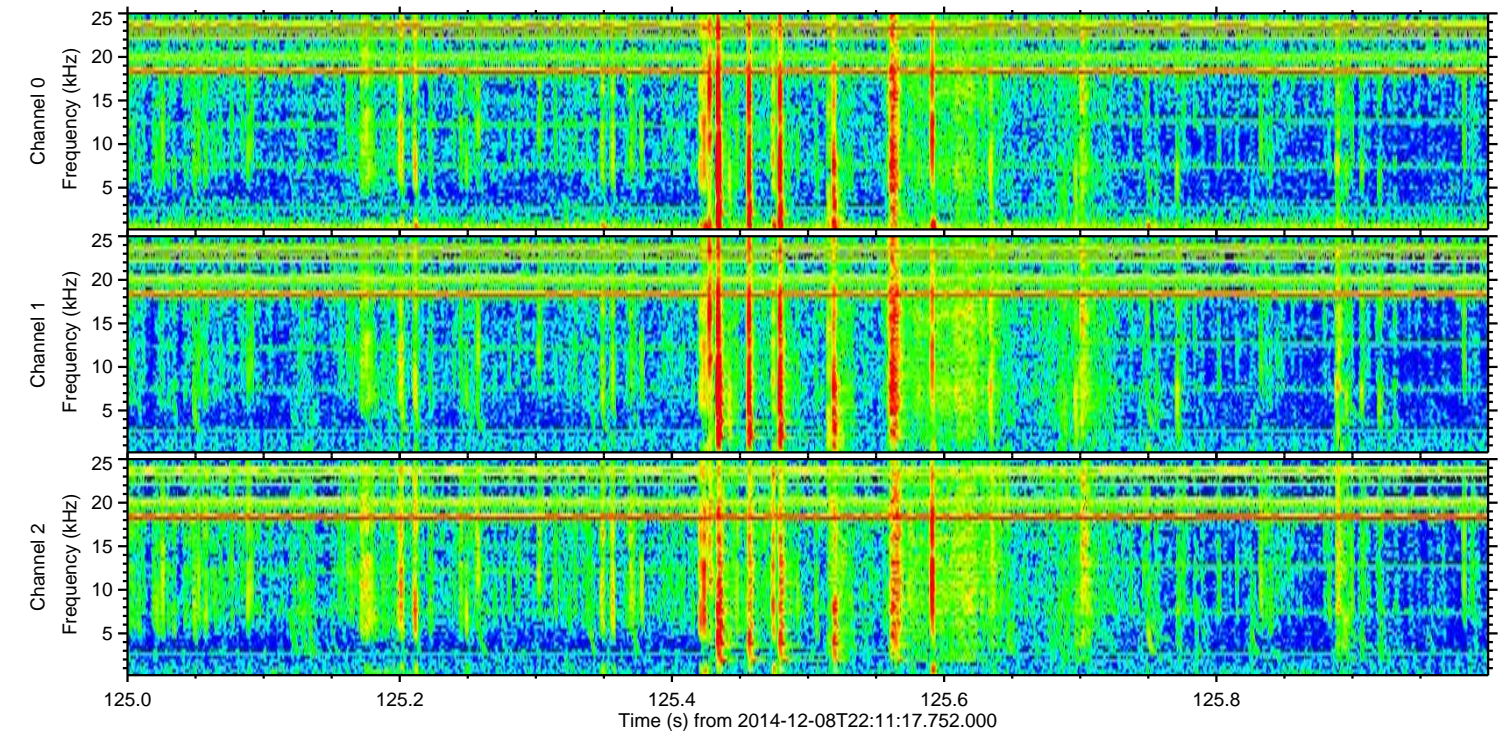
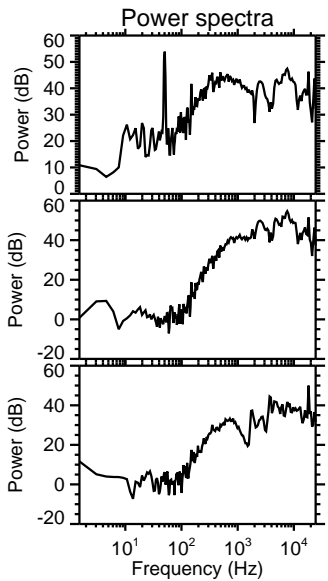
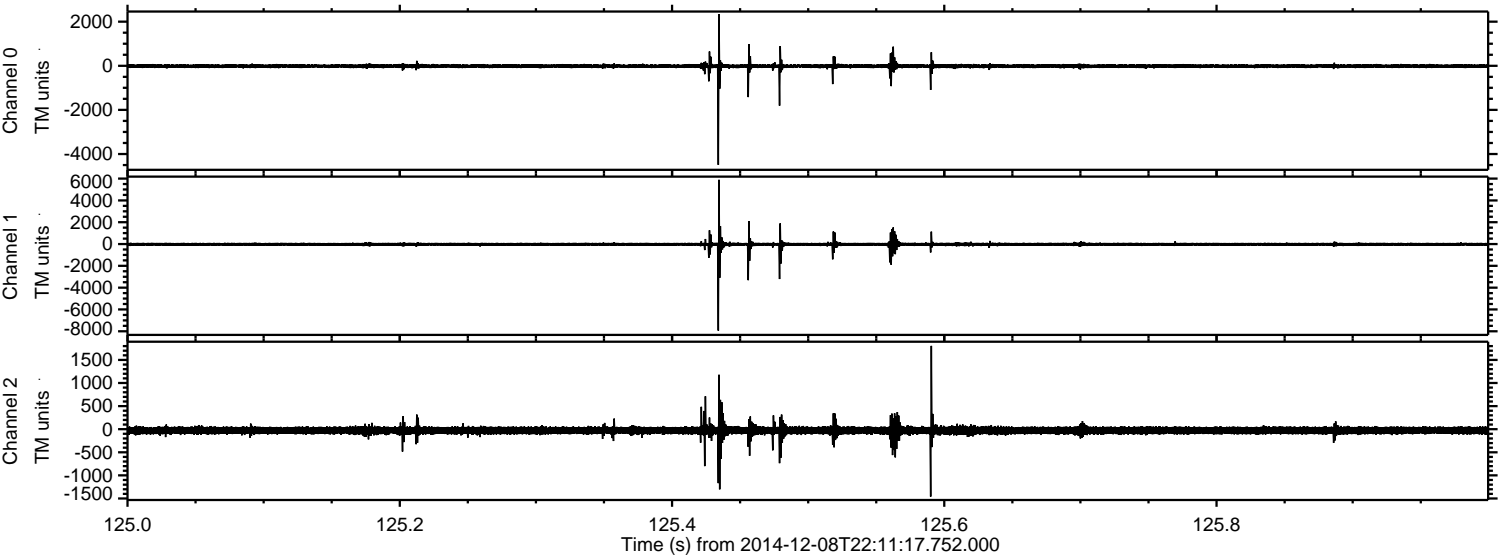
Channel 0
mn: -7214
mx: 3578
 μ : -15.0
 σ : 56.8

Channel 1
mn: -1613
mx: 1459
 μ : -24.4
 σ : 63.3

Channel 2
mn: -6110
mx: 8641
 μ : -27.5
 σ : 83.9

ELMAVAN 3D WAVEFORMS (Measured data sampled at 50 kHz) 49753 packets of 144 samples from 2014-12-08T22:11:17.752.000. Part 126/144

Processed Tue Dec 9 01:35:49 2014 by ELM ver.2012-10-06 from 001__elm20141208_221116__dat00.bin

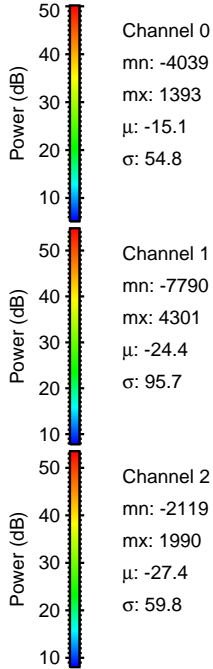
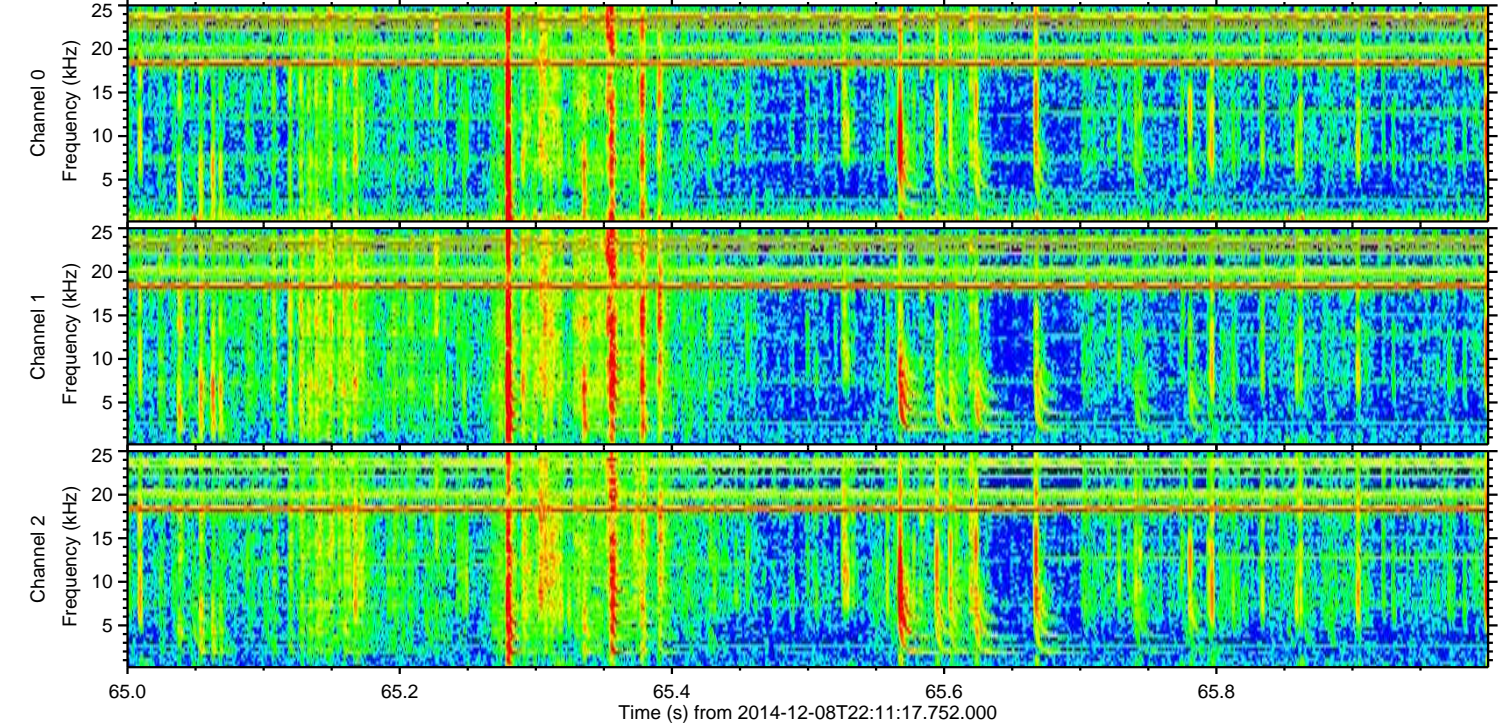
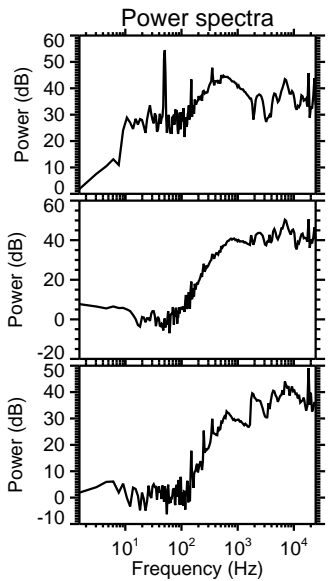
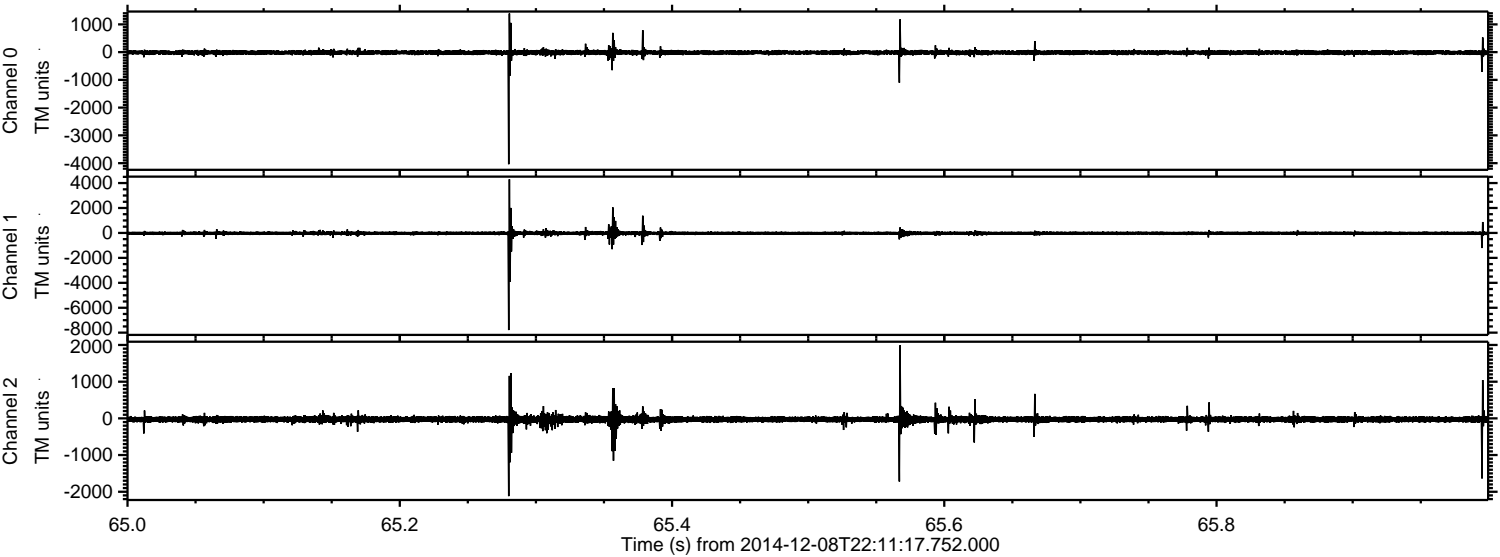


Channel 0
mn: -4493
mx: 2343
 μ : -15.1
 σ : 63.0

Channel 1
mn: -7936
mx: 5886
 μ : -24.4
 σ : 121.2

Channel 2
mn: -1460
mx: 1804
 μ : -27.4
 σ : 55.2

Processed Tue Dec 9 01:35:50 2014 by ELM ver.2012-10-06 from 001__elm20141208_221116__dat00.bin



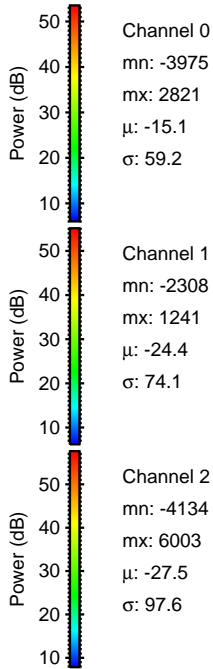
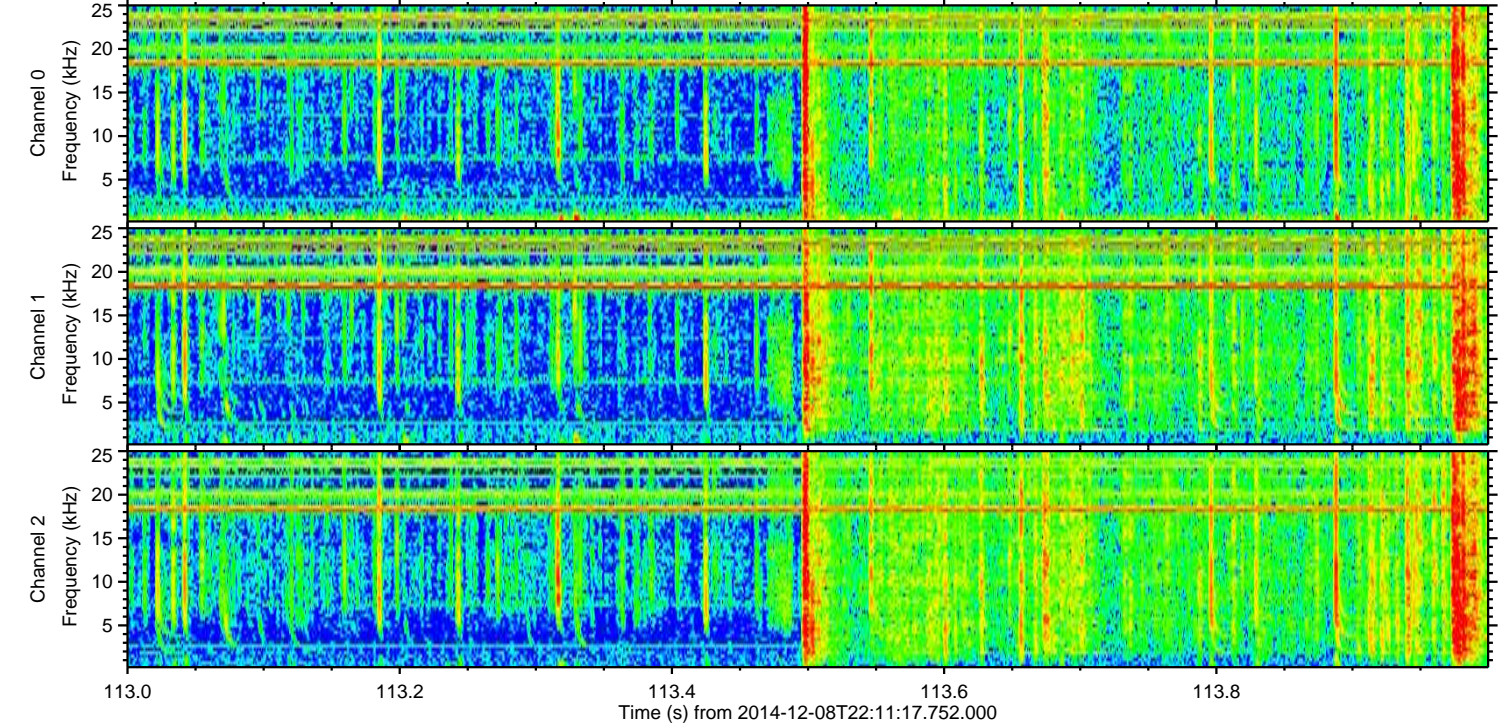
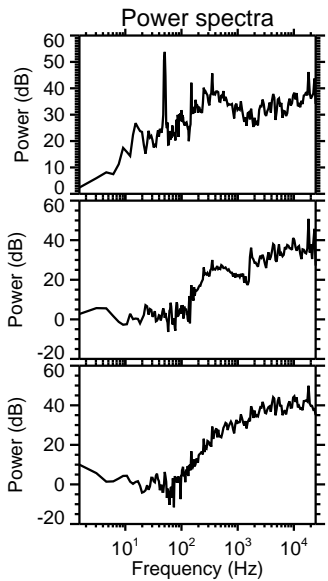
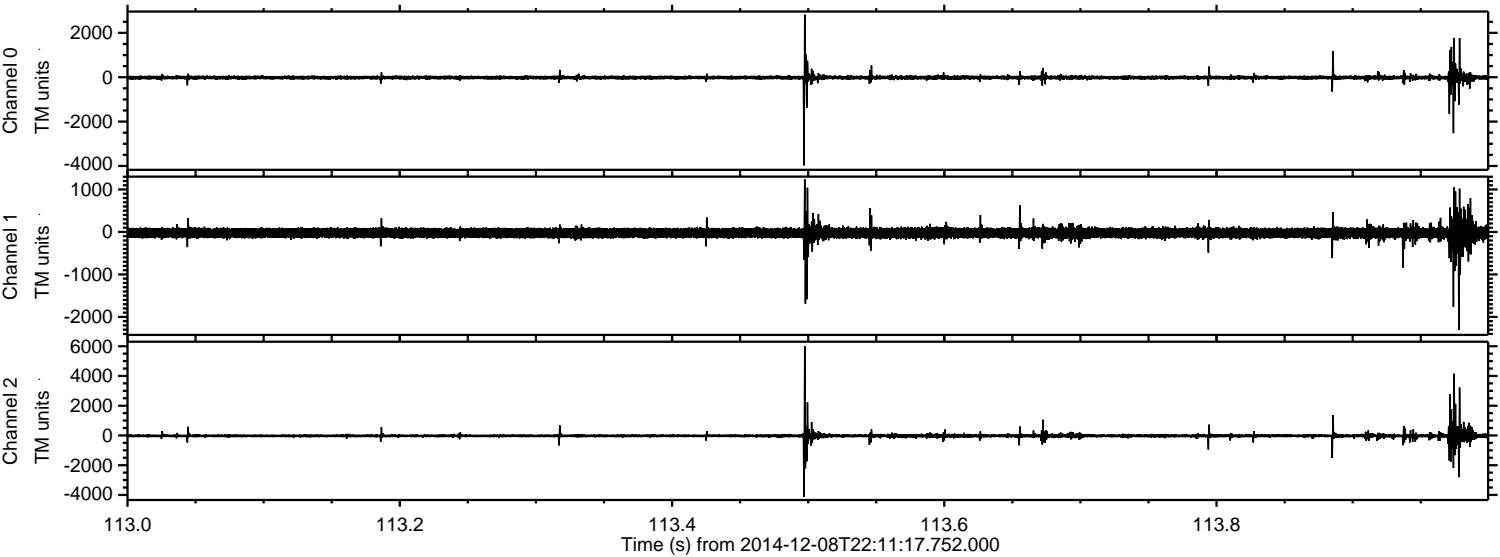
Channel 0
mn: -4039
mx: 1393
 μ : -15.1
 σ : 54.8

Channel 1
mn: -7790
mx: 4301
 μ : -24.4
 σ : 95.7

Channel 2
mn: -2119
mx: 1990
 μ : -27.4
 σ : 59.8

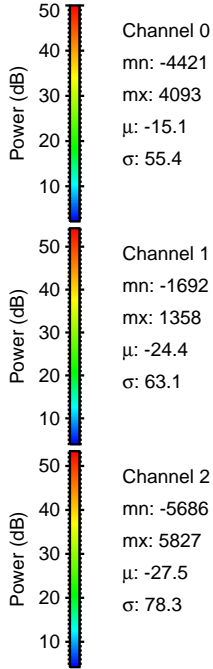
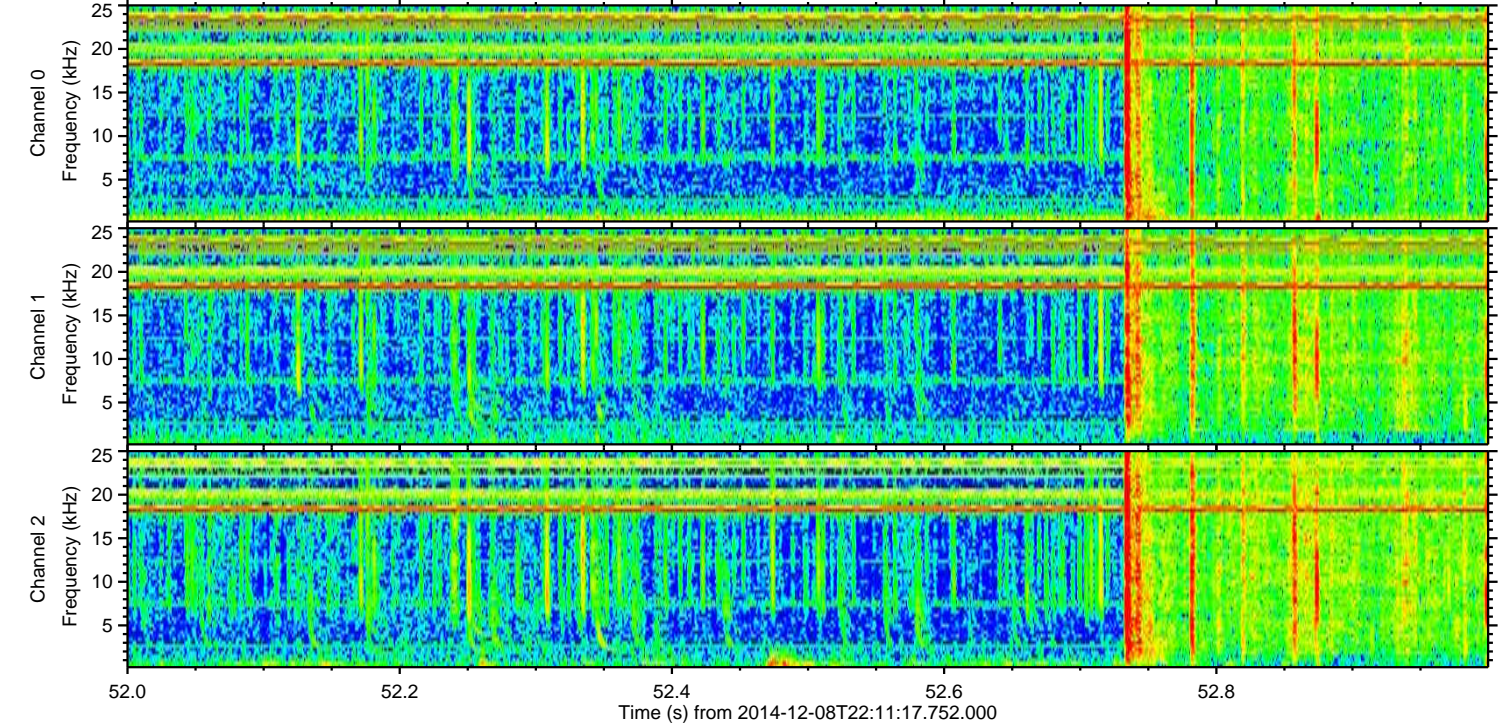
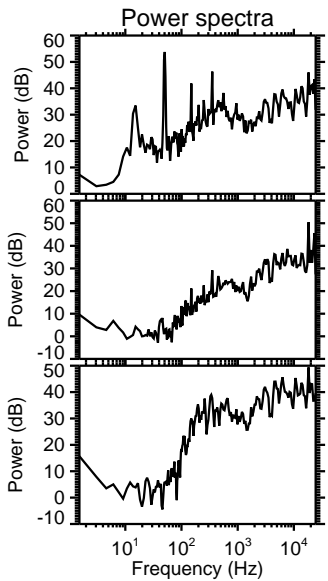
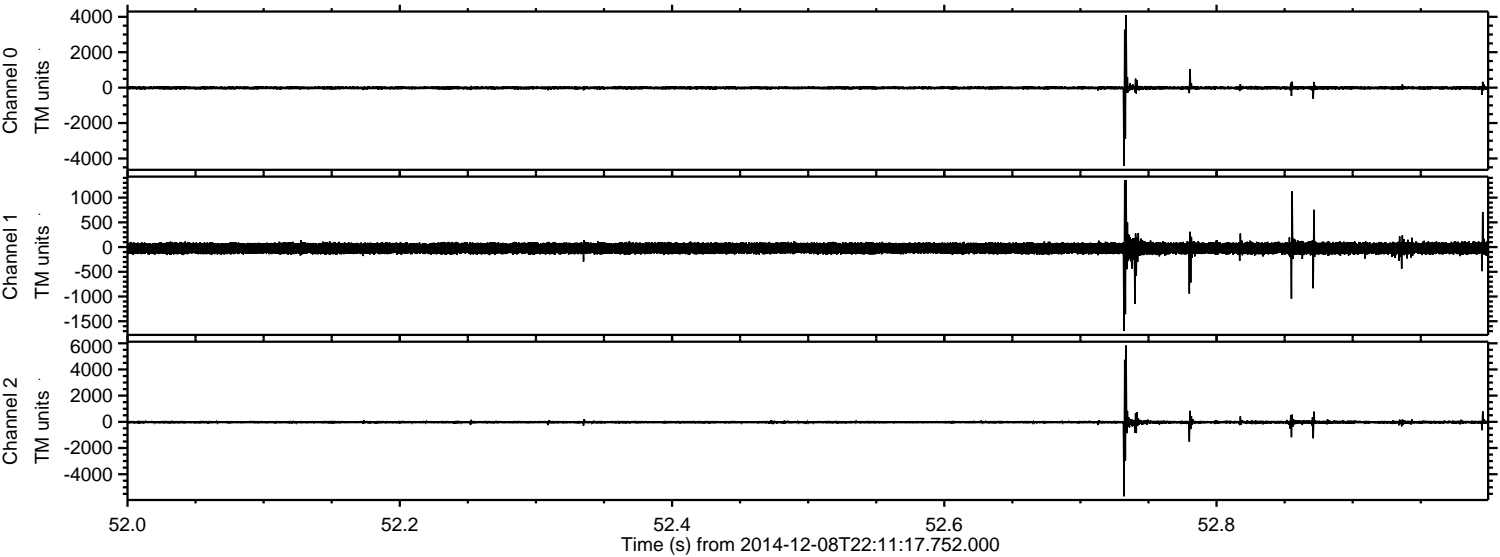
ELMAVAN 3D WAVEFORMS (Measured data sampled at 50 kHz) 49753 packets of 144 samples from 2014-12-08T22:11:17.752.000. Part 114/144

Processed Tue Dec 9 01:35:51 2014 by ELM ver.2012-10-06 from 001__elm20141208_221116__dat00.bin



ELMAVAN 3D WAVEFORMS (Measured data sampled at 50 kHz) 49753 packets of 144 samples from 2014-12-08T22:11:17.752.000. Part 53/144

Processed Tue Dec 9 01:35:52 2014 by ELM ver.2012-10-06 from 001__elm20141208_221116__dat00.bin



Processed Tue Dec 9 01:35:52 2014 by ELM ver.2012-10-06 from 001__elm20141208_221116__dat00.bin

