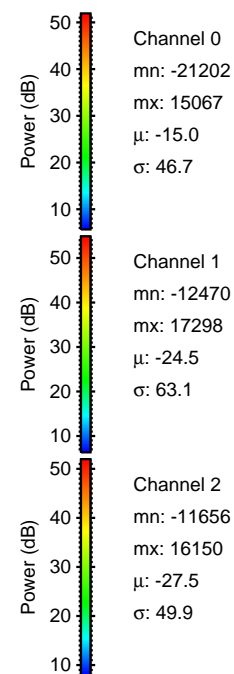
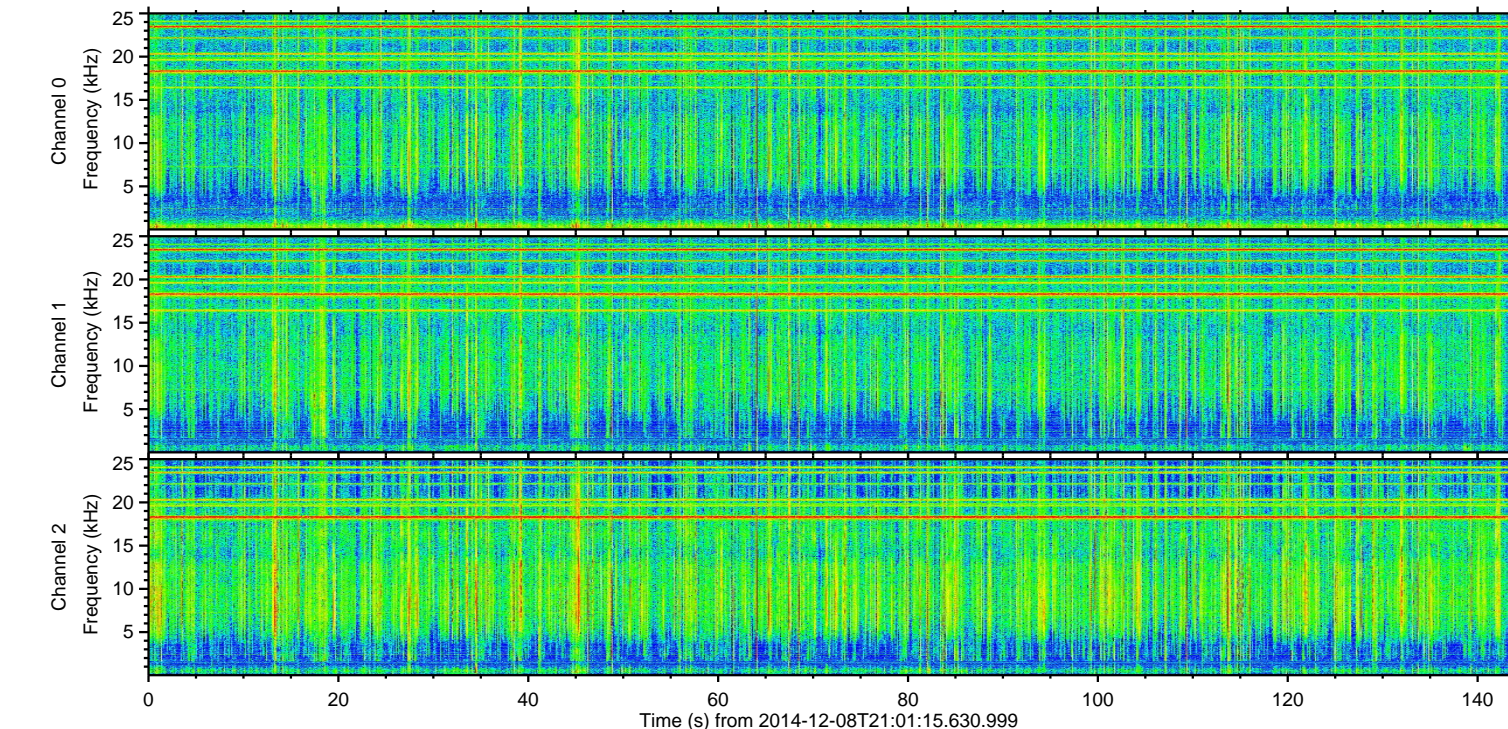
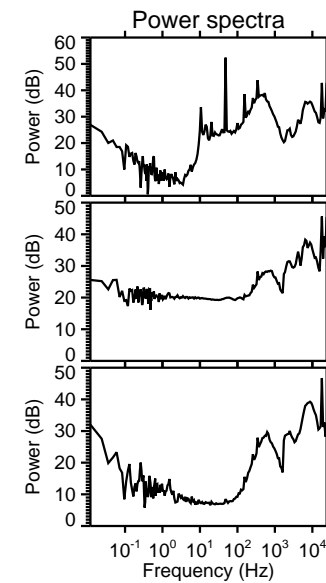
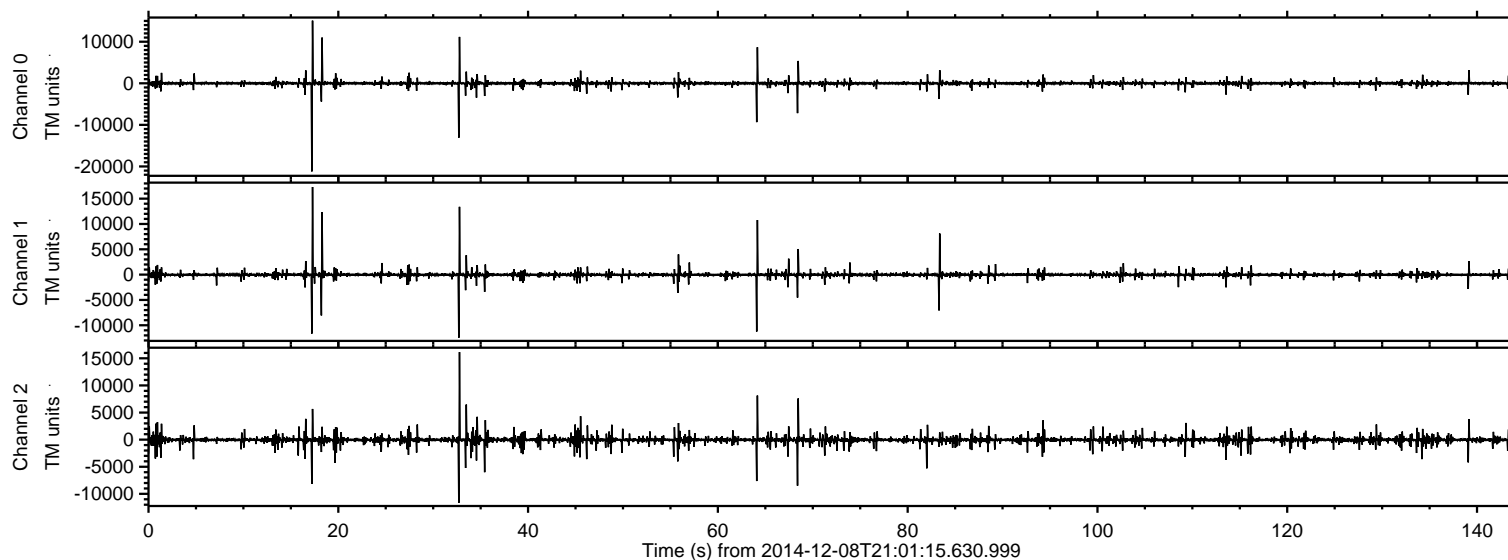
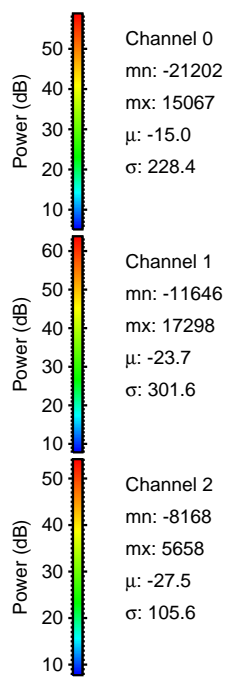
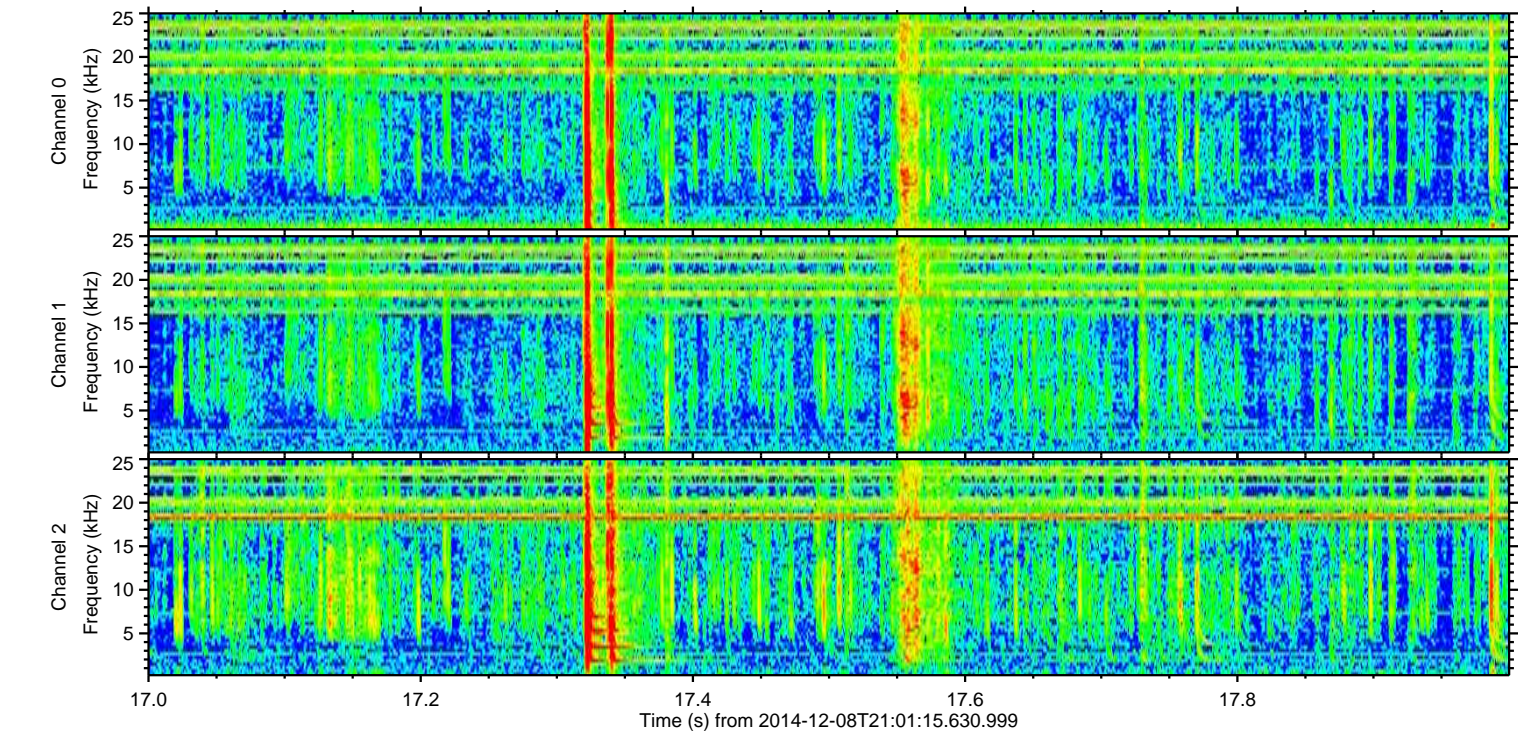
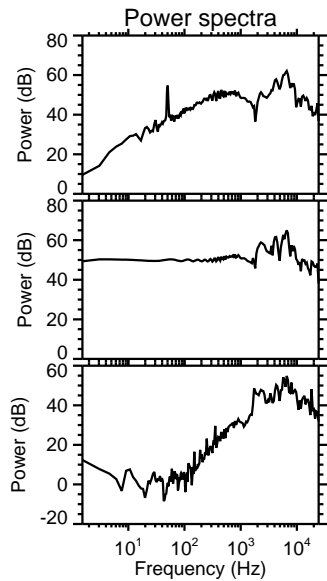
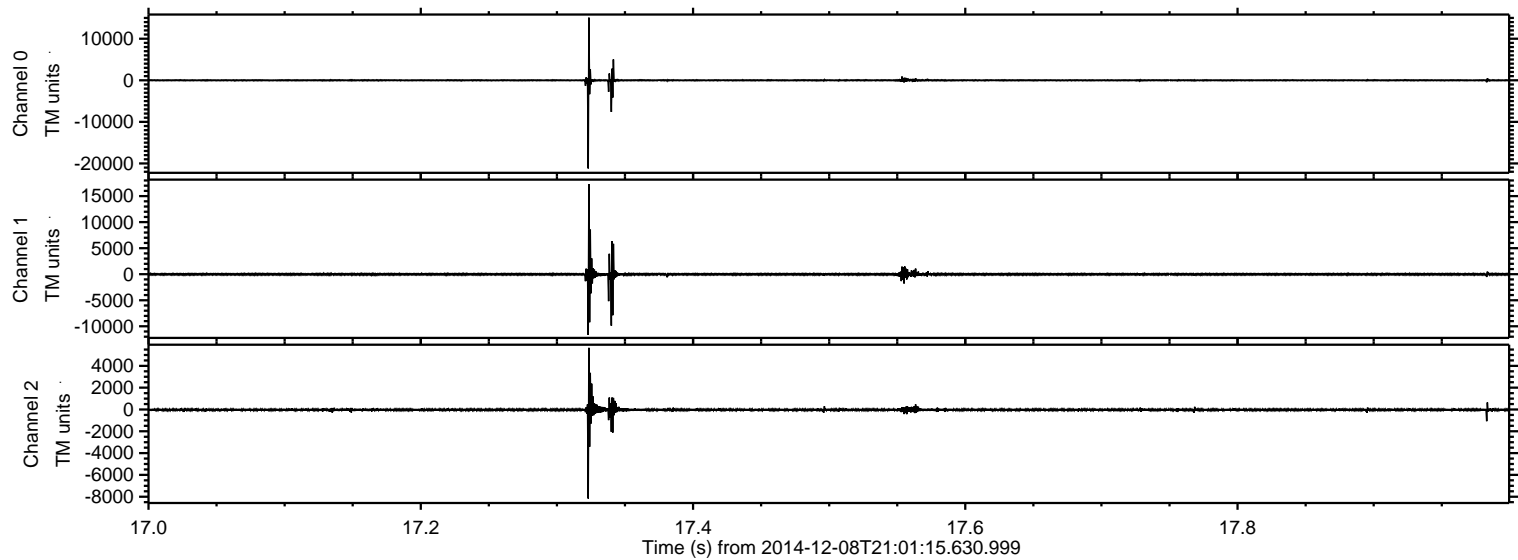


ELMAVAN 3D WAVEFORMS (Measured data sampled at 50 kHz) 49786 packets of 144 samples from 2014-12-08T21:01:15.630.999.

Processed Mon Dec 8 22:56:23 2014 by ELM ver.2012-10-06 from 001__elm20141208_210114__dat00.bin

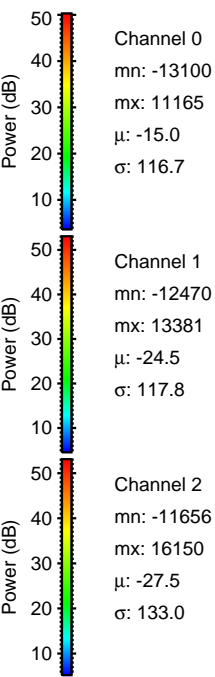
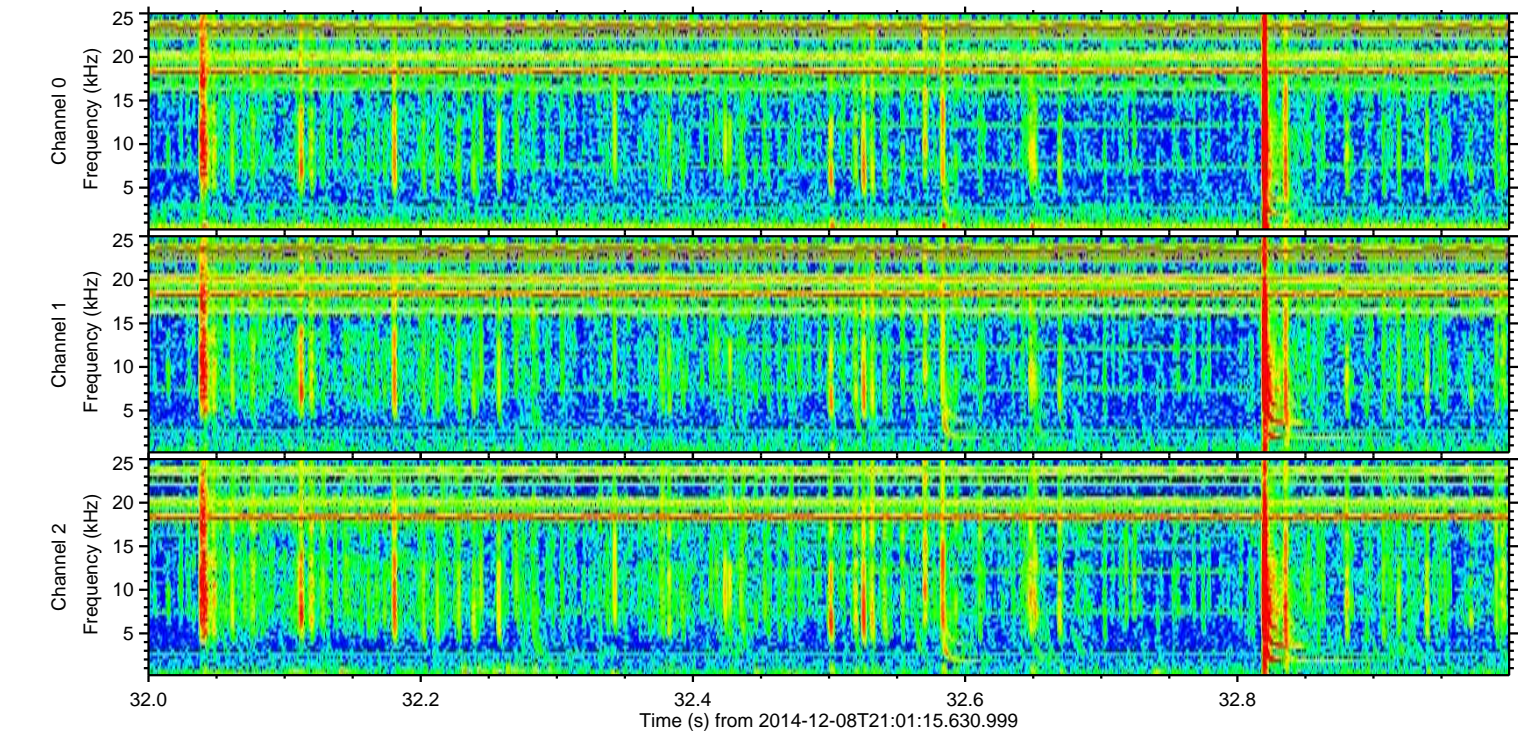
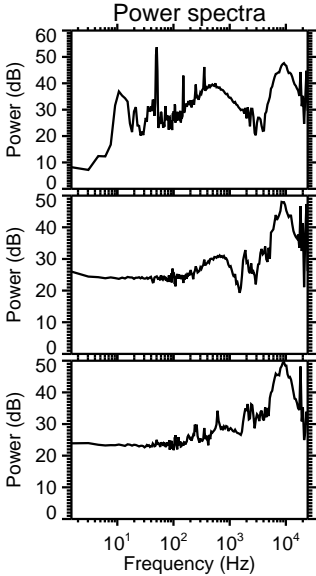
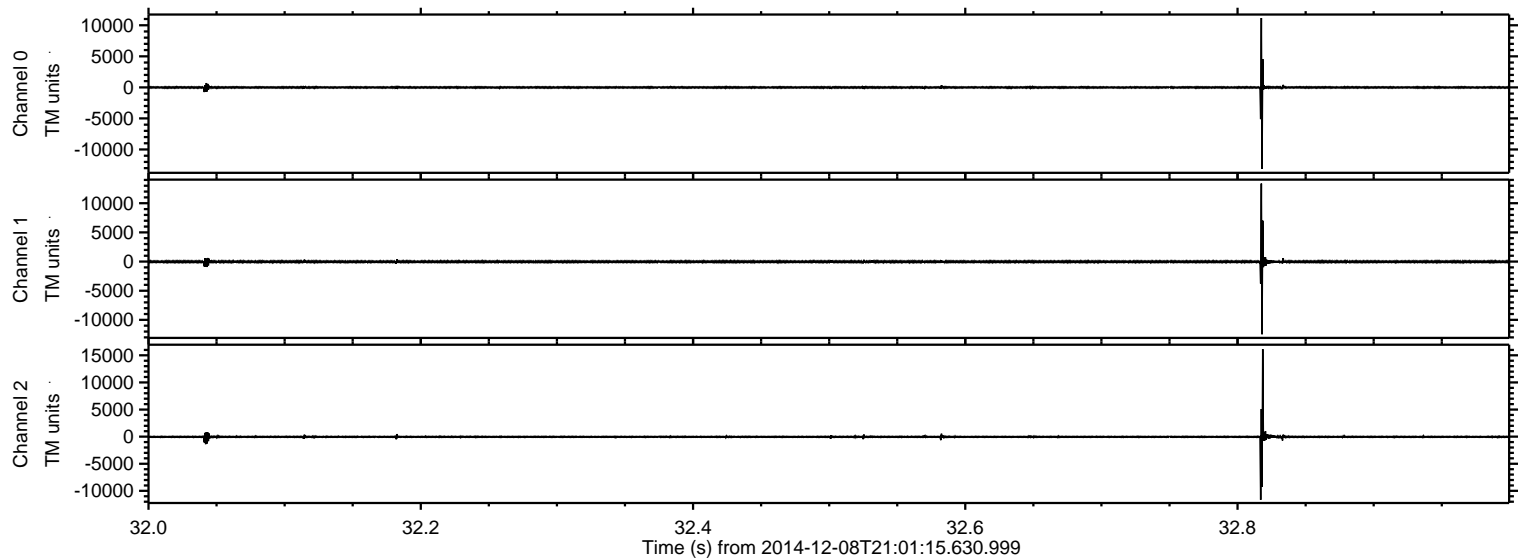


Processed Mon Dec 8 22:56:34 2014 by ELM ver.2012-10-06 from 001__elm20141208_210114__dat00.bin



ELMAVAN 3D WAVEFORMS (Measured data sampled at 50 kHz) 49786 packets of 144 samples from 2014-12-08T21:01:15.630.999. Part 33/144

Processed Mon Dec 8 22:56:35 2014 by ELM ver.2012-10-06 from 001__elm20141208_210114__dat00.bin

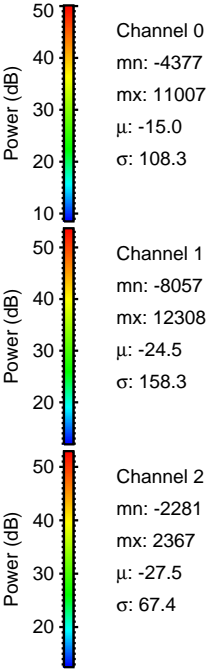
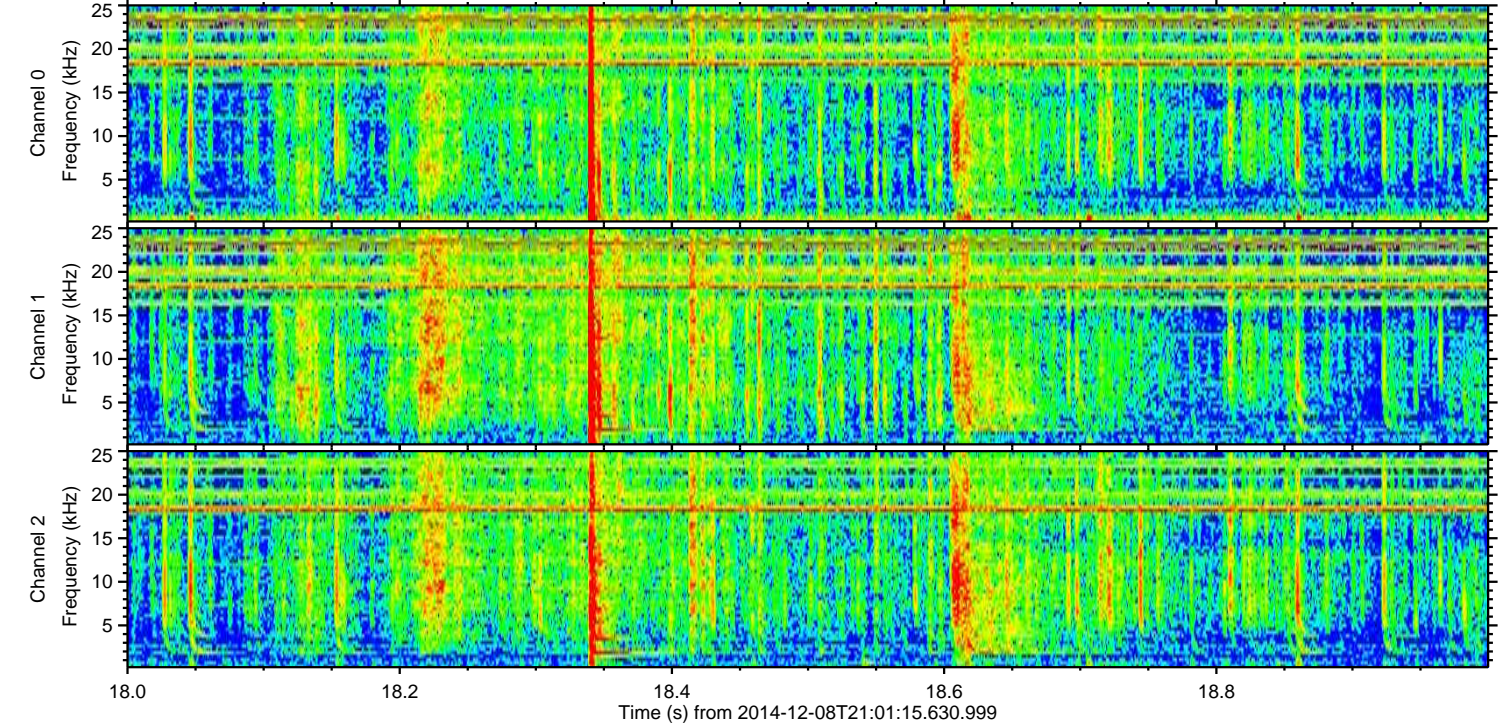
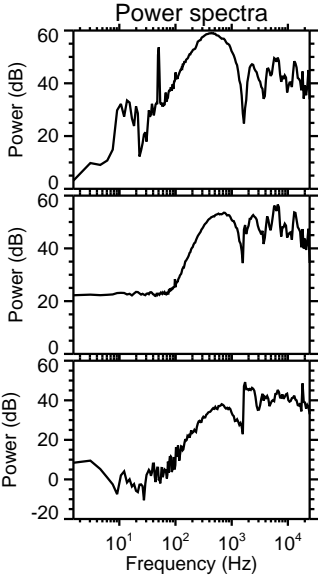
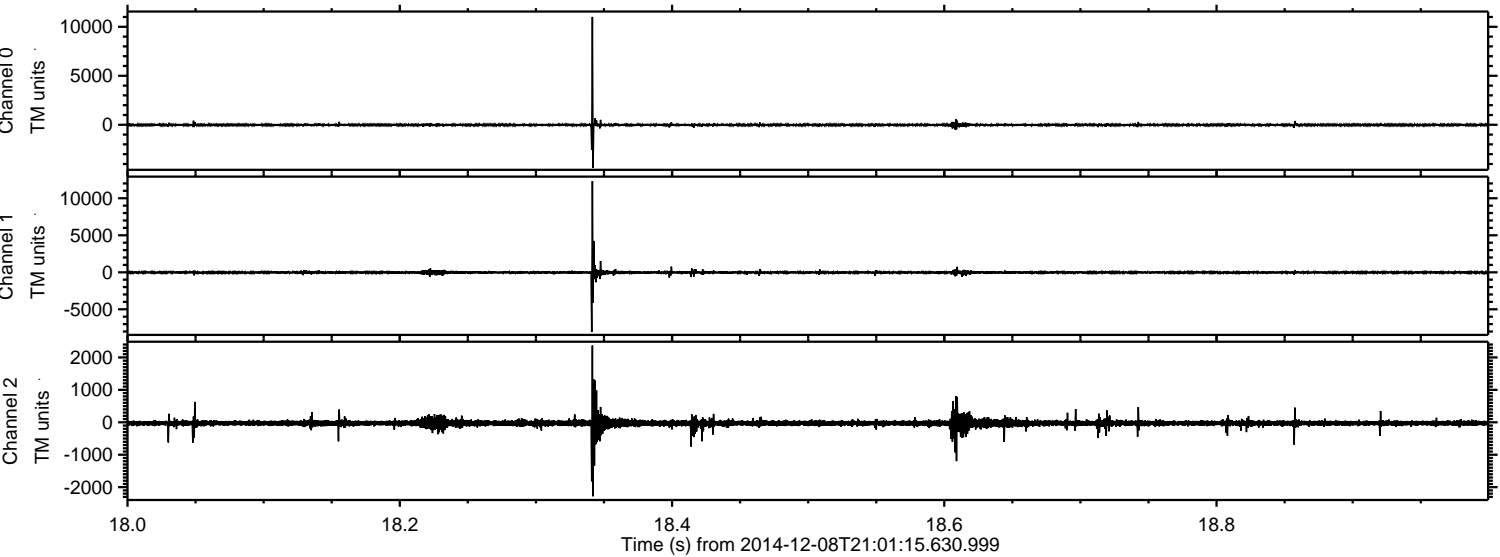


Channel 0
mn: -13100
mx: 11165
 μ : -15.0
 σ : 116.7

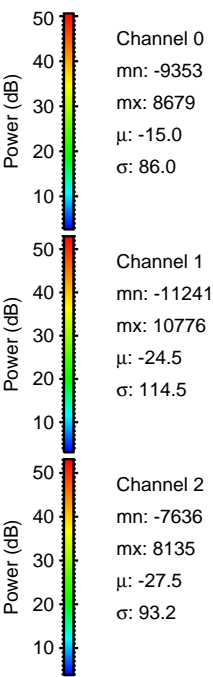
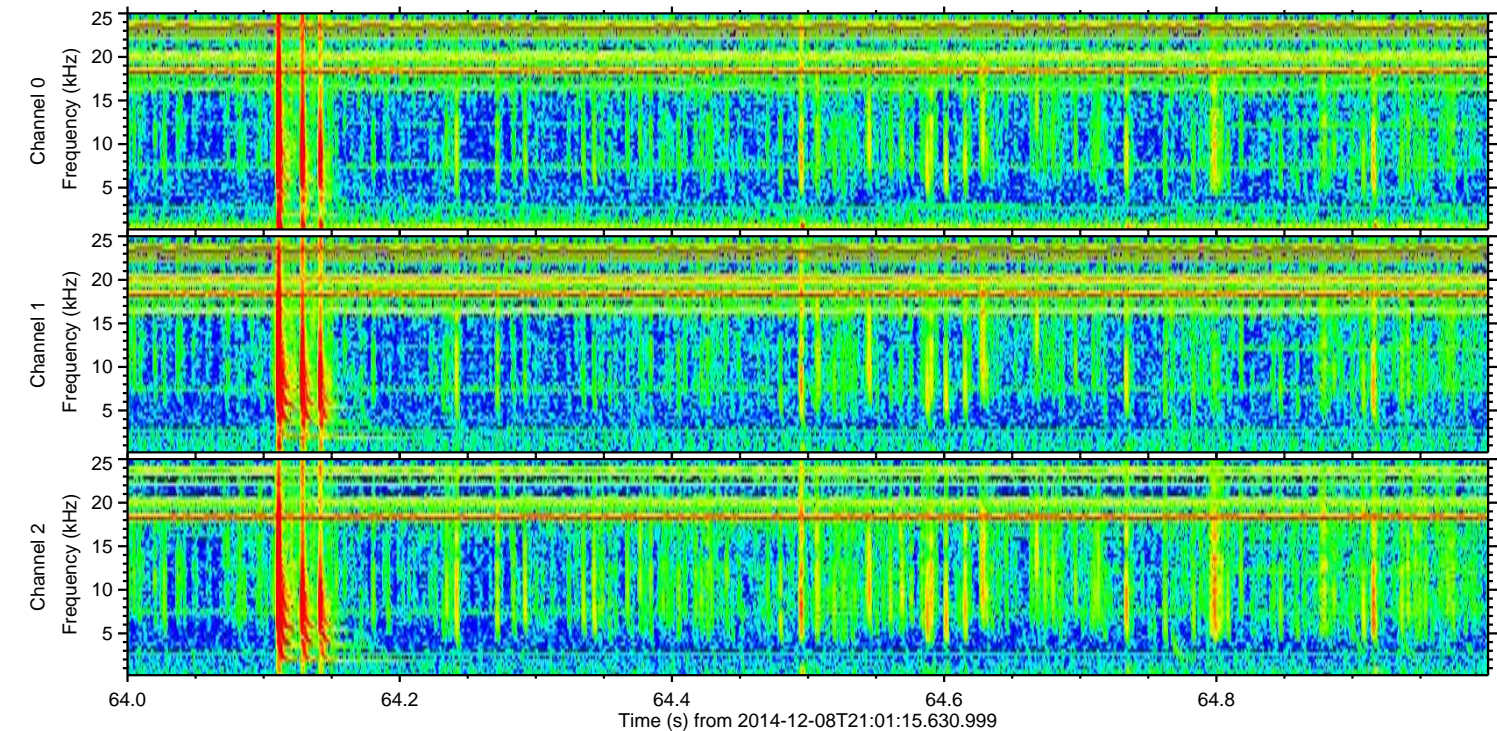
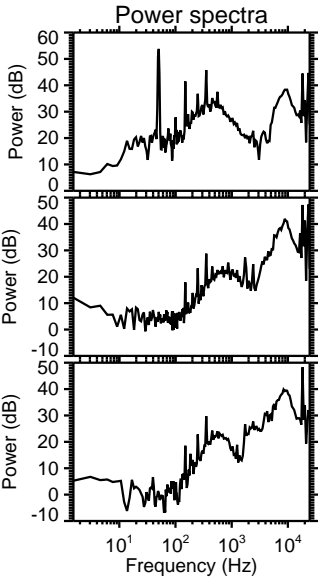
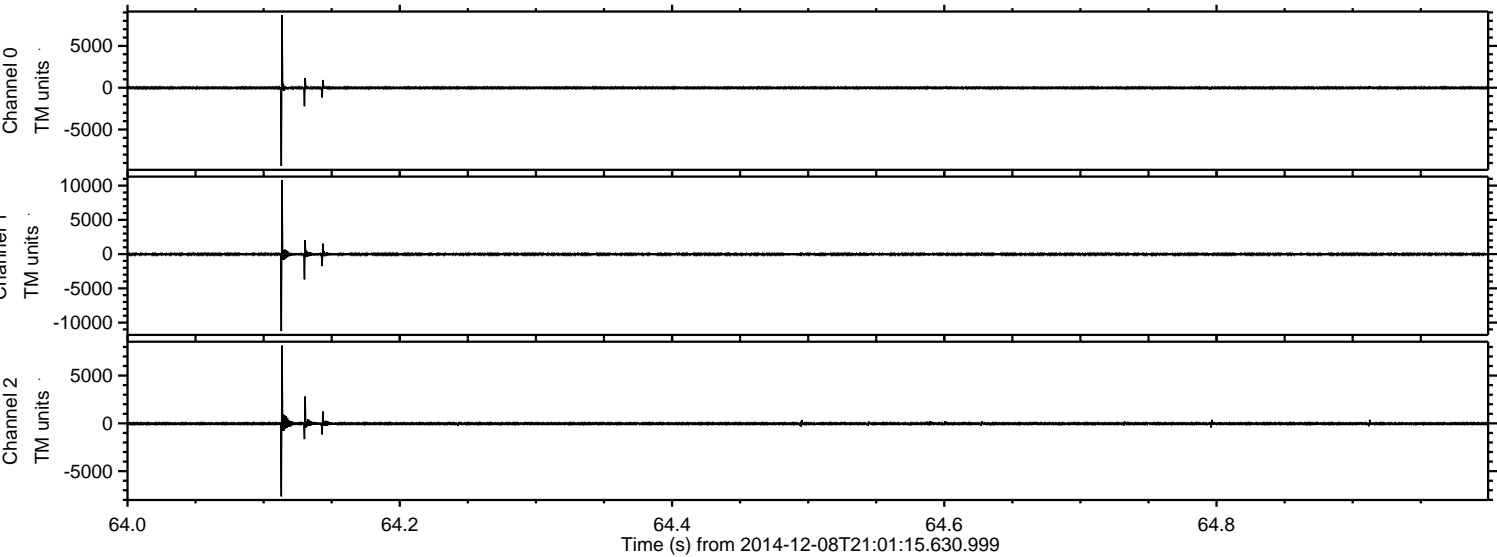
Channel 1
mn: -12470
mx: 13381
 μ : -24.5
 σ : 117.8

Channel 2
mn: -11656
mx: 16150
 μ : -27.5
 σ : 133.0

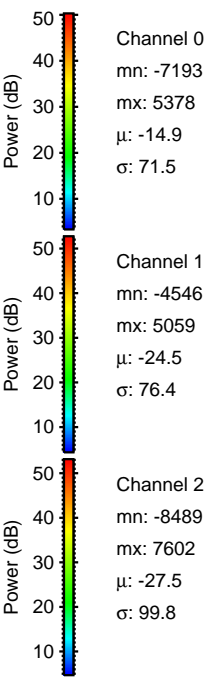
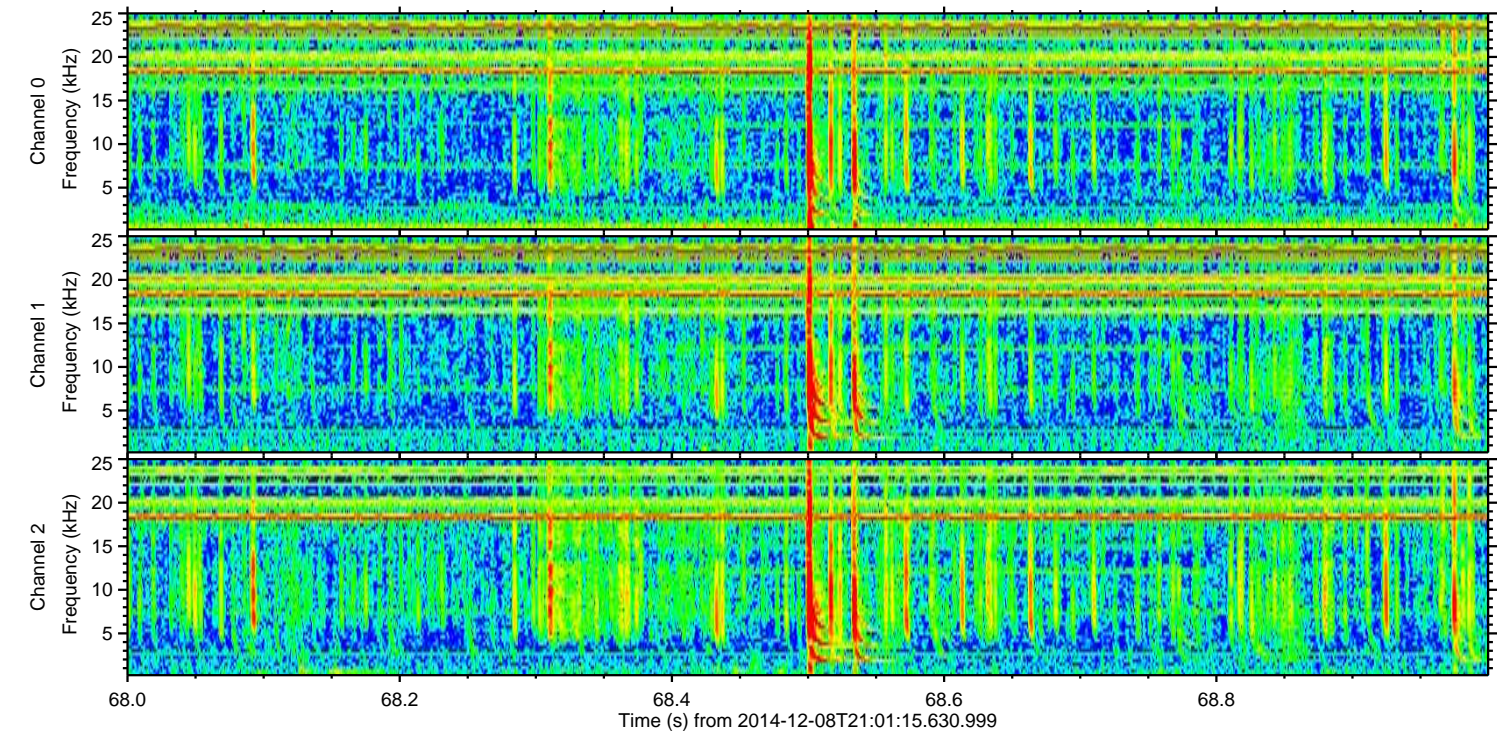
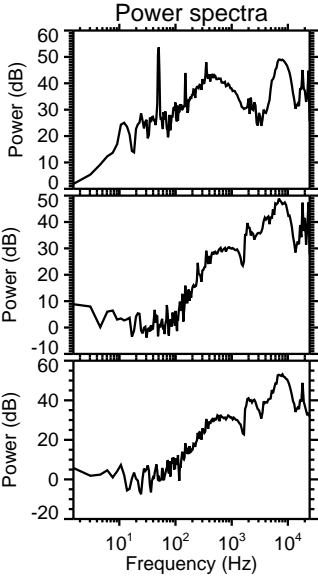
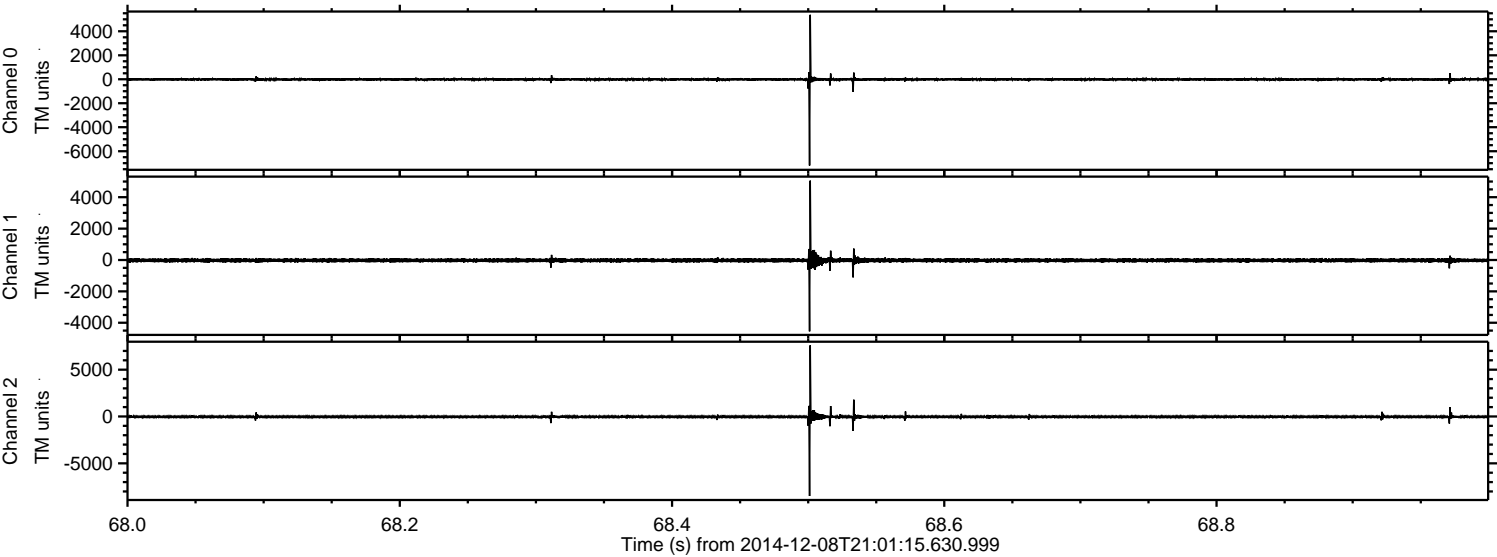
Processed Mon Dec 8 22:56:36 2014 by ELM ver.2012-10-06 from 001__elm20141208_210114__dat00.bin



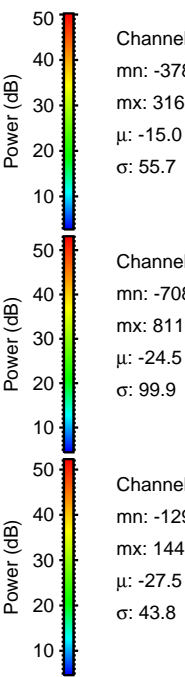
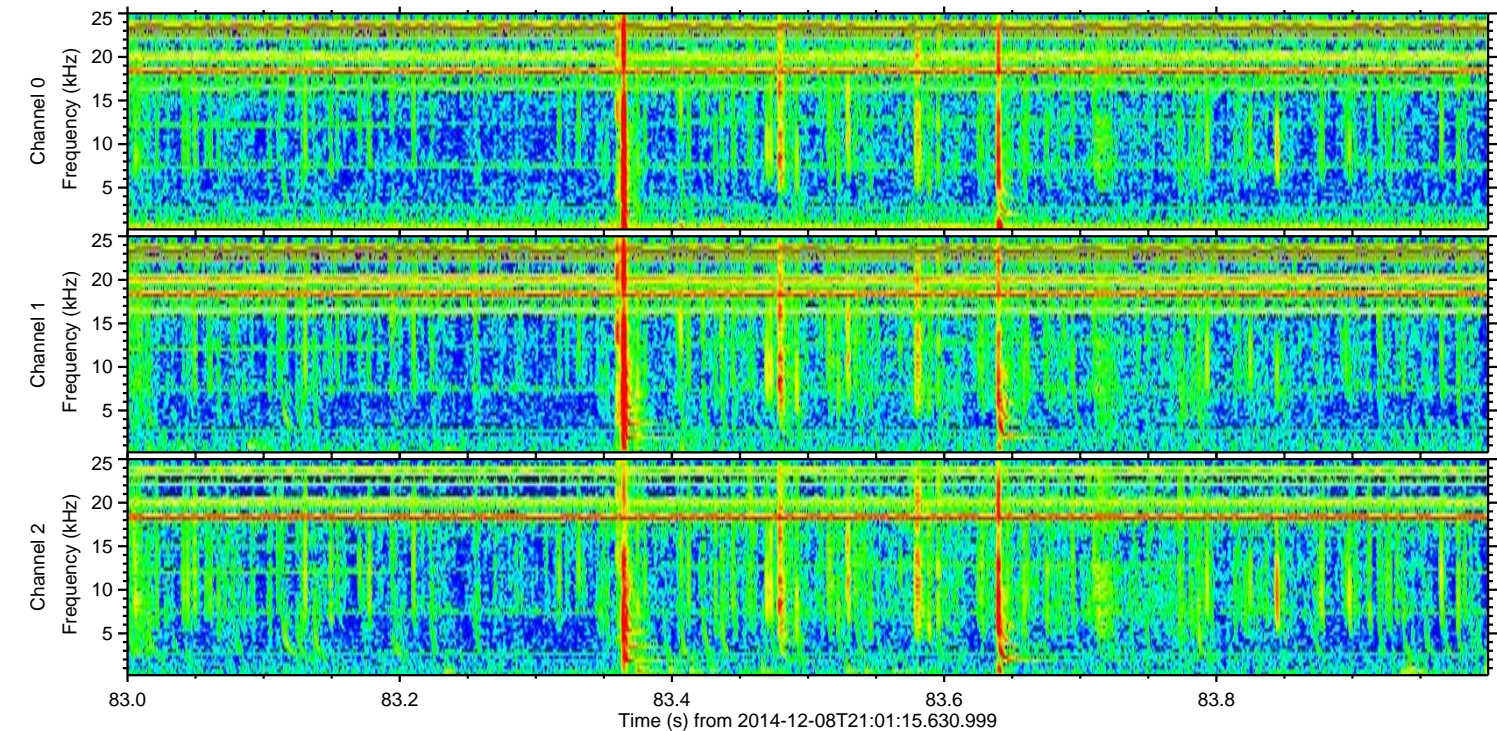
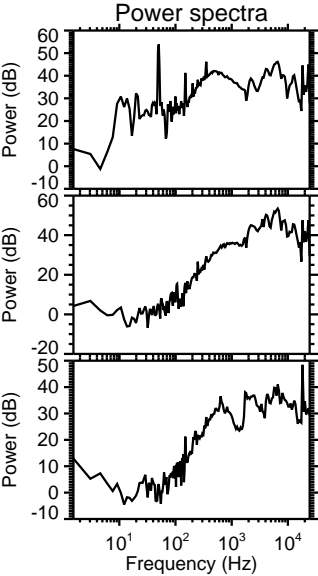
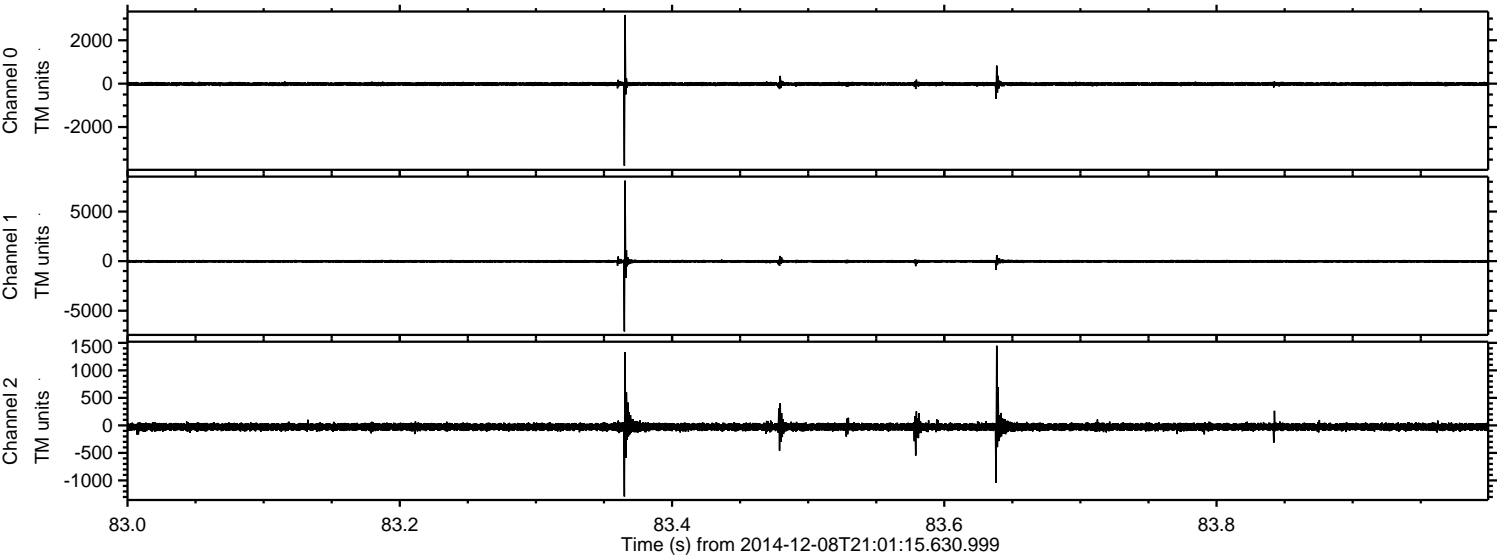
Processed Mon Dec 8 22:56:37 2014 by ELM ver.2012-10-06 from 001__elm20141208_210114__dat00.bin



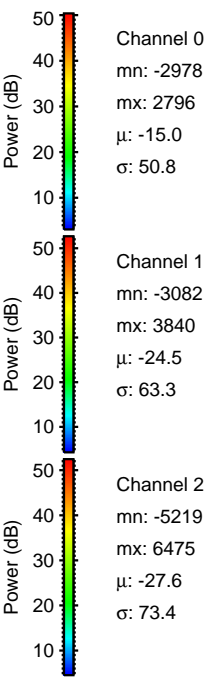
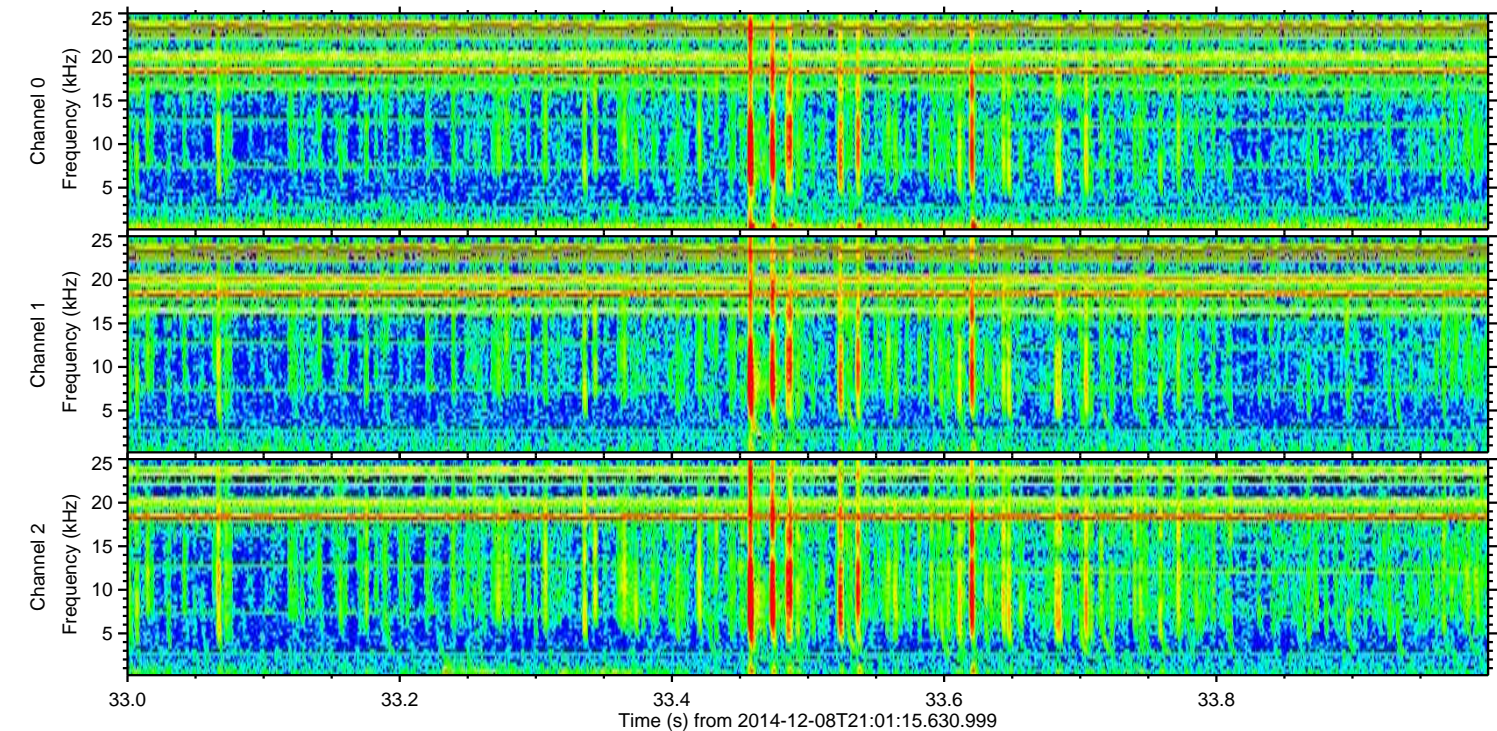
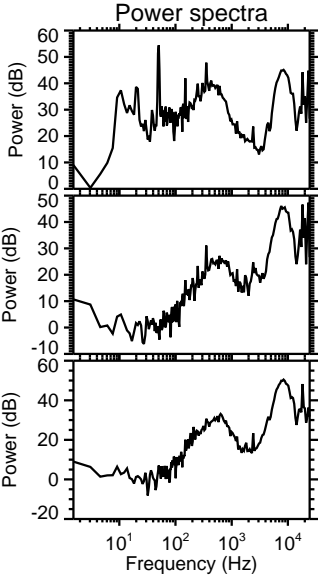
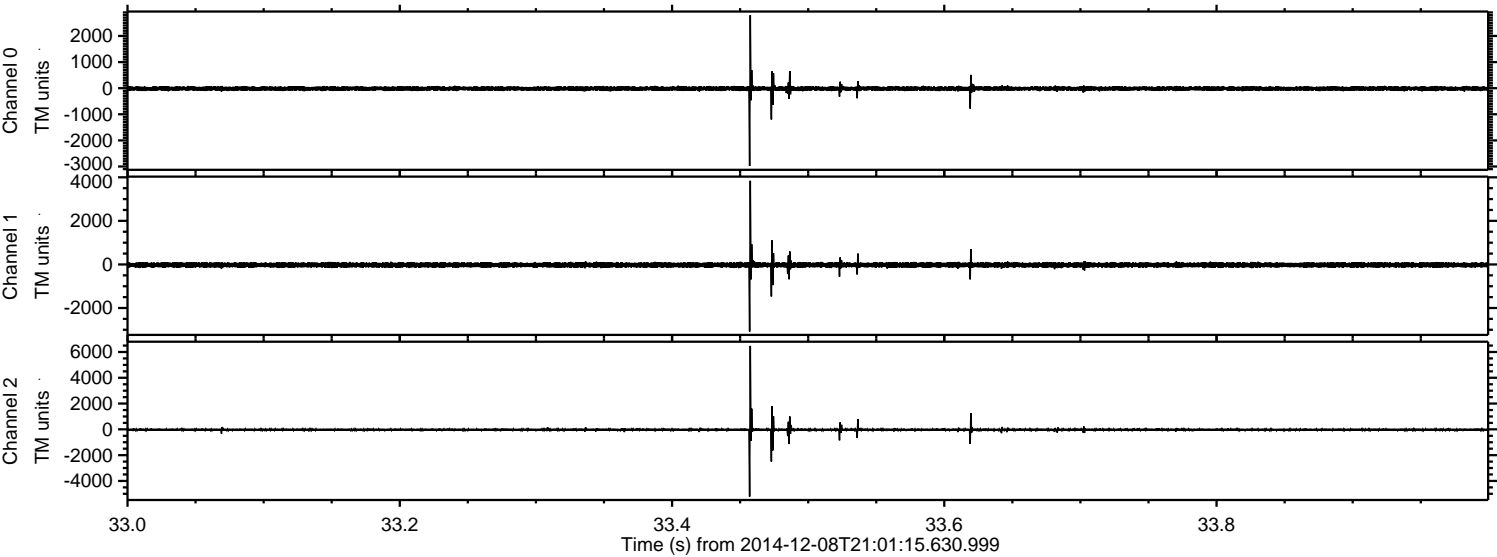
Processed Mon Dec 8 22:56:38 2014 by ELM ver.2012-10-06 from 001__elm20141208_210114__dat00.bin



Processed Mon Dec 8 22:56:39 2014 by ELM ver.2012-10-06 from 001__elm20141208_210114__dat00.bin

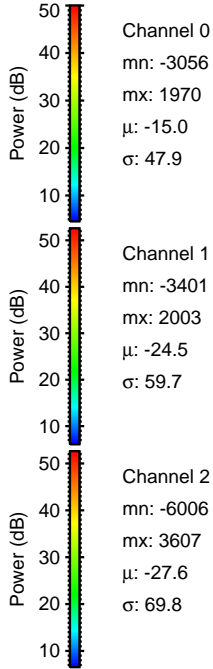
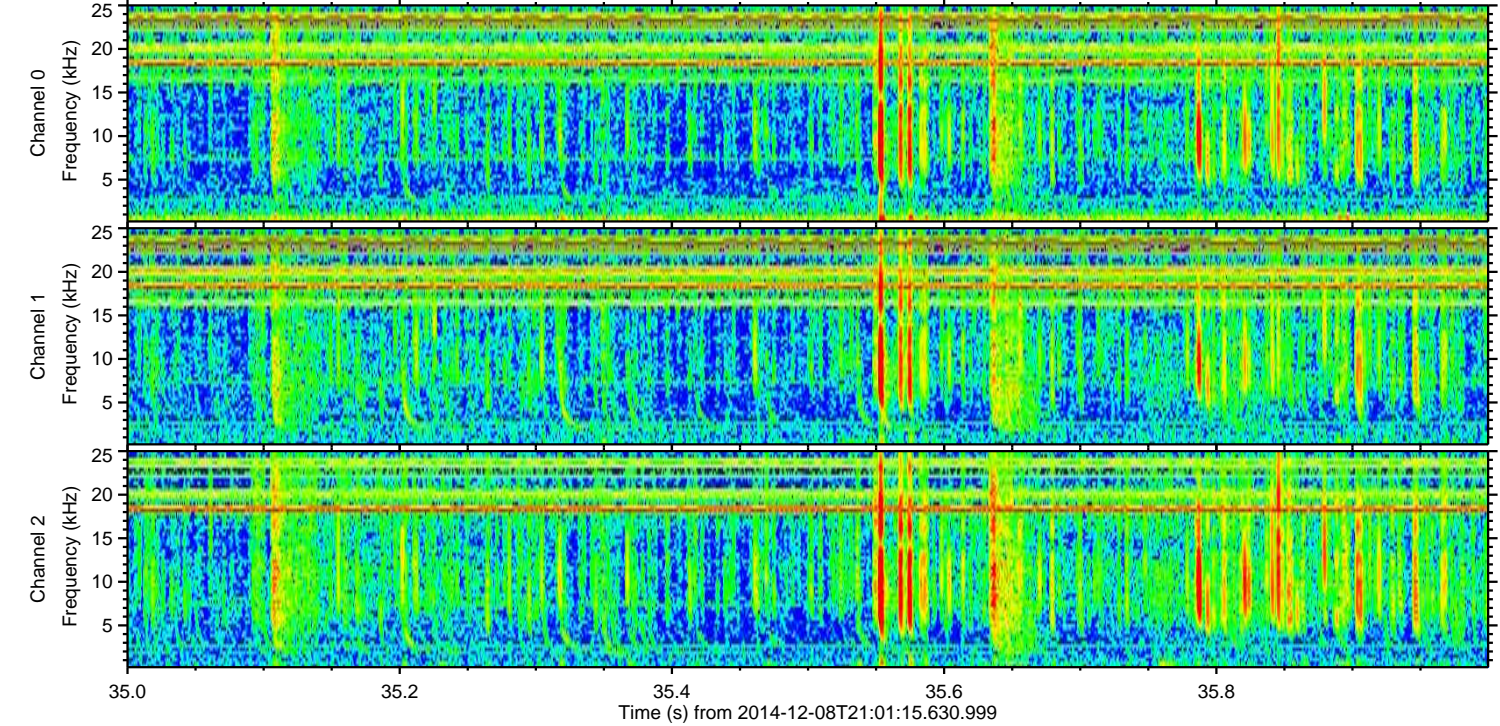
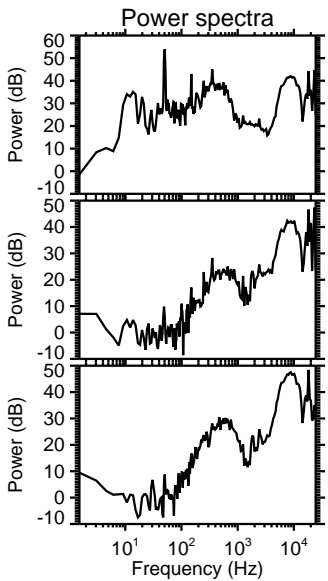
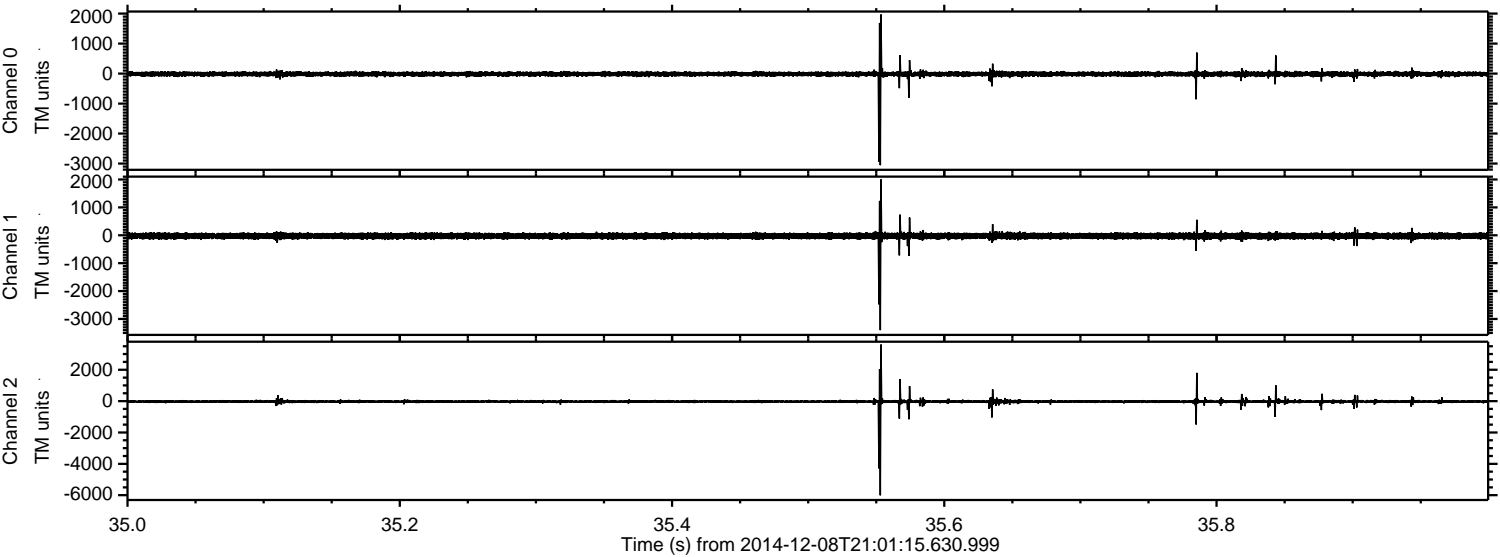


Processed Mon Dec 8 22:56:40 2014 by ELM ver.2012-10-06 from 001__elm20141208_210114__dat00.bin



ELMAVAN 3D WAVEFORMS (Measured data sampled at 50 kHz) 49786 packets of 144 samples from 2014-12-08T21:01:15.630.999. Part 36/144

Processed Mon Dec 8 22:56:41 2014 by ELM ver.2012-10-06 from 001__elm20141208_210114__dat00.bin

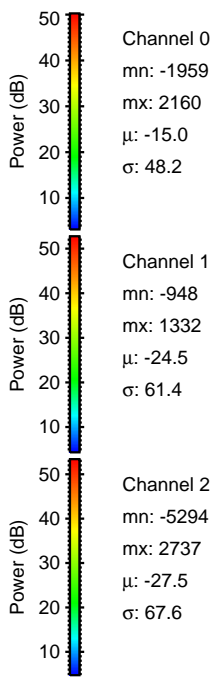
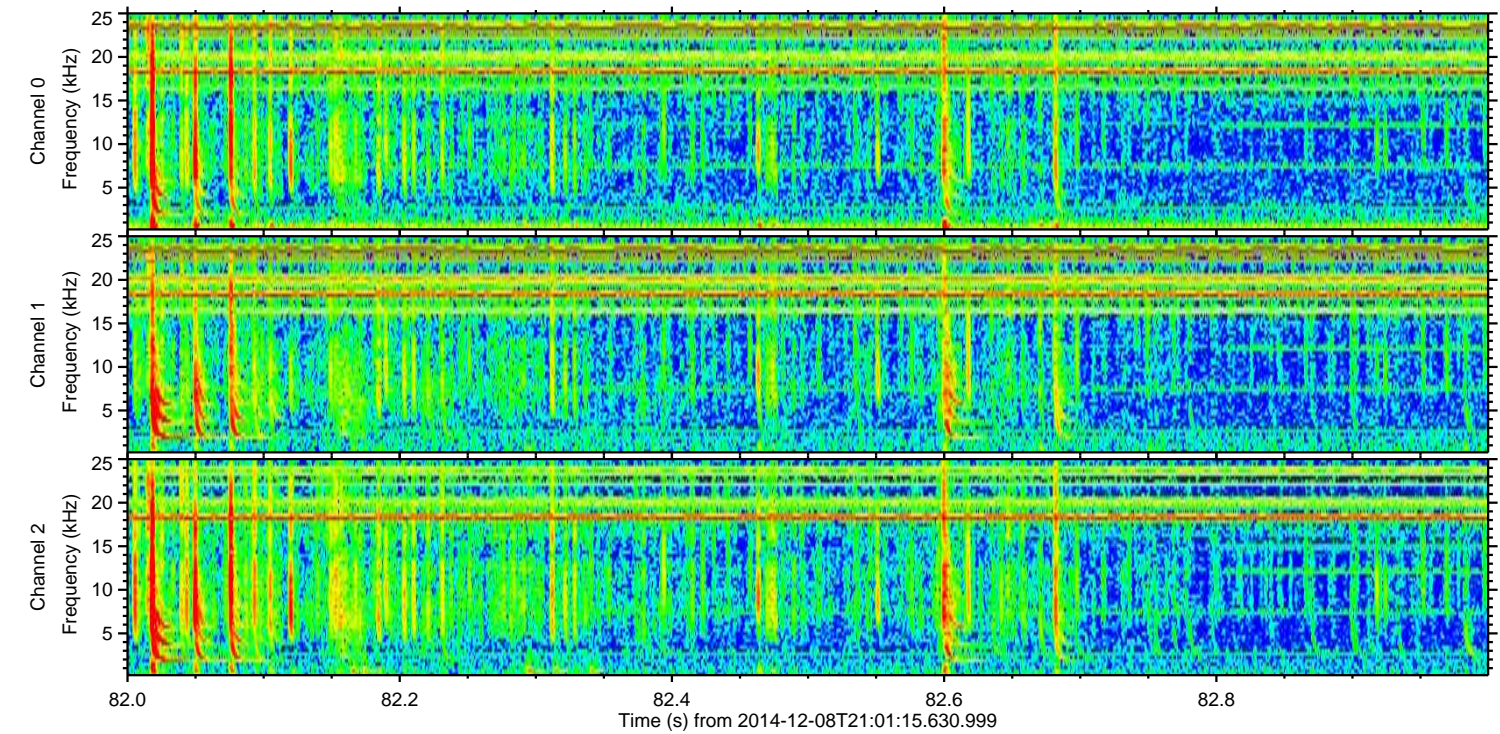
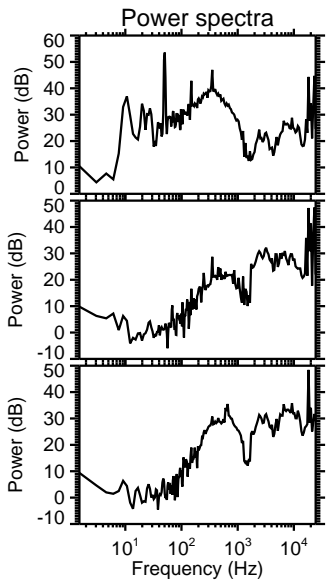
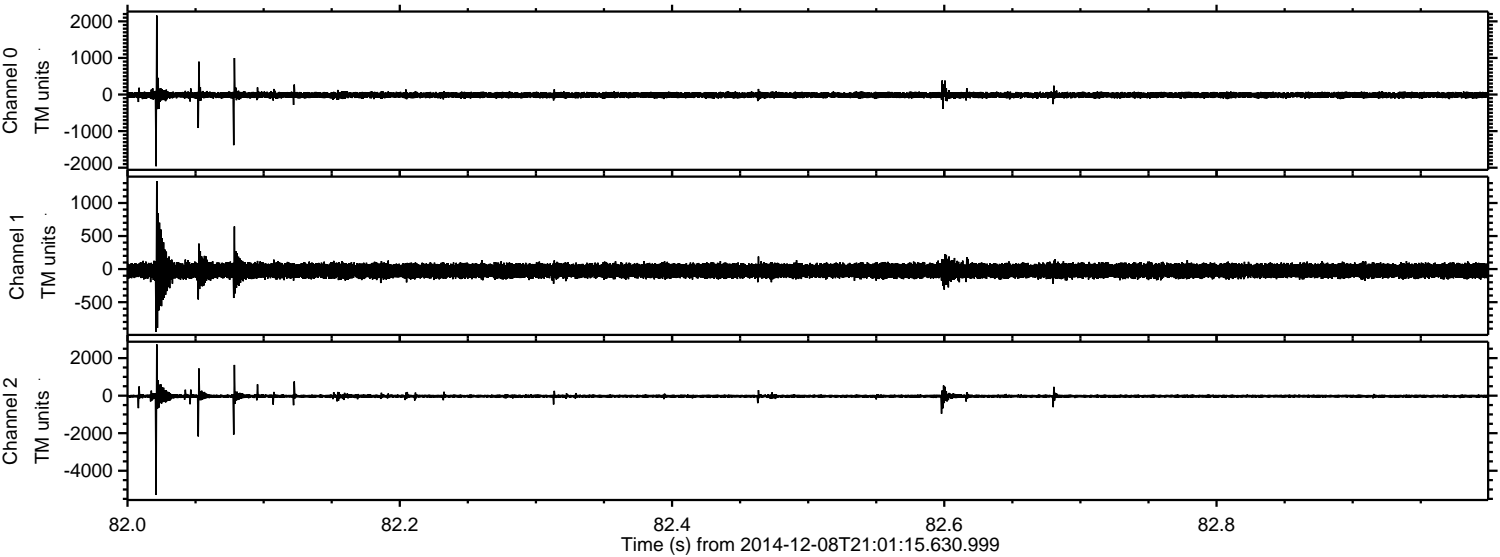


Channel 0
mn: -3056
mx: 1970
 μ : -15.0
 σ : 47.9

Channel 1
mn: -3401
mx: 2003
 μ : -24.5
 σ : 59.7

Channel 2
mn: -6006
mx: 3607
 μ : -27.6
 σ : 69.8

Processed Mon Dec 8 22:56:42 2014 by ELM ver.2012-10-06 from 001__elm20141208_210114__dat00.bin



Channel 0
mn: -1959
mx: 2160
 μ : -15.0
 σ : 48.2

Channel 1
mn: -948
mx: 1332
 μ : -24.5
 σ : 61.4

Channel 2
mn: -5294
mx: 2737
 μ : -27.5
 σ : 67.6

Processed Mon Dec 8 22:56:43 2014 by ELM ver.2012-10-06 from 001__elm20141208_210114__dat00.bin

