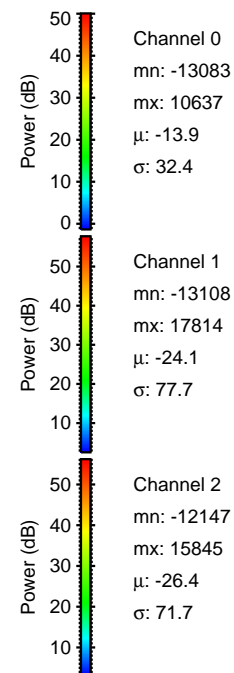
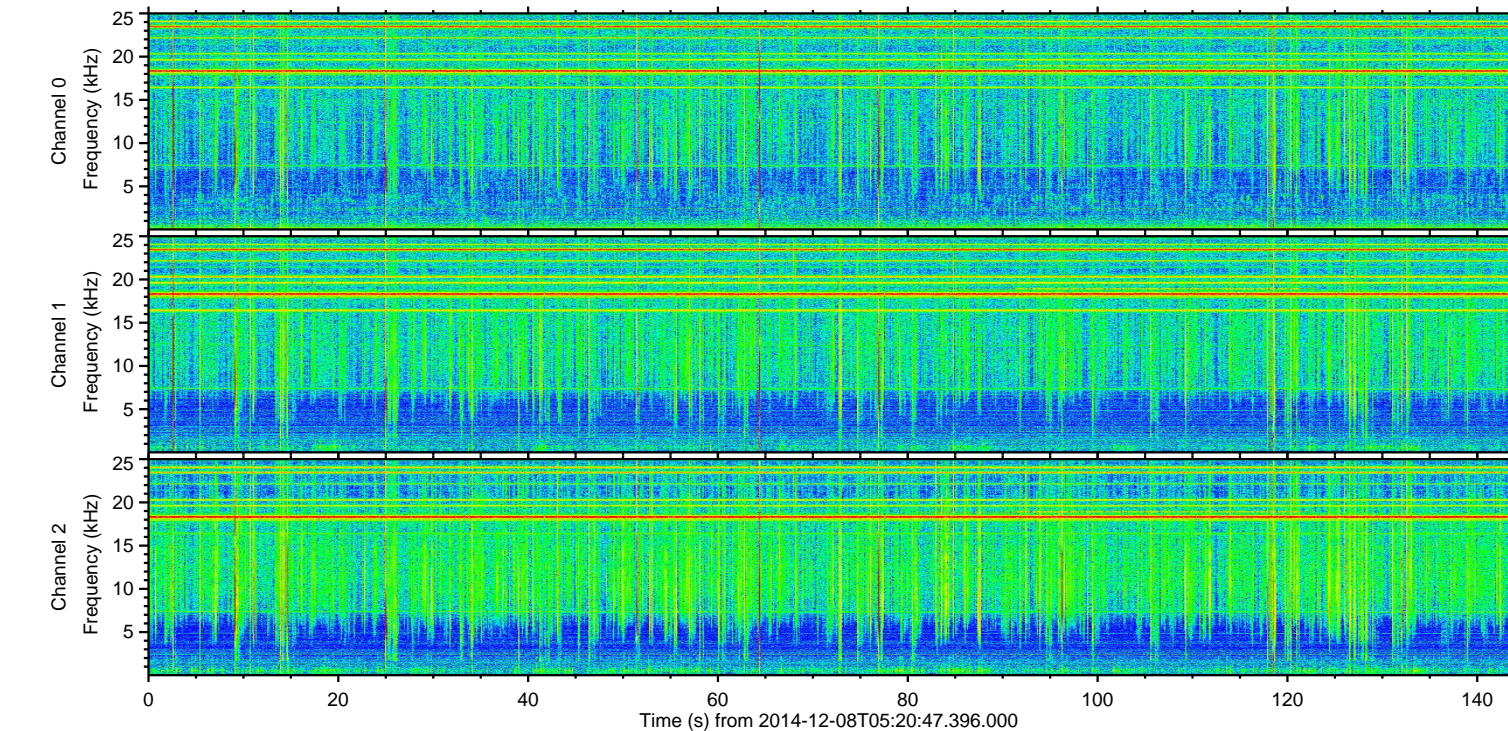
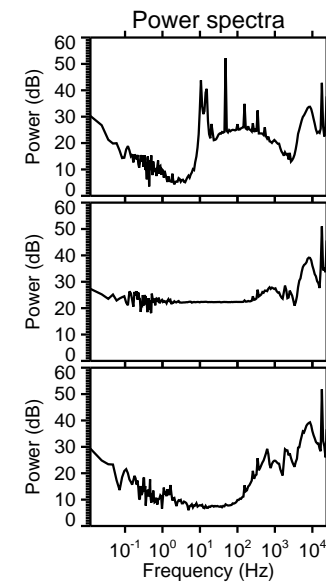
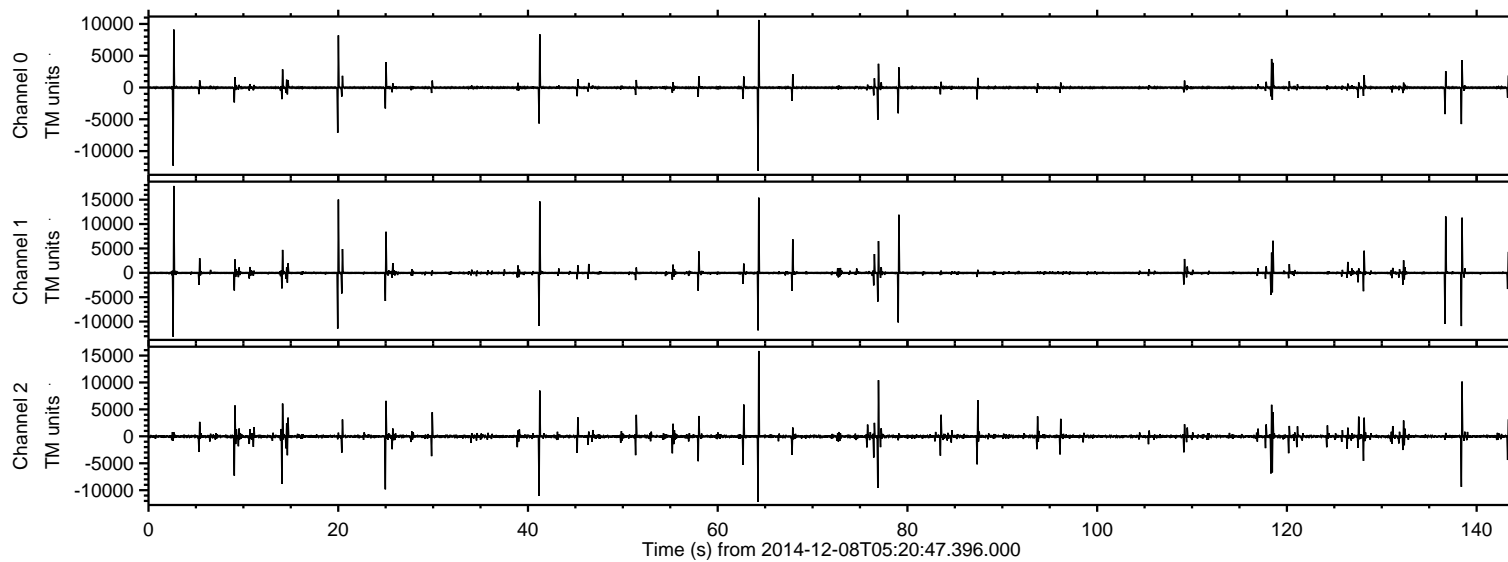
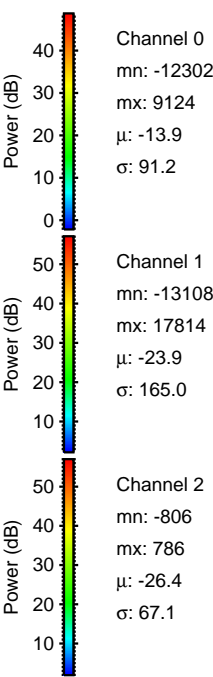
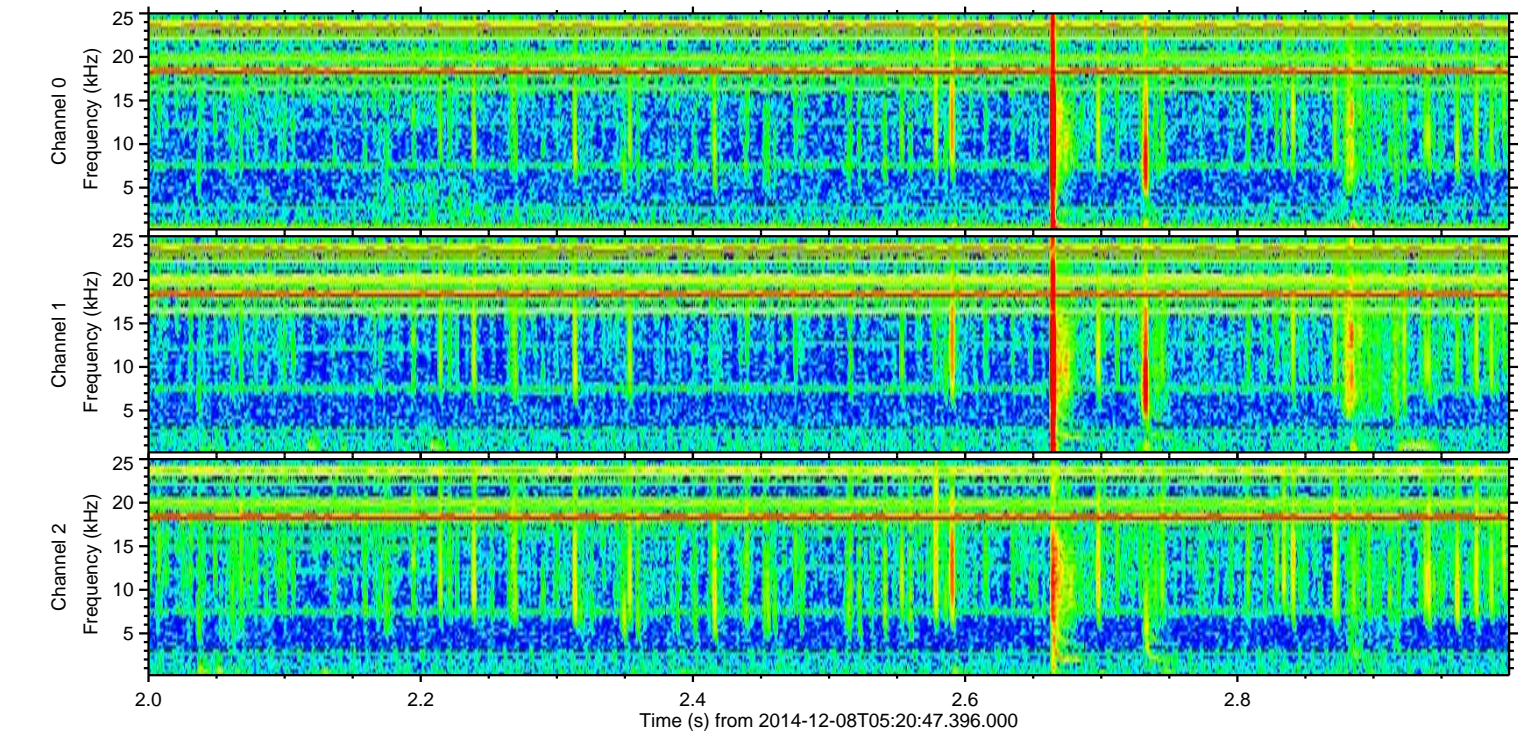
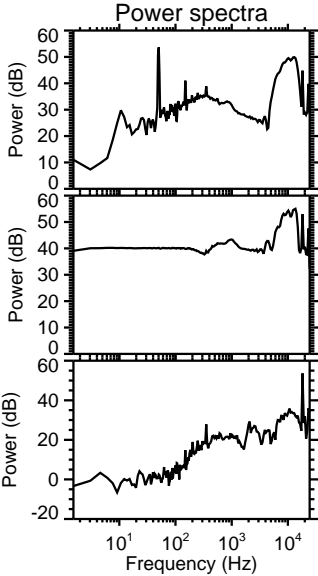
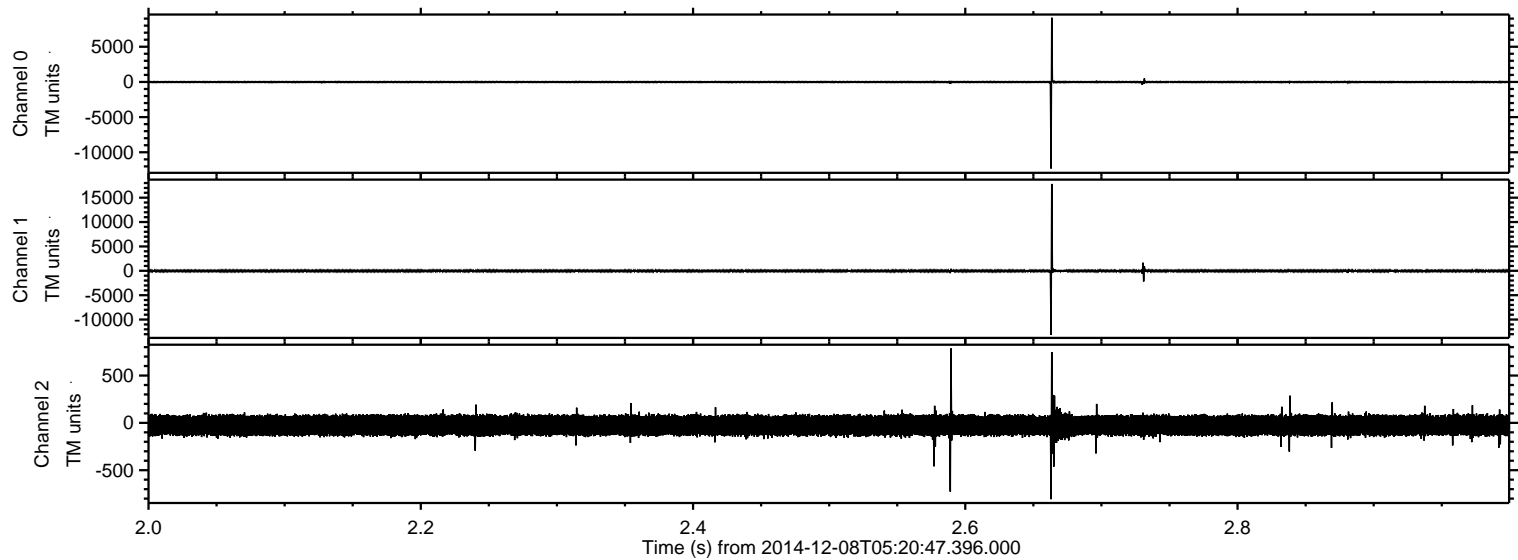


ELMAVAN 3D WAVEFORMS (Measured data sampled at 50 kHz) 49801 packets of 144 samples from 2014-12-08T05:20:47.396.000.

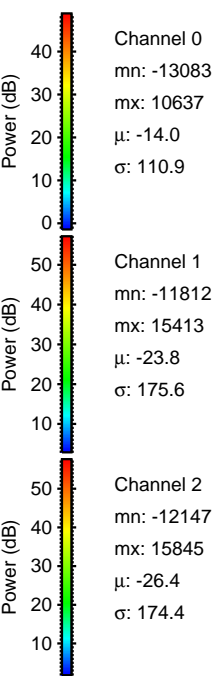
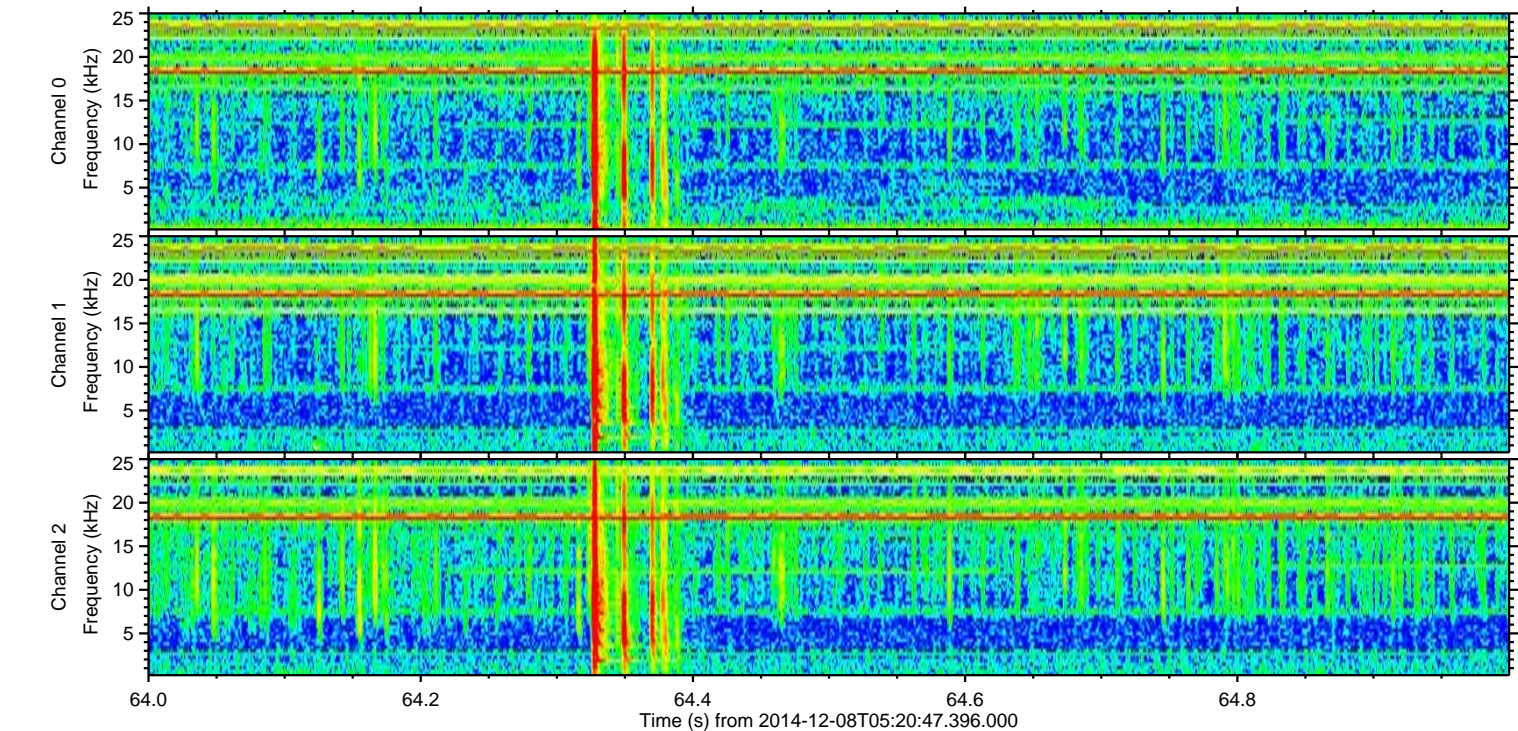
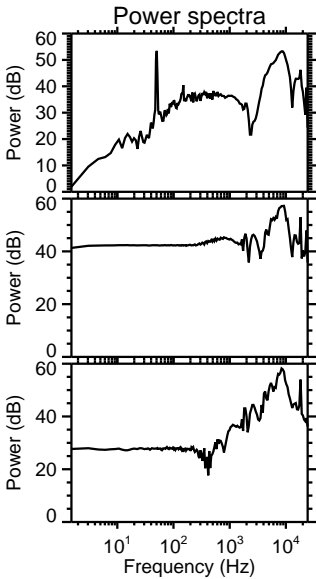
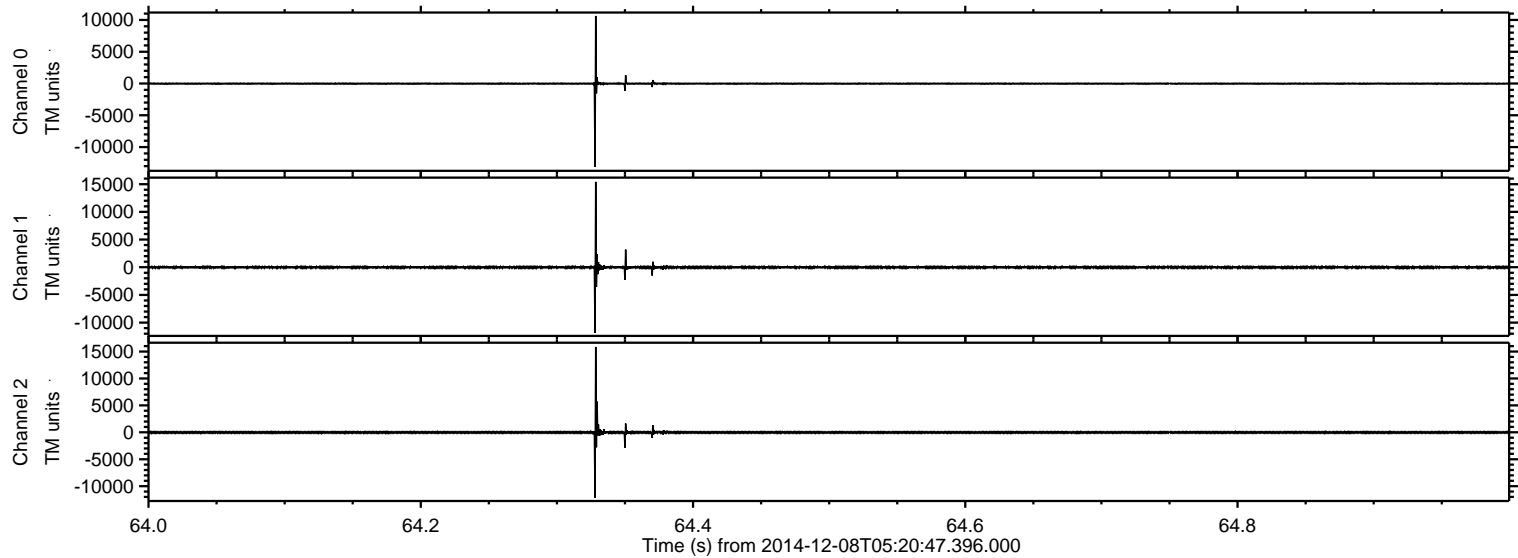
Processed Mon Dec 8 07:43:38 2014 by ELM ver.2012-10-06 from 001__elm20141208_052046__dat00.bin



Processed Mon Dec 8 07:43:49 2014 by ELM ver.2012-10-06 from 001__elm20141208_052046__dat00.bin

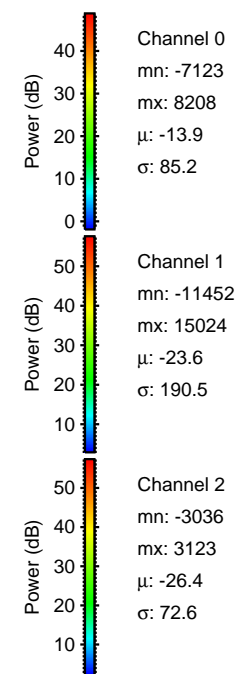
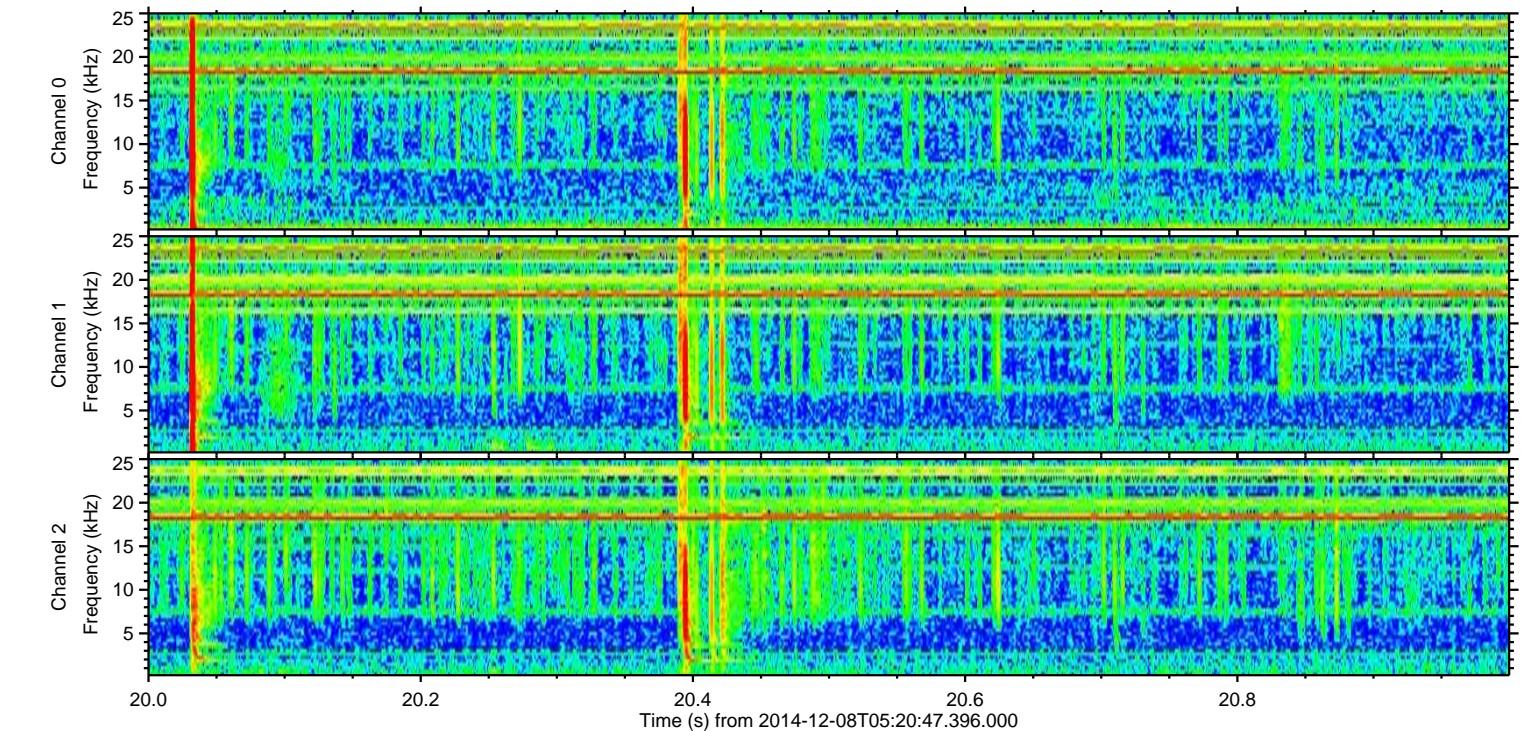
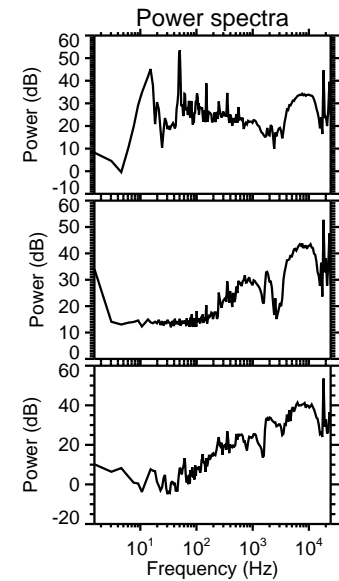
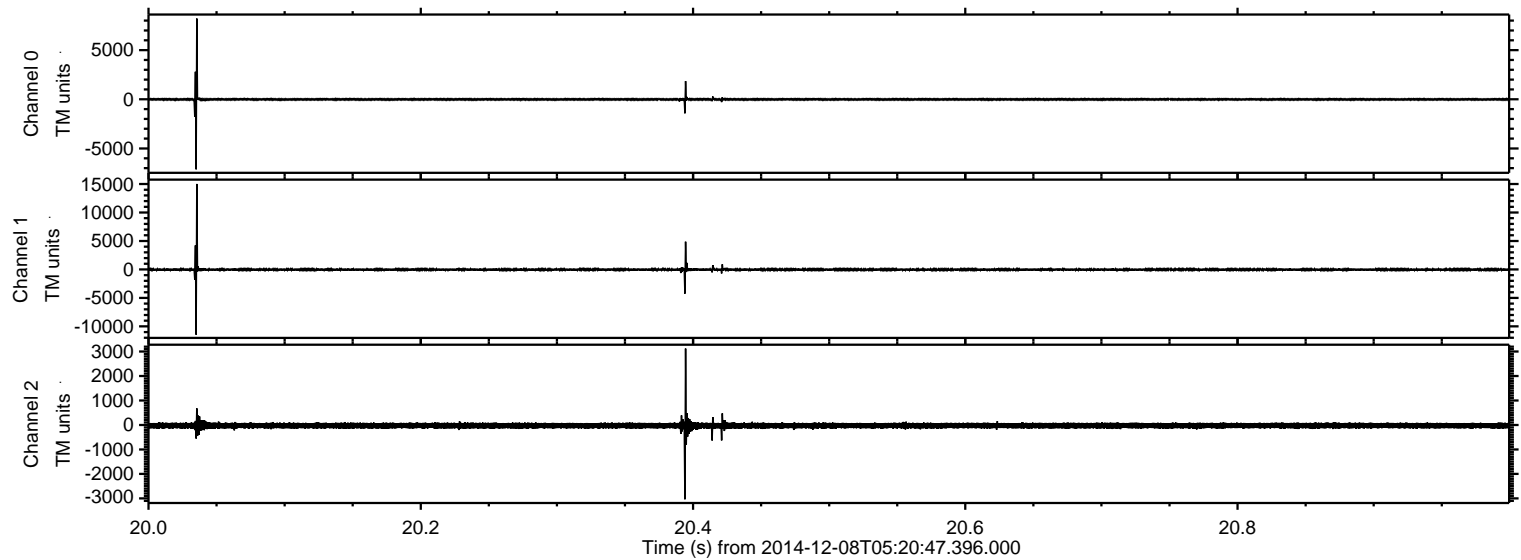


Processed Mon Dec 8 07:43:50 2014 by ELM ver.2012-10-06 from 001__elm20141208_052046__dat00.bin



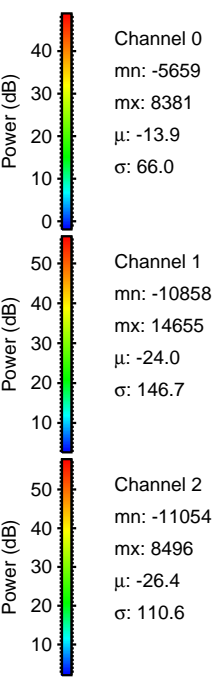
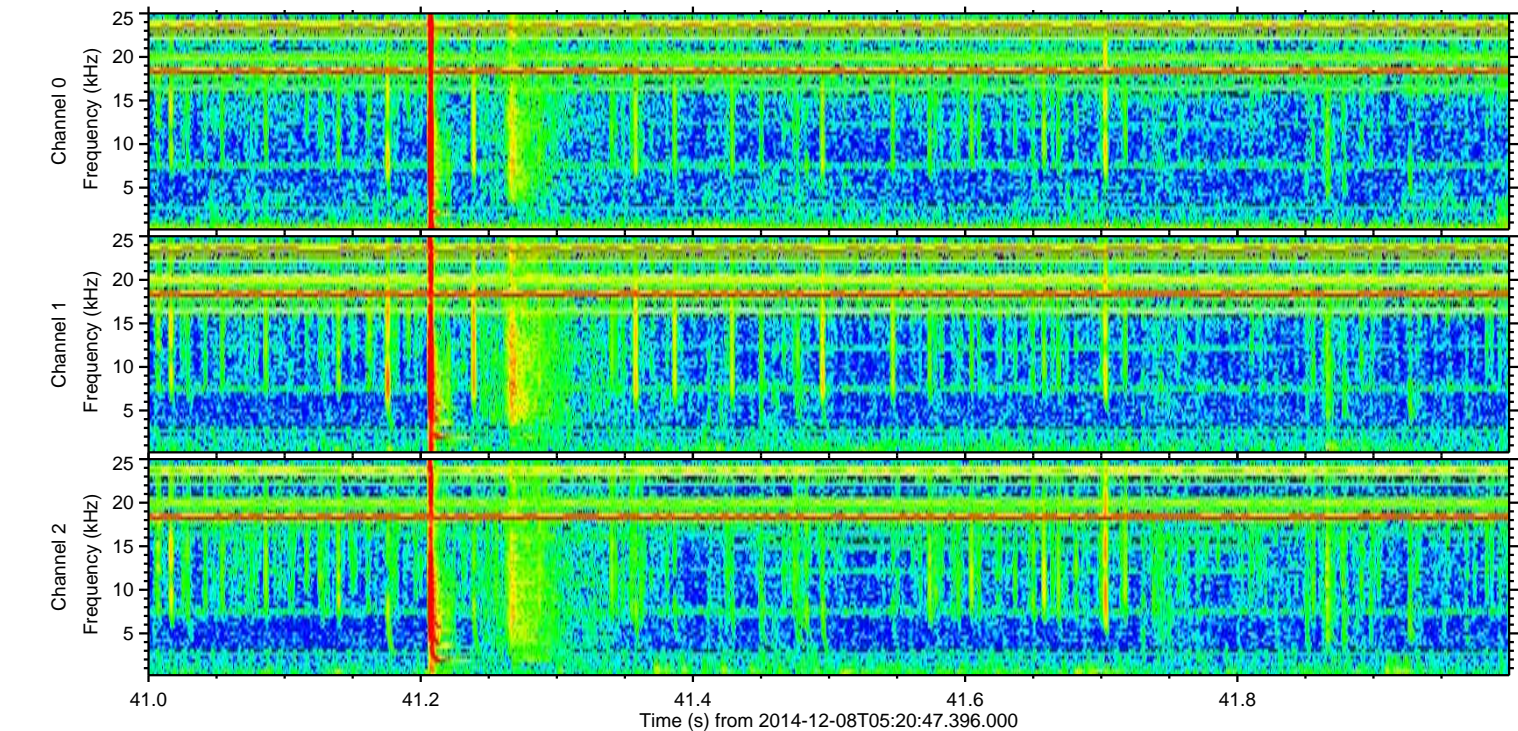
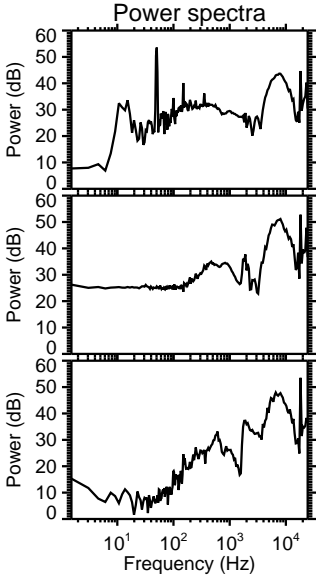
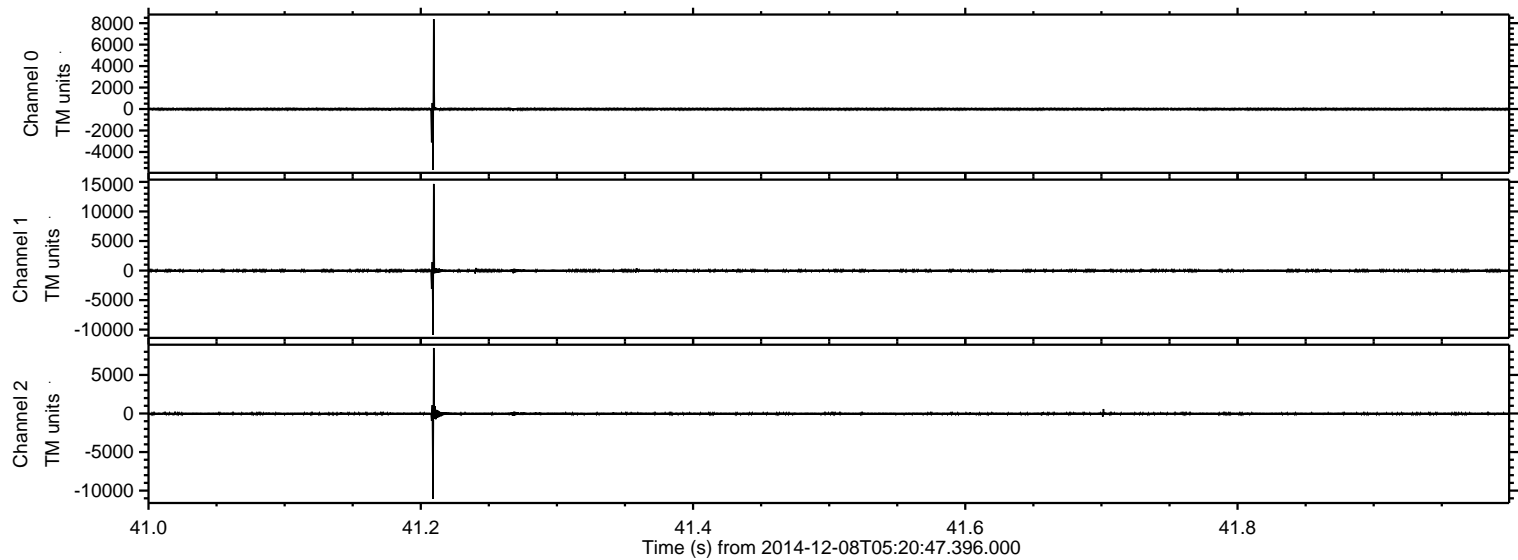
ELMAVAN 3D WAVEFORMS (Measured data sampled at 50 kHz) 49801 packets of 144 samples from 2014-12-08T05:20:47.396.000. Part 21/144

Processed Mon Dec 8 07:43:51 2014 by ELM ver.2012-10-06 from 001__elm20141208_052046__dat00.bin

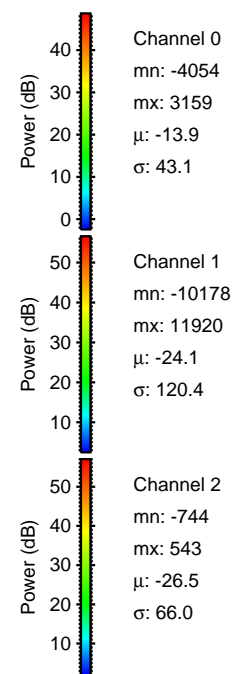
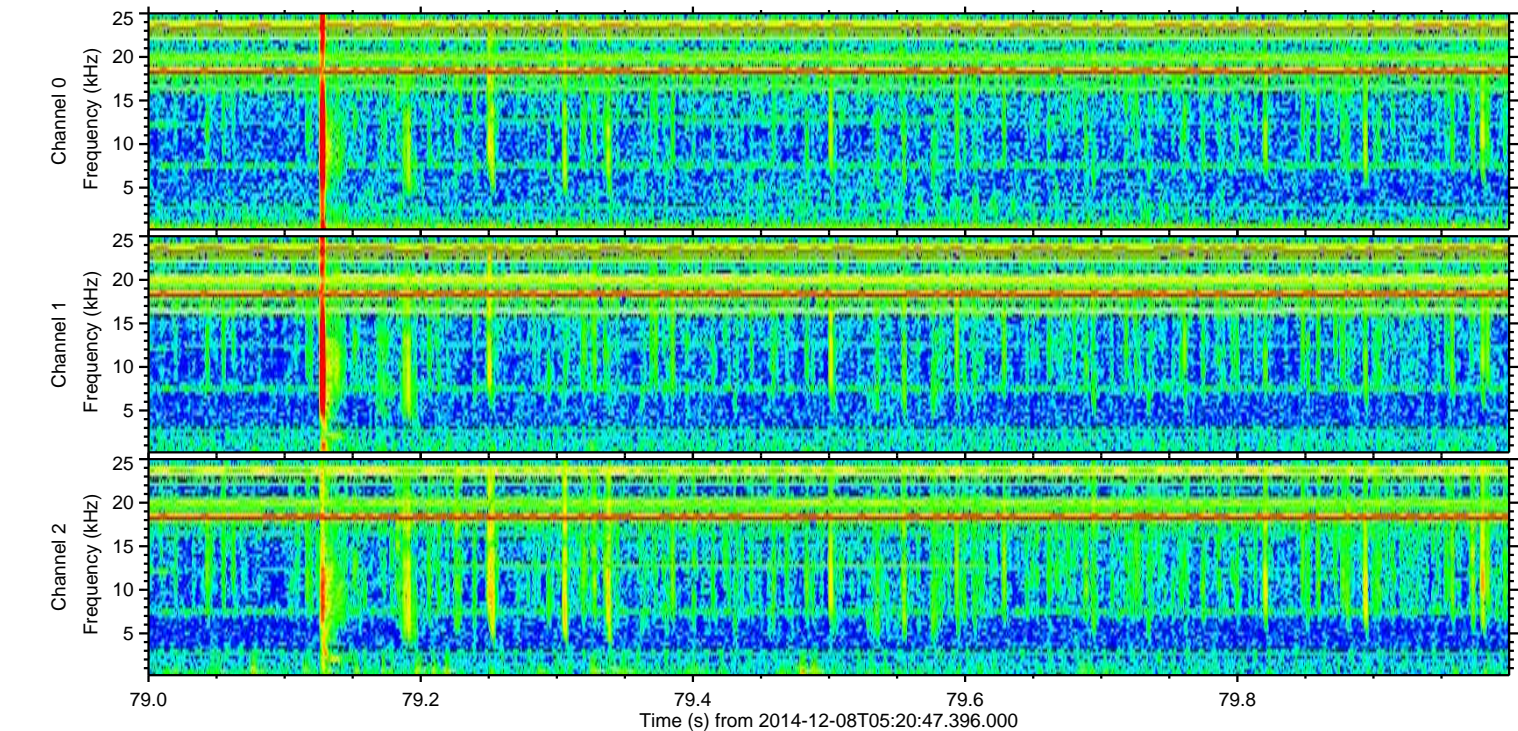
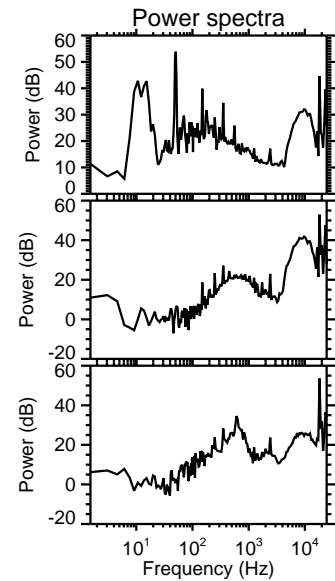
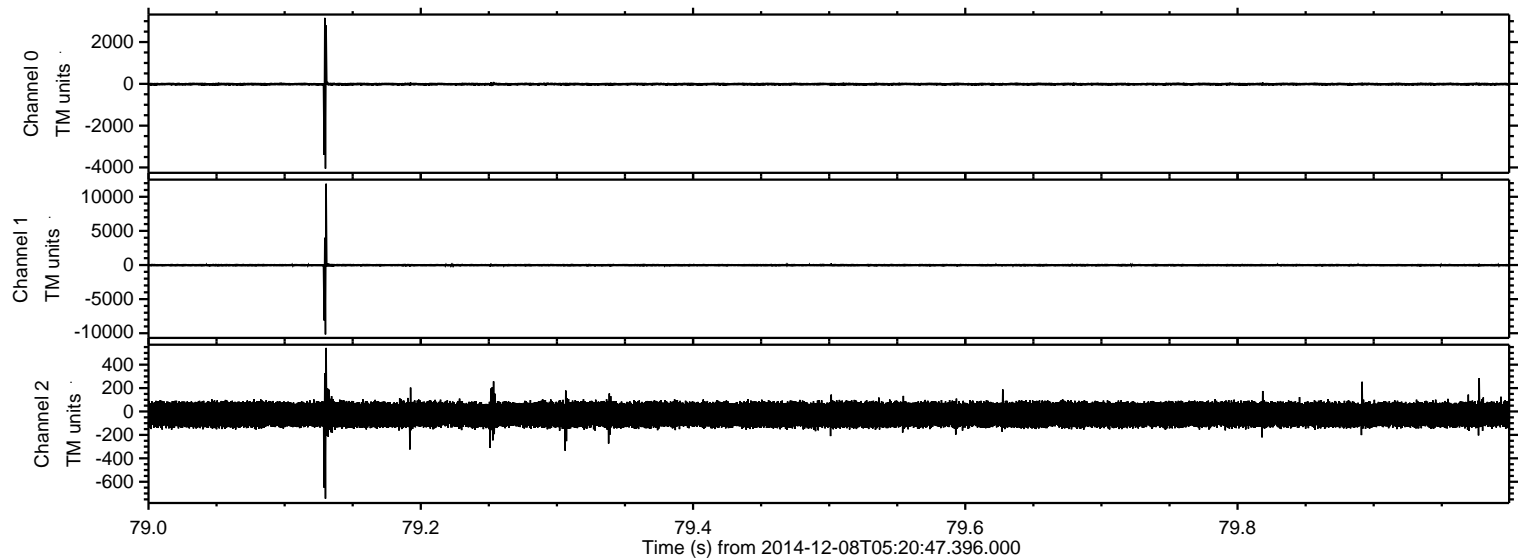


ELMAVAN 3D WAVEFORMS (Measured data sampled at 50 kHz) 49801 packets of 144 samples from 2014-12-08T05:20:47.396.000. Part 42/144

Processed Mon Dec 8 07:43:52 2014 by ELM ver.2012-10-06 from 001__elm20141208_052046__dat00.bin

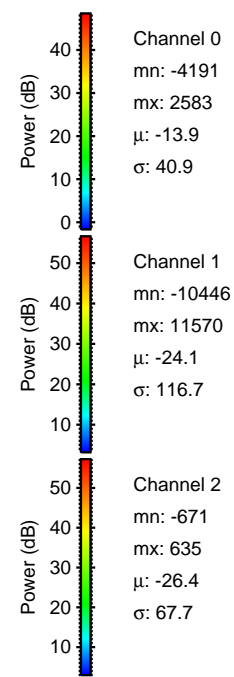
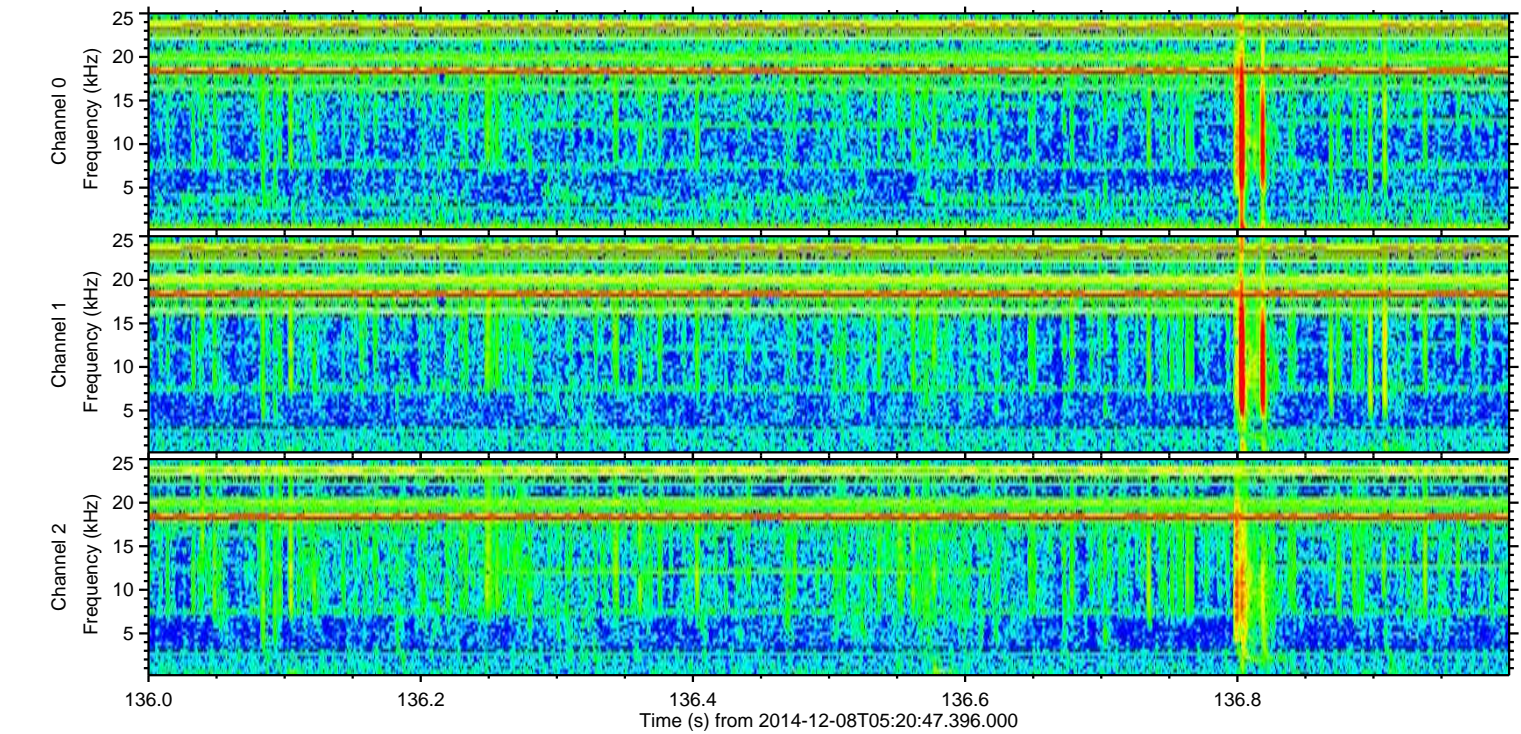
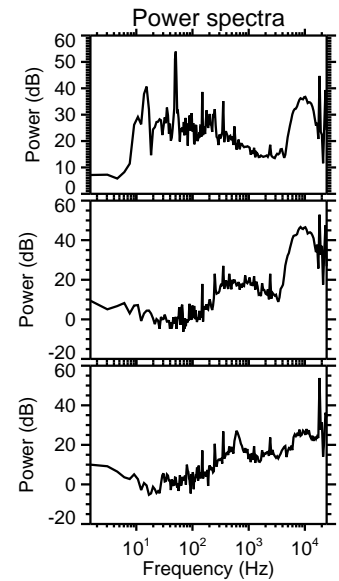
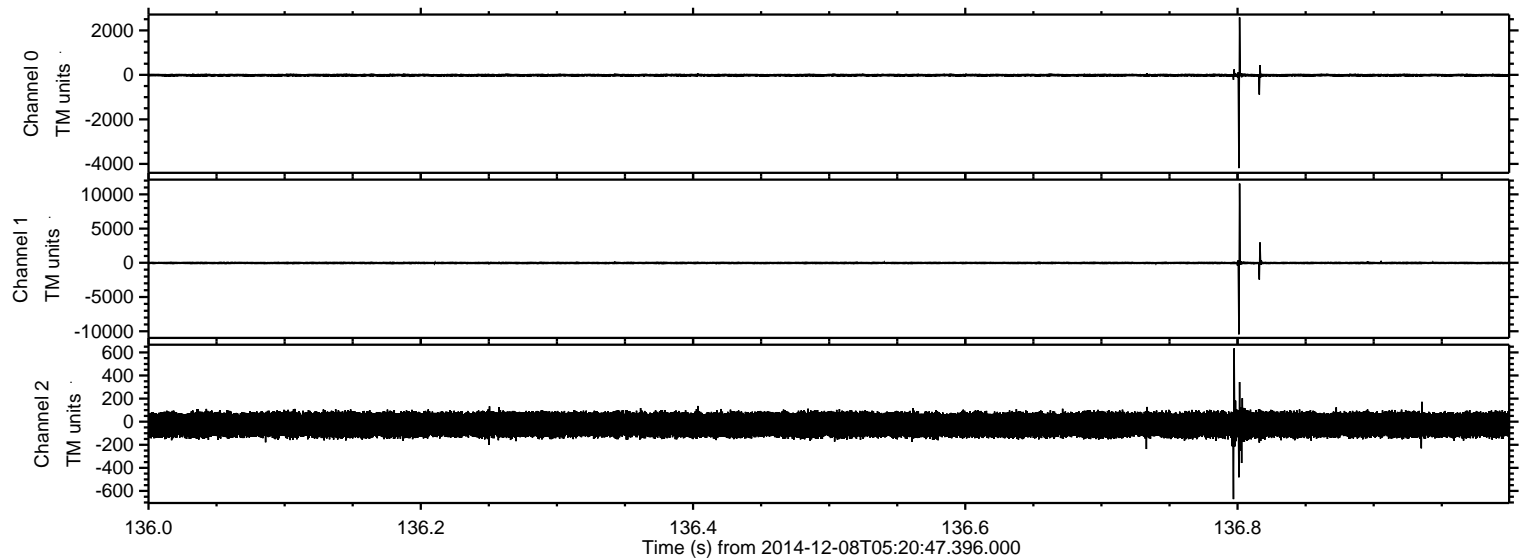


Processed Mon Dec 8 07:43:53 2014 by ELM ver.2012-10-06 from 001__elm20141208_052046__dat00.bin



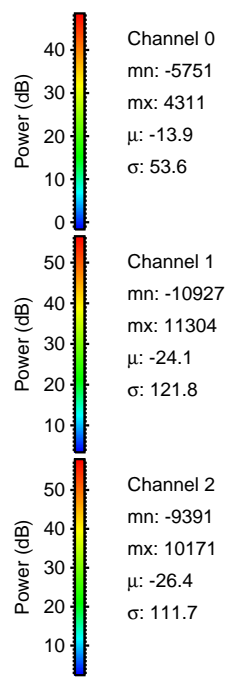
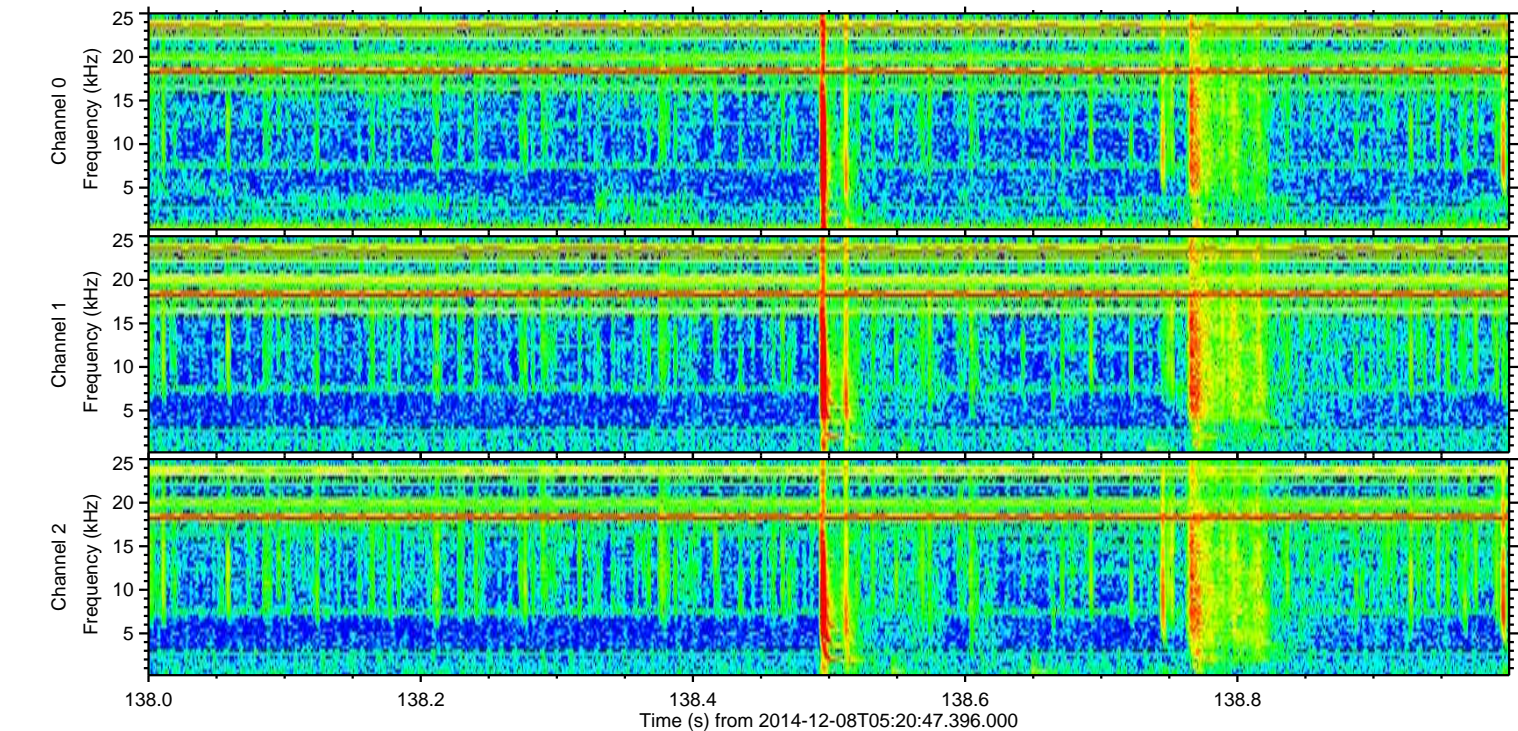
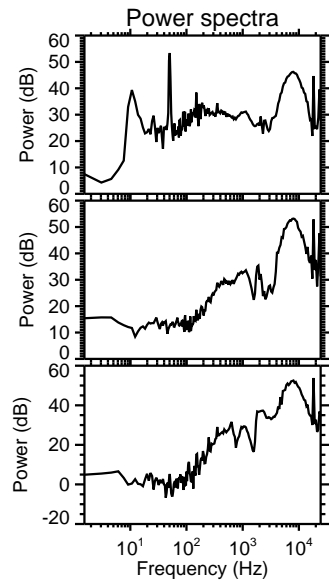
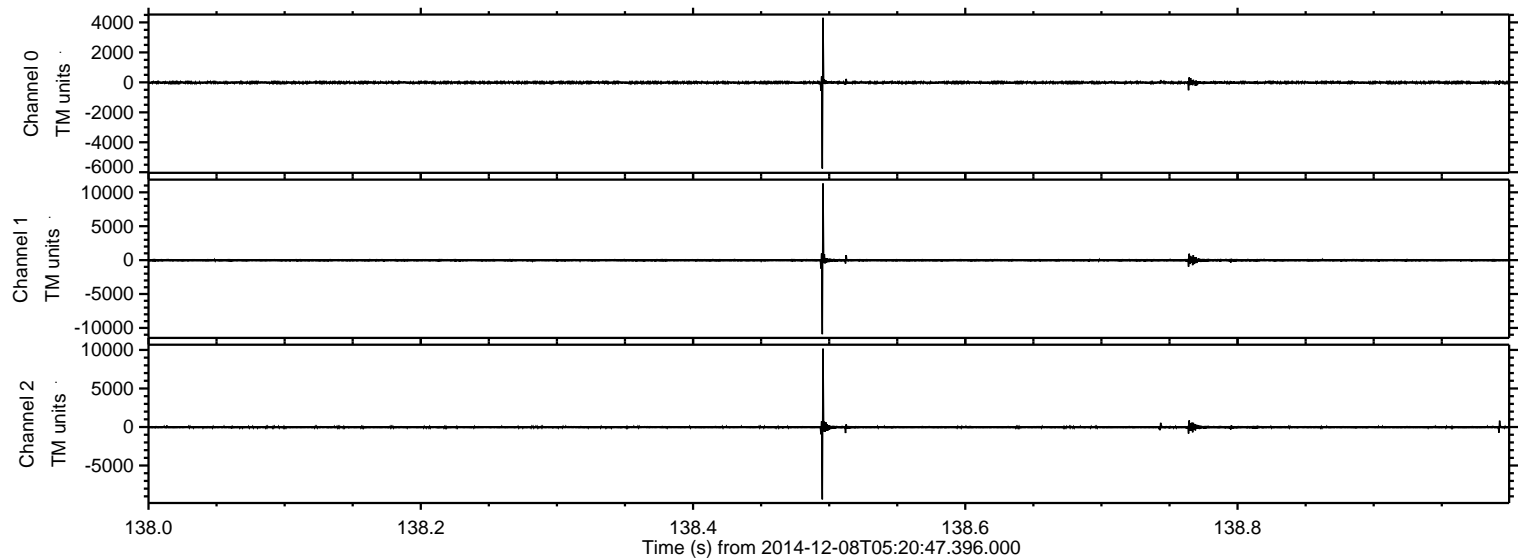
ELMAVAN 3D WAVEFORMS (Measured data sampled at 50 kHz) 49801 packets of 144 samples from 2014-12-08T05:20:47.396.000. Part 137/144

Processed Mon Dec 8 07:43:54 2014 by ELM ver.2012-10-06 from 001__elm20141208_052046__dat00.bin

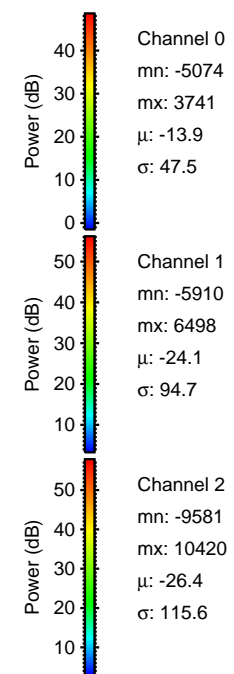
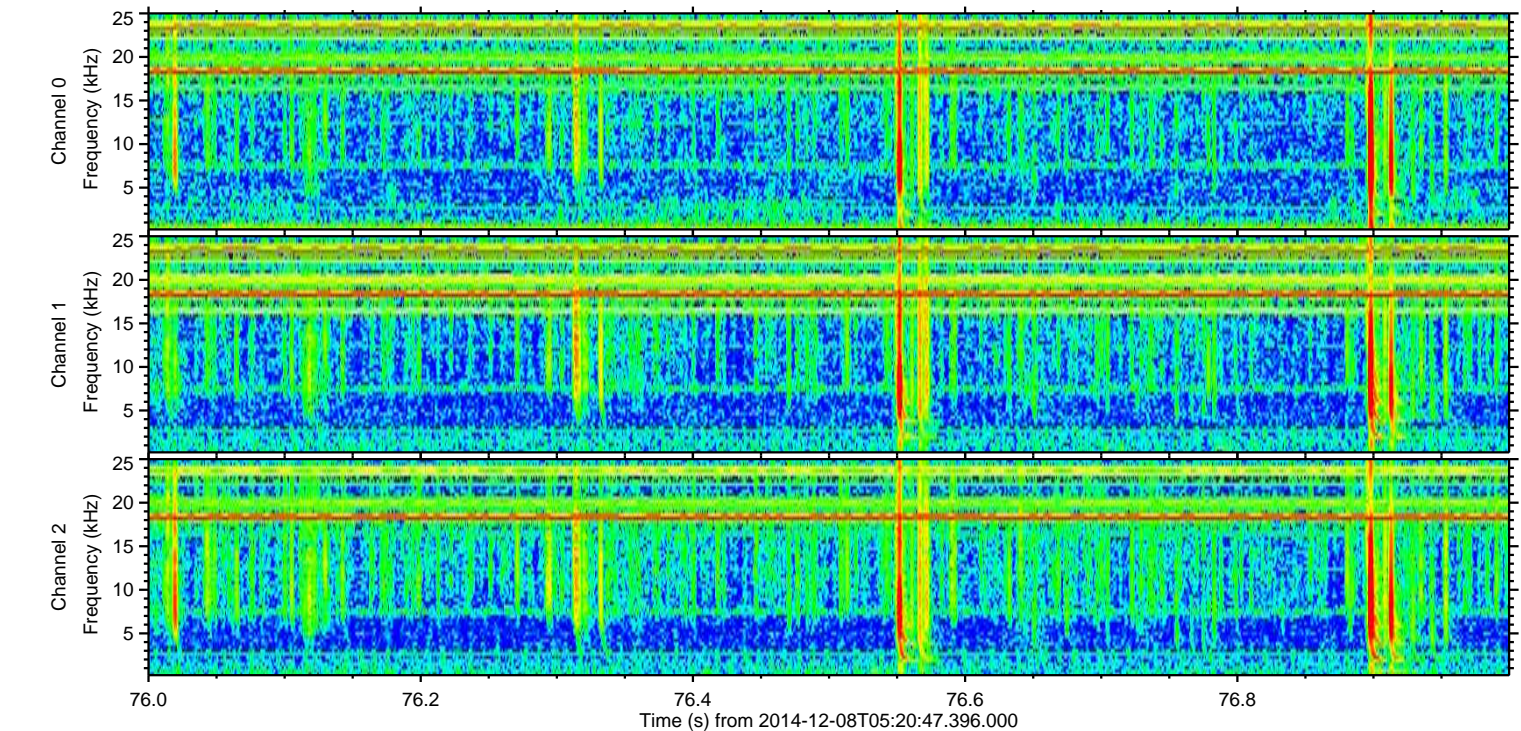
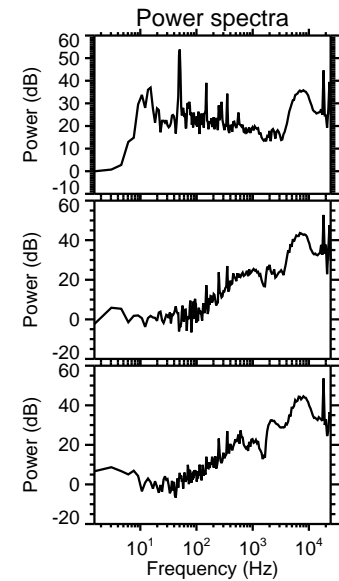
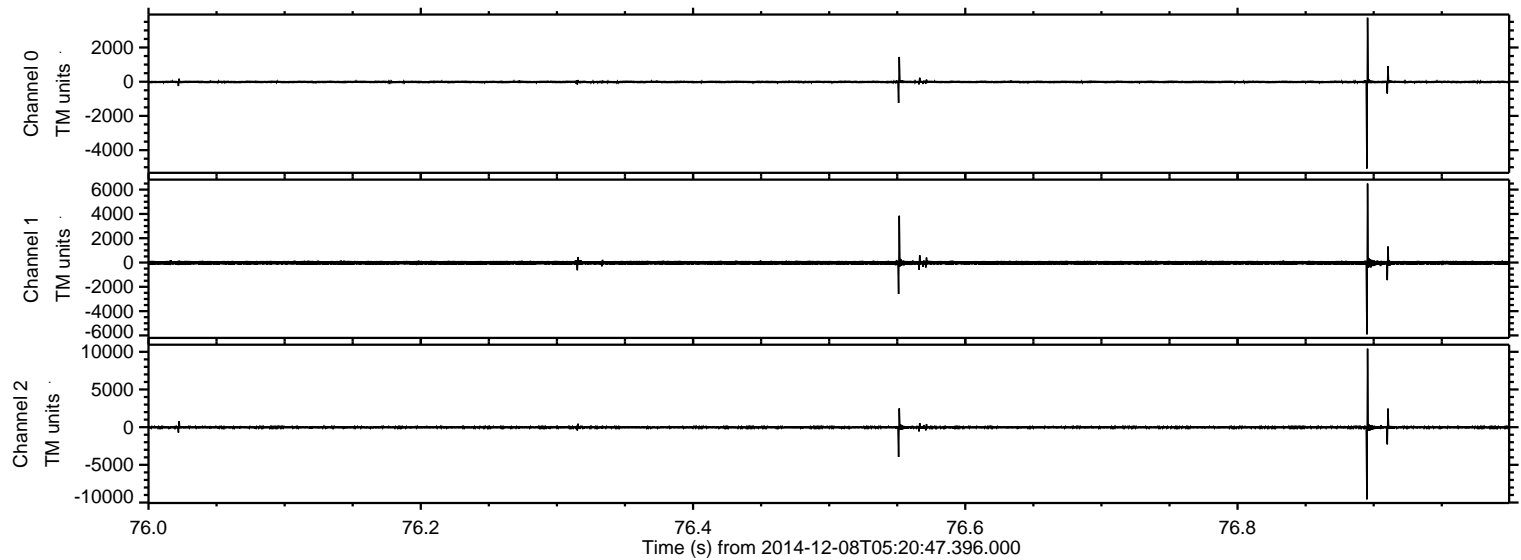


ELMAVAN 3D WAVEFORMS (Measured data sampled at 50 kHz) 49801 packets of 144 samples from 2014-12-08T05:20:47.396.000. Part 139/144

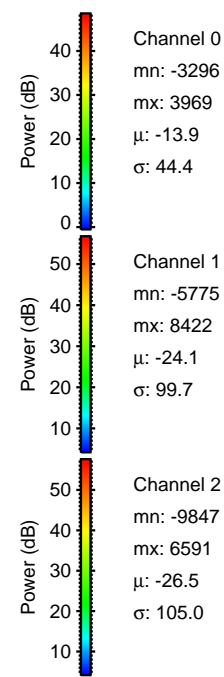
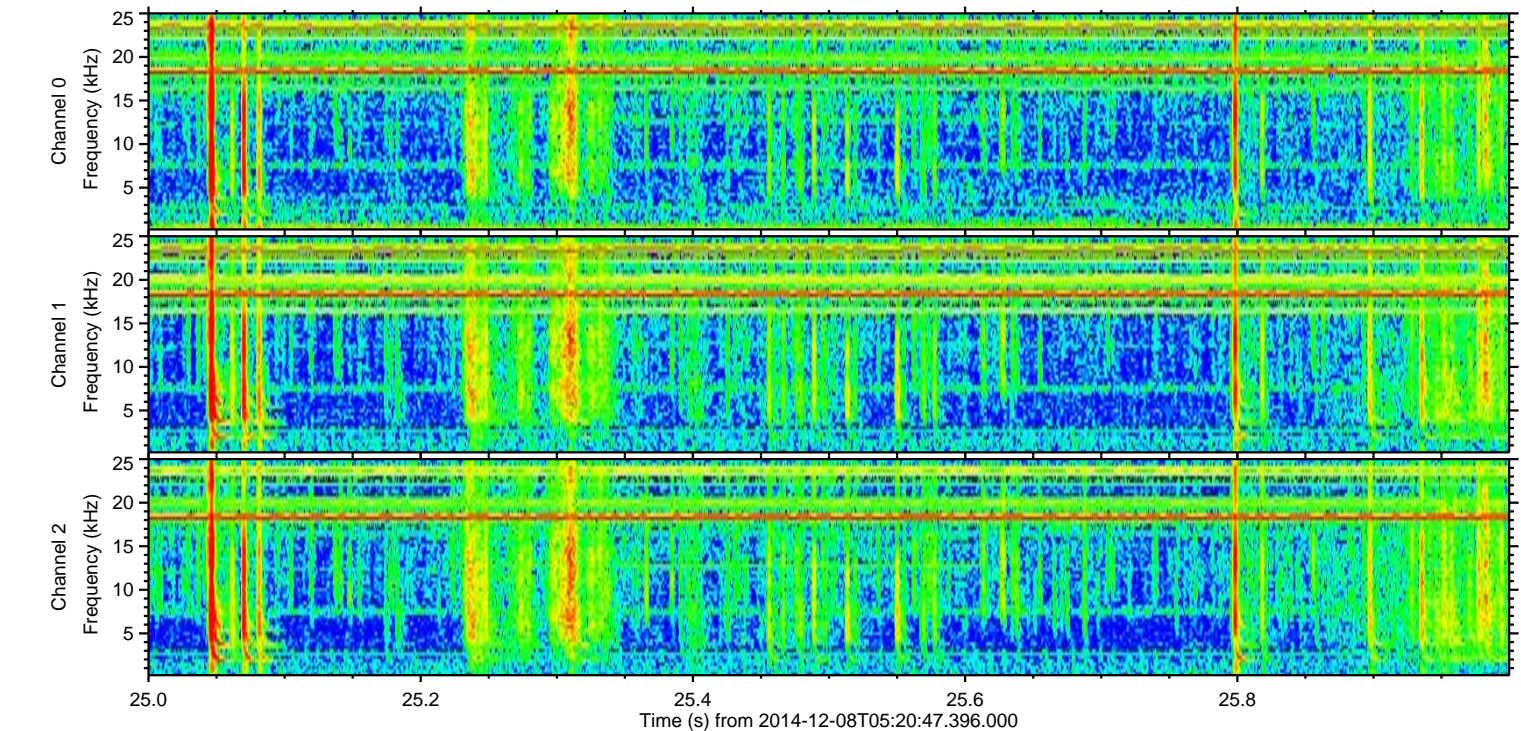
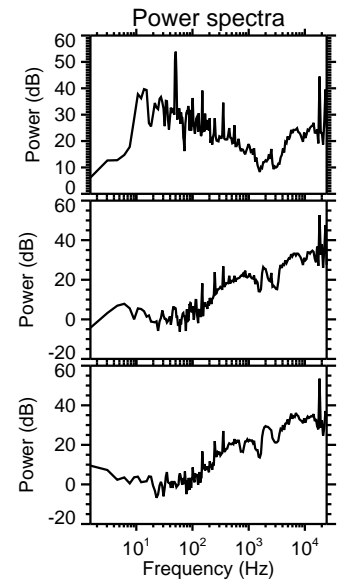
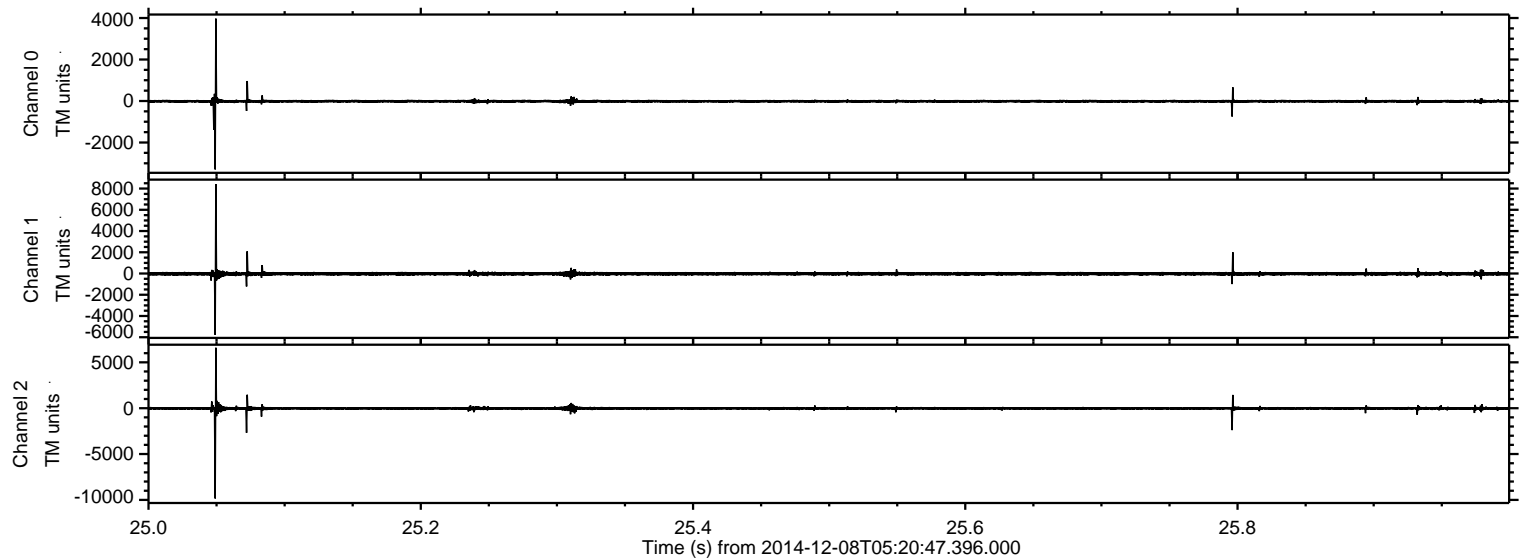
Processed Mon Dec 8 07:43:55 2014 by ELM ver.2012-10-06 from 001__elm20141208_052046__dat00.bin



Processed Mon Dec 8 07:43:56 2014 by ELM ver.2012-10-06 from 001__elm20141208_052046__dat00.bin



Processed Mon Dec 8 07:43:57 2014 by ELM ver.2012-10-06 from 001__elm20141208_052046__dat00.bin



Channel 0
mn: -3296
mx: 3969
 μ : -13.9
 σ : 44.4

Channel 1
mn: -5775
mx: 8422
 μ : -24.1
 σ : 99.7

Channel 2
mn: -9847
mx: 6591
 μ : -26.5
 σ : 105.0

Processed Mon Dec 8 07:43:58 2014 by ELM ver.2012-10-06 from 001__elm20141208_052046__dat00.bin

